

## Historic, archived document

Do not assume content reflects current scientific knowledge, policies, or practices.



1302 (?)

Mrs. Theodosia B. Shepherd's

Copyright  
Washington, D. C.

DESCRIPTIVE  
CATALOGUE

OF

FLOWERS.



PLANTS,  
BULBS,  
SEEDS  
CACTI  
ETC.

VENTURA-BY-THE-SEA  
CALIFORNIA.

THE  
NEW INDEPENDENT,  
VENTURA.

## Please Read Carefully.

---

The plants, seeds, and bulbs offered in this catalogue are, with few exceptions grown in my own greenhouses and gardens. The plants are started from vigorous outdoor stock, and should, in consequence, be the more satisfactory for growing in the house, garden or greenhouse. Many of the novelties are offered by no one else, and others have originated here which are now deceminated far and wide.

Every precaution is used to prevent mistakes in the names of plants.

The greatest care is taken in packing, and I am prepared to ship plants to any part of the country by mail, freight or express.

When ordering, always state which way plants shall be shipped. No plant order filled for less than \$1.00, unless 10 cents extra is sent for postage. Seed orders are filled to any amount. Should plants be received in bad condition, report should be made at once, and they will be replaced, provided report is made within ten days after the receipt of the plants.

This catalogue is free to all customers. The price is 10 cents to all new applicants, and if they order stock, they may deduct the amount from the first order.

If plants and seeds give good satisfaction, any expressions of appreciation will be gladly received.

Customers may select 25c cents worth of seeds extra on all seed orders; 20 cents worth of plants on each dollar for plants.

Always make a second list of plants to be substituted, in case any varieties are out in the first list.

Postage will be paid on all small plants without soil, and larger plants and plants with soil, sent by express at customer's expense. Extra plants will be sent on all such orders.

---

## Cheap Collections.

**Any One Sent Postpaid for \$1.10. Any Six for \$5.50.**

1. 20 cuttings of 20 varieties of choice Geraniums.
2. 20 varieties of choice Geraniums.
3. 16 varieties of begonias.
4. 10 varieties of foliage Geraniums, 10 varieties of Zonale cuttings.
5. 1 Smilax, 1 Callas, 5 Amaryllis, 5 Cannas, 2 Crinum.
6. 10 varieties of Climbers and Trailing Plants.
7. 1 Crinum Fimbratum, 1 Crinum Kirkii, 1 Amaryllis Aulcia; large bulbs.
8. 12 Basket Plants.
9. 20 varieties of Fuchsia cuttings.
10. 20 varieties choice Greenhouse Plants.
11. 15 varieties of Coleus.
12. 6 varieties of Lady Washington Geraniums.
13. 20 varieties of Flower Seeds.
14. 12 varieties of choice Greenhouse Flower Seeds.

Small plants, not named, no premiums.

NOTE—The heading "The Amaryllis Lily" on Page 75, should read "Amaryllis."







MRS. THEODOSIA B. SHEPHERD.

## GREETING . . . . .

---

*To all Flower Loving Friends and Customers:*

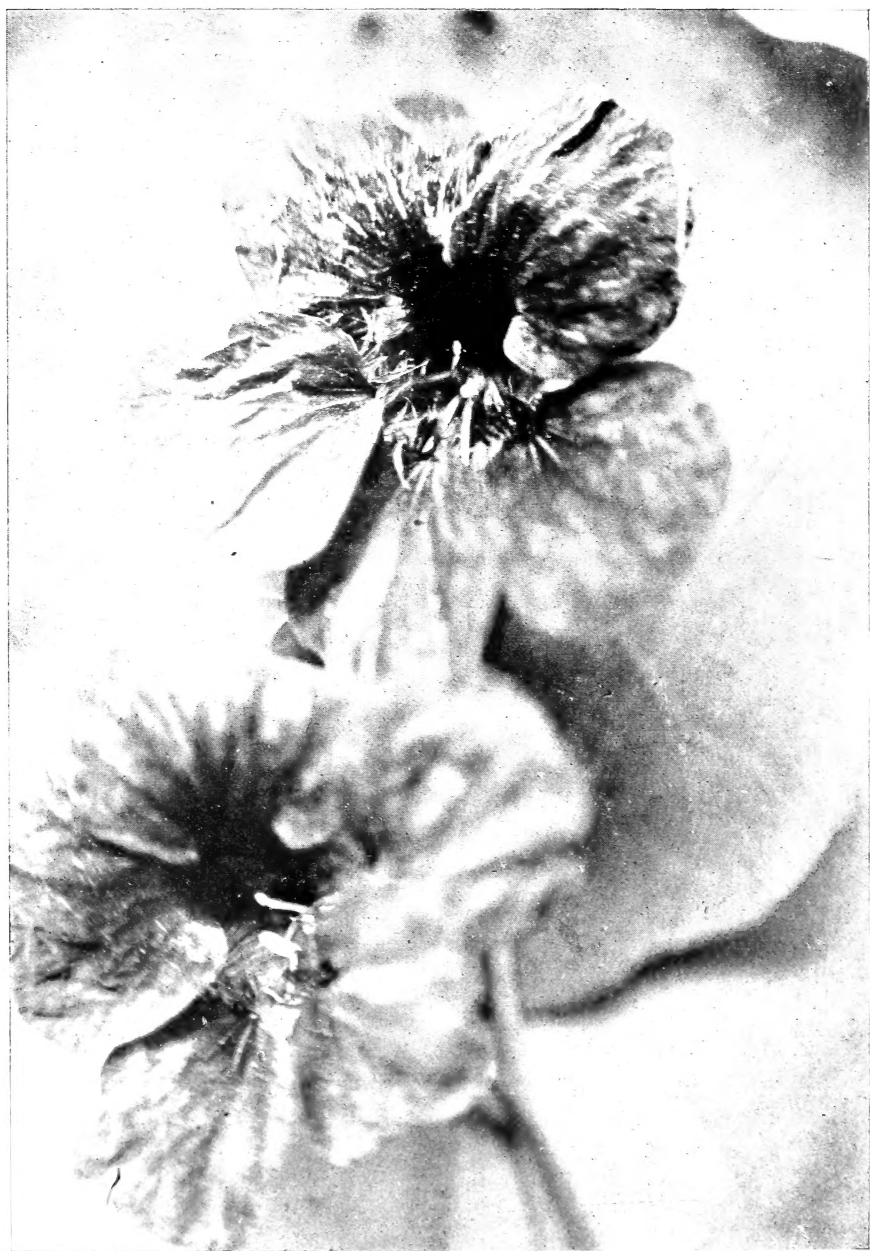
AS this catalogue goes to press, I read that old Boreas is holding high carnival east of the Rockies, reveling in disastrous storms by land and sea. From these tragic pictures, I turn to look through the open window into a great garden flooded with soft warm sunshine, where moving palms and bamboo, giant strelitzias, and graceful tree ferns, rise in stately beauty, where flaunting red poinsettias gleam, gay geraniums, glorious roses, spicy carnations, and fragrant heliotrope are gay with blossoms; where a hundred varieties of captivating begonias run riot in garden beds and lath-houses, bearing myriads of exquisite flowers in most bewildering profusion, vieing in the wonderful diversity and the brilliancy of their beautiful flowers.

Into this ideal spot Jack Frost never enters. Here new creations in flowers are developed, and the choicest plants, bulbs, and seeds are grown to the greatest perfection. It is a labor of love to cultivate them, and a great pleasure to send them to those who love and care for them.

Trusting for a share of your flower orders, I am

Yours sincerely,

THEODOSIA B. SHEPHERD.



MRS. SHEPHERD'S NEW GIANT NASTURTIUM "JUPITER."

# MRS. THEODOSIA B. SHEPHERD'S

## ...Annual Floral Catalogue...

---

VENTURA-BY-THE-SEA, CALIFORNIA.

---

### Novelties and Specialties in Flower Seeds

---

#### **Mrs. Shepherd's New Giant "Rainbow" Cosmos.**

Everyone should have these magnificent new varieties, new departures in Cosmos. Colors—white, cream, blush and palest mauve, exquisitely flamed, flecked and penciled in many combinations; some have aurioles around the center of the flower; with red, lavender or pink bands around the eye, some are daintily flecked like bird eggs; the petals are broad and over-lapping, pleated or frilled; edges plain, toothed or lacinated. Flowers very large, measuring from 3½ to 4 inches across. Perfect in form and color, all so exquisitely beautiful as to excite the most enthusiastic admiration. 15c pkt.

#### **"Cut and Come Again" Sunflowers.**

(*Helianthus Cucumerifolius*) New Types.

These beautiful new types of Sunflowers are a great addition to the garden. They grow 3 to 5 feet high, and bear charming flowers on long stems that are fine for decoration or vases. They are beautifully and variously formed; single and semi-double. Colors—cream white, pale yellow, orange, pale yellow with darker zone. The flowers measure 4 to 5 inches across, and are variously and beautifully formed; some with very broad petals, some pointed, some like single cactus dahlias. The center of the flowers are brown or black, or greenish white—all sorts mixed 10c; cactus flowered mixed, 10c; white star, 15c; 3 pkts for 25c.

#### **Mrs. Shepherd's Two Grand New Giant Flowered Nasturtiums.**

**Jupiter.** Seldom is a floral novelty offered more worthy than this superb new Nasturtium. It attracts attention at once by its great size, beautiful form, bright glowing color, and the exquisite crimped crepe-like effect of the flowers. It is a rich glowing yellow, with only a few faint

black lines low at the base of the upper petals. The flowers measure  $3\frac{1}{2}$  inches across; the petals  $1\frac{1}{4}$  inches in diameter. It is a seedling of Sunlight, my first giant flowered Nasturtium, which was bought and introduced by W. Atlee Burpee, the well-known Philadelphia seedsman. It is almost one-third larger than Sunlight, and the two shades deeper in color, and much more deeply crinkled. 15c pkt.

**Saturn.** A fitting companion and a fine contrast to the beautiful crinkled flower Jupiter, is Saturn, a variety with large round smooth petals in shades of brightest tawny red, like rich velvet. The two upper petals are almost black at their base, the calyx bright yellow, which brings the dark gleaming red and black into fine relief. Both of the above are fine for cutting. 15c pkt.; the two for 25c.

### **Mrs. Shepherd's New Golden Leaved Nasturtium.**

**"Rivers of Gold."** A mixture of beautiful varieties with large golden leaves that contrast finely with the pale green sorts. The flowers are large in shades of yellow, variegated with red, pink, brown and black. They are very showy; their golden foliage being very effective near, or at a distance, as it is moved by the air, resembling rippling rivers of gold. Pkt 10c.

## **General List of Flower Seeds.**

**AGATHA Celestes. "Blue Daisy."** 10c pkt.

**ASTER. "Peony Flowered Perfection."** Splendid mixed, 10c pkt.

**"VICTORIA."** Splendid mixed, 10c pkt. Two sorts, 15c pkt.

**ABUTILONS. "California Bells."** This mixture is saved from a collection of very choice named varieties. Flowers of all colors and shades, pink, white, blush, yellow, orange, primrose, red, brown, selfs and variegated. Flowers flaring, and parachute-shaped, or deep, like bells. All graceful and artistic in form. Grand mixed pkt 10c.

**AGAPANTHUS Umbellatus Alba.** A beautiful white variety of the African Lily. The flowers grow in large umbels on long stems, and keep for two or three weeks in water. Always rare. Seeds 15c per pkt.

**Agapanthus Umbellatus Blue African Lily.** This fine plant comes into bloom about the Fourth of July; giving fine blue flowers for combinations of red, white and blue. 10c pkt.

**ALGERIAN Stranger.** A stately plant of the Mullein family, with large dark green wrinkled foliage, growing to the height of 4 or 5 feet. It sends up long spikes with numerous flower buds, at first of a reddish yellow, and afterwards a pretty canary color, shining like satin and folded like squares. The fully opened flowers are saucer shaped, and have velvety brown spots in the center. It blooms for months without intermission and is very decorative and showy. 5c pkt.

**ANTIGONON Leptopus.** A magnificent climber; the foliage is very handsome; and the flowers, which are the most exquisite shade of pink, are produced in tendril-like racemes 10 to 12 inches in length; their profusion and beauty elicits the most enthusiastic admiration. 10c pkt.

**ALOES.** These interesting plants are very easily grown from seed, and very often bring new and handsome varieties; splendid mixed, 10 pkt.

**ASPARAGUS Sprengerii.** A most lovely trailer; invaluable as a pot plant, for baskets or for decorations; the numerous fronds are frequently 4 feet long, well covered with leaves of a rich shade of green, retaining their freshness for weeks after being cut; white flowers followed by red berries. A fine house plant, as it stands dry atmosphere. 10c pkt.

### Some Beautiful Begonias.

Begonias are easily grown from seeds, especially the *Semper-florens* class, which bloom when only one or two inches high. They make fine bedding plants, giving a mass of color the entire season; stand the sun well, and require only a light rich soil, and plenty of water to make a fine show.

**Fibrous Varieties.** Splendid mixed. 15c pkt.

**Semper-florens Hybrida.** Splendid mixed. 10c pkt.

**Vernon.** Rich rosy red. 10c pkt.

**Vulcan.** Scarlet Vernon. 10c pkt.

**Bijou.** Dwarf Vernon. The "Carpet Begonia," forming small, round, very compact bushes of about 4 to 5 inches in height, and possessing the same good qualities as its taller growing parent—namely, the brilliant red flowers and the brownish-red foliage. Blooming in the greatest profusion throughout the summer and autumn; one of the best bedding plants for dwarf groups or ribboning. 10c pkt.

**Frobeli.** Beautiful fiery-red, tuberous variety. 10c pkt.

**Schmidt.** A pretty dwarf variety with handsome velvety leaves and numerous white flowers; a fine budder. 10c pkt.

**Erfordia.** This is one of the most useful of all this class. It grows in bush form and is completely covered with dainty pink flowers all the year; fine for bedding. 10c pkt.

**Rex.** Splendid mixed. 15c pkt.

**Tuberous.** Splendid mixed. 10c pkt.

**BOUVARDIA.** Beautiful greenhouse plants that bear clusters of starry tubulous flowers in shades of red, pink and white; hardy in Southern California. They germinate readily, and grow well from seeds. Splendid mixed. 20c pkt.

## Dainty Daises.

**BELLIS Perennis Maxima.** "Double Daisy." New giant flowering double daisy; flowers larger than a half dollar. Splendid mixed. 10c pkt.

**Longfellow.** Large dark rose-colored flowers. 15c pkt.

**Snowball.** Pure snowy-white. 15c pkt. One packet of each sort, 25c pkt.

**BIGNONIA Tweediana.** A charming vine with beautiful foliage and large golden-yellow flowers. 10c pkt.

**GIANT BROWALLIA.** "Browallia Speciosa Major." A most beautiful summer flowering plant for flower beds in summer and equally valuable for pot culture in winter. The plants grow about 1 foot high, are bushy and bear continuously large flowers from 1 to 2 inches across, of brilliant indigo blue enlived with a white throat. People who are familiar with the old favorite, "Blue Amethyst," will scarcely recognize this new variety as belonging to the same family. 15c pkt.

## Mrs. Shepherd's Grand New Fancy Cosmos.

### "The Finest in the World."

The following is an extract from an interview with W. Atlee Burpee, the well-known Philadelphia seedsman, taken from the Los Angeles Evening Express:

"I have just been visiting in Ventura the gardens of Mrs. Theodosia B. Shepherd of that point. Mrs. Shepherd has the finest Cosmos in the world. It has never been equaled. She has developed it herself from a small flower, 2 inches across, to monster blossoms from 4 to 5 inches in diameter. I counted 35 varieties in her garden yesterday. Mrs. Shepherd is quick to see possibilities, and is developing some wonderful things in her garden."

A customer, Mrs. M. F. C. Pearce, of Louisiana, writes, April 17th:

"My Cosmos from seeds you sent me were planted in the garden early in March, and now, not 3 feet high, 3 are in bloom. Can you beat this?"

May 27th the same customer writes:

"My Cosmos from your seed are still blooming, not one of the plants 5 feet high; no limbs have split and fallen, as in so many other Cosmos."

**New Early Blooming.** (Grand Fancy Cosmos.) The flowers are surpassingly beautiful. In the mixture are immense flowers, measuring from  $4\frac{1}{2}$  to 5 inches across; in white, pink, mauve and crimson. Some are shaped like single camellias, but larger and more beautiful; some of the crimson ones could almost be taken for single dahlias; other white ones have plaited petals prettily fringed, and resemble the *Romneya Coulterii*, or California Tree Poppy. Some are star shaped. The petals are plain in some flowers; in others pinked, toothed or fringed, and beautifully overlapping. The colors range from pure white through shades of pink and red. The latter are in dark rich shades of red, shades heretofore unknown



GROUP OF GIANT COSMOS



in Cosmos. Some white ones are delicately flushed or flecked with pink or mauve, and very beautiful flowers in pink and mauve have a dark ring around the eye. The daintiest white, pink and flushed, have lacinated petals, fringed to the center of the flower, and resemble Marguerites, but are more beautiful and esthetic. The giant white are especially handsome, with very large, broad petals, flowers of great substance, almost as chaste and lovely as lilies. 10c pkt.

**Pink Butterfly.** A magnificent new variety, the richest and loveliest shade of pink imaginable. Petals are very large, measuring from  $3\frac{1}{2}$  to 5 inches across, regularly plaited, giving a full and beautiful flower; edges evenly toothed; the flowers which are on long stems are quite deep, giving the appearance of large pink butterflies; they have a rich maroon ring around the eye. This is the most exquisite pink Cosmos that has ever been offered; still very scarce. 15c pkt.

**Charmian.** A splendid flower of perfect form; color, pure bright pink; very large wide open flowers with overlapping petals; the eye is encircled by a rich red ring. 10c pkt.

**White Pond Lily.** A most chaste and lovely flower, with large plain edged petals; so beautifully formed as to remind one of a small pond lily; plants grow about 4 feet high and are very bushy. Flowers are on long, strong stems; distinct and attractive variety. 10c pkt.; one of each of the above, 25c.

**Giant Red, Pink and White.** Separate. Flowers of perfect form, great size and beauty; measuring  $4\frac{1}{2}$  to 5 inches across. Extra selected, 10c pkt.; 3 varieties 20c.

**Giant Fringed.** This charming new Cosmos has beautifully lacinated petals, and forms a fine contrast to the plain varieties. The colors are rich dark red, clear beautiful pink and snowy white. 10c each; 3 varieties 20c.

**Tints of Dawn.** New and distinct varieties. The flowers with a white ground, finely flecked or flushed with delicate pink; some are flushed much darker around the eye than others; they are variously formed and very beautiful. 10c pkt.

**New Marguerite.** Mixed. One of the prettiest and daintiest varieties imaginable; the flowers measure from  $2\frac{1}{2}$  to three inches across; the petals are deeply and irregularly lacinated or fringed; the flowers resemble Marguerites, but are much more esthetic and beautiful. Colors are red, white, pink and tinted blush. 10c pkt.

**Improved Yellow.** The flowers are twice as large as they were the first year, about 2 inches in diameter; the petals are broad, and the flowers much finer in form; the plants are more upright; they attain a height of 2 feet, and begin blooming in a few weeks after the seeds are planted, and soon form a mass of brilliant yellow that continues the entire summer; plants that commenced to bloom in May continued all through the summer and until as late as November and December. For a mass of color they are invaluable, and very effective. 10c pkt.



NEW MARGUERITE COSMOS.

**Sulphurea.** Orange Yellow. Tall-growing plants with handsome lacinated foliage. The flowers are brilliant orange-yellow and make a splendid show. 10c pkt.; 15 varieties of Cosmos, 75c.

**CALLIOFSIS Lanceolata Grandiflora.** "California Sunbeams." These lovely improved varieties are much larger than any heretofore offered; the flowers are beautifully formed. Some saucer-shaped, others flat, some exquisitely incurved, while others are like great buttercups. The petals are broad, with pinked, toothed or irregularly fringed edges. Some are very light yellow, others a deeper shade, darker around the eye—all so fine, it is difficult to say which is most beautiful. 10c pkt.

**Golden Wave.** Very bushy and compact, covered with hundreds of beautiful golden flowers with small dark centers. 5c pkt.

**COLEUS.** There are few seeds more easily grown than Coleus. A packet of seed will bring many new and pretty varieties. They can be planted in cigar boxes, and transplanted when the second leaves are formed, into larger boxes. When 3 or 4 inches high they can be potted, or transplanted into the garden. Splendid mixed. 10c pkt.

San Diego, Cal., Dec. 3d, 1901.

"I must tell you that I have the most beautiful Coleus; planted from seed I bought of you last summer. \* \* \* \*

MRS. H. S. HARMON,  
San Diego, Cal.

**CHRYSANTHEMUMS. "California Fantasies."** The Chrysanthemum is more interesting to grow from seed than most any other flower, owing to its wonderful diversity of form, color and beauty. All flowers seem to be the expression of ideas, but the Chrysanthemum more than others seems to have ideas of its own that are new and original, esthetic and artistic. One realizes this in growing seedlings, and watches with intense curiosity and pleasure to see what each unfolding flower will be. The seed offered in this mixture is saved from a most varied and beautiful collection. Flowers of every variety and form and color. New and original types. Lovers of Chrysanthemums will be delighted with them. They bloom the first season from seed, and one packet will give a lovely collection, very few of which will not be worthy of a name. The seed should be planted the first of April; the plant requires a rich soil. When the flower buds appear, all side ones should be pinched off, and if very large blooms are desired, only one bud should be left on each shoot. Splendid mixed. 15c pkt.

**CINERARIA.** Beautiful plants easily grown from seed. Flowers in shades of blue, magenta, purple and white. They make fine pot plants, and do well bedded out in shaded places. Splendid mixed. 10c pkt.

**CALLA LILY.** 5c pkt. **Calla Spotted Leaf.** 10c pkt.

**CARDIOSPERMUM Halicacabum.** "Balloon Vine." A very pretty and graceful annual climbing plant. 5c pkt.

### Beautiful Corn Flowers.

**GIANT WHITE CENTAUREA. "Marguerite."** This is entirely distinct from other Centaureas, and undoubtedly the most beautiful variety known. The plants grow about 18 inches high, and are of the easiest culture. The large flowers are of purest white, deliciously scented, exquisitely lacinated, and freely produced on long stems, which renders them invaluable for cutting. A highly decorative and particularly valuable white-flowering plant, and sure to excite admiration wherever grown. 10c pkt.

**CENTAUREA IMPERIALIS.** Splendid new varieties of Giant Sweet Sultan. The lovely white Marguerite Centaurea was the first to be offered. These are more robust in habit, with larger flowers, more finely fringed; the stems are longer, and the foliage lacinated. For cut flowers Centaureas are invaluable, keeping a week or ten days in water. Three colors, separate, white, lavender and yellow, 10c pkt.; mixed, 10c pkt.

**CENTAUREA. "Blue Bottle" or "Corn Flower."** Is one of the most attractive of all hardy annuals, the graceful beauty of its old-fashioned flowers being universally admired. A hardy annual of the easiest growth, and flowers exquisite blue; height 2 to 3 feet. 5c pkt.

**Cyanus.** Including dark and light blue, purple, pink, rose, white, etc. 5c pkt.

**Kaiser Wilhelm.** Of a rich deep blue color. 5c pkt.

**New Double.** So perfect that fully 80 per cent. of the flowers are double and semi-double. 10c pkt.

**New Dwarf Blue Victoria.** The compact and bushy plants, 6 to 9 inches high, present a mass of foliage and profusion of graceful azure-like flowers. In bloom one month after sowing seed; fine for borders. 10c pkt.

## BRILLIANT CANNAS.

**"Good Venture Strain."** Saved from a beautiful collection of very fine named varieties and large seedlings of my own. The plants range from 22 inches to 3½ feet in height, they have very large flowers, of grand colors, splendid yellow, rich orange, red spotted, deep carmine, flaming scarlet deeply margined with gold, salmon red streaked with copper and cardinal. Some flowers have 4 or 5 petals. The foliage is rich and handsome, various shades of green, dark red streaked with greenish yellow, plain green and dark maroon. Splendid mixed. 10c pkt.

**CARNATIONS.** (Perpetual or Monthly.) Carnations grow to the greatest perfection in California. Their magnificent flowers, long stems, beautiful forms, rich colors and delightful fragrance, make them wonderfully attractive. 25c pkt.

**Marguerite.** Splendid mixed. A charming strain that blooms the first year from seed. Through not as fragrant and beautiful as the monthly carnation, yet it is very satisfactory and popular. 10c pkt.

**CYCLAMEN Giganteum.** Giant flowered cyclamen. Splendid flowers of great beauty. Pure white, 20c pkt.; red, 20c pkt.; mixed, 15c pkt.

**CALENDULA.** "Pot Marigold." Splendid mixed. 5c pkt.

**CELOSIA.** "Ostrich Feather." One of the most beautiful and showy annuals that has been introduced for years, and that deserves all the praise that has been given it. It is exquisitely beautiful on close examination, and at a distance is a mass of brilliant color. It blooms when only 12 inches high, and in California keeps its splendor until late December. Crimson and orange color. 10c pkt.; two, 15c

**CANDYTUFT.** "Empress." Pure white. 5c pkt.

**CLIANTHUS PUNECEUS.** Not new, but rare. It can be trained in bush form or to climb. The foliage is finely divided, and the flowers hang in clusters on thread-like stems. They are large and of a most vivid scarlet color, and shaped like a parrot's beak. Very showy and beautiful. 10c pkt.

**MRS. SHEPHERD'S GIANT CACTUS DAHLIA, "Monarch of Dahlias."** This beautiful Dahlia was named by Mr. Williams, of the San Francisco Examiner, when visiting in Ventura, in honor of that paper

which is called the "Monarch of the Dailies." It is intermediate between the double and cactus varieties. The flowers are large, loose, very esthetic in form, and measure six or more inches across; the petals are very broad; the color deep, rich, dark red, having a beautiful bloom like velvet; flowers are borne on long stems, and are fine for cutting. The plants begin blooming very early in the summer and continue until late autumn, giving a brilliant show for three or four months. Everybody admires this splendid Dahlia. 10c pkt.

**MRS. SHEPHERD'S LARGE, FLOWERING DWARF, SINGLE DAHLIAS, "Giants of California."** A strain of beautiful single dahlias, that grow into round, bushy plants, 2 to 3 feet high. The flowers are very large and of perfect form, with long stems; the display of color is perfectly bewildering; all plain shades in scarlet, crimson, pink, orange, yellow, with their various tints, pure snowy-white and cream, and variegated flowers in infinite variety. They bloom when only 10 to 12 inches high, and make a bed of gorgeous color, that attracts great attention; they bloom from early autumn until late fall. 10c pkt.

**Dahlia.** Tall, single varieties, mixed. 5c pkt.

**Cactus.** Splendid mixed. 10c pkt.

**Double.** Very choice mixed. 10c pkt.

**Imperialis. "The Giant Lily Dahlia."** The most beautiful of all Dahlias. It grows 10 to 12 feet high, and bears panicles of elegant lily-like flowers, measuring 8 inches from tip to tip of petal. The color is a delicate mauve, almost white, veined with old pink, and with a ring of pink around the orange-yellow center. It blooms from seed the first year. 15c pkt.; two pkts. 25c.

**GIANT FLOWERED FANCY DIANTHUS, "Oriental Beauties."** A magnificent strain of giant flowered Dianthus, originally from Japan. These splendid flowers measure 2 to 3½ inches across, with petals 1½ inches in diameter. They are exquisitely formed, the petals being full, overlapping, crinkled and lacinated. The flowers possess that peculiar and artistic charm so noticeable in all plants from the Flowery Kingdom. They range in color from pure white, through shades of pink and crimson, many strikingly marked and variegated; the coloring and marking is rich beyond description; nothing could be more pretty and dainty than their charming ruffles and frills. Every one is delighted with them. They are perfectly hardy, are perpetual bloomers, needing only to be cut back occasionally for new growth. 10c pkt.

# Mrs. Shepherd's Giant Eschscholtzias.

(California Poppies.)

**GOLDEN WEST.** Grand new Eschscholtzias, developed from *E. mareitima*, a pretty variety, having light, canary-yellow flowers, with an orange blotch at the base of each petal, forming a Maltese cross in the center. The flowers measure from 4 to 6 inches in diameter; they have very large overlapping petals, often delicately waved at the edges. They are beautifully and variously formed; some are flat and wide open, some saucer-shaped, others very deep with flaring edges. In some the orange blotch almost suffuses the whole flower, in others it runs into the yellow in fine penciled lines; others again have an orange center with a margin of clear yellow, while the Maltese cross is very distinct. Words are inadequate to describe the wondrous beauty of these magnificent flowers, their intense and shining color, immense size and lovely form. They are especially adapted to the eastern climate, owing to their early and long-continued season of blooming, which, united to their brilliant beauty, makes them invaluable for bedding plants. Splendid mixed. 10c pkt.; three pkts., 20c.

**California Poppy.** Old variety. 5c pkt.

**Eschscholtzia Hunnemannia.** A beautiful perennial shrubby variety, with large cup-shaped, single primrose colored flowers with bright orange stamens. They are borne on long stems and bloom nearly all the year; the flowers keep two weeks in water. 10c pkt.

**ERYTHRINA Crista Galli.** "Coral Tree." A splendid tree or shrub that attains great size in California. Its spikes of large pea-shaped flowers are grand. It can be wintered in a cellar in the east. 10c pkt.

**FUCHSIAS.** Saved from a beautiful collection of named fuchsias. Fuchsias bloom from seed in about six month or a year, and are very interesting for the amateur. The plants are better bloomers than those grown from cuttings, and a new variety from seed gives great pleasure. 15c pkt.

**Cape Fuchsia.** "*Phygelius Capensis*." A distinct new species, blooming from May to late autumn. It bears long spikes of showy, scarlet, drooping, tubular flowers. Will grow anywhere. Entirely different from any other variety. Very showy; grows readily from seed. 5c pkt.

**FREESIAS.** Choice mixed. 5c pkt.

**GALLARDIA.** "*James Kelway*." A beautiful giant-flowering gaillardia, with magnificent flowers measuring 5 or 6 inches across, of the brightest scarlet, with a golden margin and fringed edges. A most persistent and perpetual bloomer. 10c pkt.

**GESNERIA HYBRIDA.** Beautiful flowering bulbs with velvety foliage and charming flowers. 15c pkt.

## White Drooping Genista.

### Genista Monosperma Pendula.

**Bridal Veil.** One of the most beautiful half hardy shrubs in cultivation. It forms a large plant with long pendulous, silvery green branches without foliage. They are finely divided, round and rush-like. The flowers are small, white pea-shaped, with a little flush on the petals, and are borne on two little spikes, from 1 to 2 inches in length, alternating on opposite sides of the stems; they are very close together, sometimes 15 flowers to a spike; are exquisitely fragrant. A plant 3 or 4 years from seed will cover a space from 12 to 15 feet square, or more. The plant has a cloud-like, misty effect that makes it very attractive. Nothing could be more beautiful for contrast in shrubbery on large places. It has been likened to a bridal veil. 10c pkt.

**Eldorado.** A very pretty genista of spreading habit, that is completely covered with long spikes of soft, golden-yellow flowers all the year. 10c pkt.

## Gorgeous Showy Geraniums.

**MRS. SHEPHERD'S GRAND ZONALE GERANIUMS. "Good Venture Strain."** It is with great pride that I offer this grand strain of Geranium seed saved from my new seedlings. The flowers are very large and round, of the most perfect forms with splendid trusses, some of them forming balls 16 inches in diameter. The colors are all shades of scarlet and crimson, rose pink, salmon, cream, veined pink, blush, and pure snowy white; many beautiful varieties of the Sou de Miranda type, greatly enlarged and improved, all the new auriole types with lovely rings and large white eyes. These all stand the hot sun and are sure to bring many new and lovely varieties. A finer collection has never been offered. 15c pkt.

**Geranium.** Single. Beautiful, large, round flowers in white, crimson, scarlet, pink, rose, salmon, etc.; often give lovely new varieties from seed. The seed offered is from the very choicest collection. Splendid mixed, 5c pkt.; good mixed, 5c pkt.

**Double.** Choice mixed. 15c pkt.

**Bronze and Gold.** 10c pkt.

**Silver Leaf.** 10c pkt.

**Tricolor.** The seeds offered below are saved from the beautiful geraniums, "Mrs. Pollock," "Glen Eyre Beauty," "Happy Thought," and "Sunset." In these charming plants all the colors of the rainbow are represented. Extra choice mixed. 10c pkt.



**Lady Washington.** In California these magnificent pelargoniums grow to the greatest perfection. Seeds offered are saved from a very fine collection of beautiful varieties. 15c pkt.

**Ivy Leaf.** Double. Splendid mixed, 15c pkt.; single mixed, 10c pkt.

**Apple Scented.** 10c pkt.

One packet of each of the above sorts of Geraniums, 65c.

**GLOXINIA. Grandiflora Crassifolia Erecta.** Beautiful new varieties, with erect habit. 15c pkt.

**Emperor William.** Dark violet, bordered white. 15c pkt.

**Defiance.** Fiery scarlet. Brilliant colors. 15c pkt.; one packet each sort; 35c.

**HARDENBERGIA Alba.** This beautiful plant, though not new, is still rare. It has handsome foliage, and exquisite white flowers. It blooms from January to the last of March. The flowers appear at the axils of the leaves, and the entire plant is covered with spikes of small, round, snowy-white, pea-shaped blossoms. The stems are very slender, and the spikes of bloom are from 3 to 5 inches long. It is our loveliest white winter-blooming shrub, and would be invaluable in the east for cut flowers. The seeds are slow to germinate, and should be soaked for 24 hours in water. Half hardy. 10c pkt.

**HUCHERIA Sanguinea.** A charming new plant, that forms a low-growing rosette of pretty leaves, surrounded by slender stems crowned with a number of lovely, airy, coral flowers. Beautiful for bouquets; 10c pkt.

**HIBISCUS Rosella.** This is a celebrated wild fruit of Queensland, Australia. After the blossoms have fallen, the fleshy scarlet seed-pods are gathered, and made into delicious jams, jellies, sauces, pies, tarts, etc. The fruit is also dried for winter use. The flavor of the jam is the nearest approach to red currant of anything else, and hardly distinguishable from it, except that the consistency is different and the color brighter. It has a delightful acid flavor. It does splendidly in California. 10c pkt.

**HELIOTROPE.** Very few people know that Heliotrope is quite readily raised from seed, and that young plants come into bloom very early. Those who grow flowers should have the pleasure of testing them. All varieties mixed. 5c pkt.

**Lemoines Giant Hybrids.** The flowers of these varieties are larger than the ordinary heliotrope; the foliage is also larger, and the trusses immense, often 6 inches across, and very beautiful shades of purple. Splendid mixed. 10c pkt.

## LOVELY IPOMOEAS IN VARIETIES.

**"Heavenly Blue."** A beautiful annual morning glory. The flowers are in large airy clusters, and are of that indescribable heavenly blue so rarely seen in flowers. The throat is yellow inside, spreading softly into blue. The flowers measure  $4\frac{1}{2}$  to 5 inches across, and about 10 o'clock in

the morning no lovelier sight can be imagined than this lovely vine; the great profusion of flowers almost rendering the foliage invisible. Every one who sees it for the first time is filled with delight at its beauty, exclaiming: "That is the loveliest thing I ever saw." In order to enjoy the beauty of this plant in the east, as early in the season as possible, success depends on cultivating the seedlings in the following manner: Having been potted off singly in small thumb pots, in light sandy soil, and being well-rooted, (pot-bound), they ought to be shifted to large pots, using of course, the same light soil. In these pots the plants must remain until they show their flower buds, hardening them off in the meantime. Once they show these, the plants may be planted out in the open ground, but also in light, sandy soil, where they will continue to produce their flowers freely. 10c pkt.

**Learii. "Blue Dawn"** flower. The flowers are of the most intense violet-blue, with reddish-purple rays, and are 6 inches across; there is nothing of its color that exceeds in richness the flowers of "Ipomœa Learii." 10c pkt.

**White Tassel. "Double Morning Glory."** This might be called an "All Day Glory," as it remains open during the entire day. It is white, very double and fringed, with delicate purple marks in the center of the flower. 10c pkt.

**Imperial Japanese.** Ruffled and frilled. A bewitching new class of morning glories from Japan. Beautiful colors in great variety. 10c pkt.

**KENNEDYA Nigricans.** A splendid climber from Australia. Its rapid growth and wonderful hardiness should give it a place wherever a good thick impenetrable evergreen screen is wanted. It will cover a screen 20 feet high in 2 or 3 years if well watered. The flowers are quite inconspicuous, being yellow and black. It will climb 40 to 50 feet if encouraged. Soak seed in warm water over night and plant in good soil where wanted permanently, or sow in a box of fine soil with fibrous matter in it, 3 to 4 inches apart so the seedlings can be taken up nearly whole and planted. 10c pkt.

**Monophylla Lilacina.** This is also a native evergreen climber of Australia. The leaves are rather prettier than the *K. Nigricans*, but its great beauty consists in its perfect cloud of the loveliest lilac-blue flowers drooping gracefully, and covering the screen or pillar on which it is growing with a lilac sheet. Though a lovely evergreen climber, it is not to be compared to the *Nigricans* for making a dense growth. 10c pkt.

Both stand heat and drouth splendidly. One packet of each of these *Kennedyas* for 15c. Sow in autumn or spring.

## Dainty Lobelias.

**LOBELIA Cardinalis. "The Beautiful Cardinal Flower."** Bears spikes of the most brilliant cardinal, lobelia-like flowers on long stems. The dark foliage forms a fine contrast with the gorgeous flowers. 10c pkt.

**Crystal Palace Gem Compacta.** Fine for borders; deep, beautiful blue; very dwarf. Finest mixed. 5c pkt.

**Erinus Varieties.** Choice mixed. 5c pkt.

**Lobelia Ramosia, "Heavenly Blue."** Of an intense bright shade of blue of the Ramosia type, very large flowering and free growing. For borders or baskets this is desirable, and will produce a grand effect. 15c pkt.

**LATHYRUS Splendens. "The Pride of California."** The most magnificent of native climbing plants. A splendid hardy perennial pea, with fine foliage and a profusion of large pea-shaped blossoms of a deep, rich, velvety crimson in clusters of ten or more. The buds are a charming rose-pink, and the contrast of buds and blossoms is most pleasing. No description can do justice to this lovely climber; it draws forth expressions of admiration from all who see it. Always scarce, 20c pkt.

**Marigold. "French Gilt-Edged."** Splendid large double flowers, 4 inches across; velvety brown, edged with yellow. 10c pkt.

**Little Brownie.** A charming, compact little marigold from 5 to 6 inches high, producing a fine effect in masses, and *unrivalled for borders*. 5c pkt.

**MAURANDYA.** An old and very pretty climber, with gloxina-shaped flowers, and dainty pointed heart-shaped foliage. Choice mixed. 5c pkt.

**MANDEVILEA Suaveolens Grandiflora.** Beautiful white climber, with fragrant flowers. See full description in plant list. 10c pkt.

**MYOSOTUS. "Forget-me-not."** Large flowering. Splendid mixed. 5c pkt.

**"Victoria."** Sky blue; double centers. 10c pkt.

**MESEMBRYANTHEMUM.** Fine for borders; will thrive in a dry climate with very little water; easily grown from seed. Splendid mixed. 10c pkt.

**MIGNONETTE.** Choice mixed, 5c pkt. **"Giant White Upright,"** fine for boquets and decorations.

**"Golden Queen."** A fine variety, with flowers of a golden hue. Each variety, 5c pkt.

## Brilliant Nasturtiums.

### Tall Varieties.

**Sunlight.** A beautiful giant flowered, golden-yellow climber, that gives myriads of splendid large delicately crinkled flowers. 5c pkt.; 25c oz.

**Moonlight.** The counterpart of Sunlight, except that it is a lovely straw color. 5c pkt.

**California Giants.** Splendid California varieties with very large flowers, and a great range of exquisite colors. Every one should try them. 10c pkt.; 30c oz.

**Nasturtium "Dwarf Tom Thumb," "Gay and Festive,"** mixture. This is a most beautiful strain of Dwarf Nasturtiums. Clear, golden-yellow, salmon pink, dark red, golden-brown, all shades of yellow variegated with red and brown, canary color, terra cotta, orange and black, with all combinations, making a most brilliant showing. No one can fail to be pleased with them. Pkt. 5c.

**Empress of India.** Dark foliage and deep scarlet flowers; one of the finest varieties grown. 5c pkt.

**Liliput.** A dainty new strain of very dwarf nasturtiums. They form very compact round plants, and are very pretty for lines and borders. 10c pkt.

### Choice Pansies in Variety.

**Bugnot's Large Stained.** Mixed colors. A celebrated French strain of extra large size, choicest colors, and with beautiful broad blotches and delicate penciling; a very shy seeder; the ground colors are generally white or very light, bringing the elegant and distinctive markings, in strong relief. 25c pkt.

**"Mammoth Butterfly."** A strain of pansy which, for variety and beauty has never been excelled. Of matchless forms, colors and markings, with flowers half as large again as ordinary pansies. 25c pkt.

**Peacock.** A pansy of superb and varied colors, most of them showing that glorious and luminous bronze-blue seen only in peacock feathers. It is a finely colored strain and cannot be too highly praised. 10c pkt.

**Little Red Riding Hood.** A good advance toward the bright red pansy of the future. A rich reddish color, some of them very brilliant and showy. Only a portion of the seeds come true to character. 10c pkt.

**Azure Blue.** A clear, lovely shade, very fine for bedding. 10c pkt.; choice mixed, 10c pkt.

**Giant Trimardeau.** The largest and strongest pansies grown, with immense flowers in splendid colors. They are deep rooting and drought withstanding. 10 pkt.; choice mixed pansies, 5c pkt.

**Primula Chinensis or Chinese Primrose.** One of the most charming and satisfactory plants for the house, blooming constantly for months. It is very easily grown from seed; blooms when quite small. It should be grown in a mixture of loam, leaf mold, (or rotted manure) and sand and planted in small pots. Never allow water to lie in the axils of the leaves. It likes shade and moisture, but if kept too wet will die; bedded out in a shady spot, it does well in the ground. Splendid mixed, 15c pkt.; two pkts. 25c.

**PYRETHRUM Aureum Laciniatum.** Fine for borders. Golden foliage, beautifully laciniated. 5c pkt.

**PHLOX Drummondii.** Choice mixed. 5c pkt.

**Star of Quedlinburg.** Flowers are of regular star-like form. Plant of compact habit, bearing large umbels of flowers. Mixed colors. 5c pkt.

## Giant Petunias.

**"Giants of California."** The "Giants of California" bear gigantic flowers, often 5 inches and more in diameter, of an astonishing variety of colors. They embrace every conceivable shade of crimson, pink, lavender, pure white, etc. One of the chief points of excellence is the deep throat, and diversity of veinings in the throat. Many of the flowers have a clear yellow throat, while others have a pure velvety black one, so deep that it seems to show no veining. 15c pkt.

**New Fringed Hybrid.** The loveliest petunias of all, with charming fringed flowers of exquisite form and beautiful colors. Splendid mixed. 15c pkt.

**New Double Fringed.** The grandest double petunias ever offered; perfectly round double flowers, exquisitely fringed. Pure white, pale bluish lavender, pink, deep rose, variegated, all shades imaginable. About 40 per cent. come double. Splendid mixed. 15c pkt.

## PALMS.

**Seaforthia Elegans.** One of the most graceful and beautiful of all palms, 15 seeds, 10c.; 100 seeds, 60c.

**California Fan Palm.** Very easy to germinate. 10c pkt.

**Chamaerops Humilis.** A very pretty dwarf fan palm. 10c pkt.

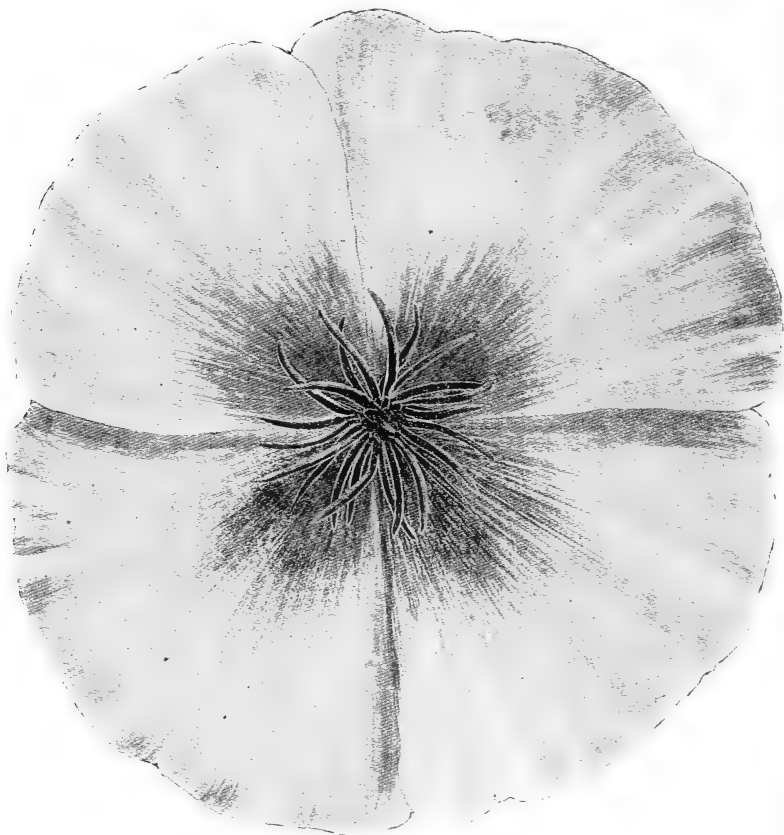
**Phoenix Rupicola.** One of the most graceful and beautiful of all palms. Five seeds, 10c pkt.

## Gay and Festive Poppies.

**"Maid of the Mist."** Mrs. Shepherd's lovely single, peony-flowered, white poppy that rivals even the lovely *Romneya Coulterii* in beauty. Flowers from 7 to 9 inches across; the petals are very large, overlapping, daintily incurved, deeply and irregularly fringed. The ovary is a beautiful, silvery, pea-green; the stamens long, with light, tan-colored anthers. The flowers are borne on long stems, and instead of looking upward, as do most poppies, turn their faces outward. The ovary, encircled with its fringe of stamens, and white, fluffy petals, suggests a pretty face looking out from a mist. A row of these graceful poppies in full bloom is a pretty picture to linger long in the mind. 10c pkt.

**"Irresistible."** This grand poppy received its name because every one who saw it wanted it, and to some it proved irresistible. They carried away the flowers in triumph saying: "I had to have them, they were so beautiful." It grows 5 feet or more in height; the flowers are immense and perfectly round. The color is beautiful red, and petals fringed. It is the most showy and largest poppy I have ever seen. It came volunteer in my garden for two or three years, improving each year, till at last it became irresistible. 10c pkt.

**Oriental Hybrids.** Grand, hardy, perennial poppies. The flowers average 6 to 9 inches across. The flowers are splendid pink, blotched with



MRS. SHEPHERD'S NEW CALIFORNIA POPPY, "THE GOLDEN WEST."

purple; blood red, blotched black; glowing scarlet; reddish orange; salmon; etc. 15c pkt.

**Iceland.** The fragrant, elegant, crushed; satin-like flowers are produced in never-ending succession from the beginning of June to October. The flowers last quite a week, if cut as soon as opened. They are white, scarlet, yellow and crimson. Mixed. 10c pkt.

**Danebrog.** Large, bright scarlet, with a white cross in the center. 5c pkt.

**Chamois Rose.** Most exquisite color, beautiful chamois-rose. 5c pkt.

**Fairy Blush.** A charming variety, with immense globular, perfectly double flowers, which will measure from 10 to 12 inches in circumference. The petals are elegantly fringed and pure white; except at the tips,

which are a rosy-cream color. The flowers at a little distance have the effect of large, white feathery balls, overcast with a rosy shade. Each plant has from 3 to 5 of these magnificent flowers open at one time, and lasting longer than any other poppy. 10c pkt.

**Snowdrift.** A most exquisite snowy-white poppy, with beautiful fringed petals. Very double. 5c pkt.

**Mikado.** Pure white, with brilliant crimson-scarlet; big, double and exquisitely fringed. 5c pkt.

**New Fayal.** Most beautiful and dainty of all poppies, in every conceivable shade of red, pink, maroon and white, self and variegated, double and single, large and small flowers. One begins to wonder as they open what the next combination will be, there are so many and such pretty ones. No one can fail to be charmed with them. 10c pkt.

**Tulip Flowered.** A new poppy of great brilliancy and beauty, having a flower which in shade and color resembles a great flaming tulip. Its color is most intense scarlet, and it blooms at least two weeks earlier than any other poppy. 5c pkt.; one pkt. each variety, 50c.

## Passion Flowers.

**Scarlet.** The beautiful red passion vine of California. 15c pkt.

**Constance Elliot.** Pure white passion flower. 10c pkt.

**Edulis.** The edible passion vine. It has pretty white flowers; the corona or fringe surrounding the center is beautifully crinked. It bears a very pleasant flavored edible fruit. 10c pkt. three varieties, 20c.

## Sweet Peas in Lovely Variety.

\***Salopian.** Deep rich crimson red; very large and fine.

**Captain of the Blues.** A wonderfully attractive variety, with purple wings and lavender standards.

**Burpee's Brilliant.** Bright crimson scarlet. Retains its fresh color in the hottest sun.

**Gorgeous.** Brilliant orange salmon, heavily veined a deeper shade, very large flowers.

**Lovely.** Exquisite rose pink, extra fine.

**Stella Morse.** Creamy pink, clouded rosy apricot.

**Royal Rose.** Deep carmine, rose pink wings.

**Daybreak.** Lovely. Watered scarlet on a white ground.

\***Sadie Burpee.** Immense lovely white.

\***Her Majesty.** Large, bold flower; standards, bright rose carmine; wings, carmine lake.

\***Katherine Tracy.** Exquisite bright pink. Large perfect flowers.

**Aurora.** Gigantic, expanded shell-formed flower. Striped orange or white.

\***Ramona.** Grand flowers of very large size and improved hooded form. It is a vigorous grower and bears three or four flowers to the stem. Its coloring is delicately beautiful; a creamy white daintily splashed with pale pink on standard and wings.

\***Celestial.** Lovely azure blue.

\***Blushing Beauty.** Soft pink, suffused with lilac.

\***Venus.** Lovely salmon-bluff, shaded rosy pink.

**Apple Blossom.** Bright rose and pink; very beautiful.

**Blanche Ferry.** Pink and white, always charming.

\***Splendor.** Superb white rose, shaded crimson.

**Fire Fly.** A deep brilliant scarlet.

**Imperial Blue.** Blue, shaded mauve.

**Emily Henderson.** Beautiful snowy-white, earliest white.

**Double White.** Very beautiful, with occasional double flowers.

\***Mrs. Dugdale.** Beautiful deep rose, fine for cut flowers.

\***Mars.** Echfords new bright scarlet.

\***Prima Donna.** Most lovely soft pink.

**Burpee's Earliest of All.** The earliest Sweet Pea by two or three weeks; soft pink and white.

\***Brilliant.** Bright scarlet; does not burn.

**Cupid.** Mixed.

Splendid mixed; any of the above 5c pkt.; 30 pkts., \$1.00.

The above are selected as the very best and prettiest of all varieties introduced.

**THE AUSTRALIAN PEA VINE.** This climber, though well-known in California, is not listed in any of the eastern catalogues. It has great powers of endurance, standing drought and heat with impunity, and should be hardy in the east. It is invaluable where rapid growth and an impenetrable screen are desired. The seeds germinate readily, and the plants grow very rapidly, beginning to bloom when quite young; the foliage is very pretty and graceful; the flowers are pea-shaped, the buds pink, when full blown the flowers are pink shaded mauve; the plant is completely covered with blossoms in California, at all times. 10c pkt.

**Romneya or "Matilija Poppy."** The great California Tree Poppy. One of the grandest of California native plants, with beautiful pure white crinkled petals, and a mass of elegant yellow stamens. The flowers measure 5 to 6 inches across. It is very difficult to propagate, either from roots or seeds; but once started grows without care. It is rarely found in any nursery. Very slow to germinate. 10c pkt.

\*All marked thus are Giant Flowering varieties.



## ROSES.

### A Rare Mixture of Many Classes and Varieties.

Any one can grow these from seed. The tea rose will bloom when only a few inches high, and will give most beautiful varieties. The seeds are slow to germinate, but when once started will make splendid plants in one season. Try for new varieties. All sorts mixed. 10c pkt.

**ROSE NANA Multiflora Perpetua "Little Midget," or "Baby Rose."** A class of dwarf everblooming diminutive roses that are easily grown from seed; blooming when 2 or 3 inches high. The leaves are quite small and the little flowers are borne in large clusters, double and single, white, pink and red; they are one-half to one inch in diameter, and resemble fruit blossoms. They are exquisitely dainty and pretty, and are followed by bright red hips or berries, which should be cut away if continual flowers desired. They make beautiful borders for beds. 10c pkt.

## CHOICE STOCKS.

**Cut and Come Again, "Princess Alice."** The best white stock grown, snowy-white flowers. 10c pkt.

**Giant Perfection.** Too much cannot be said in praise of giant perfection stocks. All who have ever seen them bloom are delighted with them. Their growth is strong, and the magnificent spikes of very large double flowers are superb. The colors are white, old rose, mauve, pink, straw, purple, red and flesh. They are fine bloomers, and give 85 per cent. double flowers. Each color separate. 10c pkt.; mixed, 5c pkt.; one pkt. each, 50c.

**Large Flowering German Dwarf.** A beautiful dwarf type of many charming colors. Splendid mixed. 10c pkt.

**Large Flowering Dwarf Violet Blue.** A perfectly lovely stock that every one likes. 10c pkt. One pkt. of all of the above seeds, 60c.

**Snowflake.** A charming, pure white stock, that grows about 10 inches high. Flowers are snowy-white and very double. Pretty for pot plants and borders. Its dwarf habit makes it distinct from any other variety. 15c pkt.

**STREPTOCARPUS Wendlandia.** This variety has immense ornamental leaves, rich and velvety. Beautiful flowers. 15c pkt.

**SALVIA Splendens.** The most brilliant scarlet bedding plant known; fine also for pot plants. 10c pkt.

**SOLANUM Betaceum. "Tomato Tree."** A fine ornamental tree or shrub, a native of South America, which is now receiving a good deal of attention under the name of "The Brazilian Melon Fruit." The foliage is large and handsome, the branches spreading. The fruit, which hangs in clusters below the foliage, is the size of a large egg, and a beautiful salmon-orange color when ripe. 10c pkt.; three pkts. 20c.; ½ ounce \$1.25. For further description see Plant Novelties and Specialties.

**Recemigerum.** "The Red Currant Solanum," A very pretty trailing plant, closely allied to the old-fashioned cherry tomato, though very refined in flowers and foliage, the former are small and grow in racemes, and are followed by fruit that resembles long stems of currants. 5c pkt.

**STREPTOSOLEN Jamesonii.** A very beautiful showy plant, with great clusters of brilliant flowers; reddish-orange at first, turning to bright yellow later. A most persistent and perpetual bloomer. Easily grown from seed. 10c pkt.

**SWAINSONA Alba.** A charming shrub, very popular in the east, with finely divided foliage and long spikes of snow white pea-shaped blossoms; invaluable for cut flowers and most ornamental in the garden; fine for the conservatory. The seeds germinate very slowly, and should be soaked before planting. 15c pkt.

**SCHINUS Molle.** "California Pepper Tree." 10c pkt.

**STAPELIA.** Choice mixed. 10c pkt.

**TORENIA Fournieri.** An exquisite basket plant, with lovely velvety shaded blue flowers. 10c pkt.

**Bailloni.** Fine, rich yellow flowers, with brown throat, contrasts beautifully with the blue variety. 10c pkt.; two for 15c.

**Thunbergia Alata.** A charming trailer for fences, trellises, etc. Fine for baskets and boxes. Foliage, arrow-shaped; flowers, gloxinia-like. Colors, white, buff and orange. 5c pkt.

### Rare Tacsonias.

**Von Volcxmi.** A tropical climber belonging to the same family as the passion vine, but much handsomer, and with larger, richer-colored flowers, and a large tube at the back of the flower. This beautiful variety is always rare. The flowers are deep crimson, and hang from thread-like stems twelve inches or more in length. 25c pkt.

**Buchani. Pink Tacsonia.** A lovely light pink variety, of most vigorous growth; a wonderful bloomer. It bears an edible fruit. 10c pkt.

**Sutherlandia.** Is of a vigorous growth with a handsome three-lobed foliage, strong in texture, of a rich dark green color. The flowers measure four inches across. Color, exquisite carmine-rose, shading darker in the center with purple fringe around the throat. The back of the petals is a light purple. The tube measures  $1\frac{1}{2}$  inches in length; stem of flower  $2\frac{1}{2}$  inches so that the flowers stand out well from the foliage. It is a fine bloomer, rivaling even the scarlet passion vine, so noted for the profusion and magnificence of its flowers. 10c pkt.; three varieties, 35c.

**Tecoma Velutina.** A splendid shrub that bears spikes of large flowering golden yellow flowers, resembling the Allamandas. It blooms from seed when quite small and blooms all the time. It far surpasses *T. Smithii* in every way. 10c pkt.

**Mackennii.** A grand new climber, of rapid growth and habit. The foliage is very handsome and the long trailing branches are covered from May to October, with large spikes of exquisite pink gloxina-shaped flowers, the throat veined with darker shades of pink. A most showy, beautiful and satisfactory flower, and easily grown, 10c pkt.

**VERBENA. "Mammoth."** Nothing can exceed the beauty of these splendid giant flowering verbenas, which each year bear witness to the wonderful qualities of Southern California soil and climate, in the great size and beauty of the flowers. Pure white, pink, and scarlet, separate; 10c pkt; two pkts 15c. Splendid mixed. 5c pkt.

**ZINNIAS. New "Curled and Crested."** This splendid strain is all that is claimed for it. The large curled and crested petals give a softness and beauty to the flowers, that is most charming. The form and colors are beautiful, and have none of the stiffness of the old-fashioned zinnias. 5c pkt.

## NEW AND RARE PLANTS.

### **Agapanthus Umbellatus Alba.**

A beautiful white variety of the African Lily. The flowers grow in large umbels on long stems, and keep for two or three weeks in water. Always rare. 20c, 35c and 50c each. Seeds 15c pkt.

### NEW TERRA COTTA BOUGAINVILLIA

#### LATERETIA.

A well grown specimen of this climber attracts the most enthusiastic admiration. The fact that it is so rare, makes the desire to possess it stronger, for it haunts the memory till it becomes one's own. The foliage is rich and handsome, and the wonderful bracts that surrounds the flowers are a rich, deep terra cotta red, the full blown flowers being a brighter shade than the buds. It forms a brilliant mass of color, and unlike other sorts, harmonizes with other flowers. It is very rare and difficult to propagate. Orders booked for delivery May 1st, in 2½ inch pots. \$1.00.

### New Double Flowered Begonias.

A most beautiful new type of Begonias of the semper-florens class, of strong, robust habit, and bearing from every branch clusters of charming double flowers, like miniature roses. They are equally free for bedding as the single varieties; standing the sun well.

**Triumph de Lorraine.** A profuse bloomer, flowers quite double with prettily lacinated petals; color of buds bright scarlet, changing to rosy carmine when opened. Stamens bright yellow, making a fine contrast with the red flowers. Rich foliage like Vernon. .35

**Boule de Neige.** Light green waxy foliage, and clusters of charming double flowers like little white roses. A perfect beauty. 35

**Double "Bijou."** A dainty double coral, red variety, that grows about 6 or 8 inches high.

**Double "Pink Vernon" and Double "White Vernon."** Very pretty airy double flowers, pink and white, not of as robust growth as "Triumph de Lorraine" and "Boulé de Neige." 20c each, the three 50c.

### Lovely Begonia Dr. Natchtegal.

A most beautiful plant with large shining, rather crinkled glossy leaves. Sends great spreading, graceful panicles of medium sized shaded pink flowers. A most lovely begonia—not new but rare. 25c.

### Two Splendid New Begonias.

**Goliath.** A splendid Begonia of the gigantic rosea type, of strong robust growth, making superb specimens. The leaves are large, round, and glossy; the flowers are borne in handsome panicles on strong stiff stems high above the foliage. The staminate flowers measure  $2\frac{1}{4}$  inches across. The color is a delicate blush.

**Mastodonte.** Almost the counterpart of "Goliath," except that the plant is not quite so robust, or the flowers quite as large. The shade is a little deeper blush. 50c each.

Owing to the difficulty of getting these novelties from the east in good condition, the stock is quite limited. 50c each.

### Brilliant New Dwarf Canna Rainbow.

A beautiful new canna that rivals the bright colored dracenas in the gay colors of its foliage. It makes a very handsome pot plant and is also a fine bedder. The leaves are dark maroon red, marked with green white pink and red. It grows 18 inches high, and is a little beauty. 25c each; \$2.50 doz.

### "The Latest Floral Wonder."

#### "SHASTA DAISY."

(Chrysanthemum Leucanthemum Hybridum.)

This beautiful novelty was called into expression by the great High Priest of Horticulture, Luther Burbank, who officiates at the weddings of fruits and flowers at Santa Rosa, California. Seeing possibilities of beauty that no one else dreamed of, he united the plebeian American field daisy, with the coarse, sturdy peasant daisy of Europe; then he brought from far away Japan a mate for his daisy children. The family multiplied and were put into his training school to develop their best qualities. Last year Mr. Burbank gave to the world this child of his heart and brain to preach the Gospel of peace and love and beauty. The Shasta Daisy is a hardy perennial, blooming in California nine months of the year. The

pretty foliage lies close to the ground. The flowers are large and graceful, and have three or more rows of petals, of purest glistening white. They are borne on long, wirey stems, two feet in length. The flowers often measure four or more inches across. They have a charming effect in the garden, and are invaluable for cut flowers, shipping well, and keeping two weeks in water. It is said when exhibited in the windows of a prominent florist in San Francisco, crowds of people visited the establishment to inquire about "the latest floral wonder." Small plants 50c each; \$3 per 10. Ready April 1st.

### **Pretty New Blue Daisy.**

"Agatha Celestes" Folia Variegata.

A pretty sport from the plain variety, with beautifully variegated golden and green leaves, that contrast finely with the blue flowers. 25c.

### **Mrs. Shepherd's Superb New Seedling Geraniums.**

A most beautiful and varied set of new seedling geraniums. One who has had an intimate acquaintance with the family for years, said: "They can't be beat." It has been a delight to help them into expression. It was difficult to choose from among the many charming contestants the favored ones and to give them appropriate names. They are a brilliant, exuberant, gay and festive little crowd, sure to win favor wherever seen.

**Peachblow.** Flowers delicate flesh color, exquisitely flushed in the center with salmon pink, and prettily veined with dark pink; large trusses on long stems.

**Aurora.** A very beautiful variety; fine large graceful trusses of flowers, flushed with very delicate blush pink; veined deeper pink, with an auriole of salmon around the large white eye.

**Zenobia.** Splendid large flower, overlaid and veined orange-scarlet; two lower petals veined maroon. A beauty.

**Volunteer.** A fine double dwarf bedder, with pretty dark green zoned foliage, bearing on long stems, fine trusses of beautiful large crimson cerese flowers, a beautiful color.

**Redbird.** A superb scarlet, single, with fine trusses of very deep round flowers, so full and overlapping are the petals, that it seems almost semi-double, distinct and beautiful, a splendid color.

**Loveliness.** A lovely single seedling from Sou de Mirande; fine large flower with white center, margin daintily splashed and flecked, with pure salmon—very light green foliage.

**White Azalia.** An exquisite single variety, with large snow white flowers on long stems. They resemble clusters of white azalias.

**Faustina.** A fine cerese, with fan-shaped spots on the lower petals, of soft pink, very rich and handsome.

**Comet.** A splendid fiery scarlet, with fine trusses on long stems, a hybrid between the zonale and ivy section. A very striking variety.

**Peep of Day.** A pure soft peach pink, an unusual color, very fine, large, handsome flowers, exquisite.

**Estelle.** Beautiful, large, flowers, nearly three inches across, three lower petals blush, heavily flushed and veined salmon pink, two lower petals white, outer part shaded salmon, lower half, white, delicately tinged salmon.

**Cerese.** Very fine round flowers, lovely cerese, delicately overlaid and veined with crimson on the lower petals.

**Crimson Ball.** A fine dwarf bedder, that grows about 18 inches high, bearing on long stems, high above the foliage, large balls of rich, deep velvety crimson flowers.

#### "GLINTS OF GOLD."

A splendid golden bedding variety of very vigorous growth; the large leaves are exquisitely tinged as if sunshine had passed over them leaving glints of golden light; a faint reddish zone encircles them, and no two leaves are alike, flowers scarlet. A most effective and striking plant. It stands the hot sun, and is a most splendid bedder.

#### DWARF SILVER GERANIUM.

This new Geranium is a great improvement on "Mt. of Snow." The plant grows 18 inches high; the foliage is deeply and irregularly margined, and marked pure white; flowers rich velvety crimson. 25c each; 13 varieties \$2.50. Cuttings one-half the price of plants.



THE FLORAL WONDER,

### BEAUTIFUL NEW GERANIUMS.

From Various Sources.

**Emanuel Arene.** Very large double florets. Pure white, with broad bands of rosy scarlet, making a flower of rare beauty. Extremely



### "SHASTA DAISY."

distinct edge of rosy pink. Very striking and unique. Dwarf, compact grower. No florist should miss this variety.

**Mme. H. Tilmant.** Semi-double. White center, with broad margin of scarlet, similar to H. Charron. A very attractive variety.

vigorous grower, producing an abundance of trusses set well above the foliage. This variety should be in every collection.

**Hubert Charron.** Beautiful semi-double auriole. Clear white center with a broad band of red-dish carmine around each petal. A very showy variety, and one of the finest in its class. This variety has given general satisfaction as a bedder, being a good grower and exceedingly free.

**Jean Viaud.** Semi-double Bruant. Very strong growth with large foliage. The flowers are borne in immense trusses, which completely cover the plant from the time it is planted until frost. Color, a beautiful shade of bright rose, which does not fade in the hottest weather.

**M. Canovas.** Double. Immense trusses of brilliant, fiery-scarlet flowers with velvet-maroon shadings. Fine dwarf, spreading habit; very free. One of the darkest geraniums.

**Richelieu.** A valuable addition to the double crimson section, being the strongest grower in this class. Extra large trusses and long stems. Color, deep crimson maroon with dark orange center.

**Ryecroft Pride.** Double crimson, similar in color to a Meteor rose. Very large florets on strong stems. Very fine color.

**La Fraicheur,** Double Picotee Pure snow-white, with a narrow





**Peep of Day.** A pure soft peach pink, an unusual color, very fine, large, handsome flowers, exquisite.

**Estelle.** Beautiful, large, flowers, nearly three inches across, three lower petals blush, heavily flushed and veined salmon pink, two lower petals white, outer part shaded salmon, lower half, white, delicately tinged salmon.

**Cerese.** Very fine round flowers, lovely cerese, delicately overlaid and veined with crimson on the lower petals.

**Crimson Ball.** A fine dwarf bedder, that grows about 18 inches high, bearing on long stems, high above the foliage, large balls of rich, deep velvety crimson flowers.

#### "GLINTS OF GOLD."

A splendid golden bedding variety of very vigorous growth; the large leaves are exquisitely tinged as if sunshine had passed over them leaving glints of golden light; a faint reddish zone encircles them, and no two leaves are alike, flowers scarlet. A most effective and striking plant. It stands the hot sun, and is a most splendid bedder.

#### DWARF SILVER GERANIUM.

This new Geranium is a great improvement on "Mt. of Snow." The plant grows 18 inches high; the foliage is deeply and irregularly margined, and marked pure white; flowers rich velvety crimson. 25c each; 13 varieties \$2.50. Cuttings one-half the price of plants.

### BEAUTIFUL NEW GERANIUMS.

#### From Various Sources.

**Emanuel Arene.** Very large double florets. Pure white, with broad bands of rosy scarlet, making a flower of rare beauty. Extremely



THE FLORAL WONDER,

#### "SHASTA DAISY."

distinct edge of rosy pink. Very striking and unique. Dwarf, compact grower. No florist should miss this variety.

**Mme. H. Tilmant.** Semi-double. White center, with broad margin of scarlet, similar to H. Charron. A very attractive variety.

vigorous grower, producing an abundance of trusses set well above the foliage. This variety should be in every collection.

**Hubert Charron.** Beautiful semi-double auricle. Clear white center with a broad band of reddish carmine around each petal. A very showy variety, and one of the finest in its class. This variety has given general satisfaction as a bedder, being a good grower and exceedingly free.

**Jean Viaud.** Semi-double Bruant. Very strong growth with large foliage. The flowers are borne in immense trusses, which completely cover the plant from the time it is planted until frost. Color, a beautiful shade of bright rose, which does not fade in the hottest weather.

**M. Canovas.** Double. Immense trusses of brilliant, fiery-scarlet flowers with velvet-maroon shadings. Fine dwarf, spreading habit; very free. One of the darkest geraniums.

**Richelieu.** A valuable addition to the double crimson section, being the strongest grower in this class. Extra large trusses and long stems. Color, deep crimson maroon with dark orange center.

**Ryecroft Pride.** Double crimson, similar in color to a Meteor rose. Very large florets on strong stems. Very fine color.

**La Fraicheur.** Double Picotee Pure snow-white, with a narrow

distinct edge of rosy pink. Very striking and unique. Dwarf, compact grower. No florist should miss this variety.

**Double "New Life."** A remarkable new variety, with pretty double deep red flowers. In the center of each, there appears a small white floret; an extremely pretty thing.

**New Dwarf Geranium "Mars."** A pretty little plant of very dwarf compact habit, that bears medium sized single flowers, brilliant salmon pink in the center, shading to white on the margin of the petals.

**Dr. E. Hering.** A fine dwarf variety with large round flowers, brilliant red overlaid with scarlet, very gorgeous and effective.

**Pierre Le Brun.** A fine variegated single. A charming combination of salmon-red, pink and white, exquisitely blended. 15c each; the set \$1.35; cuttings half price.

### Three Beautiful Metallic Shades.

Mrs. Shepherd's Seedlings.

**Castenet.** Fine flowers, soft shaded magenta; two lower petals, half magenta and half velvety salmon-scarlet extending into the edge.

**Clarabel.** Rich, deep velvety magenta. Center of the flower and half of the lower petals, a rich shaded flaming velvety scarlet. The entire truss has a velvety fruit-like bloom, that is very attractive.

**Cymbel.** Rich, bright, purplish, velvety center, two lower petals, velvety scarlet, upper petals margined scarlet, most striking.

### "New Geranium Oxnard."

A superb bedding variety of strong, robust growth, and producing splendid scarlet flowers, shaded cerise. They stand high above the foliage on long stems. The trusses are very large and the individual flowers measure nearly three inches across. 25c each, cuttings half price.

## GENISTA MONOSPERMA PENDULA.

New Drooping White Genista "Bridal Veil."

Every one should have this lovely shrub, which makes a striking ornament for the garden, and a beautiful greenhouse plant. The branches are valuable for decoration, and the flowers effective for evening wear. Its habit is spreading, growing 6 to 8 feet high. It does not bear leaves, but the branches are finely divided, round, and of a soft silvery green color. The flowers are small, white, pea-shaped, with a little flush on the petals, and are borne on two little spikes, from 1 to 2 inches in length, alternating on opposite sides of the stems; they are very close together, sometimes 15 flowers to a spike; and exquisitely fragrant. A plant 3 or 4 years from seed will cover a space of 12 to 15 square feet, or more. The plant has a cloud-like, misty effect that makes it very attractive. Nothing could be more beautiful for contrast in shrubbery on large places. It has been likened to a bridal veil. Plants in 2½ inch pots, 25c each.

## Passiflora Princeps.

### THE "CORAL RED PASSION VINE."

Not new, but extremely rare, an exquisitely beautiful climber. The leaves are thick and leathery; the flowers are borne on long spikes; color, a lovely coral red, very waxy and beautiful—stock very limited. Small plants \$1.00 each; orders booked for delivery May 1st.

### THREE BRILLIANT NEW SALVIAS.

**Salvia Splendens Grandiflora Pendula.** A beautiful variety that bears very long drooping spikes of flowers, larger and handsomer than the old splendens. 25c each.

**Salvia, "Scarlet and Gold."** A handsome sort, that grows in round bushy plants, with bright golden leaves, and vivid scarlet flowers. 15c to 25c each; \$1.50 to \$2.50 doz.

**Salvia Splendens Compacta.** A drooping bedding plant that grows in compact form, and produces numerous spikes of scarlet flowers. 20c each, \$2.00 a doz.

**New Heliotrope "Purple Giant."** One of the new giant hybrid types, and a most vigorous grower of climbing habit. It has large, handsome foliage, and bears immense trusses of rich, purple flowers. It grows so fast and blooms so profusely, that it is invaluable in the garden. 25c each, \$2.50 doz.

**New Lantana "Gold Leaf."** New sport; the foliage handsomely marked with bright yellow. Some of the leaves are all yellow; some have one-half of the leaf green and one half yellow; others are green, prettily splashed with yellow. The flowers are first yellow and pink, turning to pure pink. It is of vigorous growth, and a great improvement on Harket's Perfection. 25c each.

**Salvia "Scarlet and Gold."** A very showy variety of rather dwarf habit with bright golden-yellow leaves and brilliant scarlet flowers.

**New Salvia Splendens Grandiflora Pendula.** A beautiful new salvia with very long drooping racemes of large scarlet flowers. 25c each.

**Salvia Splendens Compacta.** A very dwarf variety of the brilliant Splendens; very fine for borders. 20c each, \$2.00 doz; the two above ready April 1st.

**New Violet "La France."** A fine large violet, even prettier than the beautiful "Princess of Wales." The petals of the flowers are broader, and the color a brighter blue. 15c each, \$1.00 doz.

**The New "Farquhar" Violet.** This is said to be the finest double violet in cultivation. Color, a clear, beautiful dark blue; flowers with long stems, very fragrant. 15c each, \$1.00 doz.

# BEGONIAS...

---

*My Greatest Specialty.*

---

The Most Fascinating of Plants

---

**For Their Great Diversity of Flowers,  
Foliage, Beauty, Grace, Loveliness.**

---

Charming for the Home and Conservatory—Invaluable for Bedding Plants—Anyone Can Grow Them Successfully, Who Studies Their Requirements.

---

## MARJORIE DAW.

THE original "Marjorie Daw" of Aldrich's charming story was only a beautiful dream girl, but our Marjorie Daw is a living reality, a dream come true; not a happy accident made welcome, but a creation, demanded; planned for, and developed. Her mother is a well known beauty; a brilliant brunette, almost everywhere loved and prized. Her father is a born aristocrat; exclusive, yet immensely admired by those who have the honor of his acquaintance; a handsome blonde, cultured and refined, but lacking energy. The match proved a very happy one, and when Majorie Daw came there was great rejoicing. She grew at first with little promise of the glorious beauty she developed as she reached mature years. She was surrounded always by charming associations, and no pains were spared in her education. Private instructors were chosen with special reference to her individual development; for it was foreseen that some day she would become a celebrity. Ambitious, generous, exquisitely graceful, she has been born a leader. To see her was to admire and love her. She is tall and stately like her mother, but far more beautiful; a pure blonde type with exquisite coloring and flower-like eyes. She dresses always in shades of green, with combinations of pink, white and light red. She is a dream of beauty; admired wherever she goes. She has already visited many parts of California and the east, has journeyed to England, New Zealand, Australia, and the Sandwich Islands, and is destined to travel through all the



world. Who is this lovely creature, and where is her home? Why have not reporters sought her out, and newspapers raved of her beauty? Because Majory Daw is only a flower, but nevertheless she is a queen; the "Queen of all Begonias" at "Ventura-by-the-Sea."

MRS. T. B. SHEPHERD.

In the "Land of Sunshine," February, 1901.

### **Mrs. Shepherd's Grand New Begonia "Marjorie Daw."**

This superb Begonia is a cross between *Rubra* and *Glaucophylla* Scandens, and is a wonderfully strong and vigorous grower, and a splendid bloomer. A large, well established plant sends out great strong shoots from 5 to 10 feet high, that branch freely, giving quantities of handsome foliage; a great number of fine flowers. They are borne in large drooping clusters on strong stems. The individual flowers measure 2 inches in length. The color is a soft, beautiful pink, with at first a large white spot in the ovaries. They are very shining and waxy, and can be cut with the branches, keeping three or more days in water. The foliage is light green, thick and leathery, and resembles that of both parents. The large specimen in the illustration was 15 feet high, and 15 feet across. It had 150 buds and blossoms at the time the picture was taken. Marjorie Daw is a valuable addition to California climbing plants, being a native daughter; it is well adapted to the climate, and grows to perfection in sheltered places. Like all begonias it requires a light, rich soil and plenty of water. It is valuable for cut flowers; a large specimen giving great quantities of exquisite sprays for cutting. 2½ inch pots, 25c.; \$2.50 doz.

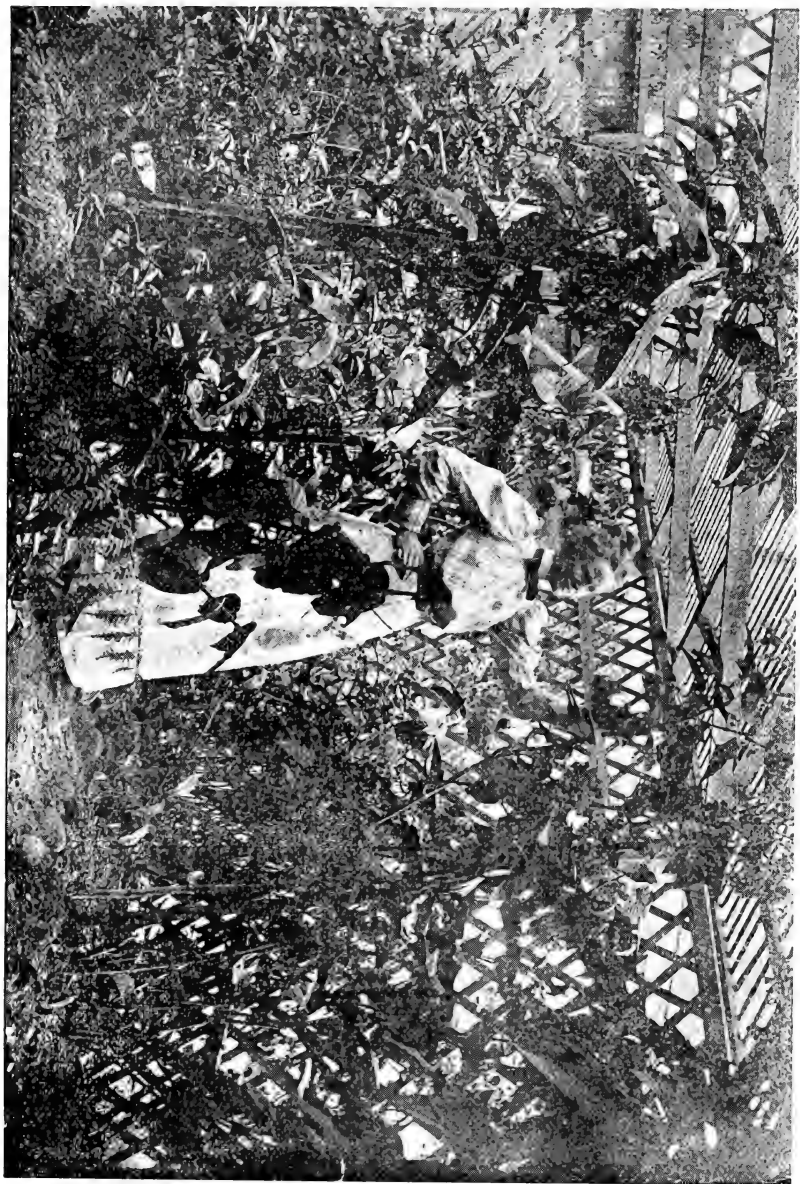
## **Mrs. Shepherd's Grand New Tree Begonias.**

### **Brilliant Leaves and Magnificent Flowers.**

Words are inadequate to describe the beauty of these splendid Begonias as they appear in my lathhouses and greenhouses. They are of the Otto Hecker and President Carnot type, but greatly superior in every way. All have large oblong leaves and immense panicles of very large flowers in shades of pink and red. They are tree like, strong and robust; sending up a great number of canes to the height of 6 or 10 feet. The foliage is yellowish or bronze-green, exquisitely beautiful in texture, and has a shining silken lustre. The difference between the various plants consists in size and shape of leaves, and the brilliant colors with which they are at various times tinged or illuminated; they change in the different stages of growth. The shades of color are bronze red; terra cotta, old rose, delicate pink, wine color, copper, yellow-feathered green, and other blendings indescribable. The underside of the leaves is a rich wine color, claret, terra cotta, and in some varieties they are charminly flushed with these lovely colors. The leaves measure frequently 15 inches in length, by 7½ inches across. The young foliage is spotted with silver.

**Yosemite.** A grand plant with a very stately habit; leaves large, slightly drooping, having a lustre like changeable silk. The flowers are in very large clusters, and are a lovely light pink; a very vigorous grower.

LATH HOUSE WITH MRS. SHEPHERD'S TREE BEGONIAS.



**Beatrice.** Truly a stately plant, with graceful arching branches and beautiful lustrous foliage that changes in all stages of growth like autumn leaves. They are a bright terra cotta red underneath, and handsomely spotted with silver above. The flowers hang in long drooping graceful panicles; bright scarlet with rose colored petals. This begonia delights everyone.

**Kathleen.** A very tropical looking begonia, of the same type as others of this cross, but having the largest foliage of any. The leaves are immense; dark red underneath, dark shining green above and closely covered with large silver dots. The large clusters of flowers are a rich, dark shining red.

**Enchantress.** This charming variety has very large, shining, dark green leaves with dark red edge, very delicately waved; underneath they are rich shining wine color. The young foliage is a coppery green, shaded with terra cotta. Foliage when old is also brilliant; it has immense clusters of very large flowers of a beautiful, rich rose color, shaded red.

**Beauty.** This variety has very large, dark green leaves, having four points; the texture is exquisite like changeable silk, and waved at edges. Young foliage is old pink, veined green, changing to darker colors.

**Atala.** Large leaves with three rather blunt points, dotted with large and small silver spots; mulberry red underneath. Young foliage a dark bronze red. Flowers bright pink. A splendid grower.

**Daphne.** More dwarf in habit than the others, and grows in a bushy form. The leaves are red underneath, and a light satin green above; oblong, with one long point and lightly pointed above the lobe. The young foliage is a golden-copper color, veined with green. It is a splendid bloomer, being completely covered with panicles of lovely shaded pink flowers. A charming variety.

**Heart's Delight.** This lovely begonia will delight the heart of any lover of these flowers. It does not grow as tall as the others, but has satiny changeable green leaves, with three points, edges delicately fluted and edged with dark red; underneath with changeable reddish-green, veined red. The flowers are a pure coral-red; the pistillate flowers are 2 inches long, and 2 inches from tip to tip across the petals.

**Flammarion.** A very rich looking plant, with the darkest foliage of all. The leaves are a deep green; mulberry red underneath; the leaf stem also very dark. The deep crimson flowers are in large panicles, and the plant is never without flowers. It is of robust growth, and is selected at once as one of the handsomest of these new varieties.

**Ianthe.** Of very strong habit; with handsome, large foliage; the leaves with four points, rich olive-green; surface of leaves like changeable silk; underside flushed and veined dark red. Very rich, shining, waxen, deep red flowers. Always in bloom and very striking.

**Ernani.** A tall stately plant, of magnificent habit; with splendid foliage. An old, well-established plant will throw up canes to the height



of 8 feet, and form an imposing sight, with its splendid leaves and grand panicles of elegant flowers hanging from long stems. The foliage is beautiful at all times; the young growth being very bright, in striking contrast with the older growth.

**Her Royal Highness.** This begonia is of more branching habit than the other varieties. The large handsome foliage with its lustrous green leaves lined with red, is very beautiful, but when the graceful panicles of waxen pink flowers hang beneath, it is one of the sweetest and prettiest of the galaxy.



BEGONIA—"FAIR ROSAMOND."

**Fair Rosamond.** A splendid, stately begonia, that sends up strong canes to the height of 6 or 8 feet. The leaves are a lustrous, changeable bronze-green above and a rich wine color underneath. They measure 15 inches in length by  $7\frac{1}{2}$  inches in width and are oblong in shape,

running to 1 long point, with 3 smaller points on the upper side. The young foliage is a bright red, sometimes spotted with silver. The magnificent panicles of exquisite waxen flowers hang from long stems and are a deep rose-red color, shaded lighter rose. The pistillate flowers measure  $2\frac{1}{2}$  inches in length.

**Day Dream.** The most rapid grower of any. The foliage is spotted silver; is smaller, and has sharper points than the other kinds. It has magnificent large clusters of exquisite pink flowers. It makes a splendid tall large plant. Plants in  $2\frac{1}{2}$  inch pots, 25c.; 5 for \$1.00. Specimens, 50c to \$2.50 each.

## Mrs. Shepherd's New Giant Begonias.

### Seedlings From Pink Rubra.

The charming mother of these Giant Begonias is thrown in the shade by her stately children. Their canes shoot up like stems of bamboo, some of which measure  $1\frac{1}{2}$  inches in diameter at the base. The leaves are thick and leathery, and often measure 10 inches long by  $4\frac{1}{2}$  inches across. The flowers, which hang on very long strong stems 5 to 7 inches in length, are double the size and number of those of the parent. They are prolific bloomers at all stages of growth.

**Hebe.** Light green foliage. Young leaves spotted with silver. Old leaves often measure 10 inches by  $4\frac{1}{2}$  inches. The plant, if allowed, will grow 6 to 8 feet high. The flowers are pale pink of an exquisite melting shade, indescribably beautiful; a perfectly lovely begonia. 25c to 50c each.

**Princess Alice.** A stately new begonia, that reminds one in its exquisite loveliness of some fair blonde princess. On old plants the canes of this begonia, which grow in the Rubra style, sometimes measure  $1\frac{1}{2}$  inches in diameter at the base. The foliage is 2 or 3 times the size of Rubra; and the young growth is pink with silver spots. The older leaves are a light green, at first lined with bright red, which fades later. They are very thick and leathery. The flowers hang in very large panicles, on long strong stems, and are a most exquisite deep pink. It is always in bloom, and is a noble descendent of that old favorite "Rubra." Still very scarce. 35c each.

**Carmen.** A lovely variety; a wonderfully profuse bloomer that bears perfect showers of exquisite pink blossoms. The original plant stands 8 feet high, with 4 great canes, with wide spreading branches, resembling a great fan, draped nearly to the ground with great clusters of flowers. So it has appeared for most of the past year. The foliage is similar to the other varieties described below. 25c each.

**"Striking Beauty."** Almost the counterpart of the lovely "Princess," with the same habit of growth, and large leathery foliage. The flowers, however, are more the color of Rubra, but it is a Rubra magnified several times, both in flower and foliage, and is the general favorite of all who see it. It makes a beautiful companion to the "Princess." 25c to 50c.

**Rubra "Bamboo."** The stems of this giant begonia shoot up like canes of bamboo. It has strong, rich foliage; thick and leathery. The bright young foliage is covered with large silver spots. It has immense panicles of bright red flowers on very long, strong stems. 25c to 50c.

**Red Coral.** A greatly improved Rubra; leaves much larger, flowers brighter and on very long stems; a fine bloomer. 25c each. These begonias ready May 1st. Five, 25c plants, \$1.00.

### Other Seedlings.

**Incarnata "California."** A seedling from "Incarnata," of much stronger habit, with leaves twice as large, and prettily waved; flowers a deeper shade and much larger, and in larger panicles. A vigorous grower and always in bloom; beautiful for boquets. 15c to 25c each.

**Sylvia.** A very pretty seedling from "Incarnata California," with a beautiful lacinated foliage and a profusion of dainty pink flowers in graceful drooping clusters. It throws up numerous shoots; forms a round handsome plant, and is always in bloom. Especially fine in winter. An ideal basket plant. 15c to 25c each.

**New Begonia "Dearest Mae."** This beautiful begonia is a seedling from *Odorata Alba*. The leaves are much larger than those of the parent plant, and are very thick and waxy in texture; looking as if varnished. The young leaves are exquisitely shining, and handsomely ruffled at the edges. Flowers are in large panicles, bluish white, lined with pink. The plant is a rapid grower, and sends up many stems. It is a fine addition to our shrubby begonias. 15c, 25c to 50c each.

**New Begonia "Ariadne."** A beautiful new variety, the type of *Pictavense*; with very large, thick velvety leaves, often measuring 9 inches in length to 6 in width; rounded on the upper side and running to one long point; upper side brilliant shining green and overlaid with fine pile; under side like plush, green and red; mid-ribs and veins a darker red; flowers in enormous trusses, resembling the most brilliant red chenille; opening out white, tinted with blush; they are borne on long stems, and last a long time. 35c each; stock very limited. Ready May 1st.

## General Collection of Fibrous or Shrubby Begonias.

No plants have more enthusiastic admirers than Begonias. There are many classes and varieties, and they are very diverse in flowers and foliage. A very beautiful, unique, and interesting garden can be made of begonias with the addition of ferns and palms. They grow from 6 inches to 10 or 15 feet or more in height, and the always beautiful foliage measures from a half inch to 15 or 20 inches in diameter. The flowers are in fine feathery sprays borne either upright or in clusters, on long drooping panicles. The

colors are white, blush, and shades of pink and red. Their habit is small and dainty, or gracefully spreading, or tall and stately; exquisitely lovely. They grow to the greatest perfection in California if given the proper environments. They like partial shade, a rich light soil, and plenty of water. Some varieties are fine bedders and stand the sunshine well, giving thousands of flowers, and blooming without interruption for months; others require a more sheltered location, but all are much more hardy than their appearance would indicate.

### Large Leaved Begonias.

A class whose natural habit is to grow prostrate with heavy stems that root along the ground; and send up branches with numerous stems, and very long stemmed flowers.

**Ricinifolia.** A fine tropical looking plant with large ricinus-like leaves, 12 inches or more in diameter, on long stems; deep velvety green above, and purplish red underneath. The flower stems rise 3 or 4 feet, or more above the foliage, bearing aloft fine, large, airy panicles of beautiful blush flowers. The stems grow along the surface of the ground. It makes a fine pot plant, and grows very large when planted outside. Small plants 15c; larger sizes 25c, 50c and \$1.00 each.

**Ricinifolia Maculata.** A beautiful and rare variety with very large deeply lobed leaves with ruffled edges. The color is a rich yellowish green, stained and veined with lighter and darker shades. The flower stems are long; the flowers in spikes, and a beautiful pink, shaded light pea-green; they are very pretty and keep well; a winter bloomer. 50c each.

**Rubella.** A very popular variety, with leaves somewhat smaller than the two above. They are a pallid, shining brownish green, spotted with numerous irregular dark brown spots; pale pink flowers on rather long stems. 15c to 50c each.

**Verochoffeldii.** A most beautiful plant with numerous large, shining green leaves crowned by airy panicles of long stemmed soft pink flowers, so numerous as to give a lovely cloud-like effect. A winter bloomer. 25c to 50c each.

**Carolinifolia.** A variety seldom seen. It has massive prostrate or leaning branches, and long stemmed handsome compound leaves, composed of eight simple oval leaves with stems joined together in the center; they sometimes measure a foot across; flower stems are 2 or 3 feet long. Flowers delicate blush pink in airy panicles. A grand begonia. 25c to 50c each.

### Small Leaved Varieties of Spreading Habit.

#### Perpetual Bloomers.

**"Hybrida Multiflora."** An old, but always beautiful plant, with small oval shaped leaves, and showers of dainty drooping clusters of pink flowers. It grows very tall outside in California and is invaluable in a collection.

**"Fuchoides Coccenea."** Of the same general habit, but with larger leaves and bright scarlet drooping fuchsia like flowers.

**"Foliosa."** Like the two above, but with smaller leaves that are daintily crinkled at the edges. It is always covered with pretty little white flowers shaded pink.

**"Robusta."** A very bushy, spreading, graceful plant, with glossy foliage, and producing quantities of graceful deep pink flowers.

**Degswelliana.** Resembles the above, but with larger leaves, that are covered with minute hairs, and prettily crinkled at the edges. Flowers are white inside, with bright pink ovaries; outside of petals shaded pink.

**Chas. Roocker.** A very fine graceful plant with rather small shining leaves, and bearing numerous graceful, drooping clusters of bright scarlet flowers, always in bloom; very showy.

**Abundance.** The counterpart of the above; except that the flowers are a lovely soft rose color.

**Sandersonii.** Of the same class as the above, but growing only 18 inches high; always in bloom. Called the "Coral Begonia" from its brilliant deep red flowers. The above varieties 10c, 25c, \$1.00 to \$2.50 doz.

### Hybrids of the Metallic Type.

**Metalica.** A beautiful old variety with oblong pointed, crinkled leaves, shaded yellowish green, covered with fine white hairs; red veins underneath, covered with hairs. Lovely white flowers, covered with pink hairs on the outside, so that the buds resemble, or seem to be made of pink chenile.

**Pictavense.** A superb variety of easy culture; always in bloom. The leaves are oblong pointed, resembling plush; shining dark green above, dark red underneath; both upper and lower part of the leaves covered with fine white hairs. Enormous clusters of very long stemmed large white flowers, drooping over in the most graceful manner. The buds and the outside of the flowers are covered with long bright red hairs, giving a most unique and striking effect.

**Haagaena.** Has bright green, plush-like leaves, and clusters of lovely pink chenile-like buds; flowers white inside.

**Thurstonii.** A beautiful stately plant with remarkably handsome, glossy foliage. The underside of the leaves is a rich, purplish red, the veinings very prominent; while the face or upper side is a bronzy-green, shaded with olive, with a peculiar glossy metallic luster over all. Flowers rosy white in large clusters, well above the foliage, chenile-like buds. The plant has a fine habit and grows very rapidly, either as a pot plant or when planted in open ground in a partially shaded position.

**Nobilis.** Resembling the above, except that the leaves are larger and deep red underneath; chenile-like flowers, white when fully open. Stock of the five above named varieties very limited. 25c each; fine \$1.00.

**Marguerite.** Leaves narrower and much smaller than any of the above; very pretty chenile pink buds; white, when fully opened. Very pretty and of easy culture. 10c to 25c each.

### **Tuberous Rooted Hybrids.**

**Weltoniensis.** A fine old variety with pretty satiny foliage, and very abundant pretty pink flowers.

**Weltoniensis Alba.** Resembles the above, but with light green leaves and stems; white flowers.

**McBethii.** A very pretty variety; always in bloom, with finely cut leaves and snow-white flowers.

### **Bedding Varieties.**

The following are especially adapted for bedding, borders and lines; growing in exposed places, and bearing the brightest sunshine.

**Semper-florens Vernon.** Stands the hottest sun, which makes it invaluable for bedding purposes. It grows in round, compact masses. The leaves are rich green, shaded bronze-red. The flowers are brightest red and are produced in the greatest profusion.

**Semper-florens Vulcan.** The counterpart of the above, except that the flowers are bright orange-scarlet.

**Semper-florens Vernon Rosea.** Like the two above, except the foliage is a lighter shade of green, and the flowers bright pink.

**Semper-florens Bijou. "Carpet Begonia."** Of dwarf compact habit, growing only about 8 inches high, giving charming red flowers. All the semper-florens class are very brilliant bedders, giving a mass of bright color for months.

**Erfordia.** A low growing variety of very graceful habit, with pretty shining leaves, and bearing continuously the greatest profusion of dainty pink flowers. A splendid bedder; stands the hot sun well.

**Snow Wreath.** The same general habit as Erfordia, and equally as valuable as a bedding plant, but with pretty snow-white flowers.

**Smithii or "White Gem."** Is dwarf and bushy, growing about 18 inches high. The leaves above are dark green and ruffled, underneath bronze-red. The foliage and flowers are covered with minute hairs. The flowers are white inside, and soft pink outside; makes a fine pot plant, and is very pretty in baskets, and invaluable as a bedder. All these varieties are dwarf. Any of the above, 5c to 25c each; 50c to \$2.00 doz.

### **Begonias of the Rubra Type.**

This class of begonias send up strong bamboo-like canes, with alternate oblong long pointed light green leaves, and fine panicles of large drooping fuchsia-like flowers on long stems.

**Rubra.** A well known old variety always in demand. It sends up erect canes with light green, oblong pointed leaves and panicles, of many large drooping clusters of handsome scarlet fuchsia-like flowers. 10c to 25c each.

**Pink Rubra.** The counterpart of the above, except that the flowers are pink. 10c to 25c each.

**Alba Picta.** A miniature edition of Rubra, with very narrow, oblong pointed leaves ornamented with numerous silver dots. Flowers are greenish white, very numerous and drooping, forming a pretty cloud-like effect. 10c to 25c.

**Picta Rosea.** Much like Alba Picta, except that the leaves are a little larger, and the flowers a beautiful rose-pink. A charming variety. 10c to 25c each.

**Wettsteinii.** This fine plant is in the direct line of Rubra. Leaf is smaller and more ornamental, being particularly indented, and a lovely shaded coloring, dark marbled green, shading lighter, with a line of scarlet at the edge. The flower is quite similar to rubra, but is a brighter shade.

**Rubra Alba.** The foliage resembles Rubra, only lighter green, and the flowers are greenish white, with beautiful orange-colored pistals. 10c to 25c each.

**Gloire de Lucerne.** A beautiful variety that is evidently a cross between Teuscherii and Rubra, both of which it resembles in foliage, while the bloom is a most beautiful rosy vermillion. The leaves are of the most beautiful form, broad and deeply lobed, bronze-green above and purple below. The plant assumes a fine tree form with a little attention. 15c, 25c and 50c each.

**Argentea Guttata.** One of the most easily grown and satisfactory begonias for amateurs. It sends up very strong branching stems, and beautiful bronze-green leaves thickly spotted with silver, underneath purple. Flowers are blush-white; and always in blossom. 10c to 25c.

**Tucherii.** A very charming begonia with very satiny dark bronze-green leaves; and bears fine clusters of beautiful large white flowers, tinged with pink. It makes a fine contrast growing with the scarlet varieties. 15c, 25c to 50c.

### Begonias of Various Types.

**Semper-florens Gigantea Rosea.** One of the best begonias. A vigorous and erect grower. It has a very large flower, of a clear, cardinal red, the bud only exceeded in beauty by the open flower, which is borne on a strong, thick stem. The leaves are smooth and glossy, and attached closely to the main stem; both leaf and stem quite upright growing, and forming a shrubby, round plant. It flowers continually from October to May, and is withal one of the most satisfactory plants in the whole family. 10c, 25c to 50c.

**Odorata Alba,** One of the most satisfactory begonias on the list.

A strong rapid grower with handsome oblong, blunt pointed, glossy green leaves, surmounted at all times by very large, airy panicles of lovely white flowers, delicately scented, like wild flowers. 10c, 25c to 50c.

**Oderata Rosea or Nitida.** Similar to the above, but with thicker and more glossy leaves. The beautiful clusters of flowers stand out above the foliage. Buds are bright pink; and the flowers are, when opened, white inside, and pink outside; always in bloom. 10c, 25c to 50c.

**Gilsonii.** Large leaved, smooth, upright growing. The leaf is sharp pointed and regularly toothed; long, triangular form, very elegant. The staminate flowers are like a partially opened little shell, with the most exquisite dainty crinkled rosette in its center; forming a charming double flower. They are in clusters above the foliage; color, a delicate blush. 15c, 25c to 50c.

**Manicata Aurea.** Large, glossy leaves beautifully blotched with creamy white, with carmine etching on the mature leaves. Flowers delicate blush white on long stems. It is easily grown and is one of the finest ornamental foliage plants for the house imaginable. Always scarce. 25c each.

**Paul Bruant.** A very handsome and easily grown plant, always in bloom. The foliage is oblong-pointed, with eight pointed lobes, and beautifully toothed; edges red. The flowers are upright or half pendant. The color is soft pink, shaded green. 10c, 25c to 50c each.

**Jessie.** This begonia has very beautiful foliage of richest green, and is beautifully ruffled at the edges. It bears numbers of small pink flowers, so numerous at times as to give the whole plant a cloud-like appearance. 10c, 25c to 50c each.

**Compta.** A very distinct variety of tall growth, long light green leaves, and soft silvery gray lines, with ribs and veins like silver. The flowers are very small and grow above the foliage; and are fine snow white giving an exquisitely dainty appearance. 10c to 25c each.

**Sceptra.** Beautiful foliage, deeply lobed, light green, crinkled, and spotted silver. Evidently a seedling from Diadema. 20c each.

**Mirabunda.** Strikingly handsome plant with large, rich green leaves deeply lobed and pointed, and covered with large silver spots; red underneath. The two above are not very good bloomers, but are desirable for their handsome foliage. 20c each.

**Washingtoniana Rosea.** Dark green foliage, covered with a felt-like substance; large panicles of deep rose flowers; free winter bloomer. 10c each.

**Washingtoniana Alba.** Immense panicles of pure white flowers, with fine glossy leaves; good winter bloomer. 10c each.

**Edmondsonii.** An old, but very handsome low growing plant with thick, round, shining olive green leaves; dark red underneath. It sends its flowers 12 inches or more above the foliage; which are soft light pink. It blooms in the fall and winter. Very easily grown. 15c to 25c each.



**Evansiana or "Beefsteak" Begonia.** Beautiful sort with light green foliage, veined bright red underneath. It bears clusters of beautiful drooping pink flowers. It has a tuberous root and dies down every year, and multiplies by little bulbils that form at the axils of the leaves. 5c to 15c each; 50c to \$1.00 doz.

Twelve 10c begonias for \$1.00; twelve 50c begonias for \$5.00; twelve 25c begonias for \$2.25.

Small begonias can be shipped safely on journeys of two or three days, but it is advisable for those sending from a long distance to order larger plants. When the wood is well hardened, begonias will endure well journeys of two or three weeks, but when the shoots are young they are soft and watery and decay easily. Always send a second choice list. If any varieties of plants are out, substitution will have to be made or money returned, and often delay and correspondence required; frequently over a small amount.

## TUBEROUS ROOTED BEGONIAS.

(**"The Magic Begonia."**)

A distinct class of begonias that have been developed within a few years from a few simple forms into innumerable varieties that are marvels of beauty and loveliness. They develop so quickly from little brown tubers into splendid plants in leaf and gorgeous bloom, that they may well be called "Magic Begonias." They are fine for pots and baskets, and invaluable for bedding plants if given partial shade and plenty of water. They grow from 12 to 18 inches high, forming bushy plants, with double or single flowers; every shade of red, yellow, pink, orange and white; flowers variously shaped. They are gorgeous and beautiful beyond description. Any one can succeed with them. As the time for planting approaches, which is in early spring, little bright pink leaf buds appear in the center of the bulbs; and if planted then, in about six weeks a plant is growing, full of buds and flowers. So soon does this transformation take place, that it seems almost like magic. In California, where it does not freeze, they will remain in the ground all winter and come up in the spring, increasing every year.

Single tubers, separate colors, 10c each, \$1.00 dozen; mixed, 75c dozen.  
 Double " " " 20c " \$2.00 " " \$1.50 "

## A Choice Collection of Rex Begonias.

Nature has bestowed on Rex Begonias many of her choicest gifts, uniting the radiance and brilliancy of precious jewels, the shining luster of metals, with the beautiful colors and textures of the most costly fabrics. The leaves alone possess all these charms, while the dainty flowers add lightness and grace. The collection, offered below, consists of many of the rarest and most beautiful varieties.

**Lesoudsii.** One of the most beautiful of all the Rex Begonias. The center of the leaf is a dark bronzy-green, outlining the midribs; ground, light yellow-green; border, rich bright green, dotted with silver; edge, bronze beautifully waved. The entire leaf is blotched and spotted with shining silver, which gives it a rich metallic luster. Leaves are pointed and prettily lobed. Flowers quite large and a lovely shade of pink.

**Mme. J. Menoreau.** This is intermediate between the Rex and upright flowers. Is very easily grown; numerous small leaves; center, emerald green along the mid-ribs; the entire leaf light green, finely flecked with silver.

**Queen of Hanover.** A rarely beautiful variety: leaves like velvet or plush; center, dark green with a broad silver band and a margin of dark green; the entire leaf is covered with fine hairs, bright red in early stages of growth, changing to green with age.

**Stella.** A beautiful, new, quadri-colored Rex, with very broad: shining, silver zone that is veined and marked with bright, metallic bronze and violet shadings. The zone is banded with deep green, and the whole distinctly bordered with reddish bronze. One of the most attractive and beautiful of the Rex family.

**Clementina.** Beautifully lobed leaves; upper surface beautiful bronze ornamented with large silvery spots; underside bronzy-red, which produces a beautiful effect.

**Perle Humefeldt.** This is a fine discolor Rex. The leaf is sharply pointed, and shows an exquisite combination of silver, and of bright silver and of bright silvery-green and deep maroon, for arrangement of colors.

**Marquis de Peralta.** One of the freest flowering of the Rex Begonias. Throws out great clusters of leaves, which are exquisitely beautiful. Edged by narrow band of silver of uniform width; this borders a bright green zone mottled in silver, which encloses the zone proper, and which is a broad silver band about a dark-rayed center.

**Mme. Le Boucq.** A very distinct variety, having the entire leaf of soft rosy-mauve color, with very high, silky lustre, and occasionally touches of silver. One of the most attractive begonias of this class.

**Constance.** Broad, shining, silvery zone encircling a dark olive center; ground color deep green, bordered with a broad bronze margin that is beautifully spotted with silver.

**Rex.** A splendid old variety with very thick, large leaves. Ground color dark rich bronze, shaded green, with a silver center; a bright silver band.

25c each, five for \$1.00; larger sizes, 35c and 50c, \$3.50 to \$5.00 doz.

**Queen Victoria.** A beautiful light green, silvered leaf, crinkled like crepe. Small bronze-green center, and delicately marked with a bronze-green margin.

**Merville.** A charming variety with rather small leaves; center bronze-green, splashed with minute irregular silver spots; then an irregular band of silver with soft metallic shadings fills the center of the leaf, extending to the front; and last, a band of light green, and a bronze edge, both sprinkled thickly with silver. 15c, 25c, 50c each; \$1.50 to \$2.50 doz.

Rex Begonias do well bedded out in a shaded location, in light soil, and plenty of water at the roots.

San Diego, Cal., Dec. 26, 1901.

"The Begonias came a few days ago; am delighted with them. They are such fine plants, and so carefully packed."

MRS. H. HARMON.

## BEAUTIFUL CARNATIONS.

### "The Divine Flower."

**Strawberry Ice.** The coloring of this lovely variety is perfectly exquisite. The petals are a beautiful pink from the base to the center, blending softly into a cream white margin. Flowers large and prettily fringed; resembling the soft shades of melting strawberry ice. A fine bloomer.

**Anna H. Shaw.** A most persistent and perpetual bloomer, and of rapid growth. In a very short time it forms large, strong plants, full of buds and blossoms on long stems. The flowers are of medium size and perfect form, never bursting; white, occasionally tinged in the center with delicate blush; spicy and sweet; especially valuable in winter. Always in bloom.

**Pride of the Pacific.** A magnificent carnation, with strong, healthy foliage and perfect flowers, measuring 3½ inches across; the petals are very large, and the flower is formed like a rose; color, beautiful rose pink; edges of petals delicately toothed and tinged silvery rose. 15c.

**Helen McGowan.** A flower that attracts universal attention; very large and full, deeply fringed; bright reddish-scarlet, fringed white, 3 inches in diameter.

**Daybreak.** Salmon-pink; very large; fine bloomer; grand sort.

**Emily Pierson.** Rich scarlet-red; fine healthy foliage; grand bloomer; one of the best.

**El Dorado.** Light yellow, edged pink; fringed.

**Grace Wilder.** Always a lovely flower: A soft exquisite pink.

**Empress.** Bright rich crimson; base of petals fiery-scarlet; large, perfectly double flowers, three or more inches in diameter, deeply fringed.

**Los Angeles.** A magnificent white fringed variety.

**Brilliant.** Beautiful brilliant red.

**Corbett.** One of the best pink varieties; a new rich shade; handsomely fringed. 10c each, \$1.00 dozen; except where noted.

### Three Fine Carnations.

**Louis Bradbury.** Intense, brilliant, carmine red with smooth, silky petals. A lovely variety.

**J. M. Howland.** A grand scarlet, striped and flaked with dark maroon. Flowers very large and strikingly beautiful.

**Siever's Scarlet.** Very large, splendid scarlet flowers on long stems, delicately fringed petals. 15c each; the three 40c.

---

## Mrs. Shepherd's Artistic Chrysanthemums.

### DREAMS OF BEAUTY.

**Curly Locks.** This is a curly darling, a perfect beauty. It is semi-double, petals long, quilled, opening about an inch from the tip; inner petals, incurving, and curling gracefully over the center; outer petals long and drooping; recurving prettily at the tips. The color of the flowers at first a beautiful pink, delicately penciled, changing to a waxen-white in the center, and shading blush to the ends of the petals. Can be grown 10 inches across.

**Golden Ball.** A magnificent ball of pure, bright canary-yellow. Petals slightly rolled at the edges, pointed at the tips, and a little recurved, all of an even length, coming down close around the stem. Flower is perfectly double, very full.

**Petaluma.** This grand flower is a new departure, both in color and form. The petals are quilled the same size from base to tip, and are the size of a large knitting needle, and 3 inches in length. Flowers very double, and when fully developed are round as a ball. Color is pure nankeen yellow; old gold with age. A grand sort.

**Blazing Sun.** A splendid dahlia-flowered variety. Color at first a rich brownish-red, with center incurved, developing later into a large, flat flower, petals blazed with yellow in center, and flushed with brownish-red, broad and deeply recurved. Flower 7 inches across.

**Peek-a-boo.** A splendid reddish-brown flower. Petals tipped yellow and very long, drooping down over the lower side of the flower, and falling from above, almost covering the eye, which looks out from the mass of petals in a way that suggested the name "Peek-a-boo." A splendid variety, measures 7 inches under ordinary care.

**Juno.** A beautiful flower; very distinct in the great width of its petals, which measure nearly  $\frac{3}{4}$  inches across, tubular at the center; they open out, curving slightly at the edges; long, pointed, and curved at the tips; the lower petals reflex and curve inward at the ends, while the upper ones curve gracefully toward the center.

**Ribbons.** A very beautiful and graceful flower; semi-double with broad petals; pale yellow in color, flushed pink half their length; flowers measure 7 inches across, and hang like great bunches of ribbons. Very lovely.

**Radiance.** A plant of this striking variety in full bloom is fairly radiant with brilliant starry blossoms. Flowers are single, with tubular petals closely set, and bright light-red around the center for about  $1\frac{1}{2}$  inches, then opening out broad, a lovely soft yellow. The contrast in color is very novel and striking, the flower being half yellow and half red.

**"Green and Gold."** A most striking variety which not only has the most splendid, large double flowers of perfect form and beauty, but also lovely foliage. The leaves are a rich shade of green, handsomely variegated with creamy yellow; the contrast being very decided. Some of the leaves are half yellow and half white. The plant retains its beautiful foliage in the hottest sunshine outside, and under glass is a splendid foliage plant, even when not in bloom.

**Parachute.** A most remarkable single flower. Petals measure  $\frac{1}{2}$  inch across and about  $3\frac{1}{2}$  inches in length, pointed at the tip. The color is a fine mauve-pink. Petals stand out from the center, so that the flower forms a perfect parachute. It is very beautiful. It can be grown 8 inches across.

**White Wings.** A very large semi-double variety, pure waxen white, very chaste and beautiful; petals at first tubular, opening flat and broad, and curling at the ends, a most exquisite variety.

**Firefly.** Beautiful bronzy-red with thread-like petals. The petals are lit up by crossbar lines of yellow; the base of all the petals is yellow. A brilliant, charming flower. 15c each, \$1.25 doz.

## Chrysanthemums From Other Sources.

**Robert M. Gray.** A grand and beautiful variety; very double, incurved flowers; at first a yellowish brown, changing to brownish-yellow; the entire flower is covered with a beautiful hairy growth; the color is very rich, making it extremely attractive. It delights everyone.

**Louis Boehmer.** Exquisite silvery-pink and deep rose. Very beautiful.

**Child of Two Worlds.** Pure snowy-white. Covered with soft down.

**Murello.** A fine dark, rich red lined with yellow. Large and handsome. Fine for cut flowers.

**Omar.** Rich, deep, blood-red; splendid flower.

**The Queen.** Splendid; pure snowy-white.

**Elmer D. Smith.** Dark cardinal-red inside, outside clear chamois.

**Princess of Chrysanthemums.** A grand variety, very large and double, long tubular petals, shining and waxen, delicate flesh-color. 15c each.

**President W. R. Smith.** A most beautiful pink variety.

**Lillian Bird.** Long quilled petals. Lovely pink.

**Puritan.** Pure snowy-white; exquisitely incurved.

**Fisher's Torch,** Splendid rich dark red.

**Golden Plume.** Drooping petals of a rich golden color, with a tuft of feathery petals in the center. The best late yellow variety.

**Mrs. John IIs,** Ivory-white, of massive build. Invaluable for cut flowers.

**Silver Wedding.** A beautiful, large, fine, white reflexed flower with very broad petals; some being nearly 1 inch in width.

**Mrs. Jerome Jones.** A very beautiful and popular variety; fine white, late bloomer. 10c each, \$1.00 doz.

---

## Three Giant Orchid Flowering Cannas.

**New Canna "Mrs. Kate Greiy,"** One of the largest cannas introduced. Flower round, clear, wine color, suffused with gold. A magnificent variety of the Orchid flowering type. 25c each.

**Austria.** This grand mammoth canna grows 5 to 6 feet high, with leaves 15 to 18 inches long, and 8 to 10 inches broad; the flowers are 6 to 7 inches across, and borne erect in large, bold clusters; color pure, deep golden yellow; truly magnificent.

**Italia.** Equally as large and similar in every way to Austria, except color, which is pure yellow, with a broad blotch of dark, rich maroon in the center of each petal. 10c each.

### Mrs. Shepherd's Beautiful Dwarf Canna "Golden Beauty."

Very large flowers, rich, bright, golden-yellow, with a few faint spots in the center of the flowers. Splendid spikes of bloom. Grows only 2 feet high. A perfect beauty. 25c each.

## General Collection of Cannas.

**Black Prince.** Intense dark velvety crimson-maroon. Fine large trusses and flowers; great bloomer. 15c each.

**Sam Trelease.** Flowers open up flat with round overlapping petals, different from all others in form. Dazzling scarlet; base of petals rich yellow. 15c each.

**Maiden's Blush.** Extra large, perfectly formed flowers in immense trusses, and borne on strong, erect stems during the whole season. Color, clear rose-pink.

**New Peachblow Canna.** "Alba Rosa Grandiflora." Rose, pink, and sunset tints.

**Philadelphia.** Undoubted the brightest and most beautiful crimson canna in existence.

**Alsace.** The nearest pure white canna, pale sulphur-yellow, changing to creamy-white.

**Canna "Queen Charlotte."** Very large scarlet flowers, deeply margined with gold.

**Florentine.** The very large flowers are frequently semi-double; an intense rich crimson color.

**Goldilocks.** A clear, rich yellow flower, with very broad petals, sometimes slightly spotted with red; dwarf habit.

**Vesuvius.** A beautiful combination of salmon, streaked with coppery red. Very large, handsome flowers.

**The Rival.** The flowers are similar in color to Madame Crozy, and bordered with yellow. It is immense in size, and truly a rival to the parent. 15c each.

**Mme. Crozy.** Dazzling crimson-scarlet, bordered with golden-yellow. The flowers are produced on large branching stems, which are closely set.

**President Carnot.** Fine dark foliage; crimson flowers flecked with darker red.

**Goffrey St. Hilaire.** Splendid foliage, streaked maroon and yellowish-green; glowing orange-scarlet flowers.

**Madam Allemagny.** One of the best yellows; with short, broad petals of fine orange-yellow, spotted dark red. A rare and scarce variety. 15c each.

**Alphonse Bouvier.** This is, all points considered, one of the grandest varieties yet introduced. It is a remarkably luxuriant grower, in rich ground attaining a height of 6 to 7 feet. Color is of a rich, brilliant crimson, almost approaching scarlet when the flower opens, changing to a deep, dazzling crimson as the flowers fully develop.

**Maranta.** Very handsome dark foliage, streaked with dark red and yellowish-green. Very dwarf habit. The leaves are so handsome as to resemble a Maranta; and the beautiful crimson, iris-like flowers are dotted with a darker red. Very dwarf habit; a fine pot plant. 10c each, \$1.00 doz.; except where noted.

---

## Magnificent New Coleus.

Nothing can be more beautiful than these gorgeous plants. They are most satisfactory for house plants, and do well when bedded out in the garden. My collection embraces a grand variety of the most brilliant colors. New seedlings, many of the older-named sorts from other collections, and some splendid new seedlings of my own; many beautifully fringed varieties; some with immense leaves; some with the most exquisite colorings imaginable. Twelve choice varieties. In ordering, state colors desired, and a selection will be made that cannot fail to please. 10c, 15c, and 20c, according to variety and size of plants. \$1.00, \$1.50 and \$2.00 doz; rooted cuttings, 50c doz. Always make a second choice list.

## Fuchias or Lady's Eardrop.

**Mary.** This is a new Fuchias of the Triphylla type, originating in France, and a decided novelty. The plant is a profuse bloomer; the drooping flowers, over two inches long, are a brilliant crimson-scarlet, and stand out prominently against the plain dark green foliage. The young foliage is veined with dark red and is very velvety. Altogether it is a very unique plant, and a fine addition to the flower garden, window garden or conservatory. 20c each.

**ESMERALDA.** A beauty, very double. Sepal crimson; corolla a most lovely melting shade of violet-mauve, changing to pink. Very handsome foliage. 15c each.

**OCTAVE FEULETT.** Sepals coral-red; corolla loose and flaring; color pinkish violet-mauve, veined deep rose; an exquisite sort. Very dainty. 20c each.

**M. JOULE.** Plant of rapid growth. Leaves arranged three at each point, with a drooping dainty single flower to each leaf. Sepals coral-red; corolla violet-mauve; lighter at base of petals; which are veined red; a very abundant bloomer; flowers flaring. 10c each, the three varieties 35c.

**Eugene Vercousin.** Double. Corolla rosy pink, shading to heliotrope; sepals rosy red. Color new and distinct.

**M. Alphan.** Double. Of grand habit; very large recurving sepals of bright scarlet; very large corolla of soft reddish-violet.

**General Vandever.** A splendid single variety, a seedling of my own, of vigorous climbing habit; with large, handsome yellowish-green foliage, and immense sprays of very large single flowers, sometimes semi-double; a fine purple and red. Will grow to the roof of the house in a few years.

**Mrs. E. G. Hill.** Grand double, rich crimson and white; immense.

**Phenomenal.** Splendid dark double; coral-red and dark blue.

**Otto.** Splendid double scarlet and white; tree-shape; a most constant bloomer; flowers rich and handsome.

**Joseph Rosian.** Splendid dark double scarlet and violet-purple, marked with carmine; grand bloomer.

**Black Prince.** One of the best old sort single flowers, with flaring funnel-like corolla; scarlet and purple-carmine.

**Aurora Superba.** Beautiful waxy orange-scarlet flowers; truly superb.

**Arabella.** The best old pink variety; flowers large; sepals clear, waxy-white; corolla exquisite pink.

**Carmelita.** A new seedling of my own; a beautiful variety of dwarf habit. Small foliage; grows in round, compact form. Completely covered



almost the entire year with charming, dainty, double crimson and white flowers. Stands the sun well, and will always give good satisfaction. 10c to 20c each.

**Helene.** A seedling from "Fulgens," which it much resembles; of vigorous growth, with long green foliage. The flowers hang in graceful panicles. The individual flowers measure 3 inches in length; color a soft orange-scarlet. Half of the sepals, the pistal, and tips of the unopened buds are a beautiful pea green. 10c each.

**"Crimson Triumphs."** A seedling from "Corymbiflora." but much prettier, with large waxen flowers of a soft clear rose-red. They measure three inches in length. The arrangement of the sepals and petals is especially pretty. The fuchias are very easily grown; and bloom constantly. Their large corymbs of long flowers are very showy, and are followed by large dark berries. The foliage is large and velvety.

**Cape Fuchsia. "Phygelius Capensis."** A distinct new species, blooming from May to late autumn. It bears long spikes of showy, scarlet, drooping, tubular flowers. Will grow anywhere. Entirely different from any other variety. 10c each, \$1.00 dozen except where noted.

## CHOICE FERNS.

**ADIANTUM WILLIAMSII** or **Golden Maiden Hair Fern.** A very elegant and strong growing variety, with large spreading fronds of yellowish green, with a golden powder on the underside; stems are black; and the plants grow 18 inches to 2 feet high, and by their great beauty excite universal admiration; a rare variety. 75c to \$1.25 each.

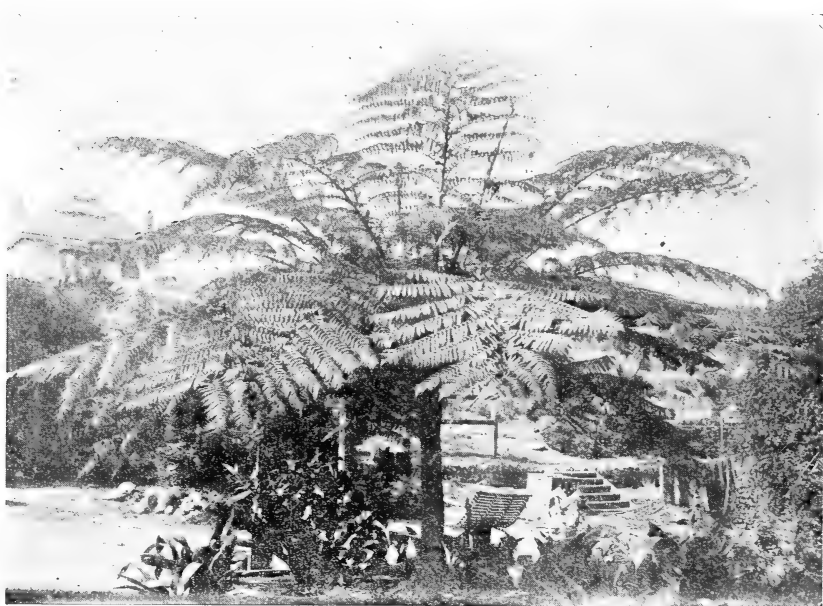
**Cuneatum.** A dainty "Maiden Hair" fern, much used in cut flower work. 20c to 50c each.

**Formosum.** A beautiful "Maiden Hair" with jet black stems and handsome fronds. 35c, 50c, to \$1.50 each.

**Fulvum.** An erect growing New Zealand species with fronds 9 to 12 inches long, 6 to 8 inches broad, and detoid in general outline; young fronds reddish. A fine sort. 25c to 50c each.

**ASPLENIUM Belangeri.** A very elegant fern, easily grown, forming new plants on the surface of the old leaves. It makes beautiful and graceful specimens. 15c to 50c each.

**NEPHROLEPIS Exaltata.** "Sword Fern." A splendid extra hardy sort, well adapted for house culture, succeeding with ordinary care with everyone who tries it. The fronds are often 4 feet long. Fine basket plants, throwing out runners which soon make new plants. 30c, 50c to \$1.50 each.



"ALSOPHYLLA," AUSTRALIAN TREE FERN.

**The Boston Sword Fern.** (*Nephrolepis Exaltata Bostoniensis*. In the vicinity of Boston, no other plant is used so extensively as this graceful *Nephrolepis*, which differs from the ordinary fern in having much longer fronds, which frequently attain a length of 4 feet. The fronds arch and droop over gracefully, on account of which it is frequently called the fountain fern. The drooping habit makes it an excellent plant to grow as a single specimen on a table or pedestal. 25c to 50c each; extra size, \$1.25.

**Duffi.** A very handsome dwarf species. 15c to 50c each.

**Tuberosa.** A beautiful large variety of the Sword Fern. 25c, 50c, 75c, \$1.50 each.

**Phillipense.** A very handsome Sword Fern. Fronds not so large as the Boston, but very easily grown; makes a fine pot plant. 25c to 50c each.

**PTERIS Tremula.** One of the finest for house decoration, growing very rapidly, and throwing up large handsome fronds; makes magnificent specimens. Easily grown and very popular. 25c each.

**Cretica Alba-Lineata.** A very pretty and useful variegated variety; charming. 15c to 25c each.

**ONYCHIUM Japonicum.** A delicate Japanese fern, with dark green, glossy leaves; excellent for cutting; height 1½ feet. 25c each.

**WOODWARDIA California.** A splendid native variety, fine for house, conservatory or garden; will grow 6 feet high. 25c to 50c each.

Three other pretty native ferns, commonly called "Goldback," "Coffee," and "Lace" Ferns. Good plants, 15c to 25c each.

# General Collection of Geraniums.

## Mrs. Shepherd's Seedlings, Older Varieties Single.

**The Peri.** This is a lovely child of Souvenir de Miranda, a perfect beauty. The lower petals are orange-salmon; white center overlaid with rose; lower petals half salmon; center white, lightly flushed deep rose; circle of salmon around the eye. Flowers measures 2 inches across and are very round.

**Madam Modjeska.** The flower is perfectly round. The buds when first unfolded are velvety orange-salmon, and the fully opened flower pure salmon-pink; edges of petals grow lighter with age; two upper petals veined pink at the center; with a fine white eye, and measure two inches across.

**Desdemona.** A rare and unusual color. Flowers most exquisite pure rose-pink with a fine eye; deep pink lines at base of upper petals. Beautifully formed.

**Bonnie Rose.** Seedling from Souvenir de Miranda. A perfectly charming variety and a splendid bloomer. The flowers have a white ground, beautifully flushed and marked with a most lovely shade of pink.

**Symphony in Red.** Flowers dazzling orange-scarlet, very velvety and beautifully formed; each individual floret is so arranged as to lie perfectly even, giving a roundness and smoothness to the entire truss that is most unusual. Flowers have a large, white eye.

**White Pearl.** Pure, pearly-white, very large, with perfectly round flowers. A valuable addition to the list of white geraniums.

**Fair Maiden.** Outer half of petals blush-white, netted with pink; circle of light salmon-pink in the center of the flower, with white eye. Flowers are often prettily shaded and variegated in lighter and darker colors.

**Pink Pansy.** Large flowers, beautifully marked, resembling a pansy. Center pure white, surrounded by a circle or halo of bright salmon-pink; outer half of petals light pink, netted or veined with salmon-pink; base of two lower petals veined with light red.

**Surprise.** The two upper petals are blotched with velvety scarlet, veined dark red; the edges and three lower ones are a vivid purplish-crimson, clouded at the margin with bright crimson. Very dwarf habit.

**Pink Pearl.** Very large flowers; large trusses of soft pearl-pink; a beauty. 10c each, \$1.00 dozen; cuttings half price.

---

## Single Geraniums From Other Sources.

**Mme. Bruant.** White, veined with carmine-lake; florets regularly bordered with bright solferino. The arrangement of color is exquisite, often intermingling and producing a striped effect.

**Fleur Poitevine.** Brilliant rose-carmine, marbled and striped pure white, producing an aureole of deep orange-carmine at the center.

**Mrs. E. G. Hill.** Enormous blooms, beautiful orange-pink.

**Souvenir de Miranda.** Each floret has a large creamy-white center; the upper petals white, edged with soft rose. Lower petals a soft salmon-rose with lighter shadings.

**L Aubi.** Very large; fine snowy-white.

**Margaret de Layes.** Immense, large, snowy-white flowers.

**Dazzler Improved.** Brilliant scarlet, with a large white eye.

**Bennie Constant.** Immense orange-scarlet flowers, with large white eye.

---

## Double Geraniums.

**J Ricaud.** Enormous trusses, purplish-crimson of a very intense shade, center very distinctly marked white.

**Alphonse Ricard.** A strong grower, dwarf and branching, and producing flowers in great masses. Both floret and truss are of enormous size; single or slightly doubled, and color brilliant orange-red.

**Beaute Poitevine.** Semi-double; the grandest of all the light, fancy Bruants. Exquisite salmon-rose.

**Marquise de Galles** Trusses of immense size; color a rosy-cerise, shading to orange; a very striking color, and quite new.

**Mme. Jaulin.** Center of flower very delicate pink, bordered with pure white; semi-double. Perfectly lovely.

**Francis Perkins.** The grandest bright pink bedding variety up to date.

**Crimson Velvet** Magnificent dark crimson.

**La Favorite** Pure snowy-white.

**Mme. Hoste.** White, shaded salmon-pink.

**Pure Pink.** The most lovely pink imaginable.  
10c each, \$1.00 dozen; cuttings, 40c dozen.

---

## Bronze and Gold.

**California.** Large golden-yellow foliage; soft shaded chocolate zone; scarlet flowers.

**Exquisite** Foliage brilliant yellow; zone chocolate and red.

**Fanny.** Golden-yellow foliage, zoned slightly with chocolate; large pink flowers. 15c each.

**Cloth of Gold** Bright yellow foliage; center disc, green.

**King of Bronzes.** Splendid variety; with broad, reddish-brown zone; center and edge of leaf yellow.

10c each, \$1.00 dozen; cuttings, 40c dozen.

---

### Tri-color Geraniums.

**Happy Thought.** Bright green foliage; light yellow center; dark band about the light zone; flowers scarlet.

**Mrs. Pollock.** Color of leaves bright bronzy-red; zone belted with crimson, edged with golden-yellow.

**Sunray.** Rich golden-yellow intersected with flame; scarlet tints on patches of dark brown. 20c each.

**Beauty.** Leaves variegated white, pink, and green, with black shadings. Broad irregular white margin. The true name of this is lost. 15c each.

**Mrs. Parker.** Leaves deeply margined with silvery-white, lightly zoned with black; very pretty double pink flowers.

**Hermione** Light green leaves, broadly margined with white, zoned with black and pink; double pink flowers.

15c each, two for 25c; \$1.25 dozen; cuttings, 60c dozen.

---

### Ivy-leaved Geraniums.

**Mrs. Shepherd's New Ivy Geranium "Sweet Sixteen."** Charming flower, that in its soft contour and tender shade, reminds one of a fair and lovely girl. The color is a melting shade of pink; petals have a dainty curve and airy lightness that is very attractive; base of the lower petals is lined and spotted with velvety-red.

**Roi de Wurtemberg.** Semi-double, bright scarlet.

**Souv. de Chas. Turner.** Splendid deep pink flowers; feathered with maroon on upper petals.

**Galilee.** Glowing pink, splendid trusses.

**Garden Glory.** Magnificent, with scarlet double flowers.

**Joan d'Arc.** Double; snowy white.

**Le Centaur.** Very handsome foliage; beautiful large pink flowers, single.

**L'Elegante.** Ivy-shaped leaves; beautifully variegated pink and white; white flowers, single. 15c to 25c each.

**Variegata.** An old variety with light green leaves, variegated yellowish-green; bright pink flowers: narrow petals; splendid grower; single.

10c each, \$1.00 dozen; cutting, 40c dozen.

## Other Varieties of Geraniums.

**Distinction.** A fine dwarf variety; bright green leaves, prettily waved at the edges: distinctly banded with a narrow black zone; bright scarlet flowers. 10c each, \$1.00 dozen; cuttings, 40c dozen.

**Apple Scented.** Leaves delightfully scented like apples. Rose geranium. 10c each, \$1.00 dozen.

Special discount on geraniums in large quantities. Rooted cuttings furnished in large quantities.

---

## Lady Washington Geraniums or Pelargoniums.

**Empress of Russia.** Ground color a very light lavender with almost white center, and shading also to white at edges of petals; each petal with blotch of dark maroon surrounded by crimson-purple.

**Inocente.** A grand flower of great substance, one-half as large again as any other white pelargonium. Of the purest white, extraordinary size, and extra number of petals, which are beautifully fimbriated.

**Double White.** A grand semi-double white. A sport from Mme. Thibaut, and exactly like it, except that it is snowy-white. Petals elegantly frilled.

**Mme. Thibaut.** "The Queen of Pelargoniums." Blotched and marbled rose on white ground; upper petals marked with crimson-maroon; large white center; edges of petals also white. Regal.

**Prince Henry.** Soft rosy-red, shaded orange and chocolate; broad white margin and center; bold flowers of great substance; fine trusses. Raised from Madame Thibaut.

**Emperor of Russia.** Extra large flowers dark maroon, surrounded with crimson - purple, margined with blush-white. A most effective variety.

**Beauty of Oxtou.** The upper petals are of a very rich maroon darkly blotched; under petals very dark crimson, shaded with maroon; light center; all the petals margined with white. Regal.

**Queen Victoria.** Flowers have beautiful crispy petals of a rich vermillion color, margined with pure white; upper ones blotched with maroon.

**Prince George.** Fine fringed white flowers, faintly suffused with blush, all the petals spotted with purple-lake, very handsome and distinct. Regal. 30c each.

**Black Prince.** One of the darkest varieties; petals undulated, very dark red, blotched black; a very rich, fine sort.

**Mrs. John Saul.** Rich, glowing vermillion with a light center, and light margin of the petals; upper petals feathered with crimson.

**Mabel.** Lovely, large, velvety pink with black blotches.

**Golden Gate.** Magnificent trusses of large, deep, salmon-pink flowers, center shaded with light violet, edged with rose.

**Mrs. Ellwood Cooper.** A magnificent large flowering pink variety, with handsome flowers; originated in Santa Barbera.

**Variegata.** A handsome variegated novelty; white, splashed pink.

**Pink and Maroon.** A very distinct and handsome variety; flowers a rich pink, beautifully marked with maroon and red. 25c each, \$2.50 doz.

## ROSES.

Owing to the necessity of using my grounds for other things, I have this year decided to give up roses; a few still on hand at the following prices: \$1.00 plants at 50c, \$4.00 dozen; 50c plants at 25c, \$2.00 dozen; 25c plants at \$1.50 dozen.

### Mrs. Shepherd's Little Midget or Baby Roses.

#### The "Mother Goose" Set.

One feels like talking baby talk to these dear little things. The least little mites of plants bloom. They form pretty little bushes and grow from 12 to 15 inches high. The leaves are very small, and the flowers measure from 1 to 1½ inches across. They grow in clusters or sprays, and are beautiful for cut flower work, boquets, boutonnières, or hanging baskets.

**Mistress Mary.** This variety has the largest flowers. The color is a delicate blush, shaded darker at edge of petals. Sprays quite large. Flowers single; 1½ inches across.

**Pretty Maid.** Small single flowers, about 1 inch in diameter, in beautiful airy sprays; color is delicate blush, resembling fruit blossoms. A little beauty.

**Baby Bunting.** The sweetest variety of all. Flowers are snowy-white, semi-double, with yellow stamen; 1 inch across.

**Little Bo-peep.** Single flowers, charmingly colored; white center; outer part of petals pink; beautiful yellow stamens; measures 1¼ inches across.

**Tommy Tucker.** A lovely semi-double pink variety. Flowers are 1¼ inches across. Lovely.

**Jack Horner.** A pale pink flower, scarcely an inch across; single. Very dainty and sweet. They are a great delight to children.

20c each, set of six for \$1.00.

## General Collection of Plants.

### Abutilons.

**Infanta Eulalie.** A very beautiful variety with large flaring flowers, a soft shade of pink.

**McKinley.** The counterpart of the above, but with lovely pale yellow flowers; very fine house plants.

**Savitse.** The most beautiful foliage plant among abutilons. Leaves are mostly white, variegated with green. It grows into bushy plants that are most striking and effective.

**Eclipse.** A charming trailing variety with beautiful variegated foliage, green and yellow, and having pretty drooping flowers. 10c to 25c each.

**ASPIDISTRA Lurida.** One of the most satisfactory plants for house decoration; the leaves start from the ground on long slender stems, from 4 to 6 inches in length, and are from 8 to 20 inches long, and 4 to 6 inches in width; are round at the base and pointed the ends; are thick and leathery and a beautiful green. This plant will grow anywhere in the house, and needs very little care except sponging the leaves occasionally, and supplying the plant with water. Small size, 30c each; larger size, 50c to \$1.00 each; extra large size, \$1.50 to \$2.00 each.

**ASPIDISTRA Lurida Variegata.** Like the above, except that the leaves are beautifully striped with white. 50c each, small plants only.

**ANTHERICUM Picturatum.** Entirely distinct from the old *Anthericum variegatum*, having a rich creamy-white band  $\frac{3}{4}$  of an inch wide running through the center of each leaf, margined each side with deep green. Fine for house plants; of very easy culture. 15c, 25c to 50c each.

**AGAPANTHUS Umbellatus "The Blue African Lily."** Grand bedding plant and a splendid pot plant. It is especially fine in groups. The flowers are arranged in umbels on long stems, 25 to 30 or more forming one head. Each one is on a slender wiry stem, lily-like in form. They are exquisite light blue, shaded lighter in the center. 15c, 25c and 50c each; 75c, \$2.00 and \$4.00 dozen.

**Umbellatus Variegata.** A more dwarf variety of the above with handsome foliage, beautifully striped white and green, white predominating. Flowers are blue like the plain variety, and contrast nicely with the foliage. It makes a very pretty pot plant. 25c to 50c each.

**CALLIOPSIS Lanceolata Grandiflora "California Sunbeams."** These lovely improved varieties have the great recommendation of being early bloomers. The flowers are beautifully formed, with very long stems; some saucer-shape, others flat, some are exquisitely incurved, while others are like great buttercups. The petals are broad, with pinked toothed or irregularly fringed edges. They are 4 inches in diameter. 15c each, \$1.50 dozen.

In ordering always make a second choice of plants; there is loss of time in writing if varieties are out.

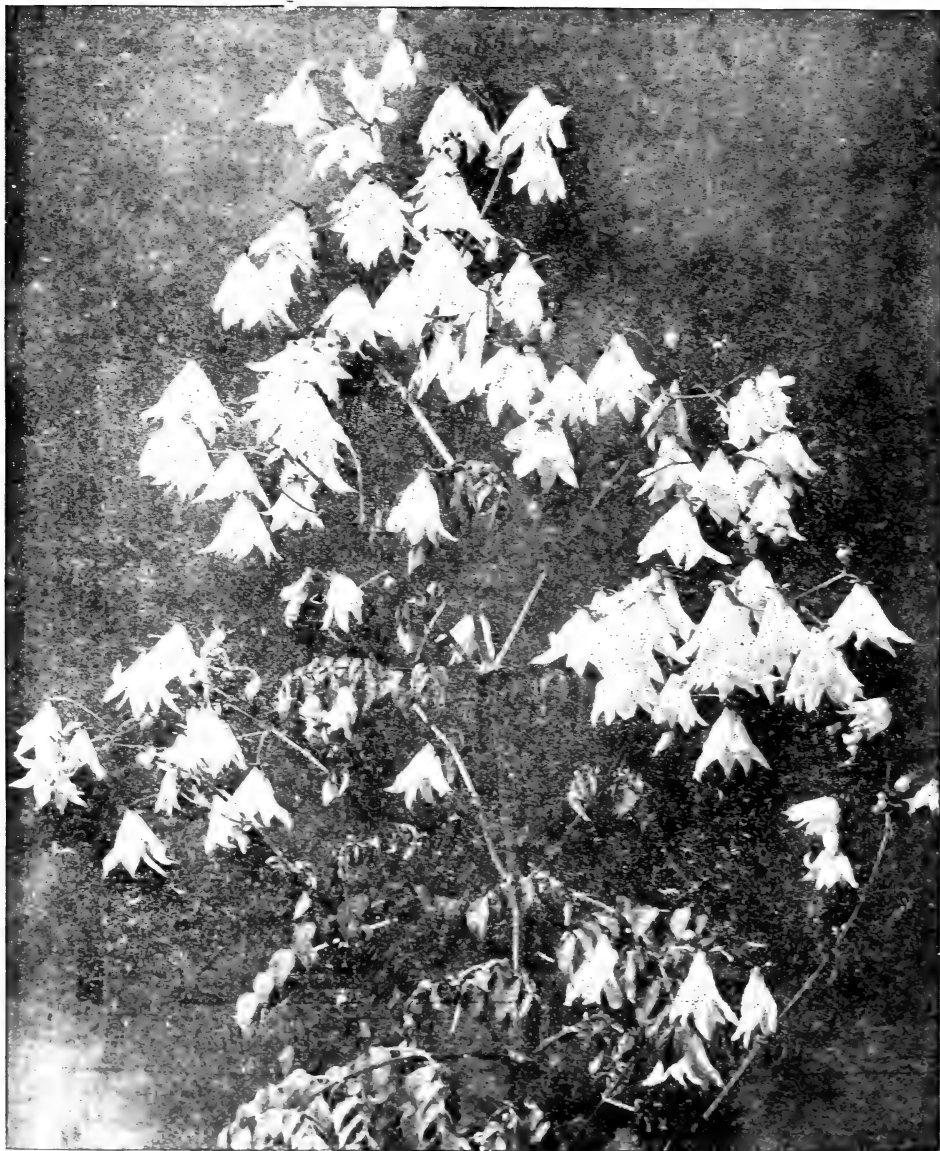


## TWO RARE DAHLIAS.



MRS. SHEPHERD'S GIANT CACTUS DAHLIA "MONARCH OF DAHLIAS."

**"Monarch of Dahlias."** Named by Mr. Thomas Williams, of the San Francisco Examiner, when visiting in Ventura, in honor of that paper, which is called the "Monarch of Dailies." It is intermediate between the double and cactus varieties. The flowers are large, loose, very esthetic in form, and measure six or more inches across; the petals are very broad; the color is a deep, rich, dark red, having a beautiful bloom like velvet; flowers are borne on long stems, and are fine for cutting. 25c to 50c each.



DAHLIA IMPERIALIS "THE LILY DAHLIA."

## "THE LILY DAHLIA."

This stately plant is a distinct species. It attains a height of 10 to 15 feet, and produces through the months of September and October innumerable large, single, drooping, lily-like flowers of a delicate pinkish mauve color. The broad petals are 4 inches long, and recurve, giving a bell-like appearance. There is a maroon ring around the yellow center, and a delicate edge around the maroon, making a charming combination of colors. The foliage is spreading and quite large. Nothing can exceed the grace and beauty of the fairy-like blossoms seen from a distance, as they swing and sway in a breeze. Nothing more lovely can be imagined than the delicate effect as one stands at the base of the plants and looks up into the depths of the bell-like flowers. Rare. 35c, 50c, 75c and \$1.00.

**Farfugium Grande.** A very showy plant for the house, and very easily grown. Valuable for bedding in partially shaded localities. The great round leathery leaves start from the ground on long slender stems, forming a most handsome plant. They are regularly marked with large bright yellow spots. 15c, 50c, \$1.00 to \$1.50 each.

**Ficus Repens.** A valuable plant for covering walls or chimneys. It is of creeping habit with pretty round leaves, and clings closely like ivy, making a beautiful covering for ugly or unsightly objects; also pretty for baskets. 10c each, \$1.00 dozen.

**HEMEROCALLIS Auranticum.** A magnificent, rich, fragrant, orange-colored lily, with very large flowers measuring 5 or 6 inches across. The foliage is handsome, and a well established plant in full bloom is a beautiful sight; blooms almost perpetually. Hardy. 25c to 50c each.

**HEMEROCALLIS Kwanso, Double Flowering.** Double variegated orange lily. A perfectly hardy variety that blooms for months during the summer and fall. It increases fast and makes very large clumps. 10c to 25c each, 75c to \$1.50 dozen.

**HYDRANGEA Magnifica.** A splendid variety from Japan, having very thick, large leathery leaves, two or three times as large as any other variety. It bears enormous heads of blossoms, often measuring 30 inches in diameter. The individual flowers are very large and a beautiful shade of pink. It is a mass of color and continues blooming for several months after other varieties are resting. 15c, 25c and 50c each.

**Black Stemmed.** A very beautiful variety that has black stems and a profusion of lovely flowers that come pink at first and change to bright blue.

**HOYA Carnosa.** Climbing wax-plant. Has thick, fleshy leaves, and bears umbels of beautiful flesh-colored flowers, like velvet. One of the best plants for house culture, as it stands the extremes of heat and cold better than most plants, and is not easily injured by neglect. Does well in shaded places outside where there is no frost. 10c to 20c each; splendid plants 50c to \$1.00 each.

**HIBICUS Sinensis, Sub-violaceous.** Splendid, half hardy shrub with enormous semi-double flowers, rich carmine tinted violet. 25c each.

**Miniatus Semi-plena.** Large, semi-double, brilliant and attractive, bright vermilion-scarlet flowers; ought to be in every garden. 25c each.

**HYPERICUM, "St. John's Wort."** A beautiful evergreen shrub that bears large golden-yellow, satiny flowers, with numerous thread-like stamens. Always in bloom. 15c to 25c each.

### Three Giant Hybrid Heliotropes.

**Purple and Gold.** A fine variety with bright yellow shaded foliage and immense trusses of lovely, pinkish-purple flowers. 20c each.

**Pink Beauty.** A charming variety, with great masses of mauve-pink flowers, the color of Mme. Millet violet. Very beautiful. 20c each.

**The Prize.** A splendid variety with immense heads of grand, purple flowers. 20c each; the three 50c.

**HELIOTROPE Midnight.** A very beautiful new heliotrope with black stems, and foliage so dark as to be almost black. Pretty flowers that are charmingly variegated light and dark purple, and white. 15c to 25c each.

**Albert Deleaux.** One of the most beautiful varieties in cultivation. The foliage is yellow, marked with green. Very large-flowers of a rich, deep purple. 10c to 25c each.

Other sorts, light and dark, 10c to 25c each, \$1.00 to \$2.00 dozen.

**IMPATIENS Sultana.** A charming plant for pots or for a shaded location. It belongs to the balsam family. The leaves are a light green, stems transparent; flowers single, always in bloom, salmon-pink and bright pink. 10c to 25c each.

**LOPESIA Rosea, and LOPESIA Alba. "Mosquito Flowers."** Pretty plants that are completely covered all the year with airy branches of pink and white flowers, resembling mosquitoes. Very useful for bouquets and valuable for bedding. 10c to 25c each.

**New Dwarf Lantana "Golden Gem."** This pretty lantana grows about 1 foot high, forming a handsome compact bushy plant and bears clusters of bright golden-yellow flowers. 15c each; seeds, 15c pkt.

**Pure Snowy White Lantana.** A tall growing fine variety with large white flowers. 15c each; seeds 10c pkt.

**LAURESTINUS Grandiflora.** Grand variety, flowers large and pure white, with clusters three times the size of the ordinary Laurestinus. 25c each.

**LAGUSTA Ovata.** A fine shrub with spikes of dainty, white, feathery flowers that bloom in early spring and summer; hardy. 15c to 50c each.

**LINUM Flavum.** A lovely blooming yellow flax; always in bloom; very showy. 10c to 25c each.

**LOTUS Pelyorensis, "Coral Gem."** A lovely new plant with fine silvery foliage, as dainty and graceful as can be imagined. It is a sweet thing at all times, so light and airy is its habit; but when adorned with its bright coral-red flowers, 2 inches in length, it is indescribably lovely. Very fine for trailing over walls and banks and very lovely for hanging baskets. 15c each, \$1.50 dozen.

**LOBELIA.** Golden foliage and lovely blue flowers; the contrast is charming. 10c to 20c each; other sorts, 10c to 15c each; 75c to \$1.25 dozen.

**LIBONIA Floribunda.** Beautiful dwarf shrub of compact growth, covered most of the year with pretty scarlet and yellow tubular flowers. Fine for driveways, for single specimens, and for pot plants. 10c to 25c each.

**NEW MARGUERITE Mme. Gaelbert.** A splendid new Marguerite with very broad petals. Surpasses all others in size and snowy whiteness. 10c to 25c each.

### Double Poinsettia Rosette.

This splendid variety comes into bloom just as the single one is waning. The magnificent flower heads consist of an inside row of long floral bracts and a closely gathered rosette-like center of lanceolate bracts 4 or 5 inches long. The color is a deep rich, brilliant red, and the effect at a distance is like rich velvet. It is strikingly beautiful. Poinsettia heads will keep for some time if the stems are dipped in boiling water immediately after they are cut. 25c to 50c each.

**POINSETTIA Pulcherrima.** A splendid ornamental winter blooming plant, with fine large scarlet bracts at the end of the branches. Hardy where there is no frost. Single. 15c to 25c each.

### Phrynium Variegatum.

An elegant pot or bedding plant, the leaves of which are bright pale green, beautifully variegated with white and gold, the variegation being extremely diversified. It is a free, vigorous, and easy grower, succeeding in all situations and under all conditions. 25c to 50c each,

**Primula Sinensis or Chinese Primrose.** One of the most valuable house plants, producing hundreds of charming flowers, very pretty at all times. Single, large flowers fringed white, pink and blue. 25c to 50c each.

**PLUMBAGO Capensis.** A beautiful shrub with lovely, light blue flowers, always in bloom. It grows 10 to 12 feet high in California, forming immense plants, and should be cut back occasionally to induce new growth. 15c to 25c each.

**Capensis Alba.** Like the above, but pure snowy-white; half hardy. 15c to 25c each.

**RUDEBECKIA. "Golden Glow."** Splendid, hardy, perennial plant that dies down in the autumn, coming up early in the spring. Long stems, 5 to 8 feet high, bearing numerous splendid double, yellow flowers, resembling refined double sunflowers. Very decorative in the garden and especially fine for groups. 10c to 25c each; 75c to \$1.50 dozen.

**RUSSELLIA Juncea. "Scarlet Fountain Plant."** Brush-like foliage; handsome scarlet flowers, always in bloom; drooping habit; fine for baskets or vases. 10c to 25c each.

**STREPTOSOLEN Jamesonii.** A plant for brilliant show; and is always in full bloom. No garden should be without it. At first the flowers are orange-red, changing to yellow with age, so that there are two or three shades of color on the plant at the same time. The plant grows very rapidly, and in the course of two or three years attains the height of 10 to 12 feet and 25 to 30 feet in circumference; is symmetrical and graceful in shape, and covered from base to top with great bunches of splendid flowers. A fine pot plant. 10c to 25c each.

---

## The South American Tomato Tree.

**SOLANUM Betaceum.** A fine ornamental tree or shrub, that is a native of South America. It bears from seed the second season, and a young plant set out in the spring grows 6 feet high and comes into bearing by Christmas. The foliage is large and handsome, the branches spreading. The fruit, which hangs in clusters below the foliage, is the size of a large egg, and of a beautiful orange-salmon color when ripe. It has a delicious sub-acid taste, slightly resembling the tomato. It is delicious raw, served with sugar and cream, or cooked as sauce, and for jam or jelly is very fine. It will keep for weeks, as it does not bruise on account of its very tough skin and the solid nature of the fruit covering the seeds, which are like those of the tomato. The fruit is so handsome that it would sell readily at sight, and if shipped east, during the holidays, would be immensely popular. In Ceylon and India it is extensively grown, and is known as the "Poor Man's Fruit." It is a showy plant for house and conservatory, and a most beautiful plant in the garden; will not stand frost. Plants, 15c, 25c and 50c each. Special rate on quantity. Seeds, 10c pkt.

**TRADESCANTIA Multi-color.** Its prettily striped leaves show every tint of silver, bronze-green, pinkish-crimson, rose, and gray, in their markings. An extra fine basket plant. 10c each.

**TECOMA VELUTINA.** Is a most showy and valuable flowering shrubs; far superior to *Tecoma Smithii*, in that it blooms when only 12 inches high from seed. The flowers are larger and a more beautiful color, while the plant is never out of bloom. The flowers are like the beautiful Allamandas; large, gloxonia-like, pure golden-yellow; in great splendid spikes or clusters. It grows into a good sized tree in California. Half hardy; easily grown from seed. 25c to 50c each.

## VIOLETS.

The ground for these sweet flowers should be level, well cultivated and thoroughly mulched with rotted manure or leaf mould. The plants should be from runners, set out 1 to 2 feet apart, 3 to 5 feet between rows. They require watering at least once a week, with an occasional sprinkling in the evening or early in the morning.

**Princess of Wales.** The foliage is very handsome, the flowers are most exquisite and deliciously fragrant, and measure  $1\frac{1}{2}$  inches across; the color is a lovely violet-blue, and more beautiful than any other violet. The stems are 10 to 12 inches long. 45c dozen.

Two new violets, *La France* and *Farquhar*; see Novelties.

## Climbing Plants.

**ASPARAGUS Plumosus Nanus.** This charming, dainty climber has branches which are finer than the fronds of the most delicate fern, and spread out in all directions. It is a beautiful vine for the house, and nothing can be finer for hanging baskets. It is invaluable for bouquets, and is very esthetic for the decoration of rooms, either in its green or dried state. Small plants, 25c each; strong, 50c, 75c and \$1.50 each.

**Sprengeri.** This very beautiful new asparagus vine is one of the most valuable introductions sent out in many years. It grows very rapidly and forms handsome plants in a short time. The branches all start from the roots, and in open ground on old plants, attain a height of 6 feet or more. For several weeks in the year it is wreathed with innumerable white flowers that grow in spikes from  $1\frac{1}{2}$  to 4 inches in length; whose fragrance is delightful. For mixing with cut flowers or for decorative purposes it is unequalled. It is one of the prettiest plants imaginable for hanging baskets, or to trail from brackets or shelves. 10c, 25c to 50c each; specimen plants, \$2.00 each; small plants, \$1.00 dozen.

**AMPELOPSIS Veitchii.** "**Boston Ivy.**" Entirely hardy in the most exposed places; attaining a height of 20 to 30 feet in 2 or 3 years, clinging to stones, brick or wood with great tenacity. For covering dead trees, gateposts, boundary walls, etc., it has no equal. In summer, the foliage is a rich shade of green, but in the fall it assumes the most gorgeous tints of scarlet, crimson and orange, so dazzling as to be seen at a great distance.

**Royalii** The old foliage is large, leathery, dark green. The new growth is a shining, bright red; foliage small, and hangs in long, beautiful festoons, or creeps in long wreaths. It is gorgeous in the autumn. 15c to 25c each.

**Tricolor.** Small foliage prettily variegated with white and pink; beautiful for hanging baskets. It grows well outside, and is very handsome in bouquets. 25c each.

## Four Grand Bignonias.

**Venusta.** Nothing can exceed the magnificence of this brilliant climber in Southern California. It is evergreen and has handsome foliage with large clusters of trumpet-shaped orange-salmon flowers at the axil of every leaf; graceful branches hang like long wreaths, and the effect is wonderfully gorgeous. It is the most beautiful of all climbers, and is very effective for decoration; blooms through the winter and spring months. 25c, 50c to 75c each.

**Speciosa.** As the flowers of *Bignonia Venusta* begin to wane, this fine variety comes in all its beauty. It has shining green foliage, and long drooping branches. The large flowers are *maurandia*-like, of a soft violet shade, beautifully veined with purple and black; blooms through the spring and summer. 25c to 50c each.

**Siderafolia.** The next bignonia on the list follows in the wake of *Speciosa*; and is a summer and fall bloomer, with the most rampant growth of all vines. The flowers come out in spikes, buds quite round, flowers *gloxinia*-like, of velvety texture, soft cream color, lined with yellow, exceedingly beautiful and graceful. 25c to 50c each.

**TWEEDIANA.** One of the most beautiful climbers in existence. The foliage is very beautiful at all times; the young growth being a pale yellowish-green, which gives a soft filmy look that is most enchanting. The flowers come in early spring, and it continues to bloom for two or three months; they are borne in pairs opposite the axils of the leaves. They gem the masses of foliage and adorn the trailing branches, making an exquisite picture; are a bright canary-yellow, shaded darker in the lobes and throat. The vine clings by tiny tendrils, growing close to the surface of walls, roofs or trees, and is beautiful to trail over the ground. 25c to 50c each.

**BOUGAINVILLEA Glabra.** One of the most brilliant flowering climbers imaginable, and one that attracts all eyes and calls forth more admiration than any other. The foliage is shining green, and the plant is always covered with brilliant magenta-rose bracts, that enclose the dainty flowers. In Southern California it is fine for greenhouse or outside. 35c to \$1.00 each.

**CLIANTHUS Puneceus or Parrot's Beak.** A most magnificent scandent shrub with long spreading branches; handsome, light-green pinnate foliage. Remarkable for its large showy flowers that are borne in axillary racemes of the most brilliant crimson-scarlet color, resembling a parrot's bill. It grows well outside in California, and is especially fine for planting on the back wall of a conservatory. 15c to 25c each.

**IPOMOEA Learii. "Blue Dawn Flower."** The flowers are the most intense violet-blue with reddish-purple rays, and are 6 inches across; there is nothing of its color that exceeds in richness the flowers of "*Ipomoea Learii*." 15c each, \$1.50 dozen.



**JASMINUM Gracillimum.** A rare and beautiful variety; snow-white flowers, larger and finer than others. Ready May 1st. 25c to 50c each.

**Poeticum.** A very rapid grower with fine glossy foliage, covered through the spring and summer with a perfect cloud of airy, starry blossoms. 15c to 25c each.

**MANDEVILLA Suaveolens. "Grandiflora."** A grand improvement on the old sort. One of the most chaste and beautiful climbers, and a very rapid grower, with handsome foliage, graceful habit, and is completely covered with its snowy-white flowers through the spring and summer months. The flowers are in clusters, of a pure snowy-white, delightfully perfumed like the jasmine. Each flower measures  $2\frac{1}{2}$  inches across and somewhat resembles the single tuberoses, but is much larger and more beautifully formed. No one who has once seen a large plant of this fine climber in the height of its beauty will ever forget it. 25c to 35c each.

**PASSIFLORA Scarlet.** One of California's most brilliant climbers. It will, in three years, reach the tops of the tallest trees, completely taking possession. With its handsome foliage and vivid scarlet flowers, it is wonderfully effective. Fine for the conservatory. Ready after April 15. 25c to 40c each.

**Viola cea.** A very desirable variety with dark purplish maroon-red flowers. 10c, 15c to 25c each.

**SMILAX.** This plant has beautiful; small, glossy foliage. It is a rapid grower and, without exception, one of the finest climbing plants. 5c, 15c to 25c each.

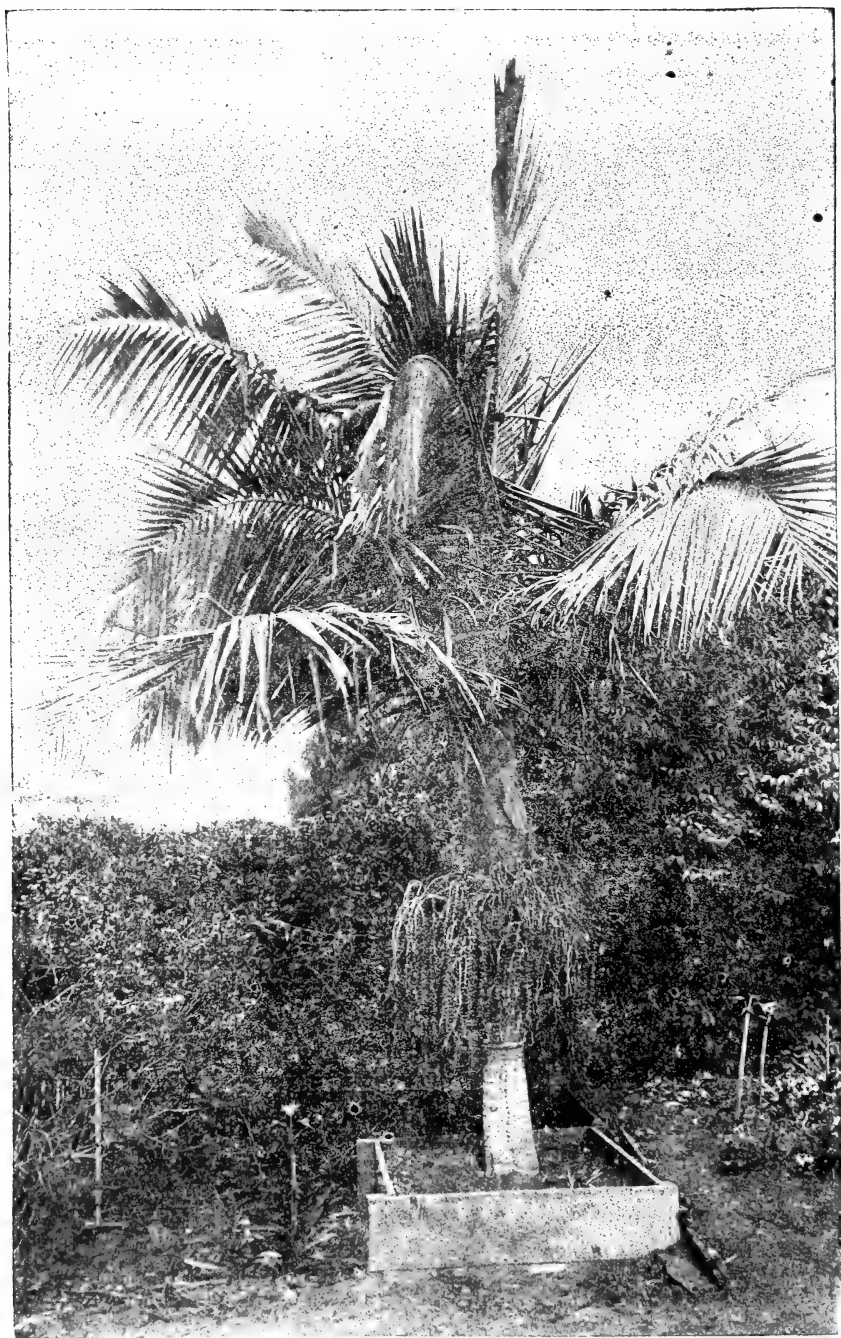
**SOLANUM Wendlandii.** Has immense panicles of large violet-blue flowers  $2\frac{1}{2}$  to 3 inches across. It is indescribably lovely, and is one of those plants that sell at sight. It is a rapid grower, and of very easy cultivation. 15c to 25c each.

**TECOMA. Jasminoides Alba** Flowers pure white, with a pale yellow throat. They are also larger, of heavier texture than the older varieties, and the lobes of the flower tube are fuller and overlap each other, giving a soft effect that is very beautiful. Very rare. 50c each.

**Jasminoides.** A very handsome climber, and always admired. Glossy foliage and clusters of large flaring, trumpet-like flowers, white with maroon-red throat, and pink with a red throat. White and pink, 25c each.

**TECOMA Mackenii "Rosea."** A remarkably handsome climber from South Africa with handsome foliage and magnificent racemes of large showy flowers, that resembles pink azalias. They are old rose pink, veined darker pink. This beautiful plant can scarcely be too highly recommended. 25c to 50c each.

**TACSONIA, "Sutherlandia."** Is of vigorous habit, with handsome, large, shining, three-lobed foliage; strong texture, and rich dark green. The flowers measure 4 inches across. The color is an exquisite carmine-rose, shaded darker in the center, with a tiny purple fringe around the throat. Fine for conservatory. Ready after April 15. 25c to 50c each.



SEAFORTHIA ELEGANS WITH CLUSTERS OF SEED.

**Mollissima.** A strong growing variety with pretty light pink flowers, followed by large yellow edible seed pods. 15c to 25c each.

**Von Volexmi.** This lovely tacsonia is not new, but is always very rare. It has handsome foliage, and bears deep crimson flowers, 6 inches across; they hang on thread-like stems, 8 to 10 inches in length, which makes them exceedingly graceful and attractive. 35c to 50c each.

## Palms, Dracaenas, Etc.

**BRAHEA Edulis.** A new variety of Fan Palm from Guadaloupe Island. Large plants, \$2.00 to \$2.50 each; small plants, 35c each.

**Filamentosa.** The hardy California Fan Palm, and a most vigorous growing plant. Foliage very regular, and of a bright green, deeply and regularly pinnated, the margins of each being covered with hair-like, long filaments, giving them a remarkable appearance from other Fan Palms. Small plants, 25c each; plants 1 to 1½ feet, 50c each; plants 2 to 2½ feet, \$1.00 each; extra large plants, \$2.00 to \$3.00 each.

**Glauc, Blue Palm** A very ornamental Fan Palm of robust habit, The leaves are a blue-green, glaucous beneath. New and rare. Small plants, 50c each; fine specimen plants, \$3.00 to \$5.00 each.

**CORYPHA Australis, Livistonia.** A very hardy Australian Palm; with dark green foliage, very symmetrically and regularly slit, the segments partly doubled from base of petioles or leaf-stock, which is thickly armed with crooked spines. Strong plants, 75c each; plants 2 to 5 feet high, \$1.50 to \$3.50 each.

**CHAMAEROPS Humilis** A Fan Palm with dwarf habit. It is a native of Southern Europe; very hardy. A splendid specimen for the lawn. Plants, 1 to 1½ feet high, 75c to \$1.50 each.

**PHOENIX Canariensis** The handsomest and hardiest of the date palm family. Being a rapid grower, it soon develops into beautiful specimens, with pinnate, dark green leaves from 6 to 12 feet long; the divisions linear, lance-shape, and very much pointed. 50c to \$1.50 each.

**PHOENIX Rupicola.** A rare and beautiful palm with a slender stem, and beautiful arching fern-like fronds, \$1.50 to \$2.00 each.

**SEAFORTHIA Elegans** Leaves dark green, pinnate, lanceolate, and narrowly bifid at the apex; leaf stems rather stout at their bases; and the whole plant perfectly smooth, on a cylindrical, smooth, whiteish-green stem. A most elegant species. Small plants, 25c to 50c each; large plants, \$1.50 to \$3.00 each.

**DRACAENA Indivisa.** A fine plant for outdoor planting in California, and much in use for lawns, avenues, and parks. The plants are fine for window decoration. 25c, 75c, to \$1.50 each.

**Australis.** Like the above, except that the leaves are much broader. Both varieties are exceptionally fine for vases, and for home or hall decoration. Small plants, 25c each; large plants, 50c, 75c, to \$1.50 each.

**Aralia Sieboldi.** A fine decorative plant with large shining light green leaves. It gives large clusters of fine white flowers. It is especially adapted for pot and house culture. 25c to \$1.00 each.

**PEPPER Tree.** 15c to 35c each; \$3.00 dozen.

## Ornamental Grasses, Etc.

**ARUNDO Donax Variegata.** Very broad corn-like foliage, beautifully striped with creamy-white and light green. It forms grand plants, and grows 8 to 10 feet high. 25c each; clumps, 50c each.

**PAPYRUS Antiquorum. "Egyptian Paper Plant."** Is most elegant, graceful, and stately. It sends up reed-like stems, which on old plants rise from 8 to 10 feet high, crowned with a tuft or umbel of long, wiry grass that falls gracefully above and around the stem. 15c, 25c each; clumps 50c each.

**CYPERUS Alternifolius. "Umbrella Grass."** Slender stems, surmounted by alternate leaves, so arranged as to resemble the frame of an open umbrella; as beautiful and ornamental for home decoration as a palm. 10c to 25c each, \$1.50 to \$2.50 dozen; clumps, 50c to 75c each.

**Alternifolius Gracilis.** A charming dwarf variety of umbrella grass, that does not grow over 18 inches high. 10c each, clumps 50c.

**GRANDES. "The New Umbrella Plant."** The slender stems are crowned with alternate leaves about  $\frac{1}{2}$  an inch wide, and about 4 inches long, that lie perfectly flat, and are surmounted by a tuft of dainty, wiry grass, with stems 2 or 3 inches long, tipped with the flower. 25c to 50c each.

**CAREX Japonica Variegata.** An exquisite grass with slender, arching, green foliage edged with white, and with an elegant habit that gives it a place not equalled by any other grass. 25c each.

**Himalaya Fairy Grass.** A very beautiful grass from India, that bears numbers of long shining reddish-green tassels, which if picked and dried before fully developed, open out into beautiful airy, plume-like flowers. They curl gracefully, and are a fine golden-yellow color. They do not shake to pieces, but keep their beauty for years. Very hardy. Good plants 25c each, \$2.00 dozen.

**Basket Grass.** A very pretty variety that came to me without a name. The blades are very long and narrow and are daintily striped green and white. It bears long spikes of quite pretty flowers; fine for baskets. 10c to 25c each.

## BAMBOOS.

Exceedingly ornamental for the garden, sending up the slender canes of feathery growth in splendid groups. They are destined to be extensively cultivated in California for their useful qualities as well as their beauty. For pots, and for cut decorations in halls and dwelling they are very effective.

**Metake.** A large leaved, rather dwarf growing variety, attains a height of 7 feet, grows erect, stems thickly tufted, and entirely covered with sheaves of the leaves. Native of Japan. 25c to 50c each.

**Common Giant.** Grows to the height of 25 or 40 feet. Useful for windbreaks. The stems can be used for ornamental and useful purposes; for fences, plant stakes, and many other ways. 35c to 50c each. The time for planting is in the spring.

**Striped.** Foliage green and white, stems yellow, with alternate sections of green. 75c each.

**Huro-Chiku. "Black Stemmed Bamboo."** One of the most beautiful. Stems 1 to 2 inches in diameter. 50c to 75 each. Three other fine tall varieties, 35c to 50c each.

**PHORMIUM Tenax. "Variegated New Zealand Flax."** Grand decorative plant of most stately habit. The leaves are 2 to 4 inches broad. They have dark red edges, and are beautifully striped yellow and bluish-green. They are showy pot plants, ranking with palms and draceenas, and make a grand clump on a lawn. 50c, 75c to \$1.25 each.

**Phormium Tenax.** Like the above except that the leaves are plain blue-green, edged red. Very beautiful. 20c to \$1.50 each.

---

## CHOICE BULBS.

---

### The Amarylles Lily.

---

**Beautiful for the House and Fine for the Garden in  
Southern California and the South.**

---

#### Lovely Pink Bella Donna Lily.

This is one of the most satisfactory of Amaryllis; bearing on a long stems clusters of eight or ten superb large pink, lily-like flowers. The color is perfectly pure pink, and the fragrance is like ripe apricots. The flowers keep for two weeks. It blooms in June and July, after the foliage dies down. Monster size, 50c each; second size, 25c each; third size, 15c each; \$1.50, \$2.50 and \$4.00 dozen.

**Bella Donna Minor** Like the above, only that the flowers stem is shorter, and the flowers have a white center; petals beautifully feathered pink; it blooms the latter part of August and September. 35c to 50c each; seedling, 25c to 50c each, \$1.00 dozen.



AMARYLLIS BELLA DONNA MAJOR.

**Grand New Hybrid Seedlings.** Fine blooming bulbs, some with a white ground, and lined, feathered, or penciled with delicate shades of red; petals daintily fluted; others a handsome shade of red, marked with white and maroon, fluted edges; others have broad flaring flowers, bright cherry red. 50c each; three for \$1.25; dozen, \$4.25.

A few very beautiful and rare seedlings, \$1.50 to \$3.00 each.

Hybrid seedlings,  $\frac{3}{4}$  inch to 1 inch in diameter, 15c each, \$1.00 dozen.

**Amaryllis Aulica. "Lily of the Palace."** Summer and autumn bloomer. Handsome broad foliage and large spreading wide open flowers of rich crimson-scarlet, lined and penciled white and maroon. Blooming bulbs, 25c each, \$2.50 dozen; larger bulbs, 50c to 75c each, \$4 to \$6 dozen.

**Defiance.** A superb variety with immense trumpet-shaped sweet scented flowers; very broad petals, rich red, lined through the center with white and penciled maroon. A grand variety that blooms at intervals through the year. Large bulbs from 50c to \$1.00; monster bulbs, 4 to 5 inches in diameter, \$2.50 each.

**Jonssonii.** A fine old variety; a small edition of the above. Good bulbs 25c each.

**Formosissima or Jacobean Lily.** A beautiful variety that blooms at intervals during the year. It is brilliant scarlet, and has two upright and three drooping petals. A very attractive and graceful flower, beautiful for borders and lines. 10c to 25c each; monster bulbs, 40c. 75c, \$2.00 and \$3.00 dozen.

**Armaryllis Halli. "The Hardy Armaryllis."** This handsome bulb is perfectly hardy. In the early summer the bulbs throw up stout stems about 18 inches in height, bearing clusters of large and beautiful soft rose colored flowers. 50c each; extra large bulbs, 75c each.

Add 5c postage on each large bulbs; small bulbs postpaid.

## Zephranthes Floribunda.

A charming variety, with large golden-yellow flowers borne in pairs on long slender stems. Very beautiful and fragrant. 15c each, \$1.50 dozen, postpaid.

**Rosea.** Flowers large, bright pink, lily-like, on slender stems. Not new, but very beautiful. 5c each; 50c dozen, postpaid.

## STRELITZIA.

### "The Bird of Paradise Flower."

Very strange, beautiful, and stately plants belonging to the same family, as the "Traveler's Palm," Banana, Plantain, etc. They are natives of the Cape of Good Hope, and were named for the queen of George Third, Charlotte of Mecklenburg-Strelitz. They are very rare and offered by only a few florists in this country.

**Strelitzia Gigantea.** This magnificent plant bears a strong resemblance to the celebrated "Traveler's Palm" of Madagascar. Specimens in my garden are 15 feet high, with stems measuring 28 inches around. The leaves are large, leathery, and massive, with a yellow mid-rib and ridges of parallel veins; they have long stems, very broad at the base, with which they alternately clasp the main stem, and stand out on each side, which gives a very beautiful fan-like effect, the first leaves starting out at the base of the plant. The flower stems emerge from the base of every leaf, close to the main stem, and consist of a short main stem and three long, pointed, boat-like, brownish-purple spathes, two at right angles and one standing out from the center. From these come numerous bird-

like flowers, with large pure white sepals and bright blue petals. Plants bloom nearly all the year. It is as stately and elegant as a palm, and very ornamental. For groups or lines it is very effective, and makes a stately ornament for courts, conservatories, and sheltered places with other tropical plants. Large plants only \$5.00, \$10.00 and \$15.00 each.

**Augusta.** Like the above, but more dwarf in habit; not so massive; very beautiful. \$5.00 to \$10.00 each.

**Regina.** A very rare and beautiful plant. It forms large clumps, and makes a very showy ornament for the garden. Leaves are spade-like on long, slender stems, that start from the base of the plant. The flowers are borne on long stems high above the foliage from a spathe; the sepals are bright orange, the petals bright blue. It is called the "Bird of Paradise Plant" from the resemblance of the flowers to this brilliant bird of the tropics. It forms large clumps and blooms nearly all the year. Strelitzias are sent by express or freight only.

---

## TESTIMONIALS.

---

Snake Hill, Natant, Mass.

Mrs. Theodosia B. Shepherd,  
Ventura, California.

Dear Madam:—Will you please send me a paper of your Petuna seed. Those you sent me were very beautiful, large, and fine. I exhibited some with other flowers at the show in Boston, and got a gratuity. \* \* \* The Cosmos are just in bloom, and I have never seen anything finer; so very large and such beautiful colors. \* \* \* The white Poppies were simply dreams of grace and beauty. The pink ones were the most pure and sunny rose; of immense size, and looked as if they had walked out of dreamland.

October 29th, 1900.

Yours, etc.,

THE HONORABLE MRS. DUNCAN.

Carrick House, Aye, Scotland.

Mrs. Theodosia B. Shepherd,  
Ventura; California.

Dear Madam—The Begonias have just arrived, and were in capital condition. I hope to take them out later to Algiers.

June 15th, 1901.

Yours, etc.,

T. G. ARTHUR.

Algate, South Australia.

Mrs. Theodosia B. Shepherd,  
Ventura, California.

Dear Madam:—You will be glad to know that we have now received all the Begonias and Cacti, which you sent to Hay & Co., of Aukland, for us.

October 18th, 1900.

Yours, etc.,

SMITH & MENEZEL.

And again they write:

The Begonias we got of you via New Zealand have done very well; we have sold a nice lot; they are Atala, Beatrice, Ianthé, and Marjorie Daw.

November 12th, 1901.

Yours, etc.,

SMITH & MENEZEL.



# RARE SUCCULENT PLANTS.

## Nature's Wonderful Carving.

### Curious Wax Work and Unique Statuary.

No class of plants are more interesting than nature's carved and sculptured forms decorated in wondrous patterns and colored in rarest tints. Dainty bits of carving that have the surprising habit of bursting into charming and brilliant bloom. Among the most attractive are Echeverias, Sempervivums, Aloes, Rochea, Haworthias, and a long list of others fresh from the studio of the Great Artist. Then their kindred, the Cactus family, from pigmy to giant statues are ornamented with hooks and spears and spikes, pins, feathers or hairs, as may be, and decorated with flowers so magnificent in color and size that one is lost in wonder. Nearly all the succulent plants are fine for house and conservatory, and are very effective with cacti, adding much to the character of a collection.

### Aloes.

**Aloe Variegata or Pheasant Aloe.** One of the most interesting plants of this class. The leaves are spirally arranged, face concave, back keeled, bright green and white, beautifully striped and marked, resembling a partridge's breast. Flowers bright red. Always in demand and always scarce. 15c to 50c each.

**New Climbing Aloe Citiris.** This is a very handsome variety that grows very rapidly. It can be trained to trellis, house, wall, or fence. It has many branches, and bears its beautiful waxen tubular flowers on long slender stems. They are bright clear red, tipped green, and are beautiful for cut flowers and decoration, keeping 2 weeks in water. It blooms nine months of the year, coming on in early fall in time for Christmas decorations. 25c to 50c each.

**Aloe Striata.** A most beautiful variety with transparent leaves of light green, beautifully striped with yellowish-white; sometimes the leaves are half white and half green. It makes beautiful specimens. 25c, 35c 50c to \$1.00 each.

**Mitraeformis.** A very handsome variety with thick, short, fleshy leaves decorated with handsome short yellow thorns. It grows 2 or 3 feet high, requiring support, and bears fine red flowers. 15c, 25c, 50c to \$1.00 each.

## CARAGUACA OR "HEART OF FIRE."

A very interesting plant of the Pine Apple family, which on account of its aggressive qualities, would be of little interest in the garden, were it not for the marvelous transformation that it assumes during the blooming period. The leaves on old plants are about 2 feet long; they alternate around the base of the plant, are about 2 inches wide at the base, and run to a sharp point at the tips. They are rigid, arching, deeply channeled, and edged with shining hooks; the color is a light yellowish-green above, and gray underneath. As the time for flowering approaches, the plain looking plant is suddenly metamorphosed; the leaves assume a reddish tinge, and the entire upper part a most intense and brilliant strawberry-red; in the center rises a fiery red stem and alternate red leaves, tipped with a bunch of brush-like flowers, cream and purplish-mauve in color. For a month or more the brilliant fire flames through the plant. Then as the seed vessels begin to form, the illumination fades away, and the grand reception is over, till again the welcome visitor is expected. Small plants only 75c each.

## ECHEVERIAS.

### Echeverias are Like the Most Exquisite Wax Work.

**Echeveria Hoveyii** or **Opal Echeveria**. The most beautiful of all varieties, because of the exquisite color of its pretty waxen leaves, that are striped or streaked with bluish, gray, or pink, and some have a blending of all three colors, suggesting the exquisite bluish-pink tints of an opal. 15c, 25c to 50 each.

**Metallica**. A grand variety, with large foliage of a beautiful, pearly, lavender-pink color, a changeable metallic shade, that is a fine contrast to the tall spikes of the waxen, red flowers, with pinkish stems. Small plants 25c each, larger plants 50c each.

**Secunda**. Low-growing, light green rosettes and pretty red flowers; fine for borders. 5c, 10c and 15c each; 50c, 75c and \$1.00 dozen.

**Secunda Glauca**. Resembling the above, but prettier, with glaucous green leaves. Flowers bright red. 5c, 10c, 15c and 20c each; 50, 75c and \$1.00 dozen.

Four other choice sorts, 10c to 25c each.

## EUPHORBIAS.

Very peculiar plants; some thorny, some with slender stems without leaves, some with large foliage, others as carved out of hard wood; all very interesting.

**Grantii**. Quite distinct; leaves large and handsomely variegated. It grows to be almost a tree; very stately. 15c 25c to 50c each.

**Candelabra**. A most handsome, slender stemmed, tree-like variety. 15c to 25c each; cuttings, 5c to 10c each.

**Euphorbia Jocquinifolia.** One of the most showy and beautiful of all Euphorbias. It grows into a tall shub, with long drooping or arching branches with fine lanceolate leaves each side of the stem, and between them like little gems, closely set together, are wreaths of the most dazzling orange-scarlet flowers shaped like For-get-me-Nots, but larger. They come into bloom about Christmas, and stay out for two months, attracting all eyes by their exquisite beauty. A very rare plant. In 2½ inch pots, 35c each; three for \$1.00.

**Euphorbia Splendens or "Crown of Thorns."** A very interesting thorny plant, that bears very beautiful bright scarlet flowers on slender stems. Always in bloom. Very showy in the garden.

### **Furcraea Lindenii.**

This valuable plant is a most beautiful and rare variety with broad waved, thick green leaves, margined with white and pink. It makes a most effective pot plant; fine for house and conservatory, and also a very striking ornament in the garden. Small plants, 35c each; large, 75c to \$2.00.

### **Gasterias.**

Resembling Aloes in their leaves and habit of growth. They are very satisfactory as house plants or for bedding out in the garden; and stand moving well. Very handsome and showy, and bear long spikes of brilliant scarlet and green waxen flowers that keep for a long time. The leaves are tongue-shaped, spotted with white or light green, or have raised spots of white. Some plants large broad leaves, and others narrow. All are very handsome. 10c, 25c to 50c each; 50c, \$1.00 to \$2.50 dozen.

### **Haworthias.**

Dainty little aloe-like plants of pretty and interesting forms, some with translucent leaves that are very beautiful. Easy to grow. Five sorts, 15c to 50c each; five for \$1.00.

### **Kleinia.**

**Articulata or "Candle Plant."** Large, round, fleshy stems of a pretty frosted appearance, distinctly marked with curious designs; foliage cut like ivy, and prettily tinted purple underneath; inconspicuous yellow flowers. 10c to 20c each; cuttings, 5c each.

**Spiculosa.** Tall growing species, stems about 18 inches high, and not fleshy. Leaves are terete in shape, resembling those of Othonna or "Pickle Plant," only larger and two or more inches long. The whole plant is of a bluish color. 10c to 25c each; cuttings, 5c each.

Winchester, Mass.

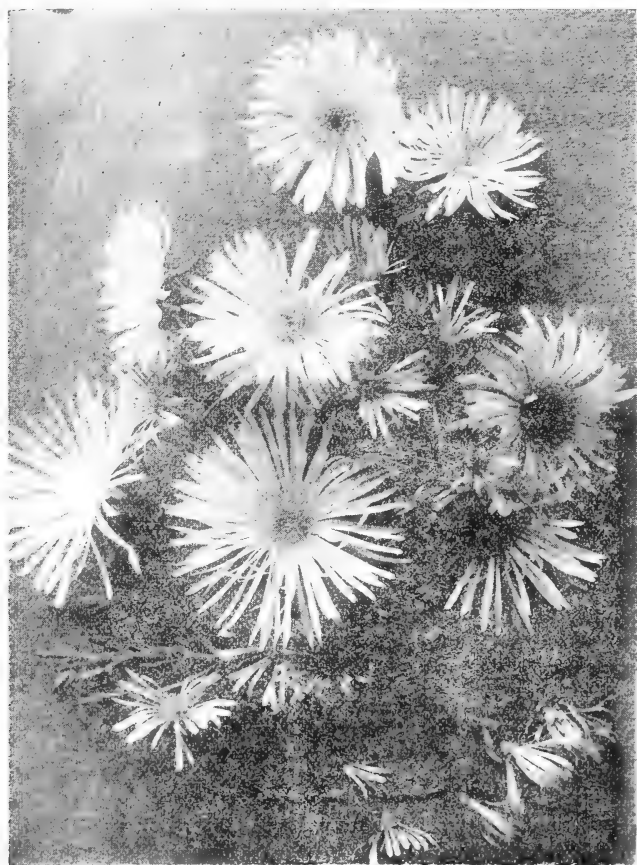
Mrs. Theodosia B. Shepherd,  
Ventura, California.

I take this opportunity of expressing my appreciation of your kindness and liberality in sending such large and perfect specimens of cacti, on my recent order. They arrived in fine condition and are perfectly satisfactory.

Yours, etc.,

July 6th, 1901.

D. D. ELLIOTT.



### **Mesembryanthemums.**

From *mesembria*, midday, and *anthemom*, a flower; referring to the flowers opening on sunny days. The leaves are variable in shape, sometimes thick and fleshy, sometimes round and resembling the portulaca; frequently they are most curiously formed. The flowers are white, blush, pink, rose, bronze-red, crimson, magenta, and various shades of yellow. The petals of the flower radiate from the center like the tentacles of the sea-anemone, and have a beautiful satin-like gloss. They measure from three-quarters of an inch to three inches in diameter. They are fascinating plants, and interesting to collectors. They will grow in any soil, and love the hot sun, and are especially suited to hot climates and for covering hillsides or bare places, or drooping over banks or for borders. A plant in full bloom is so completely covered with flowers as to be perfectly dazzling. Four varieties, 10c to 25c each. Rooted cuttings, \$3.00 per hundred.

**Rochea Falcata.** A very handsome and curious plant with thick light green leaves, looking as if pressed against the plant. They have a pretty frosted appearance, and contrast well with the clusters of dazzling scarlet flowers. 10c, 25c to 50c each.

**RHIPSALIS or "Mistletoe Cactus."** Very peculiar plants. Some have long, fleshy, whip-like branches and white berries similar to mistletoe; some resemble mesembryanthemums, and some are mistaken for epiphyllums. The flowers are small, but produced in great abundance. Six sorts, 15c to 50c each.

### **Stapelia or "Starfish Cactus."**

Very curious plants, with fleshy leaves and flowers shaped like a star fish.

**Variegata.** Flowers buff-yellow, spotted maroon-red. 15c to 25c.

**Grandiflora.** A rare variety, with very large star-shaped flowers; color of a rich maroon-red, covered with long reddish hairs. 10c to 25c. Two other sorts. 15c and 25c each.

### **Sempervivum.**

**Barbatum.** A beautiful and rare variety, with thick, furzy, light green leaves, forming a very loose but regular rosette, deeply depressed at the centre. The leaves are narrow at the base and broad at the ends, with a point in the centre. The pores of the leaf are distinctly visible underneath the surface, which gives a fine effect. Small plants. 25c; large, \$1.00 by express.

### **YUCCAS.**

**Aloefolia Variegata.** A fine Yucca with bright green foliage, bordered with a band of yellow, and occasionally striped with lighter green next to the yellow band. 25c each.

**Aloefolia Variegata Aurea.** This is one of the most ornamental of Yuccas. It has a wide, bright yellow band through the center of the leaf, with a narrow light and dark green margin. It is a very beautiful foliage-plant, fine for the house or conservatory. It is perfectly hardy in California, and makes a splendid specimen outside.

**Tricolor.** A very beautiful variety, having narrow leaves handsomely variegated pink, green and white, in longitudinal stripes. 25c, 35c, 50c, \$1.00, \$2.00 each.

### **CACTUS.**

The most satisfactory Cactus to grow are the large flowering varieties that give their superb flowers every year. Owing to the difficulty in securing collections of the globose Cactus. I offer only such varieties as I can depend on keeping in stock. These are beautiful large flowering varieties.

**ANHALONIUM Williamsii.** The top of the plant is round without any spines. Root long and turnip-shaped; a very curious cactus indeed, and extremely attractive; flowers pale rose. "Dumpling" and "Turnip" Cactus are names given to it. Each 20c to 50c.

**ASTROPHYTUM Myriostigma.** "Bishop's Hood." This, at a glance, appears to be scarcely a living plant; so regular, rigid, and unplant like is its form, that one might imagine that it had been carved from a piece of stone, beautifully spotted all over; fine yellow flowers. Prefers a sandy soil. 75c to \$1.00 each.



CEREUS TRIANGULARIS.

## CEREUS.

My collection of Cereus embraces over fifty rare varieties; but the stock of many of these is very limited, so that they cannot be offered at this date. Occasionally there is an extra plant to spare for those who especially value rare cactus.

**Triangularis.** A fine night bloomer. Outside it grows to immense proportions, and if planted near a dwelling, the branches will flatten themselves against the side of the house, sending out long white roots on each side, which attach themselves tightly until the stems become hardened, when they loosen and hang like heavy gray strings. The flowers are superb; immense size, fine creamy-white, with magnificent clusters of silky stamens and a light yellow pistil. Blooming plants, 25c, 50c, 75c and \$1.00 each; cuttings, 5c to 25c each; cuttings, 12 inches long for grafting, 25c each, postpaid.

**Cereus Beauty.** A very beautiful and distinct variety which came unnamed, and was given the name "Beauty" on account of its handsome appearance. It is a strong, vigorous grower of the Grandiflora type. The stems have four or five very deep angles, which are ornamented at the eyes with handsome tubercles that alternate along the edges; and in the center of each is a tiny cluster of black spines. These stems are a beautiful light green with a shiny waxen luster. The flowers are large with short broad petals, of a beautiful rich greenish-white. Small plants, 25c each; second size, 50c each; cuts, 15c each.

**Pink Night Blooming Cereus.** Of the *Grandiflora* type, five to six sided, very small spines, and a vigorous grower. It produces cup-shaped flowers, with old rose sepals and blush petals. A night bloomer. Small plants, 25c each; second size, 50c each; cuttings, 15c each.

**Grandiflorus "Queen of Night."** This magnificent night blooming cereus produces large flowers nearly a foot across, the sepals dark brown outside, yellowish within, the petals pure white. A great beauty. 15c, 50c to \$1.00 each; cuttings, 5c to 15c each.

**Flagelliformis. "Creeping Cereus."** Very slender stems, about  $\frac{1}{2}$  inch in diameter, of pendulous habit, fine for grafting on *C. colubrinus*; pretty in baskets. Bright, rose-colored flowers, 15c, 25c and 50c each.

**Colubrinus.** A tall, robust column-like cactus of very rapid growth. It bears innumerable beautiful flowers, with light pinkish-brown sepals and creamy-white petals that are delicately incurved. 25c to \$1.00 each; cuttings, 10c to 25c each; cuts for grafting, 12 inches long, 25c each.

**Splendens.** A tall variety, resembling the above, but with flowers one-third larger; stems and sepals deep brownish-red, petals creamy-white, flowers funnel-shaped. Both of these cacti bloom at night, and are fine bloomers. They are especially useful for grafting. 25c to \$1.00 each; cuttings, 10c each.

**Emoryii. "Velvet Cactus."** A beautiful upright growing variety with light green stems, covered with shining, transparent golden spines of various lengths. The young growth resembles the prettiest green velvet, with a golden tint. It is very beautiful. The flowers are pale yellow and inconspicuous, but the plant is very handsome. Plants, 25c to \$1.00 each; cuttings, 10c each.

**Tortuosus.** The stems of this plant are of a dark purplish-black color, spines long and dark, except on young growth, then nearly red. A fine plant on account of its grotesque growth; from Buenos Ayres. 50c to \$2.00 each.

**Rostratus.** A slender climber, with magnificent flowers like cereus grandiflorus. 25c to 75c each; cuttings, 10c each.

**Nyctacalus.** A splendid night bloomer of strong growth, with square stems and very small spines, which produces very large white flowers. 25c each.

**Cereus Gemmatus "Organ Pipe Cactus."** A most interesting variety, with very smooth stems, divided into six deep ridges by long lines of short spines, resembling beading. The flowers are small, brownish-red, 1 inch long, and are very close together. The beauty of the plant lies in its massive grandeur and bead-like lines of spines. It resembles, when well grown, a great organ pipe. Specimens grow 15 to 20 feet high, and measure 26 inches in circumference. Small plants are very handsome. 25c, 50c, 75c to \$3.00 each. A few enormous specimens. The price will be given on application.

## Echinopsis.

**Eyresii.** One of the most beautiful species when in flower. Stem very regularly globular. Flowers 6 to 8 inches long, like a curved funnel, and 4 to 5 inches across the mouth, formed by numerous, tapering, white petals spreading symmetrically. 25c, 50c to \$1.00 each.

**Mulleri.** Elegant, satin pink flowers. It is a splendid bloomer, and the flowers are very large and beautiful. It grows very rapidly, and will bloom the second year, beginning in early spring and blooming at intervals for months. 5c, 10c, 25c to 50c each; \$1.00, \$2.00 to \$3.00 dozen.

## Echinocereus.

Easily characterized by the regularity and beauty of spines, the dwarfish, cylindrical stems, and brilliancy of coloring. The flowers last for a long period; the plants are profuse bloomers, and comparatively hardy and easy of culture.

**Berlandieri.** A low growing, recumbent plant, slender stems, four-angled, with short spines. The sweetly fragrant flowers are nearly 4 inches across, bright purple and showy. An elegant species. 30c each.

**Caespitosus.** The beautiful "Lace Cactus," with an ivory-white network of spines. A perfect gem. 15c to 50c each.

## Mamillarias.

These are beautiful little plants, the spines embrace all the colors of the rainbow, while the flowers of many are large as well as brilliant; the seed-pods (delicate colored berries) remain for many months, making them doubly attractive. They can be grown anywhere and in any kind of soil, if the pots are well drained.

**Nivea.** Most beautiful species, covered with fine white spines; rare and beautiful. Pretty flowers, followed by red berries. Rare. 50c each.

**Pusilla.** Very dainty, with soft silvery spines. 15c to 25c each.

**Stella Aurata. "Golden Star."** A most beautiful variety that grows stems 2 to 4 inches high and a half inch in diameter, branching freely and covered with spreading star-like, soft yellow spines tipped with redish-brown. Small white flowers. 25c to 50c each.

**Minima.** Resembling the above, but of more dwarf habit and with smaller stems, which are covered with cream colored star-like spines; it also bears white flowers. 10c to 25c each.

**Epiphyllums or "Lobster Cactus."** A most charming class of cactus without thorns, and with smooth shining green leaves shaped like a lobster's claw. They grow rapidly with a graceful drooping habit, and bears charming pendent flowers in shades of red and pink, with white. They do well grafted in *Cereus*, or pereskies making a beautiful fountain-like plant, that bears on large plants, hundreds of lovely flowers.

**Truncatum.** Fine, rose colored flowered with white throat.



**Laneritum Alba.** Lovely pink and white.

**Violaceum.** Violet purple.

**Superbum.** Coppery-red, white throat, edged and shaded rose. Very beautiful.

**Sulphureum.** Salmon-rose, white throat, lined and edged with rose. Ten varieties, 25c to 50c each; on own roots. The set for \$2.50 to \$5.00.

## PHYLLOCACTUS.

The most gorgeous and satisfactory of all the cactus family. A large plant will frequently carry fifty to a hundred buds and blossoms. The leaves are flat or tri-angular in shape, of various shades of green, sometimes shaded with dark red. The plants attain a height of 4 to 5 feet, and from every eye of their severely plain and unattractive leaves come forth suddenly and mysteriously small buds, which develop into large flowers 5 or 6 inches across; often these flowers almost overlap each other, and they are of such wonderful brilliancy as to fairly dazzle the eyes. Some are clear scarlet and cup-shaped; others are deep crimson, with throats of metallic purple and long silken stamens, either pink or white; sometimes the pollen is pink, on others white. Then there are pale yellow, pink, and cream colored flowers, exquisitely lovely in form and color. The Phyllos begin to bloom in February, and come on during the spring and summer months, the time of blooming depending upon the varieties. The secret of having blooming plants is to take cuttings from wood that has bloomed; it will then flower at the proper time the next season.

**New Phyllocactus "Mainwaring's Red."** A stately, strong, vigorous grower, that makes an imposing plant, and produces very large dark red, heavy flowers. A very satisfactory and beautiful variety. 25c, 50c to \$1.00 each.

**Mrs. Bouman.** Makes a fine large plant; with graceful slender stems. It is a most profuse bloomer, bearing many open flowers at once; which are of medium size, colored soft velvety-scarlet, and of great brilliancy. 25c, 50c to \$1.00 each; cuttings, 10c.

**Metallica.** Strong stocky grower. Flowers are very red, tinted with purple; antlers and pistals very long and heavy. 25c, 50c to \$1.00 each; cuttings, 10c.

**Pfersdorffi.** A rare sort that bears flowers 8 to 10 inches in diameter; which have clear yellow sepals; very fragrant. Small plants, 50c each.

**Kermesinus Magnus.** An imposing plant, with great thick, heavy, rich colored stems, which produce extra large deep scarlet flowers most splendid to behold; 8 to 12 inches in diameter. Small plants, 50c each; larger size, 75c each; no cuttings.

**Conway's Giant.** This is a grand species, both in leaf and flowers. Flowers are immense, full deep scarlet, shading to purple. Small plants, 75c each.

**Jenkensoni.** "**Case Knife Cactus.**" One of the oldest varieties, with flat stems and numerous handsome light scarlet flowers, about 3 or 4 inches long. It blooms when very small. 10c, 20c, 50c, 75c to \$1.00 each; cuttings, 5c to 10c each.

**Alice Wilson.** Very large elegant scarlet flowers; exquisitely shaded metallic purple. Stems very massive and of a rich color. Small blooming plants, 50c to 75c each; cuttings, 25c each.

**Orange Gem.** Resembling the above, but with massive foliage, that has a rich yellow tint. A grand sort. 50c each; cuttings, 25c each.

**Refulgens.** Most beautiful flaring scarlet flowers, shaded metallic purple. 50c each; cuttings, 25c each.

**Speciosissimus.** Embracing all the colors of the rainbow. 25c, 50c to 75c each.

**Crenatus.** Extra fine; petals clear cream color; sepals brownish-green. Very free bloomer; strong, robust, upright grower. 25c to 50c each; cuttings, 10c each.

**Roseus.** Charming pink flowers. Small plants, 25c.

**Roseas Superbus.** Fine pink flowers; very free bloomer; one of the best sorts; charming. 25c and 50c each.

**Tettanus.** Inside violet, outside purple; very showy and rich in appearance. 50c each.

**Phyllanthoides.** Bright rose, streaked with white, shaded dark red. Small plants, 25c to 50c.

**Ackermanii.** One of the handsomest. The flowers are 6 to 8 inches across, of a rich, satiny scarlet or crimson, produced in profusion. 15c, 25c, 50c and 75c each; cuttings, 10c.

**Anguliger.** Deep notches are cut all along the leaves like the teeth of a large saw. The flowers are composed of a curved tube 6 inches long, spreading out at the top to the width of 6 inches, and surrounded by a whorl of pure white petals. 20c, 50c, 75c each; cuttings, 10c.

**Latifrons** The "Queen Cactus" is the largest of the genus, growing 8 to 10 feet high, robust in habit; the stem 4 to 5 inches broad, flat, crenated; night-blooming. The flowers a beautiful creamy white; sepals and tube of a reddish hue. 25c to \$1.50 each; cuttings, 5c to 20c.

**Wrayi.** A grand flowering sort; flowers 5 inches long by 8 inches across; brown outside; yellow within; petals yellowish white; fragrant when first open. 15c, 25c to \$1.00 each; cuttings, 10c.

---

## TESTIMONIAL.

---

Mrs. Theodosia B. Shepherd,  
Ventura, California.

I have bought a few Geranium seed every year for a number of years, and yours are the best I have had so far.

February 6th, 1901.

Des Moines, Iowa.

Yours, etc.,

JERRIE VAN KOESON.

## OPUNTIA.

**Microdasys.** The prettiest of all Opuntias with handsome, pear-shaped leaves, of a fine green, dotted with tufts of small golden spines that resemble tufts of velvet. The contrast is very beautiful. 10c, 25c, 50c and 75c each; cuttings, 15c to 25c each.

**Mona cantha Variegata.** A beautiful plant, the pear-shaped leaves of which are beautifully variegated white and green; young growth pink. 25c, 50c and 75c each. Six other choice varieties, cuttings, 10c to 25c each.

## Seeds of Cacti and Succulents.

**CACTI FROM SEED.**—It is a delight to watch their growth from the time that the seed sprouts, until it develops into a spiny ball or column, and sends out its satiny blossoms. Cactus seeds are all sizes; from the shape of a small pea to a grain of mustard seed. They should be planted in pots or cigar boxes, half filled with potsherds or gravel, with a couple of inches of sand. Seeds should be planted on top of the sand, and well watered and kept covered with glass. They generally sprout within ten days or a month. It is surprising to see the size of a plant that has come from a very small seed. They are beautiful little things; the most delicate colors, pale green, soft pink or pale yellow, and pure white; round or oval, and resemble precious gems.

**Very Choice Hybridized** seed of *Cereus* and *Phyllos* mixed. Small pkt. 35c; two pkts., 50c.

**Cereus Triangularis.** 15c pkt.

**Colubrinus.** 15c pkt.

**Mamillarias.** Choice mixed, 15c pkt.

**Echinocereus.** Choice mixed, 15c pkt.

**Echinocactus.** Choice mixed, 15c pkt.

**Epiphyllum.** Choice mixed, 25c pkt.

**Phyllocactus.** Hybridized, 50c pkt.

**Cereus Colubrinus.** Hybridized, 25c pkt.

**Cereus Tortuosus.** 20c pkt.

**Very Choice Mixed.** All sorts, 15c pkt.

All of the above varieties for \$1.75.

**Aloes.** Choice mixed. They are very easily grown, and very interesting at all stages. 10c pkt.

**Agave Filamentosa.** A very beautiful variety resembling a huge rosette. The overlapping leaves, which are very numerous, are prettily marked with white, pointed at the edges, and have gray threads or filaments at the margins. A full grown plant measures 20 inches across. The

plants in the garden are ten years or more of age, and in that time have never multiplied, but this season sent up great spikes or stems, 8 or 10 feet high, covered with reddish-maroon blossoms, so that for that for the first time seed can be offered. All the Yuccas, Agaves, and Aloes grow readily from seed, and are very interesting plants in all stages. 15c pkt.

**Gasterias.** Choice mixed, 10c pkt.

**Yucca Filamentosa.** 10c pkt.

**Yucca Whippelii.** 10c pkt.

## TESTIMONIAL.

Dunsandel, Canterbury, New Zealand.

Dear Madame:—With regard to the seeds you sent last spring, I may say I have been more successful with them than with any seeds I have had in the past.

Yours, etc.,

Nov. 25th, 1901.

J. M. CROSTIE.

Pittsburg, Pa.

Enclosed find fifty cents for Chrysanthemums, "California Fantasies." I think I will raise all seedling "mums" this year, as I had so much more satisfaction with your seedlings than I had with my plants, when I had some 200 in the greenhouse.

Yours, etc.,

GEORGE F. WRIGHT.

Gonzales, Texas.

My plants came some days ago. \* \* \* I had to call my flower friends to rejoice with me, and study your catalogue. The plants are entirely satisfactory in every way, and in fine condition; were so beautifully packed, and so many in the box. You must accept many, many thanks for the extras. I would not take \$5.00 for the Four Tree Begonias, not to speak of Miss Marjorie Daw, and if they bloom a third as well as Mrs. Shepherd's Begonias, they will set Gonzales Begonia wild. \* \* \* I have never seen such plants as you send.

Yours, etc.,

November 7th, 1901.

MRS. J. F. MILLER.

Huntsville, Texas.

I want to tell you what beautiful Petunias I raised from your seeds last spring \* \* \* ruffled, blouched, and striped. I have squandered a good many 25c on Petunia seed, but never anything to touch those raised from your seed.

Yours, etc.,

March 8th, 1901.

MRS. JOHN W. CLARK.

Bakersfield, California.

Mrs. Theodosia B. Shepherd,  
Ventura, California.

I want to say the plants were received today, and that I am delighted with them. \* \* \*

Yours, etc.,

October 12th, 1901.

MRS. M. A. FREEMAN.

Fullerton, California.

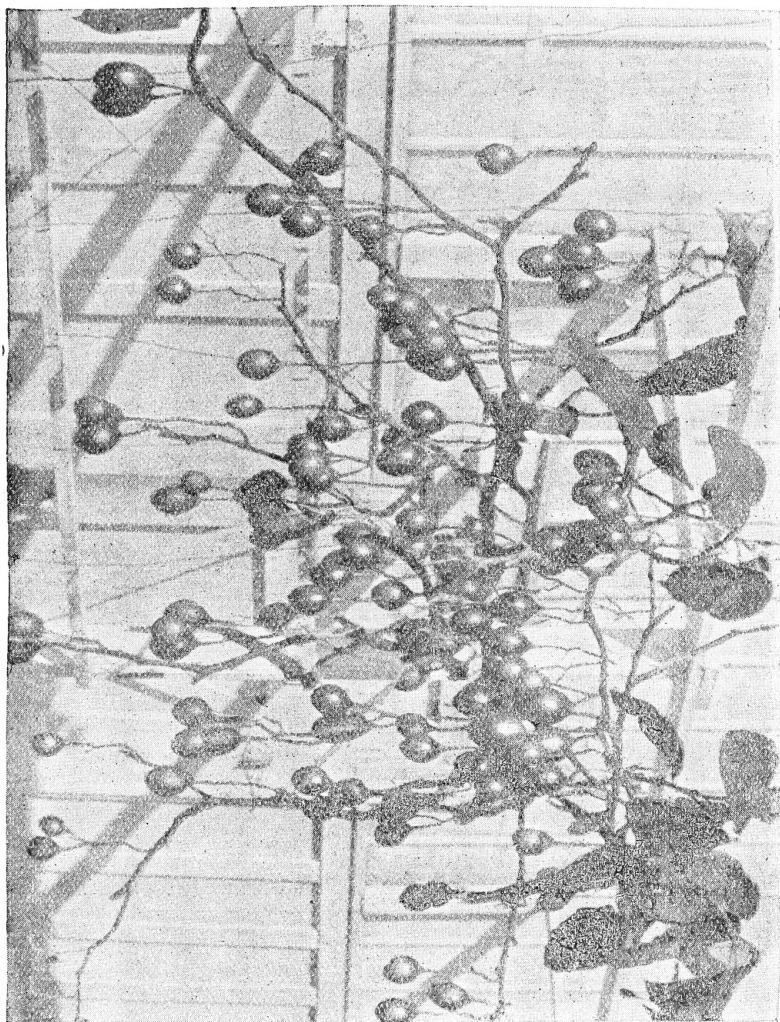
Mrs. Theodosia B. Shepherd,  
Ventura, California.

My husband returned from Ventura Saturday evening, bringing with him a large box of the most beautiful Begonias that could possibly be found in these United States, broad as they are. We knew in a moment where they came from, for nowhere in this country has any name become so famous in connection with these exquisitely delicate flowers as that of Mrs. Shepherd.

Yours, etc.,

July 8th, 1901.

MRS. C. C. CHAPMAN.



LEAF OF SOLANUM ELAEAGNIFOLIUM OR TOMATO TREE.

(See Page 68.)

## PLANTING AND SEED GROWING.

---

Great care should be exercised in setting out plants. Many choice things are lost by not being planted firmly in the ground. Never set out a plant when the soil is too wet, or it will pack; it should be mellow and crumbly. The roots of plants should be spread carefully if without soil; if balled, they should be loosened a little around the ball to induce them to grow outward. After pulverizing the soil around the plant, press it firmly with the foot, after which water thoroughly and deep. When the water has settled around the plant cover with dry soil. Watch it very carefully until well established, and see that the soil does not become porous through evaporation, and the air dry up the roots. Small plants should be carefully shaded till established. When plants from pots are set in the ground, the outer roots should be loosened to grow into the new soil, if packed against a ball of matted roots, will prevent growth and cause the plant to die very slowly. One of the most important things for growing either seeds or plants successfully in the garden is the condition of the soil. The beds should be spaded deep, the earth thoroughly broken up and raked through and through, not just over the surface, as is so frequently done. Shading should not be done when the earth is too dry or too wet; in one case it breaks up into lumps, and in the other it packs.

Seeds sown in the open ground should be planted in shallow drills and covered lightly with soil, which must be pressed down firmly so as to prevent the air from getting in, and thus drying the young plant when up. The bed should be thoroughly sprinkled with a fine spray, shutting the water off now and then that it may not wash the young plants up. The young seedlings, after they are up, must never be allowed to become dry. The plants, if too thick, must be thinned out and every one left have room to develop well. Special seed beds may be prepared in the same way as those outside, excepting that the soil should be mixed with soil and very well rotted manure; they should be enclosed by boards and shaded by lath frames or cloth.

Seeds of Mignonette, Eschscholtzia, Phlox, Centaureas, Marigolds, Poppies of all kinds, and many of the more hardy varieties, may be planted in the bed in which they are to grow. Sow them in February or March, through they will grow and bloom if planted later, but they like cool weather for luxuriant growth, and will not give it if planted late in the season, nor will the flowers be as fine.

Panstes, Asters, Carnations, Petunias, Salvias, Lobelias, Calliopsis, Coleus, and the more tender seeds are best planted in special seed beds or boxes, and afterwards transplanted to the garden or pots. Ipomea, "Heavenly Blue" which is truly a heavenly thing, may be planted either way, as it bears transplanting well; its time to go into earth is in April.

# ....INDEX....

Please Read Carefully and Cheap Collections.....	Second Page Cover
Novelties and Specialties in Flower Seeds.....	5 6
General List of Flower Seeds.....	5 to 27
New and Rare Plants.....	27 to 33
Mrs. Shepherd's Begonias.....	34 to 41
General Collection of Begonias.....	42 to 49
Special Collections of Plants.....	49 to 62
General Collection of Plants.....	62 to 69
Climbing Plants.....	69 to 75
Palms, etc.....	73 to 74
Grasses and Bamboo.....	74 to 75
Bulbs.....	75 to 76
Succulents and Cactus.....	79 to 88
Planting and Seed Growing.....	92

## SEEDS.

Abutilon.....	6
Agatha.....	6
Aster.....	6
Agapanthus.....	6
Antigonon.....	7
Algerian Stranger.....	6
Agave.....	8-9
Aloes.....	7-8-9
Asparagus.....	7
Begonias.....	7
Bouvardia.....	4
Bellis.....	8
Bignonia.....	8
Browalia.....	8
Cosmos.....	8-9-10-11
Calliopsis.....	11
California Poppy Eschscholtzia, G.W.....	15-22
Coleus.....	11
Chrysanthemum.....	12
Cineraria.....	12
Calla Lily.....	12
Cardiospermum.....	12
Cactus.....	89
Centaurea.....	12
Cyanus.....	13
Canna.....	13
Carnation.....	13
Cyclamen.....	13
Calendula.....	13
Celosia.....	13
Candytuft.....	13
Olianthus.....	13
Dahlia.....	13-14
Dianthus.....	14
Eschscholtzia "Golden West".....	15-22
Erythrina.....	22
Fuchsia.....	22
Freesia.....	22
Gaillardia.....	15
Gesneria.....	15
Genista.....	16
Geranium.....	16
Gloxinea.....	17
Hardenbergia.....	17
Heuchera.....	17
Hibiscus.....	17
Heliotrope.....	17
Ipomea.....	17
Kennedy.....	17
Lobelia.....	18
Lathyrus.....	19
Marigold.....	19
Maurandya.....	19
Mandevilla.....	19
Myosotis.....	19
Mesembryanthemum.....	19
Mignonette.....	19
Nasturtium.....	4-5-10-20
Pansies.....	20
Pyrethrum.....	20
Phlox.....	20
Petunias.....	21
Palms.....	21
Poppies.....	21
Passion Flowers.....	23
Peas, Sweet.....	23-24
Pea, Australian.....	24
Romneya.....	24
Roses.....	25
Stocks.....	25
Streptocarpus.....	25
Salvia.....	25
Solanum.....	25-26
Streptosolen.....	26
Swansonia.....	26
Schinus Molle.....	26
Torenia.....	26
Tacsonia.....	25
Verbena.....	27
Zinnias.....	27

## PLANTS.

Aralia.....	74
Aloes.....	79
Abutilons.....	62
Amaryllis.....	75
Aspidistra.....	62
Arundo Donax.....	74
Antherium.....	62
Ampelopsis.....	69
Agapanthus.....	27-62
Asparagus.....	69
Begonia.....	27-28-34 to 49
Bamboo.....	74
Bignonia.....	70
Brahea.....	73
Bougainvillea.....	27-70
Carex.....	74
Carnations.....	49-50
Cyperus.....	74
Chrysanthemums.....	50-51-52
Cactus.....	83
Cannas.....	53
Cereus.....	84-85
Olianthus.....	70
Caraguaca.....	80
Coleus.....	53
Chamerops.....	73
Calliopsis.....	62
Coryphia.....	73
Dahlia.....	63-64-65
Daisy.....	28
Dracaena.....	73
Echinopsis.....	86
Euphorbia.....	80
Echinocerus.....	89
Echeveria.....	80
Ferns.....	54-55
Farrugium.....	65
Ficus.....	65
Fuchsia.....	54-55
Furcraea.....	81
Genista.....	32
Geraniums.....	29 to 32, 57 to 61
Gasterias.....	81
Hemerocallis.....	65
Heliotrope.....	33-66
Hibiscus.....	66
Hypericum.....	66
Hydrangea.....	65
Haworthia.....	81
Hoya.....	65
Ipomea.....	70
Impatiens.....	66
Jasmine.....	71
Klenea.....	81
Lantana.....	33-66
Laurestinus.....	66
Lagusta.....	66
Linum.....	67
Lotus.....	67
Lobelia.....	67
Libonia.....	67
Marguerite.....	67
Mamillaria.....	86
Mandevilla.....	71
Mesembryanthemum.....	82
Opuntia.....	89
Passiflora.....	39-71
Phyllocactus.....	87
Phrynium.....	67
Plumbago.....	67
Phormium.....	75
Poinsettia.....	67
Phoenix.....	73
Pelargoniums.....	60
Roses.....	61
Rudebeckia.....	68
Rochea.....	83
Russelia.....	68
Rhipsalis.....	83
Streptosolen.....	68
Solanum.....	68-71-91
Smilax.....	71
Stapelia.....	83
Sempervivum.....	83
Strelitzia.....	77
Seaforthia.....	73
Salvia.....	33
Tecoma.....	71
Tacsonia.....	71-73
Tradescantia.....	67
Violet.....	33-69
Yucca.....	83
Planting and Seed Growing.....	92

## **PREMIUMS GIVEN**

For \$6 Order—\$1 worth of Plants Seeds, Etc., customers Selection, and "Out West" or the "California Floriculturist" for one year. Subscriptions Taken.

---

## **"OUT WEST,"**

Formerly

**"THE LAND OF SUNSHINE,"**

In gaining size and a new name, this Magazine has lost nothing of its old charm. Its wealth of illustration is more beautiful than ever, and its fearless habit of saying whatever its editor thinks needs to be said, in the directest and most unmistakable fashion, is ingrained. No lover of clear thinking, straight hitting and fair play can afford to be without it.

*The* **"LAND OF SUNSHINE" Pub. Co.,**

**Subscription \$1 per year.**

**Sample Copies, 10c.**

**LOS ANGELES, CAL.**

---

## **"The California Floriculturist"**

A new magazine devoted to all branches of Ornamental Horticulture, Flowers, Etc. The only one of its kind in California. It fills a long felt need.

*The* **CALIFORNIA FLORICULTURIST Pub. Co.,**

**LOS ANGELES, CAL.**

**Subscriptions Taken, \$1 per year. Sample Copies, 10c.**

---

## **SUBSCRIPTIONS TAKEN FOR THE FOLLOWING HORTICULTURAL PAPERS:**

**American Gardening.** A Weekly Illustrated Journal of Technical Instruction and Record of Current Events. From the Window Garden to the 5-Acre Farm. \$1.50 per year.

**Gardening.** A horticultural journal for gardeners of all classes, published semi-monthly, \$2.00 per year.

**Country Life in America.** Edited by Prof. L. H. Bailey. A monthly magazine, superbly illustrated, with photograph engravings of country homes and scenes; it is a country magazine for the country man, and for the city man who wants to know the country. 25c. per copy; \$3.00 per year.

**The Following Books Sent on Receipt of Price.**

**"The Wild Flowers of California."** Beautifully Illustrated, \$2.00.

**"Success with House Plants."** Cloth, \$1.00; paper, 50c.

**Garden Making,** \$1.00, and **Plant Breeding,** \$1.00, by Bailey.

**The Story of Plant Life,** \$1.00; **The Primer of Horticulture,** 35c., Wright.

**Hand Book of Plants,** \$3.00; **Practical Floriculture,** \$1.50, Henderson