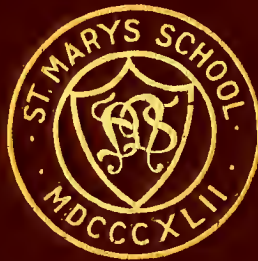


The Muse



1916



LIBRARY

PRESENTED BY

The Class of 1916

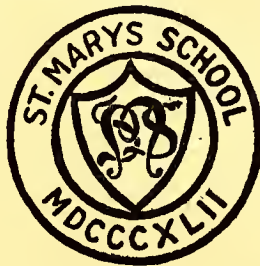
THE MUSE

..... PUBLISHED BY

THE MUSE CLUB

Vol. 18

1916




**The Year-Book of the Students of St. Mary's School
Raleigh, North Carolina**

376.9


sa

1916



Digitized by the Internet Archive
in 2012 with funding from
University of North Carolina at Chapel Hill

<http://archive.org/details/muse1916sain>



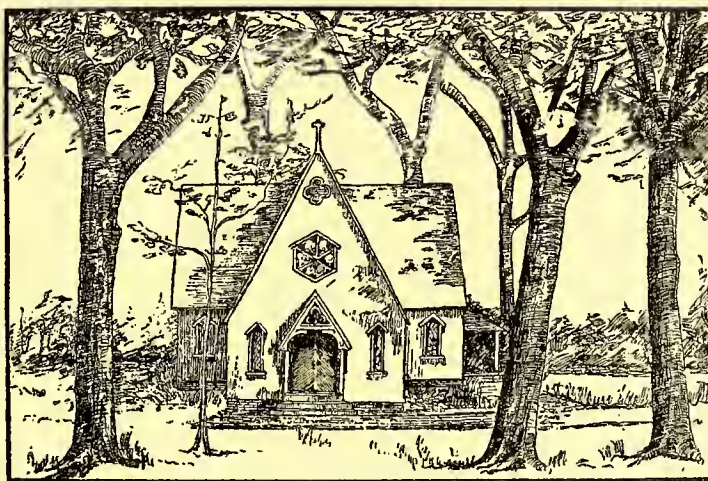
When afar in the golden future
In the days we have longed to see
When out in the world we have wandered
To work, and to strive, and to he,
May the lives that we live be a token
Of a loyal faith yet unbroken
Of the tender love that's unspoken,
St. Mary's, we hear to thee.

May the deeds that we do proclaim us
Thy daughters in truth to he.
May we follow thy precepts and teachings
Still happy and glad and free.
May our stand for the right be securer,
May our thoughts and our acts be surer,
May our hearts and our lives be purer,
St. Mary's, for love of thee.

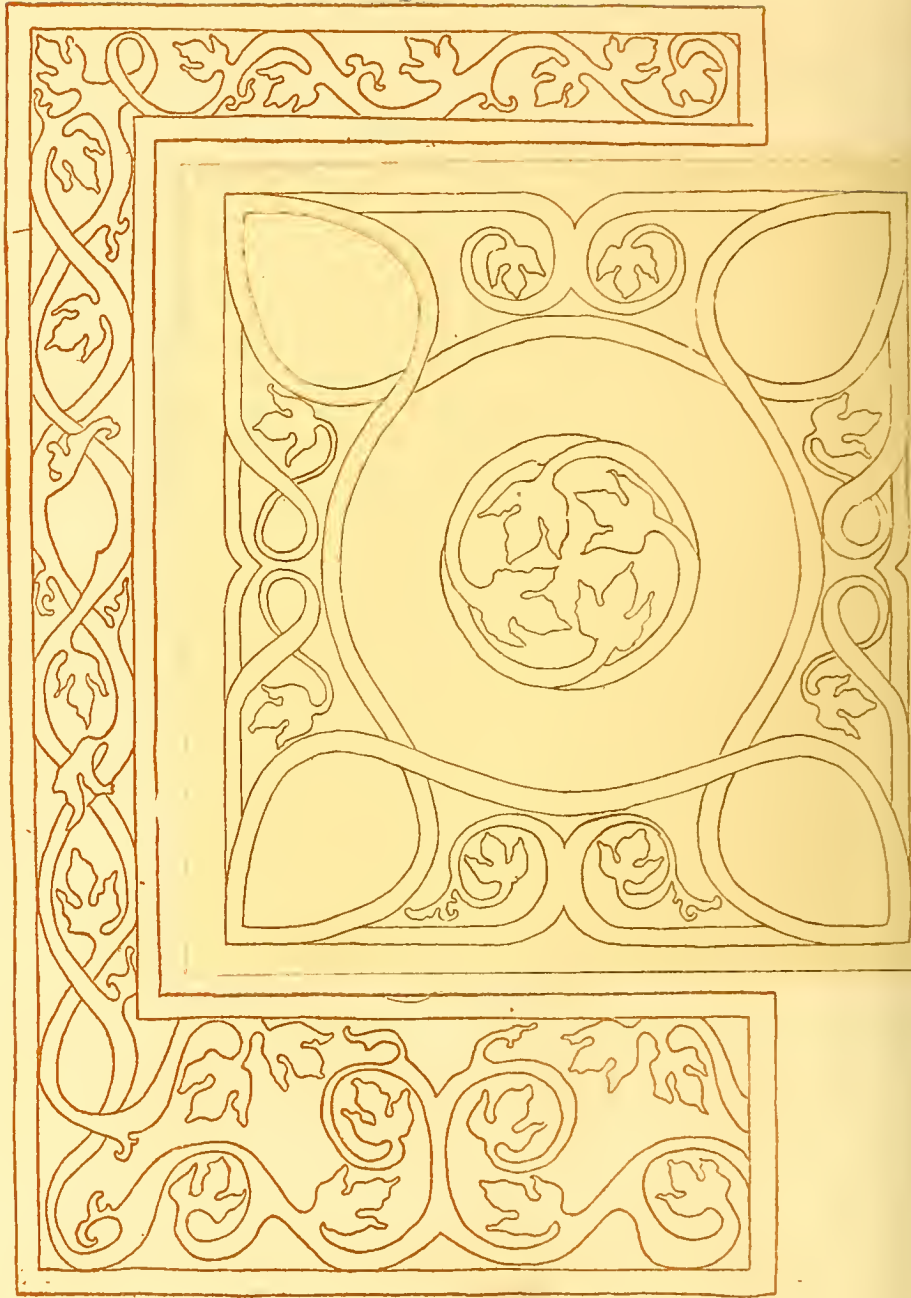
So, on through the years to follow,
The times we are yet to see,
On through the golden future,
And the wondrous days to be,
May there ever remain beside us,
As a shield from peril to hide us,
As a star to the truth to guide us,
St. Mary's, our love for thee.

A. S. C.

Live To Learn



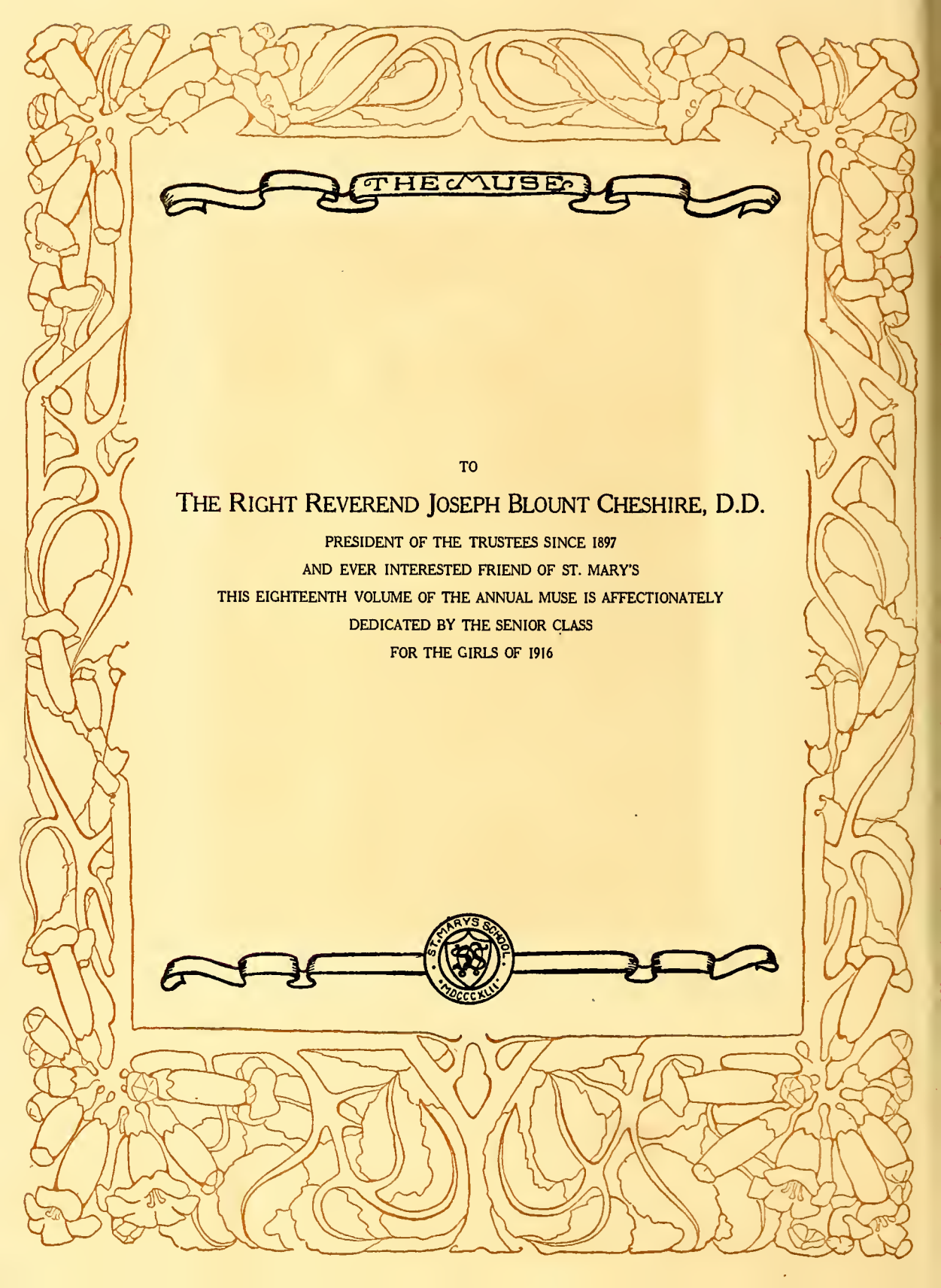
Learn To Live









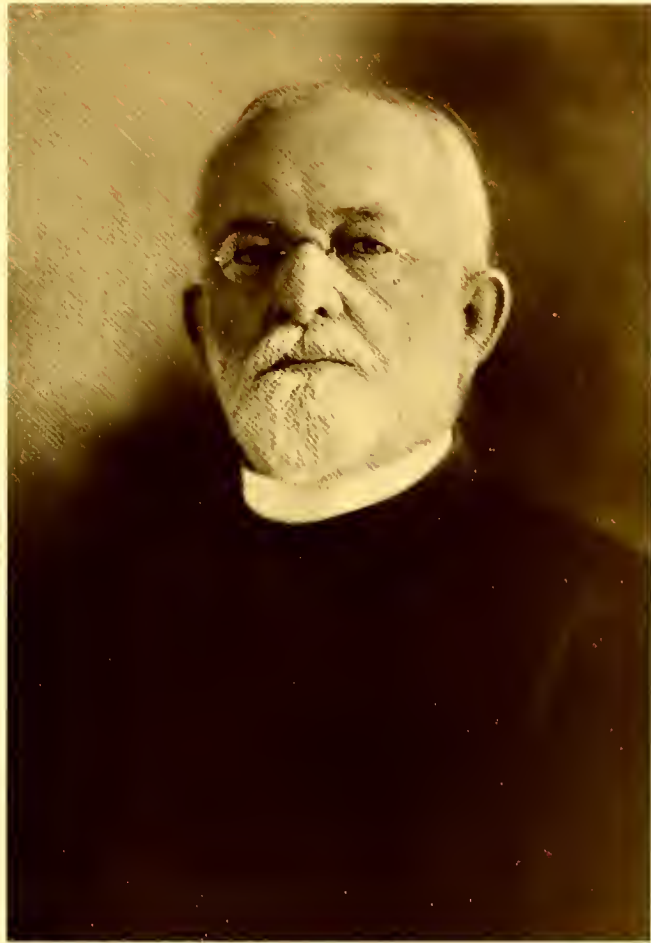


THE MUSE

TO
THE RIGHT REVEREND JOSEPH BLOUNT CHESHIRE, D.D.

PRESIDENT OF THE TRUSTEES SINCE 1897
AND EVER INTERESTED FRIEND OF ST. MARY'S
THIS EIGHTEENTH VOLUME OF THE ANNUAL MUSE IS AFFECTIONATELY
DEDICATED BY THE SENIOR CLASS
FOR THE GIRLS OF 1916





BISHOP CHESHIRE



Alma Mater

(Tune: "Believe Me if All Those Endearing Young Charms")

St. Mary's! wherever thy daughters may be
They love thy high praises to sing,
And tell of thy beauties of campus and tree
Around which sweet memories cling;
They may wander afar, out of reach of thy name,
Afar, out of sight of thy grove,
But the thought of St. Mary's eye kindles a flame
Of sweet recollections and love.

Beloved St. Mary's! how great is our debt!
Thou has cared for thy daughters full well;
They can never thy happy instructions forget,
Nor fail of thy virtues to tell.
The love that they feel is a heritage pure;
An experience wholesome and sweet.
Through fast rolling years it will grow and endure;
Be a lamp and a guide to their feet.

May the future unite all the good of thy past
With the best that new knowledge can bring,
Ever onward and upward thy course! To the last
Be thou steadfast in every good thing.
Generations to come may thy fair daughters still
Fondly think on thy halls and thy grove
And carry thy teachings—o'er woodland and hill—
Of earnestness, wisdom, and love.

H. E. H., 1905.

A decorative border with intricate floral and leaf patterns surrounds the text. The border is composed of repeating motifs of leaves and flowers, creating a frame for the central content.

The 1917 Anniversaries

On *May 12, 1842*, the Rev. Dr. Aldert Smedes opened St. Mary's to its first pupils.

On *March 10, 1897*, the "Trustees of St. Mary's School, Raleigh, N. C.," having received a charter from the State, the Board met, organized, and arranged to take over the School from Dr. Bennett Smedes.

On *September 1, 1907*, the Rev. George W. Lay assumed the Rectorship of the School.

In 1917 will therefore occur:

- (1) The 75th Anniversary of the Opening of the School.
- (2) The 20th Anniversary of the Church Ownership of the School.
- (3) The 10th Anniversary of the present Rectorship.

* * *

Besides these, 1917 marks the 50th Anniversary of "Miss Katie's" connection with the School, which would in itself be enough to set aside the year as a special one.

* * *

Thus the year 1917 will be indeed a memorable one at St. Mary's and for St. Mary's, and will be marked by events fitting the celebration of its many anniversaries.

* * *

The Semi-Centennial of the School was celebrated very happily at the Commencement of 1902.

The Hundredth Birthday of the Founder was celebrated appropriately on April 20, 1910.

* * *

It is expected that Alumnae Day, 1917, will be a time of even greater celebration.



MRS. IREDELL
*"Love, Sweetness, Goodness
in her person shin'd."*

In February, 1917, "Miss Katie" will have completed fifty years of continuous work in residence at St. Mary's. In February, 1867, she became a boarder in the School and her work has continued uninterruptedly, first as student and then as teacher.

St. Mary's has been in large measure the life-work of Mrs. Mary (Johnson) Iredele.

As "St. Mary's girl" "before the War" she was inspired with the spirit of Dr. Smedes, and later as teacher and aid to the Drs. Smedes in a multitude of ways, she in her turn imparted the spirit to many of the girls of later years.

When the Church purchased the School she became Agent of the Trustees and did invaluable work in raising the necessary funds and in building up the School.

She has always been active in Alumnae affairs and on her retirement from the active Presidency of the Alumnae Association in 1911 was made Honorary President for life.



MISS KATE MCKIMMON
*"To do good and to distribute of your love
And of your strength to them that need, that
Has been your life."*



IN THE DAYS OF THE STAGE COACH

St. Mary's Alumnae Association

Officers 1915-16

Honorary President	---	MRS. MARY IREDELL, Raleigh
Honorary Vice-Presidents	{	MRS. I. MCK. PITTENGER, Raleigh
		MRS. BESSIE SMEDES LEAK, West Durham
President	-----	MRS. WALTER GRIMES, Raleigh
Vice-President	-----	MISS LUCILE MURCHISON, Wilmington
Secretary	-----	MISS KATE MCKIMMON, St. Mary's
Treasurer	-----	MRS. ERNEST CRUISEBANK, Raleigh

Alumnae Council

MRS. CHAS. BASKERVILLE, New York City, until 1916
 MRS. DAVID ELIAS, Columbia, S. C., until 1916
 MISS SUSAN FRANKS IHEN, Raleigh, until 1917
 MRS. ELIZABETH McC. SNOW, Raleigh, until 1917
 MISS EMILIE W. McVEA, Cincinnati, O., until 1918
 MISS MINNIE LEARY, Elizabeth City, N. C., until 1918
 and the officers *ex officio*

The Alumnae Association of St. Mary's was established in 1880 and meets annually at Commencement. It has done effective work in aiding the progress of the School and grows yearly stronger and more vigorous.

The Alumnae Chapters meet in their several towns and cities on November 1st, All Saints, which is celebrated as *Founders' Day*, and on May 12th, the date of the first opening of St. Mary's, which is observed as *Alumnae Day*.

The most important special work accomplished by the Alumnae Association has been the establishment of the *Smedes Memorial Scholarship*, to the memory of the Founder and his son, the second Rector of St. Mary's; and the *rebuilding of the Chapel*. Its present special work is the fund for establishing the *Mary Ireddell* and the *Kate McKimmon Scholarships*.

The Board of Trustees

The Bishops

RT. REV. JOS. BLOUNT CHESHIRE, D.D., *Chairman*..... Raleigh, N. C.
RT. REV. WM. ALEXANDER GUERRY, D.D..... Charleston, S. C.
RT. REV. JUNIUS M. HORNER, D.D..... Asheville, N. C.
RT. REV. THOMAS C. DARST, D.D..... Wilmington, N. C.

Clerical and Lay Trustees

North Carolina

REV. M. A. BARBER, Raleigh	REV. J. E. INOLE, Henderson
REV. ISAAC W. HUGHES, Henderson	DR. R. H. LEWIS, Raleigh
COL. CHAS. E. JOHNSON, Raleigh	MR. D. Y. COOPER, Henderson
MR. W. A. ERWIN, Durham (until 1921)	MR. GRAHAM ANDREWS, Raleigh (until 1918)

East Carolina

REV. R. B. DRANE, D.D., Edenton	REV. T. P. NOE, Wilmington
MR. FRANK WOOD, Edenton (until 1921)	MR. GEO. C. ROYALL, Goldsboro (until 1918)

South Carolina

REV. T. T. WALSH, Yorkville	REV. L. G. WOOD, Charleston
MR. P. T. HAYNE, Greenville (until 1917)	MR. T. W. BACOT, Charleston (until 1917)

Asheville

REV. R. N. WILLCOX, Hendersonville	REV. H. NORWOOD BOWNE, Tryon
HON. WM. A. HOKE, Lincolnton (until 1918)	MR. F. A. CLINARD, Yadkin Valley (until 1917)

Executive Committee

RT. REV. J. B. CHESHIRE, D.D., <i>Chairman</i>	
COL. CHAS. E. JOHNSON	DR. R. H. LEWIS
HON. W. A. HOKE	MR. GEORGE C. ROYALL
	MR. D. Y. COOPER

Secretary-Treasurer

DR. K. P. BATTLE, JR.



THE REV. GEORGE W. LAY, D.C.L.
Rector

History of St. Mary's

St. Mary's School was founded in 1842 by the Rev. Aldert Smedes, D.D. The present location was first set apart as the site for an Episcopal School in 1832 when the present "Grove" was purchased for the establishing of a school for boys. This was not successful and the property passed back into private hands.

Dr. Aldert Smedes was conducting a successful girls' school in New York City when in 1842 Bishop Ives met him and laid before him the opportunity in his North Carolina diocese. Dr. Smedes determined on the effort; came to Raleigh with a corps of teachers; gave St. Mary's its name and threw open its doors on May 12, 1842.

From the first the school was a success and for the remainder of his life Dr. Smedes allowed nothing to interrupt the work he had undertaken. During the War between the States St. Mary's was at the same time school and refuge for those driven from their homes.

On April 25th, 1877, Dr. Smedes died, leaving St. Mary's to the care of his son, Rev. Dr. Bennett Smedes, who carried on his father's work as a sacred trust.

All this time St. Mary's was a Church School in the truest sense, but it was a private enterprise, and permanence required that it have a corporate existence, so in 1897 Dr. Bennett Smedes proposed to the Diocese of North Carolina that the Church should take charge of the School. The offer was accepted and in the fall of 1897 a charter was granted by the General Assembly.

Dr. Bennett Smedes, who had long wished for this disposition of St. Mary's, continued as Rector until his death on February 22nd, 1899. To succeed him the Trustees called the Rev. Theodore DuBose Bratton, Rector of the Church of the Advent, Spartanburg, S. C., and a teacher of long training. In September, 1899, Dr. Bratton took charge and for four years administered the affairs of the School very successfully. In May, 1903, he was chosen Bishop of Mississippi. In September, 1903, the Rev. McNeely DuBose became Rector and the School continued its useful career under his devoted care for four years, until he resigned in May, 1907, to resume parish work. Since September, 1907, the School has prospered under the fifth Rector, the Rev. George W. Lay.



MISS ELEANOR WALTER THOMAS
Lady Principal

Faculty and Officers of St. Mary's

1915-1916

REV. GEORGE W. LAY, D.C.L. *Rector*
MISS ELEANOR W. THOMAS *Lady Principal*
ERNEST CRUIKSHANK *Secretary and Business Manager*

Academic Department

REV. GEORGE W. LAY *Bible, Ethics and Pedagogy*
(A.B., Yale, 1882; B.D., General Theological Seminary, 1885; D.C.L., University of the South, 1915. Master in St. Paul's School, Concord, N. H., 1888-1907. Rector of St. Mary's, 1907—)

ELEANOR W. THOMAS *English and Literature*
(A.M., College for Women, S. C., 1900; B.S., Columbia University, N. Y., 1913. St. Mary's, 1900-'04; 1905-'12; 1913—)

WILLIAM E. STONE *History and German*
(A.B., Harvard, 1882. Principal Edenton, N. C., Academy, 1901-'02; Master in Porter Academy, Charleston, 1902-'03. St. Mary's, 1903—)

ERNEST CRUIKSHANK *Psychology and Current History*
(A.B., Washington College, Md., 1897; A.M., 1898; graduate student Johns Hopkins University, 1900. St. Mary's, 1903—)

MARIE RUDNICKA *French*
(Cours de l'Hotel de Ville, Paris. Instructor in St. Mary's College, Dallas, 1907-'12. St. Mary's, 1912—)

HELEN URQUHART *Latin*
(A.B., Mt. Holyoke, 1910. Instructor St. Mary's, 1910-'13; Winthrop College, 1913-'14. St. Mary's, 1914—)

FRANCES RANNEY BOTTUM *Science*
(San Diego, Cal., Normal College, 1910-'11; graduate St. Mary's, 1912; summer student Teachers' College, Columbia University, 1913-'14. St. Mary's, 1912—)

JEWETT SNOOK *Mathematics*
(A.B., Wellesley College, 1910. Teacher in the Berwick School (Va.), 1910-'12; St. Mary's Seminary (Md.), 1914-'15. St. Mary's, 1915—)

JANET B. GLEN *English and Italian*
(Lake Erie College, Painesville, O.; Cornell University; summer student University of Chicago, 1911; R. Scuola di Recitazione, Florence, Italy, 1910; summer student, Junta Para Ampliacion de Estudios, Madrid, 1912-13. Teacher in Oberlin College, 1887-91; Rye Seminary, New York, 1899-1908; The Leete School, New York City, 1911-14; St. Mary's 1894-'97; 1915—)

FLORENCE C. DAVIS *Elocution*
(B.O., Emerson College, Boston, 1906; Elmira College; Posse Gymnasium. St. Mary's, 1911—)



MR. CRUIKSHANK
MISS URQUHART
MISS BOTTUM

MISS C. FENNER
MLLE. RUDNICKA
MISS GLEN

MR. STONE
MISS SNOOK
MISS DAVIS

MABEL H. BARTON *Physical Training*
(Graduate Sargent School, 1914. St. Mary's, 1914—)

LUCY ELIZABETH ROBINS *Preparatory School*
(Graduate State Normal School, Farmville, Va., 1909; teacher in Wakefield, Va.,
Schools; Bristol, Va., Schools. St. Mary's, 1913—)

KATE MCKIMMON *Primary School*
Student and teacher at St. Mary's since 1861.)

Music Department

MARTHA A. DOWD, Director *Piano, Theory, History of Music*
(Graduate of St. Mary's, 1884; pupil of Kursteiner, Sophus Wiig, Albert Mack. St.
Mary's, 1886—; Director of Music, 1908—)

R. BLINN OWEN *Organ, In charge of Voice*
(M.Mus., Detroit School of Music; pupil of Zimmermann, Mazurette, Theo. Beach of
Detroit; Kreutschmar, in New York, Ellison Van Hoose. Teacher in Detroit and New
York; private teacher in Bluefield, W. Va., and Greensboro, N. C., 1906-'09. St. Mary's,
1909—)

NELLY AGATHA PHILLIPS *Piano*
(Graduate New England Conservatory of Music, 1912; pupil of Carl Baerman. St.
Mary's, 1912—)

BEATRICE MURIEL ABBOTT *Violin*
(Pupil of Van Hulsteyn at Peabody Conservatory, Baltimore, 1903-'09; of Sevoik in
Prague, 1906-'09; first diploma, Conservatory of Music, Geneva, Switzerland, 1911.
Instructor in Wells College; in Columbia College, S. C. St. Mary's, 1913—)

REBECCA HILL SHIELDS *Piano*
(Graduate St. Mary's, 1910; certificate in Piano, St. Mary's, 1910; certificate, Virgil
Piano School, New York, 1912; Passifern, 1911-'13. St. Mary's, 1913—)

ZONA MAY SHULL *Voice*
(Certificate in Voice, St. Mary's, 1911; diploma, 1912; certificate in Piano, 1912. Pupil
of Blinn Owen; pupil of Ellison Van Hoose. Assistant in St. Mary's, 1911-'12; private
teacher, Bluefield, W. Va., 1913. St. Mary's, 1913—)

EBIE ROBERTS *Piano*
(English Certificate, St. Mary's, 1903. Pupil in Piano, of James P. Brawley, Blinn
Owen; in Harmony, of John A. Simpson; in Organ, of Wade R. Brown. Private teacher.
St. Mary's, 1913—; Organist, 1913-'14.

LOUISE SEYMOUR *Piano*
(Graduate New England Conservatory, 1911-'12. St. Mary's 1914—)

Art Department

CLARA I. FENNER, Director *Drawing, Painting, Design, etc.*
(Graduate Maryland Institute School of Art and Design; special student Pratt Insti-
tute, 1905; special student in Paris, 1907. Director of Art, St. Mary's, 1892-'96; 1902—)

Elocution Department

FLORENCE C. DAVIS, Director *Elocution, Dramatic Art*
(B.O., Emerson College, Boston, 1906; Elmira College (N. Y.); Posse Gymnasium,
Boston; private studio, Elmira; substitute teacher, Miss Metcalf's School, Tarrytown,
1903; teacher, Reidsville Seminary (N. C.), 1909-'11. Director of Elocution, St. Mary's
1911—)



MISS ABBOTT
MISS PHILLIPS
MISS SHULL

MISS ROBERTS
MISS DOWD
MISS SEYMOUR

MR. OWEN
MISS BARTON
MISS SHIELDS

Business Department

LIZZIE H. LEE.....*Stenography, Typewriting and Bookkeeping*
(Director of the Department, 1896—)

JULIET B. SUTTON.....*Assistant*
(St. Mary's, 1898—)

Household Arts Department

HAZEL A. METCALF.....*Domestic Science, Domestic Art*
(Associate, Lewis Institute, Chicago, 1913. St. Mary's, 1913—)

Officers 1916-16

REV. GEORGE W. LAY.....*Rector*

MISS ELEANOR W. THOMAS.....*Lady Principal*

MISS LILLIAN FENNER.....*Housekeeper*
(Assistant Housekeeper, St. Mary's, 1911-'13; Housekeeper, 1913—)

MRS. EDITH C. HOLMES.....*Assistant Housekeeper*
(Certificate Domestic Science, St. Mary's, 1915; Assistant Housekeeper, 1915—)

MRS. JANET L. BOTTUM.....*Matron of the Infirmary*
(St. Mary's, 1915—)

DR. A. W. KNOX.....*School Physician*
(St. Mary's, 1907—)

ERNEST CRUIKSHANK.....*Secretary and Business Manager*

MISS LIZZIE H. LEE.....*Bookkeeper*

MISS JULIET B. SUTTON.....*Stenographer*

MISS MARGARET H. BOTTUM.....*Clerk*
(Graduate St. Mary's, 1915—)

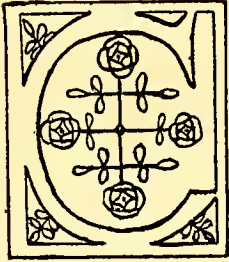
MRS. MARY IREDELL.....*Agent of the Trustees*



MISS HOLMES
MISS M. BOTTUM
MISS METCALF

MISS L. FENNER
MISS MCKIMMON
MISS LEE

DR. KNOX
MISS SUTTON
MISS ROBINS



LASS POEM

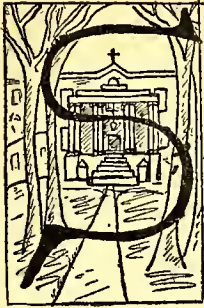
Tomorrow, when the sun's
First brilliant rays
Have put to flight the lingering
Stars of dawn,
Our lives shall turn, and seek
In unknown ways
The new life, leave with sadness
That now gone.

Together, for the last time
We shall hear
The pealing of the bells
So clear, so strong,
Then shall we bid adieu
To friends held dear,
And turn aside to paths
Now broad, now long.

Now, the portals of tomorrow
Stand so close
And still within them spreads out
Far, alone,
What mortal man ne'er sees,
Nor ever knows,
The glowing, silent future,
Vast unknown.

Then, dawn of near tomorrow,
Hasten on,
And with your golden rays
So dazzling bright,
Oh, cast upon our separate
Paths at dawn
Your clear, your ever faithful
Guiding light.

F. R. G.



SENIORS

The Class of 1916

Colors: Green and White

Flower: Marechal Neil Rose

Motto: Facta non Verba

MARY AUNINO FLOYD, *President*

FANNIE MARIE STALLINOS, *Vice-President*

KATHERINE WIMBERLY BOURNE, *Prophet*

FRANCES ROYER GEITNER, *Poet*

JOSEPHINE SAVILLA WILSON, *Historian*

Class Adviser: MR. CRUIKSHANK

Class Roll

KATHERINE WIMBERLY BOURNE, Tarboro, N. C.

ANNIE SUTTON CAMERON, Hillsboro, N. C.

MARY AUNINO FLOYD, St. Stephen's, S. C.

SELENA EMMA GALBRAITH, Waverly Mills, S. C.

FRANCES ROYER GEITNER, Hickory, N. C.

RENA HOYT HARDINO, Washington, N. C.

SUSAN ELIZABETH LAMB, Henderson, N. C.

FANNIE MARIE STALLINGS, Suffolk, Va.

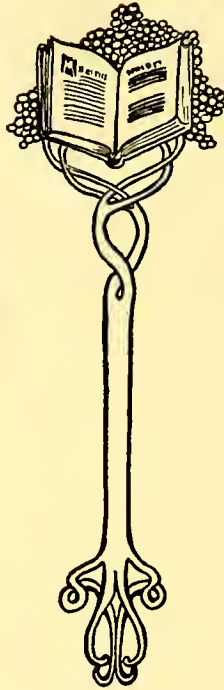
JOSEPHINE SAVILLA WILSON, San Louis Potosi, Mexico

HELEN CHERRY WRIGHT, Boardman, N. C.



KATHERINE WIMBERLY
BOURNE
Tarboro, N. C.

Treasurer, Alpha Rho, '15
Chapel Librarian, '15
Class Prophet, '16
Chapel Usher, '16
Inter-Society Debater, '14-'15
Business Manager, *Muse*, '16



ANNIE SUTTON CAMERON
Hillsboro, N. C.

Vice-President, Alpha Rho, '15
President, Sigma, '15
Monthly *Muse* Board, '15
Treasurer, Altar Guild, '15
President, Altar Guild, '15
Editor-in-Chief *Muse*, '15
Inter-Society Poet, '16

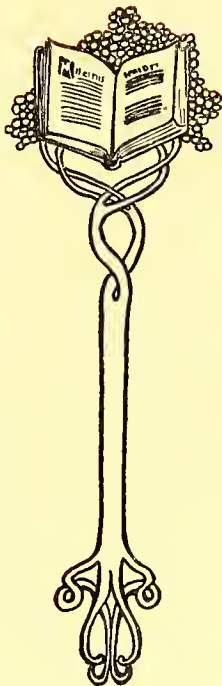
"Many days shall see her,
And yet no day without a deed to
crown it."

"High sparks of honor in thee I have
seen."



MARY AUNING FLOYD
St. Stephens, S. C.

Class President, '15
Secretary, Alpha Rho, '15
Secretary, *Muse Club*, '15
Commencement Marshal, '15
Inter-Society Debater, '15
Class President, '16
Chairman, *Muse Club*, '16



SELENA EMMA GALBRAITH
Waverly Mills, S. C.

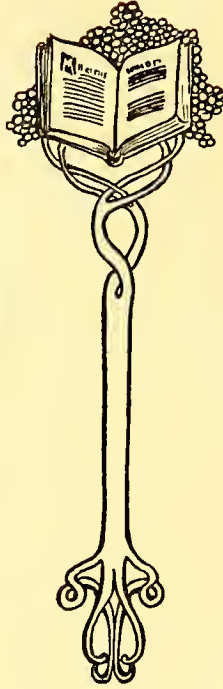
"And those around her from her shall
learn,
The perfect ways of honor."

"She is of so free, so kind, so apt, so
blessed disposition."



FRANCES ROYER GEITNER
Hickory, N. C.

President, Alpha Rho, '15-'16
Vice-President, Class, '15
Business Manager, Dramatic Club,
'16
Class Poet, '16



RENA HOYT HARDING
Washington, N. C.

Inter-Society Debater, '15
Secretary, Epsilon Alpha Pi, '15
President, Epsilon Alpha Pi, '16
Chapel Usher, '16
Monthly *Muse* Board, '16
Treasurer, Altar Guild, '16
Class Testator, '16
Inter-Society Essayist, '16

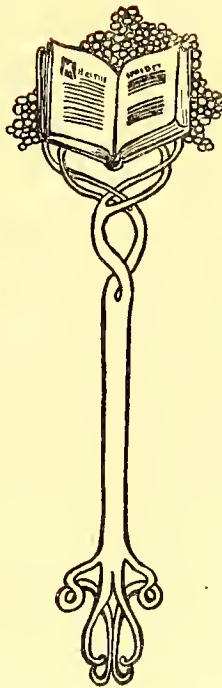
"High erected thoughts, seated in the
heart of courtesy."

"Falseness cannot come from thee,
. . . thou seem'st a palace
For crown'd truth to dwell in."



SUSAN ELIZABETH LAMB
Henderson, N. C.

Vice-President, Alpha Rho, '16



FANNIE MARIE STALLINGS
Suffolk, Va.

Secretary-Treasurer, Sigma, '15
Assistant Business Manager, *Muse*,
'15
Vice-President, Class, '16
Vice-President, Epsilon Alpha Pi,
'16
Business Manager, *Muse*, '16

"'Tis death to me to be at enmity.
I hate it and desire all good men's
love."

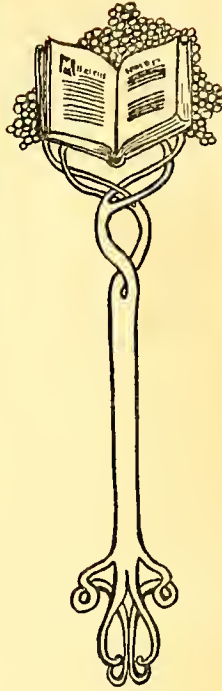
"If I do vow a friendship,
I'll perform it
To the last article."



JOSEPHINE SAVILLA WILSON
San Louis, Potosi, Mexico

Mu Tennis Captain, '15-'16
Inter-Society Debater, '15
Secretary-Treasurer, Mu, '15
Stage Manager, Dramatic Club, '15
First Vice-President, Epsilon Alpha
Pi, '16

Chapel Marshal, '16
President, Dramatic Club, '16
Inter-Society Story Writer, '16



HELEN CHERRY WRIGHT
Boardman, N. C.

Commencement Marshal, '15
Second Vice-President, Epsilon Al-
pha Pi, '15
President, Epsilon Alpha Pi, '16
Secretary-Treasurer, Class, '16
Chapel Marshal, '16

"And yet, good faith, I wish'd myself
a man,
Or that we women had men's privi-
lege
Of speaking first."

"I know you have a gentle, noble tem-
per,
A soul as even as a calm."



Candidates for Diplomas in Music



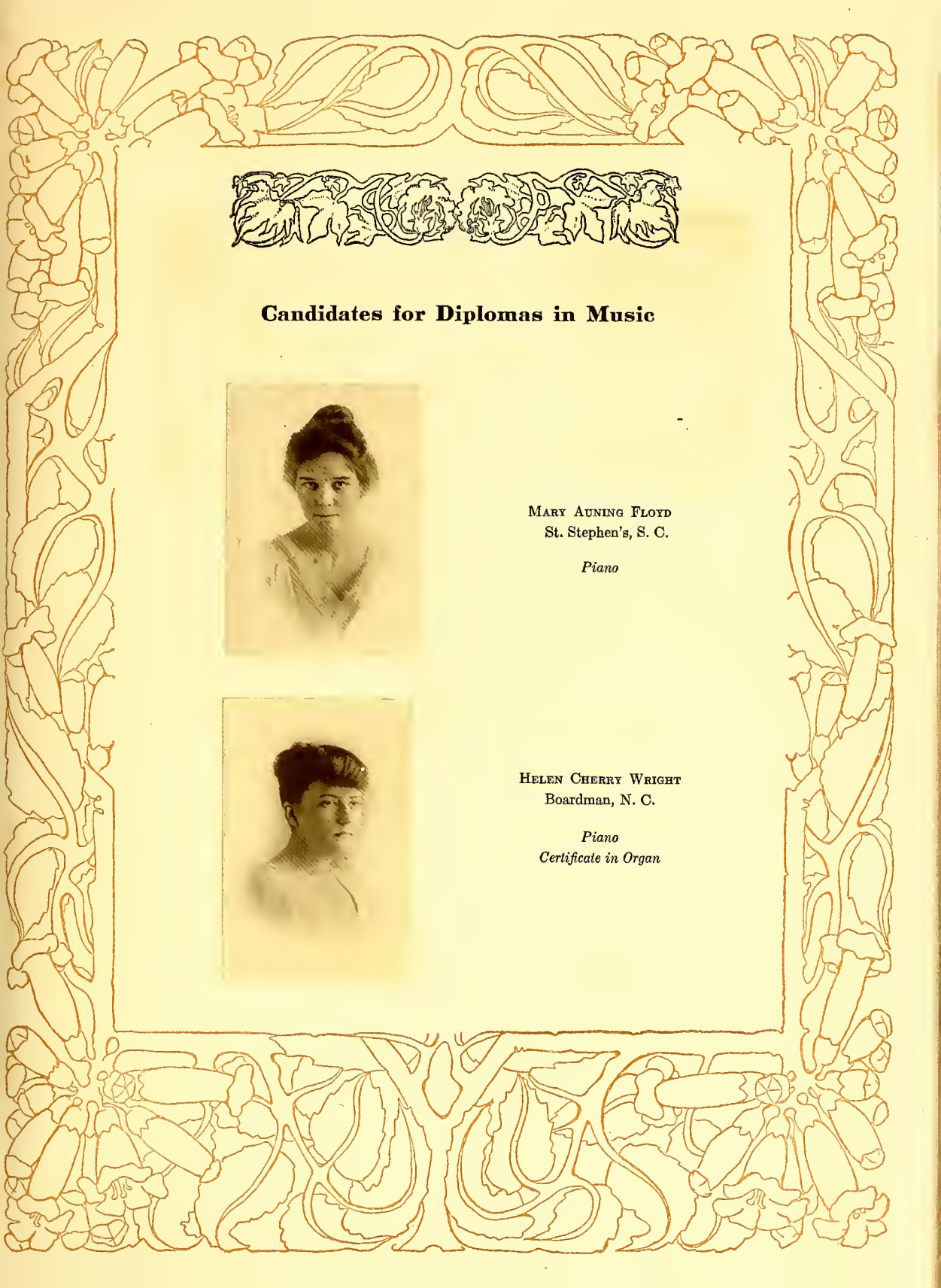
MARY AUNING FLOYD
St. Stephen's, S. C.

Piano



HELEN CHERRY WRIGHT
Boardman, N. C.

Piano
Certificate in Organ



Candidates for Certificates



MARTHA BOARDMAN WRIGHT
Boardman, N. C.

Piano
Voice



LOIS PUGH
Savannah, Ga.

Elocution

Candidates for Certificates

JANE HOWARD NORMAN
Halifax, N. C.

Elocution



VIOLET MARIE BRAY
Tryon, N. C.

Teacher's Certificate in Piano





THE CLASS OF 1917

Judd	Rose	Jenkins	Allen	Cheatham
	Peele	Robinson	Relyea	
	Badham	Miss Thomas	Layman	



JUNIORS

The Class of 1917

Colors: Lavender and purple

Flower: Violet

Motto: Aim high, but reach higher

ALICE COHN LATHAM, *President*

EMMA HUDOINS BADHAM, *Vice-President*

ELMYRA JENKINS, *Secretary*

VIROINIA CAROLINE ALLEN, *Treasurer*

Class Roll

VIROINIA CAROLINE ALLEN, Raleigh, N. C.

EMMA HUDGINS BADHAM, Edenton, N. C.

FRANCES HORN CHEATHAM, Henderson, N. C.

JANET FAIRLEY, Rockingham, N. C.

ELMYRA JENKINS, Roanoke Rapids, N. C.

GOLDA FAX JUDD, Raleigh, N. C.

ALICE COHN LATHAM, Plymouth, N. C.

EVA IRENE PEELE, Williamston, N. C.

ELEANOR RELYEA, Washington, D. C.

ANNIE HUSKE ROBINSON, Toccoa, Ga.

NELLIE COOPER ROSE, Henderson, N. C.



THE CLASS OF 1918

MORGAN
BLEAKLEY

BACON
HOLMES
DRANE

THORN
FOLK

BORDEN
FAIRLEY
MR. STONE

BRAY
PUGH
BEATTY



SOPHOMORES

The Class of 1918

Colors: Black and gold

Flower: Blackeyed Susan

Motto: Climb though the rocks be rugged

KATHARINE DRANE, *President*

ELIZABETH CORBITT, *Vice-President*

LAURA BEATTY, *Secretary-Treasurer*

Faculty Adviser: MR. STONE

Class Roll

ELSPETH ASKEW, Farmville, N. C.

SARAH BACON, Savannah, Ga.

LAURA BEATTY, Sudlersville, Md.

MARY BLEAKLEY, Augusta, Ga.

SARAH BORREN, Goldsboro, N. C.

VIOLET BRAY, Tryon, N. C.

ELIZABETH CORBITT, Henderson, N. C.

KATHARINE DRANE, Edenton, N. C.

ELIZABETH FOLK, Raleigh, N. C.

CAROLINE HOLMES, Asheville, N. C.

HENRIETTA MORGAN, Pittsboro, N. C.

LOIS PUGH, Savannah, Ga.

LILLIAN RIDDICK, West Raleigh, N. C.

MARION SMITH, Raleigh, N. C.

ALMA SPENCER, Fairfield, N. C.

RUBY THORNE, Kingstree, S. C.



THE CLASS OF 1919



FRESHMEN

The Class of 1919

Colors: Scarlet and gray

Flower: Scarlet Poppy

Motto: He who conquers, conquers himself

JOSEPHINE MYERS, *President*

ESTELLE RAVENEL, *Vice-President*

FRANCES HILLMAN, *Secretary-Treasurer*

Faculty Adviser: MISS SUTTON

Class Roll

B. ALBERTSON	C. GILMER	H. MASON
L. ARBOOAST	M. GOLD	N. MOYE
E. BARBER	F. HILLMAN	M. MULLINS
E. BLODOETT	D. HITCHCGCK	J. MYERS
H. BRIGHAM	D. HOLT	J. NORMAN
J. BRYAN	C. HOWARD	A. PRATT
N. BURKE	A. HUGHES	E. RAVENEL
M. COLLINS	C. HYATT	S. RAWLINGS
E. DAVIS	A. IVEY	M. SUOG
J. DELOATCH	M. JEROER	J. THOMAS
F. DENHAM	L. JONES	F. TILLOTSON
M. DEPASS	M. JONES	F. WATERS
E. DORSEY	V. JONES	H. WEAKLEY
L. EDWARDS	V. JUTKINS	S. WOOD
K. ELLIOTT	C. KENT	N. WOOLFORD
G. FOSTER	M. KIRTLAND	M. WRIGHT
J. FROHNE	E. KNIGHT	E. YATES
R. GEBERT	C. MARDRE	



THE UPPER PREPARATORY CLASSES



PREPS

(The Upper Preparatory Department)

Colors: Pink and baby blue

Flower: Lily of the Valley

Motto: Not yet, but soon

JACQUE SMITH, *President*

LUCILLE ANDERSON, *Vice-President*

Roll

K. ARBOGAST	M. MARSTON
L. ANDERSON	G. MERRIMON
A. BUDD	S. NORTROP
R. BARTHOLOMEW	V. POTTLE
H. BENNETT	C. PAUL
A. BRINLEY	L. PAUL
H. A. COPELAND	V. STATEN
H. R. COPELAND	H. SNYDER
R. DIXON	E. SUBLETT
D. DANIELS	M. STOCKTON
M. DOUGHERTY	J. SMITH
M. HOLT	M. SPRINGS
L. JENSEN	F. SEARS
M. LYNAB	A. TAYLOR
V. LASSITER	E. WADDELL
V. WILLIAMS	



THE SCHOOL

LITERARY SOCIETIES





THE EPSILON ALPHA PI LITERARY SOCIETY

Epsilon Alpha Pi Literary Society

(Founded 1900)

Colors: Green and gold

Flower: Jonquil

Motto: Esse quam videri

Officers

Advent Term

HELEN WRIGHT.....	President.....	RENA HARDINO
FANNIE STALLINOS.....	First Vice-President.....	JOSEPHINE WILSON
ALICE LATHAM.....	Second Vice-President.....	HELEN WRIGHT
RENA HARDINO.....	Secretary.....	ALICE LATHAM
ELIZABETH CORBITT.....	Treasurer.....	ELIZABETH CORBITT

Easter Term

Inter-Society Contest Winners

RENA HOYT HARDINO, *Senior Essay*

JOSEPHINE S. WILSON, *Story*

Commencement Marshals

ALICE COHN LATHAM, *Chief*

MARTHA WRIGHT

ELMYRA JENKINS

Honorary Members

DR. LAY
MISS LEE

MISS MCKIMMON
MR. OWEN

MISS EDITH HOLMES
MISS MARGARET BOTTM

Members

BRAY, V.
BURKE, N.
CONVERSE, A.
CORBITT, E.
DEPASS, M.
DELOATCH, J.
DANIELS, N.
EDWARDS, L.
ELLIOTT, K.
FAIRLEY, J.
FOSTER, G.
FROHNE, J.
GALBRAITH, S.
HARDINO, R. H.

HOLMES, C.
JONES, M.
JENKINS, M.
KIRTLAND, M.
JEROER, M.
LATHAM, A.
LASSITER, V.

LAY, ELLEN
LAUGHINGHOUSE, H.
MCÉLHANNON, R.
MERRIMON, G.
MOYE, N.
MORGAN, H.
MULLINS, M.

NORMAN, J.
PRATT, A.
PAUL, C.
PAUL, L.
SWETT, D.
STEWART, K.
TREDWELL, M.
STALLINGS, F.
SUBLETT, E.
WILEY, S.
WILSON, J.
WOOLFORD, N.
WRIGHT, M.
WRIGHT, H.
YATES, E.



Faculty Adviser: MR. CRUIKSHANK



THE SIGMA LAMBDA LITERARY SOCIETY

Sigma Lambda Literary Society

(Founded 1900)

Colors: Purple and gray

Flower: Yellow Jessamine

Motto: Lit with the sud

Officers

Advent Term

ELEANOR RELYEA.....	President.....	ELEANOR RELYEA
ANNIE ROBINSON.....	Vice-President.....	KATHARINE DRANE
EMMA BADHAM.....	Secretary.....	EMMA BADHAM
RUBIE THORN.....	Treasurer.....	ANNIE ROBINSON
KATHARINE DRANE.....	Critic.....	SARA BORDEN
FRANCES CHEATHAM.....	Historian.....	FRANCES CHEATHAM
LAURA BEATTY.....	Senior Teller.....	DOLORES HOLT
JACKSONIA WATT.....	Junior Teller.....	ETHEL YATES

Easter Term

Inter-Society Contest Winners

ANNIE HUSKE ROBINSON, *Essay*

KATHARINE DRANE, *Essay*

Commencement Marshals

SARA SHELLMAN BACON

KATHARINE PARKER DRANE

Honorary Members

MISS DAVIS
MISS C. FENNER

MISS L. FENNER
MISS GLENN

MISS SHIELDS
MR. STONE

MISS SUTTON
MISS THOMAS

Members

ALLEN, V. C.
ARBOCAST, K.
ARBOCAST, L.
ASKEW, E.
BACON, S.
BADHAM, E.
BARTHOLOMEW, R.
BEATTY, L.
BORDEN, S.
BRIGHAM, H.
BRINLEY, A.
BRYAN, J.
BLODGETT, E.
BOND, C.
BEST, M.
BENNETT, H.
CHEATHAM, F.

DAVIS, E.
DENHAM, F.
DODD, N.
DORSEY, E.
DRANE, K.
GEBERT, R.
GILMER, K.

GARRIOUES, A.
HOLT, D.
HOLT, M.
HITCHCOCK, D.
IVEY, A.
JUTKINS, V.
KINCAID, R.

MARSTON, M.
MCLAWS, L.
NORTHROP, S.
PUGH, L.
RELYEA, E.
REGISTER, J.
ROBINSON, A.
STOCKTON, M.
SEARS, F.
SINCLAIR, M.
SMITH, J.
SUGG, M. E.
THORNE, R.
TILLOTSON, F.
WALKER, C.
WATERS, F.
YATES, E.



Faculty Adviser: MISS THOMAS



THE ALPHA RHO LITERARY SOCIETY

Alpha Rho Literary Society

(Founded 1912)

Colors: Garnet and gray

Flower: Daisy

Motto: *Facta non verba*

Officers

FRANCES GEITNER, *President*

SUE LAMB, *First Vice-President*

ESTELLE RAVENEL, *Second Vice-President*

FRANCES HILLMAN, *Secretary*

NELLIE ROSE, *Treasurer*

JOSEPHINE MYERS, *Senior Teller*

CLARA MARDRE, *Junior Teller*

Inter-Society Contest Winner

ANNIE SUTTON CAMERON, *Poem*

Commencement Marshals

NELLIE C. ROSE

ESTELLE RAVENEL

Members

ALBERTSON, B.
ANDERSON, L.
BARBER, E.
BOURNE, K.
BRAXTON, S.
BUDD, A.
CAMERON, A.
CARTER, R.
COLLINS, M.
COPELAND, H. A.
COPELAND, H. R.
CULVER, D.
DIXON, R.
ENGLISH, M.
FLOYD, M.
FREEMAN, A. M.

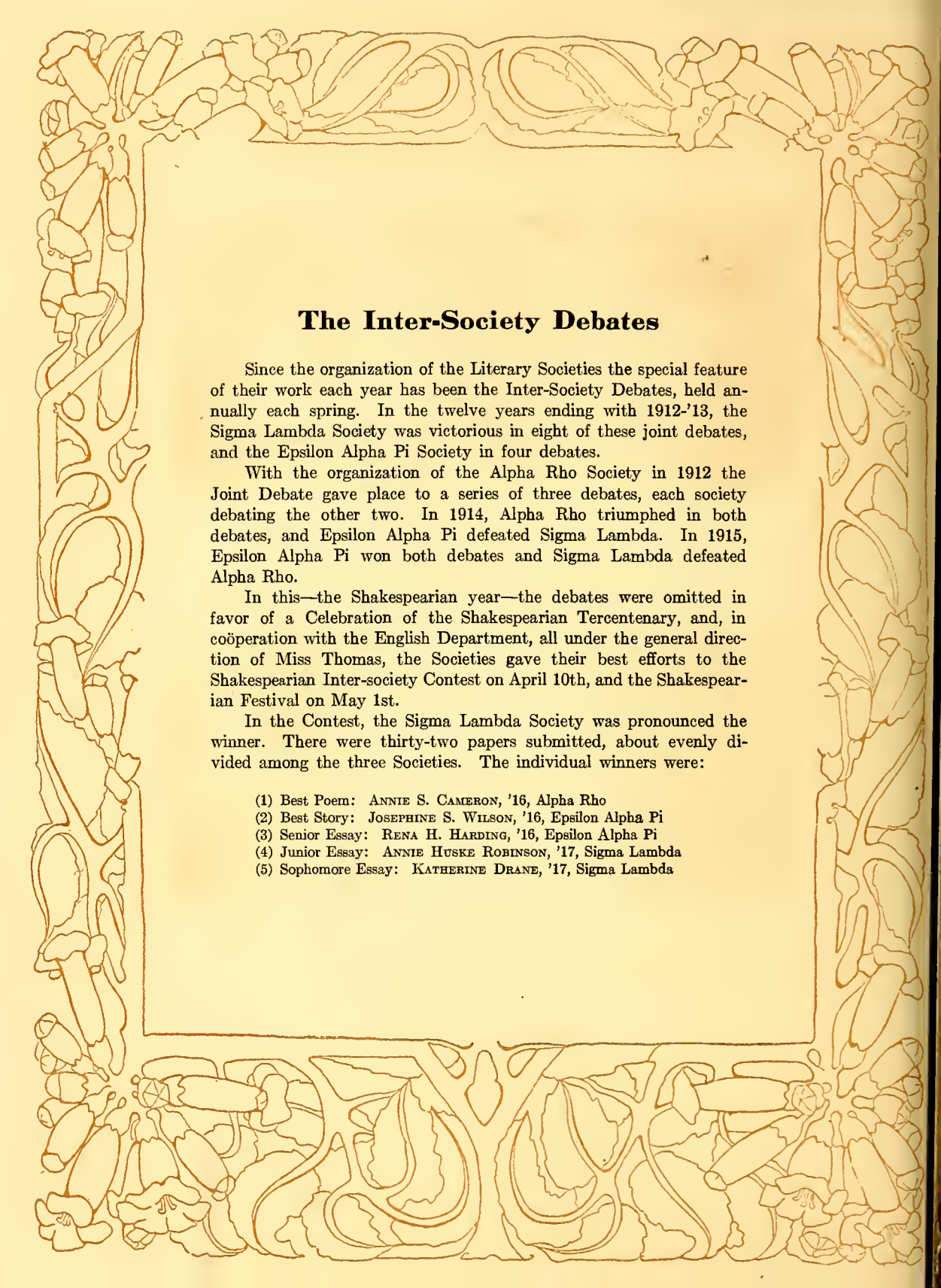
GEITNER, F.
GOLD, M.
HENRY, D.
HILLMAN, F.
HOLLADAY, M.
HOWARD, C.
HUGHES, A.
HYATT, C.

JONES, C.
JONES, L.
JONES, V.
KENT, C.
KNIGHT, E.
LAMB, S.
MARDRE, C.
MASON, H.

MYERS, J.
PEELE, E.
POTTLE, V.
RAVENEL, E.
RAWLINGS, S.
ROSE, N.
SNYDER, H.
SPRINGS, M.
STEWART, K.
TAYLOR, A.
THOMAS, J.
WADDELL, E.
WOOD, S.
WALL, R.
WILLIAMS, R.
WILLIAMS, V.
WEAKLEY, H.



Faculty Adviser: MISS BOTTUM



The Inter-Society Debates

Since the organization of the Literary Societies the special feature of their work each year has been the Inter-Society Debates, held annually each spring. In the twelve years ending with 1912-'13, the Sigma Lambda Society was victorious in eight of these joint debates, and the Epsilon Alpha Pi Society in four debates.

With the organization of the Alpha Rho Society in 1912 the Joint Debate gave place to a series of three debates, each society debating the other two. In 1914, Alpha Rho triumphed in both debates, and Epsilon Alpha Pi defeated Sigma Lambda. In 1915, Epsilon Alpha Pi won both debates and Sigma Lambda defeated Alpha Rho.

In this—the Shakespearian year—the debates were omitted in favor of a Celebration of the Shakespearian Tercentenary, and, in cooperation with the English Department, all under the general direction of Miss Thomas, the Societies gave their best efforts to the Shakespearian Inter-society Contest on April 10th, and the Shakespearian Festival on May 1st.

In the Contest, the Sigma Lambda Society was pronounced the winner. There were thirty-two papers submitted, about evenly divided among the three Societies. The individual winners were:

- (1) Best Poem: ANNIE S. CAMERON, '16, Alpha Rho
- (2) Best Story: JOSEPHINE S. WILSON, '16, Epsilon Alpha Pi
- (3) Senior Essay: RENA H. HARDING, '16, Epsilon Alpha Pi
- (4) Junior Essay: ANNIE HUSKE ROBINSON, '17, Sigma Lambda
- (5) Sophomore Essay: KATHERINE DRANE, '17, Sigma Lambda



ANNIE S. CAMERON, '16
Alpha Rho
Poem



RENA H. HARDING, '16
Epsilon Alpha Pi
Essay



JOSEPHINE S. WILSON, '16
Epsilon Alpha Pi
Story



ANNIE H. ROBINSON, '17
Sigma Lambda
Junior Essay



KATHARINE DRANE, '18
Sigma Lambda
Sophomore Essay

WINNERS OF THE SHAKESPEARIAN CONTEST



"HER MAJESTY'S PLAYERS" IN "MIDSUMMER NIGHT'S DREAM"
(The Senior English Class, as they appeared at the Shakespearean Festival, held on the night of
May 1, 1916)



The Shakespearian Celebration

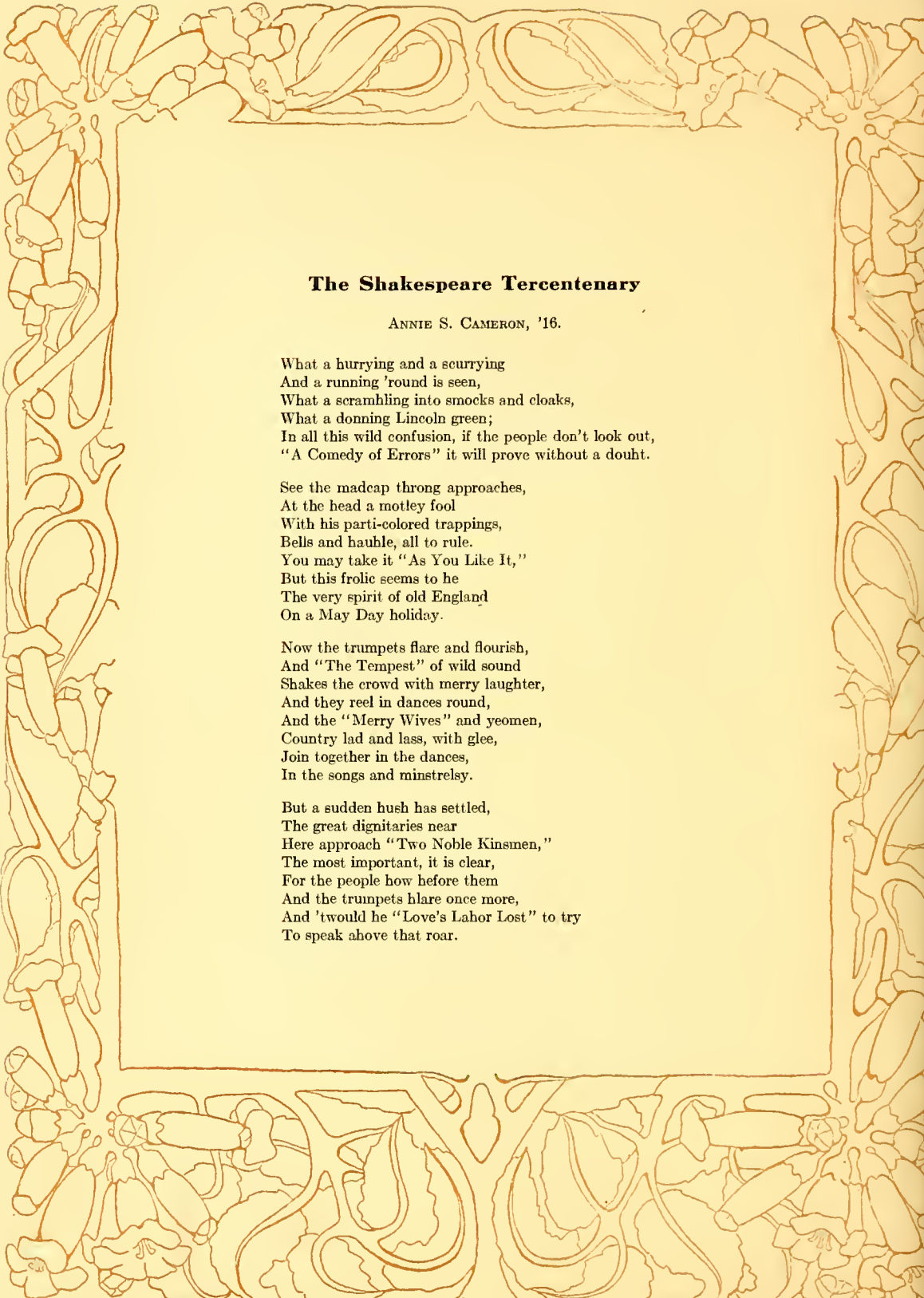
Besides the Faculty Production of "Alice in Wonderland," which, of course, marks any year as "set apart," the Shakespearian Tercentenary Celebration is the great distinctive feature of the year. It was with a certain sense of relief that for this one season the debates were laid aside and every one entered wholeheartedly into the preparation for the celebration. This was divided into three parts. First, there was a Shakespearian literary contest under the direction of the three Literary Societies meant to conserve the spirit of rivalry engendered by the Debates. The culmination of this Contest was a public inter-society meeting held in the Auditorium on the evening of April 10th, and at this meeting were read the winning contributions. In this contest Alpha Rho led in the poetry, having the four best poems; Epsilon Alpha Pi came out as first winner in a story and one essay; and Sigma Lambda was winner of two essays and second in a story and essay, thus proving herself the victor.

The second part of the Celebration was the Tercentenary Festival itself, which was held under the direction of Miss Thomas and the three Literary Societies, and was considered by many people to be by far the prettiest thing ever given at St. Mary's. The Festival was held in the Grove on the slope back of the Auditorium on the night of May 1st and was a most wonderful success. Every one in the School took part, dressed in Elizabethan costume, and the merry gathering of Lords, Ladies, and gaily-dressed villagers made a bright scene not soon to be forgotten.

The third part of the celebration was the Commencement Play, "As You Like It," given by the Dramatic Club under the direction of Miss Davis.

The girls of 1916 feel that it has been a privilege to be able to have a part in the great Tercentenary Celebration, which is this year being observed throughout England and America, and the many festivities centering around its observance at St. Mary's mark a very bright spot in the memories of the year.

A. S. C.



The Shakespeare Tercentenary

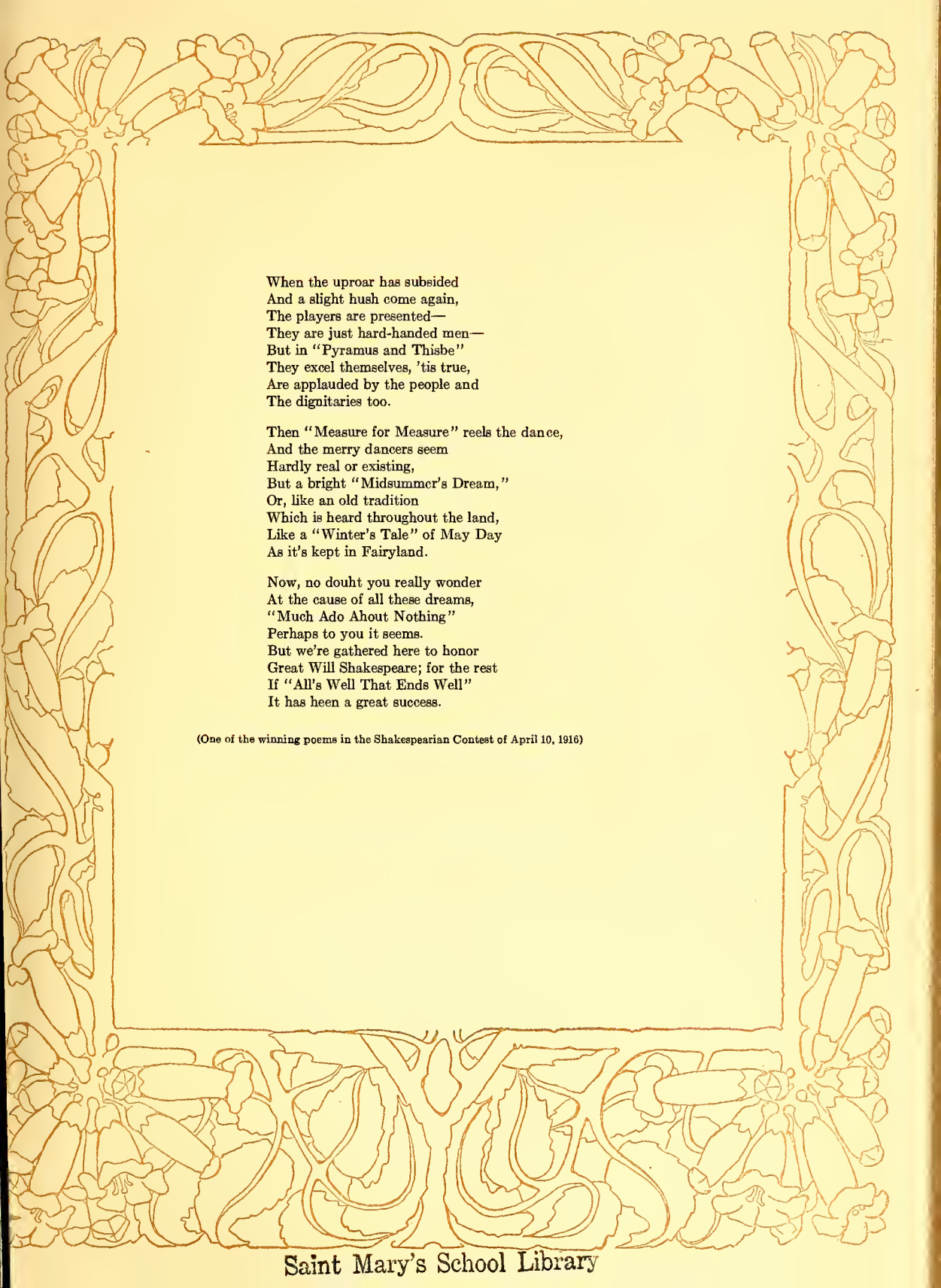
ANNIE S. CAMERON, '16.

What a hurrying and a scurrying
And a running 'round is seen,
What a scrambling into smocks and cloaks,
What a donning Lincoln green;
In all this wild confusion, if the people don't look out,
"A Comedy of Errors" it will prove without a doubt.

See the madcap throng approaches,
At the head a motley fool
With his parti-colored trappings,
Bells and hauble, all to rule.
You may take it "As You Like It,"
But this frolic seems to be
The very spirit of old England
On a May Day holiday.

Now the trumpets flare and flourish,
And "The Tempest" of wild sound
Shakes the crowd with merry laughter,
And they reel in dances round,
And the "Merry Wives" and yeomen,
Country lad and lass, with glee,
Join together in the dances,
In the songs and minstrelsy.

But a sudden hush has settled,
The great dignitaries near
Here approach "Two Noble Kinsmen,"
The most important, it is clear,
For the people bow before them
And the trumpets hlar once more,
And 'twould he "Love's Labor Lost" to try
To speak above that roar.



When the uproar has subsided
And a slight hush come again,
The players are presented—
They are just hard-handed men—
But in "Pyramus and Thisbe"
They excel themselves, 'tis true,
Are applauded by the people and
The dignitaries too.

Then "Measure for Measure" reels the dance,
And the merry dancers seem
Hardly real or existing,
But a bright "Midsummer's Dream,"
Or, like an old tradition
Which is heard throughout the land,
Like a "Winter's Tale" of May Day
As it's kept in Fairyland.

Now, no doubt you really wonder
At the cause of all these dreams,
"Much Ado About Nothing"
Perhaps to you it seems.
But we're gathered here to honor
Great Will Shakespeare; for the rest
If "All's Well That Ends Well"
It has been a great success.

(One of the winning poems in the Shakespearian Contest of April 10, 1916)



Commencement Marshals, 1916

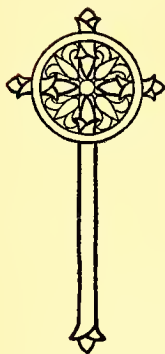
ALICE COHN LATHAM, '17, Epsilon Alpha Pi, Chief

MARTHA BOARDMAN WRIGHT ELMYRA JENKINS, '17	} Epsilon Alpha Pi
KATHARINE PARKER DRANE, '18 SARAH SHELLMAN BACON	} Sigma Lambda
NELLIE COOPER ROSE, '17 ESTELLE STROZIER RAVENEL	} Alpha Rho



Chapel Officers, 1915-16

Chapel Marshals: JOSEPHINE WILSON and HELEN WRIGHT
Wardens: MARY FLOYD and SUE LAMB
Ushers: KATHARINE BOURNE and RENA HARDING
Librarians: EMMA BADHAM and SARAH BACON



The Junior Auxiliary

MISS MCKIMMON, *General Directress*

St. Margaret's Chapter

(*West Wing*)

MISS URQUHART.....*Directress*
 ELEANOR RELYEA.....*President*
 VIOLET BRAY.....*Secretary*
 VIRGINIA ALLEN.....*Treasurer*

St. Agnes' Chapter

(*East Wing*)

MISS GLEN
 KATHARINE DRANE
 NELLIE ROSE
 FRANCES CHEATHAM

St. Catherine's Chapter

(*Senior Hall*)

MISS THOMAS.....*Directress*
 FANNIE STALLINGS.....*President*
 RENA HARDING.....*Secretary*
 SUSAN LAMB.....*Treasurer*

St. Elizabeth's Chapter

(*Main Building*)

MISS SHULL
 JOSEPHINE MYERS
 DEBORAH HITCHCOCK
 ELLEN LAY

St. Anne's Chapter

(*Main Building*)

MISS SHIELDS.....*Directress*
 ALICE LATHAM.....*President*
 FRANCES HILLMAN.....*Secretary*
 CATHERINE GILMER.....*Treasurer*

St. Monica's Chapter

(*West Dormitory*)

MISS MCKIMMON
 MILDRED COLLINS
 BERTHA ALBERTSON
 AGNES PRATT



Lucy Bratton Chapter

(*East and West Rock*)

MISS SUTTON.....*Directress*
 ETHEL YATES.....*President*
 MARY ENGLISH.....*Vice-President*
 ALLENE TAYLOR.....*Secretary*
 EVA PEELE.....*Treasurer*

The Woman's Auxiliary

MRS. LAY.....*President*
 MISS SUTTON.....*Vice-President*
 MISS THOMAS.....*Treasurer*
 MISS MCKIMMON.....*Secretary*



The Altar Guild

MISS MCKIMMON, *Directress*

ANNIE CAMERON *President*
 RENA HARDING..... *Treasurer*

Members

E. ASKEW	K. DRANE	S. LAMB
E. BADHAM	L. EDWARDS	A. LATHAM
S. BACON	K. ELLIOTT	J. MYERS
L. BEATTY	J. FAIRLEY	C. MARDRE
E. BLODGETT	G. FOSTER	S. NORTROP
A. BRINLEY	M. FLOYD	E. RELYEA
H. BRIGHAM	J. FROHNE	A. ROBINSON
V. BRAY	S. GALBRAITH	E. RAVENEL
A. BUDD	R. HARDING	N. ROSE
K. BOURNE	D. HENRY	R. THOMAS
A. CAMERON	A. HUGHES	J. THOMAS
F. CHEATHAM	E. JENKINS	H. WEAKLEY
E. DORSEY	V. JUTKINS	V. WRIGHT



The Choir

MR. R. BLINN OWEN.....*Director and Organist*

MISS ZONA SHULL.....*Assistant Director*

Altos

L. ANDERSON
V. BRAY
J. FROHNE
E. B. LAY
C. PAUL
S. RAWLINGS
C. STEWART
R. THORNE
MISS ABBOTT
MISS SEYMOUR

E. ASKEW
R. BARTHOLOMEW
S. BORDEN
J. BRYAN
A. CAMERON
H. A. COPELAND
H. R. COPELAND
E. CORBITT
F. DENHAM
L. EDWARDS
MISS SHULL

Sopranos

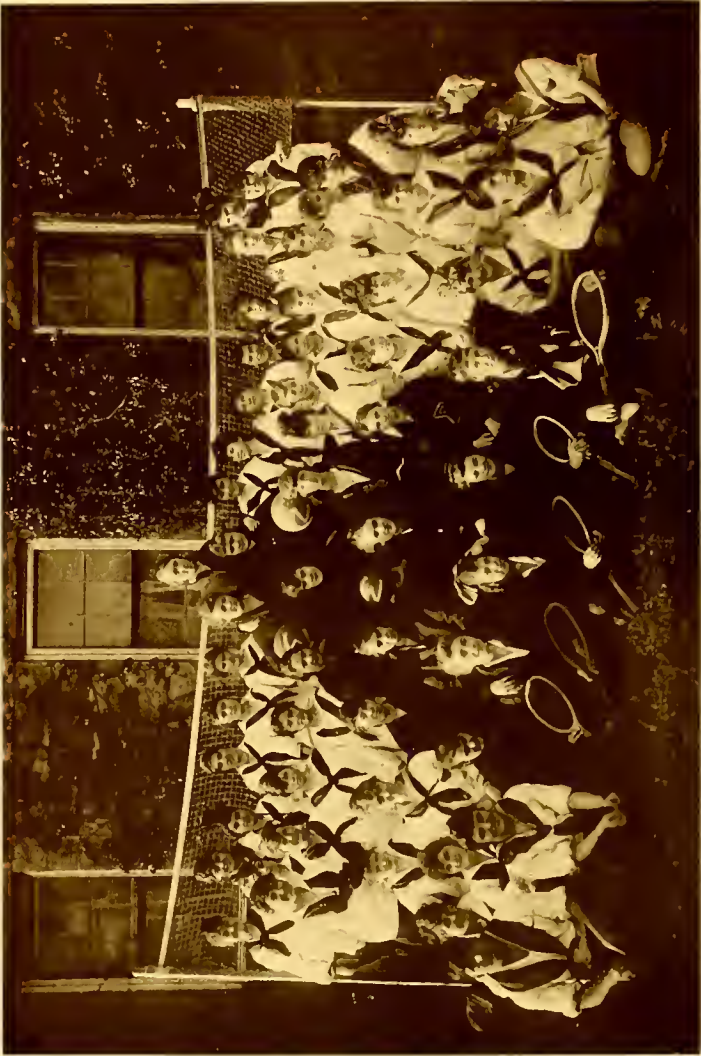
F. GEITNER
F. HILLMAN
M. HOLT
A. HUGHES
M. JERGER
V. JUTKINS
M. KIRTLAND
C. MARDRE
G. MERRIMON
J. MYERS
J. NORMAN

L. PUGH
A. ROBINSON
J. SMITH
K. STEWART
F. TILLOTSON
E. WADDELL
S. WILEY
V. WILLIAMS
M. WRIGHT
E. YATES



ATHLETICS





THE SIGMA ATHLETIC ASSOCIATION

Sigma Athletic Association

Colors: Red and white

ANNE ROBINSON, *President*

ELIZABETH CORBITT, *Vice-President*

EMMA BADHAM, *Secretary-Treasurer*

NANCY WOOLFORD, *Basketball Captain*

VIOLET BRAY, *Tennis Captain*

Members

B. ALBERTSON	G. FOSTER	M. HOLT	F. SEARS
V. ALLEN	J. FROHNE	L. LAY	M. SINCLAIR
K. ALSTON	R. GEBERT	M. LYNNAH	H. SNYDER
L. ARBOGAST	G. GENTRY	C. MARDRE	M. SPRINOS
E. BADHAM	R. HARDING	E. MARR	F. STALLINGS
E. BAKER	F. HILLMAN	M. MARSTON	C. STEWART
K. BAKER	M. HOKE	H. MASON	K. STEWART
E. BARBER	C. HOWARD	G. MERRIMON	M. SVOO
R. BARTHOLOMEW	A. HUOHES	N. MOYE	A. TAYLOR
V. BRAY	C. HYATT	M. MULLINS	L. THOMAS
A. CAMERON	A. IVEY	J. MYERS	F. TILLOTSON
I. COBB	E. JENKINS	R. McELHANNON	E. TUCKER
A. CONVERSE	L. JENSEN	E. PEELE	E. WADDELL
E. CORBITT	M. JERGER	L. PUGH	H. WEAKLEY
E. CROSS	C. JOHNSON	E. RAVENEL	A. WHITE
N. DANIELS	V. JONES	J. REOISTER	S. WILEY
J. DELOATCH	R. KINCAID	E. RELYEA	N. WOOLFORD
F. DENHAM	M. KIRTLAND	R. E. ROBBINS	E. YATES
M. DEPASS	V. LASSITER	A. ROBINSON	EULALIE YATES
E. DORSEY	H. LAUGHINOHOUSE	V. ROYSTER	



THE MU ATHLETIC ASSOCIATION

Mu Athletic Association

Colors: Dark blue and white

ANNE BRINLEY.....President
JOSEPHINE WILSON.....Vice-President
ALICE LATHAM.....Secretary-Treasurer

MASTER ERNEST CRUIKSHANK, JR., Mascot

Members

L. ANDERSON	H. A. COPELAND	C. JONES	M. RANEY
K. ARBOGAST	H. R. COPELAND	L. JONES	S. RAWLINGS
E. ASKEW	R. DIXON	M. JONES	C. ROSENTHAL
S. BACON	M. DOUGHERTY	V. JUTKINS	N. ROSE
H. BARBER	K. DRANE	C. KENT	L. SHEPHERD
L. BEATTY	L. EDWARDS	E. KNIGHT	J. SMITH
H. BENNETT	K. ELLIOTT	S. LAMB	V. STATEN
M. BEST	J. ELLINGTON	A. LATHAM	M. STOCKTON
E. BLODGETT	J. FAIRLEY	A. LAY	E. SUBLETT
C. BOND	M. FLOYD	E. A. LAY	D. SWETT
S. BORDEN	B. FOLK	E. B. LAY	J. THOMAS
K. BOURNE	S. GALBRAITH	H. MORGAN	R. THORNE
S. BRAXTON	F. GEITNER	M. MORGAN	A. C. TIMBERLAKE
H. BRIGHAM	K. GILMER	M. McLAUGHLIN	M. TREDWELL
J. BRYAN	M. GOLD	L. McLAWS	R. WALL
A. BUDD	M. GRIMES	J. NORMAN	F. WATERS
N. BURKE	R. HILL	S. NORTHROP	V. WILLIAMS
S. CAMERON	D. HITCHCOCK	C. PAUL	J. WILSON
F. CHEATHAM	C. HOLMES	L. PAUL	M. WILSON
M. COLLINS	D. HOLT	A. PRATT	E. WOOLCOTT
H. WRIGHT		S. WOOD	



Sigma Basketball Team

Forwards
CAMERON
WADDELL

Centers
RAVENEL
MULLINS

Guards
ROBINSON
WOOLFORD



Mu Basketball Team

Forwards

A. BRINLEY
E. WALKER

Centers

H. BRIGHAM
C. HOLMES

Guards

S. BORDEN
L. BEATTY



The Tennis "Champions," 1915-16

Tournament Finals.

JOSEPHINE WILSON (Capt.), *Mu*, defeated ANNIE ROBINSON, *Sigma*: 6-3, 6-2

ANNE BRINLEY, *Mu*, defeated BERTHA ALBERTSON, *Sigma*: 6-2, 6-1.

HELEN BRIGHAM, *Mu*, defeated GLADYS GENTRY, *Sigma*: 6-0, 6-0.





Granddaughters and Great-granddaughters of St. Mary's

Motto: Lest we forget

Song: Auld Lang Syne

Colors: Light blue and white
Flower: Pansy

President.....KATHARINE WIMBERLY BOURNE
Secretary-Treasurer.....EMMA HUDGINS BADHAM

SARA SHELLMAN BACON, Savannah, Ga.
d. of Sallie Shellman, of Savannah
gd. of Sarah Bennett, of Savannah

EMMA HUDGINS BADHAM, Edenton
d. of Lucy Bond, of Edenton

ELIZABETH BAKER, Raleigh
KATHARINE BAKER, Raleigh
ds. of Katharine Haywood, of Raleigh
gds. of Mary Boylan, of Raleigh
ggds. of Mary Kinsey, of Raleigh

SARAH ELIZABETH BORDEN, Goldsboro
gd. of Georgia Whitfield, of Goldsboro

KATHARINE WIMBERLY BOURNE, Tarboro
d. of Maria Clark, of Tarboro

ADELAIRE BOYLSTON, Raleigh
 d. of Adelaide Snow, of Raleigh
 gd. of Betsy Boylan, Raleigh
 ggd. of Mary Kinsey, of Raleigh
 FRANCES CHEATHAM, Henderson
 d. of Cornelia Alston, Warren County
 KATHARINE CREWS, Raleigh
 d. of Katharine Sutton, Raleigh
 JANET FAIRLEY, Rockingham
 d. of Sallie Shaw, of Rockingham
 MARY FETTER, Raleigh
 gd. of Mary Wright, Edenton
 ELIZABETH MCMORINE FOLK, Raleigh
 gd. of Martha Martin, of Edenton
 ggd. of Elizabeth McMorine, of Edenton
 MARY HOKE, Raleigh
 gd. Catherine Alexander, Lincolnton
 MAMIE DEROSSETT HOLT, Fayetteville
 gd. Elizabeth Nash, of Hillsboro
 ARELINE ENMONDS HUGHES, Henderson
 gd. of Alice Swann
 ggd. of Penelope Wiley
 ISABELLE HAY JONES, Raleigh
 d. Mary Seaton Hay, of Raleigh
 gd. of Minnie Branch, of Raleigh
 CONSTANCE KENT, Petersburg, Va.
 gd. of Constance Williams, of Society Hill, S. C.
 MARY STRANGE MORGAN, Raleigh
 gd. Marguerite Tucker Butt, of Hertford
 SYLBERT PENDLETON, Raleigh
 d. of Elizabeth Busbee, of Raleigh
 gd. of Sallie Smith, of Scotland Neck
 MARGARET RANEY, Raleigh
 d. of Kate Denson, of Raleigh
 gd. of Matilda Cowan, of Wilmington
 LILLIAS SHEPHERD, Raleigh
 d. of Lilla May Vass, of Raleigh
 MARGARET ELIZABETH SPRINGS, Waverly Mills, S. C.
 gd. of Elizabeth Morris, Wilmington
 ALLENE HARGROVE TAYLOR, Townsville
 gd. of Mary Grice, Washington
 JOSEPHINE MACON THOMAS, Waynesville
 d. of Josephine Smith, of Raleigh
 AGNES COTTEN TIMBERLAKE, Raleigh
 d. of Agnes Cotten, of Cottendale
 REBECCA WALL, Hillsboro
 d. of Annie Collins, of Hillsboro
 MARY WILSON, Raleigh
 d. Mary Turner, of Raleigh
 gd. of Love Root, of Raleigh
 SARA LOUISE WOOD, Edenton
 d. of Elizabeth Badham, of Edenton
 ELIZABETH WOOLCOTT, Raleigh
 d. of Maud Young, of Raleigh



The Monthly Muse Board, 1915-16

FLOYD
LATHAM

BOURNE

CAMERON

BADHAM

STALLINGS

HARDING
ROSE



The Muse Club

MARY AUNING FLOYD, '16..... *Chairman*
 ANNIE SUTTON CAMERON, '16..... *Editor-in-Chief*
 KATHARINE WIMBERLY BOURNE, '16 } *Business Managers*
 FANNIE MARIE STALLINOS, '16 }
 ALICE COHN LATHAM, '17..... *Secretary*

VIROINIA ALLEN, '17	SELENA GALBRAITH, '16	ANNIE ROBINSON, '17
EMMA BADHAM, '17	FRANCES GEITNER, '16	NELLIE ROSE, '17
VIOLET BRAY	RENA HARDING, '16	RUBIE THORN, '17
SARAH BORDEN	ELMYRA JENKINS, '17	FRANCES TILLOTSON
FRANCES CHEATHAM, '17	SUSAN LAMB, '16	JOSEPHINE WILSON
ELIZABETH CORBITT	EVA PEELE, '17	HELEN WRIGHT, '16
KATHARINE DRANE, '18	LOIS PUOH	MARTHA WRIGHT
	ELEANOR RELYEA, '17	
MISS FRANCES BOTTUM	MISS ZONA SHULL	
MISS REBE SHIELDS	MISS MARGARET BOTTUM	
MISS ELIZABETH LAY		

Mr. CRUIKSHANK, *Director*



COMMENCEMENT, 1915 "THE COMEDY OF ERRORS" MAY 22, 1915

Courtney Crowther as the *Duke of Ephesus*; Josephine Wilson as *Egon*; Adele Stigler and Anne Brinley as the two *Antipholuses*; Robena Carter and Wirt Jordan as the two *Dromios*; Matilda Hancock as *Angelo*; Lois Pugh and Eliza Davis as the *Merchants*; Lanie Hales as *Pinch*; Ruby Bartholomew as *Aemilia*; Elizabeth Carrison as *Adriana*; and Adelyn Barbee as *Luciana*.



The Dramatic Club

JOSEPHINE WILSON, *President*

FRANCES TILLOTSON, *Secretary-Treasurer*

FRANCES GEITNER, *Business Manager*

L. ANDERSON
R. BARTHOLOMEW
M. BEST
A. BRINLEY
J. BRYAN
R. CARTER
A. CONVERSE
E. CORBITT
R. DIXON
J. FROHNE

F. GEITNER
D. HOLT
A. HUGHES
V. JUTKINS
A. LATHAM
G. MERRIMON
R. McELHANNON
J. NORMAN
A. PRATT

L. PUGH
K. STEWART
C. STEWART
A. TAYLOR
R. THORN
M. TREDWELL
F. WATERS
J. WILSON
N. WOOLFORD
E. YATES



"THE MIKADO"

A scene from Gilbert and Sullivan's Opera presented by the Chorus Class in the Auditorium on Saturday evening, December 7, 1916, under the direction of Mr. R. Blinn Owen.

Lois Pugh as *Katisha*; Frances Tillotson as *Nanki-Poo*; Martha Wright as *Ko-Ko*; Lucile Anderson as *Pook-Pook*; Ruby Thorn as *Pish-Tush*; Elizabeth Corbitt, Violet Bray and Ruby Bartholomew as the "three little Maids"; Edith Blodgett as the Mikado.



The Chorus

MR. R. BLINN OWEN, *Director*
MISS ROBERTS, *Accompanist*

ARBOGAST
ANDERSON
ASKEW
BARBER
BARTHOLOMEW
BORDEN
BRAY
BRIGHAM
BRYAN
BURKE
COLLINS

CORBITT
DRANE
EDWARDS
ELLIOTT
HILLMAN
HOLT, D.
HOLT, M.
HUOHES
JEROER
JUTKINS
KIRTLAND

LAY, E. B.
MASON
MARSTON
MERRIMON
MYERS
MULLINS
PAUL, C.
PRATT
PUOH
RAWLINS
SEARS

SMITH, J.
STEWART, C.
THOMAS, J.
THORNE
TILLOTSON
WADDELL
WILEY
WILLIAMS, V.
WRIGHT, H.
WRIGHT, M.



The Walking Club

FRANCES GEITNER.....*President*
 VIRGINIA ALLEN.....*Secretary-Treasurer*

Members

V. C. ALLEN	J. FROHNE	E. KNIGHT	F. TILLOTSON
E. BARBER	F. GEITNER	A. LATHAM	H. WEAKLEY
A. BRINLEY	D. HITCHCOCK	E. PEELE	E. YATES
A. CAMERON	C. HOLMES	A. PRATT	ETHEL YATES
M. COLLINS	E. JENKINS	A. ROBINSON	

MISS FENNER
Critic
ANNIE CAMERON, *President*
ESTELLE RAVENEL, *Treasurer*

The Art Club



LOUISE ARBOGAST	DEBORAH HITCHCOCK
LAURA BEATTY	ELIZABETH LAY
HELEN BENNETT	NANCY LAY
ANNIE CAMERON	CLARA MARDRE
NETTIE DANIELS	MILDRED JERGER
ELIZABETH HUGHES	ESTELLE RAVENEL
AGNES COTTEN TIMBERLAKE	
ETHEL YATES	



The Kodak Club

KATHARINE BOURNE, *President*

CAROLINE HOLMES, *Secretary-Treasurer*

Motto: "Things as they are."

V. C. ALLEN
K. BOURNE
M. COLLINS
E. DAVIS
L. EDWARDS
G. FOSTER
F. GEITNER

M. GOLD
F. HILLMAN
C. HOLMES
D. HOLT
M. HOLT
E. JENKINS
M. JERGER

M. KIRTLAND
N. MOYE
M. SINCLAIR
C. STEWART
M. TREDWELL
H. WEAKLEY
H. WRIGHT





The Cotillion Club

ANNE A. BRINLEY, *Leader*

HELEN S. BRIGHAM, *Treasurer*

LUCILE ANDERSON
KATHERINE H. ARBOGAST
LOUISE H. ARBOGAST
SARAH BACON
LAURA L. BEATTY
JANET FAIRLEY
MARGARET JONES

CONSTANCE KENT
JANE NORMAN
ANNIE ROBINSON
ESTELLE RAVENEL
SARAH RAWLINGS
MINERVA STOCKTON
MAY BAKER TREDWELL



Autumn

A vague, haunting sadness hroods over the earth;
The forest's green banners are furled
And the hlue haze of Autumn like incense of prayer
Hangs over the golden world.

A spirit of quiet and rest is ahrad,
And wild-throhing nature lies still,
For peace rests over the russet field
And over the purple hill.

Dim memories are stirred by these golden days,
Vague longings, and wistful regret,
For the eve of the year, with its gentle appeal,
Stirs man's soul, that he may not forget.

A. S. C., '16



A Summer Night

The fire-fly flits through the gloaming,
And his wee shining spark is alight.
The wind murmurs low in the hollows,
Crooning wild, tender songs of the night.

The stars, tiny lamplets, are twinkling;
The radiant moon is abeam,
And meadow and fen-land are shimmering,
In her pale, misty light all agleam.

The meadows, dew-drenched, breathe forth perfume,
And afar o'er hollow and hill,
Wind blown through the dim, misty silence,
Comes the cry of the lone whippoorwill.

O'er all things a sweet stillness hroodeth,
The world is asleep and adream,
While afar in the wide peaceful heavens,
The moon and the bright starlets heam.

A. S. C., '16

State Clubs



Central Carolina Club

ANNIE CAMERON, *President*

FRANCES CHEATHAM, *Secretary-Treasurer*

KATHARINE BOURNE, Tarboro
ELIZABETH CORBITT, Henderson
FRANCES CHEATHAM, Henderson
ANNIE CAMERON, Hillsboro
ELIZABETH DORSEY, Henderson
ALINE HUGHES, Henderson
ELIZA KNIGHT, Tarboro
MARGARET GOLD, Greensboro
ELMYRA JENKINS, Roanoke Rapids
VALETTE JONES, High Point

GERTRUDE MERRIMON, Greensboro
HENRIETTA MORGAN, Pittsboro
AONES PRATT, Madison
JANET FAIRLEY, Rockingham
ALLYNE TAYLOR, Townsville
CATHERINE GILMER, Charlotte
VIRGINIA STATEN, Charlotte
SARAH WILEY, Southern Pines
FRANCES SEARS, Raleigh
ELIZABETH WADDELL, Manchester
MATTIE SINCLAIR, Rockingham

State Clubs



East Carolina Club

RENA HARDING..... *President*
 EMMA BADHAM..... *Secretary*
 ALICE LATHAM..... *Treasurer*

LUCILE ANDERSON, Wilson
 ELSPETH ASKEW, Farmville
 EMMA BADHAM, Edenton
 SADIE BRAXTON, Kinston
 HATTIE A. COPELAND, Kinston
 HATTIE R. COPELAND, Kinston
 NETTIE DANIELS, New Bern
 ROBERTA DIXON, Ayden
 KATHARINE DRANE, Edenton
 KATHARINE ELLIOTT, Wilmington
 RENA HOYT HARDING, Washington
 MAMIE HOLT, Fayetteville
 DOLORES HOLT, Wilmington
 CHARLOTTE HOWARD, New Bern
 ALICE LATHAM, Plymouth
 HELEN LAUGHINGHOUSE, Greenville
 MARTHA WRIGHT, Boardman

CLARA MARDRE, Windsor
 MARGARET MARSTON, Kinston
 HELEN MASON, Kinston
 NOVELLA MOYE, Greenville
 SUE NORTHPRO, Wilmington
 JANE NORMAN, Halifax
 CLARA PAUL, Washington
 LOLA PAUL, Grantsboro
 EVA PEELE, Williamston
 SARA RAWLINGS, Wilson
 JACQUE SMITH, Wilson
 KATHARINE STEWART, New Bern
 MINNIE E, Sugg, Greenville
 VIRGINIA WILLIAMS, Wilson
 SARA WOOD, Edenton
 HELEN WRIGHT, Boardman

State Clubs



Western Carolina Club

(The Hikers)

FRANCES GEITNER, *President*

VIRGINIA ALLEN, *Secretary-Treasurer*

VIRGINIA ALLEN, Hickory
KATHERINE ARBOGAST, Asheville
LOUISE ARBOGAST, Asheville
ELIZABETH BARBER, Wilkesboro
VIOLET BRAY, Tryon
FRANCES GEITNER, Hickory

CAROLINE HOLMES, Asheville
CHARLINE HYATT, Waynesville
LUCY JENSEN, Asheville
AONES PRATT, Madison
JOSEPHINE THOMAS, Waynesville
MISS EDITH HOLMES, Asheville

State Clubs



South Carolina Club

Motto: Dum spiro spero

Colors: Blue and white

Emblem: Palmetto

MARY FLOYD.....*President*

ETHEL YATES.....*Secretary-Treasurer*

MARY FLOYD, St. Stephens
SELENA GALBRAITH, Waverly Mills

MARIAN LYNNAH, Charleston

MARY MULLINS, Marion

JOSEPHINE MYERS, Charleston

MISS ELEANOR WALTER THOMAS, Columbia

MARGARET SPRINGS, Waverly Mills

RUBIE THORN, Kingstree

CAROLINE WALKER, Columbia

ETHEL YATES, Camden

EULALIE YATES, Camden

State Clubs



Georgia Club

Colors: Red and black

Song: "Glory to Old Georgia"

SARAH BACON, *President*

HELEN BRIGHAM, *Vice-President*

ESTELLE RAVENEL, *Secretary-Treasurer*

MARY BLEAKLEY, Augusta
ANNABEL CONVERSE, Valdosta
FLORA DENHAM, Americus
NELLIE DGD, Atlanta
GEORGIA FGSTER, Savannah
ANNIE IVEY, Americus

MILDRED JERGER, Savannah
LALLIE MCLAWS, Savannah
VIRGINIA POTTLE, Atlanta
LGIS PUGH, Atlanta
JEWELL REGISTER, Savannah
ANNIE ROBNSGN, Toccoa

CAROBEL STEWART, Savannah

State Clubs



Southern Club

MARGARET JONES, *President*

ANNIE BUDD, *Secretary-Treasurer*

ANNIE BUDD, St. Augustine, Fla.

HELEN BENNETT, St. Augustine, Fla.

NINA BURKE, New Iberia, La.

MARYE DEPASS, Gainesville, Fla.

RUTH GEBERT, New Iberia, La.

MARGARET JONES, Mobile, Ala.

MILDRED KIRTLAND, St. Augustine, Fla.

State Clubs



Virginia Club

Colors: Orange and blue

Song: "Carry Me Back to Old Virginia"

FANNIE STALLINGS, *President*

LEE EDWARDS, *Secretary-Treasurer*

CAROLISTA BOND, Norfolk
JANE DELOATCH, Port Norfolk
LEE EDWARDS, Leesburg
CONSTANCE KENT, Petersburg

VIRGINIA LASSITER, Petersburg
FANNIE STALLINGS, Suffolk
ELEANOR SUBLETT, Harrisonburg
MAY TREDWELL, Norfolk
NANCY WOOLFORD, Suffolk

State Clubs



Northern Club

Flower: Snowball

Colors: Green and white

ANNE BRINLEY, *President*

LAURA BEATTY, *Secretary-Treasurer*

EDITH BLODGETT, Pawtucket, R. I.

MILDRED COLLINS, Centerville, Md.

EMILY DAVIS, Marion Station, Md.

DOROTHY HENRY, Easton, Md.

DEBORAH HITCHCOCK, Philadelphia, Pa.

ROBERTA McELHANNON, Washington, D. C.

ELEANOR RELYEA, Washington, D. C.

HELEN SNYDER, Mt. Vernon, N. Y.

FRANCES WATERS, Wethersfield, Conn.

HELEN WEAKLEY, Phoenix, Md.

ANNE WHITE, New York

State Clubs



HILLMAN
JUTKINS
FROHNE

STOCKTON
BRYAN
DOUGHERTY

Western Club

President

FRANCES TILLOTSON

Vice-President

JOSEPHINE FROHNE

Secretary

JULIA BRYAN

Treasurer

VELMA JUTKINS

Motto: Laugh and the world laughs
with you

JULIA BRYAN
Memphis, Tenn.

MURIEL DOUGHERTY
San Francisco, Cal.

JOSEPHINE FROHNE
Detroit, Mich.

FRANCES HILLMAN
Nashville, Tenn.

VELMA JUTKINS
La Junta, Colo.

MINERVA STOCKTON
Maysville, Ky.

FRANCES TILLOTSON
Morehead, Minn.



The Call

A call to me comes in the evening wind
From mountain and hill and plain,
'Neath the tinted skies
Where the red sun dies,
And the stars creep forth again.

Down through the ages of by-gone days
Unto the years to be,
It is ringing still
Over vale, and hill,
Over the world to me.

And my heart leaps up with an answering cry
Born of this call of old,
And with wild desire
My heart is on fire,
Under the skies of gold.

Oh, for a voice to carry it on,
To send it forth again,
In words of flame
This message that came,
Over the world to men.

To see and be silent! Hear and be dumb!
Barren of words and weak!
Yet to know and to feel
Life's throbbing appeal—
Ah, but for a voice to speak!

A. S. C., '16





AMONG OURSELVES

The Calendar, 1915-16

- | | |
|--------------------------|---|
| September 16, Wednesday: | Seventy-fourth opening of the School |
| September 18, Saturday: | Reception to the New Girls. Parlor. 7:30 |
| September 25, Saturday: | Sigma Lambda Reception. Parlor. 8:30 |
| October 2, Saturday: | Dr. and Mrs. Lay's Reception to the Faculty
Athletic Party. Gymnasium
E. A. P. Reception. Muse Room. 8:00 |
| October 5, Tuesday: | Inter-Society Meeting. Parlor. 7:30 |
| October 7, Thursday: | "Thursday Talk." Miss Thomas |
| October 8, Friday: | Knox-Emerson Concert. City Auditorium |
| October 9, Saturday: | Alpha Rho Reception. Muse Room. 8:00 |
| October 11, Monday: | Faculty Recital. Auditorium. 8:30 |
| October 14, Thursday: | "Thursday Talk." Mrs. W. J. Jones of Salemburg |
| October 16, Monday: | First Peace-St. Mary's Concert. Frances Ingram.
Auditorium. 8:30 |
| October 18-23: | State Fair |
| October 20, Wednesday: | Gilmer-Sorrentino Concert. City Auditorium |
| October 23, Saturday: | Annual Track Meet |

October	24, Saturday:	Hallowe'en Party to the Muse Club. Muse Room
October	28, Thursday:	"Thursday Talk." Miss Dowd
October	30, Saturday:	Hallowe'en Party
October	31, Sunday:	Founders' Day Celebration
November	1, Monday:	All Saint's Day
		First Basketball Game
November	2, Tuesday:	Alumnae Meeting
November	4, Thursday:	"Thursday Talk." Dr. Brewer of Meredith
November	5, Friday:	Miss Thomas Entertains the Juniors
		Miss Thomas Entertains the Seniors
November	6, Saturday:	The Carnival
November	8, Monday:	Junior Basketball Game
November	11, Thursday:	"Thursday Talk." Dr. Lay
		Alfred Noyes. At Meredith College
November	13, Saturday:	"The Birth of a Nation." Academy
		Mrs. and Miss Lay Entertain the Seniors at the Rectory. 8:15
November	15, Monday:	Faculty Recital. Auditorium. 8:15
November	20, Saturday:	Senior-Sophomore Party. Muse Room. 8:00
		Junior-Freshman Party. Parlor. 8:00
November	22, Monday:	Mr. Stone Entertains the Seniors
		Basketball Game
November	23, Tuesday:	Inter-Society Meeting. Parlor. 7:30
November	26-27:	Teachers' Assembly
November	26, Thursday:	Thanksgiving Day
November	28, Sunday:	Miss Tillinghast's Talk
November	29-December 5:	Preaching Mission. Rev. Mr. Barber
November	30, Monday:	Junior Basketball Game
December	6, Monday:	Second Sigma-Mu Game
		University N. C. Dramatic Club. Auditorium. 8:30
December	11, Saturday:	Dramatic Club Play. "Green Stockings." Audi- torium. 8:30
December	12	Muse Party. Muse Room. 8:00
December	13, Monday:	Private Expression Pupils' Christmas Entertainment
December	16, Thursday:	Christmas Tree. "Alice in Wonderland"
	1916	
January	4, Tuesday	School began after the holidays
January	19, Wednesday	Lee's Birthday; Inter-society Meeting. Parlor
January	22, Thursday	"Thursday Talk." Dr. Mary Brewster of LaGrange, Georgia
January	24, Monday	Farrar Concert. 8:30
January	27, Thursday:	"Thursday Talk." Mrs. McKimmon. 7:00
January	29, Saturday	"Statistics"
January	31, Monday	Peace-St. Mary's Concert. "The Fuller Sisters." 8:30
February	5, Saturday:	Freshman Party to the Juniors. Parlor. 8:00-9:00
		Sophomore Party to the Seniors. Muse Room. 8:00- 9:00

February	12, Saturday	Valentine Party. Parlor. 8:00-9:00
February	19, Saturday:	Colonial Ball. Parlor. 8:00-9:00
February	26, Saturday:	Parlor Entertainment
March	4, Saturday:	Chapel Hill Glee Club. Auditorium. 8:00
March	6, Monday:	Miss Abbott's Recital. Auditorium. 8:00
March	8, Wednesday:	Ash Wednesday. Lenten Quiet begins
March	16, Tuesday:	Trustees Meeting
March	23, Thursday:	Organ Pupils Recital. Chapel. 5:30
March	30, Thursday:	Certificate Recital. Martha Wright. Piano. Auditorium.
April	6, Thursday:	Certificate Recital. Helen Wright. Organ. Chapel
April	9, Sunday:	Passion Sunday. Bishop's visitation for Confirmation. 5:00
April	10, Monday:	Inter-Society Shakespearean Contest. Auditorium. 7:30
April	16, Sunday:	Palm Sunday
April	23, Sunday:	Easter Day
April	24, Monday:	Easter Egg Hunt. 7:00
April	27, Thursday:	Certificate Recital. Jane Norman. Elocution. Auditorium. 8:30
April	29, Saturday:	Fourth Annual Junior-Senior Banquet. Muse Room. 8:15
May	1, Monday:	Shakespearean Festival
May	2, Tuesday:	St. Cecelia Concert. Auditorium. 8:30
May	3, Wednesday:	Certificate Recital. Martha Wright. Voice
May	6, Saturday:	Fifth Annual School Party. Parlor. 8:15
May	8, Monday:	Diploma Recital. Mary Floyd. Piano. Auditorium. 8:30
May	11, Monday:	Certificate Recital. Lois Pugh. Elocution. Auditorium. 8:30
May	12, Friday:	Alumnae Day. Seventy-Fourth Anniversary
May	13, Saturday:	Annual Recital of Chorus. 8:15
May	20, Saturday:	Annual Recital of the Elocution Department. "As You Like It." Auditorium. 8:15
May	21, Sunday:	Commencement Sermon. Rev. Mercer P. Logan, D.D., Rector of St. Paul's Church, Charleston, S. C. Chapel. 11:00
		Alumnae Service. Chapel. 5:00
May	22, Monday:	Class Day Exercises. Grove. 11:00
		Annual Exhibit of the Art Department. Studio. 3:00
		Annual Alumnae Meeting. Parlor. 4:30
		Annual Concert. Auditorium. 8:30
		Rector's Reception. Parlor. 9:30
May	23, Tuesday:	Graduating Exercises. Auditorium. 11:00
		Annual Address. Mr. James H. Dillard, D.C.L., LL.D.
		Closing Exercises. Chapel.

Quotations

- "And then to breakfast with what appetite you have—"—7:30 a. m.
- "For my own part, it was Greek to me."—*N. Philosophy.*
- "If you have tears, prepare to shed them now."—*The Last Day.*
- "The weakest goes to the wall."—*The Mail Line.*
- "A beggarly account of empty boxes."—*The Post Office.*
- "Eyes, look your last! Arms, take your last embrace!"—*The Last Day.*
- "O wearisome condition of humanity."—*Study Hall.*
- "Get money; still get money, boy; no matter by what means."—*Collectors.*
- "The Slough of Despond."—*Restriction.*
- "—moved slowly through the mind
By day, and were a trouble to my dreams."—*Examinations.*
- "Thus sung, or would, or could, or should have sung."—*The Choir.*
- "It has a strange, quick jar upon the ear."—*The Rising Bell.*
- "A greater power than we can contradict
Hath thwarted our intents." —*The Restricted.*
- "Her whose worth makes other worthies nothing.
She is alone." —*Miss Thomas.*
- "Who steals my purse steals trash."—*Monday Nights.*
- "What fates impose, that men must needs abide."—*Units.*
- "I like your silence, it the more shows off
Your wonder."—*Miss Thomas.*
- "Pleasure and action make the hours seem short."—*Mondays.*
- "He sits high in all the people's hearts."—*Mr. Cruikshank.*
- "The clock upbraids me with the waste of time."—*Senior Hall.*
- "O how full of briars is this workaday world!"—*Tuesdays.*



STATISTICS



In the pages that will follow
As no doubt you now expect,
You will find a memorandum
Of our wonderful "Elect."

Some are athletes, some are dancers,
Some are students fond of books,
And there're some deserving mention
On account of their good looks.

Some are courteous and lovable,
Some are popular and cute,
Some are truly fascinating
And most musical to boot.

Some are neat and influential,
Some are sentimental too,
And there're some enthusiastiac
Over everything they do.

Some are wide awake and practical,
Ambitious, optimistic;
For ther're many different qualities
Beneath the term "Statistic."

So upon the following pages
Pray, with confidence expect
An absorbing memorandum
Of our wonderful "Elect."



KATHARINE DRANE
Prettiest



MARY FLOYD
Most Influential



NANCY WOOLFORD
Most Enthusiastic



ANNE BRINLEY
Most Athletic



FANNIE STALLINGS
Most Practical



ANNIE CAMERON
Best Student
Most Ambitious



FRANCES GEITNER
Most Courteous



KATHARINE BOURNE
Most Unselfish



SARAH RAWLINGS
Most Stylish
Most Musical
Most Fascinating



HELEN BRIGHAM
Neatest



LOUISE ARBOGAST
Handsomest



FRANCES CHEATHAM
Most Lovable



MARGARET JONES
Best Dancer



ALICE C. LATHAM
*Best All-round
Most Wide Awake*



FRANCES TILLOTSON
Most Optimistic



ANNABELLE CONVERSE
*Most Popular
Cutest*

The Merry-makers



EMMA BADHAM
JULIA BRYAN
FRANCES CHEATHAM
ANNABELLE CONVERSE
HATTIE B. COPELAND
ROBENA CARTER
ELIZABETH CORBITT
KATHARINE DRANE
CHARLOTTE HOWARD

SUSAN LAMB
HELEN LAUGHINGHOUSE
CLARA URIE MARDRE
NELLIE ROSE
KATHERINE STEWART
AGNES COTTEN TIMBERLAKE
MAE TREDWELL
RITA GAY WILLIAMS
SARA WOOD

MAY TREDWELL
FLORA DENHAM
CHARLOTTE HOWARD

NELLIE DODD
ANNABELLE CONVERSE
MARGARET MARSTON



HATTIE B. COPELAND
HATTIE A. COPELAND
SUE NORTHRUP

DOROTHY HENRY
ANNIE BUDD
AGNES COTTEN TIMBERLAKE



D. A.

KATHERINE ARBOGAST
 LAURA BEATTY
 ANNABELLE CONVERSE
 FLORA DENHAM
 ANNIE IVEY
 MARGARET P. JONES

NANCY WOOLFORD

VELMA JUTKINS
 ALICE LATHAM
 LALLIE MCLAWS
 JANE NORMAN
 JEWEL REGISTER
 CAROLINE WALKER



B. D.

	ANNIE IVEY	
JEANETTE FAIRLEY	ESTELLE RAVENEL	
LAURA BEATTY	JANE NORMAN	
JOSEPHINE MYERS	DOLORES HOLT	
FLORA DENHAM	MAMIE HOLT	
ANNABELLE CONVERSE	HELEN BRIGHAM	



T. S. C.

MARGARET JONES, *President*

LUCILE ANDERSON	MAMIE HOLT
HATTIE A. COPELAND	MARGARET MARSTON
HATTIE B. COPELAND	MINERVA STOCKTON
CHARLOTTE HOWARD	MAY TREDWELL
DOLORES HOLT	SUE NORTHRUP
NANCY WOOLFORD	



The Follies of 1916

JOSEPHINE MYERS
HELEN BRIGHAM

SARAH BORDEN
KATHERINE GILMER

ANNE BRINLEY

JACQUELIN SMITH
LOUISE ARBOOAST

SARA BACON
ELEANOR RELYEA



T. D. F.

Motto: "Make hay while the light's on."

Colors: Purple and lavender

Flower: Johnny-jump-up

President: MILDRED JERGER

Secretary: FRANCES HILLMAN

Treasurer: SARAH WILEY

MARY BLEAKLEY
EMILYE DAVIS
LEE EDWARDS

CAROLINE HOLMES
CAROBELL STEWART
FRANCES WATERS



T. S. S.

LOIS PUGH
HELEN MASON
EDITH BLODGETT

SADIE BRAXTON
HELEN SNYDER
FRANCES TILLOTSON

VALETTE JONES

BULLETIN BOARD

Supplement to the Muse

St. Mary's, Raleigh

Some Echoes of the Year 1915-16



"A little nonsense, now and then,
Is relished by the best of men."



Annual Muse Board

ANNIE SUTTON CAMERON
Editor-in-Chief

MISS FRANCES RANNEY BOTTUM
Illustrator

MARY AUNING FLOYD	SUSAN LAMB
SELENA GALBRAITH	JOSEPHINE WILSON
FRANCES ROYER GEITNER	HELEN WRIGHT
RENA HOYT HARDING	

FANNIE STALLINGS } *Business Managers*
KATHERINE BOURNE }

*If this book has bound us closer
In love and loyalty
To St. Mary's and dear friends;
If it to you
Has brought back pleasant memories
Of the days that used to be,
It has done the thing
That it was meant to do.*



PRESSES OF
EDWARDS & BROUGHTON PRINTING CO.
RALEIGH, N. C.



