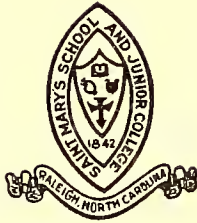


The Muse



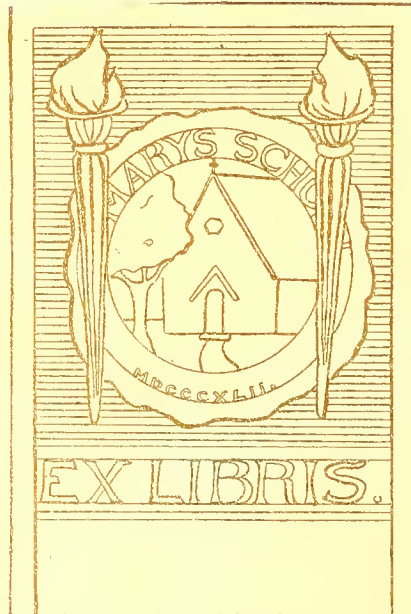
1917



LIBRARY

PRESENTED BY

The Class of 1917







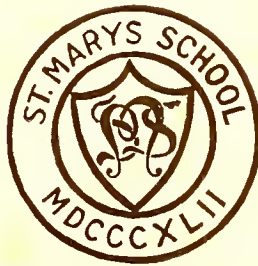
Digitized by the Internet Archive
in 2012 with funding from
University of North Carolina at Chapel Hill

<http://archive.org/details/muse1917sain>

THE MUSE

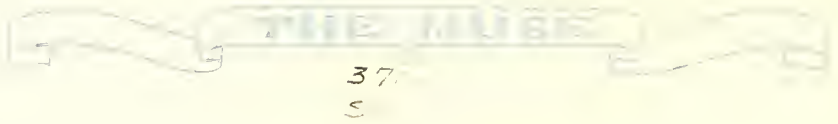
PUBLISHED BY
THE MUSE CLUB

VOLUME NINETEEN
1 9 1 7



THE YEAR-BOOK OF THE STUDENTS OF ST. MARY'S SCHOOL
RALEIGH, NORTH CAROLINA

Saint Mary's School Library

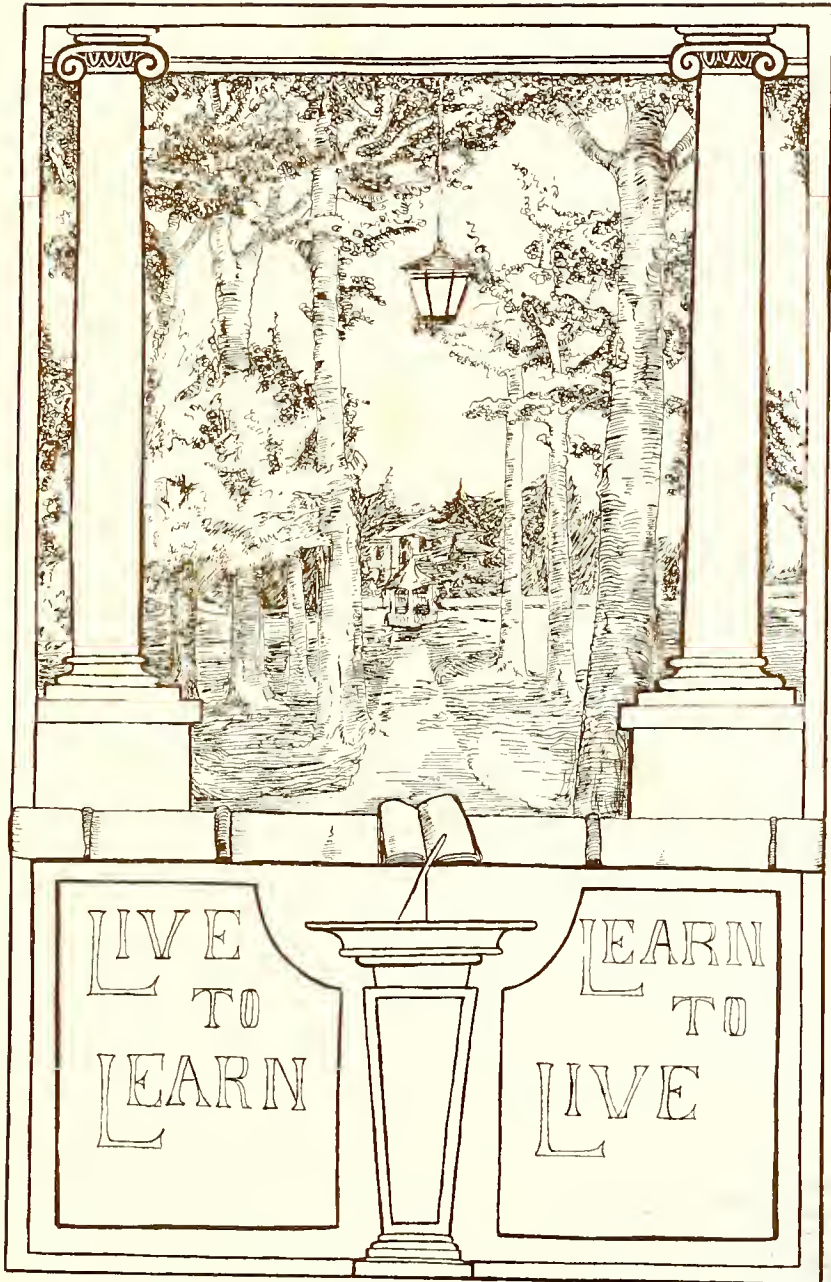


FOREWORD

Things that we have loved stay by us
Though months, nay years, shall steal away:
Wistaria, ivy, grove and Chapel,
Friends and duties, loiterings, play.
Then in our hearts' most secret places
We'll ever find well guarded there
A home for thee, oh dear St. Mary's,
Alma Mater, loved and fair.

So may for us these pictured pages
Bring before us when we ponder
These dear days of life together,
Days so bright with faith and wonder;
Those long hours we spent in idling,
And the work time swiftly passed,
Something of their charm and fragrance
May within this volume last.

E. W. T.



LIVE
TO
LEARN

LEARN
TO
LIVE



TO
MISS FRANCES RANNEY BOTTUM
LOYAL DAUGHTER OF ST. MARY'S
INSPIRING TEACHER, ENDEARING COMRADE, FAITHFUL FRIEND
THIS NINETEENTH VOLUME OF THE MUSE
IS LOVINGLY DEDICATED BY THE
SENIOR CLASS
FOR THE ST. MARY'S GIRLS OF 1917

THE MUSE



MISS FRANCES RANNEY BOTTUM

Graduate of St. Mary's, Class of 1912
Teacher of Science
Adviser of the Alpha Rho Literary Society
Illustrator of The Muse



Alma Mater

(Tune: "Believe Me if All Those Endearing Young Charms")

St. Mary's! wherever thy daughters may be
They love thy high praises to sing,
And tell of thy beauties of campus and tree
Around which sweet memories cling;
They may wander afar, out of reach of thy name,
Afar, out of sight of thy grove,
But the thought of St. Mary's aye kindles a flame
Of sweet recollections and love.

Beloved St. Mary's! how great is our debt!
Thou hast cared for thy daughters full well;
They can never thy happy instructions forget,
Nor fail of thy virtues to tell.
The love that they feel is a heritage pure;
An experience wholesome and sweet.
Through fast rolling years it will grow and endure;
Be a lamp and a guide to their feet.

May the future unite all the good of thy past
With the best that new knowledge can bring.
Ever onward and upward thy course! To the last
Be thou steadfast in every good thing.
Generations to come may thy fair daughters still
Fondly think on thy halls and thy grove
And carry thy teachings—o'er woodland and hill—
Of earnestness, wisdom, and love.

H. E. H., 1905



The Anniversary Year

The Seventy-fifth Year of St. Mary's!
The Fiftieth Year of "Miss Katie" at St. Mary's!
The Twentieth Year of the Church Ownership of St. Mary's!
The Tenth Year of the Present Rectorship!

Truly this has been in the history of St. Mary's a very year of Anniversaries, and in the Anniversary Celebration on May 11-12 we have tried to do honor to the occasion.

The Anniversary Celebration

In the Anniversary Celebration, following the spirit of St. Mary's rather than the more formal arrangement usual in colleges on such anniversaries, chief stress was laid on the welcoming back of the Old Girls by the St. Mary's girls of the present, and the entertainment was largely an attempt to revive in all St. Mary's Girls the recollections of the scenes of their St. Mary's and make them realize themselves an ever integral part of the School.

The program was the following:

FRIDAY, MAY 11

8:30 p. m. In the Auditorium. Bishop Cheshire, President of the Board of Trustees, presiding. Addresses by Dr. W. S. Currell, President of the University of South Carolina, and by Miss Emilie Watts McVea, St. Mary's, '84, President Sweetbrier College.

SATURDAY, MAY 12

8:00 a. m. In the Chapel. Celebration of the Holy Communion (with music). The Rector, celebrant.

10:30 a. m. In the Auditorium. Student Literary Exercises. Brief historical speeches by representatives of the Literary Societies, and announcement of the winners in the Inter-society Competition for the best original St. Mary's essay, story and verses, with the reading of the winning contributions.

2:00 p. m. In Clement Hall. The Rector, toastmaster. Alumnae Luncheon in the Dining Room, followed by brief after-luncheon speeches.

5:00 p. m. In the Grove. Anniversary Festival, Miss Thomas, Mistress of Ceremonies. A St. Mary's pageant, with the entire School participating, with procession reviewed by the visitors at the outdoor stage in the grove near the South Walk and the special features staged at that point.

8:30 p. m. In the Auditorium. The Chorus Class, under the direction of Mr. Owen, in a presentation of Gilbert and Sullivan's opera, "Patience."

This was the Third Anniversary Celebration on a large scale in the history of St. Mary's.

On June 5-9, 1892, at the Commencement Season, in the later years of Dr. Bennett Smedes, the Fiftieth Anniversary of the School was celebrated.

On April 20, 1910, the Hundreth Anniversary of the birth of Dr. Aldert Smedes, the Founder, was fittingly observed at the School, with a large attendance of visiting alumnae, who were entertained in the School buildings.



REV. ALDERT SMEDES, D.D., 1810-1877

Founder (1842) and First Rector (1842-1877) of St. Mary's School

At the time of the death of Dr. Smedes a tribute was paid to his memory by the Bishop in these words: "I take this occasion to express publicly, as my judgment, that Dr. Smedes accomplished more for the advancement of the Church in this Diocese, and for the promotion of the best interests of society within its limits, than any other man who ever lived in it. Under his care, and very much as the result of his intelligence, his firmness and his tender affection for them, there went out from St. Mary's School, Raleigh, every year a number of young girls who, in culture, in refinement, and still more in elevation of moral and religious character, would compare favorably with the pupils of any other institution in this country. He knew not only how to teach, but how to govern, and to make himself honored as well as loved; and to constrain his pupils to feel that the years spent under his care were at the same time the happiest and most useful of their lives. He has gone to his reward, but his work remains, and will remain from generation to generation." (Haywood's "Bishops of North Carolina," page 193.)



The Seventy-fifth Anniversary

It was on May 12th, 1842, that Rev. Aldert Smedes first threw open the doors of St. Mary's for the reception of students, and except for the vacation periods, those doors have been (at least figuratively) continuously open, the War Between the States, with all its hardships, having caused no interruption in the work of St. Mary's.

The facts of the history of the School are published in many other places. The reproduction of the first advertisement of the School will here serve to take our thoughts "across the years."

THE FIRST ADVERTISEMENT OF ST. MARY'S

(Early in the year 1842 Dr. Smedes issued a circular announcement of the approaching opening of what was to be St. Mary's, though without mentioning a name for the school. The same announcement appeared in the papers of that time. This circular follows.)

The Rev. ALDERT SMEDES, of the City of New York, designs to open a School for Young Ladies, in the City of Raleigh, N. C., on the 12th day of May next.

This Institution is to furnish a thorough and elegant Education, equal to the best that can be obtained in the City of New York, or in any Northern School.

The School Buildings, situated in a beautiful and elevated Oak grove, furnish the most spacious accommodations. The Dormitories are separated into Alcoves, for two Young Ladies each, of a construction to secure privacy and at the same time a free circulation of air.

Every article of furniture is provided by the School, except bedding (beds will be furnished) and towels.

TERMS.—For Board (including washing and every incidental expense), with Tuition in English, Latin, &c., \$100 per Session, payable in advance.

The Extra charges will be for French, Music, Drawing, Painting, and Ornamental Needle-work, at the usual prices of the Masters. There will be no other extra charge.

Pupils will be admitted at any age desired.

No Pupil, except by a written request of the Parent or Guardian to the Rector of the School, will be allowed to have an account at any Store or Shop in the City. A disregard of this prohibition will be followed by an immediate dismissal from the school.

Day-Scholars will be received from such Parents or Guardians as reside in the place.

The year will be divided into two terms of five months each. The former commencing, after the first term on the 15th of May, and terminating on the 15th of October. The latter commencing on the 20th of November and terminating on the 20th of April.

[Then follows a long list of references, etc.]



"Constant as the Northern Star,
Of whose true, fix'd and resting quality
There is no fellow in the firmament."

To Miss Katie

To long for truth, to try to realize
The highest that we see—that is the noblest
Living, and that, dear friend, in all these years
Your high sincerity, your love of love,
Your hatred of deceit and scorn of all pretense
Have helped us to desire.

Thinking of you,
We know that love and truth are real,
That God and good are the eternal verities,
Noisy ambition, hard won fame, the wish
For recognition even of worthy work,
Beside these vital truths fade into nothingness.
To do good, and to distribute of your love
And of your strength to them that need, that
Has been your life. And with such service,
God is pleased.

Emilie W. McVea. 1900.

Miss Kate McKimmon, known affectionately as "Miss Katie" to all St. Mary's girls, is this year rounding out a half century of devoted service to the School.

Entering as a little girl in 1867, from pupil she became teacher, and has continued her teaching without interruption since, being now in charge of the Primary School.

As "Dormitory Mother" she won the hearts of her girls for many years, and her work for and in the Chapel has been a very special part of her.

Unreconstructed Southerner but loyal American, whole hearted in her devotion to School and to Church, St. Mary's would hardly seem St. Mary's without "Miss Katie."

Miss McVea paid tribute to her in the poem published above on her fiftieth birthday.



THE CHAPEL IN THE '60s
(From the drawing by Miss Liddell)



Three Scenes from the Life of St. Mary's

Katharine P. Drane, '18. Σ Λ

(The Winning Sketch in the Anniversary Contest)

I

The Opening of St. Mary's

ON THE 12th of May, 1842, a bright sunshiny morning, Rev. Aldert Smedes threw open the doors of St. Mary's for the first day of school. The opening service was held in the parlor, and we can imagine the scene that took place: Rev. Aldert Smedes, tall, graceful and impressive, stood before a little band of thirteen boarding pupils and about an equal number of day scholars, with those who were to help him in his work—Madame Clement, Miss Maria Thompson, Miss Long, and Mr. and Mrs. Brandt—and led them in a short service, the first service at St. Mary's. Think of the services that have taken place since that May morning so long ago! And does it not make you love and admire the earnest man who had faith to undertake the establishment of a Church School for girls, thus making it possible for the many things which St. Mary's has done and stood for—is doing and standing for?

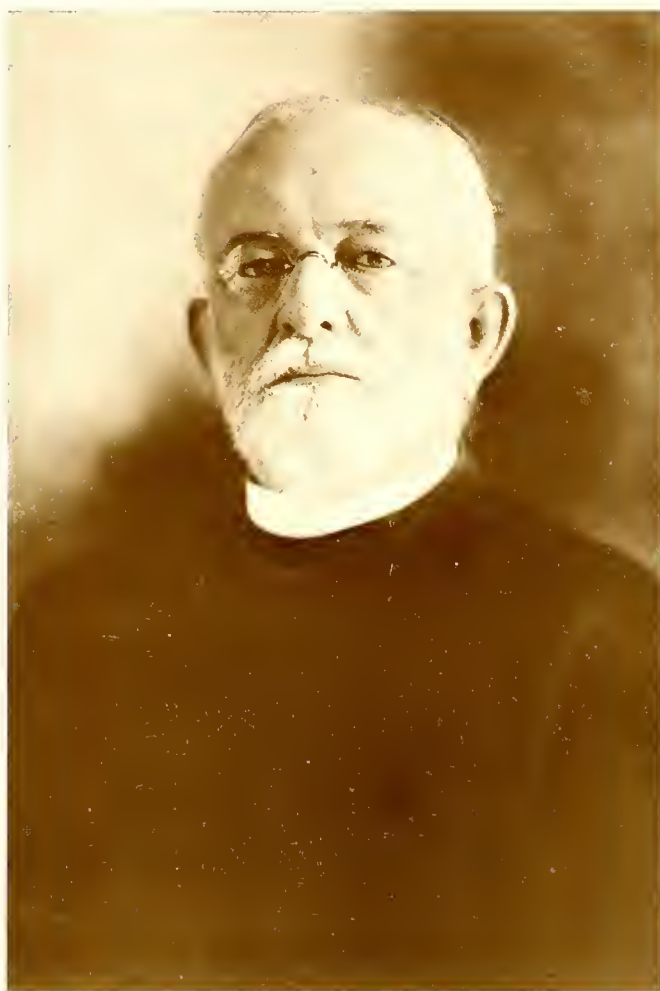
As no records have been preserved of the happenings of the first weeks of the life of the School, we have to pass over them, but not without imagining to ourselves that perhaps, after all, those thirteen little girls did and felt very much as we ourselves did and felt our first weeks at St. Mary's. For who can look back to that first week without recalling the strangeness of everything, and the times when those big lumps just would come up in the throat at the thought of home? Still, the work of St. Mary's had begun, and, in the years that followed, Dr. Smedes succeeded in establishing the School on a firmer and firmer basis.

II

Leaves from My Diary

August 3, 1863.

Father and I have just reached St. Mary's after a long and tiresome journey. We left our home in Salisbury early day before yesterday morning. As we were to drive to Salem in our carriage, mother decided to go that far with us; for it was at Salem that we were to take the coach. It was a long trip, but I was glad every minute of it, and the end of it came too soon—when I had to tell mother good-bye. We did not have much time to wait, as the stage was about ready to leave. They stored my trunk away in the boot, and father and I climbed in. It was fun at first, but I soon grew weary of looking out of the window and amused myself by reading about those funny Fezziwigs in "Pickwick Papers." We reached Durham station and father told me that our journey was almost finished. We finally reached Raleigh and rode out to St. Mary's in the Yarbrough omnibus. Father left me right after we got there, and how hard it was to tell him good-bye! I tried not to cry; but I don't know when I shall see him again, as he returns to join his company tomorrow.



RIGHT REVEREND JOSEPH BLOUNT CHESHIRE, D.D.

Bishop of North Carolina
President of the Board of Trustees of St. Mary's
and Chairman of the Executive Committee
1897-1917

August 4, 1863.

I slept in a long room last night with many little beds in it. I have met Dr. Smedes and I love him already. Miss Evertson scares me most to death, and she is so strict and sarcastic! But I saw one girl run up and sit on her knee, so maybe she won't be so stern after I know her. I went to classes today, and I am going to work hard!

August 15, 1863.

I have been so busy that I have not had time to write in my diary for a long time. This afternoon we sewed and knitted for the soldiers of "The Ellis Light Artillery," and we are going to do it every Saturday afternoon. I am learning to knit and I am getting on finely. I dropped only ten stitches this afternoon!

October 20, 1863.

Isn't it funny how you get used to things? If I had thought at the beginning of this dreadful war that the time would come when I would possess but three dresses, with two of them homespun and the other calico, why, I think I should have died right then and there. But we girls are just as happy as if we had on silks and satins. We lead an uneventful life, but we do have a good time. Every afternoon we play ball in the grove at recess, and we get so hot and mussed up that Madame always scolds us when we rush breathless into French recitation, which comes directly after recess. None of us ever thinks about grumbling when we have sorghum and bread time and again. Why, if it is good enough for Dr. and Mrs. Smedes to eat—and they are two of the best people in the world—I know that we should be glad to eat it. And sorghum tastes mighty good at those candy stews Mrs. Smedes has.

October 23, 1863.

One of the girls told me that Mildred Lee, daughter of our beloved Robert E. Lee, is coming tomorrow. I know we shall hear lots of interesting things from her. Betty Meade told Miss Evertson that she was coming, and all she said was, "Suppose she does come, she's no more than an ordinary mortal like the rest of us." But, anyhow, I know I shall be proud to be with her. And Mrs. Jefferson Davis, who has been here all summer with her four children, is expecting to leave soon. People come from far and near to receive the warm hospitality which Dr. Smedes so kindly offers.

July 20, 1864.

Never shall I forget this Sunday. Yesterday we knew that a fierce battle was raging, and lots of the girls had near relatives in the army. Our dear Dr. Smedes's son, Edward, was with the forces engaged in battle. This morning, right before the end of service, when Dr. Smedes was pronouncing the benediction, a messenger appeared at the door of the Chapel. We all guessed that he had brought bad news as we marched out of the Chapel. Madame Gouye went to the messenger and got the telegram from him, sending it to Dr. Smedes by his little daughter. Soon we learned that the telegram announced that Edward Smedes had been killed in the battle. How brave our Rector has been through all his sadness! This is the second of his sons to die for the Cause.

THE HOUSE



THE REV. GEORGE WILLIAM LAY, D.C.L.

Fifth Rector of St. Mary's, 1907—

In whose Rectorship the Wings and Clement Hall have been built and the School has reached the largest enrollment in its seventy-five years.

April 14, 1865.

Oh, I am so scared, and I want to go home! Those horrid old Yankees are camped right out in our grove! I don't know what they will do to us. I saw one of the soldiers walking around, and I just walked up to him and I told him what I thought of him for coming up here and scaring us so.

111

St. Mary's School, Raleigh, N. C., April 26, 1883.

My Dear Little Daughter:—I am enjoying my visit to your sister Elizabeth very much, and I wish that you could be here with me.

When I arrived last Friday Elizabeth was very glad to see me, but her mind seemed to be very preoccupied. I at last found out that she was thinking of the dreaded abstract of the Friday's Chapel address that she had to write. When she finished that I thought everything would be all right, but she told me that the most trying event of the whole week took place on Friday afternoon, when they had the "reading-out." I decided to slip in quietly and observe the "reading-out." All of the teachers and students assembled in the School Room; the teachers sat on the platform in the front of the room. One by one they rose, and read out the week's honor roll; and you will be glad to know that Elizabeth's name was read out by all her teachers.

Yesterday afternoon it was very cool, it almost felt like a day in early winter—and I wish you could have been here to see the funny sight of Walking Hour. When the bell rang girls came running from the Rocks and Main Building, and every girl had on a shawl! Red shawls, blue shawls, gray shawls—every kind and color of shawl imaginable. They walked up and down all around the Grove, and they looked like so many nuns in their long shawls,—but nuns would not have on such gaily colored wraps, would they? I happened to be down near the gate, and a man, evidently a stranger in Raleigh, stopped and politely asked if this were the Insane Asylum!

Rising bell rings at six o'clock and we have dinner at half-past three. I know you would like the way we have luncheon at noon. The girls all file down to the store room in a long procession, and there they find four big waiters, two filled with apples and two filled with piles of crackers, three in each pile; then the housekeeper hands an apple and three crackers to each girl, and, as a rare treat, there is cheese to go with the crackers. Then the girls may go out to the grove if they choose and eat lunch with their "chums."

Elizabeth rooms in Miss Kate McKimmon's Dormitory. The girls call the Dormitory "McKimmons-ville," and they do have so much fun.

You and Aunt Nancy can fix up a box and send it to surprise Elizabeth. "Getting boxes" is one of the very best things that can happen to a school girl, and the bigger the box, the better it is.

With a heart full of love for my little girl,

Your Mother.



THE CONFIRMATION GROUP IN THE PARLOR

The plate from which this photograph of the "Confirmation Group" is reproduced is furnished the Muse through the courtesy of Mr. Marshall DeLancey Haywood. It is used in his book, "The Bishops of North Carolina," where he says of the picture:

"About the year 1844, the Reverend Aldert Smedes, D.D., Rector of Saint Mary's School at Raleigh, engaged William Hart to paint a full length portrait of Bishop Ives. This portrait (which still hangs in the parlor at St. Mary's) represents him in the act of administering the rite of confirmation to a class of four girls."

It will be remembered that it was Bishop Ives who first interested Dr. Smedes in founding St. Mary's.

This portrait has always been an object of special interest to St. Mary's girls, and the question of who were the originals of the girls painted in the group is an ever interesting subject of discussion now carried on in the third generation.



The original of the "Stage Coach Picture," so often used in the Muse to contrast the old days with later ones, was a drawing by Mrs. Gustave Blessner. Mr. Blessner, Musical Director at St. Mary's in the '40s, had it lithographed for use on the cover of some waltzes which he composed and had published in 1845. On the title page of the music, in addition to the Stage Coach Picture, was printed: "The Flowers of the South. A Collection of Characteristic Waltzes, Composed for the Piano, and Dedicated to the Young Ladies of St. Mary's School, Raleigh, N. C., by Gustave Blessner."



Madame Clement was the first French teacher at St. Mary's, and her little daughter Eleanor accompanied her to St. Mary's and became first a pupil and then a teacher here. Later on she established a very successful girls' school at Germantown (Philadelphia), Pa. At her death she left St. Mary's a \$5,000 fund to establish a scholarship in honor of her mother, and also made St. Mary's the residuary legatee of her estate. From this bequest of \$35,000, the funds were derived for the building of Clement Hall, which was named in Miss Clement's honor.

THE MUSE



THE REV. BENNETT SMEDES, D.D.
Second Rector of St. Mary's School, 1877-1897

"I am sure that every girl who has been fortunate enough to count herself a St. Mary's girl during the regime of Dr. Bennett Smedes has felt the same sense of loving protection."

"Strictly the head of his household, he was a companion of infinite tenderness, sympathy, and understanding, a man to lean upon, to look up to, to thank God for."

"This old-time courtesy never left him in the performance of the slightest duty or amenity of life."

"His firmness, his modesty, his mental attainments, his appreciation of the beautiful, and of brilliancy and wit are well known to all who knew him."

THE MUSE



Miss Emilie Watts McVea, S. M. S., '84, the Alumnae Speaker at the Anniversary Celebration, is one of the most distinguished of the Graduates of St. Mary's, and one of them most immediately connected with it for many years.

She graduated with the Class of '84, one of the best remembered of St. Mary's classes, and was for many years first teacher and then Lady Principal, in the Rectorship of Dr. Bennett Smedes.

After leaving St. Mary's she studied at Cornell University, took her Bachelor's and Master's degrees at George Washington University, Washington, D. C., became Dean of Women at the University of Cincinnati, and in 1916 assumed the Presidency of Sweetbrier College.

THE CLASS OF 1884

of which Miss McVea and Miss Dowd were members.

(From the photograph in the Teachers' Sitting Room.)



THE HOUSE



A GROUP ON THE FRONT STEPS IN THE '60s



A FRENCH PLAY OF THE LATE '70s

THE MUSE



THE EASTER MORNING PROCESSION TO THE CHAPEL



A CLASS DAY SCENE IN THE GROVE. 1915

THE MUSE



MRS. MARY JOHNSON IREDELL

who has given the greater part of a life of usefulness to the work of St. Mary's as student, as student assistant, as teacher, as traveling representative, as organizer of the Alumnae and as President of the Alumnae Association.

St. Mary's Alumnae Association

OFFICERS, 1916-17

<i>Honorary President</i>	--- MRS. MARY IREDELL, Raleigh
<i>Honorary Vice-Presidents</i>	{ MRS. F. MCK. PITTENGER, Raleigh
	{ MRS. E. S. LEAK, Durham
<i>President</i>	--- MRS. W. E. LINDSEY, Spartanburg, S. C.
<i>Vice-President</i>	--- MRS. A. L. BAKER, Raleigh
<i>Secretary</i>	--- MISS KATE MCKIMMON, St. Mary's
<i>Treasurer</i>	--- MRS. ERNEST CRUIRSHANK, Raleigh

ALUMNAE COUNCIL

- MRS. J. J. BERNARD, Raleigh, N. C., until 1917
- MISS MINNIE LEARY, Elizabeth City, N. C., until 1917
- MISS FLORENCE SLATER, New York City, until 1918
- MISS EMILIE W. McVEY, Sweet Briar, Va., until 1918
- MISS SUSAN FRANKS IJEN, Raleigh, N. C., until 1919
- MRS. ELIZABETH McC. SNOW, Raleigh, N. C., until 1919

The Alumnae Association of St. Mary's was established in 1880 and meets annually at Commencement. It has done effective work in aiding the progress of the School.

The Alumnae Chapters meet in their several towns and cities on November 1st, All Saints, which is celebrated as Founders' Day, and on May 12th, the date of the first opening of St. Mary's, which is observed as Alumnae Day.

The most important special work accomplished by the Alumnae Association has been the establishment of the Smedes Memorial Scholarship, to the memory of the Founder and his son, the second Rector of St. Mary's; the rebuilding of the Chapel, and the establishment of the Mary IredeLL Fund and the Kate McKimmon Fund.

Americans All

As the Anniversary Celebration has been the dominant feature of the School Year in St. Mary's affairs, so the onward march of the country in the world crisis has lent a special and dominating touch to the school life in its relation to things outside.

The work for Belgian Relief, the enthusiasm displayed in the First Aid Classes of the Red Cross, with eighty members of the School completing the course, the great interest in the presentation of the Flag, were each indicative of the patriotic feeling that stirs St. Mary's deeply.

Possibly the American incident of the year which will stand out longest in memory was the exchange of telegrams with President Wilson through his daughter, Mrs. William G. McAdoo, now the wife of Secretary McAdoo, and our "Nell Wilson" of 1906-08.

The patriotic meeting of the School on the evening of April 3d aroused much enthusiasm, and at it the resolution was adopted, the reply following in due course.

Mrs. Wm. G. McAdoo,

Raleigh, N. C., April 3, 1917.

1709 Massachusetts Avenue, Washington, D. C.

The students of St. Mary's School have tonight adopted unanimously the following resolution:

"We, the girls and teachers of St. Mary's School, wish through you to extend to our President our wholehearted sympathy for him in this crisis, and to pledge to him and to our country our loyal service.

"It has been with deepest admiration that we have watched and applauded each move that he has made in his wise guidance of our country and his firm championship of the right."

(Signed) Alice Latham, President Senior Class.
 Katharine Drane, President Junior Class.
 Estelle Ravenel, President Sophomore Class.
 Nancy Woolford, President Freshman Class.
 Nettie C. Daniels, President Sub-Freshman Class.
 Eleanor W. Thomas, for the Faculty.
 George W. Lay, Rector.

THE REPLY

Alice Latham, President Senior Class, etc.,

Washington, D. C., April 14, 1917.

St. Mary's, Raleigh, N. C.

Have not had an opportunity until today to show your splendid telegram to my father. He has asked me to send you his deep appreciation and warm thanks for your message and to say that such a pledge of faith and service does much to cheer and encourage him.

I send my thanks and my love to my School.

Eleanor Wilson McAdoo.



MISS ELEANOR WALTER THOMAS

Lady Principal of St. Mary's, 1909-1912; 1913-1917
Head of the English Department
Class Adviser of the Class of 1917

"As we our several ways shall wend,
Eleanor, our Eleanor,
Though fate may us asunder rend,
Eleanor, our Eleanor,
We all shall love thee to the end,
May blessings ever thee attend,
Teacher, adviser, guide and friend,
Eleanor, our Eleanor."



The Faculty and Officers of St. Mary's 1916-1917

REV. GEORGE W. LAY, D.C.L. *Rector*
MISS ELEANOR W. THOMAS *Lady Principal*
ERNEST CRUKSHANK *Secretary and Business Manager*

The Academic Department

REV. GEORGE W. LAY *Bible, Ethics and Pedagogy*
(A B., Yale, 1882; B D., General Theological Seminary, 1885; D C L., University of the South, 1915.
Master in St. Paul's School, Concord, N. H., 1888-1907. Rector of St. Mary's, 1907—)

ELEANOR W. THOMAS *English and Literature*
(A M., College for Women, S. C., 1900; B.S., Columbia University, N. Y., 1913. St. Mary's, 1900-1904;
1905-1912; 1913—)

WILLIAM E. STONE *History and German*
(A B., Harvard, 1882. Principal, Edenton, N. C., Academy, 1901-1902. Master in Porter Academy,
Charleston, 1902-1903. St. Mary's, 1903—)

ERNEST CRUKSHANK *Psychology and Current History*
(A B., Washington College, Md., 1897; A M., 1898; graduate student Johns Hopkins University, 1900.
St. Mary's, 1903—)

MARIE RUDNICKA *French*
(Cours de l'Hotel de Ville, Paris; instructor in St. Mary's College, Dallas, 1907-1912. St. Mary's, 1912—)

HELEN URQUHART *Latin*
(A B., Mt. Holyoke College, 1910. Instructor, Winthrop College, 1914. St. Mary's, 1910-1913, 1914—)

FRANCES RANNEY BOTTUM *Science*
(San Diego, Cal., Normal College, 1910-11; graduate St. Mary's, 1912; summer student Teachers' Col-
lege, Columbia University, 1913, 1914; Peabody Teachers' College, 1915. St. Mary's, 1912—)

JANET B. GLEN *English and Italian*
(Lake Erie College, Painesville, O.; Cornell University; summer student, University of Chicago, 1911;
R. Scuola di Recitazione, Florence, Italy, 1910; summer student, Junta Para Ampliacion de Estudios,
Madrid, 1912-1913. Teacher in Oberlin College, 1887-1891; Rye Seminary, New York, 1899-1908; The
Leete School, New York City, 1911-1914. St. Mary's, 1894-1897; 1915-1917.)

JEWETT SNOOK *Mathematics*
(A B., Wellesley College, 1910. Teacher in The Berwick School (Va.), 1910-1912; St. Mary's Seminary
(Md.), 1914-1915. St. Mary's, 1915—)

JULIA WASHINGTON ALLEN *German and English*
(Graduate St. Mary's, 1914; A B., Randolph-Macon Woman's College, 1916. St. Mary's, 1916—)

THE MUSE



MR. CRUIKSHANK
MISS URQUHART
MISS F. BOTTUM

MISS C. FENNER
Mlle. RUDNICKA
MISS GLENN

MR. STONE
MISS SNOOK
MISS DAVIS

[Faint, illegible handwritten text or scribbles in the bottom right corner.]

CAROLINE ELIZABETH MYRICK *English*
(A.B., Swarthmore College, 1914, A.M., Radcliffe College, 1916. St. Mary's, 1917—)

FLORENCE C. DAVIS *Elocution*
(B.O., Emerson College, Boston, 1906; Elmira College; Posse Gymnasium. St. Mary's, 1911—)

MABEL H. BARTON *Physical Director*
(Graduate Sargent Normal School of Physical Education, 1914; practice teacher Cambridge Public Schools. St. Mary's, 1914—)

LUCY ELIZABETH ROBINS *Lower Preparatory School*
(Graduate, State Normal School, Farmville, Va., 1909; summer student, University of Virginia, 1913; teacher in the Wakefield (Va.) High School, the Bristol (Va.) City Schools. St. Mary's, 1913—)

KATE MCKIMMON *Primary School*
(Student and teacher at St. Mary's since 1861)

Music Department

MARTHA A. DOWD, Director *Piano, Theory, History of Music*
(Graduate of St. Mary's, 1884, pupil of Kjersteiner, Sophus Wiig, Albert Mack; of Edwin Farmer in New York, 1915. President N. C. Music Teachers' Association, 1916—; St. Mary's, 1886—; Director of Music, 1908—)

R. BLINN OWEN *Organ, In charge of Voice*
(M. Mus., Detroit School of Music; pupil of Zimmermann, Mazurette, Theo. Beach of Detroit; Kreutschmar, in New York, Ellison Van Hoese, teacher in Detroit and New York; private teacher in Bluefield, W. Va., and Greensboro, N. C. 1906-1909. Organist and Choir Director, Christ Church, Raleigh, 1909—; Director St. Cecilia Club, etc. St. Mary's, 1909—)

REBECCA HILL SHIELDS *Piano*
(Graduate, St. Mary's, 1910. Certificate in Piano, St. Mary's, 1910; certificate, Virgil Piano School, New York, 1912. Pupil of Ernest Hitcheson. Fessifern, 1911-1913; St. Mary's, 1913—)

EBIE ROBERTS *Piano*
(Pupil in Piano of James P. Brawley, Blinn Owen; in Harmony of John A. Simpson; in Organ of Wade Brown; Certificate in the Burroughs Method. Columbia University, Summer Session, 1916. Private teacher. St. Mary's, 1913—)

LOUISE SEYMOUR *Piano*
(Graduate New England Conservatory with honors, as teacher, 1911; as soloist, 1912. Accompanist at Whitney Vocal School; teacher at Milliken University, etc. St. Mary's, 1914—)

GUSTAV HAGEDORN *Violin*
(Pupil of Adolph Hahn and Leopold Lichtenberg; of Issay Barmas and Edgar Stillman Kelly, Berlin. Five years member of the Cincinnati Symphony Orchestra; Professor of Violin, Orchestra Instruments, etc., Meredith College, 1906-1915; Dean of the Meredith College School of Music, 1912-1915. Director of Music, University of North Carolina Summer School, 1912— President N. C. Music Teacher's Association, 1913-1914. St. Mary's, 1916—)

MARION THOMPSON *Voice*
(Graduate of the H. Thane Miller School, Cincinnati, 1908; of the Institute of Musical Art of the City of New York—Supervisor's Course, 1915; Singing Course, 1916. Pupil of Arthur Terry Tebbs, of Sergei Klbanisky, and of Mrs. Theodore J. Todd. St. Mary's, 1916—)

THE NOSE



MISS THOMPSON
MISS ALLEN
MISS MYRICK

MISS ROBERTS
MISS DOWD
MISS SEYMOUR

MR. OWEN
MISS BARTON
MISS SHIELDS



Art Department

CLARA I. FENNER, Director *Drawing, Painting, Design, etc.*
(Graduate Maryland Institute School of Art and Design, special student Pratt Institute, 1905; special student in Paris, 1907— Director of Art, St. Mary's, 1892-1896; 1902—)

Elocution Department

FLORENCE C. DAVIS, Director *Elocution, Dramatic Art*
(B.O., Emerson College, Boston, 1906; Elmira College (N. Y.); Posse Gynnasium, Boston. Pupil of Edith Herrick, Boston, summers 1911-1913-1914 (Leland Powers Method); private studio, Elmira; substitute teacher, Miss Metcalf's School, Tarrytown 1908; teacher, Reidsville Seminary (N. C.), 1909-1911— Director of Elocution, St. Mary's, 1911—)

Business Department

LIZZIE H. LEE, Director *Stenography, Typewriting, Bookkeeping*
(Director of the Department, 1896—)

JULIET B. SUTTON *Assistant*
(St. Mary's, 1898—)

Home Economics Department

MILDRED TROWBRIDGE *Domestic Science, Domestic Art*
(Manual Training High School, Kansas City; McKinley High School, St. Louis; Thomas Normal Training School, Detroit, Michigan. St. Mary's, 1916—)

Officers 1916-1917

REV. GEORGE W. LAY, D.C.L. *Rector*

MISS ELEANOR W. THOMAS *Lady Principal*

MISS LILLIAN FENNER *Housekeeper*

MISS ANNIE ALEXANDER, R.N. *Matron of the Infirmary*
(Graduate St. Vincent's Hospital, Norfolk, 1909. St. Mary's, 1916—)

DR. A. W. KNOX *School Physician*

ERNEST CRUIKSHANK *Secretary and Business Manager*

MISS LIZZIE H. LEE *Bookkeeper*

MISS JULIET B. SUTTON *Secretary to the Rector*

MISS MARGARET H. BOTTUM *Office Secretary*
(Graduate St. Mary's, 1915)

MRS. MARY IREDELL *Agent of the Trustees*

THE MUSE

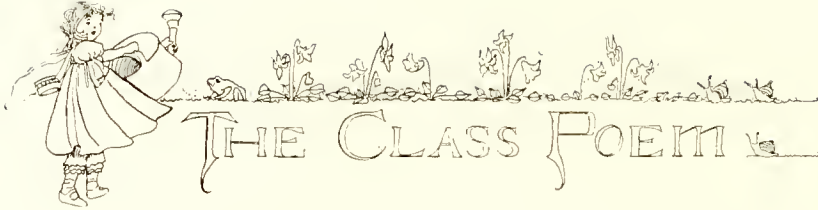


MISS ROBINS
MISS M. BOTTUM
MISS ALEXANDER

MISS L. FENNER
MISS McKIMMON
MISS LEE

DR. KNOX
MISS SUTTON
MISS TROWBRIDGE





The bonds are firm and enduring
 Which bind our hearts in one,
 Ties of affection and friendship,
 Of interest, work and fun.
 And living with face toward the future,
 We've worked with heart and with soul
 Till we've come to our graduation,
 Most eagerly sought for goal.

So now at our happy Commencement
 We're full of thanks and of zeal,
 For we have with us the teachings
 Which St. Mary's has joy to reveal.
 May her precepts and ideals stay with us,
 Keep us ever faithful and true;
 May they make our lives each of service,
 Our hearts with firm strength endue.

Farewell, then, dear Alma Mater,
 Our days now with you are past,
 But time's passing will never sever
 Our devotion and love steadfast.
 And though we are sad at parting
 Ours a quiet joy is too,
 Since memory will make ever dearer
 The love that we bear to you.

R. T.

Senior Class

Colors: Violet and lavender

Flower: Violet

Motto: Aim high, but reach higher

Alice Latham, President

Nellie Rose, Secretary

Frances Cheatham, Vice-President

Eva Peele, Treasurer

Class Adviser: Miss Thomas

Class Roll

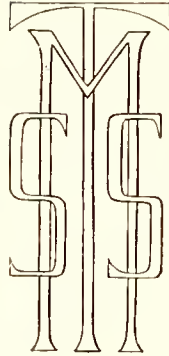
Virginia Caroline Allen, Hickory, N. C.
Virginia Pope Allen, Goldsboro, N. C.
Emma Hudgins Badham, Edenton, N. C.
Frances Howe Cheatham, Henderson, N. C.
Janet Fairley, Rockingham, N. C.
Georgia Foster, Savannah, Ga.
Elmyra Jenkins, Roanoke Rapids, N. C.
Golda Foy Judd, Raleigh, N. C.
Alice Cohn Latham, Plymouth, N. C.
Eva Irene Peele, Williamston, N. C.
Eleanor Relyea, Washington, D. C.
Annie Huske Robinson, Hawkinsville, Ga.
Nellie Cooper Rose, Henderson, N. C.
Rubie Logan Thorn, Kingstree, S. C.
Ethel Carolina Yates, Camden, S. C.

THE MUSE



VIRGINIA CAROLINE ALLEN
Hickory, N. C.

Critic, Sigma Lambda, 1917
Historian, Sigma Lambda, 1917
Editor-in-Chief Muse, 1917

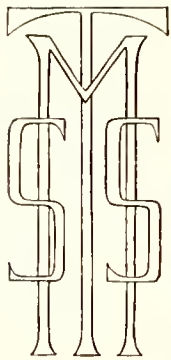


VIRGINIA POPE ALLEN
Goldsboro, N. C.

"How eloquent in every look—
Through her expressive eyes her soul
Distinctly spoke."

"My tongue though not my heart shall have
its will."

THE MUSE



EMMA HUDGINS BADHAM
Edenton, N. C.

- Chapel Librarian, 1916
- Monthly Muse Board, 1916
- Vice-President Sigma Lambda, 1917
- President Granddaughters, 1917
- Inter-Society Debater Sigma Lambda, 1917
- Chapel Marshal, 1917
- Business Manager Muse, 1917

FRANCES HOWE CHEATHAM
Henderson, N. C.

- Vice-President Sigma Lambda, 1916
- Secretary Sigma Lambda, 1917
- Vice-President Class, 1917
- Chapel Warden, 1917
- Monthly Muse Board, 1917
- Assistant Business Manager Muse, 1917

"A mind content, a conscience clear."

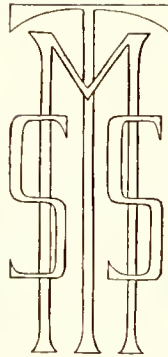
"Deep gray eyes o'er run with laughter."

THE NUSS



JEANET FAIRLEY
Rockingham, N. C.

Vice-President Epsilon Alpha Pi, 1916
Vice-President Epsilon Alpha Pi, 1917



GEORGIA FOSTER
Savannah, Ga.

President Epsilon Alpha Pi, 1917

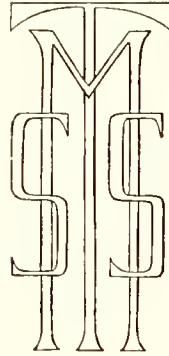
"There's sunshine in the heart of her."

"And learn the luxury of doing good."

THE MUSE



ELMYRA JENKINS
Roanoke Rapids, N. C.



GOLDA FOY JUDD
Raleigh, N. C.

Secretary Class, 1916
Commencement Marshal, 1916
President Epsilon Alpha Pi, 1917
Chapel Usher, 1917
Exchange Editor Muse, 1917

"Good humor only teaches charms to last.
Still makes new conquests and maintains the
past."

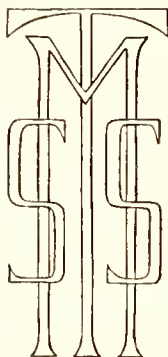
"A day, an hour of virtuous liberty.
Is worth a whole eternity of bondage."

THE MUSE



ALICE COHN LATHAM
Plymouth, N. C.

President Class, 1915-16-17
Inter-Society Debater, 1915-17
Monthly Muse Board, 1916
Secretary Muse Club, 1916
Chief Marshal Epsilon Alpha Pi, 1916
Vice-President Epsilon Alpha Pi, 1916
President Mu Athletic Association, 1917
President Dramatic Club, 1917
Associate Editor Muse, 1917
Anniversary Speaker, 1917



EVA IRENE PEELE
Williamston, N. C.

Vice-President Alpha Rho, 1917
Treasurer Class, 1917
Chapel Marshal, 1917

"When she will, she will—you can depend
on't.

When she won't, she won't, there's an end
on't."

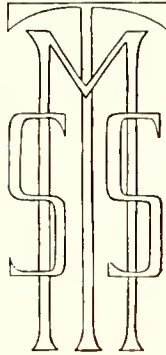
"She knew whatever's to be known,
But much more than she would own."

THE MUSE



ELEANOR RELYEA
Washington, D. C.

Inter-Society Debater, Sigma Lambda, 1915
Commencement Marshal, 1915
President Sigma Lambda, 1916-17
President Altar Guild, 1917
Chapel Usher, 1917



ANNIE HUSKE ROBINSON
Hawkinsville, Ga.

President Sigma Athletic, 1916
Vice-President Sigma Lambda, 1916
Tennis Champion, 1916
Winner Shakespearian Essay, 1916
Inter-Society Speaker, Sigma Lambda, 1917

"But genius must be born; it never can be taught."

"Life is not so short but that There is time for courtesy."

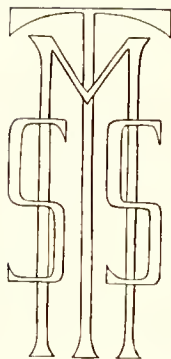


THE MUSE



NELLIE COOPER ROSE
Henderson, N. C.

Monthly Muse Board, 1916
Treasurer Alpha Rho, 1916
Commencement Marshal, 1916
Secretary Class, 1917
President Alpha Rho, 1917



RUBIE LOGAN THORN
Kingstree, S. C.

Inter-Society Debater, 1915
Treasurer Sigma Lambda, 1915
Vice-President Dramatic Club, 1917
Chapel Warden, 1917

"Now let it work: Mischief thou art afoot,
Take thou what course thou wilt."

"A friend to truth, of soul sincere,
In actions faithful, in honor clear."



ETHEL CAROLINE YATES
Camden, S. C.

Secretary-Treasurer Dramatic Club, 1917
Junior Teller Sigma Lambda, 1917

A Senior Alphabet

Catalogue the Seniors,
Class of Seventeen,
Alphabetic order,
Keep their memory green.

Virginia C., the Editor,
Virginia P., the neat,
Emma B., the Business lass,
Doodley C., the sweet.

Jeanet F., the popular,
Georgia, argufer,
Elmyra Jinks, "for goodness sake,"
Golda Judd, high flyer.

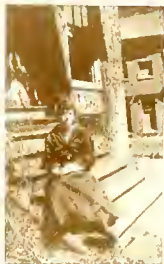
Alice, maid of influence,
Eva Peele, the teacher,
Eleanor, ambitious one,
Nellie, charming creature.

Rubie Thorne, the logical,
Annie R., athletic,
Ethel, silent eloquence,
Seventeen—synthetic.

Charming Class of Seventeen,
Fortune, please caress them,
As they wander here and yon,
Do be sure to bless them.

"Known to few, but prized as far as known."

Who's Who in the Class of 1917



VIRGINIA CAROLINE ALLEN. "Miss Caroline," for thus we have to call her on account of the complication of Virginia Allens in our class. To others she appears dignified, but we who know her so well contradict this, for she is always one of the first to enter into our Senior Hall pranks and jokes. "She hath an agile tongue," well said by one of the "Freshies," but if the Library walls could talk they would tell us even more than the "Freshies," who study there at night.



VIRGINIA POPE ALLEN, better known as "White Virginia," is the college member of our class. She came to us from Randolph-Macon with very high class ideas, and it caused us some trouble to bring her down to our simple ways of life in Senior Hall. At times she forgets that she is not at Randolph-Macon now, for she will assume certain privileges during study-hour. She is not all fun, but is a good student and grand classmate.



EMMA HUDGINS BADHAM. "Reddie." One minute she is glad, the next she is mad. Some say it is due to the disposition characteristic of "red-heads," but we know the true cause to be those eternal "Muse dues" which she is always collecting. When it comes to duty she is right there.

THE NUSE



FRANCES HOWE CHEATHAM. "Doodley" is our "most lovable" member, and a remarkable talent is her bass voice. Oftentimes it is heard in deep, melodious tones to Alice's accompaniment, and the rest of us listen, realizing how true it is that "music hath charms." She is always amusing, but mostly so when she is angry. In all her fantastic moods, in all her quaint common sense, "Doodley" has for three years been, and will be always, "most lovable."



JEANET FAIRLEY. Fun, good time, lots to eat, these make up Jean who is always bright and happy. Everybody likes to have her about because she always brings life with her. Jean's recent hobby is moving picture scenarios which she devours daily, and we hope that she may some day reach her aspiration.



GEORGIA FOSTER. Georgia is known most widely for her "unselfishness," but those with whom she is most constantly associated know that this is only one of the many laudable characteristics of her make-up. It is the regret of Senior Hall that "C" Math. claimed so much of her time, but we have managed often enough to entice her from the "beloved" study to enjoy her true spirit for a good time. Her dramatic ability rose to its height in the mid-term play, and the glory that she gained for being a good-looking man entirely prevented the tragedy which her make-up work had almost made of her life.



ELMYRA JENKINS. Elmyra, or, as her fastidious taste prefers, "Myra," must have been thought by the girls of four years ago "a very sweet little girl," but as time went by deeper and more laudable characteristics came to light. Every one soon discovered that she was determined to make her mark. When this determination shows itself it is always accompanied by a facial expression which only the Seniors know. However, it has proven a very good attribute, for Elmyra usually "gits there."

THE JUDGE



GOLDA FOY JUDD. Golda is the only "day pupil" in our class, and well she uses this great privilege. She is not with us much, for as soon as English N is over she is seen no more. But for this she is a good mixer, and we feel that this accomplishment will soon remove her from our number. She must be in love! Who ever saw one so carefree that was not? She is surely no "Maggie Gulliver," for she looks for no trouble and finds little.



ALICE COHN LATHAM. Alice really has much respect for feelings, and even she has on a few occasions shown emotion, yet from her career you would judge statistics and offices consume all her thought, for she has been voted our "most influential," "best all round," and "best dancer," and has offices which to name were too long to tell. She exerts her potent influence in stirring up spirit and she greatly admires "the good old days," perhaps only less than that remarkable child, Annie Cameron.



EVA IRENE PEELE. "Peva Eele" alias "The Bell(e) of Senior Hall," has a very keen sense of hearing, having never once missed the first peal of the rising bell, and never once failed to tell the Hall. Eva's uprightness is shown in everything, even in her very bearing as she leads out Chapel line. With all this she is the best hearted member of the class.



ELEANOR RELYEA. Eleanor is the youngest of our class in years, but not in knowledge. For two years now she has held the coveted first place in Miss Thomas's English. However, we who know her well fear she has a natural weakness for English anyway, for somehow, though she sits on the front row, Eleanor always manages to be the last one out and to "get in" a private word or two with Miss Thomas. But she is ever ready to entertain us with her mandolin and marvelous tales of "up the country," and we have to forgive her monopoly of "Miss Eleanor T." The long and short of it must both be taken into consideration, you see, in this write up.

THE MUSE



ANNIE HUSKE ROBINSON. Annie is the possessor of various talents. She swims, plays tennis and basketball, recites, and performs upon every musical instrument she can find, especially upon the ukulele and guitar, and her voice often breaks into our peaceful slumbers after lights. She is followed by a horde of "crushes" to whom she is, as well as to us, "Sweet Annie."



NELLIE COOPER ROSE. At the pageant Nellie proved herself a typical jester, and the Seniors of '17 rejoiced at the prospect of having such a joker to liven up the monotony of school life, but, alas! The Nellie of '17 is very different from the Nellie of '15 and '16. Although she has not entirely lost her ability for amusing she has now deeper interests to occupy her time, the deepest of which is "the great war," and we have to admit that she is the most loyal and devoted admirer of "Wilson" in the Senior Class.



RUBIE LOGAN THORN. Since being taken for the Lady Principal she has tried very hard to be dignified and keep up her "rep.," but her sense of humor along with the comic parts that she takes on the stage make it rather difficult. Most of her time is spent in trying to keep her roommate out of mischief.



ETHEL CAROLINA YATES. "Cupid," as she is called by her friends, has only been among us two years, but in that time she has proven to us her sterling qualities. She, too, has a quantity of red hair, but she evidently keeps the corresponding disposition well under control, for she seldom gives way to it. With her perseverance, especially as to Algebra, we are sure that she will make good.



A Might-be Prophecy of the Class of 1917

"There'll come a time some day."

Ah, strange are the changes that have come over us,
Amazing, ridiculous too!
Each is now just the opposite of what she once was,
And as such I describe them to you.

Virginia C. Allen, outspoken and tall,
Now lets her friends have their own way;
While our friend, Eva Peele, the society belle,
Has the world as it were, in her sway.

Emma Badham no longer is worried these days,
But all smiling is wholly carefree;
While Alice, most proper, with each hair tucked in place
Has a hen-pecking husband-to-be.

Elmyra, true, thrives on "for goodness sake" still,
But has won herself glorious "rep.";
Golda Judd, in class meeting so conspicuous of yore,
Now quite bubbles over with "pep."

Jean Fairley, of course, is a quaint little lady,
Prim, proper, particular too;
While Ethel, loud voiced and in manner outrageous,
Laughs and stirs up a great how-dy'e-do.

Virginia "White" Allen has at last quite recovered
From the taps on her window pane;
But Nellie, the Rose of the class in our youth,
Greet's our jokes now with lofty disdain.

Georgia Foster, once "perfect," has fallen from grace,
And is happy if still rather "queer";
While "Doodley"'s forgotten the way to say "ugh!"
And writes essays for fun like a dear.

A much thinner Rubie, a practical banker,
Scorns Poetry and English and such;
And Athletic Anne, now a most scornful "fan,"
Hates music and dinners "Sehr" much.

"Aunt Eleanor" Relyea, at length sobered down,
Is settled to sweet domesticity;

Aren't you sure now that each of the class will enjoy
A most dee-lightful brand of felicity?



Candidate for Diploma



MARTHA BOARDMAN WRIGHT
Boardman, N. C.

Diploma in Voice
Diploma in Piano

Certificate in Piano and Voice, 1916



Candidates for Certificates



KATHARINE PARKER DRANE

Edenton, N. C.

Piano

ALINE EDMONDS HUGHES

Henderson, N. C.

Expression



Candidates for Certificates



EMILIZA BRASWELL KNIGHT
Tarboro, N. C.
Home Economics

SARAH LITTLEJOHN RAWLINGS
Wilson, N. C.
Piano



THE MUSE



THE CLASS OF NINETEEN-EIGHTEEN

- | | | | | |
|---------------|-----------|-----------|----------|-----------|
| Laughinghouse | Hughes | Gebert | Miller | H. Morgan |
| Pratt | M. Wright | Mr. Stone | K. Drane | Folk |



Junior Class

The Class of 1918

Colors: Black and gold

Flower: Black-eyed Susan

Motto: Climb though the rocks be rugged

Katharine Parker Drane, President

Agnes Theresa Pratt, Secretary

Elizabeth McMorine Folk, Vice-President

Martha Boardman Wright, Treasurer

Class Adviser: Mr. Stone

CLASS ROLL

Katharine Parker Drane, Edenton, N. C.

Marion Travis Edwards, Raleigh, N. C.

Elizabeth McMorine Folk, Raleigh, N. C.

Ruth Ward Gebert, New Iberia, La.

Aline Edmonds Hughes, Henderson, N. C.

Katherine Dorothy Hughes, Raleigh, N. C.

Helen Laughinghouse, Greenville, N. C.

Helen Carhart Mason, Rocky Mount, N. C.

Maud Irene Miller, Raleigh, N. C.

Henrietta Marshall Morgan, Pittsboro, N. C.

Agnes Theresa Pratt, Madison, N. C.

Martha Boardman Wright, Boardman, N. C.



THE CLASS OF NINETEEN-NINETEEN

Myers
S. Wood

Albertson
Rawlings

Miss Sutton
Moye

Mullins
Ravenel

Burke
Collins



Sophomores

The Class of 1919

Colors: Scarlet and gray

Flower: Scarlet Poppy

Motto: He who conquers, conquers himself

Estelle Ravenel, President

Ellen Lay, Secretary and Treasurer

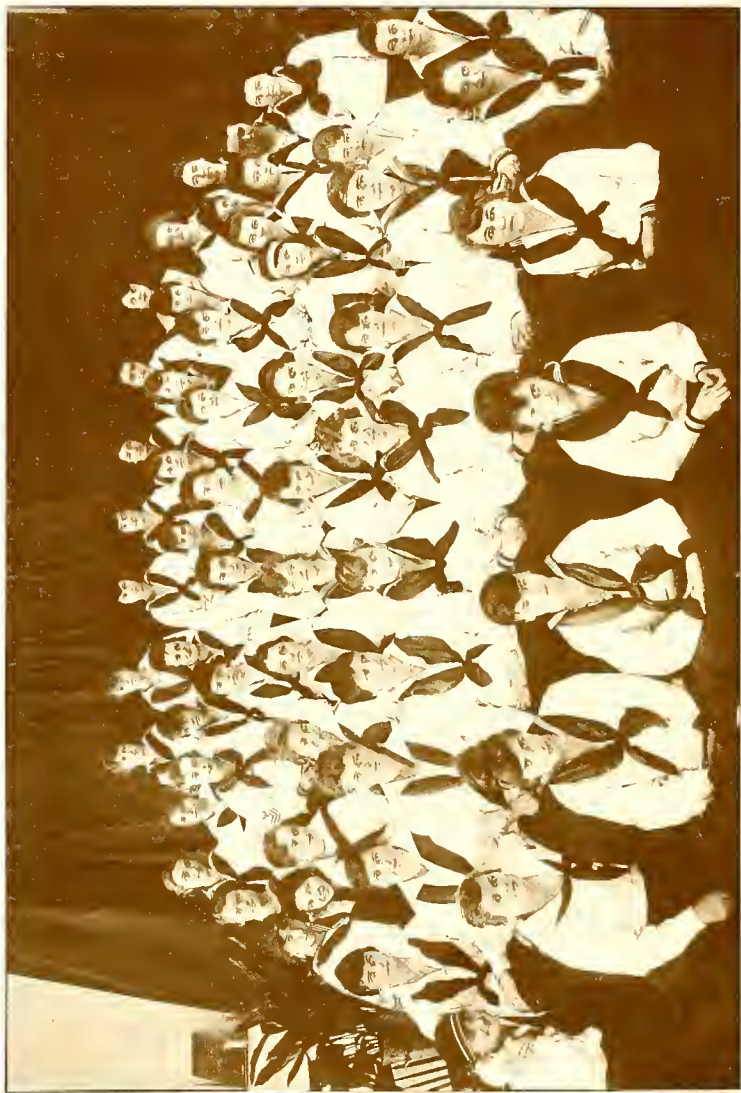
Sara Wood, Vice-President

Class Adviser: Miss Sutton

- Bertha Albertson, Scotland Neck, N. C.
- Sadie Braxton, Kinston, N. C.
- Nina Burke, New Iberia, La.
- Florence Busbee, Raleigh, N. C.
- Mildred Collins, Centreville, Md.
- Catherine Gilmer, Charlotte, N. C.
- Frances Hillman, Nashville, Tenn.
- Marie Linehan, Raleigh, N. C.
- Novella Moye, Greenville, N. C.
- Mary Mullins, Marion, S. C.
- Josephine Myers, Charleston, S. C.
- Gertrude Pleasants, Hamlet, N. C.
- Estelle Ravenel, Valdosta, Ga.
- Alma Spencer, Fairfield, N. C.
- Sara Wood, Edenton, N. C.



THE MUSE



THE CLASS OF NINETEEN-TWENTY



Freshmen

The Class of 1920

Colors: Green and white

Flower: Marechal Neil Rose

Motto: Ever onward, ever upward

Nancy Woolford, President

Catherine Gilmer, Vice-President

Frances Hillman, Secretary-Treasurer

Class Adviser: Mr. Cruikshank

M. Adams
L. Arbogast
L. S. Avent
E. Ayres
H. Battle
K. Batts
E. Bowne
H. Brigham
L. Clarke
K. Coker
B. Cooper
E. Cooper
H. Cooper
E. Curtis
K. Darden
E. Davis
S. Davis

M. R. Divine
M. Drane
J. Dunn
B. Durham
E. Faucette
M. Ferebee
S. Fishel
M. H. Gold
M. B. Gold
S. Grant
N. Gregg
M. Griffith
M. Guirkin
B. M. Hines
M. Jones
S. Kaplan
C. Kent
M. Kirtland

E. Knight
E. B. Lay
C. Lefferts
M. Lindsay
E. Marsh
R. Marsh
M. Marston
C. Martin
G. Merrimon
E. Moss
M. Moss
A. McDuffie
L. McLaws
C. McMullan
M. L. Nixon
E. Pender
M. Polk
L. Pruden

S. Rawlings
E. Rembert
A. Seed
B. Sheldon
L. Shepherd
A. Shumate
S. Smith
M. Stanley
H. Tarwater
L. Toler
J. White
G. Williamson
C. M. Wilkes
A. Wilson
M. C. Wilson
E. Wingate
D. Wood
R. Wright



THE PREPARATORY DEPARTMENT



The Preparatory Department

Colors: Pink and blue

Flower: Sweet Pea

Nettie Carol Daniels, President

Rainsford F. Glass, Secretary

Mary I. Chavasse, Vice-President

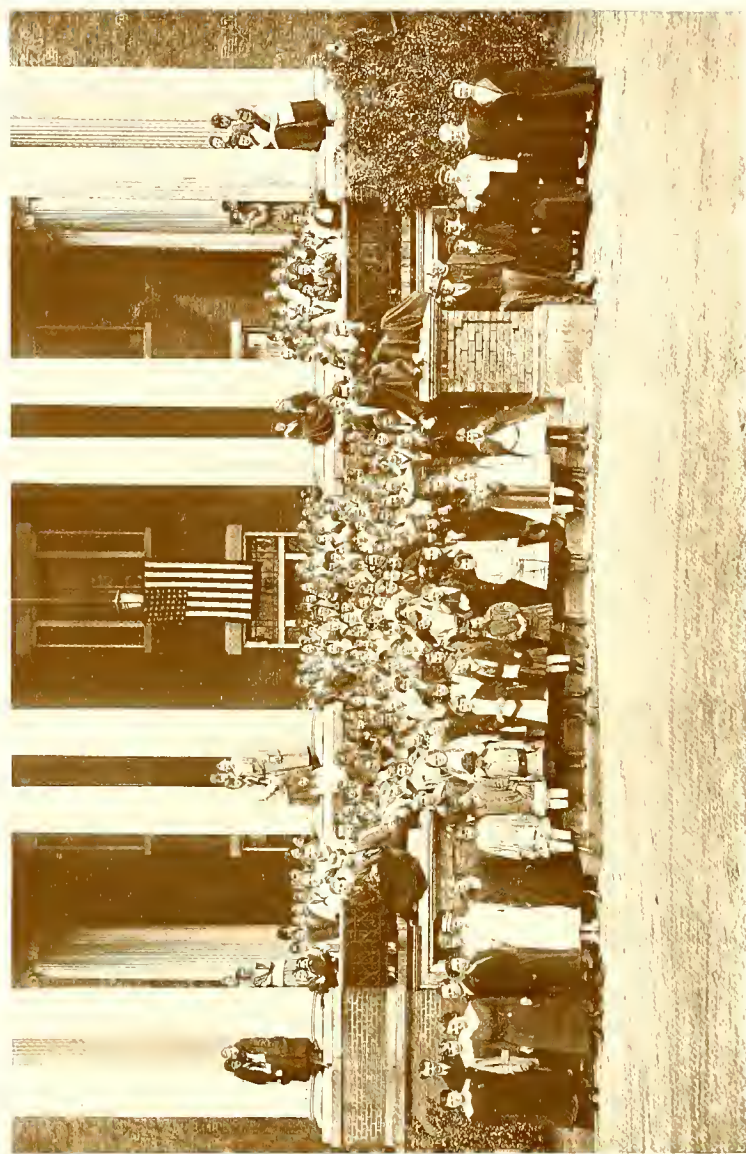
Mary Neal, Treasurer

K. Alston
K. Arbogast
H. Barber
E. Brantley
D. Brigham
C. Butt
F. Butler
M. Chavasse
H. Copeland
N. Daniels
P. Donlon
M. Fetter
T. Foot
M. Forester
E. Freeland
M. French
R. Glass
F. Griffin
E. Griffith
L. Hall
L. Hawkins

R. Hill
M. Holt
M. Hood
L. Hyman
A. Ivey
E. Lacey
A. Lay
S. Linehan
F. B. Morgan
C. Mott
H. McCoy
M. McCulloch
Hz. McNeill
Hn. McNeill
M. Neal
S. Northrop
W. Odom
L. Paul
R. Pleasants
V. Pottle
D. Powell


M. Richardson
V. Royster
J. Ruffin
K. Shuford
L. Slade
A. Smith
J. Smith
V. Staten
P. Stiles
A. Stone
D. Swett
M. Taliaferro
A. Taylor
M. Tredwell
L. Walker
S. Wiley
A. Williams
V. Williams
A. Withers
K. Yarborough
M. Yorke

THE HOUSE

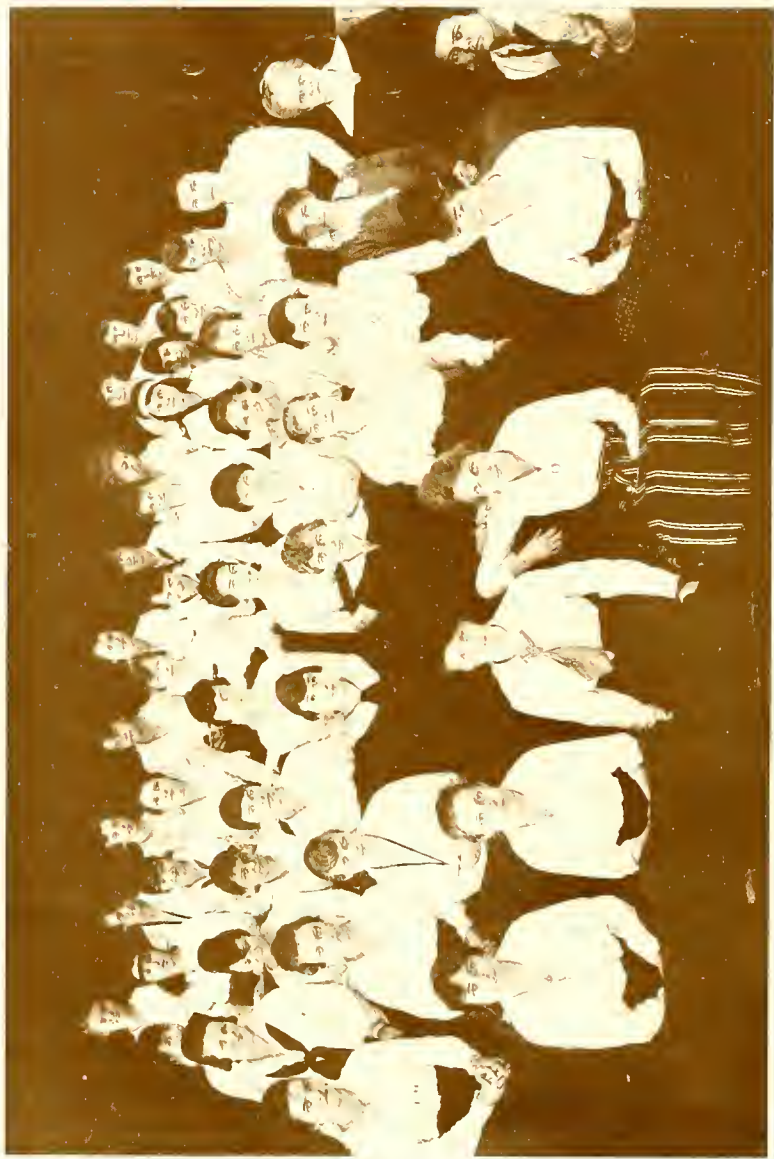


"THE WHOLE SCHOOL," 1916-17

THE MUSE

The LITERARY SOCIETIES 





THE EPSILON ALPHA PI LITERARY SOCIETY, 1916-17



Epsilon Alpha Pi Literary Society

(Founded 1900)

Colors: Olive and gold

Flower: Jonquil

Motto: Esse quam videri

Advent Term
Elmyra Jenkins
Janet Fairley
Helen Laughinghouse
Agnes Pratt
Nancy Woolford

OFFICERS
President
First Vice-President
Second Vice-President
Secretary
Treasurer

Easter Term
Georgia Foster
Janet Fairley
Helen Laughinghouse
Agnes Pratt
Martha Wright

INTER-SOCIETY DEBATERS

Agnes Pratt
Virginia P. Allen

Bessie Folk
Nancy Woolford

ANNIVERSARY SPEAKER

Alice Latham

COMMENCEMENT MARSHALS

Agnes Pratt

Nancy Woolford

HONORARY MEMBERS

Dr. Lay
Miss Lee
Miss Trowbridge

Miss McKimmon
Miss Julia Allen

Mr. Owen
Miss Myrick
Miss Margaret Bottum

ACTIVE MEMBERS

Allen, V. P.
Avent
Avera
Brigham, D.
Burke
Coker
Cooper
Daniels
Davis, S.
Donlon
Dunn
Fairley
Fishel
Folk
Foster
Grant
Hines
Jenkins

Jones
Kern
Kirtland
Lay, E. B.
Lay, A. R.
Lacey
Lassiter
Latham
Laughinghouse

Lefferts
Lindsay
McDuffie
McNeill
Merrimon
Morgan
Moss, E.
Moye
Mullins

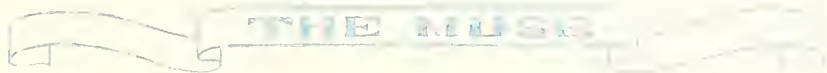
Neal
Nixon
Odom
Pearsall
Pratt
Richardson
Shuford
Staten
Stiles
Sublett
Swett
Taliaferro
Wiley
Wilson, M.
Woolford
Wright, J.
Wright, M.
Wright, R.



Faculty Adviser: Mr. Cruikshank



THE SIGMA LAMBDA LITERARY SOCIETY, 1916-17



Sigma Lambda Literary Society

(Founded, 1900)

Colors: Purple and gray

Flower: Yellow Jessamine

Motto: Lit with the sun

Advent Term
Eleanor Relyea
Frances Cheatham
Annie Robinson
Emma Badham
Virginia C. Allen
Rubie Thorn
Helen Brigham
Ruth Gebert

OFFICERS

President
Vice-President
Secretary
Treasurer
Critic
Historian
Senior Teller
Junior Teller

Easter Term
Eleanor Relyea
Emma Badham
Frances Cheatham
Rubie Thorn
Katharine Drane
Virginia C. Allen
Annie Robinson
Helen Brigham

INTER-SOCIETY DEBATERS

Katharine Drane
Rubie Thorn

Emma Badham
Marian Drane

ANNIVERSARY SPEAKER

Annie Robinson

COMMENCEMENT MARSHALS

Helen Brigham

Ruth Gebert

HONORARY MEMBERS

Miss Davis
Miss C. Fenner
Miss Sutton

Miss L. Fenner
Miss Shields

Mr. Stone
Miss Thompson
Miss Thomas

ACTIVE MEMBERS

Allen, V. C.
Arbogast, K.
Arbogast, L.
Ayles, E.
Badham
Batts
Bowne
Brigham, H.
Butler
Butt
Cheatham
Clarke
Cooper, H.
Davis
Dent
Drane, K.
Drane, M.
Forester
Freeland

Gebert
Gilmer
Glass
Gregg
Hawkins
Herndon
Hill
Holt, M.
Hood
Ivey

King
Marsh, R.
Marston
Martin
Miller
Morgan, F. B.
Moss, M.
McLaws
Northrop
Palmer

Pleasants, G.
Powell
Relyea
Rembert
Robinson
Shumate
Slade
Smith, A.
Smith, J.
Snipes
Stone, A.
Thorn
Toler
Tredwell, E.
Walker
Wilkes
Willingham
Withers, E.
Yatés



Faculty Adviser: Miss Thomas



THE ALPHA RHO LITERARY SOCIETY, 1916-17

Alpha Rho Literary Society

(Organized 1912)

Colors: Scarlet and gray

Flower: Daisy

Motto: Facta non verba

Advent Term
Nellie Rose
Eva Peele
Frances Hillman
Aline Hughes
Elizabeth Waddell
Estelle Ravenel

OFFICERS
President
Vice-President
Secretary
Treasurer
Senior Teller
Junior Teller

Easter Term
Nellie Rose
Eva Peele
Frances Hillman
Estelle Ravenel
Aline Hughes
Elizabeth Waddell

INTER-SOCIETY DEBATERS

Sara Wood
Katharine Darden

Estelle Ravenel
Frances Hillman

ANNIVERSARY SPEAKER

Aline Hughes

COMMENCEMENT MARSHALS

Sara Wood

Frances Hillman, Chief

Aline Hughes

ACTIVE MEMBERS

Adams
Albertson
Battle
Braxton
Chavasse
Collins
Cooper, B.
Copeland
Curtis
Darden
Divine
Dougherty
Durham
Ferebee
Foote
French
Griffin, F.
Griffith, E.

Griffith, M.
Hartley
Hillman
Hughes
Hyman
Jensen
Kent
Knight
Lamb
Lynah
McCoy

McMullan
McNeill
Marsh, E.
Mason
Mott
Myers
Patch
Peele
Polk
Pottle
Ravenel

Rawlings
Rose
Ruffin
Seed
Sheldon
Snyder
Springs
Tarwater
Taylor
Waddell
White
Williams, A.
Williams, V.
Wilson, A.
Wingate
Withers, A.
Wood, D.
Wood, S.
Yorke



Faculty Adviser: Miss Frances Bottum



The Commencement Marshals, 1917

Nancy Woolford, E. A. II

Agnes Theresa Pratt, E. A. II

Aline Hughes, A. P.

Helen Brigham, Σ. A.

Ruth Ward Gebert, Σ. A.

Sara Elizabeth Wood, A. P.

Frances Hillman, A. P., Chief

The Literary Society Activities

The Literary Societies have been leading organizations at St. Mary's since their establishment. Named after three leading southern poets—Edgar Allan Poe, Sidney Lanier, and Abram Ryan—they hold weekly meetings, with special Inter-society Meetings to celebrate the special holiday occasions—Thanksgiving, Lee's Birthday, Washington's Birthday, etc. For fifteen years they have held annual Inter-society Debates, and the past two years they have cooperated with the English Department, under the guidance of Miss Thomas, in an Inter-Society Contest in writing. The contest includes poetry, story and essay.

The Societies choose annually the Commencement Marshals, the Chief Marshal being chosen by each in turn.

The Anniversary Contest



Annie H. Robinson, $\Sigma \Lambda$



Alice Latham, $E \Lambda \Pi$



Aline Hughes, $\Lambda \rho$

THE SPEAKERS

As a part of the celebration of the 75th Anniversary on the morning of May 12th the speaking contest between the chosen representatives of the three Literary Societies was held, and the winning papers in the Inter-Society contest were read.

The general theme of the whole celebration was "St. Mary's," and the speeches and papers all dealt with phases of that theme.

The Anniversary Speakers were:

For Sigma Lambda: Annie H. Robinson, '17—"St. Mary's."

For Epsilon Alpha Pi: Alice Cohn Latham, '17—"Dr. Aldert Smedes"

For Alpha Rho: Aline Elizabeth Hughes, '18—"The Power of Personality"

Miss Hughes was declared the winner.

The Winners in the Contest were:

The Historical Sketch: (1) Katharine Drane, '18, $\Sigma \Lambda$ —"Three Scenes from the Life of St. Mary's."

The Poem: (1) Aline E. Hughes, '18, $\Lambda \rho$ —"The Original Thirteen."

(2) Henrietta Morgan, '18, $E \Lambda \Pi$ —"The Sacred Spot."

THE MUSE



THE INTER-SOCIETY DEBATERS. 1917

(Back Row, standing—from left to right): Katharine Darden, Frances Hillman, Sara Wood, Estelle Ravenel, Virginia Pope Allen, Nancy Woolford, Bessie Folk, Agnes Pratt.
(Front Row, sitting—left to right): Rubie Logan Thorn, Katharine Drane, Emma Badham, Marian Drane.

The 1917 Debates

Saturday, March 31: Sigma Lambda vs. Alpha Rho

Resolved, That St. Mary's should have student self-government with faculty supervision.

Rubie Thorn, '17, and Katharine Drane, '18, Sigma Lambda, Negative, defeated Sara Wood, '18, and Katharine Darden, '20, Alpha Rho, Affirmative.

Wednesday, April 11: Alpha Rho vs. Epsilon Alpha Pi

Resolved, That the country is a better location for a school like St. Mary's than the city.

Frances Hillman, '19, and Estelle Ravenel, '19, Alpha Rho, Affirmative, defeated Virginia P. Allen, '17, and Agnes Pratt, '18, Epsilon Alpha Pi, Negative.

Wednesday, April 18: Epsilon Alpha Pi vs. Sigma Lambda

Resolved, That the Improvement Fund now being raised for St. Mary's should be spent on building new buildings before remodeling the present buildings.

Bessie Folk, '18, and Nancy Woolford, '20, Epsilon Alpha Pi, Affirmative, defeated Emma Badham, '17, and Marian Drane, '20, Sigma Lambda, Negative.



The Thirteen Originals

(Metre: Alfred Noyes's "Forty Singing Seamen")

By Aline Hughes, '18

(The Prize Verses in the Anniversary Contest)

Away from home and Mother off to boarding school we rolled,
Thirteen wondering schoolgirls in the big stage coach.
The coach got there at twilight, and through the grove we bowled,
Wondering if the Teachers had noted our approach.

But the door was open wide,

Sending golden light outside,

And we thought they must have noted our approach;
Must have long been warned of us by rumblings from the coach.

But not for long we wondered if perhaps we had been heard,
We thirteen wondering schoolgirls at our Alma Mater's door,
For a lady, sweet and motherly, with smile and cheering word,
And a gentleman, whose smile we'll ne'er forget till life is o'er,

Came quickly out to meet us,

With kindly words to greet us,

And to lead us gently through our dear St. Mary's door;
For the first time then to lead us through our dear St. Mary's door.

She led us to our dear old "dorm," and showed each one her alcove there;
They showed us through the parlor with its picture covered walls.
The homesickness in our throats and eyes was very hard to bear,
But even in our homesickness we loved those rooms and halls.

The Faculty were cheerful

For they knew that we felt tearful.

And they tried to cheer us up as they led us through the halls;
Yes, they tried to entertain us as they showed us all the halls.

We learned to love those dear people and East Rock chapel small;
We'll carry all their pictures in our minds where'er we go;
But when we were just schoolgirls, without a great life call
How could we then prophesy how our dear school would grow?

We were schoolgirls just like others;

We were not then your grandmothers;

We were thirteen wondering schoolgirls, so how could we then know?
We were the thirteen first St. Mary's girls. Of course we couldn't know.

THE NUBS

We could not know that '17 would hail and celebrate
The day when first we came, just five and seventy years ago;
That after years they would recall that happy, happy date,
As thirteen wondering schoolgirls of course we did not know.
 In long past happy springs
 We played where you have Wings.
Of Clement Hall of course we could not know;
Of all the joys of '17 of course we could not know.

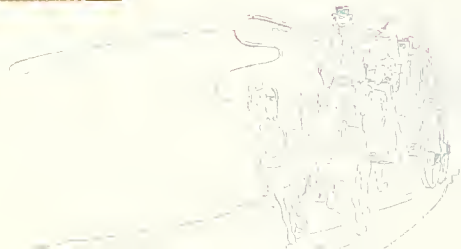
Girls of '17, we originals would say
Our blessings now are with you as you each one ought to know,
As we have loved St. Mary's may you ever love it too,
And carry on her teachings as on your way you go.
 If we had known of you
 We might have been more true,
But we were only schoolgirls, so of course we did not know;
The first thirteen St. Mary's girls, of course we could not know.

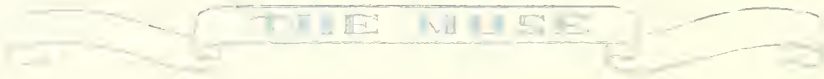
THE MUSE



Chapel Officers, 1916-17

Chapel Marshals: Emma Badham and Eva Peele
Chapel Wardens: Frances Cheatham and Rubie Thorn
Chapel Ushers: Elmyra Jenkins, Eleanor Relyea and Virginia C. Allen
Chapel Librarians: Helen Brigham and Estelle Ravenel





The Junior Auxiliary

Miss McKimmon, General Directress

ST. AGNES' CHAPTER

(East Wing)

Miss Snook
Katharine Drane
Agnes Pratt
Bessie Folk
Helen Laughinghouse

Directress
President
Vice-President
Secretary
Treasurer

ST. MARGARET'S CHAPTER

(West Wing)

Miss Urquhart
Estelle Ravenel
Aline Hughes
Nancy Woolford
Nancy Woolford

ST. CATHERINE'S CHAPTER

(Senior Hall)

Miss Thomas
Annie Robinson
Rubie Thorn

Directress
President
Secretary-Treasurer

ST. ELIZABETH'S CHAPTER

(Main Building)

Miss Thompson
Margaret Marston
Sarah Grant

ST. ANNE'S CHAPTER

(Third Floor)

Miss Margaret Bottum
Anne Wilson
Mary C. Wilson
Gertrude Merrimon
Anita Smith

Directress
President
Vice-President
Secretary
Treasurer

ST. MONICA'S CHAPTER

(West Dormitory)

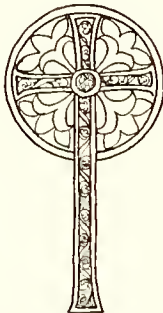
Miss Kate McKimmon
Margaret Yorke
Frances Kern
Lucy Lay
Alice Williams

LUCY BRATTON CHAPTER

(East and West Rock)

Miss Sutton
Rainsford Glass
Susan Smith

Directress
President
Secretary-Treasurer



The Woman's Auxiliary

Mrs. Lay
Miss Sutton
Miss McKimmon
Miss Thomas

President
Vice-President
Secretary
Treasurer

THE ALBUM



The Altar Guild

Eleanor Relyea
Frances Cheatham

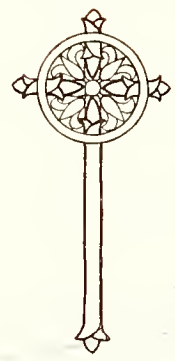
President
Treasurer

MEMBERS

B. Albertson
V. P. Allen
L. Arbogast
E. Badham
K. Batts
H. Brigham
N. Burke
F. Cheatham
M. Collins
M. Divine
M. Drane
K. Drane
J. Fairley
G. Foster
C. Gilmer

F. Hillman
A. Hughes
E. Jenkins
C. Kent
E. Knight
A. Latham
M. Marston
H. Mason
H. Morgan
M. Mullins
J. Myers
E. Pender
A. Pratt
E. Ravenel

S. Rawlings
E. Relyea
A. Robinson
N. Rose
B. Sheldon
S. Smith
M. Stanley
P. Stiles
R. Thorn
C. Wilkes
A. Williams
S. Wood
N. Woolford
M. Wright
E. Yates





The Choir

Mr. R. Blinn Owen, Director and Organist

Miss Ebie Roberts, Assistant Organist

D. Brigham
H. Copeland
M. Divine
E. Griffith
F. Hillman
A. Hughes
L. King
M. Kirtland

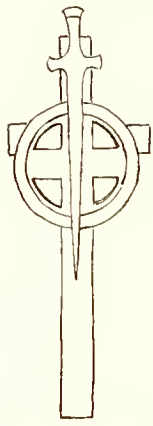
E. B. Lay
M. Lindsay
M. Marston
H. Mason
G. Merrimon
J. Myers
H. McNeill
M. Neal

L. Pearsall
E. Pender
S. Rawlings
A. Robinson
B. Sheldon
A. Smith
A. Stone
R. Thorn

E. Waddell
L. Walker
S. Wiley
V. Williams
M. C. Wilson
D. Wood
M. Wright
E. Yates

Miss Thompson

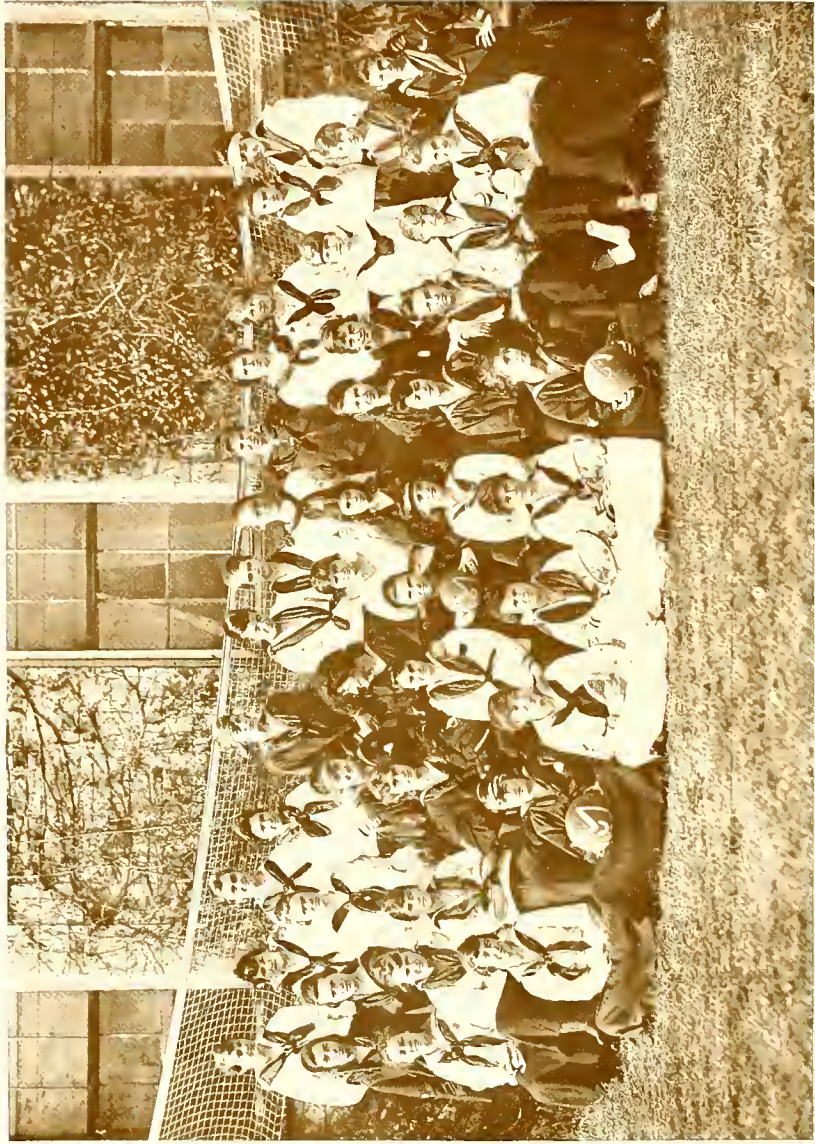
Miss Seymour



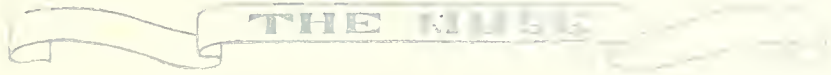
THE MUSIC



ATHLETICS



THE MU ATHLETIC ASSOCIATION



Mu Athletic Association

Colors: Blue and white

President
Secretary-Treasurer
Captain Basketball
Captain Tennis
Captain Volley Ball
Captain Junior Team

Alice Latham
Katharine Drane
Helen Brigham
Ellen Lay
Nina Burke
Nancy Lay

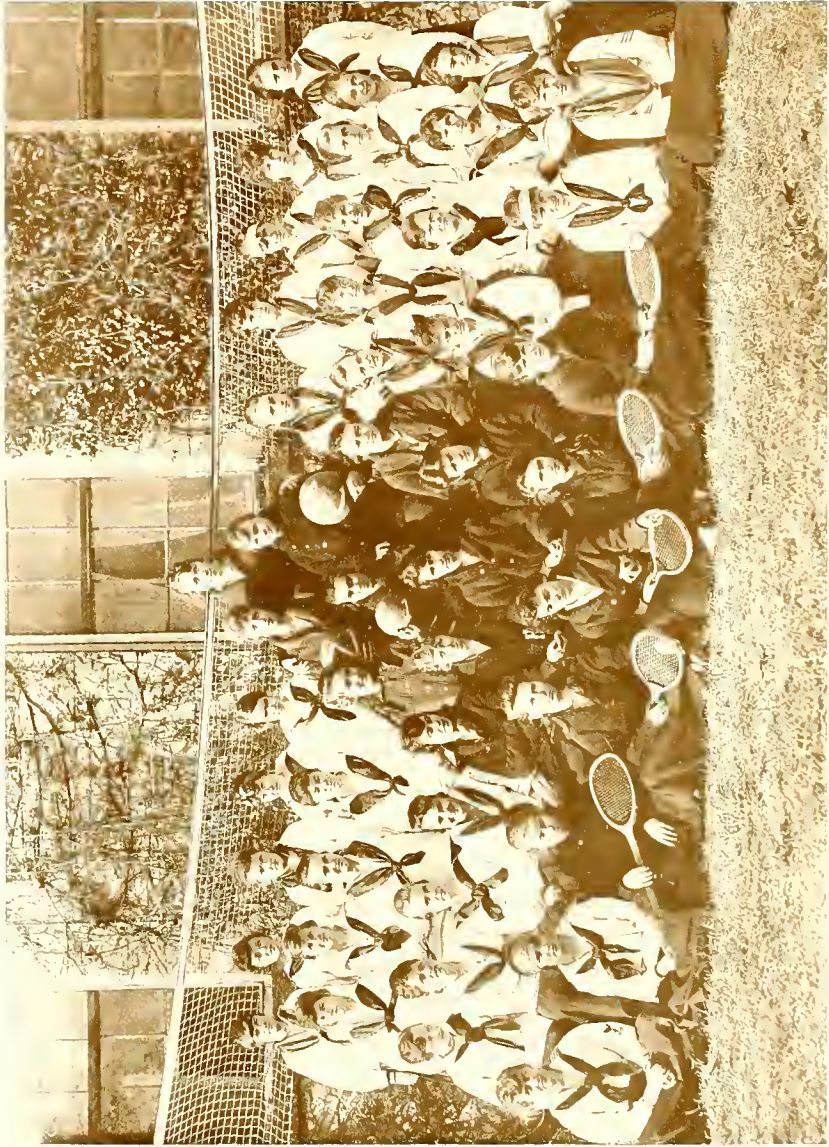
MEMBERS

M. Adams
K. Arbogast
L. S. Avent
H. Barber
E. Bowne
S. Braxton
H. Brigham
D. Brigham
N. Burke
F. Butler
F. Cheatham
M. Collins
E. Cooper
H. Copeland
E. Davis
S. Davis
P. Donlon
M. Dougherty
K. Drane
B. Durham
J. Fairley
M. Ferebee
S. Fishel
C. Gilmer

R. Glass
M. H. Gold
F. Griffin
E. Griffith
M. Griffith
J. Hartley
R. Herndon
D. Hyman
M. Jones
F. Kern
L. King
E. Knight
E. Lacy
S. Lamb
A. Latham
E. Lawrence
A. R. Lay
E. B. Lay
K. Lefferts
M. Lindsey
E. Marsh
C. Martin
F. B. Morgan
H. Morgan

E. Moss
A. McDuffie
L. McLaws
C. McMullan
H. McNeill
M. Neal
M. Nixon
S. Northrop
W. Odom
M. Palmer
G. Pleasants
V. Pottle
D. Powell
A. Pratt
L. Pruden
S. Rawlings
E. Rembert
N. Rose
J. Ruffin
A. Seed
B. Sheldon
L. Shepherd
K. Shuford
A. Shumate

L. Slade
J. Smith
S. Smith
A. Spencer
M. Stanley
V. Staten
P. Stiles
E. Sublett
D. Swett
M. Taliaferro
R. Thorn
L. Toler
M. Tredwell
C. Wilkes
A. Williams
V. Williams
A. Wilson
M. Wilson
A. Withers
E. Withers
D. Wood
S. Wood
J. Wright
M. Wright



THE SIGMA ATHLETIC ASSOCIATION



Sigma Athletic Association

Colors: Red and white

President

Vice-President

Secretary-Treasurer

Captain Basketball

Captain Basketball, Junior Team

Captain Tennis

Captain Volley Ball

Annie Robinson

Emma Badham

Estelle Ravenel

N. Woolford

Mary Hoke

Elizabeth Waddell

Mary Mullins

MEMBERS

B. Albertson	M. Forester	V. Lassiter	M. Richardson
V. C. Allen	C. Foster	H. Laughinghouse	R. Robbins
V. P. Allen	E. Freeland	L. Lay	A. Robinson
L. Arbogast	M. French	M. Lynah	V. Royster
E. Ayres	R. Gebert	M. Marston	A. Smith
E. Badham	M. B. Gold	H. Mason	E. Snipes
H. Battle	S. Grant	G. Merrimon	H. Snyder
K. Batts	N. Gregg	M. Moss	M. Springs
C. Butt	L. Hawkins	C. Mott	A. Stone
M. Chavasse	R. Hill	N. Moyer	H. Tarwater
L. Clark	F. Hillman	M. Mullins	A. Taylor
K. Coker	B. M. Hines	J. Myers	E. Tredwell
E. Curtis	M. Hoke	H. McCoy	E. Waddell
N. Daniels	M. Holt	H. McNeill	L. Walker
K. Darden	M. Hood	A. Patch	J. White
L. Dent	A. Hughes	L. Pearsall	S. Wiley
M. Divine	D. Hyman	E. Peele	M. C. Wilson
M. Drane	A. Ivey	E. Pender	E. Wingate
J. Dunn	E. Jenkins	M. Polk	N. Woolford
B. Folk	L. Jensen	E. Ravenel	R. Wright
T. Foot	M. Kirtland	E. Relyea	E. Yates
			M. Yorke



Mu Basketball Teams

First Team
 Camilla McMullan
 Lillias Shepherd
 Ellen B. Lay
 Helen Brigham, Captain
 Nina Burke
 Rainsford Glass

Forwards
 Centers
 Guards

Second Team
 Nancy Lay, Captain
 Frances Kern
 Mary Wilson
 Muriel Dougherty
 Dorothy Powell
 Harriet Barber, R. Hill

THE MUSE



Sigma Basketball Teams

First Team
 Elizabeth Waddell
 Nancy Woolford, Captain
 Mary Mullins
 Estelle Ravenel
 Mary Chavasse
 Annie Robinson

Forwards
 Centers
 Guards

Second Team
 Mary Hoke
 Lucy Jensen
 Roella Robbins
 Virginia Royster
 Elsie Freeland
 V. Lassiter, L. Lay

THE MUSE



A. Shumate

M. Lindsay

H. Brigham

L. Jensen

E. Lay

M. Hoke

The 1917 Tennis Tournament

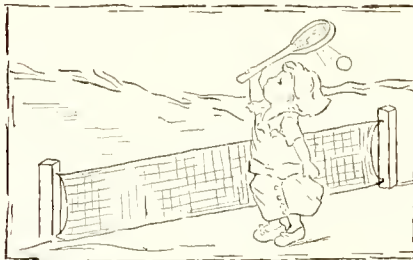
By an elimination tournament the number of Tennis Contestants for honors was reduced to three representatives each of the Sigmas and the Mus.

In the final contests the Mus were victorious, as follows:

Helen Brigham, Mu, defeated Lucy Jensen, Sigma, 6-1, 6-4.

Arlene Shumate, Mu, defeated Mary Lindsay, Sigma, 6-4, 6-4.

Ellen Lay, Mu, vs. Mary Hoke, Sigma. Not played.





Athletic Record, 1916-17

	Inter-Club Meet, October 30	
Events:	Bean Bag Race	Won by Mu
	Running Broad Jump	Won by Mu
	Dodge Ball	Won by Sigma
	Basketball Throw	Won by Mu
	Running High Jump	Won by Mu
	Relay Race	Won by Mu

Final Score—Mu 98, Sigma 55

Basketball, November 13, Senior Teams. Sigma vs. Mu
 Won by Mu. 12-5

Basketball, November 30, Senior Teams. Sigma vs. Mu
 Won by Mu. 10-5

Basketball, December 14, Junior Teams. Sigma vs. Mu
 Won by Sigma. 25-10

Midget Captainball, December 18
 Won by Jumping Jacks, 38-18

Basketball, January 15, Senior Teams. Mu vs. Sigma
 Won by Mu. 16-12

Indoor Inter-Club Athletic Meet, February 12
 Won by Sigma. 517-494

Captainball, February 19, Nimble Toes defeated Jumping Jacks (Midgets)
 Score: 12-64

Basketball, February 24, Junior Teams. Mu vs. Sigma
 Won by Mu. 38-23

Volleyball, March 10, Junior Teams. Mu vs. Sigma
 Won by Mu. 18-9

Basketball, March 24, Junior Teams. Mu vs. Sigma
 Won by Mu. 38-23

Inter-Club Athletic Meet, March 26

	Events:	Running High Jump	Won by Sigma
	Progressive Pitch Ball	Won by Sigma	Won by Sigma
	Basketball Distance Throw	Won by Mu	Won by Mu
	Running Broad Jump	Won by Sigma	Won by Sigma
	Relay Broad Jump	Won by Sigma	Won by Sigma
	Relay Race	Won by Sigma	Won by Sigma

Final Score: Sigma 175, Mu 141

Volleyball, April 4, Junior Teams. Mu vs. Sigma
 Won by Mu. 43-27

Volleyball, April 9, Senior Teams. Mu vs. Sigma
 Won by Sigma

CHAMPION SCORE

First Team basketball, 4 games out of 7	Mu 25
Junior Team Basketball, 3 games out of 5	Mu 15
First Team Volleyball, 2 games out of 3	Sigma 15
Junior Team Volleyball, 2 games out of 3	Mu 15
Indoor Meet	Sigma 20
Fall Meet	Mu 20
Spring Meet	Sigma 20
Tennis	Mu 15

Final Score: Mu 90, Sigma 55



Granddaughters and Great Granddaughters of St. Mary's

Motto: Lest we forget

Colors: Light blue and white

Song: Auld Lang Syne

Flower: Pansy

President
Secretary
Treasurer

Emma Hudgins Badham
Carrie McIver Wilkes
Sarah Littlejohn Rawlings

Emma Hudgins Badham, of Edenton
d. of Lucy Bond, of Edenton

Elizabeth Baker, of Raleigh
Katherine Baker, of Raleigh
ds. of Katharine Haywood, of Raleigh
gds. of Mary Boylan, of Raleigh
ggds. of Mary Kinsey, of Raleigh

Adelaide Boylston, of Raleigh
d. of Adelaide Snow, of Raleigh
gd. of Betsy Boylan, of Raleigh
ggd. of Mary Kinsey, of Raleigh

Frances Howe Cheatham, of Henderson
d. of Cornelia Alston, of Warren County

Jeanet Fairley, of Rockingham
d. of Sallie Shaw, of Rockingham

Mary Fetter, of Raleigh
gd. of Mary Wright, of Edenton

Elizabeth McMorine Folk, of Raleigh
gd. of Martha Martin, of Edenton
ggd. of Elizabeth McMorine, of Edenton

Mary McBee Hoke, of Raleigh
gd. of Catharine Alexander, of Lincolnton

Adeline Edmonds Hughes, of Henderson
gd. of Alice Swann
ggd. of Penelope Wiley

Laura Bryan Hyman, of New Bern
gd. of Anna Gardner, of Wilmington

Laura Snowden Hawkins, of Jacksonville, Fla.
gd. of Eliza C. London, of Pittsboro

Mildred Lord Jones, of Mooresville
d. of Daisy Scales, of Salisbury
gd. of Mary Steele Lord, of Salisbury

Constance Williams Kent, of Petersburg, Va.
gd. of Constance Williams, of Society Hill, S. C.

Rebekah Marsh, of Salisbury
Mary Ellen Marsh, of Salisbury
gds. of Carrie McNeely, of Salisbury

Emily Camilla McMullan, of Columbia
d. of Fannie Skinner, of Hertford

Mary Strange Morgan, of Raleigh
gd. of Marguerite Butt, of Hertford

Josephine Macon Myers, of Charleston, S. C.
d. of Roberta Smith, of Raleigh

Sylbert Pendleton, of Raleigh
d. of Elizabeth Busbee, of Raleigh
gd. of Sallie Smith, of Scotland Neck

Margaret Raney, of Raleigh
d. of Kate Denson, of Raleigh
gd. of Matilda Cowan, of Wilmington

THE MUSE



THE "GRANDDAUGHTERS" OF ST. MARY'S, 1916-17

Sarah Littlejohn Rawlings, of Wilson
 d. of Sarah Daniel, of Wilson
 Elizabeth Heriot Rembert, of Columbia, S. C.
 gd. of Augusta Porcher, of Columbia, S. C.
 Mamie Latham Richardson, of Washington
 gd. of Mamie Latham, of Washington
 Jane Reynolds Ruffin, of Mayodan
 gd. of Mary Cain, of Salisbury
 Lillias Shepherd, of Raleigh
 d. of Lilla May Vass, of Raleigh
 Margaret Elizabeth Springs, of Waverly Mills, S. C.
 gd. of Elizabeth Morris, of Wilmington
 Allene Hargrove Taylor, of Townesville
 gd. of Mary Grice, of Washington
 Carrie Melver Wilkes, of Charlotte
 d. of Carrie Melver, of Society Hill, S. C.
 Mary Bertrand Wilson, of Raleigh
 d. of Mary Turner, of Raleigh
 gd. of Love Root, of Raleigh
 Rena Mason Wright, of Waycross, Ga.
 d. of Sydney Grice, of Washington
 Josie Grainger Wright, of Wilmington
 d. of Susan Morris, of Wilmington
 Sara Louise Wood, of Edenton
 d. of Elizabeth Badham, of Edenton
 Margaret Bernice Yorke, of Charlotte
 d. of Frances Elizabeth Rogers, of Concord

THE MUSE



The Monthly Muse Board, 1916-17

Latham
Ravenel

Wood

V. C. Allen
Badham

Jenkins

Cheatham

Robinson
Drane

THE MUSE



The Muse Club

Alice Cohn Latham, '17
 Virginia Caroline Allen, '17
 Emma Hudgins Badham, '17
 Frances Howe Cheatham, '17
 Sara Wood, '18
 Katharine Drane, '18

President
 Editor-in-Chief
 Business Manager
 Assistant Business Manager
 Assistant Business Manager
 Secretary

Virginia C. Allen, '17
 Virginia P. Allen, '17
 Emma Badham, '17
 Helen Brigham, '19
 Nina Burke, '19
 Frances Cheatham, '17
 Katharine Drane, '18
 Jeanet Fairley, '17
 Bessie Folk, '18
 Georgia Foster, '17

Ruth Gebert, '18
 Frances Hillman, '19
 Aline Hughes, '18
 Elmyra Jenkins, '17
 Alice Latham, '17
 Helen Laughinghouse, '18
 Henrietta Morgan, '18
 Novella Moye, '18
 Eva Peele, '17

Agnes Pratt, '18
 Estelle Ravenel, '19
 Eleanor Relyea, '17
 Annie Robinson, '17
 Nellie Rose, '17
 Rubie Thorn, '17
 Sara Wood, '18
 Nancy Woolford, '20
 Martha Wright, '18
 Ethel Yates, '18

Miss Frances Bottum, '12
 Miss Margaret Bottum, '15

Miss Rebe Shields, '10
 Miss Julia Allen, '14

Mr. Cruikshank, Director



THE NOSE



The Dramatic Club in Ernest Denny's "All-of-a-Sudden Peggy"

Mary Neal, as "Lord Crackenthorpe"

Alice Latham, as "The Hon. Jimmy Keppel"

Aline Hughes, as "Major Archie Phipps"

Georgia Foster, as "Jack Menzies"

Lucia Slade, as "Parker, the footman"

Ellen Lay, as "Lucas"

Nancy Woolford, as "Lady Crackenthorpe"

Penelope Stiles, as "Hon. Millicent Keppel"

Rubie Thorn, as "Mrs. O'Mara"

Mary C. Wilson, as "Peggy"

THE MUSE

The Dramatic Club

Miss Florence Davis
 Alice Latham
 Rubie Thorn
 Ethel Yates
 Nancy Woolford

Director
 President
 Vice-President
 Secretary-Treasurer
 Business Manager



MEMBERS

Dorothy Brigham
 Pauline Donlon
 Selma Fishel
 Georgia Foster
 Marjorie Griffith
 Aline Hughes
 Alice Latham
 Helen Laughinghouse
 Ellen Lay

Gertrude Merrimon
 Evelyn Moss
 Mary Neal
 Ella Pender
 Agnes Pratt
 Sarah Rawlings
 Alice Seed
 Beatrice Sheldon

Lucia Slade
 Penelope Stiles
 Rubie Thorn
 Aline Taylor
 Nancy Woolford
 Alice Williams
 Anne Wilson
 Mary Wilson
 Ethel Yates

1916-17 PRODUCTIONS

February 12: All-of-a-Sudden Peggy
 Commencement: The Broken Twig



The Chorus Class in Gilbert and Sullivan's Opera "Patience"

Given in the Auditorium under the direction of Mr. Owen on December 16th, and repeated May 12th as a feature of the Anniversary Exercises.



Miss Mary Neal, as "Colonel Calverly"
 Miss Sarah Rawlings, as "Major Murgatroyd"
 Miss Audrey Stone, as "Lieutenant Duke of Dunstable"
 (Officers of the Dragoon Guards)
 Miss Mamie Holt, as "The Lady Angela"
 Miss Aline Hughes, as "The Lady Saphir"
 Miss Helen McNeill, as "The Lady Ella"
 Miss Rubie Thorn, as "The Lady Jane"
 (Rapturous Maidens)
 Miss Martha Wright, as "Reginald Bunthorne, a fleshly poet"
 Miss Anita Smith, as "Archibald Grosvenor," an idyllic poet
 Miss Ella Pender, as "Patience," a dairy maid
 With the "Twenty Lovesick Maidens," "Dragoon Guards," etc.



The Chorus

Mr. R. Blinn Owen, Director
Miss Martha Roberts, Assistant

First Sopranos

Brigham, D.
Copeland
Griffith, E.
Lindsay
McNeill
Mason, H.
Neal
Shuford
Smith, A.
Wiley
Wright, M.
Pender
Marston
Stone, A.
Moye

Second Sopranos

Adams
Albertson
Avent
Burke
Collins
Fishel
Gebert
Hillman
Hughes
Hyman
Hoke
Kirtland
Lay, N.
Mott
Patch
Powell
Slade
Stanley
Toler
Waddell
Walker
Wingate
Yorke

Altos

Allen, V. C.
Donlon
King
Lefferts
McCoy
Morgan
Merrimon
Myers
Lay, E. B.
Rawlings
Thorn
Wood





The Walking Club

- Eva Peele
- Selma Fishel
- Rainsford Glass
- Mr. William E. Stone.

- M. Ferebee
- S. Fishel
- R. Glass
- N. Gregg
- M. Griffith
- O. Hill
- J. Hartley

- M. Adams
- E. Ayres
- H. Battle
- K. Batts
- E. Bowne
- E. S. Batt
- S. Davis

- Secretary-Treasurer
- Captain
- Guide

- H. Morgan
- C. Mott
- M. Neal
- E. Peele
- M. Richardson
- J. Ruffin
- C. Shuford

- A. Shumate
- M. Taliaferro
- C. Wilkes
- A. Williams
- V. Williams
- E. Wingate
- A. Withers



The Sketch Club

Flower: Devil's Paint Brush
Colors: Hooker's Green and Chinese White
Aim: To put old masters to shame

President
Secretary-Treasurer

Louise Arbogast
Susan Linehan

L. Arbogast
H. Battle
D. Daniels
J. Dunn
K. Hughes
M. Jones
E. B. Lay

N. Lay
S. Linehan
L. McLaws
M. Polk
J. Ruffin
M. Fetter
F. Griffin

Mary Fetter

Miss Clara Fenner, Director

THE HOUSE



Cotillion Club

Helen Brigham
Jeanet Fairley

Leader
Secretary-Treasurer

Katherine Arbogast
Louise Arbogast
Nina Burke
Hattie Copeland
Nettie Daniels
Katherine Darden

Mary R. Divine
Marian Drane
Constance Kent
Catherine Lefferts
Maud Moss
Estelle Ravenel
Sarah Rawlings

Eleanor Relyea
Annie Robinson
Nellie Rose
Anita Smith
Penelope Stiles
Anne Wilson

THE MUSE



SNAPSHOTS OF "HALLOWE'EN" AND "THE COLONIAL BALL"

THE HOUSE



Kodak Club

Nellie Rose
Camilla McMullan
Allyne Taylor

President
Secretary
Treasurer

D. Brigham
M. Collins
S. Davis
M. Ferebee
G. Foster
M. Gold
F. Griffin

R. Herndon
L. Hawkins
F. Hillman
F. Kern
M. Kirtland
C. McMullan
E. Moss
M. L. Nixon

E. Peele
N. Rose
K. Shuford
A. Shumate
A. Taylor
E. Wingate
S. Wood

THE MUSE



CAMPUS SNAPSHOTS

THE MUSE



South Carolina Club

Colors: Blue and white

Emblem: Palmetto

Motto: Dum Spiro Spero

Rubie Thorn
Ethel Yates
Josephine Myers

President
Vice-President
Treasurer

Katherine Coker, Hartsville
Sarah Davis, Seneca
Nina Gregg, Mars Bluff
Marion Lynah, Charleston
Mary Mullins, Marion
Josephine Myers, Charleston
Elizabeth Rembert, Columbia
Margaret Springs, Waverly Mills
Rubie Thorn, Kingstree
Ethel Yates, Camden

Miss Eleanor Thomas, Faculty Member

THE MUSE



Virginia Club

Song: Carry Me Back to Old Virginny

Colors: Orange and blue

- Nancy Woolford
- Anne Wilson
- Dorothy Wood

- Elizabeth Ayres, Accomac
- Emily Sue Butt, Dixondale
- Katharine Darden, Franklin
- Elsie Freeland, Newport News
- Constance Kent, Petersburg
- Virginia Lassiter, Petersburg
- Maud Moss, Berkley
- Evelyn Moss, Berkley
- Catherine Mott, Dixondale
- Mary Neal, Danville

- President
- Vice-President
- Secretary-Treasurer

- Arline Shumate, Bealeton
- Eleanor Sublett, Harrisonburg
- Mollie Taliaferro, Zanoni
- Louise Walker, Martinsville
- Rosalie Willingham, Houston
- Anne Wilson, Berkley
- Anne Withers, Roanes
- Elizabeth Withers, Roanes
- Dorothy Wood, Norfolk
- Nancy Woolford, Suffolk

THE MUSE



Georgia Club

Colors: Red and black

Flower: Cherokee Rose

Song: Glory, Glory to Old Georgia

Annie Robinson
Estelle Ravenel
Georgia Foster

President
Vice-President
Secretary-Treasurer

Dorothy Brigham, Augusta
Helen Brigham, Savannah
Georgia Foster, Savannah
Annie Ivey, Americus
Frances Kern, Atlanta
Lallie McLaws, Savannah
Virginia Pottle, Atlanta

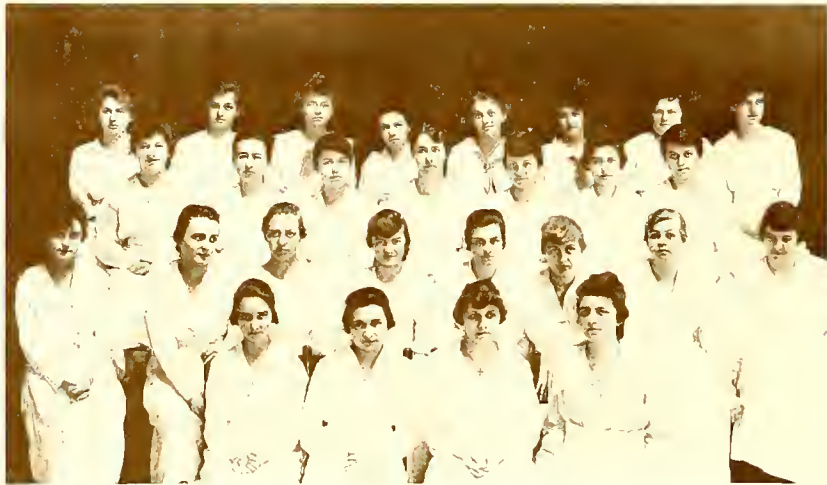
Estelle Ravenel, Valdosta
Annie Robinson, Hawkinsville
Lucia Slade, Griffin
Anita Smith, Savannah
Penelope Stiles, Rome
Rena Wright, Waycross

THE MUSE



East Carolina Club

- | | |
|--|--|
| <p>Alice Latham
Virginia Pope Allen
Katharine Drane</p> <p>Bertha Albertson, Scotland Neck
Virginia Pope Allen, Goldsboro
Lou Spencer Avent, Rocky Mount
Emma Badham, Edenton
Sadie Braxton, Kinston
Florence Butler, Elliott
Hattie Copeland, Kinston
Nettie Daniels, New Bern
Katharine Drane, Edenton
Marian Drane, Edenton
Jennie Dunn, Scotland Neck
Margaret B. Gold, Wilson
Eugenia Griffith, Kinston
Martha Hood, Kinston
Laura Hyman, New Bern
Louise King, Wilmington
Alice Latham, Plymouth</p> | <p>President
Secretary
Treasurer</p> <p>Helen Laughinghouse, Greenville
Catherine Lefferts, New Bern
Camilla McMullan, Columbia
Margaret Marston, Kinston
Helen Mason, Kinston
Novella Moye, Greenville
Mary Nixon, Hertford
Eva Peele, Williamston
Dorothy Powell, Roxobel
Sarah Rawlings, Wilson
Mamie Richardson, Washington
Marianna Stanley, Kinston
Janet White, Scotland Neck
Elizabeth Wingate, Gatesville
Sara Wood, Edenton
Josie Wright, Wilmington
Martha Wright, Boardman</p> |
|--|--|



Central Carolina Club

Frances Howe Cheatham
Jeanet Fairley

President
Secretary-Treasurer

Lou Spencer Avent, Rocky Mount
Helen VanWyck Battle, Tarboro
Mary Irene Chavasse, Rocky Mount
Frances Howe Cheatham, Henderson
Mary Ruth Divine, Rocky Mount
Selma Eugene Fishel, Vaughan
Elizabeth McMorine Folk, Raleigh
Margaret Tate Forester, Goshen
Margaret Howard Gold, Greensboro
Frances Griffin, Rocky Mount
Ruth Herndon, Durham
Adelaide Edmonds Hughes, Henderson
Elmyra Jenkins, Roanoke Rapids
Emiliza Braswell Knight, Tarboro
Annie Ivey McDuffie, Greensboro
Hazel Howland McNeill, Fayetteville
Helen Crawford McNeill, Fayetteville

Helen Carhart Mason, Rocky Mount
Gertrude Glaister Merrimon, Greensboro
Willie Pearce Odom, Rocky Mount
Anna Whitney Patch, Southern Pines
Rachel Louise Pearsall, Rocky Mount
Ella Banning Pender, Tarboro
Mary Tasker Polk, Warrenton
Agnes Theresa Pratt, Madison
Nellie Cooper Rose, Henderson
Jane Reynolds Ruffin, Mayodan
Elsie Blanche Snipes, Rocky Mount
Hylah Tarwater, Warrenton
Carrie Louise Toler, Rocky Mount
Elizabeth Nash Waddell, Manchester
Sarah Virginia Wiley, Southern Pines
Alice Howard Williams, Tarboro
Mary Catlett Wilson, Greensboro



Western Carolina Club

Virginia C. Allen
Catherine Gilmer
Louise Arbogast

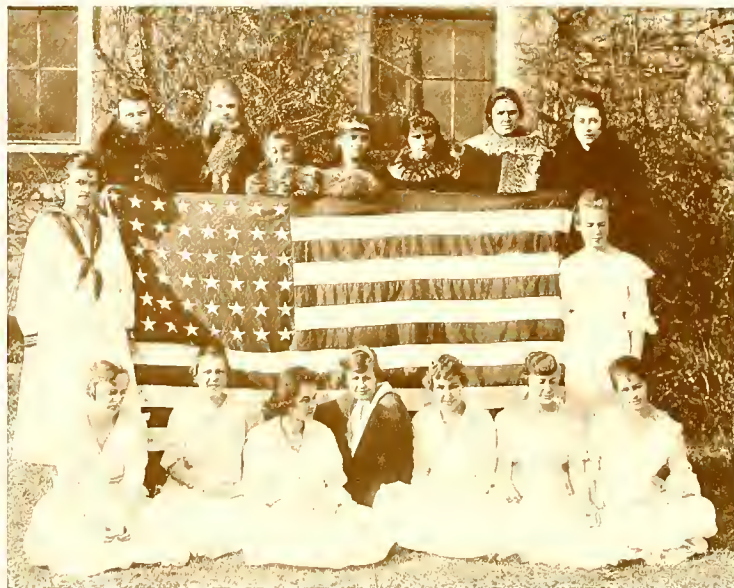
President
Secretary
Treasurer

Virginia C. Allen, Hickory
Louise Arbogast, Asheville
Katharine Arbogast, Asheville
Elizabeth Bowne, Tryon
Bessie Durham, Charlotte
Catherine Gilmer, Charlotte
Lucy Jensen, Asheville
Mildred Jones, Charlotte

Mary Lindsay, Tryon
Ellen Marsh, Salisbury
Rebekah Marsh, Salisbury
Kathryn Shuford, Hickory
Susan Smith, Charlotte
Virginia Staten, Charlotte
Carrie Wilkes, Charlotte
Margaret Yorke, Charlotte



THE MUSE



"All Around" Club

Eleanor Relyea
Mildred Kurtland

Nina Burke, New Iberia, La.
Mildred Collins, Centerville, Md.
Pauline Donlon, Oxnard, Calif.
Muriel Dougherty, U. S. Army
Margaret French, Chicago, Ill.
Ruth Gebert, New Iberia, La.
Rainsford Glass, Ocala, Fla.
Sarah Grant, Chester, Pa.
Josephine Hartley, New York, N. Y.

President
Treasurer

Laura Hawkins, Jacksonville, Fla.
Frances Hillman, Nashville, Tenn.
Mildred Kirtland, St. Augustine, Fla.
Evelyn Lacey, Sarasota, Fla.
Mary Palmer, Glenburn, Pa.
Eleanor Relyea, Washington, D. C.
Alice Seed, Greensboro, Ala.
Beatrice Sheldon, Pawtucket, R. I.
Helen Snyder, Mt. Vernon, N. Y.

THE NOSE



Rocky Mount Club

- Lou Spencer Avent
- Mary Chavasse
- Helen Cooper
- Mary Ruth Divine
- Frances Griffin
- Helen Mason
- Willie Odom
- Louise Pearsall
- Elsie Snipes
- Louise Toler

A Sacred Spot

(Henrietta Morgan, '18, E. A. II)

Todays have glided into yesterdays,
 And years have passed, swift-winged—three-score and ten of them and five.
 A host of nights have brought their stars and shades,
 A host of days their "good to be alive":—
 Some gay with Summer's flowers and light,
 Some dark with Winter's long, gray shroud.

Still among the dim, blue Southern hills
 There lies a spot whose birth is lost in days of Auld Lang Syne,
 A School, a seat of Virtue, Love and Truth;
 To those who lingered once about it, now a wayside shrine,
 A place to honor days of long ago.

Why does this spot survive the flight of years?
 And many youthful steps still travel 'long its cool green paths?
 The oaks stand forth in kingly strength and might—
 Dark and sharp amid the glow of Winter Even's sunset baths,
 Or still and peaceful 'neath the wealth of spring,
 The greenness of the dark, dim Summer wood?

As thus they nestle 'round this spot—this School—
 How have those oaks stood straight and tall 'mid boasting roars of winds?
 The things of God—they last forever—
 The Rock of Worship, bound with clinging vines of truth:—
 That's why the oaks and School have stood together.

Ye, who come from far and near to bring
 Your love for what is bound about with cords of Truth,
 Bethink you of your common sod:—
 Behold the Stars and Stripes of this, your Native Land,
 And see your School, your Country, and your God.

(Second Prize Verses in the Anniversary Contest.)



The Calendar, 1916-17

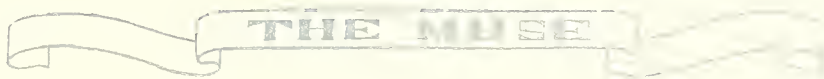
September	21, Thursday:	Seventy-fifth Opening of St. Mary's
September	23, Saturday:	Reception to New Girls. Parlor, 8:00
September	30, Saturday:	Alpha Rho Reception. Muse Room, 8:30
October	4, Wednesday:	Faculty Reception. Parlor, 4 to 6
October	7, Saturday:	E. A. P. Reception. Muse Room, 8:30 Bloomer Party, "Gym," 4:00
October	14, Saturday:	Sigma Lambda Reception. Muse Room, 8:30
October	19, Thursday:	State Fair Day
October	23, Monday:	Faculty Recital. Miss Davis. Auditorium, 8:00
October	30, Monday:	Annual Track Meet
October	31, Monday:	Hallowe'en Party. Gymnasium, 8:30
November	1, Wednesday:	Founders' Day. All Saints' Day
November	4, Saturday:	Senior-Sophomore Party. Muse Room, 8:00 Junior-Freshman Party. Parlor, 8:00
November	10, Friday:	First Peace-St. Mary's Concert. The Tollefsen Trio.
November	11, Saturday:	Muse Party. Muse Room.
November	13, Monday:	First Basketball Game
November	18, Saturday:	"Circus." Gymnasium, 8:00
November	20, Monday:	Faculty Recital, piano. Misses Seymour, Shields and Thompson. Mr. Hagedorn and Mr. Owen, accompanists
November	24, Friday:	Maude Adams in "The Little Minister." Academy of Music
November	28, Tuesday:	Russian Symphony Orchestra. City Auditorium
November	30, Thursday:	Thanksgiving Day
December	4, Monday:	Peace-St. Mary's Concert. Miss Llorra Hoffman
December	9, Saturday:	Bazaar for Belgian Relief Fund. Parlor
December	16, Saturday:	Operetta, Gilbert and Sullivan's "Patience." Auditorium
December	20, Wednesday:	Kindersymphonic. Auditorium, 8:00 Christmas Tree, Gymnasium
January	9, Tuesday:	School began after the Holidays
January	19, Friday:	Lee's Birthday. Inter-Society Meeting. Parlor

THE MUSE

January	20, Saturday:	Muse Entertainment. Muse Room
January	23, Tuesday:	Paderewski Concert. City Auditorium
January	27, Saturday:	Freshman Party to Juniors. Parlor, 8:00 Sophomore Party to Seniors. Muse Room, 8:00
January	29, Monday:	Dance. Parlor, 8:00
February	3, Saturday:	Carolina Dramatic Club. "Old Cronies," "The Glittering Gate," "Food"
February	6, Tuesday:	Maude Powell Concert. City Auditorium, 8:30
February	7, Wednesday:	Faculty Reception to Mrs. Bickett
February	10, Saturday:	Carolina Glee Club
February	12, Monday:	Indoor Meet. Dramatic Club Play, "All of a Sudden Peggy"
February	17, Saturday:	Colonial Ball. Parlor, 8:30
February	19, Monday:	Peace-St. Mary's Concert. Mr. Rudolph Reuter, Pianist
February	21, Wednesday:	Ash Wednesday. Lenten Quiet Begins
March	24, Saturday:	Alfred Noyes Reading. Meredith College
March	26, Monday:	Spring Track Meet
March	31, Saturday:	First Inter-Society Debate. Sigma Lambda-Alpha Rho
April	1, Palm Sunday:	Bishop's Visit for Confirmation
April	8, Sunday:	Easter Day
April	9, Monday:	Easter Egg Hunt. Grove, 7:00
April	12, Thursday:	Patriotic Mass Meeting. City Auditorium
April	14, Saturday:	Muse Lawn Party
April	16, Monday:	Certificate Recital. Katharine Parker Drane, Piano. Auditorium, 8:30
April	18, Wednesday:	Second Inter-Society Debate. E. A. P.-Alpha Rho
April	21, Saturday:	Muse Entertainment. Mr. Bowen, Sleight of Hand Performance. Auditorium, 8:30
April	23, Monday:	Certificate Recital. Sara Littlejohn Rawlings, Piano. Auditorium, 8:30
April	25, Wednesday:	"First Aid" Examination, 7:30
April	28, Saturday:	"School Party." Parlor, 8:15
April	30, Monday:	Diploma Recital. Martha Boardman Wright, Piano
May	2, Wednesday:	Third Inter-Society Debate. Sigma Lambda-E. A. P.
May	5, Saturday:	May Music Festival
May	7, Monday:	Certificate Recital. Aline Edmonds Hughes, Elocution
May	12, Saturday:	Alumnæ Day. Seventy-fifth Anniversary Celebration
May	14, Monday:	Certificate Recital. Frances Bennett Hillman, Piano
May	19, Saturday:	Annual Chorus Recital. Auditorium, 8:15
May	26, Saturday:	Annual Play

Commencement Program

May 27, Sunday:	Commencement Sermon. Rt. Rev. Thomas C. Darst, D.D., Bishop of East Carolina
May 28, Monday:	Class Day Exercises. Grove, 11:00 Annual Exhibit of the Art Department. Studio, 3:00 Annual Alumnae Meeting. Parlor, 4:30 Annual Concert. Auditorium, 8:30 Rector's Reception. Parlor, 9:30
May 29, Tuesday:	Graduation Exercises. Auditorium, 11:00 Annual Address. Hon. Thomas W. Bickett, Governor of North Carolina Closing Exercises in the Chapel



Program of the Seventy-fifth Anniversary of the Founding of St. Mary's School

FRIDAY, MAY 11

8:30 p. m., In the Auditorium

Historical Celebration

Invocation		
St. Mary's Hymn		Bishop Cheshire
Welcome and Introduction		Choral Class
Address	Dr. William S. Currell, President of the University of South Carolina	Bishop Cheshire
Address	Miss Emilie Watts McVea, '84, President of Sweetbrier College	The Choir
Kipling's "Recessional" (DeKoven)		Bishop Cheshire
Benediction		The School
Alma Mater		

SATURDAY, MAY 12

8:00 a. m. In the Chapel

Celebration of the Holy Communion

The Rector, Celebrant

9:00 a. m. Breakfast in Clement Hall

10:30 a. m. In the Auditorium.

Anniversary Meeting of the Literary Societies

1. Song: "In a Grove of Stately Oak Trees"
2. Historical Sketch: "Three Scenes in the Life of St. Mary's" Katharine Drane, Σ Δ
3. Poem: "A Sacred Spot" Henrietta Morgan, E A II
4. Songs:
 - a. Happy and innocent
 - b. To find Mr. Cruikshank
 - c. In the Old Swing on Senior Hall
5. Poem: "The Thirteen Originals" Aline Hughes, A P
6. Song: "The Time Has Come for Us to Graduate" Senior Class
7. Speeches:
 - The Power of Personality Aline Hughes, A P
 - Dr. Aldert Smedes Alice Latham, E A II
 - Saint Mary's Annie H. Robinson, Σ Δ
8. Poem: "The Chapel," by Annie S. Cameron, '16 Ethel Yates, '17
9. Song: "Alma Mater"

2:00 p. m. In Clement Hall

Anniversary Luncheon

5:00 p. m. In the Grove

Anniversary Festival

8:30 p. m. In the Auditorium

The Chorus Class in Gilbert and Sullivan's Opera, "Patience"

Colonel Calverley	} Officers of Dragoon Guards	Miss Mary Neal
Major Murgatroyd		Miss Sara Rawlings
Lieut. Duke of Dunstable		Miss Audrey Stone
Reginald Bunthorne (a fleshly poet)		Miss Marion Thompson
Archibald Grosvenor (an idyllic poet)		Miss Anita Smith
The Lady Angela	} Rapturous Maidens	Miss Margaret Marston
The Lady Saphir		Miss Aline Hughes
The Lady Ella		Miss Helen McNeill
The Lady Jane		Miss Rubie Thorn
Patience (a dairy maid)		Miss Ella Pender
Twenty Lovesick Maidens, Dragoon Guards, etc.		

The Anniversary Pageant

The Festival Procession

Eleanor Relyea, '17, Leader; Katharine Drane, '18; Estelle Ravenel, '19; Adelaide Boylston; Isabel Jones
The Leader speaks the Prologue written by Annie Cameron, '16

Departments of School Work Presented by the Students

Music, Art, English and Expression, German, French, Latin, Mathematics, Science, Bible, History, Physical Education, Domestic Art and Science, Business

Periods in the Life of St. Mary's presented by the Alumnae

"The Original Thirteen," 1842; Group presenting 1860's; Group presenting 1870's; Group presenting 1880's; Group presenting 1890's; Literary Societies, 1899, Sororities, 1901-1912; Alumnae Groups, 1910-1916.

Program

1. Figure Drills
2. Representatives of the Music Department: Dance and Song—"In the Time of Roses"
3. (a) Wand Drill
(b) Esthetic Dance: Moonlight Caprice
4. Representation of the Art Department in Living Pictures
5. Singing Game: Mowing the Barley
6. "La Derniere Classe" (Dramatized and arranged from the story of Alphonse Daudet)

Dramatis Personae

Hamel, a French schoolmaster	Rubie Thorn
Odile, his daughter	Bessie Folk
Otto, a German schoolmaster	Mildred Collins
Hauser	Beatrice Sheldon
Frantz	Ruth Gebert
Sophie	Mary Wilson
A Postman	Josephine Myers
Louise	Virginia Pottle
Pupils and Parents	

Time: 1872. Place: A country school in Alsace-Lorraine

7. Tarantella
8. Morris Jig
9. Minuet—Alumnae
10. "Flowers of the South." A waltz written for and dedicated to St. Mary's girls by Gustav Blessner, 1844
11. "Winter's Tale." Act IV, Scenes III and IV

Dramatis Personae

Polixenes, King of Bohemia	Evelyn Moss
Camillo, a Lord of Sicily	Alice Latham
Florizel, Prince of Bohemia	Helen Laughinghouse
Old Shepherd, reputed father of Perdita	Nancy Woolford
Clown, his son	Annie Robinson
Autolycus, a rogue	Mary Neal
Servant	Eva Peele
Perdita, Princess of Sicily, reputed a shepherdess	Frances Cheatham
Mopsa } Shepherdesses	Ella Pender
Dorcas } Shepherdesses	Alice Seed
Epilogue	Virginia C. Allen
Other Servants, shepherdesses, shepherds, herdsmen	

Scene III: A road near the Shepherd's cottage. Scene IV: The Shepherd's cottage: a rustic feast

12. "Evening" (Lucantoni) Alumnae Trio: Mrs. A. L. Baker, Mrs. T. M. Ashe, Mrs. James Briggs, Jr.
13. (a) Flag Drill
(b) "The Star Spangled Banner"

THE MISS



Gertrude Merrimon
Cutest

The
1917
Statistics



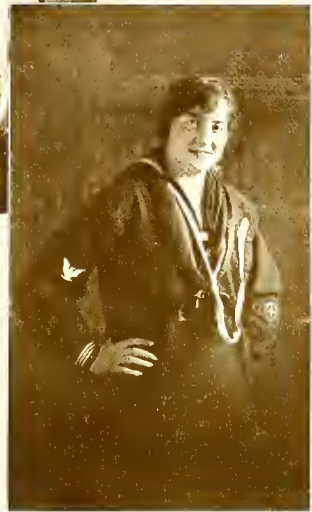
Annie Robinson
Most Practical



Frances Hillman
Most Thoughtful



Bessie Folk
Best Student



Helen Brigham
Neatest—Most Athletic

The
1917
Statistics



Katharine Drane
Prettiest



Nancy Woolford
Most Enthusiastic



Best Dancers
Mary Ruth Divine
(Leader)
Alice Cohn Latham
(Follower)



Frances Cheatham
Most Lovable



Lucia Slade
Best Looking

THE MUSE

The
1917
Statistics



Sarah Rawlings
Most Attractive



Martha Wright
Most Musical



Estelle Ravenel
Most Popular



Henrietta Morgan
Most Ambitious



Alice Latham
Most Influential—Best All-Round



Virginia Caroline Allen
Most Dignified

The
1917
Statistics



Emma Badham
Most Conscientious



Georgia Foster
Most Unselfish

Nonsense Rhymes

A most charming tatter named Pratt
 Loved to chatter as well as to tat;
 But though chatting while tatting
 And tatting while chatting,
 She was sure to be smiling, that Pratt.

Nellie Rose at daybreak,
 Nellie Rose at noon,
 Nellie Rose, you may be sure, at night;
 Should Nellie cease to rise
 'Twould cause us all surprise,
 But Anne would have a really truly fright.

Of course you've seen a house fly 'cross a river,
 You may have heard a living Laughing house,
 But tell me if you dare,
 What's neither here nor there—
 Have you ever seen a Henrietta mouse?

Arlene's a leading tennis sharp,
 Alleyne loves Senior Hall,
 The Infirmary without Susan Smith
 Could hardly run at all.

Butler haunts the Library,
 Seems to like the books;
 Annie at the crushes
 'S casting scornful looks;
 A. Taylor in the Grill Room,
 Cooks and cooks and cooks.

Louise is fond of dollies
 And Cattie likes a drum,
 But B. Folk loves to sit behind
 The Auditorium.

Alice had a little book,
 A Red Cross Book, you know,
 And everywhere that Alice went
 That book was sure to go.
 To classes, dinner, shopping, lunch,
 It was against the rule,
 But pass she must that dread exam,
 Or mortify the School.



The Follies of 1917

Louise Arbogast
Helen Brigham
Bessie Durham
Margaret Gold
Catherine Gilmer

Dolly Hyman
Catherine Lefferts
Josephine Myers
Eleanor Relyea
Sarah Rawlings

Penelope Stiles

THE NUSE



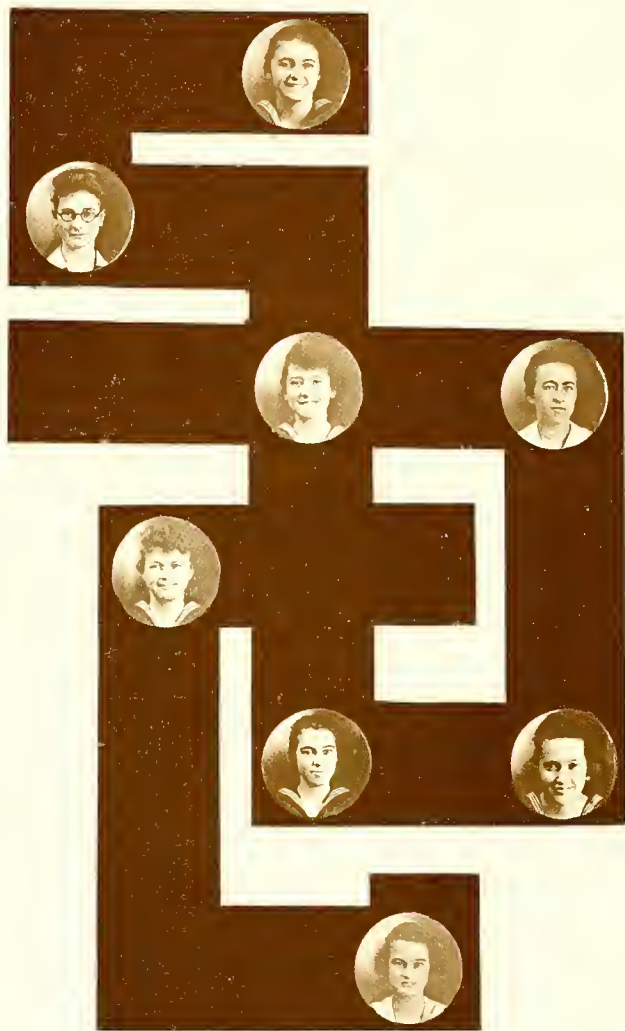
The Merry-Makers

Emma Badham
Frances Cheatham
Katherine Darden
Katharine Drane
Marian Drane

Bessie Folk

Maud Moss
Mary Polk
Nellie Rose
Helen Laughinghouse
Anne Wilson

THE MUSE



S. O. C.

Nina Burke
Theodosia Foot
Ruth Gebert

Aline Hughes
Lucy Jensen
Mary Mullins

Dorothy Powell
Margaret Springs
Elizabeth Waddell

THE MOOSE



B. D.

Virginia P. Allen
Helen Brigham
Jeanet Fairley
Annie Ivey

Annie McDuffie
Josephine Myers
Estelle Ravenel
Elizabeth Rembert

THE HOUSE



S. D.

Evelyn Lacey
Mary Neal
Ella Pender
Hyla Tarwater
Mary Wilson
Rena Wright

THE MUSE



T. I. B.

Elizabeth Bowne
Muriel Dougherty
Frances Kern
Virginia Lassiter
Marion Lynah
Mary Nixon
Anna Patch
Doris Swett
Margaret Yorke

THE MUSE



D. G. S.

Hattie Copeland
Nettie Daniels
Mary R. Divine
Eugenia Griffith
Martha Hood

Mamie Holt
Constance Kent
Gertrude Merrimon
Margaret Marston
Nancy Woolford



THE MUSE



T. S. S.

Sadie Braxton
Helen Cooper
Frances Griffin
Helen McCoy

Helen Mason
Helen Snyder
Audrey Stone
Louise Toler


Apt Quotations

- "A little more sleep, a little more slumber."—The Cry at Breakfast
- "Better late than never."—The Monthly Muse
- "Youth comes but once in a lifetime."—S. O. C.
- "In came Mrs. Fessiwig, one vast, substantial smile."—Rubie Thorn
- "Tomorrow is, ah! whose?"—The Juniors
- "Faithful to the memory of my ancestors."—Senior Hall, Room ?
- "In cash most justly paid."—On Pay Day
- "Yet that is but a crush'd necessity."—S. Rawlings's Flowers
- "I know not where to find thee."—The Lost Bell
- "Let every man be master of his time."—F. Butler
- "With strange and several noises,—roaring, shrieking, howling—
Diversity of sounds were we awak'd"—By A. & M. on Election Night
- "Sighed and looked, and sighed again."—At the Forbidden Circus Tents
- "I hate to tell again a tale once told."—Mr. Stone
- "March on, my fellows!"—Miss Barton in Gym. Class
- "The reward of one duty is the power to fulfill another."—Susan Smith
- "Say, are you not larger than you are?"—P. Stiles
- "Nay, she must bear you company."—The Chaperone
- "By my life, this is against our pleasure."—Restriction
- "What a host our ladies will have of these trim vanities."—Lacey, Wright, and Ivey.
- "And then let's dream
Who's best in favor"—of A. Robinson
- "Nature craves—" Ice Cream on Thursdays
- "And the detention of long-since-due-debts"—from Book-Money
- "Charms the forest with her tale."—M. Richardson
- "That thing you speak of, I took it for a man."—The Library Burglar

THE ALLEGES



FACULTY KODAKS



To St. Mary's Chapel

Annie Sutton Cameron, '16

Once more within thy sacred walls
We meet, but not alone.
The hearts of all who held thee dear
Meet with us here as one.
We feel their silent blessing
Upon us as we pray.
The hopes and prayers that once were theirs
Still live in us today.

For thee they labored, thee they strove,
They loved thee and passed on,
Leaving to us an heritage
Of all that they had won.
A sacred charge they gave us
In trust divine and deep.
Thine honor and thy name they left
For us to guard and keep.

Thou art to us the token
Of that we hold most dear,
Mute bond of love unbroken,
Thy sheltering arms we near.
Thou dost our love enkindle,
Our loyal hearts enroll
In kinship stronger than of blood,
The kinship of the soul.

And through the discord of the world,
Thy music rising clear,
Dispels the doubt that once we had,
Casts out our craven fear.
Hopes by defeat once shattered
And sullied with the dust,
We pledge again at thy dear name,
In holy love and trust.

Like these who loved and labored,
Led by thy steadfast light,
We pass from thee with strengthened hands
To battle for the right.
And as we strive to follow
The pathway they have trod,
We pray God's Peace be ever thine,
Oh little house of God.



Annual Muse Board

Virginia Caroline Allen
Editor-in-Chief

Virginia Caroline Allen
Virginia Pope Allen
Emma Hudgins Badham
Frances Howe Cheatham
Jeanet Fairley
Georgia Foster
Elmyra Jenkins

Emma Hudgins Badham
Business Manager
Frances Howe Cheatham
Sara Louise Wood
Assistant Business Managers

Alice Cohn Latham
Eva Irene Peele
Eleanor Relyea
Annie Huske Robinson
Nellie Cooper Rose
Rubie Logan Thorn
Ethel Caroline Yates

Finis

Here then, old friend, we "Finis" write.
Perhaps you're glad, we hope you're sad
At closing down this cover—
Not because you pathos find
Or anything of tears the mover,
But just because we hope you mind
That "Sixteen-Seventeen" fun is over.



Photographs by Horton, Raleigh
Engraving by Electric City Engraving Co., Buffalo

Presses of
Edwards & Broughton Printing Co.
Raleigh

