

333.78
Unv 324 p16
1988

NATIONAL PARK SERVICE

STATISTICAL ABSTRACT

1988



NOTICE: Return or renew all Library Materials! The Minimum Fee for each Lost Book is \$50.00.

The person charging this material is responsible for its return to the library from which it was withdrawn on or before the **Latest Date** stamped below.

Theft, mutilation, and underlining of books are reasons for disciplinary action and may result in dismissal from the University.
To renew call Telephone Center, 333-8400

4-26-90

UNIVERSITY OF ILLINOIS LIBRARY AT URBANA-CHAMPAIGN

[REDACTED]

ALSAUG 13 1991

SEP 10 1991

ALSAUG 16 1991

Courtesy of Robert W. Espeseth

LIBRARY U. OF I. URBANA-CHAMPAIGN

NATIONAL PARK
STATISTICAL ABSTRACT
1988

United States Department of the Interior / National Park Service
Denver Service Center
Statistical Office

Digitized by the Internet Archive
in 2013

<http://archive.org/details/nationalparkserv1988unit>

333.78
Un324 p16
1988

CONTENTS

	PAGE
Illustrations	
Introduction	
Table 1. Summary of Visitor Use by Year.	2
Table 2. 1988 Recreation Visits, Acreages, Areas Administered, and Areas Reporting Recreation Visits in the National Park System by Classification	4
Table 3. Visits to Areas Administered by the National Park Service, 1986-88	6
Table 4. Recreation Visits to National Park Service Areas by Region, 1982-88	22
Table 5. Recreation Visits to National Park Service Areas by State, 1982-88	23
Table 6. Recreation Visits to National Park Service Areas by Urban - Rural Location, 1982-88	25
Table 7. Overnight Stays in National Park Service Areas, 1988.	26
Table 8. Overnight Stays to National Park Service Areas by Type of Accommodation, 1979-88.	32
Table 9. Recreation Visits and Overnight Stays in the 50 National Parks, 1985-88.	34
Table 10. Number of Tour Buses Reported by National Park Service Areas, 1984-88	36
Table 11. Recreation Visitor Days at Areas Administered by the National Park Service, 1983-88	41
Footnotes	54
Definitions	55
Miscellaneous Abbreviations	58

ILLUSTRATIONS

FIGURE	TITLE	PAGE
Figure 1.	Recreation Visits, Pre and Post 1971 Reporting Units.	3
Figure 2.	1986-89 Annual Growth Rate, Recreation Visits	3
Figure 3.	Seasonality Changes, National Park Service Recreation Visits. .	5
Figure 4.	1988 National Park Service Regional Recreation Visits	22
Figure 5.	Urban - Rural Park Use.	25
Figure 6.	NPS Overnight Stays by Type	32
Figure 7.	Seasonality Changes, National Park Service Overnight Stays. . .	33

INTRODUCTION

The National Park Service (NPS) Statistical Office acknowledges the conscientious efforts of the field staff of the many areas of the National Park System. Without the effort of the park staff to count, record, and report the data summarized here, a statistical report of this quality would not be possible. These public use data are collected and analyzed monthly. A program of park counting procedure audits is conducted to ensure consistency and accuracy of data.

The gathering and publication of these statistics is in accordance with Public Law 88-29, "An Act to Promote the Coordination and Development of Effective Programs Relating to Outdoor Recreation" and related legislation. Definitions of terms in use here are given at the end of this report. The definitions are those initially outlined by "A Uniform Method for Measuring and Reporting Recreation Use on the Public Lands and Waters of the United States", unpublished guideline of the Recreation Advisory Council Study Committee Number Two, April, 1965.

In 1988 the following changes occurred: twelve areas were added as NPS units that did not report visits, Bluestone NSR, City of Rocks National Reserve, Charles Pinckney NHS, Gauley NRA, Hagerman Fossil Beds NM, Mississippi NRRRA, Natchez NHP, Poverty Point NM, Samoa NP, San Francisco Maritime NHP, Timucuan EHP and Zuni-Cibola NHP; two areas moved from affiliated status, Steamtown NHS and Boston African American NHS; one area moved from administered to affiliated status, Ebey's Landing NHR; and four administered areas moved from non reporting to reporting status, Big South Fork NR, Jimmy Carter NHS, El Malpais NM and Kaloko-Honokohau NHP.

Additional footnotes are provided at the end of this report. The footnotes describe conditions at parks which may require important adjustments for certain applications of these data.

Timely, reliable, and useful information is fundamental to effective management and planning of the National Park System. This annual report is a general summary of visitation records for the year. Comments or requests for additional statistical information should be addressed to:

Statistical Office, DSC-TNT
National Park Service
P. O. Box 25287
Denver, CO 80225

(303) 969-2060
FTS: 327-2060

TABLE 1. SUMMARY OF VISITOR USE BY YEAR (IN MILLIONS).

	1979	1980	1981	1982	1983	1984	1985	1986	1987	1988
VISITS										
RECREATION	205.4	220.5	238.6	244.9	243.6	248.8	263.4	281.1	287.2	282.5
NON-RECREATION	77.1	79.9	91.1	89.5	92.0	83.9	82.7	83.5	85.7	85.5
TOTAL	281.5	*300.3	329.7	334.4	335.6	332.7	346.2	364.6	373.0	368.0
OVERNIGHT STAYS										
RECREATION	15.4	15.9	16.4	16.4	15.7	16.0	15.8	16.0	17.1	17.0
NON-RECREATION	.6	.6	.6	.5	.4	.4	.3	.3	.3	0.4
TOTAL	16.0	16.5	17.0	16.9	16.1	*16.3	16.1	16.3	17.4	17.4
VISITOR-HOURS										
RECREATION	1,027.5	1,094.3	1,203.1	1,229.8	1,240.1	1,265.5	1,303.6	1,347.7	1,393.9	1,375.5
NON-RECREATION	43.1	39.3	40.7	40.0	37.2	39.3	39.6	40.3	38.6	43.6
TOTAL	1,070.6	1,133.6	1,243.8	1,269.8	1,277.3	1,304.8	1,343.2	*1,388.1	1,432.5	1,419.1
VISITOR-DAYS										
RECREATION	85.6	91.2	100.3	102.5	103.3	105.5	108.6	112.3	116.2	114.6
NON-RECREATION	3.6	3.3	3.4	3.3	3.1	3.3	3.3	3.4	3.2	3.6
TOTAL	89.2	94.5	*103.6	105.8	106.4	*108.7	111.9	115.7	119.4	*118.3

 *The sum of the numbers may not equal totals due to rounding.

NATIONAL PARK SERVICE RECREATION VISIT PRE AND POST 1971 REPORTING UNITS

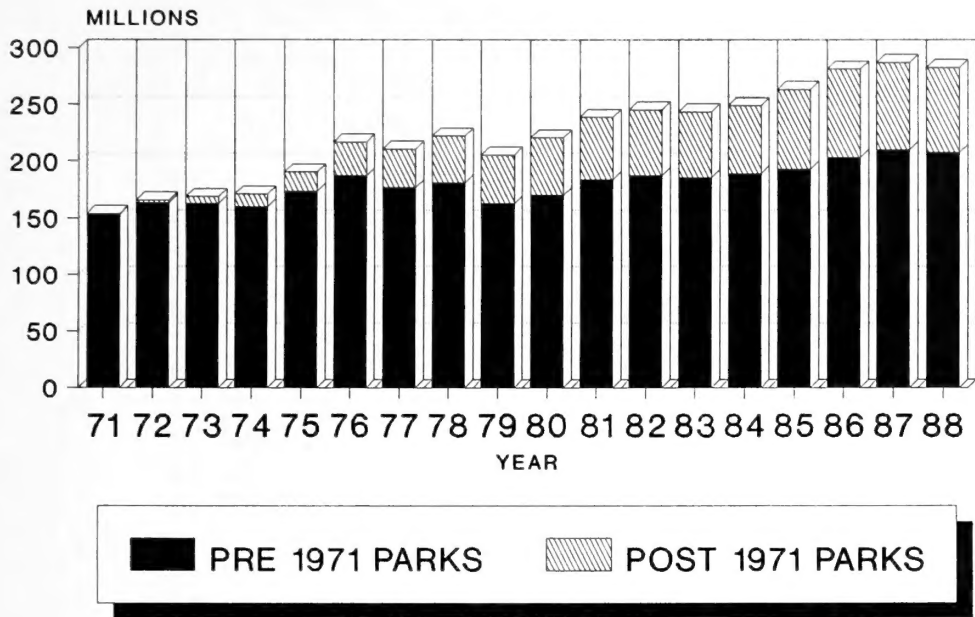


Figure 1.

1986-89 ANNUAL GROWTH RATE, RECREATION VISITS

(Monthly Percent Change Over Previous 12 Months)

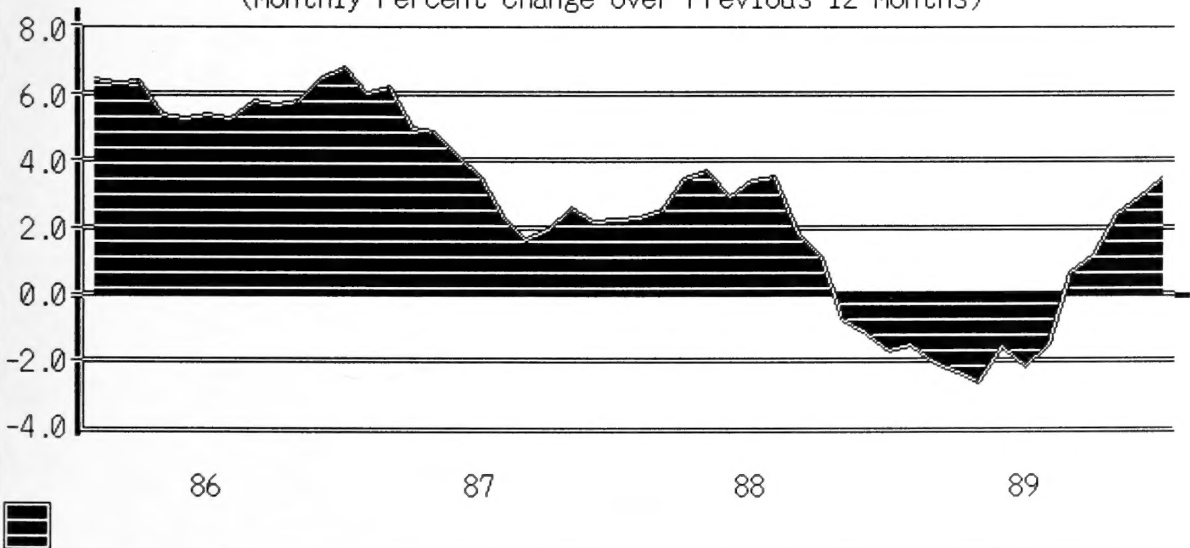


Figure 2.

TABLE 2. 1988 RECREATION VISITS, ACREAGES, AREAS ADMINISTERED, AND AREAS REPORTING RECREATION VISITS IN THE NATIONAL PARK SYSTEM BY CLASSIFICATION.

CLASSIFICATION*	RECREATION VISITS	ACREAGES**	AREAS ADMINISTERED	AREAS REPORTING VISITS
INTERNATIONAL HISTORIC SITE	0	35.39	1	0
NATIONAL BATTLEFIELDS	1,733,931	12,787.24	11	9
NATIONAL BATTLEFIELD PARKS	1,814,192	8,767.39	3	3
NATIONAL BATTLEFIELD SITES	0	1.00	1	0
NATIONAL CAPITAL PARKS ***	8,986,712	6,468.88	1	1
NATIONAL HISTORIC SITES	11,695,757	19,225.40	68	61
NATIONAL HISTORICAL PARKS	23,291,062	151,632.86	29	26
NATIONAL LAKESHORES	3,896,787	227,244.37	4	4
NATIONAL MALL	0	146.35	1	0
NATIONAL MEMORIALS	18,299,978	7,949.16	23	23
NATIONAL MILITARY PARKS	4,368,106	34,031.38	9	9
NATIONAL MONUMENTS	23,246,611	4,841,104.12	79	74
NATIONAL PARKS	56,423,301	47,319,321.18	50	49
NATIONAL PARKWAYS	42,022,719	168,618.32	4	4
NATIONAL PRESERVES	78,370	22,155,547.84	14	9
NATIONAL RECREATION AREAS	54,509,688	3,686,923.06	18	17
NATIONAL RIVERS	4,371,946	237,669.91	4	3
NATIONAL SCENIC TRAILS	0	172,202.61	3	0
NATIONAL SEASHORES	19,262,204	596,826.47	10	10
NATIONAL WILD AND SCENIC RIVERS	0	315,556.82	10	6
PARKS - OTHER ****	7,360,110	32,085.31	10	10
WHITE HOUSE	1,089,967	18.07	1	1
NATIONAL TOTAL	282,451,441	79,994,163.09	354	319

* Not including 30 affiliated areas which do not report public use to the NPS.

** Approximate acreage as of December 31, 1988.

*** 346 units within DC, Maryland, and Virginia. Not all reporting.

**** Parks without national designation.

SEASONALITY CHANGES

NATIONAL PARK SERVICE RECREATION VISITS

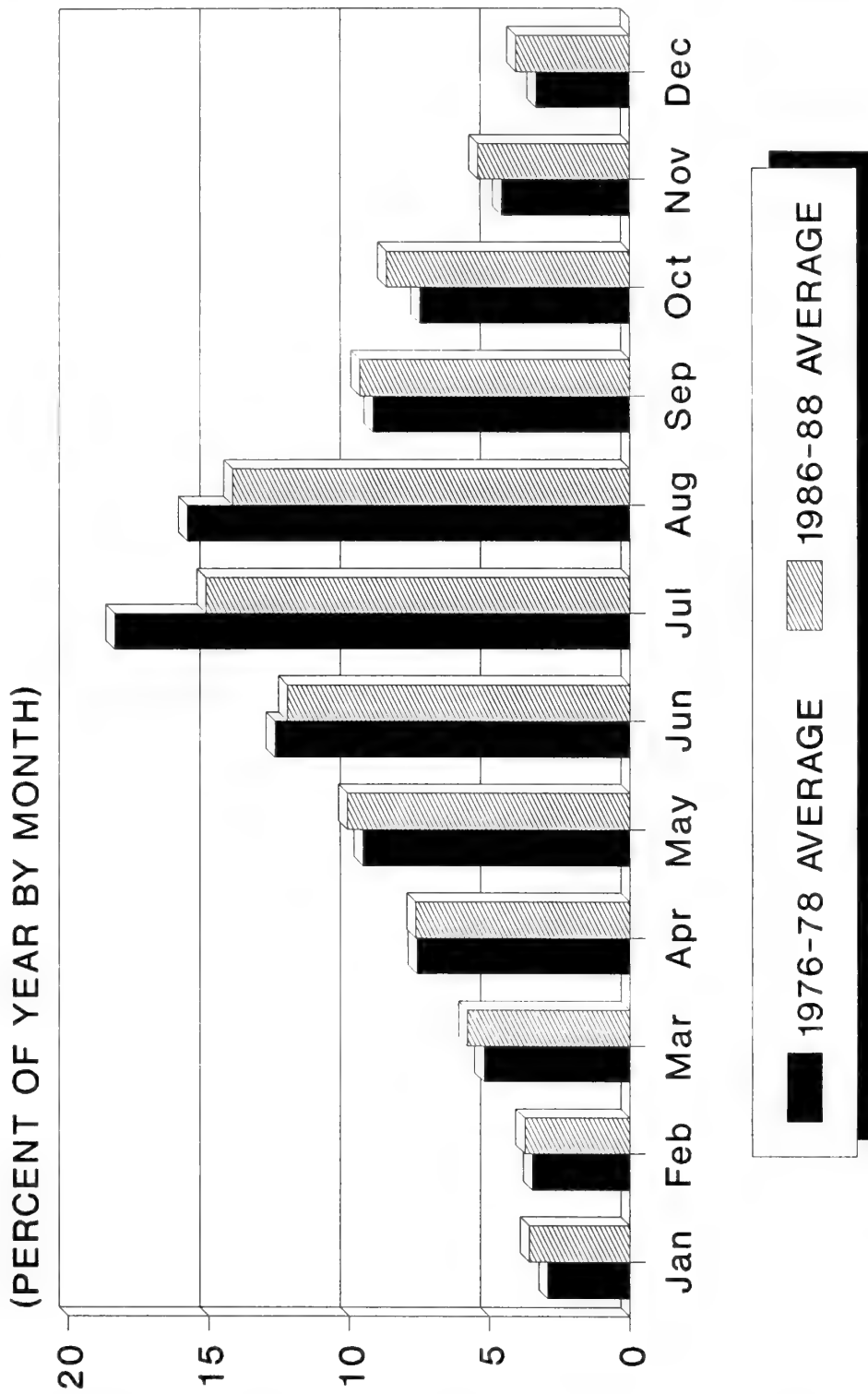


Figure 3.

TABLE 3. VISITS TO AREAS ADMINISTERED BY THE NATIONAL PARK SERVICE, 1986-88 (IN THOUSANDS).

NATIONAL PARK SERVICE AREA	1986		1987		1988	
	RECREATION	NON RECREATION	RECREATION	NON RECREATION	RECREATION	NON RECREATION
ABRAHAM LINCOLN BPL NHS	280.6	.0	292.8	.0	288.3	.0
ACADIA NP	3,929.1	183.0	4,288.2	188.3	4,502.3	188.7
ADAMS NHS	24.7	9.0	25.6	15.2	21.6	11.5
AGATE FOSSIL BEDS NM	10.2	8.5	11.4	6.6	11.2	7.1
ALAGNAK WILD RIVER	NOT REPORTING		-	-	-	-
ALIBATES FLINT QUARRIES NM	2.2	.0	2.5	.0	2.1	.0
ALLEGHENY PORT RR NHS	69.0	.7	93.3	.9	123.6	1.1
AMERICAN MEMORIAL PARK	AFFILIATED AREA		-	-	-	-
AMISTAD RA	1,206.7	1.1	1,220.0	1.1	1,284.6	1.1
ANDERSONVILLE NHS	129.8	.0	130.1	.0	129.9	.0
ANDREW JOHNSON NHS	72.6	.0	77.1	.0	76.6	.0
ANIAKCHAK NM	NOT REPORTING		-	-	-	-
ANIAKCHAK NPRES	NOT REPORTING		-	-	-	-
ANTIETAM NB	706.7	.0	610.7	.0	135.1	.0
APOSTLE ISLANDS NL ³	113.6	.9	137.3	.8	140.1	.8
APPALACHIAN NST	NOT REPORTING		-	-	-	-
APPOMATTOX COURT HOUSE NHP	323.8	.0	336.1	.0	312.7	.0
ARCHES NP	419.4	.0	468.9	.0	520.5	.0
ARKANSAS POST NMEM	60.3	.0	60.6	.0	68.6	.0
ARLINGTON HOUSE, TREL MEM	481.5	.0	481.1	.0	493.0	.0
ASSATEAGUE ISLAND NS ⁵	2,452.7	2.9	2,648.9	4.0	2,418.7	3.6
AZTEC RUINS NM	62.5	.0	65.5	.0	79.5	.0
BADLANDS NP	1,025.6	12.0	1,174.4	12.0	1,110.0	12.0
BANDELIER NM	238.0	.8	261.5	.8	249.6	.8
BENJAMIN FRANKLIN NMEM	AFFILIATED AREA		-	-	-	-

TABLE 3. VISITS TO AREAS ADMINISTERED BY THE NATIONAL PARK SERVICE, 1986-88 (IN THOUSANDS). (cont.)

NATIONAL PARK SERVICE AREA	1986		1987		1988	
	RECREATION	NON RECREATION	RECREATION	NON RECREATION	RECREATION	NON RECREATION
BENT'S OLD FORT NHS	44.8	.0	41.2	.0	41.8	.0
BERING LAND BRIDGE NPRES	NOT REPORTING		-	-	-	-
BIG BEND NP ³	200.6	41.1	227.9	46.7	239.6	2.4
BIG CYPRESS NPRES	NOT REPORTING		-	-	-	-
BIG HOLE NB	39.4	.0	32.7	.0	43.4	.0
BIG SOUTH FORK NRRRA ²	.0	.0	.0	.0	613.0	.0
BIG THICKET NPRES	66.7	1.4	62.5	.8	71.8	1.0
BIGHORN CANYON NRA	455.2	30.8	452.1	30.8	441.2	30.8
BISCAYNE NP	578.0	.0	608.0	.0	531.0	.0
BLACK CANYON of GUNNISON NM	289.1	.0	285.4	.0	269.1	.0
BLACKSTONE RIVER VALLEY NHC	AFFILIATED AREA					
BLUE RIDGE PKWY	17,076.2	4,377.1	18,604.6	4,522.0	20,003.0	5,563.9
BLUESTONE NSR ⁷	NOT REPORTING		-	-	-	-
BOOKER T. WASHINGTON NM	20.9	.1	20.6	.1	20.1	.1
BOSTON AFRICAN AMERICAN NHS	NOT REPORTING		-	-	-	-
BOSTON NHP	1,642.4	49.3	2,220.0	51.4	2,183.8	47.7
BRICES CROSS ROADS NBS	NOT REPORTING		-	-	-	-
BRYCE CANYON NP	578.0	256.7	718.3	295.2	791.3	323.4
BUCK ISLAND REEF NM	74.7	.0	93.0	.0	95.1	.0
BUFFALO NR	972.5	.0	1,052.5	.0	1,058.5	.0
CABRILLO NM	1,687.9	66.5	1,739.4	66.3	1,608.7	65.3
CANAVERAL NS	1,136.4	.0	1,037.0	.0	1,038.0	.0
CANYON de CHELLY NM	569.0	803.6	612.8	830.6	665.3	929.0
CANYONLANDS NP	173.0	4.1	172.4	8.3	212.1	2.1
CAPE COD NS	3,991.2	27.6	4,941.6	32.5	5,181.0	33.4

TABLE 3. VISITS TO AREAS ADMINISTERED BY THE NATIONAL PARK SERVICE, 1986-88 (IN THOUSANDS). (cont)

NATIONAL PARK SERVICE AREA	1986		1987		1988	
	RECREATION	NON RECREATION	RECREATION	NON RECREATION	RECREATION	NON RECREATION
CAPE HATTERAS NS	1,535.9	102.8	1,629.3	105.0	1,929.7	123.1
CAPE KRUSENSTERN NM	9.4	37.4	6.1	45.2	5.1	43.4
CAPE LOOKOUT NS	95.6	5.7	88.9	2.7	100.4	5.9
CAPITOL REEF NP	383.7	36.9	428.8	42.5	469.6	42.6
CAPULIN VOLCANO NM ¹	47.0	.0	38.8	.0	47.9	.0
CARL SANDBURG HOME NHS	61.3	.0	55.2	.0	57.9	.0
CARLSBAD CAVERNS NP	752.6	.0	781.3	.0	786.1	.0
CASA GRANDE NM	160.9	2.1	179.9	2.1	166.8	2.1
CASTILLO de SAN MARCOS NM	732.9	14.7	755.1	15.1	757.1	15.1
CASTLE CLINTON NM	2,213.6	2.3	3,040.8	2.0	2,843.2	1.5
CATOCTIN MOUNTAIN PARK ³	516.6	192.3	511.0	193.9	341.1	194.3
CEDAR BREAKS NM	425.7	11.7	430.6	14.2	477.5	13.2
CHACO CULTURE NHP	49.5	3.8	58.0	4.5	65.4	5.4
CHAMIZAL NMEM	195.0	1.0	221.0	4.2	211.5	6.7
CHANNEL ISLANDS NP	172.9	53.9	174.6	55.1	168.6	52.6
CHARLES PINCKNEY NHS ⁷	NOT REPORTING					
CHATTAHOOCHEE RIVER NRA	1,670.3	.0	1,533.0	.0	1,691.8	.0
CHESAPEAKE and OHIO CANAL NHP ⁵	4,896.0	4.9	5,962.2	86.2	2,034.1	40.6
CHICAGO PORTAGE NHS	AFFILIATED AREA					
CHICKAMAUGA & CHATTANOOGA NMP ³	1,157.1	14,684.4	1,076.3	14,159.5	877.1	7,265.8
CHICKASAW NRA	1,983.8	2,349.3	1,854.4	2,104.1	1,884.5	2,278.0
CHIMNEY ROCK NHS	AFFILIATED AREA					
CHIRICAHUA NM	61.5	.0	61.9	.0	63.8	.0
CHRISTIANSTED NHS ⁶	196.1	1.1	125.3	.0	128.2	.0
CITY of ROCKS NRES ⁷	NOT REPORTING					

TABLE 3. VISITS TO AREAS ADMINISTERED BY THE NATIONAL PARK SERVICE, 1986-88 (IN THOUSANDS). (cont.)

NATIONAL PARK SERVICE AREA	1986		1987		1988	
	RECREATION	NON RECREATION	RECREATION	NON RECREATION	RECREATION	NON RECREATION
CLARA BARTON NHS	21.9	.0	18.6	.0	24.0	.0
COLONIAL NHP	1,990.2	3,121.7	2,431.7	4,653.6	2,472.7	4,909.3
COLORADO NM	361.6	520.5	368.3	519.9	374.7	546.1
CONGAREE SWAMP NM	16.5	.0	20.3	.0	26.3	.0
CONSTITUTION GARDENS	INCLUDED IN NATIONAL CAPITAL PARKS					
CORONADO NMEM	53.8	1.4	55.8	1.5	69.7	2.1
COULEE DAM NRA	790.3	9.9	1,067.0	18.0	1,366.3	18.0
COWPENS NB	94.5	.0	90.8	.0	93.6	.0
CRATER LAKE NP ⁴	402.8	24.9	460.6	32.0	443.4	25.6
CRATERS of the MOON NM	178.3	.0	202.8	.0	217.0	.0
CUMBERLAND GAP NHP	788.6	.0	776.6	.0	760.8	.0
CUMBERLAND ISLAND NS	28.2	.0	27.9	.0	30.1	.0
CURECANTI NRA	1,114.8	.0	1,096.8	.0	1,076.5	.0
CUSTER BATTLEFIELD NM	275.5	2.8	265.0	2.7	226.5	2.3
CUYAHOGA VALLEY NRA ⁴	1,042.1	9.7	1,113.4	9.7	1,229.7	9.7
DAVID BERGER NMEM	AFFILIATED AREA					
DEATH VALLEY NM	586.7	24.4	665.3	27.7	692.3	28.8
DELAWARE LEHIGH NC and NHC ⁷	AFFILIATED AREA					
DELAWARE NSR	INCLUDED IN DELAWARE WATER GAP NRA					
DELAWARE WATER GAP NRA ³	2,247.1	2,332.7	2,546.9	2,739.3	2,527.9	4,112.8
DENALI NP	529.7	582.2	575.0	1,538.4	592.4	951.4
DENALI NPRES	INCLUDED IN DENALI NP					
De SOTO NMEM	209.4	.0	209.8	.0	152.3	.0
DEVILS POSTPILE NM	89.5	.0	118.9	.0	116.8	.0
DEVILS TOWER NM	290.5	7.6	328.0	6.5	343.1	4.3

TABLE 3. VISITS TO AREAS ADMINISTERED BY THE NATIONAL PARK SERVICE, 1986-88 (IN THOUSANDS). (cont)

NATIONAL PARK SERVICE AREA	1986		1987		1988	
	RECREATION	NON RECREATION	RECREATION	NON RECREATION	RECREATION	NON RECREATION
DINOSAUR NM	430.9	20.4	412.1	20.9	474.5	19.2
EBEY'S LANDING NHR	AFFILIATED AREA		-	-	-	-
EDGAR ALLAN POE NHS	12.4	.0	11.7	.0	14.2	.0
EDISON NHS	37.9	.0	41.8	.0	55.8	.0
EFFIGY MOUNDS NM	87.8	1.0	87.6	.9	101.6	.9
EISENHOWER NHS	131.6	.0	118.3	.0	118.2	.0
EL MALPAIS NM ²	.0	.0	.0	.0	23.5	.2
E1 MORRO NM	54.9	11.3	56.4	11.6	61.2	12.5
ELEANOR ROOSEVELT NHS	30.3	.0	28.8	.0	29.2	.0
EUGENE O'NEILL NHS	2.6	.2	3.5	.3	4.2	.2
EVERGLADES NP	739.1	23.2	787.5	28.3	1,026.2	45.2
FATHER MARQUETTE NMEM	AFFILIATED AREA		-	-	-	-
FEDERAL HALL NMEM	466.4	59.9	344.9	19.0	333.7	9.6
FIRE ISLAND NS	522.7	94.1	570.5	79.9	537.3	109.5
FLORISSANT FOSSIL BEDS NM	127.4	.0	143.6	.0	155.0	.0
FORD'S THEATER NHS	786.2	.4	827.8	.4	883.4	.4
FORT BOWIE NHS	7.4	.0	6.8	.0	7.2	.0
FORT CAROLINE NMEM	135.9	.0	84.5	.0	83.0	.0
FORT CLATSOP NMEM	173.8	.0	174.8	.0	203.2	.0
FORT DAVIS NHS	63.9	.1	52.2	.1	54.7	.1
FORT DONELSON NB	327.9	814.9	292.1	817.5	285.1	855.2
FORT FREDERICA NM	262.7	1.8	276.1	1.8	257.1	1.8
FORT JEFFERSON NM	15.4	8.4	16.3	8.7	16.9	10.4
FORT LARAMIE NHS	86.1	.4	85.2	.4	79.0	.4
FORT LARNED NHS	55.1	.0	43.6	.0	48.0	.0

TABLE 3. VISITS TO AREAS ADMINISTERED BY THE NATIONAL PARK SERVICE, 1986-88 (IN THOUSANDS). (cont.)

NATIONAL PARK SERVICE AREA	1986		1987		1988	
	RECREATION	NON RECREATION	RECREATION	NON RECREATION	RECREATION	NON RECREATION
FORT MATANZAS NM	368.8	.0	360.3	.0	330.6	.0
FORT McHENRY NM and HS	810.1	.7	546.4	.7	576.0	.7
FORT NECESSITY NB	155.2	.1	142.5	.1	135.5	.1
FORT POINT NHS	1,274.7	.0	1,796.8	.0	1,428.0	.0
FORT PULASKI NM	480.9	28.8	381.5	28.8	284.2	29.8
FORT RALEIGH NHS	259.6	2.2	282.9	1.3	287.4	1.3
FORT SCOTT NHS	82.9	2.4	74.5	2.4	68.3	2.6
FORT SMITH NHS	160.0	.0	129.3	.0	129.9	.0
FORT STANWIX NM	57.9	.0	45.3	.0	52.7	.0
FORT SUMTER NM	277.6	.0	290.2	.0	311.0	.0
FORT UNION NM	13.4	.0	14.4	.1	18.1	.4
FORT UNION TRADING POST NHS	22.7	4.5	40.1	4.2	26.6	2.1
FORT VANCOUVER NHS	263.1	24.5	249.9	25.7	275.2	31.2
FORT WASHINGTON PARK	299.4	.0	225.3	.0	324.9	.0
FOSSIL BUTTE NM	15.3	.5	19.6	.6	20.5	.8
FRDRCKSBRG & SPTSLVN CNTY BMNMP	252.9	725.0	381.5	986.3	404.4	1,269.5
FREDERICK DOUGLASS NHS ¹	33.4	.0	34.6	.0	37.8	.0
FREDERICK LAW OLMSTEAD NHS	5.4	.0	7.3	.0	6.1	.0
FRIENDSHIP HILL NHS	14.1	.0	16.2	.0	12.0	.0
GATES of the ARCTIC NP	2.8	2.2	1.1	1.1	1.3	1.1
GATES of the ARCTIC NPRES		INCLUDED IN GATES of the ARCTIC NP				
GATEWAY NRA ⁶	8,902.6	102.4	9,353.7	65.4	6,215.2	91.1
GAULEY RIVER NRA ⁷		NOT REPORTING				
GENERAL GRANT NMEM	46.6	14.6	69.2	32.8	62.9	11.7
GEORGE ROGERS CLARK NHP	120.9	.0	119.7	.0	113.8	.0

TABLE 3. VISITS TO AREAS ADMINISTERED BY THE NATIONAL PARK SERVICE, 1986-88 (IN THOUSANDS). (cont)

NATIONAL PARK SERVICE AREA	1986		1987		1988	
	RECREATION	NON RECREATION	RECREATION	NON RECREATION	RECREATION	NON RECREATION
GEORGE WASHINGTON BPL NM	163.4	3.7	175.4	3.7	152.1	3.7
GEORGE WASHINGTON CARVER NM	148.7	.0	120.5	.0	33.5	.0
GEORGE WASHINGTON MEM PKWY	9,097.1	.0	9,564.8	.0	9,537.7	.0
GETTYSBURG NMP	1,363.2	74.4	1,335.2	74.4	1,464.5	74.4
GILA CLIFF DWELLINGS NM	44.5	.0	44.4	.1	44.8	.1
GLACIER BAY NP	136.9	10.1	130.9	4.0	148.8	2.9
GLACIER BAY NPRES	INCLUDED IN GLACIER BAY NP					
GLACIER NP	1,579.2	6.7	1,660.7	7.6	1,817.7	7.7
GLEN CANYON NRA	2,438.9	45.1	2,858.7	24.7	3,529.2	35.7
GLORIA DEI CHURCH NHS	AFFILIATED AREA					
GOLDEN GATE NRA	21,582.4	34.6	21,767.2	34.6	21,759.3	34.6
GOLDEN SPIKE NHS	57.6	150.1	44.3	147.8	41.4	173.5
GRAND CANYON NP	3,035.8	312.1	3,513.0	330.6	3,859.9	366.2
GRAND PORTAGE NM ³	46.8	.0	47.3	.0	74.4	.0
GRAND TETON NP ⁶	1,306.3	874.0	1,450.8	977.8	1,232.7	844.0
GRANT-KOHRNS RANCH NHS	27.0	.0	25.4	.0	22.9	.0
GREAT BASIN NP	40.4	1.2	63.5	1.5	73.6	1.6
GREAT SAND DUNES NM	221.4	.2	225.9	.2	274.3	.2
GREAT SMOKY MOUNTAINS NP ³	9,836.3	6,033.3	10,209.8	6,316.7	8,770.8	9,126.8
GREEN SPRINGS HISTORIC DISTRICT	AFFILIATED AREA					
GREENBELT PARK	311.1	135.7	325.2	144.7	301.4	134.2
GUADALUPE MOUNTAINS NP	163.3	.0	156.3	.0	178.9	.0
GUILFORD COURTHOUSE NMP	171.0	1,304.0	150.0	1,271.6	170.9	1,164.2
GULF ISLANDS NS	7,646.2	.0	4,826.9	.0	5,197.9	.0
HAGERMAN FOSSIL BEDS NM ⁷	NOT REPORTING					

TABLE 3. VISITS TO AREAS ADMINISTERED BY THE NATIONAL PARK SERVICE, 1986-88 (IN THOUSANDS). (cont)

NATIONAL PARK SERVICE AREA	1986		1987		1988	
	RECREATION	NON RECREATION	RECREATION	NON RECREATION	RECREATION	NON RECREATION
HALEAKALA NP	1,281.2	23.1	1,333.9	26.0	1,314.7	29.5
HAMILTON GRANGE NMEM	41.6	1.2	46.3	1.8	45.3	1.1
HAMPTON NHS	45.1	.5	26.9	.5	25.4	.5
HARPERS FERRY NHP	907.7	.0	916.4	.0	697.2	.0
HARRY S TRUMAN NHS	114.1	.0	101.7	.0	125.7	.0
HAWAII VOLCANOES NP	898.0	609.2	1,006.1	866.5	983.0	950.6
HERBERT HOOVER NHS	223.9	18.0	218.7	18.0	310.2	18.0
HISTORIC CAMDEN		AFFILIATED AREA	-	-	-	-
HOHOKAM PIMA NM		NOT REPORTING	-	-	-	-
HOME of FD ROOSEVELT NHS	204.1	.0	190.6	.0	176.0	.0
HOMESTEAD NM of AMERICA	38.3	.0	42.7	.0	34.8	.0
HOPEWELL FURNACE NHS	138.6	1.4	128.9	1.3	130.4	1.2
HORSESHOE BEND NMP	61.2	393.9	47.7	453.0	65.5	460.8
HOT SPRINGS NP	1,175.2	4,438.7	1,101.2	4,205.1	1,185.8	4,215.3
HOVENWEEP NM	15.6	.6	18.6	.5	22.1	.4
HUBBELL TRADING POST NHS	138.8	4.6	132.0	4.6	148.4	4.6
ICE AGE NST		AFFILIATED AREA	-	-	-	-
ICE AGE N SCIENTIFIC RESERVE		AFFILIATED AREA	-	-	-	-
IDITAROD NHT		AFFILIATED AREA	-	-	-	-
ILLINOIS & MICHIGAN CANAL NHC		AFFILIATED AREA	-	-	-	-
INDEPENDENCE NHP	4,964.3	.0	7,300.1	.0	5,362.9	.0
INDIANA DUNES NL	1,676.6	344.0	1,576.2	338.8	1,885.4	362.8
INTERNATIONAL PEACE GARDEN		AFFILIATED AREA	-	-	-	-
ISLE ROYALE NP	26.1	.1	31.8	.2	26.6	.1
JAMES A. GARFIELD NHS		NOT REPORTING	-	-	-	-

TABLE 3. VISITS TO AREAS ADMINISTERED BY THE NATIONAL PARK SERVICE, 1986-88 (IN THOUSANDS). (cont)

NATIONAL PARK SERVICE AREA	1986		1987		1988	
	RECREATION	NON RECREATION	RECREATION	NON RECREATION	RECREATION	NON RECREATION
JAMESTOWN NHS		AFFILIATED AREA				
JEAN LAFITTE NHP and PRES	838.9	342.2	1,017.7	-	1,023.8	-
JEFFERSON N EXPANSION MEM	2,311.1	13.8	2,364.7	-	2,477.5	352.4
JEWEL CAVE NM	134.8	.2	141.7	-	126.6	156.1
JIMMY CARTER NHS ²	.0	.0	.0	-	22.9	.4
JOHN MUIR NHS	38.1	1.7	33.7	-	35.9	1.9
JOHN DAY FOSSIL BEDS NM	103.3	1.4	117.3	-	126.9	1.4
JD ROCKEFELLER JR., MEM PKWY ⁶	1,089.1	11.5	1,226.5	-	796.5	8.6
JFK CENTER for the PA	3,585.3	.0	3,760.6	-	3,926.9	.0
JOHN F. KENNEDY NHS	18.6	.0	16.0	-	15.5	.0
JOHNSTOWN FLOOD NMEM	52.0	.5	69.4	-	123.3	1.2
JOSHUA TREE NM	783.2	3.1	830.1	-	955.2	3.7
KALAUPAPA NHP		NOT REPORTING				
KALOKO-HONOKOHAU NHP ²	.0	.0	.0	-	12.5	.0
KATMAI NP	41.7	.1	38.2	-	45.7	.0
KATMAI NPRES		INCLUDED IN KATMAI NP				
KENAI FJORDS NP	54.3	.5	60.4	-	59.0	.5
KENNESAW MOUNTAIN NBP	665.6	1,508.9	749.0	-	693.4	1,513.0
KINGS CANYON NP	1,028.8	2.1	1,081.2	-	1,007.7	4.3
KINGS MOUNTAIN NMP	221.2	221.2	218.1	-	240.3	240.3
KLONDIKE GOLD RUSH NHP	156.2	1.0	151.8	-	170.3	1.1
KNIFE RIVER INDIAN VILL NHS	11.8	2.6	16.3	-	16.9	2.5
KOBUK VALLEY NP	1.1	4.6	.2	-	2.3	5.6
LAKE CHELAN NRA		INCLUDED IN NORTH CASCADES NP				
LAKE CLARK NP	13.6	7.0	16.4	-	18.9	6.2

TABLE 3. VISITS TO AREAS ADMINISTERED BY THE NATIONAL PARK SERVICE, 1986-88 (IN THOUSANDS). (cont.)

NATIONAL PARK SERVICE AREA	1986		1987		1988	
	RECREATION	NON RECREATION	RECREATION	NON RECREATION	RECREATION	NON RECREATION
LAKE CLARK NPRES		INCLUDED IN LAKE CLARK NP				
LAKE MEAD NRA	7,753.3	281.2	8,098.7	293.7	8,327.9	302.0
LAKE MEREDITH RA	1,406.7	.0	1,280.5	.0	1,321.7	.0
LASSEN VOLCANIC NP ³	439.7	.0	472.4	.0	495.6	.0
LAVA BEDS NM	77.1	32.1	75.0	31.3	77.6	32.3
LBJ MEM GROVE on the POTOMAC ³	1,176.1	.0	1,211.5	.0	1,229.3	.0
LEWIS AND CLARK NHT		AFFILIATED AREA				
LINCOLN BOYHOOD NMEM	212.0	16.8	219.1	16.3	198.7	16.1
LINCOLN HOME NHS ^{3,6}	440.8	.0	418.4	.0	606.9	5.2
LINCOLN MEMORIAL ³	3,972.5	.0	4,308.3	.0	2,787.3	.0
LONGFELLOW NHS	17.7	.0	12.7	.0	12.9	.0
LOWELL NHP	802.5	.0	740.9	.0	703.4	.0
LOWER SAINT CROIX NSRW		NOT REPORTING				
LYNDON B. JOHNSON NHP	308.1	11.0	330.8	11.0	303.2	11.0
MAGGIE L. WALKER NHS	3.1	.0	4.4	.0	5.4	.0
MAMMOTH CAVE NP	1,646.7	173.1	1,636.3	173.1	1,735.6	173.1
MANASSAS NBP	793.3	.0	667.0	.0	778.9	.4
MARTIN LUTHER KING, JR., NHS	582.6	.0	727.9	.0	817.1	.0
MARTIN VAN BUREN NHS	4.9	.2	11.1	.2	12.5	.1
MARY MCLEOD BETHUNE CH & NHS		AFFILIATED AREA				
McLOUGHLIN HOUSE NHS		AFFILIATED AREA				
MESA VERDE NP	658.9	6.3	728.6	18.8	772.2	16.1
MINUTE MAN NHP	1,208.6	.0	945.5	.0	1,002.0	.0
MISSISSIPPI NRR ⁷		NOT REPORTING				
MISSOURI NRR		NOT REPORTING				

TABLE 3. VISITS TO AREAS ADMINISTERED BY THE NATIONAL PARK SERVICE, 1986-88 (IN THOUSANDS). (cont)

NATIONAL PARK SERVICE AREA	1986		1987		1988	
	RECREATION	NON RECREATION	RECREATION	NON RECREATION	RECREATION	NON RECREATION
MONOCACY NB		NOT REPORTING	-	-	-	-
MONTEZUMA CASTLE NM	642.0	.5	738.0	.4	802.8	.4
MOORES CREEK NB	45.8	.0	41.0	.0	49.0	.0
MORMON PIONEER NHT		AFFILIATED AREA	-	-	-	-
MORRISTOWN NHP	534.1	.0	502.0	.0	460.4	.0
MOUND CITY GROUP NM	43.9	.0	46.8	.0	44.6	.0
MOUNT RAINIER NP ⁶	1,298.5	532.3	1,292.0	533.6	1,255.6	544.4
MOUNT RUSHMORE NMEM	1,648.7	345.6	1,530.7	419.2	1,570.1	443.6
MUIR WOODS NM	1,399.6	6.0	1,628.2	6.0	1,598.7	6.0
NATCHEZ NHP ⁷		NOT REPORTING	-	-	-	-
NATCHEZ TRACE NST		NOT REPORTING	-	-	-	-
NATCHEZ TRACE PKWY	14,364.0	7,182.0	9,941.6	4,970.8	11,685.6	5,842.8
NATIONAL CAPITAL PARKS ³	6,599.4	.0	8,073.1	.0	8,986.7	.0
NATIONAL MALL		NOT REPORTING	-	-	-	-
NATURAL BRIDGES NM	73.1	.8	88.2	.8	98.6	.8
NAVAJO NM	46.6	14.9	62.4	23.8	78.9	21.5
NEW RIVER GORGE NR	394.1	1.1	436.8	1.1	399.7	1.1
NEZ PERCE NHP ⁵	200.9	32.0	238.3	94.3	208.3	29.9
NINETY SIX NHS	41.7	.0	39.7	.0	37.8	.0
NOATAK NPRES	5.6	2.7	4.5	3.6	5.4	7.1
NORTH CASCADES NP	683.1	2.5	651.6	3.3	606.0	2.9
NORTH COUNTRY NST		AFFILIATED AREA	-	-	-	-
OBED WILD and SCENIC RIVER	.0	.0	6.7	.0	16.3	.0
OCMULGEE NM ³	214.9	.0	164.1	.0	118.3	.0
OLYMPIC NP	2,940.0	534.7	2,822.9	539.7	2,959.1	560.1

TABLE 3. VISITS TO AREAS ADMINISTERED BY THE NATIONAL PARK SERVICE, 1986-88 (IN THOUSANDS). (cont)

NATIONAL PARK SERVICE AREA	1986		1987		1988	
	RECREATION	NON RECREATION	RECREATION	NON RECREATION	RECREATION	NON RECREATION
OREGON CAVES NM	101.8	.7	102.9	.7	117.1	.5
OREGON NHT		AFFILIATED AREA	-	-	-	-
ORGAN PIPE CACTUS NM	219.9	2.4	247.1	2.4	240.3	2.4
OVERMOUNTAIN VICTORY NHT		AFFILIATED AREA	-	-	-	-
OZARK NSRW ⁵	1,351.0	537.3	1,280.7	.0	1,546.7	.0
PADRE ISLAND NS	708.9	5.3	606.0	1.0	587.3	2.3
PALO ALTO BATTLEFIELD NHS		NOT REPORTING	-	-	-	-
PEA RIDGE NMP	131.2	.0	98.7	.0	108.1	.0
PECOS NM	44.8	1.5	45.3	1.7	48.6	1.7
PENNSYLVANIA AVENUE NHS	310.7	.0	46.1	.0	247.2	.0
PERRY'S VICTORY & IPM	155.1	.0	143.2	.0	140.6	.0
PETERSBURG NB	524.8	154.9	460.3	206.4	442.3	279.6
PETRIFIED FOREST NP	761.3	3.6	758.1	13.2	857.0	15.1
PICTURED ROCKS NL	406.6	2.0	474.9	1.9	553.8	1.9
PINELANDS NRES		AFFILIATED AREA	-	-	-	-
PINNACLES NM	198.2	.0	204.7	.0	212.1	.0
PIPE SPRING NM	33.6	.1	35.6	.1	40.4	.1
PIPESTONE NM	139.0	.0	117.1	.0	105.2	.0
PISCATAWAY PARK	76.4	.0	87.7	.0	56.2	.0
POINT REYES NS	2,053.4	25.8	2,126.8	25.8	2,241.9	25.8
POTOMAC HERITAGE_NST		NOT REPORTING	-	-	-	-
POVERTY POINT NM ⁷		NOT REPORTING	-	-	-	-
PRINCE WILLIAM FOREST PARK ³	449.7	.5	418.1	.5	358.8	.5
PU'UHONUA o HONAUNAU NHP	432.4	.0	415.6	.0	392.5	.0
PUUKOHOLA HEIAU NHS	56.4	.0	54.9	.0	53.2	.0

TABLE 3. VISITS TO AREAS ADMINISTERED BY THE NATIONAL PARK SERVICE, 1986-88 (IN THOUSANDS). (cont)

NATIONAL PARK SERVICE AREA	1986		1987		1988	
	RECREATION	NON RECREATION	RECREATION	NON RECREATION	RECREATION	NON RECREATION
RAINBOW BRIDGE NM	283.6	.0	210.7	.0	238.3	.0
RED HILL PATRICK HENRY NMEM	AFFILIATED AREA					
REDWOOD NP	567.8	110.7	610.9	120.0	677.1	35.3
RICHMOND NBP	302.5	73.6	328.9	75.1	341.9	77.1
RIO GRANDE WSR	.8	.0	.7	.0	.8	.0
ROCK CREEK PARK	2,188.2	12,522.3	1,724.7	12,527.1	1,564.5	12,553.9
ROCKY MOUNTAIN NP	2,408.2	114.9	2,531.9	133.2	2,544.2	142.7
ROGER WILLIAMS NMEM	18.2	.1	21.9	.1	21.0	.1
ROOSEVELT CAMPOBELLO INT PARK	AFFILIATED AREA					
ROSS LAKE NRA	INCLUDED IN NORTH CASCADES NP					
RUSSELL CAVE NM	23.4	1.6	25.0	2.3	25.2	3.2
SAGAMORE HILL NHS	119.5	.0	104.8	.0	135.3	.0
SAGUARO NM	613.7	1,199.2	689.9	1,299.9	675.4	1,451.2
SAINT CROIX ISLAND IHS	NOT REPORTING					
SAINT CROIX NSRW	438.8	.0	625.5	.0	529.4	.0
SAINT-GAUDENS NHS	35.4	.0	36.2	.0	33.0	.0
SAINT PAUL'S CHURCH NHS	NOT REPORTING					
SALEM MARITIME NHS	673.9	12.4	874.6	56.4	742.7	2.1
SALINAS PUEBLO MISSIONS NM ¹	30.6	.2	35.1	.0	34.1	.0
SAMOA NP ⁷	NOT REPORTING					
SAN ANTONIO MISSIONS NHP	250.4	.0	257.3	.0	258.0	.0
SAN FRANCISCO MARITIME NHP ⁷	INCLUDED IN GOLDEN GATE NRA					
SAN JUAN ISLAND NHP	137.0	.0	158.3	.0	248.2	.0
SAN JUAN NHS	2,230.5	.0	1,808.2	.0	2,555.7	.0
SANTA MONICA MOUNTAINS NRA	516.1	4.3	517.8	2.7	501.5	7.8

TABLE 3. VISITS TO AREAS ADMINISTERED BY THE NATIONAL PARK SERVICE, 1986-88 (IN THOUSANDS). (cont)

NATIONAL PARK SERVICE AREA	1986		1987		1988	
	RECREATION	NON RECREATION	RECREATION	NON RECREATION	RECREATION	NON RECREATION
SARATOGA NHP	189.8	92.1	128.8	251.1	129.4	205.9
SAUGUS IRON WORKS NHS	49.5	42.3	69.6	48.3	70.9	48.2
SCOTTS BLUFF NM	170.7	.0	161.9	.0	147.4	.0
SEQUOIA NP	1,056.5	.4	1,139.4	.4	1,031.1	.4
SEWALL-BELMONT HOUSE NHS	AFFILIATED AREA					
SHENANDOAH NP	1,844.0	22.7	1,767.7	21.3	1,937.2	23.7
SHILOH NMP	326.0	241.3	336.1	314.5	361.6	328.9
SITKA NHP	110.6	4.1	95.1	3.8	101.0	2.9
SLEEPING BEAR DUNES NL	634.4	.0	1,222.8	.0	1,317.5	.0
SPRINGFIELD ARMORY NHS ⁵	18.3	.0	13.7	.0	.0	.0
STATUE of LIBERTY NM	1,923.7	.0	3,092.7	.0	2,833.4	.0
STEAMTOWN NHS	NOT REPORTING					
STONES RIVER NB	210.3	1.0	151.7	.9	198.2	.9
SUNSET CRATER NM ³	426.5	10.2	449.4	10.2	515.1	10.2
THADDEUS KOSCIUSZKO NMEM	7.2	.0	7.9	.0	7.2	.0
THEO ROOSEVELT BPL NHS	16.4	2.2	17.3	1.6	15.8	1.9
THEO ROOSEVELT INAUGURAL NHS	21.1	12.0	33.5	11.3	41.6	15.6
THEO ROOSEVELT ISLAND	48.4	.0	33.7	.0	36.5	.0
THEO ROOSEVELT NP	390.6	6.5	424.8	6.5	413.5	6.5
THOMAS JEFFERSON MEM ³	3,273.6	.0	1,818.6	.0	1,329.5	.0
THOMAS STONE NHS	NOT REPORTING					
TIMPANOGOS CAVE NM	124.4	.0	137.3	.0	138.7	.0
TIMUCUAN EHP	NOT REPORTING					
TONTO NM	82.8	.0	80.9	.0	78.4	.0
TOURO SYNAGOGUE NHS	AFFILIATED AREA					

TABLE 3. VISITS TO AREAS ADMINISTERED BY THE NATIONAL PARK SERVICE, 1986-88 (IN THOUSANDS). (cont)

NATIONAL PARK SERVICE AREA	1986		1987		1988	
	RECREATION	NON RECREATION	RECREATION	NON RECREATION	RECREATION	NON RECREATION
TUMACACORI NM	60.1	.0	63.3	.0	60.3	.0
TUPELO NB	NOT REPORTING		-	-	-	-
TUSKEGEE INSTITUTE NHS	99.9	6.5	199.8	.0	280.8	.0
TUZIGOOT NM	97.5	1.6	96.4	.8	108.4	.7
UPPER DELAWARE SRR	162.6	1.7	157.8	2.5	207.5	2.0
USS ARIZONA MEM	1,281.4	154.5	1,387.3	135.3	1,322.8	139.5
VALLEY FORGE NHP	4,225.6	8,651.6	4,348.2	9,609.9	4,202.5	9,902.6
VANDERBILT MANSION NHS	395.6	.0	411.4	.0	432.7	.0
VICKSBURG NMP ⁵	1,066.1	123.3	869.1	92.8	675.7	71.6
VIETNAM VETERANS MEM ³	5,355.4	.0	3,987.3	.0	3,657.7	.0
VIRGIN ISLANDS NP	766.5	347.5	785.4	369.7	838.7	377.5
VOYAGEURS NP	172.1	12.7	201.7	16.7	223.7	16.9
WALNUT CANYON NM	115.8	.5	109.0	.5	122.5	.5
WAR in the PACIFIC NHP	51.6	.5	55.9	.2	49.4	.2
WASHINGTON MONUMENT	1,271.2	.0	1,301.0	.0	1,218.0	.0
WHISKEYTOWN-SHASTA-TRINITY NRA ³	1,728.7	6.9	1,742.3	8.3	1,352.5	6.9
WHITE HOUSE	1,148.3	.0	1,077.6	.0	1,090.0	.0
WHITE SANDS NM	666.9	.3	567.6	.3	556.2	.1
WHITMAN MISSION NHS	109.9	.9	115.5	.9	97.7	.9
WILLIAM HOWARD TAFT NHS ⁵	3.9	.4	3.7	.4	5.6	.3
WILSON'S CREEK NB	270.4	.0	278.2	.0	351.7	.0
WIND CAVE NP	483.3	499.7	563.7	586.2	578.0	609.6
WOLF TRAP FARM PARK for the PA	539.3	4.2	545.7	4.8	577.1	2.8
WOMEN'S RIGHTS NHP	16.8	.0	17.0	.0	22.7	.0
WRANGELL-ST. ELIAS NP	26.6	1.0	29.2	1.1	31.0	1.2

TABLE 3. VISITS TO AREAS ADMINISTERED BY THE NATIONAL PARK SERVICE, 1986-88 (IN THOUSANDS). (cont)

NATIONAL PARK SERVICE AREA	1986		1987		1988	
	RECREATION	NON RECREATION	RECREATION	NON RECREATION	RECREATION	NON RECREATION
WRANGELL-ST. ELIAS NPRES		INCLUDED IN WRANGELL-ST. ELIAS NP	-	-	-	-
WRIGHT BROTHERS NMEM	630.8	2.2	316.0	2.2	328.6	2.2
WUPATKI NM	208.0	6.5	209.0	6.5	243.7	6.6
YELLOWSTONE NP ⁶	2,363.8	41.3	2,573.2	45.2	2,182.1	37.0
YOSEMITE NP	2,876.7	106.0	3,152.3	114.1	3,216.7	117.2
YUCCA HOUSE NM	NOT REPORTING		-	-	-	-
YUKON-CHARLEY RIVERS NPRES	1.7	3.0	1.8	2.9	1.3	2.0
ZION NP	1,670.5	194.4	1,777.6	208.8	1,948.3	226.2
ZUNI-CIBOLA NHP ⁷	NOT REPORTING		-	-	-	-
NATIONAL PARK SERVICE TOTALS	281,094.9	83,456.6	287,245.0	85,706.1	282,451.4	85,538.3
NUMBER OF AREAS REPORTING	-311-		-314-		-319-	

TABLE 4. RECREATION VISITS TO NATIONAL PARK SERVICE AREAS BY REGION, 1982-88 (IN THOUSANDS).

REGION	1982	1983	1984	1985	1986	1987	1988
ALASKA	625.3	661.9	780.8	885.4	1,034.5	1,061.1	1,117.7
MID-ATLANTIC	26,946.4	20,807.7	21,950.2	22,321.1	22,670.5	25,841.9	23,938.3
MIDWEST	9,836.8	10,618.1	9,812.4	10,567.6	10,537.0	11,285.0	12,452.6
NATIONAL CAPITAL	38,480.6	38,786.7	43,278.7	47,430.9	48,845.2	48,538.6	42,654.4
NORTH ATLANTIC	25,338.5	27,454.9	23,222.0	23,529.2	28,180.8	32,264.2	28,931.2
PACIFIC NORTHWEST	6,916.3	6,795.8	6,934.2	6,524.4	7,438.4	7,703.5	8,188.6
ROCKY MOUNTAIN	23,212.4	22,430.1	21,673.7	22,064.5	23,579.1	25,235.0	25,557.7
SOUTHEAST	53,188.8	57,449.1	60,949.5	67,953.0	69,652.9	63,252.7	67,147.6
SOUTHWEST	12,107.2	12,421.1	12,579.4	12,566.4	13,288.6	13,166.2	13,639.9
WESTERN	48,272.5	46,191.5	47,604.9	49,599.4	55,867.8	58,896.6	58,823.5
TOTAL	244,924.6	243,616.7	248,785.5	263,441.8	281,094.9	287,245.0	282,451.4

1988 NATIONAL PARK SERVICE REGIONAL RECREATION VISITS (IN MILLIONS)

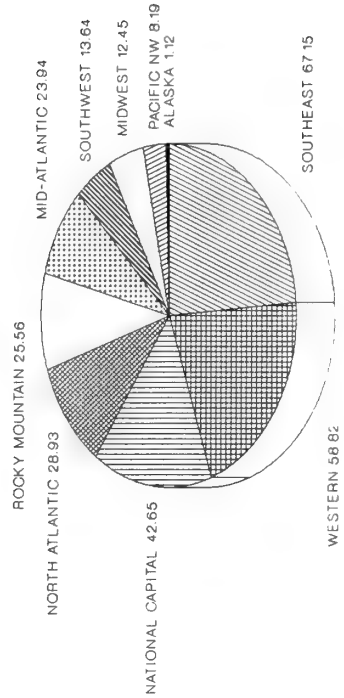


Figure 4.

TABLE 5. RECREATION VISITS TO NATIONAL PARK SERVICE AREAS BY STATE, 1982-88 (IN THOUSANDS).

STATE	1982	1983	1984	1985	1986	1987	1988
ALABAMA	935.9	1,056.4	1,123.9	1,086.0	1,189.9	968.4	1,189.4
ALASKA	625.3	661.9	780.8	885.4	1,034.5	1,061.1	1,117.7
ARIZONA	5,954.3	6,106.6	6,260.2	6,792.6	7,529.9	8,330.3	9,086.6
ARKANSAS	1,915.2	2,103.8	1,886.0	2,186.0	2,499.1	2,442.3	2,550.8
CALIFORNIA	33,984.6	30,919.4	31,815.0	33,601.2	38,160.7	39,880.5	39,181.4
COLORADO	5,277.3	5,388.5	4,891.3	5,197.6	5,551.9	5,734.8	5,868.7
DISTRICT OF COLUMBIA	23,382.8	24,578.4	28,913.6	32,224.6	33,201.7	32,431.7	27,788.7
FLORIDA	6,044.1	6,565.8	8,165.4	11,406.6	10,032.8	7,719.9	8,093.5
GEORGIA	3,053.2	3,780.2	3,786.8	4,429.6	4,914.2	4,807.6	4,711.4
GUAM	.0	.0	.0	8.6	51.6	55.9	49.4
HAWAII	4,185.8	4,545.6	4,634.5	3,628.7	3,949.4	4,197.8	4,078.8
IDAHO	482.1	481.4	443.0	400.8	379.2	441.1	425.4
ILLINOIS	432.7	448.1	431.2	431.3	440.8	418.4	606.9
INDIANA	1,382.2	1,838.0	1,891.0	2,141.1	2,009.5	1,915.0	2,197.8
IOWA	348.6	342.1	319.2	300.9	311.7	306.3	411.8
KANSAS	88.1	134.1	145.3	134.8	138.1	118.1	116.3
KENTUCKY	2,477.4	2,473.0	2,479.3	2,502.5	2,715.9	2,705.8	3,030.0
LOUISIANA	377.2	535.2	849.0	713.9	838.9	1,017.7	1,023.8
MAINE	3,572.1	4,124.6	3,734.8	3,745.6	3,929.1	4,288.2	4,502.3
MARYLAND	4,249.4	4,213.6	4,496.8	4,951.3	4,697.4	4,569.8	3,664.1
MASSACHUSETTS	7,683.2	8,822.5	8,509.9	8,329.1	8,452.7	9,867.5	9,939.8
MICHIGAN	1,034.6	1,112.4	1,272.7	1,312.2	1,067.2	1,729.5	1,897.9
MINNESOTA	537.2	536.6	560.9	581.2	577.3	678.8	668.0
MISSISSIPPI	10,157.2	11,702.8	13,056.2	13,221.4	14,086.5	9,787.8	11,063.7
MISSOURI	4,563.4	4,529.4	3,445.5	3,927.8	4,195.3	4,145.8	4,535.0

TABLE 5. RECREATION VISITS TO NATIONAL PARK SERVICE AREAS BY STATE, 1982-88 (IN THOUSANDS). (cont)

STATE	1982	1983	1984	1985	1986	1987	1988
MONTANA	3,359.9	3,904.9	3,594.1	3,304.1	3,372.4	3,540.3	3,461.6
NORTH CAROLINA	15,298.4	15,986.2	15,695.6	17,083.9	17,715.3	18,590.5	19,184.9
NORTH DAKOTA	689.3	433.4	381.9	404.6	425.0	481.2	457.0
NEBRASKA	198.2	184.7	185.6	200.3	219.2	216.0	193.4
NEW HAMPSHIRE	38.0	38.7	27.1	31.9	35.4	36.2	33.0
NEW JERSEY	4,068.8	4,363.5	3,713.6	3,933.7	3,947.9	4,222.8	3,554.0
NEW MEXICO	1,866.4	1,732.6	1,782.9	1,773.5	2,004.6	1,968.4	2,015.1
NEW YORK	11,531.7	11,830.0	8,817.5	9,104.0	13,474.2	15,714.8	12,779.6
NEVADA	5,422.8	5,944.1	6,314.2	6,988.5	7,793.7	8,162.2	8,401.4
OHIO	903.4	1,141.8	1,202.1	1,201.1	1,245.0	1,307.0	1,420.6
OKLAHOMA	2,094.3	2,238.5	2,026.7	2,129.5	1,983.8	1,854.4	1,884.5
OREGON	806.1	750.1	786.2	746.0	781.7	855.6	890.6
PENNSYLVANIA	10,116.6	10,757.4	11,303.9	11,664.7	11,866.2	14,389.2	12,531.2
PUERTO RICO	1,508.3	1,306.2	2,005.2	2,221.7	2,230.5	1,808.2	2,555.7
RHODE ISLAND	14.4	15.7	15.8	14.5	18.2	21.9	21.0
SOUTH CAROLINA	486.3	526.7	565.4	584.6	651.5	659.1	708.9
SOUTH DAKOTA	3,069.6	3,182.7	3,310.1	3,297.3	3,292.5	3,410.6	3,384.8
TENNESSEE	6,945.9	7,443.1	7,527.3	7,987.8	8,590.2	8,132.0	7,946.9
TEXAS	4,747.8	4,664.8	4,802.0	4,539.7	4,573.3	4,417.7	4,514.3
UTAH	4,901.0	5,002.6	5,309.9	5,632.8	6,553.7	7,224.7	8,318.9
VIRGINIA	30,519.4	23,112.8	23,394.8	24,614.5	24,967.0	26,461.6	27,092.3
VIRGIN ISLANDS	822.9	829.4	792.7	895.3	1,037.2	1,003.7	1,062.0
WASHINGTON	5,628.0	5,564.3	5,704.9	5,377.5	6,277.4	6,406.8	6,872.7
WISCONSIN	348.3	350.9	358.8	336.9	333.0	450.1	404.8
WEST VIRGINIA	1,045.8	971.4	1,274.8	1,200.8	1,595.6	1,710.9	1,219.0
WYOMING	5,746.6	4,340.0	4,000.0	4,031.8	4,155.0	4,579.0	3,743.9
TOTAL	244,922.2	243,616.7	248,785.5	263,441.8	281,094.9	287,245.0	282,451.4

TABLE 6. RECREATION VISITS TO NATIONAL PARK SERVICE AREAS BY URBAN - RURAL LOCATION, 1982-88 (IN THOUSANDS).

YEAR	LOCATIONS					
	URBAN	SUBURBAN	OUTLYING	RURAL	REMOTE	MIXED
1981	74,655.6	22,057.8	38,842.5	71,763.7	1,036.2	30,236.8
1982	78,814.3	22,750.8	39,040.8	71,739.6	1,110.0	31,468.9
1983	78,179.3	17,610.0	40,450.5	72,074.0	1,122.5	34,180.4
1984	77,718.2	19,345.1	43,582.1	72,172.9	1,193.7	34,773.5
1985	84,710.8	20,201.3	48,597.0	72,325.2	1,297.2	36,310.3
1986	95,627.6	20,492.7	49,063.0	78,042.9	1,532.6	36,336.1
1987	99,921.0	21,108.9	47,005.6	83,162.8	1,538.2	34,508.4
1988	93,740.0	21,308.6	46,258.1	85,641.2	1,780.9	33,722.7

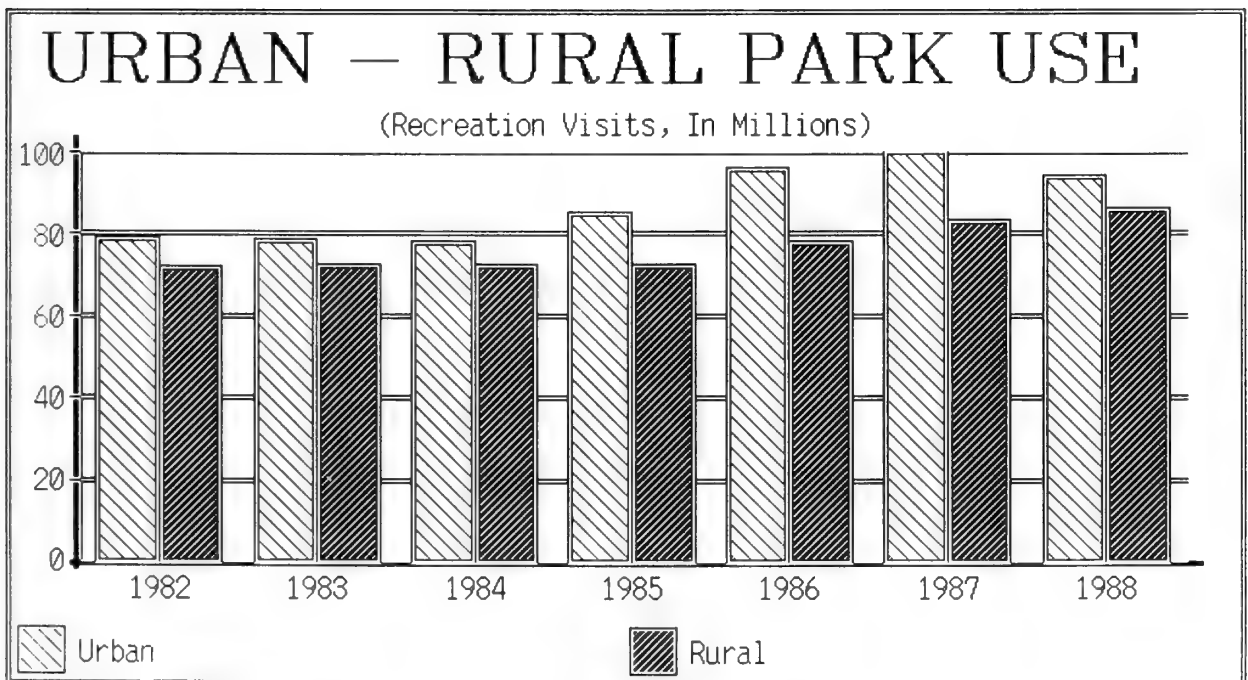


Figure 5.

TABLE 7. OVERNIGHT STAYS IN NATIONAL PARK SERVICE AREAS, 1988.

NATIONAL PARK SERVICE AREA	CONCESSION		NPS		NPS BACK COUNTRY	NPS GROUP & MISC	TOTAL RECR ONS	NON RECR ONS
	LODGE	CAMPGRND	TENTS	CAMPGROUND RV'S				
ACADIA NP	0	0	175,545	45,661	0	0	221,206	0
AMISTAD RA	0	0	18,444	64,892	16,396	4,666	104,398	0
ANTIETAM NB	0	0	0	0	0	2,804	2,804	0
APOSTLE ISLANDS NL ³	0	0	0	0	7,753	18,402	26,155	0
ARCHES NP	0	0	25,046	19,751	1,818	7,591	54,206	0
ARKANSAS POST NMEM	0	0	0	0	0	11	11	0
ASSATEAGUE ISLAND NS ⁵	0	0	15,490	10,405	2,512	6,721	35,128	0
BADLANDS NP	7,050	0	13,485	9,599	115	0	30,249	522
BANDELIER NM	0	0	12,904	8,241	3,891	0	25,036	0
BIG BEND NP ³	26,181	13,531	59,981	41,516	45,654	25,304	212,167	0
BIG SOUTH FORK NRRRA ²	2,201	0	6,255	7,409	0	2,943	18,808	0
BIG THICKET NPRES	0	0	0	0	726	0	726	0
BIGHORN CANYON NRA	0	0	5,067	10,674	3,528	3,410	22,679	0
BISCAYNE NP	0	0	2,892	0	0	42,984	45,876	0
BLACK CANYON ot GUNNISON NM	0	0	2,214	2,026	563	0	4,803	0
BLUE RIDGE PKWY	63,498	31,440	63,320	85,471	1,464	1,218	246,411	0
BRYCE CANYON NP	35,285	0	51,230	49,312	2,841	2,981	141,649	0
BUCK ISLAND REEF NM	0	0	0	0	0	3,543	3,543	0
BUFFALO NR	7,536	0	20,233	19,768	3,579	53,419	104,535	0
C & O CANAL NHP ⁵	0	0	6,958	1,688	31,976	0	40,622	0
CANAVERAL NS	0	0	0	0	336	0	336	0
CANYON de CHELLY NM	36,888	0	26,673	32,289	1,636	2,581	100,067	0
CANYONLANDS NP	0	0	11,820	4,938	54,278	6,499	77,535	677
CAPE COD NS	4,133	0	0	0	0	14,515	18,648	0
CAPE HATTERAS NS	0	0	88,917	54,125	0	17,049	160,091	19,691

TABLE 7. OVERNIGHT STAYS IN NATIONAL PARK SERVICE AREAS, 1988. (cont)

NATIONAL PARK SERVICE AREA	CONCESSION		NPS		NPS BACK COUNTRY	NPS GROUP & MISC	TOTAL RECR ONS	NON RECR ONS
	LODGE	CAMPGRND	TENTS	CAMPGROUND RV'S				
CAPE KRUSENSTERN NM	0	0	0	0	310	0	310	820
CAPE LOOKOUT NS	27,693	0	0	0	6,205	3,821	37,719	208
CAPITOL REEF NP	0	0	15,248	25,206	1,506	3,015	44,975	0
CARLSBAD CAVERNS NP	0	0	0	0	351	0	351	0
CATOCTIN MOUNTAIN PARK ³	0	0	6,794	1,910	44	32,515	41,263	0
CEDAR BREAKS NM	0	0	2,256	2,870	0	0	5,126	0
CHACO CULTURE NHP	0	0	13,912	5,980	0	2,241	22,133	0
CHANNEL ISLANDS NP	0	0	0	0	1,786	34,524	36,310	22,565
CHICKAMAUGA & CHATTANOOGA NMP ³	0	0	0	0	0	1,707	1,707	0
CHICKASAW NRA	0	0	41,455	29,823	0	24,335	95,613	0
CHIRICAHUA NM	0	0	4,482	7,296	0	525	12,303	0
COLORADO NM	0	0	7,127	10,944	85	0	18,156	78
CONGAREE SWAMP NM	0	0	0	0	322	238	560	0
COULEE DAM NRA	0	0	57,557	88,330	0	0	145,887	0
CRATER LAKE NP ⁴	17,327	33,979	1,636	263	1,508	0	54,713	0
CRATERS of the MOON NM	0	0	1,957	14,796	42	653	17,448	0
CUMBERLAND GAP NHP	0	0	3,974	4,936	1,672	1,196	11,778	0
CUMBERLAND ISLAND NS	0	0	12,618	0	7,258	0	19,876	0
CURECANTI NRA	0	0	11,944	81,464	622	733	94,763	0
CUYAHOGA VALLEY NRA ⁴	1,000	0	0	0	0	522	1,522	0
DEATH VALLEY NM	25,353	4,646	61,743	249,726	0	5,017	346,485	0
DELAWARE WATER GAP NRA ³	0	21,313	0	0	45,827	52,546	119,686	0
DENALI NP & PRES	22,101	0	35,669	41,831	29,460	1,191	130,252	0
DEVILS POSTPILE NM	0	0	3,069	2,427	0	0	5,496	0
DEVILS TOWER NM	0	0	8,072	7,794	0	0	15,866	0

TABLE 7. OVERNIGHT STAYS IN NATIONAL PARK SERVICE AREAS, 1988. (cont.)

NATIONAL PARK SERVICE AREA	CONCESSION		NPS		NPS BACK COUNTRY	NPS GROUP & MISC	TOTAL RECR ONS	NON RECR ONS
	LODGE	CAMPGRND	TENTS	CAMPGROUND RV'S				
DINOSAUR NM	0	0	27,385	19,226	24,802	1,349	72,762	0
EL MALPAIS NM ²	0	0	0	0	135	0	135	0
EL MORRO NM	0	0	2,307	1,486	0	405	4,198	0
✓ EVERGLADES NP	45,551	0	20,442	54,666	8,015	3,333	132,007	0
FIRE ISLAND NS	0	0	6,310	0	0	50,568	56,878	0
FORT BOWIE NHS	0	0	0	0	0	24	24	0
FORT DONELSON NB	0	0	0	0	0	155	155	0
FORT JEFFERSON NM	0	0	2,292	0	0	17,236	19,528	13,705
FORT NECESSITY NB	0	0	0	0	0	125	125	0
FORT POINT NHS	0	0	0	0	0	745	745	0
FORT PULASKI NM	0	0	0	0	620	0	620	0
FORT STANWIX NM	0	0	0	0	0	790	790	0
GATES of the ARCTIC NP & NPRES	0	0	0	0	3,552	0	3,552	1,291
GATEWAY NRA ⁶	0	0	0	0	0	2,137	2,137	0
GETTYSBURG NMP	0	0	0	0	0	13,123	13,123	0
GLACIER BAY NP & PRES	8,402	0	2,165	0	6,211	10,407	27,185	18,145
✓ GLACIER NP	95,843	0	85,248	128,401	16,909	0	326,401	0
GLEN CANYON NRA	176,356	94,871	74,667	86,372	25,642	1,471,492	1,929,400	11,750
GOLDEN GATE NRA	67,096	0	2,264	0	361	47,451	117,172	10,772
○ GRAND CANYON NP	609,854	41,101	92,728	55,791	37,350	31,081	867,905	0
GRAND PORTAGE NM ³	0	0	0	0	187	0	187	0
✓ GRAND TETON NP ^o	180,761	43,859	90,518	69,919	22,988	19,989	428,034	0
✓ GREAT BASIN NP	0	0	21,099	21,639	536	904	44,178	0
GREAT SAND DUNES NM	0	0	17,460	13,666	1,112	5,341	37,579	0
✓ GREAT SMOKY MOUNTAINS NP ³	9,989	0	200,518	190,092	72,152	21,477	494,228	0

TABLE 7. OVERNIGHT STAYS IN NATIONAL PARK SERVICE AREAS, 1988. (cont)

NATIONAL PARK SERVICE AREA	CONCESSION		NPS CAMPGROUND		NPS BACK COUNTRY	NPS GROUP & MISC	TOTAL RECRONS	NON RECRONS
	LODGE	CAMPGRND	TENTS	RV'S				
GREENBELT PARK	0	0	18,292	24,538	0	550	43,380	0
GUADALUPE MOUNTAINS NP	0	0	14,206	7,332	2,680	0	24,218	0
GUILFORD COURTHOUSE NMP	0	0	0	0	0	0	0	53
GULF ISLANDS NS	0	0	39,843	130,069	0	16,272	186,184	0
HALEAKALA NP	0	0	12,614	219	2,923	3,333	19,089	0
✓ HAWAII VOLCANOES NP	33,646	0	10,254	1,197	4,393	60,711	110,201	0
HOT SPRINGS NP	0	0	3,626	9,554	0	0	13,180	0
HOVENWEEP NM	0	0	917	2,533	0	0	3,450	97
✓ ISLE ROYALE NP	6,690	2,368	5,932	0	31,807	4,016	50,813	1,217
JD ROCKEFELLER JR., MEM PKWY	26,993	32,253	5,358	2,505	108	138	67,355	0
JOHN DAY FOSSIL BEDS NM	0	0	0	0	0	174	174	0
JOHN MUIR NHS	0	0	0	0	0	235	235	0
JOSHUA TREE NM	0	0	72,512	67,343	3,304	43,612	186,771	0
✓ KATMAI NP & PRES	3,231	0	3,157	0	3,079	141	9,608	9
✓ KENAI FJORDS NP	74	8	271	35	7	34	429	0
KENNESAW MOUNTAIN NBP	0	0	0	0	0	29	29	0
KINGS CANYON NP	27,257	0	110,663	71,433	77,904	0	287,257	0
KINGS MOUNTAIN NMP	0	0	0	0	124	0	124	0
KLONDIKE GOLD RUSH NHP	0	0	2,005	1,100	2,351	0	5,456	0
KNIFE RIVER INDIAN VILL NHS	0	0	0	0	95	0	95	0
KOBUK VALLEY NP	0	0	0	0	640	0	640	1,430
LAKE CLARK NP & PRES	0	0	0	0	2,962	0	2,962	0
LAKE MEAD NRA	82,612	287,609	128,006	398,762	389,948	121,847	1,408,784	245,635
LAKE MEREDITH RA	0	0	0	0	5,396	115,042	120,438	0
✓ LASSEN VOLCANIC NP ³	5,215	0	56,292	31,173	7,030	6,500	106,210	0

TABLE 7. OVERNIGHT STAYS IN NATIONAL PARK SERVICE AREAS, 1988. (cont)

NATIONAL PARK SERVICE AREA	CONCESSION		NPS		NPS BACK COUNTRY	NPS GROUP & MISC	TOTAL RECRONS	NON RECRONS
	LODGE	CAMPGRND	TENTS	CAMPGROUND RV'S				
LAVA BEDS NM	0	0	6,789	4,164	0	0	10,953	0
> MAMMOTH CAVE NP	33,057	0	32,464	25,388	2,121	4,320	97,350	0
> MESA VERDE NP	62,432	0	97,060	65,448	0	3,574	228,514	0
> MOUNT RAINIER NP ⁶	38,214	0	70,771	46,444	29,433	714	185,576	407
> NATCHEZ TRACE PKWY	0	0	6,654	13,860	0	0	20,514	0
NATURAL BRIDGES NM	0	0	1,811	1,294	0	0	3,105	0
NAVAJO NM	0	0	7,470	6,681	595	3,743	18,489	0
NEW RIVER GORGE NR	0	0	1,831	1,270	0	0	3,101	0
NOATAK NPRES	0	0	0	0	5,902	0	5,902	1,045
> NORTH CASCADES NP	16,760	924	29,900	33,068	25,284	1,241	107,177	1,082
OBED WILD and SCENIC RIVER	0	0	0	0	0	1,101	1,101	0
> OLYMPIC NP	76,284	15,627	115,779	131,423	83,497	1,245	423,855	48
OREGON CAVES NM	3,138	0	0	0	0	0	3,138	21
ORGAN PIPE CACTUS NM	0	0	4,487	45,043	3,558	3,438	56,526	0
OZARK NSRW ³	5,826	0	108,087	36,895	21,662	60,693	233,163	0
PADRE ISLAND NS	0	0	1,491	27,214	3,342	52,840	84,887	174
PETRIFIED FOREST NP	0	0	0	0	477	0	477	1
PICTURED ROCKS NL	0	0	9,503	3,789	9,448	0	22,740	0
PINNACLES NM	0	0	6,196	1,157	0	0	7,353	0
POINT REYES NS	8,722	0	0	0	21,597	0	30,319	0
PRINCE WILLIAM FOREST PARK ³	0	33,613	15,901	2,765	133	43,407	95,819	0
PU'UHONUA o HONAUNAU NHP	0	0	0	0	0	208	208	0
> REDWOOD NP	5,298	0	3,192	0	641	8,182	17,313	0
RIO GRANDE WSR	0	0	0	0	6,510	0	6,510	0
ROCKY MOUNTAIN NP	0	0	97,035	74,928	34,413	8,562	214,938	0

TABLE 7. OVERNIGHT STAYS IN NATIONAL PARK SERVICE AREAS, 1988. (cont)

NATIONAL PARK SERVICE AREA	CONCESSION		NPS		NPS BACK COUNTRY	NPS GROUP & MISC	TOTAL RECR ONS	NON RECR ONS
	LODGE	CAMPGRND	TENTS	CAMPGROUND RV'S				
SAGUARO NM	0	0	0	0	1,822	0	1,822	0
SAINTE CROIX NSRW	0	0	0	0	48,403	0	48,403	0
SALINAS PUEBLO MISSIONS NM ¹	0	0	0	0	0	552	552	0
SEQUOIA NP	115,911	0	104,114	56,399	82,844	0	359,268	0
SHENANDOAH NP	128,991	0	111,101	79,355	35,353	2,945	357,745	0
SHILOH NMP	0	0	0	0	0	5,946	5,946	0
SLEEPING BEAR DUNES NL	0	36,160	35,619	19,510	16,537	0	107,826	0
STONES RIVER NB	0	0	0	0	0	105	105	0
THEO ROOSEVELT NP	0	0	6,808	11,626	426	2,248	21,108	0
VALLEY FORGE NHP	0	0	0	0	0	1,500	1,500	0
VIRGIN ISLANDS NP	24,412	28,512	0	0	0	169,007	221,931	26,818
VOYAGEURS NP	3,408	0	7,948	0	6,475	24,193	42,024	0
WHISKEYTOWN-SHASTA-TRINITY NRA ³	0	37,993	1,219	5,942	5,965	12,644	63,763	0
WHITE SANDS NM	0	0	0	0	797	0	797	0
WIND CAVE NP	0	0	5,597	3,738	68	0	9,403	0
WRANGELL-ST. ELIAS NP & PRES	497	0	0	0	2,896	0	3,393	0
WUPATKI NM	0	0	0	0	171	0	171	0
YELLOWSTONE NP ⁶	526,690	105,887	176,677	269,773	25,155	4,814	1,108,996	0
YOSEMITE NP	1,028,113	0	717,811	437,244	102,610	0	2,285,778	0
YUKON-CHARLEY RIVERS NPRES	0	0	0	0	646	0	646	110
ZION NP	53,894	0	112,451	100,441	7,538	12,150	286,474	0
NATIONAL PARK SERVICE AREA TOTAL	3,787,463	865,694	3,921,104	3,937,271	1,617,706	2,881,558	17,010,796	378,371

TABLE 8. OVERNIGHT STAYS TO NATIONAL PARK SERVICE AREAS BY TYPE OF ACCOMMODATION, 1979-88.

YEAR	CONCESSION		NPS		NPS BACK COUNTRY	NPS GROUP CAMPING & MISC	TOTAL RECREATION ONS	NON-RECREATION ONS
	LODGING	CAMPGROUND	CAMPGROUND TENTS	RV'S				
1979	3,151,721	838,932	3,424,681	4,446,370	2,397,098	1,155,140	15,413,942	564,969
1980	3,235,039	814,734	3,934,114	4,378,491	2,395,236	1,162,303	15,919,917	575,499
1981	3,386,345	650,088	4,221,920	4,663,020	2,329,845	1,108,470	16,359,688	628,185
1982	3,312,100	644,543	4,153,999	4,596,036	2,424,227	1,291,622	16,422,527	450,272
1983	3,317,010	725,979	3,601,198	4,232,793	2,579,716	1,278,885	15,735,581	367,532
1984	3,486,041	733,121	3,747,293	3,943,183	1,978,867	2,074,650	15,963,155	362,281
1985	3,527,045	743,256	3,586,062	3,759,294	1,680,414	2,484,095	15,780,166	334,846
1986	3,538,176	786,102	3,460,005	3,788,528	1,644,691	2,779,461	15,996,963	312,942
1987	3,726,504	852,820	3,955,795	4,043,206	1,574,706	2,969,801	17,122,832	313,493
1988	3,787,463	865,694	3,921,104	3,937,271	1,617,706	2,881,558	17,010,796	378,371

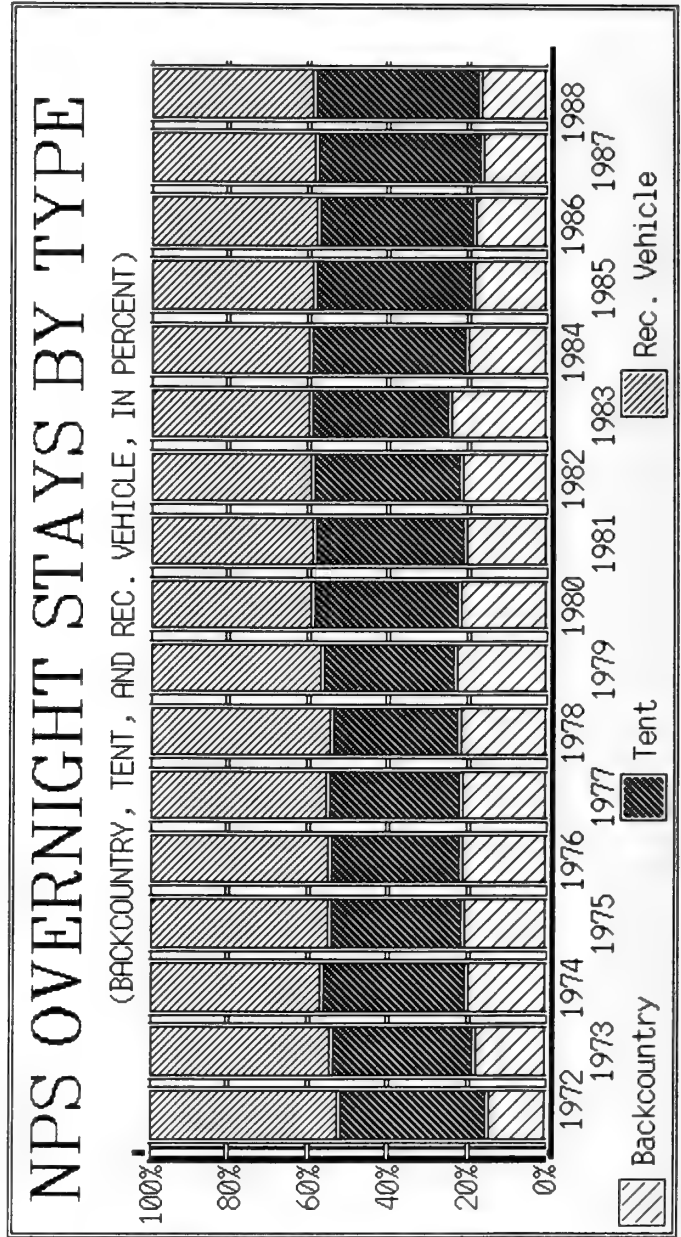


Figure 6.

SEASONALITY CHANGES

NATIONAL PARK SERVICE OVERNIGHT STAYS

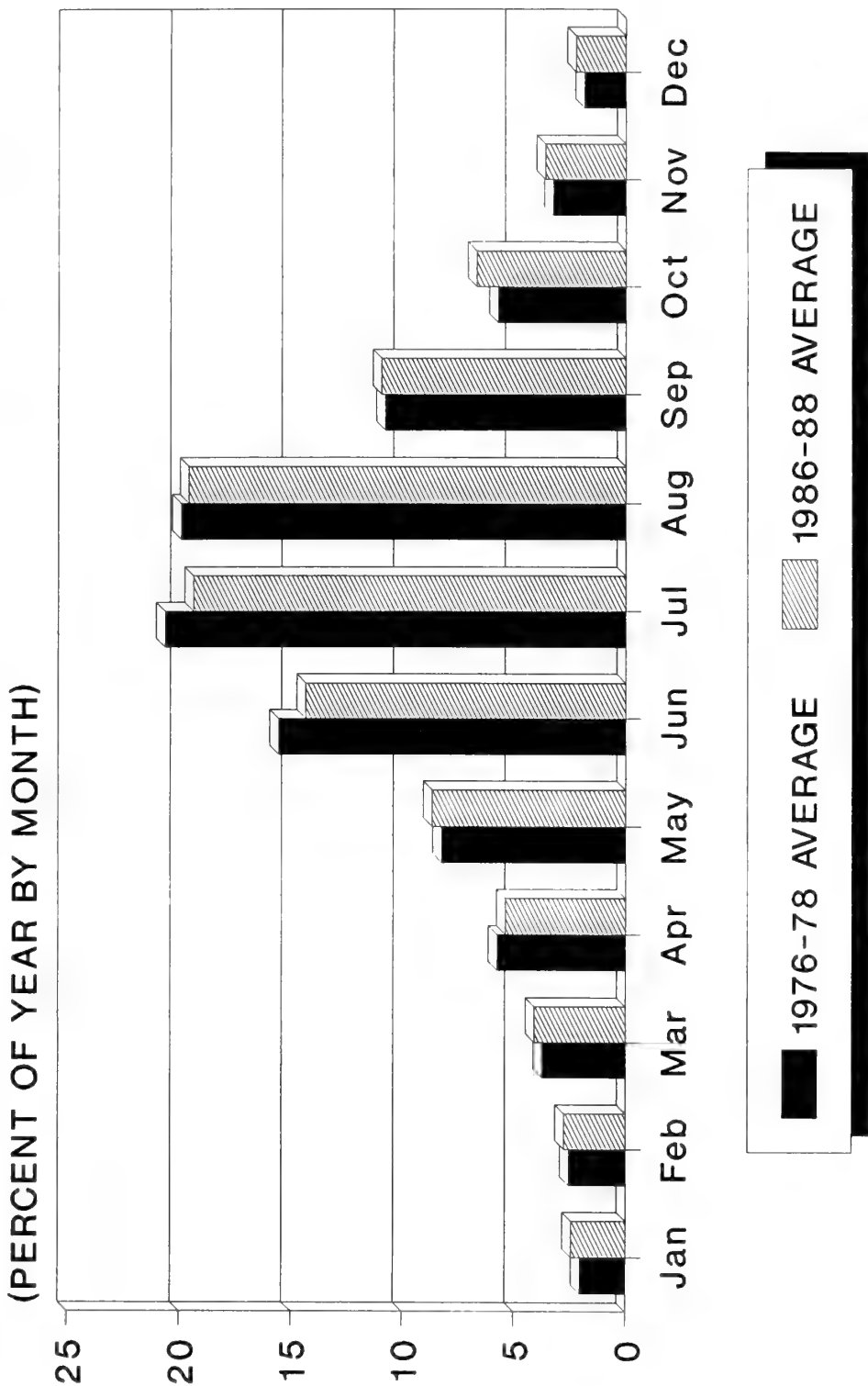


Figure 7.

TABLE 9. RECREATION VISITS AND OVERNIGHT STAYS IN THE 50 NATIONAL PARKS, 1985-88 (IN THOUSANDS).

NATIONAL PARK	1985		1986		1987		1988	
	VISITS	ONS	VISITS	ONS	VISITS	ONS	VISITS	ONS
ACADIA NP	3,745.6	207.5	3,929.1	205.7	4,288.2	211.6	4,502.3	221.2
ARCHES NP	363.5	41.8	419.4	47.1	468.9	50.7	520.5	54.2
BADLANDS NP	950.2	25.6	1,025.6	27.9	1,174.4	28.4	1,110.0	30.2
BIG BEND NP ³	188.0	237.6	200.6	221.5	227.9	225.2	239.6	212.2
BISCAYNE NP	460.9	46.2	578.0	72.3	608.0	74.0	531.0	45.9
BRYCE CANYON NP	500.8	123.2	578.0	111.8	718.3	134.2	791.3	141.6
CANYONLANDS NP	116.7	65.4	173.0	78.2	172.4	78.7	212.1	77.5
CAPITOL REEF NP	320.5	30.3	383.7	33.8	428.8	42.4	469.6	45.0
CARLSBAD CAVERNS NP	732.5	.3	752.6	.2	781.3	.1	786.1	.4
CHANNEL ISLANDS NP	164.1	34.7	172.9	37.4	174.6	37.6	168.6	36.3
CRATER LAKE NP ⁴	390.6	49.4	402.8	43.8	460.6	56.9	443.4	54.7
DENALI NP & PRES	436.5	125.0	529.7	127.5	575.0	120.5	592.4	130.3
EVERGLADES NP	697.6	125.4	739.1	133.1	787.5	132.1	1,026.2	132.0
GATES of the ARCTIC NP & NPRES	1.4	5.2	2.8	2.0	1.1	1.8	1.3	3.6
GLACIER BAY NP & PRES	130.9	23.4	136.9	26.5	130.9	27.6	148.8	27.2
GLACIER NP	1,603.0	265.8	1,579.2	286.7	1,660.7	307.1	1,817.7	326.4
GRAND CANYON NP	2,711.5	732.5	3,035.8	631.0	3,513.0	866.5	3,859.9	867.9
GRAND TETON NP ⁶	1,334.5	452.0	1,306.3	421.0	1,450.8	452.8	1,232.7	428.0
GREAT BASIN NP	.0	.0	.0	.0	63.5	33.2	73.6	44.2
GREAT SMOKY MOUNTAINS NP ³	9,319.3	478.6	9,836.3	459.9	10,209.8	495.1	8,770.8	494.2
GUADALUPE MOUNTAINS NP	147.8	21.0	163.3	22.6	156.3	21.8	178.9	24.2
HALEAKALA NP	1,194.7	18.4	1,281.2	19.2	1,333.9	20.0	1,314.7	19.1
HAWAII VOLCANOES NP	816.7	91.9	898.0	104.1	1,006.1	108.0	983.0	110.2
HOT SPRINGS NP	1,112.8	16.3	1,175.2	15.4	1,101.2	12.5	1,185.8	13.2
ISLE ROYALE NP	16.8	52.2	26.1	54.7	31.8	51.6	26.6	50.8

TABLE 9. RECREATION VISITS AND OVERNIGHT STAYS IN THE 50 NATIONAL PARKS, 1985-88 (IN THOUSANDS).

NATIONAL PARK	1985		1986		1987		1988	
	VISITS	ONS	VISITS	ONS	VISITS	ONS	VISITS	ONS
KATMAI NP & PRES	25.1	4.9	41.7	8.6	38.2	8.6	45.7	9.6
KENAI FJORDS NP	35.8	1.6	54.3	2.4	60.4	3.3	59.0	.4
KINGS CANYON NP	874.5	269.3	1,028.8	267.4	1,081.2	283.8	1,007.7	287.3
KOBUK VALLEY NP	1.3	.2	1.1	.2	.2	.1	2.3	.6
LAKE CLARK NP & PRES	12.7	2.3	13.6	2.0	16.4	3.0	18.9	3.0
LASSEN VOLCANIC NP ³	451.5	87.2	439.7	94.9	472.4	105.7	495.6	106.2
MAMMOTH CAVE NP	1,507.9	94.3	1,646.7	90.6	1,636.3	88.7	1,735.6	97.4
MESA VERDE NP	656.3	187.3	658.9	181.2	728.6	216.9	772.2	228.5
MOUNT RAINIER NP ⁶	1,165.6	166.4	1,298.5	163.1	1,292.0	188.3	1,255.6	185.6
NORTH CASCADES NP	629.2	105.1	683.1	105.2	651.6	117.7	606.0	107.2
OLYMPIC NP	2,532.1	374.6	2,940.0	366.1	2,822.9	372.3	2,959.1	423.9
PETRIFIED FOREST NP	736.7	.4	761.3	.6	758.1	.6	857.0	.5
REDWOOD NP	505.8	9.5	567.8	11.4	610.9	12.4	677.1	17.3
ROCKY MOUNTAIN NP	2,248.9	201.4	2,408.2	196.5	2,531.9	205.1	2,544.2	214.9
SAMOA NP/		NOT REPORTING						
SEQUOIA NP	939.5	375.2	1,056.5	383.4	1,139.4	442.4	1,031.1	359.3
SHENANDOAH NP	1,933.1	429.8	1,844.0	361.7	1,767.7	354.3	1,937.2	357.7
THEO ROOSEVELT NP	377.2	20.9	390.6	22.7	424.8	24.6	413.5	21.1
VIRGIN ISLANDS NP	699.4	196.1	766.5	218.4	785.4	202.5	838.7	221.9
VOYAGEURS NP	184.0	41.8	172.1	41.6	201.7	40.5	223.7	42.0
WIND CAVE NP	477.6	11.7	483.3	11.9	563.7	11.9	578.0	9.4
WRANGELL-ST. ELIAS NP & PRES	23.2	2.3	26.6	3.2	29.2	3.2	31.0	3.4
YELLOWSTONE NP ⁶	2,226.2	1,270.4	2,363.8	1,308.3	2,573.2	1,397.6	2,182.1	1,109.0
YOSEMITE NP	2,832.0	2,068.3	2,876.7	1,883.6	3,152.3	2,199.1	3,216.7	2,285.8
ZION NP	1,503.3	208.0	1,670.5	236.4	1,777.6	262.8	1,948.3	286.5
NATIONAL PARK TOTAL	5,035.5	9,399.0	53,519.8	9,144.6	56,641.2	10,135.6	56,423.3	9,968.9

TABLE 10. NUMBER OF TOUR BUSES REPORTED BY NATIONAL PARK SERVICE AREAS, 1984-88.

NATIONAL PARK SERVICE AREA	1984	1985	1986	1987	1988
ABRAHAM LINCOLN BPL NHS	409	414	437	495	520
ADAMS NHS	118	146	156	149	74
AGATE FOSSIL BEDS NM	9	8	11	9	7
ALLEGHENY PORT RR NHS	46	47	59	77	52
ANDERSONVILLE NHS	0	222	267	312	234
ANDREW JOHNSON NHS	105	93	71	85	95
ANTIETAM NB	0	0	191	166	73
APPOMATTOX COURT HOUSE NHP	287	327	440	484	495
ARCHES NP	184	198	137	322	398
ARKANSAS POST NMEM	51	45	77	77	80
ASSATEAGUE ISLAND NS ⁵	1,019	1,121	1,085	985	1,036
AZTEC RUINS NM	88	99	117	116	190
BADLANDS NP	942	999	990	871	981
BANDELIER NM	251	156	150	193	302
BENT'S OLD FORT NHS	0	175	263	151	168
BIG BEND NP ³	138	140	147	67	78
BIG HOLE NB	7	13	5	7	33
BLACK CANYON of GUNNISON NM	88	82	81	70	87
BLUE RIDGE PKWY	996	1,126	1,069	1,104	1,105
BOOKER T. WASHINGTON NM	69	74	77	150	114
BRYCE CANYON NP	1,364	1,452	2,043	3,106	3,993
CABRILLO NM	0	0	0	0	2,652
CANYON de CHELLY NM	128	120	165	205	302
CANYONLANDS NP	35	23	8	25	48
CAPE COD NS	1,651	2,062	1,680	1,581	1,589
CAPE HATTERAS NS	60	71	126	137	274
CAPITOL REEF NP	42	74	60	96	111
CAPULIN VOLCANO NM ¹	98	97	96	110	0
CARLSBAD CAVERNS NP	834	1,173	1,079	899	602
CASA GRANDE NM	0	132	131	137	158
CASTILLO de SAN MARCOS NM	1,264	1,291	1,319	1,296	1,527
CASTLE CLINTON NM	78	48	1,610	2,823	4,070
CATOCTIN MOUNTAIN PARK ³	918	1,090	766	57	142
CEDAR BREAKS NM	46	104	146	175	153
CHACO CULTURE NHP	28	40	49	53	54
CHANNEL ISLANDS NP	20	34	26	14	14
CHICKAMAUGA & CHATTANOOGA NMP ³	0	451	475	334	139
CHIRICAHUA NM	24	37	21	31	30
COLONIAL NHP	2,662	2,308	1,208	2,557	2,689
COLORADO NM	154	197	138	143	111

TABLE 10. NUMBER OF TOUR BUSES REPORTED BY NATIONAL PARK SERVICE AREAS,
1984-88. (cont)

NATIONAL PARK SERVICE AREA	1984	1985	1986	1987	1988
COWPENS NB	36	65	59	43	63
CUMBERLAND GAP NHP	122	138	119	136	108
CURECANTI NRA	28	34	17	26	18
CUSTER BATTLEFIELD NM	192	181	235	196	257
DEATH VALLEY NM	261	214	253	434	353
DELAWARE WATER GAP NRA ³	147	130	80	162	141
DENALI NP & PRES	0	646	1,183	329	52
DEVILS POSTPILE NM	3,706	580	5,876	7,348	7,814
DEVILS TOWER NM	263	353	381	431	549
De SOTO NMEM	138	89	141	128	214
EDISON NHS	382	256	345	278	319
EFFIGY MOUNDS NM	116	141	111	107	127
ELEANOR ROOSEVELT NHS	0	0	0	0	11
EVERGLADES NP	269	296	371	453	318
EI MORRO NM	75	92	65	81	49
FEDERAL HALL NMEM	141	137	193	81	97
FLORISSANT FOSSIL BEDS NM	0	0	0	162	281
FORT BOWIE NHS	0	2	0	0	0
FORT CAROLINE NMEM	4	8	2	20	2
FORT CLATSOP NMEM	343	324	333	347	408
FORT DAVIS NHS	141	129	174	133	125
FORT DONELSON NB	71	87	84	103	115
FORT FREDERICA NM	701	877	892	702	763
FORT LARAMIE NHS	132	123	169	134	164
FORT LARNED NHS	71	91	94	73	68
FORT MATANZAS NM	60	75	83	94	104
FORT McHENRY NM & HS	1,062	2,022	2,339	2,090	2,408
FORT NECESSITY NB	131	100	214	318	392
FORT PULASKI NM	294	324	268	190	232
FORT RALEIGH NHS	43	35	41	84	128
FORT SMITH NHS	57	61	78	53	48
FORT STANWIX NM	0	301	208	122	169
FORT SUMTER NM	0	305	198	183	157
FORT UNION NM	27	31	11	22	42
FORT VANCOUVER NHS	23	19	32	50	32
FRDRCKSBRG & SPTSLVN CNTY BMNMP	337	363	396	410	423
FRIENDSHIP HILL NHS	14	20	13	26	10
GATEWAY NRA ⁶	1,941	2,303	1,391	1,601	802
GENERAL GRANT NMEM	0	274	253	481	285
GEORGE ROGERS CLARK NHP	0	211	171	194	143

TABLE 10. NUMBER OF TOUR BUSES REPORTED BY NATIONAL PARK SERVICE AREAS,
1984-88. (cont)

NATIONAL PARK SERVICE AREA	1984	1985	1986	1987	1988
GEORGE WASHINGTON BPL NM	79	87	83	82	44
GETTYSBURG NMP	6,139	5,987	5,752	5,683	5,707
GILA CLIFF DWELLINGS NM	0	0	0	3	6
GLACIER NP	0	0	0	0	1,083
GOLDEN SPIKE NHS	41	52	32	76	55
GRAND PORTAGE NM ³	39	53	40	37	39
GRAND TETON NP ⁶	683	933	730	1,008	1,003
GRANT-KOHR'S RANCH NHS	0	80	68	76	62
GREAT BASIN NP	0	15	24	53	71
GREAT SAND DUNES NM	204	161	166	179	169
GREAT SMOKY MOUNTAINS NP ³	0	0	0	0	2,549
GUILFORD COURTHOUSE NMP	68	49	95	100	100
GULF ISLANDS NS	161	112	113	203	191
HALEAKALA NP	4,645	4,886	4,800	8,646	10,006
HAMILTON GRANGE NMEM	0	133	92	242	391
HAMPTON NHS	0	36	66	45	61
HARPERS FERRY NHP	0	0	379	511	453
HAWAII VOLCANOES NP	10,361	11,354	11,656	13,614	12,261
HERBERT HOOVER NHS	222	276	296	301	430
HOME of FD ROOSEVELT NHS	1,042	1,085	1,097	1,084	1,050
HOMESTEAD NM of AMERICA	28	52	0	0	0
HOPEWELL FURNACE NHS	988	0	625	734	0
HORSESHOE BEND NMP	63	54	68	71	55
HOT SPRING NP	50	62	49	56	84
HOVENWEEP NM	10	15	13	18	9
HUBBELL TRADING POST NHS	215	239	227	233	267
INDIANA DUNES NL	0	76	303	573	92
JEAN LAFITTE NHP and PRES	0	0	0	340	417
JEWEL CAVE NM	85	80	48	30	49
JD ROCKEFELLER JR., MEM PKWY ⁶	0	0	9	0	418
JOHN DAY FOSSIL BEDS NM	40	58	63	51	59
JOHN MUIR NHS	23	25	71	101	103
JOHNSTOWN FLOOD NMEM	22	20	27	21	36
KALOKO-HONOKOHAU NHP ²	0	0	0	0	3
KENAI FJORDS NP	8	26	110	138	209
KENNESAW MOUNTAIN NBP	87	360	318	298	10
KINGS CANYON NP	184	198	214	312	361
KINGS MOUNTAIN NMP	261	258	211	284	230
KLONDIKE GOLD RUSH NHP	0	0	219	0	180
KNIFE RIVER INDIAN VILL NHS	8	9	9	21	47

TABLE 10. NUMBER OF TOUR BUSES REPORTED BY NATIONAL PARK SERVICE AREAS,
1984-88. (cont)

NATIONAL PARK SERVICE AREA	1984	1985	1986	1987	1988
LAKE MEAD NRA	1,200	907	1,275	1,273	1,249
LASSEN VOLCANIC NP ³	110	110	100	98	91
LINCOLN BOYHOOD NMEM	195	262	203	337	294
LINCOLN HOME NHS ^{3,6}	1,510	1,619	1,331	851	1,004
LINCOLN MEMORIAL ³	24,290	30,158	31,450	27,078	18,960
LYNDON B. JOHNSON NHP	678	554	593	809	719
MAMMOTH CAVE NP	618	705	557	662	523
MANASSAS NBP	248	287	320	194	222
MESA VERDE NP	606	599	568	959	1,014
MINUTE MAN NHP	0	0	0	0	5,490
MONTEZUMA CASTLE NM	1,990	1,985	2,190	3,166	3,819
MORRISTOWN NHP	672	648	617	641	618
MOUND CITY GROUP NM	31	97	90	93	111
MOUNT RAINIER NP ⁶	700	603	1,048	837	685
MOUNT RUSHMORE NMEM	2,491	2,989	2,740	2,837	3,372
MUIR WOODS NM	3,920	3,156	3,733	4,185	3,767
NATCHEZ TRACE PKWY	298	323	529	510	703
NATURAL BRIDGES NM	30	16	18	54	25
NAVAJO NM	94	112	140	204	281
NEW RIVER GORGE NR	0	50	311	402	518
NEZ PERCE NHP ⁵	77	112	156	129	159
NINETY SIX NHS	0	40	51	57	31
OCMULGEE NM ³	206	216	424	343	380
OREGON CAVES NM	42	57	49	58	45
OZARK NSRW ³	81	106	118	133	159
PADRE ISLAND NS	1,065	91	147	52	52
PEA RIDGE NMP	63	101	115	62	82
PECOS NM	88	136	110	190	110
PETERSBURG NB	113	156	143	92	113
PETRIFIED FOREST NP	674	868	813	821	814
PICTURED ROCKS NL	23	19	29	24	38
PINNACLES NM	0	44	62	47	57
PIPESTONE NM	80	116	137	103	141
POINT REYES NS	205	170	158	160	186
PRINCE WILLIAM FOREST PARK ³	0	130	160	98	60
PU'UHONUA o HONAUNAU NHP	0	1,277	1,487	1,450	1,338
PUUKOHOLA HEIAU NHS	29	55	62	83	62
REDWOOD NP	58	63	102	109	141
RICHMOND NBP	62	47	76	81	59
ROCK CREEK PARK	0	7,109	7,418	8,476	8,427

TABLE 10. NUMBER OF TOUR BUSES REPORTED BY NATIONAL PARK SERVICE AREAS,
1984-88. (cont)

NATIONAL PARK SERVICE AREA	1984	1985	1986	1987	1988
ROCKY MOUNTAIN NP	2,120	2,281	2,089	2,757	3,077
SAGAMORE HILL NHS	419	438	257	175	372
SAGUARO NM	144	125	117	99	149
SAINT-GAUDENS NHS	33	38	47	29	26
SALEM MARITIME NHS	210	146	224	873	843
SALINAS PUEBLO MISSIONS NM ¹	23	31	25	40	58
SAN JUAN ISLAND NH	106	0	0	0	0
SARATOGA NHP	61	103	67	88	61
SCOTTS BLUFF NM	0	101	130	113	100
SEQUOIA NP	89	108	114	204	223
SHENANDOAH NP	1,076	1,097	1,098	1,240	1,257
SHILOH NMP	214	218	263	317	281
SITKA NHP	1,157	0	0	0	0
SPRINGFIELD ARMORY NHS ⁵	0	9	4	13	0
STONES RIVER NB	67	80	95	104	92
SUNSET CRATER NM ³	219	249	227	280	322
THEO ROOSEVELT BPL NHS	20	50	47	39	60
THEO ROOSEVELT NP	109	70	156	114	123
THOMAS JEFFERSON MEM ³	15,460	16,077	17,989	18,092	13,738
TONTO NM	49	41	45	31	50
TUMACACORI NM	92	155	114	163	120
TUSKEGEE INSTITUTE NHS	120	118	151	219	93
TUZIGOOT NM	0	99	152	108	144
VALLEY FORGE NHP	8,330	7,976	8,726	7,546	4,350
VANDERBILT MANSION NHS	750	834	789	770	723
VICKSBURG NMP ⁵	742	324	521	475	519
WALNUT CANYON NM	112	137	169	197	139
WAR in the PACIFIC NHP	0	0	198	145	92
WASHINGTON MONUMENT	6,918	9,249	7,223	6,866	5,035
WHITE SANDS NM	356	413	576	438	613
WHITMAN MISSION NHS	65	65	94	77	84
WILSON'S CREEK NB	0	86	111	159	190
WIND CAVE NP	61	49	77	116	88
WOLF TRAP FARM PARK for the PA	0	442	1,081	1,042	368
WRIGHT BROTHERS NMEM	105	114	67	177	123
WUPATKI NM	186	196	219	256	332
YELLOWSTONE NP ⁶	3,400	2,951	3,631	3,887	3,519
YOSEMITE NP	4,957	5,442	6,441	8,931	9,563
ZION NP	1,428	1,524	1,970	2,565	3,724
NATIONAL PARK SERVICE AREA TOTAL	143,042	162,086	176,856	189,221	187,501

TABLE 11. RECREATION VISITOR DAYS AT AREAS ADMINISTERED BY THE NATIONAL PARK SERVICE, 1983-88,
(IN THOUSANDS).

NATIONAL PARK SERVICE AREAS	STATE	1983 DAYS	1984 DAYS	1985 DAYS	1986 DAYS	1987 DAYS	1988 DAYS
ABRAHAM LINCOLN BPL NHS	KY	21.3	21.5	22.1	23.4	24.4	24.0
ACADIA NP	ME	2,271.9	2,061.1	2,411.1	2,101.8	2,354.3	2,472.3
ADAMS NHS	MA	1.6	1.5	1.5	1.5	1.6	1.4
AGATE FOSSIL BEDS NM	NE	.9	1.0	1.0	1.2	1.3	1.2
ALIBATES FLINT QUARRIES NM	TX	.4	.5	.5	.5	.5	.4
ALLEGHENY PORT RR NHS	PA	4.5	6.3	7.3	7.2	10.1	12.5
AMISTAD RA	TX	863.9	778.1	693.1	734.1	742.1	781.5
ANDERSONVILLE NHS	GA	18.5	16.8	19.7	21.6	21.7	21.7
ANDREW JOHNSON NHS	TN	3.4	2.4	1.9	2.1	2.3	2.3
ANTIETAM NB	MD	74.3	89.3	99.2	120.5	109.9	29.5
APOSTLE ISLANDS NL ³	WI	56.4	52.5	50.1	48.5	60.6	66.2
APPOMATTOX COURT HOUSE NHP	VA	16.6	21.5	18.7	21.8	22.3	21.1
ARCHES NP	UT	144.9	155.8	174.4	199.1	208.2	233.5
ARKANSAS POST NMEM	AR	6.9	7.3	6.9	7.5	7.6	8.6
ARLINGTON HOUSE, TREL MEM	VA	21.5	26.1	20.7	20.9	20.0	20.5
ASSATEAGUE ISLAND NS ⁵	VA-MD	1,364.8	1,279.0	1,444.2	1,525.4	1,646.2	1,662.5
AZTEC RUINS NM	NM	7.7	7.3	7.3	7.8	7.4	9.9
BADLANDS NP	SD	358.1	389.1	334.5	361.2	410.1	391.0
BANDELIER NM	NM	105.7	103.1	118.2	111.3	129.6	117.7
BENT'S OLD FORT NHS	CO	4.2	4.0	4.5	4.7	4.3	4.4
BIG BEND NP ³	TX	605.3	626.3	663.3	643.6	678.2	663.9
BIG HOLE NB	MT	6.4	5.5	4.9	5.7	4.7	6.0
BIG SOUTH FORK NRR ²	KY-TN	.0	.0	.0	.0	.0	329.2
BIG THICKET NPRES	TX	4.8	22.9	21.2	13.1	14.5	21.4
BIGHORN CANYON NRA	WY-MT	200.5	200.8	250.0	244.8	244.1	235.2

TABLE 11. RECREATION VISITOR DAYS AT AREAS ADMINISTERED BY THE NATIONAL PARK SERVICE, 1983-88, (cont)
(IN THOUSANDS).

NATIONAL PARK SERVICE AREAS	STATE	1983 DAYS	1984 DAYS	1985 DAYS	1986 DAYS	1987 DAYS	1988 DAYS
BISCAYNE NP	FL	174.3	169.9	199.8	265.0	276.6	222.9
BLACK CANYON of GUNNISON NM	CO	65.0	54.3	44.2	47.8	47.4	44.3
BLUE RIDGE PKWY	VA-NC	10,817.8	10,639.8	12,178.9	12,088.4	13,488.3	13,999.8
BOOKER T. WASHINGTON NM	VA	2.4	2.6	2.3	2.7	2.9	2.9
BOSTON NHP	MA	91.6	92.8	104.4	105.7	153.0	156.5
BRYCE CANYON NP	UT	365.9	384.8	376.9	407.8	454.2	502.1
BUCK ISLAND REEF NM	VI	22.1	19.7	27.1	32.4	40.5	41.2
BUFFALO NR	AR	376.0	300.2	366.5	491.1	482.9	481.9
CABRILLO NM	CA	176.7	172.3	204.2	207.9	207.9	193.0
CANAVERAL NS	FL	225.9	248.1	205.0	238.7	217.8	218.0
CANYON de CHELLY NM	AZ	266.2	273.0	297.4	369.2	411.0	435.1
CANYONLANDS NP	UT	159.3	160.4	161.9	209.1	207.5	229.9
CAPE COD NS	MA	697.2	791.3	740.0	679.3	830.1	898.9
CAPE HATTERAS NS	NC	931.3	809.7	662.7	790.2	814.9	1,004.8
CAPE KRUSENSTERN NM	AK	3.5	3.3	3.7	3.4	.3	2.4
CAPE LOOKOUT NS	NC	66.2	77.5	105.1	109.1	76.6	79.8
CAPITOL REEF NP	UT	56.5	53.9	50.9	58.7	70.4	76.0
CAPULIN VOLCANO NM ¹	NM	4.7	4.8	5.2	4.9	4.7	5.7
CARL SANDBURG HOME NHS	NC	5.6	5.8	6.4	7.0	6.2	6.7
CARLSBAD CAVERNS NP	NM	219.1	209.7	214.3	211.2	209.4	210.8
CASA GRANDE NM	AZ	8.4	9.5	10.1	11.4	12.7	11.8
CASTILLO de SAN MARCOS NM	FL	42.0	43.3	43.7	45.8	47.2	47.3
CASTLE CLINTON NM	NY	5.2	3.6	6.0	105.4	143.1	133.7
CATOCTIN MOUNTAIN PARK ³	MD	99.4	98.4	104.2	109.0	99.7	142.6
CEDAR BREAKS NM	UT	54.9	58.8	64.2	71.0	71.8	79.6

TABLE 11. RECREATION VISITOR DAYS AT AREAS ADMINISTERED BY THE NATIONAL PARK SERVICE, 1983-88, (cont.)
(IN THOUSANDS).

NATIONAL PARK SERVICE AREAS	STATE	1983 DAYS	1984 DAYS	1985 DAYS	1986 DAYS	1987 DAYS	1988 DAYS
CHACO CULTURE NHP	NM	55.7	46.1	39.9	45.4	54.1	59.2
CHAMIZAL NMEM	TX	24.6	32.0	38.8	51.6	53.3	51.0
CHANNEL ISLANDS NP	CA	69.3	143.2	138.6	148.0	150.2	145.2
CHATTAHOOCHEE RIVER NRA	GA	360.6	271.3	499.8	556.8	511.0	563.9
C & O CANAL NHP ⁵	MD-DC-WV	1,653.3	1,592.9	1,621.9	1,178.3	1,471.1	487.8
CHICKAMAUGA & CHATTANOOGA NMP ³	TN-GA	35.9	35.8	32.6	36.9	43.1	40.7
CHICKASAW NRA	OK	666.8	598.3	643.7	585.3	534.0	510.3
CHIRICAHUA NM	AZ	24.9	25.7	27.5	27.9	26.7	27.1
CHRISTIANSTED NHS ⁶	VI	12.9	4.9	8.9	13.4	7.4	13.8
CLARA BARTON NHS	MD	1.1	1.4	1.4	1.8	1.5	2.0
COLONIAL NHP	VA	425.4	488.4	446.7	396.0	140.4	142.0
COLORADO NM	CO	71.4	70.9	78.1	88.9	89.5	90.3
CONGAREE SWAMP NM	SC	.0	.0	2.6	3.4	4.4	5.6
CORONADO NMEM	AZ	4.9	5.1	3.5	5.8	5.5	5.4
COULEE DAM NRA	WA	341.7	274.4	219.7	281.3	360.8	464.0
COWPENS NB	SC	3.6	6.9	7.4	6.9	6.8	6.5
CRATER LAKE NP ⁴	OR	158.0	324.0	190.9	186.4	223.2	214.6
CRATERS of the MOON NM	ID	47.2	48.3	38.3	40.0	50.2	50.0
CUMBERLAND GAP NHP	KY	64.7	60.8	62.8	151.3	147.0	154.6
CUMBERLAND ISLAND NS	GA	39.0	34.8	30.9	32.5	35.4	55.8
CURECANTI NRA	CO	272.8	221.5	252.0	318.8	286.5	268.2
CUSTER BATTLEFIELD NM	MT	18.5	20.8	21.9	23.0	22.2	19.0
CUYAHOGA VALLEY NRA ⁴	OH	169.4	168.0	171.2	184.6	187.4	217.5
DEATH VALLEY NM	CA	669.0	617.6	596.2	596.1	619.7	663.8
DELAWARE NSR	NJ-PA						
			INCLUDED IN DELAWARE WATER GAP NRA				
							-

TABLE 11. RECREATION VISITOR DAYS AT AREAS ADMINISTERED BY THE NATIONAL PARK SERVICE, 1983-88
(IN THOUSANDS).

NATIONAL PARK SERVICE AREAS	STATE	1983 DAYS	1984 DAYS	1985 DAYS	1986 DAYS	1987 DAYS	1988 DAYS
DELAWARE WATER GAP NRA ³	NJ-PA	841.8	768.6	755.4	767.4	911.9	915.9
DENALI NP	AK	226.3	297.1	206.0	356.4	302.3	341.5
DENALI NP & PRES	AK	841.8	768.6	755.4	767.4	911.9	915.9
De SOTO NMEM	FL	30.4	30.5	27.8	28.9	28.9	21.0
DEVILS POSTPILE NM	CA	26.7	40.8	37.3	30.8	41.6	40.7
DEVILS TOWER NM	WY	53.5	44.3	43.4	58.1	65.6	68.8
DINOSAUR NM	UT-CO	150.4	148.4	148.8	153.9	163.9	172.1
EDGAR ALLAN POE NHS	PA	1.2	1.5	1.3	1.0	1.0	1.2
EDISON NHS	NJ	7.0	7.2	5.4	5.9	6.8	9.5
EFFIGY MOUNDS NM	IA	15.3	13.7	13.9	12.6	13.3	16.3
EISENHOWER NHS	PA	25.2	23.2	23.2	22.2	20.1	19.9
EL MALPAIS NM ²	NM	.0	.0	.0	.0	.0	7.8
EL MORRO NM	NM	5.6	5.6	11.8	14.0	14.8	16.1
ELEANOR ROOSEVELT NHS	NY	.0	.0	3.9	3.8	3.6	3.6
EUGENE O'NEILL NHS	CA	.0	.0	.4	.3	.7	.9
EVERGLADES NP	FL	425.0	405.5	369.5	498.6	540.9	576.0
FEDERAL HALL NMEM	NY	4.8	6.6	11.3	33.7	22.7	21.3
FIRE ISLAND NS	NY	135.1	128.4	135.3	135.5	244.7	202.8
FLORISSANT FOSSIL BEDS NM	CO	5.6	7.4	15.3	30.4	36.5	38.0
FORD'S THEATER NHS	DC	53.7	72.2	65.1	75.8	78.9	84.6
FORT BOWIE NHS	AZ	.8	.8	.9	1.4	1.1	1.2
FORT CAROLINE NMEM	FL	11.7	12.1	13.7	11.3	7.0	6.9
FORT CLATSOP NMEM	OR	14.6	14.7	16.5	17.5	16.5	23.5
FORT DAVIS NHS	TX	8.3	7.9	7.7	7.3	7.3	7.3
FORT DONELSON NB	TN	15.9	14.2	16.7	20.2	16.0	15.3

TABLE 11. RECREATION VISITOR DAYS AT AREAS ADMINISTERED BY THE NATIONAL PARK SERVICE, 1983-88, (cont)
(IN THOUSANDS).

NATIONAL PARK SERVICE AREAS	STATE	1983 DAYS	1984 DAYS	1985 DAYS	1986 DAYS	1987 DAYS	1988 DAYS
FORT FREDERICA NM	GA	24.7	24.0	22.1	24.8	25.8	24.1
FORT JEFFERSON NM	FL	20.2	22.2	23.0	26.9	28.1	30.3
FORT LARAMIE NHS	WY	12.1	11.2	10.2	10.7	10.7	9.9
FORT LARNED NHS	KS	6.0	7.3	6.1	6.3	5.4	8.0
FORT MATANZAS NM	FL	19.9	24.1	26.7	29.6	29.0	26.5
FORT McHENRY NM & HS	MD	90.4	96.6	99.5	101.3	68.3	72.0
FORT NECESSITY NB	PA	14.5	19.1	17.0	17.2	15.5	14.6
FORT POINT NHS	CA	56.8	65.1	59.6	71.0	93.3	77.0
FORT PULASKI NM	GA	61.5	76.1	81.1	106.6	81.1	66.5
FORT RALEIGH NHS	NC	48.5	53.1	43.5	39.0	42.9	22.8
FORT SCOTT NHS	KS	9.2	9.8	9.5	10.4	9.3	8.5
FORT SMITH NHS	AR	9.9	10.4	11.4	13.3	10.4	10.5
FORT STANWIX NM	NY	7.9	7.0	8.4	7.2	5.7	6.6
FORT SUMTER NM	SC	23.9	26.1	25.3	26.3	27.9	29.9
FORT UNION NM	NM	1.2	1.3	1.3	1.3	1.4	1.8
FORT UNION TRADING POST NHS	ND	.4	.6	1.7	2.4	4.2	2.7
FORT VANCOUVER NHS	WA	26.3	30.6	30.1	28.1	26.1	26.9
FORT WASHINGTON PARK	MD	85.4	101.5	122.5	99.8	75.0	108.3
FOSSIL BUTTE NM	WY	1.3	.8	1.0	1.0	1.4	1.3
FRDRCKSBRG & SPTSLVN CNTY BMNMP	VA	30.5	30.6	31.3	33.2	39.6	43.6
FREDERICK DOUGLASS NHS ¹	DC	2.5	2.5	2.6	2.8	2.9	3.1
FREDERICK LAW OLMSTEAD NHS	MA	.5	.5	.6	.9	1.2	1.0
FRIENDSHIP HILL NHS	PA	.8	1.1	1.3	1.3	1.7	1.3
GATES of the ARCTIC NP & NPRES	AK	15.4	65.6	10.5	4.5	3.6	7.1
GATEWAY NRA ⁶	NJ-NY	4,887.0	3,479.1	4,288.0	3,850.9	4,284.4	2,136.7

TABLE 11. RECREATION VISITOR DAYS AT AREAS ADMINISTERED BY THE NATIONAL PARK SERVICE, 1983-88, (cont)
(IN THOUSANDS).

NATIONAL PARK SERVICE AREAS	STATE	1983 DAYS	1984 DAYS	1985 DAYS	1986 DAYS	1987 DAYS	1988 DAYS
GENERAL GRANT NMEM	NY	6.9	3.6	2.3	2.0	2.9	2.7
GEORGE ROGERS CLARK NHP	IN	12.3	12.5	13.5	13.4	13.3	12.6
GEORGE WASHINGTON BPL NM	VA	22.9	25.3	25.1	27.2	29.2	25.1
GEORGE WASHINGTON CARVER NM	MO	8.6	8.9	14.9	16.1	13.1	3.6
GEORGE WASHINGTON MEM PKWY	VA	788.8	827.0	875.8	825.4	921.5	1,029.8
GETTYSBURG NMP	PA	289.0	295.5	303.6	323.8	308.1	352.3
GILA CLIFF DWELLINGS NM	NM	3.1	2.9	3.0	3.7	3.7	3.7
GLACIER BAY NP & PRES	AK	121.5	142.6	166.5	180.6	167.4	179.1
GLACIER NP	MT	5,140.4	4,512.9	1,096.8	1,086.9	1,145.3	1,267.1
GLEN CANYON NRA	AZ-UT	2,405.7	4,170.5	4,295.3	5,149.7	5,324.3	5,406.7
GOLDEN GATE NRA	CA	4,004.3	3,414.1	3,457.5	3,746.8	3,858.0	4,135.7
GOLDEN SPIKE NHS	UT	9.0	6.2	8.5	10.0	7.5	6.9
GRAND CANYON NP	AZ	2,956.2	3,176.4	3,953.6	4,381.6	4,235.1	4,659.4
GRAND PORTAGE NM ³	MN	3.1	3.8	3.9	3.9	4.0	4.1
GRAND TETON NP ⁶	WY	993.9	1,191.0	1,130.4	1,066.4	1,158.3	1,062.3
GRANT-KOHR'S RANCH NHS	MT	3.5	2.4	2.4	2.8	2.6	2.3
GREAT BASIN NP	NV	5.3	6.0	6.0	6.7	48.4	81.6
GREAT SAND DUNES NM	CO	50.3	51.9	59.6	62.6	72.9	83.9
GREAT SMOKY MOUNTAINS NP ³	TN-NC	4,908.2	4,982.0	5,385.3	5,609.0	5,896.5	5,625.5
GREENBELT PARK	MD	112.2	104.8	142.2	134.1	133.3	127.8
GUADALUPE MOUNTAINS NP	TX	50.3	52.2	51.6	55.3	51.8	54.7
GUILFORD COURTHOUSE NMP	NC	8.3	10.3	9.1	8.9	8.2	9.0
GULF ISLANDS NS	MS-FL	1,694.3	2,484.4	4,390.9	3,401.4	2,080.0	2,260.6
HALEAKALA NP	HI	169.3	196.6	234.0	250.9	261.2	257.5
HAMILTON GRANGE NMEM	NY	.1	.4	1.1	2.4	2.9	2.2

TABLE 11. RECREATION VISITOR DAYS AT AREAS ADMINISTERED BY THE NATIONAL PARK SERVICE, 1983-88, (cont.)
(IN THOUSANDS).

NATIONAL PARK SERVICE AREAS	STATE	1983 DAYS	1984 DAYS	1985 DAYS	1986 DAYS	1987 DAYS	1988 DAYS
HAMPTON NHS	MD	5.9	7.0	5.5	3.2	2.8	2.6
HARPERS FERRY NHP	WV	212.5	224.6	188.9	302.6	307.1	232.4
HARRY S TRUMAN NHS	MO	.0	6.0	6.8	6.8	6.3	7.5
HAWAII VOLCANOES NP	HI	958.8	890.4	496.9	281.1	294.4	299.5
HERBERT HOOVER NHS	IA	20.2	18.9	17.3	18.7	18.2	25.9
HOME of FD ROOSEVELT NHS	NY	32.4	36.0	37.0	34.3	31.7	31.2
HOMESTEAD NM of AMERICA	NE	2.2	2.1	2.0	3.8	3.4	3.0
HOPEWELL FURNACE NHS	PA	16.0	15.0	15.4	13.9	12.9	13.0
HORSESHOE BEND NMP	AL	12.8	11.6	12.3	12.2	10.1	13.2
HOT SPRINGS NP	AR	83.6	74.6	77.2	79.4	71.1	74.1
HOVENWEEP NM	UT-CO	5.3	5.9	5.8	6.3	7.7	8.1
HUBBELL TRADING POST NHS	AZ	4.4	4.2	4.3	6.0	5.7	6.4
INDEPENDENCE NHP	PA	208.9	200.8	190.9	223.2	475.3	210.8
INDIANA DUNES NL	IN	331.0	336.5	378.4	279.4	324.2	387.9
ISLE ROYALE NP	MI	108.2	95.2	105.6	111.2	106.8	104.6
JEAN LAFITTE NHP and PRES	LA	37.7	45.7	43.6	85.0	137.9	135.2
JEFFERSON N EXPANSION MEM	MO	245.7	142.5	178.4	192.6	197.1	206.5
JEWEL CAVE NM	SD	11.1	12.1	13.4	15.0	16.7	15.8
JFK CENTER for the PA	DC	575.0	557.8	540.6	603.6	626.4	630.6
JIMMY CARTER NHS ²	GA	.0	.0	.0	.0	.0	1.0
JD ROCKEFELLER JR., MEM PKWY ⁶	WY	213.7	200.7	183.9	195.7	205.1	176.3
JOHN DAY FOSSIL BEDS NM	OR	4.9	4.5	4.4	4.6	5.1	5.5
JOHN F. KENNEDY NHS	MA	.5	.5	.5	.5	.5	.6
JOHN MUIR NHS	CA	4.3	5.0	4.5	5.3	5.0	4.9
JOHNSTOWN FLOOD NMEM	PA	2.2	3.9	4.0	4.2	5.6	11.4

TABLE 11. RECREATION VISITOR DAYS AT AREAS ADMINISTERED BY THE NATIONAL PARK SERVICE, 1983-88, (cont)
(IN THOUSANDS).

NATIONAL PARK SERVICE AREAS	STATE	1983 DAYS	1984 DAYS	1985 DAYS	1986 DAYS	1987 DAYS	1988 DAYS
JOSHUA TREE NM	CA	786.2	813.9	729.6	848.7	935.7	1,007.8
KALOKO-HONOKOHOU NHP ²	HI	.0	.0	.0	.0	.0	.5
KATMAI NP & PRES	AK	38.2	73.8	32.8	39.0	39.8	34.1
KENAI FJORDS NP	AK	4.5	4.3	6.8	10.5	11.8	7.6
KENNESAW MOUNTAIN NBP	GA	192.1	181.4	124.1	147.7	165.2	154.9
KINGS CANYON NP	CA	2,137.8	2,540.6	2,372.3	2,796.1	2,947.1	2,737.0
KINGS MOUNTAIN NMP	SC	13.0	17.7	17.4	16.9	17.2	17.7
KLONDIKE GOLD RUSH NHP	WA-AK	15.6	16.6	14.9	17.0	18.2	18.2
KNIFE RIVER INDIAN VILL NHS	ND	1.1	1.2	1.7	1.7	2.4	2.4
KOBUK VALLEY NP	AK	1.6	.6	.8	.6	.1	1.5
LAKE CHELAN NRA	WA	INCLUDED IN NORTH CASCADES NP					
LAKE CLARK NP	AK	2.2	2.6	3.7	4.5	5.0	5.3
LAKE CLARK PRES	AK	INCLUDED IN LAKE CLARK NP					
LAKE MEAD NRA	NV	5,399.3	5,319.1	5,876.2	6,387.6	6,402.9	6,703.3
LAKE MEREDITH RA	TX	550.5	596.9	492.6	410.9	396.3	376.0
LASSEN VOLCANIC NP ³	CA	421.0	470.1	452.0	464.6	461.9	527.9
LAVA BEDS NM	CA	23.8	25.5	18.1	27.0	26.1	27.1
LBJ MEM GROVE on the POTOMAC ³	DC	.0	45.0	46.8	49.3	50.5	51.2
LINCOLN BOYHOOD NMEM	IN	20.4	20.4	20.6	19.9	20.5	18.6
LINCOLN HOME NHS ^{3,6}	IL	37.3	35.9	35.9	36.7	42.5	37.4
LINCOLN MEMORIAL ³	DC	142.4	165.1	158.8	165.5	179.5	116.1
LONGFELLOW NHS	MA	.8	.7	.8	.7	.5	1.1
LOWELL NHP	MA	51.7	70.0	81.5	95.4	84.7	80.6
LYNDON B. JOHNSON NHP	TX	39.9	38.2	38.6	40.2	43.4	40.2
MAGGIE L. WALKER NHS	VA	.0	.0	.1	.1	.2	.2

TABLE 11. RECREATION VISITOR DAYS AT AREAS ADMINISTERED BY THE NATIONAL PARK SERVICE, 1983-88, (cont)
(IN THOUSANDS).

NATIONAL PARK SERVICE AREAS	STATE	1983 DAYS	1984 DAYS	1985 DAYS	1986 DAYS	1987 DAYS	1988 DAYS
MAMMOTH CAVE NP	KY	265.0	264.9	275.1	275.3	274.4	297.1
MANASSAS NBP	VA	45.0	43.9	45.3	49.6	41.7	48.7
MARTIN LUTHER KING, JR., NHS	GA	9.7	19.1	23.6	36.4	45.5	51.1
MARTIN VAN BUREN NHS	NY	.4	.3	.3	.3	.9	1.0
MESA VERDE NP	CO	618.7	559.8	631.6	621.2	719.4	756.5
MINUTE MAN NHP	MA	38.1	36.6	34.3	51.3	39.4	41.8
MONTEZUMA CASTLE NM	AZ	39.7	43.5	44.8	52.8	60.7	65.6
MOORES CREEK NB	NC	2.1	1.7	2.3	2.4	2.1	2.6
MORRISTOWN NHP	NJ	35.5	38.6	47.0	46.6	58.8	43.1
MOUND CITY GROUP NM	OH	2.9	3.0	2.9	3.0	3.3	3.3
MOUNT RAINIER NP ⁶	WA	1,181.3	1,330.4	1,356.4	1,491.8	1,335.5	1,409.5
MOUNT RUSHMORE NMEM	SD	184.7	171.0	191.0	180.9	169.8	172.6
MUIR WOODS NM	CA	129.7	135.6	153.0	155.5	180.9	177.6
NATCHEZ TRACE PKWY	AL-TN-MS	3,216.9	3,394.0	3,249.6	3,611.2	2,507.3	2,942.8
NATIONAL CAPITAL PARKS ³	MD-DC	892.1	1,010.2	1,188.3	964.7	1,161.8	1,039.3
NATURAL BRIDGES NM	UT	24.4	25.9	26.6	31.2	32.6	40.8
NAVAJO NM	AZ	24.0	20.1	23.9	21.0	24.2	28.0
NEW RIVER GORGE NR	WV	.0	62.0	63.5	66.9	72.5	53.7
NEZ PERCE NHP ⁵	ID	36.7	37.5	39.5	34.7	41.5	35.6
NINETY SIX NHS	SC	.0	.0	1.9	4.3	4.1	3.9
NOATAK NPRES	AK	6.9	11.7	10.2	7.6	7.0	7.2
NORTH CASCADES NP	WA	323.8	455.0	444.1	470.3	457.0	419.8
OBED WILD and SCENIC RIVER	TN	.0	.0	.0	.0	1.8	4.9
OCMULGEE NM ³	GA	4.6	10.2	24.8	26.9	20.5	14.8
OLYMPIC NP	WA	951.3	1,032.3	1,078.8	1,118.6	1,063.4	1,246.9

TABLE 11. RECREATION VISITOR DAYS AT AREAS ADMINISTERED BY THE NATIONAL PARK SERVICE, 1983-88, (cont)
(IN THOUSANDS).

NATIONAL PARK SERVICE AREAS	STATE	1983 DAYS	1984 DAYS	1985 DAYS	1986 DAYS	1987 DAYS	1988 DAYS
OREGON CAVES NM	OR	32.3	33.1	27.0	29.7	29.3	30.9
ORGAN PIPE CACTUS NM	AZ	107.7	93.3	92.8	104.5	108.7	105.0
OZARK NSRW ³	MO	454.3	412.0	389.6	369.8	390.2	416.5
PADRE ISLAND NS	TX	352.8	326.9	350.3	387.6	333.1	341.0
PEA RIDGE NMP	AR	7.3	8.0	7.6	8.4	6.3	6.9
PECOS NM	NM	3.4	3.4	4.4	4.2	4.5	4.5
PENNSYLVANIA AVENUE NHS	DC	.0	.0	.0	8.6	1.3	6.9
PERRY'S VICTORY & IPM	OH	7.9	7.0	7.8	7.9	9.0	8.8
PETERSBURG NB	VA	53.1	50.7	49.2	49.6	41.2	41.4
PETRIFIED FOREST NP	AZ	98.1	98.6	100.0	103.5	103.4	108.8
PICTURED ROCKS NL	MI	142.8	130.1	127.3	129.7	151.3	174.9
PINNACLES NM	CA	65.5	62.1	69.8	72.9	74.8	78.1
PIPE SPRING NM	AZ	2.5	2.6	2.6	2.9	3.2	3.6
PIPESTONE NM	MN	27.9	26.9	27.3	29.0	24.4	21.9
PISCATAWAY PARK	MD	11.4	9.7	9.8	12.7	20.8	9.4
POINT REYES NS	CA	491.3	624.2	721.3	745.5	762.1	808.7
PRINCE WILLIAM FOREST PARK ³	VA	202.7	197.7	223.5	217.1	206.8	261.6
PU'UHONUA O HONAUNAU NHP	HI	29.0	31.9	32.9	36.0	34.6	32.7
PUUKOHOLA HEIAU NHS	HI	1.7	1.9	2.0	2.4	2.3	2.2
RAINBOW BRIDGE NM	UT	20.2	22.2	22.1	35.5	26.3	29.8
REDWOOD NP	CA	40.8	38.5	45.4	44.1	57.4	68.1
RICHMOND NBP	VA	14.8	14.2	14.4	14.0	16.0	16.7
RIO GRANDE W&SR	TX	.0	.0	10.3	11.7	9.7	11.8
ROCK CREEK PARK	DC	482.3	220.7	317.5	316.6	249.0	248.6
ROCKY MOUNTAIN NP	CO	1,542.1	1,302.0	1,325.9	1,400.7	1,471.0	1,487.0

TABLE 11. RECREATION VISITOR DAYS AT AREAS ADMINISTERED BY THE NATIONAL PARK SERVICE, 1983-88, (cont.)
(IN THOUSANDS).

NATIONAL PARK SERVICE AREAS	STATE	1983 DAYS	1984 DAYS	1985 DAYS	1986 DAYS	1987 DAYS	1988 DAYS
ROGER WILLIAMS NMEM	RI	1.1	1.1	.9	.9	1.3	1.1
ROSS LAKE NRA	WA	INCLUDED	IN NORTH CASCADES NP				
RUSSELL CAVE NM	AL	3.5	3.6	3.6	4.9	5.7	3.9
SAGAMORE HILL NHS	NY	20.6	19.6	15.2	14.9	13.1	24.2
SAGUARO NM	AZ	60.1	58.5	55.0	59.7	73.1	73.0
SAINT CROIX NSRW	WI-MN	366.2	613.1	604.6	572.0	826.2	505.6
SAINT-GAUDENS NHS	NH	5.4	3.9	4.7	5.1	5.1	4.5
SALEM MARITIME NHS	MA	37.2	47.2	37.7	38.6	35.1	31.4
SALINAS PUEBLO MISSIONS NM ¹	NM	3.9	4.1	4.1	4.3	5.4	5.4
SAN ANTONIO MISSIONS NHP	TX	9.4	15.3	16.9	19.9	20.5	20.5
SAN FRANCISCO MARITIME NHP ⁷	CA	INCLUDED	IN GOLDEN GATE NRA				
SAN JUAN ISLAND NHP	WA	8.6	6.9	7.6	-	11.5	-
SAN JUAN NHS	PR	113.0	377.7	421.0	422.7	341.1	480.3
SANTA MONICA MOUNTAINS NRA	CA	141.3	193.6	188.6	186.0	133.0	134.9
SARATOGA NHP	NY	15.4	15.2	16.1	15.3	17.2	16.8
SAUGUS IRON WORKS NHS	MA	4.8	5.4	5.0	6.2	8.7	8.9
SCOTTS BLUFF NM	NE	12.7	12.8	14.1	14.2	13.5	12.3
SEQUOIA NP	CA	2,371.1	2,664.0	2,554.3	2,879.1	3,132.9	2,790.8
SHENANDOAH NP	VA	1,581.3	1,656.8	1,727.9	1,726.6	1,655.8	1,800.4
SHILOH NMP	TN	48.9	51.1	57.3	58.1	57.6	64.2
SITKA NHP	AK	3.4	4.4	4.7	4.5	3.8	4.0
SLEEPING BEAR DUNES NL	MI	346.2	355.2	401.9	341.6	482.6	494.8
SPRINGFIELD ARMORY NHS ⁵	MA	2.6	2.9	2.7	3.0	2.3	.0
STATUE of LIBERTY NM	NY	176.1	69.4	19.8	480.9	773.2	708.4
STONES RIVER NB	TN	7.6	6.7	10.7	11.4	9.5	12.4

TABLE 11. RECREATION VISITOR DAYS AT AREAS ADMINISTERED BY THE NATIONAL PARK SERVICE, 1983-88, (cont)
(IN THOUSANDS).

NATIONAL PARK SERVICE AREAS	STATE	1983 DAYS	1984 DAYS	1985 DAYS	1986 DAYS	1987 DAYS	1988 DAYS
SUNSET CRATER NM ³	AZ	74.7	78.1	79.0	76.7	71.5	52.4
THADDEUS KOSCIUSZKO NMEM	PA	.1	.1	.2	.2	.2	.2
THEO ROOSEVELT BPL NHS	NY	1.1	1.4	2.1	1.9	1.9	1.8
THEO ROOSEVELT INAUGURAL NHS	NY	.7	1.3	1.6	2.6	4.2	5.2
THEO ROOSEVELT ISLAND	VA	8.3	7.8	7.8	7.3	5.1	5.5
THEO ROOSEVELT NP	ND	107.7	87.7	88.9	93.7	100.4	90.0
THOMAS JEFFERSON MEM ³	DC	73.6	269.5	94.2	130.9	75.8	55.4
TIMPANOGOS CAVE NM	UT	19.3	23.1	24.6	23.7	26.1	26.6
TONTO NM	AZ	7.7	7.6	8.1	9.0	8.8	8.7
TUMACACORI NM	AZ	3.2	3.2	3.2	3.3	3.5	3.4
TUSKEGEE INSTITUTE NHS	AL	4.0	5.4	5.4	5.7	9.4	11.9
TUZIGOOT NM	AZ	5.0	5.2	5.7	9.1	6.0	6.8
UPPER DELAWARE SRR	PA-NY	81.0	60.1	57.7	65.3	61.9	90.3
USS ARIZONA MEM	HI	174.1	199.0	195.8	213.6	231.2	220.5
VALLEY FORGE NHP	PA	154.6	175.9	203.3	144.1	206.9	174.4
VANDERBILT MANSION NHS	NY	54.6	50.9	47.1	58.3	50.7	53.3
VICKSBURG NMP ⁵	MS	58.3	99.2	80.2	95.1	77.5	60.2
VIETNAM VETERANS MEM ³	DC	.0	64.7	165.8	223.1	166.1	152.4
VIRGIN ISLANDS NP	VI	391.0	387.7	396.4	434.9	429.3	467.1
VOYAGEURS NP	MN	124.3	131.3	137.6	127.7	140.0	143.9
WALNUT CANYON NM	AZ	9.5	10.0	9.8	12.6	11.8	13.3
WAR in the PACIFIC NHP	GU	.0	.0	.4	3.9	4.9	4.0
WASHINGTON MONUMENT	DC	101.1	111.8	102.4	105.9	108.4	101.5
WHISKEYTOWN-SHASTA-TRINITY NRA ³	CA	354.9	397.6	387.2	451.7	607.2	401.4
WHITE HOUSE	DC	69.1	60.9	67.6	56.4	56.8	55.8

TABLE 11. RECREATION VISITOR DAYS AT AREAS ADMINISTERED BY THE NATIONAL PARK SERVICE, 1983-88, (cont)
(IN THOUSANDS).

NATIONAL PARK SERVICE AREAS	STATE	1983 DAYS	1984 DAYS	1985 DAYS	1986 DAYS	1987 DAYS	1988 DAYS
WHITE SANDS NM	NM	36.4	51.0	45.5	62.8	64.1	58.5
WHITMAN MISSION NHS	WA	9.0	8.8	8.7	9.2	9.6	8.1
WILLIAM HOWARD TAFT NHS ⁵	OH	.1	.1	.1	.2	.2	.3
WILSON'S CREEK NB	MO	13.1	14.8	20.6	46.3	47.3	59.8
WIND CAVE NP	SD	54.1	66.5	53.6	53.9	60.0	59.7
WOLF TRAP FARM PARK for the PA	VA	81.3	92.8	188.2	214.2	236.5	238.3
WOMEN'S RIGHTS NHP	NY	1.1	1.5	2.5	2.8	2.8	3.8
WRANGELL-ST. ELIAS NP & PRES	AK	18.8	20.6	21.6	26.7	29.2	31.0
WRIGHT BROTHERS NMEM	NC	33.6	31.0	32.4	43.9	26.2	29.0
WUPATKI NM	AZ	19.9	21.4	20.0	22.8	22.5	26.9
YELLOWSTONE NP ⁶	MT-WY	6,945.1	6,644.6	6,595.9	6,969.8	7,400.5	6,325.8
YOSEMITE NP	CA	5,567.4	6,145.5	6,475.8	6,379.9	6,935.3	7,154.5
YUKON-CHARLEY RIVERS NPRES	AK	3.4	2.6	5.0	5.0	5.2	3.6
ZION NP	UT	565.4	602.8	599.7	660.6	707.7	765.3
NATIONAL PARK SERVICE AREAS TOTALS		103,349	105,478	108,649	112,323	116,157	114,628

1988 FOOTNOTES

1. Redesignated in 1988: Capulin Mountain NM to Capulin Volcano NM, Frederick Douglass Home to Frederick Douglass NHS, Salinas NM to Salinas Pueblo Missions NM.
2. The following areas are either reporting for the first time or reporting separately in 1988: Big South Fork NR, Jimmy Carter NHS, El Malpais NM, Kaloko-Honokohau NHP.
3. Due to changes in 1988 counting procedures in one or more types of data reported, the figures for the following require special adjustments to be comparable with earlier data: Apostle Islands NL, Big Bend NP, Catoctin Mountain Park, Chickamauga & Chattanooga NMP, Delaware Water Gap NRA, Grand Portage NM, Great Smoky Mountains NP, Lassen Volcanic NP, LBJ Mem Grove OTP, Lincoln Memorial, Lincoln Home NHS, National Capital Parks, Ocmulgee NM, Ozark NSR, Prince William Forest Park, Sunset Crater NM, Thomas Jefferson MEM, Vietnam Veterans's Mem, Whiskeytown NRA.
4. Due to the opening of additional areas, programs, or facilities, the following areas may require special adjustments to be comparable with earlier data: Crater Lake NP, Cuyahoga Valley NRA.
5. Due to partial or temporary closing the figures for the following areas may require special adjustments to be comparable with earlier data: Assateague Island NS, C & O Canal NHP, Nez Perce NHP, Springfield Armory NHS, Vicksburg NMP, William Howard Taft NHS.
6. Due to unusual events (anniversaries, civic fairs, significant natural disasters, storm damage, etc.) the following may require special adjustments to be comparable with earlier data: Christiansted NHS, Gateway NRA, Grand Teton NP, John D. Rockefeller, Jr., Mem Parkway, Lincoln Home NHS, Mount Rainier NP, Yellowstone NP.
7. New areas named but not reporting: Bluestone NSR (West Virginia), Charles Pinckney NHS (South Carolina), City of Rocks N Reserve (Idaho), Delaware and Lehigh Navigational Canal NHC (affiliated area in Pennsylvania), Gauley NRA (West Virginia), Hagerman Fossil Beds NM (Idaho), Mississippi NRRRA (Minnesota), Natchez NHP (Mississippi), Poverty Point NM (Louisiana) Samoa NP, San Francisco Maritime NHP (reporting as part of Golden Gate NRA, California), Timucuan EHP (Florida), Zuni-Cibola NHP (New Mexico).

DEFINITIONS

AFFILIATED AREAS. Miscellaneous areas administrated in connection with the National Park System (NPS) which may utilize NPS assistance but which are neither federally owned nor directly administered by the NPS and do not report as NPS public use.

BACKCOUNTRY. One or more primitive or wilderness areas in a park reached primarily by hiking, boating, or horseback.

CAMPGROUND. An area of land designated and developed for use as a camp.

CLASSIFICATION. Areas administered by the NPS are known by several different designated names. A detailed description of each classification may be found in the publication, *The National Parks: Index 1987*.

CONCESSIONER. Private company or individual granted the privilege of providing facilities and services considered necessary by the NPS for accommodating visitors.

CONCESSIONER CAMPGROUND. An element of a concessioner operation involving services for overnight camping, land for camping, or equipment for camping.

CONCESSIONER LODGING. Overnight facilities such as hotels, motels, cabins, cottages, trailer villages, and trailer rental.

MISCELLANEOUS OVERNIGHT STAY. Any overnight stay not otherwise defined (sleeping aboard boats, camping in organized groups, and/or any other overnight stays not included in other categories of overnight stays, except inholders which are nonreportable).

MIXED AREA PARK: See definition of Urban Area Park.

NATIONAL PARK SERVICE (NPS). A Department of the Interior (DOI) agency which administers approximately two dozen types of federal land, nationally significant for their scenic, natural, scientific, historical, or archeological interest (see CLASSIFICATION). The agency was established as a Bureau of the DOI by Act of Congress, August 25, 1916. The NPS does not administer National Forests (United States Department of Agriculture/Forest Service), Wildlife Refuges (United States Department of Interior/Fish and Wildlife Service), or a variety of other lands available for public use.

NEGLIGIBLE TRANSIT. A brief, incidental entry into a park by passing traffic (vehicular or pedestrian) using NPS administered grounds, roads, or walkways. Such use is nonreportable (see NONRECREATION VISITS).

NONRECREATION VISITS. Reportable nonrecreation visits include visits by (a) persons going to and from inholdings; (b) through traffic; (c) trades-people with business in the park; (d) government personnel (other than Park Service employees) with business in the park.

DEFINITIONS (cont)

NONREPORTABLE VISITS. Nonreportable visits are the entries into the park by NPS employees, their families, concessioner employees, members of cooperating associations, and NPS contractors. (See RECREATION VISITS).

OUTLYING AREA PARK. See definition of Urban Area Park.

OVERNIGHT STAY. One night within a park by a visitor.

RECREATION VEHICLE. Any enclosed vehicle used for camping which is more elaborate than a simple truck or car, such as pickup truck with camper body, pop-up tent trailer, travel trailer, bus, motor coach, mobile home, etc.

RECREATION VISITS. Entries of persons onto lands or waters administered by the NPS for recreation purposes (see TOTAL VISITS and NONRECREATION VISITS). Visits by service personnel as broadly defined below and by others as a necessary part of travel incidental to their employment (commuters) or residence (inholders) are not reportable as recreational visits. (See NONRECREATION VISITS).

REGION. A National Park Service administrative subdivision. NPS Regions include the following states:

Alaska - AK
Mid-Atlantic - DE part of MD PA part of VA WV
Midwest - IA IL IN KS MI MN MO NE OH WI
National Capital - DC part of MD part of VA
North Atlantic - CT MA ME NH NJ NY RI VT
Pacific Northwest - ID OR WA
Rocky Mountain - part of AZ CO MT ND SD UT WY
Southeast - AL FL GA KY MS NC PR SC TN VI
Southwest - AR part of AZ LA NM OK TX
Western - part of AZ CA GU HI NV

REMOTE AREA PARK. See definition of Urban Area Park.

RURAL AREA PARK. See definition of Urban Area Park.

SERVICE PERSONNEL. (a) Employees of the NPS who are assigned to the park or are visiting the park in connection with their duty assignments; (b) NPS contractors, concessionaires, cooperating associations; (c) the temporary or permanent members in the households of NPS employees resident in the park. All such "service personnel" are not reportable as public use.

SUBURBAN AREA PARK. See definition of Urban Area Park.

URBAN AREA PARK. NPS areas are categorized by their proximity to population centers in the following manner:

Mixed Area Park - A park located in both an Urban center and a Rural center.

DEFINITIONS (cont)

Outlying Area Park - A park located in a Metropolitan Statistical Area (MSA) of less than one million population.

Remote Area Park - A park located outside of any MSA and requiring special travel arrangements to reach.

Rural Area Park - A park located outside of any MSA and accessible by paved highway, scheduled air or marine transportation service.

Suburban Area Park - A park located outside the central city but still within the MSA of greater than one million population.

Urban Area Park - A park located within the central city of a MSA.

VISIT. The entry of any person, except NPS personnel, onto lands or waters administered by the National Park Service. Visits may occur as recreation visits or nonrecreation visits. Same day reentries, negligible transits, and entries to detached portions of the same park on the same day are not counted as additional visits. Such adjustments are made insofar as practicable for noncontiguous parts of the same park. However, visits are reported separately for two contiguous parks.

VISITOR DAY. Twelve visitor hours in a park.

VISITOR HOUR. The presence of one or more persons, excluding NPS personnel, in a park for continuous, intermittent, or simultaneous periods of time aggregating one hour (e.g., one person for one hour, two persons for one-half hour).

MISCELLANEOUS ABBREVIATIONS

BMNMP	"Battlefields Memorial National Military Park" as in Fredricksburg & Spotsylvania CNTY BMNMP
BPL	"Birthplace" as in Abraham Lincoln BPL NHS
Campgrnd	"Campground"
CNTY	"County" as in Frdrcksbrg & Sptslvn CNTY BMNMP
CH	"Council House" as in Mary McLeod Bethune CH & NHS
EHP	"Ecological and Historic Preserve" as in Timucuan EHP
F	"Fitzgerald" as in John F. Kennedy NHS
FD	"Franklin D" as in Home of Franklin D. Roosevelt NHS
HS	"Historic Shrine" as in Fort McHenry NM and HS
IHS	"International Historic Site" as in Saint Croix Island IHS
INT	"International" as in Roosevelt Campobello INT PARK
IPM	"International Peace Memorial" as in Perry's Victory & IPM
JD	"John D." as in JD Rockefeller Jr., MEM PKWY
JFK	"John Fitzgerald Kennedy" as in JFK Center for the PA
LBJ	"Lyndon Baines Johnson" as in LBJ MEM Grove on the Potomac
MEM	"Memorial"
N	"National" as in Ice Age N Scientific Reserve
NB	"National Battlefield"
NBP	"National Battlefield Park"
NBS	"National Battlefield Site"
NC	"Navigational Canal" as in Delaware Lehigh NC and NHC
NHC	"National Heritage Corridor" as in Illinois & Michigan Canal NHC
NHP	"National Historical Park"
NHR	"National Historical Reserve" as in Ebey's Landing NHR
NHS	"National Historic Site"
NHT	"National Historic Trail" as in Lewis and Clark NHT
NL	"National Lakeshore" as in Apostle Islands NL
NM	"National Monument"
NMEM	"National Memorial"
NMP	"National Military Park"
NP	"National Park"
NPRES	"National Preserve"
NR	"National River" as in Buffalo NR
NRA	"National Recreation Area"
NRES	"National Reserve" as in City of Rocks NRES
NRR	"National Recreational River" as in Missouri NRR
NRRA	"National River and Recreation Area" as in Mississippi NRRA
NS	"National Seashore"
NSR	"National Scenic River" as in Delaware NSR

MISCELLANEOUS ABBREVIATIONS (cont)

NSRW	"National Scenic Riverway" as in Ozark NSRW
NST	"National Scenic Trail" as in Appalachian NST
ONS	"Overnight Stays"
ot	"of the" as in Black Canyon of Gunnison NM
PA	"Performing Arts" as in JFK Center for the PA
PKWY	"Parkway" as in George Washington MEM PKWY
PORT	"Portage" as in Allegheny Port RR NHS
PRES	"Preserve" as in Jean Lafitte NHP and PRES
RA	"Recreation Area" as in Amistad RA
RECR	"Recreation"
RR	"Railroad" as in Allegheny PORT RR NHS
RV	"Recreational Vehicle"
SRR	"Scenic and Recreational River" as in Upper Delaware SRR
THEO	"Theodore" as in Theo Roosevelt BPL NHS
TREL	"The Robert E. Lee" as in Arlington House, TREL MEM
VILL	"Villages" as in Knife River Indian Vill NHS
WSR	"Wild and Scenic River" as in Rio Grande WSR


As the nation's principal conservation agency, the Department of the Interior has basic responsibilities to protect and conserve our land and water, energy and minerals, fish and wildlife, parks and recreation areas, and to ensure the wise use of all these resources. The department also has major responsibility for American Indian reservation communities and for people who live in island territories under U.S. administration.

Publication services were provided by the graphics staff of the Denver Service Center. NPS D-394 April 1989

DSC-TNT
United States
Department of the Interior
National Park Service
P.O. Box 25287
Denver, Colorado 80225

Official Business
Penalty for Private Use, \$300

UNIVERSITY OF ILLINOIS-URBANA
333.78UN324P1A C001
NATIONAL PARK STATISTICAL ABSTRACT
1988



3 0112 023347682

Address Correction
Requested