

The image shows the front cover of a book. The cover is decorated with a dense, intricate marbled pattern of swirling, organic shapes in various shades of grey and black. In the center, there is a dark, diamond-shaped label with white text. The text is arranged vertically and separated by thin horizontal lines.

A. VON TILESIIUS.

NATURHISTORISCHE ABHANDLUNGEN.

ATLAS.

1826

332.1

Library of the Museum

OF

COMPARATIVE ZOÖLOGY,

AT HARVARD COLLEGE, CAMBRIDGE, MASS.

Founded by private subscription, in 1861.



DR. L. DE KONINCK'S LIBRARY.

No. 1530,

MCZ LIBRARY
HARVARD UNIVERSITY
CAMBRIDGE, MA USA

1. 2. Schraubenstein. 3. Anomit. 4. Musculit a. b. Sclerit c. Muricit. 5. Pectinit.

fig 1.

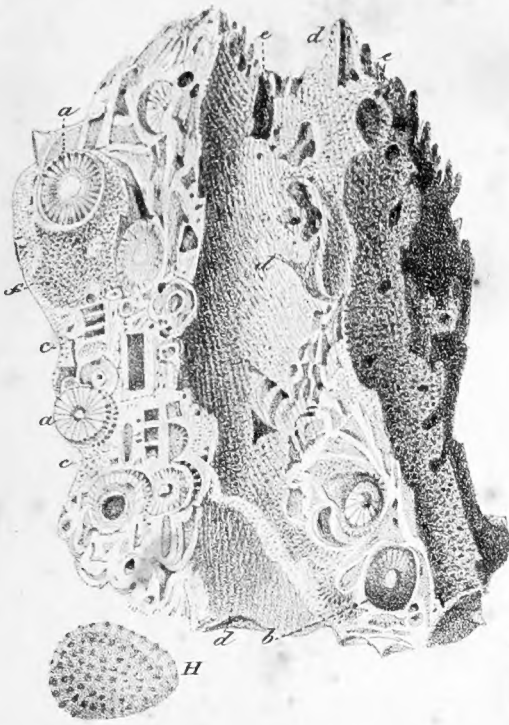


fig 2.

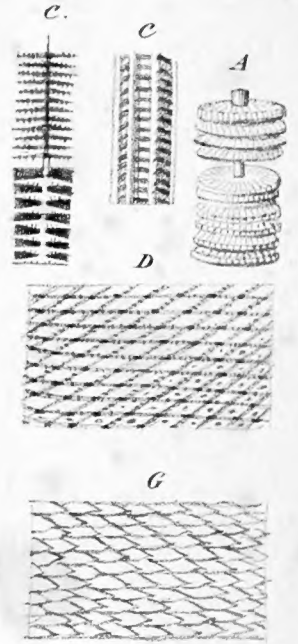
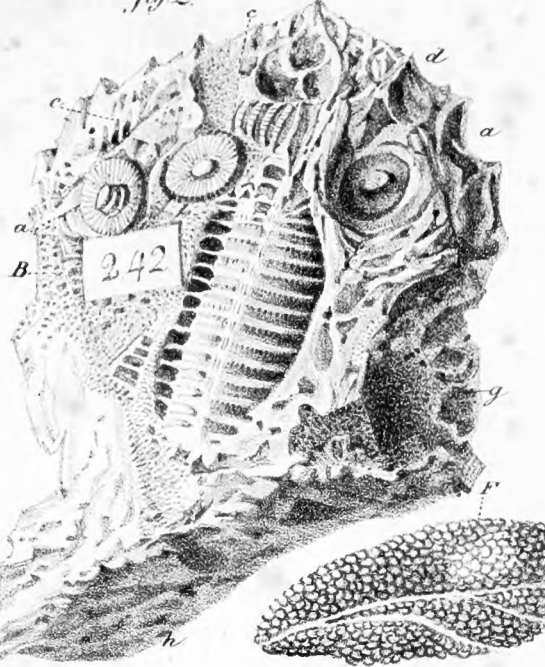


fig 3. a

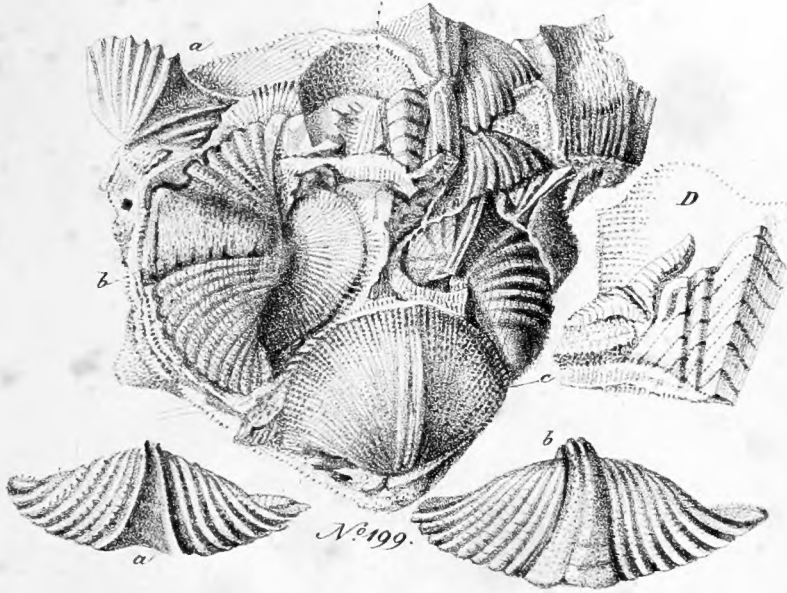


fig 4. a

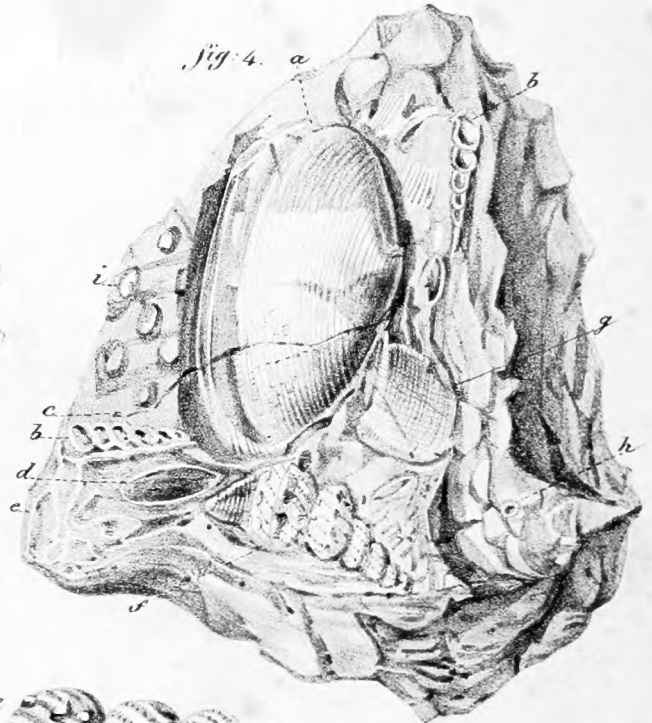
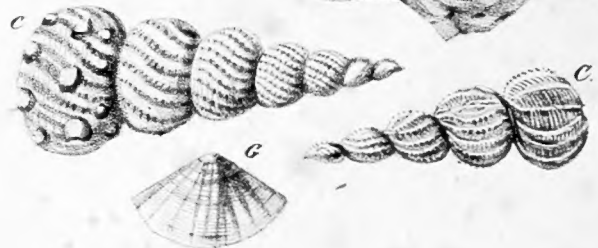
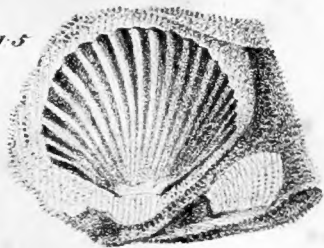
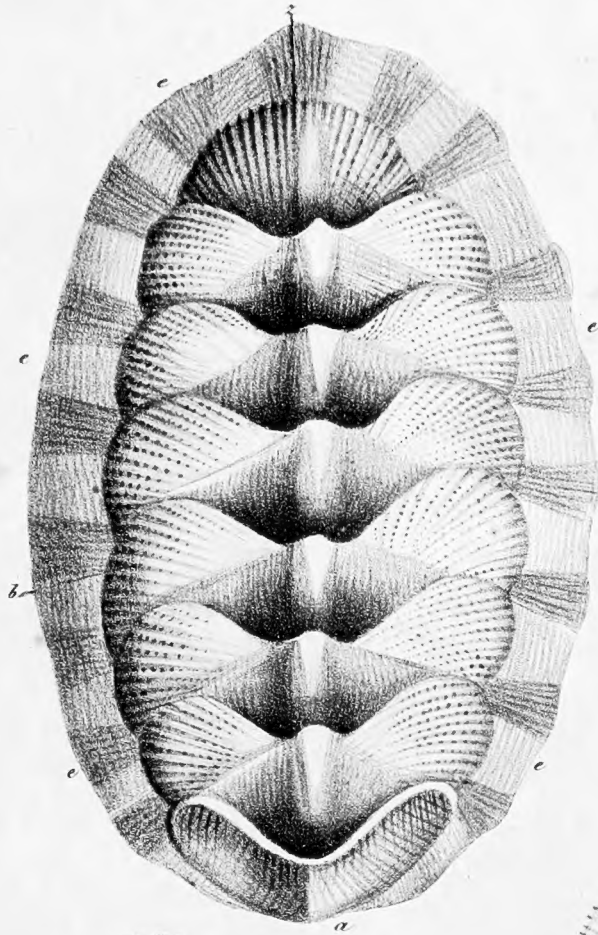


fig 5



Chiton giganteus Camtschat. *amiculatus* Pallassii

f. 1.



erste Schale a
Fig. 3.

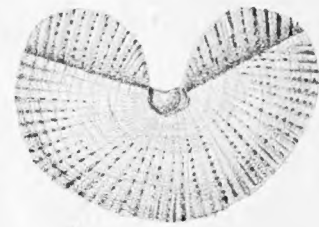
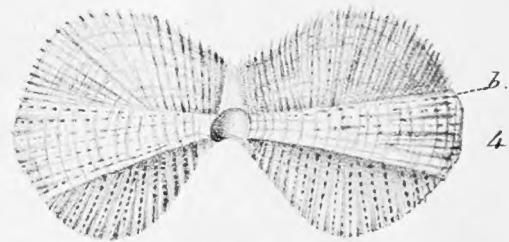


Fig. 4.



4. Schale

Fig. 2. einzelne Kieme microscope.

Fig. 5.



Kiemenfurche vergrößert.

Fig. 1. *Chiton giganteus Camtschaticus*, von unten.

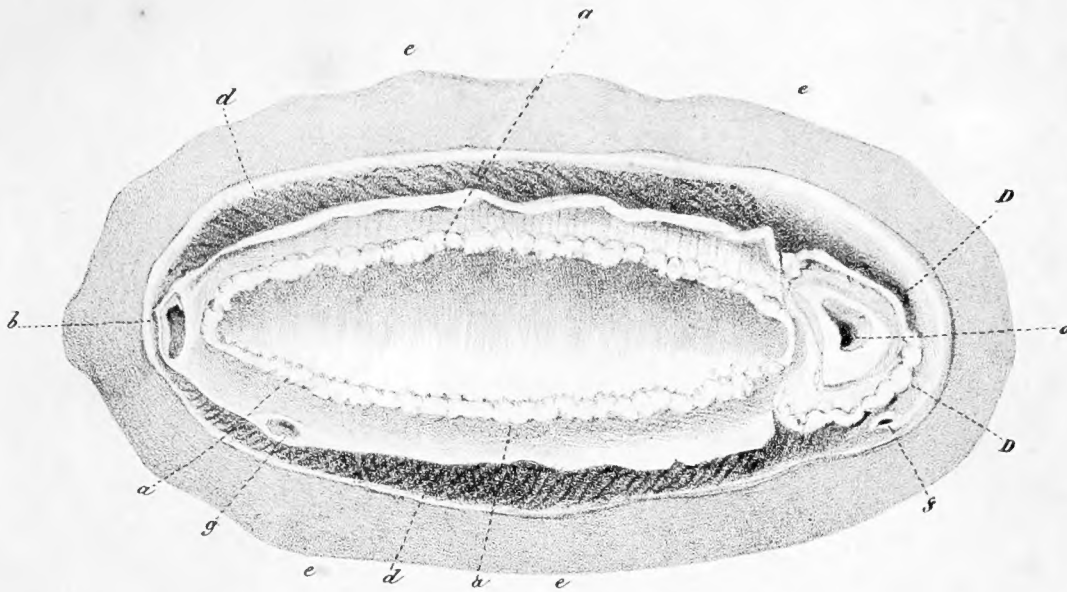


Fig. 2. von der Seite.

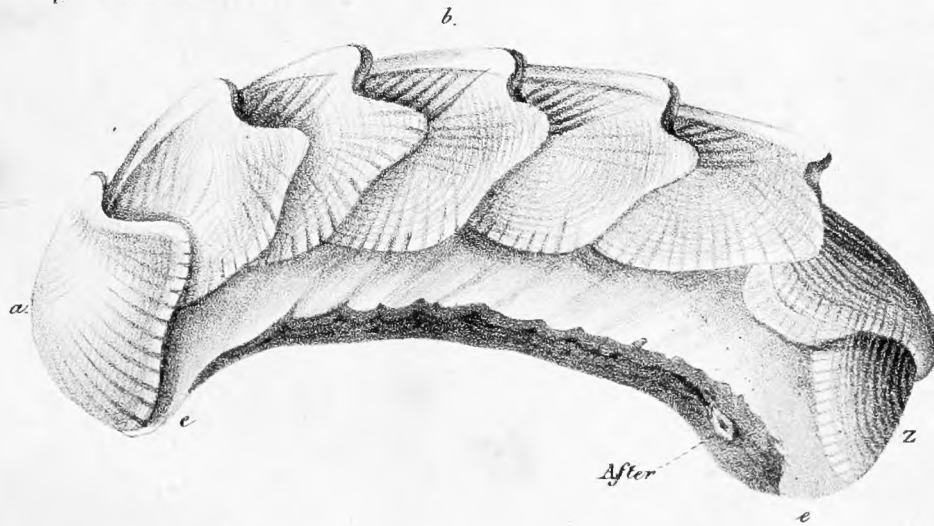




Fig. 1-8. Trilobites. 9-11. Chiton. 12-16. Alcyonites.

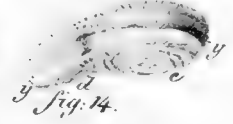
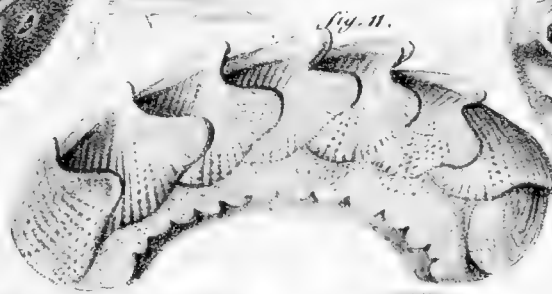
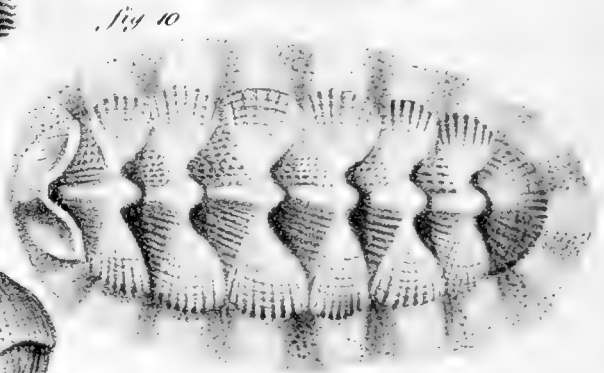
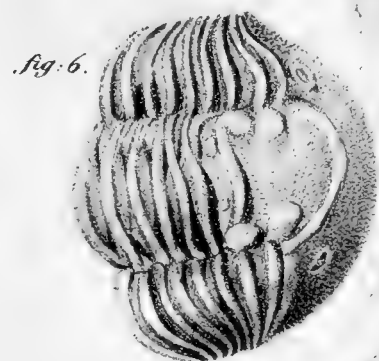
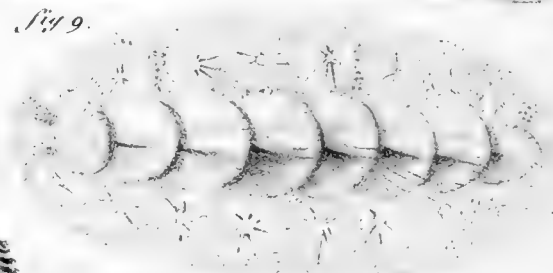
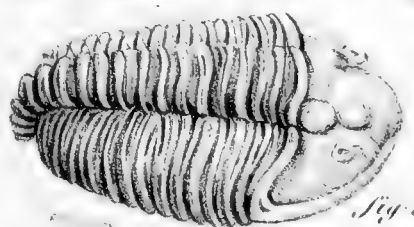
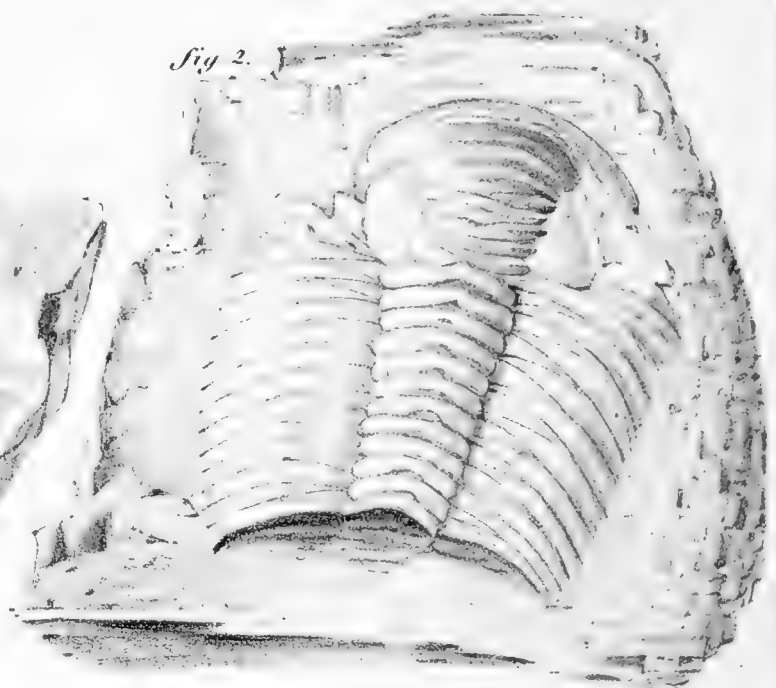
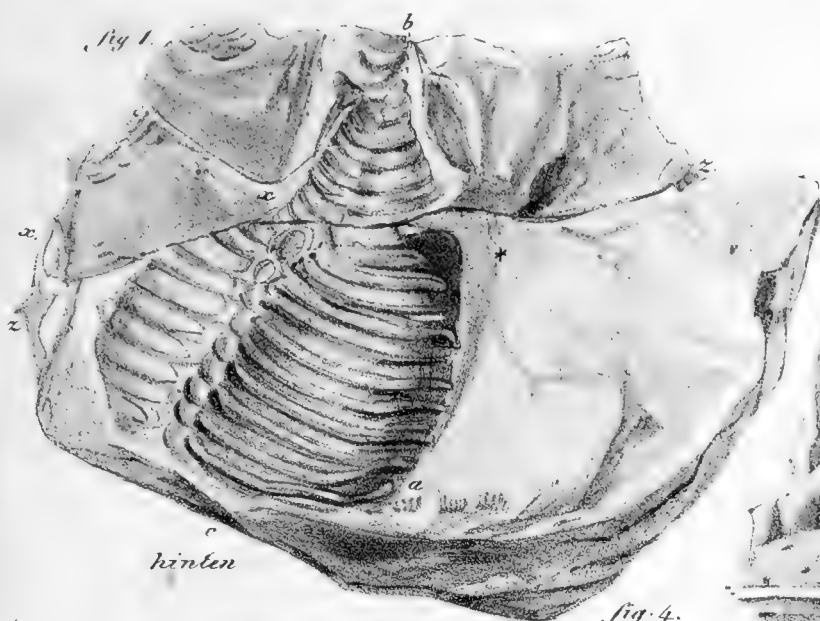
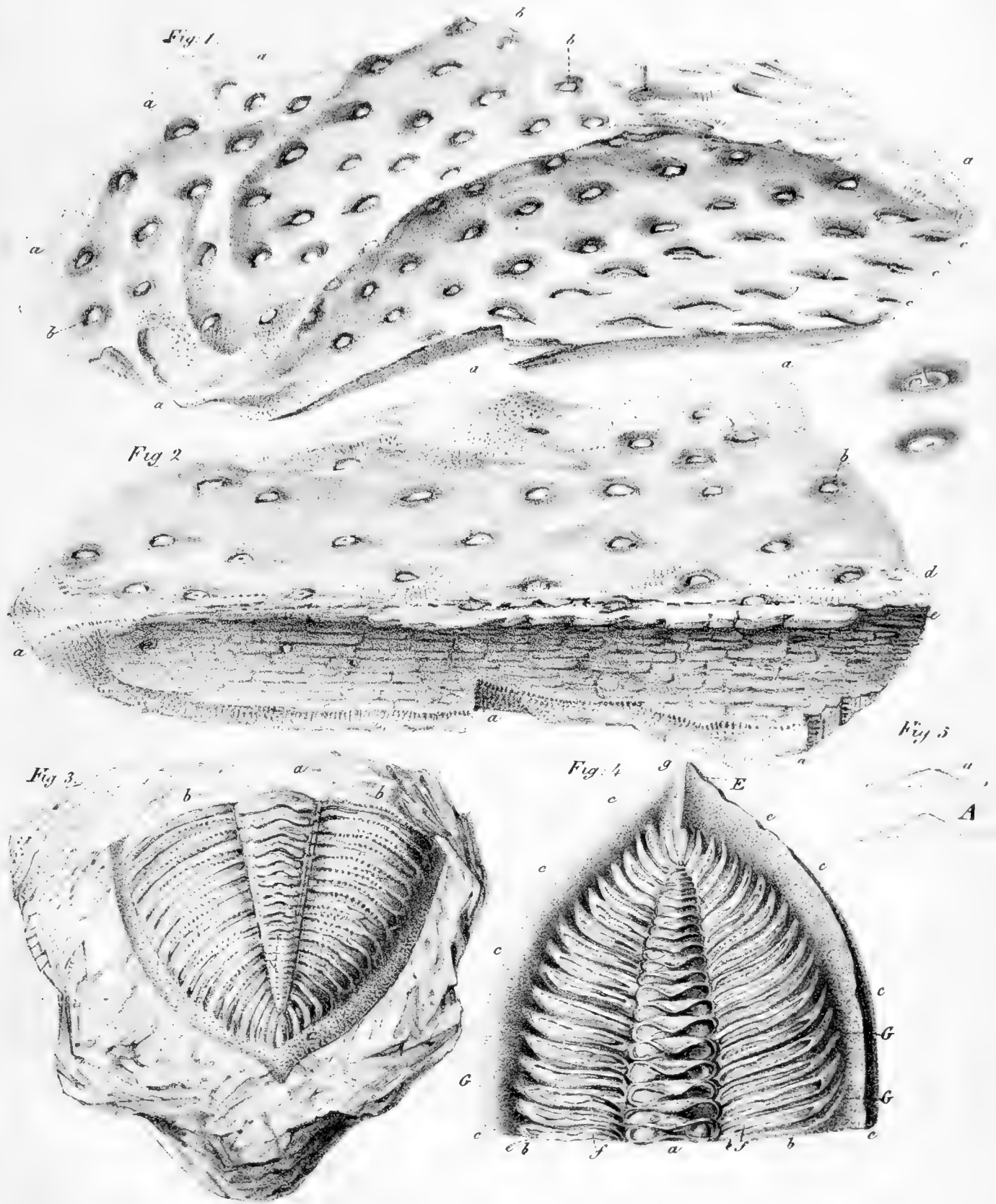




Fig. 1 et 2. *Phytolithus Cacti* Lin. pag. 432. Fig. 3, 4, 5. *Trilobites*, seu *helmintholithus mollusci testacei multiloculis*.



Escharites et Cellularites



Fig. 1.

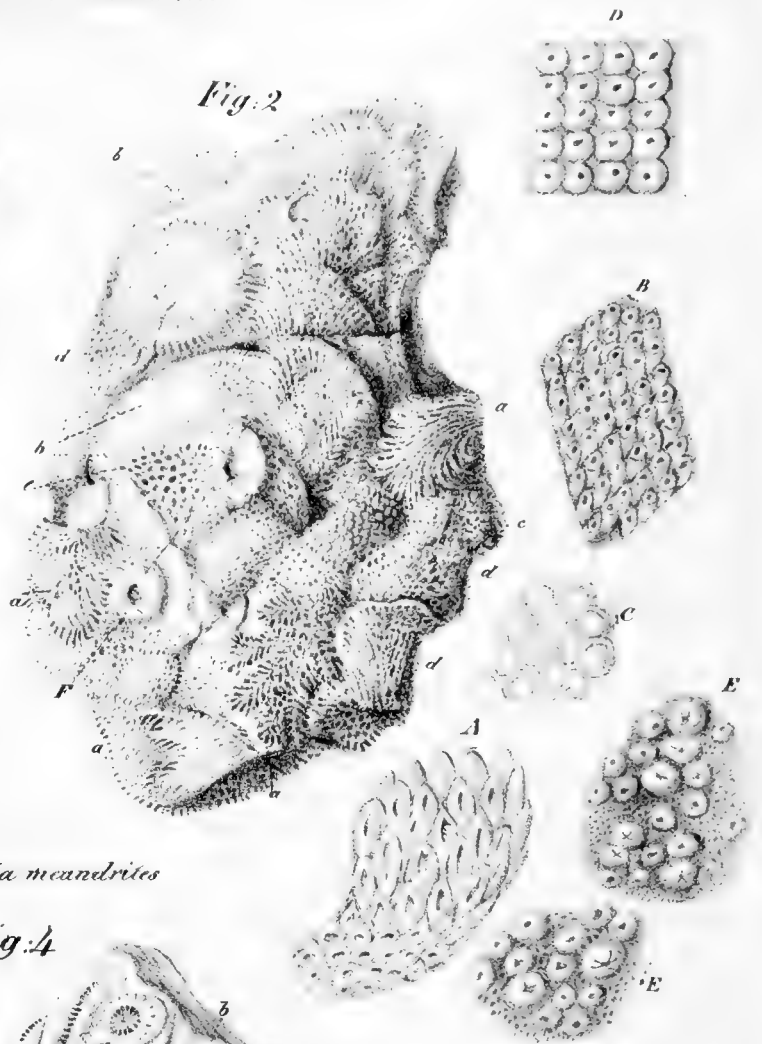


Fig. 2.

Ocellaria meandrites

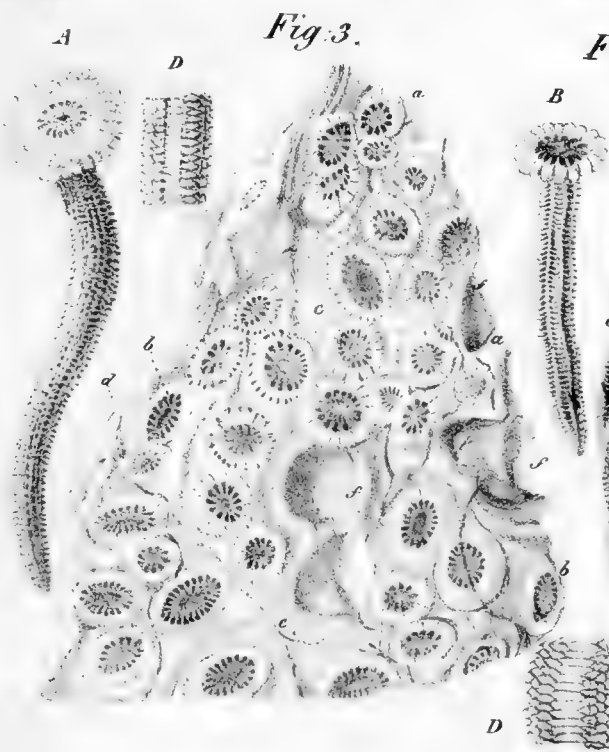


Fig. 3.

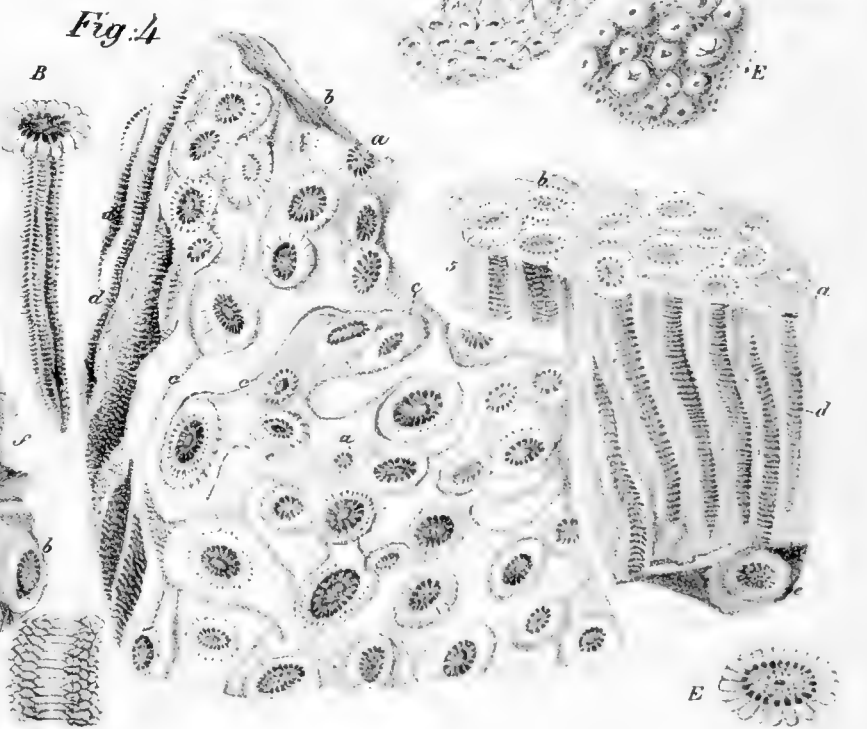


Fig. 4.



1 7 Echinus 8 10 Pentacrin 11 Felma marina 12 Actinur 13 15 Actinurac.

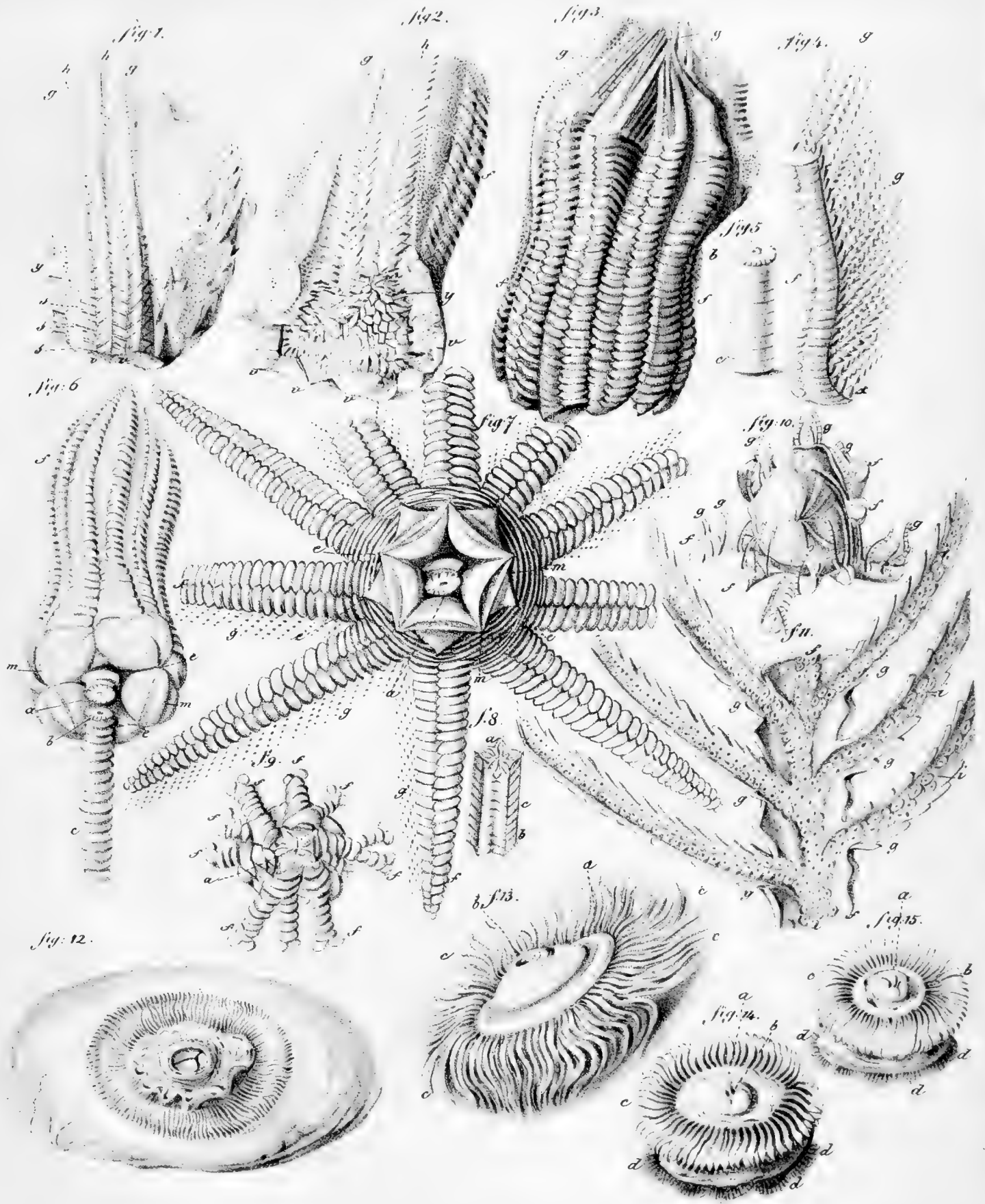




Fig. 1. *Gasteropleron Curillicum*. Fig. 2. *A* und *B* *Chionex*. Fig. 2. *D*. *Argonauta arctica*.
 Fig. 3 bis 10 *Hysterolithus*. Fig. 11 bis 18 *Gasteropleri*. Fig. 19 *Cliv helicina*.

