

Historic, archived document

Do not assume content reflects current scientific knowledge, policies, or practices.

1904
The Conard & Jones Co.

WEST GROVE, PA.

ROSE
WINTER GEM-15cts.

NEW
OSTRICH PLUME
FERN
25cts.

GERANIUM
JACOBERIE-15cts.

NEW FLORAL GUIDE

3 MAGNIFICENT HOUSE PLANTS

40¢ POSTPAID

SEE NEXT PAGE.

DESCRIPTION OF THE 3 New and Beautiful House Plants

Offered on the Front Cover Page of this Book, and particularly recommended for House and Conservatory Culture in Winter

Price For the three varieties in strong plants, specially prepared for Winter bloom, only **40c.** post-paid

New Winter Blooming Rose,

"Winter Gem"—This is a beautiful new Tea Rose and a wonderful bloomer, covering itself with lovely buds and flowers as long as kept in growing condition. Color, an exquisite shade of lovely creamy pink. Blooms all the time and particularly in the house or conservatory in Winter, hence its name, **"Winter Gem."** **Strong Repotted Plants, 15 cts. each, postpaid.**

New Winter Blooming Geranium, "Jacquerie"

—This is a magnificent new Geranium, a strong robust grower and immense bloomer, flowers extra large, 4 to 5 inches across, color rich glowing crimson scarlet, exceedingly bright and beautiful and a fine winter bloomer, especially noted for its large size, constant bloom and superb color. **Price, Strong Plants, specially prepared for Winter Flowering. 15 cts. each.**

Grand New Ostrich Plume

Fern (Nephrolepis Piersonii)—This is undoubtedly the grandest and most beautiful decorative plant for the house or conservatory ever offered. It is entirely different from the Boston Fern, and, if possible, more beautiful, but equally hardy and easily grown. The fronds are frequently 3 to 4 feet in length, and besides arching in the most graceful manner have two sets of leaves, showing two distinct shades of green, giving them a curious mossy appearance, exceedingly beautiful and attractive. Everyone is charmed with it as soon as seen. It is a strong, quick grower, and can be depended on to make a large handsome plant very quickly. **Price, Strong Repotted Plants, 25 cts. each, postpaid.**

Special Offer The set of 3 New and Beautiful House Plants, only 40 cts., or 3 Collections for \$1.10 Ask for Collection B. The 2 Colored Plate Collections (Front and Back Cover Pages), when ordered together, only \$1.75, postpaid.

PALMS—We ask particular attention to our list of Palms for house culture (see pages 33, 34 and 35) and believe that for the money expended there is nothing we offer that will give better satisfaction to our customers. They are especially grown for window and room decoration, and with ordinary care will make beautiful household ornaments for many years. We send good sturdy little trees by mail, postpaid, at the prices stated, or larger and heavier ones by express, at purchaser's expense.

Fringed Chinese Primroses (Primula Sinensis)

WE have grown a fine stock of Beautiful Fringed Chinese Primroses; strong, vigorous, heavily rooted plants, ready for quick bloom; they are a very choice strain and in fine mixed colors, including pure white, purple, rose, scarlet, spotted, striped and blue. Chinese Primroses are well known as among the very finest flowers for house culture, and if bedded out in Summer in a cool, shady place, will be in fine condition by Fall for taking to the window garden or conservatory, where they should bloom all Winter and Spring; they are strong feeders and require good large pots and rich earth. **15 cts. each, 2 for 25 cts., \$1.25 per doz., postp'd.**



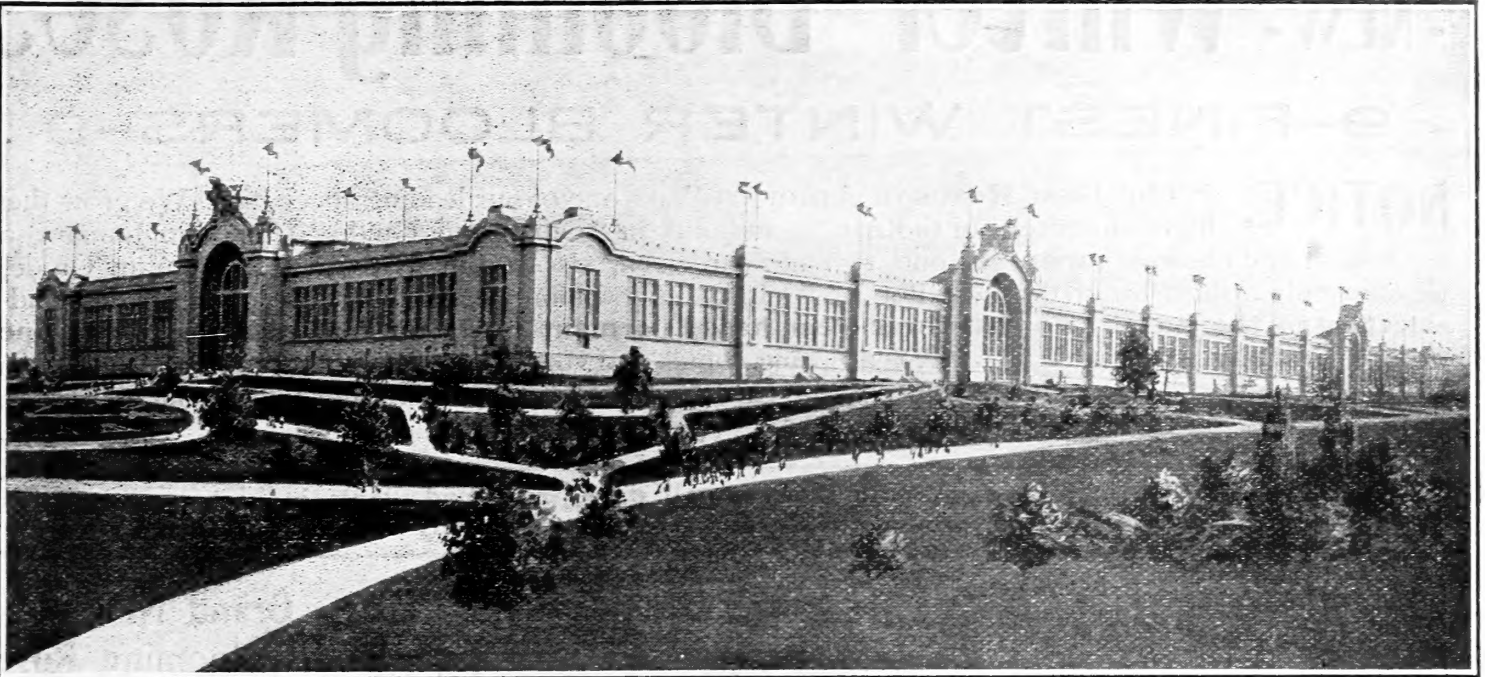
PRIMULA SINENSIS
FIMBRIATA

Ever-Blooming Primrose (Primula Obconica Grandiflora)

This is truly a grand flower for the house and conservatory; grows 8 to 10 inches high and bears enormous masses of flowers the whole year; never out of bloom; many different shades of pink, white and rose. Strong plants ready to bloom, **12 cts. each, 2 for 20 cts., \$1.00 per doz., postpaid.**

Note—All primroses require 4 or 5-inch pots and good rich earth, and should be kept in a moderately cool room.

See the Great World's Fair



AGRICULTURAL BUILDING AND PARTIAL DISTANT VIEW OF THE CONARD & JONES CO.'S EXHIBIT



THE LOUISIANA PURCHASE EXPOSITION AT ST. LOUIS this year is the grandest and the most beautiful Exposition of the World's Products ever imagined. Do not let anything prevent your going, and when there, be sure to look up **THE CONARD & JONES CO.'S FLORAL EXHIBIT**. Their Flower Beds extend for half a mile along the main avenues (Horticultural Section), literally acres of blossoms, including the Wonderful New Crimson Rambler, "Philadelphia," and other improved varieties. Altogether, thousands of "The Best Roses in America," and many in full bloom. Also the world-renowned **C. & J. Ever-Blooming Canna Lilies**, the grandest and most gorgeous flowers for bedding now known. You cannot miss seeing them on either the North, East or West sides of the 20-Acre Agricultural Building. Look for our Trade-Mark on every Flower Bed.

But whether you go to the Fair or not, you know as does everyone that

HOME is the BEST PLACE for FLOWERS

There you get pleasure from them every day, not once a year. Their influence is refining. They cost little, but the satisfaction from them is boundless. Think of having flowers in bloom all Winter long—you can if you like. Perhaps you know all about these things, or are you just beginning? In either case, this catalogue will help you. It contains a complete list of the Best Flowers for Fall Planting. Quality as good and Prices as Low as you can get anywhere. It tells the things you need to know about each one, and we hope you will find it a real "Guide" to Success with Flowers for Your Home.

We cheerfully answer questions, and give suggestions. Let us understand your wishes and we feel confident we can give you satisfaction.

Faithfully yours,

The Conard & Jones Co.

ROSE AND FLOWER GROWERS

WEST GROVE, PA., U. S. A.



ALFRED F. CONARD, President
S. MORRIS JONES, Treasurer
ANTOINE WINTZER, Vice-President
ROBERT PYLE, Secretary

INFORMATION FOR PURCHASERS—Please use the Printed Envelope and Order Sheet, and be sure to write your full name and address clear and plain, and always the same way (Mr., Mrs. or Miss).

Free Delivery in the United States—NOTICE—At the prices given in this Catalog, we deliver all bulbs and seeds free of charge, by mail or express (at our option), also all plants suitable to go by mail, but when plants are sent by express, either by request of the purchaser or because too large to go by mail, the purchaser must pay the express charges. **TO CANADA** we send goods by mail, postpaid, the same as in the United States, but large size Roses, Shrubs and Trees are prohibited except during October and November. We also ship by mail and express to every country on the Globe.

PLEASE FORWARD THE MONEY WITH THE ORDER—Remittance by P.O. order, registered letter, bank draft and express is at our risk, and we will add a handsome present to offset cost of same on all orders paid in this way. We accept new postage stamps for small amounts same as cash, but prefer money orders whenever convenient. When coins are sent they should be carefully wrapped in paper or cloth, and care taken to seal the letter securely.

THESE PREMIUMS CANNOT be allowed on goods bought at dozen rates or hundred or pound prices, nor on Special Offers or Bargains. Our prices for these are already so low that no further reduction can be made. **BUT** when plants, bulbs or seeds are ordered at the prices named for a single item, packet or ounce, the following liberal premiums may be selected:

On \$1.00 Order select premium to value of 15 cts. extra	On \$5.00 Order select premium to value of \$1.00 extra
" 2.00 " " " " 30 " "	" 10.00 " " " " 2.50 "
" 3.00 " " " " 50 " "	" 20.00 " " " " 6.00 "

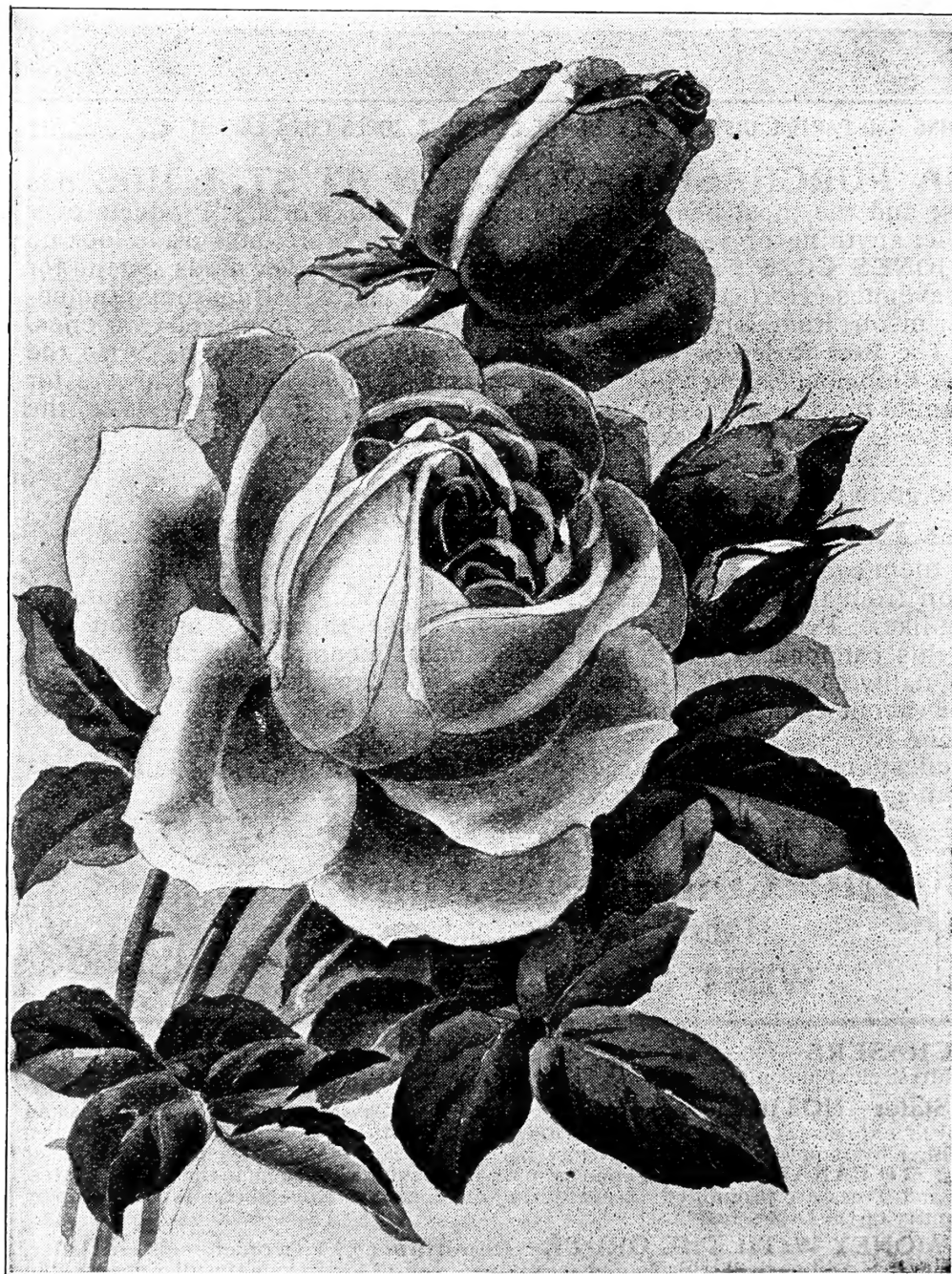
All our customers can rely on getting good value and liberal and satisfactory treatment in every way

GRAND -NEW- Winter-Blooming Roses

9—FINEST WINTER BLOOMERS—9

NOTICE. "The Best Roses in America" are one of our leading specialties. We grow them by the hundreds of thousands, and offer in "Our Spring Guide" (issued in January) all the newest and choicest varieties in one, two and three-year sizes. But in this "Our Autumn Guide," we offer only a short list of the best Pot Roses for Winter Bloom in the house or conservatory, and a selection of the finest two and three-year hardy dormant roses for Fall planting in the open ground (see pages 4, 5 and 38). When Spring comes and you are done with roses in the house and conservatory they can be planted at once in the garden or flower bed, where they will bloom all Summer and Fall.

Please Remember that our Roses are all strong re-potted plants, in best condition to bloom quickly and give plenty of lovely buds and flowers all Winter.



NEW WINTER-BLOOMING ROSE, MAMAN COCHET.

MARIE VAN HOUTTE—A lovely rose not excelled by any. Rich creamy white elegantly shaded with rose and canary yellow. Large full flowers, constant and abundant bloomer, very sweet. 15 cts.

MAD. OLGA—Beautiful large buds and flowers, cream white clouded with pale rose, very sweet. A constant and abundant bloomer. 15 cts.

Grand New Winter-Blooming Rose Maman Cochet

well-known as a queen among roses, and one of the best and most beautiful varieties ever grown. The flowers are of enormous size, very full and of great depth and substance. Color, rich coral pink, elegantly shaded with rose; has broad, shell-like petals, and makes superb long pointed buds; immense bloomer, loaded with flowers the whole season, and deliciously sweet. A grand rose. Strong re-potted plants, 15 cts., postpaid.

CHAMPION OF THE WORLD—Splendid large full flowers, deep rich rosy pink, very sweet and borne in great profusion as long as plants are kept in growing condition. A most constant and abundant bloomer. Strong plants, 15 cts., postpaid.

LUCULLUS "The Black Rose"—Splendid dark rich crimson, almost black. A constant and abundant bloomer. Very handsome. 15 cts., postpaid.

BON SILENE—Noted for the great size and beauty of its buds, bright rich rosy crimson. A fine Winter bloomer. 15 cts., postpaid.

ETOILE DE LYON—One of the very best pure deep yellow roses, clear bright golden yellow. Begins to bloom very quickly and continues to bear an abundance of lovely buds and flowers as long as kept in growing condition. Flowers are very large, full and sweet. Strong plants, 15 cts., postpaid.

CORNELIA COOK—This is a very handsome rose for house culture and Winter bloom, makes splendid large pointed buds, pure deep creamy white, sometimes tinted with rose; excellent substance and very sweet. Strong plants, 15 cts.

COQUETTE DE LYON—Lovely canary yellow, immense bloomer, elegant for house culture, one of the best bright yellow roses, blooms quickly and profusely. Strong plants, 15 cts.

SPECIAL OFFER

THE ABOVE SET OF NINE CHOICE WINTER-BLOOMING ROSES ONLY 95 CENTS, POSTPAID.

Grand Winter-Blooming Roses

CONTINUED

MRS. B. R. CANT—A splendid new constant blooming rose of round full form, bright rosy pink, perfectly full and double, blooms all the time, constantly loaded with lovely buds and flowers. Strong repotted plants, 15 cts., postpaid.

MAD. DE WATTEVILLE—The beautiful *Tulip Rose*. Splendid buds and large creamy white flowers, elegantly edged with rosy carmine, exceedingly beautiful. Strong plants, 15 cts.

MAD. C. P. STRASSHEIM—Fine sulphur yellow, changing to orange and buff. A very lovely variety, always giving plenty of buds and flowers. Strong plants, 15 cts.

PAPA GONTIER—A splendid rose, extra large finely formed buds and flowers, rich rosy red, very full and sweet—one of the best. Strong plants, 15 cts.

HERMOSA—One of the best for general planting—blooms in clusters all season; clear bright pink, very double and fragrant. Strong plants, 15 cts.

PRISCILLA OR WHITE COCHET—A neat compact grower and constant bloomer, pure snow white and very beautiful. 15 cts., postpaid.

ARCH DUKE CHARLES—Bright rosy red, beautiful buds and large well filled flowers. Early and constant bloomer. 15 cts.

BRIDESMAID—Fine large full flowers, delightfully tea scented; clear rose pink with crimson shading, very beautiful. 15 cts.

DUCHESS DE BRABANT—Beautiful large buds, deep rosy pink, edged with silver; a quick and constant bloomer, one of the best. Strong plants, 15 cts.

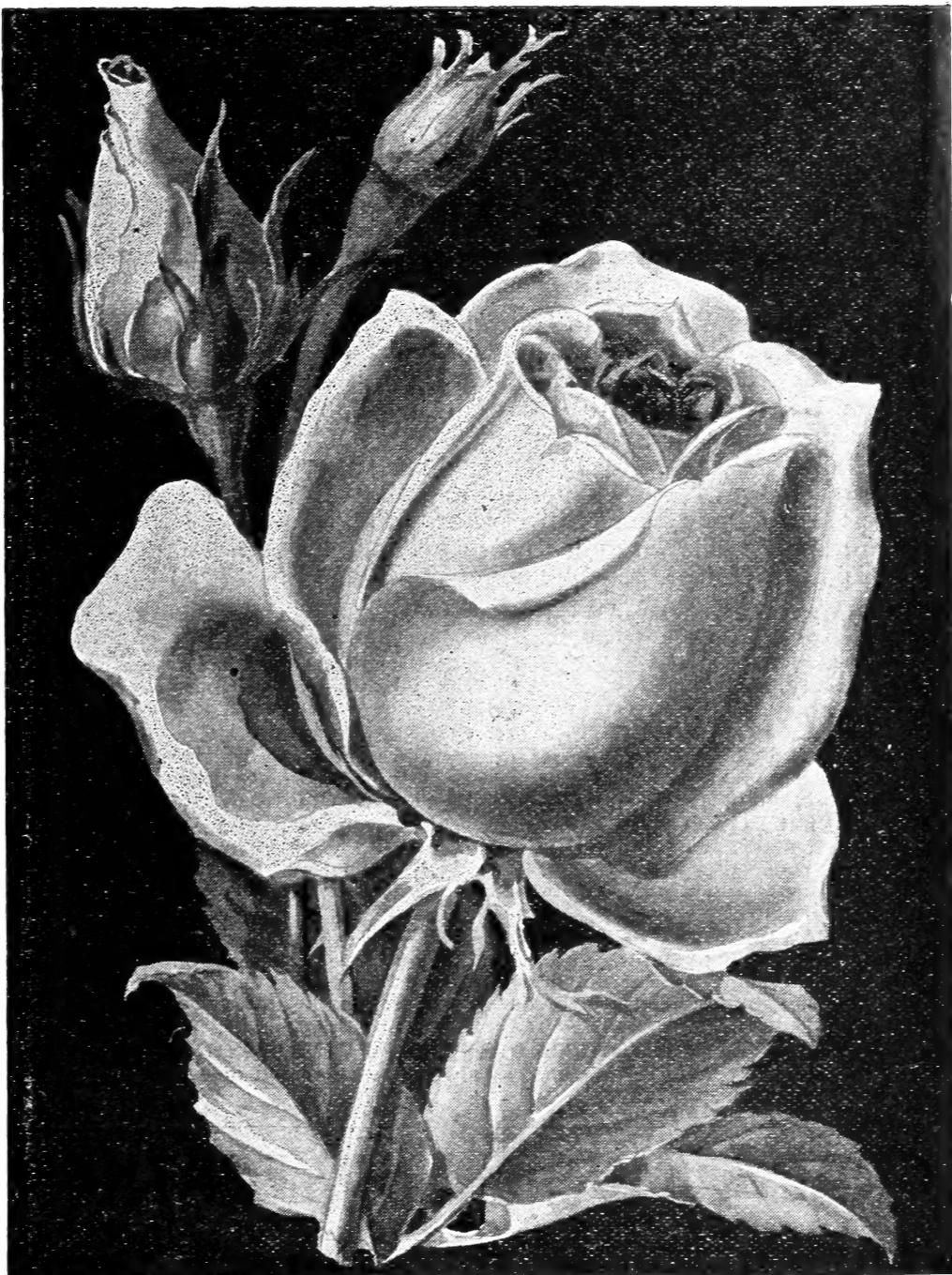
MAD. RESEL—Fine cupped form, rich creamy white, shaded with crimson and canary yellow; quick bloomer, very fragrant and handsome. Strong plants, 15 cts.

MAD. CAMILLE—A grand rose, extra large, full and sweet; clear rosy flesh; good bloomer, very handsome. 15 cts., postpaid.

MAD. RENE GERARD—A lovely new ever-blooming rose of rare beauty; large elegantly formed buds and flowers, deep coppery yellow passing to nasturtium red, shaded with crimson. 15 cts., postpaid.

CATHERINE MERMET—Large globular flowers, clear shining pink, with amber centre. One of the best for house culture. 15 cts. each.

SOUV. DE J. B. GUILLOT—Extra fine new Tea Rose, large, full and sweet; bright coppery red, richly tinted with apricot yellow. Very beautiful. 15 cts. each.



[MRS. B. R. CANT

CLOTILDE SOUPERT—This is one of the best and most beautiful varieties for house culture. The flowers are large, perfectly full and double and deliciously sweet; color, creamy white, tinged with amber, deepening at centre to clear bright rose. Strong plants, 15 cts.

MADAM DE VATREY—This valuable rose is a good healthy grower, and makes a fine supply of lovely buds and large fragrant flowers as long as kept in growing condition; color, deep rich crimson, very dark and fine. Strong plants, 15 cts.

Remember

These are all extra strong repotted roses, specially prepared for Winter flowering. Price 15 cts. each, two for 25 cts., 4 for 50 cts., 9 for \$1.00. The complete set of sixteen only \$1.75 postpaid.

TWO GOOD BOOKS

HOUSE PLANTS and How to Succeed with Them, by Lizzie Page Hillhouse. A text book which is the result of long and practical experience. Has a complete index, and is just what is needed by every woman who grows flowers in her home. 220 pages, cloth bound, and illustrated. Price, postpaid, \$1.00.

"THE ROSE." By H. B. Ellwanger. Revised edition. One of the most delightful books on Roses ever published. Tells all about varieties, classification, characteristics, planting, pruning, cultivation and care. 310 pages full of helpful hints and information. Cloth bound, postpaid, \$1.25.

SEND FOR OUR 100 PAGE CATALOGUE OF BOOKS ON GARDENING—FREE



BULBS for WINTER FLOWERING

BULBS are among the grandest of all our garden flowers and must always be planted in the Fall. All flower lovers want bulbs. No other flowers are so easy to grow and sure to bloom. Our lovely **Easter Lilies, Freesias, White Narcissus, Hyacinths, Sacred Lilies Giant Cyclamen, &c.** are the finest flowers there are for Winter flowering in the house and conservatory, and for early Spring blooming in beds and borders in the open ground there is nothing finer than our splendid **Dutch Hyacinths, Gorgeous Tulips, Narcissus, Crocus, Iris, Japan Lilies, &c.,** which are the earliest to bloom as well as the sweetest and most beautiful flowers of their season, and being entirely hardy they should be planted at once in the open ground, where they are to remain. They require no protection, though a light covering of well rotted manure or garden litter is always desirable when convenient.

TIME TO PLANT.—All Bulbs, whether for house culture and Winter bloom or for bedding out in open ground, should be planted as early as convenient, from September to January—the earlier the better.

SOIL REQUIRED.—Any good soil that is suitable for other flowers will grow fine bulbs. Old well rotted manure is the best fertilizer, but when this cannot be had, we can send you our Improved Plant Food (a highly concentrated fertilizer, specially prepared for plants and flowers). By mail or express, at any time desired. See Circular in this book.

BULBS FOR THE HOUSE OR CONSERVATORY.—Can be grown nicely in pots or boxes if care is taken to firm the earth well down on the roots, and provide good drainage at the bottom. Small bulbs can be set quite close together, sometimes several in one pot; larger ones need room in proportion to their size. Do not plant too deep; one inch is about right for house culture, but large bulbs in open ground should go a little deeper.

AFTER POTTING.—Water thoroughly and set away in a cool, dark place two or three weeks to rest, and give the roots time to start; then take to the living room window or wherever they are to remain. Bulbs do not require much heat—an upstairs room suits them nicely. Water only when the surface soil looks dry, but do not allow them to get dry at the bottom. They will soon begin to grow and bloom and then their lovely flowers and delightful fragrance will surprise and delight all who see them.

TREATMENT AFTER BLOOMING.—When pot bulbs are done blooming they can be set away in any cool, dry place and left a few weeks to mature, after which they may be shaken out of the soil and stored away until time to plant again in the Fall. They may not make as fine flowers the second season as the first, but will usually do quite well for two or three years. Bulbs in open ground, when done blooming and well matured, may be lifted and dried off, and then treated exactly like those from pots.

THE CONARD & JONES CO.'S HARDY BULBS FOR FALL PLANTING are grown and specially selected for us by the best growers in Europe and can always be depended on to give best results and entire satisfaction in every way—they are not surpassed by any.

GRAPE, MUSK AND FEATHERED HYACINTHS

GRAPE HYACINTHS—Pretty spikes of lovely Rich Blue bell-shaped flowers; fine for bedding and pots. 3 for 5 cts., per doz. 12 cts., postpaid.

SNOW WHITE—A very scarce sort, 3 for 10 cts., per doz., 15 cts., 75 cts. per 100, postpaid.

MUSK HYACINTHS (Large Flowering)—A charming dwarf-growing Hyacinth, rich purple and giving out a strong and very agreeable musky fragrance, valuable for pot culture and also for the flower bed. Entirely hardy. 10 cts. each, 3 for 25 cts., \$1.00 per doz., postpaid.

FEATHERED HYACINTHS—Lovely and curious little flowers with feathery, plume-like spikes, deep blue tinged with red, fine for pot culture and bedding out also, hardy. 5 for 10 cts.; per doz., 18 cts.; \$1.00 per 100, postpaid.



FEATHERED HYACINTHS

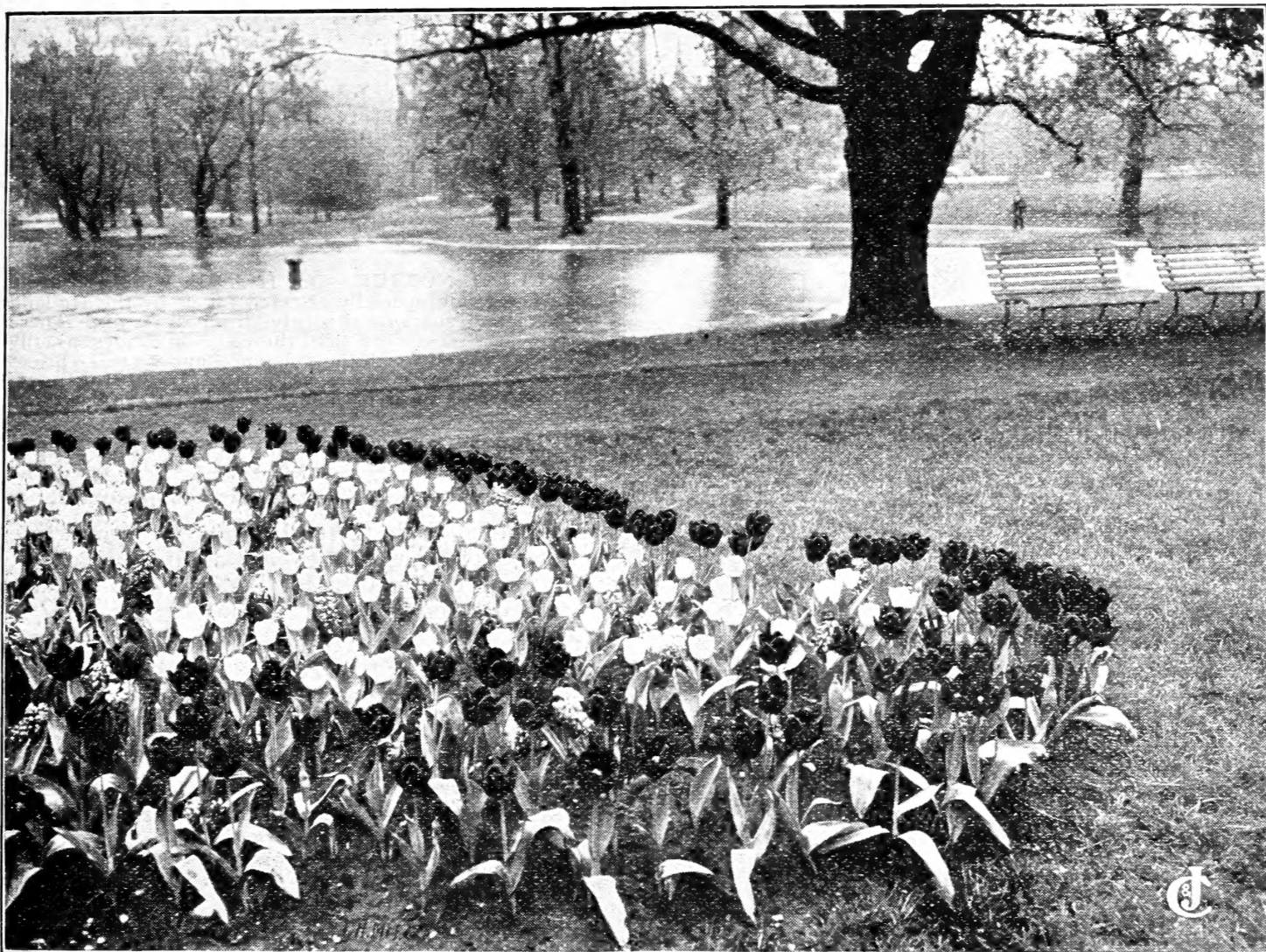
SPECIAL OFFER

4 Grape Hyacinths, 3 Snow White,
2 Musk, and 4 Feathered Hyacinths,
13 in all. Postpaid, for **25c.**

AGAPANTHUS UMBELLATUS

The Blue African Lily We offer fine Bulbs of this splendid **Blue African Lily**, which is an exceedingly beautiful ornamental plant for the Green House or Conservatory in Winter, and for pots or tubs on the lawn or piazza in Summer. The foliage is luxuriant and handsome, the flowers are borne in large clusters of 20 to 30, frequently measuring 10 to 12 inches across. The flower stalks grow 15 to 18 inches high, and the flowers open in succession for several weeks; the color is bright rich blue, very showy and attractive. **Price, 25c. each, \$2.50 per doz., postpaid. Ready in November.**

Choice May Flowering Garden Tulips



These splendid **May Flowering Tulips** are usually in full bloom about Decoration Day. They differ from the early single tulips by their taller growth, later bloom and larger flowers, and if planted in connection with them a grand display of bloom can be had until June. The flowers are very large and elegantly formed, and their colors and markings wonderfully beautiful, and like other bulbous flowers they show to best effect when planted in beds or masses.

BOUTON d'OR—Deep rich golden yellow, handsome globe-shaped flowers, exceedingly beautiful. 4 cts. each, 35 cts. per doz., postpaid.

BRIDESMAID—Bright rich scarlet, striped pure white. Very distinct and beautiful. 4 cts. each, 40 cts. per doz.

GOLDEN EAGLE—Extra large and handsome, rich orange yellow flowers, each petal edged with bright crimson, very showy. 3 cts. each, 30 cts. per doz.

MAY BLOSSOM—Pure white, elegantly striped and variegated with red, finely formed, and a most charming variety. 4 cts. each, 45 cts. per doz.

ELEGANS—Very grand and showy, rich crimson scarlet, large handsome flowers. 4c. each, 40c. per doz., postpaid.

WHITE SWAN—A splendid pure white tulip, extra large flowers, with broad silky white petals. Very handsome. 3 cts. each, 30 cts. per doz.

THE SET OF SIX CHARMING GARDEN TULIPS ONLY 20 CTS., POSTPAID

SWEET-SCENTED TULIPS FOR BEDDING AND POT CULTURE

We recommend our friends to try these lovely **New Sweet-scented Tulips**—they are extra fine for house and conservatory culture, and also for bedding out—they grow easily and never fail to bloom, and the flowers are very rich and handsome and deliciously fragrant.

GOLDEN PEARL. (Newton)—An exquisite new variety; the sweetest of all sweet-scented tulips; has the delicious tea fragrance of the American Beauty Rose, lovely golden yellow blossoms, blooms very early, and will perfume the whole neighborhood; the finest sweet-scented tulip yet introduced. 5 cts. each, 3 for 12 cts., 40 cts. per doz., postpaid.

PRINCE OF AUSTRIA—Grand flowers of largest size, thick glossy petals, rich orange scarlet, delightfully sweet-scented. 5 cts. each, 3 for 12 cts., 40 cts. per doz., postpaid.

FLORENTINE ODORATA—The **Tea Rose Tulip**—Rich yellow flowers—beautiful buds, very sweet. 5 cts. each, 3 for 12 cts., 40 cts. per doz., postpaid.

MACROSPILA—Brilliant citron red, with dark clouded centre, finely bordered with bright golden yellow, very large and handsome. 5 cts. each, 3 for 12 cts., 40 cts. per doz., postpaid.

THE SET OF 4 VARIETIES FOR 15 CTS.

THREE LOVELY PICOTEE TULIPS

PICOTEE WHITE—Large ribbon-like petals, pure waxy white, with feathered crimson border. 5 cts. each, 40 cts. per doz., postpaid.

PICOTEE YELLOW—Deep golden yellow, exquisitely feathered with rich crimson. 5 cts. each, 40 cts. per doz., postpaid.

PICOTEE RED—Extra large handsome flowers, rich scarlet crimson elegantly shaded. 5 cts. each, 40 cts. per doz., postpaid.

THE 3 PICOTEE TULIPS FOR 12 CTS.

VARIEGATED FOLIAGE TULIPS

LAC VAN RHIJN—Dark violet red, bordered with pure white. Very rich and handsome. 4 cts. each, 3 for 10 cts., 35 cts. per doz., postpaid.

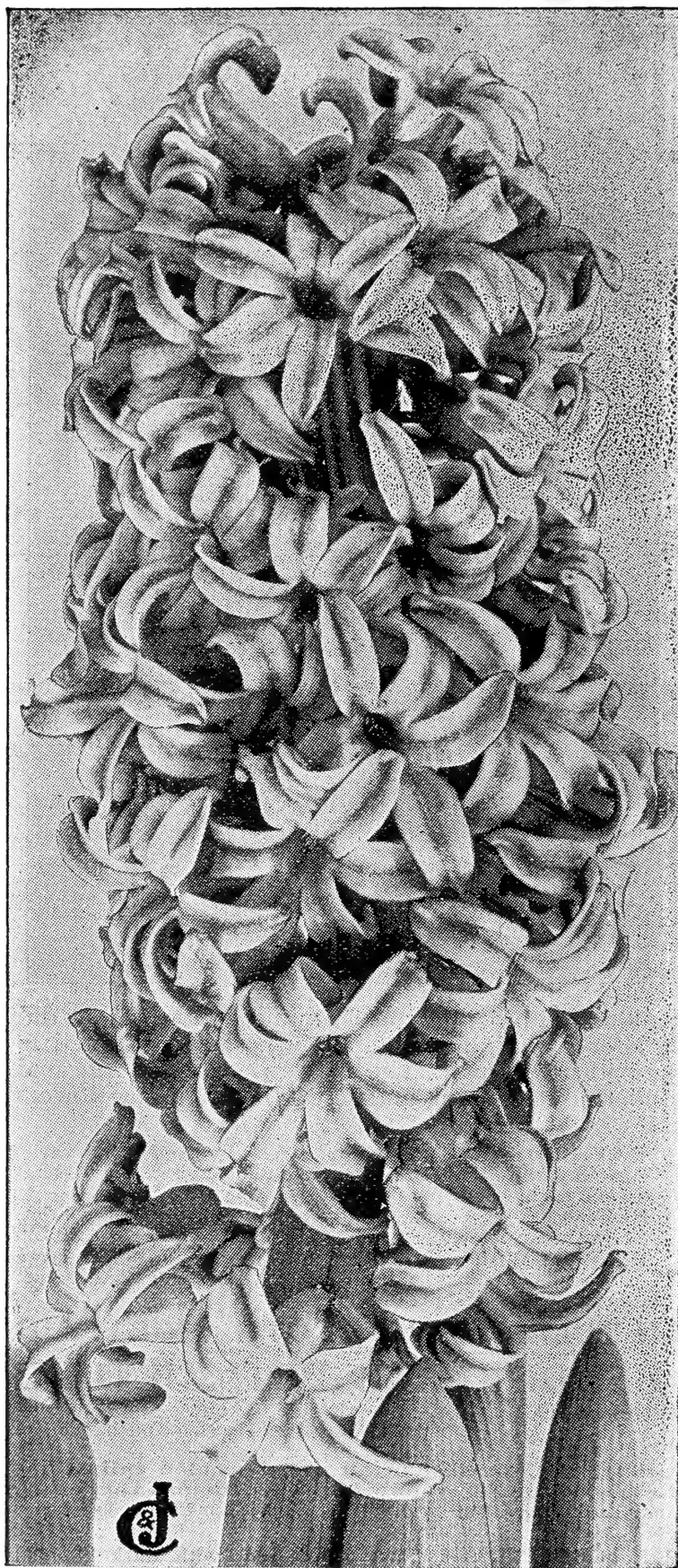
PURPLE CROWN—Splendid large flowers, dark purplish red. Very bold and striking. 4 cts. each, 3 for 10 cts., 35 cts. per doz., postpaid.

SILVER STANDARD—A grand variety; pure white, crossed with rich crimson. Handsome foliage. 4 cts. each, 3 for 10 cts., 35 cts. per doz., postpaid.

The set of 3 Variegated Foliage Tulips only 10c., or 4 of each, 12 in all, postpaid, for only 35c

THE BEST SINGLE NAMED HYACINTHS

(See Cultural Directions, page 6)



SINGLE NAMED HYACINTHS

Obelisk—A rare and exceedingly beautiful variety; large full trusses, pure deep yellow; one of the very finest of this color. 12 cts.

HYACINTHS are the most useful and popular of all hardy bulbs. They come in many lovely shades, and are exceedingly beautiful and fragrant. When planted in open ground in the Fall they bloom splendidly very early in Spring, and for house culture in pots they surpass all other flowers in exquisite beauty and delightful fragrance. They are among the easiest of all flowers to grow, and are absolutely sure to bloom.

SPECIAL NOTICE.—Our Hyacinth Bulbs are all an extra fine grade, specially selected for us by the Holland Growers, and guaranteed to give the best results. These Bulbs cost a little more than the common grades usually sold, but are well worth the difference, and we make prices as low as they can possibly be afforded, including postage, which is paid by us.

SINGLE NAMED HYACINTHS

Price, 12 cts. each, \$1.25 per doz., postpaid.

Baroness Von Thuyll—Lovely snow-white flowers in large trusses, a magnificent variety, and one of the best for bedding and pot culture. 12 cts.

Jenny Lind—Fine bright crimson. Very early. Large, full spikes. A grand variety, and exceedingly handsome. 12 cts.

King of the Blues—Beautiful large trusses of dark blue flowers, very handsome. 12 cts.

La Peyrouse—Fine violet blue, large bells in grand trusses, splendid for all purposes. 12 cts.

La Grandesse—One of the most beautiful of all the single pure white kinds; extra large and fine every way. 12 cts.

Ida—Pure bright yellow, large fine trusses, the best early flowering, pure yellow. 12 cts.

Grandeur a' Merville—Beautiful blush white, extra fine large trusses, one of the very finest of this lovely color. 12 cts.

Charles Dickens—Bright blue shading to lovely porcelain, excellent large, compact trusses; unexcelled for all purposes. 12 cts.

Gigantea—Deep rich rose, fine large bells in extra large regular trusses; one of the best, both for pots and the garden. 12 cts.

Gertrude—Bright rosy pink, large erect spikes, of beautifully formed flowers, very handsome, and fine for pots and bedding. 12 cts.

Marie—Bright rich royal purple, with light blue stripes, extra fine compact trusses; splendid for pots and bedding. 12 cts.

Moreno—Beautiful clear rose pink, large waxy flowers, extra fine trusses; early bloomer, and one of the best kinds. 12 cts.

Roi des Belges—Fine massive spikes crowded full of deep glowing, carmine flowers, very bright and beautiful. 12 cts.

Queen Victoria—Pure Waxy white, extra large bells in immense trusses. A magnificent hyacinth. 12 cts.

SPECIAL OFFER The Complete Set of Fifteen Best Single Hyacinths for \$1.35, postpaid.

NOTE—WE OFFER THREE DIFFERENT GRADES OF HYACINTHS, each one the best of its class, DELIVERED FREE AT THESE PRICES:—

	Each	Per doz.	Per 100
Extra Choice Named Hyacinths, finest grade. (See page 10.)	16 cts.	\$1.60	\$12.00
First Size Named Hyacinths—Best for general planting. (See pages 8 and 9.)	12 cts.	1.25	9.00
Fine Mixed Hyacinths—In separate colors, not named. (See pages 9 and 10.)	7 cts.	.70	5.00

REMEMBER! These prices include cost of postage or express, which we pay.

BEST DOUBLE-NAMED HYACINTHS

The Prices Given Are
For Large, Well-Ma-
tured Bulbs, Postpaid

OUR DOUBLE-NAMED HYACINTH BULBS are an extra fine grade, specially selected for us by the Holland Growers. Price, 12 cts. each, \$1.25 per doz., postpaid.

- ANNA MARIA**—Double blush white, with rich purple centre, extra large trusses, a splendid sort. 12 cts.
- BLOCKSBERG**—Lovely porcelain blue, fine double flowers in large trusses; very beautiful. 12 cts., postpaid.
- BOUQUET ROYAL**—A grand variety, splendid large flowers in fine trusses; color pure white, with rich yellow centre; very large and perfectly double, exceedingly beautiful. 12 cts. each, postpaid.
- CHARLES DICKENS**—Dark violet blue, large full spikes of exquisite flowers; very double and sweet. 12 cts. each, postpaid.
- GARRICK**—A truly magnificent sort, lovely azure blue flowers in large compact spikes; one of the very best. 12 cts. each, postpaid.
- GROOTVORST**—Extra large handsome spikes of fine rosy pink flowers; very double; a superb kind. 12 cts. each, postpaid.
- LA TOUR D'AUVERGNE**—Double pure white, very rich and waxy, blooms early, is one of the best kinds for all purposes. 12 cts. each.
- LA VIRGINITE**—Fine medium sized truss, large double flowers; rich creamy white, delicately shaded to blush. 12 cts. each, postpaid.
- LORD WELLINGTON**—Clear bright carmine, extra large and handsome in every way; one of the very best. 12 cts. each, postpaid.
- PRINCESS ROYAL**—Beautiful deep red, with fine dark centre, double and fine. 12 cts.
- PRINCE OF WATERLOO**—Extra fine double white flowers in large full spikes; deliciously sweet. 12 cts. each, postpaid.
- SUPREME YELLOW**—Pure rich golden yellow, very double and fine; the best double yellow. 12 cts. each, postpaid.
- WILLIAM III**—Double yellow with apricot pink centre, large handsome trusses, very beautiful. 12 cts.

Special Offer The Complete Set of 13 Best
Double Hyacinths for \$1.30,

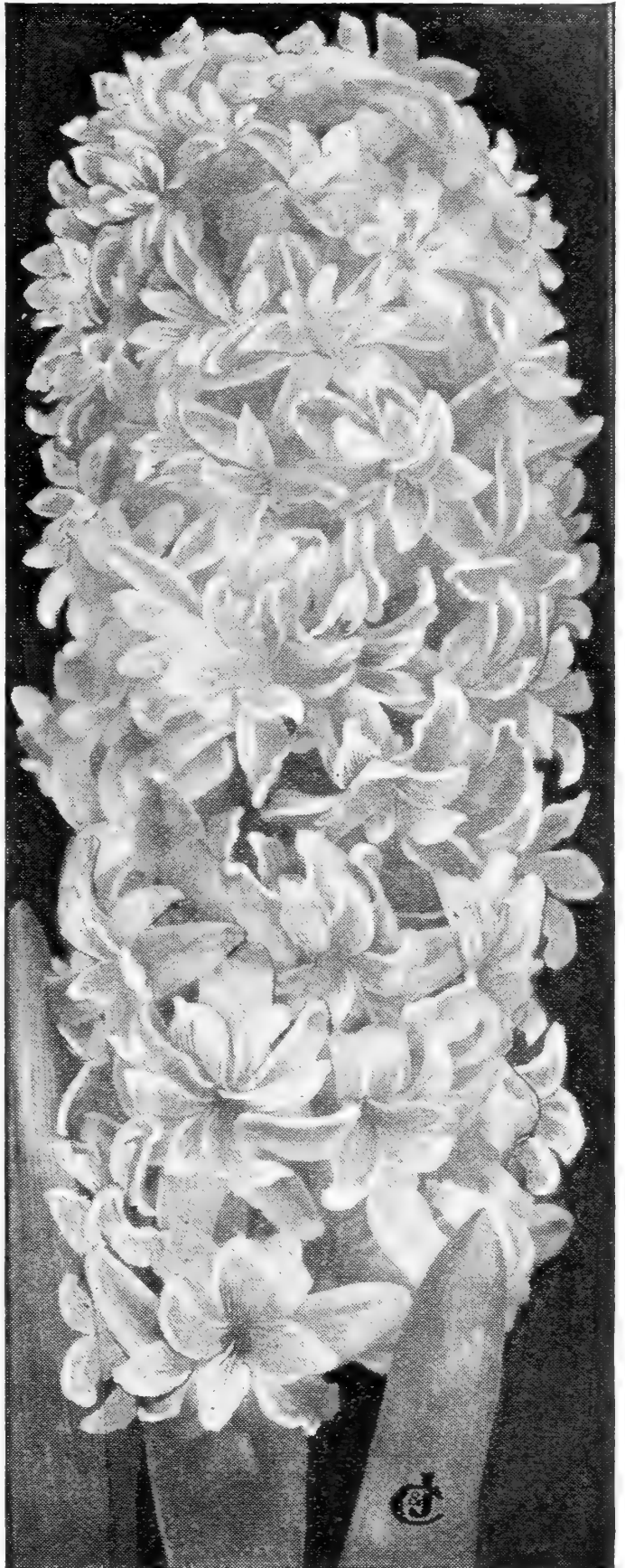
POSTPAID

Fine Double HYACINTHS

IN SEPARATE COLORS For Winter Flowering
and Bedding Out.

- DOUBLE DARK RED**—Rich crimson flowers, large full spikes, very handsome. Price, 7 cts. each, 70 cts. per doz., \$5.00 per 100, postpaid.
- DOUBLE ROSE AND PINK**—These are among the prettiest of all, good bloomers and very sweet. Price, 7 cts. each, 70 cts. per doz., \$5.00 per 100, postpaid.
- DOUBLE DARK BLUE**—Dark rich indigo blue, some almost black, always greatly admired, and contrast finely with other colors. Price, 7 cts. each, 70 cts. per doz., \$5.00 per 100, postpaid.
- DOUBLE LIGHT BLUE**—Lovely violet or porcelain blue, very beautiful and desirable. Price, 7 cts. each, 70 cts. per doz., \$5.00 per 100, postpaid.
- DOUBLE PURE WHITE**—Lovely spikes of fine pure white flowers, very sweet. Price, 7 cts. each, 70 cts. per doz., \$5.00 per 100, postpaid.
- DOUBLE BLUSH WHITE**—Lovely creamy white, delicately tinged, with soft rosy blush, exceedingly beautiful. Price, 7 cts. each, 70 cts. per doz., \$5.00 per 100, postpaid.
- DOUBLE YELLOW**—This variety is scarce, but always greatly admired, very sweet and lovely. Price, 7 cts. each, 70 cts. per doz., \$5.00 per 100, postpaid.
- DOUBLE HYACINTHS**—All colors mixed. An excellent mixture of the most desirable colors and shades, fine for bedding out. Price, 6 cts. each, 55 cts. per doz., \$4.35 per 100, postpaid.

Hyacinths in open ground should be planted 6 inches apart. A bed 6x3 feet will hold 75 Hyacinths nicely. Price, \$3.75, delivered free. A circular bed, 5 feet in diameter, holds 75 Hyacinths. Price, only \$3.75, delivered free.



DOUBLE-NAMED HYACINTHS

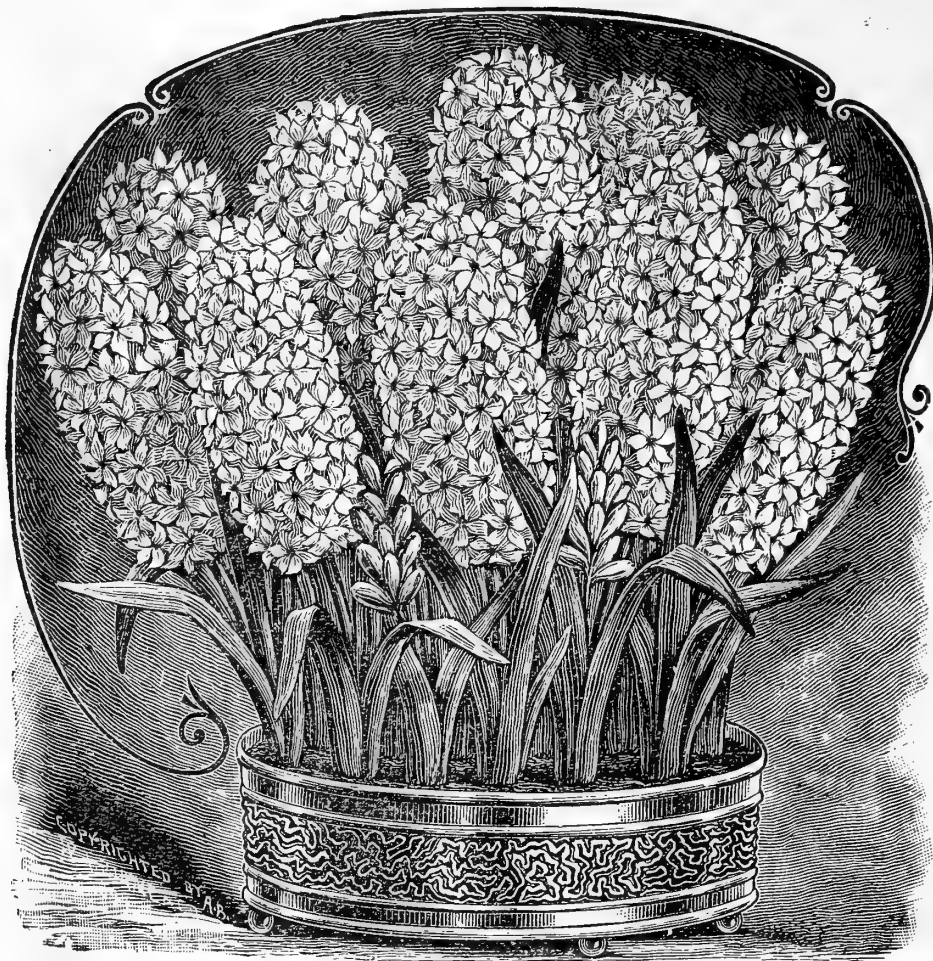
Note. Four separate colors, one ring each, makes a nice combination for a circular bed. If the bed is 5 feet in diameter, the centre will require 3 bulbs, the first ring 9, the second ring 15, the third ring 21, the fourth or outside ring 27—75 in all. Price, \$3.75, postpaid. Please select colors desired, or if preferred we will select for you and guarantee to please.

EXTRA
CHOICE

Named Hyacinths

FINEST
GRADE

Specially selected for House Culture and Bedding



10 EXTRA CHOICE NAMED HYACINTHS FOR WINTER BLOOM

SPECIAL OFFER—SET OF 5 EXTRA CHOICE DOUBLE NAMED HYACINTHS FOR 70 cts., OR BOTH SETS, 5 SINGLE AND 5 DOUBLE (10 IN ALL), ONLY \$1.35, POSTPAID.

SINGLE VARIETIES

MORENO—Splendid rose pink flowers in large handsome trusses; very grand and beautiful. 16 cts. each postpaid.

GEN'L PELISSIER—Bright, rich glowing crimson; very beautiful and a great favorite whenever seen. 16 cts. each, postpaid.

MAD, VAN der HOOP—Beautiful, large waxy bells in splendid trusses; one of the finest of all the single pure white kinds, not surpassed by any. 16 cents each, postpaid.

GRAND MAITRE—Splendid large spikes, pure ultramarine blue; elegantly shaded violet, very striking and handsome. 16 cents each, postpaid.

BIRD OF PARADISE—Beautiful, rich yellow, large compact trusses; extra fine in every way. 16 cts. each, postpaid.

Set of 5 Extra Choice Single Named Hyacinths for 70 cts., postpaid.

DOUBLE VARIETIES

CZAR NICHOLAS—An exceedingly lovely kind; large bold trusses, delicate light pink shading to rosy blush; very sweet and handsome. 16 cts. each.

PRINCE OF ORANGE—Extra large and handsome, semi-double flowers; clear fresh pink, elegantly striped with rich carmine. 16 cts. each, postpaid.

FLORENCE NIGHTINGALE—Pure waxy white, large double bells; exceedingly beautiful. 16 cts. each, postpaid.

GARRICK—Splendid bright blue with rich dark centre, extra large truss; very early bloomer. 16 cts. each, postpaid.

BOUQUET D'ORANGE—Exquisite rosy orange, elegantly shaded; fine semi-double flowers, rare and handsome. 16 cts. each, postpaid.

Fine Selected Hyacinths in SEPARATE COLORS

Our Fine Selected Hyacinths in Separate Colors are good size, well matured Bulbs, sold at low prices and specially recommended for BEDDING and also for WINTER BLOOMING in the greenhouse and window garden, when the higher priced kinds are not desired. They give excellent satisfaction, and can be planted in any combinations of colors preferred, as shown in the illustration (see page 11). We offer single varieties below, and the double varieties on page 9.

Single Hyacinths in Separate Colors

PURE WHITE—Lovely large spikes of fine pure white flowers, very sweet. Price 7 cts. each, 70 cts. per doz., \$5.00 per 100, postpaid.

BLUSH WHITE—Lovely creamy white, delicately tinged with soft rosy blush, exceedingly beautiful. Price 7 cts. each, 70 cts. per dozen, \$5.00 per 100, postpaid.

DARK RED—Rich crimson flowers, large full spikes, very handsome. Price, 7 cts. each, 70 cts. per doz., \$5.00 per 100, postpaid.

ROSE AND PINK—These are among the prettiest of all, good bloomers and very sweet. Price 7 cts. each, 70 cts. per doz., \$5.00 per 100, postpaid.

DARK BLUE—Dark, rich indigo blue, some almost black. Always greatly admired, and contrasts finely with other colors. Price 7 cts. each, 70 cts. per doz., \$5.00 per 100, postpaid.

LIGHT BLUE—Lovely violet or porcelain blue, very beautiful and desirable. Price 7 cts. each, 70 cts. per doz., \$5.00 per 100, postpaid.

YELLOW—This is always scarce, but very beautiful and attractive. Price 7 cts. each, 70 cts. per doz., \$5.00 per 100, postpaid.

SINGLE HYACINTHS—ALL COLORS MIXED. A fine mixture of different colors and shades; good, sound, blooming bulbs, fine for bedding out. Price 6 cts. each, 55 cts. per doz., \$4.35 per 100, postpaid.

NOTICE—All our Bulb Prices include Free Delivery in the United States.

New MINIATURE or POMPON Hyacinths

These charming little Hyacinths are greatly admired, both for winter bloom indoors and for bedding out; they resemble the Dutch Hyacinths, but are smaller in size, and besides costing less can be planted close together in pots, boxes or beds. The bulbs often produce three or four flower spikes each, and can be depended on to make a lovely display very quickly; they are deliciously sweet and sure to please. Do not fail to give them a trial. We offer them in five separate colors.

Pure White, Rose Pink, Red and Crimson. Dark Blue and Light Blue. Price, 4 cts. each, 3 for 10 cts., 40 cts. per doz., \$3.00 per 100, postpaid.

Collection of **HYACINTHS** For Beds



This Bed is 6 feet across, contains 108 Hyacinths in 5 colors, all for \$5.00, postp'd.
(See other prices below)

HYACINTHS must be planted in the Fall, and are esteemed among the most beautiful of all Spring flowering bulbs. The flower spikes are so regular in form, and the colors so bright and distinct, that it is easy to make any design you wish flash forth in glowing colors at the advent of Spring. **Our Selected Hyacinths in separate colors** are largely used for this purpose, as they are sure to bloom satisfactorily, and the price is as low as can possibly be afforded.

Hyacinths should be planted 6 inches apart each way and 3 to 4 inches deep, and for circular beds should be arranged as follows:

	In the center, plant 3 Hyacinths (color, purple)	
For 1st circle, 18 inches in diam.,	9	"
" 2d " 30 " " "	15	" (" bluish)
" 3d " 42 " " "	21	" (" blue)
" 4th " 54 " " "	27	" (" white)
" 5th " 66 " " "	33	" (" deep red)

Thus a bed, 6 feet in diameter, requires 108 Hyacinths. You may choose any colors you wish.

Full cultural directions will be sent with each order.

The foregoing schedule may be used for planting Hyacinths in circular beds of any size and colors. Please order as follows; we deliver free at these prices:

Bed No. 1-6 feet in diam.,	108 Hyacinths (5 colors),	\$5.00
" 2-5 " " "	75 " (4 "),	3.75
" 3-4 " " "	48 " (3 "),	2.75
" 4-3 " " "	27 " (2 "),	1.75

Plant any one of these four beds before the ground freezes this Fall and you may count on a magnificent display of blossoms on your lawn in the Spring before the grass grows green.

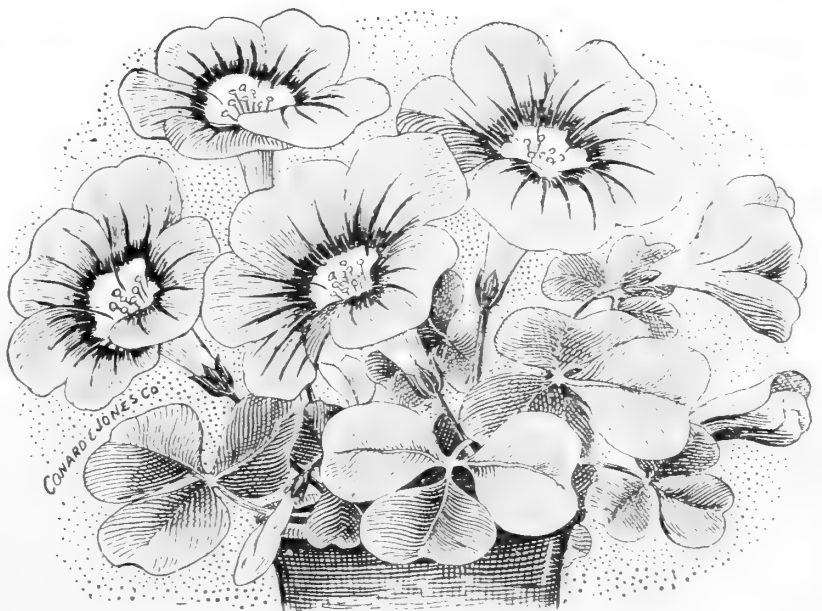
New **WINTER-BLOOMING Oxalis**—Grand Duchess

NEW GRAND DUCHESS OXALIS—An exceedingly beautiful New Winter-Blooming Oxalis, one of the finest flowers for pot culture ever introduced. Makes nice bushy plants with deep red stems and pretty bright green foliage. Blooms all the time from October to June. Flowers over 3 inches across. It is one of the flowers you cannot afford to miss; do not fail to try it now; we offer three separate colors: **Pink, Pure White and Tricolor (Lavender and Rose.)** Price, extra selected mammoth bulbs, 4 cts. each; 40 cts. per doz.; \$3.00 per 100, postpaid.

OXALIS BERMUDA BUTTERCUP—Bears lovely bright golden yellow flowers all Winter and Spring; not quite so large as Grand Duchess, but more of them. Has hundreds of buds and flowers on at one time; and is one of the finest Winter-blooming bulbs ever introduced for the window garden and living room. Price, extra selected mammoth bulbs, 4 cts. each; 40 cts. per doz.; \$3.00 per 100, postpaid.

GUERNSEY LILY (*Nerine Sarniensis*)

A beautiful variety of *Amaryllis*, flowering freely through the Winter months. Large lily-like flowers, brilliant crimson and looking as if sprinkled with gold dust. A good bloomer; very handsome and desirable. 20 cts. each; \$2.00 per dozen, postpaid.



NEW OXALIS—GRAND DUCHESS

C. & J. Grand Japanese Fern Balls



JAPANESE FERN BALL

JAPANESE FERN BALLS—5 inches and up, 1 year, 40 cts., 2 for 75 cts., postpaid.

JAPANESE FERN BALLS—4 inches and up, made especially for us, 1 year, 25 cts., \$2.25 per doz. postpaid.

BY EXPRESS, at purchaser's expense, 7 to 9 in., 50 cts. each, \$5.00 per doz.; 5 in. size, 30 cts. each, \$3.00 per doz.; 4 in. size, 20 cts. each, \$1.85 per doz.

These pretty Japanese Fern Balls have proved very attractive to flower lovers here, and there is always a large demand for them for house and conservatory culture. They are made in Japan from a special variety of Mountain Fern growing in that country, and though they are brown and dry when received, they require only heat and moisture to start in to lively growth. Set in a saucer or plate, partly filled with water and kept in a warm room they will soon be covered with a handsome growth of lovely emerald green fronds as shown in the illustration. They require no potting or soil, only keep warm and moist and they will do the rest. We offer three different sizes, all one-year old. No two-year balls to be had this year.

JAPANESE FERN BALLS—7 to 9 inches in diameter, one year, 65 cts., 2 for \$1.00, postpaid.

Early Flowering Roman Hyacinths

Roman Hyacinths—Are among the handsomest and most desirable of all Bulbs for early Winter flowering in the **House or Conservatory**. They begin to bloom very quickly and throw up a great mass of sweet and lovely flowers almost before other bulbs get started. **They are easily grown in pots or boxes; require no special treatment** and are absolutely sure to bloom. **Though recommended** for House Culture they are quite hardy and when **planted** in open ground will make an elegant display of lovely flowers very early in **Spring**.

Single Pure White—Early and profuse bloomer, very beautiful and sweet. 5 cts. each, 12 for 50 cts., postpaid.

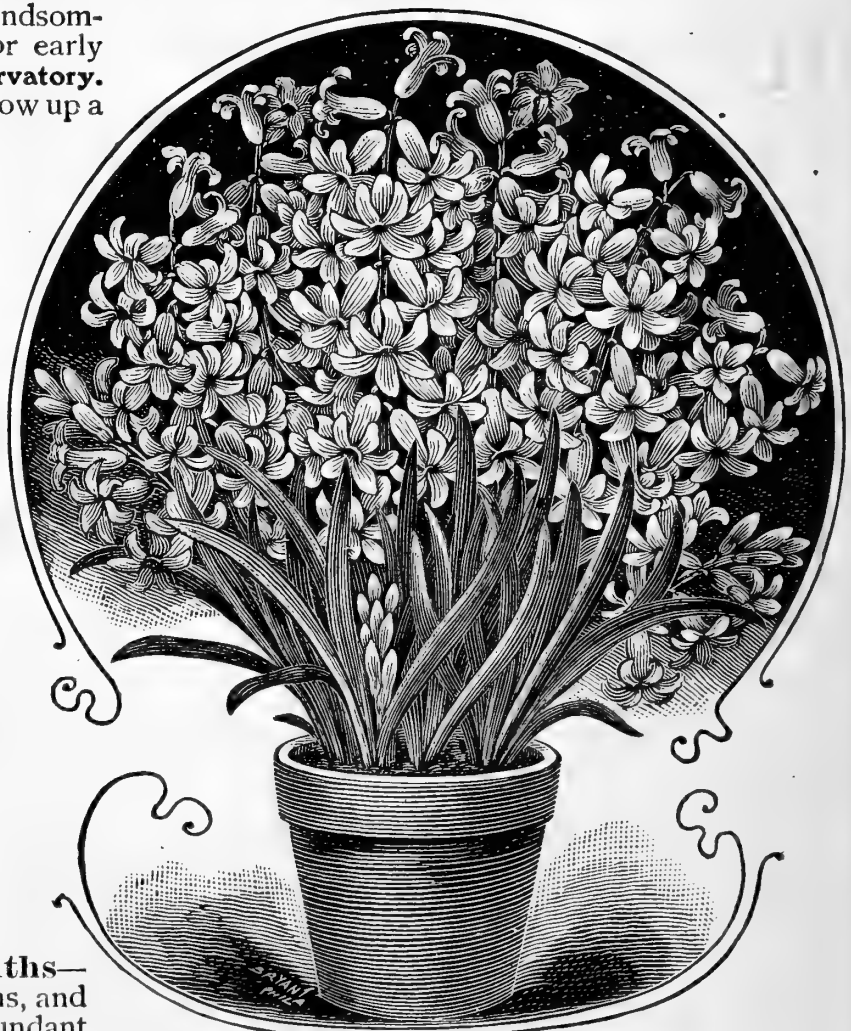
Single Blush White—Rich, creamy white; elegantly tinted with rosy blush; very beautiful, immense bloomer. 5 cts. each, 12 for 50 cts., postpaid.

Single Light Blue—A most charming color; early and profuse bloomer; very sweet. 5 cts. each, 12 for 50 cts., postpaid.

Double Pink—Splendid new variety; beautiful large flowers, in handsome well-filled spikes. 5 cts. each, 12 for 50 cts., postpaid.

Single Canary Yellow—New and very beautiful; stock limited. 10 cts. each, 3 for 25 cts.; \$1.00 per doz., postpaid.

White Italian or Parisian Hyacinths—These bloom a little later than the Romans, and the flowers are larger, they are most abundant bloomers and delightfully sweet, highly valued for forcing for cut flowers and for bedding out. 5 cts. each, 50 cts. per doz., postpaid.

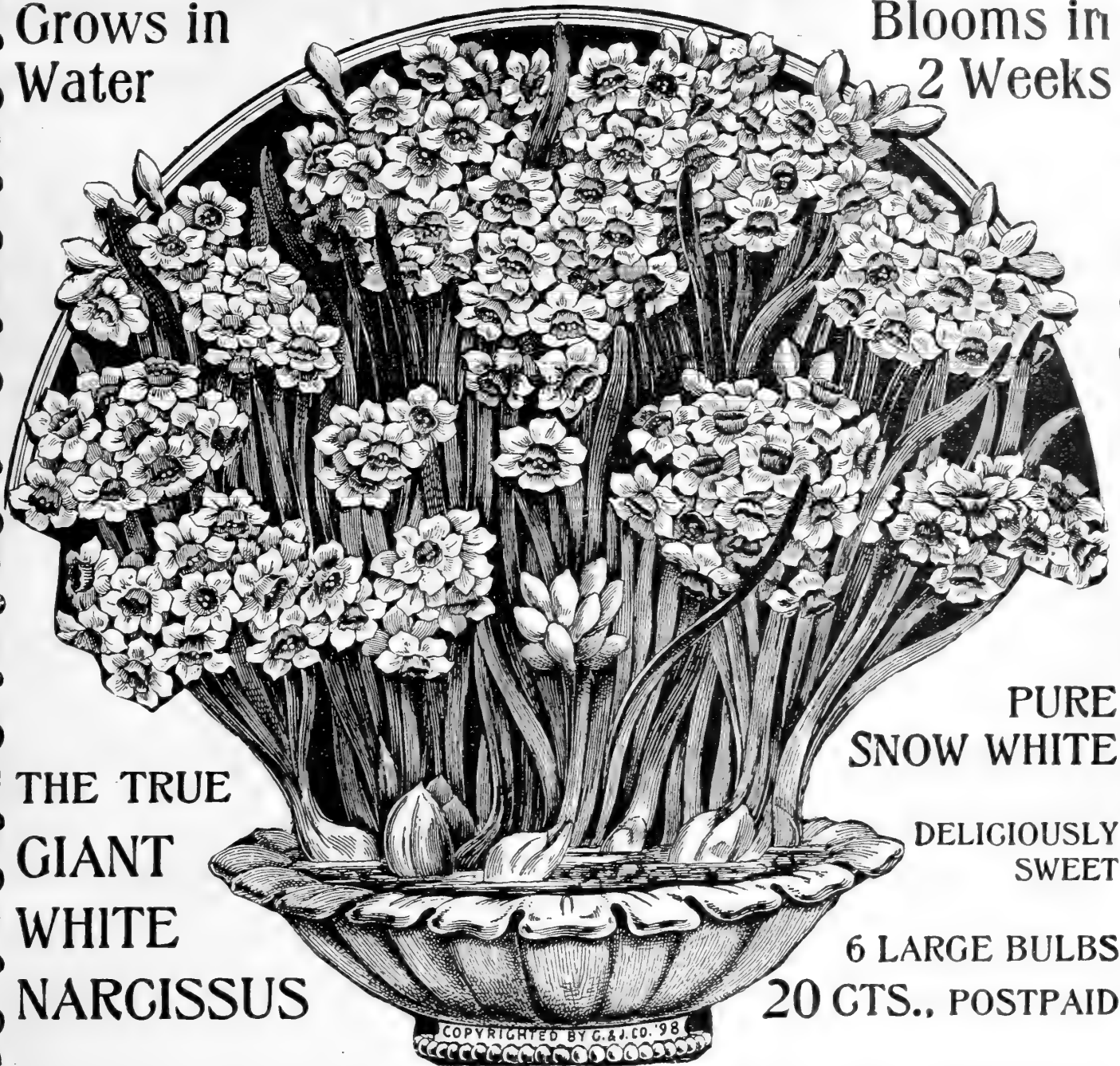


EARLY FLOWERING ROMAN HYACINTHS.

SPECIAL OFFER Complete set of 5 named Roman Hyacinths, and one White Italian, offered above—six in all—only 30 cts., postpaid.

Grows in
Water

Blooms in
2 Weeks



THE TRUE
GIANT
WHITE
NARCISSUS

PURE
SNOW WHITE

DELICIOUSLY
SWEET

6 LARGE BULBS
20 CTS., POSTPAID

GIANT WHITE NARCISSUS

Will grow in water and produce great masses of snow-white, fragrant flowers, two weeks after planting. Splendid for house and church decorations.

We recommend all our friends to plant these lovely winter-blooming Narcissus. No other bulbs we know of will produce such an abundance of pure white sweet-scented flowers with so little trouble. A dozen bulbs, set in a bowl of water and held in place by pebbles, will make a charming pot of flowers for house or church decoration, and can be had at any time desired. The bulbs will keep in any warm, dry place till wanted, and by planting at different times, you can have a succession of lovely flowers all Winter. **Price, Large Blooming Bulbs, 4 cts. each, 6 for 20 cts., 35 cts. per doz., \$1.85 per 100, postpaid.**

Double Roman Narcissus

This is one of our very finest Winter-flowering varieties. The flowers are perfectly double and pure snow-white, with small centre petals of rich golden yellow. It blooms very quickly either in water or soil, and is delightfully fragrant. Its quick bloom and wonderful profusion of flowers is truly surprising, vast quantities are grown every season for floral decorations. Strong blooming Bulbs, 3 cts. each, 6 for 15 cts., 30 cts. per doz., \$1.75 per 100, postpaid.

Narcissus Ornatus (Improved Poet's Narcissus)

One of the finest Narcissus for Winter bloom; pure waxy-white flowers with crimson bordered cups; blooms very quickly either in water or soil. 3 cts. each, 25 cts. per doz.

Narcissus Princeps—Very early and one of the most popular Winter-flowering varieties; soft sulphur yellow, with immense deep yellow trumpets. 4 cts. each, 40 cts. per doz.

NO FLOWERS are more warmly welcomed in Spring than the Narcissus. They bloom profusely early in the season and are very beautiful and delightfully fragrant.

SPECIAL OFFER Two each of the Four Varieties above, Eight in all, for 25 cts. Four each, Sixteen in all, for 50 cts., postpaid.

SINGLE EARLY TULIPS

BEST NAMED
...VARIETIES



A BED OF SINGLE EARLY TULIPS—NAMED VARIETIES

TULIPS are well known as the most showy and handsome of all Spring flowering bulbs. No other flowers can equal them in dazzling beauty; they are entirely hardy and do best when planted in open ground, though some sorts, particularly the **Duc Van Thol Varieties**, will bloom quickly and satisfactorily in pots or boxes in the house or conservatory and will make a grand show of gorgeous flowers in less time than almost anything else. They do well everywhere, and whether planted in rich ground or poor, sunshine or shade, can always be depended on to throw up their splendid flowers early in the Spring. Our list includes the very best varieties for home planting.

L'IMMACULEE—Large handsome flowers white with yellow base. 3 cts. each, per doz., 30 cts., \$1.75 per 100, postpaid.

KAIZER KROON—Red, Gold and Yellow. Splendid, 3 cts. each, per doz., 30 cts., \$2.00 per 100, postpaid.

POTTEBAKER—Pure Yellow. Extra large and fine. 3 cts. each, per doz., 35 cts., \$2.50 per 100, postpaid.

POTTEBAKER—Scarlet Crimson. Extra large and fine. 4 cts. each, per doz., 35 cts., \$2.25 per 100, postpaid.

POTTEBAKER—White. Extra large and fine. 3 cts. each, per doz., 30 cts., \$2.00 per 100, postpaid.

PROSERPINE—Rich satiny rose. Extra large and fine. 4 cts. each, per doz., 40 cts., \$3.00 per 100 postpaid.

YELLOW PRINCE—Splendid rich yellow, extra large and fine. 3 cts. each, per doz., 30 cts., \$2.00 per 100 postpaid.

VERMILION—Brilliant Scarlet. Extra large and fine. 4 cts. each, per doz., 40 cts., \$3.00 per 100, postpaid.

BELLE ALLIANCE—Very beautiful rich scarlet. 4 cts. each, per doz., 35 cts., \$2.50 per 100 postpaid.

QUEEN VICTORIA—Cream White, beautifully tinged with rosy blush. 3 cts. each, per doz., 25 cts., \$1.75 per 100, postpaid.

CHRYSOLORA—Beautiful pure yellow, extra fine. 3 cts. each, per doz., 35 cts., \$2.00 per 100, postpaid.

COTTAGE MAID—Splendid carmine pink, centre of petals feathered white, with yellow base. 3 cts. each, per doz., 30 cts., \$2.00 per 100, postpaid.

REMBRANDT—Rich glowing crimson, splendid large flowers, very early. 4 cts. each, per doz., 35 cts., \$2.25 per 100, postpaid.

PRINCESS MARIANNE—Fine peach blossom pink, tinted yellow. 3 cts. each, per doz., 30 cts., \$2.00 per 100, postpaid.

JOOST VAN VONDEL—Bright charming red, feathered with pure white. 3 cts. each, 30 cts. per doz., \$2.00 per 100, postpaid.

Set of 15 Tulips named above for 40c.

3 of each, 45 in all, \$1.00, postpaid

C. & J. Superfine Single Mixed Tulips FOR BEDDING

OUR Superfine Single Mixed Tulips for Bedding, are a special mixture made from choice named kinds of brightest colors for best effect. They grow same height and bloom at same time, very early in the Spring and make the most brilliant colored beds it is possible to have; their dazzling beauty is truly astonishing. Price, 4 for 10 cts., 25 cts. per doz., \$1.35 per 100, delivered free. Or \$1.00 per 100 by express, purchaser paying charges.

NOTE—Tulips should be planted 4 to 5 inches apart and same depth. A circular bed 5 feet across or 15 feet in circumference holds 200 Tulips. Price, \$2.70, delivered free in the U. S., or \$2.00 by express at purchaser's expense.

THE BEST DOUBLE EARLY TULIPS NAMED VARIETIES

SALVATOR ROSA—Magnificent double, pink flamed, white. 5 cts. each, per doz., 50 cts., \$4.00 per 100, postpaid.
SCARLET KING—Grand rich glowing crimson. 3 cts. each, 3 for 8 cts., per doz., 30 cts., \$2.25 per 100, postpaid.
REX RUBRORUM—Bright crimson scarlet. 4 cts. each, per doz., 35 cts., \$2.25 per 100, postpaid.
TOURNESOL YELLOW—Bright golden yellow, shaded orange. 5 cts. each; per doz., 50 cts., \$4.00 per 100, postpaid.
TOURNESOL CRIMSON—Bordered yellow. 4 cts. each, per doz., 35 cts., \$2.25 per 100, postpaid.

DUKE OF YORK—Bright rose, bordered white. 3 cts. each, per doz., 25 cts., \$1.75 per 100, postpaid.
GLORIA SOLIS—Deep crimson, with broad gold margin. 3 cts. each, per doz., 30 cts., \$2.25 per 100, postpaid.
LA CANDEUR—Pure white, extra large and full. 3 cts. each, per doz., 25 cts., \$1.75 per 100, postpaid.
MURILLO—Blush white, shaded rose. 4 cts. each, per doz., 40 cts., \$3.50 per 100, postpaid.
DUC VAN THOL—Double red and yellow. 3 cts. each, per doz., 25 cts., 1.50 per 100, postpaid.

Set of 10 Double Early Tulips, postpaid for 30c., 3 of each, 30 in all, for 85c.

DOUBLE LATE-FLOWERING TULIPS

These Grand Varieties Bloom a little later than the single early kinds

ADMIRAL KINGSBERGEN—Red and yellow, very handsome. 3 cts. each, per doz., 30 cts., \$2.00 per 100, postpaid.
BELLE ALLIANCE—Blue and white extra fine. 4 cts. each, per doz., 30 cts., \$2.25 per 100, postpaid.
BLUE FLAG—Rich purplish blue, quite distinct. 3 cts. each, per doz., 25 cts., \$2.00 per 100, postpaid.
VIOLET PICOTEE—Violet, bordered and tinted with white. 3 cts. each, per doz., 25 cts., \$2.25 per 100, postpaid.
MARRIAGE de ma FILLE—Pure white, feathered with rich crimson, 4 cts. each, per doz., 30 cts., \$3.00 per 100.

COUNT OF LEICESTER—Rich crimson and white. 3 cts. each, per doz., 25 cts., \$1.75 per 100, postpaid.
ROSE CROWN—Brilliant rose, very large, full and double. 3 cts. each, per doz., 25 cts., \$2.00 per 100, postpaid.
PEONY GOLD—Rich crimson and golden yellow, magnificent double. 3c. each, per doz., 25c., \$2.00 per 100, postpaid.
YELLOW ROSE—Pure yellow, the true yellow rose. 4 cts. each, 2 for 10 cts., per doz., 25 cts., \$1.75 per 100, postpaid.
PEONY RED—Resembles a grand blood-red rose, extra fine. 3 cts. each, per doz., 25 cts., \$1.75 per 100, postpaid.

Set of 10 Double Late Tulips, 25c., postpaid, or 2 of each, 20 in all, for 45c.

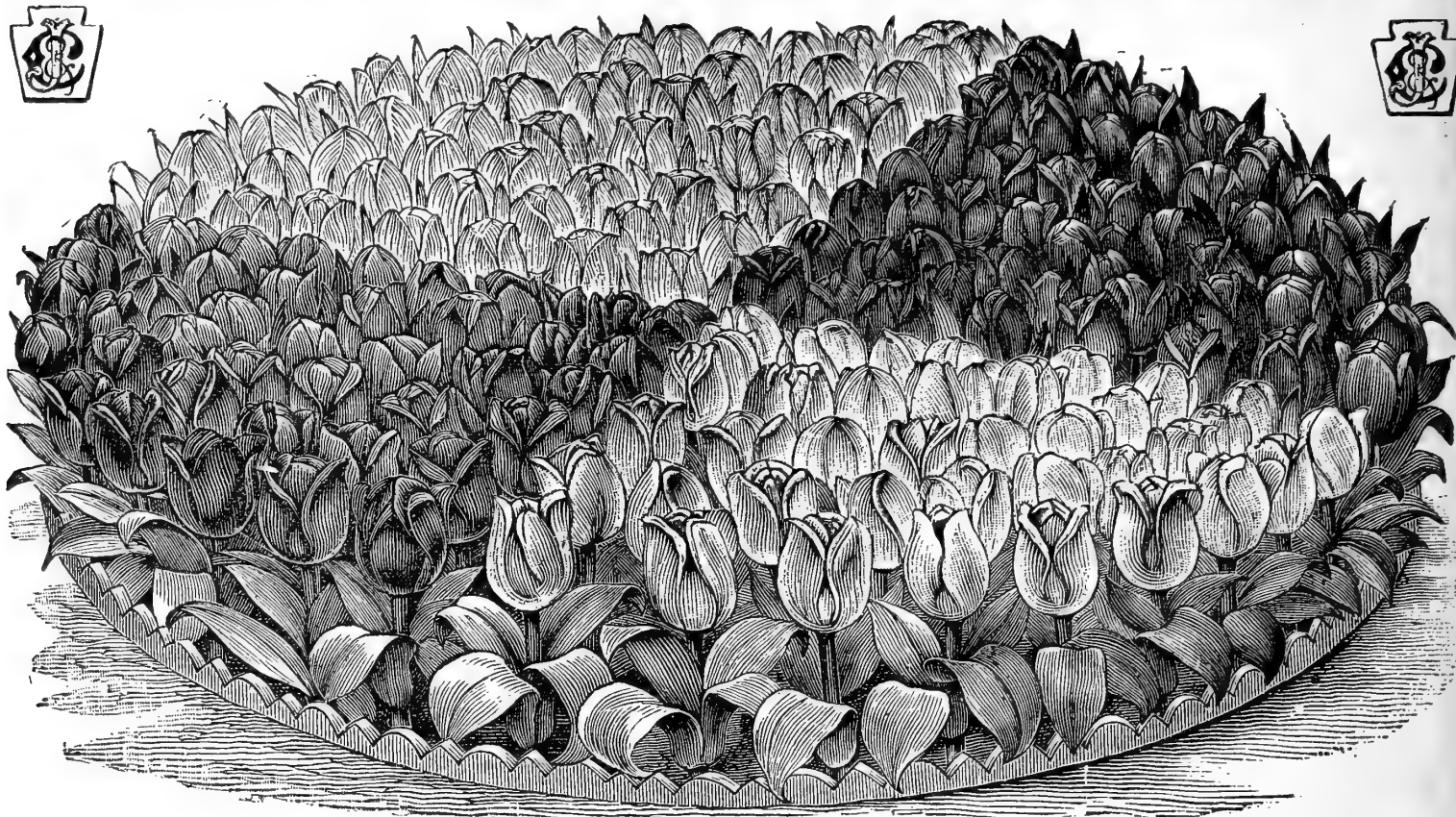


DOUBLE EARLY TULIPS

DOUBLE EARLY TULIPS—Best Varieties Mixed. Price 4 for 10c., 25c. per doz., \$1.35 per 100, postpaid, or \$1.00 per 100, \$9.00 per 1000 by express, purchaser paying charges

A BED OF TULIPS is always handsome and attractive. No other flowers will make such a splendid show of brilliant colors for so little money and none are so easily grown and sure to bloom. Some people prefer the single varieties and others the double sorts. It is merely a matter of choice as both are equally desirable. Our list is not long, but includes the very finest varieties for home planting. All at lowest possible prices, quality considered. **Tulips must be planted in the Fall, but bloom very early in Spring.**

≡ Collections of Tulips for Beds. ≡



CIRCULAR BED OF TULIPS FOR FALL PLANTING

Tulips are the most showy and handsome of all Spring-flowering bulbs. No other flowers can equal them in brilliant and gorgeous colors; they are entirely hardy, need no protection, and are absolutely sure to bloom. Our Bedding Tulips are specially selected to grow the same height and bloom at same time. We have them in **Pink, White, Crimson and Yellow**. The bed illustrated above is six feet in diameter and holds 156 tulips planted five inches apart each way. The bed is divided into four sections, as indicated: each section holds 39 tulips of same color—**39 Crimson, 39 White, 39 Pink, 39 Yellow**. Price for the 156, \$2.88, delivered free. Price per 100, in separate colors, \$1.50, purchaser paying charges, or \$1.85 per 100, delivered free.

New Darwin Tulips

The Darwin Tulips are a magnificent new class of large May-flowering tulips, just recently introduced. They grow 18 inches to two feet high, and bear splendid flowers of immense size and most brilliant colors, including gorgeous shades of Blue, Crimson, Rose, Yellow, Purple, Brown and Coal Black, far surpassing everything before known in Tulips. They are entirely out of the usual, and so surprisingly beautiful that even a small bed will attract immediate attention, and be a splendid addition to your flower garden for many weeks. Do not fail to include a few **New Darwin Tulips** in your order. Their wonderful beauty will surprise you, they cost but little, and should be planted at once, six inches apart and five inches deep, in open ground.

We offer **DARWIN TULIPS** in mixed colors only. Price, 4 cts. each, 40 cts. per doz., \$2.85 per 100, postpaid.

Duc Van Thol Tulips

Duc Van Thol Tulips are noted for their dwarf sturdy growth, brilliant colors, and early bloom. They are specially recommended for house culture, and as they bloom two weeks earlier than the other tulips, they are very desirable for bedding out also. As they grow only six or eight inches high, they should be planted separately, and not mixed with other tulips.

DUC VAN THOL, WHITE—4 cts. each, 3 for 10 cts., 35 cts. per doz., postpaid.

DUC VAN THOL, CARMINE—Very early and handsome. 3 cts. each, 4 for 10 cts., 30 cts. per doz., postpaid.

DUC VAN THOL, SCARLET—4 cts. each, 3 for 10 cts., 30 cts. per doz., postpaid.

DUC VAN THOL, YELLOW—4 cts. each, 3 for 10 cts., 35 cts. per dozen, postpaid.

A few pots or a window box of **DUC VAN THOL TULIPS** will make a fine display of gorgeous flowers very quickly.

Our New One Dollar Flower Garden for Autumn, 1904

21 Very Choice House Plants, Specially Prepared for Winter Bloom, only \$1.00, postpaid.

- 2 Beautiful Palms—2 lovely varieties for House Culture.
- 1 New Weeping Lantana—Mrs. McKinley, page 40.
- 1 New Impatiens—Evening Star, page 38.
- 1 Ruella Makoyana—page 24.
- 1 Pink Winter Blooming Rose—Selected.
- 1 White Winter Blooming Rose—Selected.
- 2 Fancy Leaved Coleus—Different colors, selected.
- 2 Lovely Flowering Begonias—1 pink, 1 white; selected.
- 1 New Heliotrope—Blooms all the time, very sweet.

- 1 Beautiful Autumn Leaf Plant.
- 1 Cyperus Alternifolia—Umbrella Fern.
- 2 Splendid Flowering Abutilons—2 elegant varieties.
- 1 Grevillea Robusta—Fern Leaf Tree.
- 1 Croton—Aurea Maculata—Gold Dust Plant.
- 1 Clerodendron Balfourii—Lovely flowering vine for the window garden.
- 1 Elegant Winter Blooming Fuchsia.

1 **SCARLET GERANIUM**, fine for Pots, Vases, etc.

PRESENTED FREE WITH EVERY ORDER—21 in all.

Only \$1.00, postpaid

Giant Gesneriana Tulips—True

THE TRUE GIANT GESNERIANA—Is one of the grandest and most beautiful of all Tulips; they grow 1½ to 2 feet high and bear great rich blooms as large as teacups. Color intense fiery scarlet, with bright shining blue-black centre. The flowers are very durable and keep their splendid colors for several weeks. They are entirely hardy and will bloom on from year to year. We recommend all to try a bed of our True Gesneriana Tulips, their wonderful beauty is truly marvelous.

Price, 3 cts. each, 3 for 8 cts., 30 cts. per doz., \$1.85 per 100, delivered free. By express, \$1.50 per 100, buyer paying charges.

THE YELLOW Gesneriana or GOLDEN QUEEN

Splendid large bold flowers, solid rich golden yellow, grows same height and blooms same time as the Scarlet Gesneriana and is the best companion for it; price is a little higher, as this variety is scarce and very beautiful. Price, 4 cts. each, 6 for 20 cts., 40 cts. per doz., \$2.50 per 100, delivered free. By express \$2.15 per 100, buyer paying charges.



Parrot or Dragon Tulips

These are very curious and remarkable, they belong to the late or May-flowering Tulips. The flowers are very large, frequently six or seven inches across, with petals deeply toothed, fringed and twisted in the most striking and fantastic manner, sometimes representing the head and beak of a parrot. The colors are exceedingly brilliant and showy—crimson and yellow, flaked, dashed and feathered with green, gold and scarlet. Fine for bedding and to plant among shrubbery. They grow ten inches high, and always attract attention. See descriptions below.

GIANT GESNERIANA AND PARROT OR DRAGON TULIPS

	Each	Per doz.		Each	Per doz.
Belle Jaune —Pure deep yellow	\$0 04	\$0 40	Feu Brillante —Rich satiny crimson . . .	\$0 05	\$0 45
Cafe Brun —Coffee color and yellow	04	40	Orange (Gloriosa) —Orange and crimson variegated	04	40
Constantinople —Deep blood red	04	40	Perfecta —Red and yellow, extra fine . . .	04	40
Mark Graaf —Crimson and orange, very handsome	04	40	Fine Mixed Parrot Tulips —\$2.00 per 100, delivered free	04	85

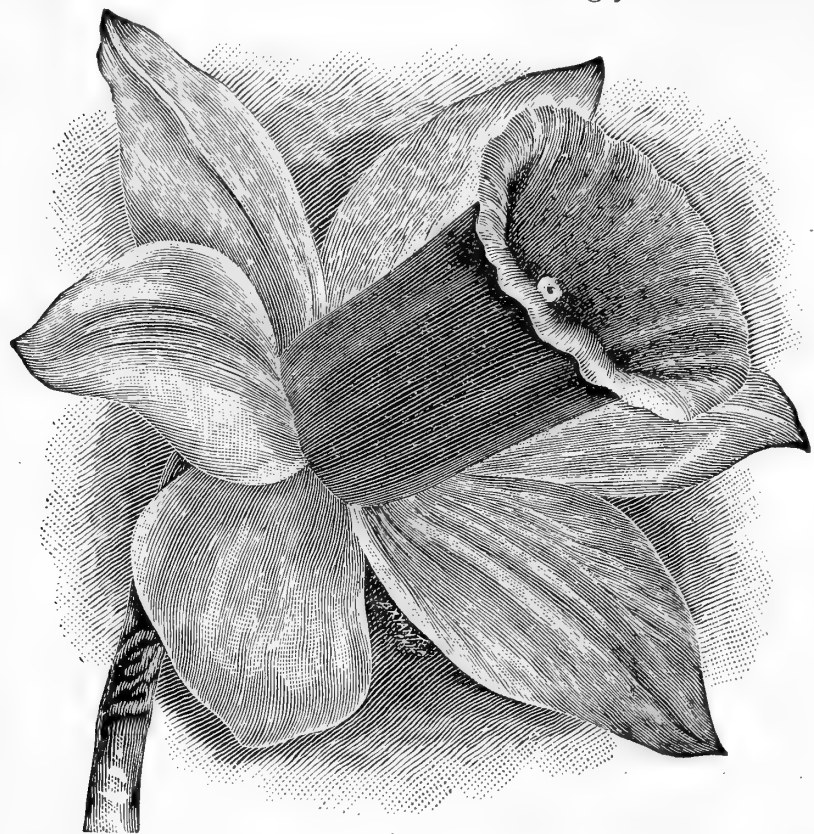
Set of Seven Parrot Tulips, Postpaid, for 25 Cts.

BIZARRE and BYBLOOM TULIPS

We ask special attention to the Bizarre and Bybloom types of Tulips. Their large cup-shaped flowers somewhat resemble the Gesneriana type, and are always greatly admired for their brilliant and striking colors. The Bizarre have yellow grounds, flamed and blazed maroon, black, scarlet, bronze and brown. The Byblooms have white, light or violet grounds, flaked and feathered with rose, pink, purple, scarlet, black and crimson, elegantly variegated. Price, fine mixed Bizarre Tulips, 4 cts. each; 30 cts. per doz., postpaid. Bybloom Tulips, fine mixed, white grounds, elegantly variegated. 4 cts. each 30 cts. per doz., postpaid. Bizarre and Bybloom Tulips, all colors mixed. 25 cts. per doz., postpaid.

Narcissus or Daffodils

THE NARCISSUS OR DAFFODILS are among the earliest to bloom and most brilliant and showy of all our Spring flowers. They are entirely hardy and highly valued for beds and borders in yard and garden, and also for Winter blooming in the house. When potted, they flower very quickly and will soon fill your window-garden with beauty and fragrance. For the flower-beds set 3 or 4 inches deep and 4 to 6 inches apart, according to the size of the bulb. They bloom beautifully very early in the Spring; the flowers are very rich and handsome and delightfully sweet. They are very different in form and color, but all exceedingly beautiful. **NOTE**—The prices include Postage, which is paid by us.



EMPRESS

GRANDEE—Flowers extra large with broad creamy white petals and magnificent golden yellow trumpets, beautifully crimped and ruffled, exceedingly handsome. 6 cts. each, 65 cts. per doz., \$5.00 per 100, postpaid.

TRUMPET MAJOR—Bright golden yellow, one of the best for bedding and fine winter flowering, an early and abundant bloomer. 3 cts. each, 30 cts. doz., \$2.00 per 100, postpaid.

SPECIAL OFFER: Set of 8 Splendid Trumpet Narcissus, postpaid, only 35 Cents

LARGE TRUMPET NARCISSUS

BARRI CONSPICUA—This is the finest of the medium Trumpet Narcissus, long stemmed flowers with beautiful broad petaled perianth $3\frac{1}{2}$ inches across, sparkling canary yellow, with deep golden cup, richly edged with orange scarlet. 4 cts. each, 40 cts. per doz., \$3.00 per 100, postpaid.

HENRY IRVING—A truly magnificent variety; extra fine large bold flowers with beautifully frilled trumpets, the color of rich beaten gold, exceedingly handsome and very fragrant. 7 cts. each, 75 cts. per doz., \$5.50 per 100, postpaid.

EMPRESS—A magnificent variety; large bold flowers, borne erect and considered the finest of the two-colored trumpets. 7 cts. each, 75 cts. per doz., \$6.00 per 100, postpaid.

SIR WATKIN—The Giant Chalice Flower, or Big Welchman. This is the largest daffodil grown; immense long-stemmed flowers, sometimes $5\frac{1}{2}$ inches across, rich lemon yellow, large dark cup tinted with orange; grand and handsome. 7 cts. each, 75 cts. per doz., \$5.00 per 100, postpaid.

GOLDEN SPUR—This is one of the grandest of daffodils, extra large, bold rich yellow flowers and broad handsome foliage. A strong grower and early bloomer, unsurpassed for garden or house culture. 7 cts. each, 75 cts. per doz., \$5.50 per 100, postpaid.

HORSEFIELDI—"The Queen of Daffodils." Extra large pure white flowers, with rich yellow trumpets, very grand and beautiful, early and free bloomer, extra fine in every way. 6 cts. each, 65 cts. per doz., \$5.00 per 100, postpaid.

Double Narcissus or Improved Daffodils

ALBA PLENA ODORATA—"The Double White Poet's Narcissus," or Gardenia-Flowered Daffodils. Double snow-white gardenia-like flowers, delightfully sweet-scented. 3 cts. each, 25 cts per doz., \$1.50 per 100, postpaid.

INCOMPARABLE—Fl. Pl. Large handsome flowers, as double as roses, bright canary yellow, with rich orange centre. 3 cts. each, 25 cts. per doz., \$1.35 per 100, postpaid.

SULPHUR OR SILVER PHOENIX—Creamy white with pale sulphur centre. Considered the finest of the double sorts. 8 cts. each, 3 for 20 cts., 75 cts. per doz., \$6.00 per 100, postpaid.

ORANGE PHOENIX—Outer petals nearly pure white, centre mixed orange and white, very handsome. 4 cts. each, 40 cts. per doz., \$2.50 per 100, postpaid.

VON SION—A famous old kind, unsurpassed in beauty, single outside petals with long double trumpet, filled with beautifully crimped petals, extra fine for cutting. 4 cts. each, 35 cts. per doz., \$2.25 per 100, postpaid.



DOUBLE DAFFODIL, VON SION

The Five Varieties for 18 cts.

THE TRUE BERMUDA EASTER LILY

GRANDEST OF ALL FLOWERS FOR WINTER BLOOM



BERMUDA EASTER LILY.

LILIUM PARDALINUM.—The California Leopard Lily. An elegant and very beautiful lily from California, rich scarlet and yellow flowers, spotted with purplish brown. This is a superb lily and always gives satisfaction, does well everywhere, blooms finely in the house in pots, and is also entirely hardy in open ground. It is one of the lilies you want. Price, 15 cts. each; 2 for 25 cts., \$1.50 per doz., postpaid.

THIS is one of the grandest and most beautiful lilies ever seen, and the best of all for Winter flowering in pots; it grows easily and is sure to bloom. The flowers are pure snow-white, very large and fragrant, and borne in splendid clusters, six or eight at a time. Vast numbers of these splendid lilies are grown for church and house decoration every year. Plant in a pot or box which is at least six inches deep and well drained; good turfy soil with a little old, well-rotted manure is best; the bulb should be covered about one inch deep; firm the earth well around it, water thoroughly and set away in a cool place two or three weeks till the roots begin to start, then bring to the light—the window of an ordinary living room is about right—they require moderate heat, with plenty of sunshine and water, and should bloom in about three months from time of planting. Our Easter Lily Bulbs are of the very best quality and warranted to give satisfaction. We offer them in three sizes.

EASTER LILIES. Extra Large Monstrous Bulbs—These should produce twelve to fifteen flowers each. They are extra fine. Price, 30 cts. each, 2 for 55 cts., \$3.00 per doz., postpaid.

EASTER LILIES. First Size Standard Bulbs—Should produce eight to twelve flowers each. Price, 20 cts. each, 3 for 50 cts., \$1.75 per doz., postpaid.

EASTER LILIES. Intermediate Size—Price, 15 cts. each, \$1.25 per doz., postpaid.

LILY AURATUM.—The gold banded Lily of Japan, considered the Queen of Lilies, and the most beautiful of all, immense flowers, nearly a foot in width, borne in great clusters, seemingly more than the slender stem can bear; color rich creamy white, thickly spotted with crimson and brown, each petal having a wide golden yellow band through the centre; very fragrant and sure to bloom; exceedingly beautiful. First size good blooming bulbs, 15 cts. each; 2 for 25 cts.; \$1.35 per doz. Extra size bulbs, 20 cts. each; 3 for 50 cts.; \$2.00 per doz., postpaid.

LILY CANDIDUM.—The Annunciation or St. Joseph Lily, next after the Easter Lily, this is one of the best lilies of all for winter flowering in the house. It grows two to three feet high, and bears grand clusters of extra large, pure snow-white flowers, very sweet, and rivaling the Easter Lily in beauty. We offer good large bulbs, sure to bloom quickly. Price, 12 cts. each; 3 for 35 cts.; \$1.25 per doz., postpaid.

LILIUM LANCIFOLIUM ALBUM.—Extra large flowers, pure snow-white, very sweet scented. 20 cts. each; \$2.25 per doz., postpaid.

LILIUM LANCIFOLIUM RUBRUM.—One of the most beautiful of all the large flowering Japan lilies; rose and white, spotted crimson, very handsome. 15 cts. each; 2 for 25 cts., \$1.50 per doz., postpaid.

SPECIAL OFFER One each of the Six Magnificent Lilies above for 80c., postpaid, or 2 of each, 12 in all for \$1 50

NOTE—In Fall planting, or when done flowering in the house, these lilies should be set four to five inches deep, in the open ground, where they can remain, as they are entirely hardy, if planted deep and given a light covering of leaves or garden litter before hard freezing.



NARCISSUS CORBULARIA, or BULBOCODIUM

star-shaped flowers with miniature saucer-shaped cups in the centre, they bloom quickly and very abundantly, and are equally valuable for garden planting and blooming in pots.

POETICUS ORNATUS—"The Improved Poeticus." Beautiful star-shaped flowers, pure white with saffron-colored cup tinged with rosy crimson, blooms quickly and is lovely for Winter bloom in pots, also for garden planting. 4 cts. each, 25 cts. per doz., \$1.50 per 100, postpaid.

POETICUS—"The Pheasant's Eye or Poet's Narcissus." Pure white star-like flowers with orange cup edged with crimson; hardy and fine for bedding, splendid for cut flowers. 3 for 5 cts., 15 cts. per doz., 75 cts. per 100, postpaid.

Narcissus Corbularia or BULBOCODIUM

THESE are curious and very pretty varieties, both for winter bloom in pots, and also for planting in open ground. Large trumpet bell-shaped flowers, bright golden yellow, pale sulphur and cream white, delightfully fragrant and very beautiful. They bloom finely in February and March, and are a charming addition to the window garden. Plant several together in a pot or box.

BULBOCODIUM—"The Large Yellow Hoop Petticoat." Rich golden-yellow. 7 cts. each, 75 cts. per doz., postpaid.

CITRINUS—"The Large Sulphur Hoop Petticoat." Large pale sulphur trumpets, very beautiful. 5 cts. each, 50 cts. per doz., postpaid.

ALGERIAN—"White Hoop Petticoat." Pure snow-white, very early. Will bloom at Christmas if planted in September. 8 cts. each, 75 cts. per doz., postpaid.

The 3 varieties for 15c. Mixed colors, 3 for 10c., 35c. doz., postp'd

Narcissus Poeticus

These beautiful varieties are entirely different from others; they have elegant



ORNITHOGALUM ARABICUM

Ornithogalum Arabicum

Arabian Star of Bethlehem—A really beautiful bulb for pots, large and solid like a Hyacinth, and requiring the same treatment; flower stalks 18 to 20 inches high, bearing immense clusters of large, pearly white flowers with jet black centre, rich aromatic fragrance. The flowers last a long time and are almost unrivalled for beauty and fragrance. They do nicely in open ground if protected from hard freezing. 4 cts. each, 6

for 20 cts.; per doz., 35 cts., postpaid.



SCILLA SIBERICA

blue flowers. Indoors it will bloom from Christmas till April, and is one of the very earliest Spring flowers when bedded out; very beautiful. 3 for 5 cts., 15 cts. per doz., 75 cts. per 100, postpaid.

Spring Snowflake

(**Leucojum Vernum**)—This is one of our earliest flowers; bears beautiful snowy blossoms like giant snowdrops, tipped with green; very pretty and delightfully sweet scented. When planted several together in clumps or masses in a shady border, they soon become well established and produce great quantities of lovely flowers, fine for cutting. If potted for house culture keep cool, as they do not like much heat. 3 cts. each, 4 for 10 cts., 25 cts. per doz., \$1.75 per 100, postpaid.

Scilla Siberica

One of the hardiest and most beautiful bulbs we have; equally valuable for winter blooming in pots, and for bedding in open ground. Perfectly hardy and always sure to bear an abundance of lovely rich,

THE AMARYLLIS Queen of Winter-Flowering Bulbs

MAY BE KEPT IN POTS ALL THE YEAR ROUND, OR BEDDED OUT IN SUMMER



AMARYLLIS EQUESTRIS

12 inches high, crowned with large elegant lily-like flowers of waxy texture, pure snowy whiteness and delicious fragrance. The outer petals are curiously reflexed, and the inner ones delicately fringed; a most lovely and charming flower, entirely distinct and different from all others. Strong blooming bulbs, 20 cts. each, 3 for 50 cts.

SPECIAL OFFER One each of the five varieties of Amaryllis only 75 cts., postpaid.

NEW PELARGONIUMS Or LADY WASHINGTON GERANIUMS

SCARCELY any plant grown in the window garden for winter flowering will give better returns with so little care as these lovely Pelargoniums. They will bloom finely in the house for weeks and months during winter, and when bedded out in spring will continue to flower freely and be ready to take indoors again before cold weather.

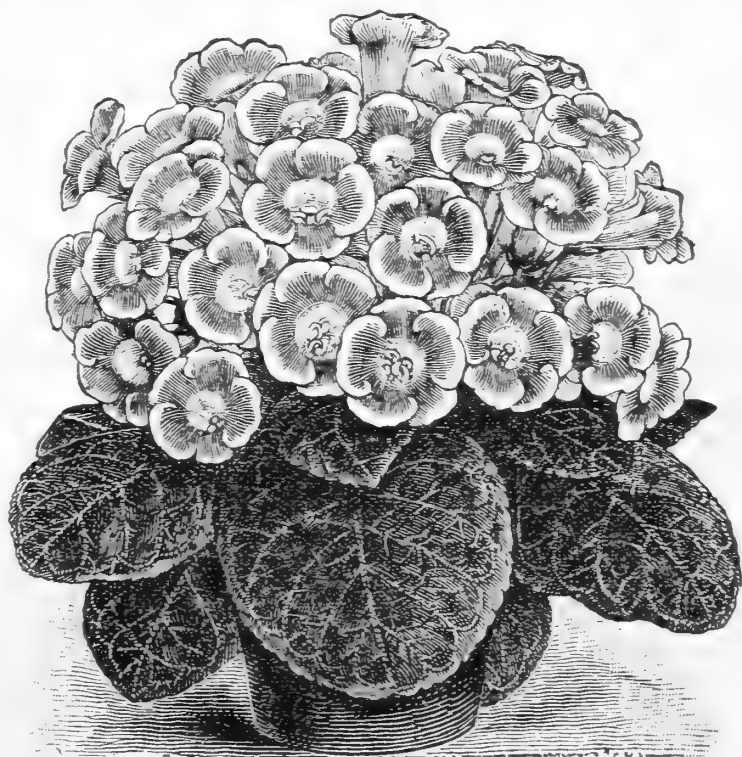
NEW PELARGONIUM "PANSY"—Flowers pink and crimson, with dark blotches, sometimes feathered white; a splendid winter bloomer. 20 cts. each.

NEW PELARGONIUM VICTOR—Bright cherry red, with white markings at base of petals; upper petals spotted maroon. 20 cts. each. The two varieties for 30 cts., postpaid.

Gloxinia Grand Erect Flowering Varieties

Dry Bulbs in Separate Colors ready in November

THE GLOXINIAS are known as among the choicest and most beautiful flowering plants we have for Winter and Spring bloom in living room, conservatory or greenhouse. They grow easily from the bulbs, and bloom finely for several months; each bulb will make a large plant, and produce many splendid flowers, 3 to 4 inches across, and of the most gorgeous and exquisite colors; some are spotted and mottled, others beautifully variegated, and all indescribably rich and velvety. They are recognized by all as entirely out of the usual, and among the most rare and handsome house plants to be had. When done blooming, the bulbs should be dried off and laid away till time to plant again. We offer three colors: scarlet, blue and white. 15 cts. each, 3 for 40 cts., \$1.50 per doz., postpaid.



GLOXINIA

AMARYLLIS EQUESTRE OR GLORIOSA LILY—One of the most beautiful of the Amaryllis family. Very easy to grow and invaluable as a Winter bloomer. Splendid large lily-shaped flowers 4 to 5 inches across, bright flashing orange scarlet, with exquisite green and white star in the centre. A most beautiful and satisfactory variety for winter bloom. Requires but little attention, and may be kept in pots all the year round. Price, good first size bulbs, 15 cts. each, \$1.50 per doz.; extra large bulbs for immediate bloom, 20 cts. each, \$2.00 per doz., postpaid.

THE LOVELY PINK AMARYLLIS OR BELLADONNA LILY—This is a grand variety, splendid for house culture and winter bloom. May be kept in pots all the year or bedded out in summer. Bears grand large well expanded flowers, lovely rose-pink, finely pencilled with silvery white and deliciously perfumed. Price extra large bulbs for immediate bloom, 20 cts. each, \$2.25 per doz. Fine first size bulbs, 15 cts. each, \$1.50 per doz., postpaid.

A. FORMOSISSIMA (Jacobean Lily)—Curiously shaped flowers, dark rich scarlet, very bright and handsome, easily grown and a sure quick bloomer; can be grown in water like the sacred lily, or if planted out in the spring will bloom during the summer. 12 cts. each, \$1.25 per doz.

AMARYLLIS JOHNSONII—One of the grandest of the Amaryllis family. Extra large and exceedingly beautiful flowers, deep red, elegantly striped with white, well known and very popular for house culture; may be planted out in Summer or kept in pots all the year round. Extra large blooming bulbs, 35 cts. each, postpaid.

QUEEN MARY OR DOUBLE WHITE AMARYLLIS (Ismene Calathena)—This is not a true Amaryllis, but belongs to the same family and is a most rare and beautiful flower, particularly valuable for pot culture and winter bloom. Throws up flower stalks

CROCUS

FINEST NAMED
LARGE FLOWERING
VARIETIES

All postage is paid by us



COPYRIGHTED
1893

AMONG all the pretty flowers of Spring, none are greeted with a heartier welcome than the Crocus. Their flowers are lovely in form, and of the brightest, freshest colors. Pure White, Golden Yellow, Purple, Pink and Variegated. They are entirely hardy, and like a rich dry soil and sunny location. They are suitable for planting in beds and borders, also for edging in ribbon lines of any desired color, for planting in the grass in lawn or yard. **Crocus are also very highly valued for House Culture.** They bloom very quickly and are so cheap that all can afford to have them. **Ours are the Improved Strains, noted for large flowers and brightest colors.**

FINEST CROCUS FOR FALL PLANTING NAMED VARIETIES

Our Crocus are Best Quality Selected Bulbs, suitable for Pots and Bedding

BARON VON BRUNOW—Dark violet-blue, a grand sort. 12 cts. per doz., 75 cts. per 100, \$5.00 per 1000, postpaid.

CAROLINE CHISHOLM—Large pure white. 12 cts. per doz., 75 cts. per 100, \$5.00 per 1000, postpaid.

CLOTH OF GOLD—Blooms very early, fine handsome feathered flowers, golden yellow, tinged with purple and scarlet. 12 cts. per doz., 75 cts. per 100, \$5.00 per 1000, postpaid.

CLOTH OF SILVER—Beautiful silvery-white flowers, very lovely. 12 cts. per doz., 75 cts. per 100, \$5.00 per 1000, postpaid.

DAVID RIZZIO—Extra large flowers, dark rich purple. 12 cts. per doz., 75 cts. per 100, \$5.00 per 1000, postpaid.

MONT BLANC—Extra large and beautiful, pure white. 12 cts. per doz., 75 cts. per 100, \$5.00 per 1000, postpaid.

SIR WALTER SCOTT—White, striped purple, very large. 12 cts. per doz., 75 cts. per 100, \$5.00 per 1000, postpaid.

YELLOW MAMMOTH—**Monster Bulbs**, each one producing from 8 to 12 splendid large, golden yellow flowers. Very early and exceedingly showy and handsome. A few bulbs, planted in a five or six-inch pot, will surprise you with their beauty and profusion of bloom, and by planting at different times a succession of lovely golden flowers can be had all Winter. A bed of Yellow Mammoth is always an object of striking beauty very early in Spring. If planted in lines on a well-kept lawn, it is easy to write any desired name, in letters of gold, in the green grass. This variety can also be grown in Crocus glasses or in dishes in sand and water. **Price, 15 cts., per dozen, \$1.00 per 100, postpaid.**

YELLOW FIRST SIZE, 12 cts. per doz., 75 cts. per 100, \$5.00 per 1000, postpaid.

SET OF 9 VARIETIES, 2 EACH, 18 IN ALL, FOR 15c., POSTPAID.

BEST MIXED CROCUS IN SEPARATE COLORS

WHITE AND LIGHT	Dozen	100	1000	YELLOW AND ORANGE	Dozen	100	1000
PURPLE AND WHITE	10c.	50c.	\$3.50	ALL COLORS, MIXED	10c.	50c.	\$3.50
STRIPED and VARIEGATED	10c.	50c.	\$3.50		10c.	35c.	\$3.34

THE PRICES INCLUDE POSTAGE WHICH IS PAID BY US.

WINTER-BLOOMING FREESIAS

FREESIA REFRACTA ALBA—This is the True Large-flowering Freesia; the flowers are pure snow-white, delicately tinted with pale yellow, and very sweet. Next to violets they are the sweetest Winter-blooming flowers we have, and are extensively planted by the **Hundred and Thousand** for cutting. They retain their beauty for a long time, and by planting at different times, you can have a succession of lovely bloom all Winter. Freesias are very easily grown, a dozen bulbs can be planted in one good sized pot or pan of ordinary soil; water sparingly and set in a warm, sunny window, and they will soon begin to bloom.



FREESIA Refracta Alba

MAMMOTH BULBS, 3 for 10 cts., 30 cts. per doz., \$2.00 per 100, postpaid. **EXTRA LARGE Selected Bulbs**, 4 for 10 cts., 20 cts. per doz., \$1.25 per 100, \$10 per 1000, postpaid. **FIRST SIZE BULBS**, all sure to bloom, 12 cts. per doz., 75 cts. per 100, \$6 per 1000, postpaid.

New Large-flowering Hybrid Freesias

This is a grand new strain, with flowers of largest size and many beautiful colors not seen before, including white, yellow, pink, purple, violet and crimson; delightfully fragrant. **Price**, all colors mixed, 4 for 10 cts., 20 cts. per doz., \$1.10 per 100, postpaid.

Scarlet Freesia

ANOMATHECA CRUENTA

This resembles the White Freesia in many respects, except that its flowers are bright scarlet, shaded crimson, and though it does not flower quite so early, it is very bright and handsome, and makes a beautiful contrast planted with the others. **Price**, 4 for 10 cts., 20 cts. per doz., \$1.00 per 100, postpaid.

Large Yellow Freesia

LEICHTLINII MAJOR

A very pleasing variety and makes a charming combination planted with the others. Large orange-yellow and white flowers, very fragrant and beautiful. 3 for 10 cts., 30 cts. per doz., \$1.75 per 100, postpaid.

SPECIAL OFFER: 6 WHITE, 3 NEW HYBRID, 3 SCARLET, 3 YELLOW 15 in all for 20 cts., postpaid

NEW WINTER FLOWERING

GLADIOLUS, THE BRIDE

These are very fine for Winter-flowering in the house, six bulbs can be planted in one six-inch pot. The flowers are large pure snow-white, and borne in long slender spikes, very beautiful and largely used for cut flowers. Fine blooming bulbs, 3 for 10 c., 25 c. per doz., \$1.35 per 100, postpaid.

CYCLAMEN GIGANTEUM, True

GIANT FLOWERING PERSIAN CYCLAMEN

These Giant Cyclamens are among the most charming Flowers we have for the parlor or conservatory and almost unequalled in beauty. The bulbs are easily grown and as each one throws up several flower stalks which continue to bloom several months, they make elegant pots of flowers for Winter and Spring. The flowers are exceedingly beautiful and range in color through many shades of pink, crimson and white; the leaves also are finely variegated, making a splendid plant for the living room, window or conservatory; they like plenty of light and air, but not too much heat. All lovers of beautiful house plants should by all means have some pots of Cyclamens. When done blooming the bulbs should be dried off and allowed to rest like Calla Lilies till time to pot up again.

Price extra selected blooming size Bulbs, finest colors mixed, 15 cts. each, 3 for 40 cts., \$1.50 per doz., postpaid. Giant Flowered Scarlet Cyclamen—the most superb variety of all. The flowers are of extraordinary size. 20 cts. each, 3 for 50 cts.; \$1.75 per doz., postpaid.

CYCLAMEN PERSICUM—Very beautiful. Similar to the above, but flowers not so large. 12 cts. each, 3 for 35 cts., \$1.25 per doz., p'paid.



CYCLAMEN

True Chinese Sacred Lily



CHINESE SACRED LILY

The Great Chinese Sacred Lily is still one of the most popular Winter-blooming Bulbs we have. They grow very easily and are sure to bloom quickly, they like moderate moisture and plenty of light and heat. They grow nicely in pots of ordinary soil, but the easiest and quickest way to bloom them is in a bowl of water. A few pebbles will hold the bulbs in place, and when set in a warm sunny window they will start to grow at once, and begin blooming in two or three weeks. The bulbs are large, and each one sends up from five to twelve flower stems bearing great clusters of large pure white wax-like blossoms, with yellow centres and deliciously fragrant. Some are single and others double, but all equally beautiful, and they bloom so quickly and abundantly they are in great demand everywhere. They continue to bloom a long time, and by planting at different times, a few weeks apart, you can have flowers all Winter and Spring. Ours are the Genuine Chinese Sacred Lily grown in China. Price, first size quick-blooming bulbs, 12 cts. each, 3 for 35 cts., \$1.35 per doz., postpaid. Original baskets containing 30 bulbs, \$2.00, or \$6.50 per 100, express. The most popular Winter Flowering Bulb for house culture ever offered. c

Golden Sweet-Scented Sacred Lily

(See full description, page 26.)

Grows in water and pebbles exactly like the Chinese variety, flowers bright, clear golden yellow and borne in the greatest profusion. Price, 3 cts. each, 4 for 10 cts., 25 cts. per doz.

SPECIAL OFFER We will send 1 Chinese Sacred Lily, 3 Golden Sweet-Scented Sacred Lilies and 3 Improved Poets Narcissus, the 7 only 25 cts., postpaid.

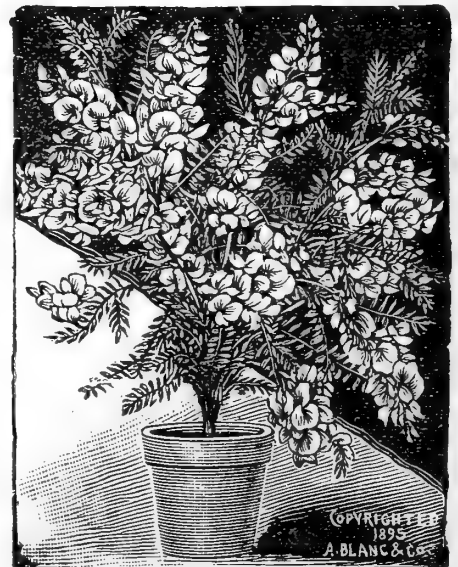
SWAINSONIA—The Swan Flower

Among winter-blooming plants for house or conservatory the Swainsonias are among the prettiest and most desirable. They have beautiful fern-like foliage and will bloom every day in the year. The blossoms are the shape of sweet peas and nearly as large, and borne in beautiful clusters on long slender branches. It begins to bloom while quite small, and will continue as long as kept in growing condition. As easy to grow as a geranium; will thrive and bloom with only the most ordinary care. When making up your order for house plants do not forget to include the beautiful Swan Flowers. We offer two splendid varieties.

Swainsonia Alba—Large snowy white blossoms, in long pendant clusters; very beautiful and fine for cutting. 15 cts. each, postpaid.

Swainsonia Rosea—Same as Alba except in color, which is bright rich rosy red. Very handsome. 15 cts. each. The two beautiful Swan Flowers, 25 cts., postpaid.

Grevillea Robusta—Silk Oak or Fern-Leaf Tree—An elegant decorative plant for house and conservatory; rapid growth, finely cut foliage, rivalling a rare fern or palm. Strong plants, 10, 15 and 20 cts. each, postpaid. Larger size, 35 cts. each, express.



SWAINSONIA ALBA

Ruellia Makoyana

This is a charming indoor plant for culture in vases, pots and baskets. It is of bushy, spreading habit with finely marked leaves which are beautiful olive green, delicately veined with silver, and rich purple underneath. A neat and handsome plant, always bright and pretty. 15 cts., 2 for 25 cts., \$1.50 per doz.



SCILLA CLUSI

SCILLA CLUSI

Scilla Clusi (the Peruvian Hyacinth or Cuban Lily)—A very grand and striking plant for house culture, throws up a strong, bold flower stem, with long lance-shaped leaves, and bearing one enormous pyramidal cluster of rich bright blue star-shaped flowers. It is very easily grown, commences to bloom about mid-winter, and continues a long time. When warm weather comes, plant in open ground, and if taken in before freezing, it will be ready to bloom again next winter. 10c. each, \$1.00 per doz., postpaid.

The New "Arum Aristatum"

A curious novelty fresh from the Plains of Palestine

Entirely new and never before offered in this country, but very popular in Europe. Claimed to bloom in a few weeks without soil or water, merely set on a plate in the window, but may be potted and kept dry. Curious and remarkable flowers, somewhat like the Black Calla, but different. Price, 25 cts. each, postpaid.

JONQUILS

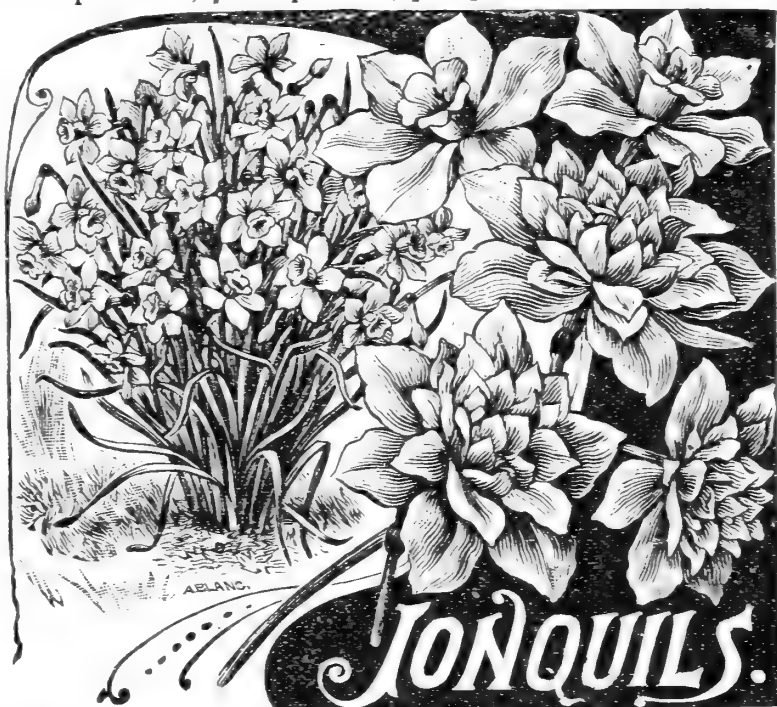
The Jonquils are lovely low-growing little flowers, and like the hyacinths and crocus, bloom very early in the spring, and are very pretty and attractive. They are bright golden yellow and delightfully sweet scented. Highly valued for bedding and borders, and for house culture in pots and pans; several should be planted together for best effect.

Double Jonquils—Extra fine, deep yellow. 4 cts. each, 3 for 12 cts., 35 cts. per doz., \$2.75 per 100, postpaid.

Single Jonquils—Rich yellow, very fragrant. 6 for 10 cts., 15 cts. per doz., 75 cts. per 100, postpaid.

Giant Campenelle (Rugulosus)—Twice the size of the others and same beautiful bright golden yellow, deliciously sweet-scented; extra fine for pot culture and bedding out. An early and profuse bloomer. You want it. 3 cts. each, 4 for 10 cts., 25 cts. per doz., \$1.50 per 100, postpaid.

Campenelle Mixed—Large yellow flowers, handsome. 15c. per doz., \$1 per 100, postpaid.



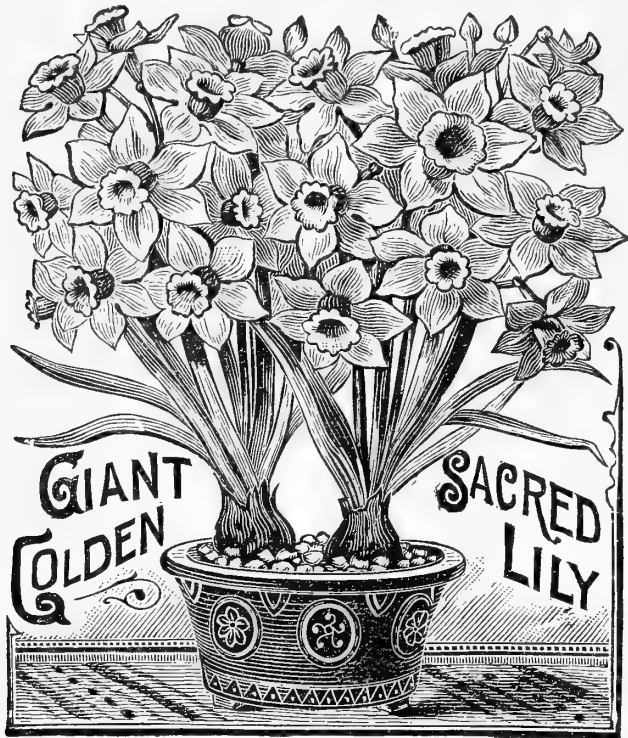
TRITELIA UNIFLORA

TRITELIA UNIFLORA

Spring Starflower—One of the most charming fairy-like white flowers for winter. White star-like flowers, tipped and faintly striped with blue. Planted several together indoors, they bloom finely for months; also fine for bedding and edging in open ground, forming a mass of starry blooms from early spring till summer. 3 for 5 cts., 15 cts. per doz., postpaid.

Blue Tritelia—Exactly like the above except that the flowers are lovely violet-blue, they contrast finely with each other, and should be planted together when convenient. Equally valuable for pots and garden. 3 for 10 cts., 25 cts. per doz., postpaid.

New Golden Sacred Lily



GOLDEN SACRED LILY

A NEW and splendid bulb for house culture ; belongs to the same family as the Chinese Sacred Lily, but the flowers are much larger, exceedingly sweet, and the color is clear **Bright Golden Yellow**. Each bulb produces several spikes of bloom, and will thrive in pots of soil or sand, or in a bowl of pebbles and water like the Chinese kind. Bulbs flower very quickly and may be had in bloom for Christmas or New Years, or even earlier. Hard usage or even freezing will not kill them, or keep them from blooming. **They are extra hardy, fragrant and very beautiful ; all should give them a trial.**

One dozen bulbs in a bowl of water will make an elegant display of flowers in a very short time, and when planted in the garden will bloom almost as early as the crocus. **Price, 3 cts. each, 4 for 10 cts., 25 cts. per doz., \$1.50 per 100, postpaid.**

Six Beautiful Sacred Lilies

- 1 GREAT CHINESE SACRED LILY—First Size Bulb.
- 3 NEW GOLDEN " " —Clear Bright Yellow.
- 2 DOUBLE ROMAN " " —Pure Snow White.

The Six Postpaid, only 20 cts.

Winter-blooming Oxalis

These beautiful Oxalis are the **true winter-blooming kinds**. Absolutely unequalled for pots, baskets, vases, window boxes, etc. They begin blooming very quickly and continue to throw out their lovely buds and blossoms every day all winter. Nothing finer for window culture.

Bermuda Butter Cup Oxalis—One of the finest winter-blooming plants ever seen, a strong vigorous grower with handsome foliage, and bearing a constant succession of lovely yellow flowers all winter. Well-grown plants have produced as high as seventy flower stems at one time, and over one thousand flowers in a season. 4 cts. each ; 3 for 10 cts. ; 35 cts. per doz., postpaid.

Oxalis Boweii—Large flowers, bright rich pink. 4 for 10 cts. ; 12 for 25 cts., postpaid.

Snow Ball (Multiflora Alba)—Large pure white flowers. 4 for 10 cts. ; 25 cts. per doz., postpaid.

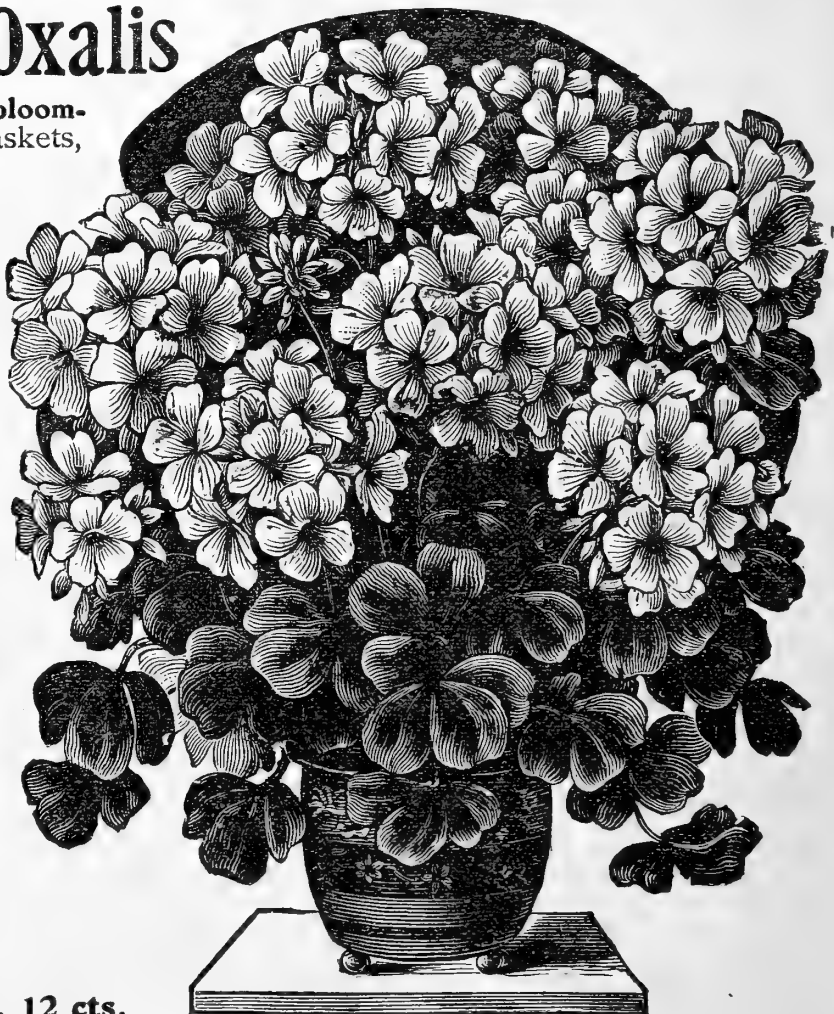
Double Yellow Oxalis—Large double flowers, bright rich yellow. 4 cts. each ; 3 for 10 cts. ; 35 cts. per doz., postpaid.

Versicolor—Deep rose with white centre, beautiful. 3 cts. each ; 4 for 10 cts. ; 25 cts. per doz., postpaid.

Lasiandra—Beautiful rosy pink flowers, finely cut foliage, 6 for 10 cts. ; 15 cts per doz., postpaid.

The Six Named Kinds - - one each, 12 cts.
Two Each, Twelve in all - - - - 20 cts.

FINE MIXED OXALIS—10 cts. per dozen ; 60 cts. per hundred.



BERMUDA BUTTER CUP OXALIS

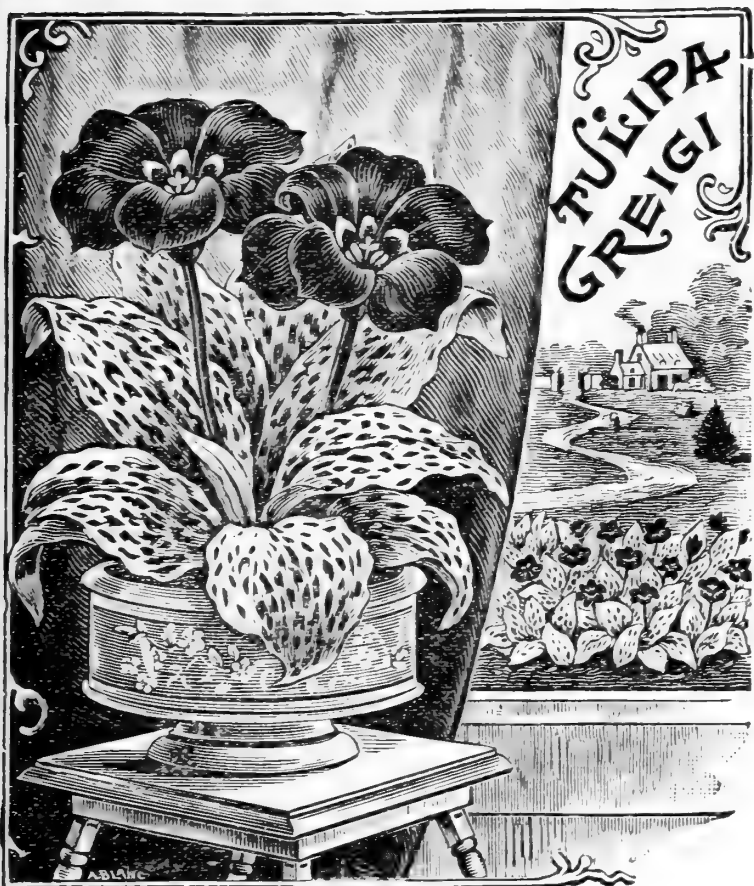
TWO BEAUTIFUL IRIS

The English Iris—Large handsome flowers, borne on stout stems, 18 to 20 inches high ; color rich purple, violet, blue and lilac ; fine for beds and borders, perfectly hardy ; needs no protection. Mixed colors. 3 for 10 cts., 25 cts. per doz., \$1.75 per hundred, delivered free.

Iris Florentina—This lovely Iris is always greatly admired. It is a slender, graceful plant, the flowers are exquisitely formed and deliciously scented ; the color is rich violet-blue, feathered with bronze yellow. One of the most beautiful and popular varieties of Iris. Price, 8 cts. each. 75 cts. per doz., postpaid.

TULIPA GREIGI

THE ROYAL TULIP, also called
THE QUEEN OF TULIPS



TULIPA GREIGI

THIS is a rare and costly variety, but is as easily grown as any tulip, and requires the same treatment, whether in pots or in open ground. The large handsome foliage is curiously spotted with dark rich maroon; the flowers are remarkably rich and handsome; color, brilliant orange scarlet, with yellow and black centre, undoubtedly the grandest of all tulips. 12 cts. each, \$1.25 per doz., postpaid.

FRITILLARIA MELEAGRIS

Fine bulbs for bedding out, also for house culture, large pendant bell-shaped flowers of many different colors, Yellow, White, Black, Purple, Variegated, etc. Entirely hardy, need no protection and bloom on from year to year. 4 for 10 cts., 25 cts. per doz.

Babiana—Beautiful little Bulbs for Winter bloom. Five or six in a medium size pot make a lovely parlor ornament. They grow six to nine inches high, throwing up charming spikes of nodding graceful flowers, rich solid colors, ranging from deep crimson to brightest blue. Fine mixed colors, 3 for 10c., 35c. per doz., postpaid.

Christmas Rose—(Helleborus Niger), a beautiful hardy bulbous plant bearing pure white waxy flowers two to three inches across—will bloom in December when potted or very early in Spring in open ground. Large roots, 30 cts. each, \$3 00 per doz., postpaid.

The Calochortus

Called also the Butterfly Tulip or Mariposa Lily, is a lovely bulbous flower, brought from the mountain forests of California, where it thrives in partial shade and plenty of rich mellow leafy soil. A half dozen bulbs can be set in a medium size pot; they will bloom quickly and the colors are marvelously beautiful, real butterfly shades and markings; there are two kinds, the large and small-flowered, both very beautiful.

Splendid Mixed Calochortus—All colors, large and small, 4 cts. each, 3 for 10 cts., 12 for 30 cts., postpaid.

Bleeding Heart (Dicentra Spectabilis)

Considered one of the most beautiful Spring flowering Plants. Elegant deep green foliage and magnificent long drooping racemes of exquisite pink and white heart-shaped flowers. Plant in garden where it is to remain. It is entirely hardy and will bloom splendidly every Spring. Strong roots, 25 cts. each, \$2.50 per doz., postpaid.

Tritonia When making up your order don't fail to include a few of the lovely New Tritonias, they are quite new and fresh and greatly admired; fine graceful sprays of soft, richly colored flowers, ranging from white, through salmon, orange and scarlet.

Fine mixed colors, 3 for 10 cts., 25 cts. per doz., postpaid.



BRODIA COCCINEA



Floral Firecracker Plant

(Brodia Coccinea)

This is a particularly nice house plant, and entirely different from everything else; treat the same as other house bulbs. The stems bear pretty clusters of long tubular-shaped flowers, deep rich crimson, tipped with white, very pretty and interesting. 3 for 10 cts., 25 cts. per doz., \$1.50 per 100, postpaid.



SNOW DROPS—GALANTHUS

Glory of the Snow—Luciliae—A lovely variety producing large clusters of beautiful azure blue flowers with clear white centre, very handsome and desirable. 2 for 5 cts.; 20 cts. per doz., postpaid.

Giant Chionodoxa—Much larger flowers than the above, lovely violet blue with white eye, very striking and beautiful. 2 for 5 cts., 20 cts. per doz., postpaid.

ALLIUM

Azureum—The Blue Allium, a rare and beautiful variety not often seen, throws up a profusion of lovely sky-blue flowers, star shaped and borne in pretty graceful sprays, extra fine for pots and also for bedding. Price, 8 cts. each; 75 cts. per doz., postpaid.

Aureum—(Molly or Golden Allium.) This a fine hardy garden plant, very desirable for beds and borders, bears large golden yellow flowers in June, and is very showy and handsome, but not as well known as it ought to be. Grows one foot high. Price, 3 for 5 cts.; 10 cts. per doz., postpaid.

Allium Neapolitanum—This is the most popular of all the Alliums, and especially valuable for pot culture. Grows very easily, costs but a trifle and bears great masses of lovely pearly white flowers, lasting a long time. Five or six bulbs in a four-inch pot make a beautiful window ornament. Hardy also in open ground, fine for bedding and borders, and always greatly admired, whether in garden or pots. Price, 3 for 5 cts.; 12 cts. per doz.; 75 cts. per 100, postpaid.

Price, 3 for 5 cts.; 12 cts. per doz.; 75 cts. per 100, postpaid.

SPECIAL OFFER ONE BLUE ALLIUM, FOUR GOLDEN YELLOW, THREE WHITE, EIGHT FOR 15 cts., postpaid

RANUNCULUS—Fair Maids of France

Sturdy dwarf-growing plants, highly valued for pot culture and for bedding out. In the north they should have a covering of leaves or litter during the Winter. They bloom quite early and will produce an abundance of large double brilliant colored flowers.

Double Turban Mixed—Peony formed flowers, large and early. Many brilliant colors. 2 for 5 cts.; 20 cts. per doz., postpaid.

Double Giant French Mixed—Strong vigorous growers, bearing immense gorgeous flowers. 2 for 5 cts.; 20 cts. per doz., postpaid.

Double Persian Mixed—Rose-shaped flowers, very double, rich, handsome colors. 2 for 5 cts.; 20 cts. per doz., postpaid.

Lily of the Valley—Its beautiful sprays of lovely pure white bell-shaped flowers are always greatly admired. It is perfectly hardy, does not object to shade, and will do well in any odd corner, and increase in number and beauty from year to year. Indoors, a half dozen bulbs in a four-inch pot, kept cool awhile, and then given light and moisture, will soon produce an abundance of lovely fragrant flowers. Price, strong flowering crowns, by mail, postpaid, 5 cts. each; 6 for 25 cts.; 12 for 40 cts. Ready about Nov. 15th.



LILY OF THE VALLEY

Snow Drops

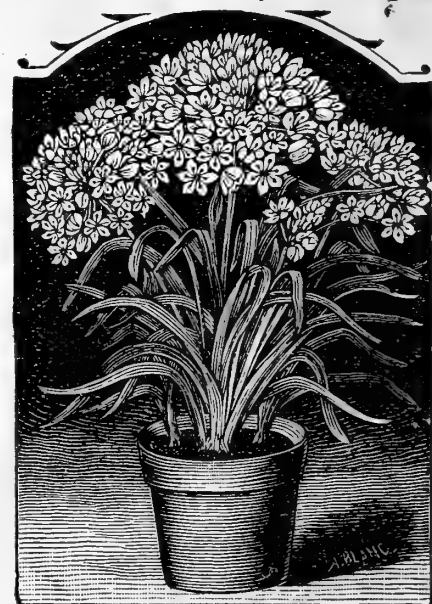
(GALANTHUS.)

Snow Drops are the earliest of all spring flowers, as they bloom a few days before the Crocus and Scilla. Their drooping white blossoms are exceedingly pretty and graceful, and make a beautiful contrast planted with the lovely blue Scilla in beds or in the grass on the lawn. (See page 20.)

Single Snow Drops—3 for 5 cts., 15 cts. per doz.; 75 cts. per 100, postpaid.

Double Snow Drops—Flowers perfectly double and pure snow white, 3 for 10 cts., 30 cts. per doz.; \$2.00 per 100, postpaid.

Giant Snow Drops—(Elwesi). The largest and most beautiful of all snowdrops, flowers pure snow white and deliciously sweet, extra fine for pots and bedding. 2 for 5 cts., 15 cts. per doz., \$1.00 per 100, postpaid.



ALLIUM NEAPOLITANUM

The Beautiful Spanish Iris



SPANISH IRIS

These are fine for blooming in pots in Winter ; they bear lovely large orchid-like flowers of most brilliant colors, blue, purple, yellow, pearly white and black, beautifully variegated, striped, spotted and ruffled ; they are also entirely hardy and splendid for bedding in open ground, need no protection and will bloom finely every Spring without attention. We put the price very low and hope all who can will give them a liberal trial.

The Finest Named Varieties

Peacock—Pure white, bright blue spot on each petal, showy and handsome. 3 for 10 cts., 30 cts. per doz., postpaid.

The Queen—Large beautiful pure white flowers. 4 for 10 cts., 20 cts. per doz., \$1.35 per 100, postpaid.

Belle Chinoise—Deep golden yellow, very fine. 4 for 10 cts., 20 cts. per doz., \$1.35 per 100, postpaid.

Olympia—Azure blue and royal purple with yellow markings. 4 for 10 cts., 20 cts. per doz., \$1.35 per 100, postpaid.

Prince of Orange—Orange yellow with rich purple spots. 3 cts. each, 4 for 10 cts., 20 cts. per doz., \$1.35 per 100, postpaid.

Set of 5 Named Varieties for 10 cents

Spanish Iris *Finest colors mixed. 3 for 5 cts., 15 cts. per doz., 85 cts. per hundred, postpaid.*

Ixias and Sparaxis

The Ixias and Sparaxis are house bulbs, not hardy in open ground but extra fine for pots, as they are sure to grow and produce an abundance of splendid flowers of most brilliant and striking colors. Though somewhat alike in growth the colors and form of flowers are entirely different so that they make an elegant contrast planted together, six or a dozen in a pot or pan. They bloom quickly and are always admired. Price the same for both. 3 for 5 cts., 15 cts. per doz., postpaid.

ZEPHARANTHUS ROSEA (Pink Fairy Lilies)—Lovely Dwarf Lilies, growing about one foot high, large rosy pink flowers exceedingly beautiful. Set several together in one pot and they will make a charming display during winter. 3 for 12 cts., 35 cts. per doz.

Z. ATAMASCO—Similar to the above but pure white, delicately suffused with clear rose—very beautiful. 3 for 10 cts., 30c. per doz. 3 of each kind, 6 for 20c.

ANEMONE, CORONARIA—Large double flowers almost like hollyhocks; two or three brilliant colors blended in each flower. Fine mixed, 4 for 10 cts., 20 cts. per doz., postpaid.

ANEMONE (Single Scarlet)—Rich, dazzling flowers, very bright and striking, splendid for pot culture, also for open ground. 3 for 12 cts., 30 cts. per doz., postpaid.

ANEMONE, APENNINA—Beautiful large rich blue flowers and elegant cut foliage, blooms profusely early in Spring ; also fine for pots. 3 for 10 cts., 25 cts. per doz., postpaid.



IXIAS AND SPARAXIS

THE BEAUTIFUL PALESTINE IRIS

ATROPURPUREA (The Black Iris)—Extra large flowers, deep dark purple—almost black. 10 cts. each.

HISTRIO—Deep sky blue, exquisitely variegated with shades of white, yellow and brown. 10 cts.

MARIE—Bright lavender pink, shaded violet. 10 cts.

SARL NAZERENÆ—Most beautiful of all, extra large and fine, rich canary, elegantly variegated with crimson and blue. 10 cts.

THE 4 VARIETIES FOR 30 CTS., POSTPAID

New Abutilons for House and Window Culture.



NEW
JAPANESE ABUTILON
SAVITZII

NEW CHINESE HIBISCUS, PEACH BLOW.

This is a truly surprising house plant, the flowers are so immense and yet so beautiful and fragrant that they almost take your breath, and you can scarcely believe that they are not artificial in some way. It is a rapid, erect grower, with bright glossy green leaves and immense double flowers like roses, 4 to 5 inches in diameter. Color rich bright pink, with deep crimson centre; likes heat and moisture, and begins to bloom while quite small; can be bedded out in Summer. All flower lovers should have it; it is one of the most striking and beautiful flowers ever seen.

Strong plants, 20 and 25 cts. each, postpaid. Larger size, 35 and 50 cts. each, by express.



DWARF OTAHIETE ORANGE

NEW JAPANESE ABUTILON, "AVITZII"—This is a very choice plant for house and conservatory culture, a neat handsome grower with large elegantly fringed leaves. Dark green in centre and widely bordered with pure white, so clear and bright they look as if painted. 20c., postpaid.

NEW ABUTILON, INFANTA EULALIE—This is one of the most beautiful and satisfactory plants ever offered for house culture; bears large cup-shaped satiny pink flowers Summer and Winter, as long as kept in growing condition. 15c. each

NEW ABUTILON, GOLDEN FLEECE—Pure deep golden yellow flowers, constant bloomer; very fine. 15c. each.

NEW CRIMSON ABUTILON, SPLENDENS—Splendid large bright crimson flowers, exceedingly bright and beautiful, one of the best Abutilons yet produced. 15c.

NEW ABUTILON, SOUV. DE BONN—Pretty bell-shaped flowers, fine buff yellow, elegantly veined with rose, strong grower. 15c.

SPECIAL OFFER: THE 5 ABUTILONS FOR 50 CTS.

FARFUGIUM GRANDE—A rare and beautiful foliage plant, for the house or conservatory, grows low and compact with thick, leathery leaves, 8 to 10 inches around, deep glossy green, with large bright yellow spots, very handsome and striking. Strong plants, 25 cts. each, postpaid.



HIBISCUS PEACH BLOW

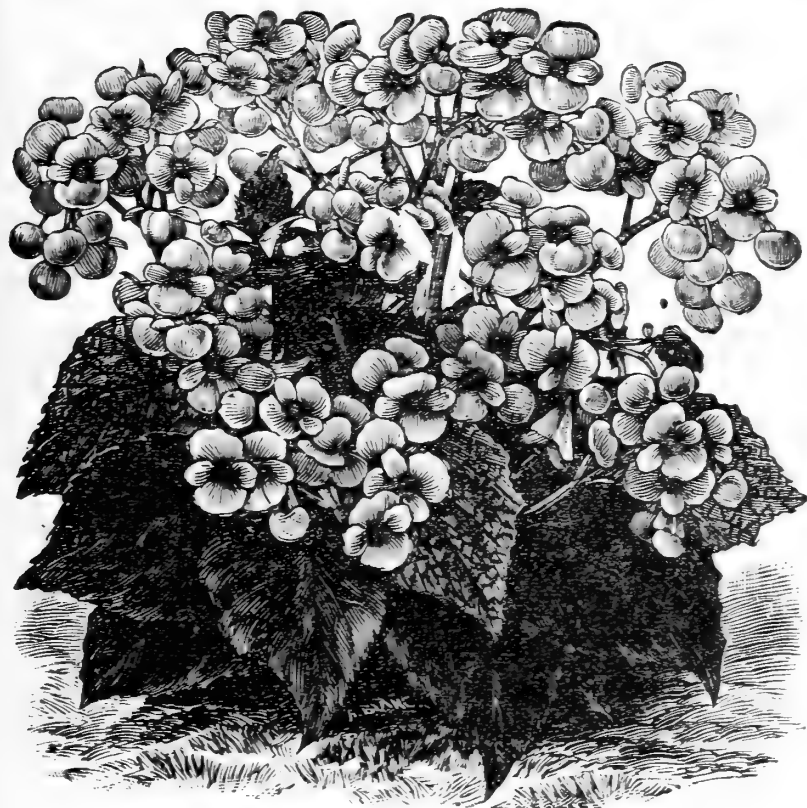
SANCHEZIA NOBILIS—A rare and beautiful decorative plant, grows erect 15 to 18 inches high, with long tapering glossy green leaves, exquisitely veined with golden yellow and bright crimson; highly ornamental for living-room or conservatory. May be bedded out in Summer in a shady border. 15c., postpaid.

Beautiful Dwarf OTAHIETE ORANGE.

This beautiful dwarf orange is one of our prettiest house plants, thick glossy green leaves, and deliciously sweet pure white flowers. Begins fruiting quickly and bears flowers and small golden oranges all the year round. Easily grown and requires very little care. Nice plants; 15 and 25 cts. each, postpaid. Bearing size, some in fruit, 35, 50, 75 cts. and \$1.00 each, by express.

ROYAL PURPLE BOUGAINVILLEA (New)—This is an immense Winter bloomer, and continues, for months at a time, covered all over with its gorgeous clusters of royal purple blossoms; one of the handsomest winter-blooming flowers ever introduced. Very beautiful and entirely different from anything else in color and form. Bed out in Summer. Can be kept for years like an Otahiete Orange or Oleander. A constant and Winter bloomer. Very desirable and handsome. A fine novelty and very easily grown. Blooming size plants, 15 and 20 cts. each, postpaid. Two-year size, 35 and 50 cts. each, by express.

NEW FLOWERING BEGONIAS



NEW PERPETUAL BLOOMING BEGONIA GRACILIS

NEW FLOWERING BEGONIA, GRACILIS—

A very lovely variety; makes handsome, graceful plants, covered all over with beautiful, waxy, rose-tinted flowers; constant bloomer, 10 cts.

MARJORIE DAW—Pale rose pink flowers in beautiful clusters with pretty foliage and bright red stems. 10 cts.

RAMOSA PICTA—A most charming house Begonia of neat compact growth; long, narrow, heart-shaped leaves, fine olive green, rich and velvety and spotted all over with shining silvery spots; under side of leaves rich carmine red. 10 cts. each.

METALLICA VELUTINA—Very distinct and different from all others; foliage very dark, rich and velvety bronze; green above, under side reddish brown; a beautiful pot plant. 10 cts.

COMPTA—A charming sort with delicate green foliage, veined with silvery lines; under side of leaves red; small white flowers in large clusters. 10 cts.

SANDERSONII—A beautiful variety; fine coral red; heart-shaped buds, constant bloomer. 10 cts. each.

PURITY—A most lovely white flowering Begonia, bearing great masses of waxy white flowers both Summer and Winter, makes a dwarf compact plant excellent both for bedding out and pot culture. 10 cts.

PREST. GAULIN—Leaves bronze green, shaded red on under side, pretty pinkish white flowers in large clusters; constant bloomer. 10 cts.

ALBA PERFECTA GRAND—Constant bloomer, beautiful white flowers in large clusters, dark glossy green leaves. 10 cts. each, postpaid.

Special Offer Any 3 kinds for 25c.; set of 9 for 65c., postpaid.

Rex or Painted Leaf Begonias

SPECULATA—A fine plant, with leaves like a grape leaf. They are bright green in color with a background of chocolate; the veins are of a light pea-green and the whole leaf spotted with silver. 15 cts.

ROI FERD MAJOR—Splendid, large, silvery leaves with dark starry centre; edged with rosy bronze. 15 cts.

MAGNIFICA—A magnificent variety; soft, velvety green, zoned with silver and bronze; very handsome and striking. 15 cts.

SPECIAL OFFER The 3 Painted Leaf Begonias only 40 cts., postpaid . . .

OLEANDERS The Oleanders are fine hard-wooded house plants, very popular and highly valued for their splendid flowers, which are as large and double as good sized roses and exceedingly fragrant and beautiful. They are strong, hardy growers, with bright glossy green foliage; can be kept in a pot or tub all the year round—set out in the Summer and taken to the cellar over Winter; require very little care and grow larger and finer every year. **White—**Splendid large snow-white blossoms very double and sweet. **Pink—**Large blossoms, fine rosy pink, very beautiful. **Yellow—**Large flowers, very sweet and handsome. **Price, 25c. each; the THREE varieties for 65c., postpaid.**



REX BEGONIA

Acalypha Bicolor Compacta

Entirely new and highly recommended as a first-class foliage plant for house culture and summer bedding; large oval leaves, beautifully variegated with bright yellow, white and green. 10 cts., larger sizes, 15 and 20 cts. each, postpaid.

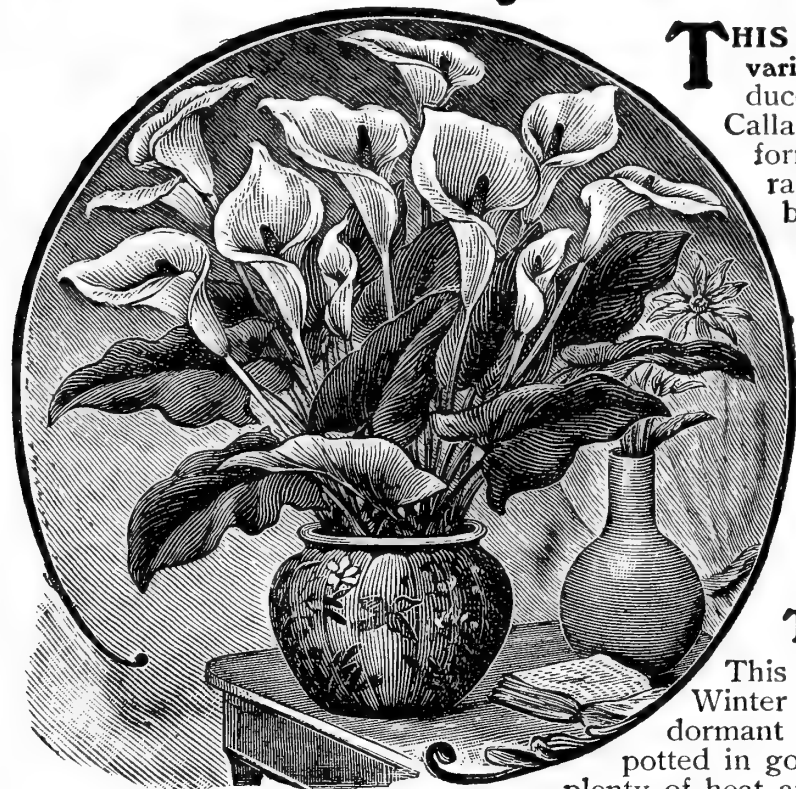
ACALYPHA SANDERII or COMET PLANT—This curious plant grows 10 to 12 inches high, blooms quickly and abundantly, and the long flower tassels grow as long as the plant is high; they are covered all over with fine crimson flowers, looking almost exactly as if made of crimson chenille or silken plush. The plant likes heat and moisture and good rich soil, but grows easily and blooms all the time. 15, 20 and 25 cts. each, postpaid.

JASMINE FLORIDA (Cape Jasmine)—A half hardy greenhouse shrub, highly valued for its pure white rose-shaped flowers of delicious sweetness. Its glossy evergreen foliage makes it a very pretty decorative plant, even when not in bloom. 15 cts.



ACALYPHA BICOLOR COMPACTA

New Godfrey EVER-BLOOMING Dwarf Calla Lily



NEW GODFREY DWARF CALLA LILY

Large Bulbs, 20 cts. each, 2 for 35 cts., \$1.80 per doz. 25 cts., \$1.50 per doz., postpaid.

THIS New Dwarf Hybrid is a true every-blooming variety, grows about 18 inches high, and will produce three times as many blooms as the old white Calla. The flowers are equally large and perfect in form. Very much whiter and delightfully fragrant. When properly treated it will grow and bloom the whole Summer and Winter, though, of course, a short season of rest is always beneficial. Price, fine growing plants, 25 cts. each, postpaid.

Yellow Calla (RICHARDIA HASTATA)

This is identical in all respects to the well-known White Calla, excepting that the flowers are a beautiful Canary Yellow and very choice and rare. Price, 40 cts. each. Good second size blooming bulbs, 25 cts. each.

The White Calla, or Lily of the Nile

This is one of our most highly valued house plants for Winter and Spring bloom; should be dried off and kept dormant from the middle of June until September, then potted in good, rich soil, in a 4 or 6-inch pot, and given plenty of heat and moisture. When well established a good plant will bear six to eight Lilies at a time. Dry bulbs only. Extra First Size, Blooming Bulbs, 15 cts. each, 2 for 25 cts., \$1.50 per doz., postpaid.

New Dwarf Calla Lily Little Gem

Most popular house plant in existence; grows only half as tall as the large kind, and bears twice as many flowers.

We send extra fine imported Bulbs, ready for potting, the very best for quick and abundant blooms and sure to give satisfaction. 10 cts. each, \$1.00 per doz., postpaid.

NEW DWARF Sweet-Scented Calla Lily

Originated in California; grows low and compact. A most constant and abundant bloomer, and delightfully sweet scented. Finest Dwarf Sweet-Scented Calla Lily yet produced. Price, Dry Bulbs, 15 cts. each, \$1.50 per doz., postpaid.

The Wonderful Black Calla (ARUM SANCTUM)

This wonderful variety resembles the White Calla in growth and foliage; the flowers are rich dark purple, and the spikes or spadix are coal black; very curious and remarkable and always attracts a great deal of attention, especially when known that it is a native of Palestine, and has only recently been brought to this country from the neighborhood of Jerusalem. Nice dry bulbs, ready for potting. Extra Size Bulbs, 20 cts. each, 2 for 35 cts., \$2.00 per doz. First Size Bulbs, 15 cts. each; 2 for 25 cts., \$1.50 per doz., post'd.

RED CALLA (Arum Cornutum)

Red flowers, spotted with black; stems curiously mottled, green and white, foliage palm-like and very handsome. 15 cts. each, \$1.50 per doz., postpaid.

Special Offer 1 Large White, 1 Little Gem, 1 Black, 1 Red—the 4 Callas for 50c. postpaid, or INCLUDING the NEW GODFREY, YELLOW, and SWEET-SCENTED Callas, the 7 for \$1.00.



BLACK CALLA (ARUM SANCTUM)

NEW RUSSELLIA ELEGANTISSIMA (Scarlet Fountain Plant)—A charming plant for pots, vases, window boxes, etc., has long, slender, wiry stems, which grow in graceful drooping masses like flowing hair, and covered with pretty tubular flowers of the brightest scarlet color; blooms the whole season, and can be kept in pots Summer and Winter. 15 cts., 2 for 25 cts.

NEW GOLDEN PHILIPPINE LILY (Allamanda Williamsii)—A charming new house plant; makes a neat and compact bush, with dark glossy green leaves, and bears grand clusters of large golden-yellow, lily-like flowers, very beautiful and deliciously sweet scented. 15 cts.; larger size, 20 cts., postpaid.

The Boston Fern



NEPHROLEPIS EXALTATA.



THE BOSTON FERN

This is one of the finest and best Ferns for growing in pots, vases and baskets; will do well planted in a shady border during Summer, and when lifted and taken indoors, makes a splendid window and house plant during Winter. The beautiful fronds grow two to three feet long, and arch over in a most graceful manner. Very popular wherever known. **Price, good strong plants, 15, 20 and 25 cts. each, \$1.50, \$2.00 and \$2.50 per doz., postpaid; larger size, 40, 50, 75 cts. and \$1.00 each, by express, at purchaser's expense.**

Special Window Garden Collection:

- 1 Beautiful Boston Fern See above.
- 1 Umbrella Plant Page 34
- 1 New Weeping Lantana Page 40
- 1 Gold Dust Plant Page 40
- 1 Browallia New Giant Blue Page 36
- 1 Scarlet Fountain Plant (Russellia Elegantissima) Page 32

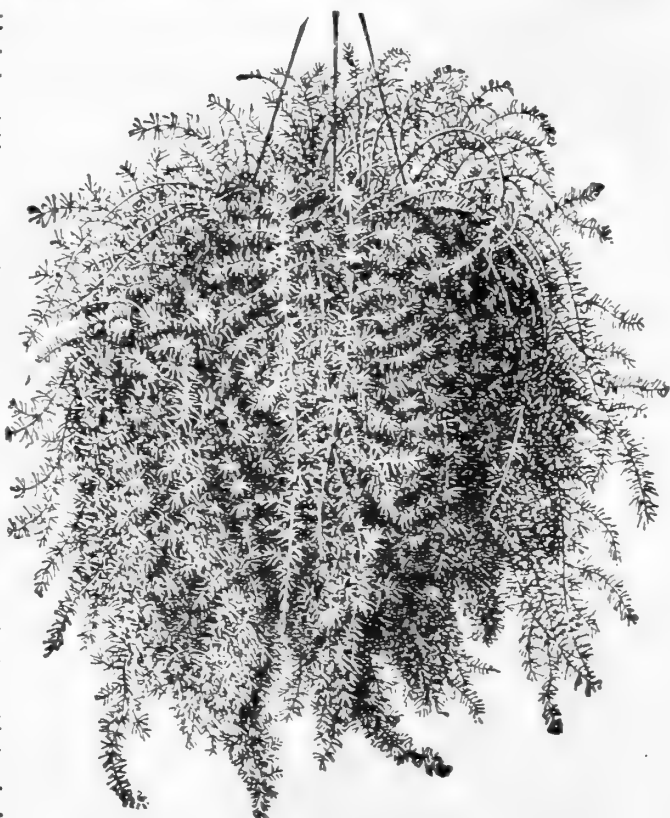
Set of 6, Postpaid only 65 cts.

New Emerald Feather Asparagus



ASPARAGUS SPRENGERII.

This is undoubtedly one of the handsomest and most valuable evergreen trailing plants for the house and conservatory ever introduced. It is especially valuable for pots, vases, baskets, etc., covering all with its beautiful sprays of lovely green feathery foliage, which can be cut freely and are very useful for bouquets, wreaths, and all kinds of floral decorations. It makes a charming ornamental plant for the window or conservatory in Winter, and is equally valuable for vases, baskets, porch boxes in Summer. It is a strong, vigorous plant, very easily grown, requires but little care and keeps on growing, fresh and green, year after year. **Price, 15, 20 and 25 cts. each; \$1.50, \$2.00 and \$2.50 per doz., postpaid. Extra size from 5 and 6 inch pots, 40 and 50 cts. each, \$4.00 and \$5.00 per doz., by express.**



EMERALD FEATHER ASPARAGUS

Asparagus Plumosa

Climbing Lace Fern.

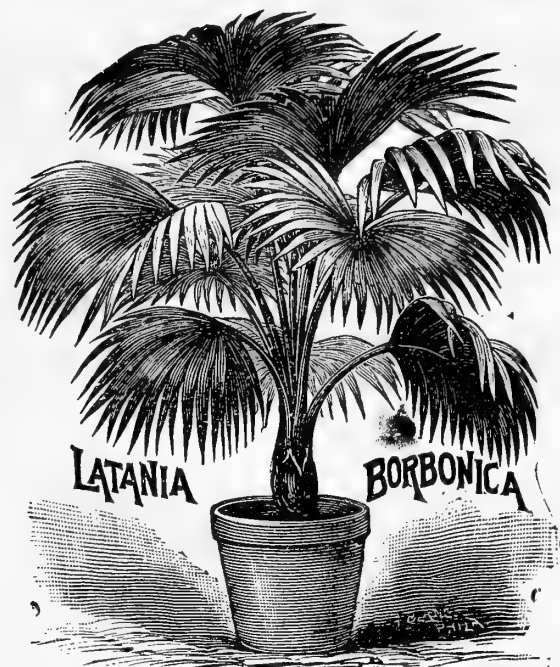


ASPARAGUS PLUMOSA

A finer and more delicate plant than the Sprengerii, but hardy and easily grown; very satisfactory for window and house culture;

an extremely graceful window climber, bright green feathery foliage, as fine as the finest silk or lace. The fronds retain their freshness for weeks when cut, and are greatly admired for floral decoration. An exceedingly beautiful plant for house and conservatory, and will thrive nicely in the temperature of an ordinary living-room. Entirely unequalled for the grace and beauty of its lovely spray-like fronds. **Price, nice thrifty plants, 15 and 20 cts. each, \$1.50 and \$2.00 per doz., postpaid; larger size, 35 cts. each, \$3.50 per doz., express.**

The Fan Palm, *Latania Borbonica*



Cocos is quite hardy and easily grown, and is highly valued as a very choice table and parlor ornament for vases, fern dishes, etc. Nice plants, 6 to 8 inches high, 3 fronds, 30 cts., postpaid. Larger size, 50 cts. each, by express.

THIS is one of the very best Palms for house culture, hardy and will thrive in any ordinary living room, regardless of heat or cold, dust or drought. Has elegant fan-shaped leaves, rich dark green, beautifully fringed. Grows easily, needs no petting or coaxing. Fine plants, 6 to 10 inches high, 25 cts. each; 10 to 15 inches, 35 cts., postpaid; 15 to 18 inches, 50 cts., by express.

Washington Weeping Palm

The hardiest of all ornamental Palms for house culture, has large fan-shaped leaves, curiously fringed with white threads. Extensively grown because of its extreme hardiness and quick growth. Good plants, 15, 25 and 35 cts. each, postpaid. Extra size plants, from five to six in pots, 50 cts., express.

Cocos Weddelliana

This is one of the most elegant and graceful of all the smaller palms; its slender, erect stem is freely furnished with its graceful arching fronds and fine, deep green leaves. The



OSTRICH FEATHER PALM

Ostrich Feather Palm

(*Areca Lutescens*)

One of the grandest and most beautiful palms for house culture now known. The foliage is rich glossy green, with bright yellow stems, full of grace and beauty; hardy and easily grown; it grows more beautiful as it grows older and larger. The palms require no special treatment; will all thrive in parlor or living room. Good strong plants, 6 to 8 inches high, 25 cts. each; 10 to 12 inches, 35 cts. each, postpaid. Larger Plants, 50 cts., express.



COCOS WEDDELLIANA

Umbrella Plant

(*Cyperus Alternifolia*)

The Umbrella Plant somewhat resembles a palm in general style and habit of growth; grows easily and makes a nice window ornament. Good strong plants, 15 cts. each, postpaid. Larger size, 30 cts. each, by express.

Araucaria Excelsa, or Christmas Tree Palm

This is the handsomest and most beautiful of all the decorative evergreens for house culture. It has no equal, but is not often seen, because rare and expensive, but we are now offering nice plants at the following reasonable prices. Fine sturdy little Trees, 6 to 8 inches high, 60 cts. each; 8 to 10 inches high, 2 to 3 tiers of branches, from 4-inch pots, 75 cts. each, postpaid. Larger and heavier trees, \$1.00, \$1.50 and \$2.00 each, by express.

SPECIAL OFFER

The 4 Palms and *Cyperus Alternifolia*, 5 in all, postpaid, for \$1.10, or with the *Araucaria*, 6 for \$1.65. Same in Larger Size, packed to express here, \$2.65. All good strong plants.



UMBRELLA PLANT, *CYPERUS ALTERNIFOLIA*



ARAUCARIA EXCELSA

THE *Kentia Palm*, *BELMOREANA*



KENTIA PALM

THE KENTIA PALM, besides being one of the most graceful and ornamental of all palms for the house or conservatory, is also one of the hardiest and easiest to grow. It is of slow growth, but is not affected by the dust and dry air of the house, and will grow and thrive where few other plants would live, and will continue to increase in size and beauty for many years. **Fine thrifty plants, 6 to 8 inches high, 25 cts.; larger size, 35 cts. each, postpaid. Extra size, 50 cts. each, by express.**

THE RUBBER TREE, *FICUS ELASTICA.*

THE INDIA RUBBER TREE is well known as one of the very finest plants for table and parlor decoration. Its large, thick, olive-green leaves and graceful polished stems make it one of the very finest ornamental plants for the house and conservatory. It stands dust and heat with impunity, and always looks handsome and attractive. **Fine sturdy plants from 4 inch pots, 65 cts. each, postpaid. By express, at purchaser's expense. 50 cts., 75 cts. and \$1.00 each, according to size.**

Six Choice Ferns for House or Conservatory

THE NEW LADY FERN (*Polystichum Prolifera*)—Extremely graceful in habit and form, as shown in photograph. The fronds have an exquisite moss-like velvety appearance impossible to describe, but always greatly admired. 20 and 25 cts. each, postpaid.

MOUNT WASHINGTON FERN (*Davallia Stricta*)—Has long graceful finely-cut foliage, rich Nile green, nice for house or conservatory, also for planting out; hardy. 15 and 20 cts. each, postpaid.

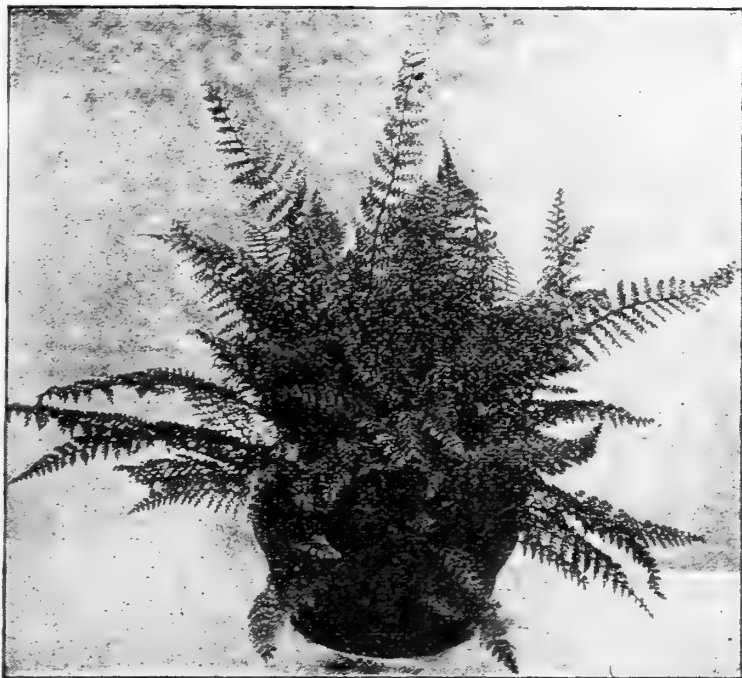
POLYSTICHUM SETOSUM—A lovely variety, erect feathery growth, bright glossy green. 15 cts.

ASPIDIUM TUSSIMENSE—Beautiful fine fronds, lace effect, one of the best for Fern Dishes. 15 cts.

PTERIS ARGENTEA, (Eagle's Claw Fern)—Pea green foliage with silver variegations. 15 cts.

THE BEAUTIFUL MOSS FERN (*Selaginella Emiliana*)—A very pretty and interesting little fern with moss-like foliage, delightful for fern dishes, wardian cases, etc. 15 cts. each, \$1.50 doz., postpaid.

Special Offer Any 3 varieties for 40 cts., set of 6 for 75 cts., postpaid.



THE NEW LADY FERN

GENISTA, or Shower of Gold

The Genista or Shower of Gold is a charming hard-wooded window plant, of neat bushy form, and almost unequalled for Winter and Spring bloom. Very highly valued for Easter decoration, etc. The flowers are bright golden yellow, delightfully fragrant, and borne in large drooping racemes in such immense profusion the whole plant seems covered with a shower of golden bloom. It is very easy to grow and absolutely sure to bloom, and is a great favorite wherever known. Set out in flower bed when done blooming, and will be ready to take in again the next Winter. 15 cts. each, postpaid; larger size, 35 cts. each, by express.



GENISTA

Clerodendron Balfourii

This is an exceedingly pretty flowering vine for window or conservatory. Grows two to three feet high and bears hundreds of beautiful pear-shaped flowers, rich crimson and pure white. No trouble to grow and a tremendous bloomer. Strong plants, 15 cts.

Cissus Discolor, or Climbing Begonia

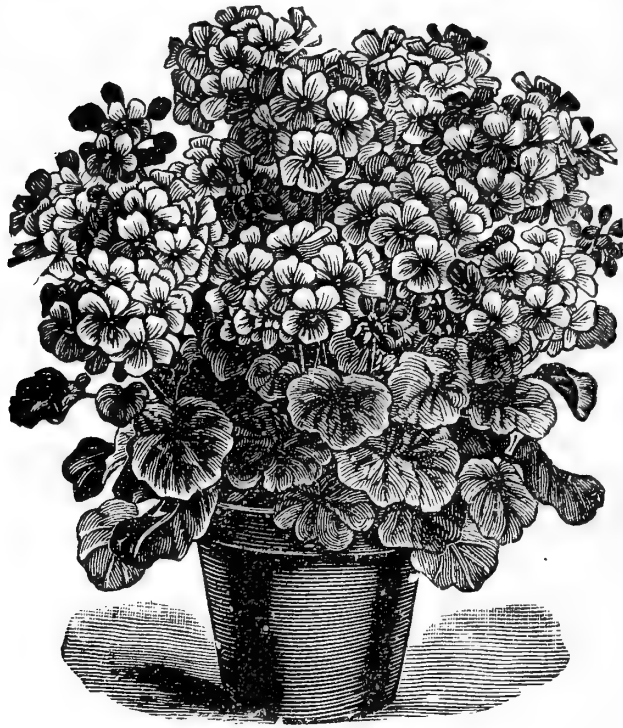
A lovely vining window plant with exquisitely colored foliage, deep bronze green with bright metallic luster, beautifully marked with silver and veined with rich crimson. Likes heat and moisture, and soon makes a parlor plant of almost unequalled beauty. Strong plants, 15 cts.

SANSEVERIA ZEALANICA

A beautiful house plant. The leaves grow erect, one to two feet high, and are beautifully barred, white and green; always showy and attractive, and requires very little care. 15 cts. each, postpaid.

Ten Choice New Geraniums

Strong plants from 3-inch pots



NEW GERANIUM CENTAURE

DOUBLE NEW LIFE—Dark red, with small, pure white floret in the centre of each flower. A great curiosity. 15 cts.

QUEEN OF CRIMSONS—The best dark crimson scarlet, immense bloomer. Extra fine in every way. 15 cts., postpaid.

CRYSTAL GEM—Very dwarf bushy grower, leaves green and white, variegated; an elegant house plant. 15 cts.

DE LACEPEDE—A very beautiful double variety, deep flesh, shading to silver pink, very fresh and attractive; a good free bloomer, 15 cts.

CENTAURE—Largest and finest double pink Geranium, constant bloomer. 15 cts.

MOUNTAIN OF SNOW—Centre of leaves deep green, widely bordered with pure white; pretty pink flowers. 15 cts.

ROSE GERANIUM—Richly scented leaves a great favorite. 15 cts.

GENL. DE BOISDEFRE—A remarkably strong, vigorous grower, bushy compact habit, rich cherry-pink flowers in splendid trusses; an excellent bedder and immense bloomer. 15 cts.

LA CID—Large bold flowers in enormous trusses, rich black crimson, great bloomer. 15 cts.

WHITE SWAN—Large pure white flowers in solid clusters, very beautiful. 15 cts.

Price Strong Repotted Plants, 15 cts. each, 2 for 25 cts. Set of Ten for \$1.10, postpaid.

TWO NEW HELIOTROPES

These are fine for Winter bloomers and very sweet.

JERSEY BEAUTY and **PICIOLA**—15 cts. each. The two for 15 cts., postpaid. Heliotropes are always admired.

NEW IMPATIENS "Evening Star"

This is a grand plant for pot culture and also for the flower bed; makes nice bushy plants 10 to 12 inches high, covered all over with pretty wide-open flowers, 1 to 2 inches in diameter; pure white with rich crimson centre. Very beautiful and blooms all the time. See illustration. 15 cts. each, 2 for 25 cts.

4 CHOICE FUCHSIAS For Winter Bloom

NEW DOUBLE WHITE FUCHSIA, GLORIE DE MARCHE—Finest double white Fuchsia ever sent out. Flowers of largest size. Price, 15 cts.

ESPERIANCE—A new and very handsome variety. Extra large flowers, rich purple and crimson, fine bloomer. 15 cts.

ROZAINS PATRIE—New double white, with deep carmine sepals; extra large flowers, very fine. 15 cts.

NEW FUCHSIA—SILVER KING—Pretty waxy pink flowers and silvery white foliage. A very handsome novelty. 15 cts.

4 Choice Fuchsias for 40 cts., postpaid.

Choice Miscellaneous Plants

Many of these are very choice varieties, and listed here because we have no room elsewhere

ASPIDISTRA LURIDA—A very durable decorative plant, grows 15 to 18 inches high, hardy and strong, large lance-shaped leaves; excellent for corner pieces, halls, show windows, etc. Strong plants, 20 cts. each, postpaid; extra size, 35 and 50 cts. each, by express.

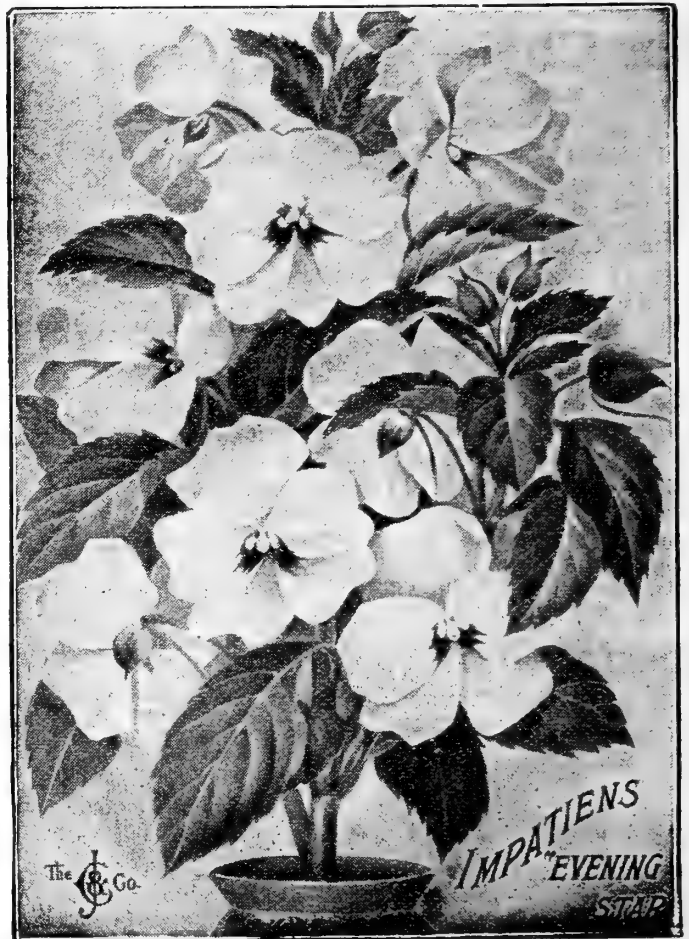
PARLOR IVY—Grows in water or soil, deep green leaves, fine for windows, pots and baskets. 10 cts. each, postpaid.

ACALYPHA MOSAICA—A handsome new foliage plant for pot culture. Thick glossy leaves, looking as if varnished and beautifully variegated with red and old gold. 15 cts. each, postpaid.

GOLDEN STAR OXALIS (Ortegesii)—A charming house plant, dark olive green leaves and bright yellow star-shaped flowers, borne in fine clusters all the year round. 15 cts. each, 2 for 25 cts., postpaid.

CUPHEA, LITTLE PET—An elegant window plant, fine deep green leaves, dotted all over with pretty rose-pink flowers; blooms all the time. 10 cts. each, postpaid.

ACHYRANTHUS ROSEA—Foliage bright red, grows low and bushy, fine for pots and vases, also edging for beds and borders. 10 cts., 3 for 25 cts., 75 cts. doz., postpaid.



TRADESCANTHIA, JOSEPH'S COAT—Purple and green foliage, fine for pots, vases and baskets. 10 cts. each.

NEW AGERATUM, STELLA GURNEY—One of the finest Ageratums yet produced; makes neat, compact plants, covered all the time with lovely, fluffy, sky-blue flowers; splendid for the window garden in Winter and for beds and borders in Summer. 10 cts. each, 75 cts. per doz.

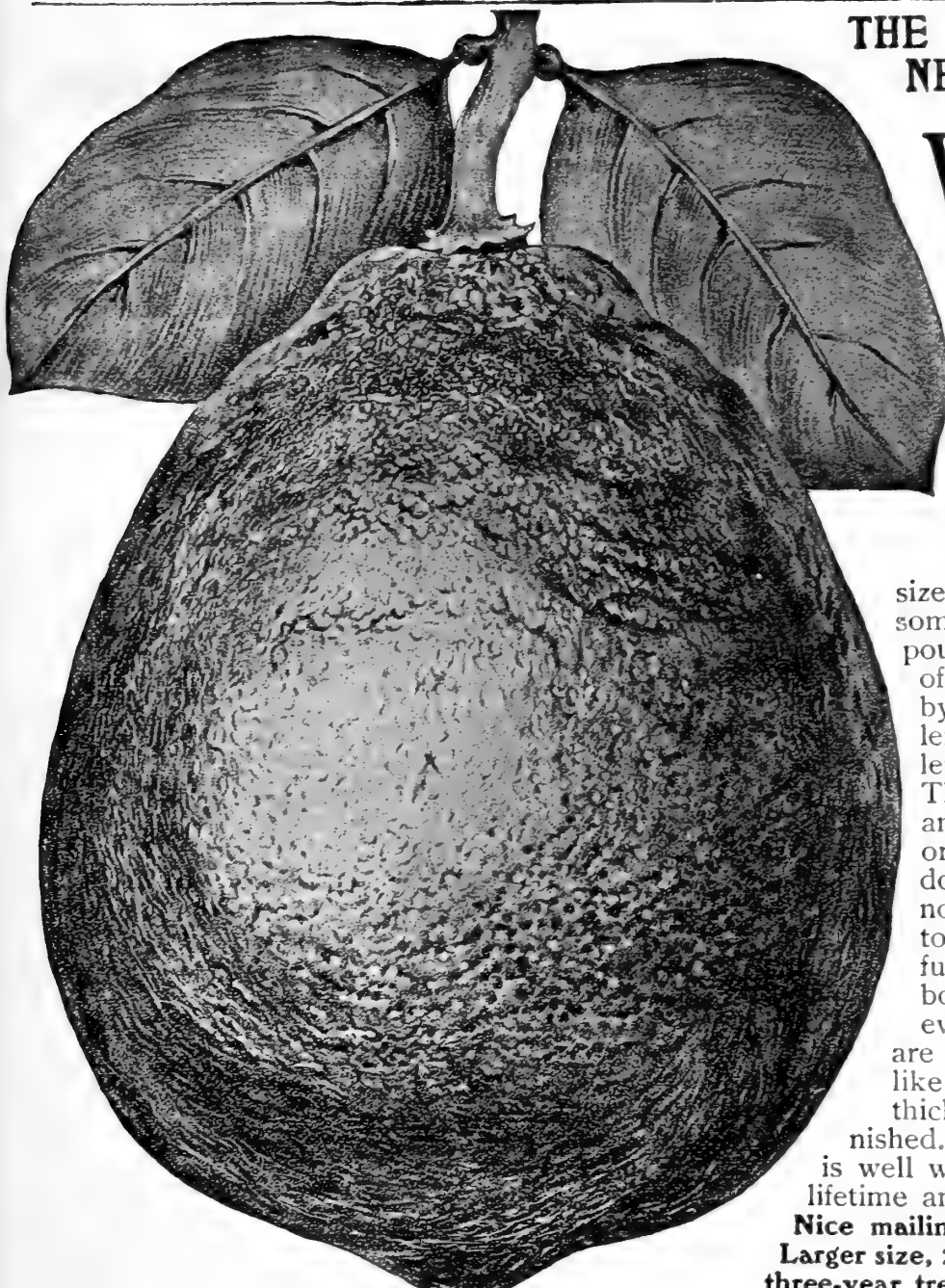
SANSEVERIA ZEALANICA—A very beautiful house plant. The leaves grow erect, 1 to 2 feet high, are beautifully barred, white and green. 15 cts. each.

NEW SNOW-WHITE AGERATUM, WHITE CAP—This is the best pure white Ageratum we know; blooms all the time; a nice companion for the blue "Stella Gurney." 10 cts. each, 75 cts. per doz. The two varieties for 15 cts.

LEMON VERBENA—Highly prized for the spicy and delicious fragrance of its leaves; nice for pots and bedding. 10 cts. each.

THE NEW AMERICAN WONDER LEMON

Will thrive and bear both flowers and fruit the whole season in any ordinary living room.



NEW LEMON, AMERICAN WONDER

THIS is one of the grandest new fruits for house culture ever introduced. Hundreds of testimonials have been received from persons who have tried it, testifying to its easy culture, wonderful productiveness and the enormous size and excellent quality of the fruit, some of which weigh as much as three pounds each, and are three times the size of the cut shown herewith. It is claimed by the introducers that one of these lemons will go as far as six ordinary lemons for all kinds of culinary uses. The tree is a strong, vigorous grower and quite hardy; may be kept in a pot or box set out in Summer and taken indoors in Winter; requires no codding, not troubled with insects, and will begin to bear very quickly, and as soon as fully established will continue to bear both flowers and fruit continuously every month in the year. The flowers are pure waxy white and very sweet and like orange blossoms; the leaves are thick glossy green and shine as if varnished. It makes a very handsome tree and is well worth taking care of as it will last a lifetime and grow more valuable every year. **Nice mailing plants, 20 cts. each, 3 for 50 cts. Larger size, 25 cts., 5 for \$1.00, postpaid. Two and three-year trees, ready for fruiting, 50 cts., 75 cts. and \$1.00 each, express only.**

New Giant Flowering Browallia (VIOLET BLUE)

A charming Plant, both for the window garden and the flower bed. Makes nice bushy little plants 8 to 10 inches high, and blooms all the time. Large flowers, fully 2 inches across, lovely deep violet blue. No trouble to grow and a most constant and satisfactory bloomer, Winter and Summer. **Strong plants, 15 cts. each, 2 for 25 cts., \$1.50 per doz., postpaid.**

Oleo Fragrans (Sweet Olive)—An elegant house plant, somewhat resembling an orange. Thick glossy green leaves and small pure white flowers, so fragrant they will perfume the whole house for months at a time. **Price, nice plants, 25 and 35 cts. each, postpaid. Larger size, 50 and 75 cts., express.**

Impatiens Sultana—One of the most cheerful and satisfactory house plants you can have, bright rosy red flowers, blooms all the time, Winter and Summer. **15 cts. each, or with the New Impatiens Evening Star, the 2 for 25 cts., postpaid.**



NEW GIANT FLOWERING BROWALLIA

NEW CAREX JAPONICA

A first-class novelty and an excellent plant for house and table decoration; forms a mass of erect-growing fine spray-like foliage, drooping gracefully from the centre, the delicate dark green leaves, beautifully edged, as with a band of gold. **15 cts. each, 2 for 25 cts.; larger size, 20 cts., postpaid.**

NEW COLEUS, MRS. HUNT—Dark crimson maroon with broad gilt edge. Very handsome. **10 cts.**
HERO, BLACK GIANT—Immense leaves, purple black. **10 cts.**
NEW COLEUS, ROB ROY—Red, bordered with yellow, beautifully fringed and ruffled. **10 cts.**
THE THREE NEW COLEUS ABOVE ONLY 25c, Postpaid

Hardy 2 and 3-year Dormant Roses

FOR FALL PLANTING IN THE OPEN GROUND



A SINGLE CLUSTER OF THE NEW PHILADELPHIA CRIMSON RAMBLER

NEW

"Philadelphia" Crimson Rambler

C. & J.
CO.
1904

Has proved the most magnificent Hardy Crimson Climbing Rose in existence. Splendid flowers, 2½ inches across and perfectly double, borne in grand clusters; color, deep rich crimson, far brighter and more intense than the old Crimson Rambler. Does not fade, bleach or wash out. Undoubtedly the brightest and best of all the Crimson Climbing Roses yet produced. Price, strong plants, 25 cts. each, 5 for \$1.00. Larger size, 30 cts. each, 4 for \$1.00, postpaid. Two-year bushes, 50 cts. each, 2 for 85 cts., \$4.50 per doz. Extra size three and four-year bushes to bloom the first season, 75 cts., \$1.00 and \$1.50 each, by express.

Sir Thomas Lipton or White Century

C. & J.
CO.
1904

The finest pure white Hybrid Rugosa Rose yet produced; makes a handsome bush, 4 to 5 feet high and bears large double pure white roses all Summer and Fall. One of the hardiest roses in existence, and particularly valuable for planting in cold localities, where other roses do not thrive. Strong two-year bushes, 75 cts. and \$1.00 each. Extra size three-year bushes, \$1.50 and \$2.00 each, express.

New Boston Pink Rambler (Farquhar)—Grows 10 to 12 feet in a season, perfectly hardy and bears enormous clusters of large double bright pink roses, very fragrant and beautiful. Strong two-year bushes for quick bloom, 50 and 75 cts. each, express.

Hardy Marechal Niel (Gardenia)—The finest hardy yellow climbing rose ever introduced. Deep rich golden yellow, almost the exact color of Marechal Niel, (flowers change to creamy white) and as hardy as an oak. A good healthy grower and free bloomer. Strong two-year bushes, 35 cts. each. Three-year bushes, 50 and 75 cts., express.

Psyche—New Hardy Yellow Climbing Rose, creamy yellow, tinged with rose, very beautiful. Two-year bushes, 35 cts. each. Three and four-year bushes, 50 and 75 cts., express.

Royal Cluster—Blossoms in enormous clusters, white, tinted blush. Strong two-year bushes, 30 cts. Three-year bushes, 50 cts., express.

New Hardy Pillar or Veranda Rose, "Northern Light"—May be trained as a climber or bedded out. Is a hardy garden rose, a strong, vigorous grower and bears great masses of beautiful pink and white Roses wonderfully variegated. Strong two-year bushes, to bloom the first season, 75 cts., \$1.00 and \$1.50 each, express.

Climbing Clotilde Soupert—The great, new, hardy, ever-blooming climbing rose; flowers 2½ to 3 inches across, perfectly double, rich creamy white, with blush centre. Strong two-year bushes, 35 cts. each. Extra size three and four-year bushes, 50, 75 cts. and \$1.00 each, by express.

Ruby Queen—Rich ruby red, with clear white centre. Strong two-year bushes, 35 cts. Three-year bushes, 50 cts., express.

Pearl Queen—Fine pearl white, with deep rose centre. Strong two-year bushes, 30 cts. each. Three-year size, 50 cts., express.

THE NEW RAMBLER ROSES

are the most popular of all. They are strong growers, perfectly hardy and tremendous bloomers. Four varieties.

The Crimson Rambler. Intense dazzling crimson.
The White Rambler. Pure pearl white.

The Pink Rambler. Rosy pink.
The Yellow Rambler. Fine canary yellow.

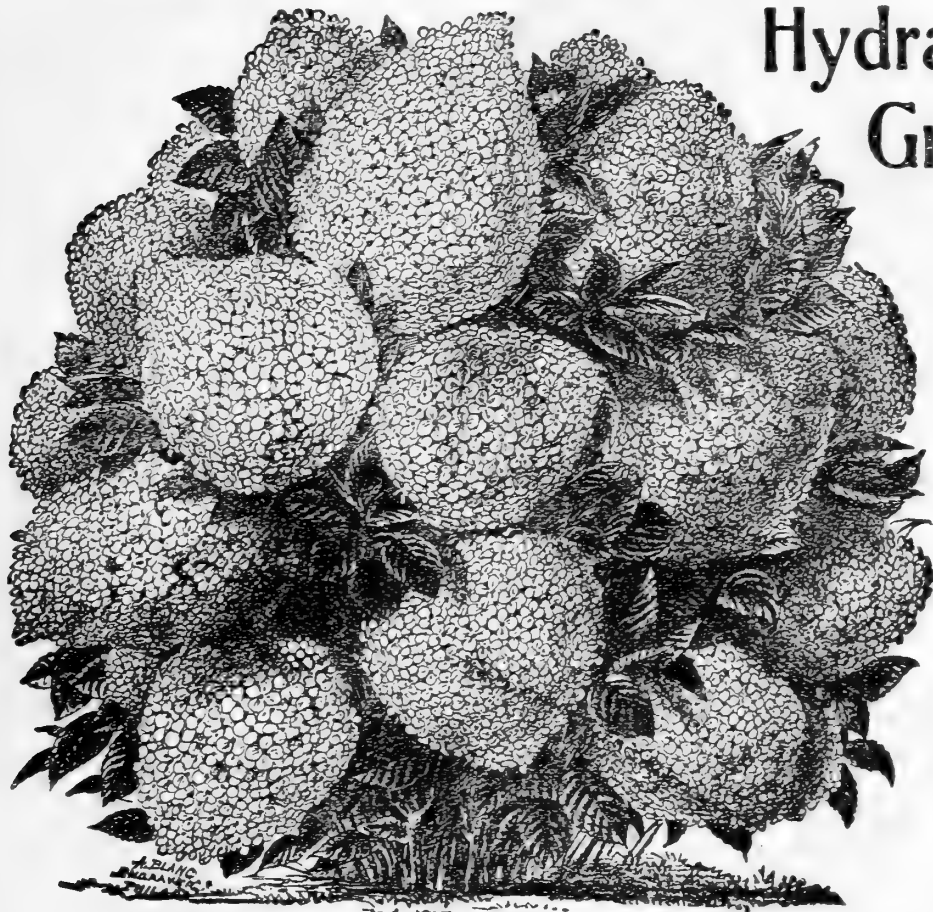
PRICE—Either color desired, strong two-year bushes, from open ground, 35 cts. each, the four varieties for \$1.00, \$3.00 per doz., express. Extra size two-year Ramblers, 60 cts. each. The four varieties for \$2.00, express. Extra size three-year Ramblers, 80 cts. each, the four varieties for \$2.75, express.

These plants will be ready for shipment about Oct. 20th and will be cut back to proper height for planting.

Hardy Ornamental Dormant Shrubbery

FOR FALL PLANTING IN THE OPEN GROUND

(FOR FULL DESCRIPTION SEE OUR SPRING GUIDE, 1904)



HYDRANGEA PANICULATA GRANDIFLORA

Hydrangea Paniculata Grandiflora

GRANDEST
and MOST
BEAUTIFUL of
all Hardy
Flowering
Shrubs

THE flowers are white changing to pink and borne in immense clusters more than a foot long, as shown in the cut. Blooms in July and August and continues in flower the rest of the season. Entirely hardy and does well everywhere; splendid for lawn, and hardy border. Price, 15 cts. each; strong 2-year bushes, 25 cts. each, 5 for \$1.00, 12 for \$2.00, 25 for \$3.75, \$12.00 per 100. 3-year bushes, 35 cts. each, 3 for \$1.00, 12 for \$3.00, 25 for \$5.50; \$18.00 per 100. 4 to 5-year, 50 cts., 75 cts. and \$1.00 each, by freight or express.

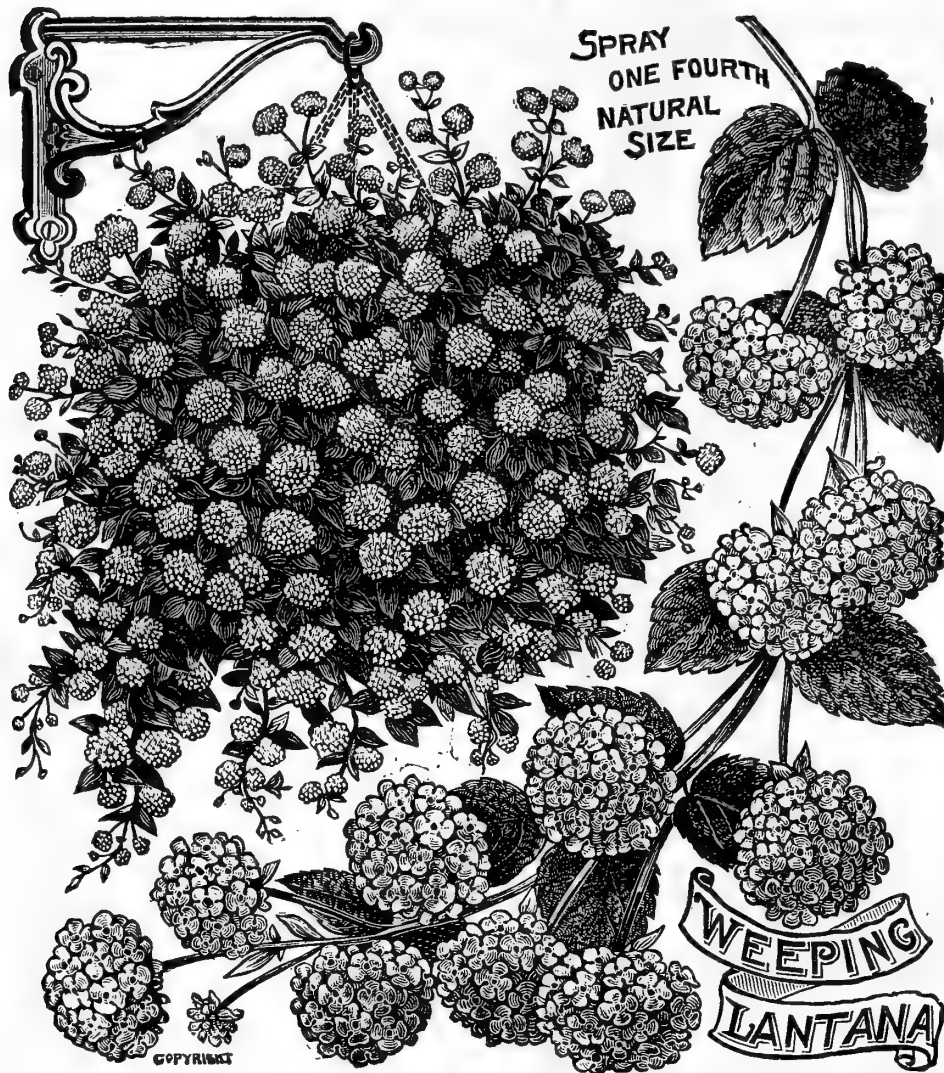
NOTE: All the Shrubs listed below are entirely hardy, and when planted in the Fall will bloom finely the first season.

- PRIVET (California)**—Close, erect-growing hardy shrub, much used for ornamental hedges and screens. 10 cts. each, \$1.00 per doz., postpaid. 2-year, 20 cts. each, \$1.50 per doz.
- STYRAX JAPONICA**—A valuable new shrub from Japan, grows neat and compact in tree form and is covered all over with snowy-white bell-shaped flowers; very handsome and quite hardy.
- BERBERRY JAPAN (Thumbergii)**—A dwarf grower, dark, purple leaves, one of the most beautiful of all hardy garden shrubs.
- CERCIS JAPONICA (Japan Judas)**—A rare and beautiful hardy flowering shrub, grows 6 to 8 feet high, blooms early in the Spring before the leaves show. Flowers are bright rosy crimson and borne in such solid wreaths and clusters the whole bush seems one mass of bloom. Strong mailing plants, 25 cts. each, postpaid.
- LILACS**—Two kinds, white and purple, both hardy and very fragrant.
- WEIGELA ROSEA**—One of the most charming shrubs in cultivation. Lovely large rose-colored flowers, borne in such profusion that the whole bush appears a mass of rosy bloom.
- WEIGELA CANDIDA (White Weigela)**—Snow-white flowers in great profusion.
- WEIGELA, VARIEGATED LEAVED**—Deep green leaves, each one with a wide border of creamy white; flowers bluish pink.
- FORSYTHIA (Golden Bells)**—Height, 3 to 4 feet, beautiful, bright yellow, bell-shaped flowers, blooms profusely very early in Spring; very beautiful.
- VIBURNUM PPLICATUM (Japan Snowball)**—Next after Hydrangea Grandiflora, one of the finest hardy shrubs ever introduced. Great globular clusters of pure white flowers, like real balls of snow; grows 4 to 6 feet high. Strong plants, 20 cts. each, \$1.75 per doz., postpaid. Extra size 2 and 3-year bushes, 35, 50 and 75 cts. each, express.
- SPIREA NEW CRIMSON (Anthony Waterer)**—Blooms profusely early in Spring and at short intervals all through the Summer and Fall; rich rosy red flowers in large clusters, entirely hardy.

- SPIREA VAN HOUTEII**—A splendid new hardy Spirea, one of the most beautiful of all, pure snow-white flowers.
- SPIREA PRUNIFOLIA (Bridal Wreath)**—Immense bloomer, pure snow-white double flowers like little roses, borne in great profusion the whole length of the branches.
- NEW JAPAN BLUE SPIREA**—One of the finest blue flowering shrubs in cultivation, makes neat compact bushes 18 inches to 2 feet high, begins to bloom in August and continues loaded with lovely sky-blue flowers till frozen up.
- NEW SPIREA FROBELI**—Height, 3 feet, fine crimson flowers, borne in large clusters, hardy and handsome.
- DEUTZIA LEMOINI**—A grand new hardy shrub in the way of D. Gracilis, but much larger and finer flowers; splendid.
- DEUTZIA GRACILIS ROSEA (New Rose-Colored Deutzia Gracilis)**—A very lovely, low growing, hardy shrub; exquisitely beautiful.
- DEUTZIA GRACILIS**—A low growing compact bushy shrub, perfectly hardy; blooms early in Spring, covered all over with pure white, bell-shaped flowers. Highly valuable for yard, lawn, park and cemetery planting.
- DEUTZIA PRIDE OF ROCHESTER**—Grows strong and upright, 4 to 6 feet high; flowers very double and full; pure white, tinged with blush; borne in great profusion during May and June.
- PHILADELPHUS or MOCKORANGE**—Beautiful, large cupped flowers; blooms early in June; flowers fine creamy white and very fragrant. Two-year only 20 cts.
- NEW DOUBLE PURE WHITE ALTHEA (Jean d'Arc)**—Finest and hardiest Double Pure White Althea ever introduced, bears splendid large double flowers like roses, over 3 inches across.
- ALTHEA—Double Violet**—Large double flowers, rich violet blue.
- ALTHEA—Double Pink**—Large double flowers; clear bright pink.
- ALTHEA—Double Rose**—Large double rose, red flowers, very handsome

Prices First or mail size, except noted, 15 cts. each, 5 for 50 cts., 10 for \$1.00, postpaid. 2-year size, 20 cts. each, 6 for \$1.00, 10 for \$1.35, \$10.00 per 100. Extra heavy 3-year size, 40 cts. each, 10 for \$3.50, \$25.00 per 100, freight or express.

New Weeping Lantana Mrs. McKinley



THIS is a neat trailing plant, particularly recommended for Winter flowering in pots, vases and baskets. The flowers are deep lilac pink and borne in clusters. A true perpetual and blooms abundantly as long as kept in growing condition. When Spring comes set out in the flower bed and it will bloom the whole season. Beds of it on our own grounds are covered with flowers for months at a time, and always attract a great deal of attention. It never fails to give satisfaction wherever it is put. **15c. each, 2 for 25c., 4 for 50c., \$1.25 per doz., postpaid.**

New Baby Primrose

This is one of the prettiest and most dainty flowers for house culture ever introduced; begins to bloom almost as soon as planted, and will continue throwing up its lovely rings of rosy-pink flowers for 8 or 10 months; will thrive in any ordinary living-room and does best in a rather cool place. **15 cts. each, 2 for 25 cts.**

Croton Aurea Maculatum (GOLD DUST PLANT)

The Crotons are greatly admired for the rich and beautiful coloring of their leaves; a most desirable plant for parlor or living room. It grows erect with long narrow deep green leaves, spotted all over with flakes of yellow, looking as if sprinkled with gold dust. **15c. each, 2 for 25c.**

THE BEST HARDY LILIES

THESE beautiful Lilies are quite hardy, but should be planted four or five inches deep and given a light covering of leaves or litter before the ground is deeply frozen. They should not be disturbed but left to grow on from year to year. They get larger and finer with age.

LILY AURATUM—The gold-banded lily of Japan, considered the Queen of Lilies, and the most beautiful of all; immense flowers, nearly a foot in width, borne in great clusters, seeming more than the slender stem can bear; color, rich creamy white, thickly spotted with crimson and brown, each petal having a wide golden-yellow band through the centre; very fragrant and sure to bloom. First size good blooming bulbs, 15 cts. each, 2 for 25 cts., \$1.50 per doz. Extra size bulbs, 20 cts. each, \$2.00 per doz., postpaid.

LILIUM PARDALINUM (The Leopard Lily).—An elegant and very beautiful lily from California. Rich scarlet and yellow flowers, spotted with purplish brown. 15 cts. each, \$1.50 per doz., postpaid.

CANADENSE—One of our finest lilies, bearing graceful clusters of drooping bell-shaped red and yellow flowers. 12 cts. each, \$1.25 per doz., postpaid.

L. ALBUM—Extra large flowers, pure snow-white, very sweet-scented. 15 cts. each, \$1.50 per doz., postpaid.

L. ELEGANS—Fine crimson and dark red, 12 cts. each, \$1.25 per doz., postpaid.

L. LONGIFLORUM—Beautiful long trumpet-shaped flowers, pure snow-white, very fragrant and entirely hardy. 12 cts. each, \$1.25 per doz., postpaid.

MADONNA LILY—Pure snow-white, very handsome and richly scented. 12 cts. each, \$1.25 per doz., postpaid.

L. MELPOMONE (Speciosum)—Rich blood-red with a clear frosty-white border; very handsome and hardy. 20 cts. each, postpaid.

L. SUPERBUM—Stands at the head of our native lilies; flowers bright orange-red, thickly spotted with purple. 12 cts. each, \$1.25 per doz., postpaid.

L. ROSEUM—One of the very best kind; splendid large flowers, rose and white, spotted crimson; beautiful. 15 cts. each, \$1.50 per doz., postpaid.

L. UMBELLATUM—Blossoms in beautiful clusters; color includes shades of red, crimson, yellow and black. 15 cts. each, \$1.50 per doz., postpaid.

L. TIGRINUM—Fl. Pl. Extra large double flowers, bright, rich orange spotted black. 15 cts. each, \$1.50 per doz., postpaid.

L. WALLACEII—Beautiful Japan lily; clear buff, elegantly spotted with crimson; very handsome and desirable. 12 cts. each, \$1.25 per doz., postpaid.



LILY AURATUM

Special Offer Two 15c. kinds, 25c.; three 12c. kinds, 30c.; complete set (13) postpaid, for **\$1.45**

STRONG FIELD GROWN CARNATIONS

FOR IMMEDIATE BLOOM

CARNATION PINKS are the sweetest and most beautiful flowers you can possibly have for Winter bloom, and it is easy to have them in abundance if you get Our **Strong Field-grown Clumps**, which are specially prepared for Winter flowering, and will break into full bloom almost as soon as potted, and continue bearing their lovely flowers as long as in growing condition. We can send small orders by mail at prices given, but it is better, whenever convenient, to have these large plants sent by express, as they carry in better condition if some earth is left on the roots, and they are not packed too close in the boxes. **The following are the best varieties for Winter flowering:**

STRIPED BEAUTY—A fine fancy carnation, pure white, beautifully variegated with rich crimson markings, very handsome. 20 cts. each, 3 for 50 cts., 7 for \$1.00, postpaid.

MRS. FRANCES JOOST—Pale salmon pink, a very productive and beautiful variety, highly valued for cut flowers on account of its exquisite color and delicious fragrance, always in demand at the highest prices. 20 cts. each, 3 for 50 cts., 7 for \$1.00.

ETHEL CROCKER—Clear, deep rose pink, extra large flowers, borne on long stems, very productive and good every way. 20 cts. each, 3 for 50 cts., 7 for \$1.00.

ELDORADO—Beautiful clear golden yellow, finely pencilled with red, lovely full flowers. Exquisite perfume. 20 cts. each, 3 for 50 cts., 7 for \$1.00.

ESTELLA—Extra large and handsome, bright flashing scarlet, one of the very handsomest and best varieties, deliciously clove scented. 20 cts. each, 3 for 50 cts., 7 for \$1.00.

FLORA HILL—Extra large pure snow-white flowers, borne on long stiff stems, very regular and full; very productive and a first-class sort in every way. 20 cts. each, 3 for 50 cts., 7 for \$1.00.



Special Offer 3 for 50 cts., 7 for \$1.00, postpaid. By express, at purchaser's expense, 15 cts. each, \$1.25 per doz., \$8.00 per hundred.

Hardy Perpetual Blooming Sweet Violets

Our violets are remarkably healthy and vigorous, and we offer the following choice varieties in two sizes: **Fine Pot-grown Plants for Mail Orders**, and **Strong Field-grown Clumps for Express Orders**. Both are strong, well-established plants, which will begin to bloom very quickly, and should bear a large crop the present season. Violets like plenty of light and air and moderate moisture, but not too much heat.

ADMIRAL AVELLAN—Rich dark red, very fragrant and productive. 10 cts. and 15 cts. each.

SWANLEY WHITE—The best White Violet in cultivation, perfectly double, very fragrant, profuse bloomer. 10 cts. and 15 cts. each.

LA FRANCE—Large double flowers, deep violet purple, very sweet and productive. 10 cts. and 15 cts. each.

CALIFORNIA—Very handsome and productive, enormous flowers, deep violet blue very sweet. 10 cts. and 15 cts. each.

LADY HUME CAMPBELL—This grand violet is one of the best for all purposes; a true perpetual bloomer; flowers very large, often an inch in diameter. 10 cts. and 15 cts. each.

RUSSIAN VIOLET—Large single flowers, deep rich blue, very fragrant and productive. 10 cts. and 15 cts. each.

NEW DOUBLE RUSSIAN VIOLET—A splendid new variety, strong, vigorous grower and entirely hardy; requires no protection; immense bloomer; extra large perfectly double flowers. 15 cts. each.

PRICE, NICE POT PLANTS, 10 cts. each, 3 for 25 cts., 85 cts. per doz., postpaid.
FIELD CLUMPS, by express only, 15 cts. each, 6 for 75 cts., \$1.50 per doz.

Sweet-Scented Honeysuckles

NEW EVER-BLOOMING SWEET-SCENTED HONEYSUCKLE, HECKROTTI—Finest and most beautiful honeysuckle ever offered. Flowers very large and deliciously sweet, dark rich red and creamy yellow; a clean, healthy grower, entirely clear of rust and disease; blooms continuously the whole season.

CHINESE SWEET-SCENTED HONEYSUCKLE—A clean healthy grower; white and yellow flowers, very fragrant and constant bloomer.

RED CORAL HONEYSUCKLE—A hardy, rapid grower, suitable for rock work, walls, etc.

HALLIANA HONEYSUCKLE—One of the sweetest and most beautiful of all. A strong, clean grower, perfectly hardy, constant bloomer, buff yellow, passing to white; deliciously sweet.

EVERGREEN SWEET-SCENTED HONEYSUCKLE—Hardy and vigorous, blooms the whole season, delightfully sweet; creamy yellow and white.

GOLDEN-LEAVED HONEYSUCKLE—A slender wiry vine. Leaves beautifully veined and netted with clear yellow; flowers yellow and sweet scented; fine for porch pillars, trellis, etc.

Price 15 cts. each, 2 for 25 cts., 4 for 50 cts. Complete set of 6 for 75 cts., postpaid. Two-year Honeysuckles, all the above varieties, large strong bushes, 25 cts. each, \$2.25 per doz., express.

SOME CHOICE FLOWER SEEDS FOR AUTUMN SOWING

PANSY SEEDS are planted largely in the open ground in the Fall for Spring bloom, and we offer the best kinds for this purpose. The other seeds we offer are for planting in pots and boxes indoors, for Winter and Spring bloom. Many handsome window-gardens are all grown from seeds.

OUR GOLD MEDAL PERFECTION PANSIES are not excelled in size and beauty by any offered in this country. They are the best. Pkt. 150 seeds, 8 cts., $\frac{1}{2}$ oz., 75 cts., postpaid.

PANSY, PRESIDENT CARNOT—New deep violet-purple, with wide border of rich creamy white. Pkt. 100 seeds, 8 cts.

PANSY, COQUETTE de POISSY—Rich rosy mauve, shading to white at outer edge; rare, beautiful. Pkt. 100 seeds, 8 cts., postpaid.

PANSY, GIANT BUGNOT—Enormous flowers, very rich and velvety, including rare shades of red and bronze. Pkt. 100 seeds, 8 cts., postpaid.

PANSY, NEW TUFTED OR BEDDING—These are entirely hardy and bloom on from year to year; flowers are extra large, delightfully fragrant and many rich and beautiful colors. Pkt. 125 seeds, 6 cts., postpaid.

PANSY, NEW PARISIAN—Recommended for great size, beautiful colors and exquisite markings. Pkt. 6 cts.

IMPERIAL GERMAN, SPLENDID MIXED—More than 50 different shades and colorings of the finest German pansies. Pkt. 150 seeds, 6 cts., postpaid.

CONARD'S SUNSHINE PANSIES—Bright rich colors, very handsome. Pkt. 200 seeds, 5 cts., postpaid.

GOOD QUALITY MIXED PANSIES FOR BEDDING—100 seeds, 3 cts., $\frac{1}{8}$ oz., 15 cts., $\frac{1}{4}$ oz., 25 cts.

Complete Set of 9 Pkts. of Pansies, 40 cts.

ABUTILON, OR CHINESE BELL FLOWER—Lovely bell-shaped flowers, pink, orange, red, white, etc. Pkt. 6 cts.

BEGONIA HYBRID—Finest colors mixed, grand for window culture. Pkt. 6 cts., postpaid.

BEGONIA, TUBEROUS-ROOTED SINGLE—Pkt. 10 cts.

BEGONIA, TUBEROUS-ROOTED DOUBLE—Pkt. 12 cts.

CARNATION, MARGUERITE—Fine early-blooming carnations. Pkt. 6 cts., postpaid.

CALCEOLARIA HYBRIDA—Splendid large flowering, mixed colors. Pkt. 10 cts., postpaid.

CINERARIA HYBRID—Large flowering, finest colors, mixed. Pkt. 10 cts., postpaid.

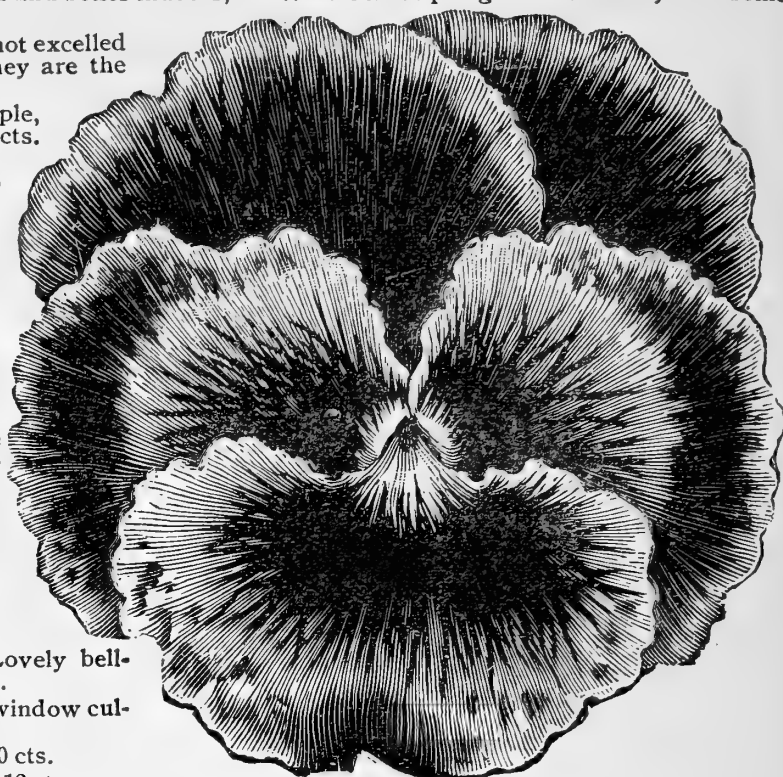
NASTURTIUM, NEW—Large-flowering dwarf. There are few flowers equal to Nasturtiums; for pot culture and Winter blooming they are superb. Pkt. 5 cts., oz., 10 cts.

PRIMULA SINENSIS FIMBRIATA (Fringed Chinese Primrose)—Large flowering, splendid mixed. Pkt. 8 cts.

SMILAX—One of the finest climbing vines for the window. Pkt. 4 cts., postpaid.

PRIMULA OBCONICA—A profuse flowering Primrose, flowers pure white shading to lilac, fine for Winter bloom. Pkt. 6 cts., postpaid.

GLOXINIA, CHOICEST MIXED HYBRIDS—Magnificent. Pkt. 10 cts., postpaid.



SCHIZANTHUS, or CHRISTMAS ORCHID FLOWER—An elegant free-blooming annual; large, curiously-shaped flowers beautifully spotted with crimson, lilac, purple and orange; makes pretty house plants. Pkt. 4 cts.

MIMULUS MOSCHATUS (The Musk Plant)—An old favorite. Pkt. 3 cts.

ALYSSUM, LITTLE GEM—Blooms constantly all Summer and Fall. (Hardy.) Pkt. 5 cts., $\frac{1}{2}$ oz., 20 cts.

ALYSSUM, SWEET—A great favorite; grows easily. Pkt. 3 cts.

AQUILEGIA IMPROVED HYBRIDS—Perfectly hardy. Pkt. 6 cts.

PORTULACA, DOUBLE FLOWERED—Produces vast numbers of the brightest colored double flowers like miniature roses. Pkt. 4 cts.

SWEET PEAS, C. & J. NEW LARGE FLOWERING—Finest mixed. Pkt. 100 seeds, 5 cts., oz., 8 cts., $\frac{1}{4}$ lb. 15 cts.

ORIENTAL POPPIES—Intense dazzling scarlet. Pkt. 4c.

INDEX TO BULBS

	PAGE		PAGE		PAGE		PAGE
Agapanthus (African Lily)	6	Chionodoxa	28	Hyacinths, ex. choice n'm'd	10	Palestine Iris	29
Alliums	28	Christmas Rose (Helleborus)	27	Separate Colors	9-10	Ranunculus	28
Amaryllis	21	Crocus (All varieties)	22	Beds	11	Scilla	20-25
Anemones	29	Cyclamen	23	Roman	12	Sparaxis	29
Anematheca		Daffodils (Narcissus)	18	Feathered & Grape	6	Spring Snow Flake	20
(Scarlet Freesia)	23	Dicentra	27	Musk & Miniature	6-10	Snow Drops	28
Arums	25, 32	Freesias	23	Iris	26-29	Tritelia	25
Babiana	27	Fritillaria	27	Ismene Calathena	21	Tritonia	27
Belladonna Lily (Amaryllis)	21	Fern Balls (Japanese)	12	Ixia	29	Tulips, Early Named	14-15
Bermuda Easter Lily	19	Gladiolus	23	Jonquils (Narcissus)	25	Superfine, Mixed	
Bleeding Heart	27	Gloxinia	21	Leucojum Vernum	20	for Bedding	14-15
Brodia Coccinea	27	Glory of the Snow	28	Lilies, Hardy	19-40	Tulips, Gesneriana	17
Bulbocodium	20	Giant White Narcissus	13	Lily of the Valley	23	Parrot, Byblooms	
Calla Lilies	32	Golden Sacred Lily	26	Narcissus	13-18-20	and Bizarre	17
Calochortus	27	Guernsey Lily	11	Nerine Sarniensis	11	Tulips, Mayflowering, Sweet	
Campanells	25	Hyacinths, Best Named	8-9	Oxalis	11-26	Scented and Greigi	7-27
Chinese Sacred Lily	24			Ornithogallum	20	Zephyranthus, Fairy Lilies	29

INDEX TO PLANTS

	PAGE		PAGE		PAGE		PAGE
Abutilons	30	Carex Japonica	37	Information for Purchasers	3	Primula Obconica	2
Acalypha	31-36	Clerodendron Balfour	35	Impatiens (2 varieties)	36-37	Privet	39
Achyranthus	36	Cissus Discolor	35	Japan Snow Ball (Viburnum)		Roses (Winter-Bloom'g)	2-4-5
Ageratum	36	Cercis Japonica	39		39	Philada. Rambler	38
Allamanda Williamsii	32	Coleus, Fancy Leaved	37	Jasmine, Florida	31	Crimson	38
Altheas	39	Croton Aurea, Maculatum	40	Lantana	40	Dormant	38
Araucaria Excelsa	34	Cuphea	36	Lemon, Amer. Wonder	37	Rubber Tree (Ficus)	35
Aspidistra Lurida	36	Deutzia	39	Lemon Verbena	36	Ruella Makoyana	21
Begonia Flowering	31	Ferns	33-35	Lilacs	39	Russellia	30
Rex (Painted Leaf)	31	Fuchsias	36	Olea Fragrans	37	Sanchezia Nobilis	32
Climbing	35	Genista (Shower of Gold)	35	Oleander	31	Sanseveria	35
Berberry, Japan	39	Geraniums	2-36	Orange Otahiete	30	Scarlet Fountain Plant	32
Bougainvillea	30	Grevillea	24	Oxalis (Golden Star)	36	Spirea (4 varieties)	39
Books	3	Heliotropes	36	Palms	2-34-35	Swansonia	24
Browallia	37	Hibiscus (Peach Blow)	30	Parlor Ivy	36	Tradescantia	36
Big \$1 Flower Garden	16	Honeysuckles	41	Pelargoniums	21	Violets, Sweet	41
Carnations	41	Hydrangea Grandiflora	39	Primroses (2 varieties)	2-40	Weigelas	39

ORDER SHEET FOR PLANTS, SHRUBS AND FRUITS

QUANTITY	ARTICLES WANTED	PRICE	
	Amount brought over	\$	
Please read carefully Premium Offers, page 3. TOTAL			

SPECIAL BARGAIN OFFERS

The Best Winter-Blooming Roses—Specially prepared for quick blooming indoors. Any color desired. See pages 4 and 5. 15 cts. each, 2 for 25 cts., 4 for 50 cts., 9 for \$1.00, postpaid.

100 Choice Hardy Bulbs for planting indoors, only \$1.50 postpaid. This is one of the best collections for the money ever offered. See page 43.

A Gorgeous Bed of Tulips—3 feet in diameter, only \$1.00, postpaid. 22 red, 14 pink, 8 yellow, 6 Giant Gesneriana for centre—50 in all, planted this Fall, will make a grand display of most brilliant flowers very early in the Spring. One-half of each—25 in all, only 50 cts.

Our Big \$1 Flower Garden for Autumn—21 very lovely flowers (page 16) for house culture; some of these will be covered with flowers all Winter long. Only \$1.00, postpaid.

A Lovely Dish of Sacred Lilies—They grow in water, no soil required. 1 True Chinese Lily, large bulb (page 24), 3 Golden Sweet-scented Lilies; 3 Poeticus Ornatus. 7 for 25 cts.

**Be sure to include the New "Philadelphia" Rambler Rose in your order.
It is the finest Crimson Climbing Rose ever introduced. See page 38.**

Always Address **The Conard & Jones Co., West Grove, Pa.**

ORDER SHEET FOR SEEDS AND BULBS

The Conard & Jones Co.

West Grove Floral Nurseries WEST GROVE, PA.

PLEASE DO NOT WRITE HERE

Please send following Order by Write Mail or Express

Name, (Very plain)

P. O. Box, Street or Rural Del'y

Post Office,

County, State,

Express Office, (If different from P. O.)

NOTE.—If you wish orders held until a certain time please write the date here

(otherwise goods will be forwarded just as soon as new stock is ready or when we think the season suitable for planting in your locality.)

PLEASE READ Information for Purchasers, on page 3, before you order, to prevent misunderstanding.

Date, 1904

AMOUNT ENCLOSED

State whether Cash, Draft, P.O. Order, Express Money Order or Stamps.

We deliver free in the United States all orders suitable to go by mail. When goods are sent by Express, purchaser must pay the charges unless otherwise agreed. Safe arrival guaranteed. Please read page 3.

Table with columns: QUANTITY, ARTICLES WANTED (Please write Plant order on other side. Seeds and Bulbs below.), and PRICE. The table contains multiple empty rows for recording orders.

More Order Blanks and Envelopes will be cheerfully sent you on request.

Amount carried over \$

THE CONARD & JONES COMPANY'S

Special Rosemawr Collection

For Winter Bloom
in the House or
Conservatory

Of Selected Bulbs

All Guaranteed to
Bloom this
Winter

**C. & J. Choice Imported
Bulbs for Fall Planting**



FINE BULBS are one of our leading specialties for Fall planting, and this Catalogue tells all about varieties and prices. Bulbs are the sweetest and most beautiful flowers you

can plant, either for Winter bloom in the house or conservatory, or early Spring bloom in the open ground. No other flowers can equal their brilliant colors and delicious fragrance. All flower lovers want bulbs, but do not forget that Bulbs must be planted in the Fall, as it takes them some time to unfold their beautiful flowers.

PLEASE READ THE LIST AND FULL DESCRIPTIONS BELOW

- 6 **Fine Named Hyacinths.** 3 single and 3 double, different colors; figure 4.
- 6 **Early-Flowering Tulips.** Various colors, selected; figure 2.
- 6 **Early-Flowering Roman Hyacinths.** White, blue and pink.
- 4 **Giant White Narcissus.** Blooms in water; figure 1.
- 4 **Polyanthus Narcissus.** Selected.
- 2 **Narcissus.** Double choice named sorts; figure 3.
- 2 **Chinese Sacred Lilies.** Grown in China.
- 2 **Golden Sacred Lilies.** Bright yellow.
- 12 **Mammoth Crocus.** Assorted colors; fig. 9.
- 2 **Large White Calla Lilies.**
- 2 **Cyclamen Giganteum.** Pink and red; figure 8.
- 6 **Freesias, Yellow.**

- 6 **Freesias, White.** Constant bloomer, very sweet; figure 6.
- 2 **Ornithogallum Arabicum.**
- 4 **Spanish Iris.** Mixed colors; figure 5.
- 2 **Bermuda Easter Lilies.** Finest Winter bloomers.
- 2 **Wonderful Black Calla Lilies.**
- 4 **Anemones.** Different colors, bloom very early.
- 4 **Ranunculus.** Fair Maids of France.
- 4 **Jonquils.** Deep bright yellow and very sweet.
- 4 **Bermuda Buttercup Oxalis.** Figure 7.
- 4 **Oxalis.** Assorted colors, with pretty foliage.
- 4 **Winter-Blooming Oxalis.** Pink and rose-colored flowers.
- 2 **Sparaxis.** Lovely nodding flowers.
- 2 **Ixias.** Many brilliant colors.
- 2 **Tritelia Uniflora.** Spring Star Flower.

100 in all, Price \$1 50, or one-half the list, 50, for only 75 cts., postpaid

We are here to serve you, and want all flower lovers to know that the Place to get the finest Roses, Bulbs, House Plants and Flower Seeds is of the CONARD & JONES CO., Flower Growers, West Grove, Pa.

THE CONARD & JONES COMPANY'S

"West Grove" Collection of Hardy Bulbs

FOR FALL PLANTING IN THE OPEN GROUND

THE FOLLOWING HARDY BULBS are among the choicest varieties for Fall planting, and the same excellent quality as we put in our best retail orders. They are entirely hardy, and when planted in the Fall, as directed, will begin to bloom very early in Spring, some of them almost before the snow is gone, and are by far the sweetest and most beautiful flowers of their season. All flower lovers want Bulbs, and in order to give our friends an opportunity of buying them at small expense, we offer our SPECIAL "WEST GROVE" COLLECTION. 200 in all per list, enough for a trial bed, 3 by 4 feet, in garden or lawn, for only \$3.00, or one-half the collection, 100 in all, for only \$1.50, delivered free in the United States. Please read the list and see what a choice collection you can get for the small sum named.

- 12 **Beautiful Dutch Hyacinths.** 6 single and 6 double, finest colors.
- 12 **May Flowering Tulips.** 6 single and 6 double, finest colors.
- 8 **Splendid Parrot Tulips.** Colors selected.
- 12 **Lovely Narcissus.** 6 choice varieties.
- 12 **Spanish Iris.** Mixed colors.
- 12 **Scillas.** Lovely blue flowers, very early.
- 10 **Grape and Feathered Hyacinths.** Assorted.

- 6 **Tritelias.**
- 6 **Anemones.**
- 6 **Snow Drops.**
- 4 **Hardy Lilies.** 4 kinds.
- 8 **Jonquils.** Assorted
- 6 **Campanelles.** Assorted.
- 12 **Ranunculus.**
- 50 **Mammoth Crocus.** Assorted colors.
- 6 **Allium Neapolitanum.**
- 24 **Oxalis.** Assorted 3 colors for border.

**200
in all for
\$3.00
Delivered free
in the
United States**

200 in all, price \$3.00, or one-half the collection, 100 in all, only \$1.50, delivered free in United States

Always
Address

The Conard & Jones Company

ROSE AND FLOWER GROWERS

WEST GROVE, PA.

Special Notice—Our elegant Floral Guide for 1905 will be ready early in January. 136 pages, filled to overflowing with the choicest New Roses, New Pedigree Cannas, Plants, Bulbs and Flower Seeds for home planting; all the nicest things at little prices. If not received promptly a postal card will bring it.

Autumn
•1904•

The *Conard &*
Jones Co.
WEST GROVE
PA.



OUR "ROSEMAWR"
COLLECTION

100 CHOICE BLOOMING BULBS
DELIVERED FREE IN U.S.A.

ONLY \$ 1.50

ONE HALF THE NUMBER 75¢

SEE INSIDE PAGE.