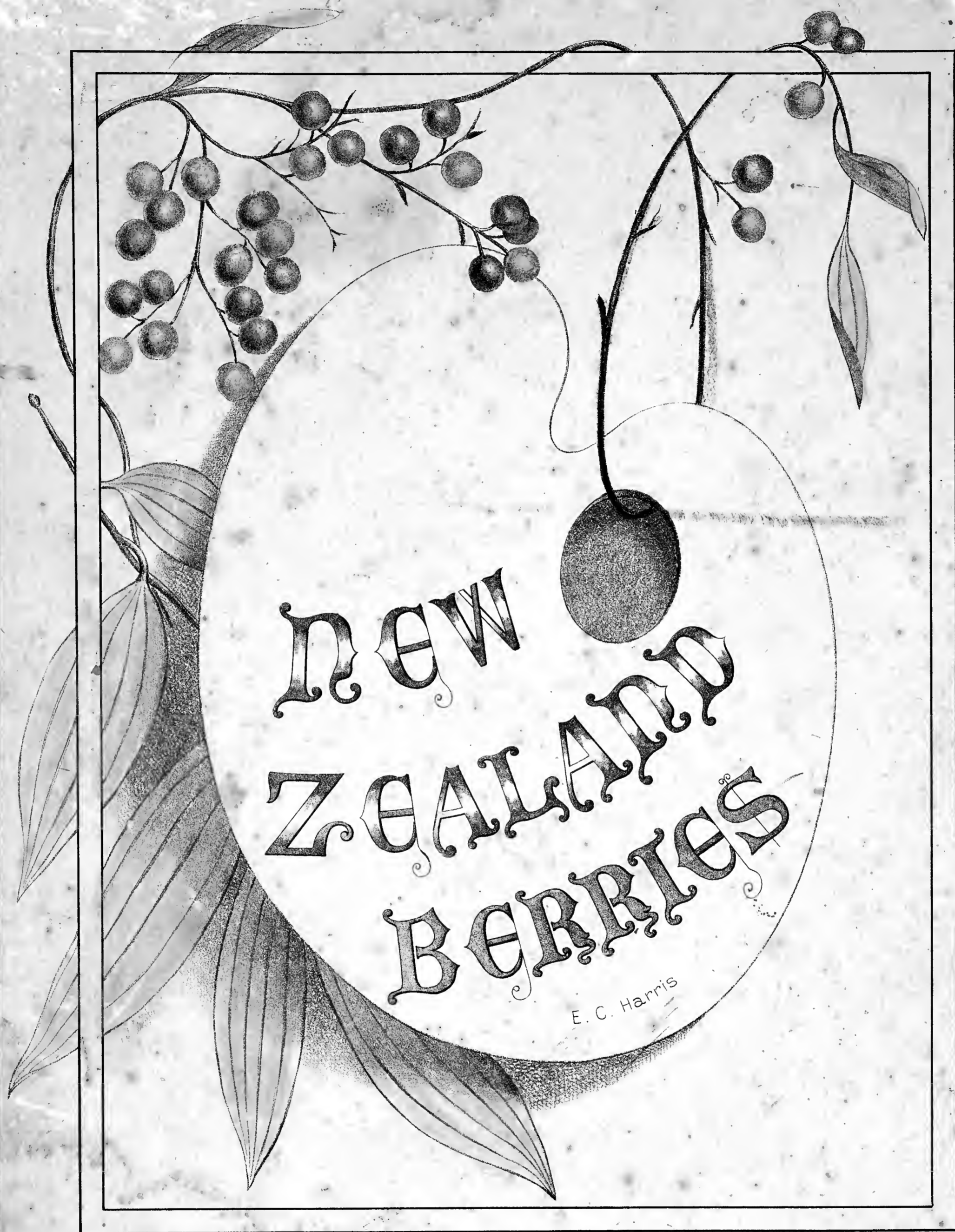


E. C. Harris



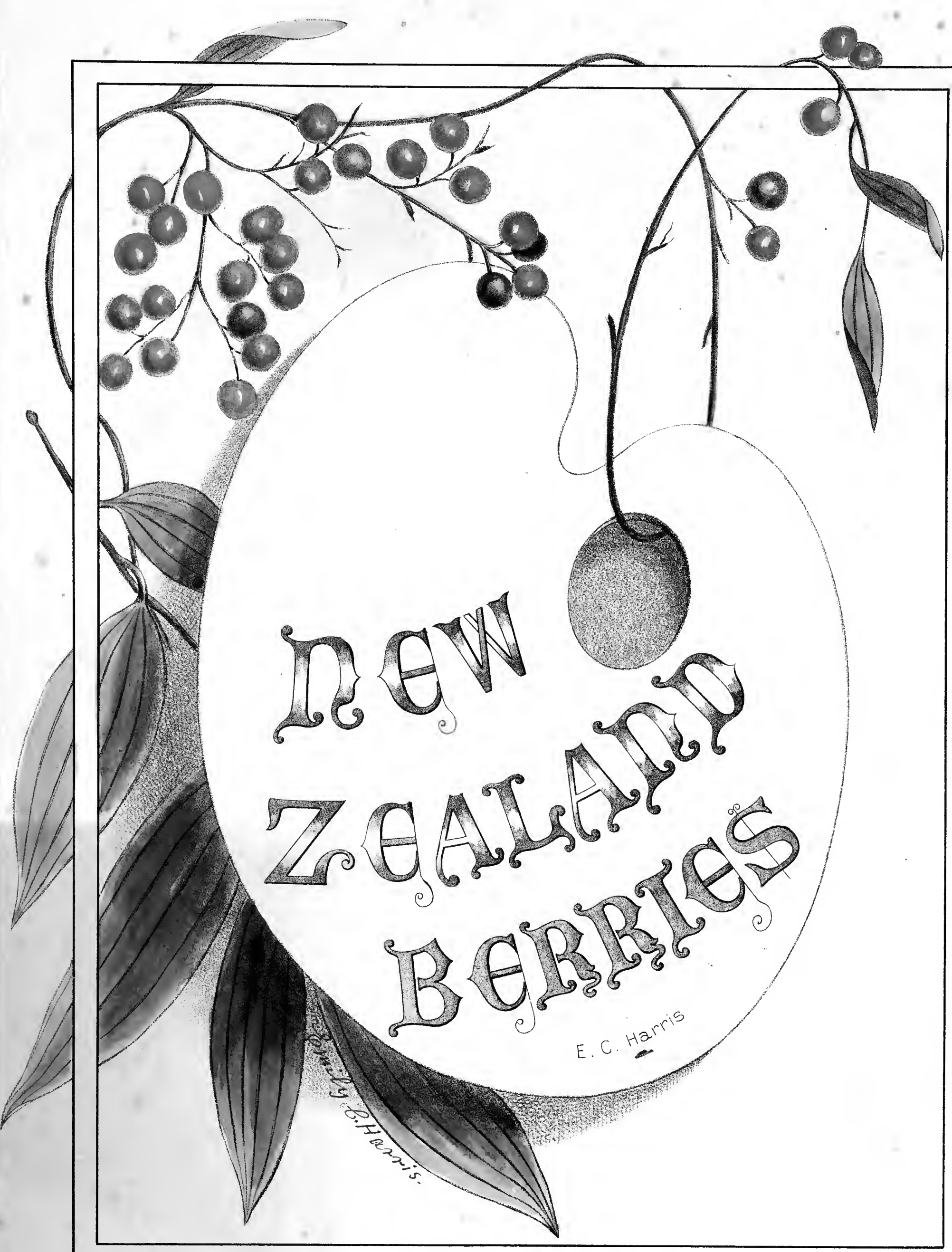
Harris - N.Z. berries.

PUBLISHED BY
H. D. JACKSON,
NELSON, N. Z.

ALL RIGHTS RESERVED

~~50321~~

PRESENTED
to the
AUCKLAND INSTITUTE
by
Mrs. J. N. Rishworth



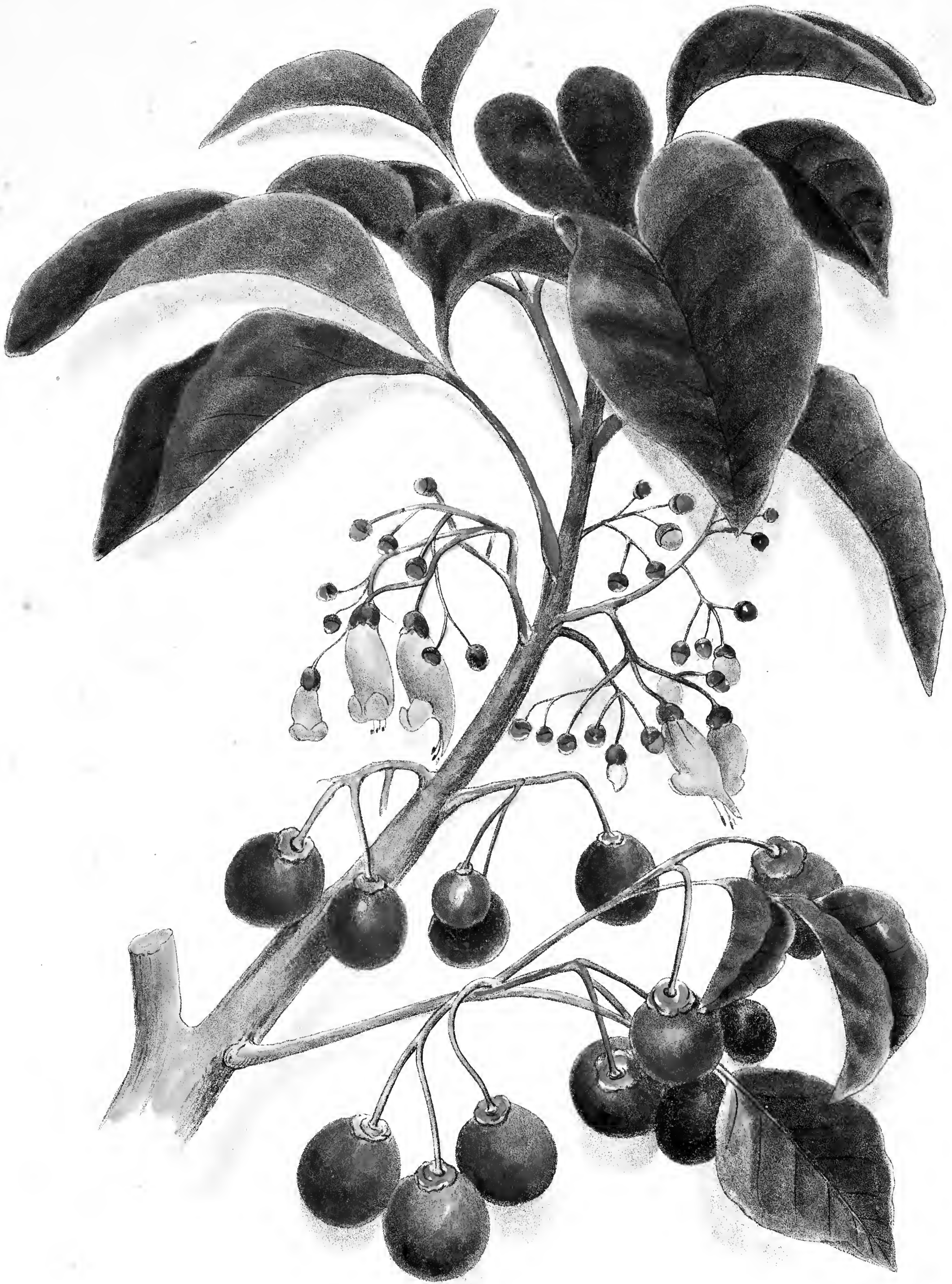
NEW
ZEALAND
BERRIES

E. C. Harris

E. C. Harris

PUBLISHED BY
H. D. JACKSON,
NELSON, N. Z.

· ALL RIGHTS RESERVED ·



Vitex littoralis.
(Puriri)

A handsome forest tree 50-60 feet high, common along the east coast of the North Island. Flowers pink, berries bright red, ripe berries and flowers appear on the same branch at the same time. Wood extremely hard.



Astelia grandis.
(Kowhara-whara)

A plant with long smooth grass-like leaves, and orange colour berries. Forest of the North Island.



Piper excelsum.
(Kawakawa)

A large bush, often 20 feet high, leaves very aromatic berries yellow with black spots. North Island, and as far south as Canterbury.

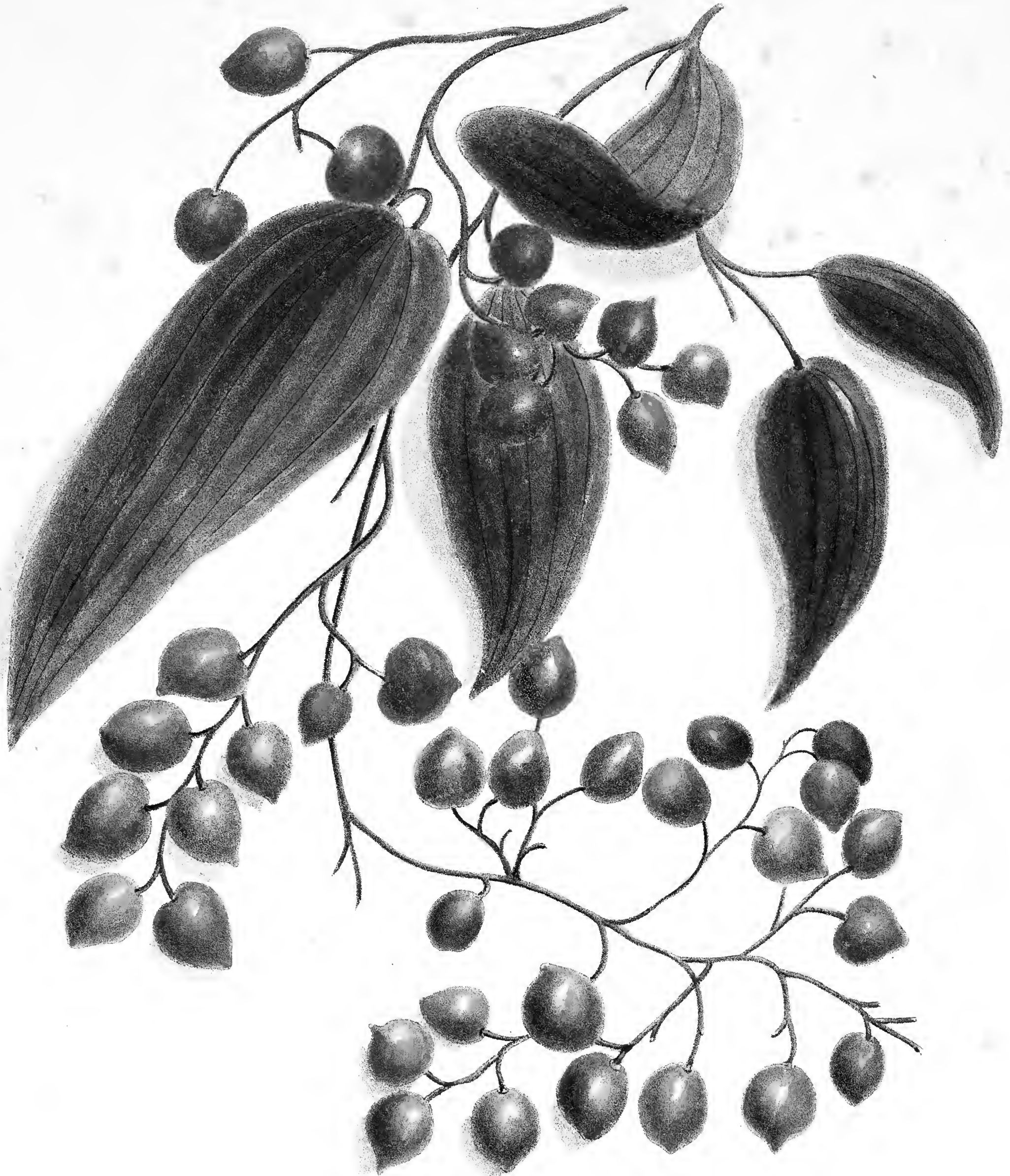




Corynocarpus laevigata.
(*Karaka*)

A laurel-like tree 40 feet high, with leaves 4-7 inches long. Fruit bright orange colour, pulp edible, the kernel poisonous until steeped for a long time in salt and water, formerly much used for food by the Maories North Island.





Rhipogonum scandens.
(Supple-jack)

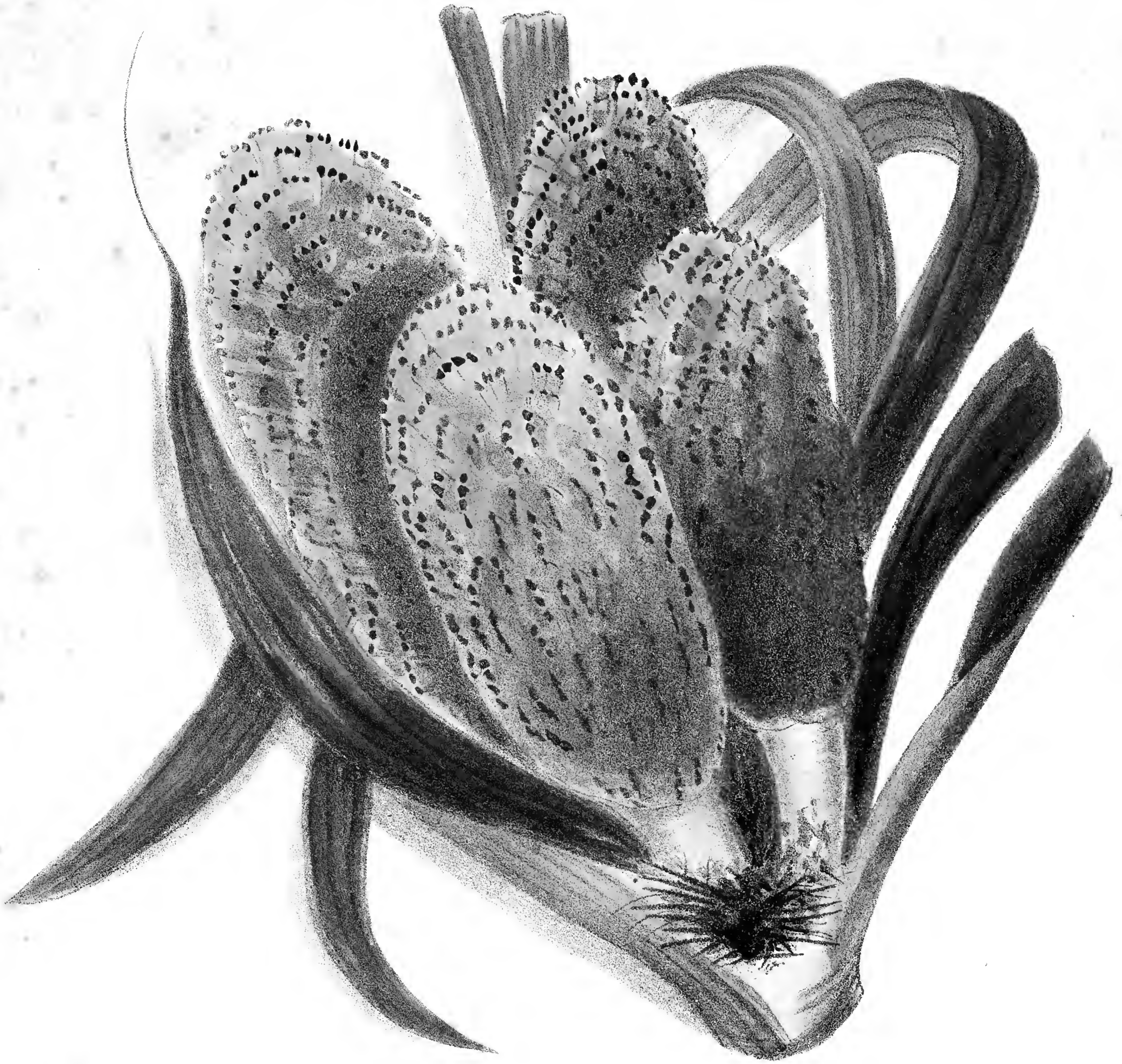
Tall climbing plant with long and slender stems, forming interwoven wiry masses in the forest very difficult to penetrate. Flowers very small greenish-white, berries bright scarlet variable in size. Abundant throughout New Zealand. The long underground root stocks have been used as Sarsaparilla and the stems for basket work and hurdles.



Solanum aviculare.
(Poropora)

A shrub very common in the North Island, quickly springing up wherever the forest has been cleared. Leaves vary from 4-10 inches long. Berry yellow, edible.





Freycinetia Banksii.
UREURE.

*Ureure fruit of the kīkie
a lofty climber giving the forest of the North Island
a tropical appearance. Leaves two feet long, sometimes
used for basket making. Fruit and flower both edible.*





Electryon excelsum.
(Titoki)

A lofty tree common in the forest of North and South Islands. The only species of the genus and confined to New Zealand. Berries bright scarlet with one black shining seed.

*"Nor yet
Had the Electryon's beads of jet,
Each on its scarlet strawberry set."*

Donnell



Dianella intermedia.
(Blue berry).

A grass like plant. Leaves 1-5 feet long, very slender, much branched stems, flowers small greenish white, berries a lovely blue. More common and finer in the North than Middle Islands, frequent in fern lands and woods.



Dysoxylum spectabile.
(Kohē - kōhē)

A handsome forest tree 40-50 feet high, common in the North Island. Flowers waxy-white. Flowers and ripe berries on the tree at the same time. Berries green, with orange colour seeds.



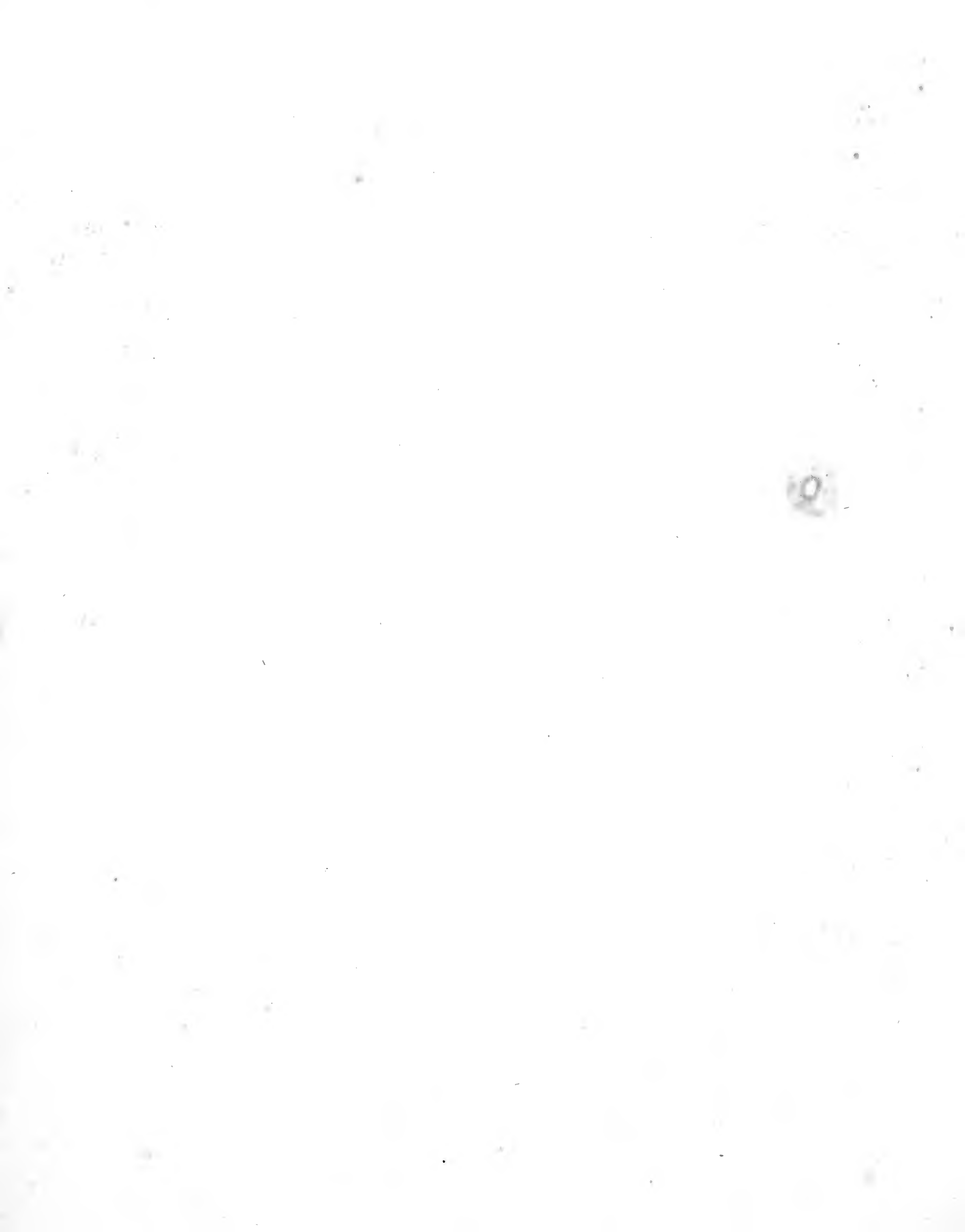
Nesodaphne Tawa
(Tawa)

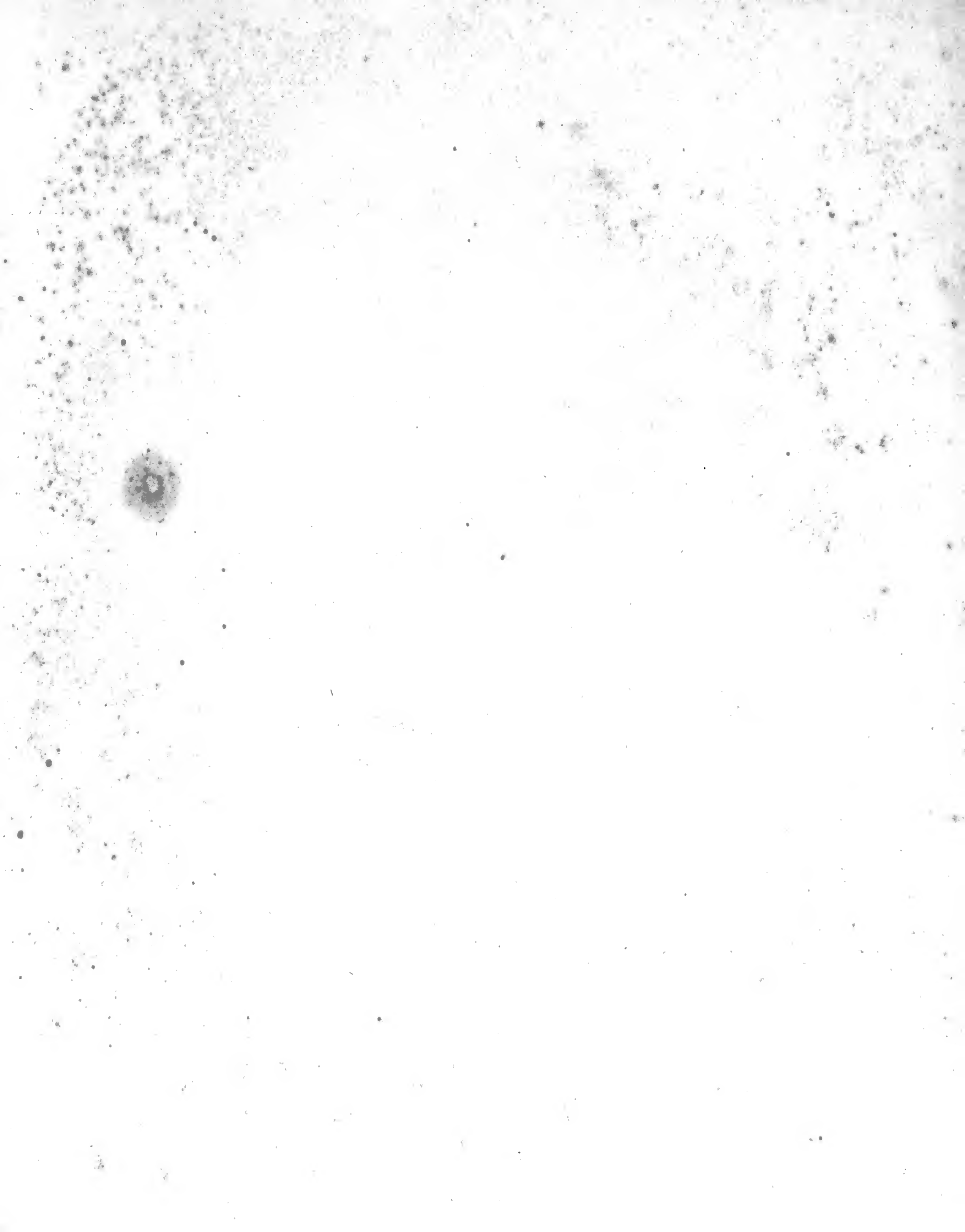
A lofty forest tree, 60-70 feet high. Leaves 3-4 inches long, very aromatic. Berries purple with a strong taste of turpentine, pigeons are very fond of them. The genus has one other species, both confined to New Zealand.



Podocarpus ferruginea.
(Miro)

A lofty timber tree 50-80 feet high, common in the forest throughout New Zealand, one of the Black Pines of the Settlers. The red berries have a strong taste of turpentine, and are greedily eaten by birds, especially pigeons.





SB381