

1885

Atlantic
coast.

SMITHSONIAN

Radial tunnel

at the shaft

or

from main



at base

3 ft to above

depth
same
from
cut

52 x (2-18)

15 ft length

12 panels



Proposed
also possible

Galery halfway
up all around

Stimeth

Yarrow

350

N. Side



Platform
suspended
in center

12 x 20

up 12 feet

350

25

55

430

Quinto W. Hempel
St. Madison
In

8 designs
2 ft. long

S. W. Hempel
 St. Madison
 In

Orders

Sup. H. W. Seerley
Oshkosh, Ia \$15.00

D. Z. Free

Sioux Falls, Dak. 15.00 +

Prof. C. M. Grumbling
Mt. Pleasant, Ia 15.00

J. B. Cooper
Lettlers 15.00

Sumner College, Fulgum, Mo. 15.00

Prof. D. S. Sheldon
Davenport, Ia 15.00

Prof. F. L. Kern
Wilton, Ia 35.00

Mary Ziska
Iowa City, Ia 15.00

St. Mark's
College

State University Iowa
Iowa City 26.00

Prof. E. D. Birge
Madison, Wis.

High School
Iowa City 26.00

Wife Susan Jones
Beaufort

Rev. Jeremiah Hill
Rev. E. M. Follen, Epus

F. W. Herrick
Johns Hopkins
Baltimore
Md.

J. Wesley Mills
Mc Gill College
Montreal Canada
Susan S. Hill
Beaufort, N. C.

John Hemminger
204 German St
Baltimore, Md.

Journal of
J. W. Herrick
1850-1851

Henry Prime

no 11. E 22nd str

New York.

J. L. Cunningham

Oak Hill

Fla

J. B. Mpsom.

Rockford

Ill.

Bayard Elliott

Iowa City

G. H. Stempel

Ft. Madison Ia

Prof. S. Caloun.

" J. N. McBride.

V. J. Shimek

294 N. Broadway

Prof. Phillbrick

Pres Pickaw.

Paul Korab

J. M. B. Letorskiy.

James Havlik

Vac Bures.

Fr. Kowalinka

Prof. Graves.

John Springer.

H. J. Horak.

H. J. Woodman

204 E. 6th st.

New York.

Rev. A. B. Kendig.

35. Dale str.

Boston Highlands.

Vac. 400 Wash. St
Boston, Mass.

H. A. Pileby 814 Perry St.
Davenport, Ia

Carl Marick
Public Square, Shreveport

Jos. A. Koula
3. Ransom St

Boston Mass

A. Radwick

Rafferty Block

Union Square

Davenport

Thos. Rockledge

269 S. 9th St.
140 W. 8th St. ^{Shreveport}

X South Boston

Vac. South Boston

22
15 Clapp St. Boston

Car av. C

Shreveport

Alois Vohal

538 5th St.

New York, N.Y.

Dr. Ed. Serwick

136 Stanton St

New York ^{Shreveport}

Go to Granite Isl
in the car.

Vertical text on the inside of the cover, possibly "S. J. ..."

Geo. W. Norton
Postmaster
Eastport, Me.
Aug. 25 - \$4.00

Geo. H. Bates.
Rockford, Me.

Sumner
C. W. Bates

Baltimore

Norfolk Bay Steamer
Elizabeth City R.R.
Newbern - Steamer Shenandoah
Moorehead City, - R.R.
Beaufort, - Sail boat.
Steamer to N. York

Send plants
to Prof. McBride

At Baltimore get
out with Oyster men

Stimck
Lorain City

^{& strangers}
Schools etc to visit

Alex Agassiz
Museum Comp. Zoology
Cambridge
Harvard Coll. Mass.

W. E. A. Aiken M.D.
Prof. Chem. 176 W Balt.
street, Baltimore, Md.
Botany

F. H. Allen Marine Zoology
Merridich, Ct.

Prof. O. D. Allen Bot.
Sheffield Science School
New Haven, Conn.

Prof. Geo. D. Armstrong
Norfolk, Va.
Bot.

Dartmouth College
Hanover, N. Hamp.

Smithsonian Institute
Washington D. C.

Yale Coll.
New Haven, Conn.

Johns Hopkins Univ.
Baltimore Md.

Geo. Allen.
Maj. John Hughes
Mr. Congdon.
all at Newbern
(to be) N. Car.

Dr. Aspendall
Mooreshead near
Beaufort

Rocky shores

Wobeska Pt. East of
Wood's Hole.

Parker's Pt. near Wood's Hole
Nude of land N. of
Wood's Hole channel,
Marshall Isl.

Long Is. Sound	{	Savin Rock	} near Marshall
		Light House Pt.	
		Stony Creek	
		Thimble Isl.	

Look in mud & sand
beneath rocks

Annelids swim about
at night. Barnacles.

Wobeska Pt.

Savin Rock

Light House Pt.

Stony Creek

Thimble Isl.

Sandy shores
marshes & meadows
Buzzard's Bay
Near New Haven
In South Bay, Long Isl.
Limulus comes up in May
June & July its lay
eggs. Burrows then
in sand also in mud
below low water.
Fulgur carica &
Dicostyus canalicularis
are sometimes on sandy
flats or in tide pools,
but are usually in
deeper water & on harder
bottom

'Razor-shell'
Remember precaution
Mya arenaria always
buried a foot or so
so many others
burrow. Remember this.

S. West. Survey
Call. No. 11.
waterway & recent
Mollusca of the Basin
R. E. Call

[Faint handwritten notes on the inside cover of the notebook, including the words "Sandy shores" and "Buzzard's Bay".]

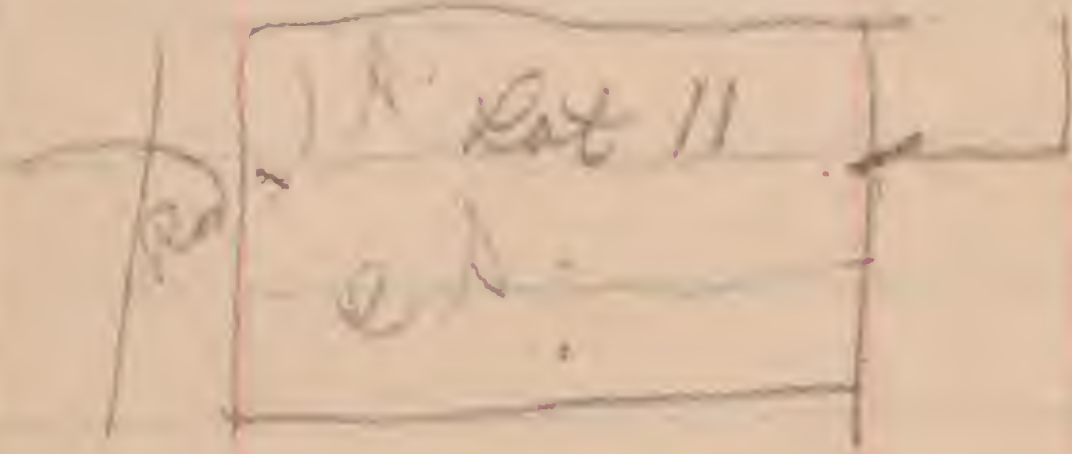
Gravelly & shelly
bottoms of bays etc.
Loligo pealii
July spawning
Gravelly bottoms of
Falmouth, New Haven
Loligo pallida ^{Antique}
west part of Long Is. Sound
Sandy bottoms
Muddy bottoms

Free + surface
Loligo
Onumastephus

Secure specimens
showing different
stages of Crustacea
Loligo pallida
stranded in full
moon, caught on
line etc. coast
of Mass. Eastport
Maine.

111
S
111

Vac. Cihlar



Redness
4 o'clock

Box from Norfolk, Va

Sent July 3rd '85.

Large oysters from

Little Bay opposite Ft. Monroe.

About 25 obtained from
a darky.

Small oysters from

the mud-covered sand of

Elizabeth river at

Berkeley (or Norfolk) - about 75

Two large fossil Pecten
valves from Prof. Webster.


Three clusters of oysters

from the Yellow-fever
Hospital (Ireland), obtained
from B. Peddle.

One Cassia from Prof.
Webster (said to be from N. Car. ??)

Littorina irroratus very
abundant on grass &
beach at and below
high-water mark on
the flats at Norfolk &
Berkeley. Obtained two
boxes full from Berkeley.
Those on mud had a thick
calcareous(?) covering.

Jars. (1) Large, others small

No. 1. "Sand-crabs" (about
twenty) obtained on
beach between Ocean
View and Ft. Monroe.
They are very agile, & run
nimble at the slightest
noise. Sometimes they
crawl in the sand.
They form burrows from
1-2" deep, they are
more or less oblique, &
some have two entrances,
thus . They carry
sand to the surface
in their small-legs.

and throw it away...
with a sudden jerk.
I have seen them feeding
on "eel-grass".

Three Crepidula fornicata
cast on the Beach opposite
Ft. Monroe, adhering to
a dead Crepidula.

A small Lizard (very
active) caught on the
sand-flats opposite
Ft. Monroe.

No. 2. Microcinea prolifera^(?)
the "Red sponge", abundant
on oysters. Found cast
on beach opposite
Ft. Monroe. A number.

No. 3. Three "sand-fiddlers"
(see above)

1 "Star-gazer" fish caught
in small net in
shallow water opposite
Ft. Monroe.

Small oysters obtained
at Berkeley (see above)
and in alcohol
about 6.

No. 4. Over twenty pairs
of little, light, "red-
backed" crabs obtained
on the beach at Berkeley
at and ~~also~~ below
high-water. Males have
one claw very large.
They carry sand out
in pellets and these are
scattered about.

A few Helasimus pugnax^(?)
(from muddy flat)
obtained at Norfolk.
These are very abundant
on muddy flats.

No 5. Littornia irroratus
(see above)

Quinine bottles

No 6. Palaeomonetes vulgaris
obtained (by net) in
great numbers, swim-
ming about like
minnows, on the
mud-flat of Norfolk
as the tide was
coming in. — Many.

No 7. } Small "Hermit Crabs"
8 } abundant on the
mud-covered sand beach
on Little Bay, just
below low-water & lower.

Illyanassa obsoleta
very abundant at
and below low water
with the preceding.
Apices were eroded.

Nassa vibex a few
found with preceding.

^{opurea.}
Crepidula plana?
found on oysters from
Little Bay.

^{Hippa talpidea.}
No. 9. ~~Young "Sand fidiculis"~~
obtained on beach by
dredging just below

low water; they
burrowed quite
rapidly & were active
over 20

Doris — about 12
cast on shore at
^{about} low water.

No. 10 Mesodon — from
Prof. Webster's garden.

Little ^{Dorsipoda (Puzosia)} wharf crustacea
very abundant on
piles etc. of New York
wharf. Very active.

Two boxes of mixed shells
from Ocean View Beach
containing *Siliqua*,
Crepidula fornicata, etc. etc.

Two boxes of *Melampus*
bidentatus. Very abundant
on and under drift left
by high tide on Norfolk
mud-flats.

One box of *Helix* — and
Meritina picta from Prof. Webster.

One box Shark's eggs
from Virginia Beach (about 12)

One box containing a large
Snake's head cast ashore
at Ocean View on Dec. (11th)
1882. Given to me by James Bare.
Also a vial of *Gammarus*
taken with the *Melampus*
(see above.) Very active.

A Box Turtle obtained
from J. V. Simak, Balt. Md.

Two Shark's teeth (the larger
a fossil from Charleston S.C.)
given to me by B. Peddle.

Two Shark's jaws from B. Peddle

A fossil clam from ^{Charleston} S.C.
from B. Peddle.

A piece of coral, Old Pt.
Comfort, from B. Peddle.

No. 10 - Frog fish and
Hippocampus from B. Peddle.

No. 11 Two prawn from
B. Peddle.

One Coconut from B. Peddle.

One Ballou fish cast
ashore on Beach opposite
Ft. Monroe.

Red-sponge cast ashore
on Ocean View Beach - 32.
White sponge (spongy) same
locality; about 6.

One jar of "egg" sponges,
same locality as above.

Found just below low
water, though many
were cast ashore.

Two shirts, sent not
as specimens but to
relieve me of "surplus".

End of Norfolk Box

Boxes from Beaufort, N.C.

Sent July - '35

No. 1. All dry.

1. Bryozoa 28 clusters.
2. Mellita quinq. (bleached) 30
3. Limulus 1 small. (fish scales)
4. Hermit crabs about 25.
5. Lepas many.
6. Moira atropos 24
7. Strongylocentrotus + Arca ^{about} 12
8. Fulgur eggs 15
9. Small box mixed shells.
10. Large sponge 1.
11. Yellow sponges about 20.
12. Annelid tubes 5.
13. Shells in paper.
14. Neptynea egg capsules

9. Cerithidea !!
10. Ligoretus —
11. Mellita quinq. over 30
12. Cytherea gig. over 30
13. Abra aequalis(?) 51.
14. Tagelus gibbus 10

- Following mollusca mixed
- Teredo (in wood)
- Pholas costata
- Solen viridis.
- Do sax furax.
- Petricola pholadiformis.
- Laevicardium mostoni.
- Cyclas dentata
- Solenomya velum
- Mytilus — (?) 2.

Stimack
Crawley
1835

Modiola plicatula ^{new}
 " *hamatus* (*Stygalis*)
Pecten irradians, ^{new}
Arca *glabra*
Neptunea gigantea
Passa villosa
Arca alpina *cineria*
Ensis *caudata*
Urosalpinx *avara*
 " *similis*
Neperita duplicata
Crepidula fornicata
 " *plana*
 " *convexa*
Stalania
Chaetopleura (?)

Trochus distocatus
Fissurella alternata
Bulla solitaria
Oliva — (*box*) 95
Styombus —
Assis (?)
Pyrus — 1

Box No. 2.

Jars

1. *Scapharca* (3) *Ascidia* ^(Arborea) *semit*
2. *Cucumis* ^(new) *about* 45
5-6
3. *Hermit Crab* *Ascidia* ^(new)
4. *Barnacles* ^(new) *Hydrozoa* & *Urosalpinx*
5. *Mixed moll.* *Fulgur* etc
6. } *Arborea* *punctat*
7. } *about* 21

The right page of the notebook is heavily stained and contains faint, illegible handwritten text. Some words like "Stygalis" and "Arborea" are barely visible through the paper.

8 } Ascidia many

9

10. Sarsina - about 50

11. Physactis - ^{about 30} Sigarets 3

Bottles

1 Hermit crabs - without shells

2. Moira atropis 6.

3. Le pas - many.

4. 2 large mussels - Lysingville 2

5. Cr. sicula several sp. many

Paper.

Sycotypus canalic 15

Fulgur carica 20

Cardium magnum 25

" " 14

Musculi tuberosi etc 15

Pinnacra 5 1/2.

In the Eastport lot
observe Gammarus ornatus

Buccinum undatum

Purpura lapidea

Lacuna vincta (like
small Lilleria)

Saxicava erecta

Trichydermon albus

{ Vaz Besidka cis. 35

Pozidnaci o narodna

ucitelci Bulhaska.

Pro prednashtu pred

ucitelstvom a slobom



Anna Procházková

264. E. 9th St.

So. Boston

Petr Kovář

240 E. 9th St.

So. Boston

Křivým pozdravem.

[Faint, illegible handwriting]

[Faint, embossed or stamped text on the leather cover, possibly including the name 'Simek']

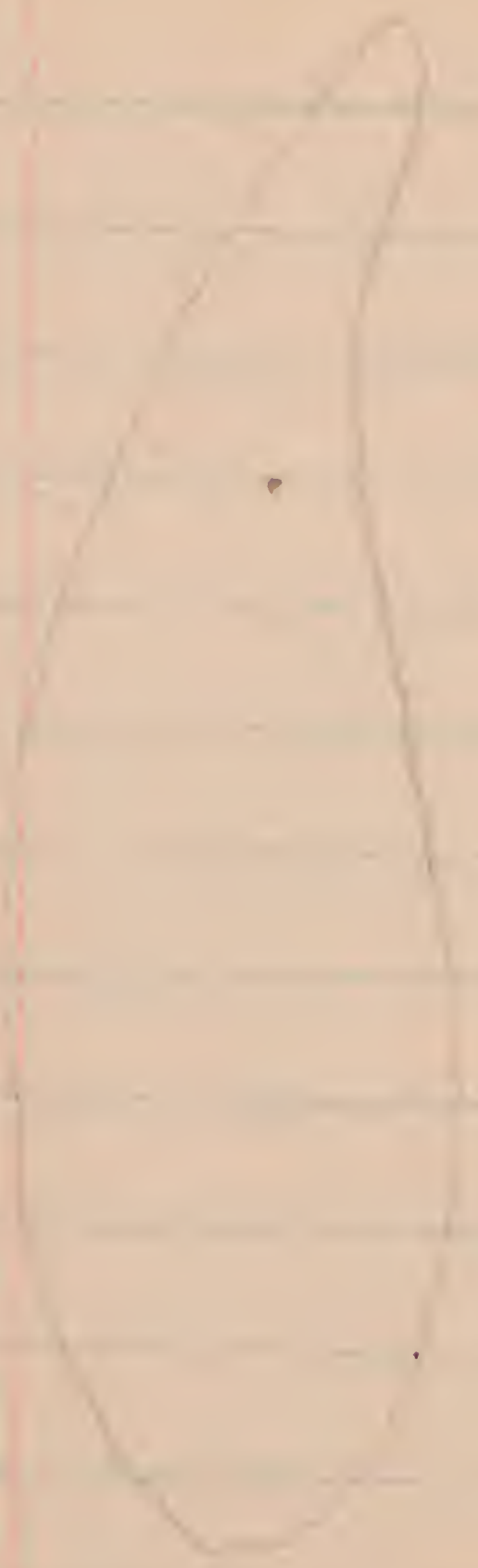
Anna E. Kovarik.
240 E. 9th str,
So. Dosting
Mass.

John M. M. M.
~~Polk~~
Danforth
Mass.
U. Burianka

U. Cistek ^{sec} 7 + 2

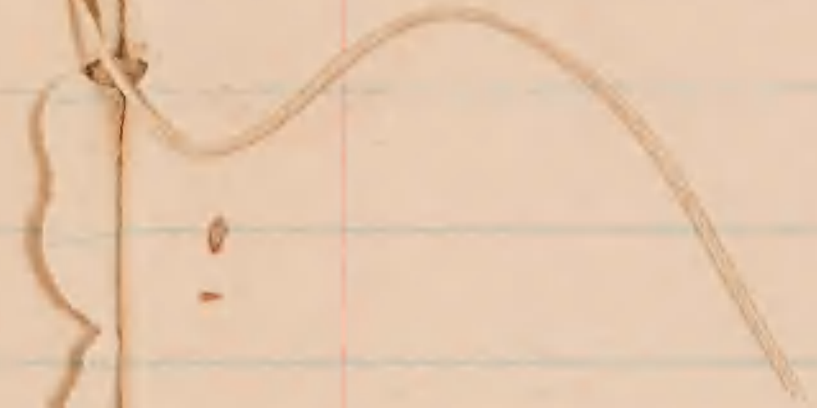
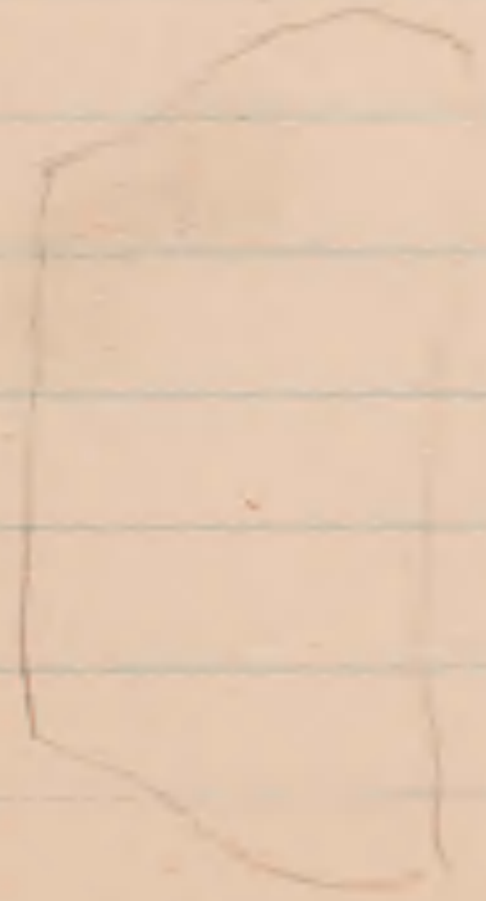
Vactor Arvenij.
N^o 1-81-7-78A.
" 2-81-7-39A.
E¹/₂ N¹/₂ E¹/₄

Bohemia
Simek
Kamery
Toma

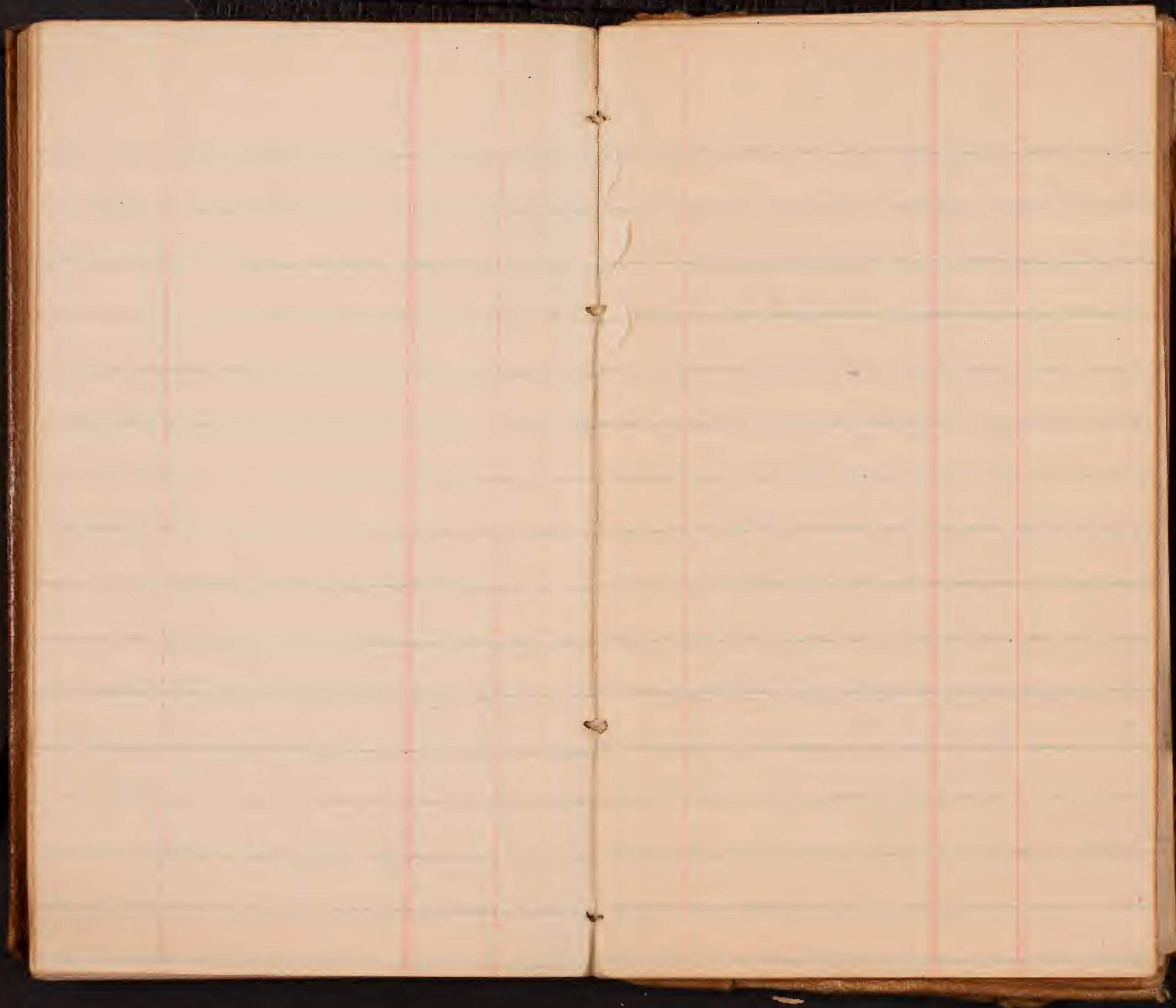


Stimul
C. C. C.





Botanici Simek &
Jama Cayana
1850



Expenses

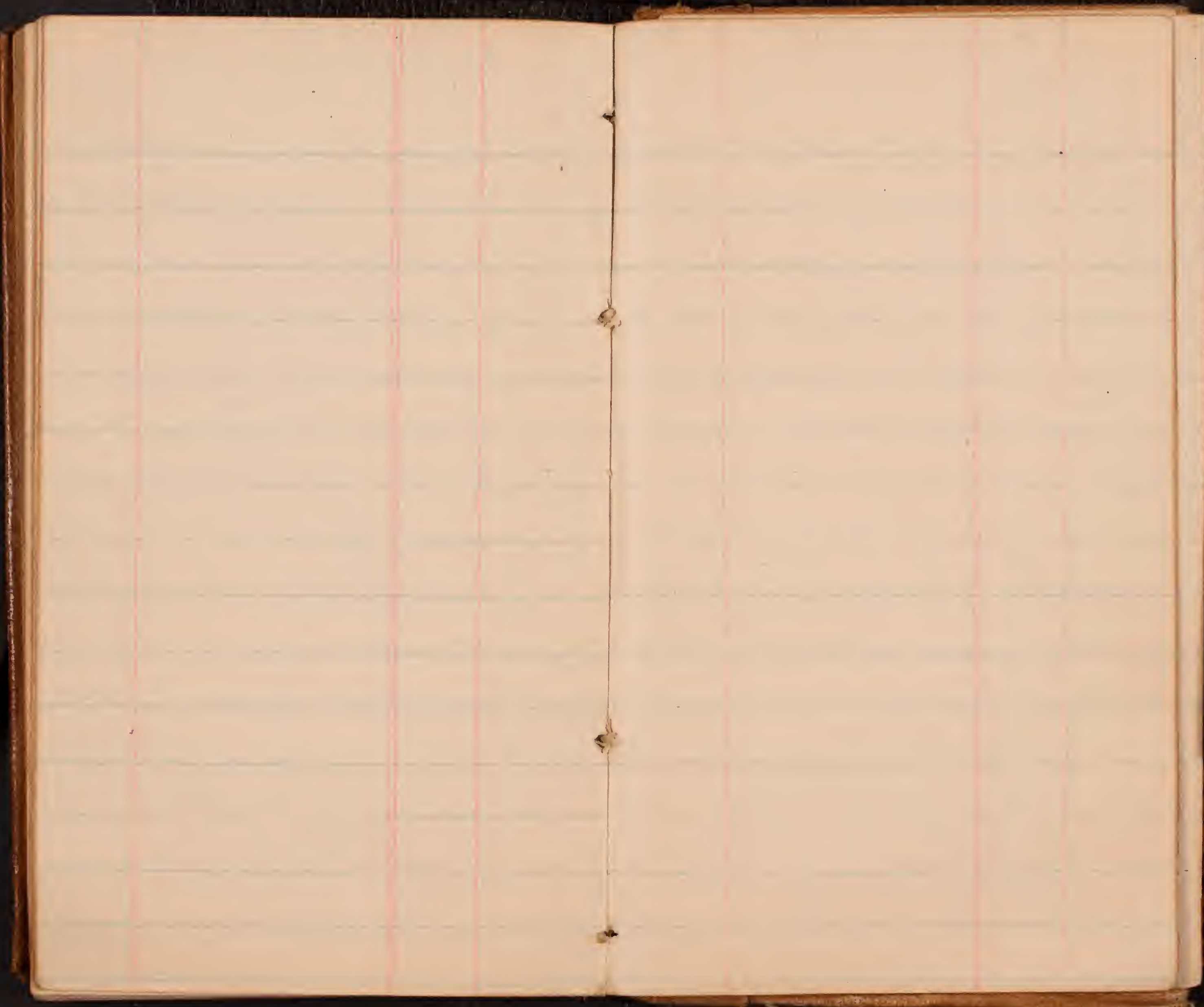
June 20 Fare to Chicago 5.82
 Storage + Lunch Chic. 50
 June 20 Fare to Balt. 15.00
 21. Coffee + Paper 15
 July 20 Storage 10
 Watch 3.00
 Board + Lodg. 1.25
 Sundrys 29
 R.R. Apples 10
 Wash Paper 05
 Balt. Sundrys 1.00
 Boat to Hog 2.00
 Food to Va. Beach 50
 Wash Paper Sundrys 35
 20. Stamps + Card 50

Shoes pair
 23
 15
 100
 Papers 2.73
 Sundrys 2.25
 Fare to New Bern 4.60
 Board + Sundrys Eliz. City 4.00
 New Bern Board + Sundrys 1.25
 Fare to Morehead + return 2.00
 Across to Beaufort .25
 Miss Dairs Row 1.50
 Sail boats @ Sunday 1.00
 Row boat (week) 1.25



Board Mrs. Deane	1.00
Alcohol, etc. 1 1/2 gall	6.10
Quinine bottles & jars	1.15
Common Sulfur	.50
Quinine -	.90

Sierra Leone
No. 1000



Blank ledger pages with blue horizontal ruling and red vertical margin lines.

Faint, illegible handwriting on the right page.

Do Kumi | Simek Co
Tama City, Iowa

Blank ledger page with horizontal blue lines and two vertical red margin lines.

Blank ledger page with horizontal blue lines and two vertical red margin lines. A faint pencil sketch of a line graph is visible, showing a line that starts at the bottom left, moves horizontally to the right, then diagonally upwards to the right, and finally horizontally to the right.

Front cover of the notebook, bound in brown leather. The cover is embossed with the text "Journal of Samuel S. Smith" in a decorative, serif font. The text is arranged in three lines: "Journal of" on the top line, "Samuel S." on the middle line, and "Smith" on the bottom line. The leather shows signs of wear and discoloration.

1885
Atlantic
coast.





Antoni Simek 08
Czajka
1898