

H O O D

Notes on the thysanoptera  
of North America with  
descriptions of new species

Entomology

A. B.

1910

UNIVERSITY OF ILLINOIS  
LIBRARY

Class

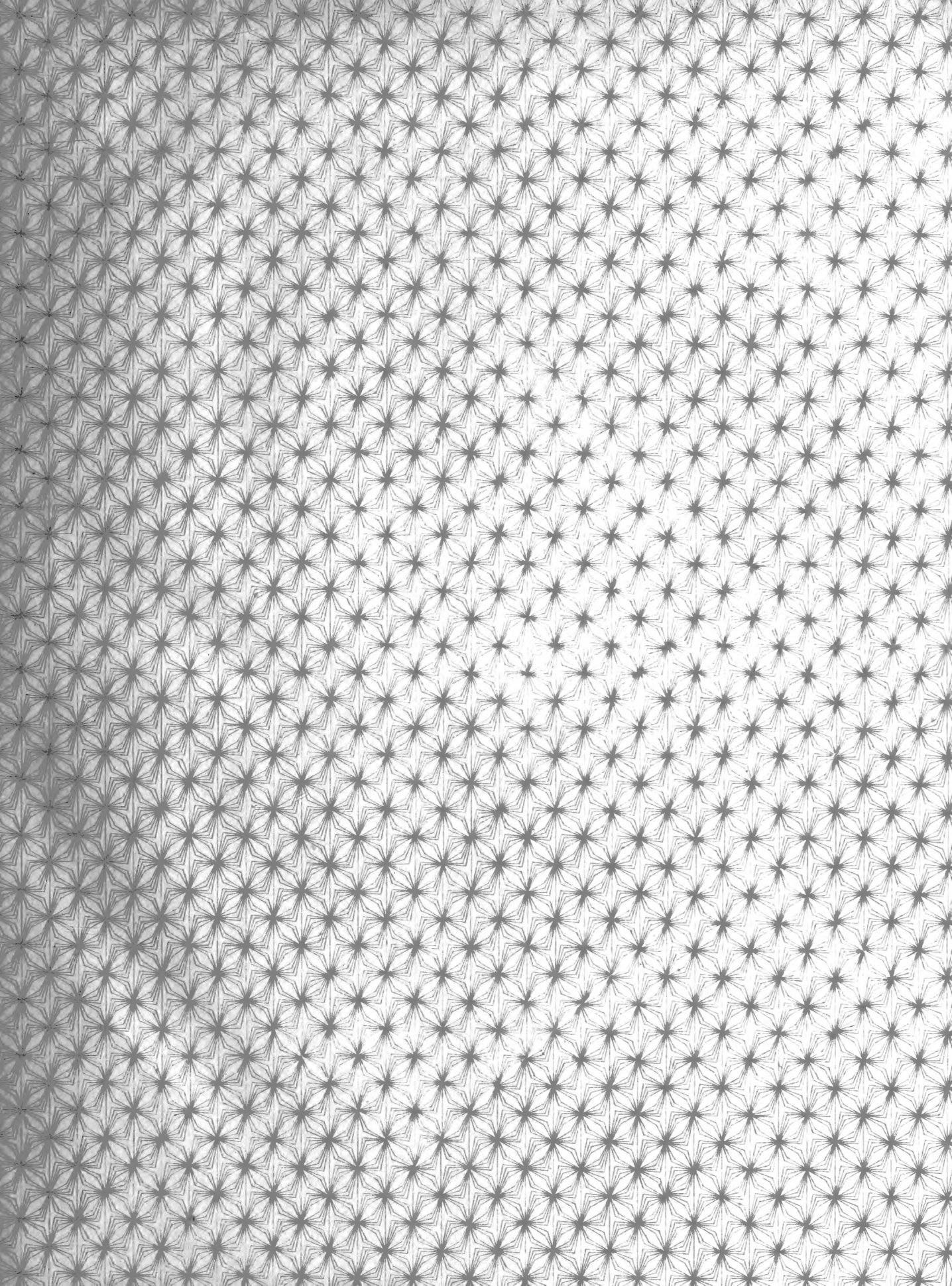
1910

Book

H76

Volume

Mr10-20M







UNIVERSITY OF ILLINOIS  
LIBRARY

NOTES ON THE THYSANOPTERA OF NORTH AMERICA  
WITH DESCRIPTIONS OF NEW SPECIES

878  
111974

by

Joseph Douglas Hood

Thesis for the Degree of Bachelor of Arts

in General Science

in the

COLLEGE OF SCIENCE

of the

UNIVERSITY OF ILLINOIS

June 1, 1910. *ml*

UNIVERSITY OF TORONTO  
LIBRARY

1310  
H76

Digitized by the Internet Archive  
in 2013

1910  
H76

1801168120  
1910  
H76

UNIVERSITY OF ILLINOIS  
DEVELOPMENTAL  
1910

UNIVERSITY OF ILLINOIS

June 1 1910

THIS IS TO CERTIFY THAT THE THESIS PREPARED UNDER MY SUPERVISION BY

Joseph Douglas Hood

ENTITLED NOTES ON THE THYSANOPTERA OF NORTH AMERICA

WITH DESCRIPTIONS OF NEW SPECIES

IS APPROVED BY ME AS FULFILLING THIS PART OF THE REQUIREMENTS FOR THE

DEGREE OF Bachelor of Arts

in General Science

J. W. Folsom

Instructor in Charge

APPROVED: C. A. Forbes

HEAD OF DEPARTMENT OF Entomology

168120

STATE OF ILLINOIS

IN SENATE,  
JANUARY 10, 1911.

REPORT OF THE

COMMISSIONERS OF THE  
STATE LANDS

FOR THE YEAR  
1910

CHAS. W. BROWN,  
COMMISSIONER

ALBANY, N. Y.,  
1911





## I N T R O D U C T I O N .

*J*  
I first became interested in Thysanoptera four years ago, in the fall of 1906, and the first specimen which I ever collected was a female of Aeolothrips bicolor, found hibernating under an old railroad tie near Champaign, Illinois. Not knowing what the insect was, I brought it to the laboratory for determination. When I found that the species had been discovered for the first time only four years previous, in Massachusetts, and that no records of its capture had been made since, my interest was aroused and I mounted the specimen carefully in balsam. I did not dream that the finding of species new to science would be possible, but I felt certain that I could by careful collection, add materially to the known geographical distribution of the several known forms. With this idea in mind, I began the collection of thrips. From a single slide of a fragmentary specimen of Aeolothrips bicolor, my collection grew rapidly, until now it contains more species from the state of Illinois than are described from all North America.

The study of Thysanoptera is of especial interest not because the insects are of any great economic importance, but rather because the group is relatively unknown and the possibilities of interesting discoveries infinite. This furnishes a mysterious and fascinating attraction, and the insects themselves make delicate and beautiful mounts, which are absolutely safe from the attacks of museum pests, easily filed away, and as nearly permanent as any collection can be.

Very little work has been done on the Thysanoptera of North America. Scattered papers have appeared now and then in which a few new species were described, and no really comprehensive monograph



has ever been written. A paper by Dr. Warren Elmer Hinds, published in the twentysixth volume of the Proceedings of the United States National Museum, is the closest approximation we have to a general work. In it are described all the species known previously to 1902--thirty seven in number, of which eighteen are new. When we find that nearly all of these eighteen forms new to science were collected by one man within a radius of a two miles from the Massachusetts Agricultural College, we begin to realize the deficiency of our knowledge of the New World species when the vast areas of Western United States and Central and South America remain unexplored.

In 1896, six years before the publication of Hinds' paper describing the Massachusetts species, Miss Alice M. Beach described a few species from Iowa. And since 1902, the species of California have been studied by Moulton, Crawford and Daniel; those of Michigan by Shull, and those of Illinois by Hood. This is all the work that has been done on the group in North America.



DIRECTIONS FOR THE COLLECTION OF THYSANOPTERA.

Owing to the small size of these insects and the consequent difficulties of collection and preservation, the few suggestions given below may prove useful to the amateur Thysanopterist. When I first became interested in this group, the lack of full directions for collecting and preserving specimens did much to hinder the progress of my work.\* It was largely through experience that I was enabled to tell where to look for specimens, and how to mount them after they have been collected. The following suggestions are consequently the results of personal experimentation. They are presented with the hope that the beginner will find among them hints which will better direct his attention to places of collection, and which will save him a portion of the needless labor which always falls to the lot of the amateur-- labor which he will in the future consider ill-directed.

This chapter is naturally divisible into two parts: first the collection of specimens, and secondly, their preservation for future study after they have been brought to the laboratory.

The order Thysanoptera as a whole has an extensive environmental distribution. Species occur in flowers, in grass, or on the leaves and branches of trees; some live in galls, turf, fungi, or moss, or under loose bark, on living or decaying trees; while still others may be found under fallen leaves and in similar decomposing plant remains. Each of these species, however, is usually confined to a particular habitat \*\* or class of habitats, outside

\* The chapter on this subject by Dr. Uzel in his "Monographie der Ordnung Thysanoptera" was at that time inaccessible to me, being written in his native tongue, Bohemian.

\*\*The word habitat has been used by several entomologists as a synonym of distribution. The habitat of a species, in the sense in which it is used by ecologists, is that particular situation in which it finds all the conditions necessary to its successful growth and reproduction. It is the situation where all the ecological factors, - climatic and edaphic, biotic and physical, - are favorable to the species. The habitat of Eurythrips ampliventralis Hinds is thus turf, and not "Amherst, Massachusetts", as given by its original describer.





of which it normally never occurs\*. We thus have one species \*\* which is found only in phylloxera galls on hickory; another \*\*\* only in galls on pin oak; a third\*\*\*\* only in flowers of jack-in-the-pulpit, while a fourth \*\*\*\*\* never occurs outside of the moss<sup>which</sup> fringes ~~in~~ the bases of our forest trees.

This large variety of situations in which he must search for species makes the collector dependent upon a rather extensive collecting apparatus. The special apparatus which he will employ when collecting in each of these particular habitats will be described below. The general outfit which he will need at all times consists essentially of vials, paper bags, a chisel or stout knife, a small camel's hair brush, and a vasculum or other receptacle in which to carry them.

Vials of about two drams capacity are recommended. The corks should be free from all irregularities which might afford shelter to the specimens and cause them to be subsequently overlooked. Care should be taken also that the corks do not project past the neck of the vial; otherwise any specimens which might cling to the sides of the cork are likely to be crushed against the neck of the vial when the cork is extracted. The observance of these seemingly slight particulars will save many a specimen. Paper bags are used to bring flowers, galls, moss, etc., into the laboratory from the field. When filled, they should be securely fastened by means of a stout paper clip, or a rubber band. Specimens are transferred to vials by means of a small, well-pointed, camel's-hair brush. When picking up the specimens, care should be taken that it is not injured. This may best be accomplished by lifting it upon the tip of the moistened brush.

---

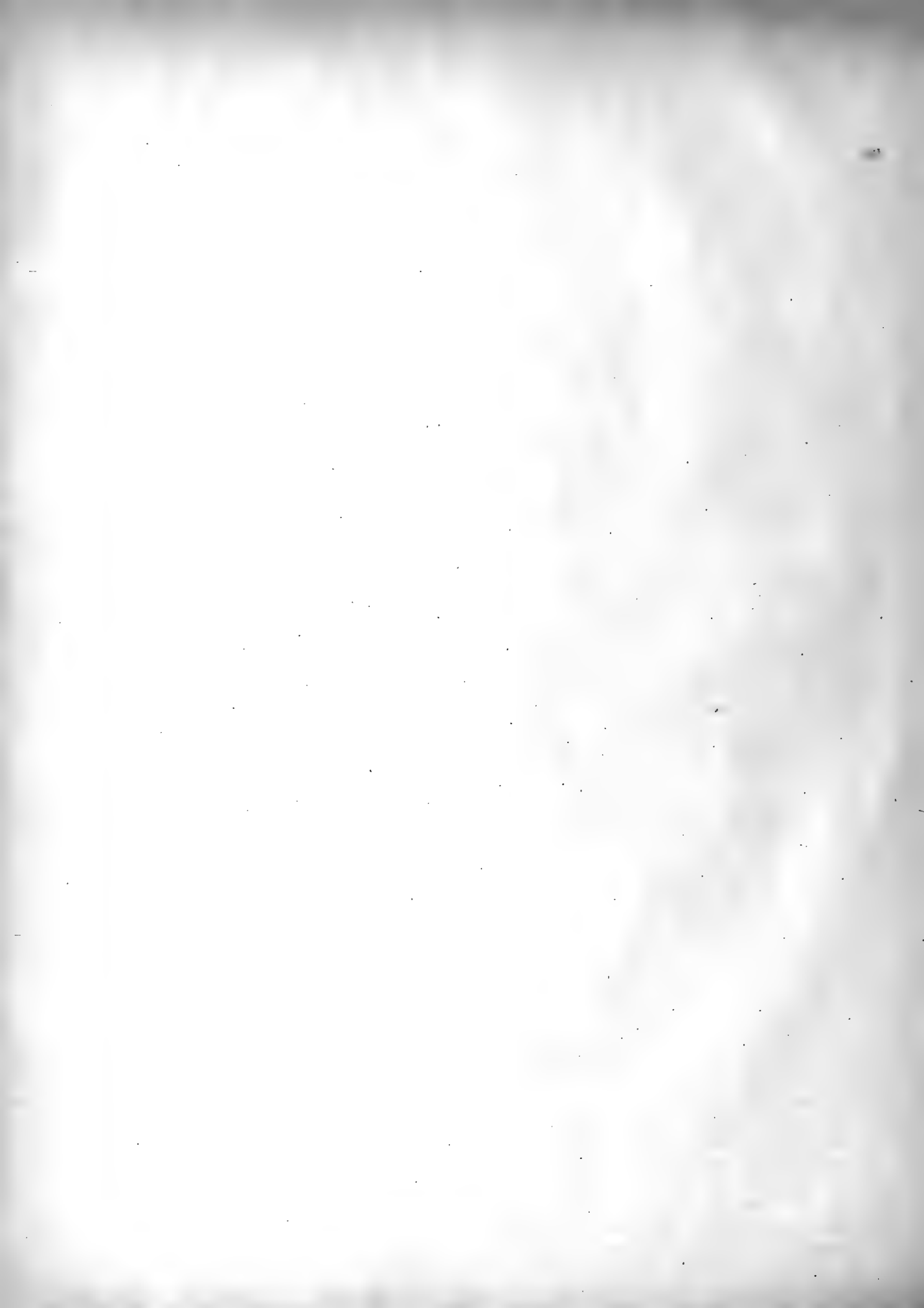
\* Species which occur commonly under the bark of trees, in galls, or in other secluded situations, may, however, sometimes be taken in sweepings from herbaceous plants. But as very few individuals of a species are ever taken at any one time in such situations, and as all such individuals are long-winged, we conclude that they are merely engaged in the dissemination of their species, and are in search of suitable places for the deposition of eggs. Trichothrips americanus Hood furnishes an excellent example. This species is normally short-winged, spending its life under the loose bark,<sup>on damp</sup> decaying, fungus-grown stumps, where it would have no use for wings even if it had them. In early Summer, long-winged individuals occur. It is this generation upon which the species is dependent for any extension of its distribution. On a sultry afternoon when the barometer is low and heralding the approach of a storm (a time when insects are unusually active) a few "sweepings" with a suitable net will frequently yield an individual or two of the long-winged form of this species. Dr. Uzel terms the macropterus females of such species the "femininae disseminatus", showing that he fully appreciated their significance.

\*\* Liothrips caryaë Fitch.

\*\*\* Phloëothrips sp. nov.

\*\*\*\* Heterothrips arisaemae Hood.

\*\*\*\*\* Lissothrips muscorum Hood.



The brush should never be brought directly down upon the insect.

I have employed two general methods for making miscellaneous extensive collections,-- collections in which quantity of material, rather than accuracy of ecological data, is desired. The first consists in "sweeping" grasses and other herbaceous plants with a strong sweep-net of fine mesh. The bag of this net should be of India linen and attached to the ring with a copper wire. The ring should be of thick galvanized iron wire and soldered into a ferrule to which a strong handle is attached. This net may be used to great advantage at all times, and will yield more species than any other single method. -- The second method is as follows:- a sheet of canvas about a yard square is sewed in the form of a bag, open at one end. Two sticks exactly equal in length to the diagonals of the bag are fastened together at the middle by means of a single nail, to form an X. These sticks are inserted into the bag, and their ends spread out and secured in corner pockets, forming a piece of apparatus sufficiently rigid and light to be held by one hand in any desired position. By means of a stout stick, Thrips may be jarred on to it from the leaves and branches of trees and shrubbery. The material so secured is usually more valuable than that obtained in any other way, owing no doubt to the slight amount of attention which has been devoted to the collection of tree-inhabiting species.

Species which occur under the loose bark on living or dead trees may be secured by prying off the bark and either sifting it with a sieve of large mesh, or by examining both the loosened bark and the exposed surface of the tree\* with a hand lens. Species collected under bark during the Winter are usually short-winged, while those taken in the summer are usually long-winged. Winter collecting will yield all those species which pass the Summer in such situations, and in addition, will furnish those which are there merely for hibernation and which seek other habitats upon the advent of warm weather in the Spring.

Galls, flowers, or fungi which contain Thrips may be brought to the laboratory in small paper bags and pulled or cut apart over a background of white paper. Nymphs or "pupae" \*\* are more commonly found in galls than are adults. It seems that the nymphs when

---

\* My experience in collecting from such situations shows that a vastly larger number of individuals cling to the tree than to the bark. If the tree is loose or disposed in flakes, they appear always to be found on the ventral surface toward the center of the tree. The explanation which suggests itself is simple: Thrips in search for protective quarters crawl about over the side of the tree and when a suitable opening in the bark is encountered, squeeze into the crevice until their body comes into close contact with the opposed surfaces. As all such species are flattened dorso-ventrally, they cannot turn over, and as a consequence must remain in the position in which they enter the crevice. We might carry this even further, and reason that the hibernating species crawl up from the base of the tree and do not descend from the crown, because they are always found below the area of attachment of the bark affording them shelter.

\*\* Insects with an incomplete or direct metamorphosis do not, strictly speaking, have a pupal stage. The term is a convenient one, however, in this connection.





when they have about attained their complete development, enter the gall in order to safely pass the quiescent "pupal" stage. Nymphs or "pupae" so taken may usually be reared with little difficulty to the adult stage by putting the galls into a vial or bottle, and taking care merely to preserve the necessary humidity.

Species which occur under fallen leaves, in decomposing plant remains, or in turf, may be collected in any one of three ways. (1) The material to be searched may be brought to the laboratory and carefully pulled apart and scrutinized over a sheet of white paper. (2) Or it may be sifted in the field, and only the siftings brought in to be searched. (3) This method is a more exhaustive one, and has been employed with marked success by Professor Antonio Berlese, an Italian arachnologist.\* It is especially valuable for the collection of hibernating species. It consists essentially in using a specially constructed tin tank which is open at one end and has a small hole in the middle of the opposite end; within this tank is fitted a tin funnel in such a way that a space is left surrounding it which can be filled with water. Across the top of the tank is supported a screen, on which is placed the debris which is supposed to contain Thrips. Water is placed in the outside portion of the tank, and a receptacle of some sort is put under the opening of the funnel. When heat is applied to the water of the outside tank, the insects, mites, and other arthropods in the debris are incited to activity, and they scurry about, falling into the funnel which directs them into the receptacle at its lower end. The specimens may be collected alive in a dry vial, or in alcohol. For Thrips, the former method is recommended.

- - - - -

\* See Entomological News. Vol. , p. .



5  
ECONOMIC CONSIDERATION:

The Important Injurious Species of the State of Illinois.

Small and apparently insignificant though the thrips are, they cannot be disregarded from an economic standpoint. Only a few species, to be sure, must be considered as decidedly injurious, but these are widespread in their distribution and difficult to control. Doubtless much damage, really caused by these tiny foes, is ascribed to more conspicuous but less injurious insects.

Before any preventive or remedial measures are to be taken, then, one should make sure that he is really dealing with a species of thrips. This is not at all a difficult task if one is provided with a strong hand lens or a compound microscope, for these insects are the only ones with a delicate fringe on all four wings, and with tarsi or feet that have at their tips a protuberant bladder-like organ which, though made slightly adhesive by a secretion from glands in the foot, depends largely upon suction for its successful operation.

These characters, though the only perfectly satisfactory ones, are not visible to the naked eye; and so the farmer or gardener will find it necessary to familiarize himself with their general appearance. This is not very difficult, for thrips are exceedingly abundant in Summer, fairly swarming in many species of flowers in our gardens and greenhouses, and on our farms. If almost any flower be carefully examined, minute, linear, slender insects, yellowish or brownish in color and about one thirty-second of an inch in length, will be seen running <sup>about</sup> and jumping, in a frantic attempt to escape. These are thrips. Folded along their backs while they are at rest are two pairs of delicate, linear wings, fringed around their edges with numerous fine cilia or hairs. Weak though these wings appear, they are really



capable of supporting the insect in sustained flight.

In feeding, the thrips usually move parallel to the veins of the leaf. The green parts of the plant, chiefly, are punctured by the lacerating, spine-like mandibles which are completely enclosed within a beak-like mouth-cone attached to the ventral or under surface of head; the sap is then withdrawn by suction. The emptied plant cells become white and shrivelled as they dry up, and as the insect moves on to fresh cells, the traces of its feeding are shown by irregular streaks of dry, whitened cells. Behind them, as they feed, they leave a row of dark colored dots of excrement, which are sometimes mistaken for eggs. There is thus no chewing of the plant tissues; the cells are simply punctured and their juices removed, the damage appearing in the form of whitish streaks and spots.

If a female of one of our common plant-loving species be carefully watched while it feeds, it may often be seen to deposit an egg. This is done by means of a hollow, saw-like ovipositor composed of four closely fitting plates. It is analogous to the sting of the honey bee, and is inserted through the plant epidermis, usually in a place where the mouth parts have first weakened the tissue or broken entirely through it. An egg is conducted through the cavity between the plates and deposited beneath the epidermis. The softest and tenderest parts are always chosen for deposition, for there is danger of the ovipositor getting caught if the tissue is hard. Also it is necessary during egg development that the surrounding tissue be flexible and moist, for the egg covering is elastic and the embryonic thrips within increases in size very noticeably before the larva issues. After about four days, the young larva issues from the egg and feeds voraciously on the plant juices for a period varying in length from about four days to more than three weeks. It then seeks some





secluded spot, often below the surface of the soil, and goes into a pupal or resting stage. From this the adult insect may emerge in as short a period as two days, or as long a period as several months, depending on the species in question and the time of the year. There are always four stages-- egg, larva, pupa, and adult, covering from one to many weeks,-- and in all except the first, great damage may be done to the food plant by the extraction of sap. As each female normally lives for several weeks, and during all this time is busily engaged in depositing eggs which successively produce other females, the increase in numbers is very rapid and the injury to the food plant great.

In Illinois, we fortunately have only four or five species of thrips which are decidedly injurious. Each of these will be briefly discussed in turn.

THE ONION THRIPIES. (Thrips tabaci Lindeman).-- This is one of the most injurious species of thrips known, because of its great numbers and wide distribution. It is quite active, about one thirty-second of an inch long, and of a pale yellowish color. Its attacks are largely confined to onions, cabbages, and greenhouse plants.

A spray of kerosin<sup>e</sup> emulsion is recommended as the cheapest and most effective method of controlling this pest. It should be used at the strength of one part of the stock to ten parts of water.\*

If the plants attacked are in a greenhouse, fumigation will often prove more satisfactory. The use of hydrocyanic-acid gas is recommended. This gas is exceedingly poisonous, and should not be employed until one has thoroughly familiarized himself with its use.

-----

\* Full and detailed directions for preparing and using this spray are given in Circular 80, Bureau of Entomology, U.S. Department of Agriculture. It may be obtained upon application to the Secretary of Agriculture, Washington, D. C.



The work must be conducted at night, and the plants should have dry foliage. Use from 0.01 to 0.05 grams of Potassium cyanide per cubic foot for from two hours to all night, the strength and length of exposure varying according to the tightness of the house and the kinds of plants treated, as there is considerable difference between various plants to their resisting power to this gas.\*

THE WHEAT THRIPS. (Euthrips tritici Fitch.)-- This insect is about one thirty-second of an inch in length, and is of a pale orange yellow color. It is the most abundant species of thrips in the state, occurring on almost every species of flowering plant. It is not quite as injurious as the Onion Thrips, however, for its attacks are less confined to cultivated plants; it is very common in many kinds of flowers and on grasses and cereals.

By far the greatest amount of damage seems to be done to strawberries, in the blooms of which they swarm, and by their punctures of the essential parts of the flower they prevent its fertilization and the consequent development of the fruit. This failure of bloom, though perhaps also produced by other insects and in other ways, is known to growers as "buttoning". The most serious injuries have been reported from Florida and Illinois. In dry seasons, the strawberry crop has been reduced to one third in some sections.

The best treatment, as in the case of the Onion Thrips, seems to be a spray of kerosine emulsion. "Rose-leaf Insecticide"-- a high grade extract of tobacco-- is another excellent practical remedy when used with 48 parts of water.

THE GRASS THRIPS. (Anaphothrips striatus Osborn.)-- This species is about the same size as the two preceding, and of a pale yellow color, with a shading of black. Its injury is entirely confined to

---

\*See Circulars 37 and 57, Bur. Ent., U. S. Dep't. Agri.





grasses. The most conspicuous effects of its work are the dead tops of June grass and timothy, known commonly as "Silver top" or "White top". This is caused by the abstraction of sap from the tender axial stems, thus cutting off the supply of sap to the head, which therefore fails to bear seed. In the case of wheat, rye, oats, etc., this and the preceding species suck the milk directly from the growing kernels in the ear and produce an abortive condition of the head.

As the female hibernates above ground, burning in early spring will destroy large numbers of them. As the damage is most severe on worn out meadows, fields, and lawns, fertilization and early harvesting will also be effective.

THE GREENHOUSE THRIPS. (Heliothrips haemorrhoidalis, and H. femoralis.)-- These species do little damage in this state, but in the east and in the Old World their injuries are of prime importance. The same remedies may be used as recommended for the Onion Thrips. Both these greenhouse species are slightly larger and stouter than the preceding species, and are nearly black in color.



S Y S T E M A T I C    P A R T.

Key to the Sub-Orders.

I. Female with a saw-like ovipositor. Last abdominal segment of female conical; that of male sometimes like that of female, but more frequently broadly rounded. Wings with numerous microscopic spines; fringing hairs jointed at their insertion into the wing membrane; fore wings with at least one vein extending from base to tip of wing.

Sub-order Terebrantia.

II. Female without an ovipositor. Last abdominal segment tube-like in both sexes. Wings without microscopic spines; fringing hairs not jointed at their insertion into the wing membrane; fore wings with a single rudimentary vein, extending from base to near middle of wing.

Sub-order Tubulifera.

Represented only by Fam. Phloeothripidae.



SUB-ORDER    TEREBRANTIA.

In this sub-order belong all the more active species of Thysanoptera, and those which are of the greatest economic importance. They are usually smaller than the Tubulifera, are often quite highly colored. The Onion Thrips, the Pear Thrips, the Greenhouse Thrips, the Tobacco Thrips, and a host of other injurious species belong here. Because of the economic importance of this group, they have been more extensively studied than their relatives the Phloeothripidae, this resulting frequently in a multiplication of scientific names, a confusion of the species, and a consequent difficulty of taxonomic work.

The Terebrantia are divisible into two distinct families, as follows:

Key to the Families of Terebrantia.

- A. Antennae always nine-segmented. Wings of both pairs broad and rounded at tips; fore wings with cross veins. Ovipositor curved upward.... Family AEOLOTHIRIPIDAE.
  
- AA. Antennae usually 6- 8 segmented, very rarely 9- segmented. Wings narrow and pointed at tips; fore wings without cross veins. Ovipositor curved downwards..... Family THIRIPIDAE.





Family ÆOLOTHRIPIDÆ.

This family includes the most primitive Thysanoptera known, as is shown by the nine-segmented antennæ, the broad veined wings, the absence of antennal sense-cones, etc. They are all moderately active species, and feed almost entirely in the flowers of plants.

- A. Antennæ strongly geniculate, with the tip of second segment strongly produced inwardly beyond the insertion of the third.

Ankothrips Crawford.

- AA. Antennæ not geniculate; second segment not produced beyond insertion of the third.

- a. Maxillary palpi seven- or eight-segmented; labial palpi 4- or 5-segmented. Ninth abdominal segment of males not prolonged into hooked clasping organ.

Orothrips Moulton.

- aa. Maxillary palpi three-segmented; labial palpi four-segmented.

- b. Head very large, swollen, hemispherical, widest at posterior margin, compactly united to prothorax. Fore wings widest near base.

Oncerothrips gen. nov.

- bb. Head small, sub-rectangular, parallel sided, not at all united to prothorax. Fore wings widest apically.

Æolothrips Haliday

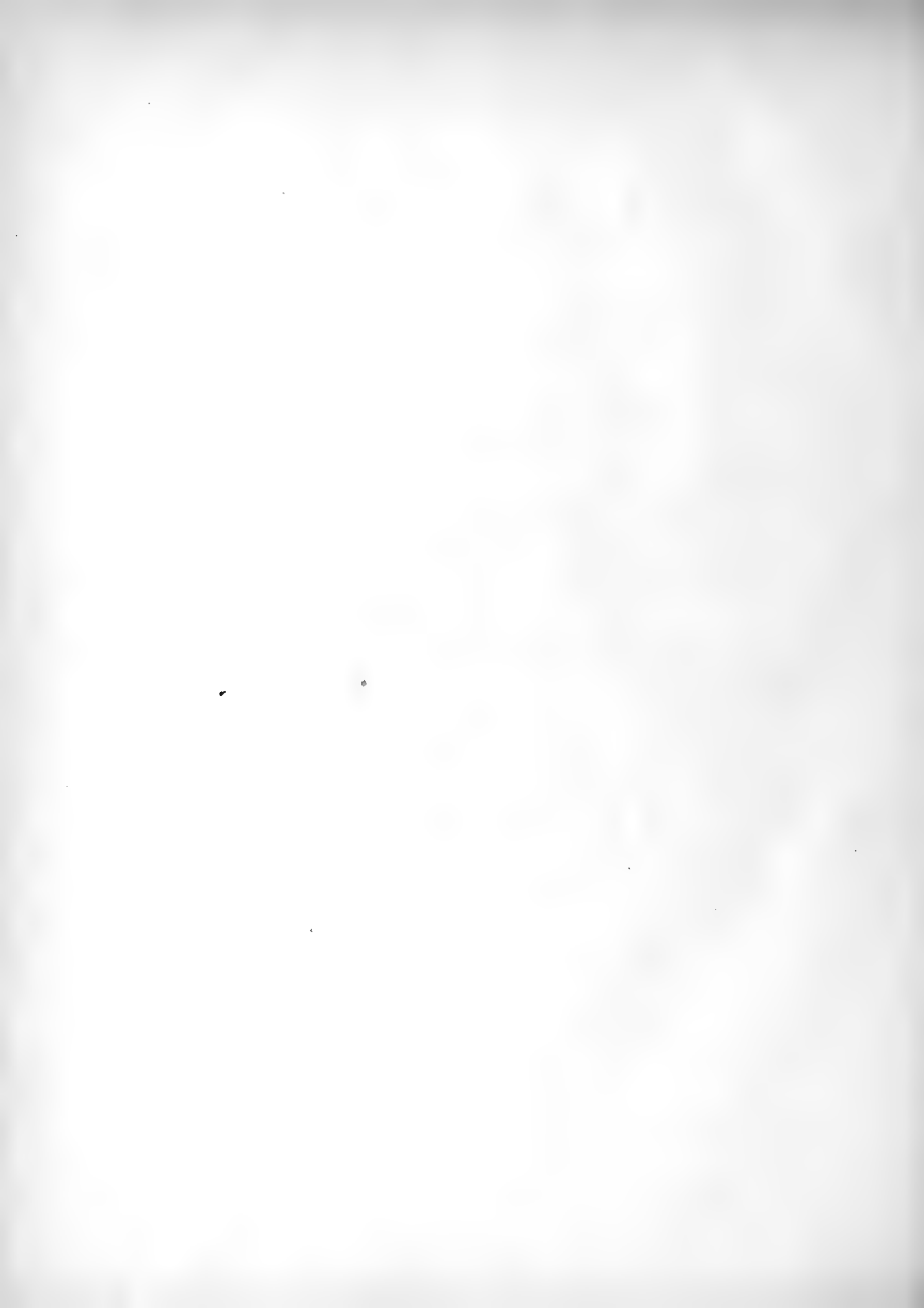
Genus ANKOTHRIPS Crawford, 1909.

Ankothrips Crawford. Pomona College Journ. Ent. Vol. 1, No-4 Dec. 1909, p. 100.

<sup>109/</sup> Dicranothrips Trybom; Schultze, Zoologische und anthropologische Ergebnisse einer Forschungsreise im westlichen und zentralen Südafrika, ausgeführt in dem Jahren 1903-05. Vierter Band. Erste Lieferung.



In this recently described genus I place Ankothrips robustus Crawford and Dicranatothrips fissidens Trybom. The former was described from California where it was taken on the California Laurel and the California Lilac, while the latter occurs in the flowers of the "Pferdebusche" in Klein-Namaland, Africa.



Genus AEOLOTHRIPS.

Three readily separable species of this genus occur in Illinois, as follows:

A. Wings cross-banded.

a. Abdominal segments 2 and 3 with a transverse white band. ....AE. bicolor  
Hinds.

aa. Abdominal segments 2 and 3 concolorous with remainder of abdomen. ....AE. fasciatus  
(Linne)

B. Wings pale, with a longitudinal black band along posterior margin. ....AE. hartii  
Hood, MSS.

AEolothrips bicolor Hinds.

AEolothrips bicolor Hinds. Proc. U.S. Nat. Mus. Vol. XXVI, No. 1310, 1902, p. 130.

A very common native species in the flowers growing along the roadsides of Illinois.

AEolothrips fasciatus (Linne).

Another common species, frequently found associated with the preceding one in similar situations. Probably introduced from Europe.

AEolothrips hartii Hood: MSS.

Common on locust trees at Havana, Illinois.



Genus OROTHRIPS Moulton, 1907.

Bull. U. S. Dept. Agr., Bur. Ent., Tech. Ser., No. 12, part III, p. 45.

Head slightly wider than long. Antennæ nine-segmented, moderately slender, all segments freely movable, but the apical four somewhat more closely united than the others. Maxillary palpi seven- or eight-segmented; labial palpi four- or five-segmented. Prothorax wider than long, usually slightly longer than head; posterior margin sometimes with strong spines. Fore tibiæ unarmed; fore tarsi with the usual hook-like appendage. Wings broadened distally, where they may be twice as broad as at basal third. Wings of first pair cross-banded in both the known species. Ninth abdominal segment of male not prolonged at the posterior angles into hooked, clasping organs.

I have preferred to extend the description of Orothrips to include the species described below rather than to erect a new genus for it, for the reason that the differences between my specimens and Moulton's diagnosis may possibly be more apparent than real, and due partly to inaccuracies of observation and description. I am led to this conclusion by the statement in the original description that all the tibiæ of Orothrips are armed. A comparison of Moulton's figure (Pl. I, fig. 1) with that given by Uzel on Tab. V, fig. 38 of his Monographie will show that such is not the case.





Orothrips flavus sp. nov.

Female.— Length about 1.6 mm. (1.47- 1.77 mm.). Color testaceous, prothorax with an indistinct V- shaped, brown cross-band at middle of dorsum; head and prothorax slightly darker; abdomen with a faint indication of a pale cross-band on segments 1, 2, and 3; antennal segments 1-4 pale yellowish white, remainder of antenna black.

Head about one and one-fourth times as wide as long, roundly angulate between antennae, and slightly shorter and narrower than prothorax; cheeks slightly arcuate; dorsal and lateral surfaces faintly transverse striate, set with numerous minute spines. Eyes large, pilose, prolonged on ventral surfaces, and with large, distinct facets. Ocelli large, equidistant. Antennae moderately slender, about as long as combined lengths of head, pro- and mesothorax, the last four segments united into a more or less compact club; segment 1 broadest, nearly as wide as long, tapering apically; 2 distinctly longer and narrower than 1; 3- 6 long, cylindrical, successively decreasing in length, 4 distinctly shorter than 3; 7 slightly longer than 6, usually about equal to 5 in length and narrowing apically; 8 abruptly shorter, one-half to one-third as long as 7, and twice to five times as long as 9, which is sub-concave and usually about as long as wide. Segments 1-4 pale yellowish white, 3 and 4 slightly more whitish; 4 clouded apically with black; 5- 9 uniform black. Segments 3-9 quite thickly clothed with short, white, inconspicuous hairs of uniform length; 5, 6, and 7 each with a short, linear, pale, sensory area on ventral surface.\* Maxillary palpi eight-segmented; labial palpi four segmented. Ventral surface of head with two pairs of prominent spines, one of which is sub-antennal and the other of which is situated between the posterior angles of the eyes, just anterior to the chitinous thickening.

Prothorax subrectangular, slightly wider than long, and a little wider than head, sides and posterior margin slightly arcuate, hind angles broadly rounded; surface with numerous minute spines. Mesothorax broader than prothorax, anterior angles broadly rounded. Mesonotum transversely striate; metathorax narrowed posteriorly, metanotum faintly transversely striate. Wings long; fore wings expanded apically, broadest at apical sixth, where they are twice as wide as at basal fourth; venation normal to the group; spines on anterior portion of ring vein short, slightly projecting beyond margin of wing; first and second longitudinal veins set with respectively about 20 and 14 short spines. Color of fore wings pale brown, with two white cross bands; a narrow one at basal seventh, and a slightly wider one at apical seventh; intermediate brown area somewhat paler at middle; hind wings white.

Abdomen sub-piliolate, at seventh segment twice as wide as at base and one and one half times as wide as pterothorax; posterior margin of segments 1, 2, and 3 white or whitish, segments 9 and 10

---

\* Similar areas are almost certain to be present on segments 3 and 4 as in Æolothrips fasciatus and Æ. bicolor, but I have not been able to make them out on my specimens.



tinged with yellow or white.

Measurements: of a female from Odin, Illinois:- Length 1.73 mm.; head, length .17 mm., width .21 mm.; prothorax, length .21 mm., width .24 mm.; pterothorax, width .30 mm.; abdomen, width .47 mm. Antennae: 1, 39 $\mu$ ; 2, 48 $\mu$ ; 3, 162 $\mu$ ; 4, 141 $\mu$ ; 5, 75 $\mu$ ; 6, 62 $\mu$ ; 7, 66 $\mu$ ; 8, 23 $\mu$ ; 9, 12 $\mu$ ; total .63 mm., width .025 mm.

Measurements: of a female from Monterey, Mexico:- Length 1.4 mm., head, length .150 mm., width .21 mm.; prothorax, length .20 mm., width .23 mm.; pterothorax, width .30 mm.; abdomen, width .35 mm. Antennae: 1, 33 $\mu$ ; 2, 56 $\mu$ ; 3, 132 $\mu$ ; 4, 89 $\mu$ ; 5, 67 $\mu$ ; 6, 49 $\mu$ ; 7, 52 $\mu$ ; 8, 25 $\mu$ ; 9, 14 $\mu$ ; total .517 mm., width .025 mm.

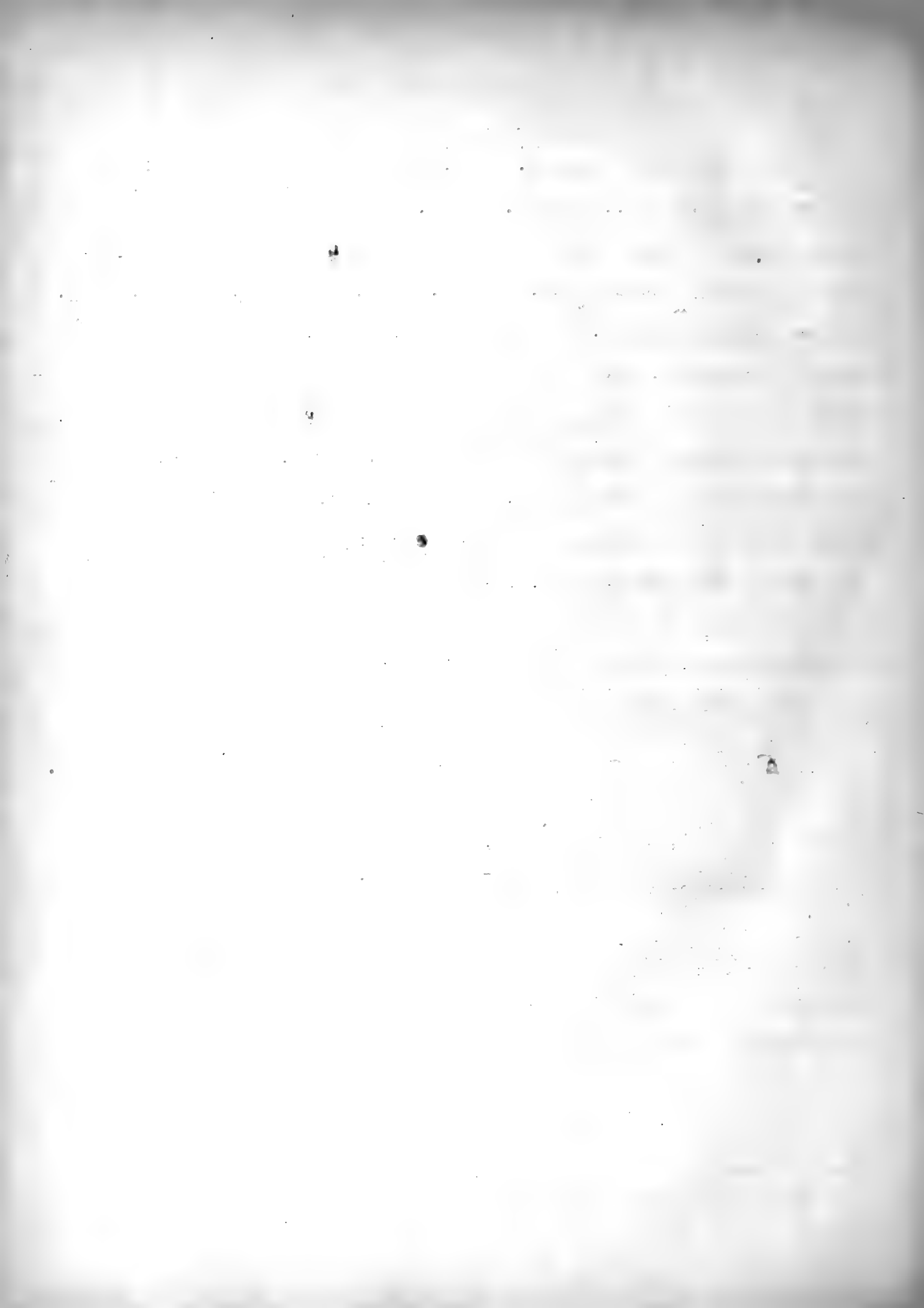
Male.- Similar to female, but slenderer and with longer antennae.

Measurements of a male from Monterey, Mexico:- Length 1.07 mm.; head, length .147 mm., width .174 mm.; prothorax, length .160 mm., width .181 mm.; pterothorax, width .245 mm.; abdomen, width .192 mm. Antennae: 1, 36 $\mu$ ; 2, 45 $\mu$ ; 3, 154 $\mu$ ; 4, 137 $\mu$ ; 5, 92 $\mu$ ; 6, 77 $\mu$ ; 7, 78 $\mu$ ; 8, 24 $\mu$ ; 9, 8 $\mu$ ; total .65 mm., width .027 mm.

Measurements of the antennae of a male from Brownsville, Texas:- 1, 31 $\mu$ ; 2, 39 $\mu$ ; 3, 118 $\mu$ ; 4, 106 $\mu$ ; 5, 75 $\mu$ ; 6, 67 $\mu$ ; 7, 75 $\mu$ ; 8, 17 $\mu$ ; 9, 8 $\mu$ ; total .54 mm.

Described from several specimens of both sexes taken in sweepings by Mr. Charles A. Hart at Monterey and Matamoros, Mexico, at Brownsville, Texas, and at Odin and DuBois, Illinois, in June and July.

This species may easily be distinguished from all other eastern Acolothripidae by its pale coloration and by the greater number of segments in the maxillary palpus. In at least one of these respects, however, it resembles Orothrips kellogii Moulton, described from California. But it differs strongly from that species in that the maxillary palpi are eight- instead of seven-segmented, the labial palpi are four- instead of five-segmented, and the fore wings are greatly expanded apically and twice as wide near apex as at basal third. These points of distinction may also be noted by a comparison with Moulton's figures. The strong spines on the posterior prothoracic margin of kellogii are greatly reduced in flavus, being no longer than the discal ones; the brown cross band at the middle of the fore wings is nearly twice as wide in flavus and frequently shows a tendency to form two cross bands by the appearance of a pale, central area; the ventral sensory areas on the fifth and sixth segments of the antennae are slit-like in flavus and circular in kellogii; and the "ring vein" of the fore wings seems in Moulton's species to be armed with slightly longer spines.



Oncerothrips gen. nov.

(ὄγκηρός, swollen\*; θρῖψ .)

Head very large, swollen, hemispherical, widest at posterior margin, compactly united to prothorax. Antennae nine-segmented, very slender, apical segments scarcely more closely united than the others. Maxillary palpi three-segmented; labial palpi four-segmented. Prothorax slightly wider than long and slightly longer than head, distinctly narrowed posteriorly, where it is three-fourths its anterior breadth; posterior margin without strong spines. Fore tibiae unarmed; second fore tarsal segment with the usual hook-like appendage. Wings very slender; fore wings widest near base, cross-banded, apical three-fifths of anterior margin set with long spines.

Type.- Aeolothrips vespiformis Crawford.

This genus is a very distinct one, readily separable from Aeolothrips Haliday (which it should follow in a linear arrangement of the genera) by the compactly united head and prothorax.

Oncerothrips vespiformis (Crawford)

Aeolothrips vespiformis Crawford, Pomona College Journal of Entomology, Vol. I, No. 4, Dec. 1909, p. 109.

The specimen from which the original description of this species was drawn was collected in Managua, Nicaragua; I have specimens from Brownsville, Texas, collected in the summer of 1908 by Mr. Charles A. Hart.

---

\* In reference to the unusually large head.



Genus CHIROTHRIPS Haliday, 1836.

KEY TO FEMALES.

- I. Second antennal segment not prolonged at outer apical angle.  
C. hamatus Trybom.
- II. Second antennal segment with a subacute prolongation at the outer anterior angle.
- a. Posterior prothoracic angles with two moderately long spines.
- b. First antennal segment shorter than the second and without a transverse carina; combined lengths of segments 7 and 8 about three-fifths as great as that of segment 6. Greatest width of fore wings (exclusive of scale) five-thirds as great as the width at middle. Basal abdominal segments with a transverse chitinous line...C. manicatus Haliday.
- bb. First antennal segment longer than the second, with a transverse carina. Combined lengths of segments 7 and 8 about five-sixths as great as that of segment 6. Greatest width of fore wings (exclusive of scale) four thirds as great as the width at middle. Basal abdominal segments with a transverse row of about 18 small, dark brown, arcuate, chitinous thickenings at basal third.  
C. capriolae sp. nov.
- aa. Posterior prothoracic angles without long spines.
- c. "Abdomen light yellow" (Hinds)...C. obesus Hinds.
- cc. "Abdomen light brown" (Hinds)...C. crassus Hinds.





Chirothrips capriolae sp. nov.

Female.- Length about 1.1 mm. Color blackish brown; segments 1-8 of abdomen often brownish yellow; pterothorax tinged with reddish.

Head slightly longer than wide; anterior portion with three pairs of small spines, one at anterior angle of eyes, the others in a transverse row in front of eyes. Antennae less than twice as long as head; segment 1 concolorous with head, shorter than segment 2, and provided with a prominent transverse carina; 2 brownish yellow, darkened laterally and basally; 3 blackish yellow; 4-8 blackish brown; 3 and 4 each with a long, stout sense cone on outer surface. Mouth cone about .6 as long as head; maxillary palpi three-segmented.

Prothorax faintly reticulate; posterior margins with about five pairs of short spines in addition to the prominent ones at the posterior angles. Fore coxae projecting beyond the lateral outline of prothorax; fore femora swollen, reticulate apically, and with a sharp ridge separating the dorsal and lateral surfaces; fore tibiae very short (about .4 as long as femora), broader than long, prominently reticulate; fore tarsi slender. Tarsi, fore tibiae, and inner surface of fore femora yellow; rest of legs nearly concolorous with body.

Abdominal bristles as in C. manicatus Haliday; basal segments of abdomen with a transverse row of small, arcuate, chitinous thickenings at basal third.

Measurements:- Total length 1.08 mm.; head, length .11 mm., width .10 mm.; prothorax, length .19 mm., width (excluding coxae) .23 mm.; mesothorax, width .29 mm.; abdomen, width .27 mm. Antennae: 1, 31 $\mu$ ; 2, 27 $\mu$ ; 3, 26 $\mu$ ; 4, 24 $\mu$ ; 5, 24 $\mu$ ; 6, 32 $\mu$ ; 7, 13 $\mu$ ; 8, 13 $\mu$ ; total, .19 mm.

Male.- Length about .8 mm. Color clear lemon yellow, excepting the last two abdominal segments, the five apical antennal segments, and the lateral surfaces of the femora and tibiae of the middle and hind pair of legs, which are blackish brown. First antennal segment longer than the second, but without transverse carina.

Measurements:- Length .78 mm.; head, length .090 mm., width, .090 mm.; prothorax, length .171 mm., width (excluding coxae) .204 mm.; mesothorax, width .238 mm.; abdomen, width .240 mm. Antennae: 1, 28 $\mu$ ; 2, 25 $\mu$ ; 3, 25 $\mu$ ; 4, 25 $\mu$ ; 5, 21 $\mu$ ; 6, 28 $\mu$ ; 7, 11 $\mu$ ; 8, 7 $\mu$ ; total .17 mm.

Described from two males and many females taken in sweeping from Bermuda grass (Capriola dactylon), at Matamoras and Monterrey, Mexico, at Brownsville, Texas, and at Pulaski, Illinois, by Mr. Charles A. Hart.

This distinct and readily recognized species is not an uncommon one in sweepings from Bermuda Grass, where it seemingly replaces the dominant C. manicatus of the north.



CALOTHRIPS gen. nov.

(καλός, beautiful; θρίψ.)

Head about as long as wide; vertex swollen, produced, overhanging and slightly surpassing base of antennae. Eyes prominent, protruding. Antennae eight-segmented; style much shorter than segment 6; all sense cones simple. Maxillary palpi three-segmented. Prothorax distinctly longer than head and nearly as long as wide, broadest near base; posterior angles with two long spines, all other spines small and scarcely visible. Wings often lacking; when present, moderately broad, without color pattern; fore pair with two longitudinal veins reaching nearly to tip; hind pair with a simple median vein; anterior margins of fore wings set with very long and slender spines which are scarcely distinguishable from the fringe.

Type.- Calothrips cinctus sp. nov.

This genus is suggestive of Aptinothrips, Euthrips, and Rhaphidothrips. It strongly resembles the first in the produced vertex and in that the antennal sense cones are simple, as in Chirothrips, Limothrips, Heterothrips, Parthenothrips, and certain species of Heliothrips; but it differs most noticeably from the two described species of Aptinothrips in the much longer and stronger dorsal bristles. In this last respect, it approaches Euthrips, but in that genus the antennal sense cones are U- or V- shaped, the prothorax is wider, and the vertex is not swollen or produced. Its resemblance to Rhaphidothrips lies in a similarity of structure of the apical antennal segments, in the presence in both genera of two prominent bristles at the hind angles of the prothorax, and in the larger size of the apical abdominal bristles; it differs from that genus, however, in that the sixth an-



tennal segment is longer than the seventh and eighth combined, and in that the sense cones are simple.



Calothrips cinctus sp. nov.

Female.- Forma brachyptera. Length about 1.0 mm. General color dark blackish brown to black, with pterothorax, first abdominal segment, intermediate antennal segments, and legs, yellow, slightly shaded with brown; prothorax often slightly paler than head.

Head about as long as wide, slightly shorter than prothorax; vertex swollen, produced anteriorly, broadly rounded as seen from above; dorsal surface faintly cross striate and armed with but two pairs of moderately long slender bristles, the first pair of which is situated opposite center of eyes and the second pair of which is placed slightly behind the inner posterior angle of the eyes. Eyes moderate in size, protruding. Ocelli lacking, or with the anterior one greatly reduced or wanting. Antennae moderately slender, about 1.7 times as long as head; segments 1 and 2 brown, the latter paler towards apex and at middle; 3-5 pale yellow, sometimes slightly shaded with brown; 6-8 brown, concolorous with head; sense cones pale, slender, simple; formula 3, 0-1; 4, 0-1; 5, 1-0; 6, 1-1<sup>+</sup>1.

Prothorax blackish brown, very slightly broader than long and somewhat longer and wider than head; posterior angles each with two long, slender spines; anterior angles with a pair of smaller, weaker bristles, about equal in size to a posterior marginal pair; all other spines small and scarcely visible. Mesothorax slightly wider than prothorax, fore angles broadly rounded; metathorax closely united to mesothorax, and of about equal width throughout; meso- and meta-thorax uniform pale lemon yellow. Legs rather short and stout, yellow in color; femora and bases of tibiae often shaded with brown.

Abdomen moderately long, slender, distinctly broader than pterothorax; apex sharply conical, segment 10 with a longitudinal dorsal suture; spines on segments 9 and 10 long, strong, dark in color, and quite prominent.\* Segment 1 of abdomen pale yellow, concolorous with pterothorax; remainder of abdomen dark blackish brown, concolorous with, or somewhat darker than, prothorax.

Measurements:- Length 1.02 mm; head, length .135 mm., width .140 mm.; prothorax, length .158 mm., width .180 mm.; pterothorax, width .200 mm.; abdomen, width .263 mm. Antennae: 1, 24 $\mu$ ; 2, 33 $\mu$ ; 3, 39 $\mu$ ; 4, 33 $\mu$ ; 5, 31 $\mu$ ; 6, 51 $\mu$ ; 7, 11 $\mu$ ; 8, 15 $\mu$ ; total .237 mm., width .018 mm.

Female.- Forma macroptera.- Length about 1.1 mm. General color nearly uniform dark blackish brown, with pterothorax slightly paler and with legs and intermediate segments of antennae brownish yellow, the former shaded with brown or black.

Similar to forma brachyptera, but differing from it as follows: Ocelli always present, subequal in size, equidistant. Mesothorax distinctly broader than prothorax and metathorax; pterothorax

---

\* Much as in the species of the genus Euthrips.

USA - 5



concolorous with, or slightly paler than, remainder of body. Wings long, nearly attaining tip of abdomen, very pale in color, shaded with a light wash of brownish; fore wings with two longitudinal veins reaching nearly to tip; anterior vein with about nine pale bristles, usually two near apex, and about six or seven near base; posterior vein with about nine nearly equidistant similar bristles; hind wings paler than fore wings, with a single longitudinal vein. Legs often dark in color, the femora and tibiae being shaded with black or brown.

First abdominal segment blackish brown.

Measurements:--Length 1.14 mm.; head, length .128 mm., width .141 mm.; prothorax, length .164 mm., width .186 mm.; mesothorax, width .233 mm.; metathorax, width .203 mm.; abdomen, width .270 mm. Antennae: 1, 23 $\mu$ ; 2, 32 $\mu$ ; 3, 36 $\mu$ ; 4, 33 $\mu$ ; 5, 32 $\mu$ ; 6, 54 $\mu$ ; 7, 10 $\mu$ ; 8, 14 $\mu$ ; total .234 mm., width .018 mm.

Described from several specimens of both forms taken at Matamoros, Mexico, and Brownsville, Texas by Charles A. Hart; and at Grand Tower, Illinois, by Charles A. Hart and the writer.

The short winged form of this species is very striking and characteristic. In the field, the pale transverse band separates it at once from all members of its family with which it could possibly be confused. And in the laboratory, the microscope shows simple antennal sense cones, a broadly rounded produced vertex, long abdominal bristles on the last two segments, and two pairs of long bristles on the posterior angles of the prothorax-- a combination of characters hitherto unknown.

[The following text is extremely faint and illegible due to low contrast and blurring. It appears to be a list or a series of entries, possibly containing names and dates, but the specific content cannot be transcribed.]

Euthrips compositarum sp. nov.

Female.-- Length about 1.0 mm. General color dark blackish brown to nearly black; tarsi and fore tibiae yellowish; antennae nearly concolorous with body.

Head nearly as long as wide, sides parallel; all spines short, inconspicuous; postocular bristles wanting. Antennae stout, slightly more than twice as long as head, of nearly equal length from base to style; segment 2 large, twice as long as 1; 3 and 4 subglobose, subequal in length, the former with a very slender pedicel; 5 smaller and rather abruptly narrower than the preceding segment; 6 longest, about twice as long as style; style slender, its second segment slightly longer than its first. Antennal coloration: segments 1, 2, and 4-8 concolorous with body, 2 slightly darkened at sides; 3 slightly paler at base.

Prothorax slightly longer than head; posterior angles each with two long spines, in addition to two slightly shorter pairs on the hind margin; anterior angles each with two short, inconspicuous spines; disk with several small scattered spines, of which an anterior marginal pair is largest. Fore wings nearly uniformly clouded with brown, excepting a very small, longitudinal, transparent area near base, just behind the anterior vein; anterior vein set with an unbroken series of about 18 spines; hind wings colorless, excepting for the brown longitudinal vein which reaches almost to tip. Legs nearly concolorous with body; fore tibiae shading to pale brownish yellow at apex; tarsi brownish yellow.

Abdomen scarcely wider than the pterothorax; spines slender, light brown; extreme posterior margin of segment 8 with a row of about ten very fine spines.



Measurements:- Length 1.05 mm.; head, length .11 mm., width .13 mm.; prothorax, length .12 mm., width .17 mm.; pterothorax, width .225 mm.; abdomen, width .225 mm. Antennae: 1, 16 $\mu$ ; 2, 32 $\mu$ ; 3, 36 $\mu$ ; 4, 33 $\mu$ ; 5, 27 $\mu$ ; 6, 39 $\mu$ ; 7, 9 $\mu$ ; 8, 12 $\mu$ ; total, .20 mm.; width .024 mm.

Described from numerous females taken in flowers at Brownsville, Texas, by Charles A. Hart.

This little species is very closely related to Euthrips minutus Moulton, recently described from California.\*

---

\* Bulletin U. S. Bur. Ent., Technical series, No. 12, Part III, p. 56, Pl. IV, figs. 32, 33.



Anthothrips graminis sp. nov.

Female.- Length about 1.5 mm. General color dark blackish brown to almost black, with a reddish cast, due to the presence of maroon hypodermal pigmentation; tarsi, apical half of tibiae of first pair, and intermediate antennal segments, yellow or yellowish.

Head somewhat longer than wide, broadest across cheeks; cheeks gently rounded, sub-parallel; vertex rounded, slightly produced, the anterior ocellus slightly overhanging; dorsal and lateral surfaces set with several short inconspicuous spines; post-ocular bristles pointed, nearly one third as long as head. Eyes slightly more than one third as long as head, not protruding. Ocelli anterior; posterior ocelli opposite anterior third of eyes. Antennae about one and one-half times as long as head, moderately stout; segments 1 and 2 dark blackish brown, the latter paler toward apex and at middle; 3 yellow, shaded laterally with brown; 4-8 successively darker in color, ranging gradually from brownish yellow to blackish brown; segment 3 subconical, swollen, noticeably narrower and shorter than segment 4; 4-6 sub-globose, pedicellate, the last truncated at apex; 7 oblong, pedicellate, truncate at apex, and broadly united to 8, which is sub-conical; sense cones short, moderately stout, those on segments 3 and 4 blunt; formula: 3, 0-1; 4, 2-2; 5, 1-1<sup>+</sup>; 6, 1-1; 7 with one on dorsum near apex. Mouth cone blunt, about half as long as head, slightly surpassing middle of prosternum.

Prothorax a little more than two-thirds as long as head, and (including coxae) about 1.7 times as wide as long, surface nearly smooth; anterior marginal spines wanting, others blunt, the two pairs at the posterior angles longest. Pterothorax slightly wider than prothorax, about as broad as long, sides gently arcuate, slightly converging posteriorly. Wings present, clear; fore wings conspicuously narrowed at middle, with a slight brownish cloud at extreme base, and with the sub-apical fringe on posterior margin double for about seven hairs. Fore tarsi armed with a small acute tooth.

Abdomen slightly wider than pterothorax. Tube rather short, about .6 as long as head, and about twice as long as its basal width.

Measurements: Length, 1.5 mm.; head, length .200 mm., width .171 mm.; prothorax, length .150 mm., width (including coxae) .266 mm.; pterothorax, width .290 mm.; abdomen, width .320 mm.; tube, length .117 mm., width at base .057 mm., at apex .032 mm. Antennae: 1, 33 $\mu$ ; 2, 39 $\mu$ ; 3, 37 $\mu$ ; 4, 42 $\mu$ ; 5, 39 $\mu$ ; 6, 36 $\mu$ ; 7, 36 $\mu$ ; 8, 25 $\mu$ ; total .29 mm., width .029 mm.

Male.- Similar to female but slightly smaller (length about 1.2 mm.). Fore femora often swollen, and fore tarsi armed with a rather large, stout tooth. Abdomen slender.

Described from several specimens of both sexes, collected by Mr. Charles A. Hart, at Brownsville and Loma, Texas, and at Matamoros, Mexico, in June and July, 1908.





Genus LIOTHRIPS Uzel, 1895.

The following synopsis will aid in distinguishing the new species described below from all its known congeners. The characters of the species setinodis, hradacensis, and major have been drawn from their published descriptions, which in most cases are extremely vague and unsatisfactory.

A. Fore tibiae yellow.

a. Antennae yellow, their first and last segments dark. Head 1.2 times as long as wide. Scotland, Bohemia, England; in summer on leaves of oak and elm, and in winter in moss ..... L. setinodis Reuter.

aa. All antennal segments excepting the third partially or entirely dark. Head about 1.3 times as long as wide. Middle and hind tibiae black, abruptly yellow at tip. Bohemia; one specimen, on leaf of Heracleum sphondylium.  
L. hradacensis Uzel.

B. Fore tibiae nearly or quite concolorous with the body.

b. Head not more than 1.3 times as long as wide.

c. Length nearly 2.5 mm.; fore tibiae brownish yellow in apical half. antennal segments 3 and 4, and the basal halves of 5 and 6 orange-yellow; spines long, pointed; marginal abdominal bristles pale; tube .8 as long as head; subapical fringe on posterior margin of fore wings double for about nineteen hairs. A large clumsy species, occurring commonly on hickory in Illinois..... L. caryae (Fitch).

cc. Length scarcely exceeding 2.0 mm.; fore tibiae black.

d. Antennae with third segment abruptly lemon yellow, remainder of antenna dark blackish brown. Bristles long and pointed; marginal abdominal spines pale; tube .9 as long as head; subapical fringe on posterior margin of fore wings double for about fourteen hairs. Mexico; one specimen taken in sweepings.... L. varicornis sp. nov.

dd. Antennae with segments 3 and 4 entirely or largely yellow; 5 yellow in basal half; 6-8 concolorous with body.

e. Forewings nearly black in basal half; head about 1.3 times as long as wide; eyes



prominent; postocular and prothoracic  
bristles short and blunt; marginal abdo-  
minal bristles nearly black; tube .6 as  
long as head. Illinois and Michigan; com-  
mon on oak leaves..L. umbripennis (Hood).

ee. Fore wings brownish at extreme base; head  
about 1.15 times as long as wide; post-  
ocular and prothoracic bristles short and  
blunt; eyes less prominent than in the  
preceding species; marginal abdominal  
bristles yellowish; tube about .8 as long  
as head. Illinois; rare; in summer, on  
hickory; and in winter, in moss.....  
L. ocellatus Hood.

bb. Head about 1.5 times as long as wide.

f. Antennae lemon-yellow; head broadest across eyes, which  
are pulgling; fore tibiae concolorous with body; post-  
ocular and prothoracic bristles short and blunt; mar-  
ginal abdominal spines pale; tube about .7 as long  
as head..... L. citricornis (Hood).

ff. Antennae yellow, both first and last segments dark.  
Africa; one specimen; habitat not recorded.....  
L. major Buffa.

Illinois, Michigan, Pennsylvania; common on grape  
and hickory.



Liothrips varicornis sp. nov.

Female.- Length about 2.1 mm. General color dark blackish brown or black; tarsi, articulations of legs, apices of antennal segments, and tip of tube paler; third antennal segment abruptly pale yellow.

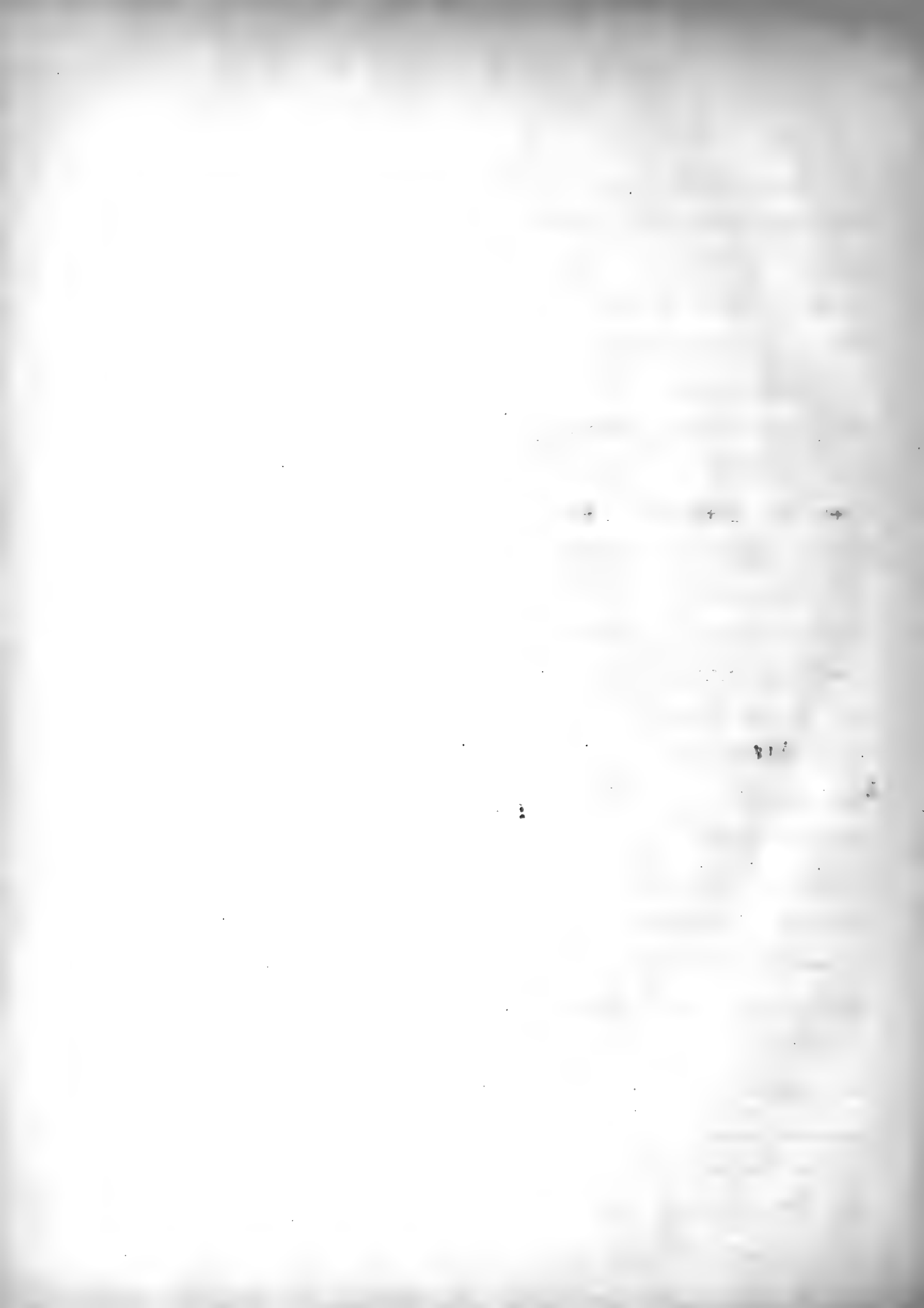
Head about one and one fifth times as long as wide, broadest across cheeks; cheeks gently arcuate, slightly converging posteriorly; vertex elevated, produced, the anterior ocellus distinctly overhanging; dorsal and lateral surfaces finely transversely striate, set with several short inconspicuous spines; postocular bristles pointed, about as long as eyes. Eyes large, finely faceted, not at all protruding, one third as long as head. Ocelli anterior; posterior ocelli opposite anterior third of eyes; anterior ocellus overreaching insertion of antennae. Antennae twice as long as head, moderately slender; segments 1 and 2 nearly concolorous with body, 2 slightly paler toward apex and its middle; 3 pale yellow, slightly clouded apically; 4-8 nearly concolorous with body, slightly paler apically; segments 3-6 clavate, pedicellate; 7 oblong, pedicellate; 8 sub-conical; sense cones slender, colorless; formula: 3, 0-1; 4, 1-1<sup>+</sup>; 5, 1-1<sup>+</sup>; 6, 1-1<sup>+</sup>; 7 with one on dorsum near apex. Mouth cone acute, just attaining base of prosternum.

Prothorax two-thirds as long as head, and (including coxae) about 2.3 times as wide as long; all spines present, moderately long, pointed, brown, the two pairs near the posterior angles longest; coxal spine straight, pointed, about equal in length to anterior marginals. Pterothorax slightly wider than prothorax, and somewhat wider than long; sides sub-parallel, slightly converging posteriorly. Wings long, closely fringed, not narrowed at middle; fore wings margined with a slight shading of brown, and with a narrow median brown bar, originating just beyond the three basal spines and becoming obsolescent before apex of wing; sub-basal spines set in a narrow, dark brown longitudinal vitta; sub-apical fringe on posterior margin, double for about fourteen hairs; hind wings clear, with a median longitudinal vein extending about to middle. Legs rather stout, not long, fore tarsi unarmed.

Abdomen large, slightly wider than pterothorax, tapering roundly from segment 6 to base of tube. Tubes about .9 as long as head, twice as wide at base as at apex, tapering evenly its entire length. Abdominal bristles moderately long, pointed, pale; terminal bristles slightly shorter than tube.

Measurements:- Length 2.13 mm.; head, length .270 mm., width .221 mm.; prothorax, length .180 mm., width (including coxae) .405 mm.; pterothorax, width .465 mm.; abdomen, width .510 mm; tube, length .248 mm., width at base .096 mm., at apex, .048 mm. Antennae: 1, 39 $\mu$ ; 2, 60 $\mu$ ; 3, 87 $\mu$ ; 4, 78 $\mu$ ; 5, 75 $\mu$ ; 6, 68 $\mu$ ; 7, 63 $\mu$ ; 8, 41 $\mu$ ; total, .511 mm.; width at segment 4, .041 mm.

Described from one female, taken in sweepings from grass and weeds, at Monterey, Mexico, July 5, 1908, by Charles A. Hart.



Phloeothrips vittatus sp. nov.

Female.-- Unknown.

Male.-- Length about 2.2 mm. Dorsal surface closely reticulate, non-shining; ventral surface smooth. General color (by reflected light) dark mahogany brown, with a narrow, latero-dorsal white stripe extending along the sides of the prothorax and abdomen, terminating on the seventh abdominal segment; this stripe is about as wide as the antenna, and is interrupted only on the pterothorax, where it is entirely wanting. General color (by transmitted light) yellowish brown, with maroon hypodermal pigmentation; legs and tube blackish brown, non-pigmented; antennae nearly concolorous with body, intermediate segments yellowish at base and at apex.

Head about 1.2 times as long as wide; dorsal and lateral surfaces closely and strongly reticulate, with several moderately prominent spiniferous tubercles, of which those on the cheeks and four near center of dorsum are especially noticeable; cheeks subparallel, converging rather abruptly to the eyes; posterior bristles lacking. Eyes moderately large, finely faceted, contained in length <sup>of head</sup> two and one-half times, and slightly narrower than their interval. Ocelli subapproximate, opposite center of eyes. Antennae five-thirds as long as head; segments 3-5 clavate, abruptly narrower apically, urn- or vase-shaped; 6 and 7 clavate, sharply conical; sense cones large, moderately slender; formula: \* 3, 1-2; 4, 1-2<sup>+</sup>; 5, 1-1<sup>+</sup>; 6, 1-1<sup>+</sup>; 7 with one on dorsum near apex; segments 1 and 2 nearly concolorous with body; 3-5 blackish brown, pale at apex, and with their basal

---

\* The explanation of the formula for the antennal sense cones has been given in Ann. Ent. Soc. Am., Vol. I, No. 4, p. 285, and in Ent. News, Vol. XX, No. 1, p. 29, footnote.





two-fifths brownish yellow; 6-8 dark blackish brown, 6 with pale pedicel. Mouth cone pointed, nearly attaining base of prosternum.

Prothorax three-fourths as long as head, and including coxæ, about 1.8 times as wide as long; all usual spines present, dilated apically, the outer pair at the posterior angles longest, twice as long as the coxal and the anterior angular pairs. Pterothorax slightly wider than long and broader than prothorax; sides nearly straight, slightly converging posteriorly. Wings long, nearly attaining tube, not narrowed at middle, closely fringed, veinless; subapical fringe on posterior margin of first pair double for about twenty hairs. Legs normal; fore femora not swollen, about half as wide as head; fore tarsi armed each with a short, characteristically shaped tooth (see figure).

Abdomen moderately slender; segment 9 long, about equal to tube in length, nearly circular as seen from above. Tube about five-sixths as long as head, tapering evenly from base to apex; terminal bristles nearly as long as tube. Marginal bristles short, capitate, colorless.

Measurements:- Total length 2.18 mm.; head, length .30 mm., width .25 mm.; prothorax, length .23 mm., width (including coxæ) .41 mm.; pterothorax, width .44 mm.; abdomen, width .45 mm.; tube, length .23 mm., width at base .09 mm., at apex .045 mm. Antennæ: 1,  $39\mu$ ; 2,  $57\mu$ ; 3,  $99\mu$ ; 4,  $87\mu$ ; 5,  $81\mu$ ; 6,  $57\mu$ ; 7,  $54\mu$ ; 8,  $33\mu$ ; total .507mm., width 41 .

Described from two macropterous males, taken by the writer on a rotting poplar stump, near Baldwin, Michigan, August 17, 1908.

The peculiar coloration of this insect distinguishes it at once from all other species of its genus. Its resemblance, however, both in coloration and structure, to the species of Acanthothrips is striking. The principal characters of that genus are, of course, the



presence in both sexes of a subapical tooth on the fore femora, and the urn- or vase-like form of the intermediate antennal segments. Phloeothrips vittatus, though lacking the femoral tooth of Acanthothrips, possesses an antenna strikingly similar to that of A. nodicornis Reuter, and in coloration is strongly suggestive of A. albivittatus m. It might be said that if the division between Phloeothrips Haliday and Acanthothrips Uzel were based on any other character than the presence or absence of an acute tooth on the anterior femora, <sup>rather</sup> this insect would fall in the latter, than in the former genus.



Diceratothrips longipes sp. nov.

Male.- (Brachypterus).- Length about 2.3 mm. Color uniform black; surface shining.

Head sub-<sup>rect-</sup>angular, 1.7 times as long as wide, truncate in front; cheeks sub-parallel, excepting for an abrupt, collar-like, basal widening about .04 mm. in length; dorsal and lateral surfaces faintly transversely striate, set with a few short, rather stout spines which are not raised on tubercles, and of which there is a longer and stronger pair near middle of dorsum and two pairs on the lateral outline at the basal and apical thirds, respectively; two pairs of small, inter-ocular spines, one just behind the posterior ocelli, the other near anterior angle of eye; post-ocular bristles pointed, about as long as eyes. Eyes small, not protruding. Ocelli moderately large, their diameter about twice as great as that of facets of eyes; posterior ones widely separated, nearly contiguous to margins of eyes; anterior ocellus situated on vertex, directed forwards and upward. Antennae slightly less than twice as long as head, not inserted behind vertex; segments 3-5 claviform, elongate, 3 nearly five times as long as greatest sub-apical width; 6 and 7 oblong, pedicellate; 8 sub-conical; sense cones short, acute. Mouth cone broadly rounded at apex, reaching beyond middle of prosternum.

Prothorax about .6 as long as head, and (including coxae) almost twice as wide as long, surface nearly smooth; anterior angles produced into a strong, short, tooth-like projection about .017 mm. in length; posterior angles with three distinct sclerites; usual spines all present, the two pairs at the posterior angles much the longest, about as long as the post-oculars, the others about as long as those on clubs; fore coxae armed with a single rather short spine; Pterothorax slightly narrower than prothorax, sides sub-parallel. Wings reduced, .7 as long as head, slightly less than five times as long as wide. Legs very long; spines short, slender; inconspicuous; fore femora very large, longer than and .7 as wide as head, and about three times as long as wide; fore tarsi armed with a long, slender, straight tooth, nearly as long as eye.

Abdomen slender, slightly narrower than prothorax; sides sub-parallel to sixth segment, thence tapering to base of tube; slightly shorter than head, expanded in basal and sixth and narrowed at apex, intermediate portion parallel-sided; terminal bristles weak, two-fifths as long as tube. Abdominal bristles pointed, long and strong, those on segment 9 nearly as long as tube.

Measurements:- Length 2.27 mm.; head, length, .40 mm., width .24 mm.; prothorax, length .25 mm., width (including coxae) .47 mm.; pterothorax, width .42 mm.; abdomen, width .45 mm.; tube, length .37 mm., width at base, .102 mm., width at apex, .048 mm. Antennae: 1, 69 $\mu$ ; 2, 72 $\mu$ ; 3, 174 $\mu$ ; 4, 129 $\mu$ ; 5, 108 $\mu$ ; 6, 78 $\mu$ ; 7, 72 $\mu$ ; 8, 42 $\mu$ ; total .74 mm., width .036 mm.

Described from one short-winged male, taken on huisache (Acacia farnesiana Willd.), in the South Texas Garden, Brownsville, Texas, June 27, 1908, by Mr. Charles A. Hart.



Diceratothrips hartii sp. nov.

Male. ( Macropterous ).- Length about 2.4 mm. Color uniform black. Surface shining.

Head sub-rectangular, 1.7 times as long as wide, truncate in front; cheeks parallel, excepting for an abrupt collar-like basal widening about half as long as eye; dorsal and lateral surfaces faintly transeversely striate; cheeks each with two rather stout spines at basal and apical thirds, respectively; middle of dorsum with a pair of small slender spines; two pairs of small interocular spines, one just behind posterior ocelli, the other near anterior angle of eyes and pointing directly forward; postocular bristles pointed, about as long as eyes. Eyes small, not protruding. Ocelli moderately large, their diameter about twice as great as that of facets of eyes; posterior ones widely separated, contiguous to margins of eyes; anterior ocellus situated on extreme vertex, slightly overhanging, and pointing directly forward. Antennae slightly more than twice as long as head, inserted beneath vertex; segments 3-5 claviform, elongate, 3 slightly more than four times as long as its greatest sub-apical width; 6-7 oblong, pedicellate; 8 sub-conical; sense cones short, acute. Mouth cone broadly rounded at apex, reaching beyond middle of prosternum.

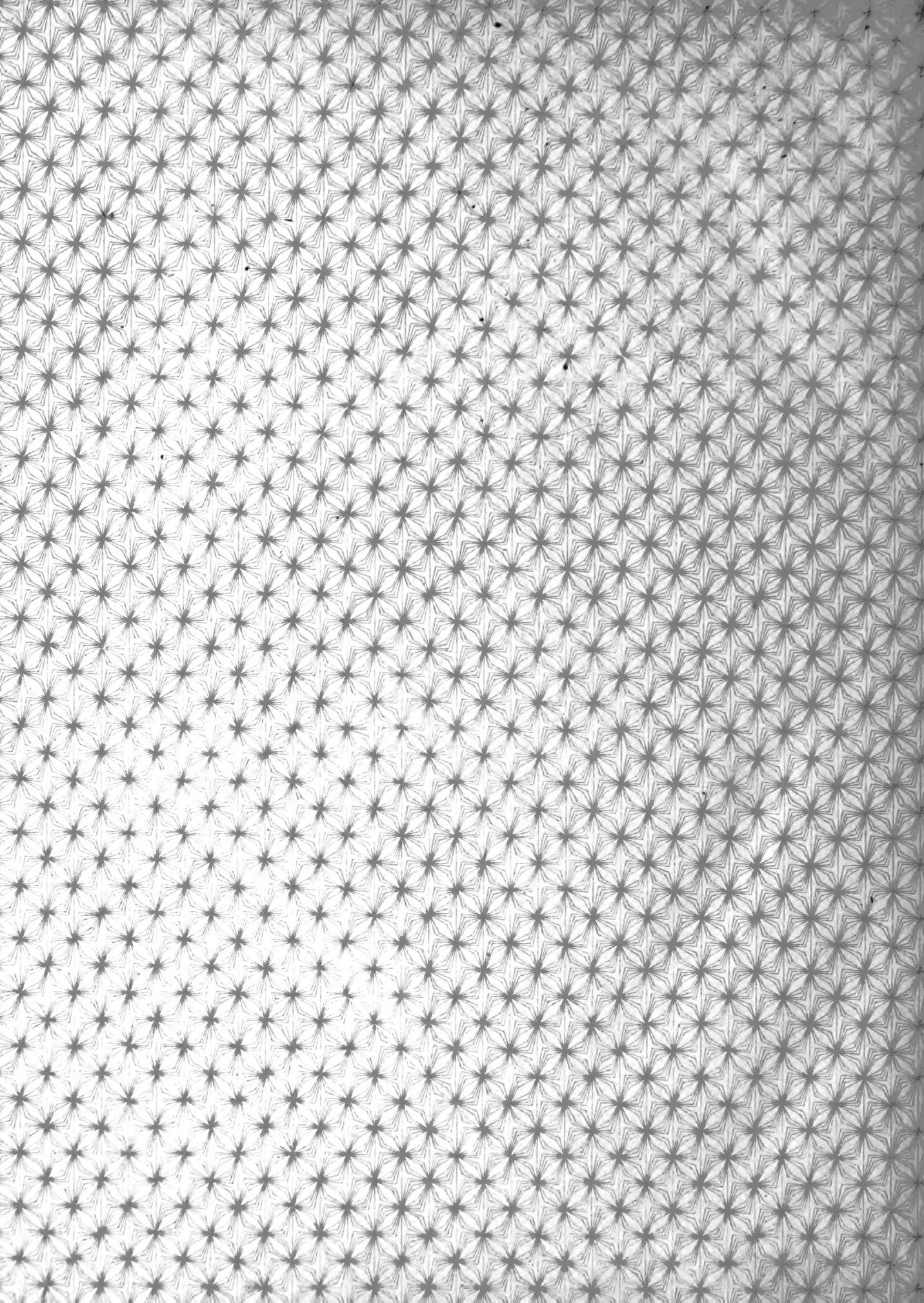
Prothorax nearly .7 as long as head, and (including coxae) somewhat less than twice as wide as long, surface nearly smooth; anterior angles acute, scarcely prolonged; posterior angles with three sclerites, the posterior two of which are more or less fused with each other and with the notum; usual spines all present, the two pairs at the posterior angles much the longest, about as long as the postoculars, the others scarcely visible, shorter than those on cheeks; fore coxae armed with a single short spine. Pterothorax slightly wider than prothorax, sides slightly arcuate. Wings long, closely fringed. Legs moderately long, without prominent spines; fore femora about as long as head and twice as long as wide; fore tarsi armed with a long slender tooth about half as long as eyes.

Abdomen slender, but distinctly wider than prothorax; sides sub-parallel to sixth segment, thence tapering to base of tube; tube slightly longer than head, expanded in basal sixth, thence tapering very gradually to near apex, which it is rather abruptly narrowed; terminal bristles weak. Abdominal bristles pointed, long and strong, those on segment 9 nearly as long as tube.

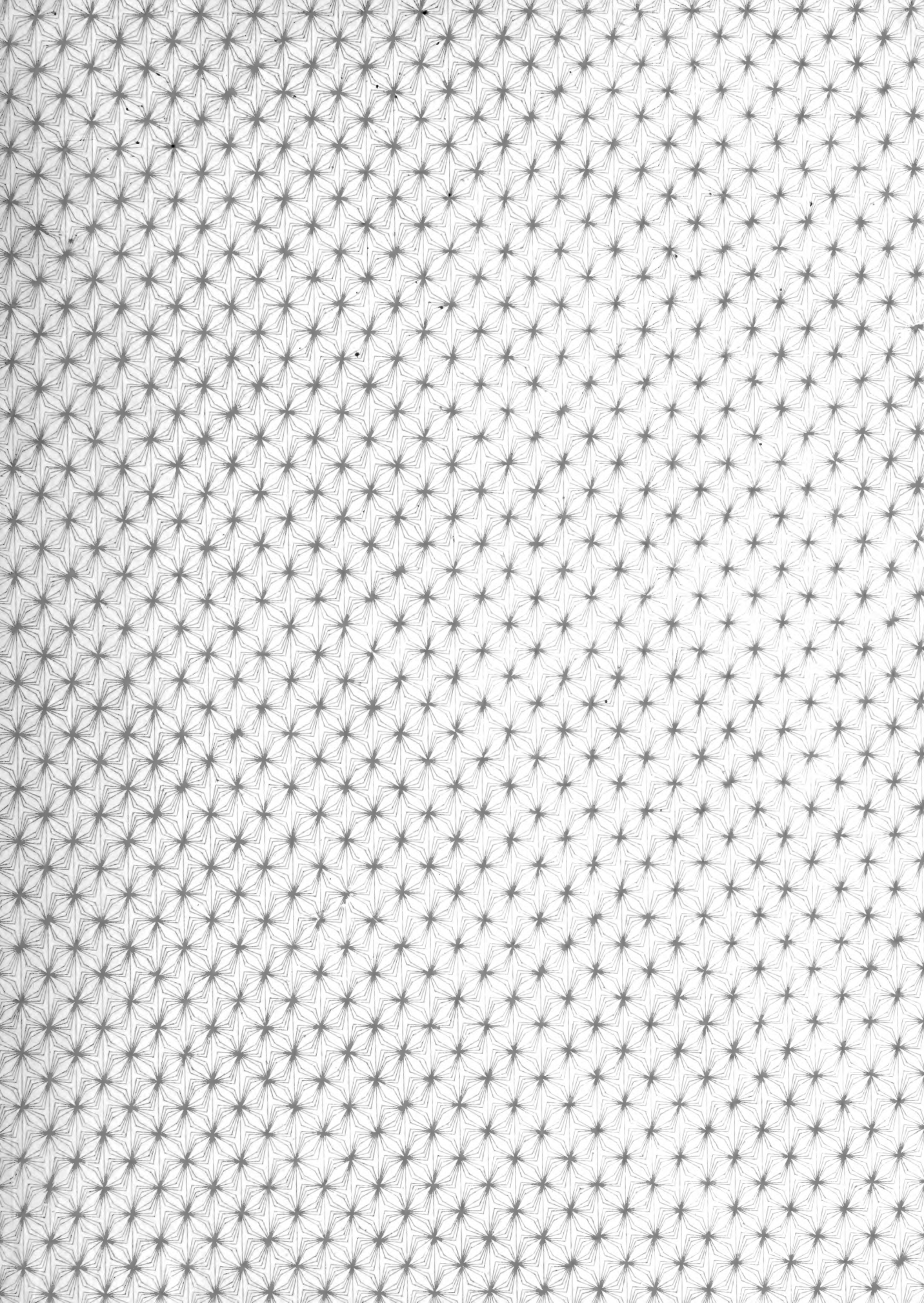
Measurements:- Length 2.36 mm.; head, length .34 mm., width .22 mm.; prothorax, length .23 mm., width (including coxae) .42 mm.; pterothorax, width .45 mm.; abdomen, width .47 mm.; tube, length .36 mm., width at base .105 mm., at apex, .048 mm. Antennae: 1, 67 $\mu$ ; 2, 72 $\mu$ ; 3, 153 $\mu$ ; 4, 126 $\mu$ ; 5, 102 $\mu$ ; 6, 78 $\mu$ ; 7, 66 $\mu$ ; 8, 47 $\mu$ ; total .71 mm., width .036 mm.

Described from one long-winged male, taken in sweepings from grass, in the South Texas Garden, Brownsville, Texas, June 27, 1908, by Mr. Charles A. Hart.









UNIVERSITY OF ILLINOIS-URBANA



3 0112 079825912