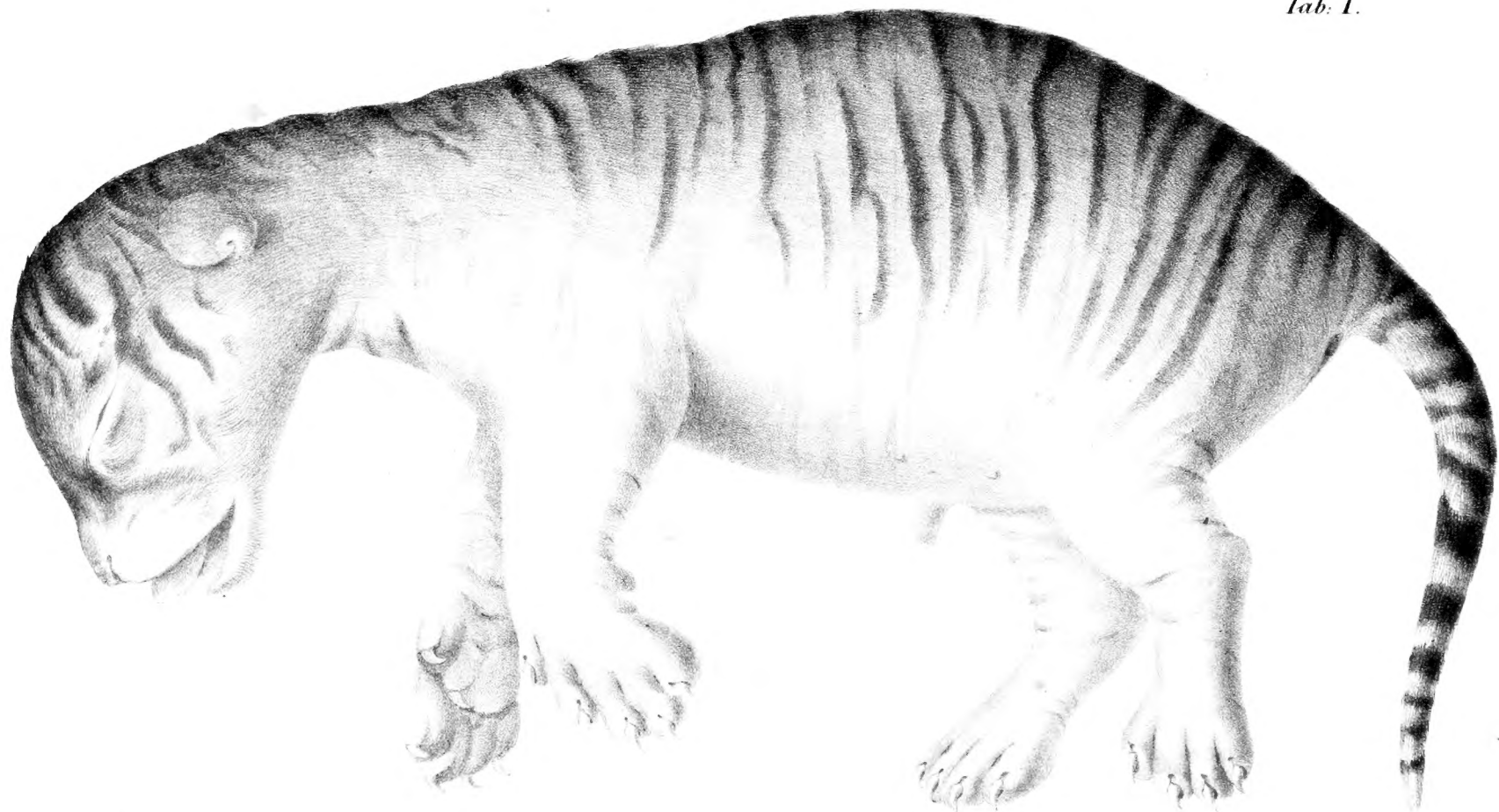


HARVARD UNIVERSITY



Library of the
Museum of
Comparative Zoology

Tab. I.



Lith. chez A. Duvigney

*Felis Tigris, fœtus
hyrcanus.*



Fig. 1.

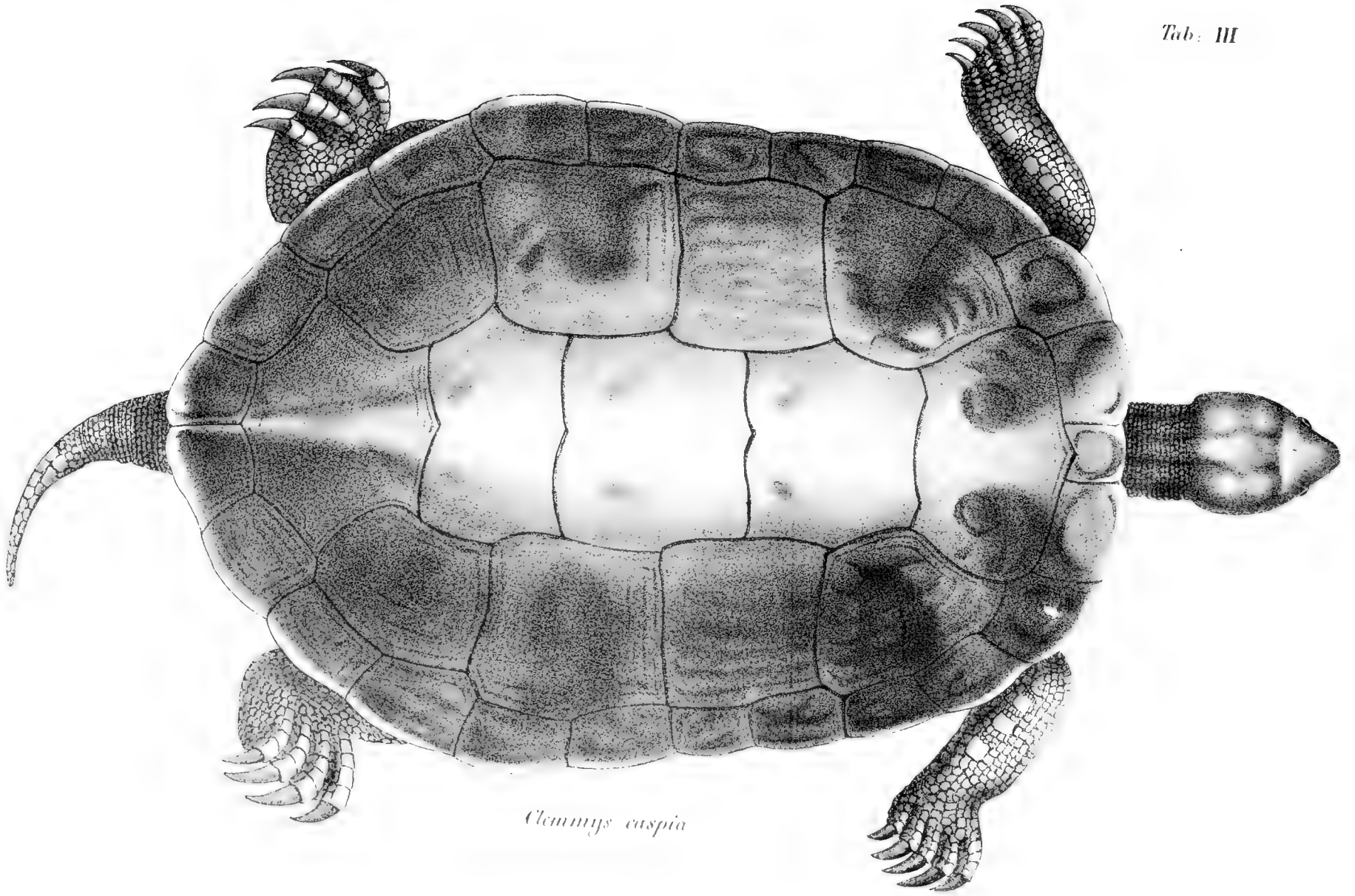
Tab. II.



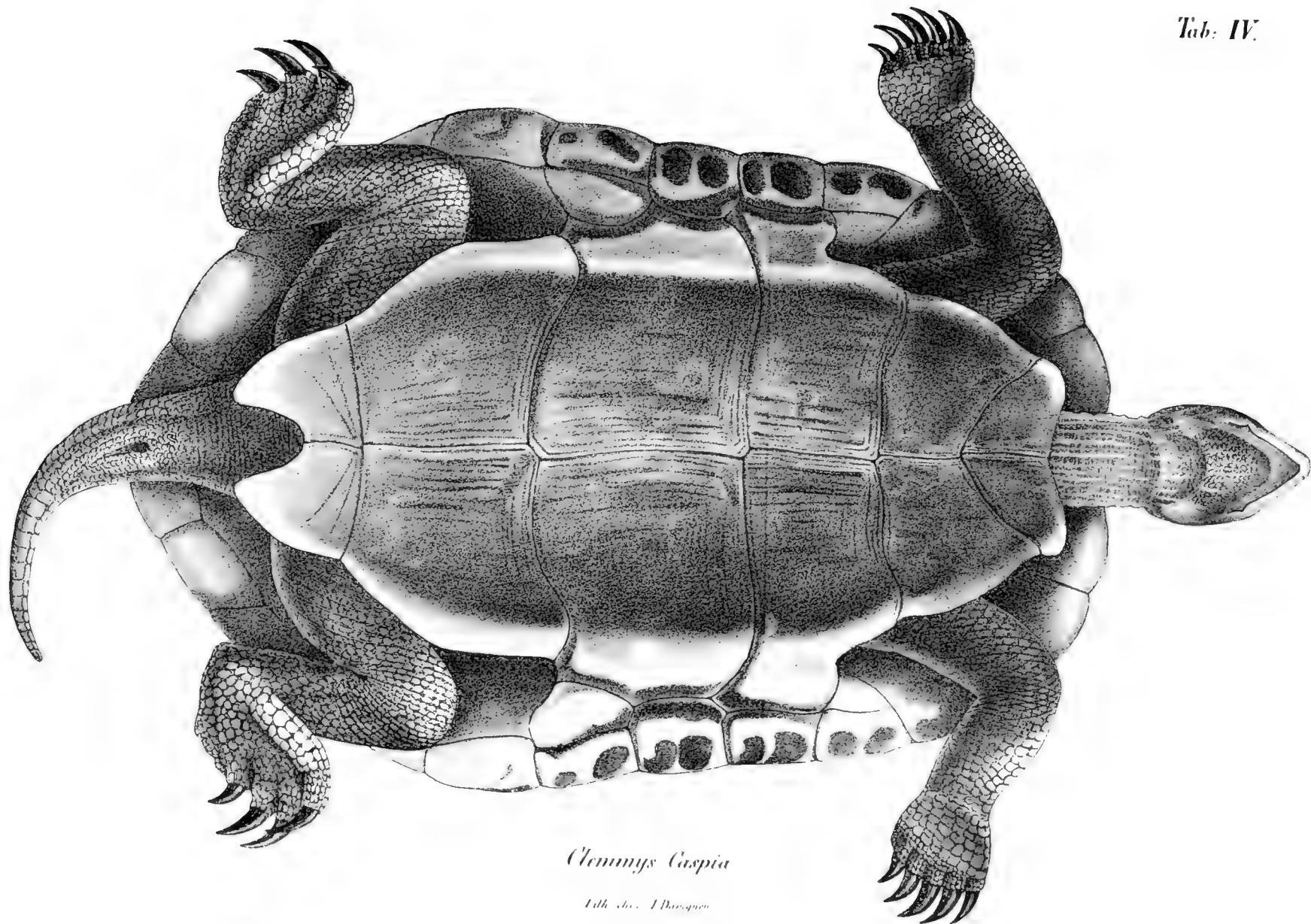
Lith. scilicet J. Dawson.

Utriusque facies.



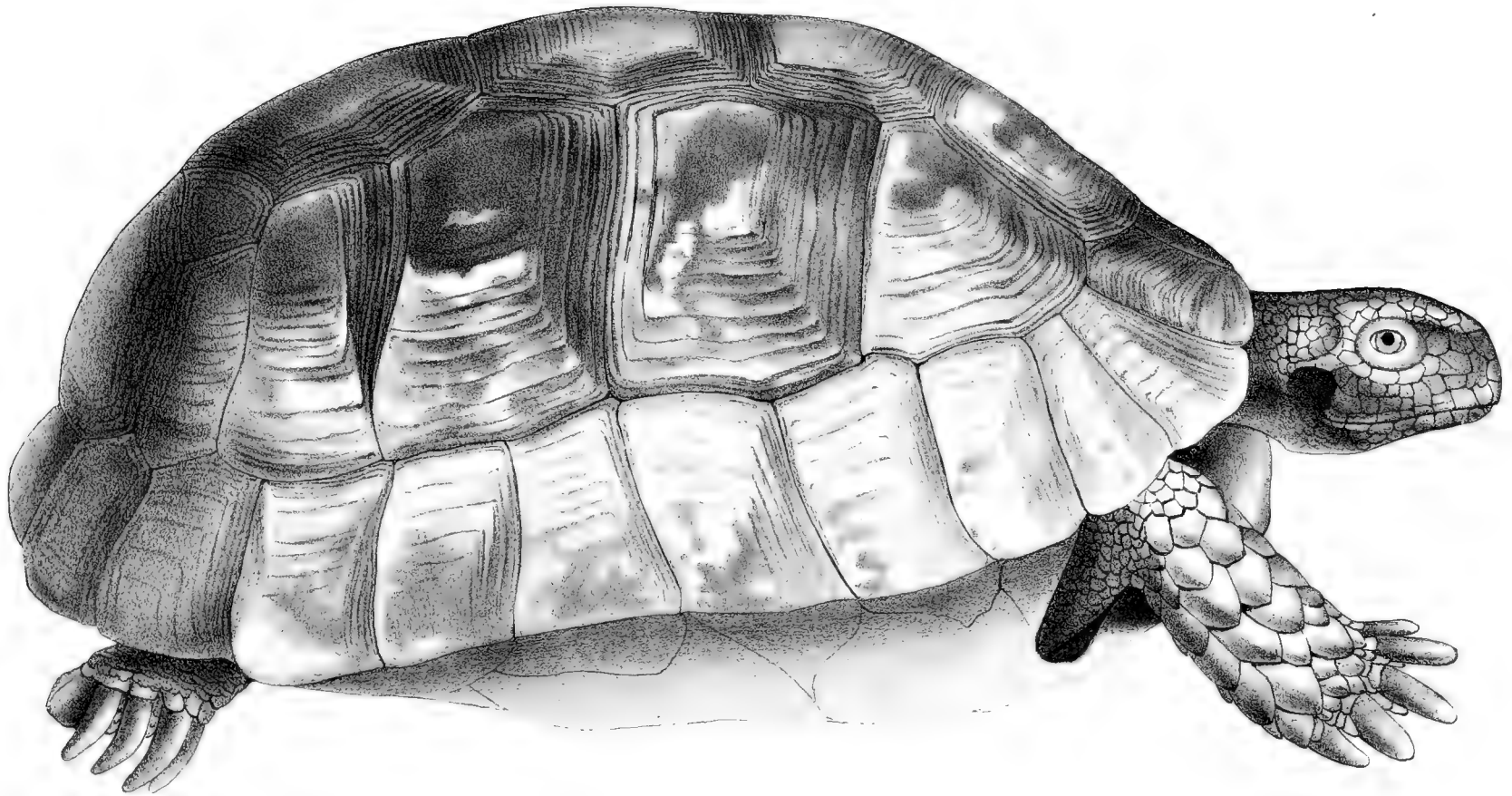


Clemmys caspia



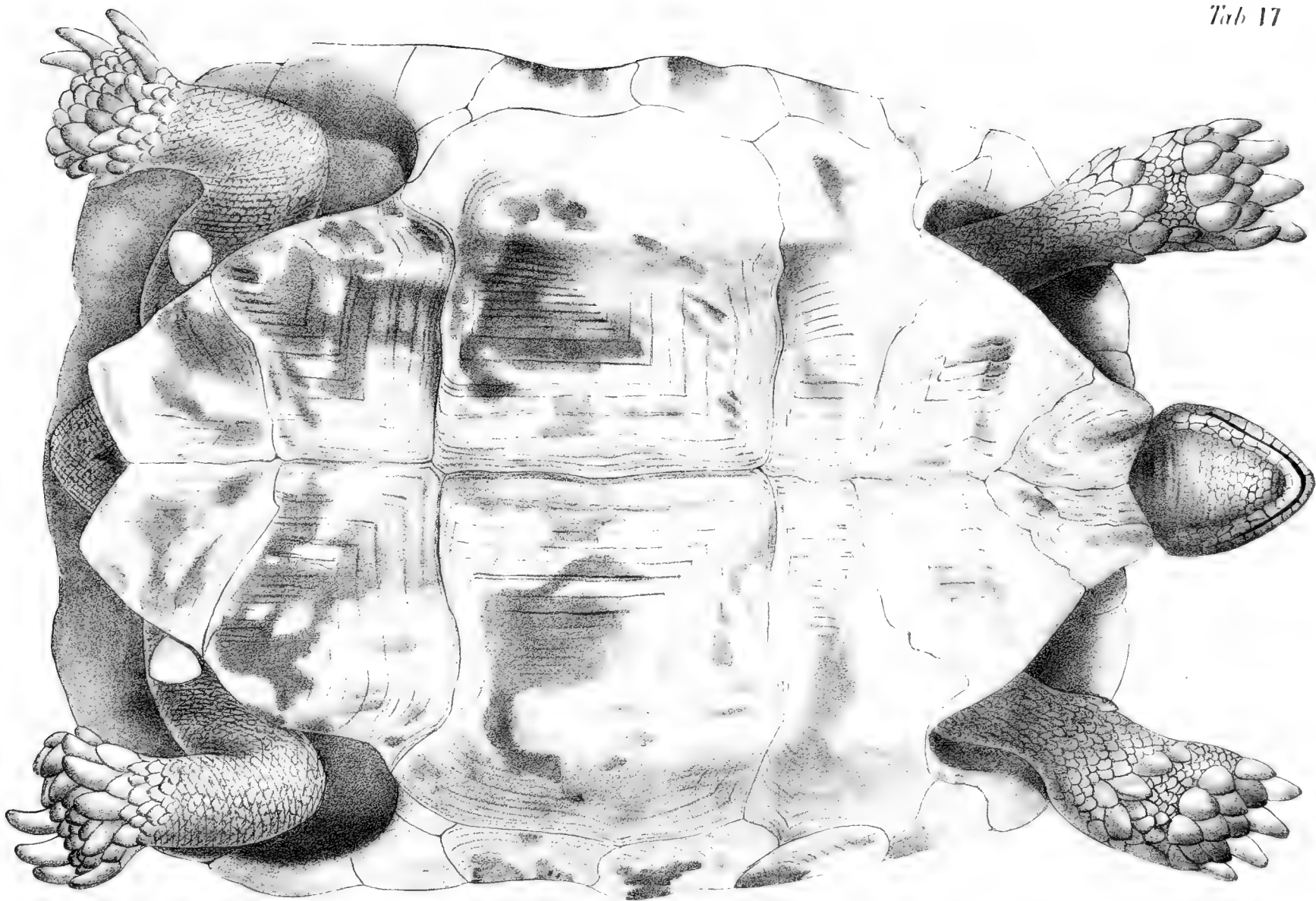
Clemmys Caspia

Edh. de. J. Boscquet



Testudo ibera.

Lith. ab A. Dreyer.



Testudo ibera

Fig. 1.

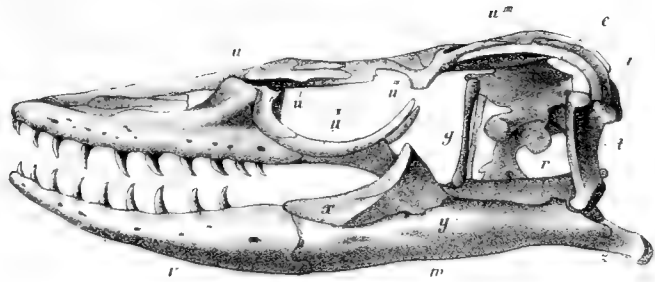


Fig. 2.

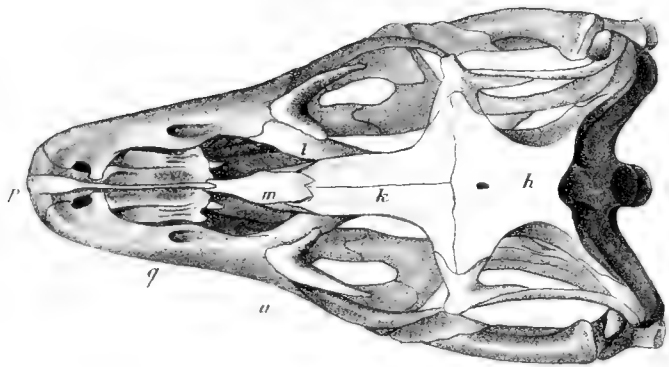


Fig. 5.



Fig. 3.

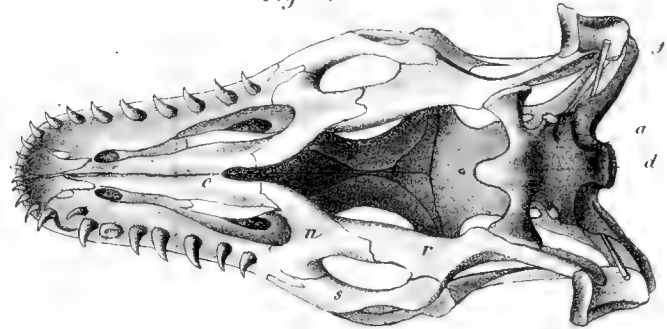
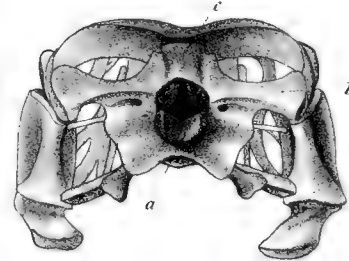


Fig. 4.



Cranium Bannosauri caspii

Fig 1



Fig 2



Fig 3



Fig 4



Fig 5



Fig 6



Fig 7



Fig 8



Fig 9



Fig 10



Fig 11



Fig 12



Fig 13



Fig 14



Fig 15



Fig 16



Fig 17



Fig 18



Fig 19



Fig 19



Fig 20



Fig 21



Fig 22

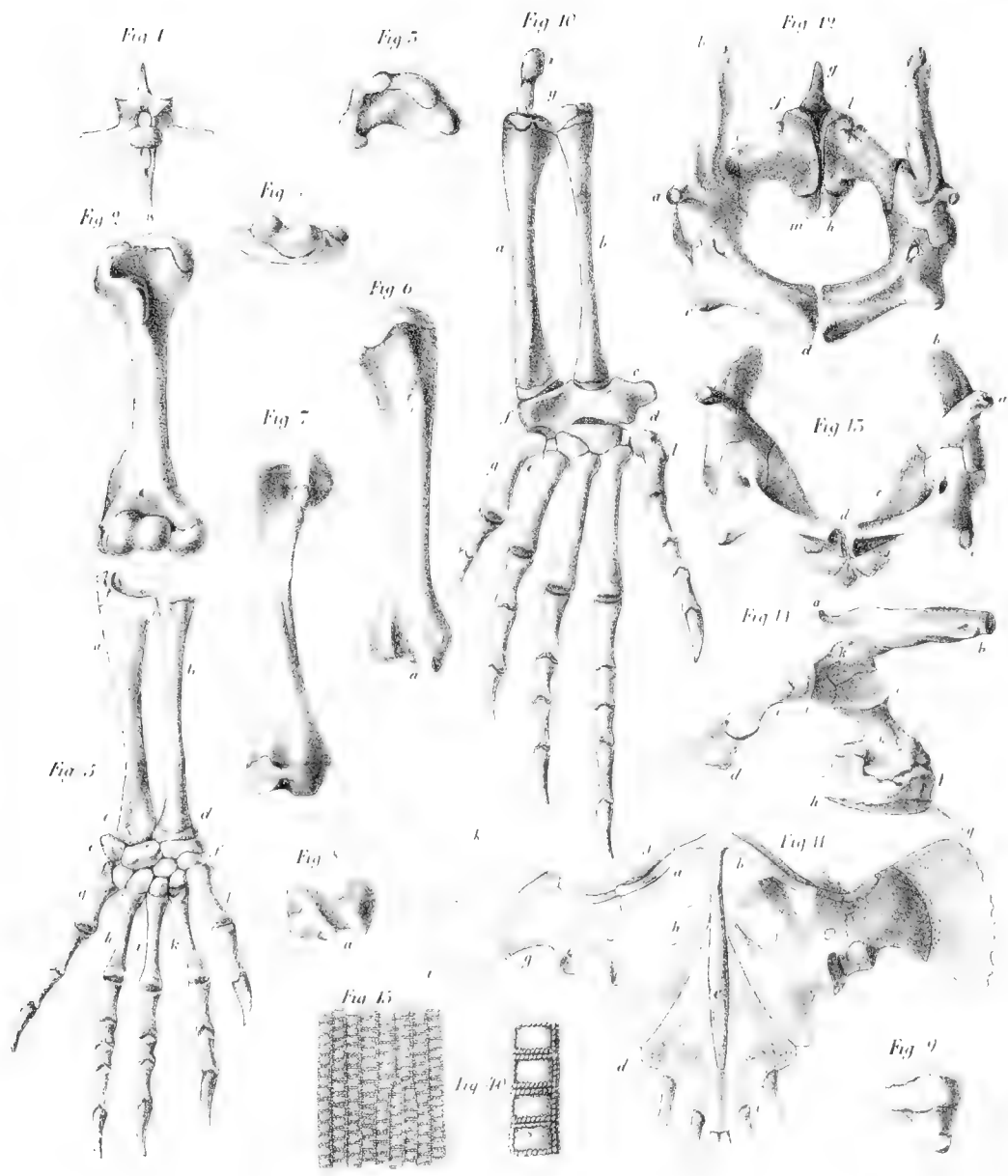


Fig 23



Fig 24





Plesiosauroi caspi singula ossa

Tab. X.

Fig. 1.



Fig. 2.



Fig. 3.



Fig. 5.



Fig. 4.

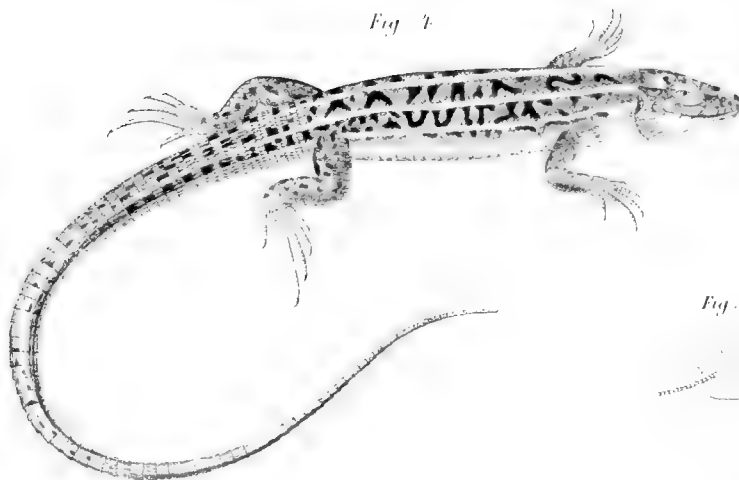


Fig. 6.



Tab. des I. Dinopon

Fig. 1-3 *Zeoloca exigua*. Fig. 4-6 *Lacerta strigata*.

Fig 1

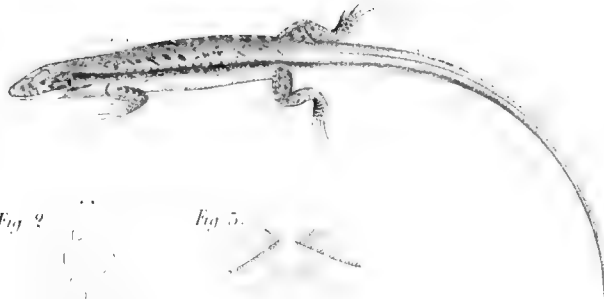


Fig 2



Fig 3.



Fig 4



Fig 5.



Fig 6



Fig 1-5 *Zootoca chalybdea* Fig 4-6 *Aspiderhinus gracilis*

Lith. scilicet J. Thompson.

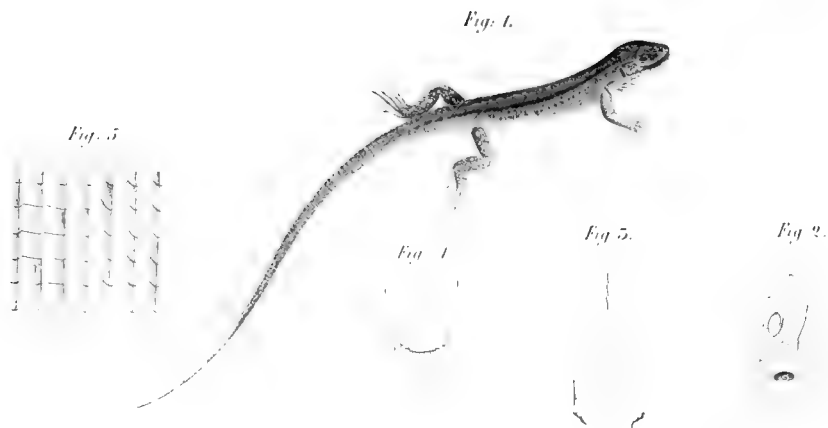


Fig. 1-5. *Ophleops degans*. Fig. 6-7 *Phrynocephalus caudivolutus*.

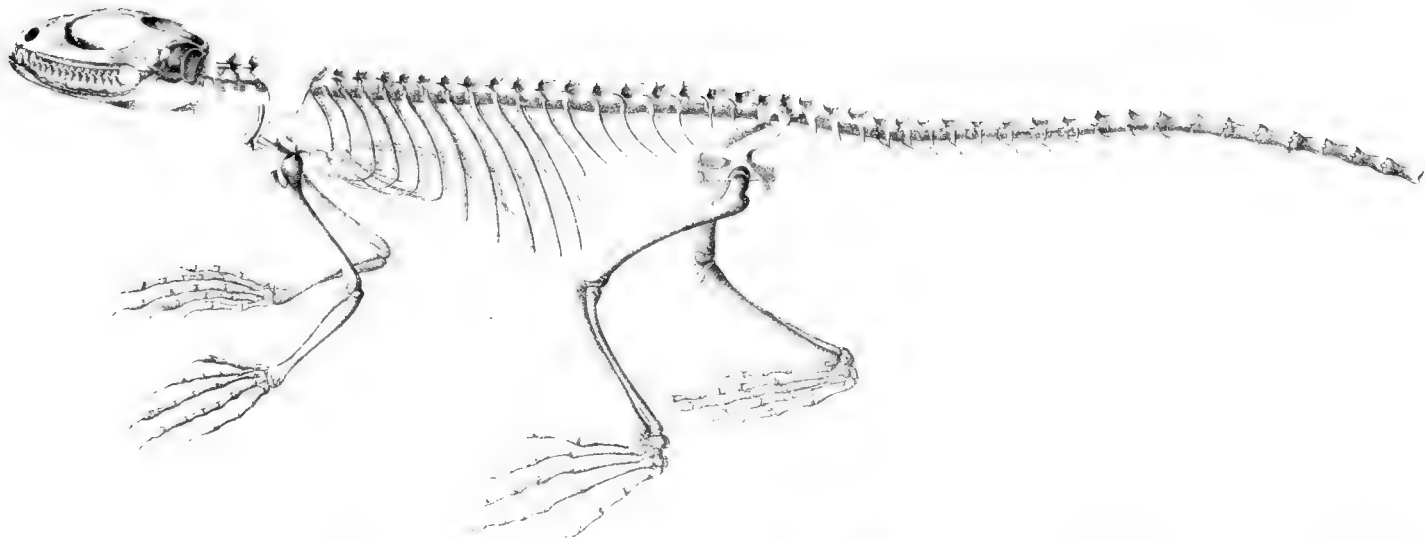


Fig. 8



Fig. 1



Fig. 2

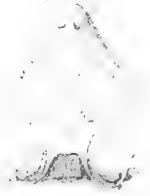


Fig. 5



Fig. 5



Fig. 6



Fig. 7

Fig. 9



Fig. 11



Fig. 12



Fig. 13



Fig. 14



Fig. 10



Skeleton Stalheims caucasia fig. 1. S. Grammi et ofsa Phrynoceph. caud. fig. 9-14

Lith. chez A. Davignon

Fig: 2.



Fig: 4.



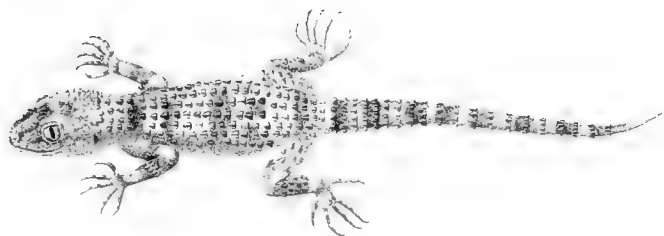
Fig: 1.



Fig: 5.



Fig: 1-2. *Megalochilus auritus*. Fig: 3-4 *Trapelus sanguinolentus*.



Lith. etc. A. Duvigney

Gymnodactylus caspius.

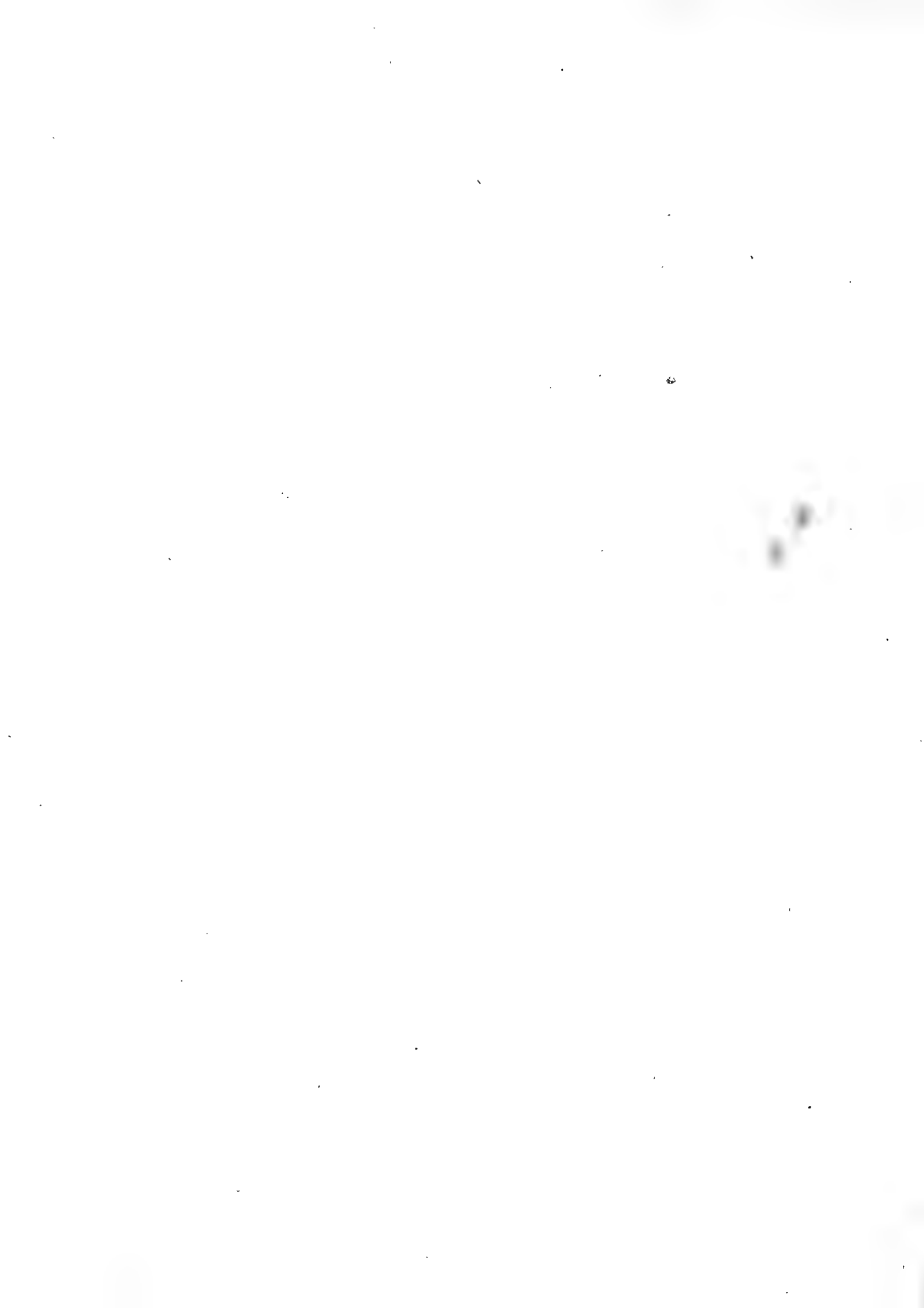


Fig 1

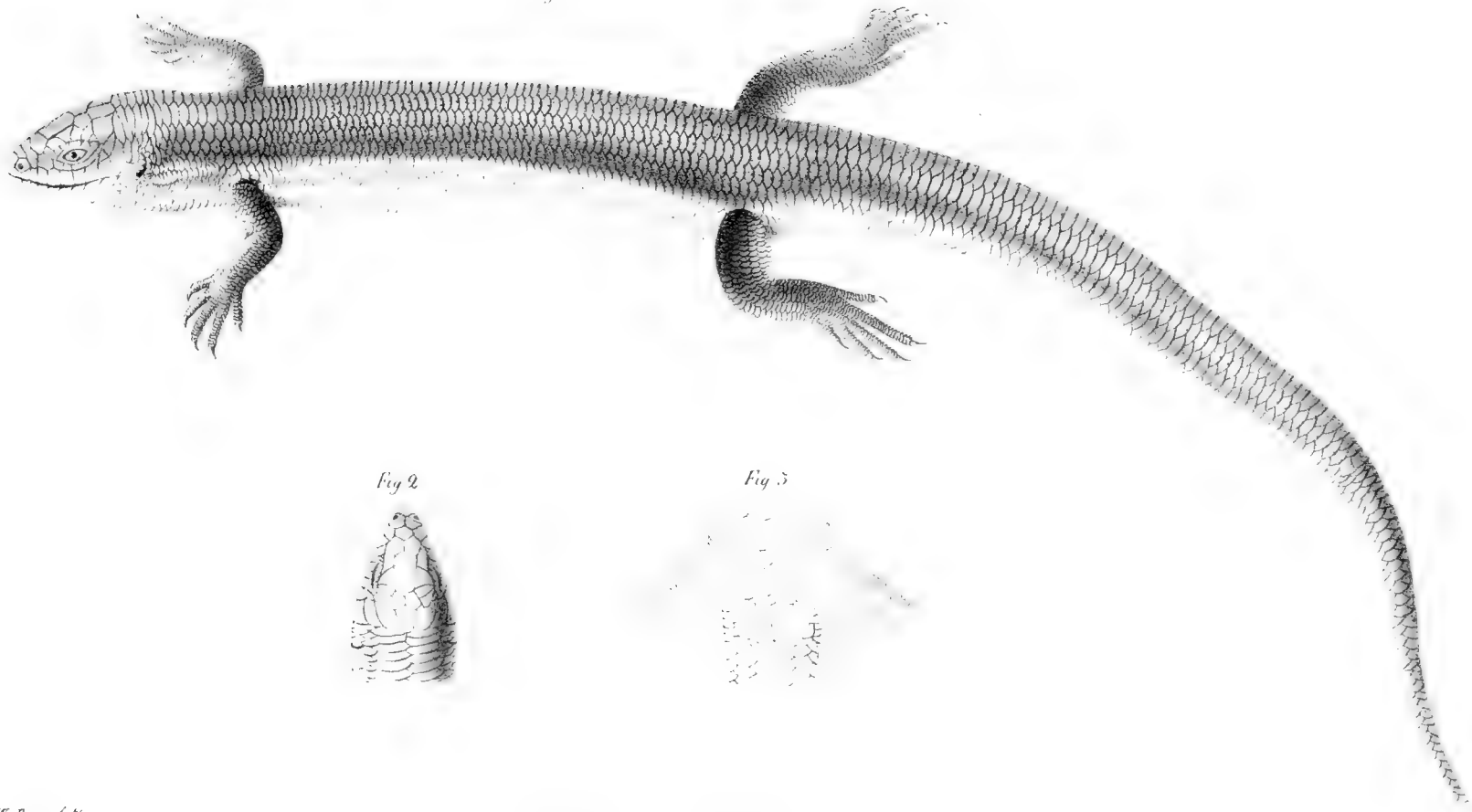


Fig 2

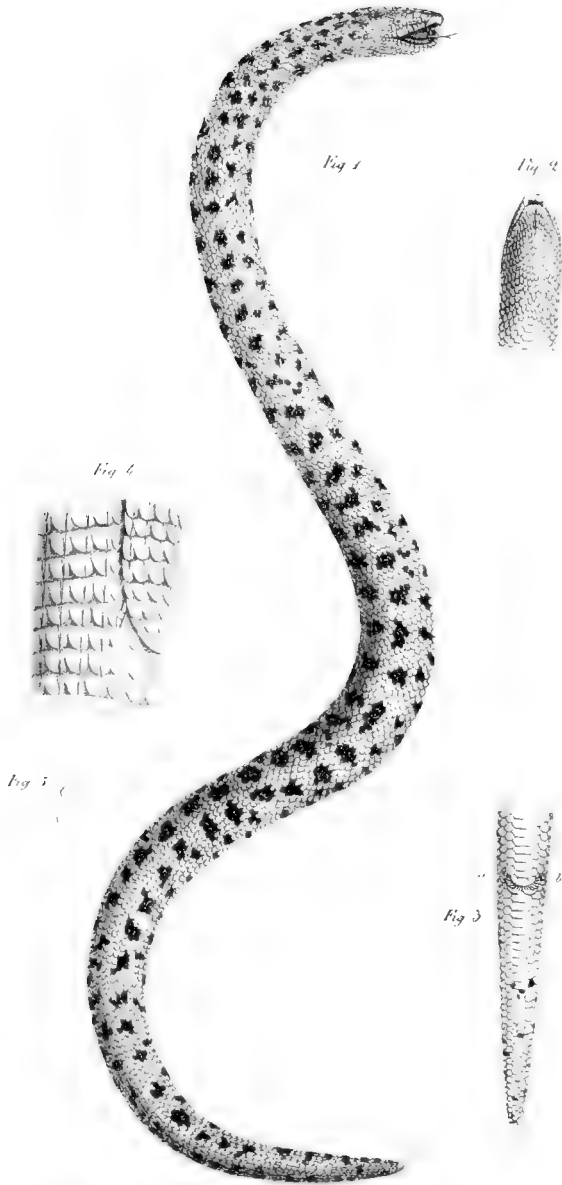


Fig 3



W. Penn. del.

Euprepis princeps



W. Peters del.

Eryx turticoides Fig. 1-3 *Pseudopus Pallasii* Fig. 4-6

Fig 1

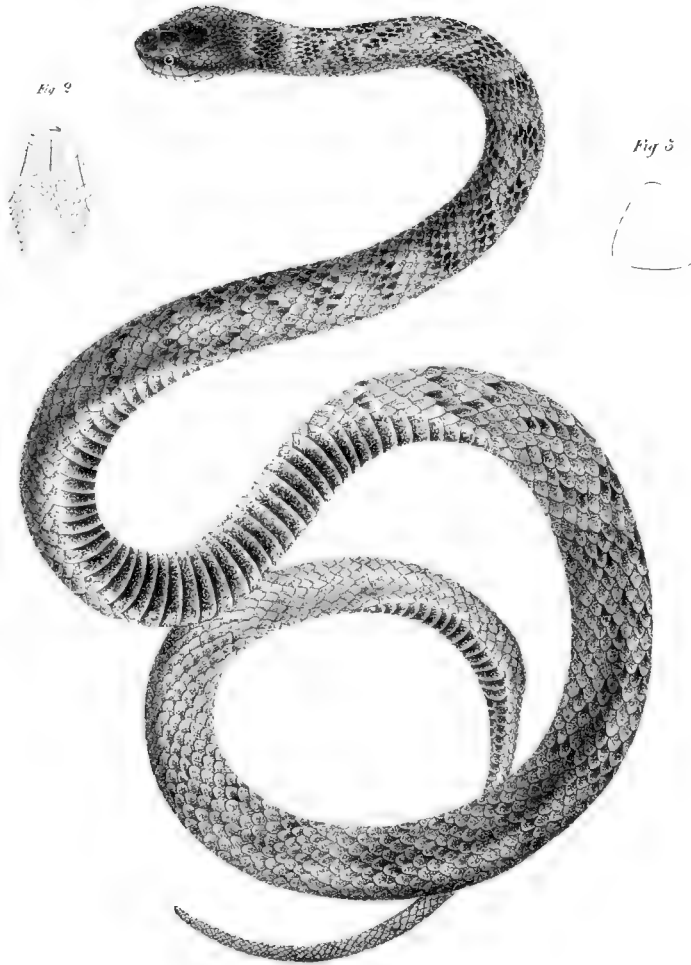


Fig 2

Fig 3

W. Linn. del.

Trigonophis iberus

Fig. 1



Fig. 2

W. Pape del.

Trogoncephalus halys

Fig 1

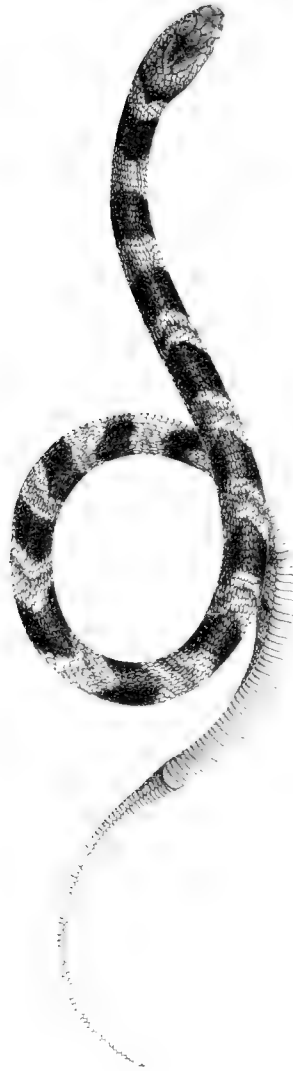


Fig 2

W. P. G. G. G.

Tomarus ornata

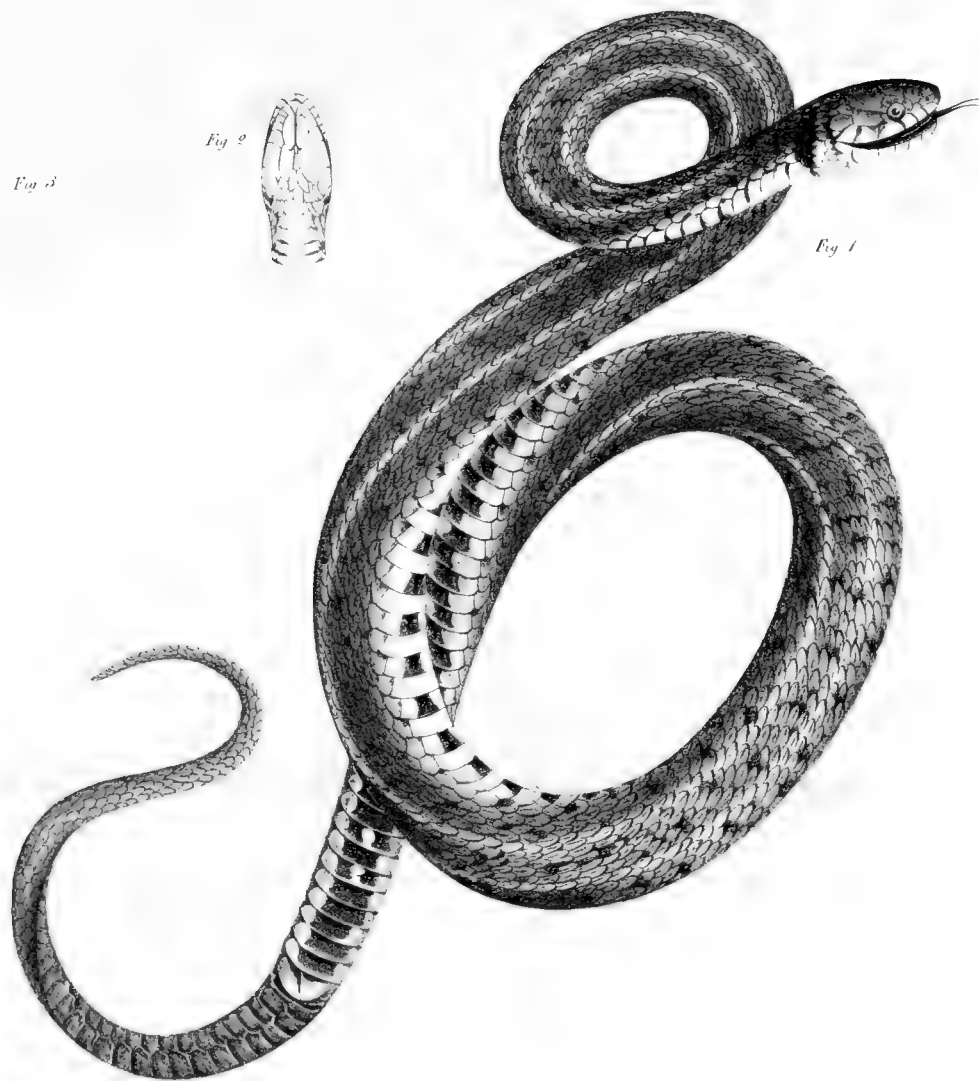


Fig 3

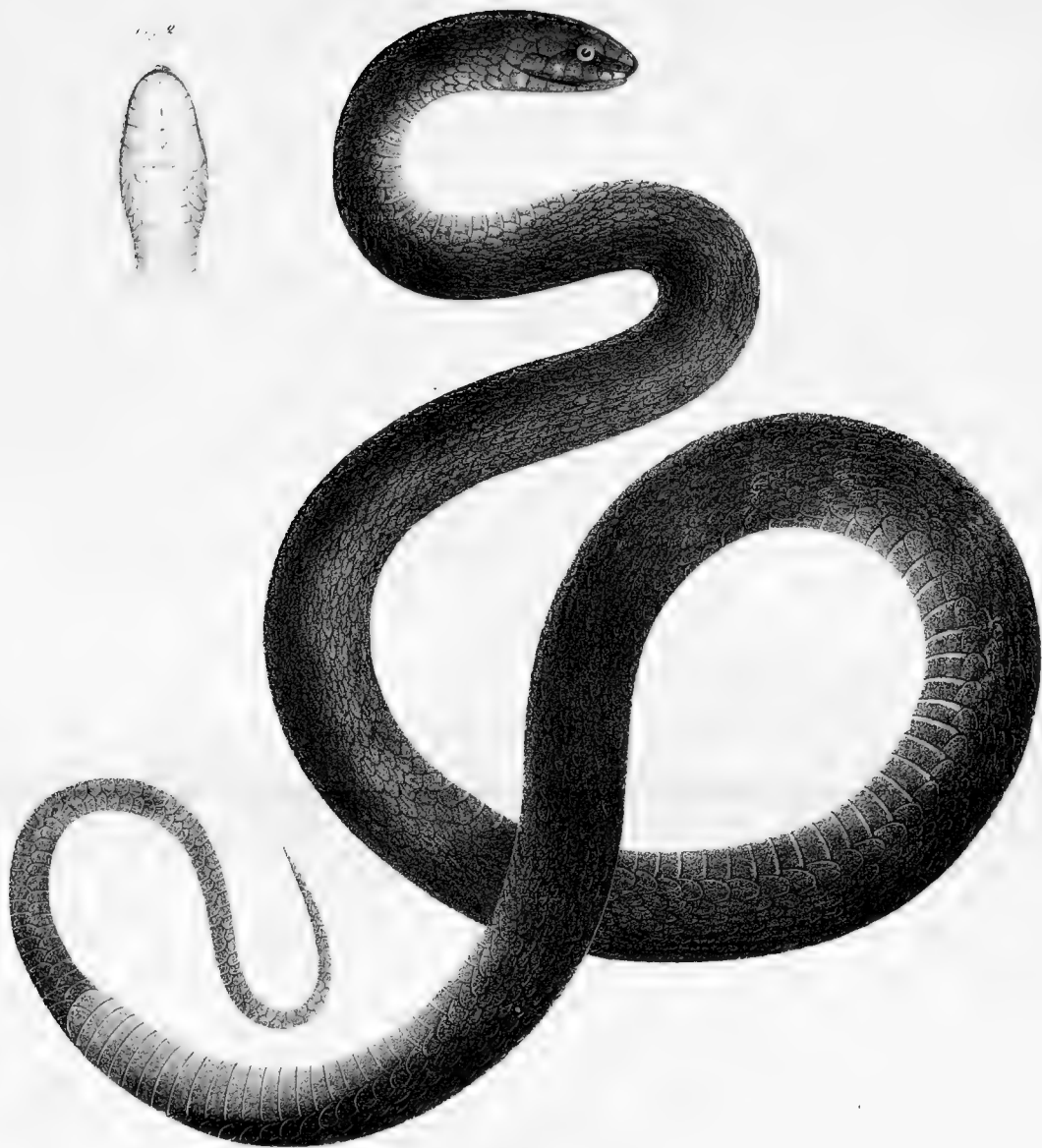
Fig 2

Fig 1

18° Paris 1818

Tropidonotus persa

Fig 1



1. 2.

Tropidonotus ater

Fig 1

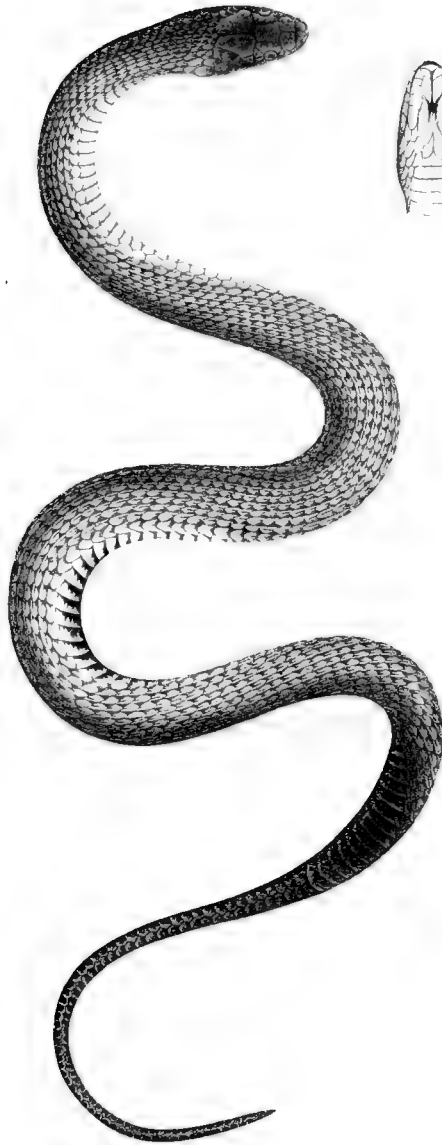
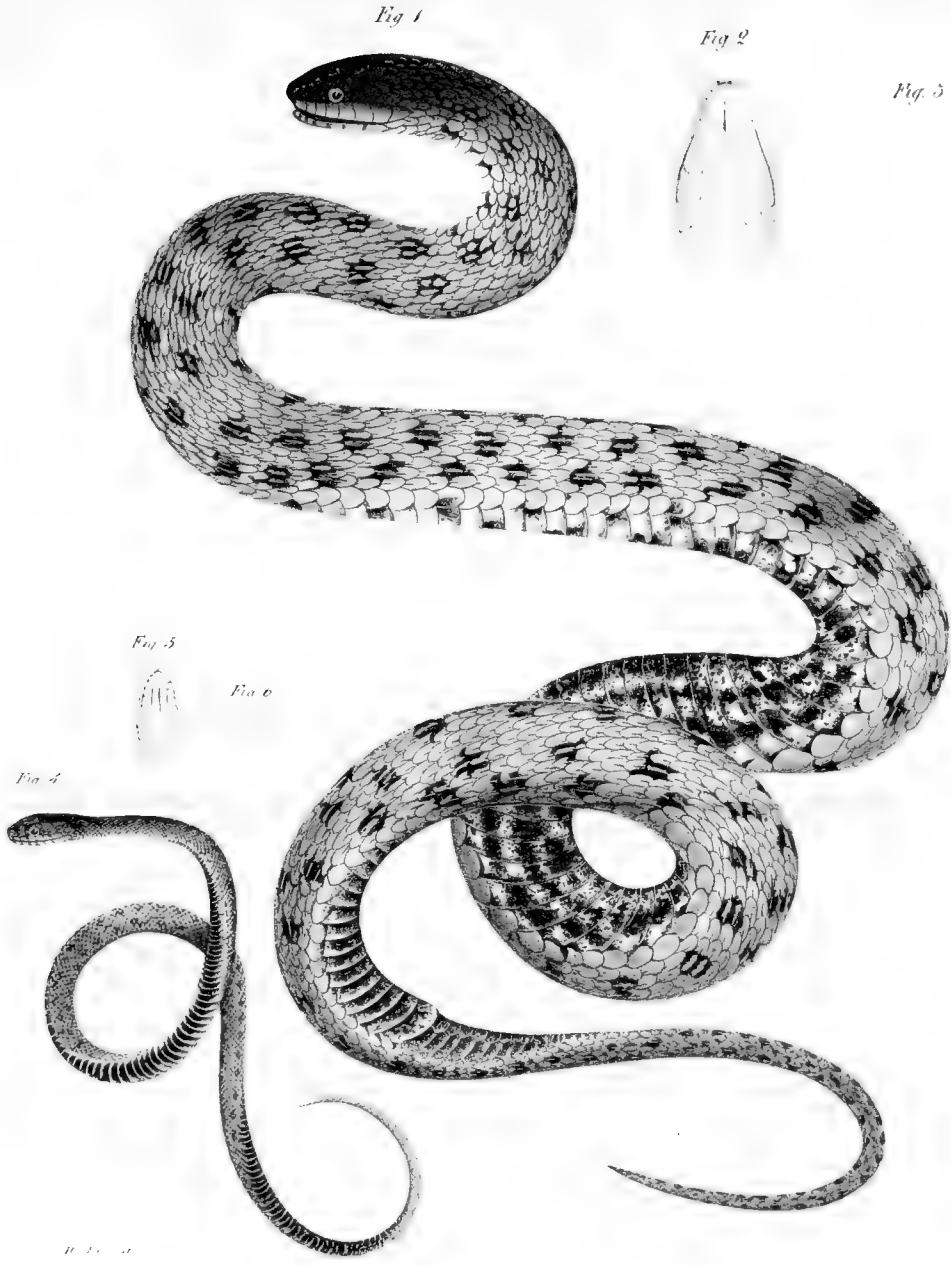


Fig 2

W. Pape del.

Tropidonotus scutatus



Tropidonotus hydrus

Fig 1

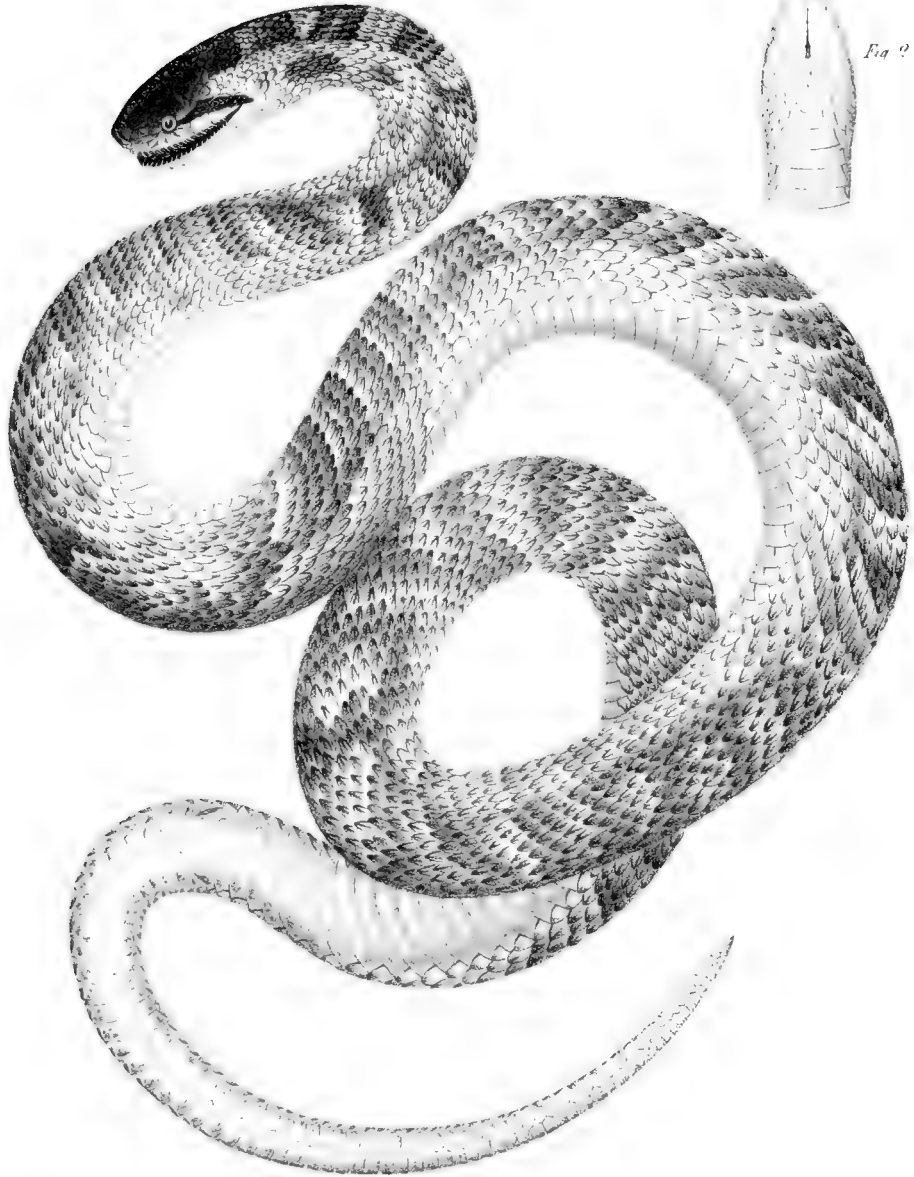


Fig 2

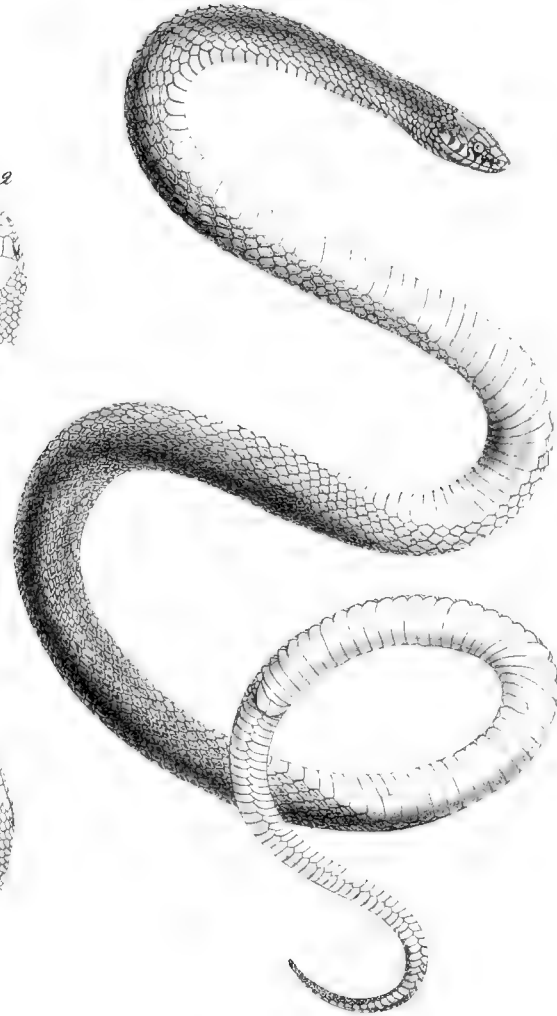
Tropidonotus Sauromates

Fig 1.

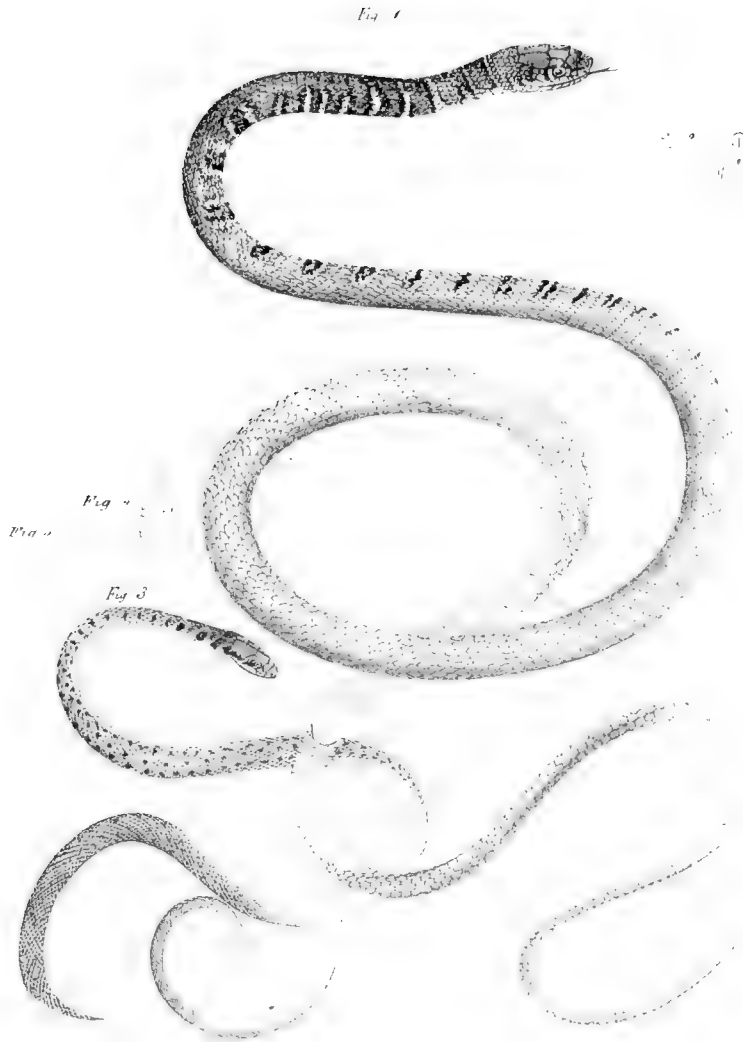
Fig 2.



Fig 3.

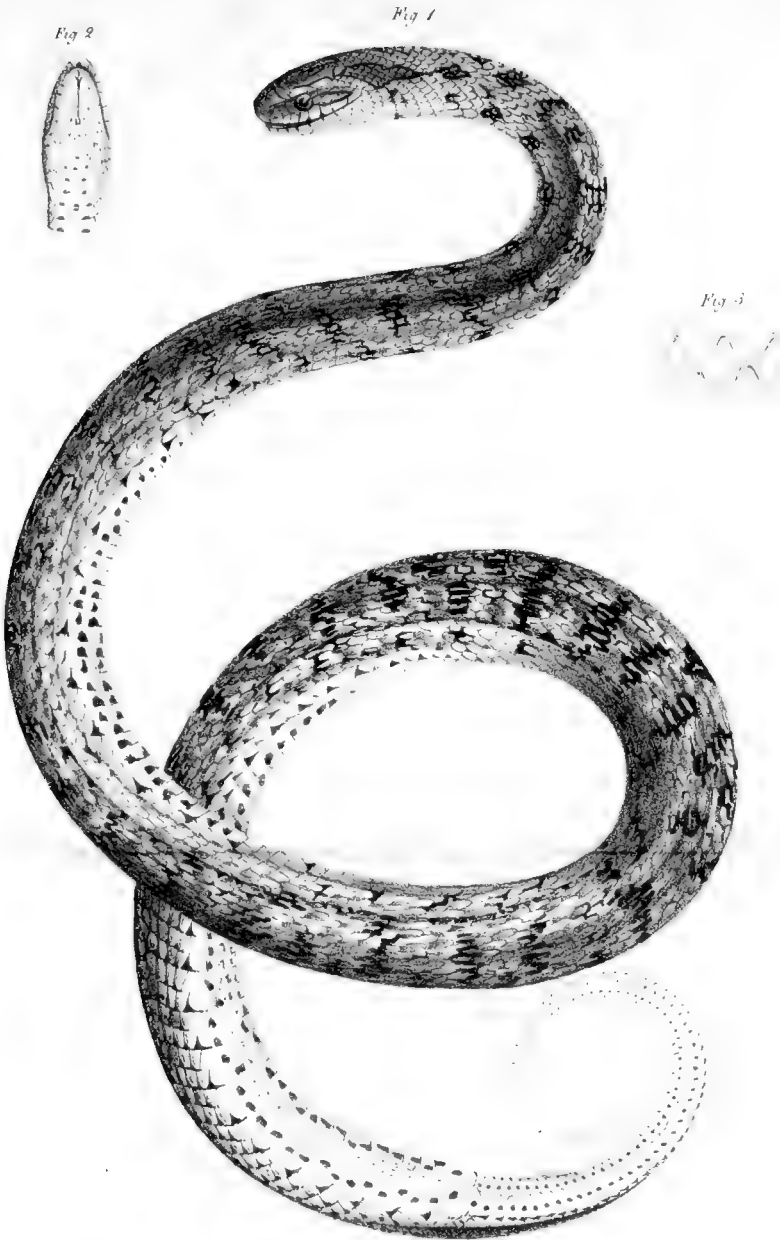


Tyria Argonauta.



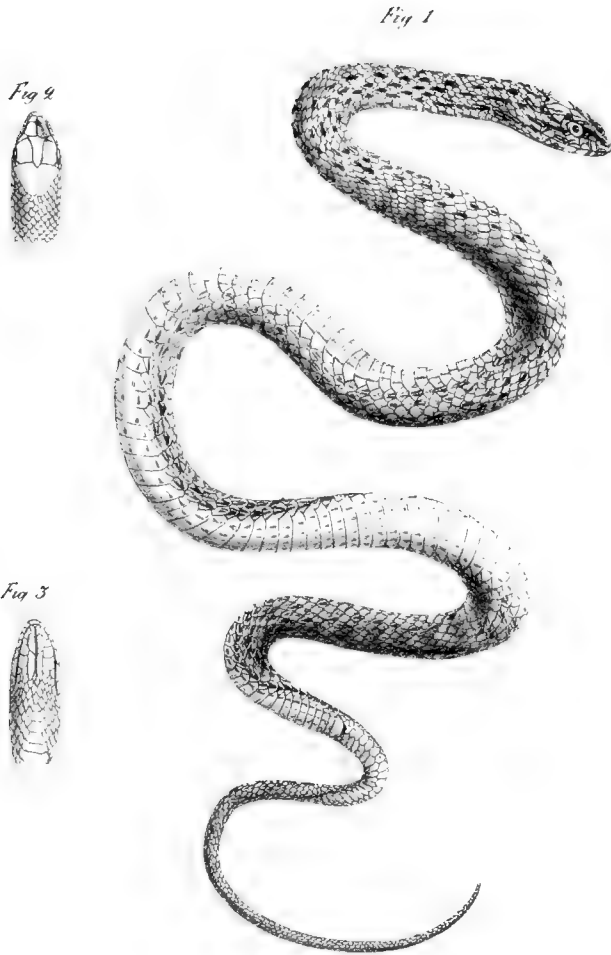
M. Papp. del.

Liria Najadum Fig 1. 2. *T. Najadum* var. *ocellata* Fig 3. 4.



U. D. C. 1818

Coleopeltis Dione

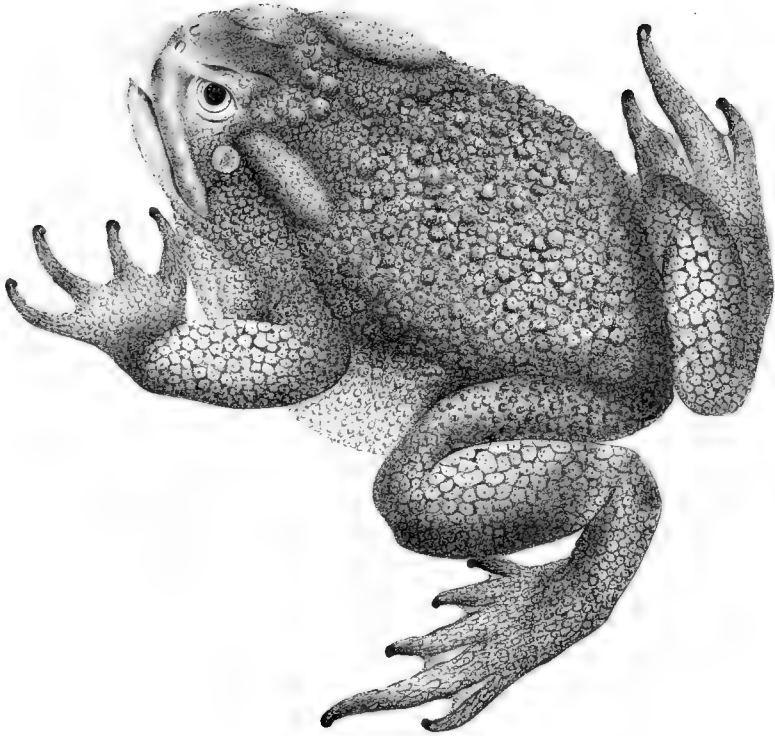


Cocolopeltus vermiculata



W. Pine del.

Rana caxhimans, Pall



W. Pope del.

Bufo cinereus var. *colduica*, m



Fig 2

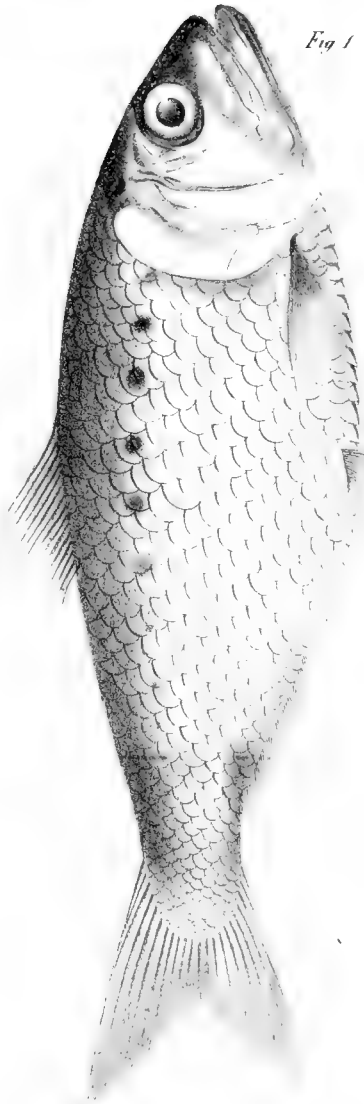


Fig 1

Clupea

Fig 1 *Clupea cuspata*

Fig 2 *pontica*

Fig 2



Fig 1



Fig 4



Fig 3

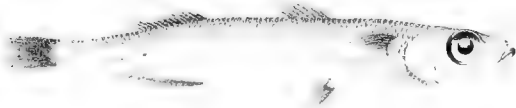


Fig 6



Fig 5

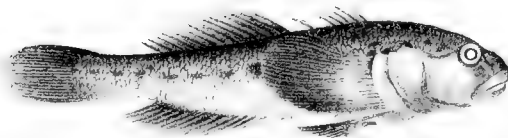


Fig 1. 2. *Atherina caspia* - Fig 3. 4. *Atherina pontica*

Fig 5. 6. *Cichlus affinis*

Fig 1

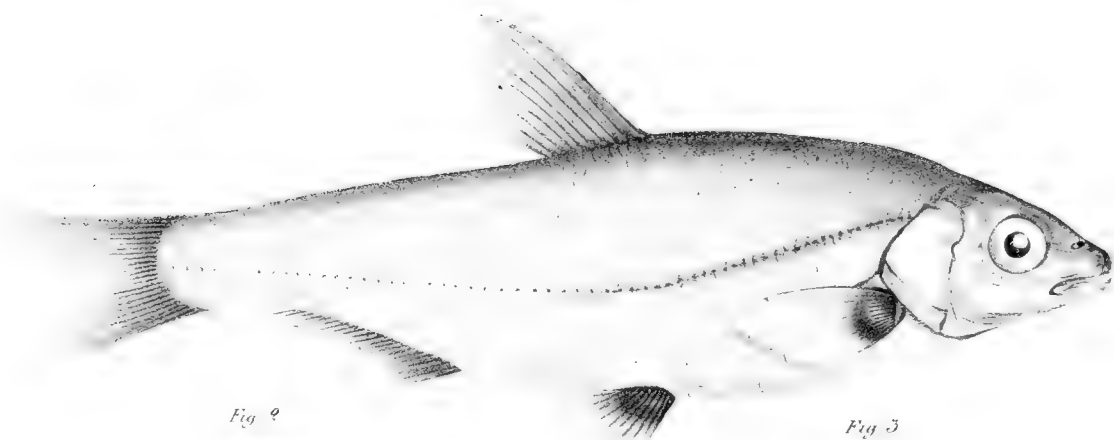


Fig 2



Fig 3



Fig 4



Fig 1 *Cyprinus persae* Fig 2 4 *Gobius sulcatus*

Fig 1



Fig 2



Fig 3



Fig 1 *Syngnathus nigrolineatus* Fig 2 *S. caspius* Fig 3 a b c
Benthophilus macrocephalus

Fig. 1

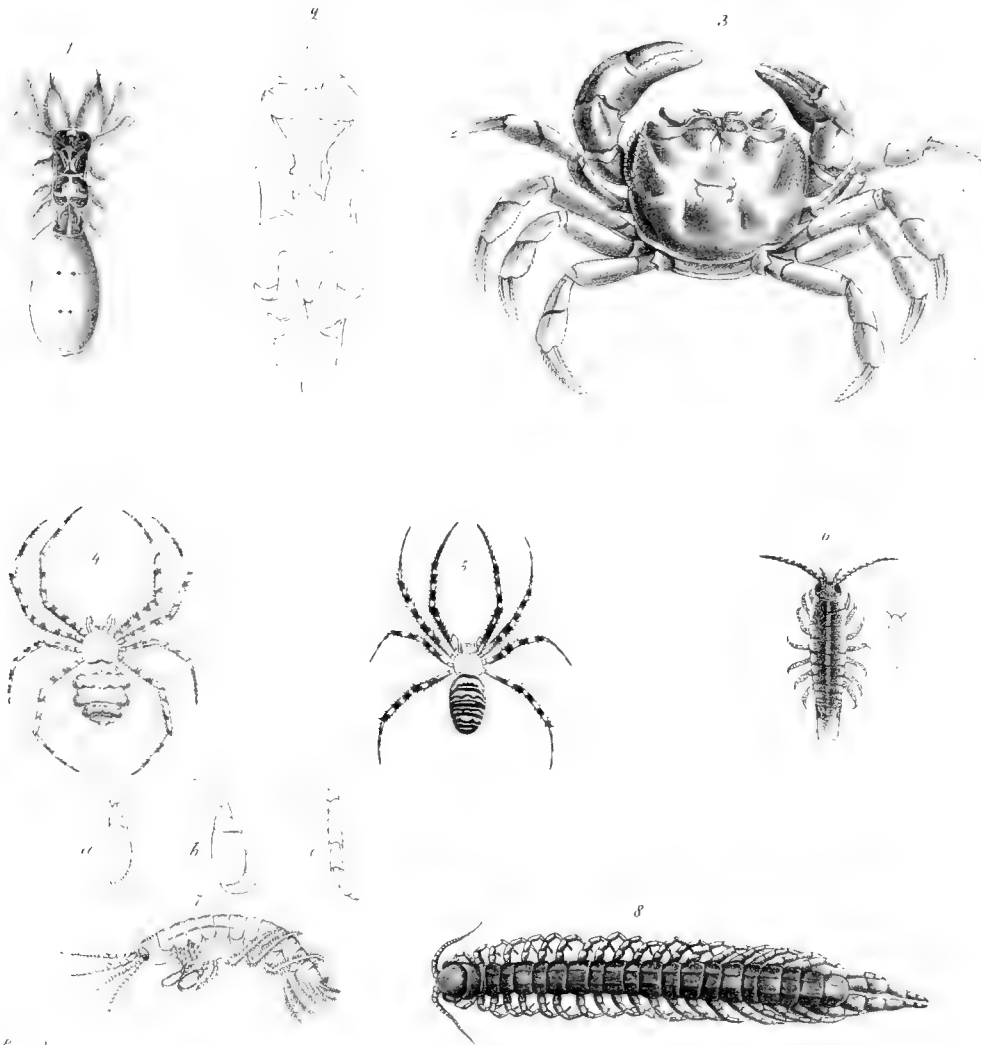


Fig. 2



Fig. 1. *Astacus leptodactylus*

Fig. 2. *Astacus caspius*



W. P. A. 20

Fig 1. 2. Skeleton *Acharys arachneoides* Fig 3. *Cancer tiberius* -
 Fig 4. *Argyopes sericea* Fig 5. *Epeira speciosa* Fig 6. *Scolotheca acuminata*
 Fig 7a-c *Gammarus haemobaphes* Fig 8. *Scolopendra circulata*.

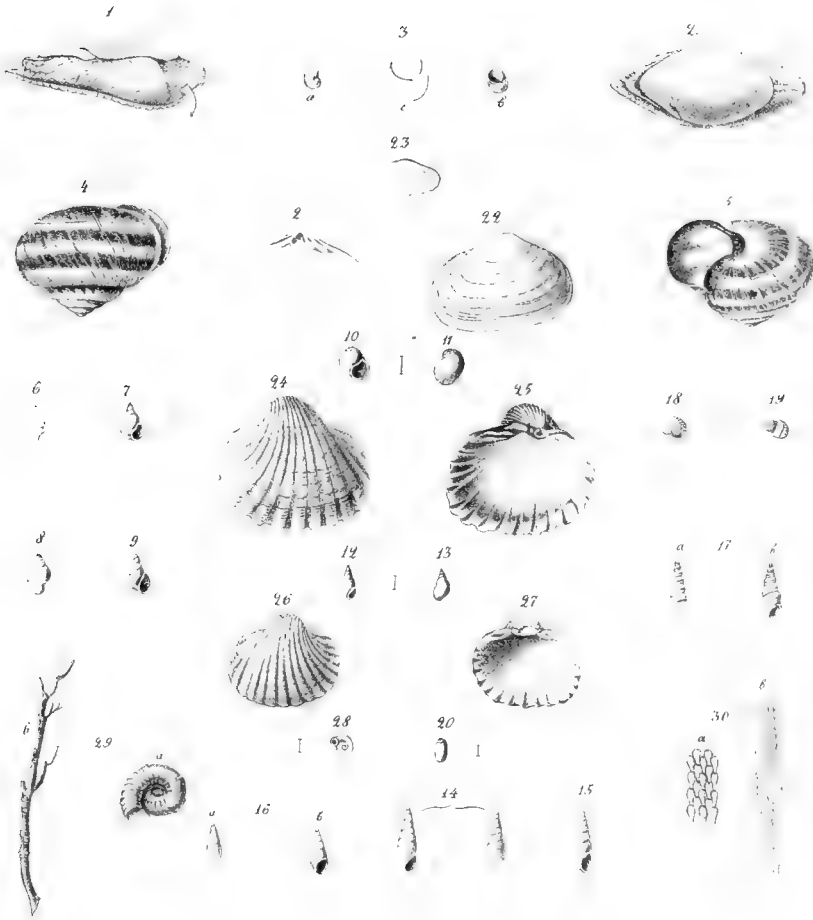
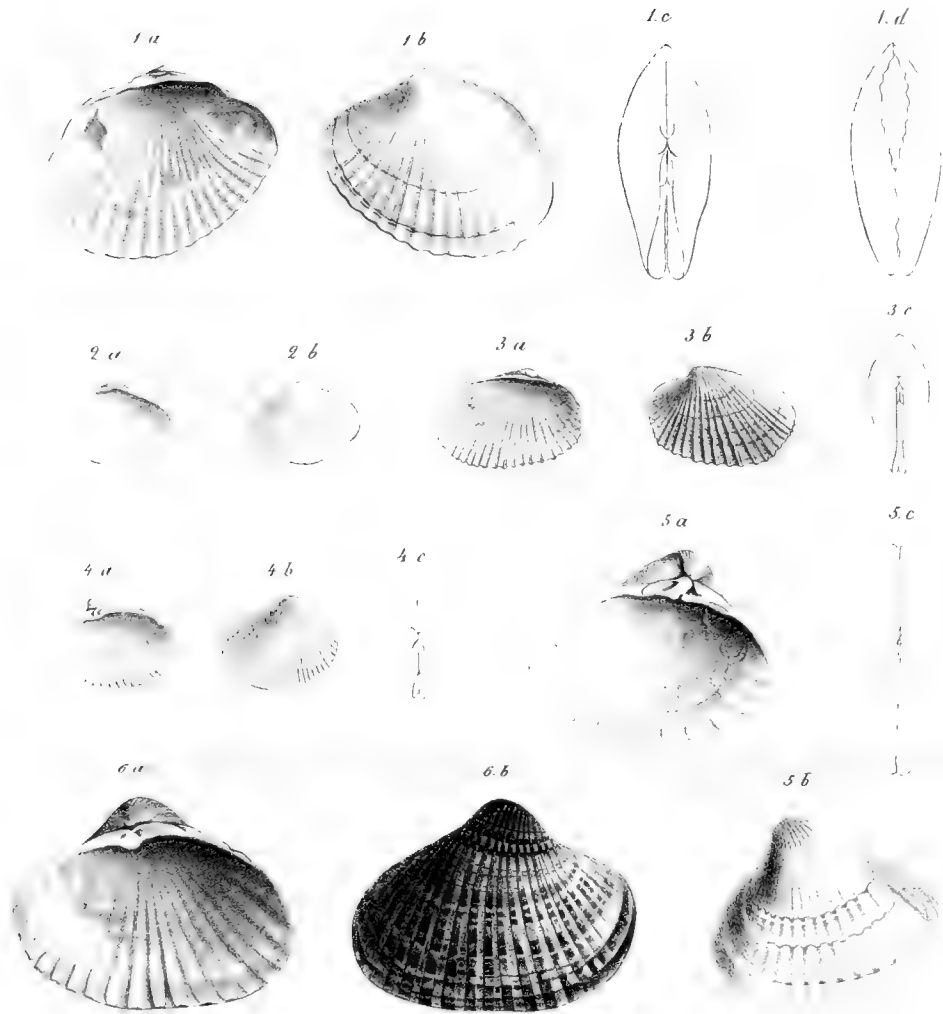


Fig 1 2 *Parvacolla Olivieri* Fig 3 a b, *Eudem testata*, c *caecum* magnitudine adhaeret
 Fig 4-5 *Melox atrolabiata* Fig 6 7 *Paludoria variabilis* Fig 8 9 *P. lutea* Fig 10 11 *P. variosa*
 Fig 12 13 *P. pusilla* Fig 14 15 *Bisfa caspia* Fig 16 a b *R. corus* Fig 17 a b *R. demerata*
 Fig 18 19 *Meritina ulurata* Fig 20 *Bullina usturtensis* Fig 21 22 *Maetra caspia*
 Fig 23 *Dorax pascus* Fig 24 27 *Cardium rusticum* Fig 28 *Strophia serpuliformis*
 Fig 29 a *Apatia rubra*, magn. adhaeret b *idem* magn. naturali Fig 30 a *Coste-*
pora, ventra adhaeret b *idem* magn. nativ. in *Costerae* folio.



W. P. Wood del.

Fig 1 a-d. *Adacne laeviuscula* Fig 2. a. b *A. vitrea*.
 Fig 3 a-c *A. plicata* Fig 4 a-c *Monodacna caspia*
 Fig 5 a, b *Didacna bizonoides* Fig. 6 a, b *D. crassa*.





Fig 12. *Morodacna catillus* Fig 3, 4. *M. propinqua* Fig 5, 7. *M. intermedia*.
 Fig 8, 9. *Adacna eboracula* Fig 10, 11. *A. protracta* Fig 12. *Tubularca casnea*
 Fig 13. *Labem magna adreata* Fig 14. *Polychaetorum furca* Fig 15. *Spaden*
cellula terminalis





