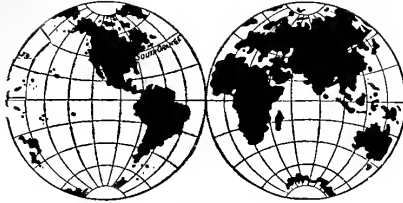


LIBRARY  
NEW YORK  
BOTANICAL  
GARDEN



TRADE-MARK

BULBS

STRAWBERRIES

FORCING  
AND

HARDY PLANTS

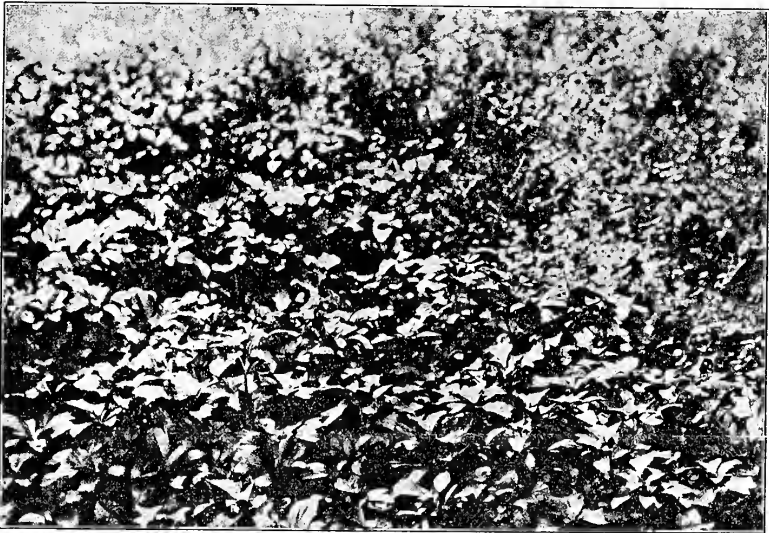
FOR PRESENT PLANTING

OFFERED BY

W. A. MANDA, INC.

SOUTH ORANGE

NEW JERSEY



PACHYSANDRA TERMINALIS.

Ten years' experimenting with this plant has convinced us that it is the finest evergreen ground cover in existence. Thriving in the densest of shade, in any soil or situation, and quickly covering the ground with a uniform close growth. The lustrous bright green leaves are arranged in a whorl or rosette on stems four to six inches high. This plant stands the most rigorous winter and the quick changes of our climate without the slightest damage to its bright-green foliage, which retains its perfection and brilliancy all the year round, and not subject to injury from any insect. The finest substitute for lawns, covering shaded places where grass refuses to grow. Nice plants. 25c. each; \$2.50 per doz.: \$15.00 per 100.

## BULBS FOR FORCING OR OUTDOOR PLANTING.

### LILIES.

	Doz.	100
Auratum (the Golden Banded Lily of Japan), 9 to 11.	\$1.50	\$12.00
Candidum (Annunciation Lily), 20 and up .....	1.50	9.00
Harrisii (the Bermuda Easter Lily), 5 to 7 .....	1.00	6.00
Harrisii (the Bermuda Easter Lily), 7 to 9 .....	2.00	12.00
Harrisii (the Bermuda Easter Lily), 9 to 11 .....	3.00	22.00
Longiflorum. Beautiful, snow white. 7 to 9.....	1.00	6.00
Speciosum Album. Pure white. 9 to 11.....	2.50	16.00
Speciosum Rubrum. Red-spotted. 9 to 11.....	2.00	15.00
Tenuifolium (Coral Lily).....	2.00	15.00
Tigrinum (the Tiger Lily) .....	1.00	6.00
Tigrinum flore pleno .....	1.25	8.00
Tigrinum splendens. Fine red flowers .....	1.25	7.50
Chinese Sacred Lilies. First size.....	.90	
Chinese Sacred Lilies. Original basket of 30 bulbs, \$2.00.		

### HYACINTHS (French).

	100	1,000
Romans. Earliest white. First size, 12 to 13.....	\$4.00	\$35.00
Romans. Earliest white. Extra selected, 13 and up..	5.00	45.00

### DUTCH HYACINTHS (MIXED).

#### Single.

	Doz.	100
Dark red .....	\$0.50	\$4.00
Rose .....	.50	4.00
Pure white .....	.50	4.00
Dark blue and purple.....	.50	4.00
Light blue .....	.50	4.00

### CHOICE-NAMED HYACINTHS (1st Size).

#### Single Red and Rose.

	Each	Doz.
Charles Dickens. Beautiful rose, white shaded .....	\$0.12	\$1.25
Gertrude. Deep rose, fine compact spike.....	.10	1.00
Gigantea. Blush, large broad spike.....	.10	1.00
Lord Macaulay. Bright red striped rose, large spike..	.10	1.00
Norma. Pale, waxy pink, large bells, early.....	.10	1.00
Robt. Steiger. Deep crimson, fine spike.....	.10	1.00

#### Single Blue.

Baron van Thuyll. Dark blue, early for forcing .....	.10	1.00
Charles Dickens. Pale blue, large bells .....	.10	1.00
Czar Peter. Light porcelain, large spike .....	.15	1.50
Grand Lilas. Porcelain, large and compact .....	.12	1.25
King of the Blues. Dark blue, extra large spike .....	.10	1.00
La Peyrouse. Porcelain.....	.10	1.00
Mary. Bright blue, large compact spike.....	.10	1.00
Regulus. Porcelain .....	.12	1.25

#### Single Pure and Blush White.

Alba Superbissima. Pure white, fine spike.....	.12	1.25
Baroness Van Thuyll. Pure white, large close spike...	.10	1.00
Grand Vedette. Pure white, very large .....	.10	1.00
Grandeur a Merveille. Rose shaded, large spike.....	.10	1.00
La Franchise. Blush, large bells .....	.10	1.00
La Grandesse. Pure white, large bells .....	.15	1.50
Madame van der Hoop. Pure white, large bells.....	.12	1.25
Mina. Pure white, fine truss.....	.15	1.50
Pavillon Blanc. Pure white, fine bells.....	.12	1.25

#### Single Yellow.

Ida. Golden yellow, splendid, large compact spike....	.15	1.50
---	-----	------

## SINGLE EARLY TULIPS.

	Doz.	100.
Artus. Brilliant scarlet, fine.....	.25	1.00
Belle Alliance. Scarlet.....	.35	2.50
Brutus. Brownish red.....	.30	1.75
Canary Bird. Pure, rich yellow, early.....	.25	1.75
Chrysolora. Large, golden yellow.....	.25	1.50
Cottage Maid. Beautiful rose and white.....	.25	1.50
Crimson King. Bright crimson.....	.25	1.50
Duc van Thol. Scarlet.....	.25	1.75
Duchess de Parma. Red, yellow bordered.....	.20	1.25
Joost van Vondel. Crimson flamed white.....	.30	2.00
Keizerskroon. Red, with yellow edge.....	.25	1.75
La Reine. White rose, shaded.....	.20	1.25
L'Immaculee. Pure white.....	.20	1.25
Pottebakker. Scarlet.....	.35	2.25
Pottebakker. Pure white.....	.30	2.00
Pottebakker. Pure yellow.....	.30	2.00
Proserpine. Rich silky rose.....	.50	3.25
Rosamundi Huikman. Rose and white.....	.25	1.50
Wouwerman. Dark purplish violet, very fine.....	.30	1.75
Yellow Prince. Golden yellow.....	.25	1.50

## DOUBLE TULIPS.

Alba Maximum. Large, pure white.....	.35	2.00
Duc van Thol. Red and yellow.....	.20	1.25
Duc van Thol. Scarlet.....	.20	1.25
Duke of York. Red, edged white.....	.25	1.50
Imperator Rubrorum. Large, bright scarlet.....	.40	2.75
La Candeur. Pure white, fine.....	.25	1.50
Murillo. Delicate light rose, the finest.....	.35	2.75
Rex Rubrorum. Scarlet.....	.30	2.00
Tournesol. Red and yellow.....	.30	2.25
Tournesol. Yellow, grand flower.....	.45	3.25

## LATE SINGLE TULIPS.

Darwin. Fine mixture.....	.30	2.00
Parrot. Fine mixture.....	.20	1.25
Genseriana Spathulata. Large, brilliant scarlet.....	.25	1.75

## NARCISSUS.

## Single Varieties.

Bicolor Empress. Very large, yellow trumpet.....	1.00	6.00
Bicolor Emperor. Large, yellow flowers.....	.60	4.00
Bicolor Horsfieldi. Large, deep yellow trumpet, early..	.50	3.50
Golden Spur. Large, deep yellow trumpet, extra forcer...	.60	4.50
Poeticus Ornatus. Pure white, red centre, very early..	.20	1.25
Princeps. Long, deep yellow trumpet.....	.25	1.50
Trumpet Major. Large, yellow trumpet.....	.25	1.50

## Double Varieties.

Albus Plenus Odoratus. Pure white.....	.20	1.25
Incomparabilis. Sulphur orange.....	.20	1.50
Orange Phoenix. White, orange centre.....	.30	2.00
Sulphur Phoenix. Sulphur white.....	.70	5.00
Von Sion. Double nosed.....	.40	2.50
Von Sion. First size.....	.30	2.00

## POLYANTHUS NARCISSUS.

Paper White Grandiflora. 13 and up.....	.30	1.75
Chinese Sacred (Original Basket of 30 bulbs, \$2.00)....	.90	6.50

## CROCUS.

	100	1,000
Yellow. 1st size .....	.70	6.00
Argus. White, striped violet .....	.70	6.00
Baron von Brunow. Dark blue .....	.70	6.00
Lord Derby. Large, dark blue .....	.70	6.00
Montblanc. Large, white.....	.70	6.00

## VARIOUS BEAUTIFUL AND INTERESTING BULBS.

	Each	Doz.
Allium Azureum. True blue.....	\$0.08	\$0.75
Allium Flavum .....	.08	.75
Allium Molllyluteum .....	.08	.75
Anthericum Liliago (St. Bernard's Lily) .....	.10	1.00
Anthericum Lilastrum Major.....	.10	1.00
Chionodoxa Gigantea .....	.08	.75
Chionodoxa Luciliae .....	.08	.75
Diclytra Spectabilis (Bleeding Heart) .....	.20	2.00
Galanthus Nivalis Simplex. Per 100, \$1.00; per 1,000, \$7.50. ....		.15
Muscari Botryoides Alba (White Grape Hyacinth)....	.20	1.25
Muscari Botryoides Coerulea (Blue Grape Hyacinth)..	.20	1.25
Spiraea Astilboides .....	.20	1.50
Spiraea Astilboides Floribundas .....	.15	1.25
Spiraea Japonica .....	.20	1.50
Spiraea Compacta Multiflora .....	.15	1.25

## FREESIA.

	Doz.	100
Freesia Refracta Alba. White, splendid for forcing...	\$0.25	\$1.00
Freesia Refracta Alba. White, monster bulbs .....	.40	2.00
Scilla Bifolia .....	.35	2.00
Scilla Siberica .....	.35	2.00

## LILY OF THE VALLEY.

	100	1,000
Lily of the Valley for forcing (Convallaria majalis)....	\$1.50	\$14.00

## VARIOUS PLANTS FOR FORCING.

## VIOLETS.

	Doz.	100
Marie Louise .....	\$1.50	\$8.00
California .....	1.00	5.00
Lady Hume Campbell .....	1.50	8.00
Princess of Wales.....	1.00	5.00

## CARNATIONS (Field Grown).

All standard sorts .....	2.00	10.00
All new sorts .....	3.00	18.00

## GARDENIA.

Gardenia, Veitch's var. The best large flowering variety for winter forcing. Should be planted now. We have a large stock of this useful plant in all sizes, and can supply same from 35c. to \$2.50 each, according to size. Young stock for planting out .....	\$3.00	\$25.00
--	--------	---------

## LIST OF SELECT POT-GROWN STRAWBERRY PLANTS.

All pot-grown plants will produce a full crop of berries next season.

- Bederwood.** Early, Perfect. A well known early berry, a good strong grower; color, orange scarlet.
- Bubach.** Mid-Season, Pistillate. One of the best known berries, should be planted extensively for home use.
- Brandywine.** Late, Perfect. The finest of all late fruiting sorts; fruit extra large, bright, rich red.
- Clyde.** Early to Mid-Season, Perfect. A strong grower, perfectly formed, light scarlet berries of fine quality.
- Early May.** Extra Early, Perfect. An extra early variety, berries having rich flavor found only in wild berries.
- Excelsior.** Extra Early, Perfect. Will produce four times as many berries as any extra early sort.
- Gandy's Prize.** Late, Perfect. A strong, healthy plant. No better late berry can be wished for.
- Glen Mary.** Mid-Season to Late, Bi-Sexual. Its roots are enormous, enabling it to ripen its great crop of berries in the driest season.
- Marshall.** Early, Perfect. The best of all. Berry very large, regular form, dark, glossy red, of fine quality.
- Michel's Early.** Early, Perfect. Quality good, attractive in color, and should be in all gardens.
- New York.** Mid-Season, Perfect. The berries are large, dark scarlet, changing to crimson when fully ripe.
- Nich Ohmer.** Mid-Season, Perfect. The berries are of the largest size, rich, glossy crimson, firm and solid.
- President.** Late Pistillate. Color bright and clear, flesh firm and seeds few and widely separated.
- Rough Rider.** Very Late, Perfect. We recommend this to all who desire a very late berry.
- Sharpless.** Mid-Season. Perfect. The best berry that can be had.

All of the above varieties, good, strong plants, 50c. per doz.; \$3.75 per 100.

- Commonwealth.** New, Late, Perfect. This superb berry originated in Massachusetts and rivals the Marshall for quality. It is two weeks later than other sorts, and being the best and most productive of all very late sorts should be in every garden. \$1.00 per doz.; \$10.00 per 100.

All other varieties of Strawberries in stock and furnished at regular prices. Also other Fruit Stock.

### BUXUS (Boxwood).

This old-fashioned plant has become such a favorite recently that it demands our special notice. It is, however, too well known to need any description. The small, dwarf box is used for edging in old-fashioned, formal and Italian gardens, while large plants, sometimes a hundred years old, are used as isolated specimens, or for topiary effects, as they can be trained or trimmed into any shape desired. We have an enormous stock of plants, varying in size from 3 inches to 12 feet. Prices on application.



SPECIMEN BLUE SPRUCE (*Picea pungens glauca*).

August and September are best months to plant.

## CONIFERAE (Evergreen or Resinous Trees).

One of the grandest classes of vegetation, varying from dwarf prostrate shrubs, rising barely a foot above the ground, to the largest and most majestic trees known, growing to the height of three hundred and fifty feet. With two or three exceptions they are evergreen, and on that account are especially desirable where evergreen and massive effect is desired. Having such a large range of form and height, they can be used for almost any purpose, such as isolated specimens, groups, beds, hedges, and also as wind screens for sheltering and protecting half hardy plants, etc. They all emit a pleasant, resinous odor, which is known to be especially healthful.

<i>Abies concolor</i> (Silver Fir of Colorado). A lofty tree of great beauty. Without doubt one of the finest American evergreens. Graceful habit, broad, handsome foliage, bluish above, silvery beneath. 2 feet, \$2.00; 4 feet, \$5.00; 6 feet ..	\$8.00
<i>Abies Canadensis</i> (Hemlock Spruce). A medium sized tree, remarkably graceful and beautiful, with drooping branches and dark foliage, like that of a Yew. It is without doubt the peer among evergreens. For hedging, massing, or planting as an individual specimen none can equal it. 4 feet, \$1.00; 6 feet ..	2.75
<i>Abies Caroliniana</i> (Carolina Hemlock). A beautiful medium-sized evergreen, upright habit, very hardy. 3 feet ..	2.00
<i>Abies nobilis glauca</i> . A magnificent tree, growing to a great height. Foliage a beautiful glaucous green, making it conspicuous wherever planted. 2½ feet.....	3.00
<i>Abies Nordmanniana</i> . This majestic Fir is of symmetrical form, vigorous and hardy. Its foliage is massive, shining dark green above and slightly glaucous below. 2 feet, \$2.00; 3 feet,	4.00
<i>Juniperus alpina aurea</i> . Spreading compact growth, with bright golden foliage throughout the year. 1 to 2 feet.....	1.00
<i>Juniperus Chinensis variegata</i> . A handsome dense dark glaucous green shrub, interspersed with branches of white, perfectly hardy. 2 feet, \$2.00; 3 feet ..	3.00
<i>Juniperus communis hibernica</i> (Irish Juniper). A distinct and beautiful variety of erect and dense outline, resembling a pillar of green. 2 feet, 75c.; 4 feet ..	2.00
<i>Juniperus Virginiana</i> (Red Cedar). A well known American tree of medium size. Varies much in habit and color of foliage. 3 feet ..	.50
<i>Juniperus Virginiana glauca</i> . The compact conical habit of this variety, combined with its glaucous foliage, renders it very distinct and desirable. 2 feet, \$1.00; 3 to 4 feet.....	3.50
<i>Picea alba</i> (White Spruce). A native tree of medium height, pyramidal in form, foliage silvery gray. Very hardy. 3 feet,	1.00
<i>Picea Alcockiana</i> . A tall growing tree of dense habit. Foliage pale green, glaucous underneath. 2 feet, \$2.00; 4 feet.....	5.00
<i>Picea excelsa</i> (Norway Spruce). An elegant tree, extremely hardy, of rapid, lofty growth and pyramidal form. One of the most popular evergreens for planting. 4 feet, \$1.00; 6 feet ..	3.00
<i>Picea excelsa pendula</i> . A pendulous variety of the Norway Spruce, with large, bright foliage. The lateral branches of the large trees are as drooping as a willow. 2 feet.....	2.00
<i>Picea orientalis</i> . A handsome tree, tall and compact. Remarkable for its graceful habit and dark, slender foliage. One of the most striking of this family. 2 feet, \$2.00; 4 feet.....	5.00
<i>Picea polita</i> (Tiger's Tail Spruce). A distinct Japanese species. It is of erect habit, and has rigid, sharply-pointed leaves of a bright green color. 2 feet, \$2.00; 4 feet, ..	5.00
<i>Picea pungens glauca</i> (Colorado Blue Spruce). One of the hardiest and most beautiful evergreens. A handsome tree of lofty and pyramidal growth. The foliage is heavy and of a rich bluish color. This plant should be in every garden. 2 feet, \$3.00; 3 feet ..	5.00

<i>Pinus Austriaca</i> (Austrian Pine). A noble tree, remarkably robust and spreading leaves, long, stiff, and dark green. Growth rapid. Very hardy. 3 feet .....	1.00
<i>Pinus Cembra</i> (Swiss Stone Pine). A dwarf growing tree, but very handsome. Compact conical form. Foliage silvery. 3 feet .....	2.00
<i>Pinus excelsa</i> (Bhotan Pine). A lofty, elegant tree, with long, drooping, silvery foliage. Hardy and vigorous. 2 feet.....	2.00
<i>Pinus mugho</i> . An upright, spreading, small pine. Its general form is that of a bush. 1 foot .....	1.00
<i>Pinus strobus</i> (White Pine). The most ornamental of all our native pines. Foliage light, delicate green. Flourishes in the poorest sandy soil. 3 feet .....	1.00
<i>Pinus sylvestris</i> (Scotch Pine). A noble, tall growing variety, with stout, erect shoots, and silvery green foliage. 3 feet..	1.00
<i>Retinospora filifera</i> . Forms a wide cone of delicate foliage, with threadlike filaments, curving gracefully from the tips of the branches .....	1.00
<i>Retinospora pisifera</i> . A large growing, graceful tree from Japan. Upright pyramidal outline. The shining green feathery foliage makes it very attractive. 2 feet, \$1.00; 5 feet .....	4.50
<i>Retinospora pisifera aurea</i> . Same habit as above, except the foliage, which is a beautiful golden color. 2 feet, \$1.00; 4 feet .....	3.00
<i>Retinospora plumosa</i> . A small growing tree of pyramidal shape, with feathery, clear green foliage. A most desirable plant for lawn decoration. 2 feet, \$1.00; 4 feet, \$3.00; 6 feet....	7.00
<i>Retinospora plumosa aurea</i> . A golden-leaved variety of the above. The favorite yellow evergreen. 2 feet, \$1.00; 4 feet, 3.00	3.00
<i>Retinospora obtusa</i> . A variety of distinguished appearance. This species is peculiarly beautiful in color and appearance of its foliage and the effect of light or shade. 3 feet.....	2.00
<i>Retinospora obtusa nana</i> . This is the variety which the Japanese grow in pots. A curious but beautiful tree of dwarf, irregular, picturesque growth, and dark green foliage. 1 foot....	2.00
<i>Retinospora squarrosa Veitchii</i> . A grand variety, having beautiful silvery foliage, extensively used. 2 feet, \$1.00; 4 feet, \$3.00; 6 feet .....	7.00
<i>Sciadopitis verticillata</i> . The Umbrella Pine of Japan. Is not only one of the most distinct Conifers, but the most remarkable and beautiful. Its growth is conical. Very hardy. Foliage a shining green. 2 feet, \$3.00; 3 feet, \$5.00; 4 feet..	7.00
<i>Taxus baccata</i> (English Yew). A large bush of tree. It is densely branched and can be trimmed in any shape. Foliage a beautiful dark green. 2 feet.....	1.00
<i>Taxus hibernica</i> (Irish Yew). A very handsome, erect, resembling a dark green pillar, rendering the plant very effective, especially for formal gardens. 2 feet.....	2.00
<i>Taxus tardiva</i> . A very dwarf variety from Japan. Very hardy. Used for bordering or where very low growth is desired. 1 foot .....	1.00
<i>Thuja occidentalis</i> (Arbor Vitae). A beautiful native tree of medium height, commonly known as the White Cedar. Especially valuable for screens and hedges. 3 feet.....	50
<i>Thuja occidentalis compacta</i> . Dwarf, compact habit, and deep green foliage. 1 foot.....	1.00
<i>Thuja occidentalis George Peabody</i> . Dwarf, pyramidal growth, foliage bright golden color, which is retained throughout the summer. 3 feet .....	2.00
<i>Thuja occidentalis pyramidalis</i> . Upright, compact habit, like the Irish Juniper. Very desirable. 3 feet, \$1.00; 6 feet.....	3.00
<i>Thuja orientalis</i> . Upright, compact grower, lace-like foliage. 2 feet .....	1.00
<i>Thuja orientalis compacta</i> . A very dwarf form of the above. 1 foot .....	2.00

We have 200 varieties of evergreens in sizes from 3 inches to 15 feet in height. Prices on application.



## POMPON CHRYSANTHEMUMS.

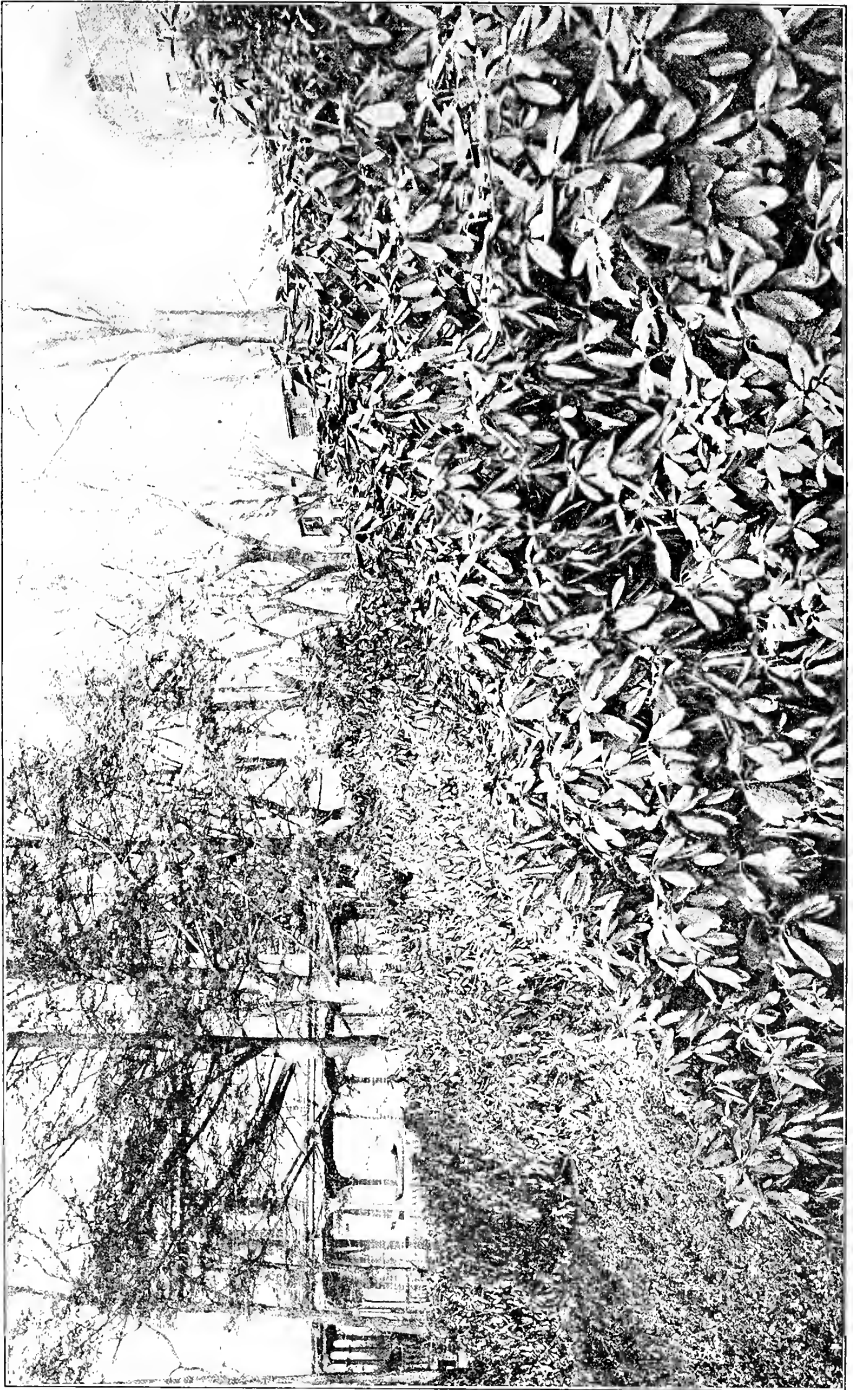
These old-fashioned plants are again the favorites of the day on account of their great beauty in the late autumn, being the last flowers to brighten the garden long after the first frost has cut down all summer vegetation. For landscape effect they are very important, as the color of the flowers blends so well with the autumn tints of trees and shrubs. If wanted for house decoration, lift the plants early in September and pot same. After they are established they can be brought in the house. Price, field grown plants, 25c. each; \$3.00 dozen.

- Ada.** Deep clear yellow.  
**Acto.** Bright rose, Dahlia-like petals.  
**Aileen.** Deep lilac pink.  
**Agnes C.** Light shaded bronze.  
**Amelia.** Blush pink, tipped with clear yellow.  
**Angelique.** Pure white, high built flower.  
**Canova.** Deep orange bronze.  
**Caritas.** Blush, shaded with deeper pink.  
**Delicatissima.** Outer petals light pink, centre wine color.  
**Edna.** White, with pink shadings, yellow centre.  
**Elberta.** Deep clear yellow.  
**Ethel.** Fine flower, blush white.  
**Golden Circle.** Bright gold color.  
**Golden Trevenna.** Soft yellow, very dwarf.  
**Grace Darling.** Pink fringe, yellow centre.  
**Gallia.** Clear soft pink.  
**Jeanevieve.** Blush pink, large flower.  
**Jersey Beauty.** Fine clear yellow.  
**Julia.** Deep reddish color.  
**La Parance.** Delicate pink, one of the best.  
**La Purite.** Pure white.  
**Little Pet.** Deep orange yellow.  
**Lune Fleuri.** Yellow, button shaped.  
**Magnificus.** Large, pure white.  
**Maid of Kent.** One of the best white varieties.  
**Manila.** Anemone flowered, deep red, yellow centre.  
**Mildred.** Anemone flowered, pure white, blush edges.  
**Mizpah.** Daisy-like, bright rose color.  
**Mr. Astie.** Bright yellow, quilled centre.  
**Mrs. Wyness.** Fine pink, quilled centre.  
**Oneita.** Bright clear yellow.  
**Prosperity.** The finest pure white.  
**Santiago.** Deep bronze red.  
**St. Crouts.** Deep copper bronze.

Correspondence solicited from parties wishing to plant borders, rockwork or wild gardens with Hardy Perennials.

Intending purchasers of large quantities of Ornamental Trees, Shrubs and Vines or Fruit Trees, Shrubs and Vines, will do well to correspond with us and get our prices for reliable goods, and advice what and how to plant. You will not only save money by contracting with us for your planting, or anything in the Landscape Department, but you will have efficient work done, the result of years' hard study, close observation, and large practical experience. Please read our remarks on Landscape Gardening.

**PLANT HARDY PLANTS, TREES, SHRUBS OR VINES**  
 and they will increase yearly in size and beauty. Once  
 planted, they live forever.



BANK OF RHODODENDRON MAXIMUM (at South Orange). For description see opposite, page 11.

## PLANTS OF SPECIAL MERIT FOR EVERGREEN LANDSCAPE EFFECT.

Following our suggestions on the former pages we here submit a few plants of extraordinary merit, especially where evergreen effects are desired, not only for producing solid masses, but also as a substitute for grass, that is, low plants which flourish well under trying conditions where grass will not grow, forming an evergreen carpet supplemented in the spring and summer months with solid masses of flowers.

### RHODODENDRON MAXIMUM.

For large massing where a broad, bold foliage effect is desired this shrub has no superior. Its perfect hardiness in any climate and under any conditions, thriving well in the full sun as well as in the densest shade underneath trees, evergreen, or deciduous, coupled with its comparatively low cost, being obtainable in large sizes from three to six feet in height and diameter, gives an opportunity to produce at the planting an immediate effect which otherwise would take years to accomplish with small-sized plants. Our stock of this plant is admitted to be the best in the country, growing isolated in the full sun. The plants are very bushy, well set in bud, and lift with a fine mass of roots, and, being handled by experienced men in lifting and packing, always insure good results. We would be pleased to quote prices in any quantity or size of plants. Special price of assorted sizes in carload lots. Single plants, 50c. to \$5.00 each.



### KALMIA LATIFOLIA.

Another garden plant, for similar purposes as the Rhododendrons, with smaller foliage and having large clusters of showy flowers varying from pure white to deep rose color, lasting a long time in perfection. Our stock of this consists of fine shaped bushy plants, from one to five feet in height and diameter, which we would be pleased to supply from 50c. to \$5.00 each. Special price in carload lots.

## GREENHOUSE ROSES.

This is a complete list of all desirable varieties for culture under glass. As a rule, plants are planted out on benches in May or June to flower the coming fall and winter, out of two or three inch pots. If wanted to flower in pots, they should be potted on, so as not to check the growth of the plant. We can supply nice, strong, young plants at the prices quoted.

Strong 3-inch plants, \$1.75 per doz.; \$12.00 per 100. Grafted plants six cents each additional.

**American Beauty.** Deep crimson.

**Bride.** The finest of all white roses.

**Bridesmaid.** Clear pink.

**Bon Silene.** Coral red, free and sweet.

**Duchess of Albany.** Satiny rose, fragrant.

**Golden Gate.** Pale lemon, tipped blush pink

**Gloire de Dijon.** Climber, blush, shaded salmon.

**Ivory.** Pure white, large flower.

**Kaiserin Augusta Victoria.** White shaded cream color.

**La France.** Soft satiny pink.

**Liberty.** Brilliant crimson.

**Madame Caroline Testout.** Lovely clear pink.

**Madame Hoste.** Lemon color, very free.

**Marechal Niel.** Climber, finest of all yellow roses.

**Meteor.** Deep crimson.

**Mrs. J. P. Morgan.** Pink and white

**Mrs. R. Garrett.** Light shade of pink.

**Maid of Honor.** Beautiful light pink.

**Niphetos.** Pure white long bud.

**Papa Gontier.** Coral red, very free.

**Perle des Jardins.** The best yellow.

**Sunrise.** Reddish gold.

**Sunset.** Deep apricot color.

**Souvenir de Wotten.** Cherry crimson, very sweet.

**Souvenir de President Carnot.** Ivory white, shaded pink.

**Richmond (new).** Dark red, \$6.00 per doz.; \$45.00 per 100.

## AZALEAS.

There is no greenhouse shrub that gives such satisfaction as a good plant and variety of Azalea. The following dozen varieties are the cream of the Azaleas, while we offer well furnished plants set with buds at the following low prices: Plants, 9-10 inches in diameter, 75 cts. each; \$7.50 per doz.: 10-12 inches in diameter, \$1.00 each; \$10.00 per doz.; extra large, 12-15 inches in diameter, \$1.50 each; \$15.00 per doz. Extra large specimens, price on application.

**A. Borsig.** Pure double white.

**Madame Van der Cruyssen.** Semi-double, bright rose.

**Sigismund Rucker.** Lilac rose and white.

**Bernard Andrea Alba.** Double white.

**Deutsche Pearl.** Very early double, pure white.

**Imperatrice des Indes.** Large double rose, edged white.

**Souv. de Prince Albert.** Double white and lilac.

**Dr. de Moor.** Double, intense rose.

**Empereur de Bresil.** Rose and white, large double.

**Cocarde d'Orange.** Fine double, orange red.

**Simon Mardner.** Very deep pink, shape of a Camellia.

**Vervaeana.** A very large double, rose and white.

---

Acacias, Genistas, and all other Greenhouse Flowering Plants and Vines in stock. Write for prices.

## SEASONABLE SEEDS.

### PANSIES, SHOW, OR GIANT FLOWERING.

Below you will find a list of the very finest of show pansies, of incomparable size, beauty and luxuriance, especially my finest mixture.

	Pkt
Manda's Finest Mixture, extra selected strain.....	\$0.50
Ordinary Mixture of standard varieties .....	.10
Odiar, extra choice, large, blotched flowers.....	.25
Cassier, very large flowered, fine.....	.25
Bugnot's superb fine strain .....	.50
Superb Mixture of the Odiar, Cassier, and Bugnot's strains.....	.25
Trimardeau, or Giant Pansies, enormous flowers, extra.....	.25
Trimardeau, in 6 choice distinct colors, 25 cts. pkt.; the 6 for \$1.25.	
Madame Perret, new, distinct, rich, wine shade colors, edged white, large flowers, fine .....	.50

### PANSIES, BEDDING.

	Pkt
Cliveden, purple, excellent varieties for bedding.....	\$0.15
Cliveden, white, excellent varieties for bedding.....	.15
Cliveden, yellow, excellent varieties for bedding.....	.15
Azure Blue, choice, extra fine .....	.15
King of the Blacks (Dr. Faust), very dark variety.....	.15
Black Blue (dark blue), fine strain.....	.15
Snow Queen (candidissima), delicate satiny white .....	.15
Light Blue, sky-blue.....	.15
Lord Beaconsfield, very effective .....	.15
Red Shades mixed, extra fine .....	.15
Yellow, fine rich color, for bedding.....	.15
Pure White, good form and clear color .....	.15
Gold Margined, splendid variety.....	.15
Silver Edged (Atropurpurea albomarginata), charming.....	.25
Violet margined with white, extra fine.....	.15
Manda's Mixture of Bedding Pansies, best varieties.....	.15

### MYOSOTIS (FORGET-ME-NOT).

This beautiful little plant is too well known to need any description. It does best in a cool, moist place, and can be used for spring bedding or winter flowering. The flowers when cut and placed in water will grow just as well as if on the plant.

	Pkt.
Alpestris (Forget-Me-Not). Blue.....	\$0.10
Alpestris Robusta Grandiflora (Elisa Fonrobert). Large flower..	.15

### CYCLAMEN.

These are among the most beautiful winter and spring flowering plants for the greenhouse.

	Pkt.
Persicum giganteum, finest mixed .....	\$0.50
Persicum giganteum album. Pure white.....	.50
Persicum giganteum atrorubrum. Dark red.....	.50
Persicum giganteum roseum superbum. Extra fine.....	.50
Persicum giganteum sanguineum. Darkest red.....	.50
Persicum giganteum, Manda's choice mixture .....	.50

### CINERARIA.

One of the most beautiful spring flowering plants for greenhouse or conservatory decoration.

	Pkt.
Hybrida Grandiflora. Large-flowered. Choice mixed.....	\$0.50
Hybrida Grandiflora Nana. Dwarf. Fine strain .....	.50

## GRASS AND CLOVER SEEDS.

We beg to draw the special attention of our patrons to the Universal Lawn Grass Seed Mixture, which is prepared to give the best results for fine lawns; also to the cheap Pasture Grass Mixture for meadows. We would also be happy to supply grass and clover seed separate, if desired.

### MANDA'S UNIVERSAL LAWN SEED MIXTURE.

This lawn grass mixture is composed entirely of the finest quality of fine-leaved, dwarf-growing grasses, in such proportions as will enable it to withstand the extreme heat of our summers. The grasses which compose this mixture are extra well cleaned, so that all weeds are excluded, leaving nothing but the pure, clean seed.

We recommend four bushels to the acre. It is necessary to sow the seed very thickly to get the most pleasing result—that is a good lawn.

The best time to sow grass seed is in the spring or about the latter part of August. We prefer the spring. The success of establishing a good lawn depends much on the season and the condition of the ground at the time of sowing. A light raking in will protect the seeds greatly. Rolling, however, is at all times indispensable, and should any weeds appear they should be eradicated.

### MANDA'S UNIVERSAL MIXTURE IS AS GOOD AS ANY AND BETTER THAN MANY.

	Qt.	Pk.	Bush.
Manda's Universal Lawn Seed Mixture .....	\$0.25	\$1.25	\$4.50
Central Park Lawn Mixture .....	.20	1.15	3.50
Pasture Grass Mixture .....	.....	.....	2.25
Golf Link Mixture .....	.30	1.50	6.00

### GRASS AND CLOVER, ALSO CEREALS AND AGRICULTURAL SEEDS.

We keep a complete list of the finest varieties of these seeds, unequalled for purity and cleanliness.

Parties desiring large quantities would do well to get quotations from us before ordering elsewhere.

### PURE SHEEP MANURE.

We are greatly pleased to say that we have secured a large quantity of the very best sheep manure, perfectly pure and unadulterated, free from all straw or litter of any kind, which is generally found in most of the other grades.

We can safely say that it is the finest quality offered in the market. There is nothing can equal this manure for greenhouse purposes, such as top-dressing roses, carnations, chrysanthemums, or any other plants that are strong feeders.

And there is nothing better for mixing through potting soil or for making liquid.

It is also the finest manure for top-dressing lawns or for the manuring of fields or gardens.

In all respects it is par excellence. For top-dressing greenhouse plants use equal proportions of manure and good loam. For mixing through potting soil use one part manure to nine parts loam. For making good liquid use about 25 pounds to the barrel. For lawns, fields or gardens use about one pound to ten square feet, or two tons to the acre. 5-lb. bag, 25 cts.; 10-lb. bag, 40 cts.; 25-lb. bag, 75 cts.; 100-lb. bag, \$1.75; per ton, \$32.00. Special price in carload lots.

### PURE COARSE BONE.

The only safe bone to buy: contains no injurious chemicals; \$2.25 per 100 lbs.; \$35.00 per ton.

All Garden Tools and Requisites at market prices.

All Horticultural Books and Papers at publishers' prices.

# Landscape Gardening



**T**HIS is a very important subject, and one that should not be neglected or overlooked, especially when building up a new place.

It means that, with a **good plan**, you can lay out your place to all the advantages it commands naturally, besides making the developing features where the location is disadvantageous. **The roads and walks** should be laid out, not only to be practical, but also to be in harmony with everything adjacent.

**The proper location of trees and shrubs**, and the selection of the most desirable kinds, are very important, for you are planting for the future, and, as it takes years for a shrub or tree to grow, you should plant only such as would be desirable and valuable when grown up. The same applies to the location of vegetable, flower, fruit, rock or wild garden borders or flower beds.

**The grouping or massing** of either trees, shrubs, plants or bulbs, to produce certain effects at special seasons, either in foliage, flower or fruit, can only be successfully accomplished by having full knowledge of the habits and character of such plants.

**Many unsightly corners and spaces** could be not only hidden, but actually made beautiful. Thus, outside the general flower garden, barren rocks and stumps of trees can be covered with luxuriant growth.

**Dry and Sandy Hills**, where even grass refuses to grow, with proper selection can be made as beautiful as where the soil is rich, while marshes can be turned into handsome objects, and ponds covered with showy water plants. In one word, it is the knowledge of the habits of plants and their adaptability to certain locations that brings the desired success.

**Location and designing greenhouses, graperies, pits or frames** on a place are also very important; so are the proper details in the construction of greenhouses, which are generally left to architects, who do not take into consideration the practical points of the greenhouse or conservatory.

**Do not lay out your place without a landscape gardener**, any more than you would build a house without an architect; and you cannot do better than consult

Yours truly,

# Our Specialties

**Landscape Work** in all branches.

**Seeds—Flower, Vegetable and Grass.**

**Evergreens** in all sizes and varieties.

**Boxwood**, many large and old specimens.

**Hardy Perennials**, the largest stock in the country.

**Hardy Trees and Shrubs** of every description and size.

**Rhododendron maximum**, by the car load.

**Kalmia latifolia**, by the car load, in all sizes.

**Hemlock**, the best evergreen in all sizes.

**Roses** of all classes, especially **Hybrid Wichuraiana**.

**Plants** with **Evergreen Foliage** for winter effect.

**Greenhouse Plants**, both **Flowering** and **Foliage**.

**Orchids**, the largest commercial collection in America.

**Palms** in all sizes, from seedlings to twenty feet high.

**Ferns**, from two-inch pots to specimen **Tree Ferns**.

**Carnations, Roses and Chrysanthemums.**

**All New and Old Plants** worth growing.

**Bulbs** for **Spring** or **Fall Planting** in all varieties.

**Fruit Stock** of all the best tested sorts.

**Our Establishment** is the most complete in America.

**Visitors** are welcome at all times.

**Plant Lovers** will find this the most interesting place in the country.

**General Catalogue or Complete Special Lists** on application.