

TEXAS ORNITHOLOGICAL SOCIETY

Occasional Publication No. 5

November 2003

RECORDS ACCEPTED BY THE TEXAS BIRD RECORDS COMMITTEE (1987–2003)

MARK W. LOCKWOOD, JOHN ARVIN, KEITH ARNOLD, KELLY BRYAN,
JIM PATON, PETRA HOCKEY, MEL COOKSEY, BRAD MCKINNEY, RANDY PINKSTON



The majority of well-documented records of Masked Duck from Texas are associated with the major invasion that occurred between fall 1992 and spring 1997. This male was photographed at Brazos Bend State Park, Fort Bend County. Photo by Mark W. Lockwood.

The Texas Bird Records Committee (TBRC) maintains the official state checklist for the Texas Ornithological Society. As part of that responsibility, the TBRC requests and reviews documentation for records of species that are considered of unusual occurrence within the state. A list of these species was developed in 1987 by Greg W. Lasley and it is commonly referred to as the "review list." The review list currently contains 140 species and the details of the accepted records for each are listed below. There have been many additions to the list, primarily through new species being documented in the state, as well as the removal of species. Species removed from the review list since 1987 include Red-throated Loon, Pacific Loon, Clark's Grebe, Cory's Shearwater, Audubon's Shearwater, Band-rumped Storm-Petrel, Glossy Ibis, Pomarine Jaeger, Parasitic Jaeger, California Gull, Lesser Black-backed Gull, Glaucous Gull, Sabine's Gull, Black-legged Kittiwake, Bridled Tern, Lewis's Woodpecker, Williamson's Sapsucker, Tropical Kingbird, Northern Shrike, Clay-colored Robin, and Henslow's Sparrow. Tamaulipas Crow was recently added to the review list as a result of the rapid decline of the United States population. Annual reports of the committee's activities have appeared in the Bulletin of the Texas Ornithological Society since 1984.

There are a large number of reports of review species made prior to 1987. Many of these observations are undoubtedly correct, but were made during a time when there was no emphasis on collecting information pertaining to sight records. The TBRC does not wish to diminish the value or potential validity of these reports. The following listing includes all accepted records of current review species as of 1 August 2003. For species with more than nine accepted records, there is a bar graph illustrating the timing of occurrence. For records where the individual was present during more than one month, each month it was present is represented in the graph. Therefore, although there may only be 12 records for a particular species, the graph may show 15 occurrences. This was done in order to give a more accurate representation of occurrence in the state.

Abbreviations used below:

AMNH	American Museum of Natural History, New York
ANSP	Academy of Natural Science, Philadelphia
ASNHC	Angelo State Natural History Collection
BBNP	Big Bend National Park
CAS	California Academy of Sciences
CCM	Corpus Christi Museum
CMNH	Cincinnati Museum of Natural History
CU	Cornell University
FMNH	Field Museum of Natural History, Chicago
GMNP	Guadalupe Mountains National Park
Is.	Island
L.	Lake
LSUMS	Louisiana State University, Museum of Natural Science
MCZ	Museum of Comparative Zoology
MM	Memphis Museum
MNH	Museum of Natural History (various)
MNS	Museum of Natural Science (various)
MSB	Museum of Southwestern Biology, Univ. of New Mexico
Mtns.	Mountains
MUM	Manchester University Museum, England
MVZ	Museum of Vertebrate Zoology
MWU	Midwestern University, Wichita Falls, Kansas
Nat'l	National
NWMSU	Northwest Missouri State University
NWR	National Wildlife Refuge
OMNH	Oklahoma Museum of Natural History
PMNH	Pember Museum of Natural History, Granville, New York
Ref	Refuge

Res.	Reservoir
ROM	Royal Ontario Museum
SFASU	Stephen F. Austin State University, Nacogdoches
SHS	State Historic Site
SHSU	Sam Houston State University, Huntsville
SMU	Southern Methodist University, Dallas
SP	State Park
SRSU	Sul Ross State University, Alpine
TAMU-K	Texas A&M University, Kingsville
TAMU	Texas A&M University, College Station
TBSL	Texas Bird Sounds Library (SHSU)
TCWC	Texas Cooperative Wildlife Collection (TAMU)
TNHC	Texas Natural History Collection, Univ. of Texas, Austin
TPRF	Texas Photo Record File (TAMU, Department of Wildlife and Fisheries Sciences)
TTU	Texas Tech University, Lubbock
UMMZ	University of Michigan Museum of Zoology
USNM	National Museum of Natural History, Washington, D.C.
UTEP	University of Texas at El Paso
VPSU	Virginia Polytechnical State University
WFVZ	Western Foundation of Vertebrate Zoology, Los Angeles
WMM	Witte Memorial Museum, San Antonio
WWF	Welder Wildlife Foundation, Sinton
YPM	Yale Peabody Museum
*	Specimen

LIST OF CURRENT REVIEW SPECIES AND ACCEPTED RECORDS

YELLOW-BILLED LOON (*Gavia adamsii*)

Accepted records - 5

2 Dec 1981–9 Jan 1982	Buffalo Springs L., Lubbock Co. (TBRC 1988–276; TPRF 696)
12–14 Jan 1992	L. O'The Pines, Marion Co. (TBRC 1992–23)
25 Nov–10 Dec 1993	Balmorhea L., Reeves Co. (* TCWC 13025; TBRC 1993–149; TPRF 1243)
21 Dec 1996–3 Jan 1997	Balmorhea L., Reeves Co. (TBRC 1997–5; TPRF 1528)
22 Dec 2000–26 May 2001	South Padre Is., Cameron Co. (TBRC 2001–39; TPRF 1967).

RED-NECKED GREBE (*Podiceps grisegena*)

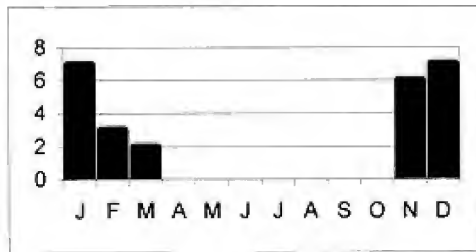
Accepted records - 17

23–30 Nov 1975	Big L., Reagan Co. (TBRC 1992–129; TPRF 1069)
5 Nov 1977	L. Fairfield, Freestone Co. (TBRC 1978–4)
21–22 Jan 1978	White River L., Crosby Co. (TBRC 1990–11)
17 Dec 1978–3 Jan 1979	Freeport, Brazoria Co. (TBRC 1989–50)
19 Dec 1982	Freeport, Brazoria Co. (TBRC 1991–101)
26 Dec 1987	Galveston, Galveston Co. (TBRC 1988–297)
5 & 7 Jan 1989	Lubbock, Lubbock Co. (TBRC 1989–23)
15 Nov 1992	Bob Sandlin L., Titus Co. (TBRC 1993–2)
28 Nov 1993–5 Mar 1994	L. Tawakoni, Van Zandt Co. (TBRC 1993–155; TPRF 1204)
31 Dec 1993–27 Feb 1994	Wright Patman L., Bowie Co. (TBRC 1994–23; TPRF 1221)
2 Jan 1995	L. O'The Pines, Marion Co. (TBRC 1995–11)



There are five documented records of Yellow-billed Loon for the state. This individual was present at Balmorhea Lake, Reeves County, from 25 November-10 December 1993. Photo by Kelly B. Bryan.

28 Nov 1996	Cooper L., Delta/Hopkins Co. (TBRC 1996-163)
28 Dec 1997	L. Roberts, Denton Co. (TBRC 1998-1; TPRF 1699)
22 Feb 1998	Imperial Res., Pecos Co. (TBRC 1998-33)
29-30 Mar 1998	L. Lewisville, Denton Co. (TBRC 1998-99; TPRF 1580)
6 Nov 1999	L. Tawakoni, Rains Co. (TBRC 1999-108)
18 Dec 2000-14 Jan 2001	Austin, Travis Co. (TBRC 2000-142; TPRF 1859)



YELLOW-NOSED ALBATROSS (*Thalassarche chlororhynchos*)

Accepted records - 3

14 May 1972	Port Isabel, Cameron Co. (TBRC 1988-50)
28 Oct 1976	S. Padre Is., Willacy Co. (*U.T. Pan American; TPRF 118)

Occ. Publ. Texas Ornith. Society No. 5; 2003

11 Jul 1997 San Jose Is., Aransas Co. (*TCWC 13338; TBRC 1997–129; TPRF 1651)

BLACK-CAPPED PETREL (*Pterodroma hasitata*)

Accepted records - 2

28 May 1994 off Port O'Connor, Calhoun Co. (TBRC 1996–129; TPRF 1631)

26 Jul 1997 off Port O'Connor, Calhoun Co. (TBRC 1997–118; TPRF 1633)

STEJNEGER'S PETREL (*Pterodroma longirostris*)

Accepted records - 1

15 Sep 1995 Port Aransas, Nueces Co. (*TCWC 13351; TBRC 1997–59; TPRF 1746)

WHITE-CHINNED PETREL (*Procellaria aequinoctialis*)

Accepted records - 1

27 Apr 1986 Rollover Pass, Galveston Co. (TBRC 1990–129; TPRF 957)

GREATER SHEARWATER (*Puffinus gravis*)

Accepted records - 11

4 Nov 1973 Galveston, Galveston Co. (*TCWC 9316) (Arnold 1975)

20 Apr 1980 High Is., Galveston Co. (TBRC 1988–167; TPRF 644)

mid-Aug 1980 N. Padre Is., Kleberg Co. (*WWF 2270; TBRC 1991–12; TPRF 949)

13 Oct 1984 off Port Aransas, Nueces Co. (TBRC 1985–14; TPRF 544)

6 Sep 1991 N. Padre Is., Kleberg Co. (*TCWC 12916; TBRC 1992–20; TPRF 1076)

24 Jun 1995 off Port O'Connor, Calhoun Co. (TBRC 1995–86)

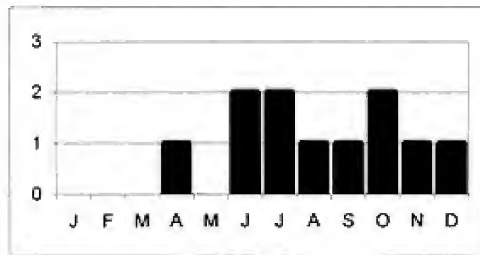
26 Jul 1997 off Port O'Connor, Calhoun Co. (TBRC 1997–119)

29 Jun 1998 Mustang Is., Nueces Co. (*TCWC 13368; TBRC 1998–94; TPRF 1619)

30 Jul 1998 St. Joseph's Is., Aransas Co. (*TCWC 13369; TBRC 1998–115; TPRF 1677)

11 Dec 2000 St. Charles Bay, Aransas Co. (TBRC 2002–45; TPRF 2077)

6 Oct 2002 off Port Aransas, Aransas Co. (TBRC 2002–108; TPRF 2078)

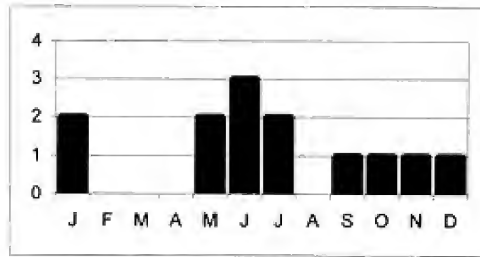


SOOTY SHEARWATER (*Puffinus griseus*)

Sight or photo records of Sooty or Short-tailed Shearwaters are difficult to positively identify. The TBRC has voted to label all such records as Sooty Shearwater until a record of Short-tailed Shearwater is documented in the Gulf of Mexico or Atlantic Ocean.

Accepted records - 13

19 Jun 1952	Port Aransas, Nueces Co. (*TCWC 9081)
23 Jul 1976	Gilchrist, Galveston Co. (*SFASU 2636)
19 May 1988	Mustang Is., Nueces Co. (TBRC 1988-234; TPRF 680)
20 Jun 1989	N. Padre Is., Nueces Co. (*CCM 90-A-0024; TBRC 2001-55; TPRF 1898)
12 May 1990	N. Padre Is., Kleberg Co. (*WWF 2402; TBRC 1991-11; TPRF 939)
26 Dec 1990	Galveston, Galveston Co. (TBRC 1991-1)
2 Jan 1991	San Luis Pass, Brazoria Co. (*LSUMNS 151916; TBRC 1991-45; TPRF 988)
6 Jan 1992	Boca Chica, Cameron Co. (TBRC 1992-27)
11 Jun 1993	Mustang Is., Nueces Co. (*TCWC 13000; TBRC 1993-107; TPRF 1166)
10 Oct 1993	Mustang Is., Nueces Co. (*TCWC 13001; TBRC 1993-140; TPRF 1238)
23 Jul 1994	off Port O'Connor, Calhoun Co. (TBRC 1994-129; TPRF 1275)
16 Sep 1995	San Jose Is., Aransas Co. (TBRC 1997-60; TPRF 1702)
5 Nov 1999	off N. Padre Is., Kenedy Co. (TBRC 2000-19)

**MANX SHEARWATER** (*Puffinus puffinus*)

Accepted records - 6

15 Feb 1975	N. Padre Is., Nueces Co. (*CCM 84A007)
11 Aug 1980	Mustang Is., Nueces Co. (*WFVZ 50099)
13 Nov 1984	Mustang Is., Nueces Co. (*TCWC 12163; TBRC 1988-139; TPRF 628)
7 Oct 1987	Mustang Is., Nueces Co. (*TCWC 12162; TBRC 1988-138; TPRF 629)
21 Jun 1993	Mustang Is., Nueces Co. (TBRC 1993-101; TPRF 1170)
13 Sep 1997	N. Padre Is., Kenedy Co. (*TCWC 13329; TBRC 1997-147; TPRF 1630)

WILSON'S STORM-PETREL (*Oceanites oceanicus*)

Accepted records - 1

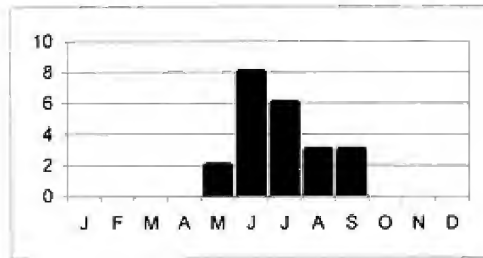
8 Aug 1979	off Port Aransas, Nueces Co. (WWF ph 52; TPRF 567)
------------	--

LEACH'S STORM-PETREL (*Oceanodroma leucorhoa*)

Accepted records - 22

31 May 1970	Corpus Christi, Nueces Co. (TPRF 7)
25 Jun 1975	N. Padre Is., Kleberg Co. (*WWF 1964)
9 Jul 1976	Corpus Christi, Nueces Co. (*CCM 76A136)
23 Jul 1976	Freeport, Brazoria Co. (*Houston MNS 13)
1 Jun 1991	off Port Aransas, Nueces Co. (TBRC 1991-69)
15 Jun 1991	off Port Aransas, Nueces Co. (TBRC 1991-78)

20 Aug 1991	Port Aransas, Nueces Co. (*TCWC 12818; TBRC 1992-113; TPRF 1411)
12 Sep 1992	off Port Isabel, Cameron Co. (TBRC 1992-121)
28 May 1994	off Port O'Connor, Calhoun Co. (TBRC 1994-95; TPRF 1267)
23 Jul 1994	off Port O'Connor, Calhoun Co. (TBRC 1994-127; TPRF 1277)
20 Aug 1994	off Port O'Connor, Calhoun Co. (TBRC 1994-139)
24 Sep 1994	off Port O'Connor, Calhoun Co. (TBRC 1994-152; TPRF 1299)
24 Jun 1995	off Port O'Connor, Calhoun Co. (TBRC 1995-83; TPRF 1370)
30 Sep 1995	off Port O'Connor, Calhoun Co. (TBRC 1995-140; TPRF 1512)
29 Jun 1996	off Port O'Connor, Calhoun Co. (TBRC 1996-195; TPRF 1643)
7 Jun 1997	near Bob Hall Pier, Kleberg Co. (*TCWC 13327; TBRC 1997-130; TPRF 1652)
28 Jun 1997	off Port O'Connor, Calhoun Co. (TBRC 1997-103)
26 Jul 1997	off Port O'Connor, Calhoun Co. (TBRC 1997-122)
23 Aug 1997	off Port O'Connor, Calhoun Co. (TBRC 1997-139)
6 Jun 1999	off Freeport, Brazoria Co. (TBRC 1999-67)
18 Jul 2001	off Port Isabel, Cameron Co. (TBRC 2001-138)
24 Jul 2002	off Port Isabel, Cameron Co. (TBRC 2002-96)



RED-BILLED TROPICBIRD (*Phaethon aethereus*)

Accepted records - 6

13 Nov 1985	Houston, Harris Co. (*TCWC 11576)
29 Apr 1989	Zapata, Zapata Co. (*TCWC 12437; TBRC 1989-134; TPRF 762)
21 Sep 1996	off Port O'Connor, Calhoun Co. (TBRC 1996-118; TPRF 1944)
8 Jun 1997	near Bob Hall Pier, Kleberg Co. (*TCWC 13339; TBRC 1997-133; TPRF 1653)
5 Sep 1998	off Port O'Connor, Calhoun Co. (TBRC 1998-126)
18 Jul 2001	off Port Isabel, Cameron Co. (TBRC 2001-107)

BLUE-FOOTED BOOBY (*Sula nebouxii*)

Accepted records - 1

2 Jun 1993-6 Oct 1994	Granite Shoals, Burnet/Llano Co.
10 Dec 1994-12 Apr 1995	L. Bastrop, Bastrop Co. (TBRC 1993-110; TPRF 1168)

BROWN BOOBY (*Sula leucogaster*)

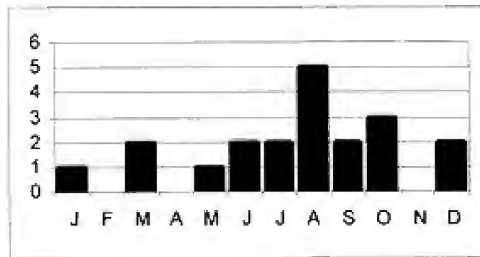
Accepted records - 19

19 Aug 1967	N. Padre Is., Kleberg Co. (WWF ph P-1)
20 Sep 1971	Port Aransas, Nueces Co. (*WFVZ 50106; WWF ph P-15)
30 May 1974	Port Isabel, Cameron Co. (TBRC 2001-100)
30 Aug 1975	off Port Aransas, Nueces Co. (TBRC 1977-8)



This Blue-footed Booby remained in Texas for more than a year, providing the only documented record for the state. This photo was taken 7 January 1995 at Lake Bastrop, Bastrop County. Photo by Mark W. Lockwood.

20 Aug 1977	Port Aransas, Nueces Co. (TBRC 1988-52)
3 Jun 1979	Sundown Is., Matagorda Co. (TPRF 175)
11 Aug 1980	Mustang Is., Nueces Co. (*WVZ 50107)
23-24 Aug 1980	Port Aransas, Nueces/Aransas Co. (TPRF 280)
25 Jul 1983	Galveston Co. (TBRC 1992-156)
20 Dec 1987	Boca Chica, Cameron Co. (TBRC 1988-127)
24 Sep 1988	Laguna Madre, Cameron Co. (TBRC 1989-139)
15 Mar 1989	Matagorda, Matagorda Co. (TBRC 1989-59)
31 Mar 1990	Freeport, Brazoria Co. (TBRC 1990-67)
23 Jan 1994	Rancho Buena Vista, Cameron Co. (TBRC 1995-143; TPRF 1437)
14 Dec 1996	Galveston, Galveston Co. (TBRC 1997-6)
30 Oct 1999	off N. Padre Is., Kenedy Co. (TBRC 1999-107; TPRF 1798)
18 Oct 2000	off Padre Is., Kenedy Co. (TBRC 2001-35)
30 Jun-16 Jul 2001	S. Padre Is., Cameron Co. (TBRC 2001-98; TPRF 1899)
13 Sep 2002	S. Padre Is., Cameron Co. (TBRC 2002-102; TPRF 2047)



RED-FOOTED BOOBY (*Sula sula*)

Accepted records - 1

27 Mar 1983 off Galveston, Galveston Co. (TBRC 1988–258; TPRF 758)

JABIRU (*Jabiru mycteria*)

Accepted records - 7

11 Aug-8 Sep 1971 Escondido L., Kleberg Co. (TPRF 22) (Haucke and Kiel 1973)
 Sep 1972 La Sal Vieja, Hidalgo Co. (*U.T. Pan American)
 26–27 Jul 1973 Harris Co. (*TCWC 9524) (Arnold 1978a)
 29 Oct 1979 Encino, Brooks Co. (TBRC 1989–137; TPRF 763)
 6–18 Sep 1981 Oso Bay, Corpus Christi, Nueces Co. (TBRC 1981–6; TPRF 251) (Clark 1982)
 5–8 Aug 1985 near Bentsen SP, Hidalgo Co. (TPRF 356)
 11 Aug 1997 Laguna Atascosa NWR, Cameron Co. (TBRC 1997–138; TPRF 1656)

GREATER FLAMINGO (*Phoenicopterus ruber*)

Accepted records - 4

26 Apr 1978+ South Bird Is., Kleberg Co. (TPRF 219) (Chapman, Buckley, and Buckley 1979) What is presumed to be the same bird was present at same location in 1979, 1980, 1981, and 1982.
 5 Apr-6 Jul 2000 Aransas Bay, Aransas Co. (TBRC 2000–49; TPRF 1900)
 15 Apr 2000 Calhoun Co. (TBRC 2000–50; TPRF 1901)
 28 Apr 2001 Matagorda Is., Calhoun Co. (TBRC 2001–92; TPRF 2024)

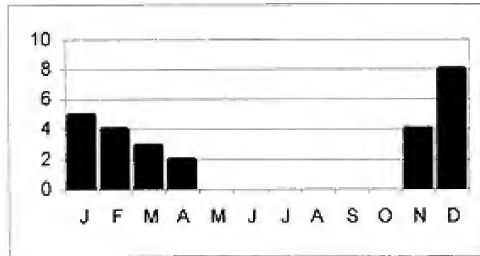
BRANT (*Branta bernicla*)

Accepted records - 20

28 Dec 1956 near Vernon, Wilbarger Co. (TBRC 1989–240; TPRF 818) (Henderson 1960)
 Nov 1971 Katy Prairie, Fort Bend Co. (*TCWC 13337; TBRC 1998–43; TPRF 1563)
 2 Jan 1976 Aransas NWR, Aransas Co. (TBRC 1988–68)
 17–18 Apr 1981 Bolivar Flats, Galveston Co. (TPRF 236)
 5 Dec 1981 Hereford, Deaf Smith Co. (TPRF 301)
 6 Mar 1982 near Dinero, Live Oak Co. (TBRC 1982–7)
 27 Dec 1982 Hereford, Deaf Smith Co. (TPRF 296)
 Dec 1983 Waller Co. (TBRC 1993–139; TPRF 1175)
 13 Dec 1986 High Is., Galveston Co. (TBRC 1989–74)
 20 Nov 1987–23 Feb 1988 Hagerman NWR, Grayson Co. (TBRC 1988–82; TPRF 598)
 27 Jan 1994 Ransom Canyon, Lubbock Co. (TBRC 1994–58)
 25 Nov 1994 Lubbock, Lubbock Co. (TBRC 1994–174; TPRF 1314)
 8 Jan 1995 Anahuac NWR, Chambers Co. (TBRC 1995–9)
 15 Jan 1995 Port Aransas, Nueces/Aransas Co. (TBRC 1995–10)
 21 Feb-5 Mar 1995 near Katy, Harris Co. (TBRC 1995–20)
 26 Feb-20 Apr 1996 Lubbock, Lubbock Co. (TBRC 1996–60; TPRF 1485)
 23 Dec 1996 L. Ray Roberts, Denton Co. (TBRC 1997–1)
 Dec 1999 near Etter, Moore Co. (TBRC 2001–54; TPRF 1902)

28 Nov 2000
4 Feb 2001

L. Rita Blanca, Hartley Co. (TBRC 2000–135)
Lubbock, Lubbock Co. (TBRC 2001–128; TPRF 1871)



TRUMPETER SWAN (*Cygnus buccinator*)

Accepted records - 4

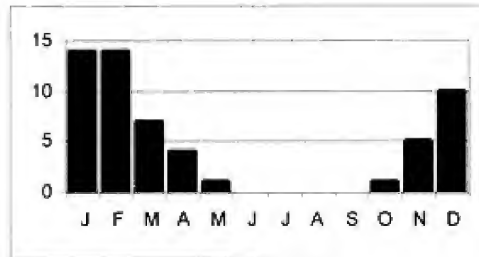
28 Dec 1989–14 Jan 1990 Falcon Dam, Starr Co. (TBRC 1990–9; TPRF 936)
8 Apr 1993 near Vega, Oldham Co. (TBRC 1996–15; TPRF 1521)
7–25 Dec 2000 northeastern Hemphill Co. (TBRC 2000–141; TPRF 1946)
2 Jan–3 Mar 2002 Brazoria NWR, Brazoria Co. (TBRC 2002–7; TPRF 1978)

EURASIAN WIGEON (*Anas penelope*)

Accepted records - 35

16 Nov 1976 Hudspeth Co. (TBRC 1988–192; TPRF 656)
11 Feb 1979 Clint, El Paso Co. (TBRC 1988–147; TPRF 658)
14 Apr 1979 Anahuac NWR, Chambers Co. (TBRC 1990–51)
27 Nov 1981–21 Mar 1982 Clint, El Paso Co. (TPRF 295)
18 Mar–11 Apr 1985 Hudspeth Co. (TBRC 1988–13; TPRF 560)
3 Jan 1988 Baffin Bay, Kleberg Co. (TBRC 1988–183; TPRF 654)
30 Dec 1989–13 Jan 1990 Santa Margarita Ranch, Starr Co. (TBRC 1990–6; TPRF 846)
4–8 Feb 1990 Clint, El Paso Co. (TBRC 1990–27; TPRF 892)
9–10 Feb 1990 L. Sam Rayburn, Nacogdoches Co. (TBRC 1990–59)
20 Jan 1991 Nacogdoches, Nacogdoches Co. (TBRC 1991–33)
27 Jan–3 Feb 1991 Cameron Co. (TBRC 1991–34)
17 Feb–2 Mar 1992 Funston, Jones Co. (TBRC 1992–82)
27 Jan 1993 Fort Hancock, Hudspeth Co. (TBRC 1993–50; TPRF 1147)
8 May 1993 Fort Bliss, El Paso Co. (TBRC 1993–98)
24–29 Oct 1993 Southside WTP, Dallas Co. (TBRC 1993–137; TPRF 1164)
1 Nov 1994–23 Jan 1995 Laguna Atascosa NWR, Cameron Co. (TBRC 1994–169; TPRF 1311)
23–30 Nov 1994 L. Marvin, Hemphill Co. (TBRC 1994–171; TPRF 1306)
20 Dec 1994–11 Mar 1995 Amarillo, Potter Co. (TBRC 1995–7; TPRF 1330)
17 Jan–18 Feb 1995 Fort Hancock, Hudspeth Co. & Tomillo Res., El Paso Co. (TBRC 1995–38; TPRF 1331)
24 Feb 1995 King Ranch, Kleberg Co. (TBRC 1995–67; TPRF 1358)
13 Nov 1995–21 Mar 1996 Amarillo, Potter Co. (TBRC 1995–146; TPRF 1429)
2 Dec 1995 Feather L., El Paso Co. (TBRC 1996–47)
2–14 Dec 1995 L. Marvin, Hemphill Co. (TBRC 1996–57)

12 Dec 1995–19 Jan 1996	Tornillo Res., El Paso Co. (TBRC 1995–162; TPRF 1405)
12 Feb–7 Mar 1997	Anzalduas Park, Hidalgo Co. (TBRC 1997–52; TPRF 1582)
24 Apr 1997	Fort Bliss, El Paso Co. (TBRC 1997–97; TPRF 1503)
Jan 1998	near Del Rio, Val Verde Co. (TBRC 1998–92; TPRF 1718)
20 Jan–28 Feb 1999	near Laguna Vista, Cameron Co. (TBRC 1999–24; TPRF 1730)
6 Apr 2000	Imperial Res., Pecos Co. (TBRC 2000–35)
12 Dec 2000	Peach Point WMA, Brazoria Co. (TBRC 2001–121; TPRF 1945)
3 Feb 2001	Lower Rio Grande Valley NWR, Hidalgo Co. (TBRC 2001–43)
15–19 Dec 2001	Fort Worth, Tarrant Co. (TBRC 2002–03; TPRF 1979)
17 Feb 2002	Shipp L., Bastrop Co. (TBRC 2002–37)
21–31 Mar 2002	Twin Buttes Res., Tom Green Co. (TBRC 2002–35; TPRF 2081)
7–23 Jan 2003	Tornillo Res., El Paso Co. (TBRC 2003–7; TPRF 2082)



AMERICAN BLACK DUCK (*Anas rubripes*)

Accepted records - 8

15 Jan 1890	Corpus Christi, Nueces Co. (*AMNH 79453)
23 Jan 1916	High Is., Galveston Co. (*AMNH 350531)
15 Apr 1936	Dallas Co. (*Dallas MNH 70)
7 Dec 1937	Gulf Coast (probably Nueces Co.) (*SMU 6440)
30 Dec 1972	Sheldon L., Harris Co. (*TCWC 13716 & 13717)
10 Dec 1974	Cherokee WMA, Cherokee Co. (*SFASU 2251; TPRF 1392)
Dec 1991	Smith Point, Chambers Co. (TBRC 1994–15; TPRF 1197)
9 Dec 1998–2 Jan 1999	Village Creek, Arlington, Tarrant Co. (TBRC 1999–3; TPRF 1778)

WHITE-CHEEKED PINTAIL (*Anas bahamensis*)

Accepted records - 1

20 Nov 1978–15 Apr 1979	Laguna Atascosa NWR, Cameron Co. (TPRF 141)
-------------------------	---

GARGANEY (*Anas querquedula*)

Accepted records - 4

11 Apr–17 May 1985	Riviera, Kleberg Co. (TPRF 354)
29 Apr–6 May 1994	Presidio, Presidio Co. (*TCWC 13170; TBRC 1994–77; TPRF 1296)
17 Apr 1998	Bolivar Pen., Galveston Co. (TBRC 1998–93)
4–7 Apr 2001	King Ranch, Kleberg Co. (TBRC 2001–88; TPRF 1968)

KING EIDER (*Somateria spectabilis*)

Accepted records - 1

30 Apr-9 May 1998 Quintana, Brazoria Co. (TBRC 1998-59; TPRF 1729)

HARLEQUIN DUCK (*Histrionicus histrionicus*)

Accepted records - 2

30 Jan-4 Feb 1990 S. Padre Is., Cameron Co. (TBRC 1990-21; TPRF 858)
5 Jan 1995 L. Tawakoni, Van Zandt Co. (TBRC 1995-12)**BARROW'S GOLDENEYE** (*Bucephala islandica*)

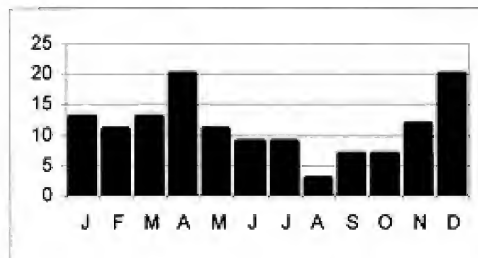
Accepted records - 7

6 Nov 1958 Greenville, Hunt Co. (TBRC 1989-202; TPRF 787) (Miller 1959)
3-31 Dec 1991 La Porte, Harris Co. (TBRC 1991-140; TPRF 1006)
returning 17 Dec 1992-19 Jan 1993 (TBRC 1992-169)
19-21 Nov 1993 L. O'The Pines, Marion Co. (TBRC 1993-146)
20 Dec 1995 Tornillo Res., El Paso Co. (TBRC 1995-163; TPRF 1406)
11-12 Dec 1998 Arlington, Tarrant Co. (TBRC 1999-01; TPRF 1980)
2 Jan-22 Feb 2002 Loy L., Grayson Co. (TBRC 2002-12; TPRF 1981).**MASKED DUCK** (*Nomonyx dominicus*)

Accepted records - 62

unk date Faysville, Hidalgo Co. (*U.T. Pan American; TPRF 1674)
18 Jul 1891 Brownsville, Cameron Co. (*AMNH 79555) (Griscom & Crosby 1926)
22 Jul 1891 Brownsville, Cameron Co. (*USNM 141451)
2 Jan 1927 Eagle Nest L., Brazoria Co. (*USNM 300115)
4-6 Sep 1937 Brownsville, Cameron Co. (TBRC 2001-136) (Loetscher 1956)
1 Sep-19 Nov 1967 Anahuac NWR, Chambers Co. (TBRC 1990-52; TPRF 1751)
Oct-Dec 1967 near Anahuac NWR, Chambers Co. (*TCWC 11150)
31 Jan 1968 Laguna Atascosa NWR, Cameron Co. (*USNM 531714)
16 Oct-16 Nov 1968 Brazoria NWR, Brazoria Co. (TBRC 1999-51; TPRF 1726)
10 Nov-5 Dec 1968 Corpus Christi, Nueces Co. (*WWF 1532; TPRF 293)
23-30 Dec 1975 Santa Ana NWR, Hidalgo Co. (TBRC 1992-147)
3 Apr 1976 Santa Ana NWR, Hidalgo Co. (TBRC 1991-100; TPRF 997)
11 Jul 1976 Fort Bliss, El Paso, El Paso Co. (TBRC 1999-42)
9 Jan 1977 Hargill, Hidalgo Co. (TBRC 1994-48; TPRF 1235)
29 Dec 1977-15 Jan 1978 Anahuac NWR, Chambers Co. (TBRC 1990-53)
20 Sep-early Oct 1980 Hayes Co. (TPRF 211)
23 Dec 1980 n. Hidalgo Co. (*U.T. Pan American; TPRF 1675)
23 Nov 1986 Shamrock, Willacy Co. (*U.T. Pan American; TPRF 1676)
28 Mar-18 Jun 1988 San Benito, Cameron Co. (TBRC 1988-196; TPRF 657)
26 Apr 1989 Brazoria NWR, Brazoria Co. (TBRC 1989-172)
23 Nov 1989 Anahuac NWR, Chambers Co. (TBRC 1994-27)
24 Jun 1990 Hidalgo Co. (TBRC 1990-119)
14 Jul 1991 Hidalgo Co. (TBRC 1991-129)

24 Apr 1992	Laguna Larga, Kleberg Co. (TBRC 1992-68)
8 Oct 1992-21 Aug 1993	Welder Refuge, San Patricio Co. (TBRC 1993-62; TPRF 1150) (Blankenship and Anderson 1993)
8 Nov 1992	Santa Ana NWR, Hidalgo Co. (TBRC 1992-148)
14 Dec 1992-3 Jan 1993	Seadrift, Calhoun Co. (TBRC 1992-161; TPRF 1123)
20 Dec 1992-Mar 1993	Brazos Bend SP, Fort Bend Co. (TBRC 1993-1; TPRF 1139)
20 Dec 1992-1 Jan 1993	Corpus Christi, Nueces Co. (*TCWC 12926; TBRC 1993-52; TPRF 1162)
25-27 Dec 1992	Santa Ana NWR, Hidalgo Co. (TBRC 1993-12; TPRF 1137)
27 Feb 1993	Riviera, Kleberg Co. (TBRC 1993-84)
11-14 Mar 1993	Kleberg Co. (TBRC 1993-46; TPRF 1155)
12 Mar-30 Apr 1993	King Ranch, Kleberg Co. (TBRC 1993-85; TPRF 1138)
2 Feb-26 May 1993	McFaddin NWR, Jefferson Co. (TBRC 1993-88)
5 Apr-5 May 1993	Kenedy Co. (TBRC 1993-79; TPRF 1117)
10 Jun 1993	Huntsville, Walker Co. (TBRC 1993-103; TPRF 1169)
11-20 Sep 1993	Riviera, Kleberg Co. (TBRC 1994-45)
20 Sep 1993-15 Apr 1994	near Norias, Kenedy Co. (TBRC 1993-142; TPRF 1239)
11 Dec 1993-28 Apr 1994	Brazos Bend SP, Fort Bend Co. (TBRC 1994-2; TPRF 1218)
11-25 Dec 1993	Attwater Prairie Chicken NWR, Colorado Co. (TBRC 1994-32; TPRF 1224)
17 Dec 1993	Aransas NWR, Aransas Co. (TBRC 1994-33)
3 Apr 1994	Brazoria NWR, Brazoria Co. (TBRC 1994-78; TPRF 1323)
20 Apr-30 Jul 1994	Laguna Atascosa NWR, Cameron Co. (TBRC 1994-72; TPRF 1292)
29 Jul-4 Dec 1994	Attwater Prairie Chicken NWR, Colorado Co. (TBRC 1994-143; TPRF 1302)
19 Nov 1994-15 May 1995	Brazos Bend SP, Fort Bend Co. (TBRC 1995-28; TPRF 1324)
18 Dec 1994	Brazoria NWR, Brazoria Co. (TBRC 1995-15; TPRF 1319)
25 Dec 1994	Sinton, San Patricio Co. (TBRC 1995-5)
25 Feb 1995	Anahuac NWR, Chambers Co. (TBRC 1995-63; TPRF 1357)
14 Apr-Sep 1995	Santa Ana NWR, Hidalgo Co. (TBRC 1995-103; TPRF 1403)
12 Nov 1995- thru Apr 1996	Brazos Bend SP, Fort Bend Co. (TBRC 1996-34; TPRF 1466)
25-26 Apr 1996	Santa Ana NWR, Hidalgo Co. (TBRC 1996-90; TPRF 1494)
15-20 Jun 1996	Corpus Christi, Nueces Co. (TBRC 1996-112)
22 Dec 1996-2 Mar 1997	Brazos Bend SP, Fort Bend Co. (TBRC 1997-28; TPRF 1502)
24 Apr 1997	Galveston, Galveston Co. (TBRC 1999-120)
28 Apr 1997	near Galveston, Galveston Co. (TBRC 1997-84)
23 Feb-4 Apr 1998	Cullinan Park, Fort Bend Co. (TBRC 1998-30; TPRF 1594)
16 Apr-30 May 1998	near Laguna Atascosa NWR, Cameron Co. (TBRC 1998-140; TPRF 1664)
10-17 May 1998	Riviera, Kleberg Co. (TBRC 1998-106)
20 Mar 1999	Kenedy Ranch, Kenedy Co. (TBRC 1999-35)
7-14 Jun 2001	Sabal Palm Sanctuary, Cameron Co. (TBRC 2001-106)
21-27 Jul 2001	Rockport, Aransas Co. (TBRC 2001-115; TPRF 1948)
4 May-22 Jul 2002	Sabal Palm Sanctuary, Cameron Co. (TBRC 2002-71; TPRF 2048)



SNAIL KITE (*Rostrhamus sociabilis*)

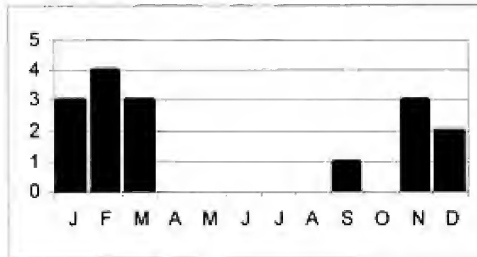
Accepted records - 2

22–26 Jul 1977 L. Alice, Jim Wells Co. (TPRF 127)
 17–29 May 1998 near Bentsen SP, Hidalgo Co. (TBRC 1998–119; TPRF 1724)

NORTHERN GOSHAWK (*Accipiter gentilis*)

Accepted records - 16

14 Feb 1937 Kaufman Co. (*Dallas MNH 6371)
 12 Jan 1973 Sheldon Res., Harris Co. (TBRC 1989–31)
 29–30 Dec 1982 Rio Grande Village, BBNP, Brewster Co. (TBRC 1988–5)
 20 Jan 1989 BBNP, Brewster Co. (TBRC 1989–20)
 13 Nov 1989 El Paso, El Paso Co. (TBRC 1989–244; TPRF 812)
 16 Mar 1994 Gillette, Kames Co. (TBRC 1994–66; TPRF 1338)
 3 Feb 1995 Sunray, Moore Co. (TBRC 1995–16)
 18 Mar 1995 Klondike, Delta Co. (TBRC 1995–91)
 18 Mar 1995 Grand Prairie, Dallas Co. (TBRC 1995–52)
 1 Nov 1995 Buffalo L. NWR, Randall Co. (TBRC 1998–137; TPRF 1663)
 11 Nov 1995 Austin, Travis Co. (TBRC 1995–147)
 20 Feb 1997 hwy 3395, Moore/Hunt Co. (TBRC 1997–155)
 27 Dec 1997 Buffalo L. NWR, Randall Co. (TBRC 1998–2)
 9 Sep 1999 BBNP, Brewster Co. (TBRC 1999–85)
 21 Feb 2001 Hueco Tanks SHS, El Paso Co. (TBRC 2001–102)
 27 Jan 2002 FM 2210, Randall Co. (TBRC 2002–39)

**CRANE HAWK** (*Geranospiza caerulescens*)

Accepted records - 1

20 Dec 1987–9 Apr 1988 Santa Ana NWR, Hidalgo Co. (TBRC 1988–87; TPRF 595)

ROADSIDE HAWK (*Buteo magnirostris*)

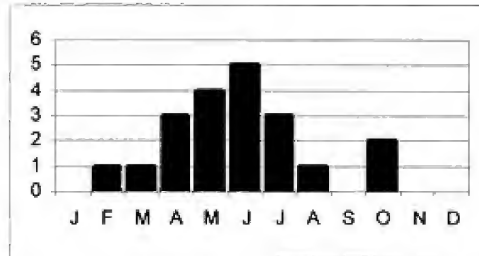
Accepted records - 4

2 Apr 1901 Cameron Co. (*Ohio State Museum 5676; TPRF 1943) (Trautman 1964)
 7 Jan 1979 Santa Margarita Ranch, Starr Co. (TBRC 1989–187)
 7 Oct 1982–mid Feb 1983 Bentsen SP, Hidalgo Co. (TPRF 283)
 11–15 Dec 2000 Bentsen SP, Hidalgo Co. (TBRC 2001–06; TPRF 1969)

SHORT-TAILED HAWK (*Buteo brachyurus*)

Accepted records - 14

22–28 Jul 1989	Santa Margarita Ranch, Starr Co. (TBRC 1989–179; TPRF 833)
8 Mar 1994	Bentsen SP, Hidalgo Co. (TBRC 1994–49; TPRF 1229)
4 Oct 1994	Santa Ana NWR, Hidalgo Co. (TBRC 1994–162)
24 May–16 Jun 1995	Lost Maples SNA, Bandera Co. (TBRC 1995–71)
30 May 1995	Santa Ana NWR, Hidalgo Co. (TBRC 1995–76; TPRF 1366)
6 Jun 1995	near Dripping Springs, Hayes Co. (TBRC 1995–78)
4 Jun–27 Jul 1996	Santa Ana NWR, Hidalgo Co. (TBRC 1996–80; TPRF 1500)
15 Feb 1997	Santa Ana NWR, Hidalgo Co. (TBRC 1997–41)
27 Apr 1998	Bentsen SP., Hidalgo Co. (TBRC 1998–58)
21 May–30 Jun 1998	Santa Ana NWR, Hidalgo Co. (TBRC 1998–77)
6–20 Apr 1999	Lost Maples SNA, Bandera Co. (TBRC 1999–50)
20 Oct 1999	Corpus Christi, Nueces Co. (TBRC 1999–119)
28 April 2002	Chisos Mountains, BBNP, Brewster Co. (TBRC 2002–65)
31 May–10 Aug 2002	Santa Ana NWR, Hidalgo Co. (TBRC 2002–68; TPRF 2049)

**COLLARED FOREST-FALCON** (*Micrastur semitorquatus*)

Accepted records - 1

22 Jan–24 Feb 1994	Bentsen SP, Hidalgo Co. (TBRC 1994–40; TPRF 1227; TBSL 206–01)
--------------------	--

GYRFALCON (*Falco rusticolus*)

Accepted records - 1

21 Jan 2001–7 Apr 2002	Lubbock, Lubbock Co. (TBRC 2002–16; TPRF 1982)
------------------------	--

PAINT-BILLED CRAKE (*Neocrex erythrops*)

Accepted records - 1

17 Feb 1972	near College Station, Brazos Co. (*TCWC 8930) (Arnold 1978b)
-------------	--

SPOTTED RAIL (*Pardirallus maculatus*)

Accepted records - 1

9 Aug 1977	Brownwood, Brown Co. (*TCWC 10400) (Parkes, Kibbe and Roth 1978)
------------	--

DOUBLE-STRIPED THICK-KNEE (*Burhinus bistriatus*)

Accepted records - 1

5 Dec 1961 King Ranch, Kleberg Co. (*USNM 478866) (MacInnes and Chamberlain 1963)

COLLARED PLOVER (*Charadrius collaris*)

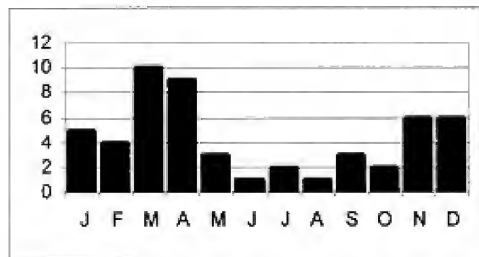
Accepted records - 1

9–12 May 1992 Uvalde, Uvalde Co. (TBRC 1992–70; TPRF 1099)

NORTHERN JACANA (*Jacana spinosa*)

Accepted records - 30

29 Apr 1889	Brownsville, Cameron Co. (*USNM 116752)
24 Apr 1891	Columbus, Colorado Co. (*PMNH 610 & 611)
24 Jul 1891	Brownsville, Cameron Co. (*USNM 141059)
25 Feb 1897	Cameron Co. (*CAS 44120)
24 Mar 1897	Cameron Co. (*CAS 44119)
1 Jan 1930	Mitchell L., Bexar Co. (*WMM 135)
4 Sep 1937	Brownsville, Cameron Co. (TBRC 2001–137) (Loetscher 1956)
26 Nov 1964	Santa Ana NWR, Hidalgo Co. (TBRC 1990–60; TPRF 894)
1 Aug-5 Sep 1968	Vattmannville, Kleberg Co. (WWF ph P-29; TPRF 884)
28 Mar 1972	Brazoria Co. (TBRC 1989–81)
22 Dec 1972	Maner L., Brazoria Co. (TBRC 1991–103)
20 Dec 1974-Mar 1975	Welder Ref, San Patricio Co. (TBRC 1992–108)
Jul 1975	Santa Ana NWR, Hidalgo Co. (TBRC 1991–96; TPRF 1010)
31 Mar-12 Apr 1981	Gonzales, Gonzales Co. (TPRF 235)
7–11 Oct 1982	near Marathon, Brewster Co. (TPRF 404) (Williams 1987)
10–30 Nov 1982	Santa Ana NWR, Hidalgo Co. (TBRC 1988–128; TPRF 639)
19 Mar 1983	Falcon Dam, Starr Co. (TBRC 2002–92)
24–30 Nov 1985	Welder Ref, San Patricio Co. (TBRC 1988–119)
Nov-28 Dec 1985	Bentsen SP, Hidalgo Co. (TBRC 1988–249)
14–31 Mar 1986	Refugio, Refugio Co. (TBRC 1988–116)
11 May-10 Jun 1986	Kerrville, Kerr Co. (TPRF 393)
12 Nov-11 Dec 1989	Austin, Travis Co. (TBRC 1989–239; TPRF 810)
6 Nov 1992–15 Apr 1993	Falcon Dam, Starr Co. (TBRC 1992–131; TPRF 1100)
10 Dec 1992–22 Apr 1993	Seadrift, Calhoun Co. (TBRC 1992–159; TPRF 1125)
2 Jan 1993	Pharr, Hidalgo Co. (TBRC 1993–134)
12 Feb-early May 1993	Santa Ana NWR, Hidalgo Co. (TBRC 1993–26; TPRF 1153)
15 Mar-18 Apr 1993	Olmito, Cameron Co. (TBRC 1994–118; TPRF 1233)
25 Apr 1993	near Gonzales, Gonzales Co. (TBRC 1993–96)
25 Sep-16 Oct 1993	Santa Ana NWR, Hidalgo Co. (TBRC 1993–143; TPRF 1240)
5 Apr-10 May 1994	Santa Ana NWR, Hidalgo Co. (TBRC 1994–92; TPRF 1264)



SPOTTED REDSHANK (*Tringa erythropus*)

Accepted records - 1

28, 29 or 30 Sep 2000 Austin, Travis Co. (TBRC 2001-129; TPRF 1983)

WANDERING TATTLER (*Heteroscelus incanus*)

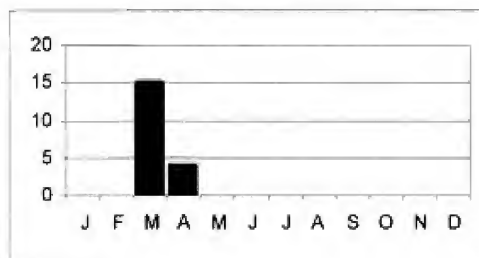
Accepted records - 1

23 Apr-8 May 1992 Galveston, Galveston Co. (TBRC 1992-64; TPRF 1090)

ESKIMO CURLEW (*Numenius borealis*)

Accepted records - 19

unk date	unk. Texas location (*AMNH 738187)
1861	unk. Texas location (*MUM B.09395)
23 Apr 1868	Long Point, Washington Co. (*USNM 011118)
8 Mar 1877	N. Padre Is., Nueces Co. (*AMNH 80026)
19 Mar 1878	Gainesville, Cooke Co. (*MCZ 171759)
17 Mar 1880	Gainesville, Cooke Co. (*FMNH 2143)
17 Mar 1880	Boerne, Kendall Co. (*MVZ 106841)
19 Mar 1881	Corpus Christi, Nueces Co. (*Topeka MNH 266)
22 or 25 Mar 1889	Brownsville, Cameron Co. (*British MNH 1965-M-2960)
26 Mar 1889	Brownsville, Cameron Co. (*British MNH 1965-M-2961)
27 Mar 1889	Brownsville, Cameron Co. (*British MNH 1891-10-20-1037)
28 Mar 1889	Brownsville, Cameron Co. (*British MNH 1891-10-20-1029)
28 Mar 1889	Brownsville, Cameron Co. (*British MNH 1891-10-20-1031)
28 Mar 1889	Brownsville, Cameron Co. (*British MNH 1891-10-20-1033)
2 Apr 1889	Brownsville, Cameron Co. (*British MNH 1889-10-20-1032)
28 Mar 1890	Brownsville, Cameron Co. (*British MNH 1891-10-20-1034)
13 Mar 1894	Brownsville, Cameron Co. (*MM 660)
22 Mar-26 Apr 1959	Galveston Is., Galveston Co. (TBRC 2000-125) (Emanuel 1962)
24 Mar-15 Apr 1962	Galveston Is., Galveston Co. (TPRF 790)

**SURFBIRD** (*Aphriza virgata*)

Accepted records - 7

13 Apr 1974 Padre Is. Nat'l. Seashore, Kleberg Co. (TPRF 327)

4–11 Apr 1975	Port Aransas, Nueces Co. (TBRC 1994–87; TPRF 1263)
21 Apr 1983	Port Aransas, Nueces Co. (TPRF 513)
16 Mar 1988	W. Galveston Is., Galveston Co. (TBRC 1988–222)
15–21 Apr 1994	N. Padre Is., Kleberg Co. (TBRC 1994–67; TPRF 1291)
10–15 Apr 1995	Fulton, Aransas Co. (TBRC 1995–41; TPRF 1333)
18–21 Apr 1995	Anahuac NWR, Chambers Co. (1995–61; TPRF 1356)

RED-NECKED STINT (*Calidris ruficollis*)

Accepted records - 1

17–22 Jul 1996	El Paso, El Paso Co. (TBRC 1996–94; TPRF 1447)
----------------	--

SHARP-TAILED SANDPIPER (*Calidris acuminata*)

Accepted records - 2

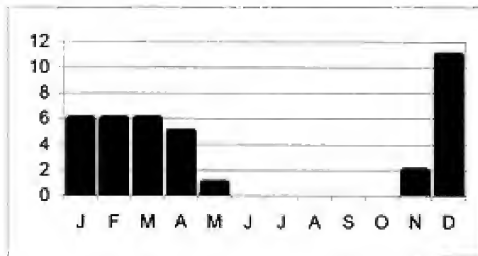
17–18 May 1991	Arlington, Tarrant Co. (TBRC 1991–56; TPRF 993)
21–22 Sep 1996	San Antonio, Bexar Co. (TBRC 1996–128)

PURPLE SANDPIPER (*Calidris maritima*)

It is not certain whether Purple and Rock Sandpipers can be safely separated in the field in basic plumage. It is the opinion of the TBRC that Texas records most likely pertain to Purple Sandpiper and all records have been listed as that species until further research shows differently. Further, it is a reasonable but unprovable expectation that some of the records from sequential winters at Freeport may represent episodes of returning bird(s).

Accepted records - 15

4–5 Dec 1953	Galveston, Galveston Co. (TPRF 506)
28 Dec 1968–1 Mar 1969	Freeport, Brazoria Co. (TPRF 27)
15–16 Dec 1975	Falcon Dam, Starr Co. (TBRC 1988–67)
29–30 Mar 1976	Austin, Travis Co. (TBRC 1988–33)
19–22 Dec 1976	Freeport, Brazoria Co. (TBRC 1988–252; TPRF 704)
12 Nov 1977–14 Jan 1978	Freeport, Brazoria Co. (TBRC 1988–251; TPRF 686)
21 Dec 1980–Feb 1981	Freeport, Brazoria Co. (TBRC 1988–250; TPRF 687)
17 Dec 1989–mid Apr 1990	Freeport, Brazoria Co. (TBRC 1990–8; TPRF 856)
16 Dec 1990–25 Apr 1991	Freeport, Brazoria Co. (TBRC 1990–154; TPRF 947)
28 Feb–10 Mar 1991	Boca Chica, Cameron Co. (TBRC 1991–41; TPRF 986)
20 Dec 1992	Freeport, Brazoria Co. (TBRC 1993–11)
19 Dec 1993	Freeport, Brazoria Co. (TBRC 1994–43)
16–28 Apr 1996	Port Aransas, Nueces Co. (TBRC 1996–58; TPRF 1508)
2–28 Apr 2002	Fulton, Aransas Co. (TBRC 2002–54; TPRF 1977)
29 Nov 2002–3 May 2003	Freeport, Brazoria Co. (TBRC 2002–119; TPRF 2080)



CURLEW SANDPIPER (*Calidris ferruginea*)

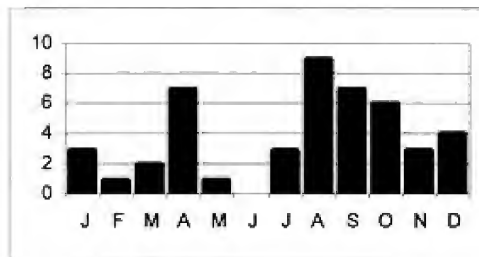
Accepted records - 9

28 Apr-8 May 1984	Crystal Beach, Galveston Co. (TPRF 314)
23-25 May 1985	San Antonio, Bexar Co. (TPRF 345)
1-9 Sep 1989	Austin, Travis Co. (TBRC 1989-196; TPRF 785)
3-7 May 1994	Santa Ana NWR, Hidalgo Co. (TBRC 1994-85; TPRF 1262)
24 Jun-7 Jul 1994	Bolivar Flats, Galveston Co. (TBRC 1994-120; TPRF 1274)
24 Nov 1994	Jefferson Co. (TBRC 1994-186)
22 May 1996	Santa Ana NWR, Hidalgo Co. (TBRC 1996-79; TPRF 1499)
30 Apr-2 May 1997	Galveston, Galveston Co. (TBRC 1997-80; TPRF 1625)
21-27 Aug 2002	Port Aransas, Nueces Co. (TBRC 2002-97; TPRF 2083)

RUFF (*Philomachus pugnax*)

Accepted records - 24

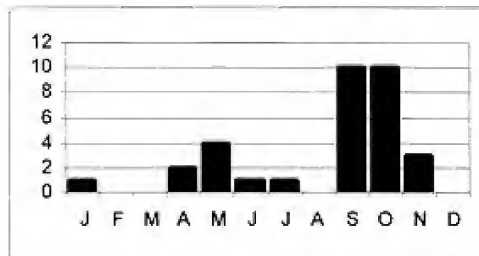
10 Dec 1902	S. Padre Is., Cameron Co. (*TCWC 8634)
19 Oct 1968-11 Jan 1969	Corpus Christi, Nueces Co. (WWF ph S-27; TPRF 568)
28 Aug 1978	Nacogdoches Co. (*SFASU 2551)
29 Mar-1 Apr 1981	Galveston, Galveston Co. (TBRC 1989-118)
11 Apr 1981	High Is., Galveston Co. (TBRC 1988-78)
5 Oct 1982	Austin, Travis Co. (TBRC 1988-6)
2 Jan-15 Mar 1984	San Antonio, Bexar Co. (TPRF 521) returning 13 Aug-6 Oct 1985
12-14 May 1984	Crystal Beach, Galveston Co. (TBRC 1988-226; TPRF 667)
24 Jul-21 Dec 1986	San Antonio, Bexar Co. (TBRC 1986-4; TPRF 409) returning 25 Jul-24 Nov 1987 returning 29 Aug-5 Oct 1988
20 Aug 1988	Austin, Travis Co. (TBRC 1988-241)
7 Sep 1989	High Island, Galveston Co. (TBRC 1989-201)
25 Jul-2 Aug 1992	Austin, Travis Co. (TBRC 1992-110; TPRF 1087)
18-21 Aug 1992	Austin, Travis Co. (TBRC 1992-112; TPRF 1098)
18-21 Apr 1993	Chambers Co. (TBRC 1993-86; TPRF 1158)
5-11 Sep 1993	El Paso, El Paso Co. (TBRC 1993-124; TPRF 1174)
21 Apr 1994	near Anahuac NWR, Chambers Co. (TBRC 1994-88)
29-30 Apr 1995	Arlington, Tarrant Co. (TBRC 1995-57; TPRF 1364)
30 Apr 1998	near Seadrift, Calhoun Co. (TBRC 1998-51)
29 Aug-4 Sep 1998	Arlington, Tarrant Co. (TBRC 1998-122; TPRF 1618)
28 Dec 2000-3 Jan 2001	El Canelo Ranch, Kenedy Co. (TBRC 2001-8; TPRF 1863)
4-7 Apr 2001	Brazoria, Brazoria Co. (TBRC 2001-91; TPRF 1984)



RED PHALAROPE (*Phalaropus fulicaria*)

Accepted records - 28

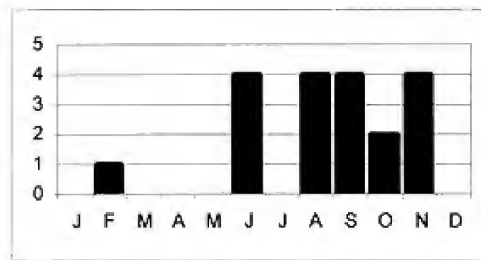
12 Oct 1933	Canyon, Randall Co. (*Panhandle-Plains Museum, Canyon) (Stevenson 1937)
15 Sep 1963	Austin, Travis Co. (TPRF 171)
6–20 Sep 1972	Dallas, Dallas Co. (*WFVZ 50327)
Jan 1975	Austin, Travis Co. (TPRF 167)
13 Sep-1 Nov 1975	Austin, Travis Co. (TPRF 98)
10 Oct 1976	near San Angelo, Tom Green Co. (*TCWC 10170)
18 Sep 1977	San Augustine Co. (*SFASU 2606)
15 Jul 1978	Laguna Atascosa NWR, Cameron Co. (TPRF 143)
12 Oct 1979	Nacogdoches, Nacogdoches Co. (TBRC 1992–76)
25–29 Sep 1980	Austin, Travis Co. (TBRC 1991–18; TPRF 943)
18 Sep 1982	Muleshoe NWR, Bailey Co. (TPRF 282)
26 May-1 Jun 1983	San Antonio, Bexar Co. (TBRC 1992–128)
20 Apr 1984	Bolivar Flats, Galveston Co. (TPRF 318)
6 May 1984	San Antonio, Bexar Co. (TBRC 1991–99)
13 Sep 1987	San Antonio, Bexar Co. (TBRC 1991–29; TPRF 946)
28 Oct 1987	El Paso, El Paso Co. (*TCWC 12817)
17–18 Oct 1988	Gibbons Creek Res., Grimes Co. (TPRF 614)
3–5 Oct 1988	Socorro, El Paso Co. (TBRC 1991–28; TPRF 953)
17 Sep-3 Oct 1991	El Paso, El Paso Co. (TBRC 1991–123; TPRF 990)
20–22 Sep 1991	Arlington, Tarrant Co. (TBRC 1991–124; TPRF 1025)
2 Nov 1991	Hagerman NWR, Grayson Co. (TBRC 1991–149)
3 Oct 1992	El Paso, El Paso Co. (TBRC 1992–125)
11 May 1996	Cooper L., Delta Co. (TBRC 1996–73; TPRF 1509)
17 Nov 1996	Fort Hancock, Hudspeth Co. (TBRC 1997–18)
10–15 Sep 1998	Arlington, Tarrant Co. (TBRC 1998–127; TPRF 1670)
5 Oct 1998	Abilene, Taylor Co. (TBRC 1998–135)
21 Apr 1999	San Luis Pass, Galveston Co. (TBRC 1999–40; TPRF 1725)
20 May 2002	South Padre Is., Cameron Co. (TBRC 2002–62; TPRF 1971)

**LONG-TAILED JAEGER** (*Stercorarius longicaudus*)

Accepted records - 17

27–30 Nov 1971	Gilchrist, Galveston Co. (TPRF 26)
31 Aug 1973	Kleberg Co. (*WWF 1940)
5 Sep 1973	Nacogdoches, Nacogdoches Co. (*SFASU 1860)
16 Aug 1975	Austin, Travis Co. (TBRC 1988–35)

26 Aug 1975	N. Padre Is., Kleberg Co. (TPRF 169)
30 Sep 1975	N. Padre Is., Kleberg Co. (TPRF 170)
20 Feb 1987	Aransas Bay, Aransas Co. (TBRC 1988–161)
6 Jun 1987	Port Aransas, Nueces Co. (*WFVZ 50394; TBRC 1990–62; TPRF 869)
8 Jun 1989	Port Isabel, Cameron Co. (*LSUMNS 159931; TBRC 1997–35; TPRF 1453)
17 Jun 1992	Port Isabel, Cameron Co. (*LSUMNS 164540; TBRC 1997–36; TPRF 1454)
4–18 Sep 1993	Kirby L., Abilene, Taylor Co. (TBRC 1994–61; TPRF 1288)
12–14 Jun 1996	McNary Res., Hudspeth Co. (TBRC 1996–85; TPRF 1510)
5 Nov 1996	L. Tawakoni, Rains/Van Zandt Co. (TBRC 1996–162)
30 Aug-2 Sep 2000	Fort Bliss, El Paso Co. (TBRC 2000–81; TPRF 1903)
2 Oct 2000	off Port O'Connor, Calhoun Co. (TBRC 2000–86)
3 Nov 2000	off North Padre Is., Kenedy Co. (TBRC 2001–37)
31 Oct-5 Nov 2001	L. Benbrook, Tarrant Co. (TBRC 2001–133; TPRF 1985)

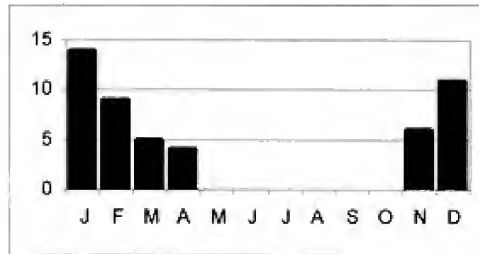


LITTLE GULL (*Larus minutus*)

Accepted records - 36

5 Apr 1965	Dallas Co. (*WFVZ 50416) (Pulich 1966)
9 Apr 1983	Lubbock, Lubbock Co. (TBRC 1984–9)
7–20 Apr 1984	Galveston Is., Galveston Co. (TPRF 511)
9 Feb 1986	San Luis Pass, Galveston/Brazoria Co. (TBRC 1992–144)
22 Dec 1986–21 Feb 1987	L. Ray Hubbard, Kaufman/Dallas Co. (TBRC 1987–5; TPRF 572)
21 Jan 1987	Granger L., Williamson Co. (TBRC 1987–6)
7 Mar 1988	Aransas NWR, Aransas Co. (TBRC 1988–179)
6–17 Dec 1988	Mountain Creek L., Dallas Co. (TBRC 1989–1; TPRF 744)
9 Jan-2 Mar 1989	L. Waco, McLennan Co. (TBRC 1989–10)
	returning 7–21 Jan 1990 (TBRC 1990–5)
	returning 16 Dec 1990–24 Jan 1991 (TBRC 1991–20)
	returning 1 Dec 1991–10 Jan 1992 (TBRC 1991–146)
	returning 1 Dec 1992–31 Jan 1993 (TBRC 1992–152; TPRF 1120)
	returning 12 Dec 1993–9 Jan 1994 (TBRC 1994–1)
25 Nov 1990	L. Ray Hubbard, Dallas Co. (TBRC 1990–146)
14 Mar 1991	Village Creek, Tarrant Co. (TBRC 1991–42)
12 Jan 1992	Mustang Is., Nueces Co. (TBRC 1992–11; TPRF 1081)
29 Jan 1992	Wright Patman L., Bowie Co. (TBRC 1992–38)
6–21 Mar 1992	Village Creek, Tarrant Co. (TBRC 1992–43; TPRF 1102)
5–27 Feb 1993	White Rock L., Dallas Co. (TBRC 1993–23; TPRF 1134)
10–11 Feb 1993	Braunig L., Bexar Co. (TBRC 1993–22; TPRF 1143)
13 Feb 1993	Cooper L., Delta Co. (TBRC 1993–65)

31 Dec 1993–18 Feb 1994	Wright Patman L., Cass/Bowie Co. (TBRC 1994–22; TPRF 1222)
2 Dec 1995	Dallas, Dallas Co. (TBRC 1996–49)
15–16 Mar 1996	Arlington, Tarrant Co. (TBRC 1996–46)
6–12 Dec 1996	Cooper L., Hopkins Co. (TBRC 1996–188; TPRF 1478)
25 Dec 1996–16 Feb 1997	Mountain Creek L., Dallas Co. (TBRC 1997–43)
28 Nov 1997	Mountain Creek L., Dallas Co. (TBRC 1997–163)
7 Dec 1997	Mountain Creek L., Dallas Co. (TBRC 1997–174)
14–19 Nov 1999	L. Benbrook, Tarrant Co. (TBRC 1999–97; TPRF 1755)
14–21 Jan 2000	Dallas Co. (TBRC 2000–2; TPRF 1792)
17–18 Jan 2000	Hagerman NWR, Grayson Co. (TBRC 2000–6; TPRF 1776)
6–19 Feb 2000	White Rock L., Dallas Co. (TBRC 2000–14)
19 Nov 2000	Imperial Res., Pecos Co. (TBRC 2000–130; TPRF 1904)
8–20 Apr 2001	Beaumont, Jefferson Co. (TBRC 2001–72; TPRF 1905)
18–19 Nov 2001	L. Worth, Tarrant Co. (TBRC 2002–02)

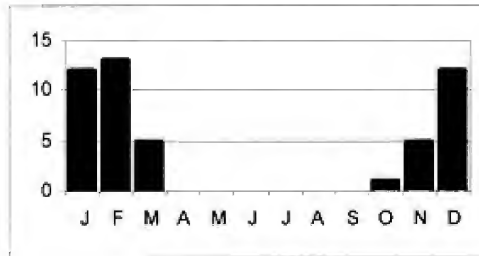


BLACK-HEADED GULL (*Larus ridibundus*)

Accepted records - 21

2 Jan–23 Feb 1982	L. Livingston, San Jacinto/Polk Co. (TPRF 260)
1 & 3 Mar 1989	L. Arlington, Tarrant Co. (TBRC 1989–26)
31 Dec 1989–4 Feb 1990	L. Waco, McLennan Co. (TBRC 1990–4; TPRF 844) returning 11 Dec 1990–12 Jan 1991 (TBRC 1991–21)
2–20 Jan 1993	Wright Patman L., Bowie Co. (TBRC 1993–35)
28 Feb 1993	Baffin Bay, Kleberg Co. (TBRC 1993–38)
31 Dec 1993–18 Feb 1994	Wright Patman L., Bowie/Cass Co. (TBRC 1994–31; TPRF 1223)
10 Dec 1995	L. Tawakoni, Rains Co. (TBRC 1995–153)
12 Feb–25 Mar 1996	Cooper L., Delta/Hopkins Co. (TBRC 1996–20; TPRF 1516) returning 2 Nov 1996–13 Feb 1997 (TBRC 1996–161; TPRF 1555) returning 26 Oct 1997–14 Feb 1998 (TBRC 1997–162; TPRF 1596) returning 18 Nov 1998–24 Feb 1999 (TBRC 1999–9; TPRF 1741) returning 26 Nov 1999–27 Feb 2000 (TBRC 1999–110; TPRF 1756)
28 Dec 1996	Wright Patman L., Bowie/Cass Co. (TBRC 1997–3)
9 Feb 1997	Mountain Creek L., Dallas Co. (TBRC 1997–49)
24 Jan–23 Mar 1998	Village Creek, Arlington, Tarrant Co. (TBRC 1998–16; TPRF 1597)
1–21 Mar 1998	Village Creek, Arlington, Tarrant Co. (TBRC 1998–42; TPRF 1608) returning 2 Feb–mid Mar 1999 (TBRC 1999–21; TPRF 1740)

24 Dec 1999–18 Feb 2000 returning 30 Nov 2000–8 Jan 2001 (TBRC 2000–144; TPRF 1862)
 23 Dec 2000 Village Creek, Arlington, Tarrant Co. (TBRC 1999–115)
 Possum Kingdom L., Palo Pinto Co. (TBRC 2001–113)



HEERMANN'S GULL (*Larus heermanni*)

Accepted records - 2

2–4 Dec 1975 Big L., Reagan Co. (TPRF 97) (Maxwell 1977)
 8 Feb 1983 Mustang Is., Nueces Co. (TBRC 1988–137; TPRF 648)

BLACK-TAILED GULL (*Larus crassirostris*)

Accepted records - 1

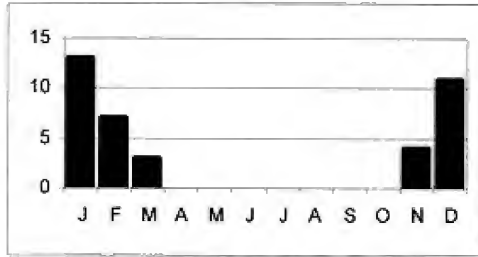
11–13 Feb & 5–16 Mar 1999 Brownsville, Cameron Co. (TBRC 1999–10; TPRF 1745) (D'Anna et al. 1999)

MEW GULL (*Larus canus*)

Accepted records - 25

1 Jan-13 Feb 1988 Fort Hancock, Hudspeth Co. (TBRC 1988–149; TPRF 634)
 14 & 19 Dec 1988
 4 Jan 1989 Fort Worth, Tarrant Co. (TBRC 1989–24; TPRF 730)
 10 Dec 1990–7 Jan 1991 L. Calaveras, Bexar Co. (TBRC 1990–153; TPRF 942)
 26 Jan 1993 Fort Hancock, Hudspeth Co. (TBRC 1993–49; TPRF 1146)
 23 Jan-6 Feb 1994 Arlington, Tarrant Co. (TBRC 1994–39; TPRF 1226)
 10–30 Dec 1994
 & 19 Feb-12 Mar 1995 San Antonio, Bexar Co. (TBRC 1994–177; TPRF 1307)
 2 Dec 1995–12 Jan 1996 San Antonio, Bexar Co. (TBRC 1996–5; TPRF 1400)
 6 Dec 1995 White Rock L., Dallas Co. (TBRC 1995–158)
 12–16 Mar 1996 Austin, Travis Co. (TBRC 1996–51; TPRF 1473)
 22 Nov 1996 White Rock L., Dallas Co. (TBRC 1996–158)
 24 Nov-14 Dec 1996 Braunig L., Bexar Co. (TBRC 1997–8; TPRF 1529)
 21 Jan 1998 El Paso, El Paso Co. (TBRC 1998–36; TPRF 1713)
 5–7 Mar 1998 L. Grapevine, Tarrant Co. (TBRC 1998–34)
 3 Dec 1998–2 Feb 1999 Village Creek, Arlington, Tarrant Co. (TBRC 1999–2; TPRF 1801)
 28 Feb 1999 Village Creek, Arlington, Tarrant Co. (TBRC 1999–32; TPRF 1736)
 22 Jan- 1 Feb 2000 San Antonio, Bexar Co. (TBRC 2000–10; TPRF 1906)
 19 Nov 2000 Imperial Res., Pecos Co. (TBRC 2000–131)

3 Dec 2000	Fort Worth, Tarrant Co. (TBRC 2001–26)
13–16 Dec 2000	Fort Worth, Tarrant Co. (TBRC 2001–25; TPRF 1865)
13 Jan 2001	El Paso, El Paso Co. (TBRC 2001–12)
23 Jan 2001	Galveston, Galveston Co. (TBRC 2001–19)
23–24 Jan 2001	L. Worth, Tarrant Co. (TBRC 2001–29; TPRF 1866)
20 Dec 2001	El Paso, El Paso Co. (TBRC 2002–32)
25 Nov-27 Dec 2002	Fort Worth, Tarrant Co. (TBRC 2003–24; TPRF 2084)
16 Feb 2003	Fort Worth, Tarrant Co. (TBRC 2003–25; TPRF 2085)



An examination of the pattern of occurrence of Mew Gull in Texas provides an unexpected result: ten of the 25 accepted records are from Tarrant County. This individual was at Calaveras Lake, Bexar County, on 3 January 1991. Photo by Willie Sekula.

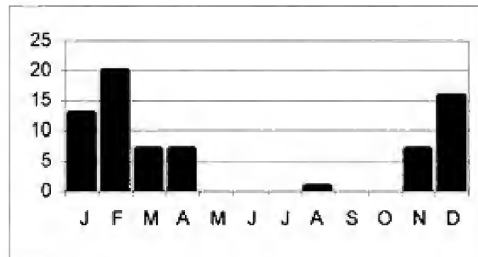
THAYER'S GULL (*Larus thayeri*)

Accepted records - 52

21 Mar 1891	Galveston Is., Galveston Co. (*USNM 128033) (Pulich 1980)
10 Apr 1891	Galveston Is., Galveston Co. (*TNHC 1014)
29 Dec 1971	Falcon Dam, Starr Co. (TPRF 25)
28 Feb-15 Mar 1976	Port Aransas, Nueces Co. (*USNM 573670)
25 Feb 1980	Brownsville, Cameron Co. (TBRC 1989-42; TPRF 881)
23 Apr 1980	Bolivar Flats, Galveston Co. (TBRC 1981-9; TPRF 772)
18 Mar 1983	Brownsville, Cameron Co. (TBRC 1991-23; TPRF 944)
27 Feb 1984	Corpus Christi, Nueces Co. (TPRF 405)
22 Dec 1985	Freeport, Brazoria Co. (TBRC 1989-64)
8-9 Nov 1986	San Luis Pass, Galveston Co. (TBRC 1987-2; TPRF 515)
5-24 Aug 1988	L. Waco, McLennan Co. (TBRC 1988-267; TPRF 747)
5 Nov & 17 Dec 1989	Surfside, Brazoria Co. (TBRC 1990-57; TPRF 868)
12 Feb 1990	Live Oak Point, Aransas Co. (TBRC 1990-74; TPRF 887)
7-14 Apr 1990	near High Is., Galveston/Jefferson/Chambers Co. (TBRC 1990-73; TPRF 855)
4 Jan 1991	Brownsville, Cameron Co. (TBRC 1991-26; TPRF 996)
21 Apr 1991	High Is., Galveston Co. (TBRC 1991-47; TPRF 1004)
1-10 Dec 1991	L. Waco, McLennan Co. (TBRC 1992-54; TPRF 1114)
5-10 Feb 1992	Brownsville, Cameron Co. (TBRC 1992-61)
24 Jan 1993	White Rock L., Dallas Co. (TBRC 1993-17)
25 Nov-28 Dec 1993	Galveston, Galveston Co. (TBRC 1994-56; TPRF 1647)
28 Nov 1993-3 Feb 1994	Fort Worth, Tarrant Co. (TBRC 1994-9; TPRF 1195)
1-19 Dec 1993	Mustang Is./N. Padre Is., Nueces Co. (TBRC 1994-63; TPRF 1334)
20 Feb-1 Mar 1994	S. Padre Is., Cameron Co. (TBRC 1994-116; TPRF 1436)
16 Apr 1994	High Is., Galveston Co. (TBRC 1994-108)
24 Apr 1994	Jefferson Co. (TBRC 1994-76; TPRF 1295)
23 Dec 1994-28 Feb 1995	Cooper L., Delta/Hopkins Co. (TBRC 1995-39; TPRF 1332)
15 Dec 1995	San Antonio, Bexar Co. (TBRC 1995-157)
16-22 Dec 1995	Fort Worth, Tarrant Co. (TBRC 1996-7; TPRF 1402)
5-7 Feb 1996	Austin, Travis Co. (TBRC 1996-39; TPRF 1463)
8 Feb 1996	Arlington, Tarrant Co. (TBRC 1996-19; TPRF 1417)
28 Feb-8 Mar 1996	Corpus Christi, Nueces Co. (TBRC 1996-31; TPRF 1621)
23 Nov 1996	L. O'The Pines, Marion Co. (TBRC 1996-159; TPRF 1525)
5 Dec 1996	L. Tawakoni, Rains Co. (TBRC 1996-189)
6 Dec 1996	White Rock L., Dallas Co. (TBRC 1996-186)
3 Jan 1997	San Antonio, Bexar Co. (TBRC 1997-14; TPRF 1577)
25 Jan-5 April 1997	Corpus Christi, Nueces Co. (TBRC 1997-64; TPRF 1617)
28 Jan 1997	Clint, El Paso Co. (TBRC 1997-45; TPRF 1561)
28 Jan-2 Feb 1997	El Paso, El Paso Co. (TBRC 1997-53)
22 Feb 1997	Brownsville, Cameron Co. (TBRC 1997-65)
22 Feb 1997	Arlington, Tarrant Co. (TBRC 1997-143; TPRF 1716)
31 Dec 1997-23 Feb 1998	Galveston, Galveston Co. (TBRC 1998-27; TPRF 1723)
23 Jan-7 Mar 1998	Corpus Christi, Nueces Co. (TBRC 1998-13; TPRF 1691)
28 Feb 1999	Village Creek, Arlington, Tarrant Co. (TBRC 1999-33; TPRF 1777)
17-20 Nov 1999	Rockport, Aransas Co. (TBRC 1999-112; TPRF 1908)
28 Jan 2000	Port Aransas, Nueces Co. (TBRC 2000-8; TPRF 1857)
17 Nov-13 Dec 2000	Galveston, Galveston Co. (TBRC 2000-139; TPRF 1909)
13-20 Dec 2000	Fort Worth, Tarrant Co. (TBRC 2001-27; TPRF 1910)
22-23 Dec 2000	Fort Worth, Tarrant Co. (TBRC 2001-28; TPRF 1867)
30 Jan 2001	Galveston, Galveston Co. (TBRC 2001-23)
4-7 Feb 2001	Dallas, Dallas Co. (TBRC 2001-32, TPRF 1986)

24 Feb 2001
19 Jan 2002

Corpus Christi, Nueces Co. (TBRC 2001–52; TPRF 2086)
San Angelo SP, Tom Green Co. (TBRC 2002–14)



ICELAND GULL (*Larus glaucooides*)

Accepted records - 1

15 Jan-12 Feb 1977 S. Padre Is., Cameron Co. (TBRC 1989–245; TPRF 935)

SLATY-BACKED GULL (*Larus schistisagus*)

Accepted records - 1

7–22 Feb 1992 Brownsville, Cameron Co. (TBRC 1992–24; TPRF 1071)

YELLOW-FOOTED GULL (*Larus livens*)

Accepted records - 1

9 Jul 1998 Surfside, Brazoria Co. (TBRC 1998–141; TPRF 1743) (Weeks and Patton 2000)

WESTERN GULL (*Larus occidentalis*)

Accepted records - 2

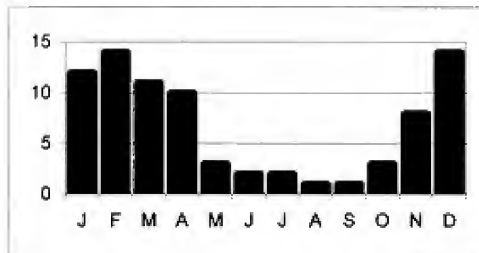
14 May 1986 Fort Bliss, El Paso Co. (TBRC 1987–3; TPRF 514)
6 Apr 1995 Boca Chica, Cameron Co. (TBRC 1995–51; TPRF 1495)

GREAT BLACK-BACKED GULL (*Larus marinus*)

Accepted records - 34

24 Mar-23 Jul 1974 Bolivar Flats, Galveston Co. (TPRF 249)
15 Oct 1975 Padre Is. Nat'l. Seashore, Kleberg Co. (WWF ph 38; TPRF 569)
22 Nov 1980–16 Apr 1981 Kemah/Seabrook, Galveston/Harris Co. (TPRF 230)
 returning fall 1981–28 Apr 1982
 returning 22 Dec 1982
 returning fall 1983-Apr 1984
 returning 4 Nov 1984-winter 1984–85
8 Feb 1981 Galveston, Galveston Co. (TBRC 1989–111)

24 Jan 1984	Galveston Co. (TBRC 1989-65)
4 Jan 1986	Port Aransas, Nueces Co. (TBRC 1988-110)
27 Apr 1986	Jefferson Co. (TBRC 1988-11)
27 Sep 1988	Port Aransas, Nueces Co. (TBRC 1996-187; TPRF 1658)
18 Dec 1989	San Luis Pass, Galveston Co. (TBRC 1990-12; TPRF 845)
1 Feb 1990	Bolivar Flats, Galveston Co. (TBRC 1990-69)
27 Feb 1990	S. Padre Is., Cameron Co. (TBRC 1990-70)
11 Nov 1991-23 Jan 1992	Mustang Is., Nueces Co. (TBRC 1991-136; TPRF 1028)
30 Dec 1992-27 Mar 1993	Harrison/Marion Co. (TBRC 1993-4; TPRF 1144)
31 Dec 1992	Corpus Christi, Nueces Co. (TBRC 1993-54; TPRF 1160)
2 Jan 1993	Corpus Christi, Nueces Co. (TBRC 1994-60)
14 Dec 1993	Mustang Is., Nueces Co. (TBRC 1994-59; TPRF 1340)
28 Dec 1993	Galveston, Galveston Co. (TBRC 1994-64)
20 Mar 1994	Sea Rim SP, Jefferson Co. (TBRC 1994-53)
4 Feb-10 Aug 1996	Galveston, Galveston Co. (TBRC 1996-10; TPRF 1397) returning 22 Nov 1996-26 Apr 1997 (TBRC 1996-169; TPRF 1533)
5 Feb 1996	Brownsville, Cameron Co. (TBRC 1996-45)
27 Apr 1996	N. Padre Is., Kleberg Co. (TBRC 1996-98; TPRF 1553)
9 Nov 1996	Mustang Is., Nueces Co. (TBRC 1997-107; TPRF 1659)
22 Nov 1996	Galveston, Galveston Co. (TBRC 1996-169)
11 Feb 1997	Brownsville, Cameron Co. (TBRC 1997-51)
22 Dec 1997-15 Mar 1998	Bolivar Flats, Galveston Co. (TBRC 1998-14; TPRF 1796)
18 Apr-1 May 1998	Bolivar Flats, Galveston Co. (TBRC 1998-111)
3-12 Mar 2001	Corpus Christi, Nueces Co. (TBRC 2001-53; TPRF 1987)
2-24 Dec 2001	Port O'Connor, Calhoun Co.
& 1 Jan 2001-2 Mar 2002	& Rockport, Aransas Co. (TBRC 2002-140; TPRF 2087)
23 Apr 2002	Port O'Connor, Calhoun Co. (TBRC 2002-53; TPRF 2088)



KELP GULL (*Larus dominicanus*)

Accepted records - 3

15 January-5 Apr 1996	Galveston, Galveston Co. (TBRC 1996-17; TPRF 1393) returning 30 Nov 1996-21 Apr 1997 (TBRC 1996-180; TPRF 1523)
4 May 1996	N. Padre Is., Kleberg Co. (TBRC 1996-88; TPRF 1627)

ELEGANT TERN (*Sterna elegans*)

Accepted records - 3

- 25 Jul 1889 Corpus Christi, Nueces Co. (*British MNH 91-10-20-92; TPRF 1460)
 23 Dec 1985 Balmorhea L., Reeves Co. (TPRF 397)
 4-18 Nov 2001 Galveston, Galveston Co. (TBRC 2001-134; TPRF 1988)

ROSEATE TERN (*Sterna dougalli*)

Accepted records - 2

- 10 Apr 1901 Corpus Christi, Nueces Co. (*ROM 39704; TBRC 1996-111; TPRF 1535)
 25 Jun 1995 Cooper L., Delta Co. (TBRC 1995-92)

ARCTIC TERN (*Sterna paradisaea*)

Accepted records - 5

- 21 Sep 1996 off Port O'Connor, Calhoun Co. (TBRC 1996-119)
 5-7 Jun 1997 McNary Res., Hudspeth Co. (TBRC 1997-98; TPRF 1614)
 26 Jul 1997 off Port O'Connor, Calhoun Co. (TBRC 1997-117; TPRF 1636)
 18 Oct 2001 L. Worth, Tarrant Co. (TBRC 2002-17; TPRF 2060)
 27 May 2002 El Paso, El Paso Co. (TBRC 2002-64)

BROWN NODDY (*Anous stolidus*)

Accepted records - 7

- 31 Aug 1979 N. Padre Is., Kleberg Co. (TPRF 226)
 18 Sep 1988 S. Padre Is., Cameron/Willacy Co. (TBRC 1988-291; TPRF 710)
 12 Sep 1992 off Port Isabel, Cameron Co. (TBRC 1992-122)
 28 Jun 1996 N. Padre Is., Kenedy Co. (TBRC 1996-99)
 26 May 1998 N. Padre Is., Kenedy Co. (TBRC 1998-73; TPRF 1747)
 19-24 Jun 1998 N. Padre Is., Kenedy Co. (TBRC 1998-98; TPRF 1722)
 27 Apr-1 May 2000 off Kenedy Co. (TBRC 2000-32; TPRF 1911)

BLACK NODDY (*Anous minutus*)

Accepted records - 3

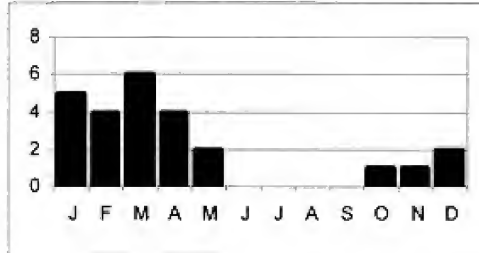
- 22 Jun 1975 N. Padre Is., Nueces Co. (TPRF 77)
 15 Apr & 1 May 1998 Rollover Pass & Bolivar Flats, Galveston Co. (TBRC 1998-63; TPRF 1692)
 27 Jul 1998 St. Jose Is., Aransas Co. (TBRC 1998-100; TPRF 1693)

RUDDY GROUND-DOVE (*Columbina talpacoti*)

Accepted records - 12

- 28 Jan-18 Mar 1971 Santa Ana NWR, Hidalgo Co. (TPRF 32; WWF ph S-31)
 21 Jan 1979 Brooks Co. (TBRC 1988-30)
 7 Mar 1984 Bentsen SP, Hidalgo Co. (TBRC 1985-1)
 18-22 Oct 1984 Santa Ana NWR, Hidalgo Co. (TBRC 1985-2)
 14-21 Nov 1986 Anzalduas Park, Hidalgo Co. (TBRC 1986-5; TPRF 407)
 5 Dec 1987-early May 1988 Rio Grande Village, BBNP, Brewster Co. (TBRC 1988-95; TPRF 602))
 7 Jan 1989 Brownsville, Cameron Co. (TBRC 1989-85)
 20 Feb-22 Mar 1990 Lajitas, Brewster Co. (TBRC 1990-66; TPRF 870)

24 Dec 1991–5 May 1992 Cottonwood Campground, BBNP, Brewster Co. (TBRC 1992–12; TPRF 1075)
 20–23 Apr 1996 El Paso, El Paso Co. (TBRC 1996–62; TPRF 1487)
 25–28 Mar 2000 El Paso, El Paso Co. (TBRC 2000–21)
 3 Apr 2001 El Paso, El Paso Co. (TBRC 2001–69; TPRF 1989)



RUDDY QUAIL-DOVE (*Geotrygon montana*)

Accepted records - 1

2–6 March 1996 Bentsen SP., Hidalgo Co. (TBRC 1996–28; TPRF 1468)



The Ruddy Ground-Doves that have been documented in the Trans-Pecos appear to belong to the paler western subspecies (*Columbina talpacoti eluta*), although no specimens are available to confirm that identification. This male was at Lajitas, Brewster County from 20 February-22 March 1990. Photo by Mark W. Lockwood.

MANGROVE CUCKOO (*Coccyzus minor*)

Accepted records - 9

30 Dec 1964	Galveston, Galveston Co. (TBRC 1988–45)
30 Dec 1981–13 Jan 1982	Bolivar Pen, Galveston Co. (TPRF 257) (Gallucci & Morgan 1987)
26–27 Aug 1982	Santa Ana NWR, Hidalgo Co. (TBRC 1991–142)
4 May 1987	White Oak Bayou, Houston, Harris Co. (TBRC 1988–88)
11 Jun 1991	Laguna Atascosa NWR, Cameron Co. (TBRC 1991–80)
25 Apr-late Jul 1992	Laguna Atascosa NWR, Cameron Co. (TBRC 1992–87; TPRF 1116)
11 May 1997	Quintana, Brazoria Co. (TBRC 1997–90; TPRF 1665)
3–4 May 2000	Corpus Christi, Nueces Co. (TBRC 2000–30; TPRF 1912)
25 Aug 2002	Matagorda Peninsula, Matagorda Co. (TBRC 2002–100)

DARK-BILLED CUCKOO (*Coccyzus melacorhyphus*)

Accepted records - 1

10 Feb 1986	Hidalgo Co. (*LSUMNS; TBRC 1995–115; TPRF 1600)
-------------	---

SNOWY OWL (*Nyctea scandiaca*)

Accepted records - 4

winter 1900	Waco, McLennan Co. (* mounted, in private collection)
1934	Dallas Co. (*Dallas MNH not catalogued)
16–17 Feb 1955	L. Wichita, Archer Co. (*TCWC 11916) (Dalquest and Lewis 1955)
22 Mar-2 Apr 2002	Tye, Taylor Co. (TBRC 2002–34; TPRF 1990)

NORTHERN PYGMY-OWL (*Glaucidium gnoma*)

Accepted records - 2

12 Aug 1982	Boot Springs, BBNP, Brewster Co. (TPRF 278)
25 Apr 1993	Boot Springs, BBNP, Brewster Co. (TBRC 1993–73)

MOTTLED OWL (*Ciccaba virgata*)

Accepted records - 1

23 Feb 1983	Bentsen SP, Hidalgo Co. (TBRC 1988–18; TPRF 377) (Lasley, Sexton and Hillsman 1988)
-------------	---

STYGIAN OWL (*Asio stygius*)

Accepted records - 2

9 Dec 1994	Bentsen SP, Hidalgo Co. (TBRC 1998–46; TPRF 1705) (Cooksey 1998)
26 Dec 1996	Bentsen SP, Hidalgo Co. (TBRC 1997–4; TPRF 1527) (Wright and Wright 1997)

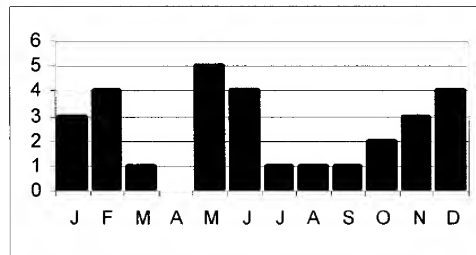
NORTHERN SAW-WHET OWL (*Aegolius acadicus*)

Accepted records - 27

22 Dec 1951	Dayton, Liberty Co. (*LSUMNS 18332)
6 Nov 1960	Midland, Midland Co. (TPRF 8)
15 Mar 1964	Rainbow, Somervell Co. (*TCWC 11625)
22–23 Feb 1968	Boot Spring, BBNP, Brewster Co. (TBRC 1993–145; TPRF 1242)

Occ. Publ. Texas Ornith. Society No. 5; 2003

23 Jun 1973	GMNP, Culberson Co. (*TCWC 9845)
6 May 1979	Buffalo L. NWR, Randall Co. (*TCWC 10662)
9 Nov 1981	El Paso, El Paso Co. (TPRF 454)
10 Feb 1983	El Paso Co. (*UTEP 886)
3 Aug 1987	El Paso, El Paso Co. (TPRF 498)
28–29 May 1988	GMNP, Culberson Co. (TBRC 1988–230)
18–19 Jun 1989	GMNP, Culberson Co. (TBRC 1989–178; TBSL 203–01)
26 Dec 1989	Flower Mound, Denton Co. (TBRC 1990–88)
3–4 Jun 1991	Davis Mtns., Jeff Davis Co. (TBRC 1991–84; TPRF 976)
31 May–2 June & 3 Jul 1993	GMNP, Culberson Co. (TBRC 1993–83; TBSL 203–13)
4 Sep 1993	BBNP, Brewster Co. (TBRC 1993–118)
11 May 1994	GMNP, Culberson Co. (TBRC 1994–81; TBSL 215–01)
17 Dec 1996	El Paso, El Paso Co. (TBRC 1997–100; TPRF 1501)
3–17 May 1997	Boot Canyon, BBNP, Brewster Co. (TBRC 1997–86; TBSL 227)
9 Jan 1998	GMNP, Culberson Co. (TBRC 1998–31; TBSL 221)
24 Oct 2000	El Paso, El Paso Co. (TBRC 2000–119; TPRF 1789)
30 Oct 2000	Amarillo, Potter Co. (*TCWC 13,624; TBRC 2001–57; TPRF 1913)
4 Nov 2000	Amarillo, Potter Co. (*ASNHC 2091; TBRC 2001–58; TPRF 1914)
6 Dec 2000	Lubbock, Lubbock Co. (TBRC 2000–143; TPRF 1860)
4 Jan 2001	Davis Mtns. SP, Jeff Davis Co. (*ASNHC 2090; TBRC 2001–11)
27 Jan 2001	Big Bend Ranch SP, Presidio Co. (TBRC 2001–86; TPRF 1915)
10 Feb 2001	Amarillo, Potter Co. (*TCWC 13,633; TBRC 2001–59; TPRF 1916)
14 Feb 2001	Lubbock, Lubbock Co. (TBRC 2001–49; TPRF 1917)



WHITE-COLLARED SWIFT (*Streptoprocne zonaris*)

Accepted records - 4

4 Dec 1974	Rockport, Aransas Co. (TBRC 1988–38)
8 Mar 1983	Padre Is., Kleberg Co. (*TCWC 11177) (Lasley 1984)
20 Dec 1987	Freeport, Brazoria Co. (TBRC 1988–144; TPRF 555) (Eubanks and Morgan 1989)
18 May 1997	Brownsville, Cameron Co. (TBRC 1997–101; TPRF 1666)

GREEN VIOLET-EAR (*Colibri thalassinus*)

Accepted records - 38

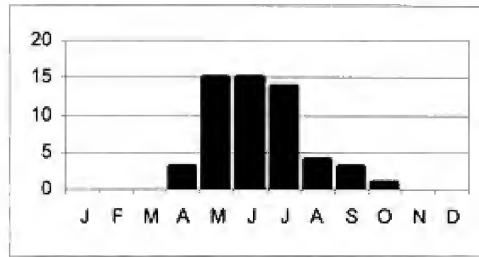
11–28 Jul 1961	Santa Ana NWR, Hidalgo Co. (TBRC 1988–69)
14 Apr 1964	San Benito, Cameron Co. (TBRC 1988–70) (Fleetwood and Hudson 1965)
25 Aug–18 Sep 1969	Austin, Travis Co. (TPRF 933)
3 Jul–13 Aug 1975	Wimberley, Hays Co. (TPRF 85)
21 May–6 Jul 1976	Wimberley, Hays Co. (TPRF 114)



The Mangrove Cuckoos found in Texas to date appear to all belong to the Mexican subspecies (*Coccyzus minor continentalis*) which have buffy underparts. This individual was on the Bolivar Peninsula, Galveston County, from 30 December 1981-13 January 1982 and was the first to be photographed in the state. Photo by Kelly B. Bryan.

6 May-13 Jun 1980	McAllen, Hidalgo Co. (TPRF 212)
26 May-19 Jun 1981	L. Jackson, Brazoria Co. (TPRF 248)
14 May-21 Jun 1983	San Marcos, Hays Co. (TPRF 305)
3-4 Jun 1989	Brownsville, Cameron Co. (TBRC 1989-145; TPRF 759)
22 Jun-11 Jul 1989	Sinton, San Patricio Co. (TBRC 1989-177; TPRF 782)
21 Apr 1991	San Benito, Cameron Co. (TBRC 1991-68; TPRF 980)
21 May 1991	Helotes, Bexar Co. (TBRC 1991-89; TPRF 977)
14 May 1994	Driftwood, Hays Co. (TBRC 1994-119; TPRF 1272)
16-17 May 1994	Helotes, Bexar Co. (TBRC 1994-107)
14-17 Jul 1994	Conroe, Montgomery Co. (TBRC 1994-147)
May-Sep 1995	Fredericksburg, Gillespie Co. (TBRC 1996-141)
6 May-25 Jun 1995	Corpus Christi, Nueces Co. (TBRC 1995-60; TPRF 1374)
16 Jun-8 Jul 1995	Sandy Creek, Travis Co. (TBRC 1995-81; TPRF 1367; TBSL 203-16)
5-6 Jul 1995	Lost Maples SNA, Bandera Co. (TBRC 1995-100; TPRF 1376)
12-30 Jul 1995	McDade, Bastrop Co. (TBRC 1995-95; TPRF 1368)
12-23 May 1996	Bastrop Co. (TBRC 1996-72) (TPRF 1511)
5 Jul 1996	Bastrop/Buescher SP, Bastrop Co. (TBRC 1996-89)
13-17 Jun 1997	Henderson, Rusk Co. (TBRC 1997-113; TPRF 1657)
20-27 May 1998	Arasans NWR, Aransas Co. (TBRC 1998-69; TPRF 1697)
24 Jun 1998	Comfort, Kendall Co. (TBRC 1998-91)
15-21 Jul 1998	Center Point, Kerr Co. (TBRC 1998-108; TPRF 1739)
24 Aug 1998	Kerrville, Kerr Co. (TBRC 1998-121)
27 Sep-3 Oct 1999	South Padre Is., Cameron Co. (TBRC 1999-92; TPRF 1757)
28 Jun 1999	Hunt, Kerr Co. (TBRC 1999-68)

28–29 Jun 1999	Graford, Palo Pinto Co. (TBRC 1999–84)
17 Jul 1999	Volente, Travis Co. (TBRC 1999–71)
25 Jun–12 Jul 2000	Leander, Travis Co. (TBRC 2000–70)
7–13 May 2000	Corpus Christi, Nueces Co. (TBRC 2000–64; TPRF 1787)
9–10 May 2001	Cibolo, Guadalupe Co. (TBRC 2001–83; TPRF 1918)
18–26 May 2001	Wimberley, Hays Co. (TBRC 2001–95)
19 Jun–16 Jul 2001	Volente, Travis Co. (TBRC 2001–97; TPRF 1919)
2–3 Apr 2002	Corpus Christi, Nueces Co. (TBRC 2002–48; TPRF 1972)
15–25 May 2002	Hebbronville, Jim Hogg Co. (TBRC 2003–21; TPRF 2089)

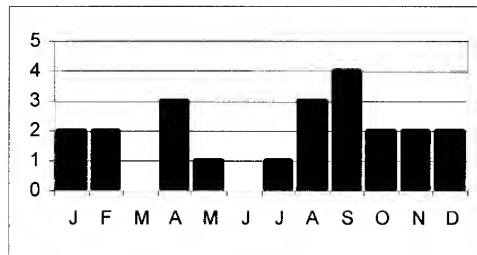


GREEN-BREASTED MANGO (*Anthracothorax prevostii*)

Immature mangos are extremely difficult to identify to species. However, research by Arvin and others suggests that any immature with blue or green visible in the central breast stripe can be safely identified as *prevostii*. Initially, the 1988 and 1993 records were accepted as mango species only, but at the annual TBRC meeting in 1995 all were accepted as *A. prevostii*.

Accepted records - 12

14–23 Sep 1988	Brownsville, Cameron Co. (TBRC 1988–272; TPRF 773)
6–27 Jan 1992	Corpus Christi, Nueces Co. (TBRC 1992–10; TPRF 1133)
18–20 Aug 1993	Santa Ana NWR, Hidalgo Co. (TBRC 1994–13; TPRF 1336)
22–23 & 27 Sep 1993	Falfurrias, Brooks Co. (TBRC 1994–30; TPRF 1273)
17–20 Aug 1996	Harlingen, Cameron Co. (TBRC 1996–107; TPRF 1544)
3–8 & 29 Nov–21 Dec 1997	Corpus Christi, Nueces Co. (TBRC 1997–150; TPRF 1632)
22–23 May 1999	Los Fresnos, Cameron Co. (TBRC 1999–56; TPRF 1790)
1–8 Feb 2001	McAllen, Hidalgo Co. (TBRC 2001–48; TPRF 1991)
	returning 28 Sep–18 Oct 2001 (TBRC 2001–123; TPRF 1993)
	returning 9 Sep–23 Oct 2002 (TBRC 2002–103)
10 Jul–15 Aug 2001	Pharr, Hidalgo Co. (TBRC 2002–01; TPRF 1992)
23 Nov 2001–12 Feb 2002	McAllen, Hidalgo Co. (TBRC 2001–139)

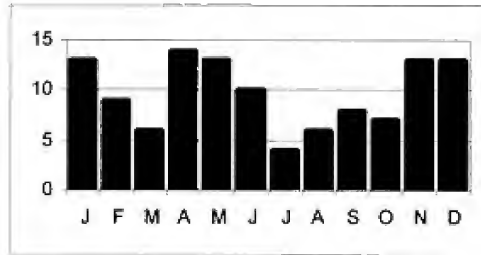


BROAD-BILLED HUMMINGBIRD (*Cyananthus latirostris*)

Accepted records - 53

23 Jun 1962	Bentsen SP, Hidalgo Co. (TBRC 1988-44)
25 May 1975	San Antonio, Bexar Co. (TBRC 1988-102; TPRF 627)
6 Aug-15 Sep 1984	Beaumont, Jefferson Co. (TPRF 337)
12 Nov 1984-21 Jan 1985	Columbus, Colorado Co. (TPRF 341)
18 Sep 1985	McNary, Hudspeth Co. (TBRC 1988-172)
11 Dec 1985-12 Feb 1986	Santa Ana NWR, Hidalgo Co. (TBRC 1986-6)
15 Jan 1988	Falfurrias, Brooks Co. (TBRC 1988-178)
9-10 Apr 1990	Del Rio, Val Verde Co. (TBRC 1990-90)
22-31 May 1990	Midland, Midland Co. (TBRC 1990-96; TPRF 889)
18 May 1991	Chisos Basin, BBNP, Brewster Co. (TBRC 1991-90)
13 Nov 1991	Cottonwood Campground, BBNP, Brewster Co. (TBRC 1995-48)
1 Dec 1991-8 Jan 1992	El Paso, El Paso Co. (TBRC 1992-45; TPRF 1106)
13 Nov 1992-19 Feb 1993	Sinton, San Patricio Co. (TBRC 1992-132; TPRF 1101; TBSL 203-12)
18 Apr 1993	Dolan Falls, Val Verde Co. (TBRC 1994-166; TPRF 1309)
21-23 May 1993	Fort Davis, Jeff Davis Co. (TBRC 1993-94; TPRF 1129)
24-27 Aug 1993	Midland, Midland Co. (TBRC 1993-121; TPRF 1173)
28 Sep 1993	Harris Co. (TBRC 1993-136)
22 Nov 1993-7 Apr 1994	Buchanan Dam, Llano Co. (TBRC 1993-154; TPRF 1245) returning 2 Oct 1994-7 Apr 1996 (TBRC 1994-159; TBSL 216-05)
17 Apr 1994	Nursery, Victoria Co. (TBRC 1994-71)
21 Mar-2 Apr 1995	Cranfills Gap, Bosque Co. (TBRC 1995-74; TPRF 1362)
20-28 Apr 1995	Mertzson, Irion Co. (TBRC 1995-69; TPRF 1360)
23 Aug 1996	Laguna Meadow, BBNP, Brewster Co. (TBRC 1996-109)
6 Oct 1996-12 Jan 1997	San Antonio, Bexar Co. (TBRC 1996-144; TPRF 1476)
16 Nov-7 Dec 1996	Inez, Victoria Co. (TBRC 1996-160)
23 May-10 Jul 1998	Fort Davis, Jeff Davis Co. (TBRC 1998-81; TPRF 1573) returning 21 Apr-6 Jun 1999 (TBRC 1999-45; TPRF 1710) returning 24 Apr-6 Jun 2000 (TBRC 2000-34) returning 25 Apr-27 May 2002 (TBRC 2002-60; TPRF 1973) returning 24 Apr-3 June 2003 (TBRC 2003-35; TPRF 2106)
9 Sep 1998	El Paso, El Paso Co. (TBRC 1998-114)
27 Jan-25 Feb 1999	L. Jackson, Brazoria Co. (TBRC 1999-15; TPRF 1732)
25 May 1999	near Fort Davis, Jeff Davis Co. (TBRC 1999-95; TPRF 1758)
11-12 Jun 1999	12 mi SW of San Angelo, Tom Green Co. (TBRC 1999-63; TPRF 1738)
17 Aug-22 Sep 1999	Alpine, Brewster Co. (TBRC 1999-76; TPRF 1733)
6 Sep 1999	near Fort Davis, Jeff Davis Co. (TBRC 1999-96; TPRF 1759)
14 Nov-18 Dec 1999	El Paso, El Paso Co. (TBRC 1999-109; TPRF 1760)
20-21 Apr 1999	near Fort Davis, Jeff Davis Co. (TBRC 1999-94)
31 May-1 Jun 1999	near Fort Davis, Jeff Davis Co. (TBRC 1999-74)
10 Jun 1999	Panther Junction, BBNP, Brewster Co. (TBRC 1999-69)
14 Jun 1999	Chisos Basin, BBNP, Brewster Co. (TBRC 1999-77)
24 Jul 1999	Kickapoo Cavern SP, Kinney Co. (TBRC 1999-83)
29 Aug 1999	Los Fresnos, Cameron Co. (TBRC 1999-81)
3 May 2000	Zapata, Zapata Co. (TBRC 2000-27)
13 Jul 2000	near Fort Davis, Jeff Davis Co. (TBRC 2000-59)
10-24 Sep 2000	near Alpine, Brewster Co. (TBRC 2001-22; TPRF 1861)
5-10 Oct 2000	Big Spring, Howard Co. (TBRC 2001-85; TPRF 1920)
3-20 Oct 2001	McAllen, Hidalgo Co. (TBRC 2001-124; TPRF 1944)
20 Oct 2001-17 Mar 2002	El Paso, El Paso Co. (TBRC 2001-132)

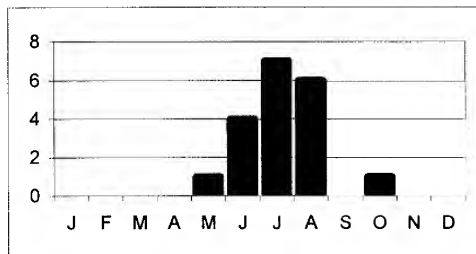
3 Nov 2001–18 Feb 2002	Houston, Harris Co. (TBRC 2001–143; TPRF 1994)
28 Nov 2001–7 Mar 2002	El Paso, El Paso Co. (TBRC 2001–142; TPRF 1995)
9 Apr 2002	GMNP, Culberson Co. (TBRC 2002–41; TPRF 2025)
16 Oct-2 Nov 2002	El Paso, El Paso Co. (TBRC 2003–3; TPRF 2091)



WHITE-EARED HUMMINGBIRD (*Hylocharis leucotis*)

Accepted records - 12

7 Jul 1937	Chisos Mtns., Brewster Co. (*USNM 365449)
14–16 Jul 1990	Starr Co. (TBRC 1991–76; TPRF 973)
7 Jun 1991	GMNP, Culberson Co. (TBRC 1991–88)
20 Jun-16 Aug 1993	near Fort Davis, Jeff Davis Co. (TBRC 1993–95; TPRF 1130)
24 Jul-31 Aug 1994	near Fort Davis, Jeff Davis Co. (TBRC 1994–131; TPRF 1280)
12–20 Oct 1994	El Paso, El Paso Co. (TBRC 1994–163; TPRF 1308)
27 Aug 1995	near Fort Davis, Jeff Davis Co. (TBRC 1995–110)
31 May 1996	GMNP, Culberson Co. (TBRC 1996–84)
31 Jul-23 Aug 1997	near Fort Davis, Jeff Davis Co. (TBRC 1997–125; TPRF 1649)
31 Jul-4 Aug 2000	Fredericksburg, Gillespie Co. (TBRC 2000–73; TPRF 1921)
20 Jun-25 Aug 2002	near Fort Davis, Jeff Davis Co. (TBRC 2002–89; TPRF 2050)
30 Jun 2002	Franklin Mtns SP, El Paso Co. (TBRC 2002–82)



BERYLLINE HUMMINGBIRD (*Amazilia beryllina*)

Accepted records - 4

18 Aug 1991	BBNP, Brewster Co. (TBRC 1991–121)
-------------	------------------------------------



White-eared Hummingbirds were regular visitors to the central Davis Mountains, Jeff Davis County, between 1993 and 1997 leading to some speculation that the species might become a rare summer resident. This female was photographed on 25 June 1993. Photo by Kelly B. Bryan.

17 Aug-4 Sep 1997 near Fort Davis, Jeff Davis Co. (TBRC 1997-137; TPRF 1661)
 3 & 8 Aug 1999 near Fort Davis, Jeff Davis Co. (TBRC 1999-80; TPRF 1922)
 25 May, 6 Jun & 16 Jul 2000 near Fort Davis, Jeff Davis Co. (TBRC 2000-53; TPRF 1923)

VIOLET-CROWNED HUMMINGBIRD (*Amazilia violiceps*)

Accepted records - 7

2-14 Dec 1987 El Paso, El Paso Co. (TBRC 1988-83; TPRF 594)
 30-31 Mar 1996 BBNP, Brewster Co. (TBRC 1996-54; TPRF 1479)
 31 Oct 1996 L. Amistad, Val Verde Co. (TBRC 1996-145; TPRF 1551)
 2 Mar 1998 L. Jackson, Brazoria Co. (TBRC 1998-40; TPRF 1695)
 10-11 May 1999 Weslaco, Hidalgo Co. (TBRC 1999-47; TPRF 1775)
 6 Nov 2001-16 Feb 2002 El Paso, El Paso Co. (TBRC 2001-135; TPRF 1996)
 24 May-6 Jun 2002 n. Presidio Co. (TBRC 2002-88; TPRF 2092)

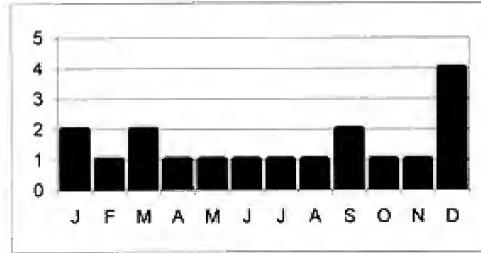
COSTA'S HUMMINGBIRD (*Calypte costae*)

Accepted records - 12

6 Feb-2 Mar 1974 San Marcos, Hays Co. (TPRF 56; WWF ph P-16)
 8-28 Mar 1975 El Paso, El Paso Co. (TPRF 71)
 21-24 Jan 1988 Kingsville, Kleberg Co. (TBRC 1988-159; TPRF 645)

Occ. Publ. Texas Ornith. Society No. 5; 2003

16–17 Sep 1992	El Paso, El Paso Co. (TBRC 1993–3; TPRF 1128; TBSL 203–15)
28 Oct–12 Dec 1995	El Paso, El Paso Co. (TBRC 1995–151; TPRF 1409)
26 Apr 1997	Rio Grande Village, BBNP, Brewster Co. (TBRC 1997–105)
19 May 2000	BBNP, Brewster Co. (TBRC 2000–63)
1–30 Sep 2000	Christmas Mtns., Brewster Co. (TBRC 2000–116; TPRF 1924)
10–11 Dec 2000	Christmas Mtns., Brewster Co. (TBRC 2001–5; TPRF 1997)
10 Jun–1 Sep 2001	near Fort Davis, Jeff Davis Co. (TBRC 2001–96; TPRF 1998)
17–21 Dec 2001	Matagorda, Matagorda Co. (TBRC 2002–15; TPRF 2093)
24 Dec 2001–21 Jan 2002	El Paso, El Paso Co. (TBRC 2002–105; TPRF 2094)



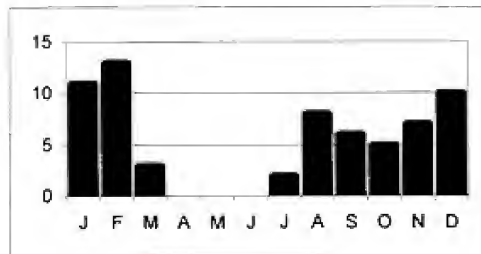
The second Tufted Flycatcher found in Texas was discovered at a most unexpected location, a rest stop 25 miles west of Fort Stockton, Pecos County. Photo by Kelly B. Bryan.

ALLEN'S HUMMINGBIRD (*Selasphorus sasin*)

On 29 September 2001, the TBRC voted to consider photographed "textbook" adult male Allen's Hummingbird for state records even if the documentation did not include diagnostic tail measurements. Those records listed below where tail measurements were obtained are marked with an asterisk (*) before the listing. The specimens listed below refer to the total feathers collected from captured birds.

Accepted records - 28

- | | |
|----------------------------------|--|
| * 1 Mar 1976 | Houston, Harris Co. (*TCWC 9945; TPRF1559) (Beavers 1977) |
| Sep 1977–21 Feb 1978 | San Antonio, Bexar Co. (TBRC 2001–34; TPRF 129) |
| * 6 Nov–20 Dec 1987 | Helotes, Bexar Co. (TBRC 1988–51; TPRF 620; *TCWC 12164) |
| * 7 Nov 1987–6 Mar 1988 | Freeport, Brazoria Co. (TBRC 1988–215; TPRF 865) |
| * 11 Jan 1993 | Houston, Harris Co. (TBRC 1993–69) |
| 26 Jul–5 Aug 1994 | near Fort Davis, Jeff Davis Co. (TBRC 1994–132) |
| * 20 Oct 1994–1 Jan 1995 | Canton, Van Zandt Co. (TBRC 1996–70; TPRF 1492) |
| 1 Aug 1995–
"early" Feb 1996 | San Antonio, Bexar Co. (TBRC 1996–114; TPRF 1949)
returning 26 Jul 1996–27 Feb 1997 |
| * 12 Nov 1995–
"mid" Mar 1996 | Victoria, Victoria Co. (TBRC 1995–136; TPRF 1549) |
| * 11–23 Aug 1998 | Corpus Christi, Nueces Co. (TBRC 1998–123) |
| 15–23 Feb 1999 | Houston, Harris Co. (TBRC 1999–123; TPRF 1999) |
| 25–27 Feb 2000 | Houston, Harris Co. (TBRC 2000–15; TPRF 1925) |
| * 7 Aug 2000 | Kerrville, Kerr Co. (*TCWC 13751; TBRC 2000–78) |
| * 18 Aug 2000 | near Victoria, Victoria Co. (*TCWC 13752; TBRC 2000–110) |
| * 2–5 Sep 2000 | near Victoria, Victoria Co. (*TCWC 13753; TBRC 2000–111) |
| * 9 Aug 2001 | Ingram, Kerr Co. (*TCWC 13773; TBRC 2001–109) |
| * 3 Sep 2001 | Corpus Christi, Nueces Co. (TBRC 2001–111) |
| 18 Dec 2001–17 Feb 2002 | Houston, Harris Co. (TBRC 2002–95; TPRF 2095) |
| * 19 Jan–16 Feb 2002 | West Columbia, Brazoria Co. (TBRC 2002–27; TPRF 2000) |
| * 25 Jan 2002 | L. Jackson, Brazoria Co. (TBRC 2002–28) |
| * 13 Feb 2002 | Corpus Christi, Nueces Co. (*TCWC 13861; TBRC 2002–29) |
| * 27 Feb 2002 | L. Jackson, Brazoria Co. (TBRC 2002–30; TPRF 2026) |
| * 24 Aug 2002 | Corpus Christi, Nueces Co. (*TCWC 13908; TBRC 2002–99) |
| * 8 Sep 2002 | Corpus Christi, Nueces Co. (*TCWC 13909; TBRC 2002–107) |
| * 18–22 Oct 2002 | Sweeny, Brazoria Co. (*TCWC 13910; TBRC 2002–114) |
| * 20 Dec 2002 | Sargent, Matagorda Co. (*TCWC 13973; TBRC 2002–125) |
| * 28 Dec 2002–14 Feb 2003 | West Columbia, Brazoria Co. (*TCWC 13972; TBRC 2003–20) |
| * 28 Feb 2003 | Kingsville, Kleberg Co. (*TCWC 13971; TBRC 2003–15) |



ELEGANT TROGON (*Trogon elegans*)

Accepted records - 5

14 Sep 1977	Bentsen SP, Hidalgo Co. (TPRF 132) (Devine, Gendron, and Smith 1978)
25–31 Jan 1990	Delta L., Hidalgo Co. (TBRC 1990–191 TPRF 857)
29 Apr 1993	BBNP, Brewster Co. (TBRC 1993–114)
28 Nov 1995–8 Jan 1996	BBNP, Brewster Co. (TBRC 1996–52)
16 Jun 1996	BBNP, Brewster Co. (TBRC 1996–83)

RED-BREASTED SAPSUCKER (*Sphyrapicus ruber*)

Accepted records - 2

27 Feb 1996	McGregor, McLennan Co. (TBRC 1996–175; TPRF 1586) (Lockwood & Shackelford 1998)
3 Dec 2000	Big Bend Ranch SP, Presidio Co. (TBRC 2001–30)

IVORY-BILLED WOODPECKER (*Campephilus principalis*)

Accepted records - 3

3 May 1885	Neches River, Jasper Co. (*eggs, Milwaukee Public Museum 338) (Allen and Kellogg 1937)
ca. 1900	Bois d' Arc Is., Trinity River, Dallas Co. (*Dallas MNH 6216))
26 Nov 1904	Tarkington, Liberty Co. (*USNM 195199 & 195200)

GREENISH ELAENIA (*Myiopagis viridicata*)

Accepted records - 1

20–23 May 1984	High Is., Galveston Co. (TBRC 1988–289; TPRF 330) (Morgan and Feltner 1985)
----------------	---

TUFTED FLYCATCHER (*Mitrephanes phaeocercus*)

Accepted records - 2

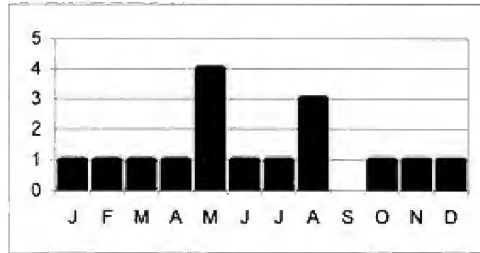
3 Nov 1991–17 Jan 1992	BBNP, Brewster Co. (TBRC 1991–132; TPRF 1000; TBSL 203–08) (Zimmer and Bryan 1993)
2–6 Apr 1993	25 mi w of Fort Stockton, Pecos Co. (TBRC 1993–41; TPRF 1149)

GREATER PEWEE (*Contopus pertinax*)

Accepted records - 13

22 Oct-17 Nov 1984	Big Spring, Howard Co. (TBRC 1985–3; TPRF 329)
7 Apr 1991	San Antonio, Bexar Co. (TBRC 1991–62)
17 Aug 1991	Chisos Mtns., BBNP, Brewster Co. (TBRC 1991–114)
20 May 1992	Davis Mtns., Jeff Davis Co. (TBRC 1992–94)
5–14 Dec 1995	El Paso, El Paso Co. (TBRC 1995–161; TPRF 1404)
21–24 Jun 1998	Davis Mtns. Preserve, Jeff Davis Co. (TBRC 1998–89; TPRF 1690)

30 May 1998	Midland Co. (TBRC 1998–78)
21 May 2000	Davis Mts. Preserve, Jeff Davis Co. (TBRC 2000–69)
5 May 2001	Davis Mts. Preserve, Jeff Davis Co. (TBRC 2001–103)
13 Jun-1 Aug 2002	Davis Mts. Preserve, Jeff Davis Co. (TBRC 2002–76; TPRF 2096)
4 Aug 2002	Guadalupe Mountains NP, Culberson Co. (TBRC 2002–94)
12 Dec 2002–19 Mar 2003	Anzalduas Park, Hidalgo Co. (TBRC 2002–123; TPRF 2097)
21 May 2003	GMNP, Culberson Co. (TBRC 2003–44)



BUFF-BREASTED FLYCATCHER (*Empidonax fulvifrons*)

Accepted records - 4

3 May-28 Aug 1999	Davis Mts. Preserve, Jeff Davis Co. (TBRC 1999–48; TPRF 1799; TBSL 225)
23 Apr-19 Aug 2000	Davis Mts. Preserve, Jeff Davis Co. (TBRC 2000–33; TPRF 1929; TBSL 231)
8 May-9 Sep 2001	Davis Mts. Preserve, Jeff Davis Co. (TBRC 2001–82; TPRF 1952; TBSL 233)
9 Jun-7 Aug 2002	Davis Mts. Preserve, Jeff Davis Co. (TBRC 2002–74; TPRF 2051)

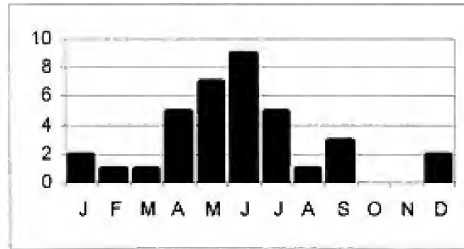
DUSKY-CAPPED FLYCATCHER (*Myiarchus tuberculifer*)

Accepted records - 20

11 May 1891	El Paso, El Paso Co. (*Carnegie MNH 119210 & 119211)
17 Jun 1932	Glenn Springs, BBNP, Brewster Co. (*UMMZ 86057)
6 May 1991	BBNP, Brewster Co. (TBRC 1991–52; TPRF 1005; TBSL 203–07)
4–19 Jun 1991	Davis Mtns., Jeff Davis Co. (TBRC 1991–74; TPRF 1020; TBSL 208–02)
6 Sep 1991	BBNP, Brewster Co. (TBRC 1991–122)
3 Sep 1994	Midland, Midland Co. (TBRC 1994–160)
7–8 May 1995	BBNP, Brewster Co. (TBRC 1995–75; TPRF 1363)
23 Apr-8 May 1996	Pine Canyon, BBNP, Brewster Co. (TBRC 1996–75; TPRF 1497)
8 Jul 1996	Davis Mtns., Jeff Davis Co. (TBRC 1996–102)
17 Apr 1997	Rio Grande Village, BBNP, Brewster Co. (TBRC 1997–78)
21–24 Jun 1998	Davis Mtns., Jeff Davis Co. (TBRC 1998–88; TPRF 1689; TBSL 223–01)
27 Jun-4 Jul 1999	Davis Mtns., Jeff Davis Co. (TBRC 1999–75; TPRF 1930; TBSL 229)
29 Apr-12 Jul 2000	Laguna Meadow Trail, BBNP, Brewster Co. (TBRC 2000–43; TPRF 1931)
10 Jun 2000	Davis Mts. Preserve, Jeff Davis Co. (TBRC 2000–76; TBSL 231)
21 Dec 2000–3 Jan 2001	Bentsen SP, Hidalgo Co. (TBRC 2001–10; TPRF 2004)
28 Dec 2000–25 Mar 2001	Sabal Palm Sanctuary, Cameron Co. (TBRC 2001–09; TPRF 2005)
4 Jul 2001	Davis Mts. Preserve, Jeff Davis Co. (TBRC 2001–120; TBSL 233)
26 Apr-22 Jun 2001	Chisos Basin, BBNP, Brewster Co. (TBRC 2001–76)

6–21 Jun 2001
26 Apr–1 Sep 2002

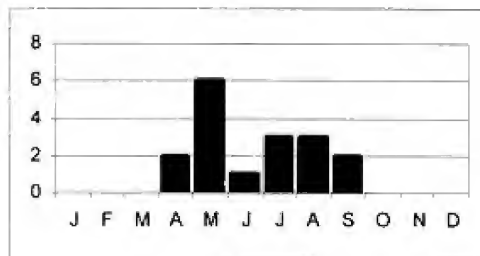
Boot Canyon, BBNP, Brewster Co. (TBRC 2001–89; TPRF 2006)
Boot Canyon, BBNP, Brewster Co. (TBRC 2002–56; TBSL 235)



SULPHUR-BELLIED FLYCATCHER (*Myiodynastes luteiventris*)

Accepted records - 13

2 Sep 1965	Anahuac NWR, Chambers Co. (TBRC 1989–30)
7 May–20 Aug 1975	Santa Margarita Ranch, Starr Co. (TBRC 1978–9) returning 8 May–11 Jul 1976 returning 30 Jul 1977
7–10 May 1983	Bolivar Pen., Galveston Co. (TBRC 1988–80; TPRF 596)
16 Sep 1989	Chinquapin, Matagorda Co. (TBRC 1989–210)
27–29 Aug 1993	Port Aransas, Nueces Co. (TBRC 1994–20)
28 Jul & 10 Aug 1997	Pine Canyon, BBNP, Brewster Co. (TBRC 1997–124; TPRF 1648)
22 May 1999	w. Galveston Is., Galveston Co. (TBRC 1999–52; TPRF 1774)
29 Apr 2000	Falcon Dam, Starr Co. (TBRC 2000–31; TPRF 1932)
5–12 May 2001	South Padre Is., Cameron Co. (TBRC 2001–78; TPRF 2007)
2 May 2002	Aransas NWR, Aransas Co. (TBRC 2002–86; TPRF 2052)
30 Apr–2 May 2003	Corpus Christi, Nueces Co. (TBRC 2003–38; TPRF 2098)



PIRATIC FLYCATCHER (*Legatus leucophaius*)

Accepted records - 2

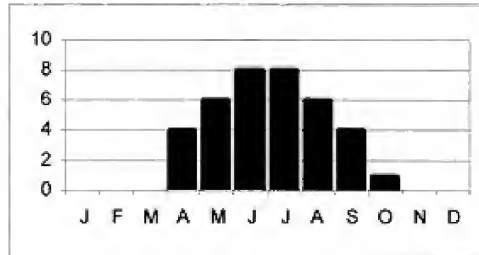
4 Apr 1998	Rio Grande Village, BBNP, Brewster Co. (TBRC 1998–60; TPRF 1685)
21–22 Oct 2000	off N. Padre Is., Kenedy Co. (TBRC 2000–126; TPRF 1933)

THICK-BILLED KINGBIRD (*Tyrannus crassirostris*)

It is likely that several of the Big Bend NP records since the mid-1980's represent returning birds and/or their offspring. In a few instances birds nesting on the same branch in the same tree in consecutive years almost surely represent a returning pair. Since none of the birds showed any unique identifying plumage characteristics or bands, we treat them all as separate occurrences here.

Accepted records - 14

21 Jun 1967	Chisos Basin, BBNP, Brewster Co. (TPRF 1424) (Wauer 1967)
30 Jul-24 Sep 1985	Rio Grande Village, BBNP, Brewster Co. (TPRF 358)
29 May-2 Sep 1986	Rio Grande Village, BBNP, Brewster Co. (TBRC 1986-7; TPRF 392)
5 Aug-18 Sep 1988	Cottonwood Campground, BBNP, Brewster Co. (TBRC 1988-240; TPRF 683; TBSL 164-01)
1 Apr-29 Jul 1989	Cottonwood Campground, BBNP, Brewster Co. (TBRC 1989-133; TPRF 774; TBSL 191-01)
11 Apr-18 Sep 1989	Rio Grande Village, BBNP, Brewster Co. (TBRC 1989-197)
7 Apr-4 Aug 1990	Cottonwood Campground, BBNP, Brewster Co. (TBRC 1990-86; TPRF 875; TBSL 203-02)
4 Jul 1990	Rio Grande Village, BBNP, Brewster Co. (TBRC 1990-124; TPRF 954)
23 Apr-26 Jul 1991	Cottonwood Campground, BBNP, Brewster Co. (TBRC 1991-51; TPRF 989; TBSL 203-06)
25 May-early Jun 1991	Rio Grande Village, BBNP, Brewster Co. (TBRC 1991-77)
21 Aug 1994	7 mi E. of Presidio, Presidio Co. (TBRC 1994-142)
30 Jul 1995	Rio Grande Village, BBNP, Brewster Co. (TBRC 1995-96; TPRF 1375)
11-17 Jun 1997	Rio Grande Village, BBNP, Brewster Co. (TBRC 1997-108)
30 Oct 1998	Palo Duro Canyon, Randall Co. (TBRC 1998-144; TPRF 1744)

**GRAY KINGBIRD** (*Tyrannus dominicensis*)

Accepted records - 5

31 Aug 1951	Rockport, Aransas Co. (TBRC 1988-218)
24 Apr 1974	W. Galveston Is., Galveston Co. (TPRF 323)
23 May-1 Jun 1992	Corpus Christi, Nueces Co. (TBRC 1992-74; TPRF 1082)
10 Oct 2001	Quintana, Brazoria Co. (TBRC 2001-126)
18 May 2002	South Padre Island, Cameron Co. (TBRC 2002-61)

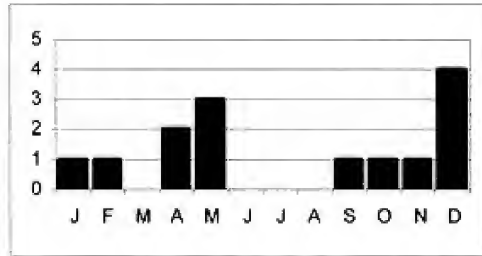
FORK-TAILED FLYCATCHER (*Tyrannus savana*)

Accepted records - 13

8 Oct 1958	Tivoli, Refugio Co. (TBRC 1995-125) (ph WWF P-26)
4 Feb 1961	Edinburg, Hidalgo Co. (*LSUMNS 25116) (James 1963)
16 May 1981	Austin, Travis Co. (TPRF 247)

Occ. Publ. Texas Ornith. Society No. 5; 2003

17 Dec 1984–16 Jan 1985	SE of Raymondville, Willacy Co. (TPRF 353)
18–26 Dec 1988	near Ricardo, Kleberg Co. (TBRC 1988–298; TPRF 732)
4 Dec 1989	Aransas NWR, Aransas Co. (TBRC 1990–36)
23–25 Apr 1991	Gilchrist, Galveston Co. (TBRC 1991–66; TPRF 1001)
25 Apr 1993	Sabine Pass, Jefferson Co. (TBRC 1993–77)
6–7 May 1997	Austin, Travis Co. (TBRC 1997–79; TPRF 1624)
17 May 1997	near Anahuac NWR, Chambers Co. (TBRC 1997–154)
13 Sep 1997	Chambers Co. (TBRC 1997–144)
18 Dec 1999	Welder Ref., San Patricio Co. (TBRC 1999–117)
1 Nov 2000	off N. Padre Is., Kenedy Co. (TBRC 2001–36; TPRF 1934)



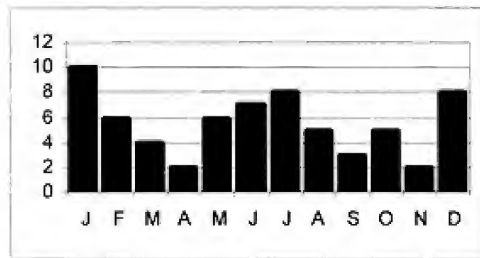
ROSE-THROATED BECARD (*Pachyramphus aglaiae*)

Accepted records - 29

30 Oct 1891	Brownsville, Cameron Co. (*ANSP 40539)
29 Dec 1948	McAllen, Hidalgo Co. (*Delaware MNH 47529 & 47530) (Sutton 1949)
30 Dec 1948	McAllen, Hidalgo Co. (*Delaware MNH 46536)
10 May 1957	Hidalgo Co. (*Slater MNH 15347)
14 Jun-28 Jul 1972	Anzalduas Park, Hidalgo Co. (TBRC 1991–105; TPRF 1013) returning summer 1973 returning 15 Jun-5 Jul 1974
18 Jul 1973	15 mi S Fort Davis, Jeff Davis Co. (*Dallas MNH 6231)
Jun 1975	Santa Ana NWR, Hidalgo Co. (TBRC 1991–106; TPRF 1014) returning summer 1976
Oct 1982-Jan 1983	Bentsen SP, Hidalgo Co. (TBRC 1988–131; TPRF 655)
early Dec 1987–29 Jan 1988	Salineno, Starr Co. (TBRC 1988–133)
28–29 Dec 1987	Santa Ana NWR, Hidalgo Co. (TBRC 1988–90)
13 Dec 1988–30 Mar 1989	Bentsen SP, Hidalgo Co. (TBRC 1989–82; TPRF 737)
24 Dec 1988	Santa Ana NWR, Hidalgo Co. (TBRC 1989–132)
14 Sep 1989–3 Mar 1990	Bentsen SP, Hidalgo Co. (TBRC 1990–62)
10 Jan 1990	Rockport, Aransas Co. (*CCM 90-A-0017; TBRC 2001–56; TPRF 1935)
15 Jan-9 Feb 1990	Anzalduas Park, Hidalgo Co. (TBRC 1990–75; TPRF 888)
18 Feb 1990	Santa Ana NWR, Hidalgo Co. (TBRC 1990–128)
20 Jan 1992	King Ranch, Kenedy Co. (TBRC 1992–18)
2 Jan-18 Mar 1993	Santa Ana NWR, Hidalgo Co. (TBRC 1993–36)
18 Feb-14 Mar 1996	Santa Ana NWR, Hidalgo Co. (TBRC 1996–21; TPRF 1394)
30 Jul-3 Oct 1997	Santa Ana NWR, Hidalgo Co. (TBRC 1997–134; TPRF 1660)
24 Apr 1999-summer 2000	Anzalduas Park, Hidalgo Co. (TBRC 1999–41; TPRF 1749)
24 Apr 1999	Bentsen SP, Hidalgo Co. (TBRC 1999–89)
27 May 1999	Laguna Atascosa NWR, Cameron Co. (TBRC 1999–90)
27–29 Jan 2000	Los Fresnos, Cameron Co. (TBRC 2000–38; TPRF 1786)

20–22 Jan 2002
25 May-1 Oct 2002

McAllen, Hidalgo Co. (TBRC 2002–19)
Santa Ana NWR, Hidalgo Co. (TBRC 2002–69; TPRF 2053)



MASKED TITYRA (*Tityra semifasciata*)

Accepted records - 1

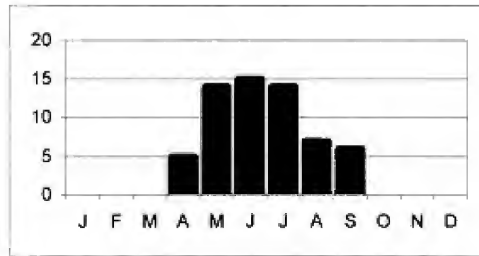
17 Feb-10 Mar 1990 Bentsen SP., Hidalgo Co. (TBRC 1990–33; TPRF 860)

YELLOW-GREEN VIREO (*Vireo flavoviridis*)

Accepted records - 35

7 Jun 1892 Brownsville, Cameron Co. (*ANSP 42478)
 9 May 1938 Matagorda Is., Matagorda Co. (*UMMZ 195270) (Wolfe 1961)
 10 May 1966 Ingleside, San Patricio Co. (*AMNH 786690) (Eisermann, Richardson, and Child 1968)
 12–13 Jul 1972 Cottonwood Campground, BBNP, Brewster Co. (*NWMSU DAE-2686) (Easterla 1972)
 2 Jul-6 Aug 1988 Laguna Atascosa NWR, Cameron Co. (TBRC 1988–224)
 25 May-10 Sep 1989 Laguna Atascosa NWR, Cameron Co. (TBRC 1989–165; TPRF 779)
 22 Jun-10 Jul 1989 Brownsville, Cameron Co. (TBRC 1989–166)
 6 May-24 Aug 1990 Laguna Atascosa NWR, Cameron Co. (TBRC 1990–121; TBSL 203–04)
 11 May-13 Jul 1991 Laguna Atascosa NWR, Cameron Co. (TBRC 1991–85)
 1 May 1992 Bolivar Pen., Galveston Co. (TBRC 1993–42; TPRF 1140)
 3 May-5 Jul 1992 Webberville Park, Travis Co. (TBRC 1992–69; TPRF 1092; TBSL 203–10)
 3 May-8 Sep 1993 Webberville Park, Travis Co. (TBRC 1993–76; TPRF 1119; TBSL 203–11)
 15–23 Apr 1996 High Is., Galveston Co. (TBRC 1996–69; TPRF 1491)
 20 Apr 1997 Sarita, Kenedy Co. (TBRC 1997–99)
 6–7 May 1997 Austin, Travis Co. (TBRC 1997–79)
 11 May 1997 Kenedy Ranch, Kenedy Co. (TBRC 1997–83)
 19–22 Apr 1998 Laguna Atascosa NWR, Cameron Co. (TBRC 1998–49)
 21–22 Apr 1998 Sabal Palms, Cameron Co. (TBRC 1998–107)
 15–27 May 1998 Aransas NWR, Aransas Co. (TBRC 1998–96)
 1–10 Jun 1998 Quintana, Brazoria Co. (TBRC 1998–79)
 7 Jun 1998 Dugout Wells, BBNP, Brewster Co. (TBRC 1998–87)
 26 Jul-19 Sep 1998 near Harlingen, Cameron Co. (TBRC 1998–102)
 20–28 Apr 1999 Sabine Pass, Jefferson Co. (TBRC 1999–53)
 28 May 1999 Quintana, Brazoria Co. (TBRC 1999–62)
 13 May 2000 Port O'Connor, Calhoun Co. (TBRC 2000–56)
 30 May-8 Sep 2000 Sabal Palms, Cameron Co. (TBRC 2000–72)
 9 Jul-9 Sep 2000 Weslaco, Hidalgo Co. (TBRC 2000–83)
 25 Apr 2001 Port O'Connor, Calhoun Co. (TBRC 2001–74)

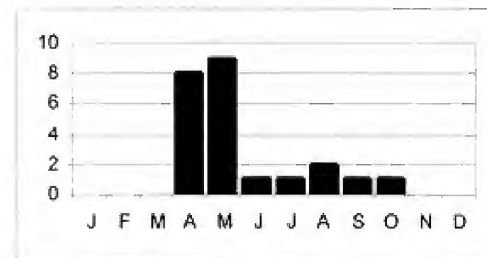
7 Jun-22 Jul 2001	Sabal Palms, Cameron Co. (TBRC 2001-105)
15 Sep 2001	near Realitos, Duval Co. (TBRC 2001-118)
1 Jun-29 July 2002	Bentsen SP, Hidalgo Co. (TBRC 2002-67; TPRF 2054; TBSL 235)
1 Jun 2002	North Padre Island, Nueces Co. (TBRC 2002-70)
4-15 Jun 2002	Sabal Palms, Cameron Co. (TBRC 2002-72)
20-27 Jun 2002	Santa Ana NWR, Hidalgo Co. (TBRC 2002-84)
5 Jul 2002	Weslaco, Hidalgo Co. (TBRC 2002-83)



BLACK-WHISKERED VIREO (*Vireo altiloquus*)

Accepted records - 18

28-29 Apr 1965	Galveston Is., Galveston Co. (*USNM 566527)
30 Apr-3 May 1981	Galveston Is., Galveston Co. (TBRC 1989-122)
4-5 Apr 1987	High Is., Galveston Co. (TBRC 1988-223)
23 May 1988	near Rockport, Aransas Co. (TBRC 1988-231; TPRF 670)
20 Aug-2 Oct 1989	High Is., Galveston Co. (TBRC 1989-195; TPRF 784; TBSL 196-01)
25 May 1991	Brownsville, Cameron Co. (TBRC 1991-65)
23-24 Aug 1991	High Is., Galveston Co. (TBRC 1991-112)
15 Apr 1992	Corpus Christi, Nueces Co. (TBRC 1992-67)
17 May 1992	Corpus Christi, Nueces Co. (TBRC 1992-80)
30 Apr-1 May 1993	Corpus Christi, Nueces Co. (TBRC 1993-87; TPRF 1132)
24 Apr 1995	Corpus Christi, Nueces Co. (TBRC 1995-90)
10 May 1997	High Is., Galveston Co. (TBRC 1997-95)
28 May 1998	Galveston, Galveston Co. (TBRC 1998-95; TPRF 1717)
8 May 1999	Bolivar Pen., Galveston Co. (TBRC 1999-55)
2-19 May 2000	Quintana, Brazoria Co. (TBRC 2000-26; TPRF 1800)
14-15 Apr 2001	High Island, Galveston Co. (TBRC 2001-70)
26 Jun-3 Jul 2001	Galveston, Galveston Co. (TBRC 2001-99; TPRF 1936)
30 Apr 2002	High Island, Galveston Co. (TBRC 2002-78; TPRF 1974)



YUCATAN VIREO (*Vireo magister*)

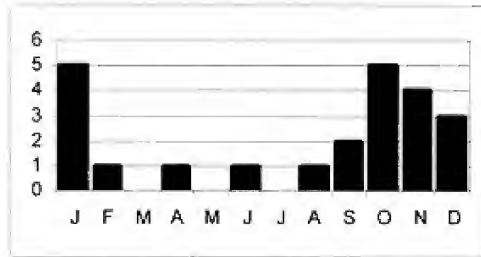
Accepted records - 1

28 Apr-27 May 1984 Bolivar Pen., Galveston Co. (TPRF 310) (Morgan et al. 1985)

CLARK'S NUTCRACKER (*Nucifraga columbiana*)

Accepted records - 20

18 Sep-6 Nov 1961	Midland, Midland Co. (TPRF 11)
1 Jun 1969	GMNP, Culberson Co. (*TCWC 9865; *Hardin Simmons Univ. 162)
12 Nov 1972	Alpine, Brewster Co. (*UTEF 443)
29 Dec 1972	Brewster Co. (*SRSU 656)
24 Jan 1973	Fort Davis, Jeff Davis Co. (*TCWC 9247)
6 Apr 1973	Jeff Davis Co. (*SRSU 663)
19 Jan 1979	Amarillo, Potter Co. (TBRC 1988-14)
27 Nov 1987	GMNP, Culberson Co. (TBRC 1988-98)
1 Jan 1993	BBNP, Brewster Co. (TBRC 1993-126)
13-14 Dec 1996	Quitaque, Floyd Co. (TBRC 1996-179; TPRF 1547)
28 Dec 1996	Midland, Midland Co. (TBRC 1997-13)
18 Jan 1997	Lubbock, Lubbock Co. (TBRC 1997-40; TPRF 1455)
31 Jan-1 Feb 1997	Sherwood, Irion Co. (TBRC 1997-39; TPRF 1456)
27 Aug 2000	Davis Mtns. Preserve, Jeff Davis Co. (TBRC 2000-109)
1 Oct 2000	Davis Mtns. Preserve, Jeff Davis Co. (TBRC 2000-77; TPRF 1782)
9-16 Oct 2000	El Paso, El Paso Co. (TBRC 2000-85; TPRF 1781)
14 Oct 2000	Smith Point, Chambers Co. (TBRC 2000-90)
27 Oct 2000	GMNP, Culberson Co. (TBRC 2000-92)
9 Nov 2000	near Alpine, Brewster Co. (TBRC 2000-97)
6 Sep 2001	Wild Rose Pass, Jeff Davis Co. (TBRC 2001-116)

**BLACK-BILLED MAGPIE** (*Pica hudsonia*)

Accepted records - 4

27 Dec 1983	Texline, Dallam Co. (TBRC 1984-11)
4-6 & 17 Feb 1990	El Paso, El Paso Co. (TBRC 1990-28; TPRF 890)
5 Dec 1997 & 16 Jan 1998	Hansford Co. (TBRC 1998-5)
5 Dec 1999-4 Apr 2000	near Gruver, Hansford Co. (TBRC 1999-106; TPRF 1855)

TAMAULIPAS CROW (*Corvus imparatus*)

On 18 November 2000, the Tamaulipas Crow was added to the Review List. The dramatic decline of this species in Texas, and therefore the United States, was the primary reason for adding this species to the Review List.

18 Mar-22 May 2001 Brownsville, Cameron Co. (TBRC 2001-65)
13 Mar-11 Jul 2002 Brownsville, Cameron Co. (TBRC 2002-47; TBSL 235)

GRAY-BREASTED MARTIN (*Progne chalybea*)

Accepted records - 2

25 Apr 1880 Rio Grande City, Starr Co. (*AMNH 89806)
18 May 1889 Hidalgo, Hidalgo Co. (*AMNH 84808)

BLACK-CAPPED CHICKADEE (*Parus atricapillus*)

Accepted records - 1

10 Apr 1881 El Paso, El Paso Co. (TBRC 1995-34; TPRF 1327) (*YPM 9723)

AMERICAN DIPPER (*Cinclus mexicanus*)

Accepted records - 6

2-3 May 1969 White River, Crosby Co. (TPRF 37) (Casto and Garner 1969)
8-16 Nov 1984 El Paso, El Paso Co. (TPRF 461)
12 Mar 1986 BBNP, Brewster Co. (TBRC 1986-8)
24 Oct 1987-14 Mar 1988 GMNP, Culberson Co. (TBRC 1988-94; TPRF 601)
23 Oct 1988 & 2 Jan 1989 GMNP, Culberson Co. (TBRC 1989-5; TPRF 664)
5 Mar 1994 Austin, Travis Co. (TBRC 1994-51; TPRF 1236)

NORTHERN WHEATEAR (*Oenanthe oenanthe*)

Accepted records - 1

1-6 Nov 1994 Laguna Atascosa NWR, Cameron Co. (TBRC 1994-165; TPRF 1310)

ORANGE-BILLED NIGHTINGALE-THRUSH (*Catharus aurantiirostris*)

Accepted records - 1

8 Apr 1996 Laguna Atascosa NWR, Cameron Co. (TBRC 1996-59; TPRF 1493) (Papish et al. 1997)

WHITE-THROATED ROBIN (*Turdus assimilis*)

Accepted records - 3

18-25 Feb 1990 Laguna Vista, Cameron Co. (TBRC 1990-34; TPRF 861) (Lasley and Krzywowski 1991)

1 Feb-3 Apr 1998 Bentsen SP, Hidalgo Co. (TBRC 1998–10; TPRF 1700)
 1–12 Mar 1998 Santa Ana NWR, Hidalgo Co. (TBRC 1998–23; TPRF 1701)

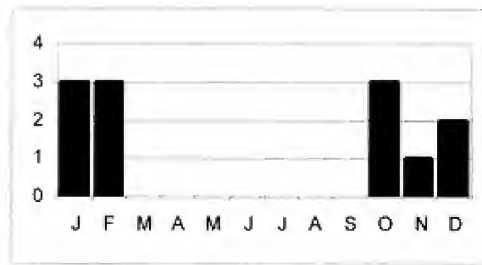
RUFOUS-BACKED ROBIN (*Turdus rufopalliatu*s)

Accepted records - 11

29 Dec 1975 below Falcon Dam, Starr Co. (TBRC 1988–20)
 11–18 Nov 1976 Langtry, Val Verde Co. (TPRF 116)
 9 Feb 1992 near Fort Davis, Jeff Davis Co. (TBRC 1992–25)
 27 Oct 1993 El Paso, El Paso Co. (*UTEF 1439; TBRC 1994–36; TPRF 1225)
 14 Feb 1997 Santa Elena Canyon, BBNP, Brewster Co. (TBRC 1997–42)
 14 Jan 1998 Santa Ana NWR, Hidalgo Co. (TBRC 1998–21)
 20 Jan 1998 Bentsen SP, Hidalgo Co. (TBRC 1998–17)
 30 Oct 1999 near BBNP, Brewster Co. (TBRC 1999–99)
 31 Jan-13 Feb 2000 Sarita, Kenedy Co. (TBRC 2000–5; TPRF 1856)
 30 Oct 2000 El Paso, El Paso Co. (TBRC 2000–120; TPRF 1937)
 30 Dec 2000 Rio Grande Village, BBNP, Brewster Co. (TBRC 2001–14; TPRF 2008)



There are three accepted records of White-throated Robin in Texas and the United States. Interestingly, the two records from the winter of 1997-1998 each involved two individuals. This was one of the birds at Bentsen-Rio Grande Valley State Park, Hidalgo County. Photo by Mark W. Lockwood.



VARIED THRUSH (*Ixoreus naevius*)

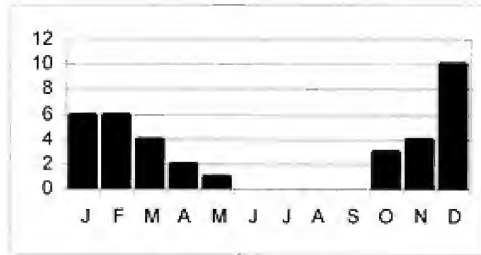
Accepted records - 22

27 Dec 1978–31 Jan 1979	Gilchrist, Galveston Co. (TPRF 142)
18 Feb–21 Mar 1979	Idalou, Lubbock Co. (TBRC 1979–2)
31 Dec 1979–29 Feb 1980	Big Spring, Howard Co. (TPRF 191)
7 Dec 1981–10 Jan 1982	BBNP, Brewster Co. (TBRC 1982–1)



This Aztec Thrush at North Padre Island, Nueces County, was one of the more unexpected occurrences in Texas considering the species inhabits the mountains of western Mexico. Photo by Willie Sekula.

8 Jan-17 Feb 1988	Midland, Midland Co. (TBRC 1988-148; TPRF 652)
12 & 14 Apr 1989	Cottonwood Campground, BBNP, Brewster Co. (TBRC 1989-142)
3 Oct 1989	GMNP, Culberson Co. (TBRC 1989-209)
19 Dec 1989	Fort Worth, Tarrant Co. (TBRC 1990-2)
29 Apr-10 May 1990	El Paso, El Paso Co. (TBRC 1990-89)
28 Oct 1990	Los Fresnos, Cameron Co. (*LSUMNS 151912; TBRC 1991-53; TPRF 981)
5-8 Dec 1990	Bentsen SP, Hidalgo Co. (TBRC 1990-151; TPRF 958)
15 Dec 1990	Lubbock, Lubbock Co. (TBRC 1991-108)
22 Feb-3 Mar 1991	Smith Point, Chambers Co. (TBRC 1991-25)
14 Dec 1991	Lubbock, Lubbock Co. (TBRC 1993-13)
8-27 Mar 1992	Davis Mtns. SP, Jeff Davis Co. (TBRC 1992-56; TPRF 1088)
9-22 Feb 1996	Balmorhea SP., Reeves Co. (TBRC 1996-22; TPRF 1395)
29 Nov 1997	Santa Ana NWR, Hidalgo Co. (TBRC 1997-167)
25 Dec 1999-4 Mar 2000	Lubbock. Lubbock Co. (TBRC 1999-114; TPRF 1773)
4-10 Nov 2000	Davis Mtns. SP, Jeff Davis Co. (TBRC 2000-95; TPRF 1788)
30 Nov-1 Dec 2000	Davis Mtns. SP, Jeff Davis Co. (TBRC 2001-04)
24-25 Oct 2001	Balmorhea SP, Reeves Co. (TBRC 2001-127; TPRF 2009)
24 Nov 2002	El Paso, El Paso Co. (TBRC 2002-120; TPRF 2099)
6 Dec 2002-24 Jan 2003	El Paso, El Paso Co. (TBRC 2003-5; TPRF 2100)



AZTEC THRUSH (*Ridgwayia pinicola*)

Accepted records - 4

21-25 Aug 1977	Boot Canyon, BBNP, Brewster Co. (TPRF 125) (Wolf 1978)
30 Jan 1979	Port Aransas, Nueces Co. (TBRC 1988-27)
31 Jul-7 Aug 1982	Boot Canyon, BBNP, Brewster Co. (TBRC 1989-22)
16-20 May 1996	Corpus Christi, Nueces Co. (TBRC 1996-71; TPRF 1496)

BLACK CATBIRD (*Melanoptila glabrirostris*)

Accepted records - 1

21 Jun 1892	Brownsville, Cameron Co. (*ANSP 42944)
-------------	--

BLUE MOCKINGBIRD (*Melanotis caerulescens*)

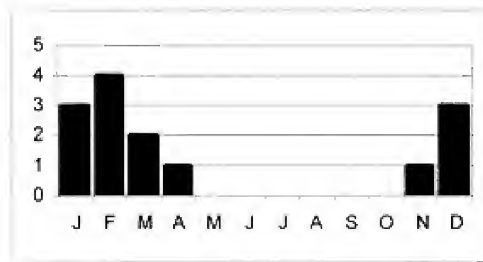
Accepted records - 1

9 May 1999–27 Feb 2002 Weslaco, Hidalgo Co. (TBRC 1999–46; TPRF 1797; TBSL 230)

BOHEMIAN WAXWING (*Bombycilla garrulus*)

Accepted records - 11

26 Dec 1936	Palo Duro Creek, Randall Co. (*USNM 597272)
18 Dec 1977–19 Mar 1978	Lubbock, Lubbock Co. (TBRC 1991–43; TPRF 978)
12 Feb 1980	Bastrop Co. (TBRC 1988–25)
24 Dec 1987	Falfurrias, Brooks Co. (TBRC 1988–177)
28 Jan 1993	Palo Duro Canyon SP, Randall Co. (TBRC 1993–48)
17 Nov 1996	Lubbock, Lubbock Co. (TBRC 1997–26)
12 Jan 1997	Texline, Dallam Co. (TBRC 1997–38; TPRF 1590)
7 Feb 1997	8 mi N. of Rosenberg, Fort Bend Co. (TBRC 1997–30)
26 Feb 2000	Cooper L., Hopkins Co. (TBRC 2000–37)
21 Mar 2000	River Legacy Park, Tarrant Co. (TBRC 2000–46)
1 Apr 2000	Arlington, Tarrant Co. (TBRC 2000–36)



GRAY SILKY-FLYCATCHER (*Ptilononys cinereus*)

Accepted records - 2

31 Oct-11 Nov 1985	Laguna Atascosa NWR, Cameron Co. (TBRC 1989–37; TPRF 363) (Lasley and Pincelli 1986)
12 Jan-5 Mar 1995	El Paso, El Paso Co. (TBRC 1995–13; TPRF 1320)

OLIVE WARBLER (*Peucedramus taeniatus*)

Accepted records - 6

3 May 1991	BBNP, Brewster Co. (TBRC 1991–61)
19 May 1992	Davis Mtns., Jeff Davis Co. (TBRC 1992–72; TPRF 1094)
7 Sep 1994	Big Bend Ranch, Presidio Co. (TBRC 1994–146)
30 Apr 1995	Tule Canyon, Briscoe Co. (TBRC 1995–65)
6 Oct 2000	Davis Mtns. Preserve, Jeff Davis Co. (TBRC 2000–89)
11–14 Oct 2000	Hueco Tanks SHS, El Paso Co. (TBRC 2000–128; TPRF 1938)

CONNECTICUT WARBLER (*Oporornis agilis*)

Accepted records - 7

16 Sep 1978	High Is., Galveston Co. (TPRF 140) (Morgan and Eubanks 1979)
10 Oct 1979	Galveston Co. (TBRC 1989-76)
3-14 May 1986	Driftwood, Hays Co. (TPRF 387)
30 Apr 1988	Grand Prairie, Dallas Co. (TBRC 1988-238)
5 Sep 1988	Plano, Collins Co. (TBRC 1988-244; TPRF 703)
29 Sep 1992	Crosby, Harris Co. (TBRC 1992-118)
6 Oct 1996	Galveston, Is., Galveston Co. (TBRC 1996-166)

GRAY-CROWNED YELLOWTHROAT (*Geothlypis poliocephala*)

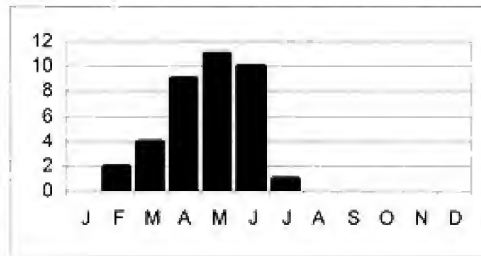
Accepted records - 40

7 May 1890	Brownsville, Cameron Co. (*British MNH 1892-4-20-1533)
26 Feb 1892	Brownsville, Cameron Co. (*ANSP 43427)
24 Apr 1892	Brownsville, Cameron Co. (*ANSP 43426)
4 May 1892	Brownsville, Cameron Co. (*ANSP 42275)
6 May 1892	Brownsville, Cameron Co. (*ANSP 42274)
7 Jun 1892	Brownsville, Cameron Co. (*ANSP 42279)
10 Jun 1892	Brownsville, Cameron Co. (*AMNH 760095)
11 Jun 1892	Brownsville, Cameron Co. (*AMNH 760096)
11 Jun 1892	Brownsville, Cameron Co. (*ANSP 42278)
14 Jun 1892	Brownsville, Cameron Co. (*ANSP 42281)
16 Jun 1892	Brownsville, Cameron Co. (*UMMZ 194474)
17 Jun 1892	Brownsville, Cameron Co. (*USNM B26391)
23 Mar 1893	Brownsville, Cameron Co. (*ANSP 43684)



This immature male Olive Warbler was the first to be photographed in Texas and placed the species on to TOS's official state list. It was discovered in the Davis Mountains, Jeff Davis County, on 19 May 1992. Photo by Kelly B. Bryan.

Apr 1893	Brownsville, Cameron Co. (*USNM 129405)
13 Apr 1893	Brownsville, Cameron Co. (*USNM 129402)
14 Apr 1893	Brownsville, Cameron Co. (*ANSP 43764)
14 Apr 1893	Brownsville, Cameron Co. (*USNM 128486)
14 Apr 1893	Brownsville, Cameron Co. (*USNM 128487)
15 Apr 1893	Brownsville, Cameron Co. (*USNM 129404)
16 Apr 1893	Brownsville, Cameron Co. (*ANSP 43765)
18 Apr 1893	Brownsville, Cameron Co. (*ANSP 43766)
21 Apr 1893	Brownsville, Cameron Co. (*USNM 129403)
26 Apr 1893	Brownsville, Cameron Co. (*USNM 129401)
23 May 1893	Brownsville, Cameron Co. (*ANSP 43685)
2 May 1893	Brownsville, Cameron Co. (*USNM 129350)
4 May 1893	Brownsville, Cameron Co. (*USNM 129348)
5 May 1893	Brownsville, Cameron Co. (*USNM 129351)
10 May 1893	Brownsville, Cameron Co. (*USNM 129349)
1 May 1894	Brownsville, Cameron Co. (*USNM 151988)
3 May 1894	Cameron Co. (*CU 16815)
9 May 1894	Brownsville, Cameron Co. (*ANSP 82114)
16 May 1894	Brownsville, Cameron Co. (*USNM B27240)
16 May 1894	Cameron Co. (*FMNH 6567)
25 May 1894	Brownsville, Cameron Co. (*ROM 62320)
15 Feb-3 Apr 1988	Sabal Palm Sanct., Cameron Co. (TBRC 1988-155; TPRF 637; TBSL 159-01)
15 Apr 1988	Rancho Viejo, Cameron Co. (TBRC 1988-204)
8 Mar 1989	Santa Ana NWR, Hidalgo Co. (TBRC 1989-87)
21 May-5 Jul 1989	Sabal Palm Sanct., Cameron Co. (TBRC 1989-144; TPRF 760)
17-22 Jun 1999	Santa Ana NWR, Hidalgo Co. (TBRC 1999-59; TPRF 1793; TBSL 228)
24 Mar-26 Jun 2000	Santa Ana NWR, Hidalgo Co. (TBRC 2000-23; TPRF 1940)

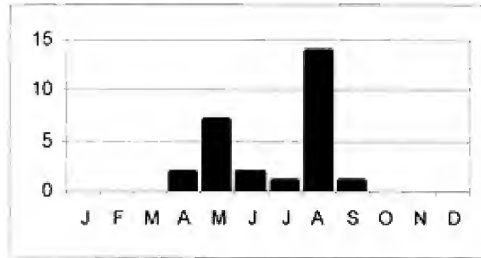


RED-FACED WARBLER (*Cardellina rubrifrons*)

Accepted records - 26

17 Aug 1890	El Paso Co. (*MVZ 37897)
16 May 1968	El Paso, El Paso Co. (TBRC 1988-104) (Lasley et al. 1982)
2 Jun 1974	Boot Canyon, BBNP, Brewster Co. (TPRF 294)
11 May 1982	Buescher SP, Bastrop Co. (TBRC 1988-105)
10-16 Aug 1982	Boot Canyon, BBNP, Brewster Co. (TPRF 277)
18 Aug 1985	Laguna Atascosa NWR, Cameron Co. (TPRF 350)
8 Aug 1988	Boot Canyon, BBNP, Brewster Co. (TBRC 1988-242)
1-2 May 1990	Boot Canyon, BBNP, Brewster Co. (TBRC 1990-109)
17 Aug 1991	Boot Canyon, BBNP, Brewster Co. (TBRC 1991-113; TPRF 1015)
30 Apr 1993	Pine Canyon, BBNP, Brewster Co. (TBRC 1993-106)

7 Aug 1993	Boot Canyon, BBNP, Brewster Co. (TBRC 1994–19)
16 Aug 1994	El Paso, El Paso Co. (TBRC 1994–137)
13–14 Aug 1995	Boot Canyon, BBNP, Brewster Co. (TBRC 1995–106)
12 May 1996	El Paso, El Paso Co. (TBRC 1996–77)
12 Aug 1996	Pine Canyon, BBNP, Brewster Co. (TBRC 1996–106)
23 Apr 1997	Boot Canyon, BBNP, Brewster Co. (TBRC 1997–74)
6 May 1999	Boot Canyon, BBNP, Brewster Co. (TBRC 1999–38)
14 Aug 1999	Boot Canyon, BBNP, Brewster Co. (TBRC 1999–82)
2 May 2000	Pine Canyon, BBNP, Brewster Co. (TBRC 2000–40)
6 Aug 2000	Davis Mtns. Preserve, Jeff Davis Co. (TBRC 2000–75; TPRF 1794)
6 May 2001	Matagorda Island SP, Calhoun Co. (TBRC 2001–80)
3 Aug 2001	Chisos Mtns, BBNP, Brewster Co. (TBRC 2001–130)
15 Sep 2001	Canyon L., Comal Co. (TBRC 2001–117)
23 Jul–25 Aug 2002	Boot Canyon, BBNP, Brewster Co. (TBRC 2002–93; TPRF 2055)
21 Aug 2002	Chisos Mtns, BBNP, Brewster Co. (TBRC 2002–98)
10 Jun 2003	GMNP, Culberson Co. (TBRC 2003–59; TPRF 2107)



SLATE-THROATED REDSTART (*Myioborus miniatus*)

Accepted records - 5

26 Apr–15 May 1990	BBNP, Brewster Co. (TBRC 1990–85)
2 Aug 1997	Davis Mtns., Jeff Davis Co. (TBRC 1997–126; TPRF 1650; TBSL 222)
21–25 Jun 2000	Davis Mtns., Jeff Davis Co. (TBRC 2000–54; TPRF 1939; TBSL 231)
25 Apr 2001	BBNP, Brewster Co. (TBRC 2001–75)
10 Apr 2002	Corpus Christi, Nueces Co. (TBRC 2002–49; TPRF 2032)

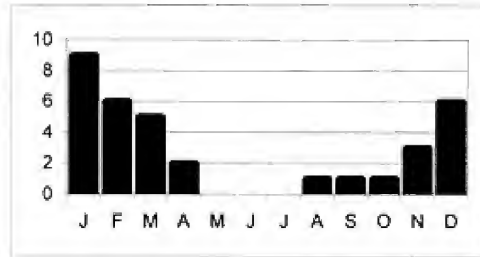
GOLDEN-CROWNED WARBLER (*Basileuterus culicivorus*)

Accepted records - 16

6 Jan 1892	Brownsville, Cameron Co. (*ANSP 42479)
20 Jan 1892	Brownsville, Cameron Co. (*ANSP 43449)
5 Sep 1943	Harlingen, Cameron Co. (TBRC 2002–104) (Davis 1945)
29 Dec 1979–1 Mar 1980	Brownsville, Cameron Co. (TPRF 194) (Langham 1980; Arvin 1980)
1 Jan 1984	Santa Ana NWR, Hidalgo Co. (TBRC 1984–8)
1 Feb–7 Mar 1987	Brownsville, Cameron Co. (TPRF 473)
31 Dec 1987–19 Mar 1988	Santa Ana NWR, Hidalgo Co. (TBRC 1988–100; TPRF 604)
23 Dec 1989–12 Jan 1990	Brownsville, Cameron Co. (TBRC 1989–236; TPRF 819)
1 Jan–15 Feb 1990	Santa Ana NWR, Hidalgo Co. (TBRC 1990–31; TPRF 891)
30 Apr 1995	Santa Ana NWR, Hidalgo Co. (TBRC 1999–101)
8 Nov 1995–mid Jan 1996	Santa Ana NWR, Hidalgo Co. (TBRC 1995–133; TPRF 1443)

Occ. Publ. Texas Ornith. Society No. 5; 2003

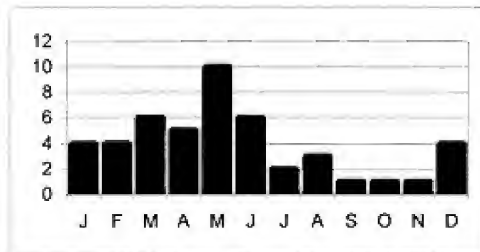
21 Dec 1995	Bentsen SP, Hidalgo Co. (TBRC 1996–134)
25–29 Apr 2001	Corpus Christi, Nueces Co. (TBRC 2001–90; TPRF 1941)
12 Aug 2001	Laguna Atascosa NWR, Cameron Co. (TBRC 2002–77; TPRF 1975)
29 Mar 2002	Santa Ana NWR, Hidalgo Co. (TBRC 2002–38; TPRF 2012)
2 Nov 2002–6 Apr 2003	Edinburg, Hidalgo Co. (TBRC 2002–118; TPRF 2101)



RUFOUS-CAPPED WARBLER (*Basileuterus rufifrons*)

Accepted records - 20

10 Feb 1973	Falcon Dam, Starr Co. (TBRC 1977–9)
9 Sep 1973–29 Jun 1974	Campground Canyon, BBNP, Brewster Co. (TBRC 1989–106; TPRF 1065)
23 Mar–Jun 1979	Santa Elena Canyon, BBNP, Brewster Co. (TPRF 165)
17, 19 May 1980	Webb Co. (* TCWC 10887 & 10888) (Arnold 1980)
3–12 Jan 1982	Cibolo Creek near Boerne, Kendall Co. (TPRF 259)
12–13 Mar 1986	Lost Mine Trail, BBNP, Brewster Co. (TBRC 1989–99)
19 Dec 1992	Corpus Christi, Nueces Co. (TBRC 1993–55)
10 Jan–9 Mar 1993	Dolan Creek, Val Verde Co. (TBRC 1993–18; TPRF 1199)
8 May 1993	Dugout Wells, BBNP, Brewster Co. (TBRC 1993–80)
20 Apr–“early” Aug 1995	15 mi NW Uvalde, Uvalde Co. (TBRC 1995–55)
30 Aug 1995	Dolan Creek, Val Verde Co. (TBRC 1995–130)
27 Dec 1997–6 Mar 1998	L. Amistad, Val Verde Co. (TBRC 1998–44; TPRF 1595)
1 May 1998	Hot Springs, BBNP, Brewster Co. (TBRC 1998–74)
19 Aug 1998	Rio Medina, Medina Co. (TBRC 1998–134)
20 Dec 1998	near San Antonio, Bexar Co. (TBRC 1999–13)
20 Jun 1999	Dolan Creek Preserve, Val Verde Co. (TBRC 1999–72; TPRF 1737)
1 May 2000	Green Gulch, BBNP, Brewster Co. (TBRC 2000–41)
25 Mar–25 Jun 2000	Dolan Creek Preserve, Val Verde Co. (TBRC 2001–114; TBSL 232)
2 Apr–30 Jul 2001	Dolan Creek Preserve, Val Verde Co. (TBRC 2001–119; TPRF 1954; TBSL 233)
9 May 2001	Sam Nail Ranchsite, BBNP, Brewster Co. (TBRC 2001–84)



FLAME-COLORED TANAGER (*Piranga bidentata*)

Accepted records - 5

14–19 Apr 1996	Pine Canyon, BBNP, Brewster Co. (TBRC 1996–64; TPRF 1488)
20–22 Apr 1996	Chisos Basin, BBNP, Brewster Co. (TBRC 1996–65; TPRF 1489)
1–5 Oct 2001	Davis Mtns Resort, Jeff Davis Co. (TBRC 2001–122; TPRF 2014)
11–14 Apr 2002	South Padre Island, Cameron Co. (TBRC 2002–50; TPRF 2028)
26–27 Apr 2002	Boot Canyon, BBNP, Brewster Co. (TBRC 2002–55; TPRF 2029)

YELLOW-FACED GRASSQUIT (*Tiaris olivacea*)

Accepted records - 2

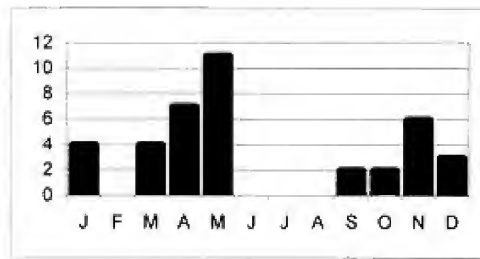
22–24 Jan 1990	Santa Ana NWR, Hidalgo Co. (TBRC 1990–23; TPRF 859)
11–29 Jun 2002	Bentsen SP, Hidalgo Co. (TBRC 2002–75; TPRF 2031)

BAIRD'S SPARROW (*Ammodramus bairdii*)

Accepted records - 39

winter 1880	Rio Grande City, Starr Co. (*AMNH 83460)
25 May 1935	Boquillas, Brewster Co. (*CU 19451)
30 Dec 1965	30 mi S of Marfa, Presidio Co. (*WMM 242)
22 Nov 1973	near Salt Flat, Hudspeth Co. (*SFASU 2082)
22 Nov 1975	Brewster Co. (*SHSU 959)
27 Nov 1976	Muleshoe NWR, Bailey Co. (*OMNH 11361)
18 Jan 1977	Muleshoe NWR, Bailey Co. (*OMNH 11570)
19 Jan 1977	Muleshoe NWR, Bailey Co. (*OMNH 11571)
12 Mar 1978	Kent Co. (*TTU 3703)
23 Sep 1980	Lubbock Co. (*TTU 3895)
22 Mar 1985	Hidalgo Co. (TBRC 1985–17)
23 Apr 1985	San Angelo, Tom Green Co. (*ASNHC 486)
16–17 Jan 1988	Marfa, Presidio Co. (*LSUMNS 135903, 135904)
23–27 Apr 1988	San Antonio, Bexar Co. (TPRF 606)
15 Apr 1989	near Valentine, Jeff Davis Co. (TBRC 1989–164)
11 May 1990	San Angelo, Tom Green Co. (*MSB 18002)
19 Jan 1992	Jeff Davis Co. (TBRC 1992–40)
17 Apr 1992	Jeff Davis/Presidio Co. (TBRC 1992–96)
29 Apr–1 May 1992	San Antonio, Bexar Co. (TBRC 1992–85; TPRF 1084)
29 Oct 1992	Big Bend Ranch, Presidio Co. (TBRC 1992–165; TPRF 1126)
28 Nov 1995	20 mi N of Fort Davis, Jeff Davis Co. (TBRC 1995–156)
1–2 May 1996	near Panther Junction, BBNP, Brewster Co. (TBRC 1996–66; TPRF 1490)
4–6 May 1996	Rio Grande Village, BBNP, Brewster Co. (TBRC 1996–74)
11 May 1996	Cattail Falls, BBNP, Brewster Co. (TBRC 1996–133)
15 Nov 1996	20 mi N of Fort Davis, Jeff Davis Co. (TBRC 1996–157)
28 Nov 1996	N. of Fort Davis, Jeff Davis Co. (TBRC 1997–25)
21 Dec 1996	5 mi N. of Balmorhea, Reeves Co. (TBRC 1997–20)
30 Apr–9 May 1998	Rio Grande Village, BBNP, Brewster Co. (TBRC 1998–64; TPRF 1728)
5 May 1998	Panther Junction, BBNP, Brewster Co. (TBRC 1998–66)
16 May 1998	Parker Co. (TBRC 1998–65; TPRF 1698)
16 May 1998	Hot Springs, BBNP, Brewster Co. (TBRC 1998–68)
1 May 1999	near Fort Worth, Tarrant Co. (TBRC 1999–43)

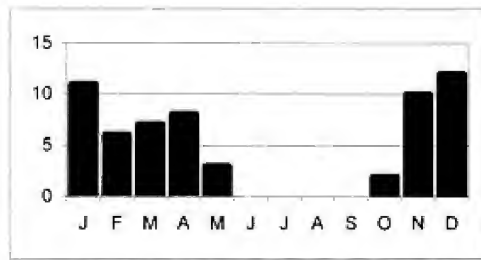
9 Dec 1999	Fort Hancock, Hudspeth Co. (TBRC 2000–16)
25 Apr 2000	20 mi S of Marathon, Brewster Co. (*BBNP; TBRC 2000–47; TPRF 1785)
7 May 2000	Rio Grande Village, BBNP, Brewster Co. (TBRC 2000–42; TPRF 2013)
10 May 2000	BBNP, Brewster Co. (TBRC 2000–60)
23 Sep 2000	Lubbock, Lubbock Co. (TBRC 2000–114)
15 Oct 2000	near Muleshoe, Bailey Co. (TBRC 2000–117)
12 May 2002	Cottonwood Campground, BBNP, Brewster Co. (TBRC 2002–79; TPRF 1976)



GOLDEN-CROWNED SPARROW (*Zonotrichia atricapilla*)

Accepted records - 27

15 Mar 1887	Orange Co. (*UMMZ 48964)
4 Apr 1887	Orange Co. (*UMMZ 48963)
15 Jan 1974	BBNP, Brewster Co. (TBRC 1994–156; TPRF 1301)
3–22 Apr 1974	College Station, Brazos Co. (TPRF 58)
12 Nov 1976–1 Jan 1977	Amarillo, Potter Co. (TBRC 1977–4)
19–29 Dec 1983	Big Spring, Howard Co. (TBRC 1988–113; TPRF 792)
23–24 May 1984	Bridge City, Orange Co. (TPRF 315)
28 Dec 1985	near Stanton, Glasscock Co. (TPRF 413)
25 Oct 1986–10 Feb 1987	Junction, Kimble Co. (TBRC 1988–56)
1 Jan 1990	Caprock Canyons SP, Briscoe Co. (TBRC 1990–3)
2 Dec 1990–9 Mar 1991	Amarillo, Potter Co. (TBRC 1991–40; TPRF 1023)
31 Dec 1990	El Paso, El Paso Co. (TBRC 1991–13)
10 Nov 1991	GMNP, Culberson Co. (TBRC 1991–135)
11 Nov 1992	Davis Mtns. SP, Jeff Davis Co. (TBRC 1992–166; TPRF 1127)
19 Dec 1993–2 May 1994	Hueco Tanks SHS, El Paso Co. (TBRC 1994–17; TPRF 1219)
	returning 23 Oct 1994–16 Apr 1995 (TBRC 1994–183; TPRF 1303)
	returning 13 Nov 1995–13 Apr 1996 (TBRC 1995–149; TPRF 1408)
31 Jan 1995	Uvalde, Uvalde Co. (TBRC 1995–64)
28 Nov 1995	20 mi N of Fort Davis, Jeff Davis Co. (TBRC 1995–150)
16–19 Nov 1997	El Paso, El Paso Co. (TBRC 1997–164)
27 Nov 1998–9 Jan 1999	near George West, Live Oak Co. (TBRC 1999–18; TPRF 1684)
19 Dec 1998	Fort Hancock, Hudspeth Co. (TBRC 1999–11)
2 May 2000	Levelland, Hockley Co. (TBRC 2000–28)
4 Nov 2000	GMNP, Culberson Co. (TBRC 2000–98)
21 Apr 2002	Pinto Canyon, Presidio Co. (TBRC 2002–52)
8 Dec 2002–20 Apr 2003	near George West, Live Oak Co. (TBRC 2003–22; TPRF 2102)
26 Mar–9 Apr 2003	near Archer City, Archer Co. (TBRC 2003–28; TPRF 2105)



YELLOW-EYED JUNCO (*Junco phaeonotus*)

Accepted records - 7

17 Jun 1980	BBNP, Brewster Co. (TBRC 1993–24)
25 Nov 1987	GMNP, Culberson Co. (TBRC 1988–97)
20 Mar-early Apr 1988	GMNP, Culberson Co. (TBRC 1988–187; TPRF 660)
25 Apr & 5 May 1990	BBNP, Brewster Co. (TBRC 1990–122)
5 Nov 1995	GMNP, Culberson Co. (TBRC 1995–144)
25 Nov 1996	GMNP, Culberson Co. (TBRC 1997–91)
13 Jan 1997	El Paso, El Paso Co. (TBRC 1997–56)

SNOW BUNTING (*Plectrophenax nivalis*)

Accepted records - 5

21–23 Dec 1977	L. Livingston, Polk Co. (*SHSU 1001) (Bryan et al. 1978)
29 Dec 1983	16 mi N of Dalhart, Dallam Co. (TBRC 1984–12)
9 May 1988	Chisos Basin, BBNP, Brewster Co. (TBRC 1988–214)
27 Nov 1993	Balmorhea L., Reeves Co. (TBRC 1994–7)
26 Dec 1999–15 Jan 2000	L. Tawakoni, Rains Co. (TBRC 1999–116; TPRF 1858)

CRIMSON-COLLARED GROSBEAK (*Rhodothraupis celaeno*)

Accepted records - 8

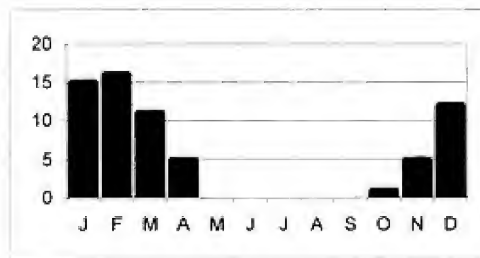
28 Jun-1 Jul 1974	Bentsen SP, Hidalgo Co. (TPRF 244; TBSL 25–01)
27 Dec 1985–4 Jan 1986	McAllen, Hidalgo Co. (TPRF 385)
7–17 Jan 1986	Laredo, Webb Co. (TPRF 369)
2–12 Nov 1987	Bentsen SP, Hidalgo Co. (TBRC 1988–81; TPRF 597; TBSL 184–01)
28 Dec 1987	Santa Ana NWR, Hidalgo Co. (TBRC 1988–91)
28 Dec 1987–29 Apr 1988	Sabal Palm Sanct., Cameron Co. (TBRC 1988–99; TPRF 603)
31 Jan 1988	Laguna Vista, Cameron Co. (TBRC 1988–164; TPRF 638)
3 Feb-9 Apr 1988	Aransas NWR, Aransas Co. (TBRC 1988–152; TPRF 636; TBSL 162–01)

BLUE BUNTING (*Cyanocopsa parellina*)

Accepted records - 27

12–16 Mar 1980	Bentsen SP, Hidalgo Co. (TPRF 196)
----------------	------------------------------------

24 Jan-16 Feb 1984	Bentsen SP, Hidalgo Co. (TBRC 1984-6 & 1984-7)
3 Dec 1984-Apr 1985	Bentsen SP, Hidalgo Co. (TBRC 1985-4; TPRF 357)
18 Oct 1985	Santa Ana NWR, Hidalgo Co. (TBRC 1988-130)
early Dec 1985-8 Apr 1986	Bentsen SP, Hidalgo Co. (TPRF 512)
13 Dec 1987-9 Jan 1988	Santa Ana NWR, Hidalgo Co. (TBRC 1988-103; TPRF 621; TBSL 161-01)
mid Dec 1987-7 Apr 1988	Bentsen SP, Hidalgo Co. (TBRC 1988-93; TPRF 600)
20 Dec 1987-12 Feb 1988	Freeport, Brazoria Co. (TBRC 1988-153)
20 Dec 1987-early Jan 1988	Freeport, Brazoria Co. (TBRC 1988-154; TPRF 642)
29 Dec 1987	Bentsen SP, Hidalgo Co. (TBRC 1988-92)
5 & 30 Jan 1988	Salineno, Starr Co. (TBRC 1988-125; TPRF 622; TBSL 161-01)
12 Jan 1988	Santa Ana NWR, Hidalgo Co. (TBRC 1988-191)
7 Feb 1988+	Sabal Palm Sanct., Cameron Co. (TBRC 1988-146)
5 Jan-15 Mar 1990	Bentsen SP, Hidalgo Co. (TBRC 1990-46; TPRF 864)
11 Nov 1995	Santa Ana NWR, Hidalgo Co. (TBRC 1995-155)
17 Dec 1995-27 Mar 1996	Bentsen SP, Hidalgo Co. (TBRC 1996-26)
16 Nov 1996	Laguna Atascosa NWR, Cameron Co. (TBRC 1996-153)
30 Nov 1996-29 Mar 1997	Bentsen SP, Hidalgo Co. (TBRC 1996-172; TPRF 1579)
15 Feb 1997	Santa Margarita Ranch, Starr Co. (TBRC 1997-55)
28 Nov 1997-15 Mar 1998	Bentsen SP, Hidalgo Co. (*TCWC 13335; TBRC 1998-9; TPRF 1588)
7 Feb 1998	Salineno, Starr Co. (TBRC 1998-26)
Feb-16 Mar 1999	Bentsen SP, Hidalgo Co. (TBRC 1999-49)
1-4 Dec 1999	Bentsen SP, Hidalgo Co. (TBRC 1999-113)
1 Apr 2000	below Falcon Dam, Starr Co. (TBRC 2000-52)
27 Nov 2000-23 Feb 2001	Bentsen SP, Hidalgo Co. (TBRC 2001-13; TPRF 2017)
23 Jan-31 Mar 2002	Bentsen SP, Hidalgo Co. (TBRC 2002-23; TPRF 2018)
14 Feb-10 Mar & 12-13 Apr 2002	2.5 m. SW of Mission, Hidalgo Co. (TBRC 2002-58; TPRF 2019)



SHINY COWBIRD (*Molothrus bonariensis*)

Accepted records - 8

23 May 1990	Fort Hood, Bell Co. (*TCWC 12720; TBRC 1990-95; TPRF 878)
12 Jun 1992	Fort Hood, Coryell Co. (*TCWC 12980; TBRC 1992-81; TPRF 1083)
5 Mar 1993	Goliad Co. (TBRC 1993-56)
26 Mar 1995	Matagorda, Matagorda Co. (TBRC 1995-44)
19 Apr 1997	Port O'Connor, Calhoun Co. (TBRC 1997-73)
3 Feb 2000	Houston, Harris Co. (TBRC 2000-9)
1 Apr 2001	Matagorda Is. SP, Calhoun Co. (TBRC 2001-68)
15-22 Apr 2001	Port O'Connor, Calhoun Co. (TBRC 2001-71)

BLACK-VENTED ORIOLE (*Icterus wagleri*)

Accepted records - 4

- 27 Sep 1968 Rio Grande Village, BBNP, Brewster Co. (TPRF 31) (Wauer, 1970)
returning 26 Apr-27 Sep 1969
returning 17 Apr-10 Oct 1970
- 17 Jun-4 Oct 1989 Kingsville, Kleberg Co. (TBRC 1989-176; TPRF 781)

PINE GROSBEAK (*Pinicola enucleator*)

Accepted records - 5

- 24 Nov 1969 Dallas, Dallas Co. (*WFVZ 49829)
- 21-24 Nov 1984 Amarillo, Potter Co. (TPRF 336)
- 1 May 1988 Lubbock, Lubbock Co. (TBRC 1988-232)
- 28 Dec 1990 Lewisville, Denton Co. (TBRC 1991-10)
- 24 Nov 2000 GMNP, Culberson Co. (TBRC 2000-104; TPRF 1942)

WHITE-WINGED CROSSBILL (*Loxia leucoptera*)

Accepted records - 7

- 28 Dec 1975-8 Mar 1976 Lubbock, Lubbock Co. (TPRF 94)
- 12-16 Mar 1981 Amarillo, Potter Co. (TPRF 242)
- 12-16 Dec 1992 &
- 13 Jan 1993-27 Feb 1993 Aledo, Parker Co. (TBRC 1992-160; TPRF 1124)
- 24-28 Dec 2001 L. Tanglewood, Randall Co. (TBRC 2002-04; TPRF 2022)
- 30 Dec 2001-21 Jan 2002 Amarillo, Randall Co. (TBRC 2002-20; TPRF 2027)
- 23 Jan 2002 Amarillo, Randall Co. (TBRC 2002-21)
- 27 Jan-6 Feb 2002 L. Tanglewood, Randall Co. (TBRC 2002-31; TPRF 2104)

COMMON REDPOLL (*Carduelis flammea*)

Accepted records - 7

- 25 Nov 1965-16 Jan 1966 Buffalo L. NWR, Randall Co. (TBRC 1978-2)
- 27 Nov 1977 Wolf Creek Park, Ochiltree Co. (TBRC 1978-1)
- 7 Jan-1 Mar 1989 Glen Rose, Somervell Co. (TBRC 1989-11; TPRF 733) (Haynie 1989)
- 8-31 Jan 1994 Dallas, Dallas Co. (TBRC 1994-24; TPRF 1220)
- 2-26 Dec 1996 Davis Mtns., Jeff Davis Co. (TBRC 1997-19)
- 28 May-1 Jun 2002 Laguna Vista, Cameron Co. (TBRC 2002-66; TPRF 2023)
- 18-19 Jun 2002 Galveston, Galveston Co. (TBRC 2002-90; TPRF 2044)

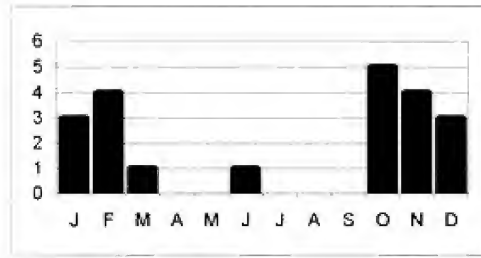
LAWRENCE'S GOLDFINCH (*Carduelis lawrencei*)

Accepted records - 13

- 7 Dec 1984 Hueco Tanks SHS, El Paso Co. (TBRC 1988-101; TPRF 533)
- 11 Feb 1996 El Paso, El Paso Co. (TBRC 1996-53; TPRF 1474)
- 12 Oct 1996 Davis Mtns., Jeff Davis Co. (TBRC 1996-125)
- 12 Oct 1996-10 Mar 1997 Hueco Tanks SHS, El Paso Co. (TBRC 1996-126; TPRF 1557)
- 12 Oct-1 Nov 1996 Fort Bliss, El Paso, El Paso Co. (TBRC 1996-127)

Occ. Publ. Texas Ornith. Society No. 5; 2003

21 Oct 1996	Marathon, Brewster Co. (TBRC 1996–154)
22 Oct 1996	Terlingua Ranch, Brewster Co. (TBRC 1997–17)
3 Nov 1996	Tornillo, El Paso Co. (TBRC 1996–148)
18 Nov 1996	Jeff Davis Co. (TBRC 1996–177)
29 Dec 1996 & 17 Feb 1997	Macho Tank, Hudspeth Co. (TBRC 1997–7)
19–26 Jan 1997	El Paso, El Paso Co. (TBRC 1997–22; TPRF 1585)
26 Jan–17 Feb 1997	Pinto Canyon, Presidio Co. (TBRC 1997–34)
5–7 Jun 2002	GMNP, Culberson Co. (TBRC 2002–73; TPRF 2023)



REVIEW LIST B

The following taxa are treated similarly to Review List A species. The subspecies included here would all meet the standards for a review species if elevated to species status.

GREAT BLUE (WHITE) HERON (*Ardea herodias occidentalis*)

5–6 March 2002 Port Aransas, Nueces Co. (TBRC 2002–59; TPRF 2079).

GREEN-WINGED (COMMON) TEAL (*Anas crecca crecca*)

30 Jan–1 Feb 1994 Fort Worth, Tarrant Co. (TBRC 1994–135; TPRF 1279)

YELLOW (MANGROVE) WARBLER (*Dendroica petechia oraria*)

26 May 1978 Rockport, Aransas Co. (TBRC 2002–10; TPRF 2010)
20 Mar–6 Apr 1990 Boca Chica, Cameron Co. (TBRC 2002–11; TPRF 2011)

DARK-EYED (WHITE-WINGED) JUNCO (*Junco hyemalis aikeni*)

19 Dec 1968 near Quitaque, Briscoe Co. (*USNM 531924; TPRF 2103) (Weske 1974)
30 Nov & 1 Dec 2000 El Paso, El Paso Co. (TBRC 2000–140; TPRF 1951)
24 Jan 2001 Palo Duro Res., Hansford Co. (TBRC 2001–61; TPRF 2015)
24 Jan 2001 Wolf Creek Park, Ochiltree Co. (TBRC 2001–62; TPRF 1872)

ORCHARD (FUERTES'S) ORIOLE (*Icterus spurius fuertesi*)

3 Apr 1894 Brownsville, Cameron Co. (*MCZ 258513; TBRC 2002–8; TPRF 2020)
15 Apr–17 Jul 1998 Arroyo City, Cameron Co. (TBRC 2002–9; TPRF 2021)
returning 11 Apr–17 July 1999

PRESUMPTIVE SPECIES LIST

The following species have not been included in the official Texas bird list due to the lack of an accepted specimen, photograph, or tape recording. These species have, however, had sight records accepted by the TBRC.

MURRE Species (*Uria* species)

19–20 Mar 1994 L. O’The Pines, Marion Co. (TBRC 1994–70)

WHITE-CROWNED PIGEON (*Columba leucocephala*)

24 Jun & 2 Jul 1989 Green Is., Cameron Co. (TBRC 1989–186)

BLACK SWIFT (*Cypseloides niger*)

22 Aug 1985 El Paso, El Paso Co. (TBRC 1994–172)

SOCIAL FLYCATCHER (*Myiozetetes similis*)

17 Mar–5 Apr 1990 Anzalduas Park, Hidalgo Co. (TBRC 1990–83)

CRESCENT-CHESTED WARBLER (*Parula superciliosa*)

2 Jun 1993 Boot Canyon, BBNP, Brewster Co. (TBRC 1993–90)

ACKNOWLEDGMENTS

This publication would not be possible without the efforts of Greg Lasley and the contributions of numerous birders and participation of the following past committee members; Ted Eubanks, Brush Freeman, Carl Haynie, Terry Maxwell, Jim Morgan, Warren Pulich, Martin Reid, Willie Sekula, Chuck Sexton, Kenneth Seyffert, Bret Whitney, Frances Williams, David Wolf, Gail Diane Luckner, Barry Zimmer. For more about the TBRC and current contact information see <http://texasbirds.org/tbrc>

LITERATURE CITED

- ALLEN, A. A. AND P. P. KELLOGG. 1937. Recent Observations of the Ivory-billed Woodpecker. *Auk* 54:164–184.
- ARNOLD, K. A. 1975. First record of the Greater Shearwater from the Gulf of Mexico. *Auk* 92:394–395.
- _____. 1978a. A Jabiru specimen from Texas. *Auk* 95:611–615.
- _____. 1978b. First Record of a Paint-billed Crane for the United States. *Auk* 95:645–646.
- _____. 1980. Rufous-capped Warbler and White-collared Seedeater from Webb County, Texas. *Bull. Texas Ornith. Soc.* 13:27.
- ARVIN, J. C. 1980. The Golden-crowned Warbler: an 88-year-old “New” species for the avifauna of the United States. *Birding* 12:10–11.
- BEAVERS, R. A. 1977. First specimen of Allen’s Hummingbird, *Selasphorus sasin* (Trochilidae) from Texas. *Southwest. Nat.* 21:285.
- BLANKENSHIP, T. L. AND J. T. ANDERSON. 1993. A large concentration of Masked Duck (*Oxyura dominica*) on the Welder Wildlife Refuge, San Patricio County, Texas. *Bull. Texas Ornith. Soc.* 26:19–21.
- BRYAN, K., T. GALLUCCI, AND R. MOLDENHOUER. 1978. First record of the Snow Bunting for Texas. *Amer. Birds* 32:1070.
- CHAPMAN, B. R., P. A. BUCKLEY, AND F. BUCKLEY. 1979. First Photographic Record of Greater Flamingo in Texas. *Bull. Texas Ornith. Soc.* 12:20–21.
- CASTO, S. AND H. W. GARNER. 1969. Photographic Evidence for the occurrence of the Dipper in west Texas. *Occ. Publ. Texas Ornith. Society* No. 5; 2003

- Bull. Texas Ornith. Soc. 3:29.
- CLARK, C. 1982. Jabiru in the United States. *Birding* 14:8–9.
- COOKSEY, M. 1998. A Pre-1996 North American Record of Stygian Owl. *Field Notes* 52:265–266.
- DALQUEST, W. W. AND L. D. LEWIS. 1955. Whistling Swan and Snowy Owl in Texas. *Condor* 57:243.
- D'ANNA, W., D. DiTOMMASO, B. POTTER, J. SKELLY, AND S. SKELLY. 1999. First Texas record of Black-tailed Gull. *Texas Birds* 1:20–24.
- DAVIS, L. I. 1945. Brasher's Warbler in Texas. *Auk* 62:146.
- DEVINE, A. B., D. GENDRON, AND D. G. SMITH. 1978. Occurrence of the Coppery-tailed Trogon in Hidalgo County, Texas. *Bull. Texas Ornith. Soc.* 11:52.
- EASTERLA, D. A. 1972. Specimens of Black-throated Blue Warbler and Yellow-green Vireo from west Texas. *Condor* 74:489.
- EISENMANN, E., J. I. RICHARDSON, AND G. I. CHILD. 1968. Yellow-green Vireo collected in Texas. *Wilson Bulletin* 80:235.
- EMANUEL, V. L. 1962. Texans rediscover the nearly extinct Eskimo Curlew. *Audubon Magazine* 64:162–165.
- EUBANKS, T. L., JR., AND J. MORGAN. 1989. First photographic documentation of a live White-collared Swift from the United States. *Amer. Birds* 43:258–259.
- FLEETWOOD, R. J. AND C. E. HUDSON, JR. 1965. Probable Green Violet-ear Hummingbird in Cameron County, Texas. *Southwest. Nat.* 10:312.
- GALLUCCI, T. AND J. G. MORGAN. 1987. First documented record of the Mangrove Cuckoo for Texas. *Bull. Texas Ornith. Soc.* 20:2–6.
- GRISCOM, L. L. AND M. S. CROSBY. 1925. Birds of the Brownsville region, southern Texas. *Auk* 42:432–440, 519–537.
- HAUCKE, H. H. AND W. H. KIEL, JR. 1973. Jabiru in south Texas. *Auk* 90:675–676.
- HAYNIE, C. B. 1989. First photographic record of Common Redpoll in Texas. *Bull. Texas Ornith. Soc.* 22:18–20.
- HENDERSON, J. C. 1960. A Texas Record of the Black Brant. *Auk* 77:227.
- LANGHAM, J. M. 1980. Golden-crowned Warbler in Texas: a documented record for the ABA checklist area. *Birding* 12:8–9.
- LASLEY, G. W. 1984. First Texas specimen of the White-collared Swift. *Amer. Birds* 38:370–371.
- LASLEY, G. W., D. A. EASTERLA, C. W. SEXTON, AND D. A. BARTOL. 1982. Documentation of the Red-faced Warbler in Texas and a review of its status in Texas and adjacent areas. *Bull. Texas Ornith. Soc.* 15:8–14.
- LASLEY, G. W. AND M. KRZYWONSKI. 1991. First United States record of the White-throated Robin. *Amer. Birds* 45:230–231.
- LASLEY, G. W. AND T. PINCELLI. 1986. Gray Silky-Flycatcher in Texas. *Birding* 18:34–36.
- LASLEY, G. W., C. W. SEXTON, AND D. HILLSMAN. 1988. First record of the Mottled Owl in the United States. *Amer. Birds* 42:23–24.
- LOCKWOOD, M. W. AND C. E. SHACKELFORD. 1998. The occurrence of Red-breasted Sapsucker and suspected hybrids with Red-naped Sapsucker in Texas. *Bull. Texas Ornith. Soc.* 31:2–6.
- LOETSCHER, F. W. JR. 1956. Masked Duck and Jacana at Brownsville, Texas. *Auk* 73:291.
- MACINNES, C. D. AND E. B. CHAMBERLAIN. 1963. The first record of Double-striped Thick-knee in the United States. *Auk* 80:79.
- MAXWELL, T. C. 1977. First record of Heermann's Gull for Texas. *Southwest. Nat.* 22:282–283.
- MILLER, F. W. 1959. The Barrow's Goldeneye in Texas. *Condor* 61:434.
- MORGAN, J. G. AND T. L. EUBANKS, JR. 1979. First documentation of Connecticut Warbler in Texas. *Bull. Texas Ornith. Soc.* 12:21–22.
- MORGAN, J. G. AND L. M. FELTNER. 1985. A neotropical bird flies north: the Greenish Elaenia. *Amer. Birds* 39:242–244.
- MORGAN, J. G., T. L. EUBANKS, V. EUBANKS, AND L. N. WHITE. 1985. Yucatan Vireo appears in Texas. *Amer. Birds* 39:244–246.
- PAPISH, R., J. L. MAYS, AND D. BREWER. 1997. Orange-billed Nightingale-Thrush: First Record for Texas and the U.S. *Birding* 29:128–130.
- PARKES, K. C., D. P. KIBBLE, AND E. L. ROTH. 1978. First records of the Spotted Rail (*Pardirallus maculatus*) for the United States, Chile, Bolivia, and western Mexico. *Amer. Birds* 32:295–299.
- PULICH, W. M. SR. 1966. A specimen of the Little Gull from Dallas County, Texas. *Auk* 83:482.
- _____. 1980. A Thayer's Gull specimen from Texas: A Problem in Identification. *Southwest. Nat.* 25:257–258.
- STEVENSON, J. C. 1937. The Alaska Longspur and Oregon Horned Lark in Texas. *Condor* 39:44.

- SUTTON, G. M. 1949. The Rose-throated Becard in the lower Rio Grande Valley of Texas. *Auk* 66:365–366.
- TRAUTMAN, M. B. 1964. A Specimen of the Roadside Hawk from Texas. *Auk* 81:435.
- WAUER, R. H. 1967. First Thick-billed Kingbird record for Texas. *Southwest Nat.* 12:485–486.
- _____. 1970. The occurrence of the Black-vented Oriole, *Icterus wagleri*, in the United States. *Auk* 87:811–812.
- WEEKS, R. AND M. A. PATTON. 2000. First Texas record of Yellow-footed Gull. *Texas Birds* 2 (1):25–33.
- WESKE, J. S. 1974. White-winged Junco in Texas. *Condor* 76:119.
- WILLIAMS, S. O. 1987. A Northern Jacana in Trans-Pecos Texas. *Western Birds* 18:123–124.
- WRIGHT, J. S. AND P. C. WRIGHT. 1997. Stygian Owl in Texas. *Field Notes* 51:950–952.
- WOLF, D. E. 1978. First record of an Aztec Thrush in the United States. *Amer. Birds* 32:156–157.
- WOLFE, L. L. 1961. Specimen of Yellow-green Vireo from Texas. *Auk*. 78:258–259.
- ZIMMER, B. AND K. BRYAN. 1993. First United States record of the Tufted Flycatcher. *Amer. Birds* 47:48–50.



(Above) 1991 Annual Meeting at the TCWC. Petra Hockey and Willie Sekula.

(Right) 1991 Annual Meeting at the TCWC. Mark Lockwood, Terry Maxwell, Greg Lasley.

Photos TBRC Archive



Occ. Publ. Texas Ornith. Society No. 5; 2003 Copyright ©2003 by the Texas Ornithological Society
 Jack Clinton Eitniear, Editor E-Mail: Bulletin@Texasbirds.org
 Printed by Cadmus Professional Communications, Ephrata, PA 17522, USA

ERRATA Sheet

Occasional Publication #5 of the Texas Ornithological Society

pg. 4: Red-necked Grebe	28 Dec 1997	L. Ray Roberts, Denton Co.
pg. 5: Greater Shearwater	6 Oct 2002	off Port Aransas, Nueces Co.
pg. 8: Brown Booby	18 Oct 2000	off N. Padre Is., Kenedy Co.
pg. 11: American Black Duck	9 Dec 1998-2 Jan 1999	Fort Worth, Tarrant Co. ¹
pg. 12: Barrow's Goldeneye	11-12 Dec 1998	Fort Worth, Tarrant Co.
pg. 15: Gyrfalcon	21 Jan-7 Apr 2002	Lubbock, Lubbock Co.
pg. 18: Sharp-tailed Sandpiper	17-18 May 1991	Fort Worth, Tarrant Co.
pg. 19: Ruff	29-30 Apr 1995	Fort Worth, Tarrant Co.
pg. 20: Red Phalarope	29 Aug-4 Sep 1998	Fort Worth, Tarrant Co.
	20-22 Sep 1991	Fort Worth, Tarrant Co.
	10-15 Sep 1998	Fort Worth, Tarrant Co.
pg. 21: Little Gull	14 Mar 1991	Fort Worth, Tarrant Co.
	6-21 Mar 1992	Fort Worth, Tarrant Co.
pg. 22: Little Gull	16-16 Mar 1996	Fort Worth, Tarrant Co.
pg. 22: Black-headed Gull	24 Jan-23 Mar 1998	Fort Worth, Tarrant Co.
	10-21 Mar 1998	Fort Worth, Tarrant Co.
pg. 23: Black-headed Gull	24 Dec 1999-18 Feb 2000	Fort Worth, Tarrant Co.
pg. 23: Mew Gull	23 Jan-6 Feb 1994	Fort Worth, Tarrant Co.
	3 Dec 1998-2 Feb 1999	Fort Worth, Tarrant Co.
	28 Feb 1999	Fort Worth, Tarrant Co.
pg. 25: Thayer's Gull	28 Feb 1999	Fort Worth, Tarrant Co.
Pg. 32: Mangrove Cuckoo photo	This species is now considered monotypic (Banks and Hole 1991), so the subspecies designation included in the photo caption is not valid. However, the buffy coloration of the underparts of this bird suggests an origin from the populations from northern Mexico rather than the paler birds found in the northern Caribbean and south Florida.	
pg. 64: TBRC photos	These were taken in 2001 (not 1991).	

¹ All Fort Worth records stem from an inconsistency of how Village Creek Drying Beds was listed.

Literature Cited

- Banks, R. C. and R. Hole, Jr. 1991. Taxonomic Revision of the Mangrove Cuckoo, *Coccyzus minor* (Gmelin). Carib. J. Sci. 27 (1-2): 54-62.