

BATRACHIA AND REPTILIA
OF
COSTA RICA.

E. D. COPE.

ATLAS.

HARVARD UNIVERSITY.



LIBRARY
OF THE
MUSEUM OF COMPARATIVE ZOOLOGY
70969
LIBRARY OF
SAMUEL GARMAN

September 29, 1928

SEP 29 1928

Sarmon

THE
BATRACHIA AND REPTILIA
OF
COSTA RICA.

BY
E. D. COPE

ATLAS.

PHILADELPHIA, APRIL, 1877.

c

NOTE.

The letterpress of this memoir was published in an edition of fifty copies, Nov. 26, 1875. The principal edition will appear in the *Journal of the Academy of Natural Sciences of Philadelphia*, which has not yet been issued, in consequence of the delay in the completion of the plates. These are now published, completing the separate memoir.

March 20th, 1877.

EXPLANATION OF THE PLATES.

PLATE I.

Costa Rica Batrachia, natural size, excepting figs. 8a, 9a, and 13a, which are twice natural size.

- Fig. 1. *Cranopsis fastidiosus*; 1a, mouth. Page 96.
2. *Crepidius epiocticus*; 2a, mouth. Page 97.
3. *Ollotis corulescens*; 3a, mouth. Page 98.
4. *Bufo auritus*. Page 99.
5. *Bufo coccifer*. Page 100.
6. *Dendrobates talamancae*. Page 102.
7. *Hyla nigripes*. Page 104.
8. *Phyllobates hylaformis*; 8a, mouth. Page 107.
9. *Lithodytes podiciferus*; var. D. Page 108.
10. *Lithodytes melanostictus*; 10a, mouth. Page 109.
11. *Lithodytes megacephalus*; 11a, mouth. Page 110.
12. *Tryphleropsis chrysoprasinus*; 12a, mouth. Page 114.

PLATE II. = 114

- Fig. 1. *Anolis insignis*; one-half natural size. Page 120.
2. *Anolis microtus*; one-half natural size. Page 119.
3. *Anolis pachypus*; natural size. Page 122.
4. *Anolis orylophus*; natural size. Page 123.
5. *Chalcidolepis metallicus*; natural size. Page 116.

PLATE III. = 115

- Fig. 1. *Basiliscus plumifrons*, natural size; 1a, head from above. Page 125.
2. *Basiliscus mitratus*; head from above, natural size. Page 127.

PLATE IV. = 116

- Fig. 1. *Dendrophidium melanotropis*. Page 134.
2. *Dryophilis brevirostris*. Page 132.
3. *Hyla elaeochroa*; 3a, mouth. Page 105.
4. *Hylodes cerasinus*; 3a, mouth. Page 112.

PLATE V. = 117

- Fig. 1. *Leptognathus argus*, natural size. Page 130.
2. *Teleüraspis schlegelii*, natural size. Page 149.
3. *Bothriopsis proboscideus*, natural size. Page 150.
4. *Hyla uranochroa*, natural size. Page 103.

PLATE VI. = 118

Heads of *Lacertilia* and *Ophidia*, natural size, except figs. 2 and 4.

- Fig. 1. *Mabuia alliacea*, from above. Page 115.
2. *Chalcidolepis metallicus*: a, above; b, below; twice natural size. Page 116.
3. *Amiva gabbiana*; a, above; b, below. Page 117.
4. *Anolis trochilus*, above; twice natural size. Page 121.
5. *Anolis orylophus*, above. Page 123.
6. *Xiphosoma annulatum*: in this and the following figures, the superior view is marked a, the lateral b. Page 129.
7. *Leptognathus argus* (a). Page 130.
8. *Leptognathus pictiventris* (a and b). Page 130.
9. *Leptophilis acrygioides* (a and b). Page 132.
10. *Leptophilis saturatus* (a and b). Page 133.
11. *Spilotes chrysobronchus* (a and b). Page 136.
12. *Contia calligaster* (a and b). Page 146.
13. *Bothriopsis proboscideus* (a). Page 150.

NOTE.—In the Catalogue of *Ophidia* given on page 95, the species *Colobognathus nasalis* and *Colophrys rhodogaster* should be for the present omitted, as they occur in the adjoining State of Nicaragua.



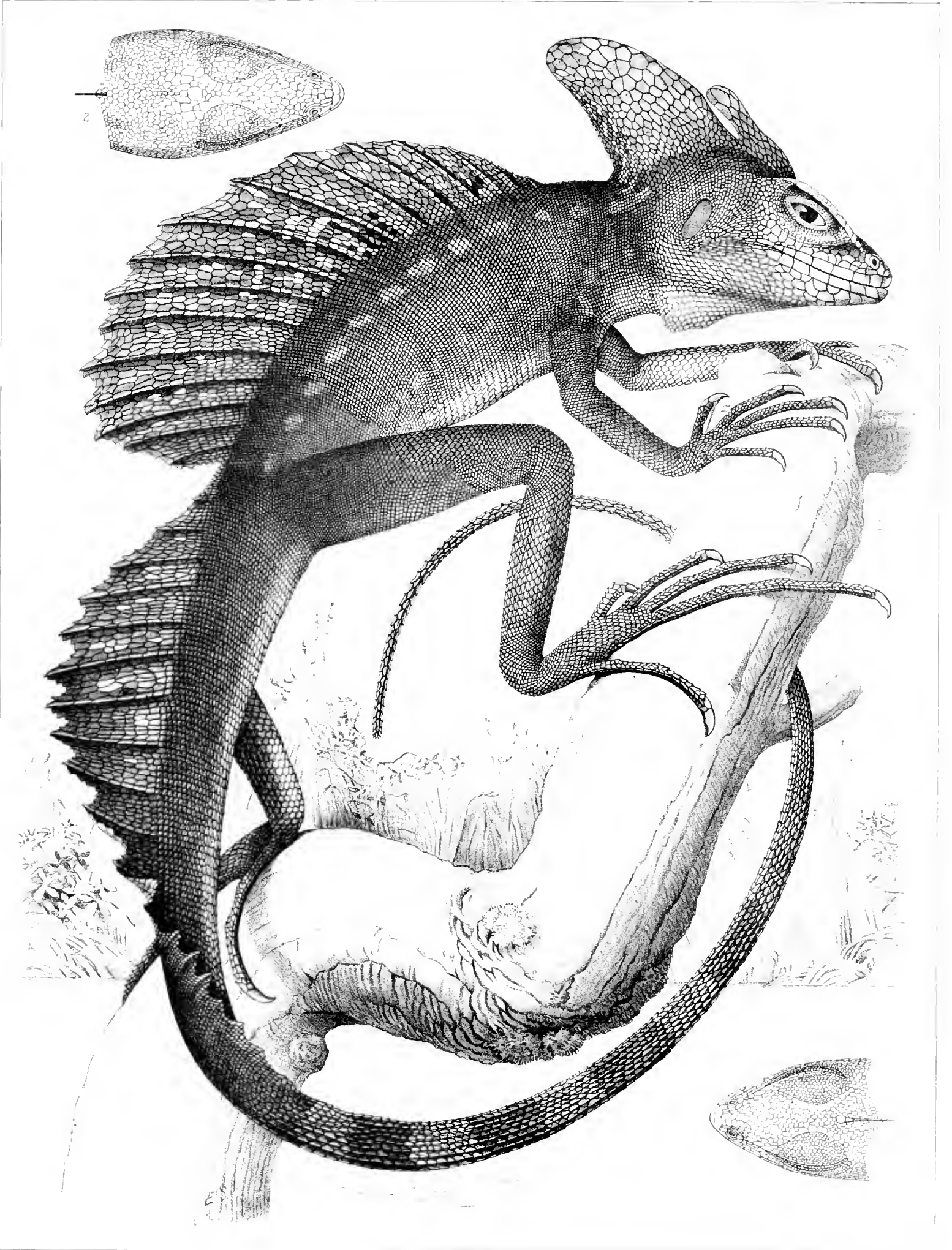
1 *Cranopsis fastidiosa*. 2 *Cheradnus epibicus*. 3 *Callisus variolosus*. 4 *Bufo* sp. 5 *Bufo* sp. 6 *Dendrobates talamancae*. 7 *Hylandinae*. 8 *Phyllolates hyleformis*. 9 *Phyllolates hyleformis* var. 10 *L. melanostictus*. 11 *L. neogrethabris*. 12 *Tyrrhenopsis dryocentris*. 13 *Lithobates* sp.

W. H. & S. W. F. Co. Phila.



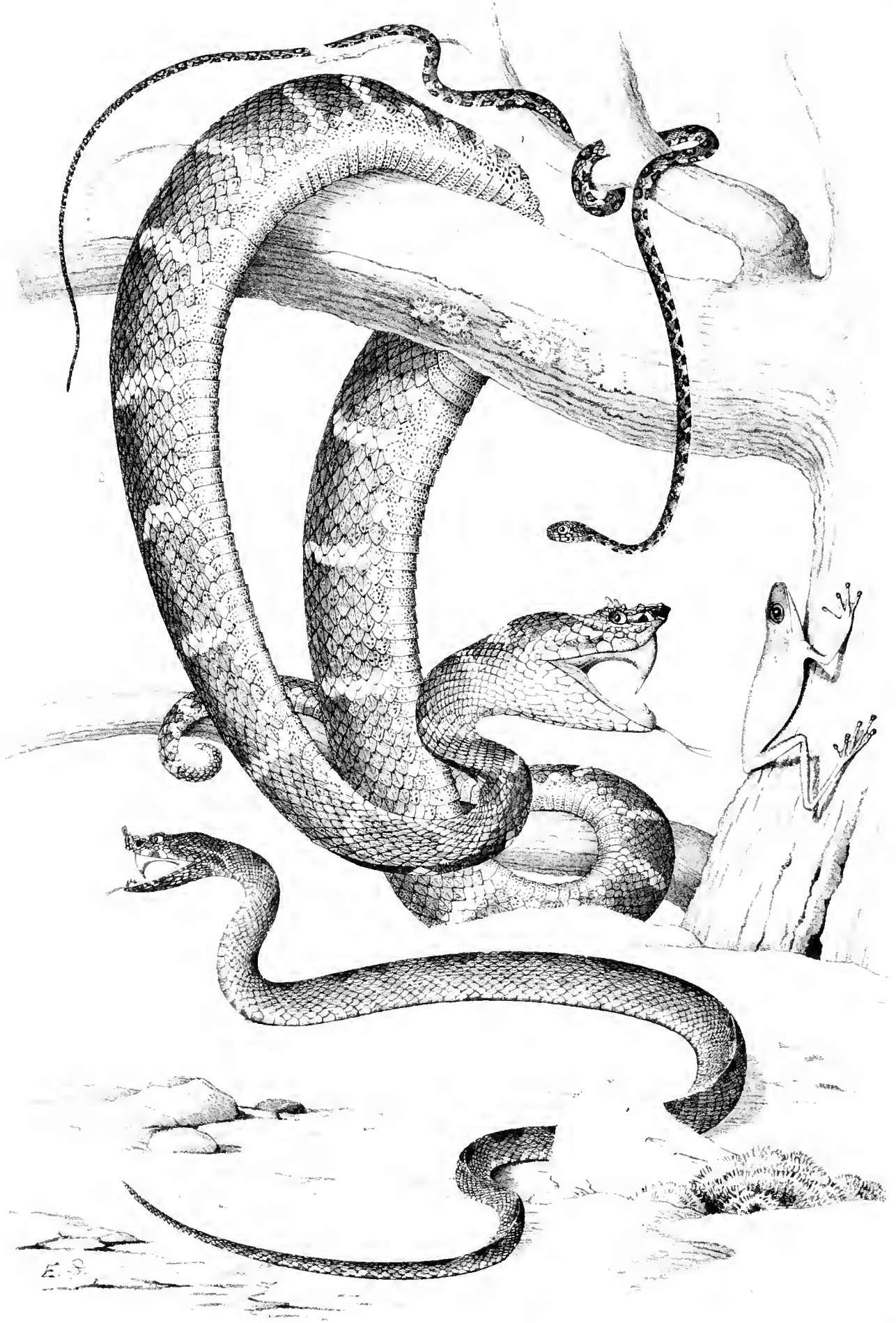
1. *Anolis m. signatus* ♀ 2. *A. muricatus* ♀ 3. *A. pachypus* ♀ 4. *A. oxylophus* ♀ 5. *Thalassidroma metallicus* ♀

HCZ LIBRARY
HARVARD UNIVERSITY
CAMBRIDGE, MA USA



Pholisus plurifrons (F. n. natus)

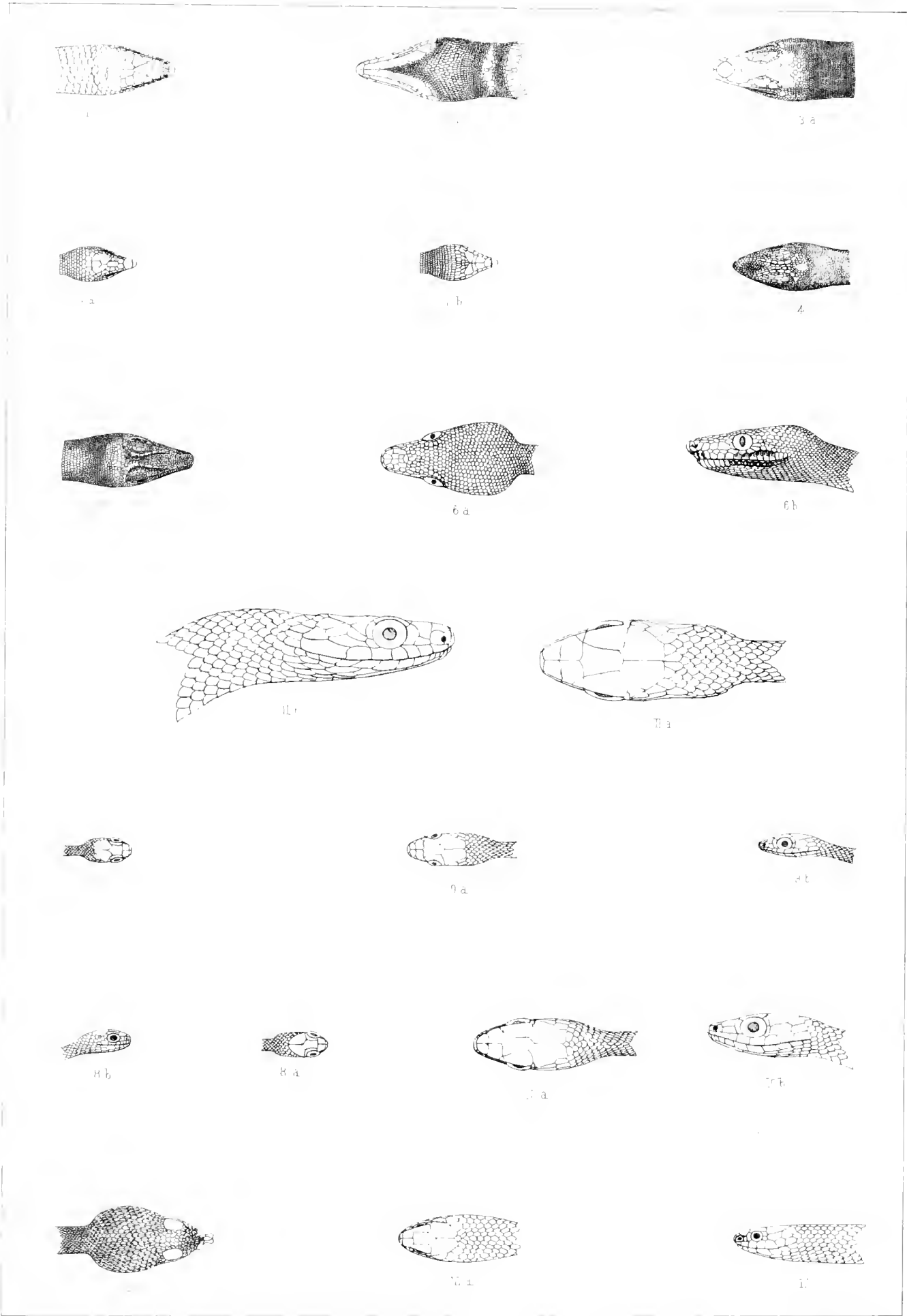
MCZ LIBRARY
HARVARD UNIVERSITY
CAMBRIDGE, MA USA



4

Coluber constrictor (L.) - *Coluber constrictor* (L.) - *Coluber constrictor* (L.) - *Coluber constrictor* (L.) - *Coluber constrictor* (L.)

2000
HARVARD UNIVERSITY
CAMBRIDGE, MA USA



1 *Molura alleneae*. 2 *Helictesopsis metallica*. 3 *Amura gabriana*. 4 *Anolis tennini*. 5 *A. oxylophus*.
 6 *Xiphosoma annulatum*. 7 *Leptorhynchus aegyptus*. 8 *L. ochiventris*. 9 *Leptichnus argemoneus*.
 10 *L. saturatus*. 11 *Spilotes chrysobronchus*. 12 *Portia allgaster*. 13 *Echis cisissus boiscideus*.

W. H. K. F. 13

MCZ LIBRARY
HARVARD UNIVERSITY
CAMBRIDGE, MA USA

