

1940

THE ONTARIO



Fannie K. Taylor

We the staff are happy to dedicate
this issue of the Outanoga to you,
may it bring you many happy
moments in the years to come.

The Staff

Paul Callahan - Ed.

LEES-McRAE LIBRARY

Engravings by
CHARLOTTE ENGRAVING CO.
CHARLOTTE, N. C.

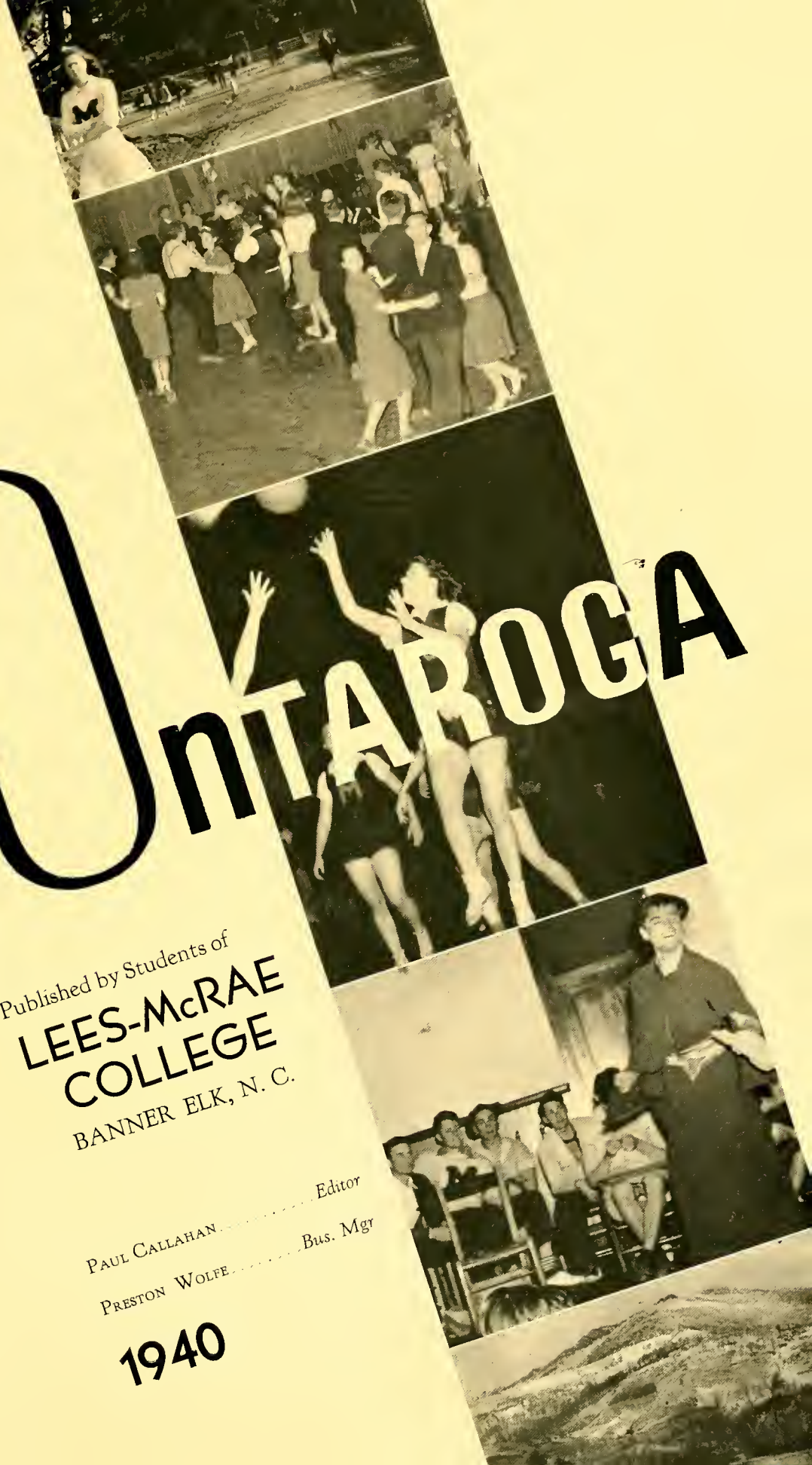
Printed and Bound by
THE KING PRINTING CO.
BRISTOL, TENN.

THE **Ontarogia**

Published by Students of
LEES-McRAE
COLLEGE
BANNER ELK, N. C.

PAUL CALLAHAN Editor
PRESTON WOLFE Bus. Mgr

1940





FOR HER MANY YEARS OF DEVOTION AND SERVICE TO BOTH THE STUDENTS AND ALUMNI OF LEES-McRAE, FOR HER LOYALTY TO THE COLLEGE AND THE PART SHE HAS PLAYED IN ITS DEVELOPMENT FROM A SMALL BOARDING SCHOOL TO WHAT IT IS TODAY, AND BECAUSE SHE MERITS THE ADMIRATION AND ESTEEM OF EVERY LEES-McRAE STUDENT, THE STAFF OF THE 1940 ONTAROGA DEDICATES THIS ISSUE TO

MISS FANNIE K. TAYLOR

PRESENTATION

TO THOSE DAYS ON THE CAMPUS OF LEES-McRAE we owe many happy memories.

Each student has his own store of souvenirs, but from freshman cap to academic gown there have been certain days and experiences which belong to us all. In compiling this book we have tried to select the activities, the incidents, and personalities which we believe will give a representative picture of life on our campus in 1939-40. We are glad to include also the Grace Hospital School of Nursing, which through its affiliation with Lees-McRae, deserves an important place in a record of our life here.

As we present the 1940 ONTAROGA we hope its pages will add to your memories of our college and enable you to live again our days together at Lees-McRae.



COLLEGE

ACTIVITIES

FROM FRESHMAN CAP

TO ACADEMIC GOWN

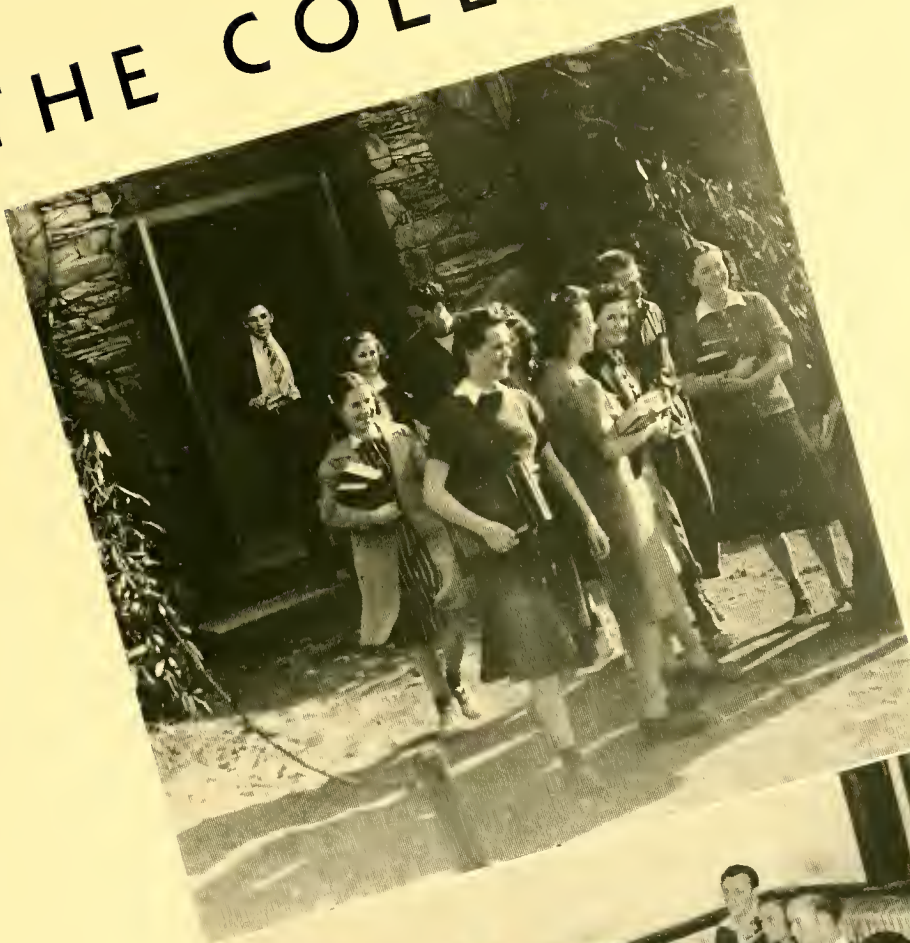
ATHLETICS

FEATURES



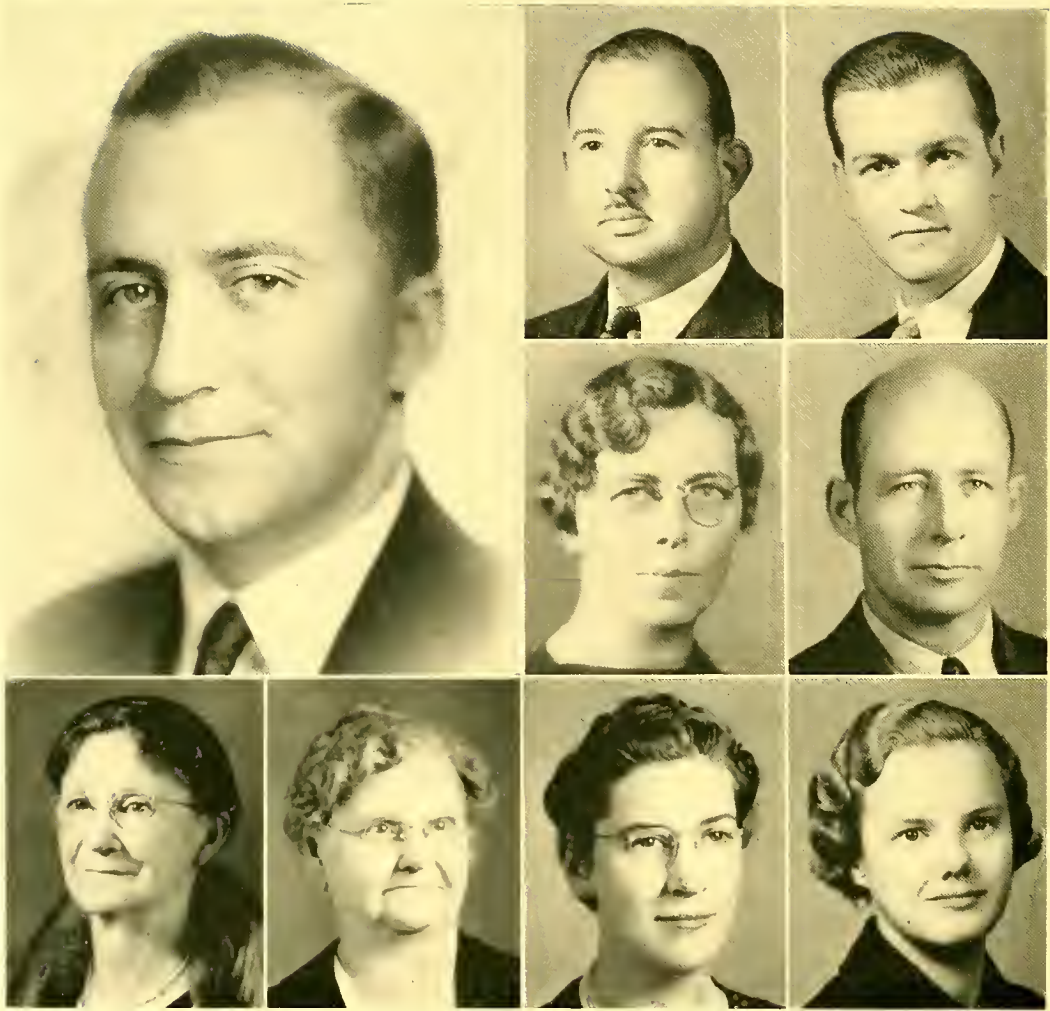


THE COLLEGE









FACULTY

First Row: EDGAR H. TUFTS, B. S., *President*; LEO K. PRITCHETT, A. B., M. Ed., *Dean and Registrar*; B. L. BAUCOM, *Business Manager*.

Second Row: M. ELISABETH HUDSON, A. B., B. R. E., M. R. E., *Dean of Women, Bible*; CHARLES F. WHITESELL, B. S., B. E., *Dean of Men, Wood Work, Mechanical Drawing*.

Third Row: ALISON B. STIRLING, *Librarian*; FANNIE K. TAYLOR, Ph. D., *Alumni Secretary*; CLAIRE J. DOUGLAS, A. B., M. A., *French, English*; ROSANNA BLAKE, A. B., M. A., *History, Sociology*.



FACULTY

First Row: E. LINWOOD LAFFERTY, B. S., M. S., *Chemistry, Physics*; MARGARET A. TUFTS, A. B., M. A., *English*; JOHN W. POPOW, B. S., *Assistant Coach, Mathematics*; JOHN C. MACKORELL, B. S., *Athletic Director and Coach*.

Second Row: MARGARET E. JAMES, B. S., B. M., *Music*; MRS. S. F. YELTON, *Home Economics, Assistant to Dean of Women*; MRS. L. K. PRITCHETT, *Secretary, Shorthand*; MRS. C. L. BAUCOM, *Secretary, Typing*.

Third Row: MRS. TILDON BRIDGES, *Accounting*; C. I. BAUCOM, *Manager of College Exchange*; MRS. H. F. YOUNG, *Supervisor of Dormitories*; S. F. YELTON, *Dietitian*.

Not Pictured: BYRON PRITCHETT, B. S., *Biology*; ELLEN MCLEOD, B. S., *Home Economics*; MARY-BETH HURST, R. R. L., *Instructor and adviser for Medical Secretarial Students*.



SENIOR CLASS

OFFICERS

PAUL CALLAHAN *President*
TOM FITE *Vice-President*
WILLIE MAE LINKER *Secretary and Treasurer*

SENIORS

HOWARD ABERNATHY

NEWTON, N. C.

"Trust not the man that hath no music in his soul."

Demosthenean Club, '39, '40; Glee Club, '39, '40; Pianist for Glee Club, '40.

FRED ARLEDGE

SALUDA, N. C.

"Don't take life too seriously; you will never get out of it alive."

Glee Club, '39-'40.

CHARLES ARMBRUSTER

PITTSBURGH, PA.

"Be yourself and leave custom to fools who need it."

Football, '39-; basket-ball, '39-'40; Monogram Club, '39-'40; Phi Theta Kappa, '39-'40; Editor of *Mountain-Ear*, '39.

PRICE BAKER

BETHUNE, S. C.

"Live well today, and tomorrow will take care of itself."

Christian Council, '39-'40; Demosthenean Club, '39-'40; Vice-Pres. Demosthenean Club, '40; *Mountain-Ear* Staff, '39; Phi Rho Pi, '39-'40.

LOUISE BARNES

CANTON, N. C.

"You have a nimble wit; I think 'twas made of Atalanta's heel."

Sullivanian Sorority, '39-'40; Phi Rho Pi, '39-'40; Debate Team, '39-'40; Basket-ball, '39-'40; Peppercette Club, '39; *Mountain-Ear* Staff, '39.

MADLINE BEAM

CHERRYVILLE, N. C.

"Demure and quiet she is and yet, methinks there's something more beneath."

Appalachian State, '39; Sullivanian Sorority, '40.

TALMADGE BEAN

SPENCER, N. C.

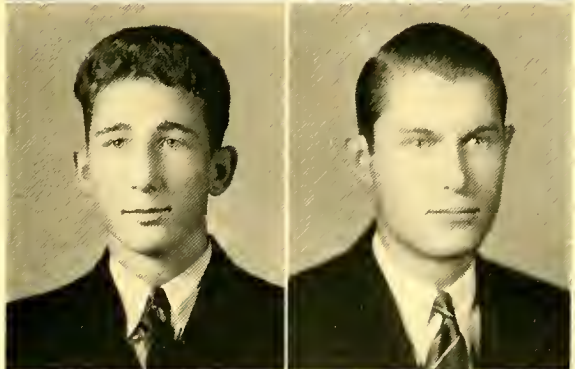
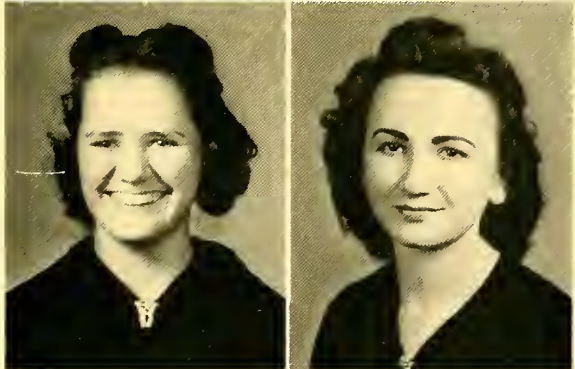
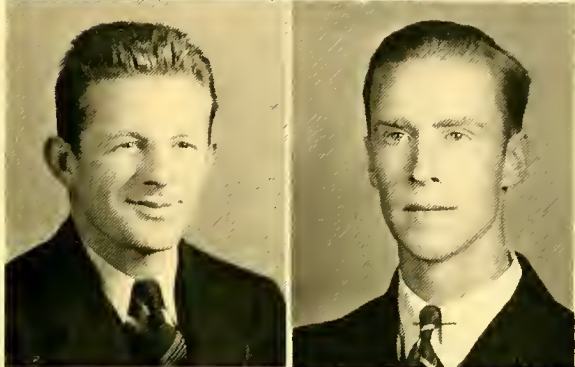
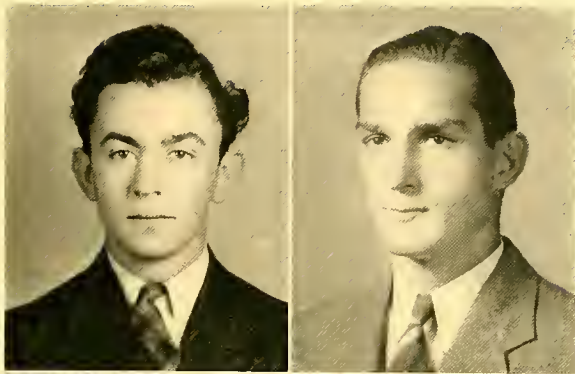
"A merry heart goes all the day."

Monogram Club, '39-'40; Pres. Monogram Club, '40; Demosthenean Club, '39-'40; Green and Gold Masquers, '40; Basket-ball, '39-'40; Alternate Capt. of Basket-ball, '40.

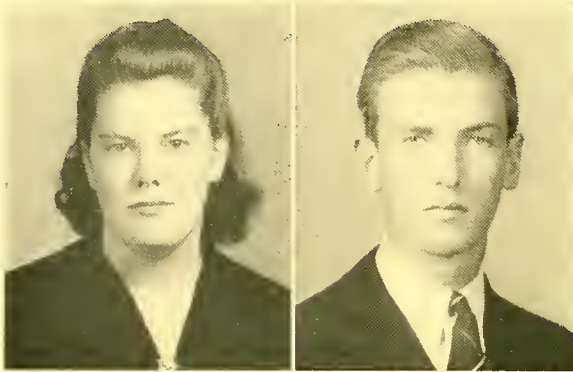
JAMES BLACK

MATTHEWS, N. C.

"There's nothing so becomes a man as modesty, stillness, and humility."



SENIORS



ARLENE BLACKMER

BATAVIA, N. Y.

"The tongue is the pen of the mind."

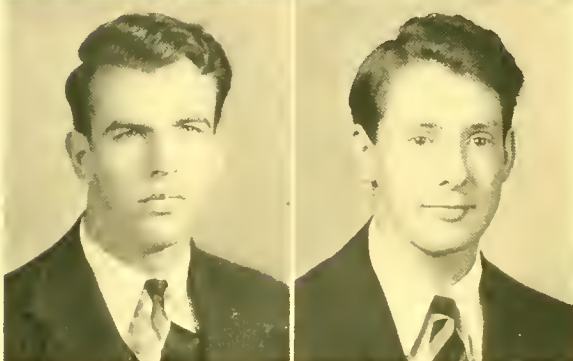
Phi Rho Pi, '39, '40; Green and Gold Masquers, '39, '40; Mountain-Ear Staff, '39; Glee Club, '39, '40.

FRANK BRADSHER

MILTON, N. C.

"Happy am I, from care I'm free; why aren't they all contented like me?"

French Club, '39, '40.



LORRAINE BROWN

CHESTERFIELD, S. C.

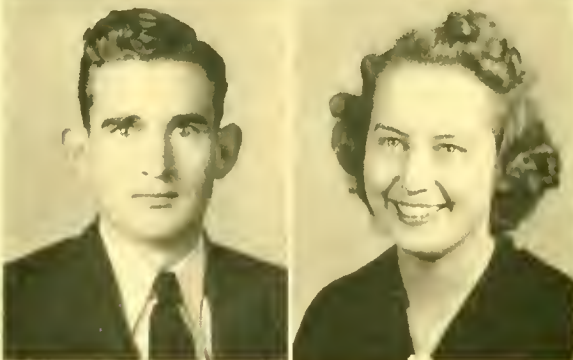
"A genial disposition brings its own reward and many friends."

PAUL M. CALLAHAN

BIG STONE GAP, VA.

"Bring with thee jest and youthful jollity."

Pres. Freshman Class, '39; Pres. Senior Class, '40; Asst. Bus. Mgr. ONTAROGA, '39; Editor-in-Chief ONTAROGA, '40; Football, '38'; 39 Monogram Club, '39-'40; Green and Gold Masquers, '39, '40; Demosthenean Club, '39, '40; Glee Club, '39; Bus. Mgr. Mountain-Ear, '39.



ORTON CAMERON

CAMERON, N. C.

"A quiet conscience makes one serene."

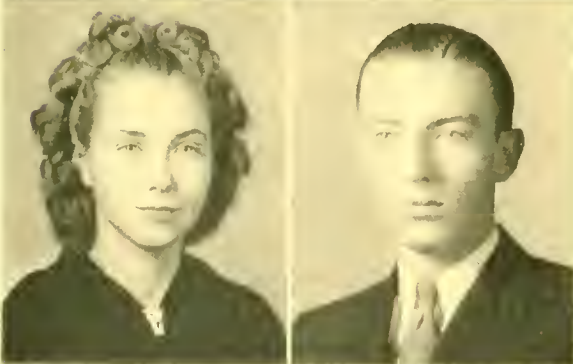
French Club, '39-'40.

NANCY CHEEK

BURLINGTON, N. C.

"Do you not know that I am but a woman? When I think, I must speak."

Sullivanian Sorority, '39-'40; Glee Club, '39-'40; Mountain-Ear Staff, '39.



ADA CHURCH

BANNER ELK, N. C.

"The most precious goods oft come wrapped in the smallest packages."

Green and Gold Masquers, '39-'40; Vice-Pres. Green and Gold Masquers, '40; Glee Club, '39-'40.

WILLIAM COBB

ROANOKE, ALA.

"Not too serious, not too gay, but a rare good fellow."

Vice-Pres. Student Body, '40.

S E N I O R S

GILBERT DAUB
EAST BEND, N. C.

*"True merit is like a river; the deeper it is
the less noise it makes."*

WARD D. DAUB
EAST BEND, N. C.

*"A man who stands foresquare to all the
winds that blow."*

EDITH DELLINGER
HAWK, N. C.

*"My mind to me a kingdom is."
Phi Theta Kappa, '39-'40.*

WINNIFRED DAVIDSON
STATESVILLE, N. C.

*"Ever in smiles, never weary,
Always cheerful, never dreary."
Sullivanian Sorority, '39-'40; Glee Club,
'39-'40; Skiing Zero, '39-'40; Home Ec.
Club, '39-'40; French Club, '40.*

MARQUIS DAVIS
DURHAM, N. C.

*"Hear ye not the hum of mighty workings."
Football, '38-'39; Monogram Club, '39-
'40; Phi Rho Pi, '39-'40; Pres. Phi Rho Pi,
'40; Demosthenean, '39-'40.*

MURIEL FARRINGTON

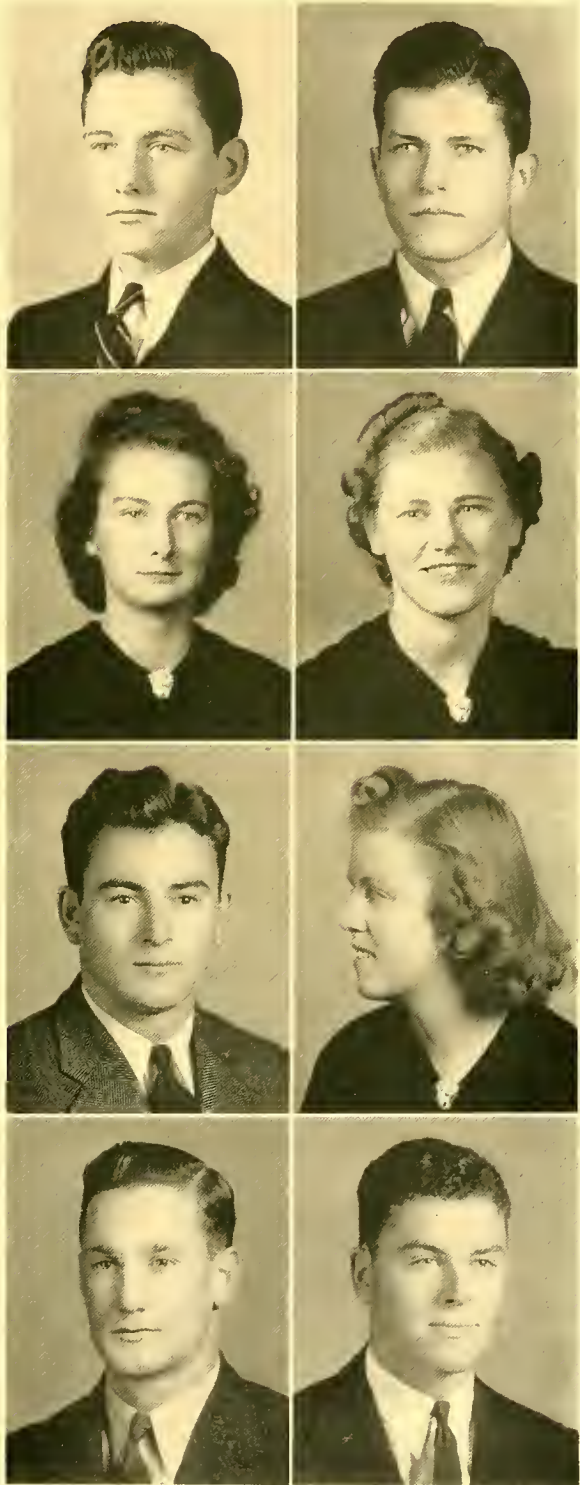
*"Never idle a moment, but thrifty, and thought-
ful of others."
Home Ec. Club, '39-'40.*

TOM FEREBEE
MOCKSVILLE, N. C.

*"By Sports like these are all our cares beguiled."
Football, '38-'39; Capt. Football, '39;
Basket-ball, '39-'40; Track, '39-'40; Mono-
gram Club, '39-'40; Demosthenean Club,
'39-'40; Student Council, '39-'40.*

THOMAS FITE
PAW CREEK, N. C.

*"Affable in manner, versatile in traits."
Basket-ball, '39-'40; Monogram Club,
'39-'40; Sec. & Treas. Monogram Club, '40;
Christian Council, '39-'40; Treas. Christian
Council, '40; Demosthenean Club, '39-'40;
Pres. Demosthenean Club, '40; Vice-Pres.
Senior Class, '40.*



S E N I O R S



FRANCES FORTUNE

OLD FORT, N. C.

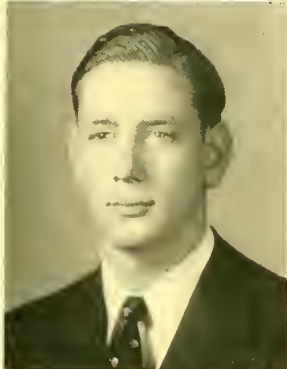
"May the essence of her name always be with her."

Sullivanian Sorority, '40.

ROBERT GAPEN

REIDSVILLE, N. C.

*"I had rather have a fool to make me merry
Than experience to make me sad."*



WILLIAM BRYAN GIBBS

REIDSVILLE, N. C.

"Life is short, but thou art long."

VIRGINIA GOUGE

SPRUCE PINE, N. C.

"The mildest manners and the gentlest heart."
Sullivanian Sorority, '39, '40; Glee Club,
'39, '40.



MARTHA GUY

NEWLAND, N. C.

"A charm attends her everywhere."

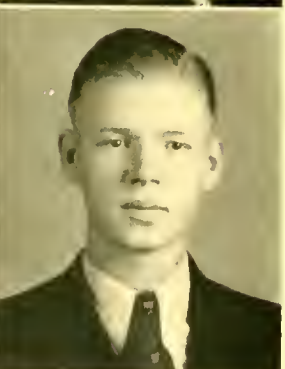
Sullivanian Sorority, '39, '40; Pres. Sullivanian Sorority, '40; Green and Gold Masquers, '39, '40.

JENNIE GRAY

ABINGDON, VA.

"I have a heart with room for every joy."

Phi Rho Pi, '39, '40; Green and Gold Masquers, '39, '40; Glee Club, '39.



NELLIE GRILLS

BANNER ELK, N. C.

"A friendly smile and a word for all."
Glee Club, '39, '40.

HARLOS GROSS

ROANOKE, ALA.

"A true gentleman of the Old South."

S E N I O R S

JOHN FRANK HAMPTON, JR.
LINVILLE, N. C.

*"Who mixes reason with pleasure and wisdom
with mirth."*

Phi Theta Kappa, '40.

MACK HENDERSON
MOORESVILLE, N. C.

*"Of a cheerful look, a pleasing eye, and a most
noble carriage."*

Phi Theta Kappa, '40; French Club, '39,
'40.

TOM HENSON
STANFIELD, N. C.

"A man of few words."

TUNA HINTON
SPRINGHOPE, N. C.

"Neatness is a crowning grace of womanhood."

Green and Gold Masquers, '39, '40; Glee
Club, '39, '40; Sullivanian Sorority, '39, '40;
Christian Council, '39, '40.

ROBERT HOOD
MATTHEWS, N. C.

*"In thy face I see the map of honor, truth, and
loyalty."*

Cheer Leader, '40; Christian Council, '40.

JACK HOYLE
BELWOOD, N. C.

"He is as constant as the stars."

Phi Rho Pi, '39, '40; Phi Theta Kappa,
'40; Glee Club, '39, '40.

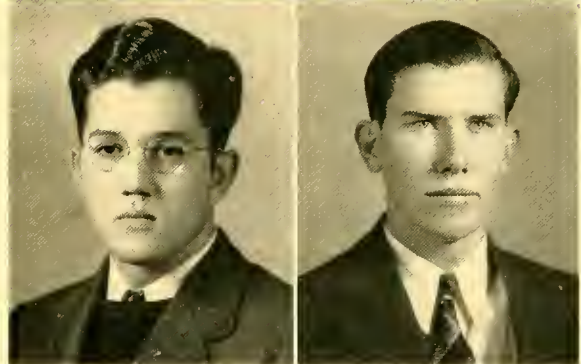
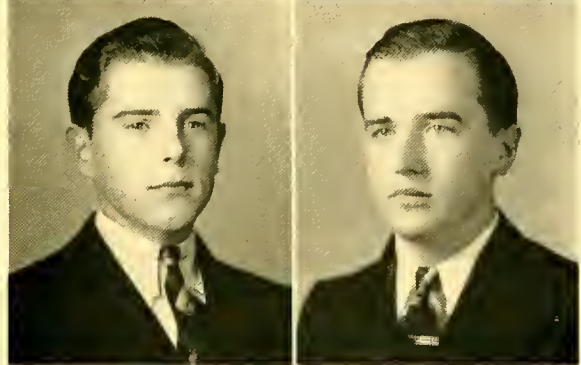
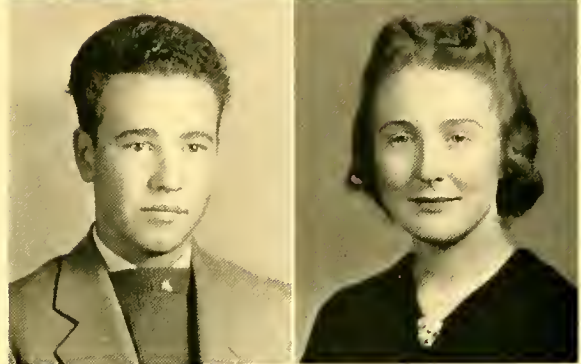
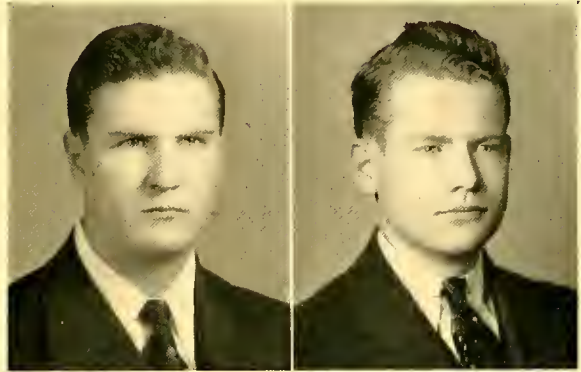
EDWARD D. HOWLAND
MOREHEAD CITY, N. C.

"He hath a heart as sound as a bell."

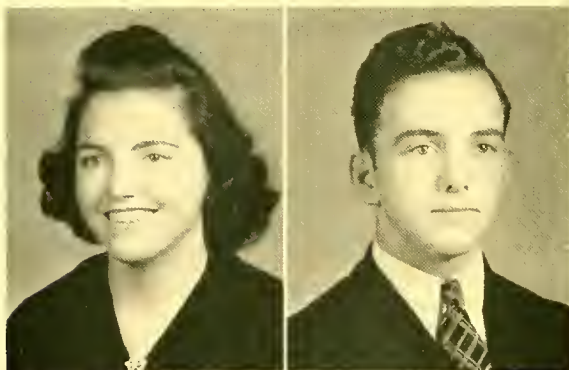
SAM HART
WOODLEAF, N. C.

"Common sense is nature's gift."

French Club, '40.



S E N I O R S



MARY ELLEN INGLE

BLOWING ROCK, N. C.

"A maid, so tender, fair, and happy."

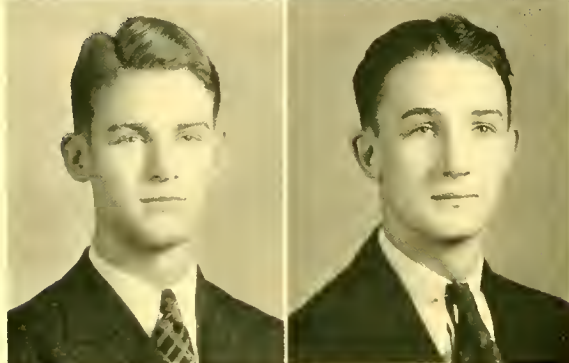
Christian Council, '39-'40; Sec. Christian Council, '40; Skiing Zero, '39-'40; Sullivanian Sorority, '39-'40.

GEORGE JONES

SALUDA, N. C.

"He is simply the rarest man in the world."

Phi Theta Kappa, '40; Glee Club, '39-'40.



M. E. KEY, JR.

ROCKINGHAM, N. C.

"Truth, independence are my fluttering plumes."

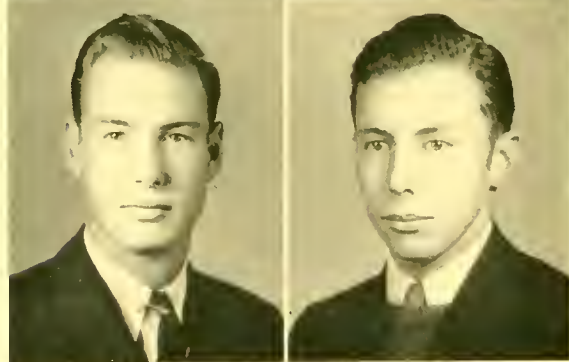
Mountain-Ear Staff, '39.

GARTRELL LANCASTER

HENDERSONVILLE, N. C.

"I crave no other, nor no better man."

Football Manager, '39; Basket-ball Manager, '40; Monogram Club, '40.



HUGH LEE

WILMINGTON, N. C.

"I know thee for a man of many thoughts."

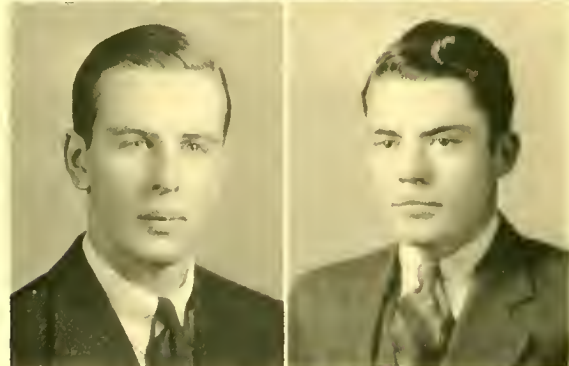
Skiing Zero, '39-'40; Boxing, '39.

JOHN LEDON

HAVANA, CUBA

"Determination is the master key to success."

Mountain-Ear Staff, '39; Green and Gold Masquers, '40.



JOHN E. LEGARD

ABINGDON, VA.

"Things are bound to happen—why worry? Everything comes to him who waits—why hurry?"

Football, '38-'39; Monogram Club, '39-'40; Vice-Pres. Monogram Club, '40; Co-Capt. Football, '39.

LELAND LEVI, JR.

HENDERSONVILLE, N. C.

"Content with the present trend of things, he never hurries."

SENIORS

CALVIN LINDSAY

LUMBERTON, N. C.

"A man of words; fashion's own knight."

Skiing Zero, '39, '40; Chief Skiing Zero-
'40; Green and Gold Masquers, '39, '40;
ONTAROGA Staff, '40; Demosthenean Club,
'40; Peppercette Club, '39.

WILLIE MAE LINKER

MIDLAND, N. C.

*"Her air, her smile, her motions
Told of womanly completeness."*

Glee Club Pianist, '39; Sullivanian
Sorority, '39, '40; Phi Theta Kappa, '40;
Sec. Treas. Senior Class, '40.

JOHN LOONEY

VANSANT, VA.

"The secret to success is constancy of purpose."

Phi Theta Kappa, '39, '40; Pres. Phi
Theta Kappa, '40; Christian Association
Council, '40.

JAMES LANE

ROANOKE, ALA.

"Gentle, courteous and friendly toward all."

JACK MARTIN

MOUNT AIRY, N. C.

*"If it be a gentleman ye seek, ye have found
him."*

Green and Gold Masquers, '39, '40;
Track Manager, '39, '40.

JACK MATTHEWS

LEAKSVILLE, N. C.

"Come on students, let's dance."

Green and Gold Masquers, '40; Skiing
Zero, '39, '40.

GILBERT MAYES

COOLEEMEE, N. C.

"Honors come by diligence."

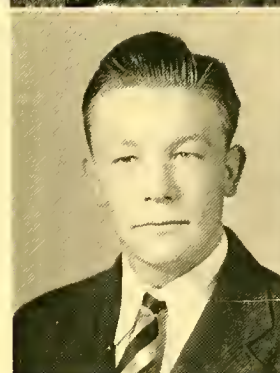
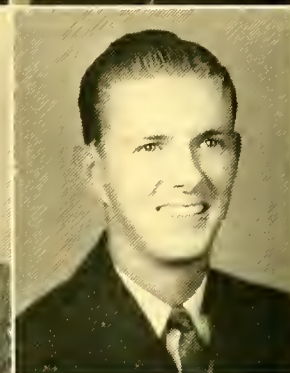
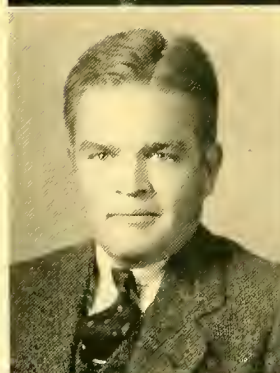
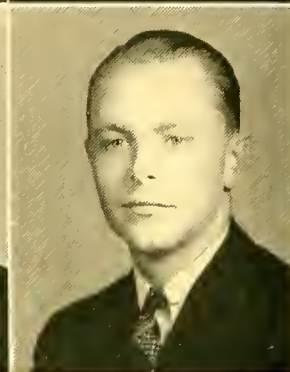
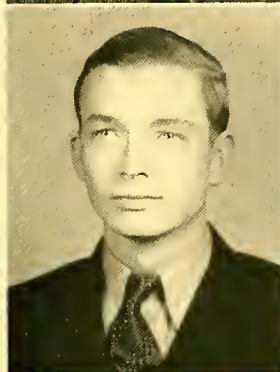
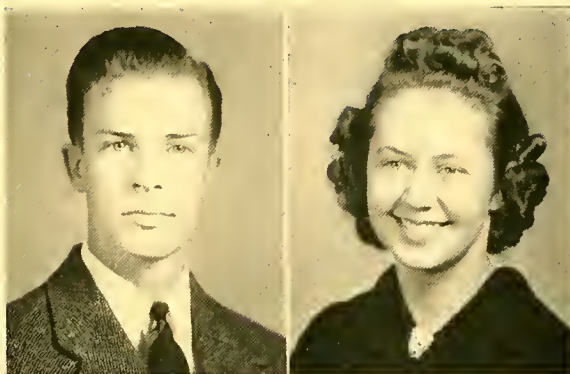
Phi Theta Kappa, '39, '40; Treas. Phi
Theta Kappa, '40.

VIRGINIA MILLER

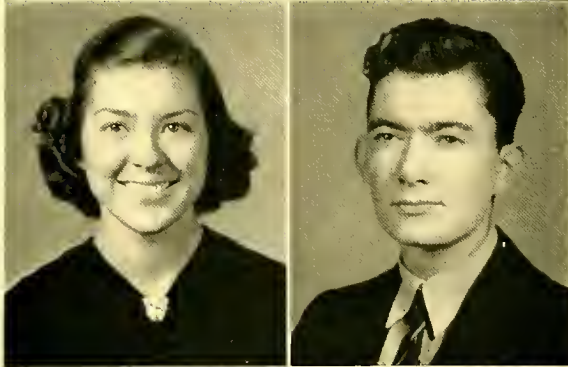
WILKESBORO, N. C.

"The reason firm, the temperate will."

Christian Council, '39, '40; Sullivanian
Sorority, '39, '40; Manager Girls' Basket-
ball, '39, '40; Glee Club, '39.



S E N I O R S



CARLYNE MORRISON

BANNER ELK, N. C.

"Her voice was ever soft, gentle, and low, an excellent thing in woman."

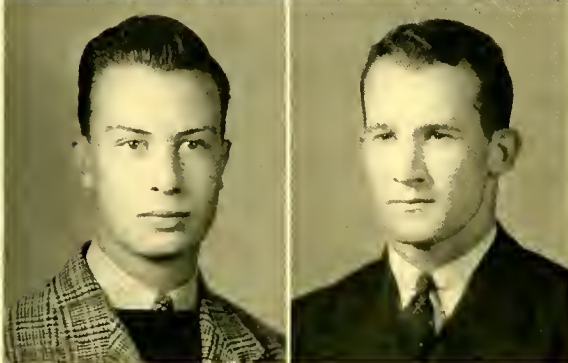
Phi Theta Kappa, '39-'40; Sec. Phi Theta Kappa, '40.

GEORGE MORRISON

BANNER ELK, N. C.

"Good sense and good nature must ever join."

Phi Theta Kappa, '39-'40; Vice-Pres. Phi Theta Kappa, '40.



BEN MCBRYDE

LINDEN, N. C.

"Be thyself, there is no better law."

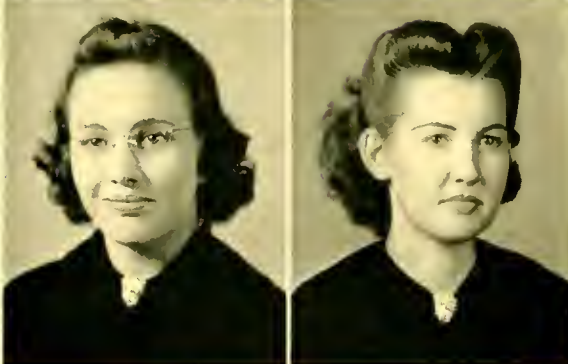
Green and Gold Masquers, '39-'40; French Club, '39-'40; Glee Club, '39-'40.

JOHN A. McCONNELL

ABINGDON, VA.

"He doth deserve as much as may be yielded to a man."

Pres. Student Body, '40; Student Council, '39-'40; Phi Rho Pi, '39-'40; Vice-Pres. Phi Rho Pi, '40; Glee Club, '39-'40; Green and Gold Masquers, '39-'40; Demosthenean Club, '39-'40.



SARAH MCCRACKEN

LEICESTER, N. C.

"Ever earnest, ever true."

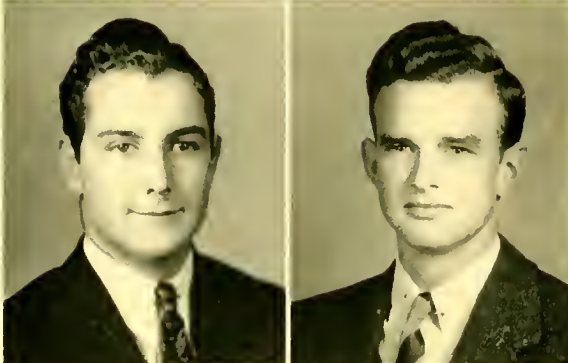
Cone Home Economics Club, '39; Basketball, '39.

HELEN MCEWEN

MINT HILL, N. C.

"A maid of grace and complete majesty."

Basketball, '39-'40; Capt. Basketball, '39; Sullivanian Sorority, '39-'40.



VIRGIL McINTYRE

SHELBY, N. C.

"Who deserves well needs not another's praise."

CLARENCE McNEELY

MOORESVILLE, N. C.

"A proper man as one shall see."

SENIORS

GEORGE McNEELY
CLEVELAND, N. C.

"Here is a true, industrious friend."

RANKIN McNEELY
MOORESVILLE, N. C.

"I will maintain my truth and honor firmly."

Christian Council, '39, '40; Phi Theta Kappa, '39, '40; French Club, '39, '40; Demosthenean, '39, '40.

ARCHIE McRIMMON
ROWLAND, N. C.

"A fellow of infinite jest."

French Club, '40; Skiing Zero, '39, '40; Demosthenean, '40; Student Council, '40.

QUENTIN NIBLOCK
CLEVELAND, N. C.

"Still waters run deep."

NOLAN PACE
SALUDA, N. C.

"A merry heart maketh a cheerful countenance."

VESTA PALMER
COEBURN, VA.

"Of manner gentle; of affections mild."

The Cone Home Economics Club, '39, '40.

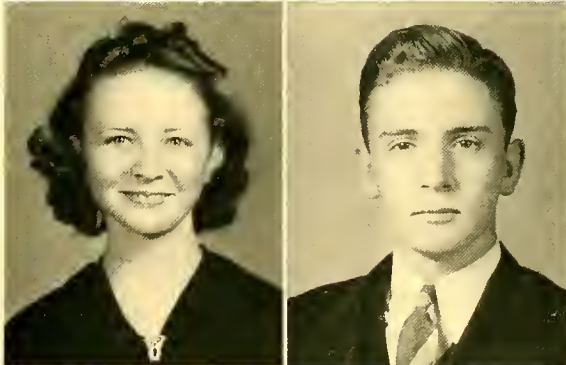
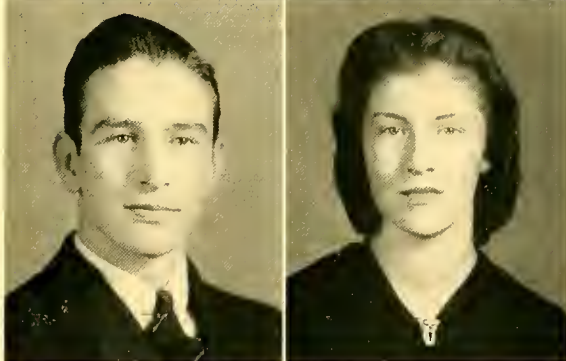
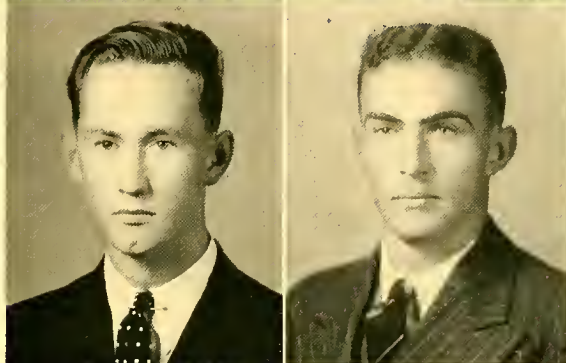
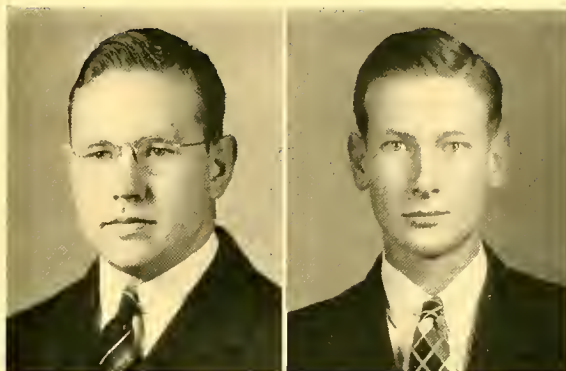
NANCY PILE
LEBANON, VA.

"There's little of the melancholy element in her."

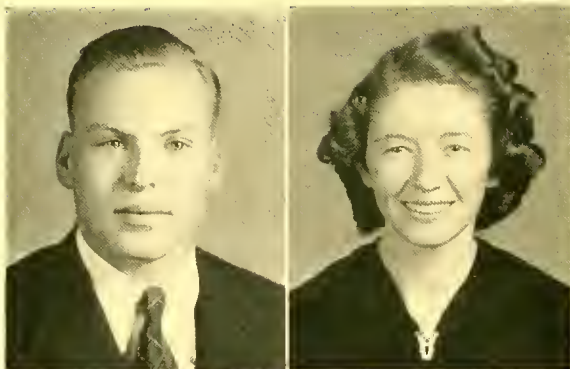
Sullivanian Sorority, '39, '40.

BRYCE REAVIS
YADKINVILLE, N. C.

"His heart is as true as steel."



S E N I O R S



WARD ROBINSON

NEWTON, N. C.

"Good humor is the clear blue sky of his soul."

Monogram Club, '39, '40; Capt. Track Team, '40; Demosthenean Club, '40; Skiing Zero, '39, '40.



BLANCHE ROSS

PINEVILLE, N. C.

"Good words went with her name."

Sullivanian Sorority, '39, '40; Phi Theta Kappa, '39, '40; Cone Home Economics Club, '39, '40, Pres., '40; Basket-ball, '39; Glee Club, '39.



CARLYNE SAWYER

WEAVERVILLE, N. C.

"Endurance, foresight, strength of will."

Sec. & Treas. Student Council, '40; Glee Club, '39, '40; Sullivanian Sorority, '39, '40; Phi Theta Kappa, '39, '40.



ROBERT SEALS

BRIDGEWATER, N. C.

"He hath a mint of phrases in his brain."

Glee Club, '39.



MARY SHEPHERD

LANSING, N. C.

"Steady of purpose, to her aim ever true."

Christian Council, '39, '40; Pres. Christian Council, '40; Phi Rho Pi, '39, '40; Phi Theta Kappa, '40; French Club, '39, '40; Sullivanian Sorority, '39, '40.



ERNEST SHOMAKER

BALM, N. C.

"I have no ambition to see a goodlier man."



VIRGINIA SLAGLE

TOECANE, N. C.

"A maiden never bold, of spirit still and quiet."

Transfer from Tenn. Wesleyan; Glee Club, '40.



MABEL SMITH

LEAKSVILLE, N. C.

"Grace in speech and words clad with wisdom's majesty."

SENIORS

RALPH W. SOVEREL, JR.
WILMINGTON, N. C.

"The glass of fashion and the mold of form."

Green and Gold Masquers, '39-'40; Pres. Green and Gold Masquers, '40; Skiing Zero, '39-'40; Asst. Chief, '40; ONTAROGA Staff, '39; Asst. Editor ONTAROGA, '40; Glee Club, '39-'40; Mountain-Ear Staff, '39; Pepperette Club, '39; Boxing, '39-'40.

ELIZABETH STAFFORD
KERNERSVILLE, N. C.

"The typical co-ed from every perspective."
Transfer from Flora Macdonald.

JEANNE DORIS TOWNSEND
VALLE CRUCIS, N. C.

"She hath a soft and pensive grace."

French Club, '39-'40; Sec. & Treas. French Club, '40; Glee Club, '39-'40; Sullivanian Sorority, '40.

GEORGE VUCKAN
PITTSBURGH, PA.

"All I ask, the heavens above and the road below me."

Football, '39; Monogram Club, '40; Green and Gold Masquers, '40; Track, '40.

JACK WALSH
PITTSBURGH, PA.

"Have your convictions and stick to them."

Football, '38-'39; Boxing, '39-'40; Track, '39-'40; Monogram Club, '40; Mountain-Ear Staff, '39.

LESTER WATTS
HENDERSONVILLE, N. C.

"He loved the nature which he saw, but better loved the things he dreamed of."

Glee Club, '39-'40.

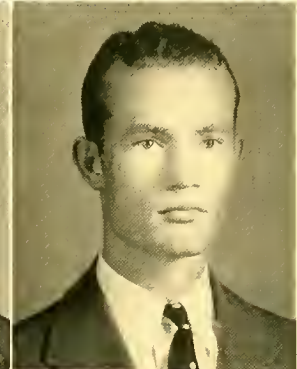
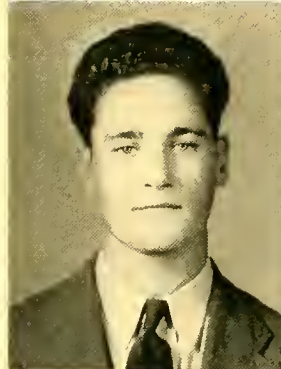
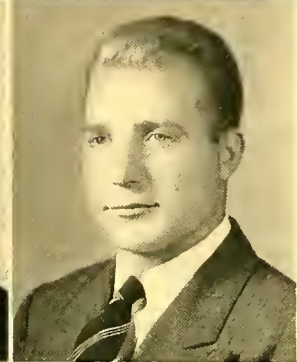
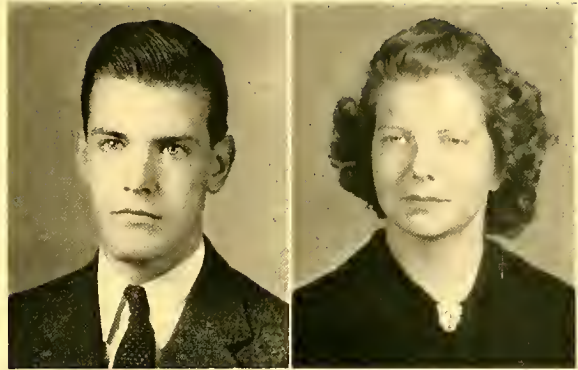
H. C. WATSON
BEAR CREEK, N. C.

"Quiet dignity coupled with good nature."

ROBERT WESP
GRANTWOOD, N. J.

"Leave silence to saints, I am but human."

Green and Gold Masquers, '39-'40; Glee Club, '39-'40.



S E N I O R S



CORNELIA WILKINSON

RIDGEVILLE, N. C.

"Gracious in manner and gentle in speech."

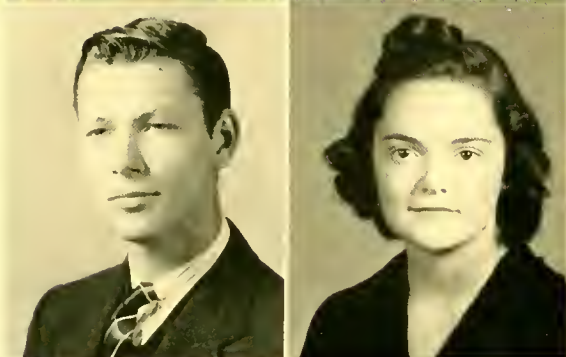
Green and Gold Masquers, '39, '40; Sec. & Treas. Green and Gold Masquers, '40; Peppereette Club, '39; Sullivanian Sorority, '39, '40; Glee Club, '39; French Club, '40.

HOPE WILLS

BANNER ELK, N. C.

"A sweet, helpful disposition that won her many friends."

French Club, '39, '40; Glee Club, '39.



C. J. WILSON

MATTHEWS, N. C.

"Thou hast a mind that suits with this, thy fair and outward character."

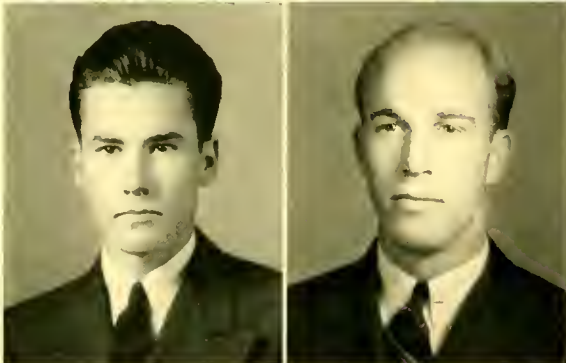
Cross Country, '39, '40; Glee Club, '39, '40; Demosthenean Club, '39, '40; Sec. & Treas. Demosthenean Club, '40; Phi Rho Pi, '39, '40; French Club, '39, '40, Pres., '40; Phi Theta Kappa, '40; Christian Council, '40; Monogram Club, '40.

SUE WOODSIDE

STATESVILLE, N. C.

*"A smile for all, a greeting glad,
A lovable, jolly way she had."*

Sullivanian Sorority, '39, '40; Basket-ball, '39, '40; Christian Council, '40.



PRESTON WOLFE

BIG STONE GAP, VA.

"A merrier man I never spent an hour's talk withal."

French Club, '39; Christian Council, '39; ONTAROGA Staff, '39, '40; Business Mgr. ONTAROGA, '40; Student Council, '39, '40; Green and Gold Masquers, '39, '40; Phi Theta Kappa, '39, '40; Mountain-Ear Staff, '39.



JOHN YORKE

BANNER ELK, N. C.

1918—1940

"We loved him for his happy ways and his sincerity at all times."

DORIS RAMSEY

"And those about her

From her shall read the ways of perfect honor."

Christian Council, '39-'40; Sullivanian Sorority, '39-'40; Cone Home Economics Club, '39-'40; French Club, '39-'40; Phi Theta Kappa, '39-'40; Glee Club, '39-'40.

SENIOR SUPERLATIVES

Prettiest Girl

MARTHA GUY

Best Looking Boy

JOHN McCONNELL

Cutest Girl

ADA CHURCH

Cutest Boy

CALVIN LINDSAY

Most Dependable Girl

MARY SHEPHERD

Most Dependable Boy

BILL COBB

Wittiest Girl

LOUISE BARNES

Wittiest Boy

PRESTON WOLFE

Most Talented Girl

WILLIE MAE LINKER

Most Talented Boy

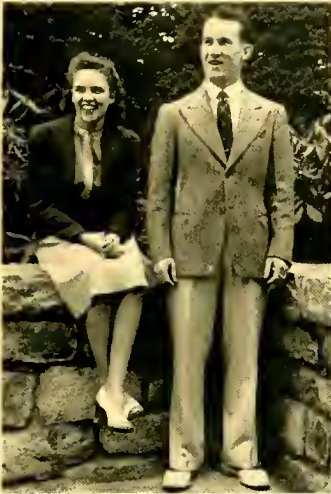
RALPH SOVEREL

Most Popular Girl

HELEN McEWEN

Most Popular Boy

PAUL CALLAHAN





THIRD YEAR STUDENTS

THELMA BANNER

BANNER ELK, N. C.

ETHEL BOYD

CLOVER, S. C.

LA NELLE KELLY

CORNELIUS, N. C.

JAMES PALMER

NEW LONDON, N. C.

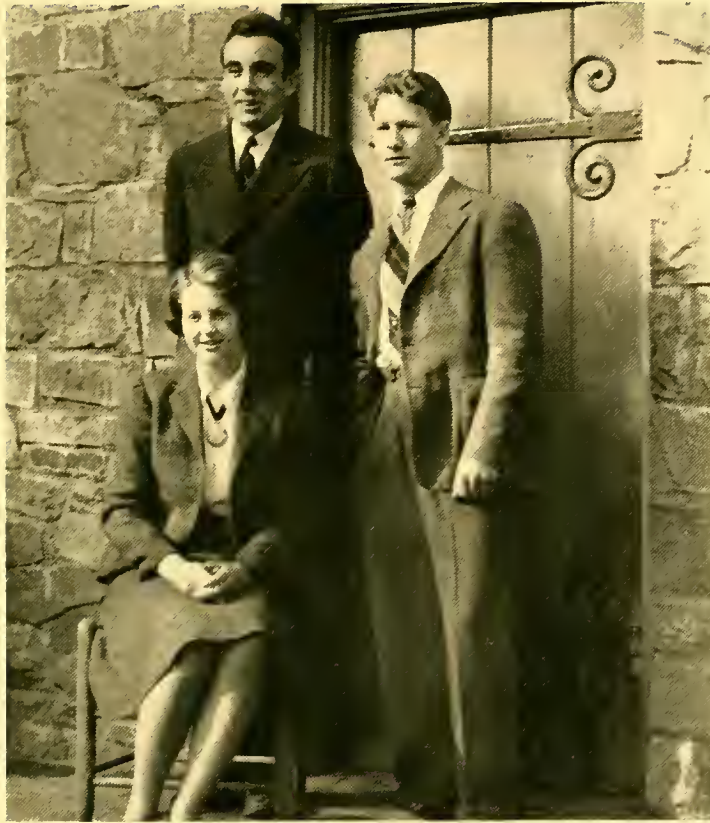
RUTH RAGAN

DURHAM, N. C.

JANE ELLEN ROBERTS

RICHMOND, VA.

LOWER CLASSMEN



OFFICERS

GEORGE WHITE..... *President*
ROBERT WOOLWINE..... *Vice-President*
VIRGINIA STEELE..... *Secretary and Treasurer*



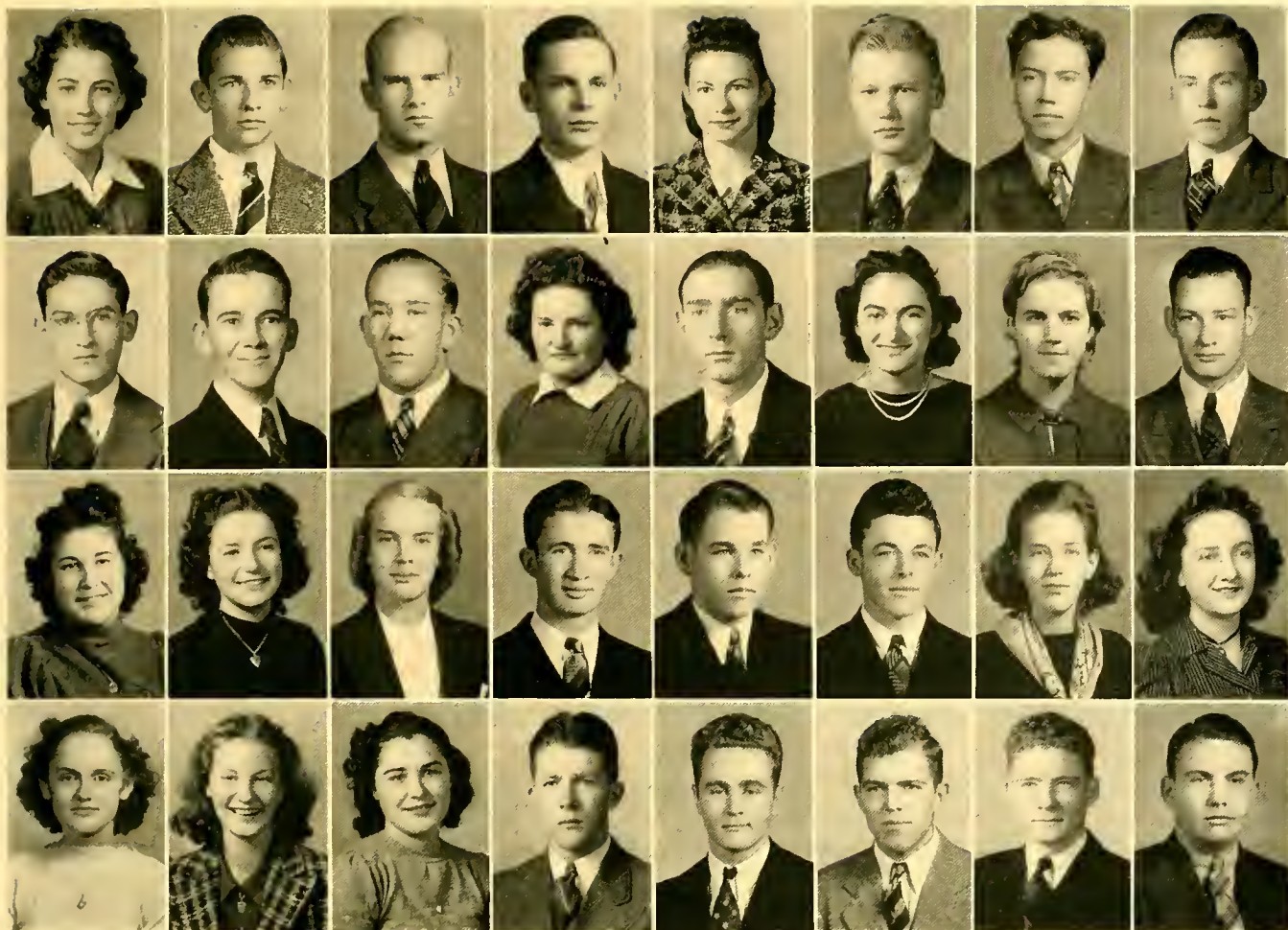
F R E S H M E N

First Row: PAT A. ADAIR, Glen Cove, Md.; ROBERT ALLEN, Charlotte, N. C.; VERGIE ANDERSON, Birchleaf, Va.; HAROLD ARLEDGE, Saluda, N. C.; ETHEL BAGBY, Lynchburg, Va.; MARGARET BANNER, Banner Elk, N. C.; WILFRED BARKLEY, Statesville, N. C.; DOROTHY BARTLEY, Covington, Va.

Second Row: MADELINE BAXTER, Fallston, N. C.; DOROTHY BEADLE, Davidson, N. C.; FRED BEADLE, Davidson, N. C.; GONZALEE BEAM, Cherryville, N. C.; KNOX WRAY BESS, Vale, N. C.; ROSE BISANOR, Alexis, N. C.; MARY HILDA BLACK, Maiden, N. C.; LENARD BLANTON, Lincolnton, N. C.

Third Row: JOHN BOLTON, Concord, N. C.; CAROL BOWMAN, Aberdeen, N. C.; SCOTT BRANK, Weaverville, N. C.; MILDRED BROWN, Gastonia, N. C.; ARDRIC BUCHANAN, Minneapolis, N. C.; MARION CAMPBELL, Maiden, N. C.; ALBERTA CAMPBELL, Charlotte, N. C.; WALTER CARTER, Clinton, S. C.

Fourth Row: SAM CARTNER, Mocksville, N. C.; ELMA COLLINS, Durham, N. C.; JEAN CORPENING, Newton, N. C.; EDNA CROCKETT, Wytheville, Va.; STEPHEN CROWLEY, Wilmington, N. C.; BETTY DAVIS, Rahway, N. J.; ALVIN DRESSER, Leland, N. C.; WILLIAM DULIN, Statesville, N. C.



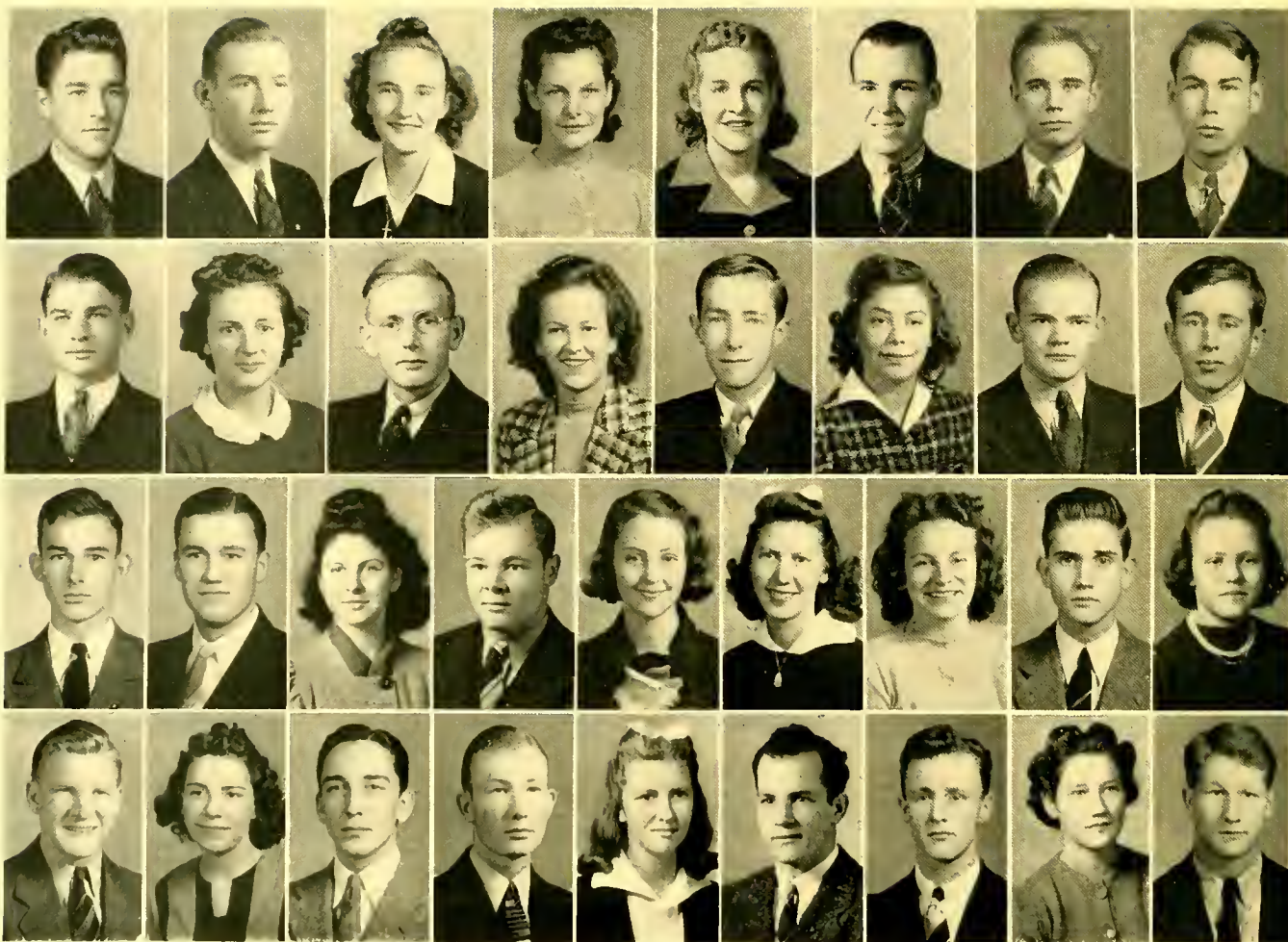
F R E S H M E N

First Row: MARY LOU ELLIS, Gilbert, W. Va.; MARSHALL FOWLER, Mount Airy, N. C.; ROBERT FOWLKES, Yanceyville, N. C.; JIMMIE GILBERT, Mount Airy, N. C.; MARY KATE GRILLS, Banner Elk, N. C.; LEVERING GROSS, Roanoke, Ala.; SHIRLEY HAM, Husk, N. C.; THOMAS HAM, Lansing, N. C.

Second Row: MACK HARPER, Woodleaf, N. C.; CALVIN HENDERSON, Smyrna, Tenn.; JOE HENDRIX, Newton, N. C.; RUTH HENSON, Sherwood, N. C.; HAROLD HENSON, Sherwood, N. C.; EVELYN HIRSCHBERG, Boone, N. C.; DOROTHY HORNADAY, Snow Camp, N. C.; BEN HURSEY, Darlington, S. C.

Third Row: ESTELLE ICARD, Maiden, N. C.; EDITH JAMISON, Pineville, N. C.; KATE JOHNSON, St. Pauls, N. C.; SAM FRANK JOHNSON, York, S. C.; HAROLD LEWIS, Morehead City, N. C.; EARL LEWIS, Morehead City, N. C.; ADA LOVE, Burlington, N. C.; JUNE LOWE, Banner Elk, N. C.

Fourth Row: LELIA NEAL, Reidsville, N. C.; SARA LOU NICHOLSON, Banner Elk, N. C.; EILEEN MATTHEWS, Gates, N. C.; RUFUS MILLER, North Wilkesboro, N. C.; DEE MINNICK, Bristol, Tenn.; SAM MOOSE, Newton, N. C.; TIMOTHY MORGAN, Eagle Springs, N. C.; W. H. Mc NEILL, Aberdeen, N. C.



F R E S H M E N

First Row: JAMES PARKER, New Bern, N. C.; CALVIN PARKS, Pineville, N. C.; VIRGINIA PERRY, Liberty, N. C.; LUCILLE PETERMAN, Cleveland, Ohio; SARA FRANCES PORTER, Rural Retreat, Va.; RUSSELL POWERS, St. Pauls, N. C.; ARCHIE PURCELL, Laurinburg, N. C.; FRANK RANSON, Huntersville, N. C.

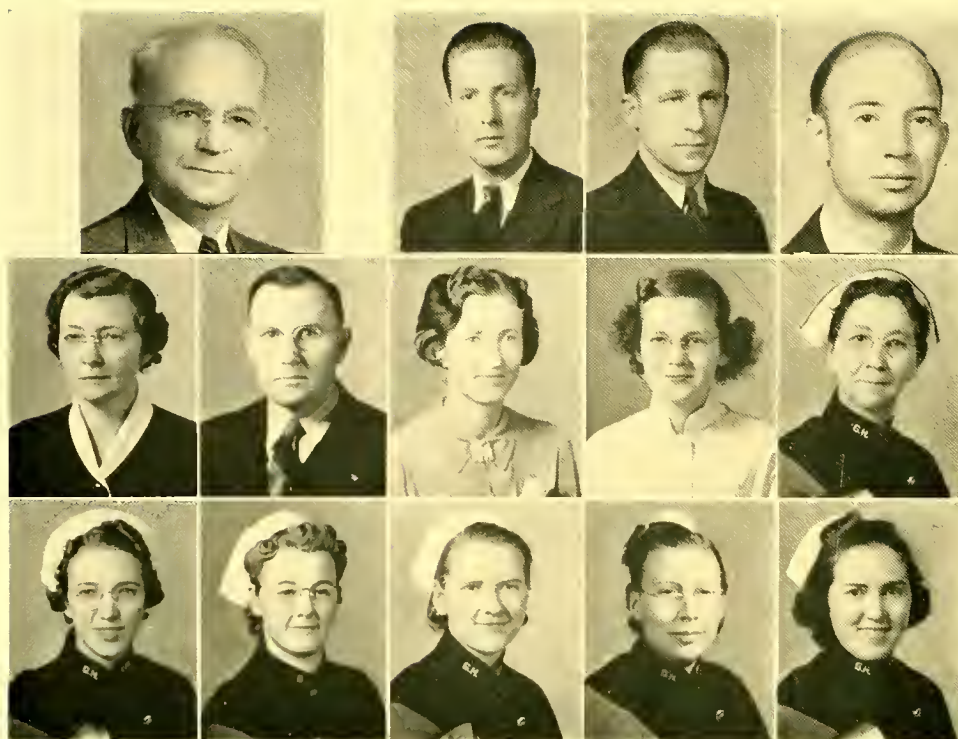
Second Row: FOREST RATCHFORD, Bessemer City, N. C.; MARY LOU REAVIS, Yadkinville, N. C.; EMMETT REDMON, Warsaw, N. C.; KATHRYN ROBERTS, Hartsville, S. C.; HAROLD ROCKETT, Conover, N. C.; MILDRED SCOTT, Cooleemee, N. C.; WARREN SCRONCE, Newton, N. C.; William Smith, Aberdeen, N. C.

Third Row: ROBERT SMITH, Blanche, N. C.; OSCAR SMITH, Blanche, N. C.; CELENE SLAGLE, Toecane, N. C.; JOHN SOSSOMON, Midland, N. C.; VIRGINIA STEELE, Alderson, W. Va.; JULIA STEPHENS, Wytheville, Va.; MARIE STEPHENSON, Charlotte, N. C.; GEORGE STOKES, Norfolk, Va.; MARGARET SQUIER, Greensboro, N. C.

Fourth Row: ROSS TILLEY, Big Stone Gap, Va.; CATHERINE WALLING, Lakewood, Ohio; JACK WARD, Gastonia, N. C.; HAROLD WATT, Charlotte, N. C.; MYRTLE WEAVER, Lansing, N. C.; COURTNEY WEBB, Morehead City, N. C.; WAYNE WHITE, Charlotte, N. C.; GLADYS WINBOURNE, Nashville, N. C.; ROBERT WOOLWINE, Abingdon, Va.

GRACE HOSPITAL SCHOOL OF NURSING





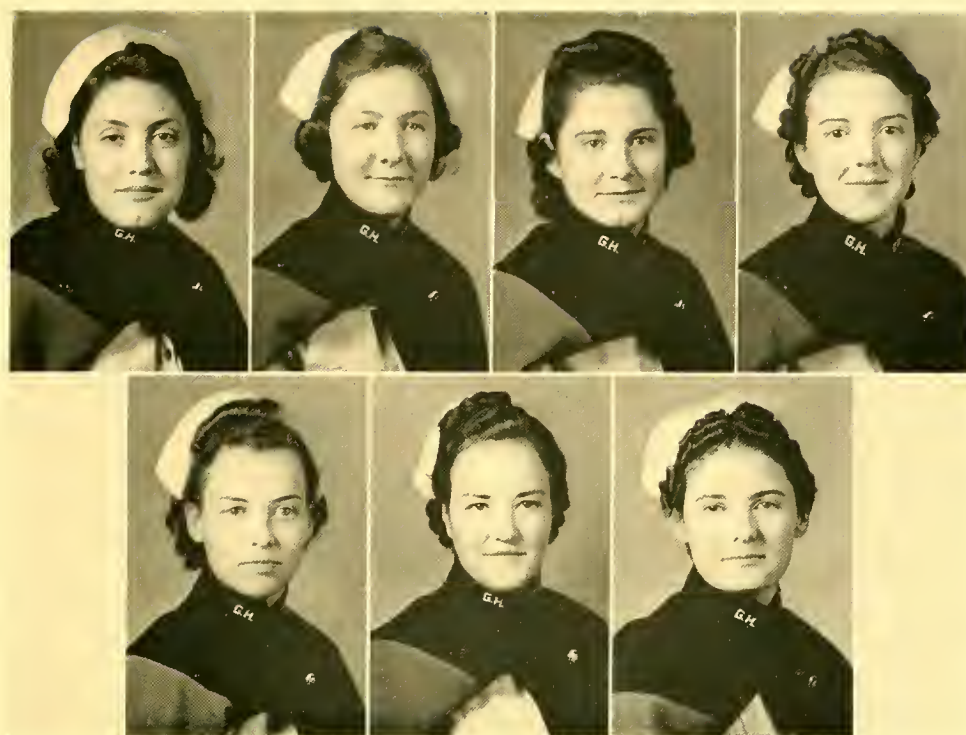
STAFF

First Row: DR. W. C. TATE, M. D., *Chief of Staff*; DR. J. A. BROWN, M. D.; DR. VICTOR H PRUSA, M. D.; J. B. PRITCHETT, B. S., *Laboratory Technician*.

Second Row: MARYBETH HURST, R. R. L., *Record Librarian*; ROY A. HARMON, *Business Manager*; MRS. FRED STANLEY, *Secretary*; ELLEN MCLEOD, B. S., *Dietitian*; MAYE LOWE, R. N., *Superintendent of Nurses*.

Third Row: SHIRLEY HAWKE, R. N., *Educational Instructor*; MRS. PAULINE J. LAWRENCE, R. N., *Operating Room Supervisor*; MRS. J. B. PRITCHETT, R. N., *Third Floor Supervisor*; MRS. PAUL CHAPPELL, R. N., *Second Floor Supervisor*.

Not Pictured: LAURA EPPERSON, R. N., *Night Supervisor*.



SENIOR CLASS HOSPITAL

HELEN DOUGHERTY
Johnson City, Tenn.

EVELYN HOLDERBY
Weaverville, N. C.

JEAN LUNSFORD
Walnut, N. C.

DOROTHY PRITCHETT
Banner Elk, N. C.

SADIE RIDDLE
Burnsville, N. C.

LUCILLE STEVENSON
Taylorsville, N. C.

KATHERINE VINSON
Franklin, N. C.



JUNIOR AND FRESHMAN CLASSES

JUNIORS

First Row: BESSIE DOCKERY, Murphy, N. C.; PEARL DOLINGER, Husk, N. C.; WAVA FARRINGTON, Wagoner, N. C.; EILEEN HANDY, Grassy Creek, N. C.; ALMA KEYS, Lenoir, N. C.

Second Row: MARY MACK STEVENSON, Taylorsville, N. C.; RUTH SHEPHERD, Lansing, N. C.

FRESHMEN

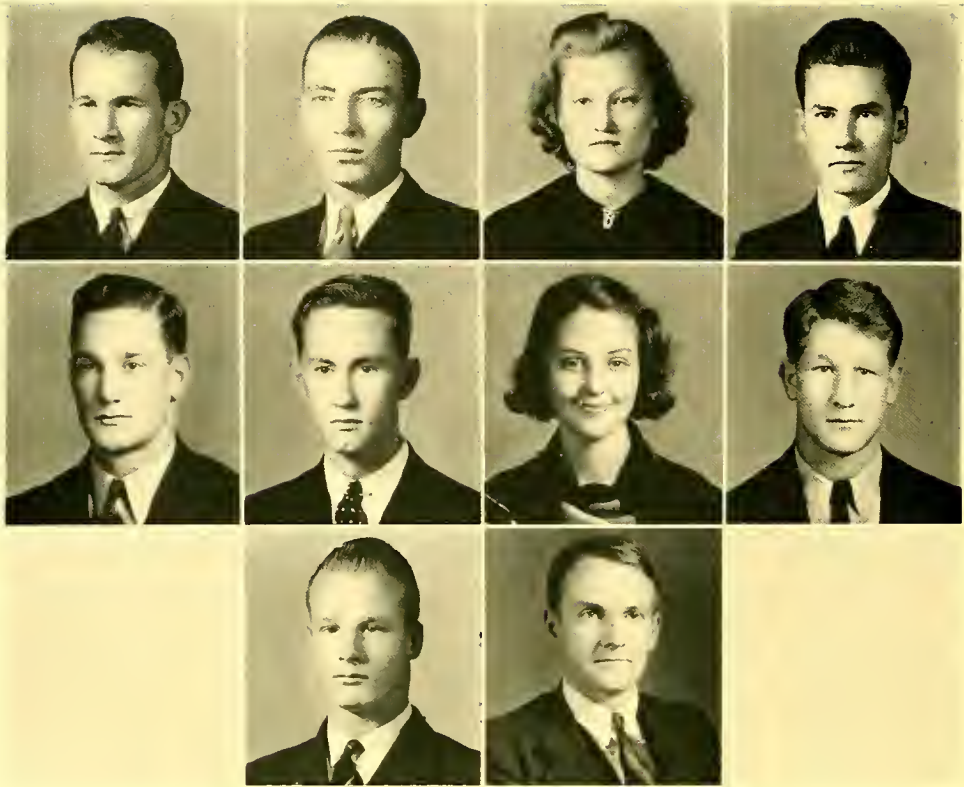
Second Row: OMA AUSTIN, Bristol, Va.; GENEVA FRANKLIN, Crossnore, N. C.; ROBERTA FLEMING, Woodleaf, N. C.

Third Row: VIOLET GOBBLE, Johnson City, Tenn.; EMILY HOVEY, Lenoir, N. C.; IRMA HUNTER, Mars Hill, N. C.; VIRGINIA ROBBINS, Pineola, N. C.; EDNA ROBINSON, Lenoir, N. C.

Fourth Row: NINA SILVER, Burnsville, N. C.; HELEN THOMPSON, Cheraw, S. C.; MARY TOWNSEND, Lenoir, N. C.; MILDRED YELTON, Paint Gap, N. C.

ACTIVITIES





STUDENT COUNCIL

JOHN McCONNELL *President*
 BILL COBB *Vice-President*
 CARLENE SAWYER *Secretary*

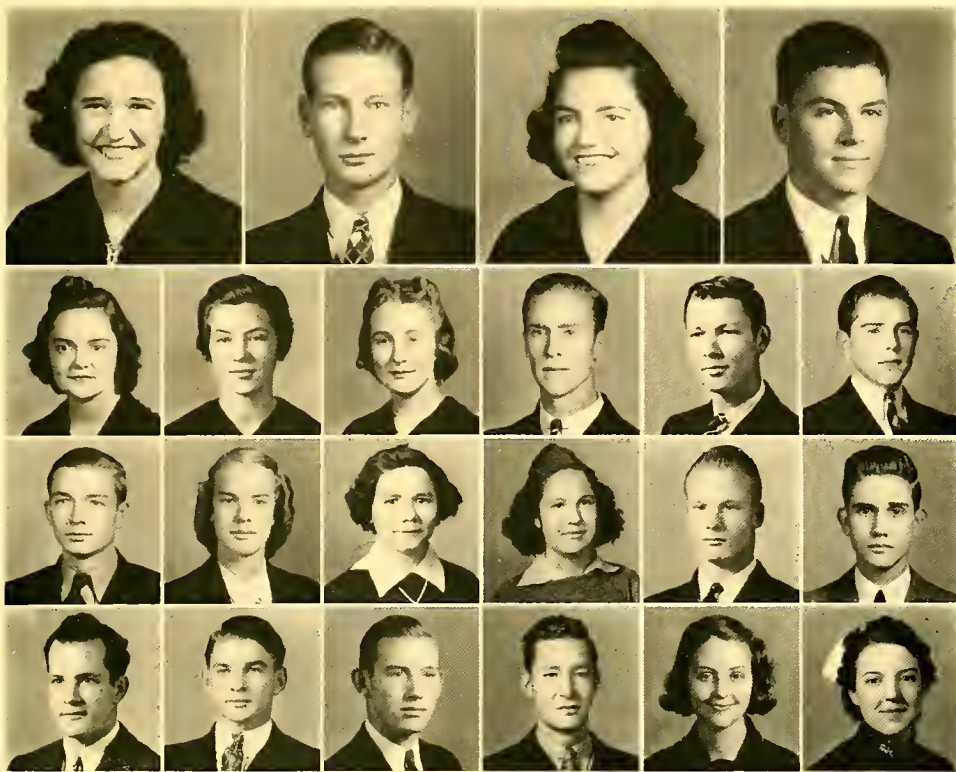
SENIOR REPRESENTATIVES

PRESTON WOLFE ARCHIE McRIMMON
 THOMAS FEREBEE

FRESHMAN REPRESENTATIVES

VIRGINIA STEELE WALTER CARTER
 ROBERT WOOLWINE GEORGE WHITE

E. L. LAFFERTY *Faculty Adviser*



CHRISTIAN ASSOCIATION

OFFICERS

MARY SHEPHERD..... *President*
 RANKIN McNEELEY..... *Vice-President*
 MARY ELLEN INGLE..... *Secretary*
 TOM FITE..... *Treasurer*
 MR. M. J. MURRAY..... *Adviser*

AREA CHAIRMEN

SUE WOODSIDE
 VIRGINIA MILLER
 TUNA HINTON

PRICE BAKER
 C. J. WILSON
 ROBERT HOOD

JOHN LOONEY

GROUP LEADERS

VIRGINIA STEELE
 KATE JOHNSON
 ALBERTA CAMPBELL
 MARGARET STANFORD
 GEORGE WHITE
 WALTER CARTER

GEORGE STOKES
 COURTNEY WEBB
 FOREST RATCHFORD
 GRAYSON ROBBINS
 CALVIN PARKS
 SCOTT BRANK

DOROTHY PRITCHETT



SULLIVANIAN SORORITY

OFFICERS

MARTHA GUY *President* MARY ELLEN INGLE *Vice-President*
 MARY SHEPHERD *Secretary-Treasurer* NANCY CHEEK *House Governess*
 MISS MARGARET TUFTS *Faculty Sponsor*

MEMBERS

JEAN AVEN	ETHEL BOYD	TUNA HINTON	DORIS RAMSEY
LOUISE BARNES	EDNA CROCKETT	WILLIE MAE LINKER	RUTH RAGAN
MADLINE BAXTER	WINNIFRED DAVIDSON	VIRGINIA MILLER	BLANCHE ROSS
DOROTHY BEADLE	BETTY DAVIS	HELEN MCEWEN	CARLYNE SAWYER
MADLINE BEAM	FRANCES FORTUNE	MISS ELLEN McLEOD	JEANNE DORIS TOWNSEND
ROSE BISANER	JENNIE GRAY	NANCY PILE	CORNELIA WILKINSON
MARY HILDA BLACK	VIRGINIA GOUGE	MRS. L. K. PRITCHETT	SUE WOODSIDE

THE DEMOSTHENEAN CLUB

OFFICERS

TOM FITE *President* PRICE BAKER *Vice-President*
 C. J. WILSON *Secretary-Treasurer*

MEMBERS

HOWARD ABERNATHY	WALTER CARTER	LOYD HUFFMAN	WARD ROBINSON
TALMADGE BEAN	ALVIN DRESSER	E. L. LAFFERTY	GEORGE STOKES
LEONARD BLANTON	TOM FEREBEE	CALVIN LINDSAY	GEORGE WHITE
SCOTT BRANK	WILLIAM FETZER	RANKIN MCNEELEY	C. F. WHITESSELL
PAUL CALLAHAN	RICHARD HAMILTON	ARCHIE McRIMMON	

GLEE CLUB

Under the direction of Miss Margaret James, the Glee Club of over sixty members presented two major programs: a Christmas sacred concert and at Easter a cantata, "Life Everlasting". They also participated in the music festival at East Tennessee State Teachers College, Johnson City, Tenn.



GREEN AND GOLD MASQUERS

OFFICERS

RALPH SOVEREL.....*President*
ADA CHURCH.....*Vice-President*
CORNELIA WILKINSON.....*Secretary-Treasurer*

MEMBERS

TALMADGE BEAN	MARSHALL FOWLER	MALINE LANGSTON	JAMES PARKER
ARLENE BLACKMER	JENNIE GRAY	JOHN LEDON	LUCILLE PETERMAN
JOHN BOLTON	MARTHA GUY	CALVIN LINDSAY	VIRGINIA PERRY
CAROL BOWMAN	EVELYN HIRSCHBERG	JACK MARTIN	SARAH PORTER
ETHEL BAGBY	TUNA HINTON	JACK MATTHEWS	KATHRYN ROBERTS
DOROTHY BARTLEY	KATE JOHNSON	JOHN McCONNELL	CELENE SLAGLE
PAUL CALLAHAN	SAM FRANK JOHNSON	CALVIN PARKS	PRESTON WOLFE
	GEORGE WHITE	WAYNE WHITE	GEORGE VUGHAN





THE CLAN OF SKIING ZERO

OFFICERS

CALVIN LINDSAY Chief
 RALPH SOVEREL Assistant Chief
 ARCHIE MCRIMMON Scribe
 MISS CLAIRE DOUGLAS Sponsor

MEMBERS

PAT ADAIR
 MARY HILDA BLACK
 ARLENE BLACKMER
 JOHN BOLTON
 CAROL BOWMAN

BILL BURNETT
 EDNA CROCKETT
 WINNIFRED DAVIDSON
 ROBERT FOWLKES
 MARY ELLEN INGLE

HUGH LEE
 JACK MATTHEWS
 LUCILLE PETERMAN
 SARAH FRANCES PORTER
 RUSSELL POWERS

KATHRYN ROBERTS
 WARD ROBINSON
 BILL SMITH
 JULIA STEPHENS
 GEORGE STOKES

ROSS TILLEY

THE FRENCH CLUB

OFFICERS

C. J. WILSON.....*President* ARCHIE McRIMMON.....*Vice-President*
 JEANNE DORIS TOWNSEND...*Secretary-Treasurer* MISS CLAIRE DOUGLAS.....*Faculty Sponsor*

MEMBERS

DOROTHY BEADLE
 FRANK BRADSHAW
 ORTON CAMERON
 WALTER CARTER
 STEPHEN CROWLEY

WINNIFRED DAVIDSON
 SAM HART
 MACK HENDERSON
 BEN MAC BRYDE
 RANKIN McNEELEY

JAMES PARKER
 RUTH RAGAN
 DORIS RAMSEY
 MARY SHEPHERD
 GEORGE STOKES

LESTER WATTS
 BOB WESP
 CORNELIA WILKINSON
 HOPE WILLS
 ROBERT WOOLWINE

THE CONE HOME ECONOMICS CLUB

OFFICERS

BLANCHE ROSS.....*President* BETTY DAVIS.....*Vice-President*
 CATHERINE WALLING.....*Secretary* WINNIFRED DAVIDSON.....*Treasurer*
 MRS. SAMMY YELTON.....*Faculty Sponsor*

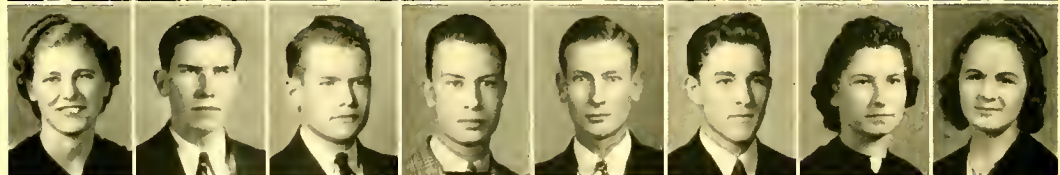
MEMBERS

MADLINE BAXTER
 MURIEL FARRINGTON
 ADA GOODMAN

MARY KATE GRILLS
 RUTH HENSON
 MALINE LANGSTON
 NANCY PILE

SARAH McCracken
 ELOISE McKINNEY
 LELIA NEAL
 DORIS RAMSEY

GRACE OWENS
 VESTA PALMER
 LUCILLE PETERMAN



PHI THETA KAPPA

OFFICERS

JOHN LOONEY *President* GEORGE MORRISON *Vice-President*
 CARLYNE MORRISON *Secretary* GILBERT MAYS *Treasurer*
 MISS ROSANNA BLAKE *Faculty Sponsor*

MEMBERS

CHARLES ARMBRUSTER	JOHN FRANK HAMPTON	WILLIE MAE LINKER	MARY SHEPHERD
WALTER CARTER	MACK HENDERSON	RANKIN MCNEELEY	VIRGINIA STEELE
EDITH DELLINGER	JACK HOYLE	DORIS RAMSEY	GEORGE STOKES
NELL DELLINGER	GEORGE JONES	BLANCHE ROSS	C. J. WILSON
ALVIN DRESSER	HAROLD LEWIS	CARLENE SAWYER	PRESTON WOLFE

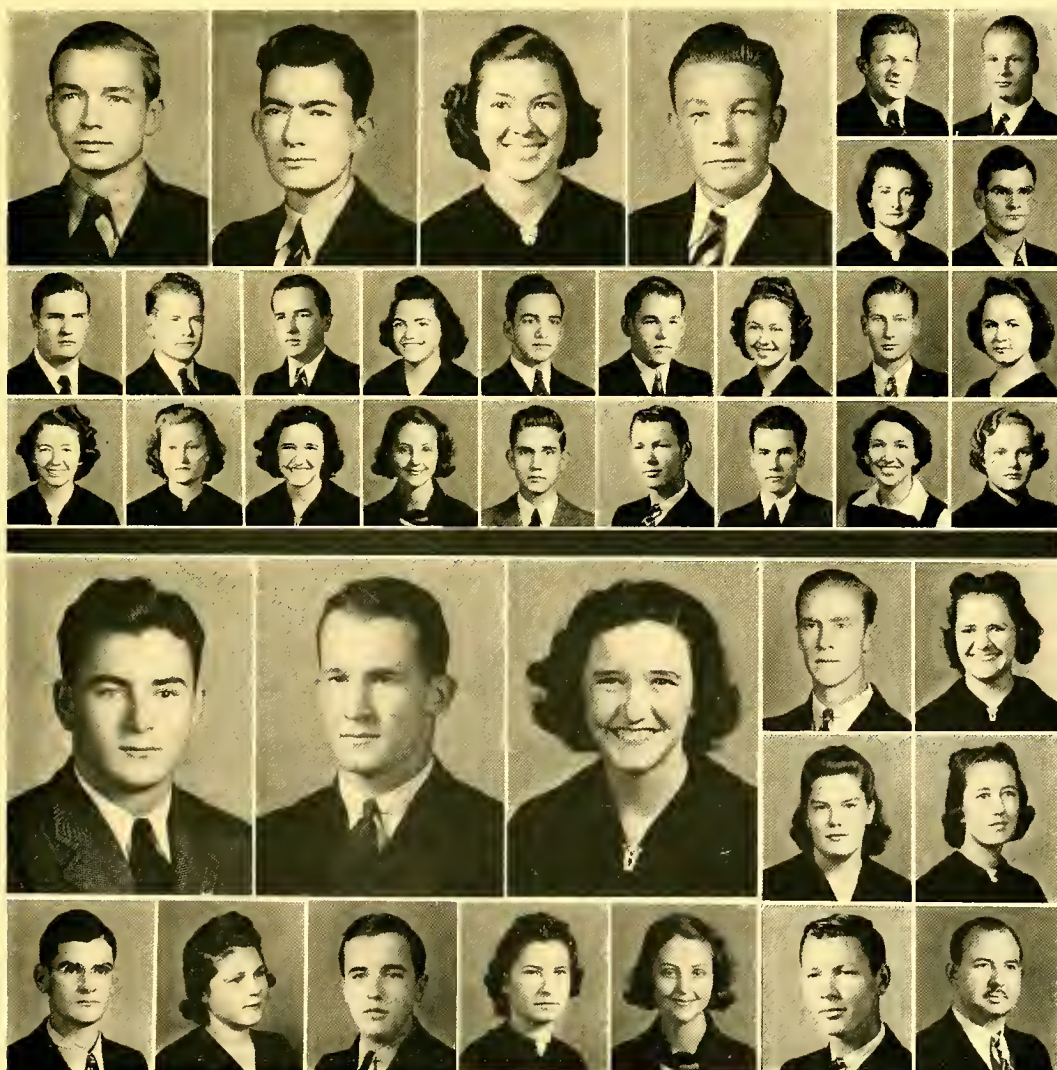
PHI RHO PI

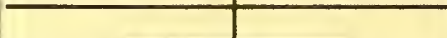
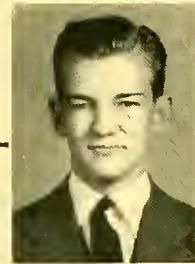
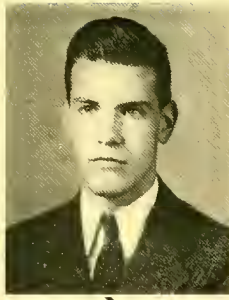
OFFICERS

MARK DAVIS *President* JOHN MCCONNELL *Vice-President*
 MARY SHEPHERD *Secretary-Treasurer* L. K. PRITCHETT *Sponsor*

MEMBERS

PRICE BAKER	ARLENE BLACKMER	ORTON CAMERON	JENNIE GRAY
LOUISE BARNES	JOHN BOLTON	ALVIN DRESSER	JACK HOYLE
RUTH RAGAN	VIRGINIA STEELE	C. J. WILSON	





EDITORIAL STAFF

PAUL M. CALLAHAN *Editor-in-Chief*
RALPH W. SOVEREL, JR. *Assistant Editor*
HAROLD WATT, CAROL BOWMAN, KITTY ROBERTS, PAT ADAIR. *Associate Editors*

BUSINESS STAFF

PRESTON WOLFE *Business Manager*
CALVIN LINDSAY, ARCHIE PURCELL, VIRGINIA PERRY *Assistant Business Managers*
MISS MARGARET TUPTS. *Faculty Adviser*



ATHLETICS



ATHLETICS

AT

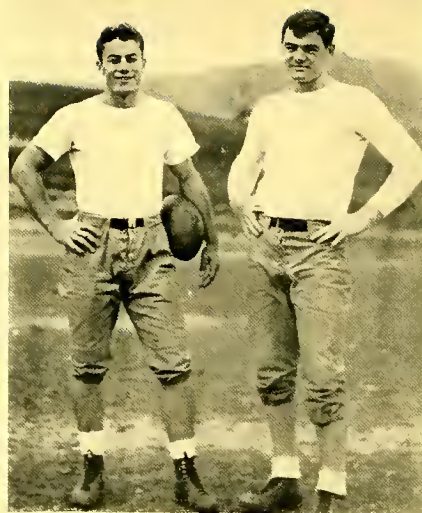
COACHES

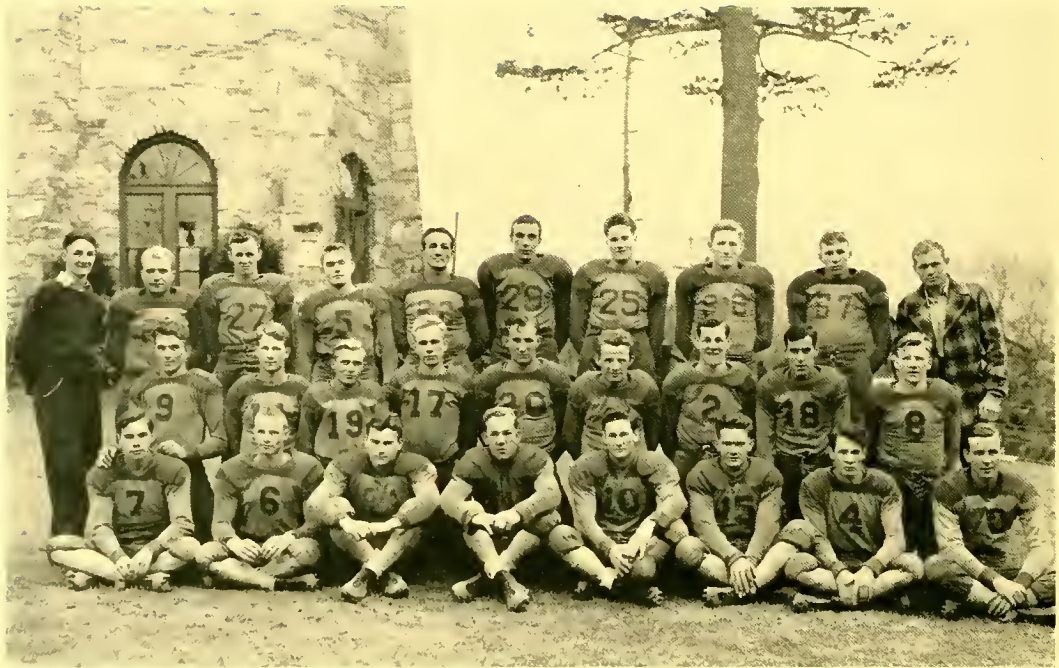
MACKORELL—*Football, Basket-ball*

POPOW—*Football*

LAFFERTY—*Track*

BLAKE—*Girls' Basket-ball*





TOM FEREBEE, Mocksville, N. C.,
 Captain 1939 Lees-McRae Bobcats.
 JOHN LEGARD, Abingdon, Va., Co-
 Captain.

F O O T B A L L

First Row: BOLTON, CARTER, DAVIS, HENDRIX, FEREBEE, CORDELL, CALLAHAN, LEGARD.

Second Row: CARSON, WOOLWINE, SMITH, PURCELL, HARTLEY, ARMBRUSTER, DULIN, BINGHAM, TILLEY.

Third Row: LANCASTER (Manager), VUCKAN, WHITE, HENDRICKSON, KREGER, WHITE, WALSH, HENSON, ATKINS and COX.

F O O T B A L L R E S U M E

SEPTEMBER 1. A squad of forty-five strong reported to Coaches Mackorell and Popow at the beginning of the 1939 season eager to settle down to hard practice in preparation for the opening tilt with King College.

SEPTEMBER 16. On the night of September 16 the valiant Bobcats were downed by their initial foe, King College, 28-0. Although defeated by a much heavier and experienced senior college aggregation, the Lees-McRae boys showed promises of a strong eleven for the remainder of the junior college schedule.

SEPTEMBER 30. After an open date the Green and Gold machine journeyed to Boone to conquer the Appalachian State "B" team, 6-0.

OCTOBER 7. "Bobcats upset powerful Belmont Abbey Crusaders," was the headline in the papers, when on October 7 before a large home-coming crowd Lees-McRae fighting all the way, overcame their strongest foe. This victory was something to boast of as the Crusaders had not been defeated by any junior college team in three years.

OCTOBER 14. Next in line of competition came Mars Hill, our bitterest rivals, who proved to be a little too tough for the Bobcats. Playing at Spruce Pine on a mutual field Lees-McRae lost a heart-breaker to the roaring Lions, 6-0.

OCTOBER 28. Taking advantage of an open date to polish up, the Bobcats broke back into the winning column by defeating the strong Wingate College eleven, 12-6, in a hot, dusty battle at Wingate.

NOVEMBER 4. Away from home again, playing Campbell College, the leading contender for the junior college crown the Bobcats battled the Campbell eleven on even terms until the fourth quarter when the Camels obtained the upper hand grabbing a 12-point lead to hold it until the final whistle.

NOVEMBER 11. The Spruce Pine field again proved to be a jinx when the Bobcats riddled with injuries, were upset by the Brevard Tornado, 19-6.

NOVEMBER 17. Invading Davidson for a game with the powerful Davidson "B" team, the Bobcats were badly scratched by the Wildcats, 31-6, ringing down the final curtain on the 1939 Lees-McRae gridiron campaign.

Although the Bobcats' defeats overbalanced their victories it is no means by which to measure the squad's spirit. In spite of discouraging luck and disappointing defeats the team was in there fighting all the way.



T H E V A R S I T Y B O B C A T S

Top Picture: Left End, DULIN; Left Tackle, KREGER; Left Guard, VUCKAN; Center, CORDELL; Right Guard, DAVIS; Right Tackle, HENSON; Right End, ATKINS; Backs: WHITE, FEREBEE, HENDRIX and LEGARD.

Bottom Picture: Left End, WHITE; Left Tackle, HARTLEY; Left Guard, CARSON; Center, CALLAHAN; Right Guard, CARTER; Right Tackle, BOLTON; Right End, WALSH; Backs: SMITH, TILLEY, WOOLWINE, ARMBRUSTER and HENDRICKSON.



BOYS' BASKET-BALL

Squad Picture, Left to Right: BINGHAM, ARMBRUSTER, ISAACS (Capt.), FEREBEE, WHITE BEAN (Co-Capt.), HENSON, FITE, HENSON and MINNICK.

Paced by Captain Hoy Isaacs the Lees-McRae basketeers emerged from a schedule of stiff competition with fourteen victories against nine defeats, scoring a total of 992 points to opponents' 761.

The team not only had a successful season but also advanced to the semi-finals in the N. C. Junior College tourney.

Highlight of the season came when the Bobcats romped over Boiling Springs College to the tune of 91-19, one of the largest inter-collegiate basket-ball scores of the season.

The loss of Isaacs, Bean, Armbruster, Henson, Fite and Ferebee by graduation will be keenly felt by Coach Mackorell as he begins his next year's campaign.



G I R L S ' B A S K E T - B A L L

Left to Right: BEAM, STEVENS, McEWEN, WOODSIDE, BLACK, BARNES. *Standing:* MANAGER MILLER, PORTER, ROBERTS, CROCKETT, GRILLS, HENSON, BOWLES and COACH BLAKE.

The Blake coached lassies of Lees-McRae suffered only three setbacks out of a twelve game schedule. Although most of their competition was high school, they also encountered several colleges and by defeating the Wingate and Mitchell College sextets they laid claim to the mythical junior college basket-ball championship for girls.



T R A C K

Left to Right: HAMILTON, HENDERSON, CAPT. ROBINSON, SMITH, McNEELY, CARTNER, LEWIS.
Standing: WALSH, KEY, WHITE, FEREBEE, ATKINS, FETZER, BRANK, RANSON. *Back Row:*
 MANAGER MARTIN, HOOD, FOWLKES, McDONALD, BLANTON, ALLEN, ROBBINS and LAFFERTY,
 Coach.

Track, the comparatively new division of Lees-McRae athletics, brought to the front some real stars of the cinder path. Although the track team lost to Mars Hill and Appalachian State they placed second in the annual state meet.

Recognition should go to the boys who, undaunted by defeat, kept working diligently trying to break the tape first. Captain Robinson, star miler led this year's attack along with Ferebee, Atkins and Fetzer.

RESULTS

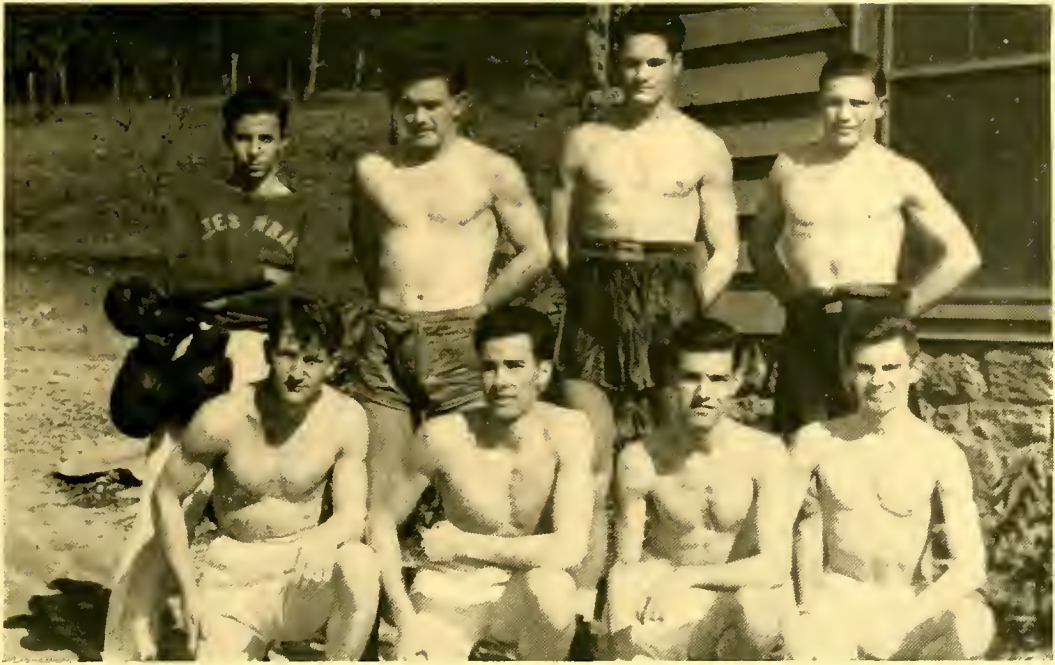
Lees-McRae.....	55	Mars Hill.....	65
Lees-McRae.....	29	Appalachian.....	32
Lees-McRae.....	53	Second to Belmont Abbey.....	77



CROSS COUNTRY

With only two meets scheduled, Coach Lafferty's distance runners led by Ward Robinson, out-ran all competition to come through the season undefeated. The Lees-McRae cross country men won over Guilford College varsity, 25-28; Davidson Freshmen; and Greensboro High in a triangle meet; Lees-McRae, 27; Davidson, 33; Greensboro, 75.

Left to Right, Standing: COACH LAFFERTY, BRANK, BURNETTE, KEY, DRESSER, RIFE. *Kneeling:* BAUMGARNER, ROBINSON, WEBB, WILSON, HUFFMAN and BLANTON.



B O X I N G

Left to Right: WOOLWINE, WOLFE, SOVERELL, GAPEN.

Back Row: MANAGER LEDON, CORDELL, WALSH and BARKLEY.

Not Pictured: ATKINS (middleweight champion of N. C.), SMITH, MOOSE, CRONIN.

Beginning with the annual intramural boxing tourney which saw fistic laurels resting upon the brows of Wolfe, Soverell, Gapen, Atkins, Barkley and Cordell, division winners, the Lees-McRae pugilists went on to gain new honors in the Golden Gloves classic held in Charlotte. Out of twenty-three fights in the Charlotte tourney and other tournaments Lees-McRae fighters won sixteen and lost seven. Bear Atkins, Bobcat middleweight, won the middleweight championship of North Carolina by knocking out three and winning a decision over the fourth in the Carolina Golden Gloves tournament.



M O N O G R A M C L U B

TALMADGE BEAN *President*
 JOHN LEGARD *Vice-President*
 TOM FITE *Secretary-Treasurer*
 JOHN MACKORELL *Sponsor*

MEMBERS

CHARLES ARMBRUSTER	HARRY CRONIN	GARTRELL LANCASTER
BILL ATKINS	MARK DAVIS	NEILL McDONALD
GEORGE BARNES	BILL DULIN	WARD ROBINSON
JOHN BOLTON	TOM FEREBEE	JOE SMITH
LEONARD BLANTON	HAROLD HENSON	GEORGE VUCKRAN
PAUL CALLAHAN	VANCE HENSON	JACK WALSH
WALTER CARTER	LEO HENRICKSON	COURTNEY WEBB
FRANK CON	ROBERT HOOD	WAYNE WHITE
HERSHILL CORDELL	HOY ISAACS	C. J. WILSON
	FRENCH KREGER	

FEATURES



SUPERLATIVES



Best All-Round
HELEN McEWEN
PAUL CALLAHAN



Most Intellectual
CARLYNE MORRISON
GEORGE MORRISON



Most Athletic
SUE WOODSIDE
TOM FEREBEE

SUPERLATIVES

Best Leaders

MARY SHEPHERD

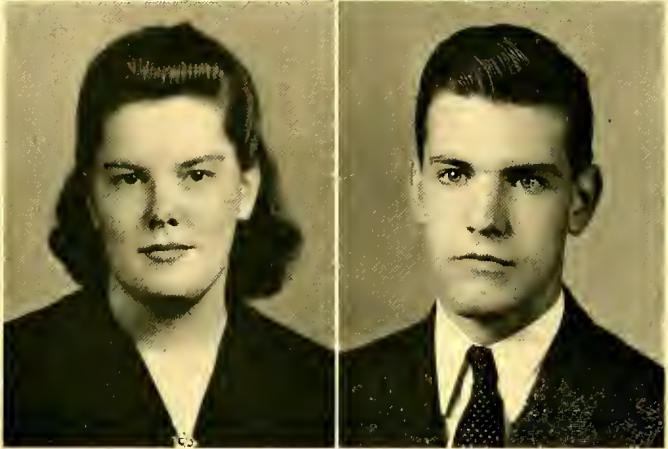
TOM FITE



Most Dramatic

ARLENE BLACKMER

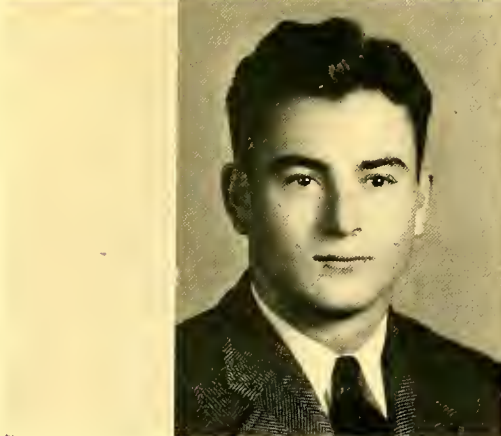
RALPH SOVERELL



Best Debaters

MARK DAVIS

MARY SHEPHERD



The Camera Follows a Lees-McRae



1. She enters as a freshman—green, scared, and wondering what it's all about.

2. In the registrar's office—what in the world is psychology, sociology and trigonometry!



3. This is not so hard, she thinks, "I ought to slay this class."

4. And last year she was valedictorian of her class; look at her now.



5. Excited, she cheers the team to a homecoming victory.

6. Christmas holidays—and home!!!!

Co-ed Through College *or* Freshman Year

1. She burns the midnight oil for her first college exams.



2. Winter, snow, she tries her luck at skiing.



3. Spring comes at last—a young girl's fancy turns to club picnics.



4. Not worried about exams this time—studying turns into a "bull session".

5. She sings in the choir at commencement and wonders if she will ever wear a cap and gown.

6. Summer vacation — she leaves her academic cares and worries behind.



The Camera Follows A Lees-McRae



1. September comes too soon
—but she is glad to be
back.

2. Plenty of time to register
—talking over the summer
is more important now.



3. Classes begin again—So
what!

4. The tables have turned—
she enjoys her senior su-
periority.



5. Still excited over football,
but—someone—excites her
more.

6. Christmas holidays were
fun, but it's good to be
back with the crowd at
L. M. C.

Coed Through College *or* Senior Year

1. Winter almost gone, social functions help break the monotony.



2. A letter from home—she wishes she had studied for those exams after all.



3. In the spring a young woman's fancy *still* turns—this time to Sunday afternoon dates.

4. Term papers to finish, exams tomorrow—she's gotta graduate.



5. At last she has reached the goal that once looked so distant.

6. Her college days over—she lingers among her souvenirs.

ADVERTISEMENTS



THE APPALACHIAN STATE TEACHERS' COLLEGE

BOONE, NORTH CAROLINA

» «

In the Blue Ridge Mountains, 3,333 Feet High

» «

Better Trained Teachers for the Old North State

» «

Student Activities Along Social, Intellectual, Recreational, and
Religious Lines Are Encouraged and Fostered

BOONE STEAM LAUNDRY

"We Wash and Dry Clean Everything
but the Baby"

TELEPHONE 56 BOONE, N. C.

Compliments of

CAROLINA PHARMACY

PHONE 47 BOONE, N. C.

Compliments of

BELK-WHITE COMPANY

BOONE NORTH CAROLINA

Farmers' Hardware Supply Co.

Dealers in Everything in Hardware
and Associated Lines

BOONE NORTH CAROLINA

B. W. STALLINGS

Your School Jeweler

BOONE, N. C.

Watches — Diamonds — Jewelry

Compliments of

BOONE DRUG COMPANY

MR. BOB AGLE Manager

PREVETT'S MENS SHOP

PHONE 162 BOONE, N. C.

MR. R. F. McDADE, Manager

Compliments of

PARKER'S CAFE

SPRUCE PINE NORTH CAROLINA

THE TRI-COUNTY NEWS

A Newspaper Devoted to the
Best Interests of the People of the
Mountains

Printing — Advertising

PHONE 80

SPRUCE PINE NORTH CAROLINA

1910 1940

SPRUCE PINE STORE CO.

The Home of Quality

Merchandise

PHONE 57

SPRUCE PINE NORTH CAROLINA

Compliments of

YOUR REXALL DRUG STORE

—«»—

Spruce Pine Pharmacy

—«»—

SPRUCE PINE NORTH CAROLINA

Compliments of

BURLESON STORE

SPRUCE PINE NORTH CAROLINA

HAPPY HOME DINING ROOM

SPRUCE PINE, N. C.

MRS. RETTA BUCHANAN, Mgr.

FAUCETTE COMPANY, Inc.

BRISTOL, TENNESSEE

Wholesale Hosiery, China, Glassware
and Groceries

Retail Hosiery, China, Glassware and Metal Wares

Compliments of

—«»—

JFG COFFEE COMPANY

—«»—

KNOXVILLE TENNESSEE

Compliments of

—«»—

WATAUGA CHEVROLET CO.

—«»—

ELIZABETHTON TENNESSEE

J. W. MOORE

Manufacturer and Wholesaler

Potato Chips Peanuts
Peanut Butter Popcorn
Sandwiches Candies

BRISTOL, VIRGINIA

We Pride Ourselves on Our
Quality Merchandise and Quick
Delivery Service at Prices that
Are Competitive

PEARCE-YOUNG-ANGEL CO.

109 ROBERTS ST. PHONE 4277
ASHEVILLE, N. C.

ELECTRIC SUPPLY COMPANY

(Wholesale Only)

—«»—

Electrical Supplies and Equipment

—«»—

ASHEVILLE

NORTH CAROLINA

OAK HALL

Men's Wear Women's Wear
Children's Wear

Student Discount, Ten Per Cent
See Us Before Buying Elsewhere

CAPS AND GOWNS UNIFORMS

OAK HALL—Thru-the-Blok

JEFFERSON ROANOKE CAMPBELL

Compliments of

—«»—



—«»—

MARION N. C.

Kill Insect Pests—Use

Se - Fly - Go

In Your Home for
Flies, Mosquitoes and Certain Other Household Insect Pests

Manufactured by

THE SELIG COMPANY

ATLANTA

GEORGIA

McNeil Paper Company, Inc.

—«»—

"School Supplies of Pinnacle Quality"

—«»—

CHARLOTTE

NORTH CAROLINA

Eat Delicious

PET ICE CREAM

"A Health Food"

PET DAIRY PRODUCTS COMPANY

PHONE 5153-10

JOHNSON CITY

TENNESSEE

**THE CHARLEY CARGILLE
STUDIO**

Made All the Photographs
for the

1940 ONTAROGA

JOHNSON CITY

TENN.

Compliments of

—«»—

**THE UNITED STATES BLUE
PRINT PAPER COMPANY**

—«»—

CHICAGO

ILLINOIS

—«»—

Compliments of
JOHN SEVIER HOTEL

JOHNSON CITY TENN.

—«»—

BECKNERS'

Diamonds —«»— Watches

Jewelry

Fine Repairing

Mail Orders Given Prompt
Attention

JOHNSON CITY TENN.

Compliments of

—«»—

BROWN MILLING CO.

Makers of
Flour, Meal and Feed

JOHNSON CITY TENN.

For
FLOWERS
Call

GUNNAR TEILMANN & SON

JOHNSON CITY, TENN.

—«»—

PHONE 511 303 ROAN ST.

—«»—

PARKS-BELK

Men and Boys Store

JOHNSON CITY, TENN.

—«»—

SMITH-HIGGINS CO., Inc.

Wholesale

—«»—

Drugs, Chemicals, Biologicals,
Sundries, Paper Products
Cigars and Confections

—«»—

JOHNSON CITY TENN.

HANNAH BROTHERS, Inc.

Wholesale

Dry Goods, Notions, and
Furnishings

—«»—

JOHNSON CITY TENN.

**Lumber and All Kinds Building
Material.**

Firtex and Celotex Insulation — Curtis
Millwork (Silentite Windows), Hanna
Green Seal Paint

See us for Complete Service

F. H. A. Loans—Terms or Cash

CARR BROTHERS

PHONE 5104

JOHNSON CITY TENN.

—«»—
Compliments of

—«»—
**PEPSI-COLA
BOTTLING COMPANY**

JOHNSON CITY

TENN.

Hot or Cold
Drinks Taste Better
with a

LANCE

Peanut Butter Sandwiches
Ask for a Toastchee

—«»—
CHARLOTTE

N. C.

Compliments of
BANNER ELK SERVICE STATION

Mansfield Tires & Tubes
Good Gulf Products

—«»—
PHONE 107

F. H. PERRY, Prop.

Compliments of
THE LEES-McRAE EXCHANGE

"The Students' Store"

—«»—
BANNER ELK

NORTH CAROLINA

THE EXCHANGE

—«»—
The Most Complete Line
of Trout Supplies in
Western North Carolina

—«»—

ED JENNINGS SERVICE STATION

"Bumper to Bumper Service"

—«»—
Shell Products

—«»—
Clean Rest Rooms

PHONE 123

BANNER ELK, N. C.

Compliments of

—«»—

CARRIER'S BAKERY

ELIZABETHTON, TENN.

—«»—

KING'S

JOHNSON CITY

Catering Particularly to the College Set

—« with »—

"College Shops" for Smart Young Men and Women

"Where Those Who Know Buy Their Clothes"

SUMMERS

HARDWARE & SUPPLY CO.

—«»—

PHONE 5101

—«»—

JOHNSON CITY

TENN.

Compliments of

BOONE MASTER CLEANERS

BOONE, N. C.

Compliments of

MAPLE TEA ROOM

BANNER ELK, N. C.

Compliments of



ASHEVILLE, N. C.

Meet Your Friends at

BANNER'S TEA ROOM

"Where Everybody Is Just Right"

Compliments of
EAST TENNESSEE PACKING COMPANY
Knoxville, Tennessee

ATLAS SUPPLY COMPANY

Wholesale

Plumbing, Heating,
Industrial and Sheet Metal
Supplies

WINSTON-SALEM

NORTH CAROLINA

THE RUBEROID COMPANY

BALTIMORE

MARYLAND

Manufacturers of

—«»—

Asphalt and Asbestos
Roofings and Sidings

Compliments of

E. W. KING CO., Inc.

Wholesale Dry Goods, Notions and Ready-to-Wear

BRISTOL, TENNESSEE

Compliments of

STERCHI BROTHERS

JOHNSON CITY, TENN.

THE BANNER ELK BANK

"We Appreciate Your Business"

Member Federal Deposit Insurance
Corporation

—«»—

Compliments of

WILD CAT LAKE

BANNER ELK, N. C.

—«»—

Compliments of

**LEES-McRAE ATHLETIC
ASSOCIATION**

» «

Motion Pictures Twice Weekly

**CONGRATULATIONS
GRADUATES**

And Best Wishes to
LEES-McRAE COLLEGE

from

ASHEVILLE POST CARD CO.

ASHEVILLE, N. C.

Compliments of

PINNACLE INN

BANNER ELK, N. C.

Owned and Operated by Lees-McRae College



T H E E N D



DATE DUE

7/22/85

July 10th

APR 26 1985

LMC
Y39

26885

AUTHOR

TITLE

Ontaroga, 1940

LMC
Y39

26885

Ontaroga, 1940

McKee College Library
Banner Elk, N. C.

