




1952

ontario



Digitized by the Internet Archive
in 2012 with funding from
University of North Carolina at Chapel Hill

<http://archive.org/details/ontaroga1952lees>

The Students of Lees-McRae College.

Present The

1952 ONTAROGA



Editor JOYCE WOOD

Business Manager HOOVER KEITH

YEAR AWAY IN A



BEAUTIFUL VALLEY...



Theme...

Far away in a beautiful valley
Where the river rushes by,
And the mountain peaks so lofty
Are close against the sky,
Stands our cherished Alma Mater,
To whom all praises belong
To her we raise this chorus,
To her we sing this song!

These colors we have chosen,
Green and gold our symbol make.
Green, the living, true life-giving
Let us never her teachings forsake.
While the golden hours are passing
Let us our motto give heed,
"Not less than the best," and remember
We are striving in all things to please.

And when the time comes for parting
And we say our final goodbye,
And we go out into Life's Conflict
Wher'er our pathway may lead
Let us take these high ideals with us;
They will help us the evil to shun:
And when we end Life's journey
May we hear the plaudit, "Well Done".

Dedication



In appreciation of his daily thoughtfulness toward individual students
In recognition of his keen interest and his helpful advice in our activities
In respect for his position and the manner in which he fills it
We the annual staff, dedicate this 1952 edition of "The Ontaroga", to our President,
Reverend Fletcher Nelson.

Registration Day



"Get Your Rat Hats Here!"

"LET US NE'ER THEIR TEACHINGS FORSAKE..."

1500 7 4000 11
2000 5000 1



FACULTY

Administration



MR. CREED F. GILLEY
A. B., M. S.
Dean of College



DR. WILLIAM
CUMMINGS TATE
B. S., M. D., F. A. C. S.
President of Edgar Tufts
Memorial Association



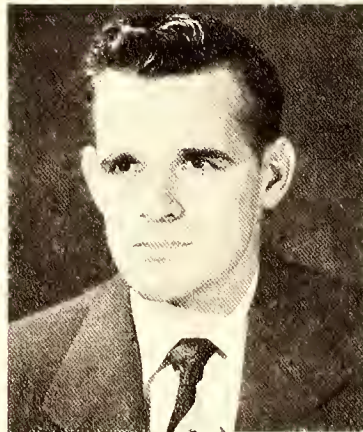
MR. PAUL H. McEWEN
B. S.
Registrar



MR. FLETCHER NELSON
President
A. B., B. D.



MISS BETTY MORROW
A. B., M. A.
Dean of Women



MR. HOYLE BINGHAM
B. S., M. A.
Dean of Men
Biological Sciences



MR. B. L. BAUCOM
Business Manager

Faculty



MRS. G. E. KIDD
B. S.
Asst. Dean of Women



MISS LAURA BLAND
A. B., M. A., Ph. D.
English



MISS ANNIE R. MOORE
A. B., M. A.
Modern Languages
Librarian



E. L. LAFFERTY
B. S., M. S.
Chemistry, Physics



MISS MARGARET TUFTS
A. B., M. A.
English



MISS MARYBETH HURST
R. R. L.
Anatomy and Terminology
Instructor for
Medical Secretarial Students



FRED I. DICKERSON
B. S., M. S.
Physican Education



MISS AGNES M. STOKES
A. B., M. A.
Bible



MRS. LOIS REINICHE
B. S.
Secretarial Science

Faculty



MISS LENORE G. PIERCE
A. B., M. A.
Typing, Shorthand



MRS. ELMA RANDALL
A. B., M. M.
Voice, Piano



MRS. C. J. COOKE
Secretary to the Registrar



MRS. EARL TESTER
Dietitian



EARL TESTER
Maintenance, Shop



MRS. PAUL H. McEWEN
Assistant Librarian
Alumni Executive Secretary



MRS. HIGHT REDMOND
Secretary to President



CHARLES F. WHITESELL
B. S., B. E.
Mechanical Drawing



MISS PHOEBE WAKEFIELD
B. S.
Mathematics



MISS MARGARET MOORE
A. A.
Record Librarian
Grace Hospital



MISS ELIZABETH WHITSON
B. S.
Accounting, Bookkeeping

"NOT LESS THAN THE BEST..."



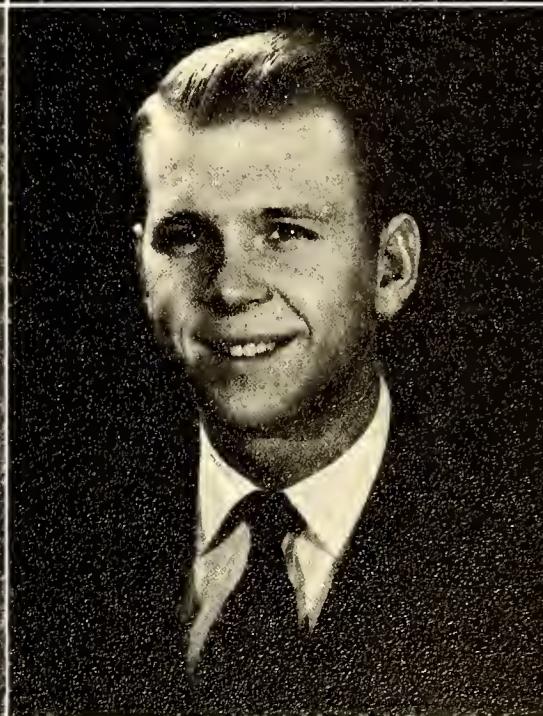
SENIORS



Senior Class Officers

President	JOE LEE
Vice President	CHARLES DOLINGER
Secretary and Treasurer	MIRIAM ALDRIDGE
Faculty Advisor	MR. PAUL McEWEN

SENIORS



MIRIAN HELEN ALDRIDGE
Banner Elk, N. C.

Basketball, 1-2; Glee Club, 1-2; Sullivan-
ion, 1-2; W.A.A. 1-2, Sec.; House Council,
1; W.S.G.A. 2, Vice President; Senior Class
Officer; Senior Superlative; Dramatics Club,
2; Folk Dance Club, 2.

JOSEPH ANDREWS, JR.
Bradenton, Florida

CAROLYN ARANT
Gadsden, S. C.

Transfer from Wingate. Basketball, 2; Bob-
cat Toles Staff, 2; W.A.A., 2; Dramatics
Club, 2; Volleyball, 2; Tennis, 2.

TED HERBERT AUTEN
Charlotte, N. C.

Demosthenean, 1-2; Student Body Presid-
ent, 2; Basketball, 2.

HELEN FRANCES BALES
Mosheim, Tenn.

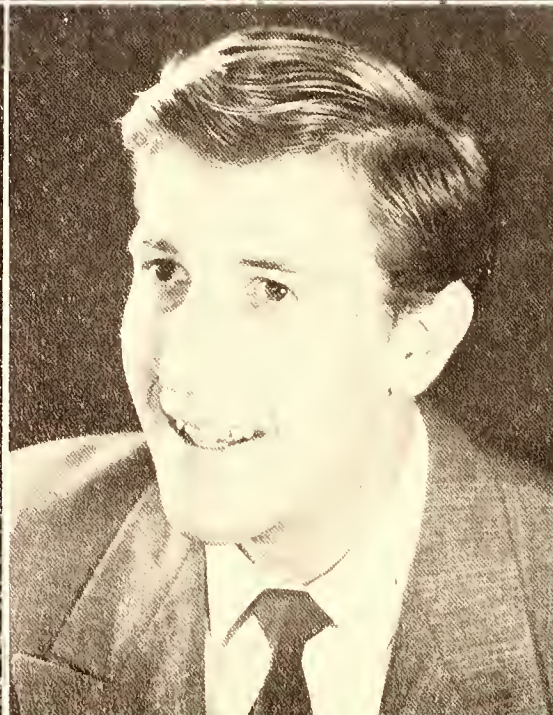
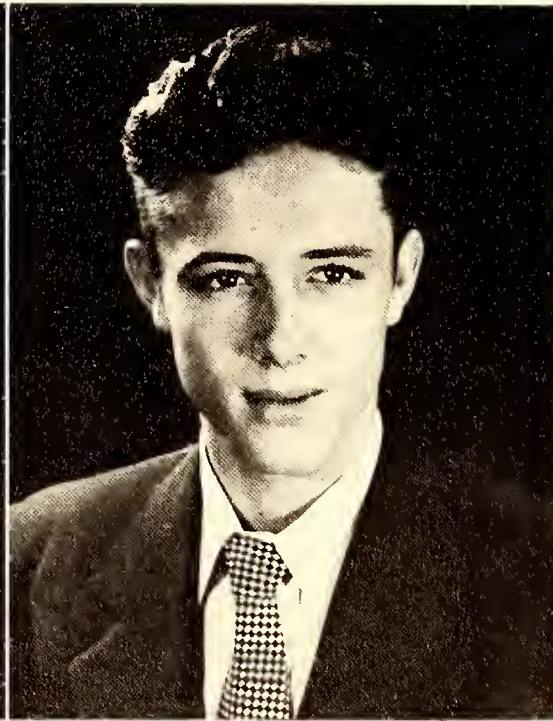
BILL BLEVINS
Elizabeth City, N. C.

SENIORS

Demasthenean, 1-2, Vice President 2; Annual Staff, 2; Senior Superlative; Student Council, 2, Vice President 2; Basketball, 2; M.S.G.A., 2.

DORIS JANET BARE
Jefferson, N. C.
Camera Club, 1-2; Dramatics Club, 2.

RONALD SUTTON BRADSHER
Milton, N. C.



SENIORS



VONDEHLEEN BROWN
Charlotte, N. C.

Glee Club, 1; Dramatics Club 1; Phi Theta
Kappa, 2, Treasurer 2.

KENNETH EUGENE CANNON
Morion, N. C.

Football, 1-2; Monogram, 1-2; Track, 1-2;
Demosthenean, 2; Glee Club, 2; M.S.G.A.,
2; Dramatics, 2; Senior Superlative.

MARY LEAN CARTER
Jefferson, N. C.

Christian Council, 1-2; Dramatics Club 2.

MARY MAXINE CARTER
Husk, N. C.

Camera Club, 1-2, President; Phi Theta
Kappa, 1-2, Vice President 2; Sullivanian,
2; Christian Council, 1-2.

MARY JACQUELINE CAVNEY
Gastonia, N. C.

ROBERT C. COBB, JR.
Morganton, N. C.

CAROL REID COFFEY
Lenoir, N. C.

Glee Club, 1-2; Student Council 1; Christian Council, 1-2; Senior Superlative; Moy Court, 1-2, Queen 2; Homecoming Sponsor, 2; Annual Staff, 2.

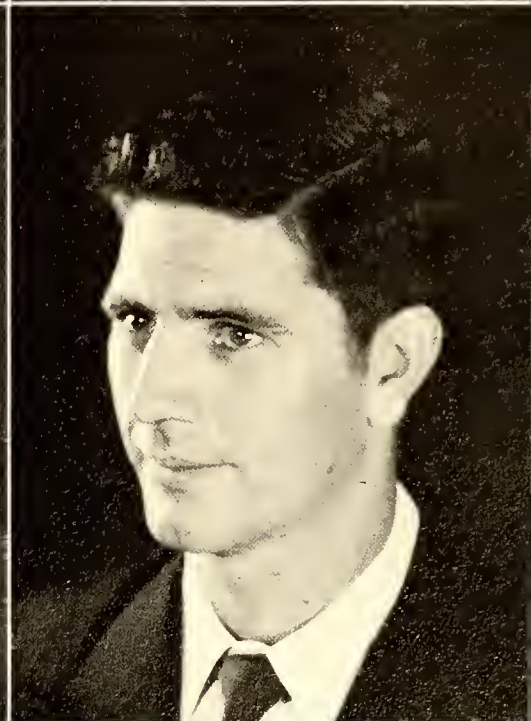
BILLIE LOU COLE
Cleveland, Ohio

Dramatics, 1-2; Glee Club, 1-2; Sullivan, 1-2, Vice President 2; Social Board 1.

SENIORS



SENIORS



LIBBY MARIE CONNELL
Adel, Ga.

Christian Council, 1-2; Glee Club, 1.

ALICE LOUISE COOLEY
Elk Park, N. C.

Glee Club, 1-2; Phi Theta Kappa, 1-2, President 2; Dramatics Club, 2; Tennis, 2.

MARTHA JANE CRAVEN
Franklinville, N. C.

Student Council, 1-2; Glee Club, 1-2; Christian Council, 1-2; W.S.G.A., 1-2, President 2; House Council, 1-2, Secretary 2; Dramatics Club, 1; Sullivanian, 2; Annual Staff, 2; Student-Faculty Senate, 2; Senior Superlative; Homecoming Sponsor, 2.

RODGER CLAYTON CRENSHAW
Banner Elk, N. C.

Basketball, 2; Dramatics Club, 2; Tennis 2.

WILLIAM GERALD CRONE
Balfour, N. C.

Student Council, 1; Dramatics Club, 1-2,
President 2; Christian Council, 1-2, Treas-
urer 1-2; Track, 2; Tennis, 2; Senior Su-
perlative.

MARY MAXINE CURD
Mountain City, Tenn.

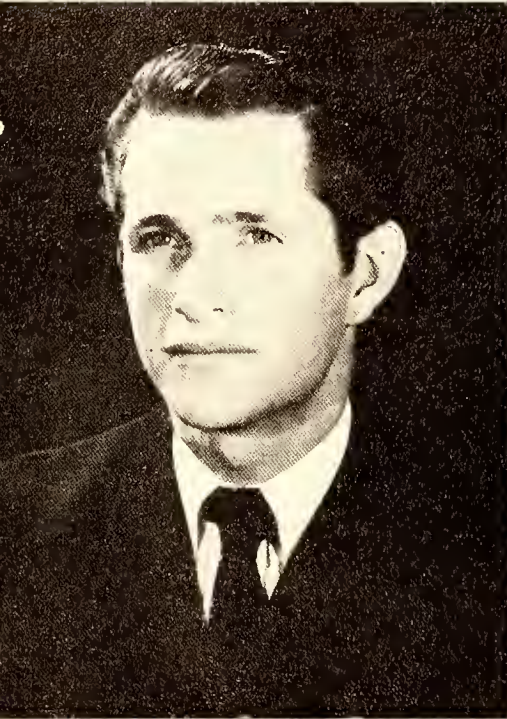
DORIS MARIE DAVIS
Star, N. C.

Glee Club, 1-2, Secretary-Treasurer 2;
Camera Club, 2; Dramatics Club, 2.

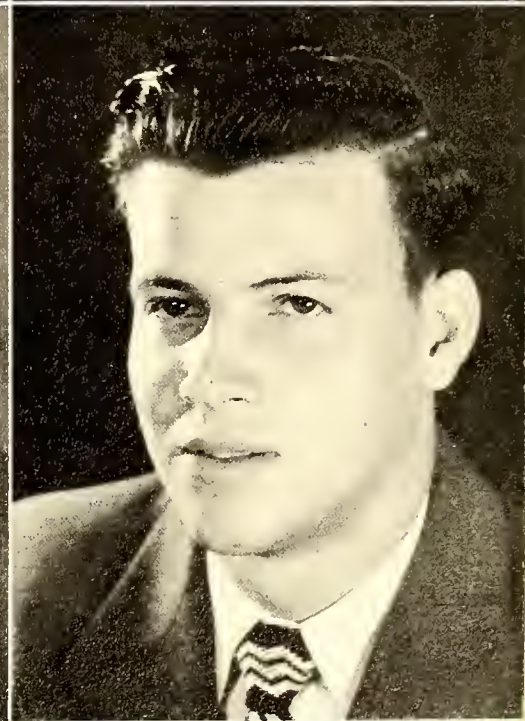
JUANITA SARAH DAVIS
Morganton, N. C.

Dramatics Club, 1-2, Vice President 2; Phi
Theta Kappa, 2.

SENIORS



SENIORS



SARA KATE DAVIS
Graham, N. C.

Student Council, 1-2, Secretary-Treasurer 2; Bobcat Tales, 1; Christian Council, 1-2, President 2; Phi Theta Kappo, 1-2; Glee Club, 1-2, Secretary-Treasurer 1; Sullivanian, 1-2; Dramatics Club, 1-2, President 1; Green and Gold, Editor; Folk Dance Club, 2.

MAVIS AUDREY DENTON
Lenior, N. C.

Christian Council, 1-2; Class Officer, 1; Sullivanian, 1-2, President 2; Annual Staff, Student Council, 2.

DODY DE VOS
Kingstree, S. C.

Bobcat Tales, 1-2; Skiing Zera, 1; Senior Superlative.

CHARLES DOLINGER
Lansing, N. C.

Christian Council, 1-2, Vice President 2; Demasthenean, 1-2; Social Baard 2, Treasurer; Class Officer, 2; Dramatics Club, 2; Folk Dance Club, 2; Basketball, 2.

VIRGINIA LEE DUNCAN
Kingspart, Tenn.

Glee Club, 1-2; Bobcat Toles, 1-2; Senior Superlative.

CHARLES LEE FRANKLIN
Newland, N. C.

Basketball, 1-2; Demostheneon, 1-2.

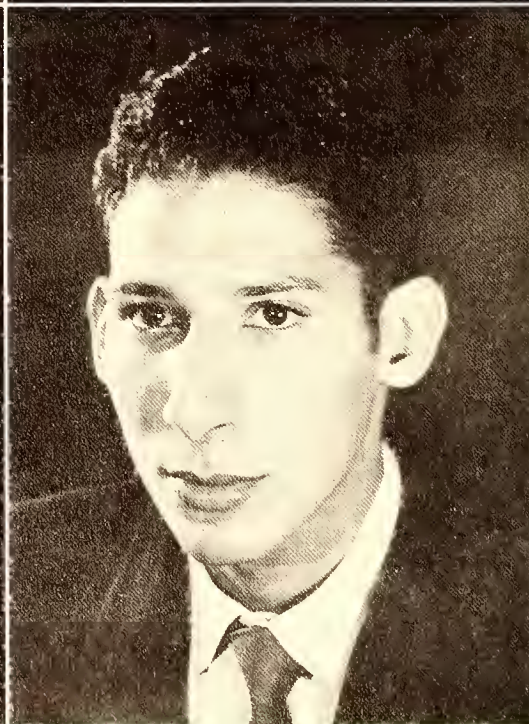
MARTHA PEARL FRAZIER
Claremant, N. C.

Phi Theto Koppo, 1-2, Secretary 2; Christian Council, 1-2.

RODRIQUEZ ROBERTO GARCIA
Cardenas, Cuba

Christian Council, 1-2; Tennis, 2; Folk Donce Club, 2, Vice President 2.

SENIORS



SENIORS



EUNICE MAE GOODMAN
Bristol, Tenn.

Glee Club, 1-2; Dramatics Club, 1-2.

JANIE LUCILLE GRAGG
Greensboro, N. C.

Christian Council, 1-2; Skiing Zero, 1; Dramatics Club, 1-2; Folk Dance Club, 2; Glee Club, 2; Phi Theta Kappa, 1-2; Basketball Manager, 2.

WILLIAM CAROLL GREGG
Greenville, S. C.

Football, 1; Manager, 2; Track, 1-2; Skiing Zero, 1; Managram, 1-2; Bobcat Tales, 1; Co-Ed, 2.

DOROTHY ANNE GREENE
Blowing Rock, N. C.

Transfer from Furman University. Dramatics Club, 2; Folk Dance Club, 2.

WILLIAM SPENCER GREENE, JR.
Blowing Rock, N. C.

RODERICK HALL
Cranberry, N. C.

M.S.G.A., 2; Senior Superlative.

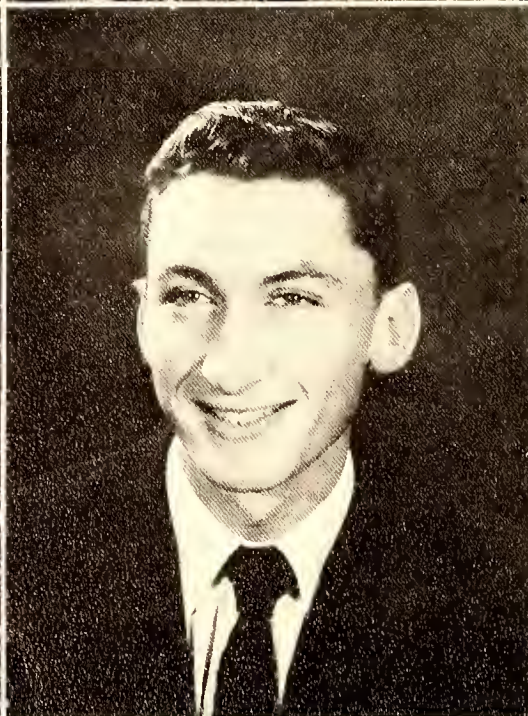
SENIORS

GWENDOLYN GRINER
Adel, Ga.

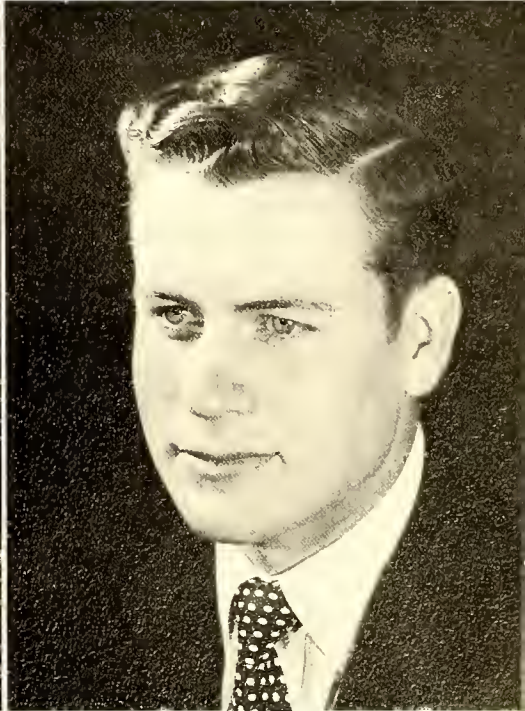
Bobcat Tales, 1-2

JOHN WILBURN HAMMETT
Marion, N. C.

Manogram Club, 1-2, Treasurer 2; Foot-
ball, 1-2; Track, 1-2.



SENIORS



REBECCA ANNE HARRIS
Morganton, N. C.

Dramatics Club, 1-2; Babcat Tales, 2, Business Manager, 2.

JEANNETTE FLORA HARVIEL
Salisbury, N. C.

W.S.G.A., 1; Sullivanian, 2.

CHARLES EDWARD HARTSOE
Creston, N. C.

EUGENE ALFRED HESTER
High Point, N. C.

Demosthenean, 1-2, President 2; Mangram, 2; Dramatics Club, 1-2; M.S.G.A., 2; Football, 1-2.

CHARLES BERNARD HOLCOMB
Jonesville, N. C.

Skiing Zero, 1; Folk Dance, 2; Track, 1-2;
Managram, 1-2.

SAMMIE HUGHES
Adel, Georgia

W.A.A., 1-2; Babcat Tales, 1-2; Dramatics
Club, 2; Cheer Leader, 1; Glee Club, 1.

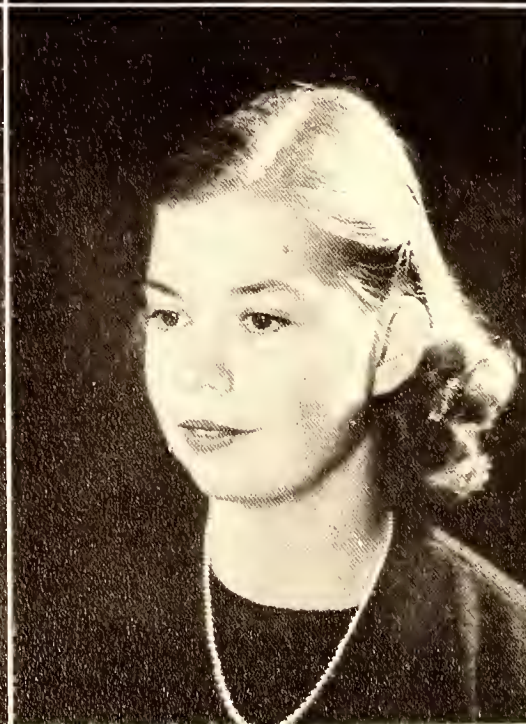
PEGGY RUTH HUSKEY
Reidsville, N. C.

Glee Club, 1; Skiing Zero, 1; Babcat Tales,
2; Dramatics Club, 2.

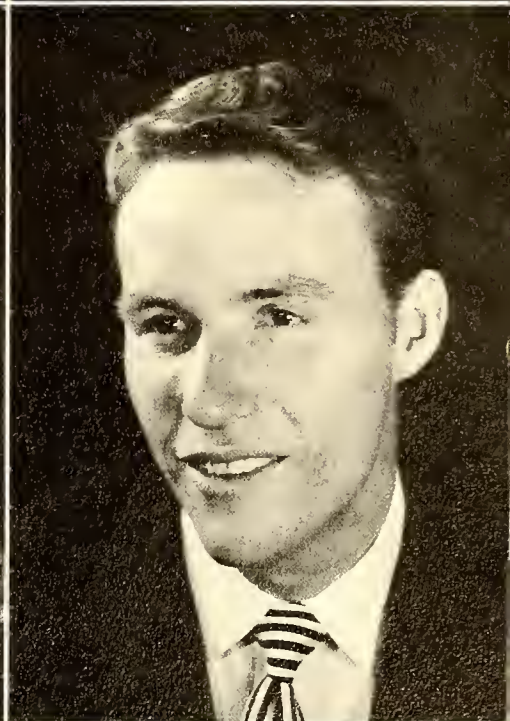
FRANCES CIVILA JEFFREYS
Creedmoor, N. C.

Christian Council, 1-2; Dramatics Club, 1-2;
Camera Club, 2; Babcat Tales, 1.

SENIORS



SENIORS



AILEEN VIRGINIA JONES
Leicester, N. C.

Bobcat Tales, 1-2; Camera Club, 2; Folk Dance Club, 2; Dramatics Club, 1-2; W.A.A., 2; Basketball, 2.

FRANCES CHRISTINE JONES
Hendersonville, N. C.

Christian Council, 1-2; Camera Club, 1-2; Skiing Zera, 1.

JO ANN JONES
Wilson, N. C.

Basketball, 1-2; Phi Theta Kappa, 1-2; W.A.A., 1-2, President 2; Bobcat Tales, 1-2; Co-Ed. 2; Student Council, 1; W.S.G.A., 1; Dramatics Club, 2; Cheerleader, 1-2, Captain, 2.

HOOVER KEITH
Fries, Va.

Demasthenean, 1-2, Secretary-Treasurer, 2; Basketball 2; Annual Staff, 2; Business Manager.

BETTY JANE KELSEY
Montezuma, Ind.

Christian Council, 1-2; Dramatics Club, 1.

ARNOLD EDWARD LEBERMAN
Waterbury, Conn.

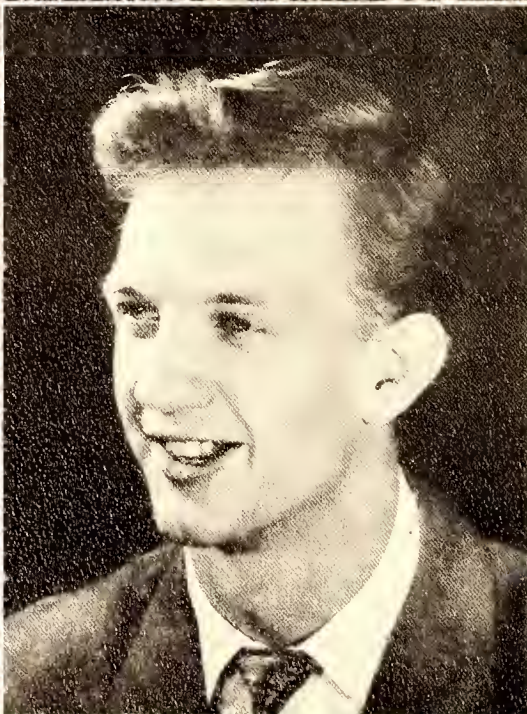
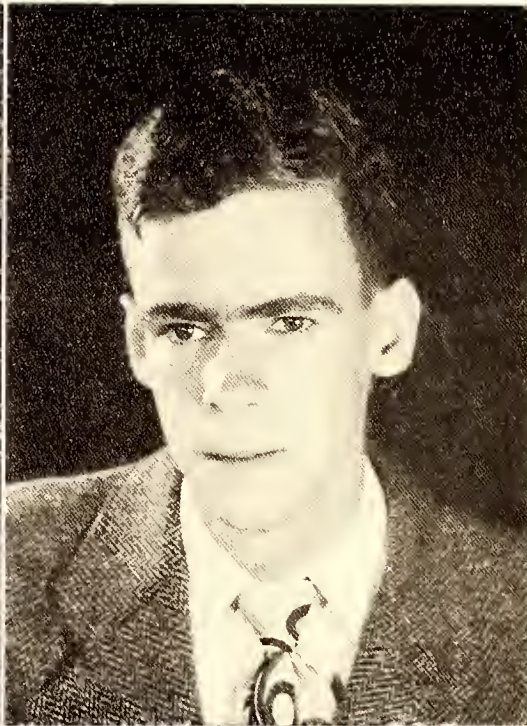
Demasthenean, 2; Managram, 2; Football,
2; Track, 2.

CLARENCE HENRY LEE, JR.
Reidsville, N. C.

JOE WILLIAM LEE
Charlotte, N. C.

Class Officer, 1-2; Football, 1-2; Managram,
1-2; Demasthenean, 2; Christian
Council, 1-2; Senior Superlative; Student
Council, 1-2; Babcat Tales; 1, Asst. Editor,
1.

SENIORS



SENIORS



SHIRLEY LOUISE LOMAX
Lenoir, N. C.

Camera Club, 2;

JO ANN LOONEY
Lenoir, N. C.

Camera Club, 2; Dramatics Club, 2; Phi
Theta Kappa, 2.

DOROTHY MARLOWE
Glenwood, N. C.

Sullivanian, 2; Valleyball, 2; W.S.G.A., 2;
Glee Club, 2, Vice President 2.

MARY LUCILLE MENIUS
Monroe, N. C.

Transfer from Wake Forest. Folk Dance
Club, 2; W.A.A., 2; Phi Theta Kappa, 2.

ROBERT THOMPSON MOON
Greenville, S. C.

Football, 1-2, Co-Captain, 2; Managram Club, 1-2, President 2; Demasthenean, 1-2; Glee Club, 1; Skiing Zeta, 1; Senior Superlative.

JAMES HAROLD McCALLUM
Charlotte, N. C.

Football, 1-2; Managram Club, 1-2; Demasthenean, 2.

WILLIAM EARL McGEE
Greensboro, N. C.

Football, 1-2; Managram Club, 2; Demasthenean, 1-2; Social Board, 1-2, Chairman, 2; Basketball, 1; Tennis, 2; Student Council, 2; Student Faculty Senate, 2; Skiing Zeta, 1; Dramatics Club, 1-2.

ELIZABETH JANICE McLEAN
Moxtan, N. C.

Christian Council, 1-2, Secretary 2; Sullivanian, 1-2; Phi Theta Kappa, 1-2; Glee Club, 1-2; Babcat Tales, 2.

SENIORS



SENIORS



BARBARA REID NEAL
Charlotte, N. C.

DORIS LEE NICELY
Cranberry, N. C.

Sullivanian, 2; Phi Theta Kappa, 2; Camera
Club, 2.

JEAN MARIE OGBURN
Rural Hall, N. C.

Green & Gold Staff, 1, Ass't. Ed., 1; Phi
Theta Kappa, 2.

ANNICE REBECCA PARHAM
Oxford, N. C.

SENIORS

FLOYD PATRICK, JR.
Greenville, S. C.

Football, 1-2, Co-Captain, 2; Most Valuable Player, 2; Monogram, 1-2; Demosthenean, 2; Track, 1-2; Senior Superlative; Skiing Zera.

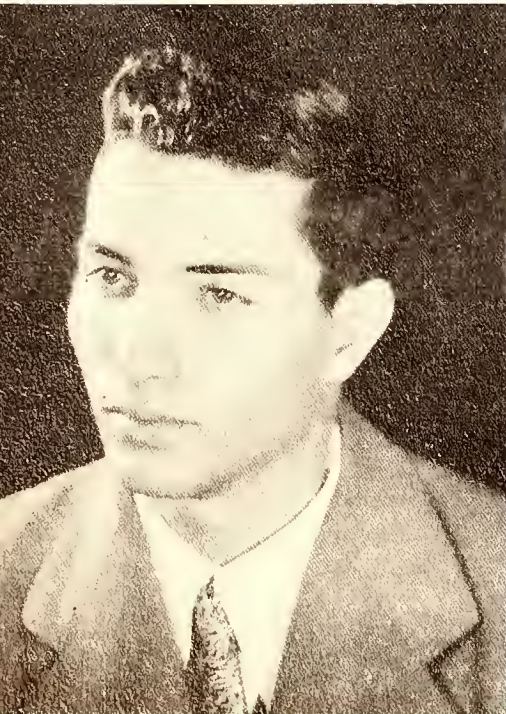
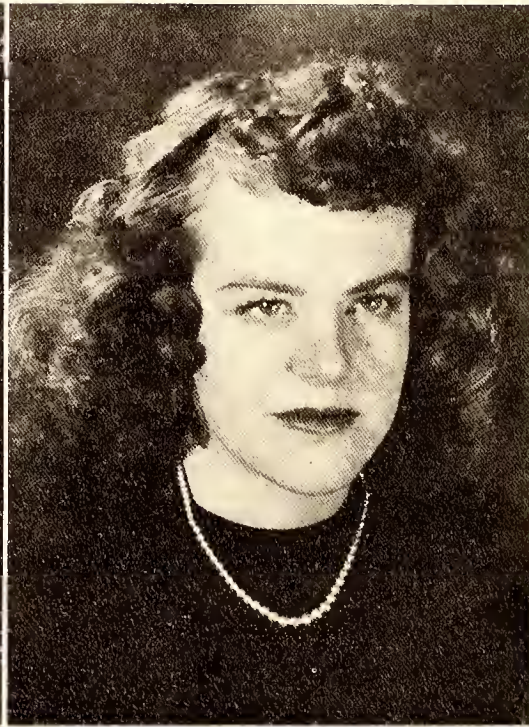
JOE BURNS PERRY
Banner Elk, N. C.

MILDRED ALLENE POWERS
Lansing, N. C.

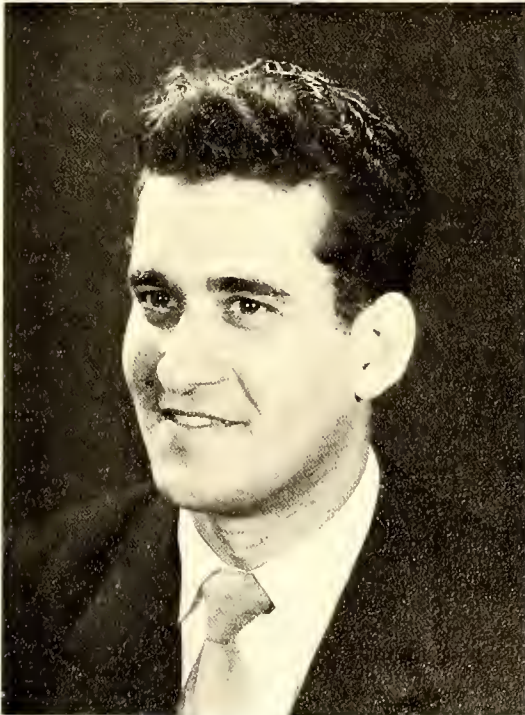
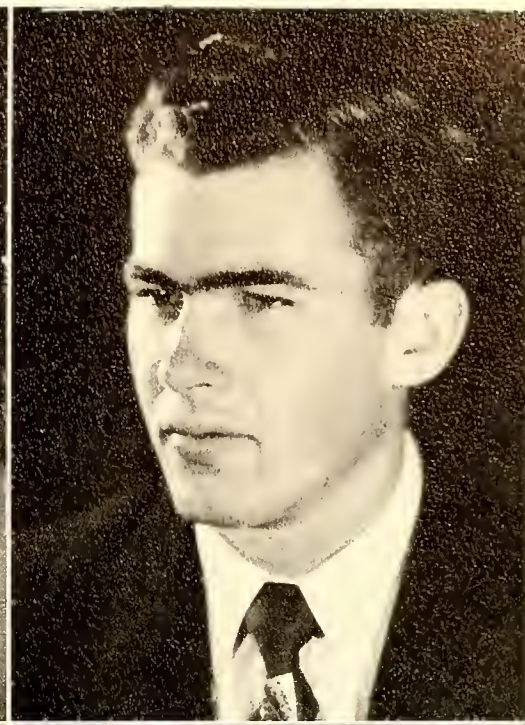
Camera Club, 1-2; Glee Club, 1-2; Dramatics Club, 1; Christian Council, 1-2; Sullivanian, 2.

DOT RASH
Smethport, N. C.

Bobcat Tales, 1-2; Basketball, 1-2; Sullivanian, 1-2; Dramatics Club, 1-2, Sec. 2; W.A.A., 1-2; Christian Council, 1-2.



SENIORS



JOSEPH BUTLER ROBINSON, JR.
Creston, N. C.

RICHARD PAINTER ROE
Lansing, N. C.

LUIS RODRIQUEZ
Cardenas, Cuba

Folk Dance Club, 2; Tennis, 2; M.S.G.A.,
2; Christian Council, 2

Christian Council, 1-2; Demosthenean, 1-2;
Folk Dance Club, 2; M.S.G.A., 2.

HAZEL SAUNDERS
Lenoir, N. C.

W.A.A., 1-2, Vice President, 2; Tennis, 2;
May Court, 1-2; Basketball, 1-2; Sullivan-
ian, 2; Volleyball, 2; Bobcat Tales, 2; Dra-
matics Club, 1-2; Folk Dance Club, 2.

SENIORS

MARGARET ANNE STEPHEN
Pacolet, S. C.

Camera Club, 1-2, Vice President 2; Sullivanian, 1-2.

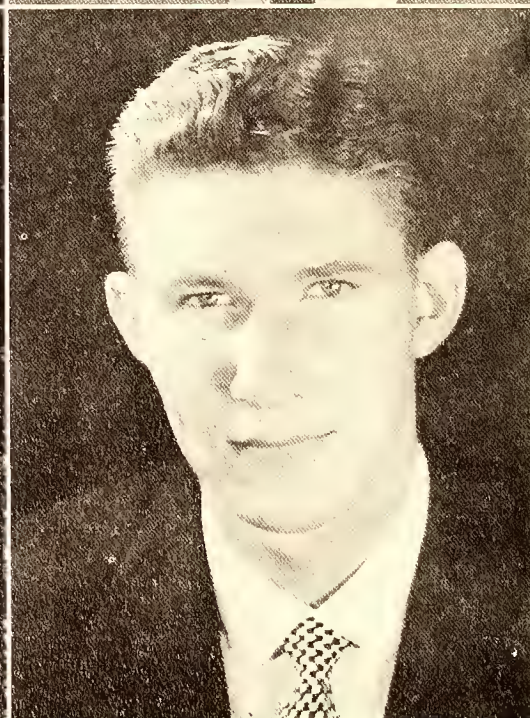
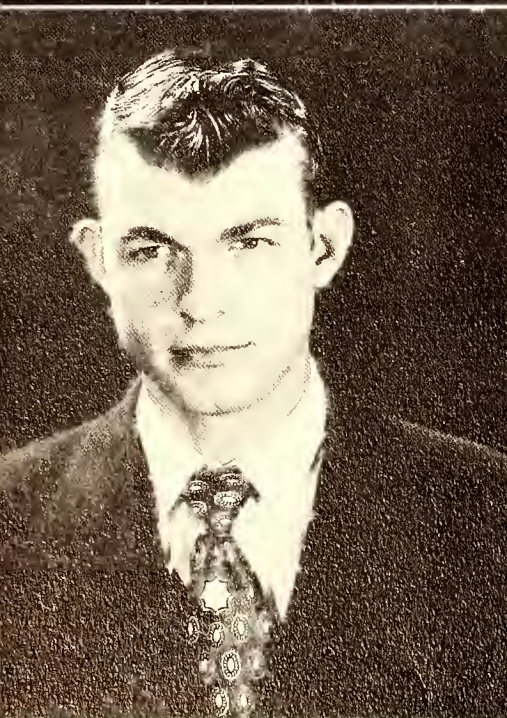
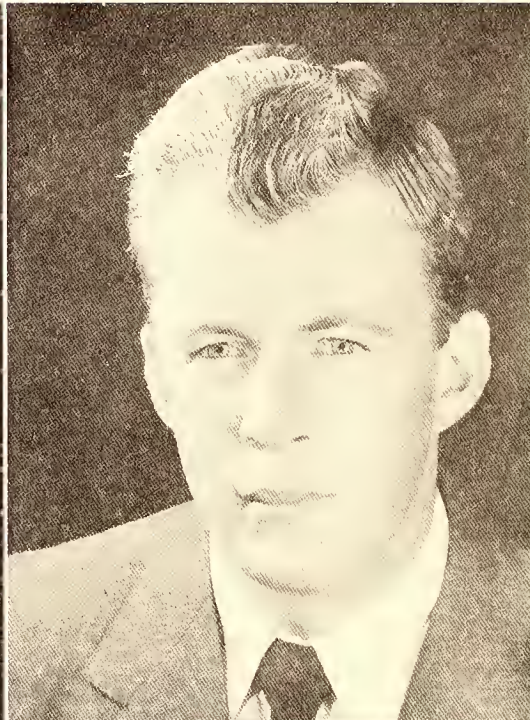
CHARLIE STOUT
Elk Park, N. C.

FRED STREET, JR.
Buladean, N. C.

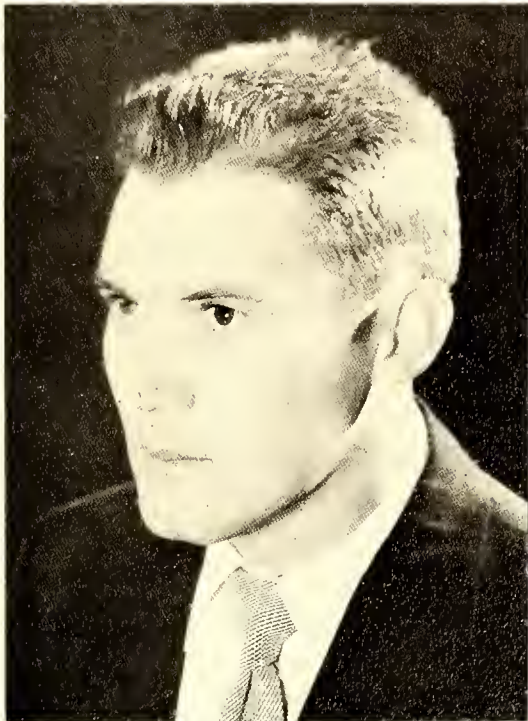
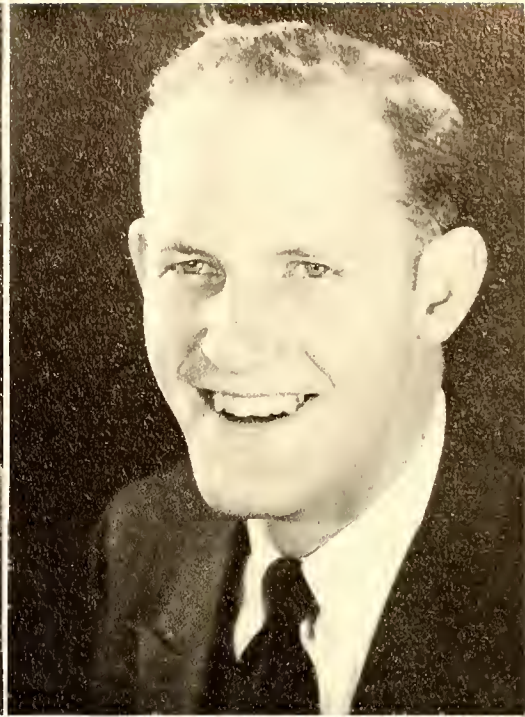
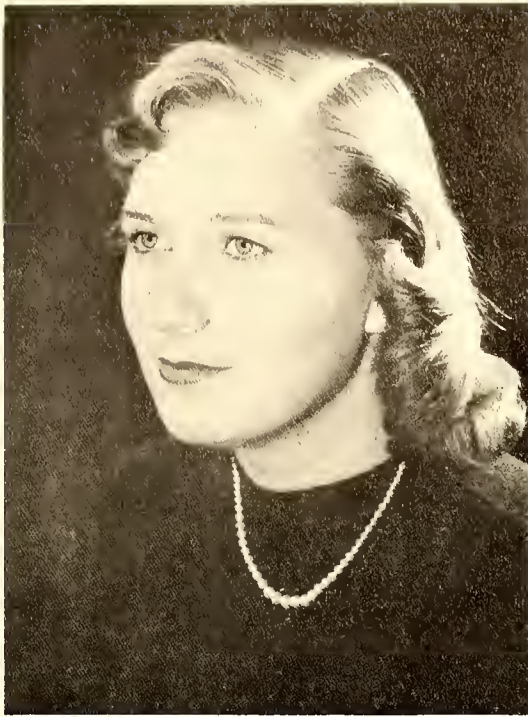
Monogram, 1-2; Basketball, 1-2.

BILLIE SWANSON
Salisbury, N. C.

Football, 1-2; Monogram Club, 2.



SENIORS



DOROTHY IRENE SWANSON
Salisbury, N. C.

W.S.G.A., 2; House Council, 2; Folk Dance Club, 2; Dramatics Club, 2; Tennis, 2.

JACK MITCHELL THORNBURG
Fort Pierce, Fla.

Football, 1-2; Manogram, 1-2, President, 2. Demosthenean, 2; M.S.G.A., 2, President 2; Student Council, 2.

SCOTT AMOS THROWER, JR.
Belmont, N. C.

Glee Club, 1; Christian Council, 1; M.S.G.A., 2, President; Dramatics Club, 1-2.

JANICE ELAINE TOWNSEND
Banner Elk, N. C.

Cheerleader, 1-2; W.A.A., 1-2; Sullivanian, 2; Senior Superlative.

SENIORS

BENNY TRIPLET
Jonesville, N. C.

Managram, 1-2; Vice President 2; Demas-
thenean, 2.

DON LOUIS TYNDALL
Cherokee, N. C.

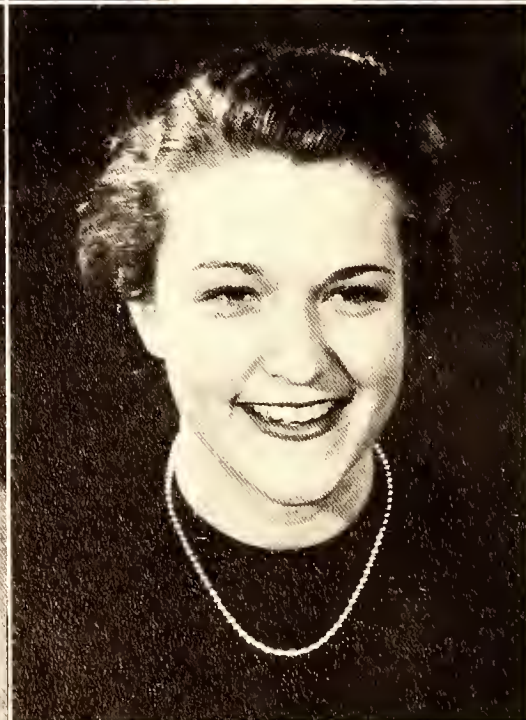
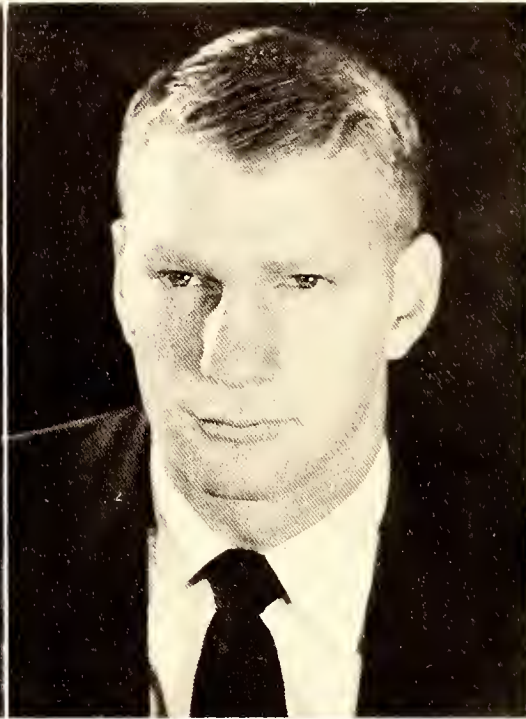
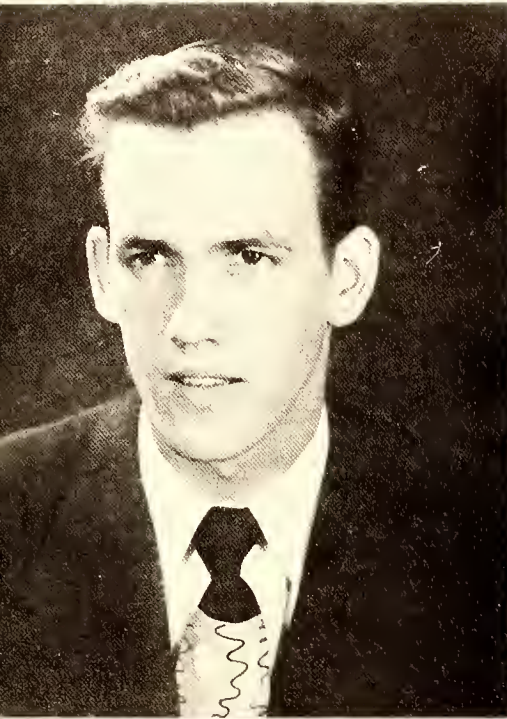
Managram, 1-2; Dramatics, 1-2; Track, 1-2;
Skiing Zero, 1; Folk Dance Club, 2.

CECIL VICTOR WARD
Sugar Grove, N. C.

Football, 1-2; Managram, 2; Skiing Zero,
1; M.S.G.A., 2.

GEORGIA WARD
Sugar Grove, N. C.

Sullivanian, 1-2; Christian Council, 1-2;
W.A.A., 2; Basketball, 1-2; Babcat Tales,
1; Dramatics Club, 1-2; Folk Dance Club,
2; Glee Club, 1-2; Tennis, 2.



SENIORS



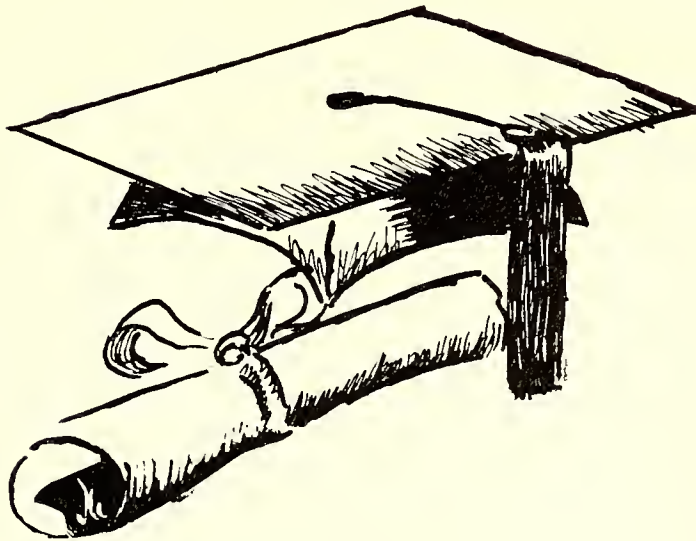
ROCHELLE FAYE WILLIAMS
Star, N. C.

Basketball, 1-2, Captain, 2; House Council, 1-2, Secretary, 1, President, 2; W.S.G.A., 1-2, Vice President, 1; Sullivanian, 1-2; W.A.A., 1-2; Social Board, 2, Secretary.



JOYCE WOOD
Lenoir, N. C.

Annual Staff, 2, Editor; Sullivanian, 2; May Court, 2; Homecoming Spansar, 2.





"Careful, Miss Boland!"



"A 'Hunting We Will Go!"



"Taking It Easy!"



"They're Not Tired — — Yet!"

Mountain Day

"Whew! We
Finally Made It!"





"Out On A Limb!"



"Daisy Mae and Her Little Abner"



"Eligible Bachelors"

Sadie Hawkins Day



"They're Off"



Interns



BETTY BLALOCK
Canton, N. C.



JOAN GRAHAM
Tuckerdale, N. C.



WANDA BOWER
Wagoner, N. C.



LAURA HILLHOUSE
Clinton, S. C.

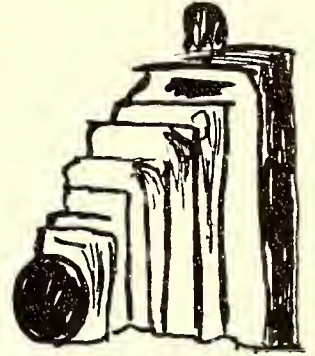


BARBARA GILENTINE
Erwin, Tenn.



RUTH POWERS
Lumberton, N. C.

"WE ARE STRIVING IN ALL THINGS TO PLEASE..."



FRESHMEN



Freshman Class Officers

President	BILLY BOYD WILSON
Vice President	FRANK RICHARDSON
Secretary and Treasurer	JOYCE BRIDGES
Faculty Advisor	MISS LAURA BLAND

Freshmen



KENNETH ALEXANDER
Charlotte, N. C.

JOHNNY BAIRD
Newland, N. C.

FLOYD BARKER
Waadway, Va.

SYLVIA BARTEE
Honaker, Va.



ELAINE BELK
Indion Trail, N. C.

WILMA BLEYNAT
Voldese, N. C.

EMILY BOLINGER
Vale, N. C.

BILLY BOOKER
Mt. Airy, N. C.



BETTY ANNE BOST
Lenoir, N. C.

REBA BOWMAN
Marion, N. C.

JOYCE BRIDGES
Morganton, N. C.

MARGIE BRIM
Charlotte, N. C.

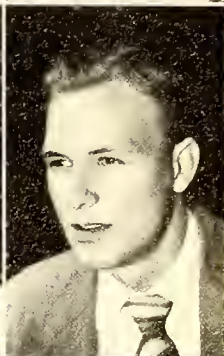


BETTY BROOME
Cramertan, N. C.

PHYLLIS BUCKNER
Belmont, N. C.

BETTY BULLMAN
Clinton, S. C.

CLIFTON BURCHETTE
Hollsboro, N. C.



AMELIA ANN BURLESON
Bokersville, N. C.

EDWARD BURLESON
Roan Moutoin, Tenn.

MORRIS BYERS
Ingalls, N. C.

JOHN CARAWAY
Mt. Airy, N. C.



Freshmen



KATHERINE CARTER
Lansing, N. C.

JOHN CITTY
Reidsville, N. C.



MARTHA CLAPP
Plumtree, N. C.

HELEN COFFEY
Banner Elk, N. C.



NATALIE COFFEY
Banner Elk, N. C.

ELLA BEE COLE
Clinton, S. C.



NANCY COOK
High Point, N. C.

SAMUEL CORNETT
Newland, N. C.



CHARLOTTE COUCH
Cleveland, Va.

RONALD CURRENT
High Point, N. C.



BETTY LOU CURRIN
Olivia, N. C.

DORIS ANN CURRIN
Olivia, N. C.



PHILLIP DRUMM
Ramsey, N. J.

MARY ELLEN DUTY
Lebanon, Va.



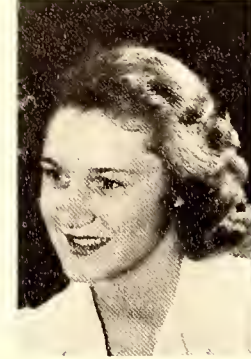
DOROTHY SUE ELLIS
Marian, N. C.

HELEN ELROD
Cramerton, S. C.



ETHEL LEE FLETCHER
Putnam, Va.

RANDALL FLETCHER
Newland, N. C.



ALICE FORD
Newland, N. C.

JERRY FOX
Marganton, N. C.

Freshmen



VIRGINIA FREEMAN
Newland, N. C.

NANCY GEORGE
Francisco, N. C.



JEAN GARRITY
Greensboro, N. C.

BETTY GRAGG
Newland, N. C.



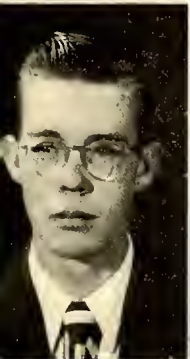
JOHNNIE GRANT
Henrietta, N. C.

CHARLES GREGORY
Trinity, N. C.



PARKS GRAY
Charlotte, N. C.

RHEBA HERMAN
Volle Crucis, N. C.



CHARLES HIGGINS
Hayes, N. C.

QUENTON HILL
High Point, N. C.



KERMIT HILL
Mt. Airy, N. C.

DELORES HODGE
Belmont, N. C.



OZALENE HOFFMAN
Elk Park, N. C.

PEGGY JEAN HOPE
Granite Falls, N. C.



HAZEL HONEYCUTT
Johnson City, Tenn.

RODNEY HORD
East Stone Gap, Va.



ROBERT HOWELL
Kokomo, Ind.

FRANCIS HURD
Moyadan, N. C.



LYNN HUGHES
Newland, N. C.

DONALD ISLEY
Walkertown, N. C.

Freshmen



IDA PEARL JACKSON
Corthoge, N. C.

ROBERT JONES
Washington College, Tenn.

ROYCE JOHNSON
Bokersville, N. C.

RICHARD KELLAR
Kokomo, Ind.



WILLIAM KELSEY
Montezumo, Ind.

MARION KLEIN
Winston-Solem, N. C.

HAROLD KINNEY
High Point, N. C.

ROSE KRESS
Belmont, N. C.



JANE LANCASTER
Garner, N. C.

JEANETTE LAWSON
Asheville, N. C.

SUZANNE LAND
Morehead City, N. C.

JACK LITTLE
Jefferson, N. C.



SHIRLEY ANNE LITTLE
Jefferson, N. C.

KATHRYN McCASKILL
Carthage, N. C.

WILDA RAYE LITTLE
Jefferson, N. C.

GENE McGUIRE
Heaton, N. C.



PHYLLIS McKINLEY
Durham, N. C.

FRANCES McRAE
Elrod, N. C.

B. W. McNEELY
Newland, N. C.

JOE MARTIN
G nville, S. C.



Freshmen



BILL MILLER
Boone, N. C.

CHARLOTTE MILLER
Quincy, Flo.

CARMON MILLIS
Jonesville, Vo.

MARTHA MINTER
Sonford, N. C.

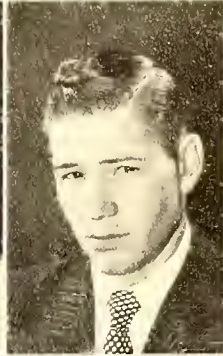
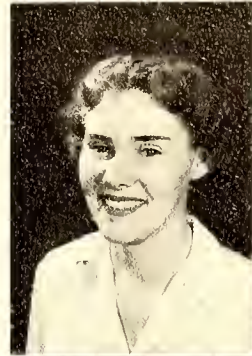


JIMMY MYERS
Pennington Gop, Vo.

JOE NICHOLS
Williamson, W. Va.

FRANCES OGBURN
Greensboro, N. C.

CLAYTON O'NEIL
Bonner Elk, N. C.



JOHNNY ORR
Roon Mountain, N. C.

MARGARET OWENS
Clinton, S. C.

WILLIAM PARRISH
Chorlotte, N. C.

DOROTHY PATTERSON
West End, N. C.



MAX PERKINS
Marion, Vo.

KENNETH PERKINS
Asheville, N. C.

MARIANA PERKINS
Morgonton, N. C.

ALMA POOLE
Rougemont, N. C.



DOT PRATT
Rosedole, Va.

DENMAN PRUITT
Newport, Tenn.

FRANCES RAMSEY
Morgonton, N. C.

JAMES RAY
Newlund, N. C.



Freshmen



JOY RHODES
Hendersonville, N. C.

LUANNE RHODES
Morganton, N. C.

FRANK RICHARDSON
Greenville, S. C.

PAGE ROBBINS
Pineolo, N. C.

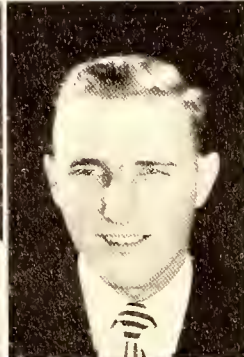
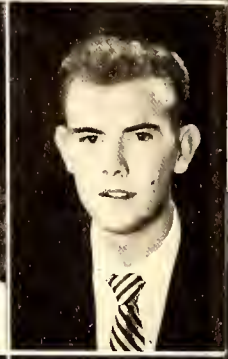


BOB ROBERTS
Roan Mountain, Tenn.

WILLIAM ROLLER
East Stane Gap, Va.

MARY JANE ROWE
Banner Elk, N. C.

DAVID SAPP
Kernersville, N. C.



SHIRLEY SCOGGINS
Durham, N. C.

BRUCE SHAW
Greenville, S. C.

HUNTER SHERIDAN
Reidsville, N. C.

REBA SHEW
Glade Spring, Va.

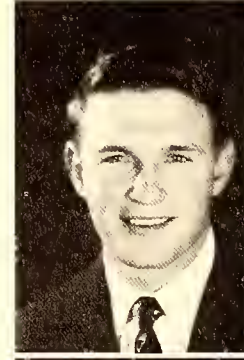


BELLE SHOUPPE
Minneapolis, N. C.

FRED SINK
Lexington, N. C.

JAMES SKELTON
Greenville, S. C.

GLENN SMITH
Mt. Airy, N. C.



IRENE SMITH
Cranberry, N. C.

P. J. SNOW
Mt. Airy, N. C.

MAX SPROLES
Castlewood, Va.

BUDDY STYLES
Marian, N. C.



Freshmen



ROMA LEE SQUIRES
Kelly, N. C.

LORRAINE TALBERT
Meadow View, Vo.



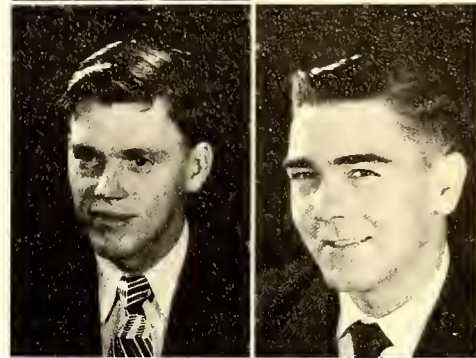
RUSSELL TATE
Blowing Rock, N. C.

PHYLLIS TATE
Big Stone Gap, Vo.



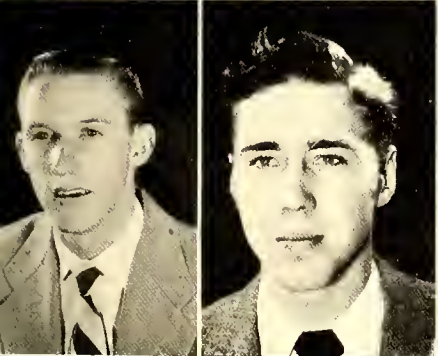
EVERETT TAYLOR
Roon Moutoin, Tenn.

RAY TAYLOR
Roon Moutoin, Tenn.



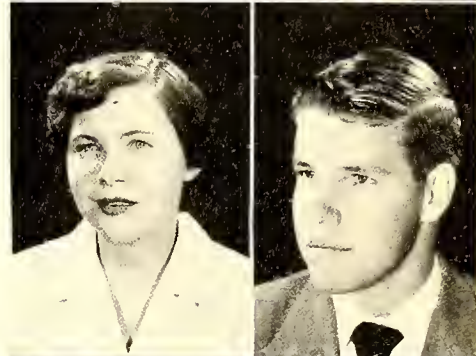
BERNARD THOMAS
Milton, N. C.

EDGAR TEER
High Point, N. C.



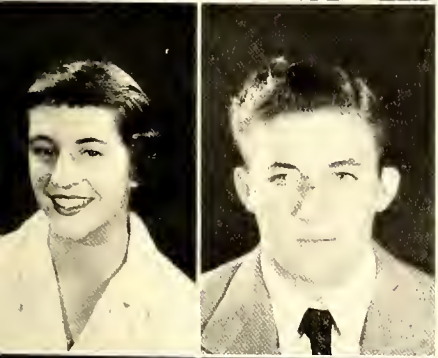
MICHAEL TILLEY
Mt. Airy, N. C.

THOMAS TILSON
Morion, Vo.



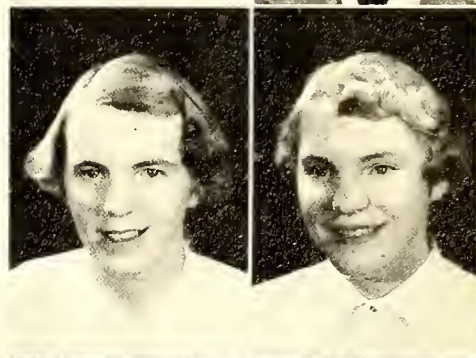
MARGARET TYSON
Woxhow, N. C.

ADRIAN WALKER
Reidsville, N. C.



PATSY WAMPLER
Ft. Defionce, Vo.

ALBERT WARD
Jonesville, S. C.



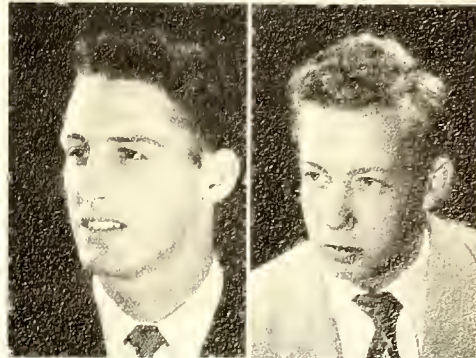
JO WARNER
Guilford College, N. C.

JOAN WARNER
Guilford College, N. C.



MARGARET WELCH
Volle Crucis, N. C.

BARBARA WHITE
Cromerton, N. C.



JOSEPH WHITE
Chorlotte, N. C.

JOHN WILLIAMS
Milton, N. C.

Freshmen



WANDA SUE WILLIAMS
Soper, Okla.

BILLY BOYD WILSON
Lebanan, Va.

WILLIAM A. WILSON
Dryden, Va.

WILLIAM G. WILSON
Marian, N. C.



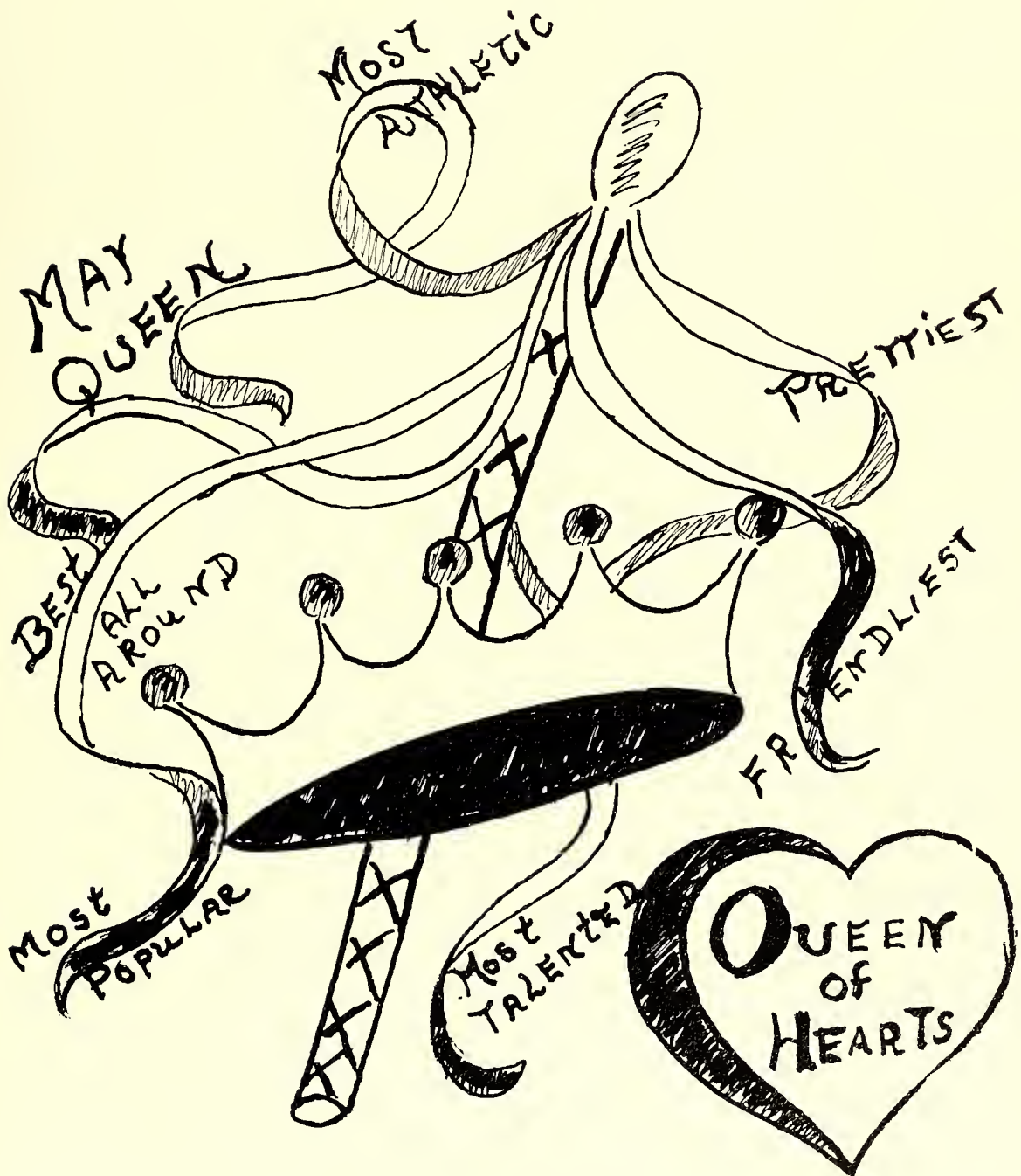
BETTY LOU WOBBLETON
Williamston, N. C.



DORIS JEAN YOUNG
Bassett, Va.



"TO WHOM ALL PRAISES BELONG..."



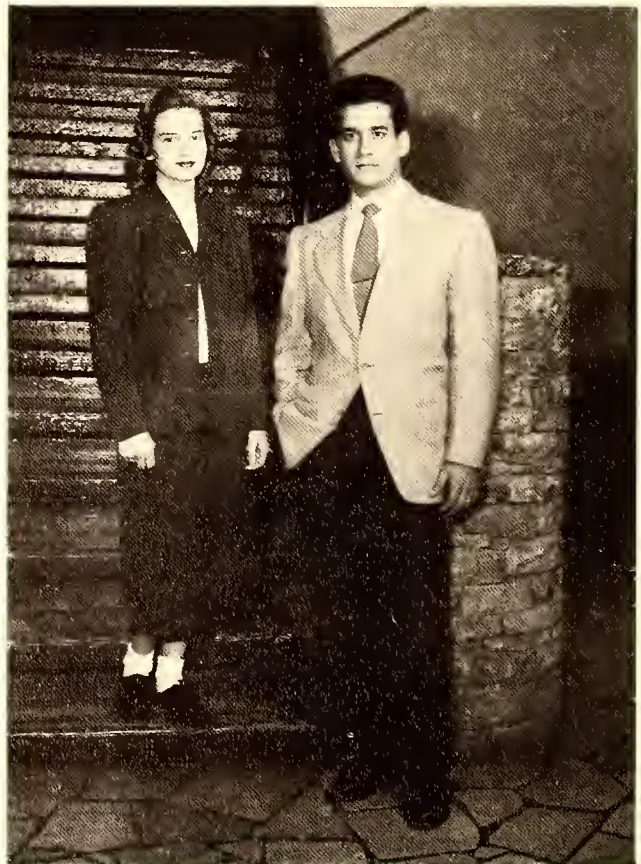
FEATURES



Most Popular

CAROL COFFEY
BILL BLEVINS

"Always going out somewhere, or
else just coming in."



Best Looking

JANICE TOWNSEND
LUIS RODRIQUEZ

"Graceful to sight and elegant
to thought."

Best Dressed

DODY deVOS
BILL CRONE



"Their dress is on index
of their contents."



Most Athletic

ROCHELLE WILLIAMS
FLOYD PATRICK

"Captain, Captain, here's to you,
You're o good sport through ond through."



Most Studious

MARTHA FRAZIER
RODERICK HALL

"The noblest mind the best
contentment has."



Best All Around

MIRIAM ALDRIDGE
JOE LEE

"People like them make the
world go round."

Friendliest

MARTHA CRAVEN
ROBERT MOON



"The way to gain a friend
is to be one."



"Charms strike the sight,
But merit wins the soul."

Most Versatile

JENNY DUNCAN
KENNETH CANNON



MARTHA CRAVEN
Christian Council



JO ANN LOONEY
Camera Club

Queen of Hearts



MAVIS DENTON
Sullivanian



JO ANN JONES
Dramatics Club



HAZEL SAUNDERS
Bobcat Tales



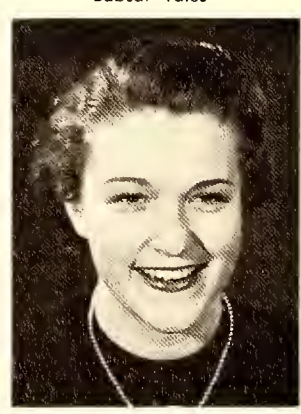
JUANITA DAVIS
Phi Theta Kappa



DOT MARLOWE
Manogram Club



JANICE TOWNSEND
Demasthenean



GEORGIA WARD
W. A. A.



MIRIAM ALDRIDGE
Chair

May Court



Queen

CAROL COFFEY

May



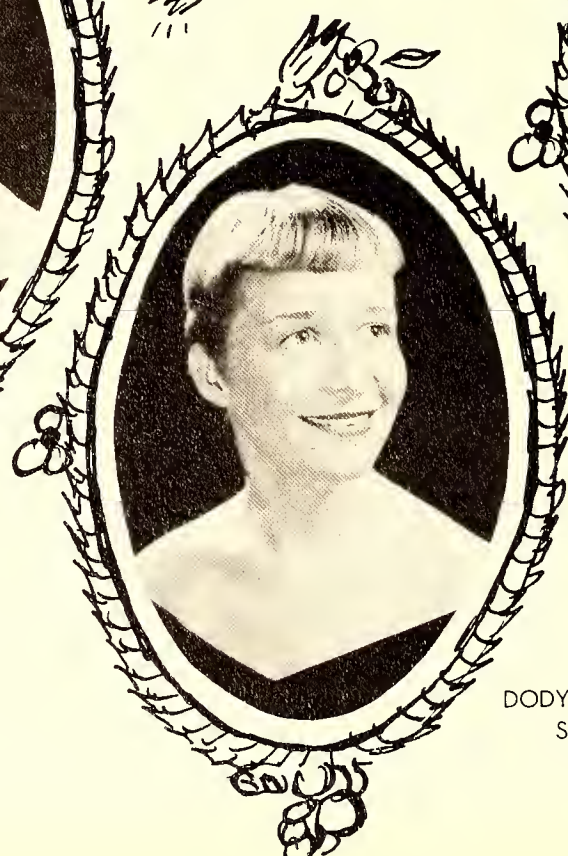
PATSY WAMPLER
Maid of Honor



HAZEL SAUNDERS
Senior



JOYCE WOOD
Senior



DODY de VOS
Senior

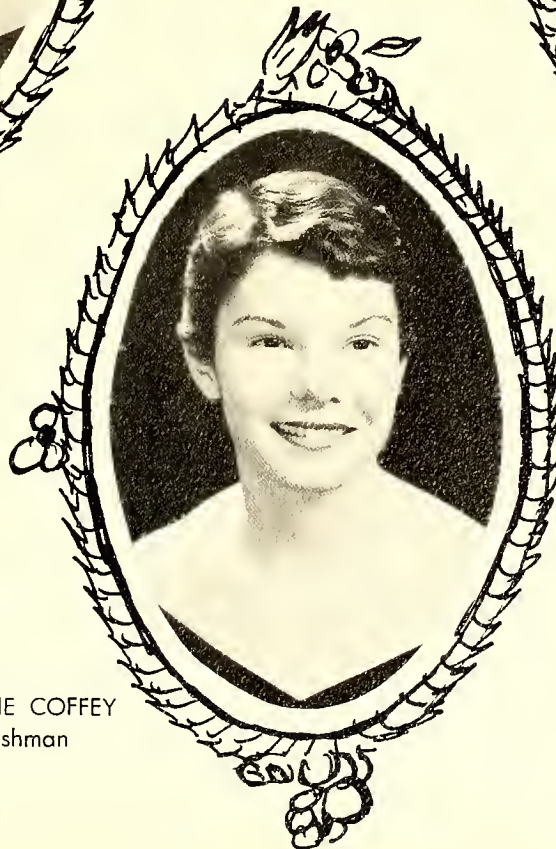
Court



RUTH POWERS
Intern



PHYLLIS BUCKNER
Freshman



NATALIE COFFEY
Freshman

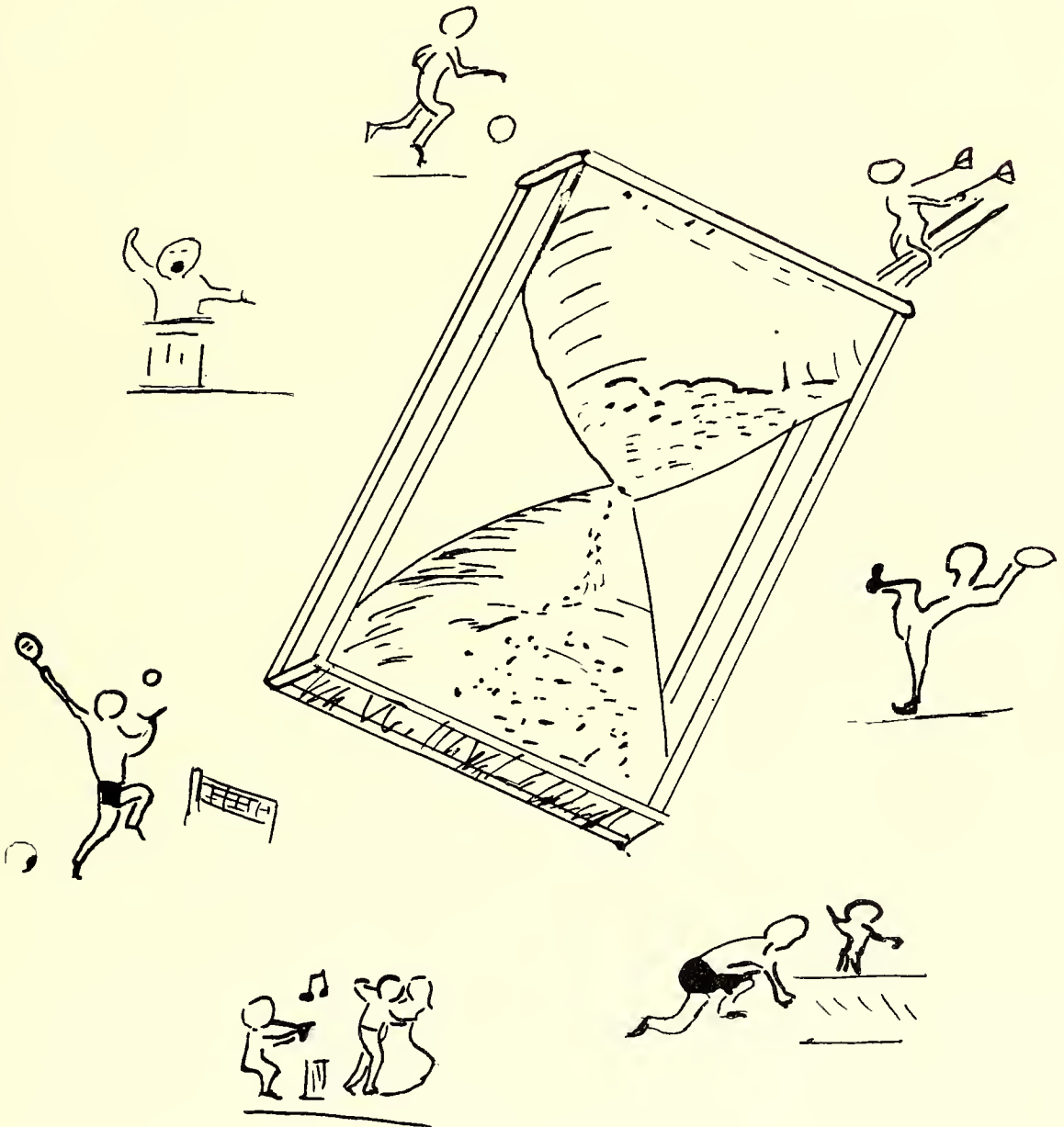


SYLVIA BARTEE
Freshman



REMEMBER WHEN?????

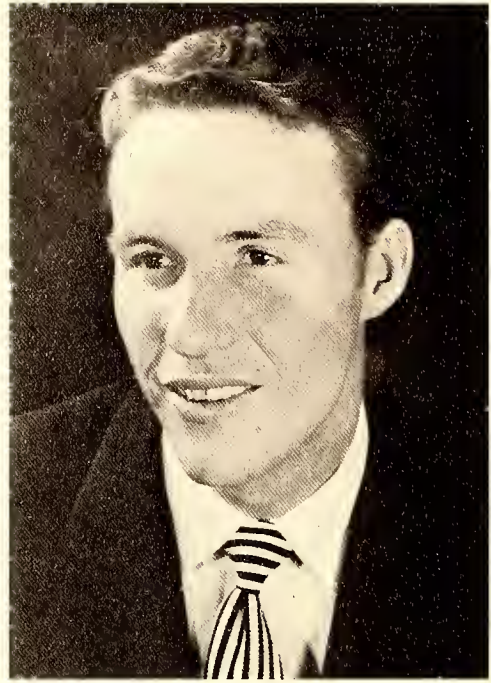
“WHILE THE GOLDEN HOURS ARE PASSING...”



ACTIVITIES



JOYCE WOOD
Editor



HOOVER KEITH
Business Mgr.



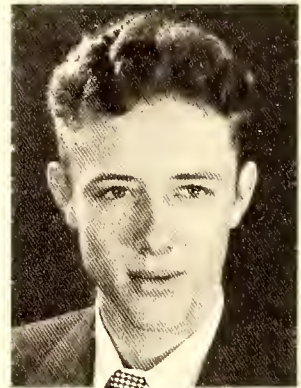
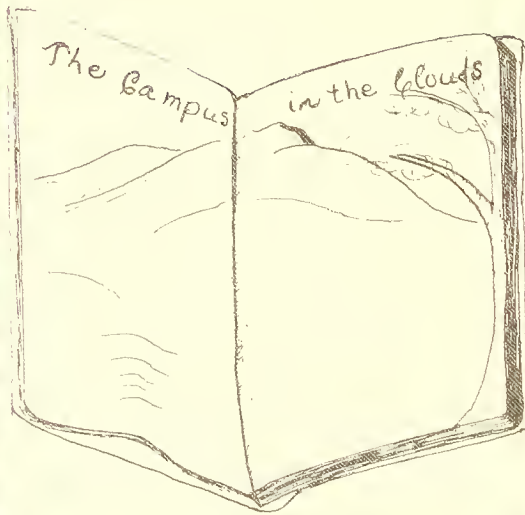
COROL COFFEY
Art Editor



MARTHA CRAVEN
Typist

Ontaroga Staff

Advisor PAUL McEWEN



BILL BLEVINS
Assistant Business Mgr.



MAVIS DENTON
Typist

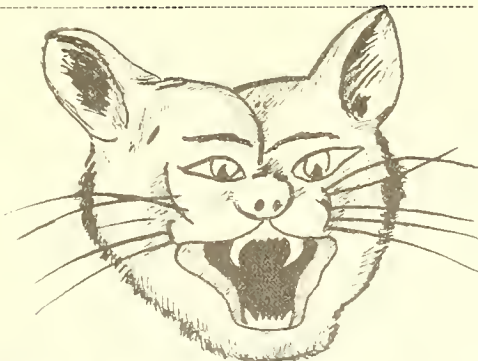


Bobcat Tales

Sponsor

MISS LAURA BLAND

JO ANN JONES
 BILL GREGG
 REBECCA HARRIS
 PEGGY HUSKY
 RONALD CURRENT
 BILL PARISH
 PHILLIP DRUMM
 ROSE KRESS
 JENNY DUNCAN
 CAROLYN ARANT
 REBA BOWMAN



PHYLLIS BUCKNER
 BETTY BULLMAN
 DODY de VOS
 GWEN GRINER
 DELORES HODGE
 SAMMY HUGHES
 JANICE McLEAN
 FRANCES McRAE
 JOY RHODES
 FRANK RICHARDSON
 MAX PERKINS

Co-Editor
 JO ANN JONES

Co-Editor
 BILL GREGG

Business Manager
 REBECCA HARRIS

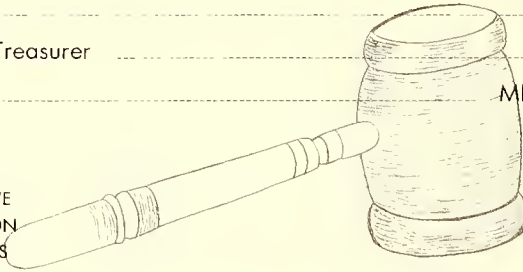




Women's Student Government Association

President MARTHA CRAVEN
 Vice President MIRIAM ALDRIDGE
 Secretary and Treasurer FRANCES McRAE
 Sponsor MISS BETTY MORROW

MARTHA CRAVEN
 MIRIAM ALDRIDGE
 DOROTHY MARLOWE
 DOROTHY SWANSON
 ROCHELLE WILLIAMS
 FRANCES McRAE



FRANCES RAMSEY
 ALMA POOLE
 PHYLLIS BUCKNER
 JOHNNIE GRANT
 JANICE TOWNSEND
 MISS MORROW

MARTHA CRAVEN

MIRIAM ALDRIDGE

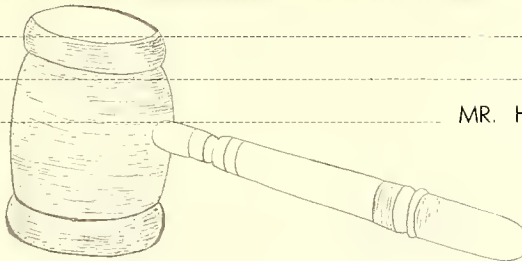
FRANCES McRAE





Men's Student Government Association

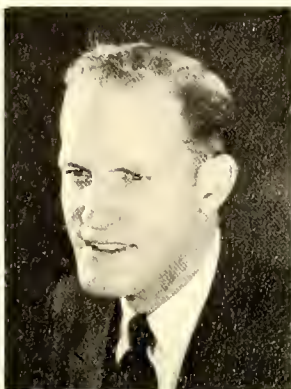
President SCOTT THROWER
 Vice President BILL BLEVINS
 Secretary BILL PARRISH
 Sponsor MR. HOLYE BINGHAM



KENNETH CANNON
 P. J. SNOW
 CECIL WARD
 JOE MARTIN
 RICHARD ROE
 LUIS RODRIQUIZ

BILL KELSEY
 JOE ROBINSON
 SCOTT THROWER
 BILL BLEVINS
 BILL PARRISH
 MR. BINGHAM

SCOTT THROWER

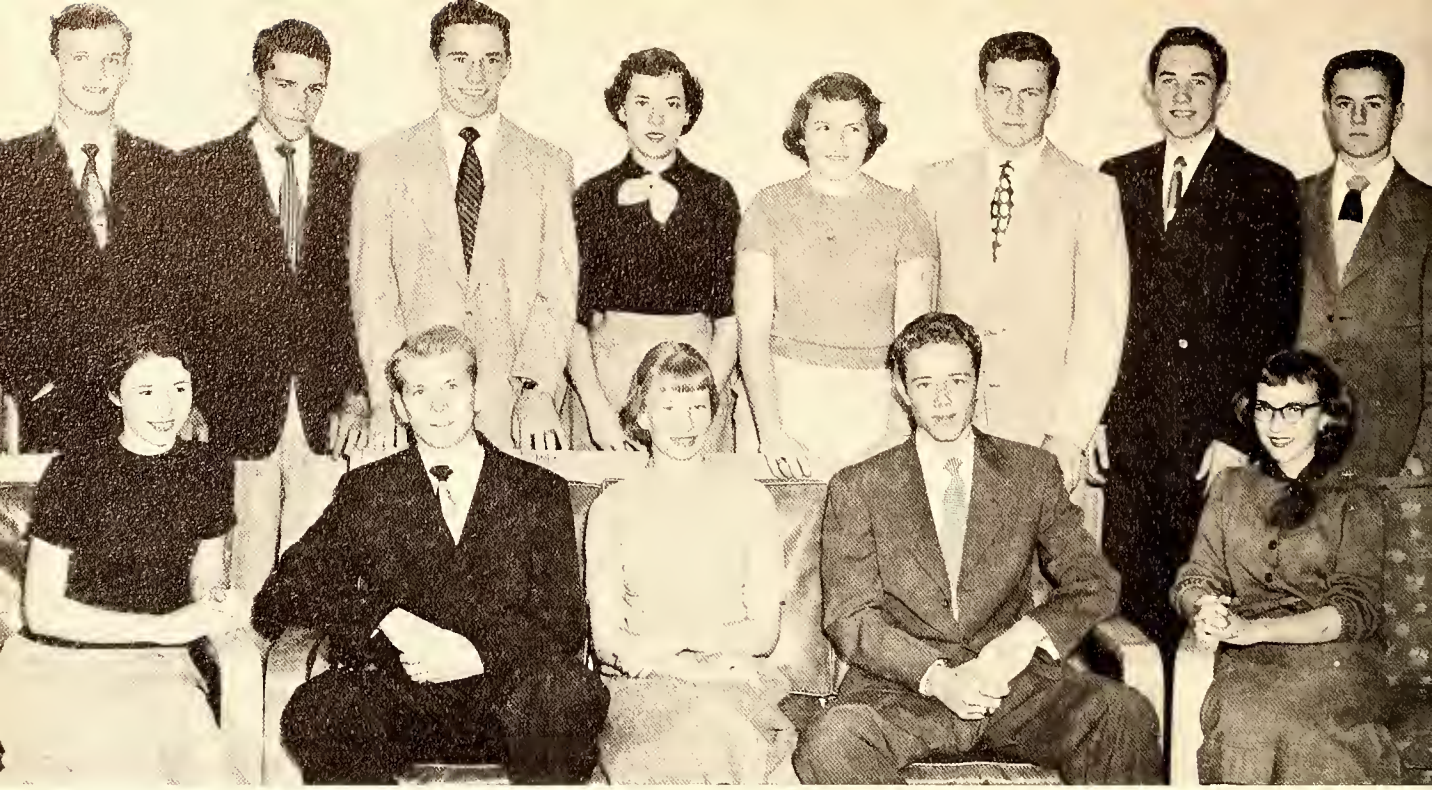


BILL BLEVINS



BILL PARRISH

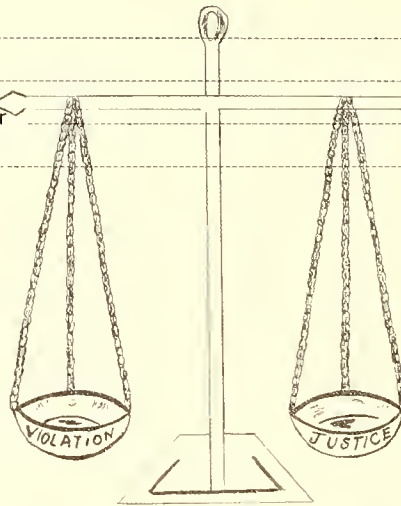




Student Council

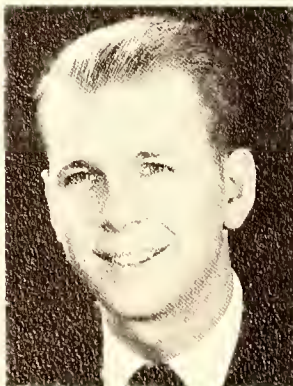
President	_____	TED AUTEN
Vice President	_____	BILL BLEVINS
Secretary and Treasurer	_____	SARA KATE DAVIS
Sponsor	_____	MR. LAFFERTY

TED AUTEN
 BILL BLEVINS
 RONNIE CURRENT
 MARTHA CLAPP
 BILL McGEE
 BETTY BLALOCK
 KATHERINE CARTER
 VIRGINIA FREEMAN
 HAROLD KINNEY

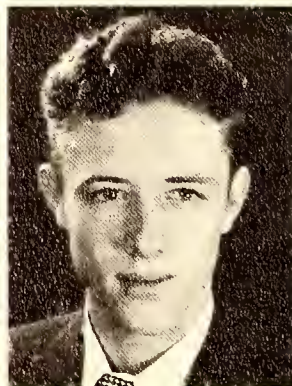


JOE LEE
 MAVIS DENTON
 RODERICK HALL
 BILLY B. WILSON
 SARA KATE DAVIS
 SCOTT THROWER
 MARTHA CRAVEN
 EUGENE HESTER
 MR. LAFFERTY

TED AUTEN



BILL BLEVINS



SARA KATE DAVIS

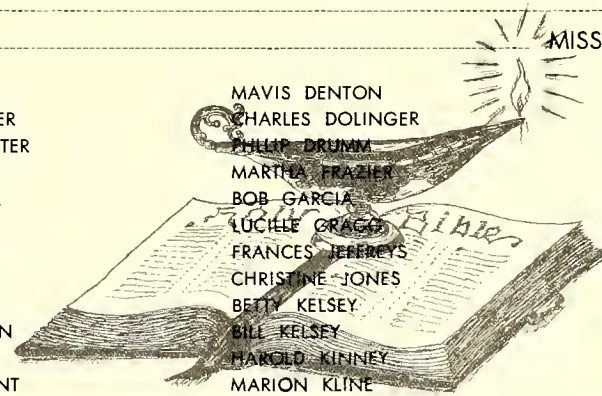




Christian Council

President SARA KATE DAVIS
 Vice President CHARLES DOLINGER
 Secretary JANICE McLEAN
 Treasurer BILL CRONE
 Sponsor MISS AGNES STOKES

MARGIE BRIM
 PHYLLIS BUCKNER
 KATHERINE CARTER
 MARY CARTER
 MAXINE CARTER
 JOHN CITY
 MARTHA CLAPP
 CAROL COFFEY
 LIBBY CONNELL
 MARTHA CRAVEN
 BILL CRONE
 RONALD CURRENT
 SARA KATE DAVIS



MAVIS DENTON
 CHARLES DOLINGER
 PHILIP DRUMM
 MARTHA FRAZIER
 BOB GARCIA
 LUCILLE GRAGG
 FRANCES JEFFREYS
 CHRISTINE JONES
 BETTY KELSEY
 BILL KELSEY
 HAROLD KINNEY
 MARION KLINE
 JEANNETE LAWSON

JOE LEE
 JANICE McLEAN
 FRANCES McRAE
 JOE NICHOLS
 ALLENE POWERS
 DOT RASH
 RICHARD ROE
 GEORGIA WARD
 WANDA WILLIAMS
 BETTY WOBBLETON
 DORIS YOUNG
 BETTY GRAGG
 PEGGY JEAN HOPE

SARA KATE DAVIS



CHARLES DOLINGER



JANICE McLEAN



BILL CRONE

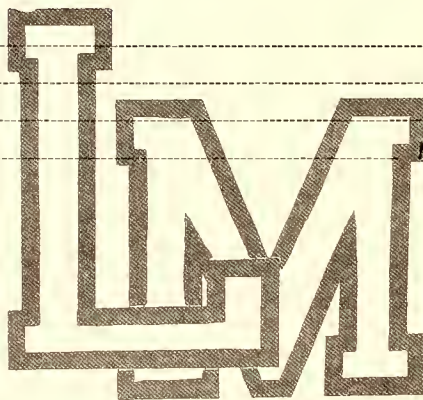




Woman's Athletic Association

President	JO ANN JONES
Vice President	HAZEL SAUNDERS
Secretary	MIRIAM ALDRIDGE
Sponsor	MISS ELEANOR BOLAND

ELAINE BELK
 SYLVIA BARTEE
 DORIS ANNE CURRIN
 JOYCE BRIDGES
 GEORGIA WARD
 HAZEL SAUNDERS
 DOT RASH
 AILEEN JONES



JO ANN JONES
 SAMMIE HUGHES
 BROWNIE MENIUS
 ROCHELLE WILLIAMS
 JANICE TOWNSEND
 MIRIAM ALDRIDGE
 CAROLYN ARANT
 ALICE FORD

JO ANN JONES



HAZEL SAUNDERS



MIRIAM ALDRIDGE

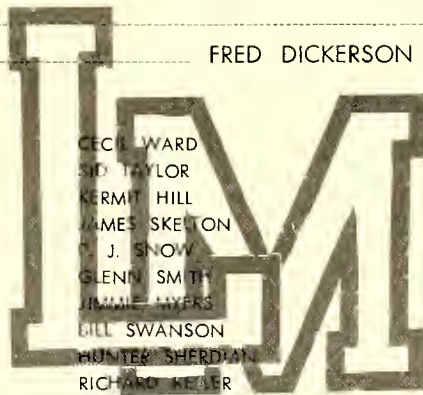




Monogram Club

President ROBERT MOON
 Vice President BENNY TRIPLETT
 Secretary KENNETH CANNON
 Treasurer JOHN HAMMETT
 Sponsors FRED DICKERSON and PAUL McEWEN

ROBERT MOON
 FLOYD PATRICK
 KENNETH CANNON
 JOHN HAMMETT
 BENNY TRIPLETT
 DON TYNDALL
 BILL GREGG
 JACK THORNBURG
 JOE LEE
 CHARLES HOLCOMB
 JOHN CARAWAY
 EUGENE HESTER
 ADRIAN WALKER



CECIL WARD
 SID TAYLOR
 KERMIT HILL
 JAMES SKELTON
 C. J. SNOW
 GLENN SMITH
 JIMMIE MYERS
 BILL SWANSON
 HUNTER SHERIDAN
 RICHARD KEISER
 FRED SINK
 FRANK RICHARDSON

BILL PARRISH
 BRUCE SHAW
 JOE WHITE
 A. L. LEBERMAN
 JIM McCALLUM
 CHARLES GREGORY
 JOE MARTIN
 B. W. McNEELY
 BILL McGEE
 BILL BOOKER
 BUDDY STYLES
 EDGAR TEER

ROBERT MOON



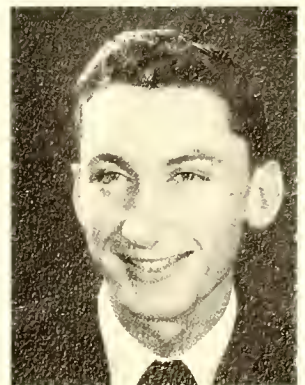
BENNY TRIPLETT



KENNETH CANNON



JOHN HAMMETT

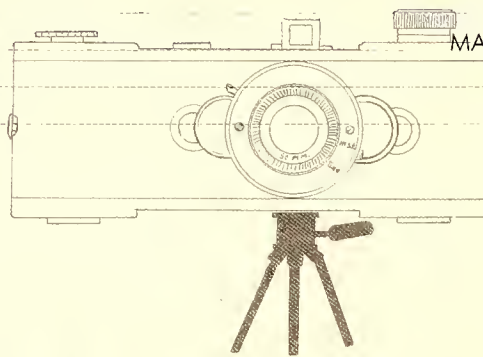




Camera Club

President
 Vice President
 Secretary
 Sponsor

ALLENE POWERS
 DORIS BARE
 MAXINE CARTER
 MARGARET STEPHEN
 WILDA RAY LITTLE
 SHIRLEY LOMAX
 ROYCE JOHNSON
 DORIS NICELY



MAXINE CARTER
 MARGARET STEPHEN
 DORIS BARE
 MISS WHITSON

AILEEN JONES
 BETTY GRAGG
 FRANCES JEFFREYS
 CHRISTINE JONES
 HELEN ELROD
 JOHN CITY
 DORIS DAVIS
 JO ANN LOONEY

MAXINE CARTER



MARGARET STEPHEN



DORIS BARE





ALICE COOLEY
President



MAXINE CARTER
Vice President



MARTHA FRAZIER
Secretary



DORIS NICELY

JEAN OGBURN



Phi Theta Kappa



JO ANN LOONEY

MARY LUCILLE MENIUS



JUANITA DAVIS

JO ANN JONES



SARA KATE DAVIS

VONDEHLEEN BROWN

JANICE McLEAN

LUCILLE GRAGG





Choir

Director

MRS. RANDALL

Accompanist

ALLENE POWERS

MIRIAM ALDRIDGE
 ALICE COOLEY
 BILLIE LOU COLE
 MARTHA CRAVEN
 CAROL COFFEY
 SARA KATE DAVIS
 DORIS DAVIS
 JENNIE DUNCAN
 LUCILLE GRAGG
 EUNICE GOODMAN
 DOROTHY MARLOWE
 JANICE McLEAN
 ALLENE POWERS

ROSE KRESS
 BETTY LOU CURRIN
 PHYLLIS BUCKNER
 MARTHA CLAPP
 SUZANNE LAND
 JEANETTE LAWSON
 JOYCE BRIGES
 BETTY BULLMAN
 ALMA POOLE
 MARGARET OWENS
 DOROTHY PATTERSON
 MAY JANE ROWE
 PATSY WAMPLER

KENNETH CANNON
 JOE ANDREWS
 JOE LEE
 RONNIE CURRENT
 HAROLD KINNEY
 GEORGIA WARD
 DORIS YOUNG
 KATHERINE CARTER
 DELORES HODGES
 DOYLE LINGLE
 P. J. SNOW
 ELIZABETH REDMAN
 MRS. EMMA RANDALL

RONNIE CURRENT
 President



DOROTHY MARLOWE
 Vice President



DORIS DAVIS
 Secretary and Treasurer





Folk Dance Club

Sponsors ELEANOR BOLAND and PAUL McEWEN

MIRIAM ALDRIDGE
 ELAINE BELK
 REBA BOWMAN
 MARGIE BRIM
 ANN BURLESON
 EDDIE BURLESON
 SYLVIA BARTEE
 KATHERINE CARTER
 JOHN CITY
 MARTHA CLAPP
 ELLA BEE COLE
 LIBBY CONNELL
 CHARLOTTE COUCH
 SAMMY CORNETT
 DORIS ANN CURRIN
 SARA KATE DAVIS
 CHARLES DOLINGER

MARY ELLEN DUTY
 HELEN ELROD
 ALICE FORD
 JERRY FOX
 VIRGINIA FREEMAN
 BOB GARCIA
 NANCY GEORGE
 LUCILLE GRACE
 DOTTIE GREENE
 CHARLES GREGORY
 PEGGY JEAN HOPE
 CHARLES HOLCOMB
 SAMMIE HUGHES
 ROYCE JOHNSON
 AILEEN JONES
 BETTY KELSEY
 BILL KELSEY

MARY LUCILLE MENIUS
 MARTHA MINTER
 PHYLLIS MCKINLEY
 ANNE McCASKILL
 FRANKIE OGBURN
 CLAYTON O'NEIL
 MARGARET OWENS
 DOROTHY PATTERSON
 LUANNE RHODES
 LOUIS RODRIQUEZ
 PAGE ROBBINS
 RICHARD ROE
 HAZEL SAUNDERS
 SHIRLEY SCOGGINS
 BILLIE SWANSON
 DOROTHY SWANSON
 ROMA LEE SQUIRES

MARGARET TYSON
 DON TYNDALL
 GEORGIA WARD
 BETTY WOBBLETON
 BOBBIE WHITE
 DORIS YOUNG
 JOY RHODES
 BETTY BULLMAN
 JANICE TOWNSEND
 NATALIE COFFEY
 JOHNNY BAIRD
 FRANCES RAMSEY
 FLOYD BARKER
 JO ANN JONES
 BETTY BROOME
 MAX SPROLES



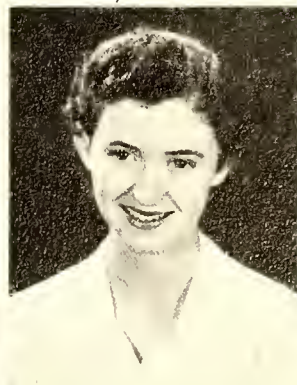
PAGE ROBBINS
 President



BOB GARCIA
 Vice President



DORIS JEAN YOUNG
 Secretary and Treasurer





Sullivanian Sorority

President	MAVIS DENTON
Vice President	BILLIE LOU COLE
Secretary and Treasurer	CAROL COFFEY
Sponsor	MRS. NELSON

MIRIAM ALDRIDGE
 JOYCE BRIDGES
 MAXINE CARTER
 CAROL COFFEY
 BILLIE LOU COLE
 MARTHA CRAVEN
 SARA KATE DAVIS
 MAVIS DENTON
 JEANETTE HARVIEL
 MISS MARYBETH HURST
 DOROTHY MARLOWE
 JANICE McLEAN



FRANCES McRAE
 DORIS NICELY
 ALLENE POWERS
 DOT RASH
 MRS. LOIS REINICHE
 HAZEL SAUNDERS
 MARGARET STEPHEN
 JANICE TOWNSEND
 GEORGIA WARD
 ROCHELLE WILLIAMS
 WANDA SUE WILLIAMS
 JOYCE WOOD

MAVIS DENTON

BILLIE LOU COLE

CAROL COFFEY

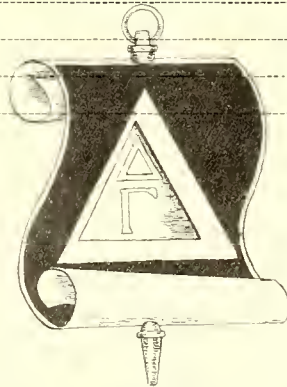




Demosthenean Club

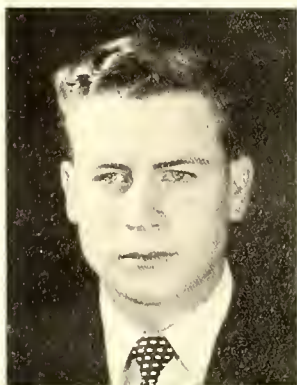
President	EUGENE HESTER
Vice President	BILL BLEVINS
Secretary and Treasurer	HOOVER KEITH
Sponsor	MR. PAUL McEWEN

EUGENE HESTER
 BILL BLEVINS
 HOOVER KEITH
 ARNOLD LEBERMAN
 CHARLES FRANKLIN
 RICHARD ROE
 BILL McGEE
 ROBERT MOON

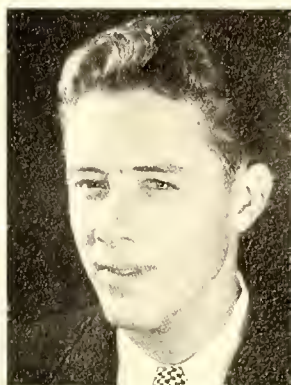


TED AUTEN
 CHARLES DOLINGER
 BENNY TRIPLETT
 FLOYD PATRICK
 JIM McCALLUM
 KENNETH CANNON
 JOE LEE
 JACK THORNBURG

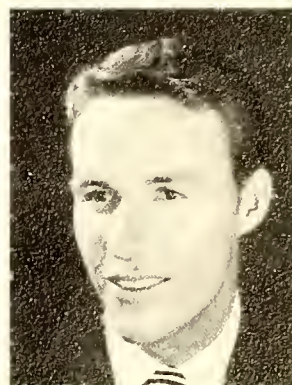
EUGENE HESTER



BILL BLEVINS



HOOVER KEITH



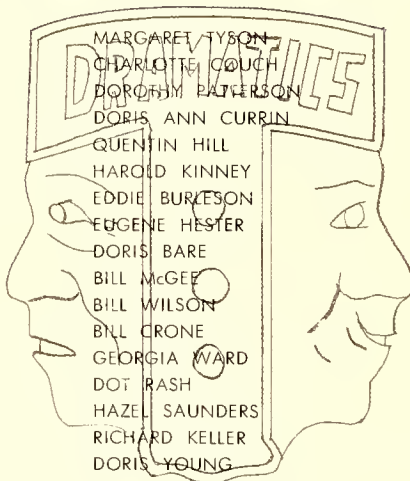


Dramatics Club

Sponsor

MISS LAURA BLAND

ROSE KRESS
 MARGARET TYSON
 REBECCA HARRIS
 ALICE COOLEY
 SARA KATE DAVIS
 RONNIE CURRENT
 FRANCES JEFFREYS
 MARY CARTER
 BILLIE LOU COLE
 SAMMIE HUGHES
 DELORES HODGES
 DON TYNDALL
 MARTHA MINTER
 DOROTHY SWANSON
 LIBBY CONNELL
 LUANNE RHODES
 VIRGINIA FREEMAN
 PEGGY HUSKEY



MARGARET TYSON
 CHARLOTTE COUCH
 DOROTHY PATTERSON
 DORIS ANN CURRIN
 QUENTIN HILL
 HAROLD KINNEY
 EDDIE BURKESON
 EUGENE HESTER
 DORIS BARE
 BILL MCGEE
 BILL WILSON
 BILL CRONE
 GEORGIA WARD
 DOT RASH
 HAZEL SAUNDERS
 RICHARD KELLER
 DORIS YOUNG

KENNETH CANNON
 BETTY GRAGG
 EUNICE GOODMAN
 CHARLES DOLINGER
 MIRIAM ALDRIDGE
 ROMA LEE SQUIRES
 LORRAINE TALBERT
 AILEEN JONES
 CHARLOTTE MILLER
 JO ANN JONES
 MARY ELLEN DUTY
 JOHNNIE GRANT
 SYLVIA BARTEE
 CAROLYN ARANT
 BETTY BULLMAN
 JOYCE BRIDGES
 LUCILLE GRAGG

BILL CRONE
 President



JUANITA DAVIS
 Vice President



DOT RASH
 Secretary





1.



3.



6.

1. President's Reception
2. P. J. Party
3. Beauty comes hard!
4. Study vs. gossip!
5. What happens next?!
6. He uses Ipana!
7. "Through thick and thin . . ."
8. Did you get it for Christmas?



4.

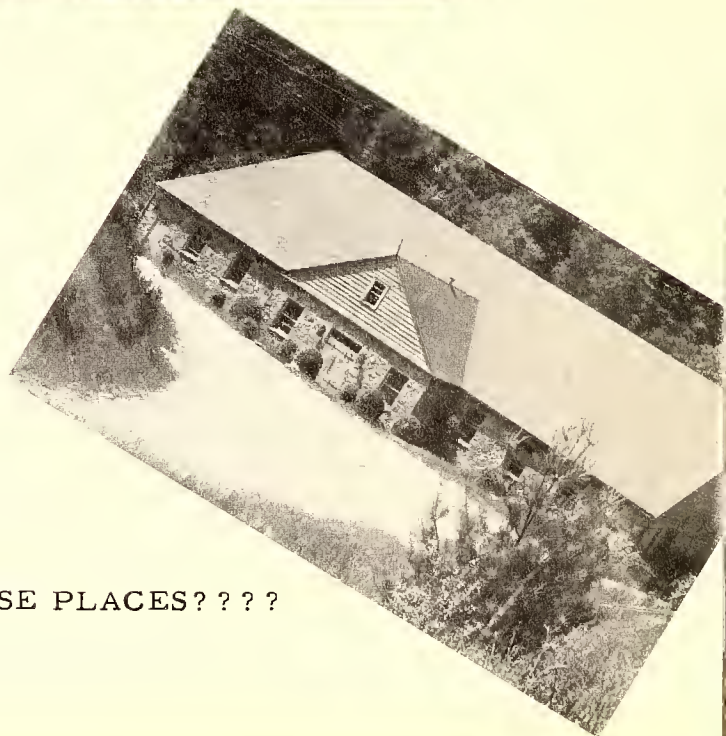
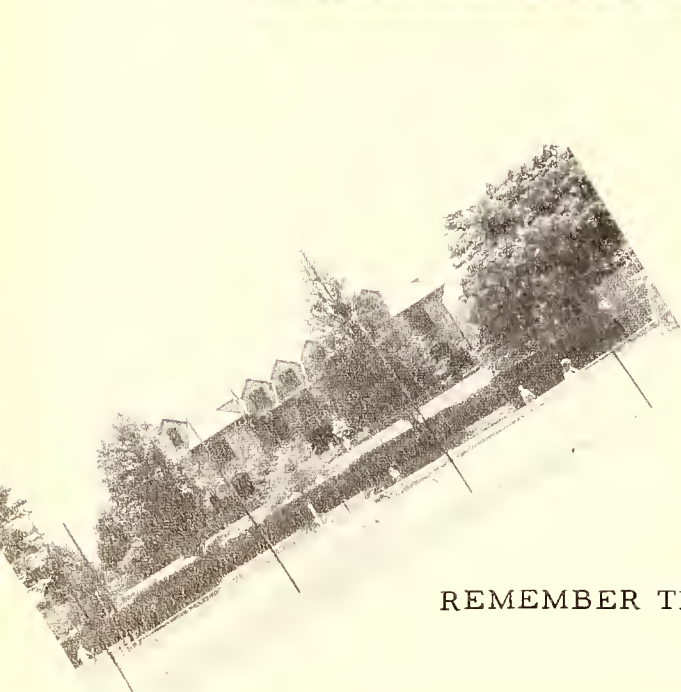
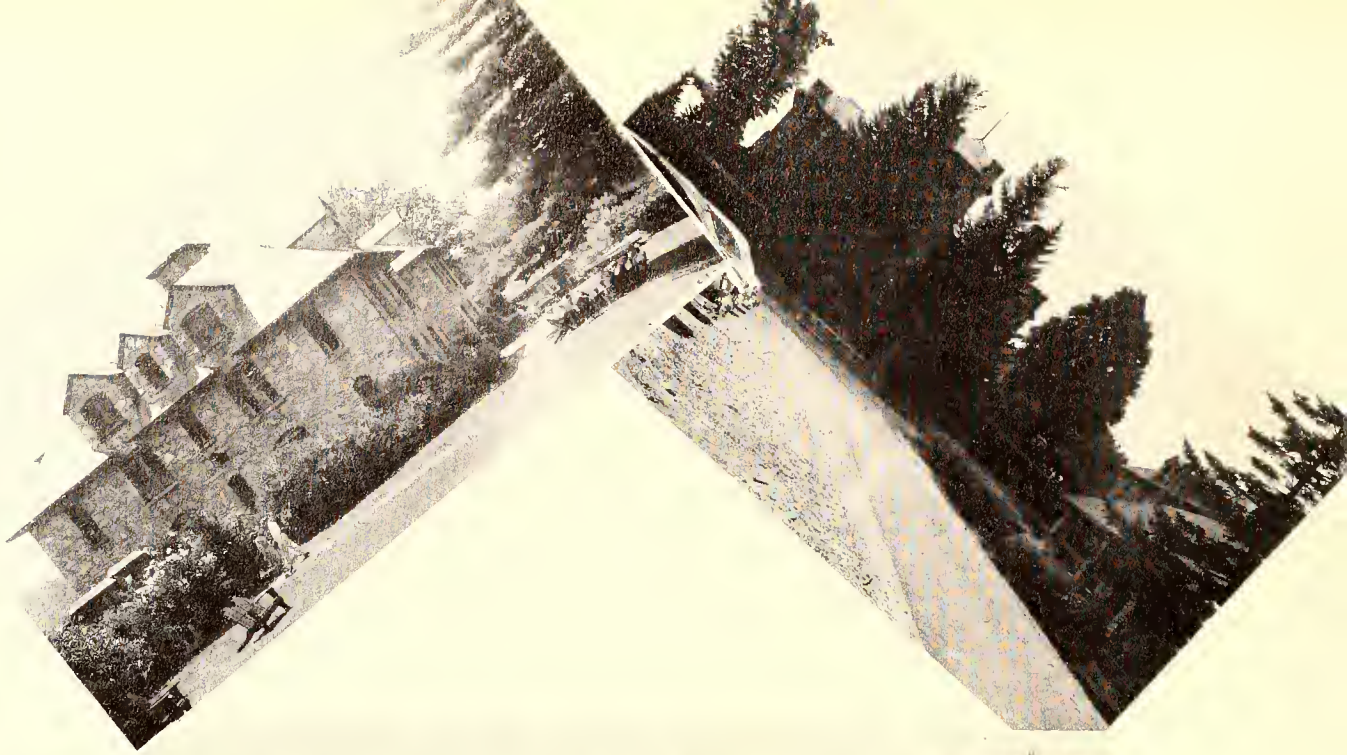


7.



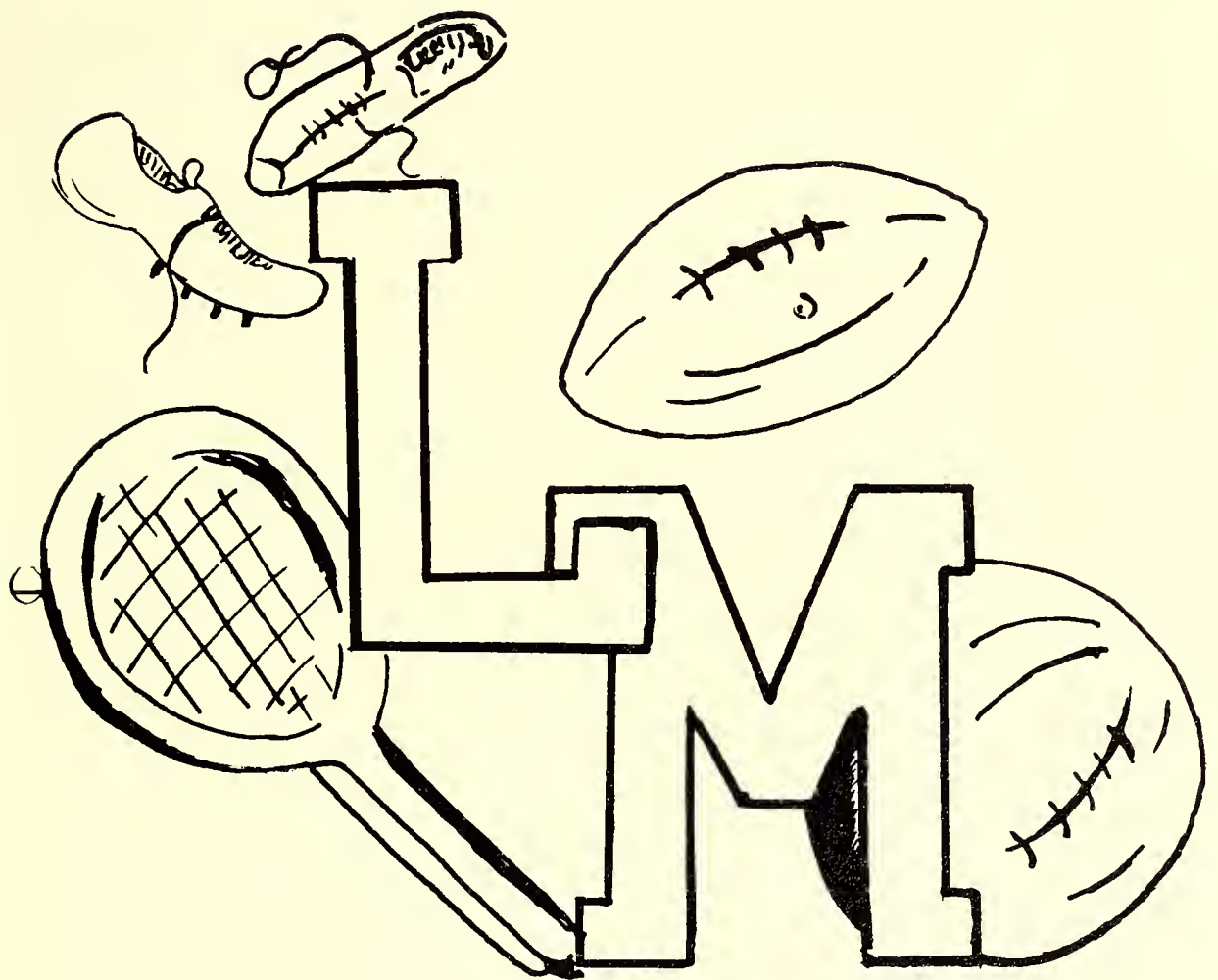
5.



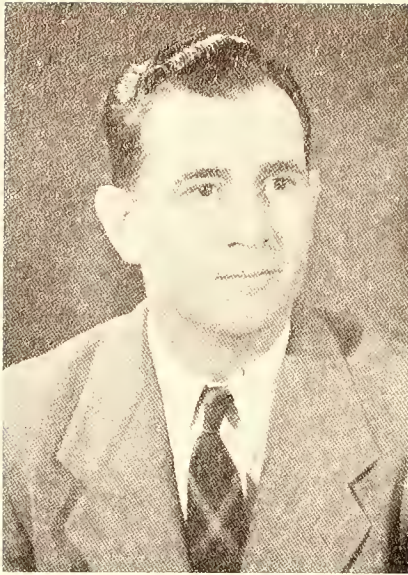


REMEMBER THESE PLACES???

"GREEN AND GOLD OUR SYMBOL MAKE..."



SPORTS

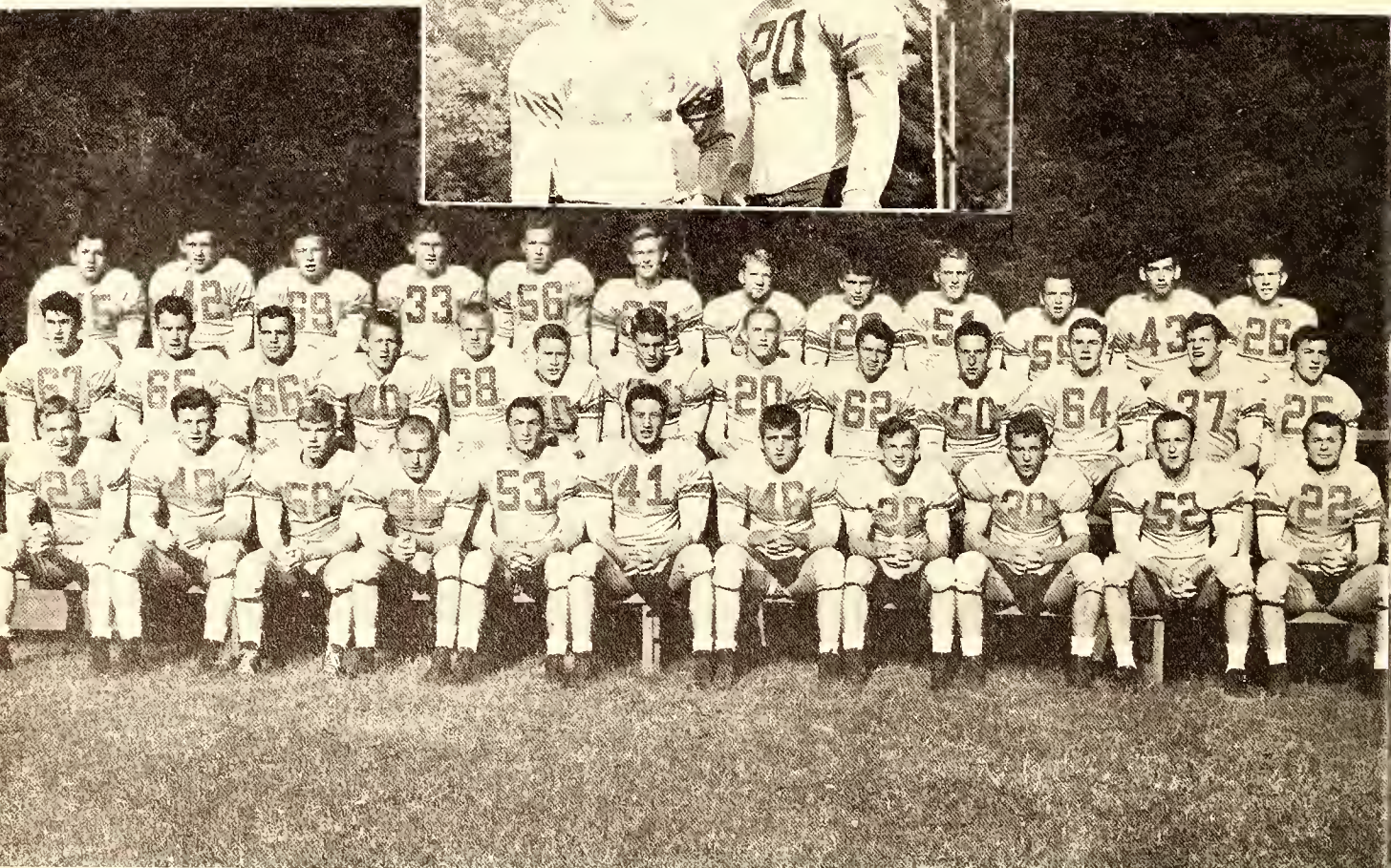
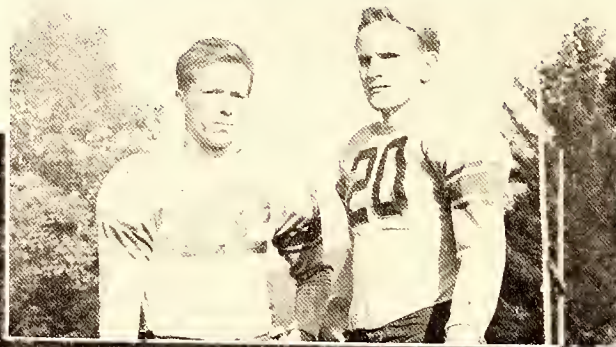


COACH DICKERSON



ASSNT. COACH McEWEN

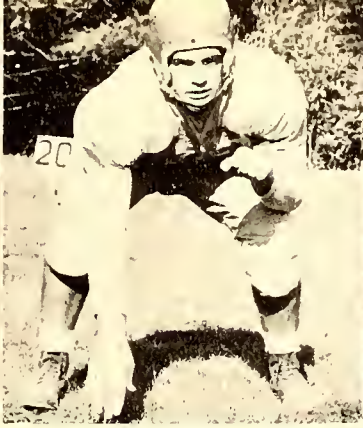
CO-CAPTAINS — PATRICK and MOON



Back Row: Leberman, Boaker, Myers, Swanson, Patrick, Martin, Ward, Skeltan, Shaw, McCallum, Wilson, Perkins, Middle Row: Styles, Tharnburg, Smith, Keller, Taylor, B. Wilson, Hill, Tilley, McGee, McNeely, Snow, Parrish, A. Ward. Front Row: Burchette, Hester, Walker, Sheridan, Hammett, Cannon, Caraway, Lee, Sink, Gregory, Hurd.



WARD — Guard



SMITH — Tackle



SWANSON — End



SHAW — Back



THORNBURG — Tackle

HOMECOMING SPONSORS



JOYCE WOOD — HAZEL HONEYCUTT



McCALLUM — Back



HESTER — Center



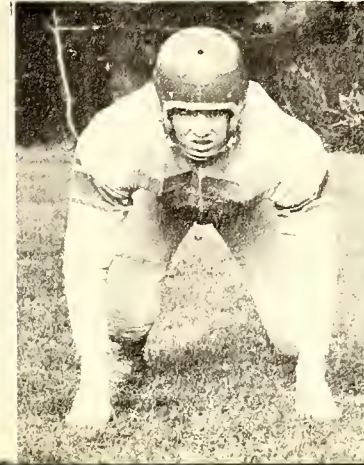
RICHARDSON — End

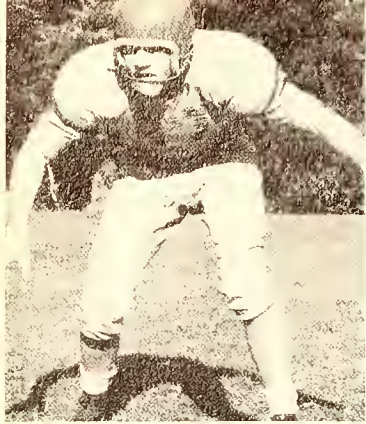
SNOW — Guard

GREGORY — Back

TAYLOR — Guard

HAMMETT — Back





PARRISH — END



STYLES — Tackle



PERKINS — Guard



WALKER — Center



MARTIN — Back



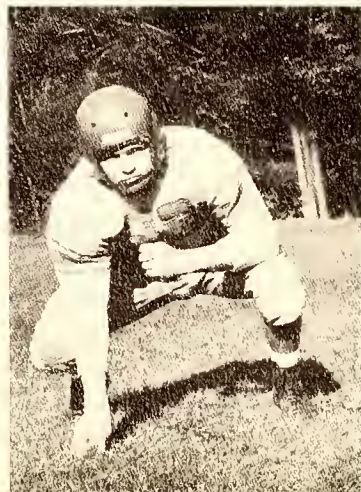
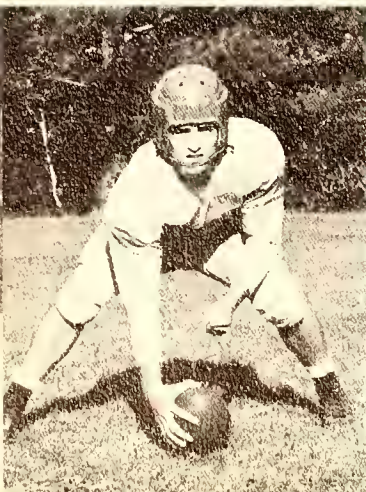
McGEE — Back

CARAWAY — Center

SKELTON — Guard

MYERS — Tackle

LEBERMAN — End





CANNON — Back



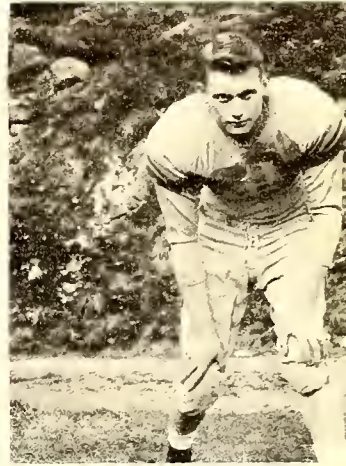
LEE — Back



TILLEY — Back



McNEELY — Back



HILL, K. — Guard

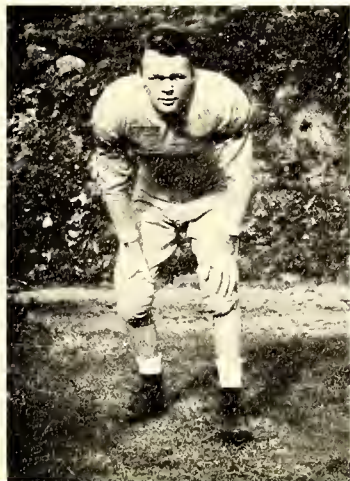


BURCHETTE — Back

SHERIDAN — End



HURD — Guard



KELLER — End



SINK — End





MOON — Center



PATRICK — Back
Most Valuable



WHITE — Back



BOOKER — Back

Western Conference Champions

The 1951 Babcats opened their year in Spruce Pine with a rousing 27-0 victory over the Appalachian JV's. The game was highlighted by the superb running of Cannan, and the passing of White. Defensive standouts were Tharnburg, Hester, Gregory, and Richardsan.

Before a large Homecoming crowd at Banner Elk, the Babcats outclassed a fighting North Greenville squad 20-7. The running of Cannan and the passing of White to Parrish and Richardsan were the main standouts of the game.

On October 13, the Babcats entertained the Gardner-Webb Bulldogs for the first time. The bawlbawnd Bulldogs brought a powerful team to Banner Elk that Saturday. The Cats' defense could not cope with the T-power of the G. W. team, as they railed up a 18-0 lead at halftime. The Babcats came back strong the second stanza with Patrick, Cannan, and White at the helm, to narrow the margin to the final 25-19 score.

Sparked by fullback Gregory's one-yard TD plunge late in the final period, the Babcats squeezed by the Lions of Mars Hill, 14-12, in a night game played there. Tailback Patrick accounted for the first 6 points with a 31-yard gallow in the opening minutes of the game. White provided both of the necessary extra points.

Although outplayed in the statistics the local gridders managed to tangle the visiting Asheville-Biltmore Bulldogs, 20-6. Fullback Cannan, Tailback Patrick, and Wingback Hammett chalked up the three touchdowns while White made good on two of three conversion attempts.

Gardner-Webb spoiled the Lees-McRae boys' hopes of ending the season with a victory by a farciful 25-0 win at Shelby under the lights. Sloppy play was exhibited throughout the contest by the Babcats who dropped their second of the season to the G. W. Bulldogs.

The final record was four wins against two losses with Patrick winning the honor of most valuable player of the year as voted by the squad.

In the past six years Coach Fred I. Dickerson's Babcats have won their respective conference four times and have received two bowl bids.



Girls' Varsity Basketball

Back Row: Lucille Gragg, Mgr.,
 Miriam Aldridge, Dot Rash, Sylvia
 Barteo, Elaine Belk, Mary Ellen
 Duty, Jay Rhodes, Aileen Jones,
 Miss Whitson, Coach.

Front Row: Hazel Sounders, Doris
 Anne Currin, Alice Ford, Rochelle
 Williams, Joyce Bridges, Patsy Wom-
 pler.



ROCHELLE WILLIAMS
 Co-Captain



ALICE FORD
 Co-Captain



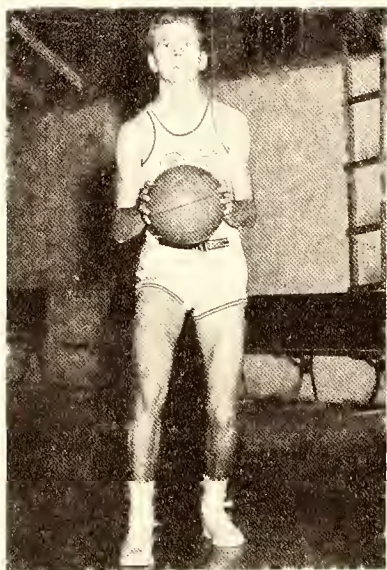
STREET — Center Captain



HOWELL — Guard



FRANKLIN — Forward All-State



AUTEN — Forward



DOLINGER — Forward



HILL — Guard



SAPP — Guard



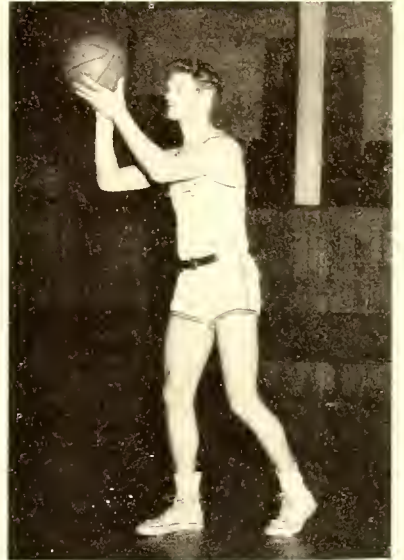
KELLER — Center All-State Most Valuable



JONES — Guard



CITY — Forward



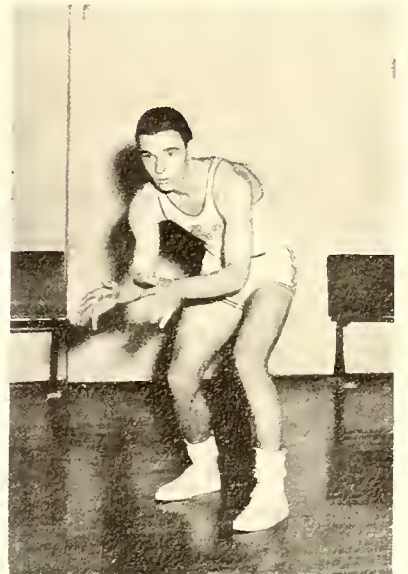
PARRISH — Forward



GREGORY — Guard



SHAW — Guard

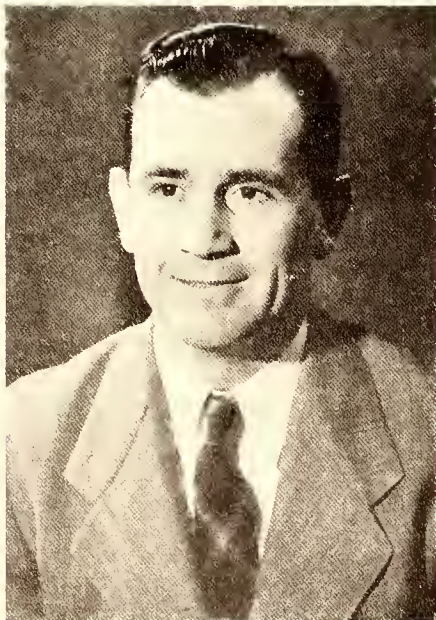


CURRENT — Guard



Conference Champions

Back Row: Auten, Franklin, Street, Keller, Dalinger, Sapp. Middle Row: McGee, Shaw, City, Hawell, Hill.
 Front Row: Janes, Current, Parrish, Gregory.



COACH DICKERSON

L.M.C. 77	Brevard	53
L.M.C. 63	King	38
L.M.C. 77	Mars Hill	42
L.M.C. 71	Appalachian "B"	54
L.M.C. 71	Mars Hill	51
L.M.C. 78	Gardner Webb	51
L.M.C. 85	Brevard	55
L.M.C. 73	Spartanburg	54
L.M.C. 61	Asheville-Biltmare	51
L.M.C. 70	Appalachian "B"	53
L.M.C. 80	Narth Greenville	48
L.M.C. 71	Gardner Webb	46
L.M.C. 62	King	52
L.M.C. 60	Lenoir Rhyne "B"	48
L.M.C. 80	Narth Greenville	50
L.M.C. 84	Asheville-Biltmare	68
L.M.C. 64	Spartanburg	42

WESTERN CAROLINA'S JUNIOR COLLEGE ATHLETIC ASSOCIATION TOURNAMENT

L.M.C.	Mars Hill
73	55
L.M.C.	Asheville-Biltmare
85	64

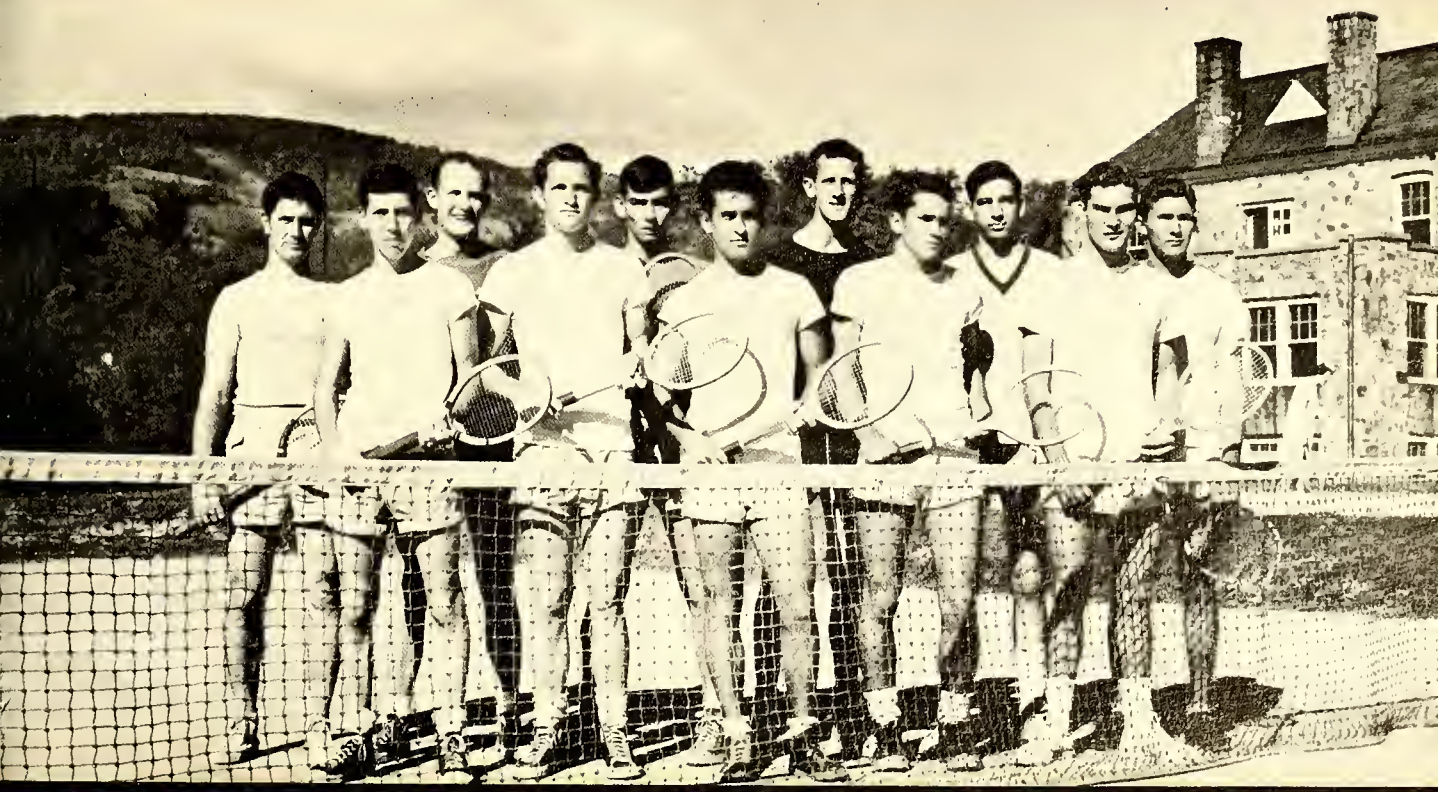


Back Row: Dat Swansan, Jayce Bridges, Alice Caaley, Betty Wabbletan, Brawnie Menius, Maxine Carter, Dat Marlawe, Dat Yaung, Nancy Gearge, Sylvia Barteer. **Front Row:** Wilda Ray Little, Daris Bare, Georgia Ward, Sammie Hughes, Libby Cannell, Margaret Stephen, Lucille Gragg, Ethel Fletcher, Hazel Saunders, Jahnnie Grant, Luanne Rhades, Betty Bullman.

Girls' Tennis Team

Boys' Tennis Team

Back Row: Scatt Thrawer, William G. Wilsan, Richard Keller, Jahn City, Bill Swansan. **Front Row:** Rager Crenshaw, Max Sprales, Bill Crane, Luis Radriquez, Bill McGee, Rayce Jahnsan.





Back Row: Bill Parish, Phillip Drumm, Albert Ward, John Corowoy, Ronold Current, Russell Tote, Middle Row: Bruce Show, Bill Booker, Richard Roe, Kermit Hill, Floyd Barker, Charles Holcomb. Front Row: Wilburn Hommett, Richard Kellor, Charles Gregory, P. J. Snow, Fronk Richardson, Sid Taylor, Benny Triplett.

Track Team

HOMECOMING THRILLS



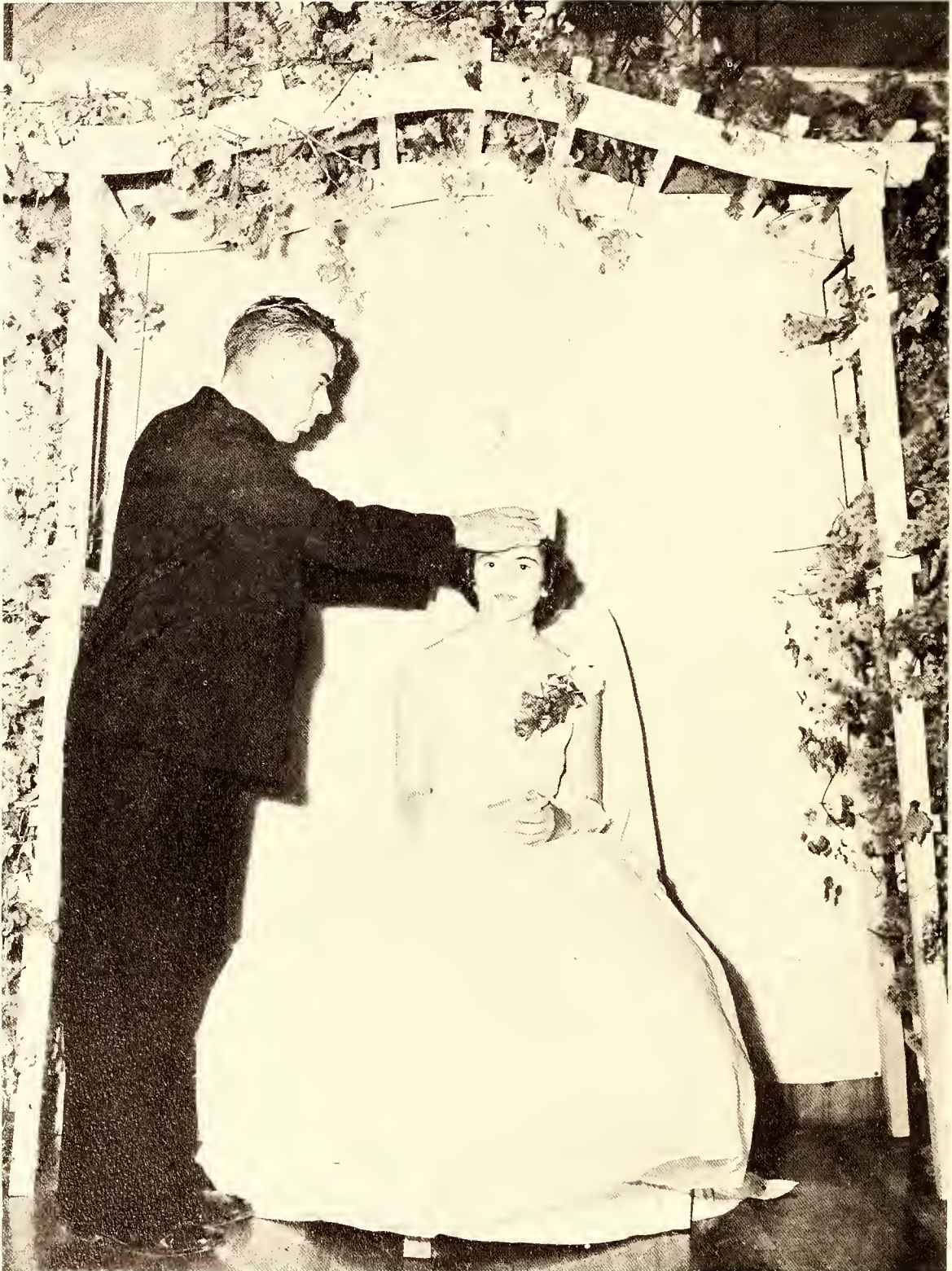


Jerry Fox, Natalie Coffey, Jo Ann Jones, Chief, Janice Townsend, Patsy Wampler.

Cheerleaders

CHEERLEADERS — Old and New



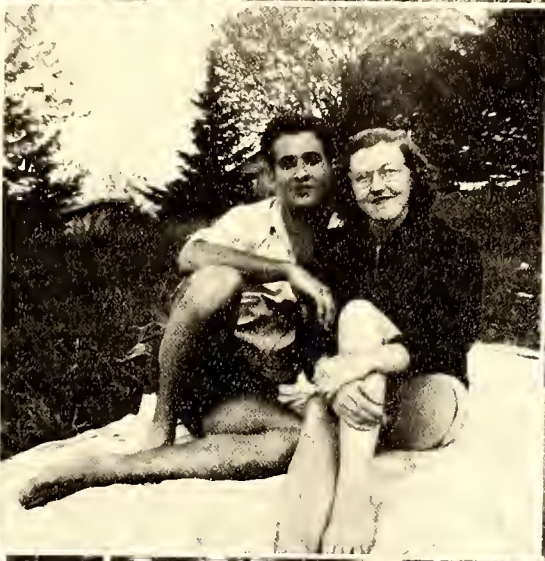


Homecoming Queen
PATSY WAMPLER



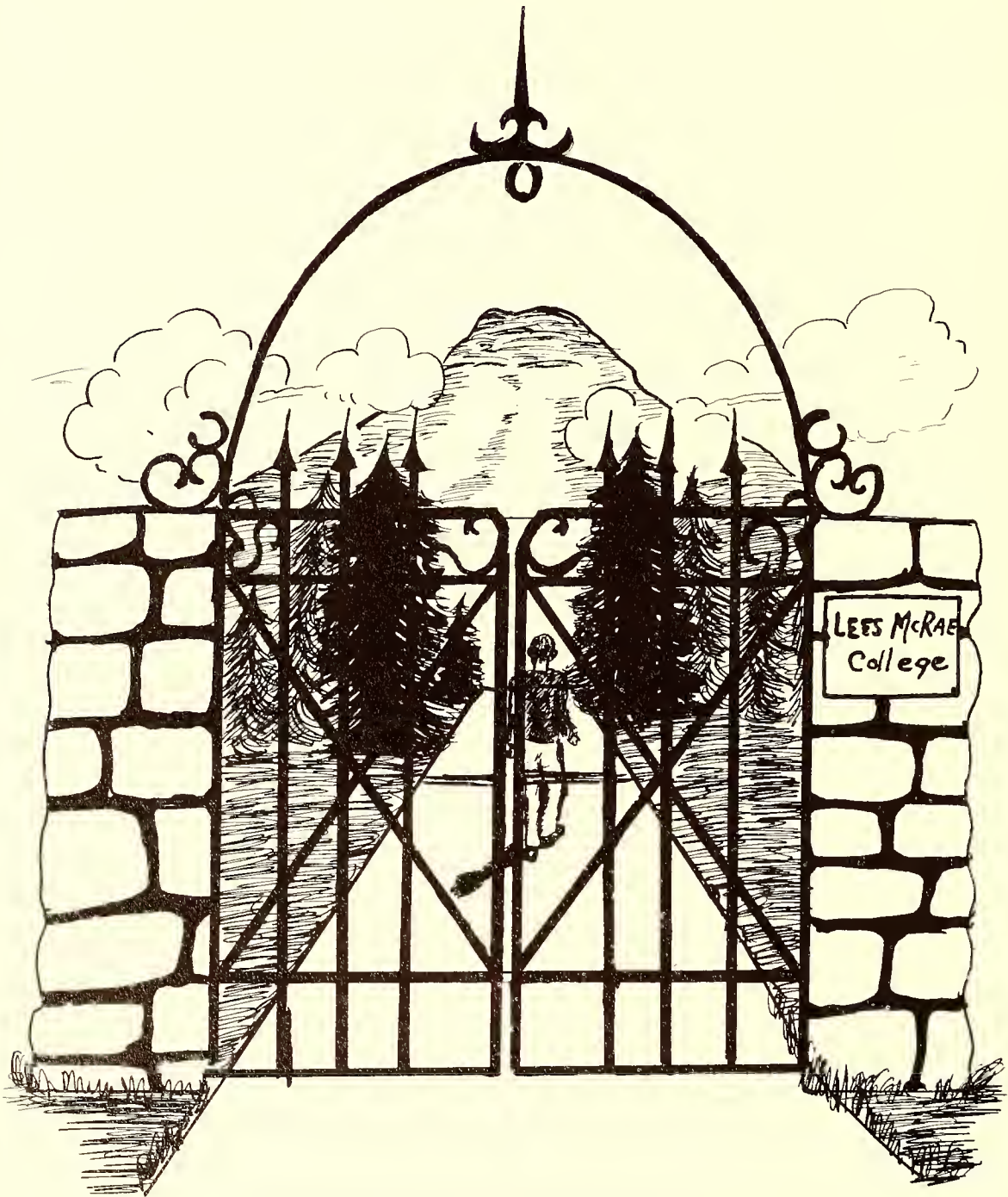
HOMECOMING SCENES





"SEEMS LIKE OLD TIMES....."

"WHERE'ER OUR PATHWAY MAY LEAD..."



AVERY COUNTY BANK

Newland, North Carolina

Member F. D. I. C.

38 YEARS OF PROGRESSIVE BANKING

Compliments of

THE LEES-McRAE EXCHANGE

"The Students' Store"

Banner Elk

North Carolina

Taste The Fresh Cream In Pet Ice Cream



Johnson City

Tennessee



FOUNDRY & MACHINE WORKS, INC.

STRUCTURAL STEEL DIVISION - TENNESSEE BRIDGE AND STEEL COMPANY

Johnson City, Tenn.

Compliments

of

HERBERT E. KING

Bristol

Tennessee

Compliments

of

GEORGE M. KING

Bristol

Tennessee

WITH COMPLIMENTS AND BEST
WISHES TO THE STUDENTS OF
LEES-McRAE COLLEGE



GRAY HOSIERY MILLS

Bristol

Virginia

BANK OF LENOIR

Lenoir, N. C.

Continuous Banking Service Since 1894.

Capital \$100,000.00

Surplus 400,000.00

Business Phone 40

Albert H. Stevens, Gen. Mgr.

BANNER ELK TELEPHONE COMPANY



Banner Elk, North Carolina

WALDENSIAN BAKERIES, INC.

Bakers of Delicious



TRAILWAYS THRU-LINERS

One Change of Bus

From

SPRUCE PINE,

to

BIRMINGHAM
CHATTANOOGA
MEMPHIS
NASHVILLE

AUGUSTA
TAMPA
RALEIGH
NEW YORK

Greetings and Best Wishes to Lees-McRae

Dendron

Crozer

Roda

Lynco

Stonega

Beehive Coke

Glenbrook

Hampton



GENERAL COAL COMPANY

Charlotte

North Carolina

CONGRATULATIONS; TO GRADUATING CLASS AND FACULTY

D. W. REED

LIFE INSURANCE AND MORTGAGE LOANS

CHARLOTTE

NORTH CAROLINA

Life Insurance is not a panacea for all of the economic ills of this day and age but it's the simplest and surest way to create an estate for the future needs of our loved ones.

"BEST WISHES"



Heritage *fine furniture*
Henredon

HENREDON FURNITURE INDUSTRIES, INC.

Morganton

North Carolina

Compliments of

by 

MORGANTON FURNITURE

Morganton

North Carolina



Drexel Furniture Company

DREXEL - NORTH CAROLINA

C O M P L I M E N T S

O F

JONES FURNITURE COMPANY

Morganton

North Carolina

To the Graduates, Class of '52, we extend
our sincerest congratulations and best wishes.
May you find success in your chosen field.

J. FRED JOHNSON & CO.

"Quality Counts"

Kingsport, Tennessee

NEWPORT PRESBYTERIAN CHURCH

"Building With Christ For Eternity"

Rev. L. F. Cowan
Minister

Mrs. H. C. Ruble
Mrs. J. B. Ruble
Organists

AMERICAN BEMBERG
BEAUNIT MILLS, INC.
NORTH AMERICAN RAYON
CORPORATION

Elizabethton

Tennessee

C. R. GRAYBEAL & SONS

ROAN MOUNTAIN, TENNESSEE

Crude Botanical Drugs

Lumber and Building Material

Hardware, Flaaring

Compliments of

PARKS-BELK COMPANY

Elizabethton, Tennessee

BRICHFIELD - BROOKS

YOUNG MEN'S CLOTHING

431 Elk Avenue

Phane 25781

Elizabethton, Tennessee

Compliments of

PATY LUMBER COMPANY

Incarporated

Elizabethtan

Bristal

Jahnsan City

TAYLOR MOTORS, INC.

Direct Dealers

Dadge and Plymouth Sales and
 Service — Dadge Job Rated Trucks
 Phane 2-4611 Elk Avenue at Braad
 Elizabethtan, Tenn.

DAVENPORT TRANSFER, INC.

Ingalls, N. C.

Tele. 152-J

APPALACHIAN HARDWARE CO.



Phone 202 SPRUCE PINE, N. C.
Sporting Goods — Hardware — Form Supplies

Mayland Upholstering Co.

FURNITURE & AUTOMOBILES
REUPHOLSTERED

SPRUCE PINE, N. C.

Box 477

Telephone 7-M

RIDDLE'S JEWELRY STORE

YOUR JEWELER and FRIEND

For Over 25 Years

Phone 185

Spruce Pine, N. C.

Licensed Wiring Contractors

Johnson Electric & Supply Co.

Distributors and Dealers

SUPPLIES — APPLIANCES — MOTOR WINDING

Phone Store 21

Shop 199

Spruce Pine, N. C.

BEAM'S MOTOR COURT

4 Miles North of Spruce Pine — U. S. 19

Operated by Mr. and Mrs. J. R. Beam

Mofor Court — 30 Units & Restouront

Spruce Pine, N. C.

Compliments of

TAYLOR BUICK CO.

Spruce Pine, N. C.

MITCHELL LUMBER COMPANY

Spruce Pine, N. C.

Phone 293

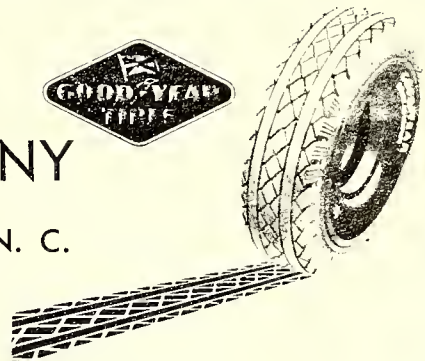
All Types of Building Materials

OWNERS

} Frank W. Phillips
} Sam W. Thompson
} C. W. Ellis

CAROLINA TIRE COMPANY

SPRUCE PINE - BURNSVILLE, N. C.



MAYLAND PRINTING COMPANY

"Complete and Dependable Printing Service"

Phone 200

Box K

Spruce Pine, North Carolina

Compliments of

GARLAND'S

"Everything for Ladies"

Spruce Pine North Carolino

Compliments of

THE ALL-SPORT STORE, INC

Sporting Goods, Fishing Tackle, Guns
Boots and Motors

Asheville, North Carolina

Compliments of

LANCE JEWELERS

Spruce Pine North Carolino

Phone 350

Cornwell Printing Co., Inc.

Printing — — — Office Supplies

Spruce Pine North Carolino

Pearce-Young-Angel Co., Inc.

Wholesale Foods
Fresh-Frozen-Canned-Dried

"SERVICE WHOLESALERS"

Asheville North Carolina

HOLLIFIELD STUDIO

Portrait and Commercial Photography

SPRUCE PINE, N. C. Phone 299

THE SPORTS MART, INC.

Sports of All Sorts — Hobby Supplies
32 Battery ark Ave Diol 3-3953

Asheville, N. C.

MAYLAND MOTOR COMPANY

Phone 29

Spruce Pine, North Carolina

International Trucks, Parts and Service



FAUL and CRYMES, INC.

Charlatte

Narth Carolina

Campliments of

PINNACLE INN

Banner Elk, N. C.

Owned and Operated by

Lees-McRae Colledge

J. Jenkins & Sons Co., Inc.

Manufacturers

Lees-McRae Colledge Rings and Pins

Baltimore

Maryland

Compliments of

BLAND PIANO COMPANY

220 North Main Street

Winston-Salem, N. C.

New and Used Pianos

George Steck
Starr

Steinway
Story & Clark

LAFFERTY UTILITIES SERVICES

Banner Elk North Carolino

Motorolo Rodios
Rodio ond Appliance Repair.
Kelvinotor Home Appliances

Phone 132-M

Compliments of
SUMMER RECREATION CLUB

Lees-McRae College
Bonner Elk North Carolina

BANNER'S TEA ROOM

Where Students Meet
Mrs. R. O. Banner
Bonner Elk North Carolino

Compliments of
THE BANNER ELK BANK

"We Appreciate Your Patronage"
Bonner Elk North Carolino

BANNER ELK MERCANTILE COMPANY

"Wares For The Farm and Home"
Bonner Elk North Carolina

Compliments of
Mr. Howard Rowe

Bonner Elk North Carolina

Compliments of

TRAILWAY LAUNDRY, INC.

Telephone 79

and

MASTER CLEANERS

Launderers and Cleaners

Telephone 348-W

"THE BEST IN LAUNDERS AND CLEANING"

Serving Lees-McRae College and Avery County

Boone

North Carolina

BARNETT MOTOR COMPANY

Baane, N. C.

Phone 237

Pontiac Cars — International
Truck and Farm Machinery

BOONE FLOWER SHOP

"Flowers for all occasions"

308 E. Main St.

Phone 214-J

Baane

North Carolina

BOONE TIRE and BARGAIN STORE

Frigidaire Appliances and
Furniture of All Kinds

Cash or Terms

Baane, N. C.

Newland, N. C.

BARE'S DEPARTMENT STORE

The

Home of Jorman Shoes

Baane

North Carolina

Vance Recapping Company

Quality Recapping

640-15

1000-20

Baane

North Carolina

Compliments of

MURRAY'S ESSO SERVICENTER

Baane

North Carolina

Blowing Rock Road at Howard Street

BOONE FABRIC SHOP

213 West Main Street

Boone, N. C.

Call 42

FINE QUALITY MATERIALS OF ALL TYPES
COMPLETE LINE OF SEWING NEEDS AND NOTIONS
We Will Appreciate Your Visiting Us

<p>Stop At NEW C. K. & M. GATEWAY Boone's Restaurant of Tomorrow Quality Foods, Superior Service, Pleasant and Comfortable Surroundings — Public and Private Rooms C. K. Marion Telephone 1921 Boone, N. C.</p>	<p>Compliments of THE CAROLINA PHARMACY "Meet Your Friends" Boone North Carolina</p>
<p>Compliments of B. W. STALLING'S Boone North Carolina YOUR COLLEGE JEWELER</p>	<p>NEWTON'S DEPARTMENT STORE "Boone's Finest" Boone North Carolina</p>
<p>HUNT'S DEPARTMENT STORE Boone's Leading Department Store Boone North Carolina</p>	<p>TYPEWRITER HEADQUARTERS We Rent, Buy, Sell & Repair All Makes OFFICE SUPPLY COMPANY 408 South Roan St. Johnson City, Tenn.</p>
<p>"CAROLYN'S FLOWER SHOPPE" 201 Depot Street Boone, N. C. "COMPLETE FLOWER SERVICE" RALPH and CAROLYN WHATLEY Proprietors</p>	<p>Compliments of JOHNSON CITY SPRING and BEDDING COMPANY Johnson City Tennessee</p>

Compliments

D. C. BLEVINS & SON, DISTRIBUTOR

GULF OIL PRODUCTS

OUR 25th YEAR OF SERVICE TO AVERY COUNTY

Spruce Pine

North Carolina

S. & S. STORE

We specialize in Good Meot
Frozen Foods
also
Hotpoint Dealer for this Area.

Phone 141-R

Mountoin City Tenn.

Mountain City's Shopping Center
Self Service

Dayton Sommons, Mgr.

Compliments of

CENTRAL DRUG STORE

Mountoin City Tenn.



BRISTOL'S GREAT DEPARTMENT STORE

Bristol

Tennessee-Virginia

Compliments

CITY SHOE STORE & SHOE SHOP

G. J. Stout and Son

Mountoin City Tenn.

JEWELERS

Stout and Son

Quolity Watch & Repair Work

Mountoin City Tenn.

PLEASANT SERVICE STATION

Greose—Wosh—ond Tire Changing

Pleosont Bros. Owners

Doeville Tennessee

PHOTOGRAPHERS

KELLY & GREEN

Bristol Virginio

Compliments of

BELK-BROOME COMPANY

"The Home of Better Values"



Morgonton North Corolino

MORRIS MOTORS, INC.

Dodge-Plymouth

Authorized Soles Service

Morgonton North Corolino

<p>BROWN'S RESTAURANT AND GULF PRODUCTS</p> <p>We Specialize in Sea Foods and Country Ham</p> <p>Courteous Service</p> <p>Vilas North Carolino</p>	<p>Compliments of</p> <p>MORGANTON HARDWARE CO.</p> <p>Hardware and Furniture</p> <p>Wholesale and Retail</p> <p>Morganton North Carolina</p>
<p>Compliments of</p> <p>BURKE TRANSIT</p> <p>Morganton North Carolina</p> <p>Phone 881</p>	<p>HANNAH BROTHERS, INC.</p> <p>Wholesale</p> <p>Dry Goods — Notions — Furnishings</p> <p>Johnson City, Tennessee</p> <hr/> <p>Nunn-Bush Shoes</p> <p>McGregor Sportswear</p> <p>HANNAH'S</p> <p>Johnson City Tennessee</p> <p>Kuppenheimer Clothes</p> <p>Arrow Shirts Dobbs Hats</p>
 <p>Your Tri-City Fashion Center</p>	<p>JOHN SEVIER HOTEL</p> <p>225 Rooms With Bath</p> <p>"EAST TENNESSEE'S FINEST"</p> <p>Johnson City Tennessee</p>
<p>MERCHANTS PRODUCE AND GROCERY COMPANY</p> <p>WHOLESALE ONLY</p> <p>Phone 406 and 1205</p> <p>Hickory North Carolina</p>	
<p>TIMES SQUARE DINER</p> <p>"The Best Place To Eat"</p> <p>Mrs. Wilt H. Burseson</p> <p>Elk Park North Carolina</p>	<p>SMITHEY'S STORE</p> <p>Dry Goods Groceries</p> <p>Ready to Wear</p> <p>Newland North Carolina</p>
 <p>FINE CARPETS AND RUGS</p> <p>1005 FOURTEENTH STREET</p> <p>HICKORY, NORTH CAROLINA</p>	<p>Compliments of</p> <p>THE FLOWER SHOP</p> <p>Newland, N. C.</p> <p>Mrs. K. W. Sams — Mrs. William R. Laughridge</p> <p>Owners</p>

COMPLIMENTS OF

ROBBINS KNITTING CO.

Spruce Pine

North Carolina

MT. DEW DAIRY

"If you drink, drink milk!"

Pure Bred Guernseys

Banner Elk North Carolina

NEWLAND KNITTING MILL

J. F. Thew -- Supt.

Newland North Carolina

S H A W E E H A W

Fine Food — Pleasant Atmosphere

Banner Elk North Carolina

Compliments of

BEAR TRAIL DRUG STORE

Newland North Carolina

CLARK & ESTES MOTOR CO.

Authorized Sales and Service

Newland, North Carolina

REINS-STURDIVANT FUNERAL HOME

Affiliated with Reins-Sturdivant

Mutual Burial Association

Day — Ambulance Service — Night

Phone 57

Newland North Carolina

MORTIMER INSURANCE AGENCY

Life — Auto — Fire — Bonds

Phane 64 Newland, North Carolina

LECKA PRODUCE CO.

C. M. Lecka, Manager

Packers of Blue Ridge Brand Potatoes

Phane 11-M Banner Elk, N. C.

COMPLIMENTS OF
ANNUAL PHOTOGRAPHER

Dickerson & Dickerson, Inc.
Reynolds Drive

Banner Elk,
North Carolina

Good Movies Are Your Best Entertainment
You Are Invited To Attend The Center Theater

CENTER THEATER

"WE SERVE THE STUDENTS OF LEES-McRAE"

Billy Burleson Monoger

BANNER ELK

NORTH CAROLINA

"SPECIALIZING IN FIRE PROTECTION"

FYR-FYTER

(Fire) (Fighter)

SALES and SERVICE

Fire Extinguishers • Recharges • Refills

CHAS. S. HAMMONS

608 Holden Raad P. O. Box 5033

Tate Street Station

PHONE 5955 GREENSBORO, N. C.

GARLAND MOTOR COMPANY

Incorporated

CHEVROLET SALES and SERVICE

Phone 70

Newland

North Carolina

VON CANNON LUMBER CO.

"For Lumber Call Our Number"

OWN YOUR

OWN HOME

Phone 21

BANNER ELK

NORTH CAROLINA



