



ANTAROGA

55

Property of
Loomis College
Archives




Property of
Lees-McRae College Archives

26896

Lees-McRae College Library
Dorset, N.C.





Digitized by the Internet Archive
in 2012 with funding from
University of North Carolina at Chapel Hill

<http://archive.org/details/ontaroga1955lees>

THE

ONTARIO 1951



Editor
DEANE BRASWELL
Business Manager
RICHARD RAULSTON
Sponsor
PAUL H. NEAL

Katin' around



IN MEMORY
OF ONE WHO HELD
"THAT THE HIGHER GIFT OF BEING KIND
IS GREATER THAN ALL WISDOM OF THE WORLD"
DR. CLARENCE LINDEN LEWIS
BORN SEPTEMBER 21, 1874; DIED JANUARY 24, 1918
"A FRIEND TO ALL"

with Bobby the Bob Cat

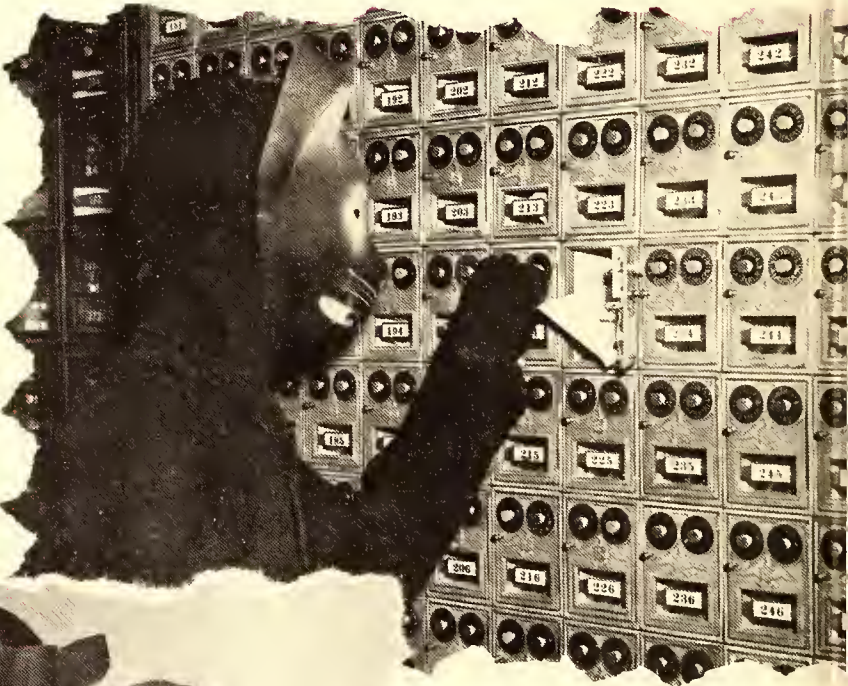




Do you have an 8 o'clock?

"Oh goody, a letter from Uncle Tom."

Taking Us Back



"Two weeks camping? Ugh!!!"





"Charge it, mam"

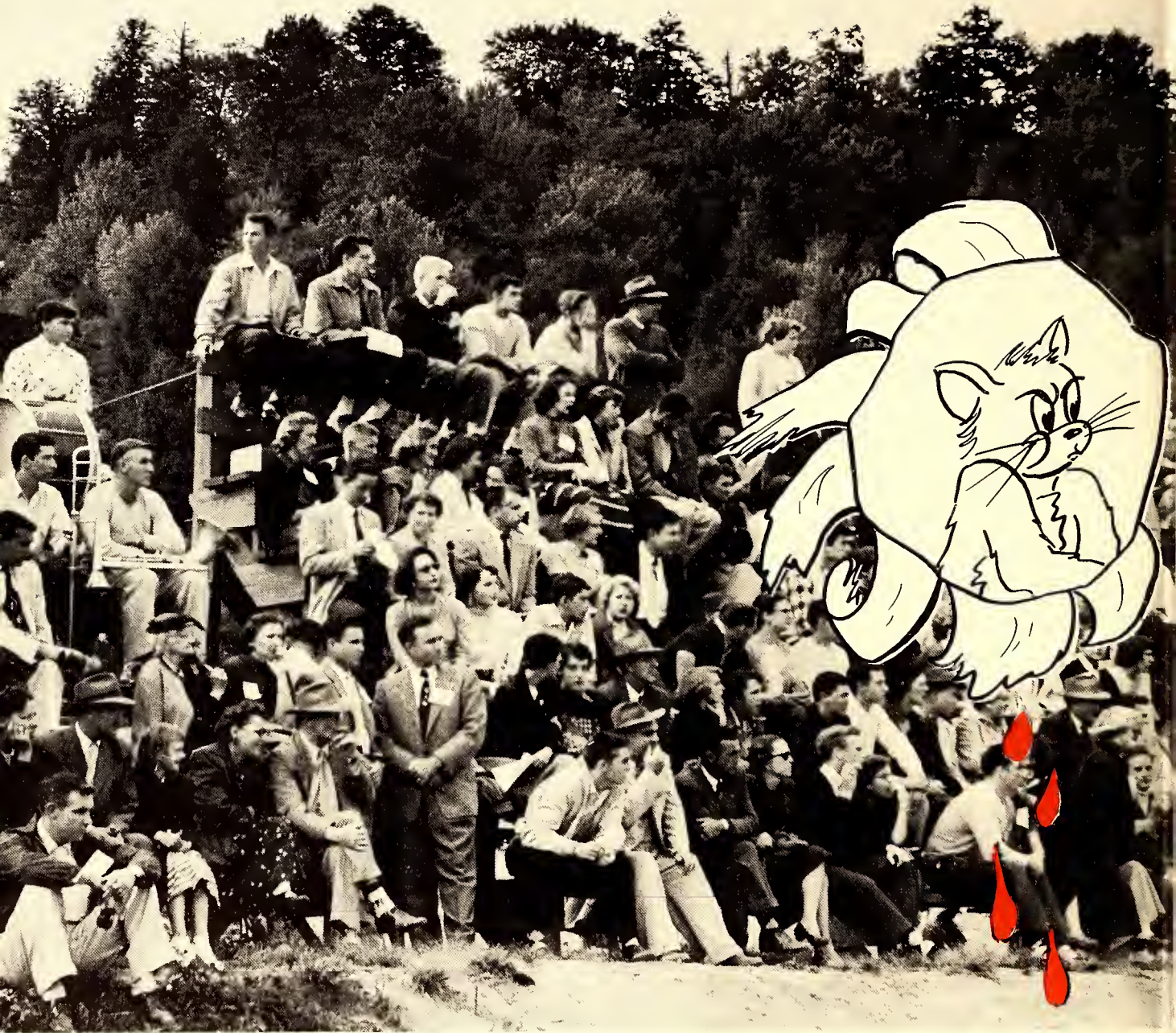


"Shakespeare!! Who's he?"

Over the Trail



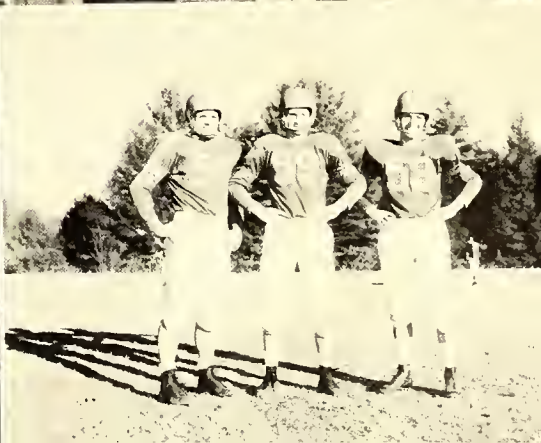
"How's about an 'A', Teacher?"



Bringing Back Memories of



A Years Events as . . .





 The Class

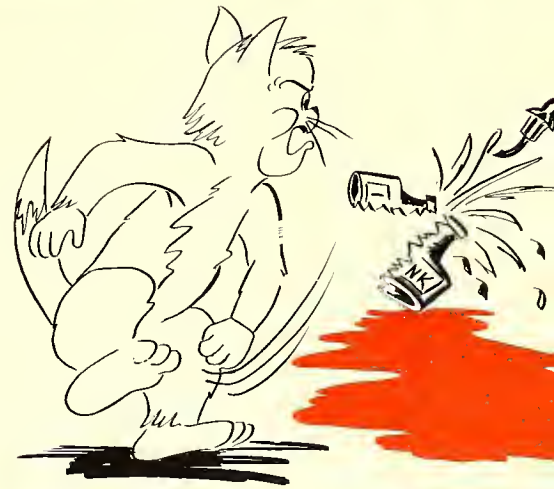


Presents 

THE 



of 1955
of Lees McRae College



ONTAROGA

Table of

ADMINISTRATION

CLASSES

ORGANIZATIONS



Contents

FEATURES

ATHLETICS

ADVERTISEMENTS



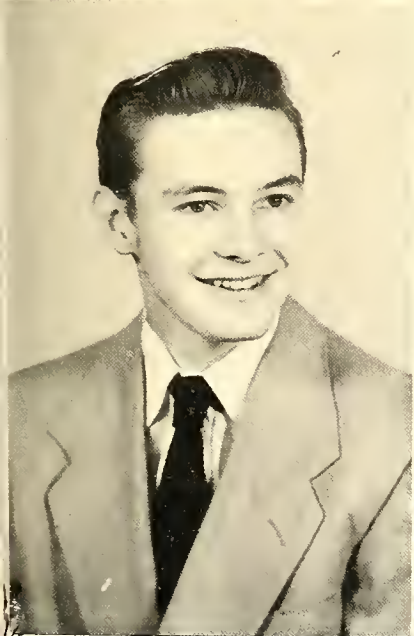


Dedication

TO MR. ARTHUR C. CHAFFEE
OF MORGANTON

Trustee, churchman, industrialist,
Philanthropist and civic leader

In love and appreciation of him, of his services and benefactions to Lees-McRae College and the Edgar Tufts Memorial Association, we respectfully dedicate this issue of the Ontaroga.



The young man
... of Lees-
... into these hills - as
... which served as a constant source



DR. FLETCHER NELSON
President

Our President



FLETCHER NELSON, D.D.

The untiring, faithful interest of Dr. Nelson reaches throughout the Edgar Tufts Memorial Association. He is known and loved at Grandfather Home, Grace Hospital—and the class of '55 is especially grateful for the fact that he is the kind of college president who can "call us by name."



Administration



Deans



MR. E. L. LAFFERTY

DEAN OF THE COLLEGE



DEAN OF MEN

MR. LEWIS HALL



**DEAN
OF WOMEN**

MISS MARY LEE GRAY

FACULTY



REVEREND
DAVID ANDERSON
Bible
A.B., B.D.



MISS TRULA BENNETT
Secretary to Registrar



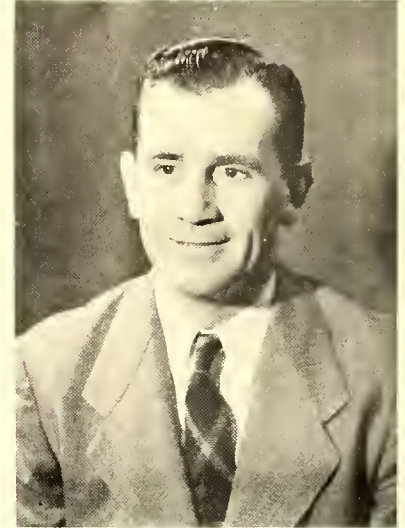
MR. J. L. COULTER
Science
B.S., M.A.



MRS. J. L. COULTER
Business Office Assistant



MR. CALVIN CRINER
Social Science
A.A., B.S., A.M.



MR. FRED I. DICKERSON
Physical Education
A.A. A.B., M.S.



MISS MARY ELIASON
English, Psychology
A.A., A.B., M.A., Ph.D.

Not Pictured:

MISS BESSIE MAY COWAN
Librarian

MR. CLYDE C. DAY
Biological Science
B.S.

FACULTY



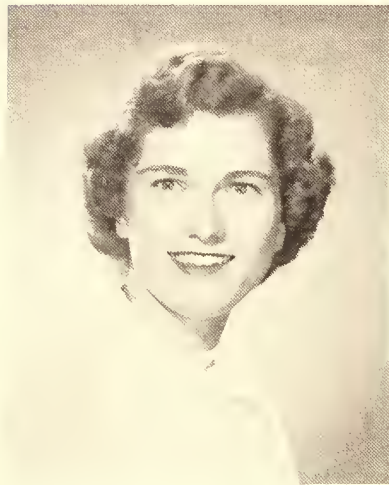
MISS MARY LEE GRAY
French, Spanish
A.A., A.B.



MISS BEATRICE HALL
Business Manager
B.S.



MR. LEWIS HALL
Mathematics
B.S.



MISS PEGGY HOPE
Terminology, Anatomy
A.A., R.R.L.



MRS. G. E. KIDD
Housemother



MR. E. L. LAFFERTY
Chemistry
B.S., M.S.



MR. PAUL H. McEWEN
Registrar, Social Science
A.A., B.S., M.A.



MR. PAUL H. NEAL
English, Dramatics, Speech
A.B., M.A.



MISS LENORE PIERCE
Typewriting, Shorthand
A.B., M.S.

FACULTY



MISS EMMA RANDALL
Voice, Piano



MISS GOLDIE SLUDER
*Secretarial Science
B.A.*



MR. IVAN STAFFORD
*Alumni and Public
Relations, Social Sciences,
Hotel Studies
A.A., B.S., M.Ed.*



MRS. JESSIE R. STEPHENS
*Housemother
B.S.*



MR. EARL TESTER
Superintendent of Operations



MRS. EARL TESTER
Dietitian



MISS MARGARET TUFTS
*English
A.B., M.A.*



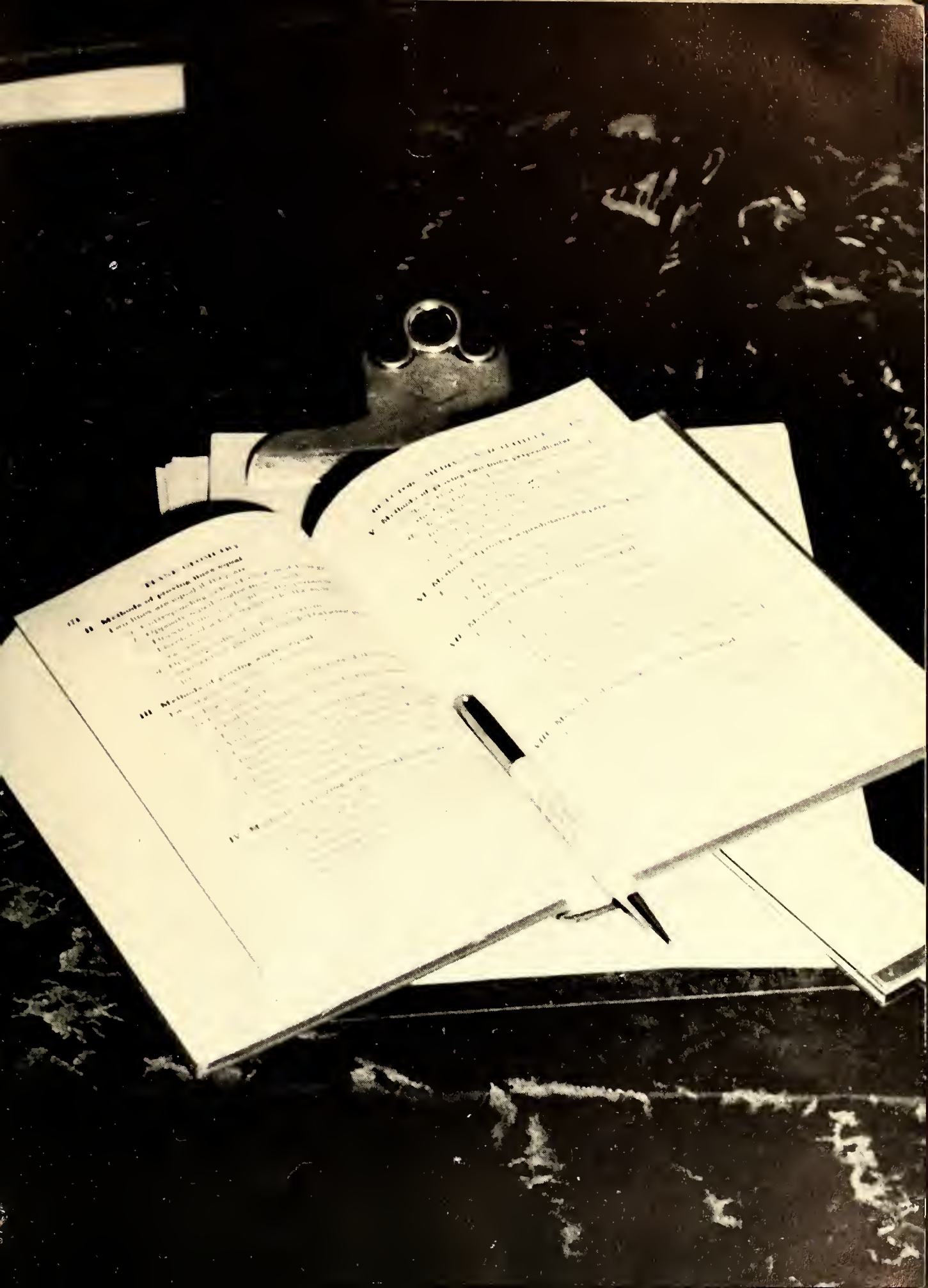
MRS. CHESTER
VON CANON
Bookkeeper



MR. CHARLES F.
WHITSELL
*Mechanical Drawing
B.S., B.E.*



Classes



178 **METHODS OF PROVING THESE CASES**
These cases are supposed to be proved
by a circumstantial case. It is
supposed that the evidence is
of the following nature:—
1. The fact that the accused
was seen at the scene of the
crime.

2. The fact that the accused
was seen with the victim
at the time of the crime.

3. The fact that the accused
was seen with the victim
at the time of the crime.

179 **METHODS OF PROVING THESE CASES**
These cases are supposed to be proved
by a circumstantial case. It is
supposed that the evidence is
of the following nature:—
1. The fact that the accused
was seen at the scene of the
crime.

2. The fact that the accused
was seen with the victim
at the time of the crime.

3. The fact that the accused
was seen with the victim
at the time of the crime.

4. The fact that the accused
was seen with the victim
at the time of the crime.



SENIOR CLASS OFFICERS

Left to right: Richard "Foots" Rawlston, *Treasurer*; Phoebe Jane Williams, *Vice-President*; Pat Smith, *Secretary*; Dale Sigmon, *President*.





**CHARLES EDWARD
ABEE**
Valdese, N. C.

EDWARD ARTHUR
Jacksonville, N. C.

JOAN ASHCRAFT
Charlotte, N. C.

Demontheneans 1 and 2;
Christian Council 1; Mono-
gram 1 and 2, Pres. 2; Bas-
ketball 1 and 2, Captain 2.

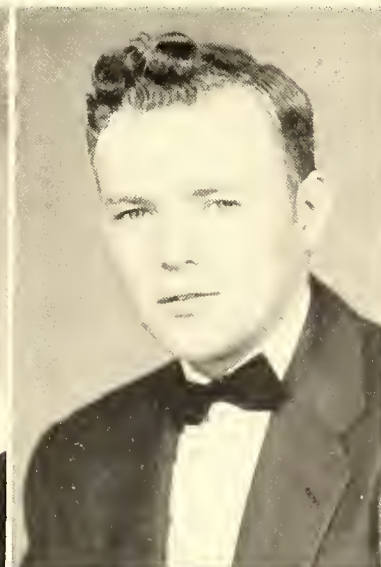
Senior Class of 1955

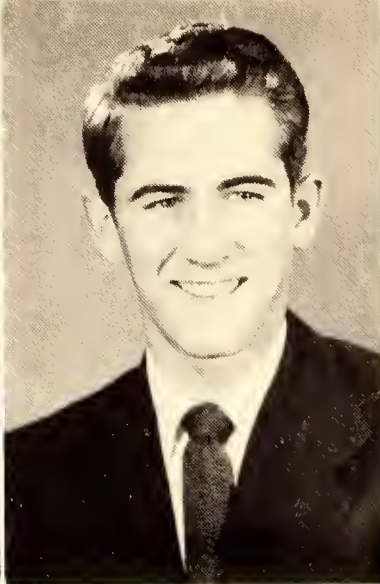
**SHIRLEY JEAN
ASHLEY**
Whiteville, N. C.
Sullivanians 2; Y.D.C. 2.

SHIRLEY BARBEE
Greensboro, N. C.
Sullivanians 1 and 2; May
Court 1 and 2, Maid of
Honor 1; Choir 2; Queen
of Hearts 2.

RALPH GERALD BARE
Laurel Springs, N. C.
Football 1; Camera Club
1 and 2; Green and Gold
Masquers 1 and 2; Young
Democratic Club 1 and 2.

RANDALL BEAN
High Point, N. C.
Camera Club 1 and 2;
Monogram Club 2; Young
Democratic Club 2; Foot-
ball 1 and 2.





EDWARD LOUIS BLEYNAT
Valdese, N. C.

Christian Council 1 and 2; Demosthneans 1 and 2; Basketball 1 and 2; Phi Theta Kappa 1, Vice-Pres. 2; Social Board 2; M.S.G.O. 2, Vice-Pres. 2; Nominee for Morehead Scholarship 2; Senior Superlative.

HARRY B. BLEVINS
Elizabeth City, N. C.

Demostheneans 1, and 2, Pres. 2; Basketball 1 and 2; Senior Superlative.

LOUISE BLEVINS
Shady Valley, Tenn.

Chorus 1 and 2, Sec. and Treas. 2; Sullivanians 1 and 2; Phi Theta Kappa 1 and 2, Pres. 2; Young Democratic Club 1; Christian Council 1 and 2; Bobcat Tales 1; W.S.G.O. 2, Sec. and Treas. 2; Homecoming Court 2.

Senior Class

DEANE BRASWELL
Monroe, N. C.

Chorus 1 and 2; Ontaroga Staff, Editor 2; Sullivanians 1 and 2; Queen of Hearts Court 1 and 2, Queen 1; May Queen 2; Basketball 1 and 2; Republican Club 1; Senior Superlative.

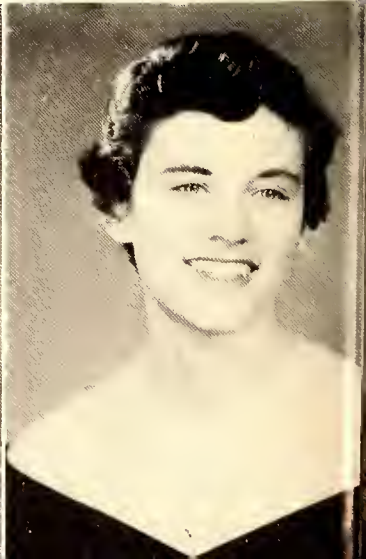
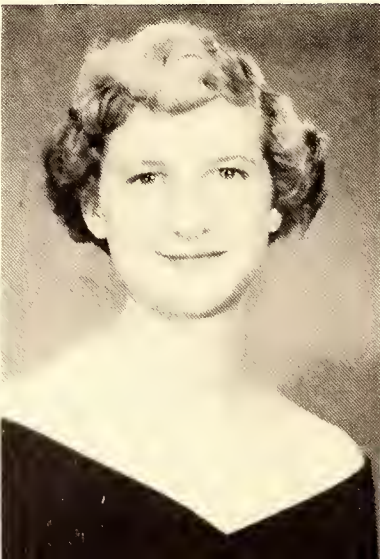
AQUILLA BROWN
Bat Cave, N. C.

Christian Council 1 and 2; Delta Psi Omega 1 and 2, Vice-Pres. 2; Sullivanians 1 and 2; Secretary Freshman Class; Social Board 2, Vice-Chairman 2; May Court 1 and 2; Homecoming Court 2; Queen of Hearts Court 1.

BARBARA RUSH
Charlotte, N. C.

Delta Psi Omega 1 and 2; Christian Council 1 and 2; Republican Club 1; Social Board 1 and 2; Bobcat Tales 1; Ontaroga Staff 2; Cheerleader 1, Chief 2; Homecoming Court 2; Queen of Hearts Court 2; Maid of Honor 2.

GLORIA BUCHANAN
Plumtree, N. C.
Phi Theta Kappa 1 and 2.





JACOB BYERLY
Lexington, N. C.

Y.D.C. 1 and 2; Camera Club 1; Veteran's Club 2.

BETSY CAMPBELL
Charlotte, N. C.

Chorus, Pianist 1 and 2; Co-ed Council 1; Student Faculty Senate 1; Sullivanians 1 and 2, Pres 2; Phi Theta Kappa 1 and 2; Bobcat Tales 2; May Court 1 and 2; Queen of Hearts Court 1 and 2; Senior Superlative.

RACHEL JUNE CARLILSE

Marion, N. C.

Transferred from Emanuel College; Green and Gold Masquers 2; Phi Theta Kappa 2.

JUDY CARROLL
High Point, N. C.

Ontaroga Staff 2; Choir 2; Bobcat Tales 2; Republican Club 1 and 2; Senior Superlative.

of 1955

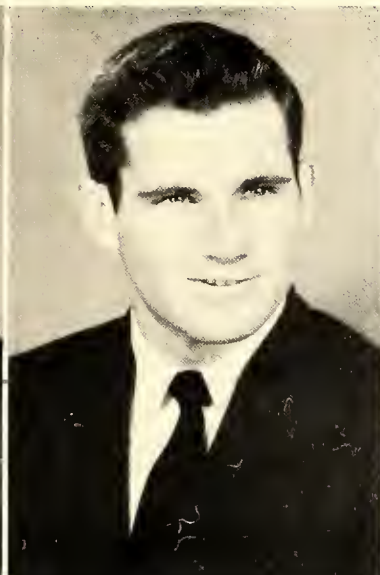
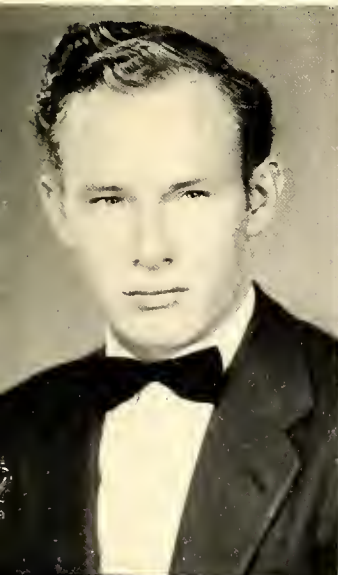
WILLIAM COLE
Durham, N. C.

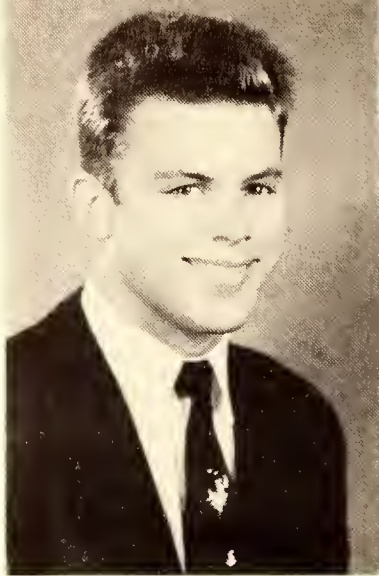
Football 1 and 2; Demosthenians 2; Monogram Club 1 and 2; Christian Council 1 and 2; M.S.G.O. 2.

JERRY CARTER
Tuckerdale, N. C.

WILMA DEAN COX
Ramseur, N. C.

Basketball 1 and 2 Folk Dance Club 2; Republican Club 2; Ontaroga Staff 2; Camera Club 2; Green and Gold Masquers 2.

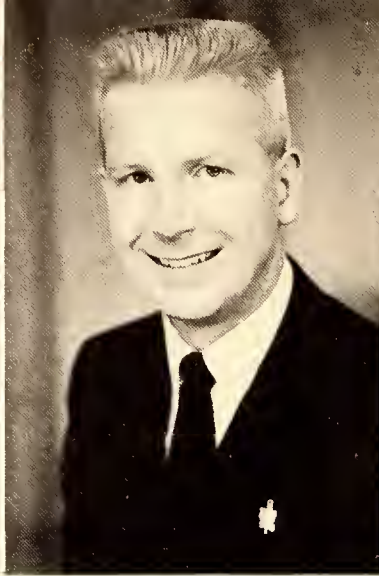




TOM CULLER

Ellerbe, N. C.

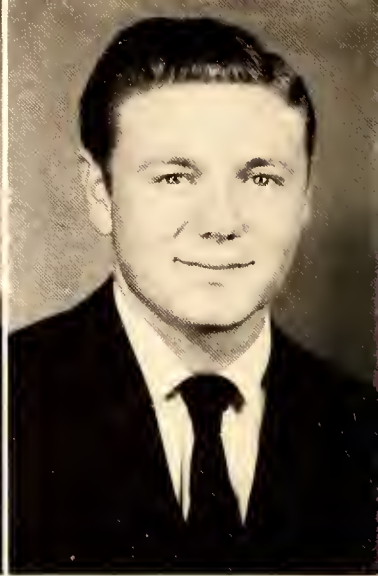
Christian Council 1 and 2; Monogram Club 1 and 2, Vice-Pres. 2; Demosthenians 1, and 2, Vice-Pres. 2; Football 1 and 2; Track 1 and 2; Senior Superlative.



WILLIAM P. CULLER

High Point, N. C.

Basketball 1; Demosthenians 1 and 2; Christian Council 1 and 2; President, Student Body 2; M.S.G.O. 1; Veteran's Club 2; Senior Superlative.



DENVER CUMBOW

Hansonville, Va.

Chorus 1; Republican Club 1 and 2; Student Faculty Senate 2; Social Board 1 and 2, Chairman 2; Christian Council 1 and 2, Treas. 2; Demosthenians 2; Delta Psi Omega 1 and 2.

Senior Class

**BILLY COX
DALRYMPLE**

Sanford, N. C.

Christian Council 1 and 2; Football 1; Ontaroga Staff 2; Folk Dance Club 1 and 2.

CHARLES DAVENPORT

Ingalls, N. C.

Demonsthenans 1 and 2; Candidate for Morehead Scholarship.

VIRGIE LEE DAWKINS

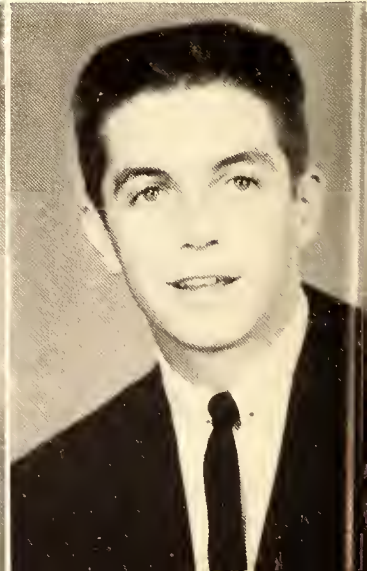
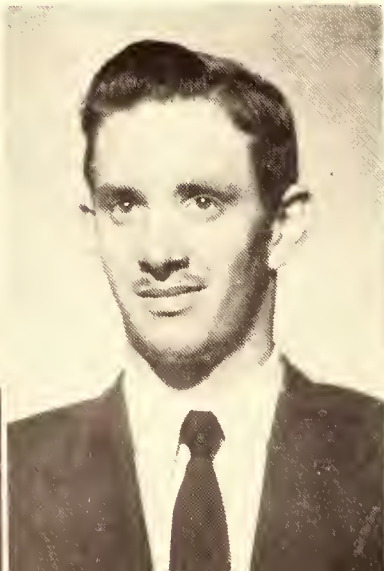
Lexington, N. C.

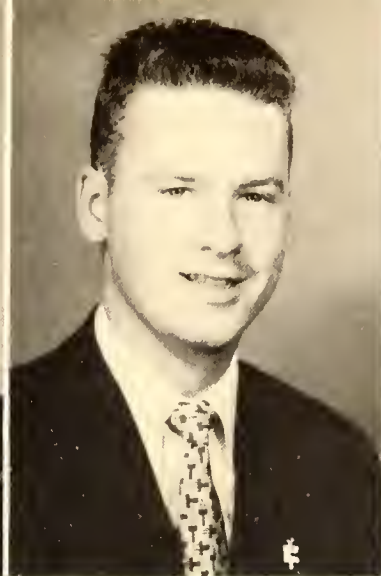
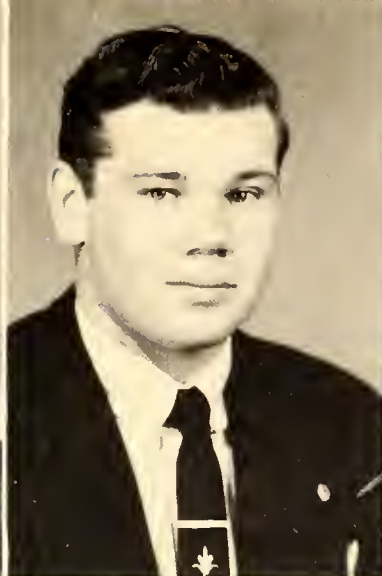
Bobcat Tales 1 and 2; Young Republicans Club 1 and 2, Sec. 2; Lettergirl 2.

GEORGE DOBYNS

Rural Retreat, Va.

Senior Superlative.





**JOYCE ELAINE
DUNLAP**

Belmont, N. C.

Camera Club 2, Sec. 2;
Young Democratic Club 2;
Green and Gold Masquers
; Ontaroga Staff 2.

CHARLES DURHAM

Greensboro, N. C.

J. RANDOLPH EATON

Spencer, N. C.

Young Democratic Club,
Vice-Pres. 1; Demosthen-
eans 1 and 2, Sec. and
Treas. 2; Phi Theta Kappa
1 and 2; Christian Council
1 and 2; Young Republi-
can Club 2; Bobcat Tales 1
and 2; Camera Club 1 and
2.

SUE EDWARDS

Wilmington, N. C.

Class Treas. 1; Cheerleader
1 and 2; Bobcat Tales 1;
Ontaroga Staff 2; Home-
coming Queen 1; Queen of
Hearts Court 1 and 2; May
Court 1 and 2; Sullivan-
ians 2; Y.D.C. 2; Social
Board 2; Christian Council
1 and 2, Vice-Pres. 2; Sen-
ior Superlative.

of 1955

**FREDERICK LARRY
ELY**

Pennington Gap, Va.

Phi Theta Kappa 1 and 2,
Treas. 2; Senior Superla-
tive.

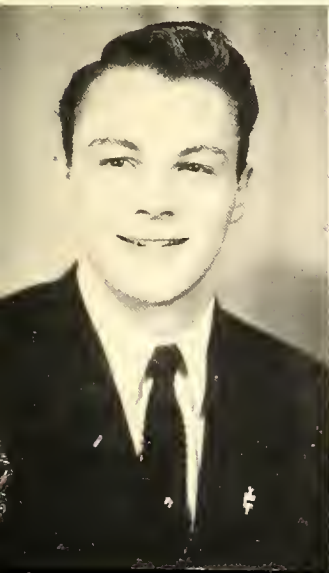
AILENE ENGLISH

Bakersville, N. C.

PAUL ENGLISH

Bakersville, N. C.

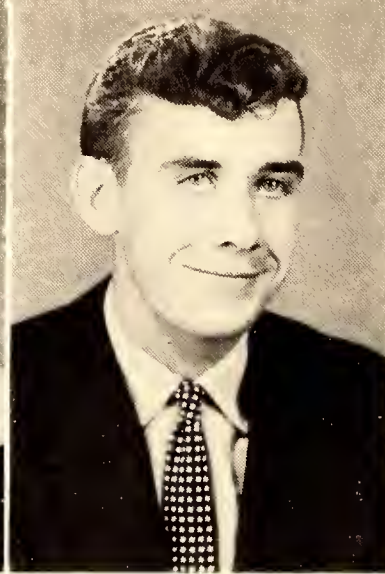
Chorus 1 and 2.





JOANNE FRANKLIN
Gastonia, N. C.

Phi Theta Kappa 1 and 2;
Christian Council 1 and 2;
Bobcat Tales 2; Ontaroga
Staff 2; Senior Superlative.



**CHARLES ANDERSON
GOUGE**

Spruce Pines, N. C.
Young Democratic Club 1
and 2, Vice-Pres. 2; Cross
Country 2.



MAX L. GOUGE
Spruce Pines, N. C.

Senior Class

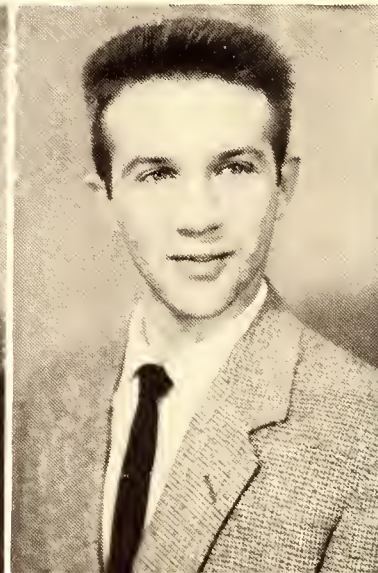
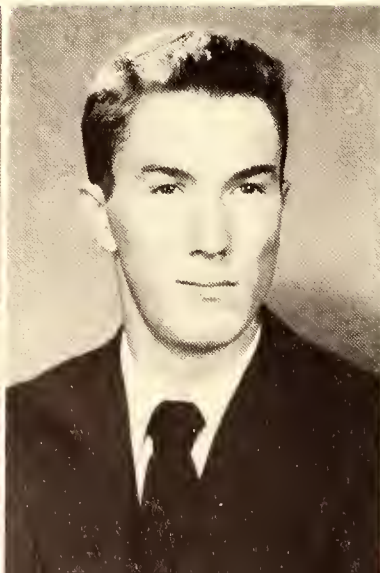
JULIA GREGSON
Sanford, N. C.

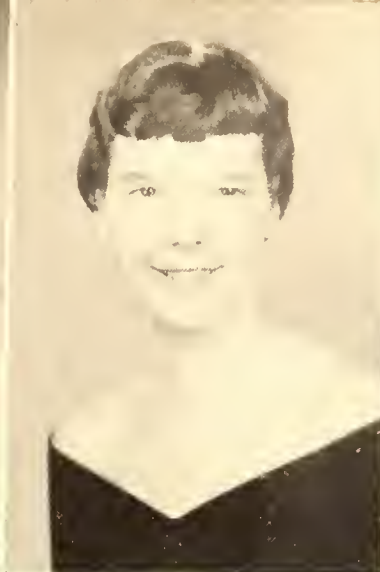
Chorus 1; Sextette 1; Bob-
cat Tales 1; Green and
Gold Masquers 1 and 2.

TOM HALL
Plumtree, N. C.

OLLAN HAMRICK
Morganton, N. C.
Chorus 1.

RACHEL HARDIN
Kings Mountain, N. C.
W.A.A. 1 and 2, Historian
2; Young Democratic Club
1 and 2; Basketball 1 and
2; Queen of Hearts Court
1 and 2.





JOAN HINSON
Reidsville, N. C.
Bobcat Tales 2; Young Republican Club 2; Sullivan-ns 2.

CARL EDWARD HIPPS
Valdese, N. C.
Football 1 and 2, All-State 1 and 2; Monogram Club 1 and 2; Green and Gold Masquers 2; Folk Dance Club, 1 and 2.

JOANNE HODGIN
High Point, N. C.
Young Republican Club 2; Camera Club 2; Folk Dance Club 2; Ontaroga Staff 2; Green and Gold Masquers 2.

DON HOLT
Kokomo, Indiana
Basketball 1 and 2; Cross Country 1 and 2; Monogram Club 1 and 2; Young Republican 2; Social Board 2, Treas. 2.

of 1955

PATRICIA HOOD
Kenner, La.
Ontaroga Staff 2; Bobcat Tales 1 and 2; Basketball Manager 2; Christian Council 2; Young Democratic Club 2.

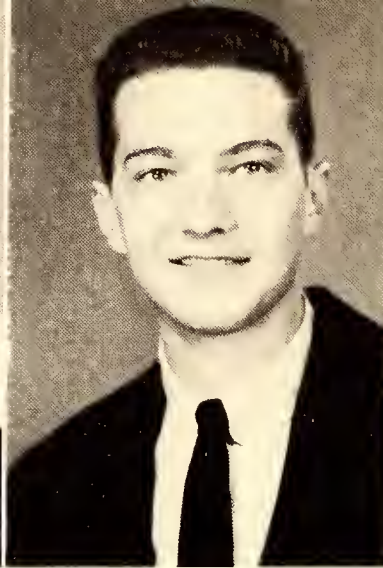
MARGIE ANN HUDSON
Clinton, S. C.

LEWIS HUFFMAN, JR.
Valdese, N. C.
Football Manager 1 and 2; Monogram Club 1 and 2; Delta Psi Omega 1 and 2; Social Board 2; Young Republican Club 2; Senior Superlative.





MARY HELEN HUGHES
Newland, N. C.
Folk Dance Club 1.



LARRY CLAYTON
HUNT
Asheboro, N. C.
Basketball 1 and 2.



NELDA JOAN
ICENHOUR
Lenoir, N. C.
Chorus 1; Phi Theta Kappa 2; Green and Gold Masquers 1; Sullivanians 1 and 2, Sec. 2; Homecoming Court 2, Maid of Honor.

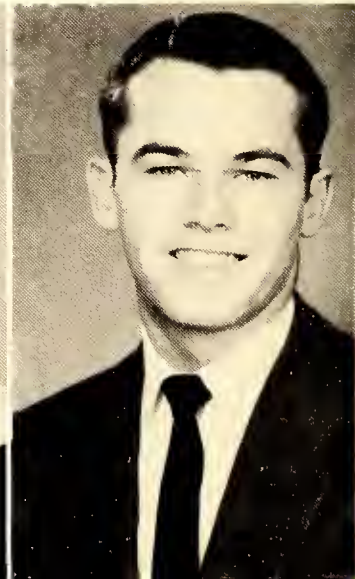
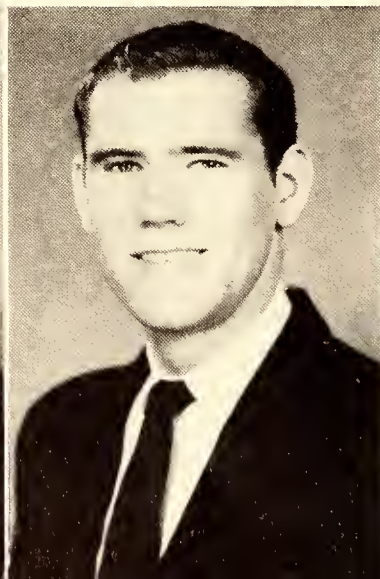
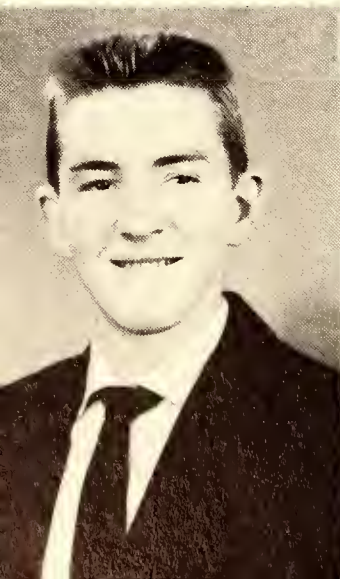
Senior Class

KEIFER IRVIN
Crockett, Va.
Cheerleader 2.

RAY JACKSON
Pilot Mountain, N. C.
Football 1 and 2; Monogram 2.

MARY EVELYN
JENNINGS
Banner Elk, N. C.
Transferred from Appalachian State Teachers College.

RAYMOND JESSUP
Pilot Mountain, N. C.
Football 1 and 2; Co-Capt. 2; Monogram 1 and 2; Demostheneans 2; M.S.G.O. 2; Senior Superlative.





CARLEEN WANDA JONES

Leicester, N. C.
Basketball 1 and 2; W.A.A.
and 2; Social Board 2;
Incoming Court 2.



PEGGY JONES
Winston-Salem, N. C.

Christian Council 1 and 2;
Sullivanians 2; Bobcat
Tales 2.



PEGGY KEETER
Grover, N. C.

Basketball 1 and 2, Co-
Capt. 2; Young Republic-
an Club 2; W.A.A. 1 and
2, Vice-Pres. 2; Ontaroga
Staff 2; Marshal 1; Senior
Superlative.



BOB KELSEY
Aiken, S. C.

Camera Club 1 and 2,
Treas 2.

of 1955

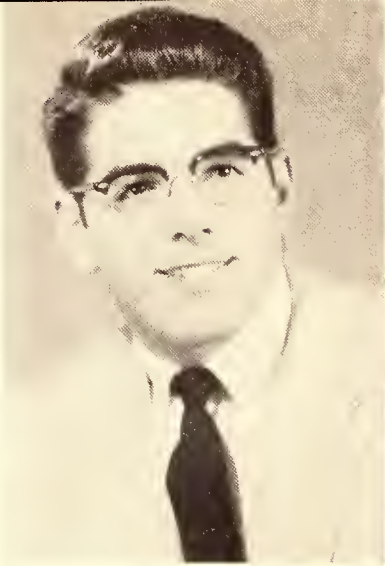
SHIRLEY PHYLLIS KINDER

Rural Retreat, Va.
Young Republican Club 2;
Basketball 2; Band 2, Pres.

PEGGY LANIER
Asheboro, N. C.
Phi Theta Kappa 1 and 2,
Sec. 2; Young Republican
Club 2; Social Board 2.

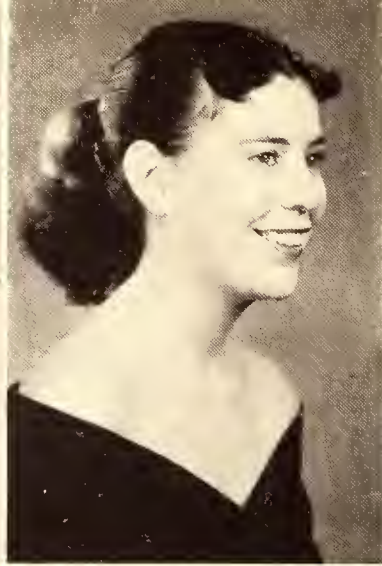
JOYCE LIVESAY
Pennington Gap, Va.
Chorus 1 and 2.





**DAVID CARR
LOCKWOOD, JR.**

Charlotte, N. C.
Football 1 and 2, All-State
2; Track 1 and 2; Mono-
gram Club 1 and 2; Sen-
ior Superlative.



BEULAH RUTH LOURY
High Point, N. C.

Young Republican Club 2;
Bobcat Tales 2; Homecom-
ing Court 2, Queen; Letter-
girl 2.



SIDNEY LOVETTE
Raeford, N. C.

Monogram Club 1 and 2;
Football 1 and 2; Track 1
and 2; Demostheneans 1
and 2; Vice-Pres. of Stu-
dent Body 2.

Senior Class

**KATHLEEN
MacCLELLAN**

Atlanta, Georgia

Sullivanians 1 and 2, Treas.
2; Christian Council 1 and
2, Sec. 2; Queen of Hearts
Court 1; Homecoming
Court 2; Ontaroga Staff 2;
Bobcat Tales 2; Young
Democratic Club 1 and 2;
Lettergirl; Senior Superla-
tive.

BOB MARTIN

High Point, N. C.

Chorus 1 and 2; Young
Democratic Club 1 and 2;
Track 1; Folk Dance Club
2.

CLARA MARTIN

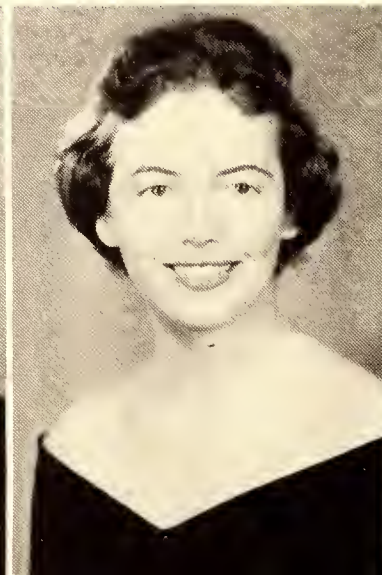
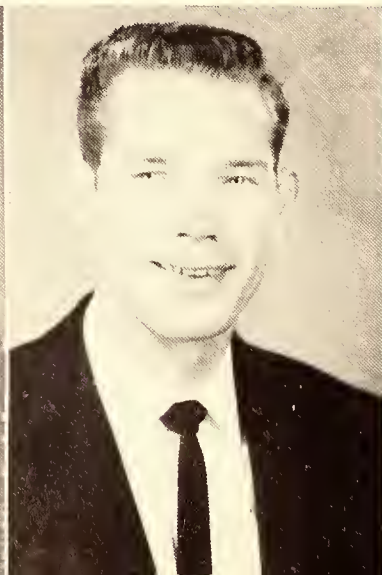
Lexington, N. C.

Cheerleader 1 and 2; On-
taroga Staff 2; Chorus 2;
Young Republican Club,
1 and 2, Treas. 2; Home-
coming Court 1; Queen of
Hearts Court 2.

GEORGE McCLELLAN

Concord, N. C.

Young Republican Club 2;
Camera Club 1 and 2; Vice-
Pres. 2.





JAMES L. MCGEE
Winston-Salem, N. C.
Young Republican Club 1
and 2.



MAC MINTER
Sanford, N. C.
Demonstheneans 1 and 2;
Bobcat Tales 2, Business
Manager; Football 1 and 2;
Monogram 1 and 2.



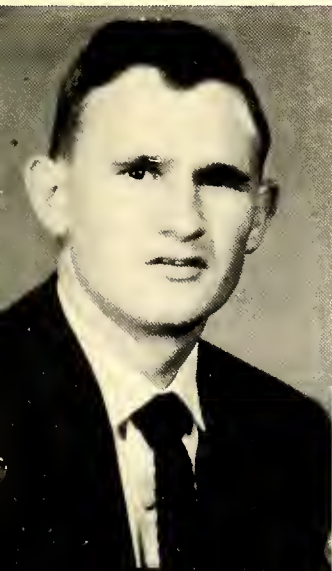
**JUNE ELIZABETH
MINTON**
Abingdon, Va.
Bobcat Tales 1 and 2;
Young Republican Club 1
and 2.



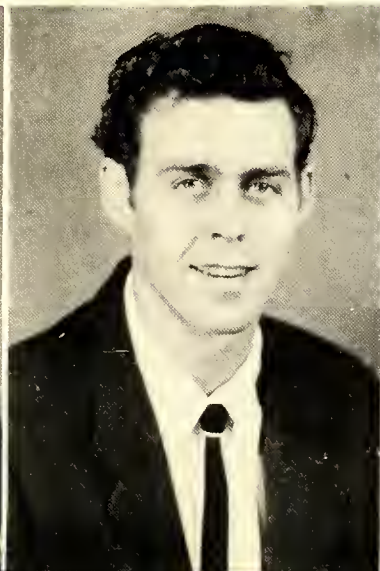
JEAN MOORE
Stanley, N. C.

of 1955

DAVID EARL MORGAN
Roan Mountain, Tenn.

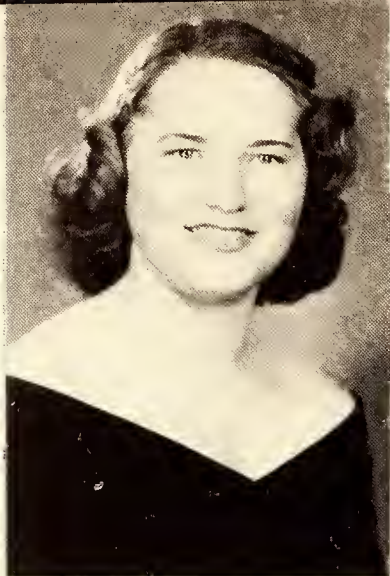


BUD MOSELY
Ridgeway, Va.
Transferred from Elon Col-
lege; Basketball 2; Folk
Dance Club 2.

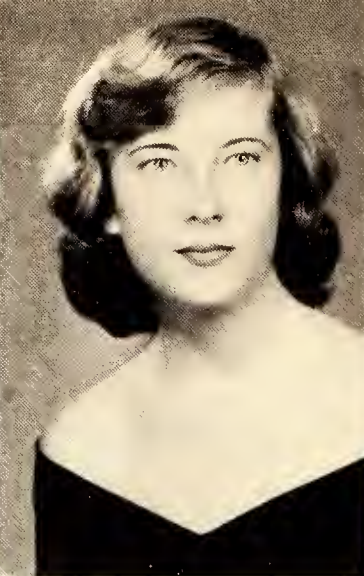


FAYE MUSICK
Cleveland, Va.
Delta Psi Omega 1 and 2;
Christian Council 1 and 2,
Pres. 2; Young Democra-
tic Club 1 and 2; Basket-
ball Manager 2; Sullivan-
ians 1 and 2.

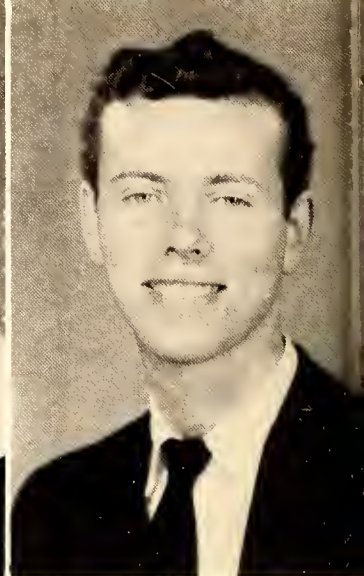




BROWNELL OLLIS
Cranberry, N. C.



COZIE MAE PAINTER
Banner Elk, N. C.
Delta Psi Omega 1 and 2;
Phi Theta Kappa 2.



ROBERT PATCHETT
Kokomo, Indiana
Basketball 1 and 2, All-State and All-Conference 1 and 2; Cross Country 2; Track 1; Young Democratic Club 1 and 2; Monogram Club 1 and 2, Sec. 2.

Senior Class

**SYLVIA JAN
PILKENTON**
Lenoir, N. C.

Phi Theta Kappa 1 and 2,
Reporter 2; Christian
Council 1 and 2; Sullivan-
ians 2; Co-Ed Council 2;
W.S.G.O. 2; Vice-Pres. 2.

FRANCES PIERCY
Banner Elk, N. C.
Phi Theta Kappa 1 and 2.

ROBERT PINKSTON
Camp Lejeune, N. C.
Veteran's Club 2.

JAKE POPE
Max Meadows, Va.
Football 1 and 2; Mono-
gram 2; Track 1 and 2;
Green and Gold Masquers.





WALTER PORTER
Castlewood, Va.

MAXINE POTTS
Banner Elk, N. C.

NANCY RAMSEUR
Morganton, N. C.

**RICHARD "FOOTS"
RAULSTON**
Alcoa, Tenn.

Delta Psi Omega 1 and 2;
Pres. 2; Phi Theta Kappa
1 and 2; Sullivanians 2;
Green and Gold Masquers.

Christian Council 1 and 2;
Ontaroga Staff 2; Phi
Theta Kappa 2; Green and
Gold Masquers 2; Marshal
1.

Green and Gold Masquers
1 and 2; Veteran's Club 2,
Vice-Commandant; Dem-
onstrations 2; Football 1;
Ontaroga Staff 2, Business
Manager; Treasurer Senior
Class 2; Delta Psi Omega
1 and 2.

of 1955

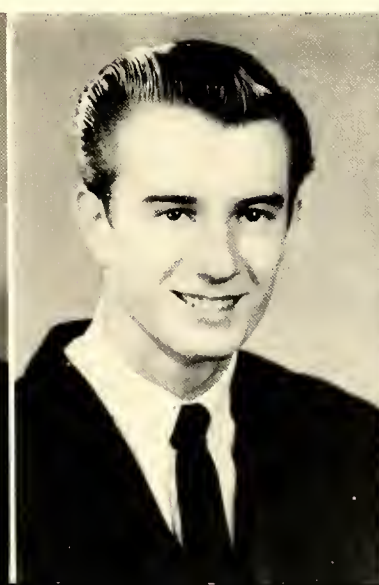
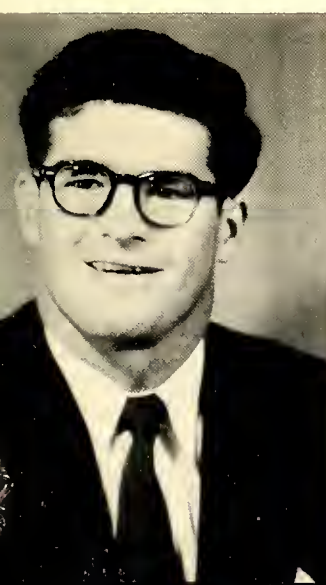
TOM REINS

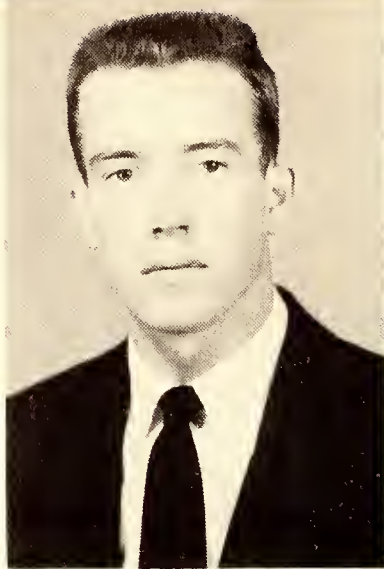
North Wilkesboro, N. C.
Young Democratic Club 1
and 2; Camera Club 1 and
2; Pres. 2; Folk Dance
Club 2.

BILL REYNOLDS

Hays, N. C.
Young Republican Club 1
and 2.

CHARLES M. RAY
Raeford, N. C.
Veteran's Club 2.

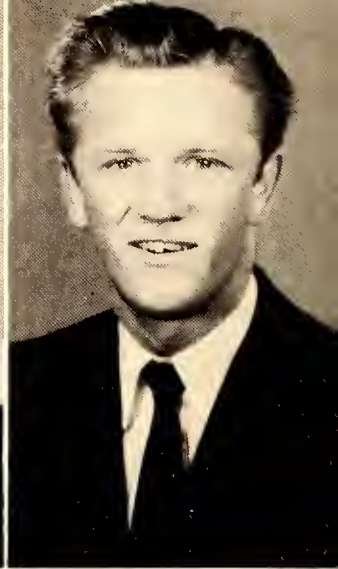




**IRONE LEE
RICHARDSON**
Camera Club 2; Young
Democratic Club 2; Green
and Gold Masquers 2.



MARY ANN RUDDLE
Harrisonburg, Va.
Camera Club 2; Band 2;
Young Democratic Club 2.



GERALD SAPPENFIELD
Red Springs, N. C.

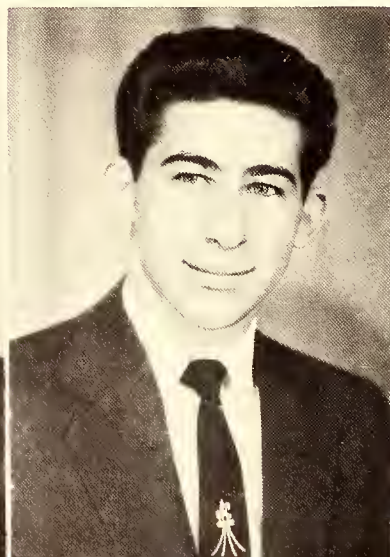
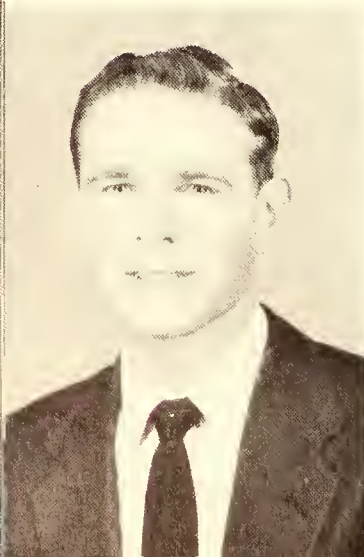
Senior Class

WARREN SEXTON
Grassy Creek, N. C.
Football 1; Veteran's Club
2.

DON SHAMEL
Winston-Salem, N. C.

JOE SHEPARD
Reidsville, N. C.
Veteran's Club 2.

ALMA JEAN SHOUP
Minneapolis, N. C.
Christian Council 2; Young
Republican Club 2; Cam-
era Club 2; Ontaroga Sta-
2.

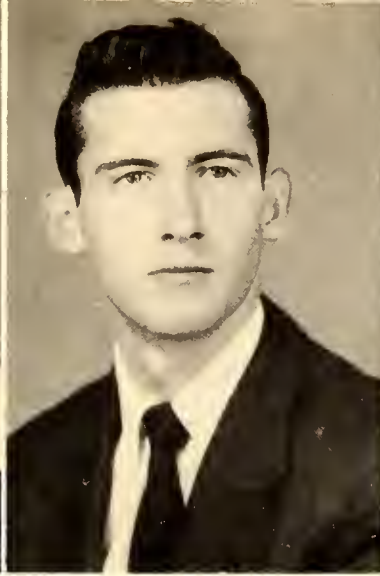




BARBARA SIDES

Greensboro, N. C.

Phi Theta Kappa 1 and 2; Sullivanian 1 and 2, Vice-Pres. 2; Sullivanian Scholarship; Christian Council 2; Folk Dance Club 2.



DALE SIGMON

Hickory, N. C.

Demonstheneans 1 and 2; Christian Council 1 and 2; President, Senior Class 2; M.S.G.O. 2, Pres.; Young Republican Club 1 and 2; Vice-Pres. 2; Green and Gold Masquers 2.



ANITA ELOISE SMITH

Clinton, N. C.

W.A.A. 1 and 2; Young Democratic Club 1 and 2; Basketball 1 and 2; Queen of Hearts Court 2.



CAROL SMITH

Winston-Salem, N. C.

Bobcat Tales 1 and 2; Phi Theta Kappa 2; Sullivanians 2; Christian Council 2.

of 1955

PATRICIA SMITH

Mount Airy, N. C.

Sullivanians 1 and 2; Phi Theta Kappa 1 and 2; Chorus 1 and 2; Secretary, Senior Class 2; Bobcat Tales 2; Sextette 2; Marshal 1; Folk Dance Club 2.

CARSON SMITH

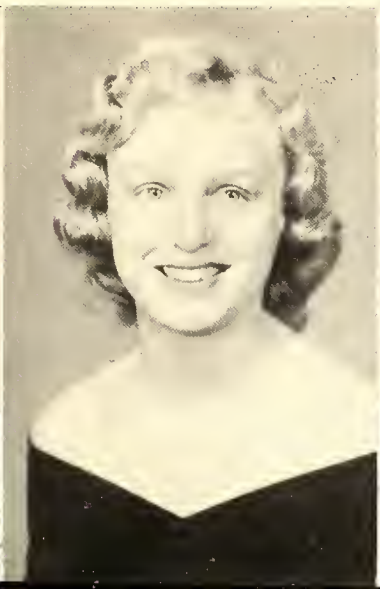
Laurel Hill, N. C.

Football 1; Track 1 and 2.

SYLVIA SPEIGHT

Mount Airy, N. C.

Christian Council 2.





DIANE STEELE
Charlotte, N. C.

Ontaroga Staff 2; Green and Gold Masquers 2; Chorus 1; Young Republican Club 2; Folk Dance 2.



NANCY JO SVOBODA
Charlotte, N. C.

Cheerleader 1 and 2; Green and Gold Masquers 1 and 2; Delta Psi Omega 1 and 2; Young Democratic Club 1; Camera Club 1.



CARL SWANSON
Boomer, N. C.

Monogram Club 1 and 2; Football 1 and 2; Track 1 and 2.

SHIRLEY VICKERS
Durham, N. C.

Chorus 1 and 2; Pres. 2; Sextette 2; Bobcat Tales 1 and 2, Editor 2; Delta Psi Omega 1 and 2, Sec. and Treasurer 2; Sullivanians 1 and 2; Christian Council 1 and 2; Green and Gold Masquers 1; Phi Theta Kappa 2; Homecoming Court 2; Citizenship Scholarship 1; Senior Superlative.

GENE WALKER
Lawndale, N. C.

Green and Gold Masquers 2.

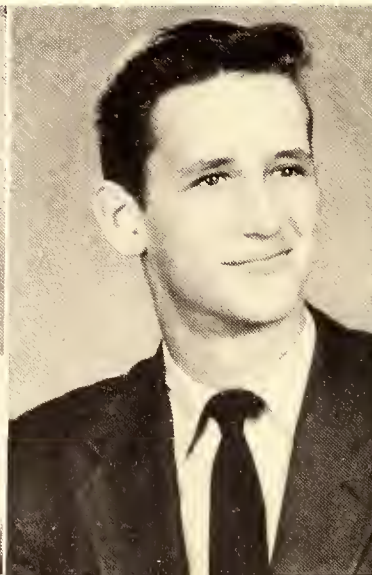
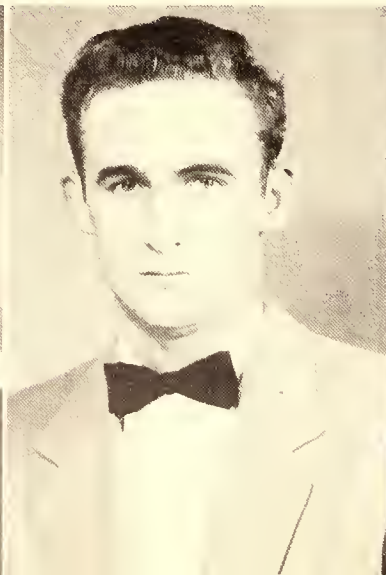
DICK WARE
Reidsville, N. C.

Christian Council 1 and 2; Monogram Club 1 and 2; Football 1 and 2; Senior Superlative.

JIM WARREN
Lenoir, N. C.

Green and Gold Masquers 1 and 2; Delta Psi Omega 1 and 2; Cheerleader; Young Republican Club and 2, Pres. 2; Folk Dance Club 2.

Senior Class





VIRGINIA WATSON

Nebo, N. C.

W.A.A. 1 and 2, Pres. 2; Basketball 1 and 2; Sullivanians 2.

FRANCES MARIE WATTS

Taylorville, N. C.

Co-Ed Council 2, Pres.; Student Faculty Senate 2, Sec. 2; Sullivanians 2; Bobcat Tales 1.

JOE JACKSON WEBB

Charlotte, N. C.

Ontaroga Staff, Photographer 2.

JOHN WELBORN

Spruce Pine, N. C.

Young Republican Club 2; Camera Club 2; Senior Superlative.

of 1955

DEAN B. WESTMORELAND

Kings Mountain, N. C.

Young Democratic Club 1 and 2, Pres. 2; Camera Club 1.

EVANGELINE WHITED

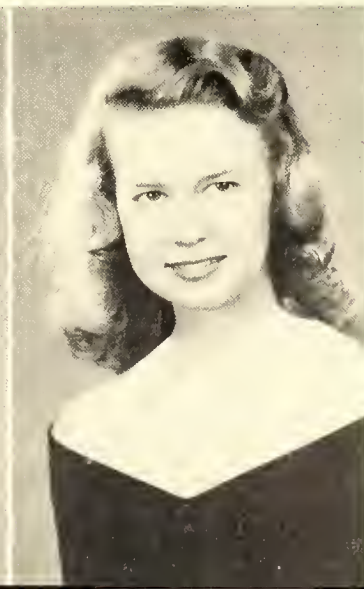
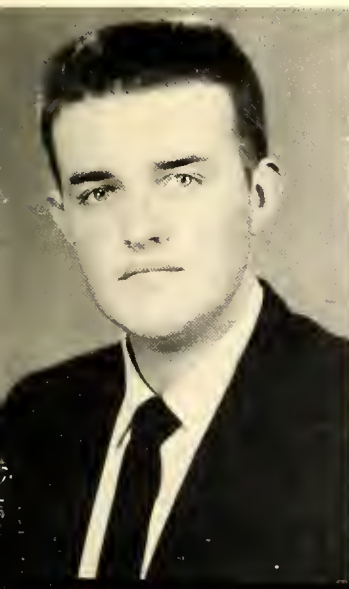
Swords Creek, Va.

Sullivanians 1 and 2; Young Democratic Club 1 and 2, Sec. and Treas. 2; W.A.A. 1 and 2, Sec. and Treas. 2; Phi Theta Kappa 2; Marshal 1; Ontaroga Staff 2; Basketball 1 and 2, Co-Capt. 2.

KERIN WHITLOCK

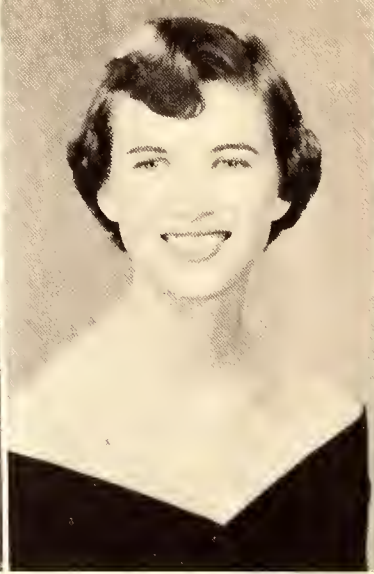
Winston-Salem, N. C.

Sullivanians 2.

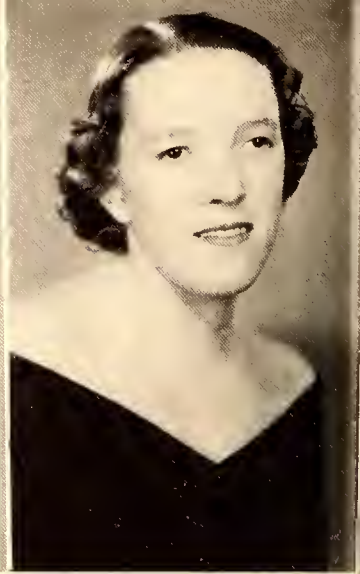




**ELIZABETH ANN
WILHELM**
Statesville, N. C.



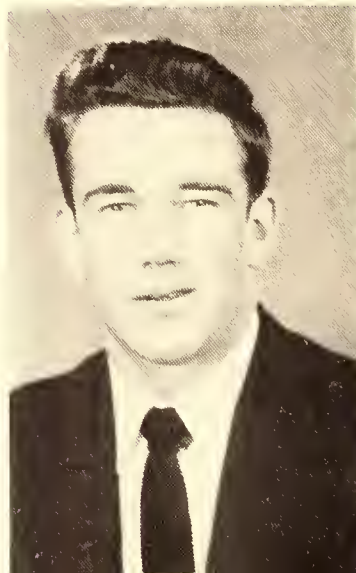
**PHOEBE JANE
WILLIAMS**
Franklinville, N. C.
Chorus 1 and 2; Phi Theta
Kappa 1 and 2; Sullivan-
ians 2; Senior Class Vice-
Pres.; Folk Dance Club 1
and 2.



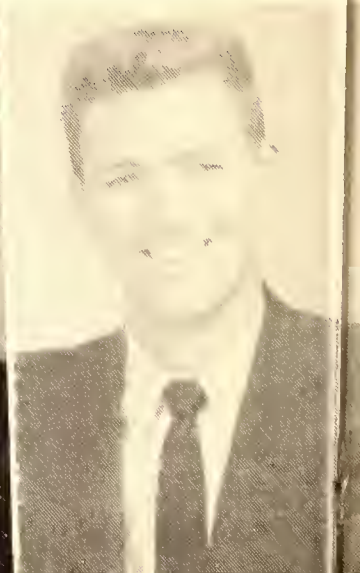
**BARBARA ANN
WINCHESTER**
Lenoir, N. C.
Christian Council 1 and 2
Camera Club 2; Ontarog
Staff 2; Folk Dance Club
2; Young Democratic Club
2.

Senior Class

FRED WOOD
Raeford, N. C.



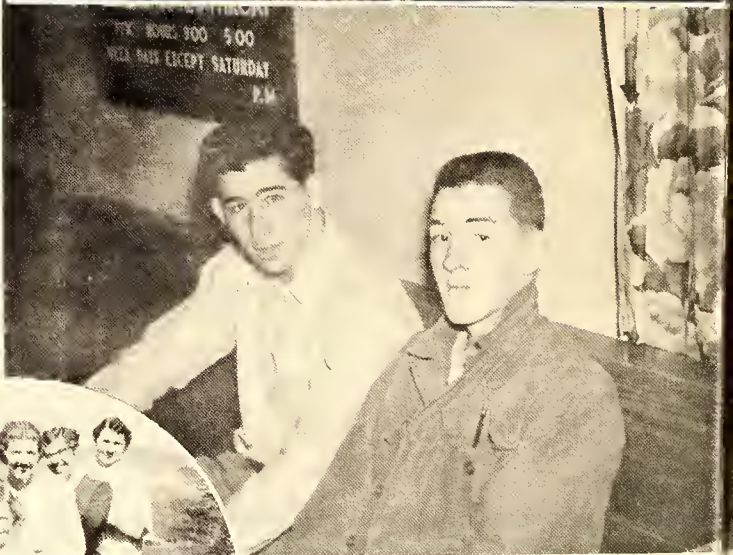
WILLIAM YATES
Grundy, Va.
Veterans's Club 2, Pres.

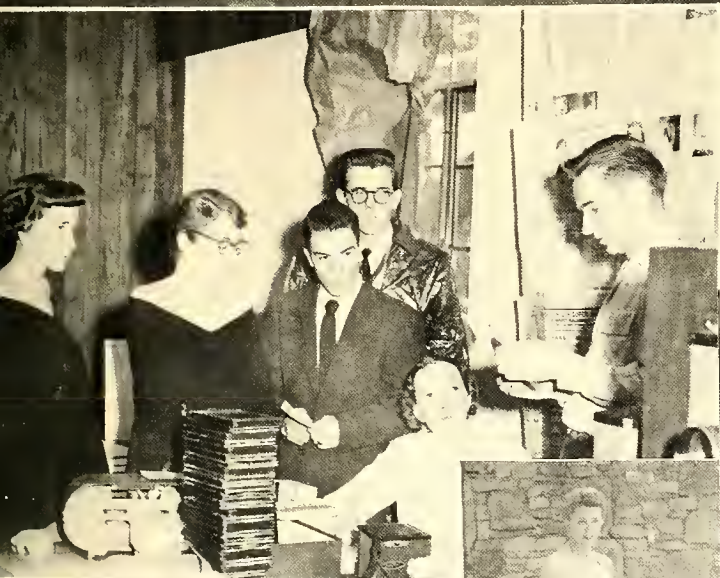




THANKS TO OUR PARENTS . . .

At last we are seniors . . . and each year was better than the last! We've had our share of the fun, the quizzes and tests, bluebooks, parties, and classes. We have had help all along the way, though, from our friends, teachers, advisors—but most of all, from you. You are responsible for our graduation; you instilled in us from early childhood the desire to learn and to achieve. In this small way, we are trying to express our deepest appreciation for the interest, cooperation, and love that has been such a vital part of our college life.

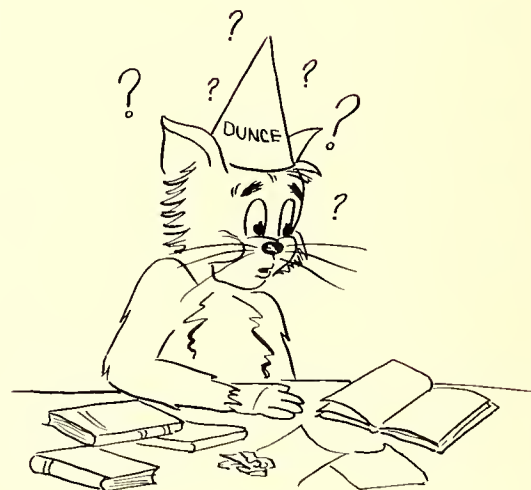






FRESHMAN OFFICERS

Tom Turnipseed *President*
Janet Blythe *Secretary-Treasurer*
Don McCarter *Vice-President*





Robert Alexander
Wilkesboro, N. C.
Patty Jane Barlow
Kannapolis, N. C.

Frances Dee Arnold
Mountain City, Tenn.
Frances Rose
Bartenfield
Clinton, S. C.

Quincy Ted Ashley
Warrensville, N. C.
James Sidney Bass
Red Oak, N. C.

Dorthula Ileen Baird
Banner Elk, N. C.
Sammy Leon Beck
Winston-Salem, N. C.

Jean Geraldine Baird
Newland, N. C.
Dora Bennett
Bakersville, N. C.

Freshmen

Trula Bennett
Bakersville, N. C.
Ila James Britt
Norwood, N. C.

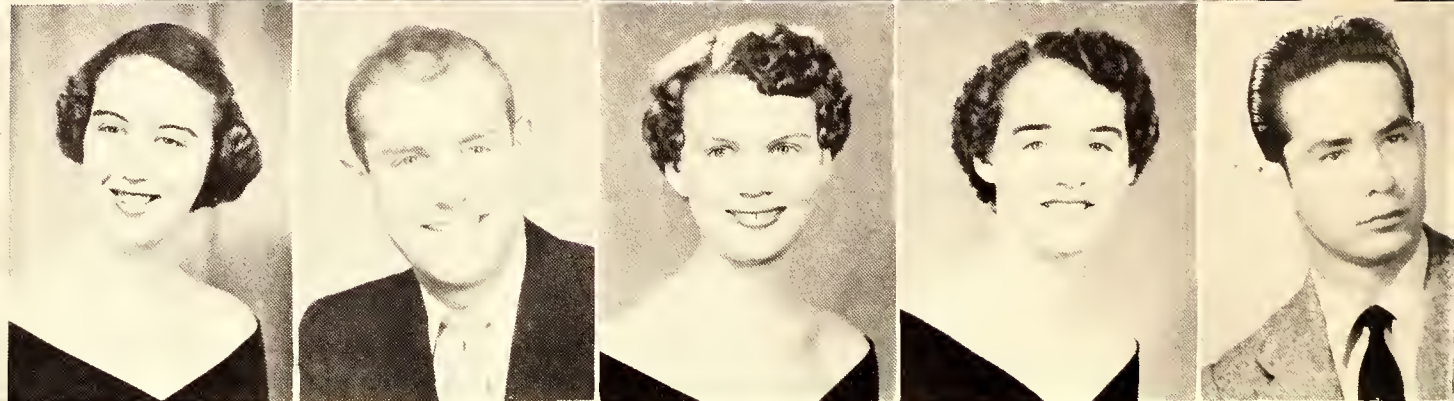
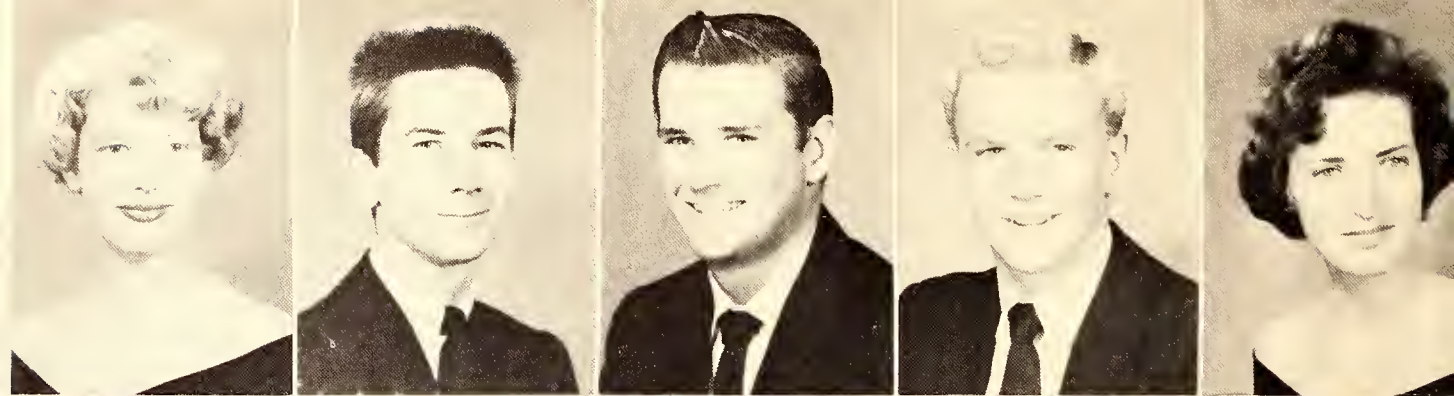
Frank Berry
Spruce Pine, N. C.
Helen Mattie Brittain
East Flat Rock, N. C.

Phyllis Jeanne
Blankenship
Cleveland, Va.
Delphyne Brown
Crumpler, N. C.

Janet Helton Blythe
Charlotte, N. C.
Ellen Brown
Fernandena Beach, Fla.

Oscar Doyle Braswell
Mount Gilead, N. C.
Teddy Ruth Burrell
Charlotte, N. C.





Diana Jane Byrd
Fries, Va.

John McPherson Byrd
Sanford, N. C.

Donald Eugene Byerly
Winston-Salem, N. C.

Billy Campbell
Greenville, S. C.

Shirley Anne Camp
Portsmouth, Va.

Connie Kateri Cannon
Marion, N. C.

George Henry
Caperton
Mt. Hope, West Va.

Laura Bell Carico
Fries, Va.

Juanita Ruth Carlan
Fries, Va.

Braulie Theodor
Carmenate
Cardenas, Cuba

Freshmen

Charlotte Carrier
Kannapolis, N. C.

Anita Carter
Concord, N. C.

Ellen Katherine Carty
Lebanon, Va.

Dale Hilliard Cato
Charlotte, N. C.

Richard Allen
Childress
Montezuma, N.

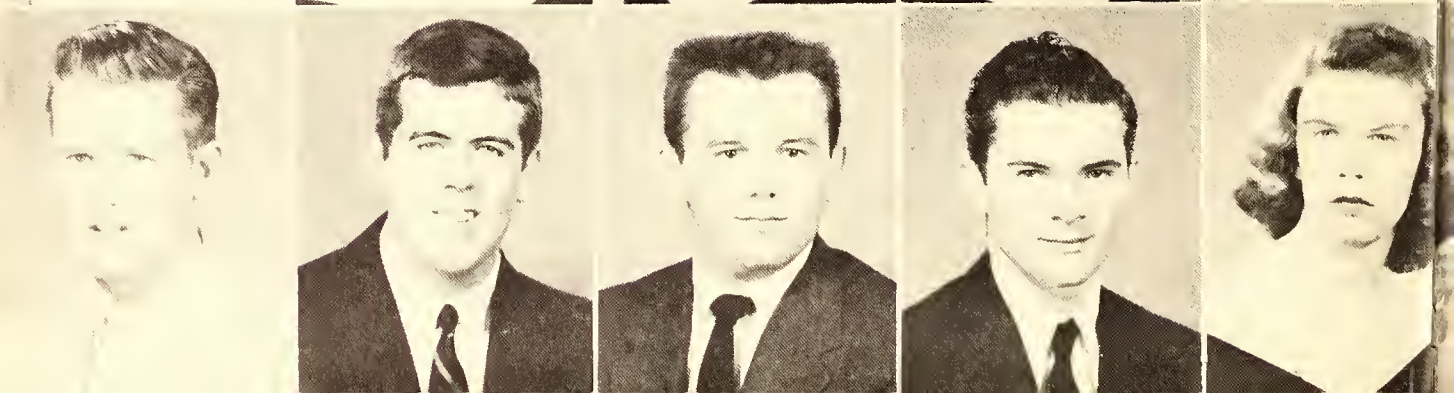
Nat Bowman Clark
Pineola, N. C.

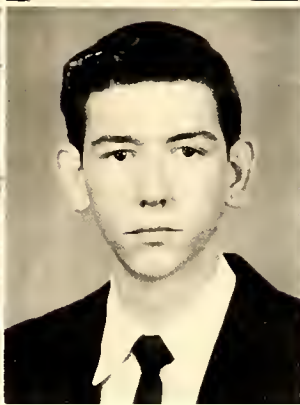
John Ralph Clifton
Mount Airy, N. C.

Leary Wilson Cloer
Gastonia, N. C.

Phillip DeWitte Cobb
Tallahassee, Fla.

Mary Elizabeth
Crowell
Little Mountain, S.





Jane Marie Currin
Olivia, N. C.

Sara Rebecca Davenport
Statesville, N. C.

Phillip Davenport
Crossnore, N. C.

Glenda Davis
Fries, Virginia

Inez Diaz
Varadero, Cuba

Naomi Marie Dorris
Banner Elk, N. C.

Kenneth Glenn Dorton
Castlewood, Va.

William Fraser Eller
Warrensville, N. C.

James Ellison
Rural Retreat, Va.

Leif Erickson
Spruce Pine, N. C.

Freshmen

Samuel Louis Edwards
Tryon, N. C.

Daniel Galen Fletcher
Newland, N. C.

Norma Jean Gage
Bakersville, N. C.

James B. Glass
Sanford, N. C.

Maxie Bonte Goins
Asheboro, N. C.

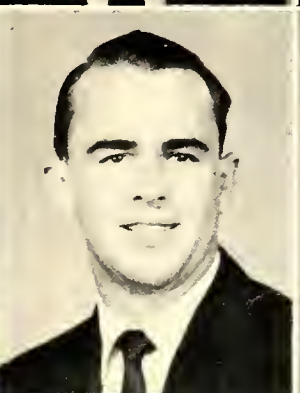
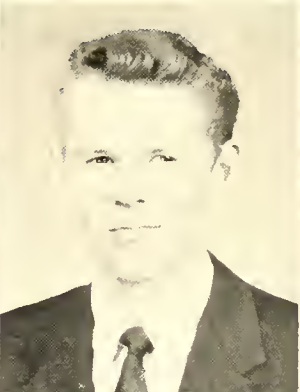
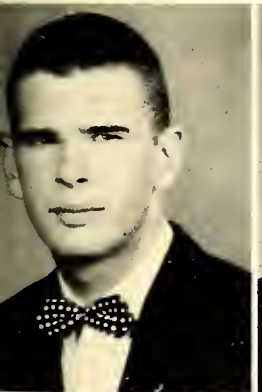
Mary Anne Gray
Brunswick, Ga.

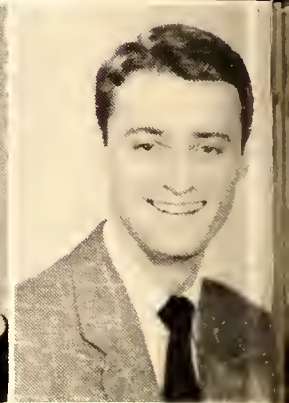
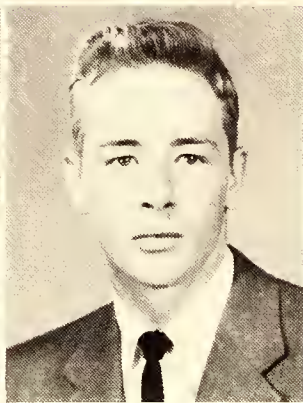
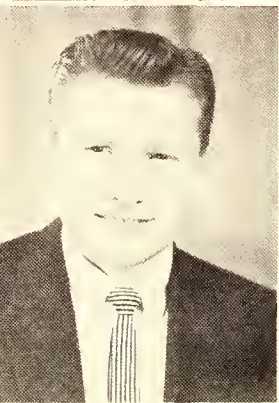
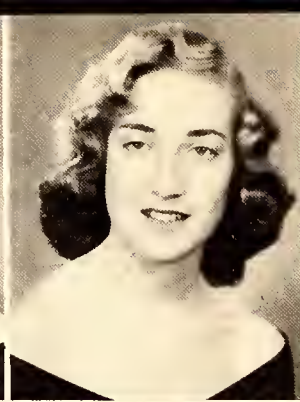
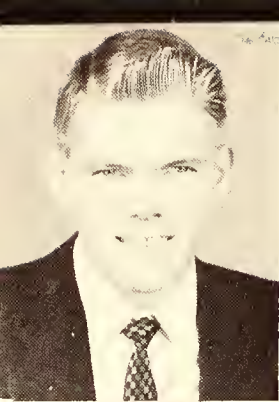
Larry Crawford Griffie
Charlotte, N. C.

Bonita Carmen Guy
Banner Elk, N. C.

Martha Ann Haney
Banner Elk, N. C.

Leonard Newton
Harmon
Lebanon, Va.





Bob Vernon Harris
Morganton, N. C.

Dwight Harold Jenkins
Charlotte, N. C.

Donald Gray Hayes
Winston-Salem, N. C.

David Livingston Johnson
Marion, Va.

Glenda Hedrick
Statesville, N. C.

Doris Jean Jones
Lenoir, N. C.

Betty Hodges (Mrs.)
Banner Elk, N. C.

Emily Sue Jones
High Point, N. C.

Patsy Ann James
Charlotte, N. C.

James Garfield Jones
Big Rock, Va.

Helen Patricia Jones
Asheboro, N. C.

Grady Carroll Kilby
North Wildesboro, N. C.

Nancy Lu Jones
Charlotte, N. C.

Charles Lee King
Summerfield, N. C.

Betty Lee Keesee
Whitsett, N. C.

Charles Lincoln King
Lansing, N. C.

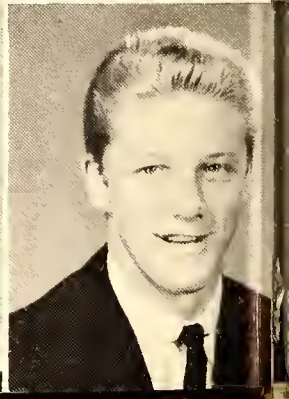
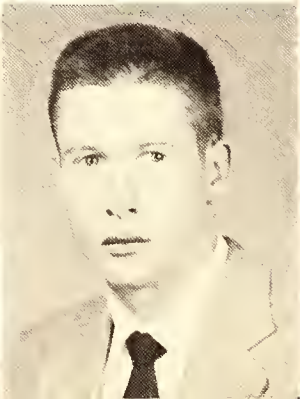
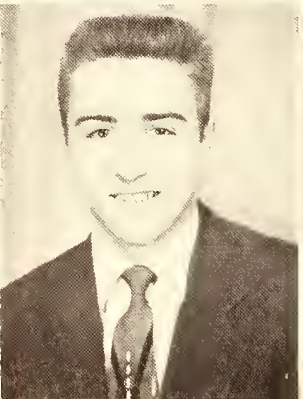
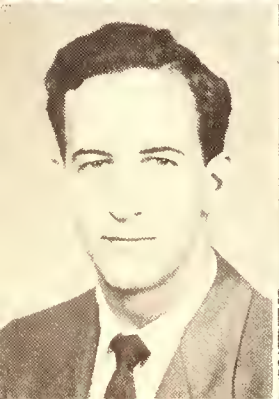
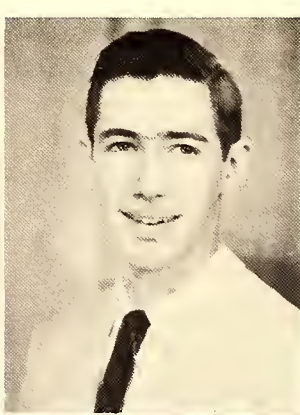
John Thomas Keller
Charlotte, N. C.

Mary Margaret Kiser
Carbo, Va.

Elsie Jean Kinder
Rural Retreat, Va.

Harold Sherman Lambert
Atkins, Va.

Freshmen





Ruth Lambeth
Asheboro, N. C.

Lorraine Land
Kokomo, Indiana
Jackson Kaman
Masters
Big Stone Gap, Va.

James Elwood
Limbaugh
Greenville, S. C.
Joseph R. Miller
Jefferson, N. C.

Gail Louise Looney
Lenoir, N. C.
Dorothy Eva Morgan
Rutherfordton, N. C.

Robert L. Looney
Grundy, Va.
Jack Ray Moore
Grundy, Va.

Robert Bingham
Marshall
Hickory, N. C.

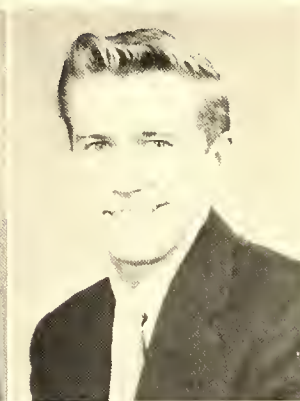
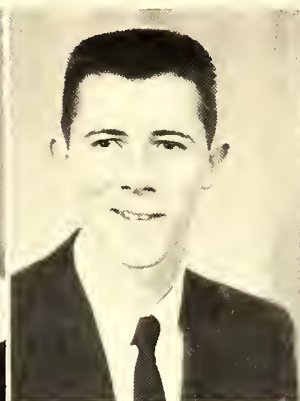
Sarah Lee Moore
Rocky Mount, N. C.

Rosa Lee Musick
Cleveland, Va.
Clyde Vernon
McKinney, Jr.
Yanceyville, N. C.

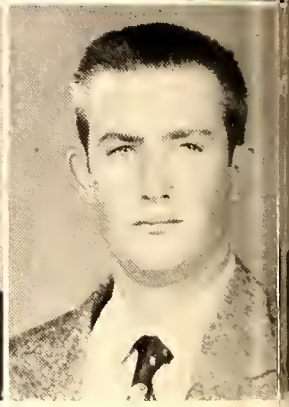
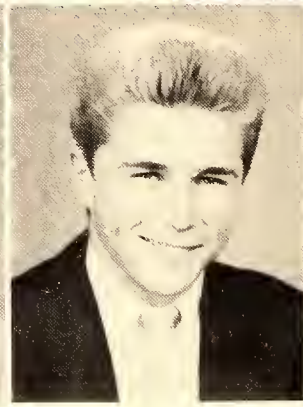
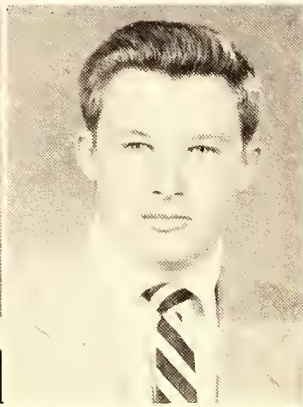
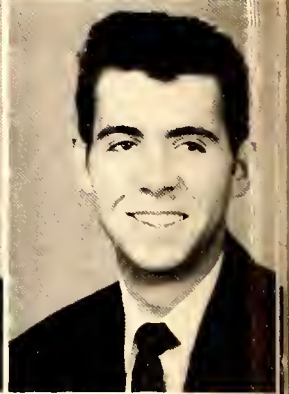
Charles Ray Myrick
Ellerbe, N. C.
Florence Ann
McKinnis
Old Fort, N. C.

Donald Eugene
McCarter
Kings Mountain, N. C.
Charles Duncan
McLeod
Sanford N. C.

Helen Marie McArthur
Rowland, N. C.
Robert Wade McRee
Charlotte, N. C.



Freshmen



Frances Dee Owle
Whittier, N. C.

Jane Kathryn Ormand
Kings Mountain, N. C.

Doris Pauline Posada
Cardenas, Cuba

George Conrad Pace
Mount Airy, N. C.

Frank Marion Palmer
Elizabeth City, N. C.

Daniel Alexander
Patterson
West End, N. C.

Elinor Hayden Pack
Asheville, N. C.

C. W. Pendarvis
Charlotte, N. C.

John David Pendley
Vienna, Va.

Frank Wilson
Phillips, Jr.
Ingalls, N. C.

Hedrick Mitchell
Phillips
Jacksonville, N. C.

Burnis Harold Poff
Rural Retreat, Va.

Freshmen

Douglas Floyd Powell
Valdese, N. C.

Charlie D. Powers
Greenville, S. C.

Eugene Joseph
Pritchard
Marion, N. C.

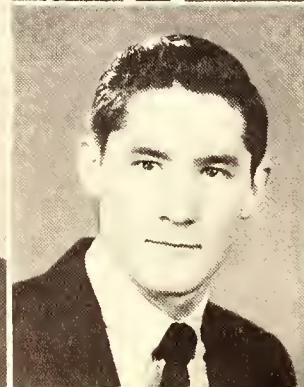
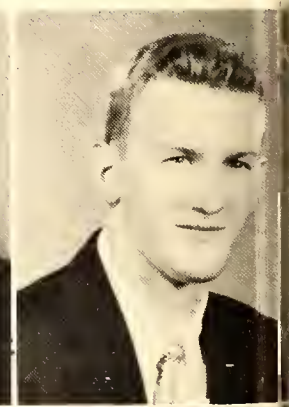
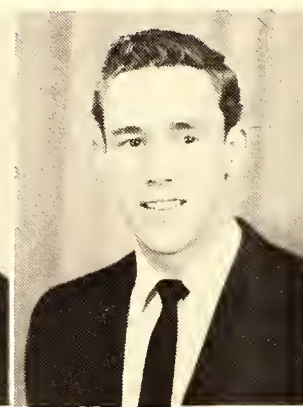
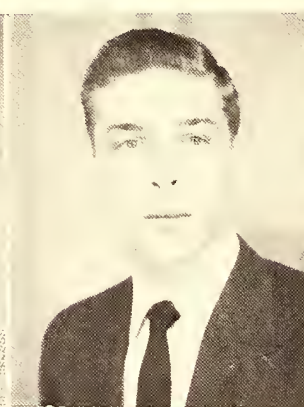
George Lindsay Proctor
Rocky Mount, N. C.

B. Franklin Pope, Jr.
Max Meadows, Va.

Floyd Ramsey
Banner Elk, N. C.

Ella Mae Reames
Charlotte, N. C.

Grace Bennette Rainey
Whitnel, N. C.





Pauline Reynolds
Clinton, N. C.

Kingsley Allen Robb
Hiialeah, Fla.

Veda Edwina Robbins
Pineola, N. C.

June Carroll Roberts
Summerfield, N. C.

Delmer Wade Rose
Lendal Springs, N. C.

Bessie Patricia Ross
Criglersville, Va.

Notre Cathryn Ross
Criglersville, Va.

Lillian Maureen Roth
Clinton, S. C.

Helen Mae Shiflet
Old Fort, N. C.

Freshmen

Barbara Jean Sharpe
Greensboro, N. C.

Jarrell Beck Smith
High Point, N. C.

John C. Smith
Elk Park, N. C.

Junior Max Smith
Banner Elk, N. C.

Thomas Smith
Hampton, N. C.

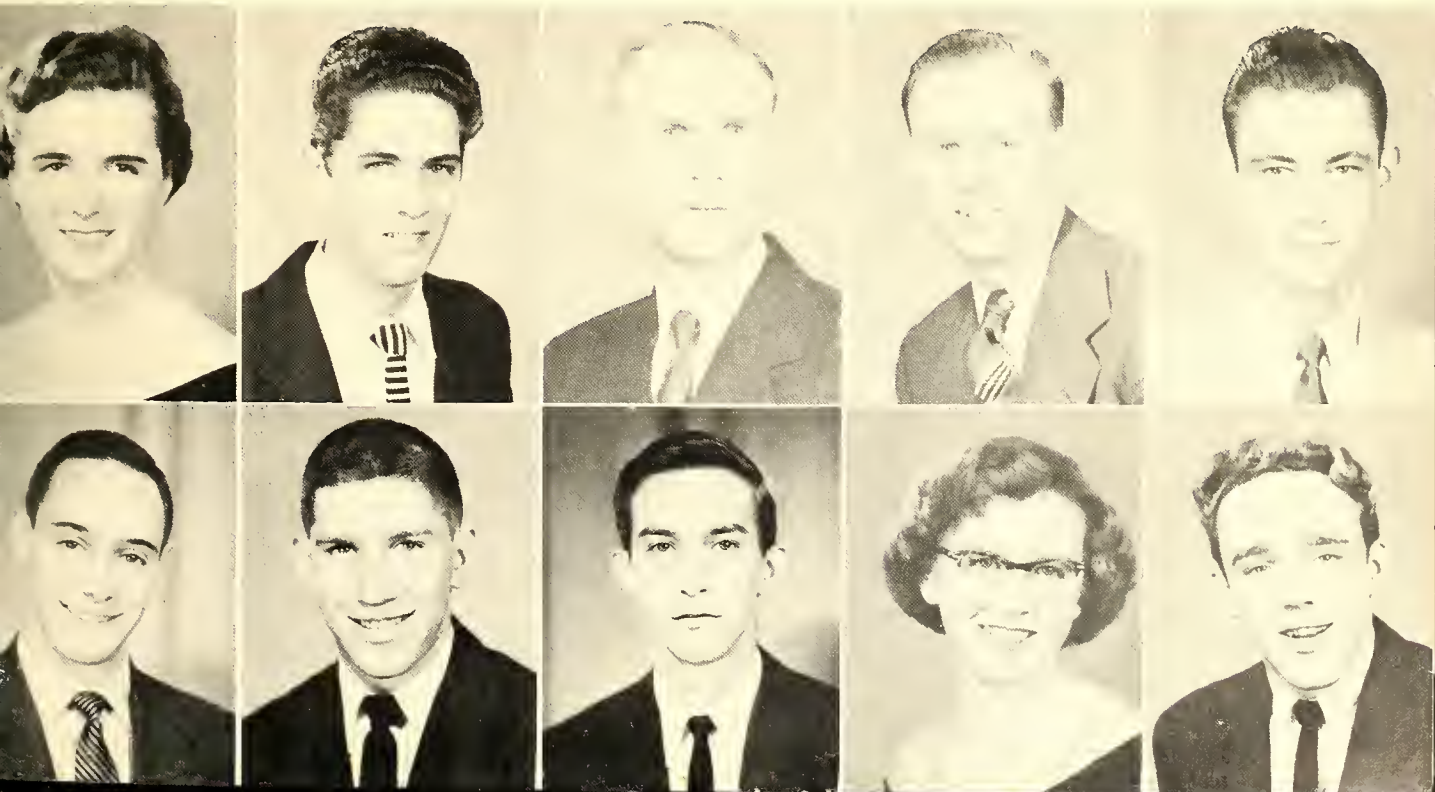
Guy Vassar Soul
Charlotte, N. C.

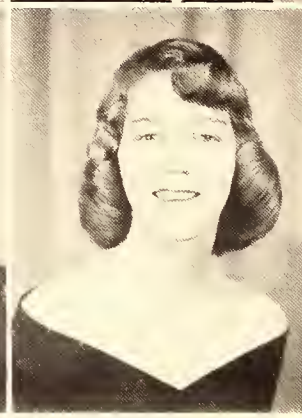
Jimmy Ansell Sproles
Castlewood, Va.

Gordon Stadler
Burlington, N. C.

Betty Jane Stanley
Summerfield, N. C.

Morris Gilmore
Stephenson
Marion, Va.





Catherine Lee Stevens
Boone, N. C.

Mary Elizabeth Tester
Valle Crucis, N. C.

Marilyn Richie
Thompson
Gastonia, N. C.

Barbara Jean Tolson
Winston-Salem, N. C.

Jackie Earlene
Townsend

James Guy Trotter
Charlotte, N. C.

George Thomas
Turnipseed
Moravian Falls, N. C.

Sandra Anne Ward
Burlington, N. C.

Jack Taylor Ware
Reidsville, N. C.

Banner Elk, N. C.

Garland Glenn
Warren, Jr.
Mount Airy, N. C.

Freshmen

Patricia B. Watkins
Marion, Va.

Bob Williams
Marion, Va.

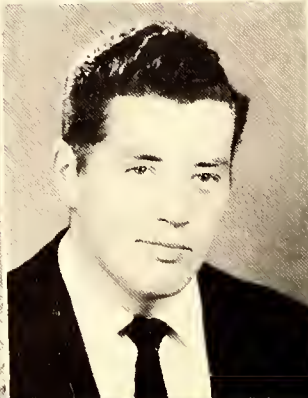
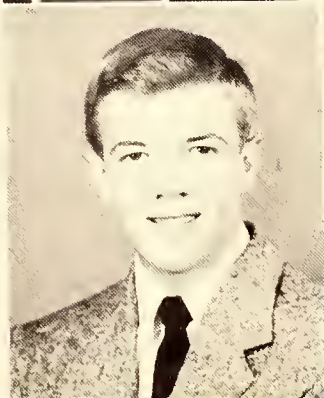
Nancy Louise Wilson
Lebanon, Va.

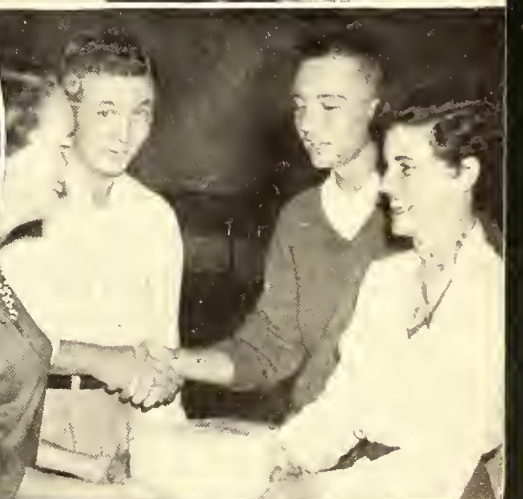
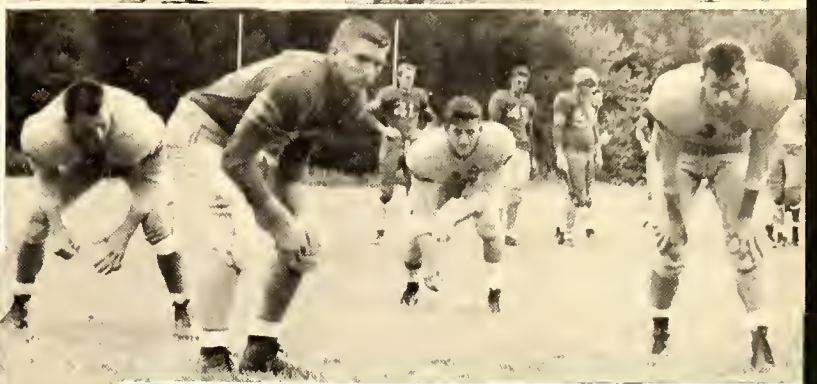
Omer Wise
Newland, N. C.

Sam Philip Yoder
Linville, N. C.

Ernest Lee Yokely
Winston-Salem, N. C.

Martha Woodside
Charlotte, N. C.



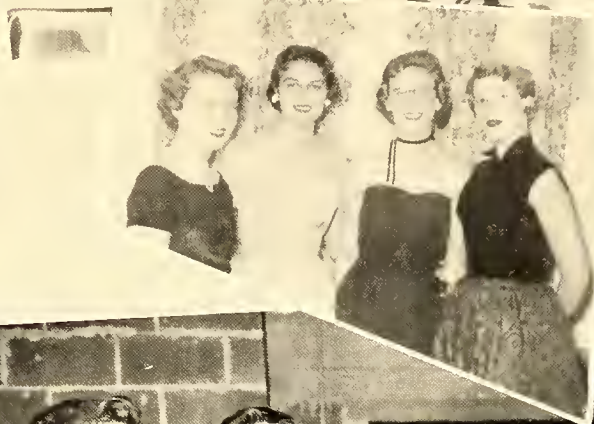




LIFE AS A



FRESHMAN



Grace Hospital



DR. LAWSON TATE
Chief of Staff



DR. W. C. TATE
Retired Chief of Staff



MR. GALEN WILLIS
Administrator

DOCTORS AND STAFF



DR. LAWSON TATE
DR. FRANK BUCKNER



DR. J. E. DONLAN DR. C. L. WOODBRIDGE MR. J. B. PRITCHETT



MRS. ELIZABETH
NELSON
Director of Nurses



MRS. JUANITA
SHOMAKER
Business Office



ARCHIE POTTER
*Operating Room
Assistant*



MISS PEGGY HOPE
*Medical Record
Librarian*



Campus Scenes





Grandfather Home

Staff



MISS ANN BRYAN

Director



Row 1: Mrs. Flora Denny, Dietitian; Miss Anne Bryan, Superintendent; Miss Lala Smith, Supervisor, Younger Boys; Mrs. Joe Gladitsch, Supervisor of Babies.

Row 2: Miss Grace Rutland, Music Teacher; Miss Helen Church, Supervisor, Younger Girls; Mr. Grover Forbis, Supervisor, Older Boys; Miss Susan Woodward, Supervisor, Older Girls; Miss Helan Greer, Secretary.



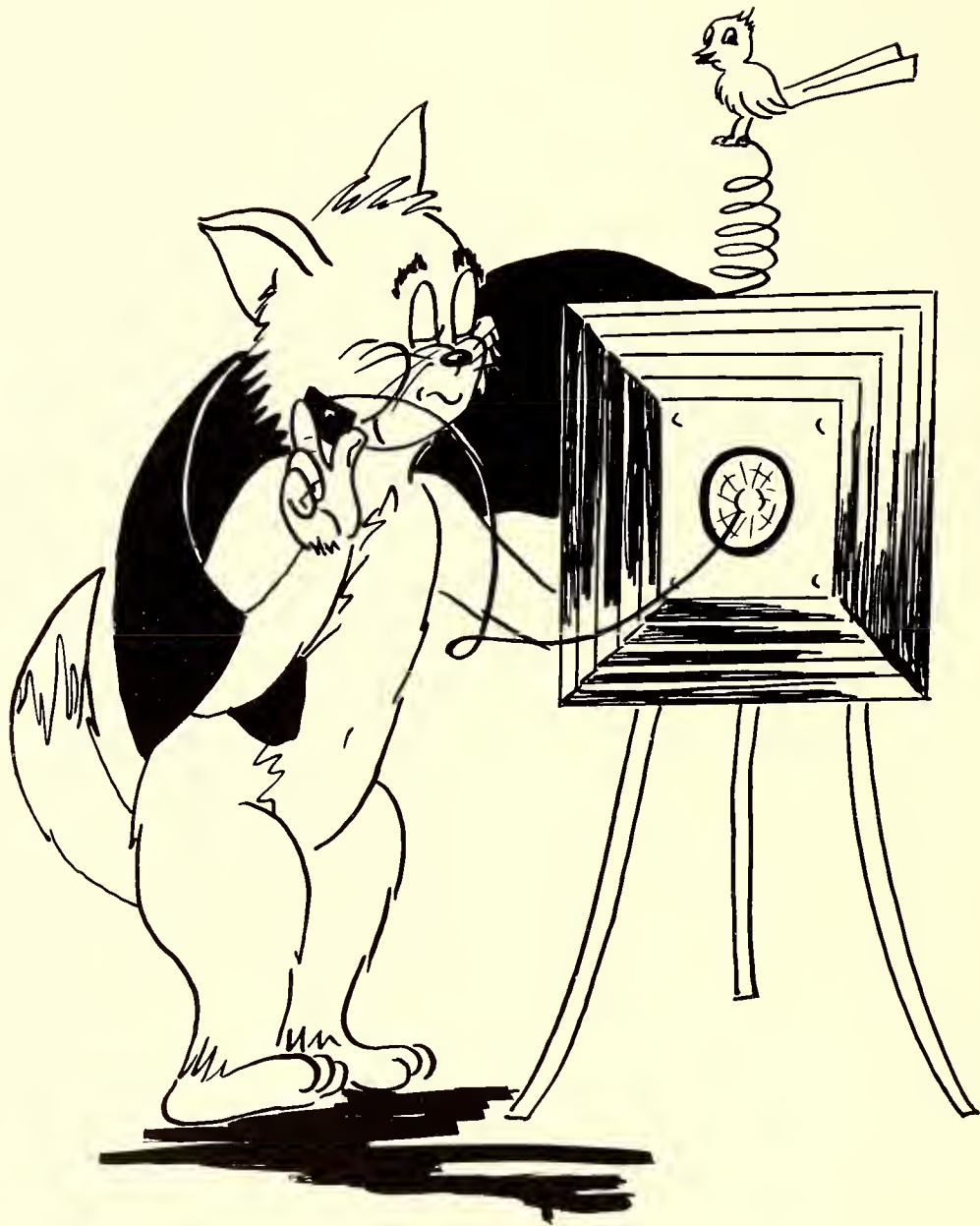
GIRLS

First Row: Sue Calloway, Norma Calloway. Second Row: Lynda Thomas, Shirley Leatherwood, Toni Hoyt, Judy Shepherd, Becky Fesperman, Martha Thomas, Nancy Shepherd, Nancy Leatherwood. Third Row: Virginia Sue Gillespie, Maxine Trivette, Gail Hathaway, Helen Thomas, Willadean Ragan, Connie Lewis, Lois Brooks, Jo Ellen Leatherwood, Doris Hathaway. Fourth Row: Susan Shepherd, Rachel Phillips, Freda Oakes, Ruth Reece, Willie Tyree, Ethel Forbes, Edna Forbes, Joyce Davis, Dorothy Tyree. Fifth Row: Mary Helen Shepherd, Barbara Forbes, Joan Lunsford, Linda Greene, Virginia Burgin, Mary Davis, Nettie Berry, Frances Greene, Bobby Campbell, Myrtle Leatherwood. Sixth Row: Carolyn Garland, Nellie Trivette, Sadie Lewis, Harriet Allison, Ruth Davis, Peggy Church.



BOYS

First Row: Jimmy Hodges, Nolan Rudisill, Richard Martin, Lawrence Ledford, J. C. Calloway, Albert Calloway, Danny Gillespie, Larry Rudisill, Gary Ragan, Skippy Creech. Second Row: Caroll Collins, Roy Hopson, Frank Greene, Joey Hoyt, John Henry Hale, Bob Calloway, Virgil Allen, Jerry Rudisill, Steve Trexler. Third Row: Jerry Dugger, Buford O'Neil, Tim Lewis, Bob Lewis, Jim Wexler, Harold Widener, Don Oaks, Phil Jones. Fourth Row: Fred Hopson, Russell Allen, Ivan Dugger, Russell Allen, Eddie Patitt, Jimmy Sans, Mike Brooks. Fifth Row: Richard Jones, Allan Lingerfelt, Ford Ollis, Billy Burgin, Don Collins, Johnny Garland, Jimmy Hicks. Sixth Row: Vance Ollis, Gene Castle, Lana Lingerfelt.



Organizations





DEANE BRASWELL
Editor



RICHARD RAULSTON
Business Manager

**The 1955
ONTAROGA
Staff**



MISS BEATRICE HALL
Financial Advisor

PAUL H. NEAL
Sponsor





PAT HOOD
Assistant Editor



KATHY MacCLELLAN
Clubs and Organizations



SUE EDWARDS
Photography



BARBARA BUSH
HELEN SHIFTLET
Circulation



PEGGY KEETER
ANGIE WHITED
Sports Editors



TOM TURNIPSEED
MAC McKINNEY
Sports Editors



CLARA MARTIN
JUDY CARROL
Senior Class Editors



LORRAINE LAND
PATTY DILLON
Freshmen Class Editors

EDITORIAL STAFF

ASSISTANTS

Row 1: Debbie Brown, Martha Woodside, Barbara Winchester, Wilma Dean Cox, Diane Steele. Row 2: Grace Rainey, Dorothy Morgan, Sandra Ward, Nancy Ramseur.



BILL DALRYMPLE
BILL CAMPBELL
Grandfather Home



JOAN HODGIN
Features



JOYCE DUNLAP
Typist



JOANNE FRANKLIN
Secretary



SHIRLEY VICKERS
Editor



MAC MINTER
Business Manager

THE BOBCAT TALES STAFF



MISS MARY ELIASON
Faculty Advisor

JOE WEBB
Photography



BOBCAT TALES' STAFF



JOHNNY PHIPPS
Sports Editor



JEAN CAROL DENNY
Art Editor



JOANNE HINSON
Exchange Editor



JACK MOORE
Business Manager



LORRAINE LAND
*Assistant Business
Manager*

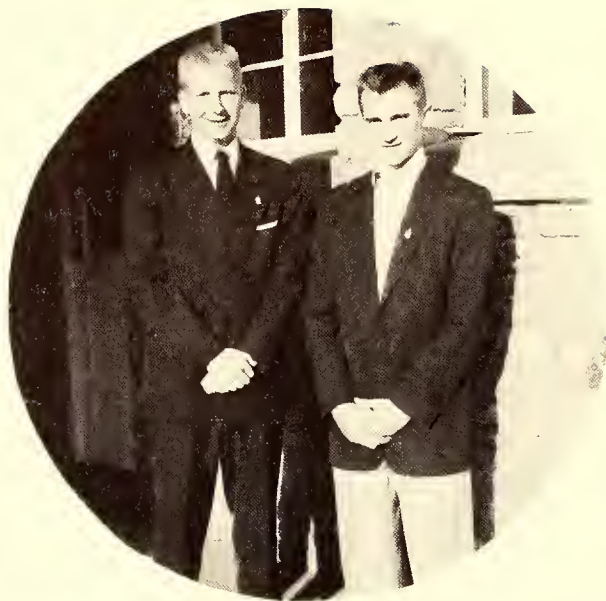


GAIL LOONEY
Editorial Assistant

REPORTERS AND TYPISTS



Row 1: June Minton, Carol Smith, Diane Steele, Clara Martin, Judy Carroll, Virgie Dawkins, Beulah Loury, Betsy Campbell. Row 2: Sarah Moore, Saundra Ward, Helen Jones, Jane Ormand, Kathy MacCellan, Janet Blythe, Peggy Jones. Row 3: Joanne Franklin, Randy Eaton, Helen McArthur, Patricia Smith, Pat Hood, C. W. Pendarvis, Miss Mary Eliason.



BILL CULLER
President, Student Body
SID LOVETTE
Vice-President, Student Body



PRESIDENTS

Row 1: Betsy Campbell, Denver Cumbow, Maxine Potts, Frances Watts, Faye Musick, Shirley Vickers, Harry Blevins, Virginia Watson, Louise Blevins, Dale Sigmon. Row 2: Tom Turnipseed, Bill Culler, Sid Lovette, Scrappy Kinder, Deane Braswell, Bill Yates, Jim Warren, Tom Reins, Dean Westmoreland.



WOMEN'S STUDENT COUNCIL

Miss Mary Lee Gray, Sylvia Pilkenton, Frances Watts, Louise Blevins, Jean Baird, Florence McKinnis.



MENS STUDENT COUNCIL

Raymond Jessup, Ed Bleynt, Bill Cole, Fred Wood, Dale Sigmon.



SULLIVANIAN

SORORITY

Row 1: Evangeline Whited, Sylvia Pilkenton, Carol Smith, Deane Braswell, Betsy Campbell, Peggy Jones, Louise Blevins, Kathy MacCellan, Aquilla Brown, Sue Edwards, Joan Icenhour, Phoebe Williams, Kerin Whitlock. Row 2: Shirley Vickers, Lee Musick, Miss Lenore Pierce, Joan Hinson, Frances Watts, Shirley Ashley, Faye Musick, Virginia Watson, Trula Bennett, Maxine Potts, Barbara Sides, Patricia Smith.



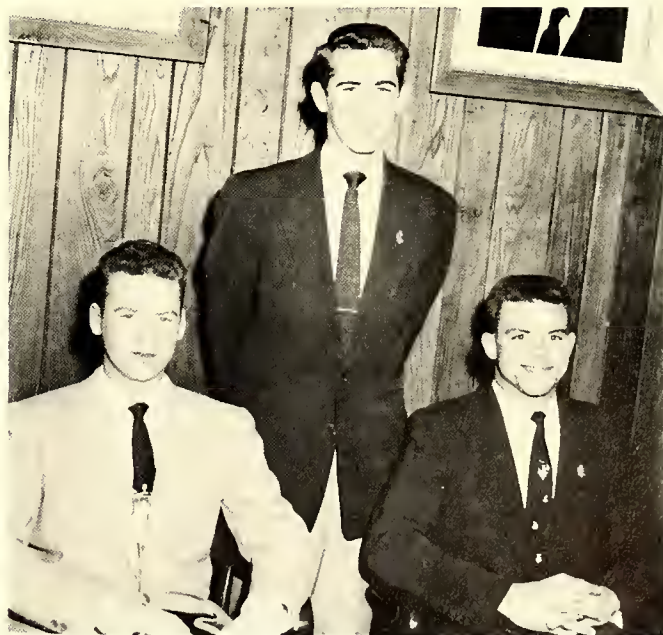
- | | | |
|------------------|-------|-----------------------|
| Betsy Campbell | | <i>President</i> |
| Barbara Sides | | <i>Vice-President</i> |
| Joan Icenhour | | <i>Secretary</i> |
| Kathy MacClellan | | <i>Treasurer</i> |



DEMOSTHENEAN

CLUB

Row 1: Randy Eaton, Harry Blevins, Tom Culler, Mr. Ivan B. Stafford. Row 2: Denver Cumbow, Raymond Jessup, Dale Sigmon, Bill Cole, Ed Bleyнат, Sid Lovette, Charles Davenport, Dickie Ware, Bill Culler.



Harry Blevins	<i>President</i>
Randy Eaton	<i>Vice-President</i>
Tom Culler	<i>Secretary-Treasurer</i>



PHI BETA

KAPPA

Row 1: Gloria Buchanan, Phoebe Jane Williams, Patricia Smith, Joan Icenhour, Louise Blevins, Ed Bleynt, Peggy Lanier, Sylvia Pilkenton, Qui Brown, Cozy Painter, Shirley Vickers. Row 2: Maxine Potts, Carol Smith, Barbara Sides, Nancy Ramseur, Randy Eaton, Mr. Paul McEwen, Charles Davenport, Frances Piercy, Evangline Whited, Bob Pinkston, Joanne Franklin, Betsy Campbell, Rachel Carlisle.



Fred Ely	Treasurer
Louise Blevins	President
Peggy Lanier	Secretary
Sylvia Pilkenton	Reporter
Ed Bleynt	Vice-President



DELTA PSI

OMEGA

Row 1: Lewis Huffman, Barbara Bush, Maxine Potts, Shirley Vickers, Faye Musick, Qui Brown, Denver Cumbow. Row 2: Jim Warren, Nancy Jo Svoboda, Cozy Painter.



Maxine Potts	<i>President</i>
Qui Brown	<i>Vice-President</i>
Shirley Vickers	<i>Secretary</i>



CHRISTIAN COUNCIL

Row 1: Dale Sigmon, Randy Eaton, Harry Caperton, Bill Culler, Guy Soule, Barbara Bush, Sue Edwards, Faye Musick, Nancy Lou Jones, Peggy Jones. Row 2: Reverend Anderson, Betsy Campbell, Barbara Winchester, Aquilla Brown, Billy Dalrymple, Louise Blevins, Bob McRee, Shirley Vickers, Bill Cole, Barbara Sides, Denver Cumbow, Carol Smith, Tom Culler, Don McCarter, Dickie Ware. Row 3: Sylvia Pilkenton, Nancy Ramseur, Sylvia Speight, Alma Jean Shoupe, Jo Anne Franklin, Pat Hood, Kathy MacClellan, Mildred Ridge, Martha Woodside, Marilyn Thompson, Lee Musick.



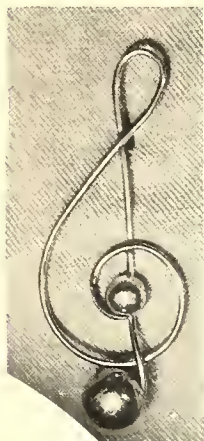
Faye Musick	<i>President</i>
Sue Edwards	<i>Vice-President</i>
Kathy MacClellan	<i>Secretary</i>
Denver Cumbow	<i>Treasurer</i>



CHOIR

Top Row: Leary Cloer, Doug Powell, Bob Martin, Lindsey Proctor, Randy Eaton, C. W. Pendarvis, Tom Turnipseed, Mac McKinney, Duncan McLeod, Don McCarter.
 Billie Blevins, Patsy James, Dale Cato, Paul English, Don Hayes, Harry Caperton, Bob Harris.
 Judy Carroll, Pheobe Jane Williams, Carmon Guy, Grace Rainey, Eleanor Peck, Nancy Lu Jones, Teddy Ruth Burrell, Jean Baird, Betty Tester, Edwina Robbins, Pat Smith, Ann Haney, Helen Shiflet, Shirley Vickers, Louise Blevins, Bobbie Tolson, Mrs. Emma Randall, Director.

Shirley Vickers	<i>President</i>
Paul English	<i>Vice-President</i>
Louise Blevins	<i>Secretary-Treasurer</i>





SOCIAL BOARD

Row 1: Aquilla Brown, Peggy Lanier, Naomi Doris, Lee Musick, Don Holt, Barbara Rush, Carleen Jones, Lewis Huffman. Row 2: Bob Marshall, Denver Cumbow, Sue Edwards, Ed Bleynt.



1955		MAY					1955	
SUN.	MON.	TUES.	WED.	THURS.	FRI.	SAT.		
1	2	3	4	5	6	7		
8	9	10	11	12	13	14		
15	16	17	18	19	20	21		
22	23	24	25	26	27	28		
29	30	31						

Denver Cumbow *President*
 Aquilla Brown *Vice-President*
 Don Holt *Treasurer*
 Lee Musick *Secretary*



GREEN AND GOLD MASQUERS

Row 1: Wilma Dean Cox, Naomi Doris, Patty Dillon, Don McCarter, Glenda Hedrick, Dana Nantz, Nancy Ramseur, JoAnn Hodgkin. Row 2: Jean Moore, Jean Baird, Harry Caperton, Ed Hipps, Nancy Svoboda, Jim Warren. Row 3: Lewis Huffman, Don Hayes, Irone Lee Richardson, Diane Steele.



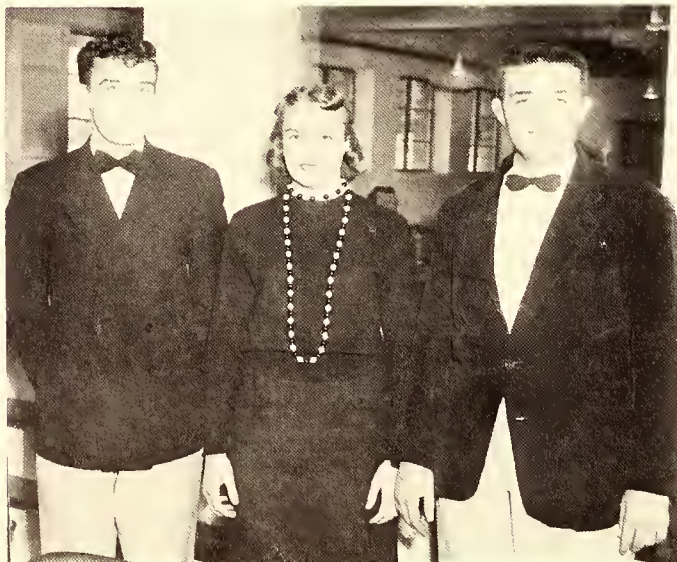
Harry Caperton	Vice-President
Ann Campen	Secretary
David Johnson	President



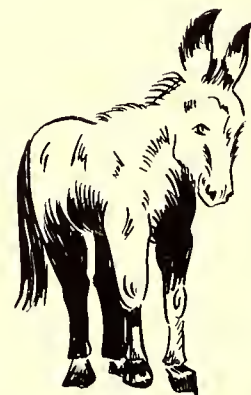
YOUNG DEMOCRATS

Anita Smith, Polly Reynolds, Ralph Bare, Tom Reins, Randall Bean, Doug Powell, Bob Patchett, Don Hayes, Randy Eaton, Irone Lee Richardson, Joyce Dunlap, Pat Hood, Laura Cairco.

Sue Edwards, Mary Ann Ruddle, June Minton, Dean Westmoreland, Vangie Whited, Charles Gouge, Barbara Winchester, Jane Ormand, Rachel Hardin, Ella Mae Reames.



Charles Gouge *Vice-President*
 Vangie Whited *Secretary-Treasurer*
 Dean Westmoreland *President*

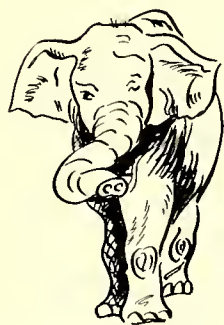




YOUNG REPUBLICANS

Row 1: Bob Marshall, Jo Ann Hodgin, John Keller, Peggy Keeter, George McClellan, Wilma Dean Cox, Alma Jean Shoupe, Virgie Dawkins, Diane Steele, Clara Martin, Beulah Loury, Judy Carroll.

Row 2: Lewis Huffman, Shirley Kinder, Randy Eaton, Dale Sigmon, Richard Davis, Don Holt, Denver Cumbow, Jim Warren, Barbara Bush, C. W. Pendarvis, Joan Hinson, Peggy Lanier, Elsie Kinder.



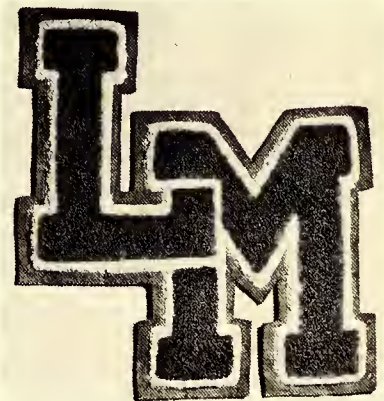
Dale Sigmon	<i>Vice-President</i>
Jim Warren	<i>President</i>
Virgie Dawkins	<i>Secretary</i>
Clara Martin	<i>Treasurer</i>





W. A. A.

Anita Smith, Virginia Watson, Mr. Paul McEwen, Carleen Jones, Rachel Hardin, Vangie Whited, Peggy Keeter.



Rachel Hardin
 Vangie Whited
 Peggy Keeter
 Virginia Watson

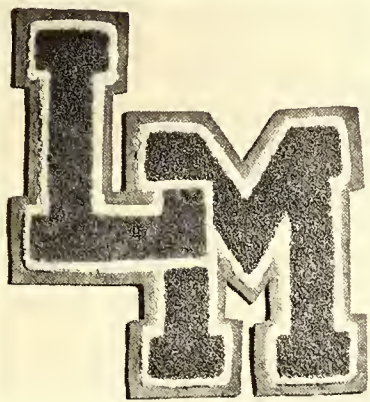
Historian
Secretary-Treasurer
Vice-President
President



MONOGRAM CLUB

Tom Culler, Frank Pope, John Clifton, Bob Patchett, Ed Abee, Ed Hipps, Bill Cole.

Randall Bean, Don Holt, Doug Powell, Tom Turnipseed, Mac Minter, Raymond Jessup, Jim Banner, Dickie Ware, Sid Lovette.



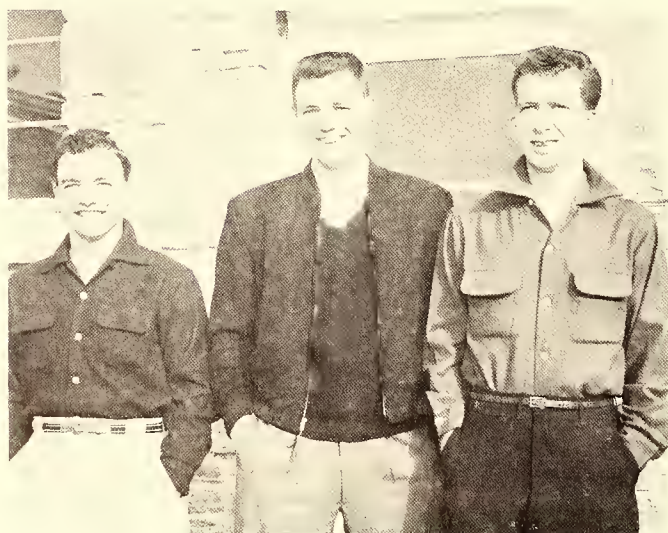
Tom Culler	<i>Treasurer</i>
Ed Abee	<i>President</i>
Bob Patchett	<i>Vice-President</i>
Dickie Ware	<i>Secretary</i>





VETERANS' CLUB

Row 1: Bill Yates, Jim Smith, Joe Miller. Row 2: Jim Banner, Jake Byerly, Bob Looney, Eugene Pritchard, Bob Pinkson, Miss Lenore Pierce, Jack Moore, Ted Ashley, Buddy Price. Row 3: Frank Pope, Bill Culler, Grady Kilby, Ed Perry, Paul English, Hedrick Phillips, Max Gouge.



Jack Moore	<i>Treasurer</i>
Bill Yates	<i>President</i>
Bob Looney	<i>Vice-President</i>



HOTEL SEMINAR

Seated: Bob Alexander, Adam Smith, Tiny McCloud, Bob Marshall. Standing: Walter Porter, Mr. Ivan Stafford, Billy Dalrymple.



FIRST TO COMPLETE COURSE

Billy Dalrymple

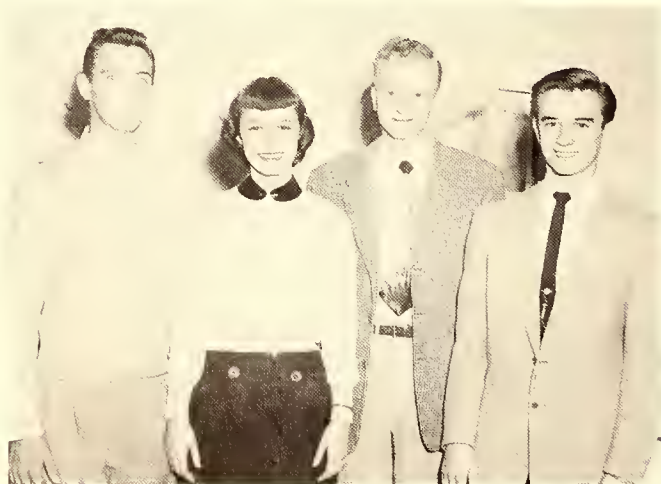
Walter Porter





CAMERA CLUB

Seated: Debbie Brown, Mary Anne Ruddle, Joanne Hodgins, Wilma Dean Cox, Barbara Winchester, Randy Eaton, Harry Caperton, Mr. J. L. Coulter. Standing: Leif Erickson, Irene Lee Richardson, Tom Reins, George McClellan, Randall Bean, Bob Kelsey, C. W. Pendarvis.



George McClellan	Treasurer
Joyce Dunlap	Secretary
Bob Kelsey	Vice-President
Tom Reins	President



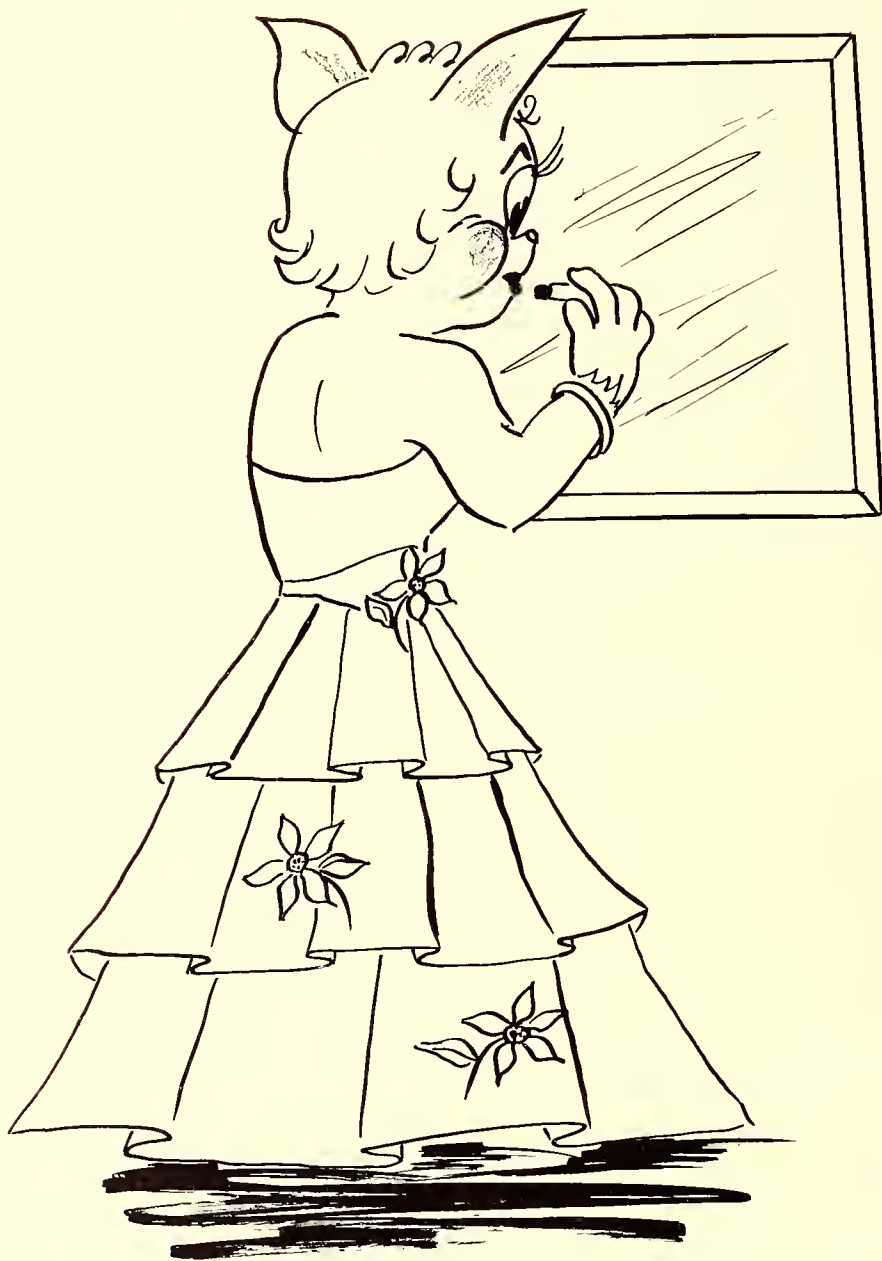
BAND

Left to Right: Harry Caperton, Louise Blevins, Leary Cloer, Director; Charles King, Don Shamel, Ed Bleyntat, Carmen Guy, Mary Anne Ruddle, Doug Powell, Bob Kelsey, Elsie Kinder, Scrappy Kinder.



Leary Cloer *Director*
 Scrappy Kinder *President*
 Elsie Kinder *Secretary*
 Don Shamel *Vice-President*





Features



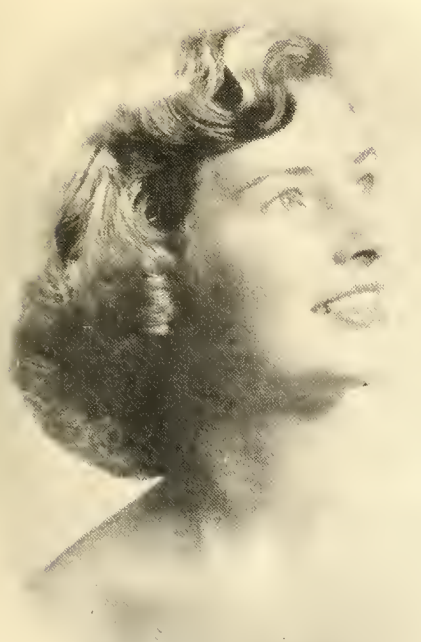


Presenting The Queen of May

DEANE BRASWELL

MAID OF HONOR

PATTY BARLOW



SUE EDWARDS
Sophomore Attendant



AQUILLA BROWN
Sophomore Attendant



SHIRLEY BARBÉE
Sophomore Attendant

PATTY DILLON
Freshman Attendant



EVANGELINE WHITED
Sophomore Attendant

BARBARA TOLSON
Freshman Attendant

May





COLE BROWN
Freshman Attendant
NANCY WILSON
Freshman Attendant



JEAN BAIRD
Freshman Attendant
BETSY CAMPBELL
Sophomore Attendant

Court





Queen of Hearts

SHIRLEY BARBEE



MAID OF HONOR

BARBARA BUSH



SUE EDWARDS



GRACE RAINEY



ANITA SMITH



PATRICIA SMITH



EANE BRASWELL



CLARA MARTIN



BETSY CAMPBELL



RACHEL HARDIN



JOYCE DUNLAP



Homecoming Queen

BEULAH LOURY



HOMECOMING COURT

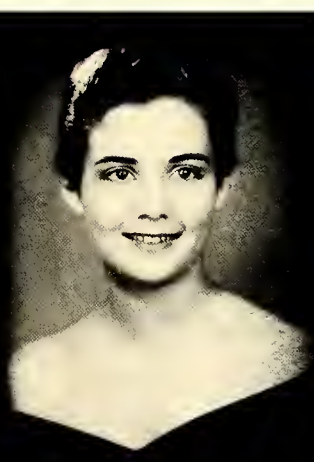
JOAN ICENHOUR



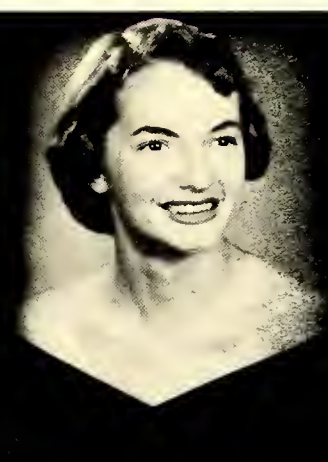
BARBARA BUSH



POLLY REYNOLDS



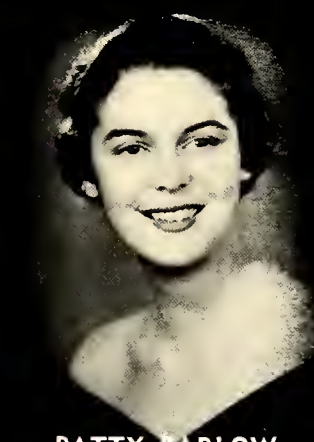
AQUILLA BROWN



LOUISE BLEVINS



SHIRLEY VICKERS



PATTY BARLOW



JEAN BAIRD



KATHY MacCLELLAN



BEST ALL-ROUND
Shirley Vickers — Ed Bleyнат

MOST POPULAR
Betsy Campbell — Dickie Ware



MOST ATHLETIC
Peggy Keeter — Raymond Jessup





BEST LOOKING

David Lockwood — Deane Braswell



MOST LIKELY TO SUCCEED
Shirley Vickers — Bill Culler

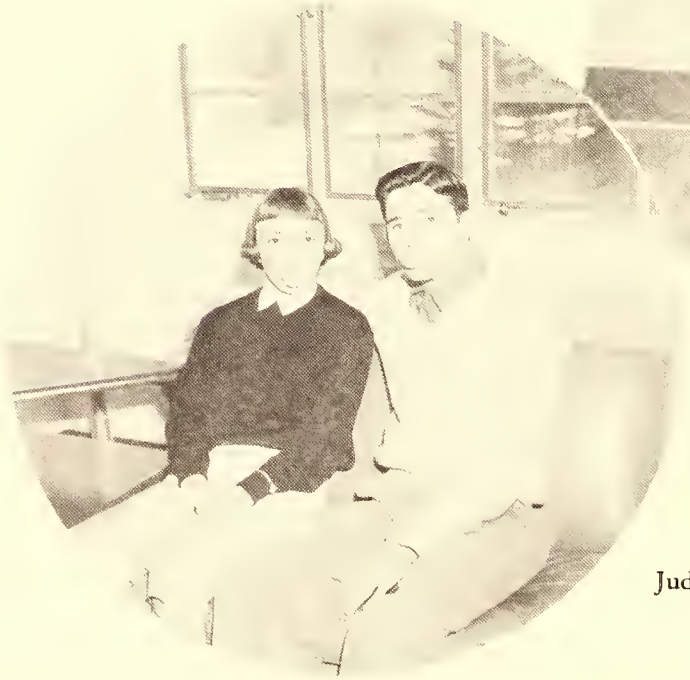


MOST TALENTED
Jean Carol Denny — Paul English



FRIENDLIEST
Sue Edwards — Harry Blevins

CUTEST
George Dobyns — Kathy MacClellan



WITTIEST
Judy Carroll — Lewis Huffman

MOST STUDIOUS

Fred Ely — Joanne Franklin



MOST DEPENDABLE

Sylvia Pilkenton — Tom Culler



BEST DRESSED

Deane Braswell — John Welborn





Athletics

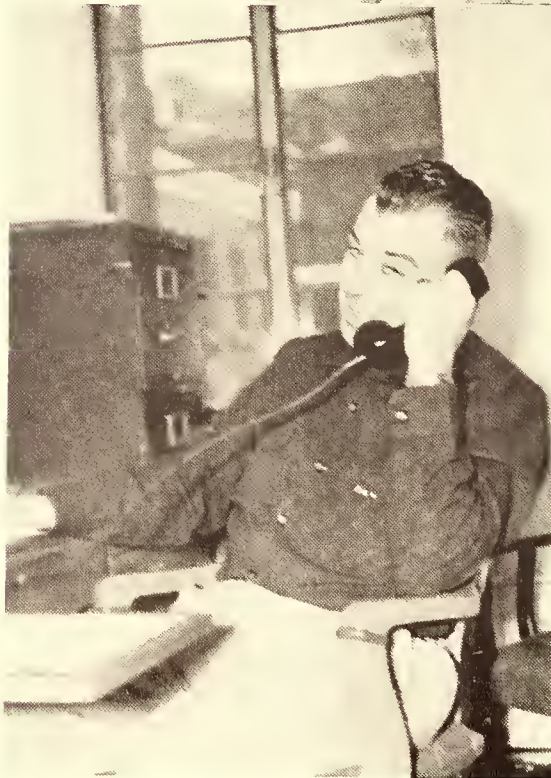


SPALDING
Official
TOP-FLITE
100

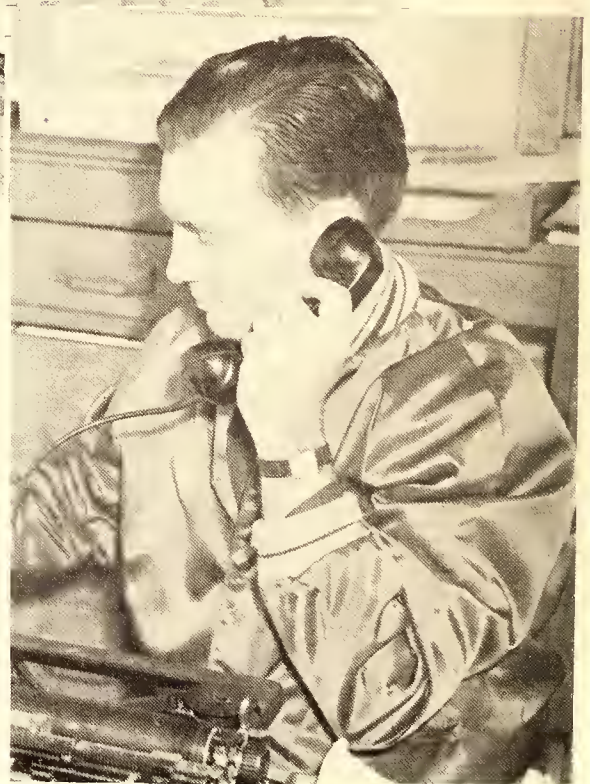
WILSON
The Wilson
RACKET

Football of 1955

1954 Co-Captains Riddle and Jessup with Mr. "Mac"



PAUL H. McEWEN
Assistant Coach



FRED I. DICKERSON
Coach

FOOTBALL SCHEDULE

	We	They
Sept. 18—Asheville-Biltmore (there)	6	6
Sept. 25—Appalachian B Team (here)	20	9
Oct. 9—Gardner-Webb (here)	7	0
Oct. 12—Mars Hill (there)	26	13
Oct. 16—Gardner-Webb (there)	20	6
Oct. 23—Asheville-Biltmore (here)	43	0
Oct. 30—Mars Hill (here)	13	13
Nov. 6—Hiwassee (there)	20	20



LEWIS EDWARDS — LOUIS HUFFMAN
Managers



SQUAD

Row 1: Ted Cox, Billy Campbell, Johnny Phipps, Sammy Beck, Harold Lambert, Charlie Powers, Dickie Ware, Bob Burleson. Row 2: Louis Huffman, Randall Bean, Doug Powell, Larry Griffie, Mac Minter, Elwood Limbaugh, David Lockwood, Ernest Yokely, Ed Hipps, Lewis Edwards. Row 3: Raymond Jessup, Sid Lovette,

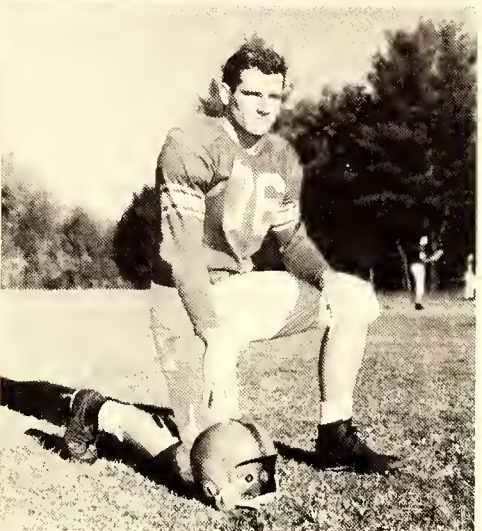
Ray Jackson, Carl Swanson, Bob McRee, Tom Turnipseed, George Pace, Bill Cole, Don McCarter, Tom Culler, Jim Banner. Row 4: Claude Riddle, Charles Taylor, John Clifton, C. W. Pendarvis, Mac McKinney, Jake Pope, Don Byerly, Frank Pope.



CARL SWANSON

FRANK POPE

BOB McREE



BILL COLE



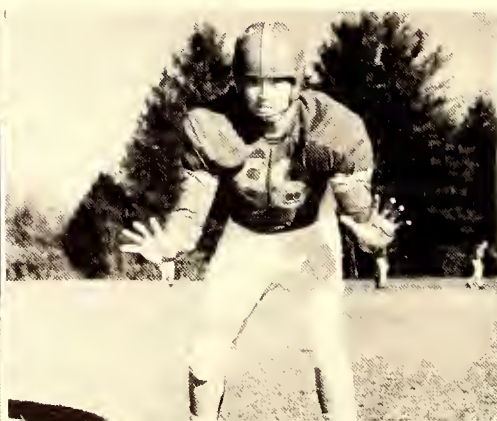
CHARLES TAYLOR

CHARLES POWERS

GEORGE PACE

ERNEST YOKELY

SID LOVETTE





DICKIE WARE



JAKE POPE



JOHN CLIFTON



C. W. PENDARVIS



DON BYERLY

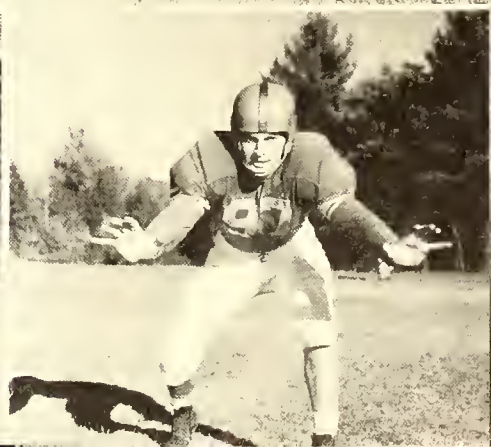
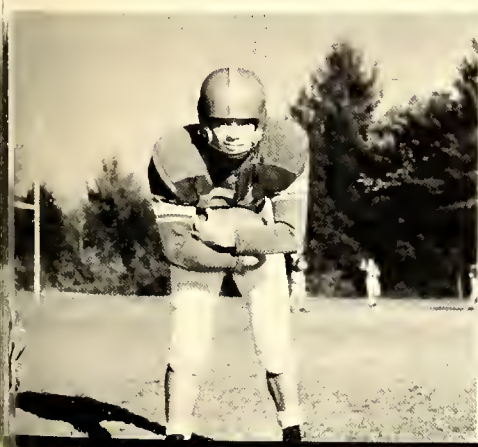


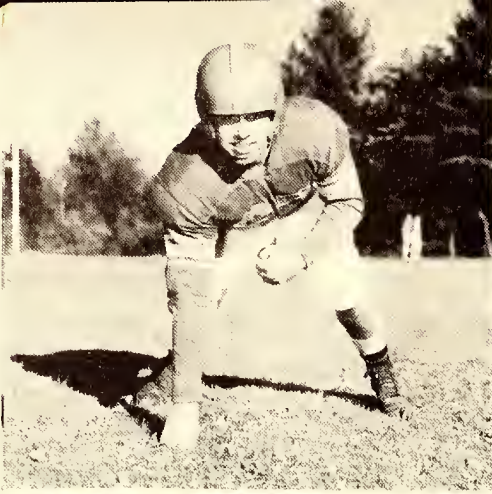
ED HIPPS

BILL CAMPBELL

ELWOOD LINBAUGH

TOM CULLER





MAC MCKINNEY

RAY JACKSON

LARRY GRIFFIE



ALLEN CHILDRESS



RAYMOND JESSUP

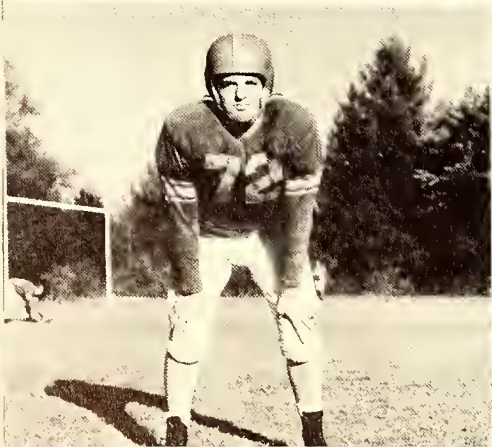


RANDALL BEAN

JIM BANNER

DOUG POWELL

HAROLD LAMBERT





BOB BURLISON



DON McCARTER



CLAUDE RIDDLE



COACH DICKERSON

TOM TURNIPSEED



JOHNNY PHIPPS



SAMMY BECK

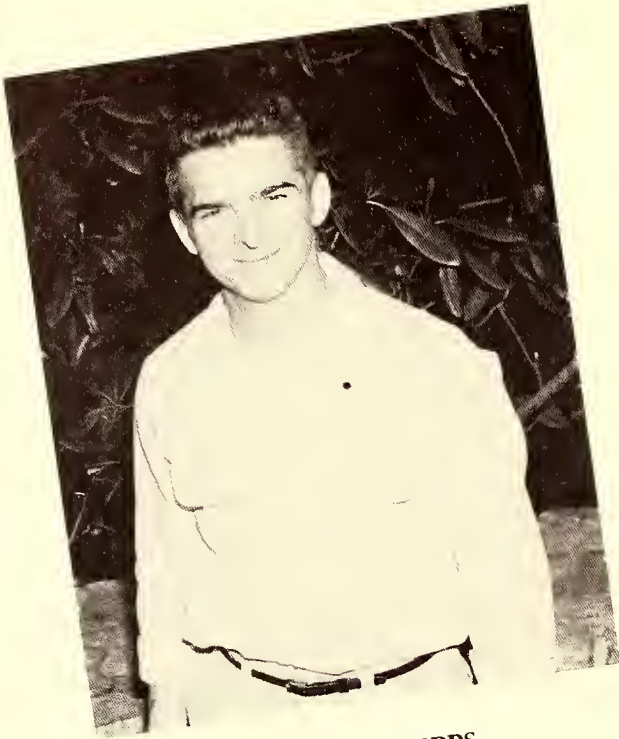
MAC MINTER

DAVID LOCKWOOD



CAPTAINS

1955-1956



JOHNNY PHIPPS
Football Captain



WADE ROSE
Basketball Captain

MARTHA ANN HANEY

Cheerleader Captain





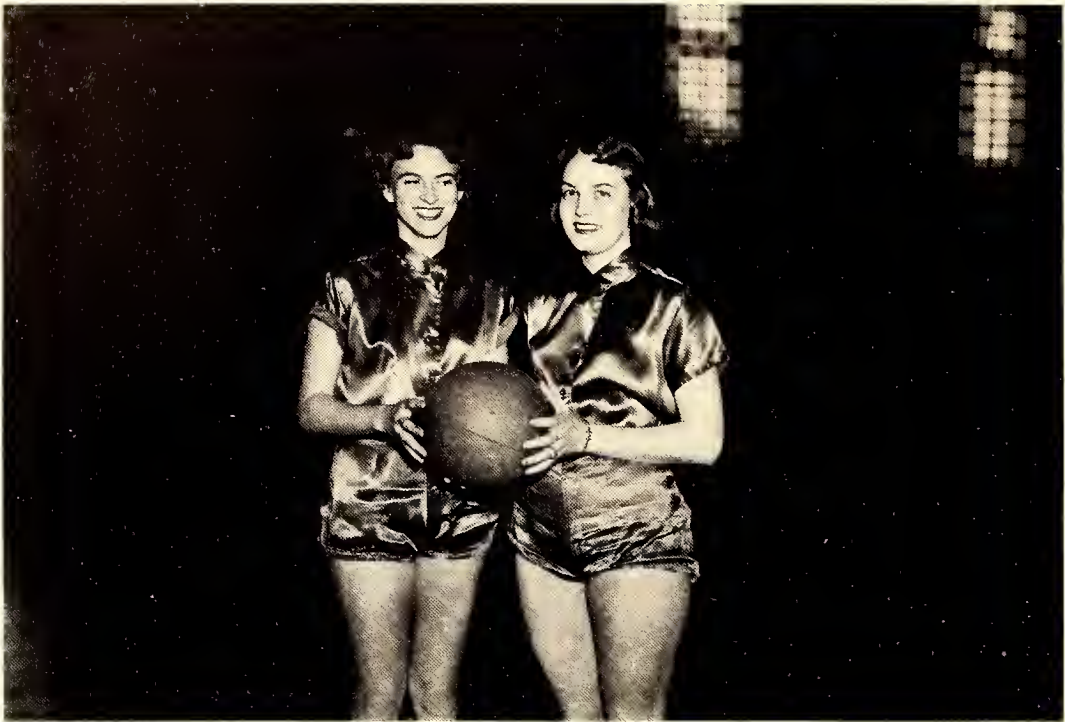
CHEERLEADERS

Jim Warren, Nancy Jo Svoboda, Clara Martin, Barbara Bush, Ann Haney, Sue Edwards, Sue Jones, Kieffer Irvin.

LETTER GIRLS

Bobbie Tolson, Beulah Loury, Peggy Jones, Maxine Goins, Helen Shiftlet, Joan Lambeth, Virgie Dawkins, Kathy MacClellan.





PEGGY KEETER — VANGIE WHITED
Co-Captains



MR. PAUL McEWEN
Coach





FAYE MUSICK — PAT HOOD

Managers

GIRLS' BASKETBALL

Row 1: Virginia Watson, Anita Smith, Peggy Keeter, Vangie Whited, Carleen Jones, Rachel Hardin, Shirley Kinder. Row 2: Faye Musick, Polly Reynolds, Helen Brittain, Ella Mae Reames, Becky Davenport, Diane Byrd, Ann McKinnis, Lorraine Land, Betty Stan-

ley, Mr. Paul McEwen. Row 3: Catherine Ross, Jane Currin, Margaret Kiser, Jane Ormand, Frances Bartenfield, Lee Musick, Phyllis Blankenship, Bessie Ross, Wilma Dean Cox, Elsie Kinder.





VIRGINIA WATSON



ELLA MAE REAMES



JANE ORMAND



PHYLLIS BLANKENSHIP



ANITA SMITH



POLLY REYNOLDS



CARLEEN JONES



ANN MCKINNIS

MARGARET KISER



SHIRLEY KINDER



VANGIE WHITED



LEE MUSICK



MARGARET KISER



RACHEL HARDIN



BETTY STANLEY

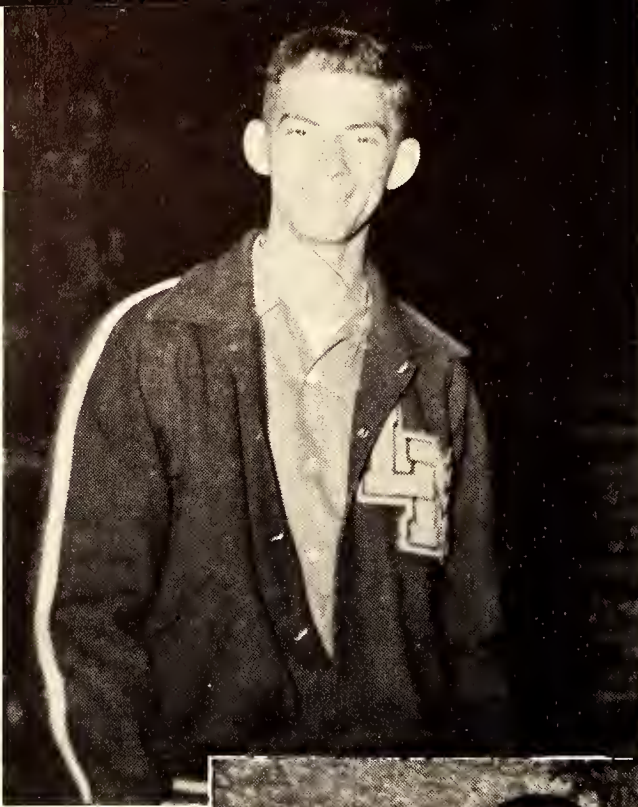


PEGGY KEETER



HELEN BRITTAIN

BOYS' BASKETBALL



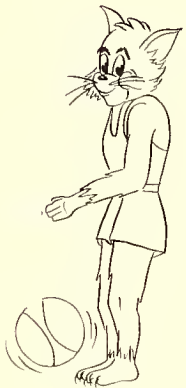
ED ABEE

Captain

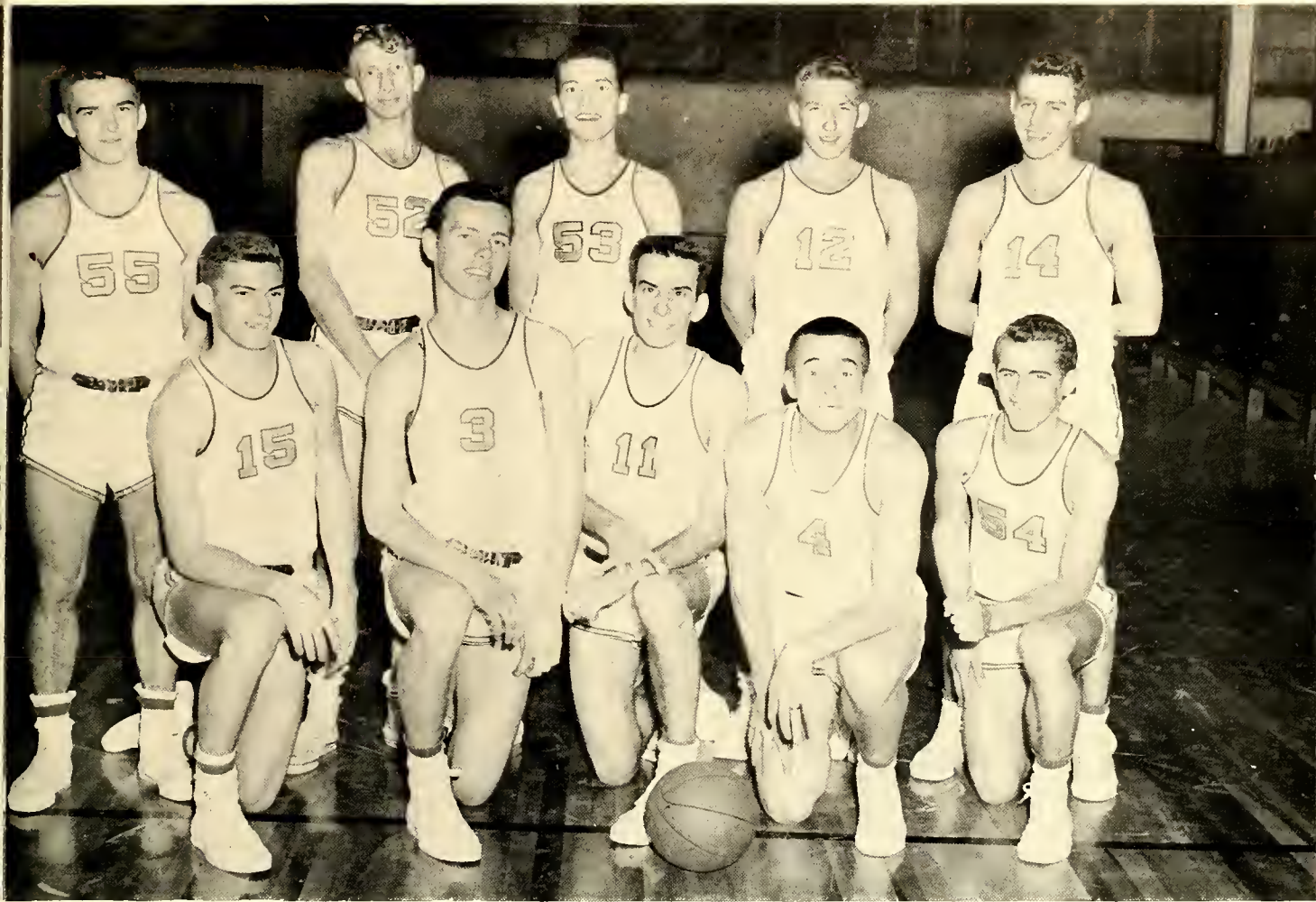
FRED I. DICKERSON PAUL H. McEWEN

Coach

Assistant Coach



VARSITY BASKETBALL TEAM



Row 1: Bob Patchett, Ed Bleynat, Don Holt, Harry Blevins. Row 2: Johnny Phipps, Cray Lee McGuire, Larry Hunt, Wade Rose, Bud Mosely.



CRAY MCGUIRE



BOB PATCHETT



BUD MOSELY



JOHNNY PHIPPS



WADE ROSE



DON HOLT



ED BLEYNAT



ED ABEE



LARRY HUNT



HARRY BLEVINS

MEDICAL SECRETARIES



CLASS OF 1954 INTERNS

First Row: JANE BREWER, LORENE BROWN, PEGGY SKAGGS, NAOMI WAGNER. Second Row: DAPHENE CARPENTER, THELMA SUE BUCHANAN, DOROTHY BUCHANAN, BETTY PARTIN. Third Row: MARTHA WHITE, BETTY LANIER, NELLIE TODD.

MRS. FLETCHER NELSON
Director

BILLY DALRYMPLE
Student Leader



FOLK DANCING CLUB

Betty McHone, Julia Gregson, Betsy Campbell, Doyle Braswell, Nancy Ramseur, Charlie Myerick, Joyce Dunlap, Dana Nantz, Ed Hipps, Bill Culler, Louise Blevins, Mildred Ridge, Marilyn Thompson, Patty Dillon, Helen Shiftlet and Mrs. Nelson.

Mary Anne Ruddle, Barbara Sides, Martha Ann Haney, Pat Smith, Jean Moore, Jack Moore, Beulah Loury, Diane Steele, Sara Moore, June Minton, Lillian Roth.

Don Hayes, Bob Marshall, Walter Porter, Tom Reins, Irone Lee Richardson, Dale Sigmon, David Morgan, Denver Cumbow, and Dean Westmoreland.

Billy Dalrymple, Kerin Whitlock, Frances Arnold, Wilma Dean Cox, Barbara Winchester, Barbara Arnold, Grace Rainey, Barbara Tolson, Nancy Wilson, Shirley Barbee, Phoebe Jane Williams, Betty Tester, Betty Stanley and Glenda Hedrick.









Advertisements

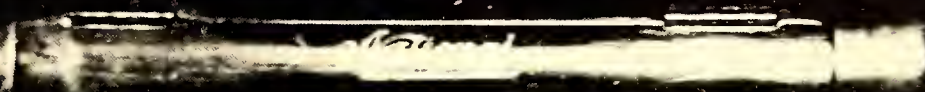


Dollars Cents

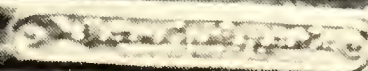


MS CASH

54.00



0	1	2	3	4	5	6	7	8	9
10	11	12	13	14	15	16	17	18	19
20	21	22	23	24	25	26	27	28	29
30	31	32	33	34	35	36	37	38	39
40	41	42	43	44	45	46	47	48	49
50	51	52	53	54	55	56	57	58	59
60	61	62	63	64	65	66	67	68	69
70	71	72	73	74	75	76	77	78	79
80	81	82	83	84	85	86	87	88	89
90	91	92	93	94	95	96	97	98	99



COMPLIMENTS OF

Oakboro Lumber Company, Inc.

LENOIR, NORTH CAROLINA

American Bemberg Beaunit Mills, Inc.

NORTH AMERICAN RAYON CORPORATION

ELIZABETHTON, TENNESSEE

**GARLAND MOTOR
COMPANY, Inc.**

Chevrolet Sales and Service

Phone REpublic 3-4351
Newland, N. C.

**PATY LUMBER
COMPANY, Inc.**

Elizabethton — Bristol
Greenville — Johnson City

**MAYLAND
PRINTING CO.**

"Complete and Dependable"

PRINTING SERVICE

Box K Phone 5-4051
Spruce Pine, N. C.

**BURLESON PLUMBING
AND HEATING**

PHILCO - HOTPOINT - BENDIX
HOME LAUNDRY

"We Know How"
Phone 349 Spruce Pine, N. C.

**MITCHELL
LUMBER CO.**

All Types of Building Materiols
PHONE 5-2732
Spruce Pine, N. C.

Compliments of
**FAUL AND CRYMES
Inc.**

Your Specialist In Sports
Chorlotte, N. C.

CITY BARBER SHOP

S. W. HALL, Prop.

"It Poy's To Look Well"

Spruce Pine, N. C.

Compliments of
**ASHEVILLE PAVING
COMPANY**

READY-MIX CONCRETE AND
ASPHALT

Branch Office:
Spruce Pine, N. C.

Compliments of
**CAROLINA
PHARMACY**

"Meet Your Friends At
Carolino Phormocy"

Boone, N. C.

Compliments of

A FRIEND

Hickory, North Carolino

**QUEEN CITY
TRAILWAYS**

Proud to hove served your fine
college. Chorter trips anywhere in
Americo.

We speciolize in:
Educotional Tours
Phone Amhurst 4-8836
Boone, North Carolino

CAUDILL'S, Inc.

"The Shop for Lodies ond Men"

123 East King Street
Boone, North Carolino

Compliments of

BANNER ELK BANK

Banner Elk, North Carolino

Compliments of

ROBBINS MOTOR CO.

Spruce Pine, N. C.

DAY'S DRUG STORE

Prescription Druggist

"Store of Friendly Service"

Spruce Pine, N. C.

**SPRUCE PINE
LUMBER CO.**

Lumber ond Building Materiol

DIAL PO 5-4266
Spruce Pine, N. C.

Compliments of

**SOULE STEEL AND
IRON WORKS**

Charlotte, N. C.

Compliments of

THE PINNACLE INN

Banner Elk, N. C.

Compliments of

**BANNER ELK
MERCANTILE CO.**

Banner Elk, N. C.

CAROLYN FLOWERS

College Dances Our Specialty

Bus Terminal Building

PHONE AM 4-8201

Boone, North Carolina

Compliments of

**STEELE AND TANK
SERVICE CO.**

Charlotte, North Carolina

Compliments of

THE STUDENT CENTER

LEES-McRAE COLLEGE

Banner Elk, North Carolina

**Johnson City Spring
and Bedding Co.**

"Invest In Rest"

Manufacturers of:
HIGH GRADE BEDDING

2300 West Walnut Phone 2143

Johnson City, Tennessee

Compliments of

**BLUE RIDGE
SUPPLY CO., Inc.**

Wholesale Auto Parts and
Accessories

Boone, North Carolina

BOONE DRUG CO.

Prescription Specialists
Sporting Goods
"3 Registered Pharmacists
To Serve You"
PHONE AM 4-3766
Boone, N. C.

Compliments of
**VANCE RECAPPING
COMPANY**

"Quality Recapping"
640-15 — 1000-20
Boone, North Carolina

Compliments of
BLUE RIDGE MOTORS

PHONE 179
Boone, North Carolina

Compliments of
Northwestern Bank

Serving Northwestern North Carolina
Boone, North Carolina

Compliments of
CALDWELL HOTEL

H. Preston Pitts, Prop and Mgr.
Morganton, North Carolina
"Come On"

Compliments of
HOME FEDERAL

Johnson City's Oldest and Largest
Savings and Loan Association
Johnson City, Tennessee

Compliments of

A FRIEND

Morganton, North Carolina

Compliments of

A FRIEND

VON CANNON LUMBER COMPANY

"For Lumber Call Our Number"

Republic 4-2345

OWN YOUR OWN HOME

Banner Elk, North Carolina

COMPLIMENTS OF

THE EXCHANGE

LEES-McRAE COLLEGE

MORGANTON HARDWARE COMPANY

58 YEARS OF COURTEOUS SERVICE

Morganton, North Carolina

JOHN SEVIER HOTEL

225 Rooms With Bath

"East Tennessee Finest"

Jahnsen City, Tennessee

Compliments of

BELK-BROOME

COMPANY

"The Home of Better Values"

MORGANTON, N. C.



Pepsi-Cola Bottling Company

SPRUCE PINE, NORTH CAROLINA

SPRUCE PINE MICA COMPANY

MAYLAND MANUFACTURING COMPANY

FABRICATED RAW MICA PRODUCTS

Spruce Pine, North Carolina

COMPLIMENTS

D. O. BELVINS AND SON, Distributor

GULF OIL PRODUCTS

Our 27th Year of Service to Avery County

SPRUCE PINE, NORTH CAROLINA

GREETINGS AND BEST WISHES TO LEES-McRAE

General Coal Company

DENDRON — RODA — STONEGA — GLENBROOK
CROZER — LYNCO — BEEHIVE COKE — HAMPTON

Charlotte, North Carolina

Congratulations To Graduating Class and Faculty

D. W. Reed

LIFE INSURANCE AND MORTGAGE LOANS

Charlotte, North Carolina

Life Insurance is not a panacea for all of the economic ills of this day and age but it's the simplest and surest way to create an estate for the future needs of our loved ones.

Autographs

LMC
Y39

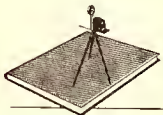
26896

Ontaroga, 1955

LIBRARY USE ONLY

Locust Hill College Library
I. N. C.

A product of



hunter's *Yearbook*
SERVICE

YEARBOOK PUBLISHERS
SCHOOL PHOTOGRAPHERS

PHONE 4 7851

1318 SOUTH HAWTHORNE ROAD
WINSTON-SALEM, NORTH CAROLINA



26896

Lees-McRae College Library



