

Historic, archived document

Do not assume content reflects current scientific knowledge, policies, or practices.

THE

DINGEE AND CONARD Co.

6273

ROSE GROWERS

West Grove, Pa.



LANTERN NATURAL SIZE

OUR NEW GUIDE

The Chinese Lantern Plant

SEE NEXT PAGE FOR DESCRIPTION

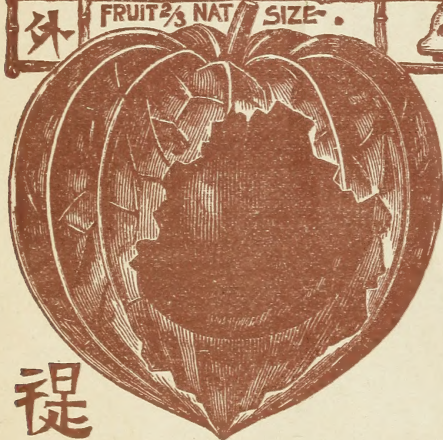
Autumn

1897

Small text at the bottom left corner, likely a printer's mark or publisher information.



A
Magnificent
Winter-
Blooming
Pot
Plant



The Chinese Lantern Plant

"*Physalis francheti*," or
Giant Winter Cherry.

SEE COLORED-PLATE ILLUSTRATION
ON PRECEDING PAGE.

WITHOUT doubt this is decidedly the most attractive and valuable hardy ornamental plant introduced in many years. It is a novelty of sterling merit, introduced from Japan by the well-known English horticulturist, Mr. James H. Veitch, a fact alone which is sufficient guarantee of its excellence. It is a gigantic species of the showy Winter Cherry, and is of the easiest possible culture. It is of sturdy, upright habit, and grows about one and one-half feet high; is perfectly hardy, and will stand outdoors over Winter, but its beauty may be more appreciated by growing in pots or boxes outdoors. In the Spring it can be planted in the open ground. It blooms early and produces the first season a large number of balloon-like husks 3 to 3½ inches across. The husks first appear light green, then gradually change to bright yellow and finally to orange scarlet. At this period of growth they strongly resemble miniature Chinese Lanterns when lighted—hence the name. The effect of the ripened husks among the bright green foliage is singularly striking. In the husks or lanterns a

fruit is borne, much like a Winter Cherry or Husk Tomato, except that the color is a deep ruby-red, and is in every way superior to the Winter Cherry, either for cooking, preserving or eating raw. The branches covered with husks are used with splendid effect as parlor ornaments, and for Christmas tree decorations, retaining their life-like appearance for nearly a year. They make an unusually elegant appearance when arrayed in tall vases together with dried grasses. **For all ornamental purposes this is an exceedingly valuable novelty and will give the best of satisfaction; as a Winter-blooming pot plant of great beauty it will be hard to find its equal.** It has received a first-class certificate from the Royal Horticultural Society of England, also an award of merit. The leading English horticultural journals speak of it in most glowing terms. It is an elegant hardy ornamental plant, of more than ordinary worth, and should become immensely popular. To get the best effect, place several plants in a large pot, box or vase. Our color-plate illustration on preceding page gives an idea of its striking beauty.

WE OFFER FINE, LARGE PLANTS FROM THREE-INCH POTS.

PRICE: 15 CENTS EACH; 2 FOR 25 CENTS; 5 FOR 50 CENTS.

\$1.00 PER DOZEN, POSTPAID BY MAIL.

.....The Dingee & Conard Company, Rose Growers, West Grove, Pa.....



NEW HARDY WHITE
 EVER-BLOOMING
 CLIMBING ROSE
 No. 999 \$1.00 ea. FOR A NEW NAME FOR IT.

GRANT GOLDEN SACRED LILY

BERMUDA BUTTERCUP OXALIS

SUCCESS WITH FLOWERS. PREMIUM 20 BEAUTIFUL FLOWERS SHOWN ABOVE. FREE WITH EACH SUBSCRIPTION. READ THE OFFER.

Wanted, A Name

\$100 Cash
will be paid
for it

WE WILL introduce and offer for sale, January 1, 1898, what we believe to be the rarest and most beautiful novelty yet found in Roses—nothing less than a pure, white, hardy, ever-blooming Climbing Rose, with magnificent long-pointed buds and full, deep flowers, the equal in grace and finish of any cut-flower Rose, with the most delicious fragrance imaginable! Until a suitable name shall have been selected, it will be known as No. 999. An idea of its beauty may be had from our illustration on the accompanying colored plate. Our achievements in originating and introducing New Roses have earned us a world-wide reputation, but we are confident that No. 999 will be our greatest introduction.

\$100 for a Moment's Thought—Better than Klondike.

We want this Rose to have a name appropriate to its beauty, pleasing to flower lovers, and one that will give it the fame it deserves. In order to secure the brightest suggestions from flower lovers everywhere, we have decided to give One Hundred Dollars (\$100) in cash for the best name received before December 15, 1897.

Conditions of the Rose Contest.

For every club of two yearly subscribers, new or old, to **SUCCESS WITH FLOWERS**, at 40 cents each (which sum includes the Twenty Beautiful Premium Flowers shown in the accompanying colored plate), the person sending the two subscriptions will receive free as a special reward *One Large Blooming Bulb of the Beautiful Mexican Scarlet Lily*, and is also entitled to the privilege of suggesting a name for our grand new Rose, No. 999. For every club of five yearly subscribers, at 30 cts. each, the club raiser is entitled to suggest three names for new Rose, No. 999, and as a further reward may select any two articles from the following list of valuable specialties:

PALM LATANIA BORBONICA,
SWAINSONIA ALBA,
A BEAUTIFUL FERN,
CANNA, CHOICE VARIETY,
RED-BRANCHED HYDRANGEA,
OHMER BLACKBERRY,
PANCRA TIUM CARIBBÆUM,
BERMUDA EASTER LILY,
10 MIXED CROCUS,
BLACK CALLA,
10 FREESIAS,

CHINESE LANTERN PLANT,
LITTLE GEM CALLA,
OTAHEITE ORANGE,
NEW ROSE, PRINCESS BONNIE,
VIBURNUM PLICATUM,
GREVILLEA ROBUSTA,
2 GIANT WHITE NARCISSUS,
CHINESE SACRED LILY,
LIL IUM AURATUM,
WHITE CALLA,
GRINUM ORNATUM.

CISSUS DISCOLOR,
FANCY-LEAVED CALADIUM,
OLEANDER ROSEUM,
ROSE, AMERICAN BEAUTY,
HYDRANGEA GRANDIFLORA,
2 SCARLET MEXICAN LILIES,
2 NAMED HYACINTHS,
6 ROMAN HYACINTHS (Assorted),
10 NAMED TULIPS,
SPOTTED CALLA,

Or, if you wish and so direct, we will send free a complete collection of the Twenty Beautiful Premium Flowers shown in accompanying colored plate.

How the Prize will be Awarded.

The names received will be submitted to a disinterested committee, consisting of Mr. ROBERT CRAIG, the well-known horticulturist; Mr. H. M. WALL, Brooklyn, N. Y., the leading lithographer of America; and Mr. A. BLANC, the eminent horticultural artist. One name will be selected, and the sender of that name will receive *One Hundred Dollars in cash*. Should two or more persons suggest the same name as the one selected by the committee, the prize money will be divided equally. The result of the contest will be announced in the January, '98, "Success with Flowers."

Additional Cash Prizes.

Besides the opportunity to win the \$100 Rose prize, here are additional opportunities, which our grand premiums make it easy to secure. Just show your friends the splendid premium given free with a yearly subscription to **SUCCESS WITH FLOWERS**. Surely no one would be without flowers when a complete collection, together with such an interesting magazine as **SUCCESS**, can be had for so little money. If at all interested in flowers, they will be glad to take advantage of this, the most liberal offer ever made. Our premiums represent the greatest value of any we have ever sent out. We propose doubling the circulation of **SUCCESS**, so we make this one grand offer, feeling confident that all our friends will cooperate with us, as we make it to their decided advantage to do so. Who knows but that by sending in comparatively few subscribers you will secure one of the following cash prizes?

\$100 Cash will be paid to the person who sends us the largest number of yearly subscribers before December 15, 1897.

- \$50 Cash for the second largest number.
- \$25 Cash for the third largest number.
- \$15 Cash for the fourth largest number.
- \$10 Cash for the fifth largest number.

In the contest for the largest number of subscribers, every 25-cent, 30-cent, or 40-cent subscription will count, whether it is included in a club or sent in singly.

Important.

When sending in your first club of five subscribers or afterwards, it is absolutely necessary to say you are working (provided that you are) for the cash prize for the largest number of subscribers. This will enable us to keep a correct record of your work.

Address **THE DINGEE & CONARD COMPANY**, Publishers, West Grove, Pa.

A Magnificent Premium.

TWENTY GRAND FLOWERS ABSOLUTELY FREE WITH EACH SUBSCRIPTION.

With every yearly subscription, at 40 cents each, or in clubs of five or more, at 30 cents each, we send postpaid and free of all cost the Twenty Splendid Premium Flowers named below. Lack of space prevents us from giving description; our color-plate illustration will, however, give an idea of their beauty and value. Remember, these are first-class bulbs, grown specially for us, and all of them are sure to grow and bloom profusely. Included among them will be found some rare and high-priced novelties.

- | | |
|--|---|
| One Crocus, | One Golden Sacred Lily, |
| One Sparaxis, | One Scarlet Freesia, |
| One Saxifraga, | One Grape Hyacinth, |
| One Tritelia Uniflora, | One Allium Neapolitanum, |
| One Ixia, | One Fritillaria, |
| One Oxalis Burmeda But- tercup, | One Iris Hispanica, |
| One Brodiaea, | One Ornithogallum Umbel- latum, |
| One Freesia Refracta Alba, | One Tritonia, |
| One Packet Seed Winter- blooming Morning Glory. | One Pkt. Seed Weeping Palm |
| One Snowdrop, | One Pkt. Pansy Seed, Large Flowering, Mixed. |

All premiums will be sent postpaid to the club raiser for distribution.

Show this list of Twenty Beautiful Flowers and the colored plate illustrating them to your friends and neighbors, and tell them they are given free with each yearly subscription to **SUCCESS WITH FLOWERS**, and we think they will agree with us that this is the grandest offer ever made by any publication, regardless of class and price. Send us a good name for new Rose, No. 999, also compete for the cash prizes for the largest number of subscriptions. Somebody will win a prize. Why not you?

SINGLE SUBSCRIPTIONS WITHOUT PREMIUMS 25c. each
SUBSCRIPTIONS IN CLUBS OF TWO AND LESS THAN FIVE, WITH PREMIUM 40c. each
SUBSCRIPTIONS IN CLUBS OF FIVE OR MORE, WITH PREMIUM TO EACH SUBSCRIBER, 30c. each

\$300.00 Cash

WILL BE GIVEN AWAY!!

SINCE the first number of **SUCCESS WITH FLOWERS** was issued, over seven years ago, its progress has been something phenomenal—nearly 150,000 subscriptions having been enrolled. As the only periodical entirely devoted to floriculture, it has a hold upon the affections of the flower-loving people that insures it still greater prosperity. This great achievement is in a large measure due to the unwavering loyalty of the thousands of good folks throughout the whole reading world who have pushed it to the front. It is a Magazine with a purpose. The gospel it teaches—to love and cultivate flowers—is a noble one. It goes further. It tells you how to grow them. In every home in the land where flowers are loved and cherished, there **SUCCESS WITH FLOWERS** should be found.

We Want Help.

Within the next three months we propose to double the already large circulation of **SUCCESS**. We realize full well that this is a gigantic task, and when successfully accomplished (which is entirely possible, if you will only help us) it will stand out as the grandest achievement ever consummated by any journal. We want your assistance in this one mighty effort. "Many hands make light work," and as we offer you extraordinary inducements, we are sure this appeal will not have been made to you in vain, particularly when a little help from you means so much to us.

A Beautiful Rose.

We will introduce next year the most remarkable new Rose in existence. It is remarkable because it is the first *pure white hardy everblooming Climbing Rose*. Imagine a hardy, white climbing Rose that blooms throughout the entire season, producing magnificent, long, pointed buds and full, deep, double flowers, the equal of the finest cut-flower Roses which are exquisitely fragrant. Until a suitable name shall have been selected, we will designate it as "No. 999."

\$100 Cash for a Name.

We want a name for this lovely Rose. Will you furnish it? If it is a good one we will pay \$100 cash for it. All we ask is that you send us *two* yearly subscriptions to **SUCCESS WITH FLOWERS**, at 40 cents each, which sum includes the Twenty Grand Premium Flowers shown on the accompanying colored plate, and suggest a name for New Rose, No. 999. For each club of two subscriptions, the person sending the club will receive as a special reward one *Scarlet Mexican Lily*, one of the grandest novelties of the year, which is illustrated on last cover-page of our **AUTUMN GUIDE**. For every club of *five* yearly subscribers, at 30 cents each, which sum also includes *Twenty Beautiful Premium Flowers*, the clubber is entitled to select free any two valuable specialties named on back of colored plate and is also entitled to suggest *three*

names for new Rose No. 999. Could anything be fairer? Be sure to read every word of the offer on back of colored plate. It means money to you. Somebody will get this prize of \$100. Why not you?

A Magnificent Flower Premium.

Just think of it! Twenty lovely flowers (worth not less than 75 cents) and **SUCCESS** one year for 40 cents! Why we can afford to do this is covered by one word—*diligence*. For two years we have been laying the groundwork for this grand premium. Our representative in Europe purchased these bulbs in such quantities as to astonish even the largest growers. Just look the varieties over on colored plate. Surely every one will want these bulbs. Never again will they have the chance of securing them so cheaply. Now is the accepted time. When the name you thought would be a nice one for *New Rose No. 999* wins the prize of \$100 you will wish you had sent in two subscriptions.

\$200 Additional Cash Premiums.

With the marvelous premium of *Twenty Flowering Bulbs* free to each subscriber, the means are thus furnished you whereby the task of getting a large number of subscriptions is made easy. That you may win a cash premium, should you fail to win the prize for naming Rose No. 999, we offer \$100 cash for the largest number of subscribers received before December 15, 1897; \$50 cash for the second largest number; \$25 cash for the third largest number; \$15 cash for the fourth largest number, and \$10 cash for the fifth largest number.

Those who won prizes in the *Flamingo Canna* contest will remember their surprise in winning a large money prize by sending in a comparatively small number of subscribers. Who knows but that a smaller number will win a cash prize this time? We urge you to begin at once. If you want to win a cash prize, and are in earnest, you certainly can do it. Commence to-day.

Send us a Good Name

\$100.00 FOR IT.

Send us *two* subscriptions at least, and suggest a name for New Rose, No. 999. As a rule there is not much in a name, but it is quite possible that the name you suggest for "999" may be worth \$100 to you. Why not run the risk? When the result is announced in the January, '98, number of **SUCCESS** will your name appear in the list of winners of cash prizes? It will, if you go to work in earnest now. We will help you to win a prize in every way we can. Write us for sample copies or any information desired. Remember that every subscription sent us will count in the competition for the largest number of subscribers. We will be glad to hear from you. Always address

The Dingee & Conard Company, PUBLISHERS,
WEST GROVE, PA.



BULBS FOR WINTER FLOWERING

Whether grown in pots or boxes in the house during Winter, or planted in the open ground for early Spring bloom, no class of flowering plants are easier to grow and surer to bloom than those produced from bulbs; the simplest culture being rewarded by vigorous growth and abundant and lovely flowers. The great majority of bulbs and roots we offer at this season, planted in the open ground, are entirely hardy anywhere in the United States, and if desired can be left undisturbed; they will then become naturalized and require no more attention than so much grass, and will increase in size and beauty each year. Nearly all the varieties offered can be grown and flowered in pots or boxes in the house during the Winter months, and for this purpose no flowers can be more accommodating. Whether indoors or out, the quality of soil necessary is not at all important; any good, ordinary soil will do. If there is any choice, however, a light, loamy soil, fertilized with old, thoroughly decomposed manure is best.

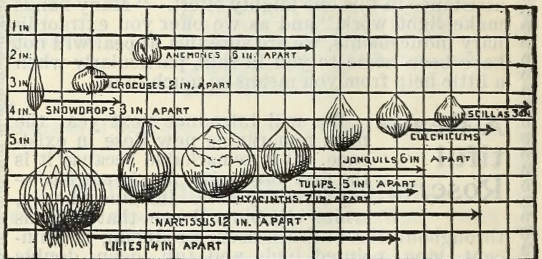
Included with the description of each class are brief cultural directions; but, as the care, use and beauty of flowering plants is such an inexhaustible subject, we invariably wish for more space than our Catalogues can afford. We are therefore glad to announce that the Autumn numbers of our *Floral Monthly*, "SUCCESS WITH FLOWERS," will be especially devoted to the use and culture of all the different classes of bulbs and plants suitable for Autumn planting.

Subscribers whose subscriptions expire with the Fall numbers should be careful to renew promptly, so as to get the full

benefit of the subject. New subscribers, to have the same, should begin their subscription with the September number.

Many timely and instructive articles will appear during the Autumn months treating of the culture of Winter-blooming bulbs and plants indoors. When the reasonable subscription price (30 cents per year in clubs), together with the twenty splendid bulbs offered free to subscribers, is considered, no one should be without the flower-growers' favorite magazine, "Success with Flowers."

Do not neglect reading the great offer made to "Success" subscribers on colored plate and page 3—twenty fine, healthy bulbs, sure to grow and bloom, free with each yearly subscription.



Information for Correspondents.

Please Read Carefully Before Ordering.

OUR PRICES ARE STRICTLY CASH.—The proper remittance must in all cases accompany the order, and should be enclosed with it.

MONEY AT OUR RISK.—All money sent us by Post-office Money Order on **West Grove P. O., Pa.**, Bank Draft on any city bank, Express Money Order or Registered Letter is at our risk, and we will be responsible for its safe arrival, and will send full value for it in all cases.

POST-OFFICE MONEY ORDERS can now be had at almost all Post-offices, and are absolutely safe. If the letter enclosing it is lost, send us the number, date and amount, the office at which it was payable, a list of what you ordered, and we will fill the order at once, and apply for a duplicate of the lost Money Order, which the Government will furnish in such cases.

BANK DRAFTS, drawn on any city bank and made payable to our order, are good and can be had at all banks. If lost, the bank will issue a duplicate.

EXPRESS MONEY ORDERS are one of the cheapest and best ways of sending us money. Perfectly safe, be-

cause if lost a duplicate can be had by applying to the Express Company.

REGISTERED LETTERS.—When you cannot get Money Orders, enclose money—either notes or coin—carefully wrapped, and have it Registered by the Postmaster; the responsibility then is ours.

STAMPS.—Please do not send stamps in payment of goods. Money is much more acceptable, and you can send small amounts (under one dollar) in silver coin, carefully wrapped and sealed, just as safely as stamps and much more conveniently to yourselves and to us.

CANADA.—Friends in Canada can remit by International Postal Order on West Grove P. O., Pa., Bank Draft on New York, or Canadian Currency in Registered Letter.

FREE BY MAIL.—At the prices named in this book we send everything offered by Mail, postpaid; when we ship by Express it is at the purchaser's request and expense.

WE GUARANTEE all orders to arrive safely to any point in the United States, whether sent by Mail or Express; if anything is injured or spoiled in any way before delivery, it will cheerfully be replaced without cost.

Notwithstanding the marked advances in the prices of foreign-grown bulbs and the import duty of twenty-five per cent. imposed by the new tariff law, we have not, in a single instance, increased prices, but have instead made numerous reductions. There will be many second grade, inferior bulbs offered for sale this season, but it is well to remember that the first size bulbs is the only grade sure to give satisfaction. All our bulbs are the first size, and the constantly increasing demand shows conclusively that the best is the most profitable for our customers, as well as for ourselves. You run no risk in buying the bulbs we offer; they are worth every cent asked for them. There is nothing that insures a permanent patronage more than honest methods. Our success depends upon our ability to please our patrons—their success is ours.

Founded . . 1850

Incorporated 1875

THE DINGEE & CONARD CO., ROSE GROWERS, WEST GROVE, PA. Our New Guide to Rose Culture Autumn Edition.

...1897...

To Our friends and Customers:



OR nearly thirty years it has been our duty and pleasure to occupy a page in each catalogue with a friendly talk with "friends and customers." After having served the flower-loving public for such an extended period, the salutation, "To Our Friends and Customers," has a significance that can be grasped only by those who have been thus honored with the confidence of thousands upon thousands of good friends, who have sent us their orders year after year.

A Satisfied Customer is Our Best Advertisement.

In these times, when deliberate misrepresentations are not uncommon, and with cheap spider-and-the-fly offers confronting the buyer on all sides, we feel that it is really an honor to be proud of to receive the steady support of all our old friends, as well as the patronage of new friends who come to us by the thousands each successive year. To all we tender sincere and hearty thanks.

If for any reason mistakes occur (and they are likely to where so many orders are handled), remember that it is impossible to prevent some errors creeping in, and if any have occurred or should be made in filling your order, please tell us *at once* and we will cheerfully rectify them and make all entirely satisfactory to you. It is this policy of having all our customers satisfied with their dealings with us that has won their lasting friendship. We believe this to be our best advertisement.

Honesty and Integrity— Their Value.

When sending your order to us, you may rest assured that you will receive just what we promise to send you, and if that is impossible, we will send you what you want—or return your money. It has never been our policy to praise unduly the goods we offer. The ease and quickness with which goods are delivered by Mail or Express to any part of the United States makes it as safe for you to buy from us, no matter where you live, as if you were our next-door neighbor. The fact that you buy by Mail or Express, at a great distance, entitles you to just the same treatment as if you were here face to face with us buying your goods in person. A man that means to be honest *will be* whether dealing with his neighbors at home or a thousand miles away. The cardinal principles of honesty and integrity that always have been characteristic of our dealings will be rigidly maintained and enforced in all departments of our business.

Your Order.

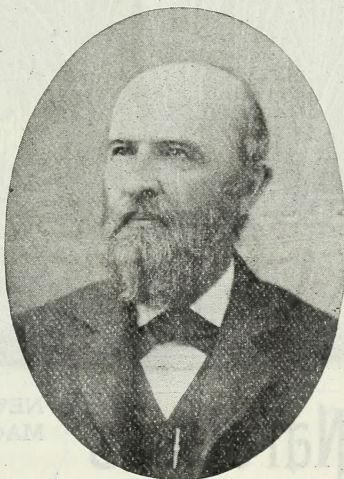
Now, a word or two about that order we expect, or rather, hope to receive this Fall. You will notice we offer several specialties that we call particular attention to, believing them to be highly meritorious and worthy of recommendation. This book also contains a complete list of all the standard Winter-flowering bulbs, choice plants, hardy shrubs and fruits. We would call attention to the fact

that all the bulbs we offer are grown especially for us, and are of the first or largest size. Smaller and inferior bulbs can be bought at cheaper prices—but they are sure to be an expensive bargain for the buyer.

A good rule to be guided by is to buy the best where you know you will get it at honest prices. Notwithstanding that an import duty of 25 per cent, has been applied to all imported bulbs and plant products, we have not raised our prices, but have in many instances given our customers the benefit of our knowledge of buying by making liberal reductions. Our prices are as low as first-class stock can be bought for, and we hope you will not look through this book without making up an order, however small it may be. Without a few Winter-blooming flowers you miss that cheery comfortable look that they alone can give. Don't be without them. They are very inexpensive and wonderfully easy to get along with.

The Founder of this Business.

We know of no better time to introduce to our many friends one of the pioneer Rose growers of this country (and the first to send them safely by mail), Mr. Charles Dingee, the founder of this present great business, and for nearly fifty years its active managing head, whose likeness appears on this page. After a life that has spanned and gone beyond the Biblical allotment of three-score and ten, we are proud to have him still guiding the destinies of this business, whose fame is not confined within the shores of our own country, and under whose fostering care and wise direction it has become the leading Rose-growing establishment of America. The



CHARLES DINGEE, FOUNDER.

road to success is long, steep and stony, and is rarely, if ever, reached by accident. Capacity, ability, force and unimpeachable honesty and integrity are the fundamental principles necessary to its attainment. These are prominent factors that have made this business what it is, and which have been so thoroughly exemplified by its founder and instilled into its co-workers. Dishonesty in all its forms has been the cause of releasing instantly those who believed it to be a virtue by which the journey to success is quickened.

Mr. Dingee's absence in Europe when this is written, seeking recreation after a season of active work, makes the introduction possible.

Concluding.

In conclusion we wish to say our great specialty is, and has been for nearly thirty years, the *Rose on its own roots*. We now have over seven hundred varieties in stock, which we can furnish, in season, at popular prices. **The Dingee & Conard Co. has no connection whatever with any other concern, and will not be responsible for any offers except those which it makes.** With many thanks for past favors, and awaiting your kind order, we are, Yours faithfully,
The Dingee & Conard Co., Rose Growers, West Grove, Pa.

OUR NEW GUIDE TO ROSE CULTURE for Spring and Summer of 1898

will be ready January 1, 1898, and will be sent *free without request* to customers of present season, including this Fall; also to customers of last year. To all others it will be sent *free upon application*. It will be a handsome book of 120 pages, containing a complete list of *Roses, Hardy Plants, Summer-flowering Bulbs, Fruits, Flower and Vegetable Seeds*, in fact all flowers worth growing will be offered for sale at popular prices. As a book of Roses it is conceded to be the leading catalogue of America. It will contain accurate descriptions of over seven hundred (700) varieties, including all the standard varieties as well as many new and rare sorts not offered elsewhere. Always address **The Dingee & Conard Co., Rose Growers, West Grove, Pa.**



Giant White Narcissus

NEW, DISTINCT AND BEAUTIFUL.
MAGNIFICENT LARGE FLOWERS.
GROWS IN WATER.

In offering the Giant White Narcissus we believe it will be nigh impossible to find a single fault in it. It has every virtue to make it the flower for the millions. It will not only grow, but will do so with absolute certainty and produce immense numbers of deliciously scented flowers in an incredibly short time; in fact, this grand new variety is the earliest flower of all Narcissus, coming into bloom for the Christmas Holidays.

GROW IT IN WATER.

It succeeds best when grown in water. Place sand or gravel in the bottom of the receptacle in which it is to be grown, firmly imbedding the bulb in it; then keep it well covered in water, as shown in the illustration, and you will not have long to wait until the lovely cluster of large white flowers, whose fragrance is equal to Orange blossoms, will appear in wonderful profusion, we might truthfully say, in extraordinary quantity. It may be grown in soil, like a Hyacinth, but the best and most interesting method is in pebbles and water.

TO GET THE BEST EFFECT.

Several bulbs (not less than four) should be planted together. Give plenty of sunshine, and we think all our friends who are fortunate enough to try it will concede that for delicious, refreshing fragrance, immensity of flower and ease of culture it will be hard to find the equal of the Giant White Narcissus. The bulbs we offer are imported direct from France, are large, sound and solid, sure to grow and bloom.

PRICE—Postpaid by Mail, 4 for 25 cts.; 2 for 15 cts.; 10 cts. each; 9 for 50 cts., 60 cts. per dozen.

GIANT GOLDEN SACRED LILY.

Large and sweet, hardy, thrives in any window or garden. Blooms quickly either in soil, sand or pebbles and water. Blooms freely. Beautiful and very fragrant. Large bulbs, 6 cts. each; 6 for 25 cts.

SPECIAL OFFER.—One Giant White Narcissus, or Sacred Lily, and one Giant Golden Sacred Lily for 15 cts.; two of each for 25 cts. They make a splendid contrast.



Giant Golden Sacred Lily.

The prices given include the postage, which we pay.

Plant
"Flamingo"
Now!



NEW
CANNA
"FLAMINGO"

THE BEST, BRIGHTEST
AND FREEST-BLOOMING
CANNA EVER OFFERED.

THERE are few Cannas that are satisfactory for Winter blooming indoors. While we have an extended list of varieties in stock, we do not recommend any but "FLAMINGO." After careful trials, we believe it to be superior to all other varieties, especially for pot culture during Winter. It is a true ever-blooming Canna, the most magnificent variety of its color in cultivation. For Fall and Winter blooming it cannot be equaled. The flowers are superb—large, have an exquisite reflex form, and are of excellent substance and possess a depth and richness of color found in no other flower; an intense glowing crimson, without a spot or blemish. Originated and introduced by us, it has been twice color-plated, and has received a national introduction. As a plant for Winter culture, no Palm or Fern or any other plant having an equally tropical effect can surpass it in beauty, color, grace of outline, ease of culture and earliness, profusion and continuity of bloom.

IT IS POSITIVELY THE FINEST WINTER-BLOOMING
CANNA FOR POT CULTURE.

It is hardly ever without flowers. It grows to a height of about three feet, commences to bloom when but six to eight inches high from the ground and continues throughout the entire year. Imagine a plant of FLAMINGO crowned with one, two and frequently three spikes of glowing crimson flowers, thus presenting an array of gorgeous color, relieved by a background of luxurious deep green, musa-like foliage, and you will admit that we have a plant that for brilliancy, beauty and effective decorative value is unequalled by any plant now known. Remember that it will commence blooming as soon as established and continue throughout the Fall and Winter. Will increase in size and beauty year after year. **IF PLANTED NOW IT WILL BLOOM PROFUSELY THROUGHOUT THE FALL AND WINTER. NO MISTAKE WILL BE MADE IN STARTING IT EARLY. BE SURE TO TRY IT.**

PRICES—Strong, well-rooted pot plants (not dry roots),
ready for blooming, 30 cts. each; 4 for \$1.00;
10 for \$2.25, postpaid by mail.

Address THE DINGEE & CONARD CO., Rose Growers, West Grove, Pa.



Winter-blooming Carnations

FOR ———●
HOUSE ———●
CULTURE ———●

As a Fall and Winter-blooming plant for house culture we recommend the Carnation as one of the very best. It is as easily grown as a Geranium and far more satisfactory. You know how high priced Carnation blooms are during the Winter. Don't buy them—grow them yourself. You can have an abundance of flowers at a trifling cost. Follow these directions and you will succeed. Plant in good soil, give plenty of water and drain well. Let the plants be cool at nights; this is an important requirement. A 40° to 50° temperature is about right. Keep the dead foliage picked off. We offer extra-large field-grown plants; they will bloom continually throughout the Winter. Two or three plants can be sent by mail; it is best, however, to send them by Express when possible, as they arrive in much better condition.

PRICE. { Any of the varieties described below postpaid by Mail, 30 cts. each; 4 for \$1; complete set of 11 varieties \$2.25. By Express at purchaser's expense, 25 cts. each; 5 for \$1; complete set of 11 varieties, \$1.75.

CAPTAIN KING.—This superb new variety is one of the best Carnations in cultivation to-day. For pot culture it is particularly valuable; makes a grand show. Strong grower; flowers extra large, produced with remarkable freedom on long stems. Color new and odd; pure white, with delicate markings of pink; deliciously fragrant.

Cllo.—Clear bright pink; very free.

Kitty Clover.—Grand new yellow variety; splendid.

Kohinoor.—Extra large; one of the finest whites.

Lizzie McGowan.—Color paper white; well known.

Mrs. Fisher.—The standard white variety.

Ophelia.—Deep, clear pink; fine for pot culture.

Portia.—Brilliant scarlet; the best.

Rose Queen.—Blooms freely; bright clear pink.

Sweetbrier.—Pure pink; fragrance like the old-fashioned Sweetbrier Rose.

Wm. Scott.—New and good; rich dark pink.

THE DINGEE & CONARD CO., Rose Growers, West Grove, Pa.



Our Beautiful New Crimson Pedigree Rose ❀ ❀

Sweeter than
"La France."
Blooms all
the time.

“PRINCESS
BONNIE.”

The Queen of
Winter-Blooming
Roses.

Perfectly Hardy.
Brighter than "Jack."

THE Brightest, Sweetest and Freest Blooming Rose in existence!

and exquisite fragrance it is positively not equaled by any Rose we know, while for continuity of bloom and vigorous, healthy growth, whether planted indoors or in open ground, it even surpasses a Geranium. It is the Rose for the many. Both in the open ground, where it is hardy, and indoors it grows vigorously and produces a continuous profusion of flowers; indeed it is rarely without flowers. For Winter blooming it has no equal. It is the most popular Rose in our list of over 600 varieties. If you must confine yourself to one Rose, let it be "Princess Bonnie." It will please you beyond measure.

We regard it as the finest Rose ever sent out. Its parentage alone is sufficient guarantee of its great excellence. It is the result of a cross between "Bon Silene" and "William Francis Bennett," two favorites of remarkable merit. It inherits in the full the fragrance and beauty of "Bennett," and the freedom of bloom and vigorous growth of "Bon Silene." Every shoot produces several perfect flowers, which frequently come in bouquet-like clusters of seven and eight. It blooms all the time, even surpassing "Clotilde Soupert," both indoors and in open ground. The flowers are borne on long, stiff stems, and have the "Bennett" form; they are large, semi-double, and in bud surpass any Rose we know. In foliage it shows the "Bon Silene" blood—large, of good substance and

free from all forms of disease which usually attack "Bennett" foliage. Of the color a prominent grower writes: "It is certainly charming." The outside petals are rich, solid crimson, deeper than "Bennett" and more vivid than "Jack," while the inner side of the centre ones, at the base, is streaked with white. In fragrance it is perhaps the most remarkable Rose yet introduced. The fragrance is rich and subtle; not the pungent odor of a Hybrid Perpetual, but rather a delicate, refined scent, so peculiarly its own that if it produced but a single crop of flowers a year its fragrance alone would entitle it to a place among the Roses of distinction. *It is perfectly hardy in open ground; it is the only hardy ever-blooming crimson Tea Rose.* We look upon it as a wonderful Rose.

Strong, 3-inch pot plants, ready for immediate blooming, 20 cts. each; 3 for 50 cts.; 7 for \$1; \$1.50 per dozen, postpaid by Mail. Strong, two-year-old plants, 40 cts. each; 6 for \$2, by Express only.

THE TRUE BERMUDA EASTER LILY.
GRAND FOR WINTER FLOWERING.

One of the most superb Lilies known, and one of the finest varieties in existence for house decoration, and should be included in every collection. The plant, while in full bloom, is lovely beyond description; it is of neat and graceful habit; the flowers are pure white and delightfully perfumed. As a window plant it is unexcelled and decidedly effective. In cultivating the Easter Lily none should anticipate failure if the directions given below are adhered to, as the plant is a vigorous grower with ordinary attention.

Cultivation.

In order to get the best effects a rich soil is required; this can usually be obtained in the yard or garden. The pot or box to be used should be not less than six inches in depth; place about two inches of broken crockery or coal cinders at the bottom in order to secure free drainage; fill loosely with soil to the top and, after planting the bulb, water moderately and put away in a cool place until the roots begin to form, when it should be transferred to the sitting-room and given a warm and light exposure.

THEY SHOULD FLOWER IN ABOUT THREE MONTHS FROM THE TIME OF PLANTING.

This Lily may be planted outside, and is hardy in the Southern States, and will survive the northern Winters if protected with a covering of leaves or other litter. The bulbs that we offer are the true Bermuda Easter Lily (*Lilium Harrisii*), secured direct from our Bermuda grower, and are of the best.

Smaller and inferior bulbs can be purchased at a much less price; such bulbs are almost worthless, as they produce few flowers. We prize the customer's satisfaction, and therefore secured only large, healthy bulbs—the different sizes are the finest we have ever sent out; they will quickly make a vigorous growth and are sure to give an abundance of bloom. We can unqualifiedly recommend them to give absolute satisfaction.

OUR IMPORTATION OF HARRISII IS PARTICULARLY FINE THIS YEAR — BULBS READY FOR IMMEDIATE DELIVERY — QUALITY THE BEST.

Extra Lilium Candidum.

We have imported from France a superb lot of *Lilium Candidum*, which were especially grown and prepared for Winter blooming in pots. The bulbs are of enormous size, and will throw up strong stalks crowned with a profusion of pure waxy white Lilies; exquisitely sweet. Give the same culture as is recommended for *Lilium Harrisii*. By mail, postpaid, 20 cts. each; 3 for 50 cts.; 6 for \$1.

The prices given include the postage, which we pay.

NOTHING you can plant will give better satisfaction or more pleasure than the **BEAUTIFUL EASTER LILY.....**



Large Bulbs, popular size : 15c. each ; 3 for 30c. ; \$1.10 per doz. Extra Large Bulbs : 20c. each ; 3 for 50c. ; \$1.85 per doz. Bulbs of Enormous Size : 30c. each ; 4 for \$1.00 ; \$2.75 per doz.

Lilium Longiflorum Albo Marginatum.
(Striped Longiflorum.)

This is one of the great novelties of the season in the bulb line. The flowers are as large as the well-known *Lilium Longiflorum*, while the luxuriant foliage has a broad margin of silvery white, which combines well with the white flowers, giving the plant a unique appearance, just like *Dracena Sanderiana*. This is a highly meritorious new Lily, and, although of recent discovery, it has already received two first-class certificates. Very rare. Stock limited. Nice, sound bulbs, 30 cts. each.

THE BEAUTIFUL

Azalea Mollis.

ONE OF THE GRANDEST
WINTER-BLOOMING
POT PLANTS.

WE have effected a special arrangement with one of the largest growers of Azaleas in Europe to furnish us with this magnificent new variety, which we now offer for the first time, for Fall and Winter blooming. By closing our contracts early, before the passage of the new tariff law, which places an import duty of 25 per cent. on goods of this character, and having bought in large quantities, we are able to offer this unusually expensive plant at a low price. Why pay \$1 or \$2 for an Azalea at Christmas time, when we can sell you the same plant at half price? Then, too, you have the pleasure of watching the development of its flowers day by day.



Produces Grand Flowers. This grand variety is the most brilliant and showy of all this family, and is considered one of the greatest acquisitions of recent years. While it is the ideal plant for Winter blooming, it is also valuable in the open ground, where it is entirely hardy. It forms a compact symmetrical bush of handsome proportions. Its beautiful flowers are large and showy, covering the entire surface of the plant with bloom. The colors are very diverse and of the greatest richness, ranging through shades of yellow, orange and red, and intense rosy crimson. The large trusses of bloom make a gorgeous display that finds its equal in no other plant we know. The plants will be sent you in a dormant state, with the flower buds already formed, ready to open.

Culture. They are easy to succeed with, being absolutely sure to bloom under ordinary treatment. When the plant is received, place it in a fairly rich, loamy soil, and keep for a few days in a darkened

situation. Keep fairly warm and water moderately. Then gradually bring into the light and heat, and water sparingly once a day. Under this treatment the flower buds will soon begin to develop, and gradually unfold their loveliness. When the plant is received, if you do not care to have it bloom for a while, or if you wish to defer planting, keep in a dark, cool place secure from heat and frost; place a slight covering of soil over the roots and it may be kept in a dormant state as long as desired.

Don't Fail to Order an Azalea.

It is Sure to Become Immensely Popular.

NOTICE.—OUR STOCK WILL ARRIVE ABOUT OCTOBER 15th.
ALL ORDERS WILL BE BOOKED AND FORWARDED AT THAT TIME.

Price. } Fine Large Plants, 6 to 9 buds, 60 cts. each, postpaid, by Mail.
} Extra Large Plants, 15 to 20 buds, 75 cts. each, by Express only.

Winter-Blooming Freesias.

TO GET THE BEST RESULTS, FREESIAS
SHOULD BE PLANTED EARLY.

A Valuable Improved Strain

We believe we have succeeded in obtaining a very much improved strain of *FREESIA REFRACTA ALBA*, which is by all odds the best variety for general house culture. The bulbs are stronger and surer to bloom than the ordinary sort usually sent out. This charming plant from the Cape of Good Hope has become one of our most popular Winter flowers, and we earnestly recommend our friends and customers to plant at least some bulbs of it. They are just the thing for the house, being sure to bloom in almost any situation. As will be seen by our illustration, which does but bare justice to the greatly improved variety we offer, the splendid flowers are borne in great profusion, and present a most distinct and novel appearance; the color is purest white, lower petals touched with yellow; the perfume is delicious, reminding one of Hyacinth, Mignonette and Jessamine combined. The buds and flowers, when cut and placed in water, remain perfect for about two weeks, therefore allowing some to be cut and taken to another room without loss; four to six bulbs can be planted in a 5-inch pot, box or pan; ordinary soil will do; if a little sandy, so much the better; water sparingly for a while; growth will be rapid and the plants will flower early and continue for a long time. For a succession of flowers plant from September to November.

Prices of Freesias, selected bulbs, sure to bloom, postpaid by mail:

First Size, 2 for 5 cts.; 15 cts. per dozen;
\$1.25 per 100.

Large Bulbs, 5 cts. each; 6 for 25 cts.;
40 cts. per dozen.

Special Prices Given on Larger Quantities.



Winter-Blooming Freesias.

NEW FREESIA "Morris White." A California seedling from *Refracta Alba*, with extra-large, pure white, fragrant flowers. This fine new variety is destined to become immensely popular, as its flowers are distinct, being entirely free from yellow; the color is true white. The crop is very limited. Nice bulbs, 7 cts. each; 4 for 25 cts.; 60 cts. per dozen.

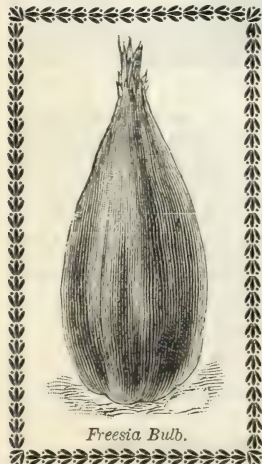
FREESIA LEICHTLINI MAJOR.—Light primrose color; very vigorous in growth; abundance of splendid flowers. 5 cts. each; 7 for 25c.; 15 for 50c.

FREESIA HYBRID SEEDLINGS.—This selection is sent us from Guernsey as a new and large flowering strain; varied colors from white to yellow; fine free bloomers. 6 cts. each; 5 for 25 cts.; 12 for 50 cts.

Anomatheca Cruenta

SCARLET FREESIA.

This lovely little gem is similar in bulb, foliage and habit to the Freesia—described on this page—but the flowers, in brilliant contrast, are brightest scarlet; the lower petals deeply marked; as it grows exactly like a Freesia, it can be planted with them, and if you want something really admirable, plant some bulbs of *Anomatheca Cruenta* with your *Freesia Refracta Alba*. As the true stock is limited, the price is necessarily high. 6 cents each; 5 for 25 cents; 12 for 50 cents.



Freesia Bulb.

The prices given include the postage, which we pay.

The Best Named Hyacinths for House Culture

WE OFFER FIRST-CLASS, WELL-RIPENED BULBS OF THE FIRST OR LARGER SIZE.

It is not often that one family of flowers are invested with so many charming qualities as are Hyacinths. Nature must have conceived them in one of her most gracious moods. Of them it may be truthfully said that for massive, yet graceful beauty, superb finish of flower, diversity of color and delicious fragrance, they are unequaled by any flower. For Fall and Winter flowering indoors this is the ideal flower, while for planting in open ground Hyacinths are the most popular of all bulbs.

We offer the choicest and most distinct varieties, recommended as the best by our Holland bulb grower. None but first-size bulbs sold. Do not be deceived by the prices of second-size and inferior bulbs. Cheap bulbs are too dear to buy.



Hyacinth—La Grandesse.

- King of the Yellows.**—Pure light yellow; large spikes. One of the grandest yellows.
- La Grandesse.**—Conceded to be one of the finest whites; compact spike, large bells of the purest waxy whiteness.
- Norma.**—Beautiful pink; very large and an extra early bloomer; exquisite.

Complete set of 14 Single Named varieties postpaid by mail for \$1.25.

Double Named Hyacinths.

- Bloksberggeb.**—Exceedingly fine; extra large; considered the best light blue.
- Bouquet Royale.**—Royal in every sense. Large truss; color beautiful shade of rose, with dark centre.
- Goethe.**—Grand; bright yellow; very large.
- La Tour D'Auvergne.**—One of the best, if not the best, pure white; superb.
- La Virginite.**—Medium size; large, drooping bulbs of white, delicately blending to blush.
- Lord Raglan.**—A grand, rich dark blue; very early; extra large.
- Othello.**—Famous. Large, double, nearly black in color; grand.
- Non Plus Ultra.**—Pure snow white; extra large and very fine.
- Prince of Saxony.**—Exceedingly fine, rich dark blue; large, bold spikes; very early.
- Pure D'Or.**—The best golden yellow; fine large spikes.

Complete set of 10 Double Named Hyacinths postpaid by Mail for \$1.00.

The prices given include the postage, which we pay.

Single Named Hyacinths.

EVERY BULB SURE TO GROW AND BLOOM.

Prices—All named varieties of Hyacinths on this page, 12c. each; 3 for 35c.; 5 for 55c.; 10 for \$1.00, postpaid.

- Alba Superissima.**—A superb, pure white variety; large trusses; very early; one of the best.
- Baron Van Thuyll, White.**—Large, sand-white trusses; early.
- Baron Van Thuyll, Blue.**—One of the best.
- Charles Dickens.**—Large bells with lilac centre, blending into a darker blue, sometimes slightly tinged red.
- Czar Peter.**—Distinct and beautiful; light porcelain-shaded lavender; grand spike.
- Gigantea.**—Probably the largest flowered variety grown; spike tall, with large bells; compact; clear rose color.
- Grandeur A Merveille.**—Recommended by our Holland grower as a variety of extraordinary merit; extra-large, blush-white spikes; A1.
- Ida.**—Pure yellows are scarce; recommended as one of the best by our Holland grower; bright glowing yellow; large trusses.
- King of the Blues.**—Finest blue; color rich dark; splendid extra-large truss (see illustration of single spike.)
- Reine des Jacinthes (King of Hyacinths).**—As suggested by the name, this magnificent dark red variety is justly conceded the King of Hyacinths. It is indeed superb; very large.
- Robert Steiger.**—A fine deep crimson, with large perfectly made trusses; the best of its color.

Mixed Single Hyacinths.

All Mixed Hyacinths postpaid at prices given, except in lots of 100, which will be sent by Express at purchaser's expense.

| | Price: Each | 3 | 12 | 100 |
|---|-------------|--------|--------|--------|
| Pure White.—Grand spikes . . . | \$0.07 | \$0.20 | \$0.65 | \$5.00 |
| Red and Blush.—Beautiful shades . . . | .07 | .20 | .65 | 5.00 |
| Blue Shades.—Very popular . . . | .07 | .20 | .65 | 5.00 |
| Yellow Shades.—Most distinct of . . . | .07 | .20 | .65 | 5.00 |
| All Colors Mixed.—Full range of color | .07 | .20 | .60 | 4.50 |

Mixed Double Hyacinths.

| | Price: Each | 3 | 12 | 100 |
|--|-------------|--------|--------|--------|
| Pure White.—Magnificent . . . | \$0.07 | \$0.20 | \$0.65 | \$5.00 |
| Red and Blush.—Extremely rich . . . | .07 | .20 | .65 | 5.00 |
| Blue Shades.—Enormous trusses . . . | .07 | .20 | .65 | 5.00 |
| Yellow Shades.—Distinct, rare . . . | .07 | .20 | .65 | 5.00 |
| All Colors Mixed.—Fine selection . . . | .07 | .20 | .60 | 4.50 |



COPYRIGHTED BY
DINGEE & CONARD CO
1891

SINGLE
TULIPS

The Choicest Single Early Tulips

Whether grown indoors or planted in open ground, Tulips are magnificent in their dazzling beauty. When arranged in masses in the garden or on the lawn, their wealth of brilliant color makes them an object of striking beauty, and in this one respect they perhaps even surpass Hyacinths. Their bright flowers lend an air of cheerfulness to their surroundings, and, being so inexpensive, one's collection of bulbs is incomplete without them.

The bulbs are entirely hardy, and may be utilized either for house or outdoor culture with entire certainty as to results of the most gratifying nature. The same method of culture in detail prescribed for the Hyacinth will suffice for the Tulip. After the blooming period has elapsed, and when the bulbs have sufficiently ripened, as indicated by the yellowish appearance of the stem, they may be taken up, cleaned, dried off, placed in paper bags and stored in a cool, dry place, and replanted again in the Fall. The single early sort are the best for pot culture for the house or conservatory.

In the selection of the different sorts herein offered we have studied to please, and feel that they are absolutely the best, both as regards quality and variety.

| | Each. | Three. | Per Doz. |
|---|--------|--------|----------|
| Belle Alliance.—Rich scarlet . . . | \$0 03 | \$0 08 | \$0 30 |
| Chrysalora.—The best of all the yellows; clear, rich golden yellow; large and beautiful flowers . . . | 4 | 10 | 35 |
| Cottage Maid.—Superb; carmine pink; centre of petals feathered white, base yellow . . . | 5 | 12 | 40 |
| DUC VAN THOL.—Carmine . . . | 4 | 10 | 35 |
| “ “ “ Scarlet . . . | 4 | 10 | 35 |
| “ “ “ White . . . | 4 | 10 | 35 |
| “ “ “ Yellow . . . | 4 | 10 | 35 |
| Keizerskroon.—Red, gold and yellow . . . | 4 | 10 | 35 |
| Potebakker.—Pure Yellow . . . | 4 | 10 | 35 |
| “ Scarlet Verboom . . . | 4 | 10 | 35 |
| “ White | 4 | 10 | 35 |

| | Each. | Three. | Per Doz. |
|---|--------|--------|----------|
| Prosperpine.—Rich silky rose . . . | \$0 06 | \$0 15 | \$0 55 |
| Yellow Prince.—One of the best yellows, 4 . . . | 10 | 40 | |
| Vermilion.—Brilliant, bright scarlet . . . | 5 | 12 | 40 |
| La Reine.—Pure white | 3 | 8 | 30 |

The Set of 15 Tulips above, postpaid, for 50 cts.;
3 of each, 45 in all, \$1.25.

Early Single Tulips.

THE BEST VARIETIES MIXED.

A complete mixture of all the best varieties of Single Tulips, price by Mail, postpaid, 3 for 10 cts.; 12 for 25 cts.; 25 for 50 cts.; 50 for \$1; 100 for \$1.75. Price by Express, 25 for 40 cts.; 100 for \$1.30; 1000 for \$11.

Although the new tariff law lately enacted imposes an import duty of 30 per cent. on Tulips, our prices have not advanced. We offer none but first-size, well-ripened bulbs.

The prices given include the postage, which we pay.



**DOUBLE
TULIPS**

The Best Double Early Tulips.

While somewhat inferior to the Single Tulips in brilliancy of colors, the bloom of the Double Varieties is more lasting, their freshness and attractiveness being retained for a much longer period. This feature is the principal quality in their favor.

| | Each. | Three. | Per Doz. |
|---|--------|--------|----------|
| Salvator Rosa.—Best of all pink Tulips | \$0 06 | \$0 15 | \$0 55 |
| Scarlet King.—Deep, rich, glowing | 3 | 8 | 30 |
| Duke of York.—Rose, bordered with white | 3 | 8 | 30 |
| Gloria Solis.—Crimson bronze, with yellow | 3 | 8 | 30 |
| La Candeur.—One of the best whites | 4 | 10 | 35 |
| Murillo.—Beautiful light rose | 6 | 15 | 55 |
| Rex Rubrorum.—Deep scarlet | 6 | 15 | 55 |

| | Each. | Three. | Per Doz. |
|---------------------------------------|--------|--------|----------|
| Tournesol.—Clear red, bordered yellow | \$0 05 | \$0 12 | \$0 40 |
| " Handsome orange yellow | 7 | 20 | 60 |
| Duc Van Tholl.—Red and yellow | 3 | 8 | 30 |

THE BEST VARIETIES MIXED.

A complete mixture of all the best double varieties of Tulips, price by Mail, postpaid, 3 for 10 cts.; 12 for 25 cts.; 25 for 50 cts.; 50 for \$1; 100 for \$1.75. Price by Express, 25 for 40 cts.; 100 for \$1.30; 1000 for \$11.

The Set of 10 Double Early Tulips, postpaid, for 40 cts.; 3 of each, 30 in all, \$1.10.

Double Late Flowering Tulips.

| | Each. | Three. | Per Doz. |
|--|--------|--------|----------|
| Abbas.—Very handsome orange red | \$0 04 | \$0 10 | \$0 35 |
| Blue Flag.—A distinct variety; purplish blue | 4 | 10 | 35 |
| Gloria Mundi.—Brown, crimson and yellow; handsome and distinct | 5 | 12 | 40 |

| | Each. | Three. | Per Doz. |
|--|--------|--------|----------|
| Pæony Gold.—Gold, yellow and red, magnificent double flowers | \$0 04 | \$0 10 | \$0 35 |
| Pæony Red.—Superb flowers; deep red | 4 | 10 | 35 |
| Yellow Rose.—Very fine striped foliage | 3 | 8 | 30 |

The Set of 6 Double Late Flowering Tulips, postpaid, for 20 cts.; 3 of each, 18 in all, 55 cts.

Double Late Flowering Tulips Mixed.—A fine mixture, valuable for flowering after earlier varieties, and for planting among shrubbery and in odd corners. Price by Mail, postpaid, 3 for 10 cts.; 12 for 30 cts.; 25 for 60 cts.; 50 for \$1.10; 100 for \$2. By Express, 25 for 50 cts.; 100 for \$1.50; 1000 for \$12.

SPECIAL ATTENTION is called to the important facts that notwithstanding the increased cost of importing Tulips our prices have in no instance been advanced, but instead have in some cases been reduced. All the bulbs we offer are the first or largest size, and are far superior to the second-size bulbs that are offered. We confidently expect an increase in trade because we make inducements not given elsewhere, and, therefore, deserve it.

The prices given include the postage, which we pay.



Narcissus, The Daffodils of Spring.

"When Daffodils begin to peer—
With hey! the doxy over the dale—
Why, then comes in the sweet o' the year,
For the red blood reigns in the Winter's pale."

SO many glowing compliments have been paid this charming old-fashioned beauty of the garden by the bards and romancers of other days that, instead of attempting to extol her many graces, we shall rest content by applying the observation of Traddles, "She is one of the dearest girls."

The Narcissus is most desirable for house or garden culture, and should be treated in the same manner recommended for the Hyacinth. Three or four bulbs may be grown in a single pot. In the garden they may be planted in any out-of-the-way place, where they will continue to thrive and bloom year after year without any care or attention, and will be among the first to respond to the fitful blandishments of early Spring.

The family is an extensive one and remarkable for its novel diversity of types and colors, in the selection of which our efforts have been to secure the finest specimens.

We Offer First Quality Bulbs, Sure to Bloom.

Ard Righ (Irish King).—Golden yellow, very early, and useful for cutting; give a trial (see cut). 20 cts. each; 3 for 50 cts.

Horsfieldi.—The "Garden's Story" says: "Can any Daffodil born or yet unborn excel the glorious bicolor of the Lancashire weaver, John Horsfield? The flowers exhale a rich Magnolia-like odor; each flutters its pure white perianth and great golden corona over the luxurious foliage like some gorgeous butterfly, rather than a perfumed flower." 20 cts. each; 3 for 50 cts.

Maximus, or "Vase of Beaten Gold" (see cut).—Immense trumpet-shaped flowers of deepest, richest yellow. A lovely sort and very showy. 10 cts. each; 3 for 25 cts.

Pseudo, or Lent Lily.—A lovely variety, sulphur-white perianth, with light yellow cup. 5 cts. each; 6 for 25 cts.; 12 for 50 cts.

Von Zion (Telamonius Plenus) (see cut).—This is the grand old "Double" yellow Daffodil, and should be in every garden; fine for massing, also one of the very best for house culture in pots; large, double yellow trumpet flowers. 5 cts. each; 6 for 25 cts.; 12 for 50 cts.

Trumpet Major (see cut).—Splendid deep golden flowers; very early, free flowering, grand for cut flowers; try a

half dozen in a six-inch pot. 5 cts. each; 6 for 25 cts.; 12 for 50 cts.

Pallidus Præcox.—Sulphur-white perianth and trumpet, one of the earliest; fine plump bulbs sure to flower well. 5 cts. each; 6 for 25 cts.; 12 for 50 cts.

Narcissus Mixed.—A superb mixture of all sorts, Double, Single, etc. 3 for 10 cts.; 35 cts. per doz.; \$2.50 per 100 by express.

The Set of 7 named Narcissus, postpaid, for 50 cts.

Narcissus Incomparabilis.

Leedsi.—Pure white perianth; cup lemon, passing to white; choice for bouquets. 5 cts. each; 6 for 25 cts.; 12 for 50 cts.

Orange Phoenix (Eggs and Bacon) (see cut).—Very handsome, double white flowers, with orange nectary. 6 cts. each; 5 for 25 cts.; 12 for 50 cts.

Stella.—A really beautiful variety; large white perianth, with golden-yellow cup, star-shaped; one of the most popular for pot culture. 5 cts. each; 6 for 25 cts.; 12 for 40 cts.

Sir Watkin (The Giant Welshman) (see cut).—Large, perianth, rich sulphur yellow, orange-tinged trumpet; new and valuable; very fine. 20 cts. each; 3 for 50 cts.; 7 for \$1.00.

Set of 4 Narcissus named above 30 cts.

In comparing our prices with others, Remember that the bulbs we offer are first quality, and are far superior to the second-grade bulbs which are sold much cheaper, as they are a year younger, consequently lack vitality and blooming capacity. All our bulbs are warranted to give splendid results under ordinary cultivation.

The prices given include the postage, which we pay.



Polyanthus Narcissus

POLYANTHUS NARCISSUS have come to the front as popular and satisfactory flowers for pot culture in Winter. They are of the easiest culture and can be potted any time from October to January. Light, loamy soil can be used, as the bulbs require little or no fertilizing material. Several bulbs can be grown in a large pot or box, and, as will be seen by our engraving, the effect is extremely lovely and graceful. To secure good drainage, cover the bottom of the pot or box with broken crockery, sand or pebbles; fill with soil to within three inches of the top, then set up the bulbs and cover them loosely with $1\frac{1}{2}$ to 2 inches of soil; water well and place in a cool, dry cellar or similar place. They will need no other attention except an occasional look to see they are not getting too dry. When the first shoot appears bring into full light, moderate temperature and moisture, and they will grow famously and delight all with their lovely flowers.

We offer the choicest varieties; first quality bulbs, sure to bloom.

Double Roman.—This superb Polyanthus Narcissus is perfectly double, as shown in our illustration, and is very large; the color is clear white, with small inner petals of pure yellow; an early and very profuse bloomer; delicious fragrance. 5 cts. each; 6 for 25 cts.; 12 for 40 cts.

Early Paper White.—Lovely clusters of snow-white flowers; enormous quantities of this variety are annually forced for cut flowers. 5 cts. each; 6 for 25 cts.; 12 for 40 cts.

Totus Albus Grandiflorus, or Improved Paper White.—(See cut.) This is a new variety of marked merit. The flowers are the purest white, very large, fragrant and are produced in beautiful clusters. It is the earliest of all, being in bloom by Christmas. 5 cts. each; 6 for 25 cts.; 12 for 40 cts.

True White Pearl, or Louis I.e Grande.—Exquisite satiny-white flowers, with primrose cups. 6 cts. each; 5 for 25c.

Glorious.—Splendid trusses of pure white, with deep orange-colored cups; very fine. 6 cts. each; 5 for 25 cts.

Grand Primo.—White, with citron cup; early. 7 cts. each; 3 for 20 cts.; 6 for 30 cts.; 12 for 50 cts.

Grand Soliel d'Or.—Deep yellow, with reddish-orange cup. 7 cts. each; 3 for 20 cts.; 6 for 30 cts.; 12 for 50 cts.

Set of 7 named varieties, postpaid, 35 cts.

Polyanthus Narcissus, Mixed.

We offer a fine selection of choice Polyanthus Narcissus mixed together, and make the very lowest prices for large, heavy bulbs of the first size. They are perfectly hardy and cannot be excelled for bedding or massing. 4 cts. each; 6 for 20 cts.; 35 cts. per dozen; \$2.50 per 100 by express.

The prices given include the postage, which we pay.

Narcissus Corbularia.

This lovely and unique flower will please all for Winter blooming, as it is easily grown and sure to bloom. Three to five bulbs in a pot or box will give numbers of charming blossoms during January, February and March. The flowers are clear yellow in color, with exquisite odor, and, as is shown in our cut, bell-trumpet shape, very odd. This variety is also desirable for planting in the open ground for early Spring; it is entirely hardy and will become established, forming a fine clump. 5 cts. each; 3 for 12 cts.; 12 for 40 cts.



Narcissus Corbularia.

On page 7 our grand new Pedigree Rose, "**Princess Bonnie**," is described and illustrated. It is the brightest, sweetest and freest blooming Rose in cultivation. Unexcelled for Winter bloom.

Bulbs for Indoor Culture.

The Bulbs offered on pages 16 to 22 inclusive are specially desirable for indoor culture, and are not suitable for planting in open ground until all danger of frost is past, except where noted in descriptions.



California Honeysuckle.

Our illustration is the best description of this remarkable flower. This variety was found in the mountains of California, hence its popular name. It is entirely suitable for growing in pots in the house in manner shown, and requires no special culture. The flowers are a beautiful rose color, and are borne in dense numbers, a single bulb producing 15 to 30 umbels; the twining scape is often over 10 feet long, and does best when twined in and about as shown in picture. A remarkable novelty. 15 cts. each; 2 for 25 cts.; extra-large bulbs, 20 cts. each; 3 for 50 cts.

Allium Neapolitanum.

This beautiful variety gives the greatest satisfaction, both for growing in pots and boxes in the house, or planted in the flower beds for early Spring flowers. It is, however, specially valuable

for Winter blooming, being sure to flower splendidly in any window. The large clusters of delicate white flowers have a distinct beauty of their own; they remain perfect for weeks, and for floral work are unsurpassed. Plant three to five bulbs in a five-inch pot or box and you will have a lovely display. 2 for 5 cts.; 5 for 10 cts.; 12 for 15 cts.; \$1 per 100.

Allium Pendulinum.—A grand variety; one bulb will produce as many as nine spikes with five to ten white bell-shaped pendulous flowers. Each petal having a well defined green stripe down the centre. Unusually good; sure to grow. 2 for 5 cts.; 5 for 10 cts.; 12 for 20 cts.

Allium Moly.—This pretty gem should be better known; in fine contrast to the above-named sorts; a profusion of flowers of clear golden yellow. 2 for 5 cts.; 5 for 10 cts.; 12 for 20 cts.



Allium neapolitanum.

Arum Sanctum.

THE TRUE BLACK CALLA OR SOLOMON'S LILY.

A native of the Holy Land, and truly a magnificent and stately plant, very desirable for indoor culture. The flowers of this rare bulb are sweet-scented and often measure more than a foot in length by 5 to 8 inches in width; the inside color is of the richest velvety purplish black, while the outside is a pleasing green. The centre spadix rises to the height of 10 to 12 inches and is of the deepest black. Foliage is solid in texture, rich deep green and elegantly reticulated. The bulbs we shall send you are the genuine stock, strong and positively sure to bloom if planted in rich soil 2 inches below the surface and given plenty of light, heat and moisture. Every order should include at least one bulb of this great Oriental novelty, for there can be no doubt that it is one of the rarest and most desirable bulbs of the year. As the bulbs increase in size and number every year, such a treasure is sure to become valued and appreciated. We make the price exceedingly low and within the reach of all. Fine large bulbs, imported direct from Palestine, 15 cts. each; 2 for 25 cts.; 4 for 50 cts.; 9 for \$1; larger bulbs, 25 cts. each; 3 for 60 cts.; 5 for \$1.



Black Calla

Other Calla Lilies.

Spotted Calla.—The leaves of this popular and beautiful novelty are deep rich green, exquisitely ornamented with pure white marks. The pure white color of the flowers is lovely in contrast with the deep black throat; it is easily grown, very distinct, free to bloom and will give satisfaction; we would advise growing two bulbs in a five-inch pot. 15 cts. each; 2 for 25 cts.; 5 for 50 cts.

Calla—Lily of the Nile.—Is the favorite old White Calla that always gives satisfaction. We offer well-ripened corms, suitable for 5-inch pots; no other Calla will give such an abundance of fine flowers and foliage as the California-grown corms we offer. 15 cts. each; 2 for 25 cts.

Calla Little Gem.—The dwarfiest of all. See page 31.

Early Flowering Gladiolus.

These superb varieties represent a distinct departure in this favorite flower. They are specially adapted to house culture, where they produce their gorgeous flowers in great abundance. Plant at least two bulbs. Like a sandy and loamy soil, also plenty of sunshine.

Blushing Bride.—Lovely white, with beautiful pink and carmine flakes on lower petals; a splendid variety for pot culture or open border. 15 cts. each; 4 for 50 cts.; 9 for \$1.

Tristis.—Creamy white flowers, borne on branching spikes; the blooms are delightfully scented and highly prized for cuttings; a fine variety for house or border culture. 15 cts. each; 4 for 50 cts.; 9 for \$1.

Tritonia.

Requires the same treatment as Ixias, blooming with them; in appearance they are like miniature Gladiolus. The colors are very soft and pleasing, ranging from white through salmon, orange and scarlet. They are especially adapted for pot culture, and are amongst the prettiest and most interesting Winter flowers now offered. Owing to a large stock our price is very low.

Finest Mixed.—A grand mixture of 16 best sorts. 2 for 5 cts.; 8 for 15 cts.; 15 for 25 cts.

Anomatheca Cruenta.

(SCARLET FREESIA.)

This lovely little gem is similar in bulb, foliage and habit to the Freesia, but the flowers in brilliant contrast are brightest scarlet; the lower petals deeply marked; as it grows exactly like a Freesia, it can be planted with them, and if you want something really admirable, plant some bulbs of Anomatheca Cruenta with your Freesia Refracta Alba. The true stock is limited. 6 cts. each; 5 for 25 cts.



The Blue Milla.

This remarkable and lovely flower will attract instant attention as being in vivid contrast with the well-known and popular Milla Biflora, whose waxy-white flowers find a deep shining blue counterpart in this new variety. The Blue Milla is of the easiest culture, and a few bulbs in a small pot will prove a great novelty and attraction; it will also grow well in the same pot with other flowers, making a lovely contrast. The plants grow about 15 inches high, and produce rich, blue, star-shaped flowers in profusion at the end of long graceful stems. 7 cts. each; 4 for 25 cts.; 9 for 50 cts.

Sparaxis.

This exceedingly handsome class of flowers is well adapted for Winter blooming in the house. They require the same treatment as Ixias described above; in fact, bulbs of each can be grown in the same pot with splendid effect. Sparaxis bear large, somewhat cup-shaped flowers, which well display the rare and beautiful combinations of color seen in this family.

Any 4 varieties for 15 cts.

- | | | |
|---|----|----|
| Angelique. —Pure white, yellow eye; very pretty . . . | 50 | 05 |
| Bicolor Lutea. —Purple and maroon, yellow centre . . | 5 | |
| Grandiflora. —Rich crimson, yellow centre; fine . . . | 5 | |
| Tricolor. —Beautiful clear yellow centre, red markings | 5 | |
| Leopard. —Pale yellow, eye deep yellow, brown spot | 5 | |
| Queen Victoria. —Blue with white and purple markings, very showy and desirable | 5 | |
| Finest Mixed. —A mixture of the above and other varieties. 6 for 15 cts.; 12 for 25 cts. | 3 | |
- Set of 6 named varieties for 20 cts.

Pretty Face.

This is the popular European name of Calliprora Lutea. The proper name comes from *Kallos*, beauty, and *prora*, a front, referring to a front view of the flowers; seen in the

light they present an exceedingly pretty appearance; fine golden, touched with purplish brown, banded with green; grows about 9 inches high, neat habit, free flowering; subject to the simplest culture; grows well in pot with other flowers; always looks charming. At the low price should be in every order. 5 cts. each; 3 for 12c.; 5 for 20c.



PRETTY FACE

The prices include the postage, which we pay.

Babianas.

These unusually pretty and attractive flowers should be better known; no illustration short of a colored plate could do justice to the remarkably beautiful shadings and variegations shown in Babiana flowers; should be given the same treatment as Ixias; especially adapted for Winter blooming.

Atrocyanæa.—Deep blue, lower petals purple and mauve. 5 cts.; 3 for 12 cts.

Lady Carey.—Rich purplish crimson, with each alternate petal shaded mauve. 10 cts.; 3 for 25 cts.

Rosea Grandis.—Color, bright rose, 5 cts.; 3 for 12c.

Villosa.—Exquisite lavender blue. 5 cts.; 3 for 12c.

Babianas, Finest Mixture.—Embracing a large number of distinct varieties. 3 cts. each; 3 for 8 cts.; 6 for 15 cts.; 12 for 30 cts.



Babianas.

Ixias.

We take great pleasure in recommending this brilliant class of flowers; they are but little known in this country, and will be sure to give great satisfaction. Ixias are admirably adapted for pot culture in the house; several bulbs can be placed in a five-inch pot or pan. They should, unlike other bulbs, be potted rather firmly, and as early as possible; placed in a dry, cool place like Hyacinths; until the flower spikes appear but little water is needed; then keep pretty moist and give full light and air. After flowering, gradually ripen, and when ready shake out and store in paper bags until next Autumn, or the bulbs can remain in the soil, which should be kept dry.

- | | | |
|--|-------|----|
| Crateroides. —Bright scarlet; free and early | Each. | |
| Golden Drop. —Beautiful rich yellow, eye deep maroon | \$0 | 05 |
| Maculosa. —Beautiful pink; very vigorous and free . . . | 5 | |
| Snowflake. —A true pure white variety; very rare . . . | 5 | |
| Fine Mixed. —Including varieties above and others; a splendid assortment. 6 for 15 cts.; 12 for 25 cts. | 3 | |
- Set of 4 named varieties for 15 cts.

Scilla Clusii.

PERUVIAN HYACINTH OR CUBAN LILY.

One of the most beautiful bulbous plants we have ever seen. Heretofore it has been but little known, but after a trial its ease of culture and superb beauty induces us to bring it before our customers in a prominent manner. European growers recommend it as the grandest of all Winter-blooming bulbs for house culture. Flowers are star shaped and are borne in one enormous cluster.

The color is distinct and striking, rich dark blue. It commences to bloom about Midwinter in pots and remains in flower a long time. If planted in open ground protection should be given the bulb. Grow it as you would a Hyacinth. We have procured a large stock of first-size bulbs, sure to bloom, and are thus enabled to offer them at one-half the usual price. 15cts. each; 3 for 35 cts.



Scilla Clusii.



Calochortus.

BETTER known as Butterfly Tulips, Star Tulips, California Lily or Mariposa Lily. Our illustration does them but scant justice. The Calochortus are not suitable for outdoor culture, except in the extreme South or along the Pacific coast; but as house plants, given the same treatment as Hyacinths, they succeed admirably. Their novel grace, varied forms and tints of exquisite colors, are a source of never-ending pleasure to all. The foliage is extremely graceful, the many stems terminating in clusters of bell-shaped, drooping flowers, which are surpassingly gay and beautiful. The best effects may be secured by planting 5 or 6 bulbs in a six-inch pot; boxes may also be used for the purpose. The soil should consist of an equal proportion of natural loam and sand. We have made the prices very low and anticipate a large demand for these bulbs.

CALOCHORTUS, ERECT-FLOWERING.

The following varieties produce erect, cup-like flowers of large size, borne on stiff, slender stalks, 10 to 20 inches high, and produce 15 to 20 flowers on a stalk.

Splendens.—The type of the species; very large flowers, fully 3 inches across; light lavender, shading to lilac, full of cobwebby hairs; a charming addition to a collection of pot plants. 10 cts. each; 3 for 25 cts.; 12 for 75 cts.

Venustus Oculatus.—Showy and distinct; glorious flowers; white ground inside, with striking eye-like spots, richly colored reddish brown outside. 6 cts. each; 3 for 15c.

Venustus Roseus.—A perfect gem; creamy inside, rose colored at top of petals, carmine on back, beautiful tinted eye in centre, silky glands at base. 6 cts. each; 3 for 15 cts.

Albus (Bell-shaped).—Strong grower; very floriferous; flowers an inch in diameter, perfect globes of pearly white; edged with silky hairs, hanging like bells. 6 cts. each; 3 for 15 cts.

Calochortus Amoenus.—Color satiny rose pink; lovely beyond description, and we consider it the highest type of Calochortus yet sent out; and best of all, it is as easily grown as any other variety of Calochortus. 10 cts. each; 2 for 15 cts.; 5 for 35 cts.

Set of 5 Varieties for 25 cts.

Calochortus, All Varieties Mixed.—Comprising a mixture of the best and richest collection of these beautiful and rare flowers yet sent out, and the most for the money ever offered. 6 for 10 cts.; 12 for 20 cts.; 25 for 40 cts.; 50 for 75 cts.; 100 for \$1.50.



A Hanging Basket of Oxalis.

OXALIS.

The varieties of Oxalis we offer at this season are entirely suitable for Winter blooming and pot culture. These lovely flowers are now among the most popular, and cannot be surpassed for hanging baskets, pots and positions calling for graceful and effective flowering plants. A few in a five-inch pot or basket will start off at once and soon be in flower, remaining so throughout the Winter.

Bermuda Buttercup.—New large flowering yellow. Grand. 8 cts. each; 4 for 25 cts.; 12 for 50 cts.

Oxalis Bowei.—An elegant species from the Cape of Good Hope; large, deep pink flowers. 4 cts. each; 3 for 10 cts.; 12 for 30 cts.

Ceruna Lutea Major.—Splendid showy clusters of bright yellow flowers. 8 cts. each; 3 for 20 cts.; 12 for 60 cts.

Floribunda Rubra.—The brightest, showiest red we know. 5 cts. each; 3 for 10 cts.; 12 for 30 cts.

Versicolor.—A lovely two-colored rose and white variety. 3 cts. each; 6 for 15 cts.; 12 for 25 cts.

Set of 5 named varieties 20 cts.

Mixed Oxalis.—A splendid mixture of 22 best varieties, including the above. 2 cts. each; 3 for 5 cts.; 12 for 15 cts.

BRODEIAES.

The blossoms are odd and beautiful, tubular in shape and borne in large clusters, or umbels, on strong, slender stems, to 12 inches high. The Brodeiaes, like Calochortus, are easily cultivated, and are specially valuable as house plants for Winter. Several bulbs can be grown in a single pot.

Stellaris.—Considered the handsomest of all Brodeiaes; star-like clusters of rich purple and white flowers; a vigorous grower. 5 cts. each; 3 for 12 cts.

Grandiflora.—The largest flowering of all; color a deep, purplish blue; flowers beautifully shaped and glossy. 5 cts. each; 3 for 12 cts.

BRODEIAES, FINEST VARIETIES MIXED.

This mixture is made up of a fine assortment of all the best colors. 4 cts. each; 3 for 10 cts.; 6 for 20 cts.; 12 for 40 cts.



Type of Brodeia.

The prices given include the postage, which we pay.



Crinum Ornatum.

Rare Crinums.

These superb flowers are imposing in their royal beauty. They are conceded to be the most magnificent decorative plants in existence; satisfactory for pot and garden culture.

Ornatum.—Ours is the true stock of this finest and rarest of Crinums. Bulbs of this variety never sell for less than \$1 per pound. Grows from 1½ to 5 feet high, bearing a crown of 12 to 20 large, Lily-like blooms; color white, with deep pink stripe down the centre of each petal. The flowers are deliciously scented; foliage evergreen and decidedly handsome. Bulbs can be kept permanently in large pots; grow larger and better every year. Magnificent large bulbs—the finest we have ever seen—sure to bloom, postpaid by mail, 50 cts. each; smaller size, 25 cts. each, postpaid by mail.

Kirky.—Large, heavy bulbs, producing numerous clusters of magnificent large flowers of great beauty and fragrance. The broad petals are pure white, with a centre stripe of deep reddish purple. First size, 35 cts.; 3 for \$1; largest size, 50 cts.

Americanum.—Large spikes of lovely white, Lily-like flowers. Very beautiful. 40 cts. each; 3 for \$1.

Set of 3 postpaid for \$1.

Floral Firecracker Plant.

This distinct novelty is well named. It is entirely unlike anything else, and will please all who like new and striking flowers in their windows, as it is specially adapted for a house plant, growing very readily in pots. The bulbs can be potted up when convenient during the Fall, and treated like Hyacinths in pots. The color is deep, rich crimson, tipped with greenish white, at a little distance an umbel of flowers looking like a bunch of bright new firecrackers—hence the name. Every order should contain this bright novelty. 6 cts. each; 3 for 15 cts.; 12 for 50 cts.

Princess Bonnie

blooms all the time during the entire Winter. No other Rose will do this.

Be sure to read page 7.

The prices given include the postage, which we pay.

THE FAMOUS Chinese Sacred Lily.

This novel and charming flower was brought to this country by the Chinese to use in celebrating their New Year's or Good Luck feast, as such was the custom at home, where, from the nature of its use, the flowers are looked upon as sacred, as the offering to their gods. The unique manner of growing the bulbs and the loveliness of the blossom attracted instant attention in this country, and during the last few years it has become the most popular of all Winter-flowering bulbs; ease of culture, certainty of bloom and rare beauty all combine to make this lovely gem from the flowery kingdom a most interesting and satisfactory Winter flower. It will thrive in soil, but the favorite method of culture is growing in water and gravel, where it can be depended upon to flower within 20 to 30 days after planting. Select a vessel of sufficient size, place two or three bulbs in it, fill the interspace with coarse sand or gravel until the bulb is firmly held in position, and then add water until quite covered. Place in a moderately cool situation by the window; replenish the water from time to time as it evaporates or becomes foul. It is particularly adapted to conditions not favorable to the growth of most other plants. The rapidity of growth and masses of deliciously scented flowers it will produce place it at the head of all Winter blooming bulbs. *There are many spurious bulbs on the market, but those offered by us are the largest and finest procurable, which we import direct from China; they are sure to bloom.* PRICE, extra large, solid bulbs, postpaid by mail, 20 cts. each; 3 for 50 cts.; 7 for \$1.



The Chinese Sacred Lily.

Parrot Tulips.

Parrot Tulips are the most distinctly shaped and marked of any; the flowers are larger than those of other varieties, and the striking and beautiful colors range through all shades of golden yellow, green, crimson-striped, deep crimson, clear yellow, etc. Some bulbs should be included in each order.



Type of Parrot Tulips.

| | Each. | Per Doz. |
|---|--------|----------|
| Belle Jaune.—Pure yellow | \$0 04 | \$0 35 |
| Café Brun.—Coffee color and yellow | 4 | 35 |
| Constantinople.—Very handsome red | 4 | 35 |
| Feu Brilliant.—Rich glossy crimson | 7 | 75 |
| Mark Graaf.—Very showy; red and orange | 4 | 35 |
| Monstre Rogue.—Elegant deep crimson | 4 | 35 |
| Perfecta.—Yellow and red; extra fine | 4 | 35 |
| Superfine Mixture.—All colors, per 100, \$2.25 | 3 | 30 |

Tulipa Greigi. THE ROYAL TULIP.

Heretofore this, the king of Tulips, was so very scarce and held at such a high price that only a limited number was imported. At last we were able to procure a fine stock of bulbs, which we offer at a reasonable price. This grand novelty is



Tulipa Greigi.

as easily grown as any Tulip, being subject to exactly the same conditions; it can therefore be grown with equal success in pots or the open ground. As will be seen by our illustration, the broad, handsome foliage is distinctly spotted with dark maroon. The gorgeous flowers are bravely borne up, as if to better display their remarkable color, which is flamed, waxy, transparent, waxy and dazzling. Greigi is undoubtedly the grandest thing in the Tulip family. 20 cts. each.

The prices given include the postage, which we pay.

Tulipa Gesneriana.

It is notable as being the most superb of all Tulips and is one of the parents of the Tulip family. The flower stems are two to three feet high, producing exquisite blossoms of large size, which in color are an intense, dazzling, glossy crimson, with centre of deep blue. 4 cts. each; 3 for 10 cts.; 35 cts. per dozen.

Tulipa Golden Crown. YELLOW GESNERIANA.

This beautiful Tulip is exactly like "Gesneriana," with the exception that the flowers are of a fine yellow color, banded with orange; it forms a superb contrast with the Scarlet Gesneriana. 4 cts. each; 3 for 10 cts.; 35 cts. per dozen.

Tulipa Verdiflora. THE GREEN TULIP.

A very beautiful as well as odd Tulip. The flowers are a showy green. Try one or two bulbs; it will please you. Extremely curious. 5 cts. each; 6 for 25 cts.; 40 cts. per dozen.

Byblooms and Bizards.

We desire to call special attention to the Byblooms, Bizards and Breeders' types of Tulips, of which we offer a fine collection. These merit more general recognition from the vast army of flower lovers. Their bloom somewhat resembles that of the Gesneriana, and they wear all the gorgeous livery of their species. They attain a height of from one to two feet, the stems often branching and producing several large blooms. Their flowering period is later than the other sorts, which is a point in their favor.

| | Each. | Per Doz. |
|--|--------|----------|
| Byblooms Mixed.—All white ground | \$0 05 | \$0 40 |
| Bizards Mixed.—All yellow ground | 5 | 40 |
| Byblooms Mixed.—All rosy colors | 6 | 50 |
| " " " " All violet colors | 6 | 50 |
| Florentine Odorata.—Also known as the Tea Rose Tulip; rich yellow flowers; very fragrant | 8 | 75 |
| All colors of Byblooms and Bizards | 4 | 30 |
| Darwin Tulips Mixed.—Splendid colors mixed | 5 | 40 |

Narcissus Poeticus.

This, the Poet's Narcissus, also called the Pheasant's Eye, needs no praise; a clump should be in every garden among the shrubbery or in the grass; half dozen or dozen bulbs will make a fine clump that will increase in size and beauty from year to year; needs no protection during Winter; blooms



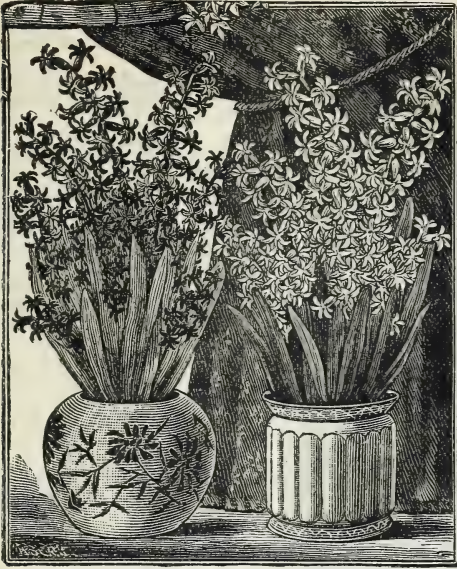
Narcissus Poeticus.

very early; pure white flowers, with miniature saucers, edged with bright crimson; exceedingly beautiful and graceful; also can be readily grown in the house in pots or vases, presenting a charming sight. We offer fine bulbs of the best varieties.

Poeticus (The True Poet's Narcissus—see cut)—Pure white flowers with orange cup, edged with crimson; splendid for cut flowers. 4 cts. each; 3 for 10 cts.; 35 cts. per dozen.

Poeticus Flore Pleno.—Double white sweet-scented flowers. 4 cts. each; 3 for 10 cts.; 35 cts. per dozen.

Poeticus Ornatus.—We have a select stock of this, the improved Poeticus; very large, well-displayed, pure white flowers, beautifully formed eye; magnificent for pot culture. 4 cts. each; 3 for 10 cts.; 12 for 35 cts.; 1 of each, 3 in all, 10 cts.



Single White Roman Hyacinths.

Roman Hyacinths.

THE POPULAR WINTER FLOWER.

Roman Hyacinths are deserving of a place in every collection of house plants. The flowers, as will be seen by the above illustration, are extremely graceful and attractive. The blooms are of the most delicate colors and tints and are delightfully perfumed. They may be grown in pots or glasses the same as other Hyacinths—the methods of treatment being the same. They are decidedly popular—the demand for them increasing yearly. We should be pleased to have your order include a few of these general favorites.

Double Dark Pink.—A magnificent new sort; very large deep-throated bells, grand spike. 6 cts. each; 3 for 15 cts.; 12 for 50 cts.

Double White Pearl.—A valuable novelty, the most popular of any; splendid spikes of lovely, double, pearl-white flowers. 10 cts. each; 3 for 25 cts.; 6 for 45 cts.

Single White (see cut).—Elegant bells of waxy white, very lovely. 6 cts. each; 3 for 15 cts.; 15 for 50 cts.

Single Blue.—Exceedingly pretty and in fine contrast with other varieties. 6 cts. each; 3 for 15 cts.; 12 for 50 cts.

Single Canary Yellow.—Newly introduced; the most distinct of all; beautiful canary yellow. 12 cts. each; 3 for 30 cts.; 6 for 50 cts.

Special Offer.—Complete Set of 5 named Roman Hyacinths offered above for 40 cts.; 2 of each, 10 in all, for 75 cts.

Tufted Hyacinths.

This is a Hyacinthum Cosmum, and is a tremendous bloomer; deep blue tassel-like racemes; entirely hardy and fine for pot culture. Try a half dozen in a 5-inch pot. 3 cts. each; 6 for 12 cts.; 12 for 20 cts.

The True Feathered Hyacinth.

We offer the *True Feathered Hyacinth*; it is a very curious plant, and well worthy of culture in pots as an odd and interesting flower. In pots, culture is of the simplest; it, however, does best in the open ground, where it is entirely hardy and will become established. The flowers are borne in the form of feathery plumes on graceful stems; the color is deep blue, tinged with red. 7 cts. each; 3 for 15 cts.; 7 for 30 cts.



Grape Hyacinths.

An extremely pretty family of flowers, sometimes called "Blue Lily of the Valley;" entirely hardy, they will adapt themselves to the soil and situation as naturally as grass. A few bulbs will rapidly increase and produce each Spring a mass of lovely bloom. For Winter blooming they give great satisfaction; a few bulbs planted in a 5-inch pot and treated the same as Hyacinths will produce a lovely potful of flowers. The flower stalks grow from 10 to 12 inches high and produce a dense spike of grape-like bells. We offer the best selection obtainable in two colors.

Improved Blue.—Sky-blue bells, tipped with white. 2 for 5 cts.; 15 cts. per dozen; \$1 per 100.

Snow White.—A very scarce sort. 3 for 10 cts.; 25 cts. per dozen; \$1.75 per 100.

Special Offer.—Five Improved Blue and 3 Snow White Grape Hyacinths, 8 in all, for 30 cts.

Lachenalias.

An almost unknown class of plants in this country. Lachenalias are especially adapted for Winter bloom, requiring only to be treated like Hyacinths in pots. We think the greatest value of Lachenalias is in their remarkably distinct appearance, and the fact that the flowers remain in bloom for upwards of two months. The curious colors are a blending of yellow and scarlet, shaded with light green, the varieties being made by a predominance of either color. The foliage is also very rare, being marked black and reddish brown.



Lachenalias.

Luteola.—Yellow, beautifully tinged green. 15 cts. each.

Pendula.—Bright scarlet, peculiarly shaded. 15 cts. each.

Tricolor.—A rare sort; greenish yellow, showily tipped with red. 15 cts. each.

Pancratium Caribbaeum.

This is the true Giant Spider Lily, the bulbs of which are immense; grows over two feet high, producing a large umbel of pure white blooms of an extraordinary form. Always attracts attention and excites astonishment. A splendid Winter-blooming variety. Plant in fairly rich soil in pots or boxes and give abundance of water. Large-sized bulbs, 25 cts. each; 5 for \$1.

The prices given include the postage, which we pay.

Crocus *& The first flowers of Spring.*



Crocus growing in Sand and Water.

"A soft breeze kissed the expectant morn,
A bluebird sang a witching strain,
A Crocus bloomed, and Spring was born."

This is another early riser, and among the first to herald the advent of Spring and to fleck the deepening green of the lawn like foam upon the surface of the deep. Like the Daffodil, they are entirely hardy, and if undisturbed will continue to bloom each Spring. To get the best effects they should be given a rich dry soil and a sunny location. The corms should be planted about three inches deep; they may be set singly or massed in beds the same as other bulbs. A favorite plan is to place them just under the sod; with a spade or trowel raise the soil to the depth of three inches, place the corm beneath, and press back into place.

They are also in great favor for house culture, where they may be grown with the very best results. The bulbs offered below are of improved strains, and compose the leading and finest varieties that will prove the most pleasing, both as regards form and color.

❁❁ CROCUS *❁❁*

At prices named, we send large bulbs, first quality Crocus by Mail, postpaid. Orders by Express will deduct 25 cts. per 100.

The Finest Named Varieties.

| | <i>Per Doz.</i> | <i>Per 100.</i> |
|---|-----------------|-----------------|
| Albion. —Fine striped, large and good . . . | \$o 12 | \$o 90 |
| Caroline Chisholm. —The best white . . . | 12 | 90 |
| David Rizzio. —Magnificent dark purple . . . | 12 | 90 |
| Lord Byron. —Superb blue . . . | 12 | 90 |
| Sir Walter Scott. —Very distinct, striped . . . | 12 | 90 |
| Queen Victoria. —A splendid pure white variety . . . | 12 | 90 |

Any of the above-named varieties, 3 for 5 cts.; 6 for 10 cts.

CROCUS, MONSTER YELLOW.

This is the largest of all Crocus; equally desirable for open ground or pot culture. The bulbs are very large and come into flower very early; the profusion of bloom is remarkable, fifteen to twenty-five large flowers being the usual number per bulb. Plant two or three in a six-inch pot, and you will be sure of dozens of bright yellow blossoms in a short time; by planting at intervals, a succession of bloom can be had through the Winter. A clump of this variety in the open ground will look, in early Spring, like a sheet of beaten gold (see cut). Price, large bulbs, 3 cts. each; 4 for 10 cts.; 12 for 25 cts.; 100 for \$1.75.

Various Crocus.

Cloth of Gold.—This striking Crocus from the Crimea is one of the earliest Spring-flowering species; variously feathered flowers, golden orange, evenly suffused with dull brown, stigma orange-scarlet. 15 cts. per doz.; \$1 per 100.

Cloth of Silver.—The same as the above, except the color is beautifully silver-shaded. 15 cts. per doz.; \$1 per 100.

Saffron.—This species furnishes the saffron of commerce; it appears to have been cultivated in Palestine at the time of Solomon. The flowers are violet colored, variously striped with deeper or lighter tints, and are fragrant. 15 cts. per doz.; \$1 per 100.

Scotch.—Well-known and popular class; should be included in every collection. 15 cts. per doz.; \$1 per 100.

Versicolor.—Beautifully colored, varying from purple to white; feathered and veined with purple, yellow anthers; one of the earliest of all. 15 cts. per doz.; \$1 per 100.

The Finest Mixed Colors.

| | <i>Per Doz.</i> | <i>Per 100.</i> |
|--|-----------------|-----------------|
| Mixed White. —Different varieties . . . | \$o 10 | \$o 60 |
| Mixed Purple and Blue. —Different varieties . . . | 10 | 60 |
| Mixed Striped. —Different varieties . . . | 10 | 60 |
| Mixed Yellow. —Different varieties . . . | 10 | 60 |
| All Colors Mixed. —Different varieties . . . | 10 | 50 |

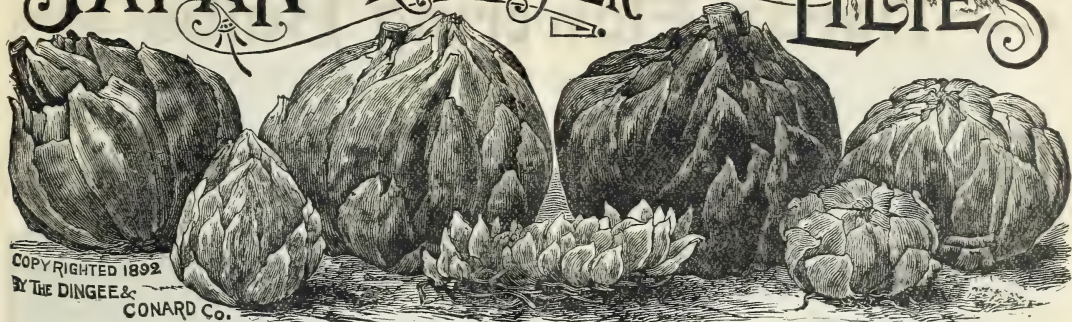
" " —Per 1000, by Express, \$4.



Crocus Monster Yellow.

The prices given include the postage, which we pay.

JAPAN AND OTHER LILIES



COPY RIGHTED 1892
BY THE DINGEE &
CONARD CO.

THIS ancient and aristocratic family, with its long line of distinguished posterity, is so well and favorably known that descriptions are unnecessary, even were it possible for the pen or brush to portray their almost savage beauty. They are hardy and of rapid and vigorous growth, and a bed of them, once established, becomes a permanent fixture that will long survive as a wondrous and at-

tractive feature of the garden. They succeed best if given a good, light, dry soil and a sheltered location, such as the proximity of shrubbery or trees (if not too large and dense), or a snug nook such as the angles of buildings usually afford. The bulbs should be planted about 6 or 8 inches deep. The varieties offered below are among the finest types, carefully selected with reference to the demands for general cultivation.

REMEMBER, the bulbs offered are large, sound and solid, and are far superior to the small bulbs frequently offered. All our bulbs are sure to grow and bloom.

Lilium Auratum.—Magnificent pure white flowers, often measuring a foot across, exquisitely spotted with rose, and rayed and banded with golden yellow in the most beautiful manner; maroon-tipped stamens in high contrast with the flowers. This noble Lily is certainly one of the most valuable and ornamental of flowers, either for pot or garden culture, and should be planted by everyone. Fine, large, blooming bulbs, 15 cts. each; 4 for 50 cts.; 9 for \$1. Larger bulbs, 25 cts. each; 3 for 60 cts.; 6 for \$1.

Batemanii.—A new and desirable Japanese Lily; grows 3 to 4 feet high; clear apricot-colored flowers, without spot or stain; very desirable. 20 cts. each; 6 for \$1.

Brownii.—A grand Lily, very rare and beautiful; immense trumpet-shaped flowers, chocolate purple outside, white inside. 50c. each; 3 for \$1.25.

Candidum.—The old white garden Lily (not Japan), a splendid sort; elegant large pure white flowers in clusters. We offer none but extra-large bulbs. 20 cts. each; 3 for 50 cts.; 7 for \$1.

Excelsum.—A superb variety, attaining the wonderful height of 5 to 6 feet. It produces from 8 to 12 nodding rich apricot blooms, delightfully fragrant. Wherever known this variety is a great favorite. 50 cts. each; 3 for \$1.25.

Giganteum.—A magnificent variety, growing 6 to 10 feet high, and frequently bearing 12 to 20 large flowers, 5 to 6 inches long; color creamy white, with a purple throat. \$1 each.

Humboldtii.—A remarkably fine variety; grows 3 to 5 feet high and produces its flowers with great freedom; color golden yellow, spotted with purple. 30 cts. each; 4 for \$1.

Kramerii.—Entirely distinct from any other Lily known; flowers beautiful soft rose color. 30 cts. each; 4 for \$1.

Longiflorum.—Well-known, beautiful, snow-white, fragrant Lily; fine for forcing, handsome in garden. 15, 20 and 25c.

Pardalium (Leopard Lily).—A very beautiful and handsome Lily from California; entirely hardy; grows 3 to 5 feet high; very free flowering; color bright orange red, with lighter orange centre; large clusters of flowers, that look very beautiful and striking. 15c. each; 3 for 40c.; 6 for 75c.



Lilium Auratum.

Elegans.—The Elegans species of Lily, also known as Thunbergianum and Umbellatum, are among the best hardy varieties; large, bell-shaped flowers are borne in clusters and produced in early Summer in great profusion.

Croceum.—This is the old Orange Lily, and is very graceful and distinct; beautifully shaped flowers, orange and black in color. 25c. each; 5 for \$1.

Elegans, Mixed Varieties.—The richest hues of yellow, crimson, red and dark red. 20 cts. each; 3 for 50 cts.; 7 for \$1.

Speciosum or Lancifolium are the most popular and satisfactory of all Lilies. We offer below the best varieties; all are distinct, graceful and very popular.

Album.—Pure white, very fragrant, and much liked. 20c. each; 6 for \$1.

Melpomene.—This is a variety of most wonderful beauty. It is both scarce and valuable. Frosted white, spotted, clouded and bearded with pinkish crimson. Petals deeply recurved and widely bordered. Inexpressibly fine. 20 cts. each; 7 for \$1.

Rubrum.—One of the finest of Japanese Lilies; splendid bright crimson and white flowers, borne in clusters; grows 2 to 3 ft. 20c. each; 7 for \$1.

Tigrinum fl. pl. (Double Tiger Lily).—This magnificent Lily is borne in immense clusters on tall strong stems; the flowers are very large, frequently 6 inches, and very double; color deep fiery red, spotted with black. 15 cts. each; 4 for 50 cts.; 9 for \$1.

Tiger Splendens (Single Tiger Lily).—This splendid Lily is one of the

best; the stem is tall, the flowers large and of excellent form, blooming in large clusters; color orange, with intense dark spots. 15 cts. each; 4 for 50 cts.; 9 for \$1.

Bermuda Easter Lily.—Most popular of all Lilies for house culture (see page 8 for description and illustration). 15c., 20c., 25c. and 30c. each.

DONT MISS THESE!

Giant White Narcissus, Flamingo Canna, Princess Bonnie Rose, Chinese Lantern Plant, and, above all, give the Scarlet Mexican Lily a trial.

The prices given include the postage, which we pay.

Hardy Flowering Bulbs

BOTH FOR INDOOR AND OUTDOOR CULTURE.

Under this heading, on pages 24 to 27, inclusive, are offered the leading and standard hardy bulbs. By hardy is meant such bulbs as are adapted to planting in open ground in the Northern, Western and Middle States, and which will stand their severe Winters with perfect impunity. The utmost care has been exercised in making this selection, and from our careful tests and observations we know the list comprises all the most desirable kinds, that will surely produce nothing but gratifying results. Many of the sorts offered are also splendid for indoor culture. It is our thought that a very large proportion of our customers will appreciate this classification.

Sauromatum Simlense.

A rare and curious garden bulb with odd flower and luxuriant Palm-like foliage.



Sauromatum Simlense.

The spathe of this Calla-shaped flower is two feet in length, with tapering point, and is of very large size. Color of blooms green on outside, inside yellow spotted with purple. Foliage very large and luxuriant like a Palm. A rare and curious plant which will create a genuine sensation. Can be planted indoors or in open ground, where it is perfectly hardy. We offer large bulbs that will bloom this year. 20 cts. each; 3 for 50 cts.

Trillium Sessile.

This pretty and interesting variety is so closely allied to the Lily family to merit the term "the Lily's cousin." It is a hardy perennial, well suited for partially shaded situations, where it increases in size and beauty year after year. The flowers are large, and in form lily-like; they measure 2 to 3 inches across, and are gracefully set in three large, dark leaves, which gives them the appearance and finish of a perfect bouquet. This is one of the finest bulbs offered in this book. 10 cts. each; 3 for 25 cts.; 7 for 50 cts.

Rainbow Iris.

The species of Iris described below will give great satisfaction grown in pots. Several can be placed in a five-inch pot for Winter blooming in the house, as they are easily grown, sure to bloom, and above all are something new. The species offered are remarkably alike for their curiously constructed flowers and the peculiar manner in which the colors are blended; also can be planted in the garden; entirely hardy.

Anglica.—Finest mixed seedlings, including great and striking variety of color, splendid for bedding or borders; will afford a gorgeous display. 5 cts. each; 6 for 25 cts.; 12 for 40 cts.

Hispanica Finest Mixed (see cut).—For intense and dazzling colors this mixture is unsurpassed; suitable for beds or borders and for pot culture. 2 for 5 cts.; 12 for 20 cts.; \$1.25 per 100.

Peacock Iris.—Very showy, pure white, with bright blue spot on each petal. 6 cts. each; 5 for 25 cts.; 12 for 50 cts.

Persian Iris (Violet scented).—Showy flowers, different colored standards; bright yellow beardless keel, with waved edges, stout stem; fine for pots. 8 cts. each; 4 for 25 cts.

Spanish Iris Gold Cup.—Bronze and yellow colors blended; a very fine and striking variety. 8c. each; 4 for 25c.

Set of 5 named above, 40 cents.

Winter Aconite.

Imported from Europe. The plant blooms in early Spring and is a most desirable acquisition to any collection. The foliage is emerald green, and the blossoms large and of a deep golden yellow, suitable for planting in shaded or moist situations; very ornamental and interesting. 2 for 5c.; 12 for 20c.



Lily of the Valley.

Lily of the Valley.

The pure white exquisite flowers and pale green foliage of this beautiful plant render it one of the most useful and admired. It succeeds in the open ground in almost any situation, but prefers shade with plenty of moisture; when once planted and established the crowns keep on increasing each year. The large ones flower each season without any attention however. A top dressing of manure on rich soil in the Autumn will be found a great advantage. Grown in pots and forced into flower they make a beautiful object for room decoration; for house culture place rather thickly in pots or boxes, and a little light soil or fibrous matter scattered among the roots, but not over the tops, then cover with moss or some such substance and place outside until after a sharp frost; then bring to window and give plenty of heat and some moisture, and the flowers and foliage will soon appear. The crowns of Lily of the Valley we offer are imported by us direct from Berlin, Germany, and we have no hesitation in saying they are far superior for home planting to those received from Hamburg, which stock is usually sent out by the dealers.

Prices of Lily of the Valley.—Strong flowering crowns, by Mail, postpaid, 5 cts. each; 6 for 25 cts.; 12 for 50 cts.; 25 for \$1; 100 for \$3.

Prices by Express.—100 for \$2.50; 500 for \$8.50; 1000 for \$16.50.

PLEASE NOTICE.—Our Importation of Lily of the Valley will arrive about the middle of November, which is as early as they are ever received in this country. All orders will be booked and sent at that time.

We meet competition both in quality and prices. Compare our prices and premium offer with others and note that we give you the most and best for the money, and guarantee satisfaction in every instance.



Erythronium Grandiflora.

Erythronium Grandiflora.

THE BEAUTIFUL WOOD LILY.

These exceedingly ornamental hardy plants are now immensely popular. They are generally planted in open ground, where they are entirely hardy and will found a colony, taking care of themselves. They will also delight all as a window plant for Winter blooming, being of the easiest culture and sure to bloom freely in Midwinter; a few bulbs will give a pot full of handsome foliage plants, which produce numbers of graceful, drooping Lily-like flowers; color a fine shade of yellow. The bulbs should be potted or planted soon after being received, as they suffer if allowed to remain dry. 5 cts. each; 6 for 25 cts.; 12 for 40 cts.

Erythronium Revolutum.

In introducing this splendid new variety for the first time, we recommend it as a valuable addition to our gardens. Those who know the beauty of Erythronium will best appreciate this new species when we say it is the most beautiful of the family. The flowers are large, of great substance and in color a very striking white, tinged with green. The leaves are narrow, beautifully marbled, and mottled with brown. It is unlike any other variety in cultivation, and, being of easy culture, growing to perfection in ordinary soil and location, is worthy of recognition. Fine bulbs, 15 cts. each; 2 for 25 cts.; 5 for 50 cts.

Camassia Esculenta.

This lovely flowering bulb is the "Quamash" of the Indians; as a hardy plant it is very valuable for shrubby borders or wherever a clump of hardy flowers is desirable.



Camassia Esculenta.

In early Spring the flower stocks grow sturdily 2 to 3 feet high, and produce magnificent spikes of starry-like blue flowers, each at least 2 inches across. A clump in bloom is a striking and graceful sight. The flowers are very fine for cutting, lasting a long time when placed in water. Can also be easily grown as a pot plant for Winter blooming, giving it the same treatment as Hyacinths (see cut). 3 for 10 cts.; 12 for 25 cts.



Scilla Siberica.

SCILLA.

Scilla Siberica or Præcox (see cut).—A most beautiful variety; equally desirable for planting in the open ground for earliest Spring flowers or in pots for Winter blooming. The bulbs are entirely hardy and thrive with little or no care. The flowers are borne in greatest profusion, and are an exquisite rich blue color; grown in pots they will be in bloom from Christmas until April; in the open ground the flowers come almost before the snow is gone. 2 for 5 cts.; 20 cts. per dozen; \$1.25 per 100.

Clusii (*Peruviana*).—Also known as the Peruvian Hyacinth and Cuban Lily. Recommended as the grandest of all Winter bloomers; produces an enormous cluster of star-shaped blue flowers, which remain in bloom a long time. See page 17 for further description and illustration. 15 cts. each; 3 for 35 cts.

Wood Hyacinth (*Campanulata*).—An elegant plant for the shrubby borders or grass in odd corners; grows 1 to 2 feet; splendid spikes of bell-shaped flowers, which droop gracefully; perfectly hardy; blue and white colors mixed. 3 cts. each; 12 for 30 cts.

1 each of the varieties named above, 20 cts.

Camassia Cusickii.

This is a grand new species, destined to become a general favorite wherever grown. The bulbs are large, running from 2 to 8 ounces. The leaves are particularly fine—fully a foot in length. It blooms in wonderful profusion, producing in great racemes, 2 to 3 feet in height, hundreds of pale sky-blue flowers. Equally satisfactory for open-ground cultivation or for planting indoors. We recommend this splendid variety most highly, and ask our customers to give it a trial. Fine bulbs, 20 cts. each; 3 for 50 cts.

Ornithogalum Arabicum.

A Splendid Winter-Flowering Bulb. Sure to bloom.

This magnificent new Winter-blooming bulb from Arabia gives great satisfaction. The bulbs are large and solid, somewhat resembling Hyacinths; the leaves are long, narrow and graceful; flower stalks are thrown up to a height of 18 or 20 inches, and produce immense clusters of pearly-white flowers, each having a jet-black centre. This distinct character, together with the durability of the flowers, makes this grand novelty the best Winter bloomer now offered. Bulbs can be planted in 4-inch pots, and given the same culture as Hyacinths. If planted in open ground, they should be given slight protection. Price of large bulbs, sure to bloom, 6 cts. each; 5 for 25 cts.; 12 for 50 cts.

The Cinnamon Vine.

A very rapid grower, and considered by many to be the most valuable climber of its type in cultivation, and is extremely desirable as a Winter-blooming vine for window. It is entirely hardy, therefore a splendid outdoor climber. The delicate white flowers are produced in profusion and are deliciously sweet, emitting a delightful cinnamon odor. Roots, 5 cts. each; 7 for 25 cts.

The prices given include the postage, which we pay.

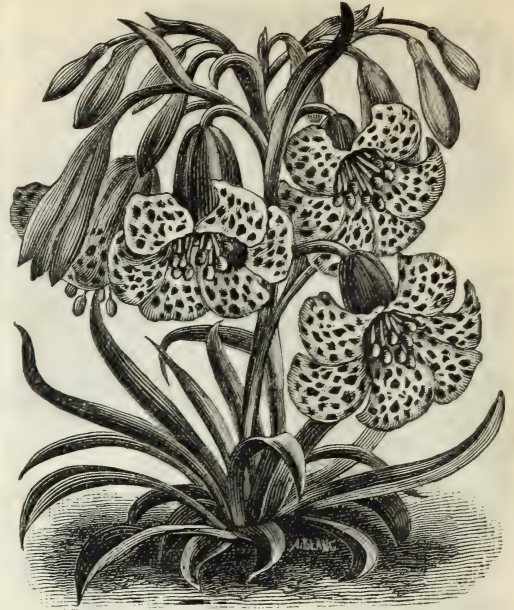
Ornithogalum Umbelatum.



Ornithogalum Umbelatum.

STAR OF BETHLEHEM.

This lovely flowering bulb is valuable both for pot culture in the house during Winter and in the open ground for early Spring blooming. Unlike *O. Arabicum* (see page 25), this variety is entirely hardy, and once planted it will become a permanent and beautiful addition to the garden. It is sure to do well under any ordinary circumstances, and the bulbs cost so little that no garden should be without a clump. In pots, culture is of the simplest. The star-like white blossoms are borne in great umbels. Fine bulbs, 5 cts. each; 3 for 10 cts.; 12 for 35 cts.



Fritillaria Recurva.

This singularly beautiful plant has attracted widespread attention, owing to the striking beauty of the flowers and its ease of culture. We know of nothing like it; the habit of growth is lily-like; the numerous large pendant bell-shaped flowers are borne profusely on stems 6 to 10 inches high. The color is clear scarlet, marked with jet black. As a pot plant the effect is extremely showy; it is as beautiful as any Lily, the profusion of flowers is remarkable; it is perfectly hardy in the open ground, but to be seen at its best it should be grown indoors in pots or boxes. The cultivation in pots for Winter blooming is very simple. It requires about the same treatment as the Bermuda Easter Lily. Care should be taken, however, not to give too much water when about to flower and while in flower. We have secured a fine lot of bulbs for sale this season, and make the price within the reach of all. 10 cts. each; 3 for 25 cts.; 7 for 50 cts.; 75 cts. per dozen.

Fritillaria Pluriflora.

This rare species has long been considered mythical, until very recently, when our collector secured a fine supply of it. It is the genuine variety, a sure, profuse bloomer, easily grown, and altogether one of the best bulbs offered in this book. The flowers are large, and of a clear reddish purple color. No better pot plant can be had. 15 cts. each; 2 for 25 cts.; 5 for 50 cts.

Tritelia Uniflora.

A most valuable addition to Winter-flowering bulbs for house culture. Several bulbs can be planted in a four or five-inch pot; each will send up numerous flower stalks, producing exquisite star-shaped blossoms; pure white, beautifully lined with azure blue. The flowers follow each other successively, and a pot or basket of these bulbs presents a lovely blooming appearance all Winter. This variety is also entirely hardy; can be planted in open ground, blooming splendidly in Spring. Fine bulbs, 2 for 5 cts.; 12 for 20 cts.; \$1 per 100.

Tritelia Violacea.—This fine new variety is beautiful violet-blue color; otherwise like Tritelia Uniflora. 4 cts. each; 7 for 25 cts.; 12 for 35 cts.

ANEMONES.

THE DEWY WIND FLOWER.

These lovely hardy perennial plants produce masses of brilliantly colored flowers which are wonderfully beautiful. If planted in the Autumn months they will bloom in early Spring, and if planted in the Spring they will bloom during the Summer and Autumn. Also very fine for pot culture in the house during Winter, where they can be grown in the simplest manner; the bulbs can remain in the same pot year after year without being disturbed. We hope every order will include some Anemones.

Chrysanthemum Flowered.—These are the finest of all the double Anemones; the splendid flowers are large and well imbricated, like an incurved Chrysanthemum; very vigorous in habit of growth and free flowering. We offer a mixture made up of the finest varieties. 10 cts. each; 3 for 25 cts.; 12 for 75 cts.


French Giant Poppy Flowered.—We now offer this new and superb race of Anemones for the first time. During mild Winters or in sheltered situations they will begin blooming in January and continue until June. The large, cup-shaped, poppy-like flowers are gorgeously colored. Unsurpassed for pot culture in the house during Winter, giving a succession of brightest flowers all Winter. 3 cts. each; 6 for 15 cts.; 12 for 25 cts.



Anemones.

Fulgens (The Scarlet Wind Flower).—No plant can compete with this elegant variety in beauty and brilliancy; the flowers are large and of a dazzling vermilion or scarlet color. In the open ground it is one of the first flowers of Spring, and is perfectly hardy; it is impossible to plant it where it will not succeed. Splendid for bouquets or vases, as the flowers last a long time when cut and placed in water. 5c. each; 6 for 20c.; 12 for 40c.

Finest Holland Double Mixed.—This is the best cheap selection of Anemones. 2 for 5c.; 12 for 20c.

Remember we are leaders  in retailing bulbs, and our trade demands immense quantities of stock, and, in consequence, we are enabled to secure it at the lowest possible price. No one can buy or sell cheaper. All the bulbs we offer are the first or largest size.

The prices given include the postage, which we pay.

❁ Snowdrops ❁

Snowdrops are the first blossoms of Spring, bringing graceful greetings of the flowers and verdure that are to come. They can be planted in groups and left undisturbed for years, coming forth annually with renewed strength and beauty. They are also exquisitely pretty planted singly in the grass, their foliage being sufficiently matured to cut without injury to the bulbs by the time the lawn is ready to be mown.

Galanthus Nivalis.—The old-fashioned Snowdrop; pure white. 3 for 5 cts.; 12 for 20 cts.

Elwes' Giant Snowdrop (Galanthus Elwesi).—The largest and most beautiful of all Snowdrops; flowers pure snow white, bright green tube. 2 for 5 cts.; 12 for 25 cts.; 100 for \$1.25.

Glory of the Snow (Chionodoxa Lucillea).—A most lovely variety, producing spikes of beautiful azure blue flowers with pure white centre; in striking contrast with G. Elwesi. 2 for 5 cts.; 12 for 25 cts.; 100 for \$1.25.

Gigantea.—As the name indicates, a large flowering variety; color beautiful light blue with white centre. This is a new production and exceedingly fine. 5 cts. each; 6 for 25 cts.; 12 for 50 cts.; 100 for \$3.



Galanthus (Snowdrops).

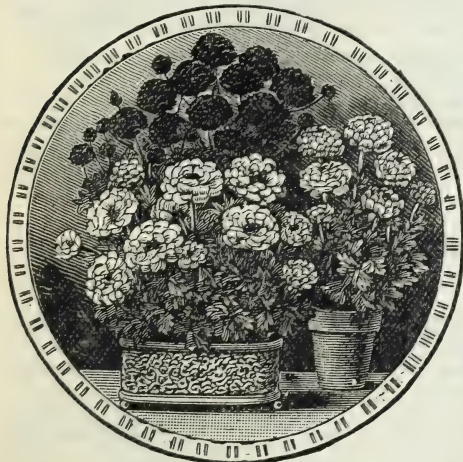
❁ Ranunculus ❁

FAIR MAIDS OF FRANCE.

These beautiful dwarf-growing bulbous plants have become very popular in this country. They are perfectly hardy in open ground south of Washington, D. C. In the north they should be protected outdoors with leaves or similar litter during Winter. They are easily grown both in pots in the house and in open ground, and are equally desirable for either purpose. The plants are sturdy growers, their habit of growth being the best. They produce a wonderful profusion of large double flowers, an idea of which can be gathered from our illustration. The flowers embrace the gayest and most brilliant colors, such as white, crimson, orange, purple, variegated, etc. Every one should possess a few bulbs of this charming family, as they will produce most pleasing results. We have imported an extra fine lot, which cannot fail to please.

Guernsey Turban (Finest Mixed).—This fine strain is very different from and far superior to the Dutch varieties usually sent out; each root produces a great number of double flowers of bright and rich colorings. 3 cts. each; 6 for 15 cts.; 12 for 25 cts.

French Turban (Finest Mixed).—Splendid and vigorous growers, with gorgeous flowers of largest size produced in great quantities. This strain will please all. 3 cts. each; 6 for 15 cts.; 12 for 25 cts.



Ranunculus (Indoors).

❁ Jonquils ❁

Jonquils make a very desirable addition to the garden, and they are also in large request for house culture. The flowers are of a rich golden yellow and delightfully scented. They belong to the Narcissus family and should be given the same treatment.

Double.—Extra fine; deep yellow. 8 cts. each; 3 for 20 cts.; 6 for 35 cts.

Single.—Rich yellow; very fragrant. 2 for 5 cts.; 20 cts. per doz.; \$1.25 per 100.

Campanelle Mixed.—Large yellow flowers; rich and very striking. 2 for 5 cts.; 20 cts. per doz.; \$1.25 per 100.

Our
New Guide
to
Rose Culture,
for 1898,

Will be ready to send out January 1, 1898. It is the acknowledged authority on matters pertaining to the culture of Roses, as well as all other flowers of worth. It will be sent free to customers of the past few years, also to those who order from this catalogue. To others free upon application.



Hardy Shrubs, Vines and Plants for fall planting.

Plant liberally of Shrubs, Vines and Hardy Plants; they will give satisfaction in every particular. This class of plants is a leading speciality with us. The list given on this page contains the very best and choicest sorts in cultivation. They are described in detail in "Our New Guide," Spring Edition, on pages 98 to 110. We recommend Shrubs for Fall planting, as they are perfectly hardy, will become established before Winter sets in, and, like trees, will make roots when the ground is frozen solid; then again they will make an early growth as Spring opens, and thereby give splendid results the year after planting. Fall planting may be said to be the quickest to produce results, the safest and most satisfactory. All the Shrubs and Vines offered on this page may be planted this Fall with the entire certainty of their surviving the severest Winter, and giving good results next year. When received, the plants should be cut back about one-half their growth, and, in planting, firm the soil well around the roots. We call special attention to the greatly reduced prices.

ALL OUR SHRUBS ARE FIELD-GROWN. THE LARGE PLANTS ARE FROM THREE TO FIVE YEARS OLD.

All plants of the first size sent postpaid, by mail, at prices named. The larger sizes must be sent by Freight or Express at purchaser's expense. Prices include boxing, packing and delivery to Freight or Express office here.

PRICES: First, or Mail Size, except where noted, 15 cts. each; 5 for 50 cts.; 10 for \$1.00, postpaid by mail.

Second Size, three years old, blooming plants, 25 cts. each; 5 for \$1.00; 10 for \$1.50; \$2.00 per hundred.

Third Size, 3 to 5 years old, extra heavy plants, 50 cents each; 10 for \$4.00; \$25.00 per hundred.

Orders for 25 or more of single varieties filled at hundred rates.

All varieties can be furnished in first and second sizes, unless otherwise stated. Only varieties marked with a star (*) can be supplied in the third or largest size.

ALTHEAS (Rose of Sharon) Alba Plena.*—Large double white flowers, blotched with rose.

Blanche.*—The nearest pure white double Althæa.

New Banner.*—Flowers as large as a rose; color, clear rosy pink, striped rich crimson. Blooms the first year.

Buist's Variegated Leaved.*—Beautiful; leaves green, broadly margined, silver white, flowers double.

Double Purple.*—Fine double flowers, deep reddish purple.

Carnation Striped.*—Pink, with crimson stripes; very fine.

Totus Albus.*—Finest single white.

ANDROMEDA MARIANA.*—Produces great sprays of fragrant waxy white flowers, that resemble Lily of the Valley.

BERBERIS (Barberry) Atropurpurea* (Purple Leaved).—Purple foliage, yellow flowers. Splendid for hedging.

Thunbergia.*—New and beautiful. Fine yellow flowers. In Winter the bush is covered with brilliant red berries.

CALYCANTHUS FLORIDUS.*—The good old-fashioned sweet-scented shrub.

CATALPA, Teas Japanese Hybrid.*—A magnificent tree-shrub. Large foliage; flowers creamy-white, tinted purple.

Speciosa.*—Finer and harder than the common Catalpas.

CERCIS (Japan Judas) JAPONICA.*—Grows 6 to 8 feet. Deep rosy crimson flowers borne in great profusion.

CHIONANTHUS (White Fringe) VIRGINICA.*—A fine ornamental tree; grows 15 to 25 feet; white flowers.

CYDONIA (Japan Quince), Snow White.*—Every one knows the beauty of the Japan Quince.

Japonica.*—Same as Snow White, except flowers are bright crimson. Both varieties fine for hedging.

CLEMATIS STANS.*—Low spreading habit. Blooms in late Fall; flowers white; look like Lily of the Valley.

CLETHERA ALNIFOLIA.*—Creamy white flowers of wonderful fragrance.

DEUTZIA CRENATA.*—Very stately. Flowers double; white tinged with rose. Blooms profusely in June.

Fortunii.*—A prolific blooming variety; pure white flowers.

DEUTZIA GRACILIS.*—Dwarf; snow-white bells.

Pride of Rochester.*—Resembles Crenata. Very fine.

EXOCHORDA GRANDIFLORA.—4 to 6 feet. Beautiful snow-white flowers. Large 5-year old plants, 65 cents each.

FORSYTHIA SUSPENS.*—Weeping habit; yellow flowers.

Verdissima.*—Lovely bright golden bell-shaped flowers.

HONEYSUCKLE TARTARIAN.*—Bush form. Fragrant creamy-white flowers.

HYDRANGEA PANICULATA GRANDIFLORA.*—The grandest of all hardy flowering shrubs. We have over 200,000 plants for sale.

JASMINUM (Jasmine) NUDIFLORUM.*—In bloom here in February and March before foliage has appeared.

LILAC (Syringa), NEW PERSIAN.*—Grand new variety. Flowers deep purple, exceedingly fragrant. Neat and compact growth. One of the finest Lilacs.

White.—Rare and beautiful. Very sweet.

Purple.*—Forms immense heads.

Red.*—Sweetly perfumed, very desirable.

NEW HARDY ORANGE CITRUS TRIFOLIATE.*—A remarkable novelty. A real hardy Orange-tree, with deliciously sweet orange blossoms, and bright red fruit.

PHILADELPHUS (Mock Orange) GRANDIFLORA.*—beautiful creamy-white fragrant flowers.

Dianthiflorus.*—Dwarf, double cream-colored flowers.

Golden-Leaved Syringa (Folius Aureis).*—Golden foliage.

POMEGRANATE.*—Native of Western Asia. Fine for vases, pots or tubs. The fruit has been highly esteemed for ages, frequent references being made to it in the Bible.

PRIVET (Ligustrum), California Privet.*—Remarkable for the beauty of its foliage and its regular symmetrical growth. Leaves are dark green, very glossy and wax-like. We sell thousands of it annually for clumps and hedges.

TRICOLOR OR GOLDEN PRIVET.*—Deep green foliage, variegated with golden yellow.

SPIRÆA AUREA.*—This is the well-known golden-leaved Spiræa. White flowers.

Billardi.*—Beautiful rose-colored flowers.

Bumalda (New).—Pink flowers; blooms all Summer.

Callosa Alba.*—A handsome new white flowering Spiræa.

Callosa Rubra* (New).—Bushy and compact; rosy-red.

Callosa Superba* (New).—Grows 3 to 5 feet; light red.

STYRAX JAPONICA.*—A fine new shrub from Japan.

Dwarf like a small tree. Flowers pure silvery-white.

SPIRÆA JAPONICA (Atsibe). Hardy, herbaceous plant.

Produces panicles of feathery-white flowers.

Prunifolia* (Bridal Wreath).—Pure white flowers; look like little Daisies.

Reevesii.—Grows 4 to 6 feet, blooming in May; white.

Thunbergii.*—One of the best. Blooms early in April.

Foliage fern-like; pure white flowers, borne in clusters.

Van Houtii.*—Extremely hardy. Fine compact grower;

large white flowers; looks like "a snow bank of bloom."

TAMARIX AFRICANA.*—Will grow in any situation.

Pretty pink flowers.

VIBURNUM (Snowball) OPULIS STERELIS.*—The fine old Snowball shrub, known everywhere.

VIBURNUM PLICATUM (New Double White Japan Snowball).—Renowned for its magnificent flowers. Very rare.

WEIGELA (Diervilla) CANDIDA.*—The best white.

Hortensis Nivia.*—Scarce; snow-white flowers.

Lavellei.*—New and fine; deep red flowers.

Rosea.*—Free flowering; large deep rosy flowers.

Variegated Leaf.*—Deep green foliage with margin of pure white; flowers clear blue.

YUCCA FILAMENTOSA.*—A low growing evergreen plant,

almost tropical in appearance. Flower stalk is from 2 to 4

feet, and rises from the centre, crowned with hundreds of

bell-shaped flowers of perfect form; very fine.

Beautiful Hardy Climbing Vines.

Price, large plants, 15 cts each, except where noted; larger size, 20 cts. each.

AMPELOPSIS VEITCHII.—The well-known Boston or Japanese Ivy.

Virginia.*—Rapid grower, adapted to any situation.

AKEBIA QUINATA.—Handsome foliage with chocolate colored flowers, very fragrant.

BIGNONIA GRANDIFLORA (Trumpet Creeper).—A fast grower, with large trumpet-shaped orange red flowers.

CLEMATIS, Jackmanii, Alba, Henryi, Fairy Queen, The Gem and Duchess of Edinburg. 60 cts. each.

HONEYSUCKLE, Chinese Sweet-scented.—White and yellow flowers, very fragrant.

Evergreen Sweet-scented.—Buff, yellow and white; very sweet. Blooms all through the season.

European Sweet-scented (Belgian).—Very fine.

Golden Leaved.—Bright, yellow foliage. Fragrant flowers.

New Halliana.—Evergreen and a constant bloomer; white and yellow flowers.

New Chapmanii.—Grows upright, very sweet and handsome.

New Heckrotii.—Distinct and beautiful; fragrant.

Red Coral.—Very vigorous. Bright red flowers.

Yellow Coral.—The only true Golden-yellow Honeysuckles.

ENGLISH IVY.—A splendid ever-green climber.

EUONYMUS, Variegated.—A most desirable ever-green climber, with silvery-like foliage.

Trailing.—Small variegated leaves; trailing habit.

Large Leaved.—Upright, fine large dark green foliage.

Chinese Blue.—Rich violet blue flowers, exquisitely fragrant. 20 cts. and 40 cts. each.

Magnifica.—Makes a growth of 30 to 40 feet in one season. Flowers pale lilac. The finest Wistaria of its color ever known. 20 cts. each.

VIRGINIA SILK VINE.—A rapid-growing twining climber; blue flowers.

Cydonia and Ligustrum.

LARGE PLANTS FOR HEDGES, BY EXPRESS OR FREIGHT.

Cydonia (Japan Quince)—Snow White.—Beautiful large flowers; splendid Hedge Plants. 50 for \$6; \$10 per 100.

Ligustrum—California Privet.—Specially adapted for hedge planting; foliage beautiful. 50 for \$6; \$10 per 100.

The larger size Shrubs can be sent ONLY BY EXPRESS OR FREIGHT at purchaser's expense; the smaller by Mail, postpaid at prices given.

REDUCTION IN EXPRESS RATES.

Plants.—Completely boxed and packed so they may be handled without extra care 20 per cent. less than merchandise rate.

The above rate is made by the following Express Companies: Adams, American, National, Northern Pacific, Pacific, Southern, United States, Wells, Fargo & Co.

The Choicest Decorative and Winter-blooming Plants

FOR HOUSE CULTURE.

We consider a collection of Winter flowers incomplete without a few decorative and blooming plants. The growing demand indicates that a very large number of our customers are of the same opinion. We offer for this season's trade an extensive, as well as a most desirable collection to choose from. Many new and rare varieties will be found described and illustrated on the following pages. All are of the easiest culture, and as the plants in each instance are large, strong specimens, good and immediate results are assured. Note the low prices.



Grevillea robusta, the Australian Silk Tree.

Grevillea Robusta.

(THE AUSTRALIAN SILK TREE.)

A magnificent plant for decorative purposes, quicker growing than a Palm, and equally effective; of easy growth; finely cut foliage, rivaling a rare Fern. The young growing leaves are a light bronze color, the tips being covered with soft down, closely resembling raw silk, hence the name "Silk Tree." In its native place it attains magnificent proportions and produces an abundance of bright, orange-colored flowers. The leaves are fine for design, so fern-like and not liable to wilt. No collection complete without it. 15 cts. each; 4 for 50 cts.; 9 for \$1.

Eucharis Amazonica.

A rare bulbous plant which throws up tall flower scapes bearing large, snowy white, star-like blossoms of great beauty and delicious fragrance. It is a plant which is very scarce, and highly prized by those who possess it. Fine flowering bulbs 30 cts. each; 4 for \$1.

TRY IT!

The grand Scarlet Mexican Lily. See last cover page.

Eucharis ama-onica.



OTAHEITE ORANGE.

The Champion Pot Plant.

Otaheite Orange can be planted in Pots or Boxes at any time. Will give perfect satisfaction.

This is, beyond question, one of the most satisfactory plants for pot culture in our collection. It is a dwarf reproduction of the genuine fruit-bearing Orange tree, the flower being identical. It flowers and fruits in pots, is exceedingly floriferous, blooming almost continuously. The fragrance of the flowers is simply delicious, and with one or two plants one can have a generous supply of highly prized and much coveted orange blossoms. It fruits immediately after flowering; the fruit measures about three inches in diameter, and while not so strongly flavored as an ordinary orange, it is quite edible, the difference being but slight. E. J. Saul, in a very instructive article published in *Success with Flowers*, says that on a single plant, twenty inches high, one hundred and sixty-four buds were counted. Prices—Strong, repotted plants, a year and a half old, 15 cts. each; 4 for 50 cts.; 9 for \$1. Larger size, 25 cts. each, postpaid by mail.

Sweet Violets.

Rich in modest beauty, famous for its enchanting fragrance and truly "the sweetest flower that grows," the Violet is too well known for an illustration and lengthy description. Perfectly hardy; plant in cool shady situation and water freely. Any of these varieties will yield a profusion of flowers.

California.—The largest single Violet; the size of a silver dollar; long stems; deep rich blue; very sweet; a wonderfully free-blooming variety.

Lady Hume Campbell.—Large double flowers, delightfully fragrant, flowers deep blue. Very popular.

Double Russian.—A beautiful new Violet, hardy, a free bloomer; deep double flowers borne on long stems.

Swanley White.—The old reliable white, the greatest favorite of all. Pure snowy white, perfectly double flowers, exquisitely sweet. Very free.

Any of the above Violets, 15 cts.; 4 for 50 cts.; 9 for \$1.



Clerodendron Balfouri.



Cissus Discolor.



Sansevieria Zealanica.



Abutilon, Souvenir de Bonn.



Strobilanthes Dyerianus.



Fancy-Leaved Caladiums.

Clerodendron Balfouri.

A most satisfactory plant for pot culture; a vigorous, rapid and healthy grower, producing an abundance of blooms, which are bright crimson, surmounted by pearly white petals, affording a striking contrast against the dark green foliage. A really beautiful plant, one of the finest for Winter blooming (see cut). Likes partial shade. Strong 3-inch pot plants, 20 cts. each; 3 for 50 cts.; extra-large blooming plants, 50 cts. each, postpaid by mail.

Cissus Discolor (Trailing Begonia).

Beyond doubt the most beautiful-leaved climbing plant now known. The leaves are long, heart-shaped, and as handsomely marbled and mottled as a Begonia Rex; the under side is a transparent wine-red; entitled to be called superbly beautiful. Grows remarkably quick and makes immense quantities of foliage. For trailing over the side of a window box, or for hanging basket, or grown on a trellis in pots (see cut), it is one of the most useful and beautiful plants. Likes heat and a little manure water now and then. Strong plants, 15 cts. each; 4 for 50 cts.; 9 for \$1.

Sansevieria Zealanica.

Too much cannot be said in favor of this as a decorative pot plant. There are none so beautiful in foliage, and few that will stand neglect so well as it; it laughs at ill treatment and neglect; thrives without water; gas or dust does not affect it; it is always clean and beautiful. Has long, leathery, sword-like leaves, elegantly marked with bars of silvery gray; an immense feathery flower; spikes shoot up from the centre of the plant, which emits a delightful fragrance; grand in every way (see cut). Fine plants, 20 cts. each; 3 for 50 cts.; extra-large plants, 40 cts. each, postpaid by mail.

New Abutilon, Souvenir de Bonn.

Singularly beautiful and unequalled for decorative purposes; makes a large bush and produces a great number of lovely flowers. The foliage is handsome—green leaves, edged with a purple white band, as shown in illustration; should be in every collection. 15c. each; 4 for 50c.; 9 for \$1.

Strobilanthes Dyerianus, Royal Purple.

Sold recently at \$2.00 per plant. Its remarkable beauty has won, besides numerous gold medals, the admiration of all who have seen it. Compact plants, 18 inches high, of most intense metallic purple, shading into light rose with green margin; flowers violet blue; easily surpasses a Coleus or Begonia for novel effect (see cut). 15 cts. each; 4 for 50 cts.

Fancy-Leaved Caladiums.

Nothing can equal these in brilliancy of foliage; to say there are over 400 combinations of colors is sufficient. The splendid large leaves are beautifully spotted, margined and variegated with every imaginable color except blue. They are best suited for pot culture in house, conservatory or shaded situation. Strong, growing plants, 20 cts. each; 3 for 50 cts.

New Heliotrope, Mad. Bruant.

This is a superb new variety, with large, dark flowers; color deep lavender blue. The size and beauty of the flower, in connection with the exquisite fragrance, makes this a variety of rare value; it is a strong grower and blooms continuously. 15 cts. each; 4 for 50 cts.; 9 for \$1.

New Fuchsia, Trailing Queen.

Differs from all other varieties in habit of growth, as it is a trailing vine. The young plants, as they commence growth, creep out to the edge of the pot and then go trailing downward, growing and branching in this way until the vines are a solid, wavy mass of the most elegant foliage and flowers; color bright rosy scarlet and rich violet purple. 15 cts. each; 4 for 50 cts.

Fuchsia Phenomenal.

The finest, freest blooming double large flowering Fuchsia in cultivation; flowers enormous, borne with great freedom; short tubes and sepals of bright crimson color; corolla bright violet purple. Splendid plants, 15 cts. each; 4 for 50 cts.

Pelargonium Lady Washington.

A fine variety, vigorous grower and profuse bloomer; flowers large and marked in a most charming fashion; color lilac pink, with centre of pure carmine, which gives the flowers the appearance of Phlox; very showy and satisfactory. 20c. each; 3 for 50c.

Sword Fern, Nephrolepis Exaltata.

A most beautiful and graceful Fern; attains a height of 6 to 7 feet; the fronds, like plumes, arch over in a most charming fashion. Splendid for indoor culture; likes shade. Large plants, 20c. each; 3 for 50c.

New Pot Hydrangea, Red Branched.

New and rare; very desirable for culture in pot, box or tub; is of stately, robust habit of growth, with fine, large foliage; produces immense panicles of clear pink flowers. A grand pot plant for Winter culture. Strong plants, 20 cts. each; 3 for 50 cts.; extra-large plants, 35 cts. each.



Red Branched Hydrangea.



Swainsonia Alba.



Asparagus Sprengeri.



Agapanthus Umbellatus.



Dwarf Calla, Little Gem.



Caladium Esculentum.



Hedychium Coronarium.

Swainsonia Alba, White.

A beautiful new ever blooming plant for house culture, with pure white flowers, produced in elegant sprays; the individual flowers strongly resemble a Sweet Pea. The foliage, too, is exceedingly pretty, equally as desirable as a Fern; of the easiest culture, growing to perfection in almost any situation; rarely ever out of bloom; one of the most desirable Winter-blooming plants; very popular. (See cut.) 15c. each; 4 for 50c.

Swainsonia Splendens, Pink.

Very rare and beautiful; same as Alba, with the exception of flowers, which are deep shiny pink. Try a plant of each variety; you will be greatly pleased with them. 20 cts. each; 3 for 50 cts.

Asparagus Sprengeri.

Perhaps the best new plant introduced within ten years; has won the highest praise. A magnificent plant for pot or hanging basket; makes sprays 4 to 5 feet long, remaining perfect for weeks after cutting. Grows freely the year round; will please you. (See cut.) 20 cts. each; 3 for 50 cts.

Dwarf Calla, Little Gem.

Known everywhere; seldom grows over 10 inches high, yet produces a great number of pure white flowers of good size. We offer pot plants of the true stock. (See cut.) 20 cts. each; 3 for 50 cts.

Caladium Esculentum, Elephant Ears.

A majestic ornamental plant, suitable for indoor culture in pots or tubs; leaves of immense size. A plant of this will change the aspect of an entire room; likes warmth and moisture. (See cut.) 15c. each; 4 for 50c.

New Cuphea Tricolor.

Blooms the year around; bright colored, curiously shaped flowers; thrifty grower and a constant bloomer; fine for pots or basket culture. 15 cts. each; 4 for 50 cts.

Asparagus Plumosus, Lace Fern.

Foliage surpasses a Maiden Hair Fern; in grace and finish resembles the finest lace. Elegant for cutting; one of the best plants in our collection. 20 cts. each; 3 for 50 cts.

The Yellow Jessamine.

Famous for its beautiful golden yellow, exquisitely sweet-scented flowers, borne in sprays of 30 to 40 flowers. Will grow anywhere; include a plant with your order. 15 cts. each; 4 for 50 cts.

New Compact Torenia.

Forms a compact, upright little bush, which is constantly covered with a mass of bloom—in fact, it is hardly ever without flowers; color lavender blue, spotted with purple, yellow throat; easily grown; fine for pot culture. 15 cts. each; 4 for 50 cts.

Hedychium Coronarium, Myrosma Cannaeifolia.

Sold last year as the White Canna for \$2.00 per plant; pure white flowers, with fragrance as sweet as that of Orange Blossom. A grand pot plant. 20 cts. each; 3 for 50c.

Agapanthus Umbellatus, African Lily

Imagine a clump of evergreen foliage spreading 3 to 4 feet, and surmounted by innumerable spikes of large, bright blue, Lily-like flowers! It is indeed a grand sight. Of the easiest culture; likes plenty of sunshine and water. (See cut.) Extra strong plants, cut back, 35 cts. each; 3 for \$1.00.

Begonia Hybrid Multiflora.

Lovely variety, producing a profusion of rosy pink flowers. Very satisfactory. 15 cts. each; 4 for 50c.

Begonia Metallica.

Distinct and rare; good grower and free bloomer; flowers white; foliage a lustrous metallic or bronze color. Very odd and desirable. 15 cts. each; 4 for 50 cts.

Oleander Roseum Splendens.

The old-fashioned, sweet-scented Oleander; produces an abundance of double, pink flowers, borne in large heads; deliciously fragrant; splendid for indoor culture. Strong plants, 20 cts. each; 3 for 50c.

Cycas Revoluta.

The best known of all the Cycas, and probably the grandest and most majestic decorative plant in the world. The leaves, which are like elegant Fern-fronds, are remarkable for their wonderful beauty; the leaves are used extensively for decorative purposes and usually sell for \$2.00 each; lives to a great age; easily grown; water sparingly. Good plants commonly sell for from \$5.00 to \$50.00 each, which, of course, keeps it out of the hands of flower lovers in general. We offer a limited number of fine pot-grown plants at 50 cts. each, post-paid by mail.

Pandanus Utilis, Screw Pine.

One of the most useful and decorative plants that can be grown. It is entirely distinct and extremely beautiful; the long, narrow leaves are notched like a saw with bright red, while the body of the leaf is green; they droop gracefully, forming a most striking plant; will please everybody. Fine, large plants; 30 cts. each; 2 for 50 cts.

Gardenia Florida, Cape Jessamine.

Well known and popular; blooms pure white, large, delightfully fragrant. Splendid for pot culture. 20 cts. each; 3 for 50c.

Olea Fragrans.

This is the Tea or Sweet Olive, one of the sweetest of flowers; flowers are white, borne in clusters and emit the most pleasing fragrance. It is a true ever-blooming plant, and it is well said that its flowers "have more sweetness than the most fragrant Lily." Splendid for indoor culture. 20 cts. each; 3 for 50 cts.

Russelia Juncea.

A magnificent plant for vase or basket culture. Grassy-like foliage, with long, slender, soft, scarlet red flowers, the shape of the Manettia Vine blooms; produced in wonderful profusion. 20c. each; 3 for 50c.

A PAGE OF CHOICE Palms and Ornamental Foliage Plants.



Musa Ensete.



Aspidistra Variegata—Silver Shield.



Phoenix Leonensis.

MUSA ENSETE.

The Grand Abyssinian Banna Tree. This is a foliage plant of magnificent proportions, and is considered the noblest decorative plant in cultivation. It attains gigantic size, often growing 18 to 20 feet high after it becomes established. For single specimens it is grand beyond description, and gives a massive tropical effect to be had with no other plant. It is a majestic and imposing plant; exceedingly rare; likes rich soil and plenty of water. We have a limited stock of plants in two sizes (*see cut*). First size, postpaid by mail, 80 cts. each; 2 for 50 cts. Second size, grand plants, by express only, at purchaser's expense, 50 cts. each.

ASPIDISTRA VARIEGATA—SILVER SHIELD.

Silver Shield is a good name for this fine ornamental-leaved Japanese plant. There is absolutely no other that will stand more ill treatment, such as dust, dry air, want of light, etc. Leaves are long, broad, shiny, alternately striped green and pure white; frequently green, others all white; likes lots of water. We recommend it as one of the grandest of plants (*see cut*). A grower going out of business had to dispose of his stock. We bought it, hence the low prices. This valuable plant cannot be grown for less than 35 cts. per plant. While our stock lasts we will sell this lot at 30 cts. each; 2 for 50 cts., fine, large plants, from 6-inch pots, 50c. each, postpaid by mail.

PHENIX LEONENSIS (DATE PALM).

This is a strong, healthy and beautiful tree-like Palm, is of exceedingly rapid growth and is remarkably hardy, standing several degrees of frost in most cases; attains an enormous size—the trunks sometimes grow larger than a flour barrel; to do this, however, requires several years. Grows upright and strong; exceedingly choice and rare (*see cut*). First size plants, 35 cts. each; 3 for \$1.00. Large plants, 1 to 2 feet, 60 cts. each, postpaid by mail.

ZAMIA INTEGRIFOLIA.

A noble Palm of highly tropical appearance, with very graceful foliage; is as easily grown as a Geranium; will thrive in almost any situation; does equally well in shade as in sunlight; likes moderate moisture. As a decorative pot plant, for window and indoor culture, this lovely Palm is the equal of any variety we know. Its beauty is so strikingly elegant that no one would be without it, could they but see it (*see cut*). We offer large, choice pot plants in two sizes. First size, 30 cts. each; 4 for \$1.00. Large, strong plants, from 6-inch pots, 75 cts. each, postpaid by mail.

PALM, WASHINGTONIA FILIFERA.

This is conceded to be one of the best Palms for amateur culture. It stands ill treatment with impunity, and thrives where other Palms die. It is exceedingly ornamental, with elegant, fan-shaped leaves, of rich, dark, leathery green, from which hang long, thread-like filaments; a compact grower, needs no petting or coaxing to succeed (*see cut*). We offer strong, well-rooted plants that are sure to grow. 15 cts. each; 4 for 50 cts.; 9 for \$1.00.

A MAGNIFICENT PALM, LATANIA BORBONICA.

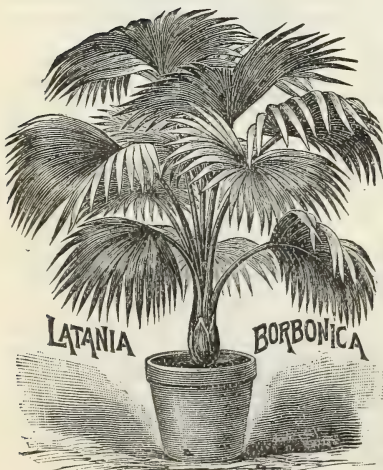
Certainly no plant could be more ornamental or satisfactory than this superb variety, which is conceded to be one of the best decorative Palms now known. It is immensely popular and deservedly so, because it is not only remarkably beautiful, but of the easiest culture, standing neglect well and attains a great size. The leaves are large, deeply divided and fan-shaped (*see cut*). Requires fairly good soil, moderate moisture and partially shady situation. We have a limited supply in two sizes; at prices named they are bargains. First size, large plants, 25c. each; 5 for \$1. Larger plants, from 4-inch pots, 50c. each, postpaid by mail.



Palm, Washingtonia Filifera.



Zamia Integrifolia.



Latania Borbonica.

NOTICE.—While we can send the larger size plants of the varieties described on this page by mail, we would advise wherever possible to have them sent by Express at purchaser's expense. They will arrive in nicer condition. Unless ordered to be sent by mail, we will forward large plants by Express, at purchaser's expense.

Giant Persian Cyclamen.

The new Giant-flowered Persian Cyclamens are considered by experienced florists the most beautiful and decorative of all pot-plants when in bloom. The foliage is broad, massive and graceful, of a dark olive green, beautifully variegated with silver and rose colors. The



Giant Persian Cyclamen.

immense fairy-like blooms are carried on long stems and produced in boundless profusion for several successive months, and are delightfully perfumed. We offer fine large bulbs, imported from the most celebrated grower in Europe. Price, 25 cts. each; 3 for 60 cts.; 5 for \$1.

Double Herbaceous Paeonies.

Ready for delivery in October.

Everyone who has seen this noble plant, with its large double flowers, will agree with us that for striking beauty, effectiveness, profusion and duration of bloom, it is beyond doubt one of the grandest flowers in cultivation. The foliage is massive and handsome, while the culture is the easiest. The flowers are immense in size, perfectly double and beautifully formed—like big double Roses. They are entirely hardy and once planted they are a source of genuine pleasure, year after year. One's garden is incomplete without some Paeonies.

We offer strong plants in different colors postpaid at the low prices given below:

- Double White 50 cts. each.
- Double Pink 40 cts. each.
- Double Red 40 cts. each.

Set of 3 postpaid for \$1.25.



Double White Herbaceous Peony.

The prices given include the postage, which we pay.

Gooseberries.

DOWNING.—Fruit handsome pale green. A vigorous grower, free from mildew; very prolific. 15 cts. each; 4 for 50 cts.; 9 for \$1. Large size, 20 cts. each; 3 for 50 cts.; 12 for \$2.
HOUGHTON.—Pale red in color; sweet, tender and one of the best; enormously productive. 15 cts. each; 4 for 50 cts.; 9 for \$1. Large size, 20 cts. each; 3 for 50 cts.; 12 for \$2.
NEW INDUSTRY.—Beyond question this is the best Gooseberry now known. Is a strong, erect grower; will succeed in all localities. By far the heaviest cropper yet known; free from mildew. The berries are of the largest size, 1 to 1½ inches in diameter. Flavor rich and pleasant; color handsome dark red. We offer fine strong plants, imported direct from the introducers, 25 cts. each; 5 for \$1; \$2 per dozen. Large plants, 35 cts. each; 3 for \$1.

Currants.

Currants are perfectly hardy, and may be planted in either Fall or Spring. Currant worm can be destroyed by dusting bushes with powdered white Hellebore when they are wet with dew.
Price, except where noted, 10c. each; 6 for 50c.; 12 for \$1.
VICTORIA.—Fine large red berries; quality excellent; very productive. Thought by some to equal Fay's Prolific.
FAY'S PROLIFIC.—One of the best of all Currants; large, cherry-red berries of finest quality; very heavy cropper. Unexcelled for family garden or market use. 15 cts. each; 6 for 75 cts.; 12 for \$1.50. Large size, 20 cts. each; 6 for \$1; 12 for \$2.
RED DUTCH.—This excellent and well-known variety is as popular as ever.
WHITE GRAPE.—Large creamy-white sweet Currant, one of the best for the table. Very prolific.

Set of Currants, 4 in all, for 50 cts.

Blackberries.

Blackberries can be planted with entire satisfaction, during the Fall, about five feet apart, and four feet apart in the row.
OHMER (New).—The best Blackberry now known. Beats all other varieties, such as Lawton, Taylor, Snyder, Erie, etc., being larger than any, black when ripe, an immense bearer, entirely hardy, superb flavor, and free from disease. Ripens after Raspberries are gone, and lasts until late in August when Blackberries are high. Large plants, 15 cts. each; 3 for 50 cts.; 7 for \$1 postpaid. Extra large bearing plants, four years old, produced a large crop of fruit this year, 25 cts. each; 5 for \$1; \$2 per dozen; \$12 per 100 by freight or express.
EVER-BEARING TREE BLACKBERRY.—Absolutely distinct. Grows to 7 feet high, branching freely into a fine tree form, straight and erect, requiring no stake. Berries enormous, borne in great clusters; ripens early in July and continues into September. Excellent flavor. Hardy everywhere. Large plants 20 cts. each; 3 for 50 cts.; 7 for \$1. Extra large plants 25 cts. each; 5 for \$1; \$2.25 per dozen; \$12 per 100 by freight or express.

Choice Hardy Grapes.

We offer a splendid stock of the most desirable Grapes for family use. Grown by our own special methods from thoroughly well ripened wood, they cannot be surpassed for health, vigor and early bearing. The vines are strong and heavily rooted, sure to grow and come quickly into bearing; can be sent by mail or express.

Price of any of the varieties described below, 15 and 25 cts.

BERCKMANN'S.—A grand new variety. The light red berries are one-third larger than Delaware, and are borne in large shouldered bunches, which mature about September 1.
BRIGHTON.—A very early sort, also a very beautiful one. Color bright red; sweet and delicious; hardy and vigorous.
CONCORD.—This fine old variety has so many good qualities that it is justly called the Grape for the millions. Bunches large, color blackish purple.
EATON.—Hardy, vigorous productive and healthy. Berries unusually large, borne in immense clusters; color black.
MOORE'S DIAMOND.—A fine white variety of excellent quality; skin smooth and clear. Considered one of the best.
MOYER.—Resembles Delaware. Exceedingly sweet and delicious, without a suspicion of foxiness.
NIAGARA.—The great white Grape, perhaps the most valuable of its kind wherever introduced. Bunches large and compact; color pale green at first, changing to pale yellow when fully ripe. Flesh tender and sweet. Very productive.
SALEM.—Red; bunch and berry very large; healthy, hardy and vigorous; early; good keeper. Best quality.

SPECIAL OFFER.—We will send one each of the 8 Grapes described above, two-year old vines, postpaid by Mail for \$1.25.

The Famous Japanese Wineberry.

The grand fruit has become so well known and popular that no description is needed to exploit its merits. It belongs to the Raspberry family, and is perfectly hardy, and produces its deliciously flavored fruit in immense clusters. Fine for preserving. Plants that will fruit next season. 15 cts. each; 4 for 50 cts.; 10 for \$1 postpaid by Mail; \$8 per 100 by express.
 Extra large bearing plants, four years old, 25 cts. each; 5 for \$1; \$2 per dozen; \$15 per 100 by freight or express.



Pot Roses.

Free-blooming Kinds for Winter Culture Indoors.

Our great specialty is Roses. In Our New Guide, Spring Edition, are offered over seven hundred varieties, comprising the choicest collection to be found in this country. From these we have selected the varieties described below, as the best, as regards freedom of bloom, variety of color, fragrance and adaptability to house culture. There are none better for Winter blooming. They are sure to give the utmost satisfaction. The plants have been specially prepared for the purpose; they are strong, stocky and thrifty, growing in three-inch pots. When received plant in larger pots or boxes, water freely and give as much light and sunshine as possible.

Price postpaid by Mail, of varieties described below, except where noted, 15 cts. each; 2 for 25 cts.

American Beauty.—Grand and beautiful; flowers extra large, double and deliciously fragrant. Color rich rosy crimson. 20 cts. each; 3 for 50 cts.

Aline Sisley.—Large, full and double flowers; rich rare shade of violet red, brightened with crimson maroon. Very fragrant. Blooms continuously.

Anna Oliver.—Superb free flowering double Rose. Extra large, color lovely creamy blush shaded with deep carmine, tinged and edged with silvery rose.

Coquette de Lyon.—One of the finest pure yellow Tea Roses in cultivation, wonderfully beautiful, buds long and pointed. A constant bloomer.

Clotilde Soupert.—A remarkable Rose; none better. Flowers large, borne in clusters, free, double and deliciously scented. Color white, with centre flushed silvery rose. Blooms continuously.

Champion of the World.—Flowers large; color a lovely clear deep pink.

Duches de Brabant.—We consider this a perfect Rose. Large, full and double. Soft rosy pink, edged with silver.

Flora.—A charming Polyantha, flowers large, full and round, delightfully perfumed and borne in immense clusters. Ivory white tinged with rosy blush. Blooms all the time.

Maman Cochet.—The best Tea Rose of its color. Exquisite color and form; blooms freely; color fleshy pink and silvery rose. Try it.

Madame de Watteville.—Famous as the Tulip Rose, remarkably beautiful. Creamy yellow, richly colored with rosy blush. Grand in every way.

Marion Dingee.—One of the most popular of all Roses, celebrated as the Darkest Tea Rose in existence. For Winter blooming it has no superior.

Pink Soupert.—The counterpart of Clotilde Soupert. Blooms continuously, producing immense clusters of shiny

pink flowers. Free and double. None better for house culture.

The Bride.—Of the many white Tea Roses, not one is more satisfactory than this variety. Very large and double. Pure white. Fine for cutting.

The Queen (see cut).—Introduced by us in 1889. A continuous bloomer; color pure snowy white; exquisitely scented; one of the best.

NOTICE.—We have seventy greenhouses, principally devoted to the culture of Roses. We invite correspondence from those desiring Roses not offered in this book. We carry over seven hundred varieties in stock, six hundred of which are offered in Our New Guide, Spring edition.

SPECIAL OFFER.—The set of 14 beautiful Roses offered above, postpaid for \$1.50.

The Best Hardy Roses.

Extra Large Field Grown Plants for Open Ground Planting.

For several years we have been preparing to offer a choice collection of hardy Roses for Fall planting in open ground. We, as well as our customers, have felt the want of this kind of stock as an almost indispensable factor both from the standpoint of the buyer as well as the seller. We now have several acres of the finest hardy Roses, comprising such varieties as,

| | |
|--------------------------|----------------------|
| Gen. Jacqueminot, | Anna de Diesbach, |
| Magna Charta, | Mad. Louis Carrique, |
| Dr. Hogg, | Vick's Caprice, |
| John Hopper, | Coquette des Alps, |
| Mad. Plantier, | Mad. Masson, |
| Prince Camille de Rohan, | Pæonia, |
| Belle de Normandy, | Gloire Lyonnaise, |
| Francois Levat, | Paul Verdier, |
| Souv. de Ducher, | Mons. Fillon, |
| Fanny Pitsold, | Louis Odier, |
| Clotilde Soupert, | Pink Souper. |

We also have a splendid assortment of Mosses, including,

| | |
|-----------------------|-----------------|
| Countess de Murinais, | Blanche Moreau, |
| Princess Adelaide, | Henry Martin, |
| Elizabeth Rowe, | Captain Ingram. |
| Luxembourg, | |

In hardy climbing Roses we offer,

| | |
|------------------|----------------------|
| Prairie Queen, | Triumphant, |
| Superba, | Bride of Washington. |
| Baltimore Belle, | |

The collection embraces over three hundred different varieties—all the best.

This is a grand opportunity. These plants are on their own roots and are from two to five years old. All of them have bloomed—some of them several times, hence they are absolutely true to name. It is a well known fact that nearly every one who plants Roses wants immediate results from them. With these plants this is an absolute certainty. You will not have to wait a year or two for flowers. Plant them in the open ground any time from October 15th up until hard freezing weather. A slight protection will prove beneficial, but is not a necessary essential, as they are perfectly hardy.

They will become established during the Winter, as Roses, like trees, make roots when the ground is frozen solid. By planting in the Fall the plants get the advantage of an early start in the Spring. They will then bloom profusely and throughout the season, producing their grand flowers in all their perfection.

Instead of having to wait two or three years for flowers you have them the first season. By all means plant some hardy dormant Roses. The price is exceptionally low—these plants are usually sold from 50 cts. to \$1 each. Our stock is large and we propose to dispose of them at prices that make it possible for every one to have them. Plant any time after October 15th up to hard freezing weather. Send in your orders now. The plants will be sent by Freight or Express at purchaser's expense when they are ready to dig. We will in every instance send varieties that we are sure will please. If you have preference as to varieties we will be pleased to conform to your selection as far as possible. Price, our selection, 35 cts. each; 6 for \$1.75; \$3 per doz.

The prices given include the postage, which we pay.



COPYRIGHTED 1895 BY DINGEE & CONARD CO.

The Beautiful
Scarlet
Mexican Lily

SEE COLORED PLATE,
NEXT PAGE.

(*Sprekelia formosissima*.)

BLOOMS QUICKER THAN A
CHINESE SACRED LILY.

GROWS IN WATER LIKE A
HYACINTH.

PRODUCES IMMENSE NUM-
BERS OF DEEP BRILLIANT
SCARLET FLOWERS.

We predict for this superb Lily a popularity far greater than that attained by the famous Chinese Sacred Lily when first introduced. For many years past we have endeavored to secure a stock sufficiently large to warrant giving it the prominence its great beauty and sterling merit deserve. Not until this season have we been able to get it in quantity. We have at last been successful in importing several thousand fine, large, blooming bulbs from Mexico, and while the stock lasts we propose selling them at the remarkably low prices given below.

To get the proper idea of the beauty of this lovely flower it must be seen. Neither a description nor a colored-plate illustration will do it justice. While it grows readily in soil, the most interesting and quickest method to secure flowers is to plant the bulbs in sand, pebbles, gravel, and water like

Hyacinths or Chinese Sacred Lilies. Grown in this method, it will bloom in two to three weeks—surpassing in this respect the Chinese Sacred Lily. We know of no bulb so easy to grow and quick to bloom; it thrives without the least care or attention. Not less than three bulbs should be planted together to get the best effect. The flowers are gorgeous. Our colored-plate illustration will give some idea of their wonderful beauty; no flower has a more intensely brilliant color than this. It is a magnificent, velvety, deep, dark scarlet, rich beyond description. By planting at different times, a succession of bloom may be had throughout the season. We offer fine, large bulbs; each one is sure to grow and just as sure to bloom. Try at least three bulbs of this grand Lily, and we are certain you will be more than pleased with their ease of culture and the gorgeous display they will make.

LARGE BLOOMING BULBS, postpaid by mail, 15c. each; 3 for 35c.; 6 for 60c.; \$1 per doz.

.....THE DINGEE & CONARD COMPANY, ROSE GROWERS, WEST GROVE, PA.....



THE SCARLET
MEXICAN LILY

SEE PRECEDING PAGE FOR DESCRIPTION.

