

Historic, archived document

Do not assume content reflects current scientific knowledge, policies, or practices.



NEW GUIDE
TO
ROSE CULTURE

1894



LIBRARY
RECEIVED
1923
Agriculture.

NEW

BEACON LITH. CO. BOSTON.

THE DINGEE AND CONARD CO.
WEST GROVE, PA.



WE BRING YOU TIDINGS OF GREAT JOY.

The only periodical in the domain of literature exclusively devoted to the culture and study of Flowering and Ornamental Plants. This bright and cheery exponent of an always interesting and popular topic still continues to be welcomed with unbounded enthusiasm everywhere. It was brilliant before; it is radiant now, with its new dress, newer ideas and engaging manners. With the knowledge born of experience, and with the cooperation of a vast clientage of generous and appreciative friends and readers, assisted by a score or more of brilliant and talented correspondents, we shall spare no effort to place **SUCCESS WITH FLOWERS** in the vanguard of modern journalism in this particular field.

IT IS WITH PRIDE AND PLEASURE THAT WE CALL ATTENTION TO OUR LIST OF REGULAR CONTRIBUTORS,

whose scholarly, happy, and original methods of treating the various subjects selected have been a source of so much pleasure and instruction to our vast army of readers. Notably among these are the names of **Mrs. M. D. Wellcome**, whose clever articles have been so widely read and so favorably received; **Sarah A. Gibbs**, whose genial contributions savor of the delights of the New England home; **J. L. Harbour**, who writes in such a scholarly and attractive manner that cannot fail to interest and instruct; **Charles E. Parnell**, whose coherent and scientific methods of treatment have been widely appreciated; **Lennie Greenlee's** attractive and readable letters have been much admired; **Phebe W.**

Humphreys contributes the original, valuable and popular fragments entitled "Hybrids," which we propose to incorporate as a permanent feature of **SUCCESS**; **Mrs. G. T. Drennan** promises to furnish a series of articles entitled "Famous Roses," which will include their histories and cultural treatment—these papers are anticipated with much interest; **Sister Gracious**, ever bright, cheery, hopeful, engaging and entertaining, will still honor us by her presence; **Henry C. Vedder's** scholarly efforts have been a source of much profit and interest to our readers; **Mrs. H. S. Cummings** (Marigold) will continue to favor us with her entertaining notes; **Rose Seelye Miller**, whose practical and timely hints have been such a mine of wealth to the amateur flower cultivator, will still be included among our valued writers; **Carl Purdy**, the well-known bulb collector of California, will give our subscribers the benefit of his knowledge and experience in the culture and treatment of Bulbs. Besides these, we have a score or more of valued and talented contributors whose articles are familiar to our readers, but to whom we are not permitted to refer personally on account of limited space. On the whole, a finer or better equipped class of contributors, having a more thorough mental grasp of the subject in general, it would be difficult to find.

OUR Premium Prospectus for 1894===

We have concluded to discontinue the practice of designating Club Premiums in advance for stated periods, and, instead, have decided to offer plants of the standard varieties and those of conspicuous and sterling merits. These particular offers will be announced in detail in each successive issue of **SUCCESS WITH FLOWERS**. By this method we shall be able to diversify our premium lists with seasonable offers. The immense stock of desirable plants grown at our establishment here makes this feature possible. We propose dealing with the promoters of clubs and the individual members thereof with the utmost liberality, and hope by this means to secure the hearty cooperation of every one interested in the culture of plants, and shall appreciate and reward all efforts in this direction. **SUCCESS WITH FLOWERS** is developing wonderful strength and popularity; the future outlook is most gratifying and encouraging. Will you lend us a helping hand?

Success with Flowers,

a monthly journal devoted to the exclusive subject of Floriculture in all its different aspects. It is a wise counselor to all who are engaged or interested in the culture of plants. Subscription price, 25 cents per annum. Published by

**THE DINGEE & CONARD CO.,
WEST GROVE, PA.**

A FEW OF OUR REGULAR Contributors.

- | | |
|----------------------------|-----------------------------|
| Mrs. M. D. Wellcome, Me. | Elizabeth S. Cranson, Mich. |
| Dorothy Lincoln, Me. | Henry C. Vedder, N. Y. |
| Sarah A. Gibbs, Vermont. | Florence Sutton, Can. |
| J. L. Harbour, Mass. | Miss Elliot Stiles, N. Y. |
| F. Schuyler Mathews, Mass. | Mrs. H. S. Cummings, Ky. |
| E. P. Powell, N. Y. | Rose Seelye Miller, S. Dak. |
| Chas. E. Parnell, N. Y. | Kate Berry, N. J. |
| Lennie Greenlee, N. C. | Sarah P. E. Hawthorne, Me. |
| Phebe W. Humphreys, Pa. | Mrs. E. S. Hanchett, N. Y. |
| Mrs. G. T. Drennan, Miss. | Mrs. H. B. Martin, Kans. |
| Beth Day, Wis. | Dr. Erichsen, Mich. |
| Mrs. E. P. Chester, Col. | G. W. Plummer, Wash. |
| Dr. C. C. Miller, Ill. | Kate Miller, Pa. |
| Sister Gracious, Mich. | Mrs. A. C. S. Engle, Ind. |
| Mrs. A. H. Hazlett, Iowa. | Carl Purdy, California. |

P.S.—Send for a sample copy.

SPRING, 1894.

OUR NEW GUIDE TO ROSE CULTURE.

ABRIDGED EDITION.

To Our Patrons and Friends:

The presence of this, the Abridged Edition of our Annual Guide and Catalogue for the season of 1894, will serve to remind our host of customers that the "World do move," and that having swung around the Winter Solstice is again approaching the Vernal Equinox, which goal seems already discernible in the distance. Yes, Spring with its spontaneous, teeming life again throbs upward and bids us be of good cheer. A few weeks more and April will greet us with her fitful blandishments, and the cheery notes of the song-sparrows, the joyous strains of the robins will blend in announcing the coming glory.

It is at this season that the thrifty, industrious, ambitious and intelligent householder contemplates "setting things to rights" by investing a few dollars in Roses, Plants, Flowering and Ornamental Shrubbery, Vines and Seeds, with which to embellish his or her home surroundings; and, as usual, we are on hand with the things necessary, both useful and ornamental, to cater to the demands of the most exacting.

Our stock was never larger, more varied, better, nor in finer condition than at present; and we confidently offer it on its merits; and again invite your confidence and patronage. It is to the home life and its personality that we more directly appeal, and to whose sense of justice for liberal and equitable treatment we shall always feel it a duty as well as a pleasure to respond.

This Abridged Edition of our Guide to Rose Culture contains only a brief abstract of the immense variety in Roses, Plants, Bulbs and Seeds offered in the Unabridged Edition; this latter work has been carefully revised, illustrated and improved for the season of 1894, and contains much valuable information with reference to the culture and care of plants; if you feel interested, we shall take pleasure in mailing a copy free on application. Thanking you cordially for past favors, we remain,

Very sincerely yours,

THE DINGEE & CONARD COMPANY, West Grove, Pa.

Information for Customers.

How to Send Money Safely.

Our Terms are Cash.—To insure dispatch the proper remittance must be enclosed with the order.

Please remember that admirable and safe as our mail facilities are, some vexatious losses to the senders of letters are liable to occur; that careful as Uncle Sam is, some of his employes steal letters in transit; some mails are burned up in great railroad wrecks. Prudence dictates that remittances be made so that in case of loss duplicates can be had. Therefore we say money *may be sent at our risk*, by P. O. Money Order on West Grove (not Postal Note), Bank Draft, Express Money Order, Money (not stamps) in Registered Letter. We will be responsible for the safe carriage of money sent us in either of the above ways, and if lost will give full value; and in addition **will present the sender with an elegant Rose** which will be marked R. on back of label, to offset the cost of obtaining the remittance, thus paying you to take care of your own money.

Canada Customers can remit by International Money Order on West Grove, Bank Draft, or Currency in Registered Letter. Canada postage stamps have no value here.

Please do not send stamps for money; they so often come stuck together or stuck to the letter that they cannot be taken out except by soaking the whole. Silver in small sums, if carefully wrapped, will carry just as safely, and is far more acceptable.

We Guarantee Our Roses.

We do not guarantee that Roses we send out will not be killed by drought, insects, accidents or frost after they are planted.

But we do guarantee that all plants we send shall reach their destination in good growing condition; if they do not, inform us by return mail and we will replace at once. When we deliver them to you in good order our responsibility ends.

Orders by mail are sent postpaid to all post-offices in the United States or Canada, and we guarantee they shall reach the purchaser in good growing condition.

When so directed we ship by express, or when the order is of a size or character that it cannot be safely sent by mail, the purchaser paying express charges. But we are on the constant lookout to save purchasers all needless expense, and to that end, especially on long distances where goods are ordered by express, we send them by mail, knowing that it is to our customers' decided advantage to do so.

We guard against errors in filling orders as carefully as we can, but occasionally, in spite of best care, some mistakes will creep in; when they do, notify us at once, and we will correct by return mail. We cordially invite customers for our goods, and do not intend they shall regret coming to us if we can possibly by fair dealing prevent it. But do not blame us for not promptly filling your order, if you have (as hundreds do every year) given no name or address; if you live in a city and give no street or number, your box will probably remain at the post-office, no fault of ours. If your letter is lost on the way and does not reach us, it will of course cause delay and often vexation; we are sorry, but cannot help it. If you send stamps that come stuck together, and to the letter, that all have to be soaked before they can be gotten out, then the fault for the delay is yours, not ours.

Our Roses are all on their own Roots.—No budded or grafted Roses are sent out. Only a few years ago a great authority on Roses said that Hybrid Perpetual and Mosses could not be grown that way; he was mistaken; we grow all classes of Roses on their own Roots, and such only are sent out.

Our Roses are all grown in pots, in good fresh soil without stimulants; are strong, healthy plants, kept from blooming here by cutting the buds off as they appear, and with any fair treatment on your part will be sure to grow; and the Ever-blooming class will bud and bloom as soon as they start to grow vigorously.

Do not expect all varieties to be of the same size. Some under the same conditions make much larger and stronger plants than others, but many of the weakest growers produce the most beautiful flowers. Exquisite beauty of form, color and sturdy vigor are seldom combined in Roses.

Our aim is to do even better than we promise, so when the order will at all afford it, we add to it some plant or plants *gratis*; they are marked P. on the back of label, and are often choice new kinds; several of the Roses now so eagerly sought after were first introduced to our customers in that way—Presented with their order.

Orders to foreign countries can only be sent by mail to the few places with whom we have a parcel post exchange. To all others they go by express, but the party ordering must give the name and address of some one in New York who will receive the goods, and prepay ocean charges and forward to them.

When large lots of Roses, Shrubbery, Vines, etc., are wanted for Cemetery, Lawn or Hedge planting, send us a list of stock wanted to price; growing it in large quantities as we do, we can make for such very advantageous prices. Ordinary orders are invariably at prices given in Catalogue.

Eight Superb New Roses

INTRODUCED BY THE DINGEE & CONARD CO.

*"Full many a flower is born to blush unseen
And waste its sweetness on the desert air."*

Among the vast number of Roses produced during the past decade, how many have been "born to blush unseen?" Their names are legion! Hundreds of types whose appearance has been heralded in laudatory phraseology and assigned unpronounceable names by their introducers, have suddenly appeared and as suddenly disappeared. The law of the "survival of the fittest" prevails here as elsewhere. If, among the large number of fine varieties under cultivation to-day, we could only name the Perles des Jardins, La Frances, Papa Gontiers and the Clotilde Souperets of the future, the broad highway to fame and fortune would be literally strewn with Roses.

The skill of the Rosarian is continually being exerted in the effort to produce or secure specimens that shall embody some new features that the already existing sorts do not possess, and to accomplish this, recourse has been had to hybridization or the blending of kindred varieties in order to combine in the resulting type the more desirable and pronounced features of both. The outcome has been a complex intermingling of the once distinct families, so that a strict classification is no longer possible. These remarks will suffice to explain the origin of the many Hybrids under cultivation at the present time, among which we have had the good fortune to discover and introduce the following eight distinct and representative varieties. With the exception of Virginia (now catalogued for the first time), the others are well and favorably known to flower cultivators everywhere, who speak in the highest terms of their pronounced characteristics and importance, which entitle them to first place as candidates for popular favor. We do not hesitate to give them our unqualified endorsement, and feel assured that a trial will convince all of their genuine merit and wondrous beauty of bloom and foliage.

Virginia.

This elegant Rose, which we now introduce for the first time, and which we have named in honor of the Old Dominion, is the result of a cross between Safrano and Marechal Niel. We consider it one of the most promising Tea Roses of modern introduction. It is a vigorous grower of bushy habit; the blooms are large, double, finely formed, lasting and of excellent substance, often remaining on the bush until dried up; color a light yellow with a tinge of saffron at the centre, and reverse of petals a pinkish cast; perfume, a delicate and delightful tea scent. It will undoubtedly prove a very desirable and profitable variety for forcing. Price, 50 cents each.

New Crimson Tea Rose, Marion Dingee.

This grand new Rose was raised from seed of the beautiful Countess de Casserta crossed with Duchess of Edinburgh. It is a strong, vigorous grower, making a handsome graceful bush, with large, thick, deep green leaves; the flowers are large, beautifully cup-shaped, moderately full, and borne in wonderful profusion all through the growing season; in fact, we scarcely know of any other Rose that will produce so many perfect flowers in a given time; the flowers are borne nearly upright on long straight stems, and are of excellent substance, having thick, leathery petals which hold their form and color for a long time; it is deep brilliant crimson, one of the darkest, if not the very darkest and richest colored Tea Rose in existence. We put the price as low as possible so it will be within the easy reach of all. 25 cts. each.

White Tea Rose, The Queen.

This grand white ever-blooming Tea Rose was introduced by us in 1839, and was received with great favor both in this country and in Europe. The Queen is a large, pure white, free-blooming Tea Rose, the offspring of that fine old Rose, the Souv. d'un Amie, whose many good qualities it possesses to a remarkable degree; it is a continuous bloomer, producing successive crops of buds and flowers in great profusion; the buds are beautifully formed, with large petals of best substance, shows the centre but slightly when fully open; color, pure snowy white; exquisitely scented; a vigorous and healthy grower; altogether we consider the Queen one of the best, if not the best white Tea Rose now in cultivation. 20 cts. each.

Golden Gate.

This magnificent Rose is the result of a cross between those old and greatly admired varieties, Safrano and Cornelia Cook. The flowers are extra large, very full and finely formed, and of excellent substance; the buds are long and of the most desirable form; the color is rich creamy white, beautifully tinged with fine golden yellow; the petals are large and broad, and exquisitely bordered and tinted with clear rose, making altogether a Rose of the rarest and most indescribable beauty. The Golden Gate is a strong, healthy grower, and most profuse and continuous bloomer; it is excellent for bedding, also for house culture and forcing; in short, we can heartily recommend it as one of the finest and most beautiful Tea Roses ever grown. 20 cts. each.

Henry M. Stanley.

This elegant new ever-blooming Tea Rose was named in honor of the great African explorer and introduced by us two years ago. It makes a beautiful contrast with Golden Gate; the color is a rare and remarkably beautiful shade of clear amber rose, delicately tinged towards the centre with fine apricot yellow; the petals are beautifully edged and bordered with rich carmine, and on the outer or reverse side pass to a lovely shade of salmon or buff rose; the flowers are large, fine full form, excellent substance and deliciously fragrant, having a rich tea scent. 20 cts. each.

Mrs. Jessie Fremont.

A seedling from Duchesse de Brabant; not quite as large buds, but more double and better substance; color white, passing to deep rosy flesh, sometimes shaded coppery red; very sweet; a vigorous grower and free bloomer. 20 cts. each.

Maud Little.

Raised from Pierre St. Cyr and Duchesse de Brabant; a moderate grower of good habit; medium size, flowers of fine form and fullness; color soft china rose with a peculiar lustrous bloom, highly distinct and beautiful. 20 cts. each.

Pearl Rivers.

This fine variety is the result of a union between Devonensis and Mad. de Watteville. It partakes of the leading characteristics of both parents, but resembles the latter most closely; the flowers are large and quite full, with fine peachy-red buds; the ground color is ivory white, having the petals delicately shaded and bordered with pale rose; very beautiful; deliciously sweet. 20 cts. each.

SPECIAL OFFER.—We will send the 8 grand new Roses of our own introduction, named and described above, for \$1.75. In ordering, please refer to Set 101.

Ever-blooming Tea Roses.

Standard List for General Planting.

The Ever-blooming Teas form a very important group and are universally regarded as the most desirable and valuable Roses for general culture; the demand for them far exceeds that of any other class. They commence to flower almost as soon as planted and continue throughout the entire season, the blooms increasing in size and beauty until Autumn. They are noted for their exquisite delicacy of coloring, which embraces all the lovely tea shades of yellow, fawn and cream; also for their delightful fragrance, which exceeds that of all the other families. It is from this class of Roses that we get all the better sorts, especially those best adapted to house culture and growing under glass. The varieties included in the following Standard List are recognized as the leading sorts for general culture; they combine all the more pronounced features of the class with reference to qualities of vigor, profuseness and brilliancy of bloom. The harvest of blossom during the first year will more than compensate for the trifling outlay and effort expended. We would call especial attention to the fact that many of the varieties included in the list are of the later introductions.

Aline Sisley.—A splendid Rose; flower is large, very full and double, exceedingly sweet; color a rare shade of violet red, brightened with crimson maroon. 15 cts. each.

American Banner.—White flowers, each bud and flower distinctly striped with bright red. 15 cts. each.

Anna Oliver.—A superb Rose; very large, full form; very double and good substance; color lovely creamy blush, shaded with deep carmine, tinged and edged with silvery rose; very fragrant. 10 cts. each.

Andre Schwartz.—"The True Tea Jacqueminot." the color is brilliant, glowing scarlet, passing to rich crimson; very bright and striking; a constant and profuse bloomer; flowers large, full and sweet. 15 cts. each.

Arch Duchesse Isabella.—A beautiful bedding and house Rose; large, full form, perfectly double; delightfully fragrant; white, shaded with rosy carmine. 10 cts. each.

Bridesmaid.—A delightful new Tea Rose, a sport from the old and popular pink tea, Catharine Mermet, but of a fine, clear dark pink, much deeper and more constant in color than Mermet; very desirable; valuable for forcing. 20 cts. each.

Camille Roux.—Fine large flowers, well filled out, very double and highly scented; color bright carmine rose, with fiery red centre; very striking and handsome. 10 cts. each.

Captain Lefort.—With splendid, large, full flowers, very handsome and sweet; color a lovely shade of rich violet crimson, softly tinted with fine rosy salmon; elegant long pointed buds; lovely for cutting. 15 cts. each.

Catharine Mermet.—A very beautiful Tea Rose, valued highly for its elegant buds; color clear shining pink, with delicately shaded amber and fawn centre; large; globular flowers; one of the very finest varieties; a strong, healthy grower and a good bloomer; equally desirable both for open-ground planting and forcing under glass. 15 cts. each.

Charles Legrady.—This splendid Rose is almost unequalled for general planting; color fine chamois red, richly shaded with violet crimson; very sweet and a constant bloomer; extra fine. 15 cts. each.

Cornelia Cook.—This beautiful Tea Rose is in great demand; color pure creamy white, sometimes faintly tinged with pale lemon and blush; very double. 15 cts. each.

Coquette de Lyon.—A lovely Tea Rose; exquisite canary yellow, clear translucent texture and delicious perfume; flowers large, fine form, very full and double; constant and most profuse bloomer. 15 cts. each.

Devonlensis (Magnolia Rose).—Beautiful creamy white, with rosy centre; large, full and double. 15 cts. each.

Duchesse Marie Salviati.—This is a grand Rose, of an attractive color, beautiful chrome yellow, elegantly tinged with orange passing to buff, prettily flushed with pale rose; buds and outer petals exquisite orange red. The flowers extra large, quite full and very sweet. 15 cts. each.

Duchesse of Edinburgh.—In great demand for its lovely buds, and remarkable for its beautiful color, which is the most intense glowing crimson imaginable. 20 cts. each.

Edmund de Biazat.—Large, finely formed flowers, quite double and full, color bright peachy red or violet crimson, with salmon rose centre; very pretty. 10 cts. each.

Edward Gontier.—We can't praise this Rose too highly; it is very beautiful and highly satisfactory in every way; color fine creamy yellow, with rosy buff centre, passing to apricot, delicately shaded with scarlet crimson; used for bedding or massing, gives good satisfaction. 15 cts. each.

Edmund Sablayrolles.—Fine purplish red, shaded to rich peachy pink; deliciously perfumed; a very fine, dark-colored Tea Rose. 15 cts. each.

Elisa Fugier (New).—The flowers are of grand size and superb form, well borne up on strong stout stems. It is a good, strong, healthy grower that will probably do well in all ordinary situations; the color is rich creamy white, beautifully tinged with pure golden yellow; the petals, which are large and broad, are frequently bordered and delicately shaded with soft pearly pink; a beautiful rose in every way. 20 cts. each.

Empress Marie of Russia.—Fine, stately flowers, extra large, very full and delightfully sweet; color fine canary yellow, passing to white, delicately tinged with pale lemon; very beautiful. 15 cts. each.

Ernest Metz.—Fine, large, full flowers and beautiful long pointed buds; color clear satiny pink, edged and bordered with blush, the centre flamed with royal crimson; very excellent and desirable. 15 cts. each.



ETOILE DE LYON.

Ever-blooming Tea Roses—Standard List, (Continued).

Etoile de Lyon.—This magnificent Tea Rose is rich golden yellow; a strong, healthy and vigorous grower; immense bloomer, bearing flowers and buds early and late; the flowers are very deep, rich and full, excellent substance, very sweet; surely one of the very best and most beautiful yellow Tea Roses for general planting ever introduced. Remarkably hardy both as to heat and cold, frequently standing the Winters here uninjured in open ground without protection; blooming nicely all through the hottest part of the Summer (see cut). 15 cts. each.

Francisca Kruger.—A strikingly handsome Rose one of the very best for open-ground culture; especially adapted for beds or masses; flowers are deeply shaded coppery yellow in color; very large. 15 cts. each.

General de Tartas.—A first-class Rose for bedding; brilliant carmine, deeply shaded with violet purple; large size, very double, full and fragrant. 15 cts. each.

General Mertchansky (New).—This is a lovely Rose; the color is exquisite rosy flesh, so sweet and tender, and clear and fresh, that it appeals to your affection at once, and you set it down immediately as a Rose you must have. It is of good large size, fine full form; petals somewhat imbricated, very sweet; a good grower and constant bloomer. 15 cts. each.

Georges Farber (New).—Medium to large size flowers, somewhat irregular form, but full and well filled and borne on long stems; color rich orange red, with a deep velvety gloss and changeable effect; very noticeable and distinct; constant bloomer, very sweet. 15 cts. each.

Gloire des Cuivres (New).—The flowers are of elegant crown form, extra large, having petals full to the centre; the color is a rare and lustrous shade of salmon rose, delicately tinted with fine coppery gold; buds are sometimes elegant citron red, with deep golden centre; a constant bloomer, delightfully perfumed. 20 cts. each.

Grace Darling.—A splendid new Tea Rose; color porcelain rose, elegantly shaded with vinous crimson; medium size, handsome flowers; very sweet. 15 cts. each.



COPYRIGHTED 1893 BY
DINGEE & CONARD CO

LA PRINCESS VERA.

Gustave Nadaud.—Very striking and peculiar; rich brown citron red or dark terra cotta, lightened with coppery rose and bright orange red; medium-size flowers. 20 cts. each.

Henry Meynadier.—Flowers very large, having broad shell-like petals, thick and of good substance; centre well filled; color unique rose, prettily shaded and delightfully scented. 15 cts. each.

Isabella Sprunt.—Bright canary yellow; large, beautiful buds; valuable for cut flowers; very sweet tea scent; profuse bloomer. 15 cts. each.

Jaune Nabonnand (New).—Rich chamois yellow, centre sometimes delicately shaded with coppery rose; very fragrant; a strong, vigorous and healthy grower; that we believe will give excellent satisfaction and produce just the kind of Roses that none of us have ever had enough of. 20 cts. each.

J. B. Varrone (New).—There is no question about this being a truly splendid Rose; superb elongated buds and extra-large, vase-shaped blooms; color intense scarlet crimson, very rich and bright, beautifully shaded with salmon yellow or buff rose at centre; exceedingly beautiful, very sweet. 20 cts. each.

Jeanne d'Arc.—Fine golden yellow, full globular form, very double, highly tea scented; extra fine. 15 cts. each.

Jeanne Guillaumez.—Medium to large size, broad, thick, shell-like petals, well filled to the centre; color pale coppery yellow, beautifully toned with canary and suffused with delicate blush; reverse of petals orange red. 20 cts. each.

Jean Pernet.—Beautiful canary yellow; large, full and double; tea scented; splendid Rose. 15 cts. each.

Joseph Metral.—Extra-large flowers, very full; deep carnation red, passing to cherry carmine or magenta; a good, healthy grower and abundant bloomer. 15 cts. each.

Jules Finger.—Elegant and valuable; flowers extra large and finely formed, very full and sweet; color bright rosy scarlet, beautifully shaded with intense crimson; a vigorous grower and full bloomer. 15 cts. each.

Lady Castlereagh.—A really charming Rose; very large flowers, full and beautifully formed, with thick, lasting petals; very desirable; color pale rose, shaded with fine sulphur yellow; exceedingly handsome and fragrant. 15 cts. each.

La Grandeur.—Beautiful lilac rose or soft rosy carmine, tinted with pale violet purple; large, full flowers. 10 cts. each.



MAD. LOUIS PATRY.

Ever-blooming Tea Roses—Standard List, (Continued).

Mad. Elie Lambert (New).—The flowers are *extra large*, fine globular form, very full and well built up. Color a rich creamy white, faintly tinted with pale golden yellow, and exquisitely bordered and tinted with soft rosy flesh; very beautiful and sweet; petals large and of good substance—in short, a magnificent Rose in every way. 20 cts. each.

Mad. Etienne.—This is a very lovely ever-blooming Rose, and is always greatly admired by all; it makes elegant buds, and the flowers are *extra large*, very full and deliciously sweet; color bright rosy flesh, passing to clear rose, brightened with pink, elegantly shaded and very beautiful. It is a strong, healthy grower, and a wonderfully free and constant bloomer; very handsome and desirable (see cut). 10 cts. each.

Mad. Falcot.—Fine apricot yellow, with beautiful orange buds; much valued for bouquets; tea scented; a constant bloomer; of medium size and fullness. 15 cts. each.

Mad. F. Brassac.—The flowers and buds are *extra large* and very double and full; color a novel shade of bronze red or tawny crimson, delicately tinted with fine copper yellow; entirely distinct and very beautiful. 15 cts. each.

Mad. Honore Defresne.—*Extra-large*, full, sweet flowers; color clear golden yellow, petals elegantly reflexed; strong grower; thick foliage; excellent for open ground. 15 cts. each.

Mad. H. Jamain.—A splendid variety; large, very double flowers, fine cup form; white with yellow centre, shaded with pink; tea fragrance; *extra fine*. 10 cts. each.

Mad. Hoste.—*Extra-large* flowers and superb buds, very full and delightfully perfumed; color soft canary yellow, deepening at centre to pure golden yellow, beautifully flushed with pale amber; edges and reverse of petals creamy white; excellent for garden or pot culture, and is particularly valuable for forcing for cut flowers; is a good, healthy grower, blooming quickly and continuously in open ground or house. 20 cts. each.

Mad. Jeannie Cuvier.—New and highly recommended; fine salmon rose, passing to clear glossy pink, nicely shaded with rich carmine; good size, very full and sweet. 20 cts. each.

Mad. Joseph Schwartz.—A lovely Tea Rose; *extra-large*, globular flowers, very full and sweet; color pure white, tinged and shaded with pale yellow and rosy blush; very beautiful Rose; constant and profuse bloomer. 15 cts. each.



MAD. LAMBARD.

Mad. Lambard.—A first-class Rose for bedding; *extra-large*, full flowers; very double and sweet; color a beautiful shade of rosy bronze, passing to salmon and fawn, beautifully shaded with carmine; an elegant Rose (see cut). 15 cts. each.

Mad. Leon St. Jean.—Beautiful, large buds, carmine and orange shaded, tinged with fawn and citron, sometimes pale lemon yellow; very full, double and sweet. 15 cts. each.

Mad. Margottin.—This is a grand Rose; always a favorite; very large and perfectly double; flowers elegantly perfumed; color beautiful dark citron yellow, with bright red centre; a strong grower and quite hardy. 15 cts. each.

Mad. Marie Pavic.—*Extra-large*, globular flowers, very fine form, beautiful buds; very sweet; color clear rose, passing to bright silvery pink, edged and bordered with pure ivory white. 15 cts. each.

Madame Louis Patry.—An extremely beautiful new Tea Rose; the buds are fine, large and tapering, of excellent form and substance; *extra-large*, well-filled flowers, opening nicely; color rich silvery pink, delicately shaded with fine rosy blush; deliciously tea scented; very double and attractive; we consider this one of the best new Tea Roses of the year; a good, compact grower and constant bloomer (see cut). 25 cts. each.

Madame Olga (New).—*Extra-large*, deep, highly built up flowers; good substance, large petals outside, becoming smaller towards the centre, marked pineapple form; color rich creamy white, faintly tinged with pale canary yellow; delightfully scented, very handsome. 20 cts. each.

Madame Philippe (New).—A lovely Rose, medium to large-size flowers, clear bright pink or china rose, shaded carmine; reverse of petals silvery pink, centre elegantly shaded salmon yellow, sometimes flushed with crimson. 20 cts. each.

Mad. Pierre Guillot.—This is undoubtedly one of the finest and most beautiful new Tea Roses recently introduced; large, full, globular flowers, having great depth and substance; color delicate orange yellow, distinctly veined and bordered with clear pink; altogether unique and remarkable, and exceedingly handsome; it makes fine, large, pointed buds, is a good healthy grower and a regular and constant bloomer; promises to be valuable for forcing and conservatory, as well as for open-ground culture. 20 cts. each.



MAD. ETIENNE.

Ever-blooming Tea Roses—Standard List, (Continued).

Mad. Rivoy.—Beautiful, rich crimson scarlet; very bright color; large, fine form, full and double; very fragrant; one of the best. 15 cts. each.

Madame Sadie Carnot (New).—Named in honor of the wife of the President of the French Republic. Blooms in large clusters; fine, moderately full flowers, clear bright cherry red passing to magenta. 15 cts. each.

Mad. Scipion Cochet.—Beautiful, creamy rose, with deep crimson centre; flowers large; very sweet. 15 cts. each.

Mad. Villermoz.—A lovely, creamy white rose, tinged and shaded with blush; extra-large size, very full and double; exceedingly sweet tea scent. 15 cts. each.

Madame Welche.—The flowers have great depth and substance, and are of fine globular form, with broad thick petals and large finely shaped buds; the color is a beautiful shade of soft amber yellow, deepening towards the centre to fine orange or coppery yellow, delicately tinged and clouded with pale ruddy crimson; both flowers and buds are remarkably sweet, and the plant is a good healthy grower, of compact bushy habit, producing its exquisite buds and flowers in great abundance during the whole growing season. It is fine for conservatory, also for open ground. 15 cts. each.

Mad'elle Claire Merle.—Large, full flowers; pale satiny pink, passing to delicate flesh color. 15 cts. each.

Mad'elle Claudine Perreau.—Flowers are extra large and perfectly double; beautiful rosy blush, passing to clear pink on white ground; rich crimson centre; a strong, vigorous grower and free bloomer; delightfully perfumed. 15 cts. each.

Mad'elle Genevieve Godard (New).—Pretty for button-hole and corsage wear; medium-size flowers, full and regular; color clear carmine red, very handsome and sweet 20 cts. each.

Mad'elle Marguerite Fabisch (New).—This is a very remarkable, brilliant and showy variety; flowers are large and finely formed; color rich crimson, with white centre; well filled, very fragrant. 15 cts. each.

Mad'elle Nathalia Imbert.—Extra-large flowers; fine full form, very double and handsome; color a beautiful shade of reddish salmon, changing to apricot. 10 cts. each.

Madeleine d'Aoust (New).—Large, regular flowers, per-



MARIE LAMBERT.

fectly double and full to the centre; rich apricot yellow, shaded coppery red; outer petals silvery white; very sweet. 20 cts. each.

Marechal Robert.—Full globular flowers, very double and deliciously sweet; color pure white, faintly tinged and shaded with soft blush and lemon yellow. 20 cts. each.

Marie Ducher.—Rich transparent salmon, with fawn centre; large size, very double and sweet. 15 cts. each.

Marie Guillot.—A splendid Rose, first class in every respect; color pure snow white, sometimes faintly tinged pale yellow; extra full and double; sweet tea scent (see cut). 15 cts. each.

Marie Lambert.—Pale flesh color, passing to creamy white, veined and clouded soft carmine (see cut). 15 cts. each.

Marie Van Houtte.—An exceedingly lovely Rose not excelled by any; the flowers are extra large, very double and full, and deliciously tea scented; color pale canary yellow, passing to rich creamy white, elegantly shaded with pale rose; a constant bloomer. 15 cts. each.

Marquise de Forton (New).—Lovely creamy white, delicately tinged with pale canary yellow, elegantly flushed with tender carmine; medium-size flowers, deliciously perfumed; makes beautiful buds. 20 cts. each.

Marquise de Vivens.—A novel shade of rich violet crimson, with centre and base of petals creamy yellow, exquisitely tinted salmon and fawn; large, full flowers, very sweet, and a constant and profuse bloomer. 15 cts. each.

Maurice Rouvier (New).—Fine globular form, very full and exceedingly sweet; the color is bright pinkish rose, elegantly tinted with shades of buff, and prettily veined with deep shining crimson, while many of the petals have a wide border of silvery white. It is a good strong grower and most prolific bloomer, well worthy of high commendation. 20 cts. each.

Miss Ethel Brownlow.—Lovely coral pink, beautifully shaded with pale canary yellow at centre and base of petals; charming buds and large, full flowers. 15 cts. each.

Miss Wenn (New).—This charming variety is noticed at once for its exquisite color, which seems entirely distinct from almost all other Roses of our acquaintance. We call it a clear coral pink, a most novel and distinct shade of color very difficult to describe. 15 cts. each.



MARIE GUILLOT.

Ever-blooming Tea Roses—Standard List, (Continued).

Souvenir de Francois Gaulain.—This is an unusual and highly remarkable color for a Tea Rose; bright rich velvety crimson, very dark and exceedingly handsome; large, full flowers, very fragrant; an early and constant bloomer. 20 cts. each.

Souv. de Gabriel Drevet.—A rare shade of salmon, red, or terra cotta, delicately toned with violet crimson; flowers large and well filled; petals of good substance; deliciously fragrant. 15 cts. each.

Souv. de Germain de Saint Pierre.—Flowers are borne in clusters; constant and profuse bloomer; color bright purplish crimson; very vivid; large, full, sweet. 15 cts. each.

Souv. de Lady Ashburton (New).—A fine shade of rich coppery red, delicately suffused with pale orange yellow; reverse of petals fine rosy fawn color. It is highly scented with the true Tea Rose odor, heightened or intensified, as the French description says, with the delicate perfume of peaches and apricots. 20 cts. each.

Souv. de Madame Pernet.—Large, bold flowers; fine full form; color soft rosy crimson, tinged and shaded with clear yellow. 15 cts. each.

Souv. de Madame Sablayrolles (New).—The prevailing color is rich creamy white, most elegantly tinged and bordered with soft silvery rose, giving an exquisite Mother of Pearl effect. The plant is a good vigorous grower, that will bear plenty of lovely buds and flowers, and they are deliciously sweet. 20 cts. each.

Souv. de Paul Neyron.—White, beautifully tinged with clear golden yellow, each petal exquisitely edged with bright rosy crimson; very distinct and fine; the flower is medium size and double, with delicious tea scent. 15 cts. each.

Souv. d'un Amie.—Extra-large, globular flowers; very full and deliciously sweet; color deep rosy flesh, beautifully shaded with rich carmine; edges and reverse of petals silver rose; vigorous grower and profuse bloomer. 15 cts. each.

Souv. de Victor Hugo.—Color lovely citron red, with beautiful amber and fawn shading; large tulip-shaped flowers, delightfully scented. 15 cts. each.

Sunset.—This grand Rose is a great favorite wherever known; the color is a rich golden amber or old gold, elegantly shaded with dark ruddy crimson, resembling the beautiful tints seen in a Summer sunset; the flowers and buds are extra large, full, finely formed and deliciously perfumed; it is a strong and vigorous grower and free bloomer, highly recom-

mended both for open-ground and house culture (see cut) 20 cts. each.

Suzanna Blanchet.—Color beautiful pale flesh, passing to silvery white, elegantly shaded with fine rosy amber; very pretty and deliciously perfumed; large, finely pointed buds, medium-size flowers, regular, full and handsome. 15 cts. each.

The Bride.—A superb, pure white Tea Rose; recommended as one of the best of its color; the buds and flowers are unusually large, finely formed, very double and full, and deliciously perfumed; it is a strong, healthy grower, and a quick and constant bloomer; does well in open ground, and is particularly valuable for growing in greenhouse for cut flowers, as it produces abundantly and its blooms are of the most desirable form and quality for floral work, bouquets, wreaths, etc. The name, too, is very attractive, and almost every one who plants Roses wants one or more Brides. Grows and blooms well in Summer, but should be taken indoors in Winter. 20 cts. each; 3 for 50 cts.; 6 for \$1.

The Queen.—This grand White Ever-blooming Tea Rose was introduced by us in 1889, and was received with great favor both in this country and in Europe. The Queen is a large, pure white, free-blooming Tea Rose, the offspring of that fine old Rose, the Souv. d'un Amie, whose many good qualities it possesses to a remarkable degree; it is a continuous bloomer, producing successive crops of buds and flowers in great profusion; the buds are beautifully formed, with large petals of best substance; shows the centre but slightly when fully open; color pure snowy white; exquisitely scented; a vigorous and healthy grower; altogether we consider the Queen one of the best, if not the best White Tea Rose now in cultivation (see cut). 20 cts. each.

Theresa Lambert.—Delicate rose color, base of petals finely tinged with gold, centre pale silvery salmon. 15 cts. each.

Triumph de Luxembourg.—Immense rosy pink buds and flowers, perfectly double and exceedingly sweet; a vigorous grower and constant and profuse bloomer. 15 cts. each.

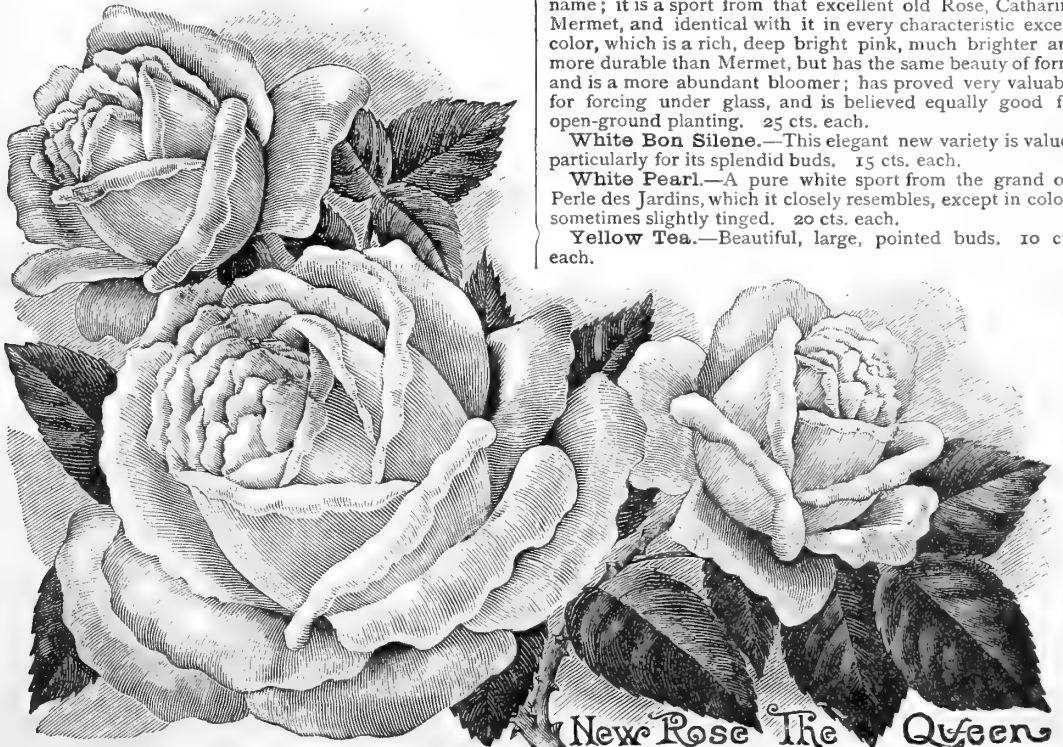
Valle de Chamounix.—Very double, full and sweet; color coppery yellow, elegantly shaded and tinged with rosy blush. 15 cts. each.

Waban.—A valuable Rose, originated at the Waban Conservatories, Massachusetts, from whence it takes its name; it is a sport from that excellent old Rose, Catharine Mermet, and identical with it in every characteristic except color, which is a rich, deep bright pink, much brighter and more durable than Mermet, but has the same beauty of form, and is a more abundant bloomer; has proved very valuable for forcing under glass, and is believed equally good for open-ground planting. 25 cts. each.

White Bon Silene.—This elegant new variety is valued particularly for its splendid buds. 15 cts. each.

White Pearl.—A pure white sport from the grand old Perle des Jardins, which it closely resembles, except in color; sometimes slightly tinged. 20 cts. each.

Yellow Tea.—Beautiful, large, pointed buds. 10 cts. each.



New Rose The Queen

Hardy Hybrid Perpetual Roses.

These constitute a very striking and distinct family of Roses, the members of which are distinguished from all others by their luxuriant foliage, prodigious blooms and vigor of growth, a bush during the course of a few years attaining considerable proportions. As a class they do not bloom until thoroughly established, which is usually not until the second year after planting. They are quite hardy and succeed well in all localities where the conditions are favorable to the growth of other vegetation. Owing to their robust habit they are suitable for outdoor culture only, in which situation they will thrive with very little care or attention, but are improved by liberal manuring and by cutting out dead and unthrifty wood. If permanency is the principal characteristic desired, that quality is a feature of the class. Many of the varieties contained in the following list are Autumnal bloomers, a few of which are: Alfred Colomb, Caroline de Sansal, Baroness Rothschild, Baronne Prevost, General Washington, John Hopper, La Reine, Louis Van Houtte, Mad. Charles Wood, Mabel Morrison, Paul Neyron and Victor Verdier. These kinds are entirely hardy.

We Offer 123 Varieties of Hardy Hybrid Perpetual Roses.

Abel Carrier.—This grand Rose still ranks as one of the best; flowers are extra large, very double, full and sweet; color dark crimson, passing to velvety maroon; very dark and handsome. 15 cts. each.

Achille Gounod.—Brilliant purple carmine, large, full and sweet; free bloomer. 15 cts. each.

Aline Rozey.—Full, imbricated flowers, medium size and quite fragrant; color clear flesh, passing to pure white, delicately shaded with blush. 15 cts. each.

American Beauty.—Many of our friends know all about this grand Rose, and value it accordingly. To others we would say it is well known as one of the best and most valuable Roses, both for garden and house culture. Color rosy crimson, exquisitely shaded and very handsome; extra-large, full flowers, exceedingly sweet; makes magnificent buds; is a good bushy grower, and a constant bloomer. 50 cts. each.

Anna Alexieff.—

This lovely Rose is a strong, compact grower, and produces flowers which are very double and full, exceedingly sweet; noted for their clear bright pink color. 20 cts. each.

Anna de Diesbach (Glory of Paris).—Brilliant crimson, sometimes shaded with bright maroon; long pointed buds, and large, finely formed, compact flowers, very full and sweet; very fine bloomer; one of the best for general cultivation. 20 cts. each.

Antoine Quihon.—A magnificent Rose, extra-large, full flowers, of the most striking color; deep rich violet crimson, elegantly shaded with intense maroon; very dark and velvety. 30 cts. each.

Antoine Wintzer.—The flowers are large and full and borne in clusters; the color is clear rosy red, brightest in the centre; it is a free and continuous bloomer, very fragrant, and we recommend it for general planting. 20 cts. each.

Arch Duchesse Elizabeth of Austria.—Flowers extra large and of lovely form; color clear rosy carmine, very bright and satiny; fragrant and beautiful. A strong and

healthy grower, forming a neat, compact bush; equally valuable for house or outdoor cultivation. 10 cts. each.

Auguste Mie.—Clear bright pink, very large and finely cupped, fragrant and good; a free bloomer and very hardy; a superb Rose in every respect; sure to please and give the utmost satisfaction. 15 cts. each.

Alfred Colomb.—Justly celebrated as one of the very finest Hybrid Perpetual Roses; extra-large, round flowers, very double and full; color clear cherry red, passing to bright rich crimson; very fragrant (see cut). 20 cts. each.

Antoine

Mouton.—The plant is vigorous and hardy, an early and free bloomer, bearing flowers of extraordinary size and fullness, which are very fragrant; in color they are distinctly beautiful, bright clear pink; reverse of petals silvery rose; very sweet; in fact, an unusual Rose in every way. 20 cts. each.

Baron Nathaniel de Rothschild.—The flowers are extra large full and double; the color is a bright carmine, passing at centre to clear pink; petals deli-

cately edged with white; exquisitely perfumed. 15 cts. each.

Baronne de Bonstettin.—Splendid large flowers, very double and full; color rich dark red, passing to deep velvety maroon; highly scented and very beautiful. 30 cts. each.

Baronne de Maynard.—A very pretty white Rose, sometimes shaded with blush; medium size, quite full and fragrant. 15 cts. each.

Baronne Prevost.—Beautiful bright rose, shaded with crimson; very large, finely perfumed, hardy and good. 15 cts. each.

Baroness Rothschild.—One of the grandest and most beautiful of all Hybrid Perpetual Roses; the flowers are of immense size and fine globular form, somewhat cupped,



ALFRED COLOMB.

Hardy Hybrid Perpetual Roses, 123 Varieties (Continued).

but well filled to the centre, very solid and massive, with broad thick petals, and borne erect on stout, thick canes; the color is a lovely shade of bright rosy pink; very handsome and attractive. 30 and 40 cts. each.

Belle de Normandy.—Splendid, large, full flowers, clear rose, shaded and clouded with rosy carmine and lilac; very sweet. 15 cts. each.

Captain Christy.—Extra-large, flat flowers, very full and regular; color a lovely shade of pale peach, deepening at centre to rosy crimson; very beautiful and valuable. 15 cts. each.

Caroline de Sansal.—Clear brilliant rose, merging into rosy lilac, edged with bronze; very large and sweet; a first-class variety. 15 cts. each.

flowers; full, perfect form; exceedingly sweet; color bright carmine red, elegantly shaded. 20 cts. each.

Coquette des Alps.—One of the finest pure white Hybrid Perpetuals; large, full, finely formed flowers; color pure white, sometimes faintly tinged with pale blush; profuse bloomer, very hardy and beautiful. 20 cts. each.

Coquette des Blanches (sometimes called Ball of Snow).—Pure snowy white, sometimes faintly tinged with pale rose; blooms in large clusters; flowers medium size, full and pretty, slightly fragrant; blooms the first year all through the season. 15 cts. each.

Crown Prince.—A noble Rose; large, compact flowers, very full and sweet; color clear purplish red, deepening at centre to ruby crimson, elegantly shaded with violet purple; a good bloomer (see cut). 15 cts. each.

Dinsmore.—A grand Rose, very popular and highly recommended for garden planting on account of its hardiness and vigor of growth and constant and profuse bloom, which begins soon after planting and continues all through the season. Flowers are large and perfectly double; color rich crimson scarlet, very showy and handsome, and delightfully fragrant. 25 cts. each.

Doctor Baillon.—Very brilliant; large, full, finely formed flowers, bright shining crimson, exquisitely shaded with rosy purple; very beautiful and fragrant. 20 cts. each.

Duc de Bragance.—Extra-large flowers, very double and full, exceedingly beautiful; color clear, satiny pink, with bright rose centre; richly scented. 20 cts. each.

Duchesse de Caylus.—First-class for general planting; strong, hardy and vigorous, and a regular and free bloomer; extra-large flowers, very double, full, perfect form, very fragrant; color rich cherry red, sometimes brilliant crimson, delicately tinged with scarlet; very fine. 20c. each.

Duke of Edinburgh.—Dark velvety maroon, medium size, full regular form; very handsome and fragrant. 15c. each.

Earl of Dufferin.—Fine velvety crimson, beautifully shaded with dark rich maroon; very large, full and fragrant; hardy and free. 20 cts. each.

Eclaire.—Color bright glistening rose, passing to rich scarlet crimson, elegantly shaded with pure maroon. 10 cts. each.

Edmund Wood.—A splendid Rose of large size and perfect form; very fragrant; color bright glowing scarlet; rich and beautiful. 15 cts. each.

Fanny Pittsoid.—Bright clear pink, shaded and edged with violet purple; large, very full and handsome. 15 cts. each.



CROWN PRINCE.

Climbing Jules Margottin.—Deep rosy pink color, same as Jules Margottin, but of climbing habit. 15 cts. each.

Climbing Victor Verdier.—Brilliant rosy carmine, edged with purple; very large, full and fragrant. 10 cts. each.

Comte Cavour.—Dark vermilion red, very double, large and sweet; an excellent sort. 15 cts. each.

Comte de Paris.—Bright vivid crimson when first opening, becoming darker and delicately shaded with violet purple as the flowers expand; very large and full; petals of good substance and very sweet; a magnificent Rose. 15 cts. each.

Comtesse de Serenye.—Beautiful, large, flesh-colored flowers; reverse of petals salmon rose; a free bloomer, very full and sweet. 15 cts. each.

Countess of Oxford.—A superb Rose; extra-large

Hardy Hybrid Perpetual Roses, Standard List (Continued).

Fisher Holmes.—A very beautiful and valuable Rose, resembling General Jacqueminot, but fuller and more constant bloomer; dark rich scarlet, passing to deep velvety crimson; extra-large, full flowers; very sweet. 20 cts. each.

Pontennelle.—Bright, shining scarlet, beautifully shaded with rich crimson; petals edged with violet; very large, handsome flowers; full and double, and exceedingly sweet. 20 cts. each.

François Levet.—A very beautiful Rose; soft china pink, delicately shaded carmine and blush; large, finely formed flowers; delicately fragrant; free bloomer. 10 cts. each.

General Washington.—This splendid Rose is one of the best Hardy Perpetuals for general planting; color bright shining crimson, very rich and beautiful; flowers are large

and perfectly double; blooms the first season and almost constantly. 20 cents. each.

Gloire Lyonnaise.—This grand Rose is a pale shade of chamois or salmon yellow, deepest at centre, and sometimes passing to rich creamy white, finely tinted with orange and fawn; the flowers have all the beauty of Tea Roses, and are large and full, and delightfully sweet. 20 cts. each.

Glory of Waltham.—Brilliant crimson, with fiery red centre; very bright and showy; large, full, regular flowers; highly perfumed. 15 cts. each.

Her Majesty.—One of the largest and most beautiful Hybrid Perpetual Roses ever grown; the blooms are of immense size, remarkably beautiful form and perfectly double; the color is a lovely shade of rosy pink, passing to clear flesh,

elegantly tinged and shaded with amaranth and silver rose; delightfully fragrant; the plant is a strong upright grower, entirely hardy. 75 cts. each.

Jacques Laffite.—Carmine rose, edged with silver rose; reverse of petals light; very fragrant; desirable. 15 cts. each.

Jean Le lievre.—Extra-large flowers, fine full form and perfectly double; color bright shining crimson, passing to deep velvety maroon; very sweet. 15 cts. each.

Jean Liaud.—This is one of the very darkest of all Roses; the flowers are large, full and fragrant, and of the most intense dark rich velvety crimson imaginable; they are so dark, in fact, that at a little distance they look almost black; very rare and handsome, and always greatly admired. 30 cts. each.

John Hopper.—One of the most reliable



JOHN HOPPER.

and satisfactory Hybrid Perpetual Roses; flowers are large, very regular and full; color brilliant rose, changing to bright glowing pink, shaded with rich crimson; very sweet, and remarkably profuse bloomer (see cut). 20 cts. each.

General Appert.—Grand violet crimson flowers; very rich and velvety; extra-large size, fine full form; good substance, and very sweet. 15 cts. each.

General Jacqueminot.—Bright shining crimson, very rich and velvety; exceedingly brilliant and handsome; makes magnificent buds, and is highly esteemed as one of the best and most desirable for open ground, and also for forcing. 15 cts. each.

Giant of Battles.—Brilliant crimson; large, very double and sweet; esteemed one of the finest old sorts for general planting. 15 cts. each.

Gloire de Margottin.—Noted for its remarkably bril-

Jules Margottin.—Bright cherry red; large, well-formed fragrant flowers; a splendid old variety. 15 cts. each.

Lady Emily Peel.—Medium size, full regular flowers, very sweet; color pearl white, sometimes faintly tinged and shaded with pale rosy blush. 15 cts. each.

Lady Helen Stewart.—A good and desirable sort; large, fully rounded flowers; petals broad and thick; highly perfumed; very beautiful. 20 cts. each.

La Reine.—Beautiful, clear, bright Rose; very large; fine full form; very fragrant and hardy. 10 cts. each.

Hardy Hybrid Perpetual Roses, Standard List (Continued.)

La France of '89.—Immense expanded flowers, somewhat resembling La France, but larger, and much deeper and more brilliant color, sometimes bordered with pure white. 20 cts. each.

Leopold Premier.—Dark, rich crimson; a fine, large Rose, very full and sweet; free bloomer. 15 cts. each.

Lord Raglan.—Brilliant crimson scarlet; splendid flowers; large, very full and finely scented. 15 cts. each.

Louis Odier.—Bright carmine rose, very brilliant and pleasing; large, full and good. 15 cts. each.

Louis Van Houtte.—Brilliant vinous crimson; large, full and fragrant; an excellent sort. 15 cts. each.

Mad. Chirard.—Fine, globular form; large, very double and fragrant; deep rosy pink; very beautiful. 10 cts. each.

Mad. Charles Wood.—A true perpetual bloomer; begins to bloom almost as soon as planted, and continues all through the season; the flowers are extra large, very double and full, and quite fragrant; color bright fiery scarlet, passing to fine rosy crimson, elegantly shaded with maroon; very showy and handsome, and one of the best Roses ever introduced for general planting. 20 cts. each.

Mad. Fanny de Forest.—An elegant white perpetual Rose; large, full flowers, very handsome and fragrant; an early and continuous bloomer; very desirable for general planting. 15 cts. each.

Mad. Francois Pettit.—A lovely pure white Rose; very full and double; perfect form, profuse bloomer; one of the best white perpetuals; blooms in clusters. 10 cts. each.

Mad. Gabriel Luizet.—Undoubtedly one of the most beautiful of all Roses. It is extra large, with broad, shell-like petals; elegantly formed, very double and full, delightfully perfumed, and the color is an exquisite shade of clear coral rose, beautifully suffused with lavender and pearl; a Rose that when once seen will always be remembered; a good bloomer and entirely hardy. 35 cts. each.

Mad. Gabriel Tournier.—A fine sort; medium size, full globular form, very double and fragrant; color deep carmine rose; very pleasing. 15 cts. each.

Mad. Gomet.—Fine, large, full flowers, somewhat cupped form, very double and handsome; color bright shining rose, passing to clear satiny pink; very beautiful. 15 cts. each.

Mad. Gustave Bonnett.—Pure white, sometimes slightly tinged with rose; medium size, very double and full, sweet scented and free bloomer. 10 cts. each.

Mad. Louise Carique.—Rich velvety crimson, large size, very double, full and sweet; vigorous grower, entirely hardy. 15 cts. each.

Magna Charta.—A splendid Rose; extra-large, full flowers, very double; of fine form and sweet; color clear rosy red, beautifully flushed with violet crimson; a sure and profuse bloomer; one of the hardiest and best for general planting. 15 cts. each.

Mad. Adelaide Cote.—An exceedingly fine Rose; extra large, very double and full, and highly perfumed; color bright crimson, passing to dark, velvety maroon. 15 cts. each.

Mad. Alfred de Rougemont.—A strong, vigorous grower; begins to bloom at once, and continues until stopped by severe freezing; pure, snow-white flowers, finely tinged and clouded with pale rosy blush; large, full and double, and borne in large clusters; fragrant and good. 15 cts. each.

Marshall P. Wilder.—This fine new Rose was named in honor of the venerated President of the National Pomological Society. Flowers are large, semi-globular, full and of good substance; color bright scarlet crimson, richly shaded with maroon; very fragrant, and a free bloomer. 35 cts. each.

Marquise de Bocella.—Creamy-white and flesh color, centre rosy blush, full and double; an excellent bloomer; very fragrant, hardy and desirable. 15 cts. each.

Mad. Masson.—One of the very best perpetuals for general planting; blooms nearly all the time, and bears plenty of large full flowers; color clear bright rose; very sweet and handsome. 20 cts. each.

Mad. Musset.—Bright carmine Rose, almost cherry red, passing to scarlet crimson; large, well-rounded flowers, very fragrant and handsome. 15 cts. each.

Mad. Plantier.—Pure white, large, very double flowers; most profuse bloomer, perfectly hardy; suitable for cemetery and general planting. 15 cts. each.

Mad. Smith.—Deep rich crimson; fragrant. 15 cts. each.

Mad. Trevenot.—An excellent Rose, rich crimson, passing to cardinal red, delicately tinged with violet; flowers large, finely formed, very full and sweet. 15 cts. each.

Mad. Trotter.—A strong, vigorous grower, very hardy; flowers bright, brilliant red, full and sweet. 15 cts. each.

Mad. Victor Verdier.—Rich bright cherry red, changing to satiny rose; large, full and fragrant. 15 cts. each.

Mad'elle Annie Wood.—A magnificent variety; flowers very large, fine, full form; color brilliant violet crimson; exquisite fragrance; a profuse bloomer. 15 cts. each.

Marie Bauman.—An excellent Rose, very full and fragrant; color rich ruby red, changing to lovely scarlet maroon; very beautiful. 20 cts. each.

Mad'elle Marie Rady.—Clear bright red, finely penciled with rich maroon; very large, full flowers, fragrant and beautiful. 10 cts. each.

Mad'elle Marie Viriot.—A lovely Rose, bright magenta red, passing to rich scarlet, delicately shaded with dark crimson; flowers large, very delightfully perfumed. 15 cts. each.

Mabel Morrison.—A rare and very beautiful Rose, extra-large size, full regular form, broad shell-like petals; color pure snow white, sometimes faintly tinged with pink, in the way of Baroness Rothschild. 35 cts. each.

Merveille de Lyon.—A splendid perpetual of the highest type of beauty. The flowers are extra large, fine cupped form, full and regular and deliciously perfumed; color ivory white, elegantly flushed with pale carmine; very beautiful. 35 cts. each.

Michael Strogoff.—Strikingly beautiful, extra-large, finely formed, compact flowers; color bright cherry red, elegantly shaded with rich maroon crimson. 15 cts. each.

Monsieur E. Y. Teas.—A very beautiful and satisfactory Rose; color rich glowing crimson, very bright and striking; large round flowers of perfect form, very full and sweet; highly recommended. 20 cts. each.

Monsieur Fillon.—Brilliant magenta red, changing to fine violet purple or lilac rose; extra-large, full, globular flowers, very handsome, showy and fragrant; profuse bloomer; one of the best. 15 cts. each.

Monsieur Mat. Baron.—Magnificent, large, flat flowers, brilliant magenta red, beautifully clouded with violet crimson; very handsome. 15 cts. each.

Mount Carmel.—Fine, large, full flowers, bright deep rose, elegantly shaded; very sweet, hardy and good. 15 cts. each.

Mrs. George Dickson.—Originated by Henry Bennett, Shepperton-on-Thames, England. Flowers large and full; color bright satiny pink, beautiful. 15 cts. each.

Mrs. John Laing.—A splendid constant-blooming hybrid perpetual, one of the very finest of its class; color clear bright pink, exquisitely shaded; the buds are long and pointed; the flowers extra large and full, borne on long stems, and exceedingly sweet, very valuable, both for open-ground, greenhouse and window culture; a grand Rose. 20 cts. each.

Oscar II, Roi de Suede.—This is a magnificent Rose; immense globular flowers, rich deep carmine elegantly flamed with vermilion red, delightfully perfumed, remarkably attractive, a good hardy grower and free bloomer. 20 cts. each.

Pæonia.—One of the best hardy hybrid perpetual Roses; large, perfectly double flowers; color rich crimson, elegantly shaded with dark maroon; entirely hardy. 15 cts. each.

Perfection des Blanches.—Large, pure white flowers, full and double; constant bloomer; very fine; one of the best pure white perpetuals for general planting. 15 cts. each.

Perle des Blanches.—One of the finest pure white hybrid perpetuals; constant and profuse bloomer; large, very double flowers; very hardy and sweet. 15 cts. each.

Panachée d'Angers.—White, finely marbled with crimson and purple. 25 cts. each.

Paul Verdier.—A splendid Rose; fine, full round flowers, exceedingly sweet; color clear bright pink, beautifully shaded; very handsome and desirable. 20 cts. each.

Pierre Notting.—A superb Rose; very dark blackish red, richly shaded with fine violet crimson; extra-large, full flowers; delightfully perfumed; a hardy, vigorous grower and free bloomer; one of the very best dark Roses. 30 cts. each.

Hybrid Tea Roses.

The Hybrid Tea Roses are recommended for their constant bloom, brilliant colors and exquisite fragrance. Some varieties, such as La France, Duchess of Albany, Meteor, Pierre Guillot, Souvenir de Wootton, etc., are among our best and most satisfactory Roses for general planting indoors, and succeed well in favorable situations in open ground, but are not very hardy, requiring slight protection during Winter months.



TRIOMPHE DE PERNET PERE.

COPYRIGHTED BY GINCEE & EDWARD CO. 1893.

Augustine Guinoisseau.—The best recommendation we can give this magnificent new Rose is that it is a pure white La France, having just a breath of rose-tinted blush, delicately clouding the depths of its broad petals; the buds and flowers are extra large, very full and finely formed, and delightfully perfumed; it blooms all through the season, and is a Rose that every one would like to have. 25 cts. each.

Augustine Halem.—Extra-large and handsome; full, well-developed buds and flowers, having good, thick, wax-like petals of excellent substance; color clear bright rosy red, verging to deep rich crimson; very beautiful; nice, erect habit of growth; clean and healthy, with good, substantial foliage; the color is remarkably clear and handsome; a constant and profuse bloomer; very fragrant (see cut). 40 cts. each.

Duchess of Albany (Red La France).—One of the finest Hybrid Teas in cultivation; its habit resembles that of La France; hence the appellation, Red La France, is decidedly appropriate. It is a continuous and copious bloomer, often being covered with buds and blooms throughout the season. The flowers are extra-large, of a brilliant rose-pink and delightfully scented. 20 cts. each; 3 for 50 cts.; 6 for \$1.

La France.—This old and universally popular variety is so well known and so highly esteemed that a description is almost superfluous. It is one of the most superb and prolific Roses known; the flowers are exceedingly sweet and handsome—being produced in great profusion throughout the season. The color is a lovely shade of peach blossom with a deliciously tea-scented fragrance. 15 cts. each; 4 for 50 cts.; 8 for \$1.

Meteor.—The color is rich velvety crimson, exceedingly bright and striking, and both buds and flowers are large and elegantly formed, fully double, and borne on nice long stems, which renders it especially attractive, as well as nice for cutting. It is a vigorous and healthy grower and a quick and constant bloomer; quite fragrant; a really excellent Rose in every way, and never fails to please. 20 cts. each.

Pierre Guillot.—One of the most valuable of all Hybrid Teas, and remarkable for its very brilliant color, bright dazzling crimson, passing to vivid carmine red; flowers large, very double and full, highly scented; profuse bloomer; a good healthy grower and moderately hardy. 25 cts. each.

Souvenir de Wootton.—This is a remarkably brilliant and striking ever-blooming Rose; bright magenta red, passing at base to fine violet crimson, richly shaded; flowers are large, full and regular, with thick leathery petals and delicious tea scent; makes beautiful buds, and is recommended both for open ground and conservatory; a good grower and immense bloomer. 25 cts. each.

Triumph d'Angers.—Bright, fiery red, changing to darkest velvety crimson, tinged with purple; large, full flowers, very double and fragrant; quite hardy. 15 cts. each.

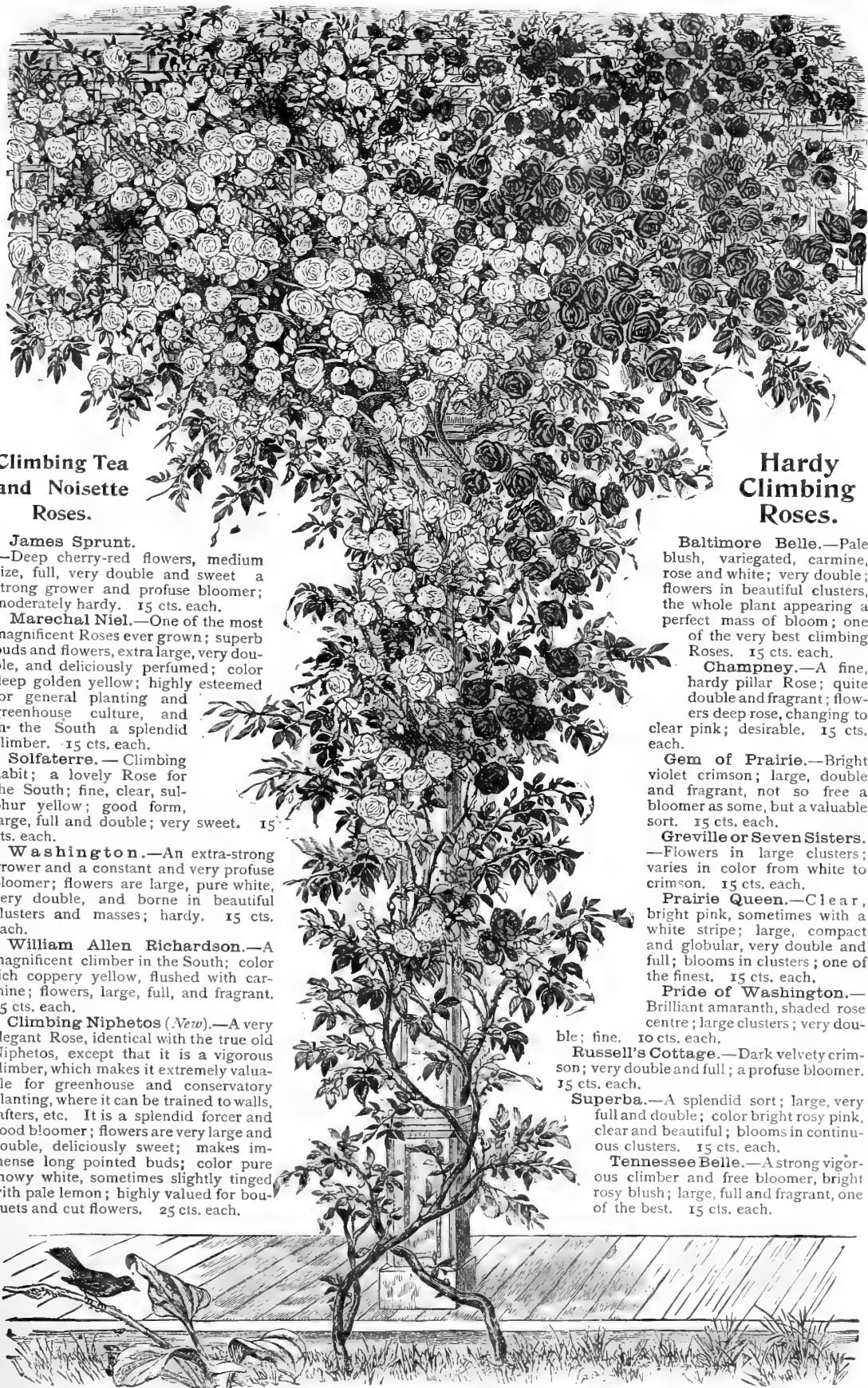
Triomphe de Pernet Pere.—Originated and sent out by Jean Pernet, one of the most celebrated Rose growers of France, who has already given us some very beautiful Roses, but considers this the triumph of his life. The flowers are extra large, having broad thick petals and long tapering buds, with delicious tea fragrance; color fine clear magenta red, sometimes passing to bright crimson, very striking and beautiful, and of such good substance that the flowers retain their beauty for a long time; very brilliant and handsome (see cut). 25 cts. each.

William Francis Bennett.—This beautiful Rose holds a secure position of its own; no other variety can take its place; it is noted for its magnificent buds and wonderful color, which is intense dazzling crimson; one of the brightest and most brilliant colored Roses ever grown; it is particularly valuable for forcing and greenhouse culture, and does fairly well in favorable situations in open ground; reasonably hardy, but requires careful protection in Winter. 40 cts. each; \$3.50 per doz.

SPECIAL OFFER.—The entire set of Hybrid Tea Roses, 10 varieties in all, for \$2.



NEW HYBRID TEA, AUGUSTINE HALEM.



Climbing Tea and Noisette Roses.

James Sprunt.

—Deep cherry-red flowers, medium size, full, very double and sweet; a strong grower and profuse bloomer; moderately hardy. 15 cts. each.

Marechal Niel.—One of the most magnificent Roses ever grown; superb buds and flowers, extra large, very double, and deliciously perfumed; color deep golden yellow; highly esteemed for general planting and greenhouse culture, and in the South a splendid climber. 15 cts. each.

Solfaterre.—Climbing habit; a lovely Rose for the South; fine, clear, sulphur yellow; good form, large, full and double; very sweet. 15 cts. each.

Washington.—An extra-strong grower and a constant and very profuse bloomer; flowers are large, pure white, very double, and borne in beautiful clusters and masses; hardy. 15 cts. each.

William Allen Richardson.—A magnificent climber in the South; color rich coppery yellow, flushed with carmine; flowers, large, full, and fragrant. 15 cts. each.

Climbing Niphetos (New).—A very elegant Rose, identical with the true old Niphetos, except that it is a vigorous climber, which makes it extremely valuable for greenhouse and conservatory planting, where it can be trained to walls, rafters, etc. It is a splendid forcer and good bloomer; flowers are very large and double, deliciously sweet; makes immense long pointed buds; color pure snowy white, sometimes slightly tinged with pale lemon; highly valued for bouquets and cut flowers. 25 cts. each.

Hardy Climbing Roses.

Baltimore Belle.—Pale blush, variegated, carmine, rose and white; very double; flowers in beautiful clusters, the whole plant appearing a perfect mass of bloom; one of the very best climbing Roses. 15 cts. each.

Champney.—A fine, hardy pillar Rose; quite double and fragrant; flowers deep rose, changing to clear pink; desirable. 15 cts. each.

Gem of Prairie.—Bright violet crimson; large, double and fragrant, not so free a bloomer as some, but a valuable sort. 15 cts. each.

Greville or Seven Sisters.—Flowers in large clusters; varies in color from white to crimson. 15 cts. each.

Prairie Queen.—Clear, bright pink, sometimes with a white stripe; large, compact and globular, very double and full; blooms in clusters; one of the finest. 15 cts. each.

Pride of Washington.—Brilliant amaranth, shaded rose centre; large clusters; very double; fine. 10 cts. each.

Russell's Cottage.—Dark velvety crimson; very double and full; a profuse bloomer. 15 cts. each.

Superba.—A splendid sort; large, very full and double; color bright rosy pink, clear and beautiful; blooms in continuous clusters. 15 cts. each.

Tennessee Belle.—A strong vigorous climber and free bloomer, bright rosy blush; large, full and fragrant, one of the best. 15 cts. each.



The Dingee & Conard Co.'s Set. Eight Magnificent Pillar Roses.

Appoline.—An extra-fine Rose, very large, full and double, exceedingly sweet; color clear pink, dashed with rosy crimson; edges and reverse of petals silvery rose; one of the best. 15 cts. each.

Cheshunt Hybrid.—Extra-fine, large flowers, very double, full and perfect form, delightfully fragrant; color ruby crimson, passing to rich maroon; a strong grower and quite hardy. 15 cts. each.

Marie Drivon.—A strong, vigorous grower, partly climbing in habit; producing flowers of large size; very double, with regular petals, beautifully imbricated; blooms in clusters of 3 to 5 flowers; delightfully fragrant; color fine clear pink, sometimes light rose; foliage large and quite thick; remarkably free from disease. 15 cts. each.

Mary Washington.—A staunch old favorite, the variety having been perpetuated from cuttings obtained from the original bush at Mt. Vernon, and therefore is really a souvenir of that historic and sacred spot. It is a vigorous grower, of climbing habit; the blooms are white, double, fragrant and are produced in clusters and in great profusion. 20 cts. each.

Madame Alfred Carriere.—Extra-large, full flowers, very double and sweet; color rich creamy white, faintly tinged with pale yellow, exceedingly beautiful; a strong grower and profuse bloomer; quite hardy. 15 cts. each.

Mrs. Degraw.—Bright coral pink; flowers are borne in clusters; very handsome; noted as a free and continuous bloomer; quite hardy; strongly resembles the *Champion of the World*. 15 cts. each.

Reine Olga'd'Wurtemberg.—A very beautiful and valuable climbing Rose; fine, large, very double flowers, borne in clusters; color clear cherry red, margined with crimson; very handsome and exceedingly sweet; profuse bloomer and quite hardy. 15 cts. each.

Reine Marie Pia.—Large, finely formed flowers, very full and double, borne in clusters, tea scented; color rich crimson, elegantly shaded; a fine climber, and quite hardy. 15 cts. each.

Ever-blooming Bourbon and China Roses.

Agrippina.—Brilliant fiery red, good size and form, very double, full and sweet; an early and profuse bloomer; much esteemed. 15 cts. each.

Appoline.—An extra-fine Rose, very large, full and double, exceedingly sweet; color clear pink, dashed with rosy crimson; edges and reverse of petals silvery rose; one of the best. 15 cts. each.

Archduc Charles.—Brilliant crimson scarlet, shaded with violet crimson; large, very double and sweet; a good hardy grower and constant bloomer; a splendid Rose. 15 cts. each.

Champion of the World.—An extremely popular Rose introduced last year for the first. A free bloomer, with flowers of large size; color a lovely clear deep pink. 25 cts. each.

Comtesse de Barbantane.—Clear flesh-color, with deep crimson centre; large, full form, very double and fragrant; a noble Rose. 15 cts. each.

Cramoisi Superior.—Medium size, rich dark velvety crimson, very double, full and beautiful; one of the best for bedding. 10 cts. each.

Douglas.—Dark cherry red, rich and velvety; large, full and fragrant; a neat compact grower and free bloomer. 15 cts. each.

Hermosa.—An excellent Rose, blooms in fine clusters; large, very double and fragrant; color beautiful clear rose; a constant bloomer; hardy; one of the best. 15 cts. each.

Monthly Cabbage.—This fine old variety is still in great demand; the flowers are bright rosy pink, and remarkably full and fragrant; a constant bloomer; known also as the hundred-leaved Rose. 15 cts. each.

Queen's Scarlet.—Very desirable and satisfactory; a constant and profuse bloomer; color rich velvety scarlet, very brilliant and striking; excellent Rose for bedding, either in masses or mixed with other sorts. 15 cts. each.

The Polyantha or Fairy Roses.

The Polyanthas are a lovely and distinct class of ever-blooming Roses, distinguished by their dwarf, bushy habit of growth, medium size and very double flowers, which are delightfully fragrant and are borne in large clusters and masses, frequently seeming to cover the whole plant with a sheet of bloom. They are good, vigorous growers and constant and most profuse bloomers, very pretty and highly recommended for general planting, also for edges and borders to beds of the larger growing varieties. They are regarded as being reasonably hardy; but as a precaution against extreme conditions of rigorous Winters, it is advisable to give them a slight covering.

We Offer 12 Varieties of Polyantha or Fairy Roses.

Clotilde Soupert (*The New Tea Polyantha*).—This lovely Rose resembles the Tea Roses so closely that it is called a Tea Polyantha, and is undoubtedly the finest Rose of its class. The flowers are borne in clusters, and are of large, round, flat form, with beautifully imbricated petals; perfectly full and double, and deliciously sweet; color beautiful pinkish amber or pale creamy yellow, delicately flushed with silvery rose, sometimes ivory white, exquisitely tinted with pale salmon, and sometimes both red and white flowers are produced on the same plant. It is a particularly handsome Rose, always greatly admired. The bush is a vigorous and compact grower, and a continuous and remarkably profuse bloomer, being literally loaded with Roses throughout the whole growing season. It is highly recommended for bedding in open ground, and also for window and house culture; moderately hardy. Be sure and include this lovely Rose. 15 cts. each; 8 for \$1.

Flora.—A charming Polyantha Fairy Rose; the flowers are quite large, very full and round, delightfully perfumed and borne in immense clusters. The color is fine ivory white, delicately tinged with soft rosy blush (see cut). 15 cts. each.

Etoile d'Or.—This elegant Rose is certainly a great acquisition; full round flowers, perfectly double, borne in large clusters; pale chrome yellow, with rich citron-red centre; blooms quickly and profusely, and besides being exceedingly beautiful, entirely distinct. 20 cts. each.



NEW TEA POLYANTHA—CLOTILDE SOUPE



George Pernet.—Very beautiful flowers, medium size, very full, with fine imbricated petals; lovely buff rose, delicately shaded lemon and fawn; extra fine. 15 cts. each.

Gloire de Polyantha.—Splendid Fairy Rose; flowers large, perfectly double and deliciously sweet; color fine citron rose, elegantly flushed pale carmine. 15 cts. each.

Jeanne Drivon.—A lovely Rose, perfect, full form, very double and sweet; color pure white, faintly tinged with crimson; a distinct and valuable sort. 15 cts. each.

Little Gem.—A very charming Fairy Rose; flowers of perfect form, very double and full; pure creamy white, sometimes delicately tinged with salmon rose. 15 cts. each.

Mad'elle Cecile Bruner.—Larger flowers than most of the others, perfectly double and delightfully fragrant; color rosy pink on rich creamy white ground; a great bloomer; very satisfactory for bedding. 15 cts. each.

Marie Pavie.—Medium size, very full and double, borne in large clusters and masses; excellent for cutting; color rich creamy white, finely flushed with carmine rose; delightfully perfumed, very pretty and bright. 10 cts. each.

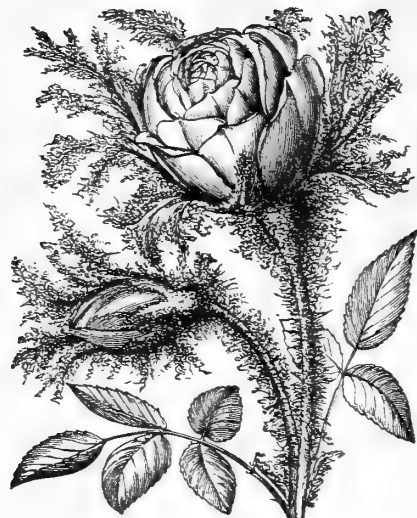
Mignonette.—A splendid variety, one of the very best; full, regular flowers, perfectly double and deliciously perfumed; color clear pink, passing to white, tinged with pale rose; an immense bloomer; very valuable. 15 cts. each.

Miniature.—This is the smallest of all Roses, but perfect form; regular, compact, fairly-like flowers, fully double and very fragrant; flowers in wreaths and clusters seem to cover the whole plant; color cream rose, flushed red. 15 cts. each.

Perle d'Or.—Charming and very distinct; color coppery gold, changing to fawn and salmon; flat-rayed form, very double and elegantly perfumed; a constant and profuse bloomer. 15c. each.

The 12 varieties named above for \$1.50.

Moss and Perpetual Moss Roses.



GLORY OF MOSSES (BUDS).

The Moss Rose is a strong, vigorous grower, perfectly hardy, and therefore justly esteemed as very desirable for outdoor culture in open ground. Most varieties bloom but once in the season, and usually not the first year, but the flowers and buds are very large and handsome; they remain in bloom a long time, and are highly prized wherever beautiful Roses are known. Moss Roses like rich ground, and are much improved in beauty and fragrance by liberal manuring and good cultivation, but they bear hardship and neglect well, and always bloom profusely. They are suitable for planting with shrubbery and other plants in beds and borders, and also singly in lawn or dooryard.

We offer 14 Moss and Perpetual Moss Roses.

Blanche Moreau (*Perpetual*).—This fine variety is highly recommended; flowers are produced in clusters, and are large, full and sweet; the color is pure white; both flowers and buds have an abundance of lovely deep green moss. 30 cts. each.

Cheveral.—This is a splendid Moss Rose, highly recommended; extra-large, full, very double flowers; rich bronze red, passing to dark purplish crimson; delightfully perfumed; and buds thickly covered with lovely deep green moss of finest texture. 35 cts. each.

Comtess de Murinais.—One of the best and most satisfactory pure white Moss Roses; the buds are elegantly mossed; flowers large, full and fragrant; a valuable and very beautiful variety. 30 cts. each.

Luxembourg.—Color bright crimson scarlet, beautifully toned; large, deep, well built up flowers, with long, thick moss; delightfully perfumed; very fine. 20 cts. each.

Madame Dupuy.—White, shaded with rosy blush; splendid large flowers; very double and sweet. 20 cts. each.

Perpetual White Moss (*Perpetual*).—A true perpetual bloomer; one of the most mossy varieties; prettiest in bud; the flowers are of medium size and borne in large clusters; fragrant, but not very double; color pure white. 50 cts. each.

Princess Adelaide.—One of the best; extra-large flowers; very double and fragrant; buds beautifully mossed; color bright rosy pink; perfectly hardy. 20 cts. each.

Purpurea Rubra.—Violet purple; large, full form, very double and fragrant; nicely covered with fine moss; one of the most satisfactory varieties. 20 cts. each.

Raphael.—Beautiful buds; very large and densely covered with lovely moss; color pinkish white, shaded with rose; large, full and sweet; very distinct. 20 cts. each.

Captain Ingram.—Habit of growth vigorous, compact and bushy; flowers medium to large; color rich crimson, turning as the flowers mature to purple; nicely mossed and a free bloomer; one of the most reliable of all Moss Roses. 20 cts. each.

Elizabeth Rowe.—Extra-large massive flowers, very double and well filled out; bright satiny pink, elegantly shaded; very fragrant and finely mossed. 20 cts. each.

Glory of Mosses.—A magnificent Moss Rose; extra-large and perfectly double; color deep rosy carmine, shaded purplish crimson; very mossy and fragrant; one of the finest (see cut). 20 cts. each.

Henry Martin.—Rich glossy pink, elegantly tinged with crimson; large globular flowers, very full and sweet; finely mossed. 20 cts. each.

James Veitch (*Perpetual*).—One of the finest perpetual Moss Roses; extra-large flowers, very fragrant and full; color bright carnation red; blooms at short intervals during the Summer. 50 cts. each.

The Complete Set of 14 Moss Roses and Perpetual Moss Roses described above for \$2.50.

Named Varieties of Roses for Bedding.

FIVE UNEQUALED OFFERS.

30 Marie Lambert for \$2.50 (*White*).—Marie Lambert is a strong, vigorous Ever-blooming Rose; very floriferous, producing masses of creamy-white flowers. We will send 30 Marie Lambert for \$2.50.

30 Clotilde Soupert for \$3.50 (*Blush*).—This splendid representative of the Tea Polyantha class is deservedly one of the most popular Roses in our collection. A free and continuous bloomer; flowers pinkish amber, flushed with rose. We will send 30 Clotilde Soupert for \$3.50.

30 Etoile de Lyon for \$3 (*Yellow*).—Also known as Star of Lyon. A strong, healthy grower and a remarkably

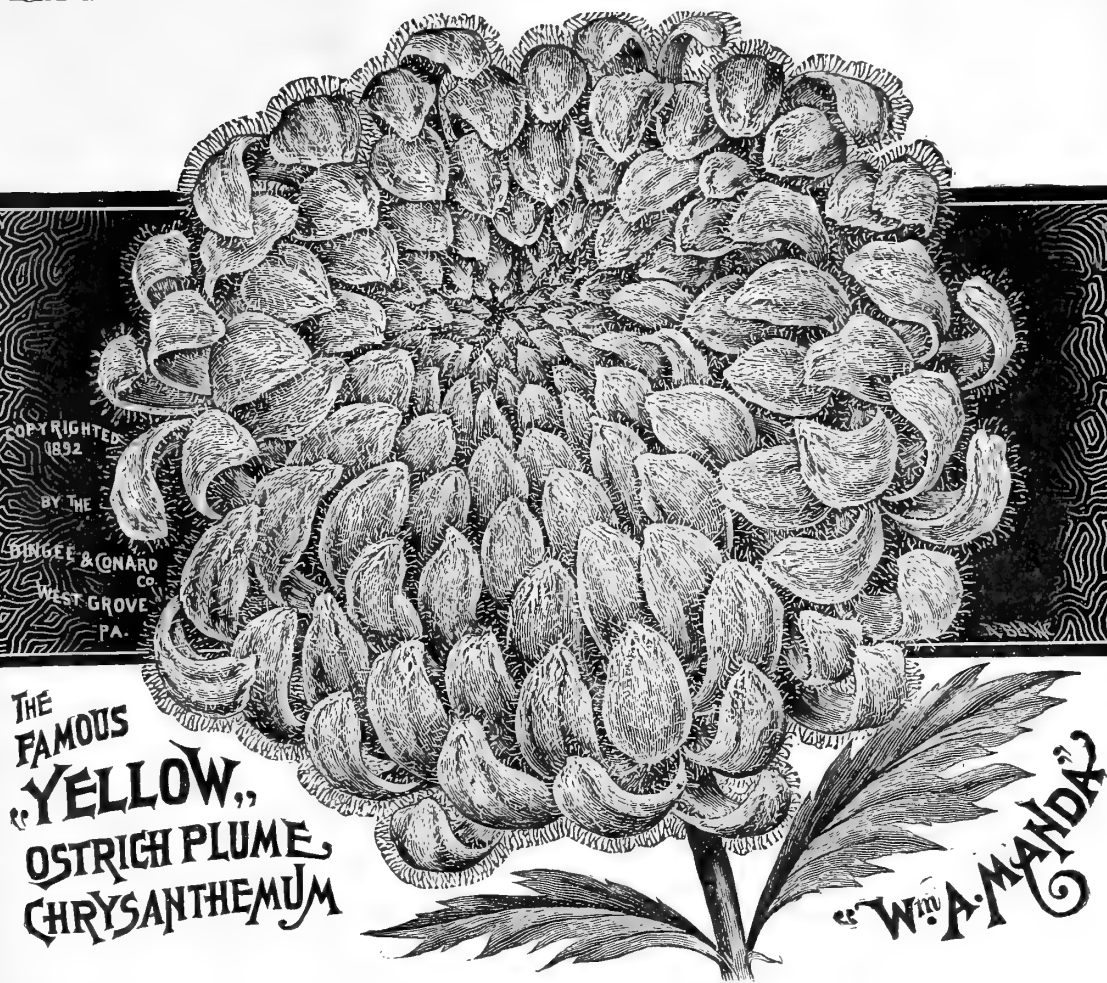
SPECIAL.—As a further inducement to have all our friends give these splendid Roses a trial, we will send 8 each of the 4 Roses described above, 32 in all, for \$3.

free bloomer, bearing a succession of buds and flowers from early Summer until severe frost. The rich golden yellow flowers are of grand size, excellent substance and exceedingly sweet. One of the best Tea Roses for general planting, especially massing, ever introduced. Perfectly hardy. We will send 30 Etoile de Lyon for \$3.

30 Queen's Scarlet for \$3 (*Crimson*).—For a striking and brilliant display we don't know of any Rose that equals *Queen's Scarlet*. A constant and profuse bloomer; color rich velvety scarlet, very striking; flowers large and full; a strong, vigorous grower. We will send 30 Queen's Scarlet for \$3.

Roses, Plants, Bulbs and Seeds as Premiums.

To those who wish to avail themselves of an opportunity to secure valuable premiums in Roses, Plants, Bulbs and Seeds by a little effort in organizing clubs, we have the following very liberal offer to make: For club orders amounting to \$5 and upwards, 15%; \$10 and upwards, 20%; \$15 and upwards, 25% of the value of the collective orders, the promoters being at liberty to select anything from this catalogue to the amount of such premiums. We exercise the greatest care in filling club orders, wrapping and marking each member's package separately, so that there need be no trouble or confusion in making deliveries. This feature of our business has developed rapidly within the past few years, many persons of both sexes finding the work very agreeable and profitable.



The Famous New Ostrich Plume Set.

THE FINEST EVER INTRODUCED.—So immensely popular, and so great the demand created for these superb and distinct types of the Chrysanthemum, that we have decided to offer them again for the season of 1894.

SPECIAL OFFER.—The set of 6 for \$1.25; any 3 varieties, 65 cents.

W. A. Manda (*the New Golden Yellow Ostrich Plume Chrysanthemum*).—This is the ideal Chrysanthemum; new, distinct and beautiful. We recommend it after thorough test and trial as the finest variety of its color for outside cultivation. The habit of growth is the best; fine, uniform, vigorous and perfectly erect, with flowers borne upright on stout stems; this grand variety is unusually floriferous, we having counted the remarkable number of 843 buds and flowers on an average plant among hundreds, planted in open ground in July on our grounds the past season. The flowers are large, and in color magnificent—the purest golden yellow we have ever seen; the outside petals are broad and long; rather incurved and streamy, but as they near the centre the form changes to slender petals, almost round, which are whorled in the most beautiful manner and perfect uniformity; the numerous petals are covered with a downy growth of fine hairs, presenting a charming and unique appearance. This variety has attracted widespread attention, and is the most valuable acquisition introduced from Japan for many years. Should be included in every order. 25 cts. each.

Miss Annie Manda.—This is another valuable new variety, having for a special recommendation the sweet-scented qualities of its flowers, which are perfectly double, compact, and a beautiful clear white in color; petals incurved and unusually well furnished with long hair-like outgrowths. This remarkable variety is a strong and healthy grower and produces its abundance of blooms erect on strong stems. Flowers make a lovely contrast when bunched with W. A. MANDA. 35 cts. each.

Patrick Barry.—A splendid new variety introduced last year from Japan, of which the introducer says: "A grand yellow incurved variety of the 'Ostrich Plume' class which, in size of flower and all the essentials of a first-class Chrysanthemum, will take rank with its predecessors. Louis Boehmer and Mrs. Alpheus Hardy." Named in honor of Patrick Barry, the veteran horticulturist. 25 cts. each.

Wm. Falconer.—This superb variety is a sport from the famous Louis Boehmer and has all its good qualities. The flowers are large, borne on stiff, vigorous stems, with beautiful incurved petals and a pronounced "Ostrich Plume" outgrowth. The color is a pleasing shade of rosy bluish, changing to a delicate pink as the flowers mature. 30 cts. each.

Louis Boehmer.—The splendid New Pink Ostrich Plume Chrysanthemum. Grand flowers, extra-large size, splendid globular form; petals broad and lasting and thickly covered with the fine, downy hairs so much admired, and from which the name Ostrich Plume is derived; color deep rich pink; solid and fine. The plant is a remarkably strong and vigorous grower, blooms quickly and profusely, especially in open ground; the flowers are of excellent substance and endure severe frosts without wilting or changing color; we regard it as one of the most desirable of Chrysanthemums. 20 cts. each.

Mad. Alpheus Hardy.—The famous white Ostrich Plume Chrysanthemum; flowers extra large and globular, with feathery, plume-like petals, giving the appearance of great balls of pure white downy feathers; remarkably curious, and handsome. 20 cts. each.

Standard Chrysanthemums—For General Planting.

The list of Chrysanthemums named and described below are well-known varieties of standard excellence, and we especially recommend them for general planting; the plants we send out are from 3-inch pots, strong, well established, and are produced from cuttings taken from field-grown stock, grown in average soil without any forcing whatever. They cannot fail to give absolute satisfaction.

Abbie Mendenhall.—Beautiful flower of pale canary yellow, of immense size; outer petals reflexed, centre petals incurving; foliage heavy and beautiful; a fine grower; stems stiff.

Ada Spaulding.—A striking variety; habit sturdy and robust; color rich deep pink, shading in upper portion to the purest pearl white. Awarded silver cup, two medals and three certificates (see cut).

Addie Decker.—Rich mandarin yellow, a new and dazzling shade, flamed with salmon and crimson; very handsome and showy; one of the best new kinds.

Amber Gem.—This is a very excellent variety; color a beautiful shade of amber and old gold, flamed with orange red; flowers large and full, with curiously twisted petals twirled around the centre, making flowers like balls of yellow worsted yarn; grows vigorously, blooms quickly and well; excellent for general planting.

Alfred Warner.—Extra-large Chinese incurved flowers; pale lemon, passing to rich creamy white.

Bronze Jewell.—Extra-large, very full flowers; fine tubular petals; color bright rich bronze, shaded crimson.

Chiffonier.—Silvery pink; petals turning and twisting towards the centre, forming a ball of perfect *négligé*.

C. F. Whiting, Jr.—Massive, extra-double specimen of largest size; rich chestnut, old gold and bronze; petals broad and flat, in deep rows, one upon another. Without question the most massive and solid bloom in existence.

Clara Riemen.—Took Certificate of Merit at the great Indianapolis Show; color rich lavender rose, with silver white centre; extra large, very handsome flowers, of good form and substance; is a healthy, vigorous grower; blooms early and abundantly; good for all purposes.

Cyclone.—Blooms enormously large, having been exhibited 11 inches across; beautiful creamy-white petals of extra size and whorled in showy manner. Valuable and distinct.

Duchesse.—Blooms in large clusters; large, full flowers; dark rich crimson, tipped with golden yellow.

E. G. Hill.—This is a truly magnificent Chrysanthemum; undoubtedly one of the finest yellow varieties in cultivation; extra-large, full double flowers of brightest golden yellow; lower petals sometimes shaded fine Indian red; a strong, healthy grower and immense bloomer; a great prize winner.

F. J. Smith.—New and fine; large, regular, full flowers; brownish yellow, shaded coppery red; showy.

Golden Lace.—A very distinct and beautiful variety; exquisite, fimbriated, lace-like florets; fine, globular flowers, resembling a ball of rich golden lace.

Garnet.—A very handsome and showy Japanese variety; rich wine red, passing to silvery pink; large, full flowers, with curiously twisted petals.

Gloriosum.—Immense flowers, perfectly double; profuse bloomer; color clear, golden yellow; exceedingly handsome. One of the best.

Joan F. Miller.—Flowers deep pink, good size, and free bloomer; perfectly double, with long, slender stems. Blooms early; vigorous grower, and is altogether a grand variety.

John Lane.—A magnificent pink ball in appearance; color pretty rose pink with peach shading, centre petals tipped with gold; flowers borne erect on long stiff stems; splendid for cut flowers and valuable every way.

James R. Pitcher.—Fine, reflexed Japanese flowers, very full and of great depth; color light delicate blush, passing to pure white; highly perfumed, very sweet and entirely different from the ordinary Chrysanthemum odor.

Jessica.—It is the earliest large white in existence, flowering by the 9th of October; flowers average 6 inches in diameter, and when grown to a single flower, 10 inches.

Mrs. Thos. A. Edison.—Very delicate rose pink; incurved flower, with compact centre.

Miss Mary Weightman.—Fine, large, loose, feathery flowers, sometimes 6 inches across; very full and exceedingly handsome; color rich chrome yellow, a delicious shade; valuable for all purposes.

Mrs. Maria Simpson.—An incurving Japanese of the largest size; petals broad and incurving, shows no centre; fine chrome yellow. Silver medal, Philadelphia.

Mandarin.—Extra-large, flame-colored flowers, with irregular and artistic pink markings; unique, showy and distinct.



CHRYSANTHEMUM ADA SPAULDING.

Mrs. Richard Elliott (Gold).—One of the best for cut flowers; long, narrow florets drooping from the centre; color bright yellow; very pretty and distinct.

Prince Kamoutska.—Immense flowers; solid, round and full; color rich old gold, centre shaded lurid crimson; very handsome; exceedingly showy and valuable; good grower and tremendous bloomer; flowers last a long time; one of the very best.

Robert S. Brown.—Magnificent dark crimson flowers, immense size, splendid form; intensely bright and attractive; a good steady grower and profuse bloomer.

Rose Queen.—An early and profuse bloomer; extra-large, round, full flowers, measuring 4 to 5 inches across; petals curiously quilled for half their length and then flattened out; color clear rosy amaranth, passing to rich pink; very bright and handsome; one of the best.

Thomas Cartledge.—This splendid variety is a general favorite. Extra-large chrome yellow blooms; very fine.

Price, 10 cents each; 6 for 55 cents; 12 for \$1.05; the collection of 29 varieties for \$2.30.

Ever-blooming Carnation Pinks.

Carnations are the incarnation of all that is chaste, elegant, delicate, fragrant and beautiful; they are cultivated extensively everywhere, and continue to increase in general esteem. The many new and improved types developed continually within the past several years has tended to awaken and foster the liveliest interest and enthusiasm in their culture. Few other flowering plants present such an array of intense and gorgeous coloring, beauty of form and exquisite fragrance as the Carnation. They are not entirely hardy and, therefore, at the approach of cold weather should be transferred from the open ground to pots or boxes; and if given comfortable quarters within doors will continue in bloom indefinitely. Upon the return of Spring they may again be transplanted outside. The varieties which we catalogue have been selected as representing the *ne plus ultra* sorts in demand at the present day.

Four Splendid New Carnations.

Aurora.

This splendid new variety originated here in Chester county, and is without question the finest pink Carnation ever introduced. Aurora is a vigorous and healthy grower, very compact, and an unusually free, early and continuous bloomer. The profusion of bloom is a strong point in favor of Aurora. The flowers are very large, open well, thoroughly well formed and are supported by stiff, upright stems. The individual flowers in color are clean, pure pink, and their superb fragrance is perhaps unequaled by any Carnation of its color. It has already won the Ladenburg Cup in open competition at the Madison Square Garden, New York city, as the finest pink variety (see cut). 30 cts. each; 4 for \$1.

Grace Battles.

This new variety originated with Mr. Edwin Lonsdale, President of the American Carnation Society, and is the first Seeding Carnation ever offered the trade by him. He says of it: "Grace Battles is a delicate and beautiful pink, fragrant, with broad petals, without any tendency to either incurve or recurve, not very double, but sufficiently so for all practical purposes. Very free blooming, requires pinching back in Summertime more frequently than any other variety that has come under my notice." The plant is of medium growth, while the stems are long and erect; a continuous bloomer. The flowers are large and the calyx entire. Grace Battles was awarded a Silver Medal by the Pennsylvania Horticultural Society, November 10, 1891. 30 cts. each; 4 for \$1.

Governor Russell.

The color is a pure white, and the variety an unusually vigorous and free grower and a constant and prolific bloomer. The flowers are borne on long, erect, stiff stems and are exceedingly fragrant. The calyx is non-bursting; a remarkably long keeper; endorsed by the trade generally as being one of the most valuable sorts of recent introduction. Very promising, and we bespeak for it a general popularity after its merits become better known, and have no hesitancy in recommending it, feeling that it will give general satisfaction to our customers. 30 cts. each; 4 for \$1.

Thomas Cartledge.

A pure shade of carmine, a little darker than Tidal Wave, but excelling that popular variety in being stronger in growth, flowers larger and much fuller in the centre, while the stems are long and erect. Comes into bloom early and is extremely prolific. Deserving of the first place among Carnations of this color. 30 cts. each; 4 for \$1.

The set of 4 New Carnations for \$1.



NEW CARNATION PINK AURORA.

Standard Carnations for General Planting.

American Flag.—An immense double and solid Japanese variety, of most novel and striking effect. Color silvery rose, each petal regularly lined and striped with darkest crimson. 20 cts. each.

Crimson Coronet (New).—A very vigorous grower that bears lifting better than any other crimson variety. Comes into flower quickly and is very productive. Flowers clear, pure crimson, well fringed and borne on long stiff stems. 20 cts. each.

Daybreak.—A beautiful light pink, with finely formed flowers, good stem, and a free and early bloomer. In growth it is healthy and vigorous, in fact, a strictly first-class Carnation in every respect. 15 cts. each.

Edna Craig (New).—A very pretty light pink, with an unusually large flower on a long and strong stem, being held well erect. The calyx does not burst, and it is an early and

continuous bloomer with a good healthy growth. 20 cts. each.

Emily Pierson.—A decided improvement over all other known varieties. A very sturdy, compact grower, producing large, full, flashing scarlet flowers on stiff, erect stems; delightfully fragrant. We predict a great run of popularity for this new sort. 20 cts. each.

Fred Creighton.—This variety comes to us very highly recommended. A strong, compact grower, bearing lovely delicate pink flowers of good form and substance on long, erect stems; never bursts. 15 cts. each.

Fred Dorner.—Bright, deep scarlet; a most perfect color, soft yet brilliant. The flower is of the largest size, with outer petals of extra weight; perfectly double, centre petals upright, nicely fringed and sweet. It is a strong, free grower and very abundant in bloom. 15 cts. each.

Golden Gate.—This is undoubtedly the finest pure yellow

Standard Carnations for General Planting (Continued).



LIZZIE M'GOWAN (NO. 1). AMERICAN FLAG (NO. 2).

low Carnation Pink yet produced. It is a seedling of Hinzey's White fertilized with Field of Gold. The plant is a vigorous, healthy grower, of rather dwarf habit, blooms quickly and profusely through the season; the color is pure golden yellow, without stripe or variation of any kind. The flowers are elegantly formed, very full and beautifully fringed; quite fragrant. The best yellow for general planting (see cut). 20 cts. each.

Golden Triumph.—This superb Carnation originated in Massachusetts, and is noted for its remarkable beauty and the very large size of its flowers. The color is deep rich canary yellow, very handsome and attractive. The plant is a strong, stocky grower, of medium height, and a true perpetual bloomer, producing a great abundance of fine, perfect flowers all through the season. 25 cts. each.

Grace Darling (New).—This grand new Carnation has taken the highest premium and certificates of merit at Boston, New York, Philadelphia and Baltimore, and, we believe, stands without a peer among pink Carnations. The color is a lovely shade of peach blossom, deepest in centre, and having a peculiar luxurious burnished appearance, very difficult to describe but superbly beautiful. The plant is a healthy, vigorous grower. 25 cts. each.

J. R. Freeman.—This is a grand Winter bloomer; color rich cardinal crimson; remarkably striking and handsome, and delightfully clove scented; the plant is a strong, upright grower; flowers on long stems, full and double, elegantly fringed; does not burst; constant and profuse bloomer; one of the newest and best for all purposes. 15 cts. each.

Lizzie McGowan.—Color pure paper white; petals crisp and lasting; close-jointed wiry stems, with very large, regular-formed flowers, almost like Roses; a strong grower, very free flowering; valuable all the year around; very popular (see cut). 15 cts. each.

L. L. Lamborn.—A splendid pure white Carnation; extra-large, full, perfect flowers; grows on long stems and

unsurpassed by any in perfection of bloom; dwarf, compact grower, excellent for growing in pots or open ground. 15 cts. each.

Mrs. Ferdinand Mangold (New).—Salmon pink, robust grower, stems long and erect. 15 cts. each.

Mrs. Fisher.—A standard variety; flowers are large, finely constructed, purest white in color, and produced in wonderful profusion. 15 cts. each.

Nancy Hanks (New).—A clear, pure Grace Wilder pink in color, but of much stronger growth than that variety. Very attractive, and the winner of several awards where exhibited. Scarce. 20 cts. each.

Portia.—Brilliant scarlet. In richness of color, profusion of bloom, vigor and growth, and every essential of a first-class Carnation, this variety stands unequalled. 15c. each.

Puritan.—This beautiful Carnation is an early and continuous bloomer, of strong and healthy growth, and bears large, perfect flowers, of fine form and fragrance. A desirable quality which makes

Puritan preëminently valuable is the remarkable substance of its flowers, which are the most lasting of all Carnations, retaining their form and fragrance for a week to ten days after cutting. 20 cts. each.

Silver Spray.—This is a grand, pure white, early, free-flowering Carnation, of healthy, vigorous growth; makes fine bushy plants and bears an abundance of flowers on long stems; never bursts; petals finely fringed, and very fragrant; an excellent variety. 15 cts. each.

Complete Set of 19 Choice Ever-blooming Carnation Pinks offered herein for only \$2.75.

NEW CARNATION PINK
"GOLDEN GATE."

Hardy Flowering Pinks.

Unsurpassed for Borders, Bedding and Edging.

Hardy Pinks stand to-day without a peer in the field of hardy blooming plants. We do not know of any other class of plants that possess as many points of genuine merit and superior qualities, hence we call particular attention to their adaptability for bordering, bedding, etc., and strongly urge their more general planting, knowing full well that they will greatly please and produce most satisfactory results. The varieties offered and described below are entirely distinct from any others produced from seed, as these varieties but rarely seed; their profusion of bloom is something remarkable, single clumps bearing 100 to 150,000 blooms, embracing a great variation of color; flowers perfectly double, deliciously sweet scented and of good substance. One of the most distinct and salient features of Hardy Pinks is their foliage, which does not change in Autumn, but remains evergreen throughout the Winter in open ground, making them extremely valuable for outdoor culture. Habit of growth vigorous and very compact.

New Hardy Flowering Pink Her Majesty.

See Illustration front Cover.

Our stock of this splendid New Pink, which originated in England, was secured direct from the originator, and we offer it this season for the first time, with absolute confidence, as the best hardy Pink of its color of recent introduction. A compact and healthy grower with beautiful and distinct foliage of a charming Nile-green color which retains its attractive evergreen appearance throughout the Winter, whether planted in open ground outdoors or grown for house culture. Flowers a lovely clear white in color, very double, and produced on long, stiff stems, exhaling an exquisite clove-scented fragrance; rivaling the finest Carnations in size and substance; very prolific bloomer, producing immense masses of flowers in latter part of May and early in June. A striking contrast can be had by bunching flowers of *Her Majesty* with *Emperor*. 20 cts. each; 3 for 50 cts.; 7 for \$1.

New Hardy Flowering Carnation Emperor.

One of the finest and most valuable of its class ever introduced. In flowers, foliage and fragrance it closely resembles the finest varieties of Carnations; it is a true perpetual bloomer, and commences blooming the first year of planting, flowering constantly all through the season, from June to December. The flowers are dark, rich scarlet, elegantly fringed and delightfully clove-scented; the flower stalks are strong and erect, requiring no support whatever; this feature will strongly commend the *EMPEROR*. The plant is entirely hardy in all ordinary situations, needs no protection, and is sure to bloom continuously all through the season. It is largely planted by those who know its value. 20 cts. each; 2 for 40 cts.; 5 for \$1.



ALBA FIMBRIATA.

Alba Fimbriata (White-Fringed Pink).—A beautiful white garden Pink, elegantly fringed; clove-scented; very double; blooms profusely; perfectly hardy, needs no protection in Winter; very pretty, compact habit; nice for edging or border. 15 cts. each; 4 for 50 cts.; 9 for \$1.

Alfred Harrington.—Elegant compact plant, handsome foliage and free bloomer; flowers perfectly double; color, rich maroon, blotched with white. A splendid sort. 15 cts. each; 4 for 50 cts.; 9 for \$1.

Gertrude.—One of the best. Very distinct and extremely popular. Flowers a lovely rosy carmine, veined with silvery white and very sweet scented. Fine for edging. 15 cts. each; 4 for 50 cts.; 9 for \$1.

Juliet.—This charming variety is a very distinct type; the blooms are produced in the greatest profusion, and emit a strong clove-scented aroma; color cherry red, variegated pink and white. 15 cts. each; 4 for 50 cts.; 9 for \$1.

Louis Chretien.—A fine variety, very sweet scented; white flowers, delicately tinted with rose. 15 cts. each, 4 for 50 cts.; 9 for \$1.

Mrs. Simpkins.—A variety that will greatly please; strong, healthy grower, with the prettiest of foliage; free and profuse bloomer, bearing large, perfectly double, pure white flowers which emit a delightful odor. 15 cts. each; 4 for 50 cts.; 9 for \$1.

Snow.—Strongly resembles Mrs. Simpkins; habit of growth vigorous and compact, producing pure white flowers of large size; very sweet scented. Particularly valuable for edging with Emperor; makes an attractive combination. 15 cts. each; 4 for 50 cts.; 9 for \$1.

Special Offer.—We will send postpaid by Mail one each of the beautiful Hardy Pinks described above, including the grand new variety *HER MAJESTY*, 9 in all, for \$1.25; without *HER MAJESTY*, 8 in all, for \$1.



NEW HARDY CARNATION EMPEROR.



NEW CHINESE WHITE WISTARIA.

somest Wistaria now in cultivation; produces a profusion of splendid large racemes of double flowers, exquisitely fragrant; color deep shining purple. Price, 75 cts.

Chinese Blue Wistaria.—One of the most beautiful of all Wistarias; a vigorous strong-growing vine, producing in early Summer a great profusion of large clusters of lovely, rich, violet-blue flowers, deliciously sweet and exceedingly handsome. One of the very best climbing vines for verandas, balconies, second-floor fronts, etc. Price, 25 cts.; with New Chinese White above, 2 for 50 cts. and 75 cts.

Wistaria America Blue (*Frutescens*).

An elegant climbing vine, hardy and vigorous, and blooms later than the other varieties; pretty violet-purple flowers, borne in compact clusters and very fragrant. 25 cts. each; 5 for \$1.

Wistaria Magnifica.

Truly a grand variety and well worthy of its name, beautiful and distinct. **The finest Wistaria of its color now known.** Extremely vigorous, growing 30 to 40 feet in one season when well established. The flowers are pale lilac, and the immense clusters of drooping racemes, which measure 12 to 18 inches in length, emit a deliciously fragrant odor. 20 cts. each; 3 for 50 cts.; 6 for \$1.

Special Offer.—The complete collection of 6 Grand Wistarias offered on this page for \$2, postpaid; or largest plants, by Express, 6 for \$3.

Wistarias.

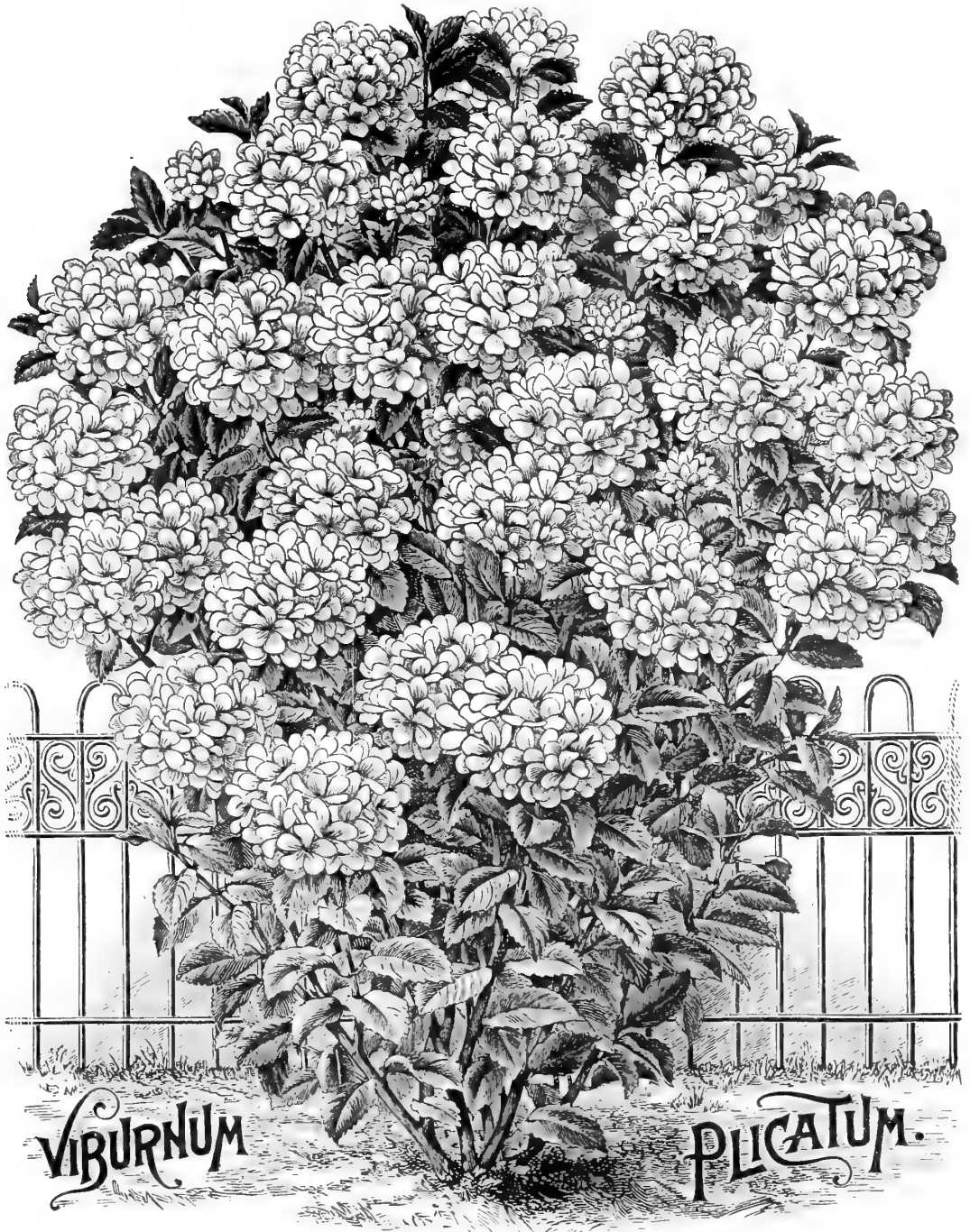
For training over buildings, piazzas, verandas or trellises, the Wistaria is of superior excellence, and the decorative features which their long, graceful, pendent blossoms afford, particularly pleasing and effective. The foliage is exceedingly rich and attractive and not too dense—half concealing and half revealing the object which it covers, which feature admits of a fine artistic effect of detail. The different varieties are entirely hardy, rapid growers and easy to cultivate. They may be trained to a shrub form of habit by attention to pruning by cutting away the new growth for several seasons. The illustration given will convey an idea of the possibilities in the way of decoration which these superb plants offer and their general appearance. Our stock is of the best and consists of strong healthy plants of the finest varieties in cultivation.

New Chinese White Wistaria.

Plant Wistarias whenever you want a good tall-growing vine to shelter high porches or second-floor fronts. It grows strong and high, makes a pretty leafy screen, not too dense, and is loaded with bloom in the early Spring, just when you seem to need flowers and shade most. There are several varieties of Wistarias; this is the finest of all; immense clusters; pure white flowers, very sweet; extra-fine plants, grown in pots; sure to bloom the first season. Price, 35 and 60 cts. each; latter should go by Express when convenient, or, if by Mail, must be cut back. The most beautiful effect is produced by planting the New Chinese White with either of the rich Violet Blues described below.

Chinese New Double Purple Wistaria.

We offered this magnificent new variety for the first two seasons ago. It is entirely distinct, and the hand-

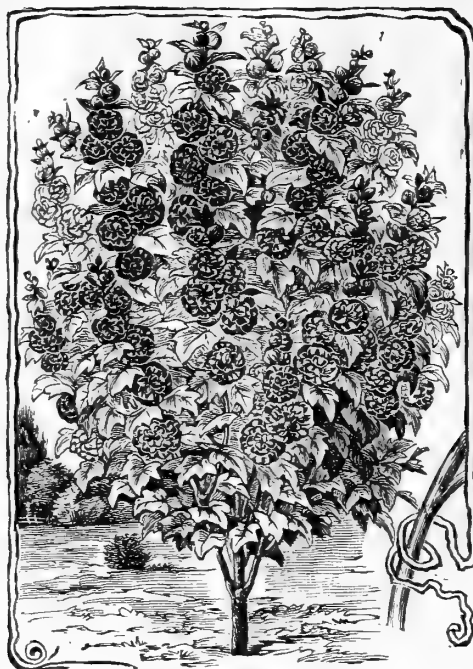


New Double, White Japan Snowball.

This grand New Double White Japan Snowball is undoubtedly one of the most superb hardy flowering Shrubs ever introduced; it blooms in June, when the whole bush is completely covered and loaded down with great compact balls of pure white double flowers, like Miniature Roses. These magnificent balls of flowers are borne in such great profusion that they almost completely hide the leaves and branches, and the whole bush appears one dense mass of bloom; the tree is of erect bushy growth, with deep glossy green leaves having a peculiar crimped and crinkled appearance; grows 6 to 8 feet high, and is entirely hardy, needing no protection of any kind. We have grown it for a long time, but have only lately suc-

ceeded in raising a large stock. Our stock this year is large and finely grown, and our artist has made a fine illustration, which, though not nearly as handsome as the plant itself, gives some idea of its wonderful beauty. We can cordially recommend it as one of the very best Hardy Ornamental Flowering Shrubs for dooryard, lawn, and park planting; it is also very suitable for cemeteries, as it is vigorous and hardy, and sure to bloom, and being quite scarce and rare, it always attracts a great deal of attention wherever seen. It is one of the things you don't want to miss getting, and ours is the true genuine variety, propagated from large old blooming plants here on our own grounds. Fine plants, 30 cts. each; 4 for \$1.

Althæas (Rose of Sharon).



NEW BANNER ALTHÆA.



THESE beautiful flowering shrubs are always satisfactory, and are deserving of more general planting. They require but little attention after once planted and respond readily to pruning and training and bloom profusely the first season; as the flowers are produced on the young wood, the plants can be trimmed at any time in Winter or Spring, thereby increasing the size of the bloom. This class embraces many distinct double varieties that produce flowers of various brilliant and striking colors. Especially valuable, as their profusion of flowers at a season when few other shrubs are in bloom is a distinct feature, making them very desirable. The plants have dark-green foliage; are of regular, compact and vigorous growth; of the easiest cultivation, thriving in almost any soil or situation, and are hardy. They make fine ORNAMENTAL HEDGES, growing to a uniform size. We have an enormous stock of Althæas in selected hedge plants, 5 years old, strong, 4 to 5 feet in height. Prices furnished upon application.

Alba Plena.

A good and reliable white Althæa; splendid grower, with large double pure white flowers; petals beautifully blotched at the base with rich rose. 15 cts. each; larger size, 20 cts.

Buist's Variegated Leaved.

This is one of the best variegated shrubs grown; regular and compact grower; the foliage is very unique and beautiful, leaves green, broadly margined with silvery white, making a striking contrast; flowers of large size, double, and a deep reddish brown in color. 20 cts. each; larger size, 25 cts.

New Banner. (See Cut.)

This novel and distinct variety of Althæa originated with us and is the most beautiful variety ever introduced. It is of erect habit and very vigorous growth. The flowers are as large as average Roses, and always open well and are produced in immense numbers, entirely double; color clear rosy pink, distinctly striped with rich crimson. It blooms the season it is planted, and will increase in size and beauty for a lifetime and produce its crop of beautiful flowers annually; very desirable for dooryard, lawn or park planting. 30 cts. each; larger size, 40 cts.

Blanche.

One of our own seedlings, originated on our grounds and selected from a stock of ten thousand. The flowers of this new variety are larger than those of the parent, the Double White Althæa, better substance and more double. This is the nearest pure white of any double variety grown. 25 cts. each; larger size, 35 cts.

Double Purple.

This is one of the best of the family; an erect and vigorous grower, free bloomer, flowers perfectly double; color deep reddish purple; opens well. 15 cts. each; larger size, 20 cts.

Double Violet.

A fine border plant; flowers large, double; color reddish violet; a very popular variety. 15 cts. each; larger size, 20 cts.

Totus Albus.

Moderate grower, free bloomer; flowers single, pure white and of good substance. The finest single White Althæa. 25 cts. each; larger size, 35 cts.

SPECIAL OFFER.—We will send by Mail, postpaid, one each of the 7 beautiful Althæas described above for \$1.25; larger size, by Express only, \$1.50.

Choice Hardy Shrubs and Plants.

The different varieties contained in the following lists of Flowering Shrubs, Vines and Grasses are commonly recognized as being superior for purposes of general planting. Our stock of them consists of clean, strong, healthy, field-grown plants, sure to succeed well in different sections of the country. Our liberal prices place them within the reach of all.

Hardy Shrubs.

Berberis Thunbergii.—A new and handsome ornamental shrub, very desirable for lawn and garden; grows 3 to 4 feet high, regular, symmetrical form; leaves beautiful, rich green, small and perfectly shaped; flowers a delicate shade of coppery yellow, borne in great profusion, after which it is loaded with the most beautiful brilliant red berries; these remain on the bush late into the Winter, giving it a bright and pleasing appearance; entirely hardy. 25 cts. each; 3 for 60 cts.

Calycanthus, Florida.—This beautiful sweet-scented shrub is very widely known; flowers purple, quite double and borne in profusion during the entire season. 15 cts. each; larger size, 20 cts.

Cydonia Japonica.—This is one of the most satisfactory of shrubs; foliage and growth resemble Snow White; flowers beautiful bright crimson and of good substance. 15 cts. each; larger size, 20 cts.

Deutzia Crenata.—Strong, stately grower; attains the height of 4 to 6 feet; flowers white, tinged pink on outside of petals; very double and full; borne in the greatest profusion during June. 15 cts. each; larger size, 20 cts.

Deutzia, Pride of Rochester.—Resembles Crenata, except that the flowers are pure white, with a faint shade of rose on outside of petals. 15 cts. each; larger size, 20 cts.

Deutzia Gracilis.—Dwarf, compact form, not exceeding 2 to 2½ feet in height; flowers pure white, bell-shaped; branches gracefully drooping, loaded with magnificent snow-white bells. 15 cts. each; larger size, 20 cts.

Hibiscus.—The flowers are produced in great profusion; they are somewhat cup-shaped and of immense size, frequently measuring 6 to 8 inches in diameter; the colors range from pure white through all shades of blush and pink to bright rosy crimson. They bloom during July and August, and continue in bloom a long time; forms large clumps, 3 to 4 feet high, and nearly as wide. Strong roots, 20 cts. each; 3 for 50 cts.

Lilac Persian.—This grand Lilac blooms in early June; flowers beautiful deep purple, and borne in profusion, hanging in the most graceful and lovely loose panicles; is truly a rare sight wherever grown; flowers very fragrant, filling the air with its delicious aroma; leaves rich, dark green, rather small and delicately shaded; habit of growth very neat, compact and perfectly hardy in any locality. 20 cts. each; larger size, 30 cts.

Mock Orange, Syringa.—A rapid-growing, medium-sized shrub, with very fragrant white flowers. 20 cts. each.

Spiraea Callosa Rubra.—A fine, bushy, compact shrub, growing 3 to 4 feet high, bearing a profusion of deep rosy-red flowers in large flat clusters. 15 cts. each; larger size, 20 cts.

Spiraea Prunifolia (Bridal Wreath).—Very beautiful; flowers pure white and perfectly double like little Daisies. 15 cts. each; larger size, 20 cts.

Spiraea Van Houtti.—The bushes form fine, compact clumps, about as broad as they are high; generally 4 or 5 feet; the pure white flowers are borne in such masses that they form great plumes, which the long, slender branches allow to droop gracefully. 20 cts. each.

Porsythia Suspensa.—A fine hardy shrub of weeping or pendulous habit; glossy, deep green leaves, and bright yellow flowers; blooms early in Spring. 15 cts. each; larger size, 20 cts.

Porsythia Viridissima.—Height 3 to 4 feet; beautiful, bright yellow, bell-shaped flowers; blooms profusely very early in Spring; splendid. 15 cts. each; larger size, 20 cts.

Weigela Variegated Leaf.—Deep green leaves, with a broad margin of distinctly defined pure white around each; flowers beautiful clear blush. 15 cts. each; larger size, 20 cts.

Weigela Candida.—New and fine; pure snow-white flowers, borne in great profusion. 15 cts. each; larger size, 20 cts.

Yucca Filamentosa.—The flower stalk is from 2 to 4 feet high, and rises from the centre; it bears a profusion of creamy-white bell-shaped flowers; very beautiful. 15 cts. each; larger size, 20 cts.

Set of 17 Hardy Shrubs offered above for \$1.80; Set in larger size, \$2.40.

Hardy Climbing Vines.

Ampelopsis Quinquefolia, American Ivy or Virginia Creeper.—A strong, rapid grower, clinging firmly to stone, brick, or wooden walls without support; suitable also for verandas, porches, trunks of trees, etc.; large, dark green foliage, changing in Autumn to bright crimson. 15 cts. each; 8 for \$1; larger size, 20 cts. each; 6 for \$1.

Akebia Quinata—Japan Akebia.—A new twining climber, suitable for pillar or trellis, handsome and distinct foliage, and chocolate-colored, fragrant flowers; very desirable. 15 cts. each; larger size, 20 cts.

Bignonia Grandiflora—Trumpet Creeper.—A hardy, fast grower, suitable for covering dead walls, back buildings, fences, etc.; produces in August large, orange-red, trumpet-shaped flowers in clusters; very distinct. 15 cts. each; larger size, 20 cts.

Chinese Sweet-scented Honeysuckle.—A fine variety, of vigorous growth; white and yellow flowers; a very fragrant and constant bloomer. 15 cts. each; larger size, 20 cts.

Evergreen Sweet-scented Honeysuckle.—A hardy, vigorous grower; blooms nearly all the season; deliciously fragrant; flowers buff, yellow and white; very desirable for veranda and trellis work. 15 cts. each; larger size, 20 cts.

European Sweet-scented (Belgian) Honeysuckle.—A fine, hardy grower; flowers large and exceedingly sweet; color buff yellow and red; a constant bloomer; one of the finest Honeysuckles; suitable for trellis or pillar. 15 cts. each; larger size, 20 cts.

New Halliana Honeysuckle.—A new variety introduced from Japan, and considered a great acquisition; it is evergreen and a constant bloomer; flowers pure white, changing to yellow; very fragrant; good for trellis or pillar; one of the very best varieties for all purposes. 15 cts. each; larger size, 20 cts.

Red Coral Honeysuckle.—A hardy, rapid grower, suitable for rock-work, etc.; bright red, trumpet-shaped flowers. 15 cts. each; larger size, 20 cts.

English Ivy.—A splendid evergreen climber, with dark, glossy green leaves; clings firmly to stone or brick walls, without trellis or support, covering them closely with its splendid foliage; very desirable. 15 cts.; larger size, 20 cts.

Set of 9 Hardy Climbing Vines offered above for \$1.10; Largest, \$1.50.

Ornamental Grasses.

Eulalia Gracillima Univittata.—This grand new variety of Eulalia forms exceedingly handsome clumps 4 to 5 feet high, which are hardy in all parts of the country. The graceful, reed-like foliage is beautiful shining green, with midrib of silvery white. We strongly recommend this superb new ornamental plant. 30 cts. each; 6 for \$1.50; 12 for \$3.

Eulalia Japonica Zebrina.—This beautiful ornamental grass is one of the finest plants for lawns. It grows 4 to 5 feet high, is perfectly hardy, needs no protection, and improves with age. The leaves are deep green, STRIPED CROSSWISE WITH BROAD BARS OF PURE WHITE. Our plants are propagated from the root, and therefore more valuable than cheap seedlings which do not come true. Strong plants, 25 cts. each; 2 for 40 cts.; \$2.25 per doz.

Eulalia Japonica Variegata.—An older variety than Zebrina, but equally valuable; LEAVES STRIPED LENGTHWISE; FINE CREAMY WHITE AND BRIGHT GREEN. The plumes of both the Eulalias make pretty parlor ornaments. 25 cts. each; 2 for 40 cts.; \$2.25 per doz.

Erianthus Ravenna.—A perfectly hardy ORNAMENTAL GRASS, throwing up splendid flower stalks, 8 to 10 feet high, the first season. It bears beautiful feather-like plumes, highly valued for parlor ornaments; it is a striking and handsome lawn plant. 20 cts. each; \$2 per doz.

Special Offer.—We will send the three Eulalias and one Erianthus—4 for 75 cts.

QUALITY instead of Quantity is the distinguishing feature of our **ROSE OFFERS.**

The Choicest Hardy Perennials,



DAHLIA SUNFLOWER.

good substance that they keep a long time after being cut, and are greatly admired. It blooms in July and August (the first season), and is altogether one of the most striking and handsome flowers of its season. It is moderately hardy, but should have a light covering of leaves or straw during Winter in cold localities. It ranks with hardy Shrubs, and is undoubtedly one of the most showy and handsome plants recently introduced. 20 cts. each; 3 for 50 cts.; \$2 per doz.

New Hardy Hibiscus

Crimson Eye.

After eight years of careful trial and selection by the originator, this grand hardy Hibiscus is the result, and was offered last year for the first time and immediately met with hearty public approval. It is entirely safe to say that it is undoubtedly one of the most satisfactory and valuable of the hardy flowering Shrubs. It blooms the first and every year; the top dies down in Winter, but sends up a strong new growth every Spring, which is crowned with magnificent blooms in August. The stems and wood are deep red, and the foliage is beautifully veined and tinged with red; the flowers are immense, with broad flat petals, making each flower as full and round as a large-sized dinner plate. The color is a clear snow white, with an intensely brilliant crimson spot at the base of each petal, making a crimson eye two or three inches in the centre of an immense white flower.

Our illustration of a single bloom, greatly reduced, will give a faint idea of the striking beauty of this distinct acquisition. The plant is healthy and vigorous, grows well in ordinary soil, entirely hardy, needs no protection in Winter, and increases in size and beauty year after year. 25 cts. each; 3 for 60 cts.



HIBISCUS CRIMSON EYE.

We ask special attention to our offering of the choicest specialties in Hardy Perennials. The genuine value of this class of plants for permanent ornamentation is gradually being found out, and they are becoming very popular; in fact, quite the fashion with the most fastidious and careful planters. All the varieties we offer are entirely hardy, and no more trouble to grow than hardy shrubbery. In the extreme Northern States and Canada some protection in Winter will be an advantage.

Astilbe (*Spiræa*) Japonica.

Sometimes called *Hoteia Japonica*. A handsome, hardy, herbaceous plant, invaluable in many respects; especially desirable as a border plant for outdoor planting, and greatly esteemed and cultivated by many for Winter forcing. Light and feathery panicles of fragrant white flowers; splendid for bouquet purposes.

Blooms in early Spring and is altogether a charming plant. 20 cts. each; 3 for 50 cts.; \$2 per dozen.

Dahlia Sunflower.

(*Helianthus Multiflora Plena*.) We present a fine illustration of a single flower of this handsome plant which is now attracting great attention. There is nothing equal to it among yellow flowers. It grows from 3 to 4 feet high, is of bushy and compact habit, and is covered from top to bottom with splendid golden-yellow flowers, the size of Dahlias, and perfectly double. They have strong, woody stems, and are of such



Our Magnificent Gladiolus.

Gladiolus are the gay bright flowers of Summer days. In point of popularity they occupy the same place in Summer Flowering Bulbs that Tulips do among Fall Bulbs. Few persons are aware how late in the season Gladiolus Bulbs can be planted. We grew, the past season, a large plantation of these lovely flowers which were planted July 15, commenced blooming latter part of September, and were a perfect mass of bloom until November. They are **Easy to Grow and Sure to Bloom.** Plant (after danger of freezing is past) in ordinary soil, 3 inches deep, and 6 or 8 inches apart, and they will soon throw up tall spikes of beautiful flowers of the most brilliant and gorgeous colors, crimson, scarlet, purple, orange, white, etc., with all imaginable shades and markings. They are superbly beautiful, and attract more attention than any other flower of their season. By planting at two or three different times you can have a constant succession of bloom. After the bloom is over, and before cold weather, the bulbs should be lifted and stored in a dry place, secure from frost, where they will keep nicely and be ready to plant again next season.

Our New American Seedling Gladiolus.

This choice strain is the product of all the finest varieties now in cultivation, and we believe them to be **THE MOST CELEBRATED STRAIN OF GLADIOLUS IN EXISTENCE;** being grown in this country, they are perfectly acclimated and *each bulb will bloom*, after planting, from 10 weeks to 3 months; the season of bloom can be prolonged by planting bulbs at different times, from early Spring until middle of July. Price, finest selected seedlings, strong bulbs, warranted to bloom, free by Mail, 10 cts. each; 3 for 25 cts.; 6 for 40 cts.; 75 cts. per doz. By Express, 25 for \$1.25; 50 for \$2.50; \$5 per 100.

Our Big 50 Cent Set, 10 Splendid Named Gladiolus.

A large stock of the following varieties allows us to make the unprecedented offer of the entire set of **Ten for 50 Cts.**; all are distinct, true to name, and each variety labeled; this set of named Gladiolus for 50 cts. is unsurpassed, and bears no comparison to any set for the money ever offered. *All labeled.*

Brenchleyensis.—The large spikes of this standard variety are flaming vermillion scarlet.

Ceres.—Large pure white, spotted with purplish rose; beautifully mottled.

Emma Thursby.—Pure white ground, well-defined carmine stripes running through lower division.

General Sheridan.—Splendid showy flowers of intense crimson, marked deep purple.

General Sherman.—Fiery crimson, dashed with glowing purple, shaded pure white; a splendid sort.

Lacandeur.—Beautiful variety; white and carmine.

Lamarck.—Cherry, tinted with orange, blotched with red; centre light, very large.

Lord Byron.—Large brilliant scarlet spikes, blotched with pure white.

Martha Washington.—Pure golden yellow, delicately tinged pale rose; stately and striking.

Shakespeare.—A very fine variety; extra-large flowers in long spikes; white, tinted carmine.

The entire Set of Ten named above for 50 Cts., Postpaid.

Lemoine's Hardy Hybrid Gladiolus.

Lemoine's splendid new hardy hybrid Gladiolus are entirely distinct from all other varieties; they are exceedingly beautiful and include shapes, colors and markings seen in no other flowers; being quite hardy, they can be left in the open ground during Winter, except in very cold localities.

Cleopatra.—Delicate lilac; lower petals gradually darker, blotched with violet; a magnificent sort. 30 cts. each.

Enfant de Nancy.—Dark red, with lower petals deep crimson; entirely new and distinct. 25 cts. each.

Incendiary.—A very striking variety; intense flaming crimson color; lower divisions covered with beautiful, velvety purple markings. 30 cts. each.

Lemoinei.—Beautiful large flowers, upper petals silvery white, finely tinged rich canary, flushed with rosy salmon; lower petals shaded and spotted violet red, finely penciled with crimson and gold. 25 cts. each.

Obelisk.—Deep solferino, with crimson spots and yellow tipped. 30 cts. each.

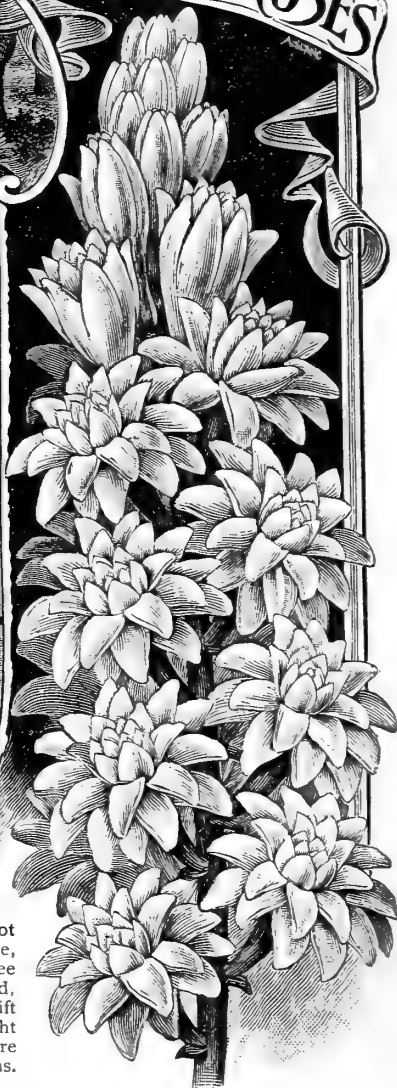
Special Offer.—For \$1 we will send by Mail, postpaid, one each of the five distinct new hybrid Gladiolus described above.

New Hardy Hybrid Gladiolus. The Finest Seedling.

Our superb mixture of Hardy Hybrid Gladiolus includes the most distinct, novel and curious of all; for vivid orchid-like coloring they have no equal; emblazoned with a combination of rare and rich shades, not found in any other varieties; they are truly wonderful. 10 cts.; 3 for 25 cts.; 6 for 40 cts.; 12 for 75 cts.



EXCELSIOR PEARL TUBEROSES



Our Famous Excelsior Pearl Tuberoses.

The Finest in Existence, all Blooming Bulbs.

Directions for Planting.—Tuberoses will not bear much cold; do not plant till ground is warm. They may be started in the house in a warm place, but care must be taken that they get no check in setting out. Plant two or three inches deep, and six to eight inches apart in the row in good warm rich ground, free from shade. If danger of frost before the flowers are done in the Fall, lift carefully with the earth on the roots and plant in pots or boxes in a warm light place, and they will continue to bloom for several weeks. Tuberose flowers are grown largely for sale, and are extensively used in all kinds of floral decorations. They are always in demand at good prices.

Dwarf Excelsior Pearl Tuberose.—A splendid new variety, the finest ever introduced. We ask attention to our engraving of a group. This new selection is greatly superior to the Common Pearl; grows about 18 inches high, blooms very early, matures perfectly; flowers pure white, large size, very double and intensely sweet. We send splendid, large, well-ripened bulbs, the finest ever grown, all sure to bloom; gives immense satisfaction every year.

Notice Prices.—Extra-fine, Large, Flowering Bulbs, Dwarf Excelsior Pearl Tuberoses, 5 cts. each; 3 for 15 cts.; 50 cts. per doz.; \$3.50 per 100.

Largest Size Selected.—Dwarf Excelsior Pearl Tuberoses, 10 cts. each; 3 for 25 cts., 6 for 50 cts.; \$1 per doz.; \$6 per 100.

Orange-Flowered Tuberose.—This is a very beautiful Tuberose, with elegant single flowers; it is considered more hardy than the double varieties, and more certain to bloom; it also blooms much earlier in the season; the flowers are pure snowy white, and very sweet, rivaling orange blossoms; strong blooming bulbs. 10 cts. each; 3 for 25 cts.; 6 for 50 cts.; \$1 per doz.

New Variegated-Leaved Tuberose.—This handsome new variety is one of the prettiest novelties yet offered; its deep-green leaves are finely edged and bordered with broad stripes of creamy white; the flowers are star-shaped, very large and of exquisite fragrance. It blooms several weeks earlier than other Tuberoses, which adds greatly to its value, and if kept in cellar over Winter, the bulbs will continue to bloom year after year. 15 cts. each; 3 for 30 cts.; 6 for 50 cts., \$1 per doz.

Two Splendid Sets of Tuberoses.

Set No. 1.—For Fifty Cents, we will send by Mail, postpaid, 10 Tuberoses, selected as follows: 6 Excelsior Pearl, 2 Orange-Flowered, and 2 New Variegated-Leaved, 10 in all, for 50 cts.

Set No. 2.—For One Dollar, we will send by Mail, postpaid, 22 Tuberoses, selected as follows: 12 Excelsior Pearl, 5 Orange-Flowered, and 5 New Variegated-Leaved, 22 in all, for \$1.



NEW IMPERIAL GERMAN PANSIES.

Our Large Flowering New Imperial German Pansies are the best in existence for general planting. They are the labor of many years' careful selection and cultivation, and the originator takes such pride in keeping his strain up to a high standard, that none of the crack strains recently offered are equal to it for general planting. The plants are entirely hardy in all ordinary situations; of fineness and compact growth; blooming profusely all through the Summer. The magnificent flowers are extra large, perfectly shaped, and embrace the rarest and most beautiful vivid colors, superbly mottled, veined, marbled and spotted on backgrounds of every shade; also striped and fancy flowers of unique beauty, and flowers with distinct eyes and contrasting rims of striking novelty. Our Imperial German Pansies will thrive splendidly with little care in almost any situation, while they richly reward the amateur who cultivates carefully and in the most approved manner. Price of the entire collection offered below, 25 varieties in all, 1 packet each, for \$1.75. This is a complete collection of Pansies, at a low price, that cannot be equalled.

The Seed We Offer is a Special Saving by the Originator.

Imperial German Splendid Mixed.—This unparalleled mixture embraces over fifty different varieties, with many more colors and markings; it is the finest mixture of Pansies ever offered for general planting. Per large pkt., 15 cts.; 2 pkts., 25 cts.; 4 pkts., 50 cts.; 10 pkts., \$1; 1/2 oz. .75 cts.; 1/4 oz., \$1.50; oz., \$5.

The following Separate Varieties of Imperial German Pansies, 10 cts. per packet.

No. 1. Improved Striped (see cut).—A fine new class, producing large, perfectly formed flowers of beautiful and exquisite coloring. This new strain is a great improvement on the Belgian.

2. Show Varieties Mixed (see cut).—A special saving from named flowers of very large size.

3. Gloriosa Perfecta, or Improved Quadricolor (see cut).—Unusually handsome flowers, of a reddish steel-blue color; pink and white edges.

4. Dark Mahogany, with White Margin.—The striking beauty of this color is particularly impressive; dark mahogany with clear-cut edge of white.

5. Dark Mahogany, with Yellow Margin.—Similar to the foregoing, but with clear yellow edge.

6. Marbled Mixed.—Beautiful colors, marbled on white, yellow and dark ground.

7. Crown Prince.—Velvety black, golden bronze face; one of the very finest and novel.

8. Silver Seam.—Dark velvet, silver edge.

9. Baron Rothschild.—A new variety of great beauty; each flower distinctly marked with large dark-brown spots.

10. Selected Odier, or Five Spotted.—A great improvement on the old Odier Pansies.

11. Fancy Varieties, Splendid Mixed Colors.

12. Golden Bronze Marbled.—Striking.

13. Snow Queen.—An extra selected strain.

14. Dr. Faust.—A splendid JET BLACK.

15. Bright Purple.—A very rich color.

16. Golden Yellow.—Very distinct.

17. Black Prince.—The finest black Pansy ever sent out; soft velvety glossy black.

18. Red Riding Hood.—Shades of brilliant red.

19. Extra Dark Blue.—One of the best.

20. Ultramarine Blue.—Improved Lord Beaconsfield.

21. Light Blue.—A beautiful color.

22. Violet, with White Border.—Exquisite.

23. Five Spotted on Red Ground.—Very showy.

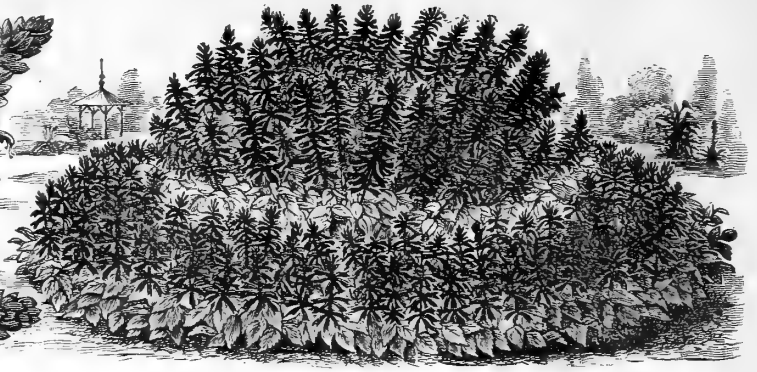
24. Five Spotted on White Ground.—Fine.

25. Large Spotted Varieties, Mixed Colors.

Special Offer.—The entire collection of New Imperial German Pansies, 25 varieties, for \$1.75.



NEW SALVIA BOUQUET.



A BED OF NEW SALVIA BOUQUET AND NANA COMPACTA.

New Salvias.

SALVIAS are particular favorites of ours; we appreciate and recognize their many strong points. Their good qualities are manifold and such as should make these handsome flowering plants extremely popular with all amateurs. They are absolutely certain to grow from seed and quickly make sturdy plants, after which they yield a wonderful profusion of bloom that lasts until severe frosts. The gorgeous brilliancy of the flowers make such a fairly lurid aspect that we think they are one of Nature's most cheerful creations. When used for single specimens, massing or bedding, they are unsurpassable and always sure to meet with unusual admiration. The engraving herewith, reproduced from Photographs taken on our special grower's trial grounds, shows their adaptability for massing and bedding. We cannot too strongly urge our friends

and customers to sow at least one packet of our New Salvia Seed. The results will be most gratifying.

New Salvia Bouquet.

Now Offered for the First Time.

We consider ourselves fortunate in having the honor of introducing this superb new acquisition; we think it will take first rank in this family, as it far surpasses anything yet seen in Salvias. The best evidence we can give of our faith in the distinctive merits of this variety is that we gladly accepted the opportunity, after seeing it in bloom, of securing the entire crop of seed from the originator, therefore have its exclusive control; it cannot be secured elsewhere. Bouquet is a rapid grower, and attains a height of three feet; it branches very freely from the ground, forming neat, compact plants of uniform height. The foliage is a beautiful shade of deep green. The flowers are miniature, being a trifle smaller than the average, and in color a deep dark scarlet—an emphatic new shade in Salvias. The individual blooms cluster closely and make dense spikes which are much larger than the ordinary Salvia spikes.

The foliage intermingles with the flower spikes—a new departure as regards flowering; this gives the plant a pleasing appearance, and makes the resemblance to a large bouquet striking. This new feature is so unique and noticeable that we consider the variety appropriately named—"Bouquet."

Full cultural directions on each packet. Per pkt., 15 cts.; 2 pkts. for 25 cts.; 4 pkts. for 50 cts.; 9 pkts. for \$1.

New Bright Scarlet.

As the name indicates, the flowers are the brightest scarlet imaginable; in size they are extra large, and perfectly double. Very profuse bloomer. Per pkt., 20 cts.; 3 pkts. for 50 cts.; 7 pkts. for \$1.

Salvia Splendens Nana Compacta.

A splendid new and distinct acquisition of this popular plant now offered for the second time, in retail packets only. We have secured our stock of this new variety direct from our special grower, and offer it with the utmost confidence as the finest type of its class ever offered, having four times the blooming capacity over the ordinary Salvia. Habit of growth very compact, branching freely and producing the greatest profusion of gorgeous miniature scarlet flowers; flower spikes very erect and all above the foliage, forming a plant two feet high and

two and a half feet in diameter. A foot high of almost solid flowers, far surpassing in beauty all other varieties of Salvias. Full cultural directions on each packet. Per pkt., 20 cts.; 3 pkts., 50 cts.

Salvia Splendens Compacta.

This is a greatly improved strain of the old sort, the plants being more compact, branching right to the ground and producing numerous spikes of vivid scarlet-crimson flowers; remains in bloom until frost. Per pkt., 20 cts.; 3 pkts., 25 cts.

Mexican Fire Plant.

(*Euphorbia heterophylla* or Annual Poinsettia.)

Also known as "Fire on the Mountain." This remarkable novelty is one of the most distinct and striking annuals sent out for a long time. The plants grow about 3 feet high, well balanced and bush-like; the smooth glossy fiddle-shaped leaves form in whorls or bracts at the end of each branch; at first light green, about Midsummer the color begins to show, and soon the entire plant is a blaze of orange, scarlet and vivid carmine and green. Water in very dry weather. Per pkt., 20 cts.; 3 pkts., 25 cts.

New Lobelia Empress Augusta.

This is the largest pure white-flowered Lobelia in cultivation; in fact, we know of no other White Lobelia from seed that produces flowers much over half the size of Empress Augusta. It is a sport from the Emperor William, and, notwithstanding that it has been selected for ten years and that even the seeds are white, it will yet throw a percentage of blue flowers, but the white flowers are so superior that we strongly recommend this new variety to our friends and customers as well worth growing. Per pkt., 15 cts.; 2 pkts. for 25 cts.

Our Standard Flower Seeds.

Below we offer an abridged list of the best Flower Seeds for general planting. Full descriptions and complete lists will be found in our New Guide, 112 pages, magnificently illustrated. If you have not a copy and desire one, ask for it when you order from this book. It is sent free. Persons ordering Flower or Vegetable Seeds to the amount of \$1 and upwards are at liberty to select in premiums at the rate of 25 cts. per dollar; fractional parts thereof not included.

	Per Pkt.		Per Pkt.		Per Pkt.
ABUTILON —Best Mixed	15	DAISY (Cont'd)—Snowball	15	PANSY (Cont'd)—Light Blue	10
AGAPANTHUS UMBELLATA	10	DAHLIA —Double, mixed	20	Lord Beaconsfield	10
ALYSSUM —Sweet	5	Single, mixed	10	Odier or Blotched	15
Little Gem	10	Zimpani	10	English Face	10
ASTER —Betteridge's Prize, mixed	5	Gracilis	15	Prince Bismarck	15
Cocardeau or Crown, mixed	10	Choicest Mixed Pompon	15	Pure Yellow	10
New Comet	10	DIANTHUS —Chinensis, mixed, fl. pl.	5	Quadricolor	15
Diamond, mixed	20	“ alba, fl. pl.	5	Silver Edge	10
Dwarf Pæony Perfection, mixed	10	Heddeiwiggii, Single, mixed	5	Snow Queen	10
Seven separate colors, each	10	“ Double, mixed	5	Striped and Mottled, mixed	10
Goliath, Mont Blanc	20	“ Alba	10	Extra Large Flowering	10
New Dwarf Bouquet, mixed	10	“ Atrosanguineus	5	Fine mixed, good quality	5
Three separate colors, each	10	Imperialis , Double, mixed	5	PRIMULA —Red	25
New Dwarf Victoria, mixed	10	Alba, fl. pl.	5	Alba Magnifica	35
New Rose, mixed	10	“ Atrosanguineus	10	Fringed, mixed	15
Queen of the Market	10	“ Carnation Striped	10	Large Flowered	25
Truffaut's Pæony Perfection, mixed	10	“ Laciniatus, Double, mixed	10	PETUNIA —New Dwarf Inimitable	10
Victoria, mixed	10	“ Crimson Bell	10	Red Star	10
Five separate colors, each	10	“ Eastern Queen	10	Superfine, mixed	10
Washington, mixed	10	“ Diadematus, Double, mixed	5	Good Mixed, Imported	5
Prince of Wales	10	Mixed, for bedding	5	PHLOX —Drummondii, mixed	5
Fine mixed, for general planting	5	ESCHSCHOLTZIA —Best, mixed	5	Five separate colors, each	5 and 10
BEGONIA —Tuberous-rooted, single	25	Mandarin	5	Grandiflora Varieties , Alba	10
“ double	25	New Double White	5	Coccinea	10
BALSAM —Double Camellia-flowered, mixed	10	Rose Cardinal	5	Carminea Alba Oculata	10
Seven separate colors, mixed	10 and 15	GAILLARDIA —Picta Lorenziana	10	Splendens	10
Choice double, mixed	15	HOLLYHOCK —Chaters Double Mixed	15	Stellata Splendens	10
CALENDULA —New Brown, marbled	10	IPOMŒA —Moon Flower	10	Quadricolor Rosea	10
“ Orange	10	LATHYRUS (Perennial Peas)—Best mixed	10	Rosemont, mixed	10
“ Oriole	10	LINARIA CYMBALARIA —Kenilworth Ivy	15	Half Dwarf Varieties, mixed	10
“ Trianon	10	LOBELIA —Erinus Compacta Alba	5	POPPY —Carnation Double Dwarf, mixed	10
Meteor	5	Crystal Palace	5	Carnation Double Pæony Flowered	5
Best Double, mixed	5	Gracilis	5	PORTULACA —Finest Single, mixed	5
COREOPSIS —New Double, mixed	10	Paxtonia	10	Single, in five separate colors, each	5
Golden Wave	10	Best mixed	5	Grandiflora Double Orange	15
CANDYTUFT —Pure White	5	MARIGOLD —The Eldorado	10	“ White	15
Rocket	5	African Varieties, mixed	5	Double Rose Flowered, mixed	10
Extra Dark Crimson	5	French Double, Tall, mixed	5	STOCKS (German, Ten Weeks)—Largest Flowering Dwarf Red	10
New Carmine	5	“ Gold Striped	5	“ “ Pure White	10
New Dwarf Hybrids	5	MIGNONETTE —Reseda Odorata	5	“ “ mixed	10
Best Mixed	5	Erfurt	15	Wall Flowered Leaved, fine mixed	10
CELOSIA —New Dwarf Queen	10	Giant White Spiral	10	Red Victoria	15
New Japanese Crimson	10	Golden Queen	5	New Giant Perfection, mixed	10
New Japanese Orange	10	New Giant Pyramidal	5	Good mixed Seed	10
Empress	10	Parson's White	5	SWEET PEAS —Scarlet striped	5
Glasgow Prize	5	New Quaker City	10	Black	5
Dwarf Varieties, mixed	5	Pure Machtet	10	Light Blue and Purple	5
CHRYSANTHEMUM —Golden Feather	10	NASTURTIUM —Tom Thumb, mixed	5	Butterfly	5
Inodorum Plenissimum	5	Cœruleum Roseum	5	Painted Lady	5
Japanese, mixed	35	Crystal Palace Gem	5	Pure White	5
Fine Varieties, mixed	5	Empress of India	10	Mixed	5
COBŒA SCANDENS	10	Golden King	5	Eckford's Mixed	10
COSMOS HYBRIDUS	10	King of 1 m Thumb	5	TROPÆOLUM —Majus, mixed	5
CYCLAMEN PERSICUM —Mixed	20	King Theodore	5	Lobbianum, mixed	10
CUPHEA PLATYCENTRA	15	Pearl	5	VERBENA —Hybrida Auricula—Flowered	20
CYPRESS VINE —Scarlet and White	10	Rose	5	Candidissima	20
Ivy-leaved	10	Ruby King	5	Scarlet Defiance	15
CARNATION —Choice Double, mixed	10	Spotted King	5	Hybrida Superfine, mixed	15
“ German “	25	Tom Thumb Beauty	5	“ Fine, mixed	10
“ Picotee “	20	Cloth of Gold	15	ZINNIA —New Pompon, mixed	10
“ Picotee, Fancy Double Mixed	35	NICOTIANA AFFINIS	10	Dwarf Snowball	10
COLEUS —Success Strain	25	OXALIS —Floribunda	10	“ Fireball	10
Mixed	10	PANSY —Giant Odier Cassiers	15	Double, mixed	10
CINERARIA —Hybrida	20	Dark Purple	10	New Giant	10
DAISY —German Double, mixed	10	Gold Margined	10		
Longfellow	10	King of the Blacks	10		

Three Grand New Pansies.

Of distinct merit; they were received with positive enthusiasm last year when offered for the first time. Our tests have proven conclusively that they are the choicest new Pansies of late introduction, and we heartily endorse them.

New Pansy Fire King.

Will satisfy all who delight in rich, deep colors; the three lower petals set off the intense deep red mahogany of the blotches on each of these petals, the perfect tone of which is brought out by the rosy red of the two upper petals. Per pkt., 10 cts.; 3 pkts. for 25 cts.

New Pansy Peacock.

A gorgeous Pansy; each petal is blotched with dark purple violet on lighter blue ground, changing to a light claret color, distinctly edged with white. Per pkt., 10 cts.; 3 pkts. for 25 cts.

New Pansy Rosy Morn.

The flowers of this lovely Pansy are of fine size, perfect form, and are borne well above the foliage. The color is exquisite rosy red, distinctly edged with white; the red in the lower petals is deep, almost to purple. Per pkt., 10 cts.; 3 pkts. for 25 cts.

Special Offer.—For 25 cts. we will send one packet each of the three grand New Pansies, Peacock, Fire King and Rosy Morn.

New Celosia Ostrich Feathered Mixed.

Is a strong, erect-growing plant and attains a height of 2½ to 3 feet. The foliage is dark brown and makes a pleasing effect against the brilliant red and deep maroon flowers. The profusion of bloom is a strong and remarkable feature; single plants producing 25 to 50 perfect plumes, averaging in length 6 to 8 inches. The quickness of growth and absolute certainty of bloom will enhance its value; plants bloom three months after sowing the seed. The unusual profusion and brilliancy of the flowers will make it preeminently the most admired of all decorative plants. Specially attractive when used in massing with "Golden Feathered" in the foreground. Full cultural directions on each packet. Red and maroon mixed. Per pkt., 15 cts.; 4 pkts. for 50 cts.; 9 pkts. for \$1.

New Celosia Golden Feathered.

This is an exact counterpart of Ostrich Feathered Mixed, and differs from it only in color of flowers, which are beautiful golden yellow. A splendid effect can be obtained by massing Golden Feathered and Ostrich Feathered Mixed. Per pkt., 15 cts.; 4 pkts. for 50 cts.; 9 pkts. for \$1.

Special Offer.—One packet each of the two varieties described above, for 25 cts.



Abridged List of Standard Vegetable Seeds.

ASPARACUS. Pkt. Oz.

Barr's Mammoth 10 25

BORECOLE OR KALE.

Dwarf German 5 10

ECC PLANT.

New York Improved 10 45

BEANS, DWARF OR BUSH.

Burpee's Saddle-back 15 60

Best of All 10 25

Golden Wax 10 25

Henderson's Bush Lima 10 35

POLE OR RUNNING.

New Willow Leaf Lima 15 75

King of the Garden Lima 15 30

Dreer's Improved Lima 10 30

White Creaseback 10 30

Lazy Wife's 15 35

BEETS.

Improved Blood 5 10

Eclipse 5 10

Early Egyptian 5 10

Edmands' Early Turnip 10 15

Long Smooth Blood Red 5 10

Lane's Improved Sugar Beet 5 10

CABBAGE.

Burpee's Surehead 10 35

Early Jersey Wakefield 10 30

Henderson's Succession 10 30

Earliest Etampes 5 20

New Early Express 10 25

Burpee's Drumhead 10 40

Superior Flat Dutch 5 20

Hard Heading Red 10 40

Early Winnigstadt 5 20

Early Summer 10 25

CARROT.

Oxheart or Guerande 10 15

Improved Long Orange 5 10

Danvers Half-long Orange 5 10

Short Horn 5 10

CAULIFLOWER.

Extra Early Erfurt 10 1.50

Veitches Autumn Giant 5 65

Our Best Early 25 1.25

CELERY.

White Plume 10 40

New Rose 10 35

Giant Pascal 15 35

Dwarf Golden Heart 5 25

CUCUMBER. Pkt. Oz.

Giant Pera 10 20

Nichols' Medium Green 5 10

London Long Green 5 10

Improved Early White Spine 5 10

Boston Pickling 5 10

SUGAR CORN.

The Cory 10 20

Stowell's Evergreen 10 20

Ne Plus Ultra 10 20

Early Minnesota 10 20

Crosby's Early 10 20

POP CORN.

Queen's Golden 10 25

LETTUCE.

California Cream Butter 10 20

Philadelphia White Cabbage 5 15

Yellow-Seeded Butter 5 15

Early Curled Simpson 5 10

Hard Head 10 25

Hanson's Improved 10 20

Gold Nugget 10 25

Denver Market 10 40

MUSK MELONS.

New Banquet 15

Emerald Gem 10 15

Hackensack 5 10

Montreal 10 15

Netted Gem 5 10

WATERMELONS.

Crawford 15

Delaware 10 15

Seminole 10 15

Green and Gold 10 15

Kolb's Gem 5 10

Mammoth Ironclad 5 10

Cuban Queen 5 10

MUSTARD.

White 5

New Chinese 5 10

PARSLEY.

Emerald 5 10

New Fern-leaved 5 10

PARSNIPS.

Long Smooth 5 10

Improved Guernsey 5 10

ONIONS. Pkt. Oz.

Mammoth Silver King 10 35

Mammoth Red Victoria 10 35

Yellow Globe Danvers 5 25

Southport Large White 10 30

Large Red Wethersfield 5 25

Earliest White Queen 5 20

Giant Yellow Rocca 10 20

Giant Red Rocca 10 20

PEAS.

Extra Early Premium Gem 10 20

Bliss's Ever-bearing 10 25

Stratagem 10 25

American Wonder 10 25

Champion of England 10 20

Laxton's Evolution 10 30

New Quantity 10 25

New Quality 10 25

McLean's Little Gem 10 20

PEPPERS.

Golden Upright 10 35

Ruby King 10 35

Large Bell 5 25

PUMPKINS.

Golden Oblong 10 20

Small Sugar 5 10

Genuine Mammoth 10 25

RADISHES.

Early Round Dark Red 5 10

Early Long Scarlet Short Top 5 10

Long White Vienna 5 10

Earliest Carmine Olive-shaped 5 10

French Breakfast 5 10

Large White Globe 5 10

SQUASHES.

Early White Bush 5 10

Fordhook 10 20

Giant Crook Neck 10 15

Hubbard 5 10

Early Orange Marrow 5 10

TOMATOES.

Extra Early Advance 10 30

Golden Queen 10 35

Turner Hybrid 10 40

Volunteer 10 30

Dwarf Champion 10 35

New Matchless 10 40

Ponderosa 10 40

TURNIPS.

Breadstone 10 25

Early White Flat Dutch 5 10

Early Red or Purple Top 5 10

White Egg 5 10

Our **Excelsior** HYBRID Strain OF SUPERB CANNAS.

WE have observed with the keenest interest the almost magical development of this majestic plant during the past few years, and the rapidity with which it has grown in popular estimation. From the old Indian Shot Plant, with its inconspicuous and commonplace blossoms, to the types of the modern Canna has been a transformation wonderful in nature and decidedly pronounced and fruitful of results. We surmise that these newer acquisitions to the lawn, the border and the piazza will be welcomed with delight by all lovers of the beautiful, who are constantly on the alert to secure new, rare and valuable novelties to still further add to the charm and beauty of their home surroundings. It is scarcely three years since the introduction of this wonderful plant has been attempted on an extensive scale; during the interval, we have been assiduously at work, nursing our handful of seedlings, experimenting and hybridizing, comparing notes with the results obtained by others laboring in the same direction, until we have succeeded in producing the five remarkable and distinct types described below. We claim that this is absolutely the finest strain of Cannas that has ever been originated, and that the several varieties are much superior in every respect to existent creations. We make this assertion boldly, fearlessly, and, we believe, truthfully; having had the best opportunities for comparisons with other sorts, but, as yet, have been unable to discover any specimens that equal them. They are the products of skilled and scientific hybridization of the best varieties obtained from time to time in Europe and America, and the results secured have more than exceeded our expectations. It is difficult for brush or language to describe the magic symphony of iridescent color which the combined association of this group presents. The foliage of all the varieties is massive and luxuriant, which in itself comprises a strikingly picturesque and decorative feature, and imparts a tropical aspect to their immediate surroundings.

~ DESCRIPTIONS ~

Golden Star.

A seedling of the well-known Star of '91; habit, dwarf and compact; rich, dark-green foliage, of tough, leathery substance; vigorous and robust grower and free bloomer. The flowers are of a deep, rich and golden yellow and are produced in massive, compact trusses, the plant, when fully matured, producing four to five of these trusses. Excellent for bedding or massing, and, because of its dwarf habit, especially desirable for a house plant. \$2.00 each.

Oriflamme.

The result of a cross between Mad. Crozy and Star of '91, resembling the former in constitution, vigor, profuseness and brilliancy of bloom; luxuriant foliage; large, handsome truss, with petals singularly and beautifully variegated, scarlet bordered with yellow; exceedingly lovely and attractive. \$2.00 each.

Orange King.

A descendant of Mad. Crozy, crossed with Nepalensis (a wild species); a superb specimen; ample foliage; large and graceful habit, sometimes attaining a height of four feet and surmounted with a gorgeous crown of pure orange-colored blossoms; extremely floriferous and a constant bloomer; a most striking figure for the yard or lawn. \$1.50 each.

Crown Jewel.

A seedling from Mad. Crozy; rich, deep yellow, evenly dotted with very small, bright scarlet points; strong and free bloomer, with large, perfectly formed trusses held well above the dark-green foliage; grows about three feet high; always in bloom and a strong, excellent variety. \$1.25 each.

Anonyma.

The resultant type of a number of careful crosses of the well-known crimson Canna, Alphonse Bouvier, with various species. We have selected six representative seedlings, differing slightly in form of flowers and manner of growth, but all possessing the rich velvety crimson and scarlet tints of Bouvier. As they differ so slightly, and in order to avoid prolixity, we have concluded to send them out all under the one name. For dazzling richness and freedom of bloom and tropical luxuriance, the strain is unequalled and sure to please the most exacting. The plants will average four feet in height and are very graceful and substantial. 75 cents each.

Miscellaneous Cannas.

MADAM CROZY.

This fine specimen still claims recognition as being one of the best; it seldom exceeds four feet in height; flowers very large, brilliant scarlet, bordered with golden yellow; can be had in bloom throughout the year. We have a large stock of this standard and popular variety, strong, pot-grown plants, ready to bloom. 25 cts. each; 5 for \$1.00.

STAR OF '91.

Very dwarf habit, and, with the exception of Golden Star, one of the best pot varieties; flowers, bright orange and scarlet, sometimes with faint yellow markings; borne in large trusses; very effective in the open ground for bordering the taller varieties. 35 cts. each; 5 for \$1.25.

CANNA FLACCIDA, the Orchid Canna.

It affords us pleasure to be able to offer this gem of native plants at a price that will place it within the reach of all. The species has been sent out heretofore in the form of roots collected in Florida, which possessed little vitality and which were almost sure to decay. The Canna Flaccida is an extremely vigorous grower, attaining a height of about four and one-half feet; foliage, rich light green; flowers, very large, averaging five inches in diameter, beautifully crimped and feathered, resembling a gigantic orchid; color, a beautiful shade of lemon yellow; blooms early and with great freedom. We offer fine, healthy, growing plants of this fine Canna. 25 cts. each; 5 for \$1.00.

===== SPECIAL OFFER =====

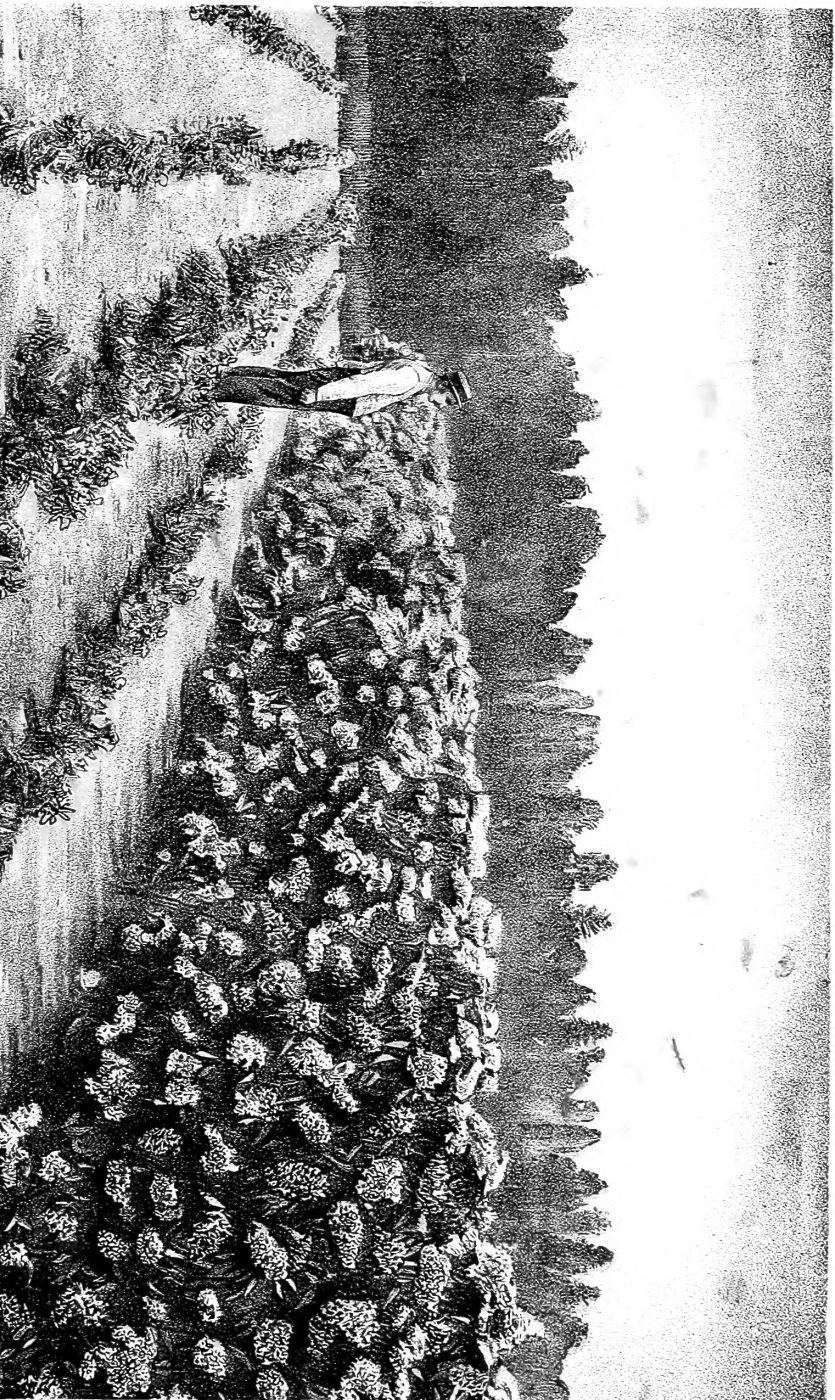
For \$5.00 we shall send by mail, postpaid, the entire collection, consisting of EIGHT Superb Cannas described on this page. This offer is unprecedented, as the collection, in point of genuine merit and distinct novelty, is unsurpassed and cannot be duplicated elsewhere.

Note.—These plants will be ready for delivery about March 15th, and thereafter, at which time we shall be prepared to fill all orders promptly and to the entire satisfaction of our patrons.

The Dingee & Conard Company, = = West Grove, Pa.

HYDRANGEA PANICULATA GRANDIFLORA.

This is the most desirable, effective and popular ornamental shrub extant, and its many distinct and striking qualities at once commend it to general favor for yard or lawn decoration. The bush comes into bloom in July and August, yielding profuse, massive, cone-shaped flowers of the purest white, which, as the season advances, change to delicate pink, and later to rich, coppery red.—Some of these blooms measuring 10 to 12 inches in length and 8 to 10 inches in diameter. It is of a dense and uniform habit of growth, and its general appearance trim and shapely; seen in the yard or on the lawn while in full bloom it is truly an imposing spectacle, the prodigal display of white affording such a charming contrast with the green of its surroundings.



Of late years the Hydrangea has been employed extensively for Ornamental Hedges, many thousand plants having been ordered each year for this purpose alone; so that we have decided to offer it in quantities at a considerable discount. Now, it must occur to the reader that a hedge of these shrubs would be a most desirable acquisition, especially for extensive yards or lawns. Planted in the back-ground, with irregular clumps of other shrubbery and plants intervening, the vista thus afforded is impressively effective and charming. The shrub may readily be kept within assigned limits by skillful pruning. They should be set in lines, 12 inches apart, the soil having been first prepared by thorough digging and manuring. We have the largest and most carefully selected stock of this grand shrub to be found in the country, and are prepared to fill all orders at the proper season, in any quantity and in the different sizes specified, to the entire satisfaction of our customers. Our soil and climate are particularly adapted to their growth. Giving to the plant a robust physical constitution, which assures vigor and vitality of future growth. We can ship by freight with entire safety to the most remote parts of the country, so that the item of cost to the customer for transportation will be very trifling. Remember that we guarantee delivery at your station in fresh and growing condition.

Treatment.
The shrub is perfectly hardy and requires no special care or attention; it is a remarkably vigorous and persistent grower, and readily adapts itself to circumstances and conditions whether or not the most favorable. It may be planted either spring or fall, and like other things, will show the effects of a little attention in the matter of cultivation. It should be cut severely back each spring, at least one half the last season's growth, dug around and manured liberally.

A TWO-YEAR HEDGE ON OUR GROUNDS, REPRODUCED FROM A PHOTOGRAPH.

STRONG ONE-YEAR PLANTS.—By Mail or Express, 20 and 30 cts. each; 2 for 40 and 50 cts.; \$2 and \$2.75 per doz. and \$1.10; \$4 and \$5 per doz.

STRONG TWO-YEAR PLANTS.—Cut back ready for planting, by Mail or Express, 40 and 60 cts. each; 2 for 75 cts. and \$1.10; \$4 and \$5 per doz.

EXTRA STRONG THREE-YEAR PLANTS.—Cut back ready for planting, by EXPRESS ONLY, \$1 each; 2 for \$1.75; 6 for \$4.50; \$8 per doz.

FOR HEDGES.—Price by Express, plants 2 to 2½ feet, 25 for \$3; 50 for \$5.50; 100 for \$10. Plants 3 and 3½ feet, 25 for \$3.75; 50 for \$6.50; 100 for \$12. For larger quantities, special prices upon application.

The Dingee & Conard Co., West Gro

