

Historic, archived document

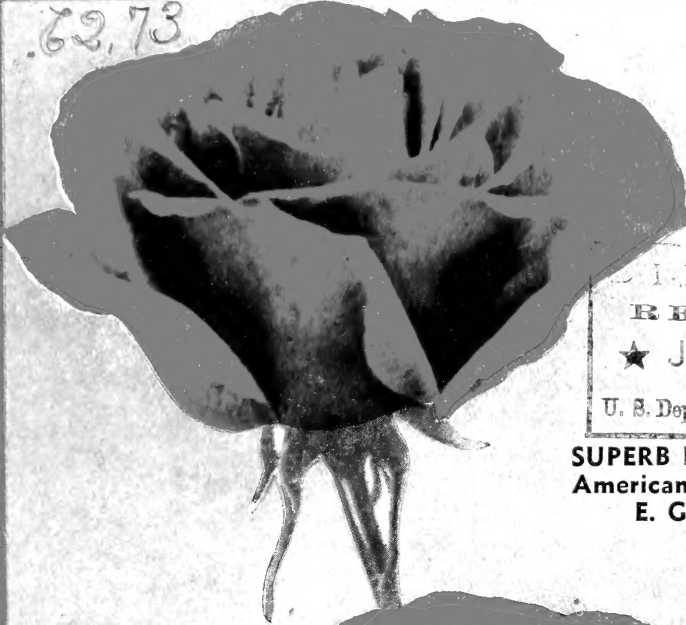
Do not assume content reflects current scientific knowledge, policies, or practices.

DINGEE ROSES

OUR NEW GUIDE TO ROSE CULTURE

62,73

1933



LIBRARY
RECEIVED
★ JAN 30 1933 ★
U. S. Department of Agriculture

**SUPERB New Hardy
American Bush Rose
E. G. HILL**

**"We Pay Postage
Safe Arrival
Guaranteed"**



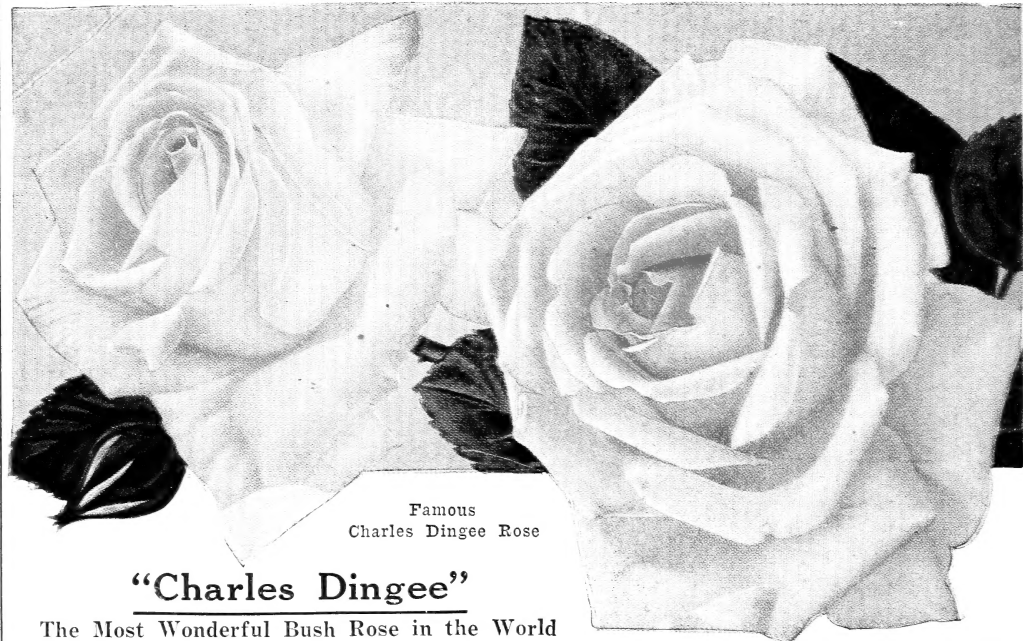
THE DINGEE & CONARD CO.

ESTABLISHED
1850

WEST GROVE, PA.

CHAS DINGEE
FOUNDER

Pioneer Rose Growers of America



Famous
Charles Dingee Rose

"Charles Dingee"

The Most Wonderful Bush Rose in the World

To honor the name of Charles Dingee, we think we produced a **Rose better than any other variety in cultivation.** We say, "Charles Dingee Rose" is far-and-away the best garden Rose for general planting in the world.

It is always blooming, whether it is growing for us or growing for you. The flowers are beautiful beyond description, immense in size, deep, double and grandly formed. It is hardy and vigorous everywhere, but winter protection in the north always helps.

The "Charles Dingee Rose" is the result of cross-breeding between **Hermosa**, that grand old hardy pink variety, and **White Maman Cochet**, perhaps the greatest of all white garden Roses—a superb parentage, which insures its offspring every point of excellence.

We have had it growing and blooming in all its glory in a temperature very little above freezing. Growing to a height of 2 to 3 feet, Charles Dingee blooms continuously, producing immense, deep, double, grandly formed flowers on long, stiff, erect stems; both in bud and bloom their beauty is nothing short of superb, practically impossible to describe because of the delicate blending of colors—rose tints in the centers of the flower, gradually shading off into pale blush creamy white, a color effect which is both entirely new and distinct, exquisitely beautiful.

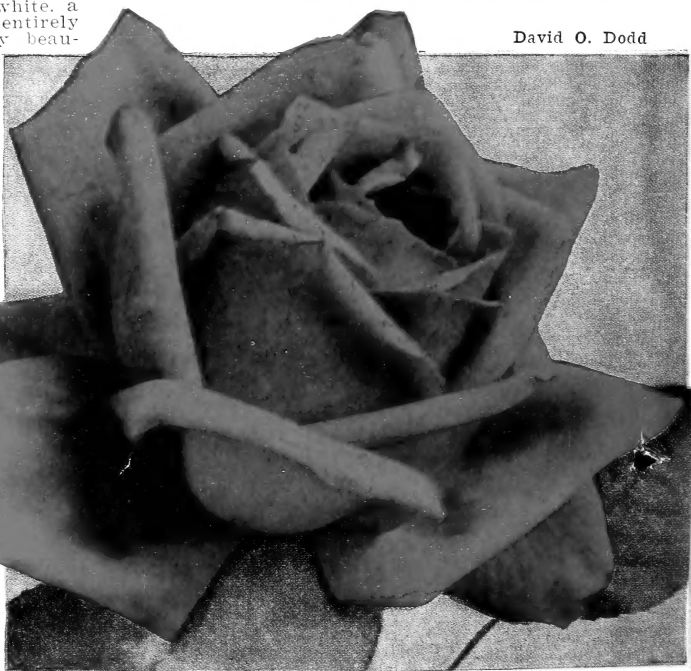
David O. Dodd

David O. Dodd

A Glorious New Bush Rose

A new crimson bush rose destined to supersede all other crimsons such as Etoile de Holland, Hawlmark Crimson and similar varieties. A magnificent rich crimson, flushed scarlet, with superbly formed buds, carried erect and opening into immense beautifully shaped flowers. Very free flowering; growth bushy and upright; hardy. A splendid crimson rose with no faults.

Prices Charles Dingee and David O. Dodd: First size plants 25c each, 5 for \$1.00, postpaid; two-year-old plants, 75c each, \$8.00 per doz.; star size 90c each, \$9.50 per doz., for one or both varieties, 6 at doz. rate, by Parcel Post prepaid.

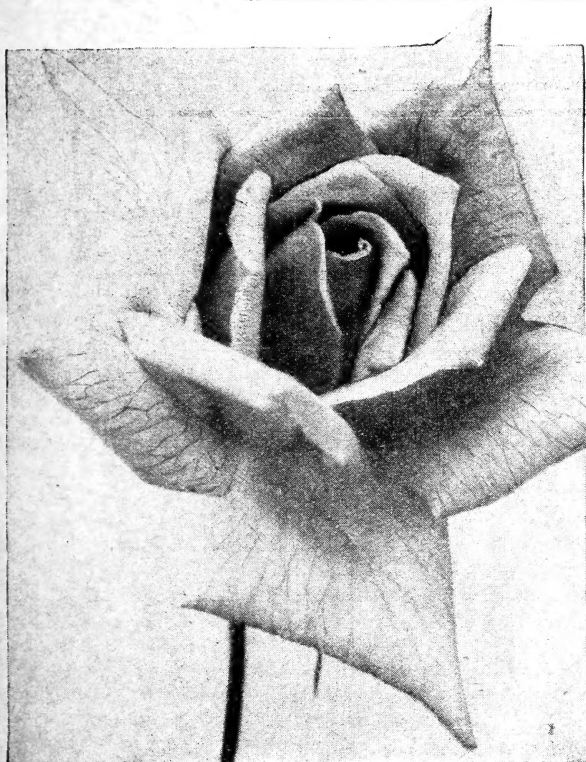


SPECIAL OFFER

Of Extra Heavy Two Year Old

Dormant "De Luxe" Field-Grown Roses

For Early Spring Planting



Our Great New Rose "Garden Gem"

RADIANCE—One of the great garden roses of the day. Always blooming. Brilliant rose pink.

RED RADIANCE—The outstanding standard deep red rose. None better.

LADY ASHTOWN—Splendid garden rose. Satiny buds and blooms of a deep shining pink.

TALISMAN—Buds are handsome. Mixture of orange yellow and red. 75c each, \$8.00 per doz. postpaid.

AMELIA GUDE—Charming buds of exquisite form and color. Orange and peach yellow.

BRIARCLIFF—Bud beautifully formed opening full and double. Brilliant rose pink.

CHAS. P. KILHAM—Brilliant coral red and orange. Splendid habit of growth with good foliage. Price 75c each, \$8.00 per dozen, postpaid.

DAME EDITH HELEN—Brilliant soft clear pink. Strong vigorous grower.

Complete Cultural Instructions With Every Order.

PRICES—60c each; Any 6 for \$3.25; Any 12 for \$6.00 Postpaid.

On this circular is offered the finest collection of dormant field-grown budded roses in America, grown by us here in our own nursery. They will positively bloom this year and continuously. We guarantee them to be absolutely satisfactory to you or money back. You will find no such prices elsewhere, no better plants, and indeed few as good. Then, why pay more?

These dormant field-grown roses must be planted as soon as the ground can be dug—the earlier the better; cold weather will not hurt them. Plant whenever they can be put in the ground. Not available after May 1st. In warm climates plant during our winter months. These are beautiful plants, strong, sturdy fibrous roots; low prices. Satisfaction guaranteed; shipping charges paid. Order liberally and early. These "De Luxe Dingee" Super Rose Plants are in limited supply. Order early, please. It's important. We Pay Postage.

REV. F. PAGE ROBERTS—Coppery red buds of great length, opening to golden yellow blooms stained outside with red. Full and double. 75c each.

SOUV. DE CLAUDIUS PERNET—Fine flowers of fadeless yellow. The most sensational rose of recent years.

VILLE DE PARIS—Round buds and globular flowers of clear yellow. Not approached by any other color.

SOUV. DE GEORGES PERNET—Buds brick red, opening to terra cotta pink. Blooms immense size. Very double, deliciously fragrant. Free blooming and hardy.

IMPERIAL POTENTATE—Dark shining rose pink, lighter on reverse of petals.

DUCHESS OF WELLINGTON—Lovely buds of orange yellow, changing to lemon and lighter shades.

ETOILE DE HOLLAND—Brilliant red blooms of magnificent size.

BETTY UPRICHARD—Carmine colored buds, suffused with orange and coppery carmine.

ETOILE DE FRANCE—Vivid crimson flowers, rounded centers.

FRANCIS SCOTT KEY—Very double of the noblest form, light crimson.

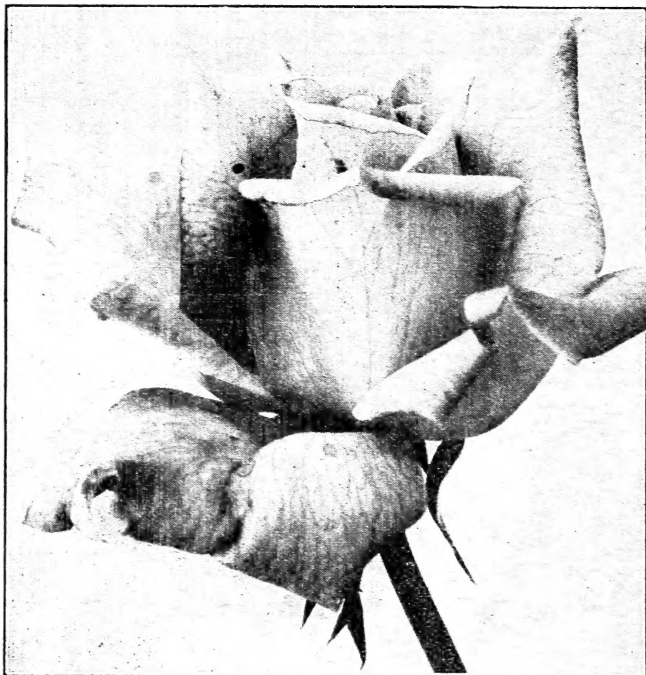
MME. BUTTERFLY—Lovely shade of Indian oak with gold at base of petals.

MRS. HENRY MORSE—Silvery pink on inside with carmine pink on outside. One of the leading two tone roses.

(over)

Dormant "De Luxe" Field-Grown Roses

(CONTINUED)



Gorgeous Yellow Rose, Joanna Hill

Joanna Hill

New and sensational. Long, handsome bud, deep full bloom, beautiful shade of creamy yellow flushed with orange at base of petals. Wonderful grower, making a magnificent bush. Blooms throughout the entire season. Foliage is good and free from disease.

DIRECTOR RUBIO

Buds cerise scarlet opening to a large double bloom of a solid cochineal pink.

DAWN—Soft rose flesh with yellow base.

EDEL—Pure white full double blooms.

GARDEN GEM—Our new Rose. Soft satiny pink. Always in bloom.

GALETTY—One of the fancy colored Roses of exceptional merit. Strong grower. Color a combination of pink, red, golden yellow, Indian red and brown. 75c each, \$8.00 per doz. postpaid.

JOHN RUSSELL—Immense crimson flowers of the old time globalar type. Healthy grower.

KOOTENAY—Creamy white, full and double.

MARIE DOT—Deep apricot darkened with orange.

MRS. E. P. THOM—Slender yellow buds and well shaped blooms of bright yellow.

FAX LABOR—Orange gold bud opening into a double pale yellow bloom.

THE GENERAL—Leading red rose due to its color and form. Dwarf habit.

F. J. GROOTENDORST—New type of Rose which might properly be called a Rugosa Baby Rambler, it being a cross between Rugosa and the crimson Baby Rambler. Imagine a shrub-like Rugosa Rose covered with trusses of crimson Baby Rambler Roses.

FRAU KARL DRUSCHKI—The best snow white Rose ever introduced. Flowers immense, glorious with deep, firm waxy petals, borne continuously on strong, hardy bush.

PRICE—60c each; Any 6 for \$3.25; Any 12 for \$6.00 Postpaid.

"DE LUXE COLLECTION" OF DORMANT FIELD-GROWN ROSES 10-2-Year Old Roses, for \$5.00 Postpaid

SPECIALLY PREPARED FOR EARLY SPRING PLANTING

Radiance—One of the best outdoor Roses. Color, carmine rose.

Francis Scott Key—The finest double red outdoor Rose.

Red Radiance—Remarkable rose, splendid even shade of clear red.

Chas. P. Kilham—Brilliant coral red and orange. Splendid habit of growth with good foliage.

Ville de Paris—Fine clear golden yellow.

Briarcliff—Pure rose pink; highly scented.

Mine. Butterfly—Buds a lovely shade of Indian Oak with a yellow tint at base.

Mrs. Henry Morse—Two tones of pink with an underlying yellow glow.

Edel—Greatest of pure white roses.

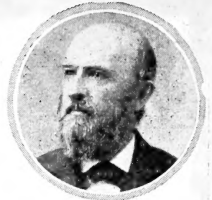
Rev. F. Page Roberts—Copper-red buds of exquisite form opening to a rich Indian yellow inside with outside petals marked apricot and carmine. One of the best.

ORDER AS THE DE LUXE COLLECTION. WE PAY POSTAGE.

THE DINGEE & CONARD CO., WEST GROVE, PA.

DINGEE OWN ROOT POT-GROWN

ROSES ARE SURELY HEALTHY



CHARLES DINGEE
Founder of
The Dingee & Conard
Company

America's Leading Roses
Established 1850

New Low Prices for 1933
Everything Prepaid

Revolutionary changes in all walks of life and in every business have occurred in the past three years.

Our specialty is pot-grown rose bushes on their own roots. We are the pioneers in America in this line. Long experience, vast equipment, close personal supervision by the owners of this business have enabled us, strange as it may seem, to not only reduce prices practically one-half, but at the same time to do what is hard to believe, and that is to increase the high quality of the stock. On top of all of this, this year, WE PREPAY ALL SHIPPING CHARGES.

Certainly, this is revolutionary. Every drastic change is absolutely in favor of our old friends and customers. That's an example which we point to with considerable pride. During the period of inflated prosperity, vast improvements in our equipment with large sums of money expended, prepared us for these days. That comes of long experience in this business.

No finer roses are grown and sold in America than those we now offer and we are proud of the achievement. We look out upon the

future with confidence to the better days to come for everyone in this broad and beloved land. We continue on in thankful humility to Divine Providence, looking back over the years through the Civil War, the innumerable panics through which we have safely passed, and we bring this message of high hope in the future in no sordid way to our friends everywhere who have made our continuity possible. For all of this we are deeply grateful.

These famous Dingee pot-grown, own-root rose bushes grow everywhere, beautifully and the bulk of them go into modest homes. Millions of people have bought them and if you want to add to the joy of living, just plant some of them. Follow the simple planting instructions given in this book and failure is practically impossible. They are clean, healthy, and anyone can grow them successfully.

Remember, we pay all shipping charges, no matter where you live in the U. S. A. proper. We guarantee satisfaction and safe arrival. Our integrity and good name is your best guarantee.

THE DINGEE & CONARD CO., West Grove Pa.

Mrs. Charles Dingee, Pres.

P. J. Lynch, Treas.

J. D. Headly, Sec. and Gen. Mgr.

We Prepay All Shipping Charges—Please Read

TERMS

Our terms are cash with order. You can open an account or we will ship Parcel Post or Express, C. O. D. Kindly give bank reference. Money may be sent at our risk by Post Office Order, Express Money Order, Bank Draft, Personal Check, Money in Registered Letter. Stamps accepted for less than \$1.00.

OUR GUARANTEE

We Guarantee Safe Arrival of all Goods in U. S. A. Proper. Goods must be satisfactory to you, and if they are not it is your privilege to have them replaced, free of charge, or your money refunded upon request, provided you advise us of either wish within 10 days after shipment reaches you. This is a plain, understandable guarantee for your protection and we invite you to take advantage of it if necessary.

Any complaint of whatever character, must be made within 10 days after receipt of shipment. Otherwise, if the goods are delivered in satisfactory condition, our responsibility ceases.

All mistakes cheerfully corrected. If a certain variety runs short, we reserve the right to substitute another of same color and equal, if not better, value unless instructed to the contrary. We strive to have all plants true to name but we do not guarantee it.

INSTRUCTIONS FOR ORDERING

Please Observe Carefully—When ordering, please use the order sheet in back of this book. Simply fill up the blanks, giving the number and name of the varieties wanted, with size and price; we will understand.

Order Early—Many of our customers order early, and the plants are set aside; the earlier you order the better. We will book for delivery whenever you direct or at the time we consider proper to plant such stock ordered if so directed.

Canadian Customers—Canadian laws permit sending Roses or Shrubs into Canada at any time, but a permit must be secured from the Secretary of the Destructive Insect and Pest Advisory Board, Department of Agriculture, Ottawa. Owing to the rate of postage on Canadian orders we must require an additional 20 per cent to cover postage.

Foreign Orders—Twenty-five per cent must be added to total cost of orders going outside the United States proper to pay extra cost of packing and postage. To most foreign countries we ship by parcel post with postage always prepaid.

CAUTION—We have no connection with any other firm in West Grove or elsewhere. We are the original rose-growing firm, established here 83 years ago, still doing business at the same location—the pioneer rose growers of America.

This business, established by Charles Dingee in 1850, still continues on in the same family. Mrs. Charles Dingee is the present president. Our firm, continues to merit the confidence of generation after generation of rose lovers, the world over.

The title of our catalog for 60 years has been, "OUR NEW GUIDE TO ROSE CULTURE". We are compelled to sound a warning that this title has been copied in part by others, especially the word "GUIDE". The reason is obvious and our friends will not be confused. This is the original "NEW GUIDE TO ROSE CULTURE" and has been issued annually under that title for more than 60 years. Our friends will kindly note this fact to avoid confusion. We assume that they will want, as always, these famous "Dingee Roses".



How to Grow "Dingee Roses"



A two-year old Rose Plant in Pot

It is of utmost importance that sufficient time and care be given to the planning of a rose garden before ordering the plants. This is true for both formal and informal gardens, and even though it is possible to have only one small bed, the selection of varieties to fill that bed must be done with the aim of having roses that will be best adapted for the purpose in view. If the object is to have a rose garden, or if it is merely to beautify the lawn, the main end is to have a harmonious and pleasing effect from the planting as a whole. This end cannot be attained by indiscriminate planting, but by painstaking planning before any plants are set into the ground.

The very best soil for roses is a rich clay loam but any good garden soil will grow good roses if fertilized, drained and cultivated.

They ought to be planted at least a foot and a half apart each way or in beds narrow enough so that one can cut the blooms without being entangled in the briars. If, however, too much food or fertilizer is given roses, the roots will not grow so well nor be so strong as if a moderate amount of fertilizer is used.

Preparation

If the location where you wish to plant them is moderately drained or water does not stand for days, or dig a small hole 12 inches deep and fill with water, if the water disappears in a short time the situation is all right, and you can simply spade the soil up to a depth of about 10 inches mixing it with ordinary well rotted manure of any kind, returning it to the hole or bed and plant roses as directed below. If, however, the soil is heavy clay and water does not disappear when you fill the hole, beds may be made as follows:

Dig the bed about 20 inches deep. A good plan is to put the top spadeful of soil on one side of the bed and the bottom spadeful on the other. For the bottom of the bed put in drainage material if necessary. Replace the top soil to the bottom of the bed and the lower soil to the top of the bed. While replacing mix in one-third well rotted cow manure. If you cannot possibly get cow manure, bone meal at the rate of 2 lbs. to the square yard is good. Use other manure or fertilizers carefully as they are apt to burn the roots. Manure and fertilizers must be well mixed in the soil. Work the soil fine and tramp it down very firmly. Have the surface of the bed an inch above the surrounding soil.

Planting

As soon as the plants are received it is best to immediately plant, yet if it is impossible to do this the plant should be placed in a cellar or moderately warm place and protected from the sun. Set them upright to admit the free circulation of air. When you receive them they will be wrapped in Sphagnum Moss, which should be removed before planting, as it is used only for protection. Water freely from time to time. The roots should be covered with soil or burlap and never allowed to become dry. Soaking the roots in lukewarm water or thin mud for an hour or two before planting to restore their vitality is beneficial. Do not set the plants too shallow. They should be planted deeper than they were growing in the pots before shipping. This can easily be determined by an examination of the plant. If you receive them with the soil on the roots in which they have been growing, do not remove this soil. Give them as near a natural position as possible. Use plenty of water after planting and shade for a few days, if the sun is hot, with newspaper or similar material, and if the season is a dry one an occasional watering will be beneficial. The best time to plant Roses such as we send out, being pot-grown, own root stock, is in early spring. This refers entirely to pot-grown plants and not dormant plants. By dormant plants we mean field-grown; that is, lifted from the field and have not made any growth whatever. Such plants as these should be set out earlier than pot-grown plants.

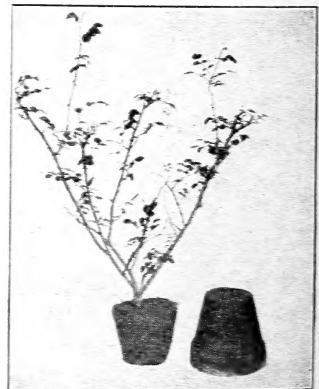
Cultivation

Cultivate top soil about 2 inches deep every week or after every hard rain. Do not cultivate when wet. This may be discontinued after the blooms come, when a good mulching of Peat Moss, cow manure, tobacco stems, buckwheat hulls, are left around the bushes the balance of the season. In dry weather water thoroughly at least once a week, and in the morning.

Fertilizing

Roses appreciate plenty of good food.

This is a question we are frequently requested to answer. Cow manure is generally preferred, and can be used in fresh condition. Horse manure when new is very heating and should not be used while in this condition, except as a winter mulch. Hog, sheep and chicken manure are also very helpful. The last two, however, should be used sparingly. Ground bone is beneficial, but should be secured as fine as possible, and it should be used sparingly. The best method is sprinkling a portion over the bed until the ground is entirely covered, then with the use of a fork it can be dug into the soil and thoroughly mixed. Air slaked lime is also beneficial, about a cupful to a plant scattered on the surface in early spring and mid-summer. A mulching of cow stable manure is very beneficial during the growing season. It helps to retain the moisture during the dry season, as well as a food for the roots.



A 2-year old Rose taken out of pot



Winter Protection

The protection needed varies according to the climate and varieties of roses. After a few hard frosts have stopped the growth throw up a mound of earth about a foot high around the plant. In cold sections after the ground has frozen put straw or other coarse litter in between the mounds built up around each plant. The tops of the bushes sticking out above mounds may be covered with evergreen boughs. Do not remove this covering until spring has come to stay and remove gradually.

Insects and Diseases

For insects of all kinds we recommend "Evergreen", a new spray which will kill all types of insects. Use regularly according to directions. Sulpho-Tobacco Soap is a very good remedy for green plant lice. Use all sprays in a sprayer which throws a fine mist such as the Auto Spray.

The two principal rose diseases are black spot and mildew. Black spot is indicated by a round black spot on the leaf which soon dies and falls off. Mildew shows itself as a white powder on the leaf which causes it to crinkle and curl. If black spot is neglected it is apt to kill all the leaves on the bush. But the protection is simple and the same for both of these diseases. Mix nine parts of powdered sulphur with one part powdered arsenate of lead and apply once a week and after rains from the beginning of the season till the end. To apply put the dust in a cheese cloth bag or salt sack on the end of a stick and beat with another stick. Or use a dust gun. Bordeaux Mixture is another dust equally as good and used the same way. These preparations we do not offer as they are poisonous and not mailable but can be sent by express or purchased locally. Remove any spotted leaves and burn them.

Pruning

As soon as the winter covering is removed, first cut away all weak stems and leave three or four of the strongest. Prune these down to at least six inches high with the Hybrid Teas, Hybrid Perpetuals or the June Roses do not need as close pruning. Bushes that are 2 to 4 feet in height should be cut back about 1-2 or 2-3 of their growth. The Polyantha and Baby Ramblers need just the tips cut. Climbing Roses should be pruned after blooming, cutting out all shoots and allow the new ones to develop and to train. Keep all weak lower side stems cut away throughout the season. When several buds appear on one stem the smaller buds may be pinched off to make one fine large rose.

Selection of Roses Important

One of the most difficult problems that presents itself to the amateur about to start a rose garden, is the very first that he has to solve, the selection of the best varieties of roses for the purpose for which he intends them. The success he will have with his roses depends very largely on intelligent selection of adaptable varieties. The matter of selection is one that should be left to the purchaser. Many of our customers grow 100 or more different kinds and they find exquisite beauty in each. At the modest price asked for them any one can enjoy many sorts.

The Tea Roses

These are the basis of the everblooming class of roses, having been imported from China into England in the early part of the 19th century. They are the ones known as the Everbloomers. Hardy enough to stand the winters of the North as far as Boston with some slight protection, they need no protection from Washington south.

Hybrid Teas

The most popular type of rose in this country today is the Hybrid Tea. Hardy in almost all sections of this country and Canada. Buds handsome and usually long pointed, opening into magnificent blooms, varying from semi-double to full double. Produced usually on long stiff stems and singly. Fragrance usually predominates, more in some than others. Foliage heavy and seems to resist mildew and black spot. Blooms almost as freely as the Teas.

This class has become the most used for winter forcing. They are also the best for cutting from outdoor plants during the summer.

The June Roses of Old Gardens

These are the ones so well remembered as blooming in the gardens of our grandparents many years ago, as they were the only ones obtainable at that time. They bloom as a rule but once, usually during the month of June. Occasionally they will bloom again in the fall. There is some exception such as Frau Karl Druschki or White American Beauty which blooms almost as freely as the Hybrid Teas.

Rugosas

Almost everblooming and produce handsome double blooms. They are extremely hardy and suitable for any place where little attention can be given, such as hedges, cemeteries, and parks.

The Polyantha Roses

A distinct species of rose introduced from Japan many years ago. Distinguished by having numerous very small flowers borne in panicked clusters. Dwarf in growth. Free flowering.

Dwarf Baby Ramblers

These are a type of Polyantha Rose but more dwarf in habit, 12 to 18 inches. Hardy and suitable for beds or borders along walks, etc. Small blooms in immense clusters. Always blooming. Those offered in catalog are the standard sorts, all good.

Climbing or Rambling Roses

Hardy Climbers are those botanically known as Multiflora Hybrids and Wichuriana Hybrids. There is so little difference between the Ramblers (Multiflora) and the Hardy Climbers (Wichuriana) that it is very difficult for an amateur to detect it. The Ramblers, such as the old variety of Crimson Rambler, produce many small blooms in clusters, while the climbing roses produce larger blooms and fewer on the stem.

The Climbers are not so susceptible to mildew and disease as the Ramblers, therefore much to be preferred. Some of the Hardy Climbers resemble the Ramblers so closely that any one wanting them will find a great improvement in such Climbers as Excelsa, Tausendschon and Aunt Harriet.

Climbing Roses should all have some support such as a pergola or arch. A wire fence where convenient may be utilized with splendid effect. They also make a good hedge.

For pillars, roses like Paul's Scarlet, Birdie Blye, Dr. Huey, Mary Lovett, Climbing American Beauty are good. They may also be used as individual specimens by pruning to a shape and size desired.

Where less growth and more bloom is desired we recommend the Climbing Hybrid Teas. They produce the fine blooms of the bush Hybrid Tea, but are fairly good climbing roses. They make a gorgeous sight at the natural blooming period and if pruned will bloom again, but not so profusely as at first. Most of them are hardy enough to stand moderate winters with little damage.

COMPLETE INDEX OF ROSES OFFERED

Abbreviations Used: Tea, Everblooming Tea; H. T., Hybrid Tea; B. C. Bourbon, Bengal and China; H.P. Hardy Hybrid Perpetuals; C.T., Climbing Tea; C.N., Climbing Noisette; H.C., Hardy Climbing; M., Moss; T.P., Tea Polyantha; P., Polyantha, or Fairy; Rug., Rugosa; W. Wichuraiana or Memorial; Rug., Hybrid Rugosa; C.H.T., Climbing Hybrid Tea; N. Noisette.

Varieties	Class	1st size Cents	2-year Cents	Page	Varieties	Class	1st size Cents	2-year Cents	Page	Varieties	Class	1st size Cents	2-year Cents	Page	
Alberic Barbier	H.C.	25	70	22	Frau Karl Druschki	H.P.	Circular			Mrs. Chas. Bell	H.T.	25	70	9	
Alex. Hill Gray	Tea	20	65	17	Freiherr V. Marschall	T.	20	65	18	Mrs. E. P. Thom	H.T.	Circular			
Amelia Gude	H.T.	25	70	10	F. R. Patzer	H.T.	25	70	10	Mrs. F. R. Pierson	H.T.	25	70	15	
American Legion	H.T.	25	70	14	Gaity	H.T.	80	7		Mrs. Henry Morse	H.T.	25	70	10	
American Pillar	H.C.	25	70	22	Garden Gem	H.T.	30	80	8	Mrs. Robert Peary	H.C.	25	70	22	
Anna de Diesbach	H.P.	25	70	20	Gen. Arnold Jansen	H.T.	25	70	16	Mrs. Wm. Cutbush	P.	20	65	19	
Aunt Harriet	H.C.	20	70	21	Gen. Jacqueminot	H.P.	25	70	20	New Century	Rug.	20	65	20	
Anna Muller	P.	20	65	19	General MacArthur	H.T.	25	70	15	Ophelia	H.T.	25	70	13	
Aviateur Bleriot	H.C.	25	70	22	George Elger	P.	20	65	19	Orleans	P.	20	65	19	
Baby Doll	P.	20	65	19	Golden Gate	T.	20	65	16	Papa Gontier	T.	20	65	17	
Baby Tausendschon	P.	20	65	19	Grace N. Crowell	H.T.	30	80	7	Paul Neyron	H.P.	25	70	20	
Bess Lovett	H.C.	25	70	22	Green Rose	B.C.	25	70	20	Paul's Scarlet Cl.	H.C.	25	70	22	
Betty Uprichard	H.T.	Circular			Gruss an Aachen	P.	20	65	19	Pax Labor	H.T.	Circular			
Birdie Blye	H.C.	20	70	21	Gruss an Teplitz	H.T.	25	70	14	Perle D'Or	H.T.	20	65	19	
Blue Rose	H.C.	25	70	22	Hadley	H.T.	25	70	16	Perle Von Godesberg	H.T.	25	70	15	
Blumenschmidt	Tea	20	65	18	Helen Gould	H.T.	25	70	32	Pink Killarney	H.T.	25	70	16	
Bon Silene	Tea	20	65	17	Henrietta	H.T.	25	70	11	Pink Maman Cochet	Tea	25	70	32	
Briarcliff	H.T.	25	70	11	Holt Hewitt	H.T.	30	80	8	President Taft	H.T.	25	70	14	
Bridesmaid	Tea	20	65	18	Hoosier Beauty	H.T.	25	70	10	Premier	H.T.	25	70	13	
British Queen	H.T.	25	70	11	Imperial Potentate	H.T.	Circular			Priscilla	H.T.	25	70	10	
Burbank	Tea	20	65	17	Ivory	T.	20	65	17	Queen Scarlet	B.C.	20	65	18	
Catherine Mermet	Tea	20	65	18	Jacotte	H.C.	25	70	22	Radiance	H.T.	25	70	13	
Chaplins Pink Cl.	H.C.	30	80	7	J. B. Clark	H.P.	25	70	20	Red Dorothy Perkins	H.C.	25	70	22	
Charles Dingee	Tea	25	75	2	Joanna Hill	H.T.	30	80	7	Red Maman Cochet	T.	25	70	32	
Charles P. Kilham	H.T.	Circular			John Cook	H.T.	25	70	11	Red Radiance	H.T.	25	70	13	
Christine Wright	H.C.	20	70	21	John Russell	H.T.	Circular			Rev. F. Page Roberts	H.T.	Circular			
City of Little Rock	H.T.	25	70	12	Jon. J. L. Mock	H.T.	25	70	11	Rhea Reid	H.T.	25	70	10	
Cl. Amer. Beauty	H.C.	20	70	21	Kaiserin A. Victoria	H.T.	25	70	13	Rosari	H.C.	25	70	22	
Cl. Gruss an Teplitz	H.C.	25	70	22	Keystone	H.C.	25	70	22	Rose Dawn	H.T.	25	70	13	
Cl. Lady Ashtown	C.H.T.	25	70	22	Killarney Pink	H.T.	25	70	16	Rose Hill	H.T.	25	70	9	
Cl. Pink Maman Cochet	C.H.T.	25	70	22	Kootenay	H.T.	25	70	16	Safrano	T.	20	65	18	
Cl. W. Maman	C.T.	25	70	22	Lady Alice Stanley	H.T.	25	70	14	Salmon Spray	H.T.	25	70	11	
Cochet	C.T.	25	70	22	Lady Ashtown	H.T.	25	70	10	Silver Columbia	H.T.	25	70	15	
Clothilde Soupert	P.	20	65	19	Lady Hillingdon	T.	20	65	18	Silver Moon	H.C.	25	70	22	
Columbia	H.T.	25	70	12	Lady Plymouth	T.	20	65	18	Sir Thomas Lipton	Rug.	20	65	20	
Commonwealth	H.T.	25	70	11	Lafayette	T.	20	65	19	Souv. de Claudius	Pernet per	Circular			
Com. d. Cassagne	H.T.	25	70	15	Laurente Carle	H.T.	25	70	15	Souv. de G. Pernet	H.T.	Circular			
Conrad F. Meyer	Rug.	20	65	20	Lord Charlemont	H.T.	25	70	16	Souv. de Pierre	Notting	T.	20	65	18
Crimson Beauty	H.T.	25	70	12	Lulu	H.T.	25	70	11	Sunburst	H.T.	25	70	13	
Crimson Maman Cochet	Tea	25	70	32	Mad. Abel Chatenay	H.T.	25	70	10	Talisman	H.T.	30	80	8	
Crusader	H.T.	25	70	13	Mad. Caroline Testout	H.T.	25	70	13	Tausendschon	H.C.	20	70	21	
Dame Edith Helen	H.T.	Circular			Mad. Charles Wood	H.P.	25	70	20	Templar	H.T.	25	70	16	
David O. Dodd	H.T.	25	75	2	Mad. Francisca Kruger	T.	20	65	18	The Bride	T.	20	65	18	
Dawn	H.T.	Circular			Mad. Jules Grolez	H.T.	25	70	12	The General	H.T.	Circular			
Dean Hole	H.T.	25	70	11	Mad. Masson	H.P.	25	70	20	Thousand Beauties	H.C.	20	70	21	
Director Rubro	H.T.	Circular			Mad. Second Weber	H.T.	25	70	10	Tip Top	P.	20	65	19	
Dorothy Perkins	H.C.	20	70	21	Marechal Niel	C.T.	25	70	22	Veilchenblau	H.C.	25	70	22	
Dr. Van Fleet	H.C.	20	70	21	Marie Dot	H.T.	Circular			Vicks Caprice	H.P.	25	70	20	
Dr. Robert Huey	H.C.	25	70	22	Marshall P. Wilder	H.P.	25	70	20	Villa de Paris	H.T.	Circular			
Duchess of Wellington	H.T.	Circular			Mary Lovett	H.C.	20	70	21	Violette	H.C.	25	70	22	
Edel	H.T.	Circular			Mary Wallace	H.C.	20	70	21	Viridiflora	B.C.	25	70	20	
E. G. Hill	H.T.	30	80	7	Miss C. E. Van	Rossem	H.T.	25	70	10	Wellesley	H.T.	25	70	16
Ellen Poulson	P.	20	65	19	Mlle. Cecile Brunner	P.	20	65	19	White Amer. Beauty	H.P.	Circular			
Etoile de France	H.T.	25	70	12	Mme. Butterfly	H.T.	25	70	15	White Baby Rambler	P.	20	65	19	
Etoile de Holland	H.T.	25	70	10	Mme. Gregoire Staech-	elin	C.	25	70	22	White Killarney	H.T.	25	70	16
Etoile de Lyon	T.	20	65	18	Mme. Jenny Guillemot	H.T.	25	70	16	White Maman Cochet	Tea	25	70	32	
Eureka	H.T.	25	70	9	Mrs. Aaron Ward	H.T.	25	70	15	Wm. Notting	H.T.	25	70	14	
Excelsa	H.C.	25	70	22	Mrs. B.R. Cant	T.	20	65	18	Wm. R. Smith	T.	20	65	18	
F. J. Grootendorst	R.	0	65	20						Yellow Killarney	H.T.	25	70	16	
Francis Scott Key	H.T.	25	70	14						Yellow Maman Cochet	T.	25	70	32	

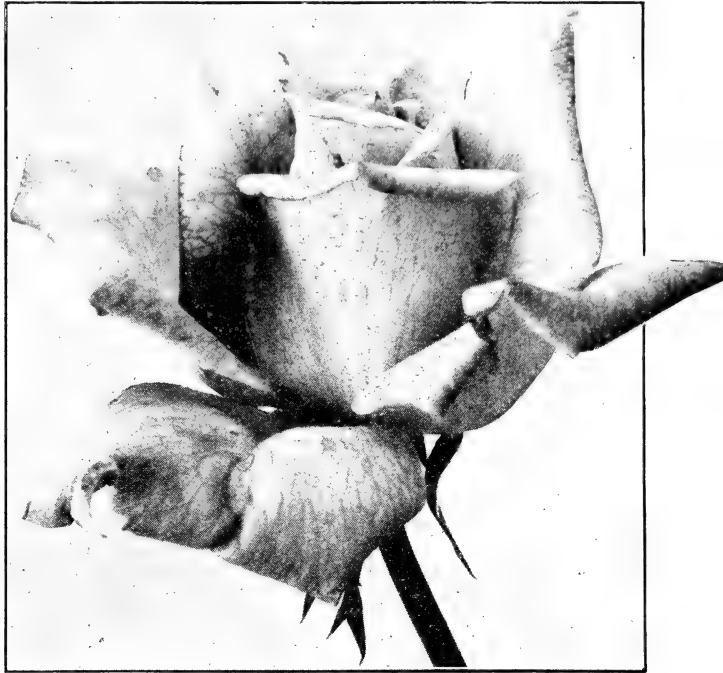
GENERAL INDEX OF PLANTS, BULBS AND FLOWER SEEDS

Page	Page	Page
PLANTS AND BULBS	Chrysanthemums 23	Hardy Climbing Vines 32
Ampelopsis 32	Clematis, Climbing 32	Hardy Grass 27
Asparagus Plumosus 31	Daphne 28	Hardy Perennials 28
Asparagus Sprengeri 31	Delphinium 28	Hydrangea 29
Astilbe 28	English Ivy 32	Hydrangea, pot 25
Azalea 27	Everblooming Hydran- gea 29	Iris 28
Boston Ivy 32	Ferns 26	Ivy, Boston 32
Beauty Bush 29	Fertilizer 25	Ivy, English 32
Boxwood 29	Funkia 28	Mock Orange 29
Callas 24	Geraniums 25	Peonies 27
Calycanthas 29	Gladiolus 26	Phlox 28
Cannas 24	Golden Glow 28	Plant Food 25
Carnations 25		Roses 2, 8-21, 31, 32
		Rudbeckia 28
		Snowball 29
		Spanish Bayonet 28
		Spirea 29
		Sprayers 31
		Stim-U-Plant 25
		Sulpho-Tobacco Soap 31
		Sweet Shrub 29
		Viburnum 29
		Violets, Sweet 24
		Weigela 29
		Yucca 28



NEW HYBRID TEA ROSES

The Roses listed under the heading of "New Roses" comprise what we consider the best latest and the most beautiful productions of the famous Rosarians in all parts of the world. We spare no effort or expense to secure such as we consider worthy after a very careful watching of the habits, characteristics and disease resistance qualities of each new variety. There are so many new varieties offered to the rose loving public each year that are not suitable at all for outdoor culture, that we hesitate to recommend only those we know will not be a disappointment. Many have been discouraged with such that have been so highly recommended because they do not prove suitable for our climate or they soon become diseased and die. Often times the bloom is a disappointment because it does not compare with the description both in color and formation.



Gorgeous Yellow Rose, Joanna Hill

These new varieties are supplied in the usual Dingee quality and on their own roots, except where noted, free from disease.

***GAIETY**—One of the fancy colored Roses that seems to meet the taste of all rose enthusiasts as we find those who have grown it speaking in the highest praise of its good characters. Exceptionally fine grower producing a fine big plant in a short time. Foliage light green, free from black spot or mildew. Produces quantities of large round camillea-like flowers of an extraordinary combination of pink, red, golden yellow, Indian red and brown. Colors vary with the season and seems to increase in beauty every day. Some claim it is the best of all their Roses. 2-year budded plants only.

GRACE N. CROWELL—Color a brilliant rose with petals heavily veined with vinous crimson while the base of the petals is shaded primrose yellow. Handsome buds opening into an immense perfect bloom, on long stiff stems.

CHAPLIN'S PINK CLIMBER—A cross between Paul's Scarlet and American Pillar. Makes a glorious color effect for several weeks. Substantial, broad trusses of wide flowers of a brilliant shade of clean, pure pink.

*Joanna Hill

Superb new everblooming Hybrid Tea bush Rose. Large long handsome buds opening into a deep full bloom of a beautiful shade of creamy yellow flushed with orange at base of petals. A wonderful grower, making a magnificent bush in a short time. Blooms produced in wonderful profusion throughout the entire season. Foliage good and free from disease.

***E. G. HILL. (H.T.)**—Immense perfect blooms of crimson scarlet retaining its color well. Handsome pointed buds on erect stems, making it fine for cutting. Produces an abundance of blooms throughout the entire season. Foliage large and free from mildew and disease. Blooms very fragrant. Perfectly hardy and a splendid outdoor variety.

Price of Roses on this page: First size plants 30c each, 4 for \$1.00 postpaid. Two year old plants, 80c each, 2 for \$1.50. Varieties marked * can be furnished in 3 year old or Star size at \$1. by Parcel Post Prepaid.

My mother has bought Roses of you for the last 30 years and she has some of the prettiest I have ever seen. I want to start a Rose garden this year, 1932—Frank Garner, Dayton, Ohio.



NEW ROSES—Continued

***Garden Gem**

This great new bush rose introduced and for sale only by us is a remarkable rose—it has no disease of any kind. Absolutely free from Black Spot and kindred diseases that are so annoying and which are found so abundantly in nearly all the roses of recent origin. It has wonderfully clean, heavy foliage.

Its parentage is the finest of any rose in cultivation—a hybridization of "Mrs. E. T. Stotensbury"—a great American rose and "America," another great American (Hill) production. It is a marvelously strong, healthy grower under the most adverse conditions, thriving even in extreme heat—just a grand grower. As already stated there is no rose we know of to compare with it in the absolute healthy growth that characterizes it at all times. Of course it is but natural that it should be a magnificent bloomer, continuously bearing its beautiful, satiny pink flowers of lovely form on strong erect stems, making it one of the greatest of all roses, new or old, for garden cultivation and for cutting.



Our Great New Rose "Garden Gem"

Talisman

A very much advertised and sensational rose. There do not seem to be two descriptions that fit it in all phases. Some speak very highly of it while others condemn it. It has one great redeeming feature and that is its disease resistant quality. We have found it a wonderful grower and bloomer. Buds are handsome of a mixture of orange yellow and red, a striking combination. Superb in early spring and in the late fall.

HOLT HEWITT (H.T.)—Some growers report that this is one of the best for exhibition purposes. Bud is well shaped on erect stems opening into a large fine flower of perfect form. Dark velvety crimson flushed scarlet, sweetly scented.

The "Charles Dingee" Rose is wonderful. The way it's growing and budding surpasses any I have ever seen. Edward C. Dutton, Arlington Hts., Illinois. June 13, 1932.

The Garden Gem is one of the finest Roses that I have ever seen. Mine has been blooming all summer and the Roses are exquisite. Yours truly, Edwin L. Plummer, Hamilton, Ohio.

Price. First size, one-year plants, 30c each, for all Roses on this page; 4 for \$1.00, postpaid; two-year-old plants, 80c each, 2 for \$1.50 by Parcel Post.

Varieties marked * furnished in Star size or 3 year old plants at \$1.00 each, postpaid.



Fancy Colored Rose "Talisman"



DINGEE FAMOUS HYBRID TEA ROSES

The Most Desirable
of All

It has not been many years since the introduction of the Hybrid Tea class of roses by Guillot. It is a part of the early history of the Rose in this country that this house was the first to call attention to the valuable characteristics of the class and was greatly instrumental in making it the most popular. Today the great majority of roses grown are Hybrid Teas, and new varieties are being produced by the hundreds.

The Hybrid Teas, as a class, are the most satisfactory of roses. They produce the most beautiful blooms, of all forms and colors—and continuously from early spring until heavy frost. Like the Hybrid Perpetuals, they are vigorous growers; hardy, but not exceptionally so. Therefore they are well adapted for growing in our temperate climates, but in zones of extreme winters need some protection. Their foliage is heavy and disease resisting, but, as with all roses must be protected from the ravages of insects.

Our collection of Hybrid Teas is extensive and complete. But the varieties offered on the following pages have been selected with an understanding of the needs of the amateur grower, and are varieties that have shown themselves to be well adapted for growing.

In my last order I made a complaint about the Roses you sent me instead of Own Root, all of which died. I have 127 of your own root and haven't lost one. I wish you could tell me the cause of this as most books I have read say budded Roses are stronger and there is a larger variety to be had in budded Roses. Ferdinand Amend, Ozone Park, New York.

Price. First size, one-year plants, 25c each, for all Roses on this page. 5 for \$1.00, postpaid; two-year-old plants, 70c each; \$8.00 per dozen of one or more varieties, 6 at dozen rate by Parcel Post prepaid.

Varieties marked * can be furnished in Star size or Specimen plants at 85c each, \$9.00 doz. by Parcel Post.



A Gorgeous Newcomer "Rose Hill"

*Rose Hill

Sport of Columbia but superior in every way. Darker than Columbia, larger blooms, better foliage and grower. The buds and blooms are perfect in color and formation, being long pointed and solid, opening into a perfect bloom of immense size. Splendid grower, free from disease, producing an abundance of flowers the entire season. Color a pure rose pink of charming brilliance which does not lighten.

MRS. CHARLES BELL—Lovely shell-pink buds and blooms of fine globular form with shadings of soft salmon, sweetly perfumed. Strong bushy plant bearing good foliage seldom attacked by disease. A sport of Radiance exactly like it except in color, making it soon to become as popular as the standard varieties Radiance and Red Radiance.

EUREKA—The color is an unusually brilliant, clear rose pink, retaining its color in the open flower. Lovely buds of fine form; flowers very large, full and double, borne on long straight stems.



Lovely Yellow Rose, Amelia Gude

Amelia Gude

A most charming rose, with dainty buds, and blooms of exquisite form. The colors of yellow-rose, deepening towards the center to peach yellow, are exceedingly soft, and very pleasingly blended. A strong growing variety, with fine healthy foliage and very liberal in its production of blooms from one season's end to the other.

MISS C. E. VAN ROSSEM—Velvety dark red, well formed buds, open flowers almost the same shade, reinforced with scarlet and black; fragrant. Strong bushy plant, free flowering. A good bedding rose on account of producing flowers under any condition.

PRISCILLA—Strong robust grower with dark green foliage free from disease. Color a flesh pink with darker shadings. Buds well formed opening full and double and on long stiff stems well above the foliage.

ETOILE DE HOLLAND—Flower bright, dark red, of medium size, fairly full; deliciously perfumed. Growth vigorous, upright. A cross between General MacArthur and Hadley. A rose of great future.

HOOSIER BEAUTY—The rich colors of this marvelous rose have never been equalled—dusky, crimson scarlet, with dark shadings and of a depth found in no other rose. Heavy petals of a velvet-like texture add to the richness of the colors.

MADAME SEGOND WEBER—One of the most beautiful roses, of ideal form. The long, pointed buds are pink or salmon-flesh and when fully expanded are immense in size, full and double; as the flower opens it deepens until it fairly glows with its warm, deep pink. Highly fragrant. Very hardy and constantly in bloom.

About six weeks ago I ordered your Maman Cochet Collection five for \$1.00. They came in excellent condition and have done marvelously. I am so well pleased that I am ordering this other collection. Miss B. Birdina Schenck, Oklahoma City, Okla.

Price. First size, one-year plants, 25c each, for Roses on this page; 5 for \$1.00, postpaid; two-year-old plants, 70c each; \$8.00 per dozen of one or more varieties, 6 at dozen rate, by Parcel Post Prepaid. Varieties marked * can be furnished in Star Size or Specimen plants at 85c each, \$9.00 doz., postpaid.

*F. R. Patzer

A Rose of striking and pleasing appearance, owing to the delicate blending of color, which is a creamy-buff, with the reverse of petals a delicate warm pink, and as they expand the color becomes a light orange pink.

***MRS. HENRY MORSE**—Two contrasting tones of pink with an underlying yellow glow, double high centered. Plant tall and branching.

***RHEA REID**—Color a vivid scarlet crimson. Flowers are marvels of beauty, large, bold and of splendid substance. Strong, sturdy, vigorous grower.

***LADY ASHTOWN**—One of the good old standard Roses that remains good. Satiny buds and blooms of deep shining pink with a yellow glow at base of petals. High center and very double.

***MAD. ABEL CHATENAY**—This splendid Rose is one of the very best of its color—rosy-carmine with darker shade.

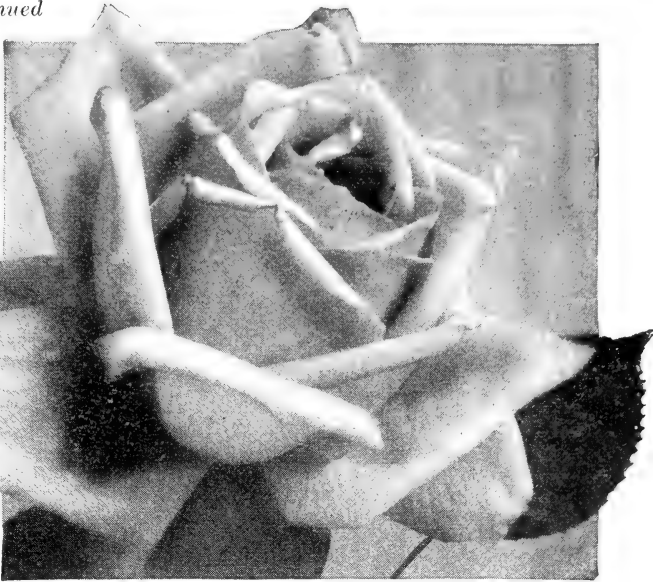
I heartily agree with you in calling your "Charles Dingee" "The Most Wonderful Rose in the World". At present I have three bushes that are blooming quite satisfactorily. Yours truly, Mrs. Calvin E. Miller, Kittanning, Penna.



HYBRID TEA ROSES—Continued

***Briarcliff**

The best sport of Columbia yet produced, and one of the grandest roses that it has been our privilege to grow, and we have grown a large number of the roses that have been produced by all countries. Bud beautifully formed, long solid but not too pointed, opening into one of the finest blooms that could be imagined. Very double and a brilliant rose pink. The plant is a splendid grower, free from disease such as black spot and mildew. Flowers produced in a great abundance the entire season, on long stiff stems, making it ideal for cutting.



Briarcliff—A most superb New Rose

HENRIETTA—Long buds, opening to semi-double blooms of fiery orange and coral red, almost perfect in half open state, quite fragrant. Strong grower with good foliage.

SALMON SPRAY—Salmon pink with carmine reverse. Flowers of medium size and borne in clusters. Continuous and profuse bloomer. Good for cutting.

LULU—Beautiful buds of orange red shaded with salmon. Very dainty and distinct being somewhat similar to Mlle. Brunner but much larger. A fine bedding variety.

COMMONWEALTH—Bud large, long pointed; flower large, open, double, very lasting; deep pink, solid color; borne singly on medium strong stem; moderate fragrance.

John Cook

A seedling of LaFrance is noted for its profusion of bloom throughout the entire season. The buds form in clusters of two to six. The flowers are similar to LaFrance in color, but it is a great improvement of that variety in its quick growth and freedom from black spot.

BRITISH QUEEN—The flower resembles Frau Karl Druschki, but with Tea Rose form and refinement. Buds sometimes show a slight flush, which disappears as flower expands.

***JONKHEER J. L. MOCK**—The buds are immense and of very fine form, borne on long, stiff stems. Color a clear imperial pink, reflexed petals of a lighter shade. Strong, tall grower, at its best in heat, when the heavy petals open to perfection.

DEAN HOLE—Silvery carmine Roses with salmon shadings. The coloring is distinct and unique; handsome tribute to the eminent Rosarian whose name it bears.

I have found your Roses true to name and more satisfactory than any Rose I ever bought and I have bought a great many. It is probably because they are all grown on their own roots. Very truly, Mrs. M. E. Robinson. Goldsboro, North Carolina.

Price. All Roses on this page, first size one-year plants, 25c each, 5 for \$1.00, postpaid; two-year-old plants 70c each, by express; \$8.00 per dozen of one or more varieties, 6 at doz. rate; by Parcel Post Prepaid.

Varieties marked * can be furnished in Star size or Specimen plants at 85c each, \$9.00 doz. by Parcel Post Prepaid.



F. R. Patzer



HYBRID TEA ROSES—Continued

***Columbia** (The Gem of the Garden)

It is an extremely profuse bloomer—as free a bloomer as the Teas, especially in the cooler seasons, for the plant is a strong grower and is made up chiefly of flower stems. The color is a deep peach pink, deepening into a glowing pink, a perfect color. Handsome, firm buds, are borne on long, stiff stems well above the foliage, and open into very large somewhat flat flowers of good substance, splendid lasting quality and of delightful fragrance. Heavy, healthy foliage.

MAD. JULES GROLEZ—The color is a distinct and charming shade of cherry-red. The fine form and attractive shape of the flowers makes them excellent for cutting.

CITY OF LITTLE ROCK—Distinct and beautiful in color, a bright rosy pink or rose shaded with Hydrangea pink. The buds which open perfectly are long of ideal form.

ETOILE DE FRANCE—The strong, upright bushes have beautiful bronze-green foliage, which is not subject to insect attacks. The bushes are blooming constantly, producing large, massive, deep, full cup-formed flowers of clear red or velvety crimson.

Price. First size, one-year plants, 25c each, for all Roses on this page; 5 for \$1.00, postpaid; two-year-old plants, 70c each, \$8.00 per dozen of one or more varieties, 6 at doz. rate by Parcel Post. Varieties marked * can be furnished in Star size or Specimen plants at 85c each; \$9.00 doz., by Parcel Post.



Columbia—A fine Garden Rose

***Crimson Beauty**

Hybrid Tea. At first we were at a loss to find a name that would be descriptive of this magnificent, new, crimson beauty, but the proper name soon suggested itself because this new, hardy, everblooming garden bush rose is the result of this parentage—the great (American) “Hoosier Beauty” crossed with “Crimson Champion” and there you have the the name — “Crimson Beauty”.

This splendid new variety has wealth in abundance, grows clean, strong and sturdy, has no weaknesses and blooms in marvelous profusion, bearing its magnificent crimson flowers, which have much of the form of “Gruss an Teplitz,” throughout the growing season, so that the bush is literally covered early and late with its gorgeous crimson flowers. Roses of this type are in the greatest demand because of their health, beauty and permanency.



Our New Rose “Crimson Beauty”



HYBRID TEA ROSES—Continued

***Red Radiance**

Very similar to Radiance and equally satisfactory. Large, globular, cupped blooms, of strong, clear red, with no trace of any other color. An exceptionally vigorous grower, sending forth heavy canes, with healthy foliage. Very liberal in producing blooms, it cannot be surpassed as a red garden rose. Extremely hardy. One of the dependable roses as it is always in bloom no matter what the conditions are.

***CRUSADER** — Rich velvety crimson of bright hue and of massive form, this rose is one of the very finest of the reds. The flowers are very large, full, extremely double, with petals of splendid substance. Plant is of moderate growth, with exceptionally fine disease resistant foliage. Its long stems and its lasting qualities make it a splendid cutting variety.

***SUNBURST**—A magnificent giant yellow forcing Rose, also well adapted for outdoor growing, being a vigorous and healthy Rose. Reddish-bronze foliage. The color is superb orange copper or golden orange, with a deep orange center.

MAD. CAROLINE TESTOUT—In color, it is of a satiny rose, deepening to clear red in the center. One of the most dependable roses.

***PREMIER**—The blooms are immense, often measuring 5 and 6 inches across the open flower; buds long, full and pointed. Color rich, deep, rose-pink, without shadings.



The Ever Popular Red Radiance

***Radiance**

The Standard Garden Rose of America

This is by far the best pink garden rose in existence, because of its vigorous, heavy growth, and its great abundance of bloom. Extremely easy to grow, requiring little attention, it is exceptionally well adapted for the amateur's garden. The color is almost a solid rose-pink, but with lighter tints and reflections. Long, heavy stems, bearing large and beautiful buds which open slowly into globular, somewhat loosely formed, fairly double flowers. This is one of the hardiest of roses, and will survive very severe winters.

KAISERIN AUGUSTA VICTORIA—Large buds of creamy white; the open flower delicate pure white, with a drop of lemon at the center, very large and fragrant.

OPHELIA—Salmon flesh, shaded with rose in perfect tints. Buds of unusual attractiveness, opening full and double. Plants of strong habit, and produces its flowers in great profusion. Very hardy.

ROSE DAWN—Bud pointed, good size, medium full. Color a soft rose flesh with yellow base. Good foliage of a light green and free from insects or disease.



The Great Radiance Rose

The three year Own Root Roses I purchased from you in August are all O. K. and have buds and Roses on at this late date. You sure do send out fine Roses and I can recommend your Roses to any one in the market for fine Roses. Yours truly, Joseph Kunkel, Newark, New Jersey.

Price. All Roses on this page, first size one-year plants, 25c each, 5 for \$1.00, postpaid; two-year-old plants, 70c each; \$8.00 per dozen of one or more varieties, 6 at doz rate; by Parcel Post Prepaid.

Varieties marked * can be furnished in Star size or Specimen plants at 85c each; \$9.00 doz. by Parcel Post.



HYBRID TEA ROSES—Continued

***Francis Scott Key**

This American production, named in honor of the author of our national anthem, is a credit to its name. It is by far the most popular red rose, for its glowing colors, its remarkable size, its fullness, its perfection of form, make it a greatly prized variety. The color is a rich, glowing scarlet, with darker shadings, becoming darker as the flower ages. It is a continuous bloomer, producing its immense blooms on stout stems in great profusion. The growth is excellent and the foliage heavy, little troubled with disease. Very hardy. Reports from almost all sections of the country show excellent results with this remarkable rose.



"Francis Scott Key"
A Super Rose

***Gruss an Teplitz**

For intense and dazzling color there is no other rose to compare with this—fiery crimson, shaded with a dark velvety sheen. The flowers are large and handsome, produced in continuous profusion throughout the season. Very vigorous, bushy grower, and because of its strong growing habits it should not be placed with other hybrid teas. Extremely hardy, easy to grow, always in bloom, it is one of the most satisfactory of roses.

***AMERICAN LEGION**—The color is a pleasing shade of cerise, which is retained until the petals fall. Well formed buds, produced on long stems, make it a fine rose for cutting. Heavy, disease resistant foliage, little troubled with insects. Strong grower, and free bloomer.

LADY ALICE STANLEY—Massive buds and blooms, fully double and very sweet outside petals coral-rose, inside pale flesh pink. One of the dependable roses for any purpose.

WM. NOTTING—Blooms fine, large, full double and perfect formation. Color a bright rosy cerise, with a deeper center.

Price. First size, one-year plants, 25c each, for all Roses on this page; 5 for \$1.00 postpaid; two-year-old plants, 70c each; \$8.00 per dozen of one or more varieties, 6 at doz. rate, by Parcel Post Prepaid. Varieties marked * can be furnished in Star size or Specimen plants at 85c each, \$9.00 doz. by Parcel Post.

PRESIDENT TAFT—A most remarkable pink Rose, with a shining intense deep pink color of a very distinctive shade. Splendid grower in every respect.

Received six two year old Roses last year and they are doing better than any other of my 34 bushes which I bought from various other companies. J. Parke Hughes, Coatesville, Penna.



Gruss an Teplitz, one of the "Big 12"



HYBRID TEA ROSES—Continued

***Mrs. Aaron Ward**

Most exquisite buds of golden buff or fawn, opening to full, double, well formed flowers, of pinkish fawn. The plant does not grow large, but is dwarf and spreading, covered with heavy foliage that is immune from disease and insect pests. This is an excellent rose for the garden, for it requires little attention, blooms profusely, and is most useful for cutting and for the buttonhole.

***PERLE VON GODESBERG** — This magnificent Rose was originally sent out as a Yellow Kaiserin Augusta Victoria, it having all the beauty of form and substance of that great garden Rose. The color is a rich canary-yellow with shadings of saffron.

LAURENT CARLE — A beautiful Rose, with extra large, handsomely formed rich velvety carmine buds and flowers. It is a phenomenally strong and robust grower, and continually in bloom throughout the season. A splendid rose and quite fragrant.

MRS. F. R. PIERSON—Color hard to describe, cardinal-red, or as described by New York experts, "a crimson Rose flooded with sunshine". The buds are long slender and pointed, of ideal shape and form, the flowers are deep, long petaled and very fragrant, borne on long strong stems.

COMTESSE DE CASSAGNE—Flowers of varying color; rich coppery-pink shaded clear rose; sometimes comes pure yellow; very large, form very fine. Many petals of good substance and deliciously fragrant. The plant is strong, vigorous, free flowering and quite healthy.



The Dainty Buds of Mrs. Aaron Ward

***Silver Columbia**

This rose is a sport of the famous Columbia. The color is a clear shade of deep silver pink, lighter than that of its parent. The color deepens towards the center. The flowers are larger than Columbia, inclined to be flat, but magnificently formed on long, strong stems, which make it an excellent rose for cutting. It has all the growing characteristics of its parent, but is a more profuse and a more constant bloomer—* blooming from one season's end to the other. The foliage is heavy, of a dark green, remarkably free from disease. Very hardy, and extremely easy to grow—admirably adapted for the amateur's garden, requiring little attention, and producing a wealth of beauty.

MME. BUTTERFLY — All the color tones of Ophelia are intensified, making it a harmony of bright pink, apricot and gold. The tight buds are a lovely shade of Indian oak, yellow at the base; the opening flowers are perfect in form and texture, clear and brilliant in color and of delicious fragrance.

GENERAL MacARTHUR — Of strong, vigorous, healthy growth, branching freely, it produces its wonderful blooms profusely from May until October, of full scarlet crimson.



Beautiful Silver Columbia

Prices of all Roses on this page, first size plants, 25c each; 5 for \$1.00, postpaid; two-year-old plants, 70c each; \$8.00 per dozen of one or more varieties, 6 at doz. rate, by Parcel Post Prepaid.

Varieties marked * can be furnished in Star size or Specimen plants at 85c each; \$9.00 doz. by Parcel Post Prepaid.



HYBRID TEA ROSES—Continued

***Kootenay**

The buds are long and pointed, and of exquisite form, opening to large rounded flowers full and double. Color creamy white, with shadings of flesh colors towards the center. Foliage heavy, unaffected by disease and little troubled with insects.

***TEMPLAR**—Bud medium size, globular; flower medium size, double globular, very lasting. Clear bright red, exceedingly double fine strong stems.

HADLEY—In color it is a deep velvety-crimson, retaining its brilliancy at all seasons of the year.

LORD CHARLEMONT — Flowers clear crimson, deepening to carmine crimson with almost black shadings, perfectly shaped, long pointed buds, large and full sweetly scented flowers.

***WELLESLEY**—A most magnificent garden Rose of a beautiful shade of pink, vigorous, healthy growers; remarkably free-flowering.

***GEN. ARNOLD JANSSEN**—Color a deep glowing carmine. Free bloomer. Buds long and pointed on long, stiff stems.

Price. First size, one-year plants, 25c each, for all Roses on this page; 5 for \$1.00 postpaid; two-year old plants 70c each; \$8.00 per dozen of one or more varieties; 6 at dozen rate. Varieties marked * can be furnished in Star or Specimen plants at 85c each; \$9.00 per doz. All sent prepaid.



An Unusual Rose "Kootenay"

Lovely Killarney Roses

***DOUBLE PINK KILLARNEY** (The Famous Irish Rose)—The bush is strong and upright, with beautiful, deep bronzy green foliage, and the Rose is entirely free-blooming, bearing immense long pointed buds and massive flowers on big, heavy shoots. The color is deep, brilliant and sparkling shell-pink. The flowers are of delightful fragrance.

YELLOW KILLARNEY (Mme. Jenny Gillemot) — A brilliant saffron-yellow Rose, opening canary with dark golden shades. Buds long and pointed, beautiful in form and color, the flowers large, with immense petals.

***DOUBLE WHITE KILLARNEY**—This offspring of the Pink Killarney is one of the most exquisite white Roses grown. The long, full buds are handsome in shape and full-open flower most refined and beautiful in form and texture.

SPECIAL OFFER—One each of these Killarneys, 3 in all, first size plants, sent postpaid for 60c. One of each, 3 in all, two-year-old plants, sent by Parcel Post Prepaid for \$2.00.

Last year I bought from you the famous "Francis Scott Key" Rose. It sure is doing fine. It had six large Roses this week. Mrs. Leander C. Wantz, Westminster, Maryland.



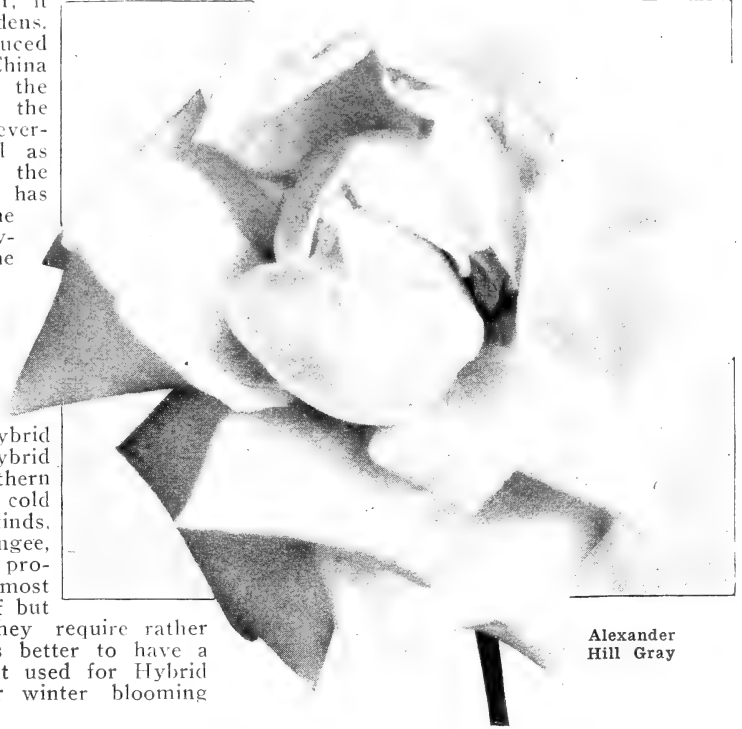
Double Pink Killarney



DINGEE EVERBLOOMING TEA ROSES

This class of Roses is famous for its lovely blooms of delicate beauty—soft, refined colors; subdued, yet powerful fragrance. Constantly in flower, it has a place in all gardens. The Tea Rose, introduced into Europe from China in the early part of the nineteenth century, is the parent of all our ever-blooming Roses, and as the foundation of all the great Roses of today, has a warm spot in the hearts of all rose-lovers. And never has the marvelous beauty of the Teas been surpassed.

It must be pointed out that the Tea Roses are not as hardy, nor as vigorous growers as the Hybrid Perpetuals, or the Hybrid Teas. In the northern climates of extreme cold even the hardier kinds, such as Charles Dingee, must be given some protection in winter. As most of the varieties are of but moderate growth, they require rather close pruning. It is better to have a richer soil than that used for Hybrid Teas. Excellent for winter blooming indoors.



Alexander Hill Gray

*"Charles Dingee"

The Most Wonderful Bush Rose in the World

(See prices and the Colored Photographic illustration on Inside Front Cover).

BURBANK—Large crimson flowers; very fragrant and produced in marvelous profusion the entire season. Strong, upright grower.

BON SILENE—The color is deep rose changing to pale light rose.

GOLDEN GATE—Color rich creamy white, shaded with golden yellow and clear rose.

PAPA GONTIER—Color rich cherry-red, passing to clear, glowing crimson.

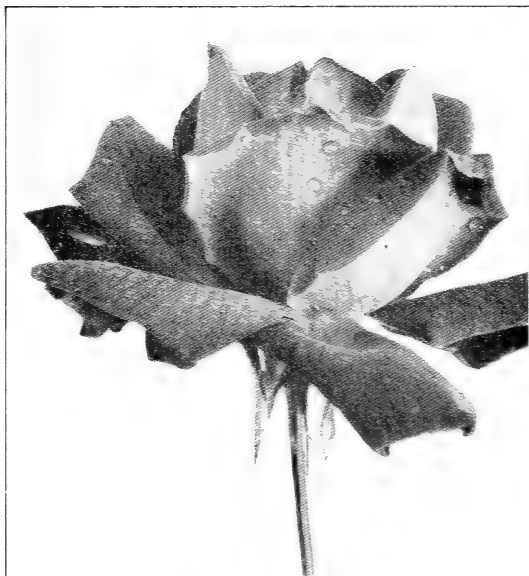
*Alexander Hill Gray

After a thorough trial both indoors under glass and in the open ground, we are pleased to offer this lovely yellow Rose to our customers as one of the very best of its class and color. The color, which is a deep lemon-yellow, deepening as the flower expands, does not fade in the open ground, as is usual with such. Buds and blooms of perfect formation and of great substance, and produced in the greatest abundance throughout the entire season. Strong grower and hardy everywhere. This Rose was awarded Gold Medal by the National Rose Society.

***IVORY**—A sport of Golden Gate. Color pure white without a particle of any other color. Good grower.

Price. First size, one-year plants 20c each, for Roses on this page; 6 for \$1.00, postpaid; two-year-old plants, 65c each; \$7.00 per dozen of one or more varieties, 6 at dozen rate by Parcel Post Prepaid. Varieties marked * can be furnished in Star Size or Specimen plants at 85c each, \$9.00 per doz. by Parcel Post.

The Charles Dingee I bought from you, first size, this summer has had one perfect bloom. It is the nicest of the whole bed of twenty Rose bushes, purchased elsewhere. Thanking you, Yours very truly, Mrs. Fred Friebe, Ferndale, Michigan.



Freiherr Von Marschall

***Wm. R. Smith**

Especially suited for outdoor planting and cutting purposes. The soft blending of the salmon-pinks, rose-pinks, and the magnificent flesh tints resemble the blush of a maiden's cheek. The flowers are large, full and double, and most exquisitely formed. The petals are so firm they look like wax. Perfect buds. The flowers are borne on long, strong stems.

MRS. B. R. CANT—Deep rose, with silvery rose center.

SOUV. DE PIERRE NOTTING—Color apricot-yellow, tinged with golden and mixed with orange-yellow, edge of petal shaded carmine-rose.

BLUMENSCHMIDT— Citron-yellow flowers, each petal of which is edged with dainty rose.

QUEEN'S SCARLET—A constant and profuse bloomer; color, velvety scarlet.

SAFRANO—The color is a bright apricot-yellow, passing to orange and fawn, sometimes tinted rose.

MAD. FRANCISCA KRUGER — The flowers large, deeply shaded coppery yellow in color.

Price. First size, one-year plants, 20c each, for all Roses on this page; 6 for \$1.00; two-year old plants, 65c each; \$7.00 per dozen of one or more varieties, by Parcel Post Prepaid; 6 at dozen rate. Varieties marked * can be furnished in Star or Specimen plants at 85c each, \$9.00 doz. by Parcel Post.

Freiherr Von Marschall

It has wonderfully beautiful foliage and produces large, full, beautifully shaped flowers, which are borne in profusion all through the season. The color is bright red.

THE BRIDE—There is no other white Rose more satisfactory than the Bride.

BRIDESMAID—This variety is valuable for cutting and does finely in the open ground; a sport from the old and popular pink Tea Catherine Mermet

CATHERINE MERMET—A very free bloomer, producing clear, shining pink flowers, the center being shaded fawn and amber.

LADY HILLINGDON—Apricot yellow shaded to orange on the outer edge of the petals, becoming deeper and more intense toward the center of the bloom. The color does not fade after the bloom is cut, but invariably becomes darker.

ETOILE DE LYON—Blooms freely, beautifully formed, rich golden yellow.

LADY PLYMOUTH—A Rose similar Souv. de Pierre Notting, which means a handsome bud, full, double bloom of large size. Deep ivory cream, faintly flushed.

Last winter I ordered some one year Rose bushes from you, special collections, among them was one Garden Gem. I lost very few plants and the little sturdy things bloomed this summer. Not long ago the Garden Gem has three immense blooms and to say that those three blossoms created a sensation is putting it truthfully. Mrs. G. W. Adams, Yaupon Hill, Andalusia, Ala.



Wm. R. Smith



Baby Rambler Roses

The Exquisite
"Baby Doll"



Baby Doll or Tip Top

The flowers are miniature in size but magnificent in form and produced by the hundreds. Exquisite for cutting or bouquets and bedding purposes. Makes a magnificent show in the open ground, always blooming from early spring until late fall. The tips of the petals are vivid scarlet, then mellowing down through shades of pink into saffron, lavender and gold, finally into deep old gold, a combination extraordinary and pleasing. Foliage slender and produced in abundance, dark lustre green.

A conspicuous group is composed of the Baby Ramblers, so called because of the resemblance, in dwarf (12 to 18 inches), to the ramblers, with blooms produced in large, many flowered clusters. Absolutely hardy.

ANNY MULLER—Color a shiny and brilliant pink, produced in the greatest profusion in large clusters.

DOUBLE WHITE BABY RAMBLER — Great masses of double, pure white flowers, covering the plant as with a mantle.

BABY TAUSENDSCHON—Flowers firm, white delicately flushed pink, changing to deep rosy-carmine.

GEO. ELGER—It produces great quantities of lovely little buds of golden-yellow, opening into miniature symmetrical Roses. Bush is so loaded with blooms they resemble a huge bouquet.

MRS. WM. CUTBUSH—Flowers of pale pink, borne in huge trusses throughout the entire summer.

ORLEANS—Brilliant geranium red flowers, suffused rose, with a rosy-white center.

LAFAYETTE — Very attractive large, bright crimson-scarlet, in sprays of 40 or more flowers each.

GRUSS AN AACHEN—Yellowish rose colored with salmon pink and red shadings. Blooms larger than the average polyantha.

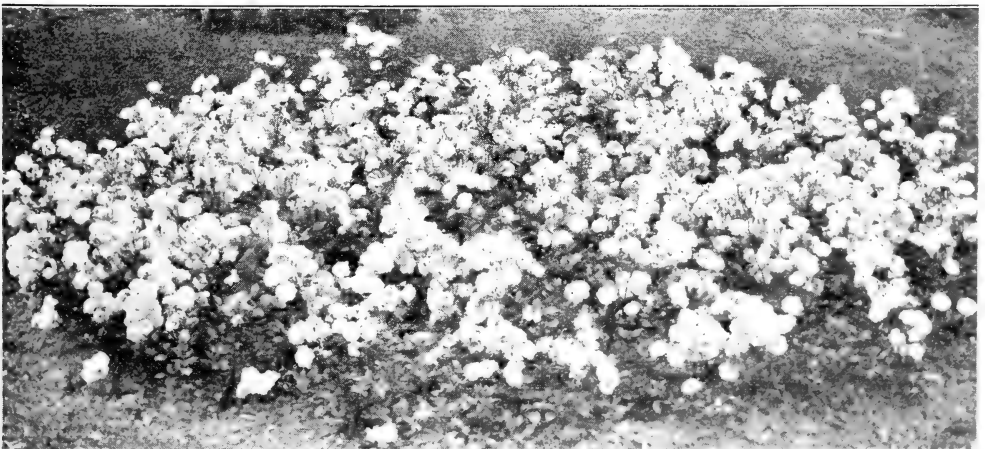
ELLEN POULSON—Dark brilliant pink.

CLOTHILDE SOUPERT — Known the world over as one of the very best of all bedding Roses. A strong, dwarf grower and a truly wonderful bloomer, producing clusters after clusters of the finest formed flowers. Full and double, and deliciously sweet. Color effect is beautiful, ivory-white, shading toward the center to silvery-rose.

Mlle. CECILE BRUNNER—Rosy pink on rich creamy white ground; a great bloomer; very satisfactory for bedding.

PERLE D'OR—Coppery gold, changing to fawn and salmon; flatrayed form, very double; elegantly perfumed.

Price of all Baby Rambler and Polyantha Roses offered on this page, 20c each for strong pot plants; 6 for \$1.00, postpaid; two-year-old plants, 65c each; \$7.50 per dozen, 6 at doz. rate by Parcel Post prepaid.



A Bed of Baby Rambler Roses—own root plants



J. B. Clark

Dingee Hardy Hybrid Perpetual Roses

The Hybrid Perpetuals, or "June Roses," are the most famous of all roses. Most of the varieties were propagated years ago—the best known is General Jacqueminot, which was brought out in 1852—but time has not lessened their popularity.

Although they usually bloom only once a year, they produce an enormous number of flowers—more than the Hybrid Teas. They are of extremely vigorous, upright growth, putting forth long, heavy canes. The flowers are immense in size, often measuring six inches in diameter, and are delightfully fragrant. They are perfectly hardy, and live through the most severe winters with slight protection.

MARSHALL P. WILDER—Flowers large, semi-globular, full and of good substance, bright scarlet-crimson, richly shaded with maroon.

GENERAL JACQUEMINOT — Bright, shining crimson, rich and velvety; exceedingly brilliant and handsome; makes magnificent buds and flowers.

ANNE DE DIESBACH—Most lovely brilliant carmine, long, pointed buds, and large, finely formed, compact flowers, very full and double and delightfully sweet.

MAD. CHARLES WOOD—Flowers extra large, double, full and quite fragrant; bright fiery scarlet, passing to fine, rosy crimson, shaded with maroon.

MAD. MASSON—It is entirely hardy, blooms nearly all the time, as free as any Hybrid Tea, bearing numbers of large, full, double flowers of unusual beauty and wonderful fragrance; clear, bright rose, distinct and charming.

PAUL NEYRON—The flowers are immense; probably the largest and finest Rose; bright, shining pink, clear, beautiful, double and full.

J. B. CLARK—An intense, deep scarlet rose, shaded blackish-crimson color like the sheen of a plum.

VICK'S CAPRICE—Flowers large and slightly cup-shaped, but full and deep; petals thick and lasting, having the ground color clear, satiny pink, distinctly striped and dashed with white and carmine.

GREEN ROSE — Viridiflora— A most interesting member of the Rose family, grown for its oddity. Petals are small, pointed, set thickly, and of the same color*as the foliage, dark pea green.

Price of Hybrid Perpetual Roses: first size plants, 25c each; 5 for \$1.00, postpaid; two-year old plants, 70c each; \$7.50 per dozen of one or more varieties, 6 at doz. rate by Parcel Post Prepaid.

"Sturdy as Oak" Rugosas

These are the only everblooming roses which can be called absolutely hardy. Their growth is extremely vigorous, resulting in sturdy, compact bushes four to six feet high. Wrinkled leathery foliage, of a dark shiny green, unaffected by insects or disease. They thrive under all conditions, and are indispensable wherever plants requiring little attention are desired.

SIR THOMAS LIPTON—The best pure white Rugosa Rose. Strong and vigorous, grows 4 feet high. Flowers double.

CONRAD FERDINAND MEYER — Strong grower; perfectly hardy; flowers large; well filled, fragrant. Silver rose.

NEW CENTURY—Bright, rosy pink, with red center, with petals widely bordered with creamy white.

F. J. GROOTENDORST—This is a new type of Rose which might properly be called a Rugosa Baby Rambler, it being a cross between Rugosa and the crimson Baby Rambler. Imagine a shrub-like Rugosa Rose covered with trusses of crimson Baby Rambler Roses and you will have a fair conception of this new hybrid variety. 2 year plants only.

Price of Rugosas, strong one-year plants, 20c each; 6 for \$1.00, postpaid; two-year-old plants, 65c each; \$7.00 per dozen, by Parcel Post Prepaid.



Dingee Hardy

Climbing Roses

Hardy Climbing Roses have become an absolute necessity for beautifying the home, for training over porches, verandas, trellises, and pergolas and for training of low supports to make the most beautiful flowering hedges. Can be grown as individual specimen plants, when properly trained, for they can be kept trimmed to any shape.

In recent years great advance has been made in the development of this class of roses. Today there are climbers that have blooms rivaling the Hybrid Teas, and even hardier than roses of the latter class. However, some of the varieties are not as hardy as others, and require some protection in the far north.

Due to the fact that these roses are hardy, and of extremely vigorous growth, sending forth canes more than ten feet long in a single year, they will survive many winters if the proper kind of plants are used. Plant own-root stock—the Dingee kind—for once planted they last. The growth is strong and heavy, and no wild shoots can come up.

Climbing American Beauty



Climbing American Beauty

The colors of carmine and crimson are those of the bush rose American Beauty. Exceptionally fine buds, opening into very large flowers of splendid form, borne on long stems, and available for cutting. Vigorous, healthy, leathery foliage, retained usually throughout the season. The blooming season is unusually long for a climbing Rose.

AUNT HARRIET—In full bloom, it is amazingly fine with its masses of dazzling scarlet-crimson Roses loading every branch.

MARY WALLACE—Blooming with great freedom in spring and bearing a considerable number of fine buds in summer and fall. Flowers very large, usually exceeding 4 inches across; well formed semi-double, of a bright clear rose-pink with salmon base to the petals.

CHRISTINE WRIGHT—Thick leathery dark green foliage, practically immune from insects or disease. Blooms are produced singly and in large clusters, each bloom perfect in form and from 3 to 4 inches in diameter. Color an exquisite shade of bright wild-rose pink.

DOROTHY PERKINS—A brilliant pink rambler Rose, flowers in large clusters, prettily crinkled petals. Hardy and satisfactory.

Birdie Blye

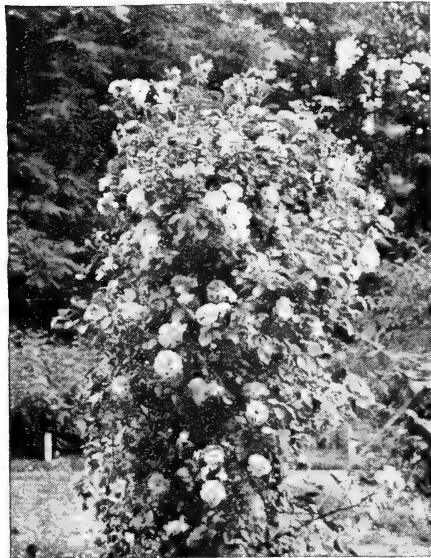
One of the Everblooming hardy climbers. Always in bloom. Perfectly hardy. Good strong grower. Foliage bright glossy green and free from insects or disease. Blooms full and double over three inches in diameter. Color a bright carmine, changing to bright rose.

THOUSAND BEAUTIES—Large flowers with ruffled petals, borne in enormous trusses, from 10 to 15 in a cluster. Colors vary through shades of yellow, cream and rose pink.

DR. W. VAN FLEET—Flowers when open run four inches and over in diameter. The center is built high, petals beautifully undulated and cupped. The color is a remarkably delicate shade of flesh-pink on the outer surface, deepening to rosy flesh in the center. Flowers full, double, of delicate perfume; buds pointed.

MARY LOVETT—A cross between a Seedling, Wichuriana and Kaiserin Augusta Victoria and termed a "White Dr. Van Fleet." This rose is strongly recommended. Loses foliage early.

Price of Climbing Roses on this page, first size plants, 20c each; any 6 for \$1.00; two-year-old plants, 70c each; \$7.50 per dozen of one or more varieties, by Parcel Post Prepaid.



Paul's Scarlet Climber

Paul's Scarlet Climber

Startling, vivid scarlet colors have won for this Rose well deserved recognition as the most attractive climber ever introduced. It is a vigorous grower, produces a mass of bloom, and with its bright colors which are retained without fading for a long period, it makes the most brilliant display imaginable. Heavy disease resistant foliage; great freedom of bloom. Paul's Scarlet Climber, the winner of innumerable medals for excellence, is a Rose that no one should be without.

KEYSTONE — Perfectly hardy everywhere. blooms in wonderful profusion. The open flower of Keystone is perfectly double, with buds beautifully formed. It is a deep lemon-yellow.

ALBERIC BARBIER—A thrifty yellow; flowers are bright and full, very fragrant.

BESS LOVETT—Resembles Climbing American Beauty in shape of bloom, but is very much brighter in color and much more fragrant. Flowers are clear bright red of good size, and of double, full, cupped form, lasting a long time.

SILVER MOON—Single flowers, extra large, freely produced on long, strong stems; excellent for cutting. Color brilliant silvery-white with a mass of golden yellow stamens in center.

DR. ROBERT HUEY—Buds and flowers medium size, semi-double to single in clusters of 3 or 4. Dark crimson of great brilliancy. Stamens and anthers, yellow.

EXCELSA—A remarkable grower, free from insects and producing a great quantity of blooms of crimson maroon with the tips of the petals scarlet.

VIOLETTE—Rather large flowers of deep reddish violet borne in large trusses.

AMERICAN PILLAR—The flowers are produced in profusion, fairly covering the bush, color bright pink. In the fall, the red berries are highly ornamental.

AVIATEUR BLERIOT — Saffron-yellow, center golden-yellow; full and double, flowering in clusters.

VEILCHEN BLAU OR VIOLET BLUE —The Blue Rose is one of the most rampant growers we have ever seen, covering a large porch in a single season. The flowers are borne in loose clusters and are a delightful shade of blue—something entirely different from any other Rose.

ROSARIE (Pink Tausendschon)—This is a bright pink form of Thousand Beauties.

JACOTTE—Color deep coppery yellow, tinted coppery red, borne several together on long stems. Very fragrant.

MRS. ROBERT PEARY—Blooms throughout the season and the flowers are magnificent beyond description. The buds are long and pointed, finely modeled.

MME. GREGOIRE STAECHELIN — A new type of climbing rose from Spain. Cross between the popular variety Frau Karl Druschki and Chateau de Clos Vougeot, and it seems to have inherited the good qualities of both. Long pointed buds of crimson at first, then as the blooms expand show splashes of carmine with pear pink inside.

MARECHAL NIEL—The wonderful garden Rose of the Southland. Deep golden yellow. In the North, should have very careful protection during winter.

CLIMBING WHITE MAMAN COCHET —Exquisite white flowers perfect specimens of the White Maman Cochet Rose.

CLIMBING PINK MAMAN COCHET—A pure Maman, Cochet Rose of the Climbing habit. Sufficiently hardy to withstand northern winters with protection.

CLIMBING LADY ASHTOWN—Strong, rapid grower; large, delicate pink flowers.

CLIMBING GRUSS AN TEPLITZ — Sometimes this fine climbing Rose does not become established quickly, but given attention it will produce a profusion of blooms of that fine dark crimson of the parent, bush variety of the same name.

Price of all Roses on this page, strong plants, 25c each; 5 for \$1.00; two-year-old plants, 70c each; \$7.50 per dozen, by Parcel Post Prepaid of one or more varieties.



Magnificent Dingee Chrysanthemums



Since the introduction of these lovely autumn-flowering plants into Europe, some two hundred years ago, they have been developed to a wonderful extent. Those who have in mind the small, old garden varieties cannot imagine the exquisite beauty of the newer sorts. They produce enormous, massive flowers of most beautiful colors and perfect shape. Their culture is the easiest. See "How to Grow Them" on page 31, and if further information is desired, it will be furnished upon application. Our collection contains the best and most beautiful of the newer varieties, as well as the choicest of the standard sorts. We offer them at prices within the reach of all, as we would like to see them growing in every garden and in every home.

Price all Mums on this page, strong, healthy pot plants, 15c each; 2 for 25c; \$1.25 per dozen, postpaid.

BETSY ROSS—Midseason. Incurved white.

BROWN UNAKA—A golden bronze. Early.

CHARLES RAGER—Midseason. Incurved pure white.

EARLY FROST—White.

GOLDEN GLORY—Midseason. Fine big yellow blooms.

HARVARD—Late. Medium size. Red.

MAJOR BANNAFFON—Late. A fine incurved yellow.

OCONTO—Large pure white blooms.

PACIFIC SUPREME—Pink. Early.

PINK CHIEFTAIN—Midseason. A pleasing shade of pink.

ROSE CHOCHARD—Midseason. A very large, dark pink.

ROSE PERFECTION—Midseason. A bright pink.

SILVER SHEEN—Early. Pure white incurve.

SUNBEAM—Late. Bright yellow. Fine.

SUN GLOW—Early incurved. Bright yellow.

UNAKA—Early. Large pink.

WHITE CHADWICK—Late. Blush white incurved.

WHITE CHIEFTAIN—Midseason. Medium white.

WHITE PATTY—Late, incurved flower. White.

YELLOW CHADWICK—Late. A handsome golden yellow.

Hardy Pompon Chrysanthemums

These are entirely hardy and produce hundreds of button-like perfectly double flowers, making an excellent show. Last until late in the autumn. We offer the choicest varieties only. Price all Pompon Mums, strong plants, 15c each; 2 for 25c; \$1.25 per dozen, postpaid.

- ALICE HOWELL**—Single orange yellow.
- BUCKINGHAM**—Single. Clear pink gigantic size.
- BOSTON**—Even shade of golden bronze.
- CHRISTMAS GOLD**—Very bright yellow, small flowers in clusters.
- CORA PECK BUHL**—Deep golden yellow.
- CLARINDA**—Double bronze.
- DIANA**—Late. Pure white.
- DOTSON**—Old rose reflex petals.
- EDEN**—Bright rose.
- EDINA**—Best rose pink.
- GODFREY**—Late. Light pink.
- GOLDEN CLIMAX**—Midseason. Golden yellow.
- IVA**—Reddish bronze.
- JULIANA**—Early yellow.
- KLONDYKE**—Brilliant yellow compact bloom.
- LEILAH**—Rose pink.
- LILLIAN DOTY**—Shell pink.
- MIRAMAR**—Large; an early bronze.
- NEW YORK**—A light bronze.
- RED DOTY**—Brilliant, rich dark red. Double.
- WHITE DOTY**—Double white flowers.
- YELLOW BABY**—Small button, yellow.

Climax Collection

8 HARDY POMPON "MUMS" 75c PPD.

Strong pot plants. All will bloom the first year, and make a great showing in late fall. One each of following varieties:

- BUCKINGHAM**—Single pink, yellow center.
- GOLDEN CLIMAX**—Golden yellow.
- DIANA**—Double pure white.
- LILLIAN DOTY**—Double shell pink.
- RED DOTY**—Double red.
- MIRAMAR**—Large double bronze.
- GODFREY**—Double late. Light pink.
- KLONDYKE**—Brilliant yellow. Compact bloom.

SPECIAL OFFER—One each of the 8 hardy Pompon varieties offered above for 75c, postpaid. Order as the "Climax Collection."



Dingee Pompon Chrysanthemum



Bed of Famous West Grove Cannas

Famous West Grove Cannas

Cannas are not hardy and should not be planted until danger of frost is past. Take the roots up in the fall and store them in a warm, dry place.

No flowers will make such an attractive bed. Rapid in growth, freedom of bloom and ornamental foliage makes them so desirable for planting in beds, on lawns or yard, and especially after early blooming bulbs are done. Blooms all summer long. All Cannas furnished in big, strong, pot-grown plants, ready to bloom.

APRICOT—4 feet. The color is a buff-yellow base overspread with salmon-pink, making a mass effect of rich apricot.

NOKOMIS—5 feet. Large, vivid crimson flowers with a rich silky sheen on the petals. Rich bronze foliage.

KING HUMBERT—A glorious Canna. The finest we have ever seen. Grows to a height of about 5 feet. Immense dark bronze foliage with great heads of orange-scarlet flowers.

KING MIDAS—5 feet. Very large flowers of glittering gamboge-yellow. An outstanding variety, making glorious trusses on stems as straight as an arrow. A true Canna aristocrat.

MRS. ALFRED F. CONARD—4 feet. Color, a beautiful shade of salmon-pink. Flowers of immense size. Producing blooms so freely as to make a continuous show for several months.

PANAMA—The orange-red petals are bordered with a broad edge of golden yellow. Flowers large and overlapping.

PRESIDENT—Produces immense heads of glowing crimson flowers 7 inches across the open bloom, on strong erect stalks well above the foliage; 4 feet in height.

EUREKA—The best white. The large substantial flowers are freely produced on vigorous upright stalks, 4½ feet, 50c each.

THE AMBASSADOR—4 feet. Brilliant, large, cherry-red flowers, borne freely on strong stems well above the healthy bronze foliage. Splendid for bedding.

YELLOW KING HUMBERT—4 feet. A sport from the bronze foliage variety of the same name, but with blooms of yellow dotted with red, and green foliage. Good as King Humbert.

MRS. PIERCE S. DUPONT—3 to 4 feet. Single flowers very large and form immense heads. Petals firm and bloom opens perfectly and does not wilt in the hot sun. Color a vivid watermelon-pink and very attractive. The edge of the petals is wavy or crinkled. Flower stems are strong and upright holding the heads well above the healthy green foliage. Price, strong pot plants, 25c each, 5 for \$1.00, postpaid.

Price above Cannas of assorted, strong pot plants, except where noted, 20c each; 6 for \$1.00 postpaid; \$2.00 per dozen, postpaid.

Dingee Hardy Violets

Rich in modest beauty, famed for its enchanting fragrance, the Violet continues to increase in popularity. With the last snows of winter still about it this gentle flower shyly appears from out its icy bed, heralding the coming of spring. All our plants are absolutely clean and healthy.

Price, strong plants, 15c each; any 12 for \$1.50, postpaid. If 100 plants are wanted ask for prices. **FREY'S FRAGRANT**—Flowers rich dark purple. For freedom of bloom this new variety outclasses all others. Very fragrant.

PRINCE OF WALES—One of the best. The large, blue, single flowers are deliciously fragrant.

Bargains in Dingee Cannas

We have a particularly fine collection of these imposing foliage plants, including novelties and standard varieties which we have found worthy of distribution. Cannas are not hardy and should not be planted until danger of frost is past. Take the roots up in the fall and store them in a warm dry place.

CANNA BED NO. 16—For Bed 4 Feet Across—1 red for center; 6 yellow for circle or 7 one color, or we can reverse the order and send 1 yellow for center and 6 red for circle. Ppd. \$1.00.

CANNA BED NO. 17—For Bed 7 Feet Across—1 scarlet with red foliage for center; 6 yellow for first circle; 12 red for second circle or 19 one color, postpaid. \$2.50.

CANNA BED NO. 18—For Bed 10 Feet Across—1 red foliage for center; 6 yellow for first circle; 12 pink for second circle; 18 scarlet for third circle, or 37 all one color if desired. Ppd. \$4.50.

Dingee Calla Lilies

LILY OF THE NILE—Grand white flowers. Strong plants, 20c each, postpaid.

NEW YELLOW CALLA—A grand novelty. Large fragrant yellow flowers. 25c each, postpaid.

EVERBLOOMING CALLA GODFREY (Dwarf)—In bloom all the time. Fine. 20c each, postpaid.

SPOTTED CALLA—Leaves dark, rich green, dotted with white. Ornamental even when not in flower. Beautiful white flowers with deep black throat. 20c each, postpaid.

SPECIAL OFFER—One each of the 4 Callas offered above sent postpaid for 75c.



Dingee Magnificent Carnations

We offer strong plants, and whether planted in the open ground or in pots, they quickly make large specimens, blooming profusely during the summer. For winter blooming pinch the plants back from time to time during the summer. Bring indoors in early fall. Grown in pots they will bloom abundantly during the winter.

Price strong pot plants, 15c each; any 2 for 25c; any 4 for 50c; \$1.40 per dozen, postpaid.

- AVIATOR**—Best standard crimson.
- HARVESTER**—Superb pure white.
- PINK ENCHANTRESS**—Large, deep pink.
- RAIUM**—Beautiful red, fine large bloom.
- GOLDEN GLOW**—Fine bright yellow.
- CHEERFUL**—Deep pink, large flowers.
- ARCTIC**—Fine white, large flowering.
- IVORY**—Beautiful creamy white.

Choice Geraniums

CHOICE DOUBLE

- ALPHONSE RICARD**—Semi-double; orange red.
- JULES VASSEUR**—Bright scarlet, white center.
- JEAN VIAUD**—Soft pink, white blotches.
- BERTHE DE PRISCILLA**—Dwarf habit. Fine bedder. Bright silver rose-pink.
- JOHN DOYLE**—Rich scarlet. Very effective.
- MME. RECAMIER**—Pure white. Strong grower. One of the best whites.
- MME. BUCHNER**—Snow white; vigorous.
- S. A. NUTT**—Rich, dark crimson, superb.
- BEAUTE POITEVINE**—Bright salmon pink.

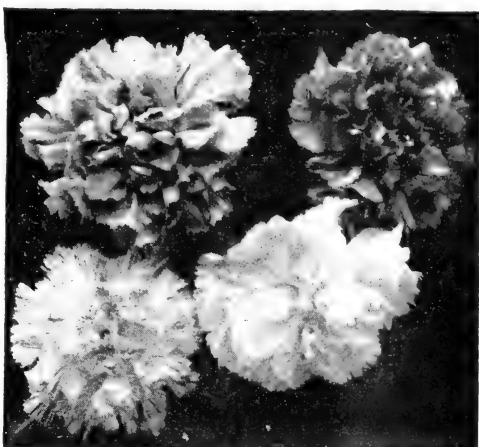
SINGLE GERANIUMS

- LA FAVORITE**—Snowy-white; fine.
- GRANVILLE**—Deep rose-pink with white blotches on upper petals.
- JACQUERIE**—Deep carmine red.
- FEUER**—Brilliant crimson-red. Dwarf.

FANCY AND SWEET-SCENTED GERANIUMS

- MAD. SALLEROI**—Green, dotted white.
- ROSE-SCENTED**—Delightful scent.
- LEMON-SCENTED**—Deliciously scented.

Price of Geraniums: Strong plants from 3 inch pots, single or double varieties. 15c ea.; 2 for 25c; \$1.50 per doz., ppd.



Summer Blooming Carnations

Pot Hydrangeas

Excellent for pot culture for blooming indoors during the winter. The foliage keeps dark green throughout the winter, making them an ideal decorative plant. They can also be planted outdoors, as they are hardy.

- AVALANCHE**—Large corymbs of pure white flowers.
- GENERAL DE VIBRAYE**—Large heads of bright rose.
- OTAKSA**—Rich pink, changing to snow-white and blue.

Price Pot Hydrangeas, 25c each; five for \$1.00, postpaid; large specimen plants from 4 to 6 inch pots, 85c each, postpaid.

D. & C. Special Rose Fertilizer

We have had so many inquiries asking for a good fertilizer for Roses that after many years of experimenting found one that we highly recommend for indoors and out. Not only for Roses, but for all kinds of plants, but especially for Roses. We have added to this, material which will keep your plants free from insects of all kinds, both in the soil and on the plants. This is put up in a very convenient form so that it can be used without any inconvenience or disagreeableness. 12 oz. packages, 30c; 2 1/2 lbs., 75c, by parcel post prepaid; 100 lbs. by express collect, \$10.00.

WALKER'S EXCELSIOR PLANT FOOD. An odorless preparation, combining in a highly concentrated and soluble form every element required in plants. (Postpaid)

2 1/2 oz. cans, making 3 gals.	\$0.20
5 oz. cans, making 6 gals.35
12 oz. cans, making 15 gals.55

STIM-U-PLANT

Tablets

An excellent fertilizer for this purpose is Stim-U-Plant, an odorless, highly concentrated plant food, in tablet form, with guaranteed chemical analysis of 11 per cent nitrogen, 12 per cent phosphoric acid, 15 per cent potash.

Especially fine for Roses. These tablets increase production, heighten color and improve quality immediately. Many professional and amateur growers use them extensively all the year around—from early spring until late fall outdoors, during the winter for pot plants, hot-house benches, etc.

Prices, postpaid: Small size, 30c; 100 tablets, 80c; 1,000 tablets, \$3.75.



Geranium, Jean Viaud



Beautiful Verona Type Fern

Dingee Decorative Ferns

Use a soil composed of five parts; two parts of good garden soil, two parts of finely screened peat or leaf mold from the woods, and one part sharp, clean sand. This should then be thoroughly sterilized by putting in an oven and baking in order to destroy earth worms, etc. Place some broken pieces of pots or crocks and some charcoal in the bottom of each pot for drainage. A temperature of not less than 55 degrees F. should be maintained at all times, with a rise in the daytime of 10 degrees to 15 degrees. On warm days they should be syringed at least twice. Never allow them to become too dry. Insects which are most troublesome are thrips, red spider, scale and mealy bug. Thrips, red spider and mealy bug are easily prevented by a properly moistened atmosphere, also by spraying of foliage once a week with tobacco water, made in the consistency of weak tea, and increased or diminished in strength as occasion demands.

Price of all Ferns in extra strong pot plants, 15c each; 7 for \$1.00; large plants from 4 and 5 inch pots, 75c each, postpaid.

TEDDY, JR.—New dwarf Fern. Fronds are broad and beautifully tapered from the base to the tip, drooping just enough to make a graceful plant. Produces nearly four times as many fronds as any other Fern introduced. Compact, thrives under any condition.

ROOSEVELT—Resembles the Boston Fern, but produces many more fronds, thus making a handsomer and bushier plant; in fact, it today is more popular with the florists than the Boston; it will make a larger plant in a shorter time. The fronds are beautifully undulated, giving it a very pretty rising effect.

BOSTON FERN—This fern differs from the ordinary Sword Fern in having much longer fronds. This drooping habit adapts this variety for growing as a single specimen for a table or pedestal.

DWARF BOSTON—Same as Boston variety but a dwarf compact plant.

JACKSONII—Extremely strong grower. Resembling Sword Fern, quickly forming large, upright plant.

MAIDENHAIR FERN (*Adiantum cuneatum*)—The best known table Fern, with dainty, lacy fronds, unlike any other.

VERONA—The fronds are very fine and fluffy. Known as Lace or Baby Breath Fern. Dwarf or compact growth.

SCHOLZELI (The Crested Fern)—The fronds, like Scottii, stand erect, and with a graceful arch form a plant of ideal shape, and they never break down, giving the plant ragged appearance and allowing a free circulation of air through the foliage, prevents the center of even the largest specimens from becoming defective or yellow.

Summer Flowering Gladioli

Among the most popular summer-flowering bulbs, and of high decorative value, either in the garden or as a cut flower. All bulbs sent out by us are first class, sure to bloom. They should be planted in a sunny position about May 1.

Price, named Gladioli below: any 2 for 15c; any 6 for 35c; 60c per dozen, all postpaid by mail.

Selected from hundreds of the best varieties. In size of flowers, blooming quality and diversity of color, none will compare with these.

AMERICA—The most beautiful variety in cultivation. Soft flesh-pink, slightly tinged with lavender.

CHICAGO WHITE—Pure white; lavender stripes.

MRS. FRANK PENDLETON—In color a lovely salmon pink with brilliant deep, red blotches in the throat.

BARON HULOT—Rich, royal violet-blue. Cut in combination with one of the yellow varieties is truly exquisite.

CRIMSON GLOW—Bright crimson-scarlet.

HALLEY (The Early Giant)—Salmon-pink, immense.

WILBRINK—A favorite variety for cutting; very early flowering, color delicate pink.

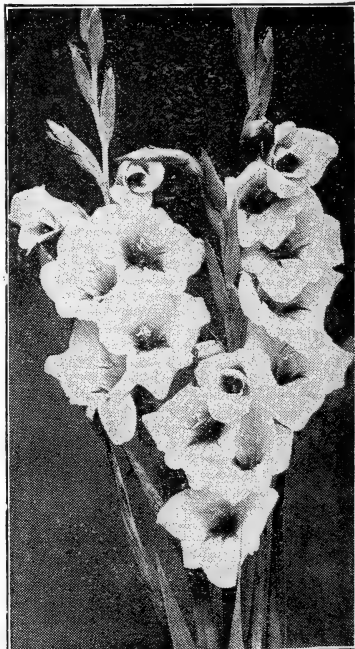
HERADA—Very large flowers of pure mauve with deeper markings in the throat; on tall, straight spikes.

SOUVENIR—Superb golden yellow.

MRS. FRANCES KING—A striking shade of light scarlet or flame color; one of the most effective.

LE MARECHAL FOCH—Soft flesh-pink.

GOLDEN MEASURE—Handsome spikes of yellow. Flowers deep brilliant crimson, large size.



Summer Blooming Gladioli

SPECIAL OFFER. For 65c we will send one each of the above 12 varieties, postpaid. All choice sorts.

MIXED GLADIOLI—Exhibition sorts, all colors mixed. 35c per doz.; \$2.25 per 100, postpaid.



Dingee Hardy Peonies

Once Peonies are planted they last for a life time. They stand the severest winters without the slightest protection. Especially fine for single specimens and cemetery planting. Prices include postage.

- PRESIDENT TAFT**—Rose type; mid-season. Strong grower, a profuse bloomer, every shoot being crowned by a big bloom. A delicate Hydrangea-pink, completely enveloped in a halo of angelic white. Very fragrant. Price \$1.50 each.
- SARAH BERNHARDT**—Strong grower. Flowers remarkable size, full and double. Large petals that are twisted and imbricated. Apple blossom pink, each petal tipped. Price, \$1.50 each.
- LORD KITCHENER**—Brilliant scarlet. Great producer, making a grand display. Double early. Price \$1.50 each.
- LIVINGSTONE**—Rose type. Late. Very full, compact, pale lilac rose with silvery tips, center petals flecked carmine. Price \$1.50 each.
- MAD. JULES DESSERT**—Large flowers of beautiful form. Color pure white overlaid with a sheen of delicate blush with a pronounced pink center, inter-mixed with golden stamens. Price \$10.00 each.
- PRIMEVERE**—Large, medium compact, flat bomb type. Guards creamy white splashed scarlet; center light sulphur-yellow. Price, \$5.00 each.
- CLAIRE DU BOIS**—Rose type, late mid-season, large and double, silvery pink. Price, \$1.00 each.
- DR. H. BARNSEY**—Large, full, globular blooms. Soft Solferino red shaded crimson, pronounced bluish reflex. Price, \$3.50 each.
- GROVER CLEVELAND**—Very large; compact, rose type. Dark crimson. Strong vigorous grower. Late. Price, \$2.50 each.
- KARL ROSENFELD**—Semi-rose type. Midseason. Tall grower, fine bloomer. Brilliant dark crimson. Price, \$2.50 each.
- SUZETTE**—Semi-rose type. Midseason. Handsome flowers of elegant shape and superb coloring. Bengal rose shaded carmine purple with silvery reflex. Price, \$1.50 each.
- ALSACE LORRAINE**—Semi-rose type. Late mid-season. Petals pronouncedly pointed. In the center petals are arranged like a water lily. Color rich creamy white, center delicately tinted brownish yellow. Price, \$3.50 each.
- ELIE CHEVALIER**—Large, globular, developing into a high built crown. Color Tyrian rose, center flecked with crimson. Price, \$2.50 each.
- JAMES KELWAY**—Early midseason. Rose white changing to a milk white, tinted yellow at base of petals. Price, \$3.00 each.
- MONSIEUR JULES ELIE**—Early midseason. Immense globular-type. Color an ideal glossy lilac-pink shading to deeper rose at the base, the entire flower overlaid with a silver sheen. Price, \$2.50 each.
- BARONESS SCHROEDER**—Late Rose type. One of the finest all-round peonies. Baby pink fading to the purest white. Immense flowers with high chalice shaped center. Price, \$1.50 each.
- TOURANGILLE**—Late midseason. Vigorous grower bearing large flat shaped flowers. Color pearly white overlaid with delicate salmon and with shades of La France rose. Price, \$5.00 each.



Dingee Double Pecny

Standard Peonies

Price, strong roots, 65c each; \$6.50 per dozen. Postpaid.

- CAROLINE ALLEN**—Double. Rose and Salmon.
 - CANDIDISSIMA**—Double. Creamy white.
 - CANARY**—Double. White primrose center, late.
 - CHARLEMAGNE**—Lilac, blush center. Double.
 - DUCHESSE DE NEMOURS**—Sulphur-white.
 - DUKE OF WELLINGTON**—Sulphur-white. Double.
 - EDULIS SUPERBA**—Double. Brilliant pink.
 - FAUST**—Delicate light pink; double, late.
 - FELIX CROUSSE**—Brilliant red. Double.
 - FESTIVA MAXIMA**—White center, flaked red.
 - FESTIVA ALBA**—Cream-white, red spots. Double.
 - FRANCOIS ORTEGAT**—Deep crimson. Double.
 - HUMEI**—Cherry pink. Highly cinnamon scented.
 - HUMEI CARNEA**—Clear flesh tinged rose.
 - INSIGNIS**—Carmine rose. Very fragrant.
 - JEANNE D'ARC**—Pure white. Early, double.
 - L'ECLETANTE**—Double. Crimson red.
 - LOUIS VAN HOUTTE**—Velvety red. Double, late.
 - LADY BRAMWELL**—Pink and rose. Double, mid-season.
 - LOUIS PARMENTIER**—Double. Bright red.
 - MODESTE GUERIN**—Deep rose. Double, mid-season.
 - MARECHAL VALIANT**—Double. Mauve pink.
 - NOBILISSIMA**—Dark violet red.
 - ROSEA ELEGANS**—Soft rose. Double.
- Mixed varieties, 50c each; \$5.00 per doz., postpaid.

Hardy Ornamental Grasses

For ornamental purposes these grasses are strikingly original in effect and impart a tropical brilliance to the landscape. The plumes which these grasses produce are for lovely indoor decoration.

Prices of Eulalias described below. 25c each; 5 for \$1.00, postpaid.

- E. JAPONICA ZEBRINA**—The leaf blades are of deep green, striped crosswise with pure white.
- E. JAPONICA VARIEGATA**—Blades are creamy white in the center.

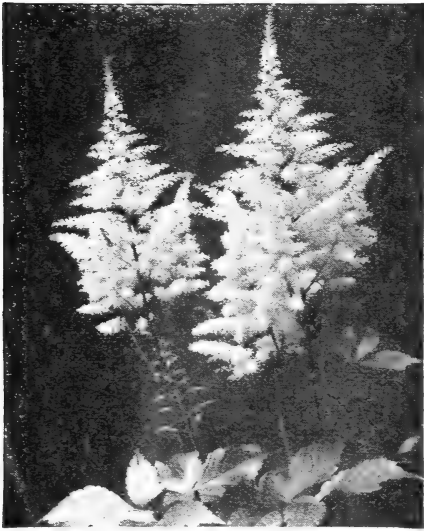
Hardy Azalea Hinodegiri

Among the most gorgeous of all hardy shrubs, bearing large flowers of fine shape. The beautiful color makes an attractive showing when in bloom in early spring. The bush is just one mass of flowers. Evergreen and entirely hardy. Dwarf grower, making a bush in time of from 12 to 24 inches high and about the same in diameter. Flowers bright scarlet. Strong potted plants from 8 to 12 inches, 50c each, postpaid.

Japanese Single Peonies

Price: 75c each; 6 for \$3.50 postpaid.

- CLAIRE**—Extra large dark red with a thick cluster of yellow stamens in the center of the flower.
- EVA**—A light but bright crimson with a thick cluster of yellow stamens.
- JACQUELINE**—Glittering pure white with yellow stamens in the center.
- NYPHEE**—Flesh color pink with yellow stamens.
- L'ETINCELANTE**—Very large cup-shaped flowers. Brilliant carmine with silvery margin.
- MIKADO**—Crimson with gold center.
- CLARISSE**—Opens light pink, changes to pure white. Two rows of petals, inner row somewhat shorter. Yellow stamens.



Astilbe

Dingee Hardy Perennial Phlox

Diversified and brilliant colors, profuse and continuous bloom and adaptability to almost any situation or soil, place Hardy Phlox in the front rank of desirable flowering plants. Being perfectly hardy, once planted they improve and multiply in vigor and beauty each successive year.

Price, strong field plants, ready to plant any time, 25c each; any 5 for \$1.00; \$2.50 per doz., postpaid, of one or more varieties.

- BEACON—Brilliant cherry red. 36 inches high. Flower heads are carried on strong stems.
- ELIZABETH CAMPBELL—Light salmon pink with lighter shadings toward center of the flower.
- MRS. JENKINS—Pure white. Late flowering. Splendid grower and free bloomer.
- RHEINLANDER—Large flower heads on good stems. Color beautiful salmon pink.
- E. P. STRUTHERS—Cherry red, shaded salmon.
- GEN. VAN HEUTZ—Salmon red, white eye.
- GRIDEUR—Deep rose.
- SUNSET—Dark rosy pink.
- W. C. EGAN—Delicate lilac pink, rosy center.
- ECLAIREUR—Purplish crimson light center.
- MRS. CHAS. DOOR—Beautiful shade of lavender.
- ISABEY—Salmon pink.

Mixed varieties. 2 for 25c; 9 for \$1.00 postpaid.

German Iris

The memory of the "Blue Flag" of the old-time gardens is one ever sweet to those whose lives were lived in such surroundings, and while the "modern" Irises if we may use the term, will remind one of the old days, they too, like everything else of these days have yielded to the influence of improvement, and there has been evolved a race of flowers absolutely bewildering in glory of their form and color.

- CANARY BIRD (Flavescens)—Lovely pale yellow.
- DARIUS—Yellow and lilac.
- HONORABILIS—Deep yellow; mahogany falls.
- FLORENTINA ALBA (Silver King)—Early white.
- INGEBORG (Interregna)—Immense white; early.
- MRS. H. DARWIN—White, violet, rather dwarf.
- LOHENGRIN—Foliage and flowers immense, of a deep violet mauve, almost pink.
- QUEEN OF MAY (Rosy Morn)—Lovely rose lilac.
- MADAME THIBAUT—White, bordered rose lilac, companion to Mad. Chereau; edge more pinkish.
- CHEERION—Standard lilac-mauve; falls mauve.

Price Iris, strong field grown roots, 15c each; 8 for \$1.00. Mixed varieties, 10c each; \$1.00 per doz., all postpaid.

Astilbes or Herbaceous Spirea

These hardy perennial herbs give such a striking effect to any hardy border or if planted as individual specimens in yard or garden. Graceful habit of growth producing tall spikes of delightfully feathered heads of flowers during June and July. Easily grown and when planted in the Fall bloom the following Spring. We offer strong potted plants of the leading varieties, postpaid.

- AMERICA—Deep pink.
 - GLADSTONE—Immense trusses of snow white flowers.
 - QUEEN ALEXANDRA—Light pink.
 - RUBENS—Rosy red. Handsome feathered spikes.
 - PEACH BLOSSOM—Rose pink.
- Price, strong pot plants, 40c each, postpaid; 3 for \$1.00.

Miscellaneous Perennials

- YUCCA FILAMENTOSA (Spanish Bayonet)—A low-growing evergreen plant with narrow leaves. The flower stalk is from 2 to 4 feet high and rises from the center. Creamy white, bell-shaped flowers. 20c ea. ppd.
- FUNKIA (Day Lily) Subcordata Grandiflora—White Day Lily. Handsome spikes of large, waxy-like blossoms, with an odor like that of orange blossoms, and large broad, glossy, light-green foliage. One foot to 18 inches. 20c each, prepaid.
- RUDBECKIA (Golden Glow)—Grows 6 to 8 feet high, branching freely and bearing by the hundreds on long graceful stems exquisite double flowers of golden yellow. 20c each, postpaid.
- DELPHINIUM BELLADONNA—This is the freest and most continuous blooming Hardy Larkspur. Clear turquoise blue. 20c ea.; 6 for \$1.00 ppd.
- DELPHINIUM CHINESE WHITE—A distinct and neat variety growing about 18 inches high, with fine, feathery foliage and producing freely large white blossoms. 20c each; 6 for \$1.00, ppd.

Daphne Cneorum

(Garland Flower)

This wonderful little evergreen plant is very popular due to the beautiful pink color and pleasing fragrance of its blossoms.

In May it is covered with flowers. Later in the fall it will flower again, they are not affected by frost, frequently can be picked in early December.

It grows about one foot high but spreads over a space of two to three feet.

We can supply well developed plants, 10 to 12 inch plants at 50c each, postpaid.



Phlox Beacon



Dingee's Hardy Shrubs

They are absolutely hardy, and, once planted, last indefinitely, increasing in size and beauty every year.

For cold climate, where hardy plants are needed they stand without an equal. Planted in clumps, masses or used for hedges, screens, or for filling unsightly corners, they make a glorious show. They supply that certain something which is lacking in every yard where hardy shrubbery is not planted.

Hydrangea Paniculata Grandiflora

They are extensively used for yard, lawn and hedge planting and for screens. Attains a height of 5 to 7 feet; hardy in all localities; blooms the first and every season in July and August. The flowers are massive, cone-shaped often measuring 10 inches in length, and have a pleasing variation of color, changing from original pure white to pink, and finally to beautiful, rich, coppery-red. Well-rooted, field grown plants that will bloom this year.

Evergreen Boxwood

Dwarf evergreen boxwood for edging walks, flower beds, etc. May be kept trimmed to any shape or height desired and always green. We offer the two varieties. The old English Box, *Sempervirens Suffruticosa* and the *Buxus Sempervirens* or the more robust growing boxwood. We offer strong specimen plants 12 to 18 inches field grown 50c each, \$5.00 per doz., postpaid.

Philadelphus or Mock Orange

BOUQUET BLANC—Dwarf growth with long slender branches densely covered from base to top with sweet-scented double flowers of creamy-white. In fact the flowers are borne in such great profusion as to totally obscure the plant.

NEW PHILADELPHUS ("Virginal")—One of the most beautiful, new ever-blooming varieties. It also makes wonderful individual specimen plants on the lawn. A vigorous tall grower with very large double-crested flowers with round petals.

Weigela

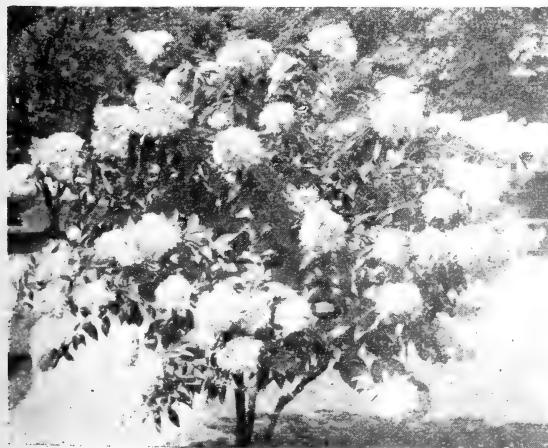
FLORIBUNDA—6 to 8 ft. Erect grower. Beautiful red flowers.

ROSEA—Large deep rose.

EVA RATHKE—Reddish purple.

AMABILIS—4 to 6 ft. Deep rose colored flowers.

MAD. LEMOINE—4 to 6 ft. White flowers with delicate blush.



Hydrangea Paniculata Grandiflora



Everblooming Hydrangea

Everblooming Hydrangea

The New Everblooming Hydrangea is as its name implies, constantly in bloom from early in June until frost, and is one of the most important additions in the way of hardy shrubs ever introduced. All summer long it bears great clusters of white flowers, much like the tender Hydrangea in size and form; it will grow to perfection in partial shade, making it most valuable for massing under trees or growing on north side of house.

Double Japan Snowball

VIBURNUM PLICATUM—Blooms in early June, when the whole bush is loaded down with great compact balls of pure white, double flowers. They are borne in such profusion that the entire plant appears one dense mass of bloom; the tree grows erect and bushy, 6 to 8 feet high.

Sweet-Scented Shrub

CALYCANTHUS FLORIDUS, CAROLINA ALLSPICE—3 to 6 ft. Flowers dark reddish brown and very fragrant and borne freely.

Spirea-Meadow Sweet

BILLARDI—Spikes of rose-colored flowers; blooms profusely.

PRUNIFOLIA (Bridal Wreath)—Double pure white flowers.

VAN HOUTTE—The bushes form fine, compact clumps. The pure white flowers are borne in great masses.

PERPETUAL BLOOMING CRIMSON SPIREA, Anthony Waterer—It makes a low compact bush, 15 to 18 inches high. Large umbels of deep crimson flowers.

Kolkwitzia Amabilis

(Beauty Bush)

An exceedingly handsome new ornamental Shrub from the wilds of China, resembling the Weigela and Honeysuckle to which it is allied. Growing 6 to 8 feet high at maturity with long arching branches, this variety combines all the merits of a perfect Shrub; hardiness, year around beauty of foliage and habit, and an amazing profusion of pale pink bell-shaped flowers in June. Strong plants 12 to 15 inches high, 50c ea.

Price of all hardy shrubs on this page, except where otherwise noted: one-year, field plants, 20c each; 6 for \$1.00, postpaid; two-year-old size, 50c each; \$5.50 per dozen, postpaid; three-year old size, 75c each; \$8.00 per dozen by freight or express not prepaid.

BARGAIN SECTION OF SPECIAL OFFERINGS OF DINGEE GOODS

In this section we offer to our customers the opportunity of securing reliable goods at BARGAIN PRICES. This is only possible on account of the wonderful production of our immense establishment the past year, which has surpassed our expectation. The goods offered are equal to any offered in this book and our Guarantee applies to these collections the same as other goods. The plant and bulb collections are gotten ready for shipment in large numbers, each one alike, thus eliminating considerable expense in our shipping department, and which we wish our customers to have the advantage of.



Our Great Rose "Charles Dingee"

10 Famous Dingee Roses For \$1.50

Postpaid with Safe Arrival Guaranteed
in U. S. A.

Every spring we receive thousands of letters asking us to name a collection of Roses—the best kind for general home culture. In our vast collection the ten varieties named below are, in our opinion, among the best garden Roses for all sections of the country. Hardiness, vigorous growth, freedom of bloom, color and beauty of flower make them the best collection for amateur planting. They will bloom with the utmost freedom this year, except the Climbing Roses. No two alike. In this collection we include our wonderful Rose, Charles Dingee and Paul's Scarlet Climber, these two alone fully worth the price of the complete set. All labeled and sent postpaid. Safe arrival guaranteed to any point in the U. S. A. Order as the DINGEE COLLECTION.

The following great Roses comprise this collection. Each one will be correctly labeled. See various pages of the book for fuller description.

CHARLES DINGEE—Without question the greatest Rose ever grown. See its glorious beauty of form and color on the cover.

PINK MAMAN COCHET—It bears masses of full deep formed flowers singly, on long substantial stems. The color is a clear shade of rich pink, changing to silvery rose; of exquisite fragrance.

WHITE MAMAN COCHET—A magnificent snow-white Rose with a faint tinge of pale blush. Best white for open ground culture.

PAUL'S SCARLET CLIMBER—A splendid cardinal red climbing Rose of thrifty habit, beautiful foliage; absolutely hardy.

MAD. FRANCISCA KRUGER—A constant bloomer, especially suited to bedding. The flowers are deeply shaded coppery yellow in color and are of large size.

MADAME ABEL CHATENAY—Brilliant rosy carmine with shadings of deeper color. Particularly hardy and free in bloom.

SOUVENIR DE PIERRE NOTTING—Handsome apricot-yellow Rose, tinged with orange and the edge of petals shaded carmine-rose.

LAURENT CARLE—Rich velvety carmine buds and flowers.

KOOTENAY—Color a creamy white, with a shading of flesh colors toward the center. Foliage very heavy, unaffected by disease.

CLIMBING PINK MAMAN COCHET—Hardy Everblooming Climbing Rose. Blooms same style and color as the old favorite Pink Maman Cochet.

Seven Garden Set \$1.00

7 Hardy Everblooming Roses, Postpaid

BRIARCLIFF—Magnificent, large, full and double silvery pink flowers. Fragrant as the American Beauty.

MARIE GUILLOT—A queen among white Roses. Large, full, finely formed flowers.

RED RADIANCE—Rich crimson; buds and flowers large, full and double.

MARIE VAN HOUTTE—Large, full, double flowers, canary-yellow, shaded creamy white.

MAD. ABEL CHATENAY—Immense, full, double flowers; rosy carmine, shading darker.

WHITE MAMAN COCHET—The premier white garden Rose. Absolutely none better.

ALEX. HILL GRAY—Large, finely formed flowers of canary-yellow color.

SPECIAL OFFER—One each, strong plants, 7 garden Roses described above, sent postpaid, for \$1.; the seven in two-year-old plants, for \$4.00, by parcel post prepaid with soil on roots. Please order as "Garden" Set.

Fern Collection EXCEPTIONAL VALUE

Owing to an immense production of the following plants, we can offer these at an unheard-of price. The collection consists of the following varieties: Boston, Roosevelt, Teddy, Jr., Whitmanii, Sword and Scottii.

6 STRONG YOUNG PLANTS \$1.00

For \$1.00 we will send, postpaid, to any address in the United States, 6 strong plants of the above named Ferns. Less than one-half regular price and all first-class "Dingee Quality." Order as the "Fern Collection."

Special Offer This entire collection of 10 magnificent Dingee Roses in strong one-year-old plants or first size, for \$1.50 postpaid; two-year-old plants by Parcel Post with some soil **\$5.00**
on their roots, for -----

POPULAR SET OF CHRYSANTHEMUMS

8 LARGE FLOWERING VARIETIES 75c

Strong Pot Plants, Postpaid. They Bloom the First Year.

ROBERT HALLIDAY—One of the best deep yellow varieties. Fine incurved form, with perfect stem and foliage up to the bloom. Tremendous size.

ROSE CHOCHARD—A beautiful shade of deep pink; flowers of immense size and excellent form. Blooms early. Flowers develop without fading. Best pink.

BRONZE UNAKA—Early. Golden bronze.

WHITE CHIEFTAIN—Incurved. Early. A pure white variety of special merit.

PINK CHIEFTAIN—Beautiful incurved, full and round. Lovely pink.

SILVER SHEEN—Pure white, incurved.

GOLDEN GLORY—Golden-yellow, ball shaped. Petals beautifully overlapping.

HARVARD—Darkest crimson scarlet. The only deep scarlet. Fine form and very large.

SPECIAL OFFER—One each of the eight beautiful "Mums" described above, postpaid, for 75c. Please order as "Popular Set."



The Rainbow Set

10 HARDY PERENNIAL PHLOX FOR \$1.50

For \$1.50 we will send, postpaid, 10 strong plants of Hardy Perennial Phlox, assorted varieties. Leading colors. Safe arrival guaranteed in U. S. A. Order as the "Rainbow Set."

Double Peony Collection

2-Year-Old Roots, 3 for \$1.00, Postpaid. Secure the plants early. You cannot fail with them. Blooms each and every season without fail.

For \$1.00 we will send you 3 strong roots, 3 different colors, White, Pink and Red. Worth many times the price. Order as the "Peony Collection."

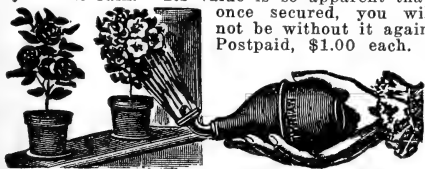
Miscellaneous Plants

ASPARAGUS SPRENGERI—For pots, vases or hanging baskets. The long, slender branches droop most gracefully, clothed with feathery, emerald-green fronds. Strong plants, 15c each; 4 for 50c, postpaid.

ASPARAGUS PLUMOSUS—Foliage surpasses a Maidenhair fern; in grace and finish resembles the finest lace. Elegant for cutting. 15c each; 4 for 50c postpaid.

Tyrian Plant Sprinkler

Is essential to the success with plants. With it you can quickly sprinkle them. It will keep the foliage fresh and healthy. Throws a spray "just like rain." Its value is so apparent that, once secured, you will not be without it again. Postpaid, \$1.00 each.



SPECIAL OFFER—The "Tyrian" Sprinkler and a 3-oz. package of Sulpho-Tobacco Soap for \$1.10, postpaid, including booklet, "The Window Garden, How to Care for It."

A typical Dingee Chrysanthemum

HOW TO GROW CHRYSANTHEMUMS BY AN AMATEUR

I am glad to give you all the information I can in regard to the methods employed in growing my Chrysanthemums. I am an amateur and have gotten splendid results, as the photograph I send will show, and this without the aid of a greenhouse. I hope that the information I can give will prove valuable to others in cultivating Chrysanthemums, the loveliest flower that I know of, and one that gives greater reward for pains taken in its culture than any other.

Procure strong plants from reliable florists in the spring. Put them in 3 or 4 inch pots at first, in good, rich soil and plunge the pots in the ground, or dig a trench and set the pots in it, filling in around with coal ashes. This keeps the worms out of the pots and keeps the roots nice and cool. Chrysanthemums require lots of water and should never be allowed to become dry. Early morning is the best time to water. Water and shower thoroughly, as one good watering is worth half a dozen if only half done. Repot the plants about twice, first in a 6-inch pot and last in an 8-inch pot. Make the soil a little richer each time the plants are repotted. The plants can also be mulched with manure, which answers the double purpose of keeping the roots cool and moist and also furnishes food for the plant. As soon as the buds form in the fall it is better to add a little manure water when sprinkling, weak at first, but gradually adding more, increasing the watering until it can be used every day. For insects such as black Aphis, use tobacco dust. If large flowers are desired, pinch off all buds and allow only a few to bloom. If a big simple flower is desired pinch off all the side branches, allowing only the crown bud to bloom. After the frosty nights come in the fall the pots are taken in the house and kept in a cool room where the flowers will develop and remain nice for a long time.

They may be planted directly in the ground and treated the same way, or they can be left to grow in the natural way and they will produce hundreds of small blooms. These are hardy and can be left out in the open ground.



A sturdy first size own root rose plant

"A TRIAL OFFER"

8 Superb, Hardy, Free Blooming Varieties Postpaid For \$1.00

Our great stock of Roses, the largest in America, contains many very fine varieties which our catalog does not describe in detail, every way the equal, if not superior, to the popular favorites. We want you to know these Roses as we do, hence we make this remarkable offer. If you will send us \$1.00 we will forward eight of them, all different kinds, no two alike, properly labeled, postpaid and safe arrival guaranteed in U. S. A.

8 Rose Plants \$1.00 Postpaid

You will not be disappointed in these Roses, take our word for it. Some will bloom this year throughout the season and will continue each succeeding year to bloom more profusely and be a source of joy forever. We will include in this collection such magnificent Roses as the exquisite dwarf Rose, Baby Doll.

"CHARLES DINGEE" illustrated in natural colors elsewhere. Free blooming. Note description in "Guide".

Order at your convenience and plants will be reserved for you and sent when you desire or immediately.

The Always Popular Cochet Roses

See Colored Photographic Reproduction on Back Cover Page

If you want five of the finest Roses listed in this book, which will produce hundreds of superb flowers throughout the growing season, and producing the kind of flowers one never tires of, order this Cochet set. No matter where you live, they will give you perfect satisfaction. The Cochet Roses are perfectly hardy in every part of the country, even where the winters are most severe, with slight protection. In the more temperate sections and in the South they thrive vigorously and bloom most lavishly all summer long, growing into great, strong, lusty bushes, which increase in beauty each year.

***PINK MAMAN COCHET**—The Queen of all Pink Garden Roses. The buds are large, full and firm elegantly pointed, showing depth and richness as they expand. The superb flowers open perfectly double, are extra large and of splendid substance. Hardy in every section of the country; clear, rich pink, changing to silvery rose.

***RED MAMAN COCHET (Helen Gould)**—A Rose that will grow and give satisfaction in almost any soil or situation. It produces flowers in amazing profusion, on long, strong shoots. The flowers are very full, perfectly double; buds long and pointed. Color, warm, rosy crimson.

***CRIMSON MAMAN COCHET (Etoile de France)**—A fitting companion to the other Cochet Roses on account of its vigor of growth, stiffness of foliage, freedom of bloom and hardness. It bears masses of full, deep-formed flowers singly on long substantial stems. The color is a new and clear shade of red or velvety crimson, brightening in the center; of exquisite fragrance.

***WHITE MAMAN COCHET**—A most magnificent pale-white Rose, with sometimes a faint tinge of snow bluish. It has the same freedom of bloom as the Pink Cochet, the same magnificent form of buds and flowers, and the same hardness—standing at the very head of all Roses as the best white kind for open ground culture. Vigorous as an oak and hardy everywhere.

***YELLOW MAMAN COCHET**—One of the best hardy, everblooming yellow Roses. It is ideal for open ground culture—a typical Cochet Rose, with gracefully molded buds, flowers, magnificent when open, on stiff, strong stems. This kind is identical in every way with Pink and White Cochet, except in the color of the flower which is deep sulphur-yellow.

Prices: Cochet Roses, strong one-year-old plants, 25c each; 6 for \$1.00, postpaid; two-year-old plants 70c each; \$8.00 per dozen; star size, 85c each, by Parcel Post Prepaid.

Special Offer

One each of Pink, White, Red, Yellow and Crimson Cochet, strong plants, postpaid, 90c; two year old plants, one of each, 5 in all, \$3.00 by Parcel Post Prepaid with soil on roots. Still larger size or specimen plants for \$3.75 of the 5 Cochets, by Parcel Post Prepaid.

Hardy Climbing Vines

CLEMATIS PANICULATA—The flowers are pure white and are borne in great panicles or clusters of bloom, fairly covering the plants, so that it is a mass or sheet of fleecy white with an exquisite fragrance. It begins to bloom late in August the first year. Strong plants in pots, 20c each. Strong two-year-old field-grown plants, 50c each. All postpaid.

BOSTON IVY (Ampelopsis Veitchi)—25c each; 5 for \$1.00; three-year-old plants, 3 feet in length 75c each, postpaid.

It covers buildings and walls with a perfect mat of dark green leathery foliage, which changes to brilliant crimson as fall approaches. Clings to either tree or wood without support.

ENGLISH IVY—A splendid evergreen climber, with dark glossy green leaves; clings firmly to stone, brick or wood walls without trellis or support; very desirable. 15c each; 8 for \$1.00.

The Five Famous Cochet Roses

Superb, Standard, Hardy Everblooming Bush Roses

The HOUSE of DINGEE has made the "COCHET ROSES" famous the world over. Absolutely the best of all hardy, free Blooming Bush Roses for the home, yard or garden.

PINK
MAMAN COCHET

WHITE
MAMAN
COCHET

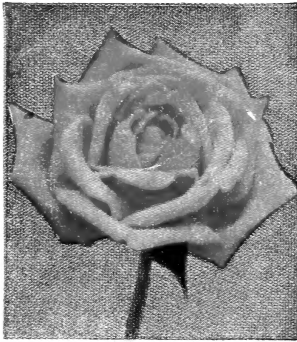
CRIMSON MAMAN COCHET

RED
MAMAN
COCHET

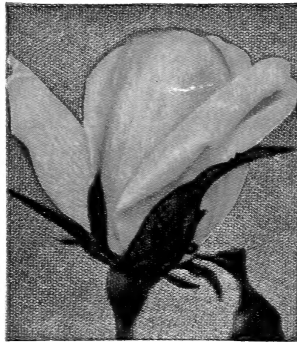
YELLOW
MAMAN COCHET

Special Offer

5 first size plants, 90c postpaid. Large 2-year-old size \$3.00 by prepaid parcel post; star size, 5 for \$3.75, postpaid.



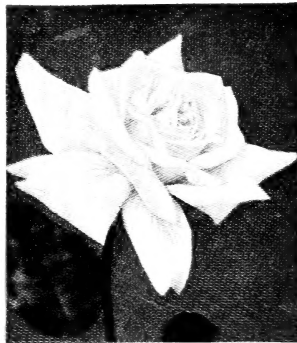
Red Radiance



Amelia Gude



Garden Gem



Kaiserin Augusta Victoria

GREAT "RADIANCE SET" OF ROSES

The Best Everblooming Bush Roses

These are the best of all Roses for the beginner. Wonderful blooms produced continuously. Long pointed buds, full double blooms. Hardy and healthy. Order "Radiance Set", 10 Famous Dingee Hybrid Tea Own Root Roses, \$1.75 Postpaid.

RADIANCE—One of the best outdoor Roses. Color richest carmine rose.

FRANCIS SCOTT KEY—The finest double red outdoor Rose. Quite hardy.

RED RADIANCE—A remarkable rose. Splendid even shade of clear red.

GRUSS AN TEPLITZ—Color fiery crimson shaded with a dark velvety sheen.

AMELIA GUDE—Yellow rose deepening towards the center to peach yellow.

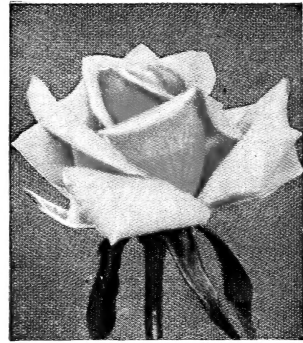
GARDEN GEM—"Dingee Rose." Satiny pink. Magnificent bud, full double bloom. Strong grower, everblooming.

MME. BUTTERFLY—Buds lovely shade of Indian Oak with a yellow tint at base. Perfect form; richly perfumed.

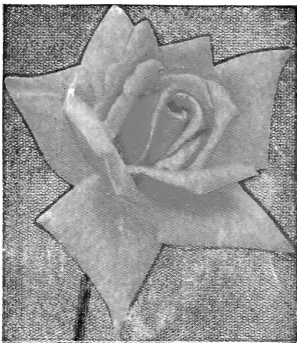
MRS. HENRY MORSE—Two tones of pink with an underlying yellow glow.

KAISERIN AUG. VICTORIA—The standard pure white. Free blooming rose.

JOANNA HILL—Gorgeous colors of Rev F Page Roberts type. Healthy, can stand blooming. Long buds, immense, double flowers. Deep yellow, base of petals deep orange. Exquisite. Fragrant.



Mme. Butterfly

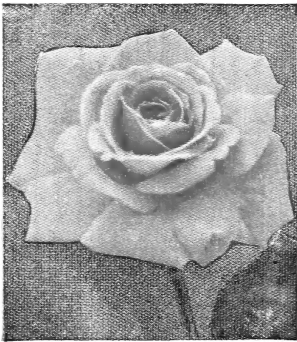


Joanna Hill



Francis Scott Key

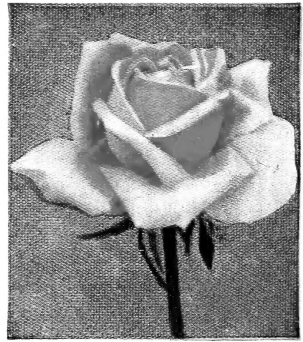
For \$1.75 we send postpaid one each, these superb Hybrid Tea Roses, all leaders, in first size plants. In large two-year-old size, one each by Parcel Post Prepaid for \$6.50. Extra heavy Star Size plants the 10 for \$7.50, postpaid.



Pink Radiance



Gruss an Teplitz



Mrs. Henry Morse