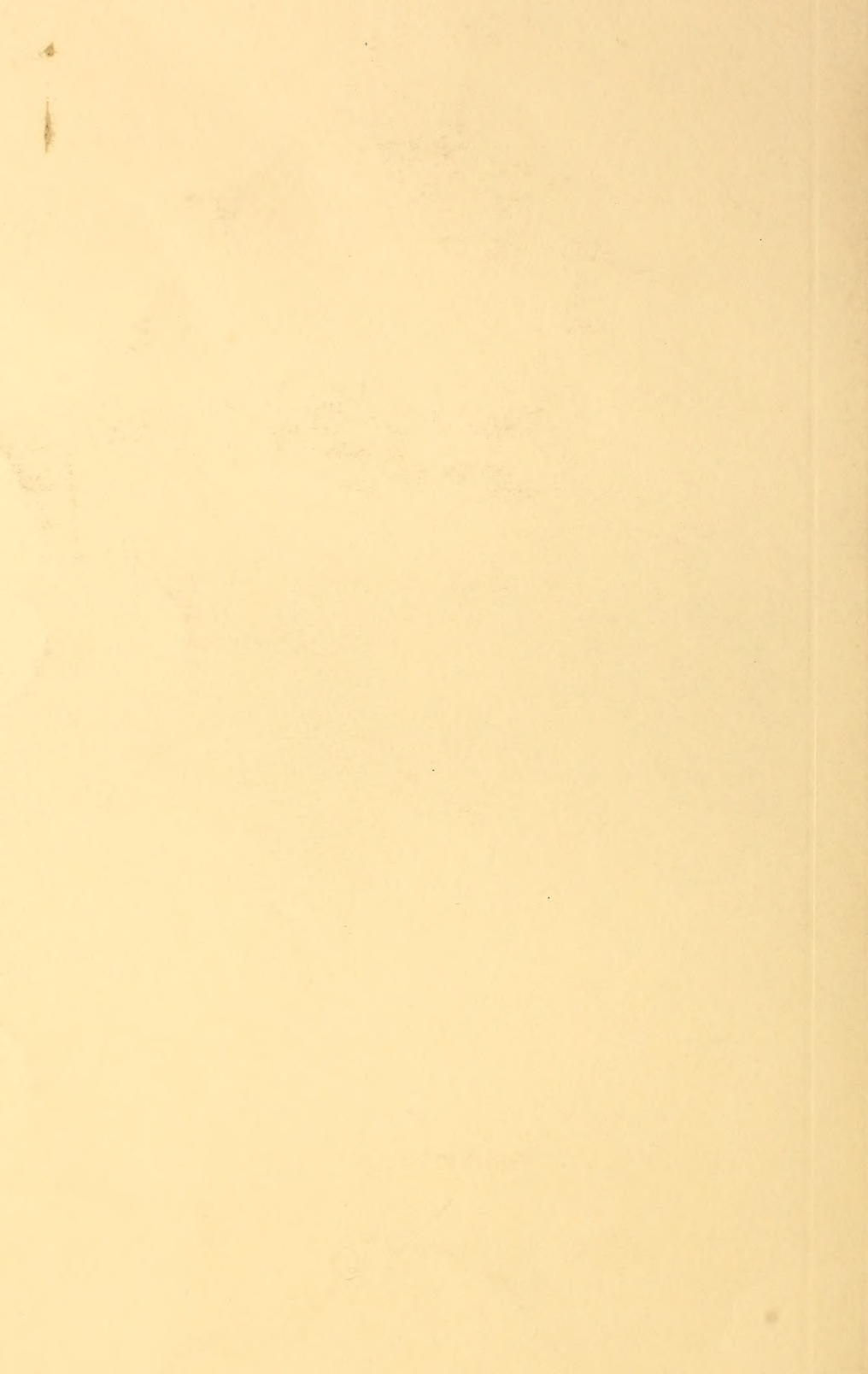


Historic, archived document

Do not assume content reflects current scientific knowledge, policies, or practices.



OUR NEW GUIDE TO ROSE CULTURE AND BULB GROWING

FALL 1908



ALL THE
PICTURES
USED ON THIS
COVER ARE FROM
PHOTOGRAPHS

5

DINGEE
FAMOUS GIANT
NARCISSUS

6 FOR 25¢
DESCRIPTION
NEXT PAGE

6

8

THE
DINGEE & CONARD
COMPANY
WEST GROVE PA.
THE LEADING ROSE GROWERS OF AMERICA

7

SPECIAL OFFER
25 BULBS OF THE
VARIETIES SHOWN
IN THIS PANEL
NOS. 1 TO 8 INCLUSIVE
POSTPAID 50¢
SEE NEXT PAGE

THE GIANT WHITE NARCISSUS

(Illustrated on front cover page)

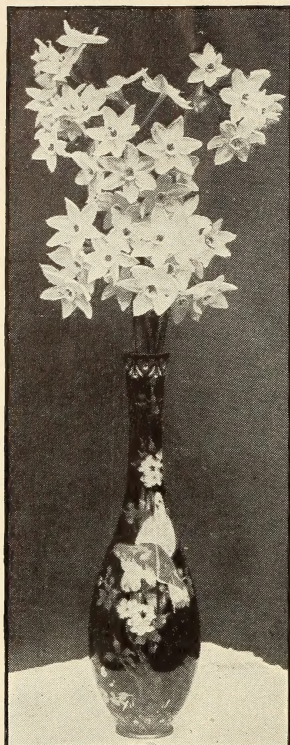
New, Distinct and Beautiful. Grows in Water

This grand Narcissus is the earliest flowering, blooming for Christmas. Grows with absolute certainty and produces in lovely clusters immense numbers of pure white flowers; in fragrance is the equal of orange blossoms. Superb.

GROW IT IN WATER.—It succeeds best grown in water. Place sand or gravel in bottom of receptacle in which it is to be grown, firmly imbedding the bulbs; keep well covered with water, and you will not have long to wait for the lovely cluster of large white flowers to appear. It may be grown in soil like a hyacinth, but the best method is in pebbles and water.

To Get the Best Effect.—Several bulbs (not less than six) should be planted together. Give plenty of sunshine, and for fragrance, immensity of flowers and ease of culture it will be hard to find the equal of the Giant White Narcissus. The bulbs we offer are imported direct from France, are large, sound and solid, sure to grow and bloom.

Price, postpaid by mail, 10 cts. for 2, 25c. for 6, 50c. per doz.



GIANT WHITE NARCISSUS

GIANT GOLDEN SACRED LILY

Large, sweet, golden yellow flowers; hardy, thrive in any window or garden. Blooms quickly and freely in soil, sand or pebbles and water. Beautiful and very fragrant. Large bulbs, 3 cts. each, 10 cts. for 4, 25 cts. per doz.

SPECIAL OFFER. Two Giant White Narcissus and three Giant Golden Sacred Lilies for 15 cts.; six of each, twelve in all, for 35 cts. They make a splendid contrast.

Our Sensational New Rose "CHARLES DINGEE"

(For Illustrative Details, see last cover page)

Here in our own establishment we have produced by hybridization a new Rose of extraordinary beauty and merit. It is the premier garden Rose of today. Just as we predicted some years ago, when we named and introduced Helen Gould (Balduin) that it would take front rank as one of the great garden Roses—and it unquestionably has—we now predict for this new creation a far greater popularity than any other Rose has attained, not even excepting the Cochet Roses.

Of all the bright galaxy of famous Roses we have introduced—the Queen, Virginia, Marion Dingee, Princess Bonnie, Pink Souper, Golden Gate and many others, this lovely new variety is our masterpiece. Out of hundreds of cross-fertilizations of the best varieties to which we have given years of labor, our efforts have at last been fruitful, and January 1, 1909, this New Queen of Beauty will be ready to go forth and add another triumph to American skill.

We have named this great Rose in honor of Mr. Charles Dingee, the founder of this business, who at the ripe age of 84 years, while no longer active in business affairs, is vitally interested in the adherence of this business to the high and honorable business methods which for more than 50 years characterized its growth under his immediate supervision.

The Charles Dingee Rose has every point of excellence—the hardy, vigorous constitution of a Hybrid Perpetual, magnificent large foliage, is a tremendous grower—the best in the list, blooms continuously, producing immense double flowers on long, stiff stems, the beauty of which is nothing short of superb. The color of the flowers almost baffles description because of the delicate blending of rose tints in the center which gradually shade off into pale flesh and creamy white, making it at once both distinct and absolutely new in color effects.

Full details and prices will be published in **Our New Guide to Rose Culture** for 1909, which will be ready for distribution January 1. This is the one Rose you want next year. A plant—either one or two years old—means hundreds of flowers throughout the growing season.

CAUTION! We are the originators and sole owners of the Charles Dingee Rose. Not a plant has been or will be distributed until January 1, 1909, when orders will be filled in rotation while the stock lasts. It cannot be had elsewhere.

25
BULBS

DINGEE PANEL COLLECTION

50
CENTS

In the panel running diagonally across the outside cover pages, we reproduce from photographs eight of the best and most popular autumn- and winter-blooming bulbs. We have secured large quantities of these and are thus enabled to make this splendid offer of

25 SUPERIOR WINTER-BLOOMING BULBS FOR 50 CTS. POSTPAID

The collection is made up as follows, the number after each variety indicating the subject in the panel: 3 Snowdrops (1), 3 Scillas (2), 8 Crocus (3), 3 Jonquils (4), 1 Roman Hyacinth (5), 3 Narcissus Von Sion (6), 2 Dutch Hyacinths (7), 2 Tulips (8), 25 in all, a "dandy" collection for indoor or open ground planting—all for 50 cts., postpaid. Please order as "Panel Collection."

THE DINGEE & CONARD CO., West Grove, Pa., U. S. A.

DINGEE BULBS

The Flowers that Bloom in the Spring

GOOD BULBS FOR FALL PLANTING

Good bulbs are not produced by chance, any more than are the good Roses for which Dingee has been famous for over half a century. The same knowledge, care and experience stand back of everything in

Good Bulbs for Fall Planting

offered in the present Catalogue—imported from the best growers abroad or grown at home under our own eyes. Any bulb, every bulb that a grower uses, either for indoor or outdoor planting, ought to be good. Cheap, poorly cured, undersized bulbs are dear at any price and should be carefully avoided.

Dingee Bulbs

are good bulbs in the full meaning of the term. If you would have success with your winter or spring bulbs this season, remember our reputation on Roses and that we are able to give you equally good satisfaction in this other corner of Flora's realm. If you want the very best at reasonable prices, send for your fall and winter bulbs and plants to

Dingee, West Grove

The advent of the autumnal season, with its wealth of color, is anything but melancholy. The meadows brown and sere are but the background for the indescribable tints of field and fen, tree and sky, and all remind us that fall is the season for planting these fair harbingers of spring—the fragrant Hyacinths, the flaming Tulips, Jonquils, Daffodils and scores of other bulbs which within their brown coats hold the mystery of the gorgeous bloom which will ere long delight the eye and entrance the senses. If you are a stranger to the beauty of the bulbous flowers for autumn planting, then we urge you to become acquainted with them. For brilliant beauty of flower, ease of culture, quick and sure results, exquisite fragrance and striking colors, they are not excelled by any other class.

Dingee Roses and Other Plants

While this Catalogue is primarily devoted to the sale of bulbs for fall planting, indoors and outdoors, we also grow in our nurseries a complete list of hardy shrubs and vines suitable for fall planting in the open ground. In our seventy greenhouses we grow a complete list of miscellaneous plants for house culture. A few of the most seasonable are herein offered.

For nearly sixty years, growing Roses on their own roots has been a specialty with us. In this department we lead, both in quantity and quality. Dingee Roses are famous the world over. Our list is the most complete in America, both in this line as well as in the hardy shrubs and miscellaneous plants for house culture. We have well nigh everything here to satisfy the wants of the amateur flower-grower to whom we cater.

Fifty-eight years has taught us how.

We send goods safely to every nation of the earth and guarantee safe delivery everywhere in the United States.

We prepay all shipments except where noted.

All mistakes cheerfully corrected.

Our annual output aggregates one million, five hundred thousand plants.

Send us your order.

We guarantee to please you.

We carry into practical effect our belief that a satisfied customer is our best advertisement.

HOW TO ORDER, ETC.

Our terms are cash with order, except when satisfactory bank reference is given, when we will gladly open an account. Goods will be shipped C. O. D., when directed. Money may be sent at our risk by Post-Office Money Order, Express Money Order, money (not stamps) in registered letter. We will be responsible for the safe carriage of money sent us in any of these ways, and, if lost, will give full value. Please do not send stamps unless absolutely necessary. They often come stuck together or stuck to the letter, so that they cannot be taken out except by soaking the whole. Ten per cent extra should be added to orders going outside of the United States of America or its colonial possessions, as well as Canada and Mexico, to pay extra cost of packing and postage. To all countries in the Universal Postal Union goods can be sent by mail.

We always do better than we promise in the way of extra bulbs and plants, so that when the order will at all afford it we add to it something gratis, often a choice or new kind. To induce our customers to make up club orders among their friends, we make attractive inducements. The only requirements are that the club shall consist of the complete addresses of five club names, including the clubber, and the order shall amount to not less than \$10 in cash. Write for our terms under these conditions.

Should this Catalogue become mislaid and you are unable to remember the corporation name, simply bear in mind Dingee, West Grove, Pa.—that will reach us. Dingee's establishment has made this village of West Grove famous the world over. We have many imitators;—let us say here, however, that we have no branch houses, either in West Grove or elsewhere, but are the old original West Grove Rose Establishment founded here fifty-eight years ago by Charles Dingee, a portrait of whom, recently taken, is reproduced on the last cover page of this book.

Kindly send all orders, money and correspondence plainly addressed to

THE DINGEE & CONARD CO.

The Pioneer Rose Growers of America

West Grove, Pa., U. S. A.

Established, 1850
Incorporated, 1871

A SPECIAL WORD.—We invite your special attention to the fact that in this Catalogue, following the lead of the last issues of our Guide to Rose Culture, we illustrate the best of our offerings with photo-engravings. In every case, therefore, our illustrations give an accurate idea of the appearance of the flower shown, as they have been made from actual photographs. You can depend upon the pictures and descriptions in the Dingee books, just as you can depend upon the quality of Dingee plants and bulbs.

Dingee "Sure-to-Bloom" Hyacinths

Truly Nature must have conceived the Hyacinth in one of her most gracious moods. For superb beauty of flower, delicious fragrance and easy culture, nothing could be more charming than a bed of this delightful Holland treasure. Or a nice collection grown in the living-room indoors will fill the air with exquisite fragrance from its majestic trusses of flowers. This lovely flower will add a charm to one's surroundings as nothing else will, and the low cost, made possible by the enormous quantities in which it is produced, proclaims it pre-eminently the spring flower for the masses. Plant liberally of them. The more Hyacinths you have, the greater your pleasure will be. See cultural instructions, page 3.

DO NOT BUY SECOND-SIZE, INFERIOR BULBS. DINGEE HYACINTHS are grown by our special growers in Holland, exhibition size, the best to be had at any price; each bulb guaranteed to grow and bloom.

NOTE.—The difference between Single and Double Hyacinths is solely in the individual flowers of the spikes. Otherwise, the habits of the two kinds are the same.

SINGLE RED AND ROSE

	Prices, postage paid		
	Each	Doz.	100
*Cardinal Wiseman. Beautiful pink flowers; enormous spikes	\$0 20	\$2 00	\$15 00
*Gertrude. Bright rosy red; excellent flower-spike; very distinct.	15	1 50	12 00
*Gigantea. Perhaps the largest of all. Immense spikes; large bells; compact. Clear rose-color.	12	1 20	9 00
*Moreno. Immense deep pink spikes; unusually fine; early.	20	2 00	15 00
Norma. Beautiful pink; large and extra early. Exquisite.	12	1 20	9 00
Robert Steiger. Deep crimson; large trusses; the best of its color.	15	1 50	12 00
*Roi des Belges. Deep crimson-scarlet; compact spike. Very fine.	15	1 50	12 00

SINGLE WHITE AND BLUSH

	Prices, postage paid		
	Each	Doz.	100
*Alba superbissima. Superb pure white; large trusses; early.	\$0 15	\$1 50	\$12 00
Baron van Thuyll, White. Large sand-white trusses; early.	15	1 50	12 00
*Grandeur a Merveille. Of extra merit; giant spikes; bluish-white.	12	1 20	9 00
*La Franchise. Splendid waxy white; large bells; fine trusses.	15	1 50	12 00
*La Grandesse. A great white variety. Perhaps the best; compact spike; large bells. Superb.	20	2 00	15 00
*L'Innocence. Beautiful pure white. Very distinct; large trusses.	20	2 00	15 00
Madam Vanderhoop. Early. Fine white; large bells; compact spike	15	1 50	12 00

SINGLE HYACINTHS, SEPARATE COLORS

Splendid bedding effects are produced with these bulbs of separate colors, different in no way from our exhibition-sized bulbs, but are the same grade, each bulb guaranteed to produce a splendid spike of bloom. For bedding effects, for growing in the conservatory, or for winter window culture, these bulbs are bound to give splendid satisfaction. They include an extended list of the finest named varieties, but are offered only under color.

	Doz.	100
Pure White and Blush	\$0 70	\$5 00
Red and Rose	70	5 00
Blue and Purple Shades	70	5 00

SINGLE SHADES, BLUE AND PURPLE

	Prices, postage paid		
	Each	Doz.	100
Baron Van Thuyll. One of the most reliable and best deep blues.	\$0 12	\$1 20	\$9 00
*Charles Dickens. Large bells; lilac center, blending into a darker blue, sometimes tinged red; curious and beautiful.	15	1 50	12 00
*Czar Peter. Light porcelain, shaded lavender; enormous spikes; very fine.	20	2 00	15 00
*Grand Maitre. Deep porcelain-blue; extra large trusses.	12	1 20	9 00
*King of the Blues. The finest blue. Deep purplish blue; close spike; one of the largest and finest.	15	1 50	12 00
Mary. Dark purplish blue; splendid spike; distinct.	12	1 20	9 00
*Queen of the Blues. Exquisite azure-blue; handsome trusses; large bells.	15	1 50	12 00

SINGLE YELLOW

	Each	Doz.	100
*Ida. Bright, glowing, pure yellow; immense trusses; distinct	\$0 15	\$1 50	\$12 00
*King of the Yellows. Deep, golden yellow; large and handsome trusses	15	1 50	12 00

SPECIAL OFFER. Complete set of 23 superb named Single Hyacinth bulbs, exhibition size, sure to bloom, postpaid for \$3.

	Doz.	100
Yellow Shades	\$0 70	\$5 00
All Colors Mixed	60	4 50

Orders for 6 of a kind filled at dozen rates



BED OF DINGEE & CONARD HYACINTHS

NAMED DOUBLE HYACINTHS

DOUBLE RED, ROSE AND PINK

	Prices, postage paid		
	Each	Doz.	100
*Koh-i-noor. Very dark rose; large spike ...	\$0 15	\$1 50	\$12 00
Bouquet Royal. As the name implies, royal in every sense; large trusses; beautiful rose; dark center.....	15	1 50	12 00
Czar Nicholas. Immense trusses; bold and beautiful spikes; light pink, shading to rosy blush. Splendid	15	1 50	12 00
Lord Wellington. A great variety. One of the finest pinks. Exquisite	15	1 50	12 00
Prince of Orange. Beautiful dark red. Distinct in every way	15	1 50	12 00
*President Roosevelt. A great new variety. Beautiful deep pink or rose. Handsome ...	20	2 00	15 00
Suzanna Maria. Early splendid dark red Enormous spikes	15	1 50	12 00

DOUBLE BLUE AND PURPLE

	Each	Doz.	100
*Blocksberg. Exceedingly fine; massive and large. Considered the best light blue. ...	\$0 15	\$1 50	\$12 00
*Lord Raglan. Grand, rich, dark blue. Very early; immense in size.....	15	1 50	12 00
Othello. Famous. Large and double; nearly black in color. Superb.....	15	1 50	12 00
Murillo. Beautiful deep blue; compact, large and distinct	15	1 50	12 00

DOUBLE WHITE AND BLUSH

	Each	Doz.	100
Duchesse de Bedford. Lovely pure white; very double; flowers in large spikes. ...	\$0 20	\$2 00	\$15 00
*La Tour d'Auvergne. One of the best, if not the best double pure white. Superb.....	15	1 50	12 00
La Virginite. Large, drooping bells of white, delicately shading to blush, with violet eye; medium size. Very dainty and distinct. ...	15	1 50	12 00
Non Plus Ultra. Snow-white. Immense in size. ...	15	1 50	12 00
*Prince of Waterloo. Exquisitely fragrant; fine, double white flowers. with large, full spikes. ...	15	1 50	12 00

DOUBLE YELLOW

	Each	Doz.	100
*Bouquet d'Orange. Distinct, buff-colored spikes, beautifully shaded; rare in color. ...	\$0 15	\$1 50	\$12 00
Goethe. Grand; bright yellow; very large. ...	15	1 50	12 00
Pure d'Or. Perhaps the best golden yellow; fine large spikes	15	1 50	12 00
Sunflower. Rare color; deep golden yellow; splendid in every way. Very scarce.....	20	2 00	15 00

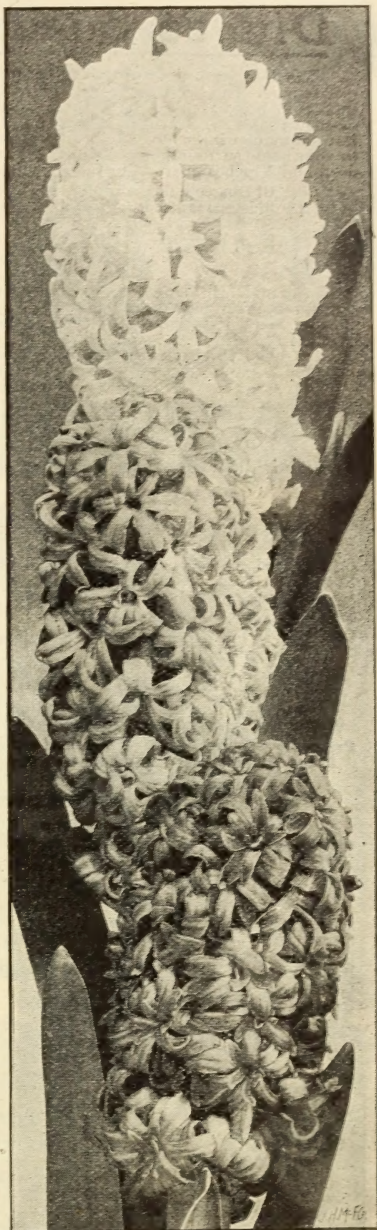
DOUBLE, SEPARATE COLORS

These separate colors include a splendid assortment of named varieties, offered, however, only in the following colors; exceedingly handsome, they deserve extensive cultivation, and we guarantee the large, finely matured bulbs to give splendid satisfaction for bedding and grouping in the open ground, as well as for house culture, either in soil or water.

	Doz.	100	Doz.	100
Pure White	\$0 75	\$5 50	Yellow Shades ...	\$0 75 \$5 50
Red and Blush	75	5 50	All Colors Mixed ...	70 4 75
Blue Shades	75	5 50		

Orders for 6 of a kind filled at dozen rates

SPECIAL OFFER MAMMOTH HYACINTH BULBS. We have in limited quantity, only 50 bulbs each, mammoth size bulbs of Single Named and Double Named Hyacinths marked with a star (*) and offered on pages 2 and 3. These are enormous bulbs, were grown specially for us, and are now three years old. They are intended to produce specimen flowers of large size. The spikes they grow are enormous both in breadth and length, and the individual flowers, owing to the strength of the bulb, are of unusual size. Orders will be filled in rotation as they are received until this stock is exhausted. Price, 25 cts. each, \$2.50 per doz., \$18 per 100, postpaid.



LA GRANDESE (upper), GIGANTEA (middle), BOUQUET ROYAL (lower)

Hyacinths—How to Grow Them

INDOOR CULTURE. Plant in pots or boxes, using ordinary garden soil, any time from September to February. Allow a small portion of the bulb to be exposed above the soil. Water thoroughly and put away in a dark, cool situation until signs of growth commence, then bring into the light and heat. For holiday blooming, pot early in September, and for a succession of bloom, plant at intervals of about two weeks. To grow in water, place the bulbs in glasses and fill with clean water; leave them in a dark, cool cellar until the glass is well filled with roots, then bring to the light and heat. Keep water fresh.

OPEN GROUND CULTURE. Select, if possible, a warm, sunny location. Ordinary garden soil enriched with well-rotted stable manure spaded to a depth of 12 inches will suffice. Plant the bulbs 5 inches deep and 6 or 7 inches apart. Set out any time from September until severe freezing weather. While not required, it is better to give winter protection. Ordinary litter will be all that is necessary.

Dingee Surpassing Quality Tulips

The dazzling beauty of the Tulip family is so well known that it is hardly necessary to further extol its merits here. The brilliancy of colors when arranged in masses in the garden, on the lawn, or grown indoors in pots or boxes, makes the Tulip an object of striking beauty; indeed, for wealth of bizarre color effects, it even surpasses the hyacinth. Plant plenty of them—they are so inexpensive; in early spring, almost before the last snows of winter have gone, the gorgeous colors of their flowers will add a wonderful air of cheerfulness to your home surroundings. They are entirely hardy in the open ground, and should be planted about 5 inches deep and 5 inches apart. For indoor culture, plant them 3 inches deep.

Like all Dingee bulbs, our offerings in Tulips are the best, both as regards quality and variety. No "seconds"—each bulb is guaranteed to grow and bloom, or your money back.

EARLY SINGLE TULIPS, NAMED VARIETIES

	Prices, postage paid		
	Each	Doz.	100
Belle Alliance. Brilliant, rich, glowing scarlet. The best of its color	\$0 04	\$0 40	\$3 00
Chrysolora. The best of all yellows; clear rich golden yellow; large and beautiful flowers	04	35	2 50
Cottage Maid. Superb; carmine-pink, center of petals feathered white, yellow base. Excellent	04	35	2 25
Keizerkroon. Crimson-scarlet, edged yellow. One of the very finest	04	35	2 50
Lorraine. Grand pure white, of which there is none better	04	35	2 50
Pottebakker, Yellow. Pure glowing yellow	04	35	2 50
Pottebakker, Scarlet. Brilliant scarlet	04	35	2 75
Pottebakker, White. Pure white	04	35	2 50
Proserpine. Deep, rosy pink. A magnificent Tulip	04	40	3 00
Yellow Prince. Bright yellow, sweet-scented; excellent in every way	04	35	2 50
Vermilion Brilliant. Dazzling vermilion. One of the best for forcing or bedding. A great Tulip	05	50	3 50

SINGLE DUC VAN THOL TULIPS

Very early flowering; especially satisfactory for all purposes; none better; distinct and effective.

	Each	Doz.	100		Each	Doz.	100
Gold-striped	\$0 04	\$0 35	\$2 50	Violet	\$0 04	\$0 35	\$2 50
Rose	04	35	2 50	White	04	35	2 50
Scarlet	04	35	2 50	Yellow	04	35	2 50
Vermilion	04	35	2 50				

SPECIAL OFFER. Set of 18 Tulips named above for 65 cts.; 6 of each, 108 in all, \$3.50 postpaid

EARLY SINGLE TULIPS, SUPERFINE MIXED

This is the finest mixture of bedding Tulips ever offered, and comprises the choicest named kinds, including every known tint and color. There is a wealth of pleasure in store for those who plant this mixture liberally.

Price, large plump bulbs, guaranteed to grow and bloom, 30 cts. per doz., 60 cts. for 25, \$1.65 per 100, \$15 per 1,000, postpaid. Price by express, purchaser paying the charges, \$1.25 per 100, \$10 per 1,000

Sweet-Scented Tulip, Florentine Odorata

Also known as Tea Rose Tulip. Rich yellow flowers, deliciously fragrant; splendid for cutting. 5 cts. each, 40 cts. per doz., \$2.50 per 100, postpaid.

PARROT TULIPS

This class has the most distinct shape and markings of any; the flowers are larger than those of other varieties, and the striking and beautiful colors range through all shades of golden yellow, green, crimson-striped, deep crimson, clear yellow, etc. We cannot say too much of this class, and your order should by all means include it.

	Each	Doz.	100		Each	Doz.	100
Belle Jaune. Pure yellow	\$0 04	\$0 40	\$3 00	Feu Brilliant. Rich glossy crimson	\$0 04	\$0 40	\$3 00
Cafe Brun. Coffee-color and yellow	04	40	3 00	Monstre Rogue. Elegant and deep crimson	04	40	3 00
Constantinople. Very handsome red	04	40	3 00	Perfecta. Yellow and red; extra fine	04	40	3 00
Markgraaf. Very showy; red and orange	04	40	3 00	Superfine Mixture. All colors	04	35	2 25



BED OF DINGEE & CONARD TULIPS

BEST DOUBLE TULIPS, NAMED VARIETIES

This splendid section of the Tulip family produces large double flowers which are more lasting, their freshness and attractiveness being retained for a much longer period than in the single varieties, but their colors are not quite so brilliant. Their lasting qualities, however, are very much in their favor, and our collection includes the very best varieties, both in the early- and late-flowering classes.

DOUBLE EARLY-FLOWERING

	Each	Doz.	100
Duc van Thol, Red and Yellow	\$0 03	\$0 30	\$2 00
Duke of York. Lovely carmine, edged with white	03	30	2 00
Gloria Solis. Deep crimson, bordered with a broad gold band	04	35	2 25
La Candeur. Grandest pure white	03	30	2 00
Murillo. Beautiful light rose	04	40	3 00
Rex rubrorum. The finest deep scarlet	04	35	2 50
Salvator Rosa. The grandest of all pink Tulips, flamed white; magnificent	06	60	4 50
Scarlet King. Deep, rich, glowing scarlet	03	35	2 50
Tournesol, Scarlet. Red, edged with yellow	04	35	2 25
Tournesol, Yellow. Handsome orange-yellow	05	50	4 00

SPECIAL OFFER. Set of 10 Double Early Named Tulips above for 35 cts.; 6 of each, 60 in all, \$2, postpaid.

DOUBLE EARLY TULIPS, SELECTED MIXTURE

We have taken special pains in making this the most complete mixture of all the best Double Early-flowering varieties of Tulips, and we have spared no expense in perfecting it.

Price, large plump bulbs, guaranteed to grow and bloom, 30 cts. per doz., 60 cts. for 25, \$1.65 per 100, \$15 per 1,000, postpaid. By express, purchaser paying the charges, \$1.25 per 100, \$10 per 1,000.

DOUBLE LATE-FLOWERING TULIPS

	Each	Doz.	100
Abbas. Very handsome; glowing orange-red	\$0 03	\$0 35	\$2 00
Blue Flag. Remarkable purplish blue. Very distinct	04	35	2 50
Gloria Mundi. A remarkable Tulip, with various shades of brown, crimson and yellow. Very handsome and distinct	04	35	2 50
Pæony, Gold. Beautiful golden yellow, striped with red. Immense flowers	04	35	2 50
Pæony, Red. Superb flowers; deep, glowing red	03	30	2 00
Yellow Rose. Pure golden yellow. The genuine variety, with striped foliage	03	30	2 00

SPECIAL OFFER. Set of 6 Double Late-flowering Named Tulips, postpaid, for 2J cts.; 6 of each, 36 in all, \$1, postpaid.

DOUBLE LATE-FLOWERING TULIPS, MIXED

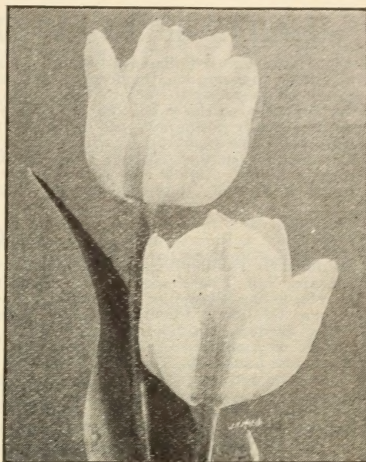
If the merits of this mixture could be better known, it would become exceedingly popular. There is no better selection of Tulips, and they are especially valuable for flowering after the earlier varieties, and for planting among shrubbery and in odd corners, where they give the very best of satisfaction.

Price, 30 cts. per doz., 60 cts. for 25, \$1.65 per 100, \$15 per 1,000, postpaid. By express, purchaser paying the charges, \$1.25 per 100, \$10 per 1,000.

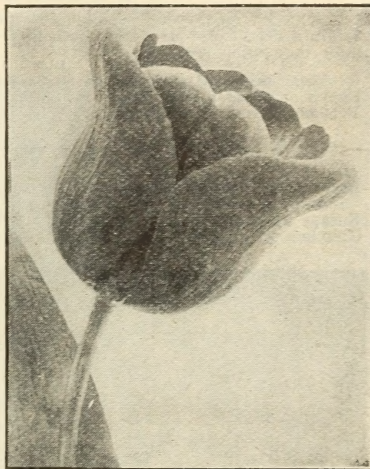
Have received order today, and think your stock and promptness would insure you great success. Thanking you very much.—J. W. FETZER, Williamsport, Pa.

Please accept my thanks for your package, which arrived today in fine condition. They look nice and healthy, and I can see no reason why they should not grow into being fine, healthy plants. Allow me to again "thank" you for your kind treatment and prompt shipment of goods. I trust to be able to order more goods from you in the future.—R. M. HODAPP, Cortland, Indiana.

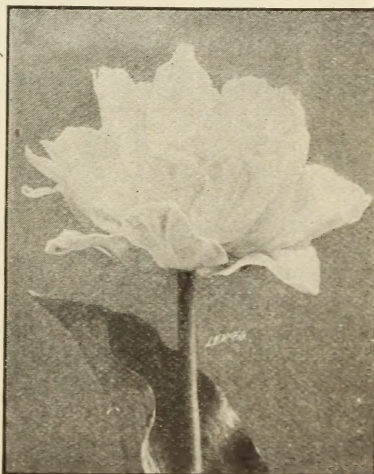
Have just received the plants. They are all fine, having arrived in a fresh and perfect condition. Am perfectly satisfied now, and wish to express to you my most sincere thanks for your kind and prompt consideration of this matter. Also thanking you for the extra ones.—MISS M. A. SCHAEFER, Buffalo, N. Y.



CHRYSOLORA



THE SULTAN (DARWIN)



LA CANDEUR

LATE, or MAY-FLOWERING SINGLE TULIPS

These superb Tulips are becoming immensely popular. Planted in large clumps or groups, they present a gorgeous appearance, the flowers much larger than ordinary Tulips, of beautiful form and splendid substance, produced on strong stems 2 to 3 feet high. Blooming, as they do, about Memorial Day, when the early-flowering Tulips are on the wane, they are always indispensable. Further, they are extremely hardy and, once planted, are practically permanent and continue to be a source of delight year after year. The Cottage Garden Tulips have been collected from countries all over Europe, where, in many instances, they have been growing for fifty years. The new Darwin Tulips are late-flowering, and, for gorgeous color effects, surpass anything yet seen in Tulips. Almost every conceivable color from azure-blue through all the violets, pinks, dazzling reds, brown, and, finally, to the blackest tints known in the floral world, is found in them. All are valuable for cutting.

COTTAGE GARDEN TULIPS

	Prices, postage paid		
	Each	Doz.	100
Bouton d'Or (Golden Beauty). Rich golden yellow; long stems; fine bedder; used for cutting.	\$0 04	\$0 40	\$2 50
Elegans, Red. Fine shaped flower; long petals, reflexed tip. Crimson-vermilion, yellow center.	07	75	6 00
La Merveille. Flower of great size; salmon-rose, shaded orange-red. Sweet-scented.	06	60	4 00
Picotee (Maiden's Blush). Elegant flower, with recurved petals; color pure white, with a picotee margin of rose-pink.	05	50	3 50
Beauty of America. Cream, tinged pink. Very beautiful.	04	40	2 50
York and Lancaster (Shandon Bells, or Isabella). Large, long, handsome flower; silvery white, suffused soft carmine-rose towards the edge; center creamy yellow and green	05	50	4 00

SPECIAL OFFER. Set of 6 May-flowering Tulips, 30 cts.; 6 of each, 36 in all, \$1.75, postpaid.

GRAND MIXTURE OF COTTAGE GARDEN TULIPS, made up of dozens of the best varieties, including sweet-scented sorts, 3 cts. each, 35 cts. per doz., \$2.50 per 100, postpaid.

BYBLOEMS AND BIZARRES

Superb large flowers, resembling that of Gesneriana, wearing all the gorgeous livery of their species. They attain a height of 1 to 2 feet; branching habit, producing several large blooms; flowering period somewhat later than other sorts.

	Each				Each		
	Doz.	100			Doz.	100	
Bybloems Mixed, all white ground.	\$0 04	\$0 35	\$2 50	Bybloems and Bizarres, all colors.	\$0 04	\$0 35	\$2 50
Bybloems Mixed, all rosy colors.	04	35	2 50	Bizarres Mixed, all yellow ground.	04	35	2 50
Bybloems Mixed, all violet colors.	04	35	2 50				

NEW DARWIN TULIPS

Baron de la Tonnaye. Exquisitely beautiful flower of clear carmine-rose-pink, fading to soft pink at the edges; base white, tinged blue. Each \$0 10, Doz. \$1 00, 100 \$8 00

Europe (Salmon King). Bright rosy red, white center; beautiful. 10 1 00 8 00

Gretchen (Margaret). Large-flowering, globular; outside soft blush, inside blush-rose. 10 1 00 7 00

Kate Greenaway. One of the largest and latest of all "Darwins." Grand, big flower of white, suffused with lilac. A tall grower. Wonderful. 08 80 6 00

Maiden's Blush. Lovely large flower of carmine-rose, blending off to blush-white edge; base white, with blue eyes. 15 1 50 12 00

Pride of Haarlem. Magnificent flowers of immense size; color brilliant deep salmon, shaded with scarlet; electric-blue base. 10 1 00 8 00

The Sultan. Large, finely formed flower of maroon-black. A wonderful color and a wonderful Tulip. 08 75 6 00

SPECIAL OFFER. Set of 7 Darwin Tulips, 70 cts.; 3 of each, 21 in all, \$2, postpaid.

GRAND MIXTURE OF DARWIN TULIPS, including a wide diversity of colors and shades, 5 cts. each, 50 cts. per doz., \$3 per 100, postpaid.

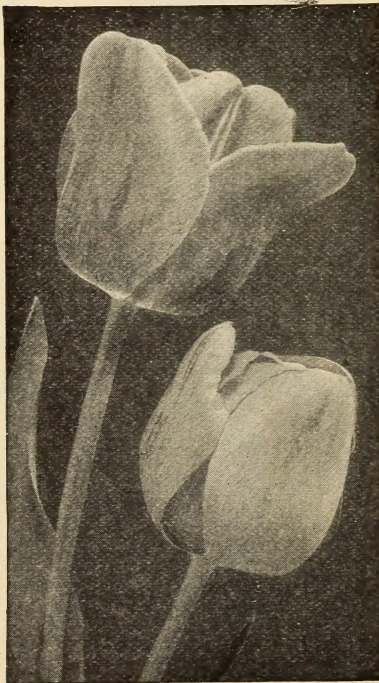
Gesneriana Tulips, Red and Yellow

TULIPA GESNERIANA. The most superb of all varieties, with fine stems 2 to 3 feet high, producing exquisite blossoms of large size, which in color are intense, dazzling, glossy crimson, with center of deep blue. 4 cts. each, 40 cts. per doz., \$2.50 per 100, postpaid.

TULIP, GOLDEN CROWN (Yellow Gesneriana). Identical with the crimson Gesneriana, except that the flowers are splendid golden yellow, petals edged with orange-red 4 cts. each, 40 cts. per doz., \$2.50 per 100.

TULIP VERDIFLORA. Flowers of immense size and showy green color; petals edged with yellow. Curious and beautiful. 7 cts. each, 75 cts. per doz., \$6 per 100.

TULIP GREIGI (The Royal Tulip). This, the king of Tulips, heretofore has been very scarce and high in price, so much so that only a limited number were imported. Under a special contract we have succeeded in having a fine stock of bulbs grown, which we offer at a reasonable price. This magnificent Tulip has very handsome foliage, distinctly spotted dark maroon; gorgeous flowers bravely borne up as if to better display their remarkable color, which is flaming red, transparent, waxy and dazzling. A royal Tulip. 15 cts. each, \$1.50 per doz., \$10 per 100.



DARWIN AND COTTAGE GARDEN TULIPS

Dingee Winter-Blooming Freesias

One of the most popular winter-blooming bulbs, growing well in ordinary soil and not requiring special knowledge to have success with them. The color is pure white, lower petals touched with yellow. When cut and placed in water the buds and flowers remain perfect for two or three weeks. A half dozen bulbs will produce a profusion of flowers, deliciously scented, reminding one of the odors of the Hyacinth, Jessamine and Mignonette combined. Freesias are sure to grow and bloom if you give them half a chance. The important thing, always, is to start with strong and vigorous bulbs, such as we have made our reputation on.

PLANT THEM EARLY—PLANT THEM NOW!

Freesias should be planted early for the best results—the earlier the better. We cannot too strongly emphasize this point. The vitality of the bulbs is at its highest early in the season. We have these bulbs grown in tremendous quantities, by our special growers, and are able to offer larger and better quality bulbs than those generally sold. As in other bulbs, quality is our motto.

DINGEE FREESIAS—THE BEST AND PUREST IN AMERICA

The best Freesias are grown in California, though many bulbs grown elsewhere are in the market. In order to give our customers the genuine *Refracta alba* strain, we have a reliable grower under contract. We have seen stock in bloom at his place and know that it is genuine. The first-size bulbs are magnificent and produce flowers of like size. These are the largest Freesia bulbs we have ever seen, and it is difficult to secure them elsewhere at any price. The second-size bulbs are strong bloomers, which produce a profusion of flowers, while our third-size bulbs are larger than the usual grade of second-size stock—not the small stuff usually sold at our prices. Keep it in mind that we sell the genuine winter-blooming Freesias, and not the inferior hybrids—that our stock has been carefully selected and is pure in color, size and fragrance.

Celebrated Freesia *refracta alba* Strain

First size, monster bulbs, 3 years old, 7 cts. each, 25 cts. for 4, 50 cts. for 10, \$1 for 25, \$4 per 100, postpaid.

Second size, mammoth bulbs, about $\frac{1}{2}$ inch in diameter, 10 cts. for 3, 30 cts. per doz., 50 cts. for 25, \$2 per 100, postpaid.

Third size, extra large selected bulbs, 12 cts. per doz., 50c. for 50, 90 cts. per 100, postpaid.



WINTER-BLOOMING FREESIA

Grand New Freesia, Purity

This variety is a type of pure white Freesia that surpasses in size, floriferousness and purity of color. Plant early for best results. Of the easiest culture and sure to grow and bloom. As with *Refracta alba*, a few bulbs will give a wonderful display. We offer one size only,—first size bulbs. 7 cts. each, 35 cts. for 6, 60 cts. for 12, \$1 for 25, postpaid.

Anomatheca cruenta

(SCARLET FREESIA)

This lovely little gem is similar in bulb, foliage and habit to the Freesia, but the flowers in brilliant contrast, are brightest scarlet; the lower petals deeply marked. As it grows exactly like a Freesia it can be planted with them, and, if you want something really admirable, plant some bulbs of *Anomatheca cruenta*. As the true stock is limited, the price is necessarily high. 5 cts. each, 10 cts. for 3, 25 cts. for 12.

Big as Morning-Glories

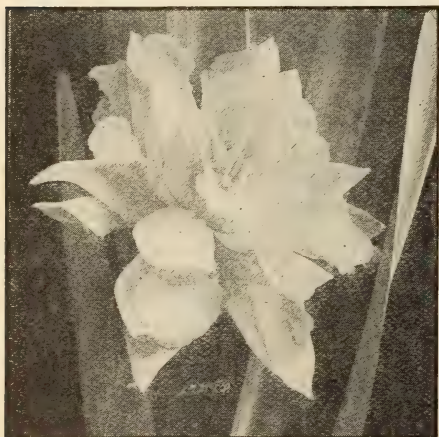
The Freesia bulbs ordered came through promptly. It seems almost impossible to believe them to be Freesias, as they are fully three times as large as any I ever bought before. I shall confidently expect to see Freesia blossoms as big as morning-glories, if the size of the bulb is any sort of an indicator. Thanks for liberality and promptness.—R. B. Edson, Whitman, Mass.



CROWN NARCISSUS, ORANGE PHENIX



SINGLE NARCISSUS, GLORY OF LEIDEN



DOUBLE NARCISSUS, VON SION

Dingee Narcissus

THE DAFFODILS OF SPRING

The Narcissus is most desirable for house or garden culture, and should be treated in the same manner recommended for the Hyacinth. Three or four bulbs may be grown in a single pot. In the garden they may be planted in any out-of-the-way place, where they will continue to thrive and bloom year after year without any care or attention, and will be among the first to respond to the fitful blandishments of early spring. The family is an extensive one and remarkable for its novel diversity of types and colors, in the selection of which our efforts have been to secure the finest specimens. Our bulbs are grown for us by our own special grower on the Isle of Guernsey; they are the best.

First-Quality Bulbs Sure to Bloom. Prices include postage

Ard Righ (Irish King). Large, beautiful golden yellow. Very early and useful for cutting. 10 cts. each, \$1 per doz., \$8 per 100.

Emperor. In many respects the finest Daffodil in cultivation. Magnificent flowers, trumpet large, rich yellow, surrounded with deep primrose petals, so broad they overlap; $3\frac{1}{2}$ inches across. 7 cts. each, 75 cts. per doz., \$6 per 100.

Maximus, or Vase of Beaten Gold. Very early. Immense trumpet-shaped flowers of deepest, richest yellow. A lovely sort. Very showy. 7 cts. each, 75 cts. per doz., \$6 per 100.

Glory of Leiden. New. Immense flowers of great substance. Long, large, fluted trumpet of rich yellow; full, broad, overlapping petals of bright yellow, borne on strong stems. In every way a magnificent new sort. 20 cts. each, \$2 per doz., \$15 per 100.

Pseudo, or Lent Lily. A lovely variety. Light yellow cup with sulphur-white perianth petals. 4 cts. each, 40 cts. per doz., \$2.50 per 100.

Double Von Sion. This is the grand old double yellow Daffodil, with large, double, rich golden yellow trumpet flowers, so highly prized in the old-fashioned gardens. Once planted, it can remain undisturbed for years, and will increase in beauty with each succeeding year. One of the very best for house culture. Specially selected, double-nosed bulbs, far superior to the average bulbs. 4 cts. each, 40 cts. per doz., \$2.50 per 100.

Trumpet Major. Flowers early and free. Grand for cut-flowers. 4 cts. each, 40 cts. per doz., \$2.50 per 100.

Pallidus præcox. Sulphur-white perianth and trumpet. One of the earliest. 6 cts. each, 60 cts. per doz., \$4.50 per 100.

Superfine Mixed. Superb mixture of all sorts, Double and Single and All Colors. 3 cts. each, 35 cts. per doz., \$2.50 per 100, \$12 per 1,000.

SPECIAL OFFER. Set of 8 Named Narcissus, postpaid, 60 cts.; 3 of each, 24 in all, \$1.75, postpaid.

Incomparable Crown Narcissus

Hybrids between Yellow Trumpet and Poeticus Daffodils. Very distinct, strong growers and good bloomers, both indoors as well as in the open ground. Plant freely of them.

Leeds. Pure white petals, lemon cup, passing to white. Choice for bouquets. 3 cts. each, 35 cts. per doz., \$2 per 100.

Orange Phoenix (Eggs and Bacon). Very handsome, double, white flowers; outside petals white; center orange and white. 4 cts. each, 40 cts. per doz., \$2.50 per 100.

Stella. Large white perianth petals, with golden yellow cup, star-shaped. Should be planted in quantities. 3 cts. each, 30 cts. per doz., \$1.50 per 100, \$12 per 1,000.

Sir Watkin. A grand old variety. One of the biggest and best. Flowers often measure $5\frac{1}{2}$ inches across. Grows anywhere. Rich sulphur-yellow; orange-tinged trumpet. 7 cts. each, 75 cts. per doz., \$5 per 100.

SPECIAL OFFER. Set of 4 Narcissus above, 15 cts.; 7 of each, 28 in all, \$1, postpaid.

Narcissus Poeticus

Poet's Narcissus, also called the Pheasant's Eye. A clump should be in every garden among the shrubbery or in the grass. Needs no protection during winter, blooms very early; pure white flowers with miniature saucers, edged with bright crimson; can be readily grown in the house.

Poeticus. Pure white flowers with orange cup, edged with crimson; splendid for cut-flowers. 3 cts. each, 25 cts. per doz., \$1.50 per 100.

Poeticus flore pleno. Double, white, sweet-scented flowers. 4 cts. each, 30 cts. per doz., \$2 per 100.

Poeticus ornatus. We have a select stock of this, the improved Poeticus; very large, pure white flowers beautifully formed eye; magnificent for pot culture. 4 cts. each, 40 cts. per doz., \$2.50 per 100.

Polyanthus Narcissus

Beautiful flowers; fragrance exquisite; not so hardy as the other types, and, in the open ground, should be well protected. Pot any time from October to January. Ordinary soil will do. Several bulbs can be grown in a large pot or box. To secure good drainage, cover the bottom of the pot or box with broken crockery, sand or pebbles; fill with soil within 3 inches of the top, then set up the bulbs and cover them loosely with 1½ to 2 inches of soil. Water well and place in a cool, dry cellar or similar place. When the first shoot appears, bring into the full light, moderate temperature and moisture, and they will grow famously.

Double Roman. Perfectly double. Superb in every way. Large, finely formed flowers; color clear white, with smaller inner petals of pure yellow; an early and profuse bloomer; delicious fragrance. 3 cts. each, 30 cts. per doz., \$2 per 100.

Improved Paper White grandiflora, or Large-flowering. This new variety is such an improvement over the ordinary "Paper White" that we no longer offer the latter. A large-flowering type, more vigorous and earlier; snow-white flowers of large size and good substance, in immense trusses. Mammoth bulbs, 4 cts. each, 40 cts. per doz., \$2.75 per 100.

True White Pearl. Satiny white flowers, with primrose cups. 8 cts. each, 80 cts. per doz., \$6 per 100.

Gloriosus. Early-flowering variety. Perianth white; cup glowing, orange-yellow; splendid trusses. 7 cts. each, 75 cts. per doz., \$5 per 100.

Grand Primo. White, with citron cup. Early and beautiful. 7 cts. each, 75 cts. per doz., \$5 per 100.

Grand Soleil d'Or. Deep yellow, with reddish orange cup. Distinct and lovely. 7 cts. each, 75 cts. per doz., \$5 per 100.

Mixed. 4 cts. each, 35 cts. per doz., \$2.75 per 100.

SPECIAL OFFER. Set of 6 Named Narcissus above, 35 cts.; 6 of each, 36 in all, \$2

Narcissus corbularia

THE BELL-SHAPED NARCISSUS

We wish that it were possible to illustrate this lovely and unique Narcissus, particularly as grown in pots. Of all the winter-blooming bulbs, there is none easier to succeed with, nor any which gives a greater reward. It will please all for winter blooming, as it is absolutely sure to bloom. With three to five bulbs in a pot or box, great numbers of charming blossoms are borne during January, February and March. The flowers are clear, golden yellow in color, with exquisite odor, very odd in shape. It is also desirable for planting in the open ground. 8 cts. each, 80 cts. per doz., \$7 per 100.

Jonquils, or Narcissus

Jonquils make a very desirable addition to the garden, and they are also in large demand for house culture. The flowers are rich, golden yellow, delightfully scented. They belong to the Narcissus family and should be given the same treatment. For best effect, put about twelve bulbs in a 6-inch pot.

Double. Extra fine; deep yellow. 4 cts. each, 40 cts. per doz., \$2.50 per 100.

Single. Rich yellow; very fragrant. 2 cts. each, 5 cts. for 3, 20 cts. per doz., \$1.25 per 100.

Campanelle Mixed. Large yellow flowers; rich and very striking. 2 cts. each, 5 cts. for 3, 20 cts. per doz., \$1.25 per 100.



POETICUS ORNATUS



PAPER WHITE GRANDIFLORA



JONQUILS



LILIAM AURATUM

Dingee Aristocratic Japan Lilies

This is one of the most ancient and distinguished varieties of Lilies, well and favorably known. It is important for pen to describe or engraving to illustrate their peculiar beauty. They are rapid and vigorous growers and become a permanent fixture when once established, succeeding best in light, dry soil, in a sheltered location. Plant the bulbs about 6 to 8 inches deep. We offer none but the best varieties and only large, sound, solid, healthy bulbs, which may be depended upon to grow and bloom.

	Prices, postage paid		
	Each	Doz.	100
Batemanii. New. Grows 3 to 4 feet high, clear apricot-colored flowers, without spot or stain	\$0 25	\$2 50	\$18 00
Brownii. A grand Lily, with immense, trumpet-shaped flowers. Chocolate-purplish outside, white inside	40	4 50	35 00
Gigantum. Grows 6 to 10 feet high, bearing twelve to twenty flowers 5 to 6 inches long. Color creamy white, with a purple throat	25	2 50	18 00
Humboldtii. Grows 3 to 5 feet high. Color golden yellow, spotted with purple	30	3 00	22 00
Washingtonianum. Highly fragrant. Delicate white blossoms freely spotted with black	30	3 00	22 00
LILIAM AURATUM. Magnificent pure white flowers, often measuring a foot across, exquisitely spotted with rose, and rayed and banded with golden yellow in the most beautiful manner; maroon-tipped stamens, in high contrast with the flowers. This noble Lily is certainly one of the most valuable and ornamental flowers, either for pot or garden culture, and should be planted by every one.			
Fine, large, extra-selected blooming bulbs	20	2 00	12 00
Enormous bulbs	25	2 50	18 00
Elegans, Mixed Varieties. The richest hues of yellow, crimson, red and dark red	15	1 50	10 00
Philippinensis. This superb Lily is a native of the Philippines, and, in many respects, it is the finest variety now known. The flowers are trumpet-shaped, snow-white in color, deliciously fragrant. Perfectly hardy, and four or five bulbs once planted makes a permanent and beautiful spot on the lawn or in the garden	25	2 50	18 00
Candidum. The old white garden Lily. A splendid sort; large, pure white flowers in clusters; extra-large bulbs	15	1 50	10 00
Pardalinum (Leopard Lily). Beautiful and handsome. Entirely hardy; grows 3 to 5 feet high; large clusters of bright orange-red, with lighter orange center	15	1 50	10 00
SPECIOSUM, or LANCIFOLIUM are the most popular and satisfactory of all Lilies. We offer below the best varieties; all are distinct, graceful and beautiful. Perfectly hardy.			
Album. Pure white; very fragrant	15	1 50	10 00
Melpomene. Beautiful white, spotted, clouded and bearded with pinkish crimson. Petals deeply recurved and widely bordered	15	1 50	10 00
Rubrum. Bright crimson and white flowers in clusters. Grows 2 to 3 feet	15	1 50	10 00
Double Tiger Lily (Tigrinum). Immense clusters of large flowers, frequently 6 inches in length. Very double. Color fiery red, spotted with black	15	1 50	10 00
Single Tiger Lily (Tigrinum splendens). Large flowers of excellent form, large clusters; orange, with intense dark spots	15	1 50	10 00
Croceum. Old orange Lily; beautifully shaped flowers; orange and black	30	3 00	22 00
Kramerii. Entirely distinct. Flowers beautiful soft rose-color	20	2 00	12 00
Longiflorum. Well known, beautiful snow-white, fragrant Lily. First size	15	1 50	10 00
" Second size	20	2 00	12 00
" Third size	25	2 50	18 00

Dingee Bermuda Easter Lilies

This superb variety is one of the finest for house decoration, is in ever-increasing popularity. When in full bloom the plant is lovely in the extreme, of neat and graceful habit, flowers pure white and delightfully perfumed. It is unexcelled as a window plant. The Easter Lily is a vigorous grower with ordinary attention.

Grand for Winter-Flowering

A rich soil is required, which can be usually obtained from yard or garden. The pot or box should be not less than 6 inches deep. Place about 2 inches of broken crockery or coal cinders at the bottom to secure free drainage. Fill closely with soil to the top, plant the bulb, water moderately and put away in a warm place until the roots begin to form. Then transfer to the sitting-room to the warmth and light. Bermuda Easter Lilies may be planted outside. They are hardy in the southern states and will survive northern winters if protected with leaves or litter. They

Flower in Three Months from Planting

The bulbs we offer are the true Bermuda Easter Lilies (*Lilium Harrisii*), secured direct from our Bermuda grower, and are the best to be had. Smaller and inferior bulbs can be purchased at a much lower price, but such bulbs are almost worthless, as they produce few flowers. We offer only large and healthy bulbs, therefore, which will make a vigorous growth and give an abundance of bloom. This year's importations are unusually fine, and bulbs are ready for immediate delivery. You can depend upon them for complete satisfaction.

Large Bulbs, Popular Size, producing 3 to 6 flowers. 15 cts. each, 50 cts. for 4, \$1.25 per doz., postpaid.

Extra-Large Bulbs, producing 8 to 12 flowers. 20 cts. each, 50 cts. for 3, \$2 per doz., postpaid.

Bulbs of Enormous Size, producing 12 to 15 flowers. 40 cts. each, 75 cts. for 2, \$4 per doz., postpaid.

Japan Easter Lily (*Lilium longiflorum*)

Well-known, beautiful, snow-white, fragrant, hardy garden Lily. Flowers trumpet-shaped, 6 to 8 inches long. Is entirely free from disease of any kind; therefore sure to satisfy. This is also a splendid variety for forcing for winter flowers. Large bulbs, 15 cts. each, 50 cts. for 4; extra-large bulbs, 20 cts. each, 50 cts. for 3; enormous-size bulbs, 25 cts. each, \$1 for 5, postpaid.

St. Joseph's Lily (*Lilium candidum*)

We have imported a superb lot of *Lilium candidum* which were especially grown and prepared for winter-blooming in pots. The bulbs are of enormous size and will throw up strong stalks crowned with a profusion of pure waxy white Lilies; exquisitely sweet. Give same culture as is recommended for *Lilium Harrisii*. Large bulbs, 15 cts. each, 50 cts. for 4, \$1 for 9, postage paid.

Miscellaneous Lilies, Etc.

Erythronium grandiflorum

THE BEAUTIFUL WOOD-LILY

These exceedingly ornamental hardy plants are now immensely popular. Planted in open ground, they are entirely hardy and will found a colony, taking care of themselves. They will also delight all as a window plant for winter blooming, being of the easiest culture and sure to bloom freely in midwinter; a few bulbs will give a pot full of handsome foliage plants, which produce numbers of graceful, drooping, lily-like flowers; color a fine shade of yellow. The bulbs should be potted or planted soon after being received, as they suffer if allowed to remain dry. 5 cts. each, 25 cts. for 6, 40 cts. per doz.

Erythronium revolutum

Those who know the beauty of Erythroniums will best appreciate this new species when we say it is the most beautiful of the family. The flowers are large and in color very striking, white tinged with green. The leaves are narrow, beautifully mottled with brown. It is unlike any other variety in cultivation; of easy culture, growing to perfection in ordinary soil and location. Fine bulbs, 10 cts. each, 25 cts. for 3, 50 cts. for 7.

Camassia Cusickii

This is a grand new species, destined to become a general favorite wherever grown. The bulbs are large, running from two to eight ounces. The leaves are particularly fine, fully a foot in length. It blooms in wonderful profusion, producing in great racemes 2 to 3 feet in height hundreds of pale sky-blue flowers. Equally satisfactory for open-ground cultivation or for planting indoors. 20 cts. each, 50 cts. for 3.

The Cuban Lily (*Scilla Clusii*)

A magnificent winter-blooming bulb which for ease of culture, sureness of bloom and superb flower stands at the head of all winter-blooming bulbs for house culture. It is exceedingly rare. The flowers are star-shaped and are borne in one enormous cluster. The color is distinct and strikingly rich, a dark blue with golden yellow anthers, giving a magnificent effect. Delicious fragrance. After flower fades it is a splendid decorative plant. 15c. ea., 50c. for 4, \$1 for 9, postpaid.



BERMUDA EASTER LILY



CRINUM ORNATUM

circumference, 30 cts. each, \$1 for 4; second size, about 9 to 11 inches circumference, 40 cts. each, \$2 for 5. Enormous bulbs, about 14 to 16 inches circumference, 60 cts. each, \$1 for 2. These prices include postage, which we pay.

Mexican Lily (*Sprekelia formosissima*)

This Lily blooms quicker than a Chinese Sacred Lily, grows in water like a hyacinth, produces immense, deep, brilliant scarlet flowers, and has become so popular that not until last season were we able to secure sufficient bulbs to meet the demand for it. We have again been successful in securing an importation of fine, large, blooming bulbs from Mexico, and while the stock lasts we propose selling them at the remarkably low prices given below. No description will do it justice. It grows readily in soil, but the most interesting and quickest method is to plant bulbs in sand, pebbles, gravel and water, like hyacinths, or Chinese Sacred Lilies. Grown by this method, it blooms in two or three weeks. We know of no bulb so easy to grow and quick to bloom; it thrives without the least care or attention. Not less than three bulbs should be planted to give best effect. The flowers are gorgeous—magnificent, velvety, deep, dark, scarlet, rich beyond description. By planting at different times, a succession of bloom may be had throughout the season: Try at least three bulbs. Large blooming bulbs, 10 cts. each, 25 cts. for 3, 50 cts. for 6, 90 cts. per doz., postpaid



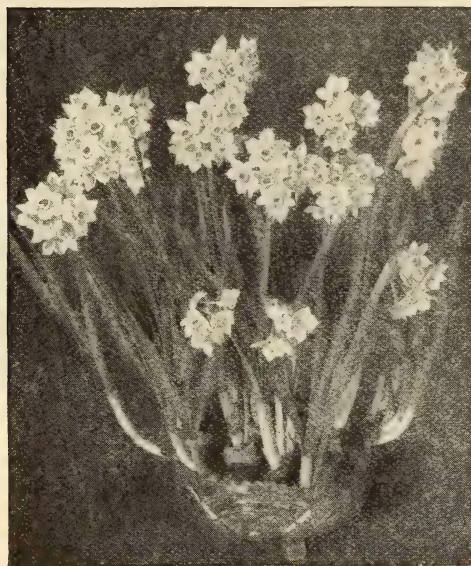
MEXICAN LILY

Chinese Sacred Lily

This novel and charming flower is used by the Chinese in celebrating their New Year's or Good Luck Feast. The flowers are looked upon as sacred, as an offering to their gods. During the last few years it has become the most popular of the winter-flowering bulbs; ease of culture, certainty of bloom and rare beauty combine to make this a most interesting and satisfactory winter flower. It will thrive in soil, but the favorite method of culture is growing in water and gravel, where it can be depended upon to flower within twenty to thirty days after planting. Select a vessel of sufficient size, place two or three bulbs in it, fill the interspace with coarse sand or gravel until the bulb is firmly held in position, and then add water until quite covered. Place in a moderately cool situation by the window, replenish the water from time to time as it evaporates or becomes foul. It is particularly adapted to conditions not favorable to the growth of most other plants. In four or five weeks it will produce masses of deliciously scented flowers which will prove a delight to all lovers of flowers.

There are many spurious bulbs on the market, but those offered by us are GENUINE—the largest and finest procurable, imported direct.

Price, extra large, solid bulbs for immediate bloom, 12 cts. each, 45 cts. for 4, \$1 for 10, postpaid. Mammoth bulbs, 20 cts. each, 50 cts. for 3, \$1 for 7.



CHINESE SACRED LILY

Dingee Early-Blooming Crocus

Since the poet sang, "A soft breeze kissed the expectant morn, a bluebird sang a witching strain, a Crocus bloomed and Spring was born," this charming little flower has been noted as the first of the spring-time. The attractive flowers mark the coming of spring and, with their beautiful shades, *tone the deepening green of the lawn*. It is entirely hardy and, left undisturbed, will continue to bloom each year.

The best results with Crocus are obtained when they are given a rich dry soil and sunny location. The bulbs should be planted about 3 inches deep; set singly or massed in beds. A favorite plan is to raise the soil with a spade or trowel to the depth of 3 inches, place the bulb beneath the sod and press back into place. Crocus are also great favorites for house culture, giving very satisfactory results. The bulbs we offer are of improved strains of the leading and finest varieties, and are superior as regards both form and color.

FINEST NAMED VARIETIES

12 cts. per doz., 75 cts. per 100, \$7 per 1,000 postpaid

Albion. Fine striped, large and good.
Caroline Chisholm. The best white.
David Rizzo. Magnificent dark purple.
Lord Byron. Superb blue.
Sir Walter Scott. Very distinct, striped.
Queen Victoria. Splendid pure white.
Cloth of Gold. This striking Crocus from the Crimea is one of the earliest spring-flowering species; variously feathered flowers, golden orange, evenly suffused with dull brown, stigma orange-scarlet.

Cloth of Silver. Same as the preceding, except the color is beautifully silver-shaded.

Saffron. This species furnishes the saffron of commerce; it appears to have been cultivated in Palestine at the time of Solomon. The flowers are violet-colored, variously striped, and are fragrant.

Scotch. Well known and popular class; should be included in every collection.

Versicolor. Beautifully colored, varying from purple to white, veined with purple; yellow anthers.

THE MONSTER YELLOW

Largest of all Crocus

Magnificent, desirable for open ground or pot culture. Bulbs very large and flower early; profusion of bloom is remarkable, fifteen to twenty-five large flowers being the usual number per bulb. Plant two or three and you will be sure of dozens of bright yellow blossoms in a short time; by planting at intervals, a succession of bloom can be had. 10 cts. for 6, 15 cts. per doz., \$1 per 100, \$9 per 1,000.

FINEST MIXED

Price, 10 cts. per doz., 50 cts. per 100, postpaid; \$4.50 per 1,000, by express.

Mixed White. Different varieties.
Mixed Purple and Blue. Different.
Mixed Striped. Different varieties.
Mixed Yellow. Different varieties.
All Colors Mixed. Different varieties.

We send large bulbs, first quality Crocus, by mail, postpaid.

Your plants and bulbs arrived all in good order. The Pinks are excellent—the finest bunch I have ever seen. The Roses came all right and are doing well.—LOUISE J. CORTELYOU, Newton, N. J.



CROCUS

Allium

Neapolitanum. This beautiful variety gives the greatest satisfaction planted in the flower-beds for early spring flowers, and is especially valuable for winter blooming, being sure to flower splendidly in any window. The large clusters of delicate white flowers remain perfect for weeks. Plant three to five bulbs in a 5-inch pot or box, and you will have a lovely display. 5 cts. for 3, 12 cts. per doz., 75 cts. per 100.

Pendulinum. A bulb will produce as many as nine spikes, with five to ten white, bell-shaped pendulous flowers, each petal having a well-defined green stripe down the center. 10 cts. for 3, 25 cts. per doz.

Moly. In fine contrast to the above-named sorts; color clear golden yellow. 10 cts. for 3, 25 cts. per doz.

Babianas

These unusually pretty and attractive flowers should be better known. Their great feature is the

striking contrast of colors seen in the same flower. They vary from the brightest blue to the richest carmine, and many of them are very fragrant. Any one can succeed with them, and for pot culture we know of nothing that will attract greater attention. Five or six bulbs in a 5-inch pot.

Finest Mixed Varieties, embracing a large number of distinct varieties, including the most exquisite shades and tints. 5 cts. each, 25 cts. for 6, 50 cts. per doz., \$3.50 per 100.

Brodiaeas

Extremely showy, half-hardy bulbs, bearing beautiful tubular flowers in clusters, on stems 1 to 2 feet high. Of the easiest cultivation, especially valuable for pot culture, or, if planted out in clumps or masses in early spring, they flower freely in June or July. Plant freely of them, as they are very satisfactory.

Finest Mixed Varieties, comprising an assortment of all colors, purple, white, blue, red, etc. 20 cts. for 6, 35 cts. per doz., \$2.50 per 100.

Miscellaneous Bulbs

Roman Hyacinths

One of the few flowers which may be had in bloom as early as Christmas. The graceful flowers embrace the most delicate colors and are very sweet-scented. May be grown in pots or glasses the same as Water Hyacinths—the methods of treatment being the same.

Prices for each of the following varieties: First-size bulbs, sure to bloom, 5 cts. each, 25 cts. for 6, 50 cts. per doz., \$3.75 per 100, postpaid.

Single White. (See cut). Forms elegant bells of waxy white color.

Single Blue. Fine for contrasts with other varieties.

Double Dark Pink. Grand spikes with very large bells.

SPECIAL OFFER. Set of 3 named Roman Hyacinths, described above, for 15 cts.; 4 of each, 12 in all, for 40 cts., postpaid.

Grape Hyacinths

These bulbs are entirely hardy and will increase very rapidly in the open ground. For winter blooming, plant a few bulbs in a 5-inch pot and treat the same as Hyacinths.

Improved Blue. Sky-blue bells, tipped white. 5 cts. for 3, 15 cts. per doz., 75 cts. per 100, \$6 per 1,000.

Snow-White. A very scarce sort. 10 cts. for 3, 20 cts. per doz., \$1 per 100, \$8 per 1,000.

SPECIAL OFFER. 6 Improved Blue and 3 Snow-White Grape Hyacinths, 9 in all, for 15 cts.

The True Feathered Hyacinth

is a very curious plant of the easiest cultivation. It is entirely hardy and best adapted for open-ground culture, but will also do well in pots. The blue flowers are tinged with red and form feathery plumes which are borne on graceful stems. 3 cts. each, 10 cts. for 4, 25 cts. per doz., \$1.25 per 100, \$10 per 1,000.

Tufted Hyacinths

Plant six in a 5-inch pot. The flowers grow in deep blue tassel-like racemes. Fine for pot culture as well as open ground. 3 cts. each, 10 cts. for 4, 25 cts. per doz., \$1.25 per 100, \$10 per 1,000.



ROMAN HYACINTH

Wood Hyacinths (Campanulata)

Elegant, hardy plants for shrubbery, borders or odd corners. The splendid spikes of bell-shaped flowers grow from 1 to 2 feet high. Blue and white colors mixed. 3 cts. each, 30 cts. per doz.

Fritillarias

We know of no plant possessing more striking beauty of flower, combined with ease of culture, than the Fritillaria; there is nothing like it. The habit of growth is lily-like, and, as a pot-plant, the effect is beautiful in the extreme; in fact, it is as beautiful as any lily, while the profusion of flowers is remarkable. Is also hardy in the open ground, but is seen at its best grown indoors in pots or boxes. Requires about the same treatment as Bermuda Easter Lily, and should not be given too much water. Our bulbs are specially grown for us and are large, plump and sound, and guaranteed to bloom.

Recurva. The finest of the world's Fritillarias, and, to our minds, one of the most beautiful of bulbous plants with lily-like growth; it produces numerous large, pendent, bell-shaped flowers, on stems 6 to 10 inches high. Frequently as many as a dozen brilliant scarlet flowers, spotted with orange in the throat, are produced at one time. It is impossible to make an illustration to do justice to the wonderful beauty of its flowers. We have secured a fine lot of bulbs for sale this season, and make the price extremely low. 10 cts. each, 25 cts. for 3, 50 cts. for 7, 75 cts. per doz., \$5 per 100.

Mixed Varieties. This splendid mixture includes a marvelous number of colors—yellow, white, pink, purple, striped, splashed and checkered in the most curious ways. Splendid for pot culture as well as for large groups in the yard or garden border, or when planted in clumps; entirely hardy. 20 cts. for 6, 35 cts. per doz., \$2.50 per 100.



TYPE OF FRITILLARIA

Snowdrops (GALANTHUS)

Snowdrops are the first blossoms of spring, coming forth annually with renewed strength and beauty almost before the snow disappears. They are perfectly hardy, equally effective whether planted singly or in groups, and they are also splendidly adapted for pot culture. The foliage matures sufficiently early to permit cutting of the grass without injury to the bulb.

Nivalis. The old-fashioned Snowdrop, Pure white and of graceful appearance. 5 cts. for 3, 15 cts. per doz., \$1 per 100.

Elwesi (Elwes' Giant Snowdrop). The largest and most beautiful of all Snowdrops, flowers pure white with bright green tube. 5 cts. for 2, 20 cts. per doz., \$1.25 per 100.

Glory-of-the-Snow (CHIONODOXA)

Lucilæ. A lovely flower, producing spikes of beautiful azure-blue color, with pure white center. Forms a striking contrast with *Galanthus Elwesi*. 5c. for 2, 20c. per doz., \$1.25 per 100.

Gigantea. Larger-flowering than the preceding, with flowers of a beautiful light blue color, with white center. 5 cts. for 2, 25 cts. per doz., \$1.50 per 100.

Lily-of-the-Valley

One of the most universally known and admired plants. The graceful spikes, with the dainty, pure white bells, are a delight to the eye, and their delicate fragrance is exquisite. Plants succeed



GALANTHUS

most anywhere, but prefer a partly shaded situation and rich soil. A judicious top-dressing in the fall of good, well-rotted manure will do wonders for already established plots of these flowers. They are equally well adapted for forcing in pots or pans in the house, and, when in full bloom, they will make a charming object for room decoration. For house culture, plant rather thickly in pots or boxes, scattering some light soil or fibrous matter among the roots without covering the crowns. Scatter some moss or other light material over it, water well and set away in a dark place. When brought to heat and light after a few weeks, the leaves and flowers will soon appear. Our Lily-of-the-Valley Pips are imported by us direct from Berlin and are far superior to the commercial grades of Dutch or Hamburg Pips usually sold in this country. Ready for delivery in November. Strong-flowering crowns, 15 cts. for 3, 50 cts. per doz., \$3 per 100, postpaid; by express, not prepaid, \$2.50 per 100, \$22.50 per 1,000.

Scilla Sibirica

PRAECOX

A most beautiful variety; equally desirable for planting in the open ground for earliest spring flowers, or in pots for winter blooming. The bulbs are entirely hardy and thrive with little or no care. The flowers are borne in greatest profusion, and are an exquisite rich blue color; grown in pots they will be in bloom from Christmas until April; in the open ground the flowers come almost before the snow is gone. 5 cts. for 3, 15 cts. per doz., 75 cts. per 100.



LILY-OF-THE-VALLEY

Ornithogalum umbellatum

STAR OF BETHLEHEM

This lovely flowering bulb is valuable both for pot culture in the house during winter and in the open ground for early spring blooming. Unlike *O. Arabicum*, this variety is entirely hardy, and, once planted, it will become a permanent and beautiful addition to the garden. It is sure to do well under any ordinary circumstances, and the bulbs cost so little that no garden should be without a clump. In pots, culture is of the simplest. The star-like, white blossoms are borne in great umbels. Fine bulbs, 10c. for 3, 35c. per doz., \$2.50 per 100.

Camassia esculenta

Very valuable as a hardy flower for shrubbery, borders, etc. The flower-spikes grow from 2 to 3 feet high, bearing exceedingly pretty star-like flowers of about 2 inches across. Can also be grown successfully during the winter months, giving the bulbs the same treatment as hyacinths. 10 cts. for 3, 35 cts. per doz., \$2.50 per 100.

Cinnamon Vine

A very well-known and most valuable climber. Quite hardy and excellently adapted for outdoor cultivation. It produces delicate white flowers in profusion during the winter if grown in a light and sunny window in the house. Roots, 5 cts. each, 25 cts. for 7.



ORNITHOGALUM



AMARYLLIS REGINA

Ranunculus

Owing to their easy culture, profuse-blooming qualities, handsome appearance and beautiful variety of colors, these dwarf-growing bulbous plants are becoming more popular every year. They are perfectly hardy south of Washington, D. C., but should be protected during the winter farther north with leaves or similar dry litter.

Guernsey Turban, Finest Mixed. An excellent variety far superior to the common Dutch sorts usually sent out. Each bulb produces a great number of bright and richly colored double flowers. 10 cts. for 4, 25 cts. per doz., \$1.50 per 100.

French Turban, Finest Mixed. Of vigorous growth, bearing an abundance of gorgeous flowers of largest size. 10 cts. for 4, 25 cts. per doz., \$1.50 per 100.

Amaryllis regina

A QUEEN AMONG LILIES

Of the various varieties of this wonderful class of Lilies, this is perhaps the most beautiful. It bears magnificent lily-like flowers of large size, in umbels or clusters. These superb flowers are of soft light scarlet color, with white center or throat. For the best effect not less than three bulbs should be planted in a pot. Unexcelled for winter blooming. Strong blooming bulbs, 15 cts. each, 40 cts. for 3, 75 cts. for 6, postpaid.

Amaryllis Johnsonii

THE ROYAL LILY

Famous as a winter-blooming bulb, not only because of its immense flowers, richness of coloring, regal habit, which are simply incomparable, but because of its easy cultivation and surety to always bloom freely and profusely. They are sure to flower both winter and summer, the bulbs sending up from two to four flower-spikes at one time, each bearing from four to eight large, velvety crimson flowers, each petal striped through the center with a broad band of pure white, which presents a gorgeous appearance. Strong blooming bulbs, 20 cts. each, 50 cts. for 3, \$1 for 7; larger size, 30 cts. each, \$1 for 4, postpaid.

Trillium sessile

A hardy perennial of the lily family. It succeeds particularly well in partially shaded situations, where the blossoms increase in beauty year after year. 10 cts. each, 25 cts. for 3, 50c. for 7, \$6.50 per 100.

I bought some Roses of you last year and they have proved to be very good. The Crimson Ramblers are grand. I just wish everybody could see them.—MRS. ELLEN HEATHCOTE, Shelbourne Falls, Mass.

Calla Lilies

Grand winter-blooming pot-plant. Easy to grow free bloomers and superb flowers. Good at all seasons of the year.

Price, 15 cts. each, 25 cts. for 2, \$1 for 9, except where noted

Little Gem. Rarely grows over 12 inches high. Snowy white flowers in great profusion. We offer strong pot-plants. Try it.

Spotted. Foliage exquisitely dotted with white; very ornamental; white flowers with black throat. We offer strong pot-plants.

Lily of the Nile. The old favorite white Calla. Grand white flowers—chaste and beautiful. Strong plants.

Black (Arum sanctum). A native of the Holy Land. Flowers very large, often measuring a foot in length; inside, of purplish black color, outside, green. The center spadix, which is deep black, rises from the flowers to a height of 10 to 12 inches. We import our stock direct from Palestine.

NEW YELLOW. A grand novelty and an absolutely new color in this popular winter-blooming plant. Large, rich flowers, similar to the old white Calla in form; very fragrant. 20 cts. each, 50 cts. for 3, \$1 for 6.

SPECIAL OFFER. 1 each of the above 5 Calla Lilies, postpaid, for 60 cts.

Ornithogalum Arabicum

A magnificent variety of winter-flowering bulbs from Arabia. The large, solid bulbs produce plants with long, graceful leaves. The waxy white flowers have a jet-black center and are produced in long spikes which stand from 18 to 20 inches high. A very conspicuous novelty. Large bulbs, sure to bloom, 5 cts. each, 25 cts. for 7, 40 cts. per doz.

Ixias

Ixias are admirably adapted for pot culture in the house.

Named varieties, 4 cts. each, 20 cts. for 6

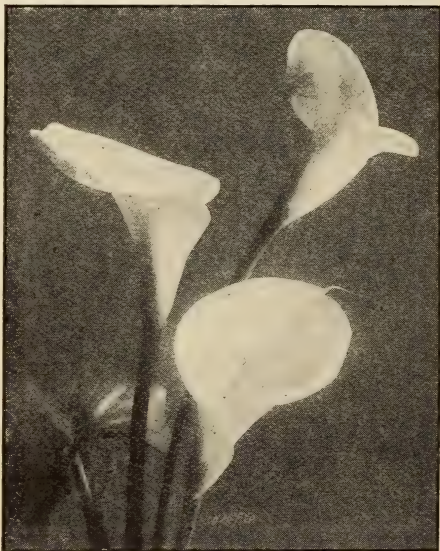
Craterioides. Bright scarlet; free and early.

Golden Drop. Beautiful rich yellow; eye, deep maroon.

Maculosa. Beautiful pink; very vigorous and free.

Snowflake. A true pure white variety; very rare.

Fine Mixed. Including varieties above and others; a splendid assortment. 10 cts. for 5, 20 cts. per doz.



CALLA LILY

Giant Persian Cyclamen

The new giant-flowered Persian Cyclamens are considered the most beautiful and decorative of all pot plants. The foliage is broad, massive and graceful, of a dark olive-green, beautifully variegated with silver and rose. The immense fairy-like flowers are carried on long stems and produced in boundless profusion for several successive months, and are delightfully perfumed.

We offer the largest size imported bulbs, grown especially for us in Europe, in three separate colors, viz., Rose, White and Crimson, at 20 cts. each, 50 cts. for 3, \$1 for 6, \$2 per doz., or one bulb each of the three colors for 50 cts.

Mixed Colors, including a fine assortment of all colors, 20 cts. each, 50 cts. for 3, \$1 for 7, \$1.75 per doz.

Lachenalias

Colors are a blending of yellow and scarlet, shaded with light green. The foliage is marked black and reddish brown.

Luteola. Yellow, beautifully tinged green. 15c.
Pendula. Bright scarlet, peculiarly shaded. 15c.
Tricolor. Greenish yellow, tipped red. 10 cts.

Pretty Face (*Calliprora lutea*)

Plants grow about 9 inches high and produce an abundance of fine golden to purplish brown flowers, which are banded with green. Of easiest culture. 6 cts. each, 15 cts. for 3, 50 cts. per doz., \$4 per 100.

Tritelia

Uniflora. The plants are perfectly hardy and are equally well adapted for outdoor as well as indoor culture. The pure white, star-shaped blossoms are beautifully lined with azure-blue. Excellent for pots or baskets. Fine bulbs, 5 cts. for 2, 20 cts. per doz., \$1 per 100.

Violaacea. Similar to the preceding except that the blossoms are of a beautiful violet-blue color. 10 cts. for 3, 25 cts. per doz.

I received the Rambler Roses in splendid condition. I have dealt with several firms, but your Roses are by far the best I have ever received for the money.—Mrs. J. H. EMERSON, Denver, Col.



GIANT PERSIAN CYCLAMEN

Oxalis

The varieties of Oxalis which we offer below are entirely suitable for winter blooming and pot culture. These lovely flowers are now among the most popular for hanging baskets, pots and positions calling for graceful and effective flowering plants. A few in a 5-inch pot or basket will start off at once and soon be in flower, remaining so throughout the winter.

GRAND DUCHESS, New Winter-blooming Oxalis.

The finest winter-blooming variety yet introduced, bearing continuously beautifully formed flowers of splendid size and color. We offer three colors, Rose-Pink, White and Lavender. (See illustration.) 4 cts. each, 15 cts. for 4, 40 cts. per doz., \$3 per 100. postpaid.

Bermuda Buttercup. New, large-flowering yellow. 4 cts. each, 35 cts. per doz., \$2.50 per 100.

Bowel. An elegant species from the Cape of Good Hope; large, deep pink flowers. 10 cts. for 4, 25 cts. per doz., \$1.75 per 100.

Cernua lutea major. Splendid showy clusters of bright yellow flowers. 4 cts. each, 40 cts. per doz., \$3 per 100.

Floribunda rubra. The brightest, showiest red. 5 cts. each, 40 cts. per doz., \$3 per 100.

Versicolor. A lovely two-colored rose and white variety. 4 cts. each, 35 cts. per doz., \$2.50 per 100.

SPECIAL OFFER. Set of 6 Named Varieties for 25 cts.

Mixed. A splendid mixture of the best varieties, including the above. 20c. per doz., \$1.25 per 100.

The Blue Milla

The plants produce rich blue, star-shaped flowers in profusion at the end of long, graceful stems. 5 cts. each, 25 cts. for 6, 45 cts. per doz.



OXALIS GRAND DUCHESS

I am very satisfied with the plants you sent me last year, especially with the Etoile de France and the American Beauty, which is true to name. It gave a Rose of 6½ inches in diameter.—D. FILOGAMO, Tampa, Florida.

Fancy-Leaved Caladiums

Nothing can equal these in brilliancy of foliage; to say there are over 400 combinations of colors is sufficient. The splendid large leaves are beautifully spotted, margined and variegated with every imaginable color except blue. They are best suited for pot culture in house, conservatory or shaded situation. We have one of the finest and largest stocks in the country, which includes all the best kinds. Ready for delivery in January. Extra-large bulbs, 25 cts. each, 60 cts. for 3, \$1 for 5.

California Honeysuckle

The flowers are a beautiful rose-color, and are borne in dense numbers, a single bulb producing 15 to 30 umbels. 15 cts. each, 25 cts. for 2; extra-large bulbs, 20 cts. each, 50 cts. for 3.

Floral Firecracker

The color is deep rich crimson, tipped with greenish white. 5 cts. each, 25 cts. for 6, 45 cts. per doz.

Calochortus, or Star Tulips

Amenus. Color satiny rose-pink. 8 cts. each, 15 cts. for 2, 35 cts. for 5.

Splendens. Bears very large flowers, fully 3 inches across; light lavender, shading to lilac. 7 cts. each, 25 cts. for 4, 60 cts. per doz.

Venustus roseus. A perfect gem; creamy inside, rose-colored at top of petals, carmine on back, beautiful tinted eye in center. 6 cts. each, 15 cts. for 3.

Albus (Bell-shaped). Strong grower, very floriferous; flowers an inch in diameter; perfect globes of pearly white. 6 cts. each, 15 cts. for 3.

Venustus oculatus. Showy and distinct; white ground inside, with striking eye-like spots richly colored reddish brown outside. 6 cts. each, 15 cts. for 3.

Mixed, All Varieties. Comprising a mixture of the best and richest collection of these beautiful and rare flowers yet sent out. 10 cts. for 3, 30 cts. per doz., \$1.25 for 50.

Iris

Anglica. Finest mixed seedlings, including a striking variety of color; splendid for bedding or borders. 10 cts. for 4, 20 cts. per doz.

Spanish, Gold Cup. Bronze and yellow colors blended. 5 cts. each, 25 cts. for 7.

Spanish, Finest Mixed. For intense and dazzling colors this mixture is unsurpassed. 5 cts. for 3, 15 cts. per doz., 35 cts. per 100.

Persian (Violet-scented). Showy flowers, different-colored standards; bright yellow, beardless keel, with waved edges; short stem. Fine for pots. 5 cts. each, 25 cts. for 6, 50 cts. per doz.

Peacock. Very showy; pure white, with bright blue spot on each petal. 4 cts. each, 25 cts. for 7, 30 cts. per doz.



ANEMONE



FANCY-LEAVED CALADIUM

Sparaxis

This exceedingly handsome class of flowers is well adapted for winter blooming in the house.

Named varieties, 4 cts. each, 20 cts. for 6

Angelique. Pure white, yellow eye; very pretty.
Bicolor lutea. Purple and maroon, yellow center.
Grandiflora. Rich crimson, yellow center; fine.
Tricolor. Beautiful clear yellow center; red markings.
Leopard. Pale yellow, eye deep yellow, brown spot.
Queen Victoria. Blue, with white and purple.
Finest Mixed. A mixture of the above and other varieties. 10 cts. for 5, 20 cts. per doz.

Tritonia

The colors are very soft and pleasing, ranging from white through salmon, orange and scarlet. A mixture of sixteen best sorts. 10 cts. for 3, 25 cts. per doz.

Anemones

Lovely, hardy plants producing brilliantly colored flowers. If planted in the fall, they will bloom in early spring, and if planted in the spring they will bloom during the summer and fall months. Also excellent for pot culture.

Chrysanthemum-flowered. The finest of all the double Anemones; they are vigorous and free-flowering, the flowers are large and somewhat resemble a chrysanthemum in shape. Our mixture is made up of the finest varieties. 10 cts. each, 25 cts. for 3, 75 cts. per doz.

French Giant Poppy-flowered. This superb new race will begin blooming in January if grown in a sheltered situation. Also unsurpassed for pot culture. The flowers are large, cup-shaped and gorgeously colored. 3 cts. each, 15 cts. for 6, 25 cts. per doz.

Fulgens (The Scarlet Wind Flower). Perfectly hardy, and one of the first to appear in the spring. The flowers are of great beauty and of a brilliant vermillion or scarlet color. Excellent for bouquets or vases. 5 cts. each, 20 cts. for 6, 40 cts. per doz.

Finest Holland Double Mixed. The best and most reasonable collection. 5 cts. for 2, 20 cts. per doz.

New Guide to Rose Culture for 1909

Will be ready to send out January 1, 1909. It is the acknowledged authority on matters pertaining to the culture of Roses, as well as all other flowers of worth. It will be sent free to customers of the past few years, also to those who order from this catalogue. To others free upon application.



The Best Dingee Roses for Fall Planting

BOTH FOR INDOOR AND OUTDOOR CULTURE

As is generally known, the Rose on its own roots is a specialty with us. We carry in stock nearly a thousand varieties, by far the choicest and biggest collection in America. We desire to call the particular attention of planters, both in the South and North, to the fact that the Roses offered in this Catalogue may be planted this fall in the open ground, notwithstanding that they are pot-grown. The important feature to be observed is to plant them early, the sooner the better, and they will have sufficient time to become established in the North before winter sets in, and, invariably, will come through safely with ordinary protection of leaves, evergreen boughs, or similar material, and the advantage accruing is that they will get an early start in the spring and will produce an abundance of flowers throughout the entire growing season next year. To induce a more general planting in the early fall, we are sending this Catalogue to friends and customers much earlier than usual, and be assured you will make no mistake in planting either one- or two-year-old plants liberally, but again we say plant them immediately. The advantage of a better start this fall for next year's results will be obvious to every one. Another point in connection with these plants, and an important one, is that they have been grown and will be sent out in a semi-dormant condition, with a portion of the soil around the roots on those that go by express, and they will receive no setback as a result of the trip in transit. We guarantee safe delivery to all points in the United States and Canada. We offer the choicest varieties and urge our friends to take advantage of this special preparation we have made to satisfy the very great demand, which has heretofore remained unsatisfied, having the best Roses of all classes for fall planting in the open ground. For winter blooming indoors there are none better, and the utmost satisfaction is assured to all those who plant for this purpose. Their cultivation is extremely simple. Indoors, plant in pots or boxes, water freely, and, whether indoors or outdoors, shade from the direct rays of the sun with newspapers for a few days, after watering them thoroughly. Subsequently, give them as much light and sunshine as possible. All are on their own roots, with very few exceptions, which are noted. The one-year-old plants will be strong and sturdy, from 2½- and 3-inch pots; the two-year-old plants from 4½- and 5-inch pots. One-year-old plants will be sent post-paid at prices named; two-year-old plants by express, the purchaser paying the charges. Dingee Roses have made this village of West Grove famous—none better and few as good. We invite a test of the truth of this claim.

The kinds marked with a star (*) furnished for fall delivery in one-year-old and extra-size plants only

Hybrid Tea Roses

A few years ago we predicted that this class of Roses would supersede all others for general planting. This prediction has been more than fulfilled. Combining as they do the valuable characteristics of both the Teas and Hybrid Perpetuals, they have the additional meritorious advantage of blooming continuously the first year like the Tea Roses, while their large, finely formed flowers and delicious fragrance, diversity of colors and constitution to stand severe winters with ordinary protection, make them best for general planting.

AMERICAN BEAUTY. One of the grandest and most beautiful Roses known. For immensity in size, rich color, exquisite form and delicious fragrance it stands without an equal. It is a quick and bushy grower and a continuous bloomer; makes magnificent buds and large, deep, double flowers, and is valuable both for house and garden culture. Color is a rich rosy crimson, shaded and veined in charming fashion; fragrance is wonderfully sweet. 25 cts. each, \$1 for 5; larger size, 35 cts. each, \$1 for 3; two-year-old plants, 50 cts. each.



AMERICAN BEAUTY ROSE

Price: All Roses described on this page, strong, one-year-old plants from 2½- to 3-inch pots, except where noted, 15 cts. each, 50 cts. for 4, \$1 for 9; larger size, 20 cts. each, 50 cts. for 3, postpaid, Two-year-old plants, 35 cts. each, \$1 for 3, \$3.50 per doz., by express.



LA FRANCE ROSES

Splendid La France Roses

Undoubtedly the most popular Tea Roses in existence. They are perfectly hardy, grow quickly, developing healthy foliage and flowers of great beauty and fragrance, which resist insect attacks.

Etoile de France. Everything considered, the finest red, ever-blooming Hybrid Tea Rose for any purpose now known. Wonderfully vigorous in growth, splendid foliage, as free-flowering as any Tea or Polyantha; it bears massive, large, full, deep, cup-shaped flowers singly on long, stiff stems. Color crimson-velvet; fragrance delicious. 20 cts. each, 50c. for 3; larger size, 30c. each, \$1 for 4, postpaid; two-year-old plants, 40c. ea., \$2.25 for 6, \$4 per doz.

***Red La France.** Deeper in color than Pink La France. Brilliant rose-pink, exquisitely shaded. Elegant in form, very double and full; deliciously fragrant.

Yellow La France. Semi-double, medium size. Color bright canary-yellow.

Pink La France. Famous the world over. One of the loveliest and sweetest of all Roses. Perfect buds and flowers. Color silvery pink, tinged crimson.

***White La France.** Just a breath of rose-tinted blush clouding the depths of its broad petals, adds decidedly to this beautiful white Rose. Flowers large, full and deliciously fragrant.

Striped La France. Resembles Pink La France in every particular, except distinctly striped with rose.

Do not fail to order some La France Roses

Joseph Hill. The grandest fancy Rose in cultivation. Beautiful foliage like Perle des Jardins; on long, stiff stems, flowers of enormous size; buds long and pointed, opening into monster blooms of the most beautiful and clearest shades of salmon, bright pink and pure gold, and various other colors are produced in great profusion. 25 cts. each, \$1 for 5; larger size, 35 cts. each, \$1 for 3; two-year-old plants, 50 cts. each.

Souv. de Wootton. A grand old favorite. Flowers large, full and regular; immense petals, deliciously fragrant. Color red passing to violet-crimson. 15 cts. each, 50 cts. for 4; larger size, 20 cts. each, 50 cts. for 3; two-year-old plants, 35 cts. each.

Richmond. One of the most sensational American productions of recent years. Very free blooming; immense, fragrant, scarlet-crimson flowers, borne on long stems. A strong rival of American Beauty. Extremely fragrant and gorgeous to behold. 20 cts. each, 50 cts. for 3; larger size, 25 cts. each; two-year-old plants, 40 cts. each.

Magnafrano. New and beautiful. A splendid grower and profuse bloomer; extra-large flowers; full, deep and double; highly fragrant; color deep shining rose, almost crimson. Rich and handsome. 20 cts. each, 50 cts. for 3; larger size, 25 cts. each, \$1 for 5; two-year-old plants, 40 cts. each.

Red Kaiserin Augusta Victoria (Mad. Jules Grolez). A beautiful Rose, almost the equal of Killarney. Free-blooming, large, bright, finely formed flowers. Color new—a charming shade of cherry-red. 20 cts. each, 50 cts. for 3; larger size, 25 cts. each, \$1 for 5; two-year-old plants, 40 cts. each.

Kaiserin Augusta Victoria. As hardy as any of the Hybrid Perpetuals, blooming with unbroken continuity at all times. Perhaps the best of its color. Long, pointed buds; large, full and double flowers. Color delicate creamy white; highly fragrant. A peerless variety.

Mme. Melanie Soupert. Color golden yellow, suffused bright pink. This new Rose will take its place as one of the greatest varieties we have. 20 cts. each, 50 cts. for 3; larger size, 25 cts. each, \$1 for 5; two-year-old plants, 40 cts. each.

Mme. Abel Chatenay. Superb; free-blooming; the best of its color; rosy carmine, shaded darker. A grand grower. Very hardy

Triumph de Pernet Pere. The introducer well claims this variety the triumph of his life.

Flowers extra large, broad, thick petals, and long, tapering buds; delicious fragrance. Clear magenta-red, sometimes passing to bright crimson. Beautiful.

Bessie Brown. Full, deep, double flowers. Color pure white, faintly flushed pink; enormous petals. A vigorous grower. 20 cts. each, 50 cts. for 3; larger size, 25 cts. each, \$1 for 5; two-year-old plants, 40 cts. each.

Meteor. Splendid indoors. Color deep, rich, velvety crimson; buds and flowers beautifully formed, double and full; fine stems. Splendid.

Mad. Schwallier. Large, globular flowers; salmon-rose, edged with violet-carmine.

Queen Beatrice. The famous \$30,000 Beauty, the price paid for the control of the original plants. Splendid for cutting. Flowers large, full and double; fragrance exquisite. A strong grower and wonderfully free-blooming. Color beautiful silvery pink. The queen of pink Roses. 25 cts. each, \$1 for 5; larger size, 40 cts. each, \$1 for 3; two-year-old plants, 50 cts. each, \$2.75 for 6, \$5 per doz.

Virginia R. Coxé (Gruss an Teplitz). The sweetest and most vivid crimson Rose of all. Grows to perfection in almost any situation. Splendid flowers; fragrance simply delicious. Strong-growing and perfectly hardy. Always blooming.

Killarney. Famous now the world over. Truly an Irish queen among Roses. The best of its class and color ever introduced. Well upholds the reputation of the home of its birth. Strong, upright bush; a magnificent variety. Bears immense, full, pointed buds and massive flowers, on heavy shoots. Color an exquisite shade of deep, brilliant, sparkling shell-pink. For the garden, has no superior, and for forcing, easily the greatest Rose of its color. Unusually hardy. 20c. each, 50c. for 3; larger size, 30c. each, \$1 for 4; two-year-old plants, 40c. each.

Mrs. Oliver Ames. Large, round, full flowers, somewhat ruffled at the edges; color creamy white, suffused and shaded with pink. Very free.

Price: All Roses described on this page, strong, one-year-old plants, from 2½- and 3-inch pots, except where noted, 15 cts. each, 50 cts. for 4, \$1 for 9; larger size, 20 cts. each, 50 cts. for 3, postpaid. Two-year-old plants, 30 cts. each, \$1 for 4, \$3 per doz., by express.

HYBRID TEA ROSES. continued

Canadian Queen. The flowers are very large, of splendid substance, very beautiful and in color light pink, lighter than Bridesmaid.

***General McArthur.** One of the brightest vivid crimson-scarlet Roses in existence. Beautiful, large, double, well-formed flowers, produced in abundance. Hardy and fragrant. A great Rose. 20 cts. each, 50 cts. for 3; larger size, 25 cts. each, \$1 for 5.

***Camoens.** A delightful shade of China-rose, suffused with pale yellow, flushed with carmine. Beautifully formed flowers; a favorite with us because of its merits.

Prince of Bulgaria. A beautiful Rose in every respect. Flowers large, full and double, and of splendid substance. In a general way, might be called deep yellow; outer petals rosy flesh; inner petals light yellow.

J. B. Clark. Imagine an intense, deep scarlet Rose, shaded blackish crimson, like the sheen of a plum, 7 inches in diameter and 5 inches deep, and you can form an idea of the beauty and immensity of this phenomenal new Hybrid Tea Rose! This

great new Rose, our stock of which is genuine, imported from the introducer, has the most beautiful habit of growth and foliage we have ever seen. The glory of the plant, however, is its flowers. The color is new and dazzling, while the fragrance is intensely sweet. It has proven hardy in the coldest parts of Canada. Our stock is all on own roots. 30 cts. each, \$1 for 4; larger size, 40 cts. each; two-year-old plants, 60 cts. each.



QUEEN BEATRICE ROSE (see page 20)

Dingee's Everblooming Tea Roses

While not so hardy as the Hybrid Teas or Hybrid Perpetuals, yet with protection they will live through the winters in almost all sections of the country, except in the extreme North. In the South they are unexcelled. Whether planted in the open ground or used for pot culture, and the fact that one-year-old plants produce a profusion of flowers makes them indispensable to every Rose-lover. We do not force plants for flowers, hence Dingee stock is always sure to give satisfaction.

Albert Stoford. Almost the equal, and, in some respects, the superior of Bon Silene, the flowers being fuller. Color dark crimson-rose.

Aline Sisley. Large, full, double flowers; rich and rare shades of violet-red and crimson-maroon, with delicious fragrance, makes it one of the best. A wonderfully free bloomer and a great red Rose.

***Beauty of Rosemawr.** New and attractive. Flowers large and perfectly double. Color rich carmine-red, veined with creamy white; very fragrant.

Bon Silene. Introduced 1839, and not yet superseded by any new variety, is sufficient recommendation of its qualities. Splendidly formed flowers, immense in size. Color deep rose, sometimes rosy crimson. Blooms all the time.

Bridesmaid. One of the finest forcing Roses, a sport from the old and popular pink Tea, Catharine Mermet, but of a fine, clear, dark pink, much deeper and more constant in color than Mermet; very desirable for winter blooming.

Burbank. An introduction of Luther Burbank. Bears profusely cherry-crimson flowers, deep and durable. It is one of the best for outdoors.

Christine de Noue. Beautiful flowers, large and handsome; buds long and finely pointed. Color clear, rich maroon, center sometimes streaked with silvery white; petals imbricated; deliciously sweet.

Comtesse Dusy. Beautiful, rare and much sought after. Magnificent buds, long and pointed; splendid flowers; color satiny white; very free.

***Cornelia Cook.** Either outdoors or in is hard to beat. Free-blooming; perfectly double flowers; creamy white, faintly tinged with pale lemon and blush.

Coquette de Lyon. One of the finest Tea Roses in cultivation; pure canary-yellow. Beautiful form; deep and double.

Crimson Baby Rambler. This is the Rose that blooms every day in the year. Grows but 20 inches high. A perfect gem in pots or boxes for winter blooming in the house; splendid in the open ground. Perfectly hardy everywhere. Flowers borne in immense numbers in clusters like Climbing Crimson Rambler. A splendid variety. Cannot be kept from blooming. Try it. Three-year-old plants, 65 cts. each.

Pink Baby Rambler. Identical with Crimson Baby Rambler, except the flowers are more full, while the color is shining, brilliant pink; flowers produced in wonderful profusion in large clusters, each individual flower measuring over 2 inches in diameter. We predict that this grand new Rose will become one of the best varieties for general cultivation yet offered. Perfectly hardy, and the equal of an Azalea for pot culture indoors.

Prices: All Roses described on this page, strong, one-year-old plants from 2½- and 3-inch pots, except where noted, 15 cts. each, 50 cts. for 4, \$1 for 9; larger size, 20 cts. each, 50 cts. for 3, postpaid. Two-year-old plants, 30 cts. each, \$1 for 4, \$3 per doz., by express.

EVERBLOOMING TEA ROSES, continued

Clothilde Soupert. With the exception of Pink Soupert, the best, biggest and freest blooming of all Polyanthas. Known everywhere. Flowers large, borne in clusters; free and deliciously scented. Color white, center flushed silvery rose. Blooms all the time. A grand pot Rose.

***Devoniensis** (The Magnolia Rose). One of the old favorites that hardly needs a description, and one that we are very partial to. Good for all purposes. Produces in great abundance its lovely creamy white flowers, which have rosy centers and are full and deep and double; delightfully fragrant.

Duchesse de Brabant. Has all the attributes of a great Rose. Vigorous, free-blooming, producing large, full flowers, both beautiful in bud and open bloom, delightfully fragrant; color soft rosy pink, deepening to bright rose.

Duchess Marie Salviati. Beautiful chrome-yellow, elegantly tinged with orange-buff, flushed with pale rose, outer petals orange-red—a delightful combination. Flowers large, full and very sweet. Unusually hardy.

Enchantress. Wonderfully free-blooming; large, globular flowers in immense clusters. Color creamy white, tinged with buff. A great Rose for pot culture; also good in the open ground.

Etoile de Lyon. Magnificent, rich golden yellow. Flowers full and deep. One of the best of its class. So well known that a description is superfluous. Splendid both indoors and in the open ground.

Frances E. Willard. A strong and vigorous grower and true everbloomer. Pure snow-white buds and flowers are of the largest size and perfect form. Exceedingly fragrant.

Freiherr von Marschall. We consider this the best Rose of its color yet introduced. Immense flowers and beautiful buds. A magnificent variety. Color bright red; none better.

General Robert E. Lee. Large, full double flowers and beautiful buds; color orange-yellow, with rich salmon tints. Free-blooming.

Golden Gate. A magnificent Rose, with large, full, finely formed flowers, of which there is no better variety; buds long and beautiful. Color rich creamy white, exquisitely tinted with golden yellow and clear rose.

Helen Good. Another good Rose of the Cochet type. Splendid in pots and fine in the open ground. Chaste and beautiful; color delicate yellow, suffused with pink, each petal edged deeper. Give it a trial. 20 cts. each, 50 cts. for 3; larger size, 25c. each, \$1 for 5; two-year-old plants, 40c. each.

Henry M. Stanley. A beautiful shade of clear amber-rose, delicately tinged with clear apricot-yellow, petals edged and bordered with rich carmine. Large, full and fragrant.

Hermosa. An excellent Rose; blooms in fine clusters; large, very double and fragrant; color beautiful clear rose; a constant bloomer; hardy; one of the best.

***Isabella Sprunt.** An old favorite. Bears with greatest profusion its bright canary-yellow flowers. Fine indoors.

La Princesse Vera. Color rich ivory-white, veined with fine coppery yellow and pale blush. A beautiful fancy Rose; magnificent flowers. Good everywhere and for all purposes.

Mad. de Watteville (The Tulip Rose). Remarkable coloring effect. Creamy yellow, richly colored with rosy blush; petals bordered with bright crimson.

Mad. E. Duranthon. The color is citron-yellow, with bright red center, delicately blended. One of the best Roses in this book.

Mad. Francisca Kruger. No better Rose in cultivation. Flowers large and double; deeply shaded coppery yellow in color; a strong and vigorous grower.

Mad. Honore de Fresne. This superb variety is valuable because of its large, full, double flowers, which are pure golden yellow.

***Mad. Hoste.** Color soft, light, canary-yellow, deepening to the center to pure golden yellow. Beautifully flushed with pale amber. Edge and reverse of petals creamy white.

Mad. Welche. Color a beautiful shade of amber-yellow, deepening toward the center to orange or coppery yellow, delicately clouded with pale crimson.

***Malmaison.** Beautiful, rich creamy flesh, distinctly and elegantly shaded peachy red, with rose center; flowers large, perfectly double and deliciously fragrant. Fine for pot culture and equally good in the open ground.

Marie Guillot. Color pure snow-white, sometimes faintly tinged with pale yellow; extra full and double; sweet tea scent.

Marie Lambert (Snowflake). Splendid in the open ground, and for pot culture one of the best. On a single plant nine months old, 143 buds and flowers were counted. Flowers large full and double; color creamy white.

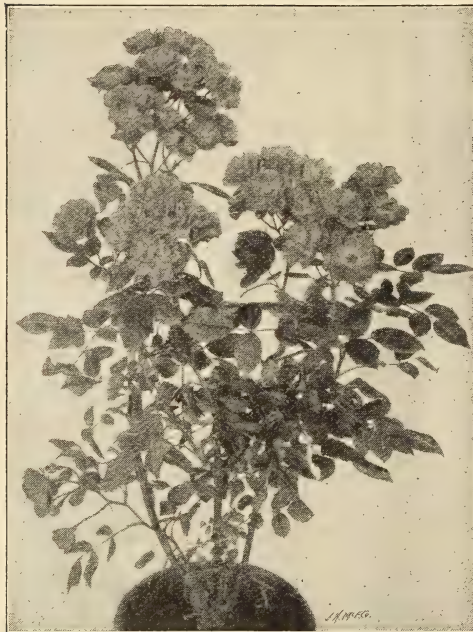
Marie Van Houtte. A grand old Rose. One of the best. Large, full, deep, double, pale canary-yellow flowers, passing to rich creamy white, shaded with pale rose. Good everywhere.

Marion Dingee. The darkest, richest colored Tea Rose known. Color deep, brilliant crimson.

Mrs. B. R. Cant. Flowers almost the equal and style of Papa Gontier, one of the greatest Roses in this book. Deep, large, double, finely formed flowers; very free-blooming. Splendid.

The Roses we got from you early in the year are all doing nobly, and our whole neighborhood are "taking notice" of the class of goods you send out.—N. T. HALL, Seattle, Washington.

Just a line to tell you that the bushes supplied to us early in the summer have borne Roses all through the summer to our great pleasure. We are planning to give them such protection through the winter that we shall have Roses again next season. With many thanks.—ADELINE L. ENGLS, Meredith, N. Y.



BABY RAMBLER ROSE (see page 21)

Price: All Roses described on this page, strong, one-year-old plants, from 2½- and 3-inch pots, except where noted, 15 cts. each, 50 cts. for 4, \$1 for 9; larger size, 20 cts. each, 50 cts. for 3, postpaid. Two-year-old-plants, 30 cts. each, \$1 for 4, \$3 per doz., by express.

Famous Cochet Roses

Absolutely without question the best Roses, from every standpoint, in the world. Grand growers and practically hardy everywhere, beautifully formed flowers, splendid color, ever-blooming, they are simply the best; they have no weak spots. Our stock has the reputation of being the best in this country.

Pink Maman Cochet. The big, elongated buds and full-blown, double flowers are exquisitely charming, while the fragrance is rich and delicious. The color is fleshy pink.

White Maman Cochet. Identical with its parent, Maman Cochet, except in color of flower, which is snowy white, sometimes tinged with the faintest suggestion of pale blush. It has the same freedom of bloom and magnificent form of buds and flowers.

Red Maman Cochet (Helen Gould). The most satisfactory Rose of its color for general planting ever introduced. Beautiful, long, pointed buds, and immense, full, perfectly double flowers. Color warm, rosy pink. Exceedingly free-blooming and vigorous, producing its beautiful flowers in great profusion on long, strong shoots.

Yellow Maman Cochet. Identical in every way with Pink and White Cochet, excepting color of flowers, which is deep sulphur-yellow. Strong, stiff stems, healthy foliage, and vigorous grower.

SPECIAL OFFER. Set of 4 Cochet Roses, first size, 50 cts.; larger size, 75 cts., postpaid. Two-year-old plants, \$1.15, by express.

Pearl Rivers. Peachy red buds; ground color ivory-white. Petals delicately shaded and bordered with pale rose.

Perle des Jardins. The best of all the yellow Tea Roses. It grows most satisfactorily indoors, blooming with the greatest freedom. The flowers are extra large and full, of globular form, with great depth and substance, richly perfumed. Color clear golden yellow. Charming.

Papa Gontier. Immense buds, flowers of great depth and substance; color rich cherry-red, passing to glowing crimson.

Pink Souper. This new, famous variety is a seedling from the Clothilde Souper, with which it is identical, except in color of flower and foliage. Color is rich pink.

Princess Bonnie. The brightest, sweetest and freest blooming Rose in existence. Color solid crimson, deeper and more vivid than "Jack." Fragrance far sweeter than La France.

Princess De Sagan. The color is rich, velvety crimson, brilliantly beautiful. The flowers are very prettily made, while the buds are exceedingly handsome.

Queen's Scarlet. Color rich velvety scarlet. Fine flowers; a constant and profuse bloomer.

Safrano. Splendid old-time Rose. Perfect flowers and buds. Bright apricot-yellow, shading to orange and tinted with rose.

Souv. de Pierre Notting. Here is a Rose of which too much cannot be said. In form and beauty it exceeds Maman Cochet, and in quantity of bloom is not excelled by any other Rose. Flowers large, well filled; beautifully elongated bud; color apricot-yellow, tinged with golden, mixed with orange-yellow, edge of petals shaded carmine-rose; great substance. Has no superior either for indoor or outdoor cultivation.

Souv. de Clairvaux. Resembles Bridesmaid in flower, while the growth is as vigorous as the Cochet Roses. Pinkish rose, shaded lighter or darker, according to the season; large, full and double. Very fragrant.

Sunrise. A beautiful variety. Color absolutely new, the buds showing the high brilliant colors seen only in the Austrian Copper, scarlet and yellow, deepening as the flower opens, the scarlet turning to dark red, the yellow to orange and copper, inside of petals golden yellow; a magnificently formed Rose.



COCHET ROSES

***Sunset.** Distinct and beautiful. Rich golden amber, shaded ruddy crimson, resembling the beautiful tints seen in a summer sunset. Flowers large, full and double. A grand grower.

The Bride. One of the best. Magnificent buds and flowers; famed for their beauty. Color pure white.

The Queen. Beautiful buds; large flowers, enormous petals. Color pure snow-white; flowers finely scented.

***Virginia.** Has Marechal Niel blood in it combined with Safrano, making it a great Rose. Long, pointed buds; blooms large, double and finely formed. Color light yellow, tinged saffron at the center; delightfully fragrant.

White Golden Gate. An offspring of that great Rose, Golden Gate, introduced by The Dingee & Conard Co., in 1891. This variety bears immense flowers and large, shell-like petals, and the color is dazzling ivory-white. Always blooming. A great new Rose.

Wm. R. Smith (Maiden's Blush). New and beautiful. Has the soft blending of salmon-pinks, rose-pinks and beautiful flesh tints, giving it the resemblance to the blush of a maiden's cheek. Splendid both for indoors and outdoors.

The Rose plants purchased from you early last spring have given entire satisfaction. All of them grew and five have bloomed, while four are again budding since transplanted into pots for house culture.—JOHN M. ODENWOELDER, Easton, Pa.

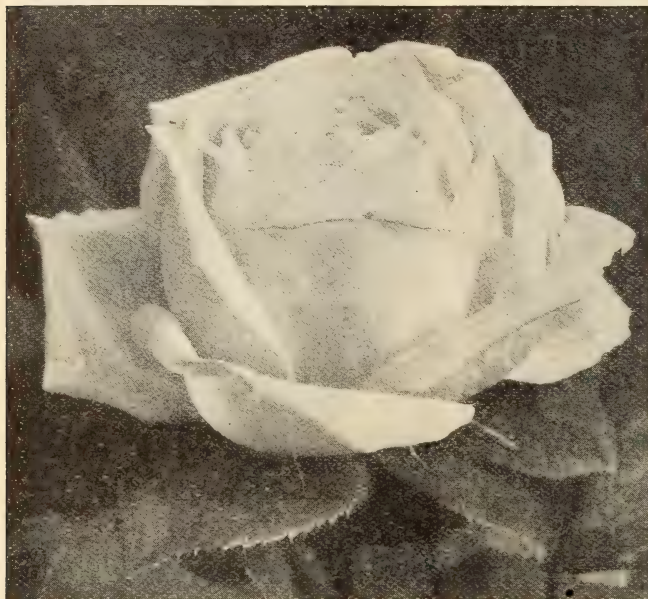
I received the Roses and other plants a week ago, and want to thank you for your early shipment and such immediate attention. Your Trial Collection is more than I expected, and will say that the Roses came through all O. K. I potted them all in five- and six-inch pots and not a stem has withered so far. I am more than satisfied with the Trial Collection and heartily thank you. Will send you another order in the early spring.—MRS. ALENE WHITE, Clayton, Wash.

Price: All Roses described on this page, strong, one-year-old plants, from 2½- and 3-inch pots, except where noted, 15 cts. each, 50 cts. for 4, \$1 for 9; larger size, 20 cts. each, 50 cts. for 3, postpaid. **Two-year-old plants, 30 cts. each, \$1 for 4, \$3 per doz., by express.**

Great Special Offer—Dingee Hardy Roses

SPECIALLY PREPARED
FOR IMMEDIATE PLANTING IN THE OPEN GROUND

The persistent inquiries of thousands of customers for extra-heavy own-root plants of the Hardy Hybrid Perpetual or "June" Roses has made it necessary for us to meet this evident demand. And now for the first time, by any firm, we offer a complete collection of hardy Roses, all on their own roots, except where noted,



GLOIRE LYONNAISE ROSE

each one a gem and famous the world over. By way of explanation and that you may understand the great value of these plants, the story how they have been grown will perhaps prove interesting. These plants were two years old last spring. For two months the water was gradually withdrawn and the plants given a thorough rest during that time. Then, after shaking all the old soil from the roots, they were re-potted with virgin soil into 5- and 6-inch pots, and grown during the summer with the natural heat of the sun. Now they are strong, vigorous plants, splendidly equipped with strong, fibrous roots, and, when shipped, a goodly portion of the soil on the roots will be shipped with them, so that transplanting into open ground may be accomplished without the slightest setback. The plants will be shipped in semi-dormant condition and may be safely planted outdoors anywhere in the United States and Canada until frost. While they are hardy everywhere, a slight protection the first winter as a precautionary measure, though not a necessary one, will not be amiss

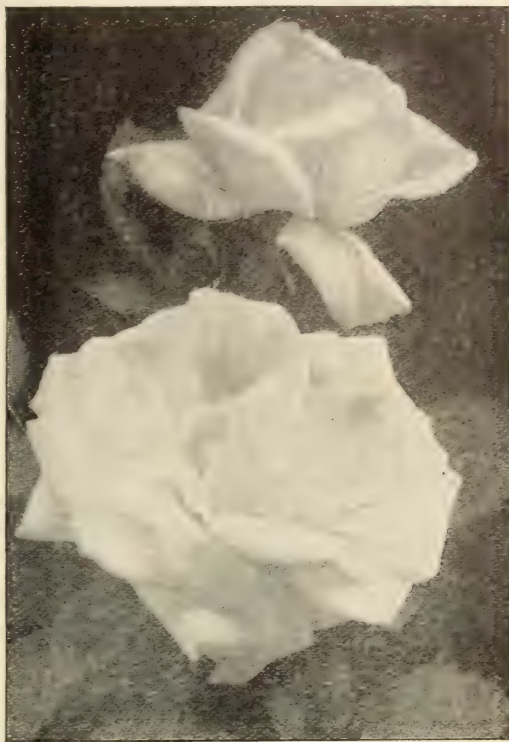
LISTEN! Stock such as we offer cannot be had elsewhere at any price. The plants are two and three years old, in pots, are semi-dormant, and, most important of all, are ON THEIR OWN ROOTS, except where noted. Plant for plant, they are worth five times as much as Holland-grown, budded stock. FINALLY—the stock is limited. Orders filled in rotation until the stock is exhausted.

ORDER EARLY! ORDER NOW!

- Alfred Colomb. Cherry-red, passing to rich crimson. Superb.
- Anne de Diesbach. Magnificent, full, deep and double. Brilliant carmine. Glorious.
- Abel Carriere. Extra large, double, full and sweet. Velvety maroon, almost black. Rich.
- Archduchess Elizabeth of Austria. Large, bold flowers; rosy carmine.
- Anna Alexiff. Beautiful, full and sweet. Color bright pink.
- Baronne de Bonstettin. Rich, dark red. Superb flowers.
- Boule de Neige. Very hardy. Pure white, medium size, full and double flowers.
- Captain Christy. Extra large; pale peach, center rosy crimson. None better.
- Countess of Roseberry. Satiny pink, shaded bright rose. Distinct.
- Clio. Flesh, shaded in center rosy pink. Large, full and beautiful. Magnificent.
- Coquette des Alpes. Pure white, faintly tinged pale bluish; double. Very hardy and beautiful.
- Cheshunt Hybrid. One of the best of all. Beautiful, large, full flowers. Color splendid crimson.
- Crimson Rambler. Hardly needs a description. A splendid climber. Large trusses of deep, glowing crimson flowers. Has acquired an international reputation in an incredibly short time. Very hardy.
- Coquette des Blanches. Snow-white, faintly tinged rose. Blooms in clusters; medium size. Very fragrant.
- Duke of Edinburgh. Brilliant scarlet-crimson, shaded maroon. Large and full. Grand.
- Dinsmore. Large, perfectly double. Color rich crimson-scarlet. Very fine.
- Earl of Dufferin. Velvety crimson, shaded rich maroon. Large, full and fragrant.
- Empress of India. Dark brownish crimson; double. A strong grower.
- Eugene Furst. Strong; velvety crimson, shaded maroon. Beautiful.
- Fisher Holmes. Dark scarlet, passing to crimson. Superb.
- Francois Levet. Almost as large as Paul Neyron. Full and double. Color cherry-pink, shaded carmine. None better.
- Giant of Battles. A grand old crimson; large, double and sweet.
- General Jacqueminot. A grand old favorite. Rich, velvety crimson. Magnificent flowers.
- Glory of the Exposition of Brussels. Deep, velvety, purplish amaranth, almost black, base fiery red. Superb.
- Gloire de Margottin. Very large and full; deliciously sweet. Color dazzling red. Gorgeous.
- Gloire Lyonnaise. A great variety. Rich creamy white, shaded salmon-yellow. Magnificent, large flowers. Hardy everywhere.
- Her Majesty. Immense size and wonderful form; double and deep. Color rosy pink, passing to clear flesh. True stock. (Budded.) \$1 each.
- Jules Margottin. Cherry-red; splendid form.

HARDY ROSES, continued

- John Keynes.** Shining red, shaded deep maroon. Large and fragrant.
- La Reine.** Color bright rose; large, full and fragrant.
- Louis Van Houtte.** Brilliant crimson. Large, full and fragrant. Superb.
- Magna Charta.** An old favorite. Large, double flowers. Rosy red, flushed crimson.
- Mabel Morrison.** Rare. Extra-large, full, broad petals. Pure snow-white, sometimes tinged pink. Two-year-old plants only.
- Mad. Alfred Carriere.** Extra large, double and sweet. Rich creamy white, faintly tinged pale yellow. Beautiful.
- Mad. Masson.** Free-blooming. Large, full, double flowers; great fragrance. Color bright rose. Distinct and charming.
- Mad. Charles Wood.** Free-blooming, extra large, double and fragrant. Fiery scarlet, passing to rosy crimson, shaded maroon. A great variety.
- Mad. Gabriel Luizet.** Coral-rose, suffused with lavender and pearl. Superb. (Budded.) Two-year-old plants only, 50 cts. each.
- Mad. Plantier.** Pure white, large and double. Extremely hardy and strong-growing.
- Marchioness of Lorne.** Free-flowering. Large, sweet and full; rich rosy color, center vivid carmine.
- Marie Bauman.** Exquisite form and fragrance; crimson-vermilion suffused carmine. Very large.
- Mme. Alfred de Rougemont.** White, tinged pink. Grand old variety. Strong-growing.
- Merveille de Lyon.** Magnificent flowers, large, full and deliciously fragrant. Ivory-white, flushed pure carmine. Splendid.
- Oakmont.** Peach-pink, large and sweet. Always good.
- Prince Camille de Rohan.** Rich crimson-maroon, almost black. Large and full. Gorgeous.
- Perfection des Blanches.** Splendid white, free-blooming. Good.
- Ulrich Brunner.** Rich glowing crimson, flamed scarlet. Large, full; long stems. Hardy.
- Victor Verdier.** Brilliant rosy carmine, beautifully edged with purple; extra large and full.
- Vick's Caprice.** Full and deep. Color satiny pink, striped and dashed with white and bright carmine. Splendid.

**FRAU KARL DRUSCHKI ROSES**

White American Beauty (Frau Karl Druschki). The best hardy and most magnificent pure white Rose in cultivation. (Budded.) Two-year-old plants only, 50 cts. each.

Price: All Dingee Hardy Roses, except where noted, one-year-old plants, 15 cts. each, 50 cts. for any 4; larger size, 20 cts. each, 50 cts. for 3, postpaid. **Two- and three-year-old plants, all on own roots, except where noted, 35 cts. each, \$1 for any 3, \$3.50 per doz., by express, purchaser paying the charges.**

OUR SELECTION. Where the purchaser desires to leave the selection to us, we will take special care in selecting the finest sorts, including a wide diversity of color, and will send kinds we would prefer were we buying.

ORDER IMMEDIATELY—THE EARLIER PLANTED THE BETTER THE RESULTS NEXT YEAR.

Dingee's Climbing Roses for Fall Planting

We make a specialty of Climbing Roses, because their remarkable merits entitle them to a place in every garden. The Rose-loving public is gradually awakening to the fact that this class is almost indispensable for home planting. All bloom with the greatest freedom, and there is scarcely a day during the growing season that they are not blooming. And such flowers! They are simply exquisite, and is it difficult to say which is the prettiest. Certain it is that of all Roses, Climbing Roses are among the cheapest, best and most satisfactory for general planting. Here are offered the best now in cultivation. All of them are adapted to planting in the South and Southwest, where they are perfectly hardy, and all the varieties marked with a dagger are hardy in the North and may be set out this fall in the open ground. Remember Dingee Roses are on their own roots.

- | | |
|--|--|
| <p>Climbing Bridesmaid. Beautiful clear, dark pink flowers, which in bud and when fully open are simply superb.</p> <p>†Climbing Clothilde Soupert. Identical with Clothilde Soupert, except that it is a vigorous climber, producing beautifully formed waxy white and silvery pink flowers in the greatest profusion. The best hardy Everblooming Climbing Rose for amateur planting now in cultivation. Two-year-old plants, 35 cts. each</p> | <p>Climbing Devoniensis. A grand Rose, white tinged with blush; very sweet.</p> <p>Gloire de Dijon. Color rich, creamy white, beautifully tinged with amber and pale blush.</p> <p>Climbing Meteor. A superb new everblooming Climber, a sport from Meteor, famous for its magnificent flowers. Attains a height of 10 to 15 feet in a single season. It is a free, persistent bloomer, with magnificently formed buds and flowers of dark velvety crimson color.</p> |
|--|--|

Price: All Dingee Climbing Roses, strong, one-year-old plants, from 2½- and 3-inch pots, except where noted, 15 cts. each, 50 cts. for 4, \$1 for 9; larger size, 20 cts. each, 50 cts. for 3, postpaid. **Two-year-old plants, 30 cts. each, \$1 for 4, \$3 per doz., by express.**

CLIMBING ROSES, continued

- †Climbing Helen Gould. The same magnificent, deep, double flowers and freedom of bloom as Helen Gould, but is of vigorous climbing habit. Free grower, grand foliage. In color the flowers are warm, rosy crimson, sometimes beautifully striped flamed and shaded in bright carmine over pale rose. A superb novelty. 20 cts. each, 50 cts. for 3; larger plants, 30 cts. each, \$1 for 4; two-year-old plants, 40 cts. each.
- Climbing Malmaison. Color rich creamy flesh, shaded clear peachy rose, with rose center. Hardy with protection.
- †Climbing Wootton. Perfectly hardy. Has no weak spots. Wonderfully vigorous, blooms continuously, producing flowers that are superb, both in beauty and in fragrance. Grows to a height of 10 to 15 feet in a single season. A magnificent variety. Enormous flowers, bright magneta-red, passing to violet-crimson, richly shaded. Two-year-old plants, 40 cts. each.
- †Crimson Rambler. THE MOST POPULAR ROSE IN CULTIVATION. One of the greatest Climbing Roses of its color in existence, the plants making a growth of 10 to 20 feet in a single season, producing in wonderful profusion large trusses of deep, glowing crimson flowers. When in full bloom it is a vivid mass of crimson beauty. Perfectly hardy everywhere.
- †Philadelphia Crimson Rambler. Differs from the old Crimson Rambler in having brighter, deeper and more intense color; the flowers are more double and are produced profusely. It is an exceedingly thrifty grower and free from diseases.

- †White Rambler (Thalia). Flowers pure white, sometimes tinted with bluish; are borne in clusters.
- †Pink Rambler. Large trusses of brilliant light carmine flowers. Very popular.
- James Sprunt. Deep cherry-red flowers, double and sweet.
- †Keystone. THE FIRST AND ONLY HARDY EVER-BLOOMING YELLOW CLIMBING ROSE. A wonderfully free bloomer, and has a vigor of constitution found in no other Rose. Flowers in clusters; perfectly double; buds beautifully formed. Color deep lemon-yellow, similar to Coquette de Lyon. Fragrance delicious, like that of Magnolia blossoms. A strong climber.
- Marechal Niel. The very name of this Rose suggests the sunny South, where it attains a degree of perfection seldom seen in any Rose. The buds and flowers are superb; extra large, very double and deliciously perfumed. The color is deep golden yellow. Blooms with greatest freedom; splendid for greenhouse or house culture.
- †Mrs. Robert Peary. This is a climbing offspring of that great hardy white, everblooming Rose, Kaiserin Augusta Victoria. It is the only white, hardy, everblooming climbing Rose. The flowers are magnificent, extra large, full, deep and double, the buds long and pointed. This superb variety grows to perfection indoors. 20 cts. each, 50 cts. for 3; larger size, 25 cts. each, \$1 for 5; two-year-old plants, 40 cts. each.
- Reve d'Or. Buff-yellow; good.
- †Rubin. Little known, but, point for point, a better Rose than Crimson Rambler. It is a strong grower, has better foliage and is absolutely free from disease. Large, loose, graceful clusters of flowers are borne in great profusion, the individual flowers more double than Crimson Rambler, while the color is bright, shining crimson-scarlet. Hardy everywhere.



THOUSAND BEAUTIES ROSES (see page 25)

Price: All Dingee Climbing Roses, strong, one-year-old plants, from 2½- and 3-inch pots, except where noted, 15 cts. each, 50 cts. for 4, \$1 for 9; larger size, 20 cts. each, 50 cts. for 3, postpaid. Two-year-old plants, 30 cts. each, \$1 for 4, \$3 per doz., by express.

I received the Rambler Roses in splendid condition. I have dealt with several firms, but your Roses are by far the best I have ever received for the money.—MRS. J. H. EMERSON, Denver, Colorado.

- †Thousand Beauties (Tausendschon). This wonderful new Rose was popularly introduced by us in 1908, and has taken its place as the most sensational Climbing Rose ever introduced, not even barring Crimson Rambler. Lack of space prevents an extended description. Imagine a Rose producing on the same bush so many different-colored flowers in large clusters of ten to fifteen that it is impossible to describe or picture the variations. From delicate balsam and tender rose through the intermediate shades of carmine, with white, yellow and crimson, it runs through indescribable tints not yet seen in any Rose. Nothing like it. Has the best foliage of any Rose we have ever seen; practically thornless; the strongest growing of any climbing variety. 25 cts. each, \$1 for 5; larger plants, 35 cts. each, \$1 for 3; two-year-old plants, 50 cts. each.
- Washington. Flowers large, pure white, double, and borne in beautiful clusters.
- White Marechal Niel. This variety is identical with its parent, Yellow Marechal Niel, with the exception of the color of the flower, which is pure white. One of the most beautiful Roses in existence. Should be carefully protected in the North.

Dingee Peonies

The wonderful improvements made during recent years in these old-fashioned hardy plants have brought them into renewed popularity. The gorgeous flowers, which rival the finest rose in size and color, are produced in great abundance. From experience we urgently recommend fall planting of Peonies. They will not be ready until October 15.

Peonies, after once being planted, require little attention and care, thrive almost anywhere, and are absolutely hardy everywhere. They do best in good, rich soil and an open, sunny position, but this is not absolutely necessary. During the growing season they like an occasional, liberal supply of water. They are not troubled with insect pests and, after once becoming firmly established, will take care of themselves, increasing in size and beauty every year.

Superb Double Herbaceous Peonies

Duchesse de Nemours. Extra fine, large, pure white and very fragrant. 50 cts.
Delicatissima. Produces large, purple-rose blossoms with salmon center. 50 cts.
Festiva maxima. The grandest of all white Peonies. Center petals flaked with red. 50c

Standard Double Peonies

Price: 35 cts. each, \$1 for 3, \$3 per doz., postpaid

Achillea. Delicate pink, fading to bluish-white.
Andre Lauris. Rosy red; free; late bloomer.
Boadicea. Large guards, high, full center. Creamy bluish-white, dotted and flushed rosy; fades white; center edged carmine.
Delacheii. Dark, velvety purple. Late-flowering.
Edulis superba. Beautiful, brilliant pink; early.
Humeii. Very large. Striking cherry-pink flower; highly cinnamon-scented.
Louis Van Houtte. Bright, violaceous red of dazzling effect.
M. Andre. Purplish pink, salmoned fleshy center; pinkish reflex.
Ne Plus Ultra. Large, rosy purplish guards; salmony straw-colored center. Very fine.
Whitleyii. A fine, pure white. One of the very best for cut-flower purposes. Very free.

SPECIAL OFFER. Set of 10 standard varieties for \$2.50, postpaid.



HERBACEOUS PEONY

Hardy Perennial Phlox

Diversified and brilliant colors, profuse and continuous bloom and adaptability to almost any situation or soil, places Hardy Phlox in the front rank of hardy perennials. The greatly improved varieties offered below are perfectly hardy and produce in gorgeous profusion great showy heads or panicles of bloom from early spring until checked by frost.

Price: Strong plants, 15 cts. each, 50 cts. for 4, \$1.15 for set of 10

Andreas Hoffer. Early; pure white.
Aquilon. Bright, deep pink.

Coquelicot. A fine, pure scarlet.
Champs Elysees. Rich purple-crimson.
Eclairer. Purplish crimson; large flower.
Jeanne d'Arc. Late; pure white.
Pantheon. Fine, deep salmon-rose.
P. Bonnetain. Rose, overlaid salmon.
R. P. Struthers. Brilliant rosy red.
Von Goethe. Tyrian rose and carmine.

Herbaceous Spireas

Compacta multiflora Compact growth, ample foliage of bright green, and wonderfully free production of feathery white flowers, in plume-like panicles.

Astilboides floribunda. Large plumes of feathery white flowers; splendid for bouquets.

White Spirea (Astilbe Japonica). Handsome herbaceous plant. Very popular for winter forcing. Splendid in the open ground. Light and feathery panicles of fragrant white flowers.

Strong, field-grown plants of these varieties, 15 cts. each, 50 cts. for 4, \$1 for 9; larger plants, 20 cts. each, 50 cts. for 3. Set of 3 grand new Spireas, postpaid, for 35 cts. One each, larger plants, postpaid, 50 cts.

Plant Phlox and Spireas in fall for best results. Not ready until October 15.



PERENNIAL PHLOX

Dingee Hardy Climbing Vines

Clematis paniculata

(See illustration)

A Magnificent Hardy Climbing Vine

The flowers are pure white and are borne in great panicles or clusters of bloom, fairly covering the plants, so that it is a mass or sheet of fleecy white. The fragrance is delicious, resembling the English Hawthorn blossom, and so subtle and penetrating that a large plant in bloom fills the air with its exquisite fragrance. It begins to bloom late in August or early in September, when other hardy climbers are out of bloom. Grows quickly and strongly, reaching a height of 15 to 20 feet. Hardy in all sections of the country. There is no better hardy vine. Strong pot plants, 15 cts. each, 50 cts. for 4, \$1 for 9; larger plants, 25 cts. each, \$1 for 5.

Honeysuckles

Chinese Sweet-scented. A vigorous variety, with white and yellow flowers. 15 cts.; larger size, 20 cts.

Evergreen Sweet-scented. Everblooming and deliciously fragrant. 15 cts.; larger size, 20 cts.

Red Coral. With bright red, trumpet-shaped flowers. 15 cts.; larger size, 20 cts.

Yellow Coral. The true golden yellow variety. 20 cts.; larger size, 25 cts.

Golden-leaved. Bright yellow foliage and fragrant flowers. 15 cts. each, 50 cts.

New Halliana. Flowers pure white, changing to yellow. Evergreen and a constant bloomer. 15 cts.; larger size, 20 cts.

New Heckrotti. Flowers clear rose, yellow at the base, and very sweet. 15 cts.; larger size, 25 cts.

Double Japan Snowball

The king of hardy flowering shrubs. Blooming in June, when the whole bush is loaded with great compact balls of pure white double flowers, like miniature roses, borne in such profusion that they almost completely hide the leaves and branches, while the entire plant appears one dense mass of bloom; the tree grows erect and bushy, 6 to 8 feet high, with deep green leaves peculiarly crimped and crinkled. Entirely hardy, needing no protection. Field-grown plants, 1-year size, 20 cts. each, 50 cts. for 3, \$1 for 7, postpaid; by express or freight, \$5 for 50, \$10 per 100; 2-year, 35 cts. each, 90 cts. for 3, \$5 for 25, by express or freight; 3-year, 50 cts. each, \$2 for 5, \$4 per doz., by express or freight.



CLEMATIS PANICULATA

Various Other Climbers

AMPELOPSIS Veitchii. The well-known Boston or Japanese Ivy. Fine plants, 15 cts. each, 50 cts. for 4, \$1 for 9.

A. Virginica. An excellent climber, rapid growth. Fine plants, 15 cts. each, 50 cts. for 4, \$1 for 9.

AKEBIA quinata. With distinct foliage and fragrant flowers. 15 cts. each, 50 cts. for 4.

DUTCHMAN'S PIPE (*Aristolochia Siphon*). A very rapidly growing hardy climber. Large, imported plants, 35 cts. each, \$1 for 3, postpaid.

EUONYMUS, Variegated. An attractive and useful climber, with silvery-colored foliage. 15 cts.

ENGLISH IVY. A splendid evergreen climber, with dark, glossy green leaves. 15 cts.; larger size, 20c.

VIRGINIA SILK VINE (*Periploca Graca*). Highly ornamental, rapid-growing climber, with pale blue flowers. 15 cts.; larger size, 20 cts.

Hydrangea paniculata grandiflora

The best and most ornamental of all hardy shrubs. Blooms every year during July and August. The massive cone-shaped flowers often measure 10 inches in length. Splendid for fall planting. **Strong, one-year-old, field-grown plants,** 15 cts. each, 50 cts. for 4, \$1 for 10; by express, \$4 for 50, \$7 per 100. **Two-year-old plants,** by express or freight, 25 cts. each, \$1 for 5, \$2 per doz., \$12 per 100. **Three-year-old plants,** 35 cts. each, \$1 for 3, \$3 per doz.

RED-BRANCHED HYDRANGEA. With dark red branches, producing immense, rose-colored flowers. 20 cts. each, 50 cts. for 3, \$1 for 7.

THOMAS HOGG HYDRANGEA. A pure white, very hardy variety. Highly recommended. 20 cts. each, 50 cts. for 3, \$1 for 7.

Other Hardy Shrubs

We carry a complete assortment of Hardy Flowering Shrubs and Vines, twenty acres of them, all suitable for fall planting. They are described on pages 101 to 105, inclusive, of our "Guide to Rose Culture for 1908." Inquiries as to these shrubs given prompt reply—and special lists cheerfully quoted upon.



HYDRANGEA PANICULATA GRANDIFLORA

Winter-Blooming Carnations

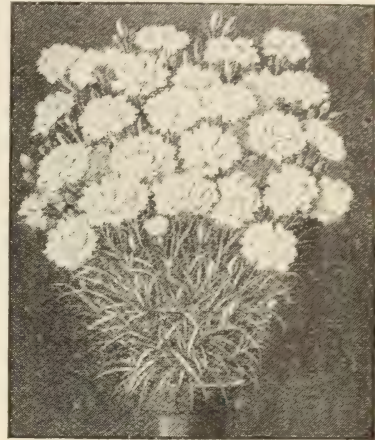
As a fall- and winter-blooming plant for house culture, we recommend the Carnation as one of the best. You can have an abundance of flowers if you plant them in good soil, water frequently and pick off the dead foliage. We offer large, field-grown plants.

NEW SORTS: Strong plants, 25 cts. each, \$1 for 5

Enchantress. A most popular light pink variety.
Harlowarden. The best standard crimson.
Lady Bountiful. Immense pure white, fragrant blossoms.
Prosperity. Color white, mottled with pink. Unique.
Queen Louise. The best white; very large.

STANDARD SORTS: Strong plants, 20 cts. each, \$1.50 for 10

Boston Market. Pure white; early.	Eldorado. Golden yellow, penciled red.
Climax. Color a beautiful salmon-pink.	Governor Roosevelt. Deep, brilliant scarlet, with deep superb maroon.
Dorothy. Clear, deep pink.	Lizzie McGowan. Pure white.
Ethel Crocker. Rich pink.	Melba. Clear, rosy pink; pretty.
Elbon. Brilliant scarlet. Full and double.	Mrs. Thos. Lawson. Pink.



CARNATION

The Best Geraniums

The following list contains the choicest new and old varieties of this very popular class of house plants. Their ease of cultivation and their free-flowering habit make them universal favorites.

NEW DOUBLE SORTS: Strong plants, 15 cts. each, 50 cts. for 4, 90 cts. for set of 8, postpaid

Jean Viaud. Semi-double pink flowers, with two white blotches.
Double New Life. Brilliant red; pure white center.
E. H. Trego. Large, semi-double flowers, produced in enormous trusses. Color dazzling scarlet.
Hubert Charron. Petals show pure white center, with rosy red border.
Dr. Despres. Color violet, upper petals marked vermilion.
Jean Labor. Petals purple, tinged with red and orange.
Thomas Meehan. Semi-double, of bright magenta color.
Alphonse Ricard. A brilliant orange-red.

STANDARD DOUBLE SORTS: Strong plants, 12 cts. each, 50 cts. for 5, \$1 per doz.

Bruant. Rich vermilion-red. Large trusses.
Beaute Poitevine. Bright salmon-pink.
Countess de Harcourt. Pure snow-white.
Double General Grant. Scarlet flowers.
Dr. Blanche. Bright orange-red.
F. Perkins. Rich carmine flowers.
Gladys Spaulding. Brilliant scarlet.
Heteranthe. Bright scarlet. Fine.
John Doyle. Rich scarlet. Very effective.
Le Pilote. Glowing crimson-scarlet.
Marvel. Dark red; large and fine.
M. Ott. Magenta, shading to pure violet.
Mme. Buchner. Snow-white; vigorous.
Mrs. Gladstone. Grand, pure white, shaded flesh-pink.



GERANIUM, MME. BUCHNER

Pink Beauty. Color rich, deep pink, shading at base to brighter pink.
Rosebud. Color scarlet, shaded lilac.
R. Roland-Gosselin. Center chamois, bordered with rose and marked with white.
S. A. Nutt. Rich, dark crimson. Superb.

SPECIAL OFFER. Complete collection of 16 Double Geraniums, named above, \$1.25.

STANDARD SINGLE SORTS

Price: Strong plants, 12 cts. each, 30 cts. for 3, 60 cts. for 7, \$1 per doz., postpaid

Columbia. Scarlet, upper petals shaded white.
Countess de Blancas. Of salmon-pink color.
Dr. Marmoteck. Bright violet, changing to carmine.
Jacquerie. Very dark crimson-scarlet.
Madame Bruant. White, veined with carmine-lilac.
Negus Menelik. Creamy white, bright pink border.
Mme. Coralie Bajac. White, petals bordered carmine.
La Favorite. Perfectly double, snow-white flowers.
Puritan. White, shaded with salmon.
General T. Lee. White and crimson; very large.
Dryden. Rosy red, with white blotches.
Telegraph. Deep orange-cerise color; very large.
Triomphe de Nancy. Carmine-red, white margins.
Vincennes. A single pink sort.

THE BEST NEW SINGLE SORTS

Strong plants, 15 cts. each, 50 cts. for 4, \$1 for 10, postpaid

Andrew Lang. Flowers scarlet, with white blotch on upper petals.
Crabbe. Charming shade of cherry-red.
Southey. Vermilion, with white blotch in center.
General Wolseley. Rosy red flowers, blotched white.
Mme. Landry. Semi-double; color rich salmon.
M. P. Morlan. Enormous rosy salmon flowers.
Mme. L. Moyot. Distinct sort with striped flowers.

FANCY-LEAVED AND SWEET-SCENTED

Price: Strong plants, 15 cts. each, 50 cts. for 4

Arbutus. Golden-leaved variety, with pink flowers.
Happy Thought. Variegated dark green and white leaves.
Madame Sallerot. Small green leaves, dotted with white.
Prince Bismarck. A good dark bronze.
Apple-scented. A grand old favorite. Rose-scented. Delightful rose scent. Lemon-scented. Deliciously scented.

PELARGONIUMS

Price: 15 cts. each, 50 cts. for 4, postpaid

Lady Washington. Color lilac-pink, with center of pure carmine.
New Pansy Pelargonium. Pink and crimson, with dark blotches.



FERN, NEPHROLEPIS AMERPOHLII

Dingee Ferns

Nephrolepis AmerpohlII (Philadelphia Lace Fern).

This variety is of exquisite and wonderful beauty. The fronds are even more lace-like, dense and delicate than those of *N. elegantissima* and *N. Whitmanii*. One of the most beautiful Ferns in existence. Strong, young plants, 20 cts. each, \$1 for 6; large specimen plants, 50 cts. each, postpaid.

Nephrolepis Scottii (Dwarf Boston Fern). Smaller, but more compact than the celebrated Boston Fern. Strong, young plants, 20 cts. each; handsome 4-inch pot plants 40 cts. each, postpaid.

Nephrolepis elegantissima (Tarrytown Fern). The feathery, plume-like fronds are very beautiful, producing an exquisitely graceful effect. Strong, young plants, 20 cts. each, \$1 for 6. Strong, handsome plants, from 4-inch pots, 50 cts. each, postpaid.

Nephrolepis Whitmanii. A gem among Ferns. It is of the same feathery fronded type as the above varieties, but more dwarf and smaller. Strong, young plants, 20 cts. each, 50 cts. for 3. Large plants, 40 cts. each, postpaid.

The Boston Fern. Forms immense bushes of gracefully drooping fronds which grow from 2 to 5 feet long. Excellent for pot culture or hanging baskets. Strong plants, 15 cts. each, 50 cts. for 4; larger plants, from 4-inch pots, 40 cts. each, postpaid.

Jacksonii Fern. An extremely strong-growing variety, one plant producing more fronds than three or four of an ordinary variety. Strong plants, 15 cts. each, 50 cts. for 3; handsome plants, from 4-inch pots, 35 cts. each, 60 cts. for 2, postpaid.

Pierson Fern. The fronds grow broad and heavy and are of exceedingly graceful appearance. Strong, young plants, 20 cts. each, 50 cts. for 3; strong, 4-inch pot plants 35 cts. each, postpaid.

Sword Fern (*Cordata compacta*). Compact, erect-growing plant, with strong, firm fronds; color very deep, shining green, as if varnished; very hard and firm, and, in consequence, not easily injured. Attains a height of 2 feet and arches beautifully. It will stand a lower temperature than other varieties, and even when quite small makes handsome specimens. Strong plants, 15 cts. each, 50 cts. for 4; strong, handsome, 4-inch pot plants, 35 cts. each, \$1 for 3, postpaid.

Other Fern-Like Pot-Plants

ASPARAGUS Sprengeri. For planting in pots, vases, or hanging baskets, has no equal. It droops most naturally, sending out numerous feathery, emerald-green fronds, which, in a short time, make a growth of 4 to 8 feet. Strong plants, 15 cts. each, 50 cts. for 4; larger size, 20 cts. each.

A. plumosus. Foliage surpasses a Maidenhair Fern; in grace and color resembles the finest lace. Elegant for cutting. 20 cts. each, 50 cts. for 4; larger size, 25 cts. each.

NEW LACE FERN. A grand decorative Fern of the most distinct type. It is low-growing, bushy, exceedingly graceful and thrives in almost any situation. Destined to become popular because it will thrive and retain its beauty for years with ordinary care. New and rare. Strong plants, 20 cts. each, 50 cts. for 3, postpaid.

MAIDENHAIR FERN (*Adiantum cuneatum*). A very graceful plant with beautiful foliage. 20 cts. each, 50 cts. for 3, \$1 for 7, postpaid.

Japanese Fern Balls

This charming novelty from the Orient has created a sensation: The ball is composed of dormant roots and moss, so constructed as to send out leaves of beautiful emerald-green from every point, until the whole is a mass of dainty green fronds. The foliage is delicate and lace-like and of splendid substance. The greatest introduction in years. Any one can grow it successfully.

Directions for starting. Place ball in water for fifteen minutes, and then suspend in any desired position; repeat every two days until growth is started, after which sprinkle occasionally, as required.

Large, dormant balls, 5 inches and over in diameter, 50 cts. each, \$2 for 5, postpaid. Larger balls, 7 to 9 inches in diameter, 60 cts. each, \$1 for 2, postpaid. By express, at purchaser's expense, 40 cts. and 50 cts. each, respectively.

A SPLENDID HOUSE PLANT

Ficus elastica (RUBBER TREE)

A well-known variety. It will flourish under the most unfavorable conditions and responds most readily to good treatment. Its thick, glossy foliage is exceedingly attractive, and the plants are singularly free from insect pests. Strong plants, 12 to 15 inches high, 75 cts. each, \$1.25 for 2, postpaid; by express, at purchaser's expense, 60 cts. each, \$1 for 2. Plants 20 to 24 inches high, \$1 each, postpaid; by express, at purchaser's expense, 80 cts. each.



FERN BALLS

Dingee Palms

Kentias THE PALMS FOR THE MASSES

Kentias are unquestionably the grandest of all Palms. For the amateur or professional grower they grow beautifully. The splendid substance of the foliage remains perfect even when grown under the most adverse conditions. *Kentia Belmoreana* is the tallest grower, while *Kentia Forsteriana* has the broadest leaves. Both are exceedingly graceful and we recommend them as the best in Palms. Strong plants, 8 to 12 inches high, 25 cts. each, 65 cts. for 3, postpaid; larger plants, 40 cts. each, 75 cts. for 2, postpaid. Large plants, splendid specimens, from 5-inch pots, 60 cts. each, postpaid.

Areca lutescens

A most graceful Palm in all stages of growth. The trunk and stems are golden green, while the gracefully curved leaves have a dark glossy green color. Strong plants, 6 to 8 inches high, 25 cts. each, 60 cts. for 3, postpaid. Large plants, 14 to 18 inches high, 60 cts. each, postpaid.

Cocos Weddelliana

An erect, graceful grower, furnished freely with broad, green leaves. Splendidly adapted for growing in fern-dishes. Strong plants, 3-inch pots, 35 cts. each, postpaid.

Latania Borbonica

One of the most popular and ornamental of the fan Palms. It is of remarkable beauty and easiest culture, developing large, deeply divided, fan-shaped leaves. Requires fairly good soil, moderate moisture and partially shaded situation. Strong plants, 20 cts. each, 50 cts. for 3; larger size, 30 cts. each, postpaid. Handsome specimen plants, 15 to 18 inches high, 50 cts. each, by express.



KENTIA FORSTERIANA

Dracaena indivisa

Forms Palm-like trees of graceful habit. Does equally well indoors or in the garden, but is not hardy. Strong plants, 15 cts. each, 50 cts. for 4, \$1 for 9.

Phoenix

Canariensis. This is a Date Palm and in the South its fruit matures. Produces fine specimen plants of highly ornamental character. 20 cts. each, 50 cts. for 3.

Rœbelini. The newest, and in every respect the finest and most beautiful Palm grown, with the most graceful and beautiful foliage, and it is the hardiest and most easily grown of all Palms, and just the one that will succeed in any window. Nothing can surpass it as a decorative plant. Finest Palm for outdoor culture in the southern or Pacific states. The whole world has gone wild over it, and it has recently sold as high as \$100.

Cycas revoluta

Produces graceful, heavy, glossy, deep green leaves, frequently used in funeral designs. An excellent house plant which will stand any amount of hard usage. Fine large plants, 8 to 12 inches high, 4 to 6 leaves, 75 cts. each, postpaid.

A HIGHLY ORNAMENTAL POT-PLANT

Norfolk Island Pine

(*Araucaria excelsa*)

A superb decorative plant of the highest class. It resembles a miniature evergreen of perfect symmetry and graceful proportions. It is admirably adapted to house culture. The dark green branches are arranged in perfect whorls, presenting a unique and graceful appearance. It is a strong, compact grower, easy to manage and quickly makes a plant of splendid dimensions. Strong plants, 8 to 10 inches high, 75 cts. each, postpaid. Large plants, 12 to 15 inches high, from 6-inch pots. \$1 each, by express.



ARAUCARIA EXCELSA

Dingee

Flowering Begonias

A beautiful class of plants, with free-blooming qualities. The foliage is attractive and odd, while the flowers are exceedingly graceful and beautiful. Their colors include the most brilliant shades of red, yellow, crimson, salmon, etc., and make a display which is hardly equaled by any other class of house-plants. For summer blooming in a shaded location, window boxes or for veranda decorations these varieties are unexcelled.

Price, except where noted: Strong plants, 15 cts. each, 50 cts. for 4, \$1 for 9, postpaid.

President Carnot. A very strong-growing variety, of stiff, upright habit; foliage, upper side deep green, under side purplish red.

Rubra. Strong, slender branches, heavy, waxy green leaves, with panicles of coral-colored flowers.

Alba picta. Long, pointed, slender leaves, thickly spotted with silver white; white flowers in clusters.

Argentea Guttata. Has the silvery blotches of *Alba picta*, and in grace is not equaled by any other variety. Beautiful, fringed, oblong leaves, with silver marking; white flowers in clusters on ends of growth stems.

Foliosa. One of the most graceful of all Begonias. Foliage small. Bright pink flowers.

Gloire de Lorraine. The greatest of all Begonias. Grows from 10 to 12 inches high. Throughout the entire winter completely hidden with soft, rosy-pink flowers. This is one of the great plant novelties, specimen plants selling from \$1 to \$2 each. Strong plants, 35 cts. each, \$1 for 3.

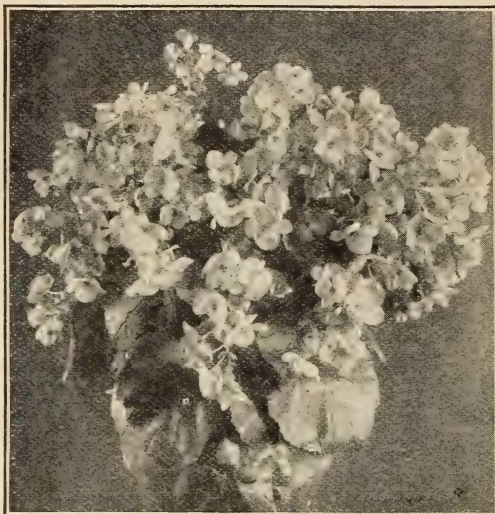
Hybrida multiflora. Lovely variety producing a profusion of rosy pink flowers. Very satisfactory.

Metallica. Distinct; good grower and free bloomer; flowers white; foliage a lustrous metallic bronze.

Marjorie Daw. New Trailing Begonia. Bears great clusters of large, shining pink flowers that droop from long stems.

Sandersoni. One of the best. Flowers are scarlet, shading to crimson. Borne in profusion continuously. Known as Coral Begonia.

Vernon. A grand sort of unusual merit; flowering continuously. Foliage rich, glossy green, shading to deep bronze. Flowers deep red, changing to clear rose when fully open.



BEGONIA, GLOIRE DE LORRAINE

Painted Leaf, or Rex Begonias

We make a specialty of this marvelous family of plants, the most beautiful ornamental foliage plants in existence. They like a moist, warm atmosphere. Plant in light soil, composed of rich loam, loose woods' earth and sharp sand.

Enfant de Nancy. Silver zone, with reddish brown edges; strong grower.

Grandi. Bright steel zone; light green center; green edge, mottled white, tinged maroon. Under side of leaves maroon.

Helen Upden. Dwarf growth. Light greenish white, with small silvery leaves and hairy light green stems, under side of leaf reddish.

Mad. Le Boucq. Very distinct; entire leaf soft, rosy mauve, of a light silky luster, plum-green.

Queen Victoria. Solid silver leaves, with crepe-like texture. Superb.

Silver Queen. Apple-green, with olive-green veins extending to edge. Medium-sized notched leaves.

Strong plants, 15 cts. each, 50 cts. for 4; larger size, 20 cts. each, 50 cts. for 3, postpaid

Dingee Choicest Fuchsias

For ease of culture, varied colors, profusion of bloom, and adaptability to all locations, we strongly recommend Fuchsias, the best varieties of which are offered in the following list. They are suitable alike for winter blooming or for growing outdoors, either in beds or in pots, boxes or vases, as the case may be.

Baby Fuchsia. A dwarf-growing variety, bearing an abundance of purple and white flowers.

Speciosa. A genuine everbloomer. Orange-scarlet corolla, with white sepals and rose calyx.

Trophy. Large, purple flowers, shaded crimson.

Rozains Patrie. Double white variety, with extra-large flowers.

Duke of Albany. Constant bloomer, of drooping habit.

Mme. Thebaud. Bright carmine, bordered with white.

Constancy. Single, bright carmine and white flowers.

Trailing Queen. Fine for pots or vases. Wine-colored.

Mrs. C. Blanc. Magenta-purple, with bright red sepals.

Lovely. Large, semi-double flowers.

Jupiter. Extra-large, very double, rich carmine flowers.

Wave of Life. Elegant golden yellow foliage.

PHENOMENAL. The finest, best-blooming, double, large-flowering Fuchsia in existence.

Price: Strong plants of all of the above varieties, sure to thrive and bloom, 10 cts. each, 35 cts. for 4, 50 cts. for 6, postpaid. The entire collection of 13 splendid Fuchsias, postpaid, for \$1.



FUCHS AS

Dingee Ornamental Pot Plants

American Wonder Lemon

Large, dark green foliage; handsome, pure white flowers, with yellow stamens, nearly as large as tuberoso blooms, fragrant as orange blossoms. The lemons have a thin rind for such large fruit, and are full of rich, acid juice. The plants will produce their magnificent, large fruit under ordinary cultivation the second year, and will prove a source of genuine delight. Plant in ordinary soil, in a pot or tub, and it will make a most interesting plant, not only ornamental, but useful, as it will bear each season a fine crop of these superb Lemons. Very hardy. Strong plants, 20 cts. each, 50 cts. for 3; larger size, 25 cts. each, \$1 for 5. Two-year-old plants, 50 cts. each, postpaid.

Otaheite Orange

A dwarf reproduction of the genuine fruit-bearing Orange tree, the flowers being identical. It flowers and fruits in pots and blooms continuously. Fragrance is delicious. Fruits immediately after flowering. Fruit measures about 3 inches in diameter and is quite edible. Strong, young plants, 15 cts. each, 50 cts. for 4; larger size, 25 cts. each, \$1 for 5, postpaid.

Clerodendron Balfouri

Most satisfactory for pot culture; vigorous, rapid, and healthy grower, producing an abundance of blooms, bright crimson, surrounded by pearly white petals, in striking contrast against the dark green foliage. Likes partial shade. Strong plants, 15 cts. each, 50 cts. for 4; larger plants, 20 cts. each, 50 cts. for 3.



WONDER LEMON

The Strawberry Guava

A MAGNIFICENT POT PLANT
BLOOMS AND FRUITS CONTINUOUSLY

A new pot plant of great value. The Guava has thick, shining, evergreen, camellia-like foliage, with pure white flowers of an agreeable odor. The fruit is large, about the size of an English Walnut, and of beautiful claret-color: the flavor is most delicious, sweet and aromatic, resembling that of the strawberry. Used as a dessert fruit, also for preserving: makes jelly of delicious quality, which brings an enormous price. Blooms and fruits continuously: has buds, flowers or fruit in some stage every day in the year. A magnificent plant for pot or box. Strong, 3-inch pot plants, 20 cts. each, 50 cts. for 3, \$1 for 7, postpaid; 4-inch pot plants, 30 cts. each, \$1 for 4, postpaid.

Sansevieria Zealanica

There are few decorative pot plants that will stand neglect so well; it thrives without water; gas or dust does not affect it. Has long, leathery, sword-like leaves, elegantly marked with bars of silvery gray. 15 cts. each, 50 cts. for 4; larger size, 20 cts. each, 50 cts. for 3.

The Manettia Vine

To get most successful results from this lovely vine, allow the roots to become pot-bound. This causes the plant to bloom profusely when quite small. The wreaths and garlands of brilliant scarlet and orange-colored flowers, interspersed with bright, oblong foliage, present a striking contrast. 15 cts. each, 50 cts. for 4; larger size, 20 cts. each, 50 cts. for 3.

Ficus pandurata

This has been called the "most beautiful of all broad-leaved evergreens." Is as pretty as a Palm and far easier to succeed with. Has large, heart-shaped, wax-like, glossy, leathery foliage, with red mid-ribs or veins. The young foliage is brilliant, glossy wine color, changing through shades of gold and purple to glossy green. Likes rich, sandy soil. Stock limited. Strong, young plants, 35 cts. each, \$1 for 3, postpaid.



GUAVA

We bought our first Roses from you over thirty years ago, and still have some of them.—Mrs. ABBIE E. CRANE, Mt. Pleasant, Iowa.

Dingee Selected Pot Plants



CROTON

Abutilon

Singularly beautiful, and unequalled for decorative purposes. Produces great numbers of lovely flowers. **Souvenir de Bonn.** Foliage handsome; green leaved with a pure white band. 15 cts. each, 50 cts. for 4; larger size, 20 cts. each.

Savitzi. Entirely different from Souvenir de Bonn; the contrast between the green and white is sharper, and the habit of the plant dwarfer. 15 cts. each, 50 cts. for 4; larger size, 20 cts. each.

ACHYRANTHES. Smooth, red foliage, similar to Coleus, and used for the same purpose. 10 cts. each, 50 cts. for 6, \$1 for 15.

ALTERNANTHERAS. Very compact; splendid for borders. Two colors, red and yellow, variegated. 10 cts. each, 50 cts. for 6, \$1 for 15.

AGERATUM, Princess Pauline. Dwarf, compact habit. Flowers of richest blue. 15 cts. each, 50 cts. for 4.

A., White. The color of the flower is pure white. 15 cts. each, 50 cts. for 4.

BOUGAINVILLEA Sanderiana. Camellia-like foliage, deep, shining green, bearing flowers of a dazzling crimson color, with golden yellow anthers, lasting long. 15 cts. each, 50 cts. for 4.

COLEUS. Grand named and mixed varieties, solid colors, striped, variegated and mottled. When ordering, state color. 10 cts. each, 50 cts. for 6, \$1 for 15.

CAREX Japonica. A remarkable new plant with fine, spray-like foliage, drooping gracefully. The leaf-blades are beautifully edged gold. 15 cts. each, 50 cts. for 4.

The Genuine Smyrna Fig

Imported from the far East. We offer, in limited quantities, strong plants on own roots, grown from fruiting wood, which will commence to bear at once. It will winter safely in an ordinary cellar, or it can be allowed to harden off with a few frosts in the early fall and then brought indoors. It will produce three crops in a season. The fruit is large, sweet, and almost seedless. Strong plants, 40 cts. each; 4-inch pot plants, 75 cts. each; 6-inch pot plants, \$1 each, by express only

Heliotrope, Madame Bruant

A superb variety with large, dark, lavender-blue flowers of exquisite fragrance. A strong grower and constant bloomer. 15 cts. each, 50 cts. for 4, \$1 for 9.

Cissus discolor (TRAILING BEGONIA)

The leaves are long, heart-shaped, and as handsomely marbled and mottled as Begonia Rex; the under side is transparent wine-red. For trailing over the side of a window box, or for hanging basket, or grown on a trellis in pots, it is unsurpassed. Likes heat and a little manure-water now and then. Strong plants, 15 cts. each, 50 cts. for 4; larger size, 20 cts. each.

Acalyphas

By all means include some of these plants in your order. Fine color effects and great decorative value.

15 cts. each, 50 cts. for 4, \$1 for 9

Triumphans. Color is red, marbled lighter and darker, streaked and dashed green, yellow, white and other colors.

Sanderi. Free-growing, branches spread widely and throw out long, dazzling, crimson, fluffy spikes, 12 to 18 inches long, between large, bright green leaves.

Bicolor compacta. Bright green ground margined with wide, regular band of lemon-yellow, with white bars running lengthwise with the leaves, blotched with yellow.

Marginati. Similar to Triumphans, but entirely different in color. The leaves combine almost every color, red, green, bronze, and intermediate shades.

CROTONS. Splendid pot plants for the piazza or window-garden. Leaves are brilliantly variegated, and present a fine appearance. A grand pot plant, succeeding in almost any situation; splendid indoors. We offer a grand collection. Extra-large plants, 20 cts. each, 50 cts. for 3, \$1 for 7.

CYPERUS alternifolia (Umbrella Plant). A splendid house plant. Resembles a palm. Of the easiest culture. Can be grown in a bowl, dish or vase, half filled with rich soil, then with water. Requires little or no attention, and remains evergreen throughout the year. 15 cts. each, 50 cts. for 4; larger size, 20 cts. each.

C. gracilis. More dwarf than the above variety, with narrower leaves, more shapely appearance. A very handsome decorative plant. 15 cts. each, 50 cts. for 4.

FARFUGIUM grande. The leaves become immense; clear bright green, heavily blotched with golden yellow. Large plants, 25 cts. each, \$1 for 5.

Strobilanthes Dyerianus

Royal purple. Compact plants 18 inches high, of most intense metallic purple, shading into light rose, with green margin; flowers violet-blue. 15 cts. each, 50 cts. for 4; larger size, 20 cts. each.

Swainsonia

Alba (White). Pure white flowers, produced in elegant sprays, strongly resembling sweet peas. Foliage exceedingly pretty. 15 cts. each, 50 cts. for 4.

Splendens (Pink). Identical with Alba, With the exception of the flowers, which are deep, shining pink. 15 cts. each, 50 cts. for 4.



FIG

Hibiscus Sinensis

A beautiful class of pot-plants, with handsome, glossy foliage and brilliant showy flowers.

All varieties, 15 cts. each, 50 cts. for 4, \$1 for 9

Versicolor. Handsomely striped crimson, buff, rose, white and many other colors.

Cooperii Tricolor. Foliage beautifully variegated with dark green, pink and white. Flowers single, very large; color crimson.

Miniatus semi-plenus. Semi-double flowers, bright vermilion-scarlet; petals waved and recurved.

Peachblow. Color pink, with crimson center.

HOYA Carnosa (Wax Plant). The flowers are bluish white in color, resembling wax, and are borne profusely in large umbels. The foliage is thick and fleshy; extremely handsome in appearance. Very scarce. 25 cts. each, \$1 for 5.

Jessamine

Greatly admired; produces lovely flowers of great fragrance.

Maid of Orleans. Large, double, waxy white flowers of great substance, produced freely. 15 cts. each, 50 cts. for 4, \$1 for 9.

Grand Duke of Tuscany. Everblooming, with large, double, waxy creamy white flowers. Blooms throughout the season. A superb pot plant. 15 cts. each, 50 cts. for 4, \$1 for 9.

Confederate (*Rhynchospermum Jasmynoides*). A beautiful pot plant, producing masses of pure white flowers; exceedingly fine for trellis or window-garden. 15 cts. each, 50 cts. for 4, \$1 for 9.

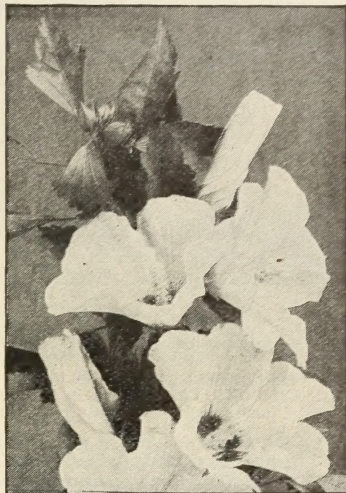
Cape Jessamine (*Gardenia Florida*). Well known and popular; blooms pure white, large, very fragrant. Splendid for pot culture. 15 cts. each, 50 cts. for 4; larger size, 20 cts. each.

JUSTICIA Velutina. A dwarf, stock, compact plant, bearing large, pink, leathery flower-heads, which last a long time. The foliage is heavy in texture and very velvety. 15 cts. each, 50 cts. for 4.

NEW WEEPING LANTANA. One of the most beautiful plants for baskets, vases, pots or for culture outdoors. Produces its clear lilac-pink flowers in clusters by the hundreds. Fragrant. 15 cts. each, 50 cts. for 4; larger plants, 20 cts. each, 50 cts. for 3.

OXALIS Ortgiesi. From 10 to 15 inches in height. Blooms profusely, until it is one enormous cluster of large, star-shaped flowers. Strong plants, 15 cts. each, 50 cts. for 4; larger size, 20 cts. each.

RUSSELLIA Lemoinei. Particularly desirable for hanging baskets, pots or vases. Profuse bloomer the entire year. Droops. Small, wiry branches and small leaves hidden by scarlet tubular flowers. Strong plants, 15 cts. each, 50 cts. for 4.



HIBISCUS

SALVIA splendens (Scarlet Sage). The finest scarlet bedder. Makes a brilliant blaze of fiery scarlet color long after other flowers are gone. 10 cts. each, 50 cts. for 6, \$1 for 15.

SNAPDRAGON, Giant White-scented. A choice plant for pot culture. Perpetual bloomer. 1 to 2 feet in height. Pure white; of lovely fragrance. 15 cts. each, 50 cts. for 4; larger size, 20 cts. each.

SOLANUM Rantonetti. The true blue Solanum. It forms a neat little bush 2 feet high. The flowers are deep, clear blue, with yellow center. 20 cts. each, 50 cts. for 3; larger size, 25 cts. each.

SHOWER OF GOLD (*Genista Canariensis*). When in flower it presents a dense mass of golden yellow. 15 cts. each, 50 cts. for 4.

VERBENAS. We have a fine collection of this well-known plant in assorted colors. 10 cts. each, 50 cts. for 6, \$1 for 15.

Violets

Rich in modest beauty and famed for its enchanting fragrance, the Violet continues to increase in popularity.

Strong plants, 10 cts. each, 25 cts. for 3, 50 cts. for 7, \$1 for 15, \$6 per 100; larger plants, 20 cts. each, 50 cts. for 3, \$1 for 7, \$12 per 100, postpaid.

California. The largest Violet; flowers are single, almost as large as a silver dollar; color is pure, rich violet-blue; flowers are borne on long stems, 10 to 14 inches in length, well above the foliage.

Farquhar. A strong, healthy grower, perfectly hardy and free-blooming, producing lovely deep blue double flowers of delicate fragrance.

Governor Herrick. New single Violet. Color rich, dark purple, stems long and strong, carrying the flowers erect.

Lady Hume Campbell. The leading double blue Violet. The deep violet-blue flowers are of the daintiest and most refined form. Perfectly double.

La France. A magnificent variety, bearing large, exceptionally fragrant flowers, with nearly round petals.

Luxonne. A grand new French Violet, with large flowers of soft violet-purple color; fragrance delicious.

Princess of Wales. The grand single flowers are true blue; large, and deliciously fragrant.

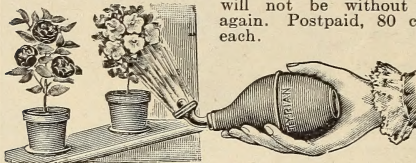
Swanley White. Vigorous and healthy, bearing quantities of pure snow-white, perfectly double, fragrant flowers. Ours is genuine stock, absolutely clean and healthy.



JESSAMINE

TYRIAN PLANT SPRINKLER

is essential to the success with plants. With it you can quickly sprinkle them. It will keep the foliage fresh and healthy. Throws a spray "just like rain." Its value is so apparent that, once secured, you will not be without it again. Postpaid, 80 cts. each.



SPECIAL OFFER.—The "Tyrian" Sprinkler and an 8-oz. package of Sulpho-Tobacco Soap for \$1, postpaid

SULPHO-TOBACCO SOAP

For the sure, easy and immediate extermination of all insect life on plants, trees and animals, Sulpho-Tobacco Soap is a matchless preparation. Will not injure the most tender plant. It dissolves readily in water, and may be applied with a Tyrian Sprinkler.

BONORA (The Greatest Plant Food)

Good for all plants. It invigorates, promotes the growth, increases the crop and produces a lasting and healthy growth. Sold in condensed form and used by dissolving in water.

Trial package, making 56 pints, only 30 cts., postpaid
Large package, making 28 gals., only 65 cts., postpaid

DINGEE BEST FLOWER SEEDS

Many varieties of flower seeds succeed best if sown in the open ground during August, September and October. The plants from Autumn-sown seed become larger and more robust, flowering earlier and more abundantly than if sown in the spring.

HOLLYHOCKS, Chater's Superb Double. Flowers 3 to 4 inches across, of most beautiful colors. 10 cts. per pkt., 25 cts. for 3.

Double Allegheny The finest mixed strain in existence. Pkt. 10 cts., 3 for 25 cts.

DIGITALIS (Foxglove). Superb flower of purple, white, yellow and rose-color. Finest mixed, pkt. 5 cts., 6 pkts. for 25 cts.

DIANTHUS (Pinks). Best varieties mixed. Pkt. 5 cts., 1/2 oz. 40 cts., oz. 75 cts.

PERENNIAL PEAS (*Lathyrus latifolius*). All varieties mixed. Pkt. 10 cts., oz. 40 cts.

PERENNIAL PHLOX, Finest Varieties Mixed. Pkt. 10 cts., 6 pkts. for 50 cts.

CARNATIONS and PICOTEEES—

Choice Double Mixed. A good selection. Pkt. 10c.
Picotee, Finest Double Mixed. A splendid strain. Pkt. 10 cts.

SWEET WILLIAM (*Dianthus Barbatous*). Splendid for beds or borders. Many beautiful colors.

Perfection, Single Mixed. Pkt. 10 cts.

Perfection, Double Mixed. Pkt. 10 cts.

DINGEE SUPERB PANSIES, Imperial German Mixed. A splendid mixture of over fifty beautiful varieties. Pkt. 10 cts., 3 pkts. for 25 cts., oz. 65 cts.

DINGEE BEDDING PANSIES. This mixture contains the choicest sorts, with large flowers of superb form and color. Pkt. 5 cts., 6 pkts. 25 cts.

SMALL FRUIT

CURRENTS. 15 cts. each, 50 cts. for 4, \$1 for 9, postpaid; larger plants, 20c. ea., 50c. for 3, by express.
Victoria. Fine, large berries of excellent quality.
Fay's Prolific. One of the best; a heavy bearer.
Red Dutch. Excellent and well known.

White Grape. Large, creamy white, sweet berries.
North Star. Strongest grower of red sorts.

GOOSEBERRIES, Downing. 15 cts. each, 50 cts. for 4, \$1 for 8; large size, 20 cts. each, 50 cts. for 3, \$2 for 12.

Houghton. Of pale red color. Prices same as for Downing.

New Industry. Heavy cropper of choice dark red berries. 20 cts. each, \$1 for 6, \$2 per doz.; large plants, 30 cts. each, \$1 for 4.

RASPBERRIES, Cumberland. Immense fruit.

Columbian. Dark red fruit of delicious flavor.

Prices for either of the above—15 cts. each, 50 cts. for 4, \$1 for 9, postpaid.

CHOICE HARDY GRAPES. One-year-old plants, 15 cts. each, except where noted, \$1 for 9, postpaid. Two-year-old plants, 25 cts. each, except where noted, \$1 for 5, postpaid.

Brighton. Hardy, bright red and delicious.

Campbell's Early. Vigorous and hardy, black and of fine flavor. One-year-old, 25 cts. each; two-year-old, 40 cts. each.

Concord. Large, blackish purple bunches.

Eaton. Immense clusters of black color. One-year-old, 25 cts. each; two-year-old, 35 cts. each.

Moore's Diamond. One of the best white sorts.

Niagara. Large, compact clusters; color pale green at first, changing to pale yellow when fully ripe.

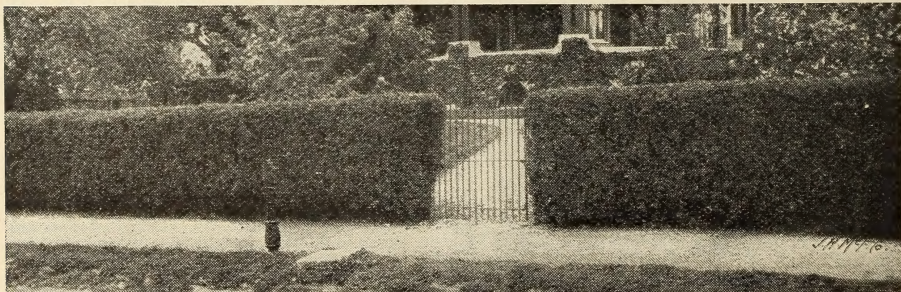
Salem. Early, red, hardy variety.

Worden. Large, black fruit of fine quality.

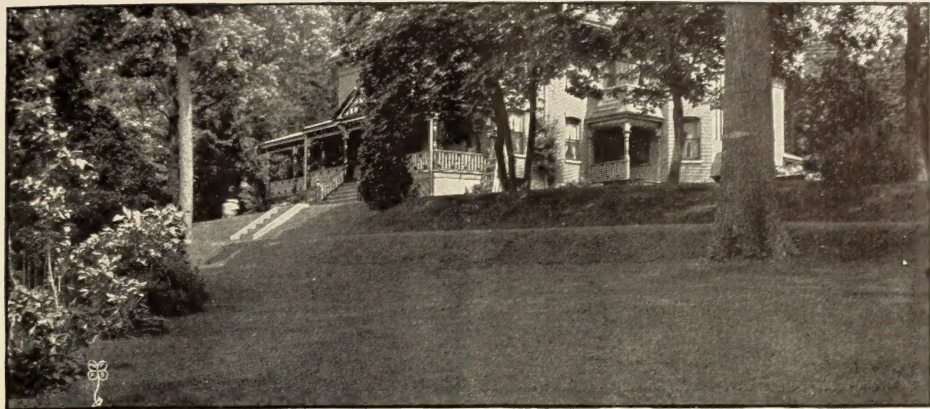
SPECIAL OFFER.—Set of 8 varieties of Grapes, 1-year-old, \$1; 2-year-old, \$1.75.

California Privet

Conceded to be the best plant for hedging purposes. Remarkable for the beauty of its evergreen foliage and strong, regular, symmetrical growth. The foliage is dark green, very glossy and wax-like. It is not subject to insects or scale attacks, and will stand pruning to any extent at all seasons. First size, 15 to 24 inches, 10 cts. each, 50 cts. for 6, postpaid; \$4.50 per 100, by express or freight. Second size, 2 to 3 feet, 15 cts. each, 50 cts. for 5, \$1 per doz., \$6 per 100, by express or freight. (Orders for 50 filled at 100 rates.)



CALIFORNIA PRIVET



Partial view of residence and grounds of Mr. Charles Dingee. Lawn sown with Dingee Lawn Grass Seed

Dingee Special Lawn Grass Seed

The best Lawn Grass Mixture for general sowing, as proven by careful experiment and comparison. It produces a smooth, velvety green sward of attractive appearance. In preparing the ground for seeding, break it 10 to 12 inches deep with plow or spade and pulverize thoroughly. The surface should be raked perfectly level to prevent the formation of pools after heavy rainfalls. Sow the seed carefully and evenly at the rate of one quart to a space equal to 15 x 20 feet; two bushels will sow one acre. After sowing, cover the seed by raking or harrowing it. Rolling is also in general practice.

Seeding may be done at any time during spring, summer or fall, but the best results are obtained by sowing during April, May, September or October. Where fall sowing is practised, a top-dressing of manure is recommended to protect the roots of the young grass during the winter. In the spring, the grass matter should be removed, leaving the surface clean. To renovate lawn, loosen the soil on the bare spots with a steel rake and, after sowing a liberal quantity of seed, roll or rake again to cover the seed.

Price: By mail, 35 cts. per pound, 2 pounds for 65 cts. In bulk, by express, 25 cts. per pound, 10 pounds or more, 20 cts. per pound, or about \$5.40 per measured bushel; a legal bushel of 14 pounds will cost \$2.80.

INDEX

PAGE	PAGE	PAGE	PAGE
Abutilon 34	Coleus 34	Honeysuckles, Cal. 18	Pretty Face 17
Acalyphas 34	Crocus 13	Hoya 35	Privet 36
Achyranthes 34	Croton 34	Hyacinths 2, 3	Ranunculus 16
Ageratum 34	Crimum 12	Hyacinths, Roman 14	Raspberry 36
Akebia quinata 28	Cubarr Lily 11	Hyacinths, Misc. 14	Rex Begonias 32
Allium 13	Currants 36	Hydrangea 28	Roses 19-26
Alternantheras 34	Cycas revoluta 31	Iris 18	Rubber Plant 30
Amaryllis 16	Cyclamen 17	Ivy, English 28	Russelia 35
Ameripollii Fern 30	Cyperus alternifolia 34	Ixias 16	Salvia 35
Ampelopsis 28	Cyperus gracilis 34	Jacksoni Fern 30	Sansevieria 33
Anemones 18	Dafodils 8, 9	Japanese Fern Ball 30	Scarlet Freesia 7
Anomatheca cruenta 7	Dracena 31	Jessamine 35	Scarlet Mexican Lily 12
Araucaria excelsa 31	Dutchman's Pipe 28	Jonquils 9	Scarlet Sage 35
Areca lutescens 31	Eastler Lily 11	Justicia 35	Scilla Sibirica 15
Aristolochia 28	Erythronium 11	Kentia Palm 31	Scottii Fern 30
Asparagus plumosus 30	Eulalias 30	Lace Fern 30	Shower of Gold 35
Asparagus Sprengeri 30	Euonymus 28	Lachenalias 17	Silk Vine 28
Babianas 13	Farfugium 34	Lantana 35	Snapdragon 35
Begonias, Flowering 32	Ferns 30	Latania Borbonica 31	Snowball 28
Begonias, Rex 32	Fern Ball 30	Lemon 33	Snowdrops 15
Blue Milla 17	Ficus 30, 33	Lilies, Japan, etc. 10, 11	Solanum 35
Bonora 36	Fig 30	Lily-of-the-Valley 15	Sparaxis 18
Boston Fern 30	Floral Firecracker 18	Manettia Vine 33	Spiraea 27
Bougainvillea 34	Flower Seeds 36	Mexican Lily 12	Strobilanthes 34
Brodiseas 13	Freesias 7	Narcissus 8, 9	Sulpho Soap 36
Caladiums 18	Fritillarias 14	Nephrolepis Scottii 30	Swainsonia 34
Callas 16	Fruits 36	Norfolk Island Pine 31	Sweet Violets 35
Calochortus 18	Fuchsia 32	Orange, Otaheite 33	Sword Fern 30
Camassia 11, 15	Geraniums 29	Ornithogalum 15, 16	Tartroytum Fern 30
Cape Jessamine 35	Glory-of-the-Snow 15	Oxalis 17, 35	Trillium 16
Carnations 29	Gooseberries 36	Peonies 27	Tritelia 17
Carex Japonica 34	Grape-vines 36	Palms 31	Tritonia 18
Chinese Sacred Lily 12	Grevillea 28	Pelargonium 29	Tulips 4-6
Chionodoxa 15	Guava 33	Perennials 29	Verbena 35
Cinnamon Vine 15	Hardy Climbing Vines 28	Phlox, Hardy 27	Viburnum 28
Cissus Discolor 34	Hardy Perennials 27	Phœnix Canariensis 31	Violets, Sweet 35
Clematis, Climbing 28	Heliotrope 34	Phœnix Rœbelini 31	Virginia Silk Vine 24
Clerodendron 33	Hibiscus 35	Pierisoni Fern 30	Wood Hyacinth 18
Cocos Weddelliana 31	Honeysuckles, Climbing 28	Plant Sprinkler 36	Whitmanii Fern 30

Our New Guide to Rose Culture for 1909. Will be ready to send out January 1, 1909. It is the acknowledged authority on matters pertaining to the culture of Roses, as well as all other flowers of worth. It will be sent free to customers of the past few years, also to those who order from this catalogue. To others free upon application.

Our Newest and Finest Rose, Charles Dingee

Below is reproduced a remarkable snap-shot, made very recently, of Mr. Charles Dingee, founder of The Dingee & Conard Company. Mr. Dingee is eighty-four years of age, and while not actively engaged in the management of this business is still vitally interested in its progress.

The word Dingee is almost a household word throughout the United States—it has been synonymous with the best in all the history of American Rose-growing. Charles Dingee was first to send own-root roses safely by mail, and pioneer in the great industry that has developed in this field. It seems more than passing strange that today no Rose bears his name.

For many years the younger members of the firm have been seeking to produce a Rose worthy of the name—a Rose better than any other. They have succeeded. The photograph reproduced on this page gives a fair idea of the marvelous beauty of this Rose, which has been named Charles Dingee—one of the most magnificent Roses in the world. No plants will be offered for sale until January 1, 1909. Further details given on second cover page.



CHARLES DINGEE
Founder of
The DINGEE & CONARD
COMPANY
From a recent photograph