

SF 751

.N87

Copy 1



THE NORTHWESTERN MEDICAL JOURNAL
PUBLISHED BY THE NORTHWESTERN MEDICAL SOCIETY
CHICAGO, ILL.

OUR GUARANTEE

We, the undersigned, do hereby guarantee that the articles of Food and Drugs manufactured, packed, distributed or sold by us are not adulterated or misbranded within the meaning of the Food and Drug act, June 30, 1906. No. 13389.

The Northwestern Medicine Co.

KEOKUK, IOWA.

READ

Our Cash Guarantee

Inside Back Cover.

Our Veterinary Adviser

THE BEST METHOD OF TREATING DISEASES OF

Horses, Cattle, Sheep
and Hogs.



PUBLISHED BY

The Northwestern Medicine Co.,

KEOKUK, IOWA.

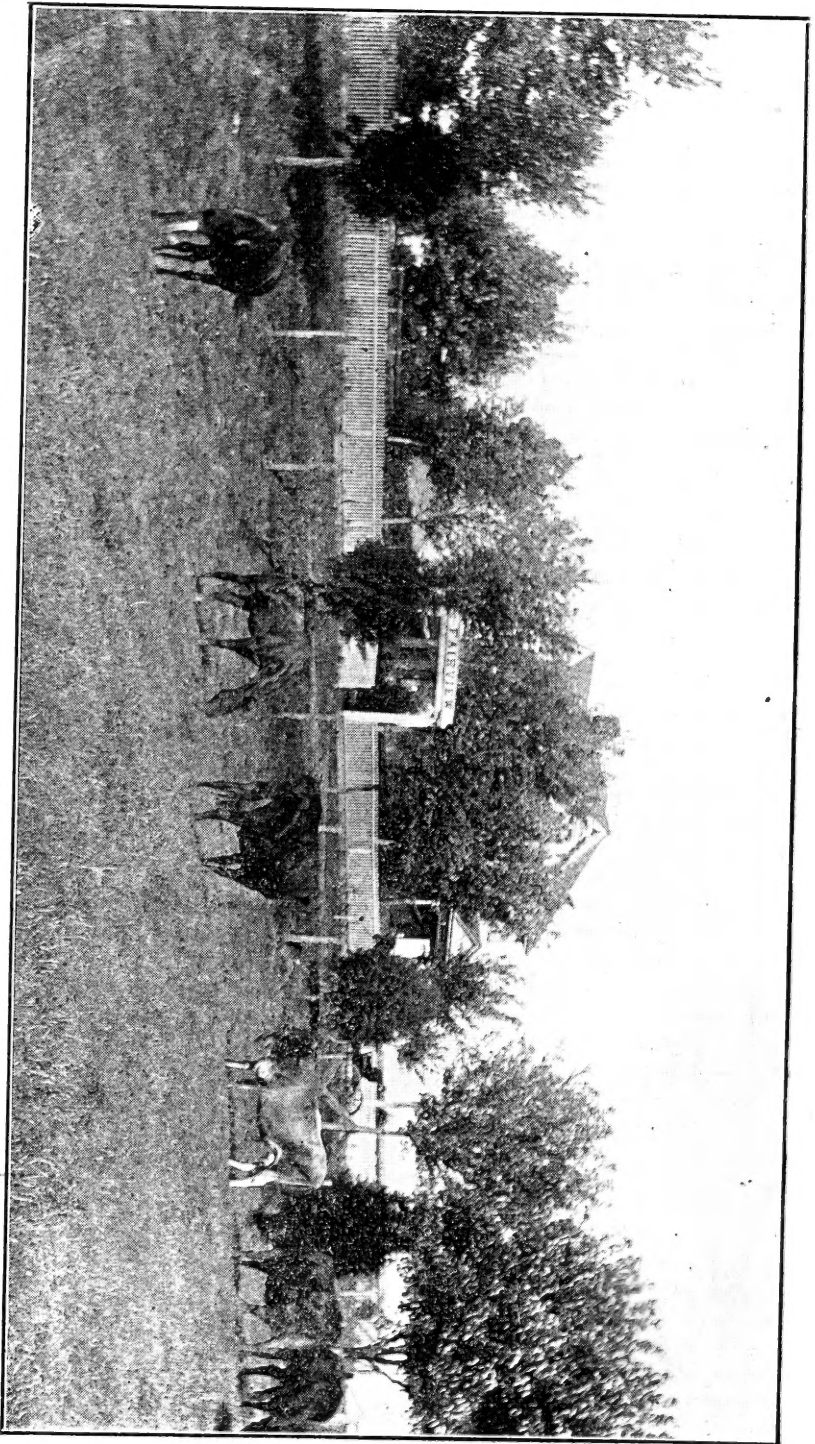
PRESS OF THE LEAKE PRINTING CO., KEOKUK, IOWA.

SF751
1187

LIBRARY of CONGRESS
Two Copies Received
DEC 23 1907
COPYRIGHT ENTRY
Dec 19 1907
CLASS A XXc. No.
194587
COPY B.

Copyright, 1907,
BY THE NORTHWESTERN MEDICINE CO.,
KEOKUK, IOWA.





HOME OF HOWARD L. CONNABLE, LEE COUNTY, IOWA.

Prosperity reigns wherever you find "Our Handy Veterinary Case."

WHY AND WHEREFORE.

In preparing the information contained in the following pages it is our aim to state the description, symptoms and best method of treatment of the diseases of domestic animals in a plain easy manner, avoiding technicalities, and so arranging the subjects that they may be readily referred to and easily comprehended by the average reader.

This work is not taken from books alone, but is theory combined with actual experience obtained by many years of successful practice of veterinary medicine. Dr. Rowe is a Regular Graduated Veterinarian and through the aid of his extensive practice, also owning and operating a large Hospital for Domestic Animals, he has become well acquainted with the most urgent needs of the farmer and stockman, relative to the diseases of their stock, and has formulated the most scientific methods and preparations for their successful treatment.

The knowledge obtained by him during these many years, and as set forth in these pages, we feel assured will be of inestimable value to the reader, and should he, through this treatise, become familiar with and use Dr. Rowe's Veterinary Preparations, it will have been of mutual value and the mission upon which it is sent will have been fulfilled.

Dr. Rowe's Veterinary Preparations are all manufactured by us from formulas of the man whose name they bear, and are backed by Our Cash Guarantee to Give Satisfactory Results or Money Refunded.

THE NORTHWESTERN MEDICINE COMPANY,
Keokuk, Iowa.

Our Handy Veterinary Case contains 12 of the best and most needed Veterinary Preparations.

•HOW TO CARE FOR THE HORSE.

The horse is kept for either work, pleasure or profit and sometimes for all these combined. Therefore, it should have proper feed and attention so as to be always in a healthy condition, and only thereby will the owner derive the greatest benefits.

At first sign of sickness you should ascertain the nature and determine the cause of the disease and give proper treatment at once; not to-morrow or the next day or next week. Neither should you wait until you drive into town and get some medicine or see the veterinarian. You should always have good reliable preparations for the treatment of all diseases at your command so that they may be given without delay.

A great many people have lost a valuable animal owing to the fact that they did not have a proper remedy at hand and were compelled to wait six, eight or ten hours, and in some cases even as long as a day or two before offering relief. In many cases after a delay of this kind, the animal is beyond the point of any relief only in death, and you not only lose so much money in the price of the animal but have also been indiscreet and inhuman.

Read this Book Carefully and study the symptoms of the different diseases with diligence in order that you may be able to recognize them when same are shown by your animals, for they cannot communicate their ailments to you in any other way. The man who neglects to give his stock proper care and nurse them when they are sick should be severely punished.

**Dr. Rowe's Veterinary Preparations are Guaranteed
to give satisfactory results.**

FEEDING AND WATERING.

The horse should have good, clean food; free from smut, mold or dust, and in quantity according to the size of the animal and the amount of work performed. Feed regularly three times a day and let the night meal be the heaviest. Give bran with cut feed once a day. Water the horse from ten to twenty minutes before feeding. Always give fresh water. Do not give water from store tanks, as it soon becomes foul in hot weather. Avoid change of water as much as possible, as it often causes derangement of the bowels. Do not water the horse sooner than two hours after feeding. Give him a few swallows only if you intend working him immediately after feeding and then water in about two hours. Too much water immediately after feeding has a tendency to force the food out of the stomach before being properly digested and therefore a large percentage of the nutriment that should go to the animal is lost. Never feed or water the horse when tired or heated. Let him rest and cool first. You may, however, give a small quantity of hay.

STABLE POINTERS.

Have as much light in the stable as possible, but have the doors and windows so arranged that no direct rays of light will fall upon the animal's eyes.

Never keep a horse in a stable that is not dry, well ventilated and free from draughts. See that the stall is large enough to allow the horse to turn around without interfering, and do not keep it standing for any length of time on a hard floor.

Dr. Rowe's Healing Powder is easily applied.

To make a good floor and one that will be comfortable to your horses, dig out a foot of the earth and fill the hole with broken stones, brick or cinders; then put on six inches of clay and six inches of sand. A floor of this kind will be a good, dry, cool place where you may let your horses stand when not at work, without any danger of them having contracted feet. By covering this floor with clean, dry bedding at night makes it very comfortable for them when lying down.

The stall should be cleaned and aired daily. Sprinkle the stall with a disinfectant every morning and throughout the entire stable at least once a month. Dr. Rowe's Bactericide, a tablespoonful to one gallon of water and used as a spray, is excellent for this purpose.

Prepare a small, stout box and keep same filled with dry sawdust. Upon bringing the horse into the stable after a hard drive or in wet and stormy weather, place his feet, one at a time, in the box and rub the legs with the sawdust. In this manner you can dry the limbs much quicker than with either straw or cloths. This will generally keep the horse from taking cold and prevent scratches.

ACTION OF DRUGS.

Diseases and injuries of domestic animals one-half century ago were not treated scientifically and successfully. The laws of health, the cause and nature of diseases and uses of medicines were then imperfectly known. Treatment was apt to be rough and ready, violent reducing remedies and methods were frequently and injudiciously used. But to-day it is radically different, as the scientific researches

Dr. Rowe's Healing Powder cools and heals very rapidly.

have made plain the physiological conditions and causes of the disease, thereby, with the assistance of carefully compounded curative agents or drugs we are enabled to combat successfully diseases which heretofore ravaged our stock.

ACTION OF DRUGS ON THE HORSE.

There is considerable difference in the action of drugs upon the horse, as compared to other animals. The stomach of the horse is very small and the walls are rather sensitive to the effect of drugs. Unfortunately, the horse is unable to vomit, therefore emetics do not produce the same action as in other animals. The intestines of the horse, on the other hand, are as voluminous as the stomach is small, and, therefore, are powerfully influenced by irritants (as purgatives, although the action of cathartics is slow).

ACTION OF DRUGS ON CATTLE AND SHEEP.

These animals have a four-fold stomach, which always contain large amounts of food, and, unlike the horse, the walls are not very sensitive and do not yield very readily to the action of drugs. Therefore, the taking up or absorption of the drugs is feeble and imperfect and requires a comparatively larger dose than the horse. The kidneys and skin of cattle are still less active to the action of drugs than in the case of the horse.

Every farmer should use Dr. Rowe's Veterinary Preparations.

ACTION OF DRUGS ON THE HOG.

The action of drugs on swine is similar to that produced on the horse, but they are less sensitive according to their relative weights.

ADMINISTERING MEDICINES.

Medicines may enter the body through different channels: By the mouth, by the lungs and air passages (by inhalation) under the skin (hypodermic), and by the rectum. The most convenient and safest method is by the mouth. Medicines to be given by the mouth are powders, drenches, balls and electuaries.

GIVING OF POWDERS

Powders must be free from any irritant or caustic action upon the mouth. Those that are without any disagreeable taste or smell are readily eaten when mixed with the food or drinking water. It is well to first dissolve the medicine in water before sprinkling on the feed, otherwise, there will be a large percentage of the medicine left in the manger.

USING A SYRINGE.

Liquids that are non-irritant and given in small doses may be placed upon the tongue by means of a small syringe or even a spoon, as absorption will take place in the mouth as well as in the stomach. Fill the syringe with the medicine to be given, insert the nozzle at the side of the mouth and empty the contents upon the tongue as far back in the mouth as possible.

DRENCHING.

Liquids, when they are to be given in large doses, may be placed in a long necked bottle or horn and given to the animal as a drench.

TO DRENCH THE HORSE the nose should be elevated higher than the neck; which can be accomplished by placing a rope around the upper jaw, back of the front teeth, throw the other end of the rope over a beam above and draw the head up to the desired height, then pour the liquid in the mouth, allowing time for the animal to swallow. Do not drench through the nose. Do not attempt to drench the horse if the throat is sore or swollen. Do not pinch or pound the throat nor draw out the tongue when giving a drench.

Cattle are comparatively easy to drench as compared to the horse. The head should not be pulled to straight up, nor twisted to the side, as they cannot swallow when in this position. The neck and head should form a straight line in which the nose is the highest point; this can be accomplished by putting the arm around the neck and taking hold of the septum nasi (partition between the nostrils) then pour the medicine in at the side of the mouth, allowing it to run slowly out of the bottle. In unruly animals or those that are inclined to resist the operation a lead may be placed upon the septum nasi, which will be found very beneficial in subduing the animal.

If you value your stock you cannot afford to be without
Our Handy Veterinary Case.



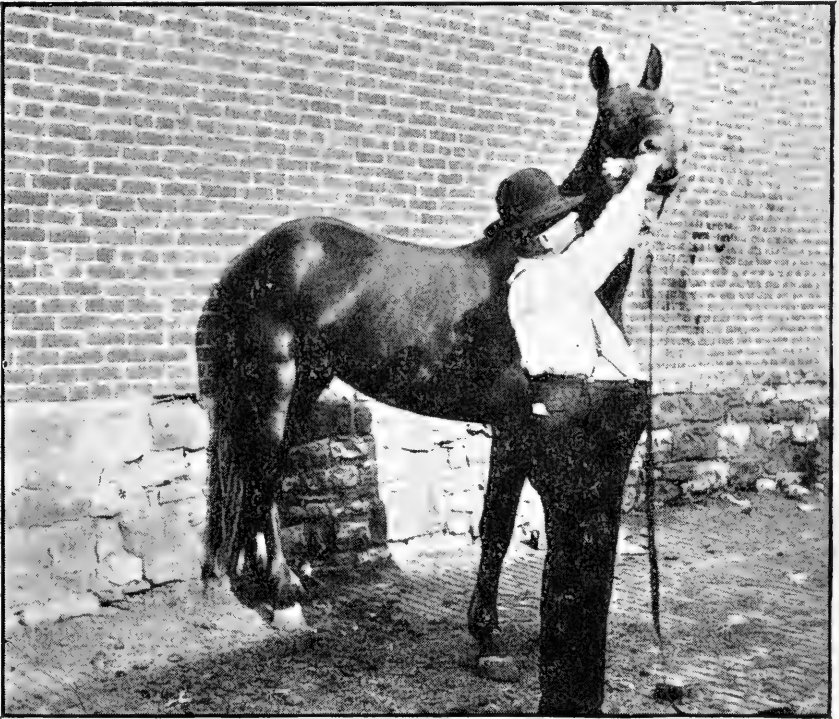
GIVING A BALL.

Tongue Withdrawn and Physic Capsule Ready.

Some drugs are more conveniently given in ball form. These are made up of the active drug, oil meal and molasses and rolled in cylindrical shape, two inches in length and about three-fourths of an inch in diameter. They may either be wrapped in tissue paper or placed in gelatine capsules when given. To be successfully given they must be placed well back in the mouth over the ball of the tongue.

One of the best methods of administering a ball is to take hold of the tongue, draw it to one side of the mouth, place the ball on the end of a pointed

Dr. Rowe's Blood and Skin Tonic gives a Glossy Coat.



**Placing the Capsule Well Back in the Mouth Over the
Root of the Tongue.**

stick, fifteen or eighteen inches long, which will enable you to place the ball back for enough in the mouth so that the animal will be forced to swallow. See illustrations.

Dr. Rowe's Physic Capsules are conveniently made (supply a long felt want of the farmer and stockman) combining a physic, stimulant and corrective, so much needed by many animals that are over-worked and over-fed.

**The Best Money-Saving proposition ever offered is
Our Handy Veterinary Case.**

ELECTUARY.

Electuary is a paste made of the drug mixed with a diluent as molasses or honey which is readily dissolved and is given the animal by placing it upon the molar teeth where it dissolves and is swallowed by the animal. They are frequently given for coughs and sore throat.

THROUGH THE LUNGS AND AIR PASSAGES BY INHALATION.

This is best accomplished by steaming the nose and consists in putting the medicine into boiling water and holding the vessel containing same beneath the nose, covering up the head and allowing the animal to breathe the fumes. This method will be found very serviceable in catarrh of the nose and throat, pharangitis, acute bronchial catarrh, distemper and influenza.

UNDER THE SKIN, HYPODERMIC.

Some concentrated preparations or alkaloids may be given to the animal by means of the hypodermic syringe. As this form of treatment requires a special instrument and considerable technicality it is usually left to the veterinarian to prescribe in this manner.

BY THE RECTUM.

This can be well accomplished by means of a syringe and consists of injecting of oils, non-irritating preparations and warm or cold water into the bowels through the rectum. The principal use of and friction or rubefacient, and are used when local the bowels.

MEDICINES AND METHODS FOR EXTERNAL USE.

These are lotions, liniments, counter irritants or blisters, absorbents, hot or cold water applications and friction or rubeficient, and are used when local action is desired.

Horses and Mules and Their Ailments

DISEASES OF THE SKIN.

SUMMER ERUPTIONS—SUMMER MANGE —LICHEN.

This disease usually occurs during the summer months and is generally confined to certain regions, however, may invade the entire surface. The parts that are most affected are those of the neck, shoulders and legs. It is also caused by molting (shedding of the hair) in the spring or fall; as at this time there are considerable changes taking place in the skin.

It is recognized by small pimples, varying in size from that of a millet seed to that of a pea. They are found, at first, to be soft, but afterwards become hard. The hair becomes glued together by an exudate; will drop out and leave bare patches. In the early stage these pimples may be recognized only by rubbing the hand over the body.

TREATMENT — Summer Eruptions; Summer Mange; or Lichen require both external and internal treatment, as in all cases we find blood changes. Give first one of Dr. Rowe's Physic Capsules; then give one or two doses a day (according to the severity of the disease) of Dr. Rowe's Blood and Skin Tonic until the eruptions disappear. Where the eruptions have become augmented, the animal rubs and the skin is much inflamed; dust the parts well,

Dr. Rowe's Healing Powder heals all eruptions and abrasions of the skin.

two or three times a day, with Dr. Rowe's Healing Powder. It is advisable to wash the skin thoroughly using castile soap, and apply the powder while the surface is wet. This will quickly dry up the pimples, form a thin scale or scab, which will drop off in a few days and leave the skin in a healthy condition. After this, one or two applications of lard or olive oil will start the hair nicely, which will soon form a new coat.

MANGE OF THE MANE AND TAIL.

This disease is purely local, affecting only the parts covered by the mane and tail. It is caused by parasites, lice and ticks, excessive amount of hair in the mane and tail, causing the skin to be kept damp and moist; and the accumulation of dirt and dandruff.

The first notice of this disease is thinness of the hair over the regions of the mane or root of the tail, which is caused by the animal rubbing or even biting at the parts affected. Sometimes even the skin is torn up and a glutinated, scabby surface of sticky, dirty, fetid matter exudes from the wounds. If this condition continues for any length of time it may extend over the entire surface of these parts, and the horse is left without mane and with but scanty hairs on the tail; or what is commonly known as rat-tail; which is a very undesirable condition to have one's animal get in. This condition is the result of absolute negligence on the part of the attendant, as it can easily be prevented by proper treatment, if applied early.

Dr. Rowe's Blood and Skin Tonic corrects faulty digestion.

TREATMENT—Treatment is only successful when begun early; as when the chronic stage is reached there is no sure cure. Treatment consists in cleansing the diseased regions thoroughly and in drying up the exudate. Take clean water and castile soap; wash the parts well and sprinkle with Dr. Rowe's Healing Powder two or three times a day, or at least sufficient times to keep the parts well covered. Whenever the scabs become loose they should be removed and the healing powder applied.

RINGWORM.

This is due to a parasite in the skin. The disease is characterized by the appearance of small, round, well defined, hairless patches. The center of these patches begin to heal, which forms a grayish colored crust. The outer border is puffed up and reddened; spread outward from the center in all directions, taking on the form of a ring; hence the name, ringworm.

TREATMENT—Apply Dr. Rowe's Veterinary Liniment and paint with tincture of iodine; alternate these two preparations every other day. Ringworm is usually killed with three or four days' treatment.

NETTLE RASH—URTICARIA.

This is an eruption in the form of small nodules, varying in size from that of a hazel-nut to that of a hickory-nut. Comes upon the neck, head, inner surface of the hind limbs and on the body. They are prominent, flat and soft; the hair upon them standing erect; itching is rare. It is most frequent in the

Dr. Rowe's Blood and Skin Tonic Relieves the System of All Impurities.

spring and fall; in young, vigorous animals, and is characterized by its sudden appearance. It at times involves the eyelids and lips, rendering them immovable; the nostrils at times puff up, causing breathing to become difficult, and the animal presents a very conspicuous condition.

TREATMENT—Give one of Dr. Rowe's Physic Capsules, to clean out the bowels, and give a dessert-spoonful of Dr. Rowe's Blood and Skin Tonic twice a day. Also apply a weak solution of alum water to the swellings, and give the animal rest.

SUMMER SORE.

This is a very obstinate sore, which appears during the summer months, whereby it derives its name, and is caused by a parasite (*Filaria Irritans*). The sores may be seen as small as a millet seed but may spread to the size of the hand. They may be found upon any part of the body, but usually upon the neck, shoulders and lower part of the limbs. They cause intense itching and the victim rubs and bites the parts until extensive raw surfaces are seen. In the midst of the soft masses are small, firm, rounded granulations; and when the soft material is scraped off, the surface presents numerous yellow points. In bad cases the tissue may be torn away until joints are opened and tendons are exposed. The hotter the climate, the more troublesome the disease. The life history of the parasite is not known, but probably enters the system with the drinking water.

TREATMENT—Place the animal in a cold, dark place; cleanse the wound with cold water; cut out or clip off the yellow points, and dust the surface with Dr. Rowe's Healing Powder sufficiently often to keep the surface covered. Tie the animal so that it cannot get at the parts with its mouth.

DR. ROWE'S HEALING POWDER.

This is a medicinal preparation and is especially prepared for healing cuts and wounds. It is manufactured from the best, dry antiseptics obtainable. These being carefully and scientifically combined produce a preparation that cleans out proud flesh, stimulates the growth of healthy tissue, forms a protective dressing and heals without scarring. It stops bleeding, heals cuts, wounds, collar galls, scratches, grease heel and all eruptions and abrasions of the skin. It is easily applied by means of the patent sifting top box, in which the powder is contained. It cools and heals very rapidly, and the animals will not lick or bite the sores when covered with this powder. They are in every way superior to liniments and salves for healing of all sores and wounds for which they are recommended and are much cheaper.

This is one of the most useful Veterinary Preparations that the farmer or stockman can have about the premises. It is GUARANTEED to do just exactly what we claim for it or your money cheerfully refunded. You are to be the user and likewise the judge.

Large Sifting Top Can 50 cents.

Sent prepaid upon receipt of price.

Manufactured only by

THE NORTHWESTERN MEDICINE CO.,

Keokuk, Iowa.

Record Breaking Results Are Obtained by Using Dr. Rowe's
Veterinary Preparations.

CRACKED HEELS—SCRATHES.

This is a disease commonly seen among work horses in rainy seasons, or animals that are subjected to considerable water wading. It usually sets in with swelling, heat and tenderness of the hollow of the heel; also with stiffness and lameness, which will be seen severe in some cases. Soon there is a yellowish, waxy discharge from the inflamed parts. The skin becomes dry and cracks open from results of its fevered condition and accumulation of the firm crust, resulting from the liquid that is thrown out, which causes the skin to become thick and ridgy. This condition is sometimes seen in front of the hock and behind the knee. Other causes of this disease are the accumulation of mud upon the legs; washing the legs with caustic soap; wrapping the legs in thick woolen bandages; clipping off the hair in cold weather; a weak heart and poor circulation; too much rich, heavy feed with lack of exercise; applying to the inflamed surface strong ammonia liniments, or any and all irritating liniments. Also caused by standing in manure and filth in low damp stables, thereby keeping the parts moist.

TREATMENT—The first step is to ascertain and remove the cause if possible; then give one of Dr. Rowe's Physic Capsules. Reduce the grain ration; give bran mash twice a day and give a dessertspoonful of Dr. Rowe's Blood and Skin Tonic three times a day. Cleanse the inflamed parts with warm water and castile soap; clip off the hair and remove all scabs and dirt; when thoroughly dry, dust well with Dr. Rowe's Healing Powder and apply a bandage over the parts. Repeat the treatment once a day.

The Best Money-Saving Proposition Ever Offered is Our Handy Veterinary Case.

GREASE HEEL.

This is a disease which affects the back part of the leg, usually below the pastern, and is associated with the growth of a parasitic fungus. It is recognized by a greasy like discharge, with a very disagreeable odor. It causes swelling of the limb; inflammation of the deeper part of the skin, or fibrous tissue beneath, which may form supuration and discharge puss through a number of small openings. Granulations spring up and form little nodules or grapes; the hair is shed, and the parts may appear as one mass of rounded, red, angry tumors, which bleed when handled and are covered with a fetid, decomposing discharge.

TREATMENT—In the mild form, treatment is the same as that for cracked heels or scratches. When grapes appear treat locally by keeping the parts clean; touch the grapes with a red-hot iron, burning them down to the skin; or they may be killed by use of butter of antimony, by touching them as they appear. When they are burned even with the skin, dust the parts with Dr. Rowe's Healing Powder. Continue this treatment until the discharge is stopped and the skin healed.

LYMPHANGITIS.

This is an inflammatory condition of the lymphatic vessels of the legs of the horse. It generally affects the hind legs, but may be seen in the fore legs and sometimes extends and covers the lower portion of the body, and at times the nose and lips. This disease comes on very suddenly and its attacks are exceedingly painful. Following the excessive inflammation, the legs and parts become swollen to enormous size.

**If You Value Your Stock You Cannot Afford to Be Without
Our Handy Veterinary Case.**

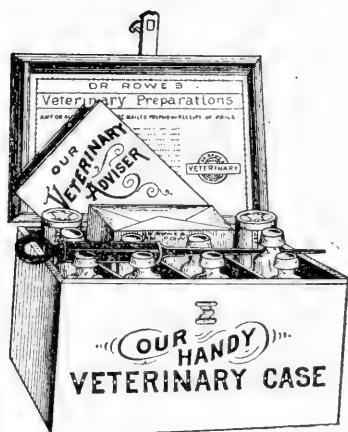
This disease is usually found in horses of a sluggish temperament. It is caused by heavy feeding and lack of exercise; sudden changes of the habits of the horse; allowing the horse to stand idly upon full feed after he has been steady at work; the blood being filled with excessive nutritive elements. Old and worked down animals that are put into extremely heavy work frequently go down with this disease.

Lymphangitis is usually ushered in by a chill; rise of temperature and with some uneasiness, but this may be overlooked. In a short time this is followed by lameness in one leg and swelling on the inside of the thigh. This swelling is increased until the whole leg is involved, sometimes reaching the body. Other legs may begin to swell, with the same amount of pain when the animal is asked to move or the leg pressed upon. The swelling at the upper part is very tender to the touch and the animal will make efforts to get away when you attempt to touch or handle these parts. The appetite is usually good in the beginning but gradually decreases as the disease advances until it may be entirely gone. Sometimes the lymphatic glands in the groin become swollen, break down and form abscesses, which causes the skin to slough until they break open and the puss escapes. At this period, sometimes the disease takes on a grave form, blood poison will set up which proves fatal. If treated early a recovery may be had in the greater number of cases. Successful treatment is as follows:

TREATMENT—Foment the limbs with hot water, in which one pint of vinegar is added for each gallon of water. Apply this vigorously for thirty

Dr. Rowe's Blood and Skin Tonic Corrects Faulty Digestion.

minutes; rub the skin dry and apply Dr. Rowe's Veterinary Liniment. Repeat this treatment twice a day. Give one of Dr. Rowe's Physic Capsules and give a dessertspoonful of Dr. Rowe's Blood and Skin Tonic three times a day. Give bran mash and good clean roughness; keep all grains away until recovery is had. If this treatment is applied early the disease will be under control within forty-eight hours, and the animal will make a speedy recovery.



The Best Money-Saving Proposition Ever Offered is Our Handy Veterinary Case.

DR. ROWE'S BLOOD AND SKIN TONIC.

This preparation is far superior to all other treatments for indigestion in all animals. It also has a favorable effect upon the mucous membranes of the respiratory tract, improves their nutrition and hastens absorption and repair in diseases of the air passages; such as Chronic Cough, Asthma, Broken Wind and Thick Wind. The majority of these diseases can be successfully cured if treatment is continued for sufficient length of time. It is the best known treatment for Scaly Skin Diseases, Rough Staring Coat and general Unthriftiness. It will entirely change the old rough hair for a new glossy coat. It is a *positive cure* for all skin diseases that are produced by blood changes, as all form of Eczema, Lichen, Chronic and Acute Urticaria.

If you have an animal that is Unthrifty, with a Poor Appetite, Rough and Staring Coat, Hide Bound and is continually Losing Flesh give him Dr. Rowe's Blood and Skin Tonic and you will be perfectly satisfied with the results.

If you have an animal that has Heaves, Broken Wind, Asthma or is Thick Winded you can cure him with Dr. Rowe's Blood and Skin Tonic.

If he has a Chronic Cough you can cure it with Dr. Rowe's Blood and Skin Tonic.

If you have an animal that has Pimples or any Skin Eruption you can cure him with Dr. Rowe's Blood and Skin Tonic.

Dr. Rowe's Blood and Skin Tonic is a liquid preparation that can be given in ground feed or drinking water as it has but slight odor and no disagreeable taste to the animal and is *guaranteed to give satisfaction* in all the named diseases and conditions or purchase price will be refunded.

Price 50 cents per bottle.

Mailed prepaid upon receipt of amount.

Diseases of the Digestive Organs

The diseases of the digestive organs are common in domestic animals. Their diagnosis is difficult on account of the number of organs to be considered in the process of digestion. In order that the process of digestion may be more readily understood we will enumerate the organs required for digestion. First we have the mouth, teeth and tongue; then the gullet or aesophagus, stomach, small and large intestines and rectum.

DISEASES OF THE MOUTH.

SORE MOUTH.

This is usually recognized by the animal refusing food and drink; slobbers dripping from the mouth, mucous membrane much inflamed with red, pitted ulcers at the base of the tongue and inside of the lips. At first there may be scattering sores, but in three or four days these are so increased in number that large patches are formed. These conditions are caused by stomach disorders, the bowels becoming constipated; and at other times produced by acute aphthous, or foot-and-mouth disease. The course is rapid, the animal losing flesh very quickly from lack of obtaining feed.

TREATMENT—First remove the cause by giving one of Dr. Rowe's Physic Capsules; then dust the ulcers lightly, two or three times a day, with Dr. Rowe's Healing Powder. If more convenient Dr. Rowe's Healing Powder may be dissolved in water, making a wash which may be put in the mouth with syringe. Use one teaspoonful of Dr. Rowe's Healing Powder to a pint of water. This treatment will effect a cure in all cases of sore mouth.

Dr. Rowe's Blood and Skin Tonic Cures All Skin Diseases.

whether produced by external violence or acute inflammation.

SLOBBERING.

An abnormal quantity of saliva in the mouth results from the fact that the animal does not swallow the secretions, or that abnormal secretions have accumulated. The saliva passes off in the form of foam, produced by working of the jaws.

The diseases named above are causes of this condition. It is also caused by feeding foods that contain a large per cent of acids; such as the clovers and grasses that are cut before they have entirely matured. This condition requires but little notice except that it is weakening to the animal, and where the animal is required to do severe labor, it is better that they have a change of feed and we recommend that you give a few doses of Dr. Rowe's Blood and Skin Tonic.

DISEASES OF THE TEETH.

The teeth require no medical treatment. An animal that shows irregularity in grinding its feed should be at once inspected by a veterinary dentist and have all diseased teeth removed. An animal cannot be expected to do well and thrive when its grinders are diseased, worn out and loose.

DISEASES OF THE GULLET OR ÆSOPHAGUS.

SORE THROAT—PHARYNGITIS.

This is found by more or less fever or swelling behind the ear and behind or between the lower jaws. The head is held up and the neck stiff. The appetite may be good but the swallowing very much

Dr. Rowe's Healing Powder Heals All Eruptions and
Abrasions of the Skin.

impaired, or at times impossible. When the animal tries to swallow water, and at times food, these are ejected through the nose. At other times there are symptoms of Laryngitis, with coughing and a rattling or snoring breathing. A swelling of the mucous membrane and larynx narrows or partly closes the air passage to the lungs. This stage is looked upon as a rather serious complication, but if early treatment is applied relief may be had and no serious effect left. On the other hand, if allowed to run its course, whistlers, roarers and thick-winded animals are the result. Swelling, even though slight, in this region should be looked upon as a serious condition and careful treatment applied at once. Excellent results are obtained by applying the following treatment:

TREATMENT—Apply Dr. Rowe's Veterinary Liniment to the throat twice a day; give a dessert-spoonful of Dr. Rowe's Distemperine three times a day. Should any enlargement remain after ten days' treatment, apply Dr. Rowe's Spavin Ointment to the enlargement, according to directions, and give the animal slop diet made of oil meal and corn meal, using one tablespoonful of oil meal to each pint of corn meal.

Our Handy Veterinary Case Contains Twelve of the Best
and Most Needed Veterinary Preparations.

DISEASES OF THE STOMACH AND INTESTINES

LACK OR LOSS OF APPETITE.

Animals refuse to eat food when they have fever and constipation; acute derangement of the stomach and liver; impaired digestion and scanty secretions.

It is caused by insufficient exercise; long and continued feeding of a single kind of food; feeding roughness of a hard, woody fiber (as over-ripe hay or grasses); irregular feeding and watering; also worms in the stomach and intestines.

Give one of Dr. Rowe's Physic Capsules and follow with Dr. Rowe's Blood and Skin Tonic according to directions. Change feed to good wholesome feed; feed and water regularly, and give moderate exercise.

COLIC OF THE HORSE.

The term colic is applied in a general way to pathological conditions of the stomach and intestines and causes the animal to manifest symptoms of pain. There are a number of forms of colic, but those most readily recognized are Spasmodic Colic, Flatulent or Wind Colic and Water Colic, all of which, as a rule, are caused by improper digestion.

SPASMODIC COLIC.

This is one of the most common forms of colic. It is caused by improper feeding of the horse; abrupt change of the feed, or over-feeding. Sometimes caused by watering immediately after feeding, or severe exercise immediately after feeding.

The most general symptoms are restlessness, pawing, lying down and rolling. The animal

Dr. Rowe's Blood and Skin Tonic Gives a Glossy Coat.

stretches out his legs; throws his head up and down; turns up his lips; gets up; turns around and lies down again; rubs his head and neck on the ground; strikes his belly with his legs; looks back toward the flank; rises to his feet; makes effort to urinate and defecate but without results. The animal may stand for a time as though relieved of pain; take a few mouthfuls of food as though his appetite relished it, but in a few minutes the pains return with a repetition of the same symptoms. In severe cases the animal shows intense pain, and the body is covered with a cold sweat. The breathing becomes faster and heavier; the eyes are more prominent and staring; denoting a fatal termination unless treatment is applied without delay. Under proper treatment the attacks of pain become fewer and farther apart and the animal soon recovers.

TREATMENT—Give Dr. Rowe's Colic Preparation according to directions. Blanket the animal and give walking exercise; at least prevent it from rolling as much as possible. Do not run the animal as too much exertion is detrimental. Give one of Dr. Rowe's Physic Capsules, which will remove the cause and prevent a return of the pain.

FLATULENT COLIC—WIND COLIC— BLOAT.

This form of colic is most frequently caused by a sudden change of feed; feeding after exhaustion or a long period of fasting; sour, mouldy food; rich concentrated or ground food, or any and all things that produce indigestion.

This disease is indicated by lack of vigor; dullness; slight pawing; lying down; enlargement of the abdomen or belly; slight escaping of gas from

Dr. Rowe's Healing Powder Cools and Heals Very Rapidly.

the rectum, and the animal shows symptoms of pain continuously. By striking upon the abdomen it is found to be tense and resisting. The animal lies down, rolls, and strikes the belly with its hind legs. Breathing is exhilarated, the eyes are staring, the mucous membrane becomes pale, with a loud beating of the heart, profuse perspiration, trembling limbs and staggering gait.

TREATMENT—Treatment must be prompt. Give one of Dr. Rowe's Physic Capsules and follow with a dose of Dr. Rowe's Colic Preparation every fifteen minutes. Keep the animal well blanketed in cold weather and apply Dr. Rowe's Veterinary Lini-ment to the abdomen. If the case is of some stand-
ing, warm water injections in the rectum will aid in expelling the gas.

WATER COLIC.

This is caused by watering an animal when heated; driving a heated horse through deep streams, cold rains, or allowing to stand in draughts of air.

Spasmodic pains come on suddenly; the animal pawing and rolling the same as in spasmodic colic, and making frequent efforts to urinate. The animal becomes very restless; steps to and fro; will kick at the belly; switch the tail; look back at the abdomen; groan; void urine and drop a thin stream, which shows the pain is at times in the bladder as well as the stomach. If the animal is not relieved in a short time it becomes worn out and dies.

TREATMENT—Blanket the animal well, give one of Dr. Rowe's Physic Capsules and immediately give a dessertspoonful of Dr. Rowe's Colic Prepara-
tion and in five minutes give a dessertspoonful of

Dr. Rowe's Kidney Preparation. Give these two preparations alternately every fifteen minutes until relieved.

OVERLOADING THE STOMACH—IMPACTION OF THE STOMACH.

The general cause of this dangerous condition is the animal getting to the oats bin, corn bin, wheat bin, rye bin, etc., and eating until the appetite is satisfied. This accident happens a great many times in the grain belt, and many animals are lost yearly through the lack of knowing what to do. There is a great difference in the appetites of animals. Some will digest a very large quantity while others are not capable of digesting a moderate amount of food. Heretofore the treatment of these cases have been very unsuccessful, but we give here Dr. Rowe's treatment which is sure to bring the desired results. All we ask is that you follow our instructions, and understand us correctly, but the treatment must begin within a few hours after the accident has happened.

Symptoms are that of a case of indigestion, with colic pains from the fifth to the twentieth hour, and if proper treatment is not given death usually results from the twentieth to the fortieth hour.

TREATMENT — Treatment should begin as promptly as possible. Give one of Dr. Rowe's Physic Capsules and follow this, every three hours, with one-half pint of raw linseed oil, putting in each dose of oil a tablespoonful of Dr. Rowe's Veterinary Liniment. Should the colic pains come on give a dose of Dr. Rowe's Colic Preparation every thirty minutes. Continue this treatment for at least twenty-four hours, even though the animal does not show much uneasiness, as it will be safe and sure.

Dr. Rowe's Healing Powder Is Easily Applied.

IMPACTION OF THE BOWELS.

This is caused by constipation or lack of secretions in the intestines, which causes the bowels to become plugged. It is brought on by feeding dry, mouldy or woody roughness; too long feeding of one kind of food, lack of watering at proper intervals; during cold and chilly weather when the animal does not drink sufficient water and with slight or no exercise.

Symptoms are loss of appetite; restlessness; pawing; lying down without rolling; getting up pawing; looking around at the sides; droppings coming away a ball at a time. There is also fever; redness of the eyelids; and the animal refuses to take water or food of any kind. These symptoms increase until pain is continuous and, unless proper treatment be given, the animal will remain in this condition until relieved by death. Sometimes lasting from three to five days.

TREATMENT—Give one of Dr. Rowe's Physic Capsules and follow in six hours with a dose of one tablespoonful of Dr. Rowe's Veterinary Liniment in a pint of raw linseed oil. Repeat this last dose every six hours until three doses are given. Where pains are severe give one dose of Dr. Rowe's Colic Preparation every thirty minutes. The physic may be repeated in thirty-six hours if the bowels have not moved sufficiently. Moderate exercise may be given and in cold weather a blanket applied.

VOLVULUS — GUT-TIE — TWISTING OF THE BOWELS.

These are terms applied to the bowels when they are knotted or twisted. This accident is rather a common one and frequently results when the ani-

mal rolls violently from pains in the bowels, as when attacked with severe colic.

Symptoms are similar to those of colic, with perhaps more straining. A positive diagnosis of this condition cannot be made while the animal is living.

TREATMENT—Treatment is same as for colic, but recovery is rare. Death usually results after all treatments have been given.

DIARRHOEA AND SCOURS.

Diarrhoea is a disease of the digestive apparatus, caused by a derangement of their function. This is produced by eating mouldy or musty food; drinking of stagnant water; being kept upon low, marshy pasture; exposure during cold nights; low, damp stables; drinking an excessive amount of water before putting to fast or heavy road work; and a morbid condition of the liver.

This disease is known by scouring, running off, or a watery discharge of the bowels.

TREATMENT—In the beginning, when the animal is yet strong, give one of Dr. Rowe's Physic Capsules which will sweep out the impurities; then follow with Dr. Rowe's Scour Remedy. Keep the animal quiet; blanket if in cold weather, and allow only a small amount of water at a time. Change the food, giving only well matured grain and roughness.

DIARRHOEA IN YOUNG FOALS.

In young foals this disease is caused, in the first few hours of their lives, by being constipated when foaled; or may be caused from the mother's milk if she suffers from indigestion, or if she is severely

**If You Value Your Stock You Cannot Afford to Be Without
Our Handy Veterinary Case.**

worked while the foal is a few days old. This disease is very fatal to young foals as the irritation, caused by scouring, soon sets up a fermentive process that causes a toxin in the bowels, which is very poisonous to the animal when taken up by the absorbing vessels and produces death in a few hours.

TREATMENT—Give the mother rest on light diet, and give Dr. Rowe's Scour Remedy to the foal until the pains have ceased.

DYSENTERY—BLOODY FLUX.

This is caused by keeping young animals on low, marshy pasture without other feed; exposure during cold, wet weather, or drinking stagnant water that contains large quantities of decomposed vegetable matter.

The symptoms are a fluid discharge mingled with blood or albuminous material, very offensive in odor and passed with much straining.

TREATMENT—Change food and give only pure water to drink. Give a light dose of castor oil and follow with Dr. Rowe's Scour Remedy according to directions.

BOTS.

These are a specie of worms found in the stomach and duodenum. They come from the nits of the gad-fly, which sticks its eggs upon the hair of the horse's leg and throat. These nits find their way to the stomach by the animal licking or biting itself, or by their falling into the feed trough and being taken into the stomach with the food. The shell is dissolved within four or five days after reaching the stomach. The bot is armed with a hook at

one end with which it attaches to the membrane, and with its sucker-mouth draws nutriment from the walls of the stomach and develops into a normal size bot in from six to eight months. When they have matured they drop with the feces to the ground and hide themselves away until they change their form to a fly or bee, known as the gad-fly or nit-bee. Their presence in the stomach is detrimental to the extent of making the animal unthrifty, by causing indigestion and frequently causing colic pains. They do not, as sometimes thought, eat holes in the stomach as they have no teeth or cutters to make holes with. They take their nourishment from the delicate, lacteal vessels of the mucous membrane of the stomach. The little hook that attaches them to the membrane causes irritation or a thickening around where it is attached, giving the membrane the appearance of having been eaten out. They do not cause any direct symptoms other than those of colic.

TREATMENT—Treat these pains as for colic. Drugs cannot be given strong enough to destroy the bots in the stomach without being detrimental to the animal. We can, however, make it disagreeable for them, causing them to let loose and get away. This can be accomplished by feeding Dr. Rowe's Worm Powder. After feeding the powder for two weeks, according to directions, give one of Dr. Rowe's Physic Capsules which will remove them from the bowels.

**All of Dr. Rowe's Veterinary Preparations Are Guaranteed
to Give Satisfactory Results.**

WORMS.

The intestines of the horse act as a harbor for a number of worms, which are sometimes found only few in number and again numerous. Some kinds are rarely seen and do not require mentioning here; but there are others that are found in large numbers, are quite common, and invariably cause a great amount of harm to the horse. Often times these parasites are the cause of other disorders but are generally overlooked as having anything to do with the disease.

The most common kinds are the *Ascaris Lumbricoides*, *Osyuris Curvula*, and *Sclerostoma Tetrocanthum*, which are taken into the stomach with the feed or drinking water and then multiply very rapidly. Worms derive their nutriment by suction from the intestinal secretions; consuming a good share of the nutriment that should go to the horse, causing the animal to show unthriftiness.

ASCARIS LUMBRICOIDES OR LARGE, ROUND WORM.

These resemble the earth worm in size and shape but occasionally are much larger, having been found as much as thirty inches in length and as large as a lady's little finger, being thickest in the middle and tapering at both ends. They are usually found singly, but are sometimes grouped together in masses, and infest chiefly the small intestines. These worms are principally found in colts from one to two years of age, and occasion a great amount of pain. When they are found in groups or masses they may plug the intestines and produce death.

Every Farmer Should Use Dr. Rowe's Veterinary Preparations.

The presence of these worms cause slight colic pains, frequent passage of manure, slight straining, rubbing the tail, licking the wall, and biting the wood-work. The appetite is depraved and even with plenty of good food the animal remains in poor condition, hide bound, pot-bellied, and does not shed his coat; the bowels are irregular, sometimes constipated and again diarrhoea is noticed.

SCLEROSTOMA TETRACANTHUM.

This parasite is better known as the Iceland Pony Worm. It is a small, red worm, (red while alive, but white when dead) measuring from one-fourth to five-eighths of an inch in length and about the size of an ordinary sewing needle. These worms are found in large numbers and infest the large intestines; generally in the cecum and colon. They are more rare than the large, round worm but cause more injury to the animal when they are present; as they multiply very rapidly and will in a few weeks' time produce grave symptoms.

The animal will show signs of unthriftiness; have a ravenous appetite, and the dung will be soft and mushy. Sometimes it requires close observation of the dung to discover the worms, as they may be found either scattering or in great numbers. Therefore, as soon as the first symptoms are shown, the dung should be carefully examined and if worms are found begin treatment at once.

OXYURIS CURVULA OR PIN WORM.

This is a common worm found in the cecum, colon and rectum. It is a semi-transparent or small white worm, measuring in length from one-half to

Our Handy Veterinary Case Contains Twelve of the Best and Most Needed Veterinary Preparations.

two inches; large at one end and tapering to a thread like appearance at the other.

These worms cause the animal considerable uneasiness; itching of the rectum, which is known by the animal rubbing its tail against the stall or fence. They are caught on the verge of the rectum when passing with the dung and are mashed, causing a whitish, dried substance to be left on and below the anus. The last named is the most marked symptom and is a sure sign of intestinal worms.

TREATMENT—For all forms of intestinal worms, in the horse, mix a tablespoonful of Dr. Rowe's Worm Powder in the feed, night and morning, for a period of one week, then give one of Dr. Rowe's Physic Capsules; skip one week and repeat. After giving the powder for two periods, watch results and repeat the treatment at any time you think the horses are again troubled with worms. For colts give one-fourth to one-half of the adult dose. The physic capsule may be made in proportionate doses for the colt by cutting with a knife. In cases where the pin worms are prevalent, make a strong soap water and with a syringe inject one or two quarts of same into the rectum, once or twice daily for a period of three or four days and repeat again in two weeks if thought necessary. This should be in addition to feeding the powder.

It should be understood that while the powder is being given no worms will be seen, as they are killed by the medicine and digested in the intestines. Avoid feeding hay from low, wet ground.

DR. ROWE'S WORM POWDER.

This is an especially prepared preparation for the eradication of worms in horses, sheep and hogs. It is composed of the best worm destroyers or anthelmintics known and is sure death to all forms of intestinal worms. It not only kills the worms, but destroys the eggs and removes them from the system. It tones up the system permitting the animal to thrive. Easy to give by simply mixing in the feed. These powders will be found to be very valuable to all stock raisers in ridding their animals of worms and prevent their return by giving a few doses occasionally, even though no worms may be seen. It will cleanse the stomach, invigorate the system and has been thoroughly tried under all conditions and we *guarantee* it to give absolute satisfaction or we will cheerfully refund your money.

Price \$1.00 postpaid.

Prepared only by

THE NORTHWESTERN MEDICINE CO.,

Keokuk, Iowa.

Dr. Rowe's Healing Powder Cools and Heals Very Rapidly.

WOUNDS AND THEIR TREATMENT.

Wounds are of different kinds and are classified as incised, lacerated, contused and punctured wounds. The external surface of the animal's body is composed chiefly of two kinds of tissue, highly organized and low form. The red flesh or muscle belong to the former; tendons, ligaments and cartilage to the latter. What is meant by highly organized tissue is where it is largely supplied with blood vessels, nerves and lymphatics, while low form of tissue contains very few blood vessels, nerves and lymphatics and are nourished by vessels that ramify over their surface. Muscular tissue heals readily, while tendons, ligaments and cartilage are slow to heal. In a wound that involves only muscular tissue it is reasonable to expect the wound to heal up very quickly, but if tendons, ligaments and cartilage are wounded, much longer time must be expected for these wounds to heal. No agents or drugs, no matter how highly they are recommended, can make one cell of the body for the tissue itself must build into repair; however, there are drugs that can greatly aid and hasten the process of healing. Of these we have the best and can furnish them at a nominal price, so that any wound the reader may have to deal with, by properly treating it under our direction, he will have a speedy recovery with as little blemish as possible. We will advise you to read carefully the following directions here laid down for treatment of the different wounds.

INCISED WOUNDS.

These are cuts made in the tissue with some sharp instrument, cutting blood vessels, nerves and tendons and may occur at any part of the body.

Dr. Rowe's Blood and Skin Tonic Gives a Glossy Coat.

Whatever parts are injured the process of repair or treatment will vary but little.

TREATMENT—First examine the wound to find the depth and direction and to see if there is any foreign substances in it, then remove all hair or dirt and wash carefully with water, to which has been added a little of Dr. Rowe's Bactericide, a teaspoonful to a quart of water. If it is a superficial wound, it is best to cleanse by letting the water run over it, but if it is a deep wound, use a syringe and wash out gently. If the wound is clean cut, lengthwise on the muscle, bring the skin together with a few stitches, but if the wound is crosswise or very ragged, stitching is no use. After the wound has been cleansed remove, with scissors, all fragments of flesh and skin. If bleeding from any considerable sized vessel it may be picked up and ligated (tied), but where the vessel cannot be found, and the wound is on the leg, pack the wound with cotton, after first cleansing and filling with Dr. Rowe's Bactericide, then apply a bandage around the leg tight enough to stop the blood. This can be done with a piece of new muslin, three or four inches wide and three or four yards long—a number of such bandages should always be at hand for emergency. After having rolled this bandage up it can be bound sufficiently tight around the leg to stop the bleeding. Dressing should be removed once a day and the wound cleansed with Dr. Rowe's Bactericide. Where a bandage cannot be kept upon the wound, cleanse with the above named preparation three or four times a day and follow each treatment by dusting the wound well with Dr. Rowe's Healing Powder.

All of Dr. Rowe's Veterinary Preparations Are Guaranteed to Give Satisfactory Results.

PUNCTURED WOUNDS.

Wounds of this nature are very dangerous on account of their tendency to close, thereby shutting up dirt and foreign substances in the tissue. These wounds are produced by some sharp pointed instrument, as running a pole or shaft into the shoulder or neck, or nails, bolts, etc., into the feet. All punctured wounds must be syringed with some good, antiseptic wash, to kill the poison that is always introduced.

TREATMENT—Open the wound well to allow the free escape of serum, water and pus, and inject a few drops (full strength) of Dr. Rowe's Bactericide. The wound should be opened and cleansed daily, as long as there is any discharge. Put a covering of some kind over the foot to keep dirt and gravel from working into the wound.

CONTUSED WOUNDS.

These are made by bruising of the skin and underlying tissue, muscle, bone, ligament and tendons, where there is no external opening or cutting of the skin. Sometimes these bruises are so severe that abscesses are formed, which break open and discharge pus. Other wounds, which are less severe, are noticed by a swelling of the parts; they remain as unsightly blemishes, have no tendency to go away and develop into callouses and bunches. See treatment for same.

ABSCESSSES.

These may appear upon any part of the body, and are caused by bruises or an unhealthy condition of the system.

Dr. Rowe's Healing Powder Heals All Eruptions and Abrasions of the Skin.

TREATMENT—Whenever they become soft in the center, they should be opened and all pus and sloughing tissue removed. Then the wound should be cleansed and washed daily with Dr. Rowe's Bactericide.

CALLOUSES AND BUNCHES.

These result from bruises and injuries to the underlying tissue, seen principally upon the legs near the joints. They may not interfere with the usefulness of the animal, but are unsightly blemishes and, as a rule, they can be removed by a few applications of Dr. Rowe's Spavin Ointment. Follow directions and repeat the application several times, which will cause an absorption and gradually remove the enlargement. This preparation will be very valuable to any person who has an animal blemished in this way.

COLLAR BOILS.

These are seen upon the shoulder, where the collar works; caused by bruising of the shoulder with the collar, especially when the horse has not been accustomed to work. These swellings come up very quickly, varying in size from that of a hickory-nut to that of a wash pan, and are invariably filled with a water or serum, in the beginning.

TREATMENT—They should be opened at once, by making a free incision at the lowest point of the swelling, allowing the fluid to escape. Syringe the cavity thus left with Dr. Rowe's Bactericide. This treatment should be continued as long as any discharge remains.

Sometimes callosities form in this region by treating these boils locally with vinegar, liniment, etc. This will carry away the liquid and leave a callous bunch, which the collar will keep sore and ulcerated, especially in warm weather, when the animal is kept constantly at work, and is the principal cause of sore shoulders.

These bunches can be permanently removed by keeping the collar off the shoulder and applying a few applications of Dr. Rowe's Spavin Ointment. However, during the working season, when these ulcers appear, they can be held in check or even healed by keeping both the collar and ulcer clean and applying Dr. Rowe's Healing Powder to them daily.

SORE NECK.

This is an ulcer on top of the neck, caused by a rough collar pad or too heavy a weight upon the neck, as working the horse upon the tongue and doing heavy backing without breeching. These wounds or ulcers are very troublesome to many horses and require considerable care on the part of the attendant to heal them up during the working season. However, this can be done by providing a smooth collar pad, keeping the neck clean and dusting with Dr. Rowe's Healing Powder twice a day; when the collar is put on and when it is taken off. It is not necessary for the horse to be laid up, as work will not prevent the healing.

DR. ROWE'S BACTERICIDE.

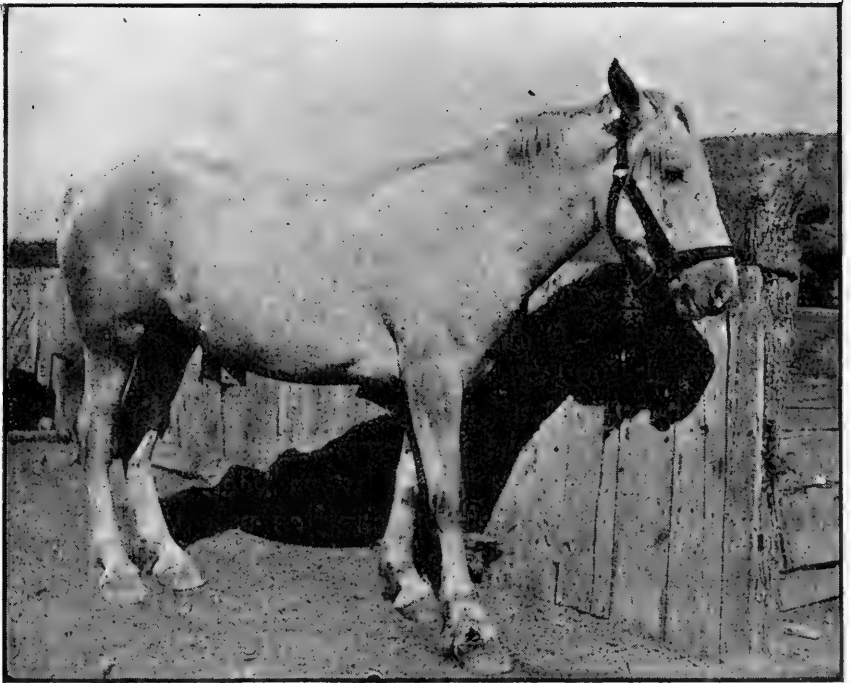
This is a preparation that has a wide field of uses. While it is not a cure-all, yet it will cure all kinds of wounds no matter how deep or how large they may be. It is a very strong antiseptic. It is double the strength of carbolic acid, creolin and other like preparations. Being very strong, it is a caustic when used without diluting and is always required to be diluted with water when healing qualities are desired, or it may be used undiluted when a caustic effect is desired. It is readily mixed with water, making the very best preparation for cleansing wounds.

One bottle of Dr. Rowe's Bactericide will make twenty-four pints of healing fluid which is far superior to all other preparations regardless of their name or cost. *It destroys the poison, kills the bacteria, heals the wounds without scar or blemish.*

When once you become acquainted with its excellent qualities as a healer you will not and can not afford to be without it. Always keep a bottle of Dr. Rowe's Bactericide on hand as you can not tell how soon you will have a valuable animal cut or injured which will require treatment, and the sooner the wound is cleansed of its impurities just so much quicker will the wound heal and the animal be free from danger.

So low is the price of Dr. Rowe's Bactericide that a large cut or wound can be healed and a valuable animal saved for a few cents. One bottle making twenty-four pints of the best healing preparation known, will be mailed postpaid upon receipt of price, 50 cents.

Prepared only by
THE NORTHWESTERN MEDICINE CO.,
Keokuk, Iowa.



QUITTOR, OR FISTULA OF THE FOOT.

Completely Cured by Using Dr. Rowe's Fistula Cure.

**The Best Money-Saving Proposition Ever Offered is Our
Handy Veterinary Case.**

FISTULA OF THE WITHERS.

This is a diseased condition of the withers, where there is a pus discharge or an open, running sore which has no tendency to heal. A fistula may be any place on the body, wherever there has been deep-seated inflammation that formed an abscess which has broken out and is running with matter or pus. When the cartilage of the foot is diseased and flowing pus, it is called Quittor; when behind the ears, upon the neck, it is called Poll Evil; and sometimes, when the pus is coming from the withers, it is called Thisalo.

It is a well known fact, by most horsemen, that fistula begins first with an abscess, and this is caused by bruising the tissue in whatever region it is established. The withers are of a prominent elevation, composed of the spines of the vertebra; ligaments that support the head and neck are attached upon these and some of the heavy muscles also have their attachment here and lie close along on each side of these spines, so that the animal often rubs the withers against the stall, when scratching the neck after a heated collar has been removed, or sometimes in reaching through a fence, rubs the withers against the bars, or may roll upon a rock and injure these parts.

The first stage of this disease is a swelling over the withers, which may appear either upon one or both sides. The swelling is quite tender and hot, and develops rapidly. Sometimes the inflammation is deep-seated and the development comes on slow, even weeks may elapse before they become very large. If the inflammation is superficial, it is not

Dr. Rowe's Blood and Skin Tonic Relieves the System of All Impurities.

long before they break open, discharge pus and soon heal up again. As soon as this occurs, the swelling begins again and in a short time breaks open as before—this process of gathering and breaking open will continue for years—each time more tissue becomes involved and instead of having only one opening there is frequently a number of openings. So it is with this disease, it never runs out or gets well of its own accord, but upon the other hand, the longer it runs the worse it gets. Deep-seated inflammations are slow in developing, they continue for some time without making any particular change, but later on pus will bore its way to the surface and will run and discharge for weeks.

The treatment varies as the disease varies, and each stage will require a different treatment; therefore, the preparation to be used depends entirely upon the stage in which treatment is to begin. A few years ago this disease was considered incurable by many, and even today, some think it better to destroy the animal in the beginning, rather than undertake the job of curing it. However, we find it comparatively easy, under our new method of treatment, which is so simple that any one, with the aid of our preparations, can cure the worst form of fistula. We treat the different stages as they appear.

FIRST STAGE TREATMENT—When the swellings first appear, clip off the hair, over the most prominent parts, of about one-half of the entire enlargement and apply Dr. Rowe's Spavin Ointment, rubbing it over gently for a few minutes. This may inflame sufficiently to cause some swelling, but will gradually subside after a few days. A scurf will raise after four or five days, to which apply a little

**Record Breaking Results Are Obtained by Using Dr. Rowe's
Veterinary Preparations.**

lard or vaseline to keep it soft. If pus has formed in the swelling, it will not be absorbed and necessarily has to open, which will allow the pus to escape. After three weeks, if the enlargement has not broken open, apply the ointment again, and continue to apply every three weeks until the enlargement has disappeared. As a rule, two or three applications are all that will be required. Should the enlargement break open, the ointment will do no good and you are ready for the second stage treatment.

TREATING FISTULA IN THE SECOND STAGE.

In this stage we have an open, running sore, discharging pus or matter. This condition exists because there is diseased tissue, bone, muscle or ligaments, and this discharge will continue as long as they remain diseased. To cure this disease we necessarily have to remove all diseased tissue, which will require some time, according to the amount of disease present.

First, explore these tubes, with a piece of wire, rounded on the end, or a long nozzle syringe, to find the direction and extent of same; then fill the syringe with Dr. Rowe's Fistula Cure, insert the syringe to the bottom of the pipe or pipes and inject the contents. Beginning on the third day after the above injection, make a solution of Dr. Rowe's Bactericide, one teaspoonful to a pint of water, and use as an injection once a day for two weeks. If at this time there is still a heavy pus discharge, use one injection of Dr. Rowe's Fistula Cure and follow with injections of Dr. Rowe's Bactericide (as before) for three weeks. This treatment, for three

**Always Have Dr. Rowe's Colic Preparation on Hand, for
When You Need It You Need It Quick.**

successive periods, will bring about a cure in the majority of cases, but may be repeated for as many periods as necessary.

POLL EVIL.

This is a fistula upon the neck, behind the ear, a region that is called the poll, and from this we get the name, Poll Evil. When upon this region it is much more dangerous to the animal than when it is upon the withers, because of its near relation to the brain, spinal cord, bursa between the bones of the head, and the vertebral column. Sometimes these articulations or joints become inflamed, and through the process of inflammation the neck is made stiff, which sometimes remains so even after the animal is cured, but these cases are very rare, averaging only about one per cent of all cases treated. Therefore, treatment should be given in all cases, as a large swelling over the region of the poll will cause the head and nose to be held outward and the neck stiff; this does not prevent the healing process and chance for recovery, and you are not able to tell whether this stiffness will be permanent or not, until the animal is entirely well.

TREATMENT—Read carefully the treatment under fistula and follow it closely.

QUITTOR.

Symptoms are lameness and a pus discharge from the side of the foot, which will continue for weeks.

TREATMENT—These fistulous tracks; or quit-tors, yield readily to treatment as advised for fistula of the withers, and a permanent cure can be had by this method of treatment.

**Dr. Rowe's Preparations Will Save Your Animal or Money
Refunded.**

DR. ROWE'S FISTULA CURE.

This is a preparation composed of drugs that have the properties of destroying and removing the diseases known as Fistula, Poll Evil and Quittor. It is made in a liquid and can be applied with a syringe thereby reaching all parts that are diseased. It is not an active caustic that destroys the living tissue, but only attacks that tissue which is diseased and causes it to slough away and pass out with the discharge. A few applications is all that is necessary to effect a cure.

The application consists simply in filling the syringe with Dr. Rowe's Fistula Cure and injecting the contents to the bottom of the cavity and can be applied by any one.

If you have a Fistula, Poll Evil or Quittor and are not using Dr. Rowe's Fistula Cure it is because you are not acquainted with its merits. With it you can always effect a cure, even after other remedies have failed. One bottle is sufficient to cure an ordinary case of Fistula, Poll Evil or Quittor. Other cases of long standing may require the second or even the third bottle. Therefore, we would advise not to discontinue treatment after using one bottle (unless the case is cured) but to continue until a complete cure is had. Dr. Rowe's Fistula Cure, like all other preparations manufactured by us, is sold with a *cash guarantee*. *Your money cheerfully refunded if not satisfied.*

Price per bottle, \$1.50.

Mailed prepaid upon receipt of amount.

Prepared only by

THE NORTHWESTERN MEDICINE CO.,
Keokuk, Iowa.

Our Handy Veterinary Case Contains Twelve of Dr. Rowe's
Veterinary Preparations.

WARTS.

These are bloody tumors, which appear upon all parts of the body. They are mostly seen on young horses, about the lips, eyelids, cheeks, ears and beneath the belly, and sometimes found upon the legs, which is quite common in the mule. They are practically a morbid growth of the skin, appear as a red, bloody tumor, grow very rapidly, having a great blood supply. The warts, in themselves, are not very sensitive, but as they are set in the skin, or hang by a neck from the skin, they are very painful when rubbed upon or struck severe enough to disturb their attachments. They are usually found in two forms, a flat tumor, or a rose like tumor with a short neck.

TREATMENT—The first forms are best gotten rid of by removing the whole mass; if this cannot be done, it is better to let them alone until they become raw, then touch them up with Dr. Rowe's Chemical No-Horn. Repeat the application after the scab has come off, if any of the wart is left. Two or three applications will remove the entire wart and the wound will heal over completely. In the other form, where they have the short neck, they can be removed by tying a silk thread tightly around the neck of the wart; this will choke off and leave a raw surface in the skin, which should be touched up once or twice with Dr. Rowe's Chemical No-Horn.

CANCEROUS WARTS.

A cancerous wart is a bloody tumor that continues to spread rapidly and has a very putrid odor.

Home Remedies Are All Right at Times, but too Many Times They Are Expensive.

These warts are incurable but may be held in check by a few applications of Dr. Rowe's Chemical No-Horn.

BLACK WARTS.

These are seen upon white or gray horses only. They are pigmentary tumors, being filled principally with black pigment. They are incurable, do very little harm and should not be disturbed, unless the skin is broken over them. When this occurs, they may be treated as for cancerous warts, and be benefited about the same.

WARTS FOLLOWING CUTS OR ABRASIONS OF THE SKIN.

We have another quite common form of tumors or warty growths that follow wire cuts or abrasions of the skin, on the lower part of the leg. They are produced by badly treated wire cuts or wounds, whatever the wound may be.

TREATMENT—To get rid of these warts, rub the parts once a day for a week with Dr. Rowe's Chemical No-Horn, using care that the secretion does not run down over the healthy skin. When once you have gotten rid of these tumors or granulations, keep the raw surface dusted with Dr. Rowe's Healing powder, which will enable the wound to heal.

I Have Seen Men When They Would Be Willing to Give
One Hundred Dollars for a Preparation That
Would Save Their Animal.



RED WARTS.

Removed by Using Dr. Rowe's Chemical No-Horn.

**All Who Have Our Hand Veterinary Case Say They Could
Not Get Along Without It.**

Diseases of the Kidneys.

The kidneys of the horse are two in number, one on each side of the body beneath the vertebral column. The right kidney is shaped like a french bean and lies beneath the heads of the last two ribs. The left kidney resembles a heart and lies beneath the last rib. These organs are filtering vats and relieve the blood of extra amount of water and impurities and are very easily affected by changes in the composition of the blood.

DIABETES—INSIPIDES.

EXCESSIVE SECRETION OF THE URINE.

This disease is often seen in the horse where an excessive amount of clear water urine is made daily, and the animal is very thirsty with great loss of strength and spirit.

Any agent, medical or elementary, and poisonous food which over stimulates the kidneys, as the reckless administration of diuretics or kidney stimulants, as unripe hay, new oats imperfectly cured, too much salt, or any mouldy or impure food may cause this condition. It is also caused by extreme heavy work of the animal; especially in colts that have not been thoroughly conditioned.

The animal drinks considerable water, at every opportunity, and passes water at every stop, or at least every few minutes. The water so passed is of a low density, without odor and deficient in solid extracts. This process is very weakening to the sys-

Better Send for Our Handy Veterinary Case. Do It To-day.

tem, the animal loses flesh rapidly, the flanks become tucked up, the fat disappears, the bones and muscles stand out prominently and the skin becomes tense and hide bound. The hair stands erect and is deficient in lustre, the eyes become dull and sunken, the spirits are depressed, the animal is weak and sluggish, sweats on the slightest exertion and is said to be of little account.

TREATMENT—Stop giving diuretics, cheap manufactured foods or the cure-alls—such as the great amount of stock foods on the market today—and give only good sound grain and hay that is not tainted with mould or improper curing. Give the animal rest for a few days. In the meantime, give one of Dr. Rowe's Physic Capsules, to correct the faulty digestion, and give Dr. Rowe's Kidney Preparation according to directions. Follow this with a treatment of Dr. Rowe's Blood and Skin Tonic.

BLOODY URINE—HAEMATURIA.

Bloody urine, as seen in the horse, is the result of one of two conditions: sprains or fractures in the region of the loins, or laceration of the psoas muscles. As a result of these injuries we have congestion of the kidneys, and bloody urine as a result of this congestion. Another common condition that sometimes exists is an over-acid condition of the food, which causes a congestion of the kidneys; this also leads to the escape of bloody urine. Blood may be presented in small clots or more or less well mixed with the urine.

TREATMENT—Remove as much of the cause as possible. If the cause is due to the poor quality of feed, this must be changed. If due to mechanical

injuries, strains and conditions of this nature, perfect rest or even putting the animal in a sling, to keep it from lying down, will be a great aid for its recovery. Give a treatment of Dr. Rowe's Kidney Preparation and apply Dr. Rowe's Veterinary Lini-ment to the loins. If the discharge is extreme, also apply cold water to the loins and keep the animal perfectly still.

AZOTURIA.

This is practically a blood disease, which comes on very rapidly. The animal appears as if struck with some great electrical shock and frequently succumbs to the disease in from three to six hours. Should it live over this period it will usually recover under proper care.

The cause of this disease is due to an over amount of albuminoids in the blood which produces a congestion of certain groups of muscles or of the entire system. The state of flesh which the animal is in has much to do with this disease, as animals that are well fed, in a fat, plethoric condition, not having had sufficient exercise to keep the system in a thorough active condition are more liable to be affected with this disease. Too suddenly putting an animal in this fat, plethoric condition to exercise and the anatomical features of the horse's liver also contribute to this malady.

One of the peculiarities of this disease is that when the animal is taken from the stable he is more frisky and in better spirits than usual, but before he has been driven one-eighth of a mile he may begin to show lameness in either one or both hind legs, lags back and if driven on, will break out in a profuse sweat. The lameness increases and the animal

Our Handy Veterinary Case Contains Twelve of the Best
and Most Needed Veterinary Preparations.

will appear (to one not accustomed to the disease) to have its leg broken, and if allowed to go on will soon give down in the harness. When down he will make great efforts to again get on his feet, in which he may succeed, but only to soon again go down and then not be able to rise although he make repeated efforts to do so. The animal will show severe pains in the region of the loins, strain to urinate but will not succeed in doing so, and may die in this which is the congestive stage. If both limbs are affected his chances for recovery are very poor, although he may live for weeks under good care.

TREATMENT—As only mild cases make satisfactory recovery we will advise that a veterinarian be called when the animal goes down, as he will be able to give advice whether it is practical to try treatment or to destroy the animal. In all cases that have not advanced so far, stop the animal from exercise, blanket, draw off the urine and keep him quiet. Give Dr. Rowe's Kidney Preparation, according to directions, and rub the limb with Dr. Rowe's Veterinary Liniment. This should be done at once after the first symptoms have appeared. The appetite is generally good and the animal should have a liberal supply of laxative food, such as bran mash and grasses. Oats and corn should be excluded.

ACUTE INFLAMMATION OF THE KIDNEYS.

Inflammation of the kidneys is caused by a great many radical changes in the system, some of which we will enumerate as follows: Poor quality of feed, feed which contains too much acid—which includes the mould, the fungui and the poorly cared for

**Dr. Rowe's Veterinary Preparations Are Easy to Give and
Leave No Bad Effects.**

grain—too sudden change of temperature of the body, cooling off too quick when hot or allowing to stand quietly after forced exercise, a diseased condition of the heart, stomach and liver; injuries and paralysis.

The disease manifests itself by stiffness of the back and staggering gait, especially with the hind limbs; difficulty in lying down and rising, the animals groaning under their effort; arching of the loins and puffing up of the flanks; looking back at the flanks, as if from colic pains; showing tenderness over the loins when pressed upon; urine is passed frequently and in small quantity, sometimes mixed with blood or puss. The legs swell at the pastern; sometimes there is a swelling of the sheath and swellings under the breast and between the fore legs; the animal loses flesh and is unthrifty.

TREATMENT—Treatment demands that the cause be removed if possible; give rest; blanket, if in cold weath; give one of Dr. Rowe's Physic Capsules; give a few doses of Dr. Rowe's Kidney Preparation and follow with Dr. Rowe's Blood and Skin Tonic; turn to pasture or give moderate exercise. Leave off all condition powders, as they will not do here but, on the other hand, may aggravate the condition.

PARALYSIS OF THE BLADDER.

This condition sometimes occurs in the horse when the animal has lost the power to stretch himself to stall and we have suppression of the urine, caused by some acute disease, as Tetanus, Rheumatism, Hemiplegia and Cystitis. It frequently occurs in the mare by injuries produced upon the bladder in foaling.

To Lose a Good Horse Means a Loss of Many Dollars.

The symptoms of this disease are a constant dribbling of urine down the legs or from the penis. This condition is looked upon as very serious.

TREATMENT—Treatment is only successful in cases where the cause can be removed. Use a catheter and draw off the urine. Give Dr. Rowe's Kidney Preparation once or twice a day.

STONE OR GRAVEL.

This is a condition resulting from the accumulation of calcareous deposits together in the bladder. They cause frequent pains, the animal strains to urinate and water comes away only a drop at a time.

TREATMENT—To remove gravel will require the assistance of a competent veterinarian.

NAVEL ILL—DISCHARGE OF THE URINE THROUGH THE NAVEL.

This condition occurs only in the newly born animal and is caused by non-closure of the urachus. This canal, which extends from the bladder to the navel, is normal in foetal life; it should close when the animal is born and the urine from the bladder should go out through the natural passage. Sometimes there is an imperfect closure of this canal—more frequently seen in the male than in the female—which is caused by the long urethra through the penis. At first there may be only a few drops of water coming from the navel but will soon increase to a stream. When in this condition there is considerable trouble for the foal, as the urine passing through this canal causes urea and different acids to be taken up by the blood which poisons the

You Can Prevent Loss by Disease if You Use Dr. Rowe's
Veterinary Preparations.

system of the little one. This manifests itself by swelling of the joints which, at first, may shift from one limb to the other, "practically a rheumatic condition." If proper treatment is not applied, these swellings soon become of enormous size, fill with water which soon turns to puss, break open and discharge water and matter; the animal weakens and soon succumbs to the disease.

TREATMENT—Treatment is simple and surely certain if applied early. It consists only in applying Dr. Rowe's Chemical No-Horn. Apply a small quantity of the paste to the navel cord sufficient to turn it white. This will contract the tissue and close the canal. It may be applied at different times, or as often as needed to keep the canal closed. Give the animal a few doses of Dr. Rowe's Kidney Preparation, keep it quiet, on a dry bed and allow to nurse frequently.

**You Should Always Have Remedies on Hand with Which
to Treat Your Stock When Necessity Arises.**

DR. ROWE'S KIDNEY PREPARATION.

This is a positive remedy in diseases of the urinary organs of all domestic animals. It is prepared for kidney, bladder and urethral trouble arising from irritation or inflammation. This preparation is used expressly for these troubles and has been found worthy and reliable in all cases. It is a stimulant, tonic and diuretic, relieving weakness of the back, and pain in the kidneys and bladder. It is eliminated from the system almost entirely through the kidneys and bladder and will correct frequent, scant, or bloody urine. Horses are more subject to these troubles than other domestic animals, being quite often found to be weak, unthrifty and with stocking of the legs due to the causes of these diseases. The majority of these animals may be put in a healthy and thriving condition by the judicious use of this preparation. Therefore we urge any farmer, stockman or horse owner having a horse suffering from these conditions to give them a treatment of Dr. Rowe's Kidney Preparation as same *is guaranteed to give satisfactory results or money will be refunded.*

Price \$1.00 per bottle postpaid.

Prepared only by

THE NORTHWESTERN MEDICINE CO.,
Keokuk, Iowa.

If Your Horse Is Lame Use Dr. Rowe's Spavin Ointment.

If a Horse Gets Cut Use Dr. Rowe's Bactericide.

Diseases of the Respiratory Organs

The organs pertaining to respiration are as follows: The nasal openings or nostrils; the sinuses in the head, communicating with the nasal chambers; the pharynx; the larynx; the trachea or wind pipe; the bronchial tubes and the lungs. The lungs are covered with the pleura which is reflected over the entire inside of the chest cavity. These organs are all lined with a delicate membrane, are easily injured by foreign substances and by extreme cold draughts of air.

TUMORS WITHIN THE NOSTRILS.

Sometimes small tumors are found in the nostrils, large enough to partially close the air passage. They can be easily removed by splitting them open with a knife and squeezing out the cheesy mass which they contain.

CATARRH—COLD IN THE HEAD.

Catarrh is caused by an inflammation of the lining membranes of the nose, which may be severe enough to break down and is then recognized by the discharge of a white, watery substance. Sometimes the inflammation reaches the sinuses of the head, then the discharge is of a sticky, yellowish, gleet substance, which stage is commonly known as nasal gleet. This condition may cause an enlargement or bulging of the frontal bones, a condition that is quite serious and will require an operation (trephining the sinuses) which can only be performed by a skilled veterinarian.

TREATMENT—In the mild form we recommend that you blanket the animal and give Dr. Rowe's Distemperine. Give good laxative feed, and if there is a tendency to constipation, give one of Dr. Rowe's Physic Capsules. Steam the nose or head, putting a teaspoonful of Distemperine in the water. This will heal the ulcers in the nose, lessen the discharge, and is far superior to the old method of smoking the nose with old rags, boots and shoes.

COUGH.

Cough in the horse is either acute or chronic. Acute cough is where it comes on suddenly, as from taking cold or from foreign substances taken into the lungs. Medicine, when given as a drench, may enter the wind pipe, and sometimes the animal is caused to breathe smoke, which causes an irritation of the lining membrane of the larynx, bronchial tubes and tubules of the lungs.

The chronic cough is where the acute form continues for some time, whereby, coughing so much causes sores or ulcers in the bronchial tubes and lung tissue, producing heaves and broken wind. There is coughing associated with a number of diseases, which will be treated under their respective heads and no further mention made here.

TREATMENT.—So long as there are sores in the lungs the animal will cough and these must be healed to affect a cure. If the cough is from a cold, give one of Dr. Rowe's Physic Capsules, to remove the poison from the system, then give Dr. Rowe's Distemperine according to directions. If possible turn the animal to pasture.

Every Farmer Should Use Dr. Rowe's Veterinary Preparations.

DR. ROWE'S DISTEMPERINE

Is one of the best cough syrups known to-day; it has great antiseptic properties, heals all ulcers in the lungs and prevents the chronic form, which is sure to follow unless properly treated. It is of great value in the chronic form of cough and in heaves. If given for sufficient length of time, and the animal have good, clean food, we guarantee it to give most satisfactory results.

ROARING.

This is a condition of the vocal cords in the larynx or of the cartilage of the larynx itself. The animal, when exercised or asked to exert himself, makes a loud sound when breathing. The vocal cords become paralyzed and there is also paralysis of the muscles, which prevents the expansion of the glottis when the animal must have more air in the lungs. When this condition exists there is a wheezing, whistling or roaring sound as the air passes through the larynx. Sometimes the opening shrinks or closes so that the animal cannot get its breath, and if forced to draw heavy loads will stagger, fall and suffocate from lack of air.

TREATMENT—Treatment is not satisfactory, and in mentioning this condition we do so that you may be warned and, thereby guard against buying an animal with these defects. In buying an animal look well to its wind and give it a fair trot before making the deal.

**When You Need It You Need It Quick. Write To-day and
Let Us Send You Our Handy Veterinary Case, Then
You Will Have it When Needed.**

DISEASES OF THE LARYNX AND BRONCHIAL TUBES.

This is an inflammation of the larynx, trachea and bronchial tubes, recognized by a cough which is at first dry and painful, but later becomes more moist. When the inflammation is severe the animal will show fever, exhaltated pulse, snoring, irregular breathing, and cough severely when brought from the stable into the open air. The animal appears dull, the appetite is partially or wholly lost and a general weakness is shown. In a few days they cough up considerable puss and slimy secretions, and the animal persists in standing throughout the attack. The animal is usually constipated and the dung is covered with a slimy mucous, which indicates a cold on the bowels. The animal shows more or less thirst and in some cases the mouth is full of saliva. The discharge from the nose increases in quantity as the disease advances, (this is usually a favorable symptom as it shows the irritated stages have passed) the cough becomes less rasping and less frequent and gradually disappears with the return of health.

TREATMENT—Place the animal in a well ventilated stall, blanket—a bucket of water may be set at its command—give as much laxative feed as it will clean up. Give one of Dr. Rowe's Physic Capsules and follow with Dr. Rowe's Distemperine. Continue this as long as they persist in coughing. The majority of cases will make a good recovery under this treatment.

On Every Farm Should Be Found Our Handy Veterinary Case.

PLEURISY.

This is an inflammation of the pleura or lining membrane covering the inner wall of the chest cavity. The inflammation may be single or double, affecting one or both sides of the lungs, generally seen upon one side only. The animal may have fever; a quick, hard pulse; a sharp, painful cough; stand with its head extended and with the elbows turned outward. A friction sound will be heard in the lungs like that of rubbing two rough surfaces together. This condition will continue for several days and, if the animal does not receive proper treatment, will be followed by Hydro-thorax (water in the chest cavity) which is rather a grave complication and may produce death.

TREATMENT—In the beginning apply a mild application of Dr. Rowe's Spavin Ointment to the inflamed area of the lungs, which is immediately behind the shoulder over the eighth or ninth rib. Give Dr. Rowe's Distemperine, according to directions, blanket the animal and keep him quiet.

PNEUMONIA—LUNG FEVER.

This is an acute inflammation of the lung cells, caused by suddenly taking cold or a mechanical injury of the chest cavity, or may be the complications of Bronchitis, Pleurisy, Choke, Influenza or Distemper. It is one of the most common and fatal diseases of the entire respiratory apparatus of the horse; is seen at all times of the year but occurs most frequently in the spring and fall seasons. It is always preceded by congestion of the lungs, which is the first stage of Pneumonia.

"Do Not Put Off Until Tomorrow What You Should Do To-day."

The first symptoms are a chill, followed by a fever and dullness, nostrils dilated, breathing hurried, heaving of the flanks and flanks tucked up showing a line along the flowing border of the floating ribs. This can be counted as always present in Pneumonia, and gradually increases in depth as the disease proceeds. The appetite is impaired, the eyes look wild and staring or dull and sunken, the breathing becomes more rapid and almost gasping. The body is covered with perspiration, which in most cases may soon evaporate, and the legs and ears may be found sometimes cold and sometimes warm, but in severe cases usually cold. The pulse may be found but is small and rapid, reaching at times one hundred or more. The temperature ranges from 103 to 107 degrees. The heart may be felt tumultuously thumping if the hand is placed against the chest behind the left elbow. If the ear is placed against the chest a loud murmur may be heard, or later on there may be a crackling sound. At times there is a complete filling up of the lungs of an exudate, which obstructs the tubules, then there is no sound or murmur heard until the absorption takes place, which may be in five or six days. When this resolution takes place and the tubules open up health is soon restored and the animal makes a good recovery. At times, instead of this favorable termination, while the lungs are plugged up, gangrene sets in and the animal soon succumbs to the disease.

TREATMENT—Treatment must begin with congestion, or first stage. Whenever this comes on the animal must be stopped from work and allowed to remain where he can get sufficient pure air. Rub the body briskly with the hand or cloth, blanket the

Let Us Tell You a Dose in Time Will Save the Animal.

animal and continue to rub the legs until circulation is well established. Give two ounces each of spirits of nitrous ether and alcohol, diluted in one pint of water, as a drench; repeat in one hour. If this preparation is not at hand give a pint of whisky in a pint of water and repeat in one hour. Follow either of these (which ever is used) with Dr. Rowe's Distemperine, giving a dose every two hours for the first twenty-four hours, then give a dose four times a day. Rub the chest walls thoroughly with Dr. Rowe's Veterinary Liniment and continue this treatment throughout the entire course of the disease. When the discharge begins from the nose steam the head twice a day, putting a teaspoonful of Distemperine in the water. The animal should have good, quiet quarters, be blanketed, and given good, laxative feed, such as bran mashes and oil cake. Change the feed often and give the animal what it will relish the best.

HEAVES—BROKEN WIND—ASTHMA.

This is a disease that is common in the central and middle states. Every horseman knows the symptoms of a heavy horse but there is much difference of opinion as to what causes or produces this condition. Some claim that it is a diseased condition of the pneumo-gastric nerve; and others, that cannot see so far, believe it to be caused by a rupture of the air cells of the lungs. However, it is well known by veterinarians that it is produced by feeding hay and clover which is raised in the Mississippi and Ohio river valleys. The same grasses raised in higher altitudes do not produce the disease, which gives evidence of the toxin existing in

You Have Heard the Old Proverb, "A Stitch in Time Saves Nine."

the districts wherein this disease is prevalent. When once the disease has taken hold there is but little chance for the animal to be entirely cured while kept upon this form of feed.

TREATMENT—Heavy animals may be permanently cured if fed upon straw and fodder, allowed to run upon pasture and be given Dr. Rowe's Blood and Skin Tonic with regularity.

THUMPS—SPASMS OF THE DIAPHRAM.

This is a disease seen mostly in young, weak animals. It is claimed by some to be heart trouble, but the heart is not the seat of this trouble; it is the diaphragm that causes the thumping. Sometimes there is congestion of the lungs which causes the diaphragm to be over-worked in forcing respiration; this weakens the nerves of the body, at times affects the nerves of the diaphragm and produces these spasms.

TREATMENT—To prevent this malady, keep the animal in a healthy condition, give abundance of sunlight and exercise, and treat the same as for congestion of the lungs.

Seize the Opportunity and Send for Our Handy Veterinary
Case.

Do It To-day.

Diseases of the Genital Organs.

The generative organs consist of the testicles, penis and urethra of the male; the ovaries, uterus, vagina and vulvas of the female. These organs are often diseased by mechanical injuries and by contagion.

CONGESTION AND INFLAMMATION OF THE TESTICLES.

These organs are often inflamed and swollen by being struck or mashed, and again they become hot, tender and swollen, the animal being in a plethoric condition.

TREATMENT—Bathe the testicles, once or twice a day, with the following astringent lotion: Actetate of lead two drachms, tincture of belladonna one ounce, tincture of arnica two ounces, water one quart. Give one of Dr. Rowe's Physic Capsules and keep the animal quiet.

DROPSY OF THE SCROTUM.

This may accompany the dropsical condition of the abdomen, inflammation of the testicles, or may result from castration. When none of these causes are present it may be caused by a dirty, filthy sheath or from inaction of the kidneys. Usually this is a dropsical condition, water having accumulated in the lower part.

To-day Is the Day to Send for Our Handy Veterinary Case.

TREATMENT—This condition can be relieved by making a few small openings in the point of the sheath, made through the skin by a small bladed knife. Other conditions may be relieved by washing of the sheath and penis with soap water and applying Dr. Rowe's Veterinary Liniment to the parts in general.



All preparations bearing this trade mark are sold under a cash guarantee.

You Know Not How Many Sick Animals You May Have
To-morrow.

Diseases of the Liver.

This is an organ in the horse that is rarely a seat of disease but, nevertheless, it has certain ailments as well as the other organs.

JAUNDICE—YELLOWWS.

This is a disease in which other organs are involved as well as the liver, but the liver gets the blame. The biliary canal, that carries the bile to the duodenem, is partially or totally closed stopping the passage of the bile to the intestinal tract; this allows the bile to remain in the liver. After the liver has become so full, this bile is picked up by the blood and distributed throughout the entire system, causing the yellowness which shows the existing conditions.

It shows first upon the white of the eye, giving it a yellowish appearance, and also on the mucous membrane of the nose and mouth; and if the animal is white skinned, the skin will show the yellowness of the bile in the blood.

TREATMENT—This condition may be relieved by giving one of Dr. Rowe's Physic Capsules, followed with a treatment of Dr. Rowe's Blood and Skin Tonic.

Record Breaking Results Are Obtained by Using Dr. Rowe's
Veterinary Preparations.

RUPTURE OF THE LIVER.

Rupture of the liver occurs in over-fatted horses, when they are too suddenly put to exercise. The animal not being in condition to stand the exertion, the blood rushes to the liver and causes a rupture of that organ. Sometimes ruptures occur in severe colic cases, where the blood rushes to the internal organs. Death occurs in a few hours afterward, depending upon the extent of the rupture.

DROPSY OF THE ABDOMEN.

This disease is caused by a deranged condition of the liver. The abdomen is filled with a watery fluid which causes it to enlarge, making the animal appear to be very much pot-bellied. Sometimes the abdomen is not much extended, there is a swelling of the limbs, the sheath of the horse, the bag of the mare, and a swelling appears beneath the abdomen and between the forelegs. These conditions are produced by the inflammation of the liver and kidneys, parasites, abscesses and fatty degeneration.

TREATMENT—Treatment is only satisfactory in the beginning, therefore do not delay. Give one of Dr. Rowe's Physic Capsules and repeat same every two weeks. Give Dr. Rowe's Blood and Skin Tonic three times a day. In the advanced stage of this disease we will not prescribe any treatment, but believe it would be humane to destroy the animal.'

**Opportunity Knocks at the Door of Every One.
Opportunity Is Knocking at Your Door To-day.**

FARCY.

This disease is characterized by a swelling of the lower part of the chest and abdomen. This enlargement is just beneath the skin and is caused by the serum or water of the blood getting out of the blood vessels and accumulating in considerable quantity. It is most generally seen in the mare during the latter stages of gestation (eight to ten months after having been bred) and at times is present just before foaling.

It is purely a blood trouble caused by the liver and kidneys being overworked to relieve the impurities resulting from pregnancy.

TREATMENT—Give good laxative food, such as bran mashes, new grain, good hay, etc., with moderate exercise. Give one dose daily of Dr. Rowe's Kidney Preparation and apply Dr. Rowe's Veterinary Liniment to the swelling.

The Best Money-Saving Proposition Ever Offered Is Our
Handy Veterinary Case.

Diseases of the Nervous System.

MAD STAGGERS—ACUTE MENINGITIS.

This is caused by excessive heat or cold, wounds upon the cranium or rupture of some blood vessel in the membrane covering the brain.

A violent pain in the head indicated by the animal flying back in the halter, plunging forward or running ahead regardless of what may be in the way, pulse rapid, breathing exhilarated or panting, the eyes contracted and the muscles of the body quivering. These symptoms all come on very suddenly, and if the animal does not receive immediate relief these deliriums and convulsions continue until the end.

TREATMENT—In mild cases, put the horse in a quiet place and apply Dr. Rowe's Veterinary Liment to the top of the head and neck. In the severe form of the disease treatment is not satisfactory.

SUNSTROKE—HEAT EXHAUSTION.

This condition is often caused by the direct sun rays and by the action of great heat, combined with the debilitated condition of the system.

Where the animal has been exposed to extreme heat for some time, the animal stops suddenly, drops his head and soon falls to the ground unconscious; breathing is deep and heavy, pulse is very slow and irregular, cold sweat breaks out in patches on the body and the animal often dies without regaining consciousness.

**If You Value Your Stock You Cannot Afford to Be Without
Our Handy Veterinary Case.**

TREATMENT—Treatment should begin at once. Apply ice or cold water to the head and along the spine and build a shade over the animal. Give one-half pint of whisky in a pint of water and give Dr. Rowe's Kidney Preparation according to directions. Give an injection, per rectum, of moderately strong ginger tea or of weak ammonia water. Give the animal a little cold water to drink, at short intervals.

SPASMS OR CRAMPS.

Spasms may result from irritation of the motor nerves or may result from irritation of any part of the sympathetic nervous system or from drugs; such as over doses of styrchnine or lead; and spasms or the neck and glottis by an over dose of aconite.

TREATMENT—Blanket the animal and apply hot fomentations to the limbs, and give a dose of Dr. Rowe's Colic Preparation and two ounces of gin in one pint of water as a drench. Repeat every thirty minutes until relieved.

SPASMS OF THE THIGH OR CRAMP OF THE HIND LEG.

Animals frequently, when they have been standing for sometime, try to step forward but are unable to raise the limb. Cramps of the legs may be of short duration or may last for several days. The leg becomes rigid and the muscles stand out. Suddenly the animal is relieved and the leg is brought forward as though nothing were wrong, but after standing for a few minutes will have the same symptoms as before.

TREATMENT—An anodyne liniment, like that of Dr. Rowe's Veterinary Liniment, applied to the leg freely will remove the cause. Give only moderate exercise.

Dr. Rowe's Colic Preparation Will Cure Colic.



TETANUS, OR LOCK JAW

**Four Days Standing Completely Cured With Dr. Rowe's
Blood and Skin Tonic.**

**Dr. Rowe's Colic Preparation Will Not Deteriorate with
Age.**

TETANUS—LOCK JAW.

This disease is characterized by involuntary and painful, continued contractions of the muscles of the face, neck, body, limbs and all muscles supplied by the cerebro-spinal nerves. It is usually caused by an injury, operation, deep wound or puncture, whereby the germ (Tetanus) is introduced by some foreign substance. The wound heals over and the germ develops in the serum drawn from the blood. They multiply very rapidly and throw off an excretion that is taken up by the nerves, which causes a contraction of the muscles and holds them rigid for a number of days if death does not cut short the life of the animal. Nail punctures are always dangerous, as the old, rusty nail is liable to carry the tetanus germ into the tissue; the opening being small, the wound heals over, making an excellent place for the germ to develop. All wounds of whatever nature, especially the deep wounds, should be thoroughly cleansed with an antiseptic to prevent the development of this disease.

The attacks may be either acute or sub-acute. In the acute form the animal becomes stiff in the limbs, body and jaws. The contraction of these muscles is so great that the animal shows great pain and the results are that the contraction increases until the animal is unable to chew its food or swallow, and after lying down is unable to rise. The animal usually dies in from two to three days. In the sub-acute form the disease comes on more slowly, the animal shows stiffness in the limbs and neck. When the head is raised the jaw pulls over the eye, appearing as partial blindness; the appetite is good

**Dr. Rowe's Colic Preparation Leaves the Digestive Track
Less Liable to Colic Attacks.**

and the animal eats and drinks without much inconvenience. This condition may continue, under proper care and treatment, for three or four weeks, which time it usually takes to make a complete recovery.

In the acute case treatment is of very little good as the disease runs such a rapid course that the medicine has not time to have any good effect; but in the sub-acute form there is a chance for recovery under the following treatment:

TREATMENT—Put the animal in a comfortable stall where it will not be molested by man or other animals. If the infected wound can be located inject into it Dr. Rowe's Bactericide. Give one of Dr. Rowe's Physic Capsules and give Dr. Rowe's Blood and Skin Tonic twice a day.

DR. ROWE'S VETERINARY LINIMENT.

This is a liniment especially prepared for horses, cattle, sheep and hogs. It is the result of many years' practice of Veterinary Medicine. It is a liniment that quickly penetrates to the seat of injury, whether it be in the muscle, bone or joint. It kills the pain and relieves the tenderness and soreness of the afflicted parts.

It is a great antiseptic and germ killer, prevents lock jaw, relieves cramps, itching, destroys the poisonous bites and stings of insects, stops rubbing of the mane and tail and will soften and heal old wounds. It is the most efficient remedy for strains, bruises, stiffness, rheumatism, swollen joints and enlargements of all kinds.

It is a preparation that will be found very useful at all times and should be always at hand. When once you know its virtue you will never be without it. It costs but little and each bottle saves many times its cost.

Price 50 cents per bottle.

Sent prepaid upon receipt of price.

Manufactured only by

THE NORTHWESTERN MEDICINE CO.,

Keokuk, Iowa.

DISEASES OF THE EYE.

The eye consists of a ball and its appendages. The parts of the eye with which we have to deal is the eyeball and the eyelids.

INFLAMMATION OF THE EYELIDS.

The eyelids become inflamed from various causes; foreign substances getting into the eye; wounds or injuries of the eye, mechanical cause; when the lids become inflamed they appear fiery red and sometimes swell so that the inside of the lids are forced out, exposing the mucous membrane. First there is a watery discharge, and, later on, pus accumulates in the corner of the eye.

TREATMENT—Use Dr. Rowe's Eye Lotion according to directions. This is a soothing application which will relieve the congested mucous membrane and prevent blindness.

CONJUNCTIVITIS—ETERNAL OPHTHALMIA.

This is an inflammation of the superficial structure of the eye; caused by colds, injuries, scratches upon the eyeball and foreign bodies that lodge between the lids.

It is known by watering of the eye; the eyelids will be closed or partially closed by the swelling; the ball becomes bluish gray or a white scum may be seen upon the eye, which will exclude the light from the interior of the eye and the sight is almost gone. Pus may form in the eye, sometimes the eyeball will take on a yellowish tinge and bulge outward, may break and discharge a pus. Early treat-

Record Breaking Results are obtained by using Dr.
Rowe's Veterinary Preparations.

ment is always desired in these cases as it is more successful than when the disease has run on for some time.

TREATMENT—Bathe the eye with warm water three times a day and put a few drops of Dr. Rowe's Eye Lotion in the eye. Keep the animal in a dark stall during the day, giving exercise in the evening.

WHITE SPECKS AND ULCERS UPON THE CORNEA.

This is a condition usually following a severe case of conjunctivitis. Whenever these spots appear upon the eye and the eye is badly clouded, it will require special treatment.

TREATMENT—This will be to touch the specks daily with a soft feather dipped in a solution of three and one-half grains nitrate of silver in one ounce of distilled water. This should be applied until the inflammation has subsided, then use Dr. Rowe's Eye Lotion as for conjunctivitis.

PERIODIC OPHTHALMIA — MOONBLINDNESS.

This is an inflammatory condition of the interior of the eye and is a very common disease of the horse in some parts of the country, especially in the Mississippi valley. It is a constitutional disease and arises from some cause not well defined at present. Low, overflowed, cultivated districts, as well as overheating the animal and allowing to cool off quickly are named as some of the causes, but as far as is known to-day, heredity is the principal cause.

The attacks usually come on quickly, the horse may be all right in the evening and by morning one

or both eyes may be affected. The animal holds the eye shut, giving the appearance as if having been struck in the eye or as if some foreign substance had entered, causing severe irritation. The eye looks dull and much inflamed, a scum soon appears upon the ball, clear water runs down the face from the eye, the ball takes on a reddish or yellowish appearance, the veins over the cornea become large and visible. It remains in this condition for several days, partially clears up in the course of a month or so. These same symptoms are repeated for a number of times.

TREATMENT—In some cases there are no cure, but same can be greatly reduced in severity if treated early with Dr. Rowe's Eye Lotion. This will subdue the inflammation and prevent the destruction of the eyesight. When the attack comes on, keep the animal in a moderately dark place, give one of Dr. Rowe's Physic Capsules, and apply Dr. Rowe's Eye Lotion to the eye three times a day.

PUNCTURES OR WOUNDS OF THE EYEBALL.

This is an accident which quite frequently happens by jabbing a weed, straw, etc., against the eyeball.

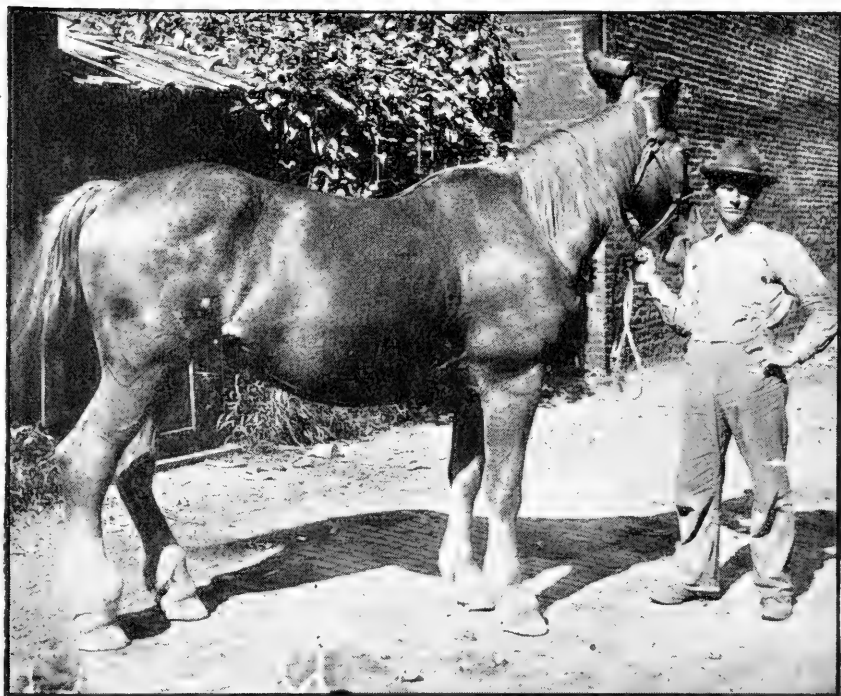
The animal keeps the eye closed, and at first there is a discharge of water from the eye, which changes to pus within twenty-four hours.

TREATMENT—Bathe the parts with cold water and fill the eye with Dr. Rowe's Eye Lotion. This should be repeated as often as three or four times a day until the inflammation subsides.

Dr. Rowe's Healing Powder Heals All Eruptions and Abrasions of the Skin.

WARTS ON THE EYELIDS.

These are common, and sometimes very difficult to remove. If they extend out from the skin, put a ligature around them, allowing it to remain until the wart falls off. If they are flat warts, make the surface raw by scratching with a knife or rasp, and touch up daily with strong acetic acid.



ENLARGEMENT OF PASTERN

Removed by Using Dr. Rowe's Veterinary Liniment

All of Dr. Rowe's Veterinary Preparations Are Guaranteed
to Give Satisfactory Results.

DR. ROWE'S EYE LOTION.

There is no preparation that will save the farmer or stockman more dollars than Dr. Rowe's Eye Lotion, as hundreds of animals go blind yearly for the want of proper treatment.

Dr. Rowe's Eye Lotion is a cure for all congestion, inflammation, ulceration and wounds of the eye. It is an antiseptic, astringent and a soothing application for this delicate organ, and will not produce any injurious effect.

Dr. Rowe's Eye Lotion will prevent blindness in Ophthalmia, Pink Eye and all general eye affections. It is *guaranteed to give satisfaction or money will be cheerfully refunded.*

Price 50 cents postpaid.

Prepared only by

THE NORTHWESTERN MEDICINE CO.,
Keokuk, Iowa.

Dr. Rowe's Healing Powder Heals All Eruptions and
Abrasions of the Skin.

Contagious Diseases.

INFLUENZA — EPIZOOTIC — CATARRHAL FEVER.

This is a contagious and infectious disease of the horse and mule, affecting the mucous membrane of the air passages and depressing the vital force of the animal; it diseases the blood, brain, intestines, lungs, heart, limbs and feet. One attack usually protects the animal from future ones of the disease, but not always. A complete recovery is not always to be had as some organs are liable to be left diseased.

Influenza is caused by an infectious agent, which as yet has not been isolated, but is supposed to be one of the Streptococcus germs (and a very active one indeed) which enters the system through the inspired air. The disease is readily communicable from one animal to another. A healthy animal is inoculated by coming into contact with diseased animals or in stables where the disease has been recently. The disease develops after being exposed for four to seven days. The duration of the disease is on an average of from six to ten days, provided the animal has proper care and treatment, otherwise it may be from two to six weeks. Sometimes the course of the disease is interrupted by a complication, such as pneumonia, pleurisy, asthma, brain trouble, diarrhoea and founder.

**You May Regret It if You Wait Until To-morrow to Send
for Our Handy Veterinary Case.**

The disease comes on quickly, may reach its height in twenty-four hours. First symptoms are loss of appetite, depression and weakness, high pulse, which gradually increases to 100 beats per minute, high fever, sometimes the temperature reaching 109° F. Breathing is hurried and sometimes very laborious, the animal holds its head low, has a sleepy look in its eyes, trembles while standing and staggers when made to move. The mucous membrane of the mouth, nose and eyes are reddened and much inflamed. The appetite is only slight and at other times wanting, the animal shows thirst and drinks considerable water, the bowels become constipated and the urine scant, in some cases the legs swell to enormous size, but this gradually subsides in a few days. The hair becomes rough and stands upon end, the animal loses flesh very rapidly, and takes on the appearance of an old, worn out animal.

Influenza has been called fever of the horse, pink eye, typhoid fever, epizootic, hepatic fever, shipping fever, red fever, mountain fever, catarrhal fever, and other names to suit the different localities, but in all it is the same disease. Many attempts have been made to clear up the confusion caused by the giving of so many names to this infectious disease of the horse. The disease is mentioned in the fourth century of our era, in the fourteenth century it was known in Italy, in 1648 it was seen in Germany, in 1711 it was seen in Prussia, again it was seen in Italy in 1729 and was described by Husinger. It existed in London in 1732 and covered all of England in 1803 and from this time until 1872 it ex-

**Our Handy Veterinary Case Contains Twelve of the Best
and Most Needed Veterinary Preparations.**

isted all over Europe. In 1873 it crossed the water and invaded the United States under the name of pink eye, and has been continuous in the United States up to the present time. In 1900, during the summer months, it took on an active form and was universal among the horses in nearly every state in the Union, since that time it has existed in nearly every locality, in scattering cases, sometimes in the mild form and others the most aggravated.

TREATMENT—Of all treatments that have been used in this disease, Dr. Rowe's Distemperine has been the most successful and we can heartily recommend it for the above diseases, whether it be in the acute, chronic or complicated stages. This treatment consists in giving the animal rest, a well ventilated stall; supplying with good, pure food and water; blanketing in cold weather and turning out in a shady lot in warm weather. Commence in the beginning with full dose of Dr. Rowe's Distemperine every three hours until the fever falls to normal, then give a dose three times a day until the animal recovers. While the animal is convalescent, give Dr. Rowe's Blood and Skin Tonic. Should the bowels become inactive and constipation present, give one of Dr. Rowe's Physic Capsules, and we guarantee that every case will recover if this treatment is carried out in full.

STRANGLES—DISTEMPER.

Strangles of the horse is an acute, infectious disease, which attacks the mucous membrane of the respiratory tract, principally the nose, sinuses of the head and pharynx or throat, producing a catarrhal condition of the membranes and a superated inflam-

Dr. Rowe's Blood and Skin Tonic Corrects Faulty Digestion.

mation of the lymphatic glands in this region. The infectious agent is the *Streptococcus equi*. This germ passes at once into the blood and sets up a high fever, then becomes localized in the lymphatic system, is highly contagious and can be carried on the clothes, or other vehicles, from one animal to another. It may break out in a stable and no other case in the neighborhood, the contagion having been brought in in some unknown way, as the germs may remain in the stable for a long period, and then attack the colt or horse when conditions are favorable. The horse seldom takes this disease twice, if he does, the second attack will be mild. Some seasons the outbreak is of a very mild character, in others it may take on a malignant form and cause many deaths in a locality.

Like all other infectious diseases distemper begins with an intense fever. There are signs of catarrh, the animal is dull, has a cough, sore throat, and when it attempts to drink, the water passes back through its nose, its head is poked out and frothy saliva comes from the mouth, sooner or later, a swelling appears between the jaws or sometimes at the back of the jaw; when this occurs the animal has great difficulty in swallowing food and water. This condition causes the animal to lose flesh rapidly, is more apt to take cold, which will be followed by a severe complication. Some of the complications are Dyspnea (labored breathing) and abscesses forming in different parts of the body, sometimes upon the neck and shoulders and others upon the legs or upon the joints and at times upon the head, nose and lips, which causes the lips to become immovable. Abscesses, as a rule, form in all of these swellings,

Dr. Rowe's Healing Powder Is Easily Applied.

often break open and discharge a large amount of creamy-like pus. When the fever is increased, appetite lost, the breathing fast and somewhat labored there is occasion for alarm, as it indicates that something has gone wrong inwardly; abscesses form in the chest cavity, the disease takes on a more aggravated form and the animal soon succumbs.

TREATMENT—In the early stages of Distemper, place the animal in a warm, well ventilated stable, clothe the body and bandage the legs; if the throat is sore, rub it well with Dr. Rowe's Veterinary Lintment. If there is a heavy discharge from the nose, steam the head, putting a teaspoonful of Dr. Rowe's Distemperine in the water, and give Dr. Rowe's Distemperine according to directions. Give the animal such food as it will eat. If abscesses form, poultice them with warm linseed poultice, changing once a day. When the abscesses become soft, open them and inject a few syringefuls of Dr. Rowe's Bactericide. If any enlargements remain after the animal has recovered, apply Dr. Rowe's Spavin Ointment.

DR. ROWE'S DISTEMPERINE.

This is the most scientific preparation known for the cure and prevention of contagious diseases of domestic animals, such as Distemper, Influenza, Pink Eye, Catarrhal Fever, Shipping Fever, Contagious Pneumonia and Bronchitis. These diseases are all produced by poison germs which enters the system through the air or with the food and drinking water. After the germs have entered the system they multiply very rapidly, until the blood and lymph is filled with the poison. In order to treat these diseases successfully we were forced to secure a preparation that would destroy the poison and at the same time one that would not produce any injurious effect to the animal. Antiseptics are the only drugs that will destroy poison germs. We were surrounded by external antiseptics or drugs, but these cannot be given internally strong enough to destroy the germs in the system without producing death to the animal. But through scientific investigations Dr. Rowe discovered Distemperine, which is the most wonderful antiseptic that can be taken into the system in sufficient quantity to destroy these poison germs. Distemperine, unlike other antiseptics, gives more life and vigor to the animal instead of injurious effects.

Distemperine is not only an antiseptic but it is also a febrifuge which lowers the temperature of the body; reduces the fever, which is always present in these diseases; enabling the animal to withstand the strain brought on the system by these diseases.

It has also a diuretic effect, acting upon the kid-

"Do Not Put Off Until Tomorrow What You Should Do To-day."

neys and has a stimulating effect upon the bowels, thereby aiding the system to throw off impurities through these channels.

Distemperine, by these actions, reduces the vitality of the germs, increases the resisting power of the system and cuts short the duration of disease.

Distemperine is a liquid made from grain and plants. The drugs which make up this preparation are chemically combined to give the fullest effect of each ingredient. It is regular in its action and can always be relied upon to give satisfactory results.

Dr. Rowe's Distemperine gives best results when given early, but even in advanced stages, where complications have set in, excellent results can be obtained by its judicious use.

Even though the case may look hopeless, do not fail to use Dr. Rowe's Distemperine as many of these cases have been cured with but one bottle, and this preparation is guaranteed to cure or your money will be refunded.

However, we do not guarantee that one bottle will be sufficient every time, and should one bottle fail to cure do not hesitate to order the second bottle and continue treatment until you have given it a reasonably fair trial as our guarantee stands good in all cases.

Price per bottle 50 cents.

Mailed prepaid upon receipt of amount.

Prepared only by

THE NORTHWESTERN MEDICINE CO.,

Keokuk, Iowa.

On Every Farm Should Be Found Our Handy Veterinary
Case.

Lameness in the Horse.

Lameness in the horse varies according to the injuries produced and the causes are far more than we can enumerate, therefore we will be brief and endeavor to give a correct and easy way to locate the seat of injury and explain the best method of removing them, based upon our own experience and the experience of many others.

HOW TO LOCATE AND REMOVE LAMENESS IN THE FORE LEGS.

When an animal is injured in the muscle, nerve, joint, bone, tendon or foot, he favors the injured member by trying to keep from using it, or to use it as little as possible, and thus produces what we call lameness. Thus, if a horse has been injured in the shoulder, it must necessarily be some violence severe enough to prevent the parts from performing their duty; in so doing it is evident to the trained eye what part is injured.

SHOULDER LAMENESS.

When a horse is injured in the shoulder, if the injury is severe, he will not be able to bring the leg forward in a straight manner as he would when normal, but swings it outward and not so far; this causes him to throw his head up and down when the opposite or well leg strikes the ground. This movement varies with the severity of the injury; when standing, if the injury is severe, the whole leg will drop down and rest upon the toe, but when the injury is less severe, he will set his foot forward, flat upon the ground, and will rest considerable weight upon it. With these symptoms present you will make no mistake in calling it shoulder lameness.

Dr. Rowe's Healing Powder is easily applied.

TREATMENT—Treatment will depend upon how the injury was produced. If the injury came from running into some object, and the shoulder is very feverish, blanket the shoulder and apply hot water, three or four times a day, for the first or second day, and apply Dr. Rowe's Veterinary Liniment after each treatment to remove the fever and pain; then apply Dr. Rowe's Spavin Ointment, not to the entire shoulder, but to a small area about the size of a tea-saucer, just behind the shoulder joint—not at the top of the shoulder, as there is no joint in that region. Give the animal continued rest. The ointment may be repeated after two or three weeks.

If the injury is from over exertion or a sprain, and there is no fever present, that is, the skin feels no hotter to the hand than other parts of the body, apply Dr. Rowe's Spavin Ointment, as before directed; and give the animal rest, in stable or pasture.

SWEENY OF THE SHOULDER.

This is an atrophy, or shrinking away of the muscles of the shoulder, caused by straining of the muscles, or resting of the limb when favoring some other injury.

TREATMENT—To treat sweeny, rub the parts the parts daily with Dr. Rowe's Veterinary Liniment for one week, stop its use for one week, then apply again as before, giving the sunken region a good, severe rubbing after each application. Continue in this manner for a number of weeks. If the animal is lame, it should have complete rest, but if not lame may be given ordinary labor.

If you value your stock you cannot afford to be without
Our Handy Veterinary Case.

SHOE BOILS.

These are caused by the animal lying with its elbows upon its heels, bruising the elbow sufficiently to cause an inflammation of the parts, producing a large fluctuating swelling, which is filled with a serum or water. Shoe boils may or may not cause lameness.

TREATMENT—To get rid of the inflammation, is best done by making an incision into the boil. On the median line (the lowest point of the swelling) make an opening large enough to let the serum or water out—if of long standing the serum or water will be changed to pus—insert the syringe into the cavity and inject a solution of Dr. Rowe's Bactericide, one teaspoonful to a pint of water, once or twice a day, as long as any cavity exists. Should any enlargement still remain, apply Dr. Rowe's Spavin Ointment to reduce the enlargement. It is well to remove the shoe and wrap the foot with a piece of blanket at night, to prevent the animal from lying on the heels.

CAPPED OR ENLARGED KNEE.

Horses sometimes produce an enlargement on the knee by striking it against some hard object, as the stall or bars, on the neckyoke when it is carried too low, or from falls upon hard ground, causing a swelling on the front part of the knee. If severe it may cause lameness.

TREATMENT—When fevered, apply hot fomentations and apply Dr. Rowe's Veterinary Liniment when cooled down. If any enlargement remains after ten days, apply Dr. Rowe's Spavin Ointment.

**Opportunity Knocks at the Door of Every One.
Opportunity Is Knocking at Your Door To-day.**

SPLINTS.

These are bony enlargements, below the knee at the side of the shin bone; sometimes located close under the knee. To detect a splint, begin at the lower part of the knee, a little behind the shin bone, rub the thumb or fingers down on either side, where you will detect an enlargement. If located near the knee, they will invariably cause lameness, which is of such a nature that the animal becomes more and more lame the longer it is driven. They are caused oftentimes by injuries upon this region or by steady driving upon hard roads; produced only upon the young horse and seldom seen in animals after they are seven years old.

TREATMENT—In the beginning, foment the leg the same as prescribed for the knee. After all the fever and inflammation has subsided, you can remove the enlargement by using Dr. Rowe's Spavin Ointment, repeating the application every third week until the enlargement has disappeared.

STRAINED TENDONS.

The tendons are injured by over exertion, drawing heavy loads, making long drives or striking them with the hind feet, and is known by swelling of the cords. This lameness continues to increase as the animal is worked or driven, and with the enlargement of the cords, there can be no mistake in the diagnosis.

TREATMENT—Where there is severe heat and tenderness, when the parts are manipulated, treatment should consist in removing the fevered condition by hot fomentations. This can be readily done by applying a bandage and keeping same saturated with hot water, from one to three hours. After the

Dr. Rowe's Healing Powder cools and heals very rapidly.

fever has been removed, if any enlargement still exists, treat the same with Dr. Rowe's Spavin Ointment. The animal should have complete rest, but if it is necessary to work the animal before it is entirely cured, put on shoes with heel corks only, this will raise the heels and lessen the tension or strain upon the tendons.

SESAMOID LAMENESS.

This lameness in the horse is usually quite severe and is caused by an inflammation of the sesamoid ligament, or of the large tendons as they pass over these bones. The location of the sesamoid is at the pastern joint, which is at the lower end of the long cannon bone. The injury is sometimes severe enough to involve the entire pastern joint, which is easily recognized by swelling of this joint; if proper treatment is not applied the lameness takes on a chronic form, and may remain during the life of the animal.

To detect sesamoid lameness, the animal will show extreme lameness for the first few steps, but this may almost disappear after a little exercise. Mild cases may only show the lameness when the animal is trotted upon hard ground. By pressure upon the joint, the animal will flinch and give evidence of pain, but this may become less marked in the chronic form, when at this time it begins to knuckle over, or what is commonly called cocked ankle; at other times the movement of this joint becomes very slight. On other occasions the bones are diseased and considerable enlargement appears, which, if allowed to remain for any length of time, will be incurable.

*

Record Breaking Results are Obtained by Using Dr. Rowe's
Veterinary Preparations.

TREATMENT—During the stages of acute inflammation, when the region has fever and swelling, a strong bandage should be placed upon the joint. If severe pain exists, cold water should be applied and the bandage kept wet for three or four days, then Dr. Rowe's Veterinary Liniment should be applied, the joint bandaged, and be renewed once a day. After two or three weeks, if any enlargement or soreness remains, use Dr. Rowe's Spavin Ointment. Even old, standing cases are often benefited by this treatment.

RINGBONE.

The term ringbone has been used since olden times to indicate all chronic diseases about the coronary joint, attended with swellings and enlargements. These swellings or enlargements are caused by injuries to the joints, and even to the bones themselves. Many animals have a hereditary tendency, that when these injuries occur the bony material is deposited.

Lameness may be slight in the beginning, but later on will become very severe. At first these chronic enlargements are but slight and require close examination to detect them, but later on they become quite large and are very easily seen. These enlargements may appear in the hind limbs as well as in the front limbs.

TREATMENT—When ringbone first begins, upon the colt or young horse, it is the proper time to begin treatment if you expect a complete recovery, which can be accomplished by using Dr. Rowe's Spavin Ointment. Apply it over the enlargement,

Dr. Rowe's Colic Preparation Will Save Many Times Its Cost.

rubbing it in well for a few minutes, then cover it over to the thickness of paint and tie the animal up so that he will not rub the ointment off with his nose. Repeat this treatment after two weeks, and again in two weeks if lameness still exists. This treatment will seldom fail to remove all enlargements and leave the animal perfectly sound. In old chronic cases use the same treatment, but same will necessarily have to be continued for a greater length of time. Some chronic cases may require two or three boxes of the ointment, which will remove the lameness, but will not in all cases remove the enlargement.

SIDEBONE.

These are quite a common occurrence in the heavy draft horse, and are very similar to ringbone, the difference being practically in the location. They are located at the side of the foot, just in front of the heels, and the enlargement may be either slight or very prominent. They are usually caused by some injury to the lateral cartilage and the bones beneath, and do not in all cases cause lameness.

TREATMENT—When there is no lameness it is better not to try treatment, but if lameness is present, apply the same treatment as for ringbone, giving the animal rest for several weeks if possible.

CORNS.

This is a disease of the sole of the foot, usually found in the heel between the wall and the bar, and is caused by improper shoeing, allowing the shoe to lie upon the sole, or leaving the shoe on too long, which will callous the sole, especially when the shoe

Dr. Rowe's Healing Powder heals all eruptions and abrasions of the skin.

is bearing upon it. Lameness is very slight in the beginning, but later on becomes very severe, even so severe that the animal refuses to put his weight upon the foot. This condition usually occurs in old horses, where shoes are required to be worn the year round.

To detect corns, examine the foot for fever, if feverish, remove the shoe, have the foot pared, then by tapping the sole of the foot with a hammer, you will detect the location of the corn by the pulsation, or by the animal jerking his foot; sometimes red streaks, or even black spots, may be seen above the corn. With the knife, remove this extra amount of sole, and by doing this, you may find pus imprisoned there; pare this out and you are ready for treatment.

TREATMENT—After paring, as advised above, touch up the ulcer with Dr. Rowe's Chemical No-Horn. Give the animal rest, or better, turn to pasture for a few days. If this cannot be done, and the animal is obliged to work, place a leather under the shoe and after one or two days the animal will be able to do its work very well. The shoe should never remain on longer than one month at a time, and in some cases, may be better to be changed oftener.

CONTRACTION OF THE FEET.

This is a common disease among horses that are kept upon hard floors and those that are given constant road work. Contraction of the feet is not a disease of the hoof, but of the soft tissue of the foot, within the horny box.

The causes are whatever interferes with the

Every Farmer Should Use Dr. Rowe's Veterinary Preparations.

health of the foot; this may be excessive use upon hard roads, wearing an ill-fitting shoe or a chronic inflammation of the coffin joint. The inflammation set up by these injuries hinders the blood supply to these tissues, causing them to shrink. When this has occurred the wall closes down and gives the narrow appearance, which is called contraction.

To detect a foot that is contracted, pick up the foot, remove the shoe and you will see that the foot has lost its circular shape, and the walls, from the quarters backward, appear almost straight. This reduces the size of the foot, necessarily changing the shape of the frog, which has become narrow; in extreme cases it is not much more than a line, being about as wide behind as in front. The frog, instead of being the wide, soft expansion, is a hard structure and appears to be squeezed together, and the bars, instead of running from the front point of the frog outward to the quarter, run straight back to the heel, making a spectacle much different from that of a healthy foot, and can be easily detected by any one. Lameness is not always present at first, but soon after the foot begins to contract, the animal stumbles and when standing there is shifting of the affected feet; when first made to move it will show a little stiffness and inclination to walk on the toe, but after a little warming up, or exercise, may go free again. At times, lameness may appear suddenly and perhaps immediately after the horse has been shod; then it is thought to be the fault of the shoeing, but it may only be caused by paring the foot and placing on a tight shoe, as the tissue beneath the sole is usually very tender and sensitive.

Our Handy Veterinary Case Contains Twelve of the Best and Most Needed Veterinary Preparations.

Sometimes the animal will go better after a rest, but lameness soon returns; alternating in this way until the lameness becomes chronic and the animal continues to go lame or peggy.

TREATMENT—Contracted feet may be successfully cured, under the following instructions: When the foot has become contracted it is hard, dry and feverish; therefore the first thing to do will be to soften it. To do this, put the foot in wet packs, by wrapping cloths around the foot and keeping them wet for three or four days; then remove the packs and apply Dr. Rowe's Spavin Ointment around the coronary band and over the heel, (do not apply in the hollow of the pastern) covering an inch of the hair, rub well for five minutes and repeat the treatment in twenty-four hours. After two weeks, it may be treated as before. If the animal is very lame, remove the shoe, turn to paddock or pasture and allow it to remain there for one month, after which time, if the lameness has disappeared, they may be put to work. In bad cases it may be necessary to repeat this treatment several times; it never fails to cure the worst cases of contracted feet, but it is always better to commence treatment early, then it is not necessary to stop them from work.

HIP-JOINT LAMENESS.

This lameness is, like other lameness, caused by some injury and, as there are so many kinds of injuries, it would be impossible for us to name the one that the lameness in your case might be produced from, therefore we will only undertake to explain how lameness in this joint or region may be detected and cured.

Your Money Back If You Want It.

To detect hip-joint lameness, it is well to move the animal, to see the manner in which the leg is handled. If the injury is not too severe, the animal will swing the leg forward, the foot going outward making a half circle—what is sometimes called swinging-leg lameness—this retards the movement of the leg and makes the stride shorter. In the more severe cases, we have what is termed supporting-leg lameness; in this, the animal tries to keep the weight off the leg and by so doing, drags the toe in his stride.

TREATMENT—In recent hip-joint lameness, give rest and apply cold water applications to the swelling of the hip-joint. If lameness still continues after the fever has been removed, hip-sweeney will usually follow. To treat this chronic form, apply Dr. Rowe's Spavin Ointment to the hip-joint, and rub thoroughly with Dr. Rowe's Veterinary Liniment every other day. Repeat the ointment after two or three weeks if necessary.

STIFLE LAMENESS.

The stifle joint of the horse corresponds to the knee joint in man. It is composed of three bones; the femur, or large bone above, the tibia, or large bone below; and the patella, or small bone. The two large bones are firmly bound together by strong ligaments; the small bone, or patella, has three small ligaments that attach it to the bone below, or tibia, and is held in place above by three muscles. This arrangement allows it considerable movement, making it the most loosely connected bone of the body and more likely to be dislocated than any other bone. The location of this joint makes it very prominent and very subject to injuries, as kicks from other ani-

Let Us Tell You a Dose in Time Will Save the Animal

mals or strains and injuries of any kind. When an animal goes lame from stifle injuries, if made to move, he will bring the leg forward with a jerk, making a shorter step than with the opposite leg and always throws the hip upwards on the lame side and downward on the well leg, giving the animal an awkward movement of the hind parts. The animal stands with the leg relaxed and with the stifle joint outward. Sometimes there will be a swelling of the stifle region, from kicks or injuries, and from strains there may be a dropsical condition of the capsule ligament, or a fluctuating swelling in front and below the stifle bone, which is quite commonly seen in young horses.

TREATMENT — In the beginning, treatment should consist of hot fomentations to the joint, to relieve the fever and tenderness. Then apply Dr. Rowe's Spavin Ointment and repeat after two or three weeks. In mild cases, where there is only slight swelling or injuries, a mild treatment will be sufficient; for this, apply a few applications of Dr. Rowe's Veterinary Liniment.

DISLOCATED PATELLA.

Dislocation of the patella, or knee cap (the bone described under stifle lameness) is often thrown out of the groove in which it glides and is called either dislocation or stifled. When this accident occurs, the leg will be thrown backward and the animal is unable to bring it forward until the patella glides into place. In the majority of cases the animal may struggle and replace the patella, in others it will need help.

To replace the patella, place a rope around the

If Your Horse Is Lame Use Dr. Rowe's Spavin Ointment
If a Horse Gets Cut Use Dr. Rowe's Bactericide

affected limb, at the foot, and pull the leg forward, at the same time let the attendant press upon the patella, pushing it inward, or, which is better, strike it with the palm of the hand to drive it into place. When this bone is replaced the animal will jerk its leg up and appear all right. Some horses are loose stifled—these are usually straight legged animals—and in these cases the patella is easily thrown out and goes back of its own accord. When once the stifle bone is thrown out it is more apt to be thrown out again under slight circumstances, as the ligaments or muscles are stretched allowing the patella more freedom, and thereby more chance to slip out of place. This accident is caused by the animal's attempting to rise upon wet, slick floors or upon slick ground, where it slips, throwing the leg backward and outward causing an over laxation of the patella cords or ligaments.

TREATMENT—To prevent or make a permanent cure of these injuries, keep the animal upon a dirt floor or a well bedded stall, where it may not slip when attempting to rise, and apply Dr. Rowe's Spavin Ointment to the joint. One or two applications are usually sufficient to strengthen the tendons, relieve the looseness of the joint and prevent the recurrence.

CURB.

This is an enlargement or swelling on the back part of the hock, and is due to strains or kicks. In the beginning it is usually attended by heat and tenderness, and in some cases will produce lameness. Old standing curbs do not, as a rule, cause lameness;

**If You Value Your Stock You Cannot Afford to Be Without
Our Handy Veterinary Case.**

it is only when the joint is inflamed that lameness is seen.

TREATMENT—Relieve the fever and swelling by bathing the joint in hot water for several days, at intervals of from one, two or three hours. After the fever has subsided, which may require from seven to ten days and there is still some enlargement, apply Dr. Rowe's Spavin Ointment over the center of the enlargement, covering a space as large as a dollar. Repeat this treatment every three weeks, until you have three or four applications; this will remove all enlargements that are capable of being removed.

BOG SPAVIN.

This is a soft, bulging enlargement, seen in front of the hock, and is quite a common occurrence in young animals. It consists of a dropsical condition of the joint, caused by an inflammation of the lining membranes and may be either acute or chronic, with or without lameness. Some forms are curable and others incurable. There are some cases, with this form of enlargement, that can hardly be called an unsoundness, (seen in a great many animals, mostly in colts) which is only an over amount of sonova, or joint water, it does not require any treatment, as it does not cause lameness, remains about stationary in size, and all at once may be entirely gone.

TREATMENT—In cases where these enlargements are seen and lameness exists, we advise the use of Dr. Rowe's Spavin Ointment, applying it to a portion of the enlargement for five or six applications.

**I Have Seen Men Whom They Would Be Willing to Give
One Hundred Dollars for a Preparation That
Would Save Their Animal.**

It will not require much time to remove the lameness, but by the continued treatment for that length of time, will permanently cure the injury and prevent the return of lameness.

THOROUGHPIN.

This is an enlargement of the same joint as in bog spavin but differently located, produced by the same conditions and often seen on the same hock with bog spavin. The location is on the upper and back part of the hock and seen upon each side at the same time. When you press upon one side it forces the other side out, resembling a pin, hence its name, thoroughpin.

TREATMENT—The treatment is the same as for bog spavin.

BONE SPAVIN OR JACKS.

This is a disease on the lower and inner part of the hock and occurs in two forms, with or without enlargements. The lameness produced is so much different from other lameness in the hind leg, that when once seen it is always easy to detect. It is to this kind of lameness that we have what is called occult or blind spavin, which may only be bone spavin proper before there is any bony enlargement. When the enlargements, or jacks, appear upon this region, there is no longer any doubt of the diseased condition. These enlargements, when they appear without lameness, only constitute a blemish, as they never appear to do the animal any harm. We will advise letting these jacks alone until lameness appears.

Causes of bone spavin are injuries to the joint

Home Remedies Are All Right at Times, but too Many Times They Are Expensive.

and the small, flat bones, called the cuniform, and may be produced by kicks or blows, improper shoeing, tied-in hock and strains. It is sometimes said to be hereditary, and this is true if the ancestors have a tied-in hock or faulty conformation.

To detect bone spavin, pass the fingers down the inside of the hock, the enlargement will be found situated at the lower inside portion, which can be told by comparing with the opposite hock. Sometimes bone spavin is found on both hocks but it is rather a rare occurrence. When the lameness occurs, it appears usually when first starting the animal, going very lame for a few steps, then going all right and without pain, but when stopped and allowed to stand for a few minutes will again show the lameness when starting. This is practically the symptoms in the beginning of spavin lameness; in some cases the lameness being only slight and in others very severe. When treatment is put off and the disease is allowed to go on, the lameness gets so severe that the animal is not able to work and never makes a well step.

TREATMENT—Bone spavin, like all other diseases, yields better to treatment in the early stages, and rest is essential to recovery. Clip off the hair over the enlargement, and apply Dr. Rowe's Spavin Ointment over this surface, with the fingers and rub well for five minutes; then coat over to about the thickness of paint. Repeat this application after two weeks, allow the scales to peel off and grease with vaseline or lard, and when these scales have peeled off, apply the ointment again, then allow three weeks to elapse before repeating. If the lameness has dis-

Dr. Rowe's Colic Preparation Is Sold Under a Cash
Guarantee.

appeared you can be assured that the disease has been killed and no other treatment is required, but if the lameness still exists, repeat the treatment the same as before. Usually the first treatment will be found sufficient to remove the lameness, and in the majority of cases, remove the enlargement and leave the leg free from scars and blemishes.

TREATING OLD STANDING CASES OF BONE SPAVIN.

These cases require more thorough treatment, and to do this, apply Dr. Rowe's Spavin Ointment once a day for four days, allow three weeks before repeating, in the meantime give daily applications of Dr. Rowe's Veterinary Liniment. Allow the animal complete rest, and repeat the treatment, at intervals of three weeks, as long as lameness exists. Usually three treatments will be sufficient.

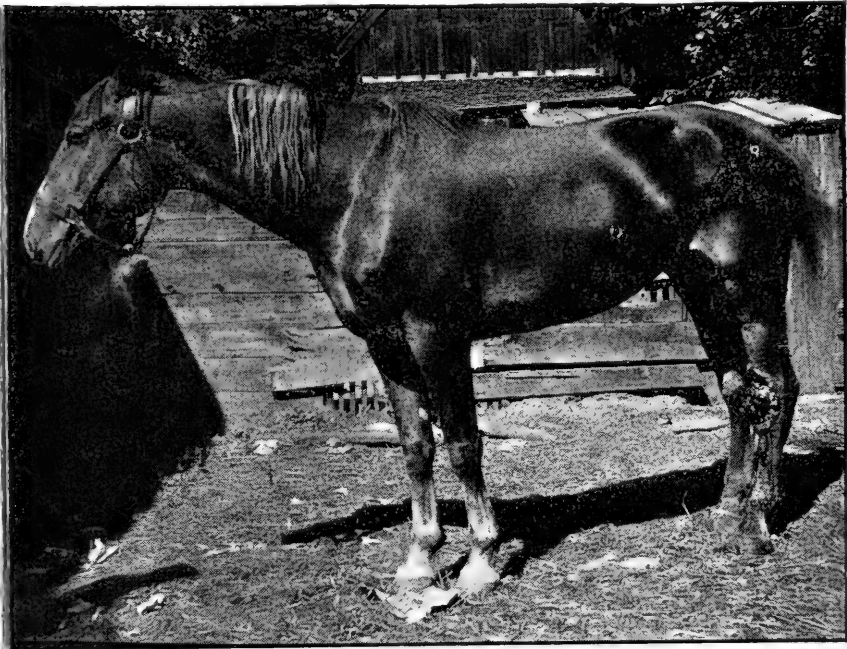
It must be understood that in bone spavin we have bone to deal with and that the process of repairing bone is much slower than in other forms of tissue. While we have never been able to find a case where we did not remove the lameness, yet they may exist, but if the treatment is continued long enough and with enough severity, we guarantee that Dr. Rowe's Spavin Ointment will make every case serivably sound; and no one that has a spavined horse need hesitate to use Dr. Rowe's Spavin Ointment, for we *guarantee* it to be a safe and positive cure for all lameness, caused either by occult or bone spavin. See our Cash Guarantee.

**You Should Always Have Remedies on Hand with Which
to Treat Your Stock When Necessity Arises.**

CAPPED HOCK.

This is a disease of the heel or point of the hock and is easily seen. It is a fluctuating swelling, caused by horses kicking when in the stall, or when getting up (especially when on board floors), raring back on the point of the hock to rise thereby bruising the same, causing an unsightly blemish, but rarely causes lameness.

TREATMENT—In the early stages, apply Dr. Rowe's Spavin Ointment. Where there is a large amount of fluid, which is known by the enlargement being very soft, we advise treatment as prescribed for shoe boils.



TUBERANT GRANULATION FOLLOWING WIRE CUT

Completely Healed Without Scar or Blemish With
With Dr. Rowe's Bactericide.

DR. ROWE'S SPAVIN OINTMENT.

This preparation is a paste or ointment, as the name specifies. It could just as well have been made in liquid form, as far as the manufacturer is concerned, as it would not have changed the cost in the least; but liquids are not so convenient to use as an ointment. When you want to apply a liquid to a certain area, as in most bony growths, you cannot as easily limit it to just a small area, owing to its tendency to run or spread. An ointment is readily controlled and can be applied exactly where it is desired and will not run or spread to other parts. This causes a saving of the preparation and is much better for the animal.

Dr. Rowe's Spavin Ointment is unlike other preparations which are advertised to cure spavins as it does not make a sore which will require months to heal and then leave an unsightly blemish. Dr. Rowe's Spavin Ointment removes the disease without loss of hair and leaves no blemish. It is safe to use on the best horses of the land. It will cure all limb lameness where medicine can be used, such as Bone and Bog Spavin, Ringbone, Sidebone, Curb, Splints, Thoroughpin, Stifle, Sprains and all enlargements of the bone, cord and muscle.

Seize the Opportunity and Send for Our Handy Veterinary Case.

Do It To-day.

Dr. Rowe's Spavin Ointment is capable of being absorbed by the skin and penetrating to the deeper parts, owing to the depth of the disease or injury, drives out the impurities and leaves the parts in a healthy condition. It contains no ingredient that can injure the horse. It removes lameness when all other remedies fail. It far surpasses any preparation ever made for these diseases. It is the crowning success of sixteen years' research and experimenting in the treatment of acute and chronic inflammation. *Satisfaction Guaranteed.* Your money will be returned if you are not satisfied.

Price \$1.00 postpaid.

Prepared only by

THE NORTHWESTERN MEDICINE CO.,

Keokuk, Iowa.

**When You Need It You Need It Quick. Write To-day and
Let Us Send You Our Handy Veterinary Case, Then
You Will Have it When Needed.**

RHEUMATISM IN THE HORSE.

This is a disease that is quite common among horses in certain seasons of the year, especially in winter and rainy seasons. It is characterized by pain in the joints or muscles; sometimes there is a swelling of the joints and at other times no swelling appears. There is a tendency for the pain to shift from one part to another, as the horse may be lame in one leg for a day or two, then the lameness will shift to another; sometimes it will affect one hind leg and one fore leg. At times, when the joints swell to a considerable size it is found that there is fluid in them. It is quite often found in the suckling colt, where it has been lying around upon damp ground. Often they break open and discharge water and pus.

The cause of this disease is not well understood, but is supposed to be due to a blood change, at least the blood contains too much acid and urea, and is more commonly found in the damp localities than in the higher and dryer altitudes—very much resembles the rheumatism in the human.

TREATMENT—Give a physic—one of Dr. Rowe's Physic Capsules will suffice for this—and give one or two bran mashes, (If it is a colt that is affected, give the mother one of Dr. Rowe's Physic Capsules) and bathe the swollen joints or limbs with Dr. Rowe's Veterinary Liniment once or twice daily. Give good, dry sleeping quarters and give a teaspoonful of Dr. Rowe's Blood and Skin Tonic, in the drinking water, twice a day. Continue this treatment until the animal is relieved.

Use Dr. Rowe's Physic Capsules and Keep Your Stock in a Healthy Condition.

HOW GOOD JUDGES TELL THE AGE OF HORSES.

There are many charts and tables laid down by writers and artists on how to tell the ages of horses, but these will do very little good to the ordinary farmer or stockman, as they are too complicated, as with them one must necessarily understand the anatomy of the teeth and the whole entire process of wear and decay before he can be a successful judge of the age of the horse; but a talk with a horse judge will teach you more in ten minutes than all the charts and guides will in a life-time.

First, when we look into a mouth we see the incisors or nippers.

At one year old there will be six pearly white teeth on each jaw, about three times as wide as they are thick, the longest line is crosswise of the jaw, and they are triangular in shape on the front surface.

At two years old they will show some wear and become smooth on the grinding surface.

At two and one-half years old the two center nippers on each jaw fall out and the permanent teeth soon take their places.

At three years old we have two heavy, permanent teeth in the center and two colt teeth on each side.

At three past the colt teeth next to the permanent teeth fall out and are replaced by permanent teeth.

At four years old this gives us four permanent teeth in the center and one colt tooth on each side.

At four and one-half years old the corner teeth fall out and are replaced by permanent teeth.

At five years old we have a full mouth of permanent teeth.

Dr. Rowe's Spavin Ointment is Guaranteed to Give Satisfactory Results.

At six years old the permanent teeth show wear, the two center nippers become smooth and the teeth point directly toward each other.

At seven years old the four center nippers are smooth on their grinding surface, the cups having been worn away, the lower corner teeth have worn into the upper corner teeth and have caused a little hook to show on the upper corner teeth, known as the seven year old hook. This is very characteristic of the seven year old mouth.

At eight years old the grinding surface is all smooth and level.

At nine years old the dental star appears on the two center nippers and they begin to narrow up crosswise and lengthen the other way.

At ten years old there is but little change from that of nine except that the teeth are a little more narrow and longer, and the dental star is more prominent. The teeth are longer and the gums are seen lower down between the teeth.

At eleven and twelve years old the change of narrowing up has gone on until the surface of the teeth show about the same width each way. The lower teeth take on more of the line of the jaw and the corner teeth cut in on the upper corner teeth, leaving a hook on the upper corner teeth as we have in the seven year old, sometimes looking very much like the seven year old hook, but the appearance of the remainder of the teeth having become more rounded and bending forward it is not difficult to see the difference between the two.

As we reach the teens there is only the gradual change in the next few years of the teeth becoming narrower crosswise and longer lengthwise, the den-

tal star showing in all the teeth, the enameled cup having entirely disappeared. To meet the regular change on the wearing off of the grinders, the nippers slant forward to allow the jaws to come closer together; thus allowing the upper and lower jaw nippers to meet at a sharp angle. This continues on into the twenties, until the surfaces of the teeth are really on the sides of the teeth, until the teeth are very narrow crosswise and three or four times the width in length. The jaws are then thin and narrow and the teeth are long and protruding and meet at a very abrupt angle, giving the appearance of an aged animal.

DR. ROWE'S COLIC PREPARATION.

This preparation is composed of a number of drugs and is made expressly for the cure of colic and spasmodic pains in the abdomen of domestic animals.

It is a non-poisonous preparation and will do no harm under any conditions. It not only relieves the pain but removes the cause of the pain and leaves the digestive track less liable to colic attacks. Any one who has one or more horses, for the price of this preparation cannot afford to be without it as it will save your animal from death by this most common and dangerous disease. Nearly every person you meet when your horse has colic will prescribe for you as long as your horse is alive and perhaps every one will have a different remedy. Some of these will be simple and harmless and entirely worthless as far as relieving your animal of its distressed condition. Others will be severe and dangerous and are likely to be given, especially in extreme cases, in such rapid succession that the animal soon succumbs

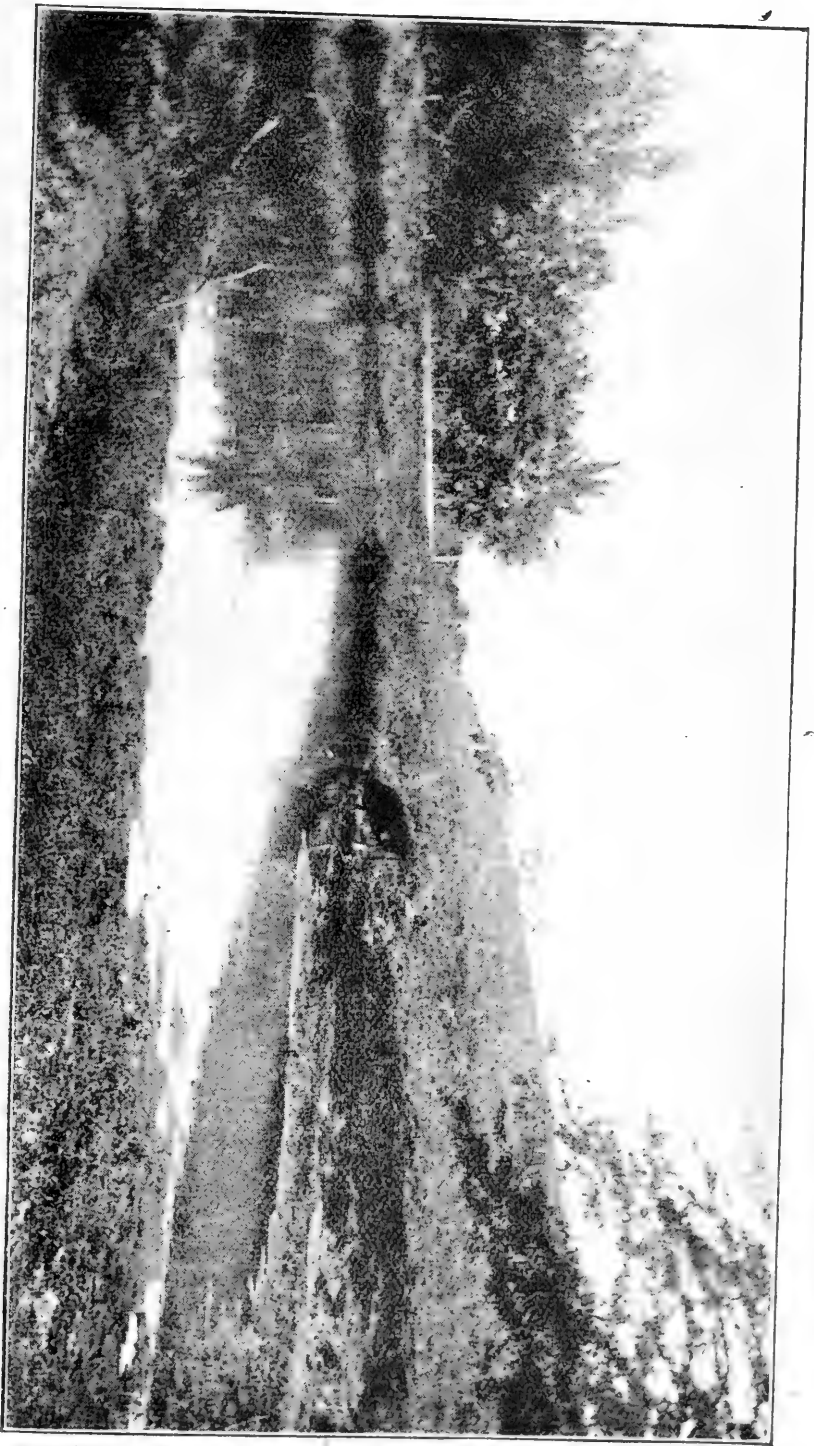
Use Dr. Rowe's Scour Remedy for Scours and Diarrhea.

to their deadly poison. Not many people are sufficiently acquainted with drugs to properly understand their physiological action. So it is reasonable to believe that they may be giving a drug which they think will accomplish the desired results; however, they may be losing valuable time until the disease has so far advanced that the animal is beyond relief and death the usual result. These are sufficient reasons why you should always be supplied with Dr. Rowe's Colic Preparation. It is uniform in action and will not deteriorate with age. *It is made to cure and guaranteed to cure or money will be refunded.*

Price \$1.00 per bottle postpaid.

Prepared only by

THE NORTHWESTERN MEDICINE CO.,
Keokuk, Iowa.



QUENCHING HER THIRST.

Cattle and Their Ailments.

DISEASES OF THE DIGESTIVE ORGANS.

It is a matter of general experience that the disorder of the digestive organs of cattle is caused by the quality and quantity of food given them, and the manner in which they feed and digest their feed. Cattle, as a rule, are not as choice about their food as other animals; sometimes there is more taken in than the organs are able to digest, which soon sets up a trouble that often results seriously. The cow's stomach is divided into four parts and the intestines are very small and long, measuring from 130 to 140 feet. The first part of the stomach, called the paunch or rumen, is very large, holding as much as 149 quarts. The reticulum or second stomach,

**If You Haven't a Bottle of Dr. Rowe's Veterinary Liniment,
Get a Bottle at Once.**

holds about 24 quarts. The omasum, or third stomach holds about 36 quarts. The abomasum or fourth stomach, which is the true stomach, practically corresponds to the stomach of the horse and will hold about 30 quarts. These capacities are based upon an average sized animal of mature age.

The ox is a ruminant and therefore chews its feed over. What is meant by this is that it will eat its feed, hay and grain, with scarcely any grinding at all. It takes a mouthful of hay, or whatever roughness it may have, chews it enough to make it into a ball and then it passes down the gullet to the paunch; it continues this process until the paunch is filled, then the process of ruminating begins. The muscular coat or wall of the paunch is very strong and is capable of moving the large mass it contains to suit conditions. The lower end of the swallow or gullet is capable of grasping a quantity of the partly ground food that the paunch contains, then with a peculiar motion forces it up to the mouth through the gullet where it is chewed and mixed well with saliva—a process that is commonly called, chewing the cud—when it is properly ground it is swallowed again and instead of going to the rumen it goes to the second stomach, where it is properly acted upon and digested, passing on down through the other stomachs to the intestines. All the food in the rumen must pass through this process, and when an animal does not chew its cud it indicates indigestion and is a sure sign of the diseased condition of the digestive apparatus (and is not a sign that the animal has lost its cud and requires one to be given it of dishcloths or old rags, as our forefathers used to think) and requires treatment to aid and strength-

**You Can Prevent Loss by Disease if You Use Dr. Rowe's
Veterinary Preparations.**

en these organs and relieve the congested condition of the bowels; which will be explained later on.

The causes of indigestion in cattle are many and cannot all be enumerated here, but some of the most important are: Food which is finely ground, such as corn meal and middlings, fed alone are not adapted for the digestive organs of cattle; hay that has been much exposed to rain while drying, is poorly nutritious and is liable to produce inflammatory infections of the stomach and bowels—the same remarks may be applied to straw or musty oats—rust on straw is also a dangerous article of food and will produce disease if fed to cattle; smut on corn or mouldy corn must not be fed to cattle; corn fodder in the fields often produces disease which is known as corn-stalk disease; grasses grown on wet, marshy land often produce dysentery; anthrax or black-leg is introduced through the digestive system by eating grass from infected pastures; frozen turnips and potatoes produce very dangerous attacks of indigestion; also eating of cold, frozen grasses often cause cramps of the stomach and bowels.

OVERLOADING THE STOMACH OR BLOAT.

This disease is known by swelling of the left flank and is caused by gorge of the rumen or paunch, and by the formation of gas which fills the stomach until it rises above the level of the backbone; when struck upon it produces a drum like sound. The animal often moans or groans; appears to be very uneasy; twists around, lies down, gets up, and has a very anxious expression. The stomach may become so full that the breathing is cut short, and if relief is not had at once the stomach may be ruptured and the animal die.

The Best Antiseptic Known is Dr. Rowe's Bactericide.

TREATMENT—When the animal shows symptoms of this trouble, treatment should begin promptly by giving one pint of raw linseed oil and follow this at once with one of Dr. Rowe's Physic Capsules dissolved in a quart of luke warm water.

In extremely urgent cases where the stomach is so distended with gas as to cause short breathing and with danger of rupturing the stomach, the trocar should be used. This instrument consists of a cannula, or hollow tube and stilet. When selecting the place to insert the trocar, observation should be made of the ribs, the hip bone and the processes of the lumbar vertebra, and equal distances from each is the point to be selected. With the knife cut through the skin an opening one-half inch in length and insert the point of the trocar and quickly push it downward and forward through the walls into the stomach; then remove the stilet and allow the cannula to remain until the gas has all escaped, then remove it and give the physic described above.

DRY MURRIAN OR GRASS STAGGERS.

This disease is an impaction of the third stomach and is a very common occurrence among milk cows, caused by lack of exercise; coarse, woody and mouldy food or food that possesses astringent properties which tend to check secretions; lack of sufficient water and probably other causes not yet known.

The symptoms of this disease are diminished appetite, tongue coated, mouth slimy, irregular chewing of the cud, constipation, dullness and fullness of the flank, and if the fist is pressed below the short ribs on the right side the third stomach will be felt

Dr. Rowe's Veterinary Liniment Will Soften and Heal Old Wounds.

and appear like a large ball of dough. If the disease has gone on for three or four days it may show some bloat, breathing short and accompanied by a grunt, the ears and horns are usually cold, the animal falls away in flesh, becomes weak and the animal is generally found lying down. When the disease has reached this condition it frequently terminates fatally. But before death comes on the animal becomes greatly distressed, bellows, butts its head against objects, runs at dogs and other animals or even at man, and continues in this frenzied state until death relieves it of its sufferings.

TREATMENT—This should consist first in aiding digestion. Camomile tea, made by steeping two ounces of Camomile Flowers in a quart of water for thirty minutes, should be given every two hours as a drench, and give one of Dr. Rowe's Physic Capsules dissolved in a quart of tepid water. The second day the camomile tea may be given three times, and after the physic has acted give a few doses of Dr. Rowe's Blood and Skin Tonic. In cases where the constipation is stubborn and the bowels refuse to act repeat the physic on the second day, and when the appetite returns give small feed of some laxative food or turn to grass.

DIARRHEA.

This disease in the cow is caused by an irritation in the intestinal tract, by food taken in excess or which is of improper quality; especially watery, green food, too much salt, impure water, and water drank in excess. The bowels show an irritation, the passage is in a liquid state, bad smelling, the animal looks dull, with the back arched, and loses flesh very rapidly.

Do Away with the Troublesome Drench and Give Dr. Rowe's Physic Capsules.

TREATMENT—This consists of putting the animal on good highland pasture or feeding good nutritious food. Also give a treatment of Dr. Rowe's Scour Remedy. When there is debility and want of appetite dissolve one of Dr. Rowe's Physic Capsules in a quart of tepid water and give as a drench.

DYSENTERY.

This disease is usually seen in the fattening pen, when animals are started upon grain. Some animals in the bunch are generally more greedy than others and get more of the food than is intended for them, consequently they cannot digest the food and it irritates the bowels, causing dysentery.

TREATMENT—Animals thus affected should be taken from the feed lot, depriving them of all grain and feeding them entirely upon bran and hay, and give in their feed a few doses of Dr. Rowe's Blood and Skin Tonic. This will correct the disturbance in the bowels and in the course of a few days they may be put back into the feed lot. If in cold weather, the animals should be kept in a comfortably warm place and not allowed to become cold or chilled from any exposures.

WHITE SCOURS OR DIARRHEA IN CALVES.

Young calves are very susceptible to this condition, which shows a catarrhal condition of the bowels manifested by a whitish discharge from the bowels. Calves which suck their dam are not frequently affected with this disease, although it may be occasionally seen when they are kept away from the mother for a long period and when allowed to suck, overload their stomach which brings on indigestion.

Better Send for Our Handy Veterinary Case. Go It To-day.

and irritation of the bowels. Calves that are separated from their mothers and which are fed upon skimmed or separated milk, suffer from the same condition.

Calf becomes dull, whisks its tail as if in pain, whenever there is a passage from the bowels, which will have a yellowish-white appearance, and passage being quite frequent. If the discharge is not checked in a few days, the calf will die from exhaustion.

TREATMENT—The calf should have a mild physic, for which give one-third or one-half of one of Dr. Rowe's Physic Capsules dissolved in one pint of warm milk. This will remove the curdled milk from the stomach and bowels. Follow this with a dose of Dr. Rowe's Scour Remedy four times a day, which will allay the irritation of the stomach and bowels and restore the digestive functions. The animal should be fed at shorter intervals, at least four times a day, and should be kept in a dry, comfortably warm stable.

DR. ROWE'S SCOUR REMEDY.

This is a preparation that has become very popular among stock raisers who have become acquainted with it. It is a mixture in which the ingredients do not chemically combine so when it is allowed to stand for some time there is a complete separation into two different parts. This, however, does not change the physiological action of the ingredients and will not deteriorate with age.

Its action is three-fold: First, it relieves the griping pains; second, it stops the discharge; and third, it removes the cause. It is a positive cure for

The Best Money-Saving Proposition Ever Offered Is Our Handy Veterinary Case.

Scours and Diarrhea in all animals and can be relied upon in all instances. Unlike many remedies, it does not cause constipation but relieves the animal of its distressed condition and restores the bowels to a normal or healthy state.

It is a preparation that no stock raiser can afford to be without and a bottle should always be kept at hand to fortify against this dreaded disease in their animals. *Absolutely guaranteed to give satisfactory results or money will be refunded.*

Price 50 cents postpaid.

Prepared only by

THE NORTHWESTERN MEDICINE CO.,
Keokuk, Iowa.

JAUNDICE OR YELLOWS.

When Jaundice exists there is a yellowish appearance of the white of the eye, and of the mucous membrane of the mouth; the yellowness may also be seen in the skin, where the animal is covered with white hair. Jaundice is merely a symptom of disease of the liver and bowels; sometimes there are symptoms of constipation and torpid condition of the bowels. Jaundice is one of the symptoms of Texas fever, a disease that causes congestion of the liver.

The animal loses flesh in this disease, lies down most of the time, groans occasionally, has a tottering gait, the ears and horns are alternately hot and cold. In cows, the secretions of milk is much diminished, and what milk is secreted has a bitter taste.

Dr. Rowe's Physic Capsules Are Guaranteed to Give Satisfactory Results.

Sometimes the animal has a dry painful cough, and presents a dull, stupid appearance.

TREATMENT—In this disease the first medicine given should be a physic, to open up the bowels and relieve the congested condition. For this we would recommend one of Dr. Rowe's Physic Capsules dissolved in a quart of tepid water (given as a drench). After the physic has worked follow with Dr. Rowe's Blood and Skin Tonic, two doses daily for three or four days. Give the animal good laxative food in moderate quantity and give good clover hay or fodder for roughness.

BLACK-QUARTER OR BLACK-LEG.

This is a disease that usually affects young animals; it is a rapidly fatal, infectious disease and usually kills in from twenty-four to forty-eight hours. It is produced by baccilli which very much resemble the anthrax bacilli, which is very prevalent in European countries. Black-leg disease is found only upon certain pastures or in certain localities. It is usually found upon low, damp pastures, where the soil is deep and rich and the grasses grow very luxuriant, but higher grounds may be infected by diseased animals feeding or roving over them. The germ of Black-leg lives principally in decaying vegetable matter, where the grass has grown up and fallen over and allowed to decay, the fall grasses growing up through it. When the animals are grazing they gather some of the dead grass which contains the Black-leg germ and through this means they are infected. They are rarely infected from each other. The disease begins to affect the constitution in from two to three days after infection has occurred.

Dr. Rowe's Physic Capsules Relieve Constipation.

The symptoms are loss of appetite, dullness and debility with a very high fever; then lameness by stiffness in one or more limbs, with tumors arising upon the limb or limbs affected. These tumors arise very rapidly and make a cracking sound when pressed upon; there is scarcely any escape of blood if the skin be cut or the tumors lanced. These tumors or swellings are very characteristic of this disease and will distinguish it from any other disease of cattle. These tumors or swellings may be located on the thigh, the neck, the shoulder, the breast, the flank or the rump, and are quite often found located on the throat or jaw. When these tumors are pressed upon there is a peculiar cracking sound heard under the skin and if the swelling is cut into a frothy dark-red, rather disagreeable smelling fluid is discharged and the cutting is apparently without any pain to the animal. When this condition is present the animal only lives a few hours, and if the skin is removed after death these swellings will appear much darker than the other tissue and will be found infiltrated with blood and yellowish, jelly like material.

TREATMENT—No treatment, as yet, has proved of any particular value. When the disease has well set in, the animal rarely recovers. The preventive treatment, which has proven very satisfactory and we believe it to be a wise plan to use, is the attenuated virus of the Black-leg germ; this to be put under the skin so as to immunize the animal against this dreadful disease, and we would advise all calf owners to vaccinate their calves when they are from three to six months old, before the disease has taken off a portion of their herd.

Dr. Rowe's Scour Remedy is Guaranteed to Give Satisfactory Results.

RETAINED AFTERBIRTH.

The cow is more subject to this accident than other animals, and perhaps it is due principally to the manner in which the membranes are fastened to the womb. The foetal membrane is attached to the womb by means of from fifty to one hundred buttons or cotyledons; these so often hold fast and do not let loose when the calf is dropped and may hold the membranes in the womb until it rots away, a condition which is very serious to the animal. When the membranes do not pass away with the foetus, they do not do much harm, if any, until after the third day; at which time they begin to decay and the cow will show symptoms of infection, refuse feed, lose flesh rapidly, may or may not have a portion of the membranes hanging from the vagina, and if the membranes are not removed the animal will remain in an unhealthy condition for weeks and sometimes for months, and occasionally the system becomes poisoned and the animal dies from the effects.

TREATMENT—In the first place, the membranes should be removed and the best time to do this is on the third day after calving. This gives time for the membranes to ripen up and they let loose from the cotyledons much easier and with less hemorrhage than if removed earlier. Any one, who is careful and not too timid to go into the womb with the hand and unbutton the membranes from the cotyledons, may remove these membranes. It is best to remove as few cotyledons as possible, as they contain large blood vessels when they are strongly attached; some are always dead and let loose of the womb easily—these should be removed

Never Be Without a Bottle of Dr. Rowe's Kidney Preparation.

with the membranes. When it is impossible to get some one to do this work on the third or fourth day the membranes may be brought away by giving one of Dr. Rowe's Physic Capsules dissolved in a quart of tepid water. This usually causes the membranes to let loose without further trouble.

MILK FEVER.—PATRUENT PARESIS.

This is a condition where paralysis sets in from one-half to four days after calving. Cause is practically unknown, except that it follows calving in heavy milkers, and is seldom seen in cows before the fourth calf, nor when the animal is thin in flesh.

First the animal becomes staggerly and pays no attention to the calves, the appetite is gone, the animal lies down, makes repeated attempts to rise but is unable to do so; weakness comes over the entire body and the animal soon becomes unconscious, lies first upon the sternum or breast bone, throws its head around to the side, lies this way for some time and then throws itself back upon the ground, stretches out and soon is unable to raise its head, and the only symptoms of life left is heavy breathing.

TREATMENT—Most cases can be saved if they are given what is known as the bag treatment; which consist of filling the bag full of air. An instrument is necessary for this in order that the air may be pumped into the bag through the teats. These instruments can be bought from numerous instrument makers over the country, but you can make one yourself that will answer the purpose very well, by getting a milk tube and attaching it to a

Dr. Rowe's Worm Powder Destroys All Kinds of Intestinal Worms.

piece of rubber hose two or three feet long, connecting this to a bicycle pump and filling each teat separately until it is well filled and repeat this filling again in from six to eight hours; a piece of tape may be tied around the teats to prevent the escape of air. This will usually revive the animal in from two to six hours. After the bag has been filled begin with Dr. Rowe's Blood and Skin Tonic and repeat every two hours until the appetite has returned.

INFLAMMATION OF THE UDDER OR GARGET—MAMMITIS.

In heavy milkers, before and just after calving, it is the rule that the mammary glands are hot, tender and enlarged. This condition, when it excites the milk glands to activity and starts the flow of milk, soon relieves the congestion and the bag assumes a normal proportion, which is greatly aided by frequently milking the cow and relieving the over-filled glands of the large quantity of milk that is secreted. This usually requires three or four days for the bag to assume its normal size.

Sometimes just the opposite of this occurs, that is, when the flow of milk does not start, the inflammation continues to increase, the bag increases in size, fever and tenderness and the animal shows considerable pain and a greatly reduced appetite, and, if relief is not had soon, the bag gets hard, caked; thick, clogged milk is found in the bag and sometimes abscesses are formed. Blows or injuries upon the bag or the milk being allowed to remain in the bag too long, especially in heavy milkers, will sometimes cause this condition. Many good

Keep Stock Free from Worms by Using Dr. Rowe's
Worm Powder.

milkers are ruined in this way and treatment should be early.

TREATMENT—First drain the bag of all milk and bathe the bag with warm water, or sometimes better to put on warm poultices made of bran or oat hulls, and then apply vaseline or lard to the bag and give the animal a physic to relieve the congested bowels, as the fever will cause more or less constipation. We would advise one of Dr. Rowe's Physic Capsules dissolved in one quart of tepid water, given as a drench. If this treatment is carried out early you will save the cow's bag from further trouble.

COW-POX.

This is another form of inflammation of the udder. It is caused by the contagious germ pox and is introduced into the skin in some unknown manner. The symptoms of this disease are slight fever, the teats and bag become redder and hotter than normal, and in two or three days little nodules appear upon the teats or bag like small peas under the skin; these increase in size from one-fourth of an inch to three-fourths of an inch in diameter by the seventh day, and by the tenth day scabs appear from an eruption that has taken place; they soon fall off and leave a pitted ulcer, which is the pox proper. In one or two days this pox becomes yellow from the exudation of the pus and a brownish scab is formed; this leaves an angry sore which heals very slowly.

TREATMENT—Wash the bag daily, or at each milking time, with Dr. Rowe's Bactericide diluted with water, (one teaspoonful to a pint of water), and give Dr. Rowe's Blood and Skin Tonic in the drinking water or feed. This will relieve the animal in a few days.

Never Be Without a Bottle of Dr. Rowe's Scour Remedy.

URTICARIA—NETTLE RASH—SURFEIT.

This is an inflammatory affection of the skin, characterized by the sudden development of patches of various sizes, from that of a nickel to as large as a hand. The swelling is accompanied with more or less itching, the animal rubs these patches, which causes them to rapidly increase, at times covering a large portion of the body and legs, and, if allowed to continue, it develops into a chronic form which is very troublesome to get rid of.

This condition is caused by a derangement of the digestive organs and is usually found in the spring of the year, when the animal is kept in the stall and fed large quantities of rich food.

TREATMENT—This consists in cleaning up the bowels with a physic. Dr. Rowe's Physic Capsules are well adapted for this. Give one, as a drench, and follow with Dr. Rowe's Blood and Skin Tonic, according to directions. Give the animal soft, easily digested food and exercise.

SCABBIES—MANGE—ITCH.

This disease is of a local nature and is caused by a mite which induces irritation and incrustation on the surface of the body generally, is highly contagious and requires for its propagation, from one animal to another, for the mite to be transplanted on the fresh subject.

TREATMENT—First, cleanse the skin and remove all scabs; do this by using warm soap water and scrub the animal thoroughly, especially where the skin has been rubbed. A very desirable preparation may be made by taking of Dr. Rowe's Bactericide, one ounce; oil of tar, one ounce; soft soap, one-

Use Dr. Rowe's Veterinary Liniment for Rheumatism, Swelled Joints, and Enlargements of All Kinds.

fourth pint; sulphur, one-half pound; alcohol, one pint; mix well and apply to the surface of the body where the scabs or eruptions appear. Leave this on for two days, then wash off with warm water and apply again. Repeat this treatment after two weeks if there is any trace of the disease left.

CONJUNCTIVITIS—OPHTHALMIA.

This is an inflammation of the conjunctivi of the eye and of the mucous membranes of the eyelids, and in severe cases it may extend to the deeper parts of the eye. It may result from bruises of the eyeball or from foreign substance in the eye, such as chaff, hay seed, dust, etc.

The symptoms are watering of the eyes, closure of the eyelids, milky color of the eyeball, fiery red mucous membrane of the eyelids.

TREATMENT—Remove the chaff or any foreign substance, and follow treatment as given for conjunctivitis of the horse.

TUBERCULOSIS—CONSUMPTION IN THE COW.

This is an infectious disease caused by the tubercle bacilli which invades all parts of the body. It may be either local or general and is characterized by minute nodules or tubercles, which contain the bacilli of tuberculosis. It is local when it is found in only one or two places of the body, and general when it is found in the blood and all the vital organs.

This disease was known back in the middle ages and it is thought today, by scientists to be identical with tuberculosis of man and that the only differ-

**Dr. Rowe's Eye Lotion Relieves Inflammation of the Eye,
Conjunctivitis and Ophthalmia.**

ence is that cattle bacilli of tuberculosis is much stronger and has a greater vitality than the human tubercle bacilli; and that the bovine tubercle bacilli is readily transmissible to man and that the human tubercle bacilli, when inoculated into the ox immunizes them against bovine tuberculosis and therefore requires great precaution—one should be very careful whether or not this disease exists among dairy or milk cows, as the milk and butter affords the best means for the tubercle bacilli of the cattle to reach the human system, as the live germs are taken into the system through the milk and butter. The meat is less dangerous from the fact that it is cooked, which readily destroys the tubercle bacilli.

The symptoms of the early stages of tuberculosis are not sufficient for the most expert to make a diagnosis, and the only successful method is by the tuberculin test. The test is made in this way: The animal's temperature is obtained during the day at two or three intervals, to get the average for the day; in the evening the tuberculin solution is introduced under the skin, by the use of a hypodermic syringe, and the temperature taken regularly every two hours, beginning ten hours after the injection was made. If the animal has tuberculosis the average temperature will be an increase of two and seven-tenths degrees. If the temperature does not show this much of a rise it is evident that the animal is not affected with tuberculosis. The test should be made at least once a year, and all animals that prove to be diseased should be removed from the herd and be destroyed or, at least, isolated from healthy animals. This disease is incurable or at

**Dr. Rowe's Distemperine is the Best Remedy That Can Be
Given for Coughs, Colds, Chills, Catarrhal Fever,
Shipping Fever and Pneumonia.**

least all treatments have proven unsatisfactory. The best method is to eradicate it from your herd and keep it out.

LUMP JAW—ACTINOMYCOSIS.

This disease is commonly known as lump-jaw or lumpy-jaw, and is a local disease due to the formation of a peculiar tumor, located in the region of the head and neck. These tumors develop as a rule, slower than simple abscesses, and in a few days break open and discharge a thick, heavy pus. The true name of this disease is Actinomycosis, and is caused by the vegetable fungi which finds its way into the system, multiplies and forms a tumorous growth and formation of a cheesy like pus. This germ has the capability of multiplying rapidly, developing in all kinds of tissue, bone, muscle, glandular and fibrous tissue, and develops in a uniform manner in each of the tissues, honeycombing and increasing the size of the organs affected.

This disease is not contagious, but is probably an infectious disease, developing only by inoculation. Inoculation is probably made in the mouth by some sharp substance in the feed which cuts through the mucous membranes, carrying the germ into the tissues; like beared grain, splinters of straw, etc., that enter the tissue. At first there appears a small, hard lump, which may be movable under the skin, or it may be firmly attached to the jaw-bone. There is usually but one tumor, but in some cases there may be two or more, and may be found below the eye on the upper jaw, all along the lower jaw, or they may be found below the ear behind the angle of the lower jaw.

Dr. Rowe's Worm Powder is Guaranteed to Destroy Intestinal Worms.

Some lumps or tumors develop rapidly and others more slowly, there being often considerable difference. These lumps continue to increase in size until they break down and discharge a thick pus. This usually diminishes the size of the lump and it appears to be getting along very well without any treatment, then it starts to grow again. This time it gets much larger than it did before, will soon break out again, this time in three or four places, and does not reduce much in size. The discharge now continues all the time and the disease has taken on the third or advanced stage. If the enlargement or lump is still movable there is yet a good chance for a cure, but if firmly attached to the bone and the bone honeycombed there is less chance for a complete recovery; but even some of these cases yield readily to our treatment.

TREATMENT—Local treatment is the only treatment that is accompanied with success, and it should begin in the early stages. Highly successful has been the treatment with Dr. Rowe's Lump Jaw Cure and the method of procedure will be explained by the directions upon the bottle. It is easy to apply and only requires one application in the beginning, but old standing cases occasionally require the second treatment. One bottle of Dr. Rowe's Lump Jaw Cure will cure a number of cases and the cost will be only a few cents per head, saving many dollars to the owner.

Each and every case should be treated, even if they do look hopeless, as the treatment costs but little and it may be possible for you to save the animal, Dr. Rowe's Lump Jaw Cure gives excellent results, curing many cases wherein other preparations have

Use Dr. Rowe's Kidney Preparation for All Urinary Diseases of Your Stock.

failed, and we are satisfied that after you have once used it you will never be without it and will recommend it to your friends. *It is guaranteed to cure and does cure or we will refund the money.* Mailed prepaid upon receipt of price, \$1.50 per bottle.

DR. ROWE'S LUMP JAW CURE.

This is a special preparation that has done more to eradicate lump jaw in cattle than all other treatments. We call it a special preparation because we do not put it in "Our Handy Veterinary Case," as there are some that purchase the case that have no use for it, as they do not deal in cattle, and those who have a case of lump jaw can order it at any time, and get it before the disease has gone very far.

It is a liquid preparation and can be used in any stage of the disease, and will affect a cure in the beginning as well as in the advanced stage. There may be some cases that have advanced so far that a cure is impossible, but you will never know this until you give it a trial. We advise you to treat any and all cases of lump jaw that you may have with Dr. Rowe's Lump Jaw Cure, and if it fails to cure we will refund your money.

In the early stages, before the lump has broken open, paint the most prominent part with the Cure, and if pus has not yet formed, the enlargement will, in a few days, begin to shrink. Repeat the application after three weeks. If the lump is very hot and feverish, a scab may form over the surface, this, in a short time, will drop out and the cavity will heal rapidly, leaving no enlargement. If pus has already accumulated in the lump, the Cure will hasten its escape. After the pus has been removed, saturate

Dr. Rowe's Worm Powder Will Destroy Intestinal Worms.

a piece of cloth with the Cure, push it into the cavity, and allow it to remain until it drops out itself, or of its own accord; the cavity will then heal without further interference.

Price per bottle \$1.50.

Mailed postpaid upon receipt of amount.

Prepared only by
THE NORTHWESTERN MEDICINE CO.,
Keokuk, Iowa.

ERGOTISM.

This disease is caused by eating the parasitic fungi, known as *Claviceps Purpurea*, which grows upon many species of grasses and produces, at one stage of its development, black or purple spurs which take the place of the kernel or seeds in the grain head. These spurs are called Ergot and are simply aggregates of the vegetable body of the fungus, which lie dormant during the winter and are capable of producing the fungi the following spring. When hay or grass containing any considerable quantity of these ergots is eaten by stock, the following symptoms are produced:

The animal begins to lose flesh and becomes sore footed, and in a short time there will be noticed a ring forming around the hoof, or may be above the pastern around the cannon-bone, appearing as though a rope had been tied around the leg so tight that the circulation had been cut off. In advanced cases the toes fall off and the whole foot and pastern may become gangrenous, the ears drop

Our Handy Veterinary Case Contains Twelve of the Best and Most Needed Veterinary Preparations.

off, the tail drops off and the animal finally succumbs to the disease. If the animal is pregnant it usually aborts.

TREATMENT—Change the feed to straw, fodder, or hay that contains no ergot. In hay that is raised upon low, wet ground is generally where ergot is found. The most common plant that yields the poisonous ergot is the wild rye, but in some localities it may be found upon blue grass and timothy. The parts that have become gangrenous should be bathed daily with a solution of Dr. Rowe's Bactericide. Most cases will recover that withstand the first shock if the ergotized feed is taken away from them.

CORNSTALK DISEASE.

This is a disease that affects cattle and is very common in the corn belt, causing a great amount of loss to the farmer and stockman. All investigations so far have not given sufficient proof to isolate the direct cause, but it is well known that corn fodder is the general cause of the disease.

Symptoms are not easily described, as death relieves the animal of its suffering very quickly and the disease is usually confined to one and two year old animals, yet occasionally milk cows are affected. The disease comes on suddenly without any apparent warning, the animal is found by itself, may be lying down or standing. If standing, the back is humped up, there is a switching of the tail and a peculiar twitching of the rump, indicating an attempt to urinate. The animal usually shows pain in the abdomen by kicking at the belly, has improper vision and the eyes are staring, the gait is staggering and uncertain, sometimes the brain is af-

There is None so Good as Dr. Rowe's Worm Powder.

ected and the animal is frightened at the approach of anyone. They often become delirious and run into wire fences or other objects, the respiration is much increased, and the disease runs its course in from twenty-four to thirty-six hours and most frequently the animal succumbs to the disease.

TREATMENT—This consists in giving bowel and kidney medicines and must be given early. At the early approach of any symptoms of this disease give Dr. Rowe's Kidney Preparation every four hours; give one of Dr. Rowe's Physic Capsules, as a drench, and repeat in six hours. Put the animal in a quiet place, give it water but no feed for the first twenty-four hours. Do not attempt to treat the disease in the last stage as the animal is dangerous to handle and treatment is unsatisfactory.

CONTAGIOUS ABORTION IN COWS.

This is a disease that is making rapid strides, principally among the dairy cattle of our country. The animals affected with this disease usually abort from the fifth to the ninth month, and I have known herds where ninety per cent of the cows aborted in one season. This is supposed to be due to a germ whose history is not yet well known.

TREATMENT—A practical, safe treatment is to give injections of an antiseptic, of which Dr. Rowe's Bactericide has no equal. Whenever an animal aborts, it should be removed from the herd and kept away for at least a fortnight, and a one per cent solution of Dr. Rowe's Bactericide injected daily into the womb. All dirt and filth from the cow should be removed, lime sprinkled in the stable or crude carbolic acid sprayed over the floor. With this treat-

**Dr. Rowe's Kidney Preparation Relieves All Pain in the
Kidney and Bladder.**

ment we have had excellent success and if carried out in full the number of cases of abortion will be very few.

WARBLES.

These are little nodules or lumps formed under the skin along the back, and contain the larvae of the gadfly, seen in the winter and spring. When they get very prominent there will be an opening appear at their highest point. The presence of these larvae causes the animal considerable annoyance; when these larvae are working their way out the animal will be seen to run and toss its head.

TREATMENT—These larvae can be removed by cutting the skin and squeezing upon the enlargement, which forces out the larvae, or a few drops of Dr. Rowe's Bactericide on the places will kill the larvae and they can be squeezed out in a couple of days thereafter.

FOOT AND MOUTH DISEASE.

This disease is known as epizootic aphtha, and is a highly contagious fever. It is characterized by eruptions or blisters in the mouth, around the coronets of the feet, and between the toes. It is contagious and may be communicated to man by the use of the milk from infected cows.

Symptoms are fever, roughness of coat, shivering, soreness in the feet, and inclination to lie down. The mouth is usually kept closed and saliva runs from the lips. After two or three days eruptions appear in the mouth, sores or ulcers appear upon the feet and between the toes; the disease usually

**If You Value Your Stock You Cannot Afford to Be Without
Our Handy Veterinary Case.**

lasts from one to two weeks. The animals quite often lose their toes or claws and go crippling around for months.

TREATMENT—This consists in bathing the feet with Dr. Rowe's Bactericide once daily and spraying the mouth with a solution of permanganate of potash, made by dissolving a teaspoonful of permanganate of potash in one-half gallon of warm water. Recovery is usually had in from two to three weeks.

ULCERS OF THE CORNEA.

Ulcers in the eye are formed by the bursting of small abscesses on the cornea, or may be caused by scratches, cuts, or bruises upon the eye. The ulcers are first of a grayish color with edges high and irregular, discharging a nasty, watery substance, with a tendency to spread rapidly; sometimes spreading to the deeper parts of the eye and empties the first chamber.

TREATMENT—This is to prevent the ulcers from spreading. To do this, place the animal in a quiet, dark stall and fill the eye with Dr. Rowe's Eye Lotion three or four times a day.

DR. ROWE'S CHEMICAL NO-HORN.

This a paste preparation, which will prevent the growth of horns. It needs only to be applied once, and must be used before the horns come through the skin. The best time to use it is from the third to the fifth day after the calf is born. To apply, clip off the hair over the horn buttons, and, with a small stick or match, take a piece of paste as large as a grain of corn and rub on the horn spot; if this is done well the horns will be killed—their growth stopped.

This is the best method to get rid of horns, as it causes scarcely any pain, and leaves the head in much better condition than when the horns are allowed to grow out and the barbarous method of sawing or cutting them off is resorted to.

One bottle of this preparation is sufficient to stop the horns, or poll, twenty-five head of calves. It is not put in "Our Handy Veterinary Case" regularly, but may be had instead of any other fifty cent preparation contained in the case, or will be mailed post-paid upon receipt of price.

Any one that raises calves should never neglect to use Dr. Rowe's Chemical No-Horn, as *it is guaranteed to stop the horns without injury to the calf, and will leave no half or crumpled horns, when used early; if it does, your money will be returned.*

Price per bottle 50 cents.

Manufactured only by
THE NORTHWESTERN MEDICINE CO.,
Keokuk, Iowa.

Always Have a Jar of Dr. Rowe's Spavin Ointment at Hand.

DR. ROWE'S PHYSIC CAPSULE.

This is a preparation that supplies a long felt want of the farmer and stockman. It is composed of drugs that are active cathartics, scientifically combined to produce best results, and placed in a gelatine capsule; and is commonly known as a physic ball.

The ball or capsule form is the most convenient manner in which these drugs can be given. It saves loss of time in administering and take the place of the troublesome drench; each capsule containing sufficient cathartics to give the horse an ordinary physic.

All horses, like people, need a physic (at times) to clean out the impurities from the over-gorged bowels and thereby prevent diseases that often result from this cause. Oftentimes horses are run down, pot-bellied, hide-bound, have frequent colic attacks, or indigestion, all caused by constipation and inaction of the bowels. One or two physics, produced by Dr. Rowe's Physic Capsule, will put these animals on their feet and they will grow fat and strong. It is the proper physic to use after a course of Dr. Rowe's Worm Powder has been given.

Dr. Rowe's Physic Capsule is the same as has been used by him during his many years of successful veterinary practice, and will be found to be the best physic and least trouble to give of any preparation known.

Dr. Rowe's Physic Capsule *is fully guaranteed.*
Your money cheerfully refunded if not satisfied.

Price per box, \$1.00.

Mailed postpaid upon receipt of amount.

Prepared only by

THE NORTHWESTERN MEDICINE CO.,

Keokuk, Iowa.

Sheep and Their Ailments.

SHEEP MANGE.

This is a disease that exists in most all localities of this country, but perhaps most generally seen upon the range districts. There are several forms of sheep mange but the most common is that caused by the scab mite, technically known as *Psoroptes communis ovis*. Its transmission is effected by coming into immediate contact with the diseased animals.

This disease is produced from a mite that invades the part of the animal which is covered by the wool. There are small eruptions which may be isolated or gathered in groups, depending upon the number of *Psoroptes* present. By parting the wool at the beginning, we will notice flattened pimples about the size of a millet seed, of a pale yellowish color, which are produced by the bites of the *Psoroptes*. On the surface of the pimples small blisters appear and when broken open a scab is formed of a yellowish brown color; these scabs protect the parasite, the wool under these patches lets loose and comes off with the scabs, the wool thus loosened forms tufts on the surface of the fleece, fall out or are torn out, the wool losing its lustre and softness. The urticaria thus produced causes the animal to rub itself, which produces ulcerated sores in the skin with considerable inflammation. When mange becomes generalized the itching is intense, the animal loses flesh, the appetite becomes suppressed, and the animal becomes rapidly emaciated and a great many of them die.

Our Handy Veterinary Case contains 12 of the best and most needed Veterinary Preparations.

TREATMENT—There are two methods of treatment and each one is applicable to different seasons of the year. One is to apply the treatment by rubbing or friction, and the other is by means of baths. During the winter season, when it is too cold to bathe or dip the animal, great relief is afforded by applying oils or ointment to the affected parts; of which the following are good ones: Four ounces of Dr. Rowe's Bactericide, one ounce oil of tar, eight ounces olive oil, mix well and with a sponge or swab rub the scabs thoroughly and remove all that is possible; or, red oxide of mercury, one ounce; cosmoline, eight ounces; mix thoroughly, and rub carefully into all the ulcers or scabs, but do not apply this to a large surface as it is poisonous and may be absorbed if too large a surface is covered. Either one of these preparations can be made in large quantity, using the same proportion, where there are large flocks to treat.

Where there are a large number of sheep affected, as is often the case in large flocks, giving a bath or dipping is the proper treatment for these animals. There are many formulae used for dipping purposes, but the one that we have found most satisfactory is the Lime and Sulphur Dip, which is made as follows. Flowers of Sulphur, 21 pounds; Unslacked Lime, 7 pounds; Water, 100 gallons.

Carefully weigh the amount of lime and sulphur for the quantity of dip desired, place the lime in a kettle and add enough water to slack it until it forms a thin paste, the sulphur is now added and the mixture well stirred. After the lime and sulphur are well mixed add enough water to make one-

Dr. Rowe's Kidney Preparation is Guaranteed to Give Satisfactory Results.

fourth the quantity of dip desired, then boil the mixture until it takes on a chocolate color, in order to bring about the chemical change of the different ingredients. This will require about two hours to complete the process. When this has been accomplished, the fluid should be allowed to settle, when the clear, brown liquid may be drawn off into the dipping vat and enough water added to make the desired quantity of dip, then the dip is ready for use.

While the dipping is being performed the dip should be kept at a temperature ranging from 100 to 112 degrees, as cold dip does not penetrate the wool and scab sufficiently, and if too hot it will not do as it is too weakening to the animal. The animal should remain in the dip for two minutes. It is best to use a watch and get it exact. If badly affected, the animal should be rubbed, or scrubbed, while in the solution. The dipping should be repeated at intervals of from ten to twelve days. The parasites are usually killed at the first dipping, but the eggs will hatch out and the young mites should be killed before they are old enough to lay eggs. This dipping process should be carried on by all persons who have scab among their sheep, so as to rid their flock of this, the worst enemy to the industry.

NODULAR DISEASES OF THE INTESTINES OF THE SHEEP.

This is a parasitic disease and infects the intestinal walls. The embryo forms tumors or nodules in the walls of the intestines; these tumors increase in size until the worms are matured, then the para-

**If You Want the Best, You Want Dr. Rowe's Kidney
Preparation.**

sites escape and float loose in the intestines; the remainder of the parasite's life is unknown. These tumors are found sometimes filled with fluid and later on turn to a green, cheesy substance.

The prominent symptoms are weakness and paleness, the mouth becoming exceedingly pale, and there may be profuse diarrhea. Death usually results from lack of absorption of nutritive material from intestines, the absorption being prevented by the numerous nodules present. The parasite that produces this disease is an extremely small one, measuring from one-sixteenth to one-eighth of an inch in length. This disease is found to be quite common and causes a considerable loss to sheep owners.

TREATMENT AND PREVENTION—To prevent the spread of this disease, change the run of the sheep; cultivate or plow the infected pasture under, as all pastures that the sheep have run upon are infected, and give Dr. Rowe's Worm Powders to the diseased ones, according to directions.

ROUND WORM—STRONGYLUS CONTORTUS—BLACK SCOURS.

This worm is found in the stomach of sheep and goats and often exists in very large numbers. This parasite is from one-third to three-quarters of an inch in length and about the thickness of an ordinary thread. They are twisted upon themselves; hence the name contortus, meaning twisted. The eggs pass out with the feces and fall upon the grass. The animals feeding upon this grass take the eggs in with the feed; thus taken into the stomach, they

Always Have a Box of Dr. Rowe's Worm Powder at Hand.
Use Dr. Rowe's Bactericide for Cuts and Wounds.

are hatched and burrow into the mucous membranes or lining of the stomach. They derive their nutriment from the membranes, mature in ten or twelve days, then, wandering through the feces in the bowels, they lay a large number of eggs in the feces, and in the course of a few weeks they die or pass out with the feces. It is during their developing stage that they cause the following symptoms :

The animals are dull and languid, lie around most of the time, eat but little, and become very thin and pale. The dung is of a dark, tarry fluid, and from this fact the disease is commonly called black scours. The animal becomes weaker and weaker until it dies from starvation. These parasites cause much more harm in the young animals than in the adult, and the disease is practically a summer and fall trouble, seen principally in the fall of the year.

TREATMENT—Dr. Rowe's Worm Powders will rid the animals of these parasites, but the animals must be taken from the infected pasture. Put the animals in a dry lot or in a new pasture, and feed ground oats with proportionate doses of Dr. Rowe's Worm Powders added twice daily. There are other treatments, as the benzoine treatment, and the potassium treatment, recommended by some, but our experience and the experience of many others is that they have not proven satisfactory. We cannot recommend Dr. Rowe's Worm Powders too highly, as they can and have saved a great many animals, and we guarantee that they will save a larger proportion of cases than any other preparation.

Dr. Rowe's Spavin Ointment Removes Lameness, Bone and Bog Spavin, Ringbone, Curb and Splints.

FOOT-ROT.

This disease affects the hoof part of the foot of the sheep. It consists of a separation of the horn or hard parts from the soft parts and produces lameness. It is caused by keeping the animal's feet continually wet, as sometimes occurs in rainy seasons, or animals that are continually kept upon wet pastures, or in the spring of the year by being kept in wet, marshy feed lots. The disease is contagious and is readily transmitted from the diseased to the healthy animal by trodding over the same pastures, or being kept in the same lot where badly diseased animals have been kept. The disease may spontaneously arise from the wet conditions as above stated, same causing the hoof to become soft and mushy and the skin tender and inflamed, thereby permitting the germ to enter; the germ being found in these low, wet pastures and filth.

Symptoms are lameness in all four feet, but generally more severe in the front feet. The animal sometimes refusing to step upon the feet, the feet being so sore that they go upon their knees, and upon examining the feet you will find ulcers or sores around the edge of the hoof, between the toes, with a bad smelling pus discharge. In extreme cases the hoof has grown long and ragged and is almost or completely detached from the soft tissue beneath. These symptoms vary according to the duration of the disease.

TREATMENT—Put the animal on dry lots and upland pastures. In mild cases, clean the hoofs, remove all dirt or other substances from between the toes; make a solution, taking one quart of rain wa-

Use Dr. Rowe's Bactericide for Bee Stings and Snake Bites.

ter to which add two tablespoonfuls of Dr. Rowe's Bactericide, and apply to the animal's feet once a day for three days. In the severe form, trim the hoof down to the quick, remove all dirt, pus and other matter, wash the parts clean and bathe with solution as described above. While the feet are still wet, dust all the diseased parts well with Dr. Rowe's Healing Powder and repeat for three or four days. This usually affects a cure, but after two weeks, should there be any disease still remaining repeat the treatment as before.

DISTEMPER.

This disease, as seen in the sheep, is much the same as a cold in the head, causing a catarrhal discharge from the nose, dullness, a watery discharge from the eyes, coughing and sneezing.

It is caused by the animal being housed in badly ventilated sheds or quarters, or exposed to cold, changeable weather, or may follow clipping.

TREATMENT—Give the animals well ventilated quarters, keep them out of the cold, damp rains during the spring and fall of the year, and give a teaspoonful of Dr. Rowe's Distemperine once a day.

TICKS.

These insects, as found upon sheep, are about one-fourth of an inch in length, brown in color, and with a long snout provided with suckers which they fasten to the skin and suck out the blood. These ticks are very detrimental to the sheep, causing the animals to lose flesh, and preventing a healthy growth of wool.

TREATMENT—This consists in eradicating these ticks. Dipping is the most successful means of erad-

ication, and we recommend the same solution as given for scab.

MAGGOTS.

These are worms that are found in open wounds, or where there is an inflamed surface with a putrid odor that attracts the blow-fly, and this is where they deposit their eggs. These eggs hatch out in from six to eight hours, and live upon the secretions of the wound. They develop very rapidly into a screw-like worm, from one-fourth to five-eighths of an inch in length, which have a proboscis at one end with which they bore into the tissue and cause great pain and annoyance to the animals.

TREATMENT—Clip off the wool wherever they are found and apply a solution of Dr. Rowe's Bactericide, one tablespoonful to a pint of water, which will destroy the parasites and heal the sores. Where they are deep in the tissue, apply one application of Dr. Rowe's Veterinary Liniment and then apply solution as above for one or two applications.

**You May Regret It if You Wait Until To-morrow to Send
for Our Handy Veterinary Case.**

Swine and Their Ailments.

THE HOG LOUSE.

This parasite is found upon hogs of all ages. The most common form is the gray louse. The favorite seat of the lice is back of the ears, along the neck, and under the breast. They are all blood suckers and suck the life out of the animal, reducing the vitality so low that they are more subject to other diseases. This is especially true of the pig or shoat in the fall or winter seasons, where the animal is kept confined in an infected pen. The amount of harm that the louse produces is much greater than is commonly thought. This has been proven beyond a doubt, by killing the lice upon runty pigs, when the pigs have made much better gains, showing that the lice have been the greatest source in producing their stunted condition.

TREATMENT—To rid the animal of the lice we would recommend spraying or dipping the animal with the following solution: Take of soft soap, one-fourth pound; a full bottle of Dr. Rowe's Bactericide, and water, three gallons; stir thoroughly until well mixed, use in a spray and spray the hogs once a day for six days. Change lots or pens, or clean out all bedding and spray the nests with same preparation. This treatment may be repeated after ten days to rid the hogs of any lice that may get on them from the ground, etc.

Dr. Rowe's Eye Lotion Relieves Swollen and Granulated Lids, Pink Eye, Etc.

WORMS IN HOGS.

There are a number of worms that infest the bowels of hogs. The most common are the *Strongylus Dentatus*, found in the large intestines, and the *Strongylus Suilla*, found in the stomach and small intestines; varying greatly in length, sometimes reaching the enormous length of from eight to ten inches. These parasites infest hogs of all ages, and are very harmful, often causing death to the pig.

The first symptoms are scouring, which continue for a week or two with the appetite good, then they lose their appetite for grain, and drink only water or swill. They linger along in this manner for three or four weeks, becoming very thin in flesh, cough some, lie around most of the time and when chased out of the nest, they come out wheezing, coughing, the back arched, the hair standing on end and with a very dull, shaggy look. They continue this way for three or four weeks and then die. Older animals do not fatten well and are usually sold without being in prime condition. Many times these symptoms are mistaken for swine plague or hog cholera, and, whenever hogs are not thriving, worms should be looked for and steps taken to eradicate them.

TREATMENT—This should begin as soon as the first symptoms are shown. A great many preparations have been recommended by the farm journals, such as turpentine and oils. Turpentine does but little good, as it is quickly taken up by the blood from the stomach and never reaches the worms below the stomach. Santonine, another very much recommended preparation, is a very dangerous drug,

and in a number of cases may kill the pig before it does the worms. Formaldehyde is another very dangerous drug. This is a valuable disinfectant, but it is too irritating to be given internally. We can safely recommend Dr. Rowe's Worm Powder, which destroys worms throughout the elementary tract and does no harm to the animal. Give according to directions which will be found upon the package, and do not experiment with untried and dangerous preparations. These worms can also be destroyed by giving Dr. Rowe's Hog Remedy. Full directions accompanies each package.

RICKETS.

This disease is seen in young pigs weighing from fifty to one hundred fifty pounds. It sets in with swelling of the legs and feet, soreness and lameness, and the animals scarcely having strength to stand on their legs and often lie down to eat. However, they lose but little flesh, drink well, remain in this condition about ten days and quite frequently die. The disease is produced by corn feed, upon a weak, paupered strain of hogs.

TREATMENT—Stop feeding corn. Feed milk, middlings, ground oats and bran. Give lime water to drink and give two doses daily of Dr. Rowe's Blood and Skin Tonic. Give a teaspoonful for each hog, in the slop. Give free range upon grass pasture.

RHEUMATISM.

This manifests itself by lameness in the hind legs, may be swelling of the joints of the limb, and quite often found in the coupling of the back. When this occurs, the animal is unable to stand, lies around, the appetite is good, it is unable to get up

There is None so Good as Dr. Rowe's Spavin Ointment.

and walk, and drags its hind parts around, squeals whenever approached or made to move. It is caused by feeding too much corn, bad sleeping quarters, and lack of exercise.

TREATMENT—Give Dr. Rowe's Blood and Skin Tonic, one teaspoonful to each pig, twice a day. Apply Dr. Rowe's Veterinary Liniment to the back and legs once daily and rub in well; move the animal to itself and give it a good, dry bed, and give sloppy foods, as milk, oats and bran.

DIARRHEA.

This disease may arise from poor quality of feed, or from drinking water from stagnant pools. In suckling pigs, it may be caused by the dam over-eating corn or flax seed meal, but the most common cause of diarrhea in pigs is intestinal worms.

TREATMENT—In cases where diarrhea is caused from improper feeding; poor sleeping quarters; wet, damp lots; feeding in mud and manure, and drinking water from stagnant pools, give Dr. Rowe's Scour Remedy, in milk or grain swill. Give one teaspoonful per head to six weeks old pigs, and one tablespoonful per head to adult hogs. In cases where caused from worms, see treatment under worms in hogs.

CANKER OF THE NOSE AND FACE.

This is a disease affecting the skin about the nose, but later on may spread over the face and ears. The skin breaks open, forming ulcers, which thicken up the skin, causing heavy wrinkles over the face and neck, and causes the animal to hold its nose upward as though it was trying to catch some

Record Breaking Results Are Obtained by Using Dr. Rowe's
Veterinary Preparations.

odor in the air. Sometimes enlargements come upon the body, and discharge a bloody like pus. This disease is caused by a parasite, sometimes affecting the whole herd, and quite frequently causing death.

TREATMENT—This consists in swabbing out the pockets or ulcers with Dr. Rowe's Bactericide, one tablespoonful to a pint of water, for three or four applications, then dust with Dr. Rowe's Healing Powder daily, for a few days.

PILES.

These are often seen in pigs that are fed upon dry food, and with but little exercise. This is the result of constipation, inflaming the mucous membrane of the rectum, causing it to turn outward from the body. They sometimes develop nodules as large as a man's fist.

TREATMENT—Give slop foods, adding a little common salt. Treat the piles with a few applications of Dr. Rowe's Bactericide, diluted with equal quantity of water, then dust daily with Dr. Rowe's Healing Powder.

HOG CHOLERA—SWINE PLAGUE.

These are practically two diseases but as the average hog raiser is not able to distinguish between the two diseases, care and treatment of the two are practically the same. For the convenience of the reader we will combine the cause, symptoms and treatment of these diseases. They are both very fatal and destructive diseases. They affect the hogs in all parts of the United States, and are estimated as to causing loss to the farmers of from \$25,000,000 to \$30,000,000 annually. Hog cholera is more fatal

**Dr. Rowe's Eye Lotion Will Prevent Your Horses from
Going Blind.**

in young than in older animals. Old animals often escape the disease after being exposed. The period of incubation, or the time that elapses between the infection and first appearance of illness, varies from four to twenty days.

The first symptoms are the signs of fever, shivering, the animal hides itself in the bedding, unwillingness to move, more or less loss of appetite, appears stupid and dull; the bowels may be normal or constipated in the beginning of the attack, but later may become liquid and foetid. The eyes are at first congested, later on pus accumulates, sticking or adhering the lids together, the breathing is more rapid than usual and may become very laborious in the latter stages, and the animals usually cough when driven up from their sleeping quarters. In white haired hogs the skin becomes red and inflamed, being more or less spotted between the legs, under the abdomen and neck; later on these spots become purple. The animals lose flesh rapidly, grow weak, stand with the back arched and the abdomen tucked up, and walk with a tottering and uncertain gait. These symptoms all increase until death relieves the animal. These are the same symptoms as will be seen in swine plague with the exception of more lung trouble, characterized by a deeper, heavier cough. The course of the disease varies from one or two days to two or three weeks.

The cause of these diseases is supposed to be due to a bacteria known as hog cholera germs or swine plague germs, and is very contagious. The *prevention is always better than a cure*, as some animals are left weak even after cured.

You Should Never Be Without a Bottle of Dr. Rowe's
Eye Lotion.

PREVENTION—To prevent this disease, be extremely careful that no diseased animals reach your herd, and that no animal or man that has anything to do with the diseased animals is ever allowed in or near your hog pens; also that you give them daily Dr. Rowe's Hog Remedy.

Before giving our treatment, it must be understood that we do not expect to cure every case, as some forms of these diseases are so virulent and rapid that the animals are dead almost before they are observed to be sick. Under such conditions, there is no time for the most active remedy to produce any benefit, but other times the outbreak of the disease is much less virulent, and there is time to treat the animals after they have become sick, or the balance of the herd may have proper care and treatment and the greater number saved.

In order that you may have success with our preparation, proper care must be given the animal, which is as follows: Place the animals in comfortable quarters, giving soft; easily digested food. The troughs, pens, nests and feeding floors should all be disinfected with crude carbolic acid or slacked lime. We would also advise that the animals be moved to new quarters, which will aid greatly in stamping out the disease. This disease causes an inflammation of the internal organs, especially of the large intestines, spleen and liver, therefore, it will require easily digested food, as milk, ground oats, bran and oil meal.

TREATMENT—To animals that are able to eat, feed a mixture of bran, middlings or shorts, corn meal and ground oats, adding sufficient hot water

On Every Farm Should Be Found Our Handy Veterinary Case.

to make a thin slop, and stir in the required amount of Dr. Rowe's Hog Remedy. To those that are not able to eat, or will not come to the feed, the remedy may be given in a drench, as follows: Considerable care should be used in drenching the hog, as it may become strangled; do not turn the animal upon its back, merely raise its head, pull out the cheek and slowly pour the medicine in the pouch thus formed. The medicine will flow from the cheek into the mouth, and when the hogs find out what it is they will swallow without any further trouble. Hogs that could not eat before, will commence eating after getting a dose of the remedy, and will continue to improve until they are well.

DR. ROWE'S HOG REMEDY.

This is a remedy that cures and prevents Hog Cholera, Swine Plague and Infectious Pneumonia. It is a good worm exterminator, a tonic for the bowels, and an excellent invigorator for the unthrifty pig. It will be found to be the best treatment for your hogs when they are out of condition, and will cure more cases of genuine Hog Cholera and Swine Plague than any other preparation.

Not all sick hogs have Cholera or Swine Plague. Therefore, many times, when your hogs are sick and dying, there are other diseases that are taking them off; and you are treating them for cholera or swine plague—if you are treating them at all. Many farmers and hog raisers have become disgusted with all treatments they have tried, and think, that after their hogs have commenced to die, any money spent for medicine is uselessly spent. We know this to be the wrong idea, and yet, we do

Dr. Rowe's Eye Lotion is Guaranteed to Give Satisfactory Results.

agree with them that it is worse than useless to try to treat a disease unless they have a proper remedy for that disease. Owing to the similarity of the symptoms of the different diseases of hogs, a person may very easily mistake one disease for another; and just as easily be prompted to give the wrong remedy. Under these circumstances, a *strictly* Hog Cholera Remedy will not give success if given for the disease of Infectious Pneumonia, Gastro-enteritis, Scrofulosis, Obesity, Scorbutus, Anthrax, etc., and vice versa.

Because of this similarity of symptoms and the uncertainty of diagnosis, we have, after spending much time, labor, and money, compounded this preparation—Dr. Rowe's Hog Remedy. This preparation is a general hog remedy; that is, it is a remedy for all general diseases of swine. Therefore, you need not be too particular in your diagnosis of the disease, for whether it be Worms, Hog Cholera, Swine Plague, Infectious Pneumonia, etc., this remedy will be of inestimable value in driving the disease from your herd. This remedy is made of many drugs; there being a drug, or a number of drugs, for each of the different diseases, and these drugs act upon the system according to the disease with which your animals are afflicted. The other drugs will do no harm, but, on the other hand, will act as a preventive and ward off other diseases.

Dr. Rowe's Hog Remedy not only drives out disease, but it also leaves the hogs in a healthy and vigorous condition. Whenever your hogs are not thriving—growing or making flesh—there is something wrong with them, and they should have a

**Dr. Rowe's Veterinary Liniment Relieves Itching—Stops
Rubbing of the Mane and Tail.**

treatment of this remedy. A supply of this remedy should always be at hand, to be given at intervals, as a preventive, or upon first sign of disease. Whereas, should you wait until your hogs begin dying before you send for the remedy, you will lose many hogs that otherwise might have been saved.

To know when your hogs are not doing as well as they should, only requires a little care and observation on your part. Hogs are much like people, that is, when they are not feeling well they prefer to lie around. This is often the first sign of disease. Dr. Rowe's Hog Remedy is a medicine that will please you, when you are in just this kind of trouble. It will make the sick hogs well and the well hogs better, thereby, saving you many dollars. The cost of the medicine will be comparatively nothing, and if it does not satisfy you, that is, if it has not saved many times its cost, we will cheerfully refund your money. We do not wish you to understand that we expect to cure every case, for we do not. Sometimes disease gets such a grip upon the animal that it is utterly impossible to save it, or the treatment was begun too late. But this does not matter; if you are willing to spend your time to give the treatment correctly, we are willing to furnish the medicine, and return the money paid for it if it fails to cure. We have so much confidence in our Dr. Rowe's Hog Remedy—knowing that it will effect a cure in the majority of cases—that we can well afford to lose the cost of the medicine in the few instances where it fails. We feel that it is enough for you to lose your hogs, without paying for the medicine; and we believe the medicine will

**Dr. Rowe's Distemperine Insures a Speedy Relief for
Distemper, Lung Fever, Influenza, Pink Eye, and
Epizootic.**

cure, or we would not make this proposition. Nothing can be more fair than this, and in this manner we try to show you our confidence in this remedy. We are positive, that if you will give it a fair trial, you will agree with us.

Dr. Rowe's Hog Remedy is put up in one size boxes only, and sells at \$1.00 per box. Each box contains sufficient medicine for the treatment of five 75-pound pigs; or four 100-pound pigs; or three 125-pound hogs; and about the same proportion for younger and older animals. These boxes are put up in two size cases; namely: six boxes in a case, which sell for \$5.00; and fifteen boxes in a case, which sell for \$12.00. We do not prepay shipping charges on the smaller case, but the larger case will be shipped, all charges prepaid, upon receipt of price.

Order a case today, give it to your hogs according to directions, and be convinced of the satisfying results to be obtained by its judicious use.

Prepared only by

THE NORTHWESTERN MEDICINE CO.,
Keokuk, Iowa.

SCHIRRHUS—TUMORS FOLLOWING CASTRATION.

These tumors are quite often common following the work of some operators. They vary in size from that of a man's fist to that of a gallon bucket, and are located in the scrotal sack at the point of incision. They are the result of a poor job of castration, by making the incision too high on the scrotum, or too small an opening. They rarely ever follow a rightly performed operation. To castrate, one

Dr. Rowe's Veterinary Liniment is Guaranteed to Give Satisfactory Results.

should make an incision at the bottom of the scrotal sack, so that the secretions or pus may all escape, and also that the scrotal cord be pulled out or cut as far as possible from the testicle. When these enlargements or tumors begin to develop, they do so very rapidly, the animal soon begins to lose flesh and will succumb to the disease if it is not removed.

TREATMENT—This consists in removing the tumor. A great many writers recommend that they be dissected out, but this most invariably causes death of the animal. The proper treatment for their extinction is to make an incision into the center of the tumor, cutting it half in two at the very lowest point. The most of these tumors have a cavity of pus in the center and this should be filled with a cloth saturated with Dr. Rowe's Bactericide, full strength, allowing it to remain until it sloughs away and drops out. The tumor then will fast recede and the animal heal up and be perfectly normal. This treatment will be found very satisfactory if due care is used in making the incision.

DOMESTIC LIQUID MEASURE.

A teaspoonful equals 1 drachm.

A desertspoonful equals 2 drachms or $\frac{1}{4}$ ounce.

A tablespoonful equals 4 drachms or $\frac{1}{2}$ ounce.

A wine glass equals 2 ounces.

A teacupful equals 4 ounces.

The syringe, which we furnish in "Our Handy Veterinary Case," will hold one desertspoonful, or two drachms.

These measures will vary somewhat from the standard, but are accurate enough for all practical purposes.

Remove That Lameness, in Your Horse, by Using Dr. Rowe's Spavin Ointment.

Dr. Rowe's Veterinary Preparations are practical, and have stood the test of many years of successful practice. They are invariably his choice from all drugs at hand, and, by years of experience, they have proven to be superior to all other preparations, and are sure to give you better success than any remedies you have ever tried. We are positive that, if you give them a trial, you will have as good success as he has had and that you will lose no more valuable animals by experimenting with home remedies, or unguaranteed and unreliable preparations.

If you have not read this book carefully, we trust that you will do so and thereby become acquainted with the symptoms of the diseases that may affect your animals. You will find that we have covered the field so thoroughly that you can treat successfully every disease and condition with which your animals may become afflicted. In order that you may treat the ailments of your stock successfully, you must provide yourself with the preparations for the different diseases, in order that they may be at hand when needed. Therefore, order at once "Our Handy Veterinary Case," and with same always kept filled with Dr. Rowe's Veterinary Preparations you will have no need for other remedies or drugs.

Dr. Rowe's Distemperine is Guaranteed to Produce Satisfactory Results. Your Money Refunded if It Fails.

WHY WE OFFER "OUR HANDY VETERINARY CASE."

We do not believe that the farmers and stockmen are fools, but we do believe that they are an intelligent and sensible class of people and that they realize that a preparation that will cure ringbone, curb, splints, etc., will not cure colic, influenza, distemper, pneumonia, etc.

Diseases are divided into classes, and, in the treatment of them, they must be treated with regard to their classes; and only those of one class and with a similarity can be treated with the same preparation. Therefore, it requires a different preparation for each of the different classes. With this fact before us, and knowing it to be true, we take great pleasure in offering "Our Handy Veterinary Case" to the farmers and stockmen. The case is made of hard wood, highly finished, trimmed with brass hinges, lock and handle, and contains twelve of the best and most needed veterinary preparations. It also contains a hard rubber syringe, one surgeon's needle, one skein of surgeon's silk thread, and a copy of Our Veterinary Adviser, durably bound in leatherette, containing 176 pages of valuable information concerning the diseases of Domestic Animals. This makes a very complete veterinary outfit and one with which the farmer or stockman can successfully treat any disease, injury, cut or wound with which his stock is liable to become affected.

We were fully satisfied, in the beginning, that a veterinary outfit, such as "Our Handy Veterinary Case" and contents, was very much needed and would be appreciated by the farmers and stockmen,

Dr. Rowe's Distemperine Will Please You. All We Ask is That You Give It a Trial.

which fact is being proven much beyond our expectations by the numerous unsolicited testimonials we are constantly receiving. It will prove as valuable to you as it has to thousands of others.

Send for "Our Handy Veterinary Case," complete with twelve of the best and most needed Veterinary Preparations, Hard Rubber Syringe, Surgeon's Needle, Skein of Surgeon's Silk Thread, and a copy of Our Veterinary Adviser, which will save the lives of your animals, and thereby save you many times the cost of the case. The case and contents are sold on a *cash guarantee—your money refunded if not satisfactory.*

Price of "Our Hand Veterinary Case" complete,
\$7.50.

Manufactured and distributed by
THE NORTHWESTERN MEDICINE CO.,
Keokuk, Iowa.



Dr. Rowe's Bactericide Destroys the Poison, Kills the Bacteria, Heals Without Scar or Blemish.

P R I C E L I S T.

"Our Handy Veterinary Case" contains one bottle each of—

Dr. Rowe's Colic Preparation, price	\$ 1.00
Dr. Rowe's Kidney Preparation, price	1.00
Dr. Rowe's Distemperine, price50
Dr. Rowe's Bactericide, price50
Dr. Rowe's Blood and Skin Tonic, price50
Dr. Rowe's Scour Remedy, price50
Dr. Rowe's Veterinary Liniment, price50
Dr. Rowe's Eye Lotion, price50
Also a large sifting can of—	
Dr. Rowe's Healing Powder, price50
A large box of—	
Dr. Rowe's Worm Powder, price50
A large box of—	
Dr. Rowe's Spavin Ointment, price	1.00
And a box of—	
Dr. Rowe's Physic Capsules, price	1.00
A Hard Rubber Syringe, price50
One Surgeon's Needle, price25
One Skein Surgeon's Silk, price25
One Copy of "OUR VETERINARY ADVISER," durably bound in leatherette, containing 176 pages of valuable information concerning the diseases of Domestic Animals	1.00

Total\$10.50

Any of the above preparations sent prepaid upon receipt of price.

Price of Case Complete \$7.50.

OUR SPECIAL PREPARATIONS NOT CONTAINED IN CASE.

Dr. Rowe's Fistula Cure, price	\$ 1.50
Dr. Rowe's Lump Jaw Cure, price	1.50
Dr. Rowe's Chemical No-Horn, price50
Dr. Rowe's Hog Remedy, per pkg, \$1.00; 6 pkgs, \$5.00; 15 pkgs	12.00

THE NORTHWESTERN MEDICINE CO.,

Keokuk, Iowa.

INDEX.

THE HORSE.

Abscesses	42	Cramps in the hind leg..	77
Action of drugs	7	Curb	106
Administering medicines.	9	Diabetes	55
Giving of powder	9	Diarrhea and scours	33
Using a syringe	9	Diseases of the skin	15
Drenching	10	Diseases of the gullet or	
Giving a ball	11	oesophagus	26
Age of horses, how good		Diseases of the digestive	
judges tell	115	organs	25
Asthma	69	Diseases of the mouth...	25
Azoturia	57	Diseases of the teeth...	26
Bladder, paralysis of the.	59	Diseases of the stomach	
Bladder, stone or gravel in	59	and intestines	28
Bloat	29	Diseases of the eye	82
Bloody flux	34	Diseases of the eyelid...	82
Bloody urine	56	Diseases of the respiratory	
Bog spavin	107	organs	63
Boil, collar	43	Diseases of the larynx or	
Boil, shoe	96	bronchial tubes	66
Bone spavin	108	Diseases of the genital	
Bots	34	organs	71
Bowels, twisting of	32	Diseases of the liver	73
Bowels, impaction of	32	Diseases of the nervous	
Broken wind	69	system	76
Bronchial tubes, diseases		Discharge of urine through	
of	66	the navel	60
Bunches, callous	43	Dislocated patella	105
Cancerous warts	52	Distemper	89
Capped hock	111	Drenching	10
Capped knee	96	Domestic liquid measure..	164
Catarrh	63	Dropsy of the abdomen..	74
Catarrhal fever	87	Dropsy of the scrotum...	71
Cold	63	Dysentery	34
Colic, spasmodic	28	Dr. Rowe's Healing Pow-	
Colic, flatulent or wind...	29	der	19
Colic, water	30	Dr. Rowe's Blood and	
Collar boils	43	Skin Tonic	24
Contraction of the feet...	100	Dr. Rowe's Worm Powder	39
Contagious diseases	87	Dr. Rowe's Bactericide...	45
Corns	100	Dr. Rowe's Fistula Cure..	51
Cough	64	Dr. Rowe's Kidney Prepa-	
Cracked heels	20	ration	62
Cramps or spasms	77		

THE HORSE—Continued.

Dr. Rowe's Veterinary Liniment	81	Itch—Urticaria	17
Dr. Rowe's Eye Lotion...	86	Intestines, diseases of the	28
Dr. Rowe's Distemperine..	92	Jacks	108
Dr. Rowe's Spavin Ointment	112	Jaundice—Yellows	73
Dr. Rowe's Colic Preparation	117	Kidneys, acute inflammation of the	58
Dr. Rowe's Scour Remedy.	124	Kidneys, diseases of the..	55
Dr. Rowe's Lump Jaw Cure	137	Lameness, how to locate.	94
Dr. Rowe's Chemical No-Horn	143	Larynx, diseases of the...	66
Dr. Rowe's Physic Capsule	144	Liver, rupture of	74
Dr. Rowe's Hog Remedy..	160	Lymphangitis	21
Enlarged knee	96	Lung fever	67
Epizootic	87	Mange	15
Exhaustion, heat	76	Mange of the mane and tail	16
Eye, diseases of	82	Measure	164
Eye specks on cornea....	83	Meningitis	76
Eyeball, punctures of the.	84	Moonblindness	83
Eyelids, warts on the....	85	Mouth, diseases of the ...	25
Farcy	75	Navel ill	60
Feeding and watering ...	6	Neck, sore	44
Feet, contraction of the...	100	Nervous system, diseases of the	76
Fever, lung	67	Nettle rash	17
Fever, catarrhal	87	Ophthalmia, periodic ...	83
Flatulent colic	29	Ophthalmia, external ...	82
Fistula of the withers ...	47	Our Handy Veterinary Case	66
Flux, bloody	34	Overloading the stomach	31
Gravel in the bladder ...	60	Paralysis of the bladder..	59
Grease heel	21	Pastern lameness	98
Gut-tie or twisting of the bowels	32	Pharyngitis	26
Haematuria	56	Pink eye	87
Heat exhaustion	7	Pin worm	37
Heaves	69	Pleurisy	67
Hip-joint lameness	103	Pneumonia	67
How to care for the horse	5	Pimples	15
Impaction of the bowels..	32	Poll evil	50
Impaction of the stomach.	31	Price List	168
Inflammation of the eye..	82	Quittor	50
Inflammation of the kidneys	58	Rash	17
Inflammation of the testicle	71	Respiratory organs, diseases of	63
Influenza	87	Rheumatism in the horse.	114
		Ringworm	17
		Ringbone	99
		Roaring	65
		Scours	33

THE HORSE—Continued.

Scratches	20	Strangles and distemper..	89
Shoe boils	96	Stable pointers	6
Shoulder lameness	94	Summer sores	18
Shoulder sweeny	95	Sun stroke	76
Sidebone	100	Sweeney of the shoulder..	95
Skin, diseases of the	15	Teeth, diseases of the	26
Slobbering	26	Testicle, inflammation of.	71
Sore neck	44	Tetanus	79
Sore mouth	25	Thoroughpin	108
Sore throat	26	Thumps	70
Spasms of the diaphragm..	70	Tumors within the nos-	
Spasms or cramps	77	trils	63
Spasmodic colic	28	Urine, bloody	56
Spavin, bog	107	Urine, discharge of	
Spavin, bone	108	through the navel	60
Splints	97	Warts	52
Sprained tendons	97	Warts on the eyelid	85
Staggers	76	Water colic	30
Stifle lameness	104	Wind colic	29
Stomach, overloading the.	31	Wind broken	69
Stomach, diseases of the..	28	Wounds and their treat-	
Stone or gravel in the		ment	40
bladder	60	Wounds of the eyeball ...	84

CATTLE.

Abortion	140	Jaundice or yellows	125
Actinomycosis	135	Lump jaw	135
Afterbirth, retained	128	Milk fever	129
Black leg	126	Mammitis	130
Bloat	120	Mange	132
Consumption in the cow..	133	Nettle rash	132
Cornstalk disease	139	Ophthalmia	133
Cowpox	131	Overloading the stomach.	120
Cud, loss of	119	Partruent paresis	129
Diarrhea	122	Pink eye or conjunctivitis.	132
Diarrhea in calves	123	Rash	132
Diseases of the digestive		Stomach, overloading the.	120
organs	118	Scours	123
Dry murrain or grass stag-		Scabbies	132
gers	121	Staggers	121
Dysentery	123	Tuberculosis	133
Ergotism	138	Udder, inflammation of	
Eye, ulcers on the cornea.	142	the	130
Foot and mouth disease..	141	Urticaria	132
Inflammation of the udder		Warbles	141
or garget	130	White scours in calves..	123
Itch	132	Yellows, jaundice	125

SHEEP.

Black scours	148	Maggots	152
Diseases of the intestines.	147	Round worm	148
Distemper	151	Sheep mange	145
Foot rot	150	Scours, black	148
Intestines, diseases of the.	147	Ticks	151
Mange	145	Worms	148

SWINE.

Canker of the nose and face	156	Piles	57
Castration, tumors follow- ing	163	Rickets	155
Cholera	157	Rheumatism	155
Diarrhea	156	Swine plague	157
Dr. Howe's Hog Remedy..	160	Tumors following castra- tion	163
Lice	153	Worms	154

OUR CASH GUARANTEE

THE RISK IS OURS—YOU HAVE NOTHING TO LOSE. WE WILL TAKE YOUR WORD AND IF YOU SAY THAT ANY ONE OF DR. ROWE'S PREPARATIONS HAS NOT PROVEN SATISFACTORY, WE WILL REFUND TO YOU THE PURCHASE PRICE. YOU TO BE THE USER AND LIKEWISE THE JUDGE.

If you haven't

“Our Handy Veterinary Case”

ORDER ONE TO DAY.

To have it and not need it is better
Than to need it and not to have it.

LIBRARY OF CONGRESS



0 002 843 282 3

THE FARMER'S



QUARTER
VETERINARY CASE

Price of Case Complete \$7.50