

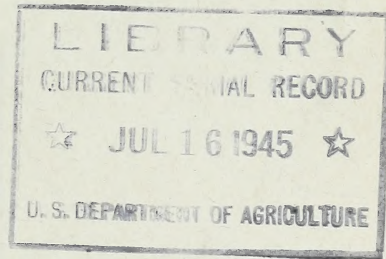
Historic, archived document

Do not assume content reflects current scientific knowledge, policies, or practices.

M

Outline of Suggested Specifications for Purchasing Processed Fruits and Vegetables

Miscellaneous Publication No. 565



U. S. DEPARTMENT OF AGRICULTURE

War Food Administration

Office of Marketing Services

Washington, D. C., May 1945

Members of organizations who formulate specifications used in procuring supplies for their respective institutions and agencies have found this outline a helpful guide in suggesting prudent planning and buying.¹ The need for complete and proper purchasing specifications cannot be overestimated. Ever-changing market situations emphasize the importance of standardizing requirements for purchasing on a competitive basis. The requirements of various purchasing agencies differ, but the basic provisions are similar.

Since the first issue of these suggested specifications in 1938, many United States standards for grades of processed fruits and vegetables have been revised, and continuous factory inspection on a voluntary basis has been introduced and is now being conducted in many canning plants throughout the country.

It is believed that this outline will satisfy a definite demand of those persons who desire a guide in their food-procurement operations. Organizations that need further specific details for developing their specifications should write to the War Food Administration, Office of Marketing Services, Washington 25, D. C.

¹ Former issues were mimeographed.

Outline of Suggested Specifications for Purchasing Processed Fruits and Vegetables

By Paul M. Williams, Assistant Chief, Fruit and Vegetable Branch

I. DESCRIPTION OF PRODUCT

The processed fruits and vegetables included here are those which have been preserved by canning, drying, dehydrating, and freezing, and other food-processing methods. The grade or quality is one of the most important considerations in any specification (fig. 1). After selecting the grade to meet your particular requirements, indicate any additional requirements which may be appropriate, so that your needs will be fully described.

A. Grades

General descriptions of the United States standards for grades of processed foods follow:

U. S. Grade A, or U. S. Fancy, processed fruits and vegetables are high-quality foods. They are very carefully selected as to size, color, and maturity.

U. S. Grade B, or U. S. Extra Standard, vegetables are usually more mature than those in Grade A. Fruits in this grade (U. S. Grade B, or U. S. Choice) are not so uniform in color, size, or maturity as those in Grade A. This grade is very satisfactory for general household and institutional purposes.

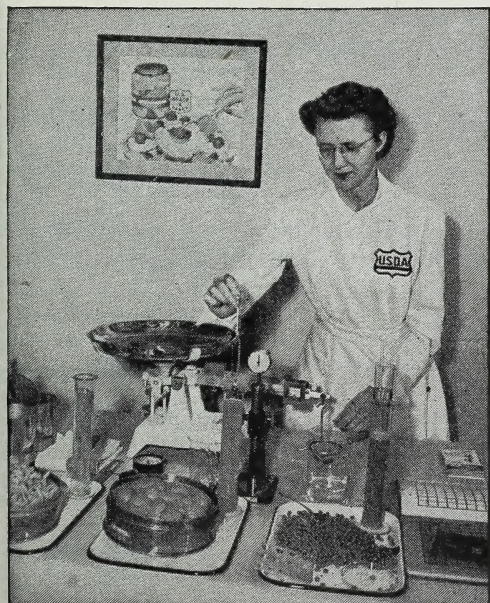


FIGURE 1—United States Department of Agriculture inspector demonstrates the inspection for grade of canned beans, apricots, and peas.

U. S. Grade C, or U. S. Standard, fruits and vegetables are good, wholesome products. The raw products used in this grade may not be so carefully selected as to size, color, and maturity as in the higher grades. Products of this grade should sell at lower prices than products of the higher grades, but the food in many instances is just as nutritious.

(In the interest of brevity it is suggested that the grade name only be shown when writing specifications. It is not necessary to write a detailed description of the above grades.)

B. Style

If more than one style of a product is available, specify the style desired. Cream-style canned corn and Whole-grain-style canned corn are examples of a product packed in more than one form.

C. Type

If more than one type of product is available, specify the type desired. The term "type" is used to differentiate between the varietal characteristics of a commodity. Early and Sweet (or sugar) peas are different types of peas, and Red Sour and Sweet cherries are distinct types of cherries.

D. Size and Kind of Containers

Indicate size of containers to be furnished. Indicate kind of containers to be furnished—i.e., cans (plain or enamel-lined cans), glass containers, or packaging such as paper cartons or wood boxes.

E. Drained Weight

If the commodity is one commonly packed in brine or sirup, specify the minimum drained weight desired.

F. Count or Size

Specify the range of count of pieces desired for commodities in which count is important. Range of count is suggested, for it is seldom practicable to designate a specific number of pieces for each can. Variations incident to commercial canning are almost unavoidable. Some commodities are sold by size. For example, the size of peas, lima beans, and mushrooms should be specified.

G. Packing Medium

If fruit packed in sirup is desired, specify sirup density, such as extra-heavy sirup or heavy sirup; if fruit packed in water is desired, designate as water pack.

H. Examples

The following are examples of descriptions that may be used in a specification:

If you desire the best grade of canned all-green asparagus spears of medium size in No. 2 cans, your specification for this item would properly read:

ASPARAGUS, all-green—U. S. Grade A, or U. S. Fancy No. 2 cans

Minimum drained weight— $12\frac{1}{4}$ ounces

Range of count—34 to 50 spears to the can

If you decide that your needs for canned yellow clingstone peaches require halves of good color, reasonably uniform in size and symmetry, and reasonably

tender, packed in heavy sirup, in glass jars, your specification might read:
 PEACHES, yellow cling, halves—U. S. Grade B, or U. S. Choice
 No. 2½ glass jars
 Minimum drained weight—19¼ ounces
 Range of count—7 to 9 halves
 Heavy sirup (19° to 24° Brix)

If you decide that your requirements for soup or for stewing purposes are such that you do not need canned whole tomatoes or tomatoes in large pieces or tomatoes of high red color, U. S. Grade C, or U. S. Standard, will probably be satisfactory. Your specification for this grade in No. 10 cans would properly read:

TOMATOES—U. S. Grade C, or U. S. Standard
 No. 10 cans

Drained weight need not be indicated in a specification for this commodity, as drained weight is specified as a factor of each grade in United States Standards for Grades of Canned Tomatoes.

II. COMMODITIES, GRADES, AND GENERAL REQUIREMENTS

A detailed description of each processed product may be developed to meet the particular requirements of any consumers' cooperative or other type of purchasing agency.

For the purpose of this list the term "canned" applies to products preserved in tin or glass containers.

The grades which are marked with an asterisk (*) are suggested grades for institutional purchases that will satisfactorily fill the needs of most agencies.

COMMODITY AND GRADES AVAILABLE	SPECIFICATION SHOULD INCLUDE—
APPLES—canned *U. S. Grade A, or U. S. Fancy U. S. Grade C, or U. S. Standard	Grade Minimum drained weight Size and kind of container
APPLES—dried U. S. Grade A, or U. S. Fancy *U. S. Grade B, or U. S. Choice U. S. Grade C, or U. S. Standard	Grade Style (rings, sliced, or quartered) Size and kind of packaging
APPLE JUICE—canned *U. S. Grade A, or U. S. Fancy U. S. Grade C, or U. S. Standard	Grade Style (clarified or unclarified) Size and kind of container
APPLESAUCE—canned *U. S. Grade A, or U. S. Fancy U. S. Grade C, or U. S. Standard	Grade Size and kind of container

COMMODITY AND GRADES AVAILABLE	SPECIFICATION SHOULD INCLUDE—
<p>APRICOTS—canned</p> <p>U. S. Grade A, or U. S. Fancy *U. S. Grade B, or U. S. Choice U. S. Grade C, or U. S. Standard *U. S. Grade D U. S. Grade E *U. S. Grade C (Solid Pack) *U. S. Grade D (Solid Pack) U. S. Grade E (Solid Pack)</p>	<p>Grade Style (whole or halves) Minimum drained weight Range of count Sirup density Size and kind of container</p>
<p>APRICOTS—dried</p> <p>U. S. Grade A (Slabs), or U. S. Fancy (Slabs) *U. S. Grade B (Slabs), or U. S. Choice (Slabs) U. S. Grade C (Slabs), or U. S. Standard (Slabs)</p>	<p>Grade Size (1, 2, 3, 4, 5, or 6) Size and kind of packaging</p>
<p>ASPARAGUS—canned</p> <p>*U. S. Grade A, or U. S. Fancy *U. S. Grade C, or U. S. Standard</p>	<p>Grade Type (culturally bleached or all-green) Style (spears, tips, points, cuts, or bottom cuts) Range of count if spears Size and kind of container</p>
<p>ASPARAGUS—frozen</p> <p>*U. S. Grade A, or U. S. Fancy *U. S. Grade B, or U. S. Extra Standard</p>	<p>Grade Type (culturally bleached or all-green) Style (spears, cut spears, cuts) Range of count if spears Size and kind of container</p>
<p>BEANS, dry—canned red kidney, so-called “baked beans,” etc.</p> <p>*U. S. Grade A, or U. S. Fancy U. S. Grade C, or U. S. Standard</p>	<p>Grade Style, such as, in tomato sauce or plain sauce, with or without pork; “baked beans” Size and kind of container</p>
<p>BEANS, Lima—canned</p> <p>*U. S. Grade A, or U. S. Fancy *U. S. Grade B, or U. S. Extra Standard U. S. Grade C, or U. S. Standard</p>	<p>Grade Size (No. 1, 2, 3, or 4) Size and kind of container</p>
<p>BEANS, Lima—frozen</p> <p>U. S. Grade A, or U. S. Fancy *U. S. Grade B, or U. S. Extra Standard U. S. Grade C, or U. S. Standard</p>	<p>Grade Type (thin-seeded or thick-seeded) Size and kind of packaging</p>

COMMODITY AND GRADES AVAILABLE	SPECIFICATION SHOULD INCLUDE—
BEANS, Snap—canned U. S. Grade A, or U. S. Fancy *U. S. Grade B, or U. S. Extra Standard U. S. Grade C, or U. S. Standard	Grade Color (green or wax) Style (whole, cut, or shoestring) Type (round or flat) Size (No. 1, 2, 3, 4, 5, or 6) Minimum drained weight Size and kind of container
BEANS, Snap—frozen *U. S. Grade A, or U. S. Fancy *U. S. Grade B, or U. S. Extra Standard U. S. Grade C, or U. S. Standard	Grade Color (green or wax) Type (round or flat) Style (whole, cut, or shoestring) Size and kind of container
BEETS—canned *U. S. Grade A, or U. S. Fancy *U. S. Grade C, or U. S. Standard	Grade Style (whole, sliced, diced, quartered, shoestring, or cut) Range of count (if packed whole) Minimum drained weight Size and kind of container
BLACKBERRIES—canned U. S. Grade A, or U. S. Fancy *U. S. Grade B, or U. S. Choice U. S. Grade C, or U. S. Standard U. S. Grade D *U. S. Grade E (Water Grade, or Pie Pack)	Grade Type of pack, (if Heavy Pack not less than 80 ounces drained weight in No. 10 cans) Sirup density Minimum drained weight Size and kind of container
BROCCOLI—frozen *U. S. Grade A, or U. S. Fancy *U. S. Grade B, or U. S. Extra Standard	Grade Style (stalks, florets, cut, chopped) Count of stalks Size and kind of container
BRUSSELS SPROUTS—frozen *U. S. Grade A, or U. S. Fancy *U. S. Grade B, or U. S. Extra Standard U. S. Grade C, or U. S. Standard	Grade Count per package Range of diameter Size and kind of container
CARROTS—canned *U. S. Grade A, or U. S. Fancy U. S. Grade C, or U. S. Standard	Grade Style (whole, sliced, diced, quartered, shoestring, or cut) Minimum drained weight Size and kind of container
CAULIFLOWER—frozen *U. S. Grade A, or U. S. Fancy U. S. Grade B, or U. S. Extra Standard	Grade Style (clusters or quarters) Size and kind of container

COMMODITY AND GRADES AVAILABLE	SPECIFICATION SHOULD INCLUDE—
CHERRIES, Red Sour Pitted—canned *U. S. Grade A, or U. S. Fancy *U. S. Grade C, or U. S. Standard	Grade Sirup density, if sirup pack Minimum drained weight Size and kind of container
CHERRIES, Red Sour Pitted—frozen *U. S. Grade A, or U. S. Fancy *U. S. Grade C, or U. S. Standard	Grade Sugar or sirup pack Ratio of fruit to sugar (such as 5 + 1, 4 + 1, 3 + 1) Size and kind of container
CHERRIES, Sweet—canned U. S. Grade A, or U. S. Fancy *U. S. Grade B, or U. S. Choice U. S. Grade C, or U. S. Standard U. S. Grade D U. S. Grade E (Water Grade, or Pie Pack)	Grade Type (light sweet or dark sweet) Style (pitted or unpitted) Range of count, if unpitted Sirup density Minimum drained weight Type of pack (if Heavy-pack Pie, not less than 86 ounces drained weight in No. 10 cans) Size and kind of container
CHERRIES—sulfured U. S. No. 1 U. S. No. 2	Grade Type (pitted or unpitted) Size (small, medium, or large) Size and kind of container
CORN—canned U. S. Grade A, or U. S. Fancy *U. S. Grade B, or U. S. Extra Standard U. S. Grade C, or U. S. Standard	Grade Style (cream or whole-grain) Color (golden or white) Size and kind of container
CORN, Whole-grain—frozen U. S. Grade A, or U. S. Fancy *U. S. Grade B, or U. S. Extra Standard U. S. Grade C, or U. S. Standard	Grade Color (golden or white) Size and kind of container
CURRENTS (DRIED ZANTE) U. S. Grade A *U. S. Grade B	Grade Type (black or white) Size and kind of container
FIGS, Kadota—canned U. S. Grade A, or U. S. Fancy U. S. Grade A Split, or U. S. Fancy Split *U. S. Grade B, or U. S. Choice U. S. Grade B Split, or U. S. Choice Split U. S. Grade D (seconds)	Grade Sirup density Range of count Minimum drained weight Size and kind of container

COMMODITY AND GRADES AVAILABLE	SPECIFICATION SHOULD INCLUDE—
FRUIT COCKTAIL—canned *U. S. Grade A, or U. S. Fancy U. S. Grade B, or U. S. Choice	Grade Sirup density Minimum drained weight Size and kind of container
FRUIT PRESERVES or JAMS *U. S. Grade A, or U. S. Fancy U. S. Grade B, or U. S. Choice	Grade Type (either a single variety or a mixture of any two or more varieties) Variety (blackberry, apple-raspberry, peach, etc.) Size and kind of container
FRUITS FOR SALAD—canned U. S. Grade A, or U. S. Fancy *U. S. Grade B, or U. S. Choice	Grade Sirup density Minimum drained weight Size and kind of container
GRAPEFRUIT—canned U. S. Grade A, or U. S. Fancy *U. S. Grade B, or U. S. Choice U. S. Broken, or Broken	Grade Style (whole segments or broken) Sirup density (Minimum drained weight need not be specified) Size and kind of container
GRAPEFRUIT JUICE—canned *U. S. Grade A, or U. S. Fancy U. S. Grade C, or U. S. Standard	Grade Sweetened or unsweetened Size and kind of container
BLENDED GRAPEFRUIT JUICE AND ORANGE JUICE—canned *U. S. Grade A, or U. S. Fancy U. S. Grade C, or U. S. Standard	Grade Sweetened or unsweetened Size and kind of container
EXTRACTED HONEY *U. S. Grade A, or U. S. Fancy U. S. Grade B	Grade Type (liquid or crystallized) Floral source (such as clover, orange, sage) Color (water - white, extra - white, white, extra - light amber, light amber, amber, dark) Size and kind of container
LEMON JUICE—canned *U. S. Grade A, or U. S. Fancy U. S. Grade C, or U. S. Standard	Grade Size and kind of container

COMMODITY AND GRADES AVAILABLE	SPECIFICATION SHOULD INCLUDE—
MUSHROOMS—canned *U. S. Grade A, or U. S. Fancy U. S. Grade C, or U. S. Standard	Grade Style (whole, button, sliced, or stems and pieces) Size (No. 0, 1, 2, 3, 4, or 5), if whole or button Minimum drained weight Size and kind of container
OKRA—canned *U. S. Grade A, or U. S. Fancy U. S. Grade C, or U. S. Standard	Grade Size and kind of container
OLIVES, Ripe—canned *U. S. Grade A, or U. S. Fancy *U. S. Grade B, or U. S. Choice U. S. Grade C, or U. S. Standard	Grade Type (dark ripe or green ripe) Size (count range) Size and kind of container
ORANGE JUICE—canned *U. S. Grade A, or U. S. Fancy U. S. Grade C, or U. S. Standard	Grade Sweetened or unsweetened Size and kind of container
ORANGE JUICE, Concentrated—canned *U. S. Grade A, or U. S. Fancy U. S. Grade C, or U. S. Standard	Grade Brix (60°, 65°, 72°, etc.) Net weight if purchased by gallon Maximum SO ₂ if preserved with use of sulfur dioxide, and not in hermetically sealed containers
PEACHES—canned U. S. Grade A, or U. S. Fancy *U. S. Grade B, or U. S. Choice U. S. Grade C, or U. S. Standard *U. S. Grade D *U. S. Grade D (Water Grade) *U. S. Grade C (Solid Pack) *U. S. Grade D (Solid Pack)	Grade Type (clingstone or freestone) Style (halved, quartered, diced, sliced, or whole) Range of count Sirup density Minimum drained weight Size and kind of container
PEACHES—dried U. S. Grade A, or U. S. Fancy *U. S. Grade B, or U. S. Choice U. S. Grade C, or U. S. Standard	Grade Type (freestone or clingstone) Size (1, 2, 3, 4, 5, or 6) Size and kind of container
PEANUT BUTTER *U. S. Grade A U. S. Grade C	Grade Finish (fine, medium, or coarse) Color (light or heavy roast) Size and kind of container

COMMODITY AND GRADES AVAILABLE	SPECIFICATION SHOULD INCLUDE—
<p>PEARS—canned U. S. Grade A, or U. S. Fancy *U. S. Grade B, or U. S. Choice U. S. Grade C, or U. S. Standard U. S. Grade D U. S. Grade E (Water Pack) *U. S. Grade F (Solid-Pack Pie)</p>	<p>Grade Variety (Bartlett, Kieffer, or other) Style (halved, quartered, sliced, diced, or whole) Range of count Sirup density Minimum drained weight Size and kind of container</p>
<p>PEARS—dried U. S. Grade A, or U. S. Fancy *U. S. Grade B, or U. S. Choice U. S. Grade C, or U. S. Standard</p>	<p>Grade Size (1, 2, 3, 4, 5, or 6) Size and kind of container</p>
<p>PEAS—canned U. S. Grade A, or U. S. Fancy *U. S. Grade B, or U. S. Extra Standard U. S. Grade C, or U. S. Standard</p>	<p>Grade Type (early or sweet) Size (No. 1, 2, 3, 4, 5, 6, or 7) Size and kind of container</p>
<p>PEAS—frozen U. S. Grade A, or U. S. Fancy *U. S. Grade B, or U. S. Extra Standard U. S. Grade C, or U. S. Standard</p>	<p>Grade Size and kind of container</p>
<p>PEAS, Black-eye—canned fresh *U. S. Grade A, or U. S. Fancy U. S. Grade C, or U. S. Standard</p>	<p>Grade Size and kind of container</p>
<p>PICKLES, CUCUMBER—canned, bottled, barreled *U. S. Grade A, or U. S. Fancy U. S. Grade C, or U. S. Standard</p>	<p>Grade Type (dill, sour, sweet, sweet or sour mixed) Style (whole, sliced, or cut) Range of count if whole Size (midget 1, 2, 3; gherkin 1, 2, 3; sweet 1, 2, 3; medium, large, jumbo, Dixies) Size and kind of container</p>
<p>PIMIENTOS—canned U. S. Grade A, or U. S. Fancy *U. S. Grade A, or U. S. Fancy (Pieces) U. S. Grade C, or U. S. Standard U. S. Grade C, or U. S. Standard (Pieces)</p>	<p>Grade Style (whole or pieces) Size and kind of container</p>

COMMODITY AND GRADES AVAILABLE	SPECIFICATION SHOULD INCLUDE—
PINEAPPLE—canned U. S. Grade A, or U. S. Fancy *U. S. Grade B, or U. S. Choice *U. S. Grade C, or U. S. Standard (Half slices or Broken slices)	Grade Style (whole slices, half slices, broken slices, crushed, tidbits, chunks) Sirup density Minimum drained weight Size and count range Size and kind of container
PINEAPPLE JUICE—canned U. S. Grade A, or U. S. Fancy *U. S. Grade C, or U. S. Standard	Grade Size and kind of container
PLUMS—canned *U. S. Grade A, or U. S. Fancy *U. S. Grade B, or U. S. Choice U. S. Grade C, or U. S. Standard U. S. Grade D U. S. Grade E (Water Grade or Pie Pack)	Grade Variety (Fresh Italian Prunes, Greengage Plums, Yellow Egg Plums) Style (whole or halves) Range of count, if whole Sirup density Minimum drained weight Size and kind of container
PRUNES—dried U. S. Grade A, or U. S. Fancy *U. S. Grade B, or U. S. Choice U. S. Grade C, or U. S. Standard	Grade Type (French, Italian, or other varieties) Size range (20-30, 30-40, 40-50 count, etc.) Size and kind of container
PUMPKIN and SQUASH—canned *U. S. Grade A, or U. S. Fancy U. S. Grade C, or U. S. Standard	Grade Size and kind of container
RAISINS *U. S. Grade A U. S. Grade B	Grade Type—1. Thompson Seedless (a) unbleached (b) sulfur-bleached (c) soda-dipped 2. Muscats (a) seeded (b) unseeded (c) soda-dipped, unseeded 3. Sultana Size—Thompson Seedless (small, medium, large, custom) Muscats (4, 3, 2, or 1 crown) Size and kind of container

COMMODITY AND GRADES AVAILABLE	SPECIFICATION SHOULD INCLUDE—
RED RASPBERRIES—canned U. S. Grade A, or U. S. Fancy *U. S. Grade B, or U. S. Choice U. S. Grade C, or U. S. Standard U. S. Grade D U. S. Grade E (Water Grade or Pie Pack)	Grade Sirup density Minimum drained weight Size and kind of container
RASPBERRIES—frozen *U. S. Grade A, or U. S. Fancy U. S. Grade B, or U. S. Choice	Grade Sugar or sirup pack Ratio of fruit to sugar (such as 4 + 1, 5 + 1) Color or variety (red, black, purple) Size and kind of container
SAUERKRAUT—canned *U. S. Grade A U. S. Grade C	Grade Minimum drained weight Style (shredded or chopped) Size and kind of container
SAUERKRAUT—barreled or bulk *U. S. Grade A U. S. Grade C	Grade Style (shredded or chopped) Size and kind of container
SPINACH AND OTHER GREENS —canned *U. S. Grade A, or U. S. Fancy U. S. Grade C, or U. S. Standard	Grade Minimum drained weight Size and kind of container
SPINACH—frozen *U. S. Grade A, or U. S. Fancy U. S. Grade B, or U. S. Extra Standard	Grade Net weight after draining Size and kind of container
STRAWBERRIES—frozen *U. S. Grade A, or U. S. Fancy U. S. Grade B, or U. S. Choice	Grade Style (whole or sliced) Size (small, medium, large) Sugar or sirup pack Ratio of fruit to sugar (such as 3 + 1, 4 + 1, 5 + 1) Size and kind of container
SUCCOTASH—canned *U. S. Grade A, or U. S. Fancy U. S. Grade B, or U. S. Extra Standard U. S. Grade C, or U. S. Standard	Grade Mixture of ingredients (such as whole-grain corn, lima beans, tomatoes; whole-grain corn, snap beans; etc.) Size and kind of container

COMMODITY AND GRADES AVAILABLE	SPECIFICATION SHOULD INCLUDE—
SWEETPOTATOES—canned *U. S. Grade A, or U. S. Fancy U. S. Grade C, or U. S. Standard	Grade Minimum drained weight Type (vacuum-pack, dry-pack, or sirup-pack) Style (whole, pieces, or mashed) Size and kind of container
TOMATOES—canned U. S. Grade A (Whole), or U. S. Fancy (Whole) U. S. Grade A, or U. S. Fancy *U. S. Grade B, or U. S. Extra Standard *U. S. Grade C, or U. S. Standard	Grade (Minimum drained weight need not be specified) Size and kind of container
TOMATO CATSUP—canned or bottled *U. S. Grade A, or U. S. Fancy U. S. Grade C, or U. S. Standard	Grade Specific gravity or tomato solids Size and kind of container
TOMATO JUICE—canned or bottled *U. S. Grade A, or U. S. Fancy U. S. Grade C, or U. S. Standard	Grade Size and kind of container
TOMATO PASTE—canned *U. S. Grade A, or U. S. Fancy U. S. Grade C, or U. S. Standard	Grade Concentration (heavy, light, medium) Texture (fine, coarse) Size and kind of container
TOMATO PUREE (TOMATO PULP) —canned U. S. Grade A, or U. S. Fancy U. S. Grade C, or U. S. Standard	Grade Concentration (heavy, medium, light) Size and kind of container

III. DETAILED SUGGESTIONS COVERING OTHER PROVISIONS

In preparing purchase specifications for processed fruits and vegetables the buyer must determine his individual requirements and the best way to insure their being met. To that end the suggestions made here with respect to other basic provisions should be followed. Satisfactory delivery may be had by stipulations in specifications, invitations for bids, or contracts regarding inspection, guarantees, responsibility for merchandise tendered, and payments.

A. Bid Samples

Some purchasing departments require that bidders submit samples of the merchandise they propose to deliver prior to the opening of the bids. If specifications or invitations for bids stipulate the grade of the product desired, and contain other specific descriptive information, it should be unnecessary to have samples submitted with bids. Certificates of grade of the U. S. Department of Agriculture, covering lots proposed for delivery or merchandise inspected in a plant operating under continuous factory inspection (fig. 2) may be accepted in lieu of bid samples.

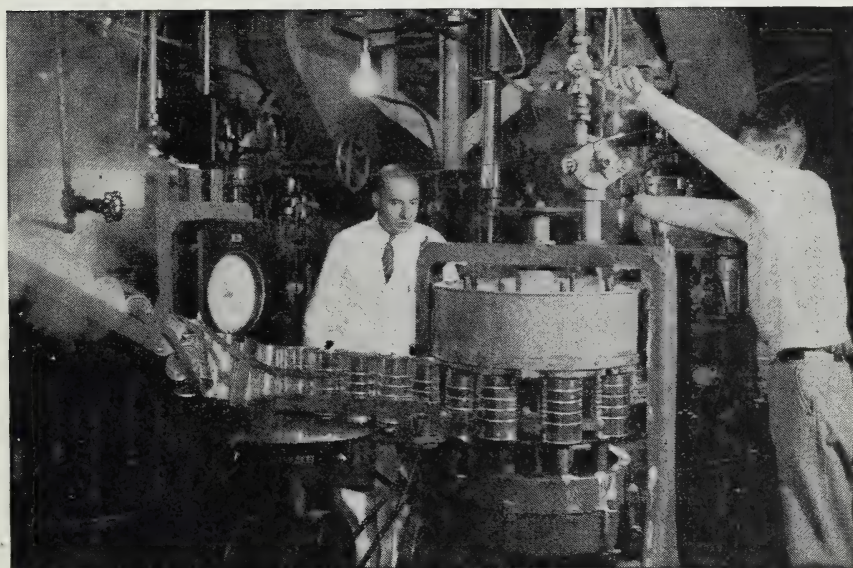


FIGURE 2—This inspector is checking and double-checking on the job at a cannery which has War Food Administration continuous inspection.

If bid samples are required, they should be furnished as required in the purchaser's specifications or invitation for bids. The following suggestions might be applicable to bid samples:

Bid samples should be delivered to the purchaser as designated in the "invitation for bids" prior to the date the proposals are to be opened. Samples arriving during or after the date set for the opening of bids or failure to submit samples when required should disqualify the bid.

At least two bid samples should be submitted by each bidder at bidder's expense. One sample should be cut and the other should be retained by the purchaser if the bid sample opened is found to be acceptable. The retained sample should be cut if the delivery does not comply with specifications. If requested, samples submitted by unsuccessful bidders should be returned to the bidder at his expense.

Each sample should be plainly marked with the bid item number, name of product, name of bidder, and other pertinent information. A list of the samples being sent should accompany the bid; a carbon copy of this list should be enclosed in the package containing bid samples. Unless such lists are properly filled out, unaccepted samples should not be returned but should be disposed of in the manner deemed advisable. If samples of more than one class of merchandise are packed in a single package, each class of samples should be wrapped and marked separately or should be placed in separate compartments and distinctly marked.

Cases containing bid samples should be plainly marked "samples" with the name of the bidder in the upper left-hand corner, and should be addressed to the purchasing agency. All charges for transportation of samples, including cartage, should be prepaid by the bidder, and no package of samples should be accepted unless these charges have been prepaid.

Proposals should not be enclosed in the package containing bid samples. Envelopes containing bids should be sealed and marked in the upper left-hand corner with the name and address of the bidder and should be addressed to the purchasing agency. The date and hour of opening of the bids should also be shown.

B. Final Inspection of Deliveries

Inspection at destination by a qualified person to determine whether or not delivery conforms with requirements of the specification should entail little difficulty. The contractor may provide that the vendor be required to submit the certificate of grade of the United States Department of Agriculture to substantiate his claim of the grade offered.

1. The certificate of grade of the United States Department of Agriculture may be used as evidence of good delivery, provided the certificates bear a date not more than 60 days prior to date of delivery and there is satisfactory evidence to indicate that the identical lot originally graded is the lot delivered.

Ordinarily the identity of a delivery may be established by the following evidence:

a. If delivered merchandise bears embossed code marks identical with those on goods originally graded.

b. If certificates of grade are accompanied by certificates of loading or other evidence denoting subsequent shipment of lots covered by certificates of grade.

With satisfactory evidence indicating that the goods are those from which samples were originally drawn and graded, inspection at destination should not be necessary.

Merchandise bearing the Department's shield, which denotes that the grade has been certified and that the product has been packed under continuous factory inspection, need not be subjected to further inspection.

In the event that a question arises as to whether delivery has been made from the lot originally graded or if there is evidence that substitution has been

attempted, the purchaser may submit samples to any one of the processed-products inspection offices of the United States Department of Agriculture. Expense incident to grading for these reasons should be borne by the contractor in the event the United States Department of Agriculture finds that the delivery does not meet the grade requirements of the specification; otherwise, such expenses should be for the account of the receiving agency.

2. *Bid Samples*.—If a bid is awarded on the strength of bid samples and the delivery does not comply with specification, the retained bid samples may be cut by the purchaser as a further check. Purchasers who wish to ascertain the quality of bid samples or the quality of samples from delivered merchandise may specify that samples are subject to inspection by the United States Department of Agriculture. The cost of inspection of bid samples should be borne by the bidders, and all costs incident to the inspection of samples from deliveries should be borne by the contractor.

3. *Drained weights* should be determined after draining the respective commodities as outlined in the U. S. standards for grades of these products. Drained weights of commodities in which unavoidable variations in drained weights occur should be averaged, provided the drained weight is not more than 10 percent below that required in the specification. If the delivery is satisfactory in all respects except that the drained-weight requirement is not met, the merchandise may be accepted at the option of the purchaser, provided:

a. The contractor agrees that a proportionate deduction for the deficiency shall be made in settlement, or

b. The contractor agrees to furnish additional merchandise to compensate for the deficiency.

C. Acceptance or Rejection of Merchandise

Final inspection and acceptance or rejection of the merchandise should be made as provided in specifications or invitations for bids. This final inspection should be conclusive except for latent defects, fraud, or such gross mistakes as amount to fraud. Notice of acceptance or rejection should be made as promptly as practicable, but failure to inspect and accept or reject merchandise should not impose liability on the purchaser for merchandise that is not in accordance with the specifications.

D. Contractor's Responsibility

1. *Guarantees for swells*. A contractor should guarantee merchandise against swells for a period of 12 months after delivery. The term "swells" refers to flippers, springers, hard swells, or cans out of condition for any reason whatsoever.

2. *Delivery and Rejected Merchandise*.—The contractor should be responsible for merchandise until delivered at designated point. The contractor should bear all risk on rejected merchandise after notice of rejection. When final inspection is at point of origin but delivery by contractor is at some other point, the contractor's responsibility should continue until delivery is accomplished.

3. *Delays*.—If the contractor refuses or fails to make deliveries of the merchandise within the time specified, or any extension of time, the purchaser may terminate the right of the contractor to proceed with deliveries or the portion of the delivery on which there has been a delay. The purchaser may wish to reserve the right to purchase similar merchandise in the open

market or secure the manufacture and delivery of the merchandise by contract or otherwise. The contractor would be liable for any excess cost to the purchaser unless the delay is due to unforeseen causes beyond the control and without the fault or negligence of the contractor, including, but not restricted to, acts of God or of the public enemy, fires, floods, epidemics, quarantine restrictions, strikes, freight embargoes, and unusually severe weather. Excess costs occasioned by delays caused by subcontractors should be at the expense of the contractor.

The contractor should be obligated to notify the purchaser in writing, within a stipulated number of days from the beginning of such delay, of the causes of delay.

E. Reservations

If, in the judgment of the purchaser, his interests require it, the right should be reserved to reject any and all bids, to waive technical defects, and to accept or reject any part of any bid. If, in the opinion of the purchaser, there has been a failure to perform faithfully any of the contract stipulations or a willful attempt to impose upon the purchaser articles inferior to those required under the contract, the right should be reserved to declare any contractor in default. It should be understood and agreed that when a contractor has been declared in default the buyer may purchase during the remainder of the contract period the articles covered by the contract without furnishing the defaulting contractor an order therefor and that any excess cost over the original contract price will be charged to the defaulting contractor.

F. Payments and Discounts

The contractor should be paid for accepted merchandise at the prices, less discounts, stipulated in properly certified invoices or vouchers. Unless otherwise specified, payments should be made for partial deliveries accepted by the purchaser when payment for the amount due is warranted or when payment would equal or exceed 50 percent of the total amount of the contract.

When discounts are quoted for payment within a specified time, it should be understood and agreed that the discount period begins with the date of acceptance of material and submission of properly certified invoices or vouchers.

PUBLICATIONS

For the following publications of interest to purchasers of processed fruits and vegetables, apply to the War Food Administration, Office of Marketing Services, Washington 25, D. C.

The A B C of Canned Fruit and Vegetable Labeling. M. P. 460.

Continuous Factory Inspection and Labeling of Canned Fruits and Vegetables in Terms of U. S. Standards. (Processed.)

Government Grading of Processed Fruits and Vegetables—Questions and Answers. (Processed.)

What Do These Mean? (A Short Short Story About U. S. Grade A, B, C Labels). (Processed.)

Canned Food Labels in Terms of U. S. Grades. (Processed.)

Institutional Purchasing of Processed Fruits and Vegetables. (Processed.)

