

DAVIE COUNTY PUBLIC LIBRARY



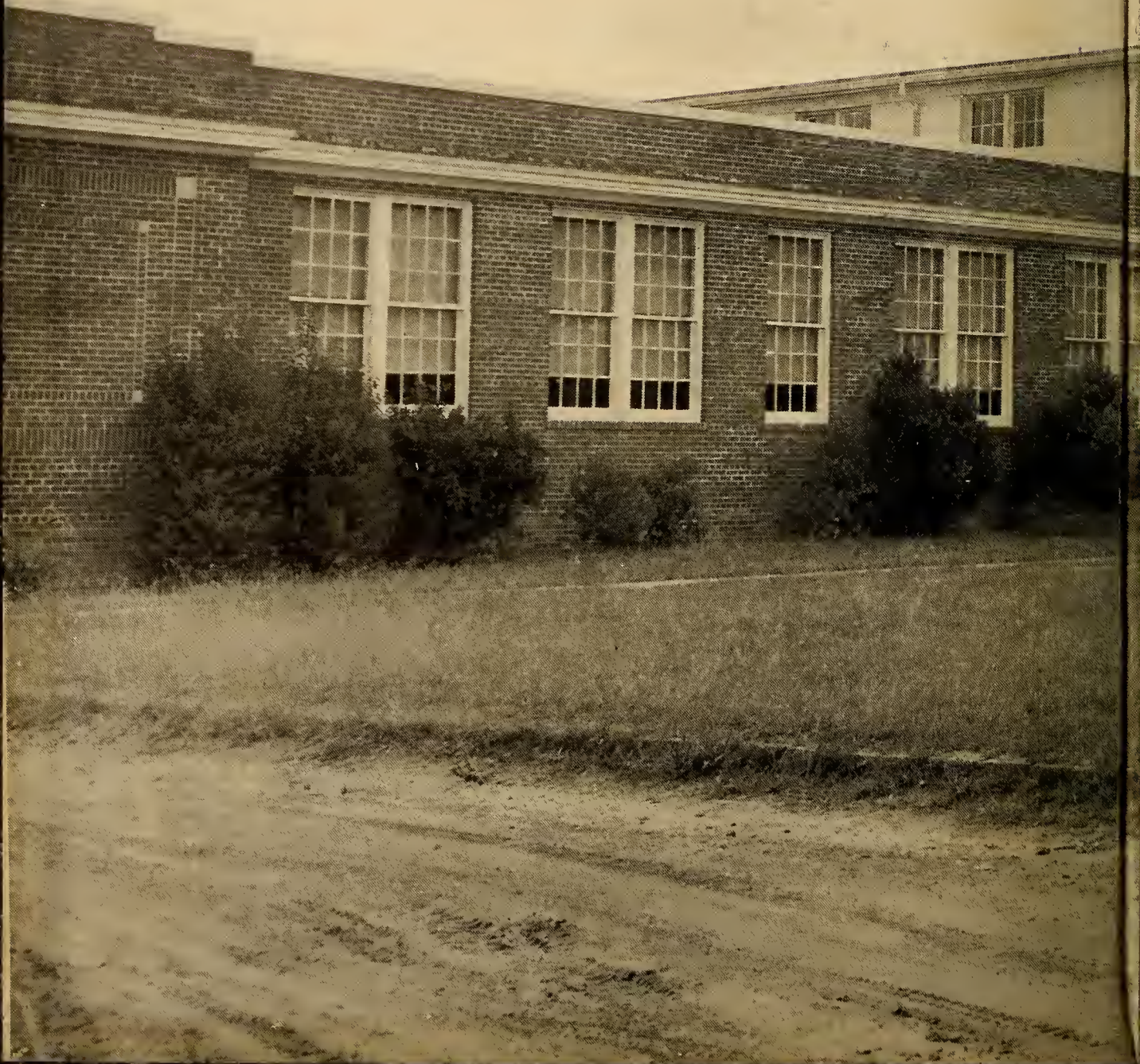
3 9872 00148 2584



1954

THE PANTHER

Mildred Nance
11th Grade
April 21, 1954



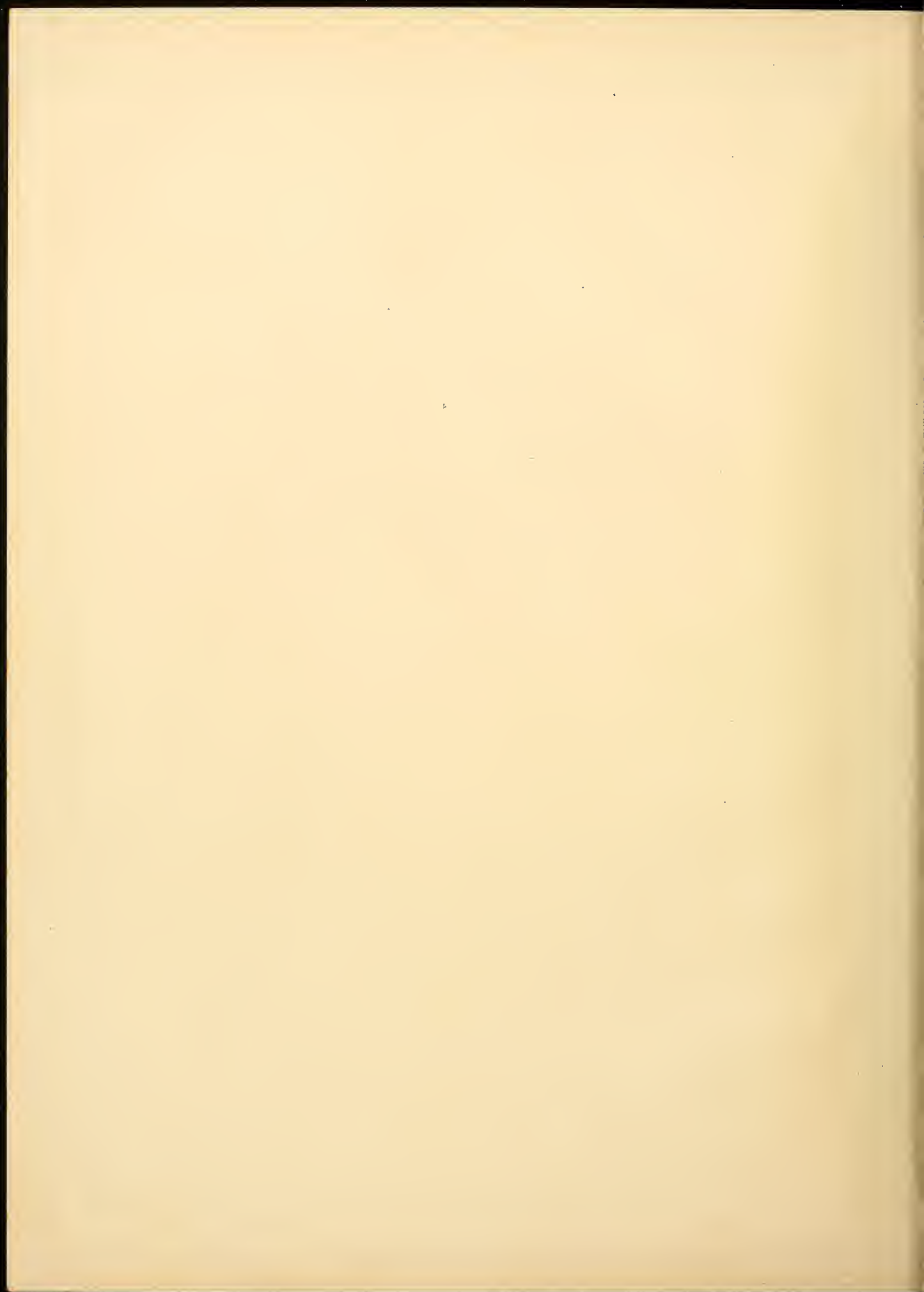
Mildred

I'll never forget the bonquet.
It was very nice. I enjoyed
sitting next to you. We really
had fun. You are really
howe lots ahead of you.
Don't ever let any of it
pass you by.

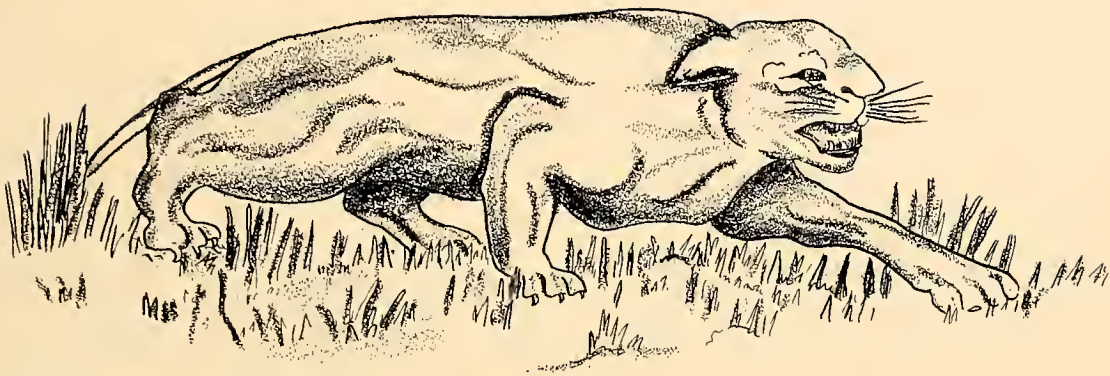
Good Luck

F. M. B.





Presenting



THE PANTHER

FIFTH VOLUME

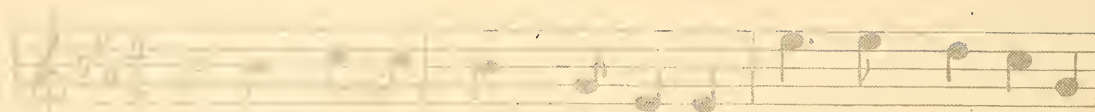
By

SENIOR CLASS

Shady Grove High School

1954

ALMA MATER



To the Shady Grove High School we raise our voices



and to them with our prais-es we sing.

FOREWORD

We treasure the memories of our school life and realize that they will become even more priceless to us through the years. Perhaps through the pages of this volume of the PANTHER, we can portray to others and can keep for ourselves some of our cherished memories. This annual has been compiled for the enjoyment of the students in its preservation of a small part of the dynamic life at S.G.H.S. Moreover, it is the wish that this annual will be a force in the maintenance of the traditional school spirit and principles in the forth coming years at Shady Grove High School.

Davie County Public Library
Mocksville, NC



Mildred
sweet girl you're a very
enjoyed having you side
in class. May the
best always be
yours - May Rose Hall

MISS MARY ROSE HALL

DEDICATION

To You, who has sponsored the PANTHER, making it a success, for two successive years; who, sponsoring the Beta Club, has led the club in upholding the National Constitution and made our club what it is today, we the PANTHER STAFF of 1954, proudly dedicate this, our Annual to you.



01-01
1482584
485281



ADMINISTRATION



Mr. J. D. Parker, Jr.
Principal



Mr. Dave Stillwell
Supervisor



Mr. Curtis Price
Superintendent



Mildred, Thanks For The money kids
with the Evans this year. You're doing
Job keeping out money. Best
Wishes For your future -
M.P.H.

FACULTY

Mr. Frank D. Hardin
History and Coach

Mrs. J. D. Parker, Jr.
Math and Commerical

Mr. J. D. Parker, Jr.
Science



Mr. Hugh Partin
Agriculture

Miss Mary Rose Hall
English and French

Miss Marjorie Bishop
Home Economics



Mrs. Fallie C. Vogler
Seventh Grade

Mrs. Lucille Cornatzer
Eighth Grade

Mrs. Erma Mauldin
Seventh and Eighth Grade





FACULTY

Mrs. Elsie Vogler
Sixth Grade

Miss Helen Barnhardt
Fifth Grade

Mrs. Alma Shermer
Fourth and Fifth Grades



Miss Ethel Smithdeal
Fourth Grade

Mrs. Margaret Jones
Third Grade

Mrs. Edith Bailey
Second Grade



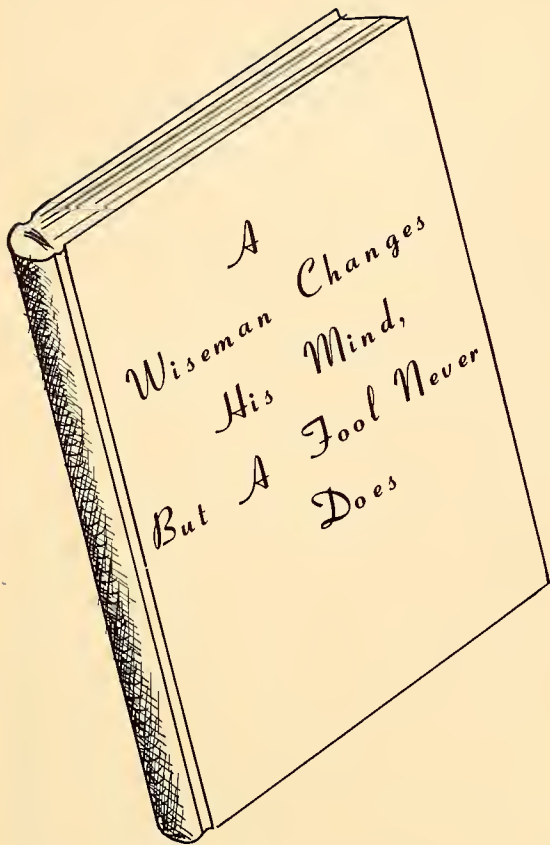
Mrs. Mymie Garrison
First Grade

Mrs. Ruth Hartman
Second Grade

Mrs. Ruby Markland
First Grade



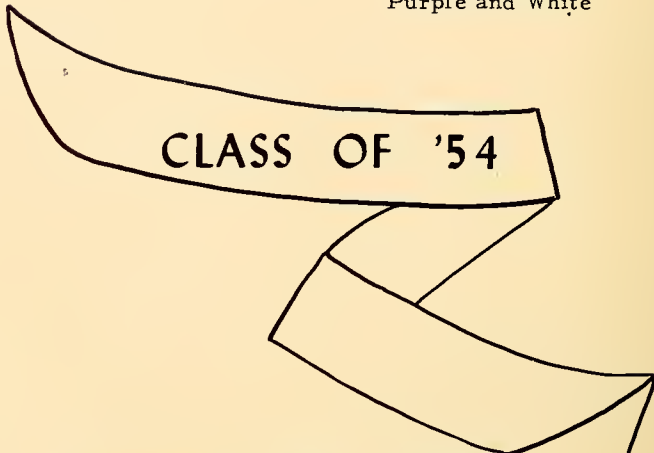
CLASSES



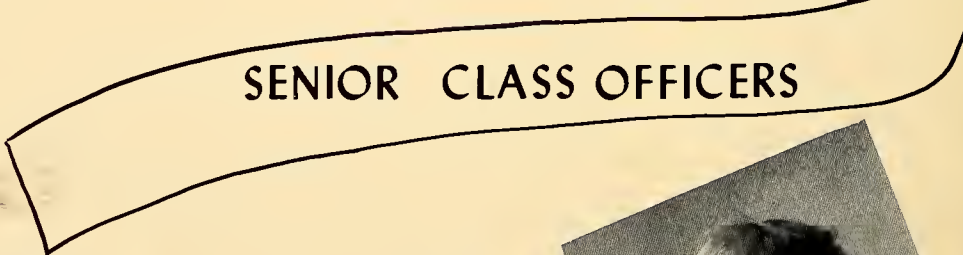
CLASS FLOWER
Violet



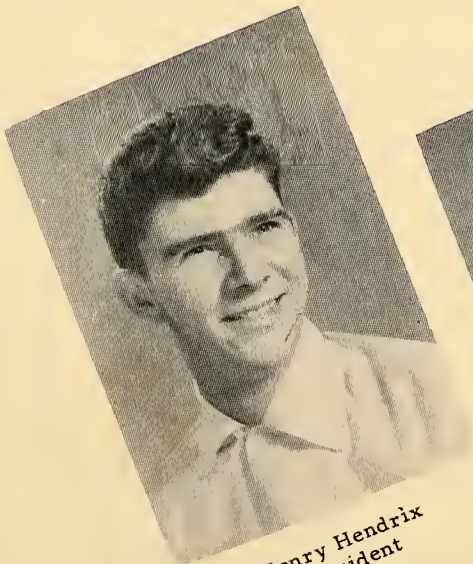
CLASS COLORS
Purple and White



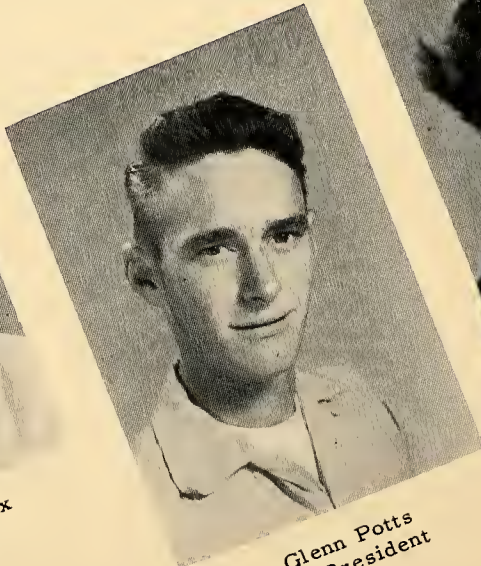
CLASS OF '54



SENIOR CLASS OFFICERS



Henry Hendrix
President



Glenn Potts
Vice President



Frances Hartman
Secretary



BAILEY, KERMIT MARSHALL - "CROOK"

Intelligent, active, in a hurry.
"Come in, let's go."

Beta Club 1,2,3,4, President 2; Monogram Club 4; Basketball 1,2,3,4; Co-Captain; Marshall 3; Panther Staff Sports Editor 4; Outlook Reporter 1,3, Assistant Editor 4; Cheerleader 1,2; Bus Driver 3,4; 4-H Club 1,2,3,4, President 4; F.F.A. Club 1,2,3, Secretary 4; Honorable Mention All-Star Northwest Team 3; Junior Play 3; Banquet Program 3.



BEEDING, BONNIE ROSE - "BUNNY"

Studious, married, and high tempered.
"I'm not telling you."

F.H.A. Club 1,2; 4-H Club 1,2; Junior Play 3; Panther Staff Proof Reader 4.

BOWLES, MAMIE DALE - "SAM"

Courteous, quiet, and friendly.
"I don't say."

F.H.A. Club 1,2; Panther Staff Proof Reader 4.



BURTON, MILDRED MARIE - "LITTLE'UN"

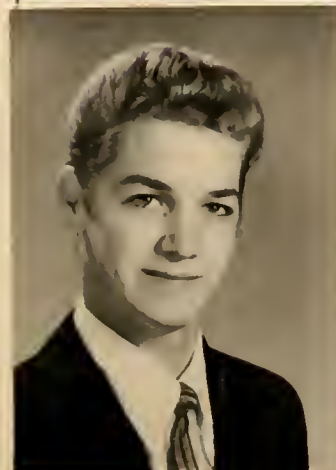
Cute, short, and engaged.
"Goodness Gracious!"

Glee Club 2,3; Basketball 2,3,4; F.H.A. 1,2,3; 4-H Club 3,4; Songleader 4; Panther Staff Business Manager 4; Monogram Club 4; Crass Club 4, Reporter 4; Junior Play 3.

BURTON, KENNETH BLAINE - "SKINNETH"

Blonde, good-looking, best dressed.
"I ain't going to do it."

Basketball 1,2,3,4, Co-Captain 4; Baseball 1,2; F.F.A. Club 1,2,3,4, Reporter 3; Crass Club 4; 4-H Club 1,2; President of Class 1,3; Halloween King 2; Junior Plays 3; Paper Staff 2; Banquet Program 3; Monogram Club 4; Annual Staff, Art Editor 4; Cheerleader 1.



CARTER, BETTY JEAN - "LU LU"

Tall, quiet, and dependable.
"Oh, foot!"

F.H.A. Club 1,2,3; Glee Club 1,2,3,4; 4-H Club 1,2,3,4; Crass Club 4.

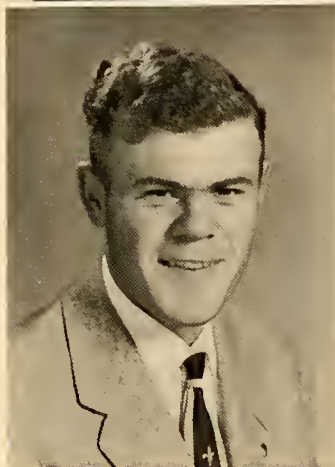


CORNATZER, PEGGY MARIE - "PEG"

Blonde, pretty, and giggles.
 "Oh, I have something to tell you."
 Beta Club 3,4; F.H.A. Club 1,2,3; Manager Junior Plays 3; Usher Senior Skits 3; Halloween Court 3; 4-H Club 2,4; Croquet 1,2,3.

FOSTER, CONNIE RUTH - "CON"

Best all-around, sweet, likes to drive a bus.
 "Didn't you know that?"
 4-H Club 1,2,3,4; Beta Club 3,4, Treasurer 4, Reporter 4; Music 1,2; Junior Plays 3; Snapshot Editor of Panther 4; Banquet Program 3; F.H.A. Club 1, 2; Croquet 3; Halloween Stunt 4; Substitute Bus Driver 3, 4.



FOSTER, GEORGE LESTER - "BUCK"

Quiet, neat, gets around.
 "Let's go, Willie!"
 F.F.A. 1,2,3,4; Bus Driver 3,4; Substitute Bus Driver 2; Crass Club 4, Vice President 4; Junior Play 3.

HARTMAN, ELIZABETH FRANCES
 "GIGGLES"

Tall, loud, and well-dressed.
 "Come on, let's yell."
 Panther Editor 4; Beta Club 1,2,3,4; F.H.A. Club 1,2,3, Reporter 3; Glee Club 1,2,3; Class Secretary 4; 4-H Club 1,3,4, Song-leader 4; Marshall 3; Cheerleader 4; Junior Play 3; Banquet Program 3.

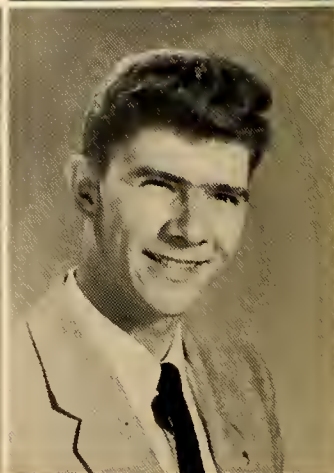
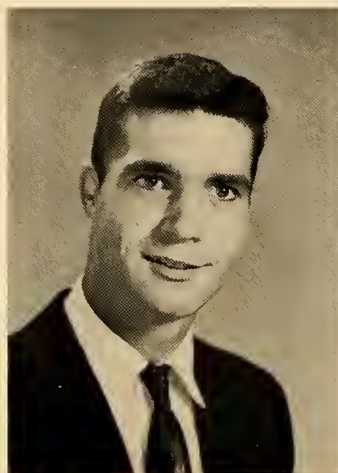


HENDRIX, HENRY ANDERSON
 "SONNY-BOY"

Talented, musical, good-looking.
 "Ain't that a pill!"
 Beta Club 3,4, Vice President 4; F.F.A. 1, 2,3, Vice President 3; 4-H 1,2,3,4, President 3, Vice President 4, County Winner 4; Basketball 1,2,3,4; Baseball 3,4; Bus Driver 3,4; Class President 3,4; Outlook Staff 2,4; Panther Staff 4; Marshall 3; Junior Play 3; Banquet Program 3; Sports Editor 4; Circulation Manager of the Panther Staff 4.

HOLDER, GILBERT SANFORD - "HOLDER"

Cute, witty and flirtly.
 "Oh! You sweet little thing."
 F.F.A. Club 1,2,3,4; Baseball 2; Bus Driver 4; Panther Staff 4; Junior Play 3; Class President 2; Halloween Court 3.





JOLLY, EDNA GELENE - "GENE"

Short, blonde, and muscial.
 "El, My goodness."
 Beta Club 3,4; F.H.A. Club 1,2,3; Junior Play 3; Prophet on the Panther Staff 4, Outlook Reporter 2, Secretary 4; Cheerleader 1; Glee Club 1,2; Banquet Program 3; Halloween Court 2; Stunt 3,4; 4-H Club 1,2,3,4; Song-leader 3.



MYERS, BILLY EUGENE - "WILLIE"

Dependable, likable, and married.
 "Ah! You don't mean it."
 F.F.A. Club 1,2,3,4; Bus Driver 2; Substitute Bus Driver 1,2,3,4; Crass Club 4.

OWENS, RETA GAYE - "Ritta"

Popular, engaged, and sweet
 "What'd you do that for";
 Beta Club 4; F.H.A. 1,2; Junior Play 3; 4-H Club 1,4; Halloween Attendant 3; Banquet Program 3; Music 1; Testatrix 4; Croquet 1,2,3,4.



POTTS, BARBARA FAYE - "BOBBIE"

Tall, witty and silly.
 "Don't do me that way"
 Beta Club 4; 4-H Club 1,2,4; F.H.A. 1,2; Outlook Reporter 4; Class Secretary 2; Banquet Program 3; Junior Play 3; Halloween Court 4, Halloween Stunt 3,4; Panther Staff, Historian 4.

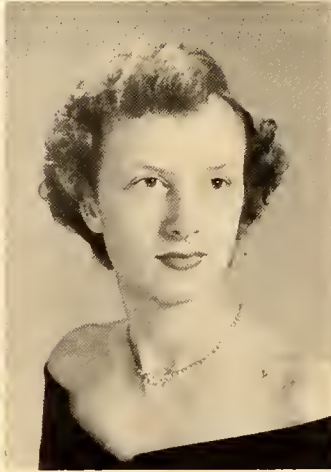
POTTS, GLENN FOSTER - "SLIM"

Popular, tall, and handsome.
 "Spinna wheel."
 F.F.A. Club 1,2,3,4; Crass Club 4, President 4; Class Vice President 4; Junior Play 3; Halloween King of 1953-54.



POTTS, NANNIE LOU - "LOU"

Quiet, reserved, hates noisy people.
 "Well, silly."
 F.H.A. Club 1,2,3; 4-H Club 1,2,3,4; Stage Manager Junior Play 3; Halloween Stunt 4; Crass Club 4; Elementary Editor of Panther 4.



RATLEDGE, FRANCES HARRIET
"DUMPLIN"

Short, cute, and athletic.
"I don't know."

Class Secretary and Treasurer 1, Class Vice President 2, Secretary 3; Halloween Court 1,2; Basketball 1,2,3,4, Co-Captain 4; 4-H Club 3,4; Sweetheart of 1951; Monogram Club 2,3,4; Vice President 4; F.H.A. Club 1,2; Crass Club 4; Secretary 4; Junior Play Usher 3; Honorable Mention All-Star Northwest Team 2,3; Sports Editor of Panther 4.

VOGLER, LYNDA MAE - "CORA"

Tall, likes to argue and play basketball, intelligent.

"Let me tell you."

4-H Club 1,2,3,4; Vice President 3, Secretary and Treasurer 4; Monogram Club 2,3,4, Secretary 3, President 4; Beta Club 1,2,3,4, Secretary 3, President 4; Glee Club 1,2; Class Treasurer 3; Outlook Sports Editor 3, Editor-in-chief 4; Basketball 1,2,3,4, Co-Captain 4; Associate Editor of the Panther 4; Halloween Queen of 1953-54; Chief Marshall 3; Junior Plays 3; Banquet Program 3; Halloween Stunt 4; Piedmont Bowl Entrant 4; F.H.A. Club 1,2, Vice President 3.

MASCOTS



RANDALL WARD

GLENDA CORNATZER



SENIORS



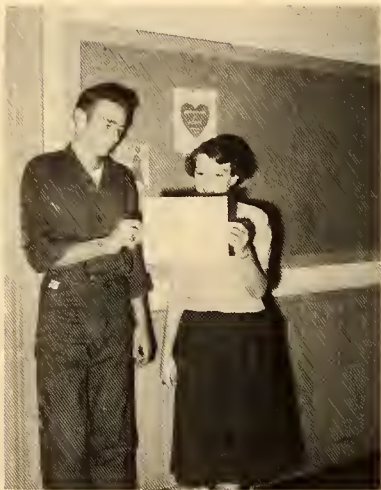


BEST LOOKING
Peggy Cornatzer
Kenny Burton



BEST DRESSED
Frances Hartman
Kenny Burton

MOST POPULAR
Reta Gaye Owens
Glenn Potts



MOST STUDIOUS
Bonnie Rose Beeding (not pictured)
George Foster



MOST DEPENDABLE
Betty Jean Carter
Billy Myers

QUIETEST
Nannie Lou Potts
George Foster



Senior



MOST LIKELY TO SUCCEED
Lynda Vogler
Kermit Bailey



MOST COURTEOUS
Mamie Dale Bowles
Glenn Potts



CUTEST
Mildred Burton
Gilbert Holder



MOST ATHLETIC
Frances Ratledge
Kermit Bailey



BEST ALL AROUND
Connie Foster
Henry Hendrix



MOST MUSICAL
Gelene Jolly
Henry Hendrix



WITTIEST
Barbara Potts
Gilbert Holder

Stars

CLASS HISTORY

In the fall of 1950, a strange caravan started on the long journey through Shady Grove High School. This caravan was drawn by thirty-one strong, and able-bodied mules. Crack-the whip over this wild gang was Mr. Frank Hardin. Helping him hold the reins were Bud Jones, Kermit Bailey, and Frances Ratledge. Our journey was successful with the biggest struggle being the Halloween King and Queen. Our candidates were king, Bud Jones, queen, Marie Alien, and attendant, Frances Ratledge.

When the team met in 1951 to be hitched up for another year's work, we found only twenty-four of our team were present. Billy Potts, Helen Hege, Bud Jones, Nell Spry, Edera Robertson, and Betty Tucker were the teammates who found it too hard to carry the load that was before them. This year our gang seemed tamer when Miss Frances Parsons cracked the whip. Helping to keep the team steady were Gilbert Holder, Barbara Potts, Frances Ratledge, and Lynda Vogler as class officers. Miss Parsons proved to be a grand leader when we elected our Halloween candidates who were king, Kenny Burton, queen, Gelene Jolly, and attendant, Frances Ratledge. We worked hard to win, but others were more determined so we came in with second place. With a weiner roast at Biltmore Dairies and a Christmas party at the community building, this year proved to be a real success.

The team was aware of its added responsibility when in the fall of 1952, we were hitched up for the journey through our Junior year. At roll call we found that, Patsy Barney, Gilda Foster, Rosia Myers, Felix Jones, and Bobby Barney, were missing because the way proved too hard for them. The official holder of the whip this year was Mrs. William Haynes. Her able assistants were Henry Hendrix, Glenn Potts, Frances Ratledge, and Lynda Vogler. To start the caravan rolling, we elected our candidates for Halloween, king, Gilbert Holder, Queen, Peggy Cornatzer, and attendant, Reta Owens. The next important event of this year was the presentation of two one-act plays, "Itchin to get Hitched" and "Rootin for Ruth." We were proud of the way our teammates each did his share to make these plays a success. In April of 1953 came the highlight of the Junior year, "The Junior-Senior Banquet." After much work and discussion about this occasion we finally settled down in the State Room of the Robert E. Lee Hotel. We had decided on "The Gay Ninties" as our theme and this was carried out in the program and in the decorations. We were thoroughly delighted with this gala occasion. The close of this fun-filled and work-packed year was when the team triumphantly carried the daisy chain for the seniors of 1953.

When the fall of 1953 rolled around, we found there were twenty teammates instead of the nineteen who had disbanded in May. Billy Myers was the one who was added to our team. Mrs. J. D. Parker Jr., as usual, cracked the whip over the senior class. The first load the team carried was the responsibility of the annual. Miss Hall proved very capable of helping to make our annual a success. Also each senior put forth an effort to make the the "Outlook" the best ever.

Our first action was to elect Henry Hendrix, Glenn Potts, and Frances Hartman as leaders for the twelfth grade. As usual, the first battle this year was working to win the Halloween king and queen. Our candidates this year were: King, Glenn Potts, queen, Lynda Vogler, and attendant, Barbara Potts. We were all overjoyed when our team won with 264.70.

Then came the gay season of Christmas time and the seniors gathered at the home of Mrs. Parker for a real fun-filled party. Seems as if Christmas Holidays were no more than over when we began thinking about our trip to Washington which took place in May. The senior play was the next thing we began to work on and our teammates performed wonderful when the play was given. Next came graduation which everyone had looked forward to with great anxiety. But as our journey through S.G.H.S. came to a close, there were sighs and sorrows because our team had to disassemble and travel into the different paths of life, but each one felt that with the many ups and downs our journey had been prosperous and successful.

Barbara Potts
Historian



CLASS PROPHECY

The moon sparkled in a million silver droplets as a new wave broke on the shore. As the last tiny wavelet crossed my bare toes, I stopped, startled by what appeared before me. Rising out of the shimmering mist was a figure. Do my eyes deceive me? Yes, it is, it really is a mermaid. Slowly she turned and watched my approach.

After my greetings she smiled mysteriously, "Would you like to see into the future?", she asked. "Yes!", I exclaimed, "But why am I so privileged?" The mermaid explained that once a year she visited this spot and granted the wish of mortals. I thought of my class back at the beach house waiting for the prophecy and I cried at once, "Tell me about the future of the class of 1954."

"Behold," she cried: and here is what I saw:

Kermit Bailey, the boy voted most likely to succeed, is now head of a large firm in Nevada. This company is in charge of production and experiments in guided missiles and space control. Looking further I see Gilbert Holder as chief construction engineer of the firm.

As the scene changes I see Bonnie Rose Beeding looking like a gypsy. She and her children are trying to catch a plane to California. William has just been transferred again.

The flight is about to leave when suddenly I hear the delighted screams of teenagers. Well, look who is causing all the disturbance - handsome Kenny Burton! He has just starred in a new movie, "The Heart-breaker." Incidentally, he still has all that blond hair.

Someone else catches my eye in this crowd. Oh yes, I couldn't mistake that smile, it's Henry Hendrix. I see that he and his string band are new stars of radio and television. You can see them every Sunday night on WMNC-TV, Mocksville.

I see now that we are back in Winston-Salem and there is City Hospital coming into view. I find that Frances Hartman is now head nurse there. One of her leading assistants is Mrs. Dick Vogler, the former Reta Gaye Owens. They are both doing special work with children in order to get some practical experience. Now I see that Nannie Lou Potts, the quiet girl in our class is here too. She is taking care of expectant fathers.

The country side is changing, we are no longer in Winston-Salem, but entering the suburbs of Advance. What is that sign I see flashing on and off? George Foster is now leading car dealer of the South. Chief mechanic in charge of new inventions is Bill Myers. Looking in back of the garage I see Glenn Potts working on his 42 Ford, which he used to race around school, has now won the Grand Sportsman Circuit of 1964. He was awarded his trophy and a kiss from Miss Peggy Cornatzer, who was crowned Miss Universe of 1964. Peggy has just received an offer from Hollywood. She and her business manager, Barbara Potts, are on their way out there now. I'm not surprised to see them together because they were inseparable at school.

Speaking of inseparable companions, what will Mamie Dale Bowles and Betty Jean Carter be doing in ten years? Oh, I see them now. They have opened a little speciality shop in Advance.

I look a little longer at this scene and I see a lovely young matron coming down the street. Do I know her? Why, yes, it's Mildred Burton. She now has another ring to match that sparkler she flashed at school. And those two darling children? Yes, they belong to Mildred, too.

Suddenly my gaze is attracted to the school building. The old place hasn't changed much in the past ten years. Who is that? It's Connie Foster. It seems that she has taken Miss Hall's place teaching English and French.

Now I have seen what we will all be doing except for that old threesome, Lynda, Gelene, and Frances Ratledge.

Oh, now I see Madison Square Garden. The sign says wrestling tonight-SPECIAL FEATURE: LADY WRESTLING. Fancy Frances vs. Gravel Gertie. We never dreamed, back at Shady Grove, that ninety-pound Frances could be so powerful! I see we are between falls and before Frances goes on a number of celebrities are being introduced. One of them is the new Commander-in-Chief of all the Women in Military Service for North America. Why it's none other than Lynda Vogler. After her first five years in the Waves, I lost track of her. I notice a gold band on her left hand. I wonder if she stuck by the military tradition in choosing her husband.

Slowly the ring fades away and I see a Brilliantly lighted sign - THE STORK CLUB. The feature entertainer for the week is Gelene Jolly. THAT'S ME! I must hurry back and tell everyone what I've found out.

"Thank you, beautiful mermaid, for the lovely look into the future. Why she's gone! I'm very glad I was here when she paid her one visit a year to mortals.

Gelene Jolly
Prophetess



LAST WILL AND TESTAMENT

State of North Carolina
County of Davie
City of Advance

We, the Seniors, realizing that we are about to leave dear old Shady Grove School with our diplomas in our hand, indicating that our knowledge and experience are sufficient to meet the requirements for graduation, do hereby make our last will and testament.

ARTICLE I

SECTION I. To our school, and community, we leave our grateful appreciation for all the time, effort, and patience it has taken to put us through twelve years of school.

SECTION II. To our parents we leave our undying love and gratitude for all the love and encouragement you gave us and for the sacrifices you have made to enable us to complete our education.

ARTICLE II

SECTION I. To the Junior Class we will all the dignity of being Seniors.

SECTION II. To the Sophomores we leave all the headaches of the Junior-Senior Banquet.

SECTION III. To the Freshman Class we leave first year algebra.

ARTICLE III

The following bequests are made to our faculty:

SECTION I. To Mr. Parker we will a relief from all the headaches we caused him.

SECTION II. To Mrs. Parker we leave a Senior Class that never talks.

SECTION III. To Mr. Partin we will a new set of tools to replace the ones we wore out.

SECTION IV. To Mr. Hardin we leave the hope that he will have better home rooms than he had his first two years here.

SECTION V. To Miss Hall we will a box of KLEENEX to catch all the tears when we graduate.

SECTION VI. To Miss Bishop we will a book to give you new ideas on cheerleading.

ARTICLE IV

The following individual bequests are made by the Seniors:

SECTION I. Kermit Bailey wills his school bus to Richard Bailey and hopes the switch won't be left on.

SECTION II. Bonnie Beeding wills to Ethel Shore her ability to get a husband.

SECTION III. To Edith Bailey, Mamie Bowles wills her love of Home Economics.

SECTION IV. To Clifford Howard, Mildred Burton wills her 99 lbs.

SECTION V. Kenny Burton, wills his love of arguing and being stubborn to Roy Potts because he never seems to do either.

SECTION VI. Betty Carter wills her ability to write themes to Dorothy Smith.

SECTION VII. Peggy Cornatzer and Barbara Potts will to Don Barnhardt and William Bailey their ability to get the favor of Mr. Parker.

SECTION VIII. Connie Foster leaves to Mildred Nance her bus license.

SECTION IX. George Foster wills to Elmer Shore his curly hair.

SECTION X. Frances Hartman, leaves to Ann Lawson her cheerleader suit.

SECTION XI. Henry Hendrix leaves to Red Cornatzer his love for girls and music.

SECTION XII. Gilbert Holder leaves his pesty ways to Clark Smith.

SECTION XIII. Gelene Jolly, wills to Sally Barney her position in the Beta Club.

SECTION XIV. To Gray Barnhardt, Billy Myers wills his 37 Chevrolet so Gray can carry the boys down town.

SECTION XV. I, Reta Gaye Owens, do will and bequeath my short hair style to Geraldine Spry.

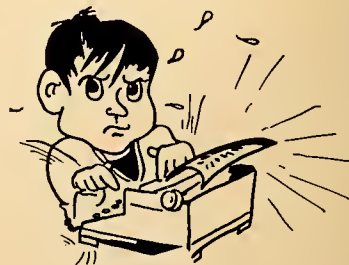
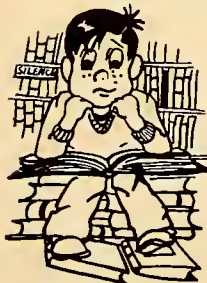
SECTION XVI. Glenn Potts wills to Bennett Potts a sure way of being late for a date.

SECTION XVII. Nannie Lou Potts wills her English book to Betty Mullis if she is crazy enough to take it.

SECTION XVIII. Frances Ratledge, wills her faithfulness to one boy to Jackie McCulloh.

SECTION XIX. To Josephine Howard, Lynda Vogler wills her ability to talk.

Reta Gaye Owens
Testatrix



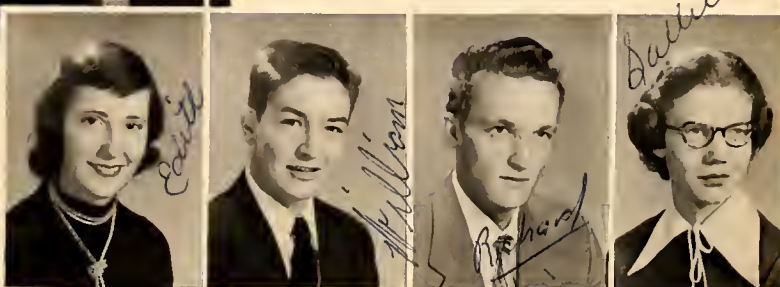


JUNIOR CLASS

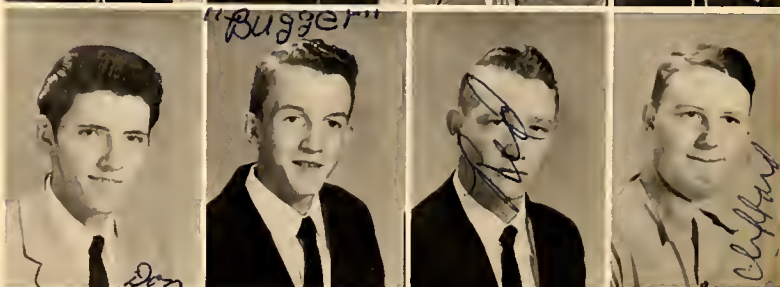
OFFICERS

President	Don Barnhardt
Vice President	Elmer Shore
Secretary	Betty Mullis
Treasurer	Mildred Nance
Sponsor	Mr. Hardin

Edith Bailey
William Bailey
Richard Bailey
Sallie Barney



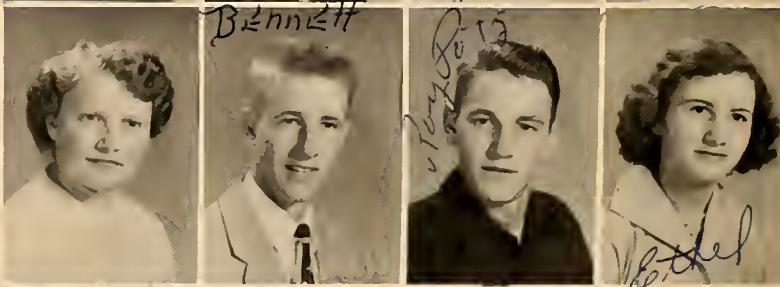
Don Barnhardt
Gray Barnhardt
Richard Cornatzer
Clifford Howard



Josephine Howard
Ann Lawson
Jackie McCulloh
Betty Mullis



Mildred Nance
Bennett Potts
Roy Potts
Ethel Shore



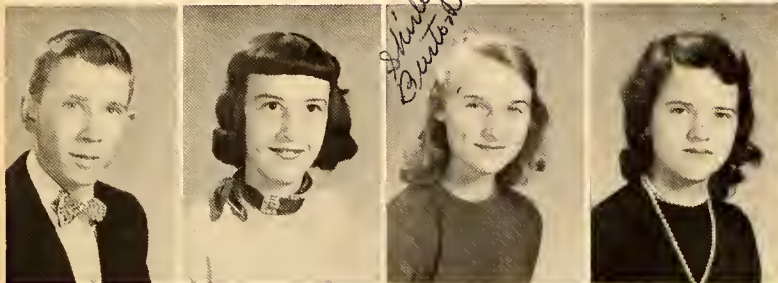
Elmer Shore
Dorothy Smith
Geraldine Spry
Clark Smith
(not pictured)



SOPHOMORE CLASS

OFFICERS

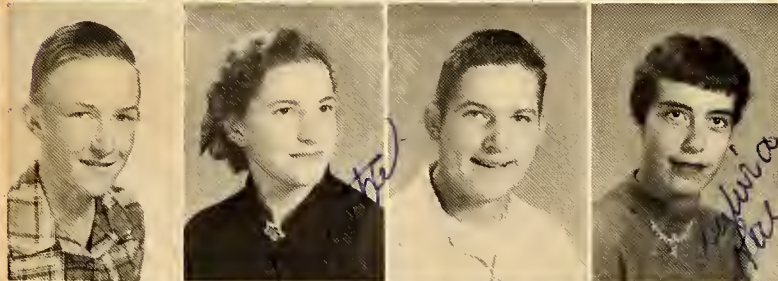
President	Nancy Hartman
Vice President	Emily Mock
Secretary & Treasurer	Cleo Carter
Sponsor	Miss Bishop



Brack Bailey
Dorothy Bailey
Shirley Burton
Dorothy Byerly



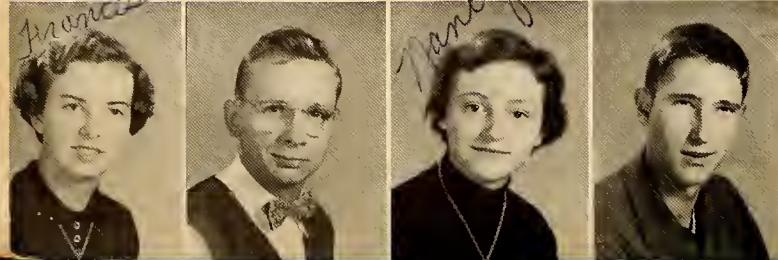
Cleo Carter
John Foster
Nancy Hartman
Ann Hendrix



Craig Howard
Martha Kate Husser
Jimmy Jones
Sylvia Livengood



Emily Mock
Jeanette Orrell
Nancy Richie
Wilma Lou Riley



Frances Seaford
Odell Thonasson
Nancy Vogler
Wayne Williams



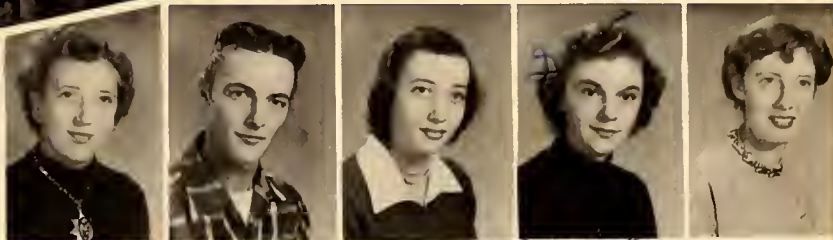


FRESHMAN CLASS

OFFICERS

President Sue Browder
 Vice President Glenda Bailey
 Secretary Peggy Hamilton
 Treasurer Tama Sue Markland
 Sponsor Miss Hall

Nancy Allen
 Berrie Lee Bailey
 Glenda Bailey
 Sue Browder
 Dema Bowles



William Carter
 Catherine Cope
 Gordon Cornatzer
 Jean Cornatzer
 Peggy Hamilton



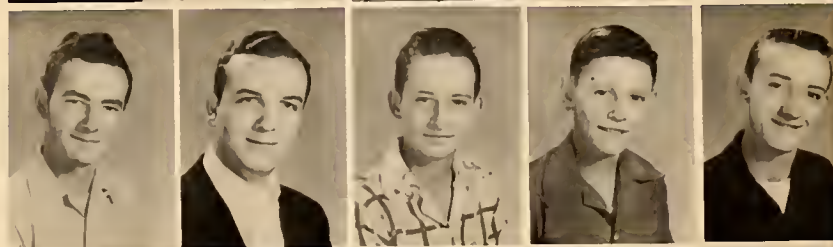
Linda Hartman
 Jerry Hege
 Hattie Hege
 G. Vernon Hendrix
 Kenneth Howard



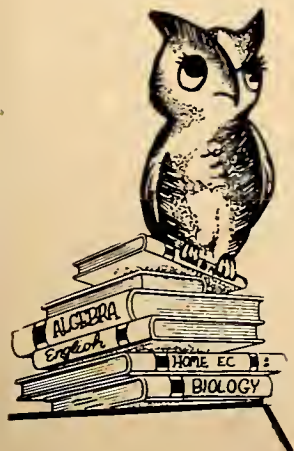
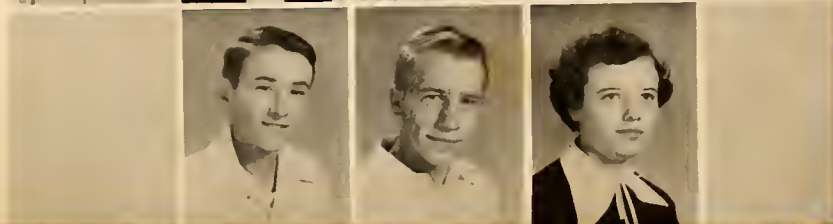
Leonard Jones
 Clement Jones
 Billy Livengood
 Gyndol Long
 Tama Sue Markland



Jerry Mock
 Alvin Myers
 James Myers
 Lester Myers
 Thurman O'Mara



Gray Potts
 Gilbert Potts
 Louise Sheets
 Charles Bailey
 (not pictured)



MRS. MAULDIN

SEVENTH AND EIGHTH GRADES



Ethel Allen, Franklin Bailey, Joan Barney, Hayden Beauchamp, Dale Buchanan, Judy Hamilton, Ricky Hartman, Joe Hendrix, Sarah Hendrix, Joyce Holder, Sammie Howard, Shermer Jarvis, Dallas Jones, Vell Livengood, James Myers, Pansy Myers, Ann Nail, Ruth Potts, Florence Shore, Jo Ann Shuler, Bobby Sidden, Elaine Sowers, Larry Vogler, Betty Jo Williams, Nora Williams, Ben Browder, Vernon Livengood, not pictured.

MRS. CORNATZER

EIGHTH GRADE



Nellie Allen, Allen Bailey, Stacey Barney, Betty Beauchamp, Lewis Carter, Linda Cope, Rose Cope, Dickie Crater, Jane Craver, Roverda Ellis, Willie Dean Erchison, Linda Fitzgerald, C.W. Foster, Millie Foster, Maggie Hartman, Velda Sue Howard, Dan Lawson, Frank Minor, Lillie Mae Myers, Betty Jean Norman, Jane Partin, Archie Potts, Kermit Ratledge, Betty Gale Seaford, Douglas Seaford, Mary Nell Shutt, Madge Sparks, Connie Faye Tucker, Janice Wilson, Bobby Barnes, not pictured.

MRS. E. VOGLER

SIXTH GRADE



Evie Ann Bailey, Rad Barnes, Nadine Barney, Betty Jean Bowens, Billy Burton, Edith Byerly, Billy Carter, Donnie Carter, Johnny Carter, Larry Carter, Mary Carter, Toby Cornatzer, Jimmy Craver, Bill Doby, Sharon Ellis, Donald Forrest, Helen Hudson, Anna Guinn Jones, Ursula Jones, Harry Leonard, Becky Livengood, Gene Alton Livengood, Johnny Long, Bill Minor, Kenneth Munday, Jerry Nivens, Sharon Partin, Roy Phelps, Rosalie Potts, Luther Potts, Mary Sue Shore, Amy Jean Sparks, Norman Spry, Rachel Wilson

MRS. F. VOGLER

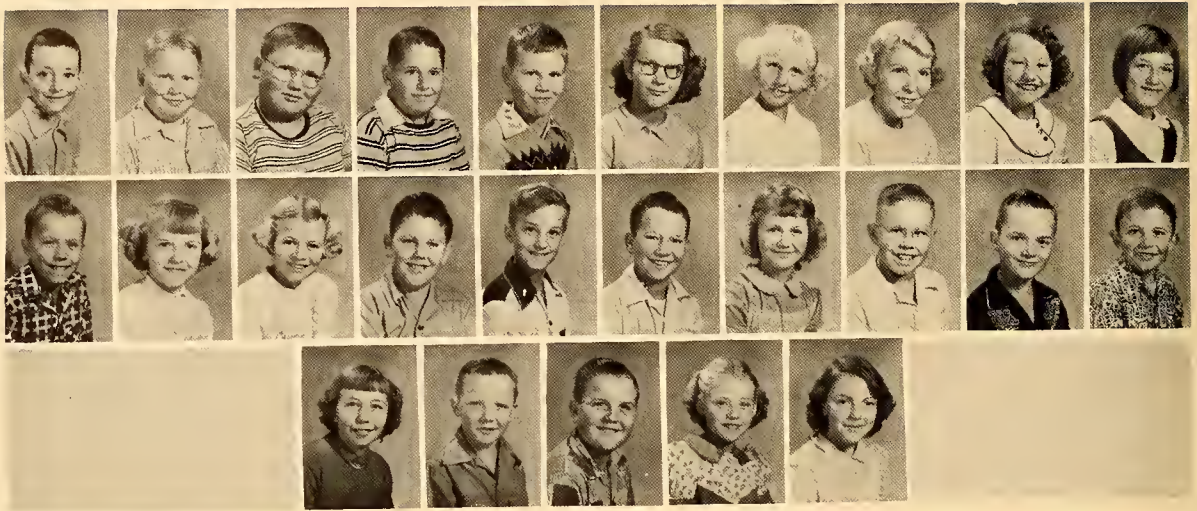
SEVENTH GRADE



Johnny Allen, Jackie Bailey, Sallie Lou Bailey, Rommie Barney, Shirley Ann Blake, Junior Burton, Marvin Byerly, Jean Carter, Betty Nan Cornatzer, Quincy Cornatzer, Jane Cornatzer, Mary Frances Cope, Roger Foster, Hazel Franks, Emma Lou Frye, Melvin Gillaspie, Nell Hudson, Gray Jones, Maggie Jean Julian, Charles Long, Maudie Melton, Patsy Messick, Jimmy Myers, Delnora Phillips, Nannie Sue Robertson, Betty Gray Sidden, Fred Smith, Margaret Smith, Billy Spillman, Not Pictured, Miller Blake, Billy Craver, Huston Frye, Earnest McLemore, Edith Potts.

MRS. SHERMER

FOURTH AND FIFTH GRADES



Carl Bailey, Larry Barnes, Johnny Barney, Johnny Boger, Jack Carter, Mary Ann Cornatzer, Georgia Craver, Judy Doby, Janice Forest, Vickie Franks, Donald Hall, Lois Hamilton, Betty Hendrix, Wayne Howard, Arnold Husser, Nelson Jones, Nancy Munday, James Nance, Hugh Partin, Cecil Smith, Linda Smith, Richard Smith, Douglas Sprye, Joan Sprye, Dorothy Cornatzer, not pictured, Peggy Wood.

MISS BARNHARDT

FIFTH GRADE



Callie Bailey, Joe Bailey, Larry Bailey, Jimmy Barney, Jerry Beal, Roger Blake, Margaret Branch, Shirley Carter, Donnie Cornatzer, Robert Cope, Kermit Craver, Dean Foster, Johnny Foster, William Gillaspie, Joyce Hendrix, Dennie Jarvis, Margaret Laird, Carlton Livengood, Steve Long, Richard Markland, Betty Lou McLemore, George Frank Mock, Donald Myers, Stacy Myers, Jimmy Nail, J.R. Norman, Douglas Potts, Kay Potts, Carol Robertson, Jerry Robertson, Dorothy Jane Smith, Gaye Sowers, Fay Dean Williams, Betty Winters, Gail Williams, Brenda Zimmerman.

THIRD GRADE

MRS. JONES



Anita Bailey, Thomas Bailey, Martha Frances Barney, Louie Beal, Jr., Brenda Kaye Carter, Travisene Carter, Carol Chaplin, James Cline, Alvin Coon, Robin Ellis, Katie Lee Etichson, Carol Fitzgerald, Ray Forrest, Maretha Foster, Carol Jane Green, Gay Hotts, Lonnie Jones, Herman Laird, Jerry Livengood, Charles Markland, Jr., Garry McDaniel, Joetta McMahan, Donald Messick, Donny Myers, Eddie Myers, Jerry Wayne Myers, Judy Myers, Leroy Nivens, Glenda Potts, Katrina Robertson, Brenda Sprye, Janine Vogler, Evone Williams.

FOURTH GRADE

MISS SMITHDEAL



Jerry Allen, Larry Beauchamp, Leo Bruebraker, Ray Byerly, Francis Cope, Connie Cornatzer, Grady Craver, Don Doby, Brenda Ellis, Johnny Gillaspie, Edith Hartman, Wayne Hamilton, Henry Hege, Raymond Hege, Judy Holder, Leonard Hudson, Eugene Livengood, Grady Minor, Nettie Minor, Bettie Myers, Judy Nail, Billy Potts, Lynda Richardson, Mary Robertson, Judy Shuler, Joyce Tucker, Opal Wood, Sue Wood, Bobby Waller.

MRS. HARTMAN

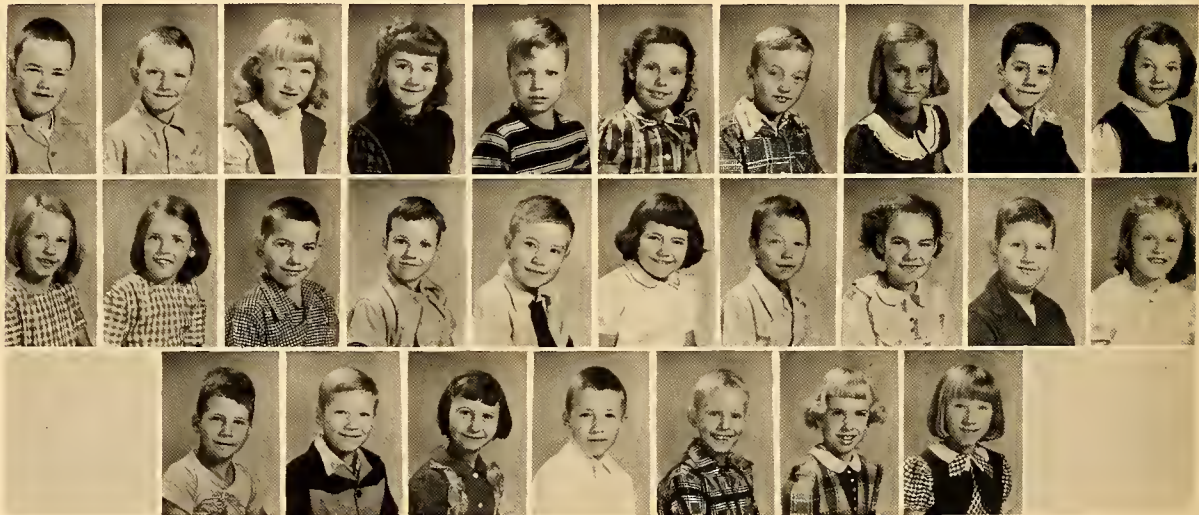
SECOND GRADE



James Barnes, Allie Rea Barney, Douglas Barney, Wanda Barney, Edna Branch, Kenneth Branch, Blaine Brubaker, Brenda Byerly, Gladys Carter, Irilla Carter, Jimmy Cope, Shirley Cope, Wanda Craver, Earl Doby, Ava Lou Foster, Donald Foster, James Foster, Earl Hege, Jr., Patricia Hilton, Glenn Messick, Dorothy Minor, H.L. Norman, Linda Rummage, Donald Sprye, Donald Waller, William Waller.

MRS. BAILEY

SECOND GRADE



Terry Allen, Sammy Bailey, Freda Barnhardt, Linda Barnhardt, Steve Beauchamp, Dana Buchanan, Ray Carter, Jr., Majorie Cornatzer, David Crater, Ann Essex, Doris Gillaspie, Dorothy Gillaspie, George Hairston, Franklin Holder, John Jones, Marlene Jones, John Keaton, Wilma Keaton, Gary Livengood, Susan Mock, William Nivens, William Robertson, Bobby Seaford, Donald Tucker, Ronald Vogler, Adrian Zimmerman, Brenda Potts.

FIRST GRADE

MRS. GARRISON



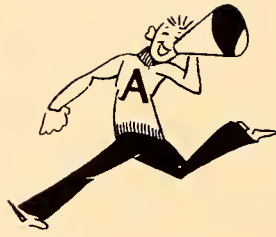
Diane Bailey, Larry Bailey, Joyce Barney, Wayne Blake, William Burton, Katie Carter, Shelby Coon, Gurney Coon, Tommy Cope, Francis Green, James Hartman, Doris Hege, Faye Hoots, Bobby Jones, Donald Jones, Clay Lawson, Connie Markland, Douglas Markland, Garry Markland, Patricia Markland, Billy Melton, Kermit Myers, Albert Norman, William Patton, Terry Potts, Brenda Potts, Nancy Richardson, Kent Walser, Linda Wood, not pictured, Carolyn Potts, Brenda Carter.

FIRST GRADE

MRS. MARKLAND

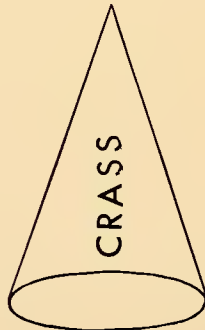


Barbara Barney, Charles Bailey, Charles Carter, Jerry Carter, Patsy Carter, Wanda Carter, Patsy Davis, Susan Ellis, Bobby Foster, Terry Gillaspie, Eddie Hilton, Terry Keaton, Brenda Keaton, Rebecca Keaton, Billy Laird, Bobby Laird, Max Long, Doris Livengood, Novella McMahan, Richard Massey, Gaither Markland, Gail McDaniel, Freida Myers, Frank Orrell, Grant Robertson, Richard Robertson, Jane Seaford, Dorothy Seaford, Sue Smith, Tim Sprye.



ACTIVITIES

A





Frances Hartman
Editor in Chief



Lynda Vogler
Associate Editor

PANTHER STAFF



- Testator Reta Owens
- Prophet Gelene Jolly
- Historian Barbara Potts
- Proof Readers Bonnie Beeding
Mamie Bowles
Betty Carter
- Girl's Sports Ed Frances Ratledge
- Boy's Sports Ed. Kermit Bailey
- Art Ed. Kenny Burton
- Elementary Ed. Nannie Lou Potts
- High School Ed Peggy Cornatzer
- Snap Shot Ed Connie Foster
- Circulation Managers. Henry Hendrix
George Foster
Glenn Potts
Gilbert Holder
Billy Myers



Miss Mary Rose Hall
Sponsor



Mildred Burton
Business Manager

Our Advance

The Senior Editor
 ted annual Editor
 Assoc. Editor
 Test Editor
 Hist. Editor
 Prop. Editor
 Busi. Editor
 Proof Editor



Girl's Sp. Editor
 Boy's Sp. Editor
 Art Editor
 Elementary Editor
 High School Editor
 Snapshots Editor
 Circulation Editor

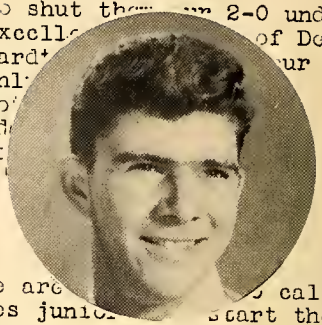


The first days of school were
 Lynda Vogler
 Editor-in-Chief

Seniors, we take this opportunity to wish you the very best of luck in the future. You have been a fine group in school, and we are sure you will achieve even greater things as individuals.
 As we look around in the halls next year and see the marks you left, we will miss you. Here is wishing you lots of success in the things you undertake through the advancing years.



Wonderful and Brances
 ran in...
 boing...
 get...
 Lynd...
 have...
 W...
 and R...
 Bill...
 party, you...
 Mrs. J. D. Parker, Jr.
 Sponsor
 Hartman and Bonnie typing?
 Why did Kenny not want Lynda to eat onions at the class party?
 Wonder why Mamie Dale and Betty Jean are so quiet this year.
 We wonder why Glenn didn't go to the Briving Range after the party.
 Barbara, who were you flirting with during Chemistry, Thursday?
 We are glad to announce that everyone got home safe after the hamburger frv.



Advance traveled to Mocksville to shut them out 2-0 under the excellent leadership of Derry Barrett. Our 7 men...
 We are... call our... start the year...
 solves junior...
 off we ele...
 President- Henry Hendrix
 Vice-pres. Printer
 Secretary-Betty Mullis
 Treasurer-Mildred Nance
 Reporters- Sallie Barney
 Bennett Potts
 Party Comm...
 S. We are...
 other an...
 calls of...
 officer...
 Glenn...
 ances...
 treasurer...
 will make fine...
 hard to make ou...
 The Gelene Jolly
 Secretary 17th. at
 the Advance Community Building.
 all enjoyed the hamburgers and



OUTLOOK STAFF



- Reporters:
 Gelene Jolly
 Henry Hendrix
 Sallie Barney
 Bennett Potts
 Frances Seaford
 Wayne Williams
 Gwyndol Long
 William Carter
- Sports Editors:
 Betty Mullis
 Henry Hendrix
- Typists:
 Typing Classes

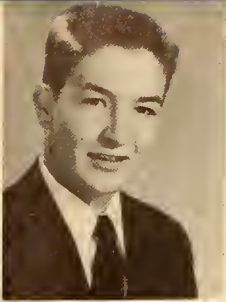
BETA

CLUB



President Lynda Vogler
Vice President Henry Hendrix
Secretary Betty Mullis
Treasurer Connie Foster
Sponsor Miss Mary Rose Hall

Kermit Bailey
Don Barnhardt
Peggy Cornatzer
Frances Hartman
Gelene Jolly
Jackie McCulloh
Mildred Nance
Reta Gaye Owens
Barbara Potts



William Bailey

MONOGRAM CLUB

Gray Barnhardt



Frances Ratledge



Betty Mullis



Lynda Vogler



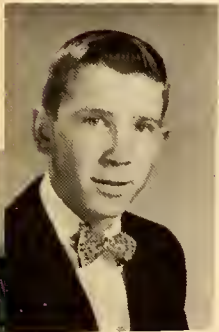
Sallie Barney



Kermit Bailey



Kenny Burton



Brack Bailey



Mildred Burton



Roy Potts



Bennett Potts



Jackie McCulloh



Martha Kate Husser



Elmer Shore

Wayne Williams



SENIOR 4-H CLUB



Henry Hendrix - Vice President; Lynda Vogler - Secretary and Treasurer;
Kermit Bailey - President.

JUNIOR 4-H CLUB



Allen Bailey - President; Connie Tucker - Vice President; Linda Fitzgerald - Secretary and Treasurer.

FUTURE HOMEMAKERS OF AMERICA



Seated: Catherine Cope, Linda Hartman, Glenda Bailey, Nancy Allen, Hattie Hege, Gwyndal Long. Standing: Dorothy Smith, Mildred Nance, Sue Browder, Tama Sue Markland, Edith Bailey, Geraldyn Spry, Sally Barney, Miss Bishop.



OFFICERS

Sue Browder - Secretary and Treasurer; Sallie Bailey - President; Geraldyn Spry - Vice President; Miss Bishop - Sponsor; Tama Sue Markland - Reporter.

FUTURE FARMERS OF AMERICA



First Row: Jerry Hege, Gray Potts, Lester Myers, Clifford Howard, Leonard Jones, James Myers, Thurmond O'Mara. Second Row: Roy Potts, Wayne Williams, Pichard Cornatzer, Clement Jones, Charles Bailey, Kenneth Howard, William Bailey, John Foster, Clark Smith, Hugh Partin, Berry Bailey, Bill Livengood. Third Row: George Foster, Don Barnhardt, Kenny Burton, Gilbert Holder, Gary Barnhardt, Richard Bailey, Bennet Potts, Brack Bailey. Fourth Row: Gilbert Potts, Gordon Cornatzer, Vernon Hendrix, Jimmy Jones, Alvin Myers, William Carter, Craig Howard.



F.F.A. Officers: Richard Bailey - President; Brack Bailey - Vice President; Mr. Partin - Sponsor; Jimmy Jones - Secretary and Treasurer.

M
U
S
I
C
C
L
U
B



First Row: Maretha Foster, Sharon Ellis, Callie Bailey, Gaye Sowers, Glenda Potts, Gale Williams, Rosa Lee Potts, Betty Jean Bowens, Sharon Partin, Faye Dean Williams, Carol Jane Greene. Second Row: Evie Ann Bailey, Hugh Partin, Kay Potts, Charles Markland, Rachel Wilson, Brenda Zimmerman, Ronnie Vogler, Faye Hoots, Janime Vogler, Ava Lou Foster, Jane Craver, Elaine Sowers. Third Row: Jane Partin, Mary Nell Shutt, Maggie Hartman, Velda Sue Howard, Frances Seaford, Connie Tucker, Janice Wilson, Linda Hartman, Jeanette Orrell, Wilma Lou Riley, Betty Jo Williams, Joan Shuler, Roverda Ellis, Nancy Richie.



C
R
A
S
S
C
L
U
B

First Row: Mildred Burton, Elmer Shore, Frances Ratledge, Edith Bailey, Dorothy Smith, Mamie Dale Bowles, Bonnie Rose Beeding, Betty Jean Carter. Second Row: Mrs. Parker, Kenny Burton, Nannie Lou Potts, Geraldyn Spry, William Bailey, Bennett Potts, Sallie Barney, George Foster, Richard Bailey, Not Pictured - Billy Myers, Glenn Potts. Officers: President: Glenn Potts, Vice-President: George Foster, Secretary: Frances Ratledge, Treasurer: Sallie Barney.



CHEERLEADERS

Geraldyn Spry - Chief

Frances Seaford

Ethel Shore

Nancy Vogler

Edith Bailey

Frances Hartman



Dear Mildred,
 you are one of
 the nicest students
 I have ever had.
 I appreciate your
 doing so many
 extra things I so
 often asked you to do.
 Lots of luck and happiness in
 everything you do. Marjorie Bishop

Miss Marjorie Bishop
 Director



CAFETERIA STAFF

Bessie Crews
Cornelia Crews
Ida Crews
Mrs. Minnie Bryson-Supervisor



CUSTODIANS
Lee Phelps
Edna Allen



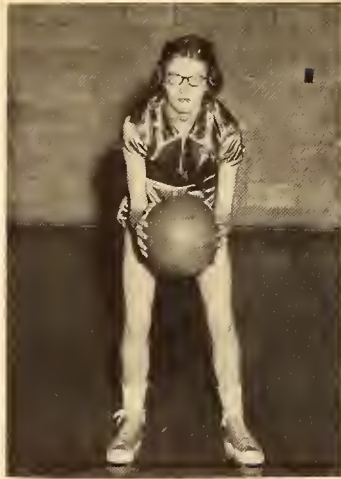
Edna Allen



COACH: Frank Hardin
CO-CAPTAINS: Lynda Vogler
Frances Ratledge



F. Ratledge
Forward



S. Barney
Forward



N. Hartman
Forward

GIRLS' BASKETBALL



L. Vogler
Guard



M. Husser
Guard



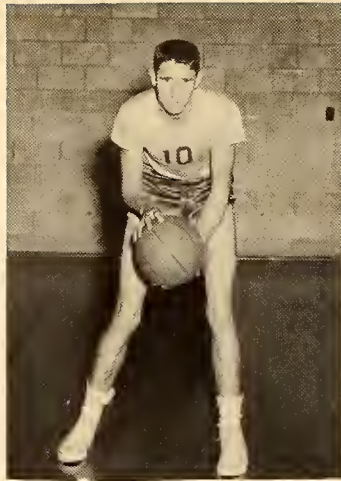
J. McCulloh
Guard



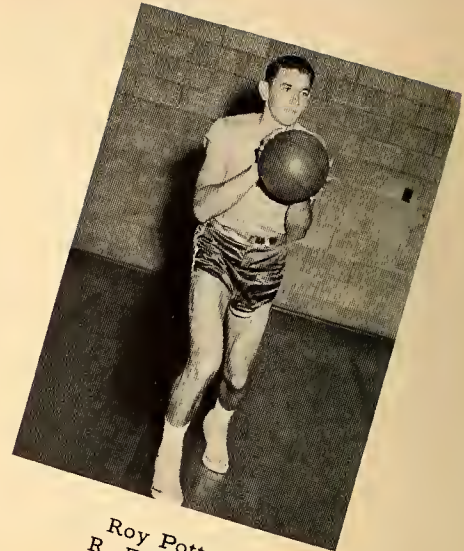
COACH: Frank Hardin
CO-CAPTAINS: Kermit Bailey
Kenny Burton



Kermit Bailey
L. Forward



Wayne Williams
Center



Roy Potts
R. Forward

BOYS' BASKETBALL



Kenny Burton
L. Guard

Richard Cornatzer
R. Guard





Thurmond O'Mara, Gordon Cornatzer, Vernon Hendrix, Alvin Myers, William Carter, Gilbert Potts, Gray Potts.

JUNIOR VARSITY

First Row: Frances Seaford, Wilma Riley, Dorothy Byerly, Shirley Burton, Linda Hartman, Tama Sue Markland. Second Row: Nancy Vogler, Nancy Allen, Jean Cornatzer, Louise Sheets, Glenda Bailey, Peggy Hamilton, Sue Browder, Mr. Hardin, Not Pictured, Sylvia Livengood.





Halloween King and Queen

Glen Potts

Lynda Vogler

HALLOWEEN COURT

Jane Partin - Sharon Partin - Dancers
Martha Kate Husser - Pianist



Barbara Potts
Maid of Honor

Front Row:
Jane Seaford - Flower Girl
Patsy Davis - Train Bearer
Dorothy Seaford - Flower Girl
Back Row:
Grant Robertson - Train Bearer
Susan Ellis - Crown Bearer
Bobby Foster - Crown Bearer



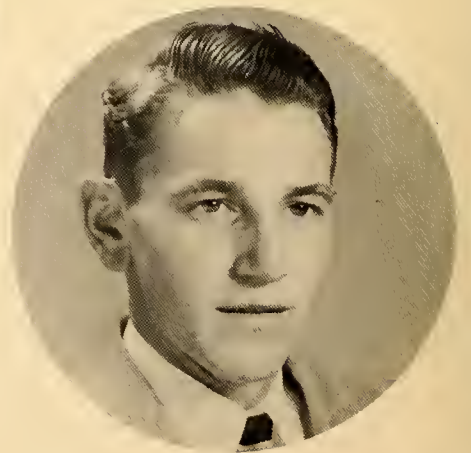
HALLOWEEN COURT



Edith Bailey
Junior Attendent



Jackie McCulloh
Junior Attendent



Roy Potts
Junior Attendent

HALLOWEEN COURT



Sylvia Livengood
Sophomore Attendent



Nancy Hartman
Sophomore Attendent



Brack Bailey
Sophomore Attendent

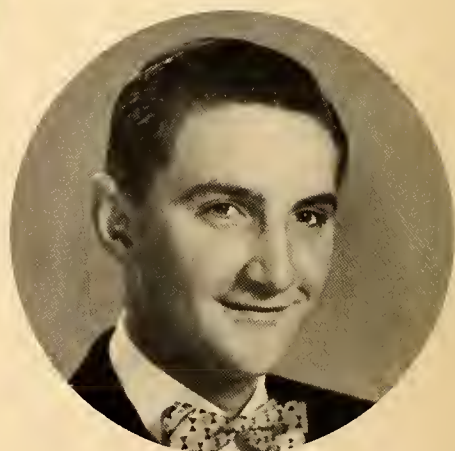
HALLOWEEN
COURT



Glenda Bailey
Freshman Attendent



Peggy Hamilton
Freshman Attendent



Billy Livengood
Freshman Attendent



Compliments of
F. H. ROBERTSON & CO.

General Merchandise

Feed & Fertilizer
Phone 21F30

Bixby

North Carolina

Compliments of
DAVIE DRIVE-IN

Compliments of
SAM COPE



Compliments of

**HENDRIX & MERRILL
FURNITURE COMPANY**

Mocksville North Carolina

Compliments of

**MOCKSVILLE
HOME & AUTO SUPPLY**

135 Salisbury

Phone 36

Mocksville North Carolina

RE-NEW CLEANERS

11 - F - 13

Davie County's Largest & Best

Mocksville North Carolina

Dine With Your Friends At

THE MOCKSVILLE GRILL

Phone 263J

Mocksville North Carolina

WILKINS DRUG COMPANY



Phone 21

Mocksville North Carolina

BANK OF DAVIE

Member of Federal Deposit

Insurance Corporation

Mocksville North Carolina

DAVIE FEED & SEED CO.

Purina Chows-Baby Chicks---
Sanitation

Phone 17
Depot Street



Mocksville North Carolina

"JUNKER-BROS."

**FARMERS HARDWARE
& SUPPLY CO.**

Phone 46

Mocksville North Carolina

**INTERNATIONAL
MINERALS & CHEMICAL CORP.**

For Satisfaction at Harvest
Time Use International
Fertilizers
Potts Lumber Co. Agent.
John S. Kimmons Box 651
Sales Rep. Phone 3164
Statesville North Carolina

Headquarters for Howard Zink
Seat Covers
Electric Appliances
Guns & Ammunition
Radios, Television
Fishing Tackle

TRIVITTE'S AUTO SUPPLY CO.

Phone 4-0295 208 W. 6th Street
Winston Salem North Carolina

Compliments of
CROSS ROAD SERVICE

Elmo Foster, Prop.
Gas, Oil, and Groceries
Route 3

Mocksville North Carolina

Compliments of
W. G. WHITE & CO.

Winston Salem North Carolina

Compliments of
**BOWLES & YORK SINCLAIRE
SERVICE**

Specialize in Washing and
Greasing

Phone 243 or 294

Mocksville North Carolina

KEEP
DANDY BREAD
HANDY

BELL BAKERIES, INC.

Winston Salem North Carolina

Compliments of
**DAVIE TRACTOR & IMPLEMENT
COMPANY**

Ford Tractor and Dearborn
Farm Equipment

Telephone 310 - J

Mocksville North Carolina

Compliments of
**FIRESTONE
HOME & AUTO SUPPLY CO.**

G.H.C. Shutt Owner

Phone 132

Mocksville North Carolina

*Best of Davis
back always
a nice a photo*

MOCKSVILLE ENTERPRISE

"Davis Largest
and
Best Newspaper"

Mocksville North Carolina

C'S BAR-B-CUE

Phone 428

Mocksville North Carolina

Compliments of

HOWARD MILLING COMPANY

Custom Grinding and Mixing

Dealers in
Nutrena Staff-O-Life Feeds

Advance North Carolina

Compliments of

HEFFNER & BOLICK GROCERY

Mocksville North Carolina

Compliments of

**CORNATZER & SON
GROCERY SERVICE STATION**

Advance North Carolina

Compliments of

CITY GROCERY & FEED CO.

Wholesale and Retail

Seeds, Feeds, Groceries
High Grade Poultry Feeds

Phone 2-1920 217 W. 6th St.

Winston Salem North Carolina

Compliments of

**FOSTER'S
WATCH SHOP**

Fine Jewelry-Expert Watch
Repair

Mocksville North Carolina

Compliments of

PICK & PAY GROCERIES

Fresh Meats Crown Gas & Oil

Advance North Carolina

Mildred,
I have enjoyed being in school with you through the past years. You are a very sweet and nice girl. Here's wishing the best of everything in life for you.
A friend, Betty Jean

ORRELL'S PRODUCE COMPANY

Wholesale Fruits and Produce

513 North Cherry Street

Phone 2-2393 4-8321 2-L.D. 924 and 934

Winston Salem

North Carolina

MARTIN BROTHERS



Feeds-General Merchandise-Fertilizer

JOHN DEERE

Phone 99

Mocksville

North Carolina

JOHN C. BOWLES

Sheet Metal Shop

Furnace Installation

Guttering, Awnings

Tobacco Cutters and Pipes

345 Wilkesboro Street

Phone 374 W

Mocksville

Mildred,
She is a real nice kid. Remember all the good times we have had together for the past two years. Hope your wish comes true.
A friend always,
Ethel Shore

Mildred,
I have enjoyed knowing you, and hope to see you back next year. Wishing you the Best of everything,
Shirley D. D.

Best wishes
To a very sweet
and friendly girl I
wish you all the
best in the world
a friend
ANNE

Mildred
I have enjoyed being in
your classes for several years.
Best of luck to a nice girl
always a friend
Jo

Compliments of

BILTMORE DAIRY FARMS

Milk and Ice Cream

Gold Guernsey

Pasteurized Milk - Homogenized with Vitamin D

Cottage Cheese - Heavy Cream - Coffee Cream

Goat's Milk - Butter & Eggs - Chocolate Milk

Dial 2-2555

Stratford Road

Winston Salem

North Carolina

you are a
"sweet girl."
Best of luck.

Love Emily

Best of luck
to a sweet person
Martha

Mildred
It has been fun
going to school with you.
I'm sure I will miss you
next year. Always
Compliments of

ARDEN FARMS

PACKING COMPANY

"Highest Quality Meats From The Farm To You"

Phone Winston Salem 40535

Clemmons

North Carolina

Best wishes
to a sweet girl
who may
everybody
luck come
the future.
Love always
Betty
Marshall

Lots of luck & best
wishes to a nice
girl.

Don Barnhardt

Best wishes

Richard

Mildred I have enjoyed
going to school with you
these years. Lots of luck
to a cute girl. Love ya
Sylvia

Best wishes
and lots of
luck to a swell
person. "Cherry"

Best of luck
to a sweet
girl.

Love,

Frances Dieford

lots of good luck
& success in the
future.
Best wishes
Janet



Mildred
you are a very
good friend, I
love you lots.
Love
Janice

I have enjoyed
being in school
with you. Lots
of luck to a sweet
girl.
Nancy Vager

Mildred you are a very sweet
girl. I remember all the
good times we've
had at school. Always
remember me, always
on my writing things
and wish you love ya!
the best of luck
M.N. & R.D.
Edith Bailey

Wishing a good friend
much happiness in
life. Love
Connie

Best wishes
for a dependable
girl in the future
Always,
Mildred Burton

Davie County Public Library
Mocksville, NC

