

The Parrot

Annual



MAY . NINETEEN . HUNDRED . TWENTY . THREE

**An Honest Deal for Every Customer
Everything Must Be RIGHT or WE
Make It SO.**

Meet your friends at
Belk-Harry Co.
Salisbury's LARGEST AND BEST Store



Dry Goods, Shoes, Clothing,
Millinery, Ladies Coats, Coat
Suits and Dresses, for LESS.
At the end of the year you
will be a gainer through
dealing with us.

Ask your neighbor



BELK-HARRY CO.

Salisbury, N. C.

Phones 11, 1015 and 187

Chickens - Chickens - Chickens

I breed Silver Laced Wyandottes, Single and Rose
Comb Rhode Island Reds, and Silver and Golden
Sebright Bantams.

BRED FOR BEAUTY AND EGGS.
STOCK AND EGGS FOR SALE.

THOS. S. WILKIE, China Grove, N. C.

Oh, Boy!

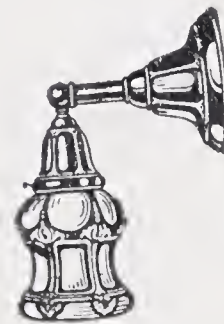
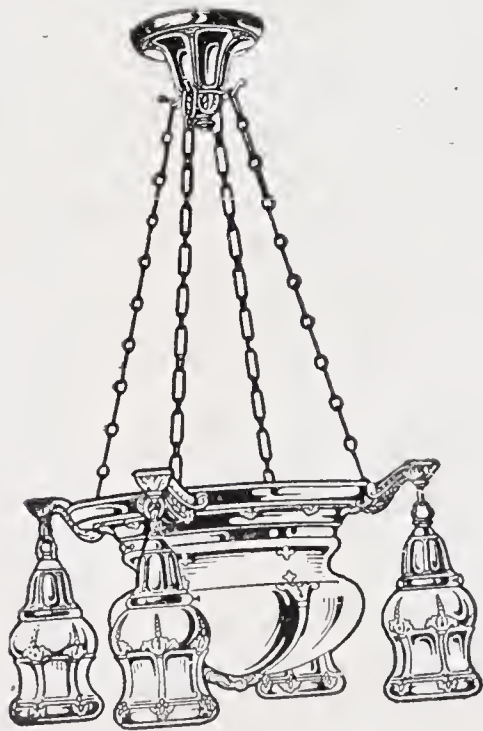
The Baseball Season is Here.

Buy Your Equipment at

Salisbury Pawn Shop

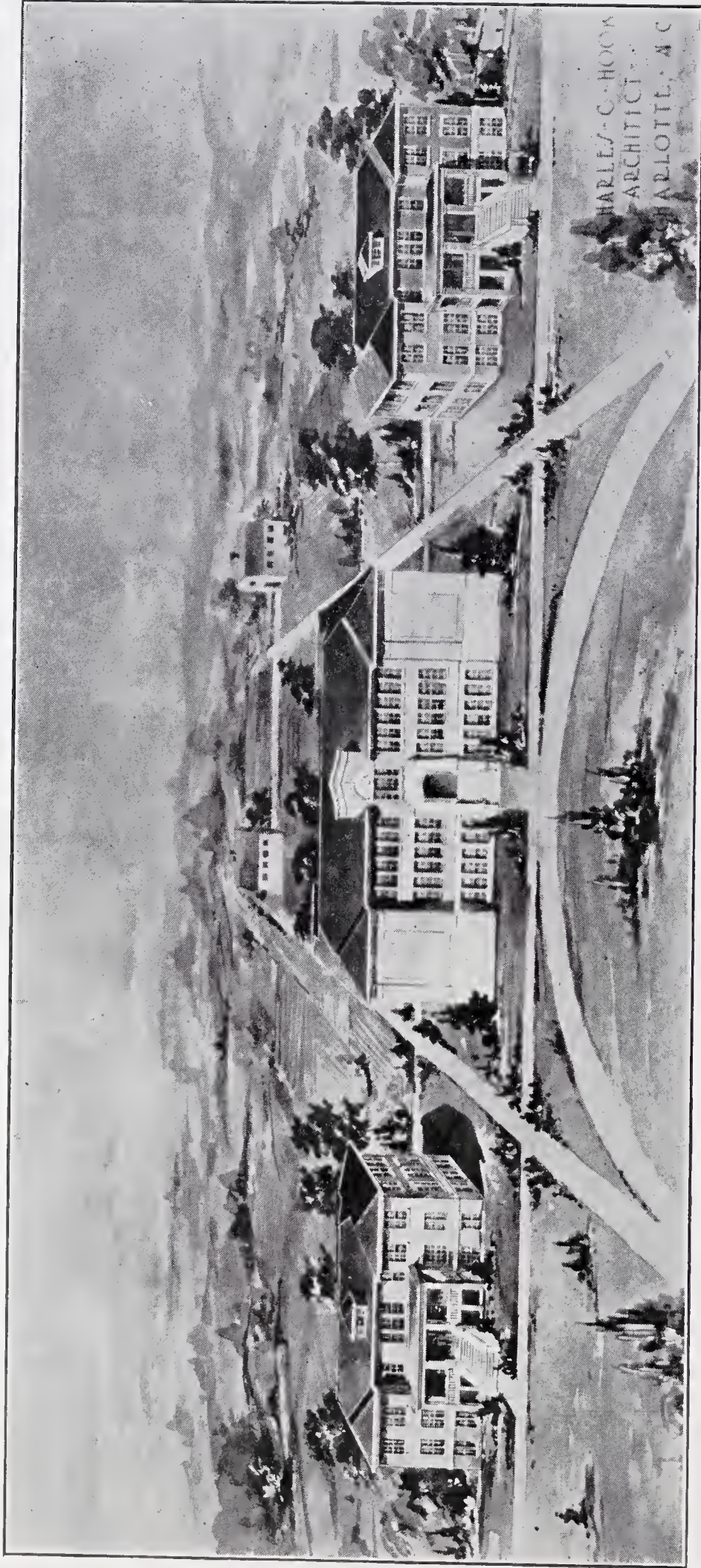
FOR ANYTHING ELECTRICAL
SEE

T. M. Casey
Electrical
Contractor



220 South Main Street

SALISBURY, N. C.



Board of Trustees

ROWAN COUNTY FARM LIFE SCHOOL

A. M. HANNA, Chairman
 P. A. EARNHARDT, Secretary
 COL. A. H. BOYDEN
 F. D. PATTERSON
 W. J. SWINK

W. D. GRAHAM
 I. T. BAILEY
 W. P. SLOOP
 C. A. BROWN
 J. B. LINGLE

J. S. HALL
 B. L. PHILLIPS
 I. C. SHAVER
 C. M. FISHER

EXECUTIVE BOARD

A. M. HANNA
 P. A. EARNHARDT
 W. P. SLOOP
 F. D. PATTERSON
 C. A. BROWN



To Our Beloved Principal

MR. O. B. JONES

We, the Class of 1923, affectionately dedicate this,
the first volume of "The Parrot."



Faculty

O. B. JONES	Principal	MRS. O. B. JONES	Lady	Science
L. S. PRESSON	History	MRS. L. S. PRESSON	Principal	
NITA GAHAGAN	Latin	SAMUEL LEE CARPENTER		Agriculture
CATHERINE ALBERTSON	French	KATHERINE MILLSAPS		Home Economics
VIVIAN BLACKSTOCK	Public School	MABEL CARPENTER		Home Economics
MAUDE P. MINISH	English	RUTH BLACKWELDER		Mathematics
		ADA STIREWALT		Piano



Editorial Board

Marvin Eddleman '23	-----	Editor in Chief	-----	Pauline Karriker '25	-----	Sophomore Editor
Lillian Yost '23	-----	Alumni Editor	-----	Opal Tickel '26	-----	Freshman Editor
Lucille Gillon '24	-----	Social Editor	-----	Walter Hinson '23	-----	Business Manager
Grace Templeton '24	-----	Athletic Editor	-----	Eloise Barnhardt '24	-----	Business Manager
Eura Jones '24	-----	Exchange Editor	-----	Miss Gahagan, Miss Minish, Mr. Presson	-----	Faculty Advisers

Commencement Exercises

MAY 11th. to 15th.

Friday Evening—8 O'clock -----Declamation and Reading Contests
Saturday Evening—8 O'clock ----- Operetta, "Gypsy Rover".
Sunday Morning—11 O'clock ----- Baccalaureate Sermon
By Archdeacon W. H. Hardin
Monday Afternoon—3 O'clock ----- Class Day Exercises
Monday Evening—8 O'clock ----- Play "Clarence"
Tuesday Morning—10:30 O'clock ----- Graduating Exercises
Address by Judge Stahle Linn

Senior Roll

Lee Albright	Nell Miller
Christine Blackwelder	Herbert Miller
Nellie Bostian	Lena Moore
Lee Cauble	Hugh Overcash
Annie Lee Corriher	Summey Ramsaur
Frank Dayvault	Eloise Robertson
Marvin Eddleman	Joan Rothrock
Everett Goble	Mary Sechler
Walter Hinson	Luther Wiley
Ola Fleming	Lillian Yost
Helen Fleming	Frences Hurley
Harold Lentz	Bonnie Lee
Janie Lowrance	Frank Lipe
	Lucile Hunter

Seniors of 1923

Class Flower: Sweet Pea; Class Colors: Gold and Black; Class Adviser: Miss Maude Minish



Our President

HUGH OVERCASH

“A gallant knight came riding.”

Basketball; Dramatics Club; Glee Club; Boys Society '22; Graham Society '23; Athletic Association; President of Senior Class; Triangular Debate 1923.

“Vic” was voted the best looking boy in the class, and if we had included the “slickest politician” among our statistics he would surely have been elected for that honor. It is a constant source of amazement to us all how Hugh can “stand in” so well with the faculty—maybe its his famous dimples. Hugh is a good debater, a fair student, a good all 'round fellow and is very popular with the whole student body. One of the very beautiful pictures that will always be a cherished memory of our senior year is Hugh as a brave knight on May Day. He has made us a good president. We predict for him a sensational career in Rowan County politics.

LAWRENCE STEWART PRESSON, Jr.

“Lub oo!”

McNeil Literary Society; Junior member of the faculty; center of his Daddy's universe.

Lawrence entered the class of '23 in the fall of 1922. He has been called “the touch of home that most schools lack.” He loves us all impartially and we love him with all our hearts. He is the only member of the class who has nerve enough to call Miss Minish “Maud,” and Miss Gahagan “Bill,” to their faces. His class ring is the smallest one the company ever made, just as Hugh's is the largest. We expect to find Lawrence, History teacher and coach at the University of Rowan at China Grove in 1943.



Our Mascot



LEE ALBRIGHT

O'Henry Literary Society '20, Athletic Association '23.

"They say you are a very melancholy fellow."

"Smiley Bill" has the honor of being on the "Tardy Roll." For the past two years Lee has caused much attention by dropping in for school just any old time of day. Lee is a very conscientious fellow taking life seriously. This is a fine commendation for anyone in this fast age and mad rush of life. We know not what the future holds for him, but present indications seem to point out a most successful career. "All the world's a stage!" Lee played the melancholy Jaques in "As You Like it" and Colonel Richard in "Christmas at Five Oaks" very effectively.

CHRISTINE BLACKWELDER

"Blithe, blithe and merry was she."

O'Henry Literary Society '20; F. L. S. Society '21; Treasurer Bickett Society '22; Secretary Bickett Society 1st. Term '23; Treasurer Junior Class '22; Secretary Class '23; Athletic Association '22-'23; Dramatics and Glee Clubs '23; Winner of medal in Recitation Contest '21; Tri-Angular Debate '23; Basket Ball Team '22-'23; Home Economics Club '23.

"Chris" as she is affectionately called by her class-mates is our most popular girl. Her pleasing personality entraps the hearts of all those who have the pleasure of her acquaintance. Christine displays great talent in character acting as any one can see who saw her performance as Auntie in "Christmas at Five Oaks" and Audrey in "As you like it." "Oh, sweet Audrey!"





NELLIE BOSTIAN

"This be one of music's daughters."

Pianist '22; President McNeill Literary Society;
1st. term '23; Dramatics and Glee Clubs.

"Dawg" is our alto prima-donna. It is nothing unusual to hear Nellie coming to her various classes singing. Her wit intermingled with an air of superiority causes her to be a good all around sport. Throughout the two years she has been with us she has never failed to help out with any entertainment which has been given. Her assistance in this line of school work has been wonderful and her classmates appreciate it. She seems to have a love affair—but—leave it to H———R!

ANNIE LEE CORRIHIER

"I cannot check my girlish blush,
My color comes and goes.
I redden to my finger tips
And sometimes to my nose."

Bickett Literary Society '22 and '23; Athletic Association '23; Home Economics Club '23.

Annie Lee has been one of our most faithful and consistent class-mates. Her unselfishness and thoughtfulness towards the girls and boys causes us to regard her with much respect. Annie Lee's performance as Sir Oliver Martext in "As You Like It" was well carried out. Her impersonation was splendid. The "sedan" has certainly been a means of saving many a one of us from "Study-hall." Never will we forget the many nice things which Annie Lee has done for us. Some day, we prophesy Annie Lee will be looked upon as an example of the higher type of people in the community in which she will live.





LEE CAUBLE

"I love a lassie!"

Athletic Association '23; Graham Literary Society '23; Glee Club '23; Dramatics Club '23; Boys Quartette '23; Vice President Graham Society '23.

Seldom in the history of a class does one find such a fine, manly, and upright member as Cauble. Although being with us but one year he has endeared himself to the hearts of all. He has such an air of sincerity and reality that no one can help admiring him. Lee possesses a wonderful voice. Perhaps some day we may purchase a seat to witness the performance of "Faust," at the Metropolitan Theater, New York, starring Lee Cauble, Lee does have one fault, and that is too much l—o—v—e!

FRANK DAYVAULT

What signifies the life of man,
An 'twere not for the lassies I."

Secretary Junior Class '22; Secretary and Treasurer
Graham Literary Society '23; Athletic Association;
Glee Club.

Why be pessimistic? Frank is our jolliest member. He shares honors with his "lady love" as our cutest member. He is a good student, tho' he does not study much. He is a sincere friend and as true a lover as ever sighed upon a mid night pillow." Daily letters of incredible thickness he writes. Frank was a splendid Adam in "As You Like It," and made all the May Day posters. He plans to go to Trinity and study medicine. We believe his career will be successful.





MARVIN EDDLEMAN

"Self reverence; self knowledge, self control,
These three alone lead life to sovereign power."

President Junior Class '22; Editor in Chief of
Parrot, Member O'Henry Literary Society '20-21.

Marvin has the best high school record in the class. His report is one complete list of A's. He also shares with Walter Hinson the honor of at least one conference a day with Miss Minish. "The Parrot" is the child of his brain. He has served the class most faithfully and is the friend of every member in it. Marvin will be missed in school. Quiet, unassuming and gentle, he has been a power in school. He stands unwaveringly for the best things. Marvin surprised us all by the very fine way he played William in "As You Like It." He plans to go to U. N. C. and we predict for him a most successful career as a dramatic critic.

OLA FLEMING

"But thou be wise in this dream world of ours"

President of McNeil Society Spring term '22; Vice-President Sophomore Class '21; Vice-President Junior Class '22; Vice President Senior Class '23; Teacher Training; Dramatics Club; Athletic Assn.

Ola shares honors with Marvin as our best student. Her power to do good class work is a constant source of envy to those of us less gifted. She is generous with her lesson-learning ability tho' and translates Virgil or interprets the constitution for us frequently. Ola has done a great deal of work for the Parrot, she can take the most awkwardly written article and whip it into shape in an hour. Ola should be a teacher. Her keen brain and conscientious spirit will make her a power in the class room.





HELEN FLEMING

"Her kindness and her worth to spy
You need but gaze on Helen's eye."

Treasurer Sophomore Class '21; Vice President of McNeil Society '23; Teacher Training '23; Member of Athletic Association; Member of O'Henry Literary Society '21-'22.

Patiently and diligently Helen has pursued her studies, with results telling a splendid story. She leaves the Farm Life School a record that is the envy of many of us. She has won many friends and she holds those friends she has won. Helen expects to go to N. C. C. W. and we feel that she will be a strong student, and we predict that she will make a valuable addition to the ranks of North Carolina teachers.

EVERETTE GOBLE

"Vanity, vanity, all is vanity."

Member Dramatics Club; Glee Club; Varsity Basket Ball; Varsity Base Ball, '22-'23; Triangular Debater '23; Track Team.

"Pedab" was voted our best athlete and best all round man. He is a strong student and possesses a keen analytical brain. He has a fatal tendency to get into trouble and is always a subject for discussion in faculty meeting. (Witness the bulletin board on Tuesdays!) "Pedab's" specialty is argument. He will argue with any body about any thing, any time and any way. He has very strong convictions—the strongest being that he is always right! His greatest ambition is to go to Wake Forest College and study law. We predict that he will eventually be appointed a member of the Railroad Labor Board.





FRANCES HURLEY

"She's a winsome we thing,
She's a bouny wee thing."

Member McNeil Society; O'Henry Society '20-'21;
Home Economics Club '23; Teacher Training.

"Fritz" is our least member. Also our most casual attendant. She drops in on school when she has nothing more important to do. She is quick enough to make her grade tho', and was a most successful teacher in the practice teaching this spring. We predict for Fritz a successful career as a primary teacher.

LUCILE HUNTER

"To see her is to love her."

Dramatics Club; President Bickett Literary Society
Fall Team '23.

'Cile was voted the sweetest, the prettiest and teacher's pet in the statistic election. 'Cile is always deep in a love affair. We strongly suspect her heart is in the Highlands, but that doesn't prevent her pretty blue eyes from doing ruthless destruction on the F. L. S. campus. In fact there were those in the audience who saw no feigning in the sighs and impassioned speeches of Orlando on May Day. 'Cile has added a great deal to the happiness of our Senior year and we will miss her sunny smile and gay voice when she returns to her beloved mountains. We predict for her the happiest of lives—as queen of a little grey house in the West." "But, Heavenly Rosalind!"





WALTER HINSON

"There's monie a lass has broke my rest."

Athletic Association; President Dramatics Club; President Graham Society 1st. term '23; Business Manager Parrot; President Sophomore Class '21.

Walter was voted the most popular boy in our class, the biggest flirt, and teacher's pet. His sterling worth, real business ability, sincerity and willingness to work have made him a very valuable member of our class. Anything that needs doing from going for the mail to playing a graceful and romantic "Orlando;" Walter does well. His specialty in life and in plays is love scenes. Financing "The Parrot" has been a feat that we all admire and appreciate. It is hard to think of any sphere in life Walter could not achieve, but we predict a successful business career and "just a love nest."

JANIE LOWRANCE

"Her voice is gentle, sweet and low,
An excellent thing in woman."

Bickett Literary Society; Teacher Training Club;
Athletic Association.

Janie has only been a member of our class for one year, but she has won the affection of all. She is very quiet and we daresay if everyone was like her, we would be classed with those "most wonderful dignified sophomores!" Janie is sure to succeed in life if we can judge by her sincerity and truthfulness.





BONNIE LEE

"Fair was she to behold."

Dramatics Club; Home Economics Club; Vice
President of Bickett Society '23.

Bonnie came to us from the Gastonia High School last fall, and has made a very attractive addition to our class. In fact her school spirit and ability to "fit in" have been most valuable to us. She plans to go to N. C. W. and after that her future is veiled in a rosy mist.

FRANK LIPE

"His form accorded with a wind,
Lively and ardent; frank and kind."

Member Dramatics Club, Athletic Association.

Frank came to us for the first time this fall. He has added much to the gayety of the class, and has given us each a "frank" unselfish friend. He was voted our most unselfish member. As Oliver in "As You Like It" he gave a very fine impersonation. In fact we heard one lady say he was a "beautiful boy." Frank is another true lover, he has "sighed like a furnace" with Lee and Walter all year. He and Hugh were for a brief time, supervisors of the County Schools. We believe that Frank will be a most successful business man.





HAROLD LENTZ

"The honest heart that's free from an intended fraud or guile."

Athletic Association; Track Team, Graham Literary Society '23.

"Shorty" is our class baby. His tallness is a joke. When we need a helping hand, we always call on him, for he needs but to stand on tip-toe to reach the top of sky-scrapers. He is a true friend and a reliable "trusted and tried" helper. He has the ability to plan things and carry them thru. He is serious at times, but he appreciates a joke. He is full of pep, energy and determination!

NELL MILLER

"She seemed a part of joyous spring."

Basketball Team and Treasurer of Bicket Literary Society '23; Teacher Training School.

Nell has been with us only one year, but her bright eyes and pleasing personality have won our hearts. She has set before us an example of true "school spirit." Never faltering, always meeting her tasks with a willing and helping hand, she has encouraged us in our work. We predict for her a bright future.





LENA MOORE

As bonnie lassies I have seen,
An' monie fu' as braw,
But for a modest gracefu' mien,
The like I never saw.

Treasurer of Class '23; Treasurer of Bickett Literary Society '23; Member of Basket Ball Team; Teachers Training.

Lena came to us from Mt. Ulla last Fall. In one year she has won our love and friendship. Shy, dainty and sweet; full of school spirit; gentle and true; we are glad to have had her with us. (Especially Frank Dayvault!) We voted her our cutest member. She played Celia in "As You Like It," and the lovely old fashioned girl in "Christmas at Five Oaks" with spirit and grace. Lena can surely "walk with Dukes nor lose her common touch."

HERBERT MILLER

"Ay sir, I have a pretty wit."

Athletic Association; Varsity Basket Ball and Base Ball '23; Dramatics Club; Progressive Literary Society '22; O'Henry Literary Society '20-'21.

"Chick" was voted the brightest boy of the class and also the most conceited. From the way he played Touchstone in "As You Like It" we think he will likely become a great star in the theatrical world. We are extensively proud of his athletic prowess and histrionic ability. Whether he will become a Babe Ruth or a Charlie Chaplin remains to be seen.





ELOISE ROBERTSON

"She's fair, fair, with golden hair."

Bickett Society '23; Home Economics Club '23;
Athletic Association '23; Teachers Training Club.

Eloise came into our midst last fall. Her first and last year at the Farm Life School has meant much to her. She is very popular with her classmates, in fact with the whole student body. Eloise is gentle, modest and very unselfish. She always meets you with a smile and would sacrifice any thing to do you a favor. Eloise has worked very faithfully throughout the year and is now ready for college.

JOAN ROTHROCK

"Some think the world was made for fun and frolic
——— and so do I."

Dramatics Club; Captain Basket Ball Team '22-'23;
President Bickett Society Spring Term '22 and Fall
Term '23; Vice President Home Economics Club '23.

"Jo" is one of our strongest girls. She is full of "pep," energy and school spirit. She was voted the most athletic girl in the class. "Jo" has always lamented the fact that she wasn't a boy, and she prides herself on her indifference to the sterner sex. It is hard to think of the Farm Life School without "Jo," she has been here four years and will be greatly missed. It is hard to decide what the future has in store for "Jo," but it is easy to predict success and happiness for her!





SUMMEY RAMSAUR

"Then the lover, sighing like a furnace,
With a woeful ballad made to his mistress'
eye brow."

**Athletic Association; Dramatics Club; Glee Club;
Graham Literary Society; Track Team; Boys
Quartette.**

Summey is a good student. He hands in themes with a self righteous air. He is unique in another particular. He is the only student in our class who even pretended to enjoy Milton's Minor Poems. Summey is very gifted in music and possesses to a marked degree "the artistic temperament." He cherishes an ambition to be a poet which ambition Miss Minish has most cruelly discouraged. The Glee Club will miss his splendid voice and the track team will miss his good work. We predict for Summey a career as Church organist. He is a staunch and sincere friend.

MARY SECHLER

"An' ay they're dimpled in a smile,
The rosy cheeks o' bonie Mary."

**Bickett Society; Home Economics Club; Dramatics
Club; Assistant "Mistress of the Wardrobe" for
May Day; Member of Athletic Association.**

Our best all around girl; everybody's friend; and a hard worker. Mary sewed up all the costumes for May Day and made a most graceful Hymen in "As You Like It." Mary's conduct and scholarship are both exceptional and we predict for her a successful career as a teacher in Rowan County until a "gallant knight comes riding."





LILLIAN YOST

“My love is like a red, red rose,
That’s newly sprung in June;
My love is like the melodie
That’s sweetly played in tune.”

McNeil Society; Glee Club; Dramatics Club; Winner of Silver Loving Cup in State Musical Contest.

“Bill,” our sweet singer, delighted every one of her classmates by winning the soprano solo cup at the State Musical Contest. She is our class baby and our most conceited girl. The scalps that dangle from her belt show that she really is our “biggest flirt.” Yet, her sweet disposition and unselfish nature make her popular with the girls as well as the boys. May her sweet voice always be the blessing it now is!

LUTHER WILEY

“If he compact of jars grows musical
We shortly shall have discord in the spheres.”

O. Henry Society '21-'22; Athletic Association; Boys Quartette; Glee Club; Base Ball Team; Graham Literary Society '23.

Unexpectedly, before we even guessed that Luther could carry a tune, he was selected for the quartet. Patiently and diligently he has worked to become a good singer. Luther takes life easy. He is always care-free, jolly and never worries, we shall always remember him as he appeared walking leisurely on the Farm Life Campus.



Senior Class Statistics

Girls

Boys

Prettiest—Lucile Hunter	Best Looking—Hugh Overcash
Most Popular—Christine Blackwelder	Walter Hinson
Cutest—Lena Moore	Frank Dayvault
Brightest—Ola Fleming	Herbert Miller
Best All Around—Mary Sechler	Everette Goble
Most Bashful—Annie Lee Corriher	Lee Albright
Sweetest—Lucile Hunter	Sissiest—Marvin Eddleman
Most Unselfish—Lena Moore	Frank Lipe
Best Athlete—Joan Rothrock	Everette Goble
Best Student—Ola Fleming	Marvin Eddleman
Biggest Flirt—Lillian Yost	Walter Hinson
Most Musical—Nellie Bostian	Lee Cauble
Class Baby—Lillian Yost	Harold Lentz
Most Conceited—Lillian Yost	Herbert Miller
Teacher's Pet—Lucile Hunter	Walter Hinson



History of the Senior Class

A long, long night, and then——the dawn of our high school days arrived. Eagerly and pulsing with joy we wended our way to the old and dilapidated school building on the hillside. It was a “grand and glorious feeling” to be in HIGH SCHOOL! Little Harold Lentz in his knee pants and demure little Helen Fleming with hair straggling down her back acted as dignified as any senior. Oh! we were very important (in our estimation) until Mr. Trexler came around. Then you could have heard a pin as it fell on the floor. Nevertheless we loved him. Although we thought we were the bon-tons when school opened there was a decided change of opinion in our minds as the months rolled by. To our chagrin we discovered how green we really were. After a year of “greenness and freshness” and after the foundation had been laid our class advanced to a higher grade.

Our Sophomore year brought about a split in the class. Some decided to continue their studies at the Farm Life School while others remained at the China Grove High School. During this year we climbed gradually towards the middle age of high school life. A change was at last being effected in our mental capacity but not in “noise.” We of C. G. H. S. will never forget our class adviser, “Miss Lewis.” There is no question as to the torment she endured patiently from Frank Dayvault who was continually singing, “Just a little bit of Heaven,” (imitating Miss Lewis.) Although considered the worst class in school we came out with flying colors, five pupils being on the honor roll.

Juniors! Swiftly do we approach our goal! As Juniors of the Farm Life School (the C. G. H. S. school being suspended) a higher type of education fell to our lot. Not only this, but class-mates rejoined class-mates. Good work was accomplished and compliments were bestowed upon us at commencement when “The Gold Bug” was so splendidly presented by the Juniors. Miss Gahagan made us a perfect faculty advisor and we deeply appreciate the many things she did for us.

Now our “glorious days of high school” are drawing to a close. Many have left our fold and many new ones have joined us. We realize that our record has not been what it should but we do think that our support has been a little help. Of course we cant hope to attain the heights that the “Sophomores” now hold but what’s the use to be so serious when the whole world calls for laughter and fun? Our activities have been numerous this year. Entertainments seem to be our specialty and each time success crowns our efforts. The splendid faculty advisor which we chose has been partly the cause of this. Too many thanks cannot be given Miss Minish for her support during the year. One of our most beloved members had to leave school this year and we were very, very disappointed. May Robert some day finish his education is our hearty wish. If anyone deserves it, he does.

Twilight is falling now on the senior class but a brighter sun is looming up over the horizon. We know not over what paths the sun falls we shall travel in future years, but it is our earnest desire that each one of us may be able to congratulate the other on his or her success and Miss Minish on———.

Marvin Eddleman.

Junior Class



OTIS PLEASANTS, President

JUNIOR CLASS OFFICERS

Otis Pleasants	-----	President
Helen Ritchie	-----	Vice President
Buice Pouncey	-----	Secretary
Erastus Heglar	-----	Treasurer

Class Motto: Kicked About, But Always Cheerful.

Colors: Green and Gold

Flower: Daffodil

Class Advisor: Miss Vivian Blackstock.



JUNIOR CLASS

History of the Junior Class

In the fall of 1920, Franklin County sent us a splendid student with never ceasing ambition and courage. Since his entrance here in the Freshman Class he has taken great interest in all school activities and has always striven for the highest goal. We are now indeed very pleased to have him as our President.

The year of 1921 brought us another excellent student from China Grove who has as great intellectual ability as any student attending the Farm Life School. This enables us to have her as our Vice President.

China Grove also presented another student whom we are very glad indeed to accept as our Secretary. He has been a very trustworthy classmate in all undertakings.

Last but not least is the officer who holds the purse. Our Treasurer also comes from the vicinity of China Grove, whom we know to be very accurate in all attainments.

In September, 1920, we began our career as Freshmen at the China Grove High School. It took us a long time to realize that we were really High School students. But when we finally did, it was not without result. The members of the class numbered about twenty. And with Mr. Harmond for advisor, we were able to look back over a successful year when vacation time came.

In September, 1921, we took up our High School career again. This time at the Rowan County Farm Life School. After assembling and calling the roll, we were delighted to learn that the class had increased in number to about sixty-five. Our Sophomore Class year was full to the brim with action and events. And when vacation time again came, we were fully convinced that the Sophomores of 1921 couldn't "be beat."

When we returned to the Farm Life School in 1922, we tried our best to assume the dignity of upper classmen. Perhaps the biggest social event of the Junior class this year was the Junior-Senior Banquet, we shall always remember it. Now we are at the end of the Junior year, and we are exceedingly proud of the record we have made, and hope to carry it with us next year.

Lucille Gillon, '24.

Junior Class Roll

Margaret Atkins	Erastus Heglar	Lula Peeler	Hazel Sloop
Breck Alexander	George Lee Adams	Geneva Kerr	Kathleen Lentz
Gilbert Beaver	Virginia Hurley	Otis Pleasants	Annie Belle McKnight
Irene Bostian	Lucile Gillon	Mary Belle Parks	Grace Templeton
Vivian Bradshaw	Helen Ritchie	Eura Jones	Mary Smith
Myrtle Corriher	Buice Pouncey	Arthur Smith	Ralph Sechler
Geneva Davis	Lois Clary	Katie Misenheimer	Fannie Smith
Max Freeze	Wayne Patterson	Myrtle Walker	Henry Hodge
			Eloise Barnhardt



SOPHOMORE CLASS

Sophomore Roll

This is a roll call, hear every name,
Each is emblazoned on our roll of fame.
Helen Templeton, to her the first call is made,
Then there's Pauline Heilig, a sweet little maid.
Why couldn't this "E" be a "K?"
Pauline and Mitchell Karriker will say.

Stafford is the name for me,
James, John and Anderson, all three.
O is for Overcash, you know,
There's Louanna, we love her so.
Hatterson, that's Grace's name—
Propst and Procter begin the same.
Fenderson, Mabel, Harris, Josephine,
Where are fairer maidens seen?
O stands again for Overcash,
Addie's a girl with plenty of dash.
Miller—yes, Sudie is fairer than May,
Also we have Merle, Maxa, Clara May.
O, well, we told you before,
O is for Overcash, ask us no more.
Rodgers and Roberts—Yorke's our president.
To join them Florence Rothrock and Ray Deal are meant.
F stands for Eller, and Edwards (Marie),
Elizabeth Trexler says " 'E' is for me!"

Catherine Glover, Carrigan, Corriher, Correll and Cress—
We have plenty of C's—who is the best?
Fee—that's Rachel, a fair maiden is she,
And Lucile is as sweet as you ever can see.
Alexander won immortal fame;
Floyd Alexander McCorkle has his name.
S Carl Davis' name ends with this letter,
As Smith and Stafford (Sadie) begin—that's better.
So sweet, so serious, yet so full of glee,
Sophomores better you'll never see.

Biggest
Brightest
Best

These "B's" tell the truth about us,
Farm Life School couldn't live without us.
The "B's"—Katherine, Lena and Lillie Brown,
Ella Best, a student of much renown.
Genolia Beaver, so laughing and gay,
Mary Blackwelder happy all day.

Pauline Karriker '25; Mary Helen Carrigan '25.



YORKE ROBERTS, President

A true type of "school spirit!" Yorke possesses one thing which many students lack, and that is "true school spirit." He also has the honor of being the president of the most illustrious and dignified class in school. His personality outshines his talents. We wish for him success in future life. Judging from his ability to carry on the president's work, our wish will come true!

History of Sophomore Class

One day I was visiting one of our neighbors, and she seemed to be very interested in the Farm Life School. She asked me what class I was in. I told her the Sophomore class, the best class at the Farm Life School. She asked me how many members there were in the Sophomore class. I told her forty-four, and also told her that there were only six of us, who have been together from the first grade. She then seemed to be very interested in the Sophomores, and asked me to tell her some history of my class.

I told her that we entered as Freshmen at the Farm Life in the year of 1921. There were students from different parts of North Carolina that made up the Freshman class. Soon after school started we had a class meeting, for the purpose of electing class officers. We chose for our president, Florence Rothrock; vice-president, Caleb Swink; secretary, Mary Helen Carrigan; treasurer, Helen Templeton; and class advisor, Miss Strupe, who was the Home Economics teacher at the Farm Life then, but is now teaching in Albemarle.

We were enjoying the school year very much till one day the message came to the Farm Life School that death claimed Hazle Walker, one of the sweetest members of our class. This was near spring, so school closed not long afterwards. We parted looking forward to fall when we would meet again.

In the fall we met again. We had some new members added to our class, and some members we had lost. We chose for our class president this year, Yorke Roberts; vice president, Florence Rothrock; secretary, Mary Blackwelder; treasurer, Curtis Russel; class editor, Pauline Karriker; and class advisor, Miss Gahagan who is our Latin teacher. After a while Curtis stopped school and we had to choose another treasurer, this time we chose Glen Barger. He stopped school also, and we have not chosen another one.

After Christmas death claimed another one of our sweetest and best members, Mable Cooper, of which we were very sorry indeed.

There are very many brilliant Sophomores. The last addition of the Parrot was written mostly by the Sophomores.

Besides all this the Sophomores had the honor of having the prettiest girl in school, May Queen, who was Sudie Miller.

I stopped by telling her that we have so far been classed as the best class in high school, during our course here, and intend to keep this reputation all through high school.

My neighbor gave me her attention while I was telling her this, and said when I got through that it was very interesting indeed.

Kathryn Brown, '25; Helen Templeton, '25.



HOLLIE RITCHIE, President

Coming to us in the fall of 1922, Hollie soon became prominent in class and school affairs. He is the jolliest one at a picnic as well as the most eager one in class work. Since he has been president of the Freshman class, he has done everything possible to promote class spirit and to help us have a jolly good time. It is easy to see that he will continue to be a leader in the Farm Life School.

Class Flower: Carnation
Motto: "Wide Awake."

Class Colors: Purple and Gold
Class Advisor: Miss Ruth Blackwelder

Freshman Class Officers

Hollie Ritchie	-----	President
Myrtle Parks	-----	Vice-President
Ada Richardson	-----	Secretary
Hubert Fleming	-----	Treasurer

Freshman Class Roll

William Atkins
Cecil Albright
Edna Bostain
Eunice Bost
Frank Blackwelder
Ivey Correll
Earle Correll
Lilla Florence Davis
Marks Deal
Hubert Fleming
Charles Gillon
Evelyn Holshouser
Sadie Kepley
Ethel Kesler
Ruth Lippard

Alma Lingle
Nannie Litaker
Cornie Menius
Edna McCorkle
Mabel McNeeley
Lindsay Nesbit
Hubert Overcash
Myrtle Parks
Ruth Patterson
Ada Richardson
Hollie Ritchie
Floyd Roper
Ethel Speck
Zelia Sechler
Oline Safriet



FRESHMAN CLASS

History of the Freshman Class

At the beginning of our high school career, our class consisted of almost one-third of the entire student body. As every one was busy at the beginning we did not organize until sometime in October. By a large majority, Miss Ruth Blackwelder was elected as our class advisor, one of the most popular members of the faculty.

It was customary at the beginning of school, for each class to give a program in chapel. The freshman class selected North Carolina Day and gave a very interesting program on the lives of the great men and women of North Carolina.

On the 26th of April our class gave a circus on the campus at the Farm Life School. We had clowns; a museum; a fortune teller; a fish pond; and side shows. After everyone had enjoyed seeing the circus, refreshments were served.

On the sunny afternoon of May the 3rd, the freshman class started on a picnic to South River. The chaperons were Misses Blackwelder; Carpenter; Millsaps; Gahagan and Mr. Carpenter. When we arrived at the river, some went fishing and the remaining played games until lunch was spread. Everyone responded to the call to lunch. After everyone had done their utmost to consume all the lunch, we started home wishing we could go on another picnic before the close of school.

We, as the Freshman class are represented in all the Societies and Clubs. One of our members entered in the preliminary contest for the triangular debate. Some of our members entered in the declamation and recitation contest. In fact we have some of the most talented members in the student body.

We believe that the class of '26 will be the greatest in the history of the Farm Life School.

Cecil Albright, '26; Hollie Ritchie, '26.





MCNEIL LITERARY SOCIETY

Dramatics Club

Membership in the Dramatics Club is an honor. The Club was organized by nine students. Each of the students selected three persons for members of the Club.

The aim of the Club is to train the students for leadership. Every member of the Club is on a committee. When a public program or entertainment is given the various committees have charge of the lights, decorating, make-up, and furnishings.

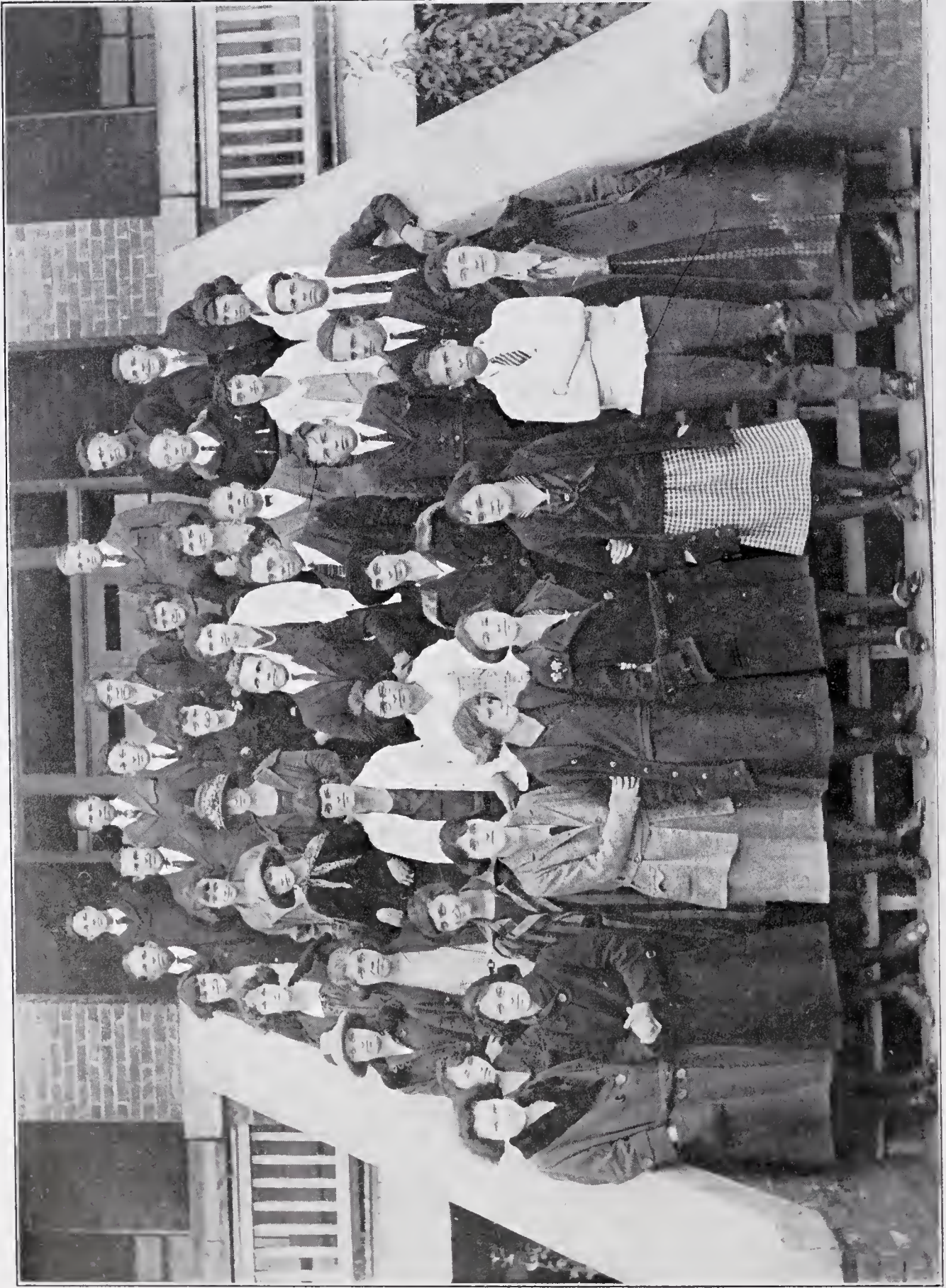
During the year we have given one open program and presented three plays, "The Private Secretary," "As You Like It," and "Clarence." All of these programs were a decided success.

OFFICERS

Walter Hinson	-----	President
Lucille Gillon	-----	Vice President
Helen Ritchie	-----	Secretary
Eura Jones	-----	Treasurer

MEMBERS

Margaret Atkins	Walter Hinson
Vivian Bradshaw	Eura Jones
Miss Blackwelder	Bonnie Lee
Nellie Bostian	Miss Minish
Eloise Barnhardt	Annie Belle McKnight
Miss Blackstock	Herbert Miller
Christine Brown	Hugh Overcash
Kathryn Brown	Buice Pouncey
Gilbert Beaver	Otis Pleasants
Myrtle Corriher	Helen Ritchie
Lois Clary	Joan Rothrock
Mary Helen Carrigan	Hollie Ritchie
Lee Cauble	Yorke Roberts
Ola Fleming	Mary Sechler
Miss Gahagan	Ralph Sechler
Everette Gobel	Caleb Swink
Lucille Gillon	Authur Smith
Mary Virginia Hurley	Fannie Smith
Lucille Hunter	Grace Templeton
Erastus Heglar	Myrtle Walker
Henry Hodge	Lillian Yost



DRAMATICS CLUB

Sketch of McNeil Literary Society

We have the name of John Charles McNeill, the greatest poet that North Carolina has ever produced. We have tried to make our society an honor to the man that we have named it after.

Our work has been very satisfactory this year, and we have had many delightful, funny, serious, and interesting programs. Our meetings have been profitable and beneficial. We have gained much from them. Next year we hope to surpass even the work that we have accomplished this year.

OFFICERS

Annie Bell McKnight	-----	President
Helen Fleming	-----	Vice President
Ella Bost	-----	Secretary
Fannie Smith	-----	Treasurer

MEMBERS

Margaret Atkins	Cornie Menius
Eloise Barnhardt	Edna McCorkle
Edna Bostian	Mabel McNeely
Genolia Beaver	Sudie Miller
Miss Vivian Blackstock	Annie Belle McKnight
Vivian Bradshaw	Mary Belle Parks
Nellie Bostian	Myrtle Parks
Lillie Brown	Fannie Smith
Lena Brown	Pearl Shue
Eila Bost	Ethel Speck
Mary Helen Carrigan	Helen Templeton
Ivey Correll	Maxa Fisher
Ethel Correll	Myrtle Walker
Lois Clary	Lillian Yost
Lilla Florence Davis	Kathryn Brown
Lorene Davis	Nannie Litaker
Helen Fleming	Oline Safrit
Ola Fleming	Addie Overcash
Myrtle Corriher	Lucille Thompson
Miss Nita Gahagan	Irene Bostian
Frances Hurley	Louanna Overcash
Miss Maude Minish	Ada Richardson



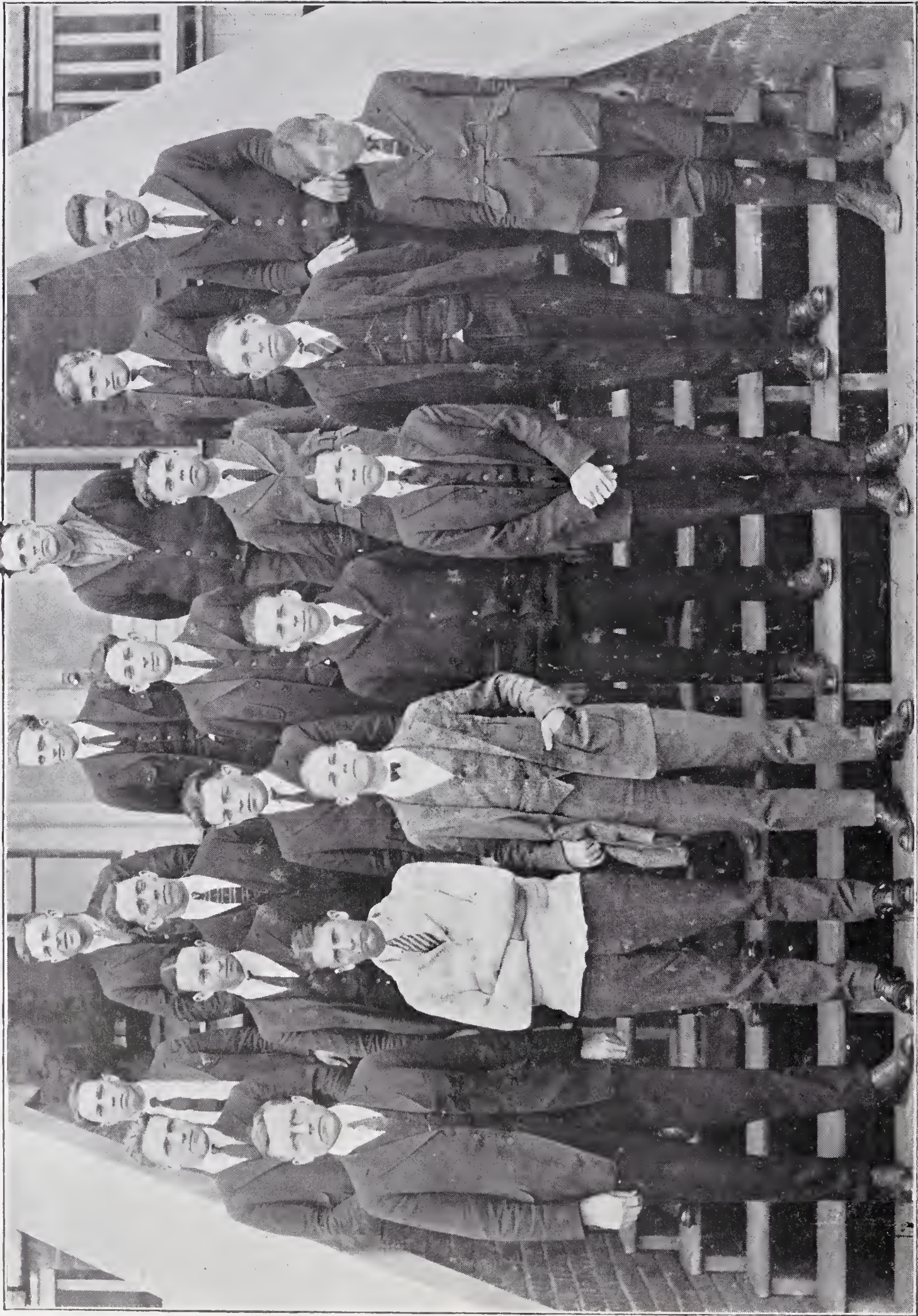
GRAHAM LITERARY SOCIETY

Sketch of Bickett Literary Society

The Bickett Literary Society has the distinction of bearing the name of our former governor, Thomas W. Bickett. Its work is mostly literary and musical. Their programs throughout the school term have been very satisfactory.

OFFICERS

President	-----	Helen Ritchie
Vice President	-----	Bonnie Lee
Secretary	-----	Mabel Henderson
Treasurer	-----	Nell Miller



GRAHAM LITERARY SOCIETY

Sketch of Graham Literary Society

The Graham Literary Society was organized to give our boys a more thorough knowledge of debating. Although not a success during the first term, a complete reorganization has brought about a decided change in its programs and activities. A result which might be used as an example of its work is the splendid debating team which contested for a place at Chapel Hill in the Triangular Debate.

OFFICERS

Otis Pleasants	-----	President
Lee Cauble	-----	Vice President
Eura Jones	-----	Secretary-Treasurer

MEMBERS

Floyd Roper
Lee Cauble
Breck Alexander
Glenn Barger
York Roberts
Everette Goble
Eura Jones
Luther Wiley
Ralph Sechler
Frank Dayvault

Max Freeze
Sunny Ramseur
Hugh Overeash
Otis Pleasants
Erastus Heglar
Hollie Ritchie
Walter Hinson
Arthur Smith
 Advisor
Mr. O. B. Jones

Triangular Debate

MARCH 30th., 1923



EVERETTE GOBLE
Affirmative



CHRISTINE BLACKWELDER
Affirmative

ALBEMARLE HIGH, Negative vs. ROWAN COUNTY FARM LIFE, Affirmative
AT CHINA GROVE

Affirmative Won

* * * * *

QUERY—Resolved: That the Railroad Labor Board should be given power
to enforce its decisions.

* * * * *

ALBEMARLE HIGH, Affirmative vs. ROWAN COUNTY FARM LIFE, Negative
AT ALBEMARLE

Negative Won



HUGH OVERCASH, Negative



RALPH SECHLER, Negative

Glee Club

The Glee Club has accomplished what almost might be termed the height of its ambition. This was the reward of entering the State Musical Contest. We were victorious in three out of five honors. Those winning were:

Soprano Solo	Lillian Yost, 1st prize
Tenor Solo	Eura Jones, 2nd prize
Girls Glee Club	1st prize
Points	Second
Place in State	Second

The Silver Loving Cups are the pride of the school and it is predicted that we might some day, have the honor of having had in our school, some of the world's leading musical artists.

Director	Miss Vivian Blackstock
Accompanist	Kathryn Brown

OFFICERS

President	Lillian Yost
Vice President	Lee Cauble
Secretary	Katie Misenheimer
Treasurer	Luther Wiley

MEMBERS

BOYS

Breck Alexander
 Gilbert Beaver
 Lee Cauble
 Frank Dayvault
 Everette Goble
 Erastus Heglar
 Henry Hodge
 Eura Jones
 Hugh Overcash
 Otis Pleasants
 Buice Pouncey
 Summey Ramsour
 Ralph Sechler
 Grace Templeton
 Luther Wiley

GIRLS

Nellie Bostian
 Christine Blackwelder
 Kathryn Brown
 Genolia Beaver
 Ruth Beaver
 Mabel Henderson
 Geneva Kerr
 Sudie Miller
 Katie Misenheimer
 Annie Belle McKnight
 Clara Mae Neal
 Addie Overcash
 Mary Belle Parks
 Fannie Smith
 Lillian Yost



GLEE CLUB



AGRICULTURE CLUB



TEACHER TRAINING CLASS

Teacher Training Sketch

All the year we had studied theory—how we thrilled at the thought of our practice teaching! Two by two we went out to the County schools—one by one we came home wiser and sadder. Ever since then our teachers have been the recipients of our deepest sympathy, and also of a real envy for, despite its trials, we found teaching a great work. We feel deeply grateful for the opportunity given us by Miss Reese's kind co-operation, to get actual experience. Some of us are going out to teach next year. We go with more confidence and a better understanding of our duties because of the course in Teacher Training.



HOME ECONOMICS CLUB

Home Economics Club Sketch

The Home Economics Club was organized Wednesday afternoon, March the twenty eighth. As our school year was nearly out, we have not performed miracles, but we have had quite a few pleasant meetings.

The purposes of the club are:

1. To organize the Home Economics students into one club: keeping the third and fourth year students as interested in this work as they were the first and second year.

3. To put more "pep" and enthusiasm in our work.

4. To become better acquainted and to have a better time socially.

5. To study the Home Economics movements.

We feel that our work has not been in vain. Long live the Home Economics Club!

OFFICERS

Geneva Kerr	-----	President
Joan Rothrock	-----	Vice President
Evelyn Holshouser	-----	Secretary
Margaret Atkins	-----	Treasurer

Roll of Home Economics Club

Edna Bostian	Ethel Speck
Irene Bostian	Elizabeth Trexler
Lilla Florence Davis	Merle Albright
Marie Edwards	Ruth Beaver
Pauline Heilig	Lillian Eller
Mabel Henderson	Catherine Glover
Nannie Litaker	Josephine Harris
Cornie Menius	Rachel Lee
Annie Belle McKnight	Arbie Propst
Clara May Neal	Eloise Robertson
Mary Belle Parks	Pearle Shue
Myrtle Parks	Mary Blackwelder
Ruth Patterson	Hazel Glover
Ada Richardson	Mary Isenhour
Zelia Sechler	Geneva Kerr
Fannie Smith	Virginia Newsom
Ethel Correll	Lula Peeler
Ivy Correll	Florence Rothrock
Evelyn Holshouser	Lucile Thompson
Ethel Kesler	Lucile Hunter
Sadie Kepler	Joan Rothrock
Ruth Lippard	Margaret Atkins
Alma Lingle	Kathleen Lentz
Katie Misenheimer	Lucile Gillon
Edna McCorkle	Geneva Davis
Mabel McNeely	Christine Blackwelder
Dorothy Proctor	Bonnie Lee
Oline Safrit	Mary Sechler
Alice Smith	Annie Lee Corriher
Mary Smith	Frances Hurley

May Day Fete

Our first May Day Fete was an unqualified success. Beginning promptly at 4:30 on the afternoon of May 1st the procession marched from the boys dormitory down to the stage which had been built on the edge of the alfafa field by the agriculture boys. It was a lovely scene. The procession was headed by a medieval knight in full armor—on a gallant black horse. The knight carried the crown on the tip of his spear. Hugh Overcash, president of the senior class, was the knight.

Next came the herald, Ralph Sechler, in a gold and white costume, carrying a trumpet—then the May Queen with her maids of honor, walking under a flower decked canopy which was borne by Otis Pleasants, Caleb Swink, Marvin Rodgers and Hollie Ritchie. The May Queen, Sudie Miller, was lovely. She wore a beautiful costume of cream satin brocaded in red. Her maids of honor were Lillian Yost in a rose colored flower costume, Annie Belle McKnight in green, Kathryn Brown in yellow, and Cornie Menius in blue. The page, Frances Hurley, wore a medieval costume of pink satin. The two flower girls, Lilla Florence Davis and Edna Bostian wore rainbow costumes and scattered flowers before the May Queen.

Just behind the May Queen came the players in "As You Like It," then the Scotch dancers, the Irish dancers and the Junior, Sophomore and Freshman classes. Mr. Presson was marshall and the procession moved in perfect order.

When the procession reached the stage the knight galloped across the alfafa field, and dismounted, gave his horse to his page, conducted the May Queen to the flower strewn throne and most gracefully crowned her. Then the sports began.

First was the Highland Fling danced by Yorke Roberts, Buice Pouncy and Hubert Fleming. They wore Scotch costumes and danced this pretty dance very well indeed. Next four girls danced an Irish Jig. They wore green Irish costumes and were typical Irish lassies. Virginia Hurley, Lucille Gillon, Helen Ritchie, and Margaret Atkins from the Junior class were the dancers.

Next came an old English Morris dance which was danced by Clara May Neal, Lula Peeler, Louanna Overcash, Addie Overcash, Pauline Karriker and Helen Templeton of the Sophomore class. The May Pole Dance was then danced by thirty-two girls. In the center of the alfafa field with rainbow colored ribbons it made an exquisite picture.

Just before the play the Girls' Glee Club sang their prize song, "Where My Caravan Has Rested." And between the first and second acts Lucille Gillon as Titania, queen of the faries, danced a beautiful solo dance.

The closing part of the program was the most ambitious thing that the Dramatics Club has attempted. The seniors put on "As You Like It." It was most unusually well played and very many spectators assured us that it was the best high school play they had seen. All of the parts were well taken. The outstanding characters were; Herbert Miller as Touchstone; Christine Blackwelder as Audrey; Walter Hinson as Orlando; Lucile Hunter as Rosalind; Frank Lipe as Oliver; Frank Dayvault as Adam; Lena Moore as Celia; Ola Fleming as Silvius; Joan Rothrock as Corin; Helen Fleming as Phebe; Lee Albright as Jaques; Marvin Eddleman as William; Elcise Robertson as Dennis; Nell Miller as Le Beau; Bonnie Lee and Janie Lowrance as Court Ladies; Luther Wiley as Duke Frederick; Harold Lentz as Duke Senior; Everette Goble as Amieus; Summey Ramsaur as Jaques De Boys; Hugh Overcash as Charles; Annie Lee Corriher as Sir Oliver Martext and Mary Sechler as Hymen.

The costumes for the principals were rented from Miller Costumier in Philadelphia and were very handsome and appropriate. Thanks to Mr. Carpenter and the agriculture class, the Forest of Arden was very beautiful and the scenes were well taken.

The two best scenes were Touchstone's proposal to Audrey and Orlando's love scene with Rosalind. These scenes were acted in a very sincere and convincing manner. Touchstone and Orlando were almost as good as professionals.

A very large crowd of spectators from all over Rowan saw the fete and were much pleased with it. We hope to make it a permanent feature of our school life.

At the close of the fete, supper was served on the lawn by the Parrot Board. Misses Carpenter and Millsaps planned the meal and a committee of girls cooked and served it.

The Executive Board held their annual meeting on the evening of May Day and expressed their approval and appreciation of the fete.

Clara May Neal, 25; Mabel Henderson, 25.





MUSIC CLUB

ATHLETICS

* * * * *

F L

1922

S

1923

* * * * *

ATHLETIC ASSOCIATION

Everette Gobel, President

Joan Rothrock, Vice President

Lula Peeler, Treasurer

L. S. Presson, Faculty Advisor



BOYS BASKET BALL TEAM

Members of Athletic Association

BASKET BALL

BOYS

Grace Templeton, Capt.
Herbert Miller
Hugh Overcash
Worth Freeze
Everette Gobel
Gilbert Beaver
Max Freeze
Caleb Swink

GIRLS

Joan Rothrock, Capt.
Florence Rothrock
Eloise Barnhardt
Christine Blackwelder
Lena Moore
Nell Miller
Geneva Kerr
Lula Peeler
Ella Bost

BASE BALL

Arthur Smith, Captain

Herbert Miller
Caleb Swink
Anderson Stafford
Luther Wiley
Everette Gobel
Gilbert Beaver

Dewey Miller
Jas. Stafford
Grace Templeton
John Stafford
Erastus Heglar
John Miller

TRACK TEAM

Harold Lentz
Everette Gobel
Joan Rothrock

Lula Peeler
Arthur Smith
Summey Ramsouer



GIRLS' BASKET BALL TEAM

Review of Basket Ball Season

BOYS

The boys basket ball team had an unusually successful season. Notwithstanding the fact that they were handicapped by having to practice on an outdoor court, they were able to uphold the F. L. S. standard against the leading teams of this section of the state. The original schedule called for ten games, but only nine were played, out of which our boys won six games.

The Farm Life boys defeated Salisbury High; Albemarle High; Concord High (twice); Winecoff and Landis, losing one game each to Winecoff; Albemarle and Kannapolis.

GIRLS

The girls basket ball team only got to play half their schedule, and were unable to keep in practice due to the severe weather in January and February. The girls defeated Faith High School twice, and were defeated by Winecoff and Salisbury. Games with Mt. Pleasant and Mooresville had to be cancelled on account of the weather.

Review of Base Ball Season

The base ball season was delayed several weeks on account of the wet weather in March and early April. The boys were not able to get sufficient practice to turn out a well balanced team for the first game of the season. The 1923 season was featured by the heavy hitting of the entire Farm Life Team. Out of six games played on a schedule of ten games, the F. L. S. boys have returned victors in four of the contests. Having defeated Spencer High School; Rockwell and Faith (twice) and having been defeated by Rockwell and Salisbury in the first two games of the season.

Smith has played a good game behind the plate, and his big bat has broken up several games. Miller has also played a good game at first, and has been hitting hard throughout the season. Anderson Stafford has been called upon to do most of the pitching and has proved himself worthy of the task. He pitched an unusually good game against Spencer and also against Rockwell, the last being a 13 inning game.



BASE BALL TEAM

Review of Track Team

The Farm Life Team took all individual athletic events at the China Grove Community Fair and also won the grand prize of \$15.00 for the Athletic Association. The Running High Jump was won by Everette Gobel, the Standing High by Harold Lentz, the Running Broad by Arthur Smith, the Standing Broad by Summey Ramsaur and the 100-yd. dash by Arthur Smith.

Our track team also won three of the track events at County Commencement. The winners were: Running High Jump, Everette Gobel; Standing High, Harold Lentz; Basket Ball throw for girls, Joan Rothrock.

Prospects For 1923-24

GYMNASIUM

Those that are interested in athletics, and especially in Basket Ball, will be delighted to learn that plans are now being worked out for the erection and equipment of a Gymnasium that will meet the needs of the Farm Life boys and girls. This will give us an indoor Basket Ball court, and thereby meet one of the long felt needs of the day.

While nothing definite has been decided upon, those that are working on the plans are sure that sympathy will materialize before the 1923 Basket Ball season begins.

BASKET BALL

The outlook for Basket Ball next year is very encouraging. Only two of this year's men graduate, so there will be a strong nucleus to build around next year. The team at present looks like Championship contenders, and is going to give somebody trouble in the State Championship in 1924.

The prospects are also very bright for a strong girls team. While four of this years players will graduate, there will be plenty of material left from which to pick a strong team to represent the F. L. S. in 1923-24.

BASE BALL

Our Base Ball team for 1924 should be the strongest team that has ever been turned out by the F. L. S. Only three of this year's men graduate, and while they will be missed in their respective positions, a years experience for the remainder of the team, with the addition of several new men should more than make up for the loss. We also hope to make trouble for some of our neighbors in the 1924 Base Ball Championship.

Mutual Building and Loan Association

**PAYS
5 Per Cent.
NON-TAXABLE**

P. S. CARLTON,
President.

ROSS M. SIGMON,
Sec'y and Treas.

“ S A V E ”

Rowan Hardware and Machinery Company

Dealers in

*General Hardware, Stoves, Ranges,
Paints, Jno. Deere Farming
Implements.*

Telephone 158

SALISBURY, N. C.

**Salisbury Realty
AND
Insurance Company**
122 N. Main Street

Real Estate
Insurance
Loans

Play Ball With Spalding

BALLS, GLOVES, BATS,
MASKS, MITTS, AND
BODY PROTECTORS.

FOR SALE BY
W. F. AREY

121 North Main Street

SALISBURY, N. C.

We Carry the

Largest stocks of light and heavy Hardware, Paints, Stoves, Cement, and Fertilizers. McCormick-Deering Harvesting Machinery and Tractors, Superior Grain Drills, Nissen Wagons. A full line of Sporting Goods.

Salisbury Hardware and Furniture Company

Telephones 81 and 82

JOHNSTON MOTOR COMPANY

DEALERS IN

PARTS AND ACCESSORIES

Electrical Testing a Specialty. Hupmobiles and Used Cars.
Willard and Mark'o Batteries.

Telephone 82

CHINA GROVE, N. C.

Deal's Garage

Landis, N. C.

Rebuilding and Recharging Batteries a Specialty. All Garage Work Guaranteed satisfactory.



See Us before you Buy or we both lose

Through Service We Grow.

The Salisbury Marble Company

Manufacturers of Memorials of Quality

117 West Fisher Street
SALISBURY, N. C.

*Perpetual Building
and
Loan Association*

FRANK R. BROWN,
Secretary and Treasurer

Office: 124 North Main Street

Telephone 8

SALISBURY, N. C.

CHAS. C. HOOK, Architect

CHARLOTTE, N. C.

Twenty years' experience in planning
school and college buildings.

Brown Insurance and Realty Co.

Real Estate, Real Estate Loans,
Insurance.

SALISBURY, N. C.

Durant and Star Cars

We will demonstrate with any competitor.
Give us a chance and be convinced.

Cal. Cutting Motor and Service Company

EXIDE BATTERIES—The Giant Power

West Fisher Street

SALISBURY, N. C.

EFIRDS

Salisbury's Largest And
Fastest Growing
Department Store.

Cor. Main and Bank Sts. Salisbury, N. C.

Fisher-Thompson Hardware Co.

A Complete Line General
Hardware
And Farm Implements

Telephone 110

SALISBURY, N. C.

EDDLEMAN & SONS

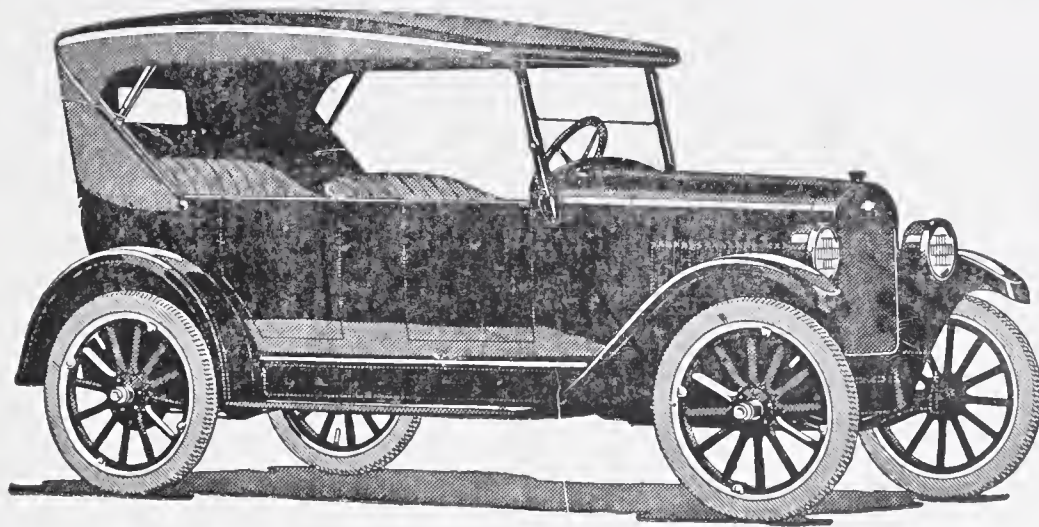
Solve Your Menu Problems

Dealers in

Meats, Groceries, Etc.

Telephone 15

"Once a Customer—ALWAYS"



For Economical Transportation

CHEVROLET

SALES

SERVICE

Motor and Tire Service Company

122 East Liberty Street

SALISBURY, N. C.

Hupmobile

The final Saving, which the Hupmobile owner realizes because of his car's high re-sale value, is a further evidence of the soundness of the Hupmobile as an investment.

Charlotte Motor Car Company

Distributors

501 East Trade Street

CHARLOTTE, N. C.

The Bank of China Grove

CHINA GROVE, NORTH CAROLINA

Capital Stock \$25,000.00
Surplus, Profits and Other Reserves
Over \$12,000.00
Resources Over \$300,000.00

OFFICERS

A. M. HANNA, President JNO. H. RUTLEDGE, Vice-President
C. C. GRAMAM, Cashier

DIRECTORS

Mc. L. RITCHIE	M. A. J. ROSEMAN
J. F. COOPER	JNO. H. RUTLEDGE
H. J. EDDLEMAN	A. M. HANNA
J. F. McNIGHT	C. C. GRAHAM

WE MOST RESPECTFULLY SOLICIT YOUR BUSINESS AND WILL
GRANT YOU EVERY FAVOR CONSISTENT WITH
CONSERVATIVE BANKING.

Rouzer Motor Company

Fords, Lincolns, Fordsons

SERVICE

Telephones 224-899

SALISBURY, N. C.

If You Don't Trade Here

WE BOTH LOSE

Holshouser & Dayvault
General Merchants

We Laundry Anything

Concord Steam Laundry

F. W. D. Agt.

Concord, N. C.

Dixie Sales Store

Jewelry, Trunks, Bags, Musical Instruments, Cameras,
Guns, Ammunition, Clothing, Gents' Furnishings,
Tools, Etc.

Corner Council and Lee Streets
SALISBURY, N. C.

Dixie Loan Office
311 North Main Street
Winston-Salem, N. C.

MAYNARD BROTHERS

EMPIRE BLOCK

Grand, Upright and Player Pianos, Phonographs
and Records, Sheet Music and Musical Merchandise

TUNING A SPECIALTY.

KNABE AMPICO

Telephone 464

SALISBURY, N. C.

KIRK'S AUTO SERVICE

BUS SERVICE TO CHINA GROVE, LANDIS AND KANNAPOLIS DAILY

Leave Salisbury 8:00 A. M., 12 Noon, 2:00 P. M. and 6:00 P. M.

Leave Kannapolis 9:30 A. M., 1:30 P. M., 3:00 P. M. and 7:00 P. M.

BUS SERVICE FROM SALISBURY TO MOCKSVILLE AND WINSTON-SALEM

Leave Salisbury 8:00 A. M. and 4:00 P. M.

Leave Winston-Salem 8:00 A. M. and 3:30 P. M.

BUS SERVICE TO LEXINGTON

Leave Salisbury for Lexington 8:00 A. M., 11:00 A. M. and 2:30 P. M.

Leave Lexington for Salisbury 9:30 A. M., 1:00 P. M. and 5:00 P. M.

BUS SERVICE TO STATESVILLE

Salisbury to Statesville 12:00 M.

Statesville to Salisbury 2:00 P. M.

PHONE 77 OR 78

Alexander's Studio

*High-Grade Photographs
and Frames*

204 1-2 South Main St.

SALISBURY, N. C.

Linn-Wertz Company

LANDIS, N. C.

SELLS FOR LESS

SELLS FOR CASH

Complete line of Men's, Women's and Children's
Ready-to-Wear Hats, Hosiery, and Furnish-
ings of all kinds. Home of Style Plus Clothes.

THE STORE OF VALUES.

QUALITY - SERVICE - SATISFACTION

A LITTLE MONEY

goes a long way sometimes toward putting a man on Easy street. A little ready money to invest may prove a nucleus for a fortune. How often one has an opportunity to take advantage of a bargain, and how vain his regrets if he cannot put up the necessary cash. Command both cash and credit by having money in the bank—a growing account, which will testify to your thrift—and you won't have to pass up your chances. We are ready to help you in every possible way.

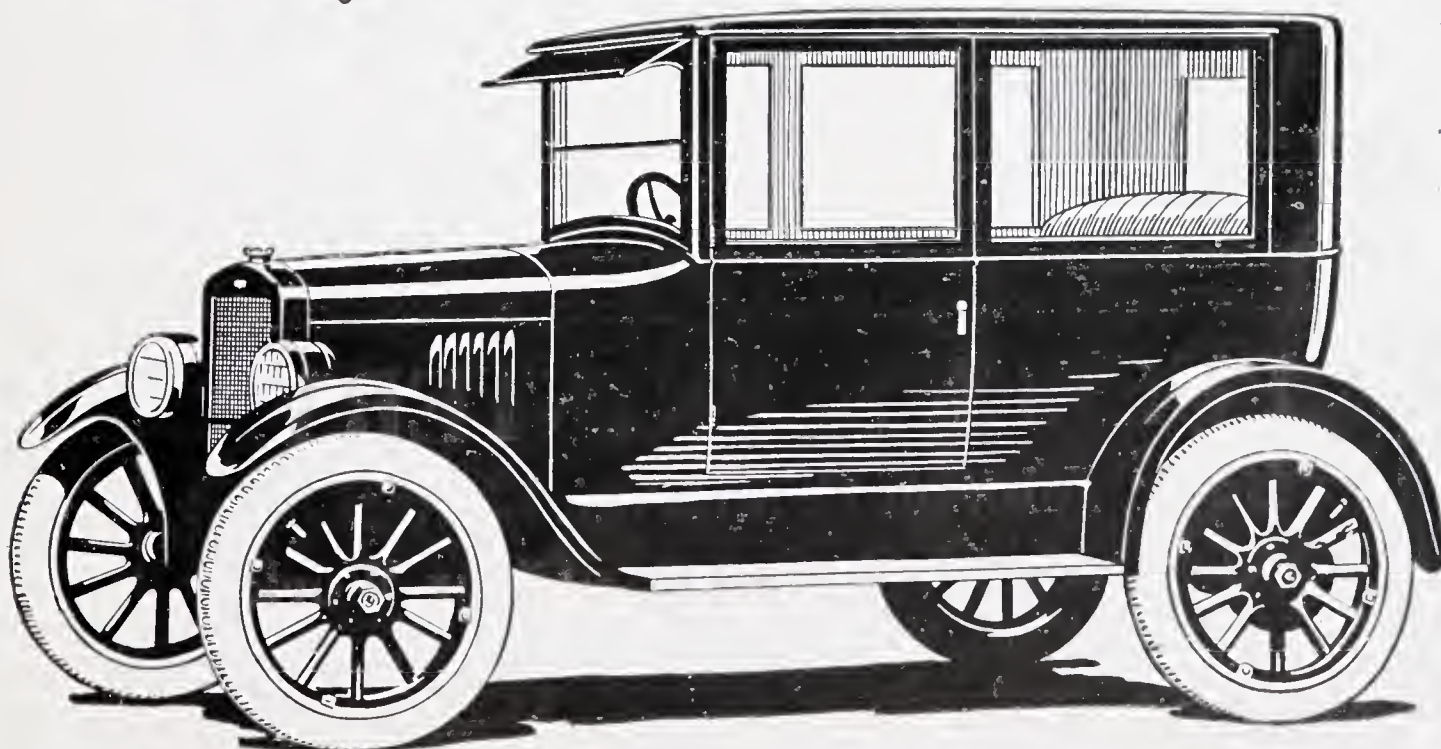
Merchants and Farmers Bank, Landis, N. C.



Touring Car	\$520
Roadster	\$490
Coach	\$785
Two Passenger Coupe	\$685
Four Door Sedan	\$835
Chassis	\$420

A. T. BOST, Dealer

CHINA GROVE, N. C.



Mint-Cola Bottling Co.

SALISBURY, N. C.

SANITARY BOTTLERS OF

Mint-Cola and Cheerwine

Good Grape and Elk Rock Ginger

Refreshing - Delicious - Wholesome - Healthful

Mundy-Trott Drug Company

Reliable Druggists

CHINA GROVE, N. C.

" JUST WHAT THE DOCTOR WANTS "

Our Soda Fountain is managed by expert Soda Dispensers and Vortex Sanitary System used. We also carry a complete line of Toilet Articles, Candies, and everything you need from a drug store.

" Try the Drug Store First "

Oestreich's

SALISBURY, N. C.

**Feminine Wearables
of Quality**

PEELER'S PRINTERY

Book, Job and Commercial Printing

This Annual is a Sample of Our Work

Wallace Building

Phone 500

SALISBURY, N. C.



Quality and service
Hand in hand
Makes our store
The best in the land.

Good Hardware And Service

for our customers, is our motto and standard. The foundation rock of business is honesty. That is what you get at our store, honest goods, honest prices, and honest service. Hardware that will stand the test and give you service in proportion to the money expended is the only kind that is not too high for you to buy.

Aside from our usual line of General Hardware, Farm Implements, Gas Engines, Farm Electric Lighting Plants, Etc., we are preparing to carry a full line of high and graded school books next year, also other school necessities. We offer more tablet and loose leaf paper for less money than any place we know of. To buy once is to buy again.

We buy right is why we can sell right.

China Grove Hdw. Co.

CHINA GROVE, N. C.

