



PARROT -

1937

WILMA DEAC CARIGAN



The Parrot

VOLUME XV

Published by

THE SENIOR CLASS

OF

CHINA GROVE

HIGH SCHOOL

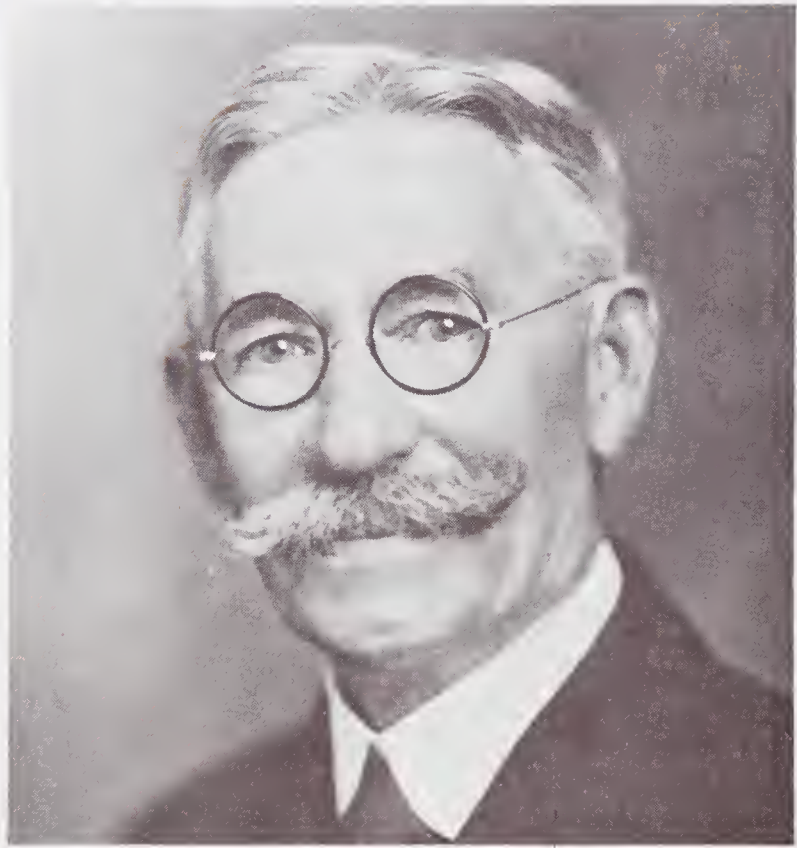
CHINA GROVE, N. C.

1937

FOREWORD

We have undertaken in this issue of THE PARROT to give recognition, both in dedication and theme, to the main industry of our community—textile manufacturing.

DEDICATION



MR. W. J. SWINK

To a pioneer in the building of our present high school, one who is vitally interested in education, a tower of strength in the establishment and development of the textile industry in this section, we, the class of nineteen hundred thirty-seven respectfully dedicate this, the fifteenth volume of THE PARROT.



ADMINISTRATION



MEMBERS OF BOARD

MR. W. L. COOPER

MR. K. A. SHINN

MR. W. S. FREEZE

MR. L. C. CAUBLE

MR. R. L. PATTERSON

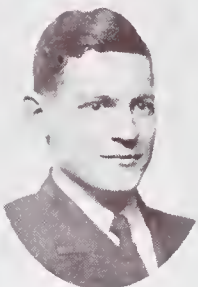
PRINCIPAL

MR. CURTIS BIVENS



CURTIS BIVENS

A. B., Duke University,
M. E., State College,
English, Principal.



BERTHA PILAND

H. A. STIREWALT

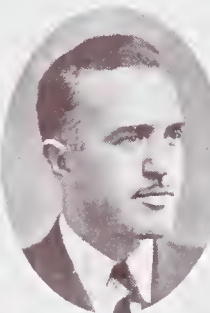
A. B., Eastern Carolina Teachers' College; M. A.,
Columbia University.



FRED W. FROWEIN

PAULANNA COOPER

B. S., Presbyterian College, Science, Mathematics, Athletics.
A. B., Woman's College University of N. C. Mathematics



ALICE C. FISHER,

W. R. LINGLE

A. B., Catawba College, French.
A. B., Lenoir Rhyne College, English, Science, Athletics.



H. W. DICKENSHEETS

MRS. W. CARRIGAN

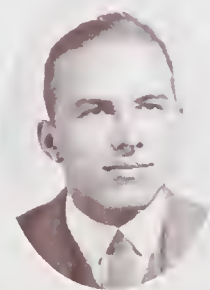
Westminster Choir School, Music B., Music.
B. S., Catawba College, Home Economics.



OLA I. FLEMING

CHARLIE B. BROWN

A. B., W. C. U. N. C., M.A., University of N. C. English.
B. S., N. C. State College, Vocational Agriculture.



GEORGE B. ELY

REBECCA NEELY

A. B., Catawba College English, Biology, Athletics.
A. C. A., A. B., Bowling Green College of Commerce, Commercial.







SENIORS



SENIOR OFFICERS

LEON FRYE *President*

OSCAR LINN *Vice-President*

DOROTHY CAUBLE *Secretary*

LUCILLE NESBIT *Treasurer*

COLORS: *Blue and White*

FLOWERS: *Violet and White Rose*

ADVISORS

MISS OLA FLEMING

MISS REBECCA NEELY

MR. W. R. LINGLE

MOTTO:

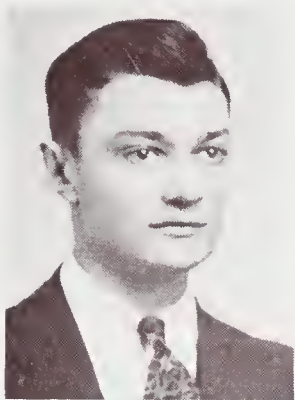
"The Elevator to
Success is not
running; so take
the stairs".



MASCOTS

Nancy Lentz,
Daughter of Mr.
and Mrs. G. H.
Lentz.

Jackie Swink,
Son of Mr. & Mrs.
Caleb Swink.



FRANK H. BAKER

Young Tar Heel Farmer (1-2-3-4); Reporter (2-4); Vice-President (3); Physical Education (1). Frank is good-natured, dependable and trustworthy. Here's hoping good fortune will be his companion forever.

RACHEL E. BOST

Girl Reserve Club (1); Home Economics Club (3-4). Rachel is quiet and reserved, yet she knows how to make friends. She is a fine girl and we are wishing her a happy and successful journey through life.

HOYLE S. BOSTIAN

Manager Baseball (1-2-3); Manager Basketball (4); Manager Football (2-3); Assistant Manager Football (1); Monogram Club (1-2-3-4); Pen and Ink Club (4); Debating Club (1-2); Sport and News Reporter.

Here's to Hoyle, better known as "Sock"; jolly, full of pep, yet serious at the right time. He not only takes part in all activities but seems to make a "howling" success out of everything he tries. Here's luck to you, "Sock"!

DOROTHY CAUBLE

Dramatics Club (1-2); Glee Club (1-2-3-4); Vice-President (4); Treasurer of Class (1-2); "J" Club (3); Vice-President (3); Home Economics Club (3); Chief Marshall (3); Beta Club (3-4); President (4); Secretary of Class (4); Librarian (4). Charming, cultured, and outstanding—that's our Dorothy. She was voted our most attractive girl; and this, with her pleasing personality, assures her of an enjoyable future.

PAUL S. CORRIHER

Hi-Y Club (2-3); Glee Club (4); Sec.-Treasurer (4); Tennis (1-2-3-4); Business Manager "Parrot" (4); Senior Play (4); Physical Ed. Club (1-2); Y. T. H. F. Club (1-2-3); Monogram Club (3). Paul is about our most energetic member. He is quite capable and really puts himself into all he undertakes. The Parrot thanks him for working so diligently, especially toward the completion of the "ad" section. Best wishes to a very popular boy!

WILLENE CORRIHER

Girl Reserve Club (1); Treasurer (2); Home Economics Club (3); "J" Club (3); Home Economics (4). Reserved, quiet and unassuming, yet a true friend, is Willene. Always ready when called upon to do her part, she is a loyal and dependable member of the class.

BIRDIE B. CRESS

Campus Improvement Club (1); Young Tar Heel Farmers' Club (1-2-3-4); President (3); Treasurer (4). Birdie is a very promising member of the Young Tar Heel Farmers' Association. He is friendly and good-natured; we predict a bright future for him. You'll get along, Birdie!

JOHN E. CRESS

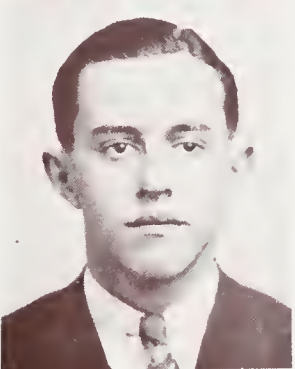
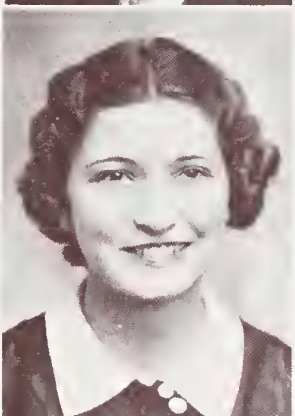
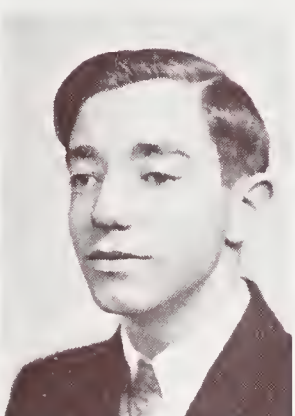
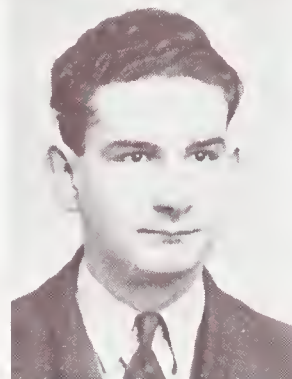
Young Tar Heel Farmers (1-2-3-4); President (4); Campus Improvement Club (1); Physical Education Club (1-2). John is one of our Young Tar Heel Farmers. He has a very bright future in agriculture. We are expecting great things of you, John. (Keep up that winning smile).

THETA CRESS

Dramatics Club (1); Sec. of Home Economics Club (3); Pres. (4). Theta is very attractive. Because of her ability to accomplish all she undertakes, she is admired by her many friends. Best wishes to a sweet girl!

ELVA MAYE DAVIS

Dramatics Club (1); Pen and Ink Club (2); Home Economics Club (3); Athletics Club (4); Softball Club (4); Recitation Contest Winner (2-3); Senior Play (4). Here now, there then. Why not talk and have a good time? That's Elva Maye. She is the fun of our class. "Comment vous porte-vous?" was her famous passage in the Senior play of '37, where she played the part of Hettie, the hired girl. Good luck, old girl!





JONSIE V. DEAL

Girl Reserve Club (1-2); Home Economics Club (3-4).

Quiet and reserved is Jonsie. You can always depend on her, even at the last minute. Her friendly disposition has won her many friends. May success and happiness be yours!



GLENN A. DEMARCUS

Baseball (2-3-4); Physical Education Club (1); Monogram Club (2-3-4).

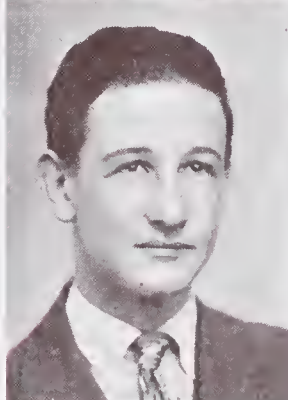
Glenn is a very valuable member of our class especially in athletics. He is jolly, free-hearted and has many friends. His familiar figure will be missed at first base in the years to come.



WILLIE NELL DIAL

Dramatics Club (1); Physical Education (3); Home Economics Club (3-4).

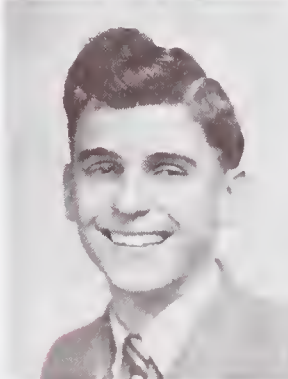
Although Willie Nell was voted the biggest flirt, she is generous, sincere and a mighty sweet girl. C. G. H. will miss her. Here's to your future, Willie Nell.



DAVID FISHER, Jr.

Physical Education (1); Pen and Ink (4); Baseball (4).

Very quiet and reserved, yet always having fun, is "Just David". He has accomplished much since he entered old China Grove High. Here's wishing you the best of luck. Keep up the good work!



LEON FRYE

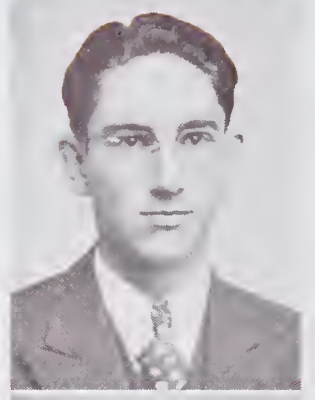
Vice-President of Class (1-2); President (4); Beta Club (4); Pen and Ink Club (2-4); Dramatics Club (1); Assistant Business Manager of "Parrot" (3); Annual Staff (4); First Aid (3).

Nice, quiet and studious is Leon. He is a loyal, trustworthy and dependable student. His character is of the best both morally and spiritually. He has a bright future in store for him.

H. J. FUNDERBURKE

Physical Education (1-2-3).

Howard is a quiet, unassuming worker who attends strictly to business. Look out for him in later years.



MARY E. GLOVER

String Band Club (3); Monogram Club (3-4); Basketball (3-4); Co-Captain Softball (4); Captain Basketball (4); Athletic Club (4); Cheer Leader (4); Glee Club (4); Senior Play (4).

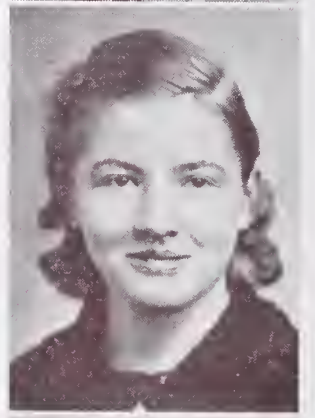
Mary is outstanding in scholarship, athletics and dramatics. Her good sportsmanship and winning smile make her popular. A splendid record, Mary!



MARTHA J. GOODMAN

Dramatics Club (1); Pen and Ink Club (2); Home Economics Club (3); Treas. (3); Beta Club (3-4); Vice-Pres. (4); Marshall (3); Historian (4); Treasurer of Class (3); Scholarship (3); Senior Play (4).

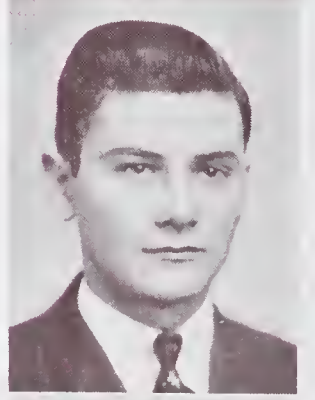
If you are looking for an ambitious, dependable, popular and willing worker we will show you Martha Jane. She is a student that any school would be proud to enroll. We prophesy a glorious future for her.



E. MARIUS GOODNIGHT

Baseball (2-3-4); Glee Club (3-4); Pen and Ink Club (4); Senior Play (4); Physical Education Club (1); Monogram Club (2-3-4).

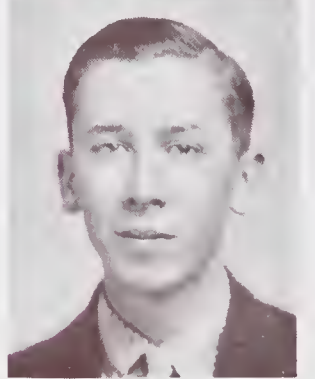
When it comes to sports and dramatics, Marius is right there. In four years he has gained an overflow of friends. Good luck to our Beau Brummel!

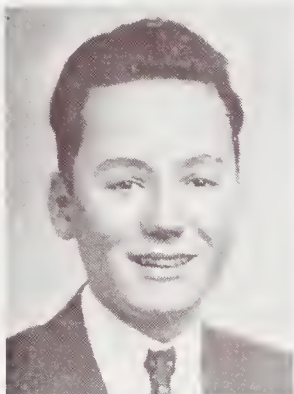


HAROLD S. HAMPTON

Dramatics Club (3); Pen and Ink Club (4).

Harold lives to learn. Energetic, capable and sociable, he possesses the qualities of a first-class student. He is one of our best and we are proud of him. We are expecting great things from you, "Hamp"; don't disappoint us.





HARRY LYNN HAUSS

Physical Education Club (1-2); Dramatics Club (3); Pen and Ink Club (4).

"Harry, will you please get in your seat?" He is a little mischievous; but after he finds his place in English, he does very good work. We'll miss our "chatterbox", for he has brightened many dull moments.



MAMIE ELLEN JONES

Dramatics Club (1-2-3); Girl Reserve Club (1); Sec. & Treas. Home Room (3); Home Economics Club (4); Cast of "Son John" (4).

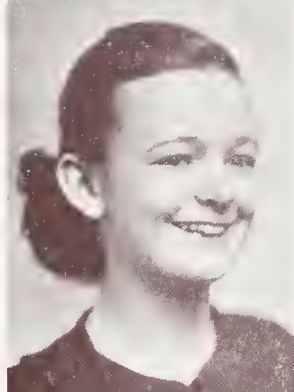
Mamie Ellen's originality, kindness and courteous ways are sure to carry her far. We are sure of a very successful future for a bright, attractive, and talented girl.



MARIETTA LEE

Dramatics Club (4); President (4); Fi-Y Club, Monroe (3); Senior Play (4); Cast of "Son John" (4).

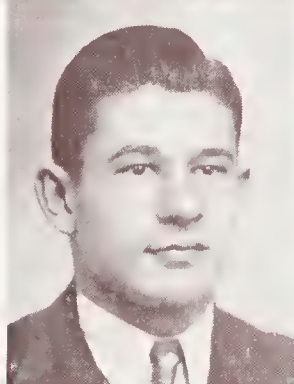
Although Marietta has been with us only one short year, we have grown to love and depend upon her. Her friendly ways and sweet disposition have captured the hearts of all of us. She ranks high in scholarship, as well as dramatics. Keep it up, "Sis"!



LUCY LEWIS

Boyd High (1-2); Home Economics Club (3); Dramatics Club (4); Senior Play (4); Cast of "Son John" (4).

Full of pep, ready for anything—that's Lucy. She has a very striking personality and winning ways. Good luck, Lucy!



OSCAR REID LINN

Football (3); Basketball (4); Baseball (4); Vice-Pres. of Class (4); Sec. (2); Monogram (4).

Oscar is one of the most popular students China Grove High has ever had. Always ready for a laugh, he has always proved himself a good sport and a good friend. We expect great things of Oscar.

VON EVA MABRY

Girl Reserve Club (1); Dramatics Club (2-3); "J" Club (4); Softball Club (4); Glee Club (1-2-3-4); Cast of "Son John" (4); Mixed Quartet (4).

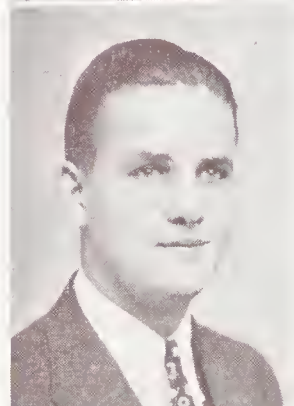
Von Eva is happy-go-lucky. She is very friendly and courteous and never knows a dull moment. She is a valuable asset to our school. Best of luck, "John".



OLIN McNEELY

Dramatics Club (1); Hi-Y Club (2-4); Vice-President of Class (3); Glee Club (1-2-3-4); Cast of "Son John" (4).

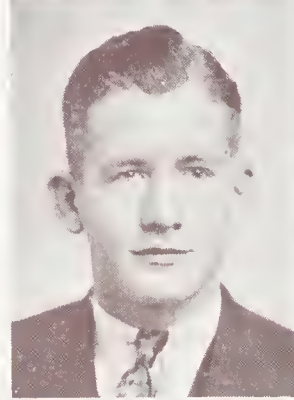
Olin is a person whom others like to call a friend; perhaps some of the fairer sex would like to call him more that that! He is a little mischievous, but back of that he has a "political" line that will knock one off one's feet. He is talented in music and has an attractive personality.



GEORGE L. McSWAIN

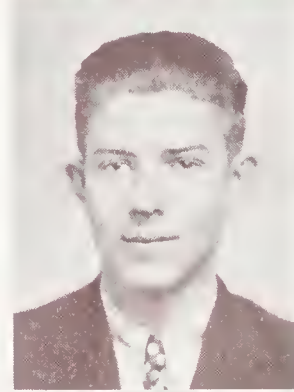
Hi-Y Club (2); Monogram Club (2-3); Softball (1-2-3); Baseball (2); Pen and Ink Club (4).

George L., better known as "Red", is a likeable person, and does he have his fun? Especially at banquets. We feel that his high school career has been successful and we hope he will have an even more successful future. "Wake up 'Red'; the bell has rung".



LAVON MILLER

First Aid Club (3); Pen and Ink Club (4); Physical Education Club (1). Lavon is one of our most loyal and dependable classmates. He likes his fun, but can be serious if the occasion arises. Here's wishing the best in life for you, Lavon.



LUCILLE NESBIT

Girl Reserve (1); Glee Club (2-3-4); Dramatics Club (2); President of Class (2); "J" Club (3); President of Home Economics Club (3); Beta Club (3-4); Sec & Treas. of Beta Club (1); Treas. (4); Senior Class Prophet (4).

She is one of the best members of the class. She is a good leader and can be depended on in time of need. She is studious and has great possibilities for the future.





HELEN V. OVERCASH

Girl Reserve Club (1); Dramatics Club (2-3); Basketball (4); Softball (4); Glee Club (1-2-3-4); Monogram Club (4); Senior Play (4); Cast of "Son John" (4); Mixed quartet (3); Poet (4).

Helen is likeable, studious, industrious, and capable. She has made many friends in high school and has a bright future in store for her. Good record, Helen, keep up the good work!



VERNON L. SECHLER

Physical Education Club (1-3); Basketball (4); Baseball (4); Monogram Club (4).

Happy-go-lucky describes him. We all admire his witty and mischievous personality. He is a swell guy and we know he is sure to succeed. Good luck, Vernon!



KATHLEEN SHIVE

Granite Quarry High School (1-2-3); Glee Club (4); Home Economics Club (4).

Quiet, studious, reserved, steady—these partly describe Kathleen. Although she has been with us only one year, she has won many friends by her cheerful smile and pleasing personality. Keep going, Kathleen!



RUTH H. SHUE

Girl Reserve Club (1); Home Economics Club (3-4).

Ruth is the most romantic of the class of '37. She is a generous, kind-hearted girl. Her unusual charm and cleverness have won a place in our hearts. Don't get too romantic, Ruth!



ELIZABETH SIMPSON

Dramatics Club (1); Home Economics Club (3-4).

Quiet, but what do we care? We like her just the same. The smartest are not always the greatest talkers. We rest assured that she will get along well in whatever she undertakes in life.

CARL E. SLOOP, Jr.

Pres. of Class (3); Assistant Editor of "Parrot" (3); Editor-in-Chief "Parrot" (4); Cast of "Son John" (4); Glee Club (4); Marshal (3); Beta Club (4); Football (4); Dramatics Club (1-2-3). Little, but loud—that's Sloop. When it comes to business, he's right there. He has shown that with his hard work as Editor-in-Chief of the "Parrot". Here's to your future, Sloop!



KATHLEEN STIREWALT

Girl Reserve (1); "J" Club (3); Home Economics Club (4); Vice-President (4).

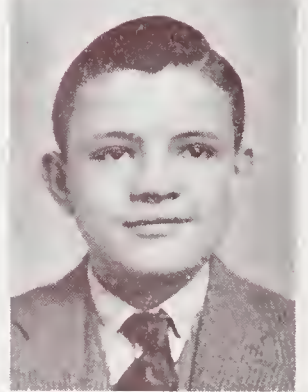
Intelligent, studious, and reserved—that's Kathleen. When it comes to getting the most out of life, she's at the top. Luck to you!



MARTIN TURRENTINE

Glee Club (1-2-3-4); Pen and Ink Club (1-4); Dramatics Club (2-3); Senior Play (4).

Martin is one of those versatile fellows who make an ideal companion. The more you know him the better you like him. We believe he will make a success in anything he may undertake.



ESTHER WALTER

Girl Reserve Club (1-2); Home Economics Club (2-4).

Esther is quiet, but has won for herself many friends. She joins wholeheartedly into all our school activities and we predict for her a very successful future.

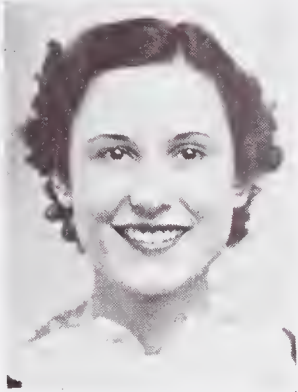


TROY L. WASHAM

Football (1-2-3-4); Captain (4); Basketball (1-2-3-4); Cap. (3-4); Baseball (2-3-4); Capt. (4); Pen & Ink Club (1-2); First Aid Club (3); President (3); National Honorary Beta Club (4); Monogram Club (1-2-3-4); Glee Club (1-3); Senior Play (4); Hi-Y Club (2-3); Chief Marshal (3).

Troy has the ability to do things well. He has won a host of friends during his career at C. G. H. S. His unexcelled athletic ability has helped to pull ole China Grove High out of many tight spots. Luck to you, Troy.





EDITH WILLIAMS

Girl Reserve Club (1);
First Aid Club (3);
Basketball (1-2-3-4);
Softball (4); Monogram
Club (4); Cast of "Son
John" (4).

When you are looking
for a loyal and attractive
person, Edith fills the
bill. When it comes to
athletics, she is there
with a "bang". We shall
always remember her per-
sonality and achieve-
ments. Bon voyage!

GEORGE F. WATSON

Pen & Ink Club (4);
Physical Education Club
(1); Dramatics Club (2);
Testator (4).

When it comes to mis-
chief, you can depend
on George Frank. Don't
be misled, however, for
he is a real student with
a splendid record. He is
a fine fellow, and we
like him.



SENIOR CLASS POEM

Our high school days are over;
The victory we have won.
We realize our careers in life
Are mere started—just begun.

As we face daily battles,
We'll always do our very best;
We shall remember our class motto,
For it will help us stand the test.

All thanks to parents, friends and teachers
Who helped us surmount all fretful cares
And raised our motto high, "The elevator
To success isn't running—take the stairs".

And now the class of '37
Has reached its long sought goal.
It leaves the teachers and the students
Best wishes and love untold.

—HELEN OVERCASH

CLASS HISTORY

To many people the year 1933 was not very important, but to the members of the class of '37 it was one of the most important ones in our lives. It was then that we began our high school careers.

It seems that we have been going on a long journey; now we have reached our destination after many years. In the fall of 1933 there were about sixty-five of us "green" freshmen. Under the leadership of Miss Fleming and Mr. Bostian we soon became accustomed to high school life and work. Our class president was Helen Wagner. We chose for our motto, "The elevator to success is not running; so take the stairs." This motto has served as a beacon through our four years of high school.

The next year we returned eager for more fun and hard work. Our advisors were Miss Fleming and Mr. Lingle. For our president we chose Lucille Nesbit. We invited the seniors to a program, including "Aladdin and His Wonderful Lamp" and "The Patsy."

As always, the junior year was one of great importance. We chose Carl Sloop as our president. With the help of our advisors we sponsored a big Hallowe'en carnival. The most outstanding event of the year was the Junior-Senior banquet held at the Yadkin Hotel, Salisbury, N. C. The senior class colors, green and white, were used attractively to carry out the theme, "Pleasure Island."

At last we became seniors. For our president we chose Leon Frye who has proved to be capable and efficient. We were very fortunate in getting Miss Fleming, Miss Neely, and Mr. Lingle for our advisors; under their supervision we accomplished much. We were invited by the Sophomore Class to see the play, "Son John". Nancy Lentz and Jackie Swink were selected as mascots, the dearest members of our class. Under the direction of Mrs. Lingle, our senior play, "Romance in a Boarding House", was highly successful. We enjoyed very much being guests at the Junior-Senior banquet at the Yadkin Hotel. Colorful decorations harmonized with the theme, "At the End of the Rainbow". As a whole, our senior year was the most significant one in our journey through high school; it was filled to the brim with happy events, intermingled with hard work.

Our journey through life has started successfully. May we always be brave travelers. It is unfortunate for us that some of our happiest days of school life have passed. Soon we must begin life's work and face arduous tasks. Training at China Grove High School has helped us tremendously and taught us many fine things that we shall always cherish. Throughout our journey of life we shall recall happy memories of our high school days, because to us

"Memory like the ivy clings
To olden ways and times and things."

—MARTHA JANE GOODMAN

SENIOR CLASS PROPHECY

As I was strolling along in a park one day in June, about dusk, a beautiful conveyance, somewhat like a car, rolled up beside me. The driver, a kind, old man, leaned out and said, "Would you like to take a ride in my new invention?"

"What is it?" I asked.

"A sky rocket," the inventor replied. I stepped inside. He shut the door, pulled a lever, and up we went.

"Where are we headed?" I asked.

"To the moon," he replied.

When we reached the moon, we started toward a beautiful mansion. We went down a long corridor. On one side in an alcove, I saw an instrument somewhat similar to a telescope.

"Oh, what is this?" I inquired.

"It is a futurescope," he replied. "If one knows the secret of operating it, he may find out what the future holds for him and his friends."

"Can you operate it?" I asked, awaiting his reply breathlessly.

"Yes, I learned the secret years ago when I first visited the moon," he said.

Can you reveal the future of my high school classmates on earth?" I inquired.

"Yes, I'll do it if you promise not to tell when you go back to earth", was his reply.

"I promise never to tell," I said.

Slowly, he pressed a secret button and adjusted the futurescope. I could see very faintly in the distance the figure of a man sitting at a desk in China Grove, N. C. It is none other than Leon Frye, President of the University of China Grove, in 1950. Even as I watch, two secretaries, David Fisher and Vernon Sechler, approach and wait for instructions.

Slowly these images fade and others appear in rapid succession. I recognize Olin McNeely as director of the internationally famous Duke University Orchestra.

Edith Williams and Kathleen Stirewalt are nurses at Johnston Willis Hospital, Richmond, Va.

George Frank Watson is a comedian, in Hollywood. He is even more famous than Bert Wheeler and Robert Woosley. Lucy Lewis is there, also, preparing for her next picture with Martin Turrentine, a second Robert Taylor.

Willene Corriher is Mrs. Rodgers, living in Kannapolis, N. C., where her husband is a painter.

Troy Washam is athletic coach at Harvard University. His assistant is George L. McSwain.

Faintly I see Dorothy Cauble and Mary Glover operating their own beauty parlor in High Point. They are very successful.

Von Eva Mabry is in Paris serving as a model for Parisian stylists. Ruth Shue is working as her designer.

North Carolina is proud of Howard Funderburke, owner of the Carolina Coach Company. His best driver is Frank Baker.

Birdie Cress owns one of the largest farms in Rowan County.

Martha Jane Goodman is head of the Mathematics department in a large college in Illinois.

At Yale University, Carl Sloop, Jr., is a very popular history professor. Two French instructors there are Oscar Linn and Harold Hampton. Jonsie Deal and Marietta Lee are dietitians at this same institution.

Harry Hauss is the owner of twelve large drug stores in North Carolina.

Theta Cress is head clerk at one of the largest millinery shops in New York. Clerks under her are Esther Walter and Elizabeth Simpson.

Next the futurescope shows a figure known to us as Hoyle Bostian. He is editor-in-chief of the China Grove News, one of the best known papers in North Carolina.

Elva Maye Davis is the main attraction, a monologist, in a Broadway show.

Marius Goodnight is the dignified and respected captain of a new ship, "Queen Mary" (Virginia).

Mr. and Mrs. Paul Corriher are explorers, residing temporarily in China. The latter, formerly Miss Helen Overcash, has recently employed a new butler, Glenn DeMarcus.

Mamie Ellen Jones, author of the famous book, "Scatter Brains", is the only American woman ever to receive the coveted Nobel prize in literature.

Willie Nell Dial is a librarian in Boston, Massachusetts. She has won the heart of her employer, and wedding bells are faintly tinkling in the future.

China Grove High School is proud of her agriculture teacher, John Cress, a successor to Mr. C. B. Brown.

Kathleen Shive is head nurse in a doctor's office in Greensboro, N. C. Her assistant is Rachel Bost.

On the corner of a street in New York, Lavon Miller is running a cut-rate jewelry shop.

Suddenly my own image appears on the futurescope. I lean forward eagerly, trying to see in what occupation I am engaged. The image is blurred.

"Can you adjust the futurescope so that the picture is clear?" I asked, breathlessly.

"No", interrupted the strange voice of an attendant on Mars who, unobserved, had entered the room, he won't have time to do it and you won't have time to see it either; that is, if you expect to get back to earth. The sky rocket on which you came is starting back in one minute. I have been hunting everywhere for you two during the last fifteen minutes. The time limit for your visit to Mars is up. Travelers are not allowed to stay in this building one minute after midnight."

We rushed from the building just before the doors were locked. As we walked hurriedly toward the sky rocket, I thanked my kind benefactor for what he had shown me and said, "Now, I suppose I shall never be able to learn what the future holds in store for me."

He stepped into the sky rocket before he answered. I sat down beside him, and we started slowly to descend to earth.

"You are right," he answered slowly, as a smile crept over his face. "Time alone will reveal that."

—LUCILLE NESBIT

LAST WILL AND TESTAMENT

We, the Seniors of the class of 1937, knowing that we are about to depart from our life of toil, hardships and pleasure at China Grove High School, do hereby will and bequeath to the members of the faculty and our classmates who we are about to leave behind, some of our highly valued treasures.

(1) To Mr. Bivens and the Board of Education we wish to express our sincere thanks for all that they have done for us during our four years here.

(2) To our parents who have made it possible for us to further our education here, our undying love and appreciation.

(3) To the members of the faculty a more orderly student body and our sincere thanks for the assistance they have rendered us.

(4) To our faculty advisors, Miss Fleming, Miss Neely and Mr. Lingle, we leave our heartfelt appreciation for their kind advice and assistance.

(5) To the Junior class we leave our seats in chapel and our little used Senior privileges.

(6) To the Sophomore and Freshmen classes we leave our best wishes.

The individual wills are as follows:

Dorothy Cauble wills her radiant beauty and winning smile to Claudia Lefler. Marius Goodnight wills his title of school Romeo to Floyd Guffy with the hope that he will capture the hearts of as many girls as he did.

Oscar Linn wills his shiny worn place on the basketball bench to N. J. Grimes hoping that he doesn't accidentally sit on a splinter.

Kathleen Shive wills her quiet ways to Mary Austyne Wagner with the hope that she will make use of them next year.

George L. McSwain wills his red hair and the temper that goes with it to James Honeycutt.

Glenn Alfred DeMarcus wills his position as first baseman on the baseball team to Homer Overcash and a few feet of his height to Junior Herrin.

Mary Glover wills her wad of chewing gum to anyone who thinks they are capable of chewing 24 hours a day as she did.

Martin Turrentine wills his title of the class' trikiest boy to Jaek Deal.

David Fisher wills his ability to learn Chemistry and the method he employs to Bill Eller.

Elva Maye Davis wills her much used vocal cords to the future cheerleaders, hoping they get a lot of pep out of the basketball and football fans.

Kathleen Stirewalt wills her golden hair to Mattie Belk, provided she keeps it combed.

Marietta Lee wills her ability to make friends to Herbert Clawson.

Von Eva Mabry wills her alluring figure to Hazel "Mae West" Rivenbark.

Birdie Cress wills his place in the Young Tar Heel Farmers club to Frank Barnhardt.

Paul Corriher wills his ability to drive fast and carefully to Giles Smith.
 Lucille Nesbit wills to Lucille Bassinger a few pounds of excess weight.
 Olin McNeely wills his easy way with the girls to Louie Owens.
 Mamie Ellen Jones wills her ability to recite to Mary Lee Propst.
 John Cress wills his ever-ready smile to Jake Barnhardt.
 Harold Hampton wills his slenderness to any junior girl who might need to lose a few pounds to keep her school girl figure.
 Martha Jane Goodman wills her ability to learn French to Virginia Smith.
 Frank Baker wills to Baxter Weant his position as bus driver.
 Lucy Lewis wills her dramatic talents to Mary Sue Kimball.
 Elizabeth Simpson wills her popularity to Dorothy Thompson.
 Willene Corriher wills her untiring patience to Mary Ellen Goodman.
 Howard Funderburke wills his ability to borrow pencil and paper to Richard Menius.
 Theta Cress wills her little used Chemistry book to Elma Chapman hoping that she will get more out of it than she did.
 Edith Williams wills her position on the basketball team to Violet Winecoff.
 Troy Washam wills his position as captain of the basketball, football and baseball teams to Ray Correll.
 Carl Sloop wills his place as editor-in-chief of the annual to Kenneth Shinn.
 Willie Nell Dial wills her love for the boys to Viola Herrin.
 Harry Hauss wills his ability to entertain the girls during English class to James Isom.
 Vernon Sechler wills his seat in English class to Floyd Guffy hoping that he will get one period of sleep and rest.
 Lavon Miller wills all his old library fees to Frank Dennis.
 Helen Overcash wills her ability to sell magazines to anyone that wants to work his way through college in that manner.
 Leon Frye wills his studious ways to Carl Davis.
 Rachel Bost wills her ability to learn Geography to any Geography student who might need a little help next year.
 Ruth Shue wills to Layvon Belk her ability to blush.
 Esther Walter wills her seat on the bus to Margaret Mull.
 Jonsie Deal wills to Elaine Wilkie her old notebook hoping that she gets as much service out of it as she did.
 Hoyle "Sock" Bostian leaves his job as head reporter on the China Grove News to Vernon Stirewalt.
 I, George Frank Watson, not having any outstanding talents do leave with China Grove High School my best wishes.

—GEORGE FRANK WATSON, Testator



GOODMAN-LINN
Best All-Around



JONSIE DEAL
Quietest



"SOC" BOSTIAN
Best Sport



LEON FRYE
Most Loyal



MABRY-McSWAIN
Laziest



PAUL CORRIHER
Most Dignified



HELEN OVERCASH
Neatest



GOODNIGHT-CAUBLE
Handsome-Attractive



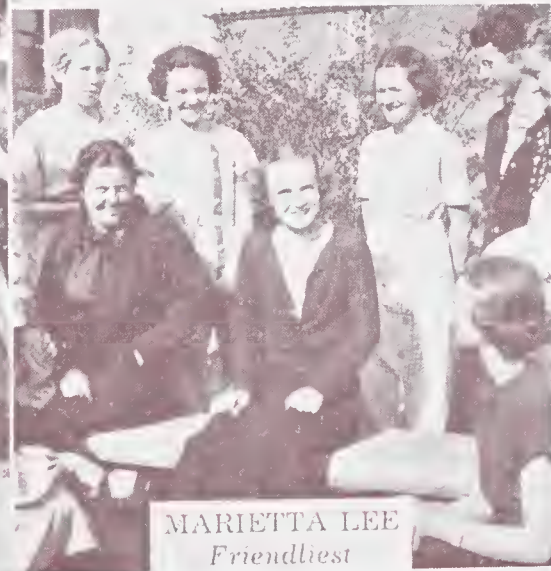
HAMPTON-GOODMAN
*Most Dependable
Most Accomplished*



OLIN McNEELY
*Best Politician
Most Musical*



LINN-DIAL
Biggest Flirts



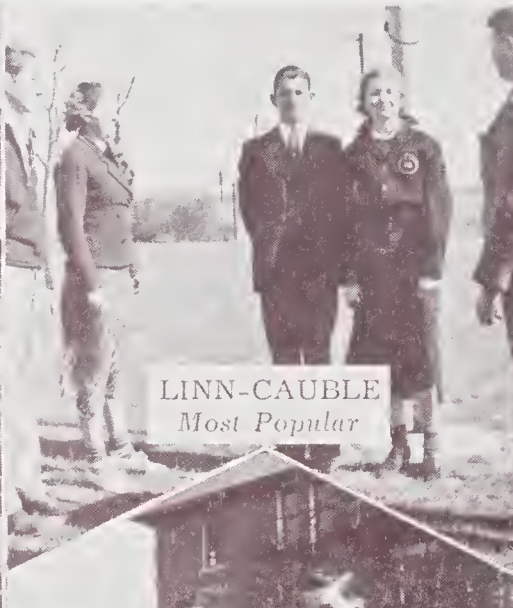
MARIETTA LEE
Friendliest



M. TURRENTINE
*Trickiest-Jolliest
Biggest Liar*



GEO. FRANK WATSON
Cutest



LINN-CAUBLE
Most Popular



GOODMAN-FRYE
Most Studious



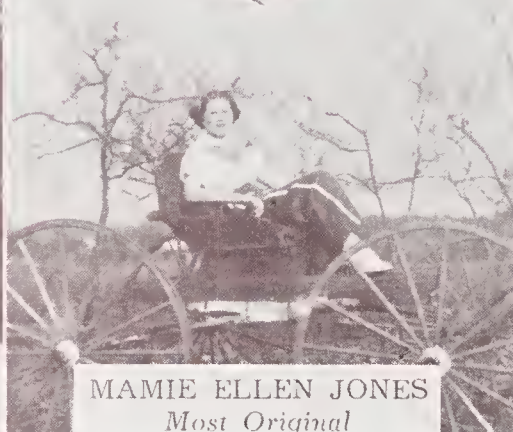
GOODNIGHT-MABRY
Best Dressed



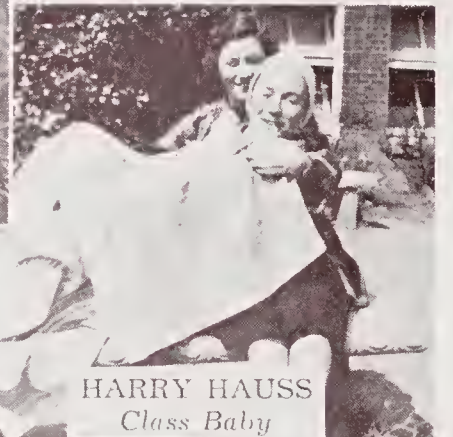
SHUE-GOODNIGHT
Most Romantic



MARTHA JANE GOODMAN
Most Independent



MAMIE ELLEN JONES
Most Original



HARRY HAUSS
Class Baby



GLOVER-WASHAM
Most Athletic



LEE-WASHAM
Most Courteous



OSCAR LINN
Most Personality



CARL SLOOP
Most Business-Like



JUNIORS



JUNIOR CLASS

OFFICERS

GRADY LOWE	President
KENNETH SHINN	Vice-President
KATHLEEN CASTOR	Secretary
RAY CORRELL	Treasurer
MARY SUE KIMBALL	Critic

COLORS: *Rainbow*

FLOWER: *Sweet Pea*

MOTTO: "Press Onward"

ADVISORS

MISS BERTHA PILAND

MR. C. B. BROWN

CLASS ROLL

Frank Barnhardt
 Jake Barnhardt
 Orin Barnhardt
 Helen Basinger
 Lucille Bassinger
 Rufus Beaver
 Mattie Belk
 Helen Boggs
 Versie Bradshaw
 Kathleen Castor
 Elma Chapman
 Ray Correll
 Duard Cress
 Charlsye Culp
 Carl Davis
 Geneva Davis
 Jack Deal
 Ruby Deal
 Ruth Deal
 Billy Eller

Mary Ellen Goodman
 N. J. Grimes
 Floyd Guffy
 Delmer Hodge
 James Honeycutt
 Robert Jolly
 Mary Sue Kimball
 Angie Kirk
 Margaret Koon
 Charles Lee
 Robert Lee
 Claudia Lefler
 Grady Lowe
 Richard Menius
 Allie Mae Mills
 Heyt Moose
 John Moose
 Cordia Morgan
 Cey Morgan
 Reuben Morrison

Hazel Owensby
 Mary Virginia Phillips
 Hazel Rivenbark
 Clarence Safrit
 Frances Safrit
 Kenneth Shinn
 Robert Sloop
 Giles Smith
 Virginia Smith
 Raiefield Soloman
 Vernon Stirewalt
 Harris Suther
 Dorothy Thompson
 Mary Austyne Wagner
 Cecil Waggoner
 Baxter Weant
 Elaine Wilkie
 Vae Wilson



JUNIOR CLASS



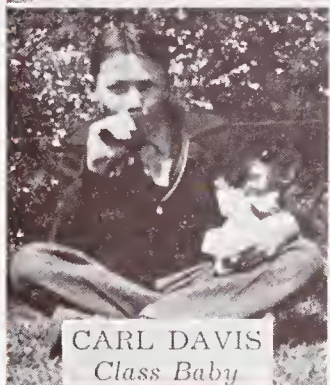
GRIMES-CASTOR
Best All-Around



MARY AUSTYNE WAGNER
Biggest Talker



JUNIOR CLASS TEAM



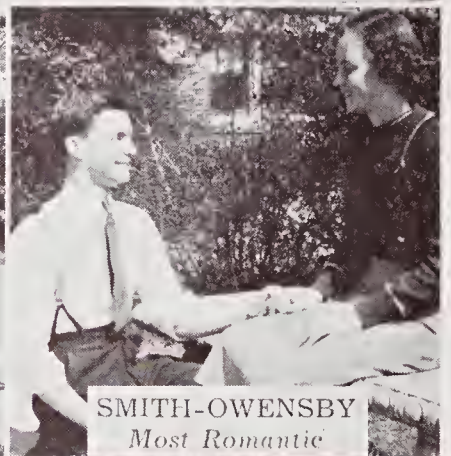
CARL DAVIS
Class Baby



GILES SMITH
Laziest



VIRGINIA SMITH
Most Studious



SMITH-OWENSBY
Most Romantic



MORGAN-GRIMES
Attractive-Handsome



OWENSBY-LOWE
Best Dressed



CORRELL-BASINGER
Most Athletic



VERSIE BRADSHAW
Best Sport



BELK-SHINN
Most Popular



KATHLEEN CASTOR
Most Dependable



GRADY LOWE
Most Loyal



S O P H O M O R E S



SOPHOMORE CLASS

OFFICERS

HERBERT CLAWSON	<i>President</i>
MARY LEE PROPST	<i>Vice-President</i>
RUTH BERRY	<i>Secretary</i>
HAROLD BEAVER	<i>Treasurer</i>
JAMES ISOM	<i>Critic</i>

COLORS: *Red and White*

FLOWER: *Red Rose*

MOTTO: *"While We Live We Serve"*

ADVISORS

MRS. WILMA CARRIGAN

MR. FRED FROWEIN

CLASS ROLL

Thomas Abernathy
Edgar Baker
Harold Beaver
Layvon Belk
Ruth Berry
Ruth Bost
Frank Bostian
Claretta Bostian
Kathryn Brown
Herbert Clawson
Oscar Lee Correll
Dorothy Cranford
Fay Cress
Hazel Davis
John DeMarcus
Frank Dennis
Andrew Dickerson
Charles Earnhardt
Frances Goodnight
Kathleen Goodnight
Daniel Graham
Vardell Graham

Billy Hauss
Junior Herrin
Carolyn Hinshaw
Grier Horton
James Isom
Linda Jolly
Don Jones
Mae Nell London
Virginia Lowder
Maxine Lumsden
Harry Morrison
Mildred Mull
Homer Overcash
Louie Owens
Freda Park
Ruth Park
Minnie Parker
Frances Phillips
Mary Lee Propst
Charles Ridenhour
Wade Rogers
David Sechler

Mary Seymore
Willard Seymore
Evelyn Shoe
Elmer Shue
Frank Shue
Lois Shue
Mary Shuffler
Ethel Sloop
Frances Smith
Mary Lily Stiller
J. C. Stirewalt
Sallie Lee Turrentine
G. W. Walter
Albert Wilhelm
James Wilhelm
Johnsie Wilhelm
Pearl Wilhelm
Miriam Wilson
Violet Winecoff
Brady Wise
Edith Wyatt
Mike York



SOPHOMORE CLASS





LINDA JOLLY
Biggest Talker



J. D. BAILEY
 Laziest



THOMAS ABERNATHY
Studious-Loyal



HERBERT CLAWSON
Best Sport



DOROTHY CRANFORD
Most Athletic Girl



BROWN-ISOM
Best All-Around



PROPST-WISE
Most Romantic



"HUB" CRANFORD
Most Athletic Boy



SMITH-OVERCASH
Most Popular



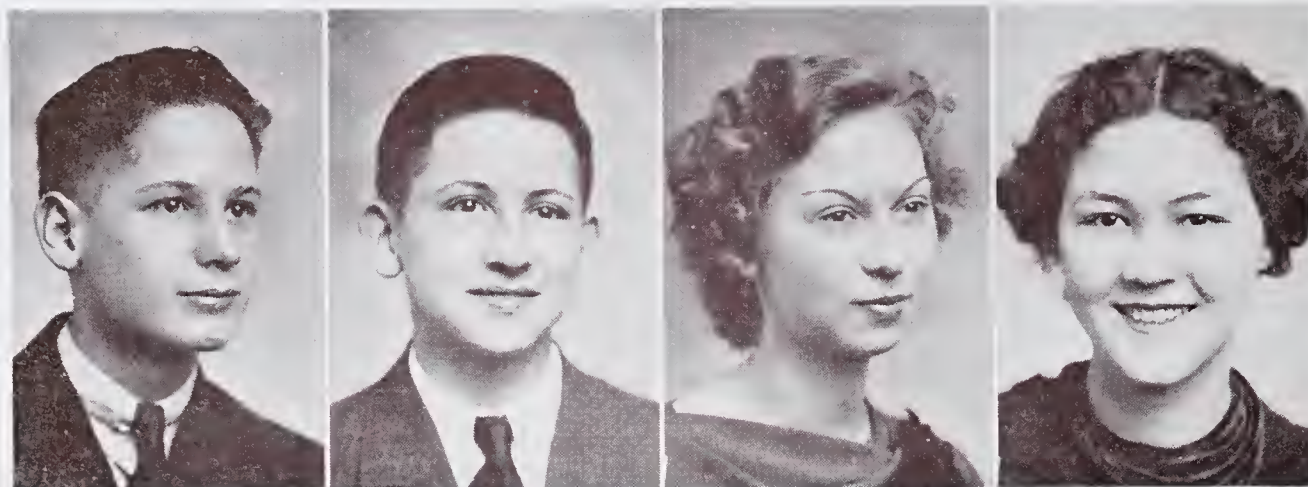
BEAVER-BELK
Handsome-Attractive



JUNIOR HERRIN
Most Dependable



FRESHMEN



FRESHMEN CLASS

OFFICERS

EDGAR BOSTIAN	<i>President</i>
WADE CLAWSON	<i>Vice-President</i>
HAZEL NICHOLSON	<i>Secretary</i>
KATHLEEN DEMARCUS	<i>Treasurer</i>

COLORS: *Blue and Gold*

FLOWER: *Goldenrod*

MOTTO: *"Sail On"*

ADVISORS

MISS PAULANNA COOPER

MISS ALICE FISHER

CLASS ROLL

Ethel Baker
Mary Baker
Ruth Baker
Frank Barger
Linn Barnhardt
Charles Basinger
J. B. Beaver
Ruby Berry
Dixon Blackwelder
Roscoe Boger
Raymond Boggs
Lucille Bost
William Bost
Edgar Bostian
Weldon Bradshaw
Hazel Broome
R. D. Calloway
Emanuel Carter
Harold Carter
Helen Castor
Wade Clawson
Bonnie Correll
Willie Mae Cowan
Hazel Curran
Dorothy Davis
Ethel Davis
Kathleen DeMarcus
Cecil Dial
Doris Duncan
Odell Dyson

Grover Earnhardt
T. R. Eller
Kathleen Evans
Helen Faggart
Billy Fesperman
Ruby Fesperman
John Fisher
Robert Goodman
Lawrence Goodnight
Mildred Goodnight
Sarah Lee Goodnight
Arthur Hampton
Robert Henderson
Viola Herrin
Harold Hinshaw
Claude Hodge
Robert Hodge
Earnest Honbarger
Loree Honeycutt
Duwan Johnston
Margaret Jordan
Phyllis Karriker
Helen Koon
Willie Koon
Alice Lewis
John Mabry
Nell Melchor
Catherine Miller
John Robert Miller
John Misenheimer

Sybil Mundy
Hazel Nicholson
Lloyd Owens
Helen Overcash
Thomas Overcash
Viola Owens
Hope Park
Hubert Patterson
John Peeler
Louise Pirie
Raymond Rivenbark
Harold Rogers
Lucille Safrut
Mable Shillinglaw
Kenneth Shive
Junior Shue
Albert Sloop
Doris Sloop
Earle Speck
Frank Smith
Nola Solomon
Virginia Stirewalt
Alma Lee Swink
Mary Thomas
Sadie Wallace
Maxine Watson
Herman Weant
Frances Wilhelm
Marie Wilhelm
Barbara Yost



FRESHMAN CLASS



STIREWALT-CLAWSON
Most Romantic



BOGGS-NICHOLSON
Most Popular



NELL MELCHOR
Biggest Talker



HOPE PARK
Most Loyal



HELEN CASTOR
Best Sport



WILLIE MAE COWAN
Most Dependable



DYSON-PIRIE
Most Athletic



ROBERT HODGE
Class Baby



HONBARGER-BAKER
Handsome-Attractive



ELLER-FESPERMAN
Best All-Around



DAVIS-BOSTIAN
Most Studious



TROUBLE



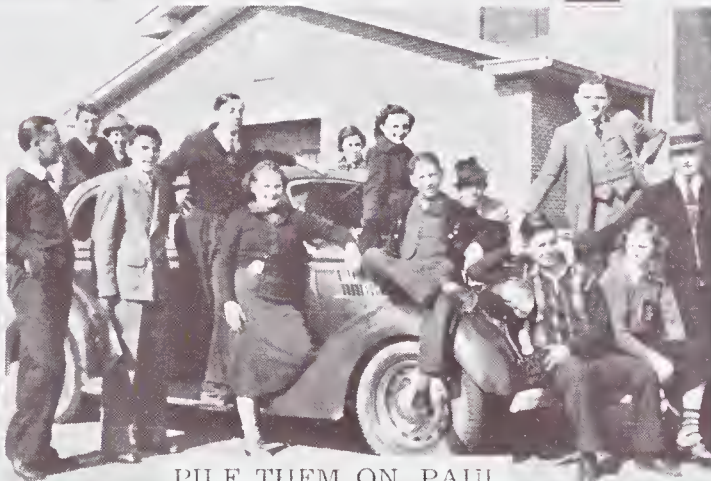
MITCHELL'S CLASS



WE DID HAVE SNOW



TRAINING CAMP
BIG LEAGUE RED
DEVILS



PILE THEM ON, PAUL



PICTURE DAY



LEST THEY FORGET



SOFT BALL

TAKE IT EASY. BIG TEAM!



CHEER LEADERS



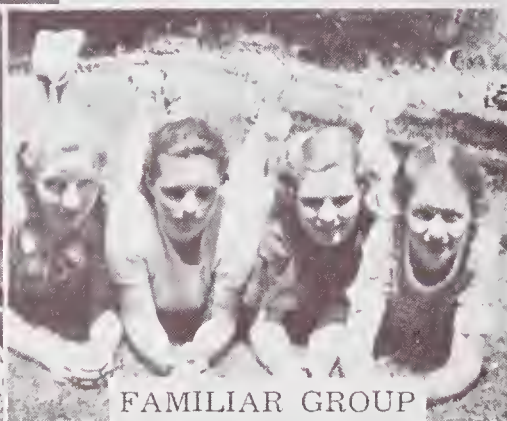
MORE FUN



BUS DRIVERS



CANDY FOR SALE



FAMILIAR GROUP



SENIOR GIRL CHAMPIONS



ISN'T HE CUTE

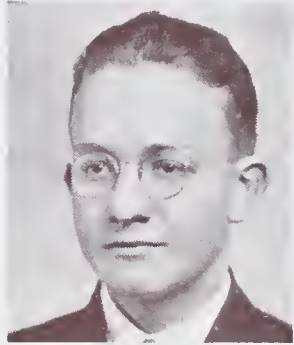


DAY IS DONE

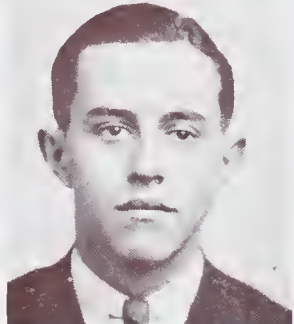


CLUBS

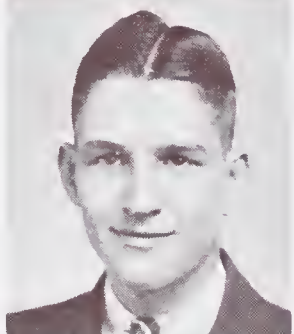
PARROT STAFF



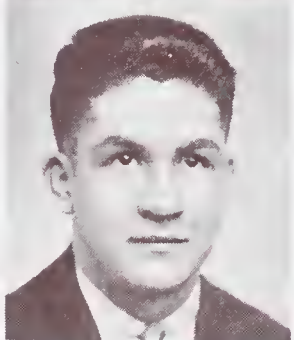
CARL SLOOP
Editor-in-Chief



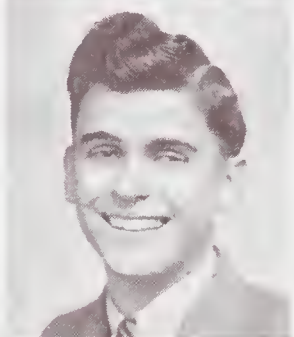
PAUL CORRIHER
Business Manager



KENNETH SHINN
Assistant Editor



RAY CORRELL
Assistant Business Manager



LEON FRYE
Proof Reader



MISS REBECCA NEELY
Faculty Advisor



GLEE CLUBS

OFFICERS

Girls' Glee Club

HAZEL OWENSBY *President*
 DOROTHY CAUBLE *Vice-President*
 KATHLEEN CASTOR *Secretary-Treasurer*
 FRANCES SAFRIT *Accompanist*
 MR. HAROLD W. DICKENSHEETS, Mus. B. *Director*

Boys' Glee Club

JENNINGS TREXLER
 KENNETH SHINN
 PAUL CORRIHER
 EDGAR BOSTIAN
 Director

FIRST SOPRANO

Lucille Bassinger
 Dorothy Cauble
 Charlsye Culp
 Kathleen DeMarcus
 Mary Sue Kimball
 Frances Smith
 Virginia Smith

SECOND SOPRANO

Helen Basinger
 Weldon Bradshaw
 Helen Castor
 Kathleen Castor
 Helen Ruth Overcash
 Viola Owens
 Frances Safrit
 Kathleen Shive
 Elaine Wilkie
 Barbara Yost

ALTO

Mary Glover
 Mary Ellen Goodman
 Von Eva Mabry
 Lucille Nesbit
 Helen Overcash
 Hazel Owensby
 Lida Silliman
 Virginia Stirewalt
 Alma Lee Swink

TENOR

Frank Bostian
 Paul Corriher
 Duard Cress
 Billy Hauss
 Grady Lowe
 John Mabry
 Lloyd Owens
 Charles Ridenhour
 David Sechler
 Kenneth Shinn
 Carl Sloop
 Jennings Trexler
 Martin Turrentine

FIRST BASS

Edgar Bostian
 Herbert Clawson
 Charles Earnhardt
 Billy Eller
 Homer Overcash
 Wade Rogers
 James Wilhelm

SECOND BASS

John DeMarcus
 Marius Goodnight
 Olin McNeely
 Baxter Weant

SOLOISTS AND QUARTETS IN THE STATE HIGH SCHOOL MUSIC CONTEST

SOPRANO: Mary Sue Kimball

ALTO: Hazel Owensby

BASS: Olin McNeely

MIXED QUARTET: Frances Safrit, Von Eva Mabry, Martin Turrentine, Olin McNeely.

GIRLS' TRIO: Mary Sue Kimball, Frances Safrit, Hazel Owensby.

BOYS' QUARTET: John Mabry, Carl Sloop, Homer Overcash, Baxter Weant.



"J" CLUB

OFFICERS

LIDA SILLIMAN *President*

LAYVON BELK *Vice-President*

KATHRYN BROWN *Secretary*

MARY LEE PROPST *Treasurer*

ADVISOR

MISS ALICE FISHER

MEMBERS

Hope Park
Freda Park
Ruth Park
Nell Melchor
Maxine Lumsden
Maxine Watson
Mabel Shillinglaw
Jonsie Wilhelm
Claretta Bostian
Miss Fisher
Helen Basinger
Von Eva Mabry
Mary Ellen Goodman
Elaine Wilkie
Sadie Grace Wallace
Doris Sloop
Marie Wilhelm

Sara Lee Goodnight
Mary Thomas
Alice Lewis
Carolyn Hinshaw
Hazel Broome
Ruby Berry
Loree Honeycutt
Margaret Jordon
Minnie Parker
Sally Lee Turrentine
Virginia Lowder
Mildred Mull
Frances Phillips
Mildred Goodnight
Ethel Baker
May Nell London
Barbara Yost

Hazel Davis
Viola Owens
Kathryn Brown
Mary Lee Propst
Lucille Bost
Ruth Baker
Pearle Wilhelm
Lois Shue
Catherine Miller
Mary Lee Stiller
Ruth Bost
Fay Cress
Layvon Belk
Lida Silliman
Ethel Sloop
Mary Elizabeth Seymore
Nola Solomon



DRAMATICS CLUB

MARIETTA LEE *President*

WADE CLAWSON *Vice-President*

EDGAR BOSTIAN *Secretary*

RICHARD MENIUS *Treasurer*

ADVISOR

MR. CURTIS BIVENS

MEMBERS

Kathleen Goodnight
Bonnie Correll
Alma Lee Swink
Helen Faggart
Frances Goodnight
Edgar Bostian
Wade Clawson
Marietta Lee
Lucy Lewis
Mary Baker
Sybil Mundy
Dorothy Thompson

Mr. Bivens
Phyllis Karriker
Mary Shuffler
Edith Wyatt
Richard Menius
Jennings Trexler
Evelyn Shue
Miriam Wilson
Linda Jolly
Willie Mae Cowan
Carl Davis



PEN AND INK CLUB

ADVISOR

MISS REBECCA NEELY

MEMBERS

James Wilhelm
George Frank Watson
Frank Dennis
Junior Herrin
Martin Turrentine
Harry Hauss
Thomas Abernathy
George L. McSwain

Harold Hampton
James Morrison
Lavon Miller
Marius Goodnight
Miss Neely
David Fisher
Hoyle Bostian
Leon Frye



NATIONAL HONORARY BETA CLUB

OFFICERS

DOROTHY CAUBLE *President*

MARTHA JANE GOODMAN *Vice-President*

LUCILLE NESBIT *Secretary-Treasurer*

COLORS: *Black and Gold*

MOTTO: *Loyalty, Courage, Leadership*

ADVISOR

MISS PAULANNA COOPER

MEMBERS

Carl Sloop
Mary Sue Kimball
Lucille Nesbit
Dorothy Cauble
Miss Cooper
Leon Frye

Martha Jane Goodman
Grady Lowe
Troy Washam
Virginia Smith
Kenneth Shinn
Kathleen Castor



HOME ECONOMICS CLUB

OFFICERS

THETA CRESS *President*

KATHLEEN STIREWALT *Vice-President*

FRANCES SAFRIT *Secretary*

ELMA CHAPMAN *Treasurer*

ADVISOR

MRS. WILMA CARRIGAN

MEMBERS

Elizabeth Simpson
Mary Virginia Phillips
Jonsie Deal
Angie Kirk
Frances Safrit
Esther Walter
Margaret Koon
Mattie Belk
Theta Cress
Mamie Ellen Jones
Cordia Morgan

Rachel Bost
Kathleen Shive
Willie Nell Dial
Ruth Deal
Ruby Deal
Kathleen Stirewalt
Ruth Shue
Willene Corriher
Charlsye Culp
Mrs. Carrigan



YOUNG TAR HEEL FARMERS' CLUB

OFFICERS

JOHN CRESS *President*

JAKE BARNHARDT *Vice-President*

JOHN MOOSE *Secretary*

BIRDIE CRESS *Treasurer*

FRANK BARNHARDT *Chaplain*

ADVISOR

MR. C. B. BROWN

MEMBERS

Edgar Baker
Hubert Patterson
Robert Goodman
Jack Deal
Vardell Graham
Frank Shue
J. C. Stirewalt
Robert Jolly
Cecil Dial
Don Jones
Albert Sloop
Brady Wise
Delmer Hodge
Frank Barnhardt
Coy Morgan
Harris Suther

Elmer Shue
Jack Miller
Cecil Waggoner
Frank Baker
John Cress
John Moose
Orin Barnhardt
Rufus Beaver
Albert Miller
Hoyt Moose
Birdie Cress
Junior Shue
Robert Sloop
Duard Cress
Mr. Brown



POSTER CLUB

OFFICERS

CLAUDIA LEFLER *President*

RAYMOND BOGGS *Vice-President*

GENEVA DAVIS *Secretary*

RUBY FESPERMAN *Treasurer*

ADVISOR

MISS OLA FLEMING

Roscoe Boger
Dixon Blackwelder
Hazel Curran
Kathleen Evans
Doris Duncan
Helen Castor
Thomas Overcash
Willie Koon
Weldon Bradshaw
Claudia Lefler
Raymond Boggs

James Honeycutt
Viola Herring
Ruby Fesperman
Helen Koon
Helen Ruth Overcash
Miss Fleming

Geneva Davis*
Ethel Davis*
J. B. Beaver*

*Absent when picture was made



SCIENCE CLUB

OFFICERS

RUTH BERRY *President*

HAZEL NICHOLSON *Vice-President*

VIRGINIA STIREWALT *Secretary-Treasurer*

ADVISOR

MR. FRED FROWEIN

MEMBERS

Charles Earnhardt
Virginia Stirewalt
Harold Hinshaw
John Misenheimer
Robert Henderson
R. D. Calloway
T. R. Eller
William Bost
Billy Fesperman

Hazel Nicholson
Oscar Lee Correll
Billy Hauss
Worth Wagner
Emanuel Carter
Odell Dyson
Grier Horton
Lawrence Goodnight
Mr. Frowein



GIRLS' SOFTBALL CLUB

CAPTAINS

MARY GLOVER

VIOLET WINECOFF

ADVISOR

MISS BERTHA PILAND

MEMBERS

Frances Wilhelm
 Lucille Safrit
 Dorothy Cranford
 Louise Pirie
 Hazel Rivenbark
 Helen Boggs
 Mary Austyne Wagner
 Hazel Owensby
 Frances Smith

Helen Overcash
 Von Eva Mabry
 Edith Williams
 Versie Bradshaw
 Kathleen DeMarcus
 Mary Glover
 Lucille Bassinger
 Violet Winecoff
 Miss Piland



ATHLETICS



BOYS' BASKETBALL

MR. W. R. LINGLE *Coach*

TROY WASHAM *Captain*

MIKE YORK-FRANK BOSTIAN *Co-Managers*

"SOCK" BOSTIAN *Athletic Reporter*

MEMBERS

Kenneth Shinn
Herbert Clawson
Oscar Linn
Louie Owens
N. J. Grimes

Raiefield Solomon
John DeMarcus
Troy Washam
Ray Correll
Vernon Sechler



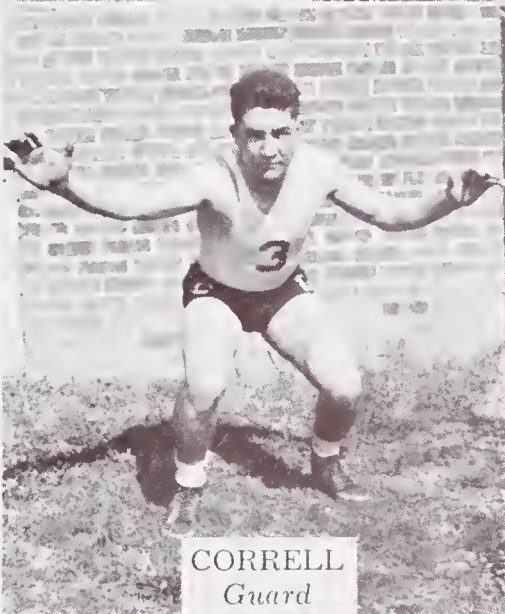
GRIMES
Guard



OWENS SECHLER
Forward Guard



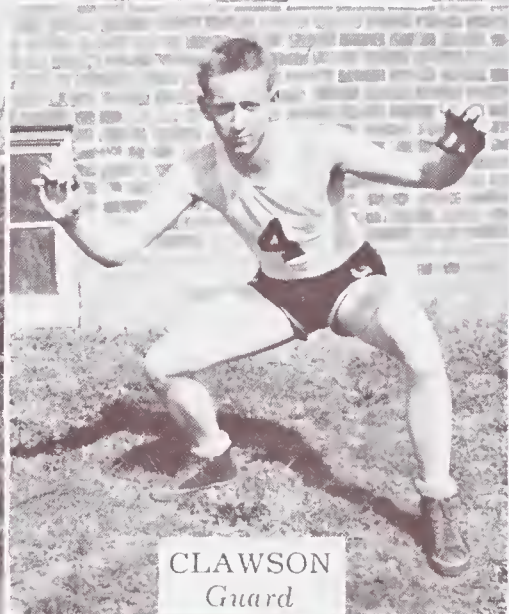
SHINN
Forward



CORRELL
Guard



LINGLE
Coach



CLAWSON
Guard



SOLOMON
Center



WASHAM
Guard



LINN
Forward



DEMARCUS
Center



GIRLS' BASKETBALL

MISS BERTHA PILAND Coach

MARY GLOVER Captain

VIOLET WINECOFF Manager

MEMBERS

Hazel Rivenbark
Hazel Owensby
Kathleen DeMarcus
Helen Overcash
Versie Bradshaw

Lucille Bassinger
Edith Williams
Mary Glover
Helen Boggs
Mary Sue Kimball



DEMARCUS
Substitute Guard



OWENSBY
Forward



GLOVER
Forward



KIMBALL BASINGER
Guard Forward



DILAND
Coach



BRADSHAW WILLIAMS
Forward Guard



RIVENBARK OVERCASH
Guard Forward



BOGGS
Guard



BASEBALL

MR. GEORGE ELY *Coach*

TROY WASHAM *Captain*

"JAKE" BEAVER *Manager*

MEMBERS

Ray Correll
Oscar Linn
Harold Beaver
Albert Wilhelm
Homer Overcash
Glenn DeMarcus
Marius Goodnight
Troy Washam
Herbert Clawson

Clarence Safrit
Charles Lee
Raiefeld Solomon
John DeMarcus
Kenneth Shinn
Albert Miller
Vernon Sechler
Odell Dyson



MONOGRAM CLUB

Ray Correll
 Dorothy Cranford
 Billy Eller
 Violet Winecoff
 Kenneth Shinn
 Mary Glover
 Homer Overcash
 Lucille Bassinger
 Hoyle Bostian
 Helen Overcash
 Oscar Linn
 Hazel Owensby
 Marius Goodnight
 Mary Sue Kimball
 Miss Piland
 Mr. Frowein
 Herbert Clawson
 David Sechler
 Harold Beaver

Frank Bostian
 Albert Wilhelm
 Hazel Rivenbark
 Odell Dyson
 Louise Pirie
 N. J. Grimes
 Edith Williams
 John DeMarcus
 Helen Boggs
 Raiefield Solomon
 Versie Bradshaw
 Louie Owens
 Vernon Sechler
 Troy Washam
 Miss Fisher
 Glenn DeMarcus
 Mr. Ely
 Mr. Lingle

NAME	CALLED	IS	PREFERS	WILL BE
John DeMarcus	"Shorty"	Athletic	Basketball	Chief of Police
Virginia Smith	"Toni"	Studious	Good Grades	Wife of French Nobleman
Giles Smith, Jr.	"Smitty"	Jovial	Midnight Singing	A & P Boss
Louise Pirie	"Boots"	Likeable	Basketball	Nurse
Harold Hinshaw	"Mama's Boy"	Loud	Chewing Gum	Ventriloquist
Sybil Mundy	"Red"	Romantic	Edgar	Movie Star
Geo. Frank Watson	"Frankenstein"	Short	Detective Stories	"Gob"
Hazel Owensby	"Toots"	Attractive	Sleeping Out	Cook
Ray Correll	"Razor"	Athletic	Football	Coach
Elva Maye Davis	"Fat"	Loud	Talking	News Spreader
Ruth Park	"Ruth"	Style Show Winner	Keeping Quiet	Designer
Wade Clawson	"Fat"	Flirty	Girls	Movie Star
Mary Ellen Goodman	"Mouthy Mutt"	Popular	Soda Jerker	Druggist's Wife
William Bost	"Bostic"	A Pest	Pestering	Public Pest No. 1
Marietta Lee	"Sis"	Friendly	Pontiacs	Married
Martha Jane Goodman	"Marthy"	Book-worm	Reading	Teacher
Martin Turrentine	"Turp"	Crazy	French	"Biggest Lie" Champion
Elaine Wilkie	"Lane"	One of "The Gang"	Flake	Mrs. Sechler
Mary Sue Kimball	"Sue"	Musical	Kenneth	Opera Singer
Carl Sloop, Jr.	"Sloop"	Biggity	Marietta	Mrs. _____
Hazel Rivenbark	"Shaky"	Flirt	Romance	Housekeeper
Kathleen DeMarcus	"Pat"	In Love	"Buggy"	6-Day Bicycle Rider
Viola Herrin	"Lula Belle"	Robust	"Floyd"	Radio Announcer
Thomas Overcash	"Tommie"	"Worry-Wart"	Talking	



ADVERTISEMENTS

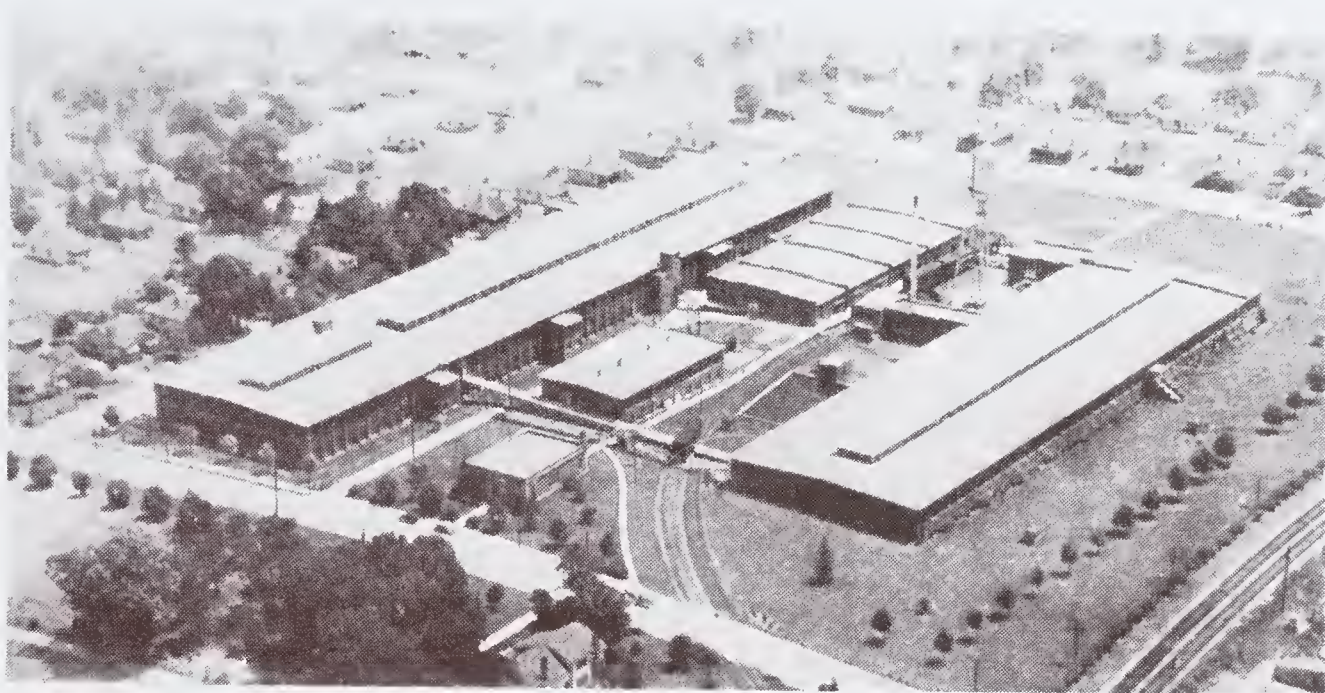


The Patterson Manufacturing Company of China Grove, N. C., now a part of the Cannon Mills Company known as Plant No. 8, was organized under the laws of North Carolina on April 27, 1893, the incorporators being J. W. Cannon, I. Frank Patterson, J. C. Corriher, J. L. Rendleman and R. J. Holmes; the business of this corporation being specified as buying, manufacturing and selling cotton, wool, and cotton and woolen goods. The capital stock of the company at the beginning was \$75,000.00. The first Board of Directors consisted of R. J. Holmes, J. W. Cannon, D. B. Coltrane, L. D. Duval, J. C. Corriher, D. F. Cannon, and I. Frank Patterson. The officers were J. W. Cannon, President, and I. Frank Patterson, Secretary-Treasurer. The original mill had 4,160 spindles and 130 looms, employing less than 100 people.

At the death of Mr. I. Frank Patterson, Mr. W. J. Swink became connected with the mill on May 14, 1896 in the capacity of Secretary and Treasurer. On August 3, 1896 he was made a Director.

The Patterson Manufacturing Company at one time operated a branch plant at Kannapolis which was later sold to the Cannon Manufacturing Company.

On June 4, 1928 the Patterson Manufacturing Company was merged with ten other plants into the present Cannon Mills Company, the old Patterson Manufacturing Company being known as Cannon Mills Company, Plant No. 8. This plant today has over 15,000 spindles, 340 looms, and employs approximately 500 people.



The China Grove Cotton Mills Co., was organized April 5th, 1920, for the manufacture of combed yarns, and received it's charter as of that date. The Incorporators being, Mr. A. C. Lineberger, Mr. C. B. Miller, Mr. A. E. Davis, Mr. P. M. Barger, Mr. A. W. Winecoff and Mr. Frank R. Brown. The Officers elected at that time were as follows:

Mr. A. C. Lineberger, President
 Mr. R. L. Stowe, Vice President
 Mr. John H. Rutledge, Secretary & Treasurer

The Directors were, Mr. A. C. Lineberger, Mr. R. L. Stowe, Mr. C. B. Miller, Mr. McL. Ritchie, Mr. W. F. Snider, Mr. J. H. Rutledge and Mr. F. R. Brown.

The Capital stock was \$1,000,000.00 authorized, with \$850,000.00 being paid in. In 1921 the first unit was built containing 21,760 spindles. This unit has been in operation since that date.

In 1926 the demand for China Grove Cotton Mill yarns was so great that it was necessary to build a new unit. The certificate of Incorporation was amended in 1926, increasing the authorized Capital stock to \$2,000,000, with \$1,600,000 paid in capital. The second unit of this organization began operation in February 1927, with 21,120 spindles. In laying out the machinery for unit number two provision was made for approximately 5,000 additional spindles, which were to be added later, as the range of counts at that time was 30's to 120's. The demand for counts coarser than 30's necessitated adding 4800 spindles in 1929, which enabled the Company to make counts as coarse as 20's, giving them a range of counts from 20's to 120's, with 47,680 spindles.

The Company owns 150 houses, which are occupied by the employees of the Company. The Company at this time employs approximately 750 people.

The present Officers of the Company are as follows;

Mr. A. C. Lineberger, President
 Mr. A. L. Brown, Vice-President
 Mr. J. H. Rutledge, Secretary & Treasurer
 Mr. C. J. Beaver, Assistant Secretary

The Directors are: Mr. A. C. Lineberger, Mr. J. H. Rutledge, Mr. J. L. Fisher, Mr. McL. Ritchie, Mr. A. L. Brown, Mr. C. J. Beaver and Mr. E. F. Lucas. Mr. George W. Boys is Superintendent.



Rowan Cotton Mills Company

ORGANIZED 1920

STARTED OPERATION APRIL, 1921

25,000 SPINDLES

MAKE COMBED KNITTING YARNS EXCLUSIVELY

A. C. LINEBERGER, Belmont, N. C.

E. C. BARNHARDT, Concord, N. C.

S. W. HARRY, Salisbury, N. C.

W. L. CAMPBELL, Salisbury, N. C.

HENRY A. LINEBERGER, Belmont, N. C.

A. E. DAVIS, Salisbury, N. C., Sec.-Treas.

D. S. TYSINGER, Salisbury, N. C., Assistant Secretary

SEE US FOR YOUR
PAINTS—VARNISHES—SHELAC—STAIN
FLOOR POLISHES, LIQUID AND WAX
POLISHING MOPS

DISTRIBUTORS OF SPARTON
RADIOS — — REFRIGERATORS

.....
FARM IMPLEMENTS
.....

CHINA GROVE HARDWARE COMPAY

CHINA GROVE, N. C.

Flour, Feed and Meal

China Grove Roller Mill

CHINA GROVE, N. C.

Miss Piland: "Do you know Lin-
coln's Gettysburg address?"

Chas. Ridenhour: "No, I didn't know
he lived there."

.....
Mrs. Mundy: "Didn't I tell you to
notice when the rice boiled over?"

Sybil: "I did; it was at 3 o'clock."

Compliments of

C. E. SLOOP

CHINA GROVE, N. C.

GROCERIES AND MEATS

Representative of
SCOTCH WOOLEN MILLS
*Made to Measure Clothing
For Men and Women*

EDDLEMAN & SONS

GROCERIES AND MEATS

ICE AND FEED

PHONE 15

CHINA GROVE, N. C.

SALISBURY POST

*Extends
Congratulations
To The Class of 1937*

Latest News by Associated Press
N.E.A. Feature Service

Member
Audit Bureau of Circulation

"THE POST TELLS IT FIRST"

HART'S

China Grove's New Drug Store

This is the Store that Brought Down
High Prices on Drugs in China Grove

OPPOSITE POST OFFICE

Welcome to

Efird's Clothing Store

KANNAPOLIS, N. C.

For Better Merchandise

STERCHI BROS.

STORES, Inc.

FURNITURE

124 EAST INNIS STREET

SALISBURY, N. C.

Frances Safrit: "Where is Edgar,
Lou?"

Lou Bostian: "He's in the house
playing that duet. I finished my
part first."

Charles Lee: "I'm thinking of ask-
ing some girl to marry me. What
do you think of the idea?"

Jonsie Wilhelm: "It's a great idea,
if you ask me."

Compliments of

Rotary Club of China Grove

Meetings

Miller's Hotel—Tuesdays 6:15 P. M.

Meet your friends at

PHILLIPS DRUG CO.

Dependable Drugs

CHINA GROVE, N. C.

Trexler Bros. & Yos t

CLOTHING AND FURNISHINGS
FOR MEN AND BOYS

121-123 S. Main Street—Phone 1495

SALISBURY, N. C.

HANFORD'S FLOWERS

Sold at

THE FLOWER SHOP

(Next to Capitol Theatre)

SALISBURY, N. C.

PHONE 381

NIGHT PRONE 382

Call us about our excellent delivery
service to China Grove and vicinity.

We buy our Groceries, Fresh Meats
and Vegetables from

**ROWAN MILLS
Co-Operative Store**

PHONE 1332

SALISBURY, N. C.

Linn Bros.

General

Merchants

SINCE 1901

LANDIS, N. C.

**China Grove Furniture and
Undertaking Company**

China Grove, N. C.

THE FUNERAL HOME

PHONES: DAY 18—NIGHT 74-R—OR 38-W KANNAPOLIS

Authorized Agents

THE H. B. WILKINSON CO. BURIAL FINANCE ASSOCIATION, INC.

KANNAPOLIS, N. C.

THERE COMES a time in almost every man's life when it will mean a good deal to him to have the recommendation or endorsement of a good bank.

IF HE IS FAVORABLY KNOWN at the bank, he has a distinct advantage over the man who is not.

YOUR REPUTATION is what you have made it through years of honest dealing, and your disposition to meet your obligations promptly.

The Bank of China Grove

CHINA GROVE, N. C.

MEMBER OF THE FEDERAL DEPOSIT INSURANCE CORPORATION

MAXIMUM INSURANCE FOR EACH DEPOSITOR \$5,000.00

THE ROWAN COUNTY BUILDING AND LOAN ASSOCIATION

CHINA GROVE, N. C.

This Building and Loan Association's business is mutual.

Members save money together.

They lend to each other.

They divide profits among themselves.

They work to help each other.

Our shares are good investments and pay good dividends.

Come in and we will talk it over.

Under State Supervision

McL. RITCHIE, *President*

C. C. GRAHAM, *Sec'y-Treasurer*

COMPLIMENTS OF

NORMAN INGLE, JEWELER

SALISBURY, N. C.

Representing

Herff-Jones Company

The World's Largest Manufacturers of High School Class Rings and Pins

CLINE MOTOR CO.

Extend Congratulations to the
Class of 1937



SALES AND SERVICE
CHINA GROVE, N. C.

Purcells

*The Shop for those who seek
the Smartly Different*
SALISBURY, N. C.

SNIDER BROTHERS Wholesale Groceries

PHONE 91
SALISBURY, N. C.

"If we have it, it's Good"
Our COAL, ICE and WOOD are
The Pride of Cabarrus County

KANNAPOLIS ICE AND FUEL CO.

PHONE 112 KANNAPOLIS, N. C.

BELK'S

Kannapolis' Finest and Largest Department Store

THE UNFAILING COURTESY AND HOSPITALITY OF TWENTY-ONE YEARS

Since Belk's was established in Kannapolis, true spirit of hospitality has been its charm . . . the welcome and personal contact that we have given our patrons have made and kept friends.

Today, though times have accelerated, we still have the time . . . and true hospitality to greet you with a smile . . . to suggest . . . to give you unhurried assurance.

When you visit Kannapolis, make Belk's your shopping center . . . rest in our spacious lounge room on the second floor . . . delightfully refreshing ice water . . . magazines . . . all at your convenience.

BELK'S DEPARTMENT STORE

PHONE 7, 17 & 47

KANNAPOLIS, N. C.

SCIENCE
has so developed the industry that
THE LAUNDERING AND DRY
CLEANING OF CLOTHES
has now become a profession

WE ARE SPECIALISTS
and you will find the most modern
equipment in our plant, this
enables us to give you

SUPERIOR SERVICE

AT ALL TIMES

A Trial Bundle Sent to Us Will
Make You Our Friend for Life.

SUNSHINE LAUNDRY AND DRY CLEANING

GOOD WASHING WINS GOOD DRY CLEANING WINS GOOD WILL

PHONE 35

CHINA GROVE, N. C.

PEELER CANDY CO.

Confectionery Jobbers

KANNAPOLIS, N. C.

"Keep Sweet With Candy"

McCanless Motor Co.

SALISBURY, N. C.

Dealers in Plymouth and Dodge

Nothing
but the
best for

Her!



Beautiful shoes for Women

Handsome Shoes for Men

ALL SIZES AND WIDTHS

Family Shoe Store

SALISBURY, N. C.

Fit Your Feet by X-Ray

COMPLIMENTS OF

Bostian's Dairy

G. J. TEMPLETON

General Merchandise

PHONE 14

CHINA GROVE, N. C.

Mr. Bivens to Miss Fleming: "I want you to help me. I promised to meet Miss Reese at one o'clock for luncheon, and I can't remember where. Would you mind ringing her up and asking her where I am likely to be about that time?"

Poor old Martin Turrentine. He went up to New York determined to make his fortune pulling some skin games on innocent strangers. However, the first fellow he tried to sell the Brooklyn Bridge to turned out to be the owner, and if Martin hadn't paid him ten dollars to keep quiet, the man would have had him arrested.

RABON'S BAKERY

QUALITY BREAD

CAKES AND PIES

TELEPHONE 939

SALISBURY, N. C.

**TOMS DRUG STORE
CUT-RATE**

102 S. MAIN ST.

PHONE 234

"Meet me at Toms"

SALISBURY, N. C.

**MILLER'S HOTEL
AND CAFE**

Good Beds and Excellent Food
A home-like atmosphere Prevails

Center of City

TELEPHONE 78-W

CHINA GROVE, N. C.

GOOD GULF
Good Service—Good Dealers

At

**DEAL'S SERVICE
STATION**

CHINA GROVE, N. C.

Let Us Serve You!

A. C. MENIUS

PACKARD AND

... INTERNATIONAL TRUCKS ...

Corner Main and Liberty

SALISBURY, N. C.

PHONE 707



THE WORLD'S FOREMOST
FOOD SERVICE CAN
HELP YOU SAVE!

A Non-Profit Organization

China Grove Seed Association, Mutual, Inc.

CHINA GROVE, N. C.

FEEDS. SEEDS, FERTILIZERS,
AND FARMERS' SUPPLIES

We Appreciate Your Patronage

The China Grove P. T. A.

Congratulates the
Senior Class of 1937

*Photographs
Of All Kinds*

Alexander's Studio

"Photographer for 1937 Parrot"

TELEPHONE 248 204½ S. MAIN ST.
SALISBURY, N. C.

Phone 9206 Day or Night

LANDIS HARDWARE

.....
LINN—WRIGHT

DIAMONDS
WATCHES
JEWELRY
W.H. Leonard, Jr.

CONVENIENT EASY TERMS

115 S. MAIN

SALISBURY, N. C.

FLEMING CANDY CO.

S & P Peanut Butter Sandwiches
Our Specialty

412 W. Council St. Phone 1252 J.
SALISBURY, N. C.

Reddy Kilowatt Says

"FOR YOUR EYES SAKE"
USE THE PROPER LIGHT

DUKE POWER CO.

Mr. Lingle (At drug store): "Give me some of that prepared monacetate of salicylic acid."

Howard Hinshaw: "Do you mean aspirin?"

Mr. Lingle: "That's right! I can never think of that name."

Mrs. Carrigan: Give me an example of period furniture."

"Pat" DeMarcus: "Well, I should say an electric chair, because it ends a sentence."

The Thrill of Saving

No one is too old, too young, too rich or poor to enjoy the thrill of saving money. The habit grows stronger with time. The measure of your value to yourself and your country is the surplus accumulated from year to year.

All are treated alike at this friendly bank and we cordially invite your account, whether large or small.

MERCHANTS AND FARMERS BANK

LANDIS, NORTH CAROLINA

MEMBER OF THE FEDERAL DEPOSIT INSURANCE CORPORATION

Johnston's Furniture Co.

Home of Friendly Service

CONCORD, N. C.

PHONE 21

White Packing Co., Inc.

SALISBURY, N. C.

Ask Your Grocer for White Seal
Brand Meats, Hams, Bacon, Sausage,
and Pure Lard.

LANDIS LAUNDRY

COMPLETE LAUNDRY SERVICE

and

"PROSPERIZE" CLEANING

NEW—SCIENTIFIC

LANDIS, N. C.

PHONE 104-W

DRINK

Coca-Cola

In Sterilized Bottles

**Salisbury Coca-Cola
Bottling Co.**

Compliments of

Maxwell Bros. & Collins

CONCORD, N. C.

You Save by Trading at

BELK-HARRY'S

SALISBURY, N. C.

F. L. SMITH DRUG CO.

"The Rexall Store"

PHONE 9-39-49

KANNAPOLIS, N. C.

**BLUE MOON TOURIST
CAMP**

Modern Tourist Cabins

Complete Car Service

ON HIGHWAY 15

Thomas & Howard Co.

WHOLESALE GROCERS

SALISBURY, N. C.

Richard Menius: "No girl ever made
a fool of me."

Marietta Lee: "Then who did?"

~~~~~

Mary Sue: "Now, dear, what'll I get  
if I cook a dinner like this for you  
every day?"

Kenneth: "My life insurance."

**GROVE THEATRE**

CHINA GROVE, N. C.

*"The Best in Entertainment"*

Your Patronage is Appreciated

***Smile!***



**It's Full O'Good Cheer**

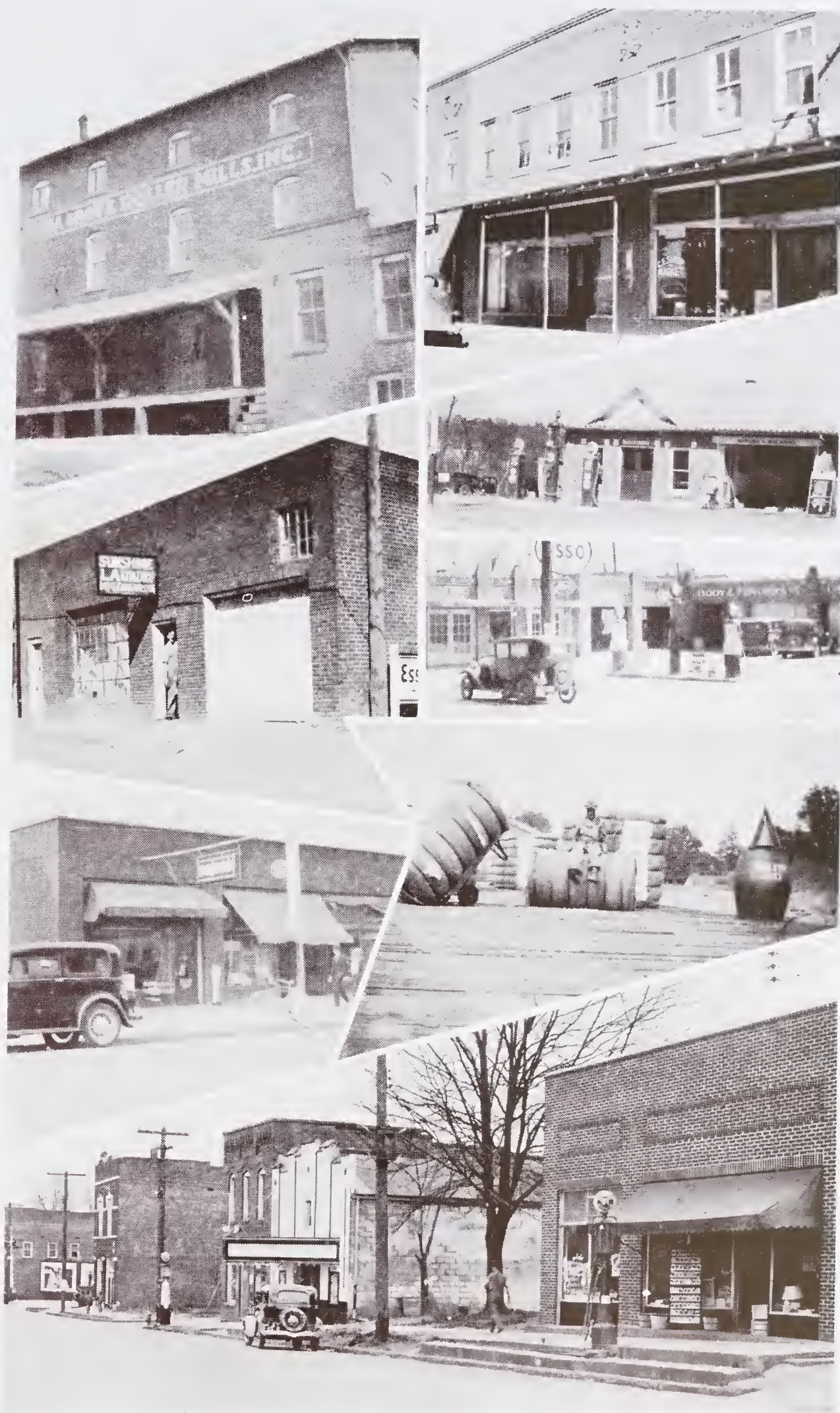
Compliments of

**The Concord Daily  
Tribune**

For Over 36 Years A Cabarrus

County Institution





*China Grove Street Scenes*



# *Autographs*































































































