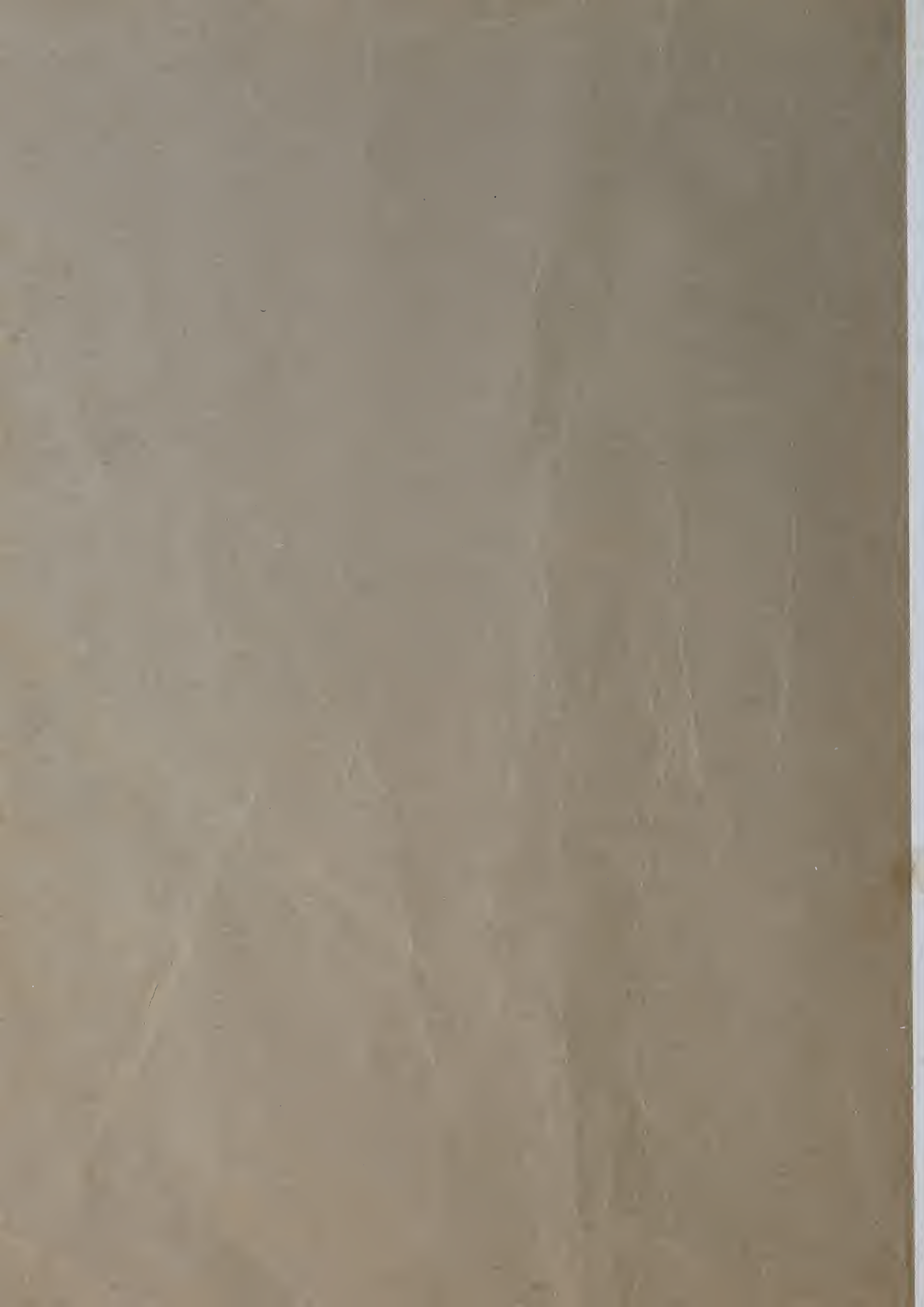




P
A
R
R
O
T
1938



The Senior Class of
CHINA GROVE HIGH SCHOOL,
CHINA GROVE, N. C.

presents the 1938 edition of



THE PARROT

*To an expectant world
we humbly give this*

VOLUME SIXTEEN

FOREWORD

Intellectual Achievement has been our theme these many years we spent in school. Why change it now, when the intellect should be our guide throughout the uncharted future?

Since our High School education is but a stepping-stone to future success, we expect to build foundations of ideas, structures of thought, and edifices of knowledge that lead to a fuller life.

—THE STAFF



DEDICATION



TO
MR. CURTIS BIVENS

Whose sincere interest, parental guidance, and extreme loyalty have endeared him forever in our hearts, we, the Senior Class of nineteen hundred thirty-eight, graciously do dedicate the
PARROT.





THE PARROT STAFF

KENNETH SHINN *Editor-in-Chief*

HERBERT CLAWSON *Junior Editor-in-Chief*

RAY CORRELL *Business Manager*

KATHLEEN CASTOR *Proof Reader*

HENRY NAU *Faculty Adviser*

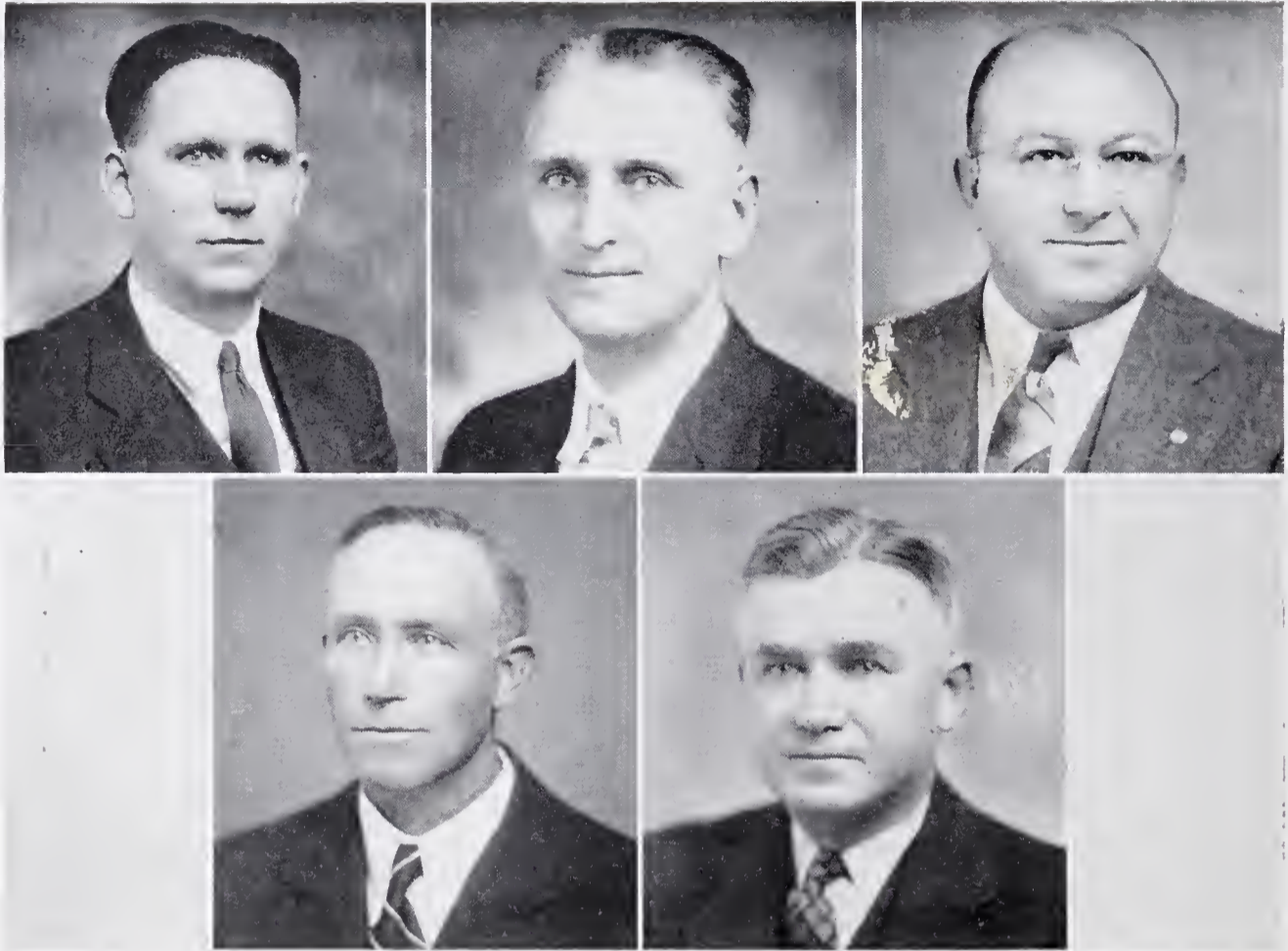


In this space, the Staff wishes to extend its most hearty thanks to Miss Rebecca Neely, Miss Kathleen Castor, and Miss Virginia Smith, whose kind help makes this publication possible.





ADMINISTRATION



THE SCHOOL BOARD

MR. W. L. COOPER

MR. K. A. SHINN

MR. W. S. FREEZE

MR. L. C. CAUBLE

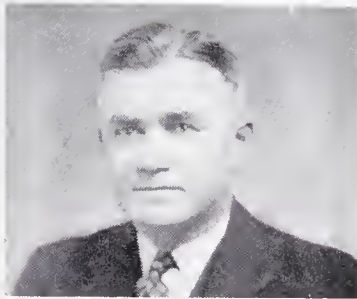
MR. CURTIS BIVENS

MR. DEWITT PATTERSON



THE FACULTY

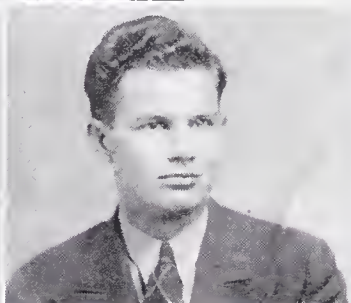
CURTIS BIVENS
A.B., Duke University
M.E., State College
English, Principal



*Here's to my
best boy friend -
I'll try to
come up and
see you
Miss Sally*

ALICE C. FISHER
A.B., Catawba College
French

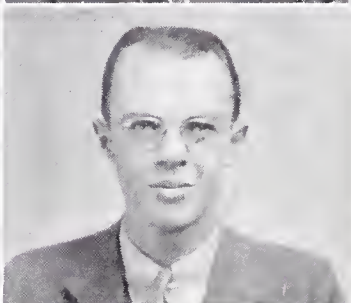
WILLIAM BOOTH
A.B., High Point College
*History, Civics
Athletics*



*It has been a
pleasure having you
in my home room
I hope to see you
back to school
William Booth*

BERTHA PILAND
A.B., Eastern Carolina
Teacher's College
M.A., Columbia University

JOHN FOX
A.B., Catawba College
Music



PAULANNA COOPER
A.B., Woman's College
University of N. C.
Mathematics

PAUL HUFFMAN
B.S., Appalachian State
Teacher's College
*Mathematics and
Science*



REBECCA NEELY
A.C.A., A.B., Bowling
Green College of
Commerce
Commercial

CHARLIE B. BROWN
B.S., N.C. State College
Vocational Agriculture



HENRY NAU
B.S., Guilford College
*Chemistry, Biology,
Mathematics, Athletics*

MARGARET BLAIR
B.S., Woman's College
University of N. C.
Columbia Graduate School
Home Economics



Paul Huffman





SENIOR CLASS

OFFICERS

GRADY LOWE *President*

KENNETH SHINN *Vice-President*

KATHLEEN CASTOR *Secretary*

CARL DAVIS *Treasurer*

COLORS: *Rainbow*

FLOWER: *Sweet Pea*

MOTTO: *"Press Onward"*

ADVISERS

MISS REBECCA NEELY

MR. JOHN FOX





Senior Mascots

JOE FREEZE AND BARBARA RITCHIE

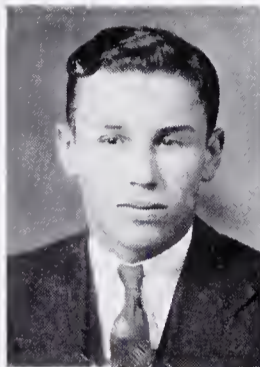
Our mascots, by far the most important and lovable in our class, have added priceless value to the thoughts that shall soon be our fondest reminiscences.

SENIORS

JAKE BARNHARDT

"Aw Shucks."

Tar Heel Farmers (1, 2, 3, 4); Physical Ed. Club (1, 2); Vice-President Tar Heel Farmers (3, 4).



MATTIE BELK

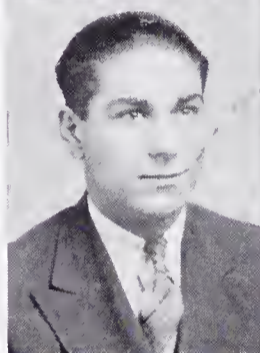
"Don't mess up my hair."

Landis High (1); Dramatics Club (2); Home Ec. (3); Glee Club (4); Cast Senior Play.

FRANK BARNHARDT

"Loan me a nickle, will you?"

Tar Heel Farmers (1, 2, 3, 4); Physical Ed. Club (1, 3); President Tar Heel Farmers (4).



HELEN BOGGS

"My boy friend went to State—"

Rockwell High (1, 2); Softball (3); Basketball (3); Glee Club (4).

HELEN BASINGER

"Will you please hush."

Girls' Athletic Club (1); Pen and Ink Club (1); Tennis Club (1); First Aid Club (2); Glee Club (2, 3, 4); French Club (4); Cheer Leader (4); Girls' Reserve (4).



VERSIE BRADSHAW

"Silence is strength."

Basketball Team (3, 4); Glee Club (4); Girls' Athletic Club (1).

LUCILLE BASINGER

"Pitch me the ball."

Girls' Reserve (1, 2); Athletic Club (2); Basketball Team (3, 4); Glee Club (3, 4).



KATHLEEN CASTOR

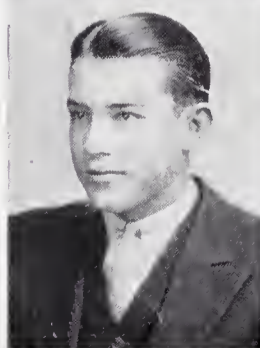
"Uh-huh, I think I can."

Glee Club (1, 2, 3, 4); Secretary of Class (2, 3, 4); Dramatic Club (2); Girls' Reserve (1); Beta Club (3, 4), Secretary (4); Mixed Quartet (4); Chief Marshal (3); Librarian (4); Double Mixed Quartet (4).

RUFUS BEAVER

"No, I am not going to Miss Piland's room."

Tar Heel Farmers (1, 2, 3, 4).



ELMA CHAPMAN

"Gosh Richard—sigh."

Dramatics Club (1, 2); Home Ec. Treasurer (3); Librarian (4).

SENIORS

RAY CORRELL

*"Walk with me outside,
Mr. Booth."*

Basketball Team (2, 3, 4); Monogram Club (3, 4); Science Club (4); President (4); Business Manager PARROT (4).



RUTH DEAL

"I'm not Ruby."

Girls' Reserve (1); Home Ec. Club (2, 3); French Club (4).



CHARLSYE CULP

"I forgot it."

Dramatics Club (1, 2); Home Ec. Club (3); Glee Club (2, 3); Librarian (4).



MARY ELLEN GOODMAN

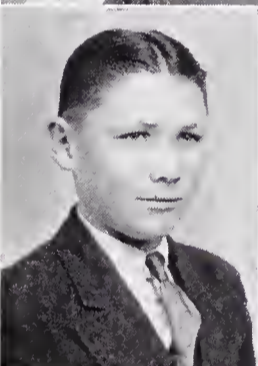
"It isn't me talking."

Glee Club (2, 3, 4); Cheer Leader (4); Assistant Marshal (3); First Aid Club (2); Tennis Club (1); Girls' Athletic Club (1).

CARL DAVIS

"Who's the guy?"

Monogram Club (4); Baseball (4); Beta Club (4); Science Club (1); Dramatics Club (1, 2, 3); Senior Play (4); Debating Team (2); Junior Rotarian.



DELMAR HODGE

"Are fiddlesticks."

Tar Heel Farmers (2, 4); String Band Club (2, 3).

GENEVA DAVIS

"Some fun—ch?"

Debating Club (1); Dramatics Club (3); Girls' Reserves (2); Science Club (4).



ANGIE ELIZABETH KIRK

"Miss Fisher likes it."

Hi Times Club (4); Home Ec. Club (2, 3); "J" Club (2).

RUBY DEAL

"I'm not Ruth."

Girls' Reserves (1); Home Ec. Club (2, 3); French Club (4).



MARGARET KOON

"I didn't know it."

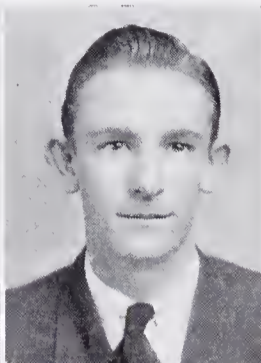
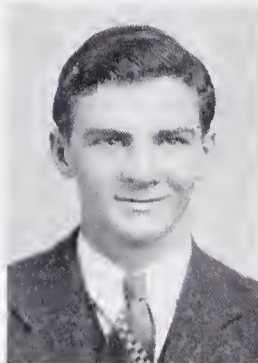
Dramatic Club (1, 2); Home Ec. (3); Hi Time Club (4); Librarian (2, 3).

SENIORS

CHARLES LEE

"Doretha's Queen."

Football (4); Science Club (3, 4).



HOY

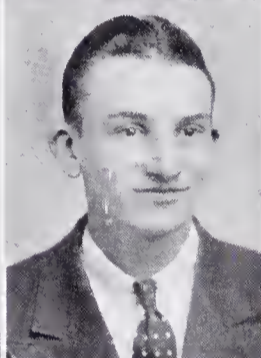
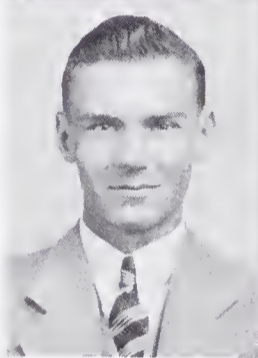
"Flat top"

Tar Heel (2, 3, 4); Football Club (3); Senior Play (4).

ROBERT LEE

"Gracious Alive."

Science Club (3, 4).



JOHN MOOSE

"Some city suits me."

Tar Heel Farmers (1, 2, 3, 4); Physical Ed. Club (2, 3).

CLAUDIA LEFLER

"I ain't going to do it."

Dramatic Club (1, 2); Poster Club (3); French Club (4); Senior Play (4).



REUBEN MORRISON

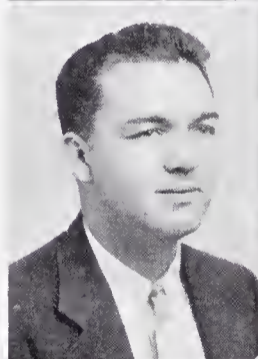
"How do 'do."

Stony Point School (1, 2, 3); Science Club (3); French Club (4).

GRADY LOWE

"Meeting come to order."

Class President (3, 4); Beta Club (3, 4), Vice-President (4); French Club (4); Junior Rotarian; Glee Club (3, 4).



HAZEL OWENSBY

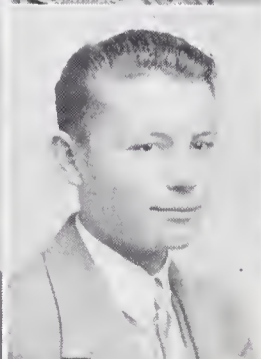
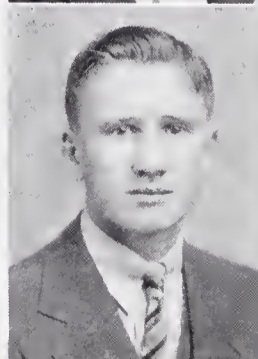
"Shut up."

Glee Club (1, 2, 3, 4); Basketball (3, 4); First Aid Club (2); Tennis Club (1); Monogram (3, 4); Assistant Marshal (3); Trio (2, 3, 4); Double Mixed Quartet (4).

RICHARD MENIUS

"Bernard's the name"

Physical Ed. Club (2); Dramatic Club (3); Treasurer (3); Hi Time Club (4); Senior Play (4); Junior Rotarian.



CLARENCE SAFRIT

"Naw, I ain't got my English."

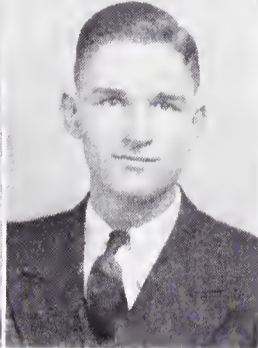
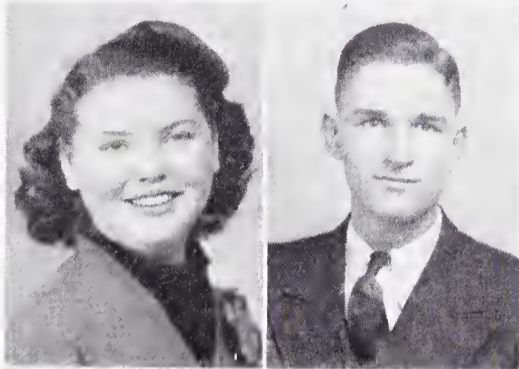
Monogram Club (4); French Club (4); Baseball (4); Physical Ed. Club (1, 2, 3).

SENIORS

FRIT

"Edgar."

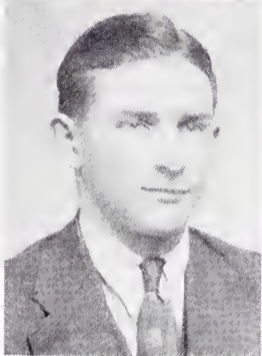
(1, 2, 3, 4);
 Club (3);
 Club (1);
 Mixed Quartet (1, 2, 3,
 4); Trio (1, 2, 3, 4);
 Sop. Solo (1, 4).



ROBERT SLOOP

"Herr 'tis."

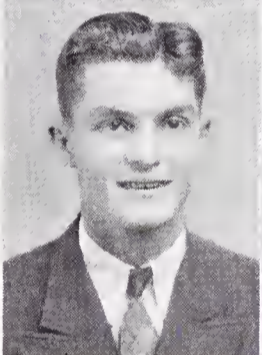
Tar Heel Farmer (1,
 2, 3, 4); Physical Ed.
 Club (3).



GILES SMITH

"Hi, Tuts."

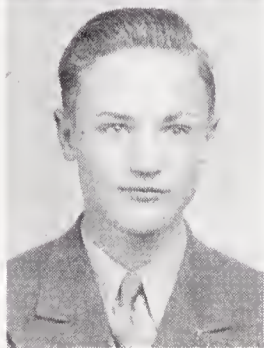
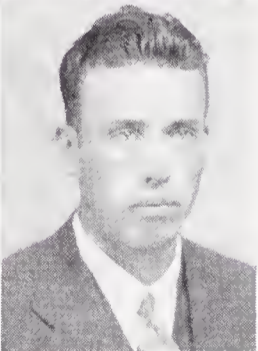
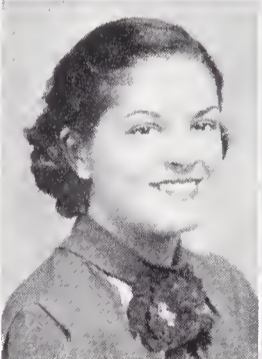
First Aid Club (2);
 Science Club (4); Cheer
 Leader (4); Basketball
 (3).



VIRGINIA SMITH

"Conquer Intellect."

Glee Club (2, 3, 4);
 Dramatic Club (1, 2);
 Beta Club (3, 4), Treas-
 urer (4); Girls' Athletic
 Club (1); Class Plays
 (1, 2); French Club Li-
 brarian (3, 4); Trio (4);
 Tennis Club (1); Double
 Mined Quartet (4).



KENNETH A. SHINN,
 JR.

"Out of gas again."

Glee Club (1, 2, 3, 4);
 Physical Ed. Club (1, 3);
 Beta Club (3, 4), Pres-
 ident (4); Basketball (2,
 3, 4); Baseball (3);
 Class President (2);
 Vice-President (3, 4);
 Cast of "Son John" (3);
 Senior Play (4); Mono-
 gram Club (2, 3, 4); As-
 sistant Editor-in-Chief
 (3); Editor-in-Chief
 (4); Chief Marshal (3);
 Double Mixed Quartet
 (4).

DOROTHY
 THOMPSON

"Gosh, how I act."

Dramatic Club (1, 2,
 3).

MARY AUSTYNE
 WAGNER

"Everything."

Vice-President (1);
 Girls' Athletic Club (1);
 Dramatic Club (1); First
 Aid Club (2); Cheer
 Leader (3); French Club
 (4); Senior Play.

BAXTER WEANT

*"I've just gotta pass
 Chemistry."*

Glee Club (2); Base-
 ball (2); String Band
 Club (2, 3).

DUARD CRESS

"Yeah-baby."

Tar Heel Farmer (1, 2,
 3, 4); Glee Club (2, 3,
 4).

SENIOR CLASS POEM

As Seniors, we sometimes think we've won:

And yet, I guess we've only begun.

We hate to part from China Grove Hi,

But our time is soon drawing nigh.

Our motto, "Press Onward," will always be

Of value for us in the future to see;

And we shall think of our high school days,

For to C. G. H. we owe all our praise.

And now to our Parents, Teachers, and Friends,

By whom we've been encouraged no end.

Guided in every thoughtful way,

We say farewell and thank you today!

—ANGIE ELIZABETH KIRK



SENIOR CLASS HISTORY

"The moving finger writes and having writ moves on, nor all your piety or wit shall lure it back to cancel half a line, nor all your tears wash out a line of it."

Just so we cannot erase one event in the history of the class of 1938. Nor would we if we could.

In the fall of 1934, approximately eighty freshmen began their high school career. Then the goal seemed far away, and at times adjustment to new situations was not so easy. Every day brought us nearer, and before we knew it we were no longer in the lowest class. Under the direction of Miss Florence Mackie and Mr. C. B. Brown we had completed our freshman year before we realized it. Our class officers were: President, Joe Frene; Vice-President, Marv Austyne Wagner; Secretary, Mary Sue Kimball; Treasurer, Ray Correll. Our motto was, "Keep fresh with the freshman spirit."

The main event in our second year was a theater party given in honor of the Seniors. We took them to see Shirley Temple in "Captain January." Miss Cooper and Mr. C. B. Brown were our advisers. We chose as our class officers Kenneth Shinn, President; Joe Frene, Vice-President; Kathleen Castor, Secretary; Ray Correll, Treasurer. Our motto this year was, "Press Onward."

In our Junior year we sponsored the Hallowe'en Carnival, which was a great success. Then we began the biggest event in our Junior year, preparing for the Junior-Senior banquet which was, "At the End of the Rainbow." The Rainbow, our class color, was carried out in the color scheme.

This year, which seemed so far in the distance when we were freshmen, has at last rolled around. This year has been a very busy one, as well as a pleasurable one.

We chose as our class officers this year: President, Grady Lowe; Vice-President, Kenneth Shinn; Secretary, Kathleen Castor; Treasurer, Carl Davis. Our motto was again, "Press Onward." Our efficient advisers were Miss Neely and Mr. Fox.

We selected as our mascots, attractive little Barbara Ritchie and Joe Freeze.

The highlights of our Senior year was the Junior-Senior Banquet held at the Yadkin Hotel, Salisbury, N. C. The evening was a unique and enjoyable one.

The sophomore class took us to see "Damsel in Distress." This was a pleasure to each of us.

The management of the Grove Theater courteously invited us to see, "Thoroughbreds Don't Cry," which was enjoyed by all.

This being our Senior year, our high school career is completed. We hope that this does not mean our life's career is completed. We hope to reach higher things in life in our future.

We being Seniors means our last year in school, also the last year in the present building. The erection of the new building will not drown the happy memories of the year spent in the old.

Indeed, we are proud of our past history and we hope that the future holds as many good things in store for us as the past has.

MARY AUSTYNE WAGNER—*Historian*
KATHLEEN CASTOR—*Compiler*

SENIOR CLASS PROPHECY

As I was sitting by the fire stirring the coals one night, I suddenly thought of my classmates of 1937-38. I said aloud, "I wish I knew what they will be doing 10 years from now."

A voice in the fire said, "I heard your wish, and if you do not take your eyes away from the fire, I will show you what they will accomplish." I consented to this, and the voice began.

"First, I see Baxter Weant. He is owner of the Greyhound bus line. Cecil Waggoner is his chief helper.

Next I see Claudia Lefler, who has charge of a large beauty shop in New York. Dorothy Thompson and Mattie Belk are assisting her.

Slowly these images fade and others appear in rapid succession. I recognize Carl Davis as Governor of the State of North Carolina.

Duard Cress and Robert Sloop are the leading farmers in Rowan County.

Charlsye Culp is in Paris studying art, and incidentally, trying to get the eye of a French Nobleman.

Geneva Davis is keeping house. I wonder who the victim is?

I see Angie Kirk acting as secretary for Mr. Cannon, owner of Cannon Mills.

Ruby and Ruth Deal are working in Ringling Bros. Circus. Their show is called, "Seeing Double."

Lucille Basinger is coaching a girls' professional basketball team known the world over. Versie Bradshaw is her star forward.

Frances Safrit is Mrs. Edgar Bostian, Jr., having given up her career as an opera singer to become a housewife.

Virginia Smith is now the Lily Pons of the opera. She is very much in demand by her adoring public.

Richard Menius is the principal at the University of China Grove, assisted by his wife, the former Miss Elma Chapman.

Ray Correll is coach of the baseball team at Duke. Clarence Safrit is his star player.

Hazel Owensby, Mary Austyne Wagner and Marv Ellen Goodman, rising young stars, are refilming the picture, "Three Smart Girls." (Watch for it at your local theater.)

Helen Basinger is at the head of the famous "Come and Get It" Cafeteria.

Grady Lowe is superintendent of the China Grove Cotton Mills.

Jake Barnhardt and Frank Barnhardt are playing baseball in the big league. They were holding back on us in High School.

Kathleen Castor and Margaret Koon are nurses at Johnston Willis Hospital, Richmond, Va.

Rufus Beaver has taken over the reins from Mr. Brown at China Grove High.

Hoyt Moose and John Moose are owners of the Rowan County Agricultural Fair.

Giles Smith quit the A.&P. business, and is "thumbing" to Hollywood, to join a certain young star.

Delmar Hodge is the leader of a hill-billy band, which has succeeded the Briarhoppers.

Jack Deal is owner of a large dairy farm in Rowan County.

Helen Boggs is manager of Rayless Chain Store in Salisbury, N. C.

Charles Lee is teaching English Grammar at State College. Bob Lee is teaching Chemistry in the same college.

Next, my own image appeared and at the same time a knock was heard at the door. I turned my head toward the door, then remembered my promise, but when I turned back, only dying coals in a black fireplace met my gaze. A voice said, "Time only will tell what the future holds for you." I will have to live to find what the future holds for me.

—KENNETH SHINN, JR.

LAST WILL AND TESTAMENT

SENIOR CLASS 1938

We, the class of 1938, now at the end of our four years of hardships, toil, and pleasure at C. G. H. S. do hereby will and bequeath some of our most highly (?) valued treasures.

To Mr. Bivens we extend our sincerest thanks for the interest that he has shown us in the past two years he has been with us. We also wish to thank him for his untiring patience during our English classes.

To the Board of Education we wish to express our appreciation for the interest it has taken in us in the last four years.

To our parents who have stood behind us and who have shown so much interest in us we leave our undying love and gratitude.

To our faculty we leave our best wishes and most sincere hope that next year they will have a better student body.

To Miss Neely and Mr. Fox, our class advisers, we leave our deepest appreciation for their wonderful guidance through our Senior year.

To the Junior Class we leave our unused Senior privileges, with the hope that they will break the ice and discover them next year.

To the Sophomore and Freshman Classes we leave our best wishes and all the wads of chewing gum they find on the campus as well as under desks.

The members of the class leave the following individual requests:

Burton Barger wills his football prowess to Mike York with the hope that he can take it.

Mattie Belk wills her blond, curly hair to Jonsie Wilhelm with the assurance that Jonsie will keep it well curled.

Reuben Morrison leaves his John Barrymore profile to Frank (Robert Taylor) Bostian and his Alfalfa Switzer ways to Hardy Poston.

To Thomas Abernathy, Charlsye Culp wills her artistic talent.

Duard Cress leaves his tenor voice to John Mabry.

Helen Boggs leaves her neatness to Hazel McNeely.

Grady Lowe wills his De Soto to any Junior boy who will bring as many students to school as he did.

The Deal Twins will their identical sameness and their ability to keep people guessing "which is who" to the Ridenhour twins.

Richard Menius leaves his courteous ways to Junior Herrin but retains the love for a certain Senior girl for himself.

Claudia Lefler leaves her dramatic ability to Dixon Blackwelder.

Giles Smith wills his hearty laugh and his ability to eat in class unnoticed to "Hub" Clawson.

Kathleen Castor wills her distinguished lady-like manners to Ruth Park.

Carl Davis wills his good English grades to Daniel Aderholt, in case he needs them next year.

Lucille Basinger wills her athletic ability to Grace Barger.

Baxter Weant leaves a few feet of his height to C. P. Safrit and his bass voice to Homer Overcash.

Margaret Koon leaves her quiet voice to Mary Eleanor Davis.

Floyd Guffy leaves his seat in English to Albert Wilhelm hoping that he will get one period of sleep undisturbed.

Dorothy Thompson leaves her ability to give readings to Pauline Cress.

Kenneth Shinn leaves his ability to attract ladies to Harold Beaver.

Robert Sloop leaves his ability to judge seeds to Elmer Shue, with the hopes that he will be able to bring back prizes to our Agriculture Department.

Hazel Owensby leaves some of her good looks and musical talent to "kid-sister" Marie.

John Moose wills his position as bus driver to James Wilhelm.

Delmer Hodge leaves his musical talent to his two younger brothers.

Mary Ellen Goodman leaves her title as "Class Flirt" to Francis Smith.

N. J. Grimes leaves his good looks and the ability to turn girls' heads in his direction to his brother Reid.

Helen Basinger leaves her faithful comb to Dorothea Patterson, provided she uses it as often as she did.

Jack Deal leaves his talkative nature and voice to Wade Clawson, provided he keeps talking all his waking hours as he did.

Hoyt Moose leaves his little-used Sociology book to Charles Earnhardt.

Elma Chapman wills her book, "How to Catch a Man," to Edith Sloop with the hope that she has as much success with it as she did.

Charles Lee leaves his handsomeness to Grier Horton.

To Frank Dennis, Rayfield Solomon wills his position on the basketball team hoping that he will help the team to be champs again next year.

Frances Safrit wills her shadow to Sybil Mundy with the hope that "he" will keep up with her as well as he has Frances.

Ray Correll leaves his athletic ability to the County Champs of next year. We hope that it is China Grove.

Clarence Safrit leaves his interest in tennis to Harold Hinshaw.

Versie Bradshaw leaves her outstanding popularity to Lavvon Belk.

Cecil Waggoner wills his courting, but not his girl, to William Bost.

Robert Lee leaves his good-ole easy ways to Edgar Bostian—calm down Edgar.

Mary Austyne Wagner wills her wise-cracking ability to Caroline Hinshaw.

Frank Barnhardt wills his good luck with the fairer sex to Earnest Honbarger.

Rufus Beaver wills his completely filled date book to Louie Owens and challenges him to break the record.

Angie Kirk leaves her winning smile and her ability to read short-hand to Kathyne Brown.

Geneva Davis leaves her interesting personality to Sarah Lou Dickerson.

Jake Barnhardt leaves his ever-ready smile to Billy Hauss.

I, Virginia Smith, having no special talent that might be worthwhile mentioning, do leave my love and best wishes to the new China Grove High School.

VIRGINIA SMITH—*Testator.*



Most Popular
HAZEL OWENSBY
KENNETH SHINN



Biggest Talkers
MARY AUSTYNE WAGNER
GILES SMITH



Best All Round
KENNETH SHINN
VERSIE BRADSHAW



Most Dignified
Most Loyal
KATHLEEN CASTOR



Most Business-like
GRADY LOWE



Most Dependable
KENNETH SHINN



Most Attractive Handsome
HAZEL OWENSBY
N. J. GRIMES



Quietest
DEAL TWINS



Most Accomplished
VIRGINIA SMITH
GRADY LOWE



Most Romantic
ELMA CHAPMAN
RICHARD MENIUS



Friendliest
MARY AUSTYN WAGNER
CHARLES LEE



Most Courteous
RICHARD MENIUS
KATHLEEN CASTOR



Thickest-Biggest Liar
GILES SMITH



Best Dressed
CHARLSYE CULP
GRADY LOWE



Laziest
MARY AUSTYN WAGNER
CHARLES LEE



Biggest Flirts
MARY ELLEN GOODMAN
GILES SMITH



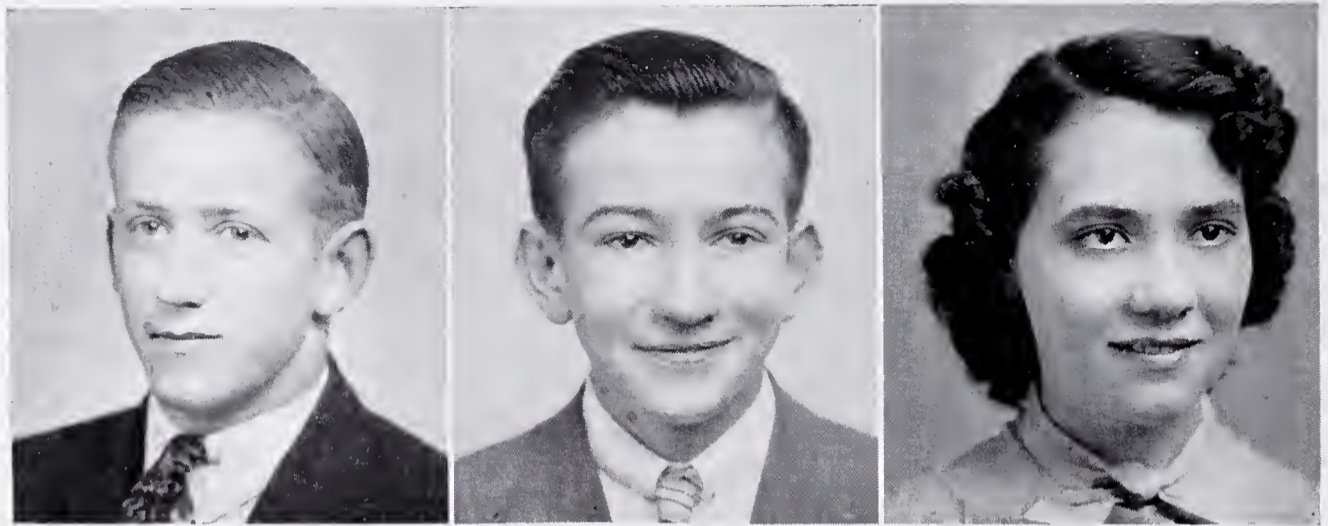
Neatest
GILES SMITH
CHARLSYE CULP



Most Athletic
RAY CORRELL



Most Athletic
LUCILLE BASINGER



THE JUNIOR CLASS PRESENTS
ITS
CLASS OFFICERS

HERBERT CLAWSON *President*
 DANIEL ADERHOLT *Vice-President*
 CAROLYN HINSHAW *Secretary*
 JUNIOR HERRIN *Treasurer*

ROLL

Edgar Baker
 Harold Beaver
 Frank Bostian
 Herbert Clawson
 John Demarcus
 Andy Dickerson
 Charles Earnhardt
 Vardell Graham
 Billy Hauss
 Don Jones
 Homer Overcash
 Louie Owens
 David Sechler
 Elmer Shue
 Frank Shue
 Albert Wilhelm
 James Wilhelm
 Mike York
 Thomas Abernathy

Daniel Aderholt
 Frank Dennis
 Daniel Graham
 Junior Herrin
 Grier Horton
 Harry Morrison
 G. W. Walter
 Layvon Belk
 Ruth Berry
 Ruth Bost
 Claretta Bostian
 Kathryn Brown
 Dorothy Brown
 Fay Cress
 Hazel Davis
 Frances Goodnight
 Kathleen Goodnight
 Thelma Goodnight
 Carolyn Hinshaw

Mae Nell London
 Virginia Lowder
 Maxine Lumsden
 Freda Park
 Ruth Park
 Minnie Parker
 Frances Phillips
 Mary Seymour
 Lois Shue
 Mary Shuffler
 Ethel Sloop
 Frances Smith
 Mary Stiller
 Sally Lee Turrentine
 Jonsie Wilhelm
 Pearl Wilhelm
 Violet Winecoff
 Miriam Wilson
 Edith Wyatt
 Evelyn Shue

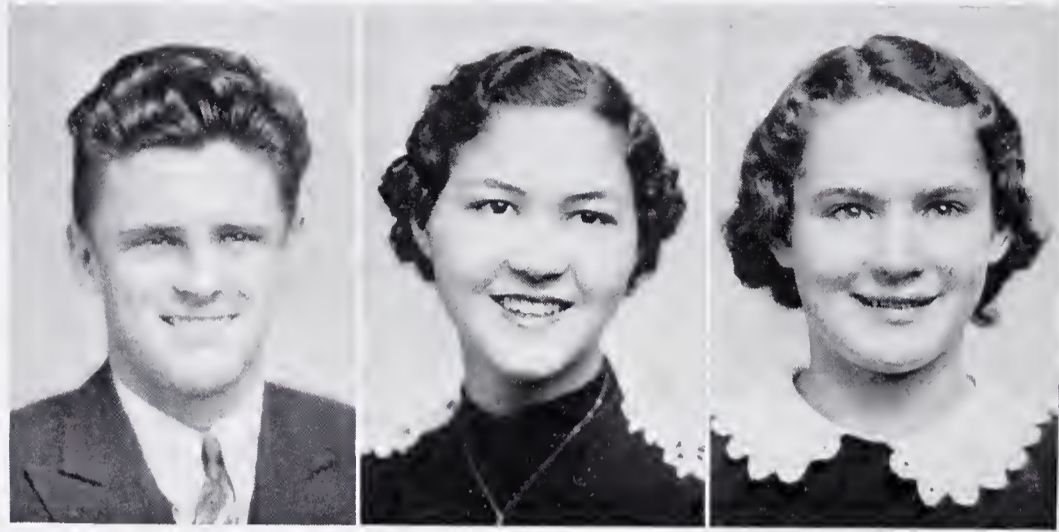
Here is the Junior Class, the new Seniors that are to be the first to graduate from the new C. G. H. S. As a unit, they present a band of promising citizens of which we shall have no need of shame. Under the guidance of its faculty advisers, Miss Piland and Mr. Brown, the class will soon win laurels of intellectual achievement—the purpose of any educational system.





JUNIOR CLASS





THE SOPHOMORE CLASS PRESENTS
ITS
CLASS OFFICERS

EARNEST HONBARGER *Boys' President*
KATHLEEN DEMARCUS *Girls' President*
VIRGINIA STIREWALT *Class Secretary*

CLASS ROLL

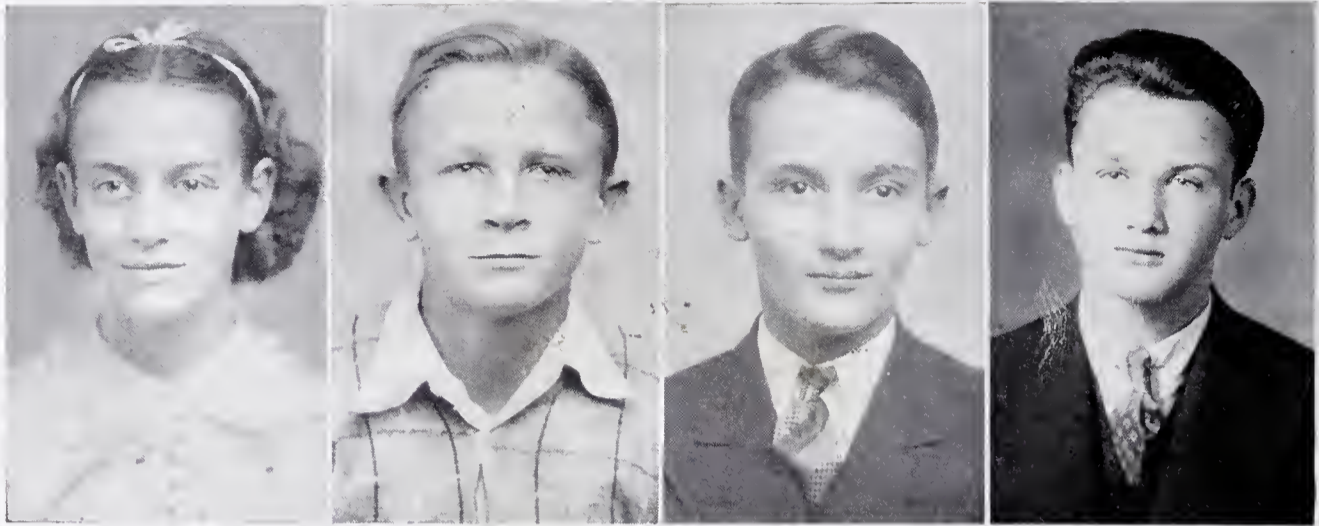
Ethel Baker	Loree Honeycutt	Mary Thomas	Robert Goodman
Ruth Baker	Margaret Jordan	Sadie Wallace	Lawrence Goodnight
Mary Baker	Phyllis Karriker	Maxine Watson	Arthur Hampton
Ruby Berry	Helen Koon	Frances Wilhelm	Robert Henderson
Dixon Blackwelder	Willie Koon	Marie Wilhelm	Harold Hinshaw
Lucille Bost	Alice Lewis	Barbara Yost	Claude Hodge
Weldon Bradshaw	Nell Melchor	Eloise Lippard	Robert Hodge
Hazel Broome	Catharine Miller	Frank Barger	Earnest Honbarger
Helen Castor	Sybil Mundy	Linn Barnhardt	Duwan Johnston
Bonnie Correll	Hazel Nicholson	J. B. Beaver	John Mabry
Willie Mae Cowan	Helen Overcash	Roscoe Boger	John Miller
Mary Cranford	Viola Owens	Raymond Boggs	John Misenheimer
Catharine Curlie	Hope Park	William Bost	Thomas Overcash
Dorothy Davis	Louise Pirie	Edgar Bostian	Hubert Patterson
Ethel Davis	Mildred Rogers	Harold Carter	Hardin Poston
Kathleen DeMarcus	Lucille Safrit	Wade Clawson	Howard Poston
Doris Duncan	Mable Schillinglaw	Osear Correll	Albert Sloop
Kathleen Evans	Doris Sloop	Cecil Dial	Earl Speck
Helen Faggart	Nola Solomon	T. R. Eller	Herman Weant
Ruby Fesperman	Virginia Stirewalt	William Fesperman	Olin Weaver
Viola Herring	Alma Lee Swink	John Fisher	Wade Rogers

We can notice a decided change for the better in our Freshman Class of '36. Under the heads of the genial presidents, Earnest Honbarger and Kathleen Demarcus, and under the guidance of Miss Blair and Mr. Nau, the class of '40 is well on its way toward the theme of our entire educational set-up. Not only has this class grown in physical stature, as you will notice by the picture, but it has also grown in mind and in spirit.



SOPHOMORE CLASS





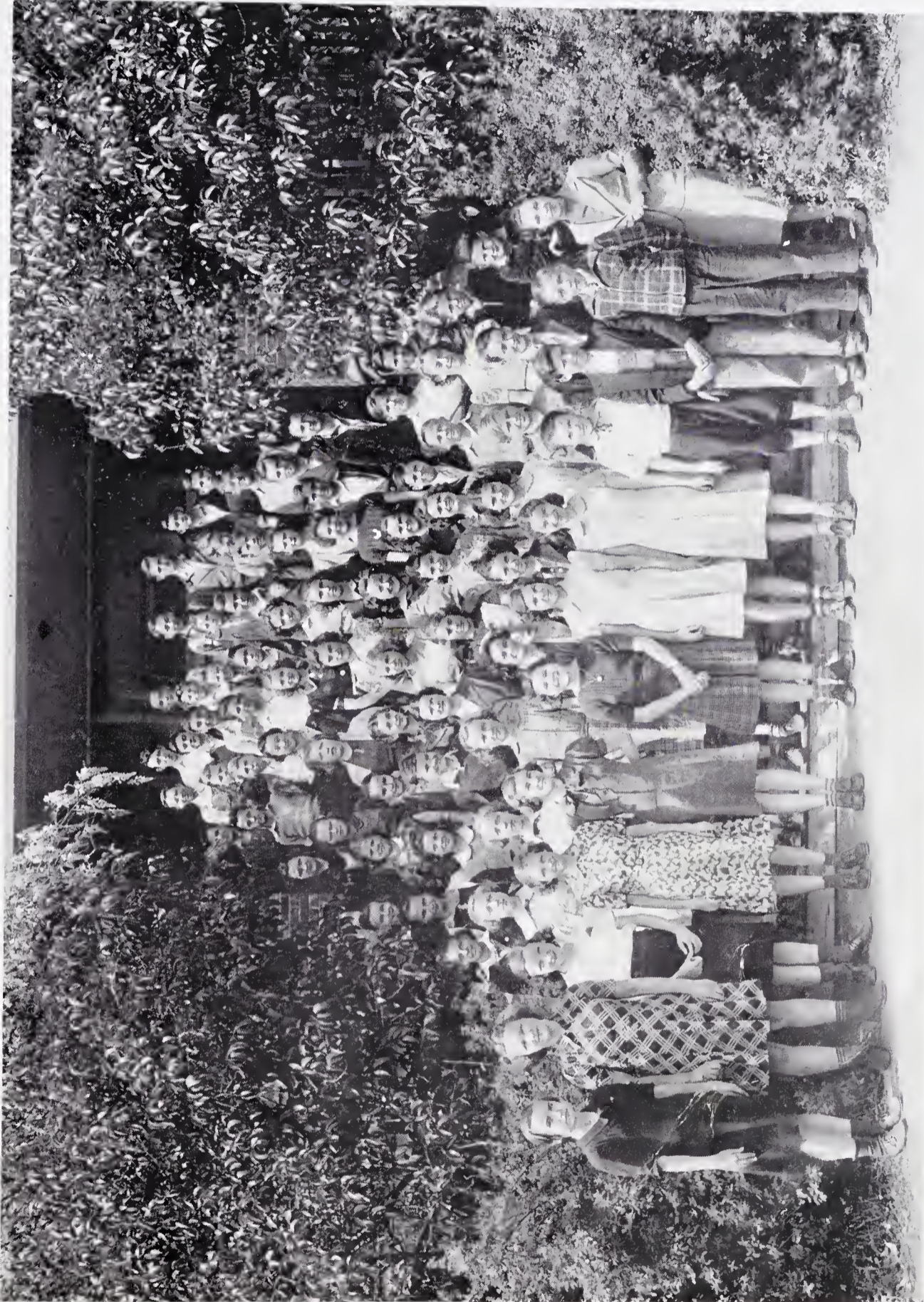
THE FRESHMAN CLASS PRESENTS
ITS
CLASS OFFICERS

EDITH SLOOP *President*
 J. C. MACDONALD *Vice-President*
 MAX MISENHEIMER *Secretary*
 REID GRIMES *Treasurer*

ROLL

Hazel McNeely	Mairs Williams	Harold Boger	Grady Wilhelm
Bessie McCombs	Vera Wilson	David Cress	Earnest Weaver
Ruby McCoy	Nannie Wood	Paul Freeze	Mary Alexander
Christine McDonald	Annie Taylor	Francis Cauble	Lois Atwell
Marie Miller	Cecil Herrin	Earnestine McCombs	Connie Bailey
Thelma Morrow	Glen Brown	James Nesbit	Grace Barger
Juanita Overcash	Roy Kimball	Lloyd Owens	Dorothy Barnhardt
Marie Owensby	Billy Broome	Willard Overcash	Mary Beaver
Dorothea Patterson	J. C. McDonald	Henry Overcash	Lon Bostian
Adelaide Ridenhour	Reid Grimes	Paul Overcash	Dorothy Carrouth
Alice Ridenhour	Benard Bost	Thurmon Poston	Wilma Cooper
Gladys Roberts	Max Misenheimer	William Readling	Pauline Cress
Lula Safrit	Bill Cranford	Robert Rector	Mary Davis
Nora Shuffler	Ben Beaver	Harold Rogers	Sarah Diekerson
Evelyn Sides	Frank Miller	Billie Rary	Evelyn Freeze
Dorothy Sloop	Clifford Davis	Howard Shue	Mildred Goodnight
Edith Sloop	C. B. Jones	Junior Sloop	Sarah Goodnight
Ruth Smith	Charles Basinger	Wayne Simpson	Virginia Grimes
Margaret Vanderford	Leonard Litaker	C. P. Safrit	Novella Guffy
Margaret Watkins	Arnold Barnhardt	Louis Seymour	Doris Harrell
Nellie Watson	John Belk	Bobby Ward	Opal Horton
			Bessie Koon

Here is the raw material that is soon to be molded into the crucible of High School Education. It is the most promising group that has ever entered our school. Soon, we all expect in the fondest hopes, to see this group turned out into the world—to conquer it with faith, love, and intellect.



FRESHMAN CLASS



THE 1938 PARROT



Best All Round
RUTH PARK
HERBERT CLAWSON



Most Attractive Handsome
MARIE OWENSBY
EARNEST HONBARGER



Biggest Flirts
FRANCES SMITH
WADE CLAWSON



Most Independent
DANIEL ADERHOLT



Most Loyal
JUNIOR HERRIN



Most Accomplished
EDGAR BOSTIAN



Most Popular
Most Businesslike
HERBERT CLAWSON



Most Athletic
GRACE BARGER
HERBERT CLAWSON



Most Romantic
JONSIE WILHELM
EARNEST HONBARGER



Best Dressed
HAZEL McNEELY
HERBERT CLAWSON

THE 1938 PARROT



Biggest Talker
NELL MELCHOR



Most Dignified
MAX MISENHEIMER



School Baby
C. P. SAFRIT



Most Courteous
RUTH PARK



*You've Heard It -
Now You See It*
PAUL HUFFMAN



Most Handsome
WILLIAM BOOTH



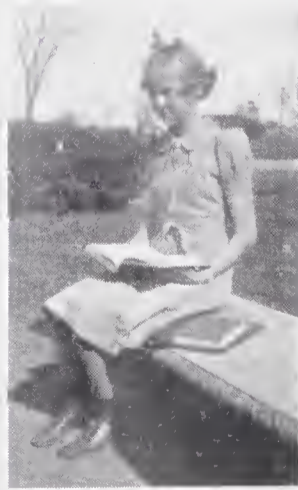
Quietest
CLIFFERT DAVIS



Cutest
DAVID CRESS



Most Contemplative
GRACE BARGER



Most Studious
HOPE PARK

CANDIED PEEKS IN SCHOOL LIFE



SARY LOU



"SONG OF SONGS WILHELM"



MOTHER OF MILK



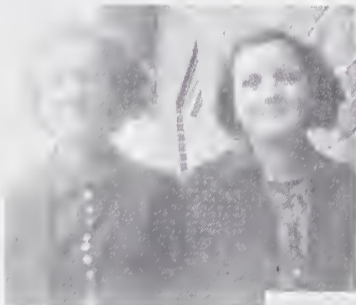
STUDIOUS BAKER



THREE ON A BAT



WILLIE



SUNRISE • SUNSET



SELF CONSCIOUS



P. W. A



HURRY UP, YOU'VE GOT TO PICK COTTON





ACTIVITIES





GLEE CLUB

SOPRANO

Kathleen DeMarcus
Carolyn Hinshaw
Frances Safrit
Bonnie Correll
Virginia Smith
Maxine Watson

Viola Owens
Mattie Belk
Doris Duncan
Marie Owensby
Dorothea Patterson
Helen Boggs
Pauline Cress

Mary Baker
Ruth Park
Alice Ridenhour
Juanita Overcash
Aetaide Ridenhour
Hazel McNeely
Edith Sloop

Sybil Mundy
Lucille Safrit
Helen Basinger
Mary Ellen Goodmar
Kathleen Castor
Nanny Wood

ALTO

Lou Bostian
Gladys Roberts

Grace Barger
Alma Lee Swink
Hazel Owensby

Violet Winecoff
Lucille Basinger
Versie Bradshaw

Annie Taylor
Frida Park

TENOR

John Mabry
Duard Cress
Max Misenheimer

Billy Hauss
Glenn Brown
J. C. McDonald

Thurmon Poston
Lloyd Owens
David Cress

Billy Broome
Grady Lowe
Frank Bostian

BASS

Baxter Weant
Wade Rogers

Charles Earnhardt
Louie Owens
John DeMarcus

Billy Eller
Kenneth Shinn
Herbert Clawson

Homer Overcash
James Wilhelm

ACCOMPANISTS

Edgar Bostian

Frances Safrit

DIRECTOR

John Fox



BETA CLUB

OFFICERS

- KENNETH SHINN *President*
 GRADY LOWE *Vice-President*
 KATHLEEN CASTOR *Secretary*
 VIRGINIA SMITH *Treasurer*
 PAULANNA COOPER *Faculty Adviser*

ROLL

- | | | | |
|------------------|----------------|-----------------|----------------|
| Thomas Abernathy | Virginia Smith | Carl Davis | Violet Wincoff |
| Grady Lowe | Kathryn Brown | Ruth Park | Kenneth Shinn |
| Kathleen Castor | Junior Herrin | Carolyn Hinshaw | |

The National Honorary Beta Club is a non-secret-scholarship-service organization for high school students of America. Its purposes are: to encourage scholarship, to promote character, and to stimulate leadership qualities among its members.

We are proud of our Beta Club. We are certain that they are the leaders in our school and the lights of the generations to come.





SCIENCE CLUBS

NEWTONION ORDER

ROLL

Earl Speck
J. B. Beaver
J. Misenheimer
A. Henderson
R. Goodman
Wm. Bost
Harold Carter

N. Reading
L. Seymour
Cecil Herrin
Carl Davis
Robert Lee
T. R. Eller
W. Overcash

C. Kimball
Billy Rary
Ray Correll
Harold Beaver
Giles Smith
E. Honbarger
Herman Weant

Raymond Boggs
Charles Lee
R. Solomon
Burton Barger
Henry Nau
(Faculty Adviser)



CURIAN ORDER

ROLL

Thelma Morrow
Mary Cranford
Marie Wilhelm
Margaret Watkins
Sarah Dickerson
Mary Beaver

Mavis Williams
Christine Macdonald
Jonsie Wilhelm
Dorothy Carrouth
Wilma Cooper
Connie Bailey

Mary Alexander
Dorothy Cranford
Catharine Curlie
Mary Thomas
Ruby Fesperman
Viola Herring

Loree Honeycutt
Virginia Grimes
Geneva Davis
Paul Huffman
(Faculty Adviser)



YOUNG TARHEEL FARMERS

ROLL

Junior Sloop
Wayne Simpson
L. Litaker
Don Jones
Grady Wilhelm
Edgar Baker
C. B. Jones
John Belk
Francis Cauble

Harold Boger
John Moose
Cecil Waggoner
Jack Deal
James Nesbit
Ben Beaver
A. Barnhardt
Robert Rector
Bobbie Ward

Howard Shue
Albert Sloop
Earnest Weaver
Frank Barnhardt
Duard Cress
Hoyt Moose
John Miller
Robert Sloop
Rufus Beaver

Harold Rogers
Frank Miller
Cliffert Davis
Hubert Patterson
Lawrence Goodnight
Paul Freeze
Frank Shue
Mr. Brown
(Faculty Adviser)



SEW WELL CLUB

ROLL

Helen Faggart
Louise Pirie
Hope Park
Mable Schillinglaw

Francis Wilhelm
Helen Castor
Helen Overcash
Helen Koon

Margaret Jordan
Bessie Koon
Willie Koon

Miss Blair
(Faculty Adviser)
Barbara Yost
Dorothy Davis





DRAMATICS CLUB

ROLL

Nell Melchor
Mary Seymour
Doris Harrell

Nellie Watson
Edith Wyatt
Evelyn Sides

Mary Shuffler
Evelyn Shue
Willie Cowan

Phyllis Karriker
Hazel Broome
Bertha Piland
(Faculty Adviser)



PEN AND INK CLUB

REPORTERS

Margaret Koon
Charlsye Culp

Junior Herrin
Harold Hinshaw

G. W. Walter
Frank Barger

Richard Menius
Elma Chapman
Harry Morrison

DANIEL ADERHOLT

THOMAS ABERNATHY

WADE CLAWSON

FRANK DENNIS

MIKE YORK

ANGIE KIRK

..... Editor-in-Chief

..... Assistant Editor-in-Chief

..... Society Editor

..... Humor Editor

..... Sports Editor

..... Typist



FRENCH CLUB

ROLL

Helen Basinger
Sally Turrentine
Mary Wagner
Virginia Lowder

Fay Cress
Kathryne Brown
Ruby Deal
Ruth Deal

Claudia Lefler
Clarence Safrit
Virginia Smith
Reuben Morrison

N. J. Grimes
Miss Fisher
(Faculty Adviser)



MONOGRAM CLUB

ROLL

Earl Speck
Clarence Safrit
Mike York
Harold Beaver
Frank Barger
Herbert Clawson
Billy Eller
Kenneth Shinn

Louie Owens
Carl Davis
Glenn Brown
Charles Lee
Albert Wilhelm
Ray Correll
Hazel Owensby
Virginia Stirewalt
Pat DeMarcus

Grace Barger
Edith Sloop
Bucky Piland
Viola Owens
Helen Boggs
Henry Nau
Burton Barger
David Seehler
Earnie Honbarger

Alma Lee Swink
John DeMarcus
Versie Bradshaw
Violet Wincoff
Baxter Weant
N. J. Grimes
Ray Solomon
William Booth



SPORTS



FOOTBALL SQUAD

The football squad, under the tutorship of Mr. Nau, has made some decided steps toward building a winning ball club, although the record of this season was much the same as that of last year. Competition this year was unusually high, including such formidable foes as Kannapolis, Thomasville, Spencer, Mocksville, the traditional foe, Rockwell, Cleveland, Badin, Winston-Salem. China Grove came out on the wrong side of the ledger for all but two games, successfully squelching Rockwell, and fighting the powerful Spencer aggregation to a standstill.

The work on the team this year was greatly helped by the captaincy of Herbert Clawson, who was later injured in the Cleveland game that necessitated his staying out for the remainder of the season. Ray Correll, quarterback, and the spark plug of the team, did some exceptionally fine work on the gridiron. Every member of the squad added much to the spirit of sports, that seemed, for a time at least, to be on the down grade.

THE SQUAD

BILL CRANFORD	<i>Fullback</i>	EARNEST HONBARGER	<i>Halfback</i>
JOHN DEMARCUS	<i>End</i>	BURTON BARGER	<i>Fullback</i>
CHARLES LEE	<i>Tackle</i>	RAY CORRELL	<i>Quarterback</i>
HAROLD BEAVER	<i>Guard</i>	"HUB" CLAWSON	<i>Halfback</i>
MIKE YORK	<i>Center</i>	BILL ELLER	<i>Halfback</i>
FRANK BARGER	<i>Guard</i>	HAROLD CARTER	<i>Guard</i>
ALBERT WILHELM	<i>Tackle</i>	JACK RARY	<i>End</i>
N. J. GRIMES	<i>End</i>	HARRY CRESS	<i>Tackle</i>
WILLIAM BOST	<i>Guard</i>	HENRY NAU	<i>Coach</i>

THE 1938 PARROT



HAROLD BEAVER
Tackle

HERBERT CLAWSON
Halfback

RAY CORRELL
Quarterback

BURTON BARGER
Fullback

BILL ELLER
Halfback

ALBERT WILHELM
Tackle

CHARLES LEE
Tackle

MIKE YORK
Center

FRANK BARGER
Guard

EARNEST HONBARGER
Halfback

N. J. GRIMES
End





THE COUNTY CHAMPIONS

The Basketball Team of our High School won the Rowan County championship. Under the able William Booth the team built up an astounding record that is the envy of every basketball team in this section of the country. Time after time, when the going was pretty tough, the school could depend upon rangy Rayfield Solomon, chubby Ray Correll, Clawson, Owens, and John Demarcus. After the bacon was well in hand, the "subs" generally finished the fight with added form and color. Manager Brown added his inspiration to the club that helped to bring them out on top in each conference contest.

RESULTS

Mt. Ulla14	C.G.H.S.28	Mt. Ulla21	C.G.H.S.37
Cleveland 9	C.G.H.S.33	Cleveland20	C.G.H.S.35
Woodleaf18	C.G.H.S.31	Woodleaf21	C.G.H.S.35
Landis 5	C.G.H.S.19	Landis 8	C.G.H.S.33
Rockwell33	C.G.H.S.30	Rockwell21	C.G.H.S.26
Granite Quarry...14	C.G.H.S.40	Granite Quarry...28	C.G.H.S.55

FOR THE COUNTY CHAMPIONSHIP

Rockwell—17.....C. G. H. S.—19

THE SQUAD

DAVID SECHLER <i>Sub Guard</i>	JOHN DEMARCUS <i>Center</i>
BURTON BARGER <i>Sub Forward</i>	LOUIE OWENS <i>Guard</i>
EARNEST HONBARGER <i>Sub Guard</i>	N. J. GRIMES <i>Forward</i>
FRANK DENNIS <i>Sub Guard</i>	HERBERT CLAWSON <i>Guard</i>
GLENN BROWN <i>Manager</i>	RAY SOLOMON <i>Forward</i>
WILLIAM BOOTH <i>Coach</i>	RAY CORRELL <i>Guard</i>



JOHN DEMARCUS
Center

RAY CORRELL
Guard

EARNEST HONBARGER
Guard

LOUIE OWENS
Guard

RAYFIELD SOLOMON
Forward

WILLIAM BOOTH
Coach

N. J. GRIMES
Forward

FRANK BOSTIAN
Guard

HERBERT CLAWSON
Guard

BURTON BARGER
Forward

GLENN BROWN
Manager
DAVID SECHLER
Guard





GIRLS' BASKETBALL

Never was the court visited by a team that showed more spunk and spirit than this year's girls' team. Although the girls were small in stature as compared to their opponents, they succeeded time after time in whipping them down to their own size, and then looping the ball through the basket at will. All the girls played fine ball. The marksmanship of Hazel Owensby did much to bring our girls through to victory. Lucille Basinger, no doubt, was the most consistent player through the year. Grace Barger filled the court with ever-ready fight at all times. Miss Piland, too, gave much fight to those surrounding her and made the spectacle of a girls' basketball game still more entrancing.

RESULTS

Granite Quarry ...18	C.G.H.S.22	Granite Quarry ...36	C.G.H.S.25
Mt. Ulla33	C.G.H.S.31	Mt. Ulla39	C.G.H.S.35
Cleveland29	C.G.H.S.34	Cleveland20	C.G.H.S.39
Woodleaf33	C.G.H.S.38	Woodleaf32	C.G.H.S.55
Landis27	C.G.H.S.17	Landis27	C.G.H.S.25
Rockwell20	C.G.H.S.24	Rockwell21	C.G.H.S.37

THE SQUAD

GRACE BARGER*Guard*
 ALMA LEE SWINK*Guard*
 HAZEL OWENSBY*Forward*
 LUCILLE BASINGER*Forward*
 VERSIE BRADSHAW*Forward*

EDITH SLOOP*Guard*
 VIRGINIA STIREWALT*Guard*
 PAT DEMARCUS*Forward*
 VIOLA OWENS*Guard*
 BERTHA PILAND*Coach*

THE 1938 PARROT



PAT DEMARCUS
Forward

HAZEL OWENSBY
Forward

ALMA LEE SWINK
Guard

GRACE BARGER
Guard

VERSIE BRADSHAW
Forward

LUCILLE BASINGER
Forward

VIRGINIA STIREWALT
Guard

VIOLA OWENS
Guard

EDITH SLOOP
Guard





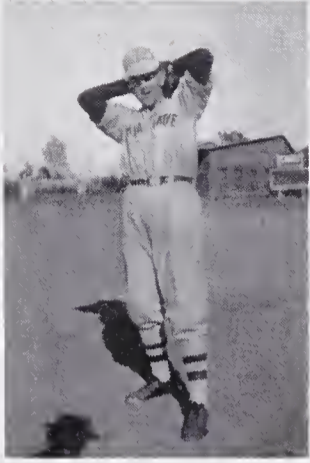
BASEBALL

Here you see the new China Grove Nine, all decked out in the new uniforms that it has been longing for these many years. So far C. G. H. S., under the baton of William Booth, has played but four games. Due to a streak of evident hard luck, our boys bowed to the Thomasville nine 9-6, to East Speneer 18-11, to Hartsell 6-5 in a 12-inning melee, and managed to submerge the Granite Quarry nine by a 9-3 score. The team expects to come out in a fifty-fifty way. Most of the players are unseeded. So far, some nice playing has been exhibited by Shortstop Ray Correll, Centerfielder Burton Barger, and by Moundsman Albert Wilhelm. The subsequent schedule will include such competition as Concord, Mocksville, Woodleaf, Roekwell, and a group of others. Our best wishes are extended to this, our new team, for success in every way.

DUARD CRESS*Outfield*
 RAY CORRELL*Shortstop*
 ALBERT WILHELM*Moundsman*
 CARL DAVIS*Outfield*
 N. J. GRIMES*First Base*
 CLARENCE SAFRIT*Second Base*
 BURTON BARGER*Outfielder*
 BILL CRANFORD*Trainer*
 WILLIAM BOOTH*Coach*

HAROLD BEAVER*Outfielder*
 MIKE YORK*Catcher*
 FRANK BARGER*First Base*
 JOHN DEMARCUS*Moundsman*
 BAXTER WEANT*Catcher*
 LOUIE OWENS*Moundsman*
 HARRY MORRISON*Outfielder*
 GLENN BROWN*Manager*
 JACK RARY*Third Base*

THE 1938 PARROT



BURTON BARGER
Outfielder

ALBERT WILHELM
Pitcher

RAY CORRELL
Shortstop

CLARENCE SAFRIT
Second Base

FRANK BARGER*First Base*
HAROLD BEAVER*Outfield*
N. J. GRIMES*First Base*

MIKE YORK*Catcher*
LOUIE OWENS*Pitcher*
CARL DAVIS*Outfielder*

JACK RARY*Third Base*
JOHN DEMARCUS*Pitcher*

WILLIAM BOOTH
Coach

BAXTER WEANT
Catcher



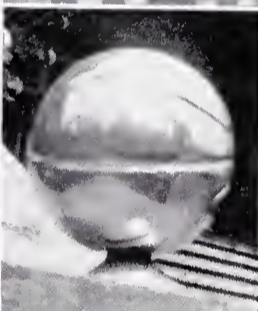
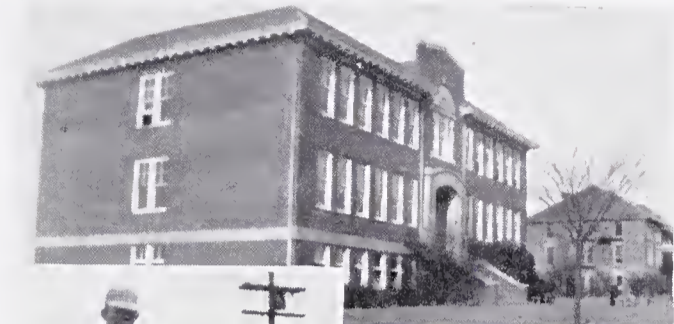


AS THIRD GRADERS

This is our Senior Class 'way back in 1929. After seeing this picture, we all break down and begin to believe in evolution. If you look closely you will see yourself as you were before you became a dignified Senior. Appearing here we see Louie Owens before he became the biggest politician, Hazel Owensby, Mary Ellen Goodman, Frances Safrit, Ray Correll, Kenneth Shinn, Charlsye Culp, Mattie Belk, and Nell Melchor. If anyone else is there, see Louie Owens and he will identify you.

This reminds us of the day that Kenneth Shinn shot Hazel Owensby smack on the head with a bean shooter, and Mrs. Rankin really tanned his hide—right in front of the class, too. Also one time Ray Correll was shooting marbles with Mattie Belk and Frances Safrit. Ray fudged a little, won all the marbles. They say, or at least the rumor persists that the girls slapped his sassy face. Louie Owens used to leave school at the end of the first period for at least the first few days in grade three. He lied out of it by saying that someone told him school would be over when the bell rang. The rest of them might have been fools enough to stay after school was over at the end of the first period—but not Louie. One time someone misplaced Nell Melchor's book. She still maintains that she would have graduated this year instead of 1940 had not someone removed that precious reading book from its duly appointed place. Back in 1929 Hazel Owensby would slap you down if you called her pretty, today she picks you up— My, my—um um—times sure do change, eh what.

THE 1938 PARROT



THE 1938 PARROT

Compliments

of

BELKS

Kannapolis, N. C.



There comes a time in every man's life when it will mean a good deal to him to have the recommendation or endorsement of a good bank.

IF HE IS FAVORABLY KNOWN at the bank, he has a distinct advantage over the man who is not.

YOUR REPUTATION is what you have made it through the years of honest dealing, and your disposition to meet your obligations promptly.

THE BANK OF CHINA GROVE

CHINA GROVE, NORTH CAROLINA

MEMBER OF THE FEDERAL DEPOSIT INSURANCE CORPORATION
MAXIMUM INSURANCE FOR EACH DEPOSITOR \$5,000.00

THE ROWAN COUNTY BUILDING & LOAN ASSOCIATION

CHINA GROVE, NORTH CAROLINA

This Building and Loan Association's business is mutual.

Members save money together.

They lend to each other.

They divide profits among themselves.

They work to help each other.

Our shares are good investments and pay good dividends.

Come in and we will talk it over.

UNDER STATE SUPERVISION

McL. RITCHIE, *President*

C. C. GRAHAM, *Sec'y-Treasurer*

HANFORD'S FLOWERS

Sold at

THE FLOWER SHOP

(Next to Capitol Theater)

Phone 381 Night Phone 382

SALISBURY, N. C.

Call us about our excellent delivery service to China Grove and vicinity

FLOUR, FEED and MEAL

China Grove Roller Mill

CHINA GROVE, N. C.

You Save by Trading at

BELK - HARRY'S

SALISBURY, N. C.

W. H. LEONARD, Jr.

Diamonds, Watches, Jewelry

CONVENIENT EASY TERMS

115 S. Main Salisbury, N. C.

Meet your friends at

PHILLIPS DRUG CO.

Dependable Drugs

CHINA GROVE, N. C.

HART'S

China Grove's New Drug Store

This is the store that brought down high prices on drugs in China Grove

(Opposite Post Office)

Drink

COCA-COLA

In Sterilized Bottles

Salisbury Coca-Cola

Bottling Co.

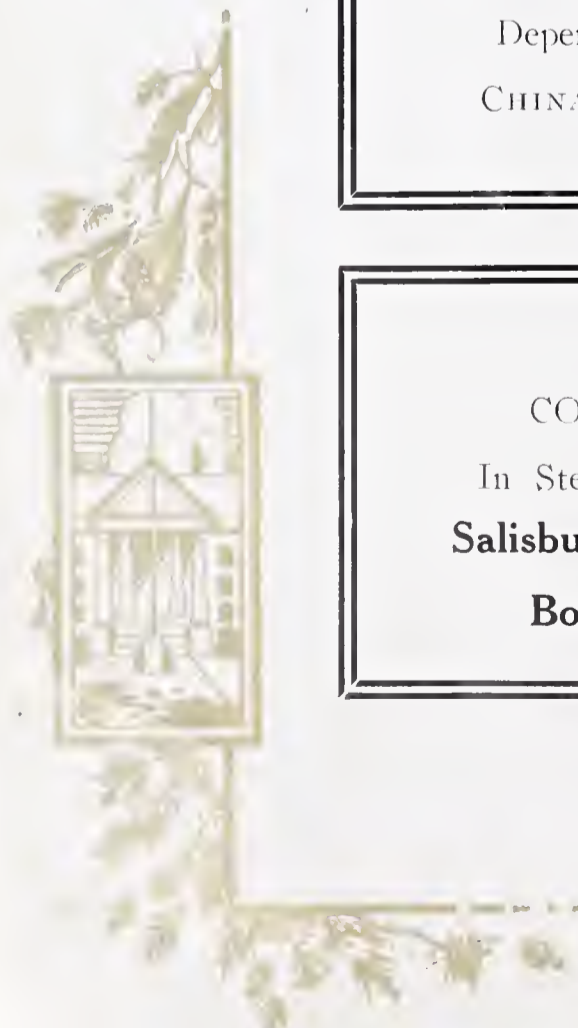
EDDLEMAN & SONS

GROCERIES and MEATS

ICE and FEED

Phone 15

CHINA GROVE, N. C.



Compliments of

GROVE THEATER

CHINA GROVE, N. C.

Compliments of

FAMILY SHOE STORE

Fine Shoes and Hosiery

SALISBURY, N. C.

MR. NAU: Who was the young lady
I saw you with last night, John?

MR. FOX: She wasn't a lady, she is
my wife.

Compliments of

Green Frog

CHINA GROVE, N. C.

SCIENCE

has so developed the industry that
**THE LAUNDERING and DRY
CLEANING OF CLOTHES**
has now become a profession

We Are Specialists—
and you will find the most modern
equipment in our plant—this
enables us to give you

SUPERIOR SERVICE

At All Times

A Trial Bundle Sent to Us Will Make
You Our Friend for Life

**SUNSHINE LAUNDRY
& DRY CLEANING**

CHINA GROVE, N. C.
Phone 35

Compliments of

The Smoke Shop

218 S. Main Street
SALISBURY, N. C.

White Packing Co., Inc.

SALISBURY, N. C.

Ask Your Grocer For
White Seal Brand Meats, Hams,
Bacon, Sausage and Pure Lard.

THE 1938 PARROT

Thomas & Howard Co.

WHOLESALE GROCERS

SALISBURY, N. C.

Compliments of

Bostian Mercantile

CHINA GROVE, N. C.

Photographs of All Kinds

Alexander's Studio

"Photographer for 1938 PARROT"

Phone 248 204½ S. Main St.

SALISBURY, N. C.

Compliments of

ZENITH CHEMICAL CO.

Compliments of

Salisbury Marbling

&

Granite Co.

Welcome to

Efird's Clothing Store

KANNAPOLIS, N. C.

For Better Merchandise

**Kannapolis
Ice & Fuel Co.**

KANNAPOLIS, N. C.

Phone 112

The China Grove

P.-T. A.

*Congratulates the
Senior Class of 1938*



Blue Moon Tourist Camp

Modern Tourist Cabins
Complete Car Service

On Highway 15

Johnston's Furniture Co.

Home of Friendly Service

CONCORD, N. C.

Phone 21



DUKE POWER CO.

**LINN BROTHERS
MERCHANTS**

LANDIS, N. C.

YADKIN HOTEL

SALISBURY, N. C.

ROBERT SHINN, *Manager*

**FISHER - THOMPSON
HARDWARE CO.**

SALISBURY, N. C.

Compliments of

C. E. SLOOP

CHINA GROVE, N. C.

GROCERIES and MEATS

**CHINA GROVE DEPT.
STORE**

CHINA GROVE, N. C.

**China Grove Seed
Association, Mutual, Inc.**

CHINA GROVE, N. C.

Fleming Candy Co.

Get Your Candies Wholesale
412 W. Council St. Phone 1252-J
SALISBURY, N. C.

Compliments

**Capitol, State and Victory
Theaters**

Rowan's Finest Theaters
SALISBURY, N. C.

Dairy Maid Ice Cream Co.

Made of Pure Creams and Fruits
Try a cone and be convinced of
its value.

Compliments of

**LORENA SHOP
LADIES' DRESSES**

111 Fisher St.

COMPLIMENTS

ROWAN PRINTING COMPANY

SALISBURY, NORTH CAROLINA

PRINTERS — LITHOGRAPHERS
OFFICE OUTFITTERS

"COMPLETE BOOK STORE"



THE 1938 PARROT



COMPLIMENTS OF

NORMAN INGLE, JEWELER

SALISBURY, NORTH CAROLINA

REPRESENTING

HERFF-JONES COMPANY

The World's Largest Manufacturers of High School

Class Rings and Pins



Autographs

J. C.

We've missed you - We're
looking forward to seeing you next
year.

Calvin Cooper



