

*The Patriot 1947*





Digitized by the Internet Archive  
in 2018 with funding from  
North Carolina Digital Heritage Center

<https://archive.org/details/parrot194119chin>

parrot [1941]

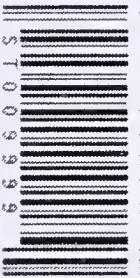
Grove High School (China Grove, N.C.)

County Public Library

**parrot194119chin**

2018

<http://books-yaz4.archive.org/book/slip/index.php...>







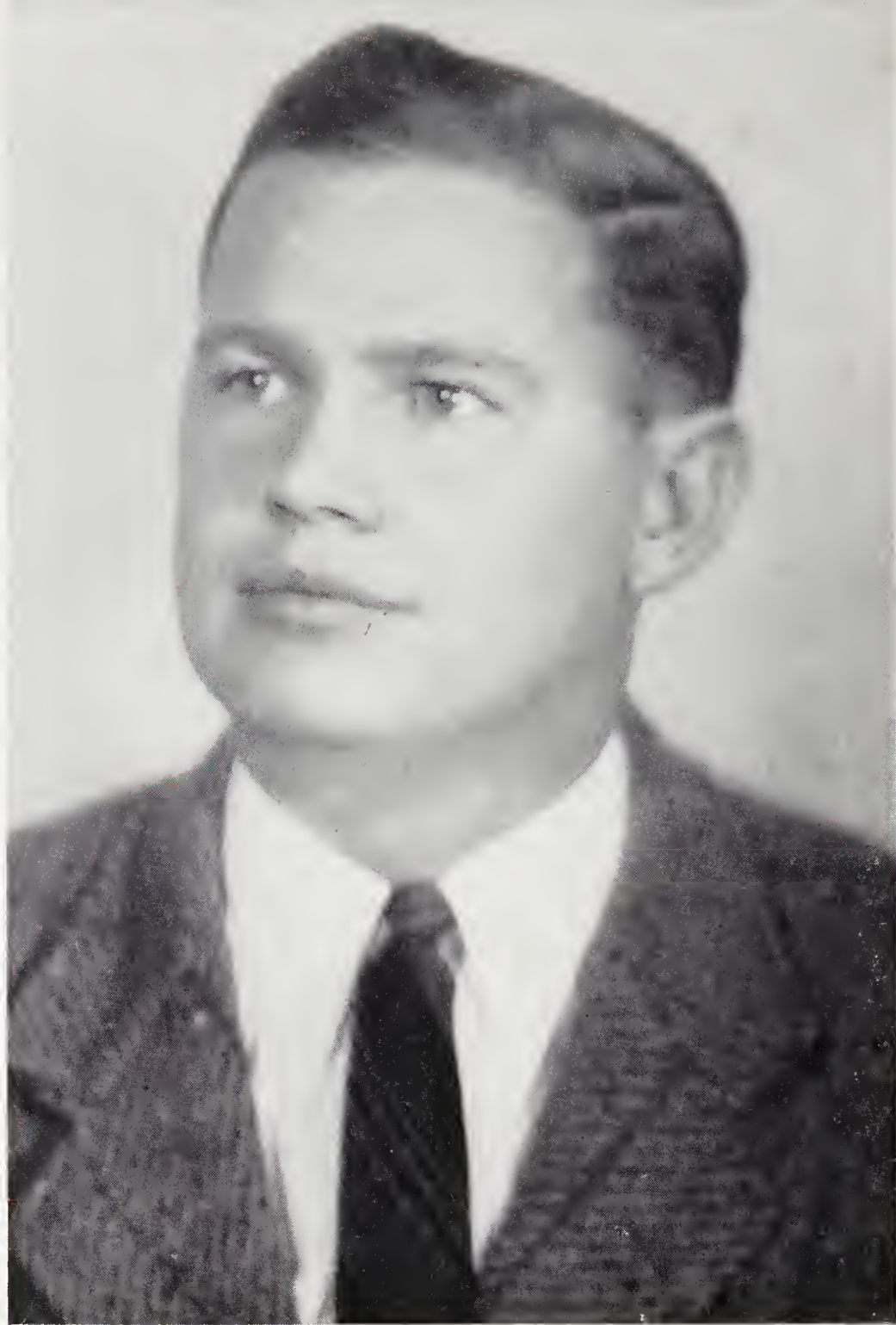
# 1941 PARROT



Published annually by the Senior Class of  
China Grove High School,  
China Grove, N. C.







## DEDICATION

— TO —

William Albert Booth whose enduring efforts and remarkable abilities have so successfully promoted, not only athletics, but also a higher scholastic standing, we, the Senior Class of 1941, dedicate this, the nineteenth volume of THE PARROT.





# FOREWORD

The chief value of any yearbook is to recall classmates, acquaintances, incidents, and experiences; which belong to our high school life. We have tried to make THE 1941 PARROT a true representation of The China Grove High School as it has been during the school term of 1940-1941.

*Editor-in-Chief* ..... EDITH SLOOP  
*Business Manager* ..... EARL GRAHAM



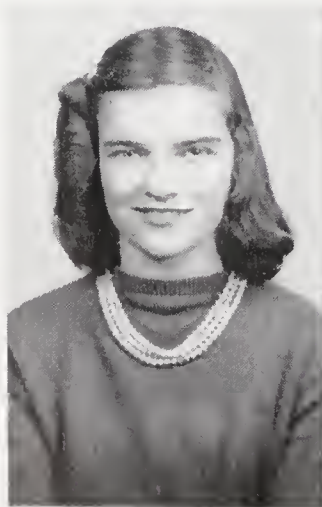
# THE PARROT



EDITH SLOOP

## THE PARROT STAFF

<i>Editor-in-Chief</i> .....	EDITH SLOOP
<i>Assistant Editor</i> .....	JANE LEE
<i>Business Manager</i> .....	EARL GRAHAM
<i>Secretary</i> .....	MARIE OWENSBY
<i>Treasurer</i> .....	THELMA MORROW
<i>Faculty Advisor</i> .....	WILLIAM BOOTH



JANE LEE



EARL GRAHAM



MARIE OWENSBY



THELMA MORROW





## ADMINISTRATION



# THE PARROT



WHIT COOPER

## MEMBERS OF SCHOOL BOARD

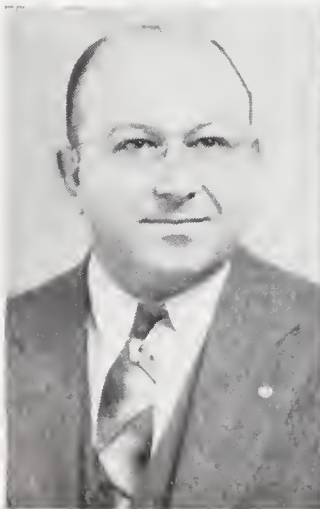
MR. WHIT COOPER  
*President*

MR. S. WORTH FREEZE

MR. K. A. SHINN

MR. L. C. CAUBLE

MR. F. D. PATTERSON



S. WORTH FREEZE



L. C. CAUBLE



K. A. SHINN



F. D. PATTERSON



# THE FACULTY

CURTIS BIVENS  
A.B. Duke, M.Ed. N. C.  
State  
*Principal*

PAUL HUFFMAN  
B.S. Appalachian S. T. C.  
*Mathematics, Science*

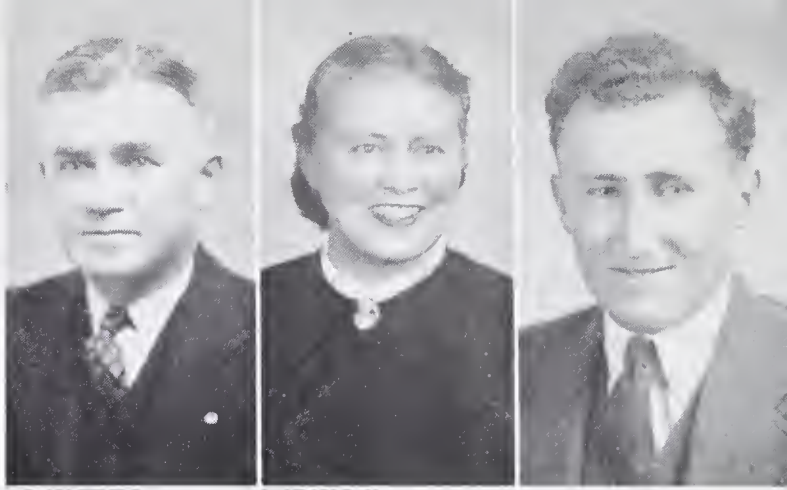
ETHEL EUDY  
A.B. Woman's College, U. N. C.  
*English, Dramatics*

*Kind regards from  
Ethel Eudy*

MARGARET BLAIR  
B.S. Woman's College, U. N. C.  
*Home Economics*

REBECCA NEELY  
A.C.A., A.B. Bowling Green  
College of Commerce  
*Commercial*

JOHN FOX  
A.B. Catawba College  
*English, Music*



WILLIAM BOOTH  
A.B. High Point College  
*Athletic Director, History*

RAY POOLE  
B.S., N. C. State College  
*Agriculture*

WILLIAM GERHARDT  
A.B. Catawba, U. N. C.  
*History, English*

*Harry - I've enjoyed having  
you this year. Good luck.  
W. Gerhardt*

MRS. RALPH CORRIHER  
A. B. Catawba College  
*French, Librarian*

ROBERT RUSSELL  
A.B. Lenoir Rhyne  
*History  
Girls' Basketball Coach*

ROBERT HILL  
B.S. Appalachian S. T. C.  
*Science, Mathematics  
Phy. Ed.*

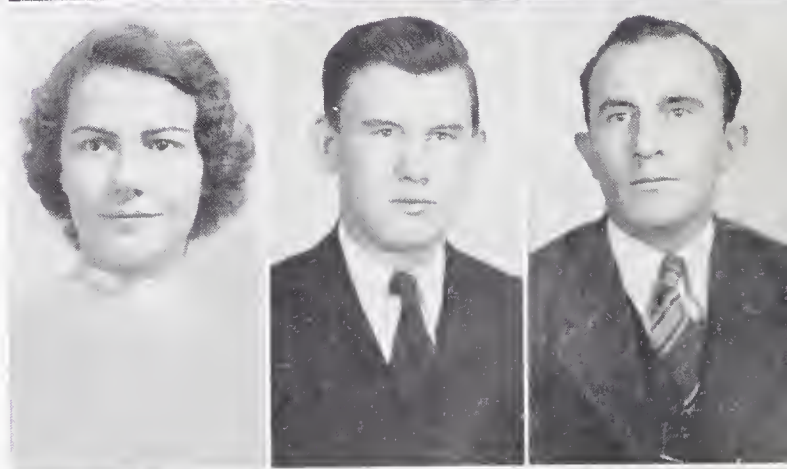
*You ride to  
run off from  
school! I hope  
you succeed  
with it.*

PAULANNA COOPER  
A.B. Woman's College, U. N. C.  
*Mathematics*

CLIFTON YOUNG  
A.B., U. N. C.  
*English, Dramatics*

MRS. PAUL HUFFMAN  
B.S. Appalachian S. T. C.  
*Science, English*

*Harry,  
I hope you don't  
think I've been  
picking on you  
this year. Really,  
though, I've enjoyed  
teaching you.*







## THE CLASSES

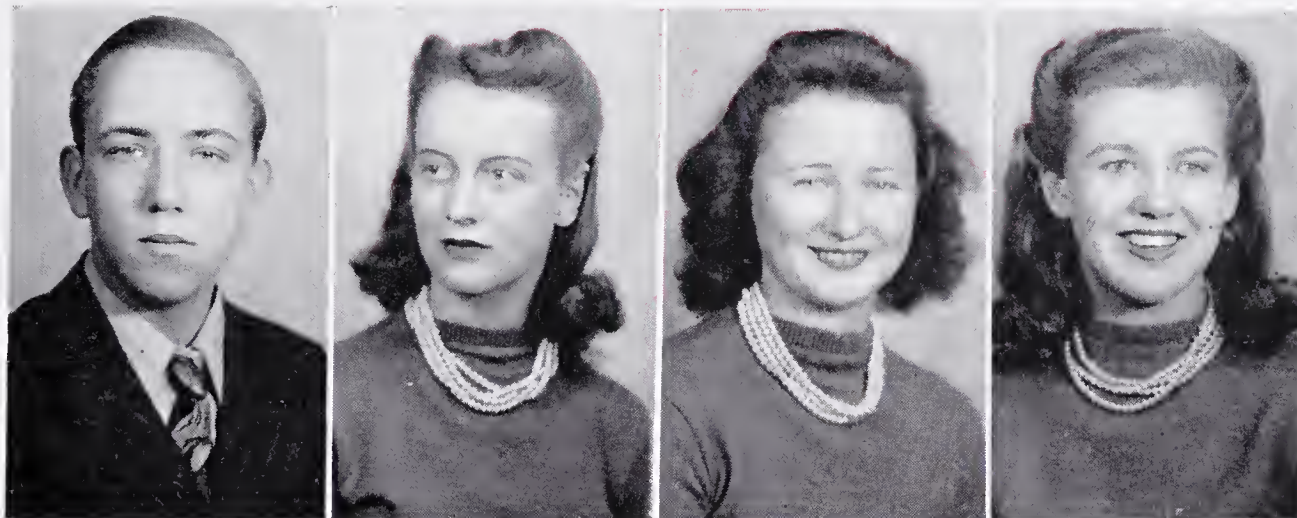
SENIOR MASCOTS

KERN FREEZE

ANN WHICKER



# THE PARROT



CECIL HERRIN

EDITH SLOOP

THELMA MORROW

GRACE BARGER

## SENIOR CLASS

### OFFICERS

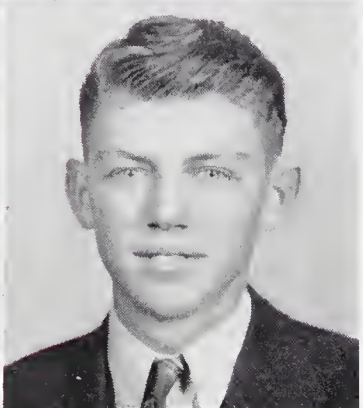
CECIL HERRIN.....*President*  
EDITH SLOOP.....*Vice-President*  
THELMA MORROW.....*Secretary*  
GRACE BARGER.....*Treasurer*





RUTH BARBER

GRACE BARGER



ARNOLD BARNHARDT

CHARLES BASINGER



MARY RUTH BEAVER

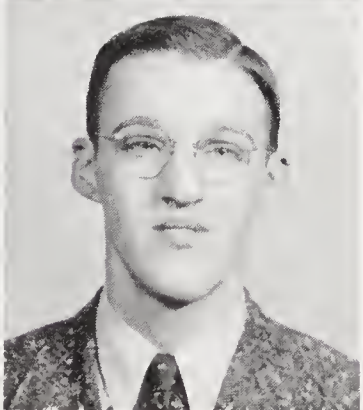
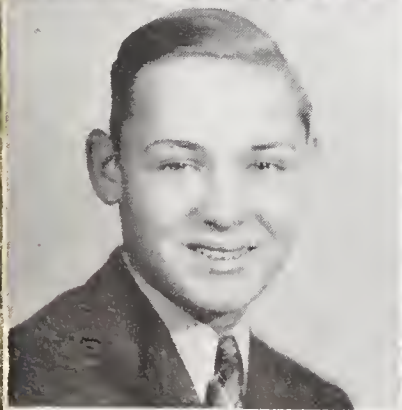
DIXON BLACKWELDER



HAROLD BOGER

LOU BOSTIAN

*"Best Wishes!"*  
*"Lulu"*



BILLY BROOME

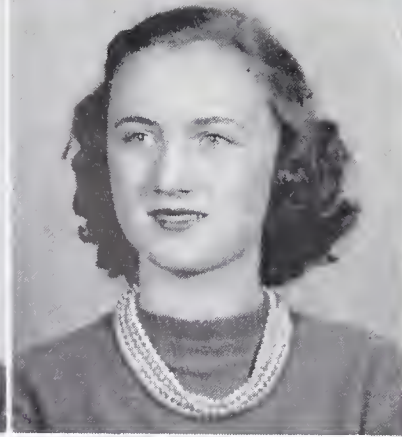
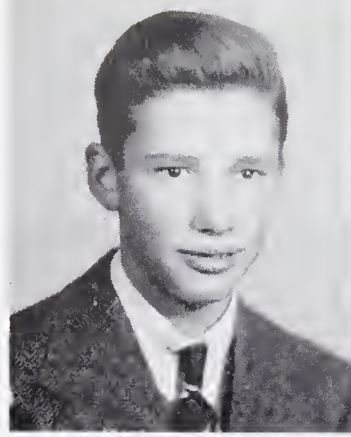
GLENN BROWN

*Harry,*  
*I have enjoyed*  
*knowing you. May*  
*your future - be*  
*-bright - with success*  
*& happiness*  
**SENIORS** *Billy*



DAVID CRESS

PAULINE CRESS



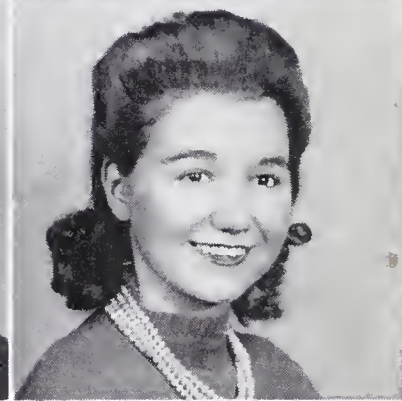
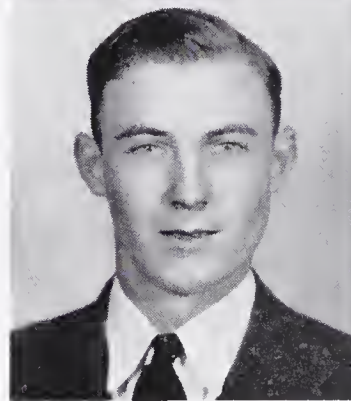
MARY ELINOR DAVIS

SARAH LOU DICKERSON



CHARLES EARNHARDT

ALMA FARRINGTON



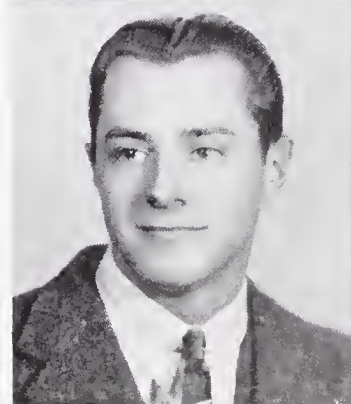
JOE NELL FARRINGTON

EVELYN FREEZE



LAWRENCE GOODNIGHT

SARAH LEE GOODNIGHT



*Mary & I have enjoyed this year of school with you. Best wishes and luck always.  
1935  
Lawrence Goodnight*

# SENIORS





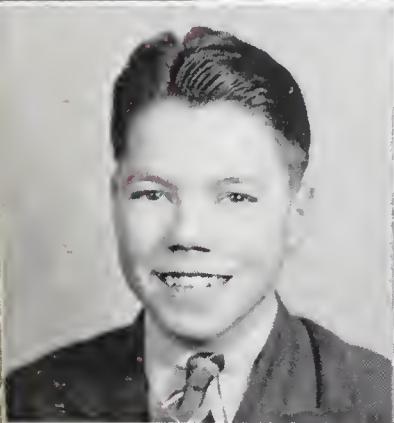
EARL GRAHAM

VIRGINIA GRIMES



CECIL HERRIN

OPAL HORTON



C. B. JONES

ELIZABETH MAULT



BESSIE McCOMBS

CHRISTINE McDONALD



HAZEL McNEELY

JOHN MILLER

# SENIORS



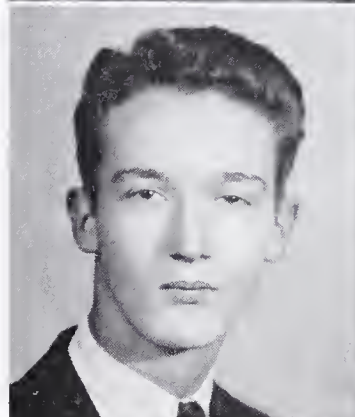
MARIE MILLER

THELMA MORROW



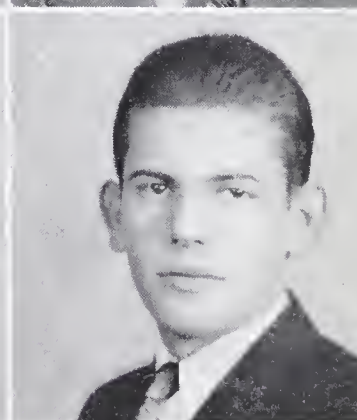
MAX MISENHEIMER

HOMER OVERCASH



JUANITA OVERCASH

LLOYD OWENS



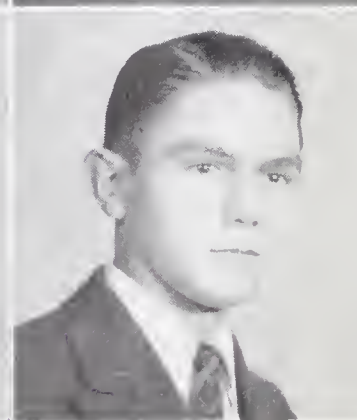
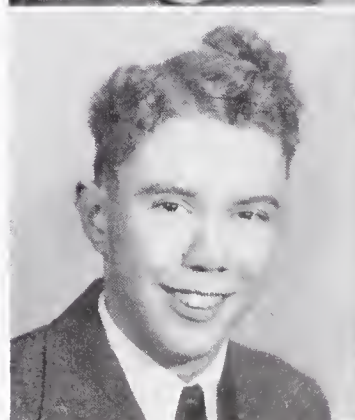
VIOLA OWENS

MARIE OWENSBY



THURMAN POSTON, JR.

BILLY RARY



# SENIORS





ROBERT RECTOR



ADELAIDE RIDENHOUR



ALICE RIDENHOUR



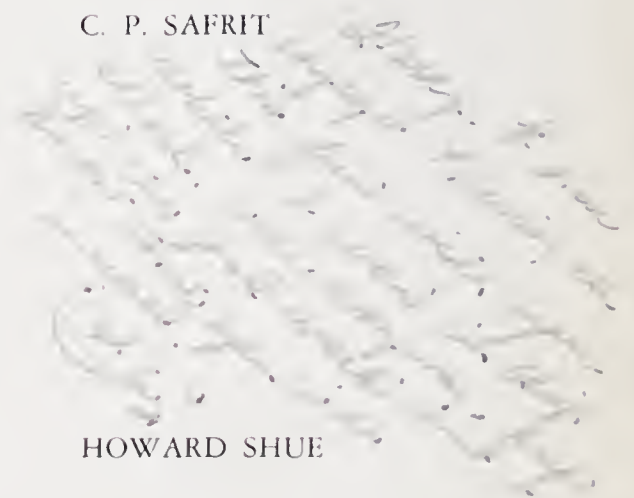
CHARLES RIDENHOUR



GLADYS ROBERTS



C. P. SAFRIT



LEWIS SEYMOUR



HOWARD SHUE



NORA SHUFFLER



WAYNE SIMPSON

# SENIORS



EDITH SLOOP

DOROTHY SLOOP



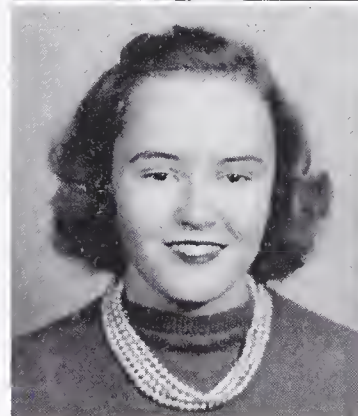
CRAWFORD SLOOP, JR.

NOLA SOLOMON



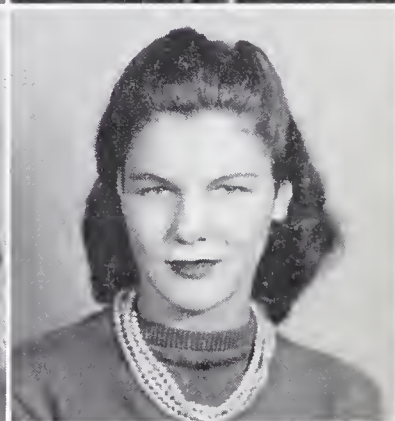
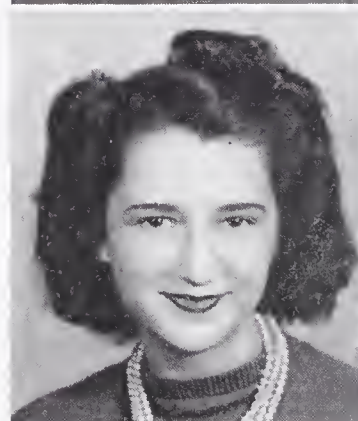
ANNIE LAURIE TAYLOR

BOBBY WARD



MARGARET A. WATKINS

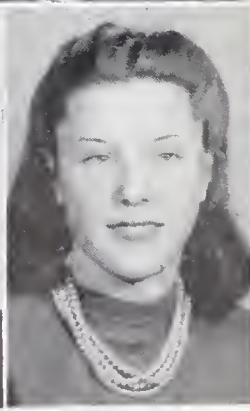
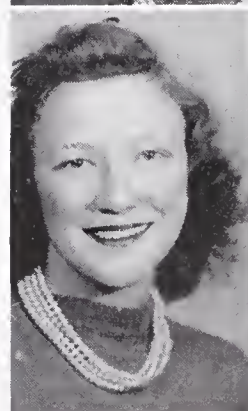
NELLIE WATSON



MAVIS WILLIAMS

VERA WILSON

GRADY WILHELM



*Harry,  
I have enjoyed  
knowing and being  
in school with you.  
May success and  
happiness be  
yours always.  
Mavis*

# SENIORS



# THE PARROT

## RUTH BARBER

Cleveland High School (1, 2); Home Economics (4).

## GRACE BARGER

Monogram Club (1, 2, 3, 4); Glee Club (1, 2, 3, 4); Basketball Team (1, 2, 3, 4), Captain (3); President of Class (2); Physical Education (2, 3); Treasurer of Monogram Club (3), Vice-President (4); Treasurer of Class (3, 4); Beta Club (3, 4); Mixed Quartet (2); Trident Staff (3).

## ARNOLD SAMUEL BARNHARDT

F. F. A. (1, 2, 3, 4), Treasurer (4).

## CHARLES BASINGER

Mimeograph Club (4); Physical Education (2); Science Club (3); Civics Club (1).

## MARY RUTH BEAVER

Glee Club (2, 3, 4); Dramatics Club (3, 4), Vice-President (4); Science Club (1).

## DIXON BLACKWELDER

Home Economics Club (2); Monogram Club (3, 4); Librarian (1); Typist of The Trident (4); Secretary Girls' Athletic Club (2); Mimeograph Club (4), Vice-President Mimeograph Club (4).

## HAROLD BOGER

F. F. A. (1, 2); Camera Club (3); Physical Education (4); Science Club (4).

## LOU BOSTIAN

Glee Club (1, 2, 3, 4); Double Mixed Quartet (4); Dramatics Club (3, 4), President (4); Trident Staff (3, 4); Band (1, 2, 3).

## BILLY BROOME

Glee Club (1, 4); Beta Club (3, 4); Junior Book Club (3), Secretary (4); Dramatics Club (4); Junior Rotarian (4); Science Club (2).

## GLENN BROWN

Basketball (1, 2, 3, 4); Baseball Manager (1); Physical Education (2, 4), Treasurer (4); Monogram Club (1, 2, 3, 4); Quartet (1); Beta Club (3, 4); Glee Club (1, 2, 4).

## DAVID CRESS

Glee Club (1, 2, 3, 4); Beta Club (3, 4), Treasurer Beta Club (4).

## PAULINE CRESS

Glee Club (1, 2, 3, 4), Soloist (3, 4); Beta Club (3, 4); Librarian (4); Scholarship Medal (1, 3).

## MARY ELINOR DAVIS

Monogram Club (2, 3, 4); Physical Education Club (2, 4), Treasurer (2); Glee Club (4); Chief Cheer Leader (2, 3, 4).

## SARAH LOU DICKERSON

Glee Club (2, 3, 4); Basketball Manager (2, 3, 4); Beta Club (3, 4); Monogram Club (3, 4), Treasurer (4); Librarian (3); Science Club (1); Trident Staff (3, 4).

## CHARLES EARNHARDT

Glee Club (1, 2, 3, 4), Solo (4); Boy's Quartet (3, 4); Physical Education Club (1); Science Club (2); Baseball (4).

## ALMA FARRINGTON

Charlotte Tech (1, 2, 3); Glee Club (4); Mimeograph Club (4), Treasurer Mimeograph Club (4).

## JOE NELL FARRINGTON

Charlotte Tech (1, 2, 3); Monogram Club (4); Physical Education (4); Basketball (4); Glee Club (4).

## EVELYN FREEZE

Mimeograph Club (4); Trident Staff (4).

## LAWRENCE G. GOODNIGHT

Science Club (1); F. F. A. (2, 3); Photography Club (4), Vice-President (4).

## SARAH LEE GOODNIGHT

"J" Club (1); Dramatics Club (4).

## EARL GRAHAM

Cannon High (1, 2); Photography Club (1, 2, 3, 4); Band (1, 2, 3, 4); Circulation Manager Trident (4); Business Manager of Annual (4).

## VIRGINIA GRIMES

Physical Education Club (1); Monogram Club (2, 3, 4); Dramatics Club (4), Vice-President (4); Cheer Leader (3, 4); Manager Basketball (1, 2).

## CECIL HERRIN

Science Club (1, 2); Beta Club (3, 4); Monogram Club (3, 4); Physical Education Club (4); Baseball (3, 4); Football (4); Class President (4); Junior Rotarian (4).

## OPAL HORTON

Mimeograph Club (4).

## C. B. JONES

F. F. A. (1, 2, 3, 4).

## ELIZABETH MAULT

Boyden High School (1, 2); Monogram Club (4); Dramatics Club (4).

## BESSIE LOUISE McCOMBS

Home Economics Club (1); Monogram Club (2, 3, 4); Cheer Leader (2, 3, 4); Dramatics Club (4), President Dramatics Club (4).

## CHRISTINE McDONALD

Science Club (1, 2, 3), Secretary (3); Mimeograph Club (4).

## HAZEL McNEELY

Glee Club (1, 4); Monogram Club (2, 3, 4); Dramatics Club (4); Art Editor Trident (4); Assistant Marshal (3); Librarian (3, 4).

## JOHN ROBERT MILLER

F. F. A. (1, 2, 3, 4), President (3), Vice-President (3); Baseball (4).

## MARIE MILLER

Science Club (1), Treasurer and Secretary (1); Monogram Club (3, 4); Physical Education Club (2); Marshal (3); Mimeograph Club (4), Secretary Mimeograph Club (4).



# THE PARROT

## THELMA MORROW

President of Science Club (1, 2); Monogram Club (3, 4); Art Editor of Trident (3, 4); Secretary of Senior Class (4); Mimeograph Club (4); Treasurer of PARROT (4); President, Mimeograph Club (4).

## MAX MISENHEIMER

Glee Club (1, 2, 3, 4); Class Secretary (1); Physical Education Club (2).

## HOMER OVERCASH

Glee Club (1, 2, 3, 4), Solo (4); Boy's Quartet (3, 4); Physical Education Club (1); Science Club (2); Baseball (1, 2, 4); Football (4); Monogram Club (2, 3, 4).

## JUANITA OVERCASH

Glee Club (1, 2, 3, 4); Monogram Club (2, 3, 4), Secretary (4); Basketball (1, 2); Girls' Trio (3); Physical Education Club (4).

## LLOYD OWENS

Basketball (3, 4); Monogram Club (3, 4); Physical Education (3, 4); Hi-Y Club (1); Glee Club (1, 2, 4); Football (2); Marshal (3).

## VIOLA OWENS

Glee Club (1, 2, 3, 4); Monogram Club (2, 3, 4); Basketball (2, 3, 4); Physical Education Club (3, 4).

## MARIE OWENSBY

Glee Club (1, 4); Secretary of Class (2); Monogram Club (2, 3, 4); Chief Marshal (3); Dramatics Club (4); News Editor of Trident (4); Librarian (3, 4); Queen of Hal'owe'en Carnival (4); Secretary, PARROT (4).

## THURMAN POSTON, JR.

Vice-President of Class (2, 3); Associate Editor of Trident (3), Editor of Trident (4); Glee Club (1, 2, 3, 4); Band (3); Junior Rotarian (3, 4); Beta Club (3, 4); Dramatics Club (3, 4); Double Quartet (4); Chief Marshal (3); Scholarship Medal (2).

## BILLY SANDERS RARY

Science Club (1, 2); Football (3, 4); Baseball (3, 4); Monogram Club (3, 4); Physical Education Club.

## ROBERT RECTOR

Tar Heel Farmers Club (1, 2, 3, 4), Secretary (4).

## ADELAIDE RIDENHOUR

Glee Club (1, 2, 3, 4); Beta Club (3, 4), Secretary (4); Trident Staff (4); Librarian (4).

## ALICE RIDENHOUR

Glee Club (1, 2, 3, 4); Beta Club (3, 4), President (4); Trident Staff (4); Librarian (3, 4).

## CHARLES RIDENHOUR

Glee Club (1, 2, 3); Physical Education Club (3); Science Club (2).

## GLADYS ROBERTS

Glee Club (1, 4); Monogram Club (3, 4); Physical Education Club (2, 4).

## C. P. SAFRIT

Civics Club (1); Book Club (3), Critic (3); Glee Club (2, 4); Dramatics Club (4).

## LEWIS SEYMOUR

Science Club (1); Physical Education Club (2, 4); Monogram Club (3, 4); Football (3, 4); Basketball (3, 4).

## HOWARD LEE SHUE

F. E. A. (1, 2, 3, 4).

## NORA SHUFFLER

Science Club (2, 3); Critic (3); Mimeograph Club (4).

## WAYNE COUNCIL SIMPSON

Young Tar Heel Farmers (1, 2, 3, 4), Secretary (3), President (4).

## EDITH SLOOP

Monogram Club (1, 2, 3, 4), Secretary (3), President (4); President of Class (1), Treasurer of Class (2), Secretary (3), Vice-President (4); Glee Club (1, 4); Trident Staff (3, 4); Basketball (1, 2, 3, 4); Physical Education Club (2, 4); Editor-in-Chief of THE PARROT (4).

## DOROTHY SLOOP

Mimeograph Club (4).

## JUNIOR SLOOP

Young Tar Heel Farmers (1, 2, 3, 4), Treasurer (3).

## NOLA SOLOMON

Girls' Reserve (1, 2); Physical Education Club (3).

## ANNIE LAURIE TAYLOR

Glee Club (1, 2, 3, 4), Soloist (2, 3, 4); Dramatics Club (3); Beta Club (3, 4), Vice-President (4); Trident Staff (3); Girls' Reserve (1); Double Mixed Quartette (4).

## ROBERT WARD

F. E. A. (1, 2, 3); Camera Club (3); Physical Education Club (4).

## MARGARET ANN WATKINS

Science Club (1, 2, 3), President (3); Dramatics Club (4).

## NELLIE WATSON

Dramatics Club (1, 2, 3, 4); Glee Club (4).

## MAVIS WILLIAMS

Basketball (2, 3); Dramatics Club (3); Monogram Club (4); Glee Club (4); Physical Education Club (4); Science Club (1).

## GRADY EUGENE WILHELM

F. E. A. (1, 2, 3); Beta Club (3, 4); Junior Rotarian (4).

## VERA WILSON

Mimeograph Club (4).





*Most Popular*  
MISENHEIMER • SLOOP



*Most Personality*  
MCNEELY • OWENS



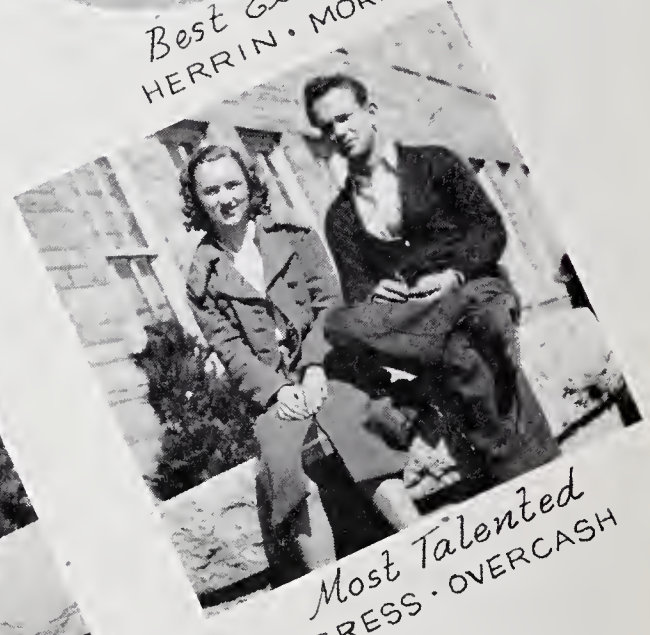
*Best Executive*  
HERRIN • MORROW



*Most Studious*  
CRESS • WILHELM



*Most Romantic*  
BOSTIAN • GRAHAM



*Most Talented*  
CRESS • OVERCASH



*Most Ideal*  
MORROW • HERRIN



*Best All-Round*  
HERRIN • SLOOP



*Most Original*  
OVERCASH • CRESS



# SUPERLATIVES



*Cutest*  
FARRINGTON • SAFRIT



*Wittiest*  
OWENS • WATKINS



*Biggest Flirts*  
DICKERSON • GOODNIGHT



*Biggest Liars*  
WATKINS • OWENS



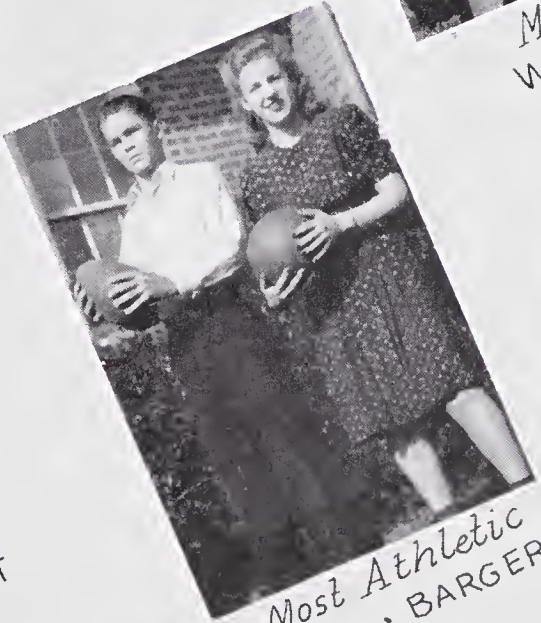
*Best Dressed*  
EARNHARDT • SLOOP



*Most Talkative*  
WATKINS • OWENS



*Best Looking*  
OWENSBY • EARNHARDT



*Most Athletic*  
RARY • BARGER



*Most Friendly*  
SLOOP • HERRIN



# THE PARROT

## LAST WILL AND TESTAMENT

We, the Senior Class, having finished our high school life of toils, hardships, and pleasures at China Grove High School, are ready to distribute our most treasured possessions.

To our parents and those who have made our training here possible, we leave our undying love and gratitude.

To our principal, Mr. Bivens, we give our untiring thanks for all he has done on our behalf.

To our faculty, we give our sincere appreciation and thanks for all they have done for us.

To our faculty advisors, Miss Neely and Mr. Fox, we leave our appreciation.

To the Junior Class we leave the privilege of following in our footsteps.

To the following we leave, what may seem like small gifts, but we hope they will be valuable to you.

Ruth Barber and Opal Horton leave their quiet manners to Pearl Freeze.

Grace Barger and Edith Sloop leave their athletic ability to Willie Mae Kluttz.

Arnold Barnhardt and Charles Basinger will their Sociology seats to Frank Miller and wife.

Mary Ruth Beaver and Juanita Overcash leave their cooperative ways to Lena Safriet.

Harold Boger and Bob Ward leave their love for F. F. A. weiner roasts to Dr. Poole.

Dixon Blackwelder, Evelyn Freeze, and Billy Broome will their typing jobs to the Trident Staff.

Glenn Brown, Lloyd Owens and Lewis Seymour will their basketball positions to Bo, Bill, and Johnny.

Lou Bostian and Earl Graham leave their romantic ways to Priscilla and Reid.

Francis Cauble and Howard Shue will to Raymond Kirk, their ability to tease girls.

Pauline Cress, Adelaide Ridenhour, and Annie Laurie Taylor leave their "A's" to those students needing them.

Sarah Lou Dickerson and Mary Elinor Davis leave their long list of masculine friends to Audarine Wilkie.

Charles Earnhardt and Max Misenheimer will their good looks to Reid Grimes.

Alma and Joe Nell Farrington leave their personalities to Mary Brown and Sarah Suddeth.

Lawrence Goodnight and John Miller will their buses to the junk yard.

Sarah Lee Goodnight leaves her curly hair to Olyve Hauss.

Virginia Grimes and Bessie Louise McCombs leave their friendly smiles to Hazel Abernathy.

Cecil Herrin and Thurman Poston leave their business-like ability to Jane Lee.

C. B. Jones and Christine McDonald leave their tallness to "Bo" McDonald.

Elizabeth Mault and Gladys Roberts will their ability to talk a lot to Carrie Safrit.

Hazel McNeely and Marie Owensby leave their companionable ways to Hazel Raybon and Lorene Wilhelm.

Marie Miller and Thelma Morrow leave their modesty to Lola Park.

Homer Overcash leaves his beloved bookkeeping seat to his son, Johnny Benard.

Viola Owens and Mavis Williams will their good sportsmanship to Leona Shuping.

Bill Rary and Crawford Sloop will their good-nature to Arnold Wessinger.

Robert Rector and Wayne Simpson leave their agricultural records to Kenneth Suther.

Charles Ridenhour wills his ability to stay in high school so long to Roy Charles Kimball.

Nora Shuffler and Nola Soloman leave their business courses to Lois Trexler and Nellie Bradshaw.

Margaret Ann Watkins wills her ability to make the English class laugh to Clyde Luther.

Nellie Watson leaves her flirty ways to Bonnie Glover.

Vera Wilson and Dorothy Sloop leave their quiet ways to John Basinger.

Grady Wilhelm leaves his studiousness to Howard James.

Alice Lewis and Frances Wilhelm, our post graduates, leave the uncertain seniors a cure for laziness.

I, Alice Ridenhour, having no special talent, do leave my love and best wishes for China Grove High School.

—ALICE RIDENHOUR.



# THE PARROT



JANE LEE

JOHN BASINGER

SARAH SUDDETH

MARY F. CORRIHER

## JUNIOR CLASS

### OFFICERS

JANE LEE .....*President*

JOHN BASINGER .....*Vice-President*

SARAH SUDDETH .....*Secretary*

MARY FRANCES CORRIHER .....*Treasurer*



# THE PARROT



Hazel Abernathy  
 Nellie Bradshaw  
 Edith Eagle  
 Pearl Freeze  
 Ralph Hopkins

Mildred Allen  
 Mary Brown  
 Jack Eller  
 Elizabeth Hall  
 Robert Kirk

George Miller Bostian  
 Margie Cress  
 Helen Freeze  
 Priscilla Honbarger  
 Bessie Koon

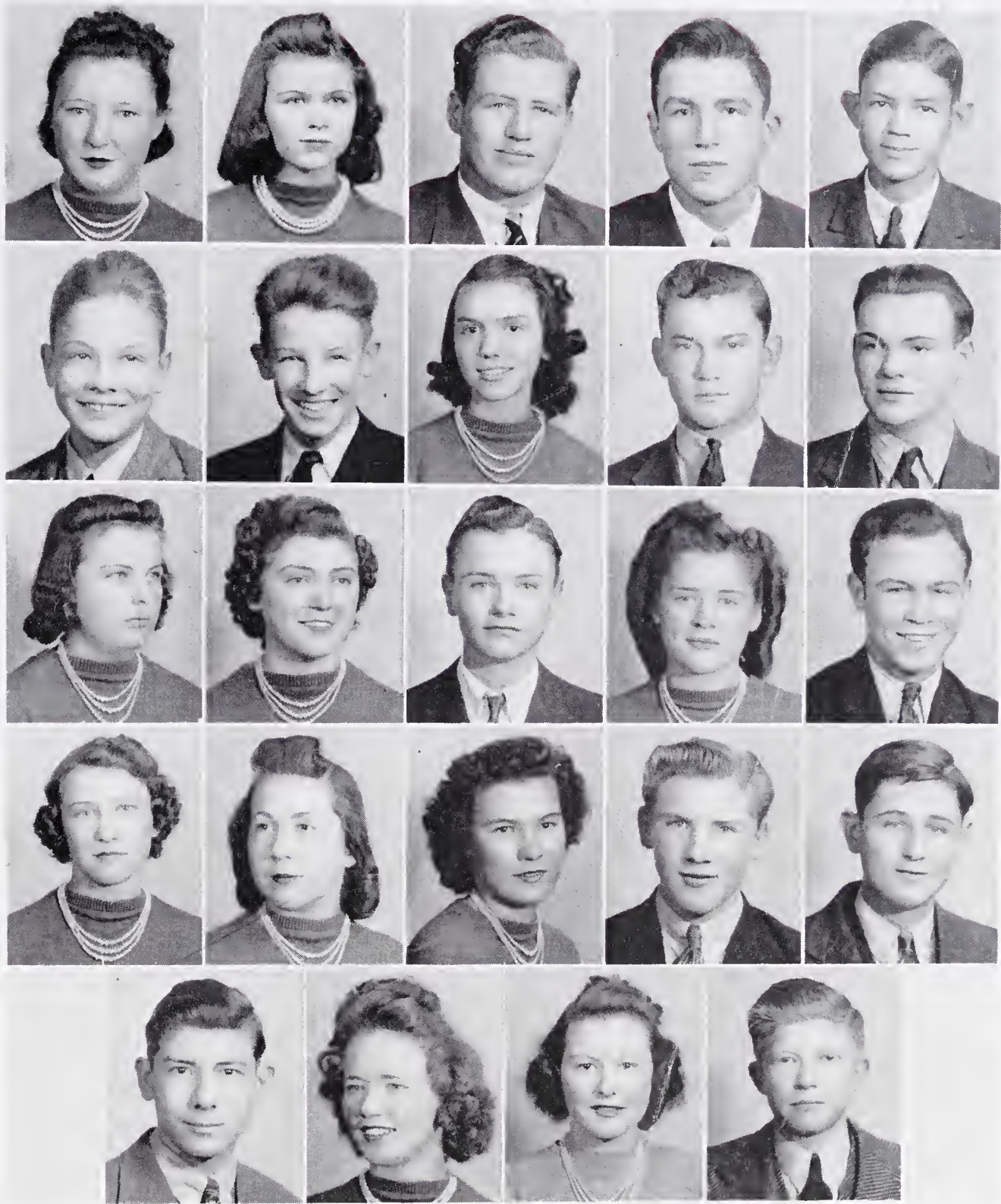
Oscar Abernathy  
 Rachel Bradshaw  
 Junior Earnhardt  
 Helen Grant  
 Raymond Kirk

Juanita Belk  
 Dorothy Calloway  
 Ernestine Eudy  
 Eva Mae Haynes  
 Willie Mae Klutz



# THE PARROT

*Bob*



Marvie Livengood  
Harold McKnight  
Lena Safrit  
Pansie Thompson  
Arnold Wessinger

Clyde Luther  
Mable Newlin  
Harold Smith  
Helen Upright  
Audarine Wilkie

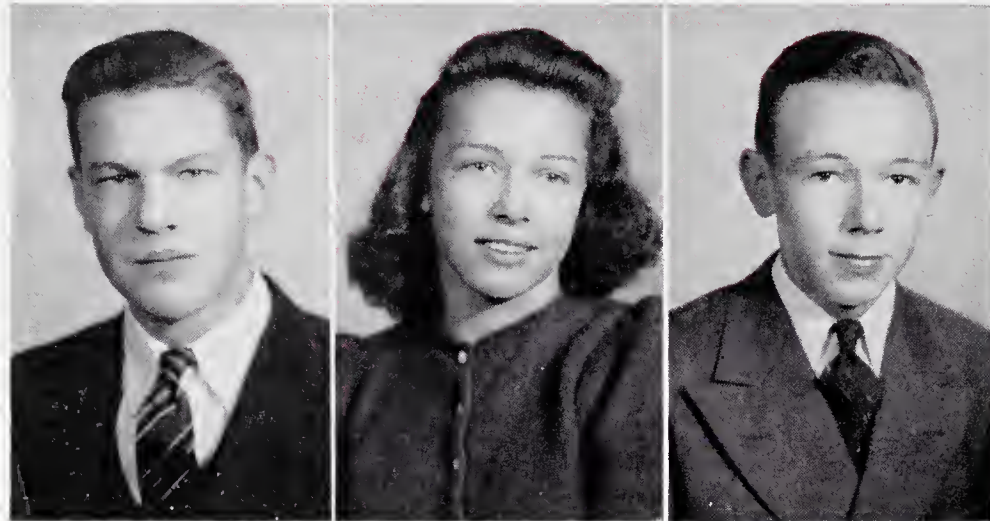
Ray Mault  
Hoyt Safrit  
Bill Talbert  
Ernest Weaver

Wilma Lowder  
Odell Moose  
Ruby Shue  
Lois Trexler  
Birdie Wihelm

Jim Mault  
Willard Overcash  
Ruth Smith  
Wesley Wagner  
Jimmy Wood



# THE PARROT



GRADY SLOOP

ODESSA THOMPSON

J. L. PEELER

## SOPHOMORE CLASS

### OFFICERS

GRADY SLOOP.....*President*

ODESSA THOMPSON.....*Vice-President*

J. L. PEELER.....*Secretary-Treasurer*



# THE PARROT



## SOPHOMORE CLASS ROLL

Edith Williams  
Martha Propst  
Lola Park  
Kathleen Rogers  
Oveda Poag  
Odessia Thompson  
Laura Jo Wilkie  
Rachel Propst  
Marie Seymore  
Hazel Raybon  
Adeline Turrentine  
Catherine Wallace  
Evon Shimpock  
Louise Sanders  
Ezella Park  
Carrie Louise Safrit  
Marion Watkins  
Willie Weaver

Louise Rary  
Martha Sue Simpson  
Ruth Pierce  
Frances Reed  
Lucille Miller  
Rachel Mabry  
Bernice McCombs  
Nellie Poston  
Willie Sue Wilhelm  
Leona Shuping  
Clifford Albright  
Hugh Beaver  
William Beaver  
Hubert Benson  
Robert Bost  
Delmer Cauble  
Robert Davis  
Bill DeMarcus

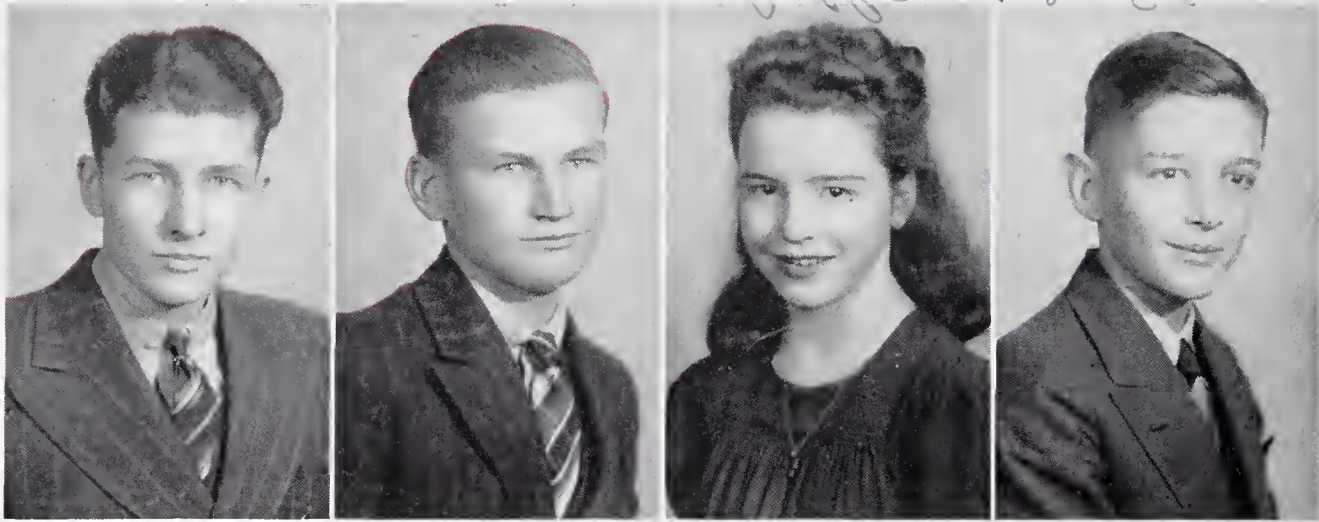
Howard Eagle  
Frank Eller  
Ralph Fisher  
Gray Freeze  
Bill Gillespie  
Billie Glover  
Reid Grimes  
James Harrison  
Joe Herrin  
Herbert Johnston  
Roy Charles Kimball  
Harry Lee Klutz  
Buell Lowder  
Blenton Lowder  
Claud Mainhall  
Arnold McDonald  
Jack Melchor  
Frank Miller

Robert Overcash  
Willard Overcash  
Leonard Patterson  
J. L. Peeler  
James Rector  
Willie Shaver  
Eustice Sloop  
Grady Sloop  
Otho Sloop  
Kenneth Suther  
Carl Wagoner  
Devon Waddell  
Preston Weant  
James Weaver  
Stanley Weaver  
Robert Whitaker  
Bobby Wilhelm  
Ralph Williams



# THE PARROT

*I hope you are all well. I have been nice knowing you. Much love to the future. Johnny*



HOWARD JAMES

JOHN WINECOFF

CLARIS MCGALLIARD

JOHNNY MILLER

## FRESHMAN CLASS

### OFFICERS

HOWARD JAMES ..... *President*

JOHN WINECOFF ..... *Vice-President*

CLARIS MCGALLIARD ..... *Secretary*

JOHNNY MILLER ..... *Treasurer*



# THE PARROT



## FRESHMAN CLASS ROLL

Aldena Abernathy  
Bellie Baker  
Bobbie Jean Barnhardt  
Doris Barnhardt  
Jo Basinger  
Frances Bradshaw  
Elsie Chamberlain  
Lois Dabbs  
Lucille Davis  
Nina Davis  
Mildred Fesperman  
Colleen Freeze  
Bonnie Glover  
Clara Goble  
Frances Goodman  
Ida Goodnight  
Betty Sue Graham  
Jessie Mae Guffy  
Olyve Hauss  
Ruby Henrickson  
Opal Jones  
Helen Karriker  
Loma Kirk  
Claris McGalliard

Daisy Morgan  
Lula Morgan  
Waulena Morris  
Dorothy Murray  
Kathleen Parrish  
Sadie Propst  
Mary Frances Rary  
Thelia Ridenhour  
Arline Safrit  
Helen Sides  
Callie Talbert  
Virginia Teague  
Lucille Troutman  
Peggie Turrentine  
Hazel Vanderford  
Maxine Walters  
Louise Williams  
Ella Mae Wilhelm  
Lorene Wilhelm  
Ola Mae Winecoff  
Louise Wyatt  
Ruth Yost  
James Aldridge  
Billy Allman

Cecil Allman  
Jack Baker  
Robert Basinger  
G. T. Bradshaw  
Junior Carter  
John Cauble  
Ned Davis  
James Fisher  
Harvey Henson  
James Jones  
John Jordan  
Hugh McKnight  
Albert McKnight  
Jimmy Mundy  
Robert Nicholson  
J. W. Safrit  
Jack Sasser  
Walter Sheeks  
Paul Shuping  
Hoy Stirewalt  
Jack Bame  
J. T. Barnhardt  
Bobby Bostian  
Hoy Correll

Ralph Corriher  
Charles Coughenour  
H. T. Davis  
Tommie Eller  
Jack Fletcher  
Albert Freeze  
Lloyd Gaskey  
Gerald Herrin  
J. P. Horton  
Howard James  
George Ray Kirk  
Charlie Marshall  
Donald McLaughlin  
John Miller  
Voigt Park  
James Smith  
Grover Starnes  
Johnnie Sutton  
George Trexler  
Troy Wagoner  
Clyde Williams  
John Winecoff  
Manuel Wyatt







# THE PARROT



## 7th GRADE CLASS

Ralph Adcock  
Janie Atwell  
Elsie Arant  
Mazie Baily  
Harry Lee Bame  
Bob Barrett  
Betty Lou Basinger  
Annie Ruth Basinger  
Helen Bass  
Harby Beeker  
Mildred Belk  
Donald Bernhardt  
Mildred Bostian  
Kenneth Bradshaw  
Martha Brotherton  
Council Brown  
Nellie Carter  
Cecil Casper  
Elwood Caulder  
Frances Collins  
Lucille Collins  
Tommy Cooper  
Mary Frances Correll

Glenn Corriher  
Goldia Cranford  
Ovell Crawford  
Martha Cress  
Alby Eller  
Shafer Eller  
Ramona Ervin  
Eugene Eudy  
Carl Evans  
Ruth Everhart  
George Farmer  
Sonnie Fesperman  
Hazel Freeze  
J. B. Freeze  
Gleston Gaskey  
Ernest Gilreath  
Dorothy Goodman  
John Henry Graeber  
Howard Haynes  
Roxie Henley  
Charlotte Hensler  
James Hogan  
Oscar Honeycutt

Donald Jolly  
Billy Kluttz  
Robert Kluttz  
Roy Knight  
Elmore Koon  
Billy Lefler  
Haywood Lefler  
William Livengood  
Erma Gail Lumsden  
Claude Mault  
Lauelle Michael  
Virginia Misenheimer  
Jack Moore  
Gene Morrison  
Peggy Myers  
Henry Owens  
Albert Palmer  
Beeks Pless  
W. C. Readling  
Cora Mae Rogers  
Earlyne Russell  
Frances Safrit  
Foil Safrit

Glenn Safrit  
Jack Shaw  
Geneva Shillinglaw  
Earl Shillinglaw  
Charles Shinn  
Lester Sisk  
Eugene Smith  
Harry Smith  
Richard Smith  
Jennie Ruth Solomon  
Corrine Stiller  
Harold Sutton  
Eugene Thompson  
Louise Thompson  
Harvey Trexler  
Joeleen Upright  
Bernard Wagoner  
Betty Wall  
Louise Wall  
Gearlean Walters  
Melba Walters  
Arlene Weaver  
Viva Lee Withers



# SCHOOL



*Most Athletic*  
MAULT • EAGLE



*Most Friendly*  
LEE • JAMES



*Best Looking*  
CORRIHER • EAGLE



*Best Executive*  
LEE • JAMES



*Biggest Liars*  
HARRELL • McDONALD



*Best Dressed*  
EAGLE • KLUTTZ



*Most Talented*  
LEE • JAMES



*Most Ideal*  
ABERNATHY • SLOOP



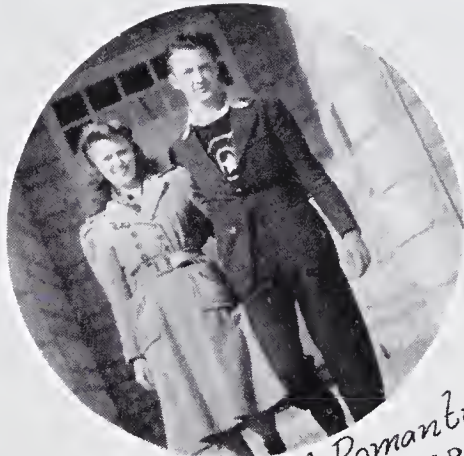
*Most Popular*  
KLUTTZ • GRIMES



# SUPERLATIVES



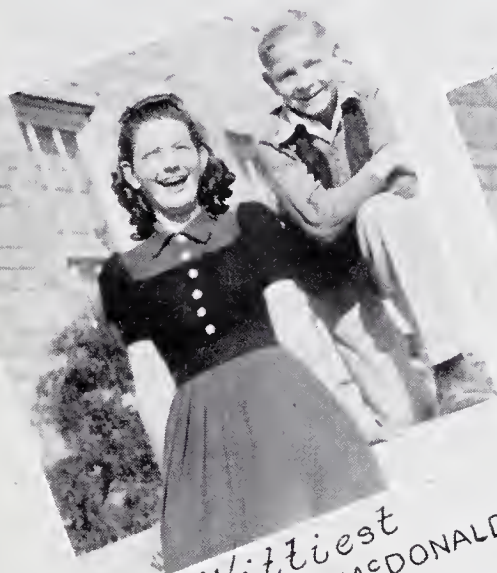
*Most Personality*  
BROWN • GRIMES



*Most Romantic*  
HONBARGER • GRIMES



*Most Original*  
McDONALD • BROWN



*Wittiest*  
RAYBON • McDONALD



*Best All-Round*  
EAGLE • MELCHOR



*Biggest Flirts*  
GRIMES • ALLEN



*Most Studious*  
PARK • JAMES



*Most Talkative*  
BOST • LUTHER



*Cutest*  
EAGLE • McDONALD



# THE PARROT

## ORGANIZATIONS



### BETA CLUB

*President* ..... ALICE RIDENHOUR  
*Vice-President* ..... ANNIE LAURIE TAYLOR  
*Secretary* ..... ADELAIDE RIDENHOUR  
*Treasurer* ..... DAVID CRESS  
*Advisor* ..... MISS COOPER

#### MEMBERS

Adelaide Ridenhour	Miss Cooper	Grace Barger	David Cress
Jane Lee	Sarah Lou Dickerson	John Basinger	Glenn Brown
Mary Brown	Sarah Suddeth	Pansy Thompson	Thurman Poston
Frances Wilhelm	Lena Safrin	Grady Wilhelm	Cecil Herrin
Alice Ridenhour	Annie Laurie Taylor	Billy Broome	

### HANDY HELPERS CLUB

#### MEMBERS

George Trexler	Johnnie Sutton	Jack Fletcher	Billy Glover
Frank Eller	Herbert Benson	Jack Melchor	John Winecoff
	Mr. Huffman	Bill Gillespie	



# THE PARROT



## TRIDENT STAFF

Editor.....	THURMAN POSTON
Sports Editor.....	EDITH SLOOP
News Editor.....	MARIE OWENSBY
Class-Club Editor.....	MARY BROWN
Feature Editor.....	JANE LEE
Art Editor.....	THELMA MORROW, HAZEL MCNEELY
Business Manager.....	HOYT SAFRIT
Circulation Manager.....	EARL GRAHAM
Publication Manager.....	MISS NEELY
Copyists.....	ALICE RIDENHOUR, ADELAIDE RIDENHOUR, BILLY BROOME
Typists.....	DIXON BLACKWELDER, BILLY BROOME
Faculty Advisor.....	MISS EUDY

## MONOGRAM CLUB

Mr. Russell  
Marie Miller  
Edith Sloop  
Grace Barger  
Bo McDonald  
Edith Eagle  
Jo Basinger  
Lucille Miller

Bernice Beaver  
Juanita Overcash  
Mavis Williams  
Hazel Abernathy  
Mary Elinor Davis  
Sarah Lou Dickerson  
Elizabeth Mault  
Rachel Bradshaw

Jo Nell Farrington  
Cecil Herrin  
Dixon Blackwelder  
Thelma Morrow  
Virginia Grimes  
Bessie McCombs  
Pansy Thompson  
Priscilla Honbarger  
Willie Mae Kluttz

G. T. Bradshaw  
Lewis Seymore  
Reid Grimes  
Marie Owensby  
Hazel McNeely  
Rachel Mabry  
Ruth Smith  
Gladys Roberts

Mr. Booth  
Bill DeMarcus  
Homer Overcash  
Howard Eagle  
Clyde Luther  
Lloyd Owens  
Glenn Brown  
Bill Rary



# THE PARROT



## MISS EUDY'S DRAMATIC CLUB

*President* ..... LOU BOSTIAN  
*Vice-President* ..... MARY RUTH BEAVER  
*Secretary* ..... FRANCES FREEZE  
*Treasurer* ..... BERNICE MCCOMBS

Lou Bostian	Frances Wilhelm	Kathryn Callicutt	Mable Newlin	C. P. Safrit
Laura Jo Wilkie	Mary Ruth Beaver	Evon Shimpoch	Billy Broome	Hoyt Safrit
Hazel McNeely	Lucille Jones	Bernice McCombs	Rachel Propst	Marie Owensby
Mary Brown	Martha Mae Propst	Nellie Watson	Thurman Poston	Ernestine Eudy
Jane Lee	Frances Freeze	Margaret Farmer	Louise Rary	Gray Freeze

## MR. YOUNG'S DRAMATICS CLUB

*President* ..... BESSIE MCCOMBS  
*Vice-President* ..... VIRGINIA GRIMES  
*Secretary* ..... LOMA KIRK  
*Treasurer* ..... MR. YOUNG  
*Advisor* ..... MR. YOUNG

Coleen Freeze	Mary Glenn	Nina Davis	Elizabeth Mault	Jessie Mae Guffy
Thelia Ridenhour	Leona Shuping	Loma Kirk	Bessie McCombs	Judith Ann Jordan
Olyve Hauss	Juanita Harrell	Johnnie Miller	Margaret Ann Watkins	Betty Sue Bost
Waulena Morris	Charles Coughner	Mr. Young	Virginia Grimes	Harold McNight
		Louise Wyatt		



# THE PARROT



## DINNER BELLES CLUB

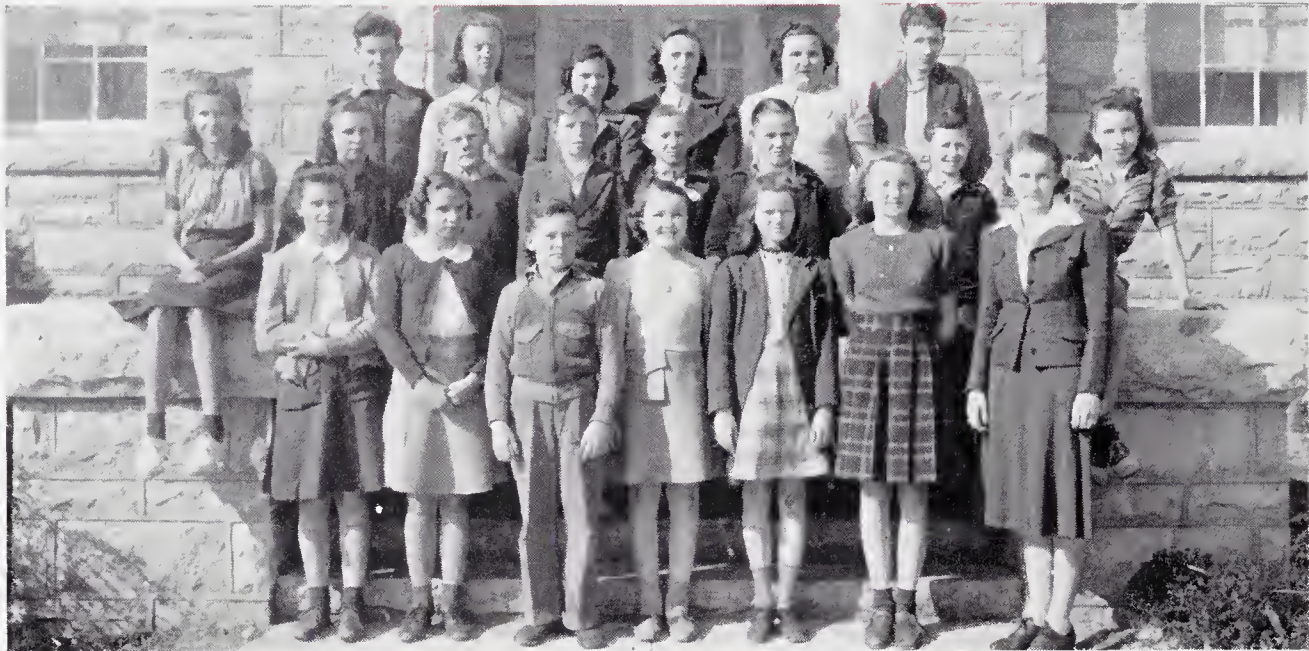
<i>President</i> .....	LOUISE RARY		
<i>Vice-President</i> .....	LOLA PARK		
<i>Secretary-Treasurer</i> .....	ADELINE TURRENTINE		
<i>First Row:</i>	<i>Second Row:</i>	<i>Third Row:</i>	<i>Fourth Row:</i>
Miriam Watkins	Maxine Walters	Elsie Arant	Miss Blair
Ezela Park	Geneva Shillinglaw	Mildred Allen	Mary Frances Corriher
Lois Dabbs	Willa Weaver	Margaret Castor	Doris Barnhardt
Frances Safrit	Adeline Turrentine	Nellie Poston	Opal Jones
Margie Isenhour	Katherine Jordan	Juanita Goodnight	Sarah London
Joan Bame	Jennie Ruth Solomon		
	Lola Park		

## FUTURE FARMERS ORGANIZATION

<i>President</i> .....	WAYNE SIMPSON			
<i>Vice-President</i> .....	RAYMOND KIRK			
<i>Treasurer</i> .....	ARNOLD BARNHARDT			
<i>Secretary</i> .....	ROBERT RECTOR			
<i>Advisor</i> .....	MR. POOLE			
Robert Nicholson	Otho Sloop	Frank Miller	Earl Patterson	Troy Wagoner
Hoy Stirewalt	George Ray Kirk	Francis Linn Cauble	Mr. Poole	Robert Basinger
C. B. Jones	Donald McKnight	Raymond Kirk	Arnold Barnhardt	Ernest Weaver
James Harrison	James Aldrige	Odell Moose	Kenneth Suther	Wayne Simpson
Eustace Sloop	John Miller	Leonard Patterson	Robert Bost	Crawford Sloop, Jr.
Howard Sheeks	Jack Sasser	Paul Shuping	James Weaver	Robert Kirk
	Howard Shue		Hugh McKnight	



# THE PARROT



## SCIENCE CLUB

*President* ..... ALDENA ABERNATHY  
*Vice-President* ..... HOWARD JAMES  
*Secretary* ..... LUCILLE TROUTMAN  
*Treasurer* ..... TOMMY ELLER

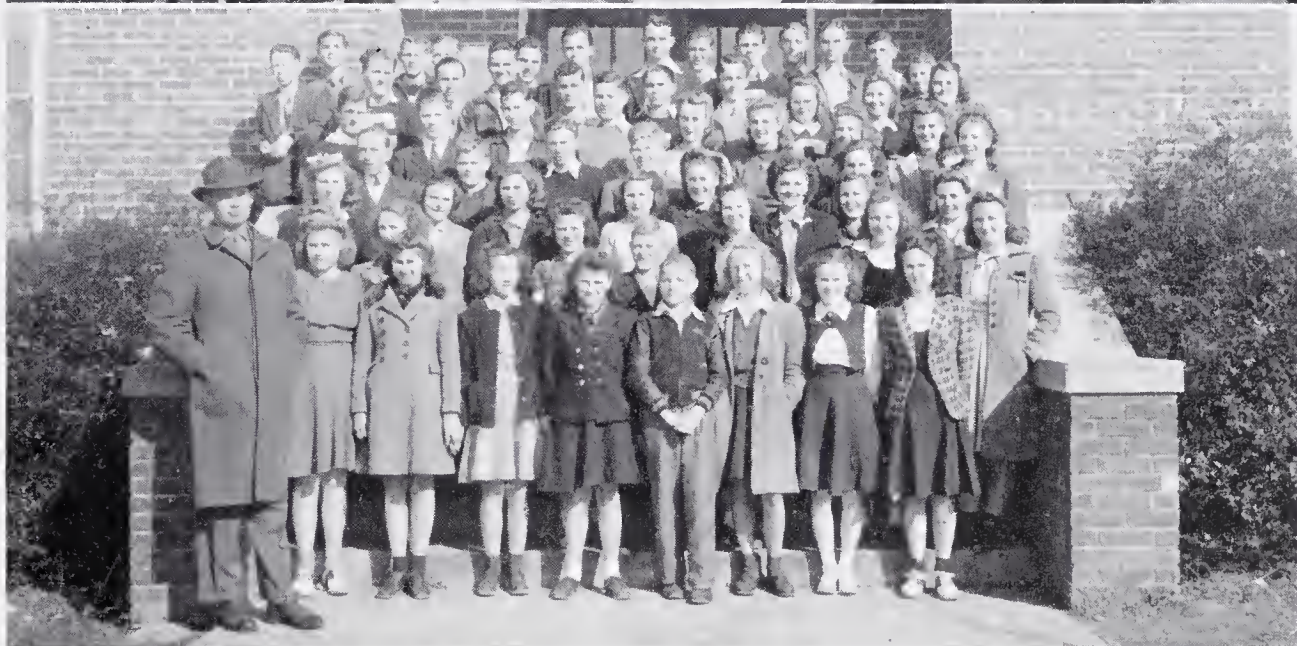
Aldena Abernathy	Ola Mae Winecoff	Christine Follett	Charles Ray Marshall	Elsie Chamberlain
Lucille Troutman	Arlene Safrit	Jack Eller	Claris McGalliard	Ruth Pierce
Tommy Eller	Mrs. Huffman	Voit Park	Roy Charles Kimball	Oveda Poag
Peggy Turrentine	Dorothy Murray	William Beaver	Kathleen Rogers	Howard James
		Devon Waddell		

## GLEE CLUB

<i>First Row:</i>	<i>Second Row:</i>	<i>Third Row:</i>	<i>Fourth Row:</i>
Devon Waddell	Ned Davis	Jimmie Mundy	Mr. Fox
Voit Park	David Cress	Homer Overcash	Lloyd Owens
Johnnie Miller	Mavis Williams	Charles Earnhardt	Thurman Poston
C. P. Safrit	Annie Laurie Taylor	Billy Broome	Glenn Brown
Mary Ruth Beaver	Lou Bostian	Edith Sloop	Max Misenheimer
Juanita Overcash	Mildred Allen	Grace Barger	Hoyt Safrit
Nellie Watson	Mary Frances Corriher	Frances Freeze	Kenneth Suther
Alice Ridenhour	Thelia Ridenhour	Gladys Roberts	
Mary Elinor Davis	Joe Nell Farrington	Sarah Lou Dickerson	
Adelaide Ridenhour	Frances Wilhelm	Bernice McCombs	
Marie Owensby	Viola Owens	Alma Farrington	
Hazel McNeely			
Loma Kirk			
Laura Jo Wilkie			



# THE PARROT



## MIMEOGRAPH CLUB

<i>President</i> .....	THELMA MORROW			
<i>Vice-President</i> .....	DIXON BLACKWELDER			
<i>Secretary</i> .....	MARIE MILLER			
<i>Treasurer</i> .....	ALMA FARRINGTON			
<i>Chief Mimeographer</i> .....	CHARLES BASINGER			
Helen Grant	Nora Shuffler	Charles Basinger	Thelma Morrow	Ray Mault
Evelyn Freeze	Opal Horton	Marie Miller	Dixon Blackwelder	Dorothy Sloop
Christine McDonald	Wilma Lowder	Alma Farrington	Vera Wilson	Junior Farnhardt
	Wesley Wagner		Alice Lewis	

## PHYSICAL EDUCATION CLUB

<i>First Row:</i>	Gerald Herrin	<i>Fourth Row:</i>	Gladys Roberts	<i>Seventh Row:</i>
Mr. Booth	Dora Abernathy	Cecil Herrin	Priscilla Honbarger	Buell Lowder
Nell Carter	Mavis Williams	John Henry Graeber		Bill DeMarcus
Erma Gail Lumsden	Juanita Overcash	Bob Ward	<i>Sixth Row:</i>	Junior Carter
Jearlean Walters		Jimmy Wood	Bobbie Bostian	Howard Eagle
Jo Basinger	<i>Third Row:</i>	Hazel Abernathy, Secretary	Clyde Luther	Bill Talbert
Bo McDonald	Juanita Belk	Louise Saunders	Ralph Williams	Reid Grimes
Bernice Beaver	Elizabeth Hall		Oscar Abernathy	G. T. Bradshaw
Lucille Miller	Mildred Belk	<i>Fifth Row:</i>	Willard Overcash	Lloyd Owens
Edith Eagle	Aurdrine Wilkie	Lewis Seymour, V.-Pres.	Billy Rary, President	Glenn Brown, Treas.
	Ruth Smith	Harvey Henson	Harold Boger	Ralph Hopkins
<i>Second Row:</i>	Willie Mae Kluttz	George Bostian	Mary Elinor Davis	Arnold Wessinger
Viva Lee Withers	Rachel Bradshaw	Manuel Wyatt	Rachel Mabry	Pansie Thompson
Annie Ruth Basinger	Joe Nell Farrington	Edith Sloop	Dorothy Galloway	
		Grace Barger		



# THE PARROT



## LIBRARY CLUB

*President* ..... LOIS TREXLER  
*Vice-President* ..... CLARA GOBLE  
*Secretary* ..... BERNICE BRADSHAW  
*Treasurer* ..... WINONA FOSTER

### MEMBERS

*First Row:*  
 Louise Thompson  
 Marie Seymour  
 Nellie Allman  
 Bardee Seymour

*Second Row:*  
 Lois Trexler  
 Ella Mae Wilhe'm  
 Helen Karriker  
 Edith Honbarger  
 Callie Talbert  
 Nellie Bradshaw

*Third Row:*  
 Winona Foster  
 Clara Goble  
 Mildred Fesperman  
 Mary Louise Bernhardt  
 Helen Freeze  
 Margie Ciess

*Fourth Row:*  
 Bernice Bradshaw  
 Polly Gillespie  
 Marie Livengood  
 Frances Goodman  
 Eva Mae Haynes  
 Mrs. Corriher  
 Pauline Basinger  
 Willie Koon

### BAND

Robert Whitaker  
 Jimmy Smith  
 George Bostian  
 John Henry Graeber

Blenton Lowder  
 Mr. Fox (Director)  
 Bobby Wilhelm  
 Bobby Davis

Buell Lowder  
 Bob Barrett  
 William Beaver  
 Junior Carter

Ray Mault  
 Bobby Bostian  
 Glenn Corriher  
 Albert Palmer



# THE PARROT



## JUNIOR GLEE CLUB

Juanita Harrell  
Bobby Jean Barnhardt  
Phyllis Gillon  
Martha Cress

Peggy Stirewalt  
Kathleen Parrish  
Ola Mae Winecoff  
Jo Basinger

Mr. Fox  
Bobby Davis  
Carrie Louise Safrin  
Elsie Chamberlain

Ruth Pierce  
Oveda Poag  
Bobbie Wilhelm

## 7th GRADE DRAMATICS CLUB

*President* ..... MARTHA ANN BROTHERTON

*Vice-President* ..... OVELL CRAWFORD

*Secretary-Treasurer* ..... PEGGY ANN STIREWALT

### MEMBERS

Arlene Weaver  
Rachel Talbert  
Louise Glenn  
Betty Lou Basinger  
Martha Ann Brotherton  
Dorothy Goodman

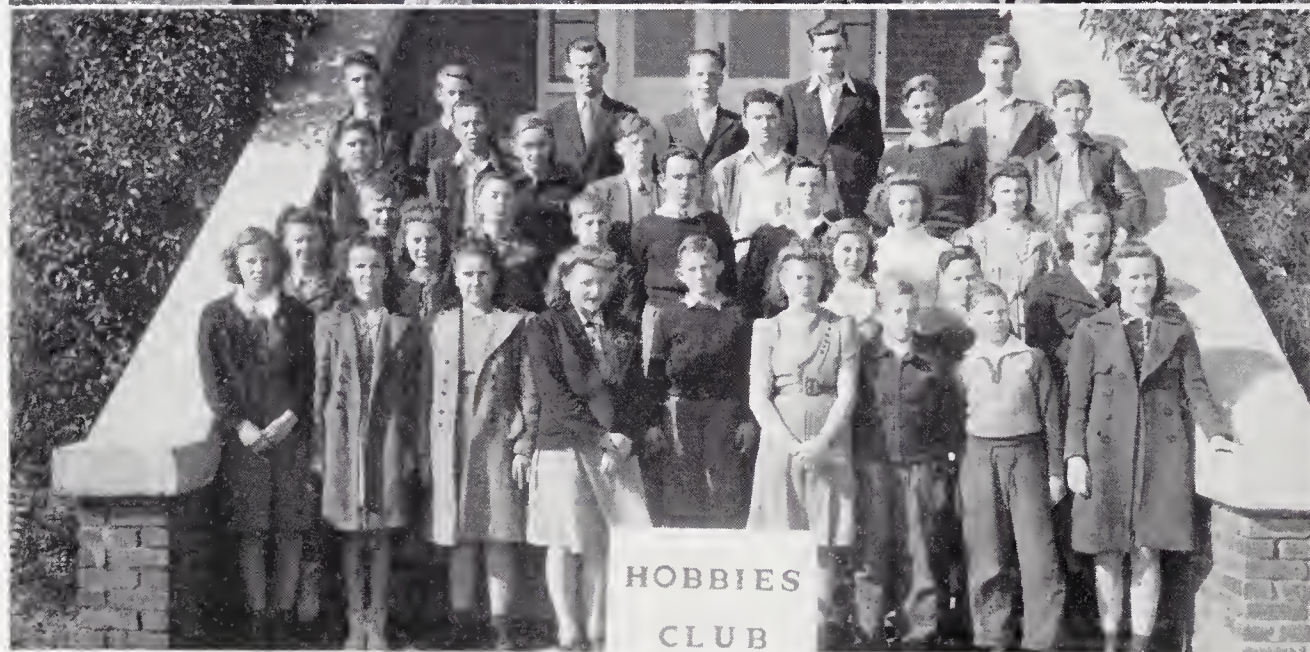
Virginia Misenheimer  
Louise Walls  
Kinard Park  
Joleen Upright  
Peggy Stirewalt  
Ernest Gilreath

Earl Shillinglaw  
Helen Bass  
Coreene Stiller  
Cora Mae Rogers  
Erlyne Russell  
Janie Atwall

Ovell Crawford  
Lucille Collins  
Martha Cress  
Phyllis Gillon  
Mary Frances Correll  
Mr. Gerhardt



# THE PARROT



## PHOTOGRAPHY CLUB

*President* ..... EARL GRAHAM  
*Vice-President* ..... LAWRENCE GOODNIGHT  
*Secretary-Treasurer* ..... MARTHA SIMPSON  
*Advisor* ..... MR. FOX

J. T. Barnhardt	Mr. Fox	Helen Upright	Mary Rose Gillis	Glenn Corriher
Daisy Morgan	Earl Graham	Lucille Davis	Louise Williams	Troy Wagoner
Kathleen Parrish	Martha Simpson	Ruth Yost	Clyde Williams	Preston Weant
Carl Evans	Ida Goodnight	Betty Baker	Lawrence Goodnight	Pearl Freeze
Lula Morgan	Virginia Teague	H. T. Davis	Harold Cruse	Sadie Propst
	Paul Aldrige	Lucille Casper	Harvey Weant	

## HOBBIES CLUB

*President* ..... ROBERT WHITAKER  
*Vice-President* ..... JACK SASSER  
*Secretary* ..... HARRY LEE KLUTTZ  
*Treasurer* ..... GEORGIA COOK

Goldia Cranford	Foil Safrin	Robert Whitaker	Frances Bradshaw	James Fisher
Mazie Baily	Hazel Vanderford	Donald McLaughlin	Ralph Corriher	Albert Palmer
Betty Sue Graham	Hazel Freeze	Bonnie Glover	Sonnie Fesperman	Elmore Koon
Frank Collins	Harold Sutton	Willie Sue Wilhelm	Howard Haynes	Mr. Hill
Harold Bame	Lauelle Michael	Billy Allman	Jimmie Mundy	Stanley Weaver
Betty Wall	Billy Kluttz	Georgia Cook	John Jordan	Jack Sasser
William Ivengood	Harvey Trexler		Harry Smith	Harry Lee Kluttz





BASINGER

DAVIS

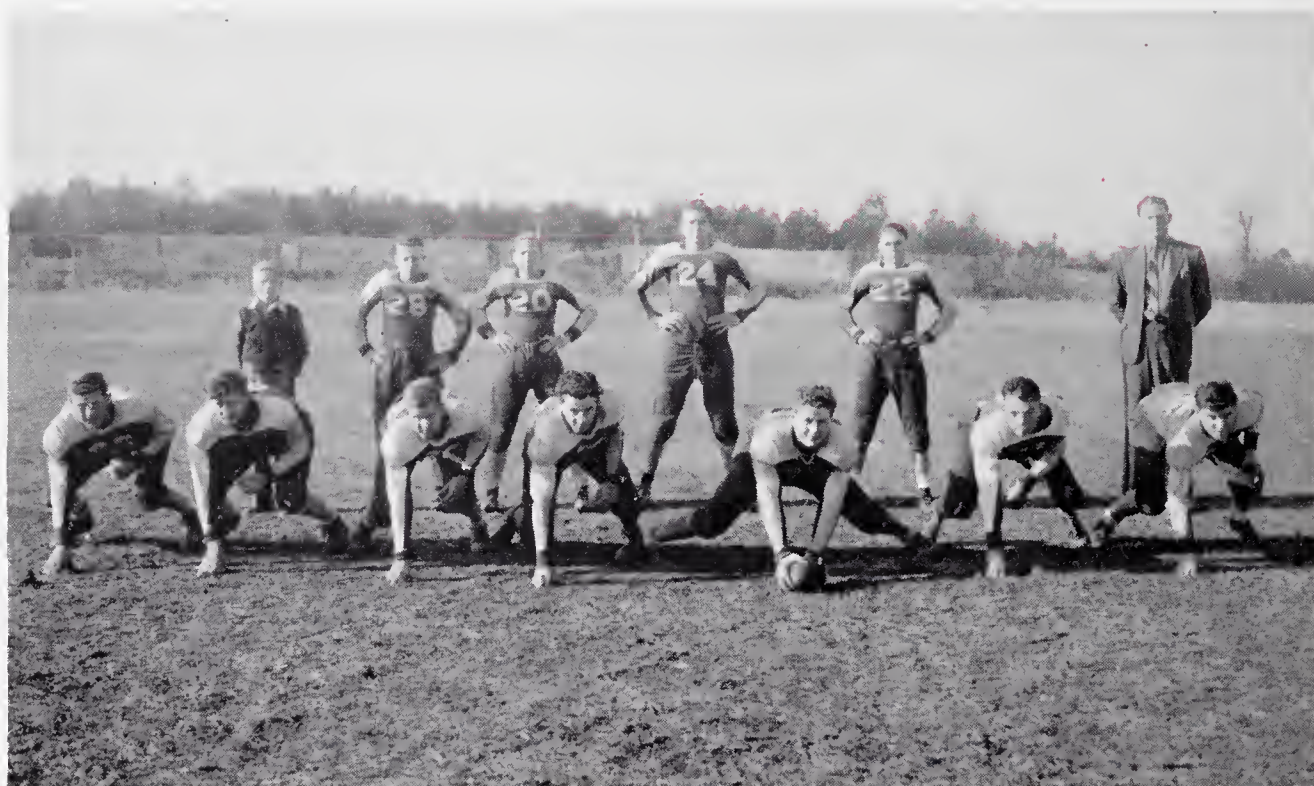
GRIMES

MCCOMBS

# ATHLETICS



# THE PARROT



## FOOTBALL TEAM

R.E.....G. T. Bradshaw	L.G.....Howard Eagle	L.E.....Jack Bame	H.B.....Cecil Herrin
R.T.....Jack Fletcher	C.....Clyde Luther	Mgr.....Bo McDonald	F.B.....Vernon Stirewalt
R.G.....Lewis Seymour	L.T.....Bill Gillespie	H.B.....Albert Wilhelm	Q.B.....Billy Rary
	Coach.....William Booth		

### RESULTS

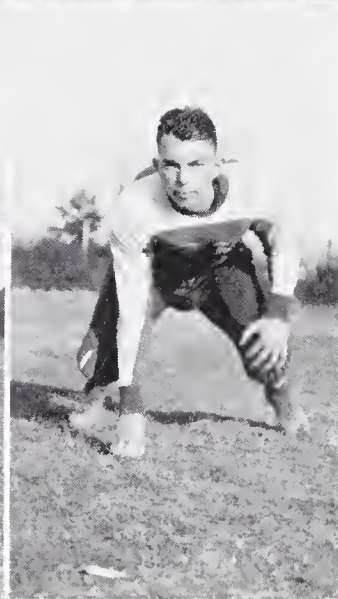
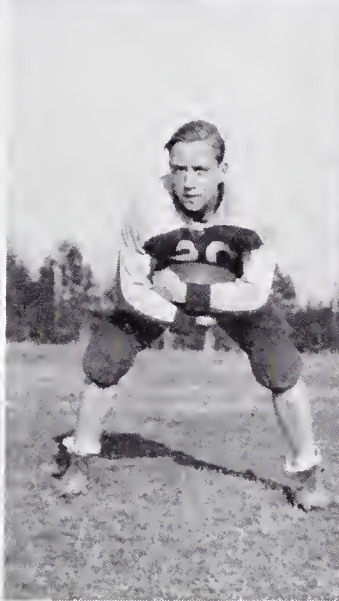
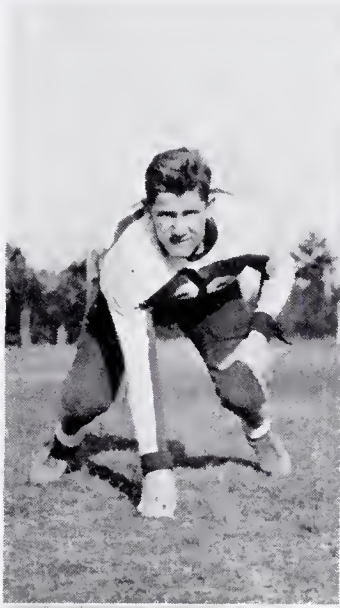
Charlotte .....	12	C. G. H. S.....	0
Mooreville .....	0	C. G. H. S.....	7
Jackson Training School.....	0	C. G. H. S.....	40
Walkertown .....	0	C. G. H. S.....	13
Clemons .....	13	C. G. H. S.....	6
Kernersville .....	12	C. G. H. S.....	16
Lewisville .....	0	C. G. H. S.....	0
Cleveland .....	6	C. G. H. S.....	26
North Wilkesboro .....	6	C. G. H. S.....	20

### FOOTBALL

With only 15 boys out for football, the Red Devils had their best season in many years. We expect, due to their past record, more interest in football. The 15 Red Devils seldom depended on substitutes. The players usually had to go the full distance, and much credit is due them for their courage.



# THE PARROT



SEYMOUR  
Guard  
EAGLE  
Guard  
WILLIAMS  
Back

BRADSHAW  
End  
HERRIN  
Back  
WILHELM  
Back

RARY  
Back  
STIREWALT  
Back  
BAME  
End

FLETCHER  
Tackle  
LUTHER  
Center  
GILLESPIE  
Tackle



# THE PARROT



## BOY'S BASKETBALL TEAM

Oscar Abernathy  
Lewis Seymour  
Arnold Wessinger

Lloyd Owens  
Glenn Brown  
Reid Grimes

Couch Booth  
John Winecuff  
Jack Melchor

Bill Gillespie  
Manager Palmer

### RESULTS

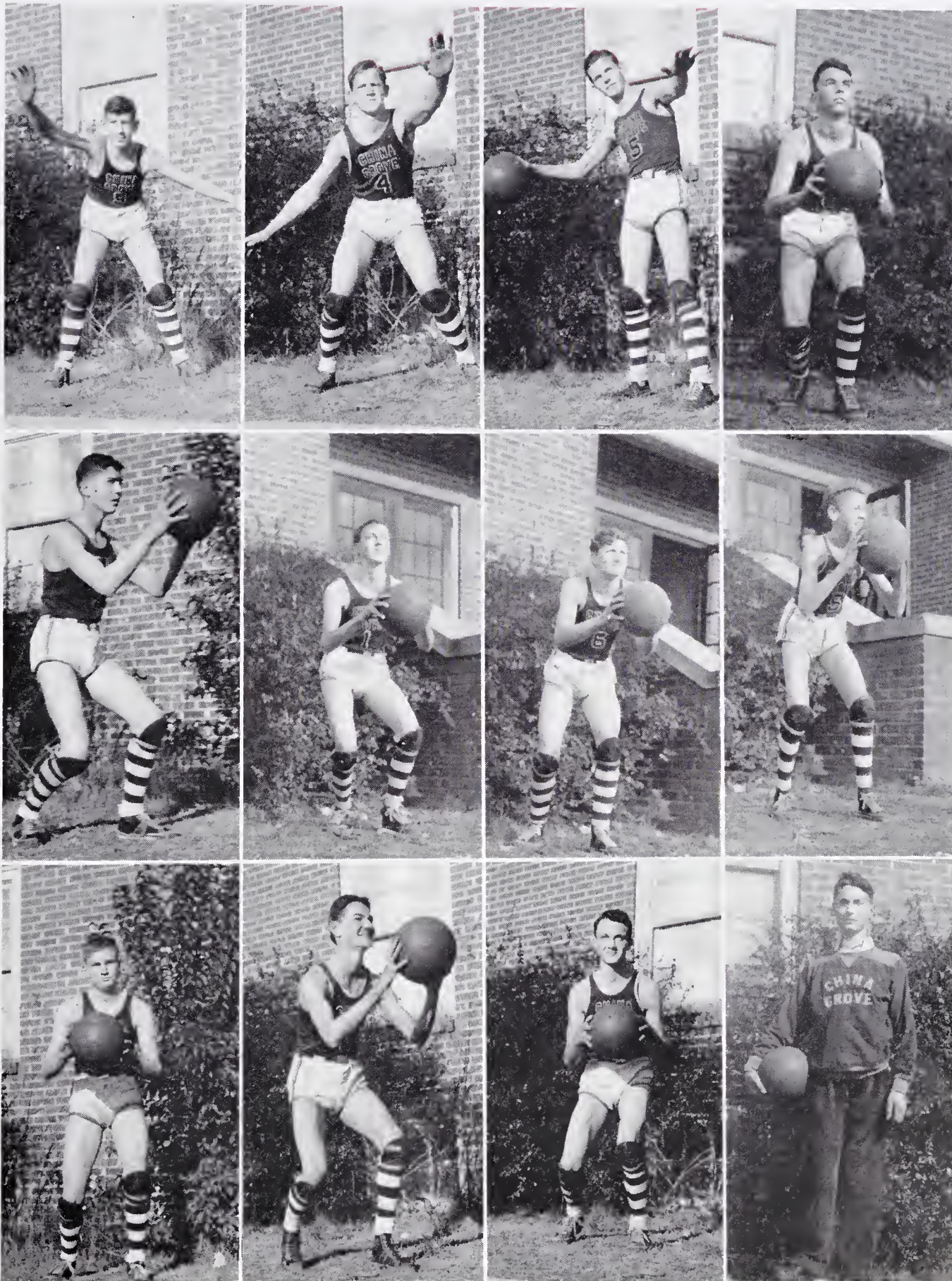
Granite Quarry	.....22	C. G. H. S.	.....11
Rockwell	.....19	C. G. H. S.	.....10
Landis	.....19	C. G. H. S.	.....21
Woodleaf	.....15	C. G. H. S.	.....14
Cleveland	.....12	C. G. H. S.	.....23
Mt. Ulla	.....11	C. G. H. S.	.....26
Granite Quarry	.....18	C. G. H. S.	.....8
Rockwell	.....17	C. G. H. S.	.....26
Landis	.....23	C. G. H. S.	.....35
Woodleaf	.....9	C. G. H. S.	.....24
Cleveland	.....11	C. G. H. S.	.....31
Mt. Ulla	.....18	C. G. H. S.	.....25

### BASKETBALL

After getting off to a slow start with three consecutive losses the Red Devils have won 8 out of 9 consecutive games. Doing most of the performing work throughout the season we find Brown, Owens, Grimes, Seymour, Abernathy, and Wessinger our most outstanding players.



# THE PARROT



WESSINGER  
Guard  
MELCHOR  
Forward  
WINECOFF  
Center

SEYMOUR  
Guard  
BROWN  
Guard  
ABERNATHY  
Forward

OWENS  
Forward  
FLETCHER  
Center  
GRIMES  
Center

GILLESPIE  
Guard  
DeMARCUS  
Guard  
PALMER  
Mgr.



# THE PARROT



## GIRL'S BASKETBALL TEAM

Joe Nell Farrington  
Viola Owens  
Judith Ann Jordan

Edith Sloop  
Grace Barger  
Edith Eagle

Priscilla Honbarger  
Willie Mae Kluttz  
Sarah Lou Dickerson

Willie Sue Wilhelm  
Leona Shuping  
Bernice Beaver

Louise Saunders  
Rachel Bradshaw  
Coach Russell

### RESULTS

Granite Quarry	15	C. G. H. S.	25
Rockwell	17	C. G. H. S.	37
Landis	8	C. G. H. S.	37
Woodleaf	21	C. G. H. S.	46
Cleveland	8	C. G. H. S.	41
Mt. Ulla	25	C. G. H. S.	54
Granite Quarry	22	C. G. H. S.	25
Rockwell	24	C. G. H. S.	32
Landis	9	C. G. H. S.	43
Woodleaf	23	C. G. H. S.	41
Cleveland	7	C. G. H. S.	51
Mt. Ulla	18	C. G. H. S.	28

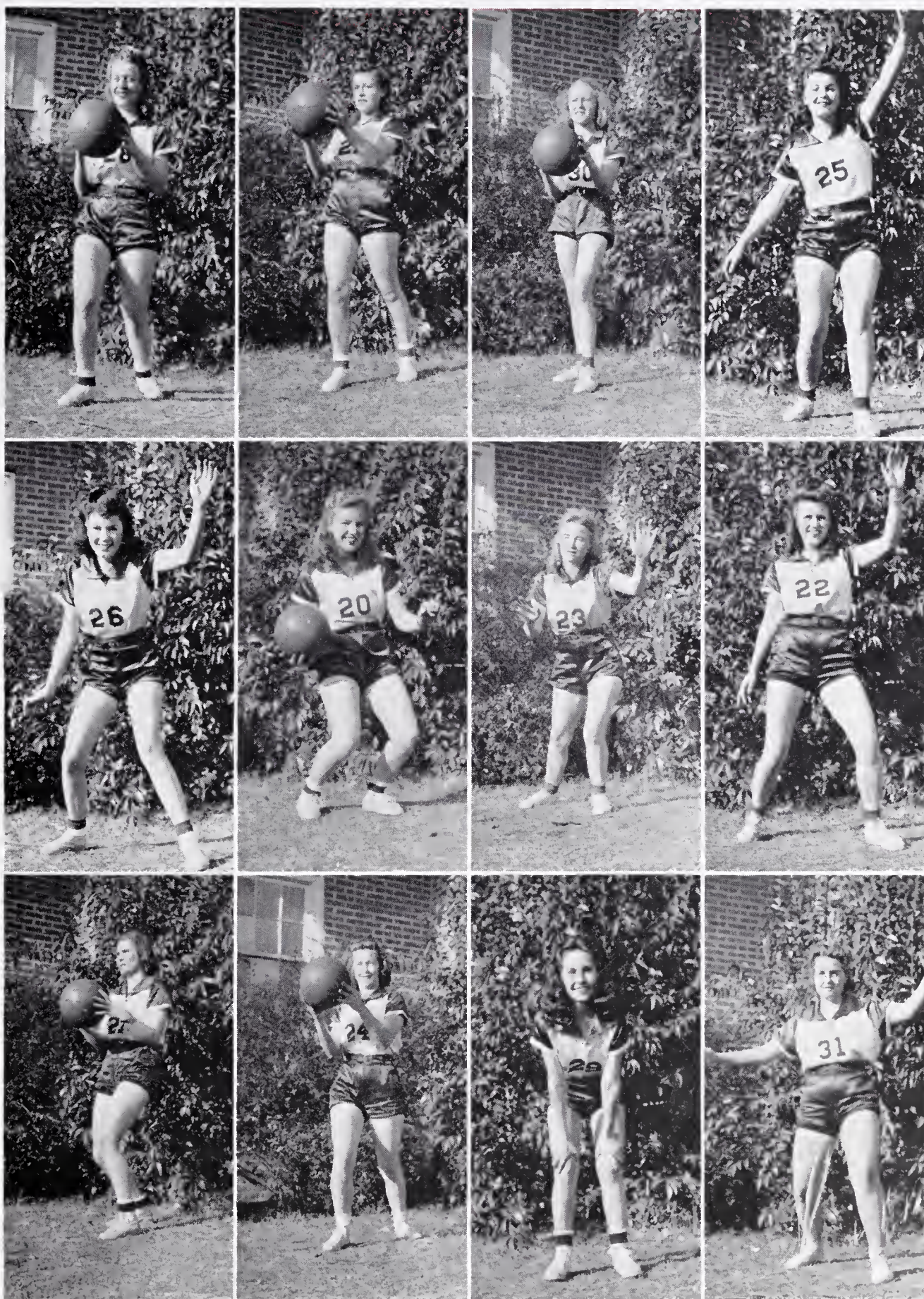
### BASKETBALL CHAMPIONS

Completing one of the best seasons in the history of the Red Devilettes, we found our girls undefeated throughout twelve conference games.

With Sloop, Barger, and Owens as forwards, the Red Devilettes have scored more points this season than any school in the state, according to the games they have played. Along with 12 conference games the Devilettes have won eight practice games. This gives them a total of 20 wins and no losses.



# THE PARROT



SLOOP  
Forward

JORDAN  
Guard

OWENS  
Forward

BRADSHAW  
Forward

BARGER  
Forward

WILHELM  
Forward

BEAVER  
Forward

SHUPING  
Guard

EAGLE  
Guard

KLUTTZ  
Guard

HONBARGER  
Guard

FARRINGTON  
Guard



# THE PARROT



## BASEBALL TEAM

Billy Rary  
G. T. Bradshaw  
Reid Grimes

John Winecoff  
Boyd Buckwell  
Coach Booth

Cecil Herrin  
Ralph Williams  
Jack Fletcher

Clyde Luther  
Bill DeMarcus, Mgr.

With only a few weeks left in the school year to play basketball the Red Devils have been handicapped in arranging enough games to keep them developing. Last season out of 12 games played they won 7 and lost 5. This year with quite a few lettermen back, we are expecting greater things out of them. The lettermen are: Herrin, Williams, Luther, Rary, Bradshaw, Grimes, Winecoff, and Buckwell.



# ***THE PARROT***

## **THE ROWAN COUNTY BUILDING AND LOAN ASSOCIATION**

CHINA GROVE, N. C.

This Building and Loan Association's business is mutual.

Members save money together.

They lend to each other.

They divide profits among themselves.

They work to help each other.

Our shares are good investments and pay good dividends.

COME IN AND WE WILL TALK IT OVER

UNDER STATE SUPERVISION

McL. RITCHIE, *President*

K. A. SHINN, *Vice-President*

C. C. GRAHAM, *Secretary-Treasurer*

THERE COMES A TIME in almost every man's life when it will mean a good deal to him to have the recommendation or endorsement of a good bank.

IF HE IS FAVORABLY KNOWN at the bank, he has a distinct advantage over the man who is not.

YOUR REPUTATION is what you have made it through the years of honest dealing, and your disposition to meet your obligations promptly.

## **THE BANK OF CHINA GROVE**

C. C. GRAHAM, *President*

J. F. COOPER, *Vice-President*

S. W. FREEZE, *Cashier*

MEMBER OF THE FEDERAL DEPOSIT INSURANCE CORPORATION  
MAXIMUM INSURANCE FOR EACH DEPOSITOR \$5,000

CHINA GROVE, N. C.



# THE PARROT

*Compliments of*  
**NORMAN INGLE, Jeweler**

SALISBURY, NORTH CAROLINA

*Representing*  
**HERFF-JONES COMPANY**  
*The World's Largest Manufacturers of High School  
Class Rings and Pins*

PHOTOGRAPHS OF ALL KINDS  
**ALEXANDER'S STUDIO**

*"Photographer for 1941 PARROT"*

Phone 248

SALISBURY, NORTH CAROLINA

204½ S. Main St.

**OIL PRODUCTS COMPANY AGENTS**

SALISBURY, N. C.

SOLD IN CHINA GROVE BY

L. E. BOSTIAN

T. E. DENNIS

EDDLEMAN & SONS

*Congratulations, Seniors*

*We will miss you!*



**CHINA GROVE HIGH SCHOOL  
STORE**

**THE CHINA GROVE**

**P.-T. A.**



*Congratulates the  
Senior Class of 1941*



# THE PARROT

## THE DAILY INDEPENDENT

*North Carolina's Fastest Growing  
Newspaper*

*Published Daily*

*at*

KANNAPOLIS, N. C.

Only \$4.00 a Year in CHINA GROVE

*Compliments of*

CHINA GROVE ROLLER MILL

Flour, Feed, and Meal



China Grove, N. C.

*Ask your grocer for*

White Seal & Rowan Brand Meats

They Are Always Fresh

Hams, Bacon, Sausage, Pure Lard

WHITE PACKING CO., INC.

Salisbury, N. C.

HANFORD'S FLOWERS

SOLD AT

THE FLOWER SHOP

(Next to Capitol Theatre)

SALISBURY, N. C.

Phone 381 — Night Phone 382

Excellent Delivery Service to China Grove  
and Vicinity

TWO BIG STORES

THE R. W. NORMAN CO.

— FURNITURE —

Salisbury and Kannapolis

*Compliments of*

Stanback Company, Ltd.

Makers of

Stanback Headache Powders

A Rowan County Product

*Congratulations, Seniors  
from*

TAYLOR MATTRESS CO.

Salisbury, N. C.

"We make them Better than ever"

Mattresses - Venetian Blinds  
Awnings

*"To Give Our Best"*

That's what we do every time we serve a  
customer, and know today's best is never  
good enough for tomorrow. That's why we  
constantly strive to improve it.

SUNSHINE LAUNDRY



# THE PARROT

*Compliments of*



**China Grove Seed Association**

China Grove, N. C.

**YADKIN HOTEL**

*... featuring ...*

One of Carolina's finest  
Restaurants.



SALISBURY, N. C.

**DUKE POWER CO.**



for health and for pleasure

Drink

**Coca-Cola**

SALISBURY COCA-COLA BOTTLING  
COMPANY

Salisbury, N. C.  
1828 S. Main Extension

*Compliments of*

**PEPSI-COLA**



**ORANGE-CRUSH BOTTLING CO.**

Salisbury, N. C.

**EDDLEMAN & SONS**

Groceries and Meats  
Ice and Feed



Phone 15

China Grove, N. C.

**G. J. TEMPLETON**

GENERAL MERCHANT

Phone 14

China Grove, N. C.



# THE PARROT

## WAGONER MOTOR CO.

Ford Dealers

China Grove, N. C.

## THOMAS & HOWARD CO.

*Wholesale Grocers*



Salisbury, North Carolina

## ZENITH FERTILIZER

Manufactured in Rowan County  
For Rowan County Soil

Zenith Chemical Co.

Salisbury, N. C.

## LANDIS GARAGE

Body and Fender Work  
Authorized Chevrolet Service



Phone 104-R

Landis, N. C.

*Compliments*

*of*

ROWAN COOPERATIVE  
STORE CO.

*Compliments*

*of*

BOSTIAN MERCANTILE

China Grove, N. C.

*Compliments*

*of*

C. E. SLOOP

China Grove, N. C.

MEATS AND GROCERIES

China Grove Ice & Fuel Co.

ICE, COAL, AND WOOD

PHONE 95-W

China Grove, North Carolina



# THE PARROT

## DIANA SHOPS



224 S. Main St.  
Salisbury, N. C.

## DIAMONDS

WATCHES

JEWELRY

W. H. Leonard, Jr.

*Compliments  
of*  
Hart's Cut-Rate Drug Store



China Grove, N. C.

## MILLER'S HOTEL

Gives You Genuine Hospitality,  
Friendly Service

CENTRALLY LOCATED

China Grove, N. C.

C. A. STIREWALT  
*General Merchandise*



Route No. 2  
Rockwell, N. C.

## THE 1941 PARROT

Was Printed By

THE LASSITER PRESS, INC.

Charlotte, N. C.

## THE PINE TAVERN

U. S. No. 29  
Concord-Kannapolis Highway  
Concord, N. C.

## ROY CLINE'S

Esso Service Station  
A Good Place To Stop  
China Grove—Rockwell Highway

Stop At  
E. H. KIMBALL'S  
Esso Station  
Phone 135      China Grove, N. C.

*Compliments of*  
SMITH BEAUTY SHOP  
China Grove, N. C.



# THE PARROT

THOS. S. WILKIE  
EVERYTHING ELECTRIC  
Phone 3-W  
China Grove, N. C.

GREEN FROG SANDWICH SHOP  
Pit Bor-B-Q - Home Cooked  
Pet Ice Cream  
China Grove, N. C.

*Compliments of*  
MUNDY'S  
For  
Colds

*Compliments of*  
CHINA GROVE FURNITURE CO.  
China Grove, N. C.

CHINA GROVE HDW. CO.  
Hardware, Floor Coverings, Farm Implements,  
Electrical Supplies  
Established 1901 Phone 5-W

TREXLER BROS. & YOST  
Leading Clothiers For  
Young Men  
Solisbury, N. C.

The Gold Shop  
LADIES' WEARING APPAREL  
Salisbury, N. C.

HARDIMAN & SON, INC.  
FRIGIDAIRE PRODUCTS  
Solisbury      Spencer  
Kannapolis      Concord

DARLING SLIPPER SHOP  
Salisbury, N. C.  
"Solisbury's Only Exclusive  
Ladies' Shoe Store"

BAMBY BREAD  
"It's policed for freshness"  
Solisbury, N. C.

RUSTIN FURNITURE CO.  
"The Home of Friendly Credits"  
Salisbury, N. C.

RELIABLE SALES STORE, INC.  
AND PAWN SHOP  
Solisbury, N. C.

*Compliments of*  
ELLER-WOOD FLORIST  
Salisbury, N. C.

*Compliments of*  
FESPERMAN BEAUTY SHOPPE  
Landis, N. C. Phone 59-G

SIMPSON-PEACOCK COMPANY  
*Wholesale Grocers*  
SALISBURY, N. C.

*Compliments of*  
KANNAPOLIS ICE & FUEL CO.  
"Fuel Satisfaction"  
Kannapolis, N. C.



# THE PARROT

## VIOLET MAE SHOPPE

"Smart Styles For Smart Women"

Phone 269-R Kannapolis, N. C.

## DINE & DANCE

PRIVATE DINING ROOM  
TOWEL CITY RESTAURANT

Bob Summersan, Mgr.

*Compliments of*

## HOLLINGSWORTH MOTOR CO.

CHRYSLER PLYMOUTH

Kannapolis, N. C.

## DO VISIT

... "JULIES" ...

OR PHONE 704

*For Smarter Women's Apparel*

West "A" St. Kannapolis, N. C.

## LOURENE BEAUTY SHOP

"We Need Your Head In  
Our Business"

Phone 340 924 N. Main  
Kannapolis, N. C.

*Compliments of*

## LEE KLUTTZ

General Merchandise  
and Service Station

*Compliments of*

## BLACKWELDERS BAR-B-Q

Salisbury, N. C.

## LANDIS ICE & FUEL CO.

Fresh Meats - Groceries  
Ice and Fuel

Phone 104-L

## JOHNSTON'S FURNITURE CO.

Home of Friendly Service

Cancard, N. C. Kannapolis, N. C.  
Phone 21 Phone 680

## H. V. FESPERMAN

Wholesale Confectionery

206 Ridge Ave. Phone 2026-R  
Salisbury, N. C.

## STUDENT SCHOOL SUPPLY CO.

BELMONT, N. C.

## HILL-CREST FURNITURE CO.

"Service With a Smile"

Phone 686

Jackson Park Kannapolis, N. C.

*Compliments*

## CHINA GROVE DEPT. STORE

Dependable Merchandise and  
Friendly Service

Betras Nassar, Prop.

## SNIDER BROTHERS

*Wholesale Grocers*

Phone 91

Salisbury, N. C.

*Compliments*

*of*

## CHINA GROVE DRUG CO.

*Compliments of*

## COX VENDING MACHINE COMPANY

115-117 East Fisher

Salisbury, N. C.



Harry, I have enjoyed knowing you and I wish you all the luck and happiness in the years to come. I have enjoyed being in school with you for the past three years.

a friend

Jwa Lee Withers

Harry I have enjoyed being in school with you for the past year. I wish you all the luck and happiness in the future.

a friend

Melba Walters

Harry

I have enjoyed being and working with you. Hope I have a chance to do it again.

A Pal.

Ronald M. Laughlin

Harry,

Here's wishing <sup>you</sup> the best of luck in the future. Remember the good times "Creep" you and I had in History & Geography.

A friend,

Garlean Walters



Harry, I want to wish you luck in the future,  
also health and happiness.

A friend always,

Carinne Stiller

May the Fortune always be on your  
side and never be a daughter of  
Misfortune.

R.C.K. J.

So you, My friend, I want to wish you  
and yours to have the most hardy and sincere,  
"Best of luck and good wishes always!"  
A school chum.

Yours truly,

Smitty,

Girls are like a lump of gold, hard to get  
and hard to hold, Boys are like a dip of snuff,  
take a dip and that's enough. I have enjoyed  
being in school with you.

a Friend

Nellie S. Carter

Best wishes for a happy and bright future.

It's been nice having  
you as a friend, and  
I have enjoyed it etc.

Lots of Luck,  
a friend.

Edith Williams

It has been a pleasure to  
be one of your many friends.  
May you always have your  
share of the best in life.

a friend, Bernice McComb.



Harry, I have enjoyed knowing you in the past years and I hope I will be in school with you in the high school years to come. Always remember you as a friend and may you have all the luck you can possibly have and may your dreams come true.

Harry,

I have enjoyed knowing you in the past years and I hope I will be in school with you in the high school years to come. Always remember you as a friend and may you have all the luck you can possibly have and may your dreams come true.

Always Remember  
Bessie Lee

Best  
Wishes  
Bessie Lee

Harry,

I have enjoyed knowing you in the past years and I hope I will be in school with you in the high school years to come. Always remember you as a friend and may you have all the luck you can possibly have and may your dreams come true.

Always Remember  
Bessie Lee

Harry,

Here's wishing the most success possible. May you have the best luck ever and continue to climb. And put those talents to work.

Adena  
Adenathy



















