

1951 pebble



For Reference

Not to be taken from this room



WILSON COUNTY PUBLIC LIBRARY



For Reference

Not to be taken from this room



The Pebble

Nineteen Hundred Fifty-One

Vol. 4

Published By Senior Class

Rock Ridge School

Route 2

Wilson, N.C.

Foreword

Accept this book, as you review it; linger with us over the days that have passed. There have been days of sorrow-- days of joy--days which shall linger with us as an inspiration, ever leading us on to a goal of honesty, unselfishness, loyalty, and service to our fellowman. In later years, should our way become difficult, may we, the class of 1951, turn to you, The Pebble, for the love and guidance which we have always received from our Alma Mater, Rock Ridge High School.

Dedication



COACH ONNIE ROBERT COCKRELL

For the fine spirit which he has shown in making Rock Ridge School the pride of every student; for his unfailing stand for fair dealing in his sports; for his untiring efforts to nurture high ideals among his players, as well as students, we the class of 1951, are privileged to honor Coach Onnie Cockrell in the dedication of our yearbook.

Rock Ridge District School Board



L. C. BARNES, Chairman

Left to Right: T. G. Bailey, Thomas Daniel, J. H. Godwin, Mallie Stott.

"Heds to contrive; hands to execute."

Superintendent

HENRY DONALDSON BROWNING, Jr.

"Every duty, well performed."



Our Principal



MR. LEON BAYARD TAYLOR

"His influence was one thing not to be divided, nor discussed; only to be felt with gratitude and joy."

Faculty



Kate W. Wainwright Nellie W. Harris Etta L. Eatman Onnie Robert Cockrell Nan F. Shearin
 English Commerce Mathematics Coach, Social Science Science, Girls' Coach



Leonore P. Smith Blanche Gay J. Aubrey Godwin Bernice S. Harris Pauline U. Eagles
 English Social Science Social Science Home Economics Library, French



Dewey B. Sheffield Cecil B. Brantley Irene H. Hinton Gwendolyn T. Pridgen Lucille Dixon
 Agriculture Agriculture Grade 8 Grade 8 Grade 8



Vivian C. Holmes Ava B. Ashurst Laura B. Taylor Sarah P. Baldree Rosa B. Taylor Blanche B. Loftin
 Grades 7 & 6 Grades 6 & 5 Grades 4 & 3 Grades 3 & 2 Grades 2 & 1 Music

Advisors



MRS. KATE W. WAINWRIGHT

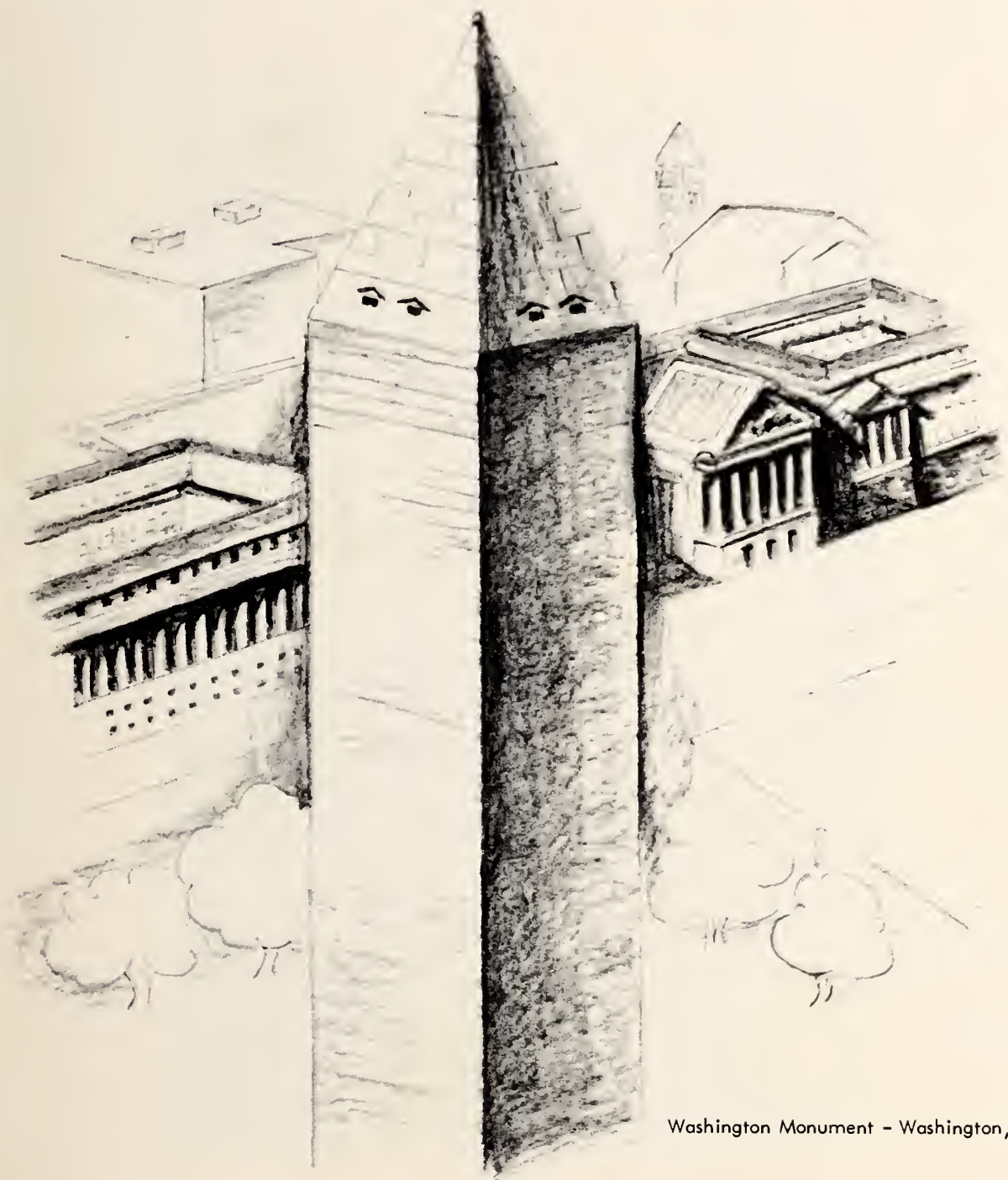


MRS. NELLIE W. HARRIS

Editorial Staff

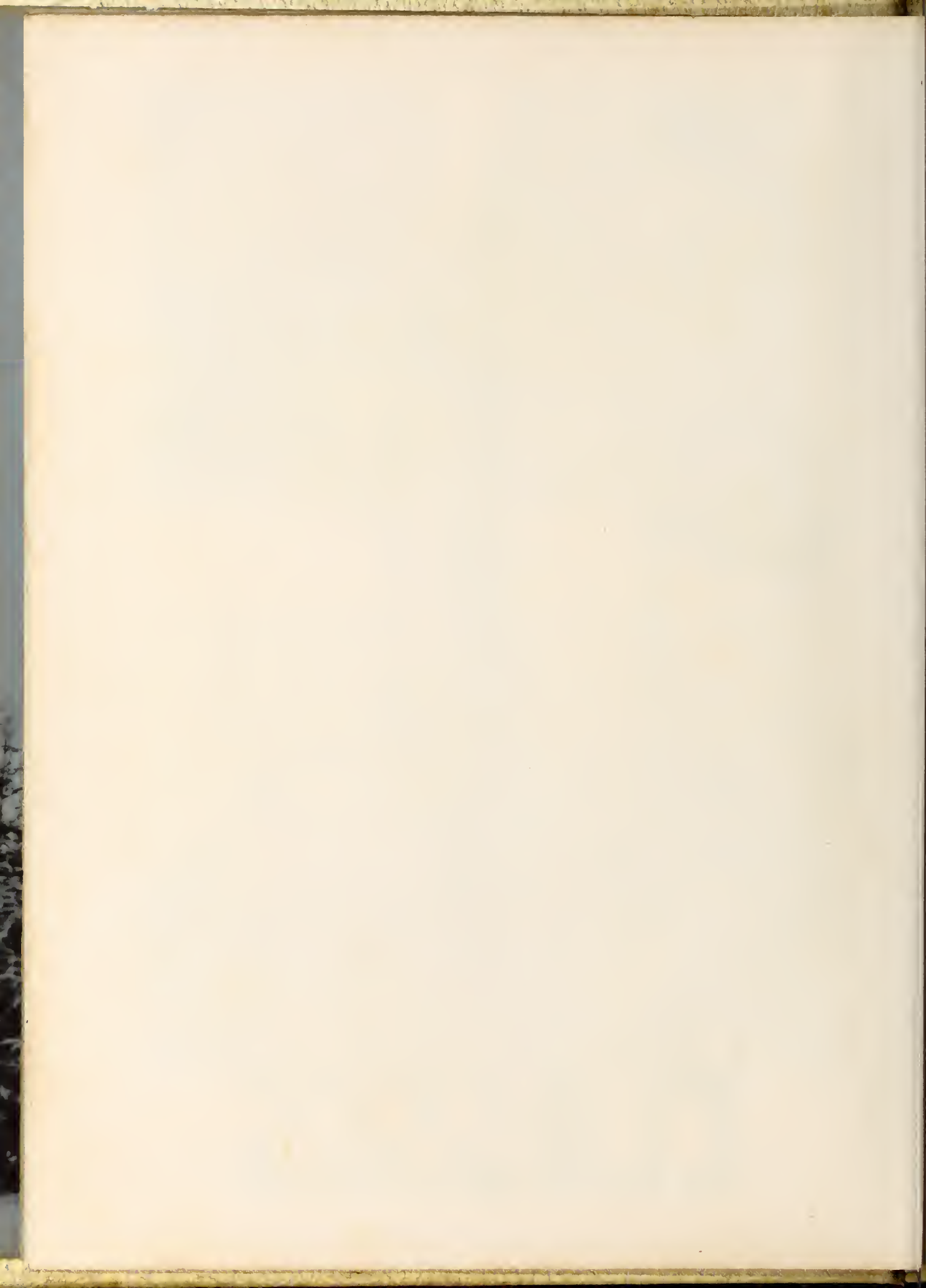


Left to Right: Lou Deans, Typist; Loree Hinnant, Sports Editor; Katie Boykin, Typist; Margaret Fulghum, Typist; Jimmy Bailey, Art and Picture Editor; Mrs. G. C. Wainwright, Sponsor; Joyce Williamson, Editor-in-Chief; Jean Thorne, Assistant Editor; Carolyn Barnes, Business Manager; Katherine Lamm, Secretary; Betty Jean High, Advertising Committee.



Washington Monument - Washington, D. C.

CLASSES



Mascots



MELBA RETA WILLIAMS, daughter of Mr. & Mrs. James Willard Williams.
ROBERT LUTHER BARNES III, son of Mr. & Mrs. R. L. Barnes.

"Sweeter than the sweetest rose."

Class Motto

"Strength to lead;
Faith to follow."



Class Officers

First Row, left to right: Lou Deans, Treasurer; Jimmy Bailey, Sergeant-at-Arms.

Second Row: Max Liles, President; Jean Thorne, Vice-President; Joyce Williamson, Secretary.

Seniors

JAMES RAY ALLEN
F.F.A. 1,2; Dramatics 4.

JAMES DONALD BAILEY
F.F.A. 1,2; Field Day 3; Bus Drivers' Club 3,4;
Dramatics 3,4; Art Editor-Editorial Staff-The
Pebble 4; Class Officer 4; Most Likely to Suc-
ceed 4; Most Popular 4.

ALICE CAROLYN BARNES
Choir 1; 4-H Club 1; F.H.A. 1,2,3,4; Serving Jr.-
Sr. Banquet 2; Cheerleader 2,3,4; F.H.A. Officer
2,3,4; Marshal 3; Tar Heel Girls' State 3; Beta
Club 3,4; Dramatics 3,4; Business Manager-Edi-
torial Staff-The Pebble 4.

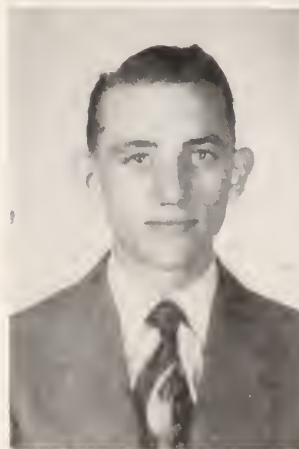
NANCY CAROL BASS
4-H Club 1,2; Choir 1,3; F.H.A. 1,2,3,4; Basket-
ball Team 1,2,3,4; Winner of County F.H.A. Dress
Revue 2; Head Cheerleader 2,3,4; County All-
Star Basketball Team 3; Monogram Club 3,4;
Most Popular 4.

AILEEN JOYCE BATCHELOR
F.H.A. 1,2,4; 4-H Club 3; Choir 3.

ROBERT RAY BELL
F.F.A. 1,2,3,4; Bus Drivers' Club 3,4.

DONALD RAY BISSETTE
F.F.A. 1,2,3,4; 4-H Club 1,2,3,4; Manager Foot-
ball Team 2; Basketball Team 3; Monogram
Club 3,4; Bus Drivers' Club 3,4; F.F.A. Officer
4; Parliamentary Procedure Contest 4; Drama-
tics 4.

ROBERT THORNE BOYETTE
F.F.A. 1,2,3,4; Bus Drivers' Club 3,4; F.F.A.
Officer 4; Parliamentary Procedure Contest 4;
Crops Judging Contest 4.





FRANKLIN DELANO BOYKIN
F.F.A. 1,2; Bus Drivers' Club 3,4.



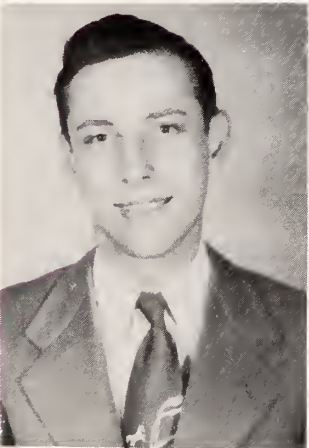
KATIE CORNELIA BOYKIN
4-H Club 1; Choir 1,2,3; F.H.A. 1,2,3,4; Serving Jr.-Sr. Banquet 2; Basketball Team 2,3,4; Tar Heel Girls' State 3; Monogram Club 3,4; Beta Club 3,4; Cheerleader 3,4; Typist-Editorial Staff-The Pebble 4; Most Versatile 4.



SARAH LEE BOYKIN
4-H Club 1; Choir 1,2,3; F.H.A. 1,2,3,4; Dramatics 4.



KATIE WIGGINS COLEMAN
4-H Club 1; F.H.A. 1,2,3,4; Prettiest Girl 4; Dramatics 4.



CHARLES EDWARD DAVIS
F.F.A. 1,2,3,4; Bus Drivers' Club 3,4.



LOIS DEANS
F.H.A. 1; Serving Jr.-Sr. Banquet 2; Beta Club 4; Most Studious 4.



WILLIAM THAD DEANS
F.F.A. 1,2,3,4; Field Day 2,3; Bus Drivers' Club 3,4; Most Handsome 4.



WILLIE LOU DEANS
Choir 1; F.H.A. Officer 1; F.H.A. 1,2,3,4; Serving Jr.-Sr. Banquet 2; Basketball Team 2; Cheerleader 2,3,4; Marshal 3; Beta Club 3,4; Class Officer 4; Typist-Editorial Staff-The Pebble 4; Most Likely to Succeed 4; County Queen-Miss Merry Christmas 4.

RELLARD GARTHOL EDWARDS
F.F.A. 1,2; Dramatics 4.



LAUDIS RAY ETHERIDGE
4-H Club 1,2; F. F. A. 1,2,3,4; Bus Drivers'
Club 3,4.



FRANCES FAYNE FLOWERS
Choir 1,2,3; F.H.A. 1,2,3,4.

MARGARET FULGHUM
Choir 1,2,3; 4-H Club 1,2,3; F.H.A. 1,2,3,4;
Serving Jr.-Sr. Banquet 2; Jr. Homemaker De-
gree 2; Chapter Homemaker Degree 3; Basketball
Team 3; F.H.A. Officer 3,4; Beta Club 4; Mono-
gram Club 4; Typist-Editorial Staff-The Pebble
4; Dramatics 4.



MYRTLE FAYE FULGHUM
4-H Club 1; Choir 1,2,3; F.H.A. 1,2,3,4; Crowned
Miss Tobacco Queen 3; Bus Drivers' Club 3,4.

JAMES EARL HARRELL
F.F.A. 1,2,3,4; Bus Drivers' Club 3,4.



WILLIAM RAY HARRISON
F.F.A. 1,2,3,4; F.F.A. Officer 2,3,4; Class Officer
3; Marshal 3; Beta Club 3,4; Beta Club Officer 3,
4; Bus Drivers' Club 3,4; Secretary of Bus
Drivers' Club 4; Most Studious 4; Most Valuable
to School 4; Parliamentary Procedure Contest 4;
Dramatics 4; Crops Judging Contest 4.

BEATRICE LUCILLE HAWLEY
4-H Club 1; F.H.A. 1,2,3; Jr. Homemaker Degree
2.

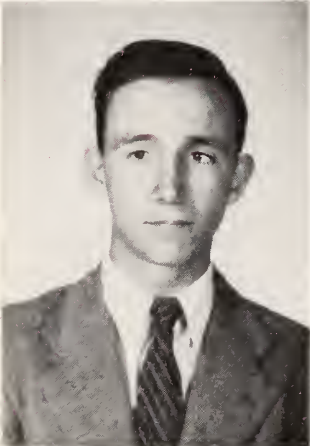


BETTY JEAN HIGH

Choir 1,2,3; F.H.A. 1,2,3,4; Serving Jr.-Sr. Banquet 2; Jr. Homemaker Degree 2; Marshall 3; Beta Club 3,4; Bus Drivers' Club 3,4; Chairman of Advertising Committee of The Pebble 4.

BESSIE LOREE HINNANT

4-H Club 1; Glee Club 1,3; F.H.A. Club 1,2,3,4; Basketball Team 1,2,3,4; Cheerleader 2,3,4; Most Valuable Basketball Player 3; County All-Star Basketball Team 3; Monogram Club 3,4; Captain of Basketball Team 3,4; Activity Editor-Editorial Staff-The Pebble 4; Most Athletic 4.

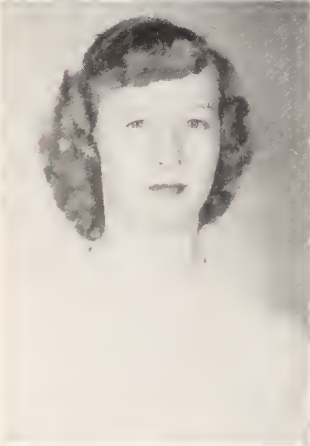


ROBERT LEE JOHNSON

F.F.A. 1,2,3,4; Bus Drivers' Club 3,4.

ALICE KATHERINE LAMM

Choir 1,2; Serving Jr.-Sr. Banquet 2; Marshal 3; Beta Club 3,4; F.H.A. 4; Basketball Team 4; Secretary-Editorial Staff-The Pebble 4; Best-All-Around 4.



MARY AUDREY LAMM

Choir 1,2; 4-H Club 1,2,3; F.H.A. 1,2,3,4; Jr. Homemaker Degree 2; Serving Jr.-Sr. Banquet 2; Chapter Homemaker Degree 3; Basketball Team 3; Marshal 3; Class Officer 3; Beta Club 3,4; F.H.A. Officer 3,4; Monogram Club 4; Dramatics 4.

CHARLES MARVIN LANDING

F.F.A. 1,2,3,4; Field Day 2,3,4; Football Team 2,3,4; Track Day 3,4; Bus Drivers' Club 3,4; F.F.A. Officer 4; Football Captain 4; Most Athletic 4.



WILLIAM LEATRICE LANGLEY

F.F.A. 1,2; Field Day 2; Bus Drivers Club 3,4; Best-All-Around 4; Dramatics 4.

MAX EDWARD LILES

F.F.A. 1,2,3,4; Baseball 1,2,3,4; Citizenship Award 3; Tar Heel Boys' State 3; Presided Jr.-Sr. Banquet 3; Monogram Club 3,4; F.F.A. Officer 3,4; Monogram Club Officer 3,4; Class Officer 3,4; Bus Drivers' Club 3,4; President Bus Drivers' Club 4; Dramatics 4; Parliamentary Procedure Contest 4; Most Dependable 4.

VIRGINIA LUCAS
Choir 1,2,3; F.H.A. 4.

VIRGINIA HOPE PAGE
Transferred from Gardners High School 3; F.H.
A. 3; Choir 3.

WILLIAM THOMAS TANT
F.F.A. 1,2,3,4; Bus Drivers' Club 3,4.

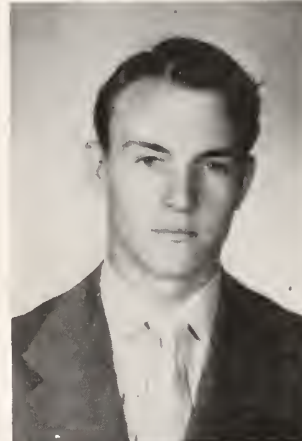
JAMES THOMAS TAYLOR
F.F.A. 1,2,3,4; Football Team 3,4; Monogram
Club 3,4; Bus Drivers' Club 3,4; Field Day 3,4;
Most Versatile 4.

CHARLES JEAN THORNE
Choir 1,2; 4-H Club 1,2,3,4; 4-H Club Officer 1,
2,3,4; F.H.A. 1,2,3,4; Jr. Homemaker Degree 2;
Serving Jr.-Sr. Banquet 2; F.H.A. Officer 2,3,4;
Chapter Homemaker Degree 3; Basketball Team
3; Chief Marshal 3; Beta Club 3,4; Beta Club
Officer 3,4; County 4-H Club Officer 3,4; Mono-
gram Club 4; Monogram Club Officer 4; Class
Officer 4; Assistant Editor-in-Chief-Editorial
Staff-The Pebble 4; Most Valuable to School 4.

JAMES ROBERT VICK
F.F.A. 1,2,3,4; F.F.A. Officer 3; Judging Team
3; Field Day 3; Bus Drivers' Club 3,4.

KAY FRANCES WATSON
4-H Club 1; F.H.A. 1,2,3; Choir 1,2,3; Jr. Home-
maker Degree 2.

ANNIE RUTH WELLS
4-H Club 1,2; F.H.A. 1,2,3,4; Jr. Homemaker
Degree 2; Chapter Homemaker Degree 3; Bus
Drivers' Club 3,4.





DONALD PRESTON WHITLEY
4-H Club 1; F.F.A. 1,2,3,4; Dramatics 3,4;
Bus Drivers' Club 3,4.

GERALDINE WILLIAMS
Choir 1,3; School Bus Conductor 3,4; Beta
Club 4.



JAMES ROBERT WILLIAMS
F.F.A. 1,2,3,4; Basketball Team 3; Bus Drivers'
Club 3,4; Monogram Club 4.

MARCELLENE JOYCE WILLIAMS
Choir 1,2; Serving Jr.-Sr. Banquet 2; Marshal
3; Beta Club 3,4.



MARTHA JOYCE WILLIAMSON
Choir 1,2,3; County 4-H Club Dress Revue
Winner 1,2,3; F.H.A. Officer 1,2,4; 4-H Club
1,2,3,4; F.H.A. 1,2,3,4; 4-H Club Officer 1,2,3,4;
County 4-H Club Officer 1,2,3,4; Serving Jr.-Sr.
Banquet 2; Jr. Homemaker Degree 2; County
Winner F.H.A. Dress Revue 2; 4-H State Revue 2;
County Sr. 4-H Club Health Queen 2; Marshal 3;
Chapter Homemaker Degree 3; Captain Maga-
zine Sales 3; County F.H.A. Officer 3; Most
Outstanding County 4-H Club Girl 3; Beta Club
3,4; Bus Drivers' Club 3,4; Editor-in-Chief-
Editorial Staff-The Pebble 4; Typist for Prin-
cipal 4; Class Officer 4; County Champion in
Leadership 4; Presentation of U.N. Flag to
Mayor 4; Most Dependable 4.

JOSEPH SAULS WILSON
Transferred from Charles L. Coon High School 4.

Class History 1951

When we, the graduating class of 1951, entered high school, we numbered one hundred strong, promising to become one of the largest classes in the history of Rock Ridge School. Now that we are at the end of our journey we regret that only forty six of us have made the goal.

Our Freshman year was spent in getting adjusted to the large school, learning our rooms, making friends with the teachers and students.

With our Sophomore year came the realization that the pathways of learning were not always easy. We learned the art of real study and the need for an education.

Many honors came to our class during our Junior year. Several became Beta Club Members. Eight marshals, including the chief marshal, were chosen for their high scholastic records. Then came our football team with their two year County Championship.

Our Senior year has been crowded with hard work along with much fun. With the exception of earning our diploma, perhaps our greatest work has been the editing of our yearbook, THE PEBBLE, as well as the financing of it. Many hours of work were put into this project. Through this we have learned the real joy of working together.

Today we leave you with a pledge of loyalty, friendship, love and honor, to Rock Ridge School, our Alma Mater.

Signed:

*Sarah Lee Boykin
Mystie Lyle Helgerson*

Superlatives



Most Dependable

MAX LILES

JOYCE WILLIAMSON

"Patient to Perform"



Most Valuable To School

JEAN THORNE

BILLY HARRISON

"Deeds not Words"

Best-All-Round

KATHERINE LAMM

LEATRICE LANGLEY

'I am a part of all I've met''



Most Likely to Succeed

LOU DEANS

JIMMY BAILEY

"Like clocks, one wheel another
one must drive;
Affairs by diligent labor drive."



Most Versatile

KATIE BOYKIN

J. T. TAYLOR

"On whom did Nature pour her bounties
forth with such a full and undrawing hand."

Most Athletic

MARVIN LANDING

LOREE HINNANT

"In all games, nimble and in running swift;
Well made to strike, to leap, to throw, to lift."



Prettiest
Most Handsome

KATIE COLEMAN

WILLIAM DEANS

"They bind you with a sudden
witching smile"



Most Popular

NANCY BASS

JIMMY BAILEY

"Life holds but laughter, love, and joy."



Most Studious

LOIS DEANS

BILLY HARRISON

"There is unmistakable pleasure attending the life of a voluntary student."

Citizenship Award 1950

MAX LILES





Class Song

Tune: In The Gloaming

Through the years, dear Rock Ridge High School,
We shall always honor thee;
And remember all the friends
And happy years we spent with thee.
Such great times we've had together
It is sad dear friends must part,
But our love will live forever
Lingering fondly in our heart.

As we leave our friends and teachers
And leave you, our dear old school,
All our hearts and prayers remain here
As in the old Golden Rule,
And may peace and love abide thus
Following us down life's highway,
And may we at some commencements,
Meet together as today.

Through the years, dear Rock Ridge High School,
As we journey on life's way
Will you think of us and love us
As you did commencement day?
Time and tide can never sever
Friendships gained, that proved sincere,
And our thoughts will cling forever
To our school we love so dear.

Class Flower

ROSE



Class Prophecy

Standing on the threshold of the future, we the class of 1951, lift our eyes to the uncertainties and realities of life. Many difficulties, disappointments await each of us as we approach the path of tomorrow.

Because of the ideals, ambitions, courage, and dreams which we have acquired through our faithful, persevering teachers and Alma Mater, we approach the door to the future with hopes and resolutions of making this world a better and finer place in which to live.

We, as a class, shall go into the world as messengers of peace, love, honesty, and hope. We shall hold these traits constantly before us as a pattern for democratic Christian living.

We cannot prophesy the destinies of each individual of this class, but we can ascertain that, with the knowledge and inspiration which we have gained here at Rock Ridge, we can expect success and happiness which await beyond the Door of Tomorrow.

Signed:

Margaret Tullgren
Audrey Hamon

Last Will and Testament

We, the class of 1951 of Rock Ridge High School, having come through the ordeal of Seniorhood, sound in body, and in mind, and realizing that the end of our lives, as students, is drawing near, do solemnly bequeath the following legacies:

To the School Board, to whom we shall ever be indebted, we leave our deepest appreciation and thanks for having given us the privilege of attending a modern, up to date school. We shall strive to bring honor to you and your community.

To our Superintendent, Mr. H. D. Browning, Jr., we leave our deepest gratitude for his untiring efforts to improve our school.

To our principal, Mr. Leon B. Taylor, we leave our sincere love and appreciation for his patience, kindness and guidance. We leave behind not only a principal, but a friend.

To our Alma Mater, we leave our everlasting love and loyalty. May she ever grow and guide many students as she has guided us.

To the faculty, we leave our thanks and appreciation for their instruction and encouragement, which have helped us to secure our goal.

To our parents, we bequeath our love and gratitude, for the many sacrifices which they have so unselfishly made in order that we may come successfully to this, our graduation day.

To our dear little mascots, Reta Williams and Bob Barnes, we leave our love and best wishes for a happy and successful life.

To the Junior Class, we leave our front seats in the auditorium, and our class room, Number M. and our best wishes for a successful senior year.

To the Sophomore Class, we leave this advice, "Evaluate your time and profit by it."

To the Freshman Class, we leave our class colors, red and white, may they have many opportunities to wave over your triumphs. May they serve as a reminder of the Class of 1951, which may help to preserve our memory and traditions.

To our faithful Janitor and Friend, Herman Barron, we leave our deepest respect and best wishes. May you contribute many more years of service to Rock Ridge High School.

In testimony whereof, we have put our hand and seal, on this the twenty-fifth day of May, in the year of our Lord, One Thousand Nine Hundred Fifty-one, at Rock Ridge High School, Route 2, Wilson, North Carolina.

Witnesses:

Leon B. Taylor, prin.
May Siles pres.
Joyce Williamson, Sec.

Signed:

Class of 1951

By:
Marcellene Williams
Geraldine Williams

"Baby's Brain Is Tired Of Thinking"





Junior Class Officers

Left to Right: Glenda Johnson, Treasurer; William Peede, President; Bertice Deans, Vice-President; Esther Mae Tant, Reporter; Joyce Lee Winborne, Secretary.

Junior Class

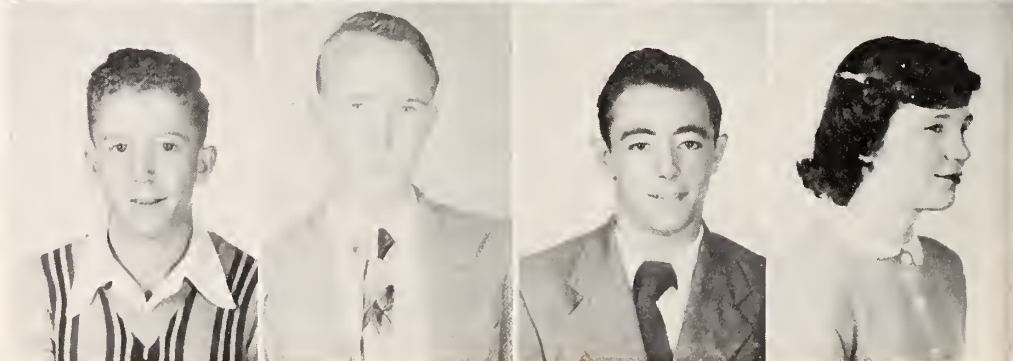
HUBERT T ATKINSON
FRANKLIN BAILEY
BARBARA BASS
SADIE RUTH BELL



MAYLON BISSETTE
BILLY BOSWELL
McKINLEY BOYETTE
ALFRED BOYKIN

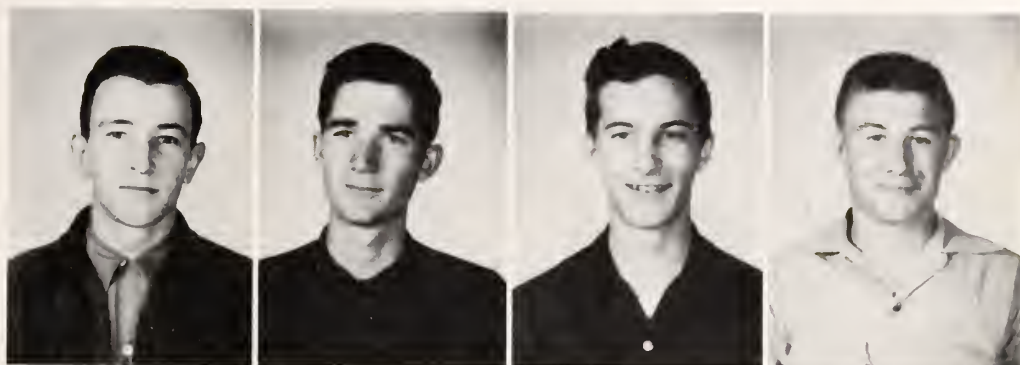


PAUL GREEN BOYKIN
RUDOLPH BOYKIN
BILLY BULLOCK
ANGELIA BUNN



Junior Class

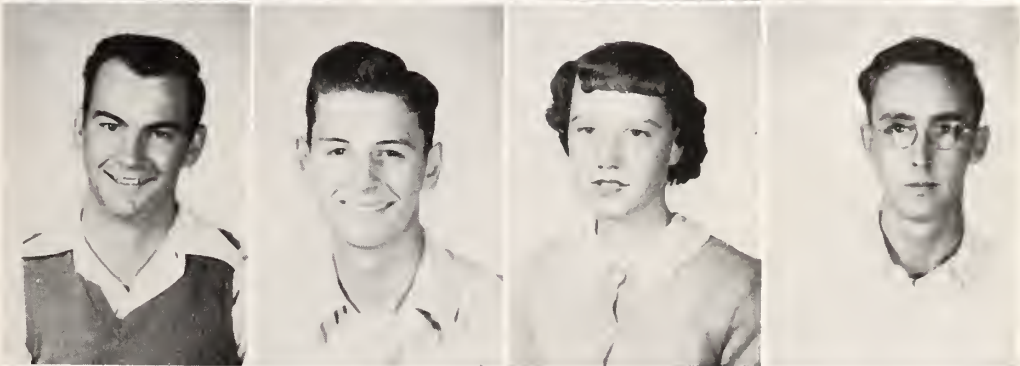
EDWIN BUNN
 GEORGE BUNN
 BOBBY COLEMAN
 CARLTON DAVIS



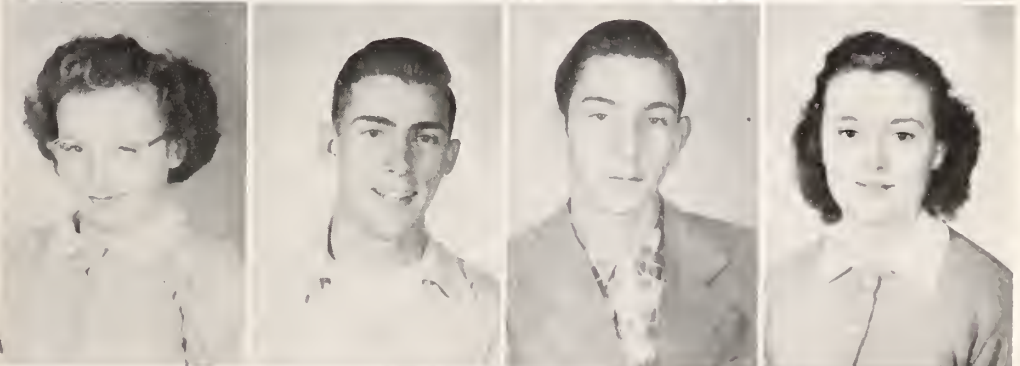
ELEANOR DAVIS
 HAROLD DAVIS
 LELAND DAVIS
 LESSIE MAY DAVIS



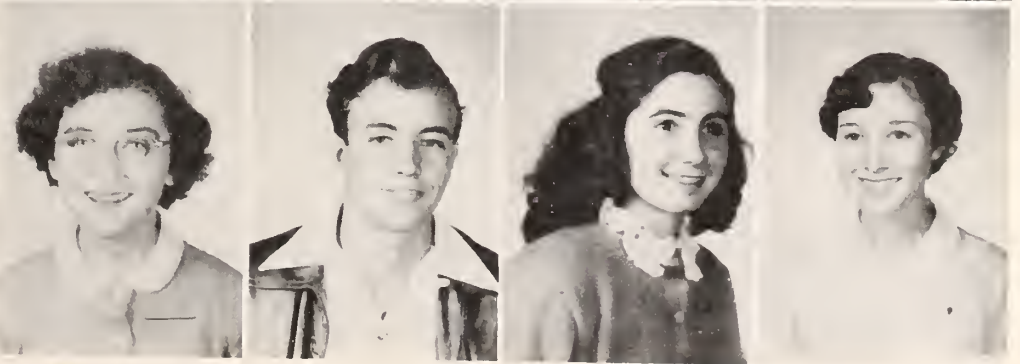
BERTICE DEANS
 BOBBY DEANS
 MAY RUTH DEANS
 JAY EATMAN



CHRISTINE ETHERIDGE
 ROBERT ETHERIDGE
 CHARLES FLOWERS
 DORIS JEAN FLOWERS

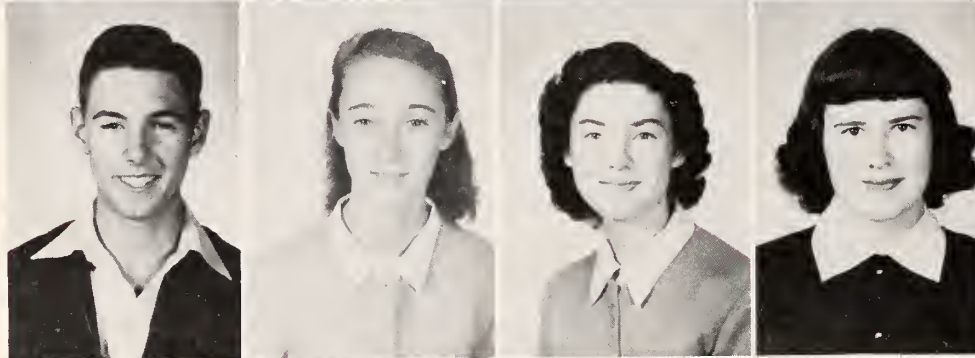


DOROTHY FULCHER
 BENNIE LEE GLOVER
 PATRICIA GODWIN
 PEGGY GODWIN

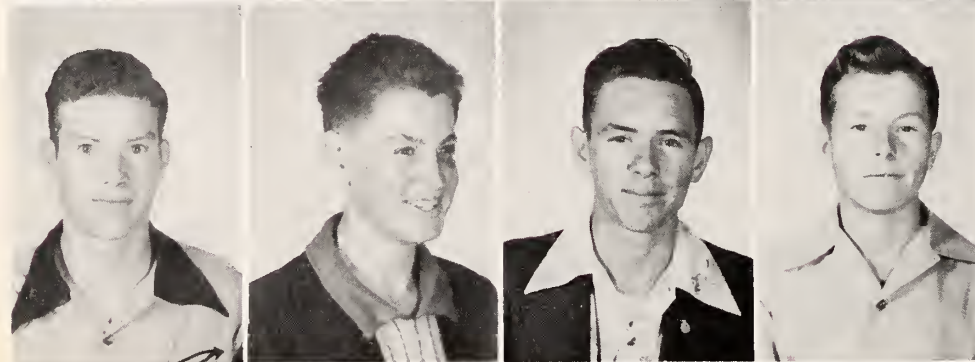




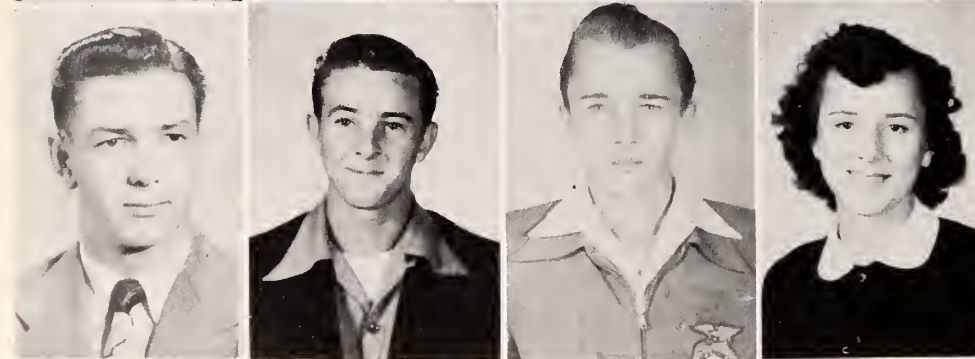
DONNIE HARRISON
ROMA HAYNES
CURTIS HINTON
W. T. HOGGE



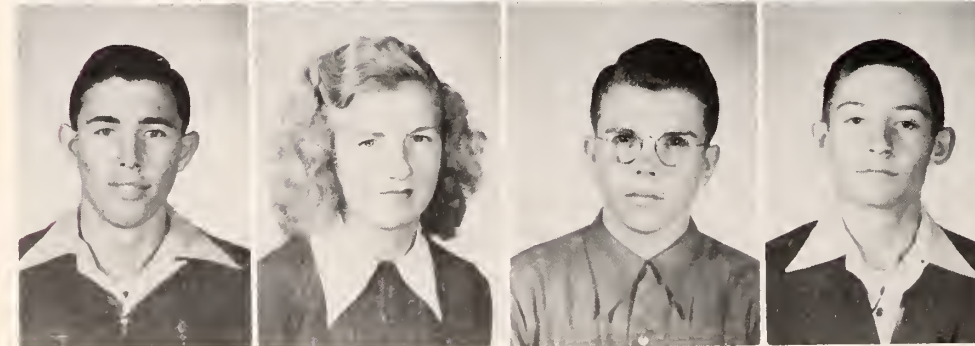
PRESTON HOLLAND
MARTHA JANE HONBARRIE
FRANCES JACKSON
GLENDA JOHNSON



CLINTON JOYNER
ELWIN LAMM
THOMAS LAMM
EUGENE LUCAS



BILL NEAL
FRANK NICKOLS
JESSE OWENS
RUBY NELL PAGE



BILLY PEEDE
GERALDINE PENDER
BILLY PITTMAN
ELWOOD ROBBINS

GLADYS SCOTT
POLLY STANCIL
DONALD LEE STOTT
MARIE SULLIVAN



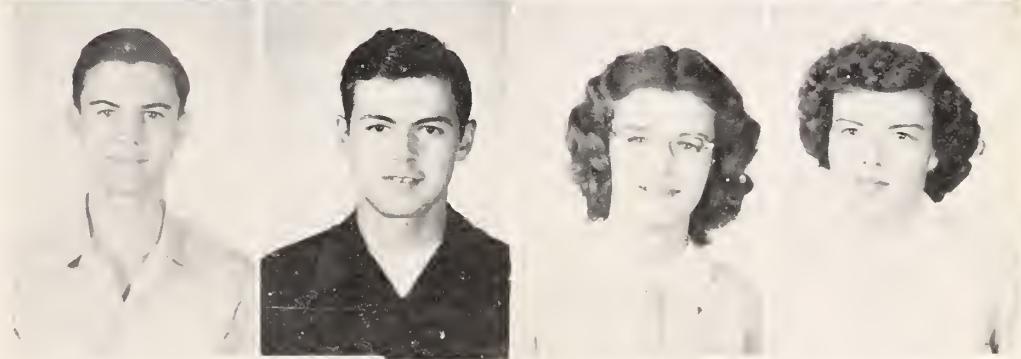
ESTHER MAE TANT
CECIL TEMPLE
REX THORNE
ELLA MAE WADDELL



CHARLES WATSON
JAY MEARL WELLS
BOBBY WILKERSON
BRUCE WILLIAMS



BOBBY RAY WILLIAMSON
ERIC WILLIAMSON
MARLENE WILSON
JOYCE LEE WINBORNE



CLEM WOODARD

Not Shown:

WADE BURGESS
R. G. DAVIS



Sophomore Class

MARJORIE ALLEN
 RONNIE ATKINSON
 PEGGY RUTH BAILEY
 BETTY LOU BARNES
 EVELYN BATCHELOR

BOBBY SID BOYETTE
 L. A. BOYETTE, Jr.
 RENA BISSETTE
 JEAN BOYKIN
 NELLIE ROSE BOYKIN

RAY BOYKIN
 EVELYN BUNN
 LARRY BUNN
 MARGARET BUNN
 FANNIE MAE COLEMAN

ARCHIE COPELAND
 BARBARA ANN DAVIS
 BOBBY RAY DAVIS
 HORACE DAVIS
 JOHNNY DAVIS

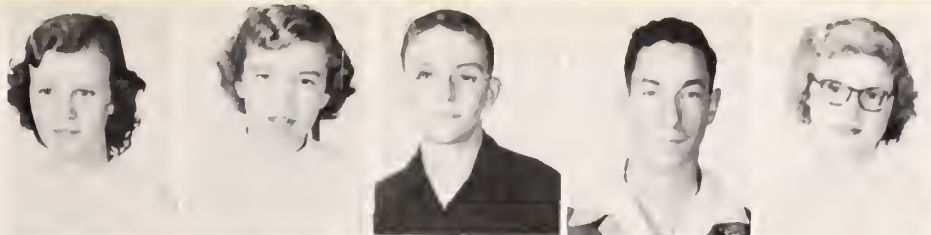
DOROTHY DENTON
 BRUCE EASTWOOD
 MARY ELLIS
 JACKIE EVANS
 MYRTLE EVANS

ROMAINE FARMER
 ELSIE FINCH
 ROBERT FULCHER
 FREDERICK FULGHUM
 KENNETH FULGHUM

L. D. FULGHUM
 MARIE FULGHUM
 W. H. FULGHUM
 ROMAINE GLOVER
 CECIL HARRISON

BILLY HAWLEY
 CAROLYN HOWELL
 BUCK JONES
 RALPH JONES

JUSTINE JOYNER
 ALBERTA LAMM
 BILLY LAMM
 FRANKLIN LAMM
 HELEN JEAN LAMM



CAROLYN LILES
 RUBY JOYCE MERCER
 CONNIE MURPHY
 BETTY JEAN NEAL
 TOMMY OWENS



LORRAINE PACE
 GLENNIE PEACOCK
 SHIRLEY PEARSON
 LUCILLE PITTMAN
 ERLENE PROCTOR



JOSEPH PROCTOR
 DONNELL RAPER
 MARGARET RENFROW
 DOROTHY SCHOPF
 DON SIMPSON



Not Shown:

CLIFTON BOYKIN
 PAUL HOLLAND
 MERWIN LAMM
 LOUIS MERCER
 MARION MORGAN
 G. RENFROW
 H. RENFROW
 MALORY ROWE
 BERT WILLIAMS



TEXIE SKINNER
 KENNETH STOTT
 ELSIE STRICKLAND
 RALPH SULLIVAN
 LINDA TOMLINSON



MARGIE TOMLINSON
 SHIRLEY WADDELL
 DORIS LEE WATSON
 DAPHNE WHITLEY
 POLLY WILKERSON

WILMA WILKERSON
 FRANCES WILLIAMS
 BILLY WILLIAMSON
 DORIS LEE WILLIAMSON
 GERALD WILLIAMSON



PHILLIP WILLIAMSON
 MAVIS WILSON
 GERALINE WINBORNE
 JEAN WINBORNE
 BILLY WOODARD





Freshman Class

BOBBY REX BAILEY
SARAH BALDREE
PEGGY BARFIELD
JAMES BARNES
MARY LOU BARNES



WILLIAM BARNES
DAISEY BASS
CORINE BATT
FANNIE LOU BISSETTE
HUBERT BISSETTE



JAMES BOSWELL
GENE RAY BOTTOMS
MARIE BOYETTE
JAMES BOYKIN
JANET BOYKIN



JESSE BOYKIN
SYLVIA BOYKIN
ANNIE BROWN
BESS BULLOCK
ROBERT BUNN



RONEY BUNN
SHELBY JEAN BUNN
MILDRED COLLINS
JOYCE DAVIS
LUDIE DAVIS



LOUISE DAVIS
RUBY MAE DAVIS
MILLIE DEANS
JANICE DEW
THOMAS EATMAN



WILLIAM EATMAN
BOBBY FERRELL
HAROLD FINN
CHARLES FLOORS
JIMMY FLOWERS



ALDAREE FULGHUM
JUANITA FULGHUM
RAIFORD FULGHUM
HAROLD GLOVER



SHIRLEY GLOVER
SUE GLOVER
EUNICE GODWIN
GRADY GODWIN
JO ANNE HARRISON



Freshman Class

IRENE JOHNSON
 LOUIS CLIFTON LAMM
 R. L. LAMM
 BARBARA LEMMONS
 LELAND LUCAS



EDWARD McDARIS, Jr.
 L. B. MITCHELL
 THOMAS NEAL
 JANICE PAGE
 JOHNNY PAGE



DONNY RAY PARKER
 FROSSIE PARKER
 HAROLD PEARSON
 PEGGY PEARSON
 HENRY POYTHRESS



MARGARET PRICE
 PEARL RENFROW
 ROSE RENFROW
 BOBBY ROWE
 SHIRLEY SCOTT



BERTHA SPIVEY
 PAUL SPIVEY
 JAMES EARL STOTT
 PARKER STOTT
 JIMMY STRICKLAND



VOLICE SUMMERLIN
 BOB TANT
 ETTA TEMPLE
 JIMMY TEMPLE
 BOBBY VAUGHAN



JANET WADDELL
 JUNE ROSE WATSON
 LINWOOD WATSON
 CARLTON WILLIAMS
 PEARL WILLIAMS



THOMAS WILLIAMS
 HAROLD WILLIAMSON
 PIETY WILLIAMSON
 WAYNE WILLIAMSON
 S. E. WILSON



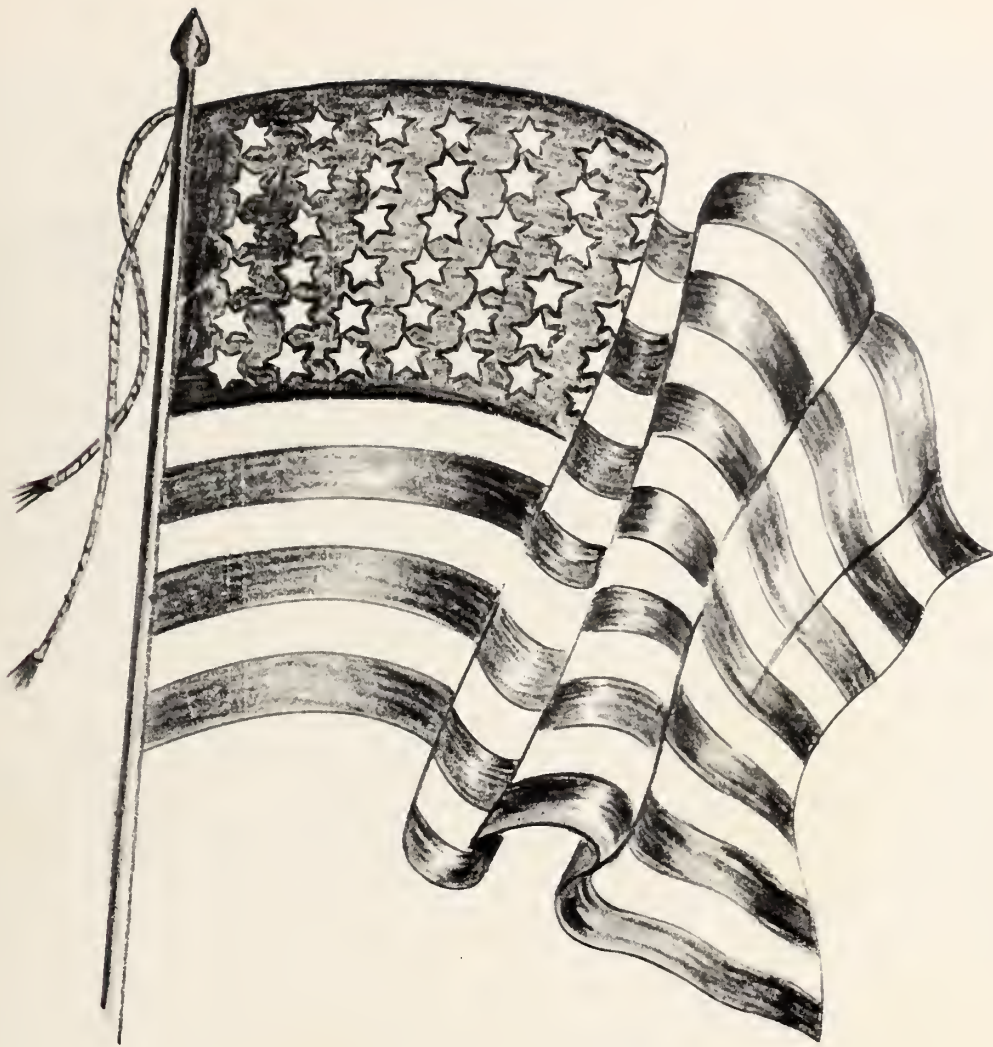
CURTIS WINBORNE
 SHIRLEY WORLEY



Not Shown:

ANNE BAKER
 MINNIE DAVIS
 HILTON HIGH
 LARRY MURRAY
 SHIRLEY NARRON
 CHARLIE PAGE
 CHARLES RODGERS
 HAROLD RODGERS
 JAMES SKINNER
 ALLIE TEDDER
 CHARLES WATSON





SPORTS

Cheerleaders

Rah ! Rah ! Rah !
Rock Ridge High ! Rock Ridge High !



First Row, left to right: Lorraine Pace; Nancy Bass, Head Cheerleader; Lou Deans; Joyce Winborne.

Second Row: Katie Boykin; Loree Hinnant; Betty Lou Barnes; Carolyn Barnes.

County Football Champions



First Row, left to right: Thomas Lamm, Manager; George Bunn, Bobby Wilkerson, Eric Williamson, Clinton Joyner, J. T. Taylor, Ed McDarius, and McKinley Boyette.

Second Row: Paul Boykin, Larry Bunn, Charles Watson, Carlton Davis, Joe Proctor and Charles Flowers.

Third Row: Coach Onnie Cockrell, Grady Godwin, Elwin Lamm, Curt Hinton, Ronnie Atkinson, Captain Marvin Landing and Billy Peede.

Not Shown: Joe Hinnant.

The 1950 season was opened in Wilson's Municipal Stadium with a 26-0 victory over Lucama. In very cold weather a crowd of one thousand shivering fans watched as Rock Ridge unveiled their junior studded squad. Going into the game occupying the underdog role, Rock Ridge showed plenty of early season power and gave every indication of repeating as Wilson County Champions.

In the last game of the year, Rock Ridge met Elm City in Wilson's Municipal Stadium for the Wilson County Championship. Playing its best game of the year, Rock Ridge easily disposed of Elm City 30-8 before fifteen hundred fans. Charging and tackling viciously, the line struck down the enemy ball carriers for huge losses and then on offense opened gaping holes in the enemy line. The stand out in the line was Captain Marvin Landing, who was playing his last game. His brilliant playing was recognized by all Wilson County coaches, who unanimously chose him for the All-County Team. Bobby Wilkerson, county high scorer with one hundred and twenty points, was the second Rock Ridge player to gain all-county honors.



MARVIN LANDING
End
"A Coach's Dream"



GEORGE BUNN
End
"Hits them low"



BOBBY WILKERSON
Halfback
"Runs like Choo Choo"



CURT HINTON
Fullback
"Charges like a 2 ton truck"



GRADY GODWIN
Center
"A Terrific Tackler"



PAUL BOYKIN
Quarterback
"Small but smart"



ELWIN LAMM
End
"Likes to snag passes"



BILLY PEEDE
Quarterback
"Throws football like a baseball"



LARRY BUNN
Halfback
"Really hits them hard"



CLINTON JOYNER
Center
"A high scoring center"



J. T. TAYLOR
End
"A capable player"



WALLACE HINNANT
Halfback
"A bright future ahead"



ERIC WILLIAMSON
Fullback
"Unlucky but determined"



RONNIE ATKINSON
End
"A hard player to block"



CHARLES FLOWERS
Halfback
"A shifty broken field runner"



CARLTON DAVIS
Halfback
"A small bundle of dynamite"



KENLEY BOYETTE
Fullback
"Runs like wind"



Coach Onnie Cockrell and his "Raiders" wait impatiently for the opening whistle to sound. It was the night of the Wilson County Championship game played in Wilson's Municipal Stadium. The Rock Ridge offense was in high gear for the game. The Elm City team was crushed by the hard, jarring tackles and precision like blocks by the boys in blue and gold.

Girls' Basketball Team



First Row, left to right: Joyce Lee Winborne, Barbara Ann Davis, Doris Lee Williamson, Romaine Glover, Loree Hinnant, Lorraine Pace, Carolyn Liles, Lois Deans, Daphne Whitley.

Second Row: Coach Nan Shearin, Geraline Winborne, Barbara Bass, Linda Tomlinson, Evelyn Bunn, Betty Lou Barnes, Katie Boykin, Nancy Bass, Katherine Lamm.

"It is not important whether you win or lose, but how you played the game."

The Rock Ridge Girls' Basketball Team of 1950-51 has demonstrated very good sportsmanship, school spirit, skills and co-operation through their participation in the interscholastic program with the Girls' Teams in Wilson County. Even though they were the victors only a few times, they always played a good game and made competition strong enough for their opponents to prevent them from achieving their goals.

Joyce Winborne, was the highest scorer for the season and Nancy Bass was the most outstanding defensive player. The captain of the team, Loree Hinnant, was considered the nucleus of the team as she always seemed to know how to make the correct decisions for her team and she did her part in carrying them through.

The prospects for more victories to be won next year in the "new gymnasium" is superb.

Boys' Basketball Team



First Row, left to right: Don Simpson, Bobby Williamson, Paul Boykin, Bobby Wilkerson, Bobby Boyette, Joe Proctor, Roma Haynes.

Second Row: McKinley Boyette, Leland Davis, George Bunn, Ronnie Atkinson, Curt Hinton, Kenneth Fulghum, Billy Peede, Eric Williamson, Coach Onnie Cockrell.

The 1950-51 edition of the Rock Ridge team was built with new and inexperienced material. Since all five of the regular starters graduated last year, the outlook for a successful season was dark. In the first game of the season, Rock Ridge lost to Bailey High, but only after a close battle. The final score was 38-31. Using a zone defense and handling the ball well on offense, the team gave every indication of being one of the top Wilson County teams.

The outfit played "spotty" ball in the early season games, but caught fire in their games with Eureka, Stantonsburg, Lee Woodard, and Gardners. Moving into the Elm City gymnasium, the strong Elm City team was hard pressed to earn a 33-31 victory in the first game and was forced into an overtime period before taking the second game.

Led by Captain Bobby Wilkerson, the team is improving rapidly and the beautiful part of the basketball picture is that not a single member of the squad is a senior. With added experience and confidence the team will bear watching next year.

Baseball



The 1950 edition of the Rock Ridge Baseball Team was a little below the 1949 club in hitting, but still ranks as one of the best teams in the school history. The team won sixteen games and lost four. Two of the losses came at the hands of Tarboro, a team which succeeded in doing what no other team had done--defeat Rock Ridge twice in one season.

The team batting champion was Billy Peede, who compiled an amazing four hundred sixty-nine average. Other regulars who hit above the three hundred mark were: Frank Nichols, Renford Peede and Bobby Deans. Renford Peede led the hard hitting pitchers with a three hundred forty-four average. In the pitching average he established a perfect mark by winning 7 games and losing none. His good control and fast ball made him one of the top pitchers. The workman of the mound staff was Max Liles. Leading the team in strikeouts, the curveball right-hander won seven games and lost one.

The climax of the season was the game with Elm City in which Rock Ridge was defending its Wilson County Championship. Max Liles pitched a 4-3 win but had to call on Renford Peede for aid. During the 1949 and 1950 season the team established a fine record by winning 36 games while losing six.

Beta Club



First Row, left to right: Harold Davis, Ester Mae Tant, Joyce Lee Winborne, Billy Harrison, Jean Thorne, Lois Deans, Lou Deans, Peggy Godwin.

Second Row: Mrs. N. W. Harris, Sponsor, Lessie Mae Davis, Marcellene Williams, Kathryn Lamm, Katie Boykin, Geraldine Williams, Glenda Johnson, Patricia Godwin, Audrey Lamm, Billy Boswell, Miss Blanche Gay, Assistant Sponsor.

Third Row: Rex Thorne, Bobby Williamson, Doris Flowers, Marlene Wilson, Sadie Ruth Bell, Betty Jean High, Carolyn Barnes, Joyce Williamson, Margaret Fulghum, Eric Williamson.



Choir

The Monogram Club



Future Homemakers of America



Future Farmers



of America





Popularity Queen
1950-'51

VICKI BOYKIN

Daughter of Mr. & Mrs. Stephen Boykin

Tobacco Queen
1950-'51

JEAN PEARSON

Daughter of Mr. & Mrs. Pearson



"Miss Merrie Christmas Of 1950"

LOU DEANS

"Yours be the genial holly wreaths,
The stocking and the tree;
An aged world to you bequeaths
Its own forgotten glee."



In a county-wide contest, which was sponsored by the retail division of the Merchants' Association of Wilson, North Carolina, Lou Deans, a member of the Class of 1951, of Rock Ridge School, was chosen "Miss Merrie Christmas."

Autographs

*Behold the secret of the
universe. To know
it is to know God.
I have written this
book for you. If you
read it, you will
know the truth.
I have written this
book for you. If you
read it, you will
know the truth.
I have written this
book for you. If you
read it, you will
know the truth.*

"Here's my book

Open wide

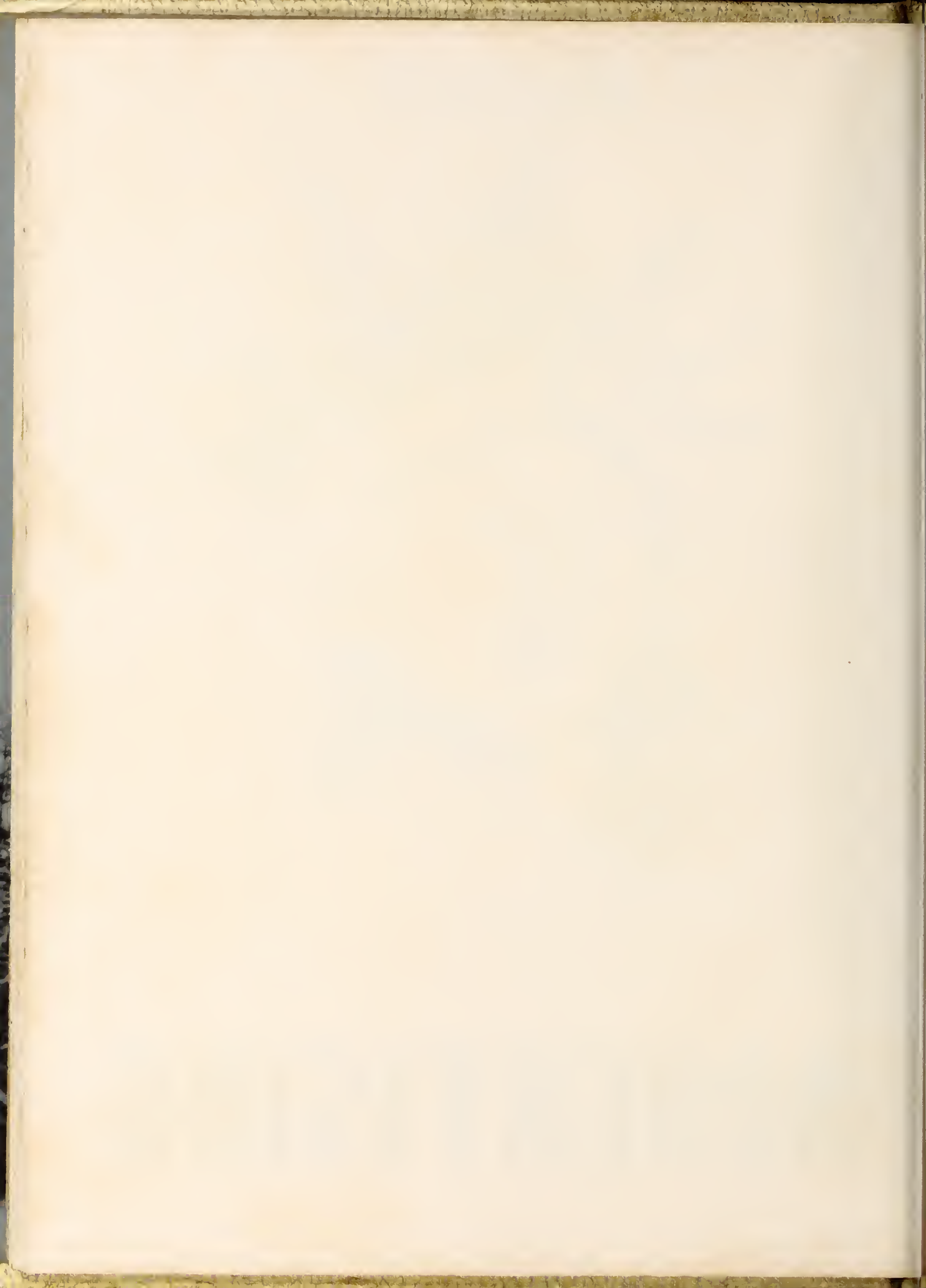
Sign here, now

Or woe betide"



Statue of Liberty - New York Harbor

ADVERTISING



BEST WISHES TO

ROCK RIDGE HIGH SCHOOL AND COMMUNITY FOR
MANY YEARS OF PROGRESS AND PROSPERITY

Wilson Tobacco Market

"THE WORLD'S LARGEST BRIGHT LEAF TOBACCO MARKET"

**P.L. WOODARD
&
CO., INC.**

GENERAL MERCHANTS
AND
AGENTS

CONTENTNEA GUANO CO.

HIGH GRADE FERTILIZERS

WILSON, N. C.

J.W. BARNES & SONS

GENERAL MERCHANTS

PHONE 3849-1 ROCK RIDGE

ROUTE 2 WILSON, N. C.

Roney M. Williamson

DEALER IN
GENERAL MERCHANDISE—HARDWARE AND FERTILIZER
COUNTRY PRODUCE

ROUTE 1

PHONE 3816-1

WILSON, N. C.

FARMERS' COTTON & OIL CO.

FARMERS
FERTILIZERS FOR ALL CROPS

TOBACCO FERTILIZER
IS OUR SPECIALTY.

"EASY TO SOW, EASY TO GROW. "

PLANTS

WILSON, N. C. NORFOLK, VA.

LILLINGTON, N. C.

HUNT'S FUNERAL HOME

AMBULANCE SERVICE

WILSON, N. C.

PHONE 3148-3149

STANTONSBURG, N. C.

PHONE 2381
WILSON COUNTY

MUTUAL BURIAL ASSOCIATION

Rock Ridge Roller Mills

MANUFACTURERS
OF

CRE—MO—FLOUR WIL—CO—MEAL FEEDS

WE DO CUSTOM GRINDING

PHONE 3839-7

ROUTE 1

LUCAMA, N. C.

COMPLIMENTS

**NATIONAL BANK OF
WILSON**

MEMBER FEDERAL
DEPOSIT INSURANCE
CORPORATION

COMPLIMENTS

**BRANCH BANKING
& TRUST CO.**

"THE SAFE EXECUTOR"

MEMBER FEDERAL
DEPOSIT INSURANCE
CORPORATION

**CONTENTNEA GUANO
CO.**

**MANUFACTURERS
OF**

**HIGH GRADE FERTILIZERS
AND
SUPERPHOSPHATES**

PHONE 2636 WILSON, N. C.

"CONTENTED FARMERS USE
CONTENTNEA FERTILIZERS"

J.T. BOYKIN

GENERAL MERCHANT

**COTTON & FERTILIZER
FLORENCE MAYO TABACCO
CURER**

PHONE 3891-3

SIMS N. C.

COMPLIMENTS

**JOHN HACKNEY
INSURANCE
&
REAL ESTATE**

112 WEST NASH ST.

WILSON N. C.

M. & W. CAFE

**SANDWICHES AND HOT DOGS
SOFT DRINKS**

ROUTE 2 PHONE 3847-4

WILSON, N. C.

**EM-JAY SPORTING GOODS
COMPANY**

COMPLETE ATHLETIC OUTFITTERS

106 S. TARBORO ST.

WILSON, N. C.

BALLAD AND SON

WILSON'S FINE JEWELERS

ROSENTHAL

SYRACUSE

FINE CHINA

WILSON

N. C.

COMPLIMENTS

JO-ANN SHOP

203 EAST NASH STREET

PHONE 4123

GRICE'S SEED STORE

PHONE 2230

WILSON, N. C.

PHONE 941

BAILEY, N. C.

MOSS AND COMPANY

"TREAT PEOPLE RIGHT"

134 S. TARBORO STREET

PHONE 2771

WILSON, N. C.

COMPLIMENTS

BELK-TYLER

WILSON, N. C.

108 W. NASH ST. WILSON, N. C.

DENNY'S

JEWELERS

THE HOUSE OF NATIONALLY

ADVERTISED MERCHANDISE

**STEVE'S ELECTRICAL
SHOP**

MEYERS PUMPS

APPLIANCES

REPAIRS

ROUTE 2

WILSON, N. C.

**A. O. DAVIS
STORE AND MILL**

PHONE 3849-5

ROUTE 2 WILSON, N. C.

**H. G. BARNES
STATION AND GROCERY**

BUCKHORN'S CROSSROAD

ROUTE 3 KENLY, N. C.

**LESLIE BARNES
GENERAL MERCHANDISE**

ALL KINDS OF TRUCKING

TRANSFER TRUCKS

BUCKHORN

ROUTE 3 KENLY, N. C.

BILL'S GROCERY

GENERAL MERCHANDISE

ROUTE 3 KENLY, N. C.

J. I. BOYKIN & GRANGER

GENERAL MERCHANDISE

FRESH MEATS, GAS AND OIL

PHONE 3839-2

ROUTE 2 WILSON, N. C.

COMPLIMENTS

BOYETTE BROTHERS

ROUTE 1 WILSON, N. C.

**WILSON FARM EQUIPMENT CO.,
INC.**

ALL KINDS OF TRACTORS AND CARS

SOLD BELOW LIST PRICE

HIGHWAY 301 WILSON, N. C. PHONE 5403

BAILEY DRY CLEANERS

LEWIS WATSON, PROP.

CLEANING, PRESSING, ALTERING

SUITS TAILORED TO
YOUR MEASURE

BAILEY, N. C.

COMPLIMENTS

BAILEY FURNITURE CO.

BAILEY, N. C.

PHONE 121

COMPLETE HOME FURNISHINGS

BUNN'S GARAGE

GENERAL AUTO REPAIRING

"WE ARE NOT SATISFIED UNLESS
YOU ARE."

ROUTE 2

WILSON, N. C.

WALTER L. WILLIAMSON

GENERAL INSURANCE

ROCK RIDGE

PHONE 3859-0

ROUTE 2

WILSON, N. C.

COMPLIMENTS

**WILSON ARMY, NAVY
AND
CIVILIAN MERCHANDISE**

129 WEST BARNES ST.

WILSON, N. C.

BRIDGERS PAINT & WALL PAPER

COMPLETE PAINT AND WALL PAPER
SERVICE

ARTIST BRUSHES AND SUPPLIES

125 S. TARBORO ST.

PHONE 4428

WILSON

N. C.

YEAR IN AND YEAR OUT
YOU WILL ENJOY DOING BUSINESS
WITH

CECIL B. LAMM AND CO.

"ALL FORMS OF INSURANCE"

117 WEST BARNES ST.

PHONE 4493

WILSON

N. C.

COMPLIMENTS

OETTINGER'S

"THE DEPENDABLE STORE"

DEPT. STORE

NASH STREET

MEN'S STORE

TARBORO ST.

WILSON, N. C.

HUGHE'S MOTOR CO.

SOUTH ST. AT DOUGLAS ST.

WILSON, N. C.

PHONE 5155

DODGE AND PLYMOUTH DEALERS

BOYKINS BODY & PAINT SHOP

WRECKS COMPLETELY
REPAIRED

215 SOUTH STREET

PHONE 5226

WILSON

N. C.

DILLON AND BARNES

MULES AND HORSES

120 W. BARNES STREET

WILSON

N. C.

COMPLIMENTS

**E. B. PITTMAN
BANKER AND FARMER**

WILSON, N. C.

J. C. PENNEY AND COMPANY

CASH PURCHASES

CASH SALES AT PENNEY'S

WILSON, N. C.

**BARSHAY'S
LADIES' SHOP**

NEXT TO POST OFFICE

WILSON, N. C.

**ALBERT NICHOLS
GENERAL MERCHANDISE**

FRESH MEATS

PHONE 3891-2

SIMS

N. C.

COMPLIMENTS

A. G. LEE OIL COMPANY

ROUTE 2

KENLY

N. C.

KENLY DRUG COMPANY

CLAUDE E. GILLIKIN, PROP.

PHONE 240

KENLY, N. C.

**RAINS AUTOMOTIVE SUPPLY
COMPANY**

CROSLY APPLIANCES
AUTO PARTS AND ACCESSORIES
TELEPHONE 426-6
KENLY, N. C.

"PARKER'S BAR-B-Q"

BARBECUE
FRIED CHICKEN, STEAKS
OYSTERS
HIGHWAY 301-SOUTH PHONE 3836-1
WILSON, N. C.

BAILEY BROTHERS' STORE

GENERAL MERCHANTS
ROUTE 3
KENLY N. C.

H. M. GRIZZARD AND CO.

MERCHANTS
FUNERAL DIRECTORS
KENLY, N. C.

BLUE FLAME GAS CO.

BOTTLED AND BULK GAS
GENERAL APPLIANCES
PHONE 239-1
KENLY N. C.

J. DOBBIN BAILEY

GENERAL MERCHANDISE
KENLY, N. C.

COMPLIMENTS

DELL'S BEAUTY SHOP

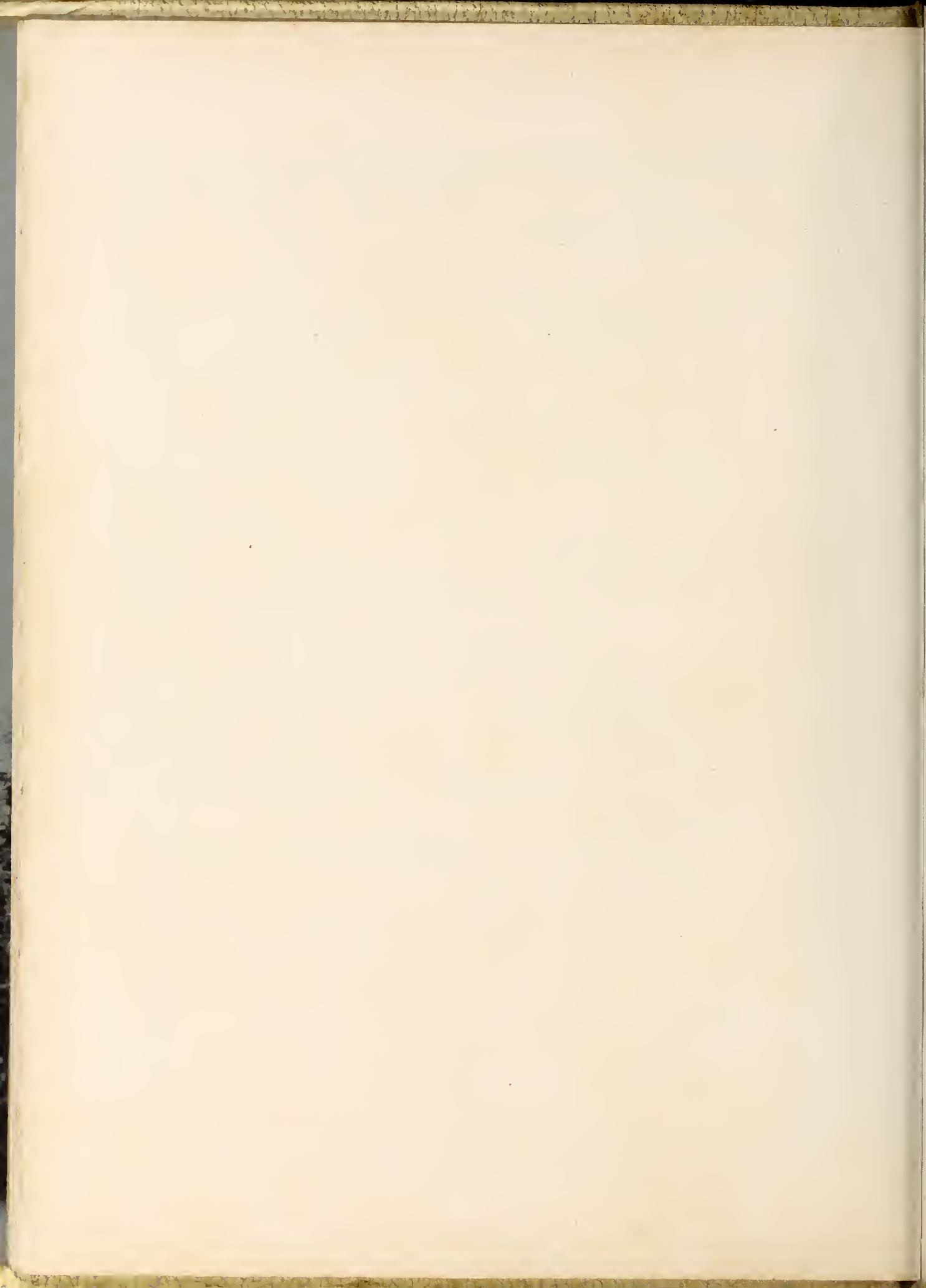
PHONE 3819-0
SIMS N. C.

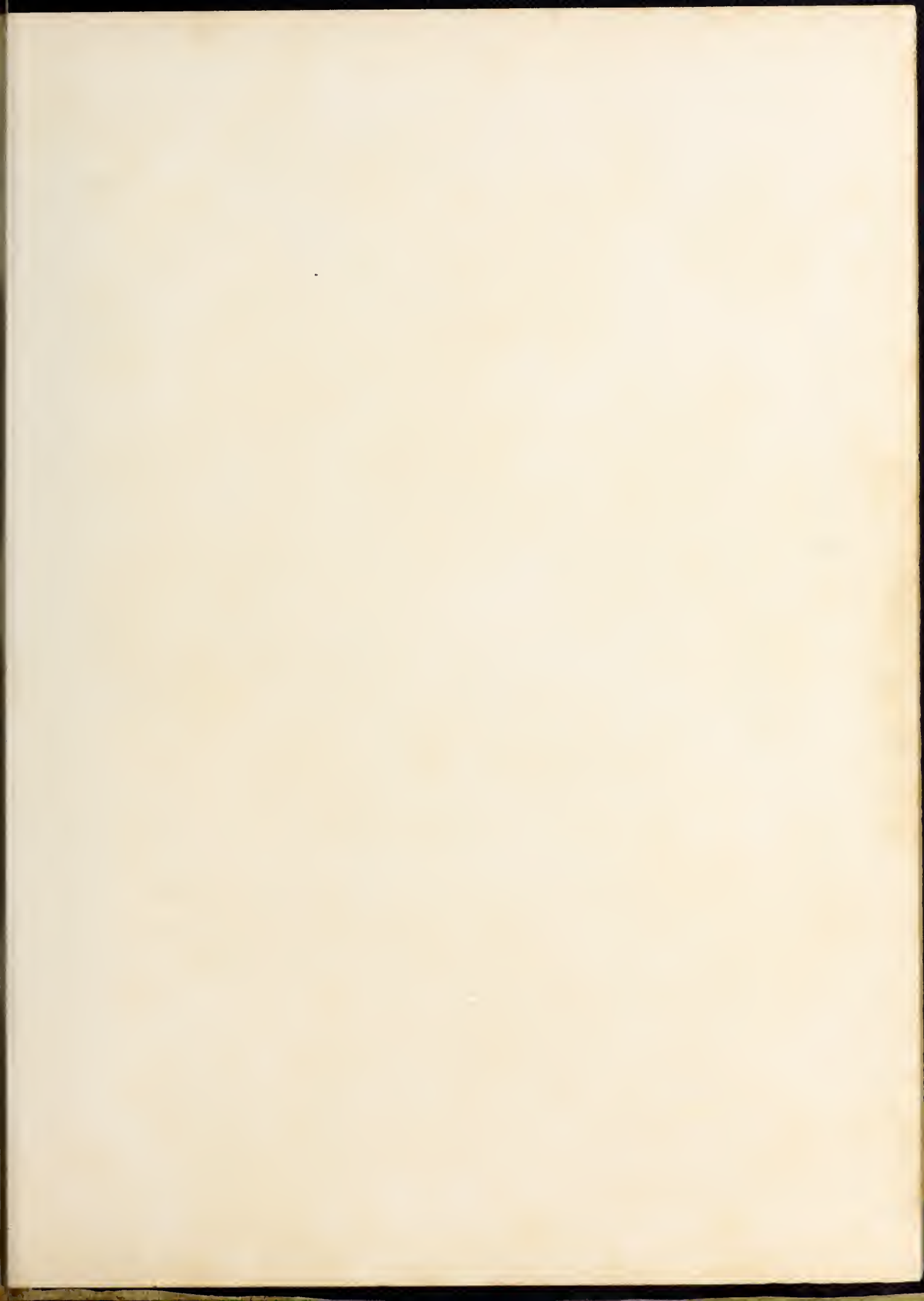
WATSON WAREHOUSES

I AND II
"LEADERS SINCE 1904"
WILSON, N. C.

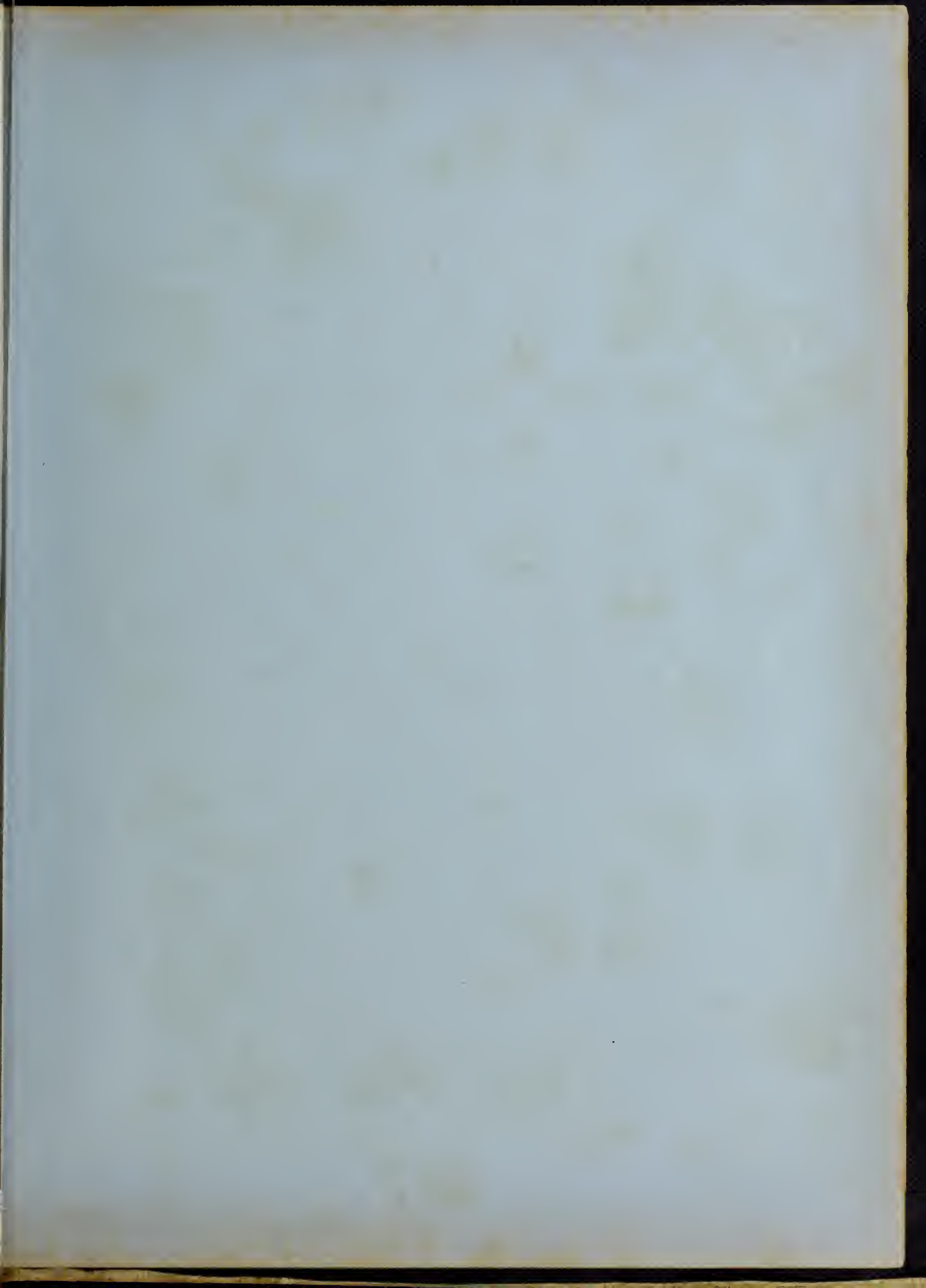
<p>ROBBINS JEWELRY & MUSIC CO.</p> <p>112 S. GOLDSBORO ST. WILSON, N. C.</p>	<p>COMPLIMENTS</p> <p>JOHNSON FURNITURE CO.</p> <p>WILSON, N. C.</p>
<p>WILSON DRUG CO.</p> <p>SINCE 1888</p> <p>114 S. TARBORO ST. WILSON, N. C.</p>	<p>LEDER BROTHERS DEPARTMENT STORE</p> <p>"SHOP WITH CONFIDENCE AND WEAR WITH PRIDE"</p>
<p>COMPLIMENTS</p> <p>SMITH WAREHOUSES A B C</p> <p>WILSON N. C.</p>	<p>TOBACCO CITY MOTORS</p> <p>HIGHWAY 301</p> <p>WILSON N. C.</p>
<p>COMPLIMENTS OF</p> <p>BRUCE WILLIAMSON</p>	<p>P. M. MOORE'S GROCERY</p> <p>ROUTE 1</p> <p>LUCAMA N. C.</p>
<p>J. H. HOCUTT GROCERY</p> <p>ROUTE 1</p> <p>MIDDLESEX, N. C.</p>	<p>EASTERN AUTO & SUPPLY CO.</p> <p>WHOLESALE AND RETAIL</p> <p>123 S. TARBORO ST. PHONE 3083 WILSON, N. C.</p>
<p>COMPLIMENTS</p> <p>MOTHER & DAUGHTER STORE</p> <p>WILSON, N. C.</p>	<p>CHARLES BARNES</p> <p>ROCK RIDGE</p> <p>PHONE 3849-6</p>
<p>HEILIG - MEYERS</p> <p>"FOR WISE BUYERS"</p> <p>WILSON, N. C.</p>	<p>COMPLIMENTS</p> <p>ANDY'S DRUG STORE</p> <p>SODA & DRUG SUNDRIES</p> <p>115 S. TARBORO ST. WILSON, N. C.</p>
<p>CARTER'S JEWELRY STORE</p> <p>102 W. NASH STREET</p> <p>WILSON, N. C.</p>	<p>R. E. TOWNSEND & CO.</p> <p>REAL ESTATE & INSURANCE</p> <p>121 S. TARBORO ST. WILSON, N. C.</p>

<p>COMPLIMENTS</p> <p>HERRING'S DRUG STORE</p> <p>WILSON, N. C.</p>	<p>CHURCHWELL JEWELRY STORE</p> <p>CHURCHWELL'S INC. "LEADING JEWELERS SINCE 1896" WILSON, N. C.</p>
<p>TALTON DRUG STORE</p> <p>"THE REXALL STORE"</p> <p>KENLY, N. C.</p>	<p>COMPLIMENTS</p> <p>J. F. NICHOLS GROCERY STORE</p> <p>SIMS, N. C.</p>
<p>COMPLIMENTS</p> <p>LUCAS ESSO STATION</p> <p>PHONE 3891-7 SIMS, N. C.</p>	<p>SIMS BARBER SHOP</p> <p>SIMS, N. C.</p>
<p>PRIDGEN'S CITY SERVICE</p> <p>PURE - OIL AND GASOLINE</p> <p>PHONE 4353 WILSON, N. C.</p>	<p>COMPLIMENTS</p> <p>E. C. SALEEBY & BROTHER</p> <p>WILSON, N. C.</p>
<p>COMPLIMENTS</p> <p>SHARP'S SANDWICH SHOP</p> <p>WILSON, N. C.</p>	<p>WILSON MARKET</p> <p>NATIVE AND WESTERN MEATS POULTRY ETC. PHONE 2117 WILSON, N. C.</p>
<p>COMPLIMENTS OF</p> <p>BLONNIE LAMM</p>	<p>COMPLIMENTS OF</p> <p>WATSON & ALFORD HARDWARE</p> <p>KENLY, N. C.</p>













WILSON COUNTY PUBLIC LIBRARY



3 9939 00357 9277

UNIVERSITY SUPPLY & EQUIP. CO.
FT. WORTH, TEXAS