

Historic, archived document

Do not assume content reflects current scientific knowledge, policies, or practices.



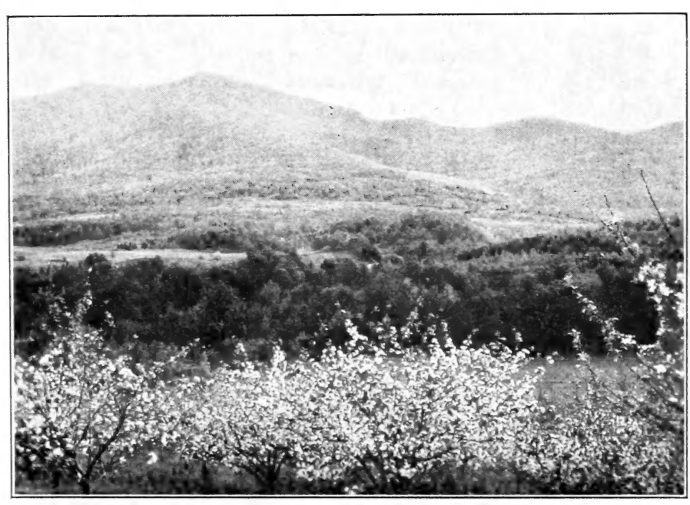
62.87

J. 2211
LIBRARY
RECEIVED
★ MAR 19 1926 ★
U. S. Department of Agriculture

Gardenside Nurseries, Inc.
Shelburne, Vt.

1928

Perennial Plants, Shrubs, Trees, Vines, Evergreens, and Roses
Fruit and Vegetable Plants



Mt. Mansfield

FOREWORD

The labor and expense involved in preparing an illustrated and complete Nursery Catalog, are almost out of proportion to the returns to be expected. In a way, this is unfair both to the Nurseryman and his customers. The cost must be covered in some way, and that way is generally, increased prices on new and rare items, and lessened attention paid to customers' correspondence.

For the present we must adhere to our earlier style, and the plain little list that follows has no photos. Instead we have tried to make our prices moderate, to have our descriptions and cultural directions, accurate, and written from our own experience, and as before we urge you to write us, ask us questions, whether about culture, names, or where to obtain the odd items that interest you, but cannot be found anywhere. We have many varied sources of information and material, and often can help. In any case you will receive as complete a reply as we can give.

Particularly to those who have their summer homes in the North, and to those whose all-year home it is, we offer our knowledge of what will grow and succeed in flowers, ornamentals and fruits. We are well fitted by experience to design and execute Landscape Plantings, and to arrange for their aftercare, and will gladly give details as to cost, without charge. In writing us, please state what is desired, and something of the location and soils. Photos are helpful.

We can supply tools, furniture—as trellises and arbors—and anything else needed in the garden. Shipment is made from the nearest point, or from Shelburne, often resulting in considerable saving.

In midsummer we publish a catalog of Bulbs and other plants for autumn setting. These include Peonies and Eremuri, not listed at this time. Bear it in mind, a copy will be mailed you, but if you do not receive one, let us know.

Our prices cover packing except as otherwise noted, and delivery to carrier. We do not pay delivery charges, save on special offers. **Parcel post charges to the extent of 10 per cent. of order should be included.** Otherwise we will ship by Express.

We guarantee all stock to be true to name, and to reach you safely. When received in good condition our responsibility ends, and in no case will we be liable for more than the value of the plants.

Remittance can best be made by Postal Money Order on Shelburne, Vt. Personal checks are acceptable. Either should be payable to Gardenside Nurseries, Inc.

HOME ACRES has something the others don't give me.--A. H. H., Cambridge

HOME ACRES is the Farm and Garden Association Magazine: "Well edited, beautifully printed and illustrated, deals only with garden and 'home place' subjects. Very fine!"—Says a leading garden expert.

MRS. HENRY FORD, *President*

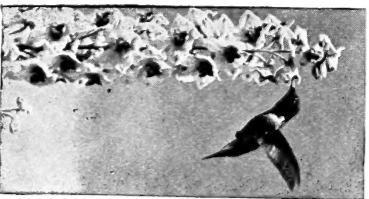
Just say: "I want HOME ACRES!"

I enclose \$1.50 for a year's subscription (or \$2 including an annual membership in the Farm and Garden Association)

Send to

Address

write to



HOME ACRES, Great Oak Lane, Pleasantville, New York

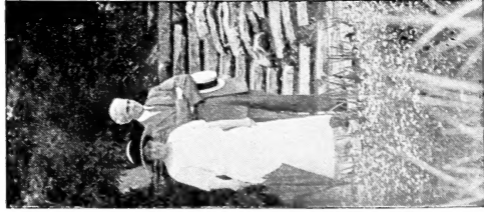
Mr. and Mrs. Henry Ford in their garden, Fair Lane, Dearborn, Michigan—see January HOME ACRES.

YOU will find PLEASURE and PROFIT in HOME ACRES, published 8 times a year to HELP THOSE who HELP THEMSELVES.

MRS. FORD as active PRESIDENT of the National FARM and GARDEN Association is warmly supported by MR. FORD and by MRS. FRANCIS KING, Honorary President, as well as by honorary endorsements of MRS. CALVIN COOLIDGE and MRS. WILLIAM JARDINE.

“It will be my pleasure . . . to do my utmost to . . . make HOME ACRES bigger and better . . . and other good things as they come along.”

Mrs. Henry Ford



Plants of Especial Interest

Which Every Garden Should Have

Anemone, Louise Uhink

We have long felt the need of a better Fall Anemone, and this variety is a great improvement on existing sorts. It is earlier, very large and double, pure white, and hardier than the type. It will bloom where others fail. Plant in deep, cool, soil, and do not disturb it. 3 feet.

Plants from pots 35c each, \$3.00 per 10.

Aster, Queen Mary

There is a bewildering variety of hardy Asters, but this one stands out above the rest. The flowers are large, often 2½ inches across, and of a very pleasing blue. The heads are branching, and the cut sprays keep well, and arrange splendidly. Any ordinary soil, in sun, 3½ feet.

50c each, \$4.50 per 10

Aquilegia, Long Spurred Hybrids

Airy graceful flowers, poised on long stems, all garden lovers know them well. Poor strains are many, in which reds and yellows predominate. The reds are short lived, the yellows tend to seed and take over the bed. Ours is a Scotch strain, thought to be one of the very best. Plant in deep loam, in sun or partial shade, 3 feet.

25c each, \$2.00 per 10

Dieletra spectabilis

Bleeding Heart, the true old-fashioned sort. The most graceful spring flowering plant we have, fine for the front of shrubbery for massing, or as a garden specimen. It should have a deep cool well-drained soil. Ours are of our own growing, fine and clean. 2½ feet.

35c each, 3 for \$1.00, \$3.00 per 10

PLANTS OF ESPECIAL INTEREST

Delphinium Hybrids

Hybrid Larkspur may be had under every conceivable name and claim. Ours is a mixture of all the best. As such a combination, it should give wonderful results. The basic strain we use is an English one not commonly offered. It does not give extra size or height, but the flowers have lasting quality, the plants are strong, stand well against wind, and are resistant to disease. To this we add an equal quantity of a mixture from the best sources. Last season we had some wonderful colors. All shades of blue, shading to rose, and an occasional white. They thrive in any good garden soil, moderately enriched. Extra fine spikes may be had by feeding with liquid manure, when the first stem growth appears.

2-yr. clumps 35c each, \$3.00 per 10

Gypsophila, Bristol Fairy

This new double Baby's Breath is one of two genuinely American introductions that are advances over all older sorts. (Viola Jersey Gem is the other.) It has received the coveted Award of Merit in England. Originating in New England, it is perfectly hardy, and will succeed anywhere, North or South. The individual flowers are double the size of the older variety, pure white, produced on stems better suited for cutting, and best of all, the plants flower continuously from July till late fall. Give plenty of room for it is a robust grower, needing as much space as a Peony. Any deep soil suits it.

Field-grown plants \$1.00 each

Lilium regale

No one plant has done more to popularize its family than the Regal Lily. Beyond a doubt, it is the most easily grown form. Readily increased it is now becoming very plentiful, and almost everyone has seen its chocolate-shaded trumpets with their primrose yellow throats, nodding over the July garden. Everyone ought to have some bulbs of this lily and we have reduced the price with that in mind. Ours are clean young stock, that will flower well the first season.

35c each, \$3.00 per 10

PLANTS OF ESPECIAL INTEREST

Lilium auratum

When planting the Regal Lily, add to the bed some bulbs of this, the Goldbanded Japanese Lily, and some of the next variety. They will provide a succession of bloom from July to October. This lily has well-opened flowers, 6-8 inches across, white, spotted with red, and with a yellow band down the center of each petal. Powerfully fragrant. Plant deeply, at least 6 inches to the top of the bulb, in a well-drained gritty loam. If necessary, spade in fine gravel. Enrich the top soil with a little old manure, but do not let it touch the bulbs. These lilies all feed from stem roots, above the bulb. Mulch with a little Peat moss or Sphagnum, during the summer.

Large bulbs, 50c each, \$4.00 per 10, \$30.00 per 100

Lilium speciosum rubrum

This Lily blossoms quite late, and has beautiful rosy-white Turkscap like flowers, heavily spotted red. It also is delightfully fragrant. Early frosts do not injure the flowers. Culture like the preceding.

Large bulbs, 50c each, \$4.00 per 10, \$30.00 per 100

Lupinus polyphyllus Hybrids

These Lupins change the familiar blue and white, to a bewildering array of yellows, creams, pinks, as well as varied blues, and bicolors. They have proven hardy here, though they are said to be finicky. They do finely in a light loam, inclined to be alkaline, and a deep soil, and to be let alone, seem to be their requirements.

Heavy plants, 35c each, \$3.00 per 10

Viola Jersey Gem

We are continually praising this deep violet-colored Viola, for every purpose. The plant is neat and compact, and makes a wonderful edging for all beds. It blooms over the entire season, and profusely if kept picked. If it gets over-large, it may be sheared off in August and will quickly recover. You always have flowers with Jersey Gem. Absolutely hardy, grows in any soil, North or South.

Field clumps, 25c each, \$2.00 per 10, \$18.00 per 100

Young plants from small pots, for edgings, at \$10.00 per 100. Not less than 50 at this price.

PLANTS OF ESPECIAL INTEREST

Papaver orientale, Olympia

This is the first genuinely good, double hardy Poppy. It opens fully double, about 4 inches in diameter, only showing the stamens as it matures. The color is a brilliant rich-flame scarlet, while the habit is vigorous, but compact. A small stock only, offered while they last at, 50c each.

Daphne mezereum

We are including three shrubs in this list of plants of special interest. The Mezereon Daphne is an old shrub, still rare and seldom seen. It is deciduous, grows about 2½ feet high, and the rosy lilac flowers deliciously sweet, appear in May, before the leaves. In smaller sizes it is not difficult to transplant, but it should not be disturbed. It is particularly valuable for planting in the shade, as on the north side of buildings, or under hard woods, and is delightfully used in that way. We have three sizes, the smallest being the best for woodland planting.

4- 6 inches 25c each, \$2.00 per 10, \$18.00 per 100

6-12 inches 50c each, 4.50 per 10, 35.00 per 100

Clumps, \$1.00 each, \$9.00 per 10

Rosa hugonis

This rose should be called the "Golden Bridal Wreath" for it is a golden counterpart of that popular shrub. It is absolutely hardy, attractive in leaf and stem, fragrant, early. Use it not in the rose garden, but as a shrub about the house, as a hedge, or a single specimen. It will delight you in May with arching branches loaded down with single yellow flowers. The rose for all sections of the country, It needs only full sun.

2-yr. plants, \$1.00 each, \$9.00 per 10

Berberis thunbergi atropurpurea

Similar to the well-known Japanese Barberry in all respects save color. The foliage is a rich, bronzy, red, becoming more brilliant as the season advances, and changing to orange and scarlet in the fall. It has the scarlet berries, too, which remain on the plant all winter. The finest foliage color of any hardy shrub and it needs only full sun to develop it.

1-yr. plants, 75c each, \$7.00 per 10

GENERAL LIST OF PERENNIAL PLANTS

All at 25c each, \$2.00 per 10, unless otherwise noted

- Aconitum napellus**, July flowering Monkshood. Fine dark blue, often six feet high, 35c; \$3.00 per 10.
- Aquilegia caerulea**, the blue and white Colorado Columbine. Long spurred.
- Artemisia lactiflora**, a fall bloomer, tall, with long foamy spikes of fragrant white flowers.
- Campanula carpatica**, blue or white, grows six inches high. Fine for edging.
- Convallaria majalis**, Lily of the Valley, Small clumps at this price. Nursery grown.
- Coreopsis lanceolata grandiflora**, the finest yellow summer flower.
- Delphinium belladonna**, light blue Larkspur.
- bellamosa**, dark blue form of the preceding. Not subject to disease.
- chinensis**, blue or white. Not so tall as the rest. Almost perpetual blooming.
- Dianthus plumarius**, Hardy Garden Pinks, in a large range of colors.
- Echinops ritro**, Globe Thistle, ornamental.
- Gypsophila paniculata flore pleno**, true double form of the perennial Baby's Breath, 50c each.
- Gypsophila ehrliei**. This is also an improved Dbl. Baby's Breath, and very good. It is a trifle more erect in growth, and a little later flowering. Our plants are own root, light, field-grown stock, \$1.00 each.
- Helenium autumnale**, tall, yellow. Fall flowering. Fine when massed.
- Iris laevigata**, Japanese Iris. Mixed seedlings, 10c each.
- Iris**. The so-called "German Iris" may be planted in the spring, but it is better to wait until July, or just after flowering. We will ship at either time, but if no date is set, will ship in July. This glorious garden flower flourishes in hard stony soils, or on sand. It requires only plenty of sun, some bone meal, and to be left alone. The newer varieties are much larger and have wonderful color shades. We offer a good selection, 10% discount on ten or more of one kind.
- | | |
|--|--------|
| | Each |
| Ambassadeur , late, wonderful tall, purple and maroon. One of the very best..... | \$2.00 |
| Anna Farr , white, lightly penciled blue, fragrant. A beauty | 1.00 |
| Caprice , still one of the best reds | .25 |
| Dr. Bernice , coppery bronze and crimson | .25 |
| Her Majesty , a fine old "Pink" variety | .25 |
| Lent A. Williamson , the most popular variety in the country today, blue violet and purple | 1.00 |
| Mme. Chereau , delicately beautiful; white, penciled blue edges | .25 |
| pallida dalmatica , vigorous, lasting foliage, exquisite lavender blue | .25 |
| Pauline , tall, rich pansy-violet | .25 |
| Powhatan , light violet and deep purple | .25 |
| Quaker Lady , odd buff or smoky grey shades | .25 |
| Red Cloud , rosy lavender and crimson maroon | .25 |
| violacea grandiflora , violet self very vigorous..... | .25 |
| Windham , soft lavender pink, falls darker | .25 |
| Wyomissing , creamy white, overspread soft rose. Falls deep rose, fading to flesh, one of the most beautiful Iris | .25 |

GARDENSIDE NURSERIES, INC., SHELBURNE, VERMONT

GENERAL LIST OF PERENNIAL PLANTS

- Lilium canadense**, native Meadow Lily. Yellow, strong bulbs.
- henryi**, the yellow Turkscap Lily. Tall, permanent. September, strong bulbs, \$1.00 each.
- philadelphicum**, native woods Lily, red with black spots. Upright blooms.
- Mertensia virginica**, Virginia Cowslip. A very fine Spring flowering plant. Blue and pink.
- Phlox**. The following list will be found to cover the various colors. All the varieties we have chosen are standard, and "good doers."
- Bridesmaid**, white, rose-crimson eye.
- Comte**, brilliant French purple, tall and late, 35c each.
- Frau G. Von Lassburg**. Clear white, good size, midseason.
- Jules Sandeau**, pure pink, very large, early.
- Paul Dutrie**, apple blossom pink, fine.
- Riverton Jewel**, mauve rose, carmine red eye.
- Rynstrom**, Paul Neyron rose pink in color, very popular sort.
- Phlox suffruticosa**, Miss Lingard. An early white variety, blossoming before the other types.
- Platycodon grandiflorum**, Japanese Bellflower, blue or white.
- Pyrethrum hybridum**, Painted Daisy. June flowering in varied and beautiful shades.
- Salvia azurea grandiflora**, Fall Blue Sage. Quite tall. Fine to plant with gladioli, or for cutting with them.
- Sidalcea-var**, Rosy Gem. Grows four feet high. A multitude of spikes covered with little pink hollyhock flowers. Fine foliage. Our plants are true type, not seedlings.
- Statice latifolia**, Sea Lavender. Fine foamy light blue flowers. Excellent for drying for winter use.
- Trollius europeus**, Globe Flower, often called Double Buttercup. Light lemon yellow, 35c each; \$3.00 per 10.
- T. Orange Globe**, seedlings. Like the above, but somewhat deeper in color, 35c each; \$3.00 per 10.

VIOLAS AND PANSIES

We grow a lot of these little Spring friends in the best strains obtainable. Our plants this year are especially fine.

Violas

\$1.50 per 10—postpaid

Blue Perfection.

White Perfection.

lutea splendens (yellow).

Pansies

\$1.00 per 10—postpaid

Florist's Exhibition. Mixed colors.

Masterpiece. Edges of the petals ruffled. Mixed colors.

ROSES

Everyone loves roses, and the question constantly heard is "What sorts are hardy here?"

As a matter of fact, none of the best new garden roses are satisfactorily hardy in the North. The wood is tender, and being budded or grafted they are lost if killed to the ground, while on their own roots, they do not succeed. If one can restock each year, however, wonderful blooms may be had.

There are, we feel, three types of roses satisfactory for Northern planting. The first are the hardy species; bushy, strong-growing plants, better used as shrubs than anything else, though beautiful and fragrant. We catalog several good forms.

Next are the newer hybrids of the Rugosa type of rose and the Moss roses. In recent years, several fine forms have appeared, bearing large, double, fragrant, well formed and colored blooms. They are generally quite spiny, and strong growing, and only a few blossom throughout the season. We list the best.

Most satisfactory, we believe, are the Polyantha or bunch flowered roses. These are comparatively hardy, do well on their own roots, and if grown in this way they may be killed to the ground, only to result in extra fine blooms. The colors are good, the flowers small but dainty, the fragrance delightful, and they are almost everblooming. We are propagating them, with a view to offering only plants on their own roots, but for the present must purchase what we sell. Whenever possible we buy own root stock.

Strong Growing, Bushy Forms

Dr. E. M. Mills. New. A hybrid hugonis, similar, but the primrose yellow flowers have a pinkish suffusion. \$1.50 each.

Hugonis. Now well known. Very fine. See page 4.

Rugosa. Strong growing, with single red flowers. 50c each, \$4.00 per 10.

Rugosa alba. Like the above, but white flowers. 50c each; \$4.00 per 10.

Sweet Brier (R. rubiginosa). A fine old rose, noted for the fragrance of its foliage and flowers. Single, pink, \$1.00.

Semi-dbl. Scotch. Yellow. We only know this rose as it is common about old homes. A mass of bright fairly double yellow flowers in late June. Strong plants, \$1.00.

Semi-dbl. Scotch. White. This seems the counterpart of the above, except in color. Strong plants, \$1.00.

Xanthina. We have not fully tested this rose. It seems perfectly hardy, and is the counterpart of Hugonis, except the flowers are double. Foliage is very good, and the flowering period is prolonged. \$1.50 each. Supply limited.

HARDY HYBRID RUGOSA AND MOSS ROSES

Rugosas, \$1.00 each; \$9.00 per 10; except as noted

- Blanc Double de Coubert.** The best double, pure white Rugosa. 75c each.
- Conrad F. Meyer.** Large, light silvery pink. Very hardy, and needs lots of room. 75c each.
- F. J. Grootendorst.** A hybrid between the Baby Rambler and the Rugosa. Clusters of bright orange-red flowers throughout the season. Makes a fine hedge.
- Pink F. J. Grootendorst.** A pink form of the above. Stock very limited. \$1.50.
- Mme. Julien Potin.** Large, double, pure flesh-pink flowers. Hardy, and a continuous bloomer.
- New Century.** Fully double flowers of clear flesh-pink, with red center, and creamy edges. Fragrant.
- Nova Zembla.** White, tinged with pink. Highly recommended. 75c each.
- Rose A Parfum de l'Hay.** Double dark crimson flowers, shaded carmine. One of the most fragrant of Roses, and very hardy. 75c each.
- Schneezwerg.** Half-double, snow-white flowers. Blossoms steadily from spring to frost. Fine for a dwarf hedge plant, and very pretty in autumn with its abundance of small red fruits.
- Sir Thomas Lipton.** A white form of C. F. Meyer, double and of unusual quality. Hardy and very vigorous. 75c each.
- Seven Sisters.** This is a very old rose found about Vermont homes. Large double pink flowers in June. Do not confuse this with the June rose, R. cinnamomea.

Moss, 75c each; \$7.00 per 10

- Blanche Moreau.** Double white flowers, in clusters.
- Crested Moss.** Full bright rose pink. Unique and handsome.
- Henri Martin.** Shining crimson. The easiest red Moss to grow.
- Salet.** Rosy pink with blush edges. Free flowering and vigorous.

POLYANTHAS

The following are fifteen of the best varieties. None are absolutely hardy, but with protection, all will winter nicely. Own root, whenever possible. 75c each, \$6.00 per 10.

- Cecil Brunner.** Pink. The sweet-heart rose. Tender.
- Chatillon Rose.** New. Bright pink.
- Eblouissant.** Dark red. Petals peculiarly twisted.
- Echo.** Tender rose-pink.
- Ellen Poulsen.** Bright rose-pink.
- Erna Teschendorff.** Carmine red.
- George Elger.** The yellow sweet-heart rose. Tender.
- Greta Kluis.** Red, or deep pink. Very hardy.
- Gruss an Aachen.** Pink, overlaid yellow. A most beautiful and different rose.
- Ideal.** Brilliant red.
- Katherina Zeimet.** The best white.
- Miss Edith Cavell.** Brilliant crimson, white eye. Very hardy.
- Orleans.** Brilliant red.
- Perle d'Or.** Buds and flowers, small. Light orange and creamy yellow. Tender.
- Triomphe Orleanais.** One of the best light red polyanthas.



GARDENSIDE NURSERIES, INC., SHELBURNE, VERMONT

Order Blank for Plants—Keep a copy of your order

Do not write in
this space

NameDate

Street or R. F. D.....P. O. Box.....

Post Office and State.....

Delivery Address if
different from above.....

Amount enclosed \$.....Ship when.....

Remarks:

Quality	Kind	Amount
---------	------	--------

CLIMBING ROSES

The Climbing Roses are a class apart. Those offered as hardy are usually sufficiently so to live through our most severe winters. But the long rambling growths—which must be preserved through the winter, for they bear the flowers—often suffer, and the result is—no flowers. If you would grow climbing roses, plant in full sun. Prune out all old wood, immediately after the flowers fade. Then in late fall, take down the canes, tie them securely together, and to two stakes, one close to the base, the other at the tips. Cover completely with leaves, or straw, and cover that with evergreen boughs. In the first warm days of spring, remove the leaves or straw, but put back the evergreen. If properly done, this will winter any of the following anywhere in the North. 2-year Plants 75c each; \$6.50 per 10.

Bess Lovett. Light crimson red.
Fine for cutting.

Christine Wright. Wild-rose pink.
Dr. Van Fleet. Best of all climbers. Pale pink buds and flowers like the finest Hybrid Teas.

Gardenia. Until now the best yellow climber. Still very good and quite hardy.

Mary Lovett. Like a white Dr. Van Fleet.

Mary Wallace. Bright pink, double flowers. Very fine and extremely hardy.

Paul's Scarlet Climber. Purest scarlet. Wonderful. Best used as a pillar rose, because of its moderate growth.

Star of Persia. This is said to be "the" yellow climbing rose. It is of a strain which does not fade and is very hardy. We have wintered it, but have not seen it flower. Stock limited. \$1.50 each.

CLIMBING VINES

	Each	Ten
Actinidia arguta. Bower Actinidia. Rapid-growing	\$1.00	\$9.00
Ampelopsis quinquefolia. Virginia Creeper. The well-known Woodbine, with red or scarlet foliage in fall. 2-yr...	.40	3.00
—veitchii. Boston Ivy. The best vine for covering walls. 2-yr...	.75	6.00
Aristolochia siphon. Dutchman's Pipe. Broad, dark green leaves. Rapid growth. Strong plants	1.00	9.00

	Each	Ten
Celastrus scandens. American Bittersweet.	\$.50	\$4.00
Clematis paniculata. Japanese Virgin's Bower. Covered with small, white, sweetly-scented flowers in late summer. 2-yr.50	4.00
—jackmanni. Large purple. 3-yr....	1.00	9.00
—henryi. White. 3-yr.....	1.00	9.00
Polygonum auberti. Splendid hardy climber. Very vigorous. 25 or more feet in a year. Quantities of foamy white flowers	.75	6.00

EVERGREENS

The use of Evergreens about small homes has added greatly to the interest in and the demand for them. Unfortunately, many times the two types of Evergreens are confused and wrongly used, resulting in great dissatisfaction.

The common Evergreens of our hills are all trees many feet high. These and similar forms from all over the world, may be used on large places, or as specimen trees. But they should rarely or never be planted close to a house.

For this purpose the Nurseryman has developed forms resulting from chance seedlings, which are more controlled in growth. Often the ultimate height is only a few feet, or the habit so pyramidal as never to conceal. Add to this various colors, grays, blues, even golden and white, variegated, and every shade of green, with odd shapes and habits; in short the lot is interesting as specimens.

The best Landscape Architects of today, consider them artistic when properly used, and though more expensive than shrubs, their year around charm makes them worth the extra cost.

Varieties preceded by an * will develop into large trees and should not be located near buildings, but grouped in clumps or as specimens, where their growth will not be hampered.

	Each		Each
* Abies balsamea , Balsam Fir.		age gray-green, changing to steel-blue in winter.	
1½ to 2 ft.	\$2.50	—12 to 15 in.	\$2.00
*— concolor , Colorado Silver Fir. Bluish green. Preferred by some to the more conspicuous Blue Spruce.		— sabina . Savin Juniper. Low, spreading habit.	
1½ to 2 ft.	3.50	1 to 1½ ft.	1.50
Juniperus chinensis alba variegata . An interesting white-tipped form.		— sabina horizontalis . Creeping Juniper. A creeping form, useful for rock-work or as a ground-cover.	
12 to 15 in.	2.50	15 to 18-in. spread	2.50
— chinensis pfitzeriana , Pfitzer's Juniper. Very hardy kind, of spreading habit. Attractive silver-green foliage. One of the best for foundation planting.		— virginiana . Red Cedar.	
1 to 1½ ft.	2.50	2 to 3 ft.	2.00
1½ to 2 ft.	3.50	3 to 4 ft.	3.00
Juniperus communis . Common Juniper.		* Picea excelsa . Norway Spruce. We can supply these trees in sizes suitable for hedges or windbreaks at a lower price.	
1½ to 2 ft.	2.50	1½ to 2 ft.	1.50
— excelsa stricta . Greek Juniper. Compact, conical. Foli-		*— pungens glauca . Colorado Blue Spruce. The deepest blue form.	
		12 to 15 in.	3.00

GARDENSIDE NURSERIES, INC., SHELBURNE, VERMONT

EVERGREENS

	Each		Each
Pinus montana mughus. Mugho Pine. The true compact type.		Effective either winter or summer.	
1 to 1½ ft.	\$3.50	2 to 3 ft.	\$2.00
* —resinosa. Red or Norway Pine. Rich, dark green foliage; vigorous growth.		—occidentalis hoveyi. A dwarf form of conical growth.	
18 to 24 in.	2.50	12 to 15 in.	1.50
* —strobos. White Pine		15 to 18 in.	2.00
1½ to 2 ft.	1.50	—occidentalis lutea, George Peabody. A handsome golden form of above.	
Taxus cuspidata. Close upright growth; dark green, glossy foliage. Splendid as a specimen or for hedging. Entirely hardy.		1½ to 2 ft.	3.50
1 to 1½ ft.	3.00	—occidentalis pyramidalis. Pyramidal Arborvitæ. Erect, pyramidal form, of compact growth.	
—cuspidata brevifolia. Dwarf Japanese Yew. Dark green foliage. Does well in sun or partial shade. Fine for low hedges or foreground planting. Slow growing.		18 to 24 in.	2.50
1 to 1½ ft.	3.50	—occidentalis wareana (sibirica). Siberian Arborvitæ. Dark green foliage; slow pyramidal growth and semi-dwarf. Very hardy.	
* Thuja occidentalis. Arborvitæ. Very hardy and useful for architectural effect or for forming dense but not spready hedges or screens.		15 to 18 in.	2.50
		18 to 24 in.	3.50
		* Tsuga canadensis. Canadian Hemlock.	
		8 to 12 in. 35c each; \$3.00 per 10	
		12 to 15 in. 50c each; 4.50 per 10	
		18 to 24 in. \$1.50 each.	

EVERGREEN SHRUBS

It is difficult to advise on the culture of Laurel and Rhododendron, where they are not native. However, recent discoveries in the use of chemicals give great promise. We will gladly give all the information we possess.

	Each		Each
Daphne cneorum. Garland Flower. Sweetly scented pink flowers. Any good soil.		Rhododendron maximum. Great Laurel. The best for massing in deep shade.	
1-yr.	\$.75	1½ to 2 ft.	\$2.50
Kalmia latifolia. The well-known Mountain Laurel.		—catawbiense. Catawba Rhododendron. Rosy purple. very hardy.	
1½ to 2 ft.	2.50	1½ to 2 ft.	3.00

SHRUBS AND TREES

There are a great many very satisfactory shrubs and trees for home ornamentation that we do not catalog, as there are many too that are useful as artistic single specimens. We have made our choice on a basis, first, of hardiness, next, of general utility about the home or on the estate, and have included for specimen planting, only those of real beauty. We procure our stock from reliable sources, and are generally able to ship quite dormant plants, quite late in the season. We will gladly advise about the individual problems of shrub planting, and will obtain varieties not listed, whenever in our judgment, success may reasonably be expected.

Packing charged on trees and shrubs. * marks varieties suitable as specimens.

	Each	Ten		Each	Ten
Acer platanoides. Norway Maple.			growing. One of the best low shrubs. White.		
6 to 8 ft.	\$4.00		12 to 18 in.	\$.60	\$5.00
— saccharum. Sugar Maple.			— lemoinei. More vigorous and free-flowering than <i>D. gracilis</i> . Pure white,		
10 to 12 ft.	4.50		18 to 24 in.75	6.00
Æsculus hippocastanum. Horse Chestnut.			Forsythia intermedia. Golden Bell. Golden yellow flowers in early spring.		
4 to 5 ft.	2.50		2 to 3 ft.60	5.00
* Amygdalus. Flowering Peach or Almond.			— suspensa. A slender, drooping-branched form.		
White 2 to 3 ft.	1.00		2 to 3 ft.60	5.00
Pink 2 to 3 ft.	1.00		Hydrangea arborescens grandiflora. Snowball Hydrangea. Pure white, ball-shaped flowers during July and August. Very showy.		
Betula alba. White Birch.			1½ to 2 ft.75	6.00
4 to 5 ft.	2.00		*— paniculata grandiflora. Common Hydrangea. Large, white flowers, turning bronzy pink in fall. Very popular.		
— alba pendula lacinata. Cut leaved weeping Birch.			1½ to 2 ft.60	5.00
5 to 6 ft.	3.50				
		Ten 100			
Berberis thunbergi. Japanese Barberry. An ironclad hedge plant entirely immune from disease.			Ligustrum amurense. Amur Privet. The hardiest and best privet for hedges.		
18 to 24 in., heavy.	\$3.00	\$20.00	2 to 3 ft.	\$2.00	\$17.50
		Each Ten			
Cornus stolonifera. Red-twigged Dogwood. Showy red branches.					
2 to 3 ft.	\$.60	\$5.00			
* Cydonia japonica. Japanese Quince. Showy scarlet flowers in late spring.					
12 to 18 in.60	5.00			
Deutzia gracilis. Dwarf-					

SHRUBS AND TREES

	Each	Ten			Each	Ten
Lonicera tatarica. Tartarian Honeysuckle. Strong, upright grower. Pink flowers; orange-red berries in summer.						
2 to 3 ft.	\$.60	\$ 5.00				
* Malus icensis plena. Bechtels Crab. Soft pink, double flowers, resembling roses. Quite fragrant.						
4 to 5 ft.	1.50					
Philadelphus, coronarius. The fragrant, tall-growing white Syringa.						
2 to 3 ft.60	5.00				
*— virginal. A greatly improved Mock Orange. Fragrant, semi-double, pure white flowers, densely clustered, completely cover the plant during June, with occasional flowers appearing later in the season.						
2 to 3 ft.75	7.00				
Populus caroliniana. Carolina Poplar.						
10 to 12 ft.	1.00	7.50				
Populus fastigiata. Lombardy Poplar.						
8 to 10 ft.	1.00	7.50				
Prunus pissardi. Purple-leaf Plum.						
3 to 4 ft.	1.50	12.00				
Snowball. See Hydrangea and Viburnum.						
Sorbus aucuparia. European Mt. Ash. Tree to 30 ft., with white flowers and flat clusters of red berries in fall.						
6 to 8 ft.	2.50	20.00				
Spirea van houttei. Bridal Wreath. The most graceful of all shrubs, completely covered with clusters of pure white flowers during May.						
2 to 3 ft.60	5.00				
Symphoricarpos racemosa. Snowberry. Showy white waxy berries until midwinter.						
2 to 3 ft.	\$.60	\$ 5.00				
Syringa vulgaris. The popular purple Lilac which does well everywhere.						
2 to 3 ft.60	5.50				
— vulgaris alba. The common white variety; equally good.						
2 to 3 ft.75	6.00				
Hybrid Lilacs						
2 to 3 ft.	1.25	10.00				
Congo. Single red.						
Mme. Casimir Perier. Dbl. white.						
Pres. Grevy. Dbl. blue.						
Ulmus americana. American Elm.						
6 to 8 ft.	1.50	12.00				
Viburnum opulus. Highbush Cranberry. Tall-growing bush with showy fruit resembling cranberries. White flowers in spring.						
2 to 3 ft.75	6.00				
— plicatum. Japanese Snowball.						
2 to 3 ft.	1.00	9.00				
— tomentosum. Double-file Viburnum. Single white flowers. Bronzy foliage in fall.						
18 to 24 in.60	5.00				
Wiegelia rosea. Large shrub with pink blossoms in June.						
2 to 3 ft.60	5.00				
— Eva Rathke. Like the above but crimson flowers in great profusion.						
18 to 24 in.60	5.00				

GARDENSIDE NURSERIES, INC., SHELBURNE, VERMONT

FRUIT TREES, BERRY BUSHES AND PLANTS

VEGETABLE PLANTS

The following list of Fruit Trees, etc., is not large. From it, however, the home planter may select varieties covering the entire season, all of high quality. We have no use for low quality in fruit. Several new varieties are offered, but generally, we cannot speak of them from experience. All apples are certified true to name, and are No. 1 grade only. Berry plants and bushes are of our own growing whenever possible. Vegetable plants are from the finest seeds, properly grown, well packed. Moderate packing is charged on trees and bushes. Plants and small bushes are not charged for.

Apples

Certified true to name, 5-7 ft. tall, well branched at 75c each, \$6.50 per 10. Lower prices on quantity. Arranged in order of ripening.

- Yellow Transparent.** Yellow.
- Red Astrachan.** Red.
- Duchess of Oldenburg.** Striped.
- Fameuse.** Red.
- McIntosh.** Red.
- Cortland.** Red, a later McIntosh, said to keep better, and to be fully as good.
- Delicious.** Red. A fine apple.
- R. I. Greening.** Green.
- Tallman Sweet.** Green.
- Pound Sweet.** Green.
- Red Spy.** This is a new strain of Northern Spy, more heavily colored red. \$2.00 each.
- Hysslop Crab.** Very red fruit for jelly.

Cherries

- 5-7 ft. well branched at 75c each, \$6.50 per 10.
- Black Tartarian.** Sweet, early.
 - Early Richmond.** Sour, early.
 - Governor Wood.** Sweet, early.
 - Montmorency.** Sour, late.

Pears

5-7 ft. extra fine stock, 75c each, \$6.50 per 10.

- Bartlett.** Summer, the standard of quality.
- Beurre d'Anjou.** Fall. Keeps 'til Thanksgiving.
- Beurre Bosc.** Fall. Fine flavor.
- Clapp's Favorite.** Earliest of all.
- Lawrence.** Winter. Fine keeper.
- Seckel.** Fall. The sugar pear.
- Sheldon.** Fall. Russet, fine.

We can supply a limited quantity of the new Pears, Cayuga, Gorham and Phelps at \$2.00 each. These are distinct advances over older sorts, all being good keepers. If interested, write us.

Plums

- 5-6 ft., 75c each, \$6.50 per 10.
- Abundance.** Cherry red, early.
 - Bradshaw.** Dark reddish purple, early.
 - Burbank.** Dark red. Best commercial variety.
 - German Prune.** Purplish black, late.
 - Imperial Gage.** Yellow, early.
 - Lombard.** Purplish red, early.
 - Yellow Egg.** Yellow, late.

FRUIT TREES, BERRY BUSHES AND PLANTS

Grapes

2-yr. first size, 25c each, \$2.00 per 10.

Agawam. Red, early.

Brighton. Red, large clusters.

Concord. Black, midseason.

Delaware. Red, highest quality.

Moore's Early. Black, early.

Niagara. Green, early.

Worden. Black, early.

Currants

2-yr. first size, 25c each, \$2.00 per 10.

Red Cross. Red, large.

White Grape. White.

Gooseberries

2-yr. first size, 35c each, \$3.00 per 10.

Downing. Whitish green.

Blackberries

\$2.00 per 25; \$7.00 per 100.

Blowers.

Eldorado.

Snyder. Hardest.

Raspberries

Red. \$2.00 per 25; \$7.00 per 100.

Cuthbert

Herbert \$1.00 per 25.

Latham mosaic immune

Golden Queen

Black cap.

\$2.50 per 25; \$9.00 per 100.

Cumberland

Plum Farmer

Purple cane.

\$2.50 per 25; \$9.00 per 100.

Columbian

Strawberries

\$2.50 per 100.

Howard 17

Senator Dunlap

Wm. Belt

Brandywine

VEGETABLE PLANTS

Delivery Charges Paid

Asparagus

Washington Pedigreed Rustproof

2-yr. \$1.50 per 100; \$10.00 per 1,000

Cabbage and Cauliflower. Early

transplanted plants, well hardened. Will stand several degrees of frost. Plant in early May for summer crop.

Golden Acre cabbage—

25c per 10; \$1.50 per 100

Snowball cauliflower—

35c per 10; \$2.00 per 100

Field grown plants of the above, in good winter varieties, ready June 15 and later.

50c per 100; \$4.00 per 1,000

Onions. Try some of these in heavily enriched land. The

onions often weigh a pound or more. Variety Prizetaker, ready May 1st and after.

\$1.00 per 100

Tomatoes. We grow two good varieties, Harris' Canadian Earliana, and Bonny Best.

Peppers, Harris Earliest.

These plants are ready after May 15th, transplanted, stocky, well hardened, sure to live and grow.

40c per 10; \$2.50 per 100

Celery. Open ground plants for main crop, ready first of June. Varieties, Golden Plume and Golden Self-blanching.

\$1.00 per 100.

NATIVE PLANTS, FERNS, ROCKERY PLANTS

We can supply the following at the proper seasons, in strong collected clumps. All at 25c each; \$1.50 per 10; \$12.00 per 100.

Actea alba. White Baneberry.
—rubra. Red Baneberry.
Aralia racemosa. Spikenard.
Anemone nemerosa. Windflower
—virginiana. Thimbleweed.
—canadensis.
Anemonella thalictroides Rue
Anemone.
Apios tuberosa. Wild Bean.
Aposynum androsæmifolium.
 Spreading Dogbane.
Aquilegia canadensis. Columbine.
Asarum canadense. Wild Ginger.
Arisæma triphyllum. Jack-in-the-Pulpit.
Campanula rotundifolia. Harebell.
Caltha palustris. Marsh Marigold.
Chelone glabra. Turtlehead.
Chimaphila maculata. Pipsissiwa.
Clintonia borealis.
Coptis trifolia. Goldthread.
Cornus canadensis. Bunchberry.
Dentaria diphylla. Crinkle Root.
Dicentra cucullaria. Dutchman's Breeches.
—canadensis. Squirrel Corn.
Erythronium americanum. Trout Lily or Adders Tongue.
Eupatorium urticæfolium.
—perfoliatum. Boneset.
—purpureum. Joe-Pye-Weed.
Gaultheria procumbens. Wintergreen.
Gentiana andrewsi. Bottle Gentian.
Geranium robertianum. Herb Robert.
Goodyera pubescens. Rattlesnake Plantain.
Hepatica triloba. Liverwort.
Houstonia cærulea. Bluets, Quaker Ladies.
Iris versicolor. Blue Flag.
Lobelia cardinalis. Cardinal Flower.
Mentha canadensis. Wild Mint.
Maianthemum canadense. Canada Mayflower.
Mitchella repens. Partridge Vine.
Mitella diphylla. Bishops Cap.
Oakesia sessilifolia. Bellwort.
Orchis spectabilis. Showy Orchis.

Polygala paucifolia. Fringed Polygala.
—senega. Seneca Snakeroot.
Pyrola elliptica. Shin Leaf.
Sanguinaria canadensis. Bloodroot.
Sarracenia purpurea. Pitcher Plant.
Saxifraga virginensis. Early Saxifrage.
Sedum acre. Yellow Stonecrop, Wall Pepper.
—telephium. Common Stonecrop.
Smilacina racemosa. False Solomon's Seal.
Spiranthes cernua. Ladies Tresses.
Thalictrum dioicum. Early Meadow Rue.
—polygamum. Tall Meadow Rue.
Trientalis americana. Star Fower.
Trillium erectum. Wakerobin.
—grandiflorum. White Trillium.
—undulatum. Nodding Trillium.
Tiarella cordifolia. Foam Flower.
Uvularia grandiflora.
Viola canadensis. Canada Violet.
—pubescens. Downy Violet.
—cucullata.
—rotundifolia. Roundleafed Violet.

Moccasin Flowers

	Per Bud
Cypripedium acaule. Common Ladies Slipper.....	\$.25
—parviflorum. Yellow Ladies Slipper.....	.25
—hirsutum. Showy Ladies Slipper35

Ferns

Adiantum pedatum. Maidenhair.
Aspidium acrostichoides. Christmas Fern.
—cristatum.
—cristatum var. clintonianum.
—marginale.
—noveboracense.
Asplenium angustifolium. Spleenwort.
—felix-fœmina. Lady Fern.

GARDENSIDE NURSERIES, INC., SHELBURNE, VERMONT

NATIVE PLANTS, FERNS ROCKERY PLANTS

Ferns

- Asplenium trichomanes.** Maiden-hair Spleenwort.
—**achrostichoides.** Silver Spleenwort.
Camptosaurus rhizophyllum. Walking-leaf.
Cystopteris bulbifera. Bladder Fern.
—**fragilis.**
Dicksonia punctilobula. Hay Scented Fern.
Onclea sensibilis. Sensitive Fern.
—**struthiopteris.** Ostrich Fern.
Osmunda cinnamomea. Cinnamon Fern.
—**claytoniana.** Clayton's Flowering Fern.
—**regalis.** Royal Fern.

- Phegopteris dryopteris.** Beech Fern.
—**polypodioides.**
Polypodium vulgare. Common polypody.
Woodsia ilvensis. Rusty Woodsia.
—**obtusa.**

Alpine and Rockery Subjects

One of the best collections of these interesting plants is maintained not far from our Nursery. If you are growing plants of this sort, or wish to grow them, write us. We can generally quote on a large number of forms, and we will gladly assist you in your choice.

GLADIOLUS, CANNAS, and ALL BULBS and SUMMER FLOWERING PLANTS, not found in this list can be supplied in first-class stock. It is impossible to catalog everything, but in the course of a season we generally handle about everything from Geraniums to Water Lilies. Why pay heavy shipping charges? If Shelburne is nearer, order it of us.

GARDENSIDE NURSERIES, INC.
Shelburne, Vermont



*“IT’S NOT A HOME UNTIL
IT’S PLANTED”*

