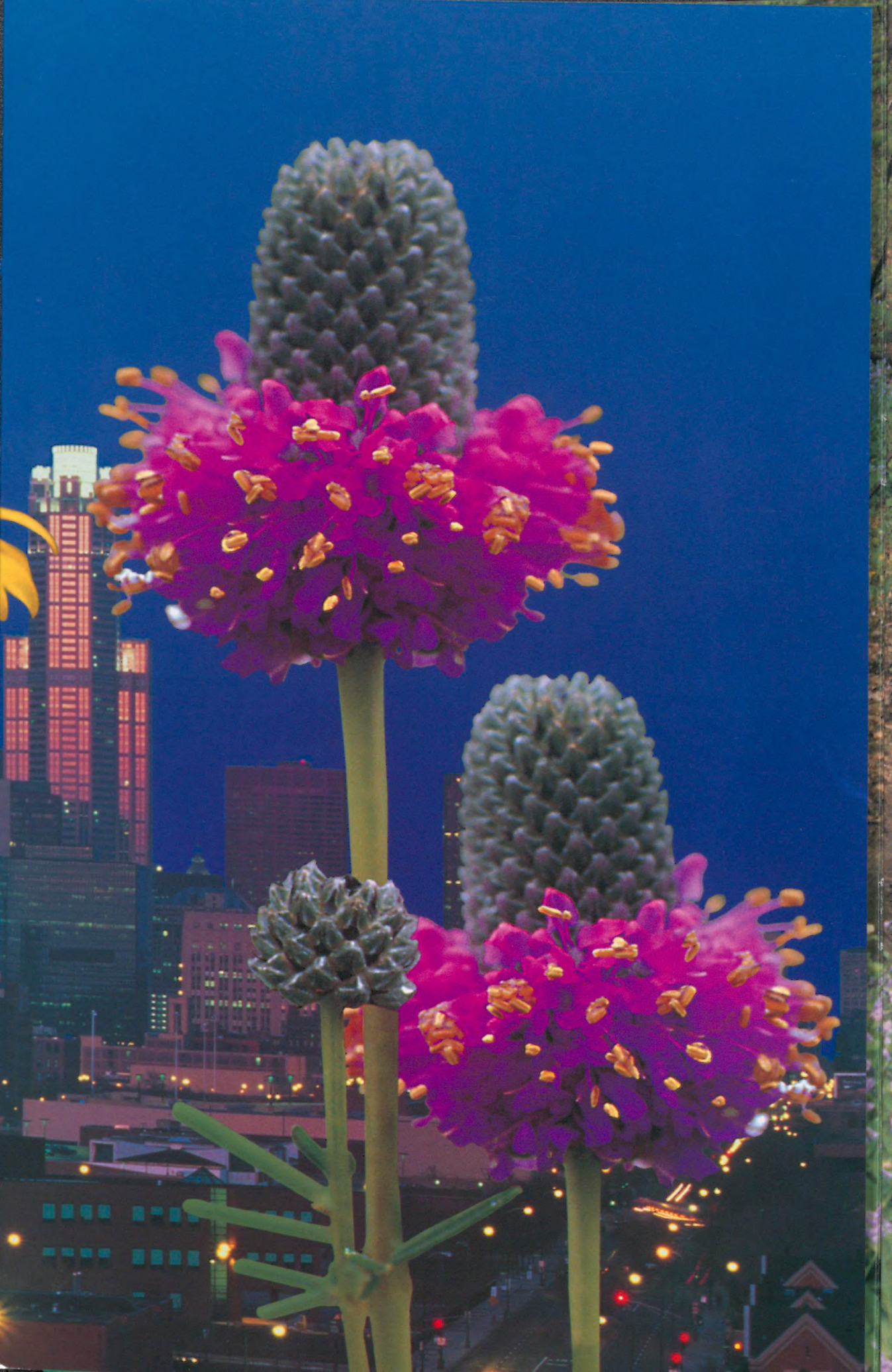


The Field Museum

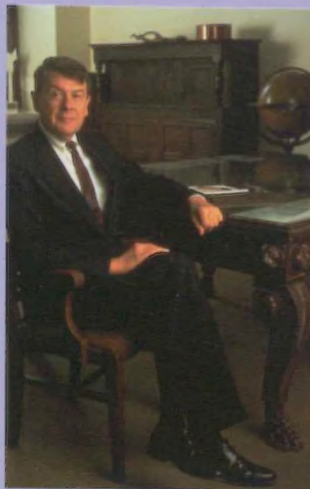
P E R S P E C T I V E S 1 9 9 6

RETURN TO:
JOHN WEINSTEIN
F.M. PHOTOGRAPHY DEPT.

Exploring
The Earth And Its
People



Because of you The Field Museum is flourishing. In ever-changing times, your Museum explores where we have been and where we are going environmentally and culturally. Your extraordinary generosity and commitment make possible this center of research and public learning about the world's envi-



ronments and cultures. In these pages you will read about scientific collaborative relationships in South America's Andes, about efforts to save

the globally significant natural wilderness in metropolitan Chicago, and about a series of civic conversations on identity and culture in America.

Even more exciting times are ahead for your Museum. We welcome with great enthusiasm our new president, John McCarter, who brings the experience, vision and commitment needed for new times. Your staunch and generous support make it possible for the Museum to move ever forward. Moreover, your enthusiasm, support and encouragement mean so much.

I want you to know how much Susan Boyd and I have appreciated and enjoyed working with you during the past 15 years.

Willard L. Boyd
President

Virginia Blue Bells carpet Pilcher
Park near Joliet, Illinois in early May.



M A P P I N G A N E W:

The Chicago Wilderness Project

On a wintry morning in November 1994, representatives from over 30 organizations with Chicago-area environmental interests met for the first time. The site was the Field Museum Library. Museum President Willard L. Boyd was charged with the task of stimulating productive dialogue among this diverse group of public land owners, research and education institutions, Federal agencies, conservation organizations, and local, regional and state agencies. The topic of discussion was a truly revolutionary urban environmental

RETURN TO:
JOHN WEINSTEIN
F.M. PHOTOGRAPHY DEPT.



Participants in a Field Museum symposium on conservation embark on a nature walk at Bluff Springs Fen near Elgin, Illinois.

initiative, eventually to become known as Chicago Wilderness.

Chicago Wilderness had its philosophical beginnings with local naturalists who recognized that pockets of unique natural communities had survived in the Chicago metropolitan area and distinguished the region as a globally important reservoir of natural diversity. In 1995, the Nature Conservancy listed the region as one of the “Last Great Places” in North America, along with the Greater Yellowstone Ecosystem, the Florida Keys, and other regions deemed the best surviving examples of the continent’s natural heritage.

In and around Chicago, some of the best remaining patches of the original Illinois wilderness — the tallgrass prairies and oak savanna woodlands, which are home to thousands of native species — survive amid a bustling metropolis. These natural communities are extremely rare and endangered, and

have now been targeted by the Chicago Wilderness agencies for further protection and restoration.

Since these pockets of diversity transcend state, county, and private property lines, their successful conservation and management necessarily involves large-scale regional thinking, and the cooperation of many institutions, each with its own individual agenda. Boyd decided that the best format for this first meeting was to give the representatives from all the organizations the opportunity to speak and voice their concerns. When all had had their say, Boyd suggested following up with a two-day session of intensive dialogue and familiarization, which took place later in the year, and was attended by chief executives of all the groups.

Months of discussion, planning and collaborative work followed, and the initiative began to take on a life of its own. The 34 organizations, now constituted as the Chicago Region Biodiversity Council, began to capitalize upon their common concerns to develop a shared vision that would guide the collective energy of the group. The Field Museum — an apolitical scientific research institution — became the steady, neutral host site. Museum scientists Debra Moskovits, Director of the Office of Environmental and Conservation Programs, and



Fringed gentians bloom in September after many other flowers have already gone to seed. These flowers were once common to the sandy soils that surround the southern part of Lake Michigan.

A butterfly weed in flower with a passing daddy long legs. This weed is common and prefers the sandy-soil edges of Lake Michigan and Chicagoland riverbanks.



Gregory Mueller, curator of mycology (mushrooms and other fungi) in the Department of Botany, were among the leading core members devoted to shaping the Council's objectives.

It is no surprise that Chicago Wilderness, a first-of-its kind attempt to coordinate efforts to conserve nature in an urban setting, should be born in this region. As early as the turn of the century, Daniel Burnham introduced a progressive urban plan for Chicago that included the integration of extensive municipal parks and connecting greenways. Other farsighted planners, including Jens Jensen, Frederick Law Olmsted, and Dwight Perkins helped conceive the idea of forest preserves encircling the city.

The Cook County Forest Preserve District Act was passed in 1913 after a

well-organized public campaign, and the collar counties soon followed suit. There are now 200,000 acres of public lands, stretching around the south end of Lake Michigan from Wisconsin to Indiana, that can be restored to healthier native ecosystems.

Our natural lands helped shape the culture of the region, and public involvement remains critical to the success of Chicago Wilderness. Residents of the metropolitan area have traditionally supported conservation and restoration efforts, and thousands of volunteers continue to perform hands-on work at many Chicago Wilderness project sites.

The on-site work of the Chicago Region Biodiversity Council is carried out by four teams, each comprised of 15 to 40 members from the Council's constituent organizations. The Science Team recommends priorities for action, assuring that partners have the best available scientific information to guide protection and management efforts. The Land Management Team promotes, coordinates, and facilitates restoration and management of existing and future preserves, including the identification of stewardship priorities. The Policy and Strategy Team pursues initiatives to benefit natural communities on a regional scale (including nature-compatible strategies for development),



PHOTO BY JOHN WEINSTEIN/GN87791_30c

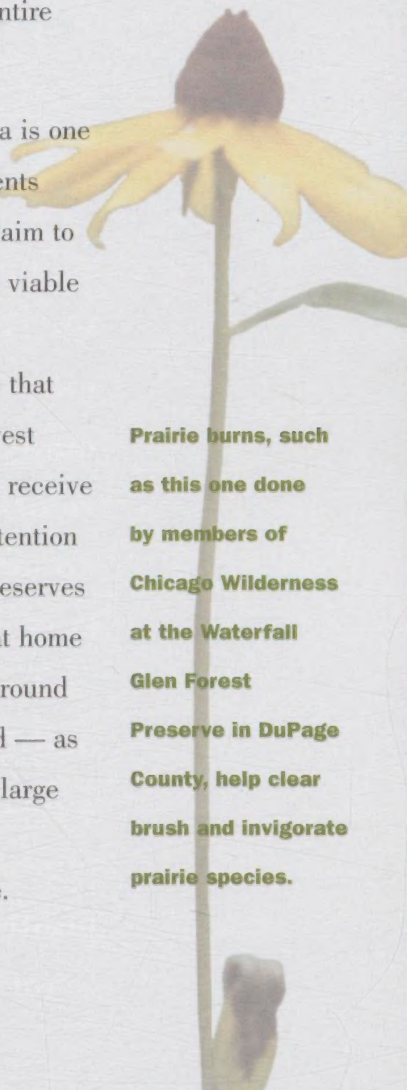
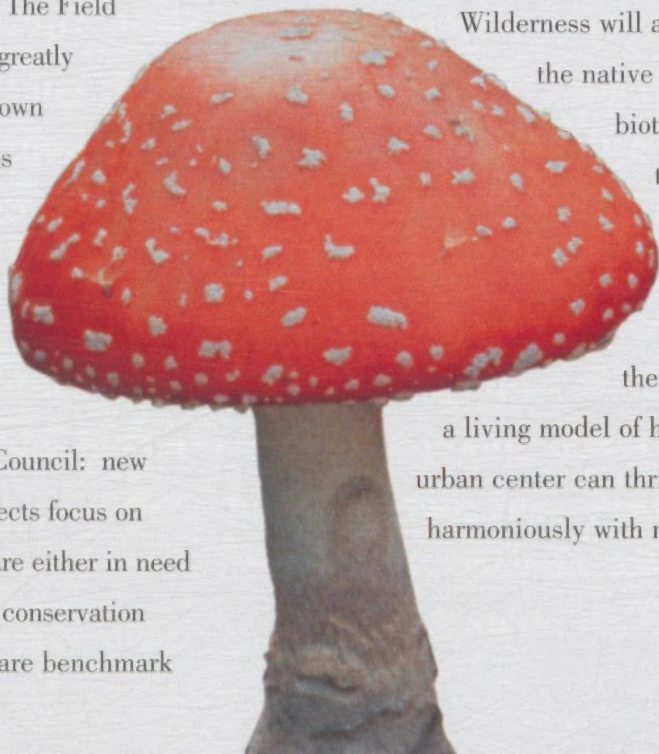
and seeks ways to address concerns about wilderness and wildlife in regional transportation, pollution control, and other development plans. The Education and Outreach Team works to increase and diversify public understanding of and participation in our region's natural communities. The Field Museum has greatly enhanced its own local programs since its involvement with the Chicago Biodiversity Council: new research projects focus on species that are either in need of immediate conservation attention, or are benchmark

organisms for the health of an entire ecological community.

The Chicago metropolitan area is one of a handful of urban environments around the world that can lay claim to having a globally important and viable natural resource base. Chicago

Wilderness will assure that the native Midwest biota will receive the attention it deserves — at home and around the world — as a living model of how a large urban center can thrive harmoniously with nature.

Prairie burns, such as this one done by members of Chicago Wilderness at the Waterfall Glen Forest Preserve in DuPage County, help clear brush and invigorate prairie species.

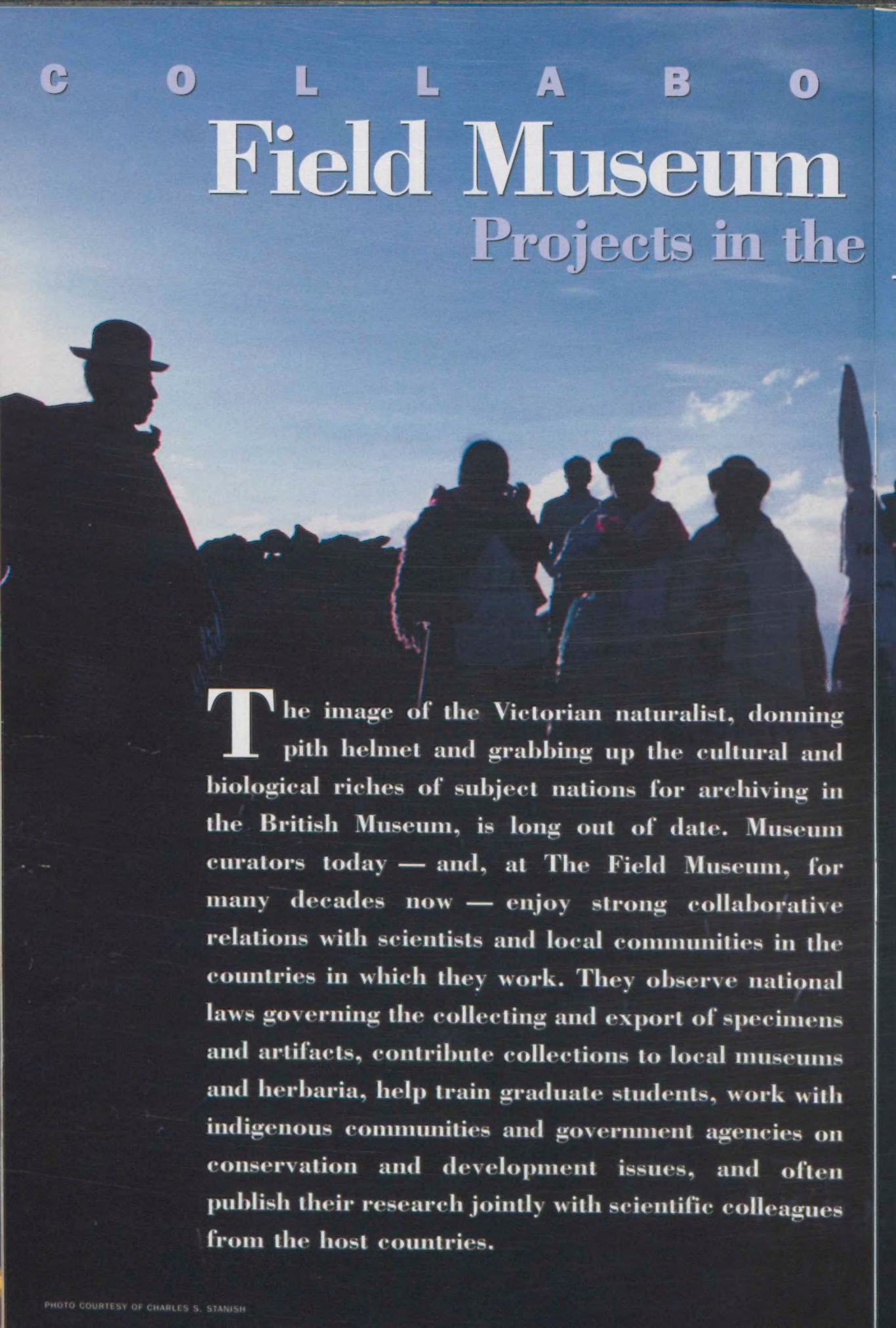


PHOTOS BY WILLIAM BURGER

C O L L A B O

Field Museum

Projects in the

A photograph showing the silhouettes of several people, likely field researchers or collectors, standing in a field. They are wearing hats and carrying equipment, suggesting a field expedition. The background is a bright, clear sky with some light clouds. The overall tone is blue and high-contrast.

The image of the Victorian naturalist, donning pith helmet and grabbing up the cultural and biological riches of subject nations for archiving in the British Museum, is long out of date. Museum curators today — and, at The Field Museum, for many decades now — enjoy strong collaborative relations with scientists and local communities in the countries in which they work. They observe national laws governing the collecting and export of specimens and artifacts, contribute collections to local museums and herbaria, help train graduate students, work with indigenous communities and government agencies on conservation and development issues, and often publish their research jointly with scientific colleagues from the host countries.

R A T I O N S :

Andes



Current Field Museum research in the Andes mountain range of South America, representing all four of the Museum's academic departments (Anthropology, Botany, Geology, and Zoology), is illustrative of how the processes of collaboration work. John Flynn, chair of the Geology Department, Charles S. Stanish, chair of the Anthropology Department, Michael O. Dillon, curator of vascular plants, and Bruce Patterson, curator of mammals, have all worked in the Andes for many years, intrigued by the region's geological history and fossil record, the extraordinary biodiversity of its many

Aymara people of the high Southern Andes hold a community meeting to grant permission for archaeological research to curator Charles S. Stanish.



PHOTO COURTESY OF BRUCE PATTERSON

Curator Bruce Patterson, his protégé Victor Pacheco, and Pacheco's student Rosa Arana prepare to depart on a two-month expedition to collect bats in the Peruvian Andes.

disparate habitats, and its succession of high pre-European civilizations culminating with the Inca. Bruce Patterson has worked extensively in Peru studying the evolution, ecology, and biogeography of South American mammals. The topography in Peru stretches east to west, from the lowland Amazonian rain forest, through numerous climatic gradients along the Andes' eastern slope, up to the high plateau and down the western slope to the rain-shadow desert on the Pacific coast. Patterson continues in a fifty-year tradition of Field Museum curators working closely with Peruvian scientists to understand and protect the astounding diversity of life in these varied environments.

The tradition began in the 1940s, when Hernando de Macedo, a professor at San Marcos University in Lima came to The Field Museum to study birds. During his career, de Macedo sent two of his most promising protégés to

Chicago for graduate training: Javier Ortiz de la Puente in the 1950s and more recently Victor Pacheco. Pacheco, an instructor interested in mammals, arrived in Chicago in 1985 on a Fulbright fellowship. He worked with Patterson in the Museum's collections and biochemistry labs, learning modern research methods while studying the evolution of bats. He also took a graduate degree at the University of Illinois at Chicago. Within a year after returning to San Marcos University in 1989, Pacheco was advising ten graduate students working on an array of topics, from dolphins and coastal fisheries to the ways in which livestock introduce foreign diseases to endangered species of deer.

Pacheco has been very important to Patterson as a student, a collaborator, and, as with all good students, a teacher. But what distinguishes Pacheco's contributions from those of his predecessors is his more active participation in the international scientific community, a direct result of his world-class training. Pacheco's research, publications, and presentations consequently have had a greater impact than those of many earlier scientists. Patterson and Pacheco's commitment has inspired a flurry of research publications and joint training exercises which have brought new generations of Peruvian students into collaboration with Field Museum scientists.



PHOTO BY DR. LUIS ALBUJA

John Flynn's collaborative project with Chilean geologist Reynaldo Charrier grew, interestingly, out of a scientific disagreement. Charrier specializes in the geological history of the Andes, with a particular interest in how the structure of the mountains has changed over millions of years. He and his students had long studied an area in the Andes near Santiago called Termas del Flaco (translated as Thermal Baths of the Skinny Man) where fossilized oceanic ammonites and dinosaur footprints were discovered. Accordingly, Charrier dated this steeply tilted, two-mile-thick sequence of rock to the late Mesozoic Era, 90 to 100 million years ago, long before dinosaurs went extinct 65 million years ago.

Among Flynn's research interests is correlating geological history with assemblages of fossil mammals. Members of his team, on an expedition to look for Mesozoic mammals in Termas de Flaco, unexpectedly discovered a group of fossils that were no older than 20 to 40 million years — much more recent than the dinosaur age. Had Charrier's widely accepted mapping and dating of the rock been incorrect? How had these fossil mammals been missed? And, most importantly, how could a thick pile of similar rocks contain fossils from two distinctly different eras?

Both interpretations, it turned out, were correct. Although there were dinosaur era rocks at the bottom of the

This new species of shrew opossum — a major group of marsupials known only from South America's Andes — was discovered in 1993 on an expedition organized by Conservation International. After extensive collaboration using the Field Museum's collections, the find was published by Ecuadorean scientist Luis Albuja and Curator Bruce Patterson.



PHOTO BY JOHN WEINSTEIN/CEO-85944

The oldest-known and most complete skull of an extinct South American monkey was discovered in the Andes mountains in Chile by an international team of scientists co-directed by curator John Flynn. The 20-million-year-old skull represents a new species.

Ceremonial dance costume from the island of the Sun worn by dancers at the celebration and dedication of the community center.

sequence, the rocks above, although superficially similar, were much younger.

Flynn and Charrier's team discovered that the rock in this part of the Andes had undergone dramatic

movement over geological time as a result of tectonic processes of subduction and uplift. What amounts to a

squeezing and churning of the mountains seems to have brought older rock containing certain earlier fossil

remains to the surface,

while forcing rock with later fossils below the older ones.

Their new fossil discoveries revealed that the geologic history was more complex than previously thought — basins were sinking and building up vast thicknesses of fossil-bearing rock, and volcanos were active at different times than the older, less

complete geologic evidence had indicated. The discovery of young mammal fossils in these rocks clearly proved that the rising of the Andes occurred much later than ever believed.

Interestingly, there are no fossil mammal specialists in Chile, which partially explains why there have been so few discoveries of fossil mammals in the Chilean Andes. Flynn and his colleagues, through their discovery and by bringing their knowledge of fossil mammals to bear on Charrier's reigning, and largely correct, geological interpretation, helped both groups better understand this elusive part of the Andes. To date, Charrier, Flynn and their colleagues have discovered six new fossil-bearing regions and, over the past six years, have developed an extremely productive collaborative partnership that promises to continue indefinitely.



Charles S. Stanish has been unearthing the remains of successive cultures in the Lake Titicaca region of Bolivia, some 12,000 feet above sea level, with particular attention to the Tiwanaku Empire, predecessor to the Inca. On Lake Titicaca's Island of the Sun, Stanish has been investigating the relationship between the on-again, off-again use of Island sites for ritual purposes, and economic activity elsewhere on the Island and in the Titicaca Basin.

The current residents of the Island, who are Aymara Indians, have joined with Stanish in a unique experiment in local economic development, known as ethno-ecotourism. With modest funding that Stanish obtained from private sources in the U.S., the islanders have constructed a two-unit building that houses a community center, a research station for Stanish's team and other

scientists, and a museum for the display of artifacts from their own as well as the many other cultures that have inhabited the Island. Bolivian and international tourists will be encouraged to visit, in small numbers, with the locals working as ferrymen and guides to the Island's archaeological sites, natural attractions, and current daily life and ritual. Housing and feeding the visitors and sending them home with souvenirs from the village market should improve the community's cash flow considerably. In a more profound sense, the people have been empowered to preserve — and maximize for their own purposes — their glorious cultural patrimony.

Michael O. Dillon studies plant communities in several distinct regions of Peru and Chile: deserts, montane forests, and alpine areas. His close Peruvian colleagues — Abundio

Residents of the village of Challa on the Island of the Sun construct the community center.



This member of the "African violet" family is known from the Andes of Colombia and Ecuador, but is very rare and endangered in the montane forests of northern Peru.



Sagástegui Alva of the Museo de Historia Natural at the Universidad Antenor Orrego in Trujillo, and Isidoro Sánchez Vega of the Universidad Nacional de Cajamarca — are both Field Museum research associates.

Dillon, who has faculty appointments at both Andean universities, also teaches informally with his colleagues at village schools. This effort to educate the next generation in the value of the diverse biota around them will give them the means to carry on their agricultural and pastoral livelihoods with minimal damage to their land's delicate ecology.

Sagástegui Alva and Sánchez Vega travel regularly to Chicago to work in the Museum's collections, which generations of curators over the past 75 years have built into one of the most important in the world. They also come to work with Dillon in an effort to make information about these plants available electronically on the Internet

and its World Wide Web. Dillon and his team's web site, called the Andean Botanical Information System (ABIS), is a database developed in collaboration with the University of California at Berkeley's Museum Informatics Project and includes digitized color photographs of Peruvian and Chilean flowers and their habitats. In addition, Dillon has made available digitized images of a sampling of The Field Museum's European Negative Collection, compiled by curator J. Francis MacBride in the 1930s. These negatives, which in total picture 12,000 specimens of South American plants in European herbaria, are of enormous scientific importance since many of the herbaria were destroyed in World War II. The negatives are now considered "phototypes," against which new specimens must be compared for proper identification and classification.



Even though Internet access in the Andes is currently at a premium, Dillon's site on the Net is being accessed by a growing number of Internet users worldwide. With the expectation that Peruvian Internet access will expand dramatically over the next few years, Dillon views this new information format as an essential component of U.S.-Andean scientific relations. In these and other contexts, Field Museum scientists are at the

leading edge of the collaborative movement in contemporary international science. The Museum's Advanced Training Program in the Conservation of Biological Diversity, which brings young scientists and conservation workers from tropical countries to Chicago for intensive training in both the science and politics of conservation, promises to expand these collaborative efforts exponentially in the new century.

This flowering species belongs to the "Periwinkle" family and is only known from extreme northern Peru.

T O S P E A K
D I F F E R E N T L Y:

The Nuveen Forum

Carved cedar totem poles from the Museum's Northwest Coast exhibit mark the clan history and lineage of important families or persons.

The totem poles were discussed during one of the Nuveen Forum conversations, "New Voices, Old Themes: Representing Change Over Time."

The "culture wars" that have been raging in the U.S. for many years now have, at one time or another, been fought on a wide variety of battlefields — public subsidies for avant-garde arts; the National History Standards; bilingualism in classrooms and government agencies; the nature of patriotism, multiculturalism in education and in the media; and even museum exhibits.



The Royal Palace of the Bamum People of western Cameroon is called by local inhabitants *Nda Ngu*, or the House of the Country. A representation of the palace is displayed in the Museum's "Africa" exhibit.

All manner of people, from rough-and-tumble talk show hosts to think-tank intellectuals have been engaged in these debates. That is, everyone but the people specifically trained to recognize and deal with cultural differences, namely anthropologists.

The National Conversation on American Pluralism and Identity, a project of the National Endowment for the Humanities, provided the Museum a unique opportunity to involve anthropologists. With additional support from the John Nuveen Company, The Field Museum's Center for Cultural Understanding and Change brought the insights of anthropologists to the public arena. The Center, directed by Alaka Wali, curator of Anthropology, held a series of nine discussions in 1995-96 titled "The Nuveen Forum: Conversations on Culture and Identity in America." These conversations brought together anthropologists from

the Museum and universities with other scholars and community leaders. In addition, each program in the series, open to the general public, took as its reference point a Field Museum exhibit or collection, the content of which anchored the discussion topic. Museum exhibits, which demonstrate the richness of human variation across cultures, are ideal contexts for discussions on identity and diversity.

The first conversation, centered around the "Africa" exhibit, addressed the realities of African life, both past and present, and their significance for all Americans. Most Americans have lost meaningful connections to Africa with its diversity of people, despite our common African ancestry. Americans tend to associate Africa with simplified images of wildlife, famine, war and disease perpetuated by the media and popular culture. In order to ameliorate such stereotyping, the conversation



The Maori meeting house, Ruatēpupuke II, is the most significant outpost of Maori culture in the Americas and is a result of a collaboration between The Field Museum and the Maori community of Tokomaru Bay in New Zealand.

called for more in-depth education for all Americans about the history and contemporary realities of African nations, as well as the many innovative solutions Africans are devising for social problems.

The next conversation addressed the uses of history and the manipulation of ethnic markers to shape nationalist identities. Taking its inspiration from the “Meso-America” exhibit, which constructs a particular view of Mexican national identity through its portrayal of Mayan and Aztec cultures, the discussion centered around the construction of American national identity. Although many conceded that nationalism can lead to perilous consequences, such as the exclusion of certain groups and distortion of their historical roles, participants also proposed that “pluralistic” nationalism, the “ideal” of America’s founding documents, held potential for a healthy civic society.

The final session in 1995 explored the relations between scientists and the indigenous peoples they study and

with whom they work. This conversation on the problems of cross-cultural collaboration took place in Ruatēpupuke, the recently restored Maori meeting house at The Field Museum. The site was itself the result of a complex collaborative process between Museum scientists and the Maori people of Tokomaru Bay, where the house originally stood in the 19th century. That scientists must have a deep understanding and knowledge of the peoples with whom they collaborate is self-evident. Knowledge, though, cannot fuel collaboration alone, but must be accompanied by sensitivity and compassion for the cultures involved.

The Nuveen forum has succeeded not only in creating an environment in which anthropologists can speak to many complex issues of culture in the public sphere, it has also inspired representatives of different academic, professional, ethnic and cultural backgrounds to come together, voice their opinions and concerns, and listen critically to one another. To continue this work Forum organizers will publish a brochure for future Museum visitors titled “Have a Conversation” based on the discussions which will link key questions about culture with Museum exhibits. Armed with these questions as they walk through the exhibits, visitors can explore cultural diversity while appreciating commonalities.

The Founders' Council

The Founders' Council recognizes individual donors who annually contribute \$1,500 or more in unrestricted support or other special funds; give a single or accumulated gift of \$25,000 or more for permanent membership; make a deferred gift of \$50,000 or more; or make a gift of a major collection.

Mr. & Mrs. Lowell E. Ackmann
Sharon A. & M. Mehdi Alister
Mr. & Mrs. Stanley N. Allan
Mr. & Mrs. Louis A. Allen
Mrs. John W. Allyn
Mrs. James W. Alsdorf
Mrs. Robert Gardner Anderson
Anonymous
Mrs. A. Watson Armour III
Mrs. Lester Armour
Mrs. P. Kelley Armour
Mr. & Mrs. T. Stanton Armour
Mr. & Mrs. Vernon Armour
Mr. Robert A. Asher
Mrs. Edwin N. Asmann
Mr. Harry Alexrod
Mr. & Mrs. George R. Baker
Robert H. & Dalia M. Baker
Mr. E. M. Bakwin
Miss Kristina Barr *

Ms. Virginia Bartholomay &
Mr. Gary Butterfield
Mr. & Mrs. Robert O. Bass
Mr. & Mrs. Lee A. Baumgarten
Mrs. George R. Beach
Nenad Belic, M.D. &
Ellen Stone-Belic
Mr. & Mrs. Gordon Bent
Mr. & Mrs. Harry O. Bercher
Mrs. James F. Beré
Richard Berger &
Linda Shaughnessy
Mrs. Edwin A. Bergman
Mr. Richard C. Berliner
Mr. & Mrs. Robert L. Berner, Jr.
Mr. & Mrs. Bowen Blair
Mr. & Mrs. Philip D. Block III
Mrs. G. E. Boone
Mr. & Mrs. William A. Boone
Mr. & Mrs. Willard L. Boyd

F O U N D E R S ' C O U N C I L

- Mrs. Harold S. Brady
 Gary & Suzann Brinson
 Mr. & Mrs. Kenneth A. Bro
 Mr. & Mrs. Bertram Z. Brodie
 Mr. & Mrs. Cameron Brown
 Mrs. Murray C. Brown
 Mr. & Mrs. Roger O. Brown
 Mr. Fred J. Brunner
 Mr. & Mrs. Robert Brunner
 Mrs. DeWitt W. Buchanan, Jr.
 Mr. & Mrs. Albert C. Buchler, Jr.
 Mr. & Mrs. Dean L. Buntrock
 Mr. & Mrs. Theodore R. Butz
 Mr. & Mrs. Donald J. Cameron
 Mr. & Mrs. Peter Roy Carney
 Dr. & Mrs. Robert Wells Carton
 Mr. & Mrs. Hammond E. Chaffetz
 Mrs. Jerry G. Chambers
 Mr. & Mrs. Henry T. Chandler
 Mr. Kent Chandler, Jr.
 Mr. & Mrs. Walter L. Cherry
 Mr. & Mrs. William C. Childs
 Mr. Michael Christ
 Dr. & Mrs. Kenneth W. Ciriacks
 Mr. & Mrs. W. H. Clark, Jr.
 Mr. & Mrs. Richard W. Colburn
 Mr. & Mrs. Gary C. Comer
 Mr. & Mrs. Frank W. Considine
 Mr. Stanton R. Cook
 Mr. & Mrs. Richard H. Cooper
 Nancy & Frank Corral
 Mr. John R. Covington
 William Cox & Mary Noble
 Mr. & Mrs. Mark Crane
 Mr. & Mrs. William F. Crawford
 Mr. & Mrs. Lester Crown
 Mrs. Sandra K. Crown
 Susan Crown &
 William C. Kunkler III
 Mrs. Dino J. D'Angelo
 Mr. & Mrs. Thomas C. Dabovich
 Mr. & Mrs. William M. Daley
 Mr. & Mrs. O. C. Davis
 Mrs. Edwin J. DeCosta
 Mrs. E. Best Deis
 Mr. & Mrs. Robert O. Delaney
 Mrs. Albert B. Dick III
 Mrs. Edison Dick
 Mrs. William R. Dickinson, Jr.
 Mr. & Mrs. Welsey M. Dixon, Jr.
 Mr. & Mrs. Edward S. Donnell
 Mrs. Gaylord Donnelly
 Mr. & Mrs. Robert G. Donnelly
 Mr. & Mrs. Thomas E. Donnelly II
 Mr. & Mrs. Gary R. Dorn
 Mr. & Mrs. Raymond H. Drymalski
 Mr. & Mrs. Arthur L. DuBois
 Mr. Alan Dworkin
 Mark & Kitty Egan
 Mr. Elling O. Eide
 Mr. & Mrs. Huntington Eldridge, Jr.
 Mrs. Phyllis Weil Ellis
 Mrs. R. Winfield Ellis
 Mrs. Marjorie H. Elting
 Mr.* & Mrs. Gordon R. Ewing
 Mr. & Mrs. Byron R. Fader
 Mr. & Mrs. John V. Farwell IV
 Mary & Bruce Feay
 Mr. & Mrs. Robert C. Ferris
 Mrs. Joseph N. Field
 Mr. & Mrs. Marshall Field
 Mr. C. W. Finkl
 Mr. & Mrs. Morgan L. Fitch, Jr.
 Mrs. Leonard S. Florsheim, Jr.
 Mr. & Mrs. L. Richard Flury
 Mr. & Mrs. Charles Robert Foltz
 Mr. & Mrs. Peter B. Foreman
 Mr. & Mrs. James C. Franczek
 Peter B. & Donna B. Freeman
 Mr. & Mrs. William M. Freeman
 Mr. & Mrs. John E. Freund
 Mr. & Mrs. Robert S. Friend
 Mr. & Mrs. Marshall B. Front
 Mr. & Mrs. William D. Frost
 Mr. & Mrs. Maurice F. Fuhs
 Mr. Bruce M. Ganak
 Stephen F. & Laura D. Gates
 Mr. & Mrs. Robert B. Gerrie
 Mr. Paul J. Geystley
 Mr. James R. Getz
 Mr. & Mrs. Gerald S. Gidwitz
 Mr. Joseph L. Gidwitz *
 Sue Ling Gin
 Mr. & Mrs. James J. Glasser
 Mr. John C. Goodall, Jr.
 Dr. & Mrs. John S. Graettinger
 Dr. * & Mrs. John G. Graham
 Mr. & Mrs. William B. Graham
 Mr. & Mrs. David W. Grainger
 Mr. & Mrs. Richard Gray
 Mr. & Mrs. George Price Grieve
 Mr. & Mrs. Donald W. Grinter
 Misty & Lewis Guiber
 Mr. & Mrs. Paul W. Guenzel
 Mr. Daniel P. Haerther
 Mr. & Mrs. Charles C. Haffner III
 Mr. James Hagan &
 Ms. Sally Hagan
 Mrs. Burton W. Hales
 Mr. & Mrs. Corwith Hamill
 Dr. & Mrs. Jeffrey S. Hammer
 Drs. K. W. & Lucy J. Hammerberg
 Mr. & Mrs. John M. Hands
 Mrs. Charles L. Hardy
 Mrs. William A. Hark
 Mr. & Mrs. D. Foster Harland
 Mr. & Mrs. King W. Harris
 Mr. & Mrs. Robert S. Hartman
 Mr. & Mrs. Barry G. Hastings
 Mr. & Mrs. John Hawkinson
 Mrs. William H. Hazlett
 Mr. & Mrs. Laurin H. Healy
 Wayne E. & Collette J. Hedien
 Mr. Reuben L. Hedlund
 Mr. & Mrs. Ben W. Heinemann
 Philip Hershkovitz
 Mr. & Mrs. David C. Hess
 Mrs. Harold H. Hines, Jr.
 Mr. & Mrs. John L. Hines
 Mr. George C. Hixon
 Mr. & Mrs. Thomas H. Hodges
 Mr. Michael E. Hodous &
 Iringard T. Holous-Ruff
 Mr. & Mrs. John L. Hoellen
 Mr. Wayne J. Holman III
 Mr. & Mrs. Arthur Holzweimer
 Keith & Catherine Hooper
 Mrs. H. Earl Hoover
 Mr. Robert E. Hord, Sr.
 Mrs. Ruth Horwich
 Mr. & Mrs. Peter H. Huizenga
 Mr. & Mrs. J. Thomas Hurvis
 Mrs. Robert C. Hyndman
 Mr. & Mrs. Robert S. Ingersoll
 Mr. & Mrs. Fruman Jacobson
 Mr. & Mrs. Reinhardt Jahn
 Mrs. Harold James
 Mr. & Mrs. Edgar D. Jannotta
 Mr. & Mrs. Clarence E. Johnson
 Mr. & Mrs. Richard M. Jones
 Mr. & Mrs. Richard L. Joutras
 Dr. & Mrs. Hyman I. Kaplan
 Mr. Morris A. Kaplan
 (The Mayer & Morris Kaplan
 Family Foundation)

F O U N D E R S ' C O U N C I L

- Mr. & Mrs. Byron C. Karzas
The Kaye Family
Mr. & Mrs. Michael L. Keiser
Mr. & Mrs. Charles M. Kierscht
Mr. & Mrs. John E. Kirkpatrick
Mr. & Mrs. Robert D. Kolar
Mrs. Ray A. Kroc
Mr. Carl A. Kroch
William H. Kurtis &
Donna La Pietra
Mr. & Mrs. Charles W. Lake, Jr.
Mr. & Mrs.* Paul H. Leffmann
Mr. & Mrs. Elliot Lehman
(New Prospect Foundation)
Mr. & Mrs. John H. Leslie
Dr. & Mrs. Michael S. Lewis
Mr. & Mrs. John S. Lillard
Mrs. Glen A. Lloyd
Mrs. Renée Logan
Mrs. Rena L. Lozins
Bettina R. Mac Ayeal
Mr. & Mrs. John W. Madigan
Mr. & Mrs. Cary J. Malkin
Mr. & Mrs. Robert H. Malott
Sandy & Jerry Mame
Mr. & Mrs. Ira G. Marks
Mr. & Mrs. Scott P. Marks, Jr.
Mrs. Geraldine Martin
Mrs. Jennifer L. Martin
Mr. & Mrs. Arthur C. Martinez
Mr. Allan C. Mayer
Mrs. Beatrice Cummings Mayer
Mr. Harold F. Mayer
Mr. Harold M. Mayer
Mr. & Mrs. Oscar G. Mayer
Mr. & Mrs. Archibald Mc Clure
Mr. Brooks Mc Cormick
Mrs. Susan Mc Dowell
Mr. Charles P. Mc Quaid
Mr. & Mrs. Andrew J.
Mc Kenna, Jr.
Mr. & Mrs. Richard L. Measelle
Dr. & Mrs. L. Steven Medgyesy
Mr. & Mrs. John C. Mecker
Mr. & Mrs. Hugo J. Melvoia
Mr. & Mrs. Charles A. Meyer
Mr. David R. Meyers
Mr. & Mrs. Newton N. Minow
Mr.* & Mrs. Kenneth Montgomery
Mr. & Mrs. Dudley E. Morris
Mr. & Mrs. Richard M. Morrow
Mrs. Arthur T. Moulding
Mr. & Mrs. Leo F. Mullin
Margaret A. Myers &
Ronald J. Krumm
Dr. & Mrs. Charles F. Nadler
Col.* & Mrs. John B. Naser
Mrs. Frances Newman
Dr. & Mrs. Tu Manh Nguyen
Mr. & Mrs. John D. Nichols
Mrs. Arthur C. Nielsen, Sr.
Mr. & Mrs. Donald E. Nordlund
Mr. & Mrs. James J. O'Connor
Mrs. Wrigley Offield
Mrs. Eric Oldberg
Mr. & Mrs. Ralph Thomas O'Neil
Mrs. Gilbert H. Osgood
Mr. & Mrs. James Otis, Jr.
Mr. & Mrs. Richard C. Oughton
Dr. C. Marcella Owens
Robert K. Parsons &
Victoria J. Herget
Mr. & Mrs. Lanny A. Passaro
Ms. Catherine Patrick
Mr. & Mrs. Donald W. Patterson
Mr. & Mrs. Richard J. Peterson
(Otto Lehmann Foundation)
Anne C. Philbrick, M.D.
Mrs. Robert R. Pierson
Conrad A. Plimpton
Ms. Sarah Willard Plimpton
Mr. & Mrs. Carl M. Plochman
Mr. & Mrs. Charles S. Potter
Dr. & Mrs. Kenneth J. Printen
Mrs. A. N. Pritzker*
Major & Mrs. James N. Pritzker
Mr. & Mrs. Robert A. Pritzker
Mr. & Mrs. Michael G. Rahal
Mr. James H. Ransom
Mr. & Mrs. John Shedd Reed
Miss Ruth Regenstein
Mr. & Mrs. Frank A. Reichelderfer
Mr. Joseph E. Rich
Mr. James V. Riley
Mr. & Mrs. James Robins
Mr. Ottomar D. Roeder
Mr. & Mrs. Robert J. Romano
Mr. & Mrs. David Rose
Mrs. Samuel R. Rosenthal
Mr. & Mrs. Norman J. Rubash
Mr. & Mrs. David S. Ruder
Mr. & Mrs. John S. Runnells
Mr. & Mrs. Patrick G. Ryan
Mr. & Mrs. Thomas R. Sanders
Mr. & Mrs. Robert E. Sargent
Mr. & Mrs. Robert P. Schauss
Mr. & Mrs. John I. Schlossman
(The Jocarno Fund)
Mr. & Mrs. David L. Schlotterback
Mr. & Mrs. Richard H. Schnadig++
Mr. & Mrs. Charles E. Schroeder
Mr. & Mrs. Fred C. Schulte
Dr. & Mrs. John S. Schweppe
Mrs. Charlene B. Seabury-Houser
Mr. & Mrs. William L. Searle
Mr. & Mrs. Gordon I. Segal
Mr. & Mrs. Stephen H. Sentoff
Mrs. Ike Sewell
Mr. & Mrs. Henry Shapiro
Mrs. John I. Shaw
Mr. & Mrs. Geoffrey Shields
Dr. & Mrs. Thomas W. Shields
Mr. & Mrs. Jeffrey R. Short, Jr.
Mr. & Mrs. John D. Simms
Mr. & Mrs. John R. Siragusa
Mr. & Mrs. Richard D. Siragusa
Mr. & Mrs. Raymond I. Skilling
Mr. Edward Byron Smith
Louise K. Smith
Mr. & Mrs. Malcolm N. Smith
Mr. & Mrs. Worthington L. Smith
Dr. & Mrs. Daniel Snyderacker
Mr. & Mrs. H. E. Sommer
Mr. & Mrs. Joseph Sondheimer
Mr.* & Mrs. Jack D. Sparks
Mr. & Mrs. Gerald A. Spore
Mr. & Mrs. Lee A. Stahl III
Mr. & Mrs. Wallace W. Steiner
Mr. & Mrs. Manfred Steinfeld
Ms. M. Anne Stelle
Dr. David W. Stewart
Miss Nellie R. Stickle
Miss Ruth S. Stickle*
Mr. & Mrs. W. Clement Stone
Mr. & Mrs. William S. Street
Mr. & Mrs. Robert D. Stuart, Jr.
Mrs. Erwin A. Stuebner
Mr. & Mrs. John W. Sullivan
Mrs. William G. Swartzchild, Jr.
Mr. & Mrs. Phelps Hoyt Swift
Mr. & Mrs. William H. Swisshelm
Mr. & Mrs. John W. Taylor, Jr.
Mr. & Mrs. John W. Taylor III
Mrs. William L. Taylor, Jr.
Mr. & Mrs.* Edward R. Telling
Mr. & Mrs. Bruce Thorne

F O U N D E R S ' C O U N C I L

Mrs. Reuben Thorson
Mrs. Theodore D. Ticken
Mr. & Mrs. Glenn R. Tilles
Mr. & Mrs. Melvin A. Traylor, Jr.
Mr. & Mrs. George S. Trees
Mr. & Mrs. George S. Trees, Jr.
Mr. & Mrs. Howard J. Trienens
Mr. & Mrs. Edgar J. Uihlein, Jr.
Mrs. Herbert A. Vance
Mr. & Mrs. Theodore W. Van Zelst
Mr. & Mrs. Robert E. Vernon
Mr. & Mrs. Louis A. Wagner
Mr. & Mrs. Charles R. Walgreen, Jr.
Gail Waller & Timothy Schwerfeger
Mr. & Mrs. Daniel J. Walsh

Priscilla A. & Douglas H. Walter +
Mr. & Mrs. Hempstead Washburne
Mr. & Mrs. Morrison Waud
Mrs. E. Leland Webber
Mr. & Mrs. Roderick S. Webster
Mr. & Mrs. William L. Weiss
Mr. John L. Welsh III
Mr. & Mrs. Robert L. Wesley
Mr. & Mrs. Henry P. Wheeler
Mr. & Mrs. Miles D. White
Mr. Willard E. White
Mr. & Mrs. George F. Wilhelm
Mr. & Mrs. Robert E. Wilkens
Mrs. Howard L. Willett, Jr.
Dr. & Mrs. Philip C. Williams

Mrs. J. Howard Wood
Mr. & Mrs. William Wood-Prince
Mr. & Mrs. Blaine J. Yarrington
Mrs. George B. Young
Mr. & Mrs. George D. Young
Mr. & Mrs. Max Zar
Mark H. Zornow, M.D.

+ Co-Chairs
++Co-Chairs-Elect
* Deceased

T H E F I E L D P A R T N E R S

The Field Partners are Corporations and Foundations dedicated to promoting understanding and support for The Field Museum's role as an international center for learning. Through their involvement, The Field Partners provide vital assistance and leadership in the form of generous financial support and enduring relationships.

The Allstate Foundation
Amoco Foundation
AON Corporation
Bank of America Illinois
The Barker Welfare Foundation
The Baxter Foundation
Leo Burnett Company, Inc.
Elizabeth F. Cheney Foundation
Chicago Board of Trade/Chicago Board of Trade Foundation
The Chicago Community Trust
Chicago Tribune Foundation
Coca-Cola Bottling Company of Chicago
Commonwealth Edison Company
Fel-Pro/Mecklenburger Foundation
First Chicago Corporation
FMC Corporation
Ford Motor Company
GATX Corporation
General Mills Foundation
Harris Bank
HBB Foundation
Household International
Illinois Tool Works, Inc.
Kraft Foods
John D. and Catherine T. MacArthur Foundation
McKinsey & Company Inc.
McMaster-Carr Supply Company
Molex, Incorporated

Nalco Chemical Company
Northern Illinois Gas Company
The Northern Trust Company
John Naveen & Co. Incorporated
The Albert Pick, Jr. Fund
Polk Bros. Foundation
S & C Electric
Sara Lee Foundation
Dr. Scholl Foundation
Sears, Roebuck and Co.
Sidley & Austin
The Siragusa Foundation
Stein Roe & Farnham Incorporated
Walgreen Co.
Wilson & McIlvaine
W. P. & H. B. White Foundation
Zurich & Kemper Investments

T H E W O M E N ' S B O A R D

- Mrs. Keene H. Addington
 Mrs. Stanley N. Allan
 Mrs. Richard J. Almedia
 Mrs. James W. Alsdorf
 Mrs. Angelo R. Arena
 Mrs. Laurance H. Armour, Jr.
 Mrs. P. Kelley Armour
 Mrs. T. Stanton Armour
 Mrs. A. Watson Armour III
 Mrs. Edwin N. Asmann
 Mrs. Stephen W. Baird
 Mrs. Claude A. Barnett
 Mrs. Robert O. Bass
 Mrs. George R. Beach
 Mrs. Robert A. Beatty
 Mrs. Edward H. Bennett, Jr.
 Mrs. Harry O. Bercher
 Mrs. David R. Bibbs
 Mrs. Michael Bierner
 Mrs. Michael A. Bilandic
 Mrs. Harrington Bischof
 Mrs. Bowen Blair
 Mrs. Frank W. Blatchford III
 Mrs. Philip D. Block III
 Mrs. Edwin R. Blomquist
 Mrs. John J. Borland, Jr.
 Mrs. Arthur S. Bowes
 Mrs. Willard L. Boyd
 Mrs. K. Dane Brooksher
 Mrs. Andrew W. Brown
 Mrs. Cameron Brown
 Mrs. Roger O. Brown
 Mrs. A. C. Buehler, Jr.
 Mrs. William C. Bullock III
 Mrs. Clark Burrus
 Mrs. Robert Norcross Burt
 Mrs. Douglas H. Cameron
 Mrs. Robert Adams Carr
 Mrs. Robert Wells Carton
 Mrs. Hammond E. Chaffetz
 Miss Nora F. Chandler
 Mrs. Walter L. Cherry
 Mrs. Donald C. Clark
 Mrs. W. H. Clark, Jr.
 Mrs. J. Nothhelfer Connor
 Mrs. Frank W. Considine
 Mrs. Edward A. Cooper
 Mrs. James R. Coulter
 Mrs. Mark Crane
 Dolores Cross, Ph.D.
 Mrs. John V. Crowe
 Mrs. Lester Crown
 Mrs. Sandra K. Crown
 Mrs. Robert Lane Cruikshank
 Mrs. Hershel H. Cudd
 Mrs. Richard M. Daley
 Mrs. William M. Daley
 Mrs. Dino J. D'Angelo
 Mrs. John A. Daniels
 Mrs. Leonard S. Davidow
 Mrs. O. C. Davis
 Mrs. Howard M. Dean, Jr.
 Mrs. Edwin J. DeCosta
 Mrs. Emmett Dedmon
 Mrs. Robert O. Delaney
 Mrs. Charles Dennehy
 Mrs. Edison Dick
 Mrs. Byram E. Dicks
 Mrs. William R. Dickinson, Jr.
 Mrs. John M. Dixon
 Mrs. Wesley M. Dixon
 Mrs. Gaylord Donnelley
 Mrs. Thomas E. Donnelley II
 Mrs. W. Gregory Doolin
 Mrs. William C. Douglas
 Mrs. Maurice F. Dunne, Jr.
 Mrs. Murrell Duster
 Mrs. Jerrold L. Eberhardt
 Mrs. Jim Edgar
 Mrs. Robert C. Edwards
 Mrs. R. Winfield Ellis
 Mrs. Josephine Fairman Elting
 Mrs. Winston Elting*
 Mrs. Jean Pierre Ergas
 Mrs. Gordon R. Ewing
 Mrs. Thomas J. Eyerman
 Mrs. Alexander H. Faurot
 Mrs. Calvin Fentress*
 Mrs. Robert C. Ferris
 Mrs. Robert Fesmire
 Mrs. Joseph N. Field
 Mrs. Marshall Field
 Mrs. Charles Robert Foltz
 Mrs. Peter B. Foreman
 Mrs. Francis G. Foster, Jr.
 Mrs. Hubert D. Fox
 Mrs. Earl J. Frederick
 Mrs. Gaylord A. Freeman
 Mrs. Cyrus F. Freidheim, Jr.
 Mrs. Marshall Front
 Mrs. William D. Frost
 Mrs. Maurice F. Fulton
 Mrs. John S. Garvin
 Mrs. John S. Gates
 Mrs. John A. Gavin
 Mrs. Robert B. Gerrie
 Mrs. Isak V. Gerson
 Mrs. Gerald S. Gidwitz
 Mrs. James J. Glasser
 Mrs. Philip W. Goetz
 Mrs. Julian R. Goldsmith
 Mrs. O. Renard Goltra
 Mrs. Paul W. Goodrich
 Mrs. William B. Graham
 Mrs. David W. Grainger
 Mrs. J. Douglas Gray
 Mrs. Roger Griffin
 Mrs. Robert C. Guinness
 Mrs. Burton W. Hales
 Mrs. Corwith Hamill
 Mrs. Charles L. Hardy
 Mrs. King Harris
 Mrs. Charles Cotton Harrold III
 Mrs. Neil F. Hartigan
 Mrs. Robert S. Hartman
 Mrs. David C. Hawley
 Mrs. Colette J. Hedien
 Mrs. Ben W. Heineman
 Mrs. Duncan Y. Henderson
 Mrs. Stacy H. Hill
 Mrs. Rembrandt C. Hiller, Jr.
 Mrs. Edward Hines
 Mrs. John L. Hines
 Mrs. Richard H. Hobbs
 Mrs. Thomas R. Hodgson
 Mrs. Robert B. Hoffman
 Mrs. Thomas J. Hoffmann
 Mrs. David B. Horn
 Mrs. Barry George Hoyt
 Mrs. Philip W. Hummer
 Janice S. Hunt
 Mrs. Robert C. Hyndman
 Mrs. Stanley O. Ikenberry
 Mrs. Robert S. Ingersoll
 Mrs. Sue Ish
 Mrs. Frederick G. Jaicks
 Mrs. Brian Colt Jerome
 Mrs. Clarence E. Johnson
 Mrs. S. Curtis Johnson III
 Mrs. James C. Jones
 Mrs. Richard M. Jones
 Mrs. John B. Judkins, Jr.
 Mrs. W. W. Kaehler, Jr.
 Mrs. Byron C. Karzas
 Mrs. John J. Kinsella
 Mrs. William T. Kirk, Jr.
 Mrs. Robert D. Kolar
 Mrs. Richard Kracum
 Mrs. Walter A. Krafft

T H E W O M E N ' S B O A R D

- | | | |
|--------------------------------|-------------------------------|----------------------------------|
| Mrs. Bertram D. Kribben | Mrs. Paul W. Oliver, Jr. | Mrs. Roger W. Stone |
| Mrs. William C. Kunkler III | Mrs. Ralph Thomas O'Neil | Mrs. William S. Street |
| Mrs. William Landreth | Mrs. James Otis, Jr. | Mrs. Robert H. Strotz |
| Donna La Pietra | Mrs. Richard C. Oughton | Mrs. James J. Stukel |
| Mrs. Benjamin F. Lenhardt, Jr. | Mrs. Donald W. Patterson | Mrs. Barry F. Sullivan |
| Mrs. John H. Leslie | Mrs. O. Macrae Patterson | Mrs. John W. Sullivan |
| Mrs. Edward H. Levi | Mrs. Jerry K. Pearlman | Mrs. Edward A. Swabb |
| Mrs. Michael S. Lewis | Mrs. Marlene Welsh Phillips | Mrs. William G. Swartzchild, Jr. |
| Camille Lione | Mrs. Richard Pigott | Mrs. Edward F. Swift |
| Mrs. Chapin Litten | Mrs. Charles S. Potter | Mrs. Hampden M. Swift |
| Mrs. Glen A. Lloyd | Mrs. Albert E. Pyott | Mrs. Phelps H. Swift |
| Mrs. Walter M. Mack | Mrs. Neil K. Quinn | Ms. Hedy Tan |
| Mrs. John W. Madigan | Mrs. Marco Reategui | Mrs. John W. Taylor III |
| Mrs. James F. Magin | Mrs. Howard C. Reeder | Mrs. Edward R. Telling* |
| Mrs. Robert H. Malott | Mrs. Clyde W. Reighard | Mrs. Richard L. Thomas |
| Mrs. Richard Marcus | Mrs. Robert W. Reneker | Mrs. Robert Ward Thomas |
| Mrs. Jennifer Martin | Mrs. Don H. Reuben | Mrs. Bruce Thorne |
| Mrs. Arthur C. Martinez | Mrs. Frederick Roe | Mrs. Theodore D. Ticken, Jr. |
| Mrs. Edward Matz, Jr. | Mrs. Edward M. Roob | Mrs. Stephen B. Timbers |
| Mrs. David Mayer | Mrs. Phillip B. Rooney | Mrs. Melvin A. Traylor, Jr. |
| Mrs. Frank D. Mayer | Mrs. Samuel R. Rosenthal | Mrs. Howard J. Trienens |
| Mrs. Frank D. Mayer, Jr. | Mrs. John S. Runnells | Mrs. Theodore W. Van Zelst |
| Mrs. Richard P. Mayer | Mrs. Patrick G. Ryan | Mrs. V. L. D. von Schlegell |
| Mrs. John W. McCarter, Jr. | Mrs. George W. Ryerson | Mrs. John R. Walter |
| Mrs. George Barr McCutcheon II | Mrs. F. Eugene Schmitt | Mrs. Thomas M. Ware |
| Mrs. Lester H. McKeever, Jr. | Mrs. Richard H. Schnadig | Mrs. Hempstead Washburne |
| Mrs. Andrew J. McKenna | Mrs. Elizabeth M. Schultz | Mrs. E. Leland Webber |
| Mrs. Eugene J. McVoy | Mrs. William L. Searle | Mrs. Arnold R. Weber |
| Mrs. John C. Meeker | Mrs. Gordon Segal | Mrs. William L. Weiss |
| Mrs. Henry W. Meers | Mrs. Richard J. L. Senior | Kathleen M. Welsh |
| Catharine Hastings Melvin | Mrs. Thomas C. Sheffield, Jr. | Mrs. Robert L. Wesley |
| Mrs. Hugo J. Melvoin | Melissa A. Shennan | Mrs. Barbara H. West |
| Mrs. Allen C. Menke | Mrs. C. William Sidwell | Mrs. Henry P. Wheeler |
| Mrs. C. Robert P. Meyjes | Mrs. Michael S. Sigal | Mrs. Richard R. Whitaker, Jr. |
| Mrs. J. Roscoe Miller | Mrs. John R. Siragusa | Mrs. Julian B. Wilkins |
| Mrs. Newton N. Minow | Mrs. Richard D. Siragusa | Mrs. Philip C. Williams |
| Mrs. Charles H. Montgomery | Mrs. Gerald A. Savage | The Reverend |
| Mrs. Kenneth F. Montgomery | Mrs. Raymond I. Skilling | Dr. Ruth Teena Williams |
| Mrs. Carolyn S. Moore | Mrs. Edward Byron Smith, Jr. | Mrs. Robert H. Wilson |
| Mrs. Vernile Murrin Morgan | Faith A. Smith | Mrs. Elizabeth H. Winston |
| Mrs. Arthur T. Moulding | Mrs. H. Brooks Smith | Mrs. Nancy Hamill Winter |
| Mrs. Aidan I. Mullett | Mrs. Malcolm N. Smith | Mrs. Peter Wolkonsky |
| Mrs. Leo F. Mullin | Mrs. Charles H. Solberg | Mrs. Clarence N. Wood |
| Mrs. Elita Mallers Murphy | Mrs. Charles H. Solberg, Jr. | Mrs. J. Howard Wood |
| Mrs. Charles F. Nadler+ | Mrs. Lyle M. Spencer | Mrs. Frank H. Woods |
| Mrs. Charles F. Nadler, Jr. | Mrs. C. Gatzert Spiegel | Mrs. William Wood-Prince |
| Mrs. Joseph E. Nathan | Mrs. Robert Allen Sprowl | Mrs. Blaine J. Yarrington |
| Mrs. Earl L. Neal | Mrs. Harlan F. Stanley | |
| Mrs. John Doane Nichols | Mrs. E. Norman Staub | + President |
| Mrs. Arthur C. Nielsen, Sr. | Mrs. Neele E. Stearns, Jr. | * Deceased |
| Miss Lucille Ann Nunes | Mrs. John Stepan | |
| Mrs. James J. O'Connor | Mrs. Adlai E. Stevenson III | |

THE FRIENDS OF THE FIELD MUSEUM LIBRARY

Mrs. Lester Armour
Mr. & Mrs. T. Stanton Armour
Mr. & Mrs. Roger Baskes
Mr. & Mrs. Duane D. Baumann
Mrs. G. E. Boone
Mr. & Mrs. Willard L. Boyd
Mr. & Mrs. John S. Broeksmit, Jr.
Mr. & Mrs. Roger O. Brown
Mrs. William C. Butler
Mr. & Mrs. Henry T. Chandler
Mr. & Mrs. Michael F. Chaneske
Ms. Gail Chastain
Ms. Nina M. Cummings
Mrs. Edwin J. DeCosta
Mrs. William R. Dickinson, Jr.
Mr. Michael A. Dloogateh
Mrs. Gaylord Donnelley
Mr. & Mrs. Thomas E. Donnelley II
Mrs. Mary Mills Dunea
Mr. & Mrs. Francis Farwell II
Mr. & Mrs. John V. Farwell IV
Mr. & Mrs. Marshall Field
Mr. and Mrs. Charles Robert Foltz
Mr. Peter J. Fortsas
Mr. & Mrs. Earl J. Frederick
Dr. & Mrs. John S. Garvin
Mr. Gregory J. Gadjia
Steven F. and Laura D. Gates
Mr. & Mrs. James J. Glasser
Mrs. O. Renard Goltra
Dr.* & Mrs. John G. Graham
Mr. & Mrs. Paul W. Guenzel
Mr. Daniel P. Haerther
Mr. & Mrs. Charles C. Haffner III
Mr. & Mrs. Daniel R. Hayman
Mr. & Mrs. Laurin H. Healy
Mrs. Harold H. Hines, Jr.
Mr. Edward C. Hirschland
Mr. Michael E. Jackson
Dr. & Mrs. Frank J. Jirka, Jr.
Mr. & Mrs. Richard M. Jones
Mr. & Mrs. Robert D. Kolar
Mr. Michael Lerner
Dr. & Mrs. Michael S. Lewis
Mr. James A. Marshall
Mr. & Mrs. Emil Martinec
Mr. Brooks McCormick
Mr. & Mrs. John C. Meeker
Mr. & Mrs. Henry W. Meers
Mr. & Mrs. Allan C. Menke
Mr. Barrett Moore
Mrs. Arthur T. Moulding

Mr. Anthony J. Mourek
Mr. & Mrs. Kenneth Nebenzahl
Mr. & Mrs. Joel Oppenheimer
Mr. & Mrs. Richard C. Oughton
Mr. & Mrs. Charles Palmer
Mr. & Mrs. Alfred B. Perlman
Dr. & Mrs. Lawrence Perlman
Mr. & Mrs. William O. Petersen
Mr. & Mrs. Gabriel L. Petre
Mrs. George A. Poole
Mr. & Mrs. Charles S. Potter
Mrs. Robert W. Reneker
Mrs. Frederick Roe
Mrs. Samuel R. Rosenthal
Mr. & Mrs. John S. Runnells
Mr. & Mrs. Richard H. Schnadig
Mr. & Mrs. Barry Scott
Mr. & Mrs. Worthington L. Smith
Mr. & Mrs. Terence A. Tanner
Mr. & Mrs. Richard P. Toft
Mr. & Mrs. Howard J. Trienens
Dr. & Mrs. William D. Turnbull
Mr. & Mrs. Theodore W. Van Zelst
Mr. Richard Vukoun
Mrs. Marjorie H. Watkins
Dr. Rupert L. Wenzel
Mr. Willard E. White
Mr. Glen N. Wiche
Dr. & Mrs. Philip C. Williams
Dr. & Mrs. John C. Wolfe
Mrs. Donald P. Woulfe
Mrs. George B. Young
Mr. & Mrs. Max Zar

+ Chair

* Deceased



THE COLLECTIONS COMMITTEE

Mr. James W. Alsdorf
 Mr. & Mrs. Robert O. Bass
 Mr. & Mrs. Lee A. Baumgarten
 Mr. John M. Beal
 Nenad Belic, M.D. & Ellen
 Stone-Belic
 Mr. Charles Benton
 Mr. & Mrs. Robert Earl Boyd III
 Mr. & Mrs. Willard L. Boyd
 Mrs. Rowena Boysen
 Mr. Donald M. Bridgeforth
 Mr. & Mrs. Robert H. Brooke
 Mr. Maury Bynum
 Mrs. Theodore R. Butz
 Dr. & Mrs. Robert Wells Carton
 Michael & Margaret Chung
 Lois & Clyde Coren
 Mr. & Mrs. Mark Crane
 Mrs. Sandra K. Crown
 Mrs. Dino J. D'Angelo
 Ms. Eileen M. Day & Alan J. Cutler
 Mrs. Edwin J. DeCosta
 Mr. & Mrs. Charles Dennehy, Jr.
 Mr. & Mrs. Robert G. Donnelley
 Mr. & Mrs. Raymond H. Drymalski
 Mr. Alan Dworkin
 Mr. Ross Edman
 Jay Fahn & Ava Newburger
 Mr. & Mrs. Isak V. Gerson
 Mr. Joseph L. Gidwitz *
 Mr. & Mrs. James J. Glasser
 Mr. & Mrs. Philip W. Goetz
 Dr. & Mrs. Allen S. Goldman
 Mr. Issac S. Goldman
 Jonathan Haas & Winifred Creamer
 Dr. & Mrs. Jeffrey Hammer
 Mr. Joel E. Harlib
 Mr. & Mrs. David C. Hess
 Mr. & Mrs. Daniel Hidding
 Mrs. Harold H. Hines, Jr. +
 Mr. & Mrs. Jerome E. Hirsch
 Mr. & Mrs. Thomas Hodges
 Dr. & Mrs. James M. Holland
 Mr. & Mrs. Robert M. Horwitch
 Mr. & Mrs. Philip W. Hummer
 Mrs. Vivian F. Hurwith
 Dr. & Mrs. Hyman I. Kaplan
 Dr. & Mrs. Sydney J. Kaplan
 Mr. & Mrs. Richard A. Karlin
 Mr. Eugene Kart
 Mr. & Mrs. Alan D. Katz
 Walter L. Keats & Winnie Lu

Mr. & Mrs. Thomas E. Keim
 Mr. & Mrs. Sheldon E. Kent
 Mr. & Mrs. Bryan G. Kleckner
 Mrs. Byla Simon Kunis
 Mr. & Mrs. Eliot A. Landau
 John M. Lavine &
 Meryl Lipton Lavine, M.D.
 Mr. & Mrs. Samuel T. Lawton, Jr.
 Dr. & Mrs. Youk Lee
 Ms. Ruth W. Lekan
 Joyce A. Levy & Christopher Egan
 Dr. & Mrs. Michael S. Lewis
 Dr. Francis H. F. Li
 Professor Elizabeth Lillehoj
 Mrs. Renee Logan
 Sandy & Jerry Manne
 Susan & Brian Mazany
 Mr. & Mrs. Edward J. McAdams, Jr.
 Mr. & Mrs. Lester H. McKeever, Jr.
 Mr. & Mrs. John C. Meeker
 Ms. Beverly M. Meyer
 Robert J. Miller, Jr.
 Mrs. Frances A. Minor
 Mrs. Carolyn S. Moore
 Mr. Anthony J. Mourek
 Ms. Daphne C. Murray
 Dr. & Mrs. Charles F. Nadler
 Mr. & Mrs. Allan N. Niederman
 Ms. Karen A. Nordquist
 Mrs. Dagmara R. Nyman
 Mr. Robert G. Paretzkin
 Mrs. Pauline Y. Petre
 Mr. & Mrs. Carl M. Plochman
 Mr. & Mrs. Charles S. Potter
 Mr. Robert A. Pritzker
 Mrs. Robert W. Reneker
 Mr. & Mrs. Burton Rissman
 Mr. & Mrs.* Harry B. Rosenberg
 Mrs. Samuel R. Rosenthal
 Ruth & Jack Rotman
 Mr. & Mrs. Minoru Saito
 Mr. & Mrs. Anthony C. Sallas
 Mr. Norman L. Sandfield
 Mrs. Thomas C. Sheffield, Jr.
 Mr. & Mrs. Louis C. Sudler, Jr.
 Mr. & Mrs. Edward A. Swabb
 Mr. Robert Tillotson
 Mrs. Dorothy A. Tollifson
 Dr. & Mrs. Michael Roy Treister
 Mr. & Mrs. Howard J. Trienens
 Mr. & Mrs. T. David Van Zelst
 Mr. & Mrs. Theodore W. Van Zelst

Priscilla A. & Douglas H. Walter
 Mr. Roger L. Weston
 Mr. Willard E. White
 Mr. & Mrs. Jeremy R. Wilson
 Mr. & Mrs. Robert M. Wright
 Ms. Jeanne Zasadil

+ Chair
 * Deceased



The Nature Network offers greater personal involvement to people who enjoy exploring the world of nature. Members of this new group go behind the scenes to get better acquainted with Field Museum scientists who are actively working to expand our understanding of the environment. Programs include Museum-based activities and local field trips with Field Museum curators, visiting scholars, and other scientists for direct participation in the Museum's far-reaching environmental mission.

Sharon Advani
 Paul Baker
 Jim & Barbara Ballard
 Charles & Norine Beirne
 Sandy & Susan Boyd
 Elvira Butz
 Cathy Carroll
 Gail Chastain
 Rich & Ingrid Dubberke
 Suzanne Edwards
 Liz Farwell
 Bruce & Mary Feay
 Karen Furnweger
 Linda Glass & Jeffrey Mercer
 Alice & Ren Goltra
 Todd & Susan Halamka
 Duane & Jane Heaton
 Richard & Laura Jones
 Jerry Kolar
 Ron Krumm & Margaret Myers
 Bill Kurtis & Donna LaPietra +

Henry & Judy Lang
 Alexis MacDowall
 Sam & Melba Mayo
 Kathleen McGiffin
 Peter & Cori Nolan
 Karen Nordquist
 Nick Pritzker
 Donald & Nora Rado
 Bernie & Gloria Rinella
 Albert & Jennie Ritchie
 Arthur & Carol Schneider
 Toni Smith
 Jim Stukel
 Tom & Julia Szafranski
 Jon & Sophie Twichell
 Christopher Valenti
 Susan VandenBosch
 Will White
 Nancy Hamill Winter
 Stephie & Pete Wood
 + Co-Chairs



Individuals and Family Foundations

Field Explorers

(\$1,000 to \$1,499)

Anonymous
 Mr. & Mrs. Howard Arvey
 William C. Bartholomay
 Carolyn P. Blackmon
 Mrs. Helen D. Bronson
 Mrs. Susanne B. Bush
 Mr. & Mrs. Rhett W. Butler
 Mr. John F. Cuneo, Jr.
 (The Cuneo Foundation)
 Mr. & Mrs. Ken M. Davee
 Mr. & Mrs. Joseph E. Dean

Mr. & Mrs. Jerome L. Ettelson
 Mrs. Rose B. Grosse
 Mr. & Mrs. Leon David Hale
 Gladys Holm*
 Mr. & Mrs. William J. Hunckler III
 Mr. & Mrs. George M. Illich, Jr.
 Mr. & Mrs. Horace W. Jordan
 Mrs. Spencer R. Keare
 Mrs. Harvey W. King
 Mr. & Mrs. William Landreth
 Mrs. Gordon Lang
 Mrs. John A. MacLean, Jr.
 Miss Marion Molyneaux

Ms. Irma Parker
 Mr. & Mrs. Allan M. Pickus
 Mr. & Mrs. Karl V. Rohlen, Jr.
 Mr. & Mrs. Ronald A. Schmura
 Dr. Bruce Schreider
 Dr. Steven O. Schwartz
 Mr. & Mrs. David Sensibar
 Adele Smith Simmons
 (Norwotock Charitable Trust)
 Mrs. Muriel R. Smith
 Ms. Toni S. Smith
 Ms. Elizabeth Stein
 Mrs. Maurice H. Wald

Field Naturalists

(\$500 to \$999)

Mr. Thomas W. Andrews
 Mr. & Mrs.* Lester J. Anixter
 Anonymous
 Mr. & Mrs. Brian J. Baker
 Mr. & Mrs. William T.
 Bartholomay
 (Ruth & Vernon Taylor
 Foundation)
 Mr. & Mrs. Norman T. Berg
 Dr. & Mrs. Robert Earl Boyd III
 Mr. & Mrs. Robert H. Brooke
 Mr. & Mrs. Herbert A. Bruckner
 Mr. & Mrs. Douglas K. Chapman
 Mr. & Mrs. Norman J. Clemetsen
 Miss Marion E. Cowan
 Mr. & Mrs. W. Allen Davies
 Mr. & Mrs. Seymour S. DeKoven
 Ralph Dieckmann
 Thomas R. Doler
 Dr. & Mrs. Richard A. Domanik
 Mr. & Mrs. Richard H. Eshbaugh
 Mr. & Mrs. Gerald J. Eskin
 Mrs. John V. Farwell III
 Mrs. Calvin Fentress, Jr.*
 Mr. Lee J. Flory
 Mr. & Mrs. Frank B. Foster
 Mr. & Mrs. Henry A. Gardner, Jr.
 Mr. & Mrs. John R. Gardner
 Mr. & Mrs. Lawrence W. Gougler
 Dr. & Mrs. Rolf M. Gunnar
 Mrs. Herbert L. Hanna

Mrs. Marian S. Harris
 (New York Community Trust)
 Drs. Malcolm H. and Adele Hast
 Mrs. Marvin Henry
 Mr.* & Mrs. Rembrandt C. Hiller, Jr.
 Mrs. Joan R. Hoatson
 Craig J. Holderness
 Mrs. Gerald V. Hollins
 Mr. & Mrs. R. A. Houston
 Mr. & Mrs. Robert L. Hulseman
 Mr. & Mrs. Philip W. Hummer
 Mr. & Mrs. Frederick G. Jaicks
 Mr. & Mrs. Sidney F. Jarrow
 Mrs. Sharmer Johnstone
 Mrs. Verla Kasmerchak
 Mr. & Mrs. Steven D. Klefstad
 Mr. Jerry A. Kolar
 Mr. John H. Krehbiel, Jr.
 Mr. & Mrs. Marshall S. Leaf
 Mr. & Mrs. Peter Lems
 Mr. David E. Lipson
 Miss Jeri A. Logemann
 Barbara Mankus Louthan
 Mr. & Mrs. R. Bailey Markham
 McKim Marriott
 Mr. & Mrs. Thomas G. Mc Bride, Jr.
 Mr. & Mrs. R. A. Mc Clevey, Jr.
 Mrs. John Mc Kinlay
 Mr. & Mrs. Andrew J. Mc Millan
 Mr. & Mrs. Bernard D. Meltzer
 Mr. & Mrs. Glenn E. Merritt
 Halga E. Muench
 Ms. Karen Nordquist
 Mrs. John Nuveen

Mr. & Mrs. William P. O'Hara
 Mr. & Mrs. James B. Patton
 Mr. & Mrs. Robert P. Perkaus, Jr.
 Mr. & Mrs. Howard J. Peterson
 Evelyn N. Pyle
 Dr. & Mrs. George B. Rabb
 Clifton L. Reeder, M.D.
 Mr. & Mrs. H. P. Davis Rockwell
 Mr. & Mrs. Harold Rosenson
 (Rosenson Family Foundation)
 Mr. * and Mrs. A. Frank
 Rothschild (A. Frank & Dorothy
 Rothschild Fund)
 Mr. & Mrs. J. Coert Rylaarsdam
 Ms. Mary Ann Sanford
 Mr. & Mrs. Walter E. Schuessler
 Mr. & Mrs. Romolo Sidoli
 Kathleen and Walter Snodell
 Marvin N. Stone
 Mr. & Mrs. Richard J. Stuckey
 Mr. & Mrs. Edgar W. Trout, Jr.
 Mr. Adam Tumas, Jr.
 Mr. & Mrs. J. V. Van Cura, Jr.
 Mr. Ralph L. Wanger, Jr.
 Mr. & Mrs. William D. Weaver
 Mr. Duayne Weinger
 Mrs. Jack Weinstein
 Dr. & Mrs. George D. Wilbanks
 Mr. & Mrs. Lawrence G. Wilcox
 James R. Wimmer
 Mr. & Mrs. Robert R. Wootton

* Deceased

Individuals and Family Foundations

Field Adventurers

(\$250 to \$499)

- Mr. & Mrs. W. Raymond Ahlberg
- Ms. Margaret Andersen
- Dr. & Mrs. Scott Anderson
- Mr. Edward F. Anixter
- Anonymous
- Mr. & Mrs. Robert Bacon, Jr.
- Mr. & Mrs. James L. Ballard
- Mrs. James Bateman
- Dr. Verna L. Baughman
- Mr. & Mrs. Robert C. Beilfuss, Jr.
- Mr. & Mrs. Donald Blanke
- Mr. & Mrs. Andrew K. Block
- Mr. George W. Blossom III
- Mr. & Mrs. Robert G. Bohnen
- Mr. & Mrs. William E. Breitzke
- Andrew & Gail Brown
- Mr. Baird Brown
- Dr. & Mrs. James L. Brown
- Mr. Donald A. Campbell, Jr.
- Mrs. Margaret Chamales
- Mr. & Mrs. Bruce Chelberg
- Ms. Joeanne A. Chmelik
- Dr. Mary Chuman
- Mr. & Mrs. John C. Colman
- Mr. & Mrs. Paul R. Cooper
- Mr. & Mrs. William D. Cox, Jr.
- Mrs. Philip R. F. Dauley
- Dr. & Mrs. Tapas K. Das Gupta
- Mr. & Mrs. Louis E. Davidson
- Mr. & Mrs. Stephen P. Davison
- Mr. & Mrs. Anthony T. Dean
- Mr. & Mrs. Louis H. T. Dehmlow
- Mr. & Mrs. William E. Deitrick
- Harry & Madeline Devereux
- Mr. & Mrs. David L. Diana
- Dr. & Mrs. Alfonso Diaz
- William S. Donnell
- Mr. & Mrs. Paul R. Duncan
- Mrs. Charles S. Dunphy &
Dr. James V. Dunphy
- Ms. Glenna Eaves
- Mr. & Mrs. Arthur Edelstein
- Stefan Edllis & H. Gael Neeson
- Mr. & Mrs. Richard Elden
- Mr. Kenneth A. Evans *
- Jay Fahn & Ava Newburger
- Mr. & Mrs. Daniel G. Falotico
- Mr. & Mrs. Charles R. Feldstein
- Ms. Joan Feneil
- Dr. & Mrs. Balbino B. Fernandez
- Mr. & Mrs. M. Peter Fischer
- Georgeanna Fischetti
- Mr. & Mrs. James G. Flood
- Mr. & Mrs. Donald B. French
- Mr. & Mrs. Herbert B. Fried
- Mr. & Mrs. John W. Fritz
- Mr. John P. Gallagher
- Mr. & Mrs. James Garnett
- Mr. & Mrs. Stephen A. Gerlicher
- Mrs. Mary Jane Gibbs
- Marion H. Giles
- Karen & Andrew Gray
- Mr. & Mrs. William H. Green
- Dr. & Mrs. Meryl H. Haber
- Mrs. William M. Hales
- Mary A. Harrison
- Mr. E. Houston Harsha
- Mrs. Augustin S. Hart
- Mr. & Mrs. Henry G. Hart, Jr.
- Mr. & Mrs. Max E. Hartl
- Mrs. Eugene Heal
- Mr. & Mrs. Robert M. Hickey
- Mr. & Mrs. Daniel P. Hidding
- Ms. Edna M. Hill
- Rose M. Houston
- Steve Isaac & Judy Olds
- Mr. & Mrs. George S. Isham
- Dr. & Mrs. Michael Jablon
- Mr. & Mrs. Richard M. Jaffee
- Mr. & Mrs. Kenneth J. James
- Mr. & Mrs. John P. Kayser
- Mr. & Mrs. John P. Keller
- Ms. M. Rosalie Kempe
- Mr. & Mrs. George P. Kendall, Jr.
- Mr. & Mrs. John E. Koliopoulos
- Mr. Paul R. Kressin
- Ms. Lottie Krzywda
- Mr. & Mrs. George C. Kuhlman, Jr.
- Mr. & Mrs. Duane R. Kulberg
- Dr. Suzanne E. Larsh
- Ms. Ruth W. Lekan
- Elizabeth Liebman
- Mr. & Mrs. Thomas M. Lillard, Jr.
- Ms. Charlotte Lindar Corbunoff
- Mr. & Mrs. Howard Littlejohn
- Drs. John R. & Nell S. Lurain
- Mr. & Mrs. Michael Lutz
- Mr. & Mrs. J. de Navarre Macomb, Jr.
- Mr. & Mrs. James E. Mandler
- Peter & Margaret Mason
- Mr. & Mrs. L. Chester May
- Mr. & Mrs. E. Jerome Mc Carthy
- The Anthony B. Mc Guire Family
- Dr. & Mrs. David G. Mc Lone
- W. Harrison Mehn, M.D.
- Mr. & Mrs. Thomas W. Merritt, Jr.
- Mr. & Mrs. David A. Meskan
- Ms. Beverly M. Meyer
- Mr. & Mrs. C. Robert P. Meyjes
- Dr. & Mrs. Robert P. Miller
- Dr. Shelby A. Miller
- Mrs. Helen M. Mojonnier
- Mr. Tom Moog
- Mrs. Frank J. Mooney
- Mr. & Mrs. Carl E. Moore
- Mr. Jerome A. Munson
- Mr. & Mrs. Kenneth Nebenzahl
- Mr. & Mrs. Jerome J. Nerenberg
- Mr. & Mrs. William C. Norby
- Mrs. Sharon Partoll
- Dr. & Mrs. Lawrence Perlman
- Mr. & Mrs. Thomas D. Peterson
- Mr. & Mrs. John A. Phillips
- Mrs. Marlene K. Phillips
- Mrs. Henry Pope, Jr.
- Mr. & Mrs. John C. Pottage
- John & Marian Pottage
- Mr. & Mrs. John Pusinelli
- Mr. & Mrs. John W. Puth
- Mr. & Mrs. Norman X. Raidl
- Mr. George A. Ranney, Sr.
- Mr. * & Mrs. Frank S. Read
- Mark Reiter, M.D. &
Kathleen A. Ward, M.D.
- Mrs. Robert W. Reneker
- Amy Ripepi & Gary Grasinski
- Mr. & Mrs. Thomas L. Rose
- Michael & Madeline Rosenberg
- Margaret Ross & Robert Riesman
- Ms. Judith A. Roth
- Mr. Robert M. Ruckstuhl
- Mr. & Mrs. Steven M. Ryan
- Mr. & Mrs. Howard N. Sankary
- Mr. & Mrs. George SchAAF
- Mr. & Mrs. Alan Schriesheim
- Mr. & Mrs. John P. Scott
- Mr. & Mrs. Irving Seaman, Jr.
- Mr. & Mrs. M. A. Self

Individuals and Family Foundations

Field Adventurers

Mr. & Mrs. C. Olin Sethness
 Mr. & Mrs. Scott R. Sevon
 Dr. & Mrs. Jerry L. Simmons
 Mr. & Mrs. R. S. Singers
 Mr. & Mrs. Robert Smolen
 Ms. Elizabeth L. Snyder
 Mr. & Mrs. John B. Snyder
 Dr. & Mrs. J. Clyde Spencer
 Mr. & Mrs. Joachim W. Staackmann
 Mr. & Mrs. E. Norman Staub
 Mr. & Mrs. Philip L. Stern
 Mr. & Mrs. Jules N. Stiffel
 Mrs. Edward J. Stransky
 Mr. & Mrs. Charles J. Surgue

Mr. & Mrs. Donald E. Sveen
 Dr. Paul A. Thomas, Jr.
 S. N. Tideman, Jr.
 Dr. Marta Tienda
 Dr. & Mrs. Joao Ubatuba
 Mr. & Mrs. Bohun Ulieny
 Sandra E. Van Tilburg
 Mr. & Mrs. Peter O. Vandervoort
 Mr. & Mrs. Richard A. Waichler
 Mr. Malcolm M. Walker
 Mr. & Mrs. Robert H. Wallace, Sr.
 Mr. & Mrs. Gary T. Walther
 Mr. & Mrs. Norman R. Wechter

Mr. & Mrs. Steven A. Weiss
 Mr. & Mrs. Michael Werner
 Lawrence S. Wick
 Mr. & Mrs. Charles H. Wilson
 Holly Wilson & Robert Dantowitz
 Mr. & Mrs. Robert H. Wilson
 Mr. & Mrs. Anthony Woewueki, Jr.
 Mr. & Mrs. Arnold R. Wolff
 Theodore N. Yelich
 Mr. & Mrs. Hobart P. Young
 Lois Zoller & James Mills
 Mr. & Mrs. Simon Zunamon

*Deceased

Field Contributors

\$100 to \$249

William & Susan Abrams
 Mr. & Mrs. John W. Acker
 Mr. & Mrs. Leland C. Adams
 Leon Adler, M.D. & Edith Adler
 Dr. Robert Adler
 Mr. Greg Albiero
 Mr. & Mrs. Arlyn E. Albrecht
 Mr. & Mrs. Walter Alexander
 Mr. Douglas W. Allen
 Mr. & Mrs. Neil W. Allen
 Mrs. Geraldine S. Alvarez
 Mr. & Mrs. Carlyle E. Anderson
 Anonymous
 Mr. & Mrs. Richard S. Antes
 Mr. & Mrs. Anthony A. Antoniou
 Mr. & Mrs. Lawrence W. Appelbaum
 Mr. Robert D. Appelbaum
 Miss Edith-Marie Appleton
 Mr. & Mrs. S. Frank Arado, Jr.
 Mrs. Leon J. Aries
 Mr. & Mrs. Paul T. Armstrong
 Carl Auerbach & Lenore Lang
 Mrs. William H. Avery
 Ms. Lynda Badgley
 Mr. & Mrs. John R. Baily
 Mr. & Mrs. Paul E. Baker
 Mrs. Robert I. Ball
 Mr. Wayne A. Baran
 Mr. & Mrs. James L. Barber
 Mr. Ralph Austin Bard, Jr.
 Dr. J. Wm. Barnes

Roland J. Barnes, DDS
 Robert & Judith Barsy
 Charles & Teresa Hall Bartels
 Mr. Henry G. Bates, Jr.
 Mr. & Mrs. Arthur S. Baum
 Mr. John M. Beal
 Ann Becker & David Muschler
 Mr. & Mrs. Robert E. Becker
 Mr. & Mrs. C. K. Beebe III
 Mr. & Mrs. John L. Behr
 Mr. & Mrs. John P. Bell
 Ms. Jo Ellen Bender
 Mr. Charles A. Benson
 Mr. & Mrs. Michael Berecek
 Mr. & Mrs. Edward C. Berry
 Mr. & Mrs. Richard J. Bertoldi
 Mr. & Mrs. Michael M. Bigos
 Mrs. Lawrence Blum
 Mr. & Mrs. Irwin A.
 Blumensaadt, Jr.
 Mrs. George V. Bobrinsky, Jr.
 Mr. & Mrs. George H. Bodeen
 Dr. H. Constance Bonbrest
 Mr. & Mrs. Daniel S. Borysewicz
 Drs. Bruce Boyer & Janice Muhr
 Dr. Newell T. Braatelen
 Mary Breen
 Mr. & Mrs. Robert B. Breisblatt
 Mr. & Mrs. James E. Briggs
 Dr. & Mrs. David Dean Brockman
 Mr. & Mrs. Frederick W. Brooke III
 Mr. & Mrs. William B. Browder
 Mr. Alan J. Brown

Mr. & Mrs. Charles S. Brown
 Mr. & Mrs. Albert J. Browne
 Mr. & Mrs. Edward A. Bruzewicz
 Mr. & Mrs. Samuel Buchsbaum
 Mr. & Mrs. Stephen J. Buck
 Mr. Donald Budny
 Mr. & Mrs. Theodore H. Buenger
 Mr. & Mrs. Howard E. Buhse, Jr.
 Mr. & Mrs. Edward Buker
 Mr. & Mrs. Harvey Bundy III
 Timothy L. & Vickie Burke
 Marie Kraemer Burnside
 Mrs. Robert S. Burrows
 Mr. & Mrs. John M. Butler, Jr.
 Mr. Louis F. Cainkar
 Miss Judith Caloud
 Ms. Bette Jane Camit
 Mrs. & Mrs. David L. Canmann
 Lee D. Carlson
 Mr. & Mrs. Roger L. Carlson
 Mr. William J. Carney
 Mr. & Mrs. Philip V. Carter
 Mr. & Mrs. John G. Cashman
 The Tom & Joan Castino Family
 Mrs. James A. Cathcart
 Mr. & Mrs. Silas S. Cathcart
 Mrs. Dorothy Dean Cavanaugh
 Mr. & Mrs. Raymond M.
 Champion, Jr.
 Allan G. & Phyllis V. Charles
 Mr. & Mrs. Sidney Cheresch
 Mr. & Mrs. George R. Clark
 Dr. & Mrs. John W. Clark

Individuals and Family Foundations

- Dr. Joyce H. Clark
 Mr. Max Clausen
 Harvey & Barbara Clements
 Mrs. Lydia Goodwin Cochrane
 Mr. & Mrs. Tasso H. Coin
 Betsy & Keith Colburn
 Mr. & Mrs. Earle M. Combs III
 Ms. Cynthia Comella
 Mr. & Mrs. Patrick Condon
 Mr. James Conrad
 Mr. & Mrs. Louis J. Conti
 De Loyce L. Cook & Family
 Mr. & Mrs. Granger Cook, Jr.
 Mr. Gerald Corrigan
 Ms. Barbara Cousins
 Miss Charlotte I. Craig
 Dr. & Mrs. William A. Craig
 Mr. & Mrs. William A. Crane
 Ms. Margaret K. Crawford
 Mr. Paul Cruikshank
 Mr. & Mrs. David Cumming
 David Currie & Barbara
 Flynn Currie
 Mrs. Frederic K. Curry
 Ms. Wanda Cygan
 Dr. & Mrs. Anthony M. D'Agostino
 Mr. Bruce E. Dalton
 Professor George E. Danforth
 Loren J. Danneil
 Mr. & Mrs. Cyrus C. De Coster
 Mr. & Mrs. Koen De Geest
 Mr. Patrick A. De Moon
 Mrs. Joseph R. De Pencier
 Mr. Bruce Dean
 Mr. & Mrs. Wheeler Dennis
 Mr. & Mrs. Leon M. Despres
 Miss Doris Devine
 Mr. Lawrence Deysach*
 Mr. James S. Di Matteo
 Mr. John H. Dick
 Mr. & Mrs. William S. Dillon
 Mr. Timothy W. Dolan
 Mr. & Mrs. Max Dressler
 Mr. & Mrs. Robert M. Drevs
 Mr. & Mrs. Herbert Drower
 Mr. & Mrs. Louis T. Duerinek
 Mr. & Mrs. Harvey Dulin
 Mr. Todd H. Duncan
 Mr. & Mrs. Thomas E. Earle
 Mr. & Mrs. Alan Edelson
 Mr. Howard O. Edmonds
 Mr. J. Thomas Eller
 Mrs. Russell C. Ellis
 Ms. Erika Erich
 Michelle Grant Ervin, M.D. &
 Christopher Ervin, M.D.
 Mary Fabri & David Goldberg
 Albert Falasz
 Mr. & Mrs. Francis C. Farwell II
 Mr. Frederick R. Fechtner
 Mr. Harry Feigenbaum
 Mr. & Mrs. Edward H. Fiedler
 Mrs. Robert C. Fink
 Mr. & Mrs. Peter D. Fischer
 Mr. & Mrs. Justin M. Fishbein
 Mr. & Mrs. Duncan G. Fisher
 Mrs. Walter T. Fisher
 Mr. James G. Fitzgerald
 Ms. Eileen M. Foell
 Mr. & Mrs. Charles W. Folds
 Mrs. Zachary D. Ford
 Mr. Harold E. Foreman, Jr.
 Mrs. Mariann Fragnoli
 Mr. & Mrs. Edward B. Frandsen
 Mr. & Mrs. A. A. Frank, Jr.
 Mr. & Mrs. Marvin H. Frank
 Christabel H. Frederick, DVM
 Ms. Audrey M. Fredrich
 Mr. Richard L. Freeman
 Mrs. Eleanor B. Frew
 Mr. & Mrs. Lewis Freyer
 Mr. & Mrs. Waldo Friedland
 Mr. & Mrs. Edward Fromhagen
 Mr. Ralph Fujimoto
 Donald I. Funk, M.D.
 Mr. & Mrs. Robert A. Funk
 Mr. & Mrs. Frank A. Furar
 Ms. Anne V. Fussell
 Mrs. Ida W. Gabler
 Mr. John Gage
 Mr. Gregory J. Gajda
 Ms. Vickie Gambino
 Mr. & Mrs. Lawrence E.
 Gartman
 Mr. & Mrs. W. W. Gasser, Jr.
 Mr. & Mrs. Paul G. Gebhard
 Mr. & Mrs. Gustav Geisel
 Mr. & Mrs. Jack M. George
 Mr. & Mrs. C. Gary Gerst
 Mr. & Mrs. Leonard J. Giblin
 Mr. & Mrs. Dennis L. Gibson
 Samuel Gidding & Cheryl Davis
 Mrs. Willard Gidwitz
 Dr. & Mrs. Louis W. Gierke
 Mr. Michael Ginsburg
 Mr. & Mrs. Robert Hixon Glore
 Mr. & Mrs. David F. Goldberg
 Mark Golden & Nancy Nagel
 Robert & Roberta Goldman
 Dr. Silvano Gomez
 Mr. Robert Gorecki
 Mr. & Mrs. E. Timothy Gorham
 Mr. & Mrs. Robert R. Gowland
 Michael Graff & Nancy Lerman
 Mr. & Mrs. David F. Graham
 Ms. Lois V. Grayston
 Janet Green
 Mr. & Mrs. John K. Greene
 Susan Griffiths
 Mr. & Mrs. Wayne Grobarcik
 Dr. & Mrs. Norton R. Groth
 Gregory & Linda M. Gruener
 Mr. Robert A. Habermann
 Mr. & Mrs. Alfred E.
 Hackbarth, Jr.
 Ms. Mary W. Haggerty
 Mr. & Mrs. John A. Hall
 James B. Hammond, M.D.
 Mrs. Marie K. Harkless
 Alice E. Harper
 Mr. & Mrs. Charles W. Harper
 Mrs. Ethel R. Harris
 Mr. & Mrs. Glenn W. Hartman
 Mr. & Mrs. Norbert O. Harz
 Mrs. Lawrence C. Hattenbach
 Ms. Virginia Heaven
 Mr. & Mrs. Raleigh Hegwood
 Mrs. Wilfred H. Heitmann
 Mr. Henry J. Henke
 Mr. & Mrs. Adolph S. Herseth
 Mrs. J. H. Herz
 Mr. & Mrs. Herbert H. Heyman
 Mr. & Mrs. Donald M. Hintz
 Dr. Albert Hirsch
 Ms. Peggy L. Hoberg
 Ms. Dorothy E. Hoffman
 Dr. Philip C. Hoffmann
 Mr. & Mrs. George E. Hoganson
 Mrs. Edwin E. Hokin
 Dr. & Mrs. James M. Holland
 Mrs. William Hollweg
 Mr. Franklin Horwich
 Mr. & Mrs. Robert M. Horwitch
 Ms. Christina Hospelhorn
 Mr. & Mrs. Lawrence Howe
 Mr. F. B. Hubachek, Jr.

Individuals and Family Foundations

Field Contributors

- Mr. & Mrs. Charles C. Huber
 Mrs. Margaret Humleker
 Mrs. Diane S. Humphrey
 Mr. & Mrs. Frank Hutchinson
 Mr. Michael L. Igoe, Jr.
 Mr. Charles Iker
 Miss Marion F. Inkster
 Mrs. Elaine R. Irvin
 Mrs. Henry P. Isham, Jr.
 Mr. & Mrs. Rudyard L. Istvan
 Mr. & Mrs. Robert Jacobsen
 Ms. Jo Kurth Jagoda
 Dr. Thomas A. Janik
 Mr. Richard Jeskey
 Mr. Carl Johnson
 Miss Elsie A. Johnson
 Mr. George Jones
 Mr. & Mrs. Marvin W. Jones
 Mr. Jack M. Joss
 Miss Olga Jurco
 Ms. Susan Kahan
 Mr. & Mrs. John P. Kaiser
 Sona Kalousdian &
 Ira Lawrence, Jr.
 Fern Kane
 Dr. & Mrs. Alan Kanter
 Lawrence & Ethel Kaplan
 Mr. & Mrs. William G. Karnes
 Mr. & Mrs. Gilbert Kart
 Mrs. Lawrence Kasakoff
 Mr. & Mrs. Harley H. Kellbach
 Mr. Daniel L. Kelley
 Ms. Diane Legge Kemp
 Mrs. Taylor L. Kennedy
 Dr. D. M. Kilpatrick
 Mr. & Mrs. Charles T. Kirschner
 Mr. & Mrs. Nicolaas C. Kist
 Dr. & Mrs. Thornton C.
 Kline, Jr.
 Mr. & Mrs. Robert W. Kling
 Mr. & Mrs. Jack T. Knuepfer
 Mr. & Mrs. Melvin J. Koenigs
 Mr. & Mrs. Norman A. Koglin
 Mr. & Mrs. Daniel B. Kokes
 Mr. & Mrs. Anthony N. Konstant
 Mr. Peter J. J. Kosiba
 Mr. & Mrs. Robert S. Kosin
 Mrs. Richard Kracum
 Norman L. & Mary E. Kramer
 Mr. & Mrs. E. Herbert Krug
 Mr. Robert E. Krumwiede
 Mr. & Mrs. Rod J. Kuehnle
 Mr. & Mrs. Alfred F. Kugel
 Mrs. William O. Kurtz, Jr.
 Mr. Charles D. Lamkin III
 Jeanne Ladd & Jeffrey Siergey
 Patricia C. Lancaster
 Mr. & Mrs. Melvin M. Landau
 Dr. & Mrs. Richard L. Landau
 Henry & Judy Lang
 Edward Langer &
 Ruby Lerner-Langer
 Deborah W. Lansing
 Mr. John J. Lanzendorf
 Mr. & Mrs. David Larson
 Mr. & Mrs. David R. Larson
 Mr. & Mrs. Warren Larson
 Mr. & Mrs. Arthur LaVelle
 Mr. & Mrs. Arnold Learner
 Carolyn & Jesse Lee
 Moon Lee
 Mr. & Mrs. Sig Lefkovitz
 Mr. & Mrs. Wilbur S. Legg
 Paul Lehman & Ronna Stamm
 Ms. Luellen Leichentritt
 Mr. & Mrs. John G. Leininger
 Mr. & Mrs. Ralph Leonard
 Thomas Lesko
 Mr. Herbert Lesser
 Mr. & Mrs. John G. Levi
 Mr. & Mrs. Lawrence R. Levin
 Dr. & Mrs. Murray L. Levin
 Mr. & Mrs. Howard P. Levine
 Ms. Patricia Levinson
 Herman B. Leynes
 Mr. & Mrs. Robert J. Lick
 Mr. Robert B. Lifton
 Mr. & Mrs. Robert E. Linde
 Del D. Liotta
 Dr. & Mrs. Herbert A. Lippitz
 Mr. & Mrs. William F. Lloyd
 Mr. & Mrs. Leslie R. Lock
 Mr. Richard J. Loewenthal, Jr.
 Mr. & Mrs. Robert I. Logan
 Mr. Chris H. Lonn
 Mr. & Mrs. Gus J. Losos
 James Luechow &
 Harriet Holderness
 Mr. Laurence B. Lueck
 Mr. & Mrs. Frank W. Luerssen
 Mr. William Lutman & Family
 Dr. Warren H. Lutton
 Mrs. Mary Keough Lyman
 Mr. & Mrs. Francis J. Lynch
 Mr. & Mrs. David O. MacKenzie
 Dr. & Mrs. Arthur Marc
 Mr. & Mrs. Robert H. Marlow
 Charlene Marsh
 Ms. Kristina Martinkus
 Mr. & Mrs. John Masley
 Mr. & Mrs. Charles A. Mast
 Mr. & Mrs. William W. Maxey
 Dr. & Mrs. David L. Mayor
 Mr. & Mrs. George H. Maze
 Mr. & Mrs. Wayne Mc Daniel
 Kevin McDonald & Judy Chan
 Mr. George Mc Elroy
 Dr. & Mrs. Ernest G. Mc Ewen
 Mr. John G. Mc Ginnis
 Mr. & Mrs. John C. Mc Kenzie
 Mr. & Mrs. C. B. Mc Laughlin
 Mr. Don H. Mc Lucas
 Debbie Mead
 James & Sybil Meindl
 Ms. Janice Meister
 Mr. Steven D. Menoff
 Mr. & Mrs. B. L. Mercer
 Mrs. Richard L. Merrick
 Mr. & Mrs. Bob Mertz
 Mr. Adolph Meyer, Jr.
 Mr. & Mrs. Kendall R. Meyer
 Dr. & Mrs. Ernest Mhoon
 Mr. John P. Middleton
 Richard N. & Jo Anne H. Miller
 Mr. David Milligan
 Mr. Ralph V. Miner
 Howard Mishoulam, M.D. &
 Carol Noetzel
 Mr. & Mrs. Ned E. Mitchell
 Mr. & Mrs. Alfred R. Moberg
 Mr. & Mrs. Roger J. Mohr
 Ms. Mary L. Momsen
 Mr. Frank A. Monhart
 Darlene & Richard Mooney
 Ms. Beverly B. Moor
 Mr. David W. Moore
 Mr. James B. Moore
 Mrs. Martha H. Moore
 Dr. Rudolph Moragne
 Dr. Timothy J. Moran

Individuals and Family Foundations

Field Contributors

- Mr. & Mrs. Joe Moravy
 Mrs. Barbara L. Morey
 Mr. & Mrs. Henry C. Morf
 Mr. & Mrs. Michael C. Morgan
 Mr. & Mrs. James Morrison
 Mr. & Mrs. William L. Morrison
 Mr. Anthony J. Mourek
 Mr. George L. Muehlenbein
 Ms. Donna K. Mueller
 Dr. Wylie H. Mullen
 Mr. & Mrs. Aidan I. Mullett
 Miss Nina A. Murphy
 Mr. & Mrs. Bernard Nath
 Dr. & Mrs. Joseph B. Neiweem
 Ms. Irina Nelidow
 Mr. & Mrs. William Ness
 Mr. & Mrs. Walter A. Netsch
 Mrs. J. Robert Newgard
 Ms. Carol Newman
 Ms. Gina Nicholas
 Ms. Carol L. Niemoller
 Mr. & Mrs. Ronald D. Niven
 Mr. & Mrs. Richard S. Nopar
 Mr. & Mrs. William C. Norby
 Dr. & Mrs. Gary Nordbrock
 Mr. & Mrs. Kenneth Nordine
 Mrs. Dagmara R. Nyman
 Mr. & Mrs. James J. O'Sullivan, Jr.
 Mr. & Mrs. William W. Oelman
 Mrs. Norman Olson
 Mr. Richard Orsan
 Mr. & Mrs. Dennis Osimitz
 Mr. Robert Osinski
 Mr. Wendel Fentress Ott
 Mr. David B. Owen
 Mr. Kevin T. Owens
 Ms. Sarah R. Packard
 Mr. & Mrs. Steve Pagnotta
 Mr. & Mrs. Potter Palmer
 Mr. & Mrs. Paul M. Pantola
 William Parker
 Dr. & Mrs. John Paton
 Mr. Thomas D. Patrick
 Mr. & Mrs. B. W. Pattishall, Jr.
 Mr. & Mrs. Beverly W. Pattishall
 The Pauly Family
 Mr. & Mrs. Warren A. Perkins, Jr.
 Mr. & Mrs. Harvey Perlman
 Dr. & Mrs. Ward E. Perrin
 Mr. & Mrs. William O. Petersen
 Mr. & Mrs. Richard J. Peterson
 Ms. Susanne Petersson
 Mr. & Mrs. Thomas D. Philipsborn
 Mr. Warde C. Pierson
 Dr. & Mrs. Michael Pine
 James Piro & Ruth Wright-Piros
 Mr. & Mrs. John F. Pittas
 Mr. Walter Plank
 Mr. & Mrs. John H. Platt, Jr.
 Mrs. John W. Pocock
 Mr. William H. Pokorny
 Mr. Nikolaos A. Porfyris
 Eduard Poser, M.D.
 Mr. Philip M. Potempa
 Mr. & Mrs. William Potocek
 Mr. C. Spencer Powell
 Mr. Michael Powers
 Mr. & Mrs. Richard A. Prinz
 Mr. & Mrs. Nicholas Pritzker
 Mr. Jerry H. Proffit
 Mr. & Mrs. Ralph E. Projahn
 Mr. & Mrs. Dennis Propp
 Dr. & Mrs. Franklin Prosser
 Mr. & Mrs. H. J. Przybylo
 Mr. & Mrs. Paul E. Purcell
 Mr. & Mrs. William Pye, Jr.
 Mr. Jack A. Quigley
 Mr. Dennis M. Quinn
 Mr. & Mrs. Daniel E. Ragen
 Mrs. Josephine M. Raidl
 Mr. Richard W. Rakowski
 Mrs. Margaret A. Ratcliffe
 Mr. & Mrs. William E. Rattner
 Mr. Gerald Razowsky
 Leslie Recht
 Mr. & Mrs. Clarence O. Redman
 Miss Gertrude E. Reeb
 Mr. & Mrs. Charles A. Reed
 Mr. and Mrs. Keith Reed
 Mr. & Mrs. Gunther Reese
 Mr. & Mrs. Colin J. Reeves
 Mr. Daniel M. Regan
 Drs. Herbert & Jane Reiman
 Mr. & Mrs. Robert M. Rempa
 Mr. John A. Renn
 Mr. & Mrs. Edward L. Renno
 Ms. Jo Ann Revak
 Mr. Charles M. Rhodes
 Mr. & Mrs. David A. Richards
 Dr. E. P. Richardson, Jr.
 Mr. & Mrs. Harold K. Ridgway
 Dr. & Mrs. A. M. Rieser
 Dr. & Mrs. Jack L. Robbins
 Mr. & Mrs. John H. Roberts
 Mr. Donald Rocap
 Lourdes M. Rodriguez
 Mr. & Mrs. Paul Roge
 Jill & Ron Rohde
 Ms. Marilyn Rohn
 Mr. James R. Roll
 Mr. & Mrs. Philip Rootberg
 Mr. Robert B. Rosen
 Mrs. Paul Rosenbaum
 Mrs. Annie M. Rosenberg
 Mr. Harry B. Rosenberg
 Mr. & Mrs. Richard M. Rosenberg
 Bernhard & Judith Rosenstein
 Mr. & Mrs. Gerson M. Rosenthal, Jr.
 Dr. Maurice J. Rosenthal
 Mr. & Mrs. Joseph A. Rosin
 Mr. & Mrs. Donald I. Roth
 Mr. & Mrs. Melvin L. Roth
 Mrs. Stephen W. Rothermel
 Ms. Barbara Rothrock
 Ms. Harriett Rozier
 Mr. & Mrs. Joseph O. Rubinelli
 Dr. & Mrs. Myron E. Rubnitz
 Miss Alice Rubovits
 Mr. & Mrs. Don Ruegg
 D. Sadowski & P. Harrison
 Frank Safford
 Dr. & Mrs. Jack Saleh
 Mr. James Sampson
 Dr. & Mrs. Richard L. Sandor
 Mr. & Mrs. Jerome A. Sara
 Dilip & Sandhya Sarwate
 Mr. & Mrs. Calvin P. Sawyer
 Dr. & Mrs. Edward F. Scanlon
 Dr. & Mrs. Dante G. Scarpelli
 Mr. & Mrs. Carl F. Schmid
 Mr. & Mrs. Lawrence Schnadig
 Mr. & Mrs. Elden J. Schnur
 Mr. & Mrs. Charles F. Scholl
 Mr. Ray J. Schoonhoven
 Mr. & Mrs. G. R. Schreiber
 Mr. & Mrs. Dieter R. Schulte
 Mr. & Mrs. John H. Scott
 Mr. & Mrs. John A. Scoville, Jr.

Individuals and Family Foundations

Field Contributors

- Ms. Olivia J. Scully
 Mrs. Cecilia Seabrook
 Kenneth Seeskin &
 Bronna Lee Wasserman
 Mr. P. J. Scippel
 Mr. Neal L. Seltzer
 Mr. & Mrs. David J. Shanahan
 Ella S. Shannon
 Jason & Ruth Sharps
 Mr. & Mrs. Robert Shattow
 Dr. & Mrs. Robert W. Shoemaker
 Mrs. Mary Shrimplin
 Mrs. Constantine Sidamon-Eristoff
 Miss Adeline E. Sigwalt
 Mr. & Mrs. Herman Silverman
 Mr. Reginald Simon
 Mr. & Mrs. Michael Simpson
 Mr. & Mrs. Eugene R. Sims
 Mr. & Mrs. Joseph Skala
 Mr. & Mrs. Leon N. Skan
 Dr. & Mrs. Albert H. Slepyan
 Dr. & Mrs. Laurence L. Sloss
 Arden & Charles Small
 Bernard Smith, M.D.
 Mr. Matthew D. Smith
 Ms. Mildred Reed Smith
 Mr. & Mrs. Martin H. Snitzer
 Mr. Roger A. Soderdahl
 Joyce Solberg
 Barbara K. Spaniak, M.D.
 Mr. & Mrs. Robert A. Sperl
 Mr. Vernon T. Squires
 Mr. Stephen F. Srejma
 Mr. & Mrs. William D. Staley
 Dr. Robert E. Stanley
 Dr. Alvin D. Star
 Mrs. Marjorie S. Staresin
 Mr. & Mrs. Harrison I. Steans
 Mr. & Mrs. Charles M. Stern
 Janet & Berton Stevens
 Mrs. Joan C. Stevenson
 Ms. Edna M. Stewart
 Mr. & Mrs. Robert C. Stewart
 Mr. & Mrs. Norman A. Stone
 Mr. Philip Strauss
 Mr. Paul H. Sumu
 Mr. & Mrs. Jason H. Sussman
 John & Jill Svoboda
 Mrs. Marilyn Svoboda
 Howard E. Sweeney, M.D.
 Mr. Philip W. K. Sweet
 Mr. Gary L. Sweetwood
 Mr. J. R. Swihart
 Mr. & Mrs. George S. Swope
 Mr. & Mrs. James B. Tafel
 Ron & Kathy Tamouye
 Jordan M. & Irene Tark
 Mrs. Sidney J. Taylor
 Mrs. Susan Tepper
 Mr. & Mrs. Earl W. Ternieden
 Mr. & Mrs. Nick Thomas
 Mr. Paul A. Thomas
 Mr. & Mrs. Richard K. Thomas
 Mrs. Frankie A. Thompson
 Mr. & Mrs. Robert D. Tice
 Raymond Tindel & Gretel Braidwood
 Mr. Nobuo Tokunaga
 Mr. & Mrs. Dennis J. Topolski
 Mr. & Mrs. Ross P. Toran
 Mr. Gerald M. Torrence
 Dr. P. D. Toto
 Mr. & Mrs. Richard S. Tremaine
 Mrs. Ralph A. Trieschmann
 Miss Janice Trimble
 Mr. T. J. Trogdon, Jr.
 Mr. & Mrs. Jeffrey P. Trotter
 Mr. & Mrs. Thomas H. Tubergen
 Mr. & Mrs. Richard Uihlein
 Mr. & Mrs. Kenneth T. Urbaszewski
 Clyde Valstad & Cathy Bartone
 Mr. & Mrs. Peter E. Van Nice
 Mr. Peter F. Van Peenen
 Mr. James M. Van Vliet, Jr.
 Mr. & Mrs. Norman Vance, Jr.
 Ms. Lillian A. Vanek
 Mr. Howard A. Vaughan
 Mr. & Mrs. B. Blair Vedder
 Mr. Maynard P. Venema
 Mr. John Vinci
 Gary & Christine Visconti
 Mr. David J. Vitale
 Mr. & Mrs. John Waddell
 Mr. Albert R. Walavich
 Mr. Mark Walden
 Mr. & Mrs. Harvey M. Walken
 Mr. & Mrs. George M. Walker
 Mr. & Mrs. Walter Wallin
 Mr. & Mrs. John P. Walsh
 Gomer W. Walters
 Mr. & Mrs. Michael Wambay
 Mr. Philip F. Warwick
 Mrs. M. Hubachek Watkins
 Mr. & Mrs. Dey W. Watts
 Ms. Sandra J. Weber
 Mr. & Mrs. Charles W. Wegener
 Dr. & Mrs. John T. Wegrzyn
 Mr. & Mrs. Sol S. Weiner
 Carey Weiss & Karen Pierce
 Mr. & Mrs. Robert G. Weiss
 Mr. & Mrs. Richard H. Weldon
 Mr. Robert H. Wellington
 Miss Ella M. Wheeler
 Mrs. Frances B. White
 Mr. & Mrs. David E. Whiting
 Mr. & Mrs. Bernhard F. Wiederhold
 Mr. & Mrs. Mark B. Wiklund
 Mr. Robert J. Wilezek
 Mr. & Mrs. Albert D. Williams, Jr.
 Barbara Williams & Martin Perry
 Mr. & Mrs. Jeremy Wilson
 Mr. & Mrs. Timothy Wilson
 Mr. Ralph S. Wirebaugh
 Mr. Michael Wirtz
 Paula Wise & Roy Slovenko
 Mr. & Mrs. Henry C. Wood
 Mr. & Mrs. James B. Wood
 Mr. & Mrs. Richard K. Woodruff
 Mr. & Mrs. Donald P. Woulfe
 George C. & Kathleen A. Wright
 Dr. & Mrs. Tito G. Yao
 Mr. & Mrs. Edward Yastrow
 Dr. & Mrs. Gerald D. Young, Jr.
 Mr. & Mrs. Willy K. Zimmermann



* Deceased

Corporations and Foundations

\$5,000 & Above

Allstate Foundation
 AON Foundation
 The Barker Welfare Foundation
 The Baxter Foundation
 Chicago Board of Trade
 The Chicago Community Trust
 Foundation
 Chicago Tribune Foundation
 Patrick and Anna M. Cudahy
 Fund
 FMC Foundation
 Ford Motor Company Fund
 The H B B Foundation
 The Walter E. Heller Foundation
 Household International
 Illinois Tool Works Foundation
 The John D. & Catherine T.
 MacArthur Foundation
 McKinsey & Company, Inc.
 McMaster Carr Supply Company
 The Nalco Foundation
 Northern Illinois Gas
 The Northern Trust Company
 John Nuveen & Company, Inc.
 The Albert Pick, Jr. Fund
 S&C Electric Company
 Dr. Scholl Foundation
 Sears Roebuck and Company
 Stein Roe & Farnham Foundation
 Walgreen Company
 W.P. & H.B. White Foundation
 Wilson & McIlvaine

\$100 to \$4,999

Abbott Laboratories Fund
 Acco World Corporation
 Akzo Nobel, Inc.
 American Agricultural
 Insurance Company
 Amsted Industries Foundation
 Bank of America Illinois/
 DeCosta Memorial
 The Braeside Foundation
 Central Steel & Wire Company
 Cherry Electrical Products
 Chicago Bridge & Iron Foundation
 The Chicago Corporation
 Coca-Cola Bottling Company
 Consolidated Papers Foundation
 Cooper Industries Foundation
 D & K Foundation
 Dana Molded Products, Inc.
 R. R. Donnelley & Sons Company
 Elkay Manufacturing Company
 The Florsheim Shoe Company
 Gardner, Carton & Douglas
 Gaylord Container Foundation
 General Binding Corporation
 Geraldi-Norton Memorial
 Harza Engineering Company
 Richard Hertzberg Photography
 Illinois Founders Insurance
 Interlake Foundation
 International Business Machines
 JUNO Lighting, Inc.
 Latham & Watkins
 Liquid Carbonic Industries
 Corporation
 Loomis-Sayles & Company
 MacLean-Fogg Company
 Mid-America Foundation
 Pittway Corporation
 The Retirement Research
 Foundation
 Rice Foundation
 S-B Power Tool Company
 SC Johnson Wax
 Sahara Enterprises, Inc.
 Sargent & Lundy Engineers
 Arthur J. Schmitt Foundation

Scotsman

Shell Oil Company Foundation
 Shure Brothers, Incorporated
 Skidmore, Owings & Merrill
 Stepan Company
 The Oakleigh L. Thorne
 Foundation
 Time Life, Inc.
 USG Foundation, Inc.
 U.S. Can Foundation
 William Blair & Company
 Foundation



PHOTOS BY WILLIAM BURGER

Unrestricted, Restricted, and Gifts to Endowment

Individuals and Family Foundations

\$100,000 & above

A. Watson Armour III Charitable
Lead Trust
Vera C. Chapman Estate
D and R Fund
Elizabeth Morse Genius Charitable
Trust
Robert E. Gregg Estate
Irene Neuhauser Gustus Trust
Mr. & Mrs. Corwith Hamill
Joseph B. Hawkes Estate
The Arthur Rubloff Trust
The Women's Board

\$10,000 to \$99,999

Anonymous
William C. Bannerman Foundation
The Buchanan Family Foundation
Henry T. Chandler
Edwin J. DeCosta Trust
Evelyn Frank Estate
Joseph M. Fury Estate
The K. Family
Bertha LeBus Charitable Trust
Elizabeth A. Leslie Estate
Mr. & Mrs. John H. Leslie
Lucy S. Lyon Estate
Oscar G. & Elsa S. Mayer
Charitable Trust
Margaret A. Myers &
Ronald J. Krumm
The Negaunee Foundation, Ltd.
The Pritzker Foundation
Philip F. Ruth Estate
Miss Nellie R. Stickle
Miss Ruth S. Stickle*
Ruth & Vernon Taylor Foundation
Jane B. & Chester D. Tripp Estate
Mrs. J. Howard Wood

\$1,000 to \$9,999

Mrs. Lester S. Abelson
Anonymous
Mrs. P. Kelley Armour
Abby K. Babcock Estate
Mr. & Mrs. Duane D. Baumann
Mrs. Harrington Bischof
Mr. & Mrs. Willard L. Boyd
Edwin J. Brach Foundation
Mr. & Mrs. Robert C. Brunner

Mr. & Mrs. A. C. Buehler, Jr.
Mrs. Robert N. Burt
Butz Foundation
Mrs. Mary V. Chen
A. G. Cox Charity Trust
Mr. & Mrs. William M. Daley
Mr. & Mrs. Howard M. Dean, Jr.
Mr. & Mrs. Byram E. Dickes
Mrs. Gaylord Donnelley
Mr. & Mrs. Robert G. Donnelley
(The Donnelley Foundation –
Robert G. & Miranda Donnelley
Family Fund)
Mr. & Mrs. Thomas E. Donnelley II
(The Donnelley Foundation –
Thomas E. II & Barbara C.
Donnelley Family Fund)
Mr. & Mrs. Samuel H. Ellis
Mrs. Robert C. Ferris
Mrs. James H. Ferry, Jr.
Mr. & Mrs. Charles Robert Foltz
Mrs. Peter B. Foreman
Mr. & Mrs. Robert E. Gallagher
Mrs. J. Douglas Gray
Mr. & Mrs. Roger S. Griffin
Mr. & Mrs. Paul W. Guenzel
Mrs. Charles L. Hardy
(The Donnelley Foundation –
Ann & Elliott Donnelley
Family Fund)
Mr. & Mrs. King W. Harris
Mrs. Robert S. Hartman
Josephine A. Hedges Estate
Miss Elizabeth Hoffman
Dr. & Mrs. Robert F. Inger
Mr. & Mrs. William Landreth
Otto W. Lehmann Foundation
Mr. & Mrs. Robert H. Malott
Mrs. Jennifer L. Martin
Clifford G. Massoth Estate
Mrs. C. Robert P. Meyjes
Mrs. Arthur T. Moulding
Mr. Harry G. Nelson
Mrs. John D. Nichols
Offield Family Foundation
Mr. & Mrs. Richard C. Oughton
Mrs. Jerry K. Pearlman
Mrs. Richard Pigott
Mr. & Mrs. Frank A. Reichelderfer
Ross, Hardies, Babcock Trust

Burton Rubloff Estate
Mr. & Mrs. John S. Runnells II
Mrs. Patrick G. Ryan
Harriet E. Sankey Estate
Dr. Nan Schaffer
Mr. & Mrs. Robert P. Schauss
Marvin H. Schmitt Estate
The Seabury Foundation
Mrs. Richard J. L. Senior
Arch W. Shaw Foundation
Toni S. Smith
Irene M. Spensley Estate
Sulzer Family Foundation
The Warwick Foundation
Mrs. John L. Welsh III
Mrs. Barbara H. West
David E. Willard
Mrs. William Wood-Prince

\$100 to \$999

Mrs. Keene H. Addington
Mrs. Helen L. Alderman
Mr. & Mrs. John A. Alexander
Mrs. Stanley N. Allan
Mrs. Richard J. Almeida
Mrs. James W. Alsdorf
Mr. & Mrs. Fred R. Anderson
Mrs. Robert G. Anderson
Anonymous
Mr. & Mrs. T. Stanton Armour
Mr. & Mrs. Donald L. Asher
Mrs. Stephen W. Baird
Dr. Michele Bardack
Mr. & Mrs. Roger S. Baskes
Mr. & Mrs. Robert O. Bass
Mrs. George R. Beach
Mr. & Mrs. William R. Beak
Mr. & Mrs. Alfred B. Bederman
Mr. & Mrs. Francis Beidler
Mrs. Barbara K. Belew
Mrs. Edward H. Bennett, Jr.
Mrs. Harry O. Bercher
Helen K. Bieker Estate
Mrs. Michael A. Bilandic
Mary Black
Mrs. Bowen Blair
Mrs. Joseph L. Block
Mr. & Mrs. Marvin W. Block
Mrs. Philip D. Block III
Mrs. Edwin R. Blomquist

Individuals and Family Foundations

- Mr. Albert H. Bloom
 Mrs. G. E. Boone
 Ms. Sally P. Boros
 Boston Museum of Science
 Mr. William J. Bowen
 Dr. & Mrs. Robert Earl Boyd III
 Rev. & Mrs. John S. Broeksmit, Jr.
 Mrs. Cameron Brown
 Mr. & Mrs. Roger O. Brown
 Mr. & Mrs. David J. Bryan
 Mrs. William C. Bullock III
 Galen & Birch Burghardt
 Mrs. Homer A. Burnell
 Mrs. Clark Burrus
 Dr. & Mrs. Stuart S. Burstein
 Mrs. William C. Butler
 Mr. & Mrs. Eugene Callen
 Mrs. Douglas H. Cameron
 Sidney Camras
 Mrs. Robert A. Carr
 Mrs. Robert Wells Carton
 Mrs. Hammond E. Chaffetz
 Mrs. Henry T. Chandler
 Mr. & Mrs. Michael F. Chaneske
 Mr. & Mrs. William C. Chapman
 Mrs. Walter L. Cherry
 Hon. & Mrs. Carl J. Cipolla
 Mr. & Mrs. Frank J. Citek
 Mrs. Donald C. Clark
 Mrs. W.H. Clark, Jr.
 Mrs. Charles F. Clarke, Jr.
 Mrs. Frank W. Considine
 Mr. John Cook
 Mr. & Mrs. John R. Cooper
 Mrs. Gale C. Corley
 Mrs. James R. Coulter
 Miss Frances M. Craig
 Mrs. Mark Crane
 Mrs. Betty Ann Cratty
 Mrs. Sandra K. Crown
 Mrs. Robert L. Cruikshank
 Mr. David W. Dangler
 Mrs. John A. Daniels
 Mrs. Robert J. Darnall
 Mrs. William W. Darrow
 Dr. & Mrs. Tapas K. Das Gupta
 Mrs. Leonard S. Davidow
 Mr. & Mrs. Eugene A. Davidson
 Mrs. Emmett Dedmon
 Mr. & Mrs. Robert O. Delaney
 Mrs. Charles Dennehy, Jr.
 Mrs. Olivia Diaz
 Dick Family Foundation
 Mrs. Edison Dick
 Mrs. William R. Dickinson, Jr.
 Mrs. John M. Dixon
 Mrs. Wesley M. Dixon
 Mr. Michael A. Dloogatch
 Ms. Patricia Dodson
 Mrs. Suzanne W. Drucker
 Mr. Loren A. DuBois
 Mrs. William E. Dumke
 Mary Mills Dunea
 Mrs. Maurice F. Dunne, Jr.
 Mrs. Benjamin C. Duster
 Mrs. Jerrold L. Eberhardt
 Mr. & Mrs. Reed H. Eberly
 Florence P. Eckfeldt Estate
 Mr. & Mrs. Samuel H. Ellis
 Mr. & Mrs. Jerry EtsHokin
 Mrs. Anne H. Evans
 Mrs. Gordon R. Ewing
 Michael Fain & Judith Barnard
 Mr. & Mrs. John V. Farwell IV
 Mr. & Mrs. Henry Field
 Mr. & Mrs. Marshall Field
 Mr. & Mrs. F. Conrad Fischer
 Mr. & Mrs. Peter J. Fortsas
 Mrs. Francis G. Foster, Jr.
 Mrs. Hubert D. Fox
 Mrs. Earl J. Frederick
 Mrs. Gaylord Freeman
 Mrs. Cyrus F. Freidheim, Jr.
 The Friday Club
 Mr. & Mrs. Joel S. Friedland
 Mrs. Marshall B. Front
 Mrs. William D. Frost
 Mrs. Maurice F. Fulton
 Mr. Thomas J. Gaffney
 Mr. Gregory J. Gajda
 Mrs. Christopher B. Galvin
 Dr. & Mrs. Patrick E. Garry
 Dr. & Mrs. John S. Garvin
 Mrs. John S. Gates
 Stephen F. & Laura D. Gates
 Mrs. Robert B. Gerrie
 Mrs. Isak V. Gerson
 Mr. & Mrs. William J. Gibbons
 Mr. & Mrs. James J. Glasser
 Mr. & Mrs. Hugh W. Glenn
 Miss Martha P. Gober
 Mrs. Philip W. Goetz
 Mrs. Julian R. Goldsmith
 Mrs. O. Renard Goltra
 David Gong, D.D.S.
 Mr. Morris F. Goodman
 Mrs. Paul W. Goodrich
 Mr. & Mrs. William M. Goodyear
 Mr. & Mrs. John K. Greene
 Mrs. Robert C. Gunness
 Mrs. Delores H. Gustafson
 Mr. Daniel P. Haerther
 Mr. & Mrs. Charles C. Haffner III
 Mr. & Mrs. William J. Hagenah III
 Mrs. Roberta C. Hanley
 Mr. & Mrs. Edward J. Harris
 Mrs. Charles Cotton Harrold III
 Mrs. Neil F. Hartigan
 Michael Hartung & Joanne Zack
 Drs. Malcom & Adele Hast
 Mrs. David C. Hawley
 Mr. & Mrs. Daniel R. Hayman
 Colette J. Hedien
 Mr. & Mrs. Richard W. Heil
 Mr. Norman Hessler
 Mr. & Mrs. Bruce Heyman
 Mr. & Mrs. James O. Heyworth
 Mr. Howard E. Hight
 Mrs. Rembrandt C. Hiller, Jr.
 Mrs. Edward Hines
 Mrs. Harold H. Hines, Jr.
 Mrs. John L. Hines
 Mrs. Thomas R. Hodgson
 Mrs. Robert B. Hoffman
 Mrs. Thomas J. Hoffmann
 Mrs. Jeanne P. Honsinger
 Mrs. Barry G. Hoyt
 Mrs. Philip W. Hummer
 Mr. & Mrs. William J. Hunckler III
 Janice S. Hunt
 Mrs. Chauncey Keep Hutchins
 Mrs. Robert C. Hyndman
 Mrs. Stanley O. Ikenberry
 Mrs. Robert S. Ingersoll
 Mr. Michael E. Jackson
 Mrs. Frederick G. Jaicks
 Bernice Jasinski Estate
 Mrs. Brian Colt Jerome
 Dr. & Mrs. Frank J. Jirka
 Mrs. S. Curtis Johnson III

Individuals and Family Foundations

- Mrs. James C. Jones
 Dr. & Mrs. Philip N. Jones
 Mrs. Richard M. Jones
 Henry J. Kaiser Family Foundation
 Ms. Patricia M. Kammerer
 Mr. & Mrs. Jack L. Karp
 Dr. Maria L. Kawasaki
 Mrs. John J. Kinsella
 Mr. & Mrs. Albert Kircher, Jr.
 Mrs. William T. Kirk, Jr.
 Mr. & Mrs. Raymond A. Kliphardt
 Gerald A. & Karen A. Kolschowsky
 Carol A. Konieczny
 Mrs. Richard Kracum
 Ms. Cara M. Kretz
 Mrs. Bertram D. Kribben
 Mr. Robert A. Kubiicka
 Helen L. Kuehn
 Dr. Chapurukha M. Kusimba
 Donna La Pietra
 Drs. Bernard S. & Pauline P. Lee
 Mr. Herbert M. Lee
 Mr. Brad Lehnigk
 Mrs. Benjamin Lenhardt, Jr.
 Mrs. Edward H. Levi
 Mrs. Michael S. Lewis
 Mrs. Joseph F. Lizzadro
 Mrs. Glen A. Lloyd
 Mrs. William W. Lovett, Jr.
 Dr. Abbie R. Lukens
 Mrs. Walter M. Mack
 Mrs. John W. Madigan
 Ms. Alice M. Mailloux
 Mr. & Mrs. Timothy J. Malloy
 Mr. & Mrs. Fred Mann
 Mr. & Mrs. Fred A. Manuele
 Mr. Samuel C. Maragos
 Mr. & Mrs. Asher C. Margolis
 Mr. James A. Marshall
 Ms. Rosemary Martin
 Joann & Emil Martinec
 Mrs. Arthur C. Martinez
 Mrs. Edward Matz, Jr.
 Mrs. Frank D. Mayer
 Mrs. Frank D. Mayer, Jr.
 Mrs. Richard P. Mayer
 Mr. Brooks McCormick
 Mrs. T. M. McCullough
 Mr. Clement J. McDonald
 David McDonald & Mary Stucky
 Mr. & Mrs. James F. Mc Donald
 Dr. & Mrs. Peter Mc Kinney
 Mr. & Mrs. William W. Mc Kittrick
 Mr. & Mrs. William M. Mc Knight
 Mr. & Mrs. James A. Mc Mullen
 Mrs. Eugene J. Mc Voy
 Mr. & Mrs. John C. Meeker
 Mrs. Henry W. Meers
 Mrs. Betty Mekemson
 Mr. & Mrs. Ronald M. Melvin
 Mrs. Hugo J. Melvoin
 Mrs. Allen C. Menke
 Mr. & Mrs. Thomas W. Merritt, Jr.
 Ms. Marcella V. Meyer
 Mrs. J. Roscoe Miller
 Mrs. Newton N. Minow
 Mr. Frank Miya
 Mrs. Charles H. Montgomery
 Mrs. Carolyn S. Moore
 Mr. & Mrs. Lawrence M. Moran
 Mr. & Mrs. Richard Moser
 Mr. Anthony J. Mourek
 Mrs. Beatrice Schuetz Mueller
 Mrs. Muriel M. Mullenbach
 Mrs. Aidan I. Mullett
 Mrs. Leo F. Mullin
 Mrs. Charles F. Nadler
 Mrs. John B. Naser
 Mrs. Joseph E. Nathan
 Mrs. Earl L. Neal
 Mr. & Mrs. Cary L. Neiman
 Lawrence S. Newmark & Gloria
 Newmark Foundation
 Nichols Middle School
 Mrs. Arthur C. Nielsen
 Miss Lucille Ann Nunes
 Mr. & Mrs. Harold P. O'Connell
 Mr. & Mrs. Jeffrey J. Oesterle
 Mrs. Ralph Thomas O'Neil
 Mrs. Paul W. Oliver, Jr.
 Mrs. Donald W. Patterson
 Mrs. O. Maerae Patterson
 Mrs. James R. Pendry
 Mrs. R. Marlin Perkins
 Mr. & Mrs. William O. Petersen
 Mr. & Mrs. Gabriel L. Petre
 Dr. Herbert F. Philipsborn, Jr.
 Mrs. Marlene K. Phillips
 Mr. & Mrs. Philip Pinsof
 Mrs. George A. Poole
 Mrs. Charles S. Potter
 Mr. Robert H. Pulver
 Mrs. Albert E. Pyott
 Mrs. Neil K. Quinn
 Dr. & Mrs. George B. Rabb
 Mr. & Mrs. Millard Rada
 Mr. & Mrs. James Radkins
 Mr. James Radtke &
 Ms. Susan Kressin
 Ms. Beth Rauner
 Mrs. Robert W. Reneker
 Mrs. Don H. Reuben
 Ms. Sheila Reynolds
 Mr. & Mrs. George G. Rinder
 Mr. & Mrs. Burton R. Rissman
 Mr. & Mrs. Harry V. Roberts
 Mr. Robert D. Rodgers
 Mrs. Frederick Roe
 Mr. William R. Rom
 Mrs. Edward M. Roob
 Mrs. Samuel R. Rosenthal
 Mrs. Rose Rozran
 Ms. Gale P. Runnells
 Mr. & Mrs. Ralph W. Rydholm
 Ms. Laurie Sanders
 Mrs. Gerhart Schild
 Mrs. Dennis Schlemmer
 Mrs. F. Eugene Schmitt
 Mr. & Mrs. Richard H. Schuadig
 Mrs. Suzanne B. Schoen
 Mrs. Carol J. Scholl
 Mr. & Mrs. Barry Scott
 Mrs. William L. Searle
 Mr. Edwin A. Seipp, Jr.
 Mrs. Thomas C. Sheffield, Jr.
 Melissa A. Shennan
 Mr. & Mrs. John G. Sickle
 Mr. Guenther Siegel
 Mrs. Michael S. Sigal
 Mrs. John R. Siragusa
 Mrs. Richard D. Siragusa
 Mrs. Raymond I. Skilling
 Mrs. Edward Byron Smith, Jr.
 Mrs. H. Brooks Smith
 Mr. & Mrs. Worthington L. Smith
 Mrs. Charles H. Solberg
 Mrs. Robert Allen Sprowl
 Mrs. E. Norman Staub
 Mr. Robert J. Stavinga
 Mrs. Neele E. Stearns

Individuals and Family Foundations

Mrs. Adlai E. Stevenson III
 Mr. & Mrs. Jules N. Stiffel
 Mrs. Harold E. Strauss
 Mr. & Mrs. Ivan G. Strauss
 Mrs. Robert H. Strotz
 Mrs. James J. Stukel
 Mrs. John W. Sullivan
 Mr. & Mrs. V. John Surak
 Mrs. William C. Swartehild, Jr.
 Mrs. Edward F. Swift III
 Mrs. Gustavus F. Swift, Jr.
 Mr. & Mrs. James M. Tait
 Mrs. Hedy Tan
 Mr. & Mrs. Terence A. Tanner
 Mr. & Mrs. Gilbert Tauck
 Mrs. John W. Taylor III
 Dr. & Mrs. Samuel G. Taylor III
 Mr. & Mrs. Alan L. Thain
 Mrs. Richard L. Thomas
 Mrs. Robert W. Thomas
 Mrs. Bruce Thorne
 Mr. & Mrs. Richard P. Toft
 Mrs. Melvin A. Traylor, Jr.
 Mr. Norman Tucker
 Dr. & Mrs. William D. Turnbull
 Mr. & Mrs. Charles R. Twede
 Mr. Robert D. Tyler
 Mrs. Murray J. Vale
 Mr. & Mrs. Theodore W. Van Zelst
 Mrs. Faith L. Vilas
 Richard Vukoun
 Mr. & Mrs. Maurice Walk
 Mrs. M. Hubachek Watkins
 Mrs. E. Leland Webber
 Mrs. William L. Weiss
 Dr. Rupert L. Wenzel
 Mrs. Henry P. Wheeler
 Mr. Willard E. White
 Mrs. Howard L. Willett, Jr.
 Mrs. Philip C. Williams
 Mrs. Robert H. Wilson
 Windy City Grotto National
 Speleological Society
 Winnetka Community Associates
 of the Woman's Board of the
 Art Institute
 Mrs. Elizabeth H. Winston
 Nancy Corwith Hamill Winter
 Mr. Arthur M. Wood
 Mrs. Clarence N. Wood

Mr. & Mrs. Donald P. Woulfe
 Mr. & Mrs. Allyn R. Wreath
 Mr. & Mrs. W. Andrew Wright
 Susan Mongerson Wunderlich
 Wymbs Foundation, Inc.
 Mrs. Blaine J. Yarrington
 Mrs. George B. Young
 Mr. & Mrs. Max Zar
 Ms. Patricia E. Zastawny



Restricted, Capital, and Gifts to Endowment

*Corporations and Foundations***\$100,000 & Above**

William Randolph Hearst
Foundation

\$10,000 to \$99,000

Abbott Laboratories
Amoco Foundation
Arthur Andersen & Company
Bank of America Illinois
Elizabeth F. Cheney Foundation
John D. & Catherine T. MacArthur
Foundation
General Mills Foundation
Kraft Foods
Polk Bros. Foundation
The Regenstein Foundation
The Rockefeller Foundation

\$5,000 to \$9,999

Fel-Pro/Mecklenburger
GATX Corporation
Harris Bank Foundation
Price Waterhouse and Company
The Siragusa Foundation

\$1,000 to \$4,999

Advanced Mittworks, Inc.
Anonymous
AON Foundation
Leo Burnett Company, Inc.
Chicago Tribune Foundation
Crate & Barrel
Griffin Trading Company
Hall's Rental Service, Inc.
JCCC Foundation
Metropolitan Life Foundation
The Prudential Foundation
Schwarz Paper Company
The Seattle Foundation

\$100 to \$999

Ameritech Foundation
Bank of America Illinois
Benvenuti & Stein, Inc.
Dean Foods Company
R.R. Donnelley & Sons Company
Froggy's Catering
General Parking Management L.P.
W. W. Grainger, Inc.
GTE Information Services, Inc.
The Walter E. Heller Foundation
Hinsdale Hospital
Kenyon Oppenheimer
Michael Lerner Productions
Miami University
Kenneth Nebenzahl, Inc.
Hotel Nikko Chicago
Pfizer, Inc.
Pittway Corporation Charitable
Foundation
St. Andrews Foundation
St. Augustine's Center

Matching Gifts

Akzo Nobel, Inc.
Ameritech Foundation
AT & T Foundation
AT & T Global Information
Solutions
Baker Fentress & Company
Bank of America Illinois
Leo Burnett Company, Inc.
CBS Foundation
CNA Foundation
Chevron Companies U.S.A.
Citicorp Foundation
The Coca-Cola Company
Consolidated Papers
Foundation, Inc.
Corning Incorporated Foundation
R.R. Donnelley & Sons Company
EXXON Corporation
Jamec & Marshall Field
Foundation
Fireman's Fund Foundation
Follett Corporation

GATX Corporation
W. W. Grainger, Inc.
John Hancock Financial Services
Harcourt General, Inc.
Harris Bank Foundation
Houghton Mifflin Company
Household International
IBM International Foundation
Illinois Tool Works Foundation
International Tool Works
Foundation
Kansas City Southern Industries
Kirkland & Ellis Foundation
John D. and Catherine T.
MacArthur Foundation
The May Department Stores
Company
Mayer, Brown & Platt
McGraw Foundation
Mobil Foundation, Inc.
Morton International, Inc.
Nalco Chemical Company

Kenneth Nebenzahl, Inc.
John Nuveen & Company
Peoples Gas Light and Coke
Company
Pfizer, Inc.
Philip Morris, Inc.
Pittway Corporation Charitable
Foundation
The Quaker Oats Foundation
Reader's Digest Foundation
Safety-Kleen Corporation
Santa Fe Pacific Foundation
Sara Lee Foundation
Stone Foundation
USG Foundation, Inc.
U S West Foundation
The Williams Companies, Inc.
WMX Technologies, Inc.

Connecting: The Campaign for The Field Museum

The Field Museum is deeply grateful for generous Campaign commitments received through December 31, 1995.

\$100,000 & Above

Mr. & Mrs. Philip D. Block III
Willard & Susan Boyd
Jamee and Marshall Field
Foundation

\$10,000 to \$99,999

Mr. & Mrs. Bowen Blair
Mr. & Mrs. Leo F. Mullin
Priscilla A. & Douglas H. Walter
Willard E. White

Edward Ayer Society

The Edward Ayer Society recognizes individuals whose charitable gift planning assures a bright future for The Field Museum.

Frances Chalex Abraham
Anonymous
Helen R. Beiser, M.D.
Robert E. & Ruth B. Berns
Mrs. G. E. Boone
Willard & Susan Boyd
Mr. & Mrs. Thomas C. Dabovich
Dr. Curtis B. Frank
Thomas A. Giarrusso
Mrs. Warren Gjorup
Gilbert & Lillian Hansen
David & Betty Hess
Dr. & Mrs. James C. Hunt

Susanne E. Larsh, M.D.
Robert E. Lewis, Ph.D.
Dr. Arthur & Mrs. Lois Marc
Hugo & Lois Melvoin
Marie E. Peruscini &
Edward C. Bapple
David & Mary Schlotterback
Mr. & Mrs. Robert E. Vernon
Mr. & Mrs. Charles R. Walgreen, Jr.
Mr. & Mrs. Daniel J. Walsh
Dr. Vida B. Wentz
Mr. & Mrs. Vernon L. Wesby



Public Entities

\$1,000,000 & above

The Chicago Park District
National Science Foundation

\$100,000 to \$999,999

Chiang Ching-Kuo Foundation
Institute of Museum Services
National Endowment for
the Humanities
National Institutes of Health
National Park Service

\$10,000 to \$99,999

Argonne National Laboratories/
Department of Energy
Chicago Board of Education
City of Chicago,
Office of Fine Arts
Department of Commerce
Illinois Arts Council
Illinois Board of Tourism
National Aeronautics and
Space Administration
National Biological Service/
Department of the Interior
National Cancer Institute
National Endowment for the Arts
United States Department of
Agriculture

Gifts in Kind

Mrs. Robert Wells Carton
Dean Foods
Alfred Dunhill of London, Inc.

Mrs. Henry K. Gardner, Jr.
Lester Lampert, Inc.
Marshall Field's

Minasian Oriental Rug Company
Saks Fifth Avenue
Schwarz Paper Company

PHOTO BY WILLIAM BURGER

DONORS TO THE COLLECTIONS

- Dr. Takahiro Asami
 Pamela K. Austin
 Dr. Mercedes Azpelicueta
 Paul Baker
 Keith Barker
 Margaret Baughman
 Bay Beach Wildlife Sanctuary
 Barbara Becker
 Dr. Willy Bemis
 Donald Bennett
 Teri Bergquist
 Dr. Rudiger Bieler
 Bohart Museum of Entomology
 Maurizio Bottoni
 Brookfield Zoo
 Barbara Brown
 Paul Brunsvold
 Mrs. Alice Burke
 California Academy of Sciences
 Mr. Ronald D. Cave
 Mr. Albert F. Chadwick
 C. L. Chan
 Tanya Chanard
 Dr. Donald Chandler
 Chicago Zoological Society
 Mr. Roberto Cipriani
 Paul Clyne
 Dr. Brian F. Coles
 Ms. Rachel Collins
 Tony Comerçi
 Merel Jack Cox
 Polly Crocker
 Indraneil Das
 Delaware Museum of Natural History
 Doug Dewitt
 Diane Doers
 Dr. Atsushi Doi
 Amy Driskell
 Dr. G. Duhamel
 Eastern Illinois University
 Suzanne Edwards
 Mr. Fred Fechtner
 Forestry Canada
 Richard Franks
 Maria Gallardo
 Laura Gates
 Mr. Steve Geick
 Thomas Gnoske
 Dr. Daniel Golani
 Steven Goodman
 George Gorman
 Dr. Shannon Hackett
 Elizabeth Hartley
 Mary Hennen
 Peter Hoffman
 Dr. Donna Hollingsworth
 Dr. Carl D. Hopkins
 Kim M. Howell
 Dr. Jean Huber
 Robert Hughes
 Michael Huhndorf
 Dr. J. Hureau
 Mr. Tateo Ito
 Ms. Mary Ann Johnson
 Dr. Clarence Dan Johnson
 David Johnson
 Mr. Samuel Johnson
 Marion Kadushka
 Kansas State University
 Daryl Karns
 Dr. Elaine Keithan
 Ms. Susan L. Kenney
 Julian Kerbis
 Dr. David Kistner
 James Koeppel
 Dr. Peter Kovarik
 Gray Lawrence
 Dr. Scott Lidgard
 Lincoln Park Zoo
 Peter Lowther
 Dr. J. Marquez Luna
 Dr. Randall Lundgren
 Dr. Richard Lutz
 Mr. Andrew Mack
 Allen Markezieh
 Ben Marks
 S. R. Mather
 Mr. David Matusik
 Dr. J. Armando Maya
 Jack McDonald
 Dr. Dorothy Merrill
 Michael J. Miller
 Mr. Richard Mine
 Minnesota Department of Natural
 Resources
 Sherman Minton
 Shaibal Mitra
 Dr. Debra Moskovits
 Museo Nacional de Ciencias
 Naturales
 Museum d'Histoire Naturelle
 Museum National D'Histoire
 Naturelle, Paris
 Dr. G. H. Nelson
 Dr. Harry G. Nelson
 Alfred F. Newton
 NOAA, Alaska Fisheries Center
 Link E. Olson
 Janet Palmer
 Mr. Philip P. Parrillo
 Ron Penczek
 Dr. Angel Perez
 Dr. Daniel Perez
 John Phelps
 Mrs. Betty Jean Piech
 Martin Puckett
 Ali Rabatsky
 Dr. William Raschi
 Jamie Rachlin
 Michael L. Reed
 Alan Resetar
 Olivier Julie Sacco
 Mario Schweiger
 Beverly Scott
 Jodi Sedlock
 Mr. Mike Severns
 John G. Shedd Aquarium
 Dr. Petra Sierwald
 Dr. Derek Sikes
 Mr. John Slapcinsky
 Robert Sliwinski
 Snow Entomological Museum
 William T. Stanley
 Dr. Douglas Stotz
 Daniel Summers
 Dr. Walter Suter
 Mr. Kevin Swagel
 Dr. Donald Taphorn
 Texas A&M University
 Dr. Margaret K. Thayer
 Dorcas Thompson
 Dr. William Turnbull
 University of Miami
 Ms. Kevina Vulinec
 Tyana Wachter
 Dr. John Wagner
 Rhonda Walker
 Mr. Chris Welch
 Benjamin Willard
 Dr. David Willard
 Wisconsin Department of Natural
 Resources
 Laura Zaidenberg
 Kathy Zeidenstein
 Zoological Museum, Moscow

Ambassadors

Mary Allan
Gwen Barnett
Daphne Dennehy
Edith Dervin
Susanna Doolin
Janet Hartl
Sue Ish
Lorraine Linnemeir
Kay Mayer
Reginald Simon
Marjorie Traylor
Joan Webber
Edith Wolnak

Anthropology

Anu Antilla
Dodie Baumgarten
Elizabeth Beak
Brynn Bender
Garland Brown
Sol Century
Aloysius Chen
Tracy Colquhoun
Connie Crane
Clare Dolan
Paul DuBrow
Betsy Eigenberg
Hershey Escudero
Peter Gayford
Margaret Goes
Meghan Goldman
Robert Gowland
Thomas Grygiel
Kyoko Iida
Kazuko Ishihara
Douglas Jackson
Belen Jaquez
Derek Kleckner
Stella Kukadia
Catalina Larios
Jack MacDonald
Heather McMillen
Steven McCandless
Kate Molumby
Carolyn Moore
Michael Morse
Barbara Novy
Hiroko Oda
Judy Odland
Naoko Osawa
Joanna Perlman

Mary Ann Peters
Dorothea Phipps-Cruz
Michael Pollich
Malcolm Smith
Marcell Smith
Sara Spivy
Pamela Stewart
Gayle Stregge
Akiko Swabb
Ika Tomaschewsky
Hsi-tsin Tsiang
Cecelia Wagner
Wang-fai Wong
Miyako Yamamoto
Edward Yastrow
Tomomi Yoshimizu

Botany

Helen Beiser
Helen Burger
Tracy Colquhoun
Ernesto DeLaRosa
Christa DeMarah
Elisabeth Farwell
Josephine Garcia
Dietrich Haas
Dennis Hall
Ruthie Harari-Kremer
Teresa Hicks
Jay Horn
Sharon Kramer
Margaret Martling
Selwyn Mather
Samuel Mayo
Marie Meskauskas
Ismial Morrar
Alice Piller
Gina Scaletta
Daniel Snyder
Randy Upton
Julius Wagman

Computing

Wei Xu

Education

Andy Abramowicz
Elizabeth Adams
Jeremy Alexander
Jeanette Almada
Fred Anderson
Shirley Anderson

Jenny Araujo
Maria Arias
Terry Asher
Sandy Atkinson
Melissa Auild
Katherine Austin
Robbie Avery
Margaret Babiarz
Alvia Baker
Betsy Baldoni
Mark Baldrige
Jean Baldwin-Herbert
Lucia Barba
Irma Barragan
Edward Barta
Rosemary Beckman
Madu Bedarinwa
Jeanne Bedrosian
Susan Bee
Annie Belmer
Jody Bembinster
Nancy Berg
Maria Bernal
Ruth Berns
Elaine Bernstein
Frieda Bernstein
Sidney Bernstein
Al Biemond
Catharine Blair
Juele Blankenburg
Robert Blasdell
Arthur Block
Beth Blomquist
Blanche Blumenthal
Roger Bohn
Madelyn Botello
Maurizio Bottomi
Susan Boyd
Laverne Bradley
Laura Brandon
Leslie Brice
Carol Brna
Irene Broede
Anna Brothers
Lori Brustin
Pauline Brzenzinski
Olga Buenz
Stephen Bugman
Peter Buol
Jack Burgeman
Eleanor Burns-Larson
Stephanie Buzan

FIELD MUSEUM VOLUNTEERS

Joseph Cablk
Kevin Cahill
Janet Calkins
Catherine Cameron
Annie Campbell
Rebecca Cannon
Harry Carmichael
Kitty Carson
Suzy Carson
Thomas Casa
Sheila Cawley
Mei Chao
Ross Chisholm
Carolyn Church
Renée Collie
Kim Collins
Wendy Colter
Joan Connor
Meyer Cornis
Gabrielle Correa da Silva
Michelle Cox
Jonathan Curbis
Yvonne Curbis
Brenda Daigre
Martha David
Bernarr Dawson
Eileen Day
Elaine Day
Carol DeBiak
Sunny DeBrito
Ellie DeKoven
Monica DeLeon
Araceli DelGado
Cathy Dennis
Violet Diacon
Diane Diaz
Dorel Dittman
Jennifer Doner
Judy Dooley
Janet Drover
Millicent Drower
Christine Dudzie
Laura Dunlap
Marion Dunn
Bill Duvall
Theresa Ebster
Suzanne Edwards
Linda Egebreght
Angela Eilering
Agatha Elmes
Josh Elmore
Bonnie Engel
Karl Engquist
Caroline Epp
LaVerna Evans
Jack Ewing
Amy Falasz
Len Farber
Zanet Flournoy
Aud Fonseca
Vickie Fotis
Elizabeth Frank
Mildred Frank
Sharlene Frank
Amy Franke
Christine Frazer
Alta Mae Frobish
Marlene Furch
Mark Garcia
Patricia Garcia
Bernice Gardner
Patricia Georgeouses
Denise Gibbons
Phyllis Ginardi
Kate Goes
Alvin Goldblatt
Halina Goldsmith
Allen Goodease
Evelyn Gottlieb
Wynn Graham
Charles Grantham
Cindy Green
Gayle Guzik
Mary Harland
Mattie Harris
Vanessa Harris
Amy Hedmark
Helen Helfgott
Eselean Henderson
Evelyn Henton
Teresa Hicks
John Holmes
Harold Honor
Zelda Honor
Carrie Howard
Suzanne Hudson
Sara Hughes
Bill Hurley
Ellen Hyndman
Barbara Imler
Sam Ingraffia
Bobette Janus
Debbie Jargstorf
Clevonne Jeka
Nancy Jenkover
Nancy Johnson
Naomi Johnson
Jim Jones
Doris Juzang
Carol Kacin
Dorothy Kahn
David Kalensky
Rosemary Kalin
Dorothy Kathan
Bob Kelly
Kitty Kelly
Kristi Kincheloe
Carol King
Dennis Kinzig
Alida Klaud
David Klinker
Joanne Kluga
Joy Kortasma
Kay Kovacs
Carol Landow
David Larson
Ruth Larson
Jill Lauroesch
Lawrence Levin
Milt Levin
Miriam Levin
Patricia Levinson
Leonore Levit
Sam Lipkin
Mary Jo Lucas-Healy
Andrea Luke
Bess Lumpkin
Andrew MacLeod
Linda Madigan
Gwenne Maiorca
Mary Ann Malloy
Mary Martinez-Mines
Mariana Mason
Britta Mather
Sel Mather
Marita Maxey
Cora Mayo
Melba Mayo
Bill McAndrews
Frank McCauley
Lisa McDonald
Ruth McDonald
Tom McNichols
Nancy Meilner
Cecelia Menaker
Ruth Merritt

FIELD MUSEUM VOLUNTEERS

Beverly Meyer
Crystal Miles
Barbara Milott
Rizalito Molina
Mary Moreau
Jo Mortland
Darlene Murray
John Nelson
Mary Nelson
Janice North
Kathleen North-Tomezyk
Gertrude Novak
Dennis O'Donnell
Thomas O'Donnell
Nancy O'Keefe
Elizabeth Ocon
Joan Oesterle
Mary Sue Offutt
Azuka Onochie
Alison Orendach
Marie Orendach
Nicole Orendain
Stephanie Orozco
Gary Ossewaarde
Ramona Pacheco
Stephen Parshall
Lee Ann Patch
David Peeler
Mary Anne Peruchini
Joan Pilot
Kelly Podgorny
Joe Powers
Edda Prats
Deirdre Pullins
Anita Punkay
Catherine Rappa
Cathy Rassmussen
Tisha Richardson
Dorothy Richie
Elly Ripp
Fred Rodriguez
Janet Rogers
Eva Roman
Barbara Roob
Carol Rosen
Sarah Rosenbloom
Barbara Royal
Alice Rubio
Antonella Russo
Rudyard Sadlier
Cesar Sanchez
Deborah Sanchez

Linda Sanchez
Terry Sanders
Marian Saska
Audrey Sauer
Merilyn Sauer
Jay Savage
Lawrence Scheff
Marianne Schenker
Karin Schmeckpeper
Robert Scholtes
Cheryl Schwent
April Sebastian
Florence Selko
Rick Senne
Ginny Shapiro
Barbara Shaw
Anne Marie Sherry
Judith Sherry
Karen Sholeen
Amy Siegal
Robin Sindelar
Karen Smith
Rick Sobezak
Richard Soska
Chester Spears
Erelah Spears
Beth Spencer
Robert Spieler
James Squires
Dale Starr
Bill Stein
Helen Stein
Magnolia Stewart
Annette Stock
Frank Stroik
Kristen Sundquist
Irene Suyeoka
Jackie Tajiri
Ayako Takahashi
Grace Takata
Alex Tanz
Jill Tanz
Debbie Tenofsky
Jane Thain
Alva Thomas
Kris Thompson
Stephen Thorsen
Barbara Todd
Lynette Troha
Gregory Trush
Bill Ujvari
Claudia Valenciana

Warren Valsa
Wayne Van de Graaf
Diane Vang
Maria Lupe Villa
Ana Villacis
Ana Maria Vitas
Gregory Vogel
Christina Von Wunder
Cecily Wagner
Lisa Wagner
Mark Warner
Sectionius Watson
Herbert Weinstein
Eila Weisman
Betty Welland
Nicole Welner
Esther White
George Williams
Sandra Winter
George Wolnak
Thomas Woods
Zinette Yacker
Sara Yaqubi
Dell Yarnell
Lois Yoksoulian
Timothy Zaek
Brian Zahlmann
Wayne Zatkalik
Agnes Zawadzka
Marlene Zielinski
Denise Zimmerman
Steven Zitowsky

Exhibits

Carolyn Byrne
Robert Eiff
Lara Furniss
Martha Heffner
Margaret Hopkins
Bettina MacAyeal
Maged Mikhail
Barbara Novy
Alan Shefner
Barbara Williams

Geology

Barbara Ballard
James Bankard
Michael Berkoff
Paul Brinkman
Irene Broede
Mary Sue Coates

FIELD MUSEUM VOLUNTEERS

Vesna Garber
Jay Horn
Wigberto Ingente
Walter Laffer
Frank McCauley
John McConnell
Donald Newton
David Nitecki
Trent Santanastaso
Joan Slotnick
Kristen Swafford
Elizabeth Wyman
Sarah Young
Matt Zinsmeister

Library

Peter Fortsas
Robert Gowland
Kasia Kipta
China Oughton
Marjorie Pannell
Marie-Louise Rosenthal
Martha Singer
Worthington Smith

Museum Store

Jerry Ripp

Photography

Reeva Wolfson

Public Relations

Frank Leslie
Bruce Saipe

Tours

Bill Roder

Zoology

Tom Anton
Paul Baker
Michelle Brown
Robert Brunner
Sophie Ann Brunner
Renee Buecker
Peter Buol
Sidney Camras
Robert Cary
Ewa Dabrowski
Stan Dvorak
Louise Dyer
Alison Ebert

Michelle Eji
Ingrid Fauci
Eileen Fielding
Maurie Fry
Henry Greenwald
David Hines
Jodi Hoffheimer
Matthew Horning
Michael Huhndorf
Fui Lian Inger
Bo Jap
Cheryl Jukich
Nicholas Kaladimos
Edwin Kapus
Dorothy Karall
Christopher Kodani
Catalina Larios
Armand Littman
Stacey Mabry
Leslie Major
Ben Marks
Laura Miller
Katlin Mohr
Sara Murphy
John Ososky
Ellen Petrick
Jack Piller
Amy Prieboy
James Pulizzi
Sheila Reynolds
Sunshine VanBael
David Walker
Brandon Wardell
Gina Wesley
Laura Zaidenberg

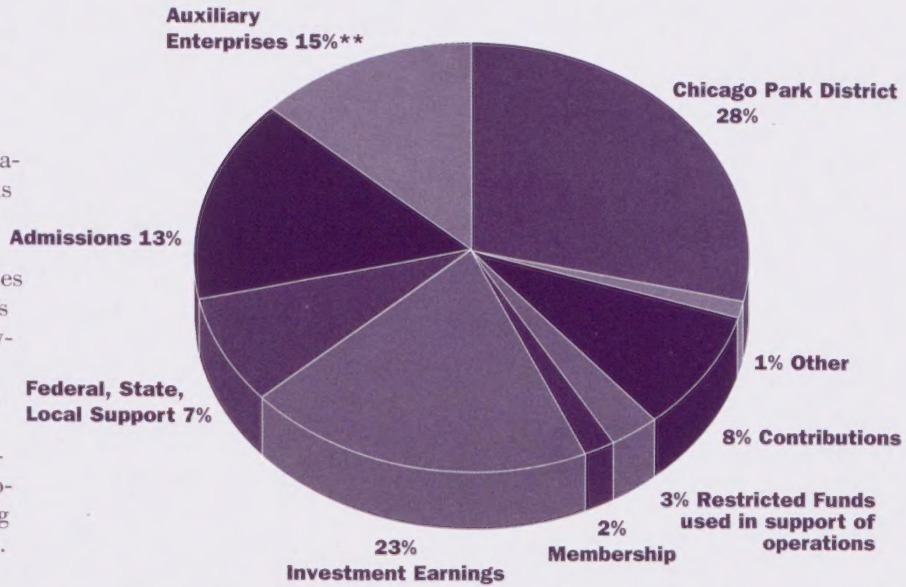
REVENUE & OTHER SUPPORT

The Field Museum is grateful to the people of Chicago for their generous support through the Chicago Park District. That support, making up nearly one-third of the Museum's annual budget, is the solid base on which our success depends.

Additional support from corporations, foundations, and individuals (in the form of contributions, memberships, and income derived from endowments) provides more than a third of the Museum's annual revenue. Support from governmental agencies such as the National Science Foundation and the National Endowments for the Arts and Humanities is often crucial money for major Museum projects, providing the initial funding which spurs further contributions.

Visitors to The Field Museum provide important revenue through admissions and auxiliary services – such as purchases in the Museum's shops and food services. Special events hosted in the Museum's grand spaces are another source of vital operating support.

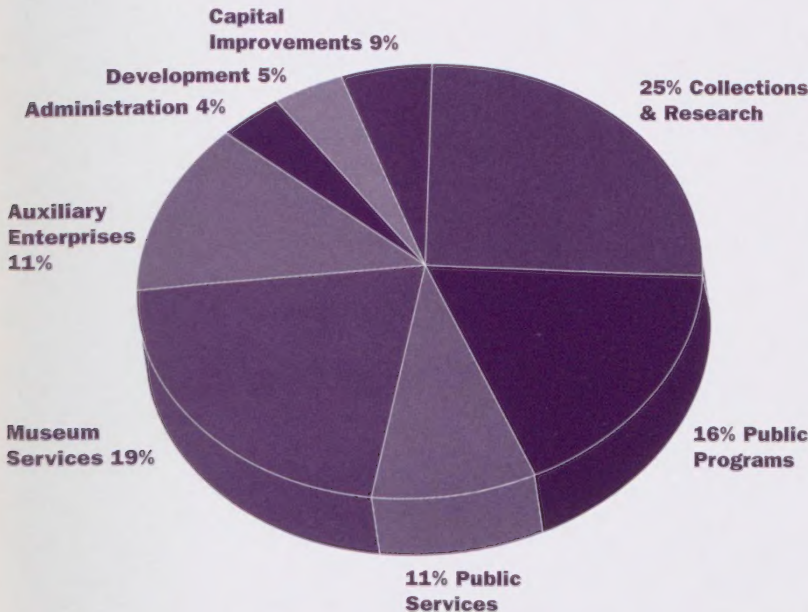
1995 Revenue & Other Support: \$26,405,249



**Gross

EXPENSES

1995 Expenses: \$26,210,670



More than 40 percent of the Museum's annual budget supports our two main activities: collections-based research and outstanding public learning opportunities (public programs and public services). Another 30 percent provides for services to improve the visitor experience and maintain the Museum's facilities.

Museum administration and development expenses total only 9 percent of the annual budget. Capital improvements (necessary for maintaining the 75-year-old building) total another 9 percent.

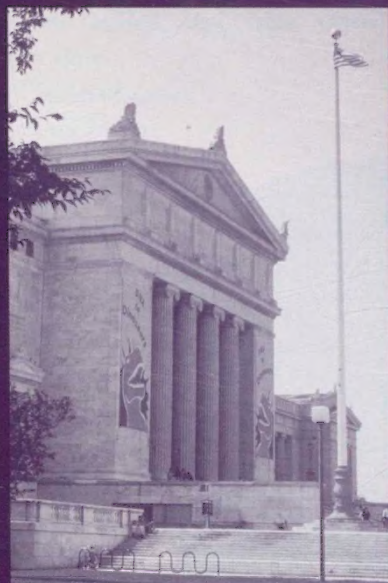


PHOTO BY JOHN WEINSTEIN/GN87301.10c

Board of Trustees

Officers

Leo F. Mullin
Chairman

Mrs. Philip D. Block III
Vice Chairman

William C. Kunkler III
Vice Chairman

Marshall Field
Vice Chairman

Worley H. Clark
Vice Chairman

Ms. Sue Ling Gin
Vice Chairman

Wayne E. Hedien
Vice Chairman

Ronald J. Gidwitz
Vice Chairman

Frank W. Considine
Ex-Officio

John S. Runnells
Secretary

Willard L. Boyd
President

Trustees

Mrs. T. Stanton Armour

Robert O. Bass

Mrs. Philip D. Block III

John A. Canning, Jr.

Carlos H. Cantu

Worley H. Clark

James W. Compton

Frank W. Considine

Dr. Dolores Cross

William M. Daley

James A. Delaney III

Marshall Field

L. Richard Flury

Ronald J. Gidwitz

Ms. Sue Ling Gin

Barry G. Hastings

Wayne E. Hedien

Richard M. Jones

William C. Kunkler III

William H. Kurtis

Scott P. Marks, Jr.

Richard L. Measelle

Hugo J. Melvojn

Leo F. Mullin

James J. O'Connor

Robert A. Pritzker

John S. Runnells

Ms. Faith A. Smith

Mrs. Theodore D. Ticken

Robert L. Wesley

Miles D. White

Ex-Officio

Willard L. Boyd
President, The Field Museum

Mrs. Charles F. Nadler
President, The Women's Board

John W. Rogers, Jr.
President, Chicago Park District
Board of Commissioners

Priscilla A. Walter

Douglas H. Walter
Co-Chairs

Founders' Council

Life Trustees

Gordon Bent

Harry O. Bercher

Bowen Blair

Stanton R. Cook

Mrs. Edwin J. DeCosta

Thomas E. Donnelley II

Mrs. David W. Grainger

Mrs. Robert S. Hartman

Patrick G. Ryan

William L. Searle

Edward Byron Smith

Blaine J. Yarrington



Perspectives 1996

Text: Ron Dorfman, Richard Quinn

Coordination: Sarah Highstone, Richard Quinn

Design: Lisa Sweeney, Ron Rowland, Performance Communications Group

Electronic pre-press/Color separations: Infocomm

Printing: FCL Graphics

Consulting and Coordination: Performance Direct, Inc.

Mailing and Fulfillment: Performance Mailers, Inc.

Collateral components: Sylvia Curtis, Performance Direct, Inc.

COVER PHOTOS BY WILLIAM BURGER; SKYLINE PHOTO BY DONALD C. JOHNSON/THE STOCK MARKET

The Field Museum
Roosevelt Road at Lake Shore Drive
Chicago, Illinois 60605-2496

