

Peter F. Major

Acc. 334775

RECORD

P.F. Major
Acc. 334775

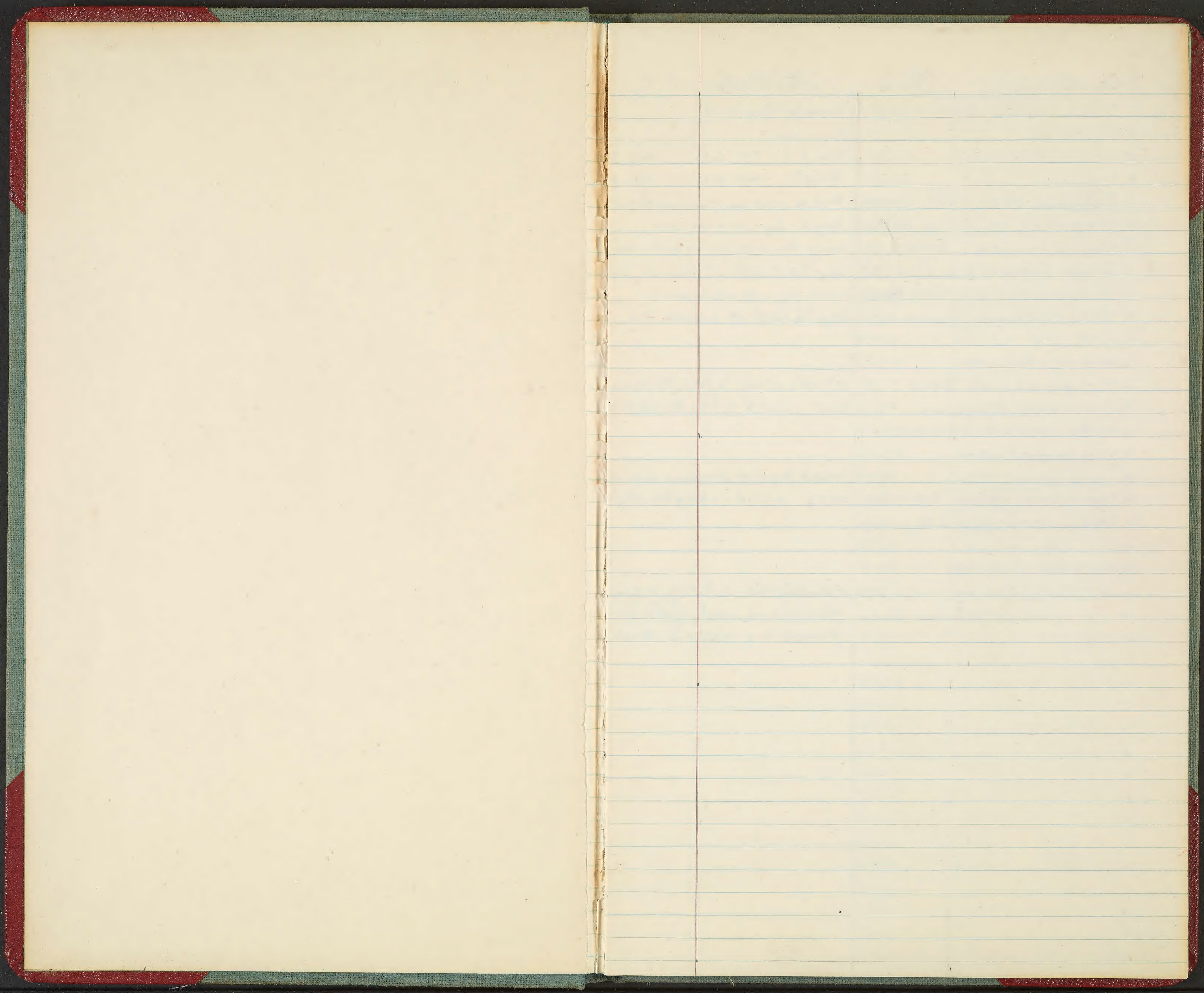
No. 2176
Account Books

160 PAGES

Made in the Following Rulings:

- 2176-J JOURNAL
- 2176-SE SINGLE ENTRY LEDGER
- 2176-DE DOUBLE ENTRY LEDGER
- 2176-D DAY BOOK
- 2176-C CASH BOOK
- 2176-R RECORD

MADE IN U. S. A.



cat. No.	Name	Locality	Collector	Date	Remarks
1	<i>Stilifer mittrei</i> Petit	Kawela Bay	Peter Major	8/26/57	late afternoon found on sea urchin in 4ft. water alive
2	<i>Stilifer</i> Conrad	Punaluu		12/29/57	" " coral formation - hermit crab
3	<i>Stilifer</i> Pease (1910)	Waikiki - Fort De Russy -- Reef Hotel		4/9/58	" in shallow water -- coral head
4	<i>Stilifer</i>	Waikiki - Fort De Russy -- Reef Hotel		4/9/58	" in " " " "
5	<i>Antigona reticulata</i> Linné	Reef on right side of point (right) of Kawela Bay		8/11/58	" on reef - low tide - alive daytime
6	<i>Strombus maculatus</i> Nuttall	Kawela Bay - same as above		8/12/58	" " " " " " dead - no animal
7	<i>Conus pennaceus</i> Born	Kawela Bay - right side by point - the		8/13/58	late afternoon alive crawling under ledge
8	<i>Drupa fusconigra</i> (Pease)	bay to right of Kawela Bay		8/19/58	3ft. low tide - about 8:00 AM. - sun shining alive crawling - top of coral formation 5ft water
9	<i>Cypraea maculifera</i> Schilder	Kawela Bay right side by point		8/15/58	alive - " under ledge - late afternoon 24 specimens
10	<i>Cypraea caputserpentis</i> Linnaeus	bay to right of Kawela Bay		8/19/58	alive - low tide - 9:00 PM - 2:00 AM - cracks on reef daytime
11				8/20/58	alive - operculum - low tide - in hole on reef
12	<i>Conus catus</i> Bruguiere			8/22/58	alive -
13	<i>Conus pennaceus</i> Born	left side of bay to left of Kahuku Point		8/22/58	dead - found on beach - low tide - morning
14	<i>Conus lividus</i> Bruguiere	near island in bay to right of Kawela		8/22/58	alive - 5ft water coral head split up
15	<i>Mitfa litterata</i> Lamarck			8/22/58	dead - found completely encrusted in coral
16	<i>Conus ebraeus</i> Linnaeus			8/23/58	alive - 5ft water
17		Kawela Bay - right side corner - 20ft out		8/23/58	low tide - early morning - on bottom of rock whole shell covered in white
18	<i>Cypraea maculifera</i> Schilder	near island in bay to right of Kawela		8/23/58	high tide - 8ft water - under small ledge found on beach
19	<i>Conus pennaceus</i> Born			8/24/58	dead - outer lip chipped - low tide good eating
20	<i>Patella</i> (or) <i>Stilifer</i> (or) <i>Patella</i> (or) <i>Stilifer</i> (or) <i>Patella</i> (or) <i>Stilifer</i> (or)			8/25/58	alive - attached to sides of island - low tide
21	<i>Acanthochiton viridis</i> Pease			8/25/58	attached to sides of island - low - high - tide
22		Mitford Bay - Hauraki Gulf, by Rangitoto to Channel North Island New Zealand	Jane Mitchelson	8/15/58	on beach, 8 specimens, dead
23		Whitianga East Coast, Auckland	" "	8/16/58	on beach dead
24		Stanmore Bay, Auckland New Zealand	" " Mrs. T. Major	8/17/58	" " " 3 specimens
25				8/17/58	8 "
26				8/17/58	3 "
27				8/17/58	6 "
28				8/17/58	8 "
29				8/17/58	2 "
30				8/17/58	3 "
31				8/17/58	1 "
32				8/17/58	2 "
33				8/17/58	3 "
34				8/17/58	4 "
35				8/17/58	4 "
36				8/17/58	2 "
37				8/17/58	1 "
38				8/17/58	2 "

39
40
41
42
43
44
45
46
47?
48
49?
50
51
52
53?
54?
55
56
57
58
59
60
61
62
63
64
65
66
67
68
69
70

Dosinia suberosa Gray
Morona crypta monobella

Conus *Pinaxia*
Bulla
Hydatina
Mitra

Conus
Pinaxia
Bulla
Hydatina
Mitra

Conus vitulinus Bruguiere
Conus lividus Bruguiere
Pinaxia versicolor (Gray)
Bulla adamsi (Menke)
Hydatina (Aplustrum) amplustre (Linn.)
Mitra astricta Lamarck

Stanmore Bay, Auckland New Zealand

Pago Pago, Samoa

Kaneohe Bay Yacht Club

Waialua Bay, Haleiwa Beach Park (in front)

Jane Mitchelson, Mrs. T.C. Major 8/17/58

bought - Mrs. T.C. Major 8/12/58 ^{found between 8/11-12/58}

bought

Peter Major 8-13, 25-58

10-20-58

10-24-58

12-20-58

12-20-58

12-29-58

1-10-59

1-10-59

1-10-59

1-10-59

1-25-59

Peter Major 2-8-59

on beach

2 specimens

7 specimens
alive, found in aperture of *Neothais scalaris*

2 specimens

4 specimens

4 "

2 "

2 "

2 "

9 "

alive - on sides of lava island

alive - under coral ledge

dead - in sand pocket

alive - under piece of coral

alive - on top of coral

alive - on top of slab of rock in open water

alive - under coral ledge - 6ft water

dead - 3 specimens - on top of exposed reef

" 7 " " " "

" 7 " " " "

" 7 " " " "

alive

a

alive - on top of sand + coral bottles

77	<i>Nassarius splendidulus</i> (Dunker)	Waialua Bay; in front of Haleiwa Beach Park	Peter Major	2/8/59	dead, sand + coral bottom
78	<i>Columbella zebra</i> Gray				dead, in seaweed on coral
79	<i>Laemodonta clausa</i> (H. + A. Adams)				" " "
80	<i>Epitonium pyramis</i>				" " "
81	<i>Cymatium nicobaricum</i> (Röding)				" " "
82	<i>Cymatium tuberosum</i> (Lamarck)				" " "
83	<i>Natica sagittata</i> Menke				" " "
84	bivalve				
85	"				
86	"				
87	"				
88	<i>Pinctada guthriei</i> Bartsch	Ola Moana	Mrs. Arch Harrison	2/15/59	alive, 40 ft. water-sand
89	<i>Turbo intercostalis</i> Menke	off Fort De Russy, Waikiki	Peter Major	2/23/59	alive, ^{under} coral head
90	<i>Bullina lineata</i> (Gray)	to right of Royal Hawaiian Hotel		2/23/59	alive, on sand
91	bivalve	Makapuu, to left on beach	Mrs Thomas Major	2/23/59	dead
92	<i>Conus pennaceus</i> Born				dead
93	<i>Cypraea isabella</i> Linnaeus				dead, 2 spec.
94	bivalve	Fort De Russy, Waikiki	Peter Major	2/23/59	dead, 2 "
95	bivalve				"
96	bivalve	Kaneohe Bay yacht club		1/25/59	dead, on muddy bottom
97	bivalve	Fort De Russy		2/23/59	alive, under coral head
98	<i>Conus ebraeus</i> Linnaeus				alive, on coral
99	<i>Conus lividus</i> Bruguiere				" "
100	<i>Cypraea maculifera</i> Schilder	break water Waialua Bay		10/1/58	alive, under coral ledge
101	"	" Haleiwa break water			dead
102	<i>Trochus intextus</i> Kiener	" "			alive
103	<i>Trochus striatulus</i>	" "			dead
104	<i>Cypraea maculifera</i> Schilder	left side (out of) Waikiki Natatorium		3/1/59	dead, on coral head ^{immature}
105	<i>Mitra auriculoides</i> Reeve				" "
106	<i>Conus miliaris</i> Hwass (v.) ^{abbreviatus} Reeve				alive "
107	<i>Mitra astricta</i> Lamarck				"
108	<i>Semivertagus nesioticus</i> (Pilsbry) ^(Vanatta)				dead
109	bivalve				dead, in sand
110	<i>Cypraea maculifera</i> Schilder	to left of Makapuu		3/2/59	alive, under coral ledge
111	<i>Conus ebraeus</i> Linnaeus				" "
112	"				" " rock
113	"				" " rock
114	<i>Conus catus</i> Bruguiere				" in coral pocket, in sand

115	<i>Conus chaldaeus</i> (Röding)	to left of Makapuu	Peter Major	3/2/59	alive, in sand in coral rock hole ^{with <i>C. catus</i> #114}
116	<i>Columbella zebra</i> Gray				alive, under rock
117	<i>Strombus maculatus</i> Nuttall				
118	<i>Conus miles</i> Linnaeus	near island in bay to right of Kawela Bay		3/12+15/59	alive, on coral
119	<i>Conus catus</i> Bruguiere				alive in sand pocket; 2 spec.
120	<i>Conus rattus</i> Bruguiere				on coral; 6 spec.
121	<i>Conus miliaris</i> Hwass (v.) ^{abbreviatus} Reeve				on coral; 6 spec.
122	<i>Conus ceylanensis nanus</i> Sowerby				" "
123	<i>Conus ebraeus</i> Linnaeus				"
124	<i>Conus chaldaeus</i> (Röding)				" 2 spec.
125	<i>Conus flavidus</i> Lamarck				" 8 spec.
126	<i>Conus lividus</i> Bruguiere				" 3 spec.
127	<i>Strombus maculatus</i> Nuttall				"
128	<i>Purpura intermedia</i> Kiener				"
129	<i>Purpura aperta</i> (Blainville)				attached to sides of island
130	<i>Cymatium nicobaricum</i> (Röding)				on top of coral
131	<i>Mitra litterata</i> Lamarck				" ; 3 spec.
132	<i>Drupa ricina</i> (Linnaeus)				attached to sides of island ^{4 spec}
133	<i>Janthina fragilis</i> Lamarck	Kawela Bay	Mrs. Thomas Major	3/12/59	dead, on beach
134		near beach in bay to right of Kawela Bay	Peter Major	3/15/59	attached to rocks
135	<i>Perilypta edentata</i> G.B.S.	near island " " "			1 in sand trapped in coral; 3 dead
136	<i>Turbo intercostalis</i> Menke	left side (out of) Waikiki Natatorium		3/27/59	on top of reef at low tide
137	<i>Terebra gouldi</i> Deshayes				buried in sand, out of sight
138	<i>Cypraea moneta</i> Linnaeus	Ala Moana reef, Waikiki		3/28/59	under rock, low tide, at night
139	<i>Hydatina (Aplustrum) aplustre</i> (Linn.)				dead " " "
140	<i>Mitra cucumerina</i> Lamarck				dead " " "
141	bivalve				" " "
142	<i>Pinctada galtssoffi</i> Sars				" " "
143	<i>Cypraea caputserpentis</i> Linn.			4/1/59	attached to side of coral head
144	<i>Cypraea caputserpentis</i> Linn.			4/1/59	under rock
145	<i>Conus flavidus</i> Lamarck				on top of coral
146	<i>Conus ebraeus</i> Linnaeus				" "
147	<i>Melampus castaneus</i> (Muhlfield)				on sides of rocky wall
148	<i>Pisania tritonoides</i> (Reeve)				dead, on coral
149	<i>Drupa nodus</i> (St. Vincent)				under + around coral rocks
150	<i>Drupa granulata</i> (Duclos)				" " "
151	<i>Drupa fucellum</i> (Gmelin)				" " "
152	bivalve				dead, in mud + sand

153	Mitra stictica (Link)	to right of Kaiser's Hotel	Peter Major	4/2/59	dead, on sand
154	Pisania tritonoides (Reeve)				" "
155	Bullina lineata (Gray)			4/18/59	" "
156	Cymatium pileare (Linn.)	Ala Moana		4/18/59	2 dead, 1 alive under rocks
157	Cymatium tuberosum (Lamarck)				alive under rocks on sand
158	Cypraea caputserpentis Linnaeus				under rock
159	Conus nussatella Linnaeus				dead, on rock
160	Mitra litterata Lamarck				on rock
161	bivalve				attached to rock
162	"				dead, on sand
163	"				attached to rock
164	Crepidula aculeata (Gmelin)				dead, on rock
165	Drupa fuscillum (Gmelin)				under rocks
166	Drupa porphyrostoma (Reeve)				" " ; 2 spec
167	Drupa nodus (St. Vincent)				" " ; 3 spec
168	Drupa ochrostoma (Blainville)				" " ; 3 spec
169	Drupa granulata (Duclos)				" " + on rocks;
170	Conus pennaceus Born	right end of Kahala Beach		5/10/59	in sand under rocks
171	Mitra auriculoides Reeve				dead, in sand + on coral
172	bivalve				attached to rocks
173	"	to right of Royal Hawaiian Hotel		6/6/59	dead, on sand
174	Cymatium pileare (Linn.)	Ala Moana		6-9-59	alive, with arounds rocks (10)
175	Cymatium nicobaricum (Röding)				" " low tide 2
176	Cymatium tuberosum (Lamarck)				" " " " 6
177	Hydatina (Amplustrum) amplustre (Linn)				dead in sand " " 6
178	Mitra ostergaardii Pilsbry				alive, around rocks 8
179	Drupa brunnea labrum (Soll)				" " " " 2
180	Drupa porphyrostoma (Reeve)				dead
181	?				alive " " "
182	Trivirostrace darsi (Shaw)				alive, on bottom of rock with white spots ^{like substance}
183	Mitra ticaonica Reeve (var) vagans Pilsbry				dead
184	Columbella species				alive, with 182
185	Drupa serriatis longus (Pils. & Van)				" , under rocks, 2 colors (6)
186	Drupa fuscillum (Gmelin)				" , " around rocks (8)
187	Peristernia chlorostoma Sowerby				" " " "
188	Cypraea helvola Linnaeus	right side of Kawela Bay		6-14-59	dead, amongst coral
189	Drupa morum Röding				alive, on side of (natural) channel wall of bay
190	Conus ebraeus Linnaeus				" amongst coral

191	<i>Conus sponsalis</i> ^{<i>C. ceylanensis nanus</i> Sowerby} Hwass in Bruguiere	right side of Kawela Bay; near island	Peter Major	6-14-59	alive, on coral	2
192	<i>Conus imperialis</i> Linnaeus				" " "	
193	<i>Purpura intermedia</i> Kiener				" in coral pocket	
194	<i>Cymatium tuberosum</i> (Hammerck)	Ola Moana		6-18-59	" amongst coral, low tide	
195	<i>Cymatium gemmatum</i> (Reeve)				" " " "	
196	<i>Drupa brunneolabrum</i> (Dall)				under rock	"
197	<i>Drupa fuscillum</i> Gmelin				amongst coral	" 2
198	<i>Cymatium pileare</i> (Linnaeus)				" " "	" 4
199	<i>Drupa dumosa</i> (Conrad)				dead on coral	"
200	<i>Semivermetus nesioticus</i> ^(Pilsbry) Vanatta				in sand pocket	"
201	<i>Cypraea helvola</i> Linnaeus				under rock	"
202	<i>Drupa ochrostoma</i> (Bl.) v. <i>spectrum</i> (R)				" " "	"
203	<i>Heliacus variegatus</i> (Gmelin)				dead, in sand	"
204	<i>Bulla adamsi</i> (Menke)				" under rock	"
205	<i>Mitra brunnea</i> Pease				"	"
206	<i>Pisania tritonoides</i> (Reeve)				"	"
207	bivalve				"	"
208	<i>Mitra ostergaardi</i> Pilsbry				amongst rocks	" 4
209	<i>Mitra astricta</i> Hamark				bottom of rock	"
210	<i>Cymatium gemmatum</i> (Reeve)				amongst rocks with other <i>Cym. sp.</i>	"
211	<i>Natica sagittata</i> Menke				under sand in pocket	"
212	<i>Calyptraea spinosum</i> (Sowerby)				" rock	"
213	<i>Drupa ochrostoma</i> (Bl.) v. <i>spectrum</i> (R)				" "	"
214	<i>Cypraea maculifera</i> Schilder	Waikiki (Reef Hotel)		6-30-59	moving up side cement block (3ft)	
215	<i>Conus pulicarius</i> Bruguiere				dead in sand 5ft. - most of animal still in	
216	<i>Conus californicus</i> Hinds	Howland's Cove (Landing), Santa Catalina Is., Calif		7-(1-4)-59	on rocks (3ft) + sand (15ft)	4
217	<i>Mitra idae</i> Melville				dead - 5ft	
218	^{Maxwellia} <i>Pterynotus gemma</i> Sowerby				on rocks below low tide mark	6
219	<i>Haminoea virescens</i> Sowerby				on rocks with sand & seaweed covering	
220	<i>Acmaea limatula</i> Carpenter				" " high tide	8
221	<i>Norrisia norrisii</i> Sowerby				" kelp	3
222	<i>Olivella biplicata</i> Sowerby				dead on beach	
223	^{Cardium} <i>Trigonicardia biangulata</i> Sowerby				" 15ft. on sand	
224	<i>Amphissa versicolor</i> Dall				" 5ft on rocks	
225	^{peina} <i>Acmaea perssoni</i> Eschscholtz ^{A. cassis}				"	
226	^{Alectryon} <i>Nassarius perpinguis</i> Hinds				"	
227	^{auriculata Fbs} <i>Tequila ligulata</i> Menke				on side of "reef" pockets	3
228	^{Cooperella sp. jophano} <i>Venerupis stamperoussi</i> ^{Jebb} Kellia				dead	

229	same as 228	Howland's Landing (Cove), Santa Catalina Is., Calif.	Peter Major	7-(1-4)-59	dead 15ft on sand	
230	<i>Haliotis cracherodii</i> Leach				on side of rock -4ft	
231	<i>Crepidula onyx</i> Sowerby ^{excavata Brudi.}	or <i>C. norrisii</i> Sowerby, or <i>C. adunca</i> Sowerby			on rock with #218	
232	<i>Pterorytis nuttalli</i> Conrad				"	
233	<i>Astraea undosa</i> Wood				on rocks + stones 5-15ft.	10
234	<i>Prothoea laciniata</i> Carpenter	Portuguese Bend, Palos Verdes, California		7-10-59	low tide on rocks, dead	7
235	<i>Acanthina spirata</i> Blainville				" " "	2
236	<i>Scenebra circumtexta</i> Stearns				" " " dead	
237	<i>Olivella biplicata</i> Sowerby				" " " "	
238	<i>Achaea limatula</i> Carpenter ^{caesia}	Long Point (left side) Palos Verdes, California		7-13-59	attached to rocks	3
239	<i>Achaea consors</i> Carpenter	Audubon Park,			" " " with #238	5
240	?				" " " " "	
241	<i>Tegula gallina</i> Forbes				" " " " " #239, 40 (5)	
242	<i>Mytilus edulis</i> Linnaeus				" " " " " "	6
243	<i>Lottia gigantea</i> Gray				" " " " " "	6
244	<i>Astraea undosa</i> Wood	Howland's Landing (Cove), Santa Catalina Is., Calif.		7-18-59	on rocks + stones 5-15ft.	(5)
245	<i>Haliotis cracherodii</i> Leach				" rock near shore	
246	<i>Haliotis rufescens</i> Swainson				" " " " +10ft.	2
247	<i>Nassarius mendicus</i> Gould ^{Alcator}				dead	
248	<i>Nassarius perpinguis</i> Monds ^{Alcator}				"	
249	<i>Tegula gallina</i> Forbes				on rock, high water	
250	<i>Tegula ligulata</i> Hentze				" " " " "	2
251	<i>Trivia solandri</i> Sowerby				dead, on rock, 2 ft.	
252	<i>Epitonium cooperi</i> Strong ^{tinatum Carpenter}				with #219	7
253	<i>Fissurella volcano</i> Revere				dead with #249	
254	?				"	
255	<i>Olivella biplicata</i> Sowerby				" on beach	2
256	<i>Prothoea laciniata</i> Carpenter				on rocks with #249, 50	2
257	<i>Plagioctenium circularis aequisulcatum</i> (Carpenter)				buried in sand (mud) 15ft.	
258	<i>Pterorytis nuttalli</i> Conrad				on rocks 2-5ft	3
259	<i>Trigonicardia biangulata</i> Sowerby				dead, 15ft.	
260	<i>Murex barbarensis</i> ^{Tritonalia Doullsoni Carpenter}				"	
261	<i>Norrisia norrisii</i> Sowerby				on kelp	
262	<i>Pterynotus gemma</i> Sowerby ^{Maxwellia, 1857}				with #258	2
263	<i>Gari californica</i> (Conrad)				dead, on sand 15ft.	
264	<i>Haminoea virescens</i> Sowerby				on rock with sand + seaweed	4
265	<i>Tagelus californianus</i> (Conrad)				dead, 15ft on sand + rocks	2
266	<i>Lepidochelone hartwegii</i> Carpenter				on rocks, high tide	3

267	<i>Aemaea scabra</i> Gould	Howland's Cove (Landing), Santa Catalina Is., Calif.	Peter Major	7-18-59	with #248	5
268	<i>Olivella biplicata</i> Sowerby	Cabrillo Beach, San Pedro, California		7-22-59	in sand $\frac{1}{4}$ "	14
269	<i>Bulla gouldiana</i> Pilsbry	ocean side Santa Catalina Is. isthmus, Calif.		2-27-60	in *on mud flat, low tide, ^{dead} alive	18
270	<i>Chione undatella</i> Sowerby				" " " " , dead	4
271	<i>Hyalina californica</i> Tomlin				on bottom of rock in ^{"sowed"} growth	
272	<i>Macoma nasuta</i> (Conrad)				on mud flat, dead	
273	<i>Trigonicardia biangulata</i> Sowerby				" " "	
274	<i>Mytilus edulis hinnaeus</i>				" " " "	
275	<i>Anomia peruviana</i> d'Orbigny				" " " yellow + orange	9
276	<i>Plagioctenium circularis aequisulcatus</i> Carpenter				" " " dead	
277	<i>Pseudochama exogyra</i> (Conrad)				bottom of rock on mud flat	
278	<i>Cardium subrotundum</i> (Conrad)				on mud flat alive	
279	<i>Crepidula onyx</i> Sowerby				" " " dead	
280	<i>Polinices neclisianus</i> Deshayes				" " " "	
281	<i>Acanthina spirata</i> Blainville	Portuguese Point, Palos Verdes, California		4-11-60	around rocks, low tide ^{common}	22
282	<i>Kelletia kelletii</i> Forbes				" " " "	
283	⁵ <i>Mitra idae</i> Melville ^{or Mitra cf. See Dall}				under rock " "	
284	<i>Bulla gouldiana</i> Pilsbry				on rocks, dead	
285	<i>Tegula ligulata</i> Menke				" " "	3
286	<i>Ocenebra circumtexta</i> Stearns				"under" with above	6
287	<i>Zonaria spadicea</i> Swainson				dead - in dump of 3, 2-5 ft rough ⁵ pockets	
288	<i>Saxidomus nuttalli</i> Conrad				in sand, with following bivalves	
289	<i>Gari californica</i> (Conrad)				" " " " " " 3	
290	<i>Prothaca staminea</i> (Conrad)				" " " " " " 28	
291	<i>Neritopsis staminea</i> (Conrad) ^{also Neritopsis staminea}				" " " " " "	
292	<i>Saxidomus nuttalli</i> Conrad				" " " " " "	
293	<i>Olivella biplicata</i> Sowerby	bay between Portuguese P. & Long P. (Abalone Cove)		4-11-60	in sand $\frac{1}{4}$ "	19
294	<i>Hyalina californica</i> Tomlin	Portuguese Point		4-11-60	under-rock in 1 pocket $1\frac{1}{2}$ "	
295	<i>Pododesmus cepia</i> (Gray)		Mrs. T.C. Major		dead, on rocks	
296	<i>Pteropytis nuttalli</i> Conrad		Peter Major		around rocks	7
297	<i>Chama pellucida</i> Broderip				dead on rocks	
298	<i>Norrisia norrisii</i> Sowerby				amongst rocks	3
299	<i>Semele decisa</i> (Conrad)				with *288-#292	3
300	<i>Mytilus californianus</i> Conrad	Monterey Peninsula, California	Mrs. & Mrs. T.C. Major	5-13-60	on rocks	
301	<i>Tegula funebris</i> Adams				" " "	11
302	<i>Thais emarginata</i> Deshayes				" " "	4
303	<i>Tegula gallina</i> (Forbes)				" " "	
304	<i>Littorina planaxis</i> Philippi				" " "	
305	<i>Calliostoma ^{ligatus} costatum</i> (Martyn)				" " , dead	

306	^{Murex sarcocarpensis} <i>Tritonalia poulsoni</i> Carpenter	Monterey Peninsula, California	Mr. + Mrs. T.C. Major	5-13-60	dead, on rocks
307	<i>Gari californica</i> (Conrad)	Portuguese Point, Palos Verdes, California	Peter Major	5-28-60	" " " 3
308	<i>Megathura crenulata</i> Sowerby				2 " , 1 alive " 3
309	<i>Fissurella volcano</i> Reeve				dead, on rocks
310	<i>Pseudochama exogyra</i> (Conrad)				" " "
311	<i>Mytilus edulis</i> Linnaeus				attached under a rock
312	^{Mytilus, Murex} <i>Jaton festivus</i> Hinds				around " " 3
313	<i>Crepidula adunca</i> Sowerby				on shells 2
314	^{Tritonalia nuttalli} <i>Ocenebra poulsoni</i> (Carpenter)				under rocks 15
315	<i>Conus californicus</i> Hinds				" " with above 6
316	^{Merastoma} <i>Pterorytis nuttalli</i> Conrad				" " with above 4
317	<i>Opalia insculpta</i> Carpenter				" " - purple "dye" released 3
318	<i>Amphissa versicolor</i> Dall				" "
319	^{Tritonalia} <i>Ocenebra circumtexta</i> Stearns				" "
320	<i>Zonaria spadicea</i> Swainson	Inspiration Point, Portuguese Cove, P.V.		7-15-60	with 6 others in small pocket 7ft. (6)
321	<i>Kelletia kelletii</i> Forbes				on rocks - crawling
322	<i>Parapholas californica</i> Conrad	Portuguese Cove (middle), Palos Verdes, Calif		7-19-60	" " , alive, low tide
323	<i>Ischnochiton conspicua</i> Carpenter		Mrs. T.C. Major		dead, on rocks
324	<i>Leptopecten latiauritus</i> Conrad	Portuguese Cove (right), P.V., Calif.	Peter Major	7-15-60	alive, amongst seaweed on beach
325	<i>Modiolus fornicatus</i> Gould	Portuguese Cove - middle		8-19-60	low tide on rocks - dead
326	<i>Nassarius fossatus</i> Gould				" " " "
327	<i>Opalia insculpta</i> Carpenter				" " " base of anemones
328	<i>Megathura crenulata</i> Sowerby	Portuguese Cove near Inspiration Point		8-25-60	6 ft. under & around rocks ^{rocks}
329	<i>Maoricolpus roseus</i> (Q. & G.)	Kaipara Harbor, Auckland, New Zealand	Jane Mitchelson	March 4, 1961	low tide, alive, collectorate animal
330	<i>Hinnites multirugosus</i> Gale	^{east side} Inspiration Point, Palos Verdes, Calif.	Peter Major	Feb. 4, 1961	
331	<i>Chama pellucida</i> Broderip				
332					
333					
334	<i>Struthiolaria papulosa</i> (Martyr)	Maraitai Beach, Howick, Auckland N.Z.	Jane Mitchelson		low tide, half buried in sand
335	<i>Megathura crenulata</i> Sowerby	east side Inspiration Point, P.V., Calif	Peter Major	Feb. 4, 1961	low tide, under rocks, broken out ^{covered}
336	<i>Hinnites multirugosus</i> Gale	middle Portuguese Bend Cove, P.V., Calif		April 18, 1962	low tide, attached under rock, ^{with} growth
337	<i>VolSELLA capax</i> Conrad	east side Inspiration Point.		April 19, 1962	" , big dead, small alive attached ^{to} rock
338	<i>Megathura crenulata</i> Sowerby	middle P.B. cove, P.V., Calif		April 18, 1962	" , alive under rock
339	<i>Trimusculus reticulatus</i> Sowerby				" " " " in pockets, ^{together}
340	<i>Zonaria spadicea</i> Swainson	off east side Inspiration Point		Dec. 20, 1960	alive - under ledge, low tide
341	<i>Mytilimelia nuttallii</i> Conrad				dead - among rocks.
342	<i>Crepidula onyx</i> Sowerby	middle part Playa del Ray beach, Calif.		Jan. 7, 1961	all dead - washed up by storm wt.
343	<i>Cerithidea californica</i> Haldeman				mud & sand offshore before
344	<i>Polinices reclusianus</i> Deshayes				

345	<i>Xenophalium pyrum</i> (Lamarck)	Bay of Plenty, North Is., New Zealand	Jane Mitchelson's aunt	Given to her on Sept. 1960
346	<i>Maoricolpus roseus</i> (A & G)	Takapuna, Auckland, N.Z.	Jane Mitchelson	April 2, 1960 lowtide in seaweed on beach,
347	<i>Pecten novaezelandiae</i> Reeve	" "		May 10, 1960 dead on beach
348	<i>Haliotis iris</i> Martyn	east coast Mercury Bay, N.Z.		Dec. 1958 alive on rock
349	<i>Haliotis australis</i> Smelin	Hot Water Beach, Mercury Bay, N.Z.		Dec. 1958 dead, lowtide on beach
350	<i>Mytilus canaliculus</i> Martyn	Muriwai Beach, West Coast, North Is., N.Z.		April 25, 1961 dead on beach
351	<i>Spisula oequilateralis</i> (Deshayes)	" " "		" " "
352	<i>Spirula spirula</i> (Linnaeus)	" " "		" high up on beach in seaweed drift ^{wood}
353	<i>Gomphina moerum</i> Smith <i>Toweria (Chione) spissa</i> (Deshayes)	Takapuna Auckland, N.Z.		April 1-4, 1960 dead, lowtide on beach
354	<i>Anomia walteri</i> Hector	Stanmore Bay, Auckland, N.Z.		Nov. 3, 1960 " , high water line on beach
355	<i>Amphibola crenata</i> (Martyn)	upcreek east end Stanmore Bay		Dec. 25, 1960 in mud flats
356	<i>Quibulla quoyi</i> (Gray)	Stanmore Bay; Wangaparoa, North Auckland		May 1960 in sand piles after storm, dead
357	<i>Conus quercinus</i> Hwass	Waialua Bay, Halaiwa, Oahu, Hawaiian Is.	Peter Major	Feb 8, 1959 dead, on mud & rock bottom - 6 ft.
358	<i>Nassarius tegulus</i> Reeve	middle part Playa del Ray, Calif.		Jan. 7, 1961 dead on beach - after storm
359	<i>Haliotis fulgens</i> Philippi	east side Inspiration Point		Dec. 20, 1960 alive under rocks, lowtide
360	<i>Erato vitellina</i> Hinds	"		" dead along ledge
361	<i>Acteon punctocaelata</i> Carpenter	middle Portuguese Bend Cove, P.V.		Dec. 21, 1961 -0.8 tide - on sand around rocks, ^{mid-tide} level
362	<i>Erato vitellina</i> Hinds	"		" , alive on rocks in seaweed bet. 2 ledges
363	<i>Nassarius insculptus</i> Carpenter	"		about 1ft seaward of #361 - under about 3" sand next to rock
364	<i>Mitrella</i>			
365				
366	<i>Cerithidea californica</i> Waldeman	slough - off Goleta airport - UCS B Calif.	Calif.	June 6, 1962 alive, on mud around ice plant ind out of water
367	<i>Bursa californica</i> Hinds	1 1/2 miles west of San Pedro Harbor near Redondo Trench	Fish & Game diver	June 15, 1962 alive, on bottom bet. 40-60 ft
368	<i>Forreria belcheri</i> Hinds	Belmont Shore Pier, Long Beach, Calif.	Fishermen	June 23, 1962 caught on hook during night, probably on <i>Engraulis mordax</i> from pier - mud-sand bottom - 3rd one I know off caught in this morning
ANOMIIDAE 369	<i>Pododesmus macroschisma</i>	Stern's Wharf, Santa Barbara, Calif.	given to Eugene Coan	Nov. 1, 1962 attached to pilings amongst (3) tube worms -
LYONSIDAE 370	<i>Mytilimeria nuttallii</i>	Breakwater (left side facing sea) Newport - Balboa Harbor		12-12-62 encased in sponge like sandy sub-alive - thin outer lips growing
371		stance attached to underside of large boulder - only umbo showing - lowtide - saw another in same condition also in Skw - didn't take it.		dead in box with <i>Conus g. facilis</i> & <i>Nassarius mendicus</i> & <i>m. cooperi</i>
MURICIDAE 372	<i>Ocenebra squamulifera</i> ?	Norm's Landing, San Pedro, Calif.	from Fisherman in fish market	2-15-62
NASSARIIDAE 373	<i>Nassarius mendicus</i> & <i>m. cooperi</i>	same as 373		
NEPTUNIIDAE 374	<i>Macron lividus</i>	amongst rocks just inside Bks Newport - Balboa Harbor		12-12-62 alive - in crevices amongst algae same color as <i>peridinium</i>
PYRAMIDELLIDAE 375	<i>Turbonilla</i> sp	rocks Portuguese Cove, P.V. Calif		7-19-61 (white) on sand under large rock (2) lowtide
COLUMBELLIDAE 376	<i>Mitrella gouldii</i>	"		7-25-61 (brown) under side of large rock (7) 2.8
MITRIDAE 377	<i>Mitra idae</i>	"		7-19-61 under side of large rock - also with above
THAISIDAE 378	<i>Thais (Purpura) aperta</i>	island off point near Malackahand Bay	Kahuku - Laie Mrs TC Major	7-19-61 on top of rock
" 379	<i>Drupa (Sistrum) ricinus</i>	"		Aug. 1962 on rocks alive - lowtide - exposed
MURICIDAE 380	<i>Drupa morum</i>	"		" (2) " "
381	List of shells collected dead on dry mud flat Alamitas Bay between Pacific Coast Hwy			12-13-60 & the Marine Stadium
382	<i>Pelecypoda Plectonium circularis acquiriculatus</i>			<i>Prothaca staminea</i> , <i>Tegulus californicus</i> , <i>Semele decisa</i> ,
383	<i>Donax gouldii</i> , <i>Ostrea lurida</i> , <i>Saxidomus nuttallii</i> , <i>Schizothaema nuttallii</i> , <i>Mytilus edulis</i> , <i>Anomia peruviana</i>			

384 *Apolymetis biangulata* (Gastropoda), *Chione undatella*, *Chione fluctifraga*, *haericardium substriatum* or
 385 *Kellia laperousii* or *Crenella decussata*, *Macona rindentata* or *naevula*
 386 *Gastropoda Nassarius tegulus*, *Cerithidea californica*, *Crucibulum spinosum*, *Crepidula onyx*, *Polinices reclusianus*,
 387 *Melanops olivaceus*, *Diodora aspera*, 1 unident.

382	<i>Strombus gracilior</i>	Huatabampo of Sonora, Mexico	PM	Sept-8-63	(13) - washed up on beach, gently sloping sand flat - good growth series
383	<i>Strombus galeatus</i>	San Carlos Bay N. end, Sonora, Mexico	Peter Major	Sept. 6-63	on flat areas 15'-25' - common
384	<i>Cancellaria (Eucilia) cassidiformis</i>	along coast - in bay N. to Kino Bay, Sonora, Mexico	PM	Sept 5-63	dead in rubble offshore - 15'-20'
385	<i>Strombus gracilior</i>	"	"	"	"
386	<i>Conus (Chelyconus) perplexus</i>	"	"	"	"
387	<i>Thais (Mancinella) speciosa</i>	"	"	"	"
388	<i>Pyrene fuscata (Columbella pallescens)</i>	"	"	"	dead, amongs rocks - 5'
389	<i>Fasciolaria (Pleuroploca) princeps</i>	San Carlos Bay - N end, Sonora, Mexico	"	Sept-8-63	on rock piles - moving along, 10'
		beautiful red-orange animal with somewhat iridescent blue spots, 2 spec. (220mm, 280mm approx)			
390	<i>Hexaplex erythrostomus</i>	San Carlos	PM	Sept-8, 6, 9-63	under ledges, in rock piles 5'-15'
391	<i>Neosimnia aequalis</i>	"			5'-15' on purple gorgonian coral - common
392	<i>Strombus granulatus</i>	Kino Bay			dead - in rubble
393	<i>Cassis (Levenia) coerctata</i>	"			"
394	<i>Jenneria pustulata</i>	San Carlos			3 alive - found singly - attached to bottom of rock on sandy patch under ledges (all in same approx situation) 1 on N to on S side of point
395	<i>Cypraea (Pseudozonaria) arabicula</i>	San Carlos			2 - singly - 5 well in pockets - white sponge? in holes - Cave through end of point - about 2ft from boundary of light on cave's wall -
396	<i>Cypraea (Zonaria) annettae</i>	San Carlos			alive under rocks in crevices - 10ft. - some with slipper shells & growth - still immature - a 5th very young
397	<i>Conus (Chelyconus) purpurascens</i>	San Carlos			common (3) on top of & amongst rocks etc,
398	<i>Trivia (Pusula) solandri</i>	"			3 alive in pockets in rocks - about 2'-3' water - 3 others dead -
399	<i>Trivia (Pusula) californiana</i>	San Carlos			1 - dead - rocks -
400	<i>Crucibulum spinosum</i>	"			1 - " - "
401	<i>Crucibulum scutellatum</i>	"			2 - " - "
402	<i>Oliva (Oliva) spicata</i>	Kino Bay			4 dead in rubble off shore - common
403					
404	<i>Pinna rugosa</i>	(Kino Bay) - on S tip of Kino Bay, N of Kino			alive - about 3/4 of shell buried in sand-mud at entrance of cave about 20' - only one seen; groupers hid in cave's recesses -
405	<i>Pinctada mazatlanica</i>	San Carlos			1 - alive - fairly common - attached to crevices in rock ledges,

406	<i>Malacringens</i>	Huatabampo, Sonora, Mexico	REF	Sept. 8-63	dead on beach - sandy offshore
407	<i>Ficus ventricosa</i>	" "	—	—	" " " "
408	<i>Pitar (Hysteroconcha) lupanaria</i>	" "	—	—	alive on beach; halves of others
409	<i>Turritella gonostoma</i>	" "	—	—	dead (1) - on beach
410	" <i>lentiginosa</i>	" "	—	—	dead (many) - "
411	<i>Cerithium maculosum</i>	San Carlos around rocks in wave swept areas		Sept. 5, 6, 9, 63	gregarious common - under & rocky area
412	<i>Knefastia</i>	San Carlos			dead - colony of coral growing ^{on it}
413	<i>Hermospira maculosa</i>	" "			" sandy area?
414	<i>Conus (Chelyconus) purpurascens</i> → <i>Conus (Conus) gladiator</i>	" "			5 alive on rocks, pockets, common
415	<i>Conus (Conus) nux</i>	" "			pink animal 15 - alive - rocks, ledges usually, com.
416	<i>Conus (C) princeps</i>	" "			10 - " & dead. " " , com.
417	<i>Tegula</i> -	Kino Bay - north -		Sept. 4, 5, 63	3 - alive - intertidal - on rocks in surf zone - common
418	<i>Turbo saxosus</i>	" " "			2 alive same as above -
419	<i>Turbo fluctuosus</i>	" " "			8 " " "
420	<i>Astraea (Uvanilla) turbanica</i>	" " "			6 " " "
421	<i>Nerita (Pitena)</i>	" " "			5 " yellow to orange aperture
422	<i>Purpura patula pansa</i>	San Carlos			1 alive in rocks
423	<i>Thais</i>	Kino & San Carlos			orange aperture
424	<i>Thais (Mancinella) speciosa</i>	" "			yellow "
425	<i>Acanthina (Neorapana) muricata</i>	San Carlos			5 alive - amongst rock, orange ^{aperture}
426	<i>Muricanthus princeps</i>	" "			5 live, 2 dead, on rocks, under ledges, pockets - 2 at bottom in cave at tip of point (as above #395) 10'-20'
427	<i>Cantharus</i>	Kino			yellow - peris 1 dead, 1 alive - rubble & attached to rocks
428		"			9 live - " " "
429	<i>Parametaria dupontii</i>	San Carlos			4 " amongst rocks - 10-15' purple aperture
430	<i>Parametaria</i>	" "			1 - white-brown patches - white aperture
431	<i>Pyrene major</i>	" "			10 - dotted - in groups in pockets - common
432	<i>Pyrene strombiformis</i>	" "			4-4 - " " zig-zag lines -
433	<i>Pyrene fuscata</i>	" "			11 - live - rocks - pockets - common
434	<i>Cantharus sanguinolentus</i>	" " (?) or kino			1 dead rubble
435	<i>Calliostoma eximium</i>	San Carlos			1 - alive - rocky area - pocket -
436	<i>Tegula (Agathistoma) byroniana</i>	" "			1 " - " -
437	<i>Tegula</i>	" "			2 " -
438	<i>Ocenebra</i> - set as <i>Coralliophila nux</i>				
439	<i>Vermetidae</i>	Kino			1 - dead, in rubble - 15'

440	Mitra (Strigatella) dolorosa	San Carlos	PEI	Sept 5, 6, 9 -63	1 live, 2 dead - amongst rocks -
441	Turritella tentiginosa	" "			3 dead - rocky area -
442	Pteria sterna	" "			live - attached to purple gorgonian -
443	Mytella falcata	Kino			dead in rubble
444	Arca (Arca) pacifica	"			" " "
445	Lima (Lima) tetrica	"			" " "
446	Lima (Promantellum) pacifica	San Carlos			1 live - sand under rock
447	Donax	Huatabampo,			
448	"	Portuguese Bend Cove			4 - dead - beach - common
449	Cypraea helvola	Moanalua, Oahu, Hawaii	PEI	Nov 28, 1963	on Heliotis fulgens - 10ft -
450	Cypraea fimbriata	" " "	Jim deVis Norton	?	in dredgings (dead)
451	Cymatium	Ala Moana, " " "	" " "	?	" " (")
452		Carpenteria Beach, below Standard Oil Station	" " "	?	under coral rock
453		" " " "	Pete Major	9, Feb, 1964	on rocks - near shore
454		Goleta Pt, Santa Barbara, California	" " "	"	" rock " "
455	Polinices reclusianus Deshayes	off " " " "	" " "	29, Jan. 1964	in mudstone-shale- ^{rock} broken by wave action
456	Mitra idae	" " " " "	" " "	2, Feb. 1964	in sand, 25', in Kelp Bed
457		" " " " "	" " "	"	on kelp holdfast - 25' (2)
458		" " " " "	" " "	"	" " " " , dead
459		Kino Bay area, Sonora, Mexico,	" " "	"	" " " "
460		" " " "	" " "	5, Sept. 1963	dead in rubble offshore 15-20'
461		" " " "	" " "	"	" " " "
462		San Carlos Bay, N. end, Sonora, Mexico	" " "	"	" " " "
463		" " " "	" " "	5, 6, 9, Sept. 1963	amongst rocks & ledges
464		" " " "	" " "	"	"
465		" " " "	" " "	"	"
466		" " " "	" " "	"	"
467		" " " "	" " "	"	"
468		" " " "	" " "	"	"
469		" " " "	" " "	"	"
470		" " " "	" " "	"	"
471		" " " "	" " "	"	"
472		" " " "	" " "	"	"
473		" " " "	" " "	"	(3) "
474		" " " "	" " "	"	(1) "
475		" " " "	" " "	"	"
476		" " " "	" " "	"	"
477		" " " "	" " "	"	"

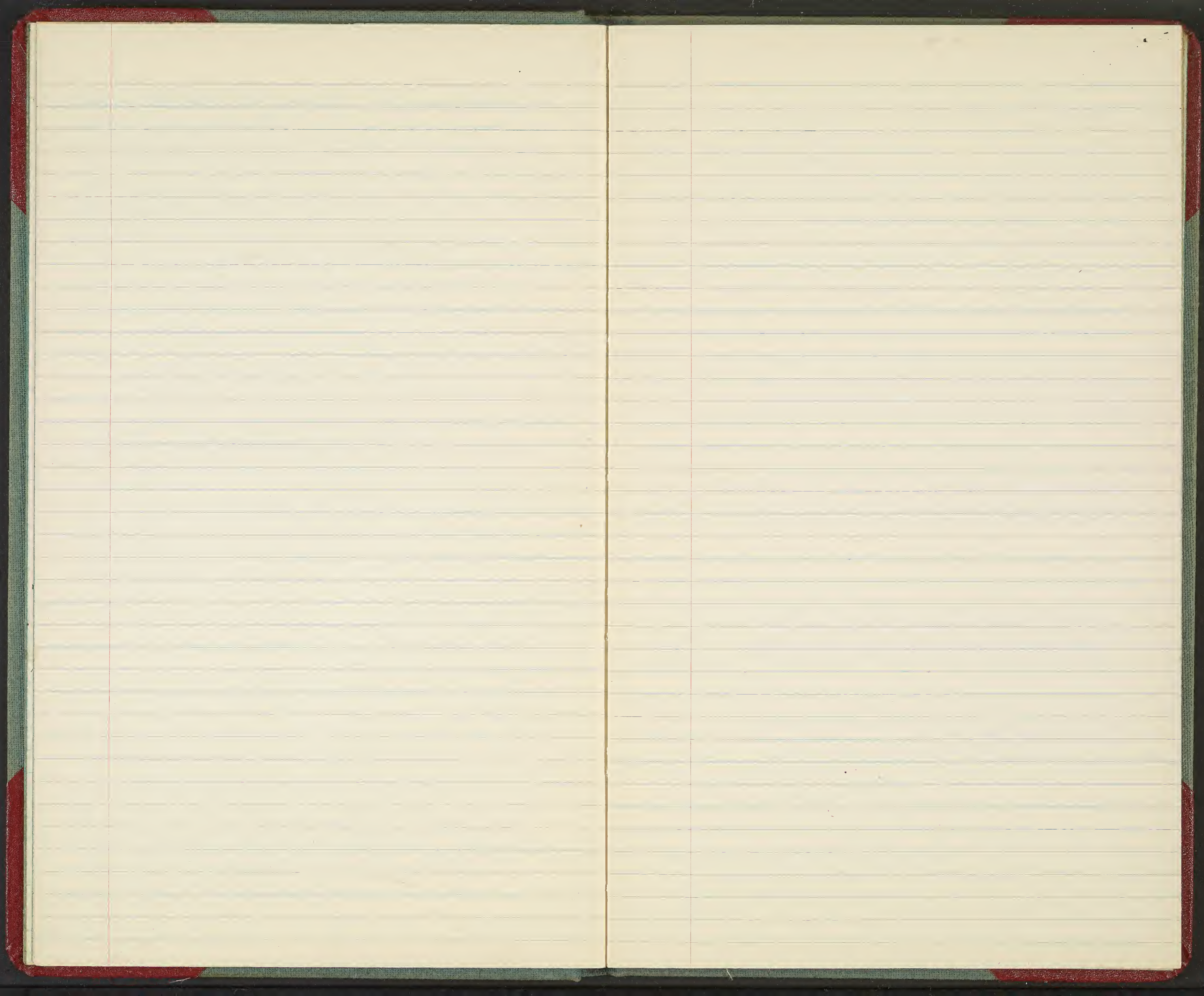
478
479
480
481
482
483

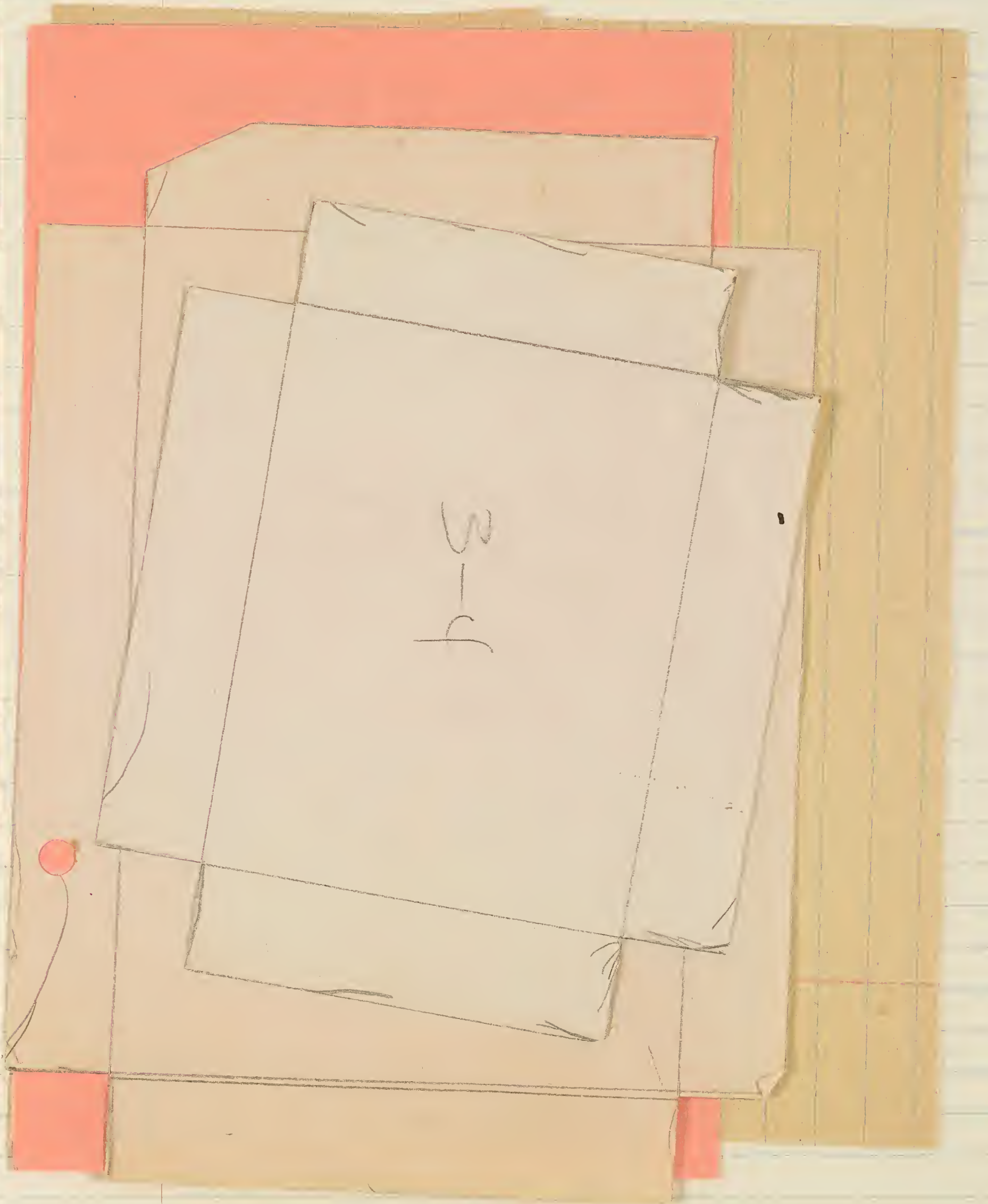
Huatabampo, Sonora, Mexico
" " "
" " "
" " "
" " "
" " "

Peter Major
"
"
"
"
"

8, Sept. 1963
"
"
"
"
"

dead on long sandy beach
" "
"
"
"
"





3-4

3-4

4 - 6

MEMO ROUTING SLIP

TO THE FOLLOWING IN ORDER INDICATED

	Name or Title	Organization	Room No.	Initial	Date
1.					
2.	Dr. Rosewater				
3.					
4.					
5.					

PURPOSE OF ROUTING

	Prepare Reply for Signature of	Supply Information on Which to Base Reply
		Comment
	Necessary Action	Information
	Initial for Clearance	See Me
	Signature	Investigate
	Approval	Note and Return
	As Requested	Per Conversation

REMARKS Someone has just given us a small collection of shells from Mexico, Viet Nam and a few other places. There are some things that you might want for the collection ~~XXXXXX~~ in the Division. Let me know when you want to take ~~X~~ a look at them.

FROM

June

DATE

5 Nov 78

PHONE

6204

Form 6 Rev. 9-14-71

SMITHSONIAN INSTITUTION

What do real black spore wear?

see # 46-50 ? no data?

66-70

84-87

344 ? same as 342-343 ?

? # 5 381-390 crossed out ?

Gene said Viet Nam ? - not in
catalogue ?

operculum



Collection from ^{D.} Pete ^{F.} Major

11597 N Shore Drive (A)

Reston Va 22090

CG
work 426-3301 until
home 437-7336 Feb 12th 79 → after
that - Marine
Mammal Commission

