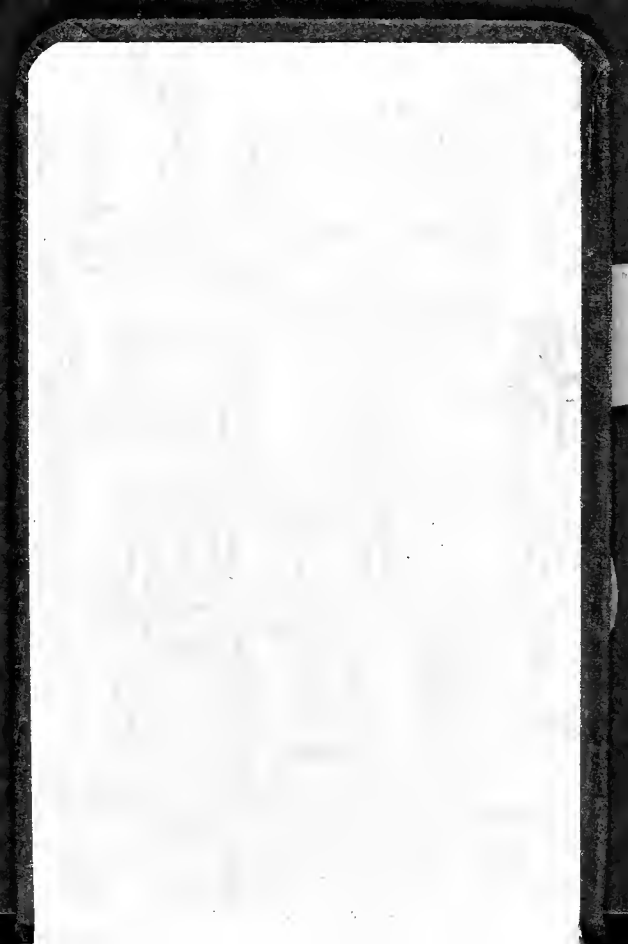


Handbook of Japan





B. S. Plants

~~Kudzu~~  
~~Coccoloba~~

Kudzu  
Pithecolobium affinale  
Bourbon  
Hibiscus

Dualaya (2)

Tanacetum (3)

(sub. sole, at roots)

Tanacetum (3)

tree, as well as  
sub. sole, west of  
hill, near top

perhaps by  
sine

Use of leaf not  
aluminum

like you  
should work.

it. this, take  
to be 2.5

from cabins  
from station

to 100 ft, fine  
of 100 ft, fine

to 100 ft

spread of 100 ft

any. 2.5

of the 2.5

Castroville

Public Library

116

Phis

University R. F. B.

from L. & L.

also for

Public Library

(1) B. J. S.

(2) S. L. S.



Frank  
- Thompson

U slovakie

Hopson Thompson  
Kocher bi...

Frank

hutsia...

Frank

R. ...



Al

D. plus info from ...  
(B. P. H. Vaccinifolia)

4 S. sp P.

5 L. dis S. G.

7 H. phillipina

B. of ...

3 S. lobangensis

8 S. f. ...

9 sp ✓ ...

AD ...

6 ...







✓ 0 " ✓ 12 30 38 97

✓ 8 ✓ 12 18 30 7

✓ 9 ✓ 12 21 ✓ 77  
(Jan 21 - 2001)

✓ ✓ 11 19 25 10

✓ ✓ 9.23 27



✓ 1 ✓ 2 ✓ 3 ✓ 4 ✓ 5 ✓ 6 ✓ 7 ✓ 8 ✓ 9 ✓ 10 ✓ 11 ✓ 12 ✓ 13 ✓ 14 ✓ 15 ✓ 16 ✓ 17 ✓ 18 ✓ 19 ✓ 20 ✓ 21 ✓ 22 ✓ 23 ✓ 24 ✓ 25 ✓ 26 ✓ 27 ✓ 28 ✓ 29 ✓ 30 ✓ 31 ✓ 32 ✓ 33 ✓ 34 ✓ 35 ✓ 36 ✓ 37 ✓ 38 ✓ 39 ✓ 40 ✓ 41 ✓ 42 ✓ 43 ✓ 44 ✓ 45 ✓ 46 ✓ 47 ✓ 48 ✓ 49 ✓ 50 ✓ 51 ✓ 52 ✓ 53 ✓ 54 ✓ 55 ✓ 56 ✓ 57 ✓ 58 ✓ 59 ✓ 60 ✓ 61 ✓ 62 ✓ 63 ✓ 64 ✓ 65 ✓ 66 ✓ 67 ✓ 68 ✓ 69 ✓ 70 ✓ 71 ✓ 72 ✓ 73 ✓ 74 ✓ 75 ✓ 76 ✓ 77 ✓ 78 ✓ 79 ✓ 80 ✓ 81 ✓ 82 ✓ 83 ✓ 84 ✓ 85 ✓ 86 ✓ 87 ✓ 88 ✓ 89 ✓ 90 ✓ 91 ✓ 92 ✓ 93 ✓ 94 ✓ 95 ✓ 96 ✓ 97 ✓ 98 ✓ 99 ✓ 100

~~January 1960~~

2

Handwritten notes on lined paper, including a circled '1' at the top left, a circled '2' at the top center, and a circled '3' at the top right. The page contains approximately 15 rows of text, each starting with a checkmark. The text is mostly illegible due to blurring and fading, but appears to be a list or series of entries. Some faint numbers like '1', '2', '3', '4', '5', '6', '7', '8', '9', '10', '11', '12', '13', '14', '15' are visible, possibly indicating a sequence or index. The checkmarks are consistently placed at the beginning of each line.



✓ 1 ... ✓ 5 ✓  
 ✓ 2 ... ✓ 21 20 26 11  
 ✓ 3 ... ✓ 17 23  
 ✓ 4 ... ✓ 17 16 15 5  
 ✓ 5 ... ✓ 27 16 12 5  
 ✓ 6 ... ✓ 24 11 18 6  
 ✓ 7 ... ✓ 20 10 16

w  
 l













8  
 ✓ 11/1/1917 ✓  
 ✓ 11/2/1917 ✓  
 ✓ 11/3/1917 ✓  
 ✓ 11/4/1917 ✓  
 ✓ 11/5/1917 ✓  
 ✓ 11/6/1917 ✓  
 ✓ 11/7/1917 ✓  
 ✓ 11/8/1917 ✓  
 ✓ 11/9/1917 ✓  
 ✓ 11/10/1917 ✓  
 ✓ 11/11/1917 ✓  
 ✓ 11/12/1917 ✓  
 ✓ 11/13/1917 ✓  
 ✓ 11/14/1917 ✓  
 ✓ 11/15/1917 ✓  
 ✓ 11/16/1917 ✓  
 ✓ 11/17/1917 ✓  
 ✓ 11/18/1917 ✓  
 ✓ 11/19/1917 ✓  
 ✓ 11/20/1917 ✓  
 ✓ 11/21/1917 ✓  
 ✓ 11/22/1917 ✓  
 ✓ 11/23/1917 ✓  
 ✓ 11/24/1917 ✓  
 ✓ 11/25/1917 ✓  
 ✓ 11/26/1917 ✓  
 ✓ 11/27/1917 ✓  
 ✓ 11/28/1917 ✓  
 ✓ 11/29/1917 ✓  
 ✓ 11/30/1917 ✓





A. fragilis  
has 1000 yms  
C. ...

Explanation of sp. no.

① ~~Thyrida~~ long set back  
= Paracanthina sp

② Paracanthina = Paracanthina  
Thyrida = "

Sabal = Sabal sp.

Also 2 other sp.

2nd leaf = S. longica

the 3<sup>rd</sup> sp has fine  
but present section.  
(coll my thin) ~~thin~~  
plates

(3) ~~has~~ 2 ~~sp~~  
sp

Today night

(4) ~~has~~ ~~sp~~ = ~~sp~~  
in the sp ~~has~~  
all ~~sp~~

~~has~~ ~~sp~~ ~~has~~  
the ~~sp~~

~~has~~ ~~sp~~ ~~has~~  
the ~~sp~~  
all ~~sp~~

(5) Hydrocorymbus  
"concolorus"

= Kenyan tulip.

- Last H. because

but probably Papilion.

- Many collections in  
acquirables.

(6) Chestnut soil leaf

= soil leaf sp. v

Pakoi. ~~Is it~~ Is

it Xanthophyllin?

(7) Tulip also = Concolorus

I think the pale form is

black stem sp. v

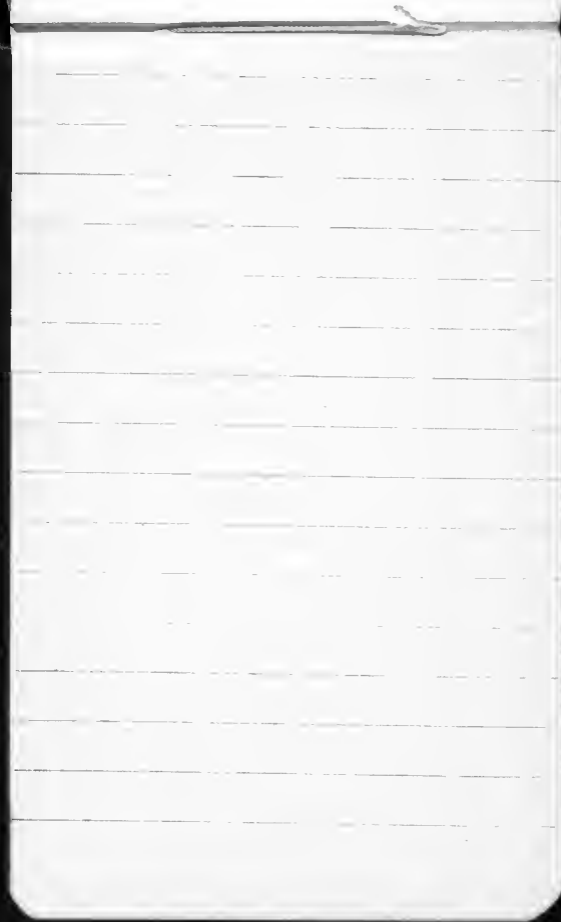
have previously found

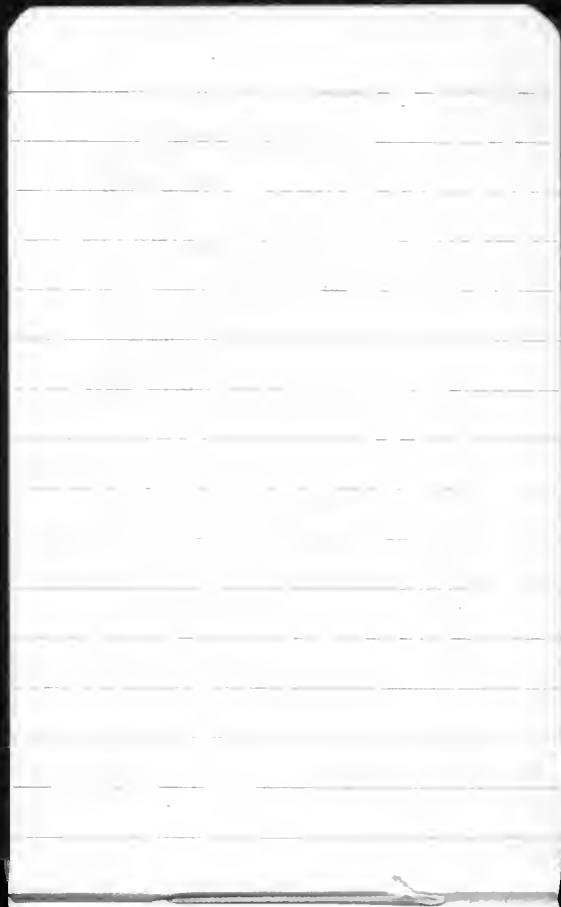
in high altitude.

(8) Takamuzt, > p is  
the largest land sp.

(9) Dove } common in  
Bait } wet coll.  
Rays line } before in  
countries









*Kyobalaxips*  
*lauceolata*



*I. oblongifolia*



12. *Phyllanthus*



*P. beccarii*



4. 1 h Day
- 2 Sunday
- 3 G. samples
- 4 "
- 5 "
- 6 P. Miami
- 7
- 8

P. ... ..

... ..

... ..

... ..

... ..

... ..

... ..

... ..



paper found well 200  
f. d. 200  
the thing of 600  
of ~~the~~ most plates  
peeled off.

Some U. Case in case  
possibly document

---

K. melan...

perhaps 6 to  
K. brownish more like  
red.

single ...  
= ...  
K. melan ... = keep



Calypso

sp. is ...

Calypso - Adl

leaf Calypso, ...

low ...

Ridges

... boat ...

... ..

... ..

... ..

P.T.O

b K. ...

...

...

Plant (tree):

Stem ...

...

Leaves (long)

...





Plate

1. Kuyutubing
2. Uagit
3. Sualoh (A. ....)
4. Kuyutubing
5. ...
6. ...
7. ...

- Z T
1. ...
  2. ...
  3. ...
  4. ...
  5. ...
  6. ...
  7. ...

Nov 11

- (1) Sigatoka - 10 4
- (2) P. ... - 10 4
- (3) U. ... - 11 9
- (4) P. ... - 14 14
- (5) L. ... - 10 12
- (6) Rebak - 10 13
- (7) ... - 4 24
- (8) ... - 6
- (9) ... - 1 5
- (10) ... - 1 25
- (11) ... - 11 24

10 ... ..  
... ..

... ..  
... ..

~~OBAK  
JAMBU  
KEMAYAU  
KELAPOK  
DUNGUN.  
KERUING  
ENGKABANG~~

~~Field~~ For long

- ✓ (17) ... 3-10
- ✓ (18) S. ... 3-23
- ✓ (19) U. ... 8-25
- ? (20) C. ... 18-15
- ✓ (21) S. ... 16-16

Reynolds, S. D.  
 yellow feet legumin  
 the ...  
 ...

Piket = 7

1		1	4
1	enia	22	3
13	Gelutur	7	1
?		22	
1		23	7
	Piket	16	2
1		1	x
1	Kayuhian	1	
1	B...	1	
1		7	9
1			
1			11
2			
1			6
1			
1			

... ..

✓ (10)	...	17	21
✓ (11)	D. ... ✓	17	24
✓ (15)	Engana <sup>h. h. kamijati</sup>	16	25
✓ (19)	P. ...	24	25
✓ (20)	Pekah	24	25
✓ (21)	P. ...	24	25

Plate F

✓ 1	Van der Grinten	✓	17.4
✓ 2	Endeavour	✓	12.3
✓ 3	Rhine	✓	12.11
✓ 4	Kangaroo	✓	4.99
✓ 5	Patrol	✓	3.8
✓ 6	Patrol	✓	5.18
✓ 7	Patrol	✓	8.18
✓ 8	Patrol	✓	14.1
✓ 9	Kangaroo	✓	7.19
✓ 10	Patrol	✓	4.21
✓ 11	Patrol	✓	6.25
✓ 12	Patrol	✓	10.73
✓ 13	Patrol	✓	18.79
✓ 14	Patrol	✓	19.28
✓ 15	Patrol	✓	19.28





			↑
✓		4	3
✓		6	4
✓	T	6	4
✓	i	93	9
✓	h	6	23
	h	3	25
✓	h	11	20
✓		1	
✓	N	5	
	F	15	21
✓	S	26	16
✓		21	10
✓		10	
✓		26	1

Completed 30/1/01

✓	Banyuwangi (K. H. S. I.)	3	9.
✓	Kampung Tala (K. H. S. I.)	5	10.
✓	... ..	3	14.
(13)	Pinggan ... ..	2	20.
(14)	... ..	1	21.
(15)	... ..	3	25.
(16)	... ..	12	23.
(17)	... ..	16	24.

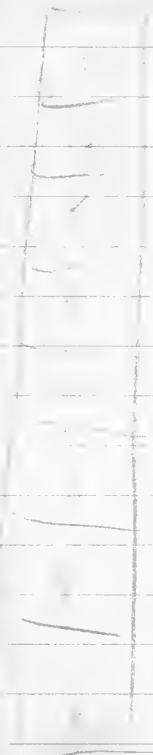
Plok B.

→ ↑

✓ 1	6. 10.	2	3
✓ (2)	Peloh	23	11
✓ (3)	<del>A. 23/</del>	22	16
✓ (4)	<u>Kombay</u> (Kombay)	16	24
✓ (5)	"	16	"
✓ (6)	"	7	"

Plok C.

✓ (1)	Dugik / 5. 16. / 4	1	
✓ (2)	W. ...	20	2
✓ (3)	...	20	2
✓ (4)	...	24	3
✓ (5)	...	24	4
✓ (6)	...	10	8



35

35

Profile No. 2

PLA → ↑  
 Get <sup>gills</sup> ~~stems~~ 23/ 1 7

~~Platanus~~ <sup>Santal</sup> ~~frondosa~~ 1 8

V. cf. ~~frondosa~~ 6 8

L. ~~frondosa~~ 8 3

L. ~~frondosa~~ 8 3

Empin 20 3

D. ~~frondosa~~ 22 2

D. ~~frondosa~~ 22 2

S. of V. ~~frondosa~~ 10 2 1

~~frondosa~~ 26

~~frondosa~~ 26

~~frondosa~~ 8

48 20

20

Shygal 26

Asah 85

Ladi 20.

— 25

Shygal

Asah

Shygal 2 boats (small)

1 ship (boat)

Carryover

1/2 ...

7

6

*Prunus serotina*

6

5

Habit in 1864

6



# 50

58 Erythraea

59

60

61

62

63

64

65

"  
K. ...

"  
K. ...

K. ...

Phytolacca

Salsola

50.

65

19

134

24

158



- 32
- 33
- 34
- 35
- 36
- 37

Part: 1

=

par -  
 the  
 the  
 the  
 the  
 the

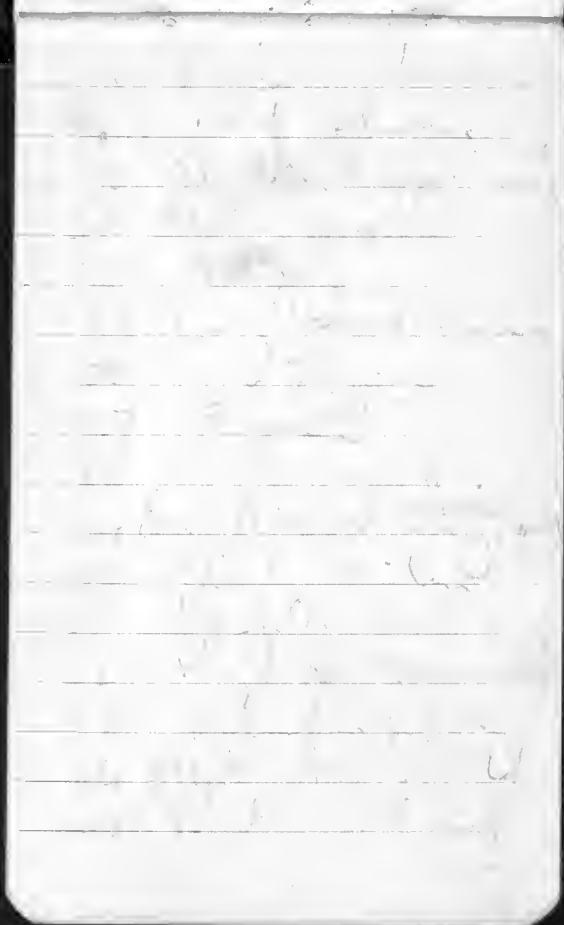
Handwritten notes on lined paper, including the word "Faint" and other illegible scribbles.

Handwritten notes on lined paper, including the number "50" and other illegible scribbles.

- 46 S. D. ...
- 47 ...
- 48 ...

Sample 1  
 P. ... 2  
 Temp 1  
 Lat 1  
 ...  
 ...

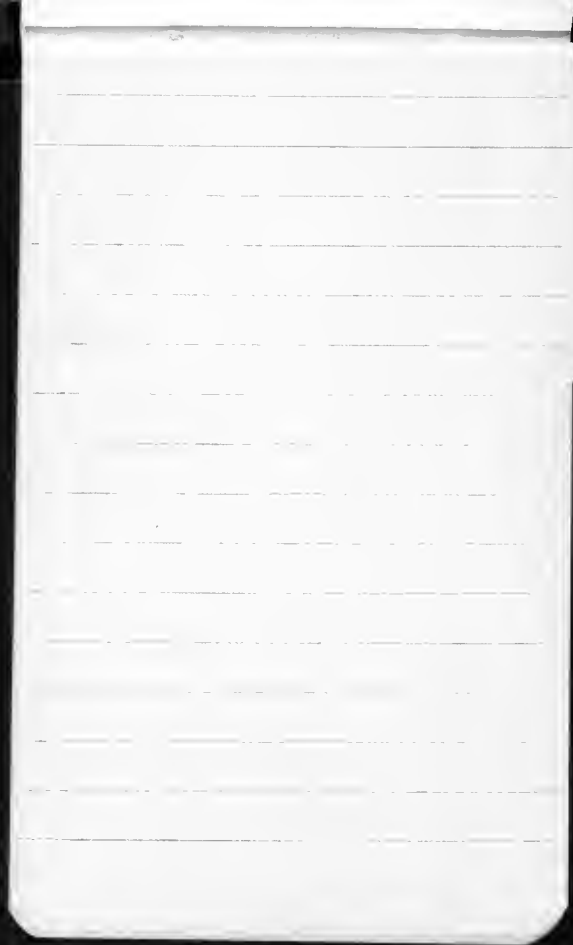
1  
 2  
 1  
 1



1. Common names

- 1) Calophyllum (Common name)
- 2) Calophyllum
- 3) Calophyllum
- 4) Calophyllum
- 5) Calophyllum
- 6) Calophyllum
- 7) Calophyllum
- 8) Calophyllum
- 9) Calophyllum
- 10) Calophyllum
- 11) Calophyllum
- 12) Calophyllum
- 13) Calophyllum
- 14) Calophyllum
- 15) Calophyllum
- 16) Calophyllum
- 17) Calophyllum
- 18) Calophyllum
- 19) Calophyllum
- 20) Calophyllum





(10) ~~Hydrolysis~~  
S. alk. sol.

Rain  
Hydrolysis  
S. alk. sol.

(11) S. alk. sol.  
Country & J.  
Parasite

9

10

11

12

13

14

15

16

17

18

19

20

21

22

23

24

25

26

27

28

29

30

31

32

33

34

35

36

37

38

39

40

41

42

43

44

45

46

47

48

Let's go  
to the store

(1)

Buy some  
fruit

Get some  
vegetables

Get some  
meat

(2)

Buy some  
bread

Get some  
dairy

Get some  
snacks

Done

(2) The (y) between  
gates of doors  
is made, the  
of the (y) between  
the  
because  
of the  
of the

U

(1000000)

... ..  
... ..  
... ..  
... ..  
... ..

1

10

100

1000

10000

1/10/20

1/10/20

2

D. ...

... ..

... ..

..

1/10/20

... ..

... ..



Handwritten text at the top of the page, possibly a title or header.

Second line of handwritten text.

Third line of handwritten text.

Fourth line of handwritten text.

Fifth line of handwritten text.

Sixth line of handwritten text.

Seventh line of handwritten text.

Eighth line of handwritten text.

Ninth line of handwritten text.

Tenth line of handwritten text.

Eleventh line of handwritten text.

Twelfth line of handwritten text.

Thirteenth line of handwritten text.

Fourteenth line of handwritten text.

Fifteenth line of handwritten text.

Sixteenth line of handwritten text.

Seventeenth line of handwritten text.

Eighteenth line of handwritten text.

PHOTOS

LISTA

D. ...

H. ...

S. ...

I. ...

F. ...

P. ...

S. ...

D. ...

... ..

N. ...

( ... )

Herbaceous plants

(1)

S. aff.

(2)

F. ...

(3)

S. ...

(4)

P. ...

(5)

T. ...

(6)

S. ...

(7)

S. ...

(8)

F. ...

(9)

P. ...

(10)

S. ...

(11)

S. ...

(12)

S. ...

(13)

S. ...

(14)

S. ...

(15)

S. ...



Plant names  
in this book.



