

HEIDEN

Memoranda

PHOENIX

Phoenix Is.

2 December 1966

SIC 16

Rich Heiden

R. HEIDEN
PHOENIX IS.
SIC # 16

DEC. 2 -

✓ ADP
CPT

taken from another source
spot-checked.
Done 1/17/69

①

SERA

PHOENIX IS.

SIC 16

56h 1 - 100
(BLUE-FACED BOOBY)

BLUE-FACED BOOBY
DEC. 2 BANDS ISSUED 767-45062
To -45100

BANDS RETURNED 767-45082
To 45100

10

64

13

18

224

29

72

112

191

85

16

71

84

303

18

70

49

08

80

R. HEIDEN PHOENIX IS. DEC. 2

WAPP *W/dh*

CAT. #	SPECIES	AGE	SEX	COLOR PHASE	NESTING STATUS	BAND NO.
1	BLUE-FACED BOOBY	A	M	NONE	w/dh	✓ 737-51401
2)		A	M)		—	(737-23064
3)		A	F)		—	(737-48013
4)		A	F)		—	(737-23948
5)		A	M)		—	(737-23940
6		A	M		—	737-48024
7		A	M		w/lmm	737-26129
8)		A	F)		w/dh	(757-67972
9)		A	M)		w/dh	(587-83412
10)		A	F)		w/lmm	✓ 757-65491
11)		A	M)		w/lmm	✓ 757-60985
12		A	M		w/lmm	737-51216
13		A	F		w/lmm	757-62571
14			M		w/mm	757-65884
15			M		w/mm	757-64303
16			M		—	737-48318
17			M		—	757-62570
18			F		—	757-64149
19			F		—	✓ 737-22608
20			M)		P.W/21	✓ 757-65880

R. HEIDEN PHOENIX IS. DEC. 2

CAT. #	SPECIES	AGE	SEX	COLOR PHASE	NESTING STATUS	BAND NO.
21	BLUE-FACED BOOBY	A	F PW/20	NONE	w/Imm	757-67978
22		A	F		—	(NB 767-45062
23		A	M		—	✓ 737-50804
24		A	F		1 E	737-22364
25		A	F		—	NB 063
26		A	M		w/ch	737-23949
27		A	M		—	757-65590
28		A	F		2 E	757-62577
29		A	F		—	Blue. 737-81581 Analyzed
30		A	F		—	737-51069
31		A	M		—	✓ 737-22399
32		A	M		—	(757-65574
33		A	F		—	(757-62677
34		↓	F		w/Imm	757-62568
35		↓	M		w/Imm	737-23298
36		Imm	U		—	NB 064
37		A	F		—	✓ 737-51411
38		Imm	U		—	NB 065
39		Imm	U		—	NB 066
H6		Imm	U		—	NB 067

✓ *AMP ok*

R. HEIDEN PHOENIX IS. DEC. 2

APP 106

CAT. #	SPECIES	AGE	SEX	COLOR PHASE	NESTING STATUS	BAND NO.
41	BLUE-FACED BOOBY	Imm	U	NONE	—	NB 068
42		Imm	U	—	—	NB 069
43		Imm	U	—	—	NB 070
44		Imm	U	—	—	NB 071
45		Imm	U	—	—	NB 072
46		Imm	U	—	—	NB 073
47		A	M	—	2E	757-64336
48		Imm	U	—	—	NB 074
49		A	M	—	Imm	737-51289
50		A	M	—	2E	737-50497
51		Imm	U	—	—	NB 075
52		A	F	—	—	737-20306
53		A	M	—	—	NB 076
54		A	M	—	—	NB 077
55		Imm	U	—	—	568 ² -71686
56	Imm	U	—	—	568-71689	
57	Imm	U	—	—	NB 078	
58	A	M	—	—	737-22100	
59	A	M	—	—	NB 079	
60	A	F	—	—	737-21867	

R. HEIDEN PHOENIX IS. DEC. 2

App John

CAT. #	SPECIES	AGE	SEX	COLOR PHASE	NESTING STATUS	BAND NO.
61	BLUE-FACED BOOBY	A	M	NONE	—	NB 080
62		A	M		w/imm	737-48264
63		A	M		w/ch	737-48015
64		A	M		w/ch	737-22044
65		A	M		w/ch	737-20179
66		A	F		w/ch	737-51297
67		A	M		w/ch	757-65492
68		A	F		—	757-62582
69		A	M		—	757-67939
70		A	M		—	737-51206
71		A	M U		—	757-62203
72		A	M		—	737-48010
73		A	M		—	757-62217
74		A	M		—	737-22098
75		A	M		—	757-64355
76		A	M		—	757-64051
77		A	F		—	757-64454
78		A	F		—	737-51292
79		A	M		—	757-65488
80		A	F		—	737-51282

R. HEIDEN PHOENIX IS. DEC. 2

ADD on

CAT. #	SPECIES	AGE	SEX	COLOR PHASE	NESTING STATUS	BAND NO.
81	BLUE-FACED BOOBY	A	M	NONE	—	737-51203
82)		A	F)		—	(757-67913
83)		A	M)		—	(737-27450
84)		A	M)		—	(757-65504
85)		A	F)		—	(757-65502
86		A	F		—	737-51208
87)		A	M)		—	(737-23939
88)		A	F)		—	(737-23935
89		A	M		w/dh	757-65503
90		A	M		—	737-48012
91		A	M		—	737-51287
92)		A	M)		—	(737-27463
93)		A	F)		—	(737-22085
94		A	M		—	737-48289
95)		A	F)		—	(757-65814
96)		A	M)		—	(NB 081
97		A	F		—	737-48001
98		A	F		—	737-26002
99		A	M		—	737-48003
100		A	M		—	757-65511

R. HEIDEN PHOENIX IS. DEC. 2

~~SOOTY TERN ADULTS~~

~~BANDS ISSUED: 863-58001~~

~~To~~

~~863-59000~~

~~all used~~

✓ADP

~~753~~

853 - 08295 OE ✓

04290 - ✓

753 - 67800 OE ✓ 09746 OE ✓

67746 OE ✓ 07086 - ✓

67798 OE ✓ 09904 OE ✓

68350 - ✓ 03396 E ✓

01316 E ✓

743 - 36191 OE ✓ 01249 E ✓

36071 OE ✓ 01202 E ✓

03336 - ✓

R. HEIDEN PHOENIX IS. DEC. 2

✓ADP

Sooty Tern Returns

843 - 58234 OE ✓ 793 - 37362 OE ✓

56929 OE ✓ 43134 OE ✓

58068 OE ✓ 36891 OE ✓

54883 OE ✓ 42936 OE ✓

60267 OE ✓ 33025 OE ✓

57498 OE ✓ 56402 OE ✓

54478 OE ✓ 39821 OE ✓

53683 OE ✓ 4077 OE ✓

58945 - ✓ 36767 OE ✓

56811 - ✓ 35610 OE ✓

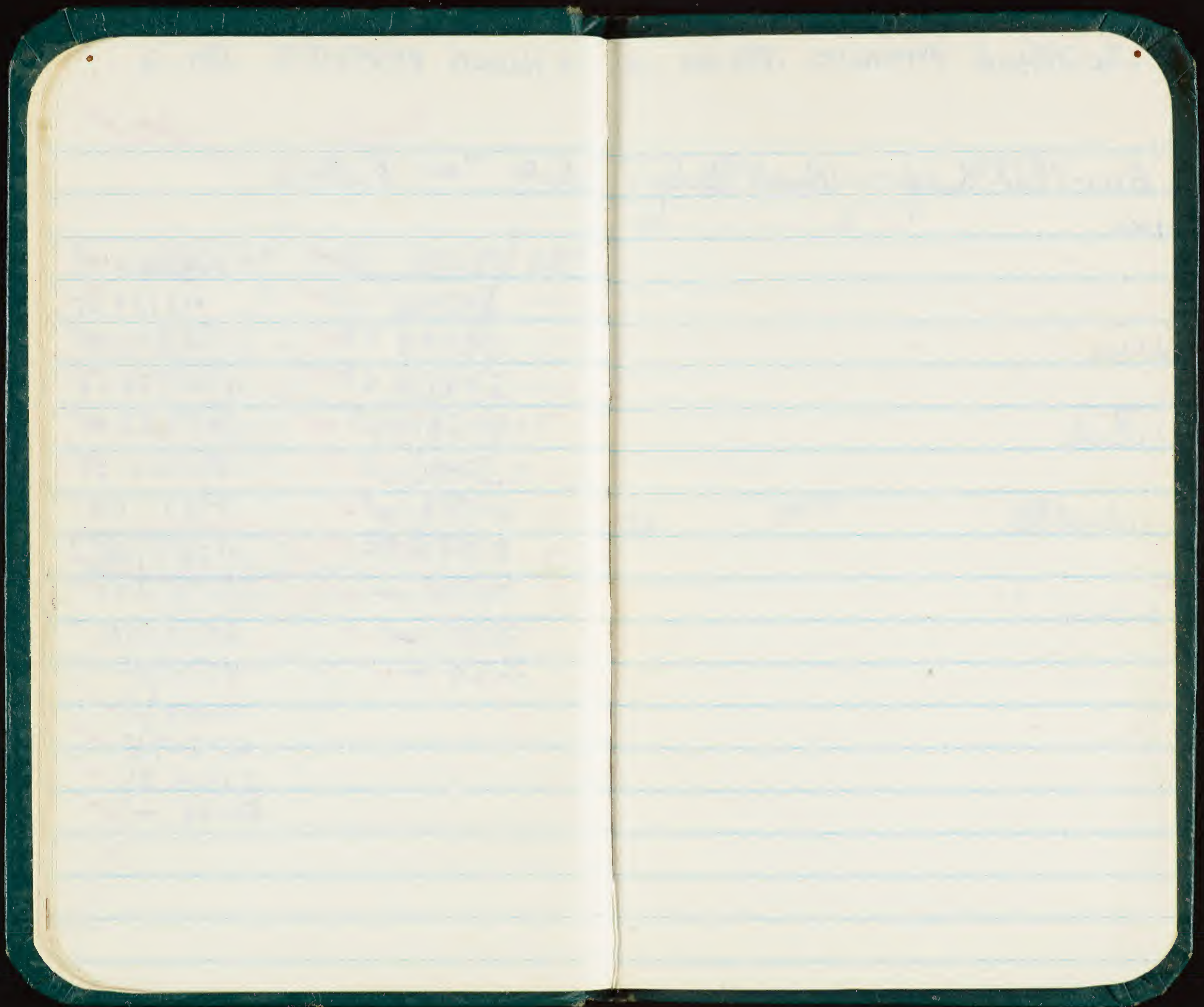
56365 - ✓ 41596 OE ✓

70284 E ✓

42809 E ✓

57394 E ✓

33228 - ✓



R. HEIDEN PHOENIX IS. DEC. 2

Blue-Faced Booby Brown Booby

1 EGG

2 EGGS

1 egg +
1 chick

1 chick

1 imm.

R. HEIDEN PHOENIX IS. DEC. 2

and Shear. Xmas Is. RTTB

IV

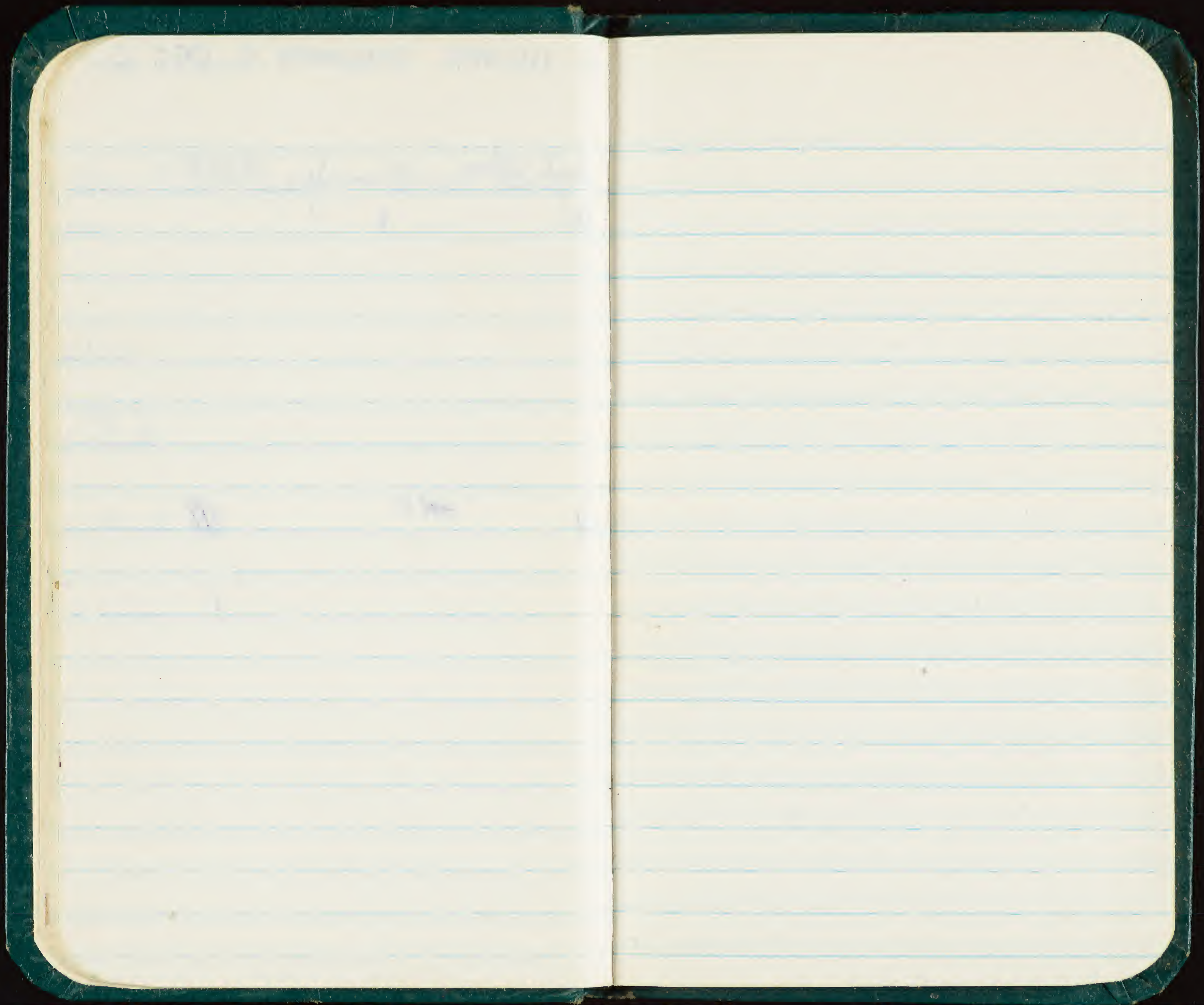
I

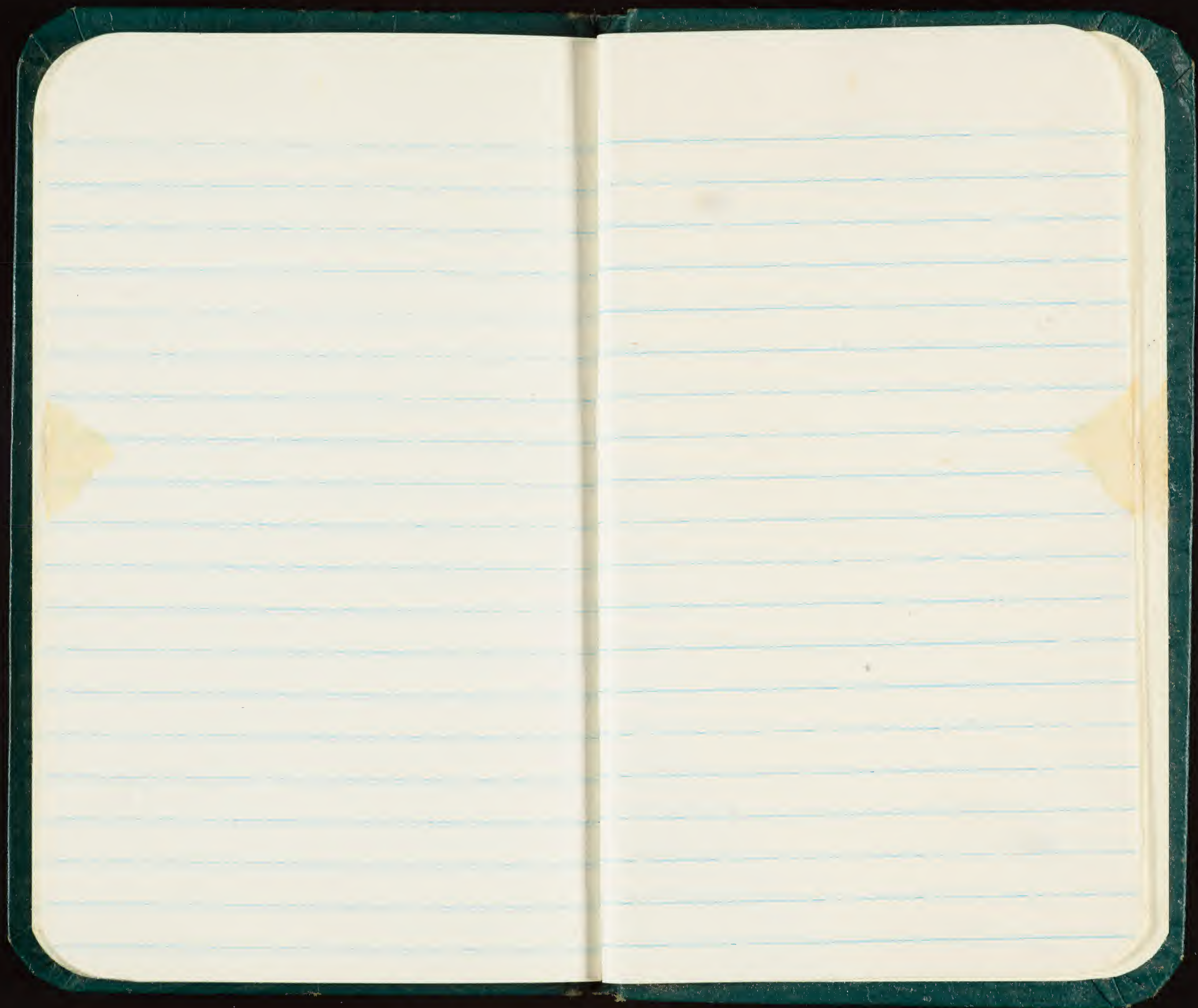
||||

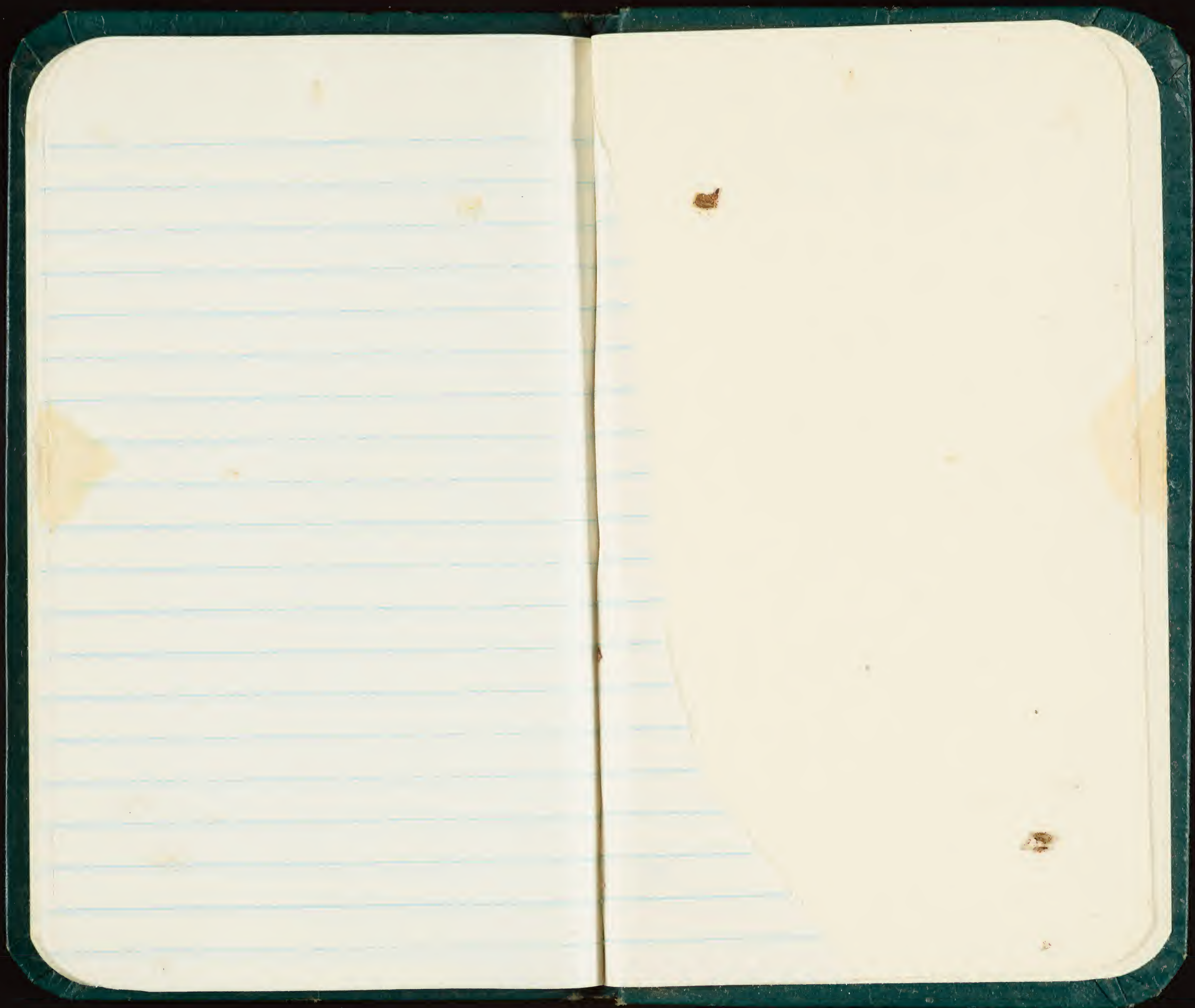
||||

⊕

|







Rabbits

|||| ||||

|||| ||

|

7530-222-0078

FEDERAL SUPPLY SERVICE