

3

[3]



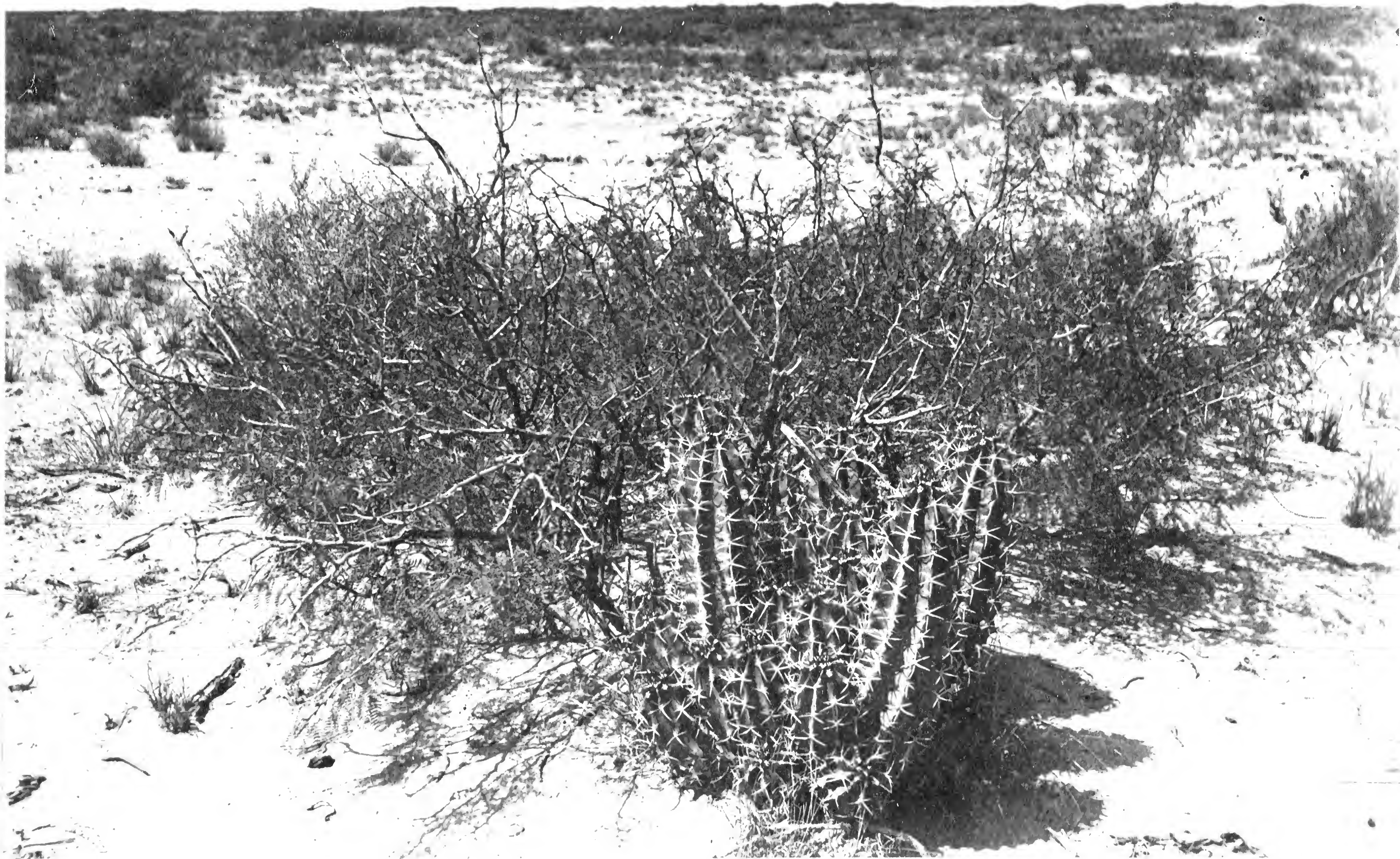
1.- Spring at south end of lava beds
west of Tula Rosa, N. Mex. Poisonous.



6. - Streamlet from spring in (1).
Salt grass, salt hushes, etc. Salicornia.

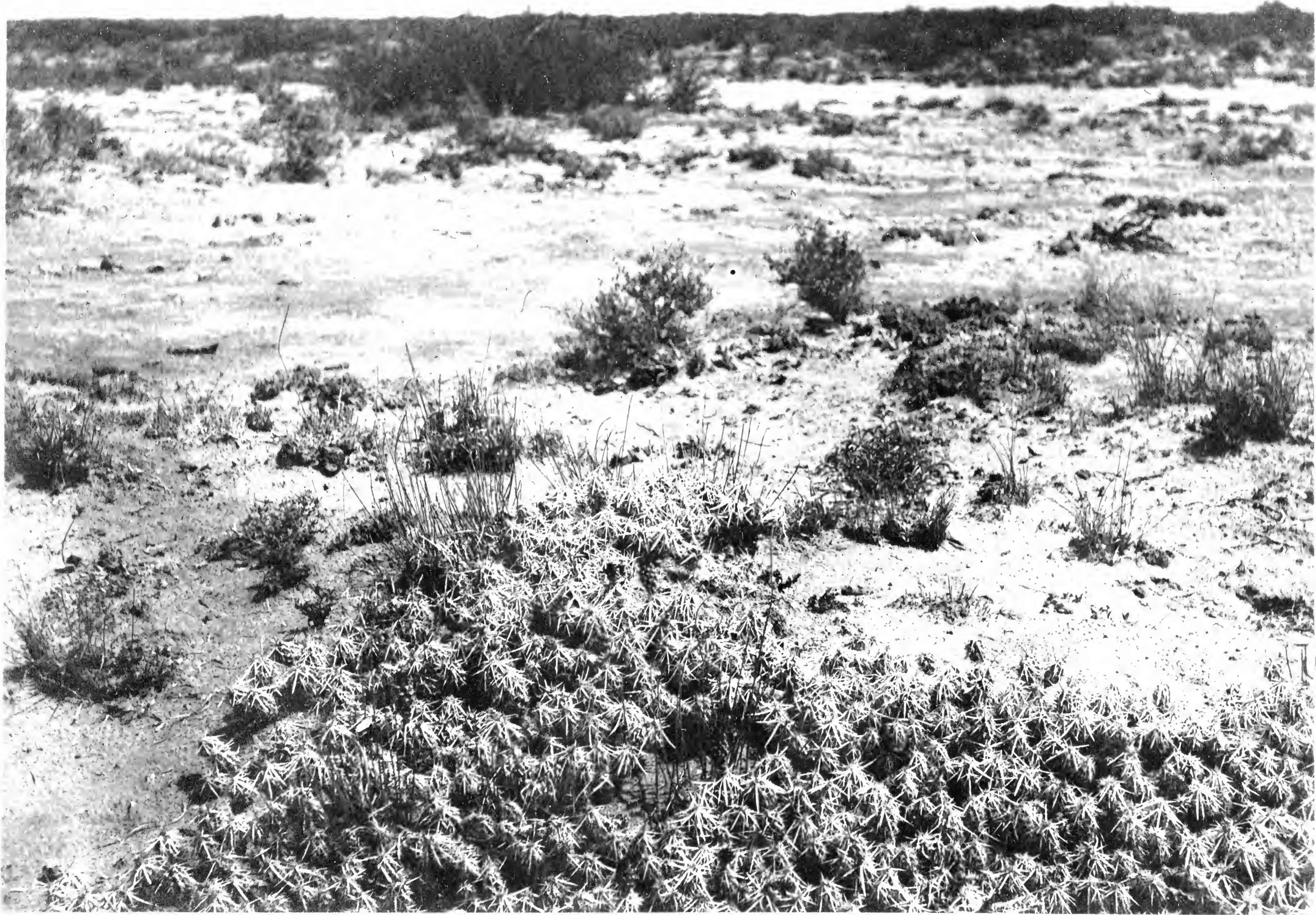


7. - *Juniperus* sp. (C). 9-7 (1938) etc.



7-7-30

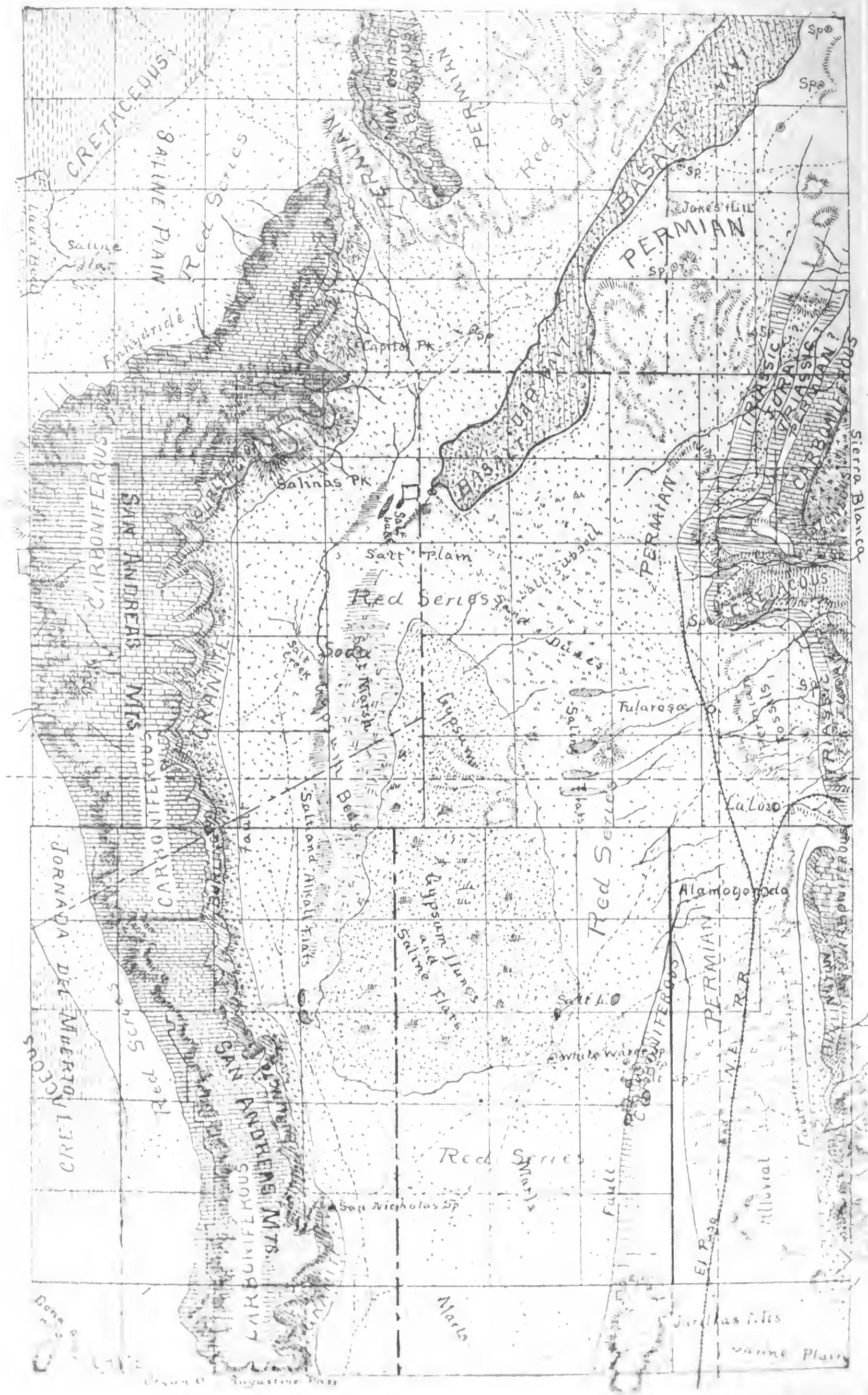
Fort Huachuca, Pima Co., Ariz.



17 - 10 - 1950 - 2 - 10 - 1950 - 2 - 10 - 1950 - 2
18 - 10 - 1950 - 2 - 10 - 1950 - 2 - 10 - 1950 - 2



View of the coast of the Pacific Ocean
from the camp of the expedition



7.- Map showing the location of the lava beds (Mal Pais), White Sands, etc. N. Mex.



3. - White Sands, -border. Trail, and sea-
anal desert with fertile soil.