

I

[I]



1.-Salt basin on salt-pans, Vancouver-
division, B.C.

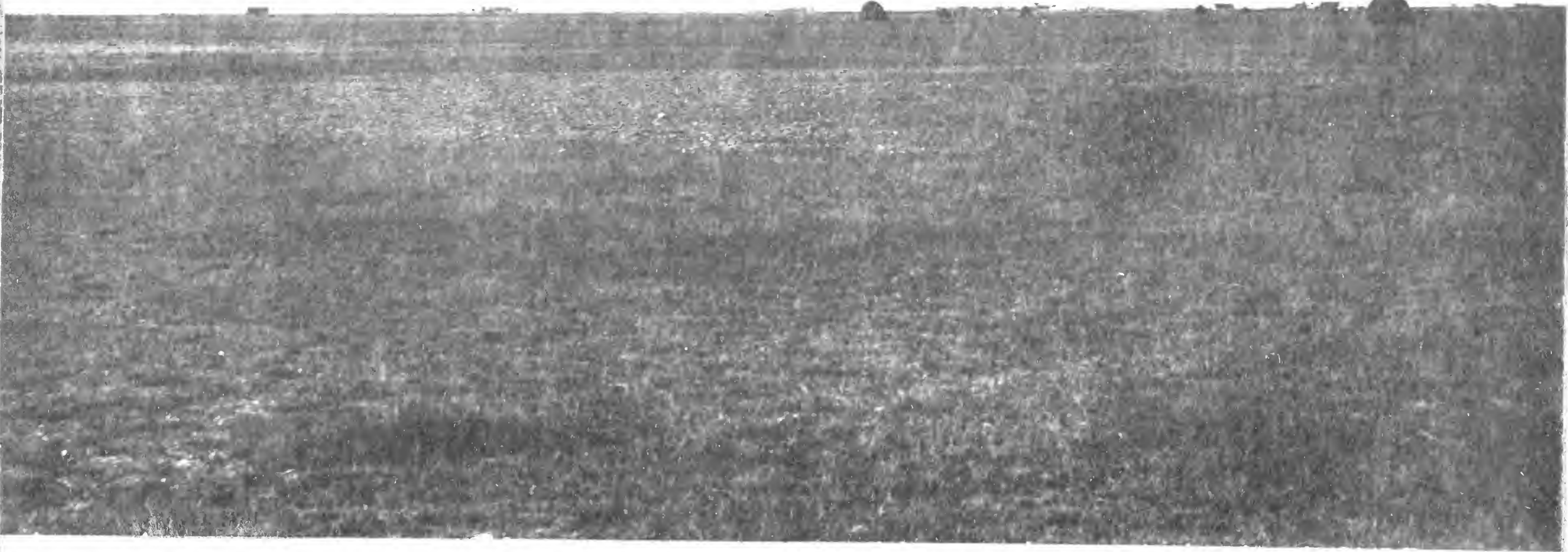
Steppe remnants of
Europe.

Those on card I are the
sand and salt "puszta"
of Hungary.

Those on cards II, III and IV
are steppe-remnants in
Bohemia. (compare with our prairie
openings.)



View from the shore of the bay at the mouth of the river
The buildings in the distance are the town of ...



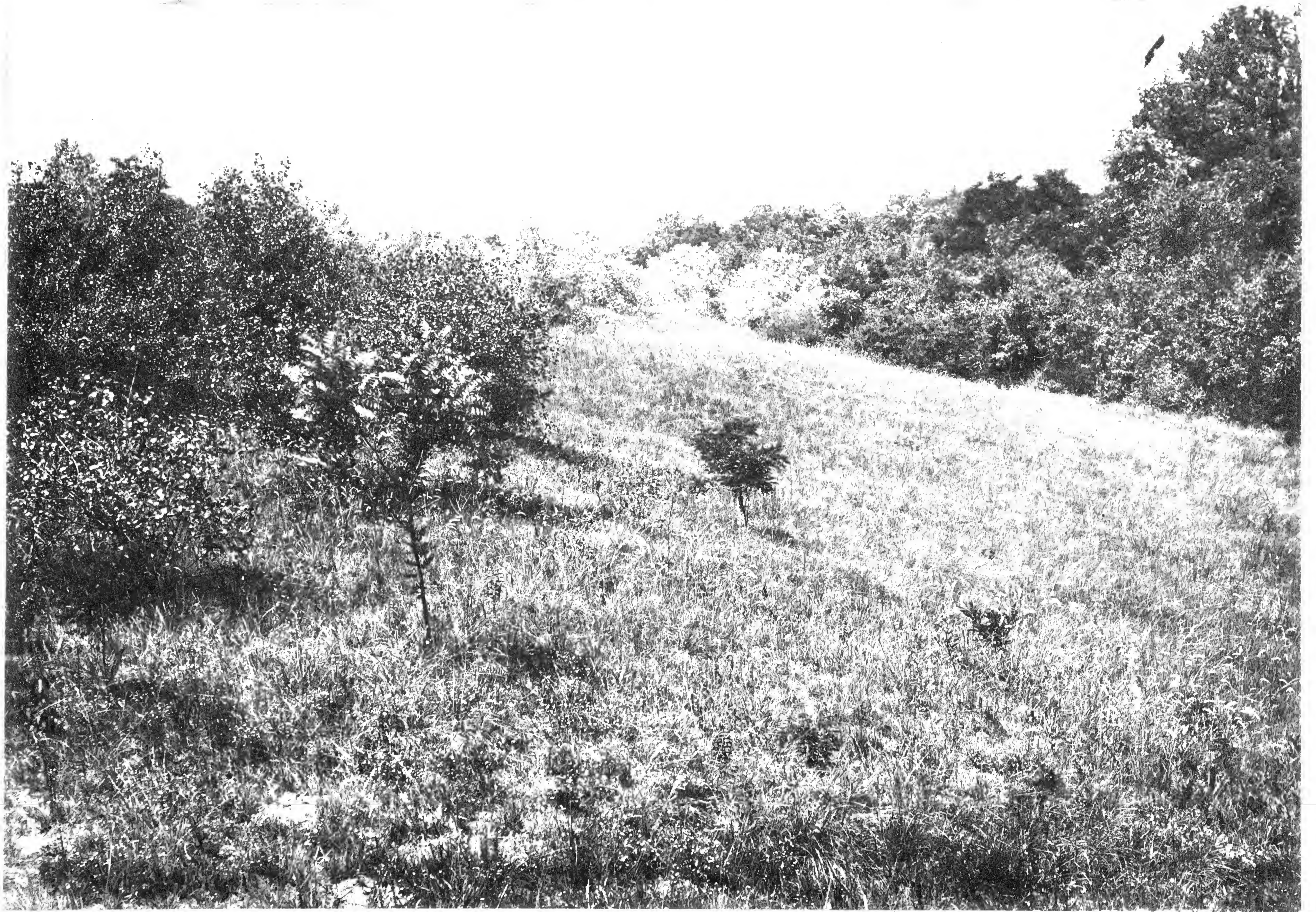
Western view of the Indian flats.
Stretch of Indian land in front.



.- 2. It is a field of "wild grass" with only *Le-*
ctia gracilifolia and *Cenchrus caryota*



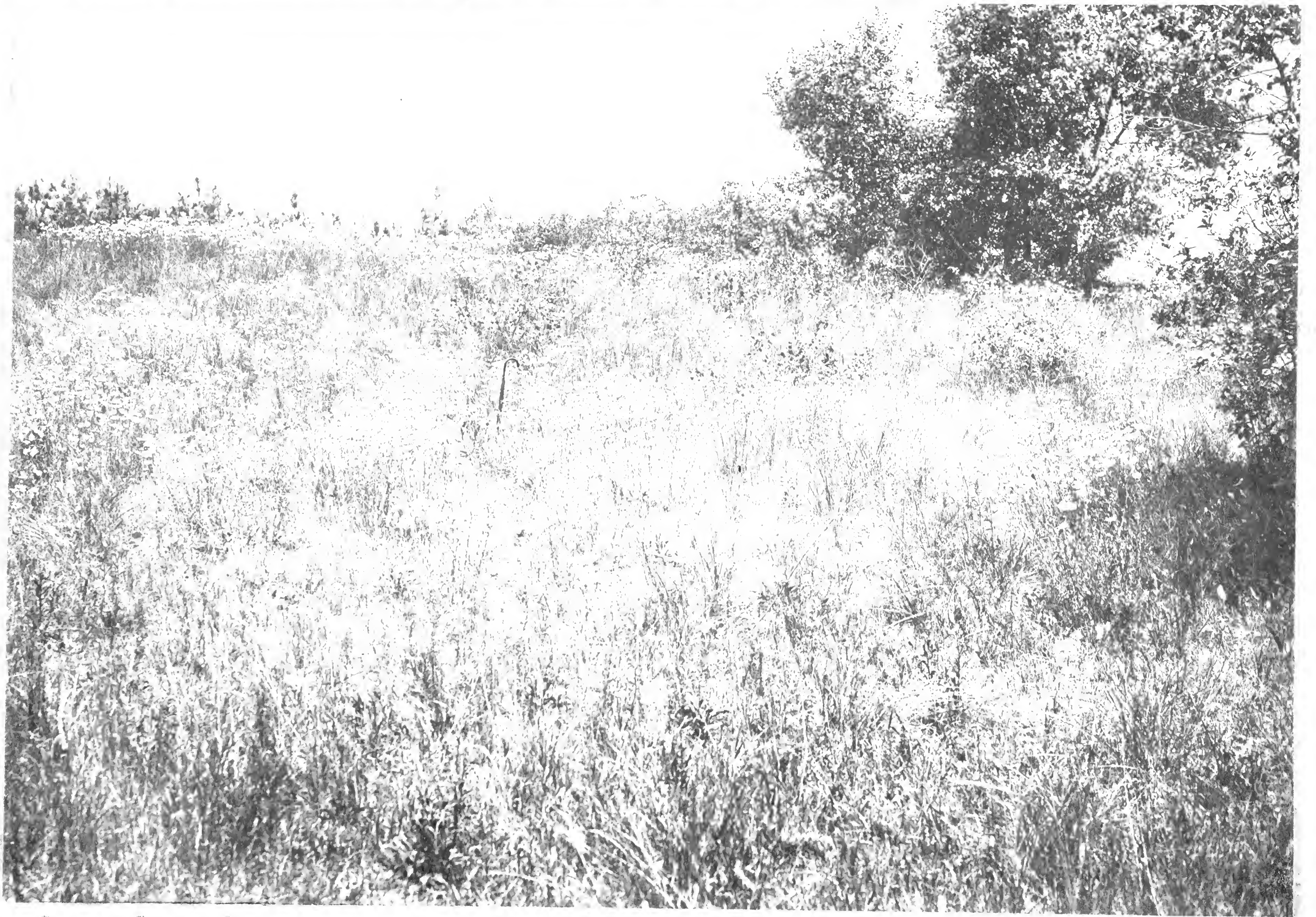
Faint, illegible text at the bottom of the page, likely a caption or description of the photograph.



Grassland on the edge of the forest
at the base of the mountain
near the village of ...



Field of tall grasses and wildflowers, with a dense line of trees in the background.



Field of grasses, Isl. of Oahu, near Honolulu -
low, side, near beach (near hotel).

Steppe remnants of
Europe.

Those on card I are the
sand and salt "puszta"
of Hungary.

Those on cards II, III and IV
are steppe-remnants in
Bohemia. (Compare with our
prairie openings.)