











**ON GIANT EGG** herring gull teeters uncertainly trying to keep from slipping off. Finally the gull gave up and settled down on the small egg alongside.

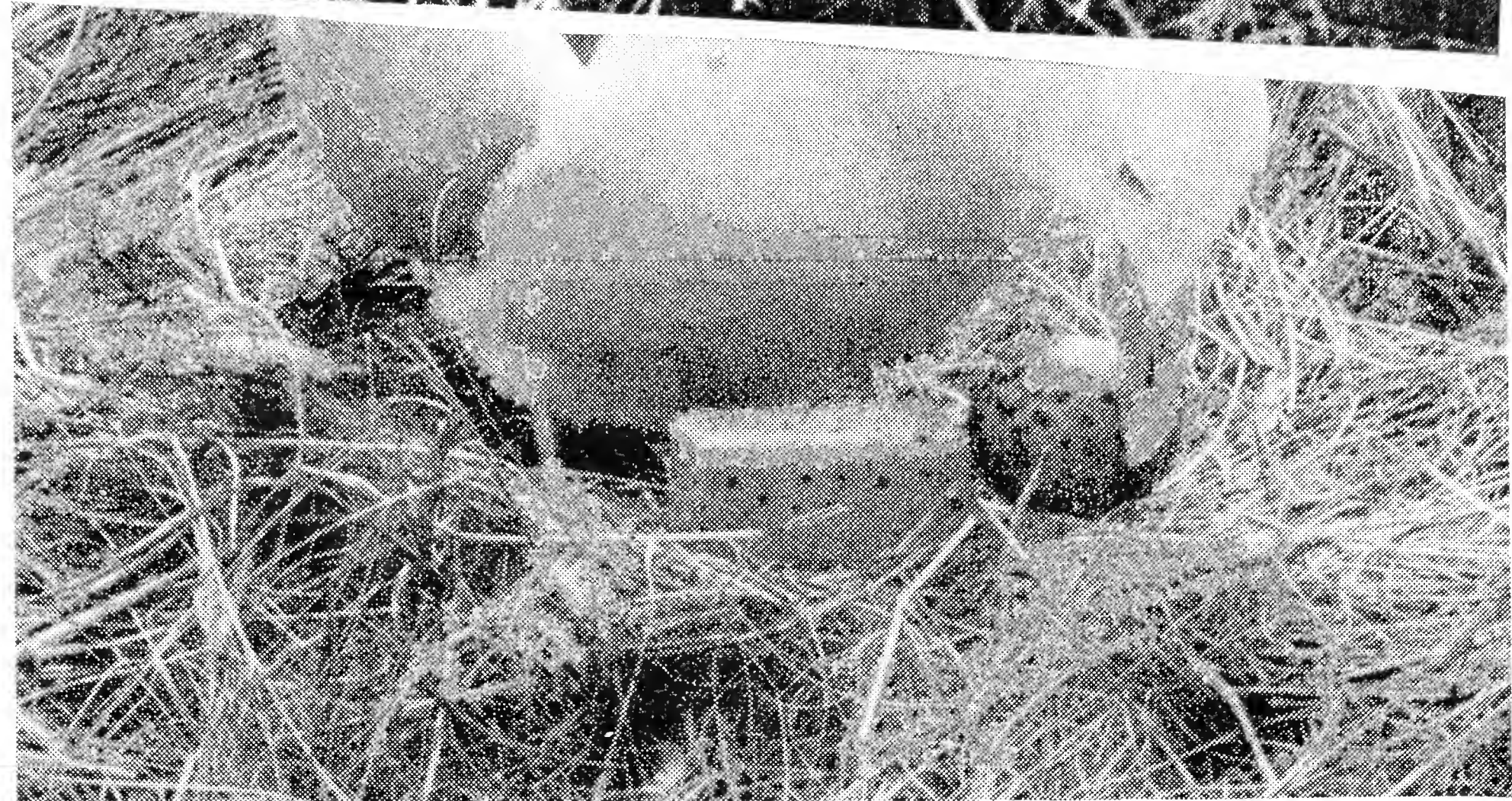
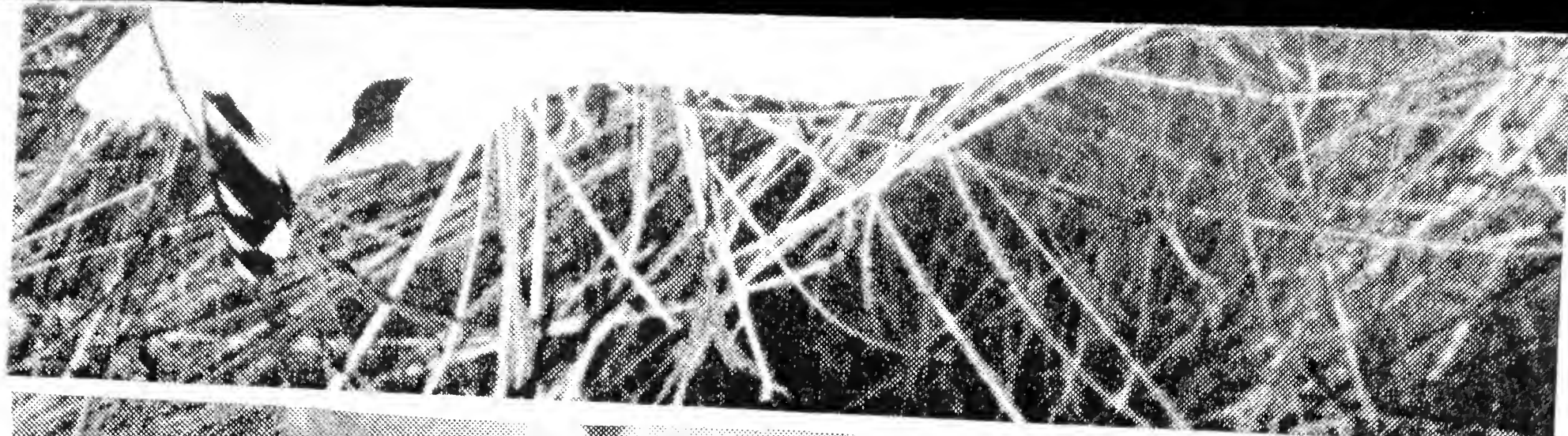
## GULL'S BIRDBRAINED ENDEAVOR

The herring gull shown on page 70 reached a decision quickly. Ignoring the normal-sized wooden egg, the bird gamely struggled aboard the monster egg (*above*). This incident was illuminating to Gerard Baerends, professor of zoology at Holland's Groningen State University, because it proved that an object needs to have only faint resemblance to a real egg for a herring gull to do its unintelligent best to hatch it, even in preference to an egg of proper size.

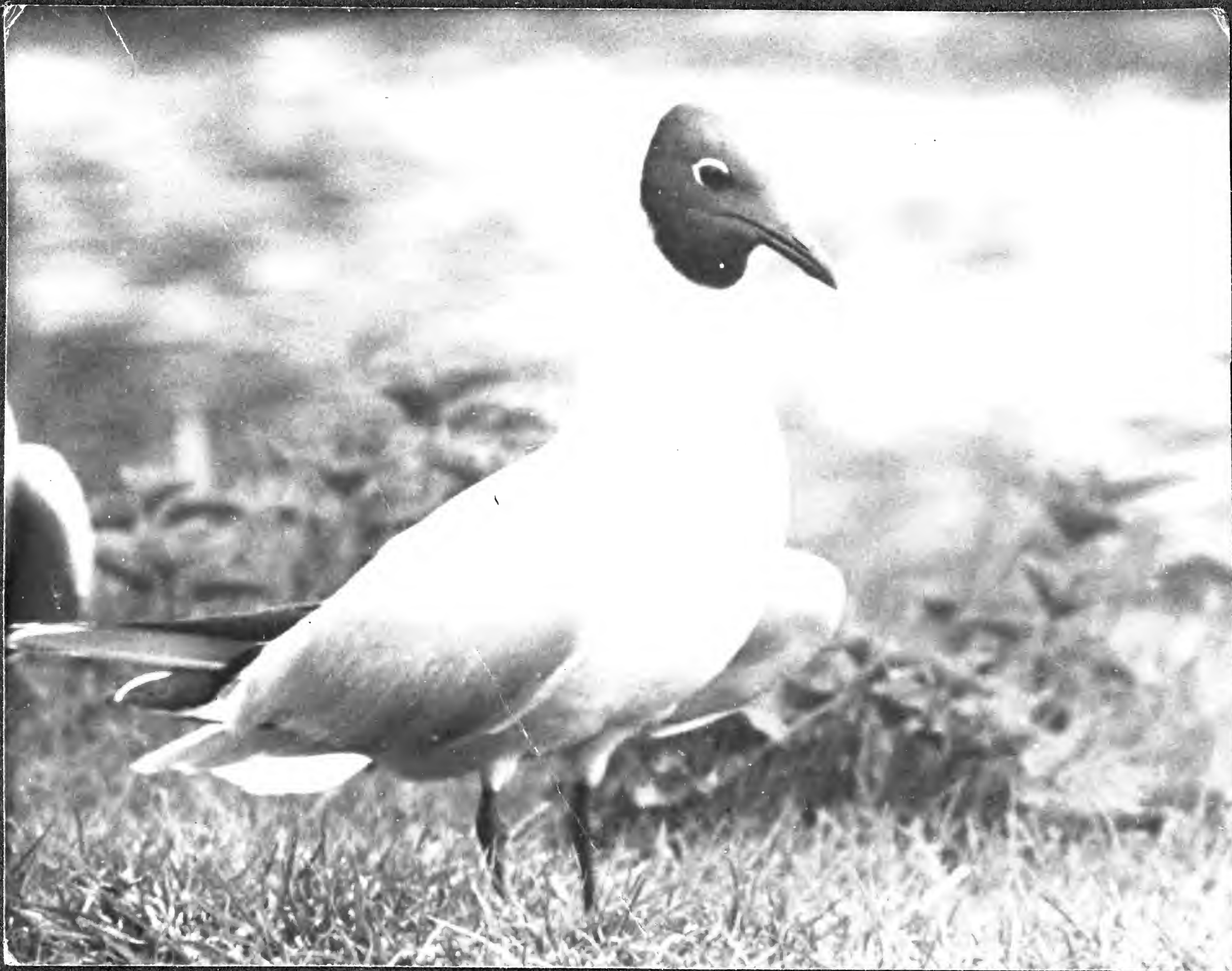
Professor Baerends made the wooden egg experiment this year on Terschelling Island in the North Sea. His experiments have taught him other things about herring gulls. To fool them he made eggs of different shapes and colors (*below*), and placed some of them on the edge of a nest and waited to see which the gull would drag in. Herring gulls, he found, are usually bored by plain eggs. But if the egg is speckled, the bird will try to hatch it, even when it is square (*next page*).



**EGG ARSENAL**, spread before Baerends, includes glass egg (*left, on paper*) invisible to gull, but which it will try to hatch when it feels egg with its body.



**FLAT-SIDED EGG**, painted with normal gull-egg color scheme, is first ignored as gull rolls egg-shaped artificial egg into nest with beak (*top*). But then she maneuvers the square egg down from the edge of the nest (*center*) and, with a wide yawn (*bottom*), settles down comfortably to hatch both of them.







With all best wishes  
for Christmas and  
the New Year!

Timbergen





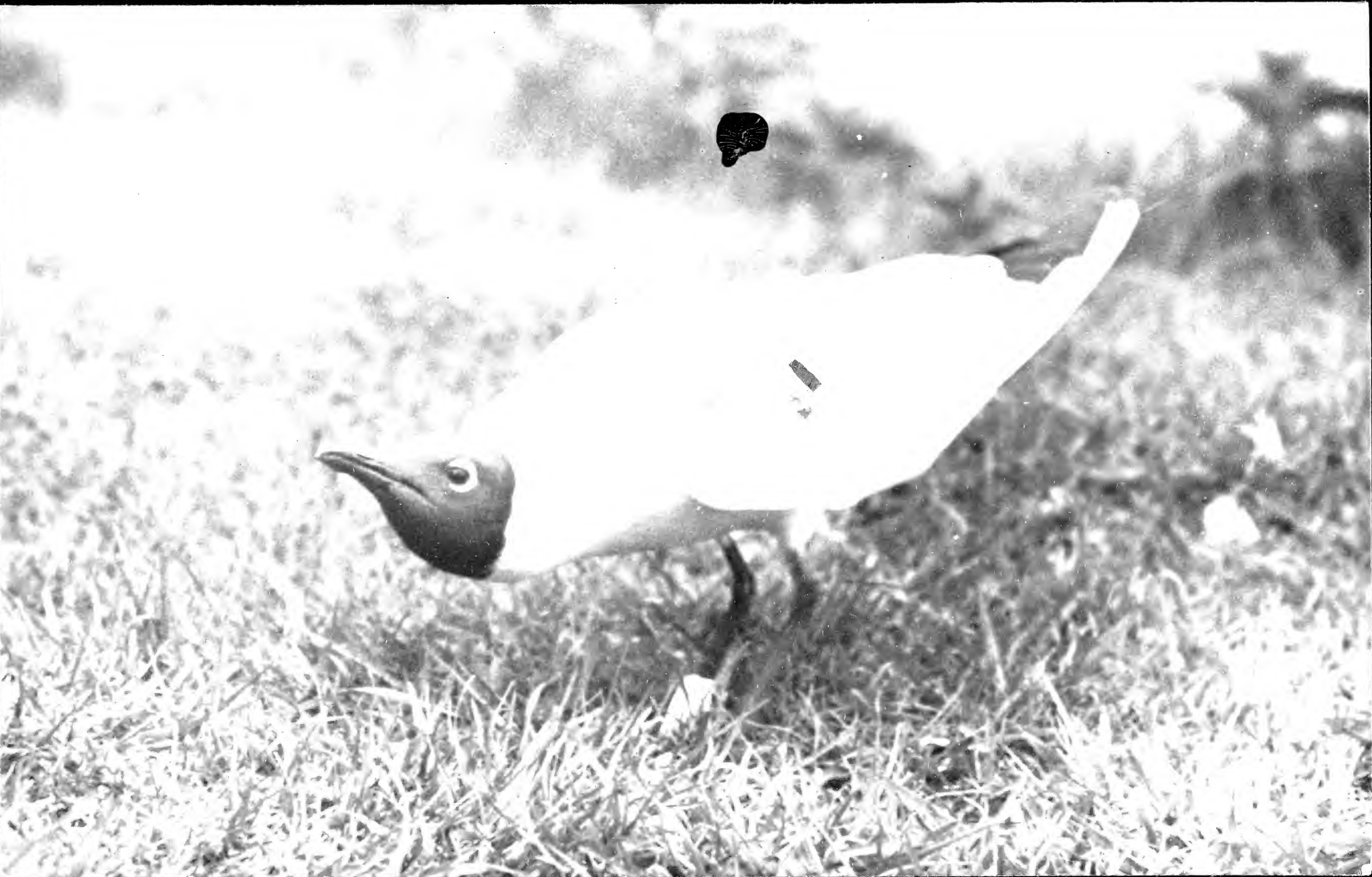
H. A. ...  
For ...  
... ..

Best wishes for Christmas  
and the New Year!

Nils P.

---









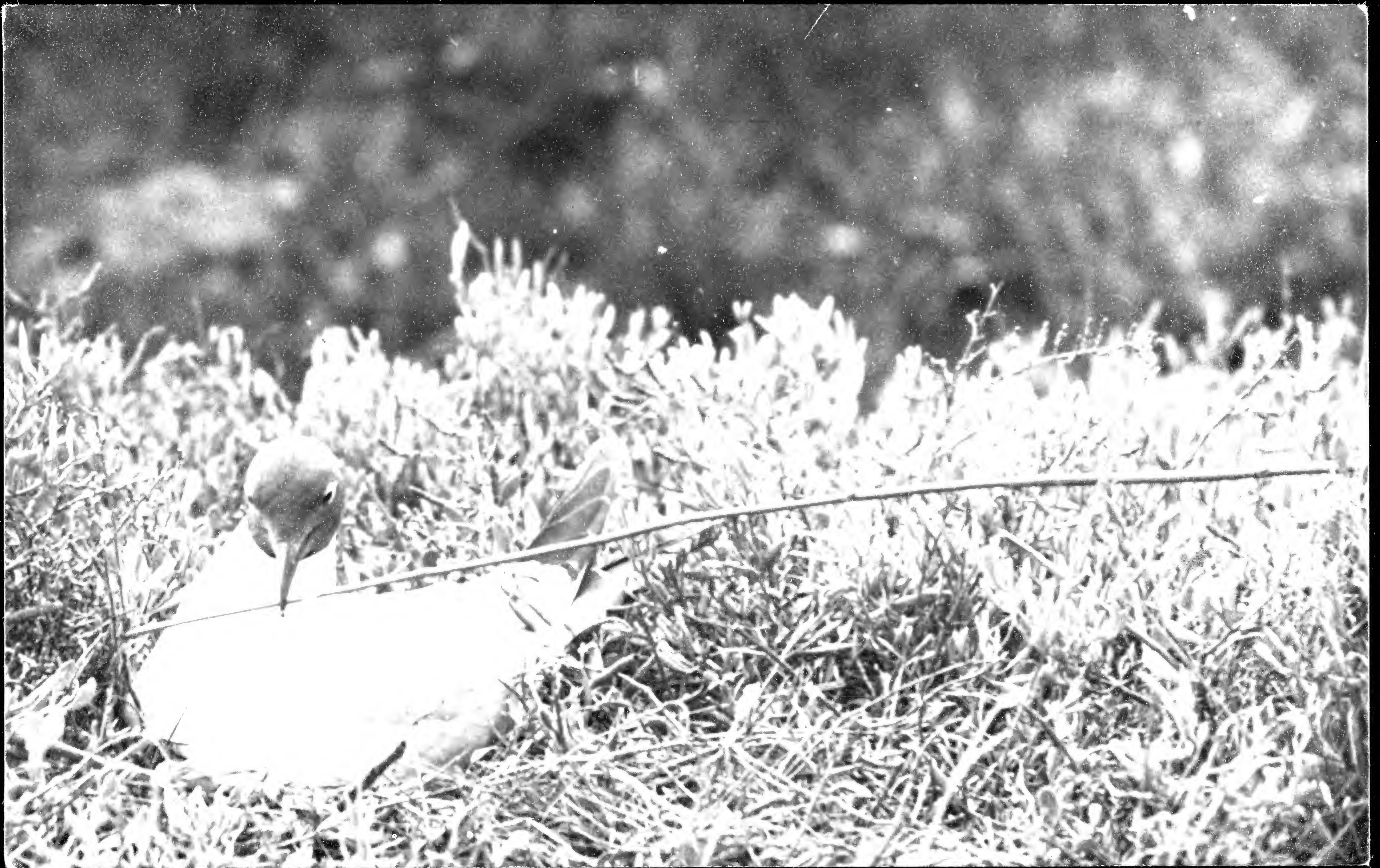
With the seasons greetings

Boam















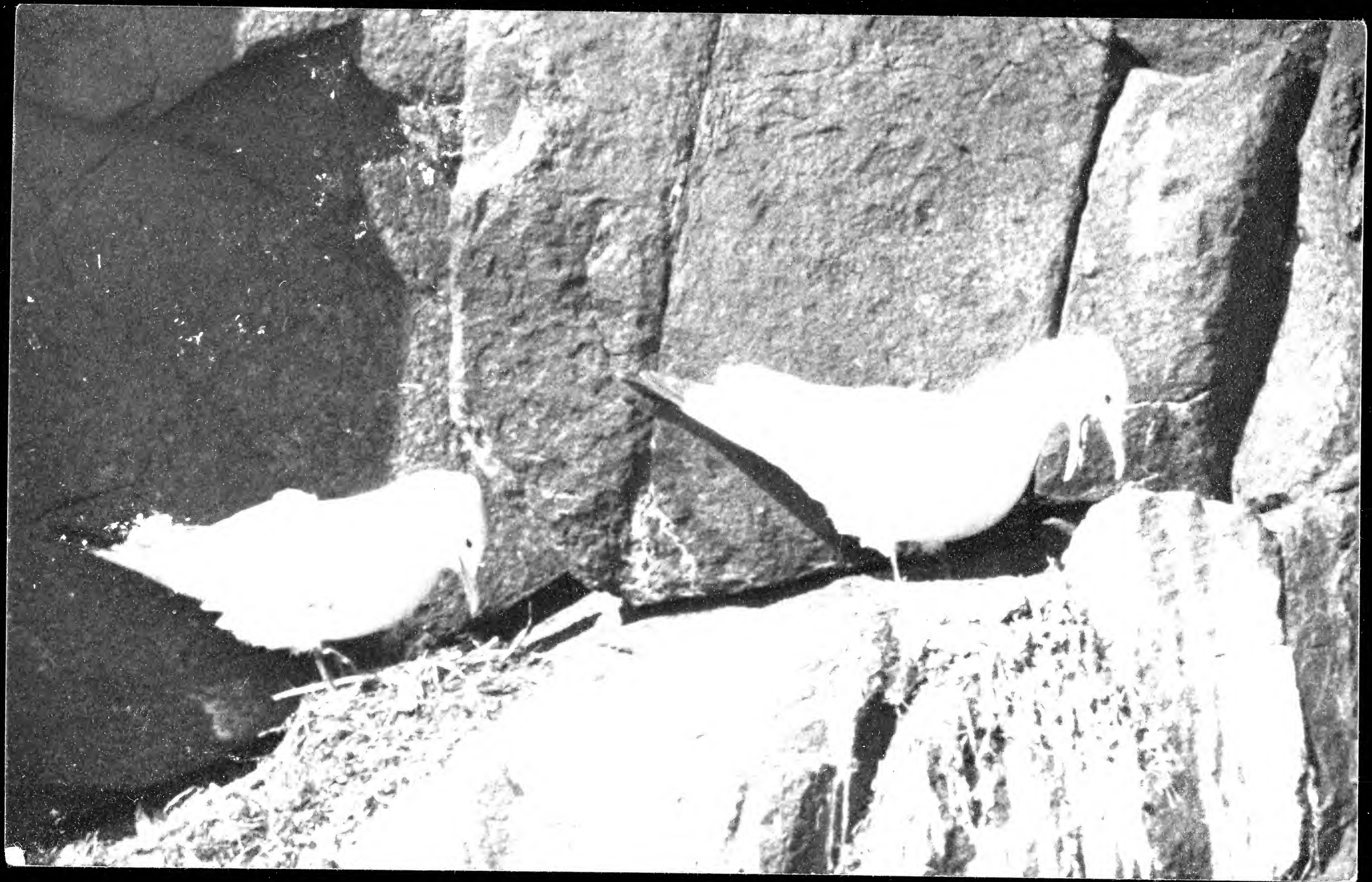


966

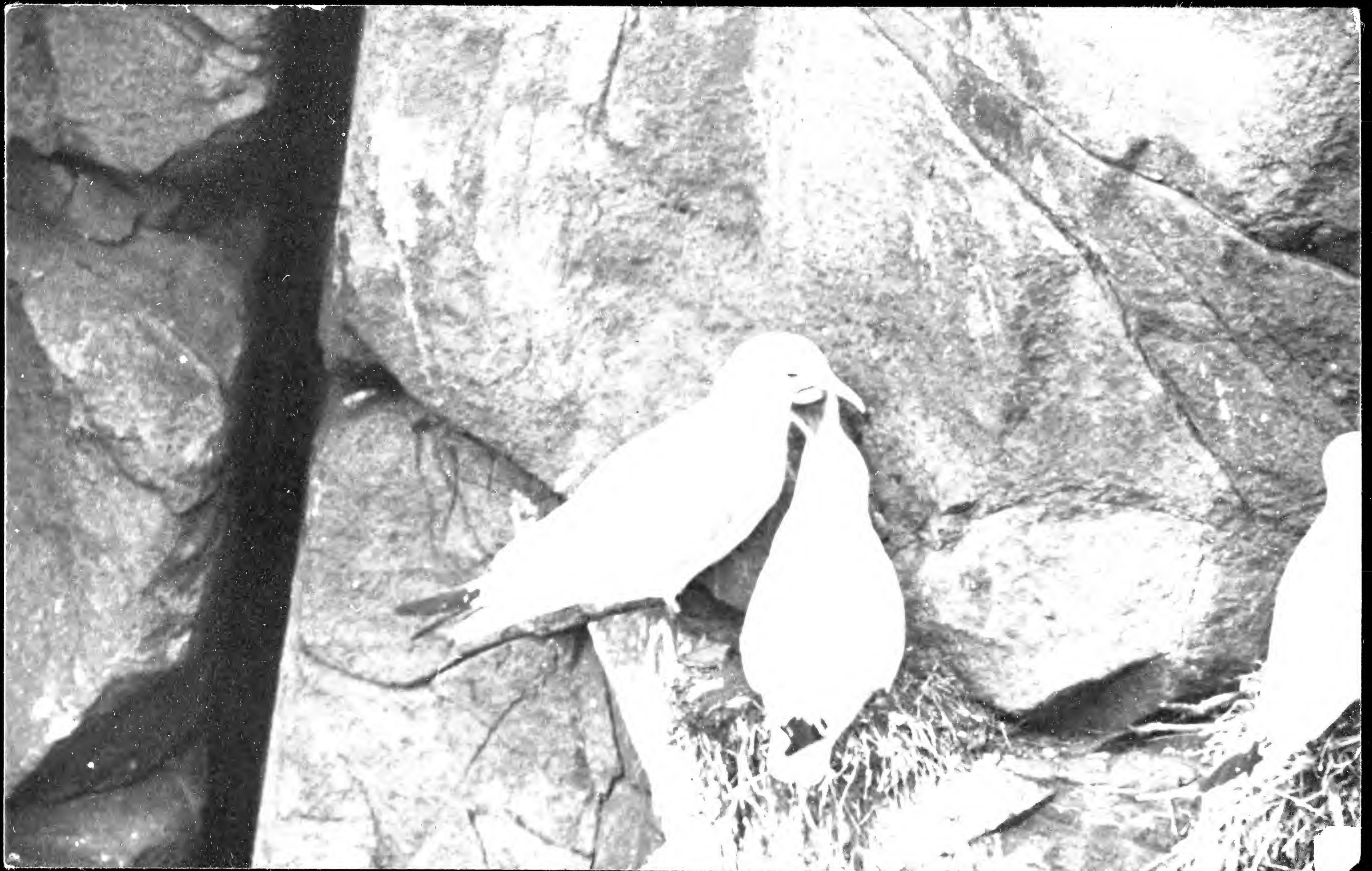
Franklin's Gulls.

Outer 22 Bulwer's Island

June 1952 Delta







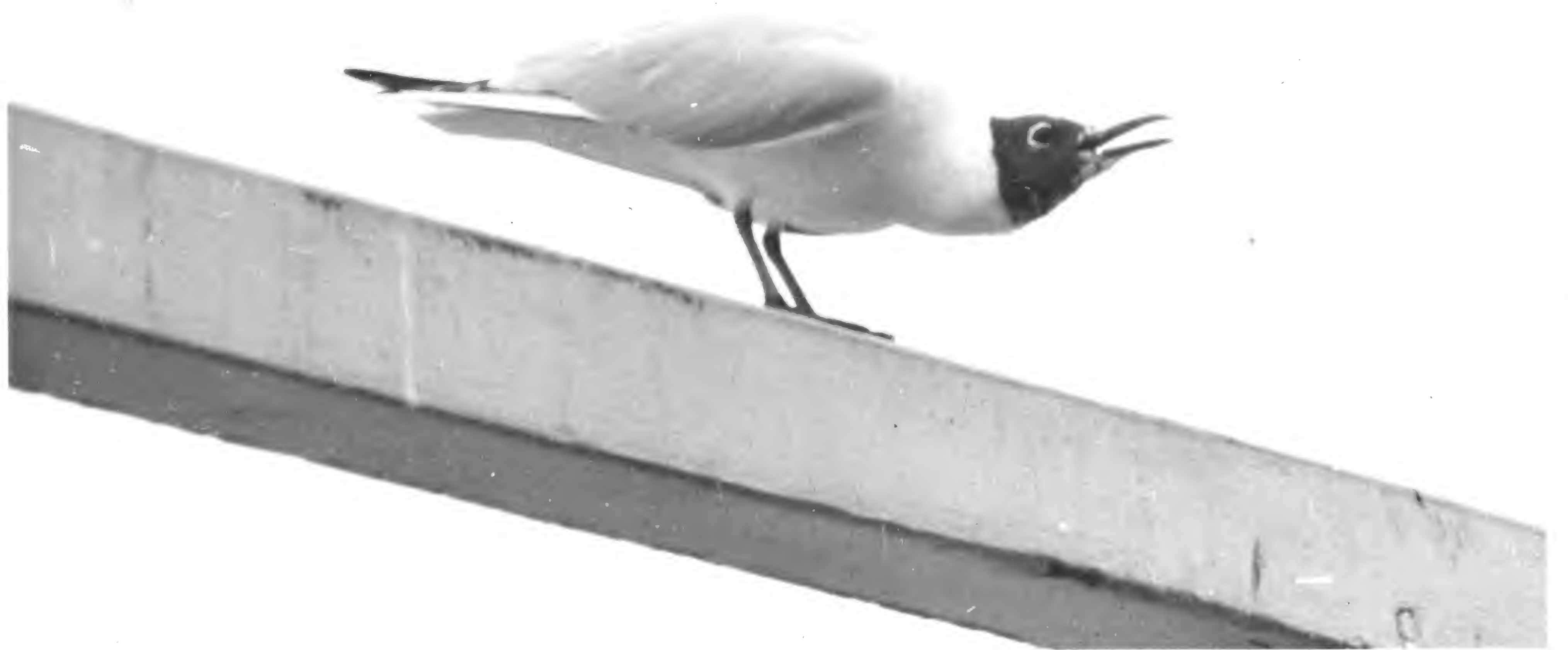








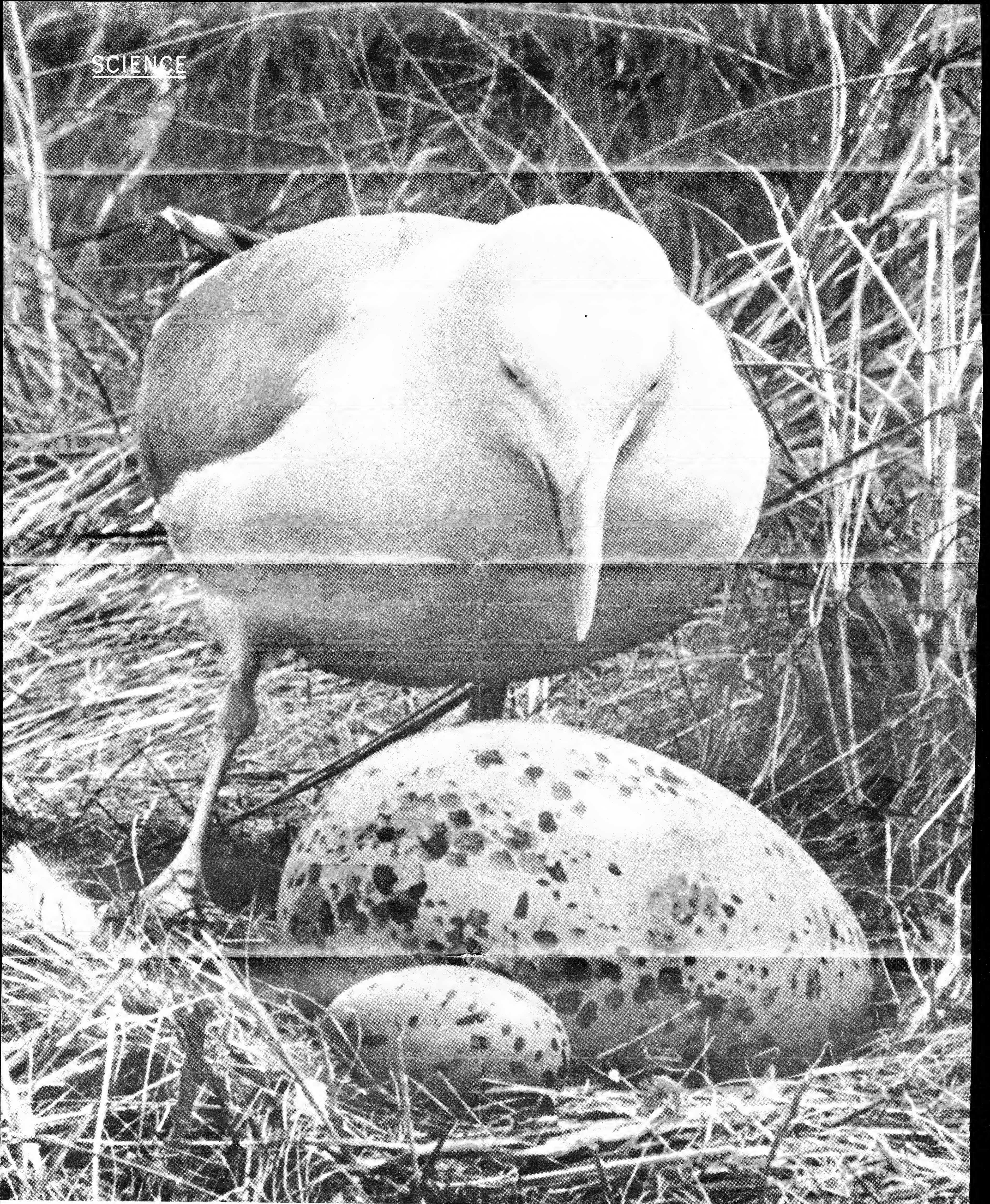








SCIENCE



IN HER NEST ON A NORTH SEA ISLAND A HERRING GULL PONDERES OVER TWO PAINTED WOODEN EGGS, ONE NORMAL SIZE, THE OTHER ONE 20 TIMES AS LARGE

**WHICH EGG WILL SHE SIT ON?**

# Dish-Quik®

**gets dishes done  
double-quick!**

The ALL-IN-ONE faucet dishwasher!  
The dishwasher all America can afford!



**THE DISH-QUIK SECRET**

... one-hand fingertip control! Turn on the faucet and you're ready to go. Now press the lever: water flowing from the spout is diverted *instantly* to Dish-Quik. Release: the flow of water returns to the faucet spout.

**FOR INSTANT SUDS**

... rich and foamy, just *tap* the red button. Every dish, every glass, gets *fresh clean* suds, automatically produced from the tiny "see-thru" cup filled with any good liquid detergent (such as Joy). The cup holds enough for two days or more!

**GETS DISHES CLEAN**

... *really clean* ... even *scours* pots and pans! And does away with "sour" dishrags. The sturdy Dish-Quik brush, made of non-absorbent nylon bristles, is always "sweet" and always clean because it's rinsed clean with every use!

**DISHES AIR-DRY**

... sparkling bright without wiping, because Dish-Quik spray-rinses *as hot as you wish* ... even cleans out the sink. It's ideal, too, for use with a fully-automatic dishwasher, for pre-washing and for odd pieces that may not go into the washer.

**Dish-Quik gets dishes done double-quick**

because it's your dishrag, dishpan, soap and rinse *all-in-one* and *always* ready to use! Billowy suds, all-nylon brush and hottest rinse ... *automatically* controlled at the fingertips of one hand! No more stacks of dirty dishes! With Dish-Quik you wash them as you use them. And you're through with rough and reddened hands ... *because* Dish-Quik keeps your hands out of hot, soapy water. Get *your* dishes done double-quick! You can get your Dish-Quik wherever plumbing goods are sold.



Available on ALL types of wall or deck mount faucet units.

← Dish-Quik comes this way

As a standard attachment on all types of quality sink faucet units, often sold under the faucet manufacturer's own trade name. To be sure it's a Dish-Quik, look for the clear detergent cup on the handle. You can replace any old faucet with a new model featuring Dish-Quik. When *building, buying or remodeling*, be sure your sink is *modern* ... get one equipped with a Dish-Quik!

... or this way →

Separately, as a replacement for any of the plain water sprays illustrated below. You can replace your old spray with Dish-Quik in minutes. Make your plain spray faucet exactly like the newest models! Ask for a Dish-Quik wherever plumbing goods are sold ... only \$9.95



The Dish-Quik Co.

nia

If your dealer is not supplied, send his name and address and your own with \$9.95, check or money order. We mail Dish-Quik to you. Californians add 3% tax.



















(X 1/11)

Behav  
Suppl. II

Hayman

Photograph 1

12 cm

4190 x 1.

Behav

60°















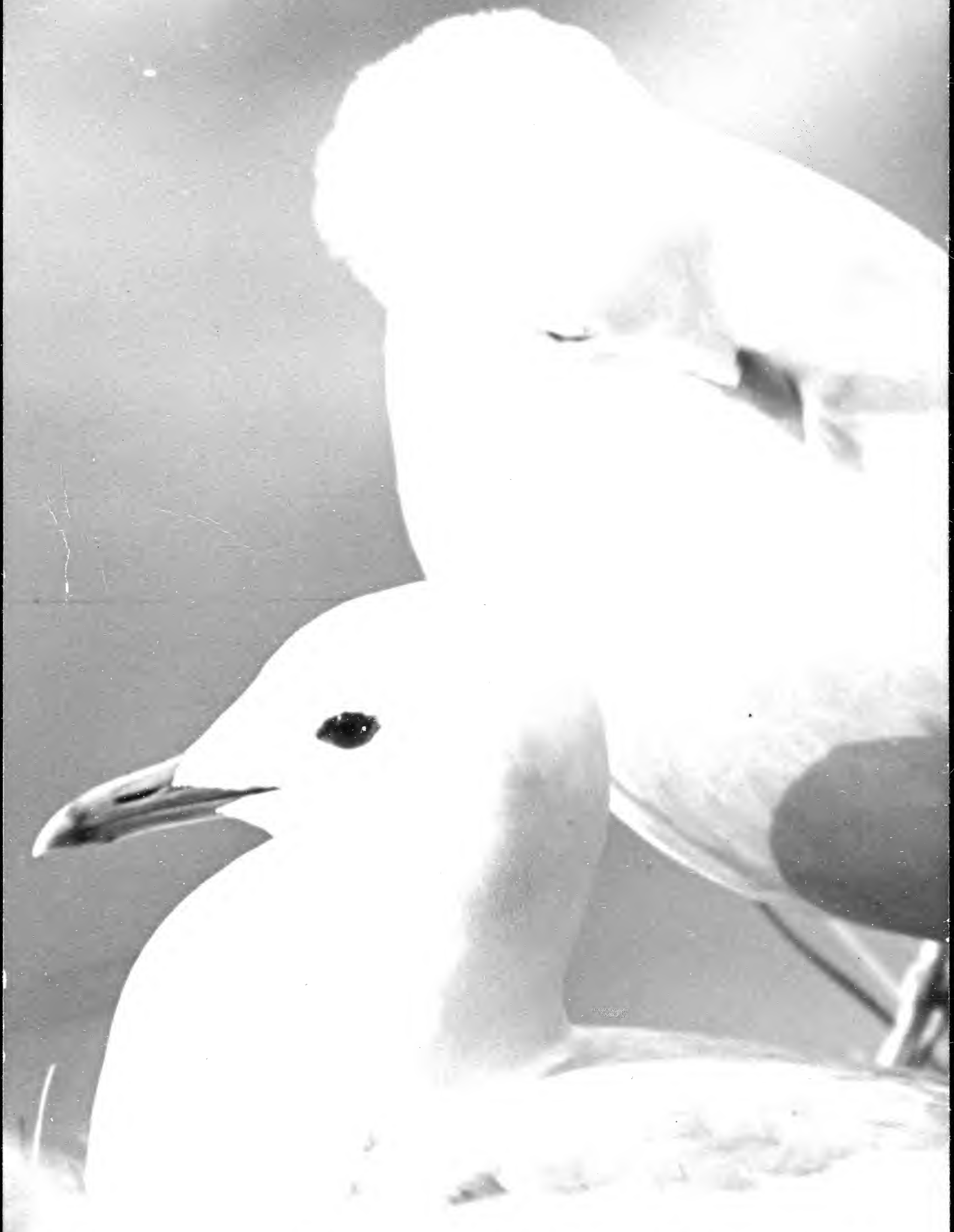












Common Gulls - Loch Sunart

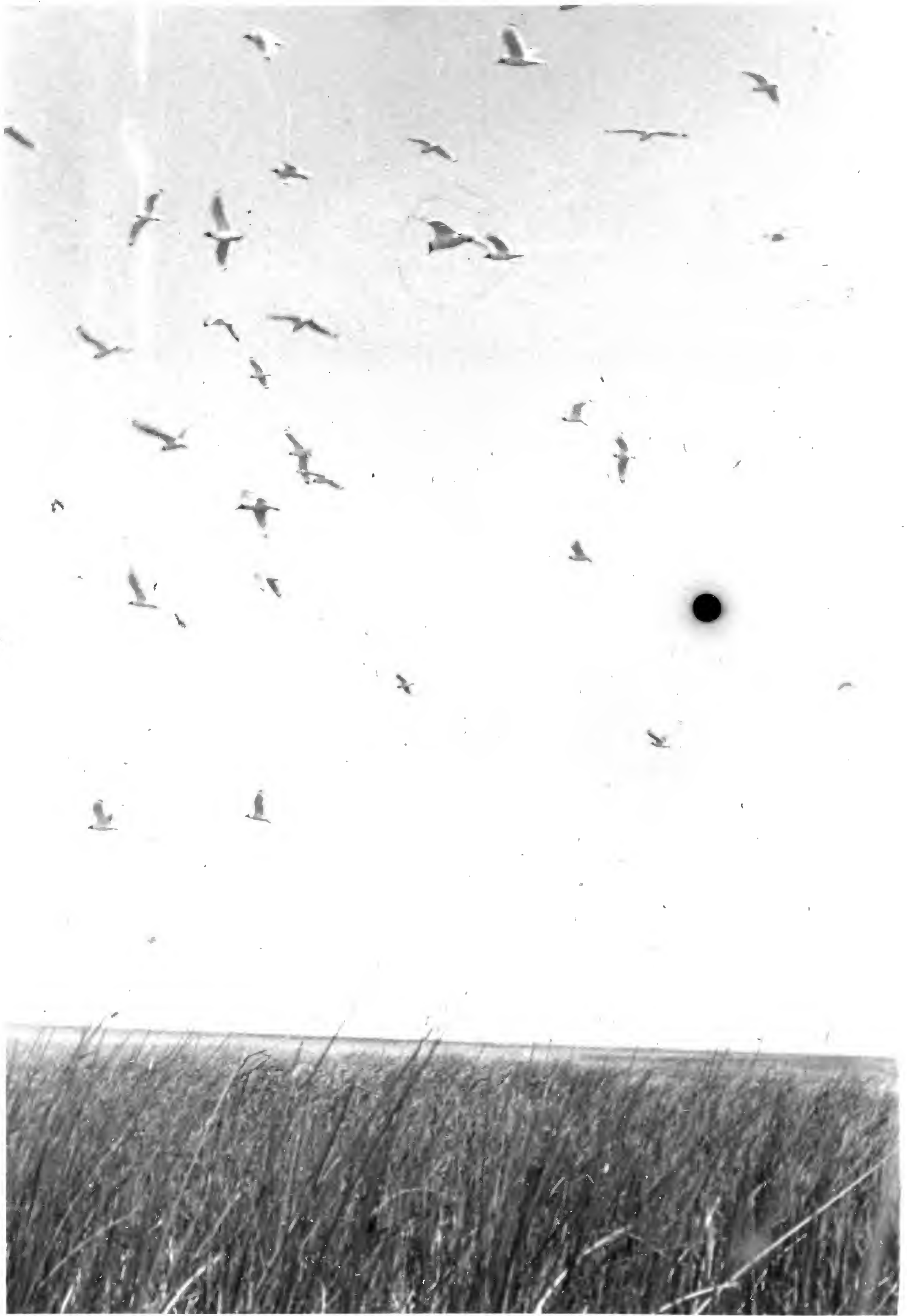
All best wishes for Christmas  
and the New Year!

From all the Simberlows









Franklin's Gulls

Outer 22

June 1952

995

