



OCTOBER 2017

The *Pipevine*

Newsletter of the Mount Lassen Chapter
CALIFORNIA NATIVE PLANT SOCIETY

General Meeting

OCTOBER 4, 2017

Wednesday 7:00 pm

Butte County Library, Chico



Native Salvias for the Garden

Presented by JOHN WHITTLESEY

California native salvias are some of the most popular plants in native, habitat-friendly and drought tolerant gardens - for good reason. They require little water, are adaptable to many soil conditions, and they are beautiful! Native salvias can feature attractive and fragrant foliage and they bear long blooming flowers - which range in color from white, to cream, to

blue and purple and even red. Their forms range from annuals, to ground covers, to worthy woody shrubs.

To top it all off, these stalwarts attract and support a whole range of pollinators and flower visitors. While there are only 19 species of salvia native to California (out of nearly 1000 in the genus worldwide) these have given rise to a wealth of excellent garden hybrids and cultivars.

John will talk about the evolution and adaptation of the different California salvias to varying soils, exposures and climatic environments as well as the pollinators they host and have co-evolved with. Finally, he will run through the best of the numerous cultivars along with a variety of good companion plants for the native plant garden.

John is a longtime member of the Mount Lassen Chapter of CNPS, having served at various times on the board of directors and as horticultural chair. He is a regular presenter to CNPS chapters throughout the state. John is the author of *The Plant Lovers Guide to Salvias* published by Timber Press, owner of Canyon Creek Nursery and Design, his passion is building wildlife friendly gardens and photographing and enjoying the many creatures which visit them.

Field Trips



BUMPASS HELL LASSEN VOLCANIC NATIONAL PARK

October 7
Saturday

Meet at Chico Park & Ride west lot (Hwys 32/99) at 8:30 am. Bring lunch, water, sturdy shoes, hiking gear and money for ride-sharing. You are invited to join us for a field trip designed to introduce you to the most popular features of Lassen Volcanic National Park. See panoramic views of Lassen Peak, Brokeoff Mountain, the bubbling mudpots and steaming fumaroles of Bumpass Hell, and hopefully some late-season flowers still lingering due to the late snowmelt. We may be able to arrange a car shuttle that allows us to hike 4 miles down hill to the Kings Creek Picnic Area and parking lot. Call for alternate meeting place. Leader: Marjorie McNairn 530 343-2397.

DEER CREEK TRAIL LASSEN NATIONAL FOREST

October 28
Saturday

Meet at Chico Park & Ride west lot (Hwys 32/99) at 8:30 am. Wear sturdy shoes. Bring lunch, water, and money for ride sharing. We will drive east on Hwy 32 about 38 miles to the trailhead at the Hwy 32 Deer Creek Bridge. Starting at 3200 ft elevation, this is a shaded and gradual 1.5 mile hike downstream to have lunch by the recently-completed renovation of the fish ladder. Big leaf maple, dogwood and black oaks should be in fall color along with Indian rhubarb, spice-bush, Sierra mint and California fuchsia. Call for alternate meeting place. Leader: Woody Elliott 530 588-2555, woodyelliott@gmail.com

President's Message

by WOODY ELLIOTT, President

Thanks to all who showed and told of their wonderful experiences with nature at September's General Meeting. Our shared experiences and associated wisdom make us stronger and appreciative of our natural world.

To continue the vitality of our environment and our humble group, you, our membership must step up to positions of leadership. The Chapter's Bylaws have 2-year term limits for Chapter officers except Treasurer with a 4-year term limit. Therefore, year 2018 will have a new President, Vice President, and some Members at Large. All offices are open for nominations by the Chapter's Nomination Committee and all members at the November General Meeting when elections occur. Of course, positions as Committee Chairs and their Members are always available as approved by the Chapter's Executive Board. Please contact me or other current Board Members to learn what they do. To learn the real deal, you can always attend Board Meetings that occur on the third Wednesday of most months.

State CNPS Chapter Council Meeting in Kenwood on Sept. 9th had a variety of informative discussions and presentations. Catie Bishop, our retiring Chapter Council Representative, will report on the specifics at <https://sites.google.com/site/cnpschaptercouncilsept2017/> with links to specific reports. CNPS is alive for you at many levels.

Legislative Notes

by DAVID ANDERSON

CHAOS REIGNS

The regular session of the 2017 California Legislature ends at midnight, Friday, September 15. At this time (September 13) hundreds of bills are awaiting legislative action. With one exception, CNPS has not posted online its Report disclosing positions in support of or in opposition to 2017 bills. On September 9 CNPS emailed a Conservation Alert urging support of SB 249. It would repair, reduce and prevent Off Highway Vehicle damage to the environment. It currently is in the Assembly with the numerous other bills awaiting last minute action. Governor Brown has until October 15 to approve, veto or allow to go into effect without approval, bills in his possession after September 15. More info will follow.

LOVING A LOVELY LASSEN DAY

by MARJORIE MCNAIRN, Field Trip Chair

On September 10, 2017, with a good turnout of 16 congenial participants, four vehicles traveled the Deer Creek canyon to Lassen Volcanic National Park for a walk from Kings Creek Falls Picnic Area to Cold Boiling Lake and on to Crumbaugh Lake. The road through the park was lined with yellow rabbit brush in full bloom.

The first area of exploration along Kings Creek and lower Kings Creek Meadow yielded a number of blooming species. Sierra alpine gentian (*Gentiana newberryi* var. *tiogana*) were scattered along the banks of Kings Creek, sometimes nestled under a small protective shrub, where they were less inclined to be trampled. This variety is white and grows along the length of the high Sierra as well as in the southeastern Klamath Range. The variety newberryi is light to deep blue with a similar shape and growth habit and is found in the Klamath Mountains in California and the Cascade Mountains of Oregon, but not in Lassen Park. Stream-bank saxifrage (*Micranthes odontoloma*) likes to grow through the small shrubs, also using them for protection. A single flower was shared with the group so each one could view the exquisite design using a lens of 10x magnification. To add color to the area, blue penstemon, yellow arnica and senecio were also blooming along the creek bank and in the meadow.

The attention shifted to trees as we reached the top of the rise above Cold Boiling Lake. In response to a question, we discussed the trees growing there, and how to tell the difference between a mountain hemlock (*Tsuga mertensiana*), a red fir (*Abies magnifica*) and lodgepole pine (*Pinus contorta* ssp. *murrayana*). The lodgepole appeared to compete in size with the signed "Champion Lodgepole Pine" we observed at Brady's Camp.



Sierra alpine gentian (*Gentiana newberryi* var. *tiogana*)
Kings Creek Meadow, Lassen Volcanic National Park
September 10, 2017 by Marjorie McNairn

Cold Boiling Lake was indeed boiling with carbon dioxide gas rising from far below to ruffle the surface. The southwest end of the lake is now a meadow filled with sedges and rushes. In the future one would expect the size of the lake to shrink as it is replaced by the meadow. We lunched at Crumbaugh Lake after traversing its meadow riddled with drainage channels. Primrose monkeyflower (*Mimulus primuloides*) was still blooming in the moist spots.

On the way home, one vehicle stopped at Bluff Falls just to the south of the park entrance where we identified a myriad of species. Some had mature fruit such as Shasta Lily (*Lilium pardalinum* ssp. *shastense*), twinberry (*Lonicera involucrata*) and California mountain-ash (*Sorbus californica*), and some were blooming including the blue hiker's fringed-gentian (*Gentianopsis simplex*) a strong population of white California grass-of-parnassus (*Parnassia palustris*) and one plant of pacific bleeding hearts (*Dicentra formosa*). It was a challenge to identify some species by leaves only, and we guessed at Sierra corydalis, and red elderberry.

Although there was much interest in plants and blooms, it appeared to this leader the high point of the day for many were the cookies!

Crumbaugh Lake, Lassen Volcanic National Park
September 10, 2017 by Robert Fischer



Executive Board Meeting

October 18, 2017

TBA

ALL CNPS MEMBERS WELCOME!

EVENTS

by JANNA LATHROP, Events Chair

FALL OUTREACH EVENTS

October 28 - 29

CHICO HORTICULTURE SOCIETY FLOWER

HOME & GARDEN SHOW at the SILVER DOLLAR FAIRGROUNDS

November 4

FARM CITY CELEBRATION HARVEST FESTIVAL

BIDWELL MANSION LAWN.

We plan to have an information table at both events. Can you help staff a 2 or 3 hour shift for either event? Please contact Janna at 228-0010. Your participation is very appreciated. THANK YOU



FRIENDS of the HERBARIUM

2017 WORKSHOP DESCRIPTIONS & REG FORMS

October 13, 2017

CELEBRATE CALIFORNIA'S FLORA!

7th ANNUAL FALL PHOTO EVENT Submit the best native plant and native landscape images to be judged OR open. Prizes for Landscape, Close-up and photos taken during the Solar Eclipse. \$10 fee / two entries. More info visit <http://www.friendsofthechicostate-herbarium.com/>

October 21, 2017

TREE IDENTIFICATION

LINNEA HANSON and EMILY MEIGS DOE Learn to ID trees of California State University, Chico campus with leaves, bark, and reproductive structures. Also learn about tree biology, pruning and urban forest management. Register in advance. For information contact the Biology office at (530)898-5356 or ssholten@csuchico.edu

HOSPITALITY

by KARROLYNN YELLS, Hospitality Chair

People are needed to bring cookies or snacks for the December General Meeting. Please contact KarroLynn Yells at 530 534-3551 or karrolynn@att.net. THANK YOU FOR ALL YOUR SUPPORT.

These businesses support the goals of the CALIFORNIA NATIVE PLANT SOCIETY MEMBERS GET 10% DISCOUNT

Nancy's
Native Springs Nursery

Perennials, Herbs
Native Trees and Shrubs

Nancy Schieffer
Certified Perennials Designer
By appointment
nativespringsnursery@gmail.com
530.774.0562
1874 Cummings Lane
Dunsmuir, CA 95938
nativespringsnursery.com

FLORAL NATIVE NURSERY
2511 Floral Avenue
Chico, California 95973-2511
Telephone/Fax: (530) 892-2511
E-mail: canative@shocking.com

discount applies only to plants

Denise Kelly
Owner
406 Ender Avenue
Chico, CA 95928
530.345.7121
FAX 530.545.4
denise@theplantbarn.com
www.theplantbarn.com

LITTLE RED HEN NURSERY
Serving Children and Adults with Disabilities
Corner of 8th & Wall Street • Chico • 891-9100

Unique Perennials, Annuals,
Garden Art & More!

LittleRedHen.org

discount applies only to plants

magnolia
GIFT & GARDEN

1367 East Ave, Chico | 530.894.5410 | www.MagnoliaGardening.com

DONATE California Native Plants for WALL FIRE VICTIMS

The Yankee Hill Fire Safe Council is requesting donations of native plant seedlings to give to those who were affected by the recent Wall Fire in Butte County. Plant donations will be accepted after the residents have had time to clean up their properties and reestablish water and electrical services. Catie Bishop recommends these plants as suitable for the areas that were burned:

Blue oak *Quercus douglasii*
 Black oak *Quercus kelloggii*
 Live oak *Quercus wislizenii* and *Q. chrysolepis*
 California bay *Umbellularia californica*
 California buckeye *Aesculus californica*
 Foothill pine *Pinus sabiniana*
 Ponderosa pine *Pinus ponderosa*
 Madrone *Arbutus menziesii*

Toyon *Heteromeles arbutifolia*
 Coffeeberry *Rhamnus californica*
 Manzanita *Arctostaphylos glauca*
 Honeysuckle *Lonicera interrupta*
 Deergrass *Muhlenbergia rigens*
 Redbud *Cercis occidentalis*
 Coyote bush *Baccharis pilularis*
 Buck brush *Ceanothus cuneatus*

Contact Brenda Rightmyer at BRightmyer@att.net
 or (530) 370-5302 for more information.

MEMBERSHIP MLC

If you have changed your . . .

address, phone number or e-mail
 or leave temporarily
 please notify Mount Lassen Chapter CNPS
 Membership Chair, MERYL BOND at
 530 487-7312 or merylbond@sbcglobal.net

This will help eliminate returned Pipevines
 from the Post Office. **Thank You**

Keep up with MLC Activities
 on our website and Facebook

California Native Plant Society,
 Mount Lassen Chapter
 and LIKE US

facebook

mountlassen.cnps.org

Officers & Chairs

(530)

ELECTED OFFICERS

President	WOODY ELLIOTT woodyelliott@gmail.com	588-2555
Past-President	CATIE BISHOP cjbishop1991@sbcglobal.net	
Vice-President	JIM BISHOP cjbishop1991@sbcglobal.net	
Secretary	CHRISTIAN SMIT christian.pt.smit@gmail.com	815-5892
Treasurer	NANCY PRAIZLER	899-1333
Members-at-Large		
	HESH KAPLAN heshelak@gmail.com	892-9938
	MERYL BOND merylbond@sbcglobal.net	487-7312
	CINDY WEINER wildflowermaven@comcast.net	588-1906

CHAIRS

Conservation / Web Administrator	WOODY ELLIOTT woodyelliott@gmail.com	588-2555
Education	JUSTINE DEVOE justinedevoe@gmail.com	917-7891
Events	JANNA LATHROP jlathrop4mlc@comcast.net	228 0010
Field Trips	MARJORIE MCNAIRN mjmcnairn@aol.com	343-2397
Horticulture	OPEN	
Hospitality	KARROLYNN YELLS karrolynn@att.net	534-3551
Invasive Plants	OPEN	
Membership/Mailing	MERYL BOND merylbond@sbcglobal.net	487-7312
Newsletter Editor	DENISE DEVINE dsrdevine@hotmail.com	345-8444
Programs	JIM BISHOP cjbishop1991@sbcglobal.net	
Co-chairs	WOODY ELLIOTT woodyelliott@gmail.com	588-2555
Publicity	CINDY WEINER wildflowermaven@comcast.net	588-1906
Rare Plants	OPEN	
Sales	NANCY PRAIZLER praizlermom@gmail.com	899-1333
Vol. Recognition / Chapter Council Delegate	CATIE BISHOP cjbishop1991@sbcglobal.net	
Yahi Trail	CHRISTIAN SMIT christian.pt.smit@gmail.com	815-5892
CCNC Gardens	ANN ELLIOTT annonfire@gmail.com	521-4402

MOUNT LASSEN CHAPTER
CALIFORNIA NATIVE PLANT SOCIETY
P. O. BOX 4067
CHICO, CA 95927-4067

Nonprofit Org.
U.S. Postage
PAID
Chico, CA
Permit No. 553

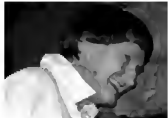
RETURN SERVICE REQUESTED

Time Value
OCTOBER 2017 issue

OCT 4



Pipevine



Phyllis would say

Join Today!



MEMBERSHIP APPLICATION

CALIFORNIA NATIVE PLANT SOCIETY

I wish to affiliate with the Mount Lassen Chapter

new _____

renew _____

Name _____

Address _____

City _____

State _____ Zip _____ Phone _____

Email _____

Send Membership Application to:

CNPS
2707 K STREET, SUITE 1
SACRAMENTO, CA 95816-5113

Student / Limited Income	\$25
Individual	\$45
Family / Library	\$75
Plant Lover	\$100
Patron	\$300
Benefactor	\$600

mountlassen.cnps.org



October

- 4 - General Meeting
- 7 - Bumpass Hell LVNP
- 18 - Ex Board Meeting
- 28 - Deer Creek Trail
- 28 - 29 - Home and Garden Show

November

- 1 - General Meeting
- 4 - Harvest Festival
- 15 - Ex Board Meeting