

## Historic, archived document

Do not assume content reflects current scientific knowledge, policies, or practices.



# Plant Flowers and Help Keep America Beautiful

THE  
**CONARD  
& JONES CO.**

ROBERT PYLE, *President*  
ANTOINE WINTZER, *Vice-Pres.*

WEST GROVE  
PENNA.  
U. S. A.

FELIX  
GROUSSE

FESTIVA  
MAXIMA

EDULIS  
SUPERBA



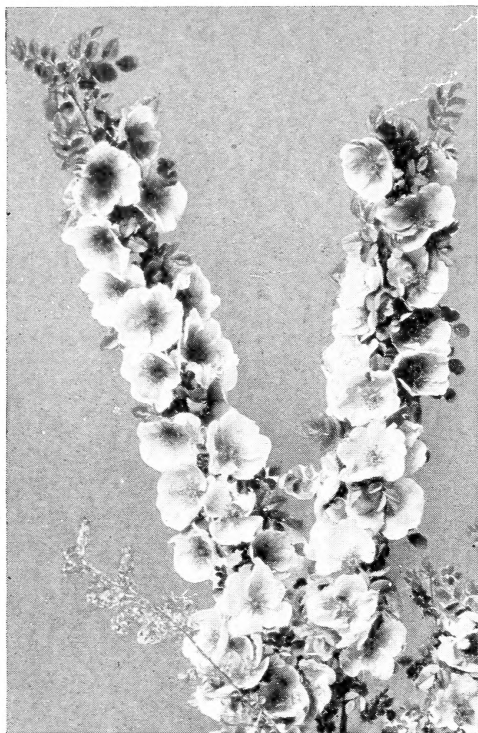
# THE PIONEER OF A NEW RACE OF ROSES

A NEW  
SPECIES

## "HUGONIS"

UNLIKE ANY  
OTHER ROSE

Recently brought from China by Plant Explorer Wilson and obtained by us through Veitch, of England, just before the war.



This is an illustration of the individual flowers and shows the masses of bloom each slender branch will produce. The branches arch gracefully, like the *Spiræa Van Houttei*. Our plants are on their own roots.

REPORT BY  
Plant Explorer E. H. Wilson  
OF THE  
ARNOLD ARBORETUM

*Who Discovered This Rose  
in China*

"It is an upright-growing shrub with slender and spreading branches on which the fragrant flowers are borne in yard-long sprays of soft yellow. As I write in mid-November, the foliage is still on the shrub and has assumed a dark purple tint."

We had Hugonis in bloom during the last snowstorm and I never saw a more beautiful sight.—MRS. W. VAN FLEET, Washington, D. C., spring, 1917.

Hugonis is unlike any other Rose we know. We have watched it for years and have never yet known even a tip of a single branch to winterkill. The same excellent report comes from trials made in Massachusetts and Wisconsin.

It bloomed here, this year, the first week in May, two weeks ahead of our otherwise earliest Roses.

It is a spectacular show in itself. Every branch of the previous year's growth becomes lined on all sides, to the very tip, with closely set, wide-open, single flowers like dainty yellow hollyhocks, and the branches bend over with the weight of bloom.

For bouquets it is great. It comes too early for the shows, but a bunch of sprays which we displayed before the Executive Committee of the American Rose Society in May, elicited an enthusiastic welcome.

This unique species is fine for shrub planting and makes a symmetrical bush about 6 feet in height and the same in diameter when fully matured. Picture this exquisite bush on *your* lawn, or at the corners of *your* house, in early spring. Think of the pleasure of looking forward daily from about the last week in April, when the buds begin to form, till the plant is a mass of fairy-like fluffy bloom the first week in May.

When through blooming you will still have a most beautiful bush, for the acacia-like foliage on arching branches makes a most decorative shrub which, as far as we are aware, is never touched by disease of any kind but is clean and healthy always. An added attraction is the ruby-colored young shoots springing from the roots, this color gradually changing to a soft green as the shoot ages. The foliage remains on the plant until well into the fall, when it assumes a purple hue. Why not be the first to introduce this unique Rose in your neighborhood?

### ROSA HUGONIS—A GEM

Editor *Horticulture*:

I note yours as to *Rosa Hugonis* in current issue. I have a strong-growing vigorous plant sent me by our old friend, Jackson Dawson, which is a thing of beauty at this present time. It has been out three winters and passed through the last unprotected and comes out uninjured—as good a test of hardiness as could be had. This is the third year of its blooming, always pleasing and admired by all. I have never seen any "bugs" or troublesome insects on it; it is free from the ugly thorns of the Scotch rose; each branch is a garland of most beautiful yellow, elegantly garnished with small deep-colored foliage. I hold it as a gem. Yours, C. W. HORT.

Nashua, N. H., May 21, 1918.

Order No. 8555.

April 23, 1918.

The *Rugosa magnifica* plants are fine and the Hugonis and Pillar Roses also. They are the kind of stock that justifies the reputation which your firm has acquired in Rose-culture.—A. C. M., Caldwell, N. J.

Strong, field-grown, potted plants, 2 years old, ready for planting *now* to produce bloom next spring, \$2 each; larger field-grown plants, ready November 15, \$3 and \$5 each, □ (see page 3). C. & J. Hugonis Roses are grown on their own roots.

"YARD-LONG SPRAYS OF BEAUTIFUL YELLOW BLOOMS"



# "KEEP AMERICA BEAUTIFUL"

Twenty-two other nations besides the United States are now engaged in war against the enemy. Almost every American is in sympathy with the aims and objects set forth by President Wilson. We must do that which will most help to obtain those objects, and in order to do our utmost every man and woman must maintain physical health, mental poise, and a spirit which shall rise above discouragement and maintain loyalty to high purpose.

Flowers help to give health and poise, both physical and mental. There is not a soul in this United States who does not need flowers. There are many who do not know they need them, but there are none who will not be the better for them. We speak from experience and an actual knowledge of results and not in hospitals only. Wherever you go, you find that individuals capable of highest accomplishments, are those most susceptible, as a rule, to having their spirits refreshed and strengthened by the influence of real beauty.

We feel it our duty to urge patriots everywhere to keep the home flowers blooming. Barbarism is an ugly thing. Civilization loves beauty. Let us strive to maintain that civilization and keep America beautiful. Yours in the service,

THE CONARD & JONES CO.

ROBERT PYLE, President  
 ANTOINE WINTZER, Vice-President  
 E. PYLE, Treasurer  
 R. T. SATTERTHWAIT, Secretary

Importers and Growers of Roses, Plants and Bulbs  
 WEST GROVE, PENNA., U. S. A.

TO WHOM IT MAY CONCERN: August 10, 1918

It affords us pleasure to testify to the high character and standing of The Conard & Jones Company. It is composed of practical, up-to-date Nurserymen and Rose Specialists. In our opinion, any statement they may make or any agreement into which they may enter can be absolutely relied upon.

The National Bank of West Grove, Pa.

## YES! We Guarantee Safe Arrival—AND

practically all the items of *small size* in this catalogue are offered with delivery charges prepaid. This includes one-year-old plants, bulbs, and seeds, **BUT—**

Larger plants, including two-year-old roses, shrubs, and other items will be found with a  after each price.

This sign at the foot of several pages in the catalogue indicates the items on that page on which transportation is not prepaid. This does not mean that the cost of delivery is expensive. It is very inexpensive. The goods may be delivered by the Government-controlled new American Railways' Express Company, services of which promise to be better than in the past, in which case delivery charges will be collected, upon delivery, by your Express Agent.

On the other hand, you may find it more convenient to have your goods sent by parcel post, *postage to be paid on delivery*. If you wish goods delivered by parcel post, please *say so when ordering*. Below is a schedule of likely *postal charges on delivery* when two-year or larger sizes are sent. Parcel-post charges are usually less than express charges east of the Mississippi. Plants vary in weight, so transportation will vary accordingly. Our figures, however, are as near right as we can estimate them.

### Postage Charges on Two-Year Dormant Plants

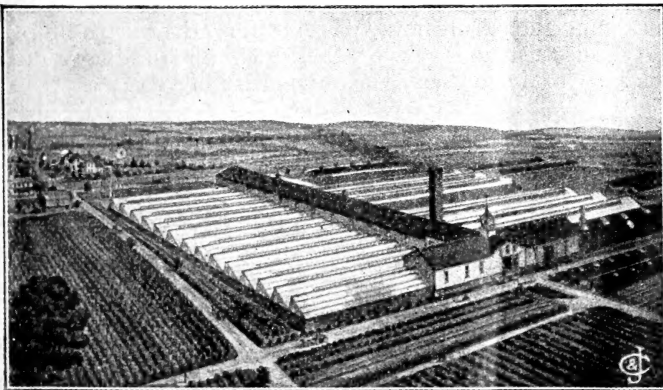
will average about as follows:

ZONE	2	3	4	5	6	7	8
5 plants . . . .	8c.	12c.	19c.	26c.	33c.	41c.	48c.
10 plants . . . .	12c.	20c.	35c.	50c.	65c.	81c.	96c.
25 plants . . . .	23c.	42c.	79c.	1.16	1.53	1.91	2.28

2-YEAR SIZE **POTTED** PLANTS WILL COST ABOUT TWICE ABOVE RATES

These cities are in the zones indicated: New York, Philadelphia, Baltimore, Washington, and Richmond, second zone; Boston and Pittsburgh, third zone; Cincinnati, fourth zone, Chicago, fifth zone.

**NOTE.** An additional charge of 13 cts. is placed on **every** package by the postmaster. This includes 10 cts. for collecting and returning postage and 3 cts. for return money order fee.



Our greenhouse plant is situated about midway between Baltimore and Philadelphia

# Wise Reasons Why We Should Grow Roses in War-Time

"What has been the welcome of France to the American soldier—a welcome which has brought joy to the hearts of the boys 'over there'? It was the French girls handing a rose to each soldier as he landed on the shores of France!

"Consider the boy in France, thinking of his mother caring for her rose-garden while awaiting the return of her son: would he rather she did not grow roses?"

G. E. M. STUMPP.

"A love of the beautiful helps to give the people stability."

MRS. EDWARD W. BIDDLE.

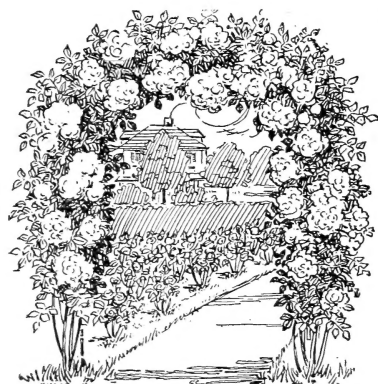
"The growing of flowers by one's own hands makes for health, for the spirit of enthusiasm, for trust in things uncontentious, and for reprieve in the stress of war. We need to stimulate the qualities for which roses stand."

DR. LIBERTY H. BAILEY.

(Above are quoted from "The American Rose Annual," 1918.)



Pergola Effect



For an Archway

## How to Select Your Roses

You, reader, may add refreshing variety and the charm of novelty to your surroundings when you become acquainted with the latitude of possibilities in the use of the various families of roses.

The illustrations on this page indicate five principal groups.

1. Polyanthas, or Baby Ramblers, most abundant bloomers. See page 7.

2. Hybrid Tea and Tea Roses, average height 2 feet, with variations. Most popular of all because persistent bloomers. See page 5.

3. Hybrid Perpetuals, average 3 feet or more; large foliage and large flowers; rich fragrance. Bloom in spring only. See page 6.

4. Rugosa Roses, also Moss, Sweetbriar, and other Briar varieties. See page 6. Too large for planting in the same bed with Teas or Hybrid Teas. Should be

planted as single specimens, or in groups like shrubbery. Also used for hedge purposes.

5. Climbing Roses grow from 4 to 30 feet in height. Hybrids of Wichuraiana, and Multiflora, page 8, for covering stumps, archways, trellises, training over the sides of buildings, etc. In the Spring Catalogue, see even larger list of varieties.



5. For Stumps or Rockeries



4. Shrub Rose, Rugosas, etc.



3. Hybrid Perpetual



2. Tea and Hybrid Tea



1. Baby Roses

### "HOW TO GROW ROSES" By ROBERT PYLE

121 pages of interesting, useful information on this delightful subject. Price, \$1, ppd.

# Ten Choice Everblooming Roses

## FOR FALL PLANTING

Some eminent Rose-growers prefer fall planting, but the time for getting the Roses dug, shipped, and replanted before the ground freezes is rather limited, inasmuch as the plants must not be moved before they are thoroughly ripened—about the first of November. We expect to ship early in November but if you live in the northern tier of states you should cover your Rose-bed with litter or straw to prevent freezing until your plants arrive. We are fortunate in having a list of the finest kinds to offer and when your plants are set out, protect them as directed below.

By planting now you will be ahead of people who defer planting until spring, and your plants will be starting to grow when theirs are being planted.

### EVERY PLANT LIVED THROUGH A MONTANA WINTER

Please send at your convenience Roses as per attached list. It is a pleasure to state that every one of the Roses purchased from you last year grew perfectly, notwithstanding the fact of a one-foot fall of snow a couple of weeks after planting.

We trust that this order will come through in as good condition.—BRIDGER MERCANTILE CO., Bridger, Mont.

**OPHELIA.** (H.T.) Introduced in 1913 and so greatly in demand on account of its excellent qualities that there are never enough plants to fill all orders. Color is salmon-flesh, shaded with rose. The blooms come on strong stems, and the perfectly formed flowers, with their strong, firm petals, are very lasting when cut. A favorite with everyone who grows it, and we commend it highly. (See cut.)

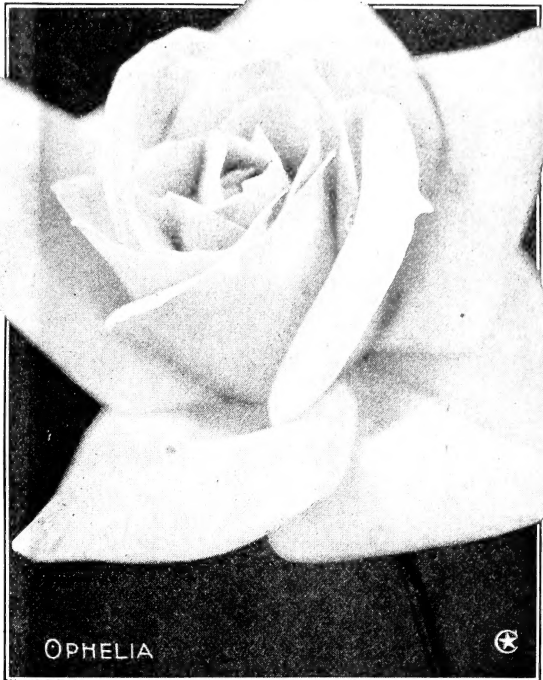
**KILLARNEY BRILLIANT.** (H.T.) Flower is larger, more double, and a more brilliant pink than the parent Killarney. It is also fragrant and blooms freely. A desirable addition to this famous family and a Rose that pleases everyone. Splendid as a cut-flower.

**GRUSS AN TEPLITZ.** (H.T.) The color is dark, rich crimson, passing to velvety, fiery red. One of the brightest colored Roses we know. Flowers are large, full, and very sweet. A most popular Rose, as it blooms almost continuously. A very strong grower.

**LA FRANCE.** (H.T.) This is probably the most popular Rose in cultivation. Both buds and flowers are of lovely form and grand size, exceedingly sweet; color fine peach-blossom, elegantly clouded with rosy flesh. Begins to bloom early in the season, and continues bearing until stopped by freezing weather.

**WHITE KILLARNEY.** (H.T.) In form, size, and freedom of bloom, this Rose is the same as the famous Pink Killarney, of which it is a sport, but it is more double and the flowers are pure waxy white.

**MME. CAROLINE TESTOUT.** (H.T.) The great bedding Rose. A grand variety, with large, full flowers and handsome buds which resemble the famous La France Rose, but the color is clear rich



pink, finely edged with silvery rose. A strong grower and abundant bloomer. One of the best for open-ground planting.

**RICHMOND.** (H.T.) A strong-growing Rose that blooms almost continuously. It is brilliant crimson-scarlet in color and very beautiful in bud form. It is not very double, but on account of its brilliant color, strong growth, and free-flowering habit it is greatly in demand as a cut-flower.

**PRINCE OF BULGARIA.** (H.T.) Large, full double flowers of splendid form. Color, silvery flesh, deepening to the center and delicately shaded with salmon-rose. Unusually fine in form, color, and general habit of growth.

**GENERAL MacARTHUR.** (H.T.) Color, bright glowing crimson-scarlet; a vigorous grower, every shoot producing a flower of intense brilliant color; very sweetly scented. Unexcelled as a splendid all-round garden Rose.

**PINK MAMAN COCHET.** (T.) A queen among Roses, one of the best and most beautiful varieties ever grown, and quite hardy. The flowers are of enormous size, very full, and of great depth and substance. Color, rich coral-pink, elegantly shaded with rosy crimson; has broad, thick, shell-like petals and makes superb long-pointed buds; immense bloomer, and flowers the whole season. Deliciously sweet and a vigorous grower.

Price, strong field-grown plants, 60 cts. each, or \$6.50 per doz. □

**WINTER PROTECTION FOR ROSES.** Your plants need protection against thawing as much as freezing; sudden thawing kills more plants than intense cold. Protect your plants so they will not thaw too suddenly and then uncover them gradually in the spring when danger from further heavy frost is past. The best protection known is to hill the earth around the stems to a depth of 6 or 8 inches and cover this with straw manure or leaves. You cannot prevent freezing but you can prevent thawing until the proper season.

# 12 Choicest Hybrid Perpetual Roses

HARDY EVERYWHERE IN U. S. A. Plant in heavy clay soil if possible

Strong 2-yr. field-grown plants, 60 cts. each

**WHITE AMERICAN BEAUTY, or FRAU KARL DRUSCHKI.** The best white Rose in existence.

**ANNA DE DIESBACH** (Glory of Paris). Color carmine-pink; flowers large, full and sweet.

**CLIO.** Flesh color with rosy pink center.

**GENERAL JACQUEMINOT.** Red.

**GEORGE ARENDS.** Tender rose-pink. Very free bloomer.

**GLOIRE DE CHEDANE GUINOISSEAU.** New. Bright vermilion-red with velvety shading.

**HUGH DICKSON.** Crimson, shaded scarlet. Large blooms.

**J. B. CLARK.** Intense scarlet, shaded crimson. Large flower.

**MRS. JOHN LAING.** Soft pink; remarkably free flowering.

**PAUL NEYRON.** One of the largest; clear shining pink.

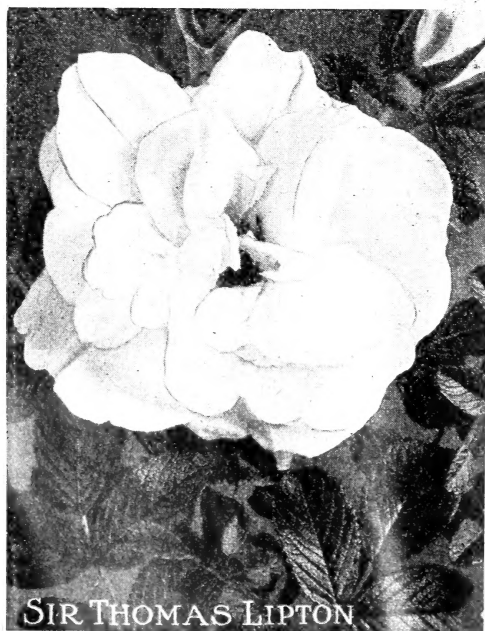
**PRINCE CAMILLE DE ROHAN.** Dark, velvety crimson.

**ULRICH BRUNNER.** Crimson-scarlet; broad, round, thick petals.



General Jacqueminot

▶ **OFFER** ▶ 6 The 12 H. P. Roses for \$6.50



SIR THOMAS LIPTON

## Hardy Moss Rose

The Moss Roses are so called on account of the unique mossy growth that forms around the buds. They are perfectly hardy and can be grown in any climate.

**HENRY MARTIN.** Medium-sized, rosy red flowers, beautifully mossed. 2-yr. plants, 60c. ea.

This indicates delivery not prepaid. See page 3.

## Rugosa Roses

VERY HARDY AND INTENSELY FRAGRANT

These Rugosas make strong bushes from 4 to 6 feet in height. They have rugged, crinkled, leathery foliage, not affected by insects or disease. They are suitable for windbreaks at the seashore, as they do well in sandy soils.

THESE THREE RUGOSAS BLOOM FREELY

**SIR THOMAS LIPTON.** Large, double, pure white flowers. Blooms all summer.

**SOUV. DE PIERRE LEPERDRIEUX.** Double flowers of vinous red. A continuous bloomer.

**RUGOSA ALBA.** From Japan. Large single flowers, pure white, followed by clusters of brilliant red berries, larger than ordinary cherries. Unique and very attractive.

Price: Strong field-grown plants, 60 cts. each

## “York and Lancaster” (Damask)

This Rose is of rich historic interest. It dates back to the “War of the Roses,” between the Royal Houses of York and Lancaster. It is heavily striped white and red and is said to have originated when the warring factions became united, its color representing the white of the Yorkists and the red of the Lancastrians.

Price: Own-root, field-grown plants that will last a lifetime, \$1 each

## Harison's Yellow AUSTRIAN BRIAR

Produces intensely bright blossoms of clear golden yellow, early in the spring. Makes a strong growth, and the entire bush becomes covered with bloom.

Two-yr. field-grown plants, 60 cts. each



# Fall Planting for the South

POTTED, 2-YEAR FIELD-GROWN EVERBLOOMING ROSES READY TO SHIP NOW

**ALEXANDER HILL GRAY.** Deep lemon-yellow, which intensifies as the blooms develop; flowers perfect.

**BLUMENSCHMIDT.** Pure citron-yellow, with outer petals edged rose. Makes a large, full flower.

**BON SILENE.** Color is bright, rich, rosy crimson.

**CHAMPION OF THE WORLD.** Rich, rosy pink color; flowers large and sweet.

April 30, 1918.

My Champion of the World Rose had over fifty buds and flowers last fall. It was beautiful.—Mrs. J. W. H., Ursa, Ill.

**CLOTHILDE SOUPERT.** Flowers large, full, and deliciously sweet; color, creamy white, deepening to clear bright pink.

**GRUSS AN AACHEN.** A beautiful Rose and very free bloomer. Color is delicate flesh-pink and yellow outside, with rich salmon-pink in center of the flower.

**HELEN GOOD.** Delicate pink, shaded deeper pink.

**ISABELLA SPRUNT.** Bright canary-yellow. Makes exquisite buds.

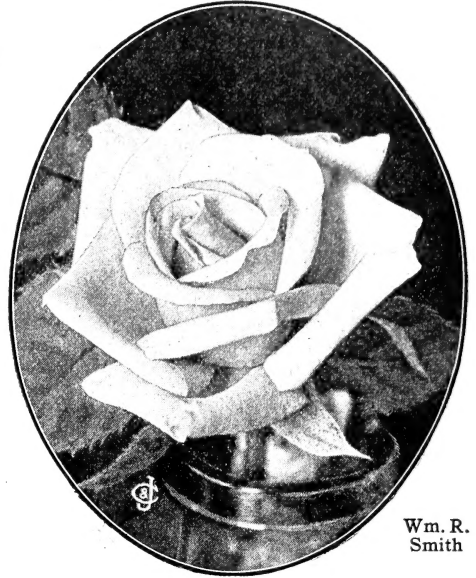
**MME. F. KRUGER.** Coppery yellow, shaded peach. Very free bloomer.

**PINK MAMAN COCHET.** Blooms very large. One of the finest Roses in existence. Color rich coral-pink, shaded rosy crimson.

**WHITE MAMAN COCHET.** An incessant bloomer. Flowers large, pure white, with outside petals tipped pink.

**WM. R. SMITH.** Cream-color, with soft pink shading, the base of the petals buff-yellow and the center a heart of pink.

Price, well-rooted, strong pot-plants, 50 cts. each □



Wm. R. Smith

## Hardy, Continuous-Blooming Baby Rambler Roses

FOR PERMANENTLY EDGING WALKS OR FLOWER-BEDS

These perfectly hardy, continuous-blooming, dwarf-growing Roses have won for themselves a conspicuous place with rosarians. They bloom from June till frost and keep color in your garden or on your lawn even during the hottest days in summer, when other Roses are gone. Use them generously for planting along walks, for dividing-lines where a tall hedge is not needed, and for solid beds. They bloom as freely as geraniums and, being perfectly hardy, their first cost is the only cost.

Price, 2-yr. field-grown plants, 50 cts. each, \$5 per doz. □

**ORLEANS.** Color is brilliant geranium-red, suffused with rose, with a center of white. The effect is brilliant pink, which changes to a lighter pink as the flower ages. The flowers come in

masses of thirty to fifty on a stem and keep up a continual show of color, even during the hottest weather. One of the most satisfactory Roses for edging. Awarded a Gold Medal.

**WHITE BABY RAMBLER.**

Very prolific bloomer, each branch bearing from fifteen to forty perfect little creamy white flowers. A bed of Orleans, edged with White Baby Rambler, makes a great show.

**ERNA TESCHENDORFF.** Flowers brilliant red, borne in clusters. Stock limited.

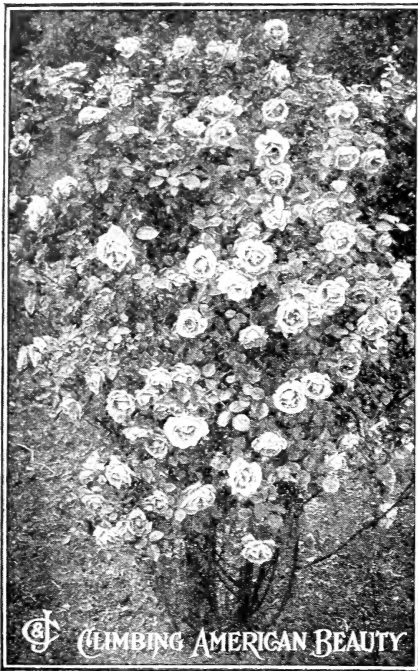
**CECILE BRUNNER** (Sweetheart). Makes lovely sprays of tiny, perfectly formed little Roses. In great demand for bouquets. Color is rosy pink on a rich, creamy white ground. This Rose is deliciously fragrant and is known to many as *Sweetheart*.

**MARIE PAVIE.** This Rose is white with a delicate rose center, and it blooms unceasingly. It is unsurpassed as a *bush cemetery* Rose because it seems to thrive even with the least care.



A solid bed of White Baby Ramblers is very effective

# Hardy Climbing Roses for Fall Planting



You can cover any reasonable-sized trellis in two years if you use our vigorous, well-rooted, 2-year or 3-year size C. & J. Roses to start with.

These are all Healthy, Hardy, Field-grown Plants, vigorous in growth, which if planted this fall will be ready to bloom for you next June. We ship them pruned, ready to plant.

**PRICE FOR ALL (except where noted):** Sturdy, 2-yr. field-grown Roses, 50 cts. each; extra-strong, Star-size plants, 75 cts. each □.

★ **CLIMBING AMERICAN BEAUTY.** Has the crimson color and the delightful fragrance of the bush American Beauty; grows to a height of 15 feet, and produces hundreds of perfect blooms at one time. 2-yr. size, 60 cts. □.

No. 10063

5-10-18.

The Climbing American Beauty grew 10 feet the first season and every year since has been the Rose sensation of this city.—CHAS. C. C., Ludington, Mich.

★ **CHRISTINE WRIGHT.** New. Bright, clear wild-rose-pink flowers. Beautiful in bud and lasts for days.

★ **DR. W. VAN FLEET.** See back cover. Description page 35.

★ **EXCELSA.** See back cover. Description page 35.

★ **HIAWATHA.** Brilliant scarlet; single flowers; very effective.

★ **LADY GAY.** Large, loose clusters of a delicate cherry-pink.

★ **MAY QUEEN.** Clear, bright pink; deliciously sweet-scented.

★ **MARY LOVETT.** Similar to the Dr. W. Van Fleet Rose, but this variety is *pearly white*. The originator, Dr. W. Van Fleet, said: "I consider this as altogether the best white that has been produced."

★ **MISS MESSMAN (Climbing Baby Rambler).** A vigorous-growing sport of the continuous-blooming Crimson Baby Rambler; not so free in bloom as the parent.

★ **AMERICAN PILLAR.** Introduced by the Conard & Jones Company. The grandest single, hardy Climbing Rose known. In wealth of bloom it stands unequaled, producing, as it does, immense masses of radiant pink blossoms. The foliage is superb at all times, and canes grow 20 feet in one season. This Rose is enthusiastically praised by all who see it. Hardy everywhere. See illustration. 2-yr. size, 50 cts.; 3-yr., \$1; extra-large size, \$1.50 □.

## USEFUL AS A CUT-FLOWER

ADOLPH MULLER, Norristown, Pa., writes: "The single Roses deserve to become more popular. On June 28 I cut a big bunch of American Pillar, placed them in a vase on my dining-room table, where they remained until the following Sunday without dropping their petals. They then commenced to fade after being cut and in water for eight days. Don't think I ever saw a more beautiful bunch of flowers, they are far more graceful than the double flowers."

★ **PHILADELPHIA.** Splendid flowers, 2½ inches across and perfectly double; color pure, deep, rich crimson, more intense than the old Crimson Rambler.

★ **RUBY QUEEN.** Rich ruby-red flowers with a clear white center.

★ **SILVER MOON.** Extra-large silvery white, semi-double flowers, with a mass of golden stamens, borne on strong stems 12 to 18 inches long and delicately scented. Remarkable also for its beautiful, large glossy foliage.

**TAUSENSCHON (Thousand Beauties).** Pure white to deep pink; almost thornless. 2-yr. size only.

★ **UNIVERSAL FAVORITE.** Clear, bright pink; double, in clusters. Splendid for massing on embankments. Plant this with White Dorothy Perkins.

★ **VEILCHENBLAU (Blue Rose).** Rosy lilac, changing to metallic blue.

★ **WICHURAIANA.** Pure white; grows flat to the ground; splendid for embankments. The foliage is a rich dark green and shines as if varnished.

No. 9570.

4-20-18.

I have completed setting the 266 Roses that you sent me. I commend you on the fine plants you shipped me.—J. E. J., Waterloo, Iowa.



Note how the foliage and flowers of American Pillar furnish the plant all over from base to tip

**SPECIAL OFFER.** Any 3—2-yr. size, 50-ct. plants on this page for \$1.25; any 10 for \$4 □  
Any 3—Star size, 75-ct. plants on this page for \$2; any 10 for \$6 □

# Let the Beauty of Nature Adorn Your Home Surroundings

## ★ Dorothy Perkins

Pink

Grows 10 to 15 feet in a season. Flowers are perfectly double, with petals crinkled, and color is a clear shell-pink; borne in immense clusters that cover the bush for several weeks in the spring. (See cut.) Price, 2-yr., 50 cts.; Star size, 75 cts.; extra-large size, \$1 □.

## ★ Red Dorothy Perkins

EXCELSA (New)

The color is an intense, clear carmine-lake, a rich contrast to Pink Dorothy Perkins. Flowers are large and double, produced thirty to forty on a stem, and almost every eye on a shoot produces a cluster of bright blossoms. Price, 2-yr., 50 cts.; Star size, 75 cts.; extra-large size, \$1 □.

## ★ White Dorothy

A pure white sport of the well-known Dorothy Perkins, of same habit of growth and freedom of flowering; a splendid companion for the pink variety, as it flowers at the same time. A most valuable addition to this class. Awarded Gold Medal, National Rose Society, and Award of Merit, Temple Show, England. Price, 2-yr., 50 cts.; Star size, 75 cts.; extra-large size, \$1 □.

## ★ Gardenia

(HARDY MARECHAL NIEL)

Yellow

Deep, rich golden yellow flowers, passing to creamy white. Blooms profusely and is as hardy as an oak. Price, 2-yr., 50 cts.; Star size, 75 cts.; extra-large size, \$1 □.

»OFFER» 9	{	The above 4 excellent Hardy Climbers, 2-yr. size .....	\$1.75	}	□
		The above 4 excellent Hardy Climbers, Star size .....	\$2.75		
		The above 4 excellent Hardy Climbers, extra-large size .....	\$3.75		

SEE OTHER HARDY CLIMBING ROSES ON PAGES 8 AND 35

Dorothy Perkins  
Roses



Dorothy Perkins Roses at "Dreamwold," on the estate of Thos. W. Lawson, in New England. Flowering canes 15 to 20 feet long, are produced in a single season. Desirable places for growing these PERFECTLY HARDY CLIMBERS are: on porches, pergolas, arbors, arches, over fences, embankments, tree stumps, etc.

# Plant Shrubs—Make Your House a Home



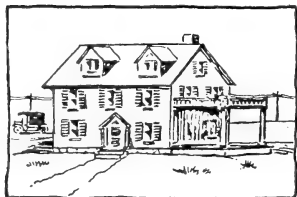
## Plant Shrubs—Here's Another Reason

"IT WAS THE BEAUTIFUL YARD THAT HELPED TO SELL THE PLACE"

*I have just lately sold my home and grounds that were well covered with C. & J. plants, and in fact it was the beautiful yard that helped to sell the place. I have just purchased another place and will next spring plant C. & J. plants."*  
No. 34456. —J. C. G., Hurley, S. D.

### Two Instructive Sketches for Home Owners

*Mother Nature, with the Assistance of a Few Vines and Shrubs, Made No. 1 into No. 2*



No. 1

Picture No. 1, you will note is a *house*. Unfortunately, houses like this are all too common because their owners or tenants do not realize that the expenditure of a few dollars on shrubs and vines, plus some joyous, healthful, outdoor work, will transform a place in a couple of years, from an enclosure of wood, bricks or stone, called a house, into a cosy, inviting home.

Spend not over 2 per cent of the value of a house for outdoor plants—shrubs, hardy vines, grass seed, and hedges, and you will add more to the value of the property than 10 per cent spent on decorating the house itself. The 2 per cent ground decorations increase rapidly in value with little care and practically no further expenditure, while the 10 per cent paint or other house decoration deteriorates annually.

Suppose you are interested in dividends more than mere beauty! Then do as large real-estate operators do and use hardy, healthy plants and vines to increase the value of your property.

If your house is not already closely surrounded, your first care should be to plant a living, green, inviting non-rotting fence of Japan Barberry or Privet along your boundary lines and, when planting is finished, you will be amazed at the different "feel" there is about your place.

Get some vines, climbing roses, shrubs, and grass started. Do it *this* fall for "waiting a season means losing a season."



No. 2

## Evergreen Arborvitæ for Lawn, Porch, or Window Decoration

Arborvitæ, or Thuya, furnishes backgrounds for flowering shrubs. It will make fine specimen plants, beautiful every month in the year. Ultimately grows to 10, 20, and sometimes 30 feet high.

- Thuya pyramidalis.** Dense in growth and columnar in habit. 9-12-in. plants, 50 cts. □
- Thuya, George Peabody.** Most beautiful of all. Bright yellow foliage at terminals of the branches. 4-6-in. plants, 50 cts. □
- Thuya sibirica.** Pyramidal in form and low in growth. Foliage green. 6-8-in. plants, 50 cts. □

- Thuya Vervæneana.** Growth small. Branchlets slender. Very fine. 8-10-in. plants, 50 cts. □
- Thuya Vervæneana aurea.** Same as above, but golden foliage. 8-10-in. plants, 50 cts. □
- Thuya elegantissima.** Flaky foliage, tipped with yellow. 8-10-in. plants, 50 cts. □
- Thuya pumila.** Dwarf. Green. 6-8-in. plants, 50c. □

A FEW OF THESE WILL FILL A WINDOW-BOX AND MAKE IT ATTRACTIVE ALL WINTER



# Useful Ornamental Hedge Plants

Beautiful hedges add much to the appearance of a property, and are everywhere coming into more general use. They look better than fences, last longer, and cost less. When once established, they require only a little cultivation and pruning each year to keep them the desired shape and size. A fence rots and causes trouble; a hedge grows better looking every year and it immediately adds value to your home. Try it.



An attractive hedge of Japan Barberry. It is chicken-proof, dog-proof, cattle-proof, and also ornamental

## Japan Barberry (*Berberis Thunbergii*) HARDY EVERYWHERE

Look around, next time you go out, and consider the difference between a property with a neatly kept hedge and a hedgeless one. A hedge, even when young and just planted, increases the value of the property at once and out of all proportion to the cost of the plants. Order yours now.

Japan Barberry is the ideal shrub and hedge plant, gracefully beautiful in summer, with its arching thorny branches thickly covered with small, fine, rich green leaves, which change in the autumn to a unique fiery crimson. Our stock is grown from cuttings and produces a uniform, shapely hedge.

Do not confuse this Japan Barberry with the Common Barberry (*Berberis vulgaris*). The latter is a host-plant for wheat-rust and therefore has been ordered destroyed by the Federal Government. But the Japan Barberry is absolutely safe for yourself and for the wheat crop. It is recommended by Uncle Sam and is the best hedge plant we know.

PRICES □ (see page 3)	10	100	1,000
8 to 10 inches .....	\$1.25	\$10.00	\$90.00
12 to 18 inches .....	1.50	11.00	100.00
18 to 24 inches .....	2.00	15.00	120.00
2 to 3 feet .....	3.00	25.00	

## California Privet (*Ligustrum ovalifolium*)

Glossy, wax-like foliage. Does well in hot, dry soils. Plant 6 to 9 inches apart.

PRICES □ (see page 3)	10	100	1,000
12 to 18 inches .....	\$0.75	\$4.00	\$30.00
18 to 24 inches .....	.90	5.00	40.00
2 to 3 feet .....	1.00	7.00	60.00



California Privet. Can be trimmed and shaped at any time without injury

## Box Edging (*Buxus sempervirens suffruticosa*)

HOME GROWN, vigorous rooted, healthy field plants

The sturdiest, nearest plant in existence for bordering garden walks. Plant 4 to 6 inches apart. 6- to 8-inch plants, \$3 per doz., \$20 per 100 □.

## Ornamental Shrubs for Hedges

**ALTHEAS.** These plants grow from 8 to 12 feet in height. They have an upright, sturdy growth and bloom profusely in July and August. 2-yr. size, 100 for \$25 □. See page 12.

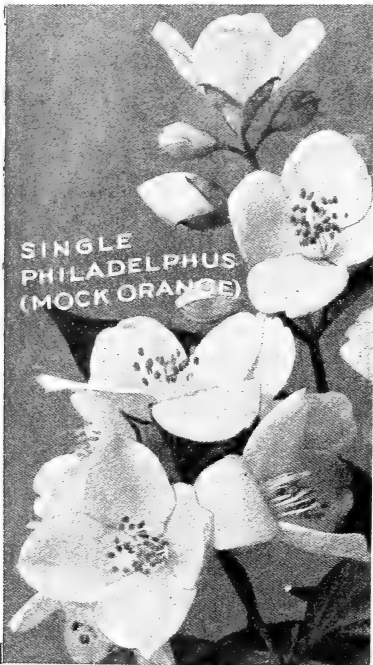
**HYDRANGEA paniculata grandiflora.** Makes a unique hedge and blooms from July till frost. 2-yr. size, 100 for \$25 □. We have this in 3-yr. and 4-yr. sizes also. See page 12.

**SPIRÆA Van Houttei.** Makes a most graceful, beautiful hedge. Blooms profusely in May. 2-yr. size, 100 for \$25 □. 3-yr. size also. See page 13.

**RUGOSA ROSES.** These make excellent hedges. See varieties on page 6. Prices on request.

# Hardy Ornamental Flowering Shrubs

SEE PRICES AT FOOT OF THE PAGE



## Philadelphus (Mock Orange)

A most graceful shrub. Flowers profusely.

**Philadelphus coronarius**, Fragrant white flowers in May.

**P., Avalanche**. Large white flowers on slender branches which arch gracefully. 2-yr. size only, 50 cts. each □.

**P., Bouquet Blanc**. A new and notable variety. Large white flowers, produced in immense quantities. 2-yr. size only, 50 cts. each □.

## Forsythia viridissima (Golden Bells)

The earliest blooming shrub. The entire plant becomes covered with yellow bell-shaped flowers.

## Hydrangea paniculata grandiflora

Considered by many to be the grandest hardy flowering shrub that grows. The immense bloom-heads, often 12 inches long, are borne in great conical clusters from July till frost. See cut.

1-yr. size, 25 cts. each, 12 for \$2.50, postpaid

By express not prepaid	Each	Doz.	100
2-yr. size.....	\$0 35	\$3 00	\$20 00
3-yr. size.....	50	4 50	35 00
4-yr. size.....	1 00	7 50	

**H. paniculata grandiflora**. Tree Form, \$1.25 each □.

## Hydrangea arborescens grandiflora

("Hills of Snow," or Snowball Hydrangea)

Blooms five weeks earlier than *H. paniculata grandiflora*. Flowers pure snow-white. 1-yr., 25 cts., postpaid; 2-yr., 50 cts.; 3-yr., \$1. □.

## Double Altheas (Rose of Sharon)

Upright-growing shrubs that bloom profusely during July and August. They grow 6 to 8 feet and make a beautiful hedge.

**Jeanne d'Arc**. Exquisite pure white flowers like azaleas.

**Bicolor**. Unusually fine. White with crimson center.

**Banner**. Pink and red on milk-white ground.

**Pink**. Clear bright pink. Plant with Jeanne d'Arc.

## Buddleia variabilis magnifica

Butterfly Shrub or Summer Lilac

Violet-mauve flowers borne in great profusion on spikes 8 to 12 inches long; deliciously fragrant and very showy. It blooms from July till frost. Should have winter protection and be pruned low in the spring.

## Showy Deutzias

A most desirable class of shrubs; hardy and strong growers and bearing numerous small clusters of flowers in the early summer. Highly valued for yard, lawn, park, and cemetery planting.

**Deutzia gracilis**. 2½ to 3 feet. Of compact, bushy growth, and in May completely covered with pure white, bell-shaped flowers.

**D. gracilis rosea**. Like the above, except that flowers are a beautiful pink and most attractive.

**D. Lemoinei**. One of the best dwarf hardy shrubs. Flowers come in cone-shaped heads of purest white, which open out when full.

**D. crenata rosea**. Grows 4 to 6 feet. Flowers pink, bell-shaped.

**D. crenata, Pride of Rochester**. Grows 4 to 6 feet. Beautiful double flowers, pure white, tinged with blush.

## Bush Euonymus

Makes a beautiful evergreen specimen plant as the leaves shine as if varnished. It always looks well and is exceedingly attractive on account of the glossy dark green foliage.



Hydrangea paniculata grandiflora

**Prices of Shrubbery**, Except where noted, 1-year, 25 cts. each, 5 for \$1, postpaid; 2-yr. size, 40 cts. each, 10 for \$3.75; extra-heavy, 3-yr. size, 60 cts. each, 10 for \$5 □.

□ This indicates delivery not prepaid. See page 3.

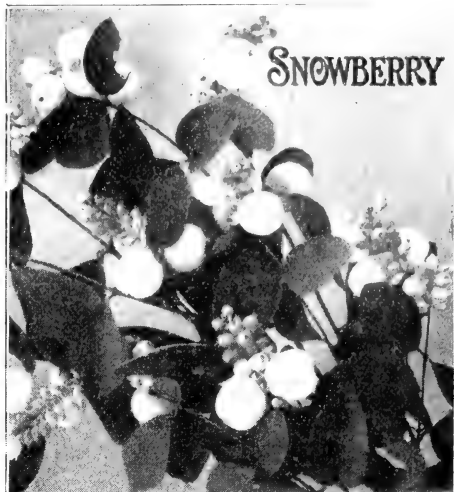
HARDY ORNAMENTAL SHRUBS, continued

Snowberry (*Symphoricarpos racemosus*)

A small, native shrub that grows well in almost any soil and succeeds in shaded locations. It is quite hardy, produces small white or pinkish flowers in July and August, and these are succeeded by white berries that last well into the winter. (See cut.) 2-yr. size only.

Japan Snowball (*Viburnum plicatum*)

The illustration below shows the amount of bloom the Japan Snowball will produce, and every ball and flower is perfect. Flowers are pure white and come in dense, globular clusters resembling balls of snow, each cluster being 4 to 5 inches in diameter, and they fairly cover the bush. It is a strong grower and will make plants 8 to 10 feet in height with strong, crinkled, dark green leaves entirely distinct from other shrubs.



*Symphoricarpos racemosus* (Snowberry)

DO YOU WANT "A SUCCESSION OF BLOOM" ?

Plant the following 12 shrubs; they will give you bloom from springtime until autumn frost. All are hardy.

- |                      |                           |                      |
|----------------------|---------------------------|----------------------|
| 2 Altheas (2 colors) | 1 Hydrangea panic. grand. | 1 Buddleia           |
| 1 Philadelphus       | 2 Weigelas (2 vars.)      | 2 Deutzias (2 vars.) |
| 2 Spireas (2 vars.)  | 1 Forsythia               |                      |

OFFER 13. The above 12 Hardy Shrubs, \$1.50, postpaid; or 2-yr. size, the 12 for \$3 ☐



*Viburnum plicatum* (Japan Snowball)

The Choicest Spireas

**Spirea Vanhouttei.** Grows 5 to 6 feet high, or even more than this in favorable locations, and blooms in May and June. It is one of the most beautiful of all; immense bloomer, pure snow-white flowers borne in elegant, plume-shaped clusters. Makes a most beautiful, graceful hedge.

**Red Spirea, Anthony Waterer, Perpetual-blooming.** A fine, hardy shrub, particularly desirable for the dooryard and lawn; makes nice, shapely bushes 2 to 3 feet high; begins to bear its large flat clusters of rich rosy red flowers almost as soon as planted, and continues blooming through the summer and fall.

**Spirea prunifolia** (Bridal Wreath). Flowers white and double like little roses, borne in great profusion.

**Blue Spirea** (*Caryopteris Mastacanthus*, or Verbena Shrub). This is the finest blue-flowering shrub we have; makes neat, compact bushes, 18 in. to 2 ft. high; begins to bloom in August and continues loaded with lovely sky-blue flowers until frost. Foliage has a peculiar, spicy fragrance. Not hardy north of Pennsylvania.



*Weigela candida*

Free-Flowering Weigelas

These most attractive shrubs make beautiful specimen plants and produce great masses of showy flowers.

**Eva Rathke.** Red. Considered the handsomest of all. The flowers are crimson, with creamy markings, and are borne in great quantities.

This variety blooms all summer and is, without question, the choicest shrub in this class. It is low-growing and spreading in habit, therefore it should be planted alone or in clumps or else on the outside of shrubby borders, where it will prove a constant source of pleasure.

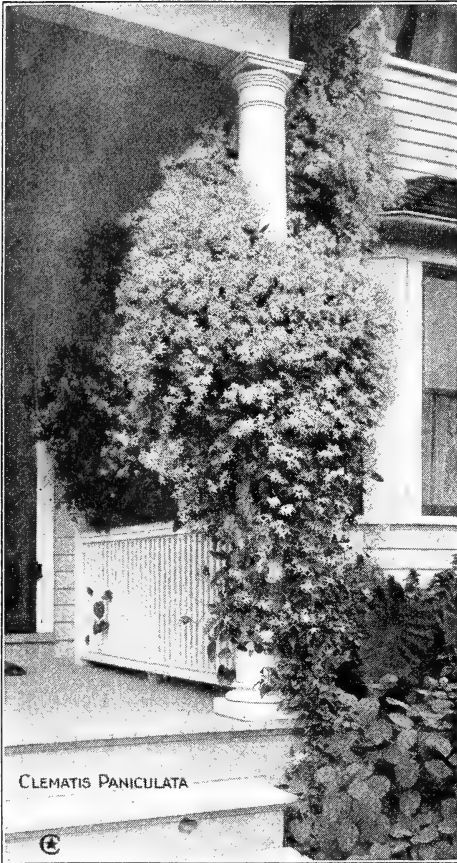
**Candida** (White Weigela). Snow-white flowers in great profusion.

**Variogated-leaved.** Deep green leaves, bordered creamy white; very attractive; flowers blush-pink.

**Rosea.** Beautiful rose-pink flowers borne in great profusion.

**Prices of Shrubbery,** except where noted, 1-yr. size, 25 cts. each, 5 for \$1, postpaid; 2-yr. size, 40 cts. each, 10 for \$3.75; extra-heavy, 3-yr. size, 60 cts. each, 10 for \$5 ☐.

# Choicest Hardy Climbing Vines



CLEMATIS PANICULATA

## SWEET-SCENTED Japan Clematis *Clematis paniculata* (Virgin's Bower)

AS SHOWN IN ILLUSTRATION

Flowers small, rich creamy white, borne in handsome clusters, completely covering the vine, and the flowers are followed by silvery, feathery seed-pods which keep the vine attractive until mid-winter; exceedingly fragrant. The sweetest of all Clematis; also one of the hardiest, and the easiest to grow. Strong, 2-yr.-plants, 35 cts. each, 3 for \$1; 3-yr. size, 50 cts. each, 3 for \$1.25, postpaid.

**Japan, or Boston Ivy** (*Ampelopsis Veitchii*). The handsome, deep green foliage changes in autumn to crimson. 2-yr. plants, 30 cts. each, 2 for 50 cts., postpaid. (See cut below.)

**American Ivy** (*Ampelopsis quinquefolia*). The true Virginia Creeper; hardy and noted for its brilliantly colored foliage in autumn. 2-yr., 30 cts. each, \$2.50 per doz.; 3-yr., 50 cts. each, \$4 per doz., postpaid.

**Hardy English Ivy** (*Hedera helix*). A hardy, evergreen climbing vine, with dark, glossy green leaves. Much used for covering walls of churches, etc., and for cemetery work. 25 cts. each, \$2.50 per doz.; large size, 40 cts. each, \$4 per doz., postpaid.

**Chinese Matrimony Vine** (*Lycium barbarum*). A strong, hardy, climbing vine. Bright rosy purple flowers, followed by brilliant scarlet berries; makes a dense, thick growth; a nice shelter for birds. 2-yr. size, 35 cts. each; 3-yr., 50 cts. □.

**Bitter-Sweet** (*Celastrus scandens*). Has attractive foliage and yellow flowers in June, followed in the autumn with bright orange fruit which usually remains all winter. 3-yr. size only, 60 cts. □

## Sweet-Scented Honeysuckles 20 cts. each, postpaid; 2-yr., 35 cts. □

**Everblooming Honeysuckle, Heckrottii.** Color is crimson-carmine on the outside of the flower, which contrasts beautifully with the golden apricot of the inside as the flower opens. Blooms unceasingly. (See illustration.)

**The Beautiful Halliana Honeysuckle.** This variety is intensely sweet-scented and a profuse bloomer; flowers buff-yellow, passing to white.

**Evergreen Sweet-scented Honeysuckle.** A hardy, vigorous grower; deliciously sweet; flowers buff, yellow, and white.

**Golden-leaved Honeysuckle.** Slender, moderate grower; leaves beautifully veined and netted with clear yellow; flowers yellow and sweet-scented.

**Hendersonii.** Flowers brilliant orange-red with bright yellow mouth.



Japan or Boston Ivy

## Evergreen Euonymus

(TWO VARIETIES)

Dense-growing, evergreen vines, climbing by aerial roots, often reaching 15 to 20 feet high. They bear pretty fruits and make good growth if planted in rich soil.

**Euonymus radicans.** Small, rich green leaves.

**E. radicans variegata.** Leaves green and white.

**Price:** Either above varieties, 25 cts. each, postpaid; extra size, 35 cts. each □

**Wistaria magnifica.** A very rapid grower. Bears long clusters of soft lavender-blue flowers. A tremendous grower that will grow to the roof of the house if desired. 2-yr. size, 50 cts.; 3-yr. size 75 cts. □.



Honeysuckle, Heckrottii

# These Fruits Will Help You to Help "Hoover"

LITTLE COST, LITTLE SPACE, LITTLE LABOR, AND BRING BIG RETURNS

When you plant a home-garden nowadays you have to consider what will give the best returns for the space occupied. These fruits all "earn their keep" and more, for from a single grape-vine, well matured, it is easy to get at least a bushel of luscious fruit for eating or preserving for winter. Blackberries and raspberries also produce fruit bountifully. So plant wherever space can be found.

## Delicious Grapes

**Niagara.** This most popular white Grape is grown in enormous quantities for the market, where it finds a ready sale. The berries are large, amber-white, with white bloom, thin-skinned, tender pulp, sweet, and luscious. The clusters are large and compact and ripen in midseason. 30 cts. each; 6 for \$1.50 □.

**McPike.** A very hardy Grape, purplish black in color. Succeeds everywhere. The berries are large and deliciously flavored. 50 cts. each; 6 for \$2.50 □.

**Berkmans.** A lovely sweet Grape with berries of medium size which form in large solid clusters. A variety you should grow as the fruit is not often seen on the market. 30 cts. each; 6 for \$1.50 □.

Grapes are ornamental as well as fruitful. Plant them wherever you have a place where the vines can be tied. You can plant them against buildings, over arches, on trellises, etc. These vines grow fast, they have large leaves, and make welcome shade in summer.

## Lucretia Dewberry

One of the low-growing, trailing blackberries. Perfectly hardy, healthy, and very productive. It ripens a little before blackberries and the fruit is large, rich, and luscious. 6 for 65 cts., 12 for \$1, ppd.

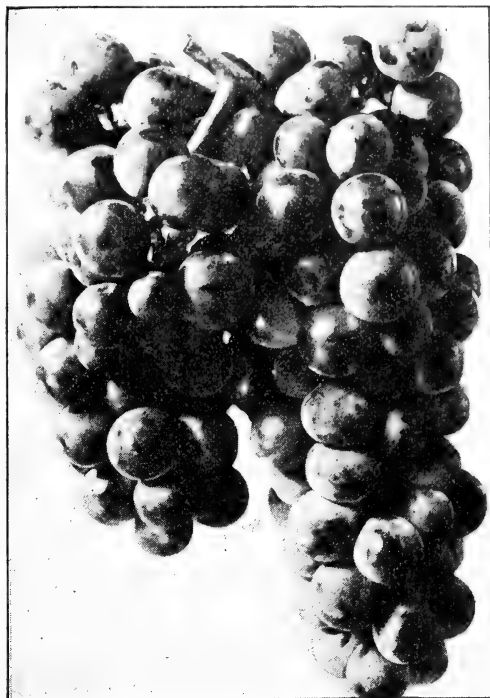
## The Japanese Wineberry

This remarkable berry belongs to the raspberry family and makes a strong, hardy bush 3 to 4 feet high; the fruit is borne in large clusters, and covered with a curious burr of fine reddish moss, like most rose buds, which open when ripe, showing the berries, which are bright, rich scarlet; excellent for cooking; makes fine jams, jellies, and preserves. Fruits first season; a heavy bearer. 3 for 50 cts., 7 for \$1, postpaid.

St. Regis  
is the most popular  
Raspberry  
now grown



St. Regis—The new Everbearing Raspberry



Clusters of Delicious Grapes

## Blackberries

6 for 65 cts., 12 for \$1, postpaid; 100 for \$5 □

**Early Harvest.** A compact, dwarf grower; it ripens very early; excellent quality and very productive.

**Snyder.** The fruit is of medium size, sweet and juicy, with no hard acid core.

**Eldorado.** A midseason Blackberry, producing large, rich-flavored fruits.

## Raspberries

**Cuthbert or Queen Raspberry.** Strong and hardy with large, handsome, crimson berries. Very sweet.

**Columbian.** The largest, finest flavored, and most productive black Raspberry yet produced.

Above two, 6 for 65 cts., 12 for \$1, ppd.; 100 for \$5 □

**St. Regis Everbearing.** A unique variety of great value. It ripens very early—in advance of all others, and gives an immense summer crop. It

also gives an autumn crop, continuing to produce large, perfect berries of full flavor until the ground freezes. The canes are of ironclad hardihood and of vigorous growth. Berries of good size, rich bright crimson in color, and of excellent quality. Unlike any other variety of the red Raspberries, it yields a moderate crop of berries the first season. Price 12 for \$1.25, postpaid; 100 for \$7.50 □.



# Hardy Herbaceous Peonies

WILL GLORIFY YOUR GARDEN IN THE EARLY SPRING

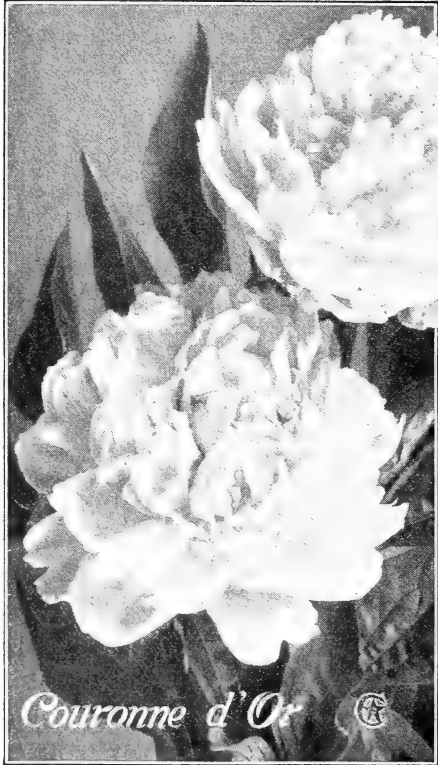
Plant now, in the fall, to get best results

When you order from this list, you may feel absolutely safe against any unhappy result, because we have allowed nothing in it except the very choicest kinds.

You surely want Peonies, because no other flower approaches them for hardiness, freedom of bloom, fragrance, usefulness as cut-flowers, and immunity from attacks of insects and disease.

We have exceptional facilities, not only for testing them in our own good soil here, but also for making critical examinations of some of the finest collections grown, thus enabling us to select for our customers the kinds which leading specialists agree are without rivals. You may order freely and feel safe.

We are Members of the American Peony Society



## Peony Culture

Peonies will grow anywhere—reasonably speaking. They thrive in partial shade, but best results are obtained when they are planted in deep, rich soil *about 2 inches below the surface* and have a sunny location. Plenty of water during the growing season is an added stimulus, and if liquid manure is applied at intervals of ten days, the grower will be amply repaid for his trouble in the increased size and coloring of the flowers. When placing manure around the plants, care should be taken not to put any on the stems, as this will sometimes cause the plants to cease blooming. September and October are the first choice of planting months.

## Three Superior Peonies

AS SHOWN ON FRONT COVER

**FELIX CROUSSE.** An exceptionally fine Peony and one of the leading red varieties. It is extremely brilliant in color, a vigorous grower, free bloomer, and slightly fragrant. 75 cts. each, postpaid.

**FESTIVA MAXIMA.** Immense, pure snow-white, perfectly double flowers with an unexpected and beautiful flake of carmine in the center; a perfect Peony. 60 cts. each, postpaid.

**EDULIS SUPERBA.** Beautiful clear pink with silvery reflex; very fragrant. Usually blooms here in time for Memorial Day. 60 cts. each, postpaid.

➤ **OFFER** ➤ 16 The above 3 magnificent Peonies in splendid roots for \$1.50, postpaid.

## Five Choice Peonies

**COURONNE D'OR** (Crown of Gold). Immense, very full, ball-shaped bloom; white, with yellow reflection, red blotch on central petals. 75 cts. each, postpaid. (See illustration.)

**MME. DE VERNEVILLE.** Immense bloomer; sulphur-white, with carmine-tipped central petals. 60 cts. each, postpaid.

**GRANDIFLORA.** Bright seashell-pink, overlaid with delicate lilac and salmon-pink—an enchanting color. \$1 each, postpaid.

**MONS. JULES ELIE.** Large and full; glossy pink. This is spoken of as the King of all Peonies. Blooms are very large and deliciously fragrant. \$1 each, postpaid.

**RUBRA SUPERBA.** Magnificent, rich, brilliant deep crimson without stamens. Very large, full and double. Very fragrant! 60 cts. each, ppd.

➤ **OFFER** ➤ 16a The above 5 choice Peonies for \$3.50, postpaid.

## Twelve Standard Peonies

Price 50 cts. each, or any 12 for \$5, postpaid

**Delachei.** Rich dark red; very fine; late.

**Delicatissima.** Color is dainty lilac-rose. Fragrant.

**Duchesse de Nemours.** A very beautiful white.

**Jeanne d'Arc.** Light pink, with rose center.

**La Tulipe.** Blush-white, guard petals marked red.

**Louis Van Houtte.** Rich violaceous red.

**Marie Lemoine.** Late-flowering; ivory-white.

**Meissonier.** Brilliant crimson, center deep crimson.

**Modeste Guerin.** Uniform solferino-red.

**Queen Victoria.** A standard pure white.

**Rose d'Amour.** Delicate rose color.

**Victoire Modeste.** Bright rose and salmon.

## Pæonia officinalis Price, 40 cts. each, ppd.

These old-fashioned Peonies bloom earliest of all. The flowers are large, full, double and fragrant. Three varieties: **Alba**, blush-white; **Rosea**, bright rose-pink; **Rubra**, brilliant, glowing deep crimson.

# Hardy Perennials OLD-FASHIONED GARDEN FLOWERS

FIRST COST THE ONLY COST — ONCE PLANTED THEY ARE THERE TO STAY

Autumn is the best time in the year for planting some Hardy Perennials. They get well established during the winter and are ready to start growth with the first sign of spring.

They are valuable for adding brightness and color to the border beds, and a comparatively small collection will enable you to have some flowers in bloom all summer through. Useful as cut-flowers.

The first figure after a variety indicates height of growth. The next figures indicate the months the flowers bloom in this locality. Some variation must be allowed according to latitude.

**DIRECTIONS.**—We send you most of these in strong roots. Allow from 1 to 3 square feet of space for each. After the first severe frost in the fall, cut down the tops to within 3 inches of the ground, and give the bed a good coat of half-rotted manure, which will protect the plants and enrich the ground; dig this under in the spring before new growth starts.

**Prices:** Unless otherwise noted, 25 cts. each, 12 for \$2.50, postpaid (remember that our postpaid prices include delivery charges for which many other firms charge *extra*), or \$12 per 100 . 25 or more at this rate.

**Achillea** *alba*, The Pearl. 2 ft. 6-10 mo. Bears an abundance of pure white, perfectly double flowers, borne in pretty, graceful sprays. 25 cts. each.

**Anchusa** *italica*, Dropmore Variety. 3-5 ft. 5-6 mo. Rich gentian-blue. Splendid long spikes; excellent for cutting. It prefers a sunny position and is considered one of the most desirable perennials. 25c. ea.

**Anemone** *japonica*, Queen Charlotte. 2-3 ft. 8-frost. Large, delicate pink flowers of great substance and perfect form. Stems stout and erect. Valuable for cutting. 25 cts. each.

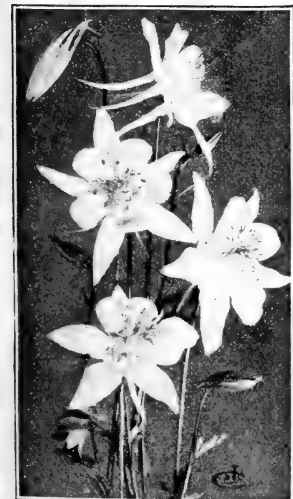
**Aquilegia** (Columbine). See cut. The dainty, spurred blossoms seem like poised butterflies. Four kinds. 25 cts. each.

**A. canadensis.** 1-2 ft. 4-6 mo. Scarlet and yellow.

**A. chrysantha.** 3-4 ft. 5-8 mo. Yellow; lips tipped claret. A charming, dainty flower.

**A. nivea grandiflora.** 12-18 in. 4-5 mo. Lovely snow-white. You need white in bouquets.

**A., Scotch Hybrids.** Grown from a special strain of imported seed. The flowers are surpassingly fine and are the result of many years of careful hybridization. Every imaginable shade of Aquilegias is included.



Aquilegia (Columbine)

**Campanula** *persicifolia* (Bellflower, or Blue Bells). 1-2 ft. 6-7 mo. Large, deep blue, salver-shaped flowers. 25c. ea.

**C. pyramidalis** (Chimney Bellflower). 4-5 ft. 7 mo. Large blue flowers, forming a pyramid. 25 cts. each.

**Coreopsis** *lanceolata grandiflora*. 2-3 ft. 6-9 mo. Emblem Flower of the International Sunshine Society. Flowers rich golden yellow, like a yellow cosmos. 25c. ea.

**Cornflower Aster** (*Stokesia cyanea*). 1½-2 ft. 7-10 mo. Large lavender-blue flowers, 4 to 5 in. across. 25c. ea.

**Delphinium** *Belladonna*, the Everblooming Hardy Larkspur. 2-3 ft. 7-10 mo. Flowers clear turquoise-blue. 30c. ea.

**D. Formosum.** 18 in. to 2 ft. 6-8 mo. Intense gentian-blue flowers. 25c. ea.



Pompon Chrysanthemums. Very showy

## HARDY POMPON Chrysanthemums

The most brilliant and showy autumn flowers we have, simply illuminating a garden with the masses of brilliant flowers they produce and these blooms are excellent for cutting. 18-24 in. 9-10 mo.

Prices for all, field plants, 25 cts. each, postpaid

**Baby.** Little golden yellow buttons.

**Brown Bessie.** Flowers bronze-brown.

**Doris.** Dark red, tipped with gold.

**Golden Climax.** The finest orange-yellow.

**Lillia.** Solid dark crimson-red.

**Princess Louise.** Crimson and bronze.



Everblooming Delphinium

HARDY PERENNIALS, continued



Lilies of France, or Fleur-de-Lis  
(FORMERLY KNOWN AS GERMAN IRIS)

The flowers are large and handsome, exhibiting every diversity of color. All are hardy and form excellent border plants, flowering in May and June.

**Shakespeare.** Color yellow to burnt umber; falls deep carmine-violet. 25 cts., postpaid.

**Florentina alba.** Fragrant, white flowers. 25c., ppd.

**Honorabilis.** Standards rich golden yellow, with falls of fine, velvety rose-purple. 25 cts., postpaid.

**Johann de Witt.** Violet, veined white. 25 cts., ppd.

**La Tendresse.** Beautiful blue throughout. 25c., ppd.

**Mme. Chereau.** White, edged light blue. 25c., ppd.

**Digitalis** (Foxglove). 3 ft. 7 mo. The bold, pointed racemes of cone-shaped flowers are odd and attractive. They prefer partial shade. Mixed colors. 25 cts. each.

**Eulalia gracillima.** Hardy Ornamental Grass. Grows 6 to 8 feet high and forms graceful clumps suitable for decorating lawns and planting among shrubbery. 25c. each, ppd. Clumps 30 cts. □.

**Funkia grandiflora** (The Large White Day Lily, or Plantain Lily). 1½-2 ft. 8 mo. Lily-like flowers, very sweet and waxy white. 25 cts. each.

**Gaillardia grandiflora** (Blanket Flower). 2 ft. 6-10 mo. Red center, scarlet and yellow edge. It lasts a long time in water when cut. 25c. ea.

**Golden Glow** (Double Rudbeckia). 5-7 ft. 7-9 mo. Golden yellow flowers. 20 cts. each, postpaid. Clumps, 25 cts. each □.

**Hemerocallis** (Yellow Day Lily). 3-4 ft. 7-8 mo. Large, lily-like, double flowers, orange-yellow, with carmine marking. One of our best native Lilies and thrives anywhere. 20 cts. each, 2 for 35 cts., \$2 per doz., postpaid.

**Japan Iris** (*Iris Kaempferi grandiflora*). The flowers are enormous, measuring 8 to 10 inches across.

**Indigo-Blue.** Magnificent dark blue. 30 cts. each.

**Snow Queen.** Flowers snow-white. 30 cts. each.

**Lychnis chalcedonica.** 2-3 ft. 7-9 mo. Maltese Cross, or Scarlet Lightning. 25c. each.

**PEONIES.** See page 16.

**Physostegia virginica.** Grows 3 to 4 feet. Bears spikes of delicate pink tubular flowers in midsummer. 20 cts. each □.

**Platycodon Bellflower.** Bears violet-blue flowers. 20 cts. each; extra-large roots, 30c., ppd.

**Plumbago** (*Larpetæ* (Leadwort)). 4-6 in. 6-10 mo. For bordering beds. Flowers deep blue. 20 cts. each, 12 for \$2, ppd.

**Pyrethrum** (*hybridum*). Daisy-like flowers in different colors. 25 cts. each.

Hardy Perennial Phlox

Of all the perennial flowers there are none more satisfactory than these beautiful Phlox. They are deliciously fragrant, especially in the evening, and their sweet perfume adds greatly to their value. Some should be planted in every garden.

12 Sweet-Scented Hardy Phlox \$2.50

Price, 25 cts. each

- |                                  |                            |
|----------------------------------|----------------------------|
| Antonin Mercie. Lilac.           | Jeanne d'Arc. Late; white. |
| Bacchante. Tyrian rose.          | L. Abbema. Dwarf, white.   |
| B. Comte. Rich French purple.    | Pantheon. Carmine-rose.    |
| Elisabeth Campbell. Rich salmon. | Rosenberg. Reddish violet. |
| Europa. White, crimson eye.      | Rynstrom. Rose-color.      |
|                                  | Thor. Deep salmon-pink.    |
|                                  | W. C. Egan. Lilac-pink.    |

**Miss Lingard** (Early-flowering White Phlox). Blooms from May till frost. 25c. ea.

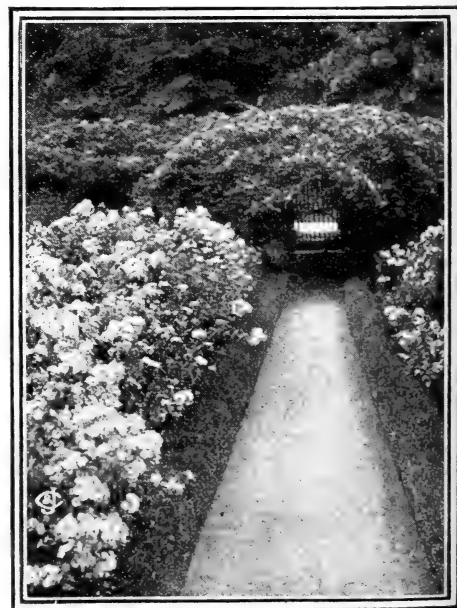
**Veronica** *spicata* (Speedwell). Long spikes of bright blue flowers. 25 cts. each.

3 Sweet Violets

**Admiral Avellan.** The "red" Violet, so called. The color is a deep shade of rich violet-crimson, quite distinct from any other kinds. 30 cts. each, postpaid.

**Governor Herrick** (Dorsett). Single, dark purple. 25c. ea.

**Princess of Wales.** Single flowers. True violet-blue. 25c. ea.



A Fine Border of Hardy Phlox



# Two Fruits for Wartime FOR INDOOR WINTER GROWING



American Wonder Lemon ( $\frac{1}{3}$  size)

## The Great American Wonder Lemon

Will bear flowers and fruits in any ordinary living-room. Fruits are immense. Equal to three or four ordinary Lemons

This is one of the grandest fruits for house culture ever introduced. The flowers are pure waxy white, very sweet and like orange blossoms; the leaves are thick, glossy green, and shine as if varnished.

The tree is a strong, healthy grower and may be set out in a pot or box during the summer and taken indoors for winter. It requires no coddling and will bear fruits quickly as soon as established.

February 20, 1917.

I bought a Lemon and Orange tree from you several years ago. There has never been a day when the Lemon-tree has not had both Lemons and blossoms on it.—Mrs. H. M. L., 904 Hume-Mansur Building, Indianapolis, Ind.

Nice mailing plants, 25 cts. each; larger size, 35 cts. each, postpaid; 2-year fruiting size, 50 cts., 75 cts., and \$1 each .

## Otaheite Orange

Has thick, glossy green leaves and deliciously sweet, pure white flowers. It begins fruiting while quite young, and bears flowers and lovely, golden yellow Oranges on the same plant at the same time. Fine plants, 25 cts. and 35 cts. each, postpaid; larger size, 50 cts. each .

## Rubber Plant (*Ficus elastica*)

Well known as one of the finest decorative plants for indoors on account of its large, thick, olive-green leaves and graceful polished stems. Price, \$1 ea. .

## Fan Palm (*Latania borbonica*)

This Palm has rich, dark green, fan-shaped leaves, beautifully fringed. Small plants only, 35 cts. each, postpaid.

## Choice WINTER-FLOWERING Geraniums

Price for all, 20 cts. each, 6 for \$1, postpaid

**Jacquerie.** Lovely brilliant crimson-scarlet; immense trusses on exceptionally long stems.

**Maxime Kovalevski.** A striking orange shade of Lincoln red. Unlike any other.

**Beaute Poitevine.** Beautiful salmon-pink. It blooms continually and is fine for winter window-gardens.

**S. A. Nutt (Queen of Crimson).** Rich crimson.

**Miss Frances Perkins.** Clear bright pink.

**La Favorite.** Pure white double flowers.

## 3 Sweet-Scented Geraniums, 50c.

Greatly prized for their unique fragrance

**Apple-scented.** Deliciously scented like rich, luscious apples. 20 cts. each, postpaid.

**Lemon-scented.** Delightful lemon odor. 20 cts., ppd.

**Rose-scented.** The favorite fragrant Geranium. 20 cts. each, postpaid.

## Lemon Verbena

This plant grows rapidly and is greatly prized for the delicious pungent fragrance of its foliage. It is a favorite with everyone and very easy to grow. 20 cts. each, postpaid.

## Pink Oleander

Splendid pink flowers, perfectly double, and exceedingly fragrant. 25 cts. each, postpaid.

## Crab Cactus

Makes a beautiful house plant and is very easy to grow. It bears large, rosy crimson flowers and continues in bloom a long time. 25 cts. each, postpaid.



Type of our Single Geraniums

This indicates delivery not prepaid. See page 3.

# Ornamental House Plants



A branch of Begonia Corallina Lucerna

## 6 Choice Flowering Begonias <sup>20 cts. each, postpaid</sup>

- Corallina Lucerna.** Gigantic trusses of bronzy red blooms.
- Multiflora rosea.** Bright rosy pink flowers.
- Robusta.** White, with center striped pink.
- Ramosa picta.** Flowers bright pink. Handsome foliage.
- President Gaulin.** Pinkish white flowers.
- Fuchsoides coccinea.** Bright scarlet, drooping flowers.

## 4 Lovely Chinese Hibiscus <sup>25 cts. each, postpaid</sup>

- Peachblow.** Immense, double pink flowers, shaded carmine in the center. Large size, 50 cts. □.
- Violacea.** Rosy carmine, with violet shading. Large size, 50c. □.
- Grandiflora.** Immense single flowers, bright rose-pink. 50c. □.
- Versicolor.** Large single flowers, bright red and white. 50c. □.

## 3 Fuchsias for Winter <sup>25 cts. each, postpaid</sup>

- Gloire de Marches.** Pure white, with red corolla.
- Jupiter.** Rich crimson.
- Speciosa.** Bright rose.

## 3 Sweet Heliotropes <sup>20 cts. each, postpaid</sup>

- Jersey Beauty.** Violet-purple.
- Centefluer.** Purple.
- Snow Wreath.** Pure snowy white.

**Genista (Shower of Gold).** Produces masses of golden blooms. 20 cts. each, postpaid; larger size, 50c. □.

**Impatiens, Evening Star.** White, with rich crimson center. Blooms incessantly. 20 cts. each, ppd.

## 3 Primroses <sup>The set of 3 for 50 cts., postpaid</sup>

- Fringed Chinese.** Assorted colors. 20 cts. each, ppd.
- Everblooming (Primula obconica).** Mixed colors. 20 cts., postpaid.

**Baby Primrose (Primula malacoides).** Pink. 20c., ppd.

**Parlor Ivy.** A lovely climber for the window; grows quickly. 20 cts., ppd.

**Scarlet Fountain Plant (Russellia elegantissima).** Tubular scarlet flowers on long stems. 20c., ppd.

**Vinca variegata.** A trailing vine; green leaves, bordered creamy white. 20 cts., postpaid.

**Bougainvillea.** Bears masses of curious reddish purple flowers. 25 cts. each, postpaid; larger, 35 cts. □.

**Browallia.** Flowers are lovely heavenly blue and bloom constantly. 20c., ppd.

**Paris Daisy (Marguerite; Mrs. F. Sander).** Magnificent double flowers of pure glistening white. This plant requires rich soil. 25 cts. each, postpaid.

**2 Beautiful Crotons <sup>20 cts. and 35 cts. each, postpaid</sup>**

**Aureo-maculatum.** Leaves green, spotted yellow.

**Majesticum.** Mottled green, yellow, and crimson.

# Illinois Self-Watering Flower-Boxes

TRY A BOX WITH SMALL EVERGREENS THIS WINTER (see p. 10)—GUARANTEED NOT TO LEAK

The boxes are made of heavy galvanized iron, flowers are planted, thus supplying water by sub-irrigation. Fill tank every 7 or 10 days. Careful trials have proved that plants treated this way thrive much better, blooms will be larger and foliage heavier than in ordinary surface-watered boxes. They make splendid Christmas presents.



Patented Jan. 29, 1907; June 22, 1909

WHEN OUR STOCK IS SOLD NO MORE CAN BE OBTAINED UNTIL AFTER THE WAR

## Window Boxes—Order Them Now

NO.	INCHES HIGH	INCHES WIDE	INCHES LENGTH	TANK QUARTS	NO. IN STOCK	PRICE BY EXPRESS
0	6	6	16	1	12	\$1 85
1	8	9½	23	2½	5	2 60
2	8	9½	25	3	4	2 85
4	8	9½	29	4	4	3 40
6	8	9½	33	5	5	3 90
7	8	9½	35	5½	10	4 15
9	8	9½	39	6½	4	4 65
10	8	9½	41	7	14	5 10

## Porch Boxes—Order Them Now

NO.	INCHES HIGH	INCHES WIDE	INCHES LENGTH	TANK QUARTS	NO. IN STOCK	PRICE BY EXPRESS
21	9	12	37	7	10	\$4 90
22	9	12	41	8	6	5 40
23	9	12	45	9	15	6 00
24	9	12	49	10	12	6 40

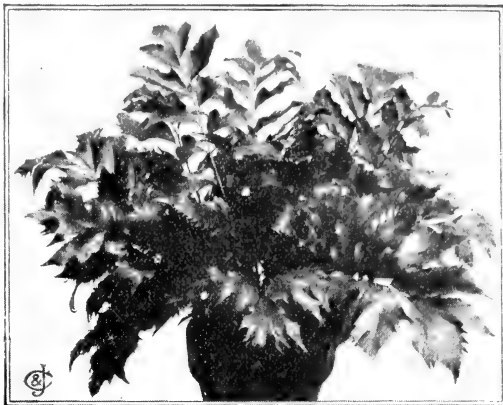
A Few Tubs for Large Palms, Etc.  
18, 20, and 22 ins. square for \$4.50, \$5.25 and \$6.75.

# For Parlor, Porch and Table



The grand Whitmanii Fern

Try a Fern in one of our Self-Watering Hanging-Baskets. See these offered on page 33

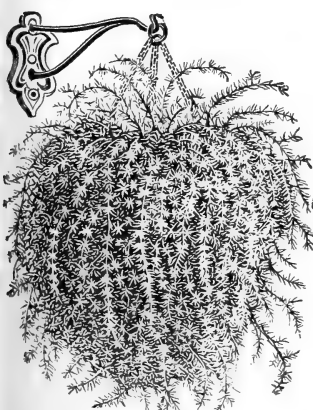


The New Crested Holly Fern

## Ornamental Ferns

- Roosevelt.** Like the Boston Fern, but the pinnae are beautifully undulated. 20 cts. and 35 cts. each, postpaid; larger size, 60 cts. □.
- Teddy Junior.** Same type of frond as the Roosevelt Fern, but the fronds are shorter. 20 cts. and 35 cts. each, postpaid; extra size, 60 cts. □.
- Amerpohli** (The Philadelphia Lace Fern). Each broad, graceful frond seems like a piece of delicate lace-work. 20 cts. and 35 cts. each, postpaid; extra size, 60 cts. □.
- Whitmanii.** Fronds wide, graceful, dense, and feathery. 20 cts. and 35 cts. each, postpaid; larger size, 60 cts. □. (See cut.)
- Boston.** World-famous; makes beautiful fronds 2 to 3 feet long. 20 cts. and 35 cts. each, postpaid; larger size, 60 cts. □.
- Newport** (*Nephrolepis Scottii*). Resembles the Boston Fern, but grows more erect and has shorter, narrower fronds. 20 cts. and 35 cts. each, postpaid; extra size, 60 cts. □.
- Scholzeli** (The New Crested Scottii Fern). Fronds curled and crinkled. 20 cts. and 35 cts. each, postpaid; larger size, 60 cts. □.

**Asparagus Sprengeri** (**Emerald Feather**). A strong, vigorous ornamental plant, very easily grown and requires little care. 20 cts. and 35 cts. each, ppd.; extra size, 60 cts. each □.



Asparagus Sprengeri □

## Asparagus plumosus

(Climbing Lace Fern). The fine, feathery foliage is always bright and green, and the fronds retain their freshness for weeks when cut. 20 cts. and 35 cts. each, ppd.; extra size, 60c. ea. □.

## Dwarf-Growing Ferns

For Fern-Disbes and Table Ornament

- New Crested Holly Fern** (*Cryptomium Rochefordianum*). Foliage is dark, glossy green and deeply toothed. Makes beautiful specimens. 35 cts. each; extra size, well-grown plants, like illustration above, 60 cts., postpaid.
- Maidenhair Fern** (*Adiantum hybridum*). The best-known table Fern, with dainty, lacy fronds. 20 cts. each; larger size, 35 cts. each, postpaid.
- Parsley Fern** (*Onychium japonicum*). Finely cut foliage which resembles parsley. 20c. each, ppd.
- The Lady Fern** (*Polystichum setosum*). Dark green, erect, feathery growth. 20 cts. each, postpaid.
- Pteris adiantoides.** Broad leaf; stems and structure after the fashion of the Maidenhair Fern. 20 cts. each, postpaid.
- Pteris, Distinction.** New and attractive style of the Pteris family. 20 cts. each, postpaid.
- Pteris cretica albo-lineata** (Silver-Leaf Fern). Pea-green foliage with silvery variegations; so distinct that everyone should have one of these. 20 cts. each, postpaid.
- Pteris Wilsoni.** An especially interesting Fern, with fronds like crested seaweed. 20 cts. each; larger size, 25 cts. each, postpaid.
- Crowfoot Fern** (*Pteris Wimsetti multiceps*). Dark green fronds borne on strong, black stems; the fronds are much bunched at the top, with an appearance like a bird's foot. 20c. each, postpaid.

► **OFFER** ► 21 Any 3 of the above 20-ct. Dwarf Ferns for 50c.; any 8 20-ct. kinds \$1.25, or the entire set of 9 for \$1.50, postpaid.

PERFECTLY HARDY

## Evergreen Christmas Fern

(*Aspidium acrostichoides*)

This Fern is fine for planting on shady banks and around porches where the sun does not reach. It grows well in good garden soil and requires little care. The fronds are simply divided, like the Boston Fern; they are deep green in color and grow about 12 inches high. 35 cts. each, 3 for \$1, 12 for \$3.50, postpaid.

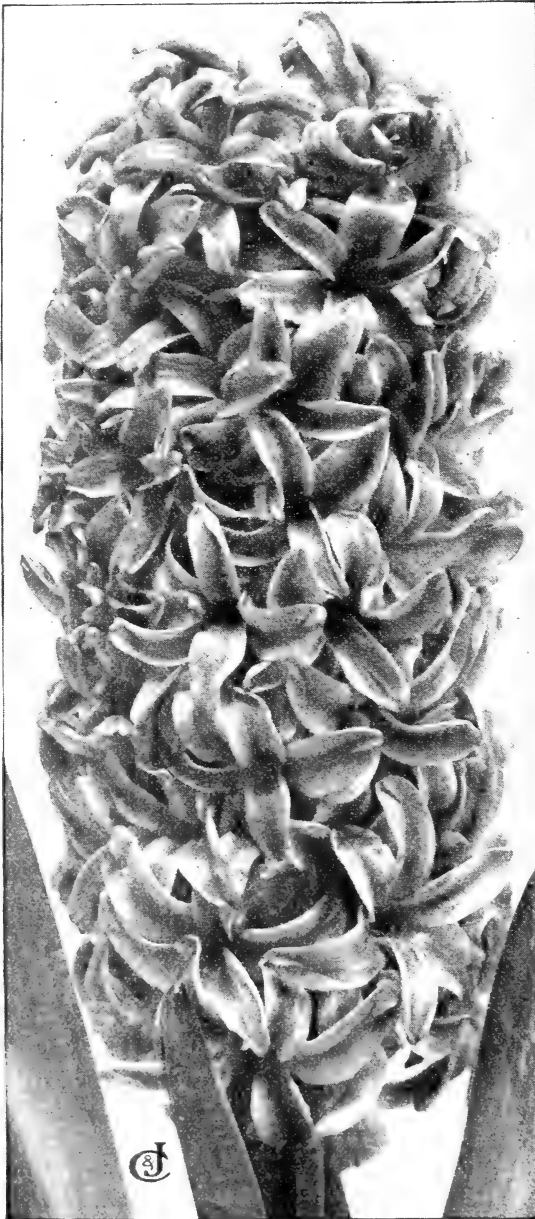
# C.&J. Finest Named Hyacinths

SPECIALLY SELECTED FOR HOUSE CULTURE AND BEDDING

Every Hyacinth bulb we send out *has the blossom already formed inside it.* By regulating the culture (see directions with each order) you can have a beautiful display of bloom for Christmas or other special occasions. Hyacinths remain beautiful a long time and are splendid for table, window, or mantel decoration. Beds on the lawn in the early spring are exquisite. Plant now

The figures, 1, 2, 3 and 4 after the names of the Hyacinths indicate the relative time of flowering—the 1's flower together and are the earliest; the 4's the latest.

Delivered free in the U. S. A. at these prices. Cost per hundred is 75 times price each



HYACINTHS GROW WELL IN WINDOWS  
GROW AND SHOW YOUR COLORS

## Red, White and Blue Sets

Let us pick for you one bulb each of the 3 national colors. *State whether single or double kinds are preferred.*  
Three 15-cent kinds, 3 colors, very choice flowers. . . . . 40 cts.  
Three 20-cent kinds, 3 colors, the best to be had. . . . . 50 cts.

YOU CAN ARRANGE FOR A SUCCESSION OF THESE AND ONE SET IN EACH WINDOW

### II Single Varieties

	Each	3 for	Doz.
	cts.	cts.	
Garibaldi. 1. Glossy crimson.	15	40	\$1 50
King of the Belgians (Roi des Belges). 4. Crimson-scarlet.	15	35	1 25
Gertrude. 3. Rich rosy pink.	15	35	1 25
Moreno. 2. Clear rose-pink; large, waxy flowers. . . . .	20	50	1 75
Baroness Van Thuyll. 1. Pure snow-white; large trusses. . .	15	35	1 25
L'Innocence. 3. White; large.	15	35	1 25
Ida. 3. Bright yellow; large.	15	35	1 25
Yellow Hammer. 3. Fine yellow, shaded gold. Charming.	20	50	1 75
Charles Dickens. 1. Bright blue, shading to porcelain. . .	15	35	1 25
King of the Blacks. 3. Deep blue-black. . . . .	20	50	1 75
Queen of the Blues. 4. Beautiful sky-blue; large spike. . .	20	50	1 75

### II Double Varieties

Lord Wellington. 2. Clear, bright carmine. . . . .	15	35	1 25
Princess Royal. 2. Fine deep red	15	35	1 25
Anna Maria. 2. Double; blush-white, with rich purple center	15	35	1 25
Grootvorst. 2. Fine rosy pink.	15	35	1 25
Florence Nightingale. 1. Pure waxy white; large. . . . .	20	50	1 75
Prince of Waterloo. 1. Extra-fine, white; very sweet. . . . .	15	35	1 25
La Virginite. 2. Rich creamy white shaded to blush. . . . .	15	35	1 25
Bloksberg. 4. Porcelain-blue.	20	50	1 75
Duke of Norfolk. 1. Splendid bright blue, rich dark center.	15	35	1 25
Supreme Yellow. 3. Great. . . .	15	35	1 25
William III. 4. Double; yellow with apricot-pink center. . . . .	15	35	1 25

## “Pan” or “Dutch” Single Roman Hyacinths

La Victoire. Red.	King of the Blues.
Gertrude. Pink.	La Peyrouse. Light blue.
Vuurbaak. Crimson.	L'Innocence. White.

Price, 7 cts. each, 15 cts. for 3, 50 cts. per doz., postpaid

➤OFFER➤ 22 The set of 6 above “Pan” Hyacinths, one of each color, 25c. ppd.

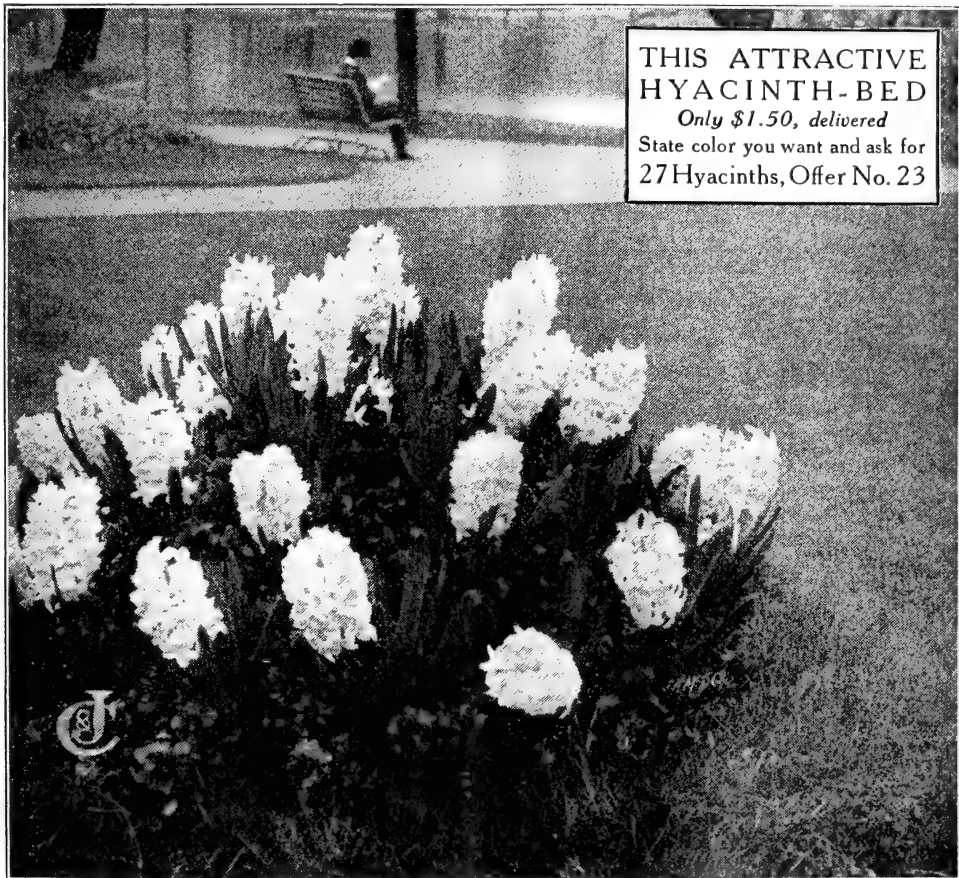
# Hyacinths in Separate Colors

Our Fine Selected Hyacinths in Separate Colors are good-size, well-matured bulbs, sold at low prices and specially recommended for bedding and also for winter blooming in the conservatory and window-garden, when the higher-priced kinds are not desired. They give excellent satisfaction.

We have given these Hyacinths a thorough trial in our proving beds year after year, and we find by experience that for outside planting the best results are obtained from the single varieties, as the spikes are always clothed with well-formed florets and are generally larger than the double varieties. As many of our customers prefer the double flowers, we offer first-class, well-matured bulbs of both kinds.

Delivered free in the U. S. A. at these prices.—Select the color or colors you prefer

SINGLE—Seven colors				DOUBLE—Seven colors					
	Each	3 for	Doz.	100		Each	3 for	Doz.	100
	cts.	cts.				cts.	cts.		
Pure White, Blush-White, Rose-Pink, Dark Red, Dark Blue, Light Blue and Yellow	10	25	\$1 00	\$5 00	Pure White, Blush-White, Rose-Pink, Dark Red, Dark Blue, Light Blue and Yellow	10	25	\$1 00	\$5 00
All colors mixed	08	20	75	4 50	All colors mixed	07	18	60	4 00



THIS ATTRACTIVE  
HYACINTH-BED  
Only \$1.50, delivered  
State color you want and ask for  
27 Hyacinths, Offer No. 23

**WHITE ITALIAN OR PARISIAN HYACINTHS**  
Flowers larger than Roman Hyacinths. Very sweet.  
6 cts. each, 3 for 15 cts., 12 for 50 cts., postpaid

**Early-Flowering Roman Hyacinths**  
All are single-flowered, bloom early, and are deliciously fragrant. Fine for growing indoors for winter bloom.  
10 cts. each, 3 for 25 cts., 12 for 75 cts., postpaid

**FIVE COLORS**

White, Blush-White, Blue, Pink, and Canary-Yellow.

➤OFFER➤ 23a The above 5 and 1 White Italian Hyacinth, 6 in all, for 45 cts., or two sets for 75 cts., postpaid.

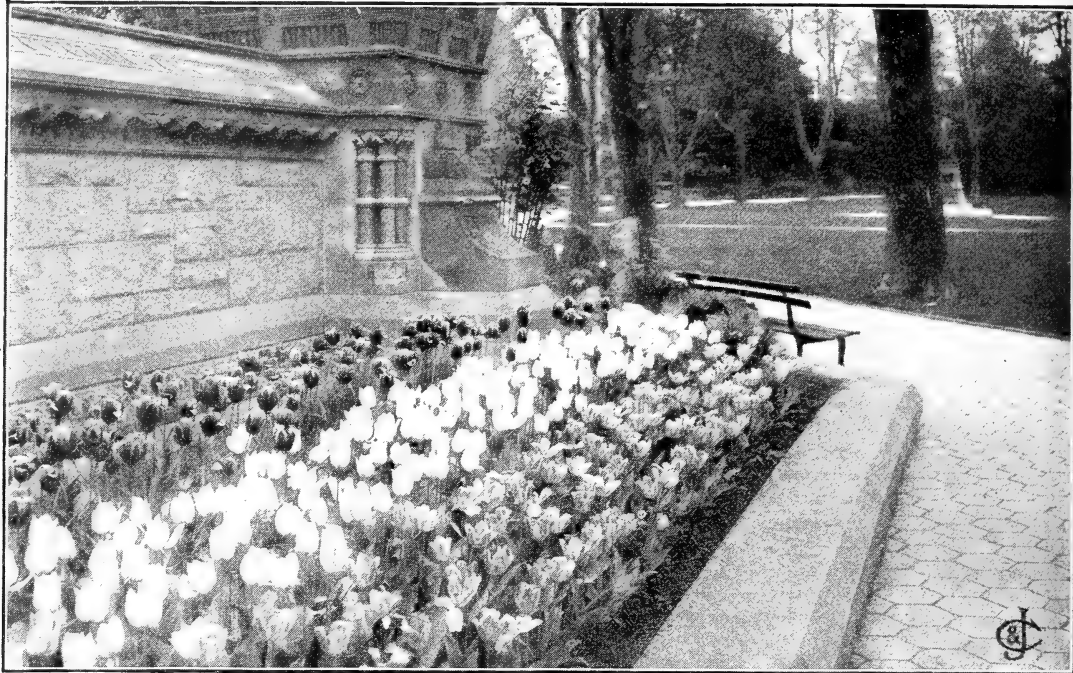
**Grape and Feathered Hyacinths**

Price, 3 for 10 cts., 12 for 20 cts., postpaid

- Blue Grape Hyacinth.** Rich china-blue.
- White Grape Hyacinth.** A very scarce variety.
- Heavenly Blue Grape Hyacinth.** Richest gentian-blue.
- Feathered Hyacinth (*Hyacinthus monstrosus*).** Plumelike spikes; deep blue, tinged with red.
- Musk Hyacinth, Large-flowering.** Rich purple flowers; musky fragrance; dwarf-growing.

➤OFFER➤ 23b 4 each of the above 5 named Grape and Feathered Hyacinths, 20 beautiful—20 in all, for 30 cts., or 4 sets, 80 bulbs, for \$1, ppd.





## Single Early Tulips. Best Named Varieties

The varieties we list are unsurpassed. We have carefully selected them from an assortment tested on our own grounds. The figures 1, 2, 3, etc., following the variety names, indicate their earliness of bloom. The 1's flower together and are the earliest of all; 2's follow before the 1's are gone, etc. The height is indicated by D for Dwarf, M for Medium and T for Tall.

### Getting the Most out of Tulips

Plant boldly in masses, avoid the one-flower spotty effect. Group several of a kind together, especially along the hardy border or in beds that will later bloom with summer colors. For May or even April, Tulips add just the needed bit of color to brighten the entire lawn.

Prices delivered free in U. S. A.			Prices delivered free in U. S. A.				
Each	Doz.	100	Each	Doz.	100		
Belle Alliance. 3 M. Rich scarlet with yellow base.....	cts. 04	cts. 40	\$3 00	La Remarquable. 3 M. Purple, bordered white.....	cts. 06	cts. 50	\$4 00
Cardinal Rampollo. 3 M. Yellow, bordered orange; first-class....	06	50	4 00	Pottebakker, Scarlet. 2 M. Bright crimson; extra large....	05	50	3 75
Cottage Maid. 3 M. Pink, feathered white, with yellow base...	05	50	3 75	Pottebakker, White. 2 M. Superb.	06	50	4 00
Goldfinch. 1 M. Lovely golden yellow; blooms very early and is delightfully sweet-scented....	06	50	4 00	Princess Marianna. 2 M. Peach-blossom-pink, tinted yellow....	05	50	3 75
Joost Van Vondel. 3 M. Bright red, feathered pure white.....	05	50	3 75	Proserpine. 2 M. Deep satiny rose.	06	50	4 00
Keizerkroon (Grand Duke). 3 T. Red, gold and yellow. A glorious Tulip; cannot be surpassed.	05	50	3 75	Queen of the Netherlands. 2 M. Very large; an attractive pink..	06	50	4 00
King of Yellows. 2 M. Pure yellow.....	04	40	3 00	Thomas Moore. 3 T. Sweet-scented; orange to terra-cotta..	04	35	2 50
				Vermilion Brilliant. 3 M. Very fine, dazzling scarlet.....	06	50	4 00
				White Hawk (Albion). 3 M. An enormous pure white.....	05	50	3 50

OFFER 24. 1 each, 16 kinds, above named, 16 bulbs...\$0 60  
 OFFER 24a. 3 each, 16 kinds, above named, 48 bulbs... 1 60

OFFER 24b. 1 each, 12 kinds, our selection, 12 bulbs...\$0 40  
 OFFER 24c. 3 each, 12 kinds, our selection, 36 bulbs... 1 00

## Superfine Single Bedding Tulips at Special Prices

IN SEPARATE COLORS

50 cts. per doz., \$2 per 100, \$18 per 1,000, delivered free.

First-class blooming bulbs, your choice. *White, Pink, Crimson, Yellow or Variegated.*

*Specialty selected to bloom at the same time, and make a gorgeous blaze of color*

C. & J. SUPERFINE MIXTURE

35 cts. per doz., \$1.50 per 100, \$14.50 per 1,000, delivered free.

Mixed by ourselves, so that we know these are uniform in height. *Will include five colors.*

# Best Double Tulips—Named Varieties

The figures following the varieties indicate their earliness. Those marked "1" flower together and are the earliest. Those marked "2" follow, etc. The height is indicated by D for dwarf, M for medium and T for tall. These are first-class bulbs and such as can be depended on to produce fine, large, well-developed flowers of good substance and rich colors.

Delivered free in the U. S. A. at these prices

EARLY FLOWERING	Each	Doz.	100
<b>Boule de Neige.</b> 2 M. Immense white. Looks like a peony.....	cts. 06	cts. 60	\$4 50
<b>Crown of Gold</b> (Couronne d'Or). 2 M. Semi-double; yellow, shaded orange. (See illustration.)	06	60	5 00
<b>Crown of Roses.</b> 2 M. Rosy white	06	60	4 50
<b>Duc Van Thol.</b> 1 D. Double; red and yellow.....	04	40	3 25
<b>La Candeur.</b> 3 M. Almost pure white, largely used for masses..	04	40	3 25
<b>Murillo.</b> 2 M. White and rose...	04	40	3 25
<b>Rubra maxima.</b> 3 M. Bright crimson-scarlet.....	05	50	3 50
<b>Scarlet King.</b> 2 M. Grand, rich, glowing crimson.....	05	50	4 00

LATE FLOWERING	Each	Doz.	100
<b>Peony Red.</b> 4. Resembles a grand blood-red rose; extra fine.....	cts. 05	cts. 50	\$3 50
<b>Violet Picotee.</b> 4. (Blanche Border Pourpre.) Violet, bordered and tinted with white.....	04	40	3 25
<b>Yellow Rose.</b> 4. Pure yellow, the true Yellow Rose.....	04	40	3 25

**OFFER** 25a 3 of each, above Double Late Tulips, 9 in all, for 35 cts.; 10 of each, 30 in all, for \$1.10, all postpaid.

## Double Late Tulips

In special mixture, including all colors. Price, 12 for 35 cts.; 100 for \$2; 1,000 for \$12, delivered free.

These late-flowering Tulips will be through blooming in time for you to prepare and plant your summer beds of cannas, geraniums and other flowers, which need not be planted until June 1.

**OFFER** 25 1 each of above 8 Double Early Tulips for 35 cts.; 3 of each, 24 in all, for \$1; 5 of each, 40 in all, for \$1.50, all postpaid

## Double Early Tulips

IN SEPARATE COLORS

For bedding or indoor bloom in five separate colors, your choice, *White, Pink, Crimson, Yellow, Variegated*. Price, 12 for 60 cts., 100 for \$2.50, 1,000 for \$20; or, if mixed, 12 for 40 cts., 100 for \$1.75, 1,000 for \$15, delivered free.

## Round Tulip-Beds

YOUR SELECTION

A round bed should be planted with one bulb in the center, 6 for the first circle, 12 for the second circle, 18 for the third circle, etc. Plant Tulips 5 inches apart in the row, and the rows 5 inches apart.

Select your own color or colors. We offer *White, Red, Pink and Yellow*. Your choice, Double or single, unnamed varieties.

- 37 Bulbs, for 2½-ft. bed.....\$0.90, postpaid
- 91 Bulbs, for 4-ft. bed..... 1.75, "
- 169 Bulbs, for 6-ft. bed..... 3.50, "
- 397 Bulbs, for 10-ft. bed..... 6.00, "

## Fancy Parrot or Dragon Tulips

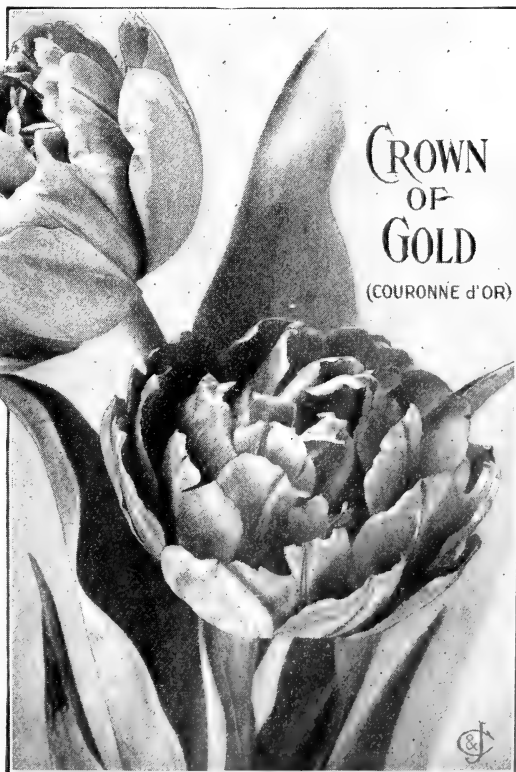
5 cts. each, 3 for 15 cts., 12 for 50 cts., postpaid

Colors exceedingly brilliant; flowers immense, with notched petals, at times representing the head and beak of a parrot.

- Belle Jaune.** Pure deep yellow.
- Cafe Brun.** Brown and yellow.
- Cramoisi Brillant.** Crimson.
- Markgraaf.** Red and orange.
- Orange** (Gloriosa). Orange and crimson.

**OFFER** 25b 3 each of the Parrot Tulips, 15 in all, for 50 cts., postpaid.

Mixed Parrot Tulips, 4c. each, 3 for 10c., 12 for 35c., ppd.



## Crown of Gold Tulips

The flowers are yellow, shaded with rich orange. 37 Bulbs, for 2½-ft. bed.....\$1.85, postpaid. 91 Bulbs, for 4-ft. bed..... 4.50, postpaid.

# Giant

# Darwins

Unusually Fine  
for Bedding.

Immense  
Flowers.

You  
Should  
Plant  
Darwins  
like this  
by the  
Hundred.

Great, bowl-shaped flowers on stems 2 to 3 feet long. Beautiful beyond description and remarkable for their brilliancy and variety of coloring. We had the leading Darwin specialist in Holland send us a special collection for trial, from which we chose the following:

**Baronne de la Tonnaye.** Vivid pink, margined blush; the leading pink.

**Clara Butt.** Soft salmon-pink, shaded rose.

**Dream.** Beautiful, uniform light lilac.

**Fra Angelica.** Dark maroon.

**Flambeau.** Brilliant rosy scarlet.

**King Harold.** Glossy blood-red.

**Mme. Krelage.** Lilac-rose, margined blush-pink.

**May Queen.** Lilac-rose, feathered white.

**Mr. Farnscombe Sanders.** Orange-scarlet.

**Nauticas.** Purplish rose with violet base, shaded bronze.

**Negro.** Crimson-maroon, dark center.

**Pride of Haarlem.** Brilliant rosy carmine, electric blue base.

**Rev. Ewbank.** Silvery heliotrope.

**White Queen.** Opens rosy but becomes pure white.

**William Pitt.** Fine, brilliant carmine, very showy.

Prices for all above, 6 cts. each, 12 for 60 cts., postpaid.

**OFFER** 26 One each of the 15 Darwin Tulips for 75 cts.; 4 of each, 60 in all, for \$2.75, postpaid.

Darwin Tulips, Mixed <sup>3 for 10 cts., 12 for 35 cts., 100 for \$2, postpaid</sup>

True Giant Gesneriana Tulips <sup>Price, 4 cts. each, 12 for 35 cts., 100 for \$2.50, ppd.</sup>

**Gesneriana, Crimson.** Hardy and very durable; grows 1 1/2 to 2 feet high. Color intense fiery scarlet with bright, shining, blue-black center.

**Gesneriana, Yellow, or Golden-Crown Tulip.** Splendid, large, bold flowers, bright, rich golden yellow, beautifully fringed with orange-red.

**Gesneriana, White, or Sweet Nancy (Albo-marginata).** Opens pure white, later edged with rose.

**OFFER** 26a 3 each of the above 3 Gesnerianas, 9 in all, for 30 cts.; 12 of each, 36 in all, for \$1, postpaid.

## May-Flowering, or Cottage Garden Tulips

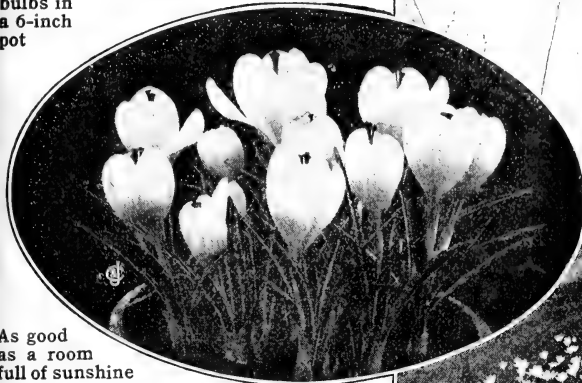
Prices, delivered free in U. S. A.				Prices, delivered free in U. S. A.			
	Each	Doz.	100		Each	Doz.	100
<b>Bridesmaid.</b> Bright, rich scarlet, striped pure white.....	cts.	cts.		<b>Macrospeila.</b> Brilliant citron-red, bordered with golden yellow...	cts.	cts.	
	04	35	\$2 50		05	40	\$3 00
<b>Elegans.</b> Rich crimson-scarlet...	04	35	2 50	<b>Parisian Yellow.</b> Clear yellow flowers with pointed petals....	04	35	2 50
<b>Golden Eagle.</b> Orange-yellow flowers, edged crimson.....	04	35	2 50	<b>Picotée, White.</b> Waxy white with feathered crimson border.	04	35	2 50
<b>Isabella (Shandon Bells).</b> Creamy white, mottled with pink, changing to carmine.....	04	35	2 50	<b>Prince of Austria.</b> Rich orange-scarlet; delightfully sweet.....	05	50	4 00

**OFFER** 26b The above 8 May-Flowering Tulips for 30 cts., or 3 of each, 24 in all, for 75 cts., postpaid.



# Crocus

A few  
bulbs in  
a 6-inch  
pot



As good  
as a room  
full of sunshine

C. & J. Crocuses are the Improved Strains, noted for large flowers and brightest colors. They are entirely hardy, and like a rich, dry soil and sunny location. They are suitable for planting in beds and borders, also for edging in ribbon lines of any desired color; for planting in the grass in lawn or yard. Crocuses are also very highly valued for house culture.

"Plant your Snowdrops in September; Scilla, Snowflake, Crocus too; If you wait until November These won't wake so soon for you."



Plant the Crocus 2½ inches deep, in the autumn. They look especially well scattered over the lawn as in this picture

## Large-Flowering Named Crocuses

Prices delivered free in U. S. A.	Doz.		
	100	250	
<b>King of the Whites.</b> The largest white Crocus.....	35	\$1 75	\$2 75
<b>King of the Yellows.</b> Deep golden yellow.....	35	1 75	2 75
<b>Cloth of Gold.</b> Very early; fine, feathered flowers; golden yellow, tinged with purple and scarlet..	25	1 50	2 50
<b>Cloth of Silver.</b> Silvery white flowers, striped with violet.....	25	1 50	2 50
<b>David Rizzio.</b> Extra-large flowers; dark, rich purple.....	25	1 50	2 50
<b>Mont Blanc.</b> Extra large and beautiful; pure white.....	25	1 50	2 50
<b>Sir Walter Scott.</b> White, striped purple.....	25	1 50	2 50

➤OFFER➤ 27 4 each of the above, 28 in all, for 50c.; 10 of each, 70 in all, for \$1.25, ppd.

## Best Mixed Crocuses IN SEPARATE COLORS

Prices delivered free in U. S. A.	Doz.		
	100	250	
<b>White and Light</b> .....	15	\$1 00	\$2 25
<b>Purples</b> .....	15	1 00	2 25
<b>Striped colors</b> .....	15	1 00	2 25
<b>Yellows, First-size</b> .....	15	1 00	2 25
<b>All colors mixed</b> .....	10	75	1 75

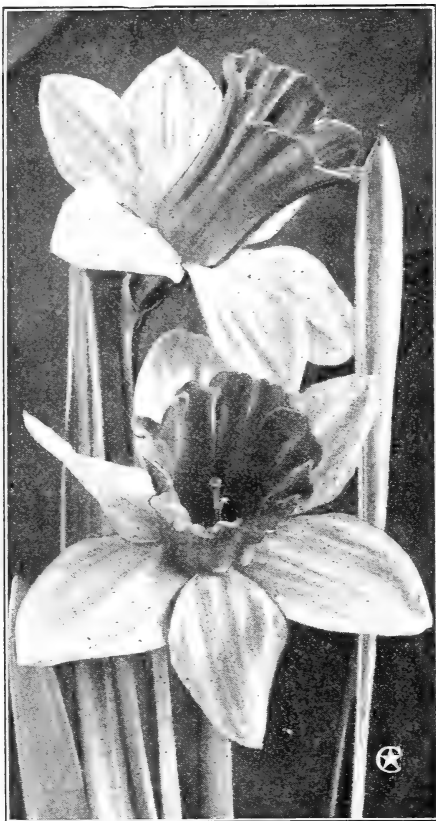
Order in quantity by getting a friend to order with you  
 ➤OFFER➤ 27a Remember the wonderful colors in Crocuses — purple, yellow, violet, striped and white. We will select and send you 50 White and Light, 50 Purples, 50 Striped, and 50 Yellows—

200 SPLENDID CROCUSES, AS ABOVE, ONLY \$1.75 - POSTPAID

These we ourselves mix here so you can surely depend on getting a good assortment of colors

## Early Spring-Flowering Bulbs for Naturalizing

If your lawn and grounds are a pleasure to you during the summer and fall, why not extend this pleasure by beginning a month or so earlier in the spring than you have been doing? This can easily be managed by naturalizing some bulbs, such as Crocuses, Narcissi, Daffodils, and Jonquils. Crocuses should be planted in the open where they will get full sunlight, and they are most effective when scattered over the lawn and not planted in straight rows. Poet's Narcissi can be planted in clumps in corners and, like Jonquils, can be used for edging beds. Daffodils prefer some shade and a good deep soil but will grow almost anywhere. If you plant Crocuses, Poet's Narcissi, and Daffodils you can have a range of colors from silvery white and shades of yellow to deepest blues to brighten the early spring. Start this season.



Narcissus, Glory of Leiden

# Narcissi, or Daffodils

The Narcissi, or Daffodils, are among the earliest to bloom and most brilliant and showy of all our spring flowers. When potted, for house culture, they flower very quickly. For the flower-beds, set 3 to 4 inches deep and 4 to 6 inches apart, according to the size of the bulb. These bulbs are hardy everywhere.

Hundred price is 8 times dozen price, prepaid	Prices prepaid		
	Each	3 for	Doz.
<b>Glory of Leiden.</b> (See cut.) Immense flowers; deep, rich golden yellow....	cts. 15	cts. 40	\$1 30
<b>Emperor.</b> Clear, rich golden yellow, with immense fluted trumpet and petals so large as to overlap; flowers measure 3½ inches across.....	07	20	60
<b>Empress, White Wings.</b> Large, bold flowers; wings white, trumpet yellow.	06	15	50
<b>Grandee.</b> Broad, creamy white petals; magnificent, golden yellow trumpet.	05	12	45
<b>Golden Spur.</b> A grand Daffodil. Rich yellow; broad, handsome foliage....	06	15	50
<b>Princeps.</b> Very early; soft sulphur-yellow with immense, deep yellow trumpet.....	05	15	45
<b>Sir Watkin.</b> The Giant Chalice Flower, or Big Welshman. One of the largest; rich lemon-yellow; dark cup tinted with orange.....	05	12	45
<b>Trumpet Major, Excelsior.</b> Bright golden yellow. Early and fine for bedding.....	05	15	45
<b>➤OFFER➤ 28</b> 50 Daffodils, including 8 Glory of Leiden and 6 each of the last 7 above, for \$2.50, or one-half of this, 25 bulbs in all, for \$1.40, postpaid.			
<b>➤OFFER➤ 28a</b> The set of Daffodils, 8 in all, for 50 cts., 3 of each, 24 in all, for \$1.45.			

## Double Narcissi, or Improved Daffodils

Hundred rate is 8 times dozen price, prepaid	Each	3 for	Doz.
<b>Alba plena odorata</b> (The Double White Poet's Narcissus). Double, snow-white.....	cts. 05	cts. 10	cts. 35
<b>Incomparabilis fl.-pl.</b> ("Butter and Eggs"). Large, handsome flowers, as double as roses; bright canary-yellow, with orange center...	05	12	40
<b>Orange Phoenix</b> ("Eggs and Bacon"). Cream-white, center mixed orange and white....	05	12	40
<b>Sulphur or Silver Phoenix</b> ("Codlins and Cream"). Creamy white, sulphur center...	07	15	50
<b>Van Sion.</b> The true Double Yellow Daffodil. Long, double trumpet, filled with beautifully crimped petals.....	04	10	35

**➤OFFER➤ 28b** 1 each of above grand Double Daffodils, 5 in all, for 20 cts., or 3 of each, 15 in all, for 60 cts., postpaid.

## Narcissus Jonquilla (Jonquils)

Fine for indoor winter bloom. Easily naturalized when planted outdoors.

**Double Jonquils.** Extra-fine, deep yellow. 4 cts. each, 12 for 40 cts., 100 for \$3, ppd.  
**Single Jonquils.** Rich yellow; very fragrant. 6 for 10c., 12 for 15c., 100 for \$1, ppd.



You, too, can naturalize Jonquils

## The Poet's Narcissus

**Narcissus poeticus** (The Pheasant's Eye). Pure white, star-like flowers with orange cup edged with crimson; hardy. 3 cts. each, 4 for 10 cts., 12 for 25 cts., 100 for \$1.25, ppd.  
**Improved Poet's Narcissus** (*N. poeticus ornatus*). Pure white flowers with crimson-bordered cups. 3 cts. each, 4 for 10 cts., 12 for 25 cts., 100 for \$1.50, postpaid.

## Double Roman Narcissus

The flowers are perfectly double and pure snow-white, with small center petals of rich golden yellow, delightfully fragrant. 4 cts. each, 12 for 35 cts., 100 for \$2.25, delivered.



## Giant White Narcissus

*Grows in water and pebbles, or in soil*

**THE TRUE PAPER-WHITE GRANDIFLORA**, or Large-flowering Polyanthus Narcissus will produce great masses of snow-white, deliciously fragrant flowers a few weeks after planting. A succession of bloom can be obtained by planting at intervals until Christmas. Late in the season they bloom very quickly. (See cut.)

**Strong bulbs, 6 for 25 cts., 25 for \$1, 100 for \$3, postpaid.**

THE CONARD & JONES CO.: Your Narcissi are wonderful! I put three in a shallow pot two weeks ago yesterday, and today they are all in bloom,—open flowers! What could one desire more than that?—J. H. B., 601 W. 148th St., New York City.

## Golden Sweet-Scented Sacred Lily

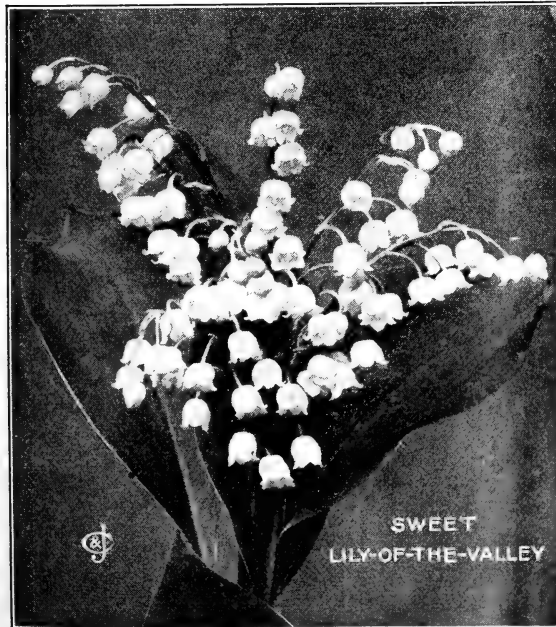
*(Campernelle rugulosus)*

Very fragrant, clear, bright golden yellow flowers. They will bloom beautifully indoors, or if planted outside, will bloom almost as early as the crocus. 5c. each, 4 for 15c., 12 for 30c., 100 for \$2, postpaid.

## Narcissus, Soleil d'Or <sup>SUN OF GOLD</sup>

Same as above except in color. Rich yellow flowers, with deep reddish cups. This will not bloom so quickly as the white. 7 cts. each, 35 cts. for 6, 60 cts. for 12, \$4 per 100, postpaid.

These are about the most easily grown, continuous and abundant blooming bulbs you can get.



»OFFER» 29 3 each, Giant White and Soleil d'Or Narcissi, to plant and bloom together, the 6 for 25 cts., postpaid.

»OFFER» 29a 6 Giant White, 6 Soleil d'Or Narcissi and 12 Golden Sacred Lilies, 24 bulbs (4 to 6 bowls of bloom), for 25c., ppd.

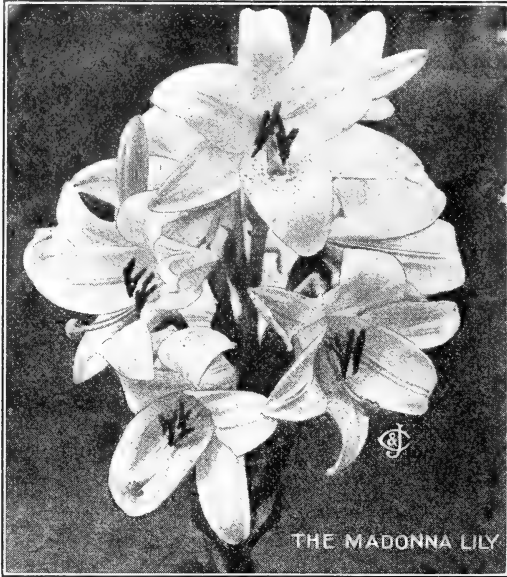
## Sweet Lily-of-the-Valley

Its deliciously fragrant sprays of pure white, bell-shaped flowers, that hang in great profusion from slender stems, are most suitable for cutting, and, as it lends itself to winter forcing, it is grown in great quantities for the holiday trade. It is perfectly hardy, does not object to shade, and when colonized in large patches in partially shaded places it will increase and care for itself for years. (Ready in November.) Clumps only, 50c. each, 12 for \$4 □. Order now.

## True Chinese Sacred Lily

This catalogue was ready to print when we were informed that the Government would permit no bulbs to come from China this autumn. To take the place of these Sacred Lilies you should get more Giant White Narcissus, Narcissus Soleil d'Or and Golden Sacred Lilies. Other beautiful bulbs for indoor growing are Daffodils, Crocuses, Freesias, Oxalis and Zephyranthes. Try some of all of these this fall.

# The True Bermuda Easter Lily (Lilium Harrisii)



The Madonna Lily (*Lilium candidum*)

## Arabian Star of Bethlehem

(*Ornithogalum arabicum*). Bears large clusters of pearly white flowers with jet-black centers and rich, aromatic fragrance. 5 cts. each, 3 for 12 cts., 12 for 40 cts., postpaid.

**Alliums** 3 for 10 cts., 12 for 25 cts., 100 for \$1, postpaid

- A. *aureum* (Moly or Golden Allium). Golden yellow flowers.
- A. *neapolitanum*. Pearly white, lasting flowers.

## Amaryllis QUEEN OF WINTER-FLOWERING BULBS

- A., **Giant Hybrids of Vittata**. (See cut.) The grandest Amaryllis yet known. These impressive giant flowers, unique in their brilliant colorings, are almost twice the size of an ordinary Amaryllis, and so durable that they retain their beauty for weeks. **Splendid bulbs**, sure to bloom, 50 cts. each, postpaid.
- Pink Amaryllis**, or **Belladonna Lily**. Rose-pink, penciled silvery white; very sweet. 20 cts. each, ppd.
- A. *Johnsonii*. Extra large; deep red, elegantly striped with white. 35 cts. each, postpaid.
- A. *Hallii* (*Lycoris squamigera*). Delicate lilac-pink, shaded with clear blue. The foliage dies down in July, after which the masses of blooms spring up as if by magic. Plant in the fall. 20 cts. each, postpaid.

### TO KEEP INSECTS AWAY

Spray your plants with Rose Nicotine, strong and effective. Two sizes, 35 cts. and 70 cts., postpaid.

### WILL YOU HAVE FLOWERS BLOOMING "WHEN THE BOYS COME HOME"?

France welcomed them with Roses; she is lovingly caring for the graves of those who have sacrificed their all for her and will forever keep their memory hallowed with living flowers. Let us have a flower welcome ready for the heroes who return. They will appreciate it.

The flowers of the **Bermuda Easter Lily** are pure snow-white, very large and fragrant, and borne in splendid clusters, six or eight at a time. Plant in a pot or box which is at least 6 inches deep and well drained; good, turfy soil with a little old, well-rotted manure is best; the bulb should be covered about 1 inch deep; firm the earth well around it, water thoroughly and set away in a cool place three weeks or more till the roots begin to start, then bring to the light.

Prices, delivered free in U. S. A.	Each	3 for	Doz.
Bulbs, 6 to 7 inches in circumference. Should produce six to eight flowers.....	25 cts.	65 cts.	\$2 50
Bulbs, 7 to 9 inches in circumference. Should produce eight to twelve flowers.....	35	90	3 50
<b>Extra-size Bulbs.</b> 9 to 11 inches in circumference. Should produce twelve to fifteen flowers..	50	\$1 25	4 50

## The Madonna Lily (Lilium candidum)

Also known to many as the Annunciation Lily. Has deliciously fragrant, pure white, perfectly formed flowers. The bulbs should be dusted lightly with powdered sulphur; do not cover with more than 2 inches of soil. *Plant early in the autumn.* 15 cts. each, 3 for 40 cts., 12 for \$1.50, postpaid.

## Lily, Myriophyllum (New)

Flowers are white, slightly suffused with pink. Center is canary-yellow. Delightfully fragrant. A wonderful Lily. \$1.25, postpaid.

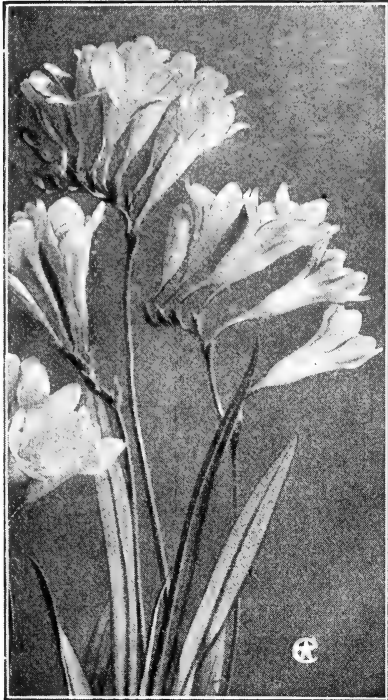
## Lily, Auratum (The Gold-banded Lily of Japan)

The most popular hardy Lily. Flowers are immense. It is considered the Queen of Lilies. 25 cts. each, 12 for \$2.50, postpaid. *Price subject to change.*



Amaryllis, Giant Hybrids of Vittata, 50c. each, ppd.

# Free-Flowering Fragrant Freesias



*Freesia refracta alba*

Freesias should be planted as early as possible. They will enrich your home, in time for Thanksgiving and Christmas too, with most delicious fragrance.

**FREESIA REFRACTA ALBA.** This is the true large-flowering Freesia. The flowers are pure snow-white, delicately tinted with pale yellow, and very sweet. Next to violets they are the sweetest winter-blooming flowers we have. Water sparingly and set in a sunny window. Three sizes.

**Choice Selected Bulbs.** 2 for 10 cts., 12 for 35 cts., postpaid.

**Large Selected Bulbs.** 12 for 25 cts., 100 for \$1.50, postpaid.

**First-Size Bulbs.** 10 for 15 cts., 100 for \$1, postpaid.

**FREESIA, "FISHER'S PURITY."** This Freesia is said to be the finest variety sold in the New York flower market. It certainly shows an advance over other kinds in size of flower, purity of color and quantity of bloom. 6 cts. each, 12 for 50 cts., 100 for \$3.50, postpaid.

## Giant-Flowering Cyclamen TWO KINDS

**CYCLAMEN GIGANTEUM** (Giant-Flowering Persian Cyclamen)

Each bulb throws up several flower-stalks which continue to bloom several months. The flowers are beautiful, and range in color through many shades of pink, crimson and white; the leaves are also finely variegated. **Mixed colors,** 20 cts. each, 3 for 50 cts., postpaid.

**GIANT-FLOWERING SCARLET CYCLAMEN.** The most superb variety of all. The flowers are of extraordinary size. 25 cts. each, 3 for 60 cts., postpaid.

## Chionodoxa (Glory-of-the-Snow)

**Gigantea.** Lovely violet-blue flowers with white center. 3 for 10 cts., 12 for 25 cts., 100 for \$1.50, 1,000 for \$9, postpaid.

## Spanish Iris

In mixed colors only. 3 for 6 cts., 12 for 15 cts., postpaid.

## Beautiful Calla Lilies

**EVERBLOOMING DWARF CALLA LILY, GOD-FREY.** Flowers white. Very free bloomer. *Fine, growing plants,* 25 cts. each, 3 for 65 cts., postpaid.

**SPOTTED CALLA** (*Richardia albo-maculata*). Leaves spotted white; flowers white. 15c. ea., ppd.

**WHITE CALLA,** or *Lily-of-the-Nile* (*Richardia athiopica*). Needs rich soil, heat and moisture. 15 cts. each; extra-size bulbs, 25 cts. each, ppd.

**ELLIOTIANA.** Golden yellow. 30 cts. each, ppd.

**MONARCH OF THE EAST** (*Arum cornutum*). (Also called Red Calla.) A novelty. 25 cts. each, ppd.

## Named Oxalis FOR WINTER FLOWERING

**Bermuda Buttercup.** Bright golden yellow. A great bloomer. 3 for 10 cts., 12 for 35 cts., postpaid.

**Double Yellow** (*Lutea fl.-pl.*). 3 for 12 cts., 12 for 40 cts., postpaid.

**Bowiei.** Bright pink. 3 for 10 cts., 12 for 25 cts., ppd. **Snowball** (*Multiflora alba*). Double; white. 3 for 10 cts., 12 for 25 cts., postpaid.

**Versicolor.** Rose and white. 3 for 10c., 12 for 25c., ppd.

**Grand Duchess.** From California. In three colors, *white, pink, and lavender.* 3 for 10c., 12 for 35c., ppd.

**Oxalis Fine Mixed.** 12 for 15c., 100 for \$1, ppd.

## Scilla sibirica (See cut)

Produces bright blue flowers indoors from Christmas to April. 3 for 6c., 12 for 15c., 100 for \$1, ppd.

## Snowdrops (Galanthus)

**Single Snowdrops.** 3 for 5 cts., 12 for 15 cts., 100 for \$1, 1,000 for \$7.50, postpaid.

**Double Snowdrops.** 3 for 10 cts., 12 for 30 cts., 100 for \$2, ppd.

**Giant Snowdrops, Elwesii.** 3 for 8 cts., 12 for 20c., 100 for \$1.10, 1,000 for \$8, ppd.

## Zephyranthes (Fairy Lilies)

**Rosea.** Rose-pink. 3 for 30 cts., 12 for \$1, postpaid.



SCILLA SIBERICA



ZEPHYRANTHES



# 50 C. & J. Thrift Sets 25c. to \$1

LIKE A 5c. AND 10c. STORE, AND ALL POSTPAID

## For \$1, Postpaid

- FREE-FLOWERING PLANTS**
- Offer No. 801 3 Peonies, assorted colors, our selection; unnamed. . . . . \$1
- 802 3 Hardy Climbing Roses, 2-yr. plants, our selection. . . . . \$1
- 803 6 Hardy Perennials, assorted, our selection. . . . . \$1
- 804 6 Geraniums, assorted, our selection, for winter bloom. . . . . \$1
- 805 5 Hardy Vines, our selection, including 1 Japan Clematis and 1 Honeysuckle. . . . . \$1
- 806 6 Hardy Shrubs, our selection. . . . . \$1
- 807 7 Plants for indoor winter growing, including 1 American Wonder Lemon. . . . . \$1
- 808 1 each of the following free-flowering indoor plants: Royal Purple Bougainvillea, Primrose, Pink Geranium, Red Geranium, Fuchsia, and Chrysanthemum. . . . . \$1
- 809 6 Lovely Ferns for indoors, our selection. . . . . \$1
- 810 6 Cannas for indoor winter bloom, our selection. \$1
- 811 5 Roses for indoor winter bloom, our selection. . \$1

## FREE-FLOWERING BULBS

- 812 10 Named Hyacinths, 5 single and 5 double, our selection. . . . . \$1
- 813 15 Unnamed Hyacinths, separate colors, single varieties, our selection. . . . . \$1
- 814 15 Unnamed Hyacinths, separate colors, double varieties, our selection. . . . . \$1
- 815 18 Unnamed Hyacinths, mixed colors, single varieties. . . . . \$1
- 816 18 Unnamed Hyacinths, mixed colors, double varieties. . . . . \$1
- 817 9 each, Single and Double Unnamed Hyacinths, mixed colors, 18 in all, for. . . . . \$1
- 818 52 Bulbs, our selection, including 6 Hyacinths, 12 Tulips, 9 Narcissi, 25 Crocuses. . . . . \$1
- 819 60 Bulbs, our selection, including 12 Narcissi or Daffodils, 12 Crocuses, 12 Alliums, 12 Snowdrops, 6 Scillas and 6 Spanish Irises. . . . . \$1
- 820 30 Named Tulips, single early varieties, our selection. . . . . \$1
- 821 125 Crocuses, named varieties, our selection. . . \$1
- 822 36 Daffodils, named varieties, our selection. . . \$1
- 823 7 Lilies, including 2 Easter Lilies, 2 Madonna Lilies, 2 Amaryllis and 1 White Calla. . . . . \$1

## For 50 cts., Postpaid

- WELL-ROOTED PLANTS**
- Offer No. 824 1 Geranium, 1 Heliotrope, 1 Pelargonium. . . . . 50c.
- 825 1 Chinese Hibiscus, 1 Genista, 1 Bougainvillea. 50c.
- 826 1 Choice Fern, 1 Ornamental Croton, 1 Sweet-scented Geranium. . . . . 50c.
- 827 1 Climbing Asparagus Fern, 1 Table Fern, 1 Ornamental Croton. . . . . 50c.
- 828 1 Lemon, 1 Table Fern, 1 Umbrella Plant. . . . . 50c.
- 829 1 Flowering Begonia, 1 Geranium, 1 Fuchsia. 50c.
- 830 1 Geranium, 1 Crab Cactus, 1 Choice Fern. . . 50c.
- 831 1 Chinese Primrose, 1 Geranium, 1 Heliotrope. 50c.
- 832 3 Hardy Shrubs, our selection. . . . . 50c.
- 833 3 Hardy Perennials, our selection. . . . . 50c.
- 834 1 Passion Vine, 1 Parlor Ivy, 1 Scarlet Fountain Plant. . . . . 50c.

## WELL-MATURED BULBS AND SEEDS

- 835 4 Named Hyacinths, 2 single and 2 double, our selection. . . . . 50c.
- 836 7 Unnamed Single Hyacinths, assorted colors, our selection. . . . . 50c.
- 837 7 Unnamed Double Hyacinths, assorted colors, our selection. . . . . 50c.
- 838 7 Unnamed Hyacinths, single and double, assorted, separate colors, our selection. . . . . 50c.
- 839 15 Named Tulips, single early varieties, 4 Red, 4 Yellow, 4 Pink, 3 White and Variegated, our selection. . . . . 50c.
- 840 50 Crocuses, named varieties, assorted colors, our selection. . . . . 50c.
- 841 12 Bulbs for growing in pebbles and water—5 Giant White Narcissi, 3 Narcissus, Soleil d'Or and 4 Golden Sacred Lilies. All fragrant and easy to grow. . . . . 50c.
- 842 24 Bulbs for indoor or outdoor growing—4 Poet's Narcissi, 4 Improved Poet's Narcissi, 4 Double Jonquils, 6 Single Jonquils, 6 Double Roman Narcissi. . . . . 50c.

## For 25 cts., Postpaid

- 843 4 Hyacinths, our selection. . . . . 25c.
- 844 7 Tulips, named, our selection. . . . . 25c.
- 845 10 Tulips, unnamed, our selection. . . . . 25c.
- 846 7 Daffodils, single, our selection. . . . . 25c.
- 847 7 Daffodils, double, our selection. . . . . 25c.
- 848 3 Pkts. 10c. seeds, your selection. . . . . 25c.
- 849 6 Pkts. 5c. seeds, your selection. . . . . 25c.
- 850 5 Pkts. seeds including 1 Pkt. each Sweet Peas, Sweet William, Hollyhocks, Oriental Poppy, Aquilegia. . . . . 25c.

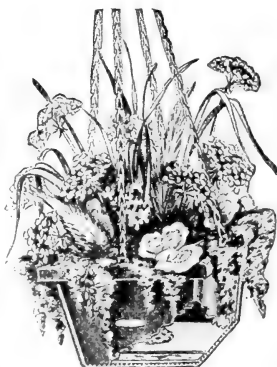
## Self-Watering Hanging-Baskets

Made of galvanized iron; painted an attractive green. Neat and clean; never leak; guaranteed 5 years.

Drooping vines attain an unusually luxuriant growth in these baskets, which may be hung by chains or cords or set on a small table, taret, or pedestal. Prices □, No. 8, 6 in. high, 8 in. sq., \$1.65; No. 12, 8 in. high, 12 in. sq., \$2.65. Strong steel chain for hanging, 6 cts. per foot.

- 1 No. 12 Hanging-Basket. . . . . \$2 65
- 1 Large Fern for center. . . . . 50
- 4 Ivies for edges. . . . . 80
- 1 Strong steel chain @ 6c. a foot

The above basket, plants and chain for hanging, \$4 □.



These Baskets can also be set on a table or pedestal

## A Good Plant-Food, "Bon Arbor"

The Greatest Plant-Food Ever Discovered

Results from only one or two applications are remarkable. It will make plants bloom that never bloomed before. Invaluable to anyone who grows flowers indoors. 7-oz. pkg., making 15 gals., 50 cts., 1-lb. pkg., making 30 gals., 85 cts., postpaid.

## Insecticide Rose Nicotine

Is chemically pure nicotine, and quick death to insects on roses, plants, pets, or wherever found. No trouble, no odor, no staining, no harm. Price, small can, 35 cts.; larger size, 70 cts., postpaid.

# Uncle Sam Uses Them for Striking Color Effects

卐 C. & J. WONDERFUL NEW LILY-CANNAS 卐

Of all high-grade Cannas in general use today, our Vice-President, Mr. Wintzer, has originated here probably more than any other three firms combined. We have carried off first prizes, not only from the international contests held in London before the war, but in every noteworthy exposition in this country — from Chicago, 1893, to the last ones, San Francisco and San Diego, 1915; and now over 20,000 grace the grounds of our National Capital, where they hold aloft the slogan for Swastika Brand Cannas, "Best by Government Test."

FOR FULL INFORMATION ABOUT VARIETIES, SEE OUR SPRING CATALOGUE

## An Interview at Washington, D. C.

A reprint from THE FLORIST'S EXCHANGE of October 28, 1916

"The fact of the matter is that in the next 15 years Cannas are going to have the right of way. There is nothing to equal them." It was Mr. Henlock speaking, expressing, not a burst of enthusiasm, but a deliberate conviction born of long experience. Mr. Henlock is a gardener of the first order. Technically, he is in the War Department, U. S. A.; practically, he is responsible for the best possible show of bloom and color display throughout the grounds that surround the Capitol, White House, and the other public buildings of our National Capital.

When the Secretary of the Interior, Mr. Lane, wants a bit of beauty made to modify the severe exterior of the Patent Office, it is Mr. Henlock who knows what is needed, and who does it.

"Well, what did it need?" It needed *color*, of the right shade, in the right place, and for such big buildings a *bold stroke of color*, and further, color that would stay there all summer and still not break up the broad sweep of lawn round about. What plant is there that can turn such a trick but the Canna—the new, big, broad-petaled Cannas, such as have been coming out of West Grove, and such as have convinced the men who know how to use them that "there is nothing to equal them?"

"When the superintendents of the parks of our very big cities come here they are impressed, for they can very well see that we consider Cannas the thing. 'You starve yours,' is what I tell them."

"And then, Mr. Pyle, another thing that is important—study colors: don't mix them in the same bed; the effect will be far more pleasing, as of course you know."

Mr. Henlock had much to say about the one variety that has distinguished itself for size, color, and abundance of bloom—"Wintzer's Colossal"—"flowers as big as a man's hat." "Is there any wonder," he said, "that tourists from Denver, Chicago, St. Louis, and New York ask, 'What is it?' 'Where can I get it?' We tell them!"

"And," he added, "I want to say this—Practically ALL the Cannas that we have here in Washington (over 20,000) came from The Conard & Jones Company at West Grove!"

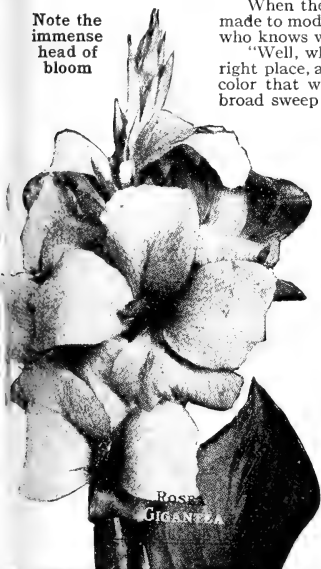
We have over 70 varieties of the most famous Cannas in the world and you will find them offered in our Spring Catalogue which will reach you early in January. Plan and prepare your beds now for continuous bloom next summer and autumn.

FROM AMERICA'S "PLANT WIZARD"

Order No. 8334. April 9, 1918.

Gentlemen: I like your Cannas and desire a few more. Respectfully yours,—LUTHER BURBANK, Santa Rosa, California.

Note the immense head of bloom



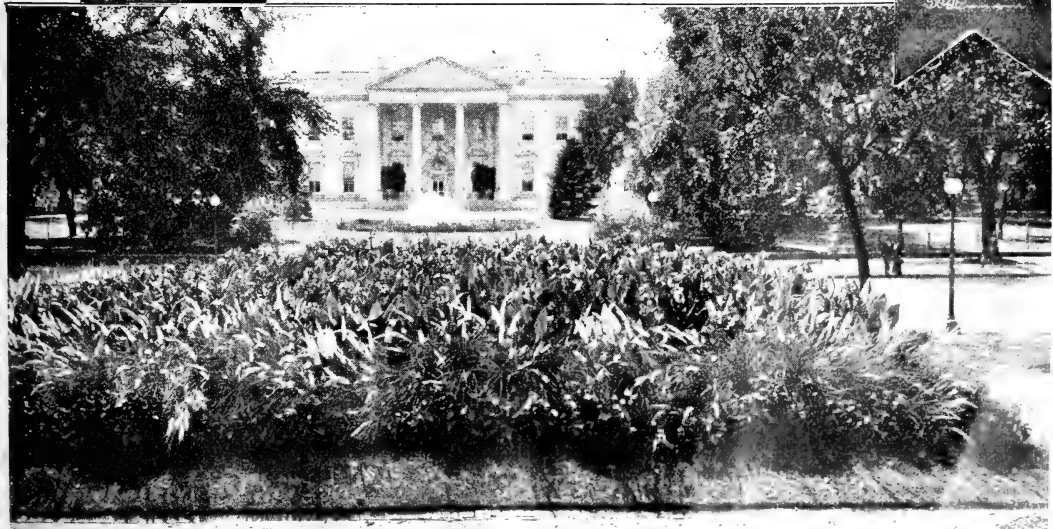
Rose GIGANTEA



OFFICIAL AWARD RIBBON



GOLD MEDAL DEPARTMENT OF HORTICULTURE



The White House toward which the Nation is looking. The flowers must be right, so C. & J. Cannas were selected

## Index to Bulbs

	Page		Page		Page
Alliums.....	30	Crocus, all varieties.....	27	Golden Sacred Lily.....	29
Amaryllis.....	30	Cyclamen.....	31	Hyacinths, all kinds.....	22-23
Arabian Star of Bethlehem.....	30	Daffodils (Narcissus).....	28	Iris.....	18, 31
Arums.....	31	Easter Lily, Bermuda.....	30	Jonquils.....	28
Belladonna Lily (Ama- ryllis).....	30	Fairy Lily.....	31	Lilies, Hardy.....	30
Calla Lilies.....	31	Freessias.....	31	Lily-of-the-Valley.....	30
Chinese Sacred Lily.....	29	Galanthus.....	31	Lycoris squamigera.....	30
Chionodoxa.....	31	Giant White Narcissus.....	29	Madonna Lily.....	30
		Glory-of-the-Snow.....	31	Monarch of the East.....	31
				Narcissus.....	28-29
				Ornithogalum.....	30
				Oxalis.....	31
				Scillas.....	31
				Seeds for Fall.....	31
				Snowdrops.....	34
				Tulips.....	25-26
				Zephyranthes.....	31

## Index to Plants, Etc.

	Page		Page		Page
Achillea.....	17	Daisy.....	20	Hydrangeas.....	12
Altheas.....	12	Delphinium.....	17	Impatiens.....	20
Ampelopsis.....	14	Deutzias.....	12	Insecticide.....	32
Anchusa.....	17	Dewberries.....	15	Iris, Japan and French.....	18
Anemone.....	17	Digitalis.....	18	Ivies.....	14
Aquilegia.....	17	English Ivy.....	14	Lemon, Amer. Wonder.....	19
Asparagus Ferns (2 kinds).....	21	Eulalia.....	18	Lemon Verbena.....	19
Arborvitæ.....	10	Euonymus (3 kinds).....	12, 14	Lychnis.....	18
Barberry, Japan.....	11	Evergreens.....	14	Marguerite, Mrs. F. Sander.....	20
Begonias.....	20	Ferns.....	21	Matrimony Vine.....	14
Bittersweet.....	14	Forsythias.....	12	Oleander.....	19
Blackberries.....	15	Fruits.....	15	Orange.....	19
Bon Arbor.....	32	Fuchsias.....	20	Palm.....	19
Bougainvillea.....	20	Funkia.....	18	Paris Daisy.....	20
Box Edging.....	11	Gaillardia.....	18	Parlor Ivy.....	20
Browallia.....	20	Genista.....	20	Peonies.....	16
Buddleia.....	12	Geraniums.....	19	Perennials.....	16-18
Campanula.....	17	Golden Glow.....	18	Philadelphus (Mock Orange).....	12
Celastrus scandens.....	14	Grapes.....	15	Phlox.....	18
Chrysanthemums (Hardy).....	17	Grasses, Ornamental.....	18	Physostegia.....	18
Clematis.....	14	Hedge Plants.....	11	Plant-food.....	32
Coreopsis.....	17	Heliotropes.....	20	Platycodon.....	18
Cornflower Aster.....	17	Hemerocallis.....	18	Plumbago.....	18
Crab Cactus.....	19	Hibiscus.....	20	Primroses.....	20
Crotons.....	20	Honeysuckles.....	14		
				Privet.....	11
				Pyrethrum.....	18
				Raspberries.....	15
				Roses.....	2, 5-9, 35
				Rose Nicotine.....	32
				Rose of Sharon.....	12
				Rubber Tree (Ficus).....	19
				Rudbeckia.....	18
				Russelia.....	20
				Scarlet Fountain Plant.....	20
				Self-watering Flower-box.....	20
				Shower of Gold.....	20
				Snowball.....	13
				Snowberry.....	13
				Spireas.....	13
				Symphoricarpos.....	13
				Verbena, Lemon.....	19
				Veronica.....	18
				Viburnum.....	13
				Vinca variegata.....	20
				Vines, Hardy.....	14
				Violets, Hardy.....	18
				Weigelas.....	13
				Wineberry.....	15
				Wistaria.....	14

# Flower Seeds for Fall Planting

HARDY BIENNIALS AND PERENNIALS SHOULD BE SOWN NOW

<b>Alyssum</b> (Golden Saxatile). Brilliant yellow..	\$0 05	<b>Mastodon Pansies—Very Best</b>	Pkt.
<b>Antirrhinum</b> (Snapdragon). Improved; in 3 colors, scarlet, white, or yellow.....	10	<b>Mme. Steele.</b> A beautiful purple shade.....	\$0 10
<b>Aquilegia</b> (Columbine). Many beautiful colors.....	05	<b>Prince Henry.</b> Rich dark blue.....	10
<b>Arabis</b> (Hardy Alpine). Pure white flowers.....	05	<b>M., Bronze.</b> Loveliest shades of bronze.....	10
<b>Bellis perennis</b> (English Double Daisy). White, pink, red, and variegated, mixed.....	05	<b>M., Yellow.</b> Clear, bright yellow.....	10
<b>Campanula</b> (Canterbury Bells). Bell-shaped flowers, single or double.....	05	<b>M., Mixed.</b> Richest colors. 100 seeds.....	10
<b>Candytuft.</b> White. Splendid for bordering.....	05	<b>Tufted or Bedding Pansies (Violas)</b>	Pkt.
<b>Carnations.</b> Sown now, will bloom next season.....	05	<b>Mixed.</b> Brilliant colors, all shades. ¼oz. 50c..	\$0 10
<b>Chrysanthemum, Perennial.</b> Finest hybrid Japanese, Chinese, and Ostrich-Plumes....	10	<b>Sweet-Scented Pansies</b>	
<b>Delphinium formosum.</b> One of the finest Larkspurs; blue with white eye.....	05	<b>Mixed.</b> All colors. Lovely sweet-scented flowers.....	¼oz. 25 cts., ½oz. 45 cts..
<b>Dianthus plumarius.</b> Original Clove Pink....	10	<b>Poppy, Oriental.</b> Brilliant scarlet.....	10
<b>Digitalis</b> (Foxglove). Mixed colors.....	05	<b>Primula vulgaris</b> (English Primrose).....	10
<b>Hollyhock, Mammoth Allegheny.</b> Finest mixed.....	10	<b>Sweet Peas, C. &amp; J. Best Mixed.</b> Good results are obtained from fall planting. ¼lb. 25c..	05
<b>Myosotis</b> (Forget-Me-Not). Beautiful blue....	05	<b>Sweet Peas, Mixed Spencers.</b> ¼lb. 40 cts..	10

## Seeds for House or Conservatory

<b>Abutilon</b> (Chinese Bellflower).....	\$0 10	<b>Heliotrope, Lemoine's Giant Hybrids.</b> .....	\$0 15
<b>Asparagus plumosus</b> (Climbing Lace Fern)...	15	<b>Lantana.</b> Pink, yellow, and orange, mixed...	05
<b>Coleus.</b> Many bright colors.....	05	<b>Maurandia.</b> White, purple, and rose.....	05
<b>Begonia, New California Hybrids, Mixed.</b> ...	05	<b>Nasturtium, Dwarf.</b> For winter flowering....	05
<b>Calceolaria hybrida.</b> Large-flowering, mixed..	10	<b>Primula sinensis fimbriata</b> (Fringed Primrose)..	10
<b>Carnation</b> (Marguerite). Fine early bloomer..	10	<b>Primula obconica.</b> Fine for winter bloom....	05
<b>Cineraria hybrida.</b> Finest colors, mixed.....	10	<b>Smilax.</b> An elegant window vine.....	05
<b>Cobæa scandens.</b> Choice climbing vine.....	05	<b>Washington Weeping Palm.</b> 6 seeds.....	10
<b>Cyclamen giganteum.</b> Mixed colors.....	10	<b>SPENCER SWEET PEAS FOR WINTER</b>	
<b>Ferns.</b> For window and house decoration....	05	<b>Early Snowstorm.</b> Pure white. 10 seeds.....	15
<b>Geraniums.</b> Bloom from seed the first season.	10	<b>Early Lavender King.</b> Lavender. 10 seeds....	15
<b>Gloxinia hybrida.</b> Fine; mixed colors.....	10	<b>Yarrowa.</b> Rose-pink with cream base. 30 seeds..	15



## **"Mutual Benefit"**

The Farm Journal is always \$1.00 for five years; the publishers do not want and generally won't take shorter subscriptions. But we believe that to read this wide-awake farm and household paper is the greatest benefit to our friends and patrons, and so indirectly to us, so we have persuaded the publishers to give us, for you, this

**SPECIAL  
TRIAL  
RATE OF**

**20 cts.**

for a year's trial of the paper.

**NOTE: Under no circumstances can renewals be accepted for only one year; this is exclusively a trial plan for those not now subscribers.**

### **YOU ARE IN THIS LIST**

The FARM JOURNAL is for the poultryman, farmer, fruit grower, dairyman, stockman, trucker, gardener, villager, suburbanite, the women folks, the boys and girls. Cheerful, clean, genuine, progressive, full of pictures, stories, gumption and sunshine; practical as a plow, readable as a novel; knows what to leave out, and what to put in. 32 to 80 pages monthly, stops when the time is up. Mail this Mutual Benefit Coupon today with two dimes or ten two-cent stamps direct to The Farm Journal. **DO NOT SEND IT TO US.**

**THE CONARD & JONES CO.,  
West Grove, Penna.**

**Robert Pyle, Pres. Antoine Wintzer, V. Pres.**

**SPECIAL: Add 5 cents (25c. in all) and get latest "Poor Richard Almanac," full of wit and wisdom for all.**

# Try this big live Magazine at this Special 20-cent Rate

You will be delighted with it, and wonder how such a splendid paper can cost so little. THE FARM JOURNAL is 41 years old, prints 1,000,000 copies a month, goes everywhere, from Maine to California. Suits everyone in every state; will suit you. Sign this Coupon below, and mail AT ONCE with only 20 cents, coin or stamps. Money refunded to you anytime you say so.

**To THE FARM JOURNAL, Philadelphia:**

Enclosed find 20 cents for which send me THE FARM JOURNAL one full year on trial. I am not now a subscriber to your magazine.

St. or  
R. F. D.

Name.....

P. O. .... State.....

**IMPORTANT:** This trial Coupon must be sent direct to The Farm Journal, Philadelphia, Pa. Not accepted for renewals. (If you live in Philadelphia, Canada, or a foreign country, send 35 cents instead of 20, to cover extra postage.)



# NEW BRILLIANT RED HARDY CLIMBING ROSE

## ☆ "Aunt Harriet"

Originated by the famous rose-hybridizer, Dr. W. Van Fleet. Introduced in 1918 by the FARM JOURNAL, of Philadelphia. Grown and distributed by The Conard & Jones Co. Received 86 points and Certificate of Merit at the Hartford Rose Gardens Show, June, 1918.

ONE OF THE FINEST DAZZLING RED CLIMBERS TO DATE

For porches, arbors, and arches this Rose will prove immensely popular, as it is among the finest of recent introductions in this hardy climbing class. It is a cross between Appoline and Wichuraiana. The wonderfully brilliant coloring and free-flowering habit of Appoline is retained and also the dark shiny foliage and rugged hardness of Wichuraiana. In full bloom it is amazingly fine with its masses of dazzling scarlet-crimson Roses loading every branch. The bright effect is intensified by the pure white centers and brilliant golden anthers which shine out when the flowers are fully open. **Own-Root Plants, 2-yr. size, \$1.50; Star size, \$5, □** (see page 3).



SEE OTHER HARDY CLIMBERS ON PAGES 8 AND 9

TWO FREE-  
FLOWERING

## Hardy Climbing Roses

SEE BACK COVER — TRY THEM BOTH

### ★ Dr. W. Van Fleet, Pink

"The Rose with One Thousand Perfect Blooms"

June 27, 1918.  
In 1910 I bought of you a Dr. Van Fleet Rose. Last year I cut from it by actual count one thousand perfect roses. Many also bloomed and died on the vine. Several dozen went by parcel post to Vermont and were reported to have kept in good condition nearly two weeks. I have not had or seen another Rose grown outdoors with so much of the delicate beauty that is usually produced only in a hothouse—MISS FAITH BRADFORD, Cummings Lane, Chevy Chase, Md.

A leader in this new class of handsome, large-flowered, perfectly hardy climbers. The foliage is shiny and attractive always, making a beautiful setting for the rich flesh-colored flowers. The buds are exquisite and the blooms, coming on strong stems 12 to 18 inches long, are unexcelled for table decoration. Hundreds of fragrant flowers can be cut from one well-matured plant. **2-yr. size, 50 cts.; extra 2-yr. size, 75 cts.; Star size, \$1, □** (see page 3).

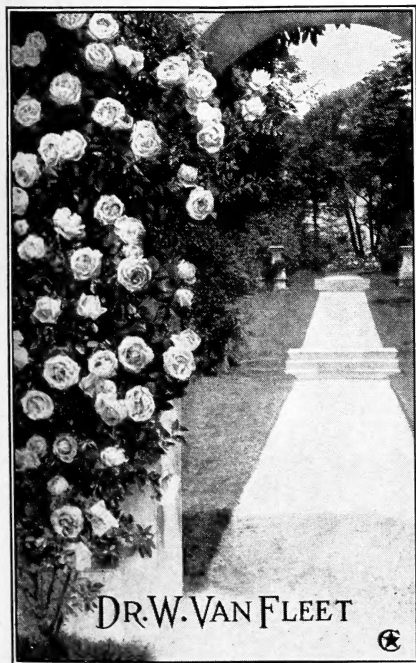
Nov. 16, 1916.  
The Rose, Dr. W. Van Fleet, I got of you last year is the admiration of the whole community.—MR. C. S. M., Westfield, F.

### ★ Excelsa (Red Dorothy Perkins)

"17,402 Roses on one plant, by careful count"

Nov. 21, 1916.  
I have at least twenty-five varieties of Climbing Roses and these have exceeded anything I ever saw. Every plant has grown most luxuriantly. There is an Excelsa that I got from you. This is its third year and it had 17,402 flowers on it by careful count.—JOSEPH H. CLOUD, Marshallton, Del., R. F. D. 2.

The color is an intense, clear carmine-lake, a rich contrast to Pink Dorothy Perkins. Flowers are large and double, produced thirty to forty on a stem, and almost every eye on a shoot produces a cluster of bright blossoms. **2-yr. size, 50 cts.; extra 2-yr. size, 75 cts.; Star size, \$1, □** (see page 3).



Magnificent in every way. It is perfectly hardy, a rapid grower and free bloomer

WAITING A SEASON MEANS LOSING A SEASON—PLANT THIS FALL

# THE CONARD & JONES CO.

ROBERT PYLE, *President*  
ANTOINE WINTZER, *Vice-President*

WEST GROVE  
PENNA.

EXCÉLSA  
AS IT GROWS



DR. W. VAN FLEET  
HARDY CLIMBER



See these Roses offered on page 55. Eighteen other hardy climbers, pages 8 and 9