

Historic, archived document

Do not assume content reflects current scientific knowledge, policies, or practices.

R 62
SB116
Z9B675



SKYSPUR
Red Delicious
APPLE

PLANTING GUIDE • FALL 1967 • SPRING 1968

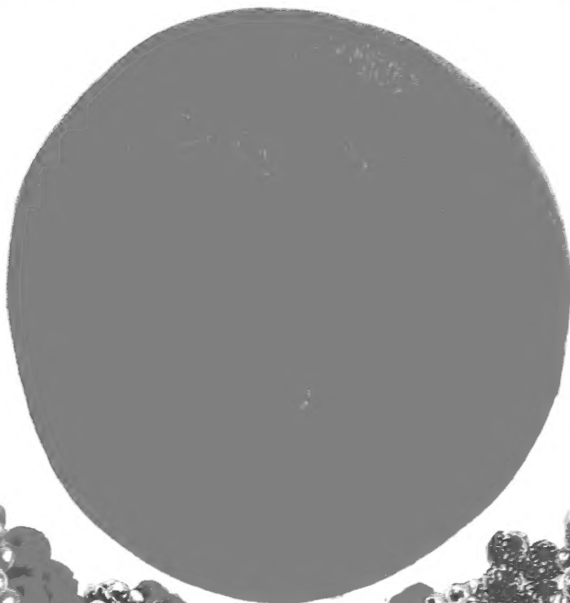
Bountiful Ridge

NURSERIES, INC.

PRINCESS ANNE • MARYLAND 21858

National Agricultural Library
RECEIVED
OCT 31 1967
U.S. Department of Agriculture

Orchards, Vineyards and Berry Fields Planted with Bountiful Ridge Grown Trees and Plants Typify the Horn of Plenty.



SUNSHINE PEACH

Plant Patent No. 2360

Large Early Ripening Sport of Redhaven



"The Farm Is The Anchor That Will Hold Through The Storms That Sweep All Else Away"



CHINESE CHESTNUTS

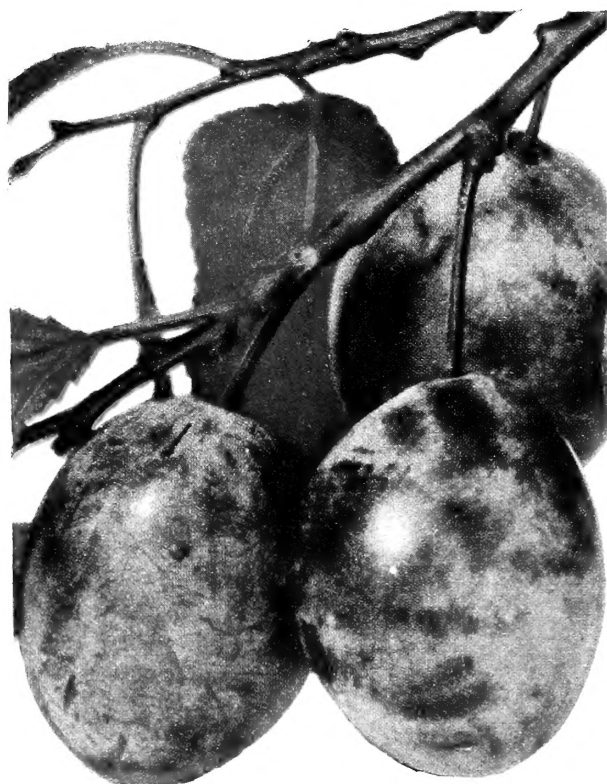
We are one of the East's largest Nurseries . . .
Specializing in Fruit Trees and Berry Plants . . .
Selling Direct to Planters for more than 80 years
. . . through four generations of the Kemp family.



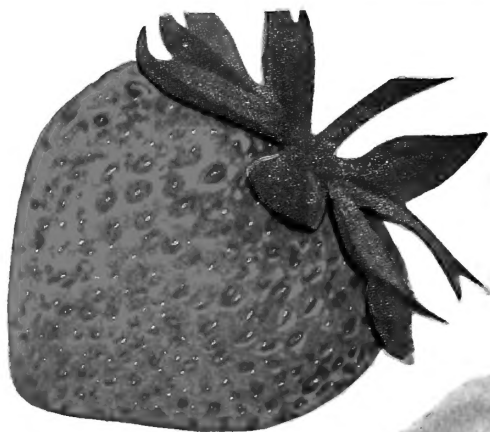
KING LUSCIOUS APPLE
U. S. Plant Patent No. 1994

**DWARF FRUIT TREES A SPECIALTY
AT BOUNTIFUL RIDGE**

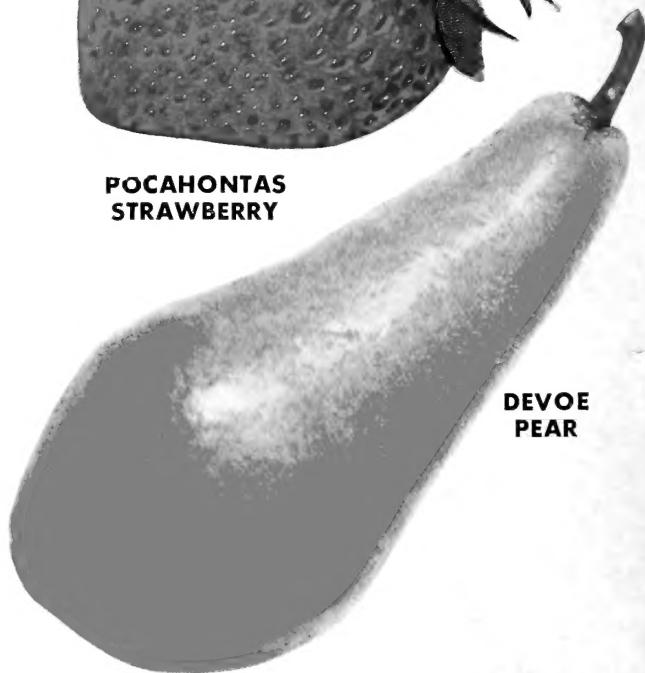
See our complete listing on pages 26 to 29
for the best in Apple, Peach, Pear, Cherry,
Plum, Apricot, and Nectarine varieties.



STANLEY PRUNE PLUM



**POCAHONTAS
STRAWBERRY**



**DEVOE
PEAR**

THE KEMPS OF BOUNTIFUL RIDGE

Dear Friends,

We are saddened by the loss of Edgar H. Kemp this past winter. Bountiful Ridge has been changed to a corporate business, but will be owned and operated by the same Kemp family you have dealt with for the last many years. We hope you will continue to favor us with your orders.

Our supply of fruit trees and berry plants will be of excellent quality this year. Ample rainfall and good temperatures have combined to make this crop "just the best." Our large variety lists allow a good selection of fruit for most any section. Why not select your needs NOW, for delivery at proper planting time?

We appreciate your orders and letters. Our continuing efforts to provide you with the best in nursery stock are greatly aided by your thoughtful suggestions. Good customer relations have allowed us to prosper over the years. We sincerely hope you will use Bountiful Ridge as *your nurseryman* for many years to come.

Sincerely,

Homar S. Kemp
President

Our 3-Point Guarantee

1. ALL STOCK GUARANTEED TO ARRIVE IN A-1 CONDITION. All Truck Freight, Express and Parcel Post shipments are insured. Notify us and the carrier at once of damage and claims will be filed for losses. Duplicate orders for damaged stock will be shipped at once.

2. ALL STOCK IS GUARANTEED TRUE-TO-NAME. Every precaution is taken to insure trueness-to-name. Any plants proving not so will be replaced at no charge or purchase price refunded. Further than this we are not responsible.

3. ALL STOCK IS GUARANTEED TO START TO GROW, providing our planting instructions are followed and normal care is given. Should any plant fail to do this, notify us direct by July 1st and replacements will be sent the following season without charge. After this date, we will replace unsatisfactory plants at one-half purchase price. You pay transportation on all replacements. This guarantee covers all normal losses. Heavy and unusual losses due to conditions beyond our control will be settled satisfactorily with the customer.

FOUNDER

HARRISON H. KEMP

Sept. 26, 1825—May 7, 1884, Father of Geo. W. Kemp, started the Kemps growing fruit and ornamental trees and plants for the planters of western Pennsylvania, nearly a century ago.



GEO. W. KEMP
May 2, 1868—June 3, 1943



EDGAR H. KEMP
September 8, 1893—
January 20, 1967



HOMER S. KEMP
President



ROBERT G. KEMP
Executive Vice President



RICHARD L. KEMP
Executive Secretary



H. GEORGE KEMP
Executive Treasurer

WHERE TO FIND IT

Apple Seedlings	20
Apple Trees	19-27, 38
Apricots	15, 28
Asparagus	41
Blackberries	40
Blueberries	44-45
Boysenberries	40
Bush Cherry	28
Cherry Trees	16-17, 28, 39
Chinese Chestnuts	34
Dawne Peach	5
Dewberries	40
Dwf. Trees	26-29
Evergreen Seedlings	36
Fertilizer	36
Figs	34
Flowering Trees	37-39
Grape Vines	35
Guarantee	3
Inspection	
Certificates	23, 46
King Luscious Apple	23
Lavaca Berries	40
Map to Nursery	36
Nectarines	18, 28
Nemaguard Peach	13
Nut Trees	32-34
Order Blank	Insert
Peach Trees	4-13, 28, 37, 38
Pear Trees	29-31
Persimmon Trees	29
Plum Trees	14-15, 28
Quince Trees	17
Raspberries	42-43
Redwin Peach	4
Rhubarb	41
Rose Hedge	37
Shade Trees	38-39
Skyline Supreme Apple	21
Spray Materials	37-38
Strawberry Plants	46-50
Sunshine Peach	6
Terms	Insert
Virus Information	41, 46



QUEEN OF FRUITS PEACHES

AMAZING NEW INTRODUCTIONS . . . IMPROVED
"BOUNTIFUL STRAINS" OF OLD POPULAR VARIETIES
. . . ENABLE YOU TO PLANT A HIGHLY PROFITABLE
SUCCESSION OF FRUITS

Bountiful Ridge Grown Peaches Are Better!

Our Superior Trees of Selected Strains are Famous for Growth and Production. Wherever they are planted "Bountiful Ridge Trees" have established their Leadership. They are truly the Foundation for Planters' Success and Satisfaction.

PRICES OF PEACH TREES

(Standard Types)

	Each	3-9 each	10-49 each	50-99 each	100 or more each
6-7', 7/8 up . . .	\$3.95	\$3.50	\$3.00		
5-6', 11/16 . . .	3.50	2.95	2.35	\$1.60	\$1.30
4-5', 9/16	3.25	2.75	2.15	1.40	1.10
3-4', 7/16	3.00	2.50	1.95	1.25	1.00
2-3', 5/16	2.75	2.25	1.85	1.10	.85
2-3', light	2.50	1.95	1.70	.95	.75
18-24"	2.00	1.65	1.50	.85	.65

We want you to plant **BOUNTIFUL RIDGE** trees. Our trees are as good as can be produced. When you need more than 300 peach trees, send us your list and we will quote you special prices consistent with market conditions at that time.

SPECIAL TREATMENT MAKES OUR PEACH TREES "BETTER THAN EVER"

At No Extra Cost To You

Bountiful Ridge is pleased to offer "At No Extra Cost," peach trees grown from budwood that has been heat treated to insure its "Freedom From Virus Disease." Our trees are being grown many miles from any known source of little peach, peach yellows, red suture, or X-disease and, because of this isolation, are essentially virus free.

We believe that our "essentially virus free" peach trees will give you, Mr. Planter, the best stock that money can buy. Combine this new practice with our regular propagating procedures—selected budwood, hardy and disease-resistant rootstocks, specially treated soils, continuous inspection, rigid storage control—and you have the best peach trees for any use that it is possible to produce. All of our peach trees, both dwarf and standard size, have been so treated. It will not, therefore, be necessary to note your wish for Virus Free trees on your order.

NOTE: Ripening order of varieties designated by bracketed numbers after name. Varieties overlapping in ripening season indicated by sub-letter. Example: Elberta and Hale are about same season and are designated by numbers 12b and 12c.

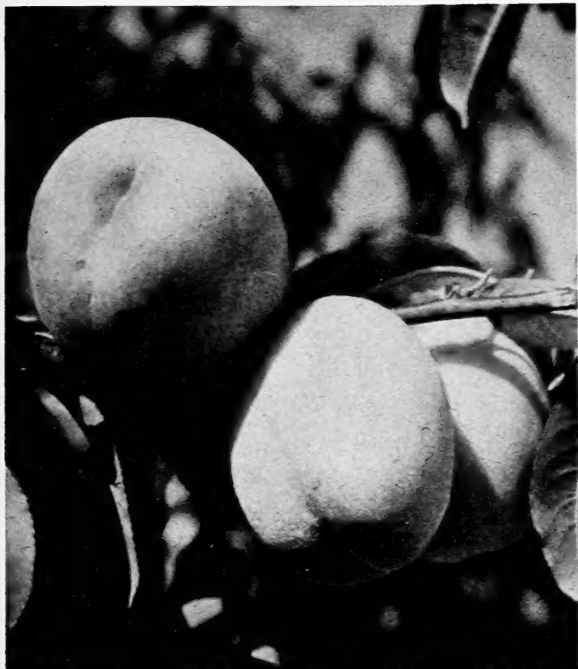
REDWIN (1) Plant Patent No. 1661. Redwin is making a place for itself in many orchards over the country. Redwin is an excellent variety for local markets and roadstand use. Growers everywhere are finding that Redwin is their best bet to start the very early peach season.

Fruits of Redwin are of good size, high color, and fine quality. They require heavy thinning and early spraying for best results. Redwin is a white-fleshed semicling that colors with a fine red blush well before picking time. Flavor is excellent for such an early peach and is much like its parent, Erly-Red-Fre. Redwin should be picked when firm ripe in order to hold or carry well. Close attention should be paid to this variety as ripening time approaches in order to avoid over-ripe fruit. Just think, Redwin needs only 60 short days from bloom to picking.

Trees of Redwin are vigorous and thrifty growers. They are hardy in wood and bud, early bearers, and heavy producers. Since the fruits ripen so early, only maintenance spraying is needed the rest of the season. Redwin needs good, sensible orchard management to be profitable—nothing more.

PRICES FOR DAWNE, REDWIN, AND SUNSHINE

	Each	3-9 each	10-49 each	50-99 each	100 or more each
6-7', 7/8 up . . .	\$4.50	\$4.00	\$3.50		
5-6', 11/16	3.75	3.25	2.60	\$1.75	\$1.40
4-5', 9/16	3.50	3.00	2.40	1.55	1.25
3-4', 7/16	3.25	2.75	2.20	1.40	1.10
2-3', 5/16	3.00	2.50	2.10	1.20	.95
2-3', Light	2.75	2.25	2.00	1.05	.85
18-24"	2.25	1.90	1.75	.90	.75



DAWNE Peach

DAWNE (2) Plant Patent No. 1955. Earliest Yellow Freestone.

COLOR—Dawne has that beautiful red blush that almost completely covers a golden yellow ground color. This fine color comes about 10 days before the fruits are ripe, allowing picking in time for distant markets.

SIZE—Dawne sizes up well on older trees. The tree loads up to such an extent that thinning is a necessity almost every year. The fruits of well grown Dawne will pack 2¼ inches up in any normal year.

ORIGIN—Dawne originated in Carbon County, Pa., as a chance seedling at the home of Mr. J. R. Stettler. It was so early and of such good size and flavor that Mr. Stettler was attracted to it.

FLAVOR—The flavor of Dawne is the most outstanding and pleasing of any early peach that we have ever tasted. It is sweet, sub-acid, melting and juicy. Dawne is equally good when eaten from the tree, sliced with sugar, canned, frozen, or used in ice cream.

VIGOR—The trees of Dawne are vigorous, upright to spreading in growth. The buds and wood are hardy to severe winter temperature and spring frosts.

BEARING AGE—Dawne bears early, having fruits the second year after planting. Good crops have nearly always been recorded in the third year. The blossoms are showy, self-fertile, and hardy.

TIME OF RIPENING—Dawne ripens about 10 days after Redwin and 8 to 10 days before Erly-Red-Fre. This is well in advance of its nearest competitor and at a time when extra high color and quality will bring the most money.

CANDOR (2a) A new yellow-fleshed, semi-free-stone peach that ripens just before Earlired. The fruits are round and about ¾ covered with a bright red blush when mature. The flesh is fine texture of good quality and very resistant to browning. Trees are productive, moderately vigorous and somewhat resistant to bacterial spot. Fruits are of good size and buds seem rather tolerant of spring frost.

EARLIRE (2b) A cross of Redhaven made at Beltsville, Md. that ripens 2 to 5 days earlier than Cardinal and completes harvest before Sunhaven. Fruits are medium sized, with very light pubescence, and colored with a bright red blush over a golden yellow ground color when mature. The flesh is yellow, firm and of good flavor; A cling when firm ripe. Trees are vigorous, and dependable bearers, and moderately susceptible to bacterial spot. Earlired should be thinned early and hard for best size.

REDCAP (2c) Ripens just before Dixired and resembles Dixired very much. A clingstone, medium size, round, with light pubescence. Attractive red blush covers most of the peach. The flesh is yellow, firm but melting, and of good flavor. Trees are moderately vigorous and productive. Buds require 750 hours chilling.

CARDINAL (2d) Ripens four days ahead of Dixired. Fruits are clingstone, medium size, round, light pubescence. Well covered with attractive red blush over yellow ground. Flesh is yellow, firm and of good flavor. Chilling requirements about 900 hours.

DIXIRE (2e) A round, medium-sized clingstone, with light pubescence. A beautiful red blush covering three-fourths of the surface gives Dixired a pleasing appearance. Flesh is yellow, firm but melting, and of good flavor. Dixired has unusual firmness and a slow rate of softening for an early peach. It is an excellent variety from the Carolinas northward into Canada because of its fine appearance and shipping ability.



George Kemp examines and admires this year's Peach tree crop.

ERLY-RED-FRE (3) For unexcelled size and quality, it is the best early white peach known. Growers everywhere still rave about Erly-Red-Fre. No other early peach has been as profitable and universally adaptable. There is still a place in nearly all plantings for this fine peach.

Fruits are large, averaging over 2½ inches in most cases without thinning. Color is never a problem; the fruits turn red at least on one side well before harvest date. Quality is exceptionally good. Erly-Red-Fre has long been known for its shipping and keeping qualities.

Trees are very vigorous, hardy in wood and bud, and produce large annual crops. Erly-Red-Fre resists bacterial spot and bears at a young age. Harvest time is about 95 days after bloom, in time to save expensive sprays and maintenance costs. Increase your profits by adding Erly-Red-Fre to your plantings now.



SUNSHINE

GOLDRAY (3a) A good budsport of Golden Jubilee that ripens two weeks earlier, yet retains most of the good traits of its parent. Goldray colors with a nice red blush on a golden yellow background. It will cling to the pit when not fully ripe and has a somewhat tender skin and flesh. It is best adapted to home use, road-stands, and local markets. Trees are vigorous, set heavy crops regularly, and are very hardy. Goldray is quite popular in the central states and Canada.

SUNHAVEN (3b) True Sunhaven or Early Sunhaven mature about 10 days earlier than Redhaven. Fruit is large sized, nearly round and uniform in shape. Color is much like Redhaven, largely a pretty bright red. Flesh is clear yellow, fine textured, firm, of good flavor, and resistant to browning. It is a partial cling until full ripe. Fruits keep well and handle easily for such an early peach. Trees are large, vigorous, and productive. Sunhaven is an excellent early fresh market variety for the central and northern peach areas. **Do not confuse this Sunhaven with Late Sunhaven**, which ripens with Redhaven or later.

COLLINS (3c) A firm attractive high quality yellow flesh peach of medium size ripening a few days before Sunrise. A semi-cling when picked at maximum shipping condition. It is a freestone when fully matured. It has developed practically no fruit with split pits. Chemical thinning is recommended to insure good size.

SUNSHINE (3d) Plant Patent No. 2360. **SUNSHINE** is a brilliant new budsport of Redhaven. It ripens five or more days earlier than Redhaven and exhibits the same fine color characteristics of its parent.

The flesh is a clear yellow sparsely flecked with red streaks, is melting, of good flavor and resists browning. Sunshine is a **TRUE FREESTONE**, even when hard ripe, making it far superior to Redhaven in this respect. Fruit size is equal to, or larger than, that of Redhaven on trees of comparable age.

Trees of Sunshine are vigorous, somewhat resistant to disease, upright in growth, and begin bearing at an early age with heavy crops. Buds and wood seem to be equally as hardy as the parent. Hours of chilling needed to break dormancy are about the same as Redhaven.

SUNSHINE originated in the orchard of John Errera, Hammondtown, N. J., as a budsport of a Redhaven tree. The first fruit was so much earlier and of such outstanding beauty that Mr. Errera was attracted to it. He brought it to our attention, and after thorough testing, we have found Sunshine worthy of introduction to the public. We are sure that you will want to try some trees of this fine new variety this year.



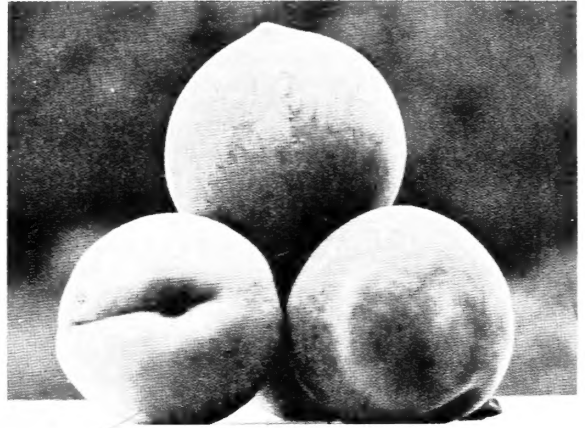
One of our Peach seedling blocks showing the propagators at work. Over one million plants in this field.



SOMERSET (3e) A fine new yellow fleshed freestone peach that originated here at Bountiful Ridge as a chance seedling. Fruits of Somerset are large, round, and very attractive. Several days before maturity, the fruits become covered with a beautiful red blush that is spread over a golden yellow ground color. The skin is tough and rather thick which makes Somerset a valuable variety for commercial use.

Fruits ripen at Princess Anne with, or just after, Sunhaven but before Red Haven. Size and appearance excellent for such an early peach. Fruits average much larger than Red Haven or Sunhaven and crops are borne just as consistently. The flesh is coarse in texture, but melting and of fine flavor.

Trees of Somerset are vigorous and sturdy growers that produce annually heavy crops. Buds are winter hardy and frost tolerant. We recommend trial of this new variety in all areas where a need for a large, attractive early yellow freestone peach is present.



SUNHAVEN

REDHAVEN (4b) Hardly enough can be said about this fine peach, the standard of all early peaches. It colors a beautiful red and golden yellow. The skin is smooth, almost fuzzless, resembling J. H. Hale. Flesh is very firm, smooth textured, and of good flavor. Fruits are medium sized, round, uniform, and of excellent appearance. Redhaven is one of our most versatile varieties. It is good for freezing, canning, local and distant markets. Proper thinning will allow the vigorous and very productive trees to be some of your most profitable ones. Wood and buds of Redhaven are hardy and disease resistant.



SOMERSET

GOLDENRED (4c) A yellow freestone of high quality and good color, ripening with Redhaven. It is smooth, round, and firmer than Redhaven. Flesh is lemon-yellow, fine textured, of pleasing taste, with some red about the pit. Fruit ripens evenly, with skin color developing early to permit picking while still firm. This fine new peach was introduced to replace Redhaven in trouble areas. Try some. . . .

JERSEYLAND—N.J. 135 (4) An early, large, firm, attractive, yellow-fleshed freestone ripening a few days before Golden Jubilee. It hangs well to the tree and is an excellent shipper. Tree is hardy, sets fruit buds freely, and comes into bearing at an early age. Jerseyland is quite popular from the Carolinas to eastern New York.

CORONET (4a) A good sized, highly colored, yellow peach ripening a few days before Redhaven. The flesh is firm, tends to stick to the pit until fully ripe, and has a very good flavor. A bright red blush over a good yellow ground color makes Coronet very attractive. Trees are vigorous and productive. Blossoms are small petaled, self-fertile, and require 800 hours to break dormancy. A very fine variety for near and distant markets.

COMANCHE (4d) A Redhaven type peach that ripens about with Redhaven. Size is exceptionally good, with little thinning required. Fruits are attractive, with firm yellow flesh, and semi-free with no split pits. Comanche has a desirable crop load with larger size fruits than Redhaven.

CUMBERLAND (5) The tree is a vigorous grower. The fruit is attractively colored with red, oval in shape. Flesh is white, almost free. Ripens just before Jubilee. Cumberland continues to be popular in all peach sections.

Bargain PEACH TREE Collection

Early To Late

- | | |
|----------------|--------------------|
| 1 Redwin | 1 Hale Haven |
| 1 Erly-Red-Fre | 1 Belle of Georgia |
| 1 Redhaven | 1 Redskin |

3 Yellow — 3 White

Home Collection for Eating, Canning, Freezing

Six 4 to 5-ft. trees

Regular \$16.75 Value for..... **\$14.95**
 Double This Order for **\$28.00**

SAVE SPACE — SAVE \$\$\$\$

Dwarf PEACH TREE Collection

- | | |
|------------------------|-----------------------|
| 1 Dawne (yellow) | 1 Hale Haven (yellow) |
| 1 Belle of Ga. (white) | 1 Elberta (yellow) |
- Heavy 1-yr., 3 to 4-ft. trees

Regular \$14.00 Value, Only..... **\$12.50**
 Double This Order for..... **\$23.00**

Other Dwarf Fruit—Pages 26-29

GOLDEN JUBILEE (5a) An old stand-by variety that is still popular for home and near-by markets. Fruits are medium to large, attractive, freestone, and of good flavor. Jubilee will be more attractive and firmer if balanced fertilizers are used. The tree and buds are unusually hardy, resisting low temperatures better than Elberta. Blossoms are self-fertile and are borne in abundance.

FAIRHAVEN (5b) A Redhaven type peach ripening about with Golden Jubilee. It has the same tendency to overcrop as Redhaven, but when thinned well it brings medium to large, round, attractive fruit. Fruits are firm, smooth skinned, and good shippers. Fairhaven is a good bet in its season.

RANGER (5c) A fine-looking yellow freestone peach ripening with Golden Jubilee. Medium to large size, almost round, with light pubescence, highly colored with bright red blush. Flesh yellow, medium firm, medium textured, good flavor and suitable for canning or freezing. Tree is vigorous and productive, showing marked resistance to bacterial leaf spot. Blossoms medium sized, self-fertile, usually open after Elberta.



RICHHAVEN

KEYSTONE (6) Keystone ripens just ahead of Triogem. The fruits are large, highly colored, round, light pubescence, bright golden ground color. Flesh is yellow, firm, smooth textured and of good flavor, and a freestone. Trees are vigorous and productive, with less bacterial spot than Southland or Elberta. Blossoms are self-fertile, require 750 chilling hours.

TRIOGEM—N.J. 70 (6a) An early, oval, red all over, firm, yellow freestone peach ripening about two days after Golden Jubilee. The trees are medium in size, hardy and heavy bearers. Trees require good soil and good culture for best results. Triogem has fruited over a wide area and has gained popularity due to heavy yields, good marketing traits, and hardiness of tree.



WASHINGTON

SOUTHLAND (7a) Yellow-fleshed variety ripening in Sunhigh season. Fruit is a freestone, medium to large size, round, and has little fuzz. Color is attractive, with a light red blush covering about half the peach at shipping stage. Flesh is yellow, firm, slow softening, medium textured, good flavor. Trees are vigorous and productive, blossoms large, self-fertile.

WASHINGTON (6b) A fine new peach from Virginia that has outstanding qualities of color, size, flavor, firmness of flesh, and fine texture. The buds are extremely resistant to injury from spring frosts. It ripens about three days after Triogem and just before Sunhigh. Trees are vigorous and productive. Buds have excellent pollen and are self-fertile. Washington will do well from southern Virginia northward wherever spring frosts are troublesome. Use Washington with Madison and Jefferson for season-long coverage of frost-resistant peaches.

WHY PLANT BOUNTIFUL RIDGE PEACH TREES?

1. Only selected bud stock of known parentage used in propagation.
2. Our rootstocks are the best money can buy—selected for rapid growth, hardiness, and disease resistance.
3. Only soil which has been especially treated to produce high food value for normal development is used to grow our trees.
4. Continuous inspection of trees from seedling to finished tree, with correct spraying compounds, timing and technique to keep trees healthy while growing.
5. Rigid control of varieties from cutting of budwood—checking workers during budding time—correct charting of all varieties—more checking at digging time plus further checking in storage insures true-to-name trees.
6. Constant searching for new and better varieties and improved strains of old commercial favorites goes on year after year by men trained to recognize all factors which influence the selection of finer trees and varieties.



PEACHES TO PLANT

- | | |
|------------------|--------------------------|
| **Redwin | *July Elberta |
| ***Dawne | **Richhaven |
| *Redcap | **Hale Haven |
| **Cardinal | **Sullivan's Ey. Elberta |
| **Eryl-Red-Fre | **Redcrest |
| **Dixired | **Blake |
| **Goldray | **Early Elberta |
| **Sunhaven | **Belle of Georgia |
| **Coronet | ***Polly |
| **Redhaven | **Redskin |
| **Golden Jubilee | **Elberta |
| **Fairhaven | **J. H. Hale |
| **Ranger | **Jefferson |
| *Keystone | **Shippers Late Red |
| **Triogem | **Gage Elberta |
| **Washington | **Brackett |
| ***Colora | *Gemmers Late Elberta |
| *Sunhigh | **Rio-Oso-Gem |
| *Southland | **Lizzie |
| **Loring | **Autumn |

*Indicates Commercial varieties, with average hardiness, adapted to distant and nearby markets.

**Indicates Hardier and good Commercial varieties adapted to distant and nearby markets.

***Indicates Extremely Hardy varieties of merit.

COLORA (6c) An outstanding, hardy, early, yellow freestone peach with high color, superb quality, size, and hardiness. Colora is our own introduction of a frost-resistant peach. Trees have withstood temperatures during past winters of about 17 degrees below zero, when most other varieties were wiped out by these low temperatures. The peach is an attractive yellow freestone ripening just after Golden Jubilee.

NEWDAY—N.J. 79 (6d) A large, oval, yellow-fleshed peach which ripens a few days after Triogem. The tree is more vigorous and produces larger fruit than Triogem. The fruit is showy, firm in texture, and hangs well to the tree.

SUNHIGH—N.J. 82 (7) A large, bright red, smooth peach which colors well before it ripens and softens slowly, making it a good commercial peach. Flesh inclines to adhere to the pit when hard ripe, but is generally freestone. Tree is spreading in growth, and dormant buds are hardy. Seems to do best in hilly sections and requires thorough summer spraying.

REDTOP (7a) A new blush red peach from the U.S.D.A. that ripens about with Sunhigh or 3½ weeks earlier than Elberta. Redtop has a low chilling requirement and was introduced for its firmness, attractiveness, flavor, and ripening period. Try a few trees of this fine variety.

LORING (8) A new yellow freestone with wide adaptability. This promising new peach resembles Jubilee in color and shape, but is much firmer and does not soften at the suture or the tip. It has an attractive bright red and yellow color over a yellow ground color. Loring ripens about two weeks ahead of Elberta. It has been found an excellent variety for fresh market and processing use.

JULY ELBERTA—Burnett Elberta (8a) A large, medium early, freestone peach ripening with Hale Haven. Golden yellow color overspread with red. It can be picked for shipping about four days before ripening, because of its early color. The quality is excellent for canning and fresh eating. It shows better than average results when frozen. The variety does well in all peach sections.

REDGLOBE (8b) Ripens 15 days before Elberta. Fruits large, round, with light pubescence. Skin is highly colored with red over a good yellow ground color. A freestone. Complete absence of red in the flesh makes it an outstanding canning peach. Very good quality. Chilling requirements about same as Elberta. Blossoms are large and self-fertile.

RICHHAVEN (8c) Fruits are large, uniform in size and shape. Color a bright red blush with stripes of red and gold laid over a bright golden ground color. Fuzz is unnoticeable and an unusually thick, tough skin adds to its handling and shipping ability. Flesh is a clear yellow with moderate reddening around the pit. Entirely a freestone when ripe. Ripens with Hale Haven, or 14 days before Elberta.

HALE HAVEN (8d) Large, oval-shaped fruits are borne on a strong, thrifty tree that is resistant to most common peach diseases. The skin is tough, and the flesh is of such texture that it will not bruise easily. A beautiful red color and excellent flavor attracts the most exacting buyer. Hale Haven is probably our best peach for quick freezing.



HALE HAVEN

DEAR SIR:

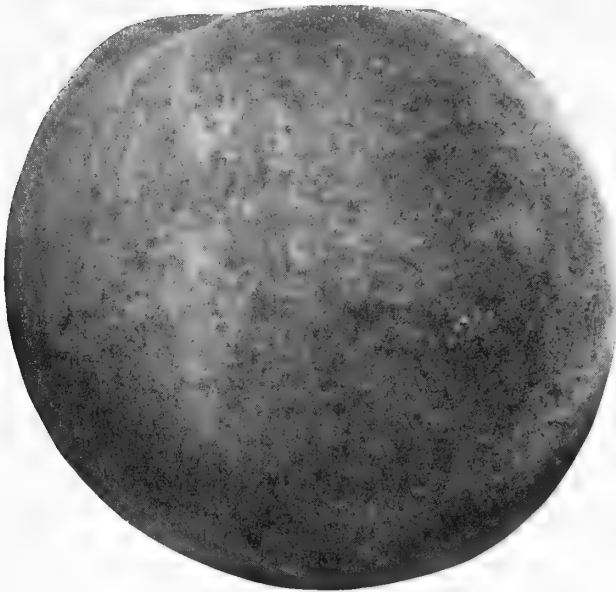
Bill received and O.K. All is just as I ordered. Thank you very much. Hope I receive the order soon.

Thanking you again for promptness in filling this order.

Yours for future orders,

Mr. Cleve Moonaw

Tenn.



GLOHAVEN

✓ **GLOHAVEN (8e)** A new attractive yellow freestone peach from Michigan that ripens two weeks before Elberta. Trees are vigorous, productive and at least average in wood and bud hardiness. Fruits are nearly round, and maintain large size even when tree is loaded. Skin is tough, mostly red over deep yellow ground color, with little fuzz. Flesh is clear yellow, and because of its excellent canning and shipping ability, Glohaven promises to be an outstanding general-purpose variety.

✓ **GOLDEN EAST—N.J. 87 (8f)** A large, oval, firm, melting, highly colored, yellow-fleshed peach ripening about 15 days before Elberta. Usually a freestone. Does best on sites south of Central New Jersey where favorable elevations, soil and climate prevail. Tree is upright, spreading and vigorous. Medium in hardiness.

✓ **CHAMPION (9)** Long known as an excellent white peach, Champion fills a definite need in this particular season. Its large, quite regular and beautiful, freestone fruits ripen between Cumberland and Belle of Georgia. The tree is very hardy and productive. Champion is the best variety to fill this part of the white peach season.

✓ **SUNCREST (10)** A new, large, round, yellow freestone that ripens about 10 days earlier than Elberta. Fruits have light pubescence and are two-thirds covered with a bright red blush over a golden yellow ground color. The flesh is firm enough for distant shipment and is of good flavor. Trees are vigorous and productive. Blossoms are large petaled and self-fertile.

✓ **SULLIVAN'S EARLY ELBERTA (10a)** An old favorite that leads the early Elberta season. Sullivan ripens ahead of the regular Early Elberta and Belle of Georgia. Fruits average large in size, with extra fine quality and shipping ability. The tree and fruit characteristics are identical with Elberta.

✓ **REDCREST—N.J. 26 (10b)** A large, attractive yellow-fleshed freestone ripening about a week before Elberta. The skin color is a beautiful crimson-red which resembles Sunhigh. The quality is supreme, flesh golden yellow, firm and juicy. Tree is productive and a vigorous grower. Redcrest is an airfree peach.

✓ **MADISON (10c)** The newest frost-resistant peach to come from Virginia. Madison is yellow, freestone, firm, fine textured, and of good quality. Fruits are well colored with bright yellow overlaid by a bright red blush. They are very attractive and sell well. The tree is of average vigor and produces a heavy crop annually. Plant Washington and Jefferson with Madison for full-season coverage of frost-tolerant peaches.

✓ **BLAKE (10d)** A widely planted and most satisfactory peach in nearly all major areas with the exception of the Deep South. Blake is a highly profitable variety to precede Elberta. Its freestone fruits are medium to large and very highly colored, with an attractive red over a good yellow ground color. Flesh is very firm, with considerable red extending out around the pit, and of excellent flavor. Trees are good growers, ranking with Elberta in hardness of bud and tree, and are very productive. Size, good color and time of ripening make Blake the Peach to precede Elberta.

✓ **CRESTHAVEN (10e)** A new variety from Michigan that ripens about one week before Elberta. Tree is self-fruitful, productive, vigorous, and above average in hardness of wood and flower buds. Fruits are uniform medium in size, and nearly round. Skin is moderately thick, tough, golden overlaid with abundant red, and shows little fuzz. Flesh is firm and clear, and resists browning. Cresthaven is very promising for fresh market, freezing, and home canning.

✓ **EARLY ELBERTA—Gleason Strain (11)** A fine commercial peach in areas where markets are not too distant and quality is important. Large, attractively colored, yellow-fleshed, freestone fruits make it one of the most beautiful Elberta type peaches. It has excellent quality and ripens with Belle of Georgia. Trees are hardy, thrifty, and bear consistently. Do not confuse other strains of Early Elberta with this, the original Gleason Strain Early Elberta.



Experts start your orchard using only best seedling stock and budwood.

DEAR SIRs:

The trees arrived in fine condition. We are very well pleased with them.

William Wunderler
Pennsylvania



Bob and Dick Kemp select only the very best buds for propagation.

BELLE OF GEORGIA (11b) The unquestioned favorite of all white peaches and a household word with the buying public. Fruits are large, bright, attractively covered with red over a creamy white background. The flesh is white, highly flavored, very firm, and aromatic. Trees are very vigorous, hardy, and productive. Belle of Georgia is the standard by which all white peaches are judged.

POLLY (11c) A very hardy peach bearing big crops after 20-below-zero winters. It is a freestone of exceptional quality, with a keen peachy taste, juicy and aromatic. The color is a beautiful white overlaid with a rich red blush. Recommended to all growers who wish an exceptional white peach in Elberta season.

HALE HARRISON (11d) U. S. Plant Patent No. 814. We offer this fine peach, often called Hale Harrison Brilliant or just Brilliant, under license from the patent owner. It ripens just before Elberta, is yellow fleshed, freestone, nicely fuzzless, and generally large throughout the tree. Blossoms are self-fertile and abundant. The tree is vigorous and a heavy bearer.

Hale Harrison is a good shipper, long keeper, and picks over a long season. Its exceptional quality makes it a favorite for fresh market and processing outlets. *Price for Hale Harrison trees is 10¢ more per tree than for regular varieties.*

REDSKIN (12) Each year Redskin becomes more popular as the leading peach of the Elberta season. It is a very pretty, large, round freestone with excellent shipping qualities. The yellow flesh is very clear, firm, aromatic, and sweet. Fruits of Redskin are borne in profusion throughout the tree and color well with a deep red blush, even under shady conditions. Processors and fresh market buyers are equally pleased with this fine peach.

Trees of Redskin are vigorous, fast growing, and productive. The wood is hardy, and buds survive low temperatures when trees are in good physical condition. Redskin trees have the ability to size generous crops well under most conditions. Why don't you bring your plantings in this season up-to-date with Redskin?

DIXIELAND (12a) This fine new peach is a large freestone and has little pubescence. At maturity, about 50% of the surface is covered with an attractive red over a golden yellow ground. The flesh is yellow, firm, of good texture and flavor. It ripens about with Redskin and Elberta.

Trees are vigorous, productive, and self-fertile, somewhat resistant to bacterial spot and have a chilling requirement of 750 hours.

Dixieland was introduced primarily for southern areas, but we believe it worthy of trial in all peach areas.

ELBERTA (12b) The world's greatest money-making peach. Elberta trees are hardy, disease resistant, very thrifty, and very productive under most conditions. Fruits are large, freestone, colored a deep golden yellow blushed with red. The skin is tough, and the flesh, while tender and juicy, is of such texture that Elberta is famous for its ability to carry to distant markets. Quality is good, and the slight bitterness around the pit is preferred by many. Even though Elberta is an old variety, you may be sure that you will receive the best of Elberta strains from Bountiful Ridge.

J. H. HALE (12c) It is one-third to one-half larger than Elberta and more highly colored. The skin is deep crimson, smooth, and almost without fuzz. Flesh is golden yellow, firm, and most delicious. A freestone with unusual keeping qualities. Fruit ripens a few days before or with Elberta, but hangs better. NOTE: J. H. Hale does not have an entirely perfect bloom and needs cross-pollination for best results.

WHITE HALE—N.J. 63 (12d) A large white-fleshed freestone of good quality, ripening with J. H. Hale. Tree is vigorous. A fine white-fleshed peach to follow Belle of Georgia.

JERSEY QUEEN (12e) A fine new variety, formerly tested as N. J. 216, which ripens with Elberta. It has better color, better quality, and better shelf life than Elberta. It is large and attractive. Trees are vigorous and productive. Flowers are large and showy, with good pollen. Yields have been satisfactory on limited acreage, even after hard winters.

JERSEY QUEEN



GENTLEMEN:

My order of dwarf fruit trees arrived in perfect condition. Thanks for sending such beautiful trees and doing such a wonderful job of packing.

W. C. Ikins
Texas

✓ **JEFFERSON (13)** Jefferson is a new, round, yellow-fleshed freestone ripening about two days after Elberta. Fruits are quite comparable to J. H. Hale, but the color is much brighter. The trees of Jefferson are more vigorous than Hale and produce a heavy set of buds which are self-fertile and quite tolerant to spring frosts. We suggest that you use Jefferson in combination with Washington and Madison for a full season of frost-tolerant peaches in any area where spring frosts present a problem.

✓ **MARGLOW (13a)** An open pollinated seedling of Redskin introduced just this year by the University of Maryland. Marglow is a beautiful, round, red peach that ripens 3 days after Redskin. Trees are vigorous and productive. Try this fine new variety to extend the Redskin season in your area.

✓ **SHIPPERS LATE RED—Hale Type (13b)** A proven variety to follow Elberta which has class and is a good money-maker. Fruits, which ripen just after Elberta and Hale, are very large, very highly colored, yellow fleshed, freestone, and of exceptional quality. Shippers Late Red is a good shipper, stores well in cold storage, and is extremely productive. Its excellent appearance causes it to bring highest prices. **Hale Type** Shippers Late Red is the best of the many strains of this fine variety. Be sure you are getting the best and plant **GENUINE HALE TYPE SHIPPERS LATE RED** from Bountiful Ridge this year.



SHIPPERS LATE RED

✓ **BRACKETT (13c)** Extend your Elberta season with this fine peach whose popularity is increasing. Brackett ripens about five days after Elberta, and its beautiful, large, orange-yellow fruits tinged with carmine bring high market prices. Fruits have deep yellow flesh that is much better in flavor than Elberta. Brackett sizes well under heavy crops, ships well, is freestone, and an excellent peach in most areas extending from Mississippi northward.

✓ **MARHIGH (13d)** This fine new peach from the University of Maryland brings Redskin quality and appearance just a little later. We think this new variety will fit into most any orchard plan; especially where late fruit is desirable. Marhigh ripens 5-7 days after Redskin on good vigorous trees. Fruits are good, well-colored and carry well.



MARSUN PEACHES

✓ **GEMMERS LATE ELBERTA (14)** An extra large, beautifully colored peach with high quality and fine shipping ability that follows Elberta by about 10 days. Fruits of Gemmers are larger than Elberta, more highly colored, and somewhat more round. Its good, tough skin is nearly covered with a brilliant red color. Flesh is firm and slightly tinged with red around the pit. Trees are vigorous, productive, and long lived. Many growers have used Gemmers Late Elberta as an excellent substitute for Rio-Oso-Gem. Gemmers brings high prices, high yields, and stores well.

✓ **RIO-OSO-GEM (14a)** A widely grown, beautiful, Hale type peach that ripens 7 to 10 days after Elberta. It is large sized, with brilliant red color and light pubescence. The flesh is firm and fine textured, with excellent flavor. Rio-Oso-Gem is best known as a highly profitable fresh market peach, but it is equally good as a canning and freezing variety. Trees are not very vigorous, but set good crops each year.

✓ **SO GOOD (14b)** A new yellow freestone from Maryland ripening about with Rio-Oso-Gem. Fruits are large, highly colored, and most nearly resemble Redskin. It crops annually, with good yields. Trees are vigorous and healthy, more upright than Redskin. So Good should have a place in your plantings.

✓ **N.J. 162 (14c)** A very attractive, large, firm, yellow-fleshed peach ripening a week to 10 days after Elberta. The blossoms do not produce viable pollen and, therefore, adequate provision should be made for cross pollination.

✓ **MARQUEEN (14d)** Just introduced this year by the University of Maryland, Marqueen is certain to become popular almost overnight. It ripens 2-5 days after So Good and just a bit later than Rio-Oso-Gem. The fruits are well-colored, of good size and appearance, and make a beautiful pack. We think Marqueen is just the peach to extend your season for high quality fruit.



LIZZIE (15) An old variety with a proud history of grower success in most central and eastern peach areas. Lizzie is a distinct Elberta type which has size, color, firmness, and high quality. It is a freestone with fine-textured, yellow flesh. It ripens 12 to 16 days after Elberta, with handsome red color over a deep yellow ground color. Fruits are good for shipping, local markets, and processing. Trees are vigorous, hardy, heavy and annual bearers. Many growers consider it the best of our very late peaches.

MONROE (15a) A new late season yellow freestone from Virginia. Monroe ripens about 6 days after Rio-Oso-Gem in a period for which no good peach is available. The fruits are above average in size, have bright red color and are very firm. The flesh has good texture, and the quality and flavor are superior to Rio-Oso-Gem. Trees of Monroe produce only a moderate set of buds that have shown above average tolerance to spring frost. However, the trees are reliable producers of large, handsome fruits. We suggest trial plantings of Monroe in every peach section.

AUTUMN—N.J. 145 (16) A large, yellow freestone that ripens just after Lizzie. Fruit colors a good yellow with a fine red blush on one cheek. The tree is very vigorous and should be planted on well-drained peach soil. Autumn is just the peach for the grower who wishes good size, high quality, very late fruit for roadside or nearby markets. In recent years, Autumn has been stored in cold storage well into the fall.

MARSUN (17) This new peach variety was introduced by the men from Maryland because of its very late maturing season. Marsun is a highly colored peach that ripens 28-30 days after Redskin. It is best suited for the Maryland area and points south. We do think it worthy of trial in other late peach producing areas.

NOVELRED

Half Nectarine—Half Peach

Novelred is a brand-new discovery that is neither all peach nor all nectarine. Both fuzzy and smooth fruits are produced on the same tree at the same time. Many times you will find that one fruit is partly smooth and partly fuzzy. The quality of both types of fruit is excellent. The fuzz on the ordinary peach-like fruits is short and not objectionable.

Fruits of Novelred are very large, very red, and have extra fine flavor. Size runs to 3½ inches in many cases. Clusters will make 2½ inches under most conditions. The excellent color of Novelred is generally a brilliant red which covers nearly all of the fruit. Even the poorer colored ones are blushed with a deep red which makes them more than appealing to the most critical eye. The smooth fruits are most always the best colored, however. The flesh of Novelred is white, streaked with carmine, and very juicy. Both the smooth and fuzzy fruits have excellent flavor, being a bit more tart and winey than an ordinary peach.

Novelred is a full freestone seedling of Erly-Red-Fre which it most nearly resembles. Its ripening season is about that of its parent, and at a time when highly flavored peaches or nectarines are not available. We know Novelred will not be good for large commercial planting, but we feel that it is a fine addition to the home gardener's or small grower's variety list. Supply limited. . . . Price: 50¢ more per plant than for regular peach, according to size and quantity.

Nematode-Resistant Peach Trees

ON NEMAGUARD ROOTSTOCKS

New Nemaguard seedlings have proven to be resistant to the common nematodes found in most peach areas. Use of these rootstocks will enable you to continue growing peaches profitably in infested areas. Nemaguard is a new seedling rootstock introduced by the U.S.D.A. that is far superior to Yunnan and other older and similar nematode-resistant rootstocks. We are now using ONLY Nemaguard as a nematode-resistant understock for peach.

VARIETIES AVAILABLE ON NEMAGUARD ROOT

Redhaven
Blake
Sunhaven

Sunhigh
Loring

Redskin
Redwin

Rio-Oso-Gem
Washington

PRICE Add 10¢ per tree to all prices listed on page 4 on whatever grade or quantity of trees you wish. (Add 10c to Dawne and Redwin prices listed on page 4.) This extra charge is necessary to cover the additional expense incurred in the production of these trees.

VARIETIES Our variety list on Nemaguard is limited. However, we will be glad to custom-bud trees on Nemaguard root of any peach variety we list, have growing in our test block, or from your own budwood. Please write for further details about this service.

NEMAGUARD SEEDLINGS

Buy True Nemaguard Seedlings For Your Own Budding Work

(2-year plants)

	10-50 each	50-200 each	200 or more each
3-4'	\$0.50	\$0.45	\$0.40
2-3'45	.40	.35
18-24"40	.35	.30



PLUMS

OUR PLUM VARIETY LISTINGS HAVE BEEN CAREFULLY SELECTED TO SUPPLY A VARIETY FOR EVERY SECTION AND PURPOSE

STANLEY PLUM

PRICES FOR ALL PLUM AND APRICOT VARIETIES

	Each	3-9 each	10-49 each	50 or more each
2 yr., 5-6', 11/16" up.	\$3.75	\$3.50	\$3.00	\$2.75
2 yr., 4-5', 9-11/16" ..	3.50	3.00	2.40	2.10
2 yr., 3-4', 7-9/16" ...	3.25	2.75	2.00	1.75
1 yr., 5-6'	3.75	3.25	2.75	2.50
1 yr., 4-5'	3.50	3.00	2.40	2.10
1 yr., 3-4'	3.25	2.75	2.00	1.75
1 yr., 2-3'	3.00	2.50	1.75	1.50

Send us your definite list for quotation when you need 100 or more plums or apricots.

Varieties listed in order of ripening

BRUCE (1) One of the best Oriental plums for southern planting. It ripens very early, averages good size, is very firm and has fine quality for such an early variety. If picked just as the yellow background appears, it will ship well and color a pretty, bright red in three to four days. Bruce is very productive, but requires pollination.

METHLEY (2) A fine variety with excellent quality and handsome appearance. Fruits are medium to large in size, reddish purple in color with red flesh. They are juicy, sweet, and of distinctive flavor. Trees are very vigorous, upright in growth. Buds are hardy, abundant, and self-fertile.

SHIRO (3) A very early Oriental plum with beautiful yellow color and good flavor when allowed to mature properly. Fruits are of medium size, and suitable for cooking, canning, and dessert use. Requires pollination.

RED JUNE (4) A mottled, garnet-red variety with firm, light yellow flesh that is aromatic and sweet. Trees are large, vigorous, hardy, and productive. Fruits are clingy, resist brown rot and curculio. Red June is an Oriental variety that is a good pollinator for Shiro and is self-fruitful.

BURMOSA (5) A new variety that is gaining favor in southern areas. Fruits have greenish yellow skin that is blushed with purple. Flesh is light yellow. Burmosa is large, freestone, rather early, and good for fresh use and shipping. Trees are spreading and resemble Burbank. Not self-fertile; plant with Santa Rosa.

ABUNDANCE (6) A very good Oriental plum. Trees are rapid growers, healthy, and bear early. They produce abundant yields of medium-sized, rich bright cherry-red, and highly perfumed fruits. Flesh is light yellow, juicy and tender, and of excellent quality. A good pollinator for Shiro and other Oriental varieties.

BURBANK (7) A large, bright reddish purple plum that is meaty and quite firm. It is hardy and prolific, and best fruits are obtained when well thinned. Trees are low growing, flat topped, and somewhat drooping. Burbank is valuable for canning and fresh market use. An Oriental variety that does much better with pollination.

OZARK PREMIER (8) A very large, firm, red Oriental plum that is gaining wide grower approval. Fruits have yellow flesh that is juicy, tart, and clingy but with good flavor. Trees are hardy, productive, and vigorous. Self-fertile.

BRADSHAW (9) An early European plum with good size, fine dark violet-red color, good shipping and keeping ability. The flesh is yellowish green and has excellent flavor. Trees are hardy and excellent growers, producing heavy annual crops. Not self-fruitful.

SANTA ROSA (10) One of our best Oriental plums. Fruits are large, conical, uniform, juicy, flavorful, and colored purplish crimson with a pale bloom. Trees are large, vigorous, and productive. Blossoms are self-fertile, but produce larger crops when planted with another variety.

SATSUMA (11) One of our best home canning and preserve plums. Fruits are large, almost round, with deep dark red skin. Flesh is purplish red, juicy, sweet, firm, and has fine flavor. A semi-freestone Oriental variety that needs pollination. Plant with Santa Rosa for best results.

FELLENBERG (12) An old European variety widely known for dessert, market, and drying usage. Fruits are long, large, oval, purple covered with a thick bloom. Flesh is firm, sweet, juicy, and delicious. A freestone. Trees make moderate growth and are hardy. Self-fruitful. Also known as Italian or German Prune.

YELLOW EGG (13) A late European variety that produces large, golden yellow fruits. Fruits have heavy skin and yellow flesh that is juicy, mild, and fine in quality. A freestone adapted to home, market, or culinary use. Trees are vigorous, round topped, hardy and very productive. Self-fertile.

STANLEY (14) The most popular of all prune plums, it is excellent for home use and commercial planting. Fruits are large, of fine quality, and colored deep purplish blue. The flesh is greenish yellow, juicy, tender, firm, and sweet. Trees are vigorous, hardy, bear early, and produce large annual crops. Freestones. Self-fertile.

SHROPSHIRE (15) One of our most esteemed preserving fruits. Damson plums are borne in profusion by good, vigorous trees. Fruits are oval, of medium size, and dark purple in color. A European variety that is self-fruitful.



METHLEY PLUM

APRICOTS

STELLA A hardy Russian type apricot that is very cold resistant. Produces good crops of fruit where other varieties freeze out. The fruit is medium size, golden yellow in color, and delicious in quality. A freestone. Recommended for all sections where peaches can be grown.

EARLY GOLDEN A good variety. Very large, deep golden yellow, fine in quality.

SUNGOLD A sister seedling of Moongold that ripens later. Fruit gold with orange blush, medium size, very high quality, freestone, and hangs well until ripe. Tree is medium sized, rather upright, exceptionally winter-hardy, very productive, self-unfruitful but pollinated by Moongold. For home use.

SUPERB Rated by many as the best. The tree is large, very thrifty and hardy, and is extremely productive. Very good quality. Fruit is beautiful yellow with slight blush; flesh firm and solid.

MOORPARK One of the largest Orange-yellow with numerous specks and dots; flesh yellow, sweet, juicy, and rich. August.

MOONGOLD A very hardy new apricot for northern areas. Fruits are medium in size, orange-yellow, freestone, and of good quality. Ripens earlier than Sungold; self-unfruitful but pollinated by Sungold. Trees medium sized, rather spreading, vigorous, and do well in cold climates. For home gardens.

QUINCE TREES

ORANGE An outstanding fruit for jam and jelly. Fruits are borne on small, dwarf-like trees and are profitable for fruit growers, farmers, and home gardeners. Large crops of roundish, bright yellow, very large fruits of fine quality are borne annually. Trees take little room and are easy to grow.

CHAMPION Fruits are very large, handsome, and lighter in color than Orange. Trees bear abundantly while young. Flesh of Champion is tender, without hard spots and cores. Flavor is very delicate and delicious for any purpose.

PRICES OF ORANGE AND CHAMPION QUINCE

	Each
4-5', 9/16" up.....	\$3.50
3-4', 7-9/16".....	3.25
2-3', 5-7/16".....	3.00





SWEET CHERRIES

HIGH IN QUALITY AND VIGOR — HEAVY
PRODUCERS — LONG LIVED — BEAUTIFUL

USE FOR BOTH FRUIT AND SHADE

PRICES OF SWEET CHERRIES

	Each	3-9 each	10-49 each	50 or more each
2 yr., 6-7', 7/8" up	\$4.50	\$4.00	\$3.50	\$3.00
2 yr., 5-6', 11/16-7/8"	3.95	3.25	2.75	2.50
2 yr., 4-5', 9-11/16"	3.50	3.00	2.50	2.15
2 yr., 3-4', 7-9/16"	3.25	2.75	2.20	1.90
1 yr., 5-6'	3.50	3.00	2.50	2.15
1 yr., 4-5'	3.25	2.75	2.20	1.85
1 yr., 3-4'	3.00	2.20	1.90	1.60

Write for special prices if you are interested in large quantities. We will give you the advantage of any market changes.

Note: Sweet Cherries bear heavier and more regular crops where properly cross-pollinated, and two or more varieties should be planted together.

Again note that Napoleon, Bing, Lambert, and Emperor Francis are incompatible; a third variety should be planted with them.

Varieties listed in order of ripening

SENECA Ripens two weeks before Black Tartarian. The cherries resemble Black Tartarian—large, round-cordate, purplish black, with juicy melting flesh and a rich sweet flavor; the pit is free and the skin does not crack. The tree is vigorous, productive, and has upright, spreading habit of growth. Early.

EARLY RIVERS This fine cherry is highly regarded by cherry growers in eastern New York. Ripens a few days later than Seneca and 10 days ahead of Black Tartarian. It is larger and firmer in flesh than Tartarian. Crimson-black in color and excellent quality for dessert. Early.

BLACK TARTARIAN Very large; bright purplish black; tender, juicy, very rich. Tree a remarkable vigorous and erect grower, and is an immense bearer. Early.

SAM The fruit is large, firm, black, and of good quality. It ripens at least a week earlier than Bing and is fairly resistant to cracking. Fruits resemble Deacon in shape and Bing in quality. Trees are vigorous, hardy, self unfruitful but interfruitful with Bing, Lambert, and Van.

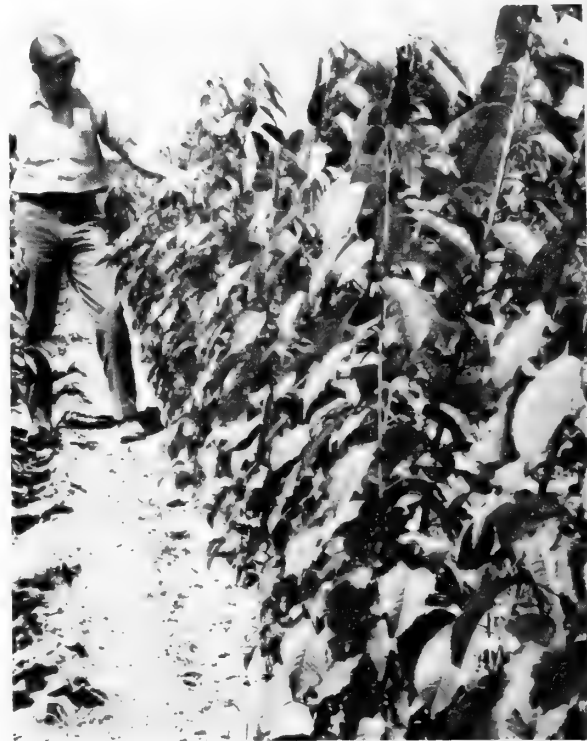
VERNON The fruit is large, firm fleshed, black, and ripens just before Bing. The tree is vigorous and productive.

BING This valuable black cherry succeeds everywhere. Flesh very solid; flavor of the highest quality. A fine shipping and market variety. Midseason.

VICTOR Fruit resembles Napoleon and ripens between Gov. Wood and Napoleon. Fruits are large, medium firm fleshed, light colored, and of excellent quality. Tree is large, vigorous, and productive.

NAPOLEON BIGARREAU (Royal Ann). A beautiful cherry of large size, pale yellow with bright red cheeks; flesh firm, juicy, and sweet. One of the best for market. Midseason.

EMPEROR FRANCIS Large, high quality cherry of the Napoleon type. Ripens just before Napoleon and is less subject to cracking. Promises to be one of the best main-crop sweet cherries of the Napoleon type. Mid-season.



Fine "Bumper Crop" one year Sweet Cherry

BLACK RUSSIAN One of our finest new, hardy sweet cherry varieties. Trees are vigorous, very hardy, and highly productive. Crops are seldom affected by low winter temperatures or spring frosts. Fruits are medium in size, do not crack, and show little tendency to brown rot before picking. Cherries are almost black in color, freestone, and very flavorful. Ripens just before Schmidt.

SCHMIDT'S BIGARREAU This fruit is very large size, with a fine rich flavor. Fruit grows in clusters. Is an excellent shipper. Tree is vigorous and one of the hardiest of all sweet cherries. Midseason.

GIANT Bears dark red cherries attractive in size and color; ripens just before Lambert. Quality is splendid. Less subject to cracking than Bing. Tree is large, vigorous, and very productive.

HEDELFINGEN Ripens just ahead of Windsor and Lambert. Its performance in New York, Canada and Europe justifies its being recommended as a large, firm-fleshed, high quality, late black cherry of the Lambert type. The fruit has the valuable attribute of being more resistant to cracking than most cherries.

DEAR SIRs:
Both our shipments for asparagus and strawberries arrived in excellent shape. Shipping for approx 36 hours in transit via Greyhound Bus is a great improvement in your ever increasing services. Thank you very much.
Rudolph J. Gron, Jr.
Illinois

LAMBERT One of the largest of all cherries. It is purple-red, firm and rich. Every year sees an enormous crop. The tree not only grows well, but is very resistant to insect and fungus attacks. Midseason.

WINDSOR Tree upright, vigorous and a rapid grower. Fruit almost black, very firm and juicy; flesh pinkish and sometimes streaked. Quality very good; a productive bearer. A leading commercial variety, used widely for pollination purposes. Midseason.

HUDSON A new black sweet cherry from New York that ripens later than Lambert. Use this new cherry to extend the season as much as 10 days. Trees are vigorous, hardy in wood and bud, and produce good crops at an early age.

DEAR SIRs:
I received all the strawberry plants and am well pleased with them. They are beautiful plants. So glad you got things straightened out about the prices in my order.
Nathan J. Hensley
Virginia



BOUNTIFUL STRAIN IMPROVED
MONTMORENCY
(DAYTON STRAIN)

Large Size—Vigor of Growth—Productivity—Plus
Virus-Free Planting Stock Make It Superior to all
Other Types of Montmorency.

It was discovered in the orchards of Clyde S. Mumma, Dayton, Ohio, in a general planting of Montmorency trees. When we first saw the tree it was about 10 years of age and loaded down with fruit, having a heavier crop than any other trees adjoining it. All trees had the same attention, and Mr. Mumma says it had always borne this large type of Montmorency. The tree is vigorous but not any larger than other trees. The fruits have the same rich red color as other Montmorency cherries but seem to be slightly more mild in flavor. Its immense size immediately attracted attention. We grew several hundred trees of this type for Mr. Mumma's own planting and now pass it on to our customers at no additional cost to them. Nature again contributes an improved type to our greatest sour cherry.

EARLY RICHMOND One of the most valuable and popular cherries, unsurpassed for cooking purposes. It is the good old variety that yields such marvelous crops in gardens. The most hardy of all varieties, uninjured by the coldest winters.

SOUR
CHERRIES

A SOUND INVESTMENT FOR PROFIT

PRICES OF SOUR CHERRY TREES

	100 or more	50-99	10-49	3-9	Each
2 yr., 4-6', 11/16" up	\$1.50	\$1.85	\$2.50	\$3.25	\$3.95
2 yr., 3-5', 9-11/16"	1.40	1.60	2.25	3.00	3.50
2 yr., 2-4', 7-9/16"	1.30	1.40	2.00	2.75	3.25

Prices and grades on 1-year Sour Cherry are the same as on 2-year trees.

Write to us for special prices if you are interested in large quantities. Please give definite grades and quantities wanted, and we will give you the advantage of any possible seasonal market changes.

Sour Cherries are generally self-fruitful and will cross-pollinate Sweet Cherries to a greater or lesser degree, depending on seasonal bloom period variations.



NECTARINES

FLAVORFUL - BEAUTIFUL - POPULAR

✓ **REDCHIEF** One of our best white-fleshed varieties. Fruits are of good size, highly colored, freestone, and with a very pleasing flavor. Trees are thrifty and productive, with a marked resistance to brown rot. Redchief ripens about 13 days before Elberta and is moderately tolerant of spring frost.

✓ **GARDEN STATE** A large, firm, freestone, yellow-fleshed nectarine that ripens with Hale Haven and Redchief, 12 to 15 days before Elberta. An orange-yellow undercolor is overspread with red to give it a fine appearance. Trees are vigorous and productive. One of our finest nectarine varieties.

✓ **CAVALIER** More highly colored than Redchief. It has good size, fine yellow flesh with high quality, marked resistance to brown rot, and is a freestone. Trees are vigorous and productive, setting abundant quantities of fruit buds that are quite tolerant of spring frost. Cavalier ripens about eight days before Elberta.

✓ **FRANCESCO**
(Plant Patent Applied For)

A very fine new nectarine found by Anthony and Nunzio Curcio of Hammonton, New Jersey. Francesco produces extremely large freestone fruits of high quality. The fruits are more than half covered with a beautiful carmine-red which is laid over a good golden yellow ground color. Ripening period is from August 25th to about September 5th or in the Blake-Redskin peach season in the Hammonton area.

The Curcio's were first attracted to this new fruit by its excellent size. Mature fruits of Francesco will measure 2½ or more inches when well grown. Color is such that Francesco can compete very favorably with western nectarines. The fruits are resistant to disease and insect pests as grown on second and third generation trees. The Curcio Brothers have found a good peach spray schedule completely satisfactory for this new nectarine. Added benefits of Francesco are fine flavor and excellent keeping and shipping quality.

Trees of Francesco are thrifty and productive, medium large in growth, upright and round-topped in habit. They are hardy and bear annually. Flowers and buds are hardy and open medium early. Cross-pollination is not required.

The first trees of Francesco will be available in the Fall of 1968. We suggest you place your orders now to reserve your needs. You may be assured this is an excellent nectarine that can be successfully grown under eastern conditions. It is truly a fine fruit for the commercial and home grower. **Price of Francesco will be 75¢ more per tree than regular Nectarines.**

PRICES OF ALL NECTARINE VARIETIES

	3-9	10-49	50-99	100 or more
	Each	each	each	each
6-7', 7/8 up ..	\$3.95	\$3.50	\$3.00	
5-6', 11/16" ...	3.50	2.95	2.35	\$1.60 \$1.30
4-5', 9-11/16" .	3.25	2.75	2.15	1.40 1.10
3-4', 7-9/16" .	3.00	2.50	1.95	1.25 1.00
2-3', 5-7/16" .	2.75	2.25	1.85	1.10 .85
2-3', light	2.50	1.95	1.70	.95 .75
18-24"	2.00	1.65	1.50	.85 .65

Varieties listed in order of ripening

✓ **CHEROKEE** A highly colored new variety from Virginia that ripens about 30 days before Elberta. Fruits are yellow fleshed, semi-freestone and above average in quality. Trees are productive, medium vigorous, and produce large showy flowers. Cherokee has above average tolerance to brown rot and spring frost. First trees of Cherokee will be available in Fall 1968.

✓ **REDBUD** A white-fleshed, average-sized freestone ripening about 27 days before Elberta. A good bright red, attractive, smooth skin covers the fruits which are above average in firmness, medium in texture, and of good quality. The trees are of average vigor and produce heavy sets of buds. They are highly resistant to brown rot when a standard peach spray schedule is followed. Buds are more tolerant to late frost than Redchief, but slightly less than those of Cavalier.

✓ **LEXINGTON** A yellow-fleshed variety ripening about 17 days before Elberta, with average-sized, freestone fruits 2 inches or more in diameter. The skin is a deep yellow overlaid with red, giving an attractive appearance. The flesh is medium textured and of good flavor. Lexington is resistant to brown rot when regular peach spray is used. The trees are vigorous and set a large amount of fruit buds which are relatively hardy.

✓ **LAFAYETTE** The largest of all the new Virginia selections. Lafayette has the best skin color and finish, too. Even though the flesh is white, we think this fine new variety will be a welcome addition to every planting. Fruits ripen with Lexington, seem resistant to brown rot, and good crops are borne annually.

Are You Planting the BEST?

KING OF FRUITS APPLES

**Bountiful Ridge Trees Are
The Foundation of a Successful Orchard**

**THRIFTY - HARDY - DEPENDABLE
PLANTING STOCK LEADS TO SUCCESS**

PRICES OF APPLE TREES (Standard Rootstock)

Skyline Supreme—\$.10 higher

See Special Price List for SkySpur, Nugget, Sungold, Waynespur, Chesapeake, & King Luscious on Page 25.

	Each	3-9 each	10-49 each	50-99 each	100- or more each
2 yr., 6-7', 7/8" up	\$3.95	\$3.50	\$3.00	—	—
2 yr., 5-6', 11/16-7/8"	3.50	2.95	2.35	\$1.70	\$1.40
2 yr., 4-5', 9-11/16"	3.25	2.75	2.15	1.50	1.20
2 yr., 3-4', 7-9/16"	3.00	2.50	1.95	1.35	1.10
1 yr., 5-7'	3.50	2.95	2.35	1.70	1.40
1 yr., 4-5'	3.25	2.75	2.15	1.50	1.20
1 yr., 3-4'	3.00	2.50	1.95	1.35	1.10
1 yr., 2-3'	2.75	2.00	1.75	—	—

All prices are net, F.O.B. Princess Anne, Md.

**VARIETIES AND PRICES OF CONTROLLED SIZE TREES ARE
LISTED ON PAGES 26 AND 27**



NOTE: The ripening order of varieties is designated by a bracketed number after the name. Varieties overlapping in ripening season are indicated by subletter. We are endeavoring to give the ripening order and not the picking order, for this will vary greatly according to the grower and where they are marketed. We trust this listing will be helpful to you.

YELLOW TRANSPARENT (1) Holds a long record as our most widely planted early commercial apple. Tree is upright, hardy, early bearer. Good size; skin clear white to pale yellow in color. Flavor very good. An excellent cooking apple known to the housewife everywhere. Ripens early July.

LODI—Big Transparent (2) One of our very best early apples, it has the same quality and flavor as Yellow Transparent but it is much larger and firmer. Fruits ship well and do not show bruising. Ripening date is a few days later than for Transparent, but Lodi can be picked earlier because of good size. Trees are spreading, vigorous, and productive. Needs pollination.

WILLIAMS' EARLY RED (2a) Among the earliest to ripen and the largest of all early apples, a better name for it is "Big Red Apple." Flesh is white, juicy and slightly tart, tender and crisp. A very good one, like Transparent. Bears heavily on young trees.

WELLINGTON (2b) An attractive red-striped apple ripening just after Lodi. Wellington matures all of its fruit at one time and needs only one picking. An excellent early commercial for fresh and processor markets. Trees on E.M. VII rootstock only.

SPECIAL NOTE: If you want more than 300 apple trees, write to us giving full list of varieties and grades desired, and we will quote you special prices consistent with market conditions at such time.



Excellent 2 yr. McIntosh on Semi-Dwarf Rootstock

EARLY McINTOSH (3) A McIntosh Hybrid, being almost red in color, very crisp. A thrifty grower and a regular bearer. Your opportunity to have the McIntosh type as a very early apple. Cash in on the popularity of the McIntosh by growing Early McIntosh for your markets.

CAULEY (3a) An extra large apple suited for growing in the deep south. Fruits mature about the middle of August in Mississippi and are greenish yellow with a slight blush of pink. Since Cauley is best used for culinary purposes, it can be picked 4-6 weeks ahead of actual maturity. Trees of Cauley are long lived, productive, and highly resistant to fire blight. Blossoms do need pollination and Yellow Delicious is suggested. Trees available on E. M. VII rootstock only.

SUMMER CHAMPION (3b) A bright red apple ripening in midsummer, with good size and fair quality. The trees bear early and produce heavy crops. We feel this fine-looking apple should have a place in most plantings of summer apples. It is good for local and distant markets.

PURITAN (3c) A new McIntosh type which picks about with Early McIntosh. It has a fine red-blush color and averages larger than Early McIntosh. It is more acid than Early McIntosh and rates fair to good for dessert purposes. Puritan is recommended for trial in orchard plantings.

JULYRED (3d) A fine new summer apple from New Jersey that ripens a week to ten days after the first picking of Starr. Fruits are covered with an attractive red color, good to eat, and above medium in size. Julyred is attractive, firmer, and has better shelf life than most other summer apples. Won't you try them. . . .

TYDEMAN'S RED (3e) A new late summer apple of McIntosh type. Ripens just after Early McIntosh. Fruits are large, red; similar to McIntosh but much firmer.

RED GRAVENSTEIN (4) This favorite of many years as a summer apple of fine quality and shipping ability is now offered in a Red Strain. Large, well colored, with slightly yellow flesh of fine quantity. Tree is vigorous and productive. Ripens somewhat irregularly and should be picked several times.



"Bountiful Grown" trees make best orchard foundation stock.

APPLE SEEDLINGS

Save Those Valuable Damaged Producing Trees by Bridge Grafting and Low Inarch Work

This is the common apple seedling that has been used in propagating apple trees for generations. We can supply these two-year-old, strong roots and one-year tops in the following sizes and prices (supply limited):

	10-50 each	50-200 each	200 or more each
3-4'	\$0.50	\$0.45	\$0.40
2-3'45	.40	.35
18-24"40	.35	.30

BEACON (4a) A highly colored, early apple with excellent eating and shipping qualities. Ripens just before Wealthy and after Williams' Early Red. The tree is vigorous, healthy, and a heavy producer. Fruit hangs well and can be picked over a long period of time to get the best size and color. Averages 2½-inch fruit with normal crop.

BLAZE (4b) A new Jonathan type apple ripening about 3½ weeks earlier than Jonathan. Fruit is medium in size, attractively blushed with red over golden yellow, and somewhat less tart than Jonathan. Tree is upright, spreading, vigorous, and productive. Blooms two days after Jonathan.

MILTON (5) Typical McIntosh, coloring full red; very good quality, about equal to McIntosh, being same texture apple. Tree hardy and vigorous. Ripens three to four weeks before McIntosh or just before Wealthy.

RED WARRIOR (5a) The tree is vigorous, well formed similar to McIntosh, and bears regularly. The fruit is large, normally averaging better than 3 inches. The skin is smooth, colored a brilliant red from stem to calyx, and does not bruise easily. Its ripening season is about with Wealthy or a little earlier. It is sub-acid in flavor and is an excellent cooking variety. The apple is shaped nearly like a Stayman.

NIAGARA (5b) A 1962 introduction from New York which provides a McIntosh type apple about two weeks earlier. In appearance, flavor, and tree habit, Niagara is very similar to McIntosh. Its desirable picking season and similarity to McIntosh should help its commercial acceptance.

WEALTHY (6) This beautiful, moderate sized, brilliant red apple is of fine quality—one of the best of its season. It is a relatively good keeper, and owing to the hardiness of the tree, its adaptability to cold climates, and early bearing habits, it can be profitable as a filler.

SUMMER RAMBO (7) Large, flat, streaked red and yellow, very tender, juicy and fine flavored. Tree is a very vigorous, semi-spreading grower, hardy and productive.

SKYSPUR (7a) A spur-type mutation of the Famous Skyline Supreme Red Delicious introduced by us several years ago. Fruits of SKYSPUR are large, have good Delicious shape, and are completely covered with the same good red blush that is present on Skyline Supreme. Season of ripening is the same as its parent, too.

Trees of SKYSPUR are normally semi-dwarf in size. The open, spreading habit of growth allows all the fruit to color well. Fruits are borne on long spurs throughout the tree. The fruits hang free and are less subject to spur injury than on most other spur-type varieties.

SKYSPUR sets a heavy crop at an early age. No need to waste precious time and money on slower bearing strains of Delicious. SKYSPUR does need pollination for best results. We suggest "NUGGET," our new spur-type Yellow Delicious; or "SUNGOLD," the new spur-type russet-free variety which resembles Yellow Delicious from New Jersey. See Special Price List for one year trees on standard rootstocks only.

SKYLINE SUPREME RED DELICIOUS (7b)



Early Coloring - Early Ripening

SKYLINE SUPREME is a true sport Starking that is particularly outstanding because of its early coloring and early ripening habits. Fruits of Skyline Supreme reach full color and maturity several weeks earlier than Richared and Starking, and many days earlier than most recently introduced early coloring types. They color equally well in all areas of the tree. The well colored, completely blush red fruits are ready to pick at the same time as the red sports of McIntosh.

Skyline Supreme exhibits a strong habit toward the sheep-nosed condition prevalent among western grown Delicious. Trees are vigorous, bear young, and set large crops of large, highly colored fruits. Blossoms are similar to other types of Red Delicious and appear at the same time. Pollination is needed for best results.

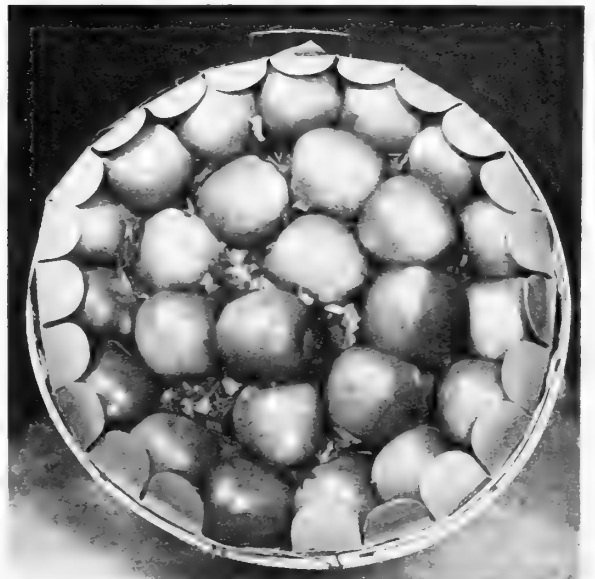
Trees of Skyline Supreme are normally regular size. See pages 26 & 27 for controlled size trees.



SKYSPUR RED DELICIOUS

IMP. ALL RED McINTOSH (7c) Our own special selected strain of the famous McIntosh apple. Known in some areas as Imperial McIntosh, this fine apple brings the grower excellent blush-red color, large size, and consistent crops. This is the finest red strain of McIntosh we have ever seen.

LOBO (8) About same season as McIntosh, with a larger apple that colors a more full red than regular McIntosh. Extra good quality. Tree equal to McIntosh. Comes highly recommended to replace the regular McIntosh for Middle Atlantic and southern growers.



SKYLINE SUPREME RED DELICIOUS



EARLY RED STAYMAN (Neipling's)

CORTLAND (8a) An improved McIntosh type. The fruits of the two varieties are similar but those of Cortland are more oblate, average larger, and are more uniform in size; they have more color and the red is lighter and brighter and the striping and splashes are laid on differently. The taste of Cortland can hardly be distinguished from that of McIntosh; the flesh is firmer but just as juicy. The apples do not drop so readily and ship better.

WAYNE (8b) Result of a cross of N. W. Greening x Red Spy introduced in 1962 by New York. It matures with Cortland, is of large size, and colored a solid scarlet-blush. Flesh texture and flavor very similar to Northern Spy. Trees bear early and annually, bloom late. Wayne is a first-class apple for sauce, frozen, and canned slice packs.

BRITEMAC (8c) A new McIntosh type apple that ripens about one week later. It hangs better than McIntosh in New Jersey and Eastern Pennsylvania. Fruits resemble Cortland, are of good quality, and not considered good for processing. Trees are hardy, strong, not as large as McIntosh. Blooms midseason. Trees on E.M. VII rootstock only.

CRAB APPLE

HYSLOP Season September to October; tree vigorous, very hardy. Fruit medium yellow ground with heavy shadings of deep crimson and splashes of maroon with heavy blue bloom. Flesh fine, firm, yellow, astringent. Bears abundantly in clusters, which makes tree exceedingly ornamental.

DOLGO A handsome red crab apple of medium size. The fruit jellies easily and makes rich ruby-red jelly. Tree hardy, vigorous, productive, medium size and especially adapted to ornamental planting.

IMP. ALL RED JONATHAN (9) This is a special bud-selected strain of the famous Jonathan apple. We have tested it in every section of the country, in trial plots and commercial orchards, for more than twenty years and have found it superior in most all cases. Highly colored Jonathan apples bring the fancy prices. Use this fine, proven red strain of Jonathan for replanting and new planting work. We are sure it will satisfy your needs.

GRIMES GOLDEN (9a) An apple of the highest quality. It is one of the fancy dessert apples and ranks with Delicious and Jonathan on the market. Medium to large, bright yellow; flesh fine grained, juicy, with a very pleasing spicy flavor. The tree is hardy, grows upright and is quite disease resistant. Highly recommended and widely planted to pollinate self-sterile varieties.

IDARED (9b) A cross between Wagner and Jonathan. Its season is with or a little later than Jonathan. Fruits are medium to large. Stems medium long, slender; cavity broad, deep; calyx small, basin shallow. Strikingly beautiful bright red color. Skin smooth, medium thick, waxen; dots sparse, inconspicuous; rich yellow under-color. Fruits hold form as well as Rome when baking. Creamy white, smooth-textured flesh. Tree form resembles Jonathan, more upright, spreading, seems rather resistant to blight. A regular bearer.

SPARTAN (9c) A very attractive McIntosh type ripening about a week later than McIntosh. Flesh is firm and dessert quality is good. Storage life is weeks longer than McIntosh. We recommend it for trial, where a McIntosh type that can be picked later and stored longer is desired.

TWENTY OUNCE (10) Fruit exceptionally large, juicy and crisp, sub-acid; color green, with slight blush and red stripe. Tree thrifty and very productive, generally recognized as our best summer baking apple.

OPALESCENT (10a) Very large, brilliant dark red all over. Tree bears when young; very prolific. Average quality. Its size and beauty recommend it for planting in central and northern areas.

PACIFIC GOLD (10b) Pacific Gold originated as a chance seedling in southwest Oregon and was introduced in the late 40's by J. E. Miller of California. The tree is moderate in size, with well-spaced, strong, wide-angled limbs. It bears when young and yields heavy crops annually. The fruit of Pacific Gold is large, with crisp, tender flesh, quite sweet, and of fine dessert quality. The skin is yellow, looking much like Yellow Delicious and Mutsu. The season is late fall or early winter. Pacific Gold keeps well in storage and should be tried in areas where russetting is a problem with Yellow Delicious.

SPIGOLD (10c) A very high quality, dual-purpose apple from a cross of Red Spy x Golden Delicious. Matures about with Golden Delicious. Spigold has exceptional quality and should be an excellent home-garden variety.



NORTHWESTERN GREENING (10d) A fine, large, green cooking apple that is being demanded by growers and processors once again. Trees are vigorous and quite hardy. The fruits are of good flavor, very smooth and attractive. This fine apple matures just before Yellow Delicious but can be picked over a long period of time with good results.

YELLOW DELICIOUS (11) This apple is famous for its unique quality, embracing a combination of flavors which is hard to equal. This, combined with the fine, firm-textured flesh of the apple and the beautiful golden yellow skin, at once attracts the eye of the consuming public. The tree, while not a large growing type, is thrifty and extremely productive, coming into fruiting and giving an abundant crop while very young.



SPUR TYPE YELLOW DELICIOUS (11a)

A new spur-type Yellow Delicious apple. Fruits are borne in profusion all over the trees at a young age. Fruits are similar in every way to Yellow Delicious. We have found no evidence that Nugget is any more or less susceptible to russeting than regular Yellow Delicious.

Trees of Nugget are normally semi-dwarf—about one-half the size of regular trees. They are hardy, very productive, and easy to manage. Pollen is good and they may be interplanted with SkySpur Red Delicious for pollinating purposes.

Trees of Nugget are on standard rootstocks this year. This fine new spur-type Yellow Delicious will allow you to make extensive plantings of well anchored trees that will be small at maturity. See special Price List for one year trees on standard rootstock only.



NUGGET

Our Trees Are Inspected For Trueness-To-Name
**PENNSYLVANIA TRUENESS-TO-NAME
 INSPECTION SERVICE**

*a service to nurserymen and fruit growers
 to promote trueness-to-name fruit varieties*

SPONSORED BY THE STATE HORTICULTURE ASSOCIATION
 OF PENNSYLVANIA

C. M. RITTER
 ROUTE 1, BOX 20
 BOALSBURG, PENNA.
 Aug. 10, 1967

TO WHOM IT MAY CONCERN:

All saleable apple, pear, plum, sweet cherry, and sour cherry varieties propagated on standard seedling material and now growing at Bountiful Ridge Nurseries have been examined by the Pennsylvania Trueness-To-Name Inspection Service. To the best of our knowledge, these trees are true to name as they now stand in the nursery row.

FURTHER:

All saleable apple varieties propagated on clonal understocks and now growing at Bountiful Ridge Nurseries have been examined by the Pennsylvania Trueness-To-Name Inspection Service for trueness to name of rootstock, interstock if any, and variety. To the best of our knowledge all parts of these trees are true to name as they now stand in the nursery row.

C. Marshall Ritter

SUNGOLD (11b) A russet-free apple resembling Yellow Del. found in New Jersey. Sungold is much the same quality, appearance, and shape as Yellow Delicious. Fruits ripen at the same time as Yellow Delicious and must be handled in the same way. Trees are vigorous, bear young, and are more spurred than Yellow Delicious. Sungold is a good pollinator.

MACOUN (11c) Very highly colored, having no stripe. Same quality as McIntosh, same textured fruit, hangs to the tree better than McIntosh and ripens one to two weeks after Cortland. Tree about equal to McIntosh, a regular bearer, and strongly recommended to lengthen the McIntosh season.

RICHARED DELICIOUS (11d) The best of the red sports of Delicious. It has superb quality, beautiful bright red color without stripe, and excellent shape. Trees are hardy, vigorous, and produce large annual crops. Fruits of Richared are large, very handsome, and good. They ripen all over the tree weeks earlier than regular Delicious. Richared is your best bet for elevations over 100 feet. An excellent storage apple, too.

DOUBLE RED DELICIOUS (11e) Another sport of Delicious that ripens with a stripe. It is your best bet for an early coloring Delicious at low elevations. When planted in areas over 100 feet, it tends to get too dark and is not as handsome as Richared. It bears young and produces large crops of fine, beautiful Delicious apples. Very similar to Starking.

DEAR SIRS:
*They are the finest looking trees I have ever received, and I am so pleased to get them before any danger of frost damage came up.
 Thank you so very much for all the trouble you have taken about my order. I can certainly recommend your nursery stock and service to anyone, and will order any trees I need in the future from you.*

H. T. Davidson
 Oklahoma

✓ **WAYNE-SPUR RED DELICIOUS** (11f) A very new and promising Spur Type Red Delicious from Virginia. Fruit is produced on spurs along scaffold limbs throughout the tree. Fruits are typical of Red Delicious in shape, are predominantly blushed red and of good size. Wayne-Spur colors earlier than Double Red Delicious, but ripens about the same time. Trees are true semi-dwarf and bear ample crops early in life. Storage life and firmness is better than Double Red Delicious. We recommend this fine new apple.

✓ **MUTSU** (11g) A new Yellow Delicious type apple from Japan that is highly resistant to russetting. Fruits are generally larger than Yellow Delicious and with coarser flesh. A possible replacement for Yellow Delicious because of its resistance to spray injury, late keeping qualities, vigorous growth of tree, and larger fruit.

✓ **EARLY RED STAYMAN (Neipling's)** (12) Colors 100% all over the apple, from 10 to 20 days before the regular Stayman. Growers can pick the entire crop at one picking, if desired, and avoid losses. Cold storage tests show it will keep through to following May and come out with less scald, more flavor and more snap than any other type Stayman.

✓ **NORTHERN SPY** (13) Large, roundish conical, often flattened, slightly ribbed; handsomely striped with red. Flavor rich, aromatic, mild sub-acid, fine. Keeps through winter and late into spring.

✓ **TURLEY** (13a) The trees resemble Stayman and are vigorous, rapid growers, productive and early bearing. The apples average large to very large; skin smooth, coloring a bright attractive red over the entire apple. Flesh is firm; quality is good but cannot be classed as a high dessert apple. The value of this apple lies in the fact that it will not crack under normal conditions.

✓ **COLORA RED YORK** (14) Earlier coloring, earlier picking, greater profits. The tree of Colora Red York has the same rugged characteristics as the old York Imperial, but will color 100% over the entire tree under most conditions. The Colora Red York can be picked from one to two weeks earlier than regular York. The entire crop can be picked at one time if desired. We do not know of any other type that will give the grower such attractive apples as the Colora Red York produces.



Well grown one year apple

✓ **RED YORKING** (14a) Another red sport of York Imperial that has merit. We offer this variety to our customers who have experienced more success with Red Yorking than Colora Red York because of site conditions, etc.

✓ **MELROSE** (14b) A new late-keeping winter apple that is a cross of Jonathan and Delicious. Tree blooms later than either parent. Fruits ripen just before Stayman, keep well in cold storage until April, and so far have proven free of Jonathan spot.

Fruits are well covered with an attractive carmine and have a live yellow undertone. Fruits larger than Jonathan—firm, crisp, juicy, not as tart as Jonathan or as sweet as Delicious. Excellent cooking and dessert quality.

Tree bears moderately young, is upright, spreading, with good crotch angles, and develops to a reasonably large size.

✓ **DOUBLE RED STAYMAN—201 Type** (15) One of the newer introductions which has found favor with some growers. Trees and fruit characteristics similar to Blaxtayman except that it has a more brilliant color which lays on earlier and does not get the dark shade often found in some Stayman types.

✓ **RUBY** (15a) A promising late-keeping apple. Ruby has great eye appeal because of its striking, brilliant over-all carmine-red. The tree resembles Rome in growth, bears early and produces annually. Blooms about with Gallia and just after Delicious. Picking date is about with Rome or just before Stayman. The flavor is good, surpassing that of Rome Beauty. It is somewhat juicy, neither sharp nor sweet but pleasingly mild; cooking does not detract from the flavor but seems to improve it; whether baked or stewed, the flesh has tendency to hold its shape well. Fruits hold well in storage into April and May, being less susceptible to scald than Rome Beauty.



BOUNTIFUL IMPROVED WINESAP



KING LUSCIOUS

U. S. PLANT PATENT No. 1994 (15b)

KING LUSCIOUS is probably the largest good apple to come to the planter in many years. KING LUSCIOUS was found by the late Wm. M. Dalton of Hendersonville, N. C., who later crossed it with Red Delicious and King David, resulting in the fine apple which we are pleased to introduce to our trade.

KING LUSCIOUS is a very large, highly colored apple with good keeping, eating, and cooking qualities. The skin is a deep red at maturity with a beautiful bloom. The flesh is pure white with excellent flavor. The season of ripening is with Rome Beauty and Stayman, although it may be picked sooner for cooking purposes if desired. The tree is a young and annual bearer, blooming a week after Rome Beauty to make it almost completely frost-proof.

The tree is semi-dwarf in habit, sets its scaffold branches well, and needs little pruning. Both tree and fruit are resistant to apple scab.

We believe KING LUSCIOUS has a place in every planting, not only because of its large size and attractive appearance, but because it is the most frost-resistant apple variety we know of.

Please refer to second cover for color illustration of this new and wonderful apple.

PRICES FOR KING LUSCIOUS, SKYSPUR, WAYNE-SPUR, NUGGET, SUNGOLD, & CHESAPEAKE

(Standard Rootstock)

	100 or				
	Each	3-9 each	10-49 each	50-99 each	more each
2 yr., 6-7', 7/8" up	\$4.50	\$4.00	\$3.50	—	—
2 yr., 5-6', 11/16-7/8"	3.75	3.25	2.60	\$1.95	\$1.65
2 yr., 4-5', 9-11/16"	3.50	3.00	2.40	1.75	1.45
2 yr., 3-4', 7-9/16"	3.25	2.75	2.25	1.60	1.35
1 yr., 5-7'	3.75	3.25	2.60	1.95	1.65
1 yr., 4-5'	3.50	3.00	2.40	1.75	1.45
1 yr., 3-4'	3.25	2.75	2.25	1.60	1.35
1 yr., 2-3'	3.00	2.25	2.00	1.45	1.20

All prices are net, F.O.B. Princess Anne, Md.

Prices of controlled size King Luscious and Chesapeake on page 27.

WINTER BANANA (16) Vigorous grower; early bearer. Fruit medium to large, smooth and handsome golden yellow, usually shaded with red blush. Flesh fine grained, rich sub-acid, aromatic; highest quality.

GALLIA BEAUTY—Red Rome (17) Originated in Ohio and is a typical Rome type tree, being thrifty, hardy, and productive. The fruit of the Gallia Beauty colors a brilliant bright red, without stripe, and seems to be of higher quality than the regular Rome Beauty and keeps exceptionally well in storage. The Gallia Beauty will size up equal to the regular Rome, but many of the other inferior, so-called Red Rome types, will not size up satisfactorily. Again we urge you to plant only the Genuine Gallia Beauty. We offer you the best, and charge you no more.

JERSEY RED (17a) A cross of Gallia Beauty and White Winter Pearmain. Fruits are large round-oblata and color a deep attractive red. Very firm and late keeping as Rome. Holds to tree exceptionally well. The tree is very vigorous, with large heavy foliage resistant to blight and breakdown. Fruit seems a little better quality than most Rome types.

CHESAPEAKE (17b) A fine, new late keeping apple with outstanding quality developed by Frank Browning of Wallingford, Ky. Chesapeake is a chance seedling which seems to embody the best characteristics of the Stayman and Rome varieties. It is a large, red apple that ripens with Rome. Much like the Rome variety, Chesapeake keeps well into the winter, even in common storage. Its good flavor resembles that of Stayman and is mildly sub-acid. Fruits retain their juices well throughout storage and are excellent for fresh or culinary purposes.

Trees of Chesapeake are vigorous, productive, and bear at an early age. Blooms appear with those of Rome and are hardy. Spring frosts are not a problem. Trees are available on Standard and E.M. VII Rootstocks.

RED ROME—No. 262 Type (17c) This type Red Rome comes to us from the far West and has been planted widely in the Appalachian fruit area. Its merits over Gallia Beauty are questionable, but some growers like it better.

BOUNTIFUL IMPROVED WINESAP (18) A glorified selection of the famous Winesap with the same beautiful color—same quality—same keeping ability found years ago in the orchard of The Consolidated Orchard Co. of Paw Paw, W. Va. This strain produces heavy annual crops of fruit that, very often, is as large as Stayman. The fruit has every characteristic of the Old Virginia Winesap in shape, color, quality, and growth habits. The tree is typical Winesap, including leaf markings. Bountiful Strain Imp. Winesap has become a favorite with orchardists for local and long-distance sales. Especially popular as an extra long keeping variety for use in polyethylene bags.

GALLIA BEAUTY





DWARF & SEMI-DWARF

"CONTROLLED SIZE"

APPLE TREES GROWN ON CLONAL ROOTSTOCKS

**LOWER PRODUCTION COSTS - SMALL TREES AT MATURITY
LARGE SIZE FRUIT - GOOD QUALITY - QUICK TO BEAR**

VARIETIES ON EAST MALLING NO. 9 ROOTSTOCK—DWARF

Smallest of all dwarf apples—The choice of most home owners

Very early to bear—6 to 10 foot tree at maturity.

All Red Jonathan
All Red McIntosh
Double Red Delicious
Early Red Stayman (Neplings)

Gallia Beauty
Grimes Golden
Improved Winesap

King Luscious .
Skyline Supreme
Yellow Delicious
Yellow Transparent

This is the most dwarfing of all apple stocks being grown today. Trees start to bear in two to three years, producing large highly colored apples. Ideal for small gardens and now being used quite extensively by commercial growers. Trees on this rootstock must be staked or trained on wire, and grown on very rich, well-drained soil for best results.

VARIETIES ON EAST MALLING NO. 7 ROOTSTOCK—SEMI-DWARF

The most widely planted semi-dwarf rootstock—Medium sized tree that is easy to care for—Seldom needs staking—Grows well on most soils

All Red Jonathan
All Red McIntosh
Beacon
Briteamac
Cauley
Chesapeake
Colora Red York
Cortland
Double Red Delicious
Double Red Stayman 201

Early McIntosh
Early Red Stayman (Neplings)
Gallia Beauty
Grimes Golden
Idared
Improved Winesap
King Luscious
Lodi
Melrose
Mutsu

Northern Spy
Richard Delicious
Ruby
Skyline Supreme
Spartan
Tydeman's Red
Wellington
Williams Early Red
Yellow Delicious
Yellow Transparent

The ideal stock for small, semi-dwarf trees, cordons and espaliers. Does particularly well on heavy clay soils. It has proven to be very hardy and has a good root system which makes a well anchored medium for small trees. Seems to grow vigorously in its early years but soon settles down to slower growth and heavy cropping. Generally recognized to be one of the best understocks for commercial planting as well as the home fruit grower.

VARIETIES ON EAST MALLING NO. 2 ROOTSTOCK—SEMI-DWARF

Recommended for orchard planting in many areas—Good root system, grower and producer

Slightly larger than trees on No. 7 stock.

All Red Jonathan
All Red McIntosh
Colora Red York
Double Red Delicious
Double Red Stayman 201

Early Red Stayman (Neplings)
Grimes Golden
Idared
Improved Winesap
Lodi
Melrose

Richard Delicious
Ruby
Skyline Supreme
Yellow Delicious
Yellow Transparent

A good semi-dwarf stock with a good root system. Although this stock makes a larger tree than E. M. 9 or E. M. 7, it does have the early and heavy bearing characteristics of them. Trees behave well on most soils and are being used quite extensively in commercial plantings. E. M. 2 root-stocks are especially useful for less vigorous varieties in high density plantings.

FROM _____

PLACE
STAMP
HERE

BOUNTIFUL RIDGE NURSERIES, INC.

PRINCESS ANNE, MARYLAND 21853

TEAR OUT ENVELOPE ALONG THIS PERFORATION AND ENCLOSE ORDER SHEET

TO AVOID DELAY PLEASE BE CERTAIN THAT ORDER BLANK IS CLEARLY AND COMPLETELY FILLED OUT AND THAT PAYMENT, INCLUDING POSTAGE, IS ENCLOSED.

WE THANK YOU VERY MUCH FOR THIS ORDER AND WILL DO OUR BEST TO PROVIDE COMPLETE SATISFACTION.

Please . . .

BE SURE THAT YOU HAVE

- ✓ Stated Size, Color, Etc. ✓ Enclosed Your Remittance
- ✓ Allowed Enough For Postage ✓ Given Your Name and Address on Order
- ✓ Listed Your Phone Number



Always Use Bountiful Grown Plants for "Bountiful Harvests"



Malling-Merton Rootstocks Control Size, Too!

VARIETIES ON M. M. 104—SEMI-DWARF

All Red McIntosh	Early Red Stayman (Neiplings)	Richared Delicious
Britemac	Gallia Beauty	Ruby
Colora Red York	Grimes Golden	Skyline Supreme
Double Red Delicious	Idared	Yellow Delicious
	Lodi	

Trees about the same size as E. M. 7 on sandy soils; about the same size as E. M. 2 on loam. Excellent root system does not need support. This makes the heaviest producing tree of any rootstock. Do not plant in wet areas.

VARIETIES ON M. M. 106—SEMI-DWARF

All Red Jonathan	Early Red Stayman (Neiplings)	Mutsu
All Red McIntosh	Gallia Beauty	Richared Delicious
Beacon	Idared	Skyline Supreme
Colora Red York	Improved Winesap	Spartan
Double Red Delicious	King Luscious	Williams Early Red
Double Red Stayman 201	Lodi	Yellow Delicious

Tree size is the same as E. M. 7 in most areas. Trees produce well and early, are resistant to woolly aphids, and seldom sucker. They stand wet conditions better than M. M. 104. Recent plantings of this rootstock show much promise.

VARIETIES ON M. M. 109—SEMI-VIGOROUS

All Red Jonathan	Double Red Delicious	Skyline Supreme
All Red McIntosh	Double Red Stayman 201	Williams Early Red
Britemac	Yellow Transparent	Yellow Delicious

A fine rootstock which allows trees to grow just a bit larger than E. M. 2. Trees withstand drought better than E. M. 2 and bear somewhat heavier.

VARIETIES ON M. M. 111—SEMI-DWARF

All Red Jonathan	Colora Red York	Skyline Supreme
	Yellow Delicious	

Trees are about the same size as E. M. 2 but better anchored. This rootstock induces early bearing, resists drought, and gives large yields on small trees.

PRICES ON ALL CONTROLLED SIZE APPLE TREES

Chesapeake, Skyline and King Luscious—\$.10 higher

	Each	3-9 each	10-49 each	50-99 each	100 or more each
2 yr., 5-6', 11/16" up	\$3.75	\$3.50	\$3.25	\$3.00	\$2.75
2 yr., 4-5', 9-11/16"	3.50	3.25	3.00	2.40	2.10
2 yr., 3-4', 7-9/16"	3.25	3.00	2.75	2.00	1.75
1 yr., 5-6'	3.75	3.50	3.00	2.75	2.50
1 yr., 4-5'	3.50	3.25	2.75	2.40	2.10
1 yr., 3-4'	3.25	3.00	2.50	2.00	1.75
1 yr., 2-3'	3.00	2.75	2.25	1.60	1.50

PLEASE WRITE FOR SPECIAL QUOTATION WHEN LARGER QUANTITIES OF DWARF TREES ARE NEEDED

CONTROLLED SIZE APPLE COLLECTIONS AT BARGAIN PRICES

SUMMER SPECIAL

- 1 Yellow Transparent
- 1 Early McIntosh
- 1 All Red Jonathan

FALL'S DELIGHT

- 1 Yellow Delicious
- 1 All Red McIntosh
- 1 Richared Delicious

WINTER'S BEST

- 1 Gallia Beauty
- 1 Double Red Delicious
- 1 Bountiful Imp. Winesap

All trees 3 to 4 feet, 1 year whips—your choice of rootstock.

Any 1 Collection, \$8.50

2 Collections, \$16.00

All three Collections, \$22.50

PLEASE NOTE: We recommend trees on East Malling 9 be planted 8 to 10 feet apart while those on East Malling 7, 2, be planted 15 to 25 feet apart, Malling-

Merton distances should be the same as for the East Malling stocks with which they most nearly compare.

Dwarf Fruit Trees for the Home Gardener

FULL-SIZED FRUIT FROM VERY SMALL TREES - PICK AND SPRAY ALL FRUIT FROM GROUND
EASIEST OF ALL TO CARE FOR

Dwarf Peaches

Can you imagine having your own beautiful, luscious fruit on your own peach tree, right in your back yard. These trees are small: never more than 7-8 feet tall, easy to spray, easy to prune. They bear heavy crops of large sized peaches, beginning in the second or third year and continuing for many years. All varieties listed are self-fruitful and need no cross-pollination. Full descriptions of these varieties can be found in the general peach section.

HALE HAVEN (yellow) GOLDEN JUBILEE (yellow)
REDHAVEN (yellow) ELBERTA (yellow)
BELLE OF GEORGIA (white)

DWARF PEACH AND NECTARINE PRICES

	Each	2 for	5 for
Jumbo, 5-6'	\$5.25	\$10.00	\$23.75
Select, 4-5'	4.50	8.50	20.00
Heavy, 3-4'	3.75	7.00	16.25

HANSEN'S BUSH CHERRY

Selected Hansen Bush Cherry has fruits resembling Montmorency only not as large. The fruits are edible and make fine pies. A True Dwarf Plant seldom attains a height of more than 3 ft. Blooms early spring, giving beauty as a shrub plant. Branches are almost covered with attractive red cherries of good size.

Hardy—Easy to Grow

18-24 inch branched, bearing-size plants:

\$1.50 each 3 for \$3.75 10 for \$9.95



Fine one year Dwarf Apples "Budded High" for best results.

Dwarf Nectarines

Trees look just like peaches, yet produce beautiful, luscious plum-like fruit so flavorful. Nectarines have long been a favorite with home owners but they presented a large maintenance problem. Now . . . Dwarf Nectarines take the same care as any other dwarf fruit. Enjoy the superb quality found only in nectarines by planting them this season.

GARDEN STATE (yellow) REDCHIEF (white)
Dwarf Nectarines Same Price as Dwarf Peach

Dwarf Cherries

NORTH STAR A very small natural dwarf sour cherry that is self-fruitful. Fruit is similar to Morello and hangs well. Trees are small (8-10 ft.) but very hardy in wood and bud. Resistant to leaf spot.

METEOR A very winter hardy dwarf sour cherry that grows just a bit larger than North Star. Fruit has the same quality, size and shape as Montmorency.

Dwarf Plums

Beautiful Flowers—Delicious Fruit

Just about all one could expect from any tree. These very small plum trees make a fine addition to any home garden. Dwarf plums can be cared for the same as peaches, grow most anywhere, and can always be reached from the ground. Plant them 6 to 8 feet apart for wonderful results.

Fellenberg Satsuma
Santa Rosa Shiro
Stanley Ozark Premier
Methley

Dwarf Apricots

Enjoy these taste tempting, luscious fruits right from your own back yard every year. These are small trees that can be planted close together, about 6 to 8 feet, and a ladder is never needed for pruning or harvesting. Apricots do well wherever peaches are grown.

EARLY GOLDEN

MOORPARK

PRICES for DWARF PLUMS, CHERRIES & APRICOTS

	Each	2 for	5 for
Select, 4-5'	\$5.00	\$9.50	\$22.50
Heavy, 3-4'	4.50	8.50	20.00
Fine, 2-3'	4.00	7.50	17.50

FREE: Ask for our complete cultural directions when ordering items on this page. They are up-to-date and informative. Sent free upon request.



DWARF PEAR TREES

EASY TO GROW—EARLY TO BEAR—TAKE LIMITED SPACE

Bountiful Ridge DWARF PEARS come into bearing the second or third year and make a very profitable satisfying venture for the home owner and the commercial grower.

DWARF PEAR trees are low-headed—reach a maximum height of 7 to 9 ft. May be planted as close as 6-8 ft. apart. Insects and diseases are no longer a problem since small size makes spraying a simplified job.

Plant Bountiful Ridge Dwarf Pear Trees with confidence. All are grown on compatible QUINCE ROOT-STOCK for complete customer satisfaction.

DWARF PEAR VARIETIES

Bartlett	Anjou	Improved Bartlett
Clapps Favorite	Kieffer	Seckel
Magness	Max-Red Bartlett	Devoe
Duchess		Moonglow

Please see our Standard Pear Section for full description of these varieties.

PRICES—ALL DWARF PEARS

	Each	2 for	5 for
Select, 4-5 ft.	\$4.25	\$8.00	\$18.75
Heavy, 3-4 ft.	4.00	7.50	17.50
Fine, 2-3 ft.	3.75	7.00	16.25

SEE PEAR PAGE FOR POLLINATION HINTS

BARGAIN COLLECTIONS of Small Fruit Trees For The Home Owner

AMATEUR GARDEN

of

DWARF PEAR & APPLE

2 Dwarf Pear . . . 2 Dwarf Apple

Select your favorite kinds from our list on preceding pages. These easy to grow types of fruits are just the thing for the amateur gardener.

All 4 heavy branched, 3 to 4 ft. trees

ONLY \$12.95

(a regular \$14.00 value)

DWARF GARDEN SPECIAL

2 Dwarf Peach—1 Dwarf Nectarine—1 Dwarf Apricot

1 "NORTH STAR" Dwarf Cherry—2 Dwarf Plums

Pick the varieties of each fruit you want for your garden. If no selection is made, we will send varieties best suited for your area.

All seven 3 to 4 ft. heavy branched trees are yours for

ONLY \$24.95

(a regular \$27.75 value)

ORIENTAL PERSIMMONS

EXTREMELY BEAUTIFUL—HIGHLY DELICIOUS

ATOMA Tree of this new hardy type is strong, vigorous in growth and a good bearer. The fruit is large, oblate with well defined quarter marks, skin orange-yellow changing to dark orange with a delicate bloom and waxy appearance; light clear flesh when ripe. Loses its astringency when ripe and of high quality. Hangs well.

FUYUGAKI Fruit of this variety is never astringent. It is edible while still hard and may be peeled and eaten like an apple. It keeps well and quality is of the best. Fruits are medium in size, rather flattened, beautiful deep red color, and a very prolific bearer.

HYAKUME The Hyakume persimmon is a large fruit of the black meat type. The tree normally grows to a height of about 10 feet producing a medium quantity of fruit of high sugar content. It is beautifully ornamental.

EUREKA A hardy variety with a most delicious flavor. Sometimes seedless. Big red-orange fruits literally cover the tree and hang until soft and ripe. Slick, dark-green foliage adds to the ornamental value of this type grafted persimmon.

TANE-NASHI Large to very large, conical in shape. Light yellow changing to red as the fruit ripens. Flesh is astringent until fully ripe when it acquires a delightful flavor that is characteristic of the fruit.

Prices For All Persimmons:

- 3 to 4 foot branched, \$5.25 each; 3 for \$15.00
- 2 to 3 foot branched, \$4.50 each; 3 for \$13.00

Oriental Persimmons are one of the finest ornamental plants we know. They have beautiful, waxy green foliage through the summer which changes to rich, golden yellow streaked with red in fall. The trees are rather slow growers which makes them popular for small homesites. Tree characteristics of Oriental Persimmons are outstanding enough to merit space in any planting. Delicious fruit is an added bonus.

The Oriental persimmon is adapted to most regions in the South and can be raised successfully as far North as Pennsylvania. The trees are vigorous and bear young. We ask that you give your persimmon trees excellent care upon arrival. They break dormancy more slowly than most other trees, but will be entirely satisfactory if kept well watered.



PEARS

A Good Pear for Everyone
Low Maintenance—Long Profit

PEAR PRICES — ALL VARIETIES

	Each	3-9	10-49	50 or more
2 yr. 6-7' 7/8 up	\$3.95	\$3.50	\$3.00	\$2.50
2 yr. 11/16	3.50	2.95	2.35	1.70
2 yr. 9-11/16	3.25	2.75	2.15	1.50
2 yr. 7-9/16	3.00	2.50	1.95	1.35
1 yr. 5-6'	3.50	2.95	2.35	1.70
1 yr. 4-5'	3.25	2.75	2.15	1.50
1 yr. 3-4'	3.00	2.50	1.95	1.35

One-year tree sold by height only

If you are interested in quantities larger than those listed, please write for our special quotation.

Varieties listed in order of ripening

MANNING'S ELIZABETH (1) A good summer pear for home use or near-by markets. The fruits have an attractive appearance and a distinctive flavor. Trees are hardy, vigorous, productive, and bear annually. This fine old variety is blight resistant when good cultural practices are followed.

CLAPP'S FAVORITE (2) A large, fine pear that resembles Bartlett except that it is much longer. Fruits are colored a pale lemon-yellow with brown dots. They have fine texture; are melting, buttery, juicy, and delicately flavored. Trees are hardy and productive.

DAWN (3) Dawn is picking mature about two weeks earlier than Bartlett. Fruit generally resembles Bartlett but the skin is smoother. The fruit is very good in quality, sweet, spicy, and very juicy. It ripens in 12 to 14 days when held at 70 degrees, and is almost free of grit cells.

Trees of Dawn are moderately vigorous, upright in growth, and bear on short terminals. They are susceptible to fire blight and should be grown only where Bartlett is grown successfully. Flowers contain only a moderate amount of pollen.

RIPENING INFORMATION *Most all pears should be picked before actually ripe and put in a cool (60 to 70 degree), shaded, or dark place to finish ripening. They will be sweeter, more juicy and eye-appealing.*

MOONGLOW (3a) A large, early-ripening pear which is promising for processing and market use. It is picking mature from 10 days to two weeks ahead of Bartlett and will ripen to prime eating quality 15 to 18 days later. Fruits are attractive, nearly free of grit cells, rather soft and moderately juicy. Flavor is rated as good.

Trees of Moonglow are vigorous, very upright, heavily spurred, and bear early. Abundant pollen is present. Moonglow is very resistant to fire blight. Never have we seen cankers of this disease enter older wood. This has been a most popular variety to date, and we expect demand to continue. Order trees early for this promising new pear.

FLEMISH BEAUTY (4) A large, juicy, melting and rich variety that doubles as an excellent pollinator. Trees are hardy, strong growers, and good bearers; they prefer sunny locations.

BARTLETT (5) The standard by which all other pears are judged. It has large size, golden yellow color, and tremendous quality. It is equally popular on the fresh market and with the processors. Fruits are buttery, very juicy, and highly flavored. Trees are strong growers, bear early and abundantly. Bartlett is moderately susceptible to fire blight and should be planted where this disease is not too severe.

IMPROVED BARTLETT (6) A "local find" that is similar in growth habit and fruit to regular Bartlett. It bears young and heavily, with well-shaped and flavorful fruits. Most important is that this fine variety has had pear blight only once in all the years we have grown it. Then, the blight was purposely induced by overfeeding, and the cankers did not go beyond the soft new wood. Our tree recovered nicely and is continuing to produce fine crops. We think this is a fine new variety and want you to try it, but we cannot guarantee it blight-proof because growing conditions, tree vigor, and planting site could alter its fine record.

DWARF PEARS

See our complete Dwarf Pear Listing on page 29 if the smaller tree will suit your needs better. These fine plants grown on Quince rootstocks produce the same sort of fruit as the large trees. Select your needs from these varieties. Anjou, Bartlett, Clapps Favorite, Devoe, Duchess, Improved Bartlett, Kieffer, Magness, Max-Red Bartlett, Moonglow, and Seckel.



DOUGLAS (7) An early-bearing, blight-resistant variety that is hardy and very productive. Healthy young trees, which often bear in their third season, produce large fruits handsomely covered with a red blush and smooth finish.

DEVOE (8) A real good variety that is popular and profitable, especially in eastern pear-growing areas. Devoe most nearly resembles Beurre Bosc in shape. It has a rich appearance, large size, and delicious flavor. Devoe brings highest prices on fresh markets everywhere and is excellent canned.

Fruits are borne in profusion at an early age on very vigorous and strong trees. A golden yellow color, highlighted with a pretty red cheek, covers the long fruits as harvest time approaches. The flesh is firm, white, lacking in grit cells, juicy and sweet. When picked at proper stage of maturity, Devoe will keep well in cold storage until January and later. Proper picking time is about a week later than Bartlett.

The tree is upright in habit; wood is whippy and bears a good fruit load without breakage. It is very resistant to pear psylla.

Devoe is a good **Blight-Resistant** variety. However, **Blight Resistance** in no way implies that the variety will be completely free of fire blight, regardless of the cultural practices used. Devoe is a fine, vigorous grower and needs little fertilization, no constant cultivation or extensive pruning for good results.

MAGNESS (8a) A very blight-resistant, new variety that is picking mature about a week later than Bartlett. The fruit is lightly covered with russet, medium in size, and generally oval in shape. The flesh is soft, very juicy, almost free of grit cells, sweet, highly perfumed, and aromatic. The skin is tough and resists insect injury. Magness can be held up to three months in cold storage and ripen with good quality.

Trees are very vigorous, spreading, and sometimes thorny. They begin bearing at about six years. Magness is entirely pollen-sterile and must be pollinated with some other variety for good set. Blight resistance is extremely high. Cankers of this disease have never spread into two-year wood, even when the disease was purposely induced. Magness is a good variety for trial in all areas.

MAX-RED BARTLETT (8b) A bud sport of the well known Bartlett variety which matures about one week later. The primary difference is the color which Max Red assumes. The flesh is white, juicy, of fine texture, and good quality. The skin turns a beautiful mahogany red at maturity. The trees are similar in growth and productivity to the parent.

ANJOU—Beurre d'Anjou (9) A large, fine pear that is buttery and melting, with a sprightly flavor. The tree is a fine grower, very productive, and an early bearer; one of our best varieties for the home and orchard trade. Anjou is partially resistant to fire blight.

BEURRE BOSCH (10) A large pear colored a dark, rich yellow overspread with a cinnamon russet. Flesh is white, rich, tender, very juicy, and with pleasing aroma. Quality is very good, Seckel alone surpassing it as a dessert fruit. Trees are slow growers and do not bear at an early age, but are large and most productive at maturity. They are blight susceptible.

DUCHESSE D'ANGOULEME (11) A very large, greenish yellow pear that is the favorite of many home gardeners. Trees grow equally well on standard or dwarf roots, making beautifully symmetrical trees that bear early and annual crops of fine fruits. Fruits are buttery, melting, and of fine flavor.

WORDEN SECKEL (12) A Seckel type pear that is larger and more handsome than Seckel. Fruits are smooth, glossy, uniform, with a good blushed cheek on a handsome yellow background. They keep longer than Seckel. A hardy tree that bears when young.

SECKEL (12a) A small, rich yellowish brown pear that is one of the best flavored ones known. Seckel is very productive, somewhat blight resistant, and easy to grow. It is the all-time favorite for home planting.

ORIENT (13) A good blight-resistant variety for southern growers. The trees are large, vigorous, productive, and require little pruning. Fruit is firm, juicy, slightly sweet, and nearly round. Its creamy white flesh has good texture and cans well.

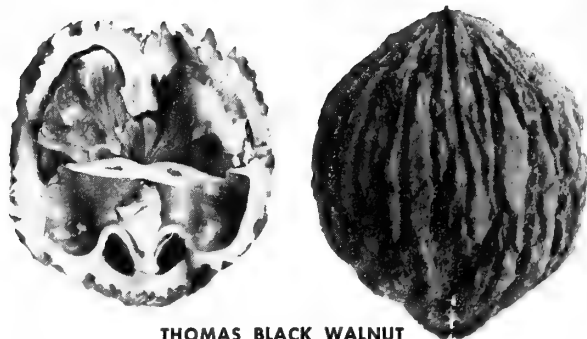
KIEFFER (14) Grown in all sections of the United States and Canada, the tree is practically immune to blight, very thrifty in growth, and bears consistently heavy crops. Fruits are large, colored golden yellow, juicy, often gritty, and of poor quality for fresh use. They are quite good for culinary purposes, however, and keep well into the winter.

HELPFUL HINT: Most pear varieties are self-unfruitful and should be interplanted with other varieties. Seckel and Bartlett will not cross-pollinate each other and where these two varieties are being planted, another variety should be added. Duchesse and Flemish Beauty are the best pollinating varieties.

1 Year Pear Tree "Bountifully Grown"



NUT TREES



THOMAS BLACK WALNUT

THOMAS BLACK WALNUTS

(Grafted For Your Insurance)

One of the largest and finest Black Walnuts yet found. Kernels large, light colored; nearly all crack out in whole halves. Tree extremely vigorous and hardy.

2 to 3 ft., \$3.95 each; 3 for \$10.50
3 to 4 ft., \$4.95 each; 3 for \$13.50

JAPAN WALNUT

Valuable as a shade tree. Nut has comparative thin shell. Kernel flavor similar to white walnut. Used largely as a pollinizer for English Walnuts. Our Japan walnut is a very selected type.

2 to 3 ft., \$2.95 each; 3 for \$7.50
3 to 4 ft., \$3.95 each; 3 for \$10.50



HALL'S HARDY ALMOND

New—Beautiful—Delicious

A fine new plant with beautiful blooms and delicious nuts. Hall's Almond thrives where peaches are grown, growing rapidly and bearing heavy at an early age. It is a fine dual purpose plant and can be added to most landscape plantings with ease. Better results are obtained when two or more trees are used.

4 to 5 ft., \$4.50 each; 2 for \$8.50
3 to 4 ft., \$3.50 each; 2 for \$6.50

HARDY NORTHERN GRAFTED PECANS

BUSSERON originated in Indiana. Trees vigorous; self-fruitful; nuts large for northern varieties. Nuts are long; shell medium thick; fair cracker. Flavor good and very sweet.

MAJOR This is perhaps one of the best of the northern pecans, for growth, disease resistance and regular bearing. Very high quality nut, thin shell, small, plump, sweet. A splendid tree, starts bearing the 3rd or 4th year after transplanting.

GILES This pecan is somewhat larger than the Major and bears very heavy crops, usually starts bearing the 3rd or 4th year after transplanting. Tree more spreading than the Major, is disease resistant, very fine flavored nut.

COLBY This fine new variety originated in Illinois and was introduced commercially in 1957. It is a northern type nut maturing in 160 days and has proven very hardy in the Illinois area. The nut is long, oval, and of good flavor. It excels other extra early types in both size and productivity.

2 to 3 feet, \$5.50 each; 3 for \$15.00
3 to 4 feet, \$6.50 each; 3 for \$18.00
4 to 5 feet, \$7.50 each; 3 for \$21.00

LARGER SIZES QUOTED ON REQUEST

FILBERTS

ROYAL This fine new filbert bears large, glossy, well filled nuts in profusion. It needs pollination from either Barcelona or DuChilly for best results. Recommended for trial where other filberts are grown successfully.

BARCELONA FILBERT Possibly the most widely planted type for commercial plantings in the Northwest. Larger than the native filbert, heavy and consistent bearer.

DuCHILLY FILBERT Widely used to pollinate other types. Nuts are large and attractive.

2 to 3 ft., \$3.50 each; 3 for \$9.50

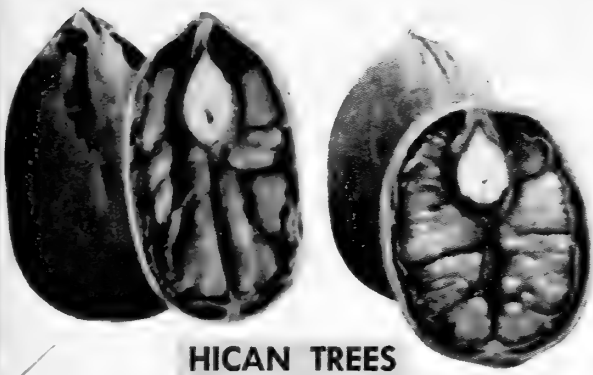
AMERICAN FILBERT (Hazel Nut)

The family favorite, attractive bush, yielding abundant crops. Bears young. Does not grow a large tree.

2 to 3 ft., \$2.50 each; 3 for \$6.50

FILBERTS





HICAN TREES

Pecan X Shellbark Hickory Hybrids

CLARKSVILLE Trees grow with great vigor, symmetry and beauty. Foliage is dark green, makes a beautiful ornamental tree as well as producing large high quality nuts which are thin shelled and fine flavored. Trees are hardy in Northern areas.

GERARDI Tree grows very much like the Clarksville and is hardy in Northern areas. Nuts are often 2 inches long and about 3/4 of an inch in diameter and very fine flavored with good cracking qualities.

PLEAS HYBRID is hybrid of pecan and bitternut hickory from Oklahoma. Tree is moderately strong growing; round-headed; a fairly early and moderate bearer. Nuts medium in size, fair cracker. A fine Timber and Ornamental Tree.

- 2 to 3 feet, \$5.95 each; 3 for \$16.50
- 3 to 4 feet, \$6.95 each; 3 for \$19.50
- 4 to 5 feet, \$7.95 each; 3 for \$22.50

LARGER SIZES QUOTED ON REQUEST

NEW . . . HARDY GRAFTED CARPATHIANS

COLBY One of the hardest varieties for the mid-west and middle Atlantic areas. This medium sized nut is thin shelled, cracks out in halves, has light meat, good flavor and quality.

LAKE This is one of the largest Carpathians having good quality, fine flavor. It cracks out in halves and has proven its hardiness in the mid-west and middle Atlantic areas over the last ten years.

- 2 to 3 feet, \$5.95 each; 3 for \$16.50
- 3 to 4 feet, \$6.95 each; 3 for \$19.50

ENGLISH WALNUTS

Very Hardy Types—Large, Thin Shelled

English Walnut production is proving practical and desirable in the East Central areas. Tree valuable for its fruit and shade. The nuts are thin shelled with fully meated kernels of delicious flavor. Tree is hardy and productive.

- 2 to 3 feet, \$3.95 each; 3 for \$10.50
- 3 to 4 feet, \$4.95 each; 3 for \$13.50

HARDY CARPATHIAN WALNUT SEEDLINGS

- 2 to 3 feet, \$3.95 each; 3 for \$10.50
- 3 to 4 feet, \$4.95 each; 3 for \$13.50

GRAFTED PAPER SHELL PECANS

(Southern Types)

STUART PECAN Extremely hardy and a strong grower. Nuts of good size and well filled. Shell very thin and easily opened.

SCHLEY PECAN The Schley is thrifty, strong grower; nuts long, well filled, with a very thin paper-like shell.

FARLEY We list this selection with the assurance that it is self-pollinating and more hardy than most varieties, and seems to adapt to varied soil and climatic conditions from the far South to the Central Northern area.

DESIRABLE The Desirable is another selection which has been much recommended as a very productive and comparatively hardy self-pollinating variety suitable for home and commercial planting. We feel that the Farley and Desirable both are very desirable additions to the older established varieties of thin shelled pecans.

	Each	3	10	20
2-3'	\$4.50	\$12.75	\$40.00	\$75.00
3-4'	5.00	14.25	45.00	85.00
4-5'	6.00	17.25	55.00	105.00

LARGER SIZES QUOTED ON REQUEST

SHAGBARK HICKORY

(Seedlings)

Beautiful trees for shade, home, or orchard planting. Shagbarks thrive on marginal soils and are adapted to growing from north Florida to New England and west. Nuts are creamy-white, sweet, hard but thin-shelled. Trees are somewhat slow growers, but exceptionally durable.

- 18 to 24 inch plants, \$3.95
- 2 to 3 ft., \$4.95; 3 to 4 ft., \$5.95

DEAR SIRs:

This is to acknowledge the safe arrival of the peach tree today. Your courtesy in replacing this item is sincerely appreciated.

James C. King, M.D.
Maryland

HARDY CARPATHIAN WALNUT

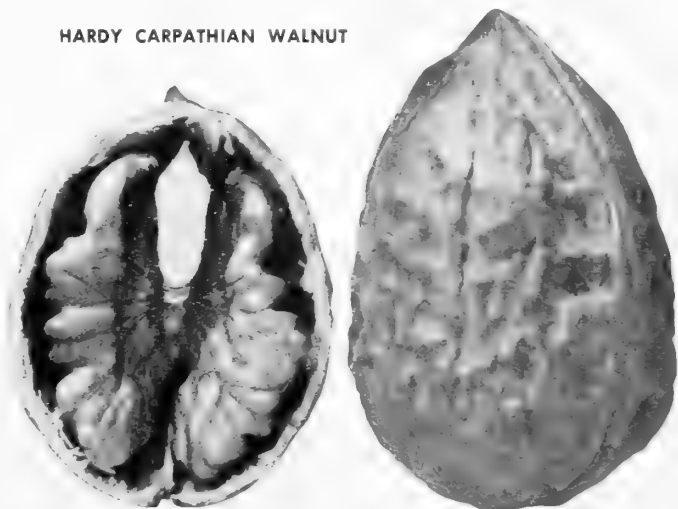


FIG TREES

HEALTHY—EASY TO GROW—DELICIOUS

✓ **EVERBEARING TYPE** Characteristics similar to the Brown Turkey, otherwise it starts to bear early in the season and continues to bear fruit into late fall. This variety is very attractive as to bush and is used much for ornamental purposes.

✓ **CELESTE** Most widely planted of all figs in the south-eastern fig areas. It is hardy and can be grown where less hardy varieties fail. Fruit is medium in size, skin violet, flesh white to rose color, firm, juicy, sweet and of excellent quality.

✓ **BROWN TURKEY** Very hardy, dwarfish and prolific. Fruit medium size to large, pear shaped, skin copper brown, flesh white shading to pink, quality good.

✓ **MAGNOLIA FIG** One of the hardiest species, doing well where the winters are not too severe. Fruit very large and of rich straw color. Fruit begins to ripen the last of June.

Prices of All Fig Varieties:

	Each	3 for
18-24 in.....	\$2.50	\$6.90
2 to 3 ft.....	2.90	7.95



✓ Chinese CHESTNUTS

Early Bearing, Fast Growing, Blight Resistant Trees

We highly recommend planting Chinese Chestnuts on hillsides, in pastures, on roadsides, in barnyards, in lawns, and in areas where general farming operations fail because of topographical conditions for beauty, shade and delicious nuts. Blight resistant Chinese Chestnut trees will thrive on most any site which will support other tree vegetation.

Chinese Chestnuts are early to bear and give quick profits. Many growers are now receiving fifty to ninety cents per pound for their nuts. Others with only a few trees are supplying their own needs with ease. You, too, can enjoy them with a minimum of expense and care. Write for our up-to-date cultural directions on **BLIGHT RESISTANT CHINESE CHESTNUTS.**



We are offering the finest types of hardy, blight resistant and high quality chestnuts our Government representatives could find in the great chestnut producing areas of China.

**PRICES OF SELECTED STRAINS SEEDLING
CHINESE CHESTNUT**

All trees are well rooted, thrifty stock.

	Each	3-9 each	10-49 each	50 or more each
5 to 6 ft.....	\$3.75	\$3.50	\$3.20	\$3.00
4 to 5 ft.....	3.25	3.00	2.70	2.50
3 to 4 ft.....	2.75	2.50	2.20	2.00
2 to 3 ft.....	2.25	2.00	1.70	1.50
18-24 in.	1.75	1.50	1.20	1.00

GRAPE VINES

A Grape For Every Purpose—At Lowest Prices

GARDEN GRAPES

DELAWARE One of the highest quality grapes in cultivation. Extremely hardy. Adapts readily to various conditions. Matures its crop early. Has very attractive appearance. Keeps and ships well and is immune to black rot. Clusters are well shouldered, compact, light red.

CONCORD The standard by which all other black grapes are judged. No vineyard is complete without a liberal planting of Concord. Our Concord vines are well rooted and are guaranteed to give perfect satisfaction, producing huge quantities of deep purple grapes of fine flavor.

CATAWBA Bunches medium size, shouldered. Grapes large, deep coppery red, juicy, sweet, rich.

CACO (RED) Is of the highest quality, being so rich in sugar and excellent flavor it can be eaten two weeks before it is ripe. The grapes are very large; bunch good size, compact and good form. The vines are strong growers, hardy and prolific. Ripens one week before Concord.

FREDONIA The earliest good black grape. The vine is vigorous, hardy and productive and ripens its fruits two weeks earlier than Concord. The clusters are medium size and compact. Berries are large and round; the skin is thick and tough. The flesh is juicy, solid but tender and very good quality.

SHERIDAN A late keeper to extend the Concord season. Under similar conditions the plants are just as hardy, vigorous, healthy and more productive than Concord. The bunches are large and compact; berries are large and very firm. The flavor is sweeter and richer than Concord. Ripens week later than Concord.

PORTLAND Holds first place among grapes as an early green variety. Vine very vigorous, hardy and healthy. Bunches and berries larger than any other green grape. Very fine quality.

NIAGARA Occupies same position among the white varieties as Concord among the black. Bunch and berries are large, greenish white changing to pale yellow when fully ripe. Skin thin but tough; quality much like Concord.

GOLDEN MUSCAT Possesses the rich golden color of Diamond and the fine muscat aroma of the European Muscat. For home use or roadside market it is one of the best. Vine vigorous and productive. Clusters large, berries handsomest and best flavored grapes grown in eastern America. Ripens after Concord.

INTERLAKEN SEEDLESS A very hardy California seedless type grape you can grow in your own garden Hardy to 15 degrees below zero. Interlaken produces loads of amber-colored, crisp, juicy and delicious fruit. It ripens early and brings added flavor to summer salads and fruit dishes. For flavor, quality, and "lip-smackin' good eatin'", plant Interlaken this spring.

GRAPE PRICES

Hunt, Higgins, Scuppernong, Dearing, Magoon, Golden Muscat, and Interlaken.
Each 3 10 25
2 yr., No. 1 plants only \$1.95 \$5.50 \$17.50 \$40.00

PRICES ALL OTHER VARIETIES

Each	2 yr., No. 1				
	3	10	25	50	100
\$1.00	\$2.85	\$9.00	\$20.00	\$35.00	\$60.00
	1 yr., No. 1				
.90	2.55	8.00	17.50	30.00	50.00

Write for special quotations on larger quantities of all varieties.

MUSCADINE GRAPES

These fine grapes grow vigorously and produce heavy crops from Delaware to Texas. Dearing and Magoon are self-fruitful and are needed to pollinate Hunt, Higgins, and Scuppernong. One vine will pollinate nine others.

HIGGINS Clusters large, pink to reddish bronze; skin thick, edible. Fruit very large; quality good; production very heavy. Ripens midseason to late. This is the largest of all muscadines and a valuable addition to any vineyard. Needs pollination.

SCUPPERNONG Clusters medium size, bronze; fruit medium to large; skin medium to thin; quality excellent. Ripens early. It has a sweet foxy flavor that is agreeably tart. The most popular muscadine variety. Needs pollination.

HUNT Clusters large; fruit medium to large. Skin medium to thin, black; excellent quality. Ripens early midseason. Hunt is the best all-purpose black muscadine. It is excellent for wine, fermented juice, jelly, jams, and all other commercial purpose. Needs pollination.

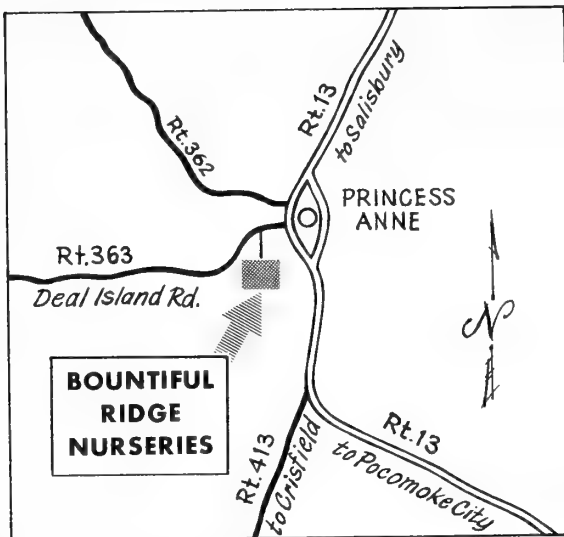
DEARING Perfect-flowered. Bronze clusters of medium size; skin thin; fruit medium to small. Excellent quality; production heavy. Ripens midseason. The best bronze perfect-flowered muscadine. Self-fruitful and will pollinate Higgins, Hunt, and Scuppernong.

PAMLICO A new light green variety with large fruit and attractive appearance. Flavor is good. Pamlico ripens about one week before Dearing, is vigorous and productive. Self-fertile. Good white pollinator.

ROANOKE A good white variety ripening about a week before Scuppernong. Fruits are large, attractive, and good. Vines very vigorous and productive. Self-fertile and a good pollinator.

MAGOON Fruits are reddish black, medium to small size. Excellent quality; heavy production. Ripens mid-season. The best black self-fertile muscadine.

Please add 30c each to the above Muscadine Prices for these fine new varieties.



Enjoy Scenic Del-Mar-Va on your way to Bountiful Ridge

We believe a visit to our nursery will be a real treat. You will find us 3 miles west of Princess Anne on Route 363. The offices and Sales Yard are open Monday through Friday from 8 A.M. to 5 P.M. If you should like to schedule your visit at another time, please call for an appointment. Our phone number is Area Code 301-651-0400.

BOUNTIFUL RIDGE GARDEN CENTER

This is another newly opened part of our business. You will find a most varied line of the finest in ornamental products here, as well as most of the necessary tools and equipment for gardening. Our landscape department will be glad to discuss your individual needs and help plan your homesite for beauty and utility.

EVERGREEN SEEDLINGS

FOR

TIMBER—WINDBREAKS—LINE MARKERS
CHRISTMAS TREES AND GENERAL ORNAMENTAL
USE. MAKE YOUR \$\$\$\$\$\$\$\$ GROW WITH THESE
STURDY WELL-ROOTED EVERGREEN SEEDLINGS.

		20-49	50-99	100-499	500 or more
		each	each	each	each
Scotch Pine, 2-yr. seedlings	5-10 in.	\$0.12	\$0.11	\$0.10	\$0.09
White Pine, 3-yr. seedlings	8-12 in.	.15	.14	.13	.12
Austrian Pine, 3-yr. seedlings . . .	6-12 in.	.12	.11	.10	.09
Amer. Red Pine, 3-yr. seedlings . .	8-12 in.	.15	.14	.13	.12
White Spruce, 3-yr. seedlings . . .	6-12 in.	.12	.11	.10	.09
Norway Spruce, 3-yr. seedlings . .	5-10 in.	.12	.11	.10	.09
Can. Hemlock, 3-yr. seedlings . . .	8-14 in.	.23	.22	.21	.20
Douglas Fir, 3-yr. seedlings	6-10 in.	.15	.14	.13	.12
American A. V., 3-yr. seedlings . .	6-12 in.	.18	.17	.16	.15
Colo. Blue Spruce, 3-yr. seedlings	5-10 in.	.18	.17	.16	.15
Concolor Fir, 3-yr. seedlings . . .	6-10 in.	.15	.14	.13	.12
Jap. Black Pine, 3-yr. seedlings . .	5-10 in.	.18	.17	.16	.16

(We cannot make any replacements on these seedlings if they fail to grow. All plants are taken freshly from the soil and good counts are given.)



RA-PID-GRO

RA-PID-GRO is an approved formula containing Nitrogen 23%—Phosphoric Acid 21%—Potash 17% in combination with Vitamin B₁ and B₂ along with other elements necessary for normal plant growth.

RA-PID-GRO is shipped in dry form and water is added by the user to make one of the finest plant foods which can be purchased. One pound of RA-PID-GRO makes 22 gallons of the quickest acting fertilizer ever used for dipping stock when planting and putting around all plant growth. Makes 44 gallons of liquid for spraying on foliage. It will not burn when applied as a spray. It is 100% effective as it contains no inert material.

Follow full directions included with every shipment for best results.

RA-PID-GRO PRICES—Not Postpaid

One pound package	\$1.30
Two pounds	2.50
Five pounds	4.75
Ten pounds	9.00
Twenty-five pounds	21.00



LONA BALDWIN

Fastigate Flowering Peach

Lona Baldwin is the finest upright flowering peach we have ever been privileged to see. The deep rose-pink blossoms are so abundant that one can hardly see the stems. Flowers last a long time, too—from mid-April to mid-May in Virginia where the original tree was found. The tree is so distinctly upright in habit that it may be used as a very colorful hedge if desired. Dr. J. T. Baldwin, Jr., discoverer of Lona Baldwin, advises that the fruit, though small, is very decorative and edible.

Prices for one-year trees

	Each	3	10
5 to 6 ft.....	\$4.75	\$13.50	\$40.00
4 to 5 ft.....	4.25	12.00	35.00
3 to 4 ft.....	3.75	10.50	30.00
2 to 3 ft.....	3.25	9.00	25.00

Write for larger quantity prices.

Rosa Multiflora

THE LIVING FENCE

Multiflora Roses are being used effectively to decrease soil erosion, as dividing line fences, wind breaks, screens for unsightly objects, to confine farm animals and as snow fences in winter.

The plants grow rapidly in most all types of soil and produce a fence up to eight feet in height in three to four years, then it stops, getting no taller. The fence needs no pruning or care after the initial setting.

Where a close hedge or screen is desired, we suggest planting one foot apart. For more open hedge they may be planted two or three feet apart in a single row.

The fence is a beautiful sight in bloom putting on a gorgeous display for about two weeks. Thereafter seed pods are formed to furnish food for the birds.

Prices of ROSA MULTIFLORA

	25	50	100	500
Jumbo, 18" up	\$9.00	\$13.50	\$20.25	\$58.50
Strong, 12-18"	6.00	9.00	13.50	39.00
Light, 6-12"	3.00	4.50	6.75	19.50

PRATT'S SCALECID

The oldest and best known dormant oil spray for fruit trees, shade trees, and ornamentals. A 96% highly refined miscible oil meeting state specifications for superior type oil. Dormant spraying with Scalecide at half the concentration required for regular oil gives safe, effective control of scale, aphid, red mite, spruce gall, red spider and similar over-wintering insects. For orchard spraying and egg type of scale use 3 gallons per 100, for shade trees 2 gallons and evergreens 1 gallon. 1 qt. \$1.49; 1 gal. \$3.50. Not Postpaid



FLOWERING CRAB

HOPA

Exquisite rosy pink blossoms cover the entire tree—no other tree can equal the profusion of bloom of the wonderful HOPA. A beautiful tree from bloom to frost with red-tinged, dark green leaves and small red, rosy apples that cover the tree. Fruits can be used for jelly if desired. Tree spreads to about 15 ft.



ALMEY

THE SENSATIONAL NEW CRAB

Fiery Blossoms in the Spring . . . Bright Red Fruit in Fall

The tree is upright, vigorous and hardy. Blooms second year. Flowers open from deep carmine buds, are large, star pointed and fiery crimson. One of the best new sorts.

BECHTEL'S DOUBLE FLOWERING CRAB

One of the most beautiful of the flowering crabs; tree medium size, covered in early spring with large, double, fragrant flowers of a delicate pink color.

Prices for all Flowering Crab and Peach

	Each	3	10
5 to 6 ft.	\$4.75	\$13.50	\$40.00
4 to 5 ft.	4.25	12.00	35.00
3 to 4 ft.	3.75	10.50	30.00

DOUBLE RED FLOWERING PEACH

Most Hardy Profuse Blooming Type, most desirable for home use. Flowers are very double, almost like a small rose and present a striking appearance.

MAGNOLIA SOULANGEANA



The Beautiful Magnolias

MAGNOLIA SOULANGEANA, the best known of the deciduous Magnolias. Perfectly hardy and very beautiful plants when in bloom. Blossoms are large purplish-pink and usually appear just before the leaves come out. 18 to 24 inch, \$3.95 each; 2 to 3 ft., \$5.50 each; 3 to 4 ft., \$7.50 each.

MAGNOLIA STELLATA (The Starry Magnolia). A distinct and charming slow growing magnolia. Blooms before foliage appears. Flowers pure white, semi-double and fragrant. A profuse bloomer and very attractive.

2 to 3 ft. plants, \$5.50 each; 18 to 24 in., \$3.95 each

MAGNOLIA GRANDIFLORA. The great evergreen, large flowering Magnolia of the South and Central areas. The most beautiful of all evergreen trees; its immense saucer-like, white shading to cream and very fragrant flowers present a striking appearance contrasted with the large glossy green leaves. Not hardy north of southern New York. 18 to 24 inch, \$4.50 each; 2 to 3 ft., \$6.50 each; 3 to 4 ft., \$8.50 each.

CHINESE ELM—Tree upright, extreme ends of branches drooping, very dense, making good shade. Fast growing and resistant to disease, drought and cold. 6 to 8 ft., \$6.50 each; 8 to 10 ft., \$7.95 each.

PRATT'S FRUIT TREE-SPRAY OR DUST

The new formula contains Captan 6.0%, Methoxychlor 10.0%, Malathion 6.0% and Sulfur 25.0%. One pound mixes with water to make 12 gallons of spray (5 tbs per gallon of water). The inclusion of Sulfur in this formula gives miticide properties and powdery mildew control which the other materials alone will not do.



1 lb. \$1.39; 3 lbs. \$3.69. Not Postpaid

FLOWERING DOGWOOD

"CHEROKEE CHIEF" DOGWOOD

Red Flowering

A new fully red, budsport of famous pink dogwood that has been fully tested and widely grown with success. They are beautiful as specimen plants and in group plantings.

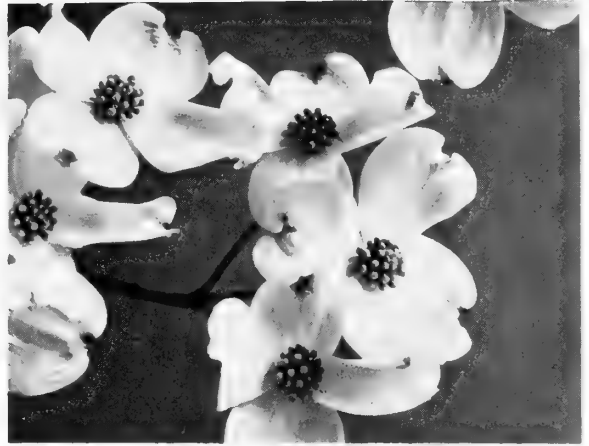
- 2 to 3 ft., bare root: \$5.50 each
- 3 to 4 ft., bare root: \$7.50 each

"CHEROKEE PRINCESS" DOGWOOD

White Flowering

A new completely white dogwood which has the fine characteristics of regular *Cornus florida*. Blooms are larger and more prolific. A very dependable variety.

- 2 to 3 ft., bare root: \$4.95
- 3 to 4 ft., bare root: \$6.95



PINK DOGWOOD (*Cornus florida rubra*)

A colored form of the native species Dogwood. It has the same habit of growth, period of bloom, and general behavior. Pink dogwoods are adapted to most of the central and northern areas and are a beautiful addition to any garden. They have bright deep rose colored blossoms which come in the early spring and last about two weeks. The foliage is a nice green which becomes a handsome red in the fall.

Prices listed are for thrifty, bare root plants; 3 to 4-ft. plants and up are budded and ready to bloom.

	Each	3	10
2 to 3 ft.	\$3.95	\$11.25	\$35.00
3 to 4 ft.	4.95	14.25	45.00

Crimson King Maple

This is the real red maple you have been waiting for. It is a beautiful form of the Schwedler Maple with intense red foliage throughout the growing season. Unlike other red maples, the color of the Crimson King does not fade as the summer progresses. This fine tree originated in Europe and has been under observation in this country for many years. We know it is adapted to our soils and climates, that it is perfectly hardy, and that it can be grown in most any location. Crimson King is truly a "TREE OF BEAUTY." See color illustration on third cover. 4 to 5 ft., \$5.95 each; 5 to 6 ft., \$6.95 each; 6 to 8 ft., \$8.95 each.

Flowering Cherries

Upright Types

KWANZAN. Large double pink blossoms borne in profusion. Tree vigorous and upright in growth.

MT. FUGI. The very best white flowering cherry. We have never seen such clusters of snow-white double blossoms as this tree bears in the spring. Trees upright in growth but droops naturally when in bloom.

Prices Upright Tree Form, Double Flowering Cherry (blooming size trees) 4 to 5 ft., \$7.50 each; 5 to 6 ft., \$8.50 each

Weeping Double Flowering Cherry

Flowers are large double brilliant pink, borne in clusters with stems about 1 inch long. Blooms later than the Single Flowering type and about the same time as other double flowering cherry, being partly in leaf when blooms appear. A grand sight to behold when in full bloom. Well developed heads on 5 to 6-ft. stems, \$12.95 each.

WHITE DOGWOOD

(*Cornus florida*)

The white dogwood is one of nature's prettiest plants. The flowers appear early and persist until leaves are formed. Foliage is green through the summer, turning red in fall. Scarlet fruits are abundant and beautiful from late summer until frost. Mixed plantings of white and pink dogwoods are very effective.

Prices listed are for thrifty, bare root plants:

	Each	3	10
2 to 3 ft.	\$2.95	\$ 8.25	\$25.00
3 to 4 ft.	3.95	11.25	35.00

Norway Maple

A large, handsome tree with broad, deep green foliage; has a very compact growth. A valuable tree for parks, lawns or streets. 6 to 8 ft., \$8.95 each; 8 to 10 ft., \$10.95 each.



BLACKBERRIES AND SIMILAR BUSH FRUITS

PRICES FOR ALL BLACKBERRY PLANTS

1-yr. No. 1 Plants				
6	12	25	50	100
\$3.60	\$5.20	\$8.25	\$14.25	\$24.75

EBONY KING

The sensational new, heavy-bearing blackberry that is proving superior because of its ability to bear consistent heavy crops. Also contributing to the popularity of this fine variety is the fact that non-bearing plants are easily distinguished and may be removed from the planting when necessary. Berries are large, glossy black, with very high dessert quality. Fruit is suitable for processing, home use, and for fresh fruit markets. Fruit ripens early. Plants are thrifty and hardy.

DARROW

This is the finest of all new blackberries. Darrow produces very large crops of delicious, firm berries. These luscious berries measure about 1 inch long and as much as $\frac{3}{4}$ inch wide. Plants are vigorous, very winter hardy, and produce well at an early age. Try some!

LAVACA BERRY

A seedling of the boysenberry, resembling its parent most but having higher production, larger berries, and more resistance to cold and disease. The berries are firmer, less acid, and of higher general quality. It is superior for freezing. We feel it to be a handsome addition to your small fruits planting.

PRICES FOR LAVACA BERRIES, BOYSENBERRY, THORNLESS BOYSENBERRIES AND DEWBERRIES

1-yr. No. 1 Plants				
6	10	25	50	100
\$3.00	\$3.75	\$6.90	\$11.90	\$20.65

New—THORNFREE

A fine new thornless blackberry from the U.S.D.A. that is hardy in all but the most northern areas of the United States. Fruits of Thornfree ripen about three weeks later than Eldorado and about one week earlier than Smoothstem. Fruits are medium-large, glossy, firm, blunt, and good. Canes are not so vigorous as Smoothstem, generally trailing the first year after planting, but semiupright thereafter.

New—SMOOTHSTEM

A completely thornless companion variety to Thornfree that was originated by the U.S.D.A. The canes are vigorous, productive, and hardy to central Ohio. Fruits ripen about one month after Eldorado. They are large, firm, blunt, jet black and of good flavor. Plants of Smoothstem and Thornfree do not sucker.

BOYSENBERRY

A giant of the blackberry type. More flavorful than the blackberry and can be picked over a longer period of time. Yields are extremely high. The plant is a vigorous grower and should not be planted closer than 6 feet apart. It seems to do much better when trained on wires similar to grapes. Plants are especially resistant to disease and drought. Try them this year.

THORNLESS BOYSENBERRY

Has the same characteristics as the boysenberry except for the fact that the vines are THORNLESS. Can be easily handled at all times without gloves.

DEWBERRIES

LUCRETIA Perfectly hardy and remarkably productive; said to be the best of this class of fruit. Ripens early. Often $1\frac{1}{2}$ inches long by 1 inch in diameter; sweet luscious and melting.



ASPARAGUS



THE GROWER'S FAVORITE

ROBERT'S STRAIN MARY WASHINGTON

Developed by selection from the original Mary Washington. It is a new type possessing very large spears, giving heavy yields, and having exceptional vigor. The most RUST-RESISTANT strain offered to the planter today. ROBERT'S STRAIN is being accepted by the large commercial planters of the East almost exclusively for their new plantings.

MARY WASHINGTON

The old stand-by of asparagus planters. A strong grower with large stock, attractive green color and rich, tender spears. Also RUST-RESISTANT and recommended for planting in most all localities. Bears early and gives heavy yields.

ASPARAGUS PRICES

(All Varieties)

	25	50	100	250	500	750	1000
JUMBO, 3 yr., No. 1	\$6.00	\$9.00	\$13.50	\$26.50	\$39.00		
HEAVY, 2 yr., No. 1	4.50	6.75	10.15	19.70	29.25	\$39.95	\$45.00
SELECT, 1 yr., No. 1	3.00	4.50	6.75	13.15	19.50	25.90	30.00

Write for prices on lots of 2000 or more. Please state the amount wanted when requesting prices. Cultural directions sent free upon request.

RHUBARB

MacDONALD RED

This is one of the best RED RHUBARBS now offered. It is suitable for field growing or forcing. The plants are healthy, strong growers, producing long, deep red to pink ribs of very fine flavor.

VALENTINE

The newest and best of all red rhubarb. Stalks are very sweet, with a pleasingly tart after-taste. This is a vigorous, tender and smooth new variety with even, bright red color all through the stalk. Valentine is excellent for home use, makes wonderfully delicious pies and bright red sauce. Try Valentine and use less sugar than you ever dreamed possible. It's the best.

CHIPMAN'S CANADA RED

This splendid type rhubarb is a favorite of the red types. It is unique in that the entire rib is a pleasing cherry-red all the way through, having a pleasing rhubarb taste when prepared for serving. The ribs are not quite as large as some other varieties, but its color and flavor sell it readily.

Prices for strong No. 1 Division Canada Red, MacDonal and Valentine

Each	3	5	10	25	50
\$1.00	\$2.85	\$4.50	\$8.50	\$20.00	\$37.50

VICTORIA

Our stock seed plants are carefully selected and protected against cross-pollination from inferior strains to assure you of getting large, well-colored rhubarb from the plants we sell.

Strong 1 yr. whole roots, 1-1½" caliber.

5	10	25	50	100
\$1.50	\$2.50	\$5.50	\$10.00	\$18.00



RASP

BOUNTIFUL RIDGE LEADS THE WAY

✓ **New! Try Them!**

← **EARLY CUMBERLAND (Black)**

(Ott's Strain)

Just the Berry to precede Cumberland; this fine new variety ripens five to ten days earlier than Cumberland. It produces heavy crops on vigorous canes. Yields are better than Bristol; berries carry as well as Cumberland. Early Cumberland berries are large, jet black, very firm and have a delicious, sweet flavor. We think Early Cumberland has a place in every black raspberry planting.

Prices for Pennridge and Early Cumberland

6	10	25	50	100
\$3.60	\$4.50	\$8.25	\$14.25	\$24.75
200	300	500	750	1000
\$45.00	\$60.75	\$86.25	\$118.15	\$150.00

✓ **CUMBERLAND (Black)**

Cumberland stands as America's leading black raspberry. It is the choice of commercial growers in central and northern regions. One of the largest of the black-caps. Plants are healthy, vigorous growers, throwing up stout, well-branched canes that produce immense crops of magnificent berries. The fruit is large and holds up well during the picking season. Very firm, and rated as one of the most delicious of black raspberries.

✓ **NEW MORRISON (Black)**

Berries are extremely large, many measuring over $\frac{3}{4}$ inch in diameter, and they do not crumble. A little later than Cumberland. Has fine dark glossy color and berries hold up well after picking, having exceptionally good quality. A worthy variety for planting anywhere.

**PRICES FOR ALL RASPBERRY PLANTS—
EXCEPT PENNRIDGE & EARLY CUMBERLAND**

All prices are net F.O.B. our Nursery

6	10	25	50	100
\$3.00	\$3.75	\$6.90	\$11.90	\$20.65
200	300	500	750	1000
\$37.50	\$50.65	\$71.90	\$98.45	\$125.00

All Black Raspberries are heavy 1 yr., No. 1 tips.
All Red and Everbearing Raspberries are heavy rooted No. 1 Sucker plants.

We have a fine supply of thrifty, well rooted plants for our customers. Let us quote you if you want larger quantities. Free Cultural Directions sent upon request.



✓ **BLACK HAWK (Black)**

Black Hawk originated in Ames, Iowa. It is a very large, nearly round, non-crumbling, firm berry. Black Hawk stands up well under commercial handling and the quality is excellent whether used fresh, frozen, or in jams, pies, or sauces. Flavor is sweet to mildly acid. Its picking season lasts from 10 to 14 days. The bush is vigorous, very hardy, and highly productive.

✓ **NEW LOGAN (Black)**

One of New Logan's outstanding characteristics is its resistance to mosaic and other raspberry diseases. The berry ripens one week earlier than Cumberland. It is a heavier yielder and the glossy black berries are as large. It holds up well through drought. The last picking is as fresh and free from seediness as the first.

A thrifty grower, and although not as upright as Cumberland, our growers find this no objection if the summer shoots are topped higher than normal.

✓ **BRISTOL (Black)**

Bristol is one of the best black raspberries being grown. It ripens just a few days before Cumberland. The berries are large and firm, fairly glossy and very attractive. Quality is one of the best. The bushes are very hardy and vigorous. Bristol rates as one of the heaviest bearing black-caps now known. From observation and reports coming to us, we can recommend it highly to planters for either commercial markets or home use.

✓ **New Amber Raspberry**

DELICIOUS — NOVEL

Amber is an outstanding new raspberry for the novelty market and home gardener. Introduced by the N. Y. Experiment Station, it is amber in color, sweet flavored, of good quality, and does not crumble. Berries are large. Amber ripens late and extends the season for home-grown raspberries.

BERRIES

0 MORE PROFIT IN RASPBERRIES

New! Try Them!

OTT'S PENNRIDGE (Red) ➔

We are pleased to introduce to our customers one of the finest new red raspberries we have ever seen. Ott's Pennridge originated in Bucks County, Pa., on the farm of Mr. H. Lloyd Ott. He was first attracted to this new berry when he noticed a few plants of outstanding vigor and berry size among his Latham. He propagated from these original plants, and after several years of selection and testing, he asked us to see the fine results of his work. We found this new berry most exceptional.

OTT'S PENNRIDGE is a large, healthy, vigorous grower that averages one to two feet taller than Latham. The berries are about 50% larger than Latham, and ripen some 10 days later. Test trials indicate that these large, heavily loaded plants out-yield most other red raspberries two to one. OTT'S PENNRIDGE berries have excellent flavor and carry as well as the best of the leading red raspberries.

INDIAN SUMMER

EVERBEARING RED

The quality is good and the season very early, starting a day or two later than June varieties. The fall crop commences in mid-September, continuing until stopped by hard freezes in November. The bulk of the crop is borne in October. Plants are above medium to tall, vigorous, upright, hardy, healthy, productive. Fruit is large and uniform, maintaining size throughout the season. Roundish conic in shape, cavity of medium size, smooth light bloom, color medium red. Juicy, tender, mild sub-acid, good.

SEPTEMBER

EVERBEARING RED

The plants are vigorous and disease resistant. The berries are shaped similar to Latham, bright red, firm, not crumbling. Ripens its fall crop two to four weeks earlier than Indian Summer and continues until frost. The spring crop ripens early and plants are very productive.



LATHAM (Red)

The popular mosaic-free, hardy raspberry. Without question Latham is the most profitable red raspberry for commercial planting. It is absolutely hardy. It cannot be surpassed in productiveness. Due to its rich brilliant red color it sells readily on market stands, is a delightful table berry and almost perfect for canning. The berries are large, round and unusually firm, exceptionally well suited for shipping to distant markets. It ripens evenly over a long season.

TAYLOR (Red)

This beautiful berry should have the consideration of every commercial raspberry grower.

The plants are vigorous, hardy, productive, tall growing and make new plants rapidly. Sturdy canes hold the berries well off the ground. Berries ripen shortly before Latham, are large, long conic, bright attractive red, thick fleshed, very firm, sub-acid and of excellent quality, being superior to Latham. The berries do not cling to the bush and carry well to markets.

HILTON (Red)

The largest of all red raspberries grows on vigorous plants that are winter hardy and produce heavy crops. Berries maintain good size throughout the season, are firm, of good quality and ripen in late mid-season. We think this fine new berry is worthy of trial for home and commercial planting.

SUNRISE (Red)

This berry ripens 10 to 16 days earlier than Latham. Its size is near the size of Latham.

It has been very resistant to anthracnose, leaf spot, cane blight, and the resistance shown is probably one of the important factors in its ability to withstand low temperatures.

The color is bright red but turns dark red on ripening. The berries pick easily. They are firm, fine textured, juicy, non-crumbling, sub-acid in flavor with good raspberry aroma, and better in quality than Latham.

ALL-SUMMER RASPBERRY COLLECTION

6 LATHAM (June)

6 INDIAN SUMMER (Everbearer)

12 No. 1 Plants for.....\$4.20

Double This Order for.....\$6.75

TWO-COLOR RASPBERRY COLLECTION

6 CUMBERLAND (Black)

6 LATHAM (Red)

12 No. 1 Plants for.....\$4.20

Double This Order for.....\$6.75

RASP BERRIES

BOUNTIFUL RIDGE LEADS THE WAY TO MORE PROFIT IN RASPBERRIES

New! Try Them!

← EARLY CUMBERLAND (Black)

(Ott's Strain)

Just the Berry to precede Cumberland; this fine new variety ripens five to ten days earlier than Cumberland. It produces heavy crops on vigorous canes. Yields are better than Bristol; berries carry as well as Cumberland. Early Cumberland berries are large, jet black, very firm and have a delicious, sweet flavor. We think Early Cumberland has a place in every black raspberry planting.

Prices for Pennridge and Early Cumberland

6	10	25	50	100
\$3.60	\$4.50	\$8.25	\$14.25	\$24.75
200	300	500	750	1000
\$45.00	\$60.75	\$86.25	\$118.15	\$150.00

CUMBERLAND (Black)

Cumberland stands as America's leading black raspberry. It is the choice of commercial growers in central and northern regions. One of the largest of the black-caps. Plants are healthy, vigorous growers, throwing up stout, well-branched canes that produce immense crops of magnificent berries. The fruit is large and holds up well during the picking season. Very firm, and rated as one of the most delicious of black raspberries.

NEW MORRISON (Black)

Berries are extremely large, many measuring over 3/4 inch in diameter, and they do not crumble. A little later than Cumberland. Has fine dark glossy color and berries hold up well after picking, having exceptionally good quality. A worthy variety for planting anywhere.

**PRICES FOR ALL RASPBERRY PLANTS—
EXCEPT PENNRIDGE & EARLY CUMBERLAND**

All prices are net F.O.B. our Nursery

6	10	25	50	100
\$3.00	\$3.75	\$6.90	\$11.90	\$20.65
200	300	500	750	1000
\$37.50	\$50.65	\$71.90	\$98.45	\$125.00

All Black Raspberries are heavy 1 yr., No. 1 tips.
All Red and Everbearing Raspberries are heavy rooted No. 1 Sucker plants.
We have a fine supply of thrifty, well rooted plants for our customers. Let us quote you if you want larger quantities. Free Cultural Directions sent upon request.

New! Try Them!

OTT'S PENNRIDGE (Red) →

We are pleased to introduce to our customers one of the finest new red raspberries we have ever seen. Ott's Pennridge originated in Bucks County, Pa., on the farm of Mr. H. Lloyd Ott. He was first attracted to this new berry when he noticed a few plants of outstanding vigor and berry size among his Latham. He propagated from these original plants, and after several years of selection and testing, he asked us to see the fine results of his work. We found this new berry most exceptional.

OTT'S PENNRIDGE is a large, healthy, vigorous grower that averages one to two feet taller than Latham. The berries are about 50% larger than Latham, and ripen some 10 days later. Test trials indicate that these large, heavily loaded plants out-yield most other red raspberries two to one. OTT'S PENNRIDGE berries have excellent flavor and carry as well as the best of the leading red raspberries.

INDIAN SUMMER

EVERBEARING RED

The quality is good and the season very early, starting a day or two later than June varieties. The fall crop commences in mid-September, continuing until stopped by hard freezes in November. The bulk of the crop is borne in October. Plants are above medium to tall, vigorous, upright, hardy, healthy, productive. Fruit is large and uniform, maintaining size throughout the season. Roundish conic in shape, cavity of medium size, smooth light bloom, color medium red. Juicy, tender, mild sub-acid, good.

SEPTEMBER

EVERBEARING RED

The plants are vigorous and disease resistant. The berries are shaped similar to Latham, bright red, firm, not crumbling. Ripens its fall crop two to four weeks earlier than Indian Summer and continues until frost. The spring crop ripens early and plants are very productive.

ALL-SUMMER RASPBERRY COLLECTION

6 LATHAM (June)	
6 INDIAN SUMMER (Everbearer)	
12 No. 1 Plants for	\$4.20
Double This Order for	\$6.75

TWO-COLOR RASPBERRY COLLECTION

6 CUMBERLAND (Black)	
6 LATHAM (Red)	
12 No. 1 Plants for	\$4.20
Double This Order for	\$6.75



LATHAM (Red)

The popular mosaic-free, hardy raspberry. Without question Latham is the most profitable red raspberry for commercial planting. It is absolutely hardy. It cannot be surpassed in productiveness. Due to its rich brilliant red color it sells readily on market stands, is a delightful table berry and almost perfect for canning. The berries are large, round and unusually firm, exceptionally well suited for shipping to distant markets. It ripens evenly over a long season.

TAYLOR (Red)

This beautiful berry should have the consideration of every commercial raspberry grower.

The plants are vigorous, hardy, productive, tall growing and make new plants rapidly. Sturdy canes hold the berries well off the ground. Berries ripen shortly before Latham, are large, long conic, bright attractive red, thick fleshed, very firm, sub-acid and of excellent quality, being superior to Latham. The berries do not cling to the bush and carry well to markets.

HILTON (Red)

The largest of all red raspberries grows on vigorous plants that are winter hardy and produce heavy crops. Berries maintain good size throughout the season, are firm, of good quality and ripen in late mid-season. We think this fine new berry is worthy of trial for home and commercial planting.

SUNRISE (Red)

This berry ripens 10 to 16 days earlier than Latham. Its size is near the size of Latham.

It has been very resistant to anthracnose, leaf spot, cane blight, and the resistance shown is probably one of the important factors in its ability to withstand low temperatures.

The color is bright red but turns dark red on ripening. The berries pick easily. They are firm, fine textured, juicy, non-crumblly, sub-acid in flavor with good raspberry aroma, and better in quality than Latham.



BLACK HAWK (Black)

Black Hawk originated in Ames, Iowa. It is a very large, nearly round, non-crumbling, firm berry. Black Hawk stands up well under commercial handling and the quality is excellent whether used fresh, frozen, or in jams, pies, or sauces. Flavor is sweet to mildly acid. Its picking season lasts from 10 to 14 days. The bush is vigorous, very hardy, and highly productive.

NEW LOGAN (Black)

One of New Logan's outstanding characteristics is its resistance to mosaic and other raspberry diseases. The berry ripens one week earlier than Cumberland. It is a heavier yielder and the glossy black berries are as large. It holds up well through drought. The last picking is as fresh and free from seediness as the first.

A thrifty grower, and although not as upright as Cumberland, our growers find this no objection if the summer shoots are topped higher than normal.

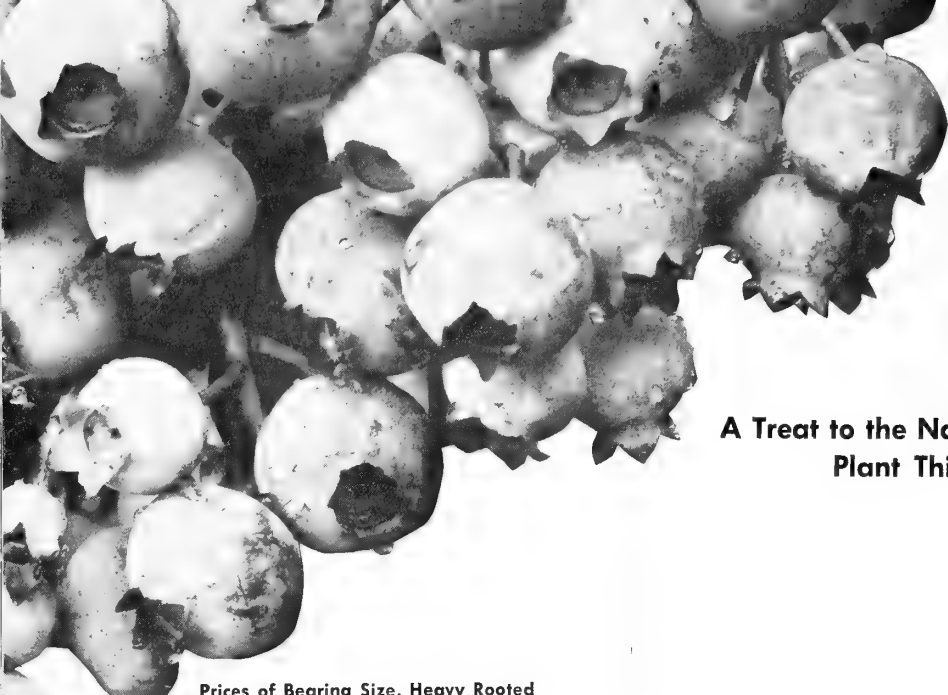
BRISTOL (Black)

Bristol is one of the best black raspberries being grown. It ripens just a few days before Cumberland. The berries are large and firm, fairly glossy and very attractive. Quality is one of the best. The bushes are very hardy and vigorous. Bristol rates as one of the heaviest bearing black-caps now known. From observation and reports coming to us, we can recommend it highly to planters for either commercial markets or home use.

New Amber Raspberry

DELICIOUS — NOVEL

Amber is an outstanding new raspberry for the novelty market and home gardener. Introduced by the N. Y. Experiment Station, it is amber in color, sweet flavored, of good quality, and does not crumble. Berries are large. Amber ripens late and extends the season for home-grown raspberries.



BLUE

THE ARISTOCRAT OF

**A Treat to the Nation — They Can Be Grown
Plant This Large Size, Fine Flavored
Makes The Plan**

Prices of Bearing Size, Heavy Rooted

BLUEBERRY PLANTS

(ALL VARIETIES)

Prices Listed Are Per Plant

	Each	3-9 each	10-29 each	30-99 each	100 or more each
2-3'	\$2.95	\$2.50	\$2.20		
3 or 4 yr. 18-24"					
3 or more branches..	2.45	2.35	2.15	\$2.00	\$1.80
2 or 3 yr. 12-18"					
2 or more branches..	1.95	1.85	1.70	1.60	1.50
2 yr. 9-12"					
2 or more branches..	1.45	1.35	1.20	1.10	1.00

NOTE: Be sure to buy your blueberry plants by graded height and age rather than by age alone. The plants we offer are of bearing age.

We suggest from eight to twelve plants for a family of five people. Ask for and follow our free cultural directions. Plant our blueberries this year for pleasure and profit.

Varieties listed in order of ripening

WEYMOUTH Earliest of all. Ripens berries quickly for early markets. Fruit is above medium in size and usually of fair dessert quality. Bush erect, open, spreading, of average vigor.

EARLIBLUE Fruit clusters of medium size; berries oblate, light blue, very firm, sub-acid. Flavor very good. Earliblue ripens early, with Weymouth and June. Bushes are upright, very vigorous, well shaped and good producers.

STANLEY A recent development recognized in New Jersey blueberry sections as one of the outstanding blueberries. Vigorous plants, large berries, very productive.

✓ **BLUERAY** The fruit is large, with a medium light blue color, medium scar, fine flavor, and resists cracking. It matures with Ivanhoe and Rancocas and most nearly resembles Dixi. The bush is hardy and very productive.

✓ **IVANHOE** Fruits are large, attractive, slightly later than Stanley, with a good blue color. Flavor is good. Plants are vigorous, productive, and more tolerant of canker than Stanley.

✓ **RANCOCAS** The bush of slender, vigorous, upright habit rarely surpasses 6 feet in height. Winter twigs are a dark red. The berries are somewhat larger than those of Rubel and begin to ripen several days earlier.

✓ **CONCORD** The bush is upright and at maturity exceeds 6 feet in height. Young growth is bright red in winter. The berries are large, frequently reaching 3/4 inch in diameter. They usually ripen a few days earlier than Rubel and are fine in flavor and appearance.

✓ **BLUECROP** Fruit clusters of Bluecrop are large. Berries are roundish oblate, very light blue, very firm. Sub-acid; flavor good, Bluecrop ripens in midseason with Concord, Pioneer and Atlantic. Bush upright and vigorous; very consistent producer.

✓ **ATLANTIC** Late midseason. A cross between Jersey and Pioneer which has two outstanding traits—one being its superior size and non-cracking during wet weather, the other is its handsome color and fine flavor. A heavy producer fruiting about with Rubel but much larger in size, better in quality and flavor. Requires less time to prune than Rubel.

✓ **PEMBERTON** One of the newer varieties, outstanding for its vigorous growth and heavy production of large to very large fruits. Berries are firm, having slight aroma and fine dessert quality. Ripens midseason.



BERRIES

THE BUSH BERRY FAMILY!

Most All Sections of The Country.
 Wonder Berry. Beauty of Leaf and Wood
 Very Ornamental



RUBEL Well-developed bushes stand 6 feet or more high, vigorous and beautiful. Stems are slender but sturdy. The winter color of the young wood is a rich red. The large berries are of a fine blue color. Planted extensively for commercial fruit production.

JERSEY The bush is vigorous and large. The winter color of the young growth is a light red over a gold-brown. Berries are the largest of any here listed, of a very light color, and ripen at the same time as Rubel.

BERKELEY Fruit is light blue. Considered one of the largest blueberries yet introduced. Berries are not subject to crack, ripen about a week after Stanley. Plants are very productive.

BURLINGTON The picking quality of Burlington is superior because of complete separation of berry from stem. It ripens later than Jersey or Rubel. Fruit is above average dessert quality. The bush is erect, vigorous and healthy. Berries are a good blue color, medium to large, and hold up in size to the end of the season.

HERBERT Fruit clusters are loose; fruit ripens about the same time as Jersey and Dixi, earlier than Coville but later than Berkeley. Berries of Herbert are large and carry their size well through ripening season. Firm, resistant to cracking; color about the same as Jersey, Rubel and Dixi. Flavor is equal to the best varieties. Fruit hangs well on bush. Bushes flower late, are thrifty growers and consistently productive.

COVILLE Selected to give larger berries of good quality and color. Ripening after Dixi, Rubel and Jersey, Coville is rated as our latest blueberry. Large, good blue color, good quality. Hangs well to clusters even when ripe, thereby requiring less picking. Thrifty plants.

BARGAIN COLLECTIONS

COLLECTION A

- 2 BLUERAY, Large 2 yr., 12-18"
 - 2 WEYMOUTH, Large 2 yr., 12-18"
 - 2 RANCOCAS, Large 2 yr., 12-18"
 - 2 JERSEY, Large 2 yr., 12-18"
 - 2 ATLANTIC, Large 2 yr., 12-18"
- 10 Large Bearing Age Plants
 Catalog Value \$17.00
 Special to you for 1967-1968 **\$15.30**
 Double this order for.....\$30.00

COLLECTION B

- 3 EARLBLUE, Large 2 yr., 12-18"
 - 3 IVANHOE, Large 2 yr., 12-18"
 - 3 BERKELEY, Large 2 yr., 12-18"
 - 3 HERBERT, Large 2 yr., 12-18"
- 12 Large Bearing Age Plants
 Catalog Value \$20.40
 Special to you for 1967-1968 **\$18.35**
 Double this order for.....\$36.00

COLLECTION C

- 2 RANCOCAS, Jumbo, 24-30"
 - 2 RUBEL, Jumbo, 24-30"
 - 2 JERSEY, Jumbo, 24-30"
 - 2 WEYMOUTH, Jumbo, 24-30"
- 8 Jumbo Heavy Fruiting Size Plants
 Catalog Value \$20.00
 Special to you for 1967-1968 **\$18.00**
 Double this order for.....\$35.00

COLLECTION D

- 3 RANCOCAS, Giant 3 yr., 18-24"
 - 3 WEYMOUTH, Giant 3 yr., 18-24"
 - 3 RUBEL, Giant 3 yr., 18-24"
 - 3 BURLINGTON, Giant 3 yr., 18-24"
 - 3 JERSEY, Giant 3 yr., 18-24"
- 15 Giant Bearing Size 3 yr. Plants
 Catalog Value \$32.25
 Special to you for 1967-1968 **\$29.00**
 Double this order for.....\$55.00



BLUE BERRIES

THE ARISTOCRAT OF THE BUSH BERRY FAMILY!
A Treat to the Nation — They Can Be Grown in Most All Sections of The Country.
Plant This Large Size, Fine Flavored, Wonder Berry. Beauty of Leaf and Wood Very Ornamental
Makes The Plant



Prices of Bearing Size, Heavy Rooted

BLUEBERRY PLANTS

(ALL VARIETIES)

Prices Listed Are Per Plant

	Each	3-9 each	10-29 each	30-99 each	100 or more each
2-3'	\$2.95	\$2.50	\$2.20		
3 or 4 yr. 18-24"					
3 or more branches..	2.45	2.35	2.15	\$2.00	\$1.80
2 or 3 yr. 12-18"					
2 or more branches..	1.95	1.85	1.70	1.60	1.50
2 yr. 9-12"					
2 or more branches..	1.45	1.35	1.20	1.10	1.00

NOTE: Be sure to buy your blueberry plants by graded height and age rather than by age alone. The plants we offer are of bearing age.

We suggest from eight to twelve plants for a family of five people. Ask for and follow our free cultural directions. Plant our blueberries this year for pleasure and profit.

Varieties listed in order of ripening

WEYMOUTH Earliest of all. Ripens berries quickly for early markets. Fruit is above medium in size and usually of fair dessert quality. Bush erect, open, spreading, of average vigor.

EARLIBLUE Fruit clusters of medium size; berries oblate, light blue, very firm, sub-acid. Flavor very good. Earliblue ripens early, with Weymouth and June. Bushes are upright, very vigorous, well shaped and good producers.

STANLEY A recent development recognized in New Jersey blueberry sections as one of the outstanding blueberries. Vigorous plants, large berries, very productive.

BLUERAY The fruit is large, with a medium light blue color, medium scar, fine flavor, and resists cracking. It matures with Ivanhoe and Rancocas and most nearly resembles Dixi. The bush is hardy and very productive.

IVANHOE Fruits are large, attractive, slightly later than Stanley, with a good blue color. Flavor is good. Plants are vigorous, productive, and more tolerant of canker than Stanley.

RANCOCAS The bush of slender, vigorous, upright habit rarely surpasses 6 feet in height. Winter twigs are a dark red. The berries are somewhat larger than those of Rubel and begin to ripen several days earlier.

CONCORD The bush is upright and at maturity exceeds 6 feet in height. Young growth is bright red in winter. The berries are large, frequently reaching 3/4 inch in diameter. They usually ripen a few days earlier than Rubel and are fine in flavor and appearance.

BLUECROP Fruit clusters of Bluecrop are large. Berries are roundish oblate, very light blue, very firm. Sub-acid; flavor good, Bluecrop ripens in midseason with Concord, Pioneer and Atlantic. Bush upright and vigorous; very consistent producer.

ATLANTIC Late midseason. A cross between Jersey and Pioneer which has two outstanding traits—one being its superior size and non-cracking during wet weather, the other is its handsome color and fine flavor. A heavy producer fruiting about with Rubel but much larger in size, better in quality and flavor. Requires less time to prune than Rubel.

PEMBERTON One of the newer varieties, outstanding for its vigorous growth and heavy production of large to very large fruits. Berries are firm, having slight aroma and fine dessert quality. Ripens midseason.

RUBEL Well-developed bushes stand 6 feet or more high, vigorous and beautiful. Stems are slender but sturdy. The winter color of the young wood is a rich red. The large berries are of a fine blue color. Planted extensively for commercial fruit production.

JERSEY The bush is vigorous and large. The winter color of the young growth is a light red over a gold-brown. Berries are the largest of any here listed, of a very light color, and ripen at the same time as Rubel.

BERKELEY Fruit is light blue. Considered one of the largest blueberries yet introduced. Berries are not subject to crack, ripen about a week after Stanley. Plants are very productive.

BURLINGTON The picking quality of Burlington is superior because of complete separation of berry from stem. It ripens later than Jersey or Rubel. Fruit is above average dessert quality. The bush is erect, vigorous and healthy. Berries are a good blue color, medium to large, and hold up in size to the end of the season.

HERBERT Fruit clusters are loose; fruit ripens about the same time as Jersey and Dixi, earlier than Coville but later than Berkeley. Berries of Herbert are large and carry their size well through ripening season. Firm, resistant to cracking; color about the same as Jersey, Rubel and Dixi. Flavor is equal to the best varieties. Fruit hangs well on bush. Bushes flower late, are thrifty growers and consistently productive.

COVILLE Selected to give larger berries of good quality and color. Ripening after Dixi, Rubel and Jersey, Coville is rated as our latest blueberry. Large, good blue color, good quality. Hangs well to clusters even when ripe, thereby requiring less picking. Thrifty plants.

BARGAIN COLLECTIONS

COLLECTION A

- 2 BLUERAY, Large 2 yr., 12-18"
- 2 WEYMOUTH, Large 2 yr., 12-18"
- 2 RANCOCAS, Large 2 yr., 12-18"
- 2 JERSEY, Large 2 yr., 12-18"
- 2 ATLANTIC, Large 2 yr., 12-18"

10 Large Bearing Age Plants
 Catalog Value \$17.00
 Special to you for 1967-1968 **\$15.30**
 Double this order for.....\$30.00

COLLECTION B

- 3 EARLIBLUE, Large 2 yr., 12-18"
- 3 IVANHOE, Large 2 yr., 12-18"
- 3 BERKELEY, Large 2 yr., 12-18"
- 3 HERBERT, Large 2 yr., 12-18"

12 Large Bearing Age Plants
 Catalog Value \$20.40
 Special to you for 1967-1968 **\$18.35**
 Double this order for.....\$36.00

COLLECTION C

- 2 RANCOCAS, Jumbo, 24-30"
- 2 RUBEL, Jumbo, 24-30"
- 2 JERSEY, Jumbo, 24-30"
- 2 WEYMOUTH, Jumbo, 24-30"

8 Jumbo Heavy Fruiting Size Plants
 Catalog Value \$20.00
 Special to you for 1967-1968 **\$18.00**
 Double this order for.....\$35.00

COLLECTION D

- 3 RANCOCAS, Giant 3 yr., 18-24"
- 3 WEYMOUTH, Giant 3 yr., 18-24"
- 3 RUBEL, Giant 3 yr., 18-24"
- 3 BURLINGTON, Giant 3 yr., 18-24"
- 3 JERSEY, Giant 3 yr., 18-24"

15 Giant Bearing Size 3 yr. Plants
 Catalog Value \$32.25
 Special to you for 1967-1968 **\$29.00**
 Double this order for.....\$55.00

Prices . . . All Varieties Strawberry Plants

SHIPPING SEASON—We ship from November 15th to June 1st. Earlier orders cannot be accepted because plants will not be sufficiently dormant nor rooted until November 15th. All orders filled after June 1st will be at the purchaser's risk. We will make every effort to see that they arrive in good condition.

PRICES—All prices listed are F.O.B. Princess Anne, Md., and apply only to varieties listed. *Several varieties cannot be combined to obtain a quantity rate!* Please write for special quotation when in need of more than 5,000 of one variety.

POSTAGE—Please see special instructions on order blank.

VIRUS FREE PLANTS—All varieties are Registered-Essentially Virus Free Plants. Virus Free Bundle Tag #12.

	25	50	75	100	250	500	750	1000	3000 per 1000	5000 per 1000
Early Varieties										
BLAKEMORE	\$2.25	\$3.40	\$4.25	\$5.05	\$9.85	\$14.65	\$19.40	\$22.50	\$22.25	\$22.00
EARLIDAWN	2.80	4.20	5.25	6.30	12.25	18.20	24.15	28.00	27.75	27.50
SUNRISE	3.00	4.50	5.65	6.75	13.15	19.50	25.90	30.00	29.75	29.50

Medium Early Varieties

PREMIER	2.45	3.70	4.60	5.50	10.75	15.95	21.15	24.50	24.25	24.00
DIXIELAND	2.50	3.75	4.70	5.65	10.95	16.25	21.55	25.00	24.75	24.50
MIDLAND	2.80	4.20	5.25	6.30	12.25	18.20	24.15	28.00	27.75	27.50
FAIRFAX	2.60	3.90	4.90	5.85	11.40	16.90	22.40	26.00	25.75	25.50
REDGLOW	2.60	3.90	4.90	5.85	11.40	16.90	22.40	26.00	25.75	25.50
MISSIONARY	2.25	3.40	4.22	5.05	9.85	14.65	19.40	22.50	22.25	22.00
EARLIBELLE	2.80	4.20	5.25	6.30	12.25	18.20	24.15	28.00	27.75	27.50
FLORIDA 90	2.25	3.40	4.22	5.05	9.85	14.65	19.40	22.50	22.25	22.00

Midseason Varieties

CATSKILL	2.50	3.75	4.70	5.65	10.95	16.25	21.55	25.00	24.75	24.50
ROBINSON	2.40	3.60	4.50	5.40	10.50	15.60	20.70	24.00	23.75	23.50
SPARKLE	2.50	3.75	4.70	5.65	10.95	16.25	21.55	25.00	24.75	24.50
ARMORE	2.45	3.70	4.60	5.50	10.75	15.95	21.15	24.50	24.25	24.00
MIDWAY	2.50	3.75	4.70	5.65	10.95	16.25	21.55	25.00	24.75	24.50
POCAHONTAS	2.45	3.70	4.60	5.50	10.75	15.95	21.15	24.50	24.25	24.00
SURECROP	2.40	3.60	4.50	5.40	10.50	15.60	20.70	24.00	23.75	23.50
EMPIRE	2.45	3.70	4.60	5.50	10.75	15.95	21.15	24.50	24.25	24.00
TENN. BEAUTY	2.40	3.60	4.50	5.40	10.50	15.60	20.70	24.00	23.75	23.50
JERSEYBELLE	2.75	4.15	5.15	6.20	12.05	17.90	23.75	27.50	27.25	27.00
VESPER	2.90	4.35	5.45	6.55	12.70	18.85	25.00	29.00	28.75	28.50

Late Varieties

REDSTAR	2.70	4.05	5.05	6.10	11.80	17.55	23.29	27.00	26.75	26.50
---------------	------	------	------	------	-------	-------	-------	-------	-------	-------

Everbearing Varieties

SUPERFECTION	3.50	5.25	6.55	7.90	15.25	22.75	30.20	35.00		
OZARK BEAUTY	4.00	6.00	7.50	9.00	17.50	26.00	34.50	40.00		



MARYLAND STATE BOARD OF AGRICULTURE

State Horticultural Department

University of Maryland
College Park, Md.
20740

Number 23 Date August 14, 1967

Certificate of Inspection

This is to Certify, That the nursery stock of Bountiful Ridge Nurseries, Inc.
located at Princess Anne, Somerset County
State of Maryland, has been officially examined in accordance with the laws of Maryland, 1896, Chapter 289,
Section 58, and that said nurseries and premises were found to be apparently free from dangerously injurious
insect pests and plant diseases.

This Certificate does not include nursery stock not grown within this state, unless such stock is previously
covered by Certificate and is copied by the State Entomologist and State Plant Pathologist

Unless sooner revoked, this certificate is valid until September 30, 1968

L. O. Wearin
State Plant Pathologist

Geo. S. Langford
State Entomologist

REGISTERED STRAWBERRY PLANTS

You can be sure that you're planting the best "Virus Free" strawberry plants money can buy if they're from Bountiful Ridge. Our "Virus Free" plants have been grown from stock provided by the U.S.D.A. and the University of Maryland according to their regulations. Since viruses do not produce clear-cut symptoms, but generally weaken the plants, no guarantee can be made that these plants are 100% virus free. Because of the protective measures used on our plants, we believe them to be "essentially virus free."



✓ **CATSKILL** →

ONE OF THE VERY GOOD MIDSEASON BERRIES

A vigorous grower, somewhat frost resistant and extremely productive. It has proven itself for many years and is recognized as one of the best midseason berries in cultivation. The foliage is healthy in this latitude. It is a good plant maker and very productive. The berries are large and of good quality. We recommend Virus Free plants of this fine variety for this and more northern areas. Catskill is the Number One midseason variety for the Northeast.

✓ **EMPIRE**

Heavy Bearer—Frost Resistant

Empire is a medium early, outstanding berry for the middle and northern berry-producing areas. It is beautiful—larger than Premier, firmer, better carrier, more attractive and a higher yielder than Premier. Empire has always been a vigorous grower. Virus free stocks make it even easier to get good fruiting beds. The high yields of large, glossy red fruit are making this fine berry very popular in the Premier growing sections of the country. Why don't you try some from Bountiful Ridge this year?

✓ **REDGLOW** →

**BEAUTY—PRODUCTIVITY—LARGE SIZE
RED STELE RESISTANCE**

Redglow is one of our best-looking strawberries. The fruit ripens in early midseason and is large, beautiful, brilliant red, and delicious. The berries hold their size throughout the season and are fairly firm. They are good for freezing and fresh market sales.

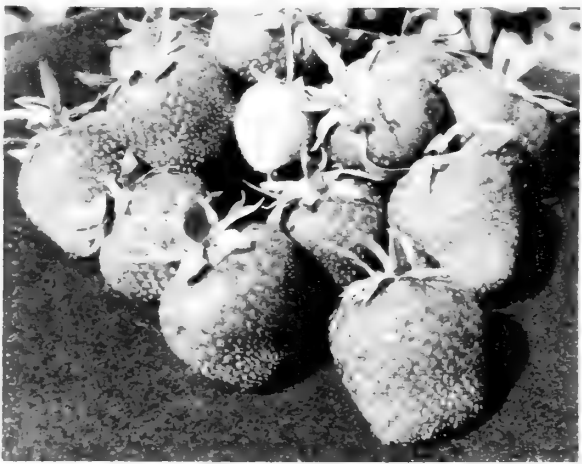
Plants of Redglow are vigorous, productive, and resistant to the common type of red stele. This is a real good variety for the middle states area and should be planted in rich, moist soil. It ripens one or two days later than Earlidawn.



✓ **DIXIELAND**

Early . . . Vigorous Grower . . . Good Yielder

Dixieland ripens with Blakemore, is slightly firmer than Blakemore and has large berries. They are a bright glossy red, only slightly darker than Blakemore, and uniform in shape. Flavor is tart and good. Yields have run over 9000 quarts per acre of good, large, firm berries.



← **OZARK BEAUTY**

A new everbearing kind that produces large volumes of big, juicy, conical fruits. Flavor is excellent. Plants are vigorous and productive. Ozark Beauty is extra good for freezing. Pick large, luscious berries all season long from this fine variety. Yields have exceeded 12,000 quarts per acre in test plots. Try them.

✓ **SUPERFECTION**

It's beautiful . . . it's heavy bearing . . . it's "good eatin'". Superfection leads the field of everbearing varieties. Harvest large, red, mouth-watering fruits just 90 days after planting. The plants are vigorous, adapt themselves to a wide range of soils and weather conditions, and produce more heavily in the fall than any other everbearing kind we know. Superfection is best for garden, commercial or local market.

Everbearing Strawberries



✓ EARLIDAWN →

EARLINESS—FREEZING QUALITY—HIGH YIELDS

Ripening five days before Blakemore and Premier, EARLIDAWN is the earliest of all the good, commercial strawberry varieties. Year after year it has come through with early, large crops of nice market berries.

The berries are quite firm, with a tough skin. Color is a vivid red only slightly darker than Blakemore, which does not become too much darker upon holding. Crops of EARLIDAWN have been outstanding in all areas, with as much as 58% of the crop being harvested in the first week on this fine new variety.

EARLIDAWN makes extra large crowned plants but not too many runner plants. Yet, production is still quite high for such an early berry.



✓ ROBINSON

**Large Size—Bright Color
A LEADING MARKET BERRY**

Robinson, often called Scarlet Beauty, has those very large attractive berries which catch the customer's eye every time. They are a beautiful bright red color with glossy finish, holding well with little loss of color. Yields are comparable to other leading varieties.

Plants of the Robinson variety are very vigorous, almost always making good picking beds under extreme circumstances. Robinson actually does better in dry seasons than in wet ones because of the tendency to over-produce plants. The berries also hold up better under dry conditions.

✓ FAIRFAX →

Queen of the Table Berries

Fairfax ripens about the same time as Premier, and its fruiting season extends over a long period. The quality Fairfax is equal to the best. Berries are large to very large, of a bright red color at picking time. Turns dark after being picked for several days but retains its flavor and firmness.



✓ SPARKLE

**A Very Heavy Producer
GOOD FOR FREEZING, TOO**

Sparkle is a prolific plant maker with good healthy foliage, and very productive. Berries are medium size, uniform in shape and have a bright red color, turning somewhat dark on fruits that are over-ripe. The quality of the berry is excellent. Ripens midseason, being a little later than Premier. Requires good moisture for best results. Sparkle is grown extensively in New Jersey, eastern Pennsylvania, New York and New England States.



← ✓ MIDLAND

Beauty . . . Size . . . Productivity . . . The Flavor King

Midland from Virus Free Stocks is one of the leaders of early strawberry varieties. Always a favorite as an early berry with outstanding size, beauty, productivity, quality, firmness and freezing ability, Midland can now be profitably grown, thanks to the increased vigor of Vigor Free Stocks. Midland will now make good beds of large vigorous plants.

Berries are early, ripening with Premier and Blakemore, and as productive as either, averaging somewhat larger in size. The flavor compares favorably with Fairfax, known generally as our highest quality berry. Freezing tests show Midland to be one of the best for either commercial or home use. We suggest you try this fine variety this year and see if you don't agree that it is most outstanding.



POCAHONTAS

The Three-Way Strawberry

FRESH MARKET . . . CANNED . . .
FROZEN PACK

Outstanding . . . Wonderful . . . My Best Money Maker . . . These are the words used by many of our customers to describe the way they feel about this great berry. Since its release by the U.S.D.A., Pocahontas has climbed to the top of the ladder as a commercial favorite. Time after time it has outyielded all other kinds from the Carolinas to New York and as far west as Ohio and Arkansas. Its extra high vigor gives Pocahontas good picking beds even under adverse conditions.

Yields of Pocahontas often are more than 10,000 quarts of large, beautiful, high quality berries. They have brought high profits on fresh markets everywhere. Pocahontas has been accepted by the processors as an outstanding berry for canning and freezing.

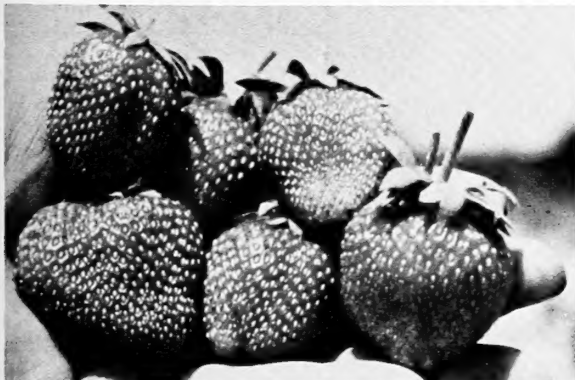
The berries are a bright, glossy red, firm, somewhat conic in shape, and not as tart as Blakemore. Pocahontas ripens about a week later than Blakemore.



TENNESSEE BEAUTY

Tennessee Beauty is being grown in nearly every eastern and midwestern berry section with the same results . . . LARGE YIELDS AND HIGH PROFITS. Berries of Tennessee Beauty are large (size holds well throughout entire season), firm, and outstanding shippers. They are a bright glossy red, holding well without changing color. Tennessee Beauties are of high quality and in demand for processing and freezing as well as for use on fresh markets. They ripen late mid-season to late, and are sure croppers.

Plants are vigorous and free plant makers, always assuring good picking beds of large stocky crowns. Tennessee Beauty can be grown on a wide variety of soils with good results. We recommend it as a sure profit-maker in most all southern, eastern, northern, and midwestern producing areas.



VESPER

(NJ 157)

This fine new berry is the result of a cross of Utah Shippers and Jerseybelle which ripens later than or about with Jerseybelle. It has a long harvest period that extends well into the Redstar season. The fruits are large and pretty. Vesper is the most productive of the selections tested at New Brunswick. It is a good plant maker but is not resistant to red stele or verticillium wilt. It appears that Vesper will do well and should be tried in areas where Jerseybelle is successful.

REDSTAR

Our Very Best Late Berry

A sure bet to continue the good strawberry season. Its large, flavorful berries are certain to make a hit with your customers and family. They ripen a week to ten days after other berries are gone—so late that they are seldom hit by frost, and annual crops are a certainty. The first berries are very large and wedge shaped. Later ones are mostly conic. Flavor is delightfully good for such a late berry. The bright red color is quite attractive and darkens little on holding.

JERSEYBELLE

Virus Free Vigor and Rich Market Quality

Jerseybelle has brought the highest prices paid for strawberries anywhere since its introduction a few years ago. Jerseybelle has risen to prominence as a highly profitable late midseason berry for growers of New Jersey and Long Island. The berries are bright orange-red, glossy and firm, turning slightly darker upon holding. Jerseybelle has been found best for moderately close and local markets.

Plants make good growth on rich, moist soils and give good picking beds of large, stocky crowns. However, they are not nearly as vigorous as Sparkle, Catskill or Pocahontas. We recommend Jerseybelle for trial in most eastern areas. It has not been found to be very adaptable to midwestern growing conditions where observed.

Our Best Disease Resistant Varieties



✓ SURECROP

MULTIPLE RESISTANCE TO RED STELE—FINE FLAVOR
VERY HEAVY PLANT PRODUCER
Excellent Size . . . Good Yields . . . High Prices

SURECROP is a really fine new strawberry variety wherever grown, from Pennsylvania and New York to southern Virginia and westward to Ohio.

SURECROP is a midseason berry ripening about with Fairland and Temple. The berries are a light, bright red which turns to a deep rich color. Seeds are a nice bright yellow set even with the surface. SURECROP berries are firm, with a tough glossy skin which makes them ideal for distant markets. They have also been recommended for freezing. Size holds well throughout the season, with the average being larger than Stelemaster.

A very vigorous plant maker and producer, rivaling such varieties as Pocahontas and Robinson as the best bed makers of all strawberry varieties. Coupled with STELEMASTER as a fine early berry, SURECROP as a midseason berry will deliver a MONEY-MAKING, RED STELE RESISTANCE PUNCH for growers everywhere.



✓ SUNRISE

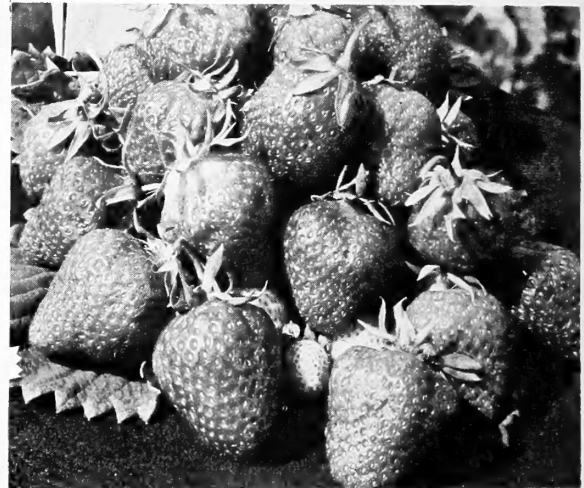
Resistant to Red Stele and Verticillium Wilt
Early . . . Vigorous . . . Productive

Sunrise is a new early berry with multiple resistance to red stele. It was released by U.S.D.A. and the Univ. of Maryland and is the result of a cross of US 4152 and Stelemaster.

Berries are medium in size, have a glossy surface, and a light, bright red color. They retain an attractive appearance long after picking. The berries are conic shaped, and have good dessert quality. Flesh is firm, pale pink in color, but not dark enough for good frozen pack appearance.

Plants of Sunrise produce runners freely, are very vigorous, and highly resistant to four races of red stele and partially resistant to a fifth race. They are also resistant to Verticillium wilt. Leaves are resistant to leaf scorch and mildew, but quite susceptible to leaf spot.

Sunrise ripens with Earlidawn at Beltsville, but is some later at mid-west test blocks. Yields have been good to very good in trial blocks in the eastern U.S. We suggest Sunrise be tried wherever red stele and Verticillium wilt occur.



✓ MIDWAY

New . . . Widely Tested . . . Red Stele Resistant
Merits Trial in All Areas

Midway is a cross of Dixieland and Temple that has done well in test plots from Massachusetts to Virginia and westward. It should be tested as a virus free, red stele resistant replacement for Temple and Fairland, neither of which has virus free stock available.

Midway ripens in midseason, about with Temple. The berries are medium to large size, have a uniform deep red color with a glossy surface, firm skin and yellow seeds. The flesh is firm. Berries are irregular conic shape but have good dessert quality and have stood up well in the frozen pack.

Plants of Midway are vigorous, highly productive, and resistant to the common race of red stele. The leaves are somewhat susceptible to leaf scorch and leaf spot.

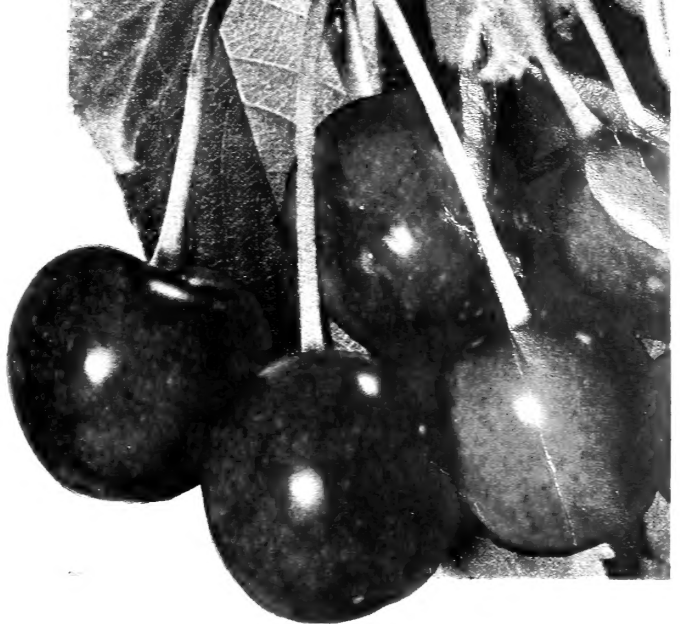
Growers report 1967 crops of Midway were excellent in yield, color, size. Buyers paid high prices for fruit because it carried long distances with a minimum of loss.





REDWIN PEACH

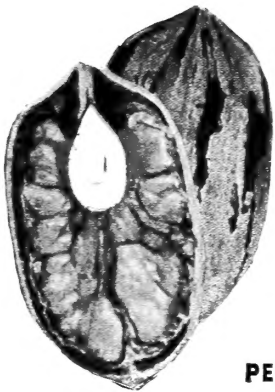
U. S. Plant Patent No. 1661



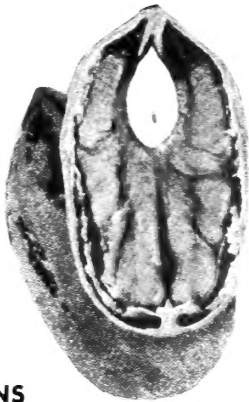
WINDSOR SWEET CHERRY

FOR GREATER PROFITS AND SATISFACTION

Plant Bountiful Ridge Trees and Plants
"Every Year"



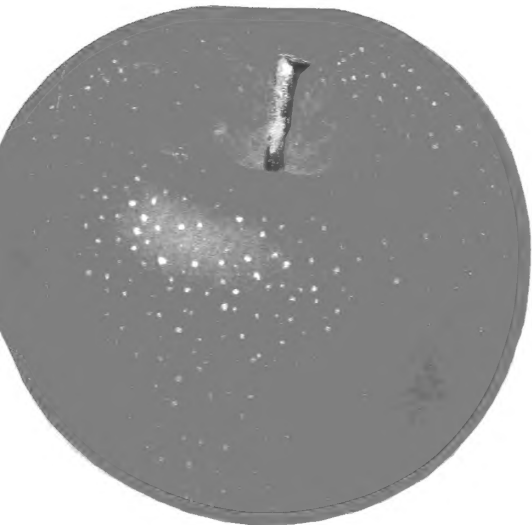
STUART



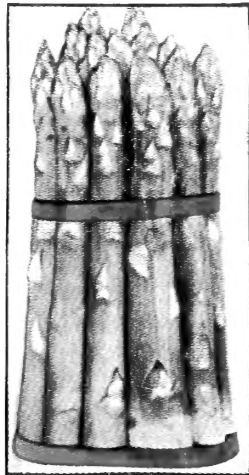
DESIRABLE

PECANS

**CRIMSON KING
MAPLE**



GALLIA BEAUTY—RED ROME



**MARY WASHINGTON
ASPARAGUS**



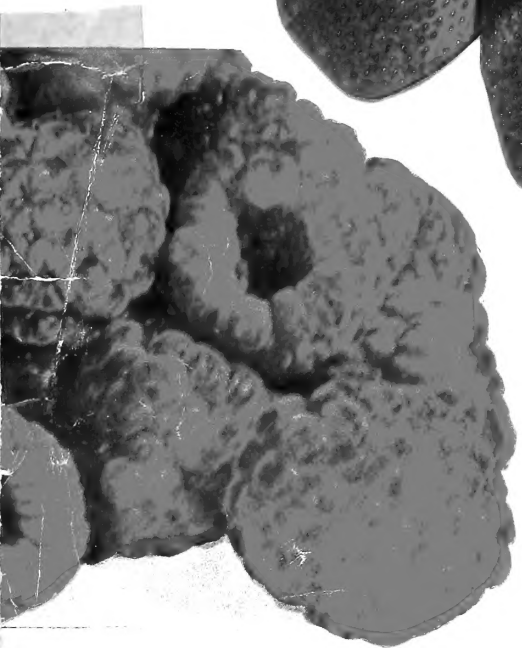
**CULTIVATED
BLUEBERRIES**



IMPROVED WINESAP APPLE

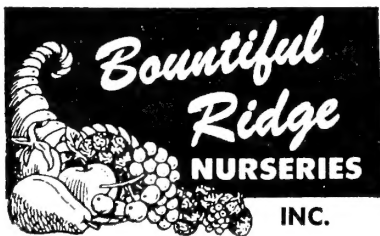


**CATSKILL
STRAWBERRY**



**OTT'S PENNRIDGE
RED RASPBERRY**

**SKYLINE
SUPREME
RED DELICIOUS
APPLE**



**PRINCESS ANNE • MARYLAND
21853**

Telephone: 301-651-0400

Return Requested

WASHINGTON, D. C. 20250

**BULK RATE
U. S. POSTAGE
PAID
Princess Anne, Md.
Permit No. 4**