

Plants collected on Peary Expedition  
to Greenland. 1897

Field notes:

White, David & Schuchert, Charles  
Nos. 1 - 243. page 24

Stein, H.  
Nos. 1 - 21. page 21

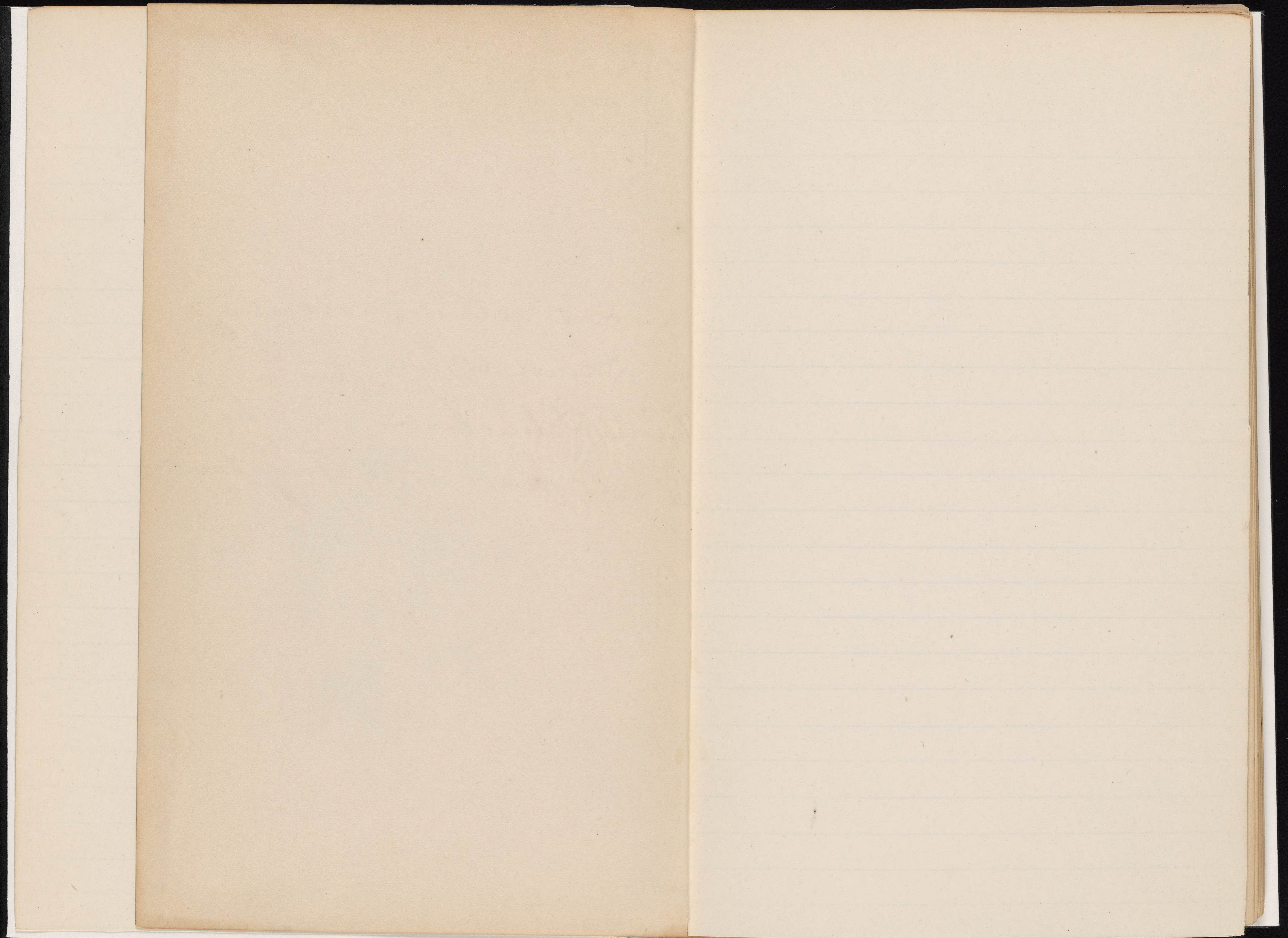
Plants collected on Peary Expedition  
to Greenland. 1897

Field notes:

White, David & Schuchert, Charles  
Nos. 1 - 245. page 26

Stein, R.  
Nos. 1 - 81. page 47

List of plants collected  
by David White and  
Charles Schuchert on the  
Peary Expedition to Greenland,  
1897.





- |    |   |                                       |
|----|---|---------------------------------------|
| 1  | July 23.  | New Campbelltown, Cape Breton Island. |
| 2  | "   | "                                     |
| 3  | "   | "                                     |
| 4  | "   | "                                     |
| 5  | "   | "                                     |
| 6  | "   | "                                     |
| 7  | "   | "                                     |
| 8  | <i>Botrychium</i>   | "                                     |
| 9  | <i>Pteris aquilina</i> L.                                   | "                                     |
| 10 | <i>Equisetum arvense</i> L.                                 | "                                     |
| 11 | <i>Lycopodium spinulosa intermedia</i> (Muhl.)<br>Underwood | "                                     |
| 12 | <i>Phlegosporis phlegosporis</i> (L.) Underwood.            | "                                     |



13 Botrychium virginianum (L.) July 23  
S.W.

New Campbelltown, Cape Breton Island

14 Lycopodium annotinum L. "

"

15 Asplenium filif-foemina Benth.

"

16 Lycopodium clavatum L. "

"

17 Onoclea sensibilis L. "

"

18 Lycopodium alpinum Linn.

"

19 Polypodium vulgare L. "

"

20 Dryopteris braunii (Spenn.) Underwood.

"

21 Dryopteris filif-mas Swtg. "

"

22 " spinulosa dilatata (Hoffm.)  
Underw.

"

23 Lycopodium complanatum L.

"

24 " obscurum L. "

"

- |    |    |                                  |                                    |                                       |
|----|----|----------------------------------|------------------------------------|---------------------------------------|
| 13 | 25 | <i>Habenaria orbiculata</i>      | July 23.                           | New Campbelltown, Cape Breton Island. |
|    |    |                                  | (Pursh) Torr.                      |                                       |
| 14 | 26 | "                                | <i>clavellata</i> (Michx.) Spreng. | "                                     |
| 15 | 27 | "                                | <i>psycodes</i> (L.) A. Gray.      | "                                     |
| 16 | 28 | <i>Bromus racemosus</i> L.       | "                                  | "                                     |
| 17 | 29 | <i>Glyceria Canadensis</i> Trin. | "                                  | "                                     |
| 18 | 30 | <i>Juncus articulatus</i> L.     | "                                  | "                                     |
| 19 | 31 | "                                | <i>effusus</i> L.                  | "                                     |
| 20 | 32 | "                                | <i>littoralis</i> Engelm.          | "                                     |
| 21 | 33 | <i>Kalmia angustifolia</i> L.    | "                                  | "                                     |
| 22 | 34 | <i>Pyrola rotundifolia</i> L.    | "                                  | "                                     |
| 23 | 35 | "                                | <i>secunda</i> L.                  | "                                     |
| 24 | 36 | <i>Erigeron strigosus</i> Muhl.  | "                                  | "                                     |

- 37 Anaphalis margaritacea B. & H. July 23.
- 38 Antennaria dioica Greene.
- 39 Leontodon autumnalis L. "
- 40 Senecio vulgaris L. "
- 41 Achillea millefolium L. "
- 42 Chrysanthemum leucanthemum L.
- 43 Iris prismatica Pursh. "
- 44 Thalictrum polygamum Muhl.
- 45 " " " "
- 46 Ranunculus acris L. "
- 47 Rumex acetosella L. "
- 48 Carex pseudo-cyperus L. "

New Campbelltown, Cape Breton Island

"

"

"

"

"

"

"

"

"

"

"



- |    |   |         |                                      |
|----|---|---------|--------------------------------------|
| 61 | <i>Spiraea salicifolia</i> L.               | July 23 | New Campbelltown, Cape Breton Island |
| 62 | <i>Potentilla anserina</i> L.               | "       | "                                    |
| 63 | <i>Fragaria americana</i> (Porter) Britton. |         | "                                    |
| 64 | <i>Raphanus raphanistrum</i> L.             | "       | "                                    |
| 65 | <i>Circaea alpina</i> L.                    | "       | "                                    |
| 66 | <i>Geranium robertianum</i> L.              | "       | "                                    |
| 67 | <i>Rosa nitida</i> Willd.                   | "       | "                                    |
| 68 | <i>Lagina procumbens</i> L.                 | "       | "                                    |
| 69 | <i>Cerastium vulgatum</i> L.                | "       | "                                    |
| 70 | <i>Galium trifidum</i> L.                   | "       | "                                    |
| 71 | <i>Eupharia officinalis latifolia</i>       |         | "                                    |
| 72 | <i>Rhinanthus Crista-galli</i> L.           |         | "                                    |

- 73 *Luzula Confusa* Lindb. Aug. 1-2  
 74 *Carex rigida* Good. "  
 75 *Arctostaphylos alpina* (L.) Spr.  
 76 *Salix herbacea* L. "  
 77 *Ledum palustre decumbens* Sge.  
 78 *Saxifraga rivularis* L. "  
 79 *Trisetum subspicatum* Beauv.  
 80 *Festuca ovina alpina* Koch.  
 81 *Poa flexuosa* Wahlberg. "  
 82 *Poa glauca* M. Vahl. "  
 83 *Hierochloa alpina* R. et S. "  
 84. *Luzula Confusa* Lindb. "

*Signaia*, near Cape Haven, Baffin's Land

"

"

"

"

"

"

"

"

"

"

"









122	Aug. 1-2	Signuia, near Cape Haven, Baffin's Land
123	"	"
124	"	"
125	"	"
126	"	"
127	"	"
128	"	"
129	"	"
130	"	"
131	"	"
132	"	"
133	"	"

- |     |           |   |
|-----|-----------|---|
| 134 | Aug. 1-2. | Signuia, near Cape Hareu, Baffin's Land |
| 135 | "         | "                                       |
| 136 | "         | "                                       |
| 137 | "         | "                                       |
| 138 | "         | "                                       |
| 139 | Aug. 7    | Godhavn, Disko Island, Greenland        |
| 140 | "         | "                                       |
| 141 | "         | "                                       |
| 142 | "         | "                                       |
| 143 | "         | "                                       |
| 144 | "         | "                                       |
| 145 | "         | "                                       |
- Fuscus vesicularis*  
*Taraxacum* sp.  
*Saxifraga cernua* L.  
*Pedicularis hirsuta* L.  
*Phyllocladon Coarctata* Gr. et Godt.  
*Equisetum arvense* L.  
*Taccinium uliginosum microphylla* Lge.  
*Pyrola groenlandica* Hornum.

13. 146 *Oxyria digyna* Campd. Aug. 7. Godhavn, Disko Island, Greenland.
- 135 147 *Polygonum viviparum* L. " "
- 136 148 *Cerastium alpinum* L. " "
- 137 149 *Carex pulla* Good. Aug. 9. Island of Omevak, Omevak fiord
- 138 150 *Pedicularis hirsuta* L. " "
- 139 151 *Antennaria alpina* Gurtu. " "
- 140 152 *Saxifraga trienspidata* Röt. " "
- 141 153 *Vaccinium uliginosum* <sup>forma</sup> *microphylla* L. " "
- 142 154 *Stellaria longipes* Gold. " "
- 143 155 *Chamaenerium latifolium* (L.) " "
- 144 156 *Salix glauca* L. " "
- 145 157. *Dryas integrifolia* M. Wahl. " "

- 158 *Silene acaulis* L. Aug 9.  
 159 *Empetrum nigrum* L. "  
 160 *Eriophorum schuchzeri* Hoppe.  
 161 *Hierochloa alpina* R. et S."  
 162 *Luzula arcuata* Hook. "  
 163 *Artemisia borealis* Pall. "  
 164 *Betula nana* L. "  
 165 *Cassiope tetragona* Lox. "  
 166 *Trisetum subspicatum* Beauv."  
 167 *Cochlearia* sp. perhaps fenestrata R. Br.  
 168 *Festuca duriuseula* L. "  
 169 *Pyrola grandiflora* Rad."

Island of Omeak, Omeak fiord.

"

"

"

"

"

"

"

"

"

"

"

- 170 *Polygonum viviparum* L. Aug 9.  
 171 *Papaver radiceatum* Rottb. "  
 172 *Saxifraga nivalis* L. "  
 173 *Melandrium apetalum* Fgl. "  
 174 " *involveratum* affine Rottb.  
 175 *Saxifraga cernua* L. "  
 176 *Armeria sibirica* Turcz. "  
 177 *Draba arctica* Vahl. "  
 178 *Cerastium alpinum* L. "  
 179 *Colpodium latifolium* R. Br.  
 180 *Poa flexuosa* Wahlbg. "  
 181 *Alopecurus alpinus* Sm."

Island of Omenak, Omenak fiord.

"

"

"

"

"

"

"

"

"

"

"

- |   |                                     |
|---|-------------------------------------|
| 182 <i>Elymus arenarius villosus</i> Aug. 9.<br>E. Mig. | Island of Omenak, Omenak fiord      |
| 183 <i>Oxyria digyna</i> Campd.                         | "                                   |
| 184 <i>Campanula rotundifolia arctica</i> Lge.          | "                                   |
| 185 <i>Arnica alpina</i> Murr.                          | "                                   |
| 186 <i>Pedicularis lanata</i> Cham. Aug. 9-10           | Kook, Noursoak peninsula, Greenland |
| 187 <i>Cochlearia groenlandica</i> L.                   | "                                   |
| 188 <i>Halianthus peploides diffusa</i> Lge.            | "                                   |
| 189 <i>Equisetum arvense</i> L.                         | "                                   |
| 190 <i>Empetrum nigrum</i> L.                           | "                                   |
| 191 <i>Sedum palustre decumbens</i>                     | "                                   |
| 192 <i>Cassiope tetragona</i> Don.                      | "                                   |
| 193 <i>Dryas integrifolia</i> Vahl.                     | "                                   |

194 Aug. 9-10

Kook, Noursoak peninsula, Greenland

195 "

"

196 "

"

197 "

"

198 *Alsine verna prospingua* Aug. 12.  
(Richardson)

Pagtorfik, Noursoak peninsula, Greenland

199 *Potentilla nivea* L. "

"

200 *Saxifraga aizoides* L. "

"

201 *Draba arctica* Tahl. "

"

202 *Cassiope tetragona* Don.

"

203 *Potentilla nivea* L. "

"

204 *Leyas integrifolia* M. Tahl.

"

205 *Stellaria longipes* Goldie.

"



- |     |  |         |   |
|-----|--|---------|---|
| 206 | <i>Potentilla pulchella</i> R. Br.     | Aug. 12 | Paqtorsfik, Noursoak peninsula, Greenland |
| 207 | <i>Toxifildia borealis</i> Wahlbg.     | "       | "   |
| 208 | <i>Saxifraga nivalis</i> L.            | "       | "   |
| 209 | " <i>oppositifolia</i> L.              | "       | "   |
| 210 | " <i>decipiens</i> Ehrh.               | "       | "   |
| 211 | <i>Draba corymbosa</i> R. Br.          | "       | "   |
| 212 | <i>Pedicularis hirsuta</i> L.          | "       | "   |
| 213 | <i>Melandrium asitalum</i> (L.) Fenzl. | "       | "   |
| 214 | <i>Cochlearia fenestrata</i> R. Br.    | "       | "   |
| 215 | <i>Saxifraga tricuspidata</i> Rottb.   | "       | "   |
| 216 | <i>Cystopteris fragilis</i> Bernh.     | "       | "   |
| 217 | <i>Saxifraga cuneata</i> L.            | "       | "   |

218 Ranunculus nivalis L. Aug. 12.

Pagtorfik, Noursoak peninsula, Greenland

219 Alopecurus alpinus Sm. "

"

220 " " "

"

221 Arnicæ alpina Murr. Aug. 17

Sarfafik, Noursoak peninsula, Greenland.

222 Taraxacum Ceratophorum " Ledeb.

"

223 Equisetum variegatum Schl. "

"

224 " arvense L. "

"

225 Poa glauca N. Vahl "

"

226 Taraxacum Ceratophorum Aug. 24  
Ledeb.

Atane, Noursoak peninsula, Greenland.

227 " officinalis Wib. "

" "

228 Veronica saxatilis L. fil.

" "

229 " alpina L. "

" "

230 Saxifraga aizoides L. Aug. 24

Atane, Noursoak peninsula Greenland

231 Artemisia borealis Pallas. "

"

232 Oxycia digyna Lamfodl.

"

233 Trisetum subspicatum Beauv.

"

234 Poa alpina L. "

"

235 Arabis alpina L. "

"

236 Salix glauca L. "

"

237 Oraba arctica Dahl. "

"

238 Carex rigida Good. "

"

239 Juncus arcticus Willd. "

"

240 Potentilla niva L. "

"

241 Rhododendron lapponicum Aug. 29  
L.

Atane Kerdluk, Noursoak peninsula

242 *Thromia saxatilis* Aug. 30.  
L. Fil.

243 *Arnica alpina* Murr.

244 *Saxifraga oppositifolia* L.

245 *Chamaenerium latifolium* (L.)

246

247

248

249

250

251

252

253

Atankraduk, Noursoakpenicula

"

"

"

List of plants collected  
by R. Stein in Greenland  
1897.

1 *Halianthus pefloides diffusa* Lge.

Stankudluk, West-Grundland. Sept. 4, 1897.

2

3

4 *Elymus arvensis villosus* E. Mey.

" " " " "

5

6 *Calamagrostis purpurascens* R. Br.

Godharen, " " " 6, "

7

8 *Lycopodium annotinum* L.

Sydney, Cape Breton, " 19, "

9

10 *Dryas integrifolia* M. Vahl.

Umanak, West-Grundland, Aug. 8, "

11 *Armeria sibirica* Turcz.

" " " " "

12 *Pyrola grandiflora* Rad.

" " " " "



25 *Trisetum subspicatum* Beauv.

26 *Chamaenerium latifolium* (L.)

27 *Loiseleuria procumbens* Desv.

28 *Pedicularis flamma* L.?

29 *Pyrola grandiflora* Radl.

30

31 *Carex misandra* R. Br.

32 *Salix glauca sericea* And.

33

34 *Cassiope tetragona* Don.

35

36

Umanak, West Greenland, Aug. 8, 1897.

" " " " " "

Hoyt Island, N. of Wilcox Head, W. Greenland 1897.  
(Aug. 10-21,

" " " "

" " " "

" " " "

" " " "

" " " "



37

38 *Pofuldia borealis* Wahlbg.

39

40

41 *Lycopodium selago* L.

42 *Empetrum nigrum* L.

43 *Saxifraga oppositifolia* L.

44

45 *Poa glauca* M. Vahl.

46 *Saxifraga tricuspidata* Rottb.

47 *Draba nivalis* Lilj.

48 *Polygonum viviparum* L.

Hoyt Island, N. of Wilcox Head, W. Greenland, 1897.  
Aug. 10-21.

" " " " " "

" " " " "

" " " " "

" " " " "

" " " " "

" " " " "

" " " " "

Hoyt Island, N. of Wilcox Head, W. Greenland, 1897.  
Aug. 10-21.

49

50 *Potentilla vahlbiana* Linn.

51

52

53 *Cystopteris fragilis* Bernh.

54

55 *Eriophorum schuchersii* Hoppe

56 *Papaver radicatum* Rottb.

57 *Cerastium alpinum* L.

58 *Erigeron uniflorus pulchellus* Fries

59 *Saxifraga nivalis* L.

60 *Luzula meenata* Wahlenb.

" " " " " "  
" " " " " "  
" " " " " "  
" " " " " "  
" " " " " "  
" " " " " "  
" " " " " "  
" " " " " "

77

8.

61 Saxifraga oppositifolia L.

62 Antennaria alpina Gärtner.

63

64

65 Cardamine bellidifolia L.

66

Lichen.

1 dup.

67 Polytichum

68

Lichen.

69

Mass.

70

Lichen.

71

Liverwort.

72. Cladonia

Hoyt Island, North of Wilcox Head,  
West Greenland, Aug. 10-21, 1897.

" " " " " "

" " " " " "

Summit House on Winter Island, near Wilcox Head,  
August-September, 1897. Greenland.

" " " "

" " " "

" " " "

" " " "

" " " "

" " " "

73. Aug-Sept. 1897. Summit House, on Winter Island, near Wilcox Head, Greenland.

Lichen

74. " " " "

Lichen; yellow-orange beneath. 1 dup.

75. Cladonia " " "

Cladonia 1 dup.

76. " " " "

Moss; (Bryum?) 3 dup.

77. " " " "

Moss. 2 dup.

78. Sphagnum sp. " " "

79. Palyponus sp. " " "

80. " " " "

Moss.

81. Aug. 1897. Hoyt Id., no. of Wilcox Head, west Greenland. Lichen.

Lichen.





