

Plants collected on Jervis Expedition  
to Greenland, 1857

Field notes:

Michx. David & Schimper, Charles  
Dec. 1 - 21. page 21

Michx. H.  
Dec. 1 - 21. page 21

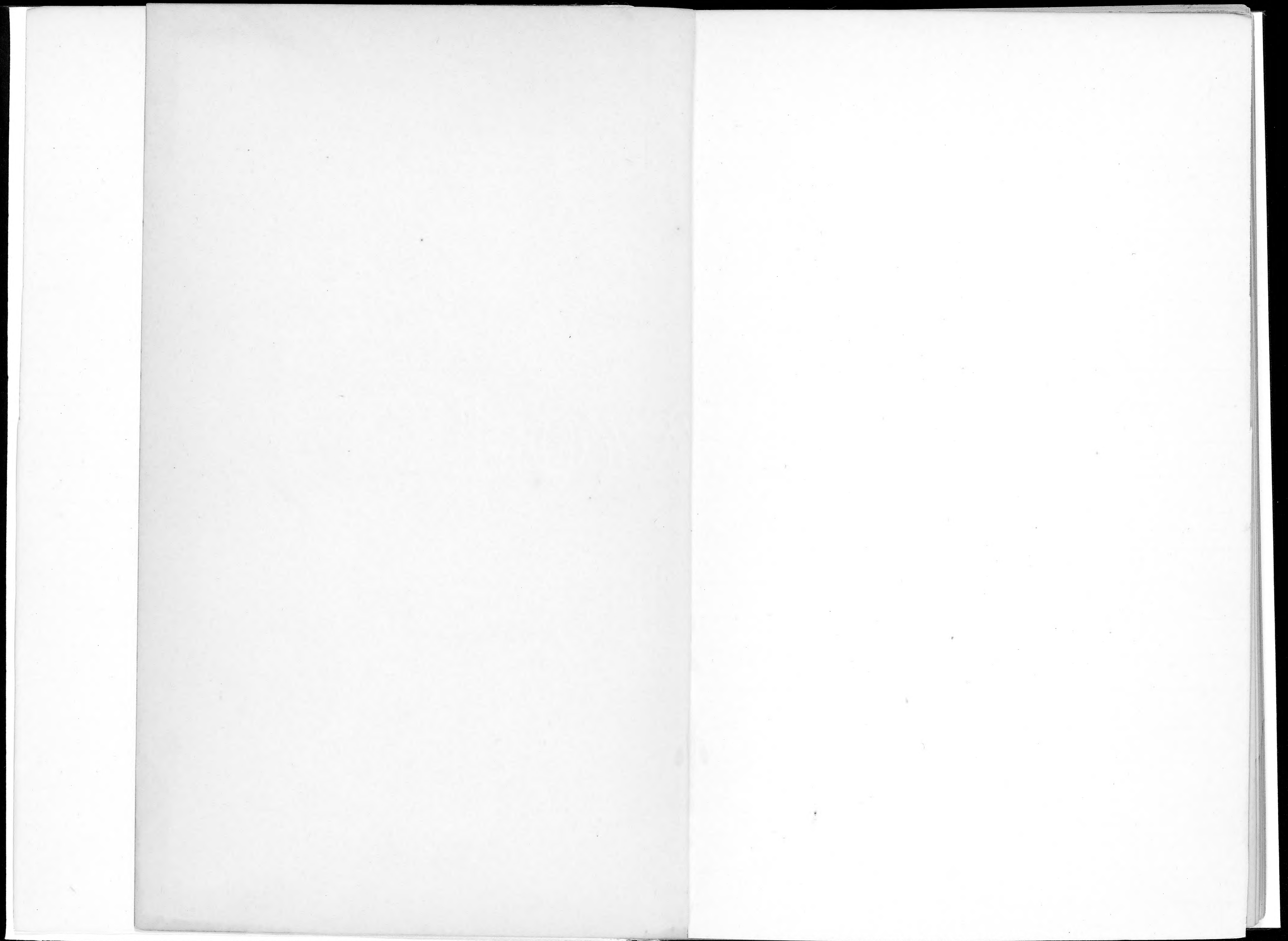
Plants collected on Peary Expedition  
to Greenland. 1897

Field notes:

White, David & Schuchert, Charles  
Nos. 1 - 245. page 26

Stein, R.  
Nos. 1 - 81. page 47

List of plants collected  
by David White and  
Charles Schuchert on the  
Peary Expedition to Greenland,  
1897.





July 23. New Campbelltown, Cape Breton Island.

1

2

3

4

5

6

7

8 *Botrychium*

9 *Pteris aquilina* L.

10 *Equisetum arvense* L.

11 *Dryopteris spinulosa intermedia* (Muhl.)  
Underwood

12 *Phlegopteris phlegopteris* (L.) Underwood.

"

"

"

"

"

"

"

"

"

"

"

"

"

"

"

"

"

"

"

"



- 13 *Botrychium virginianum* (L.) July 23  
S.W.
- 14 *Lycopodium annotinum* L. "
- 15 *Asplenium filif-foemina* Benth.
- 16 *Lycopodium clavatum* L. "
- 17 *Onoclea sensibilis* L. "
- 18 *Lycopodium alpinum* Linn.
- 19 *Polypodium vulgare* L. "
- 20 *Dryopteris Braunii* (Spenn.) Underwood.
- 21 *Dryopteris filif-mas* Swtg. "
- 22 " *spinulosa dilatata* (Hoffm.)  
Underw.
- 23 *Lycopodium complanatum* L.
- 24 " *obscurum* L. "

New Campbelltown, Cape Breton Island

"

"

"

"

"

"

"

"

"

"

"

- |    |    |                                  |                                    |                                       |
|----|----|----------------------------------|------------------------------------|---------------------------------------|
| 13 | 25 | <i>Habenaria orbiculata</i>      | July 23.                           | New Campbelltown, Cape Breton Island. |
|    |    |                                  | (Pursh) Torr.                      |                                       |
| 14 | 26 | "                                | <i>clavellata</i> (Michx.) Spreng. | "                                     |
| 15 | 27 | "                                | <i>psycodes</i> (L.) A. Gray.      | "                                     |
| 16 | 28 | <i>Bromus racemosus</i> L.       | "                                  | "                                     |
| 17 | 29 | <i>Glyceria Canadensis</i> Trin. | "                                  | "                                     |
| 18 | 30 | <i>Juncus articulatus</i> L.     | "                                  | "                                     |
| 19 | 31 | "                                | <i>effusus</i> L.                  | "                                     |
| 20 | 32 | "                                | <i>littoralis</i> Engelm.          | "                                     |
| 21 | 33 | <i>Kalmia angustifolia</i> L.    | "                                  | "                                     |
| 22 | 34 | <i>Pyrola rotundifolia</i> L.    | "                                  | "                                     |
| 23 | 35 | "                                | <i>secunda</i> L.                  | "                                     |
| 24 | 36 | <i>Erigeron strigosus</i> Muhl.  | "                                  | "                                     |

37 *Anaphalis margaritacea* B. & H. July 23.

38 *Antennaria dioica* Greene.

39 *Leontodon autumnalis* L. "

40 *Senecio vulgaris* L. "

41 *Achillea millefolium* L. "

42 *Chrysanthemum leucanthemum* L.

43 *Iris prismatica* Pursh. "

44 *Thalictrum polygamum* Muhl.

45 " " " "

46 *Ranunculus acris* L. "

47 *Rumex acetosella* L. "

48 *Carex pseudo-cyperus* L. "

New Campbelltown, Cape Breton Island

"

"

"

"

"

"

"

"

"

"

"

- 49 Scirpus pungens Vahl. July 23
- 50 Carex flava lepidocarpa Tausch.
- 51 " straminea Willd. "
- 52 Mentha Canadensis L. "
- 53 Brunella vulgaris L. "
- 54 Scutellaria galericulata " L.
- 55 Sparganium eurycarpum " Englm.
- 56 Lysimachia terrestris (L.) B.S.P.
- 57 Triglochin maritimum L.
- 58 Alnus incana (L.) Willd. "
- 59 Comarum palustre L. "
- 60 Triadenum virginicum (L.) Raf.

New Campbelltown, Cape Breton Island

"

"

"

"

"

"

"

"

"

"

"

- |    |  |         |                                      |
|----|--|---------|--------------------------------------|
| 61 | <i>Spiraea salicifolia</i> L.              | July 23 | New Campbelltown, Cape Breton Island |
| 62 | <i>Potentilla anserina</i> L.              | "       | "                                    |
| 63 | <i>Fragaria americana</i> (Poir.) Britton. |         | "                                    |
| 64 | <i>Raphanus raphanistrum</i> L.            | "       | "                                    |
| 65 | <i>Circaea alpina</i> L.                   | "       | "                                    |
| 66 | <i>Geranium robertianum</i> L.             | "       | "                                    |
| 67 | <i>Rosa nitida</i> Willd.                  | "       | "                                    |
| 68 | <i>Lagina procumbens</i> L.                | "       | "                                    |
| 69 | <i>Cerastium vulgatum</i> L.               | "       | "                                    |
| 70 | <i>Galium trifidum</i> L.                  | "       | "                                    |
| 71 | <i>Euphrasia officinalis latifolia</i>     |         | "                                    |
| 72 | <i>Rhinanthus Crista-galli</i> L.          |         | "                                    |

- 73 *Luzula Confusa* Lindb. Aug. 1-2  
 74 *Carex rigida* Good. "  
 75 *Arctostaphylos alpina* (L.) Spr.  
 76 *Salix herbacea* L. "  
 77 *Ledum palustre decumbens* Sge.  
 78 *Saxifraga rivularis* L. "  
 79 *Trisetum subspicatum* Beauv.  
 80 *Festuca ovina alpina* Koch.  
 81 *Poa flexuosa* Wahlberg. "  
 82 *Poa glauca* M. Vahl. "  
 83 *Hierochloa alpina* R. et S. "  
 84. *Luzula Confusa* Lindb. "

Signuia, near Cape Haven, Baffin's Land

"

"

"

"

"

"

"

"

"

"

"

- |   |   |
|---|---|
| 85 <i>Catabrosa algida</i> Fries. Aug. 1-2      | <i>Signuia</i> near Cape Haven, Baffin Land |
| 86 <i>Bryanthus taxifolius</i> Gray.            | "   |
| 87 <i>Tacuinium uliginosum microphylla</i> Lge. | "   |
| 88 <i>Stellaria longipes</i> Goldie.            | "   |
| 89 <i>Draba nivalis</i> Liljet.                 | "   |
| 90 <i>Polygonum viviparum</i> L.                | "   |
| 91 <i>Stellaria humifusa</i> Roth.              | "   |
| 92 <i>Silene acaulis</i> L.                     | "   |
| 93 <i>Cardamine bellidifolia</i> L.             | "   |
| 94 <i>Salix groenlandica</i> Lundstr.           | "   |
| 95 " <i>glauca</i> L.                           | "   |
| 96 <i>Cassiope tetragona</i> (L.) Loeb.         | "   |

- 97 *Lycopodium selago* L. Aug. 1-2. Signuia, near Cape Haven, Baffin's Land
- 98 *Oxyria digyna* (L.) Campd. "
- 99 *Ammodenia peploides diffusa* (L.) Rupr. "
- 100 *Prunaria maritima* (L.) Hill. "
- 101 *Saxifraga stellaris* Comosa Poir. "
- 102 *Ranunculus pygmaeus* Wahlbg. "
- 102a *Koernigia islandica* L. "
103. *Campanula uniflora* L. "
104. *Stellaria longipes* Goldie. "
105. *Cerastium alpinum* L. "
106. *Diapensia lapponea* L. "
107. *Pedicularis hirsuta* L. "
108. *Epilobium latifolium* Tenii-florum  
Fr. et Lge. "
109. *Cerastium alpinum lanatum* Lindbl. "



- 110. *Taraxacum cratophorum* DC. Aug. 1-2
- 111 *Papaver radiatum* Rottb. "
- 112 *Eriophorum angustifolium* Koch.
- 113 " *schuchteri* Hoppe.
- 114 *Ranunculus hyperboreus* Rottb.
- 115 *Dryas integrifolia* Vahl. "
- 116 *Saxifraga decipiens* Ehrh. "
- 117 " "
- 118 *Marchantia polymorpha* "
- 119 " "
- 120 " "
- 121 " "

*Signia*, near Cape Haven, Baffin's Land  
 "  
 "  
 "  
 "  
 "  
 "  
 "  
 "  
 "  
 "

|     |          |   |
|-----|----------|---|
| 122 | Aug. 1-2 | Signuia, near Cape Haven, Baffin's Land |
| 123 | "        | "                                       |
| 124 | "        | "                                       |
| 125 | "        | "                                       |
| 126 | "        | "                                       |
| 127 | "        | "                                       |
| 128 | "        | "                                       |
| 129 | "        | "                                       |
| 130 | "        | "                                       |
| 131 | "        | "                                       |
| 132 | "        | "                                       |
| 133 | "        | "                                       |

- |     |           |  |
|-----|-----------|--|
| 134 | Aug. 1-2. | Signuia, near Cape Havn, Baffin's Land |
| 135 | "         | "                                      |
| 136 | "         | "                                      |
| 137 | "         | "                                      |
| 138 | "         | "                                      |
| 139 | Aug. 7    | Godhavn, Disko Island, Greenland       |
| 140 | "         | "                                      |
| 141 | "         | "                                      |
| 142 | "         | "                                      |
| 143 | "         | "                                      |
| 144 | "         | "                                      |
| 145 | "         | "                                      |

13. 146 *Oxyria digyna* Campd. Aug. 7. Godhavn, Disko Island, Greenland.
- 135 147 *Polygonum viviparum* L. " "
- 136 148 *Cerastium alpinum* L. " "
- 137 149 *Carex pulla* Good. Aug. 9. Island of Omevak, Omevak fiord
- 138 150 *Pedicularis hirsuta* L. " "
- 139 151 *Antennaria alpina* Gurtu. " "
- 140 152 *Saxifraga trienspidata* Röt. " "
- 141 153 *Vaccinium uliginosum* <sup>forma</sup> *microphylla* Lge. " "
- 142 154 *Stellaria longipes* Gold. " "
- 143 155 *Chamaenerium latifolium* (L.) " "
- 144 156 *Salix glauca* L. " "
- 145 157. *Dryas integrifolia* N. Wahl. " "

- 158 *Silene acaulis* L. Aug 9.  
 159 *Empetrum nigrum* L. "  
 160 *Eriophorum schuchzeri* Hoppe.  
 161 *Hierochloa alpina* R. et S."  
 162 *Luzula arcuata* Hook. "  
 163 *Artemisia borealis* Pall. "  
 164 *Betula nana* L. "  
 165 *Cassiope tetragona* L. "  
 166 *Festuca subspicata* Beauv."  
 167 *Cochlearia* sp. perhaps fenestrata R. Br.  
 168 *Festuca diviuscula* L. "  
 169 *Pyrola grandiflora* Rad."

Island of Omeak, Omeak fiord.

"

"

"

"

"

"

"

"

"

"

"

- 170 *Polygonum viviparum* L. Aug 9.  
 171 *Papaver radiceatum* Rottb. "  
 172 *Saxifraga nivalis* L. "  
 173 *Melandrium apetalum* Fgl. "  
 174 " *involveratum* affine Rottb. "  
 175 *Saxifraga cernua* L. "  
 176 *Armeria sibirica* Turcz. "  
 177 *Draba arctica* Vahl. "  
 178 *Cerastium alpinum* L. "  
 179 *Colpodium latifolium* R. Br. "  
 180 *Poa flexuosa* Wahlbg. "  
 181 *Alopecurus alpinus* Sm. "

Island of Omenak, Omenak fiord.

"

"

"

"

"

"

"

"

"

"

"

- |     |  |                                     |
|-----|--|-------------------------------------|
| 182 | <i>Elymus arenarius villosus</i> Aug. 9.<br>E. M. G. | Island of Omenak, Omenak fiord      |
| 183 | <i>Oxyria digyna</i> Campd.                          | "                                   |
| 184 | <i>Campanula rotundifolia arctica</i> Lge.           | "                                   |
| 185 | <i>Arnica alpina</i> Murr.                           | "                                   |
| 186 | <i>Pedicularis lanata</i> Cham. Aug. 9-10            | Kook, Noursoak peninsula, Greenland |
| 187 | <i>Cochlearia groenlandica</i> L.                    | "                                   |
| 188 | <i>Halianthus peploides diffusa</i> Lge.             | "                                   |
| 189 | <i>Equisetum arvense</i> L.                          | "                                   |
| 190 | <i>Empetrum nigrum</i> L.                            | "                                   |
| 191 | <i>Sedum palustre decumbens</i>                      | "                                   |
| 192 | <i>Cassiope tetragona</i> Don.                       | "                                   |
| 193 | <i>Dryas integrifolia</i> Vahl.                      | "                                   |

- |     |  |  |
|-----|--|--|
| 194 | Aug. 9-10  | Kook, Noursoak peninsula, Greenland      |
| 195 | "  | "  |
| 196 | "  | "  |
| 197 | "  | "  |
| 198 | Alsine verna prospingua Aug. 12.<br>(Richardson) | Pagtorfik, Noursoak peninsula, Greenland |
| 199 | Potentilla nivea L.                              | "  |
| 200 | Saxifraga aizoides L.                            | "  |
| 201 | Draba arctica Tahl.                              | "  |
| 202 | Cassiope tetragona Don.                          | "  |
| 203 | Potentilla nivea L.                              | "  |
| 204 | Leymus integrifolia M. Tahl.                     | "  |
| 205 | Stellaria longipes Goldie.                       | "  |



- |  |  |
|--|--|
| 206 <i>Potentilla pulchella</i> R. Br. Aug. 12 | Pagtorfik, Noursoak peninsula, Greenland |
| 207 <i>Tofieldia borealis</i> Wahlbg. "        | "  |
| 208 <i>Saxifraga nivalis</i> L. "              | "  |
| 209 " <i>oppositifolia</i> L.                  | "  |
| 210 " <i>decipiens</i> Ehrh. "                 | "  |
| 211 <i>Oraba corymbosa</i> R. Br. "            | "  |
| 212 <i>Pedicularis hirsuta</i> L. "            | "  |
| 213 <i>Melandrium apetalum</i> (L.) Fenzl.     | "  |
| 214 <i>Cochlearia fenestrata</i> R. Br. "      | "  |
| 215 <i>Saxifraga tricuspidata</i> Rottb.       | "  |
| 216 <i>Cystopteris fragilis</i> Bernh. "       | "  |
| 217 <i>Saxifraga cernua</i> L. "               | "  |

218 Ranunculus nivalis L. Aug. 12.

Pagtorfik, Noursoak peninsula, Greenland

219 Alopecurus alpinus Sm. "

"

220 " " "

"

221 Arniea alpina Murr. Aug. 17

Sarfafik, Noursoak peninsula, Greenland.

222 Taraxacum Ceratophorum Ledeb.

"

223 Equisetum variegatum Schl. "

"

224 " arvense L. "

"

225 Poa glauca N. Vahl "

"

226 Taraxacum Ceratophorum Aug. 24  
Ledeb.

Atane, Noursoak peninsula, Greenland.

227 " officinalis Wib. "

"

"

228 Veronica saxatilis L. fil.

"

"

229 " alpina L. "

"

"

230 Saxifraga aizoides L. Aug. 24

Atane, Noursoak peninsula Greenland

231 Artemisia borealis Pallas. "

"

232 Oxycria digyna Lamfod.

"

233 Trisetum subspicatum Beauv.

"

234 Poa alpina L. "

"

235 Arabis alpina L. "

"

236 Salix glauca L. "

"

237 Oaba arctica Dahl. "

"

238 Carex rigida Good. "

"

239 Juncus arcticus Willd. "

"

240 Potentilla niva L. "

"

241 Rhododendron lapponicum Aug. 29  
L.

Atane Kerdluk, Noursoak peninsula

242 *Thromia saxatilis* Aug. 30.  
L. Fil.

243 *Arnica alpina* Murr.

244 *Saxifraga oppositifolia* L.

245 *Chamaenerium latifolium* (L.)

246

247

248

249

250

251

252

253

Atankraduk, Noursoakpennula

"

"

"

List of plants collected  
by R. Stein in Greenland  
1897.

- 1 *Halianthus pefloides diffusa* Lge. Stankudluk, West-Grünland. Sept. 4, 1897.
- 2
- 3
- 4 *Elymus arvensis villosus* E. Mey. " " " " "
- 5
- 6 *Calamagrostis purpurascens* R. Br. Godharen, " " " 6, "
- 7
- 8 *Lycopodium annotinum* L. Sydney, Cape Breton, " 19, "
- 9
- 10 *Dryas integrifolia* M. Vahl. Umanak, West-Grünland. Aug. 8, "
- 11 *Armeria sibirica* Turcz. " " " " " "
- 12 *Pyrola grandiflora* Rad. " " " " " "



25 *Trisetum subspicatum* Beauv.

26 *Chamaenerium latifolium* (L.)

27 *Loiseleuria procumbens* Desv.

28 *Pedicularis flammula* L.?

29 *Pyrola grandiflora* Radl.

30

31 *Carex misandra* R. Br.

32 *Salix glauca sericea* And.

33

34 *Cassiope tetragona* Don.

35

36

Umanak, West Greenland, Aug. 8, 1897.

" " " " " "

Hoyt Island, N. of Wileaf Head, W. Greenland 1897.  
(Aug. 10-21,

" " " "

" " " "

" " " "

" " " "

" " " "



37

38 *Polytrichum boreale* Wahlbg.

39

40

41 *Lycopodium selago* L.

42 *Empetrum nigrum* L.

43 *Saxifraga oppositifolia* L.

44

45 *Poa glauca* M. Vahl.

46 *Saxifraga tricuspidata* Rottb.

47 *Draba nivalis* Lilj.

48 *Polygonum viviparum* L.

Hoyt Island, N. of Wilcox Head, W. Greenland, 1897.  
Aug. 10-21.

" " " " " "

" " " " "

" " " " "

" " " " "

" " " " "

" " " " "

" " " " "

Hoyt Island, N. of Wilcox Head, W. Greenland, 1897.  
Aug. 10-21.

49

50 *Potentilla vahliaana* Linn.

51

52

53 *Cystopteris fragilis* Bernh.

54

55 *Eriophorum scheuchzeri* Hoppe

56 *Papaver radicaatum* Rottb.

57 *Cerastium alpinum* L.

58 *Erigeron uniflorus pulchellus* Fries

59 *Saxifraga nivalis* L.

60 *Luzula meenata* Wahlenb.

" " " " " "  
" " " " " "  
" " " " " "  
" " " " " "  
" " " " " "  
" " " " " "  
" " " " " "  
" " " " " "

77

1.

61 Saxifraga oppositifolia L.

62 Antennaria alpina Gaertn.

63

64

65 Cardamine bellidifolia L.

66

Greenland

67 Polypodium

68

Greenland

69

Mass.

70

Greenland

71

Greenland

72. Cladonia

Hoyt Island, North of Wilcox Head,  
West Greenland, Aug. 10-21, 1897.

" " " " " "

" " " " " "

Summit House on Winter Island, near Wilcox Head,  
August-September, 1897. Greenland.

" " " "

" " " "

" " " "

" " " "

" " " "

" " " "

73. Aug. - Sept. 1897. Summit House, on Winter Island, near Wilcox Head, Greenland.

Lichen

74.

Lichen, yellow - orange. Summit, 1897.

75. Cladonia

the 1897

76.

Moss (Polytrichum?) 1897

77.

Moss 2 1897

78. Sphagnum sp.

79. Polytrichum sp.

80.

Moss.

81.

Lichen.

Aug. 1897. Hoyt Id., no. of Wilcox Head, West Greenland.

" " " "

" " " "

" " " "

" " " "

" " " "

" " " "

" " " "





