

Historic, archived document

Do not assume content reflects current scientific knowledge, policies, or practices.

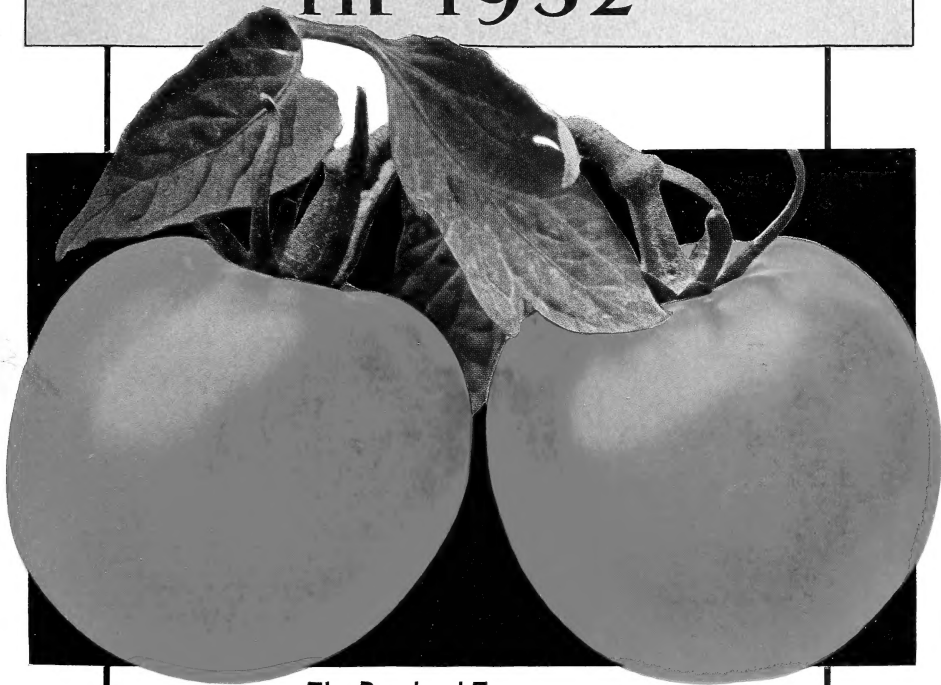


6273

L.C. Trans fer

Plant STOKES SEEDS in 1932

LIBRARY
RECEIVED
★ MAR 11 1932 ★
U. S. Department of Agriculture.



The Pritchard Tomato (NEW)

Originally sent out for trial as Scarlet Topper, this distinguished introduction has now been officially named Pritchard by the United States Department of Agriculture. This citation in honor of the late Frederick J. Pritchard is just recognition of a man who has made a great contribution to this and succeeding generations. The Pritchard, his last work, may prove even more valuable than the universally planted Marglobe. The Pritchard Tomato is very early and develops large, smooth, very solid fruits. The color is an intense scarlet. In shape it is deep globe. For further description see page 14 of this Catalog. Price: Pkt. 25 cts.; oz. \$1; 1/4lb. \$3.50; lb. \$12

FRANCIS C. STOKES & CO., Inc.

Seed Growers

The Stokes World Beater Pepper

IT HAS PROVED ITS WORTH FROM CUBA TO CANADA

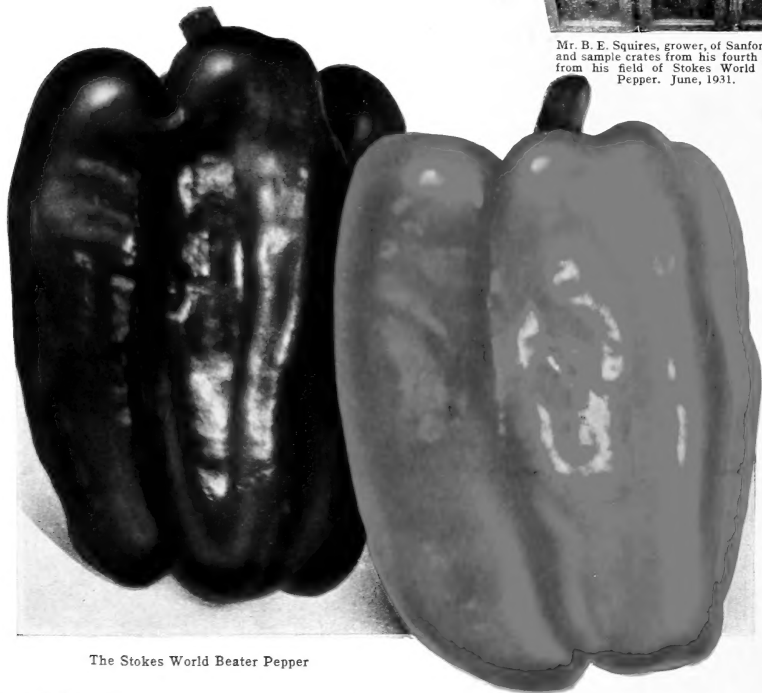
Days to maturity, 120-140. This distinguished variety, in spite of its flamboyant name, has so established itself in the Pepper trade as now to be rated among the first two commercial varieties. The Stokes strain has been given the three-star rating, which indicates that it is recommended with special confidence. This rank has been attained by reason of its unusual uniformity, its record of heavy production, and its brilliant market appearance. It is the result of painstaking individual selection over a number of years. We recommend it to Peppergrowers who are looking for the very best regardless of price. You will not be disappointed.

The World Beater Pepper has been on the market for twenty-three years. For those who do not know it, we classify it as a slightly later and greatly enlarged Ruby King. It is claimed to have been a cross between Ruby King and Chinese Giant, but we are not in position to vouch for this. The fruits will average 5 to 6 inches in length and $3\frac{1}{2}$ inches in diameter, and have sufficiently thick walls to assure carrying qualities to any market. The Stokes strain of World Beater will in every way justify its distinguished classification.

Price postpaid: Pkt. 10 cts.; oz. 35 cts.; $\frac{1}{4}$ lb. \$1.25; lb. \$4;
5 lbs., \$3.75 per lb.



Mr. B. E. Squires, grower, of Sanford, Fla., and sample crates from his fourth picking from his field of Stokes World Beater Pepper. June, 1931.



The Stokes World Beater Pepper

JAN - 6 1932

©CIA A 86655

FRANCIS C. STOKES & CO., INC.
WOODBURY, NEW JERSEY

Date

Name
Please write plainly. Ladies use prefix Miss or Mrs.

**AMOUNT
ENCLOSED**

\$

R. D. or Street

Post Office

State

Express or
Freight Office

All members of a family should order under one name

With the understanding that my money is to be returned if your seeds are not satisfactory, please ship the following items:

Quantity	VARIETY NAME OR NUMBER	Price		Quantity	VARIETY NAME OR NUMBER	Price	
		\$	cts.			\$	cts.
					Brought forward.....		
.....						
.....						
.....						
.....						
.....						
.....						
.....						
.....						
.....						
.....						
.....						
.....						
.....						
.....						
.....						
.....						
.....						
.....						
.....						
.....						
Amount to carry forward.....				Amount to carry forward.....			

HERE ARE TWO OF OUR BRANCHES



WOODBURY, NEW JERSEY
*Adjacent to a great
vegetable-growing area.*



WESLACO, TEXAS
*In the fertile lower Rio
Grande Valley.*



*"One thing I remember:
Spring came on forever,
Spring came on forever."*

AND where is the most broken man who can doubt that this wind-swept planet will bloom again; that the young laurel will shoot; that the forgotten fragrance of the woods will return? In spite of man-made folly, the sanctuary of the garden stands inviolate, offering an unequalled form of security. The man with the hoe, as always, looks on the scene with quiet eyes.

Through fifty years of changing times, Stokes Seeds have made life safer and have produced a sense of well-being for those who have placed dependence on them. We can think of many glowing phrases to describe the results obtained from planting our seeds, but we prefer to tell the story in simple, unadorned language, which in itself is comparable to our kind of business and to our effort to do things a little more carefully than they are usually done.

The Stokes Catalog, offering many of the kindly flowers and fruits of this earth, has held a unique place among three generations of planters. The accuracy of its photographs is matched by the performance of our stocks. The clarity of its descriptions is equaled by a like precision in the garden row. The prices that it offers are in accord with the spirit of the times.

In entering the second fifty years, we do so with a feeling of gratitude for past loyalties and a heavy sense of responsibility to maintain the old standards, and, wherever possible, to improve them. In planning your garden this year, we hope you will plan a Stokes Garden, whether it be of vegetables, flowers, or perennial plants. In all of these we pledge you our very best.

Francis C. Stokes
PRESIDENT.

FRANCIS C. STOKES & CO., Inc. ~ Seed Growers
WOODBURY, NEW JERSEY ✓

Philadelphia, Penna.

Sanford, Florida

Weslaco, Texas

Robstown, Texas

St. Catharines, Ontario

STOKES VEGETABLE SPECIALS FOR 1932

Mary Washington Asparagus

The most profitable Asparagus—very large, productive, and rust-resistant

Our firm has shared a large part of the Mary Washington Asparagus business. Eleven years ago we offered the original Washington stock. When the superiority of the Mary strain, named in honor of George Washington's mother, was established, we were among the first to offer it. Since that time we have done an increasing volume of business with large Asparagus growers, and, in line with our policy of carrying only the best, we have discarded all other varieties. In view of the prevalence of rust, it is utter folly for a grower to plant additional acreage with the older varieties which are susceptible to rust. In addition to its rust-

resistance, Mary Washington produces a very large, tight tip which will not prematurely sprangle out. This factor is greatly in its favor, especially in the production of green Asparagus, which is now bringing a higher price than white.

Our entire seed supply of Mary Washington now comes from fields one generation removed from the parent stock. Some growers are so situated as to soil and climate that they can produce their own roots; others are not. A poorly grown root has very little value. Unless you are in a position to make a thoroughly good job of it, it is better to buy our giant-size roots.

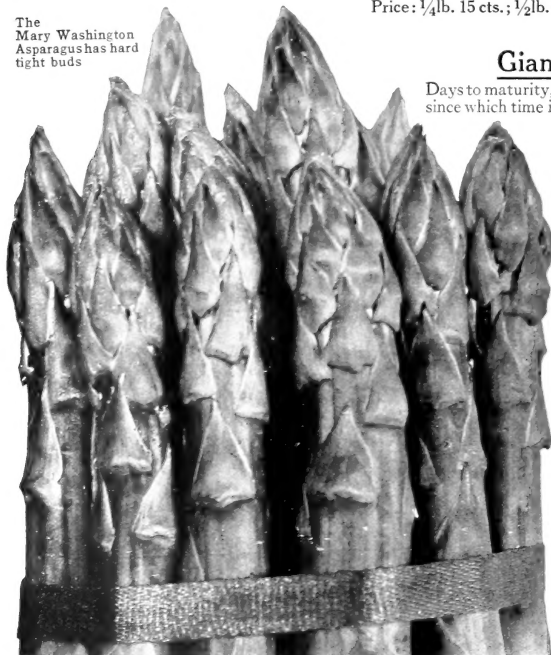
SEED: Pkt. 10 cts.; oz. 15 cts.; $\frac{1}{4}$ lb. 30 cts.; lb. \$1; 5 lbs., 90 cts. per lb.
ROOTS, Giant Size: 50 roots, \$1.25; 100 roots, \$2.25; 500 roots, \$7; 1,000 roots, \$11
Larger quantities, write for prices

Beans, Stringless Black Valentine (New)

Days to maturity, 40-45. This distinguished new Bean is precisely what its name implies, a stringless Black Valentine. It possesses all of the valuable characteristics of the original variety, having completely overcome the serious objection of so often being unfit for table consumption. In productiveness, size, and shipping quality, Stringless Black Valentine is very highly recommended. We believe it will take an important part in eliminating much of the present prejudice against the String Beans, as they are usually and justly referred to.

Price: $\frac{1}{4}$ lb. 15 cts.; $\frac{1}{2}$ lb. 20 cts.; lb. 35 cts.; 5 lbs., 30 cts. per lb.; 50 lbs., 24 cts. per lb.

The Mary Washington Asparagus has hard tight buds



Giant Stringless Green-Pod.

Days to maturity, 40-45. Introduced in 1898 by Johnson & Stokes, since which time it has held a place of leadership for both commercial and home-garden plantings. For some time the flat Bountiful type has had the call on the large eastern markets, but we suspect the trend is now going back to the stringless round-pod type, of which this is the most important variety. A heavy bearer and can be picked in one-third the time of any other sort. Pods are about 6 inches in length, slightly curved, dark green, brittle, and absolutely stringless.

Price: $\frac{1}{4}$ lb. 10 cts.; $\frac{1}{2}$ lb. 15 cts.; lb. 25 cts.; 5 lbs., 21 cts. per lb.; 50 lbs., 16 cts. per lb.

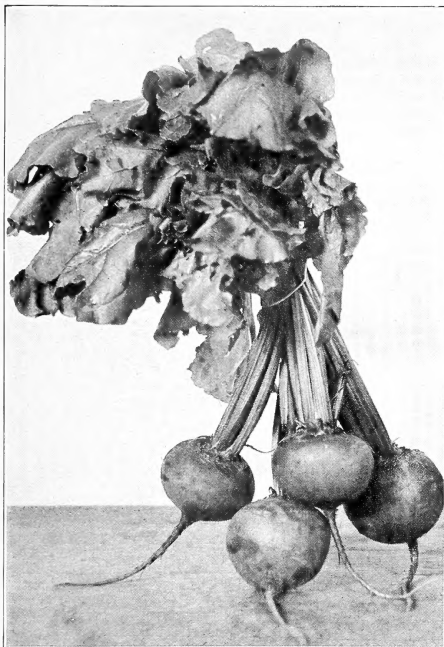
Round-Pod Kidney Wax or Brittle Wax.

Days to maturity, 40-45. The Round-Pod Kidney Wax Bean was introduced by Johnson & Stokes in 1900. The Brittle Wax was introduced by Burpee the following year. Although there may have been a slight color difference at that time, it has now entirely disappeared, hence the dual name. Grows to a height of 15 inches, producing long, curved, round, yellow pods, brittle and absolutely stringless. Excellent table quality.

Price: $\frac{1}{4}$ lb. 10 cts.; $\frac{1}{2}$ lb. 15 cts.; lb. 26 cts.; 5 lbs., 22 cts. per lb.; 50 lbs., 17 cts. per lb.

On larger quantities ask for special prices

STOKES VEGETABLE SPECIALS FOR 1932



Beets: Crosby Egyptian Special

BEETS

Crosby Egyptian Special. Days to maturity, 45-55. This distinguished strain of the well-known Crosby has been given a field-rating of 97 per cent purity, which we believe is unsurpassed by any strain of Crosby so far produced. We look on this as being one of the most satisfactory shipping Beets available. The exterior color is a deep red and the interior a dark carmine. Price: Pkt. 10 cts.; oz. 15 cts.; 1/4 lb. 30 cts.; lb. 95 cts.; 5 lbs., 85 cts. per lb.; 50 lbs., 80 cts. per lb.

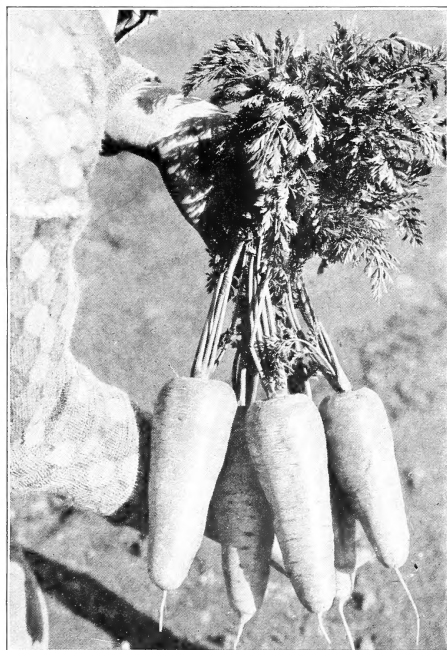
Detroit Dark Red Special. Days to maturity, 55-60. We offer this as one of the very purest strains of any vegetable listed in this Catalog. The field-reading showed 98 per cent purity, which was rated on the remarkable uniformity of the root, the pure blood-red interior, and the unusual restrained top-growth. As a home-garden, market-garden, or canning variety, this special strain of Detroit Dark Red is unsurpassed. The roots will retain their tender quality even when apparently overgrown. Price: Pkt. 10 cts.; oz. 15 cts.; 1/4 lb. 30 cts.; lb. 95 cts.; 5 lbs., 85 cts. per lb.; 50 lbs., 80 cts. per lb.

WOODBURY, NEW JERSEY

CARROTS

Red Cored Chantenay. Days to maturity, 55. This Carrot has been developed from the parent Chantenay. A selection has been successfully made to produce a Carrot without the usual pale yellow core. The result is a Carrot with a richer orange color both inside and outside. In flavor it is distinctly sweeter and the flesh more delicate. It is particularly valuable as a canning variety when the Carrot is diced, but it also has distinct advantages for the market gardener. It will mature a few days earlier than the original Chantenay. Price: Pkt. 10 cts.; oz. 15 cts.; 1/4 lb. 30 cts.; lb. \$1; 5 lbs., 90 cts. per lb.; 50 lbs., 85 cts. per lb.

Chantenay. Days to maturity, 60. This Carrot, originally imported from France, is now largely produced in the United States where it has been a recognized leader for over forty years. Although slightly shorter and more stump-rooted than Danvers Half-Long, it is nearly two weeks earlier in maturity. The surface is smooth, the color a rich orange, and the flesh crisp and tender. They will average about 5 1/2 inches in length. Price: Pkt. 10 cts.; oz. 15 cts.; 1/4 lb. 25 cts.; lb. 75 cts.; 5 lbs., 65 cts. per lb.; 50 lbs., 60 cts. per lb.



Carrots: Red Cored Chantenay

Please see pages 20 to 27 for General Vegetable List

STOKES VEGETABLE SPECIALS FOR 1932

Stokes Viking Copenhagen Cabbage

The earliest round Cabbage under cultivation

Days to maturity, 85-95. The above statement is supported by official readings taken at the Washington County Ohio Experiment Station, June, 1931. This trial consisted of 22 strains of the so-called Golden Acre types, each test being repeated four times in rows of 56 each. On June 23, this strain cut 148 heads weighing 422 pounds, giving an average of 2.85 pounds per head. The 21 competing strains gave an average cutting of 82.2 heads, thus giving the winning strain an advantage of 45 per cent over the average competition, which represented some of the very finest competing strains now offered in America. The composite trials totaled 224 heads for each strain.



Stokes Viking Copenhagen. A great money-maker

Above every other characteristic, the factor of early maturity outweighs all others in choosing the strain which is to be planted. The early Cabbage markets of the intermediate states normally are reasonably strong for the first ten days or two weeks. To all growers who are in a position to profit by a quick-maturing crop of the extra-early, round Copenhagen type, we offer the Stokes Viking Copenhagen as a stock of dependability and high merit.

The average-size head of the first cutting was 2.85 pounds; of the second cutting, 4.37 pounds. For the crop the average will be about 3½ pounds, an ideal size for the early market. The leaf-growth is uniformly restrained and allows close planting. We look on Viking Copenhagen as one of the most valuable strains offered in this Catalog. We are convinced that it will give a distinguished performance.

Price: Pkt. 15 cts.; oz. 65 cts.; ¼lb. \$2; lb. \$7.50; 5 lbs., \$7 per lb.

Charleston Wakefield-Special

Days to maturity, 95-105. The photograph on this page gives a fair representation of our present type of Charleston Wakefield-Special.

Charleston Wakefield retains first place as the most important commercial Cabbage grown along the Atlantic Coast. Its table quality is excellent, and its market appearance is greatly in its favor. Charleston is approximately one week later in reaching market stage than Jersey, but it will produce a head weighing ½ pound heavier. On a strict reading, our strain will average better than 96 per cent purity. Growers need look no farther for a finer type of Charleston. In this connection we would point out the utter futility of growing either of the Wakefield types except with carefully bred strains. The cost of production and the normal hazards of the crop and market are too great to allow the risks that are entailed in growing Wakefield from many of the stocks that are now available. Our Charleston Wakefield-Special will not fail you.



Charleston Wakefield-Special

Price: Pkt. 10 cts.; oz. 35 cts.; ¼lb. \$1.20; lb. \$4; 5 lbs., \$3.75 per lb.

STOKES VEGETABLE SPECIALS FOR 1932

Allhead Early Cabbage

Days to maturity, 110-120. Allhead Early is in the ascendancy as an important shipping Cabbage. It will mature a week earlier than Stein's Flat Dutch and develops a more acceptable-sized head. The top is not flat but rounded, which is also a favorable factor.

Allhead Early is increasing in popularity, especially in Texas, where it is showing high resistance to disease, a factor which is not entirely controlled by seed-disinfection. Another reason for the popularity of Allhead Early in the Rio Grande Valley is its ability to stand up well in the early plantings under the intense August and September heat. The heads are very solid, uniform and average 4 to 5 pounds. Our stock is very superior.

Price: Pkt. 10 cts.; oz. 25 cts.; 1/4lb. 75 cts.;
lb. \$2.50; 5 lbs., \$2.25 per lb.



Allhead Early

Glory of Enkhuizen

Days to maturity, 110-120. Glory of Enkhuizen is a high-yielding, round-headed, shipping variety of importance. It is a larger and later edition of Copenhagen Market and is recommended for main-season planting. Within the last two seasons, growers have experienced some difficulty with it under black-rot conditions. This

is especially true in Texas where it seemed much more susceptible to disease than certain American varieties. Nevertheless, Glory has much in its favor, and we are of the opinion that it should not, by any means, be discarded. It develops the type Cabbage the market wants. Our strain is recommended.

Price: Pkt. 10 cts.; oz. 25 cts.; 1/4lb. 75 cts.; lb. \$2.50; 5 lbs., \$2.25 per lb.

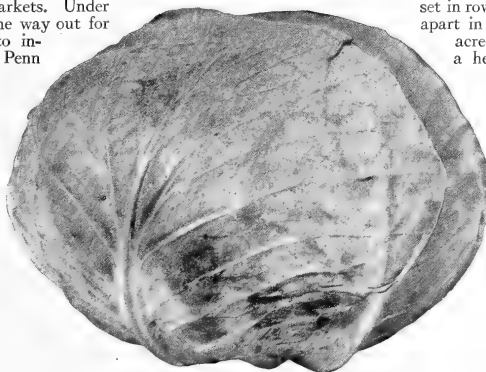
Penn State Ballhead

Days to maturity, 130-140. Penn State is one of the heaviest producing strains of Danish Ballhead Cabbage. The average yield of Ballhead type in New York state is approximately 8 tons per acre, which barely pays cost of production in normal markets and which cannot possibly pay during depressed markets. Under present conditions, the one way out for the Cabbage-grower is to increase the yield per acre. Penn State will go a long way toward doing this, for it has consistently made yields of over 20 tons per acre over a period of years. It is this extra tonnage after production costs have been met that brings the profit. The secret of

the increased tonnage of Penn State lies in the selection for hard, tight heads weighing approximately one-third more than ordinary Danish of equal size. This factor also brings with it better keeping quality and there is less loss from cracked heads.

We recommend that Penn State be set in rows 3 feet apart and 21 inches apart in the row (7500 plants per acre). Ordinarily this will bring a head weighing from 4 to 6 pounds, which is the desired market-size for fall Cabbage. For larger heads, set the plants farther apart.

Price: Pkt. 15 cts.; oz. 50 cts.; 1/4lb. \$1.75; lb. \$6; 5 lbs., \$5.75 per lb.



Penn State Ballhead



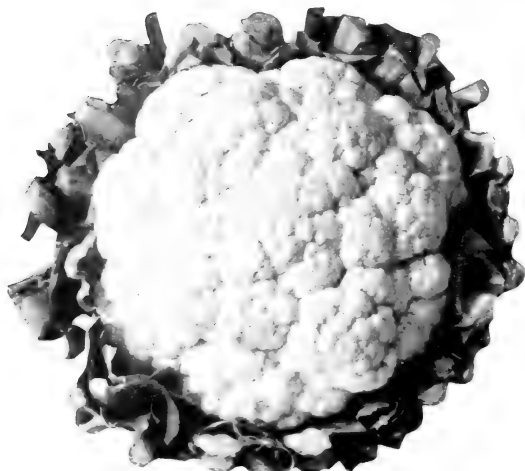
Penn State Ballhead grows a hard, tight head.



Ordinary Danish averages 30 per cent lighter.

STOKES VEGETABLE SPECIALS FOR 1932

Stokes Riverhead Snowball Cauliflower



Stokes Riverhead Snowball Cauliflower

Days to maturity, 110-120. Riverhead is recommended for maturity either as an early or a late Cauliflower. For main season we recommend Stokes Dwarf Erfurt. Riverhead is early maturing and will prove to be one of the very purest strains of any vegetable offered in this Catalog. From standpoint of sheer perfection, we believe it is unsurpassed by any strain of Cauliflower now offered—this regardless of price. The plant is vigorous and quick-growing. It is compact, but not too short-leaved. The head has unusual depth, is solid, finely grained, and pure white in color. The stock will mature with great evenness, and on the market the fine texture of the heads, which are completely free from head-leaves when properly grown, brings the highest price. Growers who do not know Stokes Riverhead Snowball will promptly recognize its distinctly superior qualities. Cauliflower does best when the heads are developed in cool nights. Otherwise its cultivation is quite similar to the growth of good cabbage, except that the heads of Cauliflower must be protected from the sun. This is readily accomplished by loosely gathering the tops of the leaves together as the heads begin to form.

Price: Pkt. 25 cts.; $\frac{1}{4}$ oz. 50 cts.; oz. \$1.50;
 $\frac{1}{4}$ lb. \$5; lb. \$18; 5 lbs., \$16 per lb.

Glory of Calabria Broccoli

America's Most Important New Vegetable Introduction

Days to maturity, 130-150. Rarely has it been our pleasure to assist in popularizing a new vegetable as has been the case with this most delicious of green vegetables, Broccoli. Coming from the remote Province of Calabria, in Southern Italy, it was almost unknown in America until 1927. Since that time it has been literally accepted with open arms. In 1929, New York City alone handled the enormous total of 786 carloads, which certainly brings Broccoli past the experimental stage.

Calabria Broccoli may be described as a green-headed cauliflower. Broccoli, however, does not require the same care as cauliflower. It should be started in plant-beds and transplanted to the field so that it will mature during the late spring or the early fall. It requires a definitely cool season for its proper growth. The head develops on the main stalk, and, after this is cut and marketed, smaller heads will develop from the axis of the leaves. These are cut and tied in bunches of two or three, thus doubling the output. Growers can put great dependence in our seed as a member of our firm made a special trip to Italy to locate original sources. All of our stock is thus imported from Italy and has been proved before being offered.

The consumers' demand for Broccoli is increasing rapidly every season. Give it a thorough trial.

Price: Pkt. 15 cts.; oz. 45 cts.; $\frac{1}{4}$ lb. \$1.40; lb. \$5;
5 lbs., \$4.75 per lb.



Glory of Calabria Broccoli, grown in the Rio Grande Valley

STOKES VEGETABLE SPECIALS FOR 1932

Celery Stokes Golden Plume

A Distinguished Strain, Full-hearted, with a Long Rib and Thick Stalk

Days to maturity, 105-115. The Stokes Golden Plume is an accepted leader in the important Sanford (Florida) Celery district. We know of no part of the United States where competition in strains of Celery is so keen. We take justifiable pride that The Stokes Golden Plume is looked on by many of the very largest growers in the district as being the most dependable and most profitable Celery they are growing. The accuracy of this statement can be checked by investigation among the Sanford growers and by our own steadily advancing sales. The success of the Stokes strain has not been left to chance, but can be attributed altogether to the infinite care taken in the production of the seed. As further protection, we have conducted proving-ground and commercial-field tests in various parts of the country. The strongest endorsement for the stock comes from the growers who have used it. Price: Pkt. 25 cts.; 1/2oz. 70 cts.; oz. \$1.25; 1/4lb. \$5 lb. \$18; 5 lbs., \$16 per lb.

Golden Self-Blanching

The Very Finest Stock of Old Golden Now Being Grown in the Sanford District

Days to maturity, 115-125. Golden Self-blanching, after forty years, still maintains an extremely important place in the yellow Celery markets. Our present stock is one which has brought credit to our Company and satisfaction and profit to our customers. Time and time again the growers of Sanford have come in to tell us that this is the most unusual as well as the most valuable stock of Old Golden they have ever seen. This has not happened once, but happens each year.

Our strain of Golden Self-blanching is a very pure one, being extremely vigorous and developing a large golden heart with a long-ribbed, upright stalk. As is the case with The Stokes Golden Plume, this strain is sold only in sealed packages under a definite test of germination, and when purchased locally at our stores is always disinfected. Price: Pkt. 20 cts.; 1/2oz. 45 cts.; oz. 75 cts.; 1/4lb. \$2.50; lb. \$9; 5 lbs., \$8.50 per lb.



Stokes Golden Plume from an Oviedo, Fla., field—60 days from time of transplanting to the field

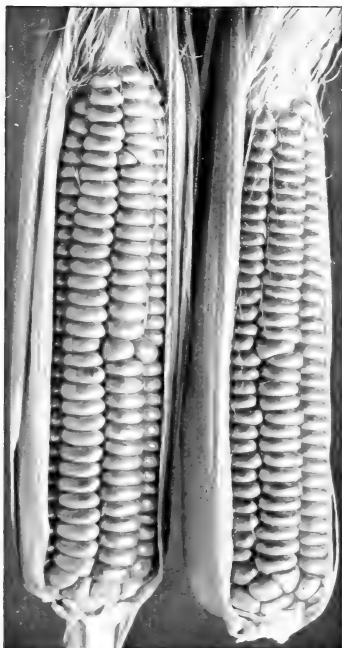


Planting Stokes Celery on farm of American Fruit Growers, Inc., Sanford, Fla.



A field of Stokes Golden Self-Blanching in Florida

STOKES VEGETABLE SPECIALS FOR 1932



Golden Bantam Corn

The Stokes Vanguard

Days to maturity, 65-70. We offer The Stokes Vanguard as the most profitable early Sweet Corn under cultivation. This statement is made six years after its introduction, and we still maintain that our claim for it is so far unchallenged by any variety in its class. Vanguard was developed by Mr. A. L. Richie, a successful grower and breeder of Burlington County, New Jersey. Our stock is still grown for us in its home county. It has brought profit to the grower for two obvious reasons: It is the earliest large-

reared Sweet Corn we know of, and it has excellent table quality. Comparative tests have proved it to be at least seven days earlier than Howling Mob, and each year we are developing a heavier yielding and more uniform strain. It will mature the same week as Early Adams, but the public long ago tired of eating Horse Corn. (If you still think it will pay for Horse Corn when Sweet Corn is available, just try it.) Vanguard will develop an ear in 65 days that is at least 8 inches long. It is well named, for it leads the whole procession to market. It takes a large part of the early money.

Price: $\frac{1}{4}$ lb. 10 cts.; $\frac{1}{2}$ lb. 15 cts.; lb. 25 cts.; 5 lbs., 22 cts. per lb.; 50 lbs., 18 cts. per lb.

Golden Bantam

Days to maturity, 70. Golden Bantam holds its premier position out of sheer merit. Its name, given to it years ago by that genius, the late W. Atlee Burpee, Sr., is probably better known than any varietal name of the entire list. One reason for this is that its inherent quality is fully the equal of its excellent name. The public long ago discounted the small ear of Golden Bantam in favor of its delightful flavor. If all so-called Sweet Corn were as sweet as Golden Bantam, consumption would double over night. Golden Bantam is not only high in sugar-content, with very tender kernels, but it has a very special flavor of its own. The stock we offer is a superior one. It is the original Golden Bantam with 8 rows and averaging 6 inches in length. Growers can place great confidence in this stock.

Price: $\frac{1}{4}$ lb. 10 cts.; $\frac{1}{2}$ lb. 15 cts.; lb. 24 cts.; 5 lbs., 20 cts. per lb.; 50 lbs., 16 cts. per lb.

The Stokes Evergreen Corn

Days to maturity, 90-100. The original Evergreen was introduced seventy years ago by Thorburn. Since that time there have been many improvements in the type. The stock we offer herewith is, in our opinion, one of the most desirable available, it being uniformly productive, developing 16-row ears averaging from 8 to 10 inches in length. It is high in sugar-content and brilliant in appearance. Owing to the length of its growing season, Stokes Evergreen cannot be produced in the more northerly latitudes.

Price: $\frac{1}{4}$ lb. 12 cts.; $\frac{1}{2}$ lb. 20 cts.; lb. 30 cts.; 5 lbs., 26 cts. per lb.; 50 lbs., 22 cts. per lb.

On larger quantities, ask for special prices

Do You Know the Importance of FRESHNESS in Corn?

Yes, we've mentioned this before. But we are sure it will bear repeating, for nothing is much flatter than Sweet Corn which has lost its flavor.

Now keep this in mind: In normal midsummer temperatures, Sweet Corn begins to lose its sugar-content (which is the basis of its flavor) *within ten minutes* after it has been cut. At the end of the first 24 hours it loses about 30 per cent, and after 2 days it has lost about 60 per cent of its sugar-content, and with it all semblance of the original flavor.

This chemical change can be greatly retarded by refrigeration, but on a large scale this is difficult and expensive. For most growers it will be a matter of quick handling, and this, of course, is the great opportunity of the alert roadside seller. Gain a reputation for selling *freshly cut* Sweet Corn, sell it by variety name; carefully examine every ear—and you can set your own price. The real flavor of Sweet Corn is only a memory to the average city-dweller.

STOKES VEGETABLE SPECIALS FOR 1932

Hale's Best—A Great Musk Melon

We offer a very reliable strain of this distinguished variety

Days to maturity, 75-80. There is now probably more Hale's Best planted in the United States than all other varieties of Cantaloupe combined. Credit is given an Imperial Valley Japanese gardener for the original selections from which Mr. I. D. Hale, dean of the Cantaloupe industry, in 1923, secured and helped develop this valuable melon.

Hale's Best is the earliest maturing Musk Melon of importance, developing ripe fruits ten days ahead of competing sorts. Aside from this factor, perhaps its most marked characteristic is that it maintains its fine quality and sweet flavor after it is over-ripe, and does not deteriorate, even when held on the market several days.

The strain we now offer almost entirely eliminates the tendency toward too large sizes and irregular shapes. It will produce, with great uniformity, melons 6 to 7 inches in length. As noted in the colored photograph, the flesh is thick and of a deep orange color. It is as disease-resistant as any strain now in general use. We recommend it without qualification.

Price postpaid: Pkt. 10 cts.; oz. 20 cts.; 1/4 lb. 45 cts.; lb. \$1.50; 5 lbs., \$1.40 per lb.

In Selling Melons by the Roadside:

Never have a melon on your stand that is from a diseased or dead vine. Its flavor is gone and your customer is likely to go with it. Don't sell just Musk Melons. Sell Hale's Best or Hearts of Gold or Bender's Surprise. Sell them by name and they are far more likely to be remembered. Then make an honest package. Don't top it off, and finally,—ask a fair price. Most people know what that is.

Keep Your Vines Green!

The flavor of your melons will closely parallel the health of your melon-vines. To keep your vines strong and free from insects and disease, first make sure that your soil contains an ample supply of available plant-foods. Cultivate the rows as late as possible and spray the vines regularly every ten days with a strong mixture of Bordeaux and Arsenate. If you want your customers to come back for more, keep your vines green.



Hale's Best
Musk Melon



Master Marglobe

*The Premier
American Shipping Tomato*

Pkt. 25 cts.; oz. S1;
1/4lb. \$3.50; lb. S12

STOKES VEGETABLE SPECIALS FOR 1932

Stokes Master Marglobe Tomato



Examining staked hills in our breeding plots



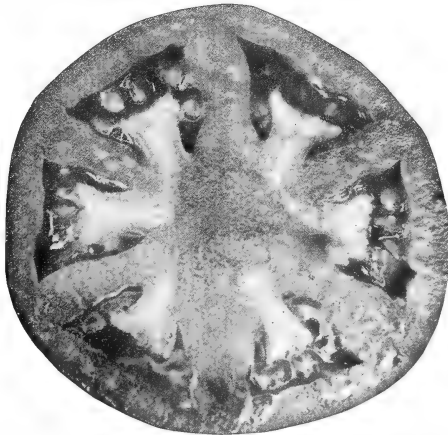
Saving seed from a single-plant selection

Days to maturity, 130-140. This strain represents our most advanced work in seed-breeding, the product of five years' selection over six plant-generations. Stokes Master Marglobe has been bred for greater depth, interior solidity, and productiveness. The photograph in natural colors on the opposite page, together with the photographs on this page, cannot fail to interest Tomato-growers. This includes the large southern planter who ships green-wrap Tomatoes, the farmer who grows for the cannery, either for the manufacture of whole canned Tomatoes or of puree; the northern gardener who sells on local markets or by the roadside; and the home gardener who is interested in quality. The advantages of a deep and, at the same time, coreless Tomato are obvious, and the market of recent

years has invariably given it the premium. The added solidity is, perhaps, an even more important factor. The unique photographs at the foot of this page tell an important story. Certainly there is little choice between the original Marglobe, as fine as that is, and the Master Marglobe from point of view of table quality, shipping ability, and solid content. The latter point is of inestimable value to the manufacturer. Furthermore, we have definitely added to the productiveness of the original Marglobe by this strain. Our recent plant selections average over 60 fruits per plant, a truly remarkable figure when the unusual size of the fruit is considered.

Realizing the importance of developing a deeper and more solid Tomato, we made our first selection of this master strain in Virginia in 1927, this selection coming from one plant chosen out of an 80-acre field, seed for which had been supplied by Dr. F. J. Pritchard the year previous. This seed was immediately sent to our Texas Branch where it was placed under the supervision of our plant-breeder, M. Mokta, for two generations. In 1929 it was brought to New Jersey where further single-plant selections were made. From this crop, seed was saved and sent south for winter production in the Virgin Islands. This crop was inspected and rogued by an officer of the Company and the seed sent north for further production. In 1930 and 1931 we continued our single-plant selections in New Jersey.

Price: Pkt. 25 cts.; oz. \$1; 1/4 lb. \$3.50; lb. \$12; 5 lbs., \$11.50 per lb.



The result obtained after five years' selection. The specimen on the left shows the great solidity of Master Marglobe. The one on the right is the original Marglobe. The photograph in color on the opposite page indicates the great depth of Master Marglobe

STOKES VEGETABLE SPECIALS FOR 1932

The Pritchard Tomato (New)

Originally put out for trial as Scarlet Topper. Now officially named Pritchard by the U. S. Department of Agriculture.

Days to maturity, 120-130. This Tomato is illustrated in color on our front cover. It was Dr. Pritchard's last release before his death in February, and one that will do honor to his memory. Although its first name, Scarlet Topper, was, in a measure, descriptive of the variety, we heartily applaud the Department in their now giving it the name of Pritchard. This action is but just recognition of the work of a great plant-breeder, and will be gratefully accepted by thousands who have profited by Fred Pritchard's introductions (three of them are listed on this page).

The Pritchard is a Marglobe \times Cooper's Special hybrid, and as such combines the well-known Marglobe qualities with the earliness, productiveness, and self-topping features of Cooper's Special. The Pritchard is an intense scarlet, both exterior and interior. Its remarkably early maturity gives the variety a place of great prominence. It may eventually replace both Earliana and Bonny Best.

The structure of Pritchard is very similar to Marglobe, it showing great interior solidity with no core and very small seed-pockets. One outstanding feature is its enormous productiveness when properly fed. It is not at all unusual to find plants bearing from 75 to 80 fruits. A field we inspected in New Jersey this present season averaged over 18 tons per acre. One picking alone averaged 12 tons per acre, a $\frac{1}{2}$ bushel basket being gathered from every 3 $\frac{1}{2}$ plants. Such a record in a season when the New Jersey state average is in the neighborhood of 4.3 tons per acre speaks for itself.

Price: Pkt. 25 cts.; oz. \$1; $\frac{1}{4}$ lb. \$3.50; lb. \$12; 5 lbs., \$11.50 per lb.

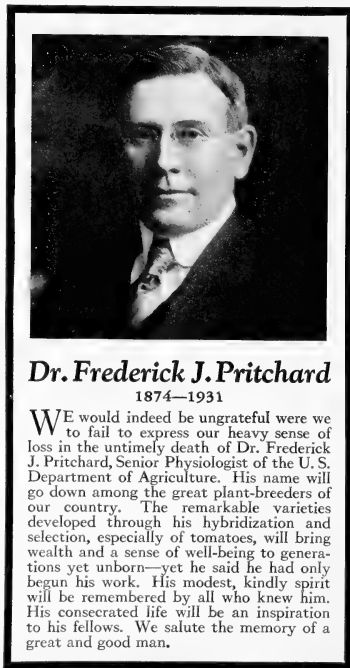
The Stokes Marglobe

Days to maturity, 130-140. We offer this as an excellent type of the original Pritchard Marglobe as introduced seven years ago.

The fruit is a deep scarlet color, perfectly globular and smooth. Its thick walls and cross-sections make it an excellent shipper. This variety shows great disease-resistance under wilt and nail-head rust conditions.

The stock we offer is of our own growing and has been certified to as to type purity and freedom from disease by the New Jersey State Department of Agriculture.

Price: Pkt. 15 cts.; oz. 50 cts.; $\frac{1}{4}$ lb. \$1.75; lb. \$6; 5 lbs., \$5.75 per lb.



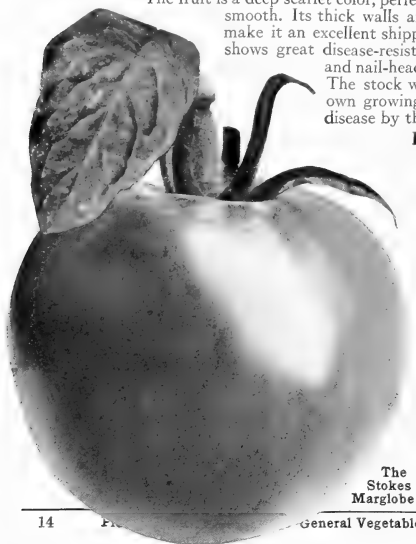
Dr. Frederick J. Pritchard

1874-1931

WE would indeed be ungrateful were we to fail to express our heavy sense of loss in the untimely death of Dr. Frederick J. Pritchard, Senior Physiologist of the U. S. Department of Agriculture. His name will go down among the great plant-breeders of our country. The remarkable varieties developed through his hybridization and selection, especially of tomatoes, will bring wealth and a sense of well-being to generations yet unborn—yet he said he had only begun his work. His modest, kindly spirit will be remembered by all who knew him. His consecrated life will be an inspiration to his fellows. We salute the memory of a great and good man.

Break o'Day

Days to maturity, 120-130. Break o'Day is a Pritchard hybrid between Marglobe and Marvana. In maturity, Break o'Day and Pritchard are about even. There are two things that can be said for Break o'Day: First, its great earliness, and, second, its great productiveness. There are two points about Break o'Day which have made it unacceptable to some planters: First, the preponderance of a yellow pigment in the skin giving it an orange-red cast rather than a pure scarlet; and, second, its very light vine-growth. Many of our customers will continue with Break o'Day because of its great productiveness. One of our fields produced beautifully formed, large Tomatoes, even after there were no leaves left on the vines. One grower we interviewed reported shipping 28 carloads of Break o'Day, at a good profit. We do not recommend this with quite the enthusiasm we did a year ago, but we feel there is considerable merit to it and that under certain conditions it will prove profitable. Price: Pkt. 15 cts.; oz. 65 cts.; $\frac{1}{4}$ lb. \$7.50; 5 lbs., \$7.25 per lb.



The Stokes Marglobe

STOKES VEGETABLE SPECIALS FOR 1932



Florida and Texas growers visit our N. J. fields

We cure our Tomato seed in the sun

Our Tomato trial at Weslaco, Texas

Stokes Super-Standard Bonny Best

Days to maturity, 125. We look on this strain as the highest development of Bonny Best we have to offer. We have offered it since 1923 and in that time it has earned thousands of dollars for our customers. As its name implies, Super-Standard Bonny Best is above and beyond the standard. We are growing our seed, this year, under ideal conditions and as usual, the crop will be inspected by an official of the Bureau of Inspection, N. J. State Department of Agriculture.

In some instances, Bonny Best has been more susceptible to disease under greenhouse conditions. This strain, however, is particularly vigorous and will succeed where others will not succeed. All of our present season's offering will be taken from the 1931 crop. It is recommended for both greenhouse and for intensive field cultivation. This stock will make an excellent account of itself wherever tried.

Price: Pkt. \$1; 1/2oz. \$2.50; oz. \$4; 1/4lb. \$15.

Lloyd Forcing and Blair Forcing

Two New Greenhouse Tomatoes That Are Commercially Free from Fusarium Wilt

Days to maturity, 125. These two Tomatoes were released last year by the University of Illinois, which has honored us by asking that we reproduce them and take charge of the distribution. Both strains are the result of a cross between Louisiana Pink and Grand Rapids Forcing. They are identical except that Lloyd Forcing is a scarlet Tomato and Blair Forcing a pink Tomato. Growers will be interested in these strains: First, because of their almost complete resistance to Fusarium Wilt, a disease which has caused losses of hundreds of thousands of dollars to Tomato-growers; secondly, because these varieties are enormously productive, even under dark midwinter conditions.

Neither Lloyd Forcing nor Blair Forcing is of any value as an outdoor Tomato, due to their tendency of over-production, resulting in undersize fruits.

Under normal greenhouse conditions, Lloyd Forcing (scarlet) and Blair Forcing (pink) will produce Tomatoes 2 3/4 inches in diameter, with a depth of 2 inches. This is an ideal winter size. They ripen uniformly to the stem. The surface is smooth and the flavor excellent.

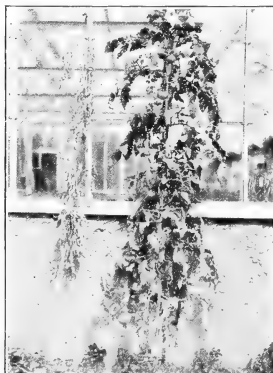
Both stocks have been grown by us privately in New Jersey from stock seed furnished us by the University of Illinois. We hope to have these stocks inspected by Prof. Huelsen or one of his associates.

Price, each: Pkt. \$1; 1/2oz. \$2.50; oz. \$4; 1/4lb. \$15.



Photo through courtesy of Prof. Huelsen

Lloyd Forcing Ready for Market



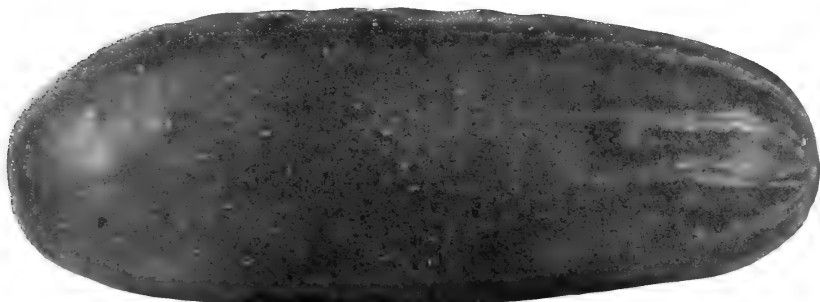
Left: Grand Rapids. Right: Lloyd Forcing

Picking season in weekly periods	Yield per plant in ounces of marketable Tomatoes					
	Grand Rapids	Lloyd Forcing	Marglobe	Grand Rapids	Blair Forcing	Marglobe
April 14-19	.41	.42	1.04	.03	.20	.51
April 21-26	2.63	4.22	4.51	1.35	3.32	4.96
April 28-May 3	9.24	13.62	6.71	8.50	11.66	4.63
May 5-10	18.35	34.57	24.87	17.28	31.42	24.00
May 12-17	19.37	30.38	21.36	21.42	30.41	23.55
May 19-24	12.12	18.75	10.58	13.72	23.06	9.99
May 26-31	7.83	13.43	9.93	10.73	13.43	10.53
Total yield per plant (ozs.)	69.95	115.39	79.00	73.03	113.50	77.77
Number of fruits per plant	22	26	16	22	29	16
Average size of fruits (ozs.)	3.18	4.43	4.94	3.32	3.91	4.86
Value of crop per plant at 20 cts. per lb.	\$0.87	\$1.44	\$0.99	\$0.91	\$1.42	\$0.97

WOODBURY, NEW JERSEY

Please see pages 20 to 27 for General Vegetable List

STOKES VEGETABLE SPECIALS FOR 1932



The Stokes Greenpack

GREENPACK
G. S. P.
CUCUMBERS
REGISTERED U. S. TRADE MARK

Days to maturity, 50-60. There are three reasons why the Stokes Greenpack is our largest seller on the Atlantic seaboard: First, its ability to hold its luxurious, deep green color when sold in northern markets; second, it is unquestionably the heaviest yielding of the White Spines; third, it averages five days earlier than Early Fortune.

The Stokes Greenpack is definitely in the ascendency as the most profitable Cucumber that is now being grown in Florida and in the Carolinas. The illustration has been greatly reduced for lack of space, the actual fruit of the Stokes Greenpack averaging 7 inches in length. Growers were offered from 50 cents to \$1 package premium for the Stokes Greenpack over prices offered for other strains and varieties. These results are based on the most careful breeding program. Such seed cannot be grown to compete with many of the ordinary strains that are sold.

Price: Pkt. 10 cts.; oz. 15 cts.; 1/4 lb. 40 cts.; lb. \$1.25; 5 lbs., \$1.15 per lb.; 25 lbs., \$1.10 per lb.

The Stokes Early Fortune

Days to maturity, 55-65. This strain is particularly recommended for cultivation in Texas, New Jersey, New York, New England, and the Central States. Its slender, symmetrical, slightly tapering shape has proved extremely popular on the markets. Its earliness, its heavy cropping, its brilliant appearance, have given it a permanent position. The Stokes Early Fortune is distinctly superior to the general run of this variety, the length averaging fully 8 1/2 inches. We believe no finer stock of Early Fortune is available.

Price: Pkt. 10 cts.; oz. 15 cts.; 1/4 lb. 30 cts.; lb. 90 cts.; 5 lbs., 85 cts. per lb.; 25 lbs., 80 cts. per lb.

Stokes Windermoor Wonder

Days to maturity, 60-70. This, without question, is the most handsome outdoor Cucumber now under cultivation. The fruits will average 10 to 12 inches in length. Color is a uniform deep green from end to end, and the characteristic white stripes at the blossom end are an attractive emerald-green in Windermoor Wonder. In a Cucumber which puts so much of its strength into its fruit, it is impossible to produce as heavy yields as with the shorter types. This feature, however, is soon lost sight of in the higher price received for the fruit. Windermoor Wonder is a Davis Perfect x English Telegraph hybrid. It is a shy-seeding variety, which makes the price of the seed invariably high.

Price: Pkt. 10 cts.; oz. 25 cts.; 1/4 lb. 85 cts.; lb. \$3; 5 lbs., \$2.75 per lb.



A field of Stokes Greenpack Cucumbers grown by Fog Brothers in Porto Rico, U. S. A. This field yielded 275 boxes per acre

STOKES VEGETABLE SPECIALS FOR 1932

Imperial Black Beauty Eggplant

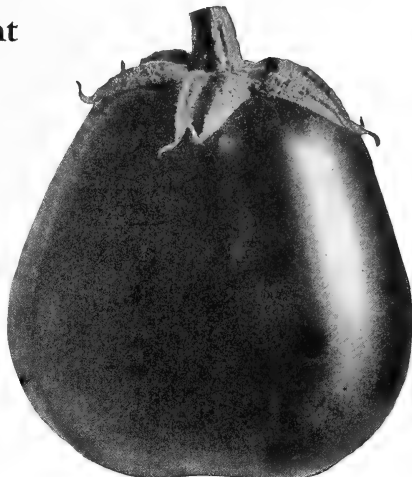
Days to maturity, 110-125. This Imperial strain of the well-known Black Beauty, a stock free from the organisms of Phomopsis Rot, is, in our opinion, the most important forward step taken in Eggplant improvement in the last decade. Most Eggplant seed is saved in areas that are badly infested with this organism, which attacks the plant in its middle growth, withers the leaves, and finally rots the fruit. In many instances the spoilage does not commence until the fruit is en route to northern markets. Some Phomopsis Rot comes from infected soil, but unless the grower starts with disease-free seed he is beaten from the start. Our Imperial strain has been grown under conditions that make us morally certain that our seed is entirely clear from the organisms of Phomopsis Rot. The height of the plant is about 18 inches, and the fruits are of a triangular globe shape and a deep purple-black color.

Price: Pkt. 15 cts.; oz. 45 cts.; $\frac{1}{4}$ lb. \$1.40; lb. \$4.75;
5 lbs., \$4.50 per lb.

Stokes Deep Heart Escarole

Days to maturity, 90-100. Our Company introduced this variety three years ago, and in that short time it has gained a well-merited reputation. Its outstanding characteristics are its early maturity, combined with the fact that the leaf is broader than the Batavian type. It is a heavy yielder, of fine appearance, and has a deep, well-blanching heart. It has been particularly successful in the Sanford (Florida) district. Stokes Deep Heart will give a good account of itself. We recommend that part of your planting be with this variety.

Price: Pkt. 10 cts.; oz. 20 cts.; $\frac{1}{4}$ lb. 45 cts.; lb. \$1.50; 5 lbs., \$1.40 per lb.

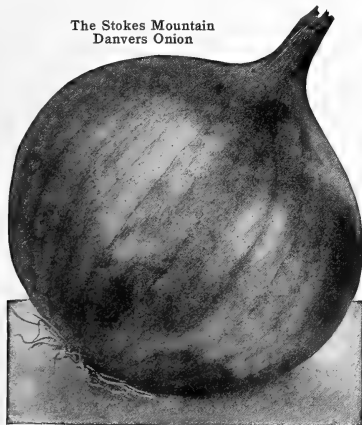


Imperial Black Beauty Eggplant

The Stokes Mountain Danvers Onion

Days to maturity, 100. This Onion, grown privately for us at an elevation of 5000 feet on the western slope of the Rocky Mountains, will mature a hard, uniform bulb fully 10 days ahead of Yellow Globe Danvers. In addition to the factor of earliness, it is the best-keeping Onion that is now being offered. The Stokes Mountain Danvers is grown for us by an experienced grower and is the result of 15 years' careful selection. Our strain will show an extremely high purity both in type and in color. We offer it now for the sixth season and can confidently say that it has made an excellent record for itself from Ontario to Texas. This includes the important muck sections of northern New York State. To all growers who can take advantage of the early market or to growers who have partial crop-failure due to shortness of season, The Stokes Mountain Danvers will prove especially valuable.

The Stokes Mountain
Danvers Onion



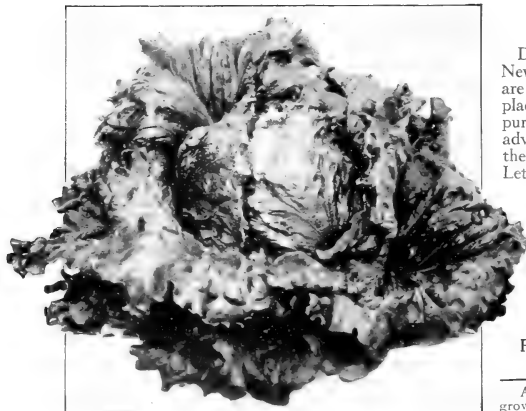
Price: Pkt. 10 cts.; oz. 25 cts.; $\frac{1}{4}$ lb. 55 cts.; lb. \$1.90;
5 lbs., \$1.75 per lb.; 25 lbs., \$1.65 per lb.

Riverside Sweet Spanish

Days to maturity, 115. This stock is well deserving of special recognition for it is a very pure strain of an increasingly important variety. Riverside Sweet Spanish is a long-keeping Onion of the large Spanish Valencia type. As compared to the familiar Prize-taker, it is now taking most of the prizes, for it is larger, a better shipper and a better storage Onion. Yields as high as 50 tons per acre are reported. Onions average $3\frac{1}{2}$ to 4 inches in diameter, uniformly globe-shaped, and a bright golden yellow color.

Price: Pkt. 10 cts.; oz. 25 cts.; $\frac{1}{4}$ lb. 85 cts.; lb. \$3;
5 lbs., \$2.75 per lb.; 25 lbs., \$2.65 per lb.

STOKES VEGETABLE SPECIALS FOR 1932



New York Lettuce

New York Lettuce

Days to maturity, 80-90. The strain we offer is the true New York, the identical stock from which thousands of acres are planted in the Imperial Valley. The largest growers can place entire dependence on this stock. It is as uniformly pure as anything we offer, and, furthermore, has the added advantage of developing an enfolding leaf over the top of the head which adds greatly to its shipping qualities. Any Lettuce-grower who desires to make a trial planting of this stock will be sent a substantial planting sample without charge. It will take but one trial to convince anyone that this is a very superior stock. It has proved so in all of the Lettuce-growing districts of California, Arizona, and the Rocky Mountain States as well as in the various districts in the Eastern States where it is finding an increasing acreage every year. If you want one of the finest strains of New York Lettuce now known you cannot do better than to order this one.

Price: Pkt. 10 cts.; oz. 25 cts.; $\frac{1}{4}$ lb. 60 cts.; lb. \$2;
5 lbs., \$1.85 per lb.; 25 lbs., \$1.75 per lb.

A customer writes: "I have been around calling on many lettuce growers and find your stock best. Book me 40 lbs. for next spring." C. K.

White Boston

Days to maturity, 75-80. This variety is of great importance to our trade. At the present time we are selling about three times as much White Boston as of the Big Boston type. We consider both stocks to be equally pure, but the choice is definitely leaning toward the green-leaved type. We go to a good deal of expense to have the very finest selection made of this stock. Every precaution has been taken to insure the purity of our strain. Its brilliant green market appearance is, no doubt, responsible for the consistently high price it commands on the market. Growers large and small can place the greatest confidence in it. We know of no finer strain. Does well in spring and fall.

Price: Pkt. 10 cts.; oz. 20 cts.; $\frac{1}{4}$ lb. 50 cts.; lb. \$1.75;
5 lbs., \$1.65 per lb.; 25 lbs., \$1.55 per lb.

Stokes Scarlet Globe Radish

Days to maturity, 25. We consider this to be the premier strain of Early Scarlet Globe. The stock is the result of single plant-breeding, and the seed has been carefully grown from selected transplanted roots. It will prove to be a nearly perfect strain of Early Scarlet Globe, surprisingly uniform, of a bright scarlet color, perfect shape, and with chin tap-root. The tops are of convenient size for bunching and are uniform. The flesh is pure white, crisp, and of fine flavor. The average size of the root at maturity is $1\frac{1}{4}$ by $\frac{3}{4}$ inches. It will grow quickly and evenly, maturing in just over three weeks under normal conditions. Market gardeners who desire the very finest Radish available for field-production may put great confidence in this strain. The photograph on this page is in every way typical of it.

Price: Pkt. 10 cts.; oz. 15 cts.; $\frac{1}{4}$ lb. 25 cts.; lb. 75 cts.;
5 lbs., 65 cts. per lb.; 25 lbs., 55 cts. per lb.



Stokes Scarlet Globe Radishes

STOKES VEGETABLE SPECIALS FOR 1932

Three Distinguished Strains of Savoy Spinach

The following three strains, all grown for us under ideal conditions in Holland, are of equally pure type, each developing a perfect savoy-leaved type, but each having a distinct place of its own. **RESELECTED BLOOMSDALE**, maturing in 40 days, is the standard of its class. It will mature perhaps a week earlier than Long-standing Bloomsdale and is a remarkably heavy yielder. **LONG-STANDING BLOOMSDALE**, maturing in about 47 days, although later in reaching the market stage, will hold ten days after attaining its full growth, a very valuable asset. We particularly recommend that Long-standing Bloomsdale be used for the late spring crop, for it will not be so seriously affected by the first warm days which so often ruin the early-maturing Spinach. **VIRGINIA SAVOY**, maturing in 40 days, is a blight-resistant type developed at the Virginia Truck Experiment Station and is especially recommended for August and September planting. This remarkable strain not only resists Spinach "yellows" or blight, but also is much more resistant to lower temperatures than the other varieties offered on this page. It will be seen that each has its place.

PRICES: RESELECTED BLOOMSDALE. Pkt. 5 cts.; oz. 10 cts.; 1/4 lb. 12 cts.; lb. 24 cts.; 5 lbs., 19 cts. per lb.; 25 lbs., 16 cts. per lb.

LONG-STANDING BLOOMSDALE. Pkt. 5 cts.; oz. 10 cts.; 1/4 lb. 12 cts.; lb. 25 cts.; 5 lbs., 20 cts. per lb.; 25 lbs., 17 cts. per lb.

VIRGINIA SAVOY (Blight-resistant). Pkt. 5 cts.; oz. 10 cts.; 1/4 lb. 12 cts.; lb. 25 cts.; 5 lbs., 20 cts. per lb.; 25 lbs., 17 cts. per lb.

On larger quantities, ask for special prices



A field of the true Bloomsdale

Stokes Summer Straightneck Squash

Days to maturity, 70. There is no question that the Stokes Summer Straightneck will fast replace the older Summer Crookneck from which it was selected. The older crookneck type often suffered damage in shipment, a loss which the new Straightneck development has practically eliminated. The strain we offer is a thoroughly dependable

one, and we are sure will rapidly replace the crookneck type. The warted fruits 18 to 20 inches long, deep orange color with thick meaty neck are of excellent quality. The plants are strictly bush, vigorous growing, and productive. This strain will produce a maximum of straightneck fruits maturing over a long period.

Price: Pkt. 10 cts.; oz. 15 cts.; 1/4 lb. 30 cts.; lb. \$1; 5 lbs., 90 cts. per lb.; 25 lbs., 85 cts. per lb.



The Stokes Cocolle

The Stokes Cocolle Squash

Days to maturity, 70. This important Italian variety has been very generally accepted in the United States and Canada as being a table Squash of rare delicacy. Italians look on Cocolle de Napoli as one of their most important vegetables, it even being forced under glass for the early

Italian market. The Stokes Cocolle has found a particularly enthusiastic reception among our Florida customers where it is looked upon as being the very purest strain of this vegetable that is now being offered. Our sales are increasing year by year.

Price: Pkt. 10 cts.; oz. 15 cts.; 1/4 lb. 30 cts.; lb. \$1; 5 lbs., 90 cts. per lb.; 25 lbs., 85 cts. per lb.

General Vegetable List

BEANS

Green-Pod Stringless

Bountiful. Days to maturity, 45. Pods over 6 inches long, slightly curved, flat, light green in color, stringless, 7-seeded, a most important variety commercially and of excellent table quality. Price: $\frac{1}{2}$ lb. 10 cts.; $\frac{3}{4}$ lb. 15 cts.; lb. 25 cts.; 5 lbs. 21 cts. per lb.; 50 lbs., 16 cts. per lb.

Giant Stringless. Days to maturity, 45. Introduced by Johnson & Stokes in 1898. The pods are about 6 inches in length, rounded, slightly curved, dark green, brittle, and absolutely stringless. This is a heavy producer and a variety of great popularity. For further description, see page 4. Price: $\frac{1}{2}$ lb. 10 cts.; $\frac{3}{4}$ lb. 15 cts.; lb. 25 cts.; 5 lbs. 21 cts. per lb.; 50 lbs., 16 cts. per lb.

Stringless Black Valentine. (New) Days to maturity, 45. A distinct improvement over the old Black Valentine which was not stringless. Carrying qualities excellent; pod more attractive than the original. This variety is worth the consideration of all commercial planters. For further description, see page 4. Price: $\frac{1}{2}$ lb. 15 cts.; $\frac{3}{4}$ lb. 20 cts.; lb. 35 cts.; 5 lbs., 30 cts. per lb.; 50 lbs., 24 cts. per lb.

Kentucky Wonder Pole. Days to maturity, 70. Old Homestead is a common synonym. This white-seeded strain is an improvement over the original. It is early and productive, the pods about 7 inches in length, slender, decidedly curved, round, creased back, and 8 to 10-seeded. This variety is only slightly stringy and of medium green color. Price: $\frac{1}{2}$ lb. 10 cts.; $\frac{3}{4}$ lb. 15 cts.; lb. 25 cts.; 5 lbs., 21 cts. per lb.; 50 lbs., 16 cts. per lb.

BEANS, Wax-Pod Stringless

Pencil-Pod Wax. Days to maturity, 45. A selection of Black Wax, as introduced by Johnson & Stokes in 1900. Vigorous grower, and not as susceptible to disease as other wax-podded varieties. The pods are 6 inches in length, slender, curved near the top, rounded, 7-seeded, clear yellow, absolutely stringless, and of excellent quality. Price: $\frac{1}{2}$ lb. 10 cts.; $\frac{3}{4}$ lb. 15 cts.; lb. 26 cts.; 5 lbs., 22 cts. per lb.; 50 lbs., 17 cts. per lb.

For larger quantities, ask for special prices

BEANS, Wax-Pod Stringless, continued

Round-Pod Kidney or Brittle Wax. Days to maturity, 45. Introduced as Round-Pod Kidney Wax by Johnson & Stokes in 1900. Plant grows to a height of 15 inches, produces long, curved, round, yellow pods, extremely brittle, and absolutely stringless. The table quality is excellent. For further description, see page 4. Price: $\frac{1}{2}$ lb. 10 cts.; $\frac{3}{4}$ lb. 15 cts.; lb. 26 cts.; 5 lbs., 22 cts. per lb.; 50 lbs., 17 cts. per lb.

Sure Crop or Yellow Bountiful. Days to maturity, 45. Heavy-bearing, flat-podded, yellow, stringless Bean of dwarf habit. A variety that is recommended for its heavy yield and its attractive appearance. Price: $\frac{1}{2}$ lb. 12 cts.; $\frac{3}{4}$ lb. 18 cts.; lb. 28 cts.; 5 lbs., 24 cts. per lb.; 50 lbs., 18 cts. per lb.

BEANS, Lima

Fordhook Bush. Days to maturity, 75. The standard bush Lima Bean for the United States. Pods are $\frac{1}{2}$ inches in length containing 3 to 4 Beans, quality excellent, a prolific bearer, and height of vine about 12 inches. The stock we offer is of very high quality. Price: $\frac{1}{2}$ lb. 15 cts.; $\frac{3}{4}$ lb. 20 cts.; lb. 35 cts.; 5 lbs., 30 cts. per lb.; 50 lbs., 24 cts. per lb.

Challenger Pole. Days to maturity, 85. Plant large, throwing long, vigorous runners. Pods are 5 inches in length, broad, flat, 5-seeded, and gray-green in color. Price: $\frac{1}{2}$ lb. 12 cts.; $\frac{3}{4}$ lb. 18 cts.; lb. 30 cts.; 5 lbs., 25 cts. per lb.; 50 lbs., 20 cts. per lb.

King of the Garden Pole. Days to maturity, 85. A highly recommended early variety with a large, broad, flat pod averaging 5 inches in length, and of excellent quality. Price: $\frac{1}{2}$ lb. 12 cts.; $\frac{3}{4}$ lb. 18 cts.; lb. 30 cts.; 5 lbs., 25 cts. per lb.; 50 lbs., 20 cts. per lb.



Giant Stringless Green-Pod Beans



BROCCOLI

Glory of Calabria. Days to maturity, 130-150. Calabria Broccoli may be described as a green-headed cauliflower and is often referred to as Italian Green Sprouting. This vegetable, comparatively new in America, is easy of cultivation, and generally speaking, should be handled very much like cabbage, being matured either in the late spring or early fall. For further description and illustration, see page 8. Price: Pkt. 15 cts.; oz. 45 cts.; $\frac{1}{4}$ lb. \$1.40; lb. \$5; 5 lbs., \$17.75 per lb.

ASPARAGUS

Mary Washington. The improved rust-resistant type as developed by Prof. J. B. Norton. Of recent years this has proved to be the strain in greatest demand. For further description, see page 4. **SEED:** Pkt. 10 cts.; oz. 15 cts.; $\frac{1}{4}$ lb. 30 cts.; lb. \$1; 5 lbs., 90 cts. per lb. **ROOTS:** 50 roots, \$1.25; 100 roots, \$2.25; 500 roots, \$7; 1,000 roots, \$11. Larger quantities, write for prices.

BEETS

Crosby Egyptian Special. Days to maturity, 45. A distinguished strain of the well-known Crosby, and one that will prove of great uniformity and in every way give great satisfaction. For further description, see page 5. Price: Pkt. 10 cts.; oz. 15 cts.; $\frac{1}{4}$ lb. 30 cts.; lb. 95 cts.; 5 lbs., 85 cts. per lb.; 50 lbs., 80 cts. per lb.

Crosby Egyptian. Days to maturity, 45. An excellent standard commercial stock of the universally planted Crosby Egyptian. Price: Pkt. 5 cts.; oz. 10 cts.; $\frac{1}{4}$ lb. 20 cts.; lb. 70 cts.; 5 lbs., 60 cts. per lb.; 50 lbs., 55 cts. per lb.

Detroit Dark Red Special. Days to maturity, 45. There are few stocks in this Catalog that attain the high point of type purity reached by this strain. For further description, see page 5. Price: Pkt. 10 cts.; oz. 15 cts.; $\frac{1}{4}$ lb. 30 cts.; lb. 95 cts.; 5 lbs., 85 cts. per lb.; 50 lbs., 80 cts. per lb.

Detroit Dark Red. Days to maturity, 45. A very good strain of Detroit and one that can be planted with every assurance of a satisfactory result. Price: Pkt. 5 cts.; oz. 10 cts.; $\frac{1}{4}$ lb. 20 cts.; lb. 70 cts.; 5 lbs., 60 cts. per lb.; 50 lbs., 55 cts. per lb.

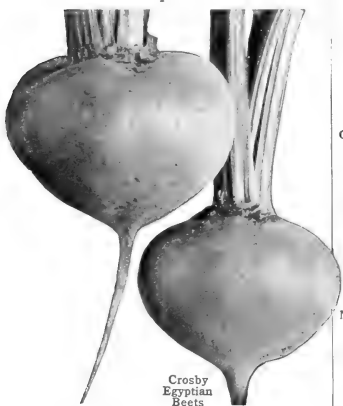
Early Wonder or Boston Crosby. Days to maturity, 40. Quite similar in type to the Crosby but slightly earlier and more restrained in the development of its root and its top. Price: Pkt. 10 cts.; oz. 15 cts.; $\frac{1}{4}$ lb. 25 cts.; lb. 75 cts.; 5 lbs., 65 cts. per lb.; 50 lbs., 60 cts. per lb.

MANGEL BEET

Mammoth Long Red. Days to maturity, 100. The standard Stock Beet in the United States. The roots attain a length of over 12 inches, averaging from 10 to 25 pounds in weight. Price: Pkt. 5 cts.; oz. 10 cts.; $\frac{1}{4}$ lb. 17 cts.; lb. 50 cts.; 5 lbs., 45 cts. per lb.; 50 lbs., 40 cts. per lb.

SWISS CHARD

Giant Lucullus. Days to maturity, 60. As a green and as a substitute for spinach, Swiss Chard has an important place in the garden. Giant Lucullus is a broad-stemmed variety, leaves yellowish green, and grows to a height of about 15 inches. Price: Pkt. 10 cts.; oz. 15 cts.; $\frac{1}{4}$ lb. 20 cts.; lb. 60 cts.; 5 lbs., 50 cts. per lb.; 50 lbs., 45 cts. per lb.



Crosby Egyptian Beets

Make Your Garden This Year a Stokes Garden



Chantenay Carrots

CARROTS

Red Cored Chantenay. Days to maturity, 60. A selection bred with smaller cores having the same type color as the surrounding flesh. In size and shape this strain is practically the same as the old type, but in table quality it is considered very much superior. It is slightly earlier than the parent Chantenay. For further description, see page 5. Price: Pkt. 10 cts.; oz. 15 cts.; $\frac{1}{2}$ lb. 30 cts.; lb. \$1; 5 lbs., 90 cts. per lb.; 50 lbs., 85 cts. per lb.

Chantenay. Days to maturity, 65. For over forty years the standard Carrot for all general purposes. Root $\frac{3}{4}$ inches long, tapering slightly from well-shaped shoulders, surface smooth, and deep orange in color. For further description, see page 5. Price: Pkt. 10 cts.; oz. 15 cts.; $\frac{1}{2}$ lb. 25 cts.; lb. 75 cts.; 5 lbs., 65 cts. per lb.; 50 lbs., 60 cts. per lb.

Danvers Half-Long. Days to maturity, 80. This is two weeks later in reaching maturity than Chantenay. The length of the root is fully 7 inches, tapering to a blunt point, and is a rich, deep orange in color. A very valuable variety for shipment. Our stock is supreme. Price: Pkt. 10 cts.; oz. 15 cts.; $\frac{1}{2}$ lb. 25 cts.; lb. 75 cts.; 5 lbs., 65 cts. per lb.; 50 lbs., 60 cts. per lb.

Scarlet Nantes. Days to maturity, 65. Because of the delicate texture of the root, this Carrot is often referred to as "Coreless." It is half-long and stump-rooted, averaging from 6 to 7 inches when mature. Roots cylindrical, light orange in color, and comparatively free from side-roots. This is the most delicious table Carrot that we offer. Price: Pkt. 10 cts.; oz. 15 cts.; $\frac{1}{2}$ lb. 30 cts.; lb. \$1; 5 lbs., 90 cts. per lb.; 50 lbs., 85 cts. per lb.

CABBAGE

Stokes Viking Copenhagen. Days to maturity, 85-95. The earliest round Cabbage under cultivation, being ready for market fully five days ahead of Golden Acre. The heads will average $3\frac{1}{2}$ pounds. This is a green money market and is strongly endorsed. For further description, see page 6. Price: Pkt. 15 cts.; oz. 65 cts.; $\frac{1}{2}$ lb. \$2; lb. \$7.50; 5 lbs., \$7 per lb.

Golden Acre. Days to maturity, 90-100. This strain of the Copenhagen Market type will mature midway between Copenhagen and Viking Copenhagen, as described herewith. The plant has few outer leaves and the head is uniform in size, shape, and time of maturity. Price: Pkt. 15 cts.; oz. 45 cts.; $\frac{1}{2}$ lb. \$1.40; lb. \$5; 5 lbs., \$4.75 per lb.

Copenhagen Market. Days to maturity, 95-105. To differentiate from the Viking strain, we have listed this as Baltic Copenhagen for a number of years. In returning to the standard name, Copenhagen Market, we are merely endeavoring to conform with the approved nomenclature. Our strain of Copenhagen Market will average twelve days later than Viking and will produce a proportionately heavier head. Price: Pkt. 10 cts.; oz. 30 cts.; $\frac{1}{2}$ lb. \$1; lb. \$3.50; 5 lbs., \$3.25 per lb.

Early Jersey Wakefield. Days to maturity, 90-100. This is the extra-early strain distinguished from the slightly larger strain of Early Jersey Wakefield, and is one of the earliest pointed varieties in cultivation. The excellent table quality of this variety is responsible for its large popularity. Price: Pkt. 10 cts.; oz. 25 cts.; $\frac{1}{2}$ lb. 75 cts.; lb. \$2.50; 5 lbs., \$2.25 per lb.

CABBAGE, continued

Charleston Wakefield. Days to maturity, 95-105. A variety that holds first place as the most important commercial Cabbage grown along the Atlantic seaboard. It is approximately one week later in reaching market stage than Early Jersey Wakefield, but will produce a head weighing $\frac{1}{2}$ pound heavier. Price: Pkt. 10 cts.; oz. 35 cts.; $\frac{1}{2}$ lb. \$1.20; lb. \$4; 5 lbs., \$3.75 per lb.

Allhead Early. Days to maturity, 110-120. A main-season variety developing a partially flattened head weighing from 4 to 5 pounds. Its ability to resist disease and heat is greatly in its favor, and it holds a place of great importance in the Cabbage production of the lower Rio Grande Valley. Price: Pkt. 10 cts.; oz. 25 cts.; $\frac{1}{2}$ lb. 75 cts.; lb. \$2.50; 5 lbs., \$2.25 per lb.



Savoy Cabbage

Stein's Flat Dutch. Days to maturity, 115-125. A short-stemmed, flat-headed Cabbage that produces heavily even under unfavorable conditions. It has few outer leaves, and consequently the rows can be set close together. Because it resists heat and "black leg," it has been found acceptable by our south Texas customers. Price: Pkt. 10 cts.; oz. 25 cts.; $\frac{1}{2}$ lb. 75 cts.; lb. \$2.50; 5 lbs., \$2.25 per lb.

Glory of Enkhuzien. Days to maturity, 110-120. A larger and later edition of the Copenhagen Market type, and one that is recommended for main-season production. The heads will average from 4 to 5 pounds each. They are rounded and of attractive market appearance. Price: Pkt. 10 cts.; oz. 25 cts.; $\frac{1}{2}$ lb. 75 cts.; lb. \$2.50; 5 lbs., \$2.25 per lb.

Penn State Ballhead. Days to maturity, 130-140. One of the heaviest producing strains of the Danish Ballhead type, showing records over a period of years of surpassing 20 tons per acre. This unusual tonnage record is due to the formation of the hard, tight head weighing one-third more than Danish heads of the same size. For further description, see page 7. Price: Pkt. 15 cts.; oz. 50 cts.; $\frac{1}{2}$ lb. \$1.75; lb. \$6; 5 lbs., \$5.75 per lb.

Danish Ballhead. Days to maturity, 130-140. Highly recommended strain of the well-known Ballhead or Hollander type. In shape the heads are almost perfectly round, and it is the standard late-maturing Cabbage for winter storage. Price: Pkt. 10 cts.; oz. 25 cts.; $\frac{1}{2}$ lb. 80 cts.; lb. \$2.75; 5 lbs., \$2.50 per lb.

CABBAGE, continued

Drumhead Savoy. Days to maturity, 120-130. The plants are vigorous and produce a fair-sized head. Outer leaves are thick, fleshy and uniformly crumpled. The quality is sweet, and the color is divided between a green and blue-green. Price: Pkt. 10 cts.; oz. 25 cts.; $\frac{1}{2}$ lb. 80 cts.; lb. \$2.75; 5 lbs., \$2.50 per lb.

Mammoth Red Rock. Days to maturity, 120-130. This is the largest and surest heading red Cabbage. Although the market is limited, there is always a demand for some of this type, and a premium is usually paid for it. The heads are round, very solid, and of an attractive bright red color. It is in the late-maturing class. Price: Pkt. 10 cts.; oz. 25 cts.; $\frac{1}{2}$ lb. 85 cts.; lb. \$3; 5 lbs., \$2.75 per lb.

CAULIFLOWER

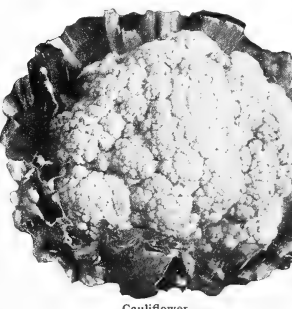
Stokes Riverhead Snowball. Days to maturity, 110-130. A very valuable early-maturing Cauliflower. The plant is vigorous and quick-growing. It is compact but not too short-leaved. The head has unusual depth, is solid, fine-grained, and pure white in color. The stock will mature with great evenness. Recommended for either the early or late crop. For further description, see page 8. Price: Pkt. 25 cts.; $\frac{1}{2}$ oz. 50 cts.; oz. \$1.50; $\frac{1}{2}$ lb. \$5; lb. \$18; 5 lbs., \$16 per lb.

Dwarf Erfurt. Days to maturity, 115-125. This variety is recommended for main-season gardening operations where extreme earliness is not the first consideration. It is a remarkably sure-heading variety, with long outside leaves and rich, deep heads which reach a marketable stage when medium to large. This variety is grown with great profit in both the United States and Canada. Price: Pkt. 25 cts.; $\frac{1}{2}$ oz. 50 cts.; oz. \$1.50; $\frac{1}{2}$ lb. \$5; lb. \$18; 5 lbs., \$16 per lb.

Dry Weather. Days to maturity, 120-130. Sometimes called Danish Giant. This variety is recommended for production under drought or semi-drought conditions, when it is more successful than either Snowball or Erfurt. The leaves are large, protecting a medium to large head which is very solid and of excellent table quality. Price: Pkt. 25 cts.; $\frac{1}{2}$ oz. 50 cts.; oz. \$1.50; $\frac{1}{2}$ lb. \$5.50; lb. \$20; 5 lbs., \$18 per lb.

CELERY

Golden Self-blanching. Days to maturity, 115-125. Very pure strain of the old Golden type. Extremely vigorous, developing a large green heart with a long, upright stalk. Our stock of this variety has been with great success in the important Celery districts of Florida and other states. For further description, see page 9. Price: Pkt. 20 cts.; $\frac{1}{2}$ oz. 45 cts.; oz. 75 cts.; $\frac{1}{2}$ lb. \$2.50; lb. \$9; 5 lbs., \$8.50 per lb.



Cauliflower

Stokes Seeds Insure Your Success

CELERY, continued



Golden Plume Celery

The Stokes Golden Plume. Days to maturity, 105-115. A very distinguished stock, full hearted, with a long rib and thick stalks. This privately developed strain of Golden Plume is an accepted leader in the important Sanford Celery district. Special care has been taken with this strain in every step of its production. For further description and illustration, see page 9. Price: Pkt. 25c.; 1/2 oz. 70c.; oz. \$1.25; 1/4 lb. \$9.; lb. \$18.; 5 lbs., \$16 per lb.

CORN

Stokes Vanguard. Days to maturity, 65-70. Introduced by Francis C. Stokes & Co. in 1902. We again offer this as the most profitable early white Sweet Corn for production in the latitude of Philadelphia. Tests prove it to be seven days earlier than Howling Mob. Each year some advance is made in our selection for a heavier yielding, more uniform, and earlier strain. Vanguard will develop a marketable ear in slightly over two months. Length 8 inches. Table quality excellent. For further description, see page 10. Price: 3/4 lb. 10 cts.; 1/2 lb. 15 cts.; lb. 25 cts.; 5 lbs., 22 cts. per lb.; 50 lbs., 18 cts. per lb.

Golden Bantam. Days to maturity, 70. In the many years Golden Bantam has been under cultivation it has not been surpassed in popularity as a table Corn. There are four reasons for its popularity: First, its attractive golden yellow color; second, its earliness; third, its sweet flavor; fourth, its convenient table size. The stock we offer is the original, 8-rowed Golden Bantam averaging 6 inches in length. For further description, see page 10. Price: 3/4 lb. 10 cts.; 1/2 lb. 15 cts.; lb. 24 cts.; 5 lbs., 20 cts. per lb.; 50 lbs., 16 cts. per lb.

Bantam Evergreen. Days to maturity, 70. A cross between Golden Bantam and Stowell's Evergreen. It combines the color and flavor of Golden Bantam and retains the greater length of the Stowell's. The ears average 8 inches and contain from 12 to 14 rows. Although ten days later than Golden Bantam in reaching

maturity, Bantam Evergreen has made an important place for itself. Price: 1/2 lb. 10 cts.; 3/4 lb. 15 cts.; lb. 24 cts.; 5 lbs., 20 cts. per lb.; 50 lbs., 16 cts. per lb.

Country Gentleman. Days to maturity, 88. This variety is popularly known as Shoe Peg. It is a narrow, deep-grained Corn of the broken-row type, and it is a variety that is highly prized for its table quality. The ears are of a convenient size, and the deep kernels have a peculiarly sweet flavor. Very popular in many of the northern markets and excellent for canning. Price: 1/2 lb. 10 cts.; 3/4 lb. 15 cts.; lb. 24 cts.; 5 lbs., 20 cts. per lb.; 50 lbs., 16 cts. per lb.

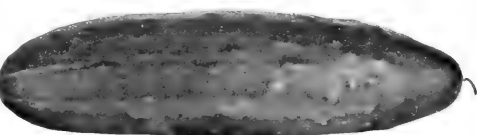
Stowell's Evergreen. Days to maturity, 90. After sixty years, Stowell's Evergreen is still a popular variety. The 10-rowed ear averages 10 inches in length, and is a heavy producer in every way. The stock offered is equal to the commercial standard. Price: 1/2 lb. 10 cts.; 3/4 lb. 15 cts.; lb. 24 cts.; 5 lbs., 20 cts. per lb.; 50 lbs., 16 cts. per lb.

CUCUMBER

Stokes Greenpack. Days to maturity, 50-60. A Cucumber of increasing importance in the growing areas of the Atlantic seaboard. Its color is a beautiful deep green which is well held in transit to northern markets. One of the heaviest yielders of the White Spine types, and it will average five days earlier than Early Fortune. Average length, 7 inches. For further description and illustration, see page 16. Price: Pkt. 10 cts.; oz. 15 cts.; 1/4 lb. 40 cts.; lb. \$1.25; 5 lbs., \$1.15 per lb.; 25 lbs., \$1.10 per lb.

Early Fortune. Days to maturity, 55-65. Our stock represents an excellent strain of the Early Fortune which is one of the most satisfactory Cucumbers in the entire list for general production purposes. Laxious green in color and slender, symmetrical, and slightly tapering in shape. It is heavy cropping, early maturing, and of a brilliant market appearance. Average length of this strain, 8 1/2 inches. Price: Pkt. 10 cts.; oz. 15 cts.; 1/4 lb. 30 cts.; lb. 90 cts.; 5 lbs., 85 cts. per lb.; 25 lbs., 80 cts. per lb.

Extra-Early White Spine. Days to maturity, 50-60. This variety is one of the most successful sorts for table use and especially well adapted for home-growing. The vines are hardy and mature an abundance of firm, crisp Cucumbers of ex-



Early Fortune Cucumber

cellent quality. Length 7 inches. It is one of the largest yielding vines met in cultivation. Price: Pkt. 10 cts.; oz. 15 cts.; 1/4 lb. 30 cts.; lb. 90 cts.; 5 lbs., 85 cts. per lb.; 25 lbs., 80 cts. per lb.

Stokes Windermoor Wonder. Days to maturity, 60-70. Introduced by our Company in 1916. The names Vaughtan and Longfellow are either synonyms or represent very similar types. This is the most handsome Cucumber of any we sell, averaging from 10 to 12 inches in length and developing the most luxurious green color from top to tip. For further description, see page 16. Price: Pkt. 10 cts.; oz. 25 cts.; 1/4 lb. 85 cts.; lb. \$3.; 5 lbs., \$2.75 per lb.

National Pickling. (New) Days to maturity, 50-60. This growing type has been developed by Mr. George Starr for the National Pickle Packers Association. Although this resembles Snow's Pickling in type and habit, it is looked on as a much superior strain, for it is the result of many years of selection. Price: Pkt. 10 cts.; oz. 15 cts.; 1/4 lb. 30 cts.; lb. 90 cts.; 5 lbs., 85 cts. per lb.; 25 lbs., 80 cts. per lb.

COLLARDS

Georgia. Days to maturity, 80. Sometimes called South-ern or Creole. This vegetable develops a loose-grained head growing about 2 1/2 feet in height and producing large, light green leaves on medium-long stems. A frost, if not too severe, will improve the crop. In the South the seed may be sown from January to and from August to October. Price: Pkt. 5 cts.; oz. 10 cts.; 1/4 lb. 17 cts.; lb. 55 cts.; 5 lbs., 50 cts. per lb.; 25 lbs., 45 cts. per lb.

18 Vegetable and Flower Specials are illustrated in natural colors in this catalogue



Stowell's Evergreen Corn

On larger quantities, write for special prices

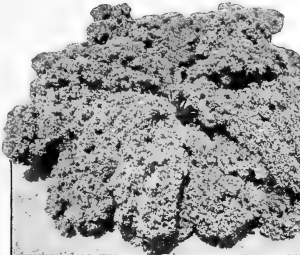
There Are No Better Seeds Than Stokes

FENNEL or ANISE

Sweet Italian. This vegetable, a native of southern Europe, is now well known in the American trade. It is an easily cultivated annual. Seed should be sown in the spring and plants thinned 12 inches apart in the row. When half grown, the plants should be earthed up and treated like celery, which it resembles in its general growth. Price: Pkt. 10 cts.; oz. 15 cts.; $\frac{1}{4}$ lb. 30 cts.; lb. 95 cts.; 5 lbs., 85 cts. per lb.; 25 lbs., 80 cts. per lb.

KALE

Green Curled Scotch. Like collards, Kale is of the genus Brassica. It is a most desirable variety and one that is widely grown for greens. The plant reaches a height of 3 feet, bearing light green, densely curled leaves. A moderate frost improves rather than injures its quality. Price: Pkt. 10 cts.; oz. 15 cts.; $\frac{1}{4}$ lb. 25 cts.; lb. 85 cts.; 5 lbs., 75 cts. per lb.



Kale

EGGPLANT

Imperial Black Beauty. Days to maturity, 110-125. To the grower seeking the very finest strain available of Black Beauty Eggplant we especially refer you to the full description and illustration to be found on page 17. This Imperial strain is grown for us privately under conditions that remove much of the danger of phomopsis rot. Price: Pkt. 15 cts.; oz. 45 cts.; $\frac{1}{4}$ lb. \$1.40; lb. \$4.75; 5 lbs., \$4.50 per lb.

Florida High-Bush. Days to maturity, 115-130. The fruits of this variety are supported on a much higher vine than Black Beauty, a feature which is especially desirable in wet seasons as most of the fruits are suspended above the ground. As its name would indicate, it is particularly popular in Florida and the Gulf States, where it seems to be more resistant to disease than Black Beauty. In shape it is slightly longer and more oval than that variety. Price: Pkt. 15 cts.; oz. 45 cts.; $\frac{1}{4}$ lb. \$1.40; lb. \$4.75; 5 lbs., \$4.50 per lb.

New York Purple (Spinless). Days to maturity, 125-135. The popularity of this variety is no doubt due to its heavy yielding characteristic. Often from 4 to 6 handsome fruits are grown on one plant. The leaves are slightly larger and of deeper color than Black Beauty. The flesh is firm, medium, and of excellent quality. Plant is spinless, with large bright foliage. Price: Pkt. 15 cts.; oz. 45 cts.; $\frac{1}{4}$ lb. \$1.40; lb. \$4.75; 5 lbs., \$4.50 per lb.

Long Purple. Days to maturity, 110-120. An early maturing, productive Eggplant developing fruits about 8 inches long with a diameter of 2 $\frac{1}{2}$ inches. It is a variety that is well known among people of European origin and is sometimes referred to as Italian Long Purple. Price: Pkt. 15 cts.; oz. 45 cts.; $\frac{1}{4}$ lb. \$1.40; lb. \$4.75; 5 lbs., \$4.50 per lb.

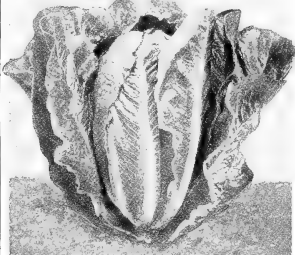
ENDIVE

Green Curled. Days to maturity, 100. Our stock as offered has been produced by many market gardeners. The rosette head will average about 15 inches across and is of a rich dark green color. It is finely cut and divided and when tied will blanch to a rich bright yellow. Price: Pkt. 10 cts.; oz. 15 cts.; $\frac{1}{4}$ lb. 30 cts.; lb. 5 lbs., 90 cts. per lb.

ESCAROLE

Stokes Deep Heart. Day to maturity, 90-100. This is a distinct and greatly improved variety of Escarole, and, to the best of our knowledge, we are the only firm offering it in this country. Its early maturity, combined with the fact that the leaf is broader than the Batavian, has given it an important place. For further description, see page 17. Price: Pkt. 10 cts.; oz. 20 cts.; $\frac{1}{4}$ lb. 45 cts.; lb. \$1.50; 5 lbs., \$1.40 per lb.

Broad-leaved Batavian. Days to maturity, 90-100. The standard, well-known variety. Its broad leaves are twisted and hardy, of a brilliant green color, with nearly white midribs, and blanch easily if tied. The head will average 15 inches in diameter. It is crisp and tender in quality. Price: Pkt. 10 cts.; oz. 15 cts.; $\frac{1}{4}$ lb. 30 cts.; lb. \$1; 5 lbs., 90 cts. per lb.



Cos Lettuce

KOHLRABI

Early White Vienna. Days to maturity, 50. This well-known European strain may be used either for forcing or for field cultivation. It is light green, and the root is usually pulled for the table when about 2 inches in diameter. Kohlrabi is a vegetable deserving of more general use. Price: Pkt. 10 cts.; oz. 25 cts.; $\frac{1}{4}$ lb. 60 cts.; lb. \$2; 5 lbs., \$1.85 per lb.; 25 lbs., \$1.75 per lb.

LEEK

Monstrous Carentan. Days to maturity, 90. This is probably the largest Leek in cultivation. The stems often measure 2 $\frac{1}{2}$ to 3 inches in diameter, are pure white and of tender quality. It is highly esteemed as a fall and winter substitute for green onions. Price: Pkt. 10 cts.; oz. 25 cts.; $\frac{1}{4}$ lb. 55 cts.; lb. \$1.90; 5 lbs., \$1.75 per lb.

LETTUCE

New York. Days to maturity, 80-90. The most widely grown variety of all the Lettuces. Leaves are slightly blistered, beautifully waved at the edges, of a rich deep green color, and are not brownish or tinged with color. Heads are large and symmetrical, with well-blanching interiors. The great majority of the lettuce sold on the produce stands under the name of "Iceberg" is in reality New York. A trial will convince you of the merits of this excellent variety. This is the identical strain planted so extensively in the large Lettuce district in the West. For further description and illustration of our particular strain, see page 18. Price: Pkt. 10 cts.; oz. 25 cts.; $\frac{1}{4}$ lb. 60 cts.; lb. \$2; 5 lbs., \$1.85 per lb.; 25 lbs., \$1.75 per lb.

LETTUCE, continued

White Boston. Days to maturity, 75-80. For many years we have been raising under the name of "Green-leaved Big Boston." It is a selection of the older Unrivaled type. Although New York has taken the leading position commercially, White Boston is still a favored variety.

The heads are firm and very tender, with a sweet buttery flavor. For further description and illustration, see page 18. Price: Pkt. 10 cts.; oz. 20 cts.; $\frac{1}{4}$ lb. 50 cts.; lb. \$1.75; 5 lbs., \$1.65 per lb.; 25 lbs., \$1.55 per lb.

Big Boston. Days to maturity, 75-80. This well-known variety is early and has a good heading, with an interior of a rich golden yellow. The variety is highly esteemed on account of its sweet, delicate flavor. Its outer leaves are of an attractive green color, with edges tinged with brown. Big Boston is looked on as one of the easiest varieties for general cultivation, and often does well under adverse conditions. Still planted extensively in the South. Price: Pkt. 10 cts.; oz. 15 cts.; $\frac{1}{4}$ lb. 40 cts.; lb. \$1.25; 5 lbs., \$1.10 per lb.; 25 lbs., \$1 per lb.

Grand Rapids. Days to maturity, 75-80. A loose-leaved Lettuce resulting from a fifteen-year selection of Black-seeded Simpson. The leaves are excessively blistered and crumpled and slightly twisted. Color is a very light green, never spotted or brownish in any part. The eating quality is not outstanding as it lacks sweetness and delicacy, seed black, slow to germinate. Care should be taken to see that the seed is covered very lightly. Price: Pkt. 10 cts.; oz. 15 cts.; $\frac{1}{4}$ lb. 40 cts.; lb. \$1.25; 5 lbs., \$1.10 per lb.; 25 lbs., \$1 per lb.

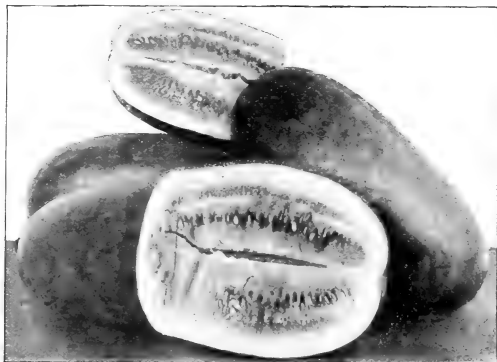
Iceberg. Days to maturity, 75-80. This variety must not be confused with New York, which is usually sold as Iceberg on the produce markets. It is crisp-heading, with curled leaves tinged with brown on the margins. While it forms a hard head, the leaves are of thin texture, and this factor limits its use largely to the home garden, and it deserves a place in every kitchen garden. Price: Pkt. 10 cts.; oz. 20 cts.; $\frac{1}{4}$ lb. 45 cts.; lb. \$1.50; 5 lbs., \$1.40 per lb.; 25 lbs., \$1.25 per lb.

Romaine or Trianon Cos. Days to maturity, 75-80. We consider this the most satisfactory type of Romaine available. Some of our customers plant it over large areas. It will form compact, well-blanching, firm heads, round at the top. The outside color is a rich dark green and the inside a beautifully blanching golden white. It is crisp and sweet. Very popular in many markets. Price: Pkt. 10 cts.; oz. 15 cts.; $\frac{1}{4}$ lb. 40 cts.; lb. \$1.25; 5 lbs., \$1.10 per lb.; 25 lbs., \$1 per lb.



Monstrous Carentan Leek

If Our Seeds Are Not Satisfactory, Money Will Be Refunded



Kleckley Sweet Water Melons

MUSK MELON

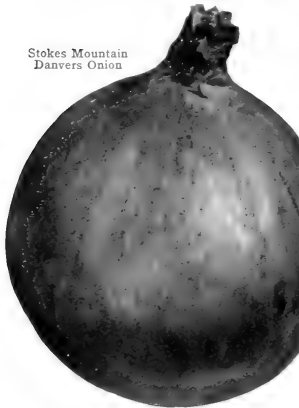
Hale's Best. Days to maturity, 70-80. This variety has attained a premier position in the industry by its outstanding merit. Its early maturity is, of course, greatly in its favor. The large produce markets pay a premium for it because of its uniformly high quality. For further description and illustration in color, see page 11. Price: Pkt. 10 cts.; oz. 20 cts.; $\frac{1}{2}$ lb. 45 cts.; lb. \$1.90; 5 lbs., \$1.40 per lb.

Bender's Surprise. Days to maturity, 80-90. This is the largest melon we offer, and it should be looked on as a distinctly individual melon in contrast to the basket type. It is not unusual to produce specimens 10 inches in length. These have sometimes been packed two to three to the crate in excelsior and sold for very high prices. Restaurants serve individual sections, and the delicious, melting texture of the flesh of the melon is highly prized. The color is a deep orange and the stock offered is a very superior one. Price: Pkt. 10c.; oz. 15c.; $\frac{1}{2}$ lb. 30c.; lb. \$1.; 5 lbs., 90c. per lb.; 25 lbs., 85c. per lb.

Fordhook. Days to maturity, 90-95. This orange-fleshed melon has been on the market over twenty years and is still enjoying great popularity. The size averages 5 $\frac{1}{2}$ inches across and 3 $\frac{1}{2}$ inches from top to bottom. We do not recommend Fordhook as a shipping variety, but it will prove a satisfactory melon for the home-garden or for local markets. Price: Pkt. 10 cts.; oz. 15 cts.; $\frac{1}{2}$ lb. 30 cts.; lb. \$1.; 5 lbs., 90 cts. per lb.; 25 lbs., 85 cts. per lb.

Hearts of Gold. Days to maturity, 85-100. On account of its excellent quality and attractive color this has proved one of the most satisfactory melons for the roadside markets. In size it is about one-fourth larger than the old Rocky Ford type. It combines the golden flesh of Osage with the heavy netting and thin rind of the Netted Gem. In the eastern part of the country, Hearts of Gold has shown a decided resistance to rust. For further description, see page 11. Price: Pkt. 10 cts.; oz. 15 cts.; $\frac{1}{2}$ lb. 30 cts.; lb. \$1.; 5 lbs., 90 cts. per lb.; 25 lbs., 85 cts. per lb.

Stokes Mountain Danvers Onion



The Stokes Mountain Danvers. Days to maturity, 100. A fifteen-years' selection in the rigorous climate of the western slope of Colorado has developed a distinctly earlier and harder type of Danvers Onion. For full description and illustration, see page 17. Price: Pkt. 10 cts.; oz. 25 cts.; $\frac{1}{2}$ lb. 55 cts.; lb. \$1.90; 5 lbs., \$1.75 per lb.; 25 lbs., \$1.65 per lb.

Riverside Sweet Spanish. Days to maturity, 115. Those desiring an Onion which has found unusual popularity due to its mild flavor and its large, handsome appearance will do well to consider this variety. Its bulbs often weigh 2 pounds each. The color is bright yellow, brown, and its keeping quality is excellent. Price: Pkt. 10 cts.; oz. 25 cts.; $\frac{1}{2}$ lb. 85 cts.; lb. \$3.; 5 lbs., \$2.75 per lb.; 25 lbs., \$2.65 per lb.

Ebenezer or Japanese. Days to maturity, 100. This Onion was offered by Johnson & Stokes back in the nineties. It is the mildest flavored variety under cultivation. The bulbs are somewhat flattened, with a yellow skin and white, firm flesh. Its keeping qualities are excellent. Price: Pkt. 10 cts.; oz. 20 cts.; $\frac{1}{2}$ lb. 50 cts.; lb. \$1.85; 5 lbs., \$1.75 per lb.; 25 lbs., \$1.65 per lb.

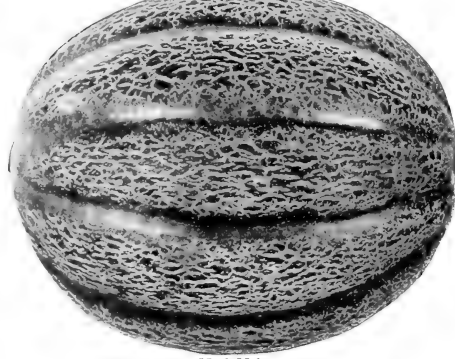
WATER MELON

Weatherford Watson. Days to maturity, 115-130. This represents the highest development of the well-known Tom Watson strain. We secure our stock from the justly famous Weatherford (Texas) Water Melon district. The outstanding features of this variety are its brilliant red interior, combined with great uniformity of size and shape. As a carload melon, we know of no finer stock than this one. Melons will average over 20 inches in length and 10 inches in diameter. Price: Pkt. 10 cts.; oz. 15 cts.; $\frac{1}{2}$ lb. 40 cts.; lb. \$1.25; 5 lbs., \$1.10 per lb.; 25 lbs., \$1 per lb.

Tom Watson. Days to maturity, 115-130. The standard shipping melon wherever the season is moderately long. Vines are vigorous and productive, and the quality of the fruit is distinctly crisp and juicy. This stock will prove to be eminently satisfactory, with uniformly long melons and good interior color. Price: Pkt. 10 cts.; oz. 15 cts.; $\frac{1}{2}$ lb. 20 cts.; lb. 70 cts.; 5 lbs., (5 cts. per lb.); 25 lbs., 60 cts. per lb.

Kleckley Sweet. Days to maturity, 120. For high flavor and flesh of fine quality, Kleckley Sweet has stood in a class of its own for thirty years. It is a long melon, very much the shape of Weatherford Watson. Its thin rind will not permit long-distance shipment, but for local market sale and for roadside stands Kleckley Sweet will prove very desirable. Price: Pkt. 10 cts.; oz. 15 cts.; $\frac{1}{2}$ lb. 20 cts.; lb. 70 cts.; 5 lbs., 65 cts. per lb.; 25 lbs., 60 cts. per lb.

Stone Mountain. Days to maturity, 110. The outstanding feature of Stone Mountain is its superior flavor. In the short time it has been on the market it has gained unusual popularity, although it cannot be classed as a long-distance shipper on account of its thin rind. Flesh is a brilliant red. The outside is rich, dark green. Price: Pkt. 10 cts.; oz. 15 cts.; $\frac{1}{2}$ lb. 30 cts.; lb. \$1.; 5 lbs., 90 cts. per lb.; 25 lbs., 85 cts. per lb.



Musk Melon

ONION

Red Wethersfield. Days to maturity, 100. One of the oldest and best-known of the red Onions. The bulbs are large and flattened. Flesh purplish white and fine-grained, with a strong but pleasant flavor. It is productive and a good keeper. Price: Pkt. 10 cts.; oz. 20 cts.; $\frac{1}{2}$ lb. 55 cts.; lb. \$1.85; 5 lbs., \$1.75 per lb.; 25 lbs., \$1.65 per lb.

White Portugal or Silverskin. Days to maturity, 100. An exceptionally pure stock of the Silverskin type. Its mild flavor and pure white skin make it a great favorite. The bulb will develop to 3 inches in diameter with a depth of 1 $\frac{1}{2}$ inches. It is a favorite for pickling and also for bunch green Onions when young. Price: Pkt. 10 cts.; oz. 25 cts.; $\frac{1}{2}$ lb. 60 cts.; lb. \$2.; 5 lbs., \$1.90 per lb.; 25 lbs., \$1.85 per lb.

Crystal Wax. Days to maturity, 115. A pure white flat Onion of the Bermuda type and extremely mild in flavor. This variety is important in Texas. Price: Pkt. 10 cts.; oz. 25 cts.; $\frac{1}{2}$ lb. 60 cts.; lb. \$2.; 5 lbs., \$1.90 per lb.; 25 lbs., \$1.85 per lb.

Stokes Seeds Are Tested for Purity and Germination



Laxton's Progress Peas

ONION, continued

Barletta. Days to maturity, 65. We offer here a very dependable strain of this well-known pickling Onion. Within a period of two months it will develop an Onion from 1 to 1½ inches in diameter, slightly flattened at the top and rounded at the bottom. The color is an attractive wax-white, and the keeping qualities are extremely good. Price: Pkt. 10 cts.; oz. 25 cts.; ¼ lb. 60 cts.; lb. \$2; 5 lbs., \$1.90 per lb.; 25 lbs., \$1.85 per lb.

Yellow Bermuda. Days to maturity, 115. Sometimes called "White Bermuda." Although it is a light straw-colored Onion, this is the most important variety grown in the state of Texas. Our seed of both this variety and Crystal Wax comes to us direct from Santa Cruz de Tenerife in the Canary Islands. Price: Pkt. 10 cts.; oz. 25 cts.; ¼ lb. 60 cts.; lb. \$2; 5 lbs., \$1.90 per lb.; 25 lbs., \$1.85 per lb.

FOUR VARIETIES OF OKRA

We offer four excellent strains of Okra or "Gumbo." **Perkins' Mammoth** which is the standard well-known commercial variety. **Dwarf Green Long-Pod** and **Tall Green Short-Pod** whose characteristics closely follow their descriptive names. **White Velvet** produces a pod of a greenish white and is better known throughout the South than in the North. The price of all four of these varieties is the same. Price: Pkt. 10 cts.; oz. 15 cts.; ¼ lb. 20 cts.; lb. 60 cts.; 5 lbs., 50 cts. per lb.; 25 lbs., 45 cts. per lb.

PEAS

Pilot. Days to maturity, 50-55. The important point about Pilot is its great hardness. Its seed is hard, nearly round, and may be planted with safety under even unfavorable conditions. The vines vary from 2 to 3 feet in height, bearing medium green pods from 3 to 4 inches in length. Price: ¼ lb. 10 cts.; ½ lb. 15 cts.; lb. 25 cts.; 5 lbs., 20 cts. per lb.; 10 lbs., 18 cts. per lb.; 50 lbs., 16 cts. per lb.

Laxton's Progress. Days to maturity, 55-60. We consider this the most important of the large-podded dwarf group. It may be distinguished from Peter Pan by being at least a week earlier. Superior to Laxtonian because the pods are much darker in color. The vines are usually limited to 15 inches, and the pods average 3½ inches in length. Price: ¼ lb. 10 cts.; ½ lb. 15 cts.; lb. 25 cts.; 5 lbs., 20 cts. per lb.; 10 lbs., 18 cts. per lb.; 50 lbs., 16 cts. per lb.

Little Marvel. Days to maturity, 60. An excellent dwarf type. The vine grows to a height of 18 inches, bearing pods nearly 3 inches in length. Price: ¼ lb. 10 cts.; ½ lb. 15 cts.; lb. 25 cts.; 5 lbs., 20 cts. per lb.; 10 lbs., 18 cts. per lb.; 50 lbs., 16 cts. per lb.

Thomas Laxton. Days to maturity, 55-60. This pea was introduced by the noted horticulturist and pea-breeder whose name it bears. The vine grows to a height of about 30 inches, producing blunt-ended pods 3 inches long. As a table variety, Thomas Laxton can hardly be surpassed. Price: ¼ lb. 10 cts.; ½ lb. 15 cts.; lb. 25 cts.; 5 lbs., 20 cts. per lb.; 10 lbs., 18 cts. per lb.; 50 lbs., 16 cts. per lb.

World's Record. Days to maturity, 53-58. This improved type of Gradus seems to be reasonably immune to Pea root-rot. World's Record grows to a height of 2 feet, being slightly more distant than Gradus, but it is three to four days earlier in reaching the market. The 4-inch pod is broad, pointed, and well filled with from 7 to 9 large peas. Price: ¼ lb. 10 cts.; ½ lb. 15 cts.; lb. 25 cts.; 5 lbs., 20 cts. per lb.; 10 lbs., 18 cts. per lb.; 50 lbs., 16 cts. per lb.

Telephone. Days to maturity, 70. This is an outstanding Telephone type, its great feature being that its long, dark green pods sometimes grow to a length of 5 inches. The vines grow to a height of 4 feet. Price: ¼ lb. 10 cts.; ½ lb. 15 cts.; lb. 25 cts.; 5 lbs., 20 cts. per lb.; 10 lbs., 18 cts. per lb.; 50 lbs., 16 cts. per lb.

PEPPER

The Stokes World Beater. Days to maturity, 120-140. Any grower desiring the finest available stock of World Beater Pepper will do well to turn to the inside front cover of this Catalog for a full description and colored illustration of The Stokes World Beater. This distinguished strain develops fruits which will average from 5 to 6 inches in length and 3½ inches in diameter, with a sufficiently thick wall to give good carrying quality. Price: Pkt. 10 cts.; oz. 35 cts.; ¼ lb. \$1.25; lb. \$4; 5 lbs., \$3.75 per lb.

California Wonder. Days to maturity, 130-150. The very heavy wall is the outstanding feature of this valuable Pepper. It is the heaviest variety under cultivation. In maturity it is slightly later than World Beater. It is a heavy producer, often bearing from 6 to 8 large fruits, all of which will average over ¼ pound in weight. The wall ranges from ¼ to ⅝ inch in thickness. It packs well, the skin is smooth and glossy, and it will not wilt under long-distance handling. Price: Pkt. 15 cts.; oz. 50 cts.; ¼ lb. \$1.75; lb. \$6; 5 lbs., \$5.75 per lb.

Ruby King. Days to maturity, 110-130. Earlier and sweeter than World Beater but, nevertheless, shares an important place commercially. Growers will find this seed to be reasonably satisfactory. Price: Pkt. 10 cts.; oz. 25 cts.; ¼ lb. 85 cts.; lb. \$3; 5 lbs., \$2.90 per lb.

On larger quantities, write for special prices

PEPPER, continued

Harris Early Giant. Days to maturity, 105-120. This is the earliest-maturing Pepper of commercial importance. It is especially recommended to the more northerly districts where the later varieties do not mature. The strain we offer has been grown privately for us in New Jersey and has proved to be one of considerable merit for all commercial purposes. Price: Pkt. 10 cts.; oz. 25 cts.; ¼ lb. 85 cts.; lb. \$3; 5 lbs., \$2.90 per lb.

World Beater. Days to maturity, 120-140. World Beater has been on the market for twenty-two years. While it originated in New Jersey, its reputation is now countrywide. In size it will develop to a length of about 5 inches and a diameter of 3 inches. It is mild and sweet, turning from a rich, dark green to a brilliant red. This, our standard commercial strain, will prove to be a very satisfactory variety for market gardens and home use. Price: Pkt. 10 cts.; oz. 30 cts.; ¼ lb. \$1; lb. \$3.50; 5 lbs., \$3.25 per lb.

MUSTARD

Southern Giant Curled. Days to maturity, 40. The leaves of this quick-growing green are closely curled and finely fringed. Its yellowish green color lends a distinctive touch, while the fine, tender quality renders the variety highly desirable for salads and greens. Price: Pkt. 5 cts.; oz. 10 cts.; ¼ lb. 17 cts.; lb. 50 cts.; 5 lbs., 45 cts. per lb.

Chinese. Days to maturity, 50. An excellent and distinct type of Mustard with round, smooth, broadened leaves of a deep green color. They grow to a length of 9 inches and a width of nearly 8 inches and will remain in table condition for a longer time than other sorts now in general cultivation. Price: Pkt. 5 cts.; oz. 10 cts.; ¼ lb. 17 cts.; lb. 50 cts.; 5 lbs., 45 cts. per lb.



Ruby King Pepper

"Play Safe," Neighbor, Plant Stokes Seeds



The Stokes Scarlet Globe Radish

PARSNIP

Hollow-crown. Days to maturity, 130. An excellent strain of Hollow-crown, forming a root from 8 to 10 inches long. The color is pure white, and roots are uniformly smooth and of excellent quality. Price: Pkt. 10 cts.; oz. 15 cts.; $\frac{1}{2}$ lb. 30 cts.; lb. 95 cts.; 5 lbs., 85 cts. per lb.; 25 lbs., 80 cts. per lb.

PARSLEY

Champion Moss Curled. Days to maturity, 55-60. This is a very pure strain of garnishing Parsley. It will develop to a height of 8 inches. The color is rich, deep green, and the leaves are very finely cut. Price: Pkt. 10 cts.; oz. 15 cts.; $\frac{1}{2}$ lb. 25 cts.; lb. 85 cts.; 5 lbs., 75 cts. per lb.; 25 lbs., 70 cts. per lb.

Hamburg Turnip-rooted. The root is the edible part of this variety, resembling in color and shape the root of the parsnip. Its leaves are very similar to those of plain Parsley, and are especially desirable for flavoring and drying. Price: Pkt. 10 cts.; oz. 15 cts.; $\frac{1}{2}$ lb. 25 cts.; lb. 85 cts.; 5 lbs., 75 cts. per lb.; 25 lbs., 70 cts. per lb.

PUMPKIN

Small Sugar. Days to maturity, 75. Sometimes called New England Pie. The standard of excellence among Pumpkins, and of convenient size for household use.

The fruits average 7 pounds each, are round, of deep orange color, and have fine-grained flesh. Price: Pkt. 10 cts.; oz. 15 cts.; $\frac{1}{2}$ lb. 25 cts.; lb. 75 cts.; 5 lbs., 65 cts. per lb.; 25 lbs., 60 cts. per lb.

Orange Winter Luxury. Days to maturity, 90. This special orange strain has been developed in the Northwest. The skin is a bright orange, comparatively smooth, and covered with very light netting. Its flesh is tender and has all the desirable pie-making qualities. Price: Pkt. 10 cts.; oz. 15 cts.; $\frac{1}{2}$ lb. 30 cts.; lb. \$1; 5 lbs., 90 cts. per lb.; 25 lbs., 85 cts. per lb.

Connecticut Field. Days to maturity, 90. Also known as Big Tom, this variety was grown for centuries by the American Indians. It is now often grown in cornfields for

Pumpkin, Connecticut Field, continued

stock-feeding, although excellent pies may be made from it. Fruit averages 20 pounds in weight. Color orange-yellow. Price: Pkt. 10 cts.; oz. 15 cts.; $\frac{1}{2}$ lb. 20 cts.; lb. 60 cts.; 5 lbs., 55 cts. per lb.; 25 lbs., 50 cts. per lb.

RADISH

The Stokes Scarlet Globe. Days to maturity, 25. For full description and illustration of this excellent strain, see page 18. This is one of the finest Radishes available for garden or field-production. Price: Pkt. 10 cts.; oz. 15 cts.; $\frac{1}{2}$ lb. 25 cts.; lb. 75 cts.; 5 lbs., 65 cts. per lb.; 25 lbs., 55 cts. per lb.

Early Scarlet Globe Forcing. Days to maturity, 25. This is a mercurial stock of Early Scarlet Globe for forcing purposes. The color is a bright scarlet. In shape it is a pure globe. The top has a restrained growth. Growers may place great confidence in this forcing strain. Price: Pkt. 10 cts.; oz. 15 cts.; $\frac{1}{2}$ lb. 25 cts.; lb. 85 cts.; 5 lbs., 75 cts. per lb.; 25 lbs., 65 cts. per lb.

Sparkler White-Tip. Days to maturity, 25-30. Color deep scarlet with a distinct white tip covering the lower third of the root. Its maximum size before becoming pithy is 1 $\frac{1}{4}$ inches. Price: Pkt. 10 cts.; oz. 15 cts.; $\frac{1}{2}$ lb. 20 cts.; lb. 70 cts.; 5 lbs., 60 cts. per lb.; 25 lbs., 55 cts. per lb.

White Icicle. Days to maturity, 30-35. This attractive Radish grows a pure white root. It is best for market when about 5 inches long, and will hold one week before becoming pithy. Price: Pkt. 10 cts.; oz. 15 cts.; $\frac{1}{2}$ lb. 25 cts.; lb. 80 cts.; 5 lbs., 70 cts. per lb.; 25 lbs., 65 cts. per lb.

Crimson Giant. Days to maturity, 30-35. The largest of the early, round Radishes. It will not become pithy until nearly 2 inches in diameter. Price: Pkt. 10 cts.; oz. 15 cts.; $\frac{1}{2}$ lb. 20 cts.; lb. 70 cts.; 5 lbs., 60 cts. per lb.; 25 lbs., 55 cts. per lb.

Chinese Rose. Days to maturity, 60. A winter Radish. When mature it is from 4 to 5 inches long and is brightest at the base. The flesh is white, fine-grained, and mildly pungent. Price: Pkt. 10 cts.; oz. 15 cts.; $\frac{1}{2}$ lb. 25 cts.; lb. 80 cts.; 5 lbs., 70 cts. per lb.; 25 lbs., 65 cts. per lb.

White Chinese. Days to maturity, 60. Winter Radish averaging from 6 to 9 inches in length and from 2 to 3 inches in width. It is clear white throughout and is not as pungent as other winter Radishes. Price: Pkt. 10 cts.; oz. 15 cts.; $\frac{1}{2}$ lb. 25 cts.; lb. 80 cts.; 5 lbs., 70 cts. per lb.; 25 lbs., 65 cts. per lb.

SQUASH

Early White Bush. Days to maturity, 60. Our strain is a distinct improvement over the usual commercial stock of White Bush. It is early maturing, and the fruits will average from 8 to 10 inches in diameter. Is best when gathered in its immature stage. Price: Pkt. 10 cts.; oz. 15 cts.; $\frac{1}{2}$ lb. 30 cts.; lb. \$1; 5 lbs., 90 cts. per lb.; 25 lbs., 85 cts. per lb.



Early White Bush Squash



Summer Crookneck Squash

SQUASH, continued

The Stokes Cozelle. Days to maturity, 70. Sometimes called "Italian Vegetable Marrow." This delicious summer Squash is in constantly increasing demand, especially in Florida. It is best for the table when from 6 to 8 inches across. The skin is a dark green, marbled with yellow and light green as it matures. Flesh is pale green, firm and tender. For further description, see page 19. Price: Pkt. 10 cts.; oz. 15 cts.; $\frac{1}{2}$ lb. 30 cts.; lb. \$1; 5 lbs., 90 cts. per lb.; 25 lbs., 85 cts. per lb.

Summer Straightneck. Days to maturity, 70. This is rapidly replacing the Crookneck type, from which it was selected. It retains the warty golden skin, fine quality, and earliness, but has the convenience of being nearly straight. Price: Pkt. 10 cts.; oz. 15 cts.; $\frac{1}{2}$ lb. 30 cts.; lb. \$1; 5 lbs., 90 cts. per lb.; 25 lbs., 85 cts. per lb.

Summer Crookneck. Days to maturity, 70. This is, perhaps, the best known of the older oval fruits of a rich, dark green color and somewhat warty. These fruits will average from 12 to 14 pounds. The flesh is very thick and of a bright yellow color. Price: Pkt. 10 cts.; oz. 20 cts.; $\frac{1}{2}$ lb. 40 cts.; lb. \$1.40; 5 lbs., \$1.25 per lb.; 25 lbs., \$1.15 per lb.

Boston Marrow. Days to maturity, 125. A bright orange-colored, oval Squash excellent for pie-making. Flesh is tender and fine-grained. The best known and the most popular of the late-maturing Squashes. Price: Pkt. 10 cts.; oz. 15 cts.; $\frac{1}{2}$ lb. 20 cts.; lb. 65 cts.; 5 lbs., 60 cts. per lb.; 25 lbs., 50 cts. per lb.

Hubbard. Days to maturity, 120-125. An extensively grown winter Squash bearing large, oval fruits of a rich, dark green color and somewhat warty. These fruits will average from 12 to 14 pounds. The flesh is very thick and of a bright yellow color. Price: Pkt. 10 cts.; oz. 20 cts.; $\frac{1}{2}$ lb. 40 cts.; lb. \$1.40; 5 lbs., \$1.25 per lb.; 25 lbs., \$1.15 per lb.

Stokes Seeds Are Tested in Florida, Texas, and New Jersey



Resected Bloomsdale Spinach

SPINACH

See page 19 for special offerings

Resected Bloomsdale. Days to maturity, 40. The standard of its class. An extra-fine stock of the well-known Bloomsdale type with leaves completely crumpled and rounded. Price: Pkt. 5 cts.; oz. 10 cts.; $\frac{1}{2}$ lb. 12 cts.; lb. 24 cts.; 5 lbs., 19 cts. per lb.; 25 lbs., 16 cts. per lb.

Long-standing Bloomsdale. Days to maturity, 45. Will hold ten days before shooting to seed, a valuable asset, especially for late spring planting. Price: Pkt. 5 cts.; oz. 10 cts.; $\frac{1}{2}$ lb. 12 cts.; lb. 25 cts.; 5 lbs., 20 cts. per lb.; 25 lbs., 17 cts. per lb.

Virginia Savoy. Days to maturity, 40. A blight-resistant variety especially recommended for September and August planting. This variety also resists lower temperatures than either of the other Savoy. Price: Pkt. 5 cts.; oz. 10 cts.; $\frac{1}{2}$ lb. 12 cts.; lb. 25 cts.; 5 lbs., 20 cts. per lb.; 25 lbs., 17 cts. per lb.

Giant-leaved Nobel. Days to maturity, 50. A flat-leaved, late-maturing, and long-standing Spinach of excellent quality. It will form a head nearly 12 inches across. Price: Pkt. 5 cts.; oz. 10 cts.; $\frac{1}{2}$ lb. 12 cts.; lb. 24 cts.; 5 lbs., 19 cts. per lb.; 25 lbs., 16 cts. per lb.

New Zealand (Tetrasonia expansa). Days to maturity, 60. Not a true Spinach but an excellent substitute in hot weather. The tender leaves may be cut throughout the summer. Three or four seeds should be planted in hills 3 feet apart. Soaking seed in luke-warm water is advantageous. Price: Pkt. 10 cts.; oz. 15 cts.; $\frac{1}{2}$ lb. 20 cts.; lb. 65 cts.; 5 lbs., 60 cts. per lb.; 25 lbs., 52 cts. per lb.

TOMATO

This is our most important vegetable. For this reason we have devoted much space (pages 12 to 19) to the special strains we have to offer. These include the following:

Master Marglobe **Break o'Day**
Marglobe **Lloyd Forcing**
Pritchard (New.) **Blaire Forcing**
Super-Standard Bonny Best

Penn State Earliana. Days to maturity, 120-130. An improved strain of Earliana as introduced by Johnson & Stokes in 1907. Penn State was developed by Prof. C. E. Myers and

Tomato, Penn State Earliana, continued

is a larger, smoother, and more productive Earliana. This stock is recommended with great confidence. Price: Pkt. 15 cts.; oz. 45 cts.; $\frac{1}{2}$ lb. \$1.40; lb. \$5; 5 lbs., \$4.85 per lb.

The Stokes Bonny Best. Days to maturity, 125-135. This variety was introduced by Walter P. Stokes in 1908. Since that time it has been the leading second-early Tomato of United States and Canada. For years we have made selections to produce a higher-yielding stock, true to type, and with more vigorous vines, and this seed of our own production is far above average. Under normal conditions it will produce ripe fruit two months after the plants are set in the field. The fruit is of medium size and of a flattened globe shape. The color is a deep scarlet. Price: Pkt. 10 cts.; oz. 25 cts.; $\frac{1}{2}$ lb. 85 cts.; lb. \$3; 5 lbs., \$2.85 per lb.

John Baer. Days to maturity, 130-135. A well-known second-early type developed in Maryland. In many ways it is very similar to Bonny Best. Price: Pkt. 10 cts.; oz. 25 cts.; $\frac{1}{2}$ lb. 85 cts.; lb. \$3; 5 lbs., \$2.85 per lb.

Clark's Early. Days to maturity, 130-135. An excellent strain developed from the Chalk's Jewel. This is particularly popular in the shipping districts of Texas where a heavy-producing, second-early Tomato is required. Price: Pkt. 10 cts.; oz. 25 cts.; $\frac{1}{2}$ lb. 85 cts.; lb. \$3; 5 lbs., \$2.85 per lb.



Penn State Earliana Tomato

TOMATO, continued

Florida Special. Days to maturity, 130-135. A Tomato of the Bonny Best type which is in some demand among the Florida growers. The stock offered herewith will prove eminently satisfactory. Price: Pkt. 10 cts.; oz. 25 cts.; $\frac{1}{2}$ lb. 85 cts.; lb. \$3; 5 lbs., \$2.85 per lb.

Greater Baltimore. Days to maturity, 140. This reliable and well-known red canning variety is particularly desirable because of its high interior color. Many of our customers find that it makes a satisfactory garden Tomato for late maturity. In size it is larger than Bonny Best. The vine is vigorous and productive. Price: Pkt. 10 cts.; oz. 25 cts.; $\frac{1}{2}$ lb. 85 cts.; lb. \$3; 5 lbs., \$2.85 per lb.

TURNIP

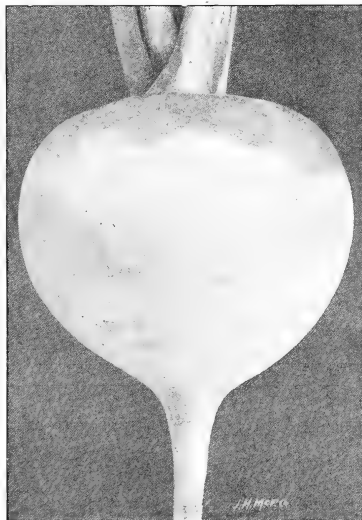
Purple-top White Globe. Days to maturity, 60. The standard multi-crop Turnip. When grown for market it should be gathered when quite young. The skin is white with a dark red ring around the top. Price: Pkt. 5 cts.; oz. 10 cts.; $\frac{1}{2}$ lb. 17 cts.; lb. 55 cts.; 5 lbs., 50 cts. per lb.; 25 lbs., 40 cts. per lb.

White Egg. Days to maturity, 55. A fine-grained, good keeping table Turnip. The white flesh is firm, solid, and sweet. Price: Pkt. 5 cts.; oz. 10 cts.; $\frac{1}{2}$ lb. 17 cts.; lb. 55 cts.; 5 lbs., 50 cts. per lb.; 25 lbs., 40 cts. per lb.

Yellow Aberdeen. Days to maturity, 75. The flesh is yellow, tender, and very solid. In color the Turnip is purple around the top and deep yellow below. The large roots resemble rutabagas in many ways. For table or stock-feeding. Price: Pkt. 5 cts.; oz. 10 cts.; $\frac{1}{2}$ lb. 17 cts.; lb. 55 cts.; 5 lbs., 50 cts. per lb.; 25 lbs., 40 cts. per lb.

Japanese Foliage Turnip. Days to maturity, 60. A variety of comparatively recent introduction from the Orient. Already it has been very generally accepted for its delicious greens, particularly in the South. Price: Pkt. 10 cts.; oz. 15 cts.; $\frac{1}{2}$ lb. 25 cts.; lb. 75 cts.; 5 lbs., 70 cts. per lb.; 25 lbs., 65 cts. per lb.

Purple-top Yellow Rutabaga. Days to maturity, 115. A highly esteemed winter vegetable, either for table or for stock-feeding. Our strain has a small top and is practically neckless. It will grow to a large size. Rutabagas are usually planted in rows not later than June. Price: Pkt. 5 cts.; oz. 10 cts.; $\frac{1}{2}$ lb. 17 cts.; lb. 55 cts.; 5 lbs., 50 cts. per lb.; 25 lbs., 40 cts. per lb.



Purple-top White Globe Turnip

Stokes Annual Flower Seeds

Owing to numerous requests from our customers for a source from which to obtain better Flower Seed, we have decided to carry seeds of the finest strains available. Our aim is to supply only the very best quality and to maintain a quality far above the standard set by most houses. A trial will convince you that there is a great difference between our Flower Seeds, which are produced by specialists, and ordinary stocks.



American Late Branching Aster

Improved Crego Giant Asters

A midseason variety, and the finest of all Feathery or Ostrich-Plume types. One of the best for cutting as the flowers keep a long time in water. 2 feet high.

- 630 Shell-Pink 633 Crimson
621 Azure-Blue 624 White
622 Rose-Pink 625 Dark Blue
630 Mixture from named sorts

Any of the above: Pkt. 10 cts.; 1/2 oz. 25 cts.;
1/4 oz. 40 cts.; oz. \$1.25

COLLECTION: One pkt. each of 6 separate
colors for 50 cts.



Arctotis Grandis

American-Grown Florists' Strains of Asters

Our American-grown Aster Seed is the finest ever offered, and does well in any good, rich soil that has been carefully prepared. A sunny location is preferable. Asters are more susceptible to disease than most other flowers, and for that reason should never be planted two years in the same location, unless the soil has been thoroughly sterilized. In order to obtain the finest flowers, the plants should be frequently cultivated and care taken that there is no check to their growth from the time they are started to their flowering season. When long stems for cutting are desired, plants should be set not closer than 12 inches apart in rows at least 2 feet apart. For mass effect or bedding, 9 inches each way is ample. If early flowers are wanted, seed should be started indoors and transplanted after danger of frost. For autumn flowers, seeds may be sown outdoors.

We will gladly mail free a copy of our circular
"How to Raise the Finest Asters"

American Late Branching Asters

The long-stemmed, chrysanthemum-shaped flowers, often measuring 5 inches across, are produced on strong, branching plants 2 to 2 1/2 feet high. Comes into flower two weeks later than Crego Giants.

- 640 Azure-Blue 644 Mary Semple.
641 Crimson Shell-pink.
642 Dark Blue 645 White
643 Deep Rose

650 Mixture of above 6 varieties
Any of the above: Pkt. 10 cts.; 1/2 oz. 25 cts.;
1/4 oz. 40 cts.; oz. \$1.25

COLLECTION: One pkt. each of 6 separate
colors for 50 cts.

California Giant Asters

The finest of all late-flowering Asters. Plants grow from 3 to 4 feet high, producing giant blooms on stems over 2 feet long. Flowers are beautifully curled and measure 5 to 6 inches in diameter. Most valuable variety for florists as well as private gardeners who want the best.

- 671 White. Exceptionally large.
672 Peach Blossom. Opens almost white, but
blushes when in full bloom.

673 Light Blue. Clear sky-blue.

674 Deep Rose. Similar in color to the
beautiful American Beauty rose.

675 Dark Purple. A rich shade.

680 Mixture of above 5 colors.

Any of the above: Pkt. 20 cts.;

1/4 oz. 50 cts.; 1/2 oz. 85 cts.;

oz. \$2.50

COLLECTION: One pkt. each
of five separate colors (value \$1)
for 65 cts.

ARCTOTIS

600 Grandis (Blue-eyed African Daisy). A very beautiful annual and excellent for cutting as the flowers often last ten days in water. The blooms are pure white on the upper surface, and the reverse of the petals is a light blue. May be started in hotbeds or planted in open ground. Most suited for sunny locations. Pkt. 10 cts.; 1/4 oz. 30 cts.; 1/2 oz. 55 cts.; oz. \$1.



California Giant Aster

Early Branching or Royal Asters

An early-flowering variety coming into bloom during the early summer and lasting over a long period. The branching habits of these free-flowering plants make them especially suited for bedding or borders. Their long-stemmed flowers are ideal for cutting.

- 660 Azure-Blue. Light blue. 663 White.
661 Shell-Pink. 664 Purple.
662 Rose. Rose-pink. 665 Mixed.

Any of the above: Pkt. 10 cts.; 1/2 oz. 25 cts.;

1/4 oz. 40 cts.; oz. \$1.25

685 Heart of France Aster

The largest of all red Asters. Produces rich ruby-red, double flowers on long stems. Pkt. 15 cts.; 1/2 oz. 35 cts.; 1/4 oz. 65 cts.; oz. \$2.

AGERATUM

505 Blue Ball. One of the best bedding plants. Blooms freely from early summer until frost. We consider this the most valuable of all Ageratum. Bushes are compact, ball-shaped, about 6 inches high, producing clear blue flowers over a long season. Pkt. 15 cts.; 1/2 oz. 35 cts.; oz. \$1.25.

ALYSSUM

510 Little Gem or Carpet of Snow. Dwarf, compact plants about 4 inches high, beginning to flower when quite small. Plants are a solid mass of pure white flowers from late spring until frost. Very valuable for edging. Pkt. 10 cts.; 1/4 oz. 20 cts.; oz. 50 cts.

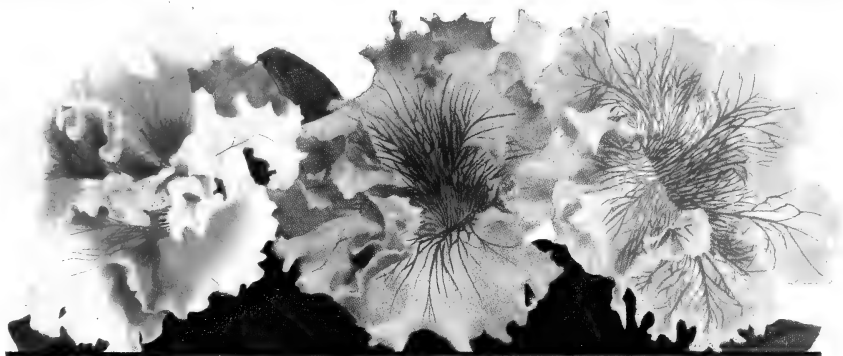
ASPARAGUS

Valuable on account of its foliage, often referred to as "Asparagus Fern." Grows excellently and quickly in any good warm window. Very useful as a pot plant or for cutting.

610 Plumosus nanus. An excellent pot-plant with fernlike leaves and wanted in quantity by florists. Pkt. 20 cts.; 100 seeds 35 cts.; 1000 seeds \$1.50.

611 Sprengeri (Emerald Feather). On account of its foliage is well adapted for hanging-baskets and cutting. May be grown successfully outdoors during summer or indoors in winter. Pkt. 10 cts.; 100 seeds 20 cts.; 1000 seeds \$1.

FRANCIS C. STOKES & CO., Inc.



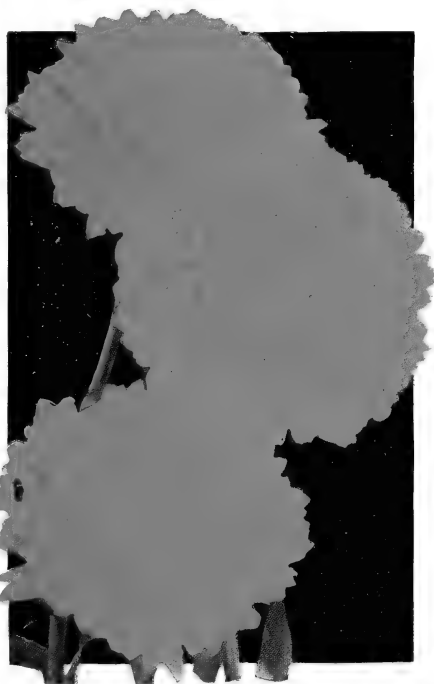
PETUNIAS, RUFFLED GIANTS

Beautiful large fringed and ruffled flowers in an unusual range of colors. This mixture contains the varieties illustrated and many others. Pkt. 35c.; $\frac{1}{2}$ oz. \$1.50.

Complete list offered on page 34.

5010. SCABIOSA COLLECTION

One packet each of blue, red, rose, white, yellow and purplish black.
Value 70c., for **50** cts.



BALL'S ORANGE CALENDULA

Pkt. 15c.; $\frac{1}{4}$ oz. 50c.; oz. \$1.75. Complete list on page 31.



MIXED SCABIOSA

Pkt. 10c.; $\frac{1}{4}$ oz. 25c. For complete list see page 35.



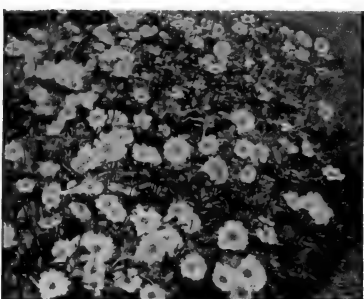
DIANTHUS, Single and Double Mixed
Pkt. 10 cts.; $\frac{1}{4}$ oz. 30 cts.
For further descriptions see page 32



CALIFORNIA POPPIES, Mixed
Pkt. 10 cts.; $\frac{1}{4}$ oz. 20 cts.
Fully described on page 32



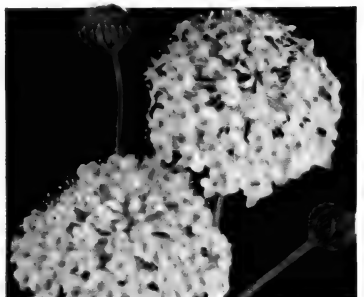
HELIOTROPE, Lemoine's Giant Hybrids
Pkt. 15 cts.; $\frac{1}{8}$ oz. 50 cts.
See page 33



CALLIOPSIS, Mixed Colors
Pkt. 10 cts.; $\frac{1}{4}$ oz. 25 cts.
For description see page 31



PORTULACA, Single Mixed. Pkt. 10c.; $\frac{1}{8}$ oz. 25c.
Fully described on page 34



BLUE LACE FLOWER. Pkt. 15 cts.; $\frac{1}{4}$ oz. 50 cts.
See page 31

5015
COLLECTION Contains six packets, one each of the
flowers illustrated. Value 70 cts., for 50 cts.

For Flowers All Season Plant Annuals With Your Perennials

ANTIRRHINUM

Snapdragon

The half-dwarf varieties are most suitable for bedding and the tall Giant or Maximium varieties show to best advantage in long borders and are excellent for backgrounds. Seed may be sown in open ground early in the spring. For early flowering, we recommend sowing seed indoors in pots or flats during March. The seedlings may be transplanted outdoors as soon as weather permits.

- Giant-flowered Half-Dwarf Varieties.** The best strains obtainable. Plants are about 18 inches high, and produce large individual flowers on long spikes.
- 537 **White Rock.** Glistening white. Pkt. 20 cts.; ½oz. 50 cts.
- 538 **Ceylon Court.** The finest clear yellow. Pkt. 25 cts.; ½oz. 55 cts.
- 531 **Cheviot Maid.** Rose-pink. Early and free flowering. Pkt. 25 cts.; ½oz. 55 cts.
- 532 **Firebrand.** Deep scarlet. Pkt. 10 cts.; ½oz. 25 cts.
- 533 **Helen.** Extra free flowering. Beautiful shade of salmon. Pkt. 20 cts.; ½oz. 50 cts.
- 534 **Jennie Schneider.** Soft rose-pink. Pkt. 20 cts.; ½oz. 50 cts.
- 536 **Philadelphia Pink.** Bright pink. Pkt. 15 cts.; ½oz. 40 cts.
- 535 **Fawn.** Delicate pink, shading yellow. Pkt. 10 cts.; ½oz. 25 cts.
- 540 **Large-flowering Mixed.** Pkt. 10 cts.; ½oz. 25 cts.

- Maximium or Tall Giants.** A recent introduction or new type of Snapdragon producing giant flowers on spikes at least 30 inches tall.
- 560 **Salmon Rose.** We consider this the finest new Snapdragon introduced. The salmon-rose flowers are immense. Pkts. 25 cts.
- 561 **Copper King.** Bright copper-scarlet, turning to pure copper-bronze. One of the most attractive of all Snapdragons.
- 562 **Apple-Blossom.** Light pink with yellow lip.
- 563 **Canary Bird.** Clear canary-yellow, with golden yellow center.
- 565 **The Rose.** Soft rose-pink.
- 566 **Orchid.** Cattleya-lilac.
- 567 **Ruby.** Rich velvety ruby-red.
- 570 **Mixed.** This mixture has been carefully blended from named varieties.

Any of the above, except where noted: Pkt. 15 cts.; ½oz. 45 cts.

COLLECTION: One pkt. each of 7 Giant varieties (value \$1.15) for 65 cts.



Half-Dwarf Antirrhinum

BALSAM (Lady Slipper)

695 **Double Camellia-flowered, Brilliant Mixed.** A favorite, old-fashioned flower producing gorgeous masses of brilliant, double flowers in many colors from early summer until fall. Plants 2 feet high. Pkt. 10 cts.; ½oz. 25 cts.; oz. 75 cts.

EVERBLOOMING BEDDING BEGONIAS

These Semperflorens varieties do well as bedding plants either in the sun, partial shade, or shade. In the northern states, start the seed indoors and transplant after danger of frost is past. Plants grow 1 foot high and are literally covered with blooms from late spring until frost. The best for florists or private gardeners.

700 **Gustav Knaake.** Pink shading to salmon. Leaves green, shaded bronze. Pkt. 20 cts.; ½oz. \$1.50.

701 **Albert Martin.** Large, bright, scarlet flowers. Dark foliage. Pkt. 25 cts.; ½oz. \$1.50.

702 **Semperflorens.** All colors mixed. Pkt. 15 cts.; ½oz. 35 cts.

715 BLUE LACE FLOWER *Disciscus Cærulea*

This popular annual is easily grown, and the umbels of pretty, blue, lace-like flowers are produced on long stems. Excellent for cutting and last unusually long in water. Sow the seed outdoors in a bed after the ground warms. Illustrated on page 30. Pkt. 15 cts.; ½oz. 50 cts.

720 BRACHYCOME

Swan River Daisy

Dwarf plant about 12 inches high. Prefers a sunny location in fairly rich soil. Produces a profusion of daisy-like flowers in shades of rose, purple, and white during the summer months. Suitable for edgings, pot-culture, or small beds. Pkt. 10 cts.; ½oz. 40 cts.

CALENDULA (Pot Marigold)

One of the showiest and most easily grown annuals, blooming freely from early summer until frost. Does well in almost all soils but best in a sunny location.

725 **Ball's Orange.** The finest of all double orange varieties. Excellent for forcing or growing outdoors. Our stock is unexcelled. Illustrated on page 29. Pkt. 15 cts.; ½oz. 50 cts.; oz. \$1.75.

727 **Lemon Queen.** Fine double flowers of a rich lemon-yellow color. Pkt. 10 cts.; ½oz. 35 cts.; oz. 90 cts.

726 **Radio.** Distinct from any other as the petals are beautifully quilted. The large, rich golden yellow flowers are borne on stems 12 inches long. Pkt. 15 cts.; ½oz. 25 cts.; oz. 75 cts.

One pkt. each of 3 varieties, 30 cts.

730 **Mixed, All Colors.** Pkt. 10 cts.; ½oz. 25 cts.; oz. 75 cts.

CALLIOPSIS

738 **Finest Mixed.** A very easily grown, showy, free-flowering annual in combinations of yellow and garnet. Does well in sunny places. Excellent for cutting and blooms over a long period. Seed should be sown where they are to bloom, thinning to stand 9 to 12 inches apart. If the flowers are kept cut, Calliopsis will bloom all summer. Illustrated on page 30. Pkt. 10 cts.; ½oz. 25 cts.; oz. 55 cts.

CARNATIONS

760 **Marguerite, Mixed.** An annual variety which blooms in about three months after the seed is sown. This fine strain produces nearly all double flowers in shades of pink, rose, salmon, yellow, red, and white. Easily grown and by far the most popular carnation with the amateur. Pkt. 15 cts.; ½oz. 50 cts.; oz. \$1.50.

For other varieties, see Perennials, page 36



Centaurea cyanus

CENTAUREA

Cyanus (Double Cornflower). Better known as "Bachelor's Button." Sow indoors during early spring, and if flowers are desired all summer, successive sowings may be made. This improved strain produces fine double flowers on plants 2 to 3 feet high.

785 **Double Rose-Pink.** 786 **Double Blue.** 787 **Double, Mixed.** Contains blue, rose, white, mauve, maroon, and rosy red.

Each: Pkt. 10 cts.; ½oz. 25 cts.; oz. 75 cts.

780 **Imperialis, Finest Mixed (Sweet Sultan).** The finest of all Centaureas for cutting. Sow early in the spring so the best blooms will be produced before hot weather. Mixture includes yellow, pink, white, lilac, and purple shades. Pkt. 10 cts.; ½oz. 25 cts.; oz. 75 cts.

CANDYTUFT

Excellent for rock-gardens, beds, and borders. Plants grow about 12 inches high and should be thinned to stand not less than 6 inches apart. Very easily grown and will succeed in any good garden soil. Fragrant and suitable for cutting.

747 **Umbellata, White.** 748 **Umbellata, Crimson.** 749 **Umbellata, Rose.** 750 **Umbellata, Lilac.** 755 **Umbellata, Mixed.**

Each: Pkt. 10 cts.; ½oz. 20 cts.; oz. 50 cts.

745 **Giant Hyacinth-flowered.** The large, hyacinth-shaped trusses of white flowers are borne on stems 18 inches long. This variety is used very extensively for cutting. Pkt. 10 cts.; ½oz. 25 cts.; oz. 85 cts.

CELOSIA (Cockscomb)

776 **Plumosa, Mixed (Feathered Cockscomb).** Seed may be sown indoors and transplants may be open ground after danger of frost is past, or sown outdoors early in the spring. These plumed Celosias prefer a soil that is not too rich and produce excellent flowers for cutting. The plants are 3 to 4 feet tall, and each branch produces a plume-shaped flower. This mixture contains shades of yellow, orange, pink, crimson, and rose. Pkt. 10 cts.; ½oz. 35 cts.; oz. \$1.

777 **Cristata, Mixed (True Cockscomb).** The large, cockscomb-shaped flowers, on stems about 12 inches high, make a gorgeous showing in the garden and are very useful for cutting.

If dwarf growth is wanted, leave plenty of room between plants; crowding often makes the plants grow spindly. This mixture contains yellow, crimson, scarlet, and orange shades. Pkt. 15 cts.; ½oz. 50 cts.; oz. \$1.50.

For Profits Grow Asters, Zinnias, Calendulas, and Larkspur



Early Double Cosmos

COSMOS

Beautiful for summer and autumn flowers and easily grown outdoors. Plants should be thinned to sets at least 18 inches apart each way. Seed should be sown early in the spring when there is little danger of frost. This new, early-flowering, double strain produces about 75 per cent double flowers and blooms from early summer until frost.

835 **Early-flowering Double, Mixed.** In Pink, Crimson, and White. Pkt. 20 cts.; $\frac{1}{2}$ oz. 60 cts.
831 **Late-flowering Giant Single, Mixed.** Pkt. 10 cts.; $\frac{1}{2}$ oz. 25 cts.

ANNUAL CHRYSANTHEMUMS

810 **Single, Mixed.** This single-flowering annual, often referred to as "Painted Daisy," is a very effective, showy variety grown for cut-flowers. Plants grow 2 feet high and produce large flowers on long stems. Entirely distinct from the hardy autumn-flowering varieties. Mixture includes shades of yellow, apricot, and white. Pkt. 10 cts.; $\frac{1}{2}$ oz. 20 cts.

CINERARIA HYBRIDA

Beautiful, ornamental plants for conservatory or house. Seed may be sown from early spring until late fall for a succession of flowers. A very important point in the culture is to secure hardy plants with medium-sized leaves. After transplanting, place pots in coldframes, facing north, and as the pots become full of roots, transplant to slightly larger pots until flowering stage.

815 **Stokes Giant-potting Exhibition, Mixed.** Flowers of this special strain often measure 4 to 5 inches across and are borne in immense, compact heads in a complete range of beautiful colors. Pkt. 50 cts.; 3 pkts. \$1.25.
816 **Multiflora Nana, Dwarf, Mixed.** The best dwarf strain, with large trusses of small flowers. Our mixture contains a complete range of colors. Pkt. 35 cts.; 3 pkts. 90 cts.

CLARKIA

820 **Finest Double, Mixed.** This easily grown annual is gradually coming into popularity. It is fine for cutting, and each flower will open in water. Does well in full sun or partial shade, often growing 2 $\frac{1}{2}$ to 3 feet high. Shades of salmon, scarlet, white, and orange-scarlet. Pkt. 10 cts.; $\frac{1}{2}$ oz. 30 cts.

COLEUS

825 **Large-leaved Bright-colored Varieties, Mixed.** Our strain produces the finest range of colored foliage, attractive for borders or bedding. Easy to start from seed if kept warm. Plantings should be made indoors in the early spring. Pkt. 25 cts.; 5 pkts. \$1.

CYNOGLOSSUM

Chinese Forget-Me-Not

840 **Amabile.** A recent introduction from China that is of easy culture, forming strong plants 18 inches high. The blue, forget-me-not-like flowers are sweet-scented and they literally cover the plants during early summer. Worthily of space in every garden. Pkt. 15 cts.; $\frac{1}{2}$ oz. 35c.

DAHLIAS

One of the most interesting flowers and easy to grow from seed. Sow early in the spring, in order to have blooms the first season. This strain produces a very high percentage of doubles in a good range of colors.

860 **Large-flowering Double, Mixed.** Pkt. 15 cts.; $\frac{1}{2}$ oz. 35 cts.

861 **Exhibition, Mixed.** Our stock of this mixture is saved for by a Dahlia specialist, and only seed from giant double flowers is used. Pkt. 50 cts.; 5 pkts. \$2.

DIANTHUS (Pink)

870 **Single and Double, Mixed.** An old favorite, easily raised from seed, and excellent for cutting. Seed may be sown outdoors as soon as danger of frost is past. Comes into flower a few weeks after planted and continues until frost. Where winters are not too severe, they will survive when given a little protection and will be a mass of blooms the next spring. Yellow grass 12 inches high and can be used for either beds or borders. Illustrated on page 30. Pkt. 10 cts.; $\frac{1}{2}$ oz. 30 cts.

DIMORPHOTHECA

African Daisy

890 **Aurantica Hybrids.** An extremely showy annual Daisy originating in South Africa but suits our climatic conditions perfectly. Plants grow 12 to 15 inches high and are a mass of bloom during the greater part of the summer. Seed should be sown early in the spring where the plants are to bloom. This mixture includes white, golden yellow, salmon, sulphur, rose, and apricot. Pkt. 10 cts.; $\frac{1}{2}$ oz. 35 cts.

ESCHSCHOLTZIA

California Poppy

900 **Mixed.** A charming annual, suitable for bedding or borders. Blooms continuously from early summer until fall if planted in a sunny place. The satiny, cup-like flowers, in shades of yellow, orange, rose, salmon, and red, with finely cut, bluish green foliage, are very attractive. This easily grown annual may be sown any time during the spring and thinned to 6 inches apart in the row. Pkt. 10 cts.; $\frac{1}{2}$ oz. 20 cts.

EUPHORBIA

910 **Heterophylla (Annual Poinsettia).** This attractive annual, with its ornamental foliage, much resembles the houseplant poinsettia. The bushy plants have glossy green foliage which about the middle of summer turns to a beautiful orange-scarlet, presenting a striking appearance. Sow the seed, after danger of frost is past, where plants are to bloom. Useful for beds or borders, growing 2 to 3 feet high. Pkt. 15 cts.; $\frac{1}{2}$ oz. 30 cts.

FORGET-ME-NOT

Myosotis

Greatly admired when grown in masses. Sow the seed any time during spring or early summer, and keep plants protected in winter where weather is severe. Succeed best in a cool, moist soil and flower profusely during the summer months.

915 **Robusta grandiflora.** Clear light blue flowers on plants 10 inches high. Pkt. 15 cts.; $\frac{1}{2}$ oz. 30 cts.

916 **Alpestris, Rose.** Bright rose. Pkt. 10 cts.; $\frac{1}{2}$ oz. 25 cts.

GAILLARDIA

Blanket Flower

920 **Double Mixed.** Yellow and crimson shades. Splendid, showy, hardy annual flowering from early summer until frost. Excellent for beds, borders, and cutting. Sow seed early in spring where plants are to bloom. Illustrated on page 30. Pkt. 10 cts.; $\frac{1}{2}$ oz. 35 cts.

GERANIUM

935 **Zonale.** A mixture of the largest and finest varieties, with individual flowers often measuring 1 to 1 $\frac{1}{2}$ inches across. Very interesting to grow from seed, and our mixture contains a wide range of colors. Start seed indoors and plant outside when weather is warm. Pkt. 15 cts.; $\frac{1}{2}$ oz. 40 cts.

940 GLOBE AMARANTH

Gomphrena

The clover-like flowers are often referred to as "Bachelor's Buttons" and are unusually attractive everlasting. If cut when full size and dried, will last all winter. Plant outdoors in early spring and they will flower all summer. Pkt. 10 cts.; $\frac{1}{2}$ oz. 25 cts.

GLOXINIA

945 **Giant Mixed.** Attractive pot plants easily grown to perfection in a conservatory where heat and moisture may be regulated. Best results are obtained when planted in a mixture of peat, loam, and sand in equal proportions. Mixture includes shades of white, rose, purple, and red. Pkt. 25 cts.; 5 pkts. \$1.

GOETIA (Satin Flower)

950 **Mixed.** A desirable, free-flowering annual deserving more attention. Blooms all summer in cool sections where the satiny, azalea-like flowers mature to perfection. Sow outdoors in the spring in rather poor soil. Attractive in beds or borders. Grows 12 inches high. Mixture includes white, pink, and crimson shades. Pkt. 10 cts.; $\frac{1}{2}$ oz. 25 cts.

GYPSOPHILA

Baby's Breath

955 **Elegans alba grandiflora (Paris Market).** An improved, large-flowering, pure white Baby's Breath wanted by florists and gardeners. Graceful, free-flowering plants doing well in any garden soil in sunny locations. The white panicles of bloom are almost indispensable in making up bouquets. Make several sowings during the season. Pkt. 10 cts.; oz. 25 cts.; lb. \$2.25.



Dimorphotheca

Flowers Mean Pleasure and Profits



Helichrysum

HELICHRYSUM Strawflower

One of the best everlasting, with large, double flowers of bright glittering colors, making a fine display in beds or borders. To dry flowers for winter use, cut with stems as long as possible when flower is about one-third open; strip off leaves, and hang, head down, in a dark place until cured. Easily grown in any good garden soil. Thin to 12 inches apart. Hardy annual 2 1/2 feet tall.

970 **Fire Ball.** Bright scarlet.
971 **Golden Ball.** Rich golden yellow.
972 **Rose Queen.** Deep rose.
973 **Violet Queen.** Deep violet.
975 **Mixed.**

COLLECTION: One pkt. each of 4 separate colors, 35 cts.

Any of the above: Pkt. 10 cts.; 1/2oz. 30 cts.

HELIOTROPE

985 **Lemoine's Giant Hybrids.** A half-hardy perennial grown extensively on account of its deliciously fragrant flowers which are excellent to use in bouquets. Large heads of flowers in shades of lavender and white. Start indoors or sow outdoors when ground is warm. Illustrated on page 30. Pkt. 15 cts.; 1/2oz. 50 cts.

IMPATIENS

Zanzibar Balsam

1000 **Holsti Hybrids.** Delightful, bright waxy flowers for decorative purposes. Bloom profusely all season. When handled as pot-plants will flower all year. Sow seed indoors early in spring or outdoors when the ground is warm. Transplant outdoors when the ground is warm. Mixture of all colors. Pkt. 20 cts.; 3 pkts. 50 cts.

1005 KOCHIA

Summer Cypress; Burning Bush

An easily grown annual. Planted in rows, the 3-foot plants form a cypress-like, bright green hedge during summer. In autumn the entire plant turns deep red. Sow thinly, early in the spring, where the plants are to bloom. Cover seed with woodch. Pkt. 10 cts.; 1/2oz. 20 cts.

LANTANA

1007 **Finé Mixed.** Desirable, half-hardy perennial bedding plants that bloom continually during the summer. The vertebra-like heads come in shades of rose, pink, yellow and white. Pkt. 10 cts.; 1/2oz. 25 cts.

LARKSPUR, Tall Double

One of the finest of all easily grown annuals. Through careful selection, this old favorite has been greatly improved, and our strain of upright-growing plants produces large, double flowers on long stems. Excellent for cutting. Very attractive when planted in the old-fashioned flower-border or amongst shrubbery. Makes a gorgeous display when in beds. Successive sowings may be made every few weeks until June.

- 1010 **Blue Spire.** Deep Oxford-blue. Pkt. 15 cts.; 1/2oz. 60 cts.; oz. \$2.
1012 **Carmine King.** Carmine-rose. Pkt. 15 cts.; 1/2oz. 60 cts.; oz. \$2.
1014 **Dark Blue.** Blue. 15 cts.; 1/2oz. 60 cts.; oz. \$2.
1016 **Exquisite Pink Improved.** Pink, shaded salmon. Pkt. 15 cts.; 1/2oz. 60 cts.; oz. \$2.
1018 **Exquisite Rose.** Deep rose. Pkt. 15 cts.; 1/2oz. 60 cts.; oz. \$2.
1020 **White Spire.** Pure white. Pkt. 15 cts.; 1/2oz. 60 cts.; oz. \$2.
1025 **Mixed.** Pkt. 10 cts.; 1/2oz. 25 cts.; oz. 75 cts.

COLLECTION: One pkt. each of 6 separate colors (value 90 cts.) for 50 cts.

LINUM

1040 **Grandiflorum rubrum** (Crimson Flax). An attractive bedding annual growing 15 to 18 inches tall with fine foliage, and bright red flowers from early summer until frost. Sow thinly in any good garden soil during the early spring and thin to 6 inches apart. Prefers a sunny location. Pkt. 10 cts.; 1/2oz. 20 cts.

LOBELIA

1050 **Crystal Palace Compacta.** A dwarf-growing, round plant with beautiful, rich deep blue flowers and dark foliage. Easily grown from seed and suitable for edging beds, borders, and pots. Sow seed in a sunny location early in spring in any good garden soil, preferably sandy, and they will give fine results. Our strain is superb. Pkt. 15 cts.; 1/2oz. 45 cts.

LUPINE

This free-flowering annual makes a glorious display all during the summer when planted in a semi-shaded, moist location. The beautiful, pea-shaped flowers are excellent for cutting, and the attractive leaves make it ideal for beds, borders, and the like. Plant early in the spring. Easily grown.

- 1055 **Light Blue** 1057 **Rose**
1056 **White** 1060 **Mixed**
- Any of the above: Pkt. 10 cts.; oz. 25 cts.

1110 MARVEL OF PERU

Mirabilis; Four o'Clock

The sweet-scented flowers of this well-known hardy annual open during the late afternoon and early morning. Desirable for use in borders, beds, and excellent in front of porches. Plant in open ground early in the spring where they are to bloom. Height 2 feet. Pkt. 10 cts.; oz. 20 cts.

MOONFLOWERS AND MORNING-GLORIES

Free-flowering, rapid-growing climbers valuable for covering trellises, walls, arbors, or stumps. To hasten germination, soak seed in water 24 hours and plant in open ground in spring.

1115 **Early-flowering Heavenly Blue Moonflowers.** Beautiful azure-blue flowers measuring 5 inches across. Pkt. 15 cts.; 1/2oz. 30 cts.
1120 **Morning-Glories, Mixed.** Large flowers in shades of blue, red, purple and white. Pkt. 10 cts.; oz. 20 cts.

MARIGOLD (Tagetes)

One of the favorite old-fashioned flowers, easily grown, free flowering, and extremely attractive in large beds or mixed borders. Makes a striking display in bowls when used with blue flowers, such as larkspur. Plant in early spring. Any good garden soil and sunny location will produce results. African Marigolds grow 30 inches tall and French Marigolds, 12 inches.

- 1074 **Tall African, Orange Prince.** Large, round, double, quilled flowers of a rich orange color. Extra-fine stock. Pkt. 15 cts.; 1/2oz. 35 cts.; oz. \$1.
1072 **Tall African, Lemon Queen.** Large; double; lemon-yellow. Pkt. 15 cts.; 1/2oz. 35 cts.; oz. \$1.
1078 **Tall African, Mixed.** Complete mixture of large, double-flowering sorts. Pkt. 10 cts.; 1/2oz. 30 cts.; oz. 90 cts.
1080 **Dwarf French, Double, Mixed.** A complete mixture of the best varieties. Pkt. 10 cts.; 1/2oz. 25 cts.; oz. 75 cts.
1081 **Single, Tall, Josephine.** Bright maroon, edged golden Yellow. Pkt. 10 cts.; 1/2oz. 35 cts.; oz. \$1.

MIGNONETTE

A garden would hardly be complete without some of these fragrant flowers. If sown in early spring and again about June, a succession of blooms will be available until frost. Easily grown in greenhouse or in pots in the house. Reaches a height of 12 to 15 inches.

1100 **New York Market.** Very carefully selected florists' strain for growing outdoors or forcing. Pkt. 15 cts.; 1/2oz. 45 cts.

1101 **Red Goliath.** The finest red variety for all purposes. Pkt. 10 cts.; 1/2oz. 35 cts.
1105 **Finest Mixed.** All varieties. Pkt. 10 cts.; 1/2oz. 20 cts.



Annual Larkspur

Grow Flowers for the Roadside Markets



Stokes Exhibition Pansy

NASTURTIUM

This easily grown, free-flowering annual has little competition for duration of bloom, bright coloring, and attractive foliage. Tall or climbing varieties make excellent ground-coverings and may be trained on strings. Come in shades of yellow, orange, and bronzy tones.

1135 Tall, Mixed. Pkt. 10 cts.; oz. 15 cts.; $\frac{1}{2}$ lb. 40 cts.

1125 Dwarf, Mixed. Pkt. 10 cts.; oz. 15 cts.; $\frac{1}{2}$ lb. 40 cts.

DOUBLE SWEET-SCENTED NASTURTIUM, Golden Gleam. The first of a new race of Nasturtiums grown from seed. Double Nasturtiums up to this introduction have been propagated by cuttings, but after years of careful selections we have at last obtained one that comes true from seed. The beautiful rich golden yellow, sweet-scented flowers, with stems 6 inches long, stand well above the foliage, making an unusual display in beds. Undoubtedly a valuable addition to this class. Illustrated on page 39. Pkts. only, 35 cts. each; 3 pkts. \$1.

NIGELLA

Love-in-a-Mist

1140 Blue and White, Mixed. The charming blue or white flowers, with fringed edges, amidst feathery foliage make a nice display and do well under nearly all conditions. Sow in the spring where they are to bloom and cover seed lightly. Grows 12 to 15 inches high. Pkt. 10 cts.; $\frac{1}{2}$ oz. 15 cts.; oz. 35 cts.

PHLOX

Among our best annuals. Flowers all season and is very easy to grow. When sown in a sunny location, plants are a mass of color ten weeks after planting and bloom until frost.

1221 Giant White. Large, snowy white flowers.

1222 Carmea. Rich pink apricot center.

1223 Scarlet. Bright red.

1224 Rose. Bright rose, with darker eye.

1225 Lilac.

1220 Giant Mixed. Splendid mixture of all colors.

Any of the above, pkt. 10 cts., $\frac{1}{2}$ oz. 30 cts.

COLLECTION: One pkt. each of 5 varieties listed for 35 cts.

PANSIES

For flowering during the summer, sow seed in a carefully prepared bed as early in the spring as possible. Best results are obtained by mixing a liberal quantity of leaf-mold and well-decayed cow-manure with the soil. Cover the seed lightly and keep moist until plants are above ground. An open location where the wind has a free sweep is best. When large enough, transplant to stand 9 inches apart. Be sure to give them plenty of water in dry weather.

1145 Stokes Giant Exhibition, Mixed. This mixture is made up of the finest Pansies in existence and includes every conceivable color combination. The gigantic, heavy-textured flowers well above the foliage, and are fine for cutting. Pkt. 35 cts.; $\frac{1}{2}$ oz. 85 cts.; oz. \$10.

1150 Giant Trimardeau, Mixed. This type produces large flowers in a good range of colors. Pkt. 10 cts.; $\frac{1}{2}$ oz. 30 cts.; oz. \$1.50.

PETUNIAS

For outdoor decorations, window- or porch-boxes, few plants rival Petunias. Easily grown from seed, they are a solid mass of color all during the summer and fall. For early flowers, sow indoors in the northern states and transplant in open when the weather is warm. Easily grown outdoors.

1185 Ruffled Giants, Mixed. Contains the three varieties illustrated on page 29 and many others in a beautiful range of colors and markings. Pkt. 35 cts.; $\frac{1}{2}$ oz. \$1.50.

1190 Dwarf Giants of California. Improved strain of the well-known California Giants. Flowers are large, with open throats and attractively veined. Excellent for pot-culture. Pkt. 50 cts.; $\frac{1}{2}$ oz. \$1.50.

1195 Stokes Giant Double Fringed, Mixed. An excellent mixture of bright colors saved from the finest collection of varieties. A large percentage of the flowers will come double. Pkt. 50 cts.; 3 pkts. \$1.25.

Bedding Petunias. Very easily grown and excellent for all purposes.

1120 Balcony Blue.

1171 Balcony Crimson.

1172 Balcony White.

1173 Balcony Rose.

Any of these, pkt. 20 cts., $\frac{1}{2}$ oz. 40 cts.

1174 Balcony, Mixed. All colors. Pkt. 15 cts.; $\frac{1}{2}$ oz. 35 cts.

COLLECTION: One pkt. each of 4 Balcony Petunias (value 80 cts.) for 50 cts.

1155 Howard's Star Improved. Crimson, with white star in center. Pkt. 10c.; $\frac{1}{2}$ oz. 25c.

1160 Rosy Morn. Rosy pink, with white throat. Pkt. 10 cts.; $\frac{1}{2}$ oz. 25 cts.

Bedding, Mixed. Complete mixture of small-flowering varieties. Pkt. 10 cts.; $\frac{1}{2}$ oz. 25 cts.

POPPY (Papaver)

1235 Shirley, Mixed. Free-flowering annuals useful in beds or mixed borders. Sow seed outdoors as early as possible and thin to set 6 inches apart. They do not transplant well, so should be sown where they are to bloom. Mixture contains white and shades of pink, apricot, and blue. Illustrated on page 30. Pkt. 10 cts.; $\frac{1}{2}$ oz. 25 cts.; oz. 75 cts.

PORTULACA (Sun Plant)

One of our showiest annuals and of easy culture. Thrives best in a light, sandy soil in a sunny place. Plants are covered with bloom all during the summer and the gaily-colored flowers make a gorgeous showing. Sow seed when ground is warm, covering very lightly. Useful for beds, edging, rock-gardens, or broadcast on sunny places.

1240 Double, Mixed. Large, double flowers in shades of pink, rose, yellow, and orange. Pkt. 15 cts.; $\frac{1}{2}$ oz. 35 cts.; $\frac{1}{2}$ oz. 65 cts.

1242 Single, Mixed. Single flowers in shades of pink, rose, yellow, and orange. Illustrated on page 30. Pkt. 10 cts.; $\frac{1}{2}$ oz. 25 cts.; $\frac{1}{2}$ oz. 35 cts.

PRIMULA

1255 Obionica, Giant Mixed. Easy to grow in greenhouses or sunny windows, flowering continually without a great deal of care. The colors will be richest when grown in a heavy soil at a temperature around 60 degrees. Sow indoors during the spring in any good, rich soil. Do not use leaf-mold. Comes in a wide range of beautiful colors, mostly crimsons, rose and purple shades. Pkt. 20 cts.; 3 pkts. 50 cts.

RICINUS (Castor Oil Bean)

1275 Red Spire. This rapid-growing ornamental plant, with bright red flowers and seed-pods, is easily raised. Plants grow at least 6 feet tall, and the large, bronzy leaves are striped and ribbed with red. Pkt. 10 cts.; $\frac{1}{2}$ oz. 25 cts.; oz. 40 cts.

SALVIA (Scarlet Sage)

A favorite bedding plant and very attractive when grown in beds, borders, or as individual specimens. Blooms profusely from midsummer until frost. Sow seed indoors or in a hotbed and transplant to open when the weather is warm. May also be sown outdoors in May.

1265 America. The earliest and freest blooming of all the Scarlet Sages. Uniform growth, 15 inches high, with flower-spikes 10 inches or more above the foliage. The best variety for florists. Pkt. 20 cts.; $\frac{1}{2}$ oz. \$1; oz. \$3.50.

1266 Bonifre. Compact bushes 2 feet high, with bright red flowers borne well above the leaves. Pkt. 10 cts.; $\frac{1}{2}$ oz. 65 cts.; oz. \$2.25.

SALPIGLOSSIS

Painted Tongue

1280 Large-flowering, Mixed. An easily grown annual making a brilliant showing from mid-summer until frost. The gloxinia-like flowers, beautifully penciled and marked, come in an unusual range of bright colors. For early blooms, start indoors or in hotbed. Sow outdoors when ground is warm. Is partial to a sunny location. Does well in any good garden soil. Thin to 12 inches apart. Plants grow 2 $\frac{1}{2}$ to 3 feet tall. Pkt. 10 cts.; $\frac{1}{2}$ oz. 25 cts.; $\frac{1}{2}$ oz. 40 cts.

ANNUAL STATICE

Sea Lavender

One of the best everlastings and very attractive in the garden. Easily dried for use as winter bouquets. Planted extensively by florists. Start seed indoors or sow in open when weather is warm. The seed comes in flower-heads which should be placed on their side when planted.

1321 Sinuata, Rose **1322 Sinuata, White**
1320 Sinuata, Blue **1323 Sinuata, Mixed**

Any of the above: Pkt. 10 cts.; $\frac{1}{2}$ oz. 25 cts.

STOCKS (Giant Imperial)

This recently developed early-flowering strain we find most suitable for growing outdoors as well as for use by the florists. The well-branched plants grow 2 $\frac{1}{2}$ feet high, having many long spikes of fragrant, double flowers. Seed may be sown during the early spring for summer and fall blooming or in the late summer for growing in the house.

1335 Antique Copper. A rich coppery red. Pkt. 30 cts.; $\frac{1}{2}$ oz. 75 cts.

1336 Rose. Deep rose-pink. Pkt. 20c.; $\frac{1}{2}$ oz. 50c.

1337 Lavender. Pkt. 20 cts.; $\frac{1}{2}$ oz. 50 cts.

1337 Royal Purple. Pkt. 30 cts.; $\frac{1}{2}$ oz. 75 cts.

1338 Chamoin. Ivory, tinted old-rose. Pkt. 20 cts.; $\frac{1}{2}$ oz. 50 cts.

1340 Mixed. All colors. Pkt. 15 cts.; $\frac{1}{2}$ oz. 40 cts.

COLLECTION: One pkt. each of 5 named Stocks (value \$1.20) for 75 cts.

FRANCIS C. STOKES & CO., Inc.

Be Sure To Plant Plenty Of Zinnias

SWEET PEAS

The Early-flowering Sweet Peas are used by florists for forcing under glass and also for growing outdoors in Florida or other states in the extreme southern part of the United States. The Summer-flowering Sweet Peas do best when grown outdoors where the spring is cool and summers not too warm. For best results outdoors, plant as early in the spring as the ground can be worked. This selected short list of varieties we consider best for forcing as well as for outdoor growing.

Early- or Winter-flowering Varieties.	Pkt.	Oz.	½lb.	Lb.
1500 <i>Jeanne Mamisch</i> . Rose-pink.....	\$0 10	\$0 50	\$1 65	\$5 50
1501 <i>Snowstorm</i> . Snowy white.....	10	50	1 65	5 50
1502 <i>Burpee's Orange</i> . Rich deep orange.....	15	60	2 00	6 00
1503 <i>Glitters</i> . Orange-scarlet.....	10	50	1 65	5 50
1504 <i>Harmony</i> . Clear lavender.....	15	60	2 00	6 00
1505 <i>Mrs. Herbert Hoover</i> . The finest medium blue.....	15	75	2 50	8 00
1520 <i>Mixed</i> . All varieties.....	10	40	1 20	4 00

COLLECTION: One pkt. each of 6 Early-flowering varieties (value 75 cts.) for 60 cts.

Summer-flowering Varieties.	Pkt.	Oz.	½lb.	Lb.
1590 <i>Avalanche</i> . Pure white.....	\$0 10	\$0 50	\$1 85	\$3 00
1551 <i>Marj Pickford</i> . Creamy pink, suffused salmon.....	10	25	85	3 00
1552 <i>Powerscourt</i> . The best lavender.....	10	25	85	3 00
1553 <i>Pinkie</i> . Deep pink; very large flowers.....	15	35	1 10	3 60
1554 <i>Huntsman</i> . Scarlet.....	10	25	85	3 00
1555 <i>Tom Webster</i> . Mid-blue.....	15	35	1 10	3 60
1590 <i>Mixture</i> . All varieties.....	10	25	75	2 50

COLLECTION: One pkt. each of 6 Summer-flowering varieties (value 70 cts.) for 50 cts.

SCABIOSA

Pin-cushion Flower; Mourning Bride

This hardy annual is more in demand each year. Plants bloom from early summer till frost, and the long-stemmed flowers last nearly a week when cut. Excellent for beds or borders. Plant any time after the ground warms. Illustrated on page 29.

1291 <i>Azure-Blue</i> . Light blue.....	\$0 10	\$0 30
1290 <i>Peach Blossom</i> . Pink.....	15	50
1297 <i>Shanta</i> . Large; white.....	15	50
1298 <i>Yellow</i>	10	30
1292 <i>King of the Blacks</i> . Velvety black-purple. Pkt. 10 cts.; ½ oz. 30 cts.		
1296 <i>Rose</i> . Rich rose-pink. Pkt. 10c.; ½ oz. 30c.		
1300 <i>Mixed</i> . All colors. Pkt. 10c.; ½ oz. 25c.		

COLLECTION: One pkt. each of 6 varieties listed (value 70 cts.) for 50 cts.

SCHIZANTHUS

Butterfly Bush

1315 *Giant Hybrids, Mixed*. Very dainty annuals especially adapted for bordering beds of taller flowers. The pyramidal plants are literally covered with orchid-like flowers a few weeks after planting. Sow seed outdoors in the spring in any good garden soil and sunny location; for winter use in the house, sow in pots during the fall. Our mixture is made up of extra-select stock in bright colors and is fine for greenhouse and outdoors. Pkt. 20 cts.; ½ oz. 35 cts.



Schizanthus



Vinca

VINCA

Ornamental plants with glossy, bright green leaves. Very free flowering and one of the most satisfactory bedding plants. Blooms over a long time. Almost always free from bugs. Start in the open ground early in the spring.

1378 <i>Rose, with Dark Eye</i>
1379 <i>White, with Red Eye</i>
1380 <i>Mixed</i>

Any of the above: Pkt. 10 cts.; ½ oz. 45 cts.

VERBENA

Hybrida grandiflora. A new, free-flowering strain of Verbena producing individual flowers as large as a 50-cent piece. The bright-colored trusses are unusually large and easily grown in the greenhouse or outdoors. Plant outdoors as soon as ground warms and they will be in full bloom all summer. Illustrated on page 39.

1355 <i>Giant Blue with White Eye</i>
1356 <i>Giant Scarlet</i>
1357 <i>Giant White</i>
1359 <i>Giant Rose, with Dark Eye</i>
1360 <i>Giant Violet, with White Eye</i>
1358 <i>Etna</i> . Geranium-red, with yellow eye.

Any of the above: Pkt. 15 cts.; ½ oz. 45 cts.
1365 *Giant, Mixed*. Pkt. 10 cts.; ½ oz. 30 cts.

COLLECTION: One pkt. each of 6 colors listed for 65 cts.



Sweet Peas

ZINNIAS (Youth and Old Age)

We consider Zinnias the most showy and satisfactory of all annuals. The brilliant flowers of all shades make a gorgeous display from late spring until frost. Very free flowering and easily grown. The seed may be sown early in hotbeds or window-boxes and the plants set outdoors when the ground warms. May be sown in open ground after danger of severe frosts.

Giant Double Dahlia-flowered . This new type of Zinnia with deep flowers 6 inches across is very popular and free flowering. Grows 31 inches high. Illustrated on page 40.
1425 Crimson Monarch . Deep red.
1426 Exquisite . Light rose, deep rose center.
1427 Golden Yellow .
1428 Dream . Lavender-purple.
1429 Polar Bear . White.
1430 Ortolo . Orange and gold bicolor.
1431 Scarlet Flame . Bright red.
1435 Giant Double, Mixed .

Any of the above: Pkt. 15 cts.; ½ oz. 45 cts.; ½ oz. \$1.50

COLLECTION: One pkt. each of 6 Dahlia-flowered Zinnias, see page 40, (value 90 cts.) for 65 cts.

Giant Mammoth (California Zinnias). The free-flowering plants produce enormous flat flowers, getting away from the objectionable conical shape of the old-type Zinnias. Bright colors.

1444 Orange King . Burnt-orange.
1445 Lemon Queen . Pure yellow.
1446 Rose Queen . Rose shades.
1447 Scarlet Queen . Bright scarlet.
1448 Mrs. Willmott . Soft pink.
1450 Mixed, All Colors .

Any of the above: Pkt. 10 cts.; ½ oz. 35 cts.; ½ oz. \$1.25

COLLECTION: One pkt. each of 5 varieties listed (value 50 cts.) for 40 cts.

Elegans pumila, Dwarf Double (Cut-and-Come-Again). Considered one of the best for bedding, and the rich, fully double flowers are excellent for cutting. Grows 2 feet high.

1400 Golden Yellow	1404 Salmon-Rose
1402 Fireball . Scarlet.	1410 Mixed, All Colors

Any of the above: Pkt. 10 cts.; ½ oz. 25 cts.; ½ oz. 75 cts.

Lilliput. Dwarf-growing, compact plants 15 inches high, with very small, fully double flowers. Fine for table decoration.

1465 Golden Gem	1467 Salmon-Rose
1466 Scarlet Gem	1468 Mixed

Any of the above: Pkt. 10c.; ½ oz. 25c.; ½ oz. 65c.

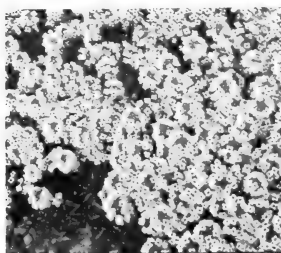
For Flowers All Season, Plant Annuals with Your Perennials

Perennial Seeds

Perennial Flowers of the finest kinds may be grown from seed, with but little more effort than Annuals. Sow the seed in late spring and establish the seedlings in the autumn in the places where they are wanted to bloom the next summer and thereafter.



Gypsophila paniculata



Alyssum



Delphiniums

- 511 **ALYSSUM saxatile compactum**. Showy, bright yellow flowers on plants 9 inches high. Excellent hardy perennial for rockwork or edging. Pkt. 10 cts.; $\frac{1}{2}$ oz. 40 cts.
- 515 **ANCHUSA italica, Lisadell**. The bright blue, forget-me-not-like flowers, on stems 4 feet high, make a showy display during the summer. Pkt. 15 cts.; $\frac{1}{2}$ oz. 45 cts.
- 590 **AQUILEGIA, Long-spurred Hybrids**. This superb strain of Columbine, with long spurs, comes in shades of blue, scarlet, rose, pink, cream, and white and makes a beautiful showing in the spring. Blooms the first year from seed if planted in early spring. Very easily handled and attractive in formal plantings. 8 in. Pkt. 15 cts.; $\frac{1}{2}$ oz. 50 cts.
- 595 **ARABIS alpina (Rock Cress)**. One of the earliest spring flowers. The tufts are covered with pure white blooms. Excellent for rock-gardens and edging. 9 in. Pkt. 10 cts.; $\frac{1}{2}$ oz. 35 cts.
- 605 **ARMERIA formosa (Sea Pink)**. Dwarf-growing edging or rock-garden plant with grass-like leaves, bearing pretty rose-pink flowers in spring. 12 in. Pkt. 15 cts.; $\frac{1}{2}$ oz. 35 cts.
- 690 **AUBRIETIA (Rock Cress)**. Valuable for borders and rock-gardens. In early spring the spreading plants are covered with rose, blue, and lilac flowers. 6 in. Pkt. 15c.; $\frac{1}{2}$ oz. 35c.
- 710 **BELLS perennis, Giant Double, Mixed (English Daisy)**. Dwarf bedding plants suited for most locations. Flowers of white, red and rose shades are very attractive during spring and early summer. Fine rock-garden plant. 5 in. Pkt. 10 cts.; $\frac{1}{2}$ oz. 45 cts.

DELPHINIUM

Stokes Giant Exhibition Hybrids. This seed has been produced from the choicest named varieties selected from large collections from the best American and English Delphinium specialists. Where our seed is grown, the tall flower-spikes are completely covered with large blooms of all shades and a good percentage of double flowers. The colors are wonderful, ranging from palest lilac-lavender to rich violet-blue, including the much-prized pink, mauve, and pastel shades. Many of the double flowers have crested white or black centers. This strain is unusual and will please the most particular grower. Giant exhibition blooms are easily grown from seed in this vigorous strain. Full planting directions furnished.

856 Art Shades.
859 Medium Blue Shades.
858 Orchid and Light Blue Shades.
857 Dark Blue Shades.
855 Stokes Exhibition Hybrids, Mixed.

Any of the above: Pkt. 50 cts.; $\frac{1}{2}$ oz. 51

- 860 **Belladonna, Improved**. The highly light blue flowers of this improved strain are much admired. Freest flowering of all Delphiniums. Pkt. 25 cts.; $\frac{1}{2}$ oz. 70 cts.; oz. \$4.50.
- 861 **Bellarosum**. The dark blue form of the popular free-flowering Belladonna. Pkt. 25 cts.; $\frac{1}{2}$ oz. 70 cts.; oz. \$4.50.
- 862 **Choicest Mixed**. Good mixture of single-flowered varieties. Pkt. 15 cts.; $\frac{1}{2}$ oz. 35 cts.

CAMPANULA

- 736 **Cup-and-Saucer Varieties, Mixed**. Undoubtedly the finest of all Campanulas. The rich blue, white, and rose flowers from early spring to midsummer are very effective. 30 in. Pkt. 10 cts.; $\frac{1}{2}$ oz. 30 cts.
- 735 **Rotundifolia (Blue)**. Bells of Scotland! Bright blue flowers. Fine in rockery. 12 in. Pkt. 25 cts.; 3 pkts. 50 cts.
- 850 **SHASTA DAISY**. The graceful white flowers, produced on long stems, are often 5 inches across and excellent for cutting. 3 ft. Pkt. 10 cts.; $\frac{1}{2}$ oz. 40 cts.

DIANTHUS

Hardy Garden Pinks

- 880 **Plumarius semperflorens, Mixed**. Charmingly variegated, double, semi-double, and single flowers in fine range of colors. Blooms over a long season. Pkt. 15 cts.; $\frac{1}{2}$ oz. 40 cts.
- 873 **Sweet Wivelsfield**. This new hybrid Dianthus originated in England and is a cross between *D. alwoodii* and Sweet William. Plants grow about 12 inches high. When planted outdoors in early spring, will flower from the middle of summer until frost. This mixture contains beautiful shades of scarlet, pink, and crimson. Pkt. 25 cts.; 5 pkts. \$1.
- 885 **FOXGLOVE (DIGITALIS), Giant Shirley**. The finest Foxglove ever offered, and a great improvement over all others. The tall stately spikes, 4 to 5 feet long, are closely set with gloxinia-like flowers ranging from pure white to deep rose, all most attractively spotted or blotched. Make a gorgeous showing. Pkt. 15 cts.; $\frac{1}{2}$ oz. 30 cts.
- 925 **GAILLARDIA, Giant Portola Hybrids**. This magnificent strain is undoubtedly the greatest improvement made in Gaillardias. The flowers are orange, tipped yellow, on strong, upright stems often 4 inches across. Excellent cut-flowers. Blooms all season. Pkt. 15 cts.; $\frac{1}{2}$ oz. 45 cts.

GYPSOPHILA

- 960 **Paniculata, Double White**. One of the most important hardy perennials of recent introduction. This Double Baby's Breath, with panicles of small white flowers, may be used in mixed bouquets or by itself. Blooms late spring and early summer. 3 ft. Pkt. 20 cts.; $\frac{1}{2}$ oz. 50 cts.
- 962 **Repens**. Excellent for rock-gardens. Plants 4 inches high, covered with pure white flowers. Pkt. 15 cts.; $\frac{1}{2}$ oz. 25 cts.
- 990 **HOLLYHOCKS, DOUBLE, Mixed**. For planting among shrubbery or forming a background, there are few plants that equal Hollyhocks. The beautiful flowers are closely placed on stems 7 to 8 feet tall, and add greatly to any garden. They vary in color from white to darkest red, and shades of yellow. Flowers early in summer. Pkt. 10 cts.; $\frac{1}{2}$ oz. 45 cts.
- 1030 **LATHYRUS, Mixed (Everlasting or Perennial Sweet Pea)**. This very showy, free-flowering climber is excellent for covering stumps, fences, and the like. Blooms almost all summer. Fine for cutting. Contains shades red, pink, and white. Pkt. 10 cts.; $\frac{1}{2}$ oz. 25 cts.
- 1035 **LINARIA cymbalaria (Kenilworth Ivy)**. A very attractive, hardy, perennial trailing plant with lilac-blue flowers. Suitable for pots, rockwork, and hanging-baskets. Easily grown. Pkt. 15 cts.; $\frac{1}{2}$ oz. 35 cts.

- 1045 **LINUM perenne (Perennial Flax)**. Very effective bedding plant with fine foliage. The light blue flowers on delicate stems make an attractive display during the summer. 15 in. Pkt. 10 cts.; $\frac{1}{2}$ oz. 35 cts.
- 1065 **LUPINE, New Regale Hybrids, Mixed**. This hardy perennial with long, graceful spikes of pea-shaped flowers adds charm to the garden in June and July. Does well in any good garden soil. An unusual range of colors. Excellent for cutting. Pkt. 15 cts.; $\frac{1}{2}$ oz. 45 cts.
- 1230 **PHYSALIS (Chinese Lantern Plant)**. Ornamental, forming dense bushes 2 feet high, covered with bright orange-scarlet seed-pods that are cut and dried for winter use. Very easily grown. Pkt. 10 cts.; $\frac{1}{2}$ oz. 25 cts.
- 1248 **POTENTILLA, Mixed**. A dainty plant for borders or use in rock-gardens. The single and double flowers, in mostly orange and red shades, are very attractive. Blooms in late spring and early summer. Pkt. 15 cts.; $\frac{1}{2}$ oz. 40 cts.

Grow Flowers for the Roadside Market

PERENNIALS, continued

ORIENTAL POPPIES

Papaver

The very large, bright-colored flowers add charm to the garden in May and June. So seed in early spring. Mark plants with a stake, as during July and August the tops die but come up again in the fall. Any transplanting should be done in the fall.

1211 Orientale. Large, bright scarlet flowers with black blotches. Feathery stems 3 feet long. Pkt. 10 cts.; ½ doz. 30 cts.

1212 Orientale, Princess Victoria. Salmon-pink. Very beautiful. Pkt. 15 cts.; ½ doz. 45 cts.

1210 Orientale, Mixed. Orange, pink, and red shades. Pkt. 10 cts.; ½ doz. 30 cts.

1215 ICELAND POPPIES, New Hybrids. This improved strain of everblooming, hardy, perennial Poppies flowers for 6 months after the seed is sown. If the pods are kept picked will bloom all summer. Flowers come in shades of yellow, orange, salmon, rose, and white. Very easily grown. Pkt. 15 cts.; ½ doz. 35 cts.

1256 PRIMULA Veris, Giant-flowered, Mixed (Cowslip). Beautiful, hardy perennial, blooming early in the spring. The flowers are mostly in shades of yellow, orange, and red and are produced on strong stems 15 inches long. Does best in cool, moist locations. Pkt. 20 cts.; ½ doz. 50 cts.

1260 PYRETHRUM, Mixed. The large, daisy-like flowers in shades of red, rose, pink, and white are very attractive. Flowers in early spring and in some locations will bloom again in fall. 2 ft. Pkt. 15 cts.; ½ doz. 40 cts.

1310 SCABIOSA, a Giant Hybrids (Isaac House Strain). This is a great improvement over all perennial Scabiosas. The frilled and ruffled flowers on long stems, in shades of blue, mauve, blue and white, are very handsome. Valuable for cut-flowers, lasting a long time in water. 3 ft. Pkt. 25 cts.; 5 pkts., \$1.

1345 SWEET WILLIAM. Probably the best known of all perennials and easily grown from seed. For best results, young plants should be started each year as they bloom more freely than old stock. Pkt. 10 cts.; ½ doz. 30 cts.

1375 VERONICA spicata, Mixed. Excellent border plants 2 to 3 feet tall. Small, dark green leaves and attractive, long spikes of blue, pink, and white flowers. Pkt. 10 cts.; ½ doz. 30 cts.

1385 VIOLA cornuta, Mixed (Tufted Pansies). Flowers are not as large as regular Pansies, but very desirable where a bright display is wanted. If planted in spring, will flower from June till frost. Pkt. 15 cts.; ½ doz. 40 cts.

1390 WALLFLOWERS, Finest Double, Mixed. A deliciously fragrant, half-hardy perennial blooming early in spring. In the North they must be given protection during the winter. Transplant to a coldframe if possible. Pkt. 15 cts.; ½ doz. 50 cts.



Iceland Poppies

FLOWER AND VEGETABLE PLANTS

During the last few years we have had such an increasing number of requests for plants that we have decided to handle the leaders.

Orders are shipped direct from the farm, and our plants are freshly dug for each order, carefully packed, and shipped promptly. We guarantee the safe arrival of all plants, and if not satisfactory write us within forty-eight hours and the unsatisfactory stock will be replaced free of charge; but in no case will the purchase money be returned.

Prices include packing, postage, or express charges to all points east of the Mississippi and north of the Gulf States. For orders beyond, add 10 per cent to cover the extra postage or expressage.

All plants are well rooted, hardened, and should be carefully planted promptly on arrival. In dry weather, give ample water when setting out plants, and at all times take care to see they do not dry out. When packing is opened, protect from sun and wind and keep the roots moist.

PERENNIAL FLOWERS

Ready for delivery any time during the spring

BELLIS, Double Mixed (English Daisy). A large-flowering strain of the favorite in a mixture of white, rose, and pink. Flowers from early spring until August, and requires protection during the winter months where the weather is severe. 8 inches high.

CAMPANULA persicifolia, Blue. One of the finest Bellflowers, with large, bright blue flowers. Grows 2½ feet tall.

CARNATIONS, Grenadin, Giant Double, Mixed. Many gardeners do not realize how easy it is to grow large-flowering Carnations outdoors. Just try a few plants of this special stock and see what a beautiful showing they make in your garden. The sweet-scented flowers of all colors are fully double. Blooms all summer.

COLUMBINE, Mrs. Scott Elliott's Mixed Shades. Considered the finest strain of Columbine available. The seed from which these plants were grown was procured from leading specialists. The large flowers with long spurs come in shades of red, rose, blue, pink, yellow, and white. This mixture contains all colors.

COREOPSIS grandiflora. The deep golden yellow, cup-shaped flowers on long stems are excellent for cutting, and the plants will bloom from early spring until frost if the flowers are not allowed to go to seed. Grows 2 feet high.

GAILLARDIA grandiflora. One of the showiest and most effective hardy perennials, blooming from early spring until frost. The bright crimson and gold flowers are excellent for cutting. Grows 2 feet high.

DELPHINIUM, Stokes Exhibition Hybrids. A mixture of all shades. Grown from seed selected from the finest collections in both America and England. The flowers range from pale lavender-lavender to rich violet-blue, and include the popular pinkish mauve and pastel shades, with a liberal number of double flowers. Mixed shades in 1-year plants, 30 cts. each; 75 cts. per doz.; \$1.35 for 6; \$2.40 for dozen.

Two-year, field-grown clumps of Delphiniums, balled and burrlapped, can be supplied in the following shades:

Light Blue Shades, with light center; with dark center.

Mauve Shades, with light center; with dark center.

Dark Blue Shades, with light center; with dark center.

Intermediate Shades, with light center; with dark center.

Mixture. All shades.

Any of above: Large clumps, \$1 each; \$10 per doz. For seed, see page 36

SWEET WILLIAM, Mixed. A complete mixture of all popular colors, making a splendid showing in beds and borders. The trusses of rich, varied flowers in bright colors are unusually attractive and sweet scented. A good cut-flower.

Prices on Perennial Plants, except where otherwise noted, 25 cts. each; 55 cts. for 3; \$1 for 6; \$1.85 per doz.; \$3.50 for 25.

Perennial Garden Collection

- | | |
|-----------|---------------------------|
| Bellis | Gaillardia |
| Carnation | Campanula |
| Columbine | Sweet William |
| Coreopsis | Delphinium (Mixed Shades) |
- 1 each of 8 varieties listed for \$3.50
1 each of 8 varieties listed for \$3.50

ANNUAL FLOWERS

Ready May 1, except where noted

ASTER, Queen of the Market, Mixed. The earliest flowering of all Asters, blooming in July. The good-sized flowers are valuable for cutting. Excellent for bedding. 25 cts. per doz., 45 cts. for 25, 75 cts. for 50, \$1.25 per 100, \$5.75 for 500.

Aster, American Late Branching, Mixed. Excellent type for all purposes. The flowers, on long stems, often measure 5 inches across when well grown. By all means plant some of this variety. 25 cts. per doz., 45 cts. for 25, 75 cts. for 50, \$1.25 per 100, \$5.75 for 500.

ANTIRRHINUM or SNAPDRAGON, Large-flowering Half-Dwarf, Mixed. This splendid type grows about 18 inches high and makes a gorgeous display all during the summer.

PANSIES, Mammoth, Mixed. These plants have grown from the finest stock obtained from Pansy specialists in America and Europe. The colors are unusually attractive, with just the right percentage of yellow, blue, wine-red, black, and blotched varieties. Flowers often measure 4 inches in diameter.

PETUNIAS, Bedding, Mixed. These large, free-flowering Bedding Petunias will make an unusual display from late spring until frost. Flowers average 3 inches across.

SCARLET SAGE or SALVIA. One of the most effective for bedding or individual specimens. Plants are completely covered with bright red flowers from early summer until frost. Very striking.

VERBENA, New Giant, Mixed. A complete mixture of giant-flowering Verbenas in shades of rose, blue, white, scarlet, and pink. The individual flowers will completely cover a 500-cent piece, and the large trusses of bright colors make an attractive display all summer.

ZINNIA'S, Giant Dahlia-flowered, Mixed. One of the easiest annuals to grow and probably the most satisfactory of all. They are a mass of color from early spring until frost and make a bright showing in every garden. 30 cts. for 6, 50 cts. per doz., \$1 for 25.

Prices on Annuals except where noted: 35 cts. for 6, 60 cts. per doz., \$1.10 for 25, \$1.50 for 50.

ANNUAL PLANT COLLECTION. 48 annual plants, 6 each of 8 varieties listed (value \$2.35) for \$2. 96 annual plants, 12 each of 8 varieties listed, \$3.50.

Vegetable Plants

CABBAGE

Golden Acre. A medium-sized, round-headed variety, and the earliest of all we offer.
Copenhagen Market. Similar to Golden Acre but matures about 10 days later.
Glory of Enkhuizen. A first-class, round-headed type considerably larger than Golden Acre and an excellent keeper or shipper.

Ready for shipment after April 1
 Any of above: 25 cts. per doz.; 45 cts. for 25;
 80 cts. for 50; \$1.45 per 100; \$3.50 for 500

CAULIFLOWER

Snowball. The finest of all large-headed varieties, and suitable for either early or late planting.

Ready for shipment after April 1
 Prices: 30 cts. per doz.; 50 cts. for 25; 90 cts. for 50; \$1.60 per 100; \$7 for 500

CELERY

For early planting, the following three varieties give excellent results and are hard to beat, whether for home-garden or for shipping to market. The quality is all that could be desired.

Golden Self-blanching **Golden Plumet**
Easy-blanching **Easy-blanching**
Fordhook Emperor. The finest of all nut-flavored Celery, producing short, stocky plants of exceptional quality. Good for local markets or the kitchen garden but does not ship long distances.

Ready for shipment after May 1
 Prices: 25 cts. per doz.; 45 cts. for 25; 75 cts. for 50; \$1.35 per 100; \$3.25 for 500

EGGPLANT

Black Beauty. Earliest and best of all large-fruited Eggplants. The large, oval, purplish black fruits are ready for picking at least 10 days ahead of all others. Very prolific, entirely spineless, and an excellent shipper.

Ready for shipment after May 1
 Prices: 30 cts. for 3 plants; 55 cts. for 6; 85 cts. per doz.; \$1.50 for 25; \$2.25 for 50; \$3.50 per 100; \$11.75 for 500.

LETTUCE

New York or Wonderful. Often referred to as "Iceberg." The large heads are closely folded, with outer leaves of a rich green and interior blanched pure white. The heart is crisp, juicy, and fine flavored.

Big Boston. The large heads, with bright green leaves and rich buttery yellow centers, are of excellent flavor.

Ready for shipment after April 1
 Prices: 25 cts. per doz.; 40 cts. for 25; 70 cts. for 50; \$1.25 per 100; \$4.75 for 500

PEPPERS

Ruby King. A very important variety commercially and excellent for the home. Fruits 6 to 7 inches long and 3 inches thick, of bright red color, mild, sweet, and highly productive.

Chinese Giant. One of the largest sweet red Peppers, maturing a little later than Ruby King but deserving an important place in the garden on account of its high quality and size.

Ready for shipment after May 1
 Prices: 25 cts. for 6; 35 cts. per doz.; 60 cts. for 25; \$1 for 50; \$1.70 per 100; \$7 for 500

TOMATOES

We are offering plants of three excellent varieties, maturing one week apart. Plant some of each variety, and you will be picking ripe Tomatoes from early summer until frost.

Break o'Day. An extra-early, large, red-fruited variety of fine quality and very prolific.

Bonny Best. This second-early variety is still a favorite with many planters, and the round, solid fruits, borne in clusters, ripen about one week after Break o'Day. A tremendous cropper.

Marglobe. The finest of all main-crop varieties, producing large, scarlet, round fruits ready to pick a few days later than Bonny Best. The leading shipping and home-garden variety and very prolific.

Ready for shipment after May 1
 Prices: 25 cts. per doz.; 45 cts. for 25; 80 cts. for 50; \$1.45 per 100; \$3.50 for 500

For those desiring late crops, field-grown plants can be supplied of the following after the dates mentioned.

CABBAGE—ready June 1: Copenhagen Market, Glory of Enkhuizen, Drumhead Savoy.
 Prices: 35 cts. for 25; 50 cts. for 50; 75 cts. per 100; \$2 for 500

CAULIFLOWER—ready June 1: Snowball.
 Prices: 25 cts. per doz.; 40 cts. for 25; 55 cts. for 50; 95 cts. per 100; \$3 for 500

CELERY—ready July 1: Golden Self-blanching, Easy-blanching, Golden Plumet, and Fordhook Emperor.

Prices: 25 cts. per doz.; 40 cts. for 25; 55 cts. for 50; 95 cts. per 100; \$3 for 500

TWO LEADING STRAWBERRIES

Premier. Adapted to all sections of the country. Ripens early and continues fruiting with the late varieties. Profitable for market and most desirable for the home-garden.

Prices: 85 cts. for 25; \$1.35 for 50; \$2 per 100; \$3.90 for 250; \$5.50 for 500; \$9 per 1000

Chesapeake. One of the best late varieties, extra large, and of exceptional quality.

Ready March and April

Stokes Lawn Grass

Special mixtures have been prepared to take care of the wants of our customers in all sections of the country, and when you order Stokes Lawn Seed you are sure of a good lawn. Only the best re-cleaned seed is used in our mixtures, and particular care is taken to see that our grasses are as free from weed seeds as possible. The mixtures include fine-bladed, slow-growing varieties, wanted in the best permanent lawns, as well as quick-growing grasses, making your lawn attractive soon after planting. Sow one pound for every 150 square feet.

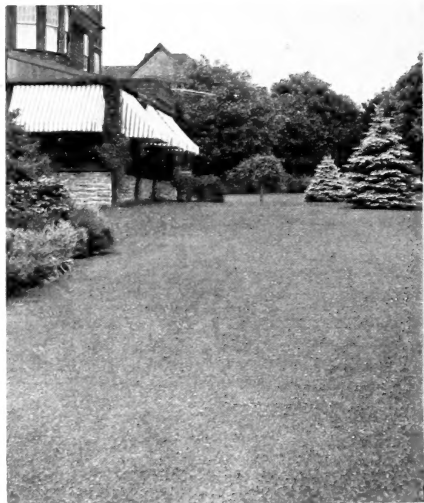
STOKES FINEST. (Our best mixture.) This carefully selected mixture contains a liberal percentage of the fine bent grasses so desirable for making a beautiful velvety lawn. The formula used has been worked out with great care and includes slow-growing, permanent varieties along with ones that will germinate quickly making a fine showing soon after planted. Lb. 45 cts.; 2 lbs. 85 cts.; 5 lbs. \$2; 10 lbs. \$3.75; bus. (20 lbs.) \$7.

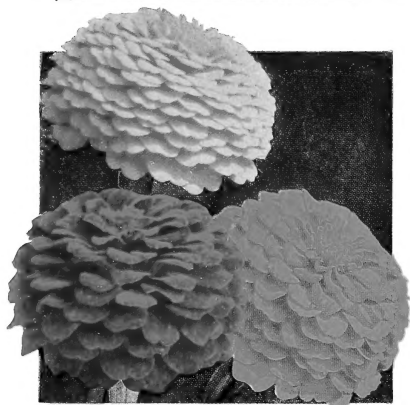
Stokes Evergreen. For the benefit of our customers not wishing to pay the price of our best mixture, we have prepared a special formula. Lb. 35 cts.; 2 lbs. 65 cts.; 5 lbs. \$1.60; 10 lbs. \$3; bus. (20 lbs.) \$5.75.

Shady Lawn. A specially prepared mixture for planting in shady locations. Lb. 50 cts.; 2 lbs. 95 cts.; 5 lbs. \$2.25; 10 lbs. \$4.25; bus. (20 lbs.) \$8.

Sunnyland. Does unusually well in southern states where so many of the ordinary mixtures have failed. With good care and plenty of water in hot, dry weather, this mixture will make a beautiful lawn. Lb. 40 cts.; 2 lbs. 75 cts.; 5 lbs. \$1.75; 10 lbs. \$3.25; bus. (20 lbs.) \$6.

WHITE DUTCH CLOVER. Lb. 75 cts.; 2 lbs. \$1.45; 5 lbs. \$3.25; 10 lbs. \$6.





CUT-AND-COME-AGAIN DWARF ZINNIAS

This dwarf type blooms profusely all summer.
Excellent cut-flowers

Salmon-Rose Golden Yellow Fireball

One packet each three varieties for 25 cts.

For further descriptions see page 35

GOLDEN GLEAM
New Sweet-Scented Double
Nasturtium. Pkt. 35 cts.



Fully described on page 34

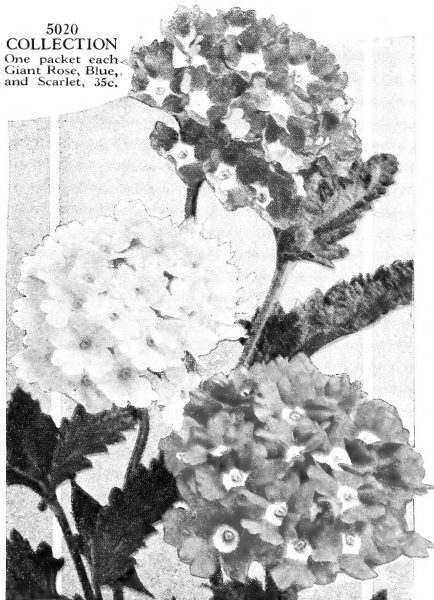


GAILLARDIA, Double Mixed. Pkt. 10c.; 1/4oz. 35c.

This showy annual blooms from early summer
until frost. Fine for cutting.

See page 32

**5020
COLLECTION**
One packet each
Giant Rose, Blue,
and Scarlet, 35c.



VERBENA HYBRIDA GRANDIFLORA, Mixed
Pkt. 15 cts.; 1/8oz. 45 cts.

Fully described on page 35

STOKES GIANT
DAHLIA-FLOWERED
ZINNIAS



5100. COLLECTION

*1 packet each Six Dahlia-Flowered
Zinnias illustrated*

- | | |
|------------------|--------------------|
| 1. Exquisite | 4. Golden Yellow |
| 2. Dream | 5. Oriole |
| 3. Scarlet Flame | 6. Crimson Monarch |

Value 90 cts. for 65 cts.

FRANCIS C. STOKES & CO., Inc.

Seed Growers
