

PORTLAND SERVICE CENTER  
Resource Standards & Technology  
Portland, Oregon

5700  
P712b

QL  
84.2  
L35  
no.156



# TECHNICAL NOTES

May 27, 1966

## PORCUPINE BAIT STATION

The control of porcupines is frequently a necessary forest development practice. This is particularly true in areas where pine species are of major importance. One control method found to be successful in controlling porcupines is poisoning with strychnine treated salt blocks attached to "stations."

First attempts at station construction utilized masonite, plywood, or lumber. Extensive use of these materials has produced an impressive list of deficiencies on their behalf (fig. 3).

This note describes an improved station constructed of aluminum half-round culvert as shown in Figure 1.

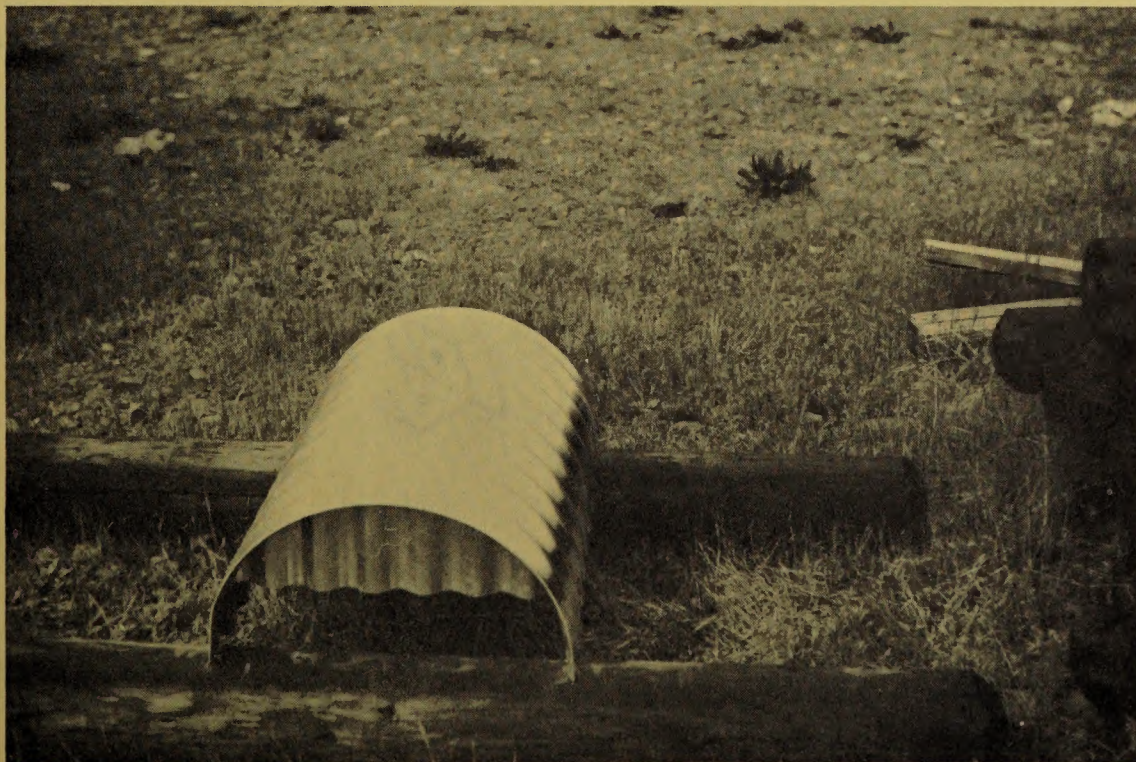
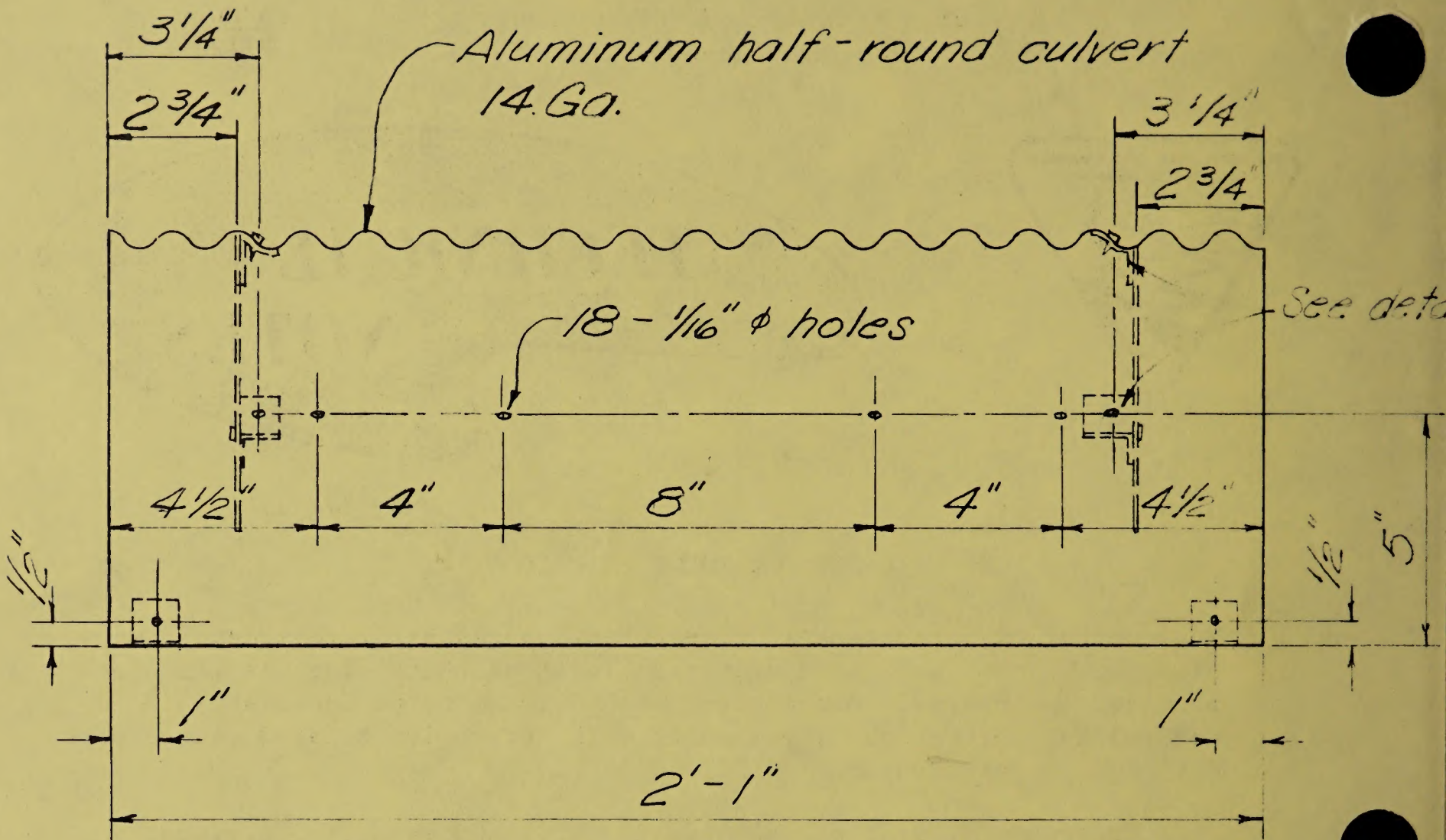
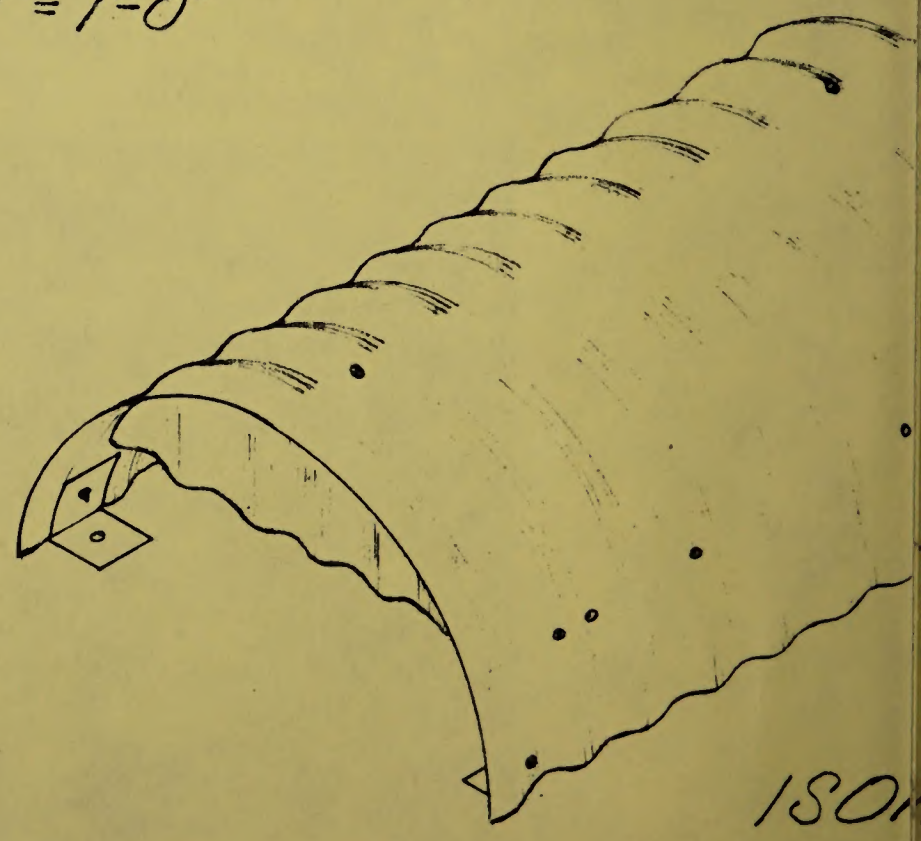


Figure 1 - Aluminum Bait Station



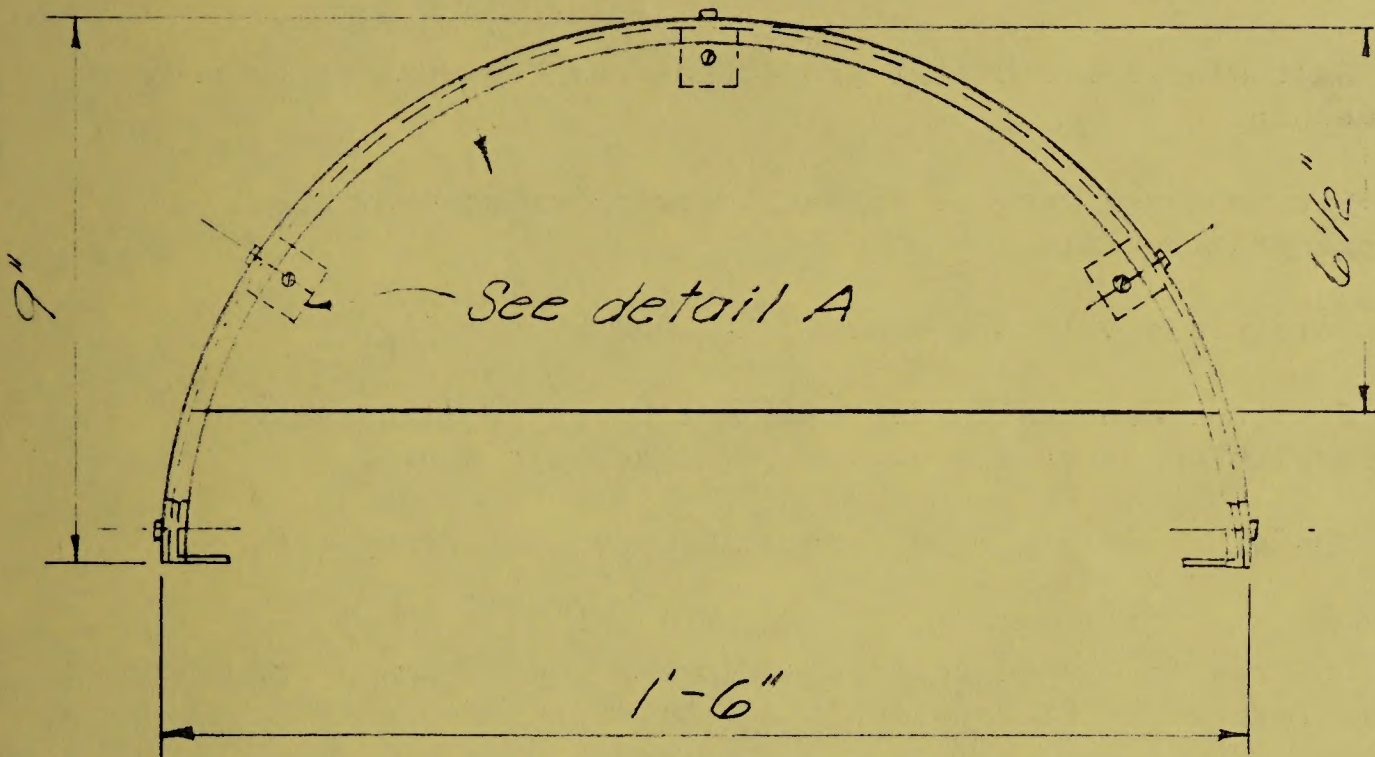
SIDE ELEVATION  
Scale: 3" = 1'-0"

NOTE: Aluminum screws  
and nails are to be used  
in fabrication.



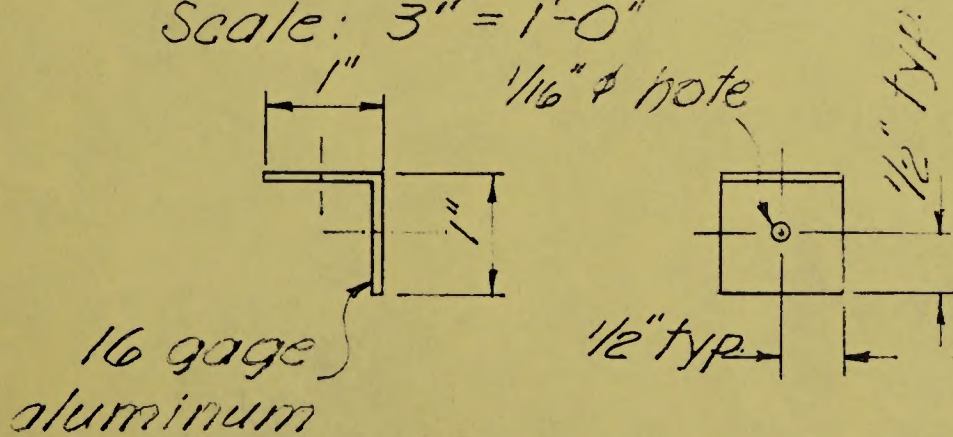
180

14 Ga. Aluminum corrugated  
sheet - both ends.



END ELEVATION

Scale: 3" = 1'-0"



DETAIL A (10 required)

Scale: 6" = 1'-0"

ETRIC VIEW

U. S. DEPARTMENT OF THE INTERIOR BUREAU OF LAND MANAGEMENT	
PORCUPINE CONTROL CYLINDER	
DESIGNED <u>L.J.J.</u>	RECOMM. <u>H.L. Haglund</u>
DRAWN <u>L.J.J.</u>	RECOMM. <u>C.J. Young</u>
CHECKED <u>W.M.</u>	APPROVED <u>Sam O'Connell</u> PSC CHIEF, DIV. OF ENG.
SCALE AS SHOWN	
DATE APRIL 1966	SHEET 1 OF 1
DRAWING NO. 36-11-6631-00-01	0007-01-01

Use of the Aluminum Bait Station gives the following advantages:

1. Life of the stations is lengthened since the aluminum will not deteriorate.

2. Salt blocks are better protected from the weather thereby reducing leeching.

3. Stations are very resistant to being crushed by snow, debris, large grazing animals.

4. Porcupines will not damage stations by gnawing.

5. Stations are easily deployed due to their light weight and the ease with which several may be stacked together.

6. The stations are more economical due to their greater lifetime.

7. Chances for accidental poisoning of game animals and livestock is reduced by the station's durability.



Figure 3 - After three years in the field this station is typical of wood and masonite construction.