A decorative border with a repeating geometric pattern of rectangles and squares, framing the text.

List of
PHLOX and ASTERS

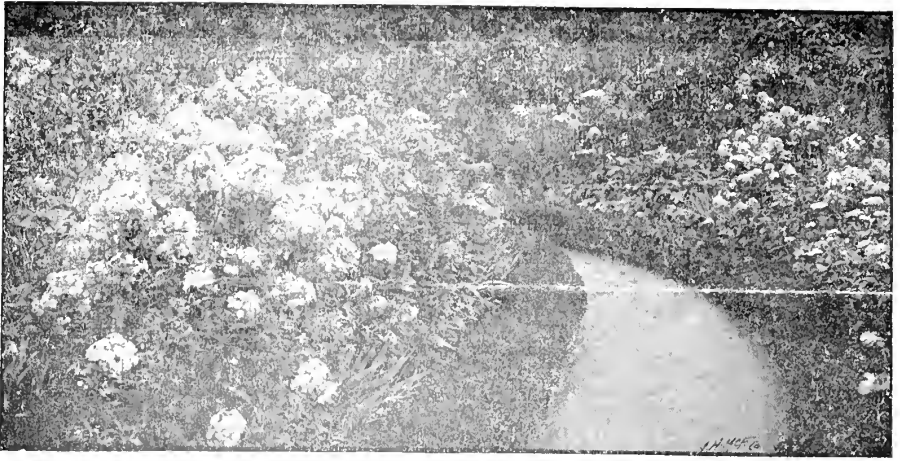
offered by

Eastern Nurseries

Henry S. Dawson, Mgr.

Jamaica Plain, Massachusetts





An attractive Box-edged herbaceous border, with large masses of Phlox

PHLOX

PHLOX is one of the most important of all Garden Flowers, and with the improved and lower-growing forms added to the list which already existed, it is now possible to have Phlox of some variety, in bloom in the garden from early Spring until late Fall. The greatest number of Phlox blooms till during late July and August—a time when we are most grateful for masses of bloom. Use it plentifully and use always plenty of white. We give below, a partial list of the large number which we carry, and in case you care to have us make a selection for you, we are giving on page 7 some combinations which we are offering at very reasonable prices.

PHLOX DECUSSATA or PANICULATA includes the taller growing sorts, which except where noted, are from 2-3 1-2 ft. in height, and bloom from early August until mid-September. Besides the varieties given below, we carry many others which will be found in our regular price-list. The price of these Phlox, except where otherwise noted is \$.20 each; \$1.50 per ten; \$10.00 per hundred.

ALBION, although one of the oldest, is still a great favorite. It is tall, large-flowered—each petal of the flower being slightly rayed with pink, giving it the appearance of a dainty pink eye. Blooms late August, just before Joan of Arc.

ANTONIN MERCIÉ, dark lilac with white centre, dwarf. \$.25 E.; \$2.00 N.; \$12.00 C.

AURORA BOREALIS, salmon scarlet, deep crimson eye.

BARON VON DEDEM, somewhat like Colquelicot, but of most lasting color—larger flowers and produced in larger clusters. The best of the scarlet-flowered Phlox. \$.25 E.; \$1.75 N.; \$12.00, C.

CHARLES DARWIN, soft salmon pink: medium height.

COLQUELICOT, another of the older and better known Phlox which is still a favorite. Good-sized pure scarlet flowers. Medium height.

CORAN D'ACHE, a showy large-flowered Phlox, blooming with the majority. The flowers are rosy-carmine with a violet centre. One of showiest.

CZARINA, one of the tallest and latest whites. This has good foliage and rather small white flowers with a tiny flush of pink at centre—it blooms between Albion and Joan of Arc.

EMBRASEMENT, medium height, with large clusters of huge flowers of deep salmon verging on the scarlet and fading softer.

EUGENE DANZANVILLIER, soft lilac blue, suffused with red and often with white eye.

FERDINAND CORTFZ, bright crimson.

FEU DE MONDE, salmon-red

FRAU ANTONIN BUCHNER, the newest and probably the finest of all the tall growing white Phlox. It has good habit: a long period of bloom and heavy clusters of flowers. \$.25 each. \$1.75 N.; \$15.00 C.

G. A. STROHLEIN, has large clusters and large flowers of scarlet-orange with bright carmine eye.

GRUPPENKONIGEN, flesh pink with carmine eye; low growing, free flowering. One of the most attractive of the pink phlox.

HERMIONE, a good dwarf white only 12-15 in.; when in flower, foliage is entirely hidden.

INDEPENDENCE, is one of the best whites; is of low habit; blooms early and has large clusters of good sized white flowers.

IRIS, one of the good purple-blue phlox, blooming late.

LE MAHDI, large flowered, dark purple violet. The best of the tall-growing purple Phlox. \$.25 Each; \$1.75 X.

LUMINEAUX, one of the older varieties, but distinct. Its flowers are very large; a good pink and star-shaped.

MADAME MEURET, bright red with deeper eye.

MICHAEL BUCHNER, light pink with darker centre.

MRS. COOK, tall, very late. Flowers medium size in large much-branched clusters and clear, soft magenta pink. End of August to October.

REICHSGRAF VON HOCHBERG, extra large clusters of brilliant amaranth purple flowers.

RIJNSTROM, this is very like Panthon—a bright carmine rose, but with huge flowers.

R. P. STRUTHERS, bright rosy-red with crimson eye.

SELMA, a strong-growing, large-clustered variety with huge soft pink flowers.

WM. MUILE, large-flowered salmon pink.

PHLOX SUFFRUTICOSTA. This group is lower growing, blooming at end of June and during July.

BELLE PYRAMID, good pink; beautiful foliage; 18-24 in.

FORWARD, the growth sturdy and foliage glossy; flower is striped white and purple. 2-3 feet.

INDIAN CHIEF, flowers large purple-pink in heavy trusses. 2-3 feet.

MISS LINGARD, tall growing with white flowers, tinged with pink at centre.

RINGLEADER, soft red with crimson eye. One of the earliest, only 10 inches high.

ASTERS OR MICHAELMAS DAISY

The Perennial Asters have now been improved upon until they are quite as important to the Fall garden, as is the Phlox to the summer garden. In fact, many of the late Phlox and early Asters are used together with pleasing effect. Below are a few of the many varieties. The Asters of the following list will be \$.20 Each; \$1.50 per ten, unless otherwise noted.

ALPINUS, is quite apart from the other sorts, in that it blooms in early Spring, and is only 6-10 inches high. It has good-sized, showy, blue flowers in large quantities—lovely for the border or rockery.

ALPINUS GOLIATH, a variety with somewhat larger and more purplish flowers.

ALPINUS SUB-COERULEUS, is taller growing than the above, and has mauve blue flowers with clear yellow centre, 2 feet.

AMELLUS, vivid royal-purple flowers with deep yellow centre. Many flowers on stiff stemlets. Wonderful color.

AMETHYSTINA, lavender aster.

BEAUTY OF COLWALL, low, good size; pink violet, abundant flowers; one of the best. \$.30 each; \$2.50 per ten.

CLIMAX, tall, heavy foliage, flowers flat, two rows of petals, pure blue, finest of all. \$.35 Each; \$3.00 per ten.

GERTRUDE, medium-sized flowers, light violet, early, abundant bloomer.

GRANDIFLORA, large flowered, deep purple, very late, one of the best.

LAEVIS, foliage good, flowers large, deep pink violet.

LAEVIS FLORIBUNDA, like Laevis, flowers lighter and fuller.

NOVAE ANGLIAE, New England Aster, \$.15 Each; \$1.00 per ten.

NOVAE ANGLIAE RUBRUM, tall growing flowers, vivid magenta pink. \$.15 each; \$1.00 for ten.

NOVELTY, low and bushy, flowers small, finely cut. Same magenta as Aster Novae Angliae Rubrum, but only half as large. Might be used together.

PTARMICOIDES, very dwarf, linear leaves, flowers all at top, white, one inch wide, flat, dainty.

REGINA, good foliage up flowering stem, flowers pink lavender, like Thomas Ware, but little bluer.

SNOWFLAKE, low-growing flower stem from rosette of foliage, flowers white, turning violet as they fade. Early.

THIRZA, very dainty, foliage good, flowers pink, one inch across, blends beautifully with Thomas Ware and Regina. \$.25 each; \$2.00 per ten.

THOMAS WARE, large flowers of pure pink with yellow centre. good foliage, dainty, one of best.

TOP SAWYER, tall grower, good habit and foliage, large flowers of pink violet, one of the best.

TURBINELLUS, narrow foliage, flowers medium, violet low-growing, not branched.

WILLIAM BOWMAN, straight and stalky, good foliage up, flowers huge violet-red turning royal purple, petals curling inward over centre.

WHITE QUEEN, good-sized white flowers, lavender flush at tips when opening, low-growing, late.

GROUP A. The Following Collection for \$2.50

- 6 Phlox Paniculata Albion.
- “ “ Antonin Mercie.
- “ “ Colquelicot.
- “ “ Embracement.
- “ “ Eugene Danzanvillier.
- “ “ Independence.

GROUP B.

Two each of GROUP A for \$1.00.

GROUP C. The Following Collection for \$3.50

- 6 Phlox Paniculata Hermione.
- “ “ Eugene Danzanvillier.
- “ “ Independence.
- “ “ Le Mahdi.
- “ “ Madame Paul Dutrie.
- “ “ Czarina.
- “ “ Mrs. Cook.
- “ “ Rijinstroom.

GROUP D.

Two each of GROUP C for \$1.25.

GROUP E.

The Following Collection for \$3.00

- 6 Aster Climax.
- 6 “ New England.
- 6 “ Regina.
- 6 Top Sawyer.
- 6 “ Sibericus.
- 6 “ Snowflake.

GROUP F.

Three each of GROUP E for \$2.00.

These prices include the PACKING, but not the cost of delivery. Delivery will be made by EXPRESS unless otherwise directed.

Phlox
Aster