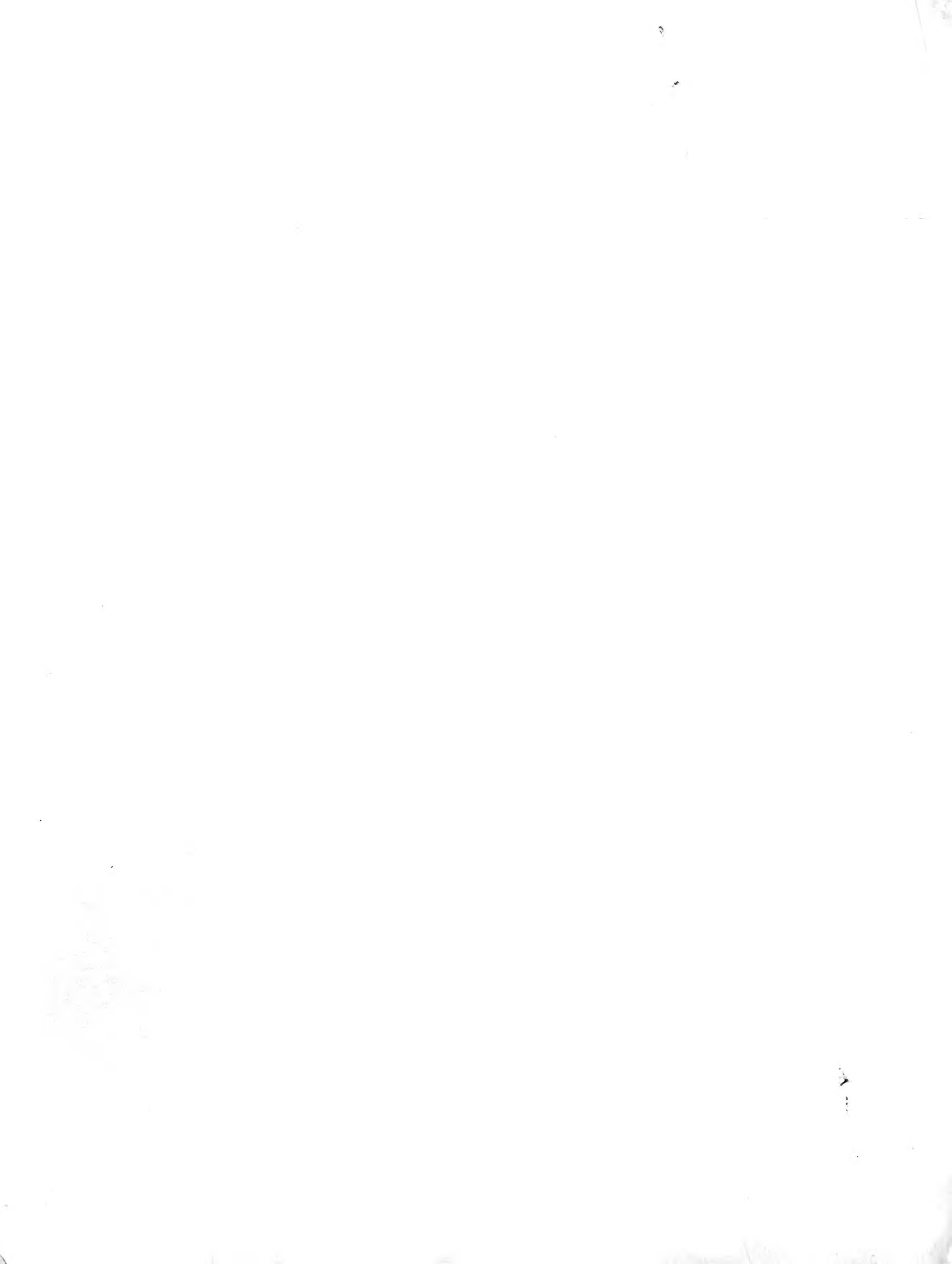


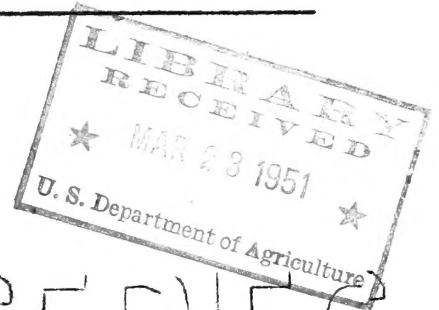
Historic, archived document

Do not assume content reflects current scientific knowledge, policies, or practices.



1951

PRICE LIST



MITCHELL NURSERIES

- COUNTRY CLUB ROAD -

Phone 2076-R

BARRE, VT.

ROCK GARDEN PLANTS

FOREWORD

The developing National Emergency has made us feel that most of our fertile acres should be devoted to the production of food, also such things as raspberry and strawberry plants. Therefore, most of our time, energy, and space will this year be devoted to this.

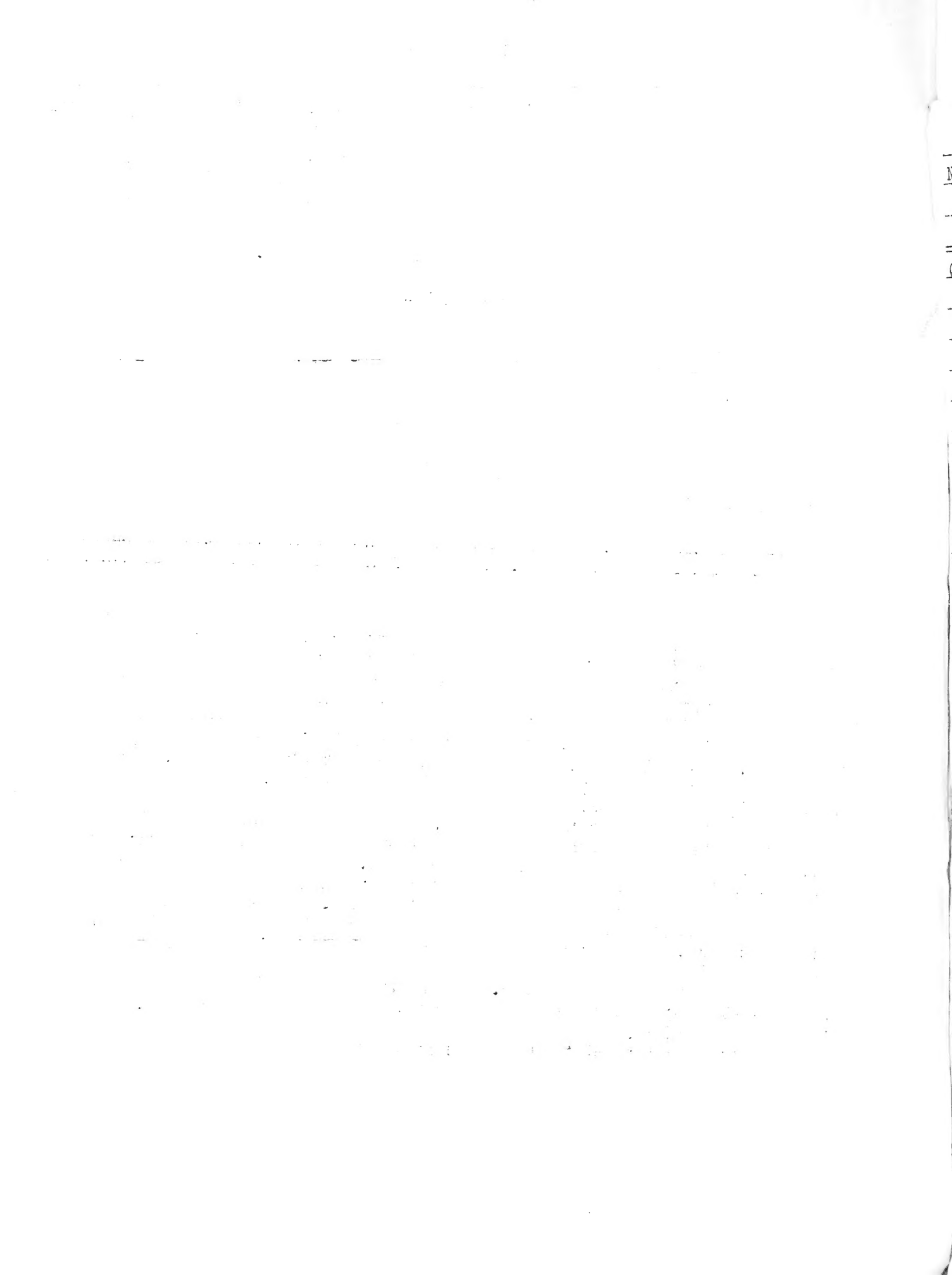
Production of Rock Plants has been and will be severely curtailed. The plants listed are in good stock, however, and can be shipped promptly after the first of April, when digging can usually be started.

During the winter now passing, there have been several very severe freezes with no snow on the ground. This condition often means some winterkilling of plants. Therefore, substitutes should be listed with any order sent in.

We guarantee plants to be true to name, and that shipments will be in good condition when left at our local Post Office or Express office. We cannot guarantee that they will reach YOU in good condition.

Orders sent in after Mar. 15 should have 10% added for parcel post charges, unless shipment by Express is desired. Either way is slow.

No order accepted that does not total at least \$2.00.



STANDARD NURSING

BY MRS. J. W. BROWN

The following is a list of the various subjects included in the course of study for the Standard Nursing Certificate. The course is designed to provide a thorough and practical education in the field of nursing, and to prepare the student for the various duties and responsibilities of a nurse in a hospital or other institution.

The subjects included in the course are:

- 1. Anatomy and Physiology
- 2. Hygiene and Sanitation
- 3. Dietetics
- 4. First Aid
- 5. Nursing Fundamentals
- 6. Medical and Surgical Nursing
- 7. Obstetrics and Gynecology
- 8. Pediatrics
- 9. Mental Nursing
- 10. Public Health Nursing
- 11. Administration of Nursing
- 12. Research in Nursing

The course is divided into two years of study, and the student is required to complete a certain number of hours of instruction in each subject. The student is also required to complete a certain number of hours of clinical practice in a hospital or other institution. The student who successfully completes the course is awarded the Standard Nursing Certificate.

ACHILLEAS are easy and attractive rock plants, blooming in late spring, needing sun and light soil. All are 40¢ each, 3 for \$1.00.

- A. ageratifolia:-8 inches, with white flowers.
- A. aureus:-8 inches, brilliant flat yellow blooms.
- A. Lewisii:-6 inches, with light yellow flowers.
- A. umbellatum:-6 inches, with white flowers in July.

AJUGAS are good ground covers in sun or shade, doing well in poor soil.

- A. Brockbanki:-6 inches, with blue flowers.
- A. variegata:-5 inches, variegated foliage, very attractive.

AETHIONEMA coridifolia:-6 inches, with a mass of pink blooms in June. Easy in full sun and sandy soil. 50¢ each, 3 for \$1.25.

ALLIUMS are flowering onions, growing well most anywhere. 40¢ each.

- A. flavum:-10 inches, with yellow heads of drooping flowers.
- A. Moly:-12 inches, large umbels of yellow flowers in August.
- A. pulchellum:-15 inches, loose umbels of pink flowers in Aug.

ALYSSUMS have attractive gray foliage, flowering freely in full sun.

- A. Moellendorffianum:-8 inches, yellow blooms most of summer.
- A. ovirense:-prostrate habit, bright yellow flowers.
- A. spinosum:-white flowers on a round clump. Long lived.

ANDROSACE Chumbyi:-2 inches, silvery fur-coated rosettes with lovely pink blooms. Does well most anywhere if given some sun. 50¢ each.

ANTENNARIA dioica is a gray-leaved ground cover, very satisfactory.

ANTIRRHINUM asarina:-hardy prostrate snapdragon. White flowers. 50¢.

AQUILEGIAS are among the most graceful of rock plants. Do well in light shade, or in full sun as well. Ordinary soil.

- A. Akitensis:-8 inches, light blue and white flowers. 50¢ each.
- *A. Canadensis nana:-12 inches, being our native eastern Columbine.
- A. flabellate nana:-10 inches, bluish-white, short-spurred.

ARENARIA caespitosa aurea forms a close yellow mat, moss-like, with tiny white stemless flowers. Should be divided every few years.

- A. laricifolia:-larger than above. Very attractive.

ARMERIA alpina:-6 inches, grows most anywhere. Pink flowers.

- A. lauchiana:-4 inches, rosy pink flowers. One of the best.

ARABIS Kelleri:-4 inches, white flowers in spring. 50¢

- A. procurrens:-6 inches, masses of white flowers in early spring.

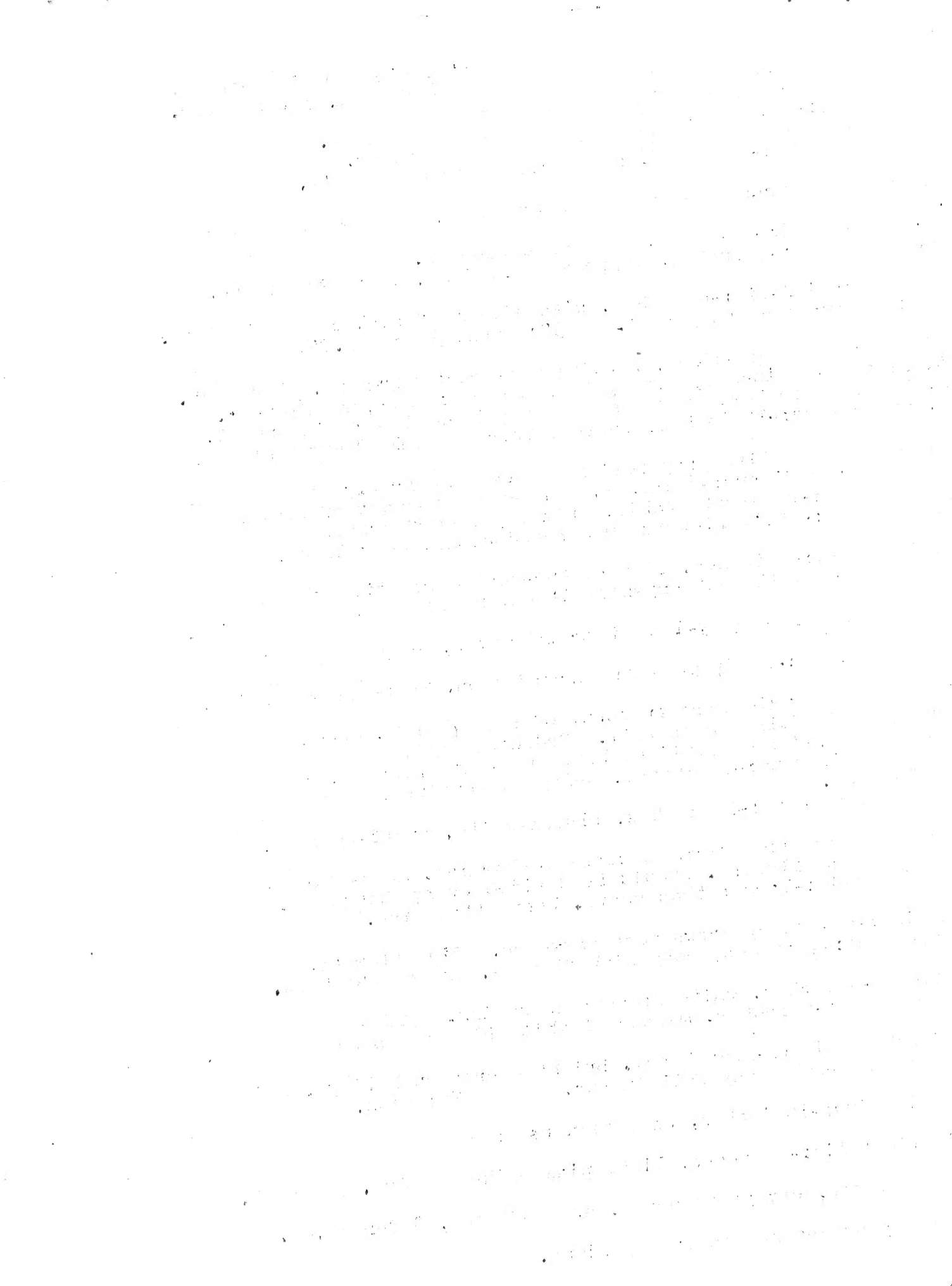
*ARCTOSTAPHYLOS Uva-Ursi:-Bear Berry. Bright evergreen foliage, red berries in fall. Acid stony soil in sun. 50¢ each.

ASTER linariifolius:-10 inches, blue flowers in Sept.

ASTILBE simplicifolia:-8 inches, light pink spikes in Aug. 50¢ each.

ALL the above plants, except as noted, are 40¢ each, 3 for \$1.00.

We pay the shipping charges on early orders.



ARTEMESIAS are grown for the lovely gray aromatic foliage. Easy.

- *A. canadensis:-native of the far north. 6 inches high.
- A. frigida:-12 inches, silky foliage, beautiful if kept trimmed.
- A. frigida, Silver Dome:-6 inches. Dwarf form of above. 50¢.
- A. pedamontana:-3 inches, small and lovely.

BELLIUM minutum:-tiny white daisy, blooming all summer.

CAMPANULA carpathica:-10 inches, old-fashioned Carpathian Harebells.
C. rotundifolia:-12 inches, blooms Aug. to Oct. Blue Bells.
C. sarmatica:-12 inches. Gray foliage, silvery blue flowers. 50¢.

CALAMINTHA alpina:-6 inches. Many purple flowers in late summer.
C. glabella:-dainty lilac flowers all summer, highly fragrant.

CANTANANCHE coerulea:-12 inches. Light blue daisies all summer.

CERASTIUM glaciale:-2 inches. The woolliest plant we have. Easy.
C. tomentosum:-6 inches, gray foliage with white flowers in May.

*CHIOGENES hispidula:-evergreen creeper with white berries in fall.
Needs shade.

*COPTIS trifoliata:-Goldthread. Shade-loving ground cover.

*CORNUS canadensis:-6 inches. The Bunchberry of the North. Acid & shade.

COREOPSIS auriculata:-6 inches. Large yellow blooms all summer.

CHRYSANTHEMUM alpinum:-4 inches. Single white daisies in October.

DIANTHUS, or Pinks, like it hot and sunny, doing well in poor soil.
D. atrorubens:-18 inches. Heads of red flowers on long stems.
D. carthusianorum:-12 inches, highly fragrant rose colored blooms.
D. deltoides, Major Stearns:-3 inches. Scarlet flowers.
D. furcatus:-5 inches. Rose colored flowers over green mats.
D. neglectus:-4 inches, with large deep pink blooms. 50¢ each.
D. Sternbergi:-6 inches, fragrant rose colored fringed flowers.
D. subacaulis:-3 inches. Dwarf, with numerous purple blooms.
D. Tiny Rubies:-4 inches. Miniature rose-colored carnations. 50¢.

DICENTRIA eximia:-10 inches, known as Plumy Bleeding Heart. Blooms all summer and fall. Rose-pink heart-shaped flowers.

*EPICAEA repens:-Trailing Arbutus, 2 inches. Acid soil & shade. 50¢.

ERIGERON glabellus:-15 inches. Purple daisy-like blooms in summer.

ERIOGANUM umbellatum:-6 inches. Yellow heads all summer. Hot & sandy.

EUONYMOUS colorata:-short vine with bronzy leaves in fall.
E. variegata:-similar to above, with variegated leaves. 50¢ each.

EUPHORBIA cyparissus:-8 inches. Very ornamental with yellow bracts.
E. myrsinites:-4 inches. Glaucus foliage.
E. polychroma:-16 inches. Yellow bracts in early spring.

Except as noted, all the above plants are 40¢ each, 3 for \$1.00.

Faint, illegible text, possibly bleed-through from the reverse side of the page. The text is arranged in several paragraphs and appears to be a formal document or report.

*GAULTHERIA procumbens, or Wintergreen:-6 inches. Acid soil, humus.

GENISTA cinerea:-24 inches. Masses of yellow blooms in early summer.
Needs plenty of room. 50¢ each.

G. prostrata:-4 inches. Prostrate, with yellow blooms. 50¢.

GERANIUM sanguineum lancastriense:-Loveliest of the hardy Geraniums,
4 inches high with light pink blooms veined with red. 50¢ each.

GEUM campanulatum:-15 inches. Reddish purple flowers. 50¢ each.

GLOBULARIA bellidifolia:-2 inches. Light blue flowers over low mat.

G. cordifolia:-larger than the above.

G. cordifolia albe:-white flowers.

GYPSOPHILA repens: trailing plants with many tiny white blooms.

HELIANTHEMUMS, or Rock Roses, do well in hot sandy locations, and
need quite a lot of room, forming a low wide mat.

H. Apricot:-name describes color.

H. Fireball:-double fiery-red blooms all summer.

H. carneum:-Lighter than above.

H. Mrs. Moon:-Lovely single blooms difficult to describe.

*HEPATICA, mixed, love leaf mold and shade and are beautiful in spring.

HIERACIUM villosum has hairy gray leaves, yellow blooms. 8 inches.

HOSTA Thomas Hogg:-12 inches. Green leaves, edged white.

H. variegata:-variegated leaves, blue flowers in mid-summer.

HYPERICUM repens:-6 inches. Brilliant yellow blooms most of summer.

IBERIS saxatilis:-3 inches. Rare plant with masses of white blooms
in early spring, and some in fall, evergreen foliage. 50¢ each.

IRIS for the Rock Garden are indispensable. Easy to grow, and hardy.

I. arenaria:-4 inches. Canary yellow blooms in spring. 50¢.

I. douglassi:-12 inches. Lilac purple blooms.

I. douglassi alba:-white form of above.

I. pumila:-6 inches. large purple flowers in spring.

I. pumila lutea: yellow form.

I. pumila Orange Queen:-yellowish orange.

I. pumila, The Bridge:-white form.

LAMIUM maculatum is a showy ground cover, pink flowers in profusion.

L. maculatum album:-white form of above; both will stand shade.

LIATRIS graminifolia:-2 feet. Short form of Kansas Gay Feather.

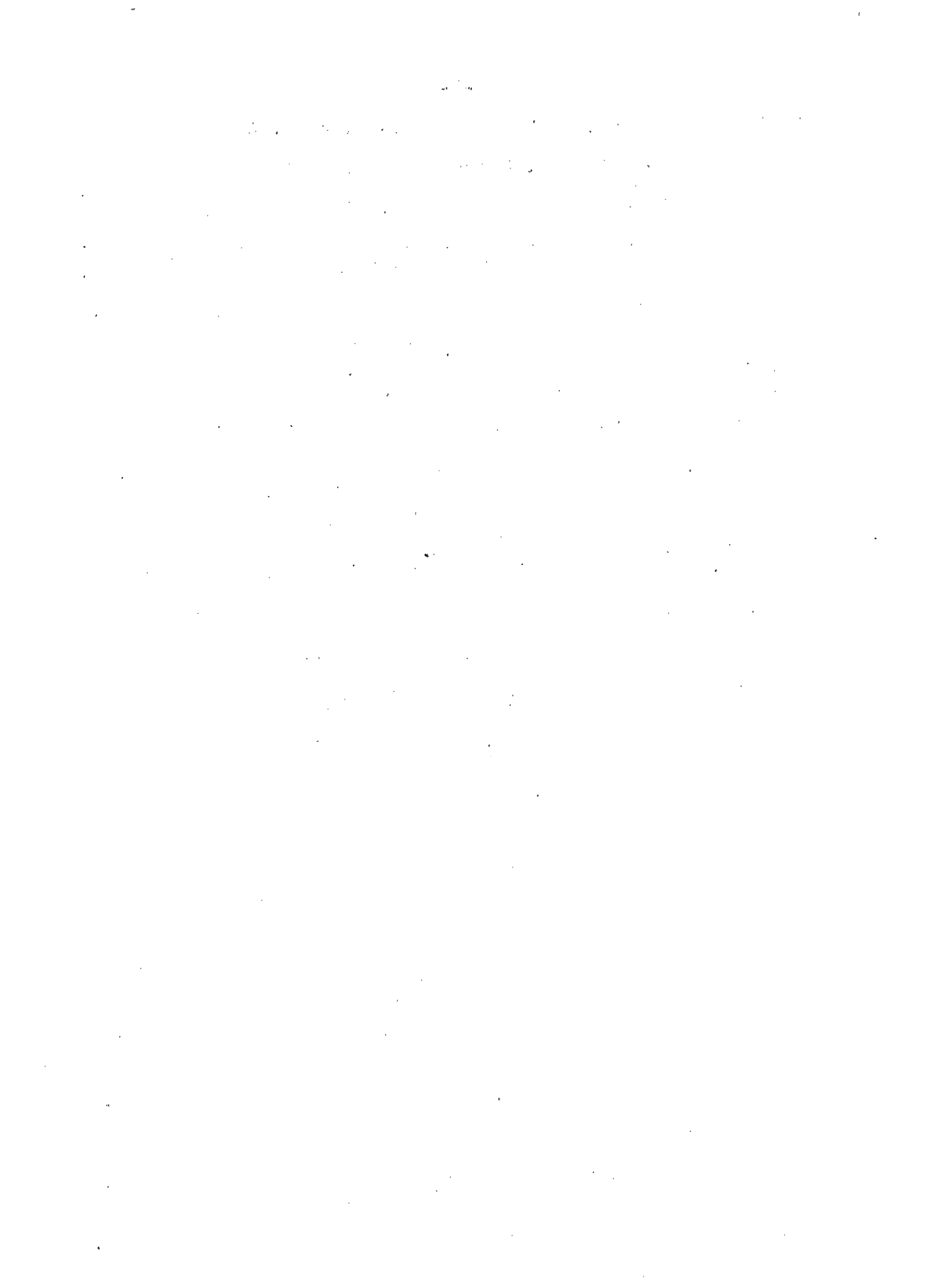
LINUM altaicum:-8 inches. lovely light blue cups all summer.

*LOISELEURIA procumbens:-1 inch. dark green mat from the mountains.

Not difficult in acid humusy soil with good drainage. 75¢ each.

LOTUS corniculatus, fl. pl.:-creeper with pretty yellow flowers.

LYCHNIS viscaria:-12 inches. masses of pink flowers in July.



- MICROMERIA croatica:-10 inches. Violet flowers in midsummer. 50¢.
- *MITCHELLA repens; Partridge Berry:-Creeper with evergreen foliage and red berries in fall. Leafmold and shade.
- MYOSOTIS palustris:-6 inches. Forget-me-not for moist places.
- NEPETA nervosa:-18 inches; pale blue flowers in spikes. 50¢ each.
- OMPHALODES verna:-6 inches. Clear blue flowers in May. Needs shade.
- ONONIS fruticosa:-18 inches. Prickly semi-shrub; pink blooms. 50¢.
- *PARNASSIA caroliniana montana:-6 inches; mountain form of "Grass of Parnassus". Creamy flowers over dark green foliage. August.
- PARONYCHIA argentea:-1 inch; light green foliage, papery flowers.
P. nivea:-lovely creeper. Both love the sun.
- PENTSTEMON glaber:-18 inches; glaucous foliage, light blue flowers.
P. Firebird:-18 inches. Brilliant red flowers, very popular.
P. Garnet:-similar to Firebird except a different shade of red.
- PHLOX for the Rock Garden like hot sunny locations, and give a riot of color in the spring, and scattering blooms in the fall.
P. amoena:-8 inches; lovely pink flowers in profusion.
P. bifida:-10 inches; purple flowers.
P. Glaberrima:-10 inches; mauve to purple flowers in July.
- PHLOX SUBULATA, or Ground Phlox, forms mats, draping over rocks.
P. alba: large white flowers.
P. Alexander's Pink: lovely pink blooms. 50¢ each.
P. atropurpurea: dark red.
P. Blue Hill: lavender, almost blue.
P. Brittoni; white, differing from Alba.
P. Sneewitchen; many tiny white blooms. Rare and desirable.
P. Tiny Tot; tiny pink blooms. Very good. 50¢ each.
P. Camla; pink blooms over a long period. 50¢ each.
- PLATYCODON Mariesii:-12 inches. large blue bells in August.
P. Mariesii alba:-white form of above.
- POLEMONIUM carneum:-15 inches; salmon flowers in late spring. Easy.
P. repens; the old fashioned Jacob's Ladder.
- POLYGONUM affine:-pink spikes 8 inches high over green mats.
- *POTENTILLA fruticosa montana:-dwarf mountain shrub, yellow bloom. 75¢.
P. fruticosa Purdomi:-20 inches; pale yellow bloom. Rare. \$1.00.
P. Warrensi:-15 inches; profusion of yellow flowers all summer.
- PRIMULAS are not difficult with rich well drained soil and light shade.
P. Dorothy:-6 inches. Yellow. 50¢ each.
P. Helene Purpurkissen:-3 inches; deep claret red. 50¢ each.
P. Primrose Lodge:-3 inches; rosy purple.
P. veris, mixed:-many shades of lovely flowers, 8 inches high.
- PULMONARIA saccharata, Mrs. Moon:-10 inches; silver and green marble foliage, flowers pink, washed with blue. likes light shade. 50¢ each.

RANUNCULUS bulbosa:-8 inches; yellow buttercups in August.

R. montanus:-5 inches; showy dwarf buttercup.

SAXIFRAGAS - our stock of these fine plants is too low to list any except as a collection, listed on the last page.

*SANGUINARIA canadensis, Blood root, is a fine wild flower, with large white flowers in early spring. Light shade and leafmold.

SEDUMS are wonderful for the hot dry rock garden, doing well in poor soil, and fitting nicely into tiny crevices. All are 40¢ each.

S.acre:3 inches; golden flowers over mossy foliage. Invasive.

S.acre minus: 1 inch. Like above, but not invasive.

S.album: 4 inches; white flowers over waxy foliage.

S.anglicum minus:-1 inch. Very small, white flowers.

S.anopetalum:-4 inches; yellow flowers over bronzy foliage.

S.bupleuroides:-5 inches; glaucous green foliage.

S.douglassi:-mossy foliage with yellow flowers. 4 inches high.

S.Ellacombianum:-6 inches; yellow flowers, attractive foliage.

S.Eversii:-8 inches; rose colored flowers in July.

S.floriferum:-5 inches; red foliage in winter, yellow flowers.

S.Forsterianum:-5 inches; trailing blue-green foliage.

S. gracilis:-very dwarf dark green foliage, white flowers.

S.gypsocolon:- 4 inches; gray foliage, white flowers. Unusual.

S.hybridum:- 5 inches; curious foliage

S.hispanicum minus:- 1 inch; light green round mats

S.Kamschaticum:- 6 inches; orange flowers

S.Lydium:-green and red mats, pink flowers. Very dwarf.

S.magallense:- 3 inches; green mat, white flowers in August.

S.middendorffianum:- 6 inches; brownish-yellow flowers.

S.monregalense:- 4 inches; white flowers in summer.

S.murale:- 4 inches; purplish foliage, white flowers.

S.Oreganum:- 3 inches; attractive fat leaves, yellow flowers.

S. radiatum:- 5 inches; gray foliage, yellow blooms.

S.rupestre:- trailing foliage, yellow flowers.

S.sexangulare:- mossy foliage with yellow flowers.

S.spurium coccineum:- 5 inches; rosy crimson flowers in August.

S.spurium Brilliant:- scarlet flowered form of above.

S.spectabile:- 12 inches; large bright green leaves, pink bloom.

S.spectabile Brilliant:- bright red flowers.

S.Stahli:- moss-like foliage, bright green.

S.stenopetalum:- 6 inches; deep green foliage, golden flowers.

S.stolonifera:- 3 inches; purplish pink flowers in August

S.Stribyrna:- 4 inches; evergreen foliage with golden flowers.

S.ternatum:- triangular leaves, white flowers.

SEMPERVIVUMS - - our stock has been temporarily depleted.

SANTOLINA incana:- 10 inches. "Lavender Cotton". Gray foliage.

SILENE maritima:- trailing plant, white flowers all summer.

SAPONARIA occymoides:- trailer, with many pink blooms.

SOLIDAGO cutleri:- 4 inches; yellow blooms, attractive and hardy.

STACHYS alpina:- 12 inches; velvety gray foliage, lavender flowers.



THYMES are very satisfactory rock plants, growing in crevices, or in stone walks. They have aromatic leaves, and attractive flowers.

- T.angustifolium:- 1 inch;narrow-leaved,with purple flowers.
- T.balticum:- 4 inches; fine foliage, pink flowers.
- T.citriodorus aureus:- 5 inches; Lemon-scented Thyme.
- T.Herba-baronne:- 8 inches; violet flowers in Sept.
- T.nummularius:- mat-forming,with round dark green shiny leaves.
- T.Mitchell's Pink:- 6 inches; gray foliage, pink flowers.
- T.vulgaris:- 8 inches;very fragrant,lilac flowers in June.
- T.serpyllum:- 1 inch; pink flowers on a green mat.
- T.serpyllum coccineum:- red form of above.
- T.serpyllum, album:- white flowers on fine mats.
- T.serpyllum, Annie Hall:-light pink flowers.

TRADESCANTIA brevicaulis alba:- 12 inches; white Spiderwort.

TUNICA saxifraga:- 6 inches; clouds of tiny pink blooms all summer.

VERONICAS are showy and dependable rock plants, and are easy to grow even in light shade. All are 40¢ each, or 3 for \$1.00.

- V.Allioni:- prostrate,with violet flowers 4 inches long.
- V.Blue Shiner:- 2 inches. green mats with light blue flowers.
- V.chamaedrys:- 8 inches,trailer with light blue flowers.
- V.corombosa:- 8 inches; dense plumes of azure-blue flowers.
- V.fruticosa:- 6 inches; semi-shrub with glossy leaves.
- V.gentianoides:- 10 inches; glossy leaves, light blue flowers.
- V."Hav-a-Look":- 4 inches;blue and white flowers in spring.
- V.incana:- 8 inches; bright gray leaves, blue flowers.
- V.nummularia:- 2 inches; mat forming, deep blue flowers in June.
- V.pectinata rosea:- 2 inches; gray mat with many single pink blooms.
- V.saxifraga:- 2 inches; small leaves, dark blue flowers.
- V.spicata erica:- 6 inches; pink spikes on attractive foliage.
- V.spicata nana:- 6 inches; masses of dark blue spikes.

VIOLETS:- We have many violets around the place, and this year are selling them in collections, only. Shade and leafmold are essential. 12 different Violets, not labeled, \$2.50.

*FERNS for Rock Garden. Shade and leafmold are essential.

- Asplenium pictum Goeringianum:- gray fronds. 75¢ each.
- Asplenium platyneuron: Ebony Spleenwort; graceful. 40¢ each.
- Asplenium trichomanes: Maidenhair Spleenwort: tiny, deep shade.
- Asplenium viride:- from the mountains. Dense shade. 75¢ each.
- Camptosorus rhyzophyllus, Walking Fern; limy dry soil on a ledge.
- Polysticum Braunii: shiny fronds, one of the best. 50¢ each.
- Polysticum achrostichoides; Xmas Fern. Evergreen, attractive.
- Woodsia ilvensis:- the lovable Rusty Woodsia. Dry ledges.

We also sell collections of large ferns for both sunny and shady places.

All above plants are 40¢ each, 3 for \$1.00, except as noted.

Plants listed at 50¢ each are 3 for \$1.25.

Collected wild flowers and mountain plants are sold at special low prices in quantity. Such plants are marked with an asterisk(*) .



- S P E C I A L S -

VERONICA FILIFORMIS--

Veronica filiformis has been in great demand the past year or so as a substitute for lawn grass where the latter will not grow, such as under large trees. It can be depended on to greatly improve these impossible spots, and will usually completely eliminate such eyesores. There has to be some soil, and some moisture, however. The plant will form a nice mat under very difficult conditions, but will not do the impossible. It is hardy, having stood Vermont winters for many years with no signs of winter killing.

A squarefoot, as we sell it, can be divided by the customer so as to plant 15 to 20 square feet. As it grows, vacant spaces between plants can be reset with pieces from the larger plants. Thus with a little care, a dense mat can be formed in a month or two.

The mat should be mowed with the lawn mower whenever blossoms appear in quantity, to keep it from flowering itself to death.

Veronica filiformis is an invasive plant, and should not be planted where growing conditions are good, or in a rock garden or other planting. In its place, as a substitute for lawn grass, it is wonderful.

PRICE - - \$2.00 per square foot.

COLLECTED WILD FLOWERS - -

The following wild flowers, not listed in the previous pages, are sold in quantities of not less than 12, at \$2.50 per dozen.

- Asarum canadensis, Ginger Root, ground cover for shade.
- Chelone glabra, White Turtlehead, good for boggy places.
- Clintonia borealis, Clintons Lily, shady spots.
- Lysimachia nummularia, Moneywort; ground cover for sun or shade.
- Sarracenia purpurea, Pitcher Plant; odd one for bogs.
- Saxifraga virginiana, Virginia Saxifraga; anywhere with shade.
- Trilliums, Wakerobin; several colors; shady spots with leaf mold.
- Vinca minor; Periwinkle; ground cover for sun or shade.

Plant collecting is an indefinite business, much depending on how much rush there is at the Nursery. Also, many back roads in Vt. are impassable in the spring. Plants will be shipped when it is possible to collect them, except during the heat of the summer. If gasoline should be rationed, our collecting style might be badly cramped, too.

PLANT COLLECTIONS - -

- #1 - 12 plants for the sunny rock garden, each labeled. \$3.00
- #2 - 12 plants for the shady rock garden, each labeled. \$3.00
- #3 - 12 Sedums, largest possible variety of foliage. \$3.00
- #4 - 6 Saxifragas; light shade; limey, sandy soil needed. \$2.00
- #5 - 6 Iris for the Rock Garden. \$1.75
- #6 - 6 Ferns for the Rock Garden. \$2.00
- #7 - 6 Ferns, large, for sunny places. \$1.75
- #8 - 6 Ferns, large, for shady places. \$1.75
- #9 - 12 Violets; shade and leafmold for these. \$2.50
- #10- 6 Rare mountain plants (shipped when collected). \$3.00

TERMS OF BUSINESS are CASH WITH ORDER. Make checks and money orders payable to Mitchell Nurseries. Shipping charges are prepaid on orders received, with cash, on or before March 15, 1951.

The first part of the document discusses the importance of maintaining accurate records of all transactions. It emphasizes that every entry should be supported by a valid receipt or invoice. This ensures transparency and allows for easy verification of the data.

Furthermore, it is noted that the records should be kept in a secure and accessible format. Regular backups are recommended to prevent data loss in the event of a system failure or disaster. The document also mentions that the records should be reviewed periodically to identify any discrepancies or trends.

In conclusion, the document stresses that proper record-keeping is essential for the success of any business or organization. It provides a clear framework for how to manage financial data effectively and responsibly.

The second part of the document focuses on the implementation of internal controls. These controls are designed to prevent errors and fraud, and to ensure that the organization's resources are used efficiently. Key areas of focus include the separation of duties, the use of standardized procedures, and the implementation of a strong security protocol.

It is also highlighted that training and education are crucial for the success of any internal control system. All employees should be aware of their roles and responsibilities, and should be encouraged to report any suspicious activity. Regular audits are also necessary to ensure that the controls are being followed and are effective.

Overall, the document provides a comprehensive overview of the best practices for managing financial data and implementing internal controls. It is intended to serve as a guide for organizations looking to improve their financial management and reduce the risk of errors and fraud.

The final part of the document discusses the importance of communication and collaboration in the financial management process. It notes that all departments should be kept informed of the organization's financial status and that there should be a clear line of communication between management and staff.

It is also emphasized that the financial management process should be a continuous one, with regular updates and reports. This allows for timely decision-making and the identification of any potential issues. The document concludes by stating that a strong financial management system is essential for the long-term success and growth of any organization.