

Historic, archived document

Do not assume content reflects current scientific knowledge, policies, or practice

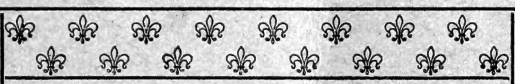
62.09

LIBRARY
RECEIVED
JUL 28 1923
U.S. Department of Agriculture

Established 1884

PRICE LIST

OF



1

FANCHER..

1

9

CREEK

9

0

NURSERIES

0

1

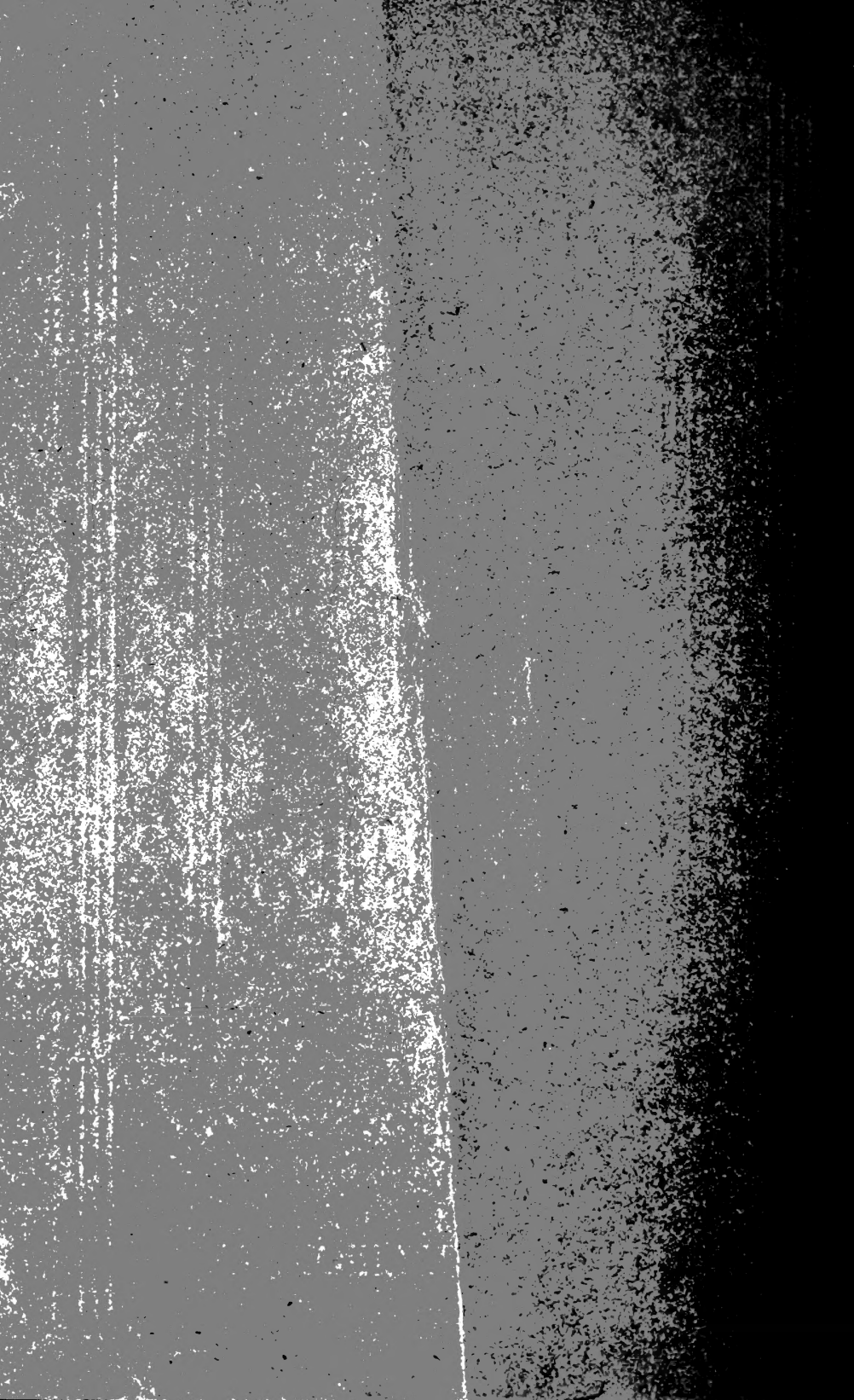
2



.. George C. Roeding ..

PROPRIETOR

FRESNO, CALIFORNIA



TO THE TRADE.

10 per cent discount on Citrus Trees.

20 per cent discount on all other stock.

...Largest Acreage in the West...



Three Nurseries



EXPERIMENTAL FARM

Olive Tree and Ornamental Nursery,
640 Acres, Six Miles East of Fresno



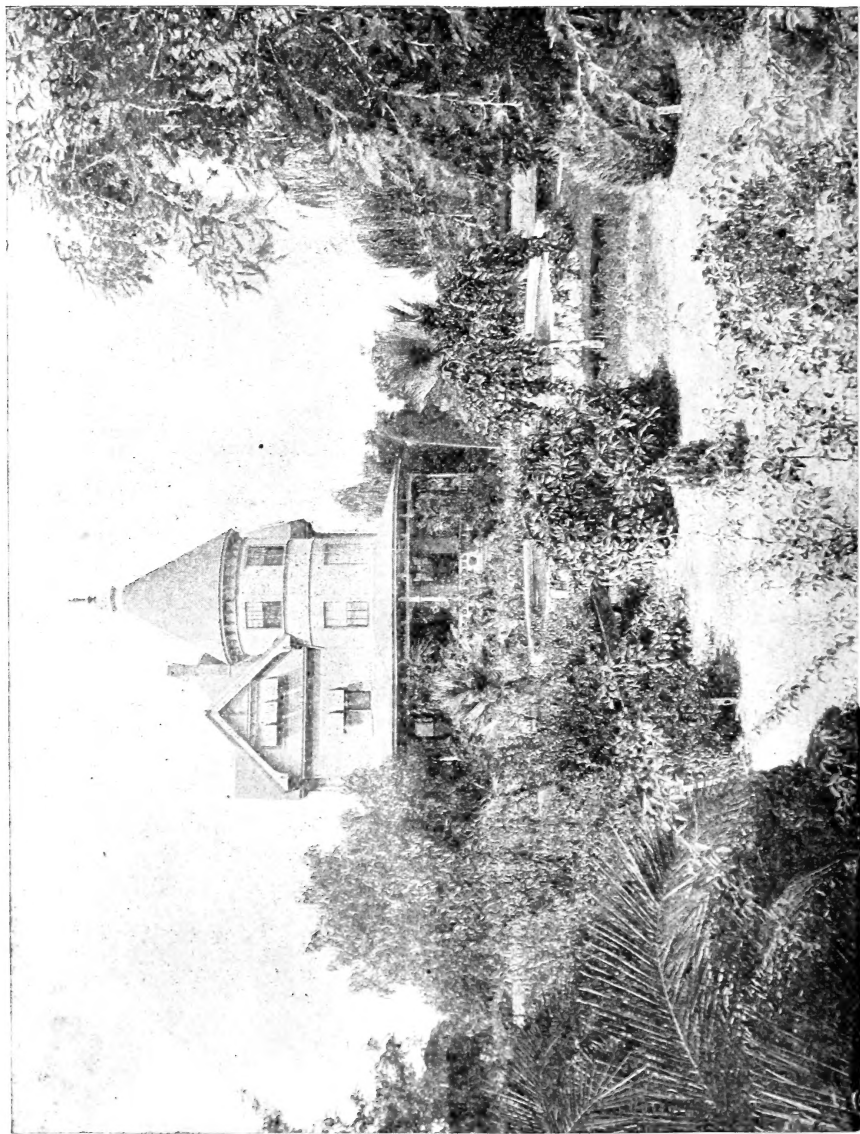
DECIDUOUS TREE NURSERY

120 Acres, Two and one-half Miles
North-west of Fresno



CITRUS NURSERY

20 Acres, Exeter, Tulare County



Residence and Grounds Fancher Creek Nursery No. 1

Notice to

Correspondents



1. All orders should be legibly written on a separate sheet of paper, and not mixed up with the body of the letter.

2. It is always advisable to send orders in for nursery stock as early as possible, as those who come first are served first, and we make it a rule to fill orders in rotation as received.

3. In ordering please state whether substitution will be permitted, as we feel at liberty when no instructions accompany the order to replace with other sorts as nearly similar as possible. Those not acquainted with the different varieties will do well to leave the selection to us, as we will send them only such varieties as we know are adapted to their locality.

4. Our packing and labeling is as perfect as possible, and we charge for the same only to cover the cost of material. All goods are delivered at the railway or express office free of charge.

5. State distinctly how you wish us to ship—by freight or express; also designate the route; otherwise we will use our own discretion in forwarding.

6. After delivery to the carriers we cannot hold ourselves responsible for any loss or injury to trees or plants after they have been carefully packed and shipped; but we will do everything in our power, if any loss should occur, for the protection and recovery of our customers' property.

7. Orders to be sent by express, C. O. D., will be filled, provided one-half of the amount is sent with the order.

8. If any mistakes are made in filling orders, we will cheerfully rectify the same, but must respectfully request our customers to notify us at once or, at the most, within ten days after the receipt of the goods.

9. Orders from unknown correspondents must be accompanied with a remittance or satisfactory references.

10. We uniformly tie our trees in bundles of 10, and grapevines in bundles of 50; and we suggest to our patrons to make their orders for assortments as far as possible in multiples of these numbers.

11. Articles mentioned in the following list will be furnished at prices named as follows: 5 at the 10 rate; 50 at the 100 rate; 500 or more at the 1000 rate. Less than 5 of a variety at the single rate.



ARTICLES BY MAIL.

For the convenience of those who cannot be reached by railroad or express, packages of small articles not exceeding four pounds in weight can be forwarded by mail, such articles to be charged at single rates.

GUARANTEE OF GENUINENESS.

OUR trees are all budded or grafted as far as possible from bearing trees, and every care and precaution is exercised to have them true to name; still with all our caution mistakes are liable to be made, but we hold ourselves in readiness, on proper proof, to replace all trees and other stock that may prove untrue to label, free of charge, or to refund the amount paid. It is mutually understood and agreed to between purchasers and ourselves, however, that our guarantee of genuineness shall, in no case, make us liable for any greater sum than that originally paid us for said trees, etc., that prove untrue.

Address all letters to

GEO. C. ROEDING, Proprietor,

Fancher Creek Nurseries,

Fresno, Cal.



REMARKS.

In presenting to our patrons our price list for the season 1901-1902, we wish to thank them for past favors, and solicit a continuance of same. We shall endeavor to maintain our reputation for fair dealing, and to give our personal attention to all orders entrusted to us, so that the stock we send out shall reach our patrons in good condition and be satisfactory. Our facilities for shipping are as perfect as possible and with our improved methods we are enabled to pack and forward orders at short notice. Our packing grounds are on the S. P. Co. Railroad Reservation, opposite the round house, and prospective purchasers are always welcome to inspect our large and varied assortment.

Our tree depot for delivering local orders will be located at the old stand, on J street, near Fresno, opposite the Barton Opera House. Telephonic communication with the nursery.

Our stock of trees, for this season is exceptionally fine, both in the fruit and ornamental departments; and we are confident that we can please all those who place their orders with us. It is a rule of this establishment to send out no tree or plant which we would hesitate to plant ourselves.

A few hints regarding the handling of trees on their arrival at destination will probably be of value to amateurs in the business.

Immediately on receipt of the trees, open up the bale or box, remove the packing from the roots, cut the rope binding each bundle, spread the trees out in a trench, slope them at an angle of about forty-five degrees, and cover the roots with soil and carefully work it in between them; then water thoroughly, and they will remain in good condition until ready to plant in the orchard.

Should the trees become dry or shriveled from delay in being promptly forwarded by the carriers, bury them in moist soil, covering them up completely, then wet the ground thoroughly, allow them to remain for several days, and when the bark appears to be fresh and bright, plant at once. Never place them in water, as it will cause the bark to rot and often kill the tree.

In planting, never bend the roots but dig the hole large enough to receive them freely. Fill with the surface soil first, and pack it firmly around the roots. After the tree is planted, a couple of buckets of water poured around the tree will settle the dirt more thoroughly than any other method which could be adopted.

For further and more explicit instructions regarding the best methods for handling trees, we refer our patrons to Prof. E. J. Wickson's book, "California Fruits and How to Grow Them."

SPECIAL PRICES on Large Lots

FOR INDEX SEE LAST PAGE.

PRICE LIST

—OF—

FANCHER • CREEK • NURSERIES

SEASON OF 1901-1902

PRICES SUBJECT TO CHANGE WITHOUT NOTICE

FRUIT DEPARTMENT

| | Each | Per 10 | Pr. 100 | Pr. 1000 |
|---|------|--------|---------|----------|
| APPLE—1 year 4 to 6 ft.. | 20 | 1 50 | 12 00 | |
| 1 year 3 to 4 ft.. | 15 | 1 20 | 10 00 | |
| SUMMER—Benoni, Duchess of Oldenburg, Early Harvest, Early Strawberry, Golden Sweet, Gravenstein, Keswick Codlin, Maiden Blush, Red Astrachan, Red June, Sweet Bough, Tetofsky, White Astrachan. | | | | |
| AUTUMN—Alexander, Fall Pippin, Fameuse, Gloria Mundi, Golden Russet, Haas, Holland Pippin, Hubbardston Nonsuch, Jonathan, King of Tompkins County, Mother, Rambo, Red Bietigheimer, Rhode Island Greening, Roxbury Russet, Skinner's Pippin, Stump, Twenty Ounce. | | | | |
| WINTER—Arkansas Black, Baldwin, Ben Davis, Cooper's Market, Dominie, Duke of Devonshire, English Russet, Esopus, Spitz- enburg, Grimes' Golden Pippin, Kentucky Redstreak, Lady Apple, Lawver, Limber Twig, Mann, Marshall's Red or Red Bell- flower, Missouri Pippin or Stone's Eureka, Nickajack, Northern Spy, Pewaukee, Rawle's Janet, Rome Beauty, Smith's Cider, Sutton Beauty, Swaar, Vandevere, Wagener, Wealthy, White Pippin, White Winter Pearmain, Wine Sap, Wolf River, Yellow Bellflower, Yellow Newton Pippin, York Imperial. | | | | |
| APPLE—(New) 4 to 6 ft.. | 40 | 3 00 | | |
| Bismark, Paragon. | | | | |
| CRAB APPLE—1 year 4 to 6 ft.. | 20 | 1 50 | 12 00 | |
| 1 year 3 to 4 ft.. | 15 | 1 20 | 10 00 | |
| Hyslop, Martha, Red Siberian, Transcend- ent, Whitney, Yellow Siberian. | | | | |
| PEAR On Pear, 1 year..... 5 to 7 ft.. | 25 | 2 00 | 18 00 | |
| 1 year 4 to 6 ft.. | 20 | 1 80 | 16 00 | |
| 1 year 3 to 4 ft.. | 18 | 1 50 | 12 50 | |
| SUMMER— Andre Desportes, Bartlett, Beurre Giffard, Bloodgood, Clapp's Fa- vorite, Dearborn's Seedling, Doyenne d'Ete, Lawson or Comet, Le Conte, Made- leine, Souvenir du Congress, Seckel, Ty- son. | | | | |

PRICE LIST OF

| | Each | Per 10 | Pr. 100 | Pr. 1000 |
|---|------|--------|---------|----------|
| PEAR—(Continued.) | | | | |
| AUTUMN—Beurre Bosc, Beurre Clairgeau, Beurre d'Anjou, Beurre Diel, Beurre Hardy, Beurre Superfine, B. S. Fox, Brockworth Park, Dana's Hovey, Doyenne du Comice, Duchesse d'Angouleme, Flemish Beauty, Howell, Idaho, Keiffer's Hybrid, Lawrence, Louise Bonne de Jersey, Onondaga, Sheldon, Urbaniste, Van Mon's Leon le Clerc, White Doyenne, Winter Seckel. | | | | |
| WINTER—Beurre Gris d'Hiver, Col. Wilder, Doyenne d'Alencon, Dr. Reeder, Easter Beurre, Forelle or Trout Pear, Glou Morceau, Josephine de Malines, Nouveau Poiteau, Pound Pear, P. Parry, Vicar of Wakefield, Winter Nelis, Zoe. | | | | |
| PEAR—On Quince, 1 year | 25 | 2 00 | 18 00 | |
| Bartlett, Beurre Hardy, Duchesse d'Angouleme, Easter Beurre, Winter Bartlett. | | | | |
| PEAR—(New) | 40 | 3 00 | | |
| Koonce, Lincoln Coreless, Winter Bartlett | | | | |
| CHERRY—On Mazzard, 1 year | 25 | 2 00 | 18 00 | |
| 1 year | 20 | 1 80 | 15 00 | |
| HEART and BIGARREAU—Belle d'Orleans, Bigarreau Cleveland, Bing, Black Eagle, Black Tartarian, Burr's Seedling, Centennial, Coe's Transparent, Early Purple Guigne, Elton, Gov. Wood, Great Bigarreau, Knight's Early Black, Lambert, Lewelling, Napoleon Bigarreau or Royal Ann, Pontiac, Rockport Bigarreau, Windsor, Yellow Spanish. | | | | |
| DUKE and MORELLO—Belle Magnifique, Early Richmond, English Morello, May Duke, Montmorency, Olivet, Reine Hortense. | | | | |
| PLUM—(New) On Peach, 1 year | 30 | 2 50 | 20 00 | |
| America, Apple, Bartlett, Chalco, Climax, Nikko, Shiro, Sultan. | | | | |
| PLUM—On Peach and Myrobolan, 1 yr. 4 to 6 ft.. | 25 | 1 80 | 15 00 | |
| 1 year, | 20 | 1 50 | 12 00 | |
| Bavay's Green Gage, Botan, Botankio, Bradshaw, Burbank, Chabot, Cherry Plum, Coe's Golden Drop, Coe's Late Red, Columbia, Clyman, Duane's Purple, Early Golden Drop, General Hand, Grand Duke, Green Gage, Imperial Gage, Jefferson, Kelsey Japan, Koenig Claude, McLaughlin, Peach Plum, Quackenboss, Red Egg, Royal Hative, Satsuma, Shropshire Damson, Simon Plum or Prunus Simoni, Smith's Orleans, Victoria, Washington, Wickson, Willard, Wild Goose, Yellow Egg, Yosebe. | | | | |
| PRUNE—(New) On Almond, Apricot and Myrobolan 1 year | 25 | 2 00 | 20 00 | |
| 1 year, | 20 | 1 80 | 16 00 | |
| Sugar. | | | | |
| PRUNE—On Peach, Apricot, Myrobolan and Almond, 1 year | 20 | 1 50 | 12 00 | |
| 1 year, | 15 | 1 20 | 10 00 | |

| | Each | Per 10 | Pr. 100 | Pr. 1000 |
|---|-------------|--------|---------|----------|
| PRUNE--(Continued.) | | | | |
| Bulgarian, French, Fellenberg, German, Golden, Hungarian, Imperiale Epineuse, Robe de Sargeant, Silver, St. Catherine, Tragedy, Wangenheim. | | | | |
| APRICOT—On Apricot, Peach and Myrobolan | | | | |
| 1 year | 4 to 6 ft.. | 25 | 2 00 | 18 00 |
| 1 year | 3 to 4 ft.. | 20 | 1 80 | 15 00 |
| 1 year | 2 to 3 ft.. | 18 | 1 50 | 12 00 |
| Blenheim, Catherine, Gortschakoff, Hems-kirke, Hinds, Large Early, Large Early Montgamet, Moorpark Newcastle, Pringle, Routier's Peach, River's Early, Royal, Spark's Mammoth, St. Ambroise, Viard. | | | | |
| PEACH (New)—On Peach 1 year..... | 4 to 6 ft.. | 30 | 2 50 | |
| Admiral Dewey, Crosby, Sneed, Triumph. | | | | |
| PEACH—On Peach, 1 year | 4 to 6 ft.. | 30 | 2 50 | 20 00 |
| 1 year | 3 to 4 ft.. | 25 | 2 00 | 18 00 |
| 1 year | 2 to 3 ft.. | 20 | 1 80 | 15 00 |
| Lovell, Muir, Phillips Cling, Yellow Tuscan Cling. | | | | |
| PEACH—On Peach, 1 year..... | 4 to 6 ft.. | 25 | 2 00 | 18 00 |
| 1 year | 3 to 4 ft.. | 20 | 1 80 | 15 00 |
| 1 year | 2 to 3 ft.. | 18 | 1 50 | 12 00 |
| Alexander, Amsden June, Arkansaw Traveler, Australian Saucer, Blood Cling, Brigg's Red May, Brice's Early, Bilyeu's Late, California Cling, Chinese Cling, Elberta, Early Crawford, Early Imperial, Foster, Governor Garland, Grosse Mignonne, George's Late Cling, Golden Cling, Hale's Early, Heath Cling, Late Crawford, Lemon Cling, Lord Palmerston, Levy's Late or Henrietta, Mary's Choice, Morris' White, McDevitt's Cling, McKevitt's Cling, Newhall, Old Mixon Cling, Runyon's Orange Cling, Picquet's Late, Persian Cling, Wilkins or Ringgold Mammoth Cling, Royal George, Seller's Cling, Snow, Smock's, Strawberry, Susquehanna, Stump the World, Salway, Twenty Ounce Cling, Van Buren's Dwarf, Wheatland Waterloo, Wager, Wonderful, Yellow St. John. | | | | |
| NECTARINE—On Peach, 1 year | 4 to 6 ft.. | 25 | 2 00 | 18 00 |
| 1 year | 3 to 4 ft.. | 20 | 1 80 | 15 00 |
| 1 year | 2 to 3 ft.. | 18 | 1 50 | 12 00 |
| Advance, Balgowan, Boston, Early Newington, Hardwick, Humboldt, Lord Napier, New White, Stanwick, Violette Grosse. | | | | |
| QUINCE—(New.) | | | | |
| Pineapple, Smyrna | 4 to 6 ft.. | 40 | 3 00 | |
| QUINCE—1 year | 4 to 6 ft.. | 25 | 2 00 | 18 00 |
| 1 year | 3 to 4 ft.. | 20 | 1 80 | 15 00 |
| Apple or Orange, Angers, Champion, Chinese, Rea's Mammoth, West's Mammoth. | | | | |
| ALMOND—On Peach and Almond 1 yr. | 3 to 5 ft.. | 25 | 2 00 | 18 00 |
| 1 year | 2 to 3 ft.. | 20 | 1 80 | 15 00 |
| California Paper Shell, Drake's Seedling, Golden State, Harriott's Seedling or Commercial, I X L, King's Soft Shell, Langue- | | | | |

PRICE LIST OF

| | Each | Per 10 | Pr. 100 | Pr. 1000 |
|--|------|--------|---------|----------|
| ALMOND---(Continued.) | | | | |
| doc, La Prima, Ne Plus Ultra, Nonpareil, Pistache, Sultana. | | | | |
| BUTTERNUT— | 50 | | | |
| CHESTNUT (New.) | 60 | 5 00 | | |
| Alpha, Hannum, Numbo, Paragon, Parry Giant. | | | | |
| CHESTNUT—American Sweet | 50 | 4 00 | | |
| American Sweet | 40 | 3 00 | | |
| Italian | 40 | 3 00 | | |
| Italian | 30 | 2 50 | | |
| Japan Mammoth | 40 | 3 00 | | |
| Marron Combale | 50 | 4 00 | | |
| Marron de Lyon | 50 | 4 00 | | |
| FILBERT—European varieties in as- sortment | 40 | 3 00 | | |
| HICKORY—Shell Bark, | 50 | | | |
| PECAN—Paper Shell | 75 | 6 00 | | |
| Paper Shell | 60 | 5 00 | | |
| Paper Shell | 50 | 4 00 | | |
| PISTACHIO NUT | 1 00 | | | |
| WALNUT—Grafted on California Black 6 to 8 ft.. | 75 | 6 00 | | |
| 4 to 6 ft.. | 60 | 5 00 | | |
| A. Bijou, Chaberte, Cut-leaved, Fran- quette, Gand, Japan, Mayette, Parisienne, Praeparturien, Serotina, Vourey. | | | | |
| WALNUT—Transplanted. | | | | |
| Ford's Improved Soft Shell... 6 to 8 ft.. | 40 | 3 00 | 25 00 | |
| 4 to 6 ft.. | 30 | 2 50 | 20 00 | |
| 3 to 4 ft.. | 25 | 2 00 | 16 00 | |
| Santa Barbara Soft Shell 6 to 8 ft.. | 30 | 2 50 | 18 00 | |
| 4 to 6 ft.. | 25 | 2 00 | 15 00 | |
| 3 to 4 ft.. | 20 | 1 80 | 12 00 | |
| FIG (New.)—Smyrna Class, 1 year... 3 to 5 ft.. | 60 | 5 00 | 40 00 | |
| 1 year | 50 | 4 00 | 35 00 | |
| Calimyrna or Genuine Commercial, Bar- dajic, Kassaba, Maple Leaved, Purple Smyrna, Purple Bulletin Smyrna, Secker Endjire. | | | | |
| FIG (New)—Wild or Capri Class, 1 yr. 3 to 5 ft.. | 75 | 6 00 | | |
| Capri No. 1, Capri No. 2, Capri No. 3. | | | | |
| FIG—Adriatic Class, 1 year | 25 | 2 00 | 18 00 | |
| 2 to 3 ft.. | 20 | 1 80 | 15 00 | |
| Agen, Angelique, Black Marseilles, Bon- dance Precoce, Bourjasotte Panache, Brown Ischia, Brown Turkey, Cargigna, Cernica, Grise, Hirtu du Japan, Ladaro, Mission or California Black, Pastillere, Rose Blanche, San Pedro Black, San Pe- dro White, Verdal Longue, White Adri- atic, White Celeste, White Endich, Zim- itzia. | | | | |
| OLIVE (New)— $\frac{1}{2}$ to $\frac{3}{4}$ inch diameter 4 to 6 ft.. | 40 | 3 00 | | |
| $\frac{3}{8}$ to $\frac{1}{2}$ inch diameter..... 3 to 4 ft.. | 30 | 2 50 | | |
| Picholine St. Chamas, Sevillano. | | | | |
| OLIVE—General Collection. | | | | |
| $\frac{3}{4}$ to $1\frac{1}{2}$ inch diameter 6 to 8 ft.. | 40 | 3 00 | 25 00 | |
| $\frac{1}{2}$ to $\frac{3}{4}$ inch diameter | 30 | 2 50 | 20 00 | |
| $\frac{3}{8}$ to $\frac{1}{2}$ inch diameter | 25 | 2 00 | 16 00 | |
| Ascolano, Atro-Rubens, Atro-Violacea, At- | | | | |

| | Each | Per 10 | Pr. 100 | Pr. 1000 |
|---|------|--------|---------|----------|
| OLIVE—(Continued.) | | | | |
| tica, Columella, Columbaro, Corregiolo, Cucco, Empeltre, Frantojo, Gentile, Gordan, Grossajo, Huff's Spanish, Leccino, Lucques, Manzanillo, Manzanillo No. 2, Mission, Morinello, Morajolo, Nevadillo Blanco, Nigerina, Obliza, Oblonga, Olivastre, Oriolo, Pendoulier, Pendulina, Piangente, Polymorpha, Radiola, Rapuina, Razzo, Regalis, Rubra, Rufa, Salonica, San Agostino, Santa Caterina, Taggiasco, Uvaria. | | | | |
| CITRUS TREES—Quotations named are for bare root trees, and an additional charge of five cents per tree will be made when same are ordered with ball of earth. | | | | |
| ORANGE—2 years, three-quarters of an inch and up in diameter..... | 1 25 | 10 00 | 75 00 | |
| 1 year, five-eighths of an inch and up in diameter | 1 00 | 8 00 | 65 00 | |
| Joppa, Mediterranean Sweet, Oonshiu, Parson Brown, Ruby Blood, Satsuma, Seedling, St. Michael, Tangerine, Valencia Late, Washington Navel. | | | | |
| ORANGE, KUMQUAT 2 to 3 ft.. | 1 25 | | | |
| LEMON—2 years, three-quarters of an inch and up in diameter | 1 25 | 10 00 | 75 00 | |
| LEMON—1 year, five-eighths of an inch and up in diameter | 1 00 | 8 00 | 65 00 | |
| Eureka, Lisbon, Villa Franca. | | | | |
| POMELO—1 year, five-eighths of an inch and up in diameter | 1 00 | 8 00 | | |
| Marsh's Seedless, Triumph. | | | | |
| CITRON OF COMMERCE—1 year, one-half of an inch and up in diameter..... | 1 25 | | | |
| LIME—1 year 2 to 3 ft.. | 1 25 | | | |
| Imperial, Mexican. | | | | |
| PERSIMMON 3 to 4 ft.. | 25 | 2 00 | | |
| Dai-Dai-Maru, Goshi-Gaki, Hachiya, Hyakume, Kuro-Kume, Shimo-Maru, Tana-Nashi, Tsuru-No-Ko, Italian, American. | | | | |
| POMEGRANATE 3 to 4 ft.. | 40 | 3 50 | 25 00 | |
| 2 to 3 ft.. | 30 | 2 50 | 20 00 | |
| Paper Shell, Spanish Ruby, Sweet-Fruited, Wonderful. | | | | |
| BANANA—Cavendishii 2 to 3 ft.. | 1 50 | | | |
| PEAR GUAVA 2 to 3 ft.. | 40 | | | |
| STRAWBERRY GUAVA 2 to 3 ft.. | 30 | | | |
| LOQUAT—Common 2 to 3 ft.. | 60 | | | |
| Large Fruited 2 to 3 ft.. | 1 00 | | | |
| MEDLAR—Nottingham 3 to 4 ft.. | 50 | | | |
| HOVENIA—Dulcis | 50 | | | |
| LYCHEE | 75 | | | |
| GRAPES—Foreign—For table and shipping..... | 15 | 1 00 | 3 00 | 18 00 |
| Black Cornichon, Black Ferrara, Black Hamburg, Emperor, Flame Tokay, Golden Champion, Malaga, Mission, Purple Damascus, Rose of Peru, White Sweetwater. | | | | |
| GRAPES—Foreign—For table and shipping. (Rare.) | 20 | 1 50 | 4 00 | |

PRICE LIST OF

| | Each | Per 10 | Pr. 100 | Pr. 1000 |
|---|------|--------|---------|----------|
| GRAPES—(Continued.) | | | | |
| Almeria, Amber Queen, Alicante, Aramon, Black Barbarossa, Black Morocco, Black Portugal, Black Prince, Blue Spanish, Bowood Muscat, Cannonhall Muscat, Chasselas Ciotat, Chasselas Croquant, Chasselas de Florence, Chasselas Fontainbleau, Chasselas Napoleon, Chasselas Rose, Chasselas Vibert, Cornichon White, Deacon's Superb, Early Madelaine, Golden Chasselas, Golden Hamburg, Golden Queen, Gros Colman, Herbermont, Hubert, Huasco, Joanne Charnice, Jura Muscat, Malbec, Mourisco Preto, Mrs. Pince, Muscat Befere, Muscat Hamburg, Muscat Precoce de Madera Rouge, Muscat Precoce de Puy de Dome, Muscat Rose, Musqus Chasselas, Primary de Frontignan, Pondichery, Rose d'Italie, Sabal Kanski, Tokay Augeison, Verdal, Victoria Chasselas, White Nice, White Corinth. | | | | |
| GRAPES—American Varieties | 20 | 1 50 | 5 00 | |
| Agawam, Catawba, Champion, Clinton, Deleware, Eaton, Early Victor, Early Ohio, Elvira, Empire State, Eumelan, Geneva, Goethe, Green Mountain, Isabella, Lady, Martha, Moore's Diamond, Moore's Early, Moyer, Niagara, Perkins, Pierce, Pocklington, Rebecca, Salem, Triumph, Vergennes, Wilder, Woodruff, Worden. | | | | |
| GRAPES—Foreign Wine | 15 | 1 00 | 2 00 | 16 00 |
| Black Malvoise, Burger, Carignan, Cabernet Sauvignon, Feher Zagos, Gray Reising, Grenache, Gutedel, Mataro, Johannisberg Reising, Moselle Reising, Trouseau, Verdelho, Zinfandel. | | | | |
| GRAPES—Raisin. | | | | |
| Muscat | 15 | 1 00 | 2 00 | 15 00 |
| Sultana | 15 | 1 00 | 2 00 | 16 00 |
| Thompson Seedless | 20 | 1 50 | 3 00 | 20 00 |
| Zante Currant | 25 | | | |
| GRAPES—Resistant. | | | | |
| Lenoir | 20 | 1 00 | 4 00 | 20 00 |
| GRAPES—Resistant. | 25 | 1 50 | 5 00 | 35 00 |
| Riparia Grande Glabra, Riparia Gloire de Montpellier, Riparia a Grandes Feuilles, Rupestris St. George, Solonis. | | | | |
| ELAEAGNUS—Longipes 2 to 3 ft.. | 50 | | | |
| LOGAN BERRY (New)—1 year plants. | 20 | 1 50 | 6 00 | |
| Tips | 15 | 1 20 | 4 00 | |
| MAMMOTH BLACKBERRY (New) 1 year plants.. | 25 | 2 00 | 15 00 | |
| BLACKBERRY—Crandall's Early, Kittatinny | | | | |
| Lawton, Wilson's Junior | 10 | 50 | 2 00 | 15 00 |
| BLACKBERRY—Erie, Evergreen | 15 | 75 | 3 00 | |
| DEWBERRY—Lucretia | 15 | 75 | 3 00 | |
| RASPBERRY—Red Varieties | 10 | 50 | 2 00 | 15 00 |
| Cuthbert, Malboro. | | | | |
| RASPBERRY—Yellow Varieties | 15 | 75 | 3 00 | |
| Golden Queen. | | | | |

| | Each | Per 10 | Pr. 100 | Pr. 1000 |
|---|------|--------|---------|----------|
| RASPBERRY—Black Caps. Gregg, Mammoth Cluster, Souhegan. | 15 | 75 | 3 00 | |
| GOOSEBERRY—American 2 years Downing, Oregon Champion, Smith's Im- proved. | 20 | 1 50 | 10 00 | |
| GOOSEBERRY—English, 2 years Berkeley, Industry. | 25 | 1 80 | 15 00 | |
| CURRENT—1 year Black Naples, Cherry, Fay's Prolific, La Versaillaise, White Grape | 15 | 75 | 5 00 | |
| STRAWBERRY Brandywine, Haverland, Jessie, Linda, Longworth's Prolific, Manchester, Mar- shall, Monarch of the West, Sharpless. | | 20 | 75 | 4 00 |
| ARTICHOKE—Globe | 20 | 1 50 | | |
| ASPARAGUS—Conover's Colossal, 1 year | | 50 | 1 50 | 6 00 |
| 2 years | | 75 | 2 00 | 10 00 |
| ASPARAGUS—Palmetto, 1 year | | 50 | 1 50 | 6 00 |
| 2 years | | 75 | 2 00 | 10 00 |
| RHUBARB—Myatt's Linnaeus | 20 | 1 50 | | |
| HOP ROOTS | | 50 | 2 00 | |
| Male | 20 | | | |

ORNAMENTAL DEPARTMENT DECIDUOUS TREES

| | Each | Per 10 | Per 100 |
|--|------|--------|---------|
| ACACIA OF CONSTANTINOPLE 6 to 8 ft.. | 75 | 6 00 | |
| ALDER—European 6 to 8 ft.. | 60 | 5 00 | |
| Heart leaved 10 to 12 ft.. | 60 | 5 00 | |
| Hoary (Incana) 10 to 12 ft.. | 60 | 5 00 | |
| ASH—European 10 to 12 ft.. | 60 | 5 00 | |
| 8 to 10 ft.. | 50 | 4 00 | |
| Flowering (Ornus) 8 to 10 ft.. | 60 | 5 00 | |
| 6 to 8 ft.. | 50 | 4 00 | |
| BEECH—European 4 to 5 ft.. | 75 | | |
| Purple leaved 2 to 3 ft.. | 1 25 | | |
| BIRCH—European 10 to 12 ft.. | 75 | 6 00 | |
| 8 to 10 ft.. | 60 | 5 00 | |
| 6 to 8 ft.. | 50 | 4 00 | |
| Purple leaved 4 to 6 ft.. | 60 | | |
| BROUSSONETIA—(Paper Mulberry) ... 8 to 10 ft.. | 75 | | |
| 6 to 8 ft.. | 50 | | |
| CATALPA—Common 10 to 12 ft.. | 60 | 5 00 | |
| 8 to 10 ft.. | 50 | 4 00 | |
| Kaempferii 10 to 12 ft.. | 60 | 5 00 | |
| 8 to 10 ft.. | 50 | 4 00 | |
| Speciosa 10 to 12 ft.. | 50 | 4 00 | |
| 8 to 10 ft.. | 40 | 3 00 | |
| CHESTNUT—Spanish or Italian 4 to 6 ft.. | 50 | 4 00 | |
| ELM—American White 10 to 12 ft.. | 60 | 5 00 | |
| 8 to 10 ft.. | 50 | 4 00 | |
| American Black 10 to 12 ft.. | 60 | 5 00 | |
| 8 to 10 ft.. | 50 | 4 00 | |
| 6 to 8 ft.. | 40 | 3 00 | |
| Berardi 3 to 4 ft.. | 60 | | |

PRICE LIST OF

| | Each | Per 10 | Pr. 100 |
|---|---------------|--------|------------|
| ELM—Continued. | | | |
| Clemmeri | 10 to 12 ft.. | 75 | |
| | 6 to 8 ft.. | 50 | |
| Cork Bark | 15 to 18 ft.. | 75 | 6 00 |
| | 10 to 12 ft.. | 60 | 5 00 40 00 |
| | 8 to 10 ft.. | 50 | 4 00 30 00 |
| | 6 to 8 ft.. | 40 | 3 00 20 00 |
| English or French | 12 to 15 ft.. | 75 | 6 00 |
| | 10 to 12 ft.. | 60 | 5 00 40 00 |
| | 8 to 10 ft.. | 50 | 4 00 30 00 |
| | 6 to 8 ft.. | 40 | 3 00 20 00 |
| | 4 to 6 ft.. | 30 | 2 00 15 00 |
| Golden English | 6 to 8 ft.. | 75 | |
| Huntingdon | 12 to 15 ft.. | 75 | 6 00 |
| | 10 to 12 ft.. | 60 | 5 00 40 00 |
| | 8 to 10 ft.. | 50 | 4 00 30 00 |
| | 6 to 8 ft.. | 40 | 3 00 20 00 |
| Latifolia | 12 to 15 ft.. | 50 | 4 00 |
| | 10 to 12 ft.. | 40 | 3 00 |
| Monumental | 15 to 18 ft.. | 75 | 6 00 |
| | 12 to 15 ft.. | 60 | 5 00 40 00 |
| | 8 to 10 ft.. | 50 | 4 00 30 00 |
| Nettle leaved | 3 to 4 ft.. | 60 | |
| Purple leaved | 12 to 15 ft.. | 60 | 5 00 |
| | 8 to 10 ft.. | 50 | 4 00 30 00 |
| | 6 to 8 ft.. | 40 | 3 00 |
| Variegated | 15 to 18 ft.. | 75 | |
| | 10 to 12 ft.. | 60 | 5 00 |
| | 8 to 10 ft.. | 50 | 4 00 |
| FRINGE TREE—(Chionanthus) | 3 to 4 ft.. | 50 | |
| HAG BERRY | 2 to 3 ft.. | 40 | |
| HORSE CHESTNUT—Red Flowering | 2 to 3 ft.. | 50 | |
| White Flowering | 2 to 3 ft.. | 50 | |
| JUDAS TREE—(Red Bud) | 8 to 10 ft.. | 50 | 4 00 |
| | 6 to 8 ft.. | 40 | 3 00 |
| White Flowering | 8 to 10 ft.. | 60 | |
| KENTUCKY COFFEE TREE | 4 to 6 ft.. | 50 | |
| KOLREUTERIA PANICULATA | 8 to 10 ft.. | 50 | |
| LINDEN—American | 4 to 6 ft.. | 40 | |
| European | 4 to 6 ft.. | 40 | |
| LOCUST—Bessoniana | 12 to 15 ft.. | 60 | |
| | 10 to 12 ft.. | 50 | 4 00 |
| | 8 to 10 ft.. | 40 | 3 00 |
| Common or Black | 15 to 18 ft.. | 60 | 5 00 |
| | 12 to 15 ft.. | 50 | 4 00 |
| | 10 to 12 ft.. | 40 | 3 50 25 00 |
| | 8 to 10 ft.. | 35 | 3 00 20 00 |
| | 6 to 8 ft.. | 25 | 2 00 |
| Decaisneana | 12 to 15 ft.. | 60 | |
| | 10 to 12 ft.. | 50 | 4 00 |
| | 8 to 10 ft.. | 40 | |
| Honey | 4 to 6 ft.. | 40 | |
| Rose Flowering | 8 to 10 ft.. | 60 | |
| | 6 to 8 ft.. | 40 | |
| Semperflorens | 12 to 15 ft.. | 60 | |
| | 10 to 12 ft.. | 50 | |
| MAGNOLIA—Acuminata | 4 to 6 ft.. | 50 | |
| Stellata | 3 to 4 ft.. | 1 00 | |
| MAIDEN HAIR TREE—(Salisburia) | 2 to 3 ft.. | 50 | |
| MAPLE—Ash-leaved (Box Elder) | 12 to 15 ft.. | 50 | 4 00 |
| | 10 to 12 ft.. | 40 | 3 00 |

FANCHER CREEK NURSERIES

| | Each | Per 10 | Pr. 100 |
|---|------|--------|---------|
| MAPLE—(Continued.) | | | |
| 8 to 10 ft.. | 30 | 2 50 | |
| Californian 4 to 6 ft.. | 35 | | |
| English or Cork-barked 10 to 12 ft.. | 60 | 5 00 | |
| 8 to 10 ft.. | 50 | 4 00 | |
| 6 to 8 ft.. | 40 | 3 00 | |
| Montpellier 4 to 6 ft.. | 50 | | |
| Norway (Platanoides) 6 to 8 ft.. | 50 | 4 00 | |
| 4 to 6 ft.. | 40 | 3 00 | |
| Silver or Soft (Eriocarpum) 4 to 6 ft.. | 40 | 3 50 | |
| 3 to 4 ft.. | 35 | | |
| Sugar 4 to 6 ft.. | 40 | | |
| Sycamore (Pseudo Platanus) 4 to 6 ft.. | 50 | 4 00 | |
| MOUNTAIN ASH—European 6 to 8 ft.. | 50 | 4 00 | |
| 4 to 6 ft.. | 40 | 3 00 | |
| MULBERRY—Black 10 to 12 ft.. | 50 | 4 00 | |
| 8 to 10 ft.. | 40 | 3 00 | |
| Downing's Everbearing 10 to 12 ft.. | 75 | | |
| 8 to 10 ft.. | 60 | 5 00 | 40 00 |
| 4 to 6 ft.. | 50 | 4 00 | 30 00 |
| Lick's American 12 to 15 ft.. | 75 | 6 00 | |
| 10 to 12 ft.. | 60 | 5 00 | 40 00 |
| 8 to 10 ft.. | 50 | 4 00 | 30 00 |
| Moretti 10 to 12 ft.. | 50 | 4 00 | |
| 8 to 10 ft.. | 40 | 3 00 | |
| Multicaulus (Italian) 10 to 12 ft.. | 50 | 4 00 | 30 00 |
| 8 to 10 ft.. | 40 | 3 00 | 25 00 |
| 6 to 8 ft.. | 30 | 2 50 | 20 00 |
| New American 12 to 15 ft.. | 50 | 4 00 | |
| 10 to 12 ft.. | 40 | 3 00 | 25 00 |
| 8 to 10 ft.. | 30 | 2 50 | 20 00 |
| Persian 8 to 10 ft.. | 75 | 6 00 | |
| 6 to 8 ft.. | 60 | 5 00 | |
| 4 to 6 ft.. | 50 | 4 00 | |
| Russian 10 to 12 ft.. | 60 | 5 00 | |
| 8 to 10 ft.. | 50 | 4 00 | 30 00 |
| 6 to 8 ft.. | 40 | 3 00 | 25 00 |
| Stubbs 6 to 8 ft.. | 60 | | |
| White 12 to 15 ft.. | 50 | 4 00 | 35 00 |
| 10 to 12 ft.. | 40 | 3 00 | 25 00 |
| 8 to 10 ft.. | 30 | 2 50 | 20 00 |
| 6 to 8 ft.. | 25 | 2 00 | |
| OAK—English (Robur) 10 to 12 ft.. | 75 | | |
| 8 to 10 ft.. | 60 | | |
| 6 to 8 ft.. | 50 | | |
| Red American (Rubra) 4 to 6 ft.. | 50 | | |
| Scarlet (Coccinea) 3 to 4 ft.. | 50 | | |
| Turkey (Cerris) 8 to 10 ft.. | 60 | | |
| 6 to 8 ft.. | 50 | | |
| PAULOWNIA—Imperialis 8 to 10 ft.. | 75 | | |
| PEACH—Blood-leaved 4 to 6 ft.. | 40 | | |
| Double Red 4 to 6 ft.. | 40 | | |
| Double White 4 to 6 ft.. | 40 | | |
| POPLAR—Aurea Van Gertii 10 to 12 ft.. | 50 | 4 00 | 30 00 |
| 8 to 10 ft.. | 40 | 3 00 | 25 00 |
| Balm of Gilead 10 to 12 ft.. | 60 | 5 00 | 40 00 |
| 8 to 10 ft.. | 50 | 4 00 | 30 00 |
| Bolleana 15 to 18 ft.. | 60 | 5 00 | |
| 12 to 15 ft.. | 50 | 4 00 | 30 00 |
| 10 to 12 ft.. | 40 | 3 00 | 25 00 |
| 8 to 10 ft.. | 30 | 2 50 | 20 00 |

PRICE LIST OF

| | Each | Per 10 | Pr. 100 |
|---------------------------------------|-----------------|--------|------------|
| POPLAR—(Continued.) | | | |
| Carolina | 15 to 18 ft.. | 50 | 4 00 30 00 |
| | 12 to 15 ft.. | 40 | 3 00 25 00 |
| | 10 to 12 ft.. | 30 | 2 50 20 00 |
| | 8 to 10 ft.. | 25 | 2 00 15 00 |
| Lombardy | 12 to 15 ft.... | 50 | 4 00 30 00 |
| | 10 to 12 ft.. | 40 | 3 00 25 00 |
| | 8 to 10 ft.. | 30 | 2 50 20 00 |
| Pyramidal | 6 to 8 ft.. | 50 | |
| SERVICE TREE (Sorbus Domestica) | 6 to 8 ft.. | 50 | |
| SIBERIAN PEA TREE—(Caragana) | 4 to 6 ft.. | 50 | |
| SOPHORA—Japonica | 8 to 10 ft.. | 60 | |
| | 6 to 8 ft.. | 40 | |
| SYCAMORE—European | 10 to 12 ft.. | 75 | |
| | 8 to 10 ft.. | 60 | 5 00 |
| | 6 to 8 ft.. | 50 | 4 00 |
| TAXODIUM—Distichum | 4 to 6 ft.. | 60 | |
| TEXAS UMBRELLA—Branched | 6 to 8 ft.. | 75 | |
| Single Stock | 6 to 8 ft.. | 50 | 4 00 30 00 |
| | 5 to 6 ft.. | 40 | 3 00 25 00 |
| | 3 to 4 ft.. | 30 | 2 50 20 00 |
| THORN—Double White | 8 to 10 ft.. | 60 | |
| | 6 to 8 ft.. | 50 | |
| Double Pink | 8 to 10 ft.. | 60 | |
| | 6 to 8 ft.. | 50 | |
| TULIP TREE | 6 to 8 ft.. | 60 | |
| | 4 to 6 ft.. | 50 | |
| VIRGILEA LUTEA—(Yellow Wood) | 4 to 6 ft.. | 60 | |
| WALNUT—American Black | 10 to 12 ft.. | 50 | 4 00 |
| | 6 to 8 ft.. | 40 | 3 00 |
| California Black | 10 to 12 ft.. | 50 | 4 00 |
| | 6 to 8 ft.. | 40 | 3 00 |
| WILLOW—Golden | 6 to 8 ft.. | 50 | |
| Osier or Basket | 3 to 4 ft.. | 40 | |
| XANTHOCERAS—Sorbifolia | 4 to 6 ft.. | 50 | |

WEEPING DECIDUOUS TREES

| | | | |
|------------------------------|---------------|------|------|
| ASH—European | 6 to 8 ft.. | 1 25 | |
| Gold-barked | 6 to 8 ft.. | 1 25 | |
| BIRCH—Cut-leaved | 6 to 8 ft.. | 1 00 | |
| ELM—Camperdown | 8 to 10 ft.. | 1 25 | |
| | 6 to 8 ft.. | 1 00 | |
| Weeping Slippery | 6 to 8 ft.. | 1 25 | |
| LINDEN—White-leaved | 6 to 8 ft.. | 1 00 | |
| MULBERRY—Teas' Russian | 6 to 8 ft.. | 1 00 | |
| POPLAR—Large-leaved | 6 to 8 ft.. | 1 00 | |
| SOPHORA | 6 to 8 ft.. | 1 50 | |
| WILLOW—Common | 10 to 12 ft.. | 50 | 4 00 |
| | 8 to 10 ft.. | 40 | 3 00 |
| New American | 8 to 10 ft.. | 60 | |
| | 6 to 8 ft.. | 50 | |

EVERGREEN TREES

| | | Each | Per 10 | Per 100 |
|--|--------------|------|--------|---------|
| ACACIA— | | | | |
| Cyanophylla, in pots | 4 to 6 ft.. | 50 | 4 00 | |
| Dealbata, in pots | 3 to 4 ft.. | 40 | 3 00 | |
| Dealbata in pots | 2 to 3 ft.. | 30 | 2 50 | |
| Decurrens, in pots | 3 to 4 ft.. | 40 | | |
| Floribunda | 2 to 3 ft.. | 35 | | |
| Latifolia | 3 to 4 ft.. | 40 | 3 00 | |
| Leucophylla, in pots | 3 to 4 ft.. | 40 | | |
| Lopantha Gigantea, in pots | 4 to 6 ft.. | 50 | | |
| Melanoxydon, in pots | 4 to 6 ft.. | 50 | 4 00 | |
| | 3 to 4 ft.. | 40 | 3 00 | |
| | 2 to 3 ft.. | 30 | 2 50 | |
| Mollissima, in pots | 3 to 4 ft.. | 40 | 3 00 | |
| | 2 to 3 ft.. | 30 | 2 50 | |
| Pycnantha | 2 to 3 ft.. | 40 | | |
| Suavolens | 3 to 4 ft.. | 40 | | |
| Trovissima | 2 to 3 ft.. | 30 | | |
| ARAUCARIA—Bidwillii, boxed | | | | |
| | 4 to 6 ft.. | 6 00 | | |
| In pots | 1½ to 2 ft.. | 2 00 | | |
| Excelsa, in pots | 2 to 3 ft.. | 2 00 | | |
| Imbricata, in pots | 1 to 1½ ft.. | 2 50 | | |
| ARBOR VITAE—American, balled | | | | |
| | 2 to 3 ft.. | 50 | | |
| Chinese Golden | 2 to 3 ft.. | 60 | | |
| Elwangeriana | 2 to 3 ft.. | 75 | | |
| Ever Golden (Semper Aurea) | | | | |
| balled | 2 to 3 ft.. | 75 | | |
| | 1½ to 2 ft.. | 50 | | |
| Gigantea, balled | 3 to 4 ft.. | 1 00 | | |
| | 2 to 3 ft.. | 60 | | |
| Golden (Aurea), balled | 2 to 3 ft.. | 75 | | |
| Japonica Filiformis | 2 to 3 ft.. | 1 00 | | |
| BRACHYCHITON—Acerifolium, in pots | | | | |
| | 3 to 4 ft.. | 40 | | |
| Poplarifolium, in pots | 3 to 4 ft.. | 40 | | |
| CALIFORNIA LAUREL OR BAY TREE— | | | | |
| (Oreodaphne), balled | 2 to 3 ft.. | 50 | | |
| CALIFORNIA BIG TREE—(Sequoia | | | | |
| Gigantea), balled | 2 to 3 ft.. | 1 50 | | |
| | 1½ to 2 ft.. | 1 00 | | |
| CALIFORNIA NUTMEG TREE— | | | | |
| Torreya | 2 to 3 ft.. | 75 | | |
| CAMPHOR TREE, in pots | | | | |
| | 2 to 3 ft.. | 50 | | |
| | 1 to 2 ft.. | 35 | | |
| CASUARINA—Quadrivalvis | | | | |
| | 2 to 3 ft.. | 30 | | |
| Stricta | 2 to 3 ft.. | 40 | | |
| CEDAR—Atlantica, balled | | | | |
| | 4 to 6 ft.. | 2 00 | | |
| | 3 to 4 ft.. | 1 75 | | |
| | 2 to 3 ft.. | 1 25 | | |
| Deodora, balled | 4 to 6 ft.. | 2 00 | | |
| | 3 to 4 ft.. | 1 75 | | |
| | 2 to 3 ft.. | 1 25 | | |
| Glauca, balled | 3 to 4 ft.. | 2 00 | | |
| Lebanon, balled | 4 to 6 ft.. | 2 00 | | |
| | 3 to 4 ft.. | 1 75 | | |
| Variegated | 2 to 3 ft.. | 2 00 | | |
| CEPHALOTAXUS—Fortunei, in pots | | | | |
| | 1 to 2 ft.. | 75 | | |
| CRYPTOMERIA—Elegans, in pots | | | | |
| | 2 to 3 ft.. | 60 | | |
| Japonica, 6-in. pots | 1 to 2 ft.. | 75 | | |

| | Each | Per 10 | Per 100 |
|--|------|--------|---------|
| CYPRESS—Funeral, balled 4 to 6 ft.. | 1 00 | | |
| Guadalupensis, balled 2 to 3 ft.. | 75 | | |
| Italian, balled 4 to 6 ft.. | 60 | 5 00 | |
| 3 to 4 ft.. | 50 | 4 00 | |
| Lawsons, balled 2 to 3 ft.. | 50 | | |
| Lawson's Erect, balled 3 to 4 ft.. | 75 | | |
| Monterey, in pots 3 to 4 ft.. | 40 | | |
| Monterey, 2 year, planted in boxes— | | | |
| \$17.50 per M 12 to 15 in.. | | | 2 00 |
| EUCALYPTUS—Globulus (Blue Gum),— | | | |
| in pots 4 to 6 ft.. | 30 | 2 50 | |
| 3 to 4 ft.. | 25 | 1 80 | |
| Globulus, transplanted in boxes— | | | |
| \$16 per M 15 to 18 in.. | | | 1 75 |
| Citriodora (Lemon Scented) | | | |
| in pots 2 to 3 ft.. | 35 | | |
| Ficifolia (Scarlet Flowering) | | | |
| in pots 2 to 3 ft.. | 50 | | |
| Corynocalyx (Sugar), in pots 3 to 4 ft.. | 40 | 3 00 | |
| Occidentalis, in pots 3 to 4 ft.. | 40 | 3 00 | |
| Polyanthes, in pots 2 to 3 ft.. | 30 | | |
| Robusta, in pots 4 to 6 ft.. | 35 | 3 00 | |
| 3 to 4 ft.. | 25 | 2 00 | |
| Robusta, transplanted in boxes | | | |
| \$18 per M 10 to 12 in.. | | | 2 00 |
| Rostrata (Red Gum), in pots 3 to 4 ft.. | 40 | 3 00 | |
| Rostrata, transplanted in boxes | | | |
| \$17.50 per M 6 to 8 in.. | | | 2 00 |
| Rudis, in pots 4 to 6 ft.. | 40 | 3 00 | |
| 3 to 4 ft.. | 30 | 3 50 | |
| 2 to 3 ft.. | 25 | 2 00 | |
| Rudis, transplanted in boxes | | | |
| \$20 per M 15 to 18 in.. | | | 2 50 |
| Rudis, transplanted in boxes | | | |
| \$17.50 per M 6 to 8 in.. | | | 2 00 |
| FICUS—Elastica (Rubber Tree), 6-in. pots 3 to 4 ft.. | 75 | | |
| Macrophylla, 6-in. pots 3 to 4 ft.. | 1 00 | | |
| GREVILLEA—Robusta (Australian Silk | | | |
| Oak), in pots 3 to 4 ft.. | 40 | 3 50 | |
| 2 to 3 ft.. | 30 | 2 50 | |
| HOLLY—(Ilex) European, balled 1 to 2 ft.. | 50 | | |
| Golden Variegated, balled 1 to 2 ft.. | 75 | | |
| JUNIPER—Bermudiana, balled 2 to 3 ft.. | 60 | | |
| Irish, balled 3 to 4 ft.. | 75 | | |
| 2 to 3 ft.. | 60 | | |
| Japan, Variegated, balled 1 to 2 ft.. | 75 | | |
| Virginian, balled 3 to 4 ft.. | 75 | | |
| LIBROCEDRUS—Chilenses, balled 2 to 3 ft.. | 60 | | |
| Decurrens, balled 3 to 4 ft.. | 1 00 | | |
| 2 to 3 ft.. | 75 | | |
| LOQUAT—Common, balled 2 to 3 ft.. | 50 | | |
| Variegated, balled 2 to 3 ft.. | 1 00 | | |
| MADRONE—balled 2 to 3 ft.. | 1 00 | | |
| MAGNOLIA—Grandiflora, balled 2 to 3 ft.. | 75 | | |
| 1 to 2 ft.. | 50 | | |
| Oxoniensis, balled 2 to 3 ft.. | 1 50 | | |
| OAK—California Live Oak, balled 1½ to 2 ft.. | 50 | | |
| Cork, balled 2 to 3 ft.. | 1 00 | | |
| PEPPER—In pots 4 to 6 ft.. | 40 | 3 00 | |
| 3 to 4 ft.. | 30 | 2 50 | |
| 2 to 3 ft.. | 25 | 2 00 | |

| | | Each | Per 10 | Per 100 |
|---|--------------|------|--------|---------|
| PINE—Austrian, balled | 3 to 4 ft.. | 1 00 | | |
| Halepensis, balled | 2 to 3 ft.. | 60 | | |
| Monterey, in pots | 2 to 3 ft.. | 40 | | |
| Ponderosa, in pots | 2 to 3 ft.. | 50 | | |
| Sylvestris, balled | 3 to 4 ft.. | 75 | | |
| | 2 to 3 ft.. | 60 | | |
| REDWOOD—(Sequoia Sempervirens), balled | 3 to 4 ft.. | 1 00 | | |
| | 2 to 3 ft.. | 75 | | |
| RETINOSPORA—Ericoides, balled | 1 to 2 ft.. | 75 | | |
| SCIADOPITYS—Verticillata, Umbrella Pine, in pots | 2 to 3 ft.. | 2 50 | | |
| SPRUCE—Douglas, balled | 3 to 4 ft.. | 1 25 | | |
| | 2 to 3 ft.. | 75 | | |
| Nordmann's Silver, balled | 1 to 1½ ft.. | 1 25 | | |
| Norway, balled | 2 to 3 ft.. | 60 | | |
| White, balled | 2 to 3 ft.. | 75 | | |
| THUJOPSIS—Borealis, balled | 2 to 3 ft.. | 1 00 | | |
| Dolabrata, balled | 2 to 3 ft.. | 1 00 | | |
| Variegated, balled | 2 to 3 ft.. | 1 25 | | |
| TORREYA—Nucifera (Japan Nutmeg) In pots | 2 to 3 ft.. | 1 25 | | |
| YEW—English (Baccata,) balled | 2 to 3 ft.. | 1 00 | | |
| Dwarf, Golden (Elegantissima) | | | | |
| Balled | 1½ to 2 ft.. | 1 50 | | |
| Irish (fastigata) | 2 to 3 ft.. | 1 00 | | |

EVERGREEN SHRUBS

| | | | | |
|--|--------------|------|------|--|
| ABELIA—Rupestris, balled | 2 to 3 ft.. | 50 | | |
| ARALIA—Sieboldii, in pots | 2 to 3 ft.. | 50 | | |
| Sieboldii variegata, in pots | 2 to 3 ft.. | 75 | | |
| ARBUTUS—Unedo, balled | 2 to 3 ft.. | 75 | | |
| ARDESIA—Crispa, in pots | 1 to 2 ft.. | 75 | | |
| AUCUBA—Japonica, 5-in pots | 2 to 3 ft.. | 75 | | |
| BERBERIS—Canadensis, balled | 2 to 3 ft.. | 60 | | |
| BOX—Sempervirens | 1½ to 2 ft.. | 40 | 3 00 | |
| Sempervirens Argentia | 1½ to 2 ft.. | 40 | 3 00 | |
| BROOM—Scotch, in pots | 2 to 3 ft.. | 50 | | |
| Spanish, in pots | 2 to 3 ft.. | 50 | | |
| BURNING BUSH—Crataegus Pyracantha, balled | 2 to 3 ft.. | 40 | 3 00 | |
| balled | 1½ to 2 ft.. | 30 | 2 50 | |
| CAMELLIA—Japonica, Double Flowering | 1½ to 2 ft.. | 1 00 | | |
| Variegated | 1 to 1½ ft.. | 1 50 | | |
| CEANOTHUS—Azureus | 1½ to 2 ft.. | 60 | | |
| CHOISYA—Ternata, balled | 2 to 3 ft.. | 60 | | |
| balled | 1½ to 2 ft.. | 40 | | |
| CHRISTMAS BERRY—(Photinia arbuti- folia | 2 to 3 ft.. | 60 | | |
| CORONILLA GLAUCA | 1½ to 2 ft.. | 50 | | |
| DAPHNE—White Flowering, in pots | 1 to 1½ ft.. | 75 | | |
| Variegated | 1 to 1½ ft.. | 1 00 | | |
| DIOSMA—Ericoides, in pots | 1 to 1½ ft.. | 40 | | |
| ELEAGNUS—Argentea | 2 to 3 ft.. | 60 | 5 00 | |
| Elegantissima | 2 to 3 ft.. | 60 | 5 00 | |
| ESCALONIA—Rubra | 2 to 3 ft.. | 60 | | |

| | Each | Per 10 | Per 100 |
|---|--------------|--------|---------|
| EUONYMUS—Japonica, balled | 2 to 3 ft.. | 30 | 2 50 |
| Japonica Duc d'Anjou, balled | 2 to 3 ft.. | 40 | 3 00 |
| Japonica, Golden leaved, balled | 2 to 3 ft.. | 40 | 3 00 |
| Japonica, Golden margined, balled | 2 to 3 ft.. | 40 | 3 00 |
| Pulchellus, balled | 1 to 1½ ft.. | 40 | 3 00 |
| Radicans, balled | 2 to 3 ft.. | 50 | 4 00 |
| Silver Variegated, balled | 2 to 3 ft.. | 40 | 3 00 |
| | 1½ to 2 ft.. | 30 | 2 50 |
| FABIANA—Imbricata, balled | 2 to 3 ft.. | 40 | |
| GARRYA—Elliptica, balled | 2 to 3 ft.. | 75 | 6 00 |
| HEATH—Mediterranean, balled | 1 to 2 ft.. | 35 | 3 00 |
| HYPERICUM—Moserianum, balled | 1 to 1½ ft.. | 40 | |
| LAUREL—English, balled | 2 to 3 ft.. | 50 | |
| Portugal, balled | 2 to 3 ft.. | 75 | |
| Sweet Bay (Nobilis) balled | 3 to 4 ft.. | 75 | 6 00 |
| | 2 to 3 ft.. | 50 | 4 00 |
| LAURUSTINUS—Common, balled | 2 to 3 ft.. | 40 | 3 00 |
| Rotundifolia, balled | 2 to 3 ft.. | 50 | 3 50 |
| Variegated, balled | 2 to 3 ft.. | 75 | |
| LIGUSTRUM—California, balled | 2 to 3 ft.. | 35 | |
| Japanese, balled | 2 to 3 ft.. | 40 | 3 00 |
| Japanese Variegated, balled | 2 to 3 ft.. | 40 | 3 50 |
| Ovalifolium | 2 to 3 ft.. | 40 | |
| MAHONIA AQUIFOLIUM—balled | 2 to 3 ft.. | 50 | |
| Japonica, balled | 1½ to 2 ft.. | 60 | |
| MELALEUCA—Decussata, balled | 3 to 4 ft.. | 60 | |
| METROSIDEROS—Semperforens, balled | 2 to 3 ft.. | 50 | |
| MYRTLE—Common, balled | 2 to 3 ft.. | 40 | 3 00 |
| Microphylla, (small-leaved), balled | 2 to 3 ft.. | 40 | 3 00 |
| NANDINA—Domestica, in pots | 2 to 3 ft.. | 50 | |
| OLEANDER—Assorted Varieties, balled | 3 to 4 ft.. | 50 | 4 00 |
| Assorted varieties, balled | 2 to 3 ft.. | 40 | 3 00 |
| Variegated, balled | 2 to 3 ft.. | 60 | |
| ORANGE—Otaheite, in pots | 1 to 2 ft.. | 60 | |
| PHOTINIA—Serrulata, balled | 3 to 4 ft.. | 50 | 4 00 |
| | 2 to 3 ft.. | 40 | 3 00 |
| PITOSPORUM—Eugenoides, balled | 2 to 3 ft.. | 50 | |
| Tobira, balled | 2 to 3 ft.. | 50 | |
| Tobira, variegated, balled | 2 to 3 ft.. | 60 | |
| POLYGALA—Dalmatiana, in pots | 1 to 1½ ft.. | 25 | |
| RAPHIOLEPIS—Balled | 2 to 3 ft.. | 50 | |
| VERONICA—Imperialis, balled | 1 to 2 ft.. | 35 | |
| Variegated, balled | 1 to 2 ft.. | 40 | |

DECIDUOUS SHRUBS

| | | | |
|---|-------------|----|------|
| ALMOND—Double Red | 3 to 4 ft.. | 40 | |
| Double White | 3 to 4 ft.. | 40 | |
| ALTHEA—(Rose of Sharon), Dbl. Flowering, assorted | 3 to 4 ft.. | 35 | 3 00 |
| Variegated leaved | 3 to 4 ft.. | 40 | |
| BERBERRY—Purple-leaved | 2 to 3 ft.. | 40 | |
| CALYCANTHUS—Sweet Shrub | 3 to 4 ft.. | 40 | |
| CHAMAECERASUS—Alberti, Upright Honey-suckle | 1 to 2 ft.. | 35 | |
| CORCHORUS—Silver Variegated | 3 to 4 ft.. | 40 | |

| | | Each | Per 10 | Per 100 |
|---|-------------|------|--------|---------|
| CRAPE MYRTLE—Pink and Purple | 4 to 6 ft.. | 40 | 3 50 | |
| | 3 to 4 ft.. | 35 | 3 00 | |
| White | 2 to 3 ft.. | 75 | | |
| DEUTZIA—Crenata, Candidissima, For- | | | | |
| tunii, Scabra | 2 to 3 ft.. | 30 | | |
| DOGWOOD—Red Branched | 2 to 3 ft.. | 30 | | |
| Variegated | 2 to 3 ft.. | 40 | | |
| ELDER—Cut-leaved | 2 to 3 ft.. | 50 | | |
| Variegated Golden-leaved | 3 to 4 ft.. | 50 | | |
| Pyramidal | 4 to 6 ft.. | 50 | | |
| Variegated Silver-leaved | 4 to 6 ft.. | 50 | | |
| ERYTHRINA—Christa Galli (Coral Plant) | | 50 | | |
| EUONYMUS—Spindle Tree | 3 to 4 ft.. | 50 | | |
| FILBERT—Purple-leaved | 2 to 3 ft.. | 40 | | |
| FORSYTHIA—Suspensa, Viridissima | 2 to 3 ft.. | 35 | | |
| HYDRANGEA—Hortensis, Paniculata Grand- | | | | |
| flora, Thomas Hogg, Variegated.. | 1 to 2 ft.. | 50 | | |
| LEMON VERBENA | 3 to 4 ft.. | 50 | | |
| LILAC— | | | | |
| Persica | 2 to 3 ft.. | 40 | 3 50 | |
| White | 3 to 4 ft.. | 40 | 3 00 | |
| New Sorts, grafted | 2 to 3 ft.. | 50 | | |
| Ambroise Verschaffelti, Blanc Vir- | | | | |
| ginal, Lemoinei Flore Pieno, Mme. | | | | |
| Briot, President Massart, Princess | | | | |
| Marie, Prof. E. Stockhardt, Re- | | | | |
| nuncule, Virginialis. | | | | |
| MOCK ORANGE—(Philadelphus) | 3 to 4 ft.. | 40 | 3 00 | |
| Coronarius, Double Flowering, | | | | |
| Golden-leaved, Grandiflorens, Ino- | | | | |
| dorus. | | | | |
| POINCIANA GILLIESII—(Bird of Para- | | | | |
| dise) | 3 to 4 ft.. | 40 | | |
| POMEGRANATE—Madame Legrelle, Scar- | | | | |
| let Dwarf, Double Scarlet, Double | | | | |
| White | 4 to 6 ft.. | 50 | 4 00 | |
| | 3 to 4 ft.. | 40 | 3 00 | |
| | 3 to 4 ft.. | 50 | 4 00 | |
| QUINCE—Alba and Japonica | 3 to 4 ft.. | 50 | | |
| RHODOTYPOS—Kerrioides | 2 to 3 ft.. | 40 | | |
| SMOKE TREE—(Rhus Cotinus) | 6 to 8 ft.. | 50 | | |
| SNOWBALL | 2 to 3 ft.. | 40 | | |
| SNOWBERRY—Variegated | 2 to 3 ft.. | 40 | | |
| SPIREA | 2 to 3 ft.. | 30 | 2 50 | |
| Billardi Alba, Callosa Superba, | | | | |
| Paniculata Rosea, Prunifolia, Reevesii, | | | | |
| Thunbergii, Ulmifolia, Van | | | | |
| Houttei. | | | | |
| STAPHYLEA—Colchica | 3 to 4 ft.. | 60 | | |
| SUMACH—Cut-leaved | 3 to 4 ft.. | 60 | | |
| TAMARIX—Gallica | 3 to 4 ft.. | 50 | | |
| TREE PAEONY—Asst. Colors, \$1.50 to \$3 | | | | |
| each. | | | | |
| VIBURNUM—Plicatum (Japan Snowball) | 2 to 3 ft.. | 60 | | |
| WEIGELIA—Abel Carriere, Candida, Hor- | | | | |
| tensis Grandiflora, Lavellei Rosea, | | | | |
| Variegated-leaved | 2 to 3 ft.. | 40 | | |

CLIMBING AND TRAILING PLANTS

| | Each | Per 10 | Per 100 |
|---|------|--------|---------|
| AKEBIA—Quinata 2 to 3 ft.. | 35 | | |
| AMPELOPSIS—Veitchii (Japan Ivy) | 40 | 3 00 | |
| Quinquefolia (Virginia Creeper) | 40 | 3 00 | |
| ASPARAGUS—Plumosus Nanus, 4-in pots | 50 | | |
| Sprengerei, 5-in pots | 60 | | |
| Tenuissimus, 5-in pots | 50 | | |
| Tenuissimus, 4-in pots | 35 | | |
| BIGNONIA—Grandiflora | 30 | | |
| Radicans, in pots | 35 | | |
| Tweediana, in pots | 40 | | |
| CLEMATIS—Assorted | 75 | | |
| CLIANTHUS—Puniceus, 3-in pots | 35 | | |
| COBEA—Scandens, 4-in. pots | 35 | | |
| DUTCHMAN'S PIPE—Aristolochia | 40 | | |
| HONEYSUCKLE—Aurea Reticulata, Flava, Halle- ana, Red Coral, Sinensis, White Coral. | 25 | | |
| IVY—Giant, 4-in pots | 30 | 2 50 | |
| Variegated, 4-in pots | 30 | | |
| JASMINE—in pots 2 to 3 ft.. | 40 | 3 50 | |
| Catalonian, Capensis, Nudiflorum, Officia- nale, Revolutum | | | |
| MANDEVILLEA—Suaveolens | 40 | | |
| MANETTIA—Bicolor | 30 | | |
| PASSION VINE—Coerulea | 40 | | |
| Constance Elliott | 35 | | |
| Coccinea | 40 | | |
| Edulis | 40 | | |
| PLUMBAGO—Capensis | 35 | | |
| Capensis Alba | 40 | | |
| SMILAX | 30 | | |
| SILK VINE—Periploca | 35 | | |
| SNAIL VINE—(Phaseolus) | 40 | | |
| SOLANUM—Jasminoides | 35 | | |
| SOLLYA—Heterophylla | 35 | | |
| SWAINSONIA—Galegifolia Alba | 35 | | |
| TECOMA—Jasminoides, Mackenii | 40 | | |
| TRUMPET VINE—See Bignonia | | | |
| VINCA—(Periwinkle) Green-leaved, Variegated | 20 | | |
| VIRGINIA CREEPER—See Ampelopsis Quinquefolia. | | | |
| WISTARIA—Chinese | 40 | | |
| Frutescens | 50 | | |
| Double Purple | 60 | | |
| Pink | 75 | | |
| White | 50 | | |

HEDGE PLANTS

| | | | |
|--|----|------|-------|
| AFRICAN BOX THORN | 25 | 1 50 | |
| ARBOR VITAE—Seedlings | 20 | 1 50 | |
| BOX DWARF—Transplanted in boxes | | | 5 00 |
| CRATAEGUS PYRACANTHA—Trans. in boxes | | | 5 00 |
| EUONYMUS PULCHELLUS—Trans. in boxes | | | 6 00 |
| LAURUSTINUS—Balled 2 to 3 ft.. | 40 | 3 00 | |
| 1 to 2 ft.. | 30 | 2 50 | |
| Transplanted in boxes | | | 6 00 |
| MONTEREY CYPRESS—See Evergreen Trees. | | | |
| POMEGRANATE 2 to 3 ft.. | 30 | 2 50 | 20 00 |

PALMS, AGAVES, DRACÆNAS, YUCCAS

| | Each | Per 10 | Per 100 |
|---|-------|--------|---------|
| ARECA LUTESCENS—In 5-in pots 1½ to 2 ft.. | 1 50 | | |
| CHAMAEROPS—Argentea, balled 2 to 3 ft.. | 1 50 | | |
| CHAMAEROPS—Excelsa (Japan Fan Palm). | | | |
| 30 x 30 in. box 10 to 12 ft.. | 15 00 | | |
| 24 x 24 in. box 8 to 10 ft.. | 10 00 | | |
| 20 x 20 in. box 7 to 8 ft.. | 8 00 | | |
| 18 x 18 in. box 5 to 6 ft.. | 5 00 | | |
| 12 x 12 in. box 4 to 5 ft.. | 4 00 | | |
| Balled 5 to 6 ft.. | 3 00 | 25 00 | |
| 3 to 4 ft.. | 2 00 | 15 00 | |
| 2 to 3 ft.. | 1 50 | 12 50 | |
| 10-in. pots 3 to 4 ft.. | 2 00 | | |
| 6-in pots 2 to 3 ft.. | 1 00 | | |
| Humilis, 20 x 20 in. box 5 to 6 ft.. | 6 00 | | |
| 18 x 18 in- box 4 to 5 ft.. | 4 00 | | |
| Balled 2 to 3 ft.. | 1 50 | | |
| 1 to 2 ft.. | 1 25 | | |
| 10-in. pots 2 to 3 ft.. | 2 00 | | |
| 6-in. pots 1 to 2 ft.. | 1 00 | | |
| Nepalensis, balled 3 to 4 ft.. | 2 50 | | |
| balled 2 to 3 ft.. | 1 50 | | |
| Tomentosa, balled 3 to 4 ft.. | 1 25 | | |
| Nepalensis, 6-in. pots 1 to 2 ft.. | 2 50 | | |
| 2 to 3 ft.. | 1 50 | | |
| COCOS—Australis, 6-in. pots 1½ to 2 ft.. | 1 25 | | |
| CORYPHA AUSTRALIS—5-in. pots 1 to 2 ft.. | 1 00 | | |
| CYCAS—Revoluta (Sago Palm) boxed 10 00 | | | |
| 10-in. pots 4 00 | | | |
| 8-in. pots 2 00 | | | |
| 7-in. pots 1 50 | | | |
| 6-in. pots 1 00 | | | |
| 4-in. pots 35 | | | |
| ERYTHERA—Armata (Blue Palm), 18 x 18 | | | |
| in. box 4 to 5 ft.. | 6 00 | | |
| 16 x 16 in. box 3 to 4 ft.. | 5 00 | | |
| 12 x 12 in. box 2 to 3 ft.. | 3 50 | | |
| Balled 3 to 4 ft.. | 2 50 | | |
| 2 to 3 ft.. | 2 00 | | |
| 5-in. pots 1½ ft to 2 ft.. | 1 00 | | |
| Edulis, 16 x 16 in. box 3 to 4 ft.. | 4 00 | | |
| 12 x 12 in. box 2 to 3 ft.. | 2 50 | | |
| Balled 4 to 6 ft.. | 3 00 | | |
| 3 to 4 ft.. | 2 50 | | |
| 2 to 3 ft.. | 1 50 | | |
| 10-in. pots 2 to 3 ft.. | 2 00 | | |
| 6-in. pots 1½ to 2 ft.. | 1 00 | | |
| JUBEA—Spectabilis, 6-in. pots 2 to 3 ft.. | 1 25 | | |
| KENTIA—Belmoreana 5-in. pots 15 to 18 in.. | 1 50 | | |
| Canterburyiana, 5-in. pots 15 to 18 in.. | 1 50 | | |
| Fosteriana 5-in. pots 15 to 18 in.. | 1 50 | | |
| LATANIA—Borbonica, 12 x 12 in. box 3 to 4 ft.. | 6 00 | | |
| 7-in. pots 2 to 3 ft.. | 2 00 | | |
| 5-in. pots 15 to 18 in.. | 1 50 | | |
| PHOENIX—Canariensis, 30 x 30 in. box 10 to 12 ft.. | 15 00 | | |
| 24 x 24 in. box 8 to 10 ft.. | 10 00 | | |
| 20 x 20 in. box 6 to 8 ft.. | 8 00 | | |
| 18 x 18 in. box 5 to 6 ft.. | 6 00 | | |

| | | Each | Per 10 | Per 100 |
|---|---------------|------|--------|---------|
| PHOENIX—(Continued) | | | | |
| 12 x 12 in. box | 2 to 3 ft.. | 2 00 | | |
| 10 x 10 in. box | 1½ to 2 ft.. | 2 50 | | |
| Balled | 4 to 5 ft.. | 2 50 | | |
| | 3 to 4 ft.. | 2 00 | | |
| | 2 to 3 ft.. | 1 00 | | |
| | 1 to 2 ft.. | 75 | | |
| 10-in. pots, stocky | 2 to 3 ft.. | 2 00 | | |
| 7-in. pots | 2 to 3 ft.. | 1 00 | | |
| 5-in. pots | 18 to 24 in.. | 75 | | |
| Dactylifera 14 x 14 in. box | 3 to 4 ft.. | 3 00 | | |
| 12 x 12 in. box | 2 to 3 ft.. | 2 00 | | |
| Balled | 4 to 5 ft.. | 3 00 | | |
| | 3 to 4 ft.. | 2 00 | | |
| | 2 to 3 ft.. | 1 25 | | |
| 7-in. pots | 18 to 24 in.. | 1 25 | | |
| Reclinata, 7-in. pots | 18 to 24 in.. | 1 00 | | |
| Rupicola, 7-in. pots | 18 to 24 in.. | 1 25 | | |
| 5-in. pots | 15 to 18 in.. | 1 00 | | |
| Sylvestris, balled | 18 to 24 in.. | 1 50 | | |
| 5-in. pots | 18 to 24 in.. | 1 00 | | |
| PRITCHARDIA—Filifera 16 x 16 in. box .. | | | | |
| 12 x 12 in. box | 4 to 5 ft.. | 3 00 | | |
| Balled | 4 to 5 ft.. | 2 00 | | |
| | 3 to 4 ft.. | 1 50 | | |
| | 2 to 3 ft.. | 1 00 | | |
| 5-in. pots | 15 to 18 in.. | 75 | | |
| RHAPIS—Flabelliformis, per shoot, 4 to 18 in. high..... | | | | |
| | | 60 | | |
| Humilis, 6 to 24 in. high | | 60 | | |
| SABAL—Andansonii, balled | | | | |
| | 4 to 5 ft.. | 2 00 | | |
| Blackburniana, balled | 3 to 4 ft.. | 2 00 | | |
| Palmetto, 16 x 16 in. box | 4 to 5 ft.. | 4 00 | | |
| balled | 3 to 4 ft.. | 2 00 | | |
| SEAFORTHIA—Elegans, 7-in. pots | | | | |
| | 3 to 4 ft.. | 2 50 | | |
| WASHINGTONIA—Sonorea | | | | |
| 18 x 18 in. box | 6 to 8 ft.. | 6 00 | | |
| 16 x 16 in. box | 4 to 6 ft.. | 4 00 | | |
| balled | 4 to 6 ft.. | 3 00 | | |
| | 3 to 4 ft.. | 2 00 | | |
| 5-in. pots | 15 to 18 in.. | 1 00 | | |
| AGAVES. | | | | |
| AGAVE—Americana, 5-in. pots | | | | |
| | 1 ft.. | 50 | | |
| Variegata, 5-in. pots | 1 ft.. | 75 | | |
| DRACAENAS. | | | | |
| DRACAENA—Australis, balled | | | | |
| | 3 to 4 ft.. | 1 50 | | |
| In pots | 1 to 2 ft.. | 75 | | |
| Indivisa, 18 x 18 in. box | 8 to 10 ft.. | 6 00 | | |
| 16 x 16 in. box | 6 to 8 ft.. | 5 00 | | |
| Balled | 4 to 6 ft.. | 3 00 | | |
| | 3 to 4 ft.. | 2 00 | | |
| 6-in. pots | 2 to 3 ft.. | 75 | | |
| YUCCAS. | | | | |
| YUCCA—Aloifolia Variegata, balled | | | | |
| | 2 to 3 ft.. | 1 50 | | |
| Aloifolia, Quadricolor, balled | 2 to 3 ft.. | 2 00 | | |
| Angustifolia, balled | 2 to 3 ft.. | 1 00 | | |
| Baccata, balled | 2 to 3 ft.. | 1 00 | | |
| Filamentosa, balled | 2 to 3 ft.. | 75 | | |
| Whipplei, balled | 2 to 3 ft.. | 1 00 | | |

| | Each | Per 10 | Per 100 |
|--|--------------|--------|---------|
| DASYLIRONS. | | | |
| DASYLIRON—Glaucum, balled | 2 to 3 ft.. | 1 50 | |
| Longifolium, balled | 3 to 4 ft.. | 1 50 | |
| | 2 to 3 ft.. | 1 50 | |
| BAMBOOS. | | | |
| BAMBOOS—Henonis, 7-in. pots | 4 to 6 ft.. | 1 50 | |
| Quoiloi, 6-in. pots | 3 to 4 ft.. | 1 50 | |
| Striata Aurea, 6-in. pots | 1½ to 2 ft.. | 1 50 | |
| Phyllostachys Bambusoides, 7-in. pots | 3 to 4 ft.. | 2 00 | |
| Phyllostachys Mitis, 6-in pots | 2 to 3 ft.. | 1 50 | |
| Phyllostachys Nigra, 6-in. pots | 2 to 3 ft.. | 1 50 | |

HERBACEOUS BEDDING AND BORDER PLANTS

| | | | |
|--|-------------|------|---------|
| ABUTILION—Assorted, 12 varieties | | 35 | |
| ACHANIA—Malviviscus, in pots | | 30 | |
| ACHRYANTHES—In pots | | 20 | |
| Transplanted in boxes | | | 2 00 |
| AGERATUM | | 15 | |
| ALTERNANTHERA—Transplanted in boxes | | | 2 50 |
| ANTHERICUM—Vitatum | | 35 | |
| ARUNDO-DONAX—Variegated | | 35 | |
| ASPIDISTRA—Lurida, 6-in. pots | | 75 | |
| Variegated, 6-in. pots | | 1 00 | |
| BANANA—Abyssinian (Musa Ensete,) in in pots | 3 to 4 ft.. | 1 00 | |
| BEGONIAS—Assorted Varieties | | 35 | |
| CACTUS—Assorted varieties in pots | | 35 | |
| CANNAS—Twelve best French sorts | | 20 | 1 50 |
| Cannas (New) | | 30 | |
| CARNATIONS—Field-grown plants, 12 sorts. | | 30 | 2 50 |
| CHRYSANTHEMUMS—Latest varieties | | 25 | 2 00 |
| CLERODENDRON—in pots | | 35 | |
| COLEUS | | 25 | |
| CONVALLARIA PUNICA—in pots | | 25 | |
| CUPHEA LLAVAE | | 30 | |
| CYPERUS—Alternafolia, 4-in. pots | | 35 | |
| 6-in. pots | | 50 | |
| 8-in. pots | | 75 | |
| DAISY—Assorted | | | 50 2 00 |
| ECHEVERIA—In boxes | | | 50 2 50 |
| EULALIA—Japonica Variegata | | 35 | |
| Japonica Zebrina | | 40 | |
| FEVERFEWS | | | 50 2 00 |
| FERNS—Assorted | | 60 | |
| FUCHSIA—Assorted, in 12 varieties | | 30 | 2 50 |
| GERANIUMS—In 20 varieties | | 25 | 2 00 |
| HELIOTROPE—Assorted | | 25 | |
| HIBISCUS—Assorted | | 35 | |
| HOLLYHOCKS | | 25 | |
| LANTANAS | | 25 | |
| LOBELIAS—In boxes | | | |
| MARGUERITE—White and Yellow | | 25 | 2 00 |

| | Each | Per 10 | Per 100 |
|--|------|--------|---------|
| NEW ZEALAND FLAX | 50 | | |
| Variegated | 60 | | |
| PAMPAS GRASS—Clumps | 50 | | |
| Variegated | 1 00 | | |
| PANSIES | 10 | 50 | 2 00 |
| PELARGONIUMS—Assorted | 35 | | |
| PETUNIAS | 25 | | |
| PHLOXES | 25 | | |
| PILEA—(Artillery Plant) | 25 | | |
| PRIMULA—Japonica | 25 | | |
| Sinensis | 25 | | |
| SALVIAS | 25 | | |
| SAXIFRAGA | 20 | | |
| SEDUMS | 25 | 2 00 | |
| THYME—Lemon | 20 | | |
| Variegated | 25 | | |
| TRADESCANTIA—3 varieties | 15 | | |
| TRITOMA—Uvaria | 25 | | |
| VERBENAS | 15 | 50 | 2 50 |
| VINCA—(Periwinkle) | 15 | | |
| Variegated | 15 | | |
| VIOLETS—Czar, Marie Louise, Princess of Wales, Russian, Swanley White, "The California." | 10 | 50 | 2 50 |

BULBOUS AND TUBEROUS ROOTED PLANTS

| | | | |
|--|----|------|--|
| AGAPANTHUS—Umbellatus | 50 | | |
| AMARYLLIS—Johnsoni | 50 | | |
| Lutea | 50 | | |
| Vittata | 50 | | |
| ANEMONES | 25 | | |
| CALADIUM—Esculentum clumps | 25 | | |
| CALLA LILY | 25 | 2 00 | |
| Variegated | 35 | | |
| CYCLAMEN—Assorted colors, in pots | 25 | | |
| DAHLIA—Double and Single, roots | 20 | | |
| GLADIOLI—Assorted | 10 | 75 | |
| HYACINTHS—Double and Single, in pots | 25 | | |
| IRIS—Kaempferii | 25 | | |
| LILY OF THE VALLEY—Pips | 16 | | |
| LILY—Auratum | 25 | 2 00 | |
| Speciosum Album, Speciosum Rubrum, Longiflorum Harissii, Tigrinum. | | | |
| NARCISSUS—Assorted | 15 | 1 00 | |
| TUBEROSES | 10 | 75 | |
| TULIPS | 15 | 1 00 | |



ROSES

OUR stock of roses for this season is exceptionally fine. With the exception of varieties of very recent introduction, our plants are all grown in the open ground; are strong, healthy and well-rooted, and will flower profusely the first season after planting. We are giving special attention to this, the most popular of all flowers, and are constantly importing the new varieties.

In order to refer more easily to the many varieties, we have arranged them in alphabetical order and appended the abbreviations for the various classes to which they belong. The abbreviations are as follows:

Abbreviations

| | |
|-------------------------|------------------|
| Ban.—Banksia. | M.—Moss. |
| Ben.—Bengal. | N.—Noisette. |
| Bour.—Bourbon. | Poly.—Polyantha. |
| H. N.—Hybrid Noisette. | Pr.—Prairie. |
| H. P.—Hybrid Perpetual. | Rug.—Rugosa. |
| H. T.—Hybrid Tea. | T.—Tea. |
| Misc.—Miscellaneous. | |

NEW ROSES

Price, 40c each; \$3 per 10.

| | |
|---------------------------------------|---------------------------------|
| Admiral Dewey—H. T. | Jubilee—H. P. |
| Banksia Single White—Ban. | Maman Cochet—T. |
| Climbing Bridesmaid—T. | Souv. de President Carnot—H. T. |
| Climbing Kaiserin Aug. Victoria—H. T. | White Marechal Niel—N. |
| Climbing White Pet—T. | White Rambler—Poly. |
| Climbing Wooton—H. T. | Wichuriana—Misc. |
| Empress of China—Misc. | Williams Evergreen—Misc. |
| Enchantress—T. | Yellow Rambler—Poly. |

ROSES—General Collection

Price, 25c each; \$2 per 10; \$15 per 100. Standards, 60c each.

| | |
|---|-------------------------------|
| Abel Carriere—H. P. | Capt. J. Ingram—M. |
| Agrippina—Ben. | Cath. Mermet—T. |
| Alice Leroy—M. | Celine Forrestier—N. |
| American Beauty—H. P. | Charles Lefebre—H. P. |
| Anna Marie de Montravel—Poly. | Charles Rovolli—T. |
| Antoine Mouton—H. P. | Cherokee Single—Misc. |
| Augustine Guinoiseau or White La France—H. T. | Cherokee Double—Misc. |
| Baltimore Belle—Pr. | Cheshunt Hybrid—H. T. |
| Banksia White—Ban. | Christine de Noue—T. |
| Banksia Yellow—Ban. | Claire Carnot—N. |
| Baroness Rothschild—H. P. | Climbing Capt. Christy—H. P. |
| Beauty of Europe—T. | Climbing Devoniensis—T. |
| Beauty of Stapleford—H. T. | Climbing Niphetos—T. |
| Belle Siebrecht—H. T. | Climbing Perle des Jardins—T. |
| Bertha Clavel—Bour. | Clothilde Soupert—Poly. |
| Elack Prince H. P. | Cloth of Gold—N. |
| Bon Silene—T. | Comtesse de Frigneuse—T. |
| Bougere—T. | Countess Eva Starhemburg—T. |
| Bridesmaid—T. | Comtesse Riza du Parc—T. |
| Cameons—T. | Cornelia Cook—T. |
| Capt. Christy—H. P. | Crimson Rambler—Poly. |
| | Dinsmore—H. P. |

- Docteur Grill—T.
 Double Cherokee—Misc.
 Duchesse de Brabant—T.
 Duchess of Albany—H. T.
 Duchess of Edinburgh—T.
 Eliza Sauvage—T.
 Empereur du Maroc—H. P.
 Empress of India—H. P.
 Etoile de Lyon—T.
 General Jacquemniot—H. P.
 General Washington—H. P.
 Gloire de Dijon—T.
 Gloire Lyonnaise—H. P.
 Golden Gate—T.
 Gold of Ophir—N.
 Greville—Pr.
 H. M. Stanley—T.
 Her Majesty—H. P.
 Hermosa—Bour.
 Homer—T.
 Hon. Edith Gifford—T.
 Improved Rainbow—T.
 James Sprunt—Ben.
 James Veitch—M.
 Jean Pernet—T.
 Jules Finger—T.
 Kaiserin Aug. Victoria—H. T.
 Lady H. Grosvenor—H. T.
 La France—H. T.
 Lamarque—N.
 Le Reine—H. P.
 La Rosier or Prince Camille de
 Rohan—H. P.
 Louis Van Houtte—H. P.
 Luciole—T.
 Mabel Morrison—H. P.
 Mme. Alf. Carriere—H. N.
 Mme. Alf. de Rougemont—H. N.
 Mme. A. Veysset—H. T.
 Mme. Berard—T.
 Mme. C. Testout—H. T.
 Mme. Chas. Wood—H. P.
 Mme. C. Guinoiseau—T.
 Mme. Cusin—T.
 Mme. de Watteville—T.
 Mme. G. Luizet—H. P.
 Mme. J. Schwarz—T.
 Mme. M. Kuppenheim—T.
 Mme. Plantier—Misc.
 Mme. S. Cochet—T.
 Mme. Welche—T.
 Mlle. Cecile Brunner—Poly.
 Marchioness of Londonderry—H. P.
 Marechal Niel—N.
 Margaret Dickson—H. P.
 Marie Bauman—H. P.
 Marie Van Houtte—T.
 Marion Dingee—T.
 Medea—T.
 Merveille de Lyon—H. P.
 Meteor—H. T.
 Microphylla—Misc.
 Mignonette—Poly.
 Mrs. Degraw—Bour.
 Mrs. J. Laing—H. P.
 Mrs. Pierpont Morgan—T.
 Mrs. W. C. Whitney—T.
 Niphetos—T.
 Papa Gontier—T.
 Pauline Labonte—T.
 Paul Neyron—H. P.
 Perfection des Blanches—H. N.
 Perle des Jardins—T.
 Persian Yellow—Misc.
 Pink Soupert—Poly.
 Prairie Queen—Pr.
 Premier Arey—Misc.
 Reine de Bourbon—Bour.
 Reine Marie Henriette—H. T.
 Reine Marie Pia—T.
 Reine Olga de Wurtemberg—H. T.
 Reve d'Or—T.
 Rubens—T.
 Rugosa Alba—Rug.
 Rugosa Rubra—Rug.
 Safrano—T.
 Salamander—H. P.
 Sappho—T.
 Senateur McNaughton—T.
 Seven Sisters of Greville—Pr.
 Single Cherokee—Misc.
 Snowflake—T.
 Sombreuil—T.
 Souvenir de Mme. Pernet—T.
 Souvenir de Malmaison—Bour.
 Souvenir de Paul Neyron—T.
 Souvenir de Victor Hugo—T.
 Souvenir de Wooton—H. T.
 Souvenir d'un Ami—T.
 Sunset—T.
 The Bride—T.
 The Queen—T.
 Ulrich Brunner—H. P.
 Valle de Chamounix—T.
 Vick's Caprice—H. P.
 Waban—T.
 Waban—T.
 White Banksia—Ban.
 White Baroness—H. P.
 White Bath—M.
 W. A. Richardson—N.
 Xavier Olibo—H. P.
 Yellow Banksia—Ban.

INDEX

—to—

Price List of Fancher Creek Nurseries

1901-1902.

FRUIT DEPARTMENT

| | Page |
|--------------------------|------|
| Almonds | 7 |
| Apples | 5 |
| Apples, Crab | 5 |
| Apricots | 7 |
| Artichokes | 11 |
| Asparagus | 11 |
| Banana | 9 |
| Blackberries | 10 |
| Butternut | 8 |
| Cherries | 6 |
| Chestnuts | 8 |
| Citron | 9 |
| Citrus Trees | 9 |
| Currants | 11 |
| Dewberries | 10 |
| Elaeagnus Longipes | 10 |
| Figs | 8 |
| Filberts | 8 |
| Grapes | 9 |
| Gooseberries | 11 |
| Hickory | 8 |
| Hop Roots | 11 |
| Hovenia Dulcis | 9 |
| Lemon | 9 |
| Lime | 9 |
| Logan Berry | 10 |
| Loquat | 9 |
| Lychee | 9 |
| Mammoth Blackberry | 10 |
| Medlar | 9 |
| Nectarines | 7 |
| Olives | 8 |
| Oranges | 9 |
| Peaches | 7 |
| Pears | 5 |
| Pear Guava | 9 |
| Pecans | 8 |
| Persimmons | 9 |
| Pistachio Nut | 8 |
| Plums | 6 |
| Pomegranates | 9 |
| Pomelo | 9 |
| Prunes | 6 |
| Quinces | 7 |
| Raspberries | 10 |
| Rhubarb | 11 |
| Strawberries | 11 |
| Strawberry Guava | 9 |
| Walnut | 8 |

ORNAMENTAL DEPARTMENT

| | |
|------------------------------|----|
| Abelia | 17 |
| Abutilon | 23 |
| Acacia, Constantinople | 11 |
| Acacia | 15 |
| Achania | 23 |
| Achyranthes | 23 |

| | Page | Page | |
|-----------------------------------|--------|---------------------------------------|--------|
| African Box Thorn | 20 | Christmas Berry | 17 |
| Agapanthus | 24 | Chrysanthemums | 23 |
| Agave | 22 | Clematis | 20 |
| Ageratum | 23 | Clianthus | 20 |
| Akebia | 20 | Climbing and Trailing Shrubs | 20 |
| Alder | 11 | Clerodendron | 23 |
| Almond, Flowering | 18 | Cobea | 20 |
| Alternanthera | 23 | Cocos | 21 |
| Althea | 18 | Coleus | 23 |
| Amaryllis | 24 | Corypha | 21 |
| Ampelopsis | 20 | Convallaria | 23 |
| Anemone | 24 | Corchorus | 18 |
| Anthericum | 23 | Coronilla | 17 |
| Aralia | 17 | Crape Myrtle | 19 |
| Araucaria | 15 | Crataegus | 20 |
| Arbor Vitae | 15, 20 | Cryptomeria | 15 |
| Arbutus | 17 | Cuphea | 23 |
| Ardesia | 21 | Cycas | 21 |
| Areca | 17 | Cyclamen | 24 |
| Arundo Donax | 23 | Cypress | 16, 20 |
| Ash | 11 | Cyperus | 23 |
| Ash, Weeping | 14 | Dahlia | 24 |
| Asparagus | 20 | Daisy | 23 |
| Aspidistra | 23 | Daphne | 17 |
| Aucuba | 17 | Dasylyron | 23 |
| Bamboos | 23 | Deciduous Trees | 11 |
| Banana | 23 | Deciduous Shrubs | 18 |
| Beech | 11 | Deutzia | 19 |
| Begonias | 23 | Diosma | 17 |
| Berberis | 17 | Dogwood | 19 |
| Berryberry | 18 | Dracaena | 22 |
| Bigonia | 20 | Dutchman's Pipe | 20 |
| Birch | 11 | Echeveria | 23 |
| Birch, Weeping | 14 | Elder | 19 |
| Box | 17, 20 | Eleagnus | 17 |
| Broom | 17 | Elm | 11 |
| Brachychiton | 15 | Elm, Weeping | 14 |
| Broussonetia | 11 | Erythra | 21 |
| Bulbs and Tuberous Roots | 24 | Erythrina | 19 |
| Burning Bush | 17 | Escallonia | 17 |
| Cactus | 23 | Eucalyptus | 16 |
| Caladium | 24 | Eulalia | 23 |
| California Bay Tree | 15 | Euonymus | 18, 20 |
| California Big Tree | 15 | " Spindle Tree | 19 |
| California Nutmeg | 15 | Evergreen Shrubs | 17 |
| Calla Lily | 24 | Evergreen Trees | 15 |
| Calycanthus | 18 | Fabiana | 18 |
| Camellia | 17 | Ferns | 23 |
| Camphor Tree | 15 | Feverfews | 23 |
| Cannas | 23 | Ficus | 16 |
| Carnations | 23 | Filbert | 19 |
| Casuarina | 15 | Forsythia | 19 |
| Catalpa | 11 | Fringe Tree | 12 |
| Ceanothus | 17 | Fuchsia | 23 |
| Cedar | 15 | Garrya | 18 |
| Cephalotaxus Fortunei | 15 | Geraniums | 23 |
| Chamaerops | 21 | Gladioli | 24 |
| Chestnut | 11 | Grevillea | 16 |
| Chamaecerasus | 18 | Hag Berry | 12 |
| Choisya | 17 | Heath | 18 |

| Page | | Page | Page |
|----------------------------|--------|-----------------------------------|--------|
| Hedge Plants | 20 | Mulberry | 13 |
| Heliotrope | 23 | " Weeping | 14 |
| Herbaceous Plants | 23 | Nandina | 18 |
| Hibiscus | 23 | New Zealand Flax | 24 |
| Holly | 16 | Narcissus | 24 |
| Hollyhocks | 23 | Oak | 13 |
| Honeysuckles | 20 | Oak Cork | 16 |
| Horse Chestnuts | 12 | Oleanders | 18 |
| Hyacinths | 24 | Orange, Otaheite | 18 |
| Hydrangea | 19 | Palms, Dracaenas | 18 |
| Hypericum | 18 | Agaves and Yuccas | 21 |
| Iris | 24 | Pampas Grass | 24 |
| Ivy | 20 | Pansies | 24 |
| Jasmine | 20 | Passion Vine | 20 |
| Jubea | 21 | Paulownia | 13 |
| Judas Tree | 12 | Peach, Flowering | 13 |
| Juniper | 16 | Pelargoniums | 24 |
| Kentia | 21 | Pepper Tree | 16 |
| Kentucky Coffee Tree | 12 | Petunias | 24 |
| Kolreuteria | 12 | Phoenix | 21 |
| Lantanas | 23 | Phlox | 24 |
| Latania | 21 | Photinia | 18 |
| Laurel | 18 | Pilea | 24 |
| Laurustinus | 18, 20 | Pine | 17 |
| Lemon Verbena | 19 | Pittisporum | 18 |
| Libocedrus | 16 | Plumbago | 20 |
| Ligustrum | 18 | Poinciana | 19 |
| Lilac | 19 | Polygala | 18 |
| Lily of the Valley | 24 | Pomegranate, Flower- ing | 19, 20 |
| Lillies | 24 | Poplar | 13 |
| Linden | 12 | Poplar, Weeping | 14 |
| " Weeping | 14 | Primula | 24 |
| Lobelias | 23 | Pritchardia | 22 |
| Locust | 12 | Quince, Flowering | 19 |
| Loquat | 16 | Redwood | 17 |
| Magnolia Grandiflora | 16 | Retinospora | 17 |
| Magnolia | 12 | Raphiolepis | 18 |
| Maiden Hair Tree | 12 | Rhapis | 22 |
| Madrone | 16 | Rhodotypos | 19 |
| Mahonia | 18 | Roses | 25 |
| Mandevillea | 20 | Sabal | 22 |
| Maple | 12 | Salvia | 24 |
| Marguerite | 23 | Saxifraga | 24 |
| Manettia | 20 | Sciadopitys | 17 |
| Melaleuca | 18 | Seaforthtia | 22 |
| Metrosideros | 18 | Sedum | 24 |
| Mock Orange | 19 | Service Tree | 14 |
| Mountain Ash | 13 | Siberian Pea Tree | 14 |
| Myrtle | 18 | Silk Vine | 20 |
| | | Smilax | 20 |
| | | Smoke Tree | 19 |
| | | Snail Vine | 20 |
| | | Snowball | 19 |
| | | Snowberry | 19 |
| | | Solanum | 20 |
| | | Sollya | 20 |
| | | Sophora Japonica | 14 |
| | | Sophora Pendula | 14 |
| | | Spirea | 19 |
| | | Spruce | 17 |
| | | Staphylea | 19 |
| | | Sumach | 19 |
| | | Swainsonia | 20 |
| | | Sycamore | 14 |
| | | Tamarix | 19 |
| | | Taxodium | 14 |
| | | Tecoma | 20 |
| | | Texas Umbrella | 14 |
| | | Thorn | 14 |
| | | Thujaopsis | 17 |
| | | Thyme | 24 |
| | | Torreya | 17 |
| | | Tradescantia | 24 |
| | | Tree Paeony | 19 |
| | | Tritoma Uvaria | 24 |
| | | Trumpet Vine | 20 |
| | | Tuberoses | 24 |
| | | Tulip | 24 |
| | | Tulip Tree | 14 |
| | | Verbenas | 24 |
| | | Veronicas | 18 |
| | | Viburnum | 19 |
| | | Vina | 20, 24 |
| | | Violets | 24 |
| | | Virgilea | 14 |
| | | Virginia Creeper | 20 |
| | | Walnut | 14 |
| | | Washingtonia | 22 |
| | | Weeping Deciduous Trees | 14 |
| | | Weigelia | 19 |
| | | Willow | 14 |
| | | " Weeping | 14 |
| | | Wistaria | 20 |
| | | Xanthoceras | 14 |
| | | Yew | 17 |
| | | Yucca | 22 |



