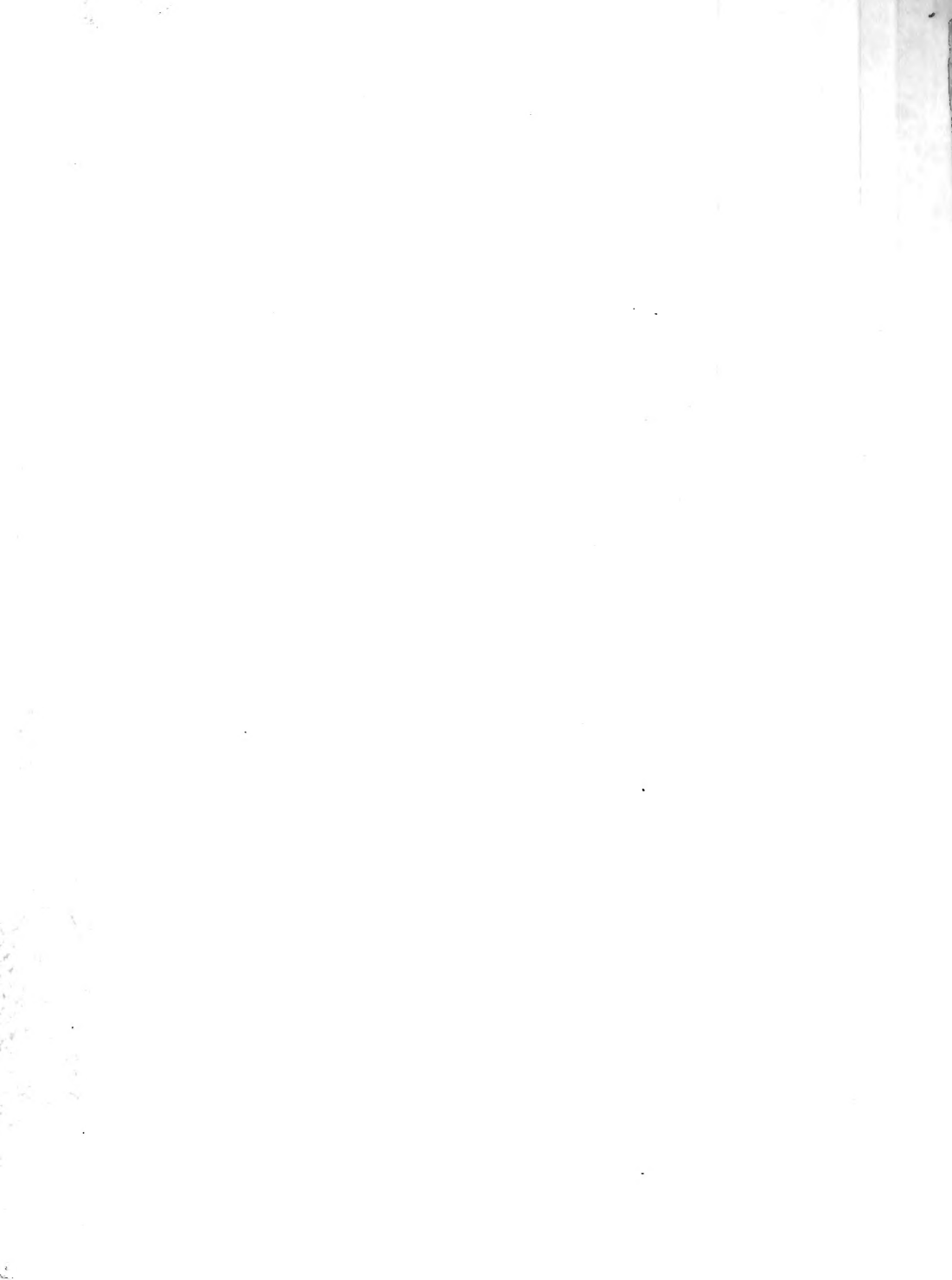


## **Historic, archived document**

Do not assume content reflects current scientific knowledge, policies, or practices.



# PRICE-LIST OF POT-GROWN AND LAYER STRAWBERRY PLANTS,

*For Summer and Fall of 1881,*

GROWN AND FOR SALE BY

**G. H. & J. H. HALE,**

Elm Fruit-Farm and Nursery, South Glastonbury, Conn.

Telegraph and Post Office, South Glastonbury; Express Office, Rocky Hill; P. O. Money Order Office, Hartford; all Hartford County, Conn.

Terms cash with the order from unknown correspondents.  
Parties may price one or more plants at dozen rates, 50 at 100 rates, and 500 at 1000 rates.  
Remit by registered letter, P. O. order on Hartford, or draft on New York.

Special terms to dealers, agents and large planters. Parties wishing to buy 5,000, 10,000, or 20,000 plants, will do well to correspond with us before purchasing elsewhere.

Explicit directions for marking and shipping packages should accompany the order. Where the mode of conveyance is left to us to choose, we shall exercise our best judgment; but in all cases articles at the risk of the purchaser after being shipped. Should loss or delay occur, the forwarders alone must be held responsible. Freight to be paid by the purchaser after the plants are delivered at station here.

Should we be out of any variety ordered, we will substitute others of equal or greater value, unless otherwise ordered.

Parties wishing us to make a selection of varieties for them, will please state character of soil; also, whether the fruit is to be grown for market or home use, and whether fine, showy fruit, or simply quantity, is wanted.

Plants by Mail.—Parties living at a distance from railroad or express office often find it a convenience to have plants sent by mail. We prefer, however, to send by freight or express where practicable, as we can use much more moss in packing, thus making sure of plants arriving in better condition. Plants in pots must always go by freight or express. During the hot weather of July and August all plants should be sent by express, if possible, as they can be packed more loosely, and therefore not as apt to heat, as when packed tight and sent by mail.

We will send Strawberry plants at dozen rates by mail, postage paid, but at 100 rates purchasers must add 35 cents to prepay postage.

Dip the plants, as soon as received, in water, and bury the roots in moist, shady ground, till you are ready to set them out.

## POT-GROWN PLANTS,

Of which 100 Plants will produce more fruit, and finer, the first season, than 500 ordinary Layer Plants.

Pot-grown Strawberry plants are now used almost exclusively for Summer and Fall planting. Our plan of growing them is to take 2½ inch flower-pots, and plunge them into the earth near the young growing plant, fill the pot with rich earth, and take the young plant with its roots just starting and press it lightly into the pot, water it thoroughly, and in two or three weeks it will be well rooted, and may be removed from the pot with the ball of earth adhering; this we wrap in oiled paper and pack in boxes of damp moss, with the tops exposed. The plants may be sent a long distance, either by freight or express, and arrive in fine condition.

No better evidence as to the superiority of pot-grown plants could be desired than the fact that experts in growing Strawberries everywhere plant them almost exclusively. Where parties wish several hundred plants we will pot them to order at \$1.25 per 100, in addition to cost of plants, if the order is received three weeks in advance of shipment.

Our prices for potted plants will be found very low, in fact less than the simple cost of potting and packing in most small establishments, but as we make a wholesale business of it, potting them by thousands, we can do it at less price and yet give our customers first-class stock in every respect. Parties wanting 50,000 or 100,000 potted to order will be given still more favorable terms.

Potted plants set now will give a good crop of fruit next June, while if planting is delayed until Spring you get no fruit until the following year.

# VARIETIES AND PRICES.

[Those marked (P) are Pistillate, and will not fruit alone;—must be placed by the side of some staminate sort like Wilson or Charles Downing.]

## NEW VARIETIES.

**MANCHESTER (P).**—A chance seedling found on the grounds of Mr. Jesse Beattie of Manchester, N. J., some ten years ago, and for the past six years he has had several acres in fruiting, shipping fruit to the New York market, where it has always sold for the highest price. Mr. C. W. Idell, a large dealer in fruits at 333 Washington Street, New York, was so highly impressed with its great value as a firm, solid, as well as showy market berry, that he brought it to the notice of the New Jersey Horticultural Society. Our firm, in connection with Mr. J. T. Lovett, have made arrangements with the originator for the introduction of this valuable new variety, and it is now offered for sale for the first time. Having full control of the entire stock of plants, and while we shall put it in the hands of a few reputable dealers, any one offering it at a price below those printed in our list may be set down as an imposter, not having any of the genuine plants.

The plant is a strong, rapid grower, free from rust or blight, as productive as Crescent, fruit averaging twice as large the season through. In form it is as smooth and regular as the Cumberland Triumph; color, a beautiful bright glossy scarlet; the flavor is thought by many to be equal to the Hovey Seedling, when at its best, and all admit that it is far better than anything offered in market at the present time. Its firmness is beyond question. It ripens about a week after Wilson, and its whole character is fully described in the following testimonial, signed by some of the best Strawberry experts in this country:—

THIS IS TO CERTIFY that we, the undersigned, having this day examined several acres of the Seedling Strawberry "Manchester" as grown on light, sandy soil, endorse the statement of the originator, which reads as follows:

AS COMPARED WITH WILSON'S ALBANY.

(1) It averages one and a half times the size. (2) It is of much better flavor. (3) It is far more attractive with its bright scarlet color, and finer in appearance. (4) The plant is double the size and far more vigorous. (5) It carries the fruit higher from the ground. (6) The yield, as it appears, is one-half more. (7) In firmness it fully equals the Wilson.

[Dated] June 9th, 1881.

[Signed]

E. BEEKMAN, prominent small-fruit grower of Monmouth County, N. J.; G. F. HERING, prominent small-fruit grower of Bergen County, N. J.; PETER B. MEAD, formerly editor of *The Horticulturist*; JNO. S. COLLINS, prominent small-fruit grower of Burlington County, N. J.; B. B. HANCE, formerly of A. Hance & Son, nurserymen; EZRA STOKES, prominent small-fruit grower of Camden County, N. J.; JOSHUA BARTON, fruit-grower of Camden County, N. J.; WM. L. FERRIS, JR., nurseryman and fruit-grower of Dutchess County, N. Y.; J. H. HALE, of Hale Bros., fruit-growers and nurserymen of Connecticut; SAMUEL S. H. STOKES, fruit-grower of Camden County, N. J.; WM. PARRY, prominent nurseryman and fruit-grower; E. P. ROE, the prominent author, nurseryman and fruit-grower; J. G. BURROW, disseminator of the Jefferson Grape; WM. F. BASSETT, experienced fruit-grower and nurseryman; C. H. DIX, fruit-grower of Ocean County, N. J.; B. L. TRAFFORD, experienced market gardener; FRANK McMAHON, foreman of Monmouth Nursery; JNO. R. PARRY, fruit-grower and nurseryman of Burlington County, N. J.; C. P. HAYES, the venerable fruit-grower of Delaware; WM. F. DREER, of the firm of Henry A. Dreer, seedsmen.

[From Dr. F. M. Hexamer, editor of the American Garden.]

NEW YORK, July 11, 1881.

MESSRS. G. H. & J. H. HALE:

Dear Sirs—After full deliberation, I do not hesitate to say that the "Manchester," as I saw it on your place, has more good qualities than any other strawberry in cultivation. For shape, color, flavor, beauty, firmness, and uniform large size of berries, as well as for productiveness and hardness of plants combined, it has no equal.

Yours truly,

F. M. HEXAMER.

### WHAT EXPERIENCED MARKETMEN THINK OF IT.

I, having sold the Manchester berry for several years, and in quantity for the past three years, do hereby certify that, from its large size, bright color, fine appearance and firmness, it invariably commands high prices. Further, it keeps its color the best of any berry I have ever handled, and "stands up" well. I do not hesitate to "keep it over," and have at different times, when there was a glut in the market, kept it over until the second day, when it would present a fine appearance, and sell readily at better prices than could possibly have been obtained when it came into market.

[Signed]

C. W. IDELL,

Commission Merchant,

333 Washington St., N. Y. City.

### FIRST PRIZE FROM THE MASSACHUSETTS HORTICULTURAL SOCIETY.

We exhibited the Manchester in connection with Longfellow at the exhibition of the Massachusetts Horticultural Society in Boston, July 28th, and were awarded the first prize for best two new varieties not previously exhibited, and this when there were eleven other new varieties on exhibition, showing

that the merits of the Manchester are fully appreciated by Strawberry experts who circulate around the Hub.

The *Country Gentleman* of July 7, 1881, says: The clusters of berries sent, although not in the best of condition, showed that the variety is productive, and of good size and quality. If as successful generally, it will be an acquisition of value.

The *Philadelphia Farm Journal* of July 1st says: We attended a strawberry christening the other day in South Jersey. Jesse Beattie, a farmer, has accidentally originated a new variety of strawberry that is believed to possess unusual merit. A dozen or two well-known gentlemen engaged in the dissemination of small fruits, and small-fruit plants, were present; for instance, William Parry and John S. Collins of Burlington County; Ezra Stokes and his boys; E. P. Roe, from-up-the-Hudson; Hale, a jolly fellow from Connecticut; Dix, a Jersey Yankee of Lakewood; Hance of Red Bank, Bassett, Peter D. Mead, the veteran, Dreer of Philadelphia, and lots more. Idell, the New York commission merchant, was there, and Lovett, of course, was on hand. We all examined the new berry, and pronounced it of good quality, solid, prolific, handsome, of good size and shape, and borne upon a vigorous plant, even in thin, sandy soil, and with indifferent care and cultivation.

We could fill pages of testimony like the above, but have not the room here. Later in the season we shall print a catalogue filled with such overwhelming proof of the great value of this remarkable berry that all will be convinced that it is just what we claim for it,—more nearly perfect than any other variety in cultivation,—combining, as it does, vigor of plant with great productiveness, large-sized fruit of perfect form, beautiful color, delicious flavor, with shipping and keeping qualities equal to the Wilson, and, in fact, the berry we have all been looking for, but, till now, have never found.

That we may more fully convince our friends of the merits of the Manchester, we have had one of the best artists in the country paint a section of a row when in full fruiting, and shall have a colored plate made from it, and send copies to all of our customers later in the season.

Plants ready for delivery after September 1. Price for Fall of 1881 and Spring of 1882, \$2 per doz., \$10 per 100, \$80 per 1000. No pot plants for sale this Fall.

**FINCH'S PROLIFIC.**—Originated in Southern Ohio, and thought to be a cross of Russell's Prolific with Wilson. We have only tested it one season, but are strongly impressed with its value as a very productive and firm market berry; plant strong and healthy, fruit large, good form and color; medium quality very firm; think it should be tested by every one growing fruit for market.

Pots, \$1 per doz., \$5 per 100, \$40 per 1000. Layers, 75c. per doz., \$4 per 100, \$30 per 1000.

**BODWELL.**—A very valuable early variety; plant strong and vigorous even on light soil; very productive, fruit of largest size; long and conical in shape, with an occasional coxcomb berry; color, a glossy crimson; superior quality.

Pot plants, \$1 per doz., \$4 per 100, \$30 per 1000. Layer plants, 75c. per doz., \$3 per 100, \$20 per 1000.

**LONGFELLOW.**—Another year's trial of this splendid berry has convinced us that, for a choice family berry, or for fancy market, it will be of great value. Plant very vigorous, moderately productive; fruit long and conical in shape, rich, dark, glossy color, and of very high quality; ripens late; very valuable.

Pots, 75c. per doz., \$3 per 100, \$25 per 1000. Layers, 50c. per doz., \$1.50 per 100, \$12 per 1000.

**MARVIN.**—A cross between Wilson and Jucunda. It will not thrive on light, dry soil; on heavy clay soil it is of great value; fruit of large size, dark red, very firm and solid, good quality; and what is best of all, the very latest to ripen.

Pots, 75c. per doz., \$3 per 100, \$25 per 1000. Layers, 50c. per doz., \$1.50 per 100, \$12 per 1000.

**MOUNT VERNON, or KIRKWOOD.**—Originated in Southern New Jersey, and said to be the most profitable market berry ever grown there. The plant is one of the most vigorous on our place; very productive, fruit of medium size and quality; moderately firm; ripens very late, and valuable for market on that account.

Pots, 75c. per doz., \$3 per 100, \$25 per 1000. Layers, 50c. per doz., \$1.50 per 100, \$12 per 1000.

Out of the fifty or more new varieties that we have grown and tested the past season, the foregoing are the only ones we can honestly recommend as worthy of general cultivation. Should our customers want any of other new varieties, we will supply them at regular market rates.

## STANDARD SORTS OF GREAT VALUE.

[Those marked (P) are Pistillate, and will not fruit alone;—must be placed by the side of some staminal sort like Wilson or Charles Downing.]

**HART'S MINNESOTA SEEDLING.**—Vigorous plant, moderately productive, fruit of large size, very regular and uniform, with no small berries; color, rich dark red, with prominent seeds, which makes it very handsome and attractive; delicious flavor; ripens early; one of the best for family use.

Pots, 50c. per doz., \$2.50 per 100, \$20 per 1000. Layers, 25c. per doz., \$1 per 100, \$5 per 1000.

**WINDSOR CHIEF (P).**—A seedling of Champion, fertilized by Charles Downing. Its general character being similar to Champion, some growers think them identical, and while a berry must be fine to surpass the Champion, we think the Windsor is its superior in many respects. Plant, strong and vigorous, free from rust blight, enormously productive, yielding with us, in 1880, 12,800 quarts per acre; fruit of regular, uniform size, with large, green hulls, very acid until fully ripe; ripens late, coming in about ten days after its rival in productiveness, the Crescent.

Pots, 50c. per doz., \$2.50 per 100, \$20 per 1000. Layers, 25c. per doz., \$1 per 100, \$5 per 1000.

**GLENDALE.**—So far, the best late market berry that has been tested. Plant, very thrifty, with tall, rank foliage; a free runner, and very productive; succeeds well either on light or heavy soil. Fruit of large size, regular, uniform, conical, bright scarlet color, fair quality, very firm, being fully equal to Wilson in shipping and keeping qualities.

Pots, 50c. per doz., \$2.50 per 100, \$20 per 1000. Layers, 25c. per doz., \$1 per 100, \$5 per 1000.

**MINER'S GREAT PROLIFIC.**—Plant, a strong, free grower, with clean, bright foliage, enormously productive; fruit large, somewhat irregular in shape; deep, rich, red color, firm enough for a near market; best quality. We have seen it growing in different States and on different soils, and everywhere producing enormous crops, and we now recommend it as the best berry to take the place of the well-known Charles Downing, which is failing in many places, on account of rust or leaf blight.

Pots, 50c. per doz., \$2.50 per 100, \$20 per 1000. Layers, 25c. per doz., \$1 per 100, \$5 per 1000.

**SHARPLESS.**—A superb variety in every respect. Plant enormous, producing very heavy fruit-stalks that are loaded with fruit of the largest size, the fruit picking, however, being very irregular. Quality good, ripens late. Took first prize at Massachusetts Horticultural Exhibition, for largest fifty berries, also for best four quarts.

Pots, 50c. per doz., \$2.50 per 100, \$20 per 1000. Layers, 35c. per doz., \$1 per 100, \$6 per 1000.

**PRESIDENT LINCOLN.**—One of the largest berries in cultivation; rich, dark color and fine quality; the first picking is very irregular in shape; requires a very heavy, rich soil, with high culture, to perfect it.

Pots, 50c. per doz., \$2.50 per 100, \$20 per 1000. Layers, 35c. per doz., \$1 per 100, \$5 per 1000.

**PIONEER.**—Is growing in favor every year, and is by far the most profitable early berry of large size that is found in market. The plant is a very strong, rapid grower, having a large amount of green foliage, perfectly hardy, requiring no winter protection, even in the most exposed position: very productive; yielded in 1879, with us, 7000 quarts per acre, and sold for 40 cents per quart. Fruit, very large and very regular in form, although a few of the largest are slightly flattened; pale scarlet color, and delicious flavor. One of the best for family use or fancy market.

Pots, 50c. per doz., \$2.50 per 100, \$20 per 1000. Layers, 35c. per doz., \$1 per 100, \$5 per 1000.

**CRESCENT SEEDLING (P).**—Very vigorous, thrifty plant, producing an enormous crop of medium-sized, bright scarlet berries of rather indifferent quality, except on light dry soil where the fruit is well exposed to the sun. Ripens early.

Price 25c. per doz., 50c. per 100, \$3 per 1000.

**CRYSTAL CITY.**—The earliest of the early. From what we have seen of this berry in our travels this present season, we are convinced that it should be in every family fruit garden; plant being very vigorous, producing a heavy crop of rather small but delicious flavored berries.

Pots, 50c. per doz., \$2.50 per 100, \$20 per 1000. Layers, 25c. per doz., \$1 per 100, \$5 per 1000.

**KENTUCKY.**—A magnificent late variety, large and productive; one of the best late varieties for family use and near market; too soft for long carriage.

Layer plants, 25c. per doz., \$1 per 100, \$5 per 1000.

## LAYER PLANTS.

If ordered three weeks in advance of time they are to be shipped, we will supply the varieties here named, grown in pots, at 20 cents per dozen, or \$1.25 per hundred, in addition to the prices quoted.

	DOZ.	100	1000		DOZ.	100	1000
Chas. Downing, Capt. Jack, Cinderella, Champion (P), Cumberland Triumph, Endicott.....	.25	\$1	\$5	Black Defiance, Beauty.....	.50	\$2.00	\$15
Great American, Hovey's Seedling (P), Ida (P), Jucunda, Keer's Late, Monarch of the West, Red Jacket, Seth Boyden, Wilson's Albany.....	.25	1	5	Duchesse, Duncan, Early Adella.....	.50	2.00	10
				Henry Davis.....	.50	2.00	15
				Huddleson's Favorite, Warren, Cewayo, Garden.....	.50	1.50	10
				Orient, Satin Gloss.....	1.00	5.00	40
				Mammoth Bush.....	1.00	8.00	

No Layer Plants at 1000 rates until after September 1st, except Crescent Seedling and Glendale, unless by special contract.

Parties obliging us with orders will please bear in mind the importance of writing their names plainly, and state distinctly the name of their post-office and nearest express company, giving also the name of the County and State each is in.

## G. H. & J. H. HALE,

South Glastonbury, Hartford County, Conn.

IF YOU WANT RASPBERRIES, BLACKBERRIES, GOOSE-BERRIES, CURRANTS, OR GRAPE VINES, FOR FALL PLANTING, SEND FOR OUR GENERAL CATALOGUE.