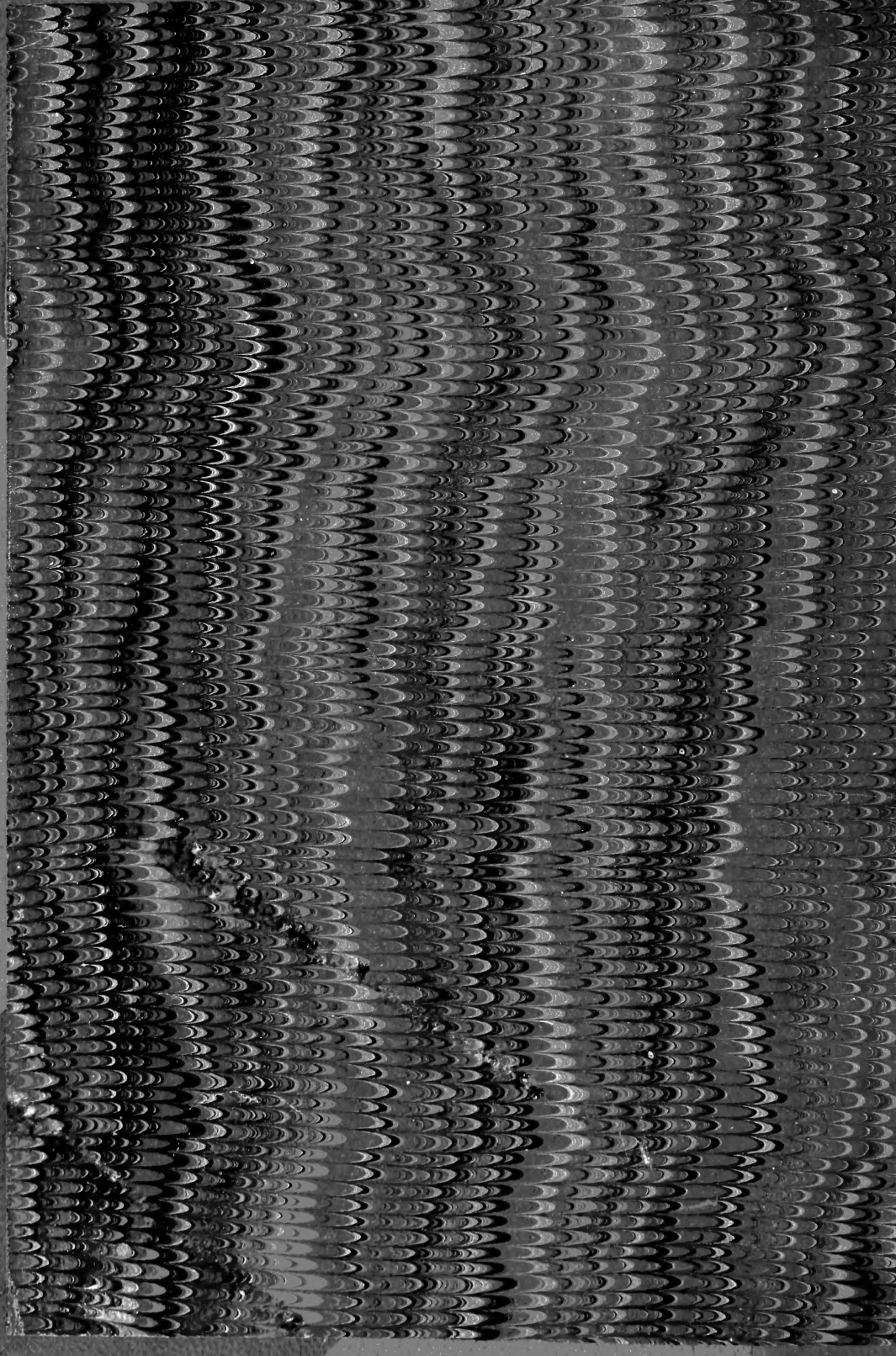


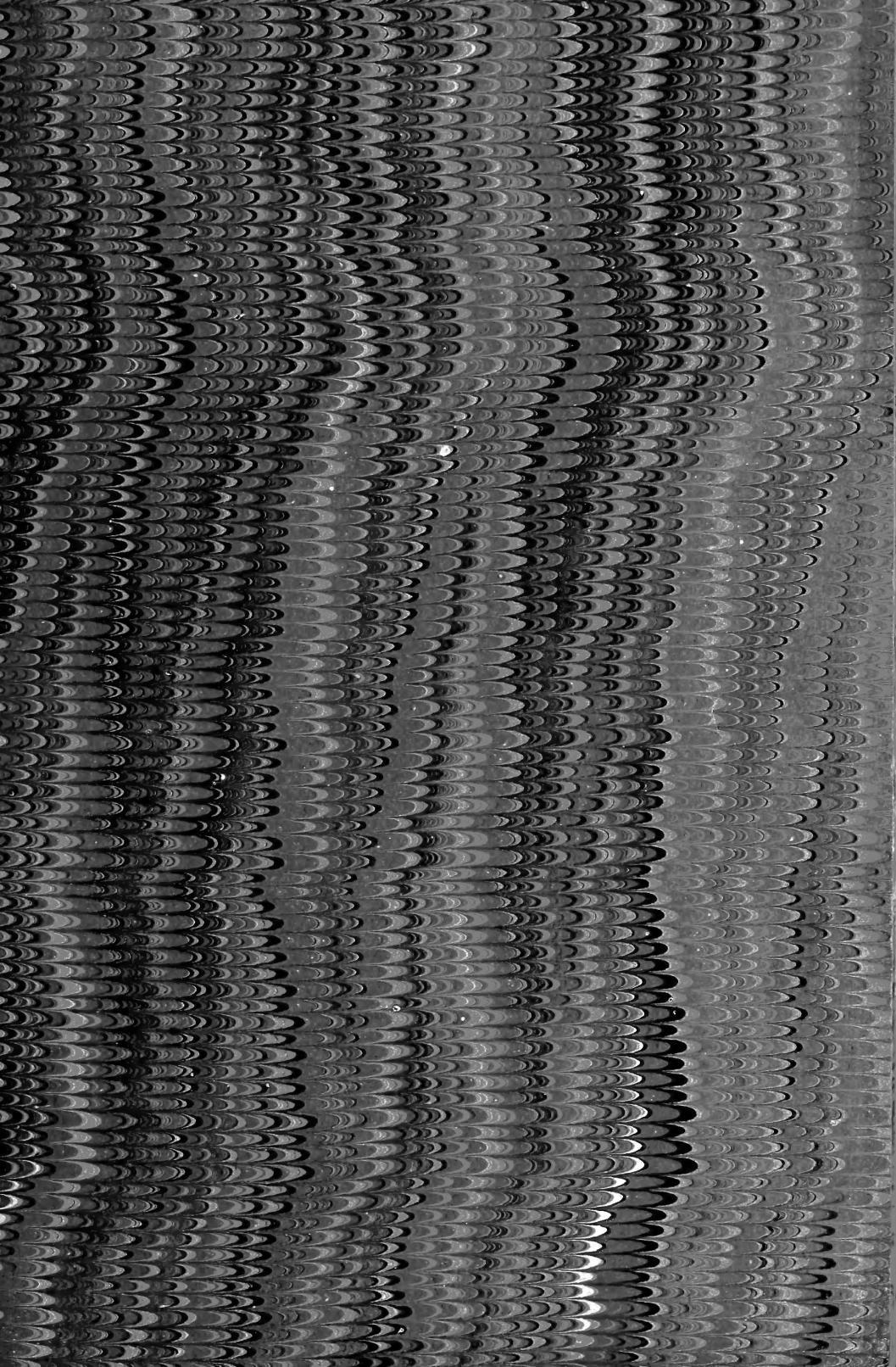
QL

1

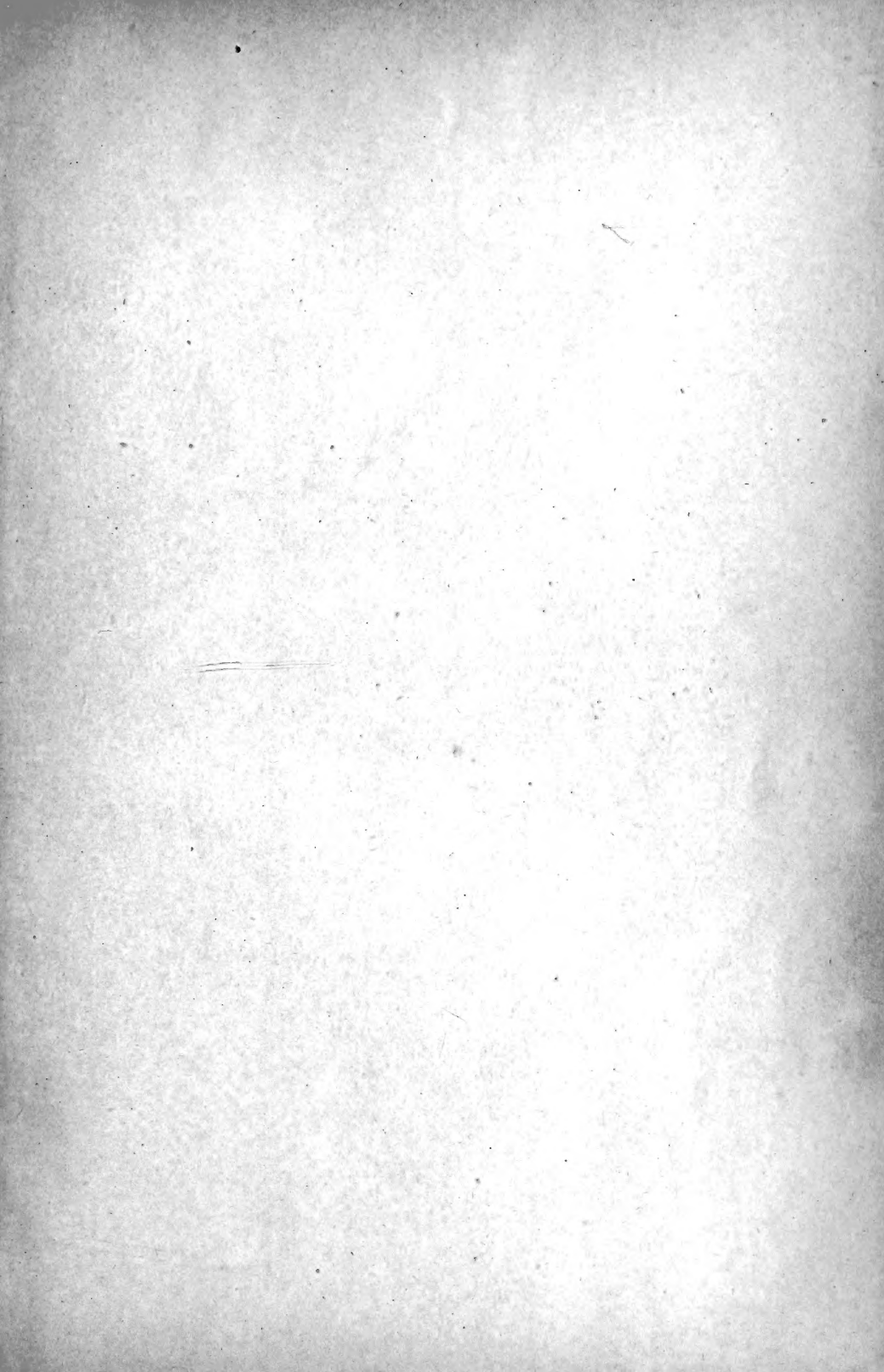
J88

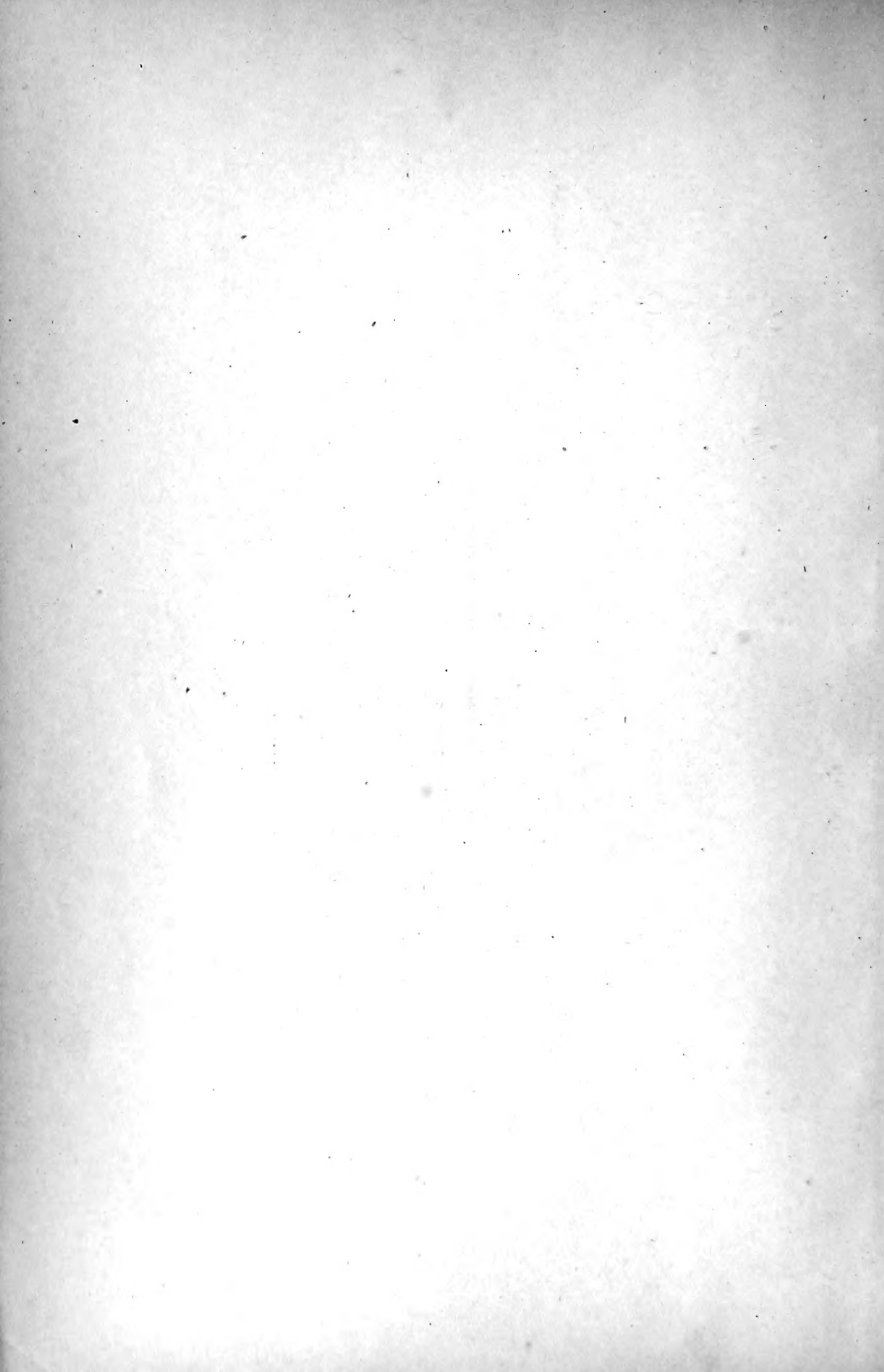
NH

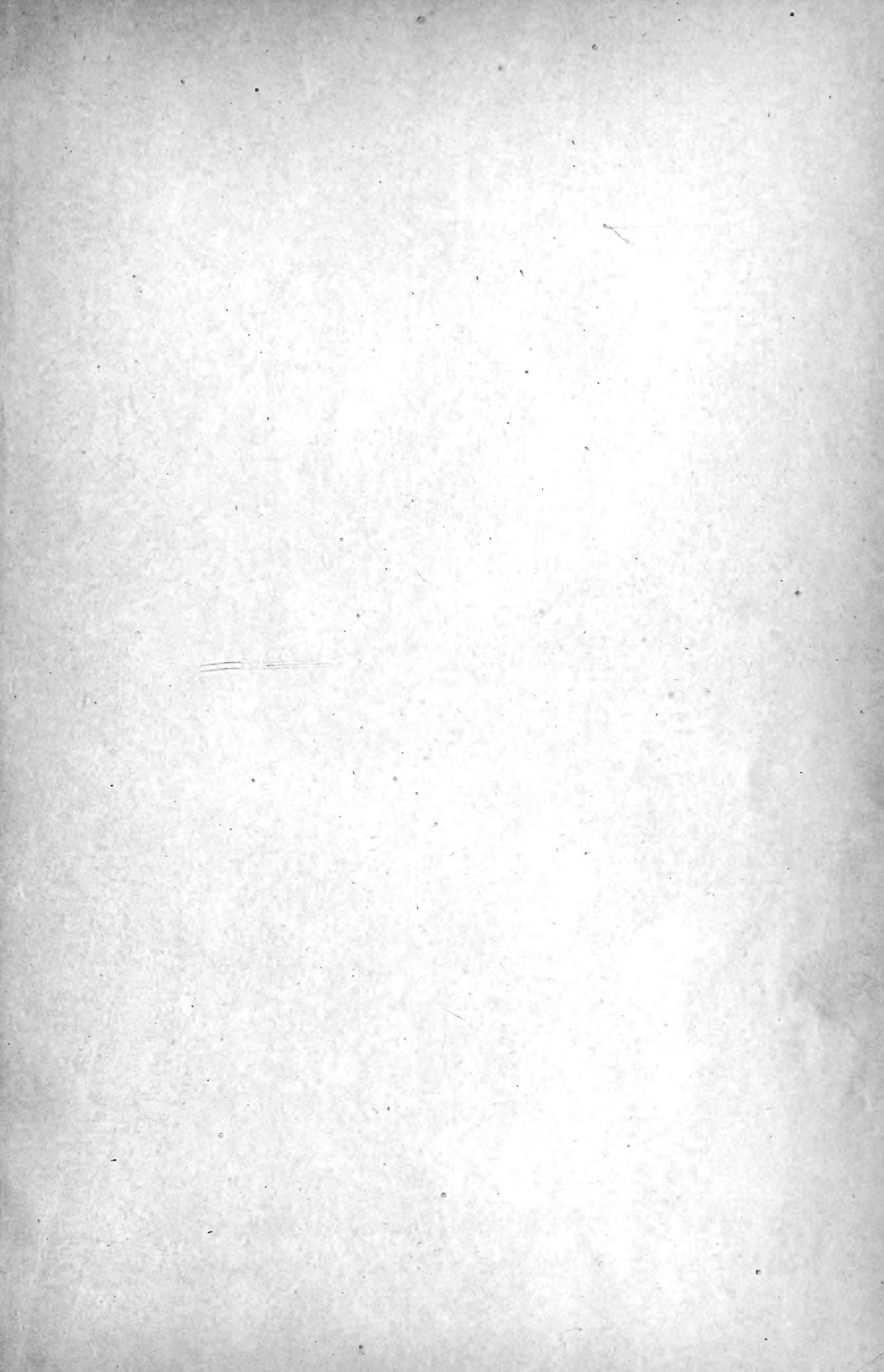


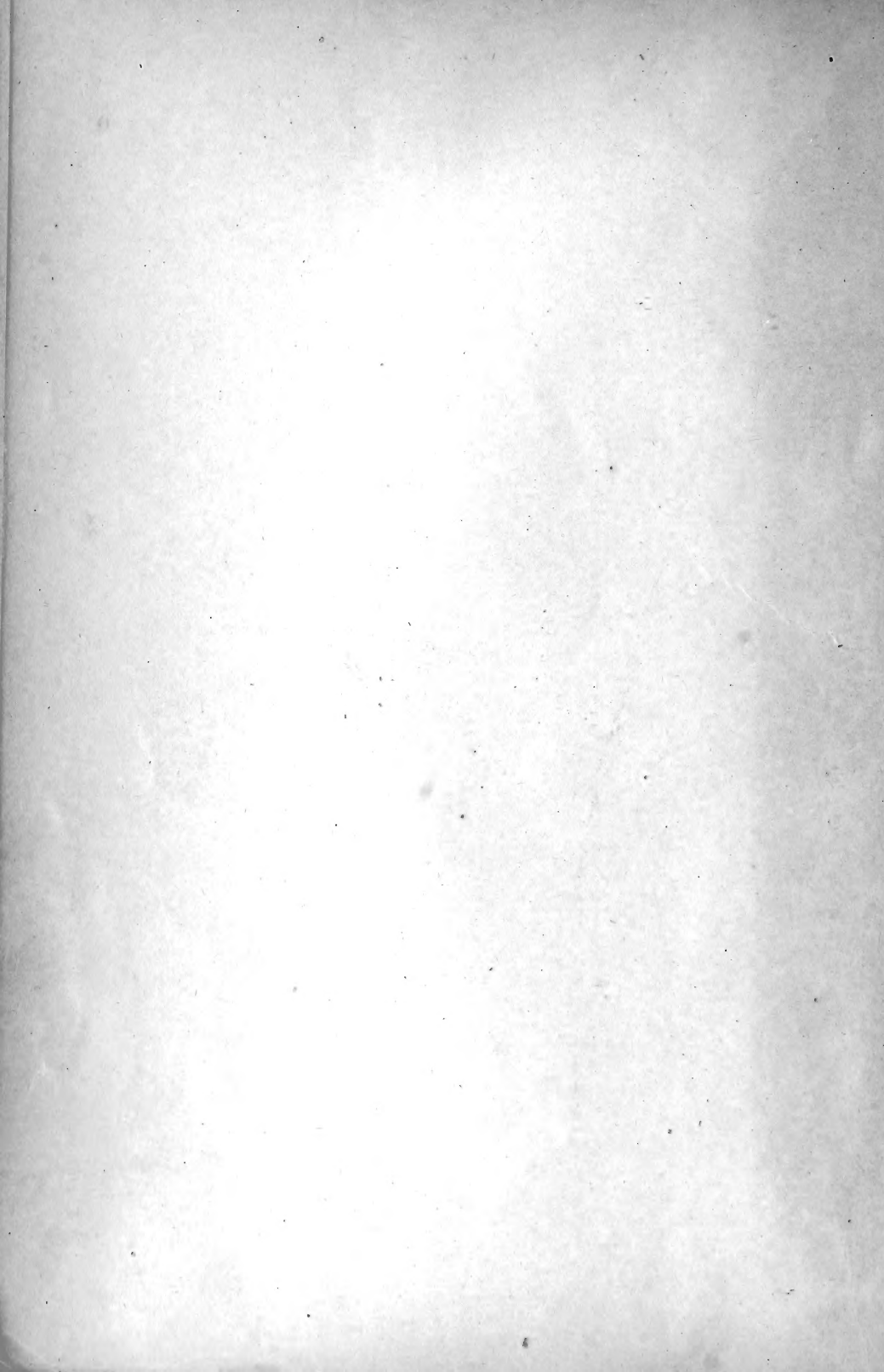










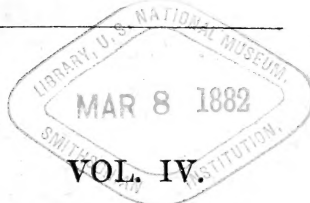


390.0
S. F. BAIRD.

PROCEEDINGS
OF THE
ZOOLOGICAL SOCIETY
OF LONDON.

ILLUSTRATIONS.

1848—60.



VOL. IV.

REPTILIA ET PISCES.

PLATES I.—XXXII. ET I.—XI.

PRINTED FOR THE SOCIETY,
AND SOLD AT THEIR HOUSE IN HANOVER SQUARE.
LONDON:
MESSRS. LONGMAN, GREEN, LONGMANS, AND ROBERTS,
PATERNOSTER ROW.

PARIS:
M. J. ROTHSCHILD,
14, RUE DE BUCY.

LEIPZIG:
M. J. ROTHSCHILD,
2, QUERSTRASSE.

BY G. M. 1300

THE UNIVERSITY OF CHICAGO

LIST OF THE ILLUSTRATIONS.

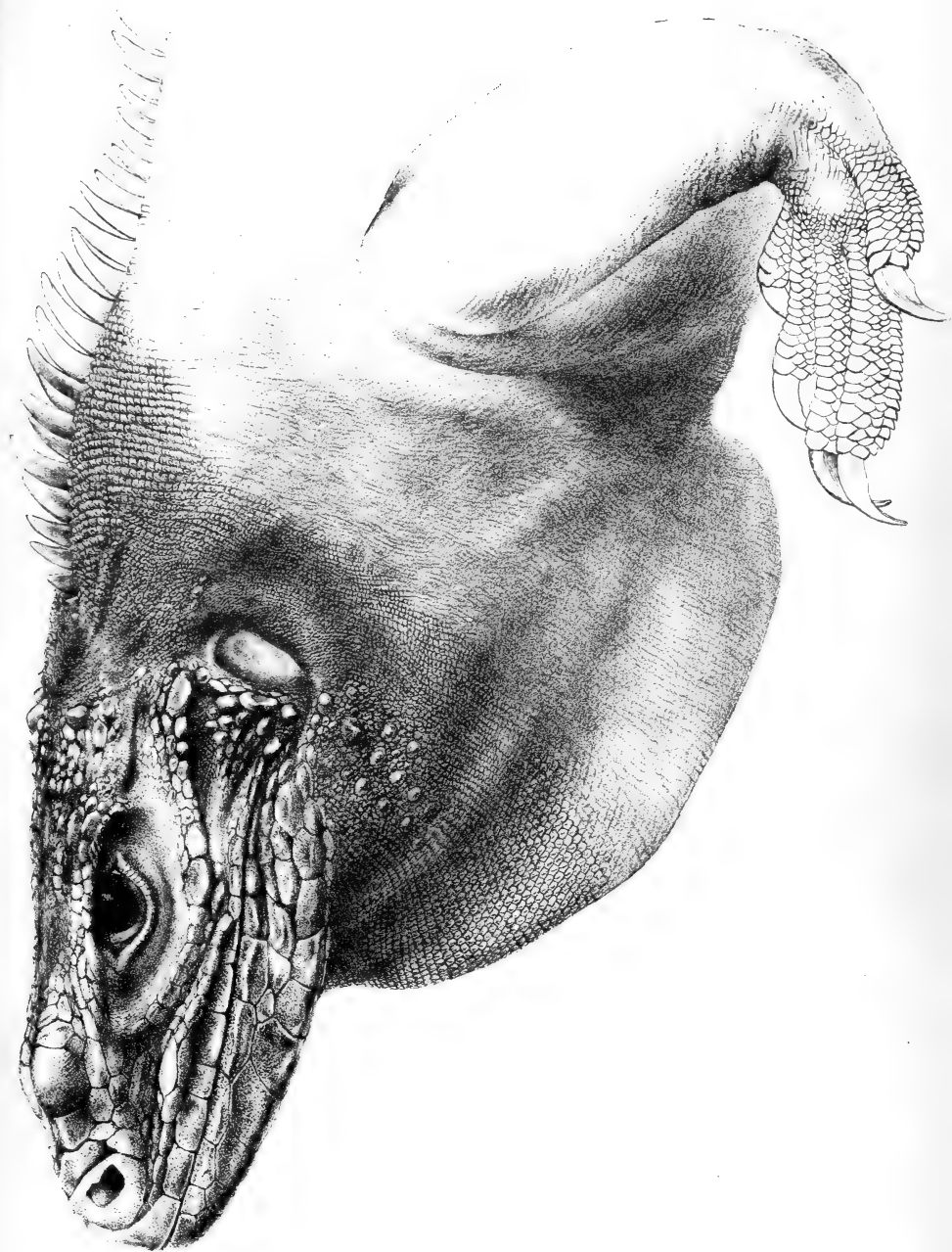
1848 to 1860.

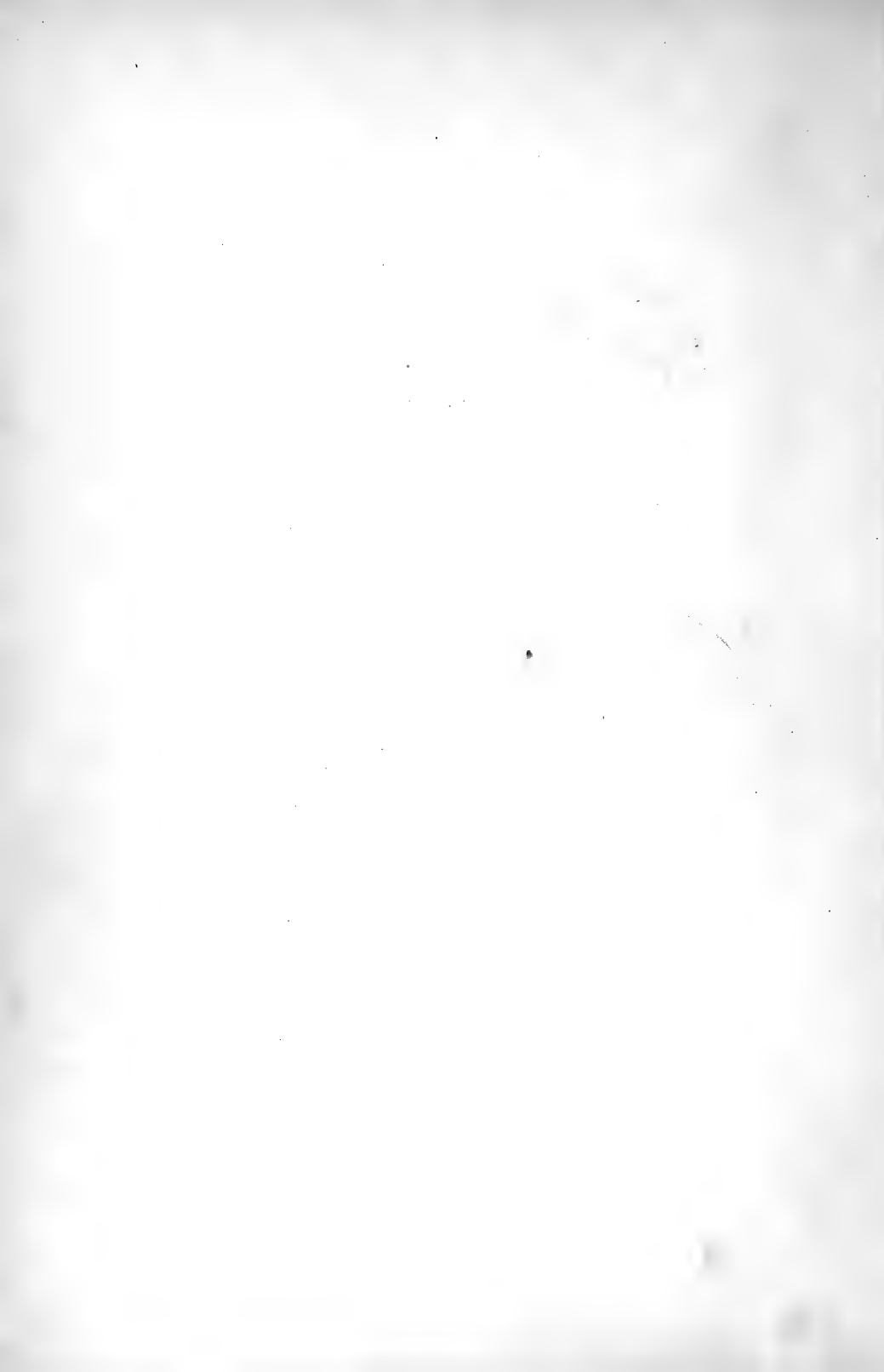
No. of Plate.	REPTILIA.	Page
I.	<i>Cyclura lophoma</i> , Gosse	1848, 99
II.	<i>Cistudo (Onychotria) mexicana</i> , Gray	1849, 17
III.	<i>Iguana rhinolophus</i>	1850, 106
	<i>Metopocerus cornutus</i> , Wagl.	
IV.	<i>Pterodactylus longirostris</i> , Bowerbank	1851, 14
V.	Cancelled.	
VI.	<i>Anadia ocellata</i> . Fig. 1	1851,
	<i>Emminia olivacea</i> . Fig. 2	
	<i>Iphisa elegans</i> . Fig. 3	1851, 39
VII.	<i>Amblyostoma californiense</i> , Gray	1853, 11
VIII.	<i>Corucia zebrata</i>	1855, 217
IX.	<i>Testudo elongata</i> , Gray	1856, 181
IX a.		
X.	<i>Batagur ocellata</i> , Gray	1856, 182
X a.		
XI.	<i>Lepidosiren annectens</i>	1856, 342
XII.	<i>Chelodina expansa</i> , Gray	1856, 369
XII a.		
XIII.	<i>Mitylia gerrardii</i> , Gray	1858, 57
XIV.	<i>Calabaria fusca</i> , Gray	1858, 155
XV.	<i>Argalia olivacea</i> . Fig. 1	1858, 446
	<i>Riama unicolor</i> , Gray. Fig. 2.	
	<i>Callophis intestinalis</i> . Figs. A, B, C	1859, 82
XVI.	— <i>trimaculatus</i> . Fig. D, magnified	1859, 83
	— <i>maculiceps</i> . Fig. E, magnified	1859, 84
	— <i>univirgatus</i> . Fig. A	1859, 83
XVII.	<i>Vermicella occipitalis</i> . Fig. B	1859, 87
XVIII.	<i>Elaps decoratus</i> , Jan. Fig. A, a	1859, 85
	— <i>filiformis</i> , Gthr. Fig. B, b	1859, 86
	<i>Cynops chinensis</i> , Gray. Fig. 1	1859, 229
XIX.	<i>Plethodon persimilis</i> , Gray. Fig. 2	1859, 230
	<i>Cercosaurus rhombifer</i> , Gthr. Fig. A	1859, 405
XX.	<i>Liocephalus iridescens</i> , Gthr. Fig. B	1859, 409
	<i>Lachesis nitidus</i> , Gthr. Fig. C	1859, 414
XXI.	<i>Geoclemmys macrocephala</i>	1859, 479
XXII.	<i>Aspidochelys livingstonii</i>	1860, 5

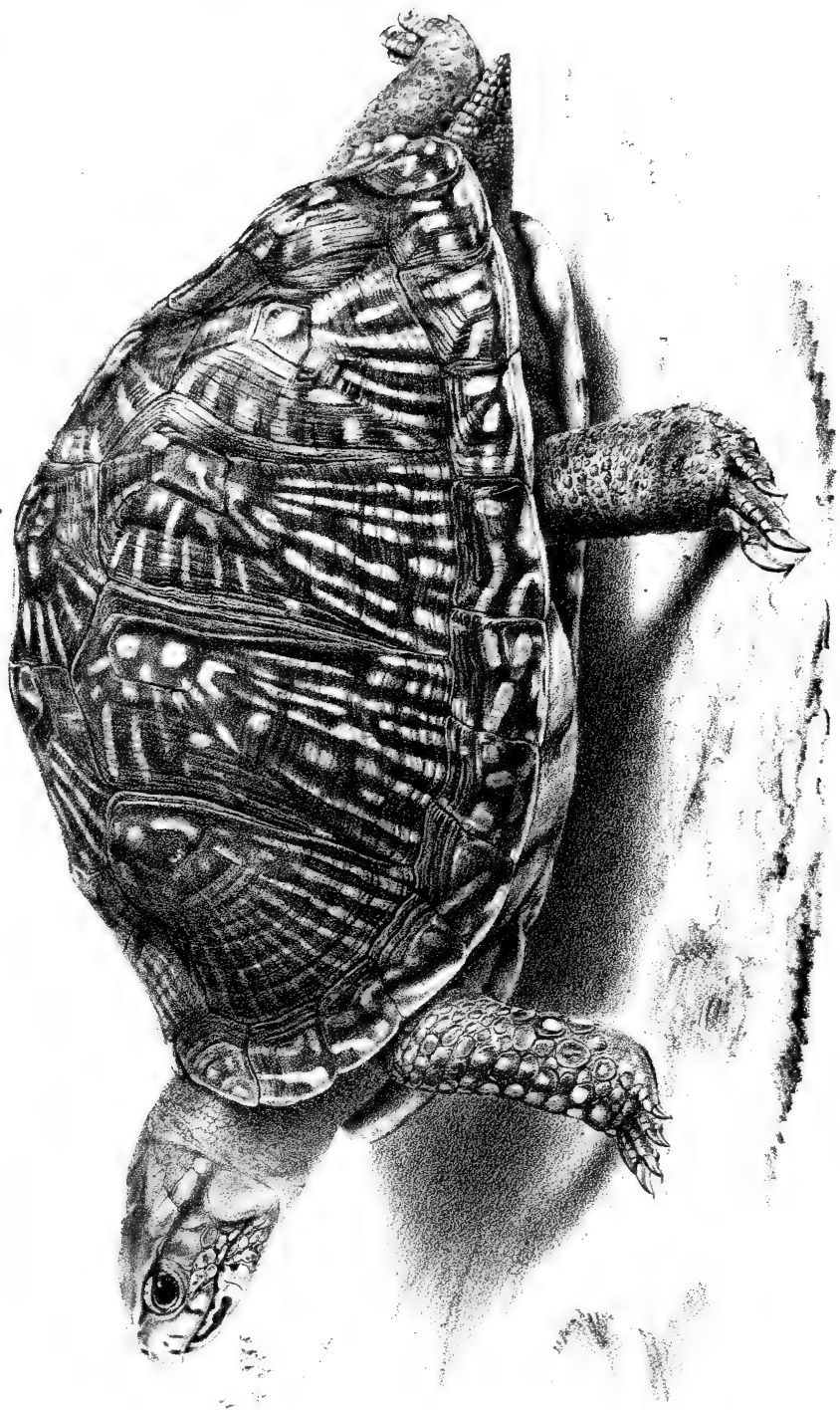
No. of Plate.		Page
XXIII.	<i>Herpeton tentaculatum</i>	1860, 114
XXIV.	<i>Chrysenis batesii</i>	1860, 132
XXV.	{ <i>Barycephalus sykesii</i> , Gthr. Fig. A	1860, 150
	{ <i>Tiaris elliottii</i> , Gthr. Fig. B	1860, 151
	{ <i>Tiliqua schlegelii</i> , Gthr. Fig. C	1860, 153
XXVI.	{ <i>Ablapes owenii</i> , Gthr. Fig. A, a	1860, 155
	{ — <i>rappii</i> , Gthr. Fig. B, b	1860, 154
XXVII.	<i>Spilotes hodgsonii</i> , Gthr.	1860, 156
XXVIII.	{ <i>Rana liebigii</i> , Gthr. Fig. A, a	1860, 157
	{ <i>Dicroglossus adolfii</i> , Gthr. Fig. B, b	1860, 158
XXIX.	<i>Geoclemmys annulata</i>	1860, 231
XXX.	<i>Emys fuliginosus</i>	1860, 232
XXXI.	<i>Manouria fusca</i>	1860, 395
XXXII.	{ <i>Thamnocenchris aurifer</i> . Fig. 1	1860, 459
	{ <i>Hyla holochlora</i> . Fig. 2	1860, 460

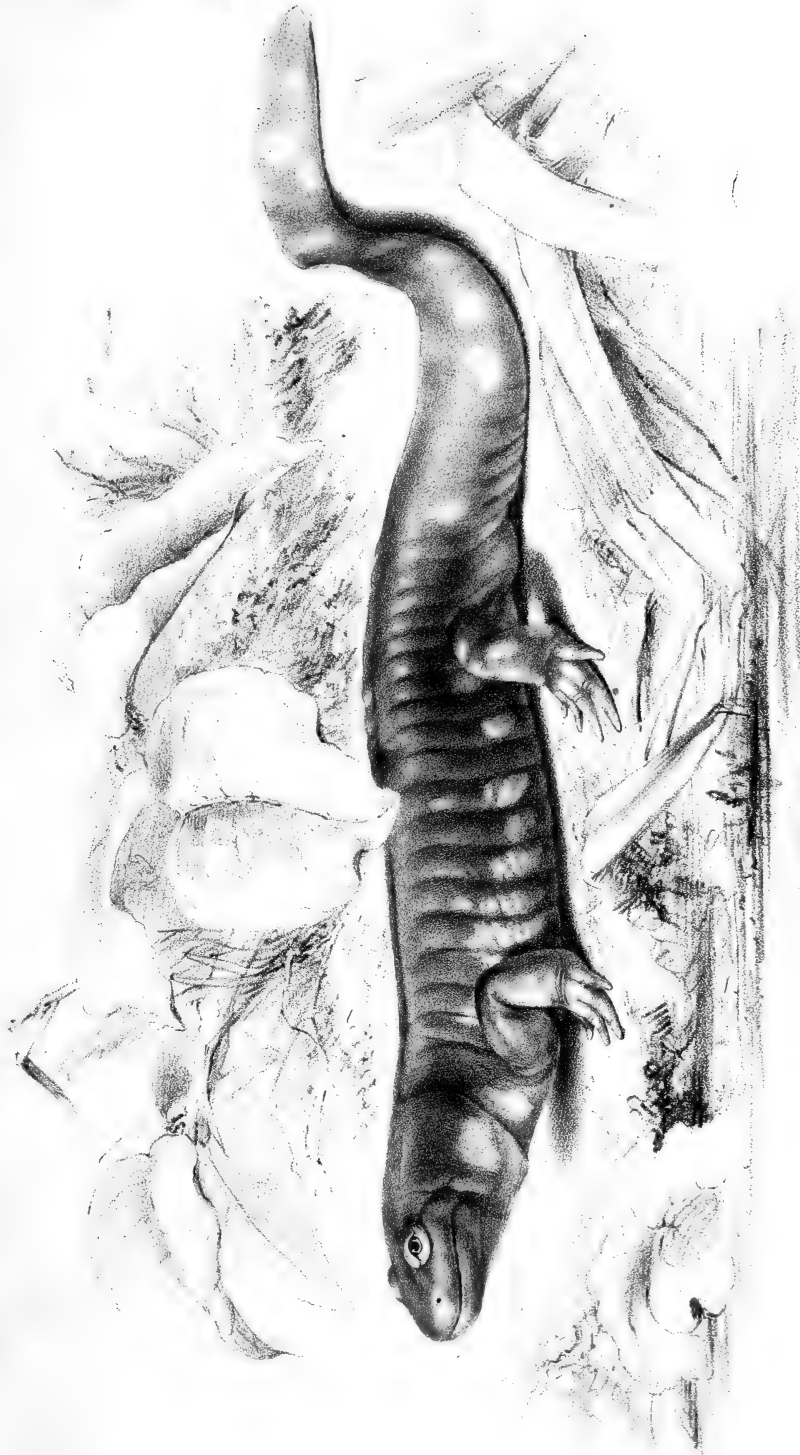
PISCES.

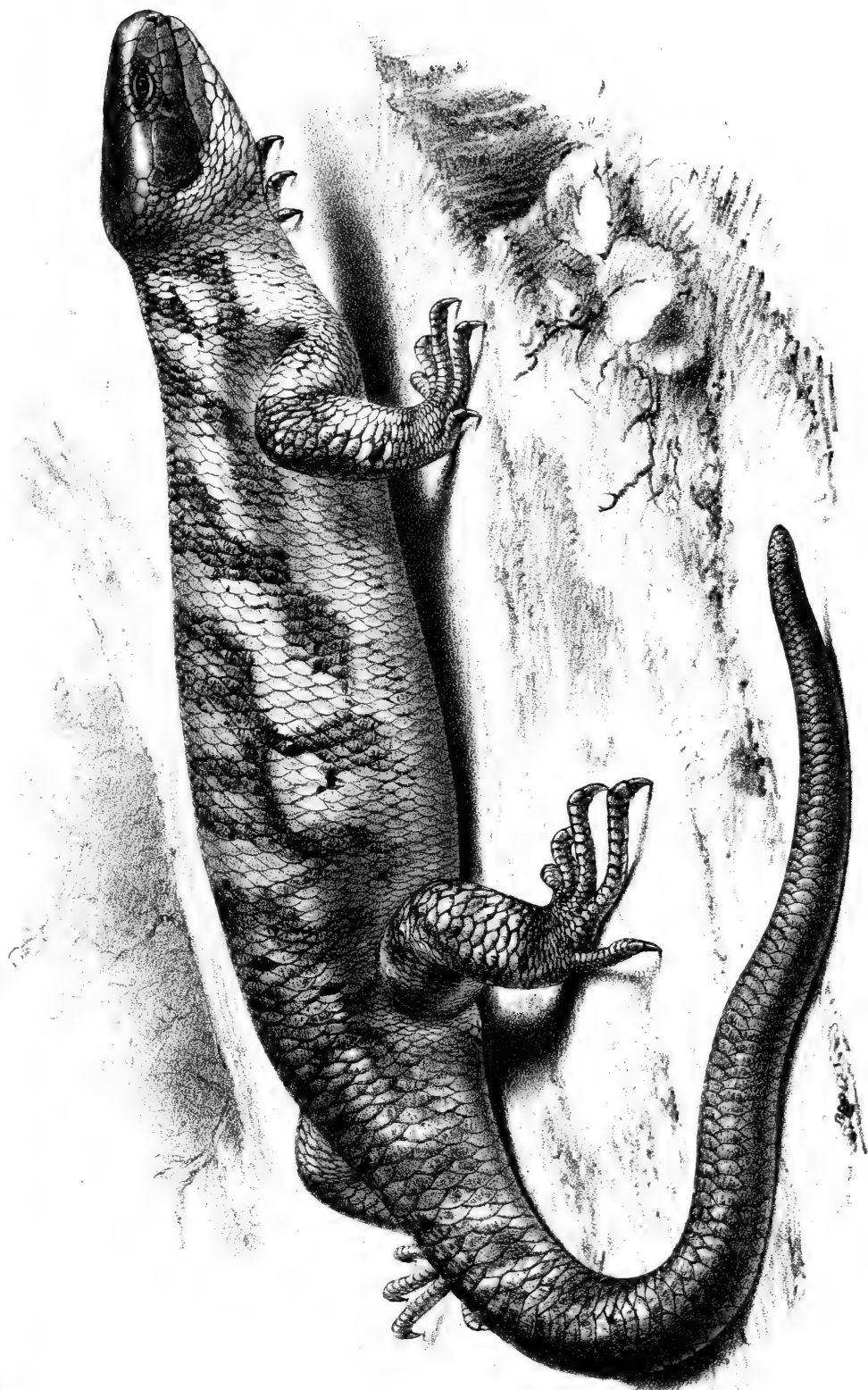
I.	{ <i>Aploactis milesii</i> , Richdn. Figs. 1, 2	1850, 60
	{ <i>Apistes panduratus</i> , Richdn. Figs. 3, 4	1850, 58
II.	{ <i>Threpterus maculosus</i> , Richdn. Figs. 1, 2 ..	1850, 70
	{ <i>Cheilodactylus gibbosus</i> , Solander. Figs. 3, 4 ..	1850, 65
III.	{ <i>Olisthops cyanomelas</i> , Richdn. Figs. 1, 2 ..	1850, 75
	{ <i>Cossyphus gouldii</i> , Richdn. Figs. 3, 4	1850, 72
IV.	{ <i>Petromyzon marinus</i> . Fig. 1	1851, 236
	{ <i>Lampetra fluviatilis</i> . Fig. 2	1851, 237
	{ <i>Geotria australis</i> . Fig. 3	} 1851, 239
	{ <i>Velasia chilensis</i> . Fig. 4	
	{ <i>Caragola lapicida</i> . Fig. 5	1851, 240
{ <i>Mordacia mordax</i> . Fig. 6	1851, 240	
V.	<i>Geotria australis</i> , Gray	1851, 239
VI.	<i>Siphonognathus argyrophanes</i> , Richdn.	1857, 237
VII.	<i>Haliichthys tæniophora</i>	1859, 39
VIII.	{ <i>Peristethus cataphractus</i> . Fig. 1	} 1859, 105
	{ — <i>orientalis</i> . Fig. 2	
	{ — <i>rieffelii</i> . Fig. 3	
IX.	{ <i>Glyphisodon biocellatus</i> . Fig. 1	1859, 222
	{ <i>Haliogenes tristranii</i> . Fig. 2	1859, 471
X.	{ <i>Pimelodus cinerascens</i> , Gthr.	1860, 237
	{ — <i>elongatus</i> , Gthr.	1860, 238
	{ — <i>modestus</i> , Gthr.	1860, 239
XI.	<i>Pagrus bocagii</i> , Gthr.	1860, 391

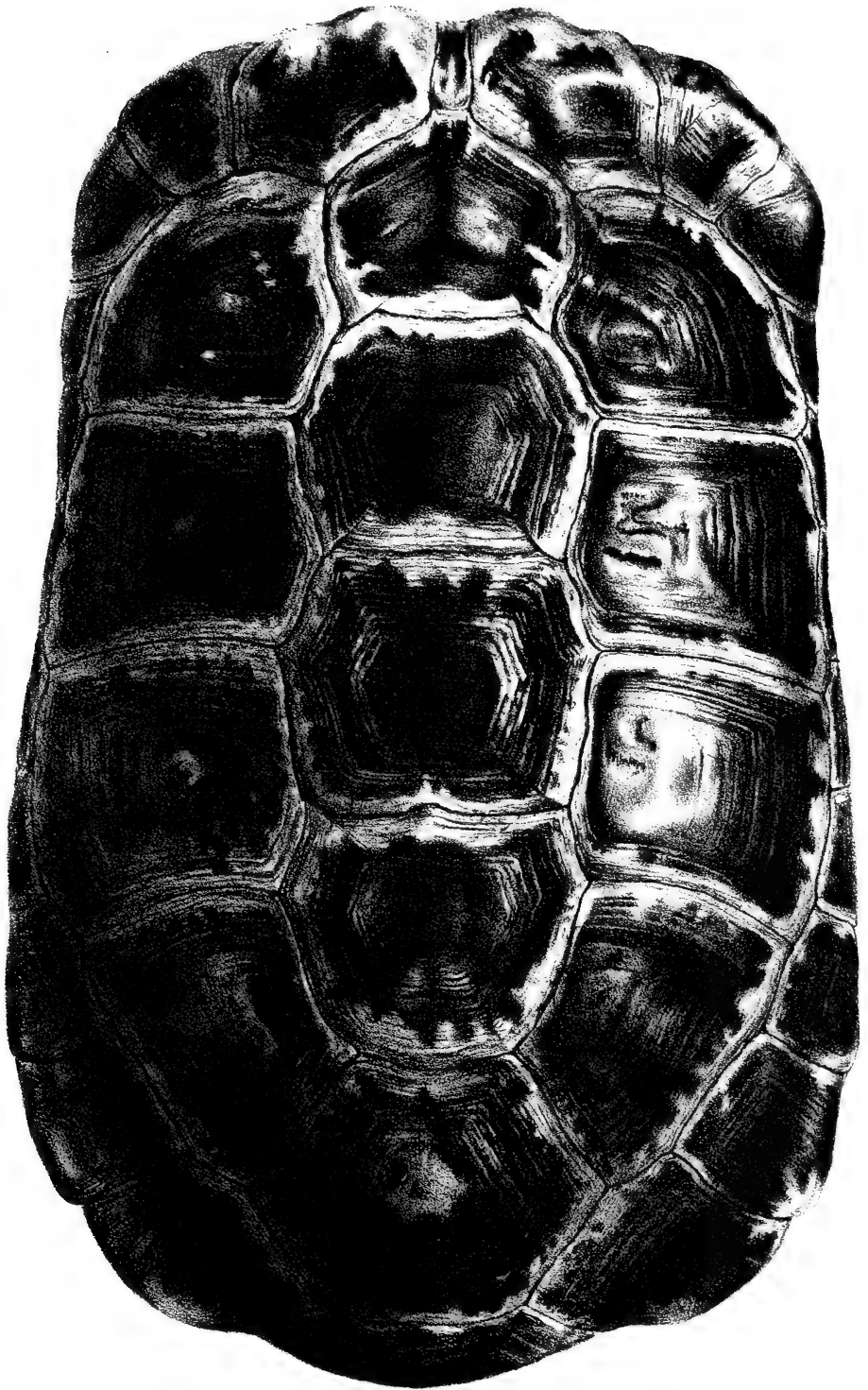












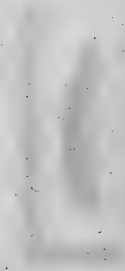
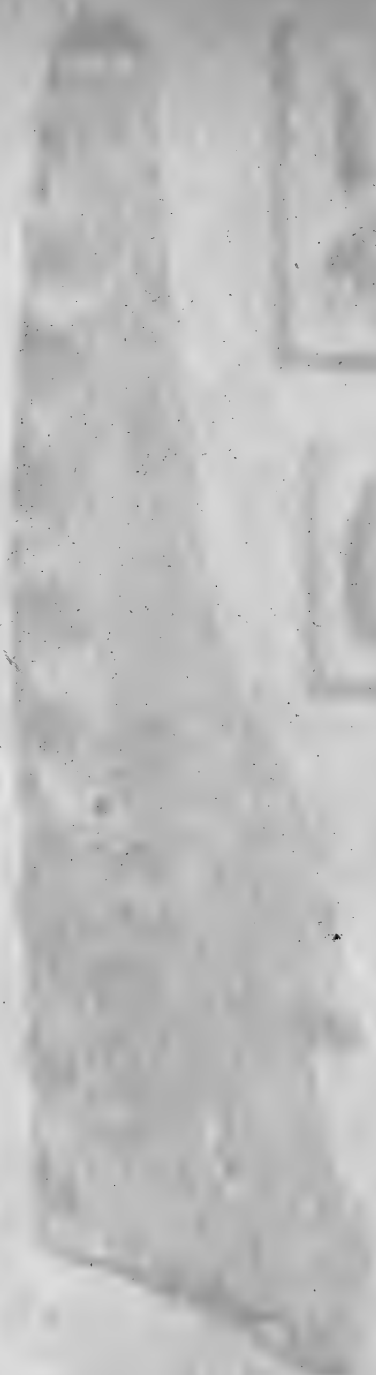
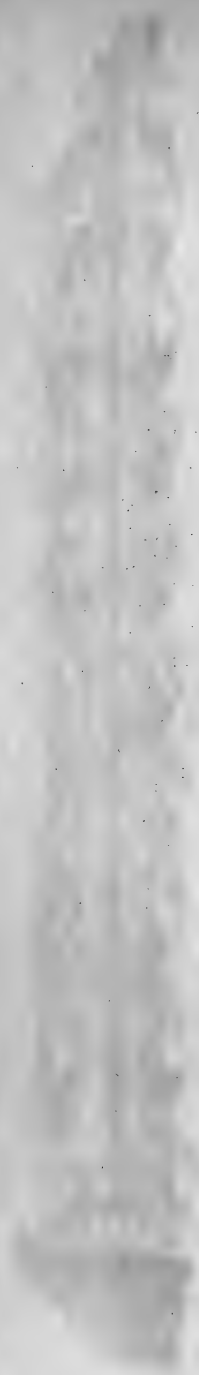


1. ANADIA OCELLATA. 2. EMMINIA OLIVACEA. 3. IPHISA ELEGANS.



IGUANA RHINOLOPHUS.

Fors. & West. Imp. 54. Batavia. Carolin.

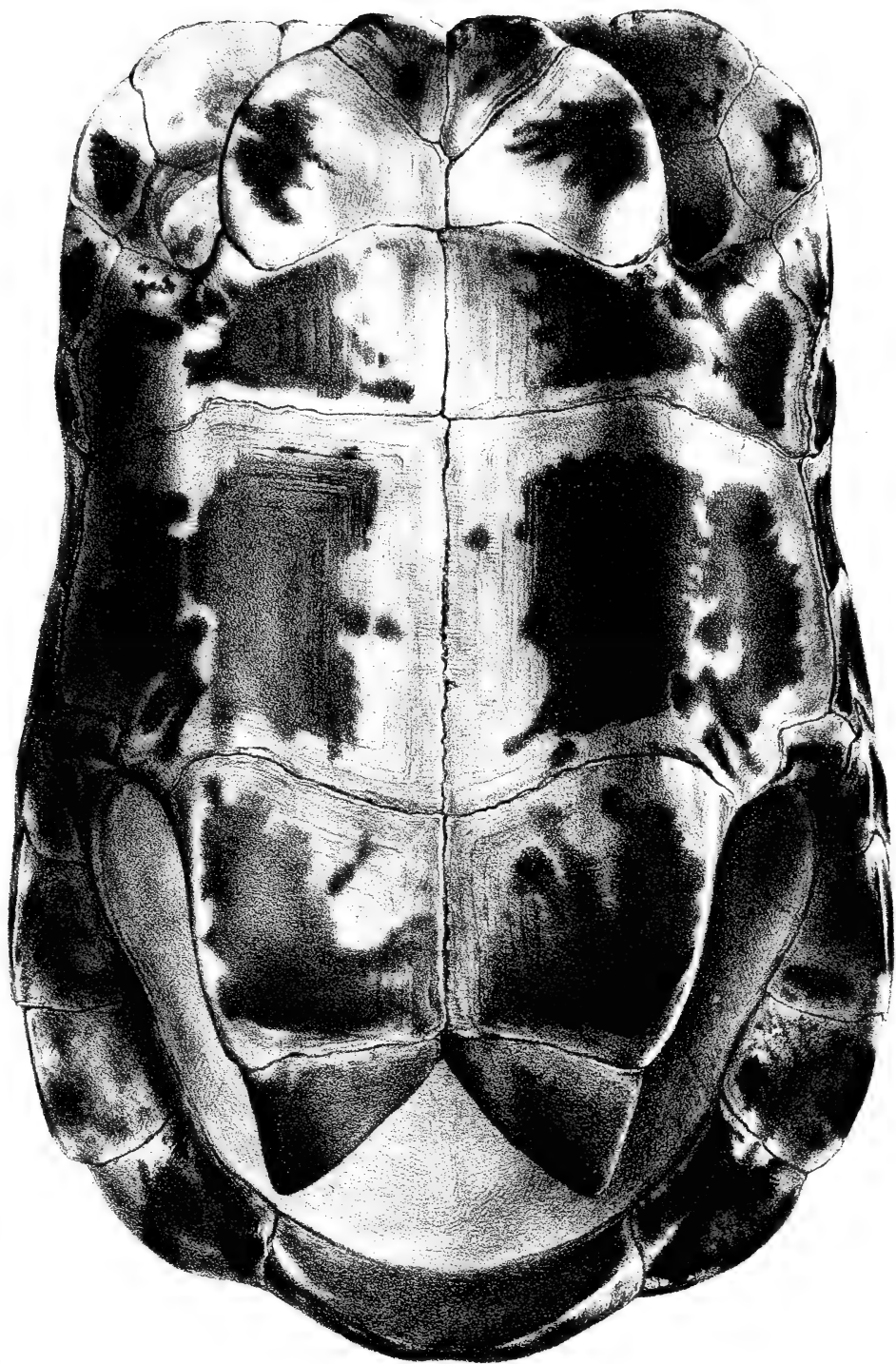


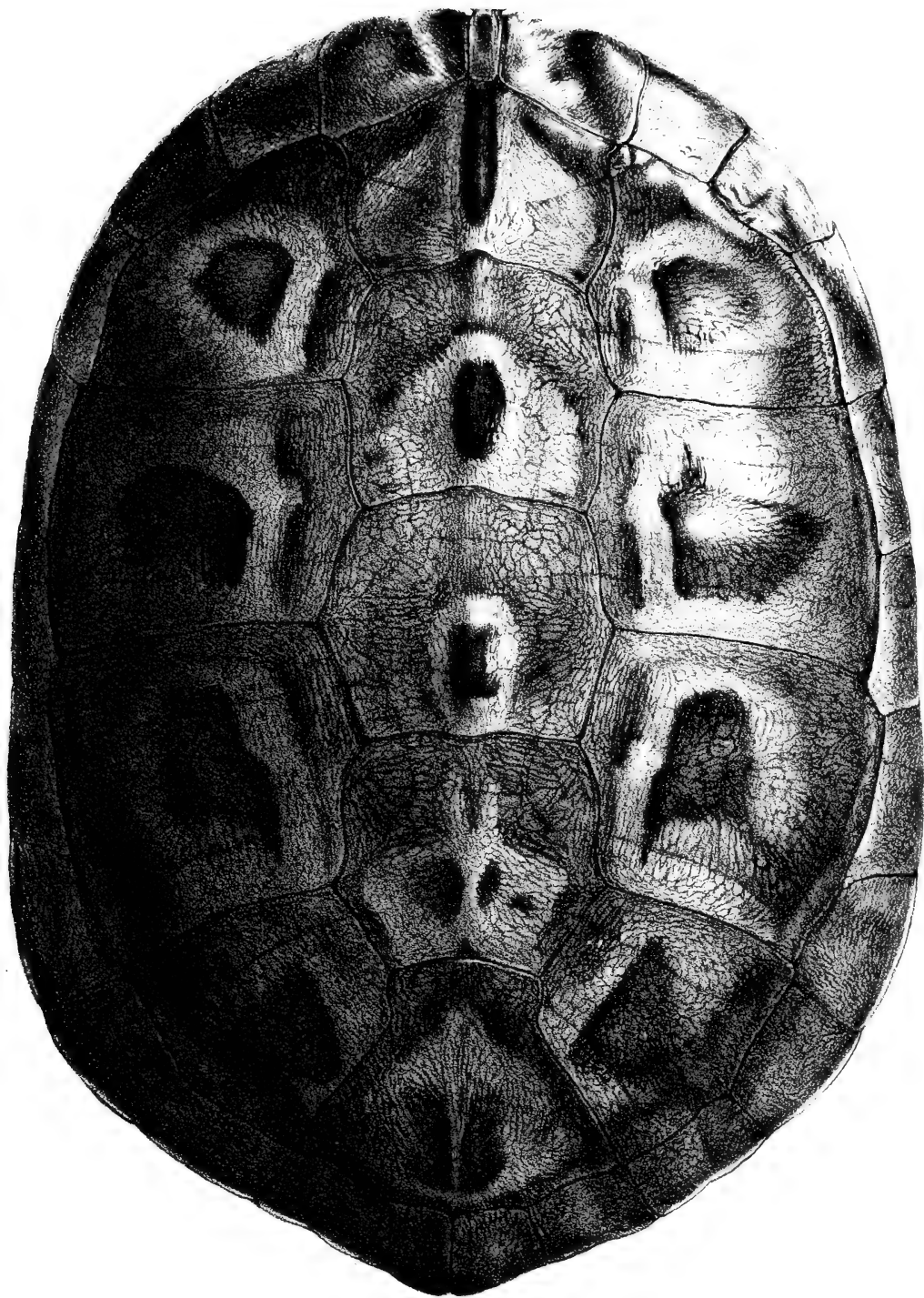


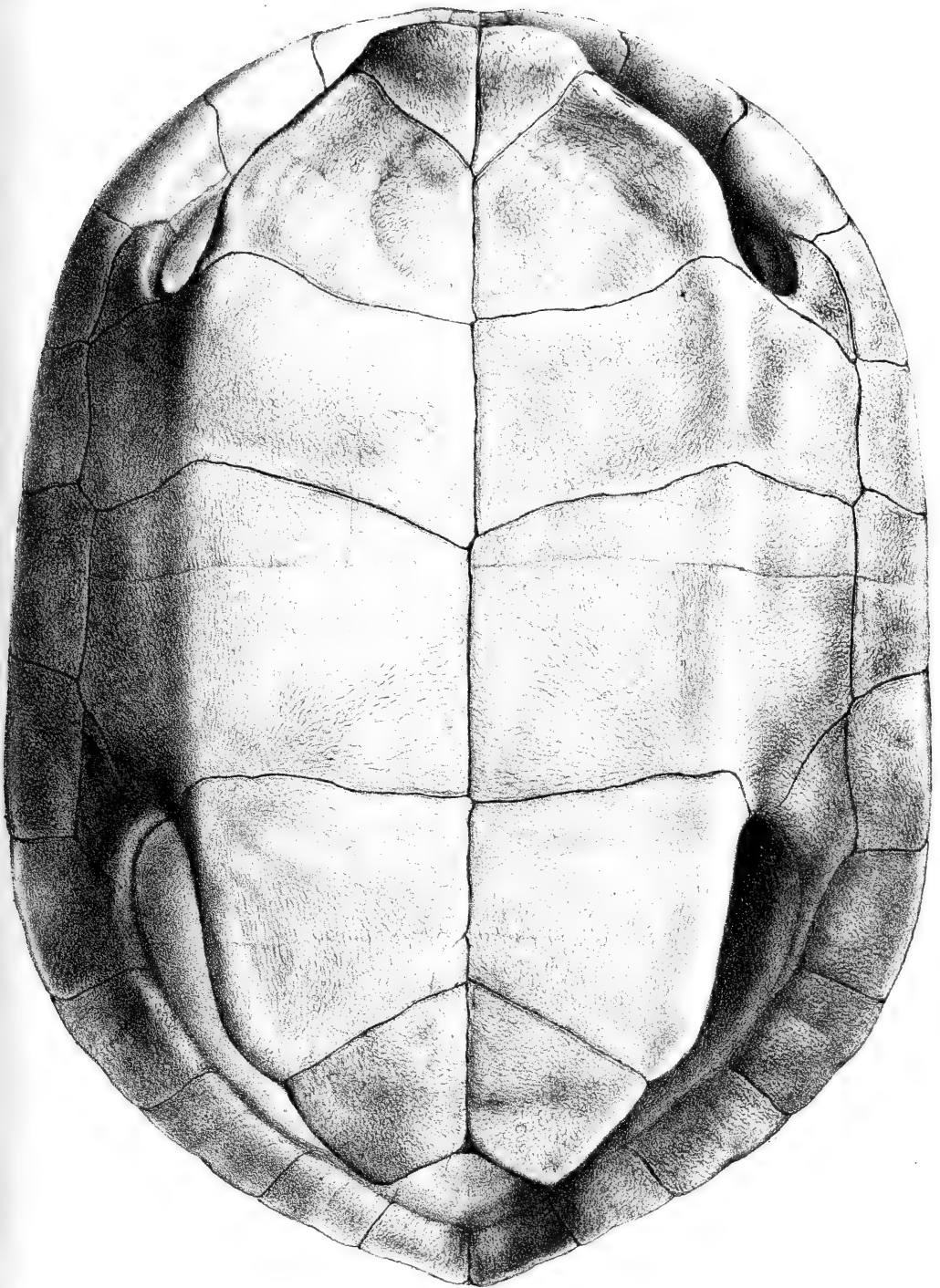
REPTILIA, PLATE V.

has been cancelled.

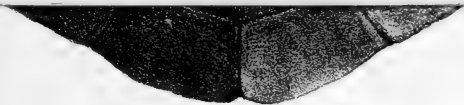




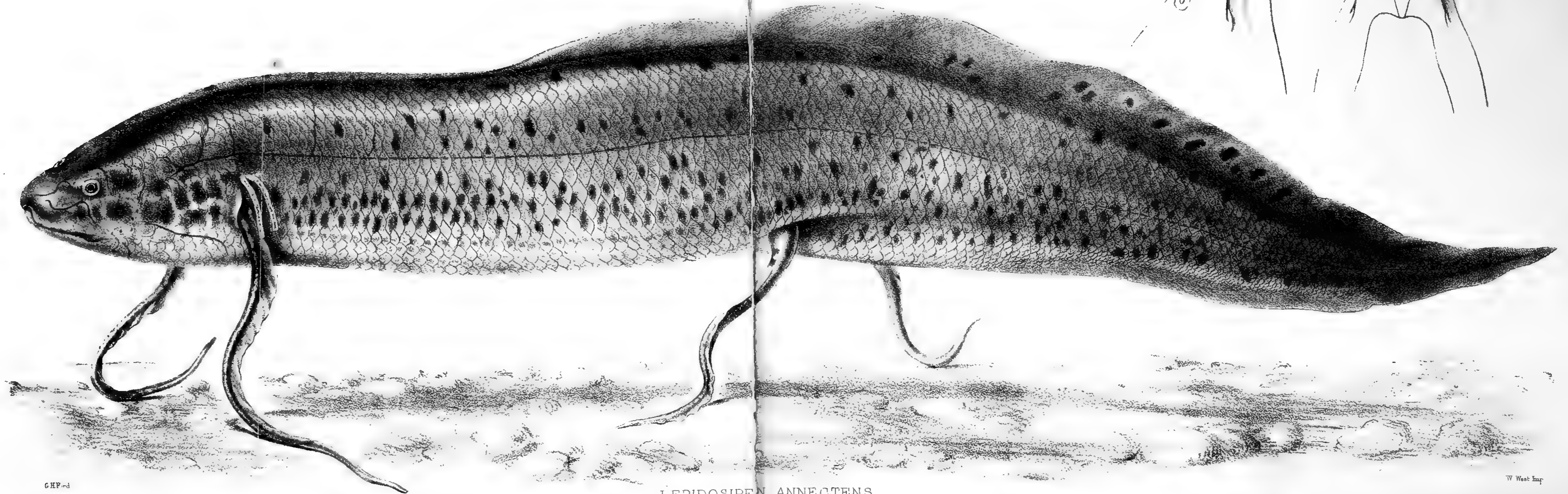




BATAGUR OCELLATA. Gray



CHELODINA EXPANSA.

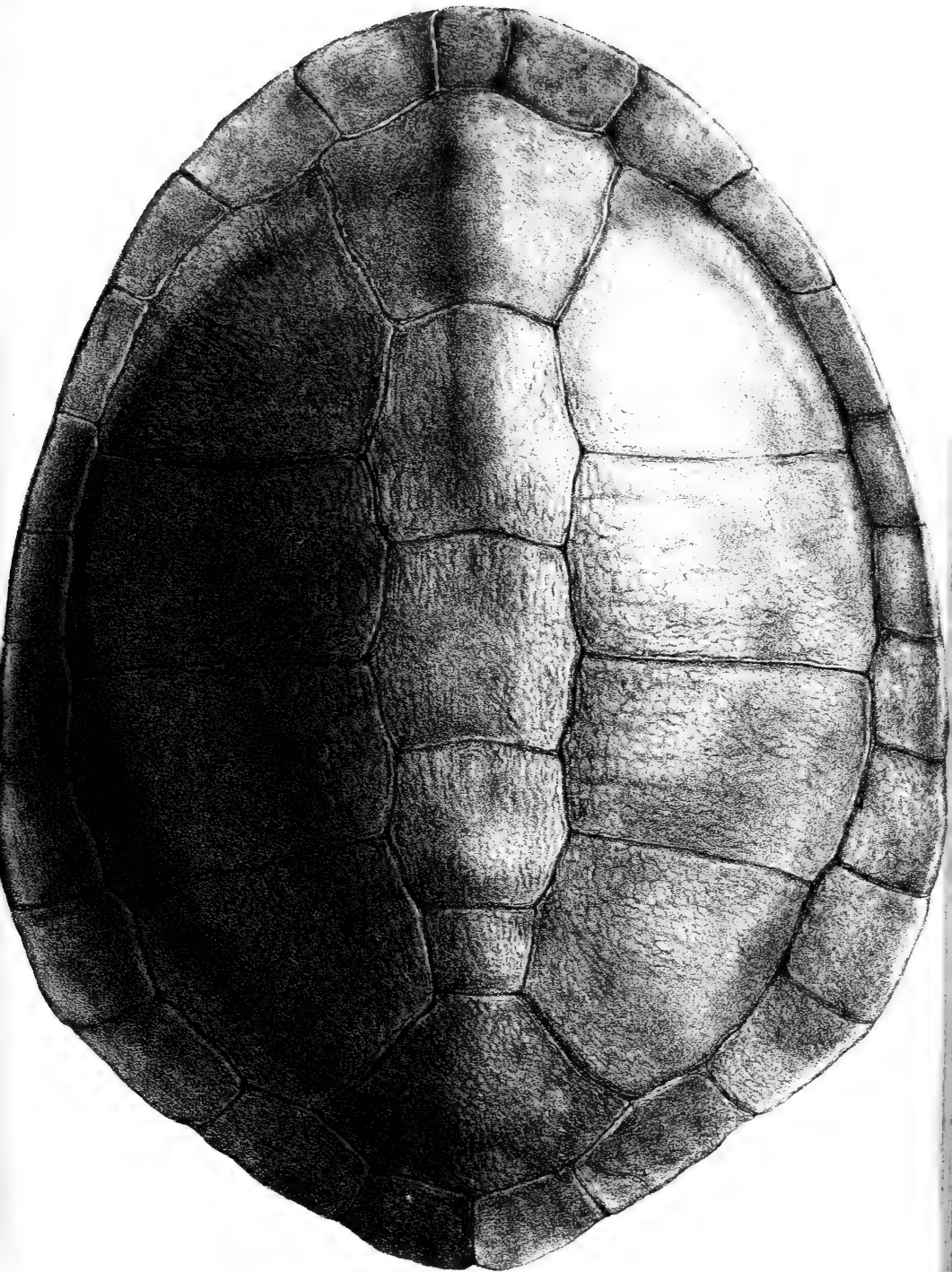


GHP:nd

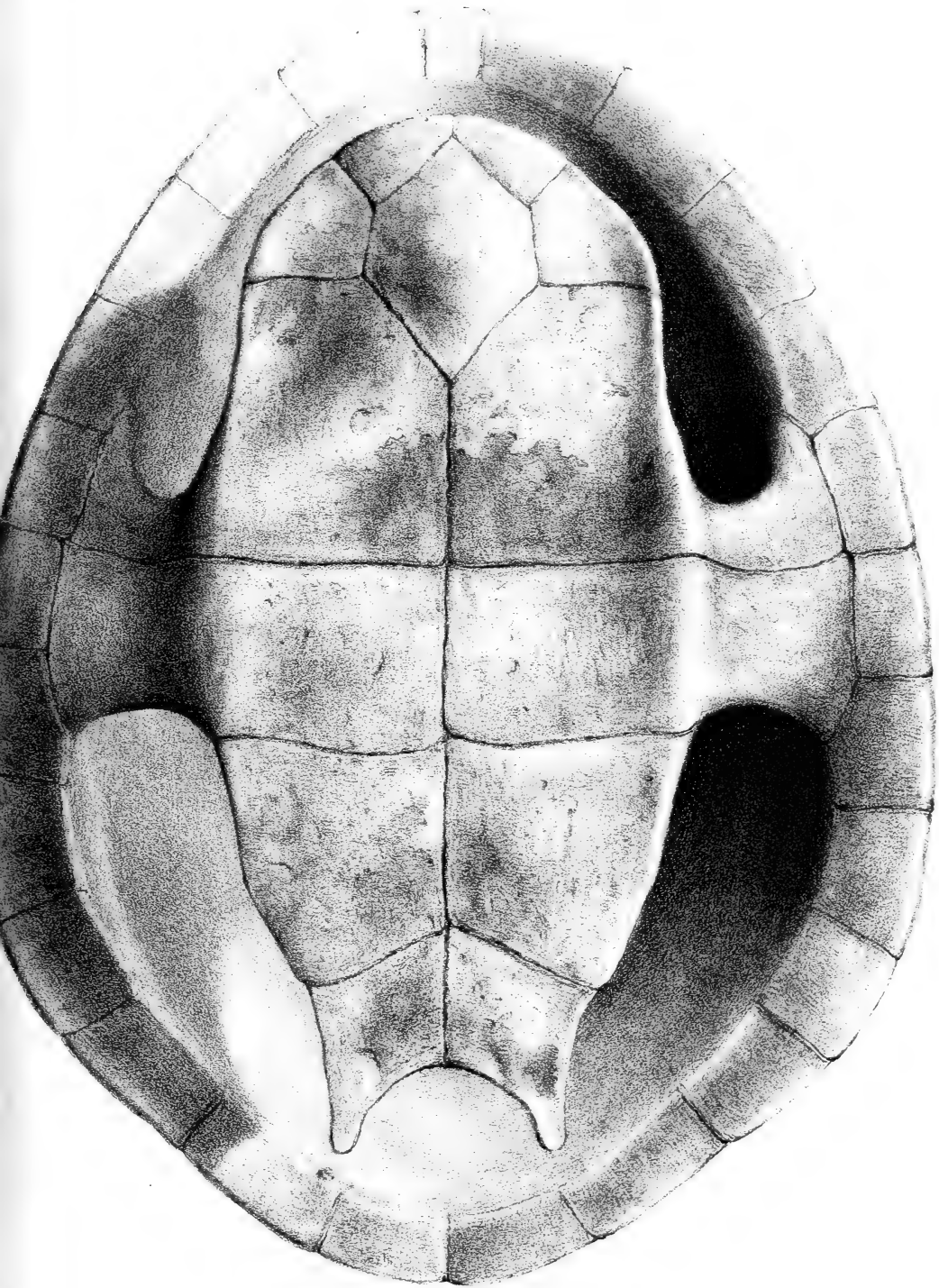
LEPIDOSIREN ANNECTENS.

W West Imp

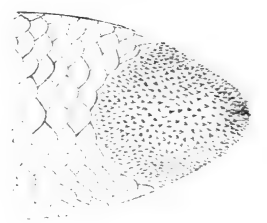
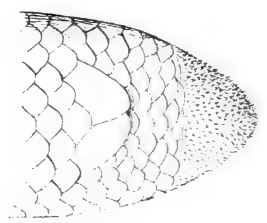
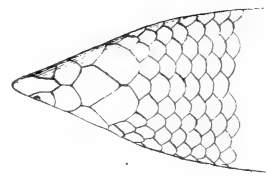
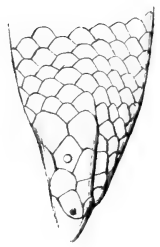
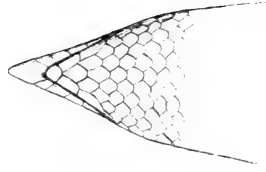
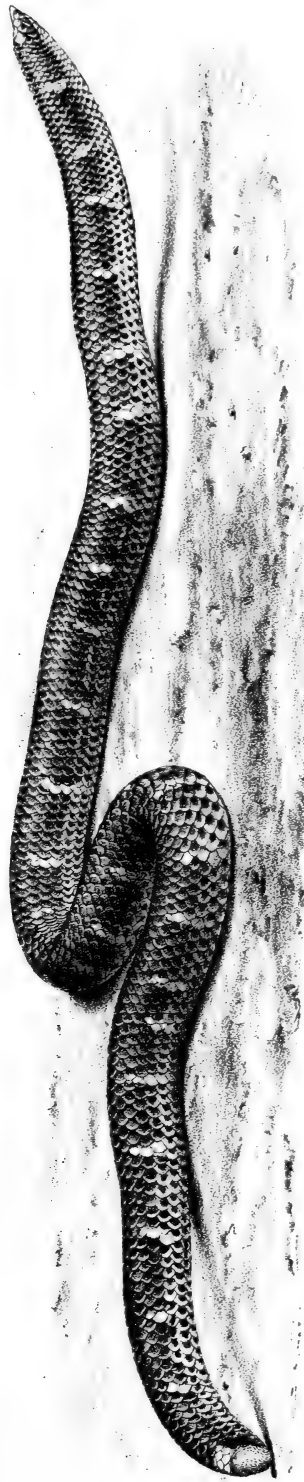


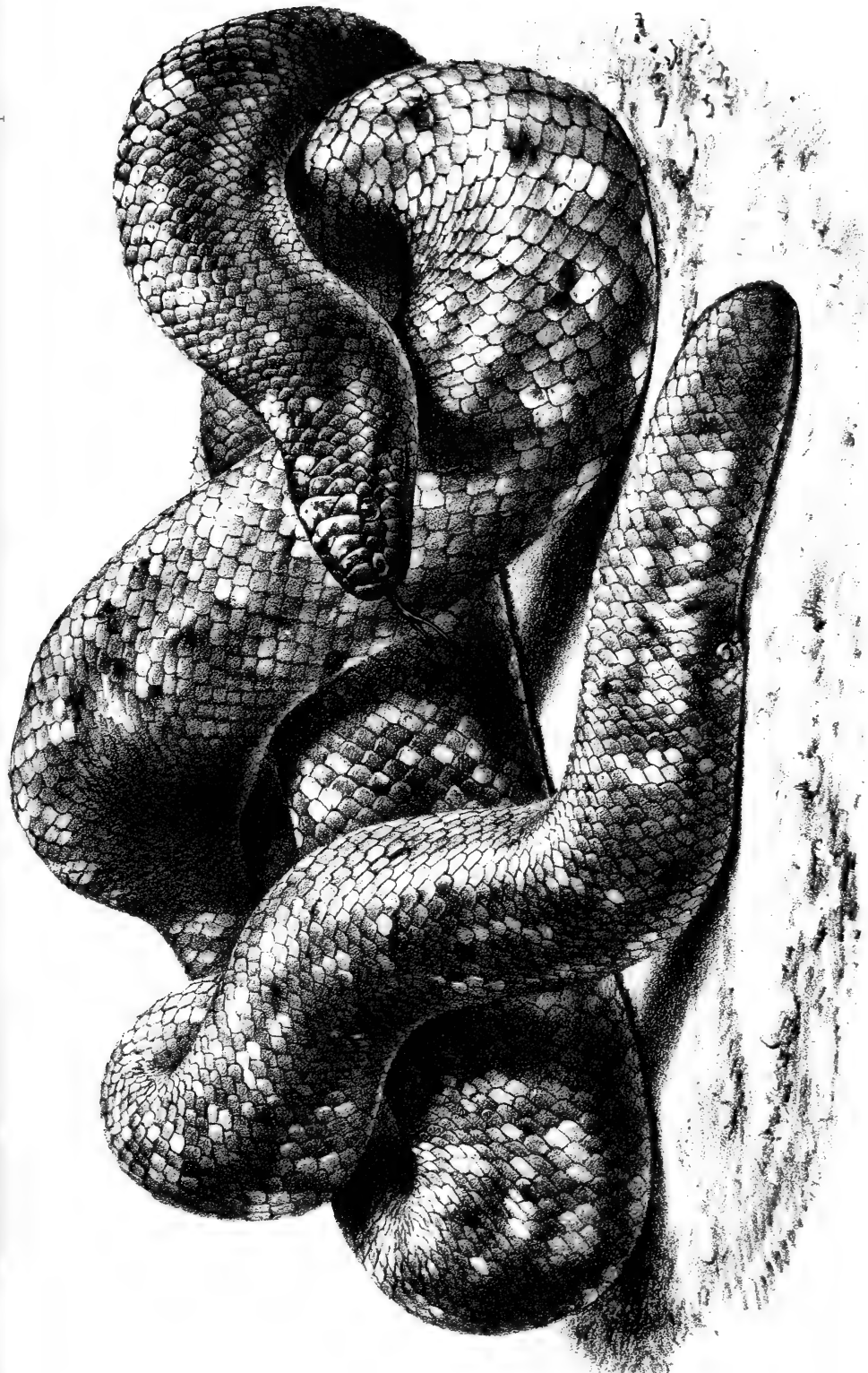


CHELODINA EXPANSA



CHELODINA EXPANSA









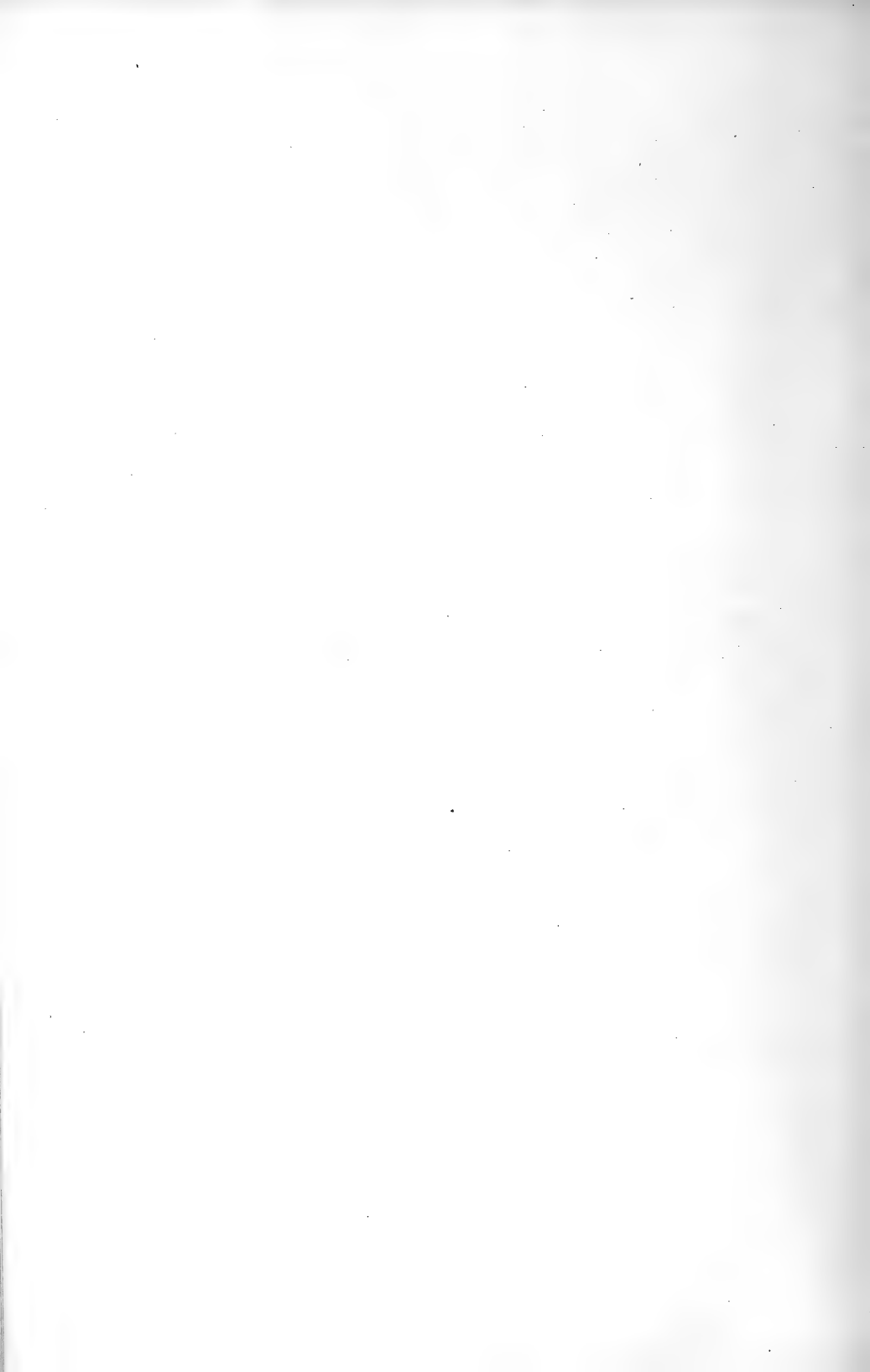
21



W. West. imp.

1. *Argalia olivacea*. 2. *Riama unicolor*.

C. H. Ford

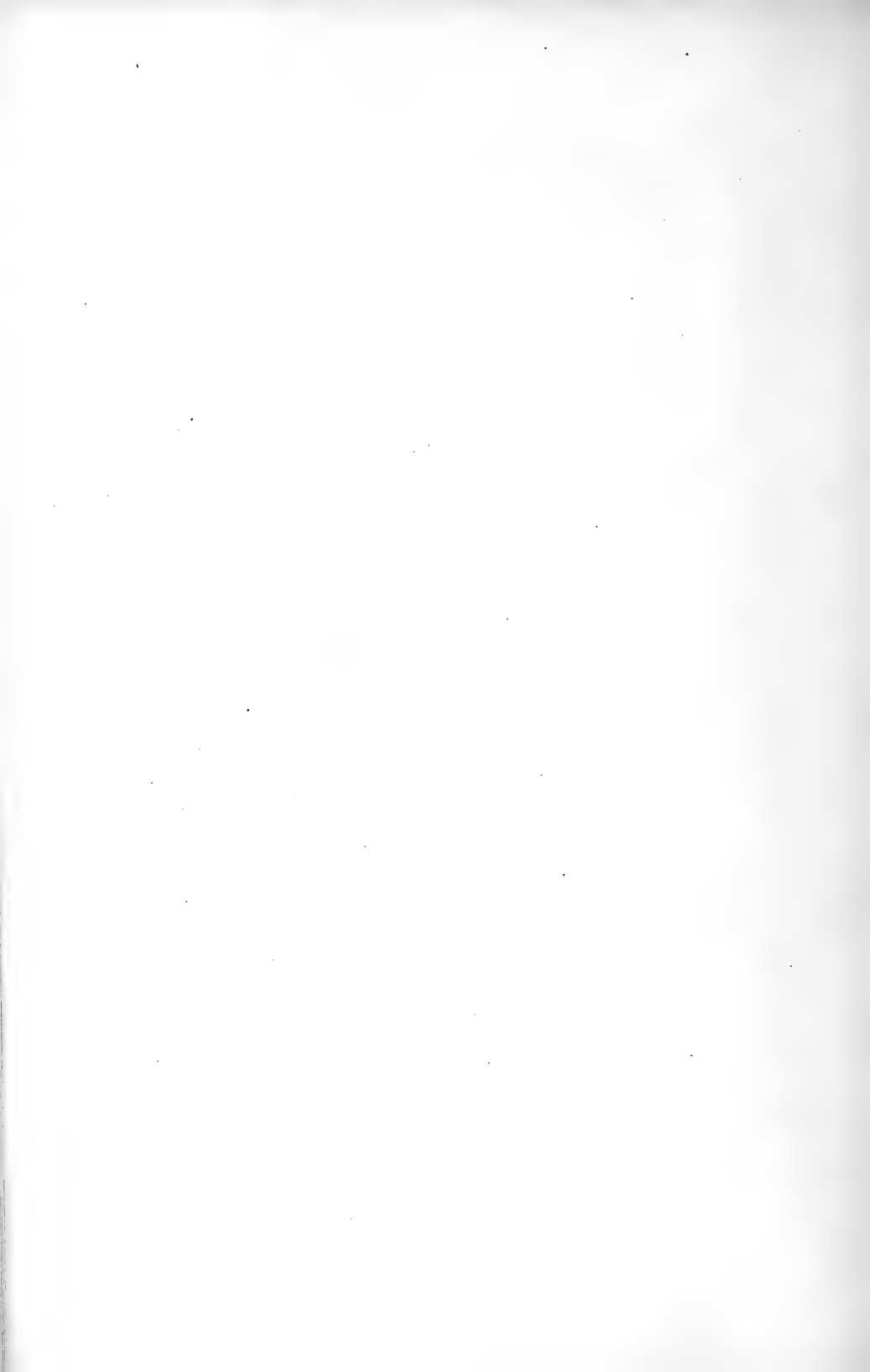




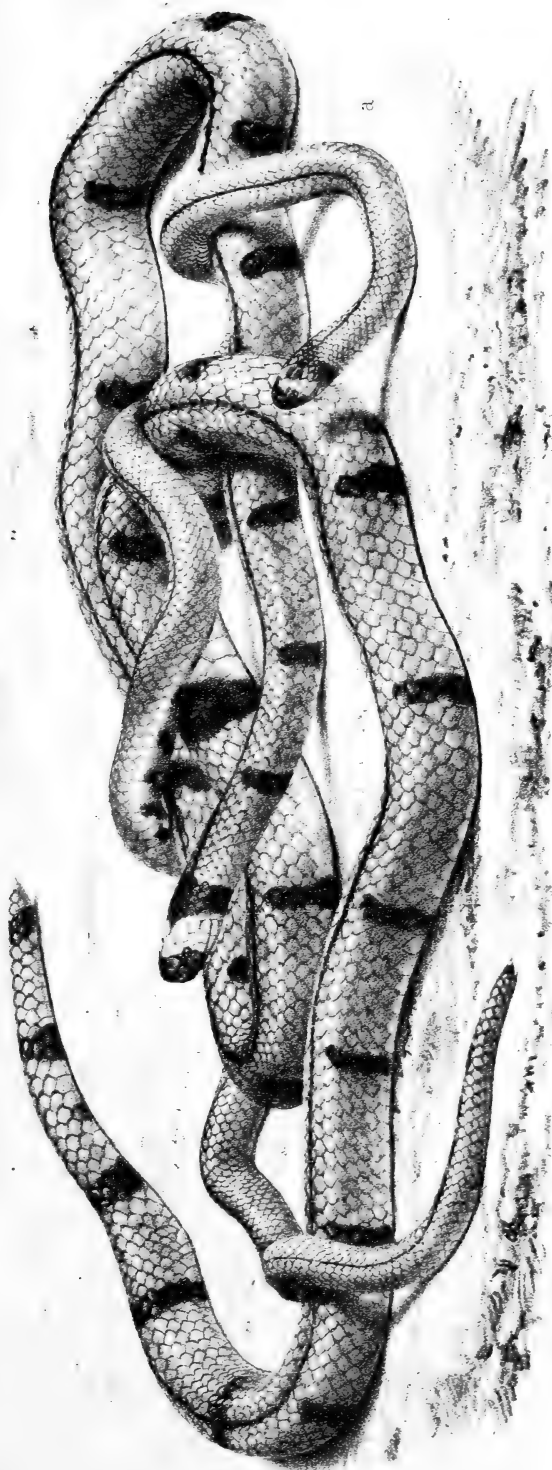
A. *Calliophis intestinalis*, var. Philipp. B. var. Javan C. var. Malayau.
 D. *Calliophis maculiceps*. *Gähr*. E. *Calliophis tramaculatus*, *Gähr*
 (D. & E. magnified)

A

a.

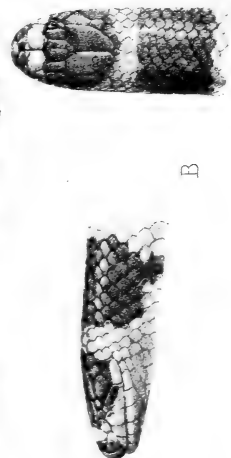


A



a

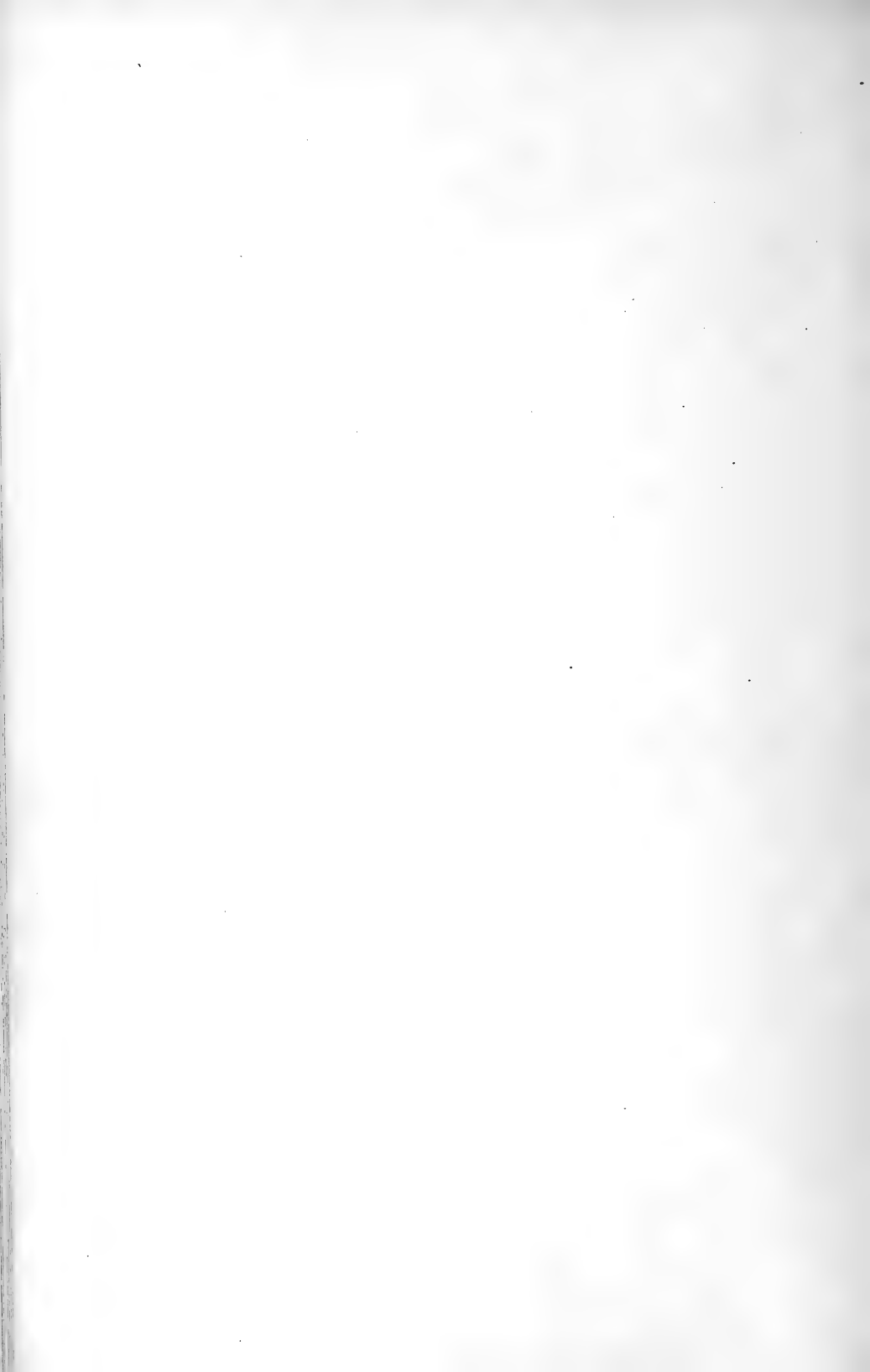
B

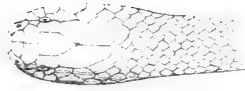
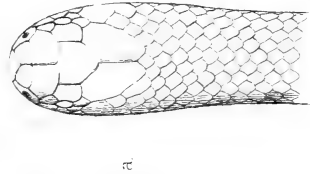


C. H. Ford

W. West. Imp.

A. *Callophis univirgatus*, *Citar*. B. *Vermicella occipitalis*, *D*. B





a

A

b

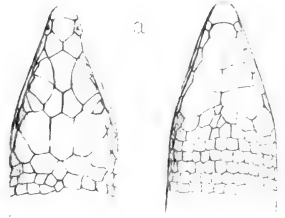
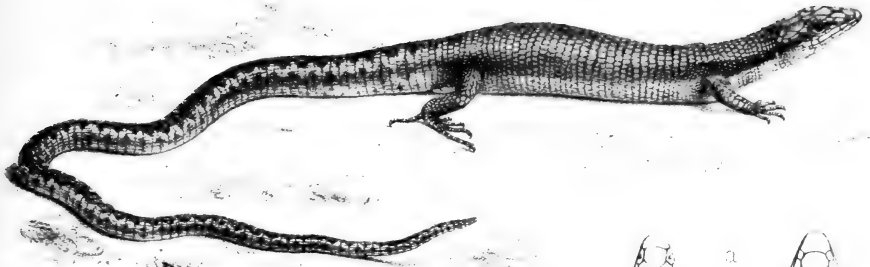




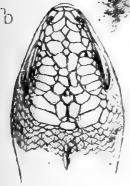
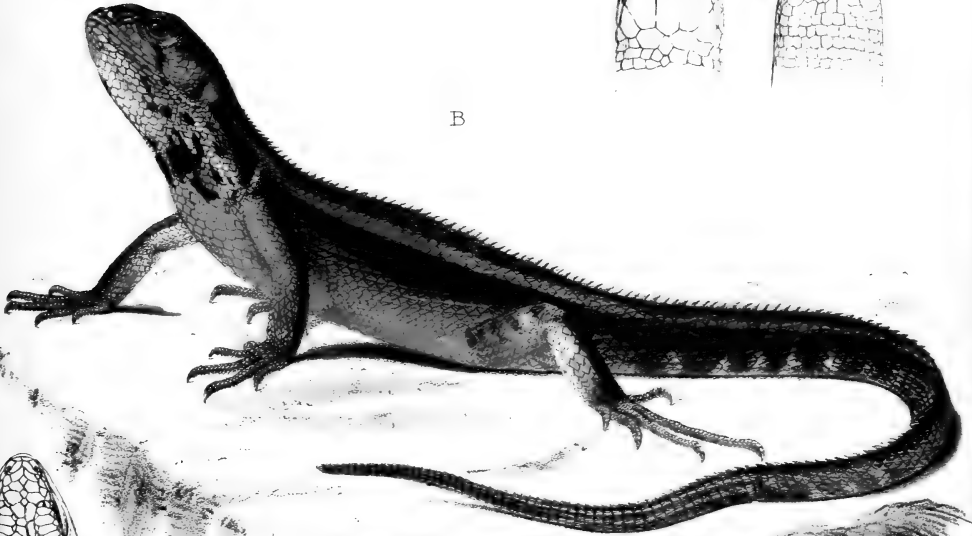


PLATE I
SALAMANDERS

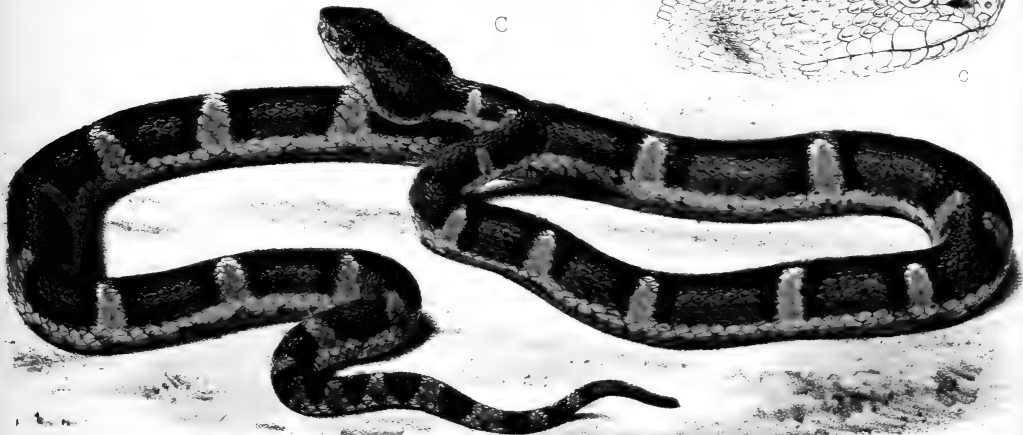




B

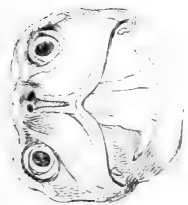


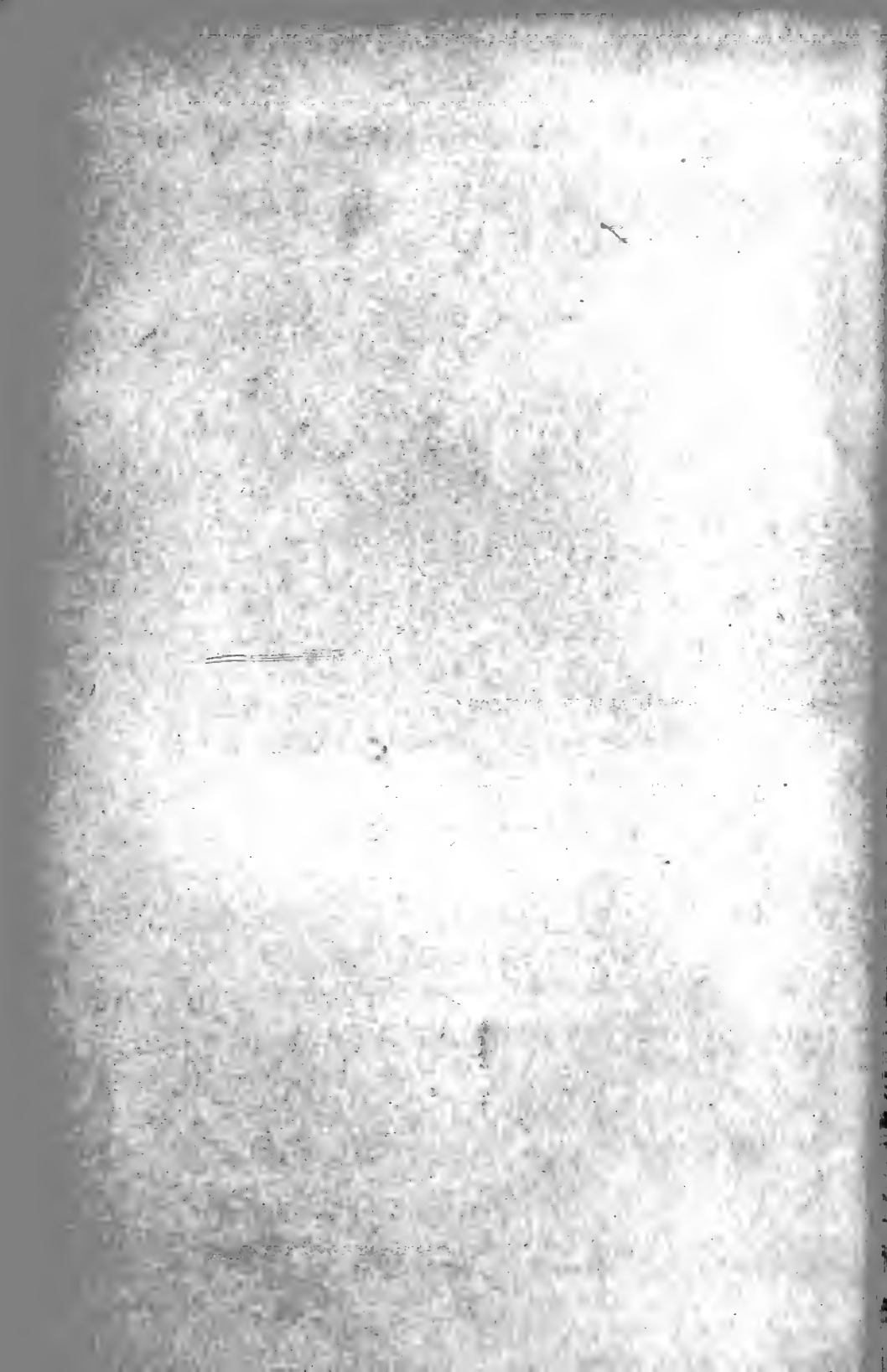
C



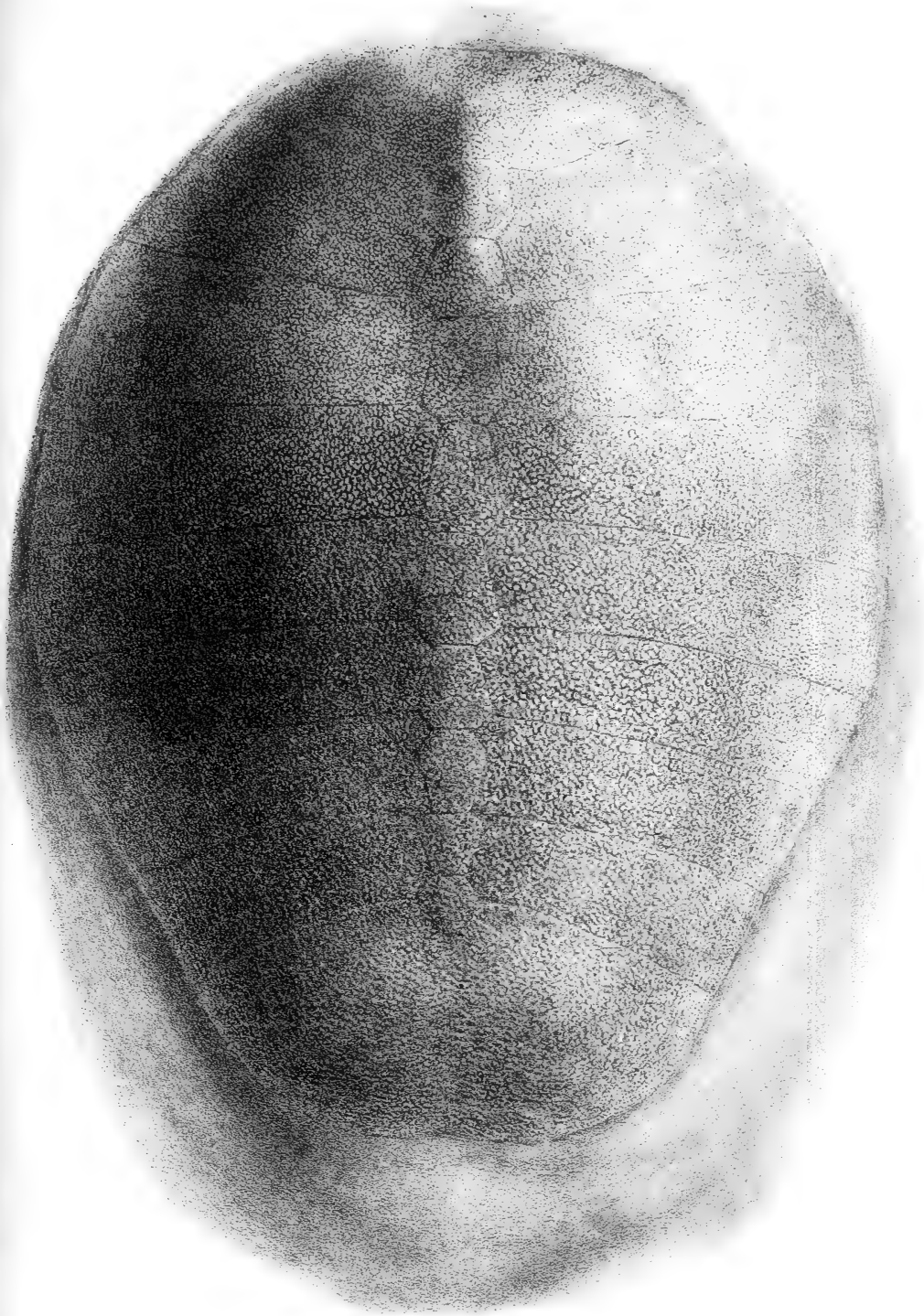
A. *Cercosaurus rhombifer*, Gthr. B. *Liocephalus iridescens*, Gthr. C. *Lachesis nitidas*, Gthr.





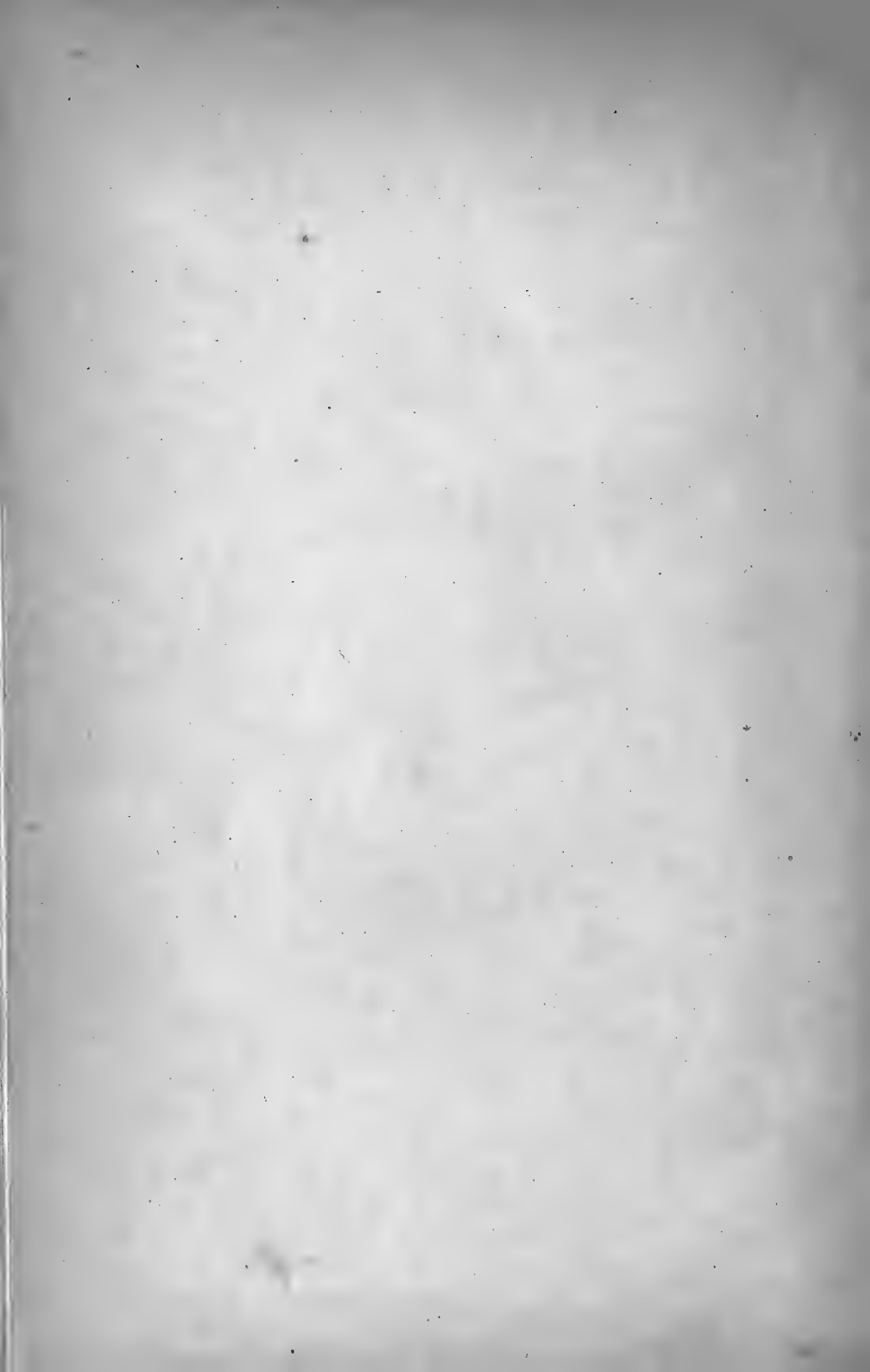














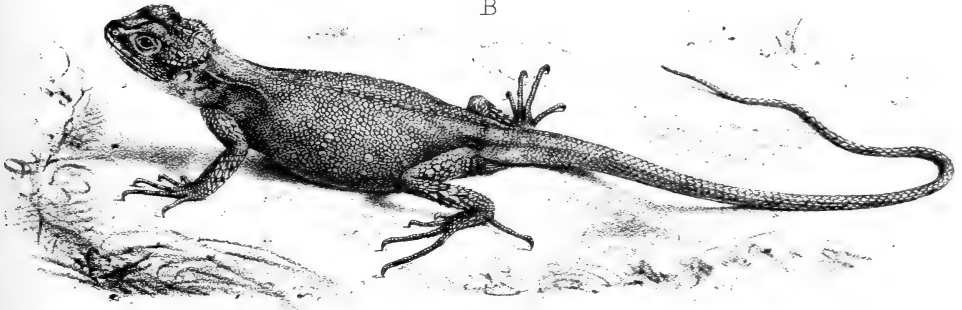
Chrysenis batesii.



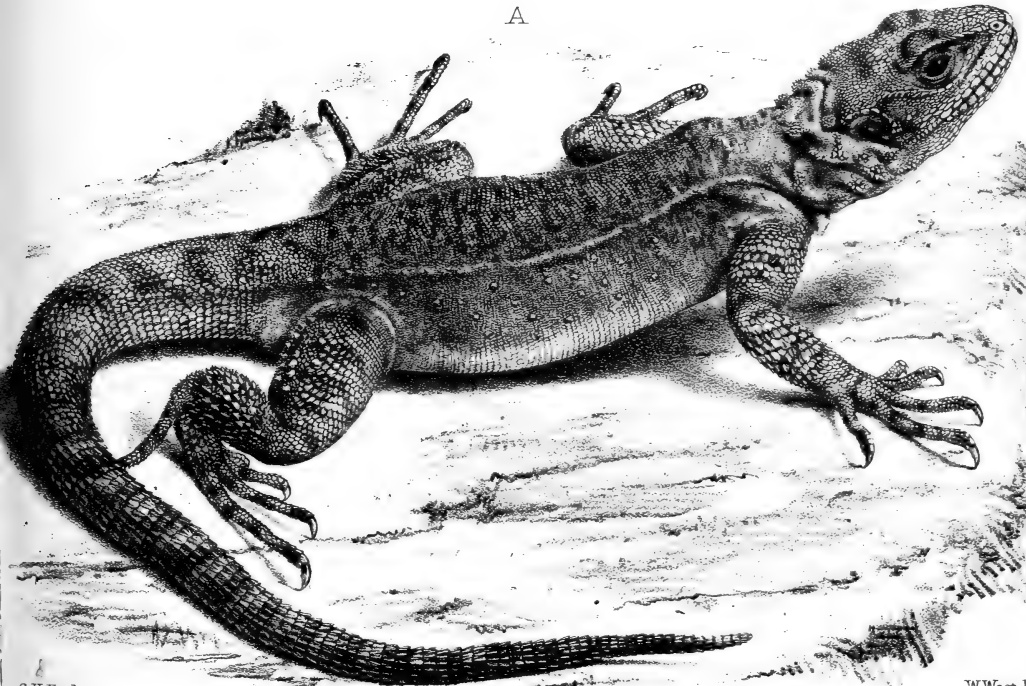
C



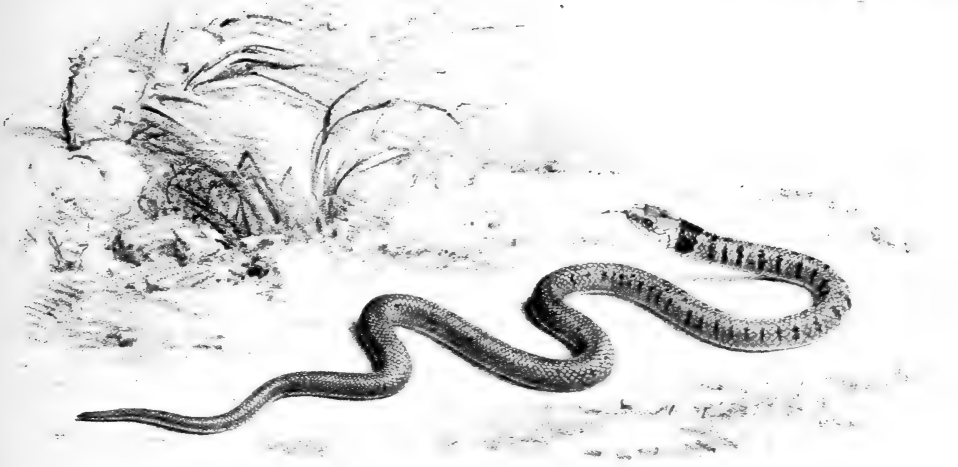
B



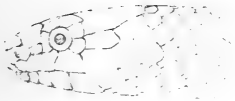
A







A.



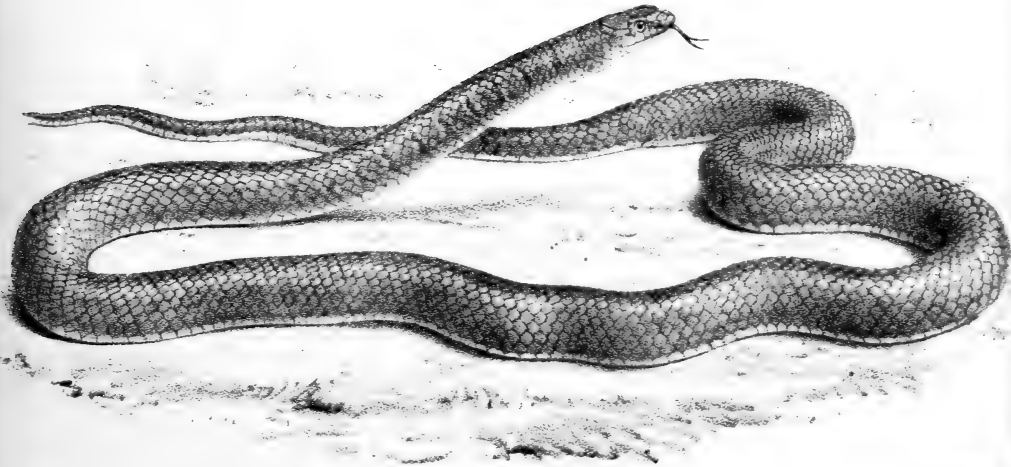
b



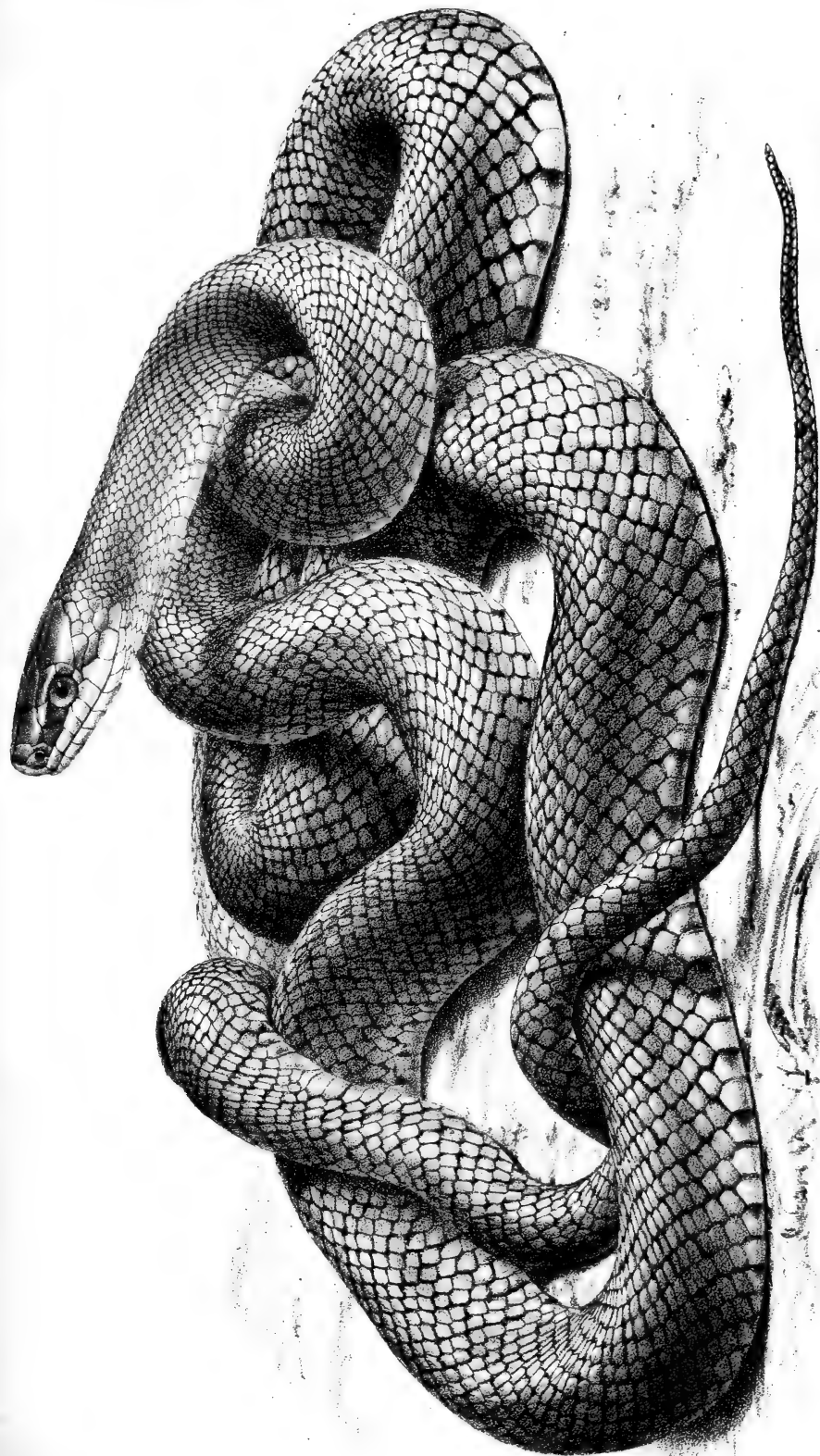
a



B.







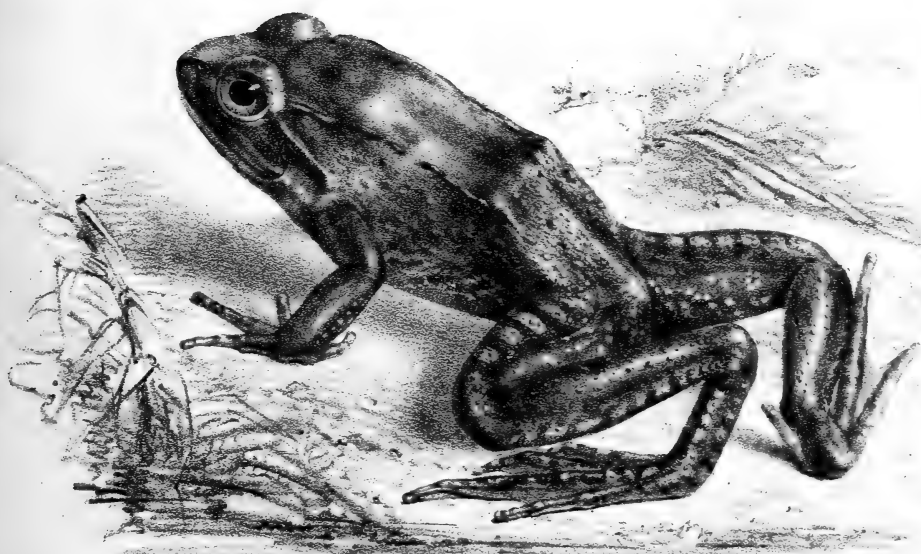




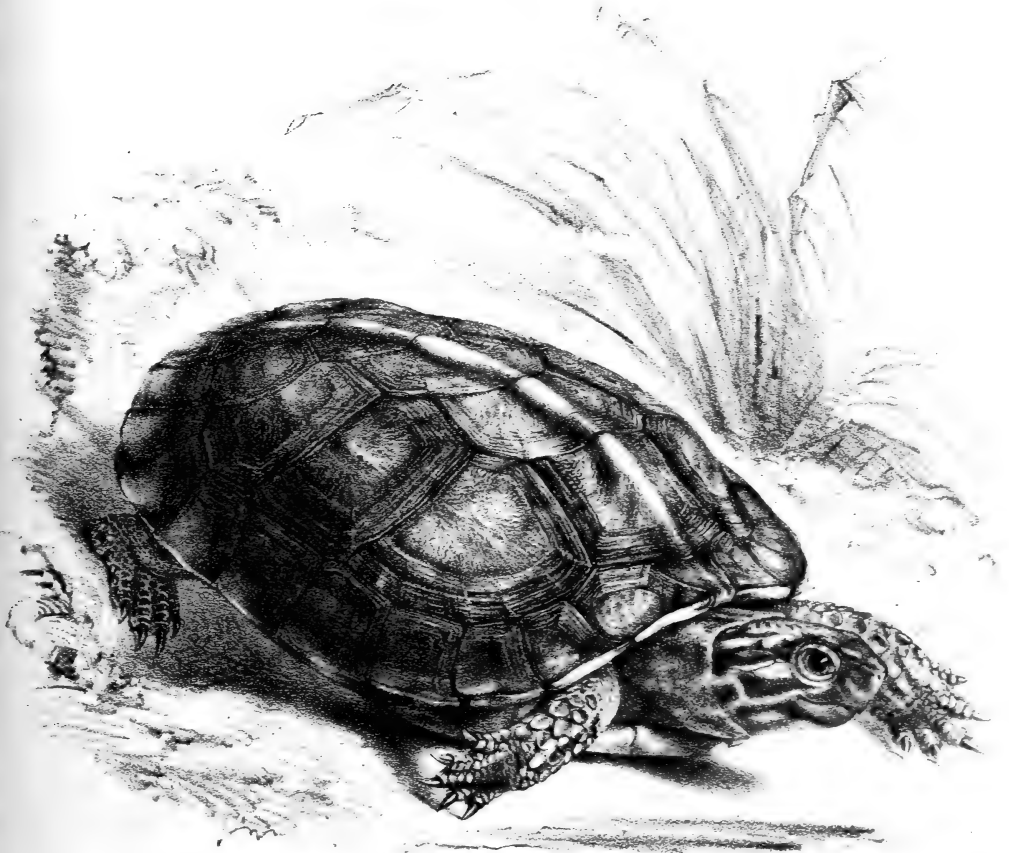
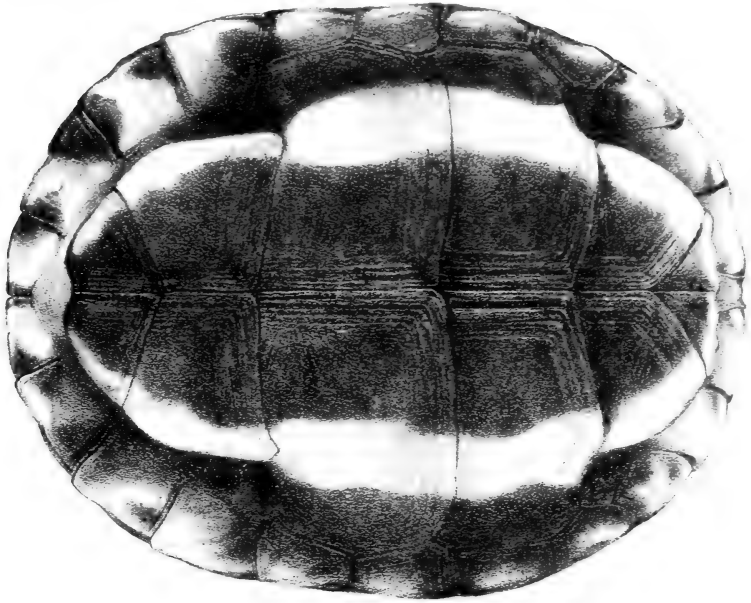
B.



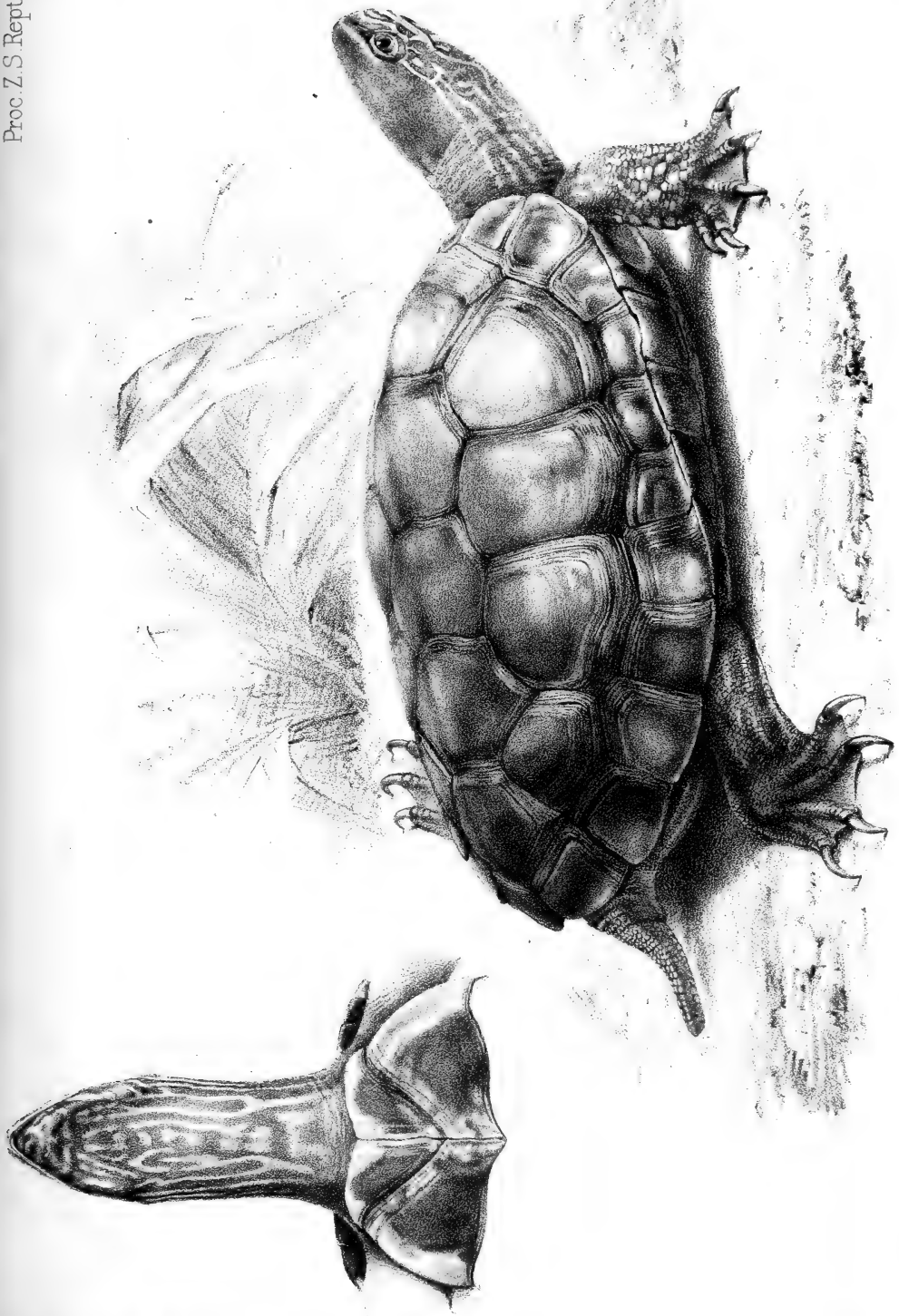
A.





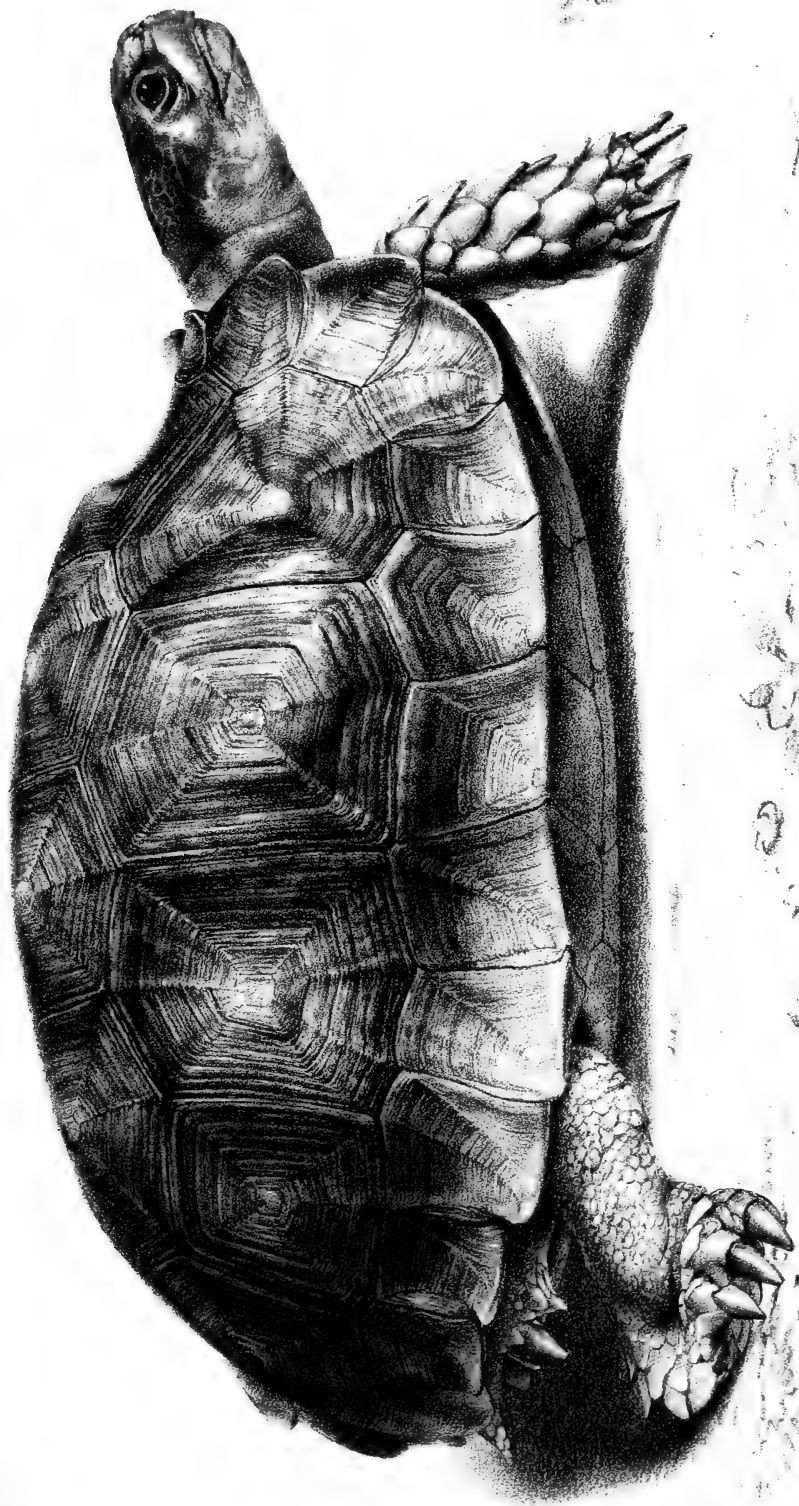


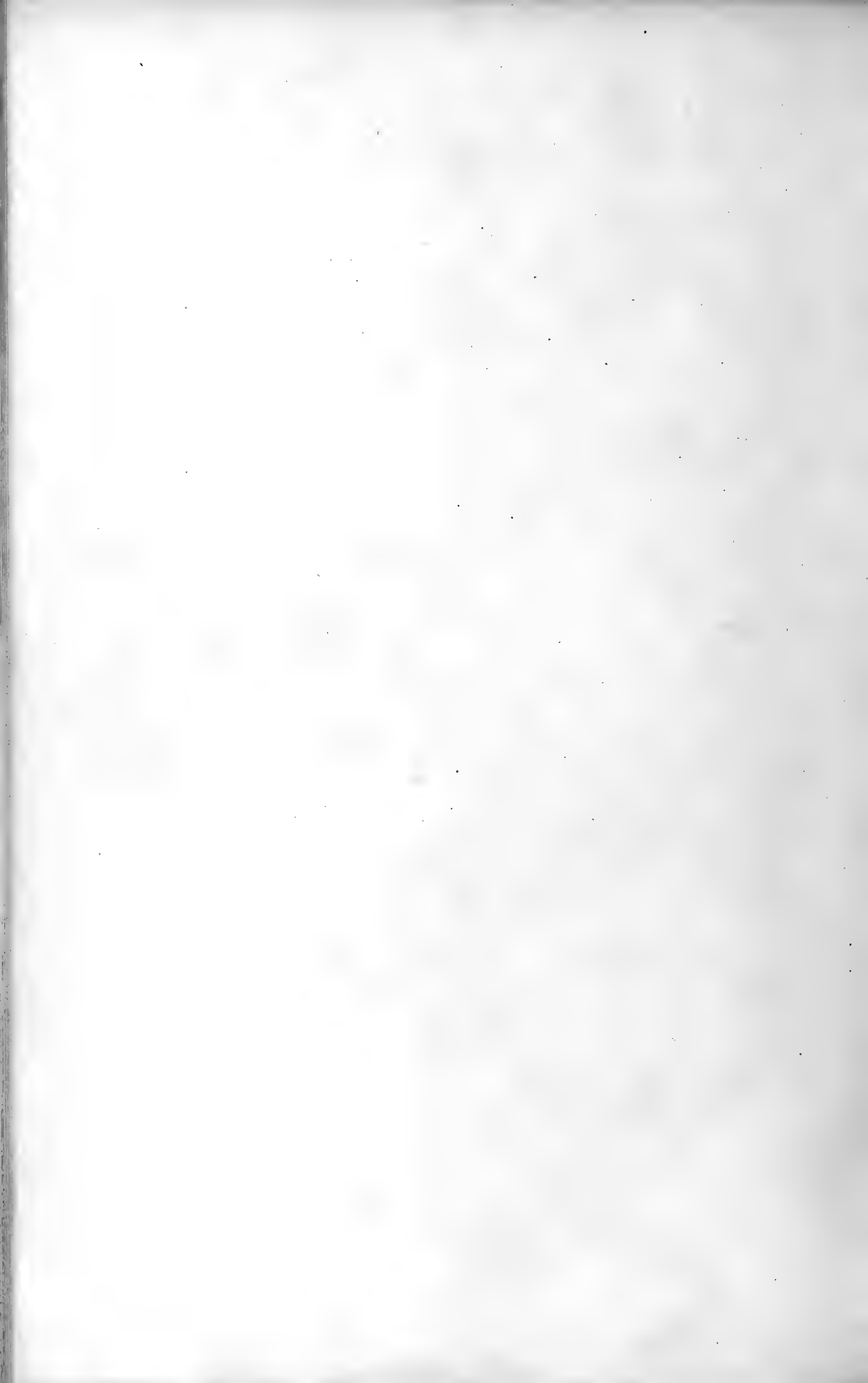




Emys fuliginosa









1.

2.

1 *Thamnophis aurifer*
2 *Hyla holochlora*

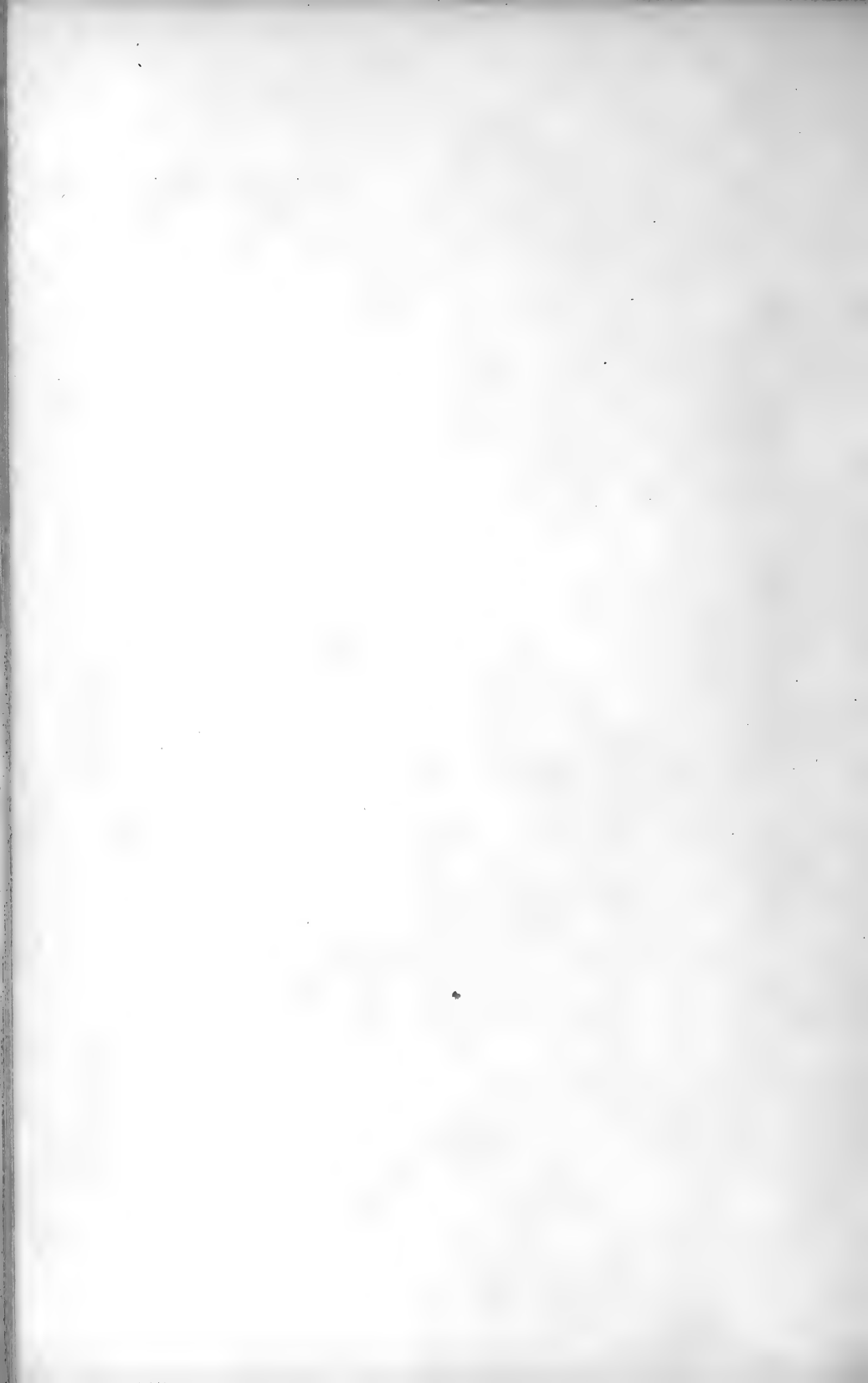
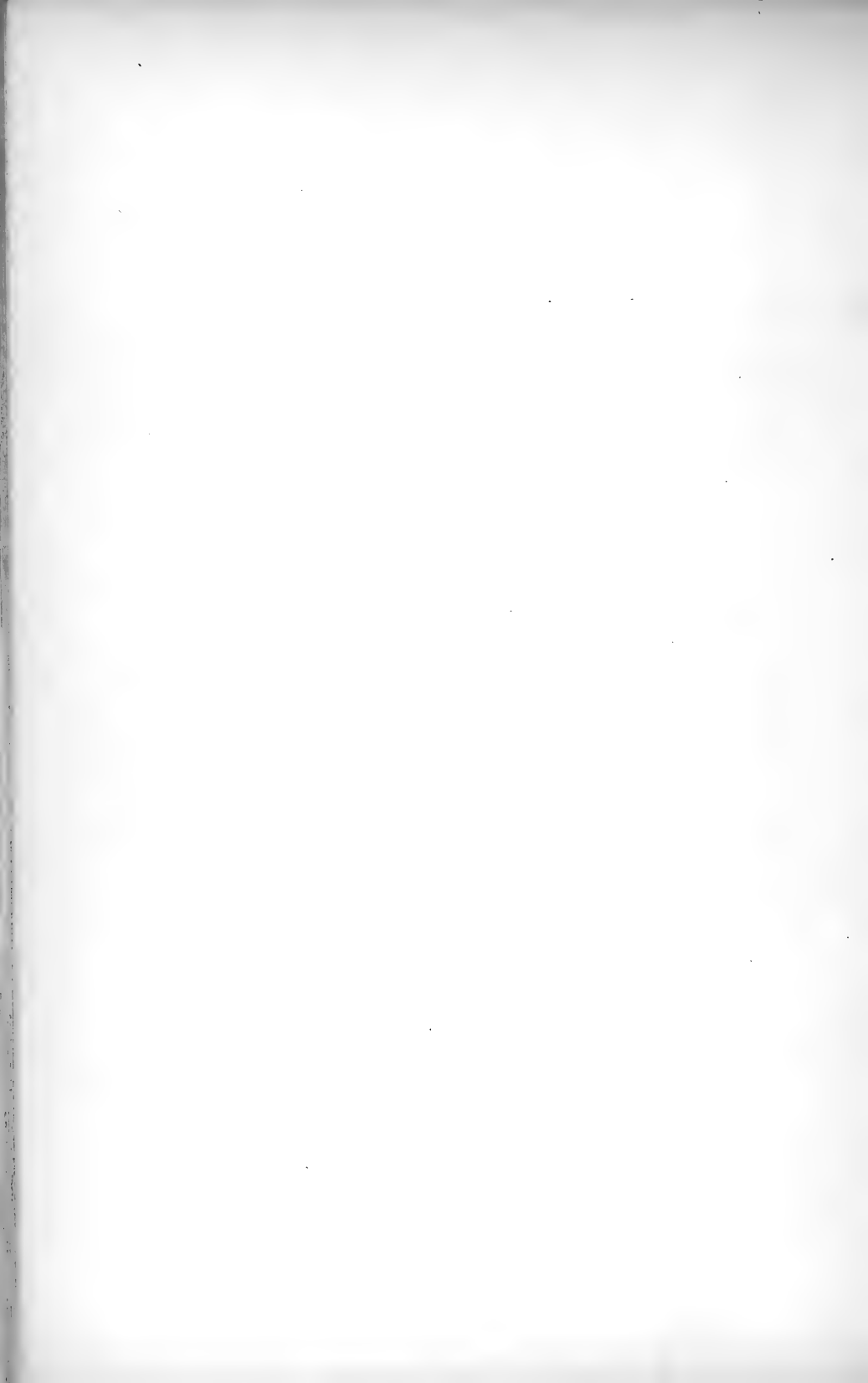


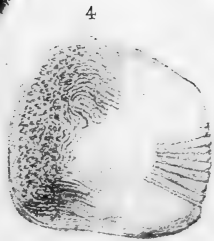
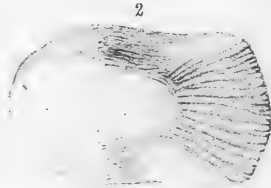


Illustration of fish

Drawn by Hebrauer & Wachs

1 2 APTOACTIS MILES 3 4 APTOACTIS PANIPUATII





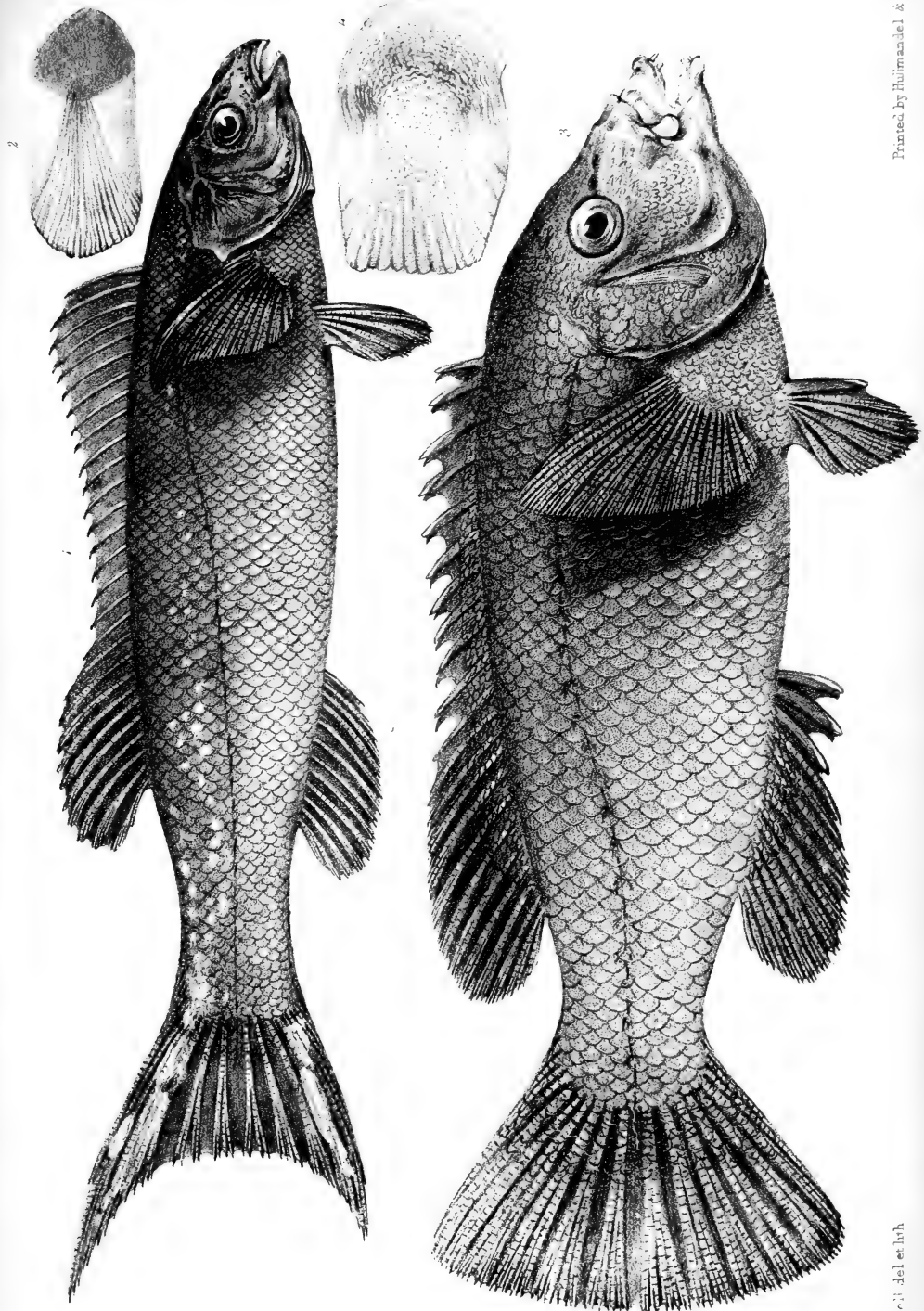
W. Moore, del. et lit.

Printed by Hullmandel & Walton.

1. 2. THREPTERIUS MACULOSUS.
3. 4. CHEILODACTYLUS GIBBOSUS.



100. 117. 1866. 11



W. Mitchell del et lith

Printed by Holman, Jel & W...

1. 2. 3. 4. 5. 6. 7. 8. 9. 10. 11. 12. 13. 14. 15. 16. 17. 18. 19. 20. 21. 22. 23. 24. 25. 26. 27. 28. 29. 30. 31. 32. 33. 34. 35. 36. 37. 38. 39. 40. 41. 42. 43. 44. 45. 46. 47. 48. 49. 50. 51. 52. 53. 54. 55. 56. 57. 58. 59. 60. 61. 62. 63. 64. 65. 66. 67. 68. 69. 70. 71. 72. 73. 74. 75. 76. 77. 78. 79. 80. 81. 82. 83. 84. 85. 86. 87. 88. 89. 90. 91. 92. 93. 94. 95. 96. 97. 98. 99. 100. 101. 102. 103. 104. 105. 106. 107. 108. 109. 110. 111. 112. 113. 114. 115. 116. 117. 118. 119. 120. 121. 122. 123. 124. 125. 126. 127. 128. 129. 130. 131. 132. 133. 134. 135. 136. 137. 138. 139. 140. 141. 142. 143. 144. 145. 146. 147. 148. 149. 150. 151. 152. 153. 154. 155. 156. 157. 158. 159. 160. 161. 162. 163. 164. 165. 166. 167. 168. 169. 170. 171. 172. 173. 174. 175. 176. 177. 178. 179. 180. 181. 182. 183. 184. 185. 186. 187. 188. 189. 190. 191. 192. 193. 194. 195. 196. 197. 198. 199. 200. 201. 202. 203. 204. 205. 206. 207. 208. 209. 210. 211. 212. 213. 214. 215. 216. 217. 218. 219. 220. 221. 222. 223. 224. 225. 226. 227. 228. 229. 230. 231. 232. 233. 234. 235. 236. 237. 238. 239. 240. 241. 242. 243. 244. 245. 246. 247. 248. 249. 250. 251. 252. 253. 254. 255. 256. 257. 258. 259. 260. 261. 262. 263. 264. 265. 266. 267. 268. 269. 270. 271. 272. 273. 274. 275. 276. 277. 278. 279. 280. 281. 282. 283. 284. 285. 286. 287. 288. 289. 290. 291. 292. 293. 294. 295. 296. 297. 298. 299. 300. 301. 302. 303. 304. 305. 306. 307. 308. 309. 310. 311. 312. 313. 314. 315. 316. 317. 318. 319. 320. 321. 322. 323. 324. 325. 326. 327. 328. 329. 330. 331. 332. 333. 334. 335. 336. 337. 338. 339. 340. 341. 342. 343. 344. 345. 346. 347. 348. 349. 350. 351. 352. 353. 354. 355. 356. 357. 358. 359. 360. 361. 362. 363. 364. 365. 366. 367. 368. 369. 370. 371. 372. 373. 374. 375. 376. 377. 378. 379. 380. 381. 382. 383. 384. 385. 386. 387. 388. 389. 390. 391. 392. 393. 394. 395. 396. 397. 398. 399. 400. 401. 402. 403. 404. 405. 406. 407. 408. 409. 410. 411. 412. 413. 414. 415. 416. 417. 418. 419. 420. 421. 422. 423. 424. 425. 426. 427. 428. 429. 430. 431. 432. 433. 434. 435. 436. 437. 438. 439. 440. 441. 442. 443. 444. 445. 446. 447. 448. 449. 450. 451. 452. 453. 454. 455. 456. 457. 458. 459. 460. 461. 462. 463. 464. 465. 466. 467. 468. 469. 470. 471. 472. 473. 474. 475. 476. 477. 478. 479. 480. 481. 482. 483. 484. 485. 486. 487. 488. 489. 490. 491. 492. 493. 494. 495. 496. 497. 498. 499. 500. 501. 502. 503. 504. 505. 506. 507. 508. 509. 510. 511. 512. 513. 514. 515. 516. 517. 518. 519. 520. 521. 522. 523. 524. 525. 526. 527. 528. 529. 530. 531. 532. 533. 534. 535. 536. 537. 538. 539. 540. 541. 542. 543. 544. 545. 546. 547. 548. 549. 550. 551. 552. 553. 554. 555. 556. 557. 558. 559. 560. 561. 562. 563. 564. 565. 566. 567. 568. 569. 570. 571. 572. 573. 574. 575. 576. 577. 578. 579. 580. 581. 582. 583. 584. 585. 586. 587. 588. 589. 590. 591. 592. 593. 594. 595. 596. 597. 598. 599. 600. 601. 602. 603. 604. 605. 606. 607. 608. 609. 610. 611. 612. 613. 614. 615. 616. 617. 618. 619. 620. 621. 622. 623. 624. 625. 626. 627. 628. 629. 630. 631. 632. 633. 634. 635. 636. 637. 638. 639. 640. 641. 642. 643. 644. 645. 646. 647. 648. 649. 650. 651. 652. 653. 654. 655. 656. 657. 658. 659. 660. 661. 662. 663. 664. 665. 666. 667. 668. 669. 670. 671. 672. 673. 674. 675. 676. 677. 678. 679. 680. 681. 682. 683. 684. 685. 686. 687. 688. 689. 690. 691. 692. 693. 694. 695. 696. 697. 698. 699. 700. 701. 702. 703. 704. 705. 706. 707. 708. 709. 710. 711. 712. 713. 714. 715. 716. 717. 718. 719. 720. 721. 722. 723. 724. 725. 726. 727. 728. 729. 730. 731. 732. 733. 734. 735. 736. 737. 738. 739. 740. 741. 742. 743. 744. 745. 746. 747. 748. 749. 750. 751. 752. 753. 754. 755. 756. 757. 758. 759. 760. 761. 762. 763. 764. 765. 766. 767. 768. 769. 770. 771. 772. 773. 774. 775. 776. 777. 778. 779. 780. 781. 782. 783. 784. 785. 786. 787. 788. 789. 790. 791. 792. 793. 794. 795. 796. 797. 798. 799. 800. 801. 802. 803. 804. 805. 806. 807. 808. 809. 810. 811. 812. 813. 814. 815. 816. 817. 818. 819. 820. 821. 822. 823. 824. 825. 826. 827. 828. 829. 830. 831. 832. 833. 834. 835. 836. 837. 838. 839. 840. 841. 842. 843. 844. 845. 846. 847. 848. 849. 850. 851. 852. 853. 854. 855. 856. 857. 858. 859. 860. 861. 862. 863. 864. 865. 866. 867. 868. 869. 870. 871. 872. 873. 874. 875. 876. 877. 878. 879. 880. 881. 882. 883. 884. 885. 886. 887. 888. 889. 890. 891. 892. 893. 894. 895. 896. 897. 898. 899. 900. 901. 902. 903. 904. 905. 906. 907. 908. 909. 910. 911. 912. 913. 914. 915. 916. 917. 918. 919. 920. 921. 922. 923. 924. 925. 926. 927. 928. 929. 930. 931. 932. 933. 934. 935. 936. 937. 938. 939. 940. 941. 942. 943. 944. 945. 946. 947. 948. 949. 950. 951. 952. 953. 954. 955. 956. 957. 958. 959. 960. 961. 962. 963. 964. 965. 966. 967. 968. 969. 970. 971. 972. 973. 974. 975. 976. 977. 978. 979. 980. 981. 982. 983. 984. 985. 986. 987. 988. 989. 990. 991. 992. 993. 994. 995. 996. 997. 998. 999. 1000.



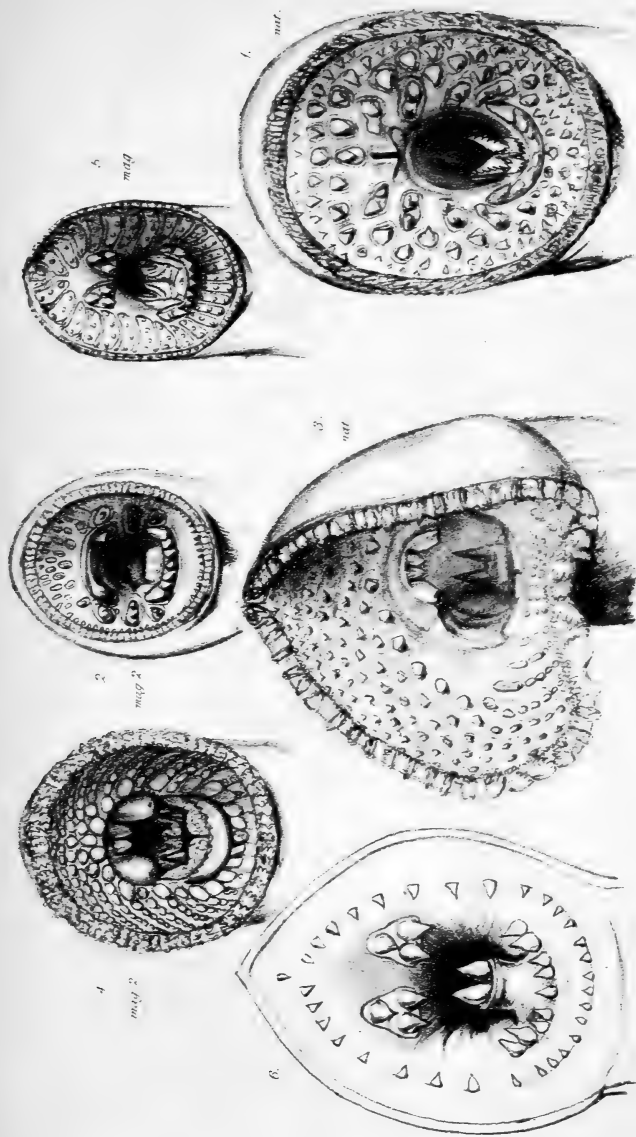


Plate V. 1853. *Subalgophora* G. Barton. Carlton.

1. *PREPORA*. 2. *MARINUS*. 3. *LAMPETRA FULVA*. 4. *CERITHIA AUSTRALIS*.
 5. *VELASIA CHILENSIS*. 6. *MORDACIA MORDAX*.





End & West. Ichthyographes, 54. London. Clarke

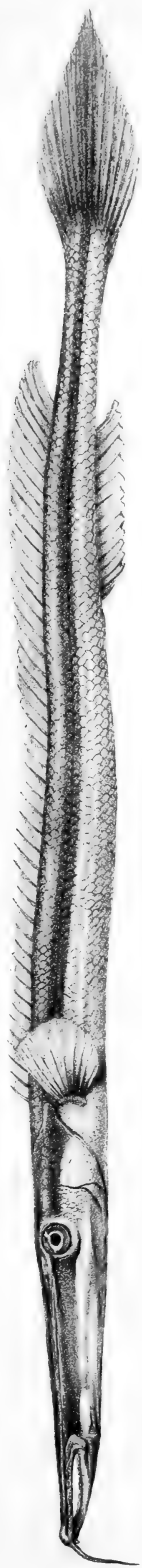
GEOTRIA AUSTRALIS. (Gray)

WVing:ad et. h.b.





nat. size.



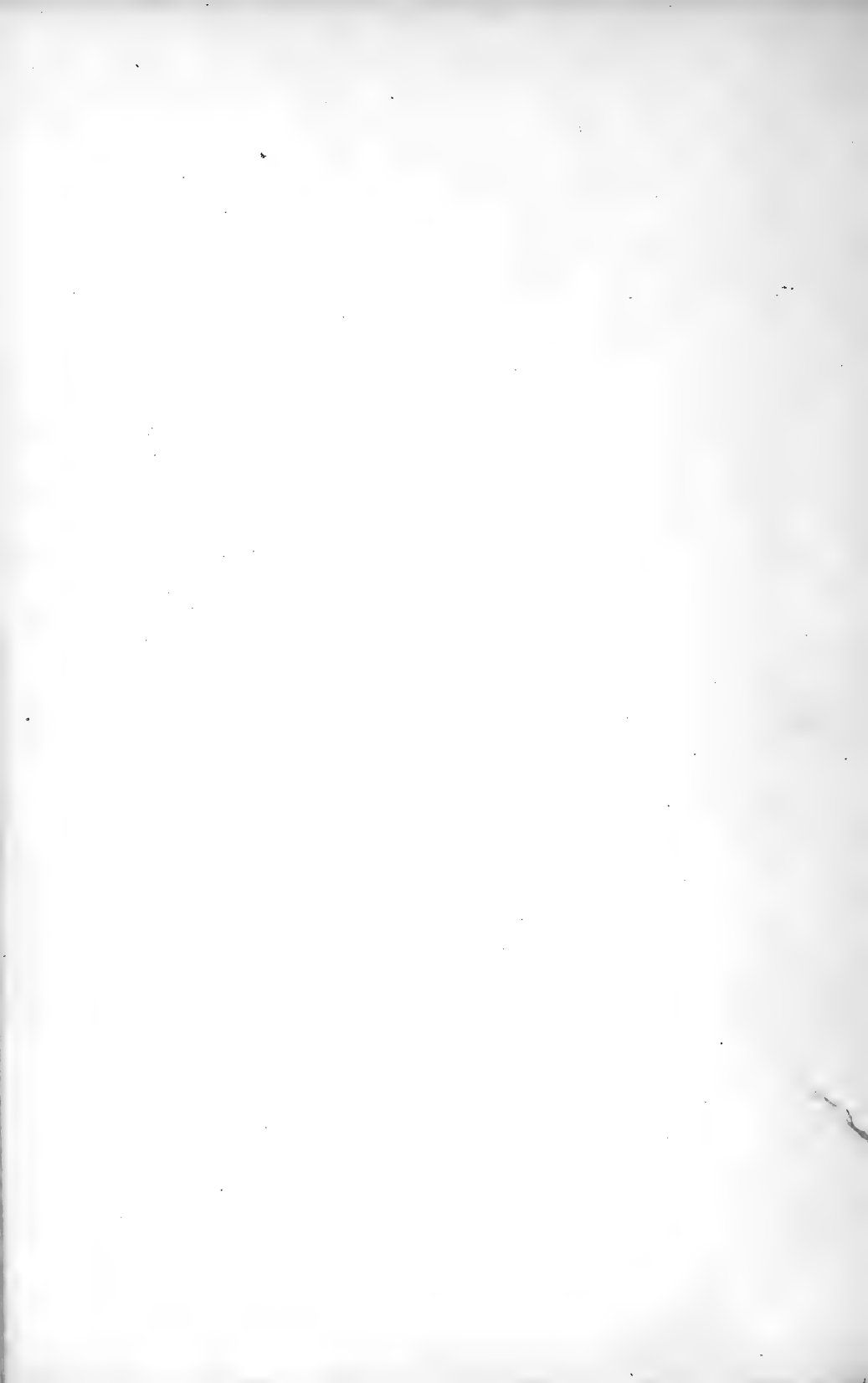
1/2 length.

SIPHONOGNATHUS ARGYROPHANES, Richardson.





HALIICHTHYS TENIOPHORA

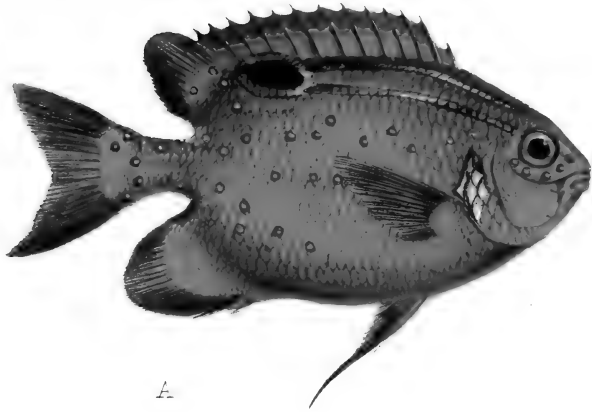




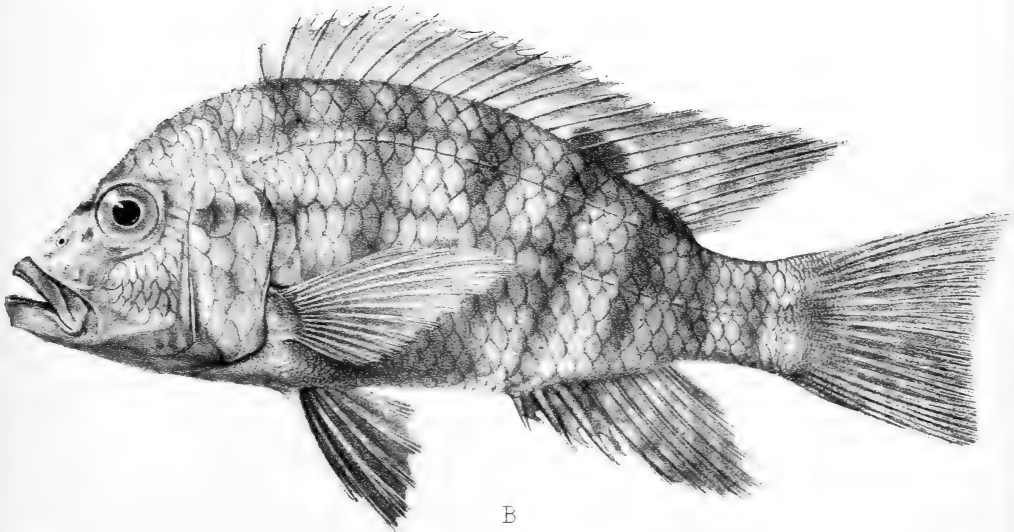
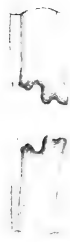
(2)

Fig. 1. PERISTHETHUS CATAPHRACTUS.
 2. _____ ORIENTALIS.
 3. _____ RIEFFELI.





A



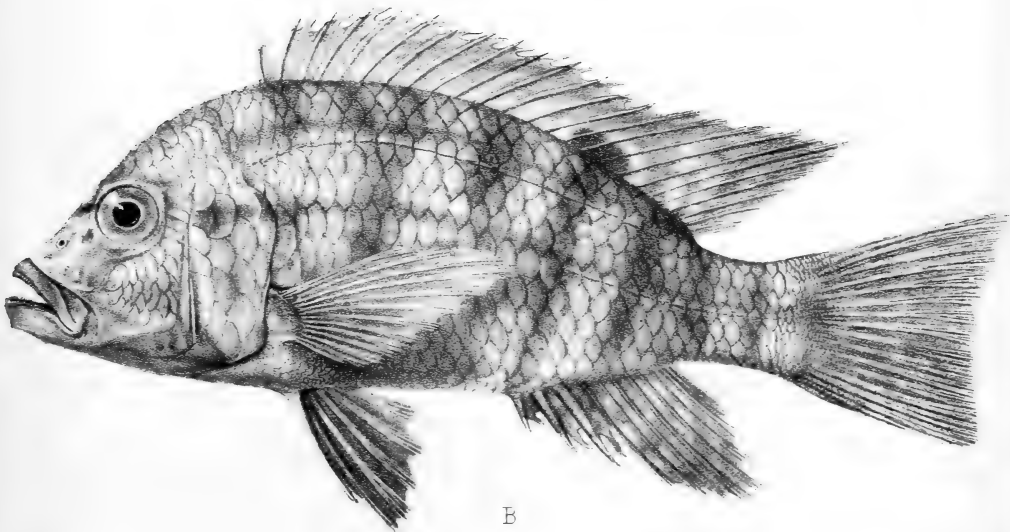
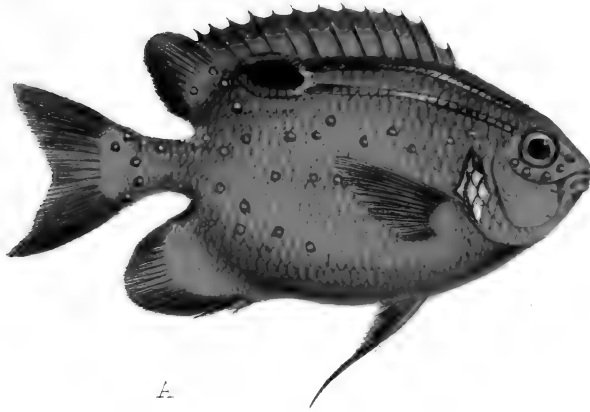
B

C. E. Ford.

W. West imp.

A. *Glyphisodon biocellatus*. B. *Halgenes tristrami*, *Ghr.*

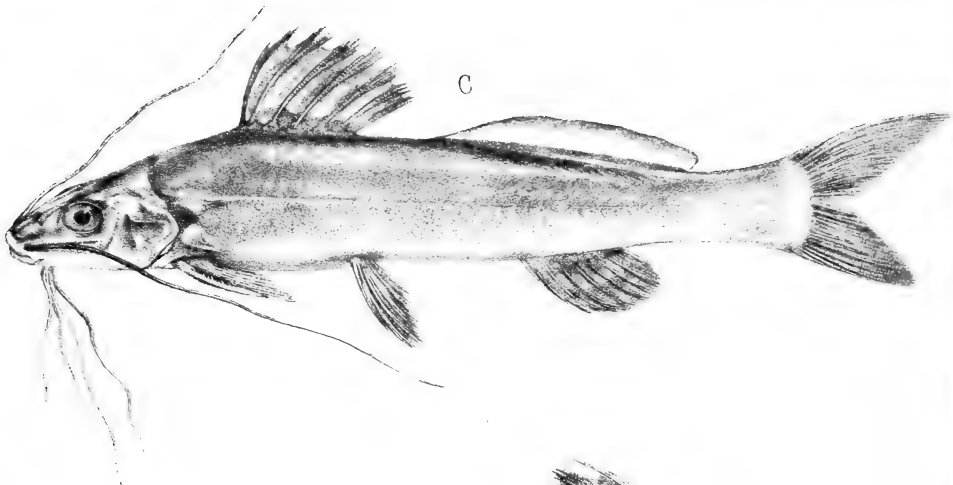




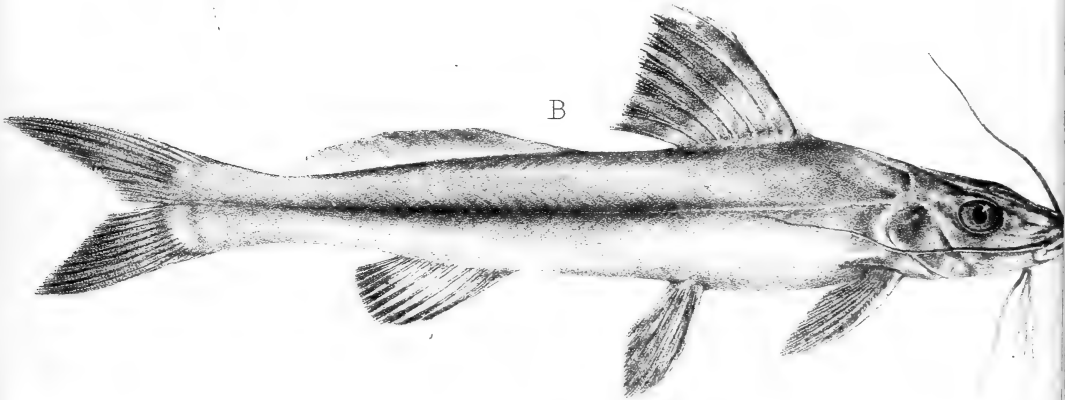
C.E. Ford

W. West imp

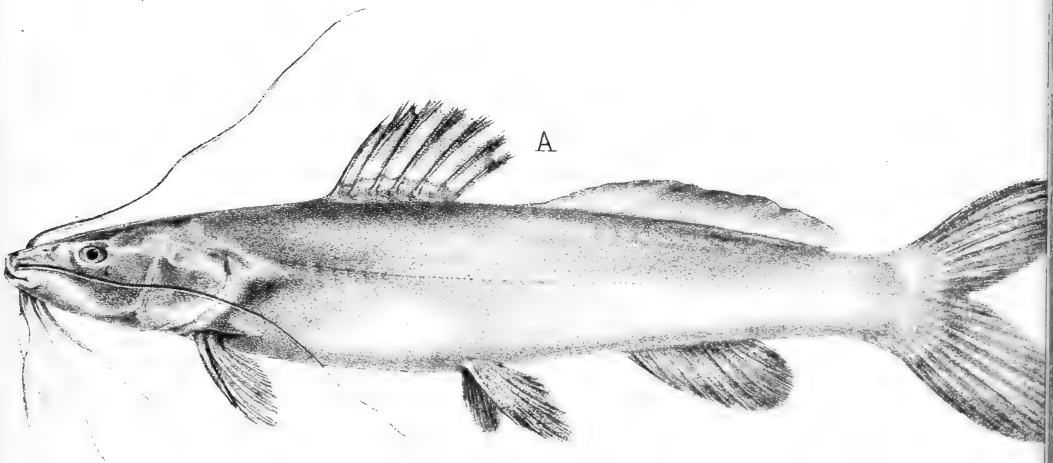
A. *Clyphisodon biocellatus*. B. *Haligenes tristrami*, *Albr.*



C



B



A

- A. PIMELODUS CINERASCENS. *Gthr.*
B. _____ ELONGATUS. *Gthr.*
C. _____ MODESTUS. *Gthr.*

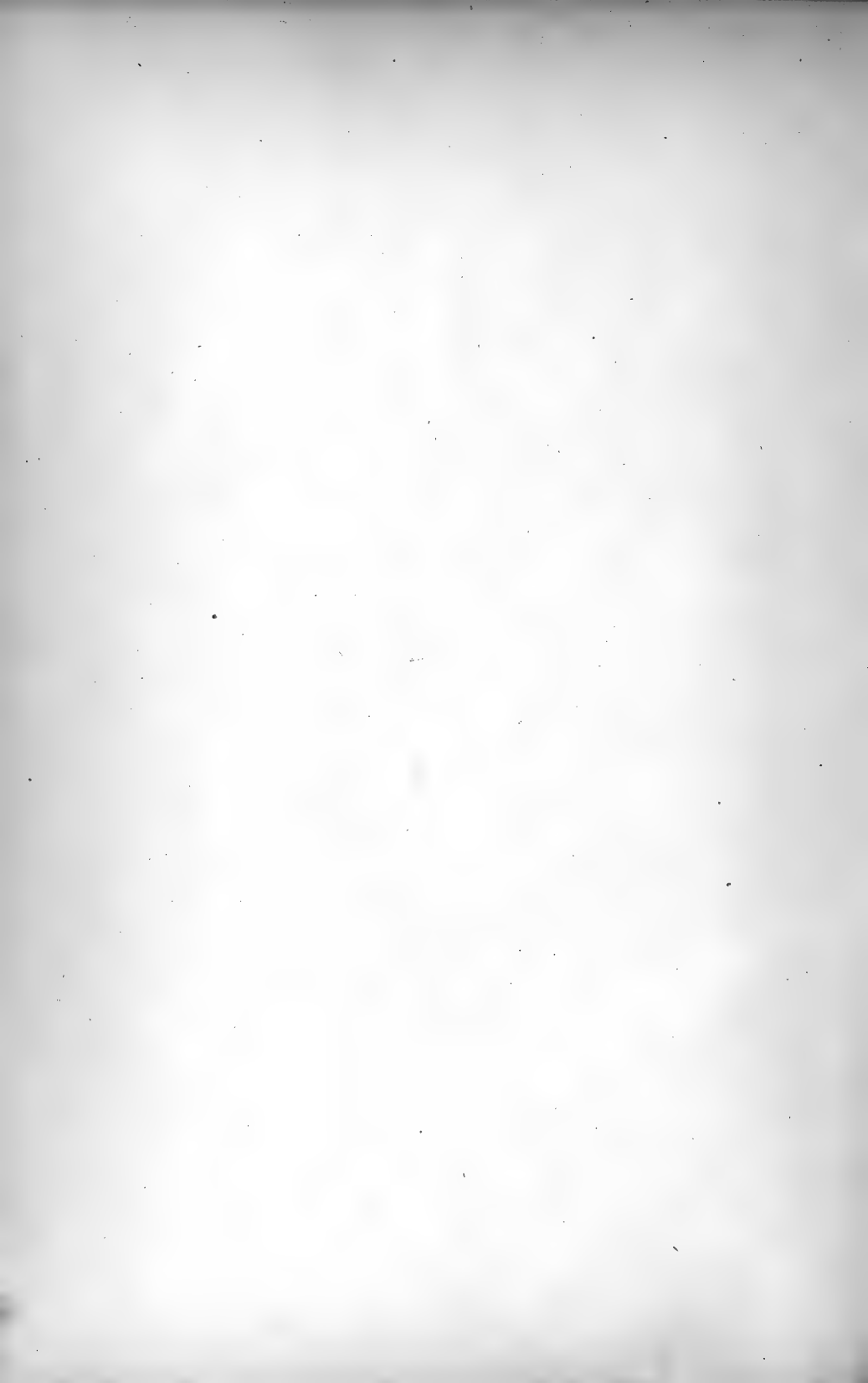


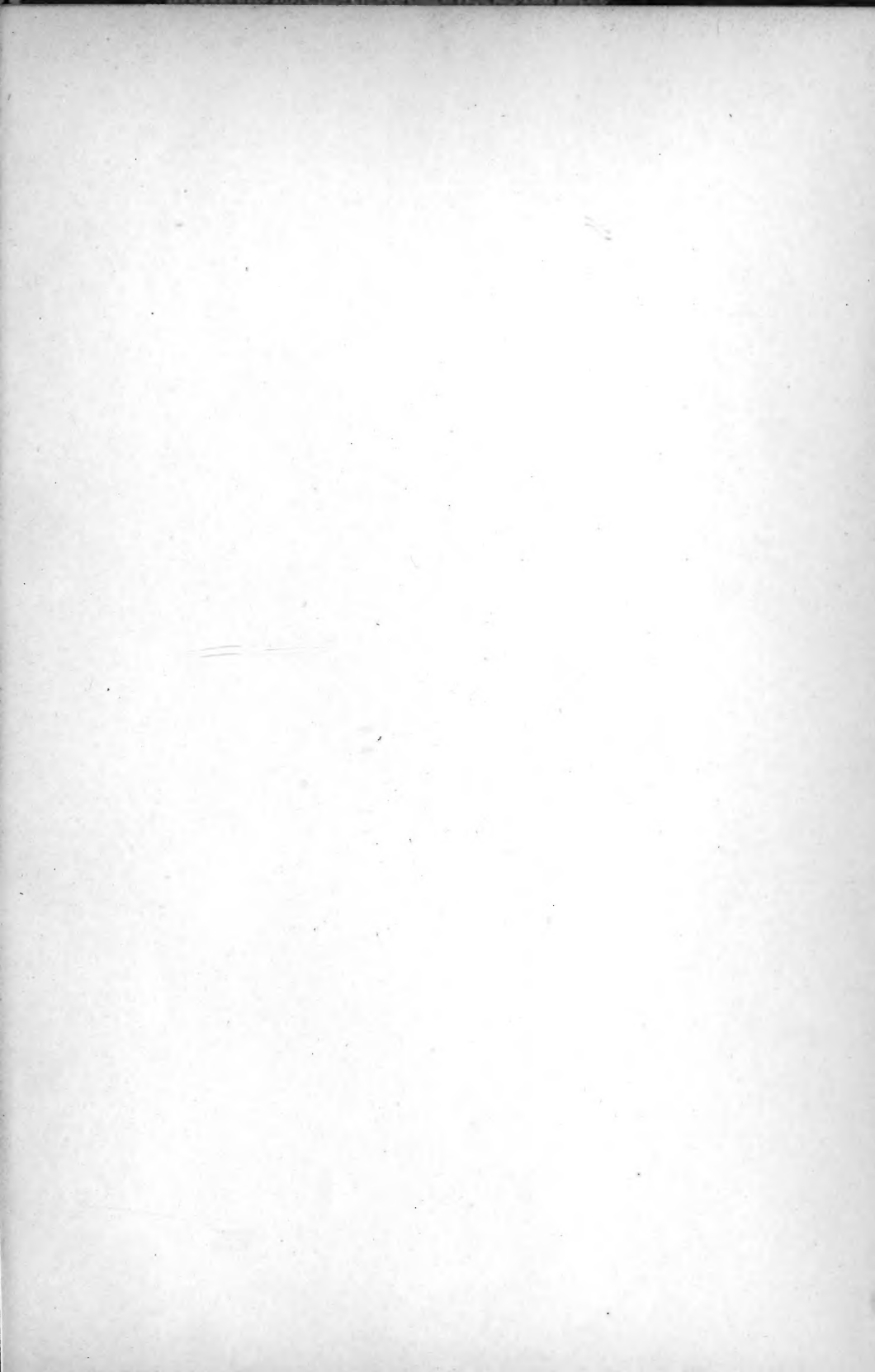


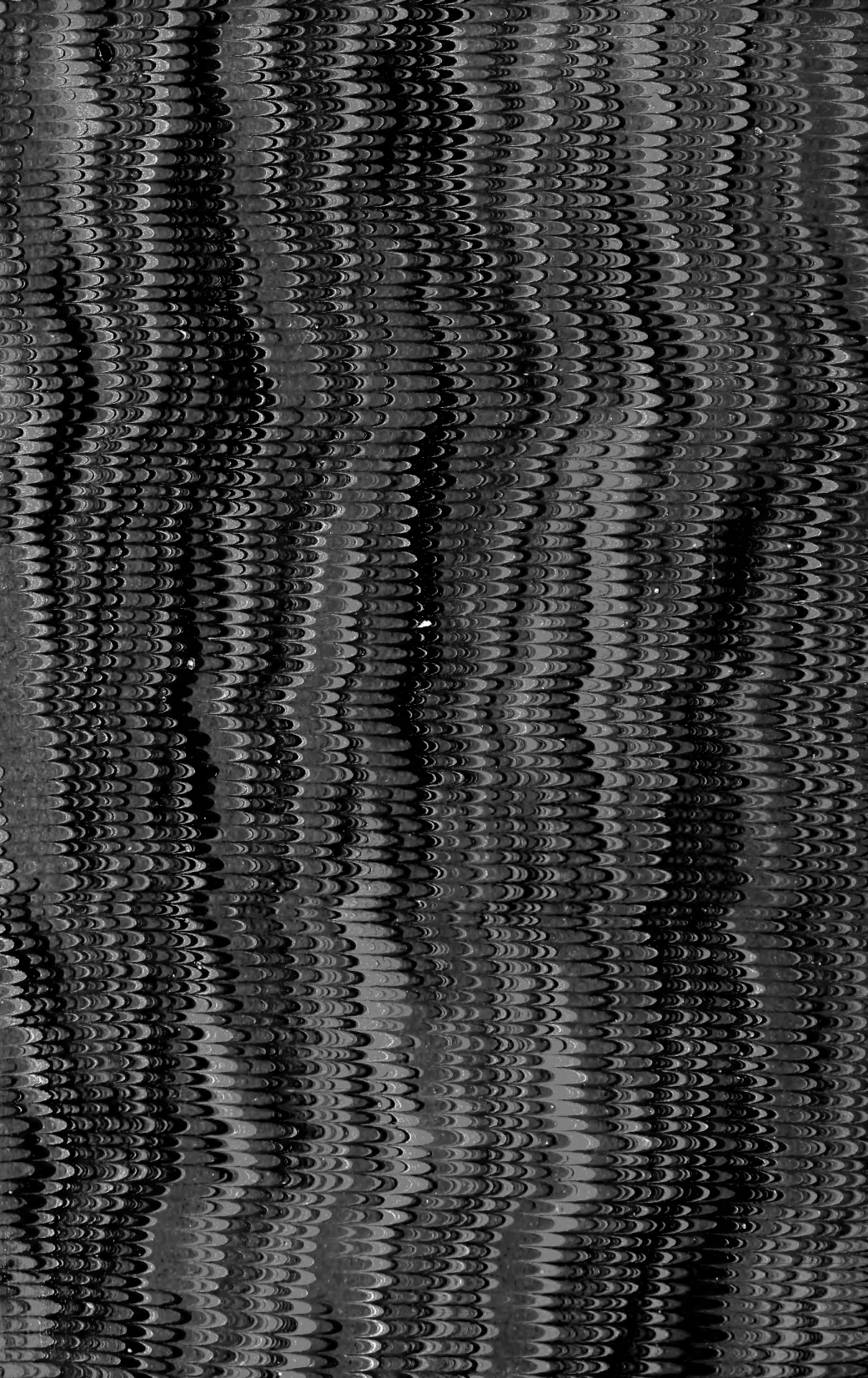


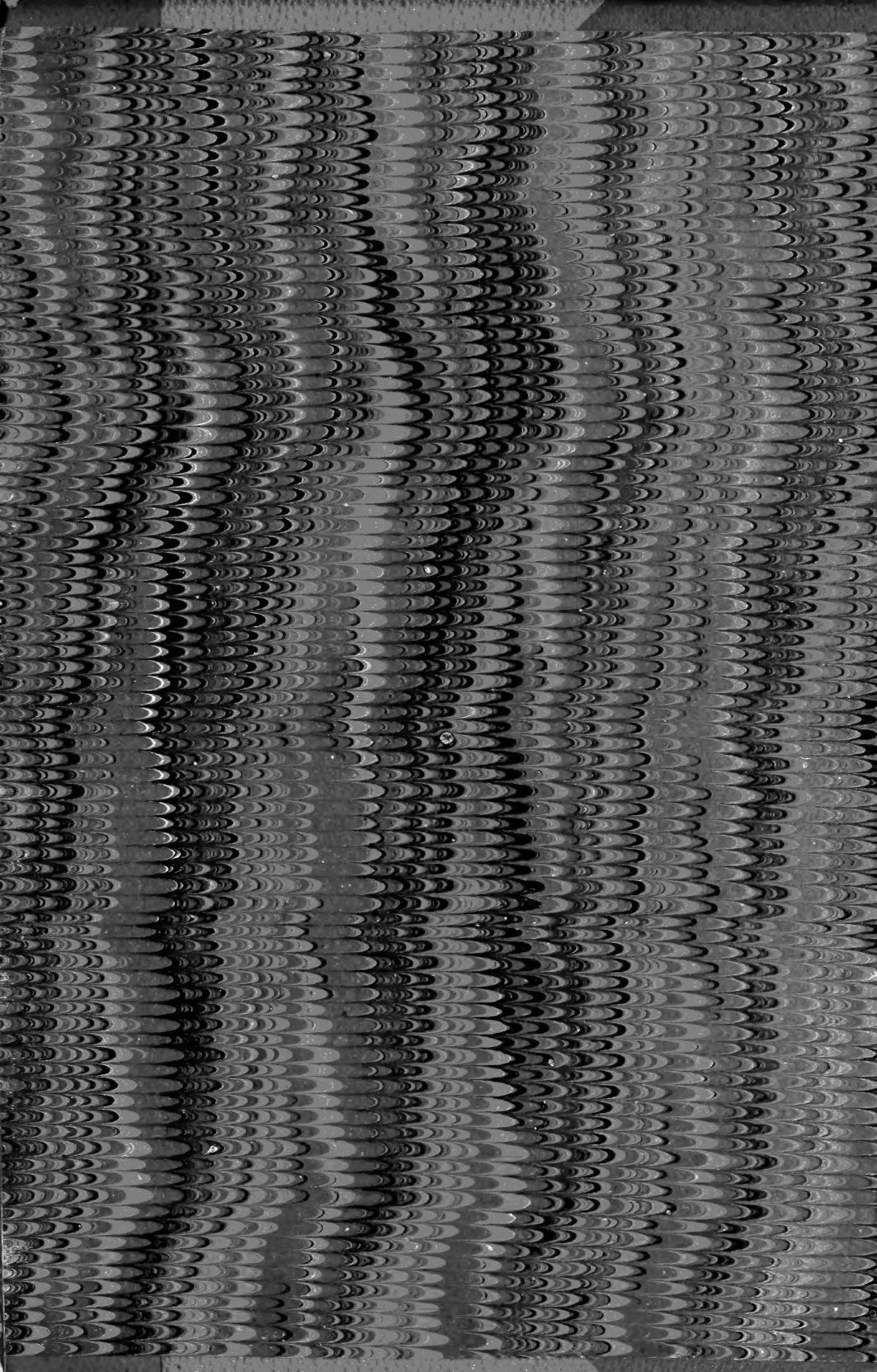












SMITHSONIAN INSTITUTION LIBRARIES



3 9088 00847 1724