



PHOENIX Island - Nov. 4-5, 1963

Blue-Gray Noddy roosting on
Sida bush

neg 189B

ac 233B



Nov. 5, 1963 - Phoenix - Female Masked Booby at nest
in Sesuvium at edge of lagoon. Note
Hippoboscid infestation on throat.

208

RMC

neg. no. 153



55



Neg. # 729

Blue gray noddy on coral rubble

Vegetation; Boerhaavia, Lepturus

Photo C.D.Hackman June 1968

MCKEAN I.

Blue Gray Noddy tern on coral rubble - MCKEAN I.
June 1968. Boerhaavia and Lepturus



Neg. # 719 McKean Island
Blue gray noddy tern on coral rubble.
Red-footed Booby (Southern phase plumage) and Great Frigate nesting in background. Vegetation;

Boerhaavia, Tribulus, Lepturus
Frigates on small Sida bushes.
Photo C.D.Hackman
July 1968



Neg. # 706 McKean Island
Blue gray noddy tern on coral rubble (foreground) ruins of old guano buildings (background) Vegetation; foreground, Boerhaavia,

Lepturus in background,
Photo C.D. Hackman July 1968



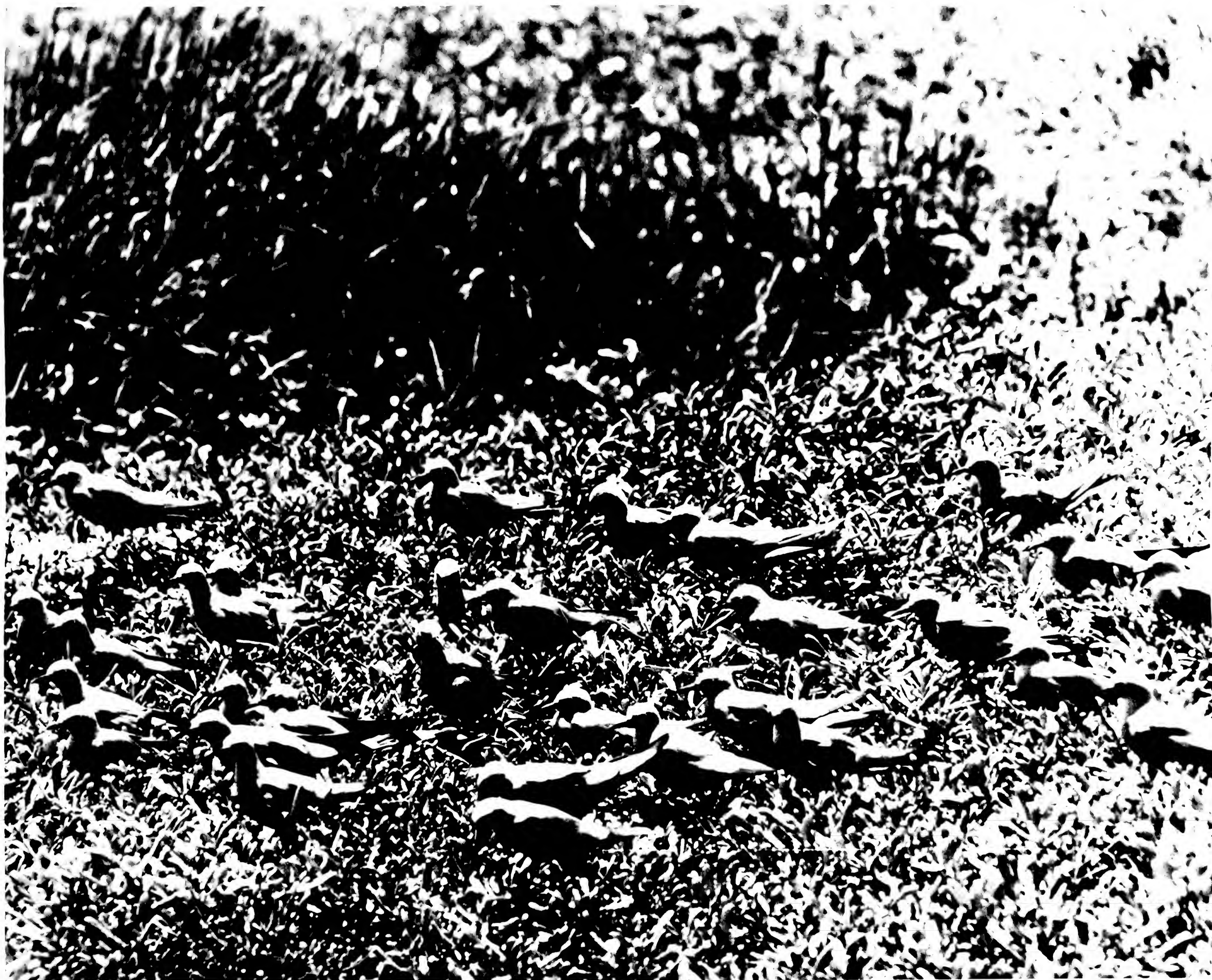
Neg. # 704 McKean Island

2 Blue gray noddy terns, 1 brown
noddy (on nest) 2 Fairy terns, (on
nests) on remaining walls of 1 old
guano buildings, Vegetation; (fore-
ground) Boerhaavia.

Photo C.D. Hackman July 1968



Neg. # 673 McKean Island
Blue gray noddy tern. July 1968
Vegetation; Boehavia, Lepturus
in clumps upper right
Photo by C.D.Hackman



Negative Number 23

McKean I Feb 16-20, 1964

Blue-gray Noddy in preferred
roosting site in Sesuvium.

57



Number : R1-18-33
Photo : David B. Marshall
Date : June 10, 1962
Location: Hawaiian Islands National Wildlife Refuge
Legend : Raymond Kramer, Game Chief, Hawaiian
Division of Fish and Game, working along cliffs of
Nihoa Islands. Loose rocks, high vegetation and general
steepness of the terrain make travel about Nihoa slow.
Cliffs in the background are inhabited by blue-gray
noddies.



MCKEAN Island - Feb. 16-20, 1964

Blue-Gray Noddy in Sesuvium
