



3 1761 02463688 8

UNIV. OF  
TORONTO  
LIBRARY



LIBRARY  
FACULTY OF FORESTRY  
UNIVERSITY OF TORONTO

Digitized by the Internet Archive  
in 2007 with funding from  
Microsoft Corporation



*The Trees*  
of  
*Great Britain*  
& *Ireland*

BY  
Henry John Elwes, F.R.S.  
AND  
Augustine Henry, M.A.

Edinburgh: Privately Printed





QK

488

E5

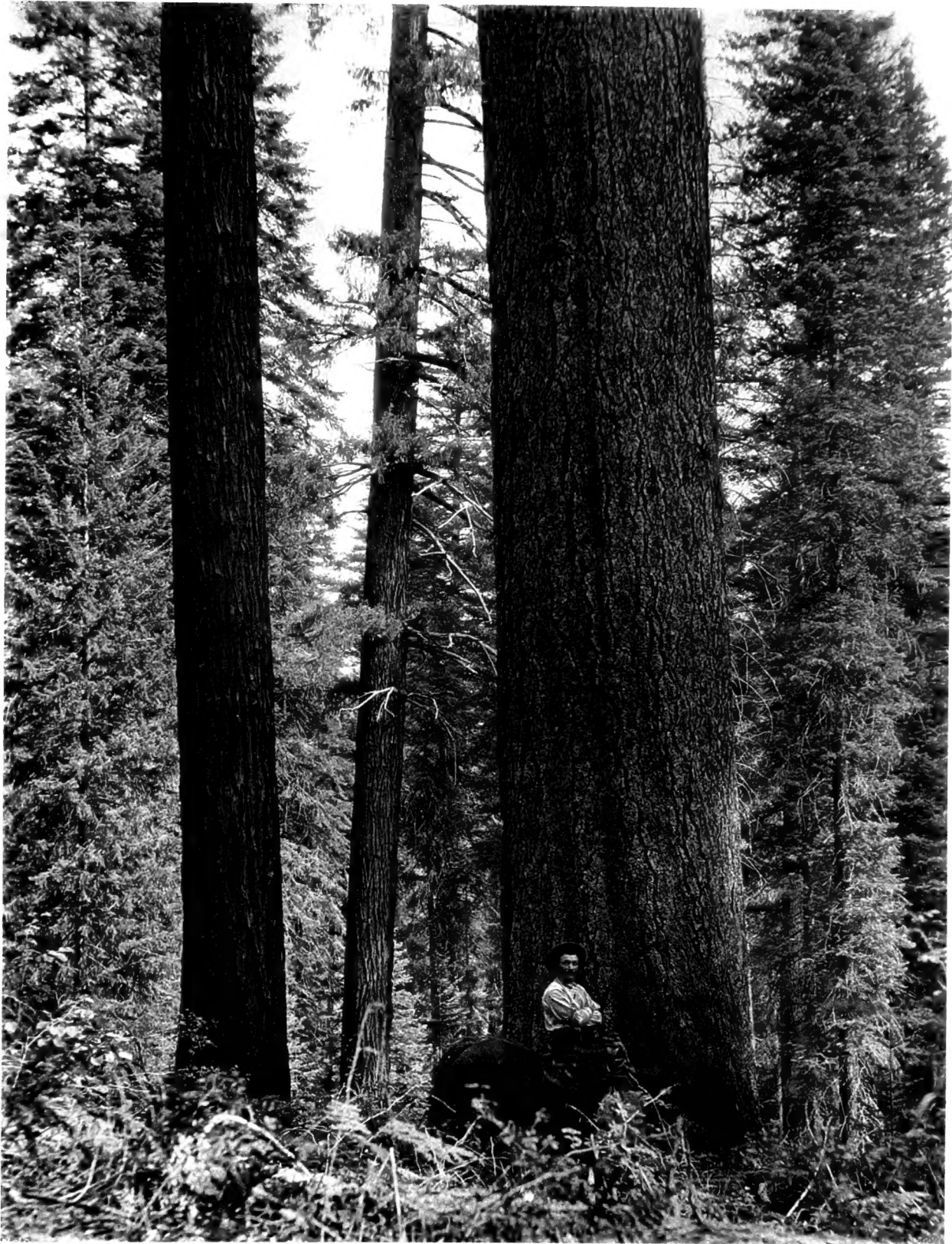
1906

plates

v. 5





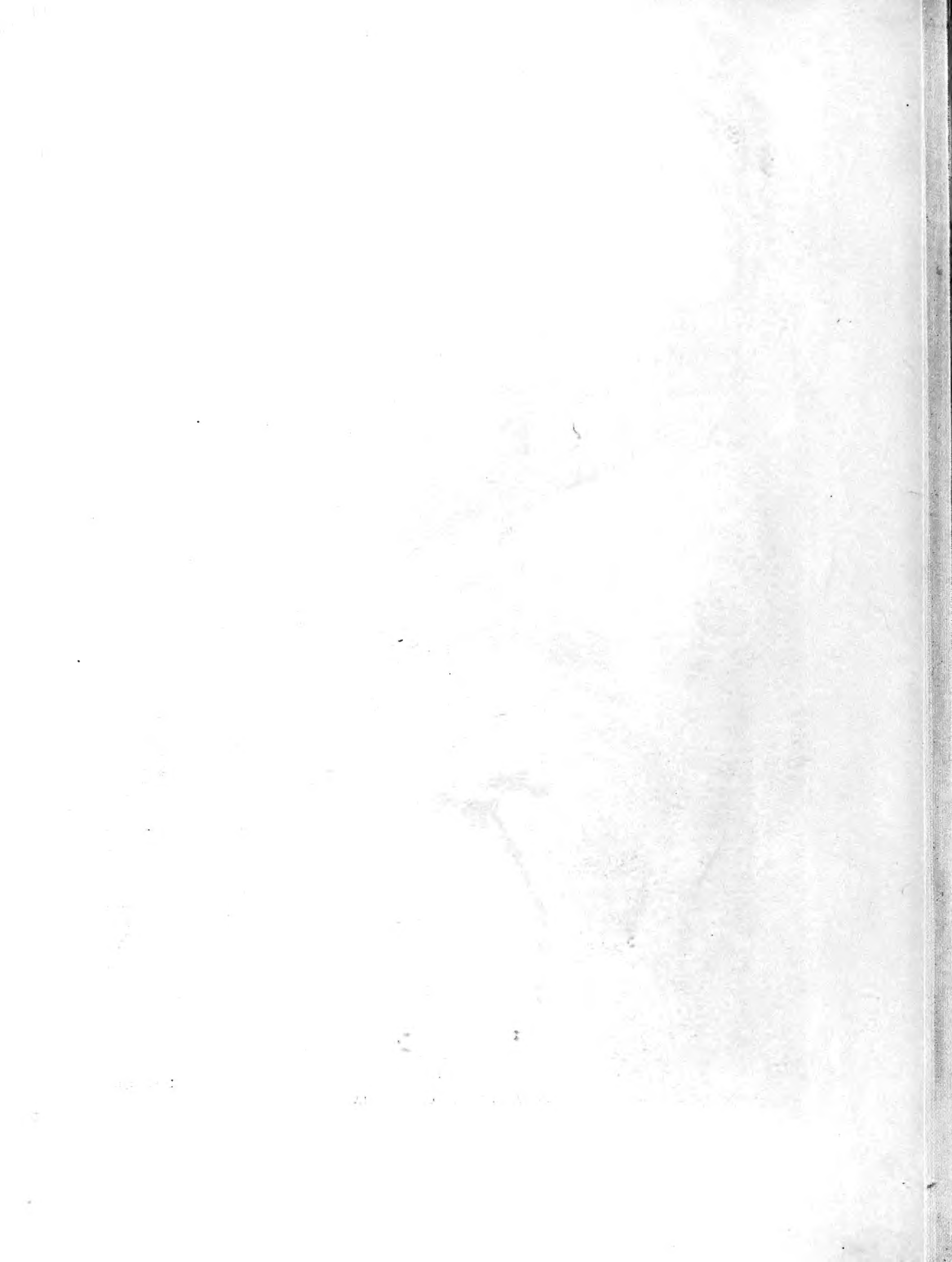


SUGAR PINE IN CALIFORNIA

PLATE 271.

12345-0  
20/7/12





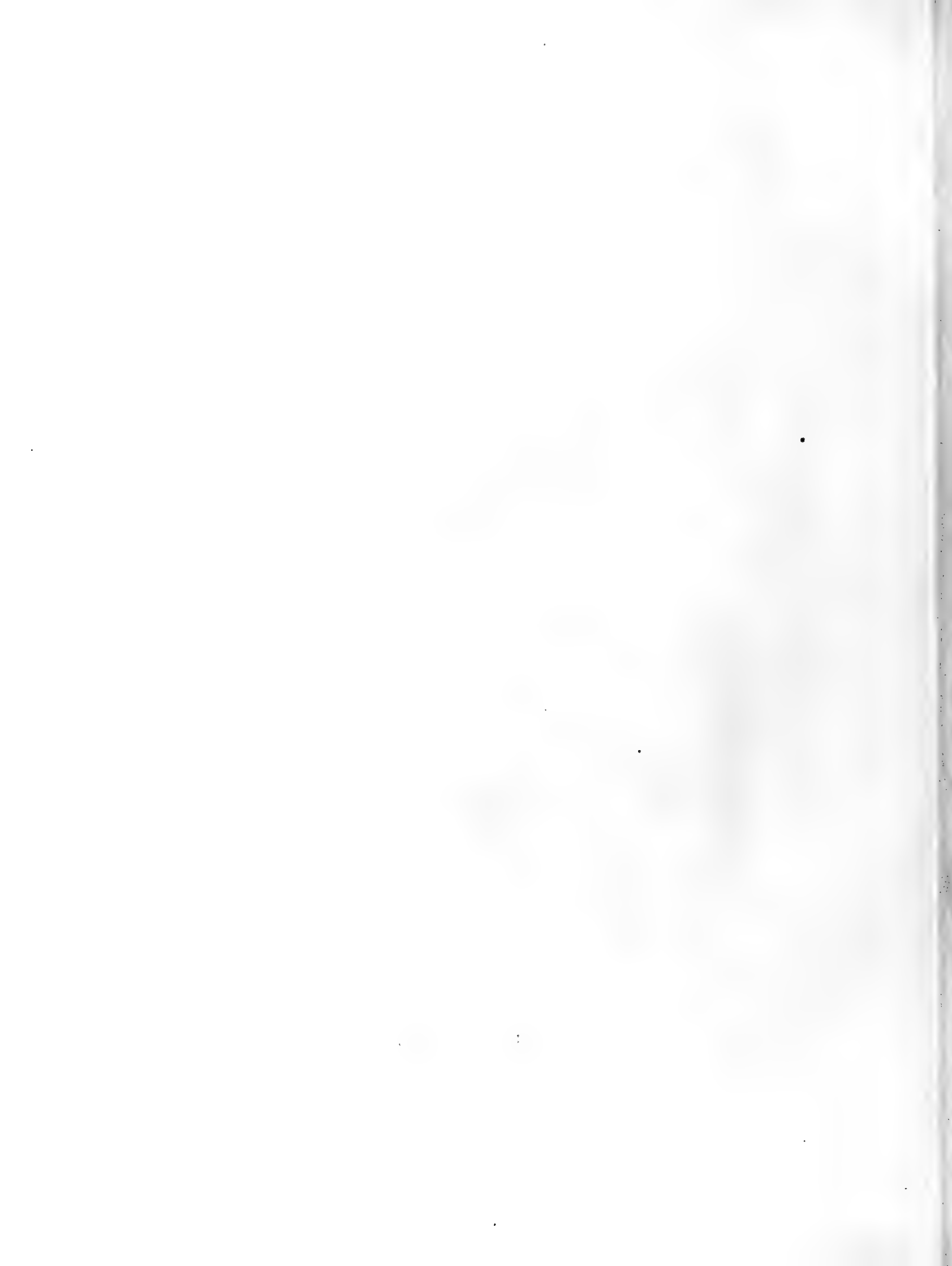


SUGAR PINE AT EASTNOR CASTLE

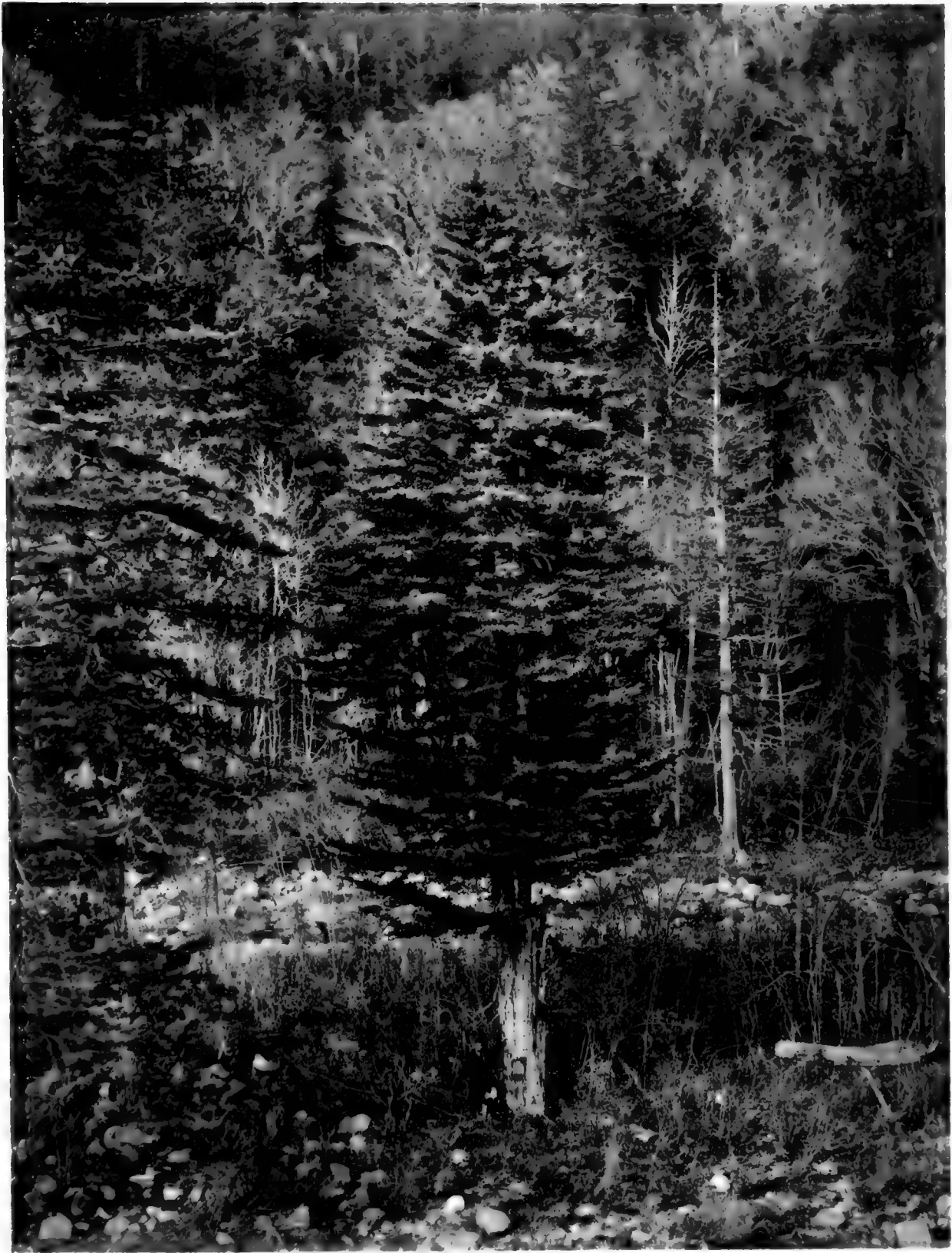




WESTERN WHITE PINE AT MURTHLY CASTLE







JAPANESE WHITE PINE IN JAPAN

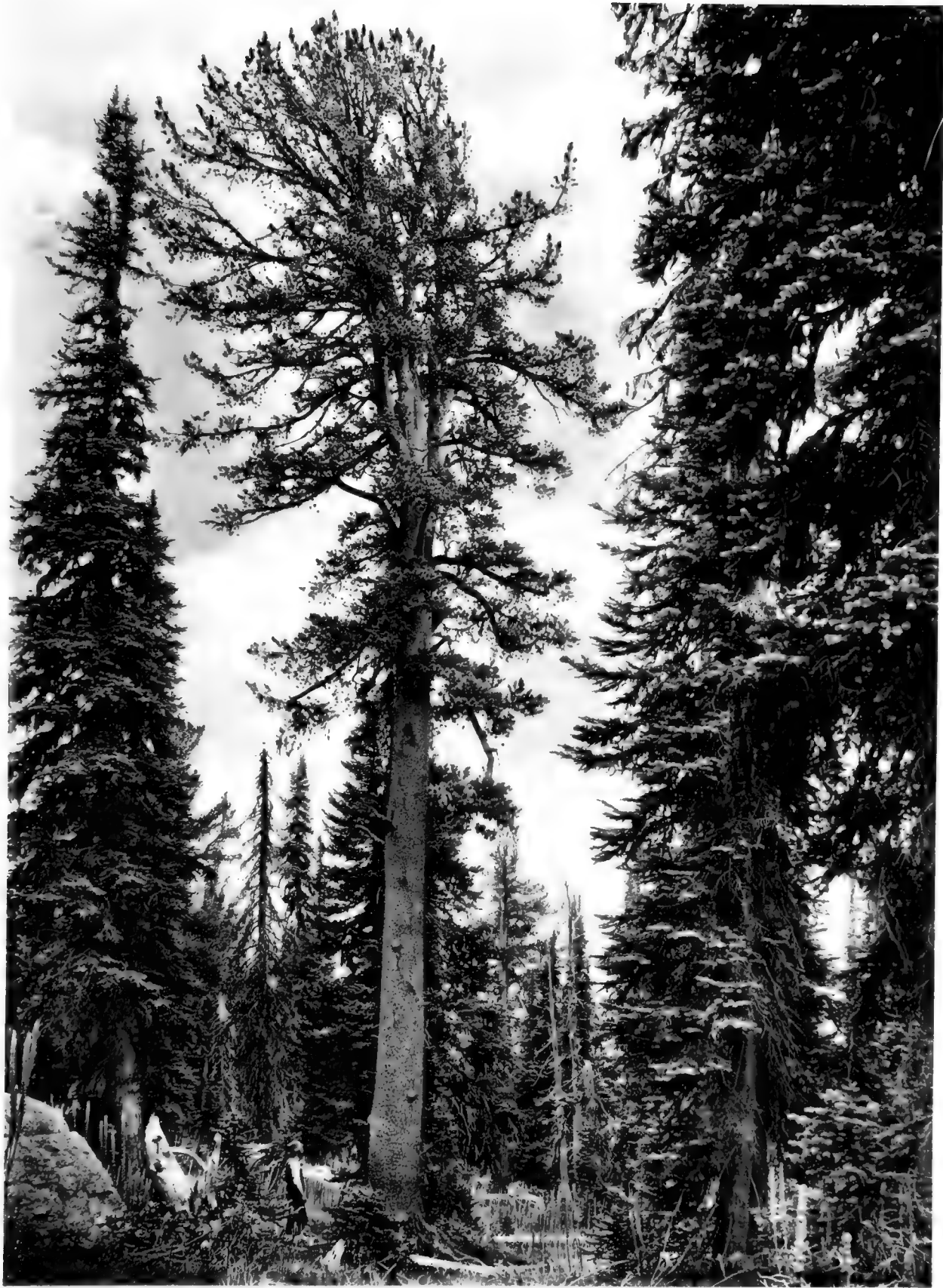




PLATE 275.

ALPINE PINE IN THE ENGADINE





WHITE BARK PINE IN MONTANA







PLATE 277.

FOXTAIL PINE IN CALIFORNIA





MONTEZUMA PINE AT FOTA

PLATE 278.

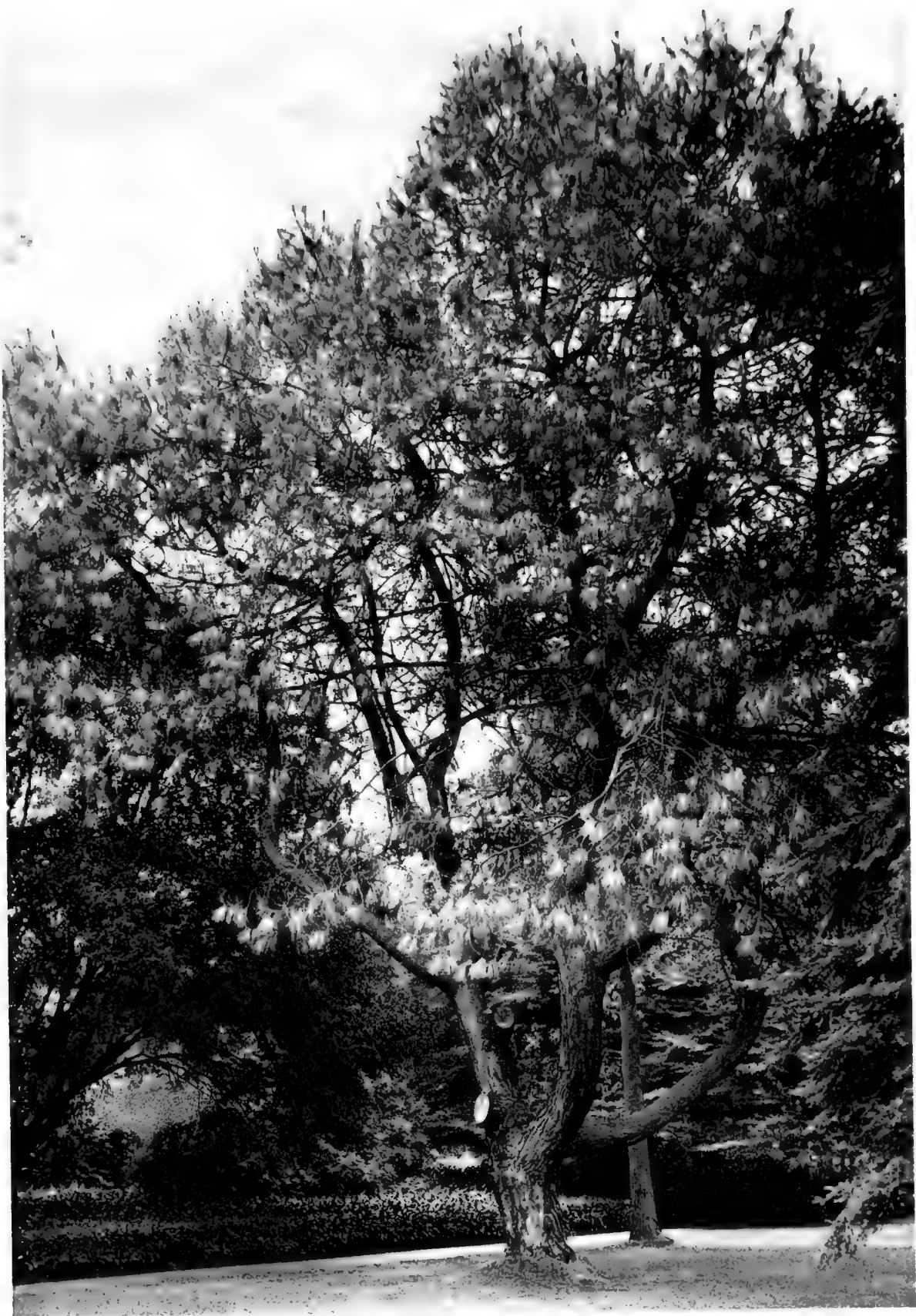






COULTER'S PINE AT HODDESDON





DIGGER PINE AT LEDBURY

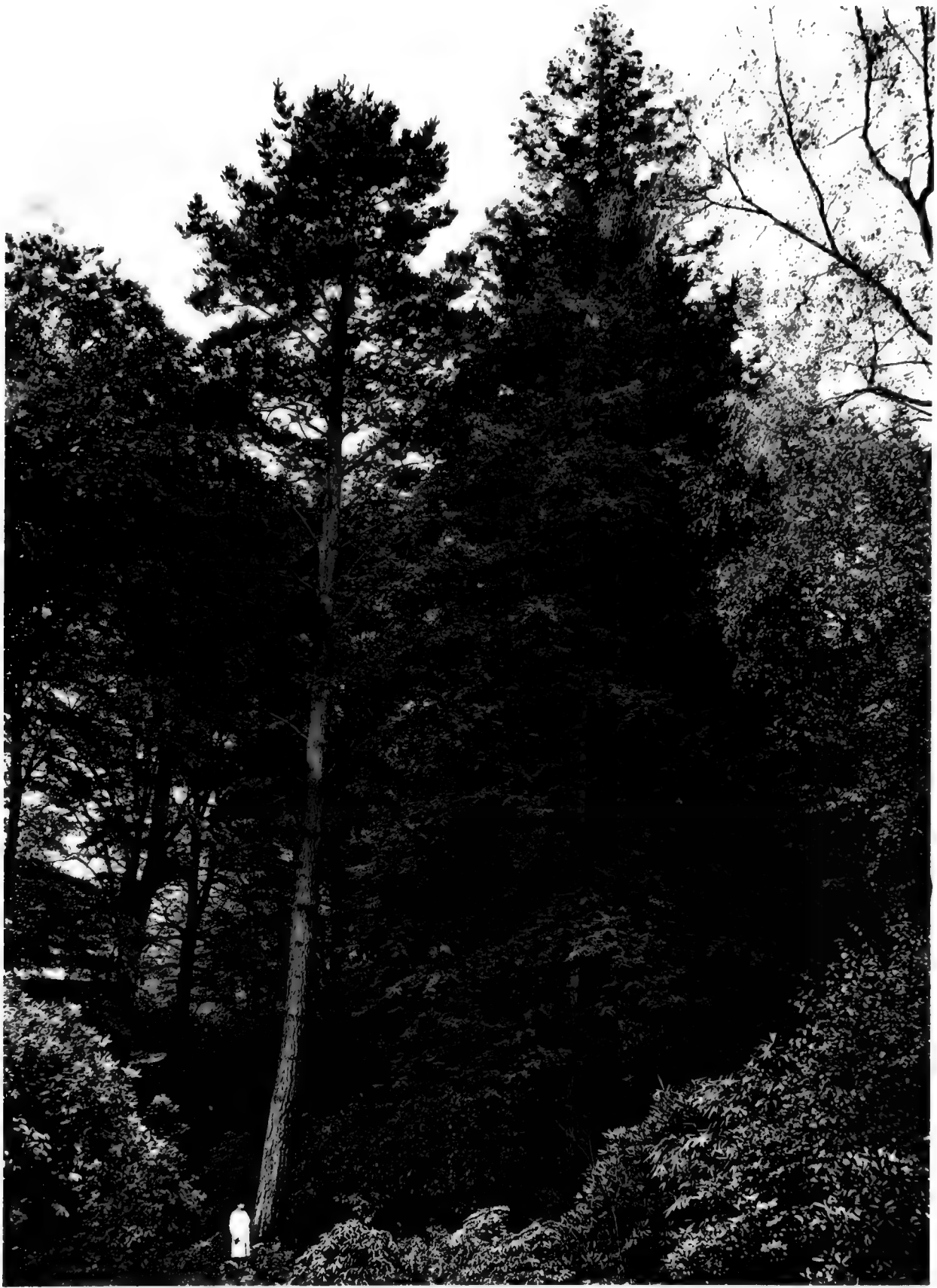




YELLOW PINE IN MONTANA

PLATE 281.





MONTEREY PINE AT CUFFNELLS







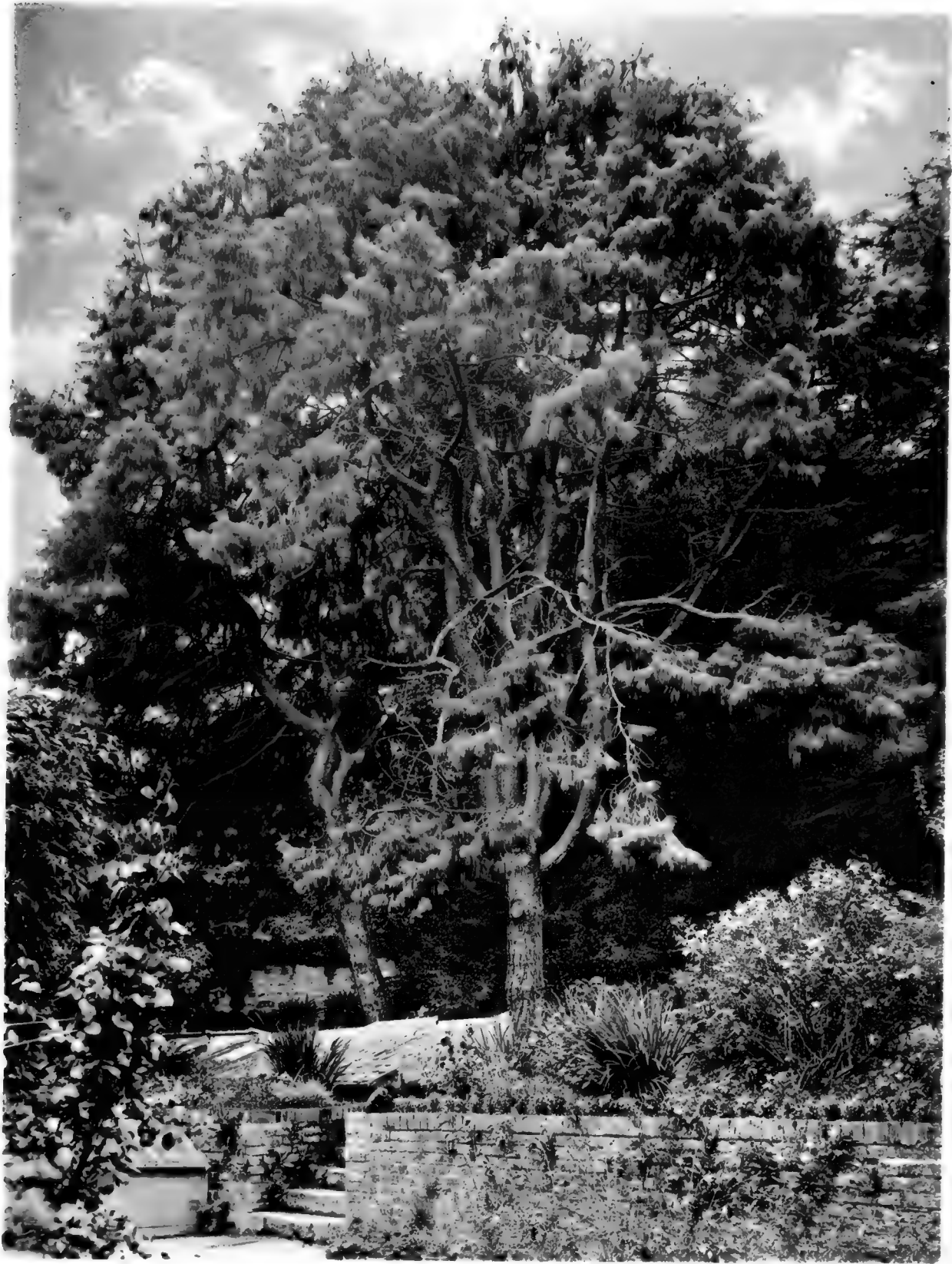
MONTEREY PINE AT GOODWOOD





MONTEREY PINE AT MUCKROSS





MEXICAN PINE AT CARCLEW

PLATE 285.







PLATE 286.

NORTHERN PITCH PINE AT ARLEY CASTLE





ALEPPO PINE IN SYRIA

PLATE 287.





ALEPPO PINE AT MARGAM PARK





PLATE 289.

JACK PINE IN MINNESOTA







MARITIME PINE AT FOXLEY





STONE PINE IN PORTUGAL







LODGE-POLE PINE AT MERTON HALL





MEDITERRANEAN CYPRESS AT HERON COURT





PLATE 293 a.

MEDITERRANEAN CYPRESS NEAR MONTPELLIER





PLATE 294.

HIMALAYAN CYPRESS AT CUFFNELLS







PLATE 295.

MONTEREY CYPRESS IN CALIFORNIA





MONTEREY CYPRESS AT BEAUPORT

PLATE 296.



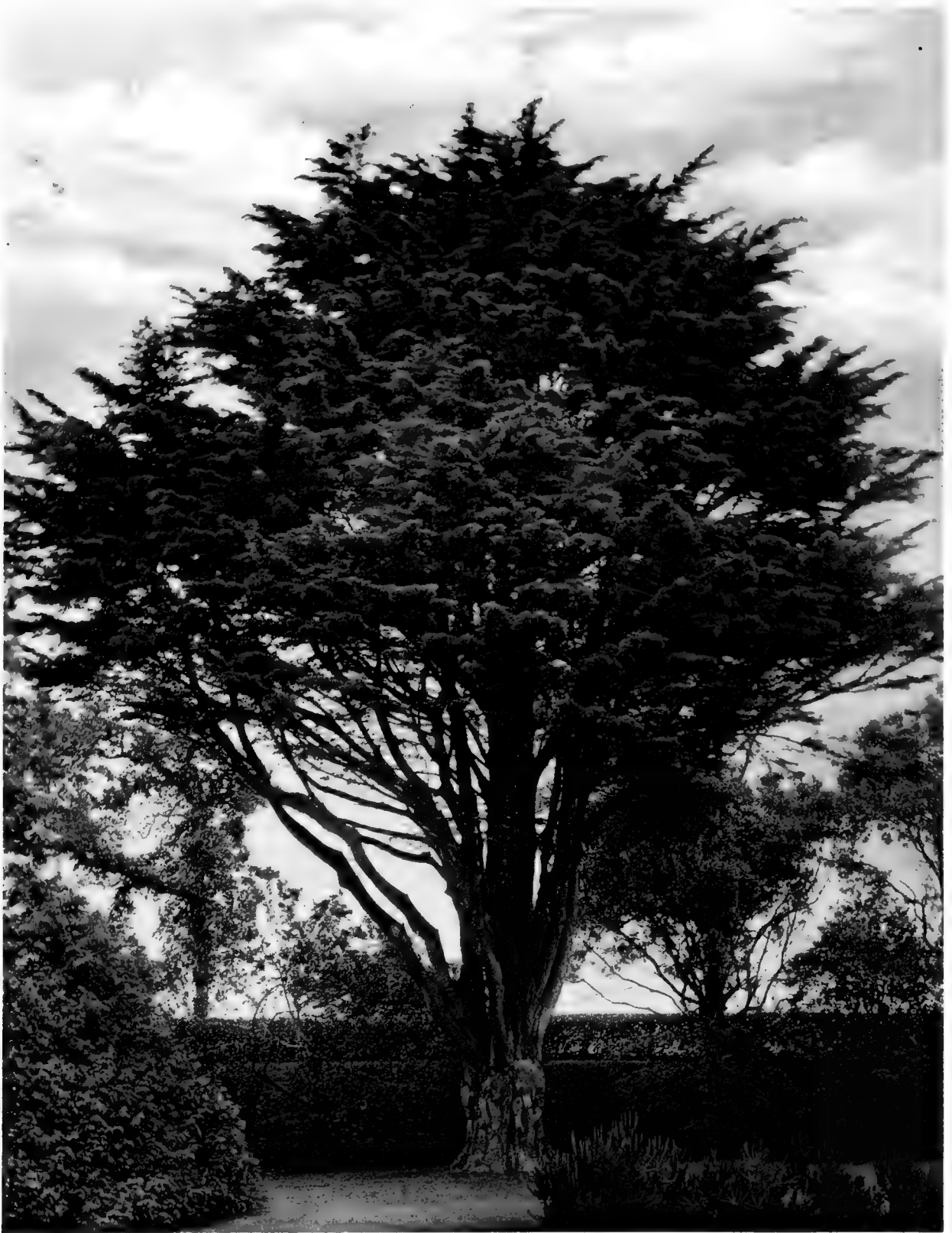


PLATE 297.

MONTEREY CYPRESS AT TYKILLEN







MONTEREY CYPRESS AT OSBORNE

PLATE 298.





GOWEN'S CYPRESS AT DROPMORE





MEXICAN CYPRESS AT HEMSTED

PLATE 300.





PORTUGUESE CYPRESS AT ORIEL TEMPLE







BENTHAM'S CYPRESS AT FOTA

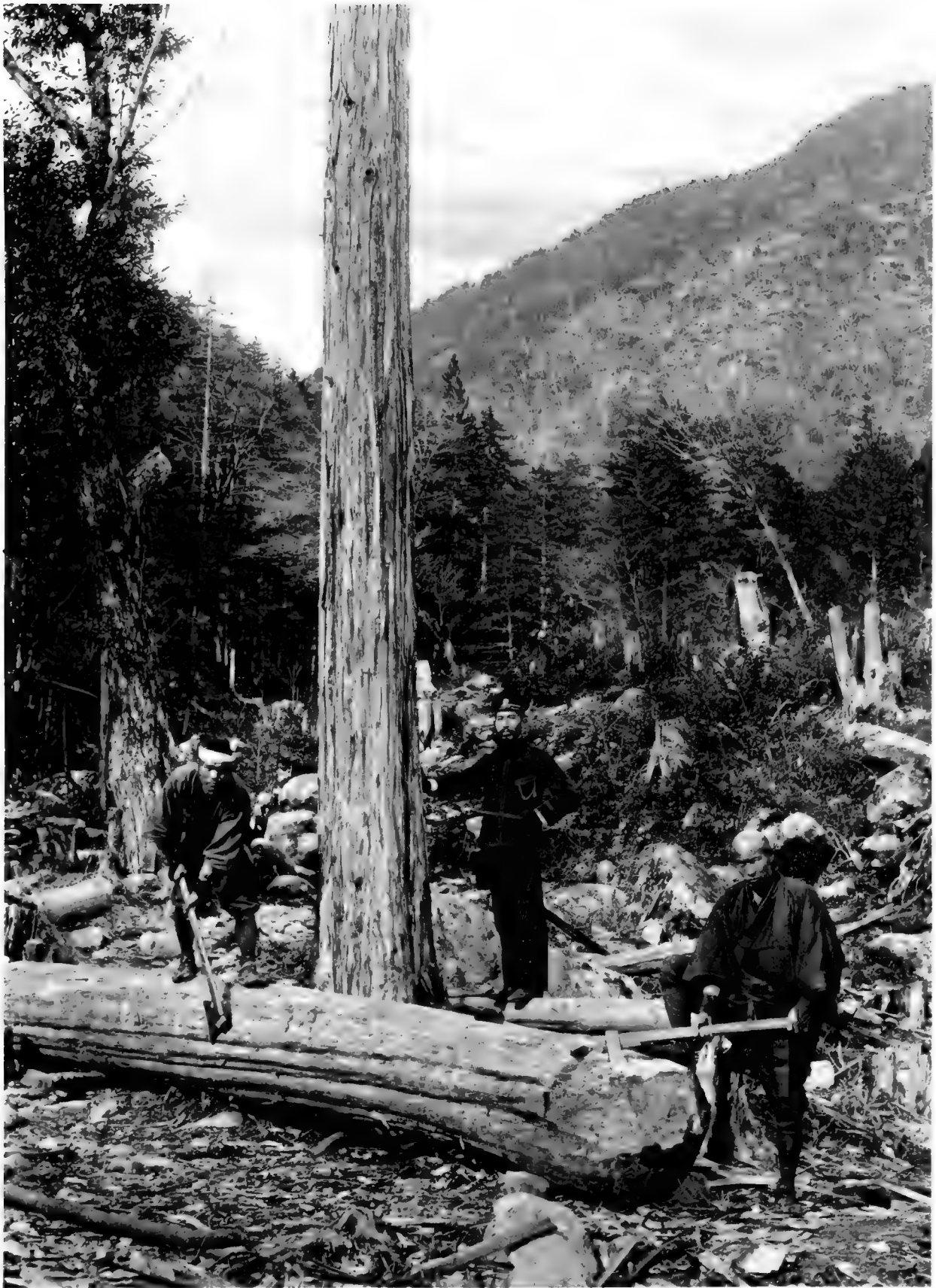




HINOKI CYPRESS NEAR IMAICHI, JAPAN

PLATE 303.

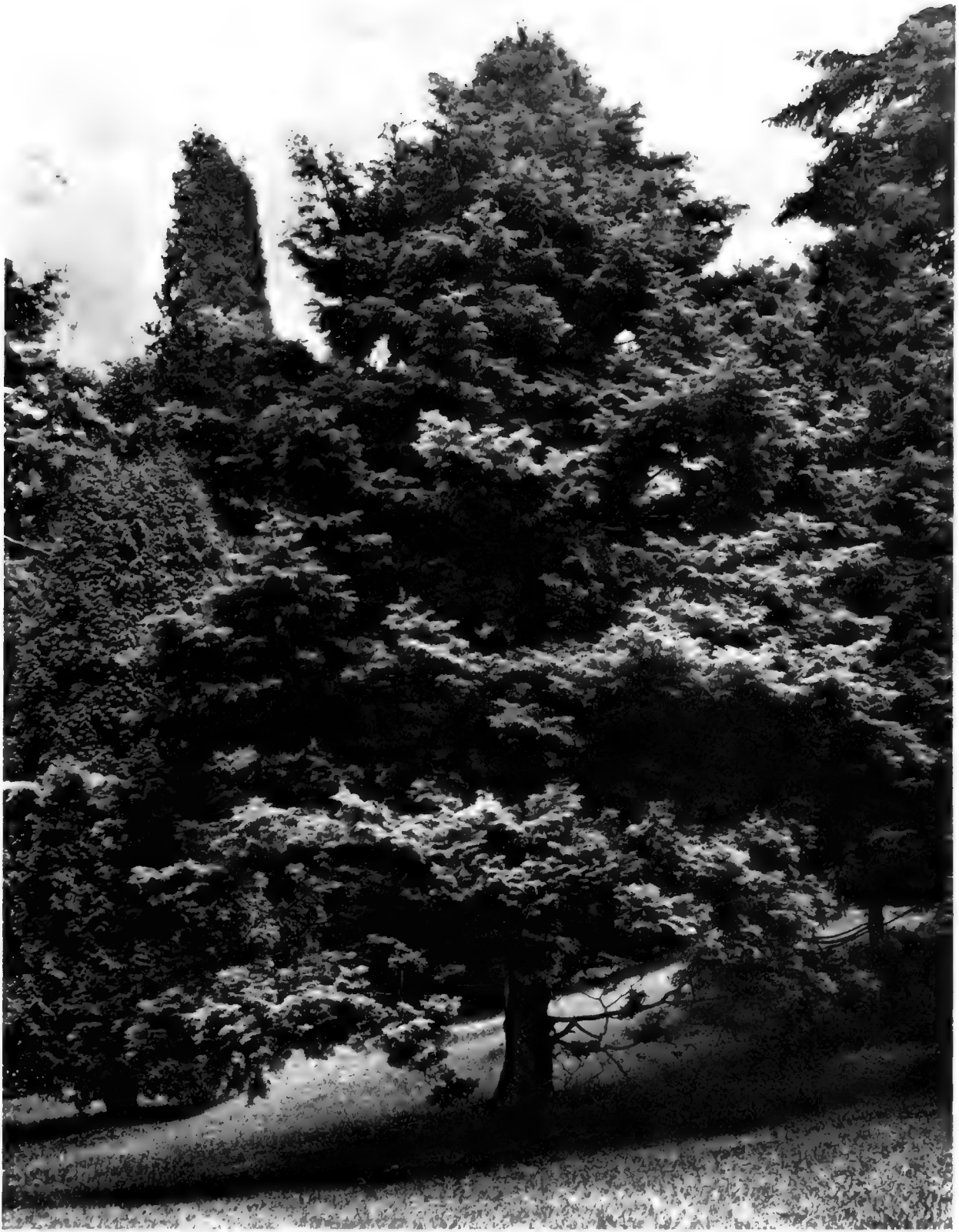




HINOKI CYPRESS IN JAPAN







SAWARA CYPRESS AT BICTON





SITKA CYPRESS ON MOUNT RAINIER





SITKA CYPRESS IN SNOHOMISH COUNTY, WASHINGTON



PLATE 307

SITKA CYPRESS IN NISQUALLY VALLEY, WASHINGTON





SITKA CYPRESS AT TORTWORTH

PLATE 308.







LAWSON CYPRESS AT KILLERTON

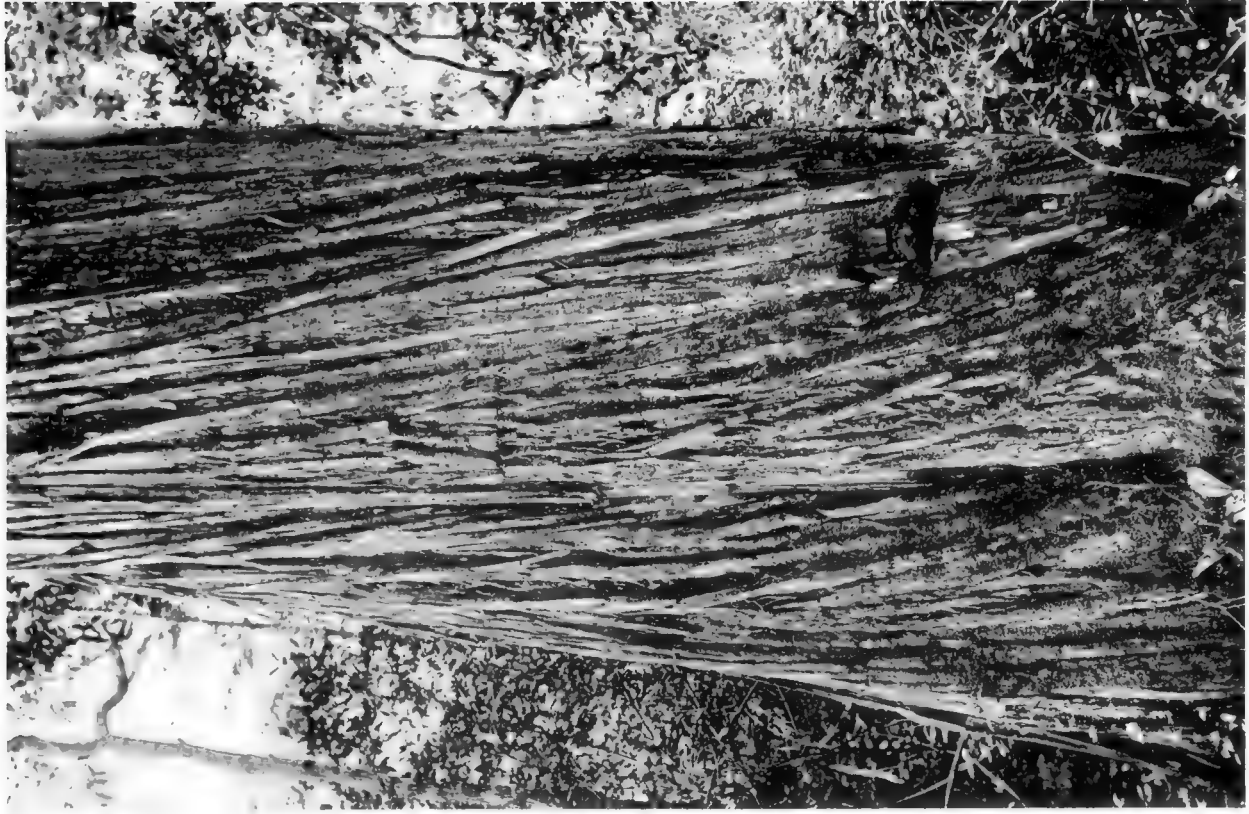
PLATE 309.





LAWSON CYPRESS AT CASTLEWELLAN





WHITE CEDAR IN NORTH CAROLINA





WATER OAK AT LYNDON HALL

PLATE 312.







BLACK OAK AT BAYFORDBURY

PLATE 313.





RED OAK AT KEDLESTON HALL

PLATE 314.





PIN OAK IN WINDSOR PARK

PLATE 315.





TURKEY OAK AT BELTON







TURKEY OAK AT MAMHEAD





TURKEY OAK AT MAMHEAD

PLATE 318.





FULHAM OAK AT KEW





LUCOMBE OAK AT CASTLE HILL







LUCOMBE OAK AT KILLERTON





VALONIA OAK AT LYNDON HALL





PLATE 323.

ALGERIAN OAK IN ALGERIA



CHESTNUT-LEAVED OAK IN ALGERIA







ILEX AT HOLKHAM







PLATE 325.

ILEX GROVE AT HOLKHAM





PLATE 326.

ILEX AT MAMHEAD





HYBRID OAK AT AUDLEY END





PLATE 328.

CORK OAK AT MAMHEAD







SWAMP WHITE OAK AT LYNDON HALL

PLATE 329.





PYRENEAN OAK AT CLONMANNON

PLATE 330.





HUNGARIAN OAK AT ORTON HALL

PLATE 331.



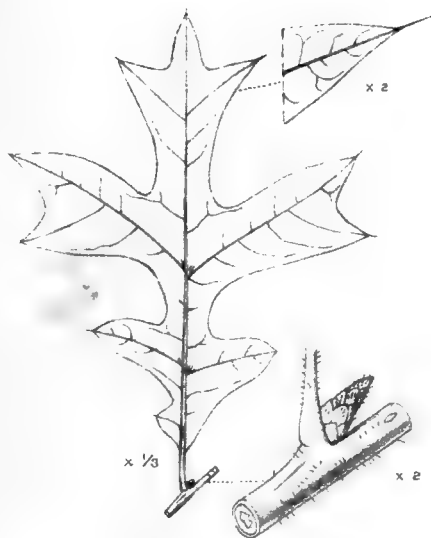


ALGERIAN OAK AT HURSLEY PARK

PLATE 332.







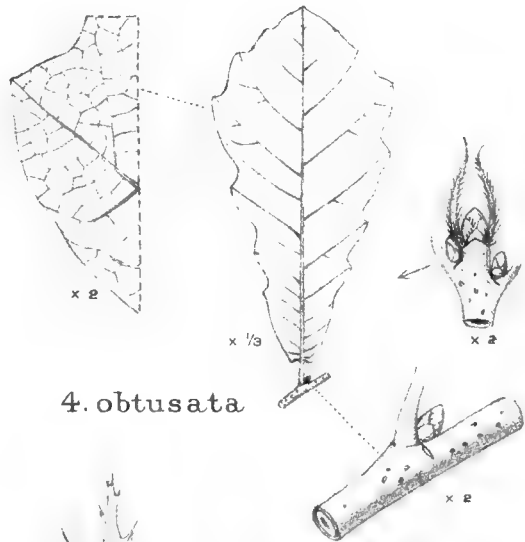
1. *Catesbaei*.



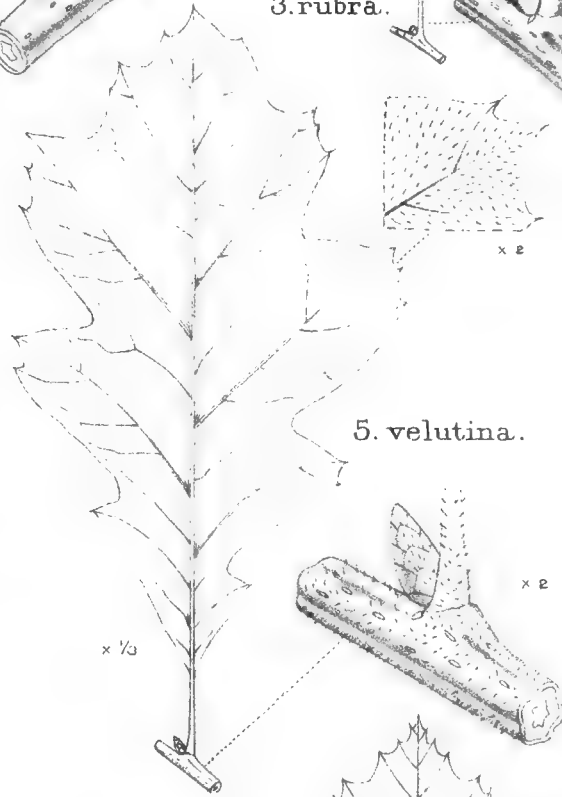
2. *Kelloggii*.



3. *rubra*.



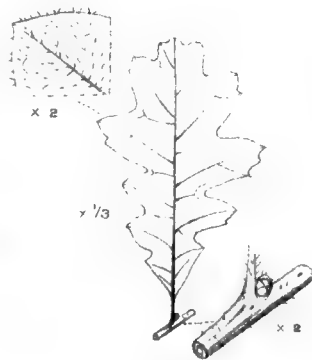
4. *obtusata*.



5. *velutina*.



6. *coccinea*.

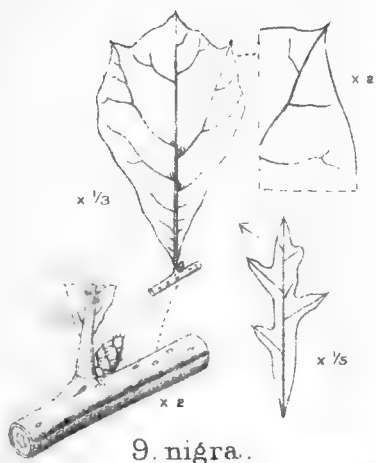


7. *Gambellii*.

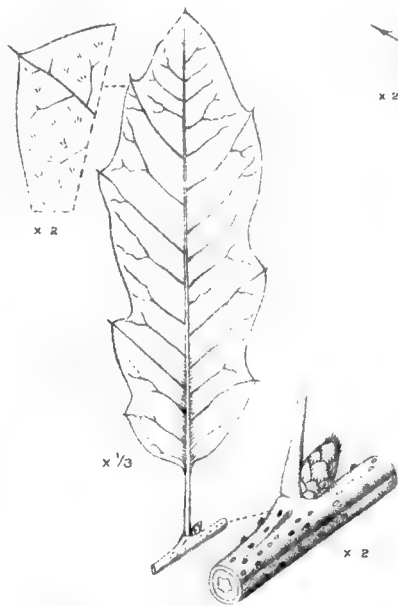


8. *rubra*.

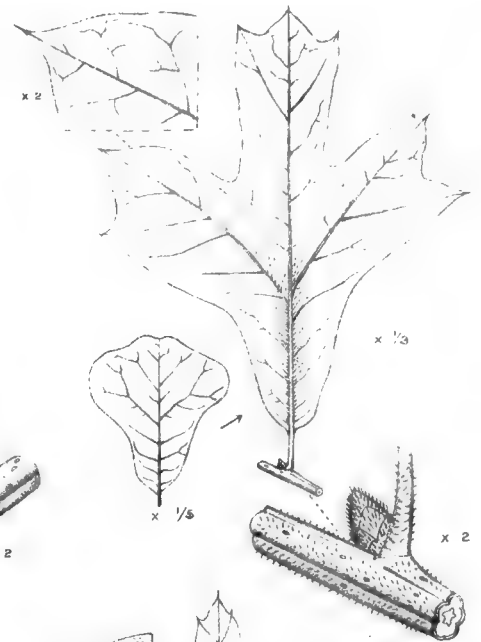




9. nigra.



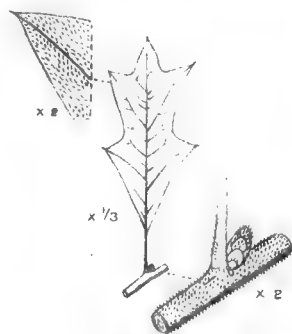
10. Leana.



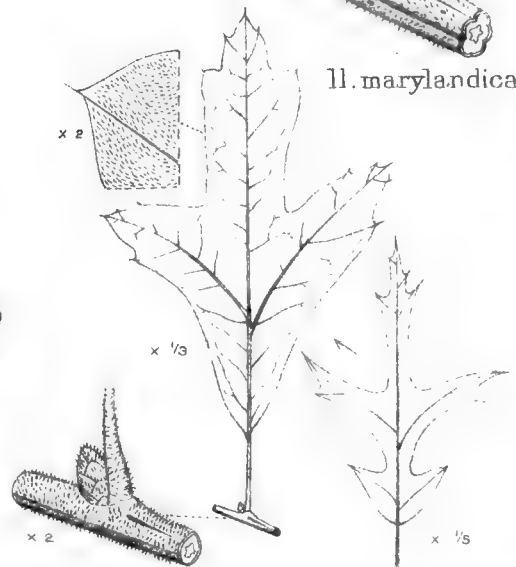
11. marylandica.



12. pagodaefolia.



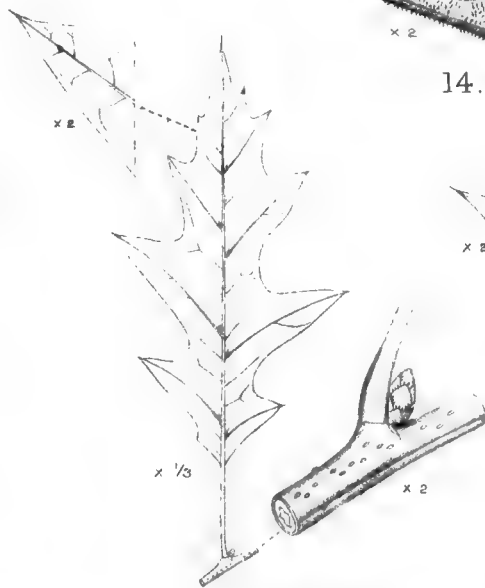
13. ilicifolia.



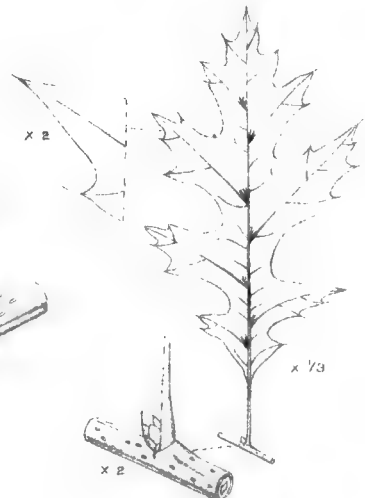
14. cuneata.



15. Schneckii.



16. heterophylla.



17. palustris.





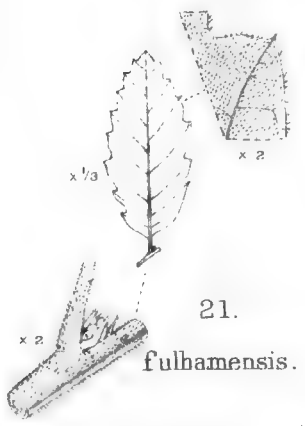
18. *incana*.



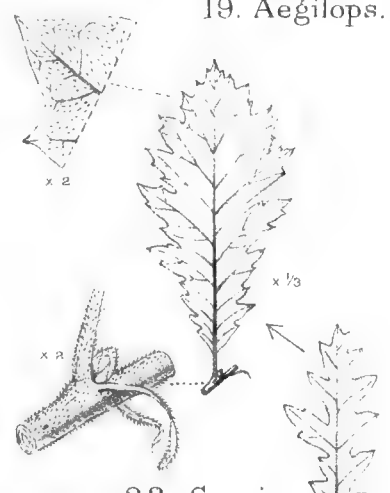
19. *Aegilops*.



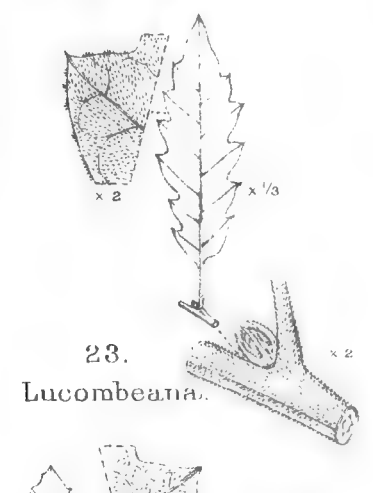
20. *Pyrami*.



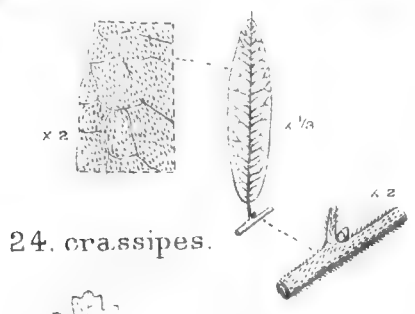
21. *fulhamensis*.



22. *Cerris*.



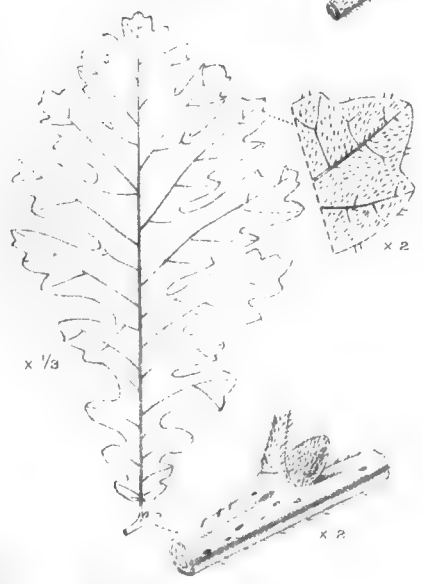
23. *Lucombeana*.



24. *crassipes*.



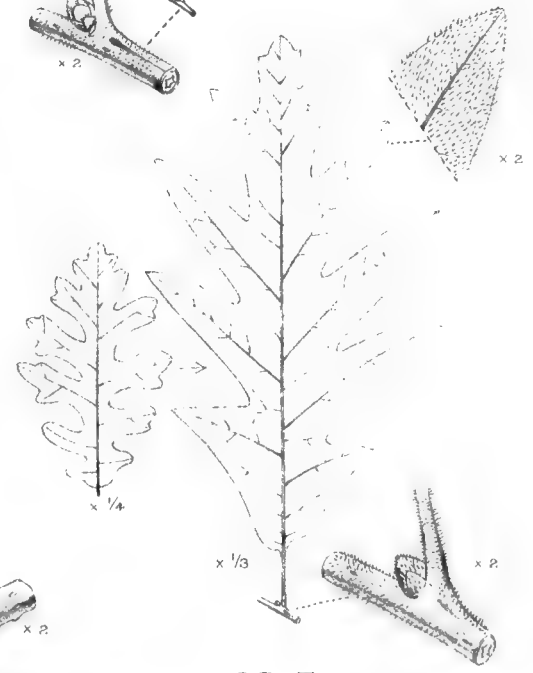
25. *lusitanica*.



26. *conferta*.



27. *glandulifera*.

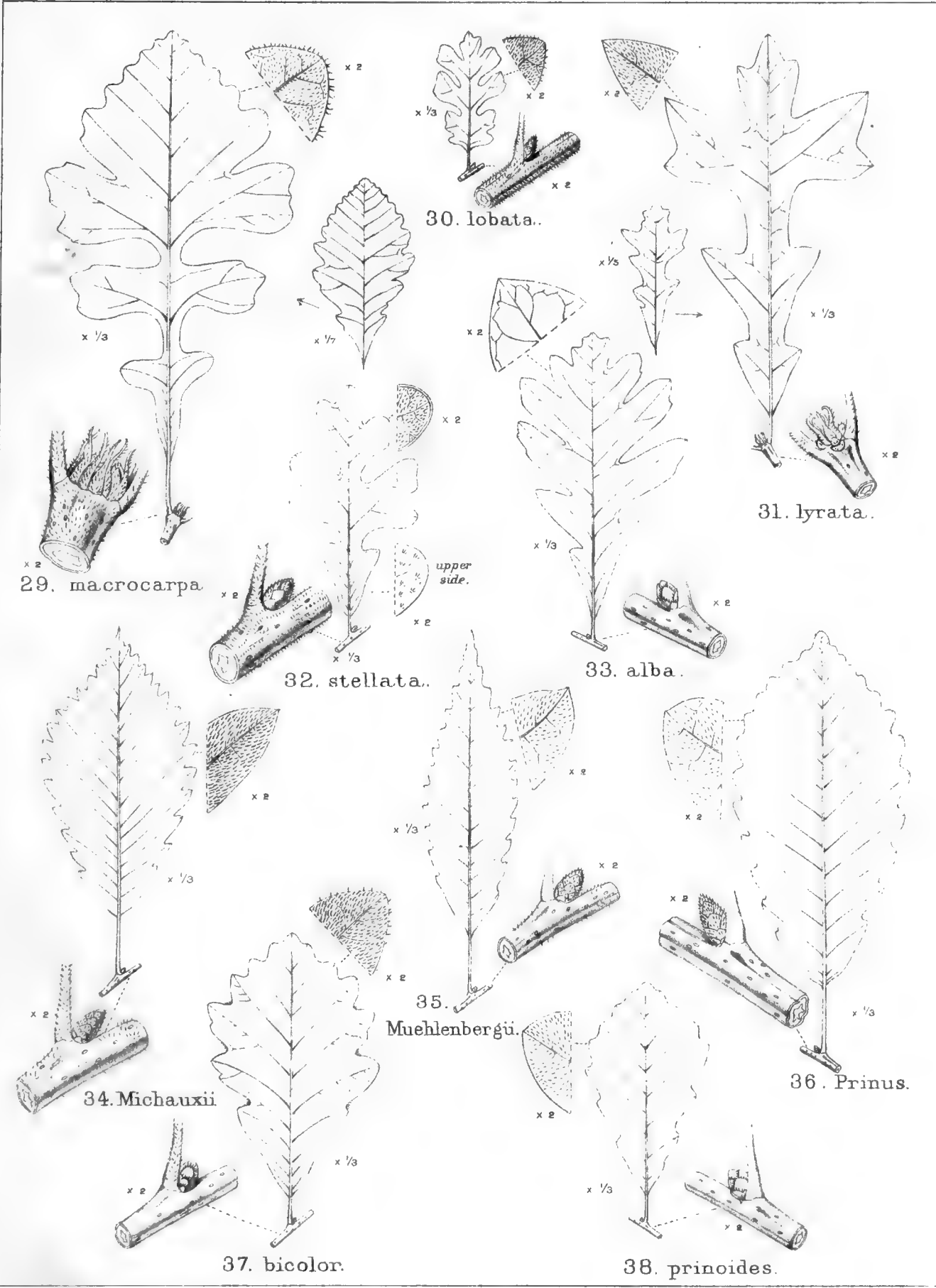


28. *Toza*.

Hort., del. Hort., lit.

QUERCUS.





29. macrocarpa

30. lobata.

31. lyrata.

32. stellata.

33. alba.

34. Michauxii

35. Muehlenbergii.

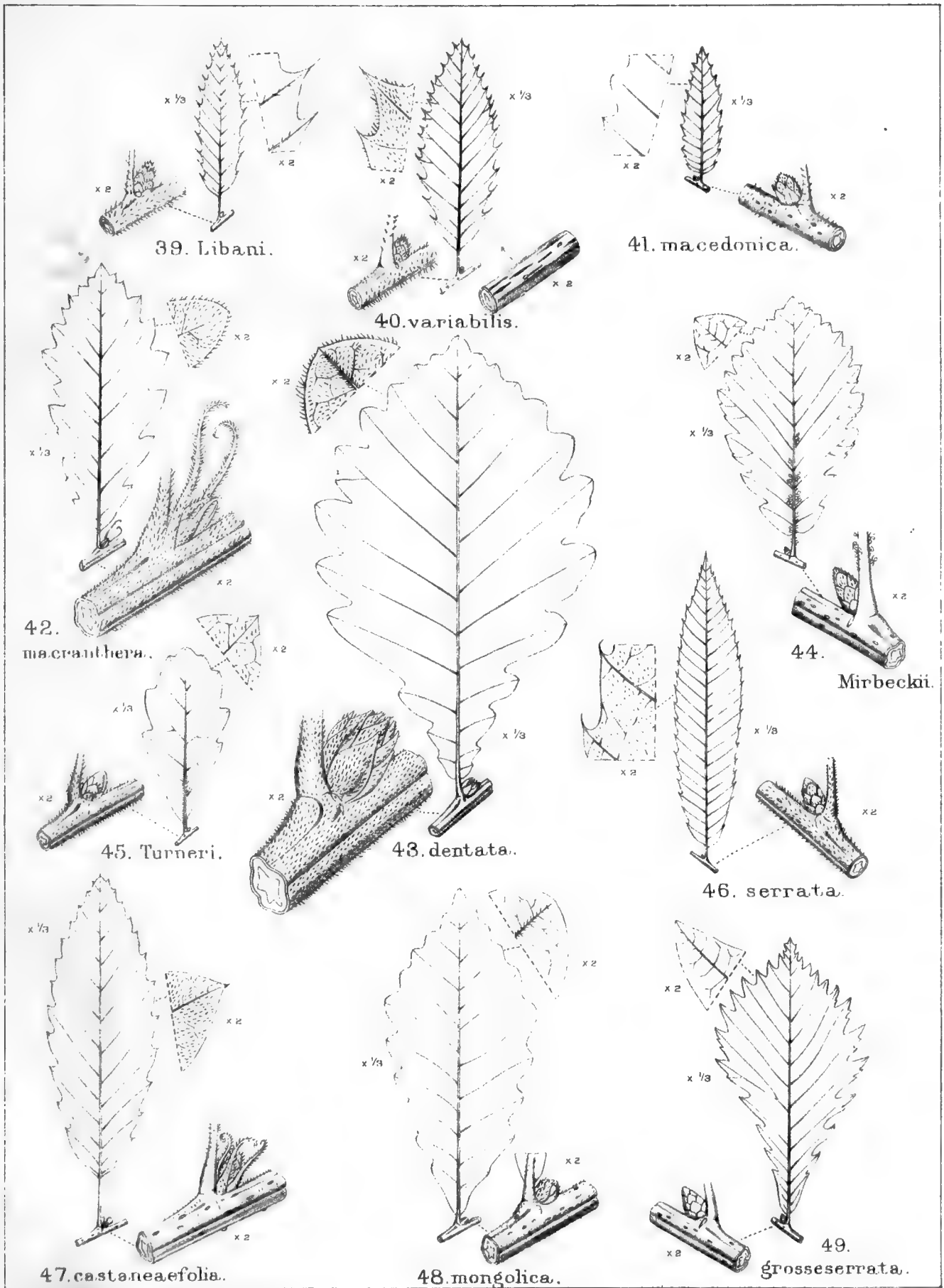
36. Prinus.

37. bicolor.

38. prinoides.





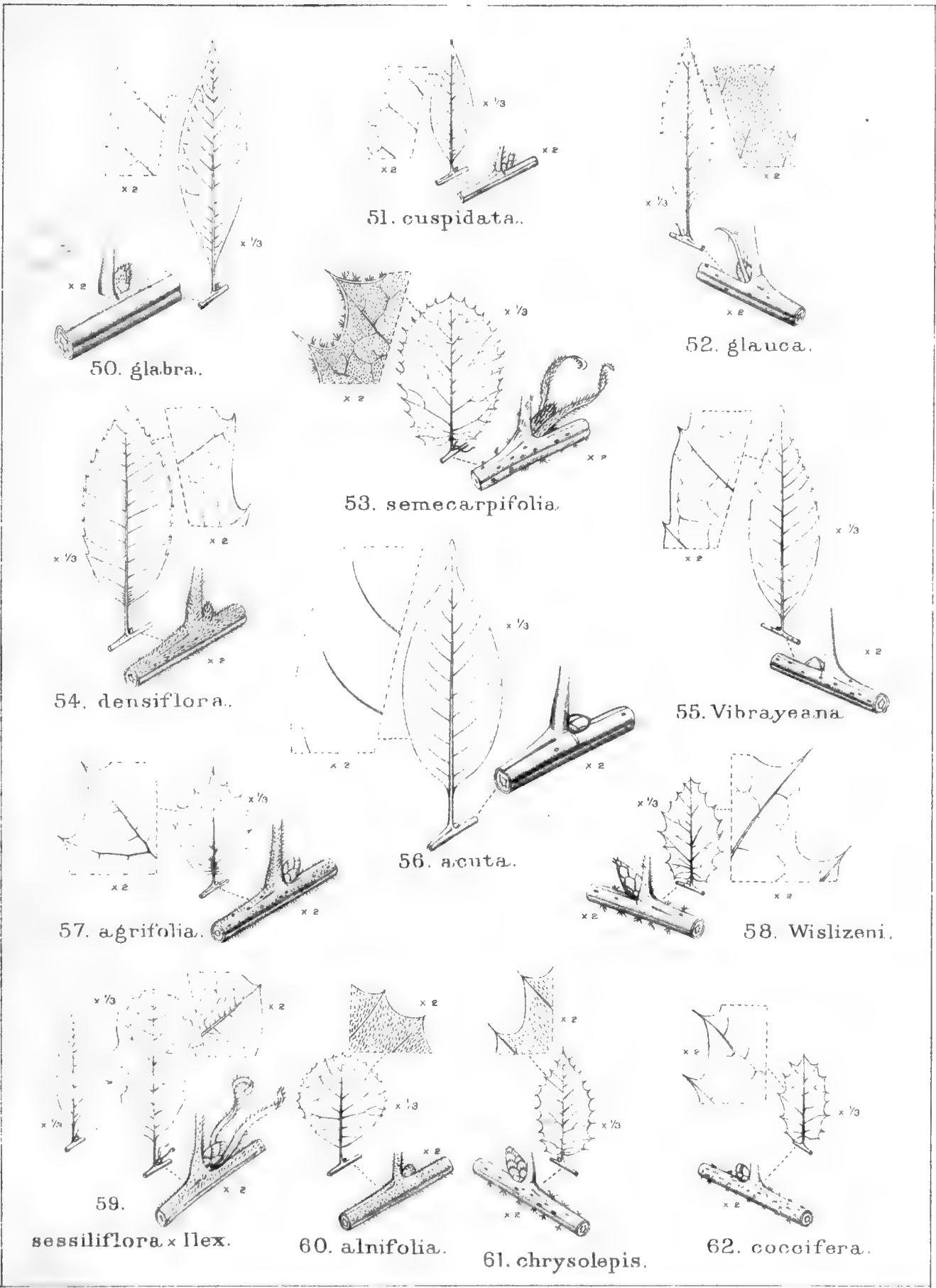


Hutt, del. Huth, lith.

PLATE 337.

QUERCUS.





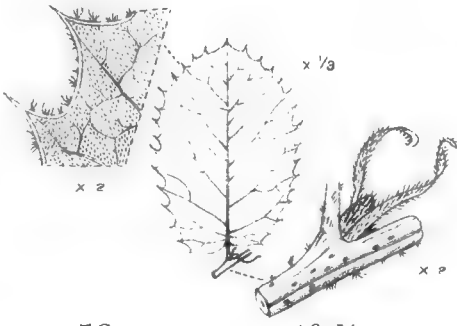
50. glabra.



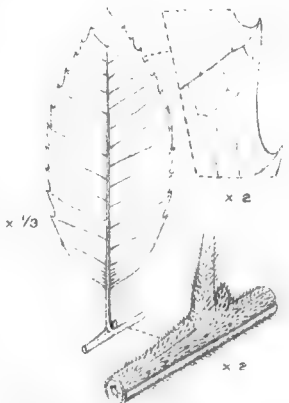
51. cuspidata.



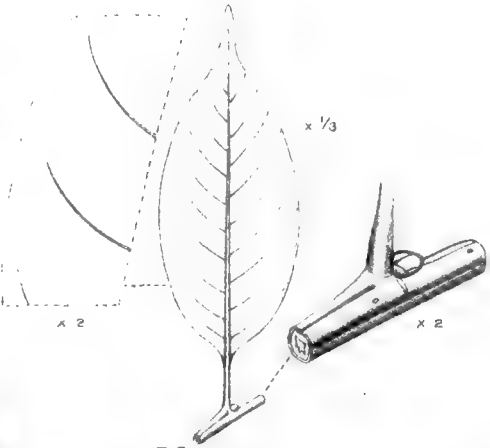
52. glauca.



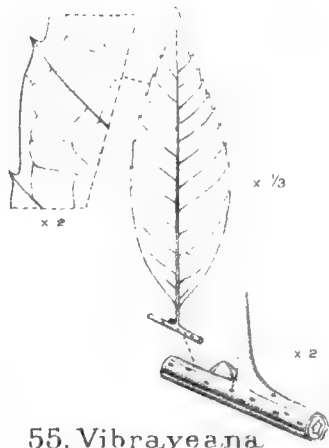
53. semecarpifolia.



54. densiflora.



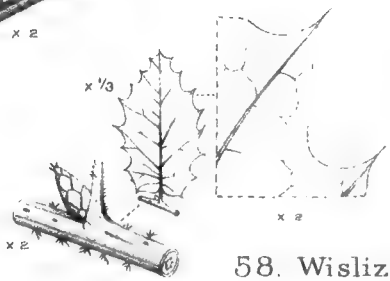
56. acuta.



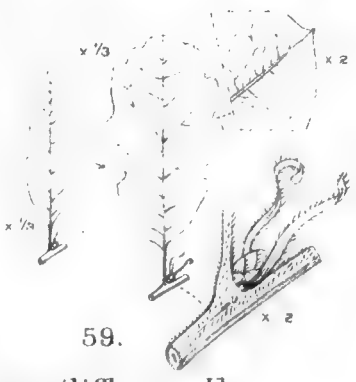
55. Vibrayeana



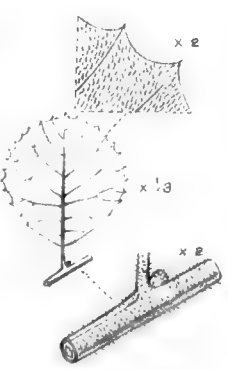
57. agrifolia.



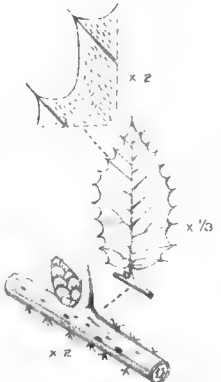
58. Wislizeni.



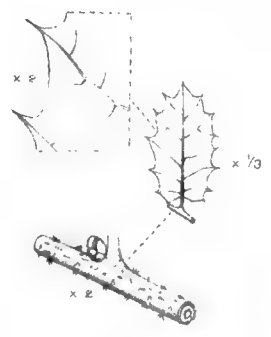
59. sessiliflora x Ilex.



60. alnifolia.

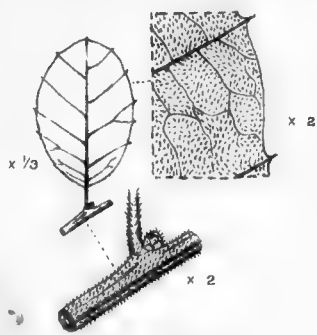


61. chrysolepis.

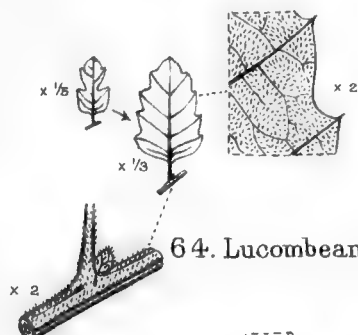


62. coccifera.

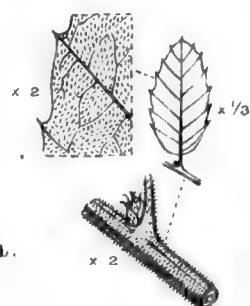




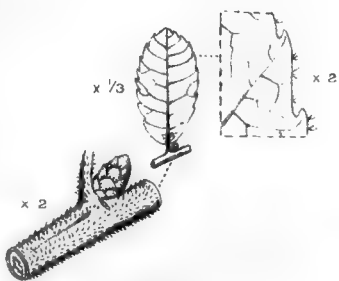
63. *Suber*.



64. *Lucombeana suberosa*.



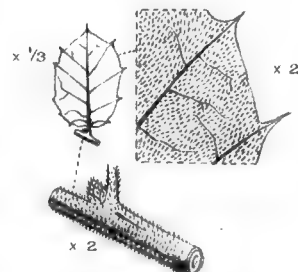
65. *coccifera* Auzandri.



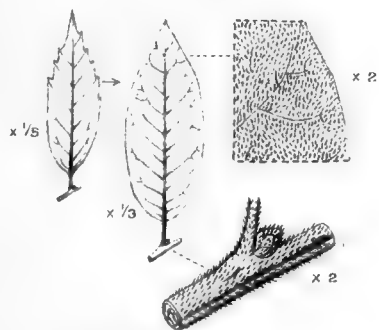
66. *phillyraeoides*.



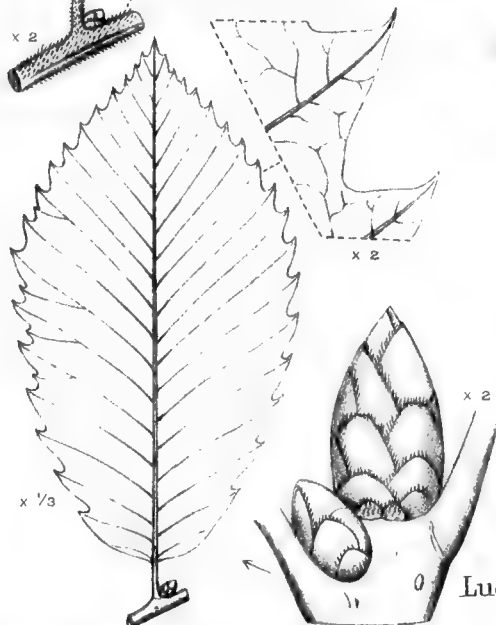
67. *glabrescens*.



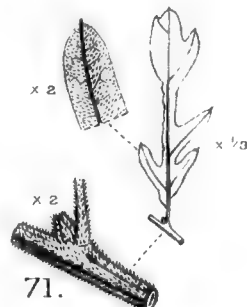
68. *Ilex Gramuntia*.



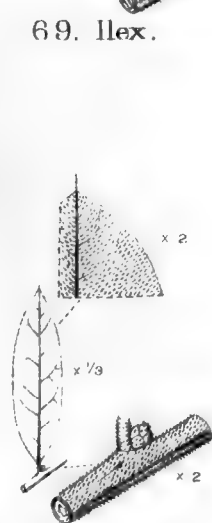
69. *Ilex*.



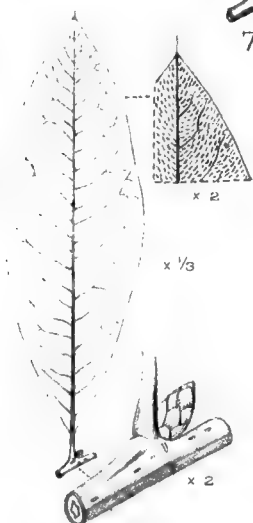
70. *pontica*.



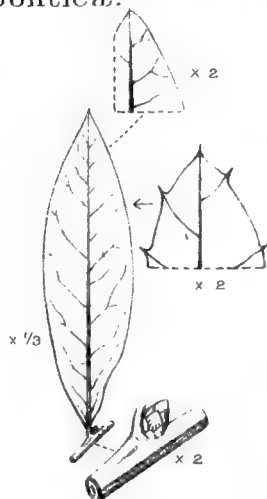
71. *Lucombeana diversifolia*.



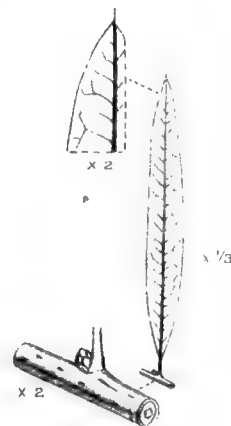
72. *cinerea*.



73. *imbricaria*.



74. *laurifolia*.



75. *Phellos*.









LIBRARY  
FACULTY OF FORESTRY  
UNIVERSITY OF TORONTO

OVERSIZE: *Rare Book Cabinet*

QK  
488  
E5  
1906  
Plates  
v.5

Elwes, Henry John  
The trees of Great  
Britain & Ireland

Forestry

PLEASE DO NOT REMOVE  
CARDS OR SLIPS FROM THIS POCKET

---

UNIVERSITY OF TORONTO LIBRARY

---

[123450]

